



Officials: Clarence Armstrong, John Gaffney, Justin Porterfield

Virginia Tech - 85

Record: 11-10 (3-7)

NO.	Name	F	Min	FG			3P			FT			Rebounds			Fouls		TP	AS	TO	ST	Blocks		+/-
				M-A	M-A	M-A	OR	DR	TOT	PF	FD	BS	BA											
22	Keve Aluma	F	23:42	2-4	0-0	0-2	0	1	1	4	1	4	0	1	1	1	0	1	1	0	1	10		
25	Justyn Mutts	F	23:38	4-5	0-0	2-2	3	2	5	3	1	10	4	2	1	0	0	5						
0	Hunter Cattoor	G	38:14	9-12	9-11	0-0	0	4	4	2	1	27	1	2	0	2	0	15						
4	Nahiem Alleyne	G	19:33	2-6	1-3	0-0	0	1	1	2	0	5	1	2	0	0	0	2						
5	Storm Murphy	G	20:46	3-4	1-2	0-0	0	2	2	0	0	7	5	1	0	0	0	-2						
1	David N'Guessan		27:05	3-4	0-0	0-0	0	2	2	2	1	6	1	0	0	0	1	13						
13	Darius Maddox		23:36	2-6	1-2	1-1	0	1	1	3	2	6	1	0	3	0	0	9						
3	Sean Pedulla		22:50	7-11	6-7	0-0	0	0	0	0	3	20	3	2	1	0	1	12						
21	John Ojiako		00:36	0-0	0-0	0-0	0	0	0	0	0	0	0	0	0	0	0	1						
Team							1	1	2			0		0										
Totals				32-52	18-25	3-5	4	14	18	16	9	85	16	10	6	2	3	13						

Shooting By Period		
1st FG%	15-27	55.6%
3PT%	9-14	64.3%
FT%	0-2	0%
2nd FG%	17-25	68.0%
3PT%	9-11	81.8%
FT%	3-3	100%
GM FG%	32-52	61.5%
3PT%	18-25	72.0%
FT%	3-5	60.0%

Dead Ball Rebounds: 1, 0

Technical Fouls::NONE

Florida State - 72

Record: 13-7 (6-4)

NO.	Name	F	Min	FG			3P			FT			Rebounds			Fouls		TP	AS	TO	ST	Blocks		+/-
				M-A	M-A	M-A	OR	DR	TOT	PF	FD	BS	BA											
22	John Butler	F	22:13	3-4	2-3	0-1	1	0	1	0	2	8	1	1	0	1	0	1						
11	Tanor Ngom	C	09:37	2-3	0-0	0-0	1	0	1	4	0	4	0	2	0	1	0	-6						
1	Jalen Warley	G	32:32	2-9	0-3	3-3	0	3	3	2	4	7	6	5	4	0	1	2						
2	Anthony Polite	G	36:57	5-8	2-4	5-6	2	4	6	0	6	17	3	2	3	0	0	-13						
35	Matthew Cleveland	G	33:48	3-11	0-1	4-4	1	4	5	1	2	10	3	1	0	0	0	-13						
24	Naheem McLeod		23:06	7-7	0-0	1-1	1	0	1	1	1	15	0	0	0	0	0	-4						
31	Wyatt Wilkes		13:50	1-3	1-2	0-0	0	1	1	0	0	3	1	1	0	0	0	-7						
21	Cam'Ron Fletcher		22:19	3-6	0-0	2-2	2	2	4	1	1	8	2	0	0	1	0	-11						
4	Caleb Mills		02:53	0-1	0-0	0-0	0	0	0	0	0	0	0	2	0	0	1	-8						
15	Quincy Ballard		02:45	0-0	0-0	0-0	0	0	0	0	0	0	0	0	0	0	0	-6						
Team							3	0	3			0		0										
Totals				26-52	5-13	15-17	11	14	25	9	16	72	16	14	7	3	2	-13						

Shooting By Period		
1st FG%	11-22	50.0%
3PT%	3-6	50.0%
FT%	6-7	85.7%
2nd FG%	15-30	50.0%
3PT%	2-7	28.6%
FT%	9-10	90%
GM FG%	26-52	50.0%
3PT%	5-13	38.5%
FT%	15-17	88.2%

Dead Ball Rebounds: 3, 3

Technical Fouls::NONE

	VT	FSU
Biggest lead	18 (2 nd 0:49)	8 (1 st 12:52)
Best Scoring Run	14(2 nd 4:39)	10(1 st 12:52)
Lead Changes	8	
Times Tied	5	
Time with Lead	27:22	08:47

	VT	FSU
Points from		
Turnovers	16	14
Paint	20	42
Second Chance	7	12
Fast Breaks	0	6
Bench	32	26

	Period by Period Scoring		
	1st	2nd	TOT
VT	39	46	85
FSU	31	41	72



Period 1

Quarter Starters:

FSU	1 Warley J	2 Polite A	11 Ngom T	22 Butler J	35 Cleveland M
VT	0 Cattoor H	4 Alleyne N	5 Murphy S	22 Aluma K	25 Mutts J

Game Time	FSU	Score	Diff	VT
20:00	22 BUTLER J jumpball lost			22 ALUMA K jumpball won
19:28	11 NGOM T foul personal (1 - 1)			0 CATTOOR H foul drawn (1)
19:09				4 ALLEYNE N 3pt FG , jump shot missed
19:06				25 MUTTS J offensive rebound (1)
18:55		0-3	-3	4 ALLEYNE N 3pt FG second chance, jump shot made (3)
18:55				5 MURPHY S assist (1)
18:24	2 POLITE A 3pt FG , jump shot missed			
18:21				25 MUTTS J defensive rebound (2)
18:05	11 NGOM T substitution out			
18:05	24 MCLEOD N substitution in			
17:57				0 CATTOOR H 3pt FG , jump shot missed
17:55	2 POLITE A defensive rebound (1)			
17:50	35 CLEVELAND M 2pt FG in the paint, driving layup made (2)	2-3	-1	
17:50	2 POLITE A assist (1)			
17:21				4 ALLEYNE N 3pt FG , jump shot missed
17:19	2 POLITE A defensive rebound (2)			
17:12	22 BUTLER J 3pt FG , jump shot missed			
17:08				0 CATTOOR H defensive rebound (1)
16:59		2-5	-3	22 ALUMA K 2pt FG in the paint, dunk, made (2)
16:59				25 MUTTS J assist (1)
16:29	24 MCLEOD N 2pt FG in the paint, layup made (2)	4-5	-1	
16:29	1 WARLEY J assist (1)			
16:29	24 MCLEOD N foul drawn (1)			25 MUTTS J foul shooting (1 - 1)
16:29				0 CATTOOR H substitution out
16:29				25 MUTTS J substitution out
16:29				1 N'GUESSAN D substitution in
16:29				13 MADDOX D substitution in
16:29	24 MCLEOD N free throw 1 - 1 made (3)	5-5	0	
16:05		5-7	-2	5 MURPHY S 2pt FG outside the paint, step back jump shot made (2)
15:48	2 POLITE A foul drawn (1)			4 ALLEYNE N foul shooting (1 - 2)
15:48	Timeout media			
15:48	2 POLITE A free throw 1 - 2 made (1)	6-7	-1	
15:48	2 POLITE A free throw 2 - 2 made (2)	7-7	0	
15:24		7-9	-2	22 ALUMA K 2pt FG in the paint, turnaround jump shot made (4)
15:14	22 BUTLER J 3pt FG , jump shot made (3)	10-9	1	
15:14	1 WARLEY J assist (2)			
14:44				13 MADDOX D 3pt FG , jump shot missed
14:43	defensive dead ball rebound (1)			
14:43	22 BUTLER J foul drawn (1)			1 N'GUESSAN D foul personal (1 - 3)
14:43	2 POLITE A substitution out			
14:43	31 WILKES W substitution in			
14:43				4 ALLEYNE N substitution out



Officials: Clarence Armstrong, John Gaffney, Justin Porterfield

Game Time	FSU	Score	Diff	VT
14:43				5 MURPHY S substitution out
14:43				22 ALUMA K substitution out
14:43				0 CATTOOR H substitution in
14:43				3 PEDULLA S substitution in
14:43				25 MUTTS J substitution in
14:19	35 CLEVELAND M 2pt FG outside the paint, jump shot missed			
14:18	offensive rebound (3)			
14:09	24 MCLEOD N 2pt FG second chance in the paint, dunk, made (5)	12-9	3	
14:09	35 CLEVELAND M assist (1)			
13:45				0 CATTOOR H 3pt FG , jump shot missed
13:42	35 CLEVELAND M defensive rebound (1)			
13:38	22 BUTLER J substitution out			
13:38	24 MCLEOD N substitution out			
13:38	11 NGOM T substitution in			
13:38	21 FLETCHER C substitution in			
13:30	1 WARLEY J 2pt FG in the paint, floating jump shot made (2)	14-9	5	
13:30	31 WILKES W assist (1)			
13:06	1 WARLEY J substitution out			
13:06	2 POLITE A substitution in			
13:00				13 MADDOX D 2pt FG outside the paint, pull up jump shot missed
12:57	21 FLETCHER C defensive rebound (1)			
12:52	2 POLITE A 3pt FG , jump shot made (5)	17-9	8	
12:52	21 FLETCHER C assist (1)			
12:24		17-12	5	3 PEDULLA S 3pt FG , jump shot made (3)
12:24				13 MADDOX D assist (1)
12:02	21 FLETCHER C 2pt FG in the paint, jump shot missed			
11:58				1 N'GUESSAN D defensive rebound (1)
11:41		17-15	2	3 PEDULLA S 3pt FG , jump shot made (6)
11:41				25 MUTTS J assist (2)
11:27	2 POLITE A 2pt FG in the paint, floating jump shot made (7)	19-15	4	
10:57		19-18	1	3 PEDULLA S 3pt FG , step back jump shot made (9)
10:38	11 NGOM T foul offensive (2 - 2)			1 N'GUESSAN D foul drawn (1)
10:38	11 NGOM T turnover offensive (1)			
10:38	Timeout media			
10:38	11 NGOM T substitution out			
10:38	24 MCLEOD N substitution in			
10:38	35 CLEVELAND M substitution out			
10:38	1 WARLEY J substitution in			
10:38				1 N'GUESSAN D substitution out
10:38				13 MADDOX D substitution out
10:38				4 ALLEYNE N substitution in
10:38				22 ALUMA K substitution in
10:18		19-21	-2	0 CATTOOR H 3pt FG from turnover, jump shot made (3)
10:18				4 ALLEYNE N assist (1)
10:06	31 WILKES W turnover lost ball (1)			22 ALUMA K steal (1)
10:02				22 ALUMA K 2pt FG from turnover in the paint, dunk, blocked
10:02	21 FLETCHER C block (1)			
09:58				offensive rebound (5)



Officials: Clarence Armstrong, John Gaffney, Justin Porterfield

Game Time	FSU	Score	Diff	VT
09:52	1 WARLEY J steal (1)			3 PEDULLA S turnover bad pass (1)
09:46	1 WARLEY J turnover bad pass (1)			25 MUTTS J steal (1)
09:39				4 ALLEYNE N 2pt FG from turnover in the paint, layup missed
09:37	2 POLITE A defensive rebound (3)			
09:23	2 POLITE A 2pt FG outside the paint, jump shot missed			
09:19	2 POLITE A offensive rebound (4)			
09:19	2 POLITE A 2pt FG second chance in the paint, layup made (9)	21-21	0	
08:48				22 ALUMA K 2pt FG outside the paint, turnaround jump shot missed
08:48	defensive dead ball rebound (2)			
08:48	1 WARLEY J foul drawn (1)			25 MUTTS J foul personal (2 - 4)
08:48				3 PEDULLA S substitution out
08:48				25 MUTTS J substitution out
08:48				1 N'GUESSAN D substitution in
08:48				5 MURPHY S substitution in
08:24	1 WARLEY J turnover bad pass (2)			
08:10		21-23	-2	1 N'GUESSAN D 2pt FG from turnover in the paint, layup made (2)
08:10				5 MURPHY S assist (2)
07:54	31 WILKES W 3pt FG , jump shot made (3)	24-23	1	
07:54	2 POLITE A assist (2)			
07:29				4 ALLEYNE N 2pt FG outside the paint, floating jump shot missed
07:24	1 WARLEY J defensive rebound (1)			
07:06	2 POLITE A 3pt FG , jump shot missed			
07:02				defensive rebound (6)
07:02	Timeout media			
07:02	21 FLETCHER C substitution out			
07:02	31 WILKES W substitution out			
07:02	22 BUTLER J substitution in			
07:02	35 CLEVELAND M substitution in			
06:46				4 ALLEYNE N turnover bad pass (1)
06:17	2 POLITE A foul drawn (2)			22 ALUMA K foul shooting (1 - 5)
06:17	2 POLITE A free throw 1 - 2 missed			
06:17	offensive dead ball rebound (3)			
06:17				4 ALLEYNE N substitution out
06:17				13 MADDOX D substitution in
06:17	2 POLITE A free throw 2 - 2 made (10)	25-23	2	
05:58	24 MCLEOD N foul shooting (1 - 3)			22 ALUMA K foul drawn (1)
05:58				22 ALUMA K free throw 1 - 2 missed
05:58				offensive dead ball rebound (1)
05:57				22 ALUMA K free throw 2 - 2 missed
05:56	35 CLEVELAND M defensive rebound (2)			
05:48	35 CLEVELAND M turnover lost ball (1)			13 MADDOX D steal (1)
05:28		25-25	0	1 N'GUESSAN D 2pt FG from turnover in the paint, layup made (4)
04:57	24 MCLEOD N 2pt FG in the paint, turnaround jump shot made (7)	27-25	2	
04:57	22 BUTLER J assist (1)			
04:24		27-28	-1	0 CATTOOR H 3pt FG , jump shot made (6)
04:10	1 WARLEY J 2pt FG in the paint, jump shot blocked			



Officials: Clarence Armstrong, John Gaffney, Justin Porterfield

Game Time	FSU	Score	Diff	VT
04:10				0 CATTOOR H block (1)
04:10	offensive rebound (10)			
04:10	1 WARLEY J substitution out			
04:10	24 MCLEOD N substitution out			
04:10	4 MILLS C substitution in			
04:10	15 BALLARD Q substitution in			
04:10				22 ALUMA K substitution out
04:10				25 MUTTS J substitution in
03:52	4 MILLS C turnover travel (1)			
03:52	Timeout media			
03:52				5 MURPHY S substitution out
03:52				25 MUTTS J substitution out
03:52				3 PEDULLA S substitution in
03:52				22 ALUMA K substitution in
03:21		27-30	-3	1 N'GUESSAN D 2pt FG from turnover outside the paint, jump shot made (6)
03:21				0 CATTOOR H assist (1)
03:06	4 MILLS C turnover lost ball (2)			13 MADDOX D steal (2)
02:43		27-33	-6	3 PEDULLA S 3pt FG from turnover, jump shot made (12)
02:43				1 N'GUESSAN D assist (1)
02:39	Timeout 30 Sec			
02:28	35 CLEVELAND M 2pt FG outside the paint, jump shot missed			
02:25	35 CLEVELAND M offensive rebound (3)			
02:25	35 CLEVELAND M 2pt FG second chance in the paint, layup missed			
02:22				22 ALUMA K defensive rebound (1)
02:13		27-36	-9	0 CATTOOR H 3pt FG , jump shot made (9)
02:13				3 PEDULLA S assist (1)
01:52	4 MILLS C 2pt FG in the paint, jump shot blocked			
01:52				0 CATTOOR H block (2)
01:52	offensive rebound (12)			
01:52	15 BALLARD Q substitution out			
01:52	24 MCLEOD N substitution in			
01:52	22 BUTLER J substitution out			
01:52	21 FLETCHER C substitution in			
01:45	2 POLITE A turnover travel (1)			
01:18				13 MADDOX D 2pt FG from turnover outside the paint, jump shot missed
01:17	defensive dead ball rebound (4)			
01:17	2 POLITE A foul drawn (3)			1 N'GUESSAN D foul personal (2 - 6)
01:17	4 MILLS C substitution out			
01:17	1 WARLEY J substitution in			
01:17				1 N'GUESSAN D substitution out
01:17				21 OJIAKO J substitution in
01:05	21 FLETCHER C 2pt FG in the paint, dunk, made (2)	29-36	-7	
01:05	2 POLITE A assist (3)			
00:41		29-39	-10	3 PEDULLA S 3pt FG , step back jump shot made (15)
00:40				Timeout 30 Sec
00:40				21 OJIAKO J substitution out
00:40				4 ALLEYNE N substitution in



Officials: Clarence Armstrong, John Gaffney, Justin Porterfield

Game Time	FSU	Score	Diff	VT
00:27	35 CLEVELAND M foul drawn (1)			13 MADDOX D foul personal (1 - 7)
00:27	24 MCLEOD N substitution out			
00:27	15 BALLARD Q substitution in			
00:27	35 CLEVELAND M 1&1 free throw 1 made (3)	30-39	-9	
00:27	35 CLEVELAND M 1&1 free throw 2 made (4)	31-39	-8	
00:03				3 PEDULLA S 2pt FG in the paint, layup missed
00:00	2 POLITE A defensive rebound (5)			
00:01	35 CLEVELAND M 2pt FG in the paint, floating jump shot missed			
00:01	offensive dead ball rebound (5)			
END OF PERIOD				
FSU 31-39 VT				



Officials: Clarence Armstrong, John Gaffney, Justin Porterfield

Virginia Tech - 39

NO.	Name	Min	FG			Rebounds			Fouls		TP	AS	TO	ST	Blocks		+/-
			M-A	3P	FT	OR	DR	TOT	PF	FD					BS	BA	
22	Keve Aluma	F 15:37	2-4	0-0	0-2	0	1	1	1	1	4	0	0	1	0	1	8
25	Justyn Mutts	F 09:44	0-0	0-0	0-0	1	1	2	2	0	0	2	0	1	0	0	2
0	Hunter Cattoor	G 18:14	3-5	3-5	0-0	0	1	1	0	1	9	1	0	0	2	0	10
4	Nahiem Alleyne	G 10:19	1-5	1-3	0-0	0	0	0	1	0	3	1	1	0	0	0	-3
5	Storm Murphy	G 10:13	1-1	0-0	0-0	0	0	0	0	0	2	2	0	0	0	0	0
1	David N'Guessan	13:22	3-3	0-0	0-0	0	1	1	2	1	6	1	0	0	0	0	7
13	Darius Maddox	12:08	0-3	0-1	0-0	0	0	0	1	0	0	1	0	2	0	0	7
3	Sean Pedulla	09:47	5-6	5-5	0-0	0	0	0	0	0	15	1	1	0	0	0	8
21	John Ojiako	00:36	0-0	0-0	0-0	0	0	0	0	0	0	0	0	0	0	0	1
Team						1	1	2			0		0				
Totals			15-27	9-14	0-2	2	5	7	7	3	39	9	2	4	2	1	8

Shooting By Period		
1st FG%	15-27	55.6%
3PT%	9-14	64.3%
FT%	0-2	0%
GM FG%	15-27	55.6%
3PT%	9-14	64.3%
FT%	0-2	0.0%

Dead Ball Rebounds: 1, 0

Technical Fouls: NONE

Florida State - 31

NO.	Name	Min	FG			Rebounds			Fouls		TP	AS	TO	ST	Blocks		+/-
			M-A	3P	FT	OR	DR	TOT	PF	FD					BS	BA	
22	John Butler	F 11:32	1-2	1-2	0-0	0	0	0	0	1	3	1	0	0	0	0	-7
11	Tanor Ngom	C 04:55	0-0	0-0	0-0	0	0	0	2	0	0	0	1	0	0	0	-5
1	Jalen Warley	G 14:39	1-2	0-0	0-0	0	1	1	0	1	2	2	2	1	0	1	4
2	Anthony Polite	G 18:23	3-6	1-3	3-4	1	4	5	0	3	10	3	1	0	0	0	-12
35	Matthew Cleveland	G 16:24	1-5	0-0	2-2	1	2	3	0	1	4	1	1	0	0	0	-8
24	Naheem McLeod	12:20	3-3	0-0	1-1	0	0	0	1	1	7	0	0	0	0	0	3
31	Wyatt Wilkes	07:41	1-1	1-1	0-0	0	0	0	0	0	3	1	1	0	0	0	0
21	Cam'Ron Fletcher	08:28	1-2	0-0	0-0	0	1	1	0	0	2	1	0	0	1	0	-1
4	Caleb Mills	02:53	0-1	0-0	0-0	0	0	0	0	0	0	0	2	0	0	1	-8
15	Quincy Ballard	02:45	0-0	0-0	0-0	0	0	0	0	0	0	0	0	0	0	0	-6
Team						3	0	3			0		0				
Totals			11-22	3-6	6-7	5	8	13	3	7	31	9	8	1	1	2	-8

Shooting By Period		
1st FG%	11-22	50.0%
3PT%	3-6	50.0%
FT%	6-7	85.7%
GM FG%	11-22	50.0%
3PT%	3-6	50.0%
FT%	6-7	85.7%

Dead Ball Rebounds: 2, 3

Technical Fouls: NONE

	VT	FSU
Biggest lead	10 (1 st 0:41)	8 (1 st 12:52)
Best Scoring Run	11 (1 st 2:13)	10 (1 st 12:52)
Lead Changes	4	
Times Tied	4	
Time with Lead	08:32	07:55

Points from	VT	FSU
Turnovers	12	1
Paint	8	16
Second Chance	3	4
Fast Breaks	0	0
Bench	21	12

	Period by Period Scoring		
	1st	2nd	TOT
VT	39	46	85
FSU	31	41	72



Period 2

Quarter Starters:

FSU	1 Warley J	2 Polite A	11 Ngom T	22 Butler J	35 Cleveland M
VT	0 Cattoor H	4 Alleyne N	5 Murphy S	22 Aluma K	25 Mutts J

Game Time	FSU	Score	Diff	VT
20:00	15 BALLARD Q substitution out			
20:00	21 FLETCHER C substitution out			
20:00	11 NGOM T substitution in			
20:00	22 BUTLER J substitution in			
20:00				3 PEDULLA S substitution out
20:00				13 MADDOX D substitution out
20:00				5 MURPHY S substitution in
20:00				25 MUTTS J substitution in
19:50	1 WARLEY J 2pt FG in the paint, driving layup made (4)	33-39	-6	
19:50	1 WARLEY J foul drawn (2)			22 ALUMA K foul shooting (2 - 1)
19:50	1 WARLEY J free throw 1 - 1 made (5)	34-39	-5	
19:31				22 ALUMA K turnover lost ball (1)
19:27	2 POLITE A foul drawn (4)			22 ALUMA K foul shooting (3 - 2)
19:27	2 POLITE A free throw fast break 1 - 2 made (11)	35-39	-4	
19:27				22 ALUMA K substitution out
19:27				1 N'GUESSAN D substitution in
19:27	2 POLITE A free throw fast break 2 - 2 made (12)	36-39	-3	
19:09		36-42	-6	0 CATTOOR H 3pt FG , jump shot made (12)
19:09				5 MURPHY S assist (3)
18:58	11 NGOM T 2pt FG in the paint, layup made (2)	38-42	-4	
18:58	1 WARLEY J assist (3)			
18:28				1 N'GUESSAN D 2pt FG in the paint, layup blocked
18:28	11 NGOM T block (1)			
18:28	1 WARLEY J defensive rebound (2)			
18:10	11 NGOM T 2pt FG in the paint, layup made (4)	40-42	-2	
18:10	35 CLEVELAND M assist (2)			
17:52				5 MURPHY S 3pt FG , step back jump shot missed
17:48	35 CLEVELAND M defensive rebound (4)			
17:35	35 CLEVELAND M 2pt FG in the paint, driving layup made (6)	42-42	0	
17:34				Timeout 30 Sec
17:34	Timeout media			
17:34	11 NGOM T substitution out			
17:34	24 MCLEOD N substitution in			
17:20				25 MUTTS J 2pt FG in the paint, layup missed
17:17				25 MUTTS J offensive rebound (3)
17:17		42-44	-2	25 MUTTS J 2pt FG second chance in the paint, layup made (2)
16:54				5 MURPHY S substitution out
16:54				3 PEDULLA S substitution in
16:44	1 WARLEY J 2pt FG in the paint, turnaround jump shot missed			
16:40				0 CATTOOR H defensive rebound (2)
16:33		42-46	-4	4 ALLEYNE N 2pt FG outside the paint, pull up jump shot made (5)
16:17	2 POLITE A 2pt FG in the paint, jump shot made (14)	44-46	-2	



Virginia Tech at Florida State

01/29/22 Donald L. Tucker Center, Tallahassee
2021-22 Men's Basketball

Game Time: 3:00 PM
Game Duration: 1:58
Attendance: 11,500

Officials: Clarence Armstrong, John Gaffney, Justin Porterfield

Game Time	FSU	Score	Diff	VT
15:57		44-49	-5	3 PEDULLA S 3pt FG , jump shot made (18)
15:32	35 CLEVELAND M 2pt FG in the paint, driving layup made (8)	46-49	-3	
15:15	1 WARLEY J steal (2)			4 ALLEYNE N turnover lost ball (2)
15:10	1 WARLEY J 3pt FG from turnover, jump shot missed			
15:06	22 BUTLER J offensive rebound (1)			
15:06	22 BUTLER J 2pt FG from turnover second chance in the paint, layup made (5)	48-49	-1	
15:06	22 BUTLER J foul drawn (2)			25 MUTTS J foul shooting (3 - 3)
15:06	Timeout media			
15:06				4 ALLEYNE N substitution out
15:06				13 MADDOX D substitution in
15:05	22 BUTLER J free throw 1 - 1 missed			
15:04				25 MUTTS J defensive rebound (4)
14:47	1 WARLEY J steal (3)			25 MUTTS J turnover bad pass (1)
14:44	1 WARLEY J foul drawn (3)			0 CATTOOR H foul personal (1 - 4)
14:34	24 MCLEOD N 2pt FG from turnover in the paint, dunk, made (9)	50-49	1	
14:34	1 WARLEY J assist (4)			
14:18	2 POLITE A steal (1)			0 CATTOOR H turnover bad pass (1)
14:12	35 CLEVELAND M 2pt FG from turnover in the paint, jump shot missed			
14:07				0 CATTOOR H defensive rebound (3)
14:02		50-52	-2	13 MADDOX D 3pt FG , jump shot made (3)
14:02				3 PEDULLA S assist (2)
14:02	35 CLEVELAND M foul shooting (1 - 1)			13 MADDOX D foul drawn (1)
14:02	24 MCLEOD N substitution out			
14:02	11 NGOM T substitution in			
14:02				25 MUTTS J substitution out
14:02				22 ALUMA K substitution in
14:02		50-53	-3	13 MADDOX D free throw 1 - 1 made (4)
13:51	11 NGOM T foul offensive (3 - 2)			13 MADDOX D foul drawn (2)
13:51	11 NGOM T turnover offensive (2)			
13:51	22 BUTLER J substitution out			
13:51	21 FLETCHER C substitution in			
13:44	11 NGOM T foul personal (4 - 3)			3 PEDULLA S foul drawn (1)
13:44	11 NGOM T substitution out			
13:44	24 MCLEOD N substitution in			
13:44				13 MADDOX D 2pt FG from turnover in the paint, layup missed
13:44	21 FLETCHER C defensive rebound (2)			
13:15	24 MCLEOD N 2pt FG in the paint, dunk, made (11)	52-53	-1	
13:15	1 WARLEY J assist (5)			
12:45				3 PEDULLA S 3pt FG , jump shot missed
12:42	35 CLEVELAND M defensive rebound (5)			
12:39	1 WARLEY J foul offensive (1 - 4)			3 PEDULLA S foul drawn (2)
12:39	1 WARLEY J turnover offensive (3)			
12:39				3 PEDULLA S substitution out
12:39				5 MURPHY S substitution in
12:39	1 WARLEY J substitution out			
12:39	31 WILKES W substitution in			
12:18				0 CATTOOR H turnover bad pass (2)



Virginia Tech at Florida State

01/29/22 Donald L. Tucker Center, Tallahassee
2021-22 Men's Basketball

Game Time: 3:00 PM
Game Duration: 1:58
Attendance: 11,500

Officials: Clarence Armstrong, John Gaffney, Justin Porterfield

Game Time	FSU	Score	Diff	VT
11:59	35 CLEVELAND M 2pt FG from turnover in the paint, jump shot missed			
11:55	24 MCLEOD N offensive rebound (1)			
11:55	24 MCLEOD N 2pt FG from turnover second chance in the paint, dunk, made (13)	54-53	1	
11:35		54-55	-1	13 MADDOX D 2pt FG outside the paint, step back jump shot made (6)
11:25	2 POLITE A foul drawn (5)			22 ALUMA K foul personal (4 - 5)
11:25	Timeout media			
11:24	31 WILKES W 2pt FG outside the paint, pull up jump shot missed			
11:20				5 MURPHY S defensive rebound (1)
10:53		54-58	-4	0 CATTOOR H 3pt FG , jump shot made (15)
10:53				5 MURPHY S assist (4)
10:32				5 MURPHY S substitution out
10:32				3 PEDULLA S substitution in
10:32	35 CLEVELAND M substitution out			
10:32	1 WARLEY J substitution in			
10:21	21 FLETCHER C 2pt FG outside the paint, jump shot missed			
10:17	2 POLITE A offensive rebound (6)			
10:17	2 POLITE A foul drawn (6)			0 CATTOOR H foul personal (2 - 6)
09:56	1 WARLEY J 2pt FG second chance outside the paint, jump shot missed			
09:54	21 FLETCHER C offensive rebound (3)			
09:44	1 WARLEY J 3pt FG second chance, jump shot missed			
09:38	21 FLETCHER C offensive rebound (4)			
09:38	21 FLETCHER C 2pt FG second chance in the paint, layup made (4)	56-58	-2	
09:17		56-60	-4	3 PEDULLA S 2pt FG in the paint, driving layup made (20)
08:53	21 FLETCHER C 2pt FG outside the paint, turnaround jump shot missed			
08:50				13 MADDOX D defensive rebound (1)
08:25				3 PEDULLA S 2pt FG outside the paint, pull up jump shot missed
08:22	31 WILKES W defensive rebound (1)			
08:00	1 WARLEY J 3pt FG , jump shot missed			
07:57	offensive dead ball rebound (6)			
07:56	21 FLETCHER C foul drawn (1)			13 MADDOX D foul personal (2 - 7)
07:56	Timeout media			
07:56	2 POLITE A substitution out			
07:56	35 CLEVELAND M substitution in			
07:56				1 N'GUESSAN D substitution out
07:56				13 MADDOX D substitution out
07:56				3 PEDULLA S substitution out
07:56				4 ALLEYNE N substitution in
07:56				5 MURPHY S substitution in
07:56				25 MUTTS J substitution in
07:56	21 FLETCHER C 1&1 free throw 1 made (5)	57-60	-3	
07:56	21 FLETCHER C 1&1 free throw 2 made (6)	58-60	-2	
07:34	21 FLETCHER C foul shooting (1 - 5)			25 MUTTS J foul drawn (1)
07:34		58-61	-3	25 MUTTS J free throw 1 - 2 made (3)
07:34		58-62	-4	25 MUTTS J free throw 2 - 2 made (4)



Virginia Tech at Florida State

01/29/22 Donald L. Tucker Center, Tallahassee
2021-22 Men's Basketball

Game Time: 3:00 PM
Game Duration: 1:58
Attendance: 11,500

Officials: Clarence Armstrong, John Gaffney, Justin Porterfield

Game Time	FSU	Score	Diff	VT
07:25	24 MCLEOD N 2pt FG in the paint, dunk, made (15)	60-62	-2	
07:25	35 CLEVELAND M assist (3)			
07:03		60-65	-5	0 CATTOOR H 3pt FG , step back jump shot made (18)
06:50	31 WILKES W 3pt FG , jump shot missed			
06:47				5 MURPHY S defensive rebound (2)
06:39		60-68	-8	0 CATTOOR H 3pt FG , jump shot made (21)
06:39				25 MUTTS J assist (3)
06:30	Timeout 30 Sec			
06:30	24 MCLEOD N substitution out			
06:30	31 WILKES W substitution out			
06:30	2 POLITE A substitution in			
06:30	11 NGOM T substitution in			
06:30				22 ALUMA K substitution out
06:30				1 N'GUESSAN D substitution in
06:12	2 POLITE A turnover bad pass (2)			
06:12				5 MURPHY S substitution out
06:12				3 PEDULLA S substitution in
05:58		60-70	-10	25 MUTTS J 2pt FG from turnover in the paint, driving layup made (6)
05:47	1 WARLEY J 2pt FG in the paint, jump shot missed			
05:44	11 NGOM T offensive rebound (1)			
05:36	11 NGOM T 2pt FG second chance outside the paint, turnaround jump shot missed			
05:34				4 ALLEYNE N defensive rebound (1)
05:14		60-73	-13	0 CATTOOR H 3pt FG , jump shot made (24)
04:59	35 CLEVELAND M 2pt FG outside the paint, jump shot missed			
04:57				1 N'GUESSAN D defensive rebound (2)
04:39		60-76	-16	0 CATTOOR H 3pt FG , jump shot made (27)
04:39				25 MUTTS J assist (4)
04:32	Timeout 30 Sec			
04:32	11 NGOM T substitution out			
04:32	22 BUTLER J substitution in			
04:18	1 WARLEY J foul drawn (4)			4 ALLEYNE N foul personal (2 - 8)
04:18	1 WARLEY J 1&1 free throw 1 made (6)	61-76	-15	
04:18	1 WARLEY J 1&1 free throw 2 made (7)	62-76	-14	
04:18				1 N'GUESSAN D substitution out
04:18				13 MADDOX D substitution in
04:00				0 CATTOOR H 2pt FG outside the paint, turnaround jump shot missed
03:56				25 MUTTS J offensive rebound (5)
03:56		62-78	-16	25 MUTTS J 2pt FG second chance in the paint, layup made (8)
03:46	1 WARLEY J turnover travel (4)			
03:46				Timeout media
03:46				4 ALLEYNE N substitution out
03:46				5 MURPHY S substitution in
03:20	2 POLITE A steal (2)			25 MUTTS J turnover lost ball (2)
03:20				5 MURPHY S substitution out
03:20				4 ALLEYNE N substitution in
03:10	jump ball situation			
03:10	22 BUTLER J turnover lost ball (1)			13 MADDOX D steal (3)



Official Basketball Play by Play - Second Half

Virginia Tech at Florida State

01/29/22 Donald L. Tucker Center, Tallahassee
2021-22 Men's Basketball

Game Time: 3:00 PM
Game Duration: 1:58
Attendance: 11,500

Officials: Clarence Armstrong, John Gaffney, Justin Porterfield

Game Time	FSU	Score	Diff	VT
03:10				4 ALLEYNE N substitution out
03:10				5 MURPHY S substitution in
03:07	1 WARLEY J steal (4)			3 PEDULLA S turnover bad pass (2)
03:05	22 BUTLER J 3pt FG from turnover, jump shot made (8)	65-78	-13	
03:05	21 FLETCHER C assist (2)			
02:41				3 PEDULLA S 2pt FG in the paint, jump shot blocked
02:41	22 BUTLER J block (1)			
02:38	1 WARLEY J defensive rebound (3)			
02:36	21 FLETCHER C 2pt FG fast break in the paint, dunk, made (8)	67-78	-11	
02:36	1 WARLEY J assist (6)			
02:10		67-81	-14	5 MURPHY S 3pt FG , jump shot made (5)
02:10				3 PEDULLA S assist (3)
01:55	1 WARLEY J turnover lost ball (5)			3 PEDULLA S steal (1)
01:55	1 WARLEY J foul personal (2 - 6)			3 PEDULLA S foul drawn (3)
01:36		67-83	-16	5 MURPHY S 2pt FG from turnover in the paint, driving layup made (7)
01:20	35 CLEVELAND M 3pt FG , jump shot missed			
01:17				0 CATTOOR H defensive rebound (4)
00:49		67-85	-18	25 MUTTS J 2pt FG in the paint, dunk, made (10)
00:49				5 MURPHY S assist (5)
00:43	2 POLITE A 3pt FG , jump shot made (17)	70-85	-15	
00:31	2 POLITE A steal (3)			5 MURPHY S turnover bad pass (1)
00:28	35 CLEVELAND M foul drawn (2)			13 MADDOX D foul shooting (3 - 9)
00:28	35 CLEVELAND M free throw fast break 1 - 2 made (9)	71-85	-14	
00:28	35 CLEVELAND M free throw fast break 2 - 2 made (10)	72-85	-13	
END OF GAME				
FSU 72-85 VT				



Officials: Clarence Armstrong, John Gaffney, Justin Porterfield

Virginia Tech - 46

NO.	Name	F	Min	FG			3P			FT			Rebounds			Fouls		TP	AS	TO	ST	Blocks		+/-
				M-A	M-A	M-A	M-A	M-A	OR	DR	TOT	PF	FD	BS	BA									
22	Keve Aluma	F	08:05	0-0	0-0	0-0	0	0	0	3	0	0	0	0	0	0	0	1	0	0	0	0	2	
25	Justyn Mutts	F	13:54	4-5	0-0	2-2	2	1	3	1	1	10	2	2	0	0	0	0	0	0	0	0	3	
0	Hunter Cattoor	G	20:00	6-7	6-6	0-0	0	3	3	2	0	18	0	2	0	0	0	0	0	0	0	0	5	
4	Nahiem Alleyne	G	09:14	1-1	0-0	0-0	0	1	1	1	0	2	0	1	0	0	0	0	0	0	0	0	5	
5	Storm Murphy	G	10:33	2-3	1-2	0-0	0	2	2	0	0	5	3	1	0	0	0	0	0	0	0	0	-2	
1	David N'Guessan		13:43	0-1	0-0	0-0	0	1	1	0	0	0	0	0	0	0	0	0	0	0	0	1	6	
3	Sean Pedulla		13:03	2-5	1-2	0-0	0	0	0	0	3	5	2	1	1	0	1	0	1	0	1	4		
13	Darius Maddox		11:28	2-3	1-1	1-1	0	1	1	2	2	6	0	0	0	1	0	0	0	0	0	2		
Team												0	0	0										
Totals				17-25	9-11	3-3	2	9	11	9	6	46	7	8	2	0	2	5						

Shooting By Period		
2 nd FG%	17-25	68.0%
3PT%	9-11	81.8%
FT%	3-3	100%
GM FG%	17-25	68.0%
3PT%	9-11	81.8%
FT%	3-3	100.0%

Dead Ball Rebounds: 0, 0

Technical Fouls::NONE

Florida State - 41

NO.	Name	F	Min	FG			3P			FT			Rebounds			Fouls		TP	AS	TO	ST	Blocks		+/-
				M-A	M-A	M-A	M-A	M-A	OR	DR	TOT	PF	FD	BS	BA									
22	John Butler	F	10:41	2-2	1-1	0-1	1	0	1	0	1	5	0	1	0	1	0	1	0	0	1	0	8	
11	Tanor Ngom	C	04:42	2-3	0-0	0-0	1	0	1	2	0	4	0	1	0	1	0	1	0	1	0	0	-1	
1	Jalen Warley	G	17:53	1-7	0-3	3-3	0	2	2	2	3	5	4	3	3	0	0	0	0	0	0	0	-2	
2	Anthony Polite	G	18:34	2-2	1-1	2-2	1	0	1	0	3	7	0	1	3	0	0	0	0	0	0	0	-1	
35	Matthew Cleveland	G	17:24	2-6	0-1	2-2	0	2	2	1	1	6	2	0	0	0	0	0	0	0	0	0	-5	
15	Quincy Ballard		00:00	0-0	0-0	0-0	0	0	0	0	0	0	0	0	0	0	0	0	0	0	0	0	0	
24	Naheem McLeod		10:46	4-4	0-0	0-0	1	0	1	0	0	8	0	0	0	0	0	0	0	0	0	0	-7	
21	Cam'Ron Fletcher		13:51	2-4	0-0	2-2	2	1	3	1	1	6	1	0	0	0	0	0	0	0	0	0	-10	
31	Wyatt Wilkes		06:09	0-2	0-1	0-0	0	1	1	0	0	0	0	0	0	0	0	0	0	0	0	0	-7	
Team												0	0	0										
Totals				15-30	2-7	9-10	6	6	12	6	9	41	7	6	6	2	0	-5						

Shooting By Period		
2 nd FG%	15-30	50.0%
3PT%	2-7	28.6%
FT%	9-10	90%
GM FG%	15-30	50.0%
3PT%	2-7	28.6%
FT%	9-10	90.0%

Dead Ball Rebounds: 1, 0

Technical Fouls::NONE

	VT	FSU
Biggest lead	18 (2 nd 0:49)	1 (2 nd 14:34)
Best Scoring Run	14(2 nd 4:39)	6(2 nd 17:35)
Lead Changes	4	
Times Tied	1	
Time with Lead	18:40	00:52

Points from	VT	FSU
Turnovers	4	13
Paint	12	26
Second Chance	4	8
Fast Breaks	0	6
Bench	11	14

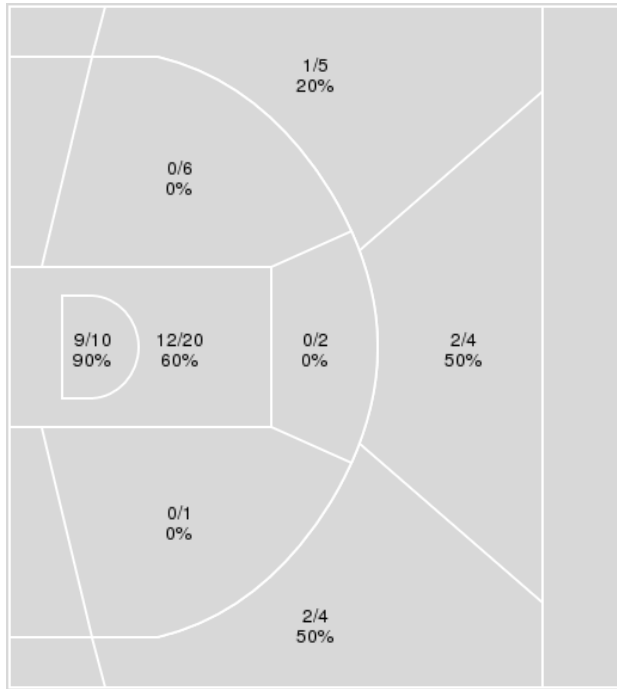
Period by Period Scoring			
	1st	2nd	TOT
VT	39	46	85
FSU	31	41	72



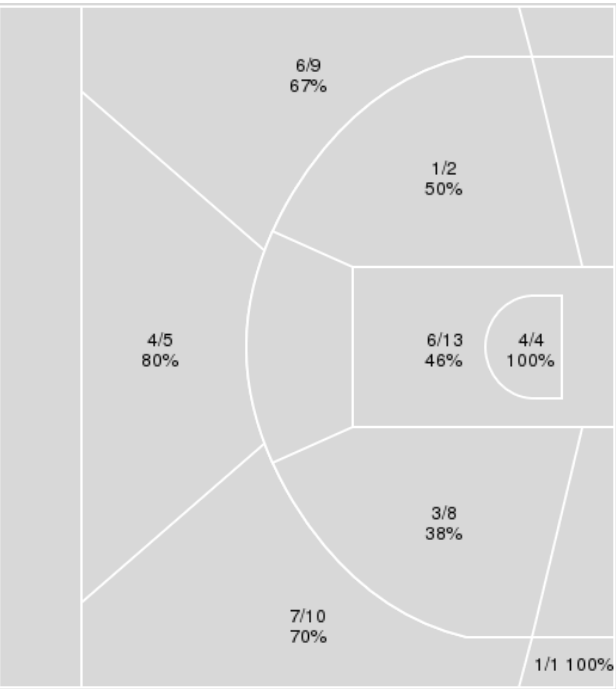
Officials: Clarence Armstrong, John Gaffney, Justin Porterfield

{ Players => 0, 1, 2, 4, 5, 10, 11, 12, 15, 21, 22, 24, 25, 30, 31, 34, 35, 40, 42, 44; } FG Types => All; Results => All;

Florida State



Virginia Tech



Florida State	M/A	%
Field Goals	26/52	50
2 Points	21/39	54
3 Points	5/13	38
Free Throws	15/17	88

Virginia Tech	M/A	%
Field Goals	32/52	62
2 Points	14/27	52
3 Points	18/25	72
Free Throws	3/5	60



Virginia Tech at Florida State

01/29/22 Donald L. Tucker Center, Tallahassee
2021-22 Men's Basketball

Game Time: 3:00 PM
Game Duration: 1:58
Attendance: 11,500

Officials: Clarence Armstrong, John Gaffney, Justin Porterfield

Virginia Tech

No	Name	Mins		Score		Points Diff		Points per Min		Assists		Rebounds		Steals		Turnovers	
		On	Off	On	Off	On	Off	On	Off	On	Off	On	Off	On	Off	On	Off
0	Hunter Cattoor	38:14	01:46	81 - 66	4 - 6	15	-2	2.12	2.26	16	0	18	0	6	0	10	0
1	David N'Guessan	27:05	12:55	57 - 44	28 - 28	13	0	2.10	2.17	10	6	11	7	2	4	5	5
3	Sean Pedulla	22:50	17:10	51 - 39	34 - 33	12	1	2.23	1.98	10	6	11	7	5	1	7	3
4	Nahiem Alleyne	19:33	20:27	42 - 40	43 - 32	2	11	2.15	2.10	7	9	11	7	3	3	4	6
5	Storm Murphy	20:46	19:14	41 - 43	44 - 29	-2	15	1.97	2.29	8	8	8	10	2	4	6	4
13	Darius Maddox	23:36	16:24	49 - 40	36 - 32	9	4	2.08	2.20	9	7	8	10	4	2	6	4
21	John Ojiako	00:36	39:24	3 - 2	82 - 70	1	12	5.00	2.08	0	16	0	18	0	6	0	10
22	Keve Aluma	23:42	16:18	46 - 36	39 - 36	10	3	1.94	2.39	9	7	9	9	4	2	4	6
25	Justyn Mutts	23:38	16:22	55 - 50	30 - 22	5	8	2.33	1.83	11	5	14	4	4	2	8	2

Florida State

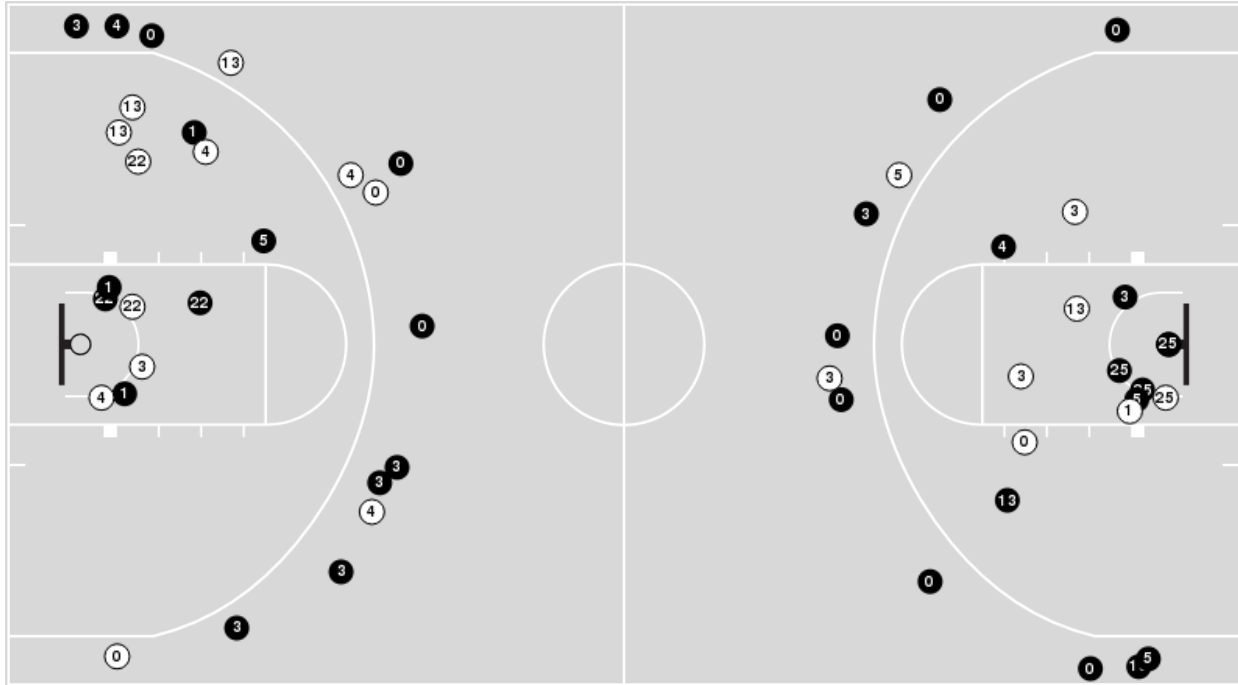
No	Name	Mins		Score		Points Diff		Points per Min		Assists		Rebounds		Steals		Turnovers	
		On	Off	On	Off	On	Off	On	Off	On	Off	On	Off	On	Off	On	Off
1	Jalen Warley	32:32	07:28	65 - 63	7 - 22	2	-15	2.00	0.94	15	1	21	4	7	0	10	4
2	Anthony Polite	36:57	03:03	64 - 77	8 - 8	-13	0	1.73	2.62	13	3	23	2	7	0	14	0
4	Caleb Mills	02:53	37:07	0 - 8	72 - 77	-8	-5	0.00	1.94	0	16	2	23	0	7	3	11
11	Tanor Ngom	09:37	30:23	18 - 24	54 - 61	-6	-7	1.87	1.78	4	12	4	21	0	7	3	11
15	Quincy Ballard	02:45	37:15	2 - 8	70 - 77	-6	-7	0.73	1.88	0	16	3	22	0	7	2	12
21	Cam'Ron Fletcher	22:19	17:41	38 - 49	34 - 36	-11	-2	1.70	1.92	8	8	14	11	4	3	10	4
22	John Butler	22:13	17:47	46 - 45	26 - 40	1	-14	2.07	1.46	10	6	12	13	6	1	7	7
24	Naheem McLeod	23:06	16:54	40 - 44	32 - 41	-4	-9	1.73	1.89	10	6	17	8	4	3	6	8
31	Wyatt Wilkes	13:50	26:10	22 - 29	50 - 56	-7	-6	1.59	1.91	5	11	11	14	1	6	4	10
35	Matthew Cleveland	33:48	06:12	65 - 78	7 - 7	-13	0	1.92	1.13	15	1	18	7	6	1	11	3



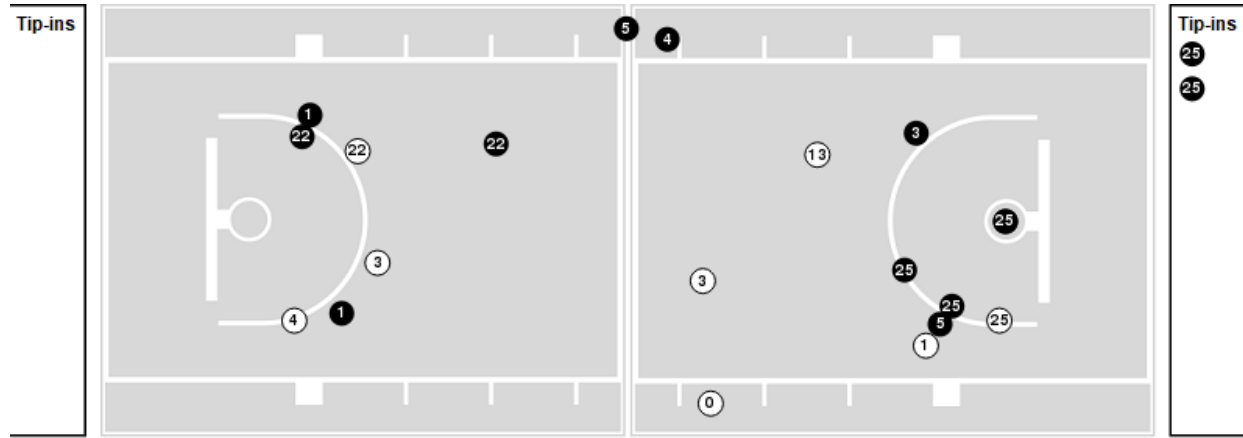
Officials: Clarence Armstrong, John Gaffney, Justin Porterfield

Players => AllFG Types=>AllResults=>All
Virginia Tech

All Field Goals



Blow Up Chart



● Made ○ Missed N - Player Number

Virginia Tech	M/A	%
Field Goals	32/52	62
2 Points	14/27	52
3 Points	18/25	72
Free Throws	3/5	60

Virginia Tech	M/A	%
Points in the Paint	20 (10 / 17)	59
Fast Break Points	0 (0/0)	0
Second Chance Points	7 (3/3)	100
Effective FG%	79	

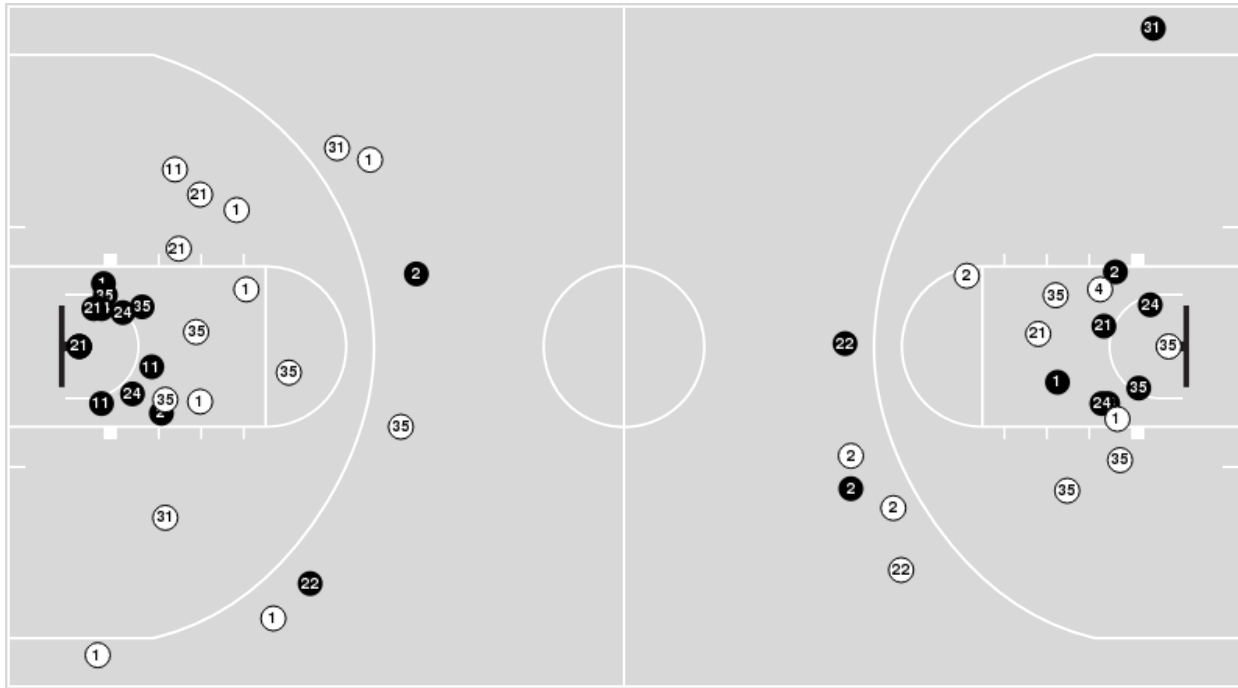


Officials: Clarence Armstrong, John Gaffney, Justin Porterfield

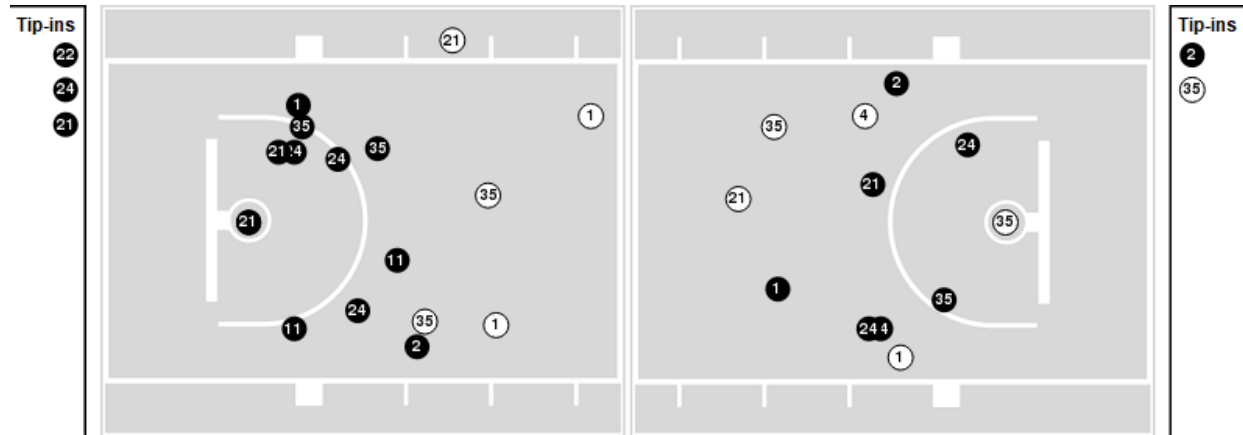
Players => 0, 1, 2, 4, 5, 10, 11, 12, 15, 21, 22, 24, 25, 30, 31, 34, 35, 40, 42, 44FG Types=>AllResults=>All

Florida State

All Field Goals



Blow Up Chart



● Made ○ Missed N - Player Number

Florida State	M/A	%
Field Goals	26/52	50
2 Points	21/39	54
3 Points	5/13	38
Free Throws	15/17	88

Florida State	M/A	%
Points in the Paint	42 (21 / 30)	70
Fast Break Points	6 (5/5)	100
Second Chance Points	12 (7/12)	58
Effective FG%	55	



Official Basketball Rotations Summary - Final
Virginia Tech at Florida State
 01/29/22 Donald L. Tucker Center, Tallahassee
 2021-22 Men's Basketball

Game Time: 3:00 PM
Game Duration: 1:58
Attendance: 11,500

Officials: Clarence Armstrong, John Gaffney, Justin Porterfield

Virginia Tech

Lineup	Quarter On	Time On	Quarter Off	Time Off	Time on Court	Score	Score Diff	Reb	Stl	Tov	Ass	PPP
0- Cattoor H/ 4- Alleyne N/ 5- Murphy S/ 22- Aluma K/ 25- Mutts J/	1	20:00	1	16:29	03:31	5-4	1	3	0	0	2	1.2500
1- N'Guessan D/ 4- Alleyne N/ 5- Murphy S/ 13- Maddox D/ 22- Aluma K/	1	16:29	1	14:43	01:46	4-6	-2	0	0	0	0	1.3333
0- Cattoor H/ 1- N'Guessan D/ 3- Pedulla S/ 13- Maddox D/ 25- Mutts J/	1	14:43	1	10:38	04:05	9-9	0	1	0	0	2	1.8000
0- Cattoor H/ 3- Pedulla S/ 4- Alleyne N/ 22- Aluma K/ 25- Mutts J/	1	10:38	1	08:48	01:50	3-2	1	1	2	1	1	0.7500
0- Cattoor H/ 1- N'Guessan D/ 4- Alleyne N/ 5- Murphy S/ 22- Aluma K/	1	08:48	1	06:17	02:31	2-3	-1	1	0	1	1	0.6667
0- Cattoor H/ 1- N'Guessan D/ 5- Murphy S/ 13- Maddox D/ 22- Aluma K/	1	06:17	1	04:10	02:07	5-3	2	0	1	0	0	1.7361
0- Cattoor H/ 1- N'Guessan D/ 5- Murphy S/ 13- Maddox D/ 25- Mutts J/	1	04:10	1	03:52	00:18	0-0	0	0	0	0	0	0.0000
0- Cattoor H/ 1- N'Guessan D/ 3- Pedulla S/ 13- Maddox D/ 22- Aluma K/	1	03:52	1	01:17	02:35	8-0	8	1	1	0	3	2.0000
0- Cattoor H/ 3- Pedulla S/ 13- Maddox D/ 21- Ojiako J/ 22- Aluma K/	1	01:17	1	00:40	00:36	3-2	1	0	0	0	0	3.0000
0- Cattoor H/ 3- Pedulla S/ 4- Alleyne N/ 13- Maddox D/ 22- Aluma K/	1	00:40	2	20:00	00:41	0-2	-2	0	0	0	0	0.0000
0- Cattoor H/ 4- Alleyne N/ 5- Murphy S/ 22- Aluma K/ 25- Mutts J/	2	20:00	2	19:27	00:33	0-4	-4	0	0	1	0	0.0000
0- Cattoor H/ 1- N'Guessan D/ 4- Alleyne N/ 5- Murphy S/ 25- Mutts J/	2	19:27	2	16:54	02:33	5-7	-2	1	0	0	1	1.2500
0- Cattoor H/ 1- N'Guessan D/ 3- Pedulla S/ 4- Alleyne N/ 25- Mutts J/	2	16:54	2	15:06	01:48	5-6	-1	1	0	1	0	1.6667
0- Cattoor H/ 1- N'Guessan D/ 3- Pedulla S/ 13- Maddox D/ 25- Mutts J/	2	15:06	2	14:02	01:04	3-2	1	2	0	2	1	1.0000
0- Cattoor H/ 1- N'Guessan D/ 3- Pedulla S/ 13- Maddox D/ 22- Aluma K/	2	14:02	2	12:39	01:23	1-2	-1	0	0	0	0	0.4098
0- Cattoor H/ 1- N'Guessan D/ 5- Murphy S/ 13- Maddox D/ 22- Aluma K/	2	12:39	2	10:32	02:07	5-2	3	1	0	1	1	1.6667
0- Cattoor H/ 1- N'Guessan D/ 3- Pedulla S/ 13- Maddox D/ 22- Aluma K/	2	10:32	2	07:56	02:36	2-2	0	1	0	0	0	1.0000
0- Cattoor H/ 4- Alleyne N/ 5- Murphy S/ 22- Aluma K/ 25- Mutts J/	2	07:56	2	06:30	01:26	8-4	4	1	0	0	1	2.7778
0- Cattoor H/ 1- N'Guessan D/ 4- Alleyne N/ 5- Murphy S/ 25- Mutts J/	2	06:30	2	06:12	00:18	0-0	0	0	0	0	0	0.0000
0- Cattoor H/ 1- N'Guessan D/ 3- Pedulla S/ 4- Alleyne N/ 25- Mutts J/	2	06:12	2	04:18	01:54	8-2	6	2	0	0	1	2.6667
0- Cattoor H/ 3- Pedulla S/ 4- Alleyne N/ 13- Maddox D/ 25- Mutts J/	2	04:18	2	03:46	00:32	2-0	2	1	0	0	0	2.0000
0- Cattoor H/ 3- Pedulla S/ 5- Murphy S/ 13- Maddox D/ 25- Mutts J/	2	03:46	2	03:20	00:26	0-0	0	0	0	1	0	0.0000
0- Cattoor H/ 3- Pedulla S/ 4- Alleyne N/ 13- Maddox D/ 25- Mutts J/	2	03:20	2	03:10	00:10	0-0	0	0	1	0	0	0.0000
0- Cattoor H/ 3- Pedulla S/ 5- Murphy S/ 13- Maddox D/ 25- Mutts J/	2	03:10	2	00:00	03:10	7-10	-3	1	1	2	2	1.1667



Official Basketball Rotations Summary - Final
Virginia Tech at Florida State
 01/29/22 Donald L. Tucker Center, Tallahassee
 2021-22 Men's Basketball

Game Time: 3:00 PM
Game Duration: 1:58
Attendance: 11,500

Officials: Clarence Armstrong, John Gaffney, Justin Porterfield

Florida State

Lineup	Quarter On	Time On	Quarter Off	Time Off	Time on Court	Score	Score Diff	Reb	Stl	Tov	Ass	PPP
1- Warley J/ 2- Polite A/ 11- Ngom T/ 22- Butler J/ 35- Cleveland M/	1	20:00	1	18:05	01:55	0-3	-3	0	0	0	0	0.0000
1- Warley J/ 2- Polite A/ 22- Butler J/ 24- McLeod N/ 35- Cleveland M/	1	18:05	1	14:43	03:22	10-6	4	2	0	0	3	1.8797
1- Warley J/ 22- Butler J/ 24- McLeod N/ 31- Wilkes W/ 35- Cleveland M/	1	14:43	1	13:38	01:05	2-0	2	2	0	0	1	2.0000
1- Warley J/ 11- Ngom T/ 21- Fletcher C/ 31- Wilkes W/ 35- Cleveland M/	1	13:38	1	13:06	00:32	2-0	2	0	0	0	1	2.0000
2- Polite A/ 11- Ngom T/ 21- Fletcher C/ 31- Wilkes W/ 35- Cleveland M/	1	13:06	1	10:38	02:28	5-9	-4	1	0	1	1	1.2500
2- Polite A/ 21- Fletcher C/ 24- McLeod N/ 31- Wilkes W/ 35- Cleveland M/	1	10:38	1	10:38	00:00	0-0	0	0	0	0	0	0.0000
1- Warley J/ 2- Polite A/ 21- Fletcher C/ 24- McLeod N/ 31- Wilkes W/	1	10:38	1	07:02	03:36	5-5	0	3	1	3	1	0.8333
1- Warley J/ 2- Polite A/ 22- Butler J/ 24- McLeod N/ 35- Cleveland M/	1	07:02	1	04:10	02:52	3-5	-2	2	0	1	1	1.0417
2- Polite A/ 4- Mills C/ 15- Ballard Q/ 22- Butler J/ 35- Cleveland M/	1	04:10	1	01:52	02:18	0-8	-8	2	0	2	0	0.0000
2- Polite A/ 4- Mills C/ 22- Butler J/ 24- McLeod N/ 35- Cleveland M/	1	01:52	1	01:52	00:00	0-0	0	0	0	0	0	0.0000
2- Polite A/ 4- Mills C/ 21- Fletcher C/ 24- McLeod N/ 35- Cleveland M/	1	01:52	1	01:17	00:35	0-0	0	0	0	1	0	0.0000
1- Warley J/ 2- Polite A/ 21- Fletcher C/ 24- McLeod N/ 35- Cleveland M/	1	01:17	1	00:27	00:50	2-3	-1	0	0	0	1	2.0000
1- Warley J/ 2- Polite A/ 15- Ballard Q/ 21- Fletcher C/ 35- Cleveland M/	1	00:27	2	20:00	00:27	2-0	2	1	0	0	0	1.0638
1- Warley J/ 2- Polite A/ 11- Ngom T/ 22- Butler J/ 35- Cleveland M/	2	20:00	2	17:34	02:26	11-3	8	2	0	0	2	2.0677
1- Warley J/ 2- Polite A/ 22- Butler J/ 24- McLeod N/ 35- Cleveland M/	2	17:34	2	14:02	03:32	8-10	-2	1	3	0	1	1.2422
1- Warley J/ 2- Polite A/ 11- Ngom T/ 22- Butler J/ 35- Cleveland M/	2	14:02	2	13:51	00:11	0-1	-1	0	0	1	0	0.0000
1- Warley J/ 2- Polite A/ 11- Ngom T/ 21- Fletcher C/ 35- Cleveland M/	2	13:51	2	13:44	00:07	0-0	0	0	0	0	0	0.0000
1- Warley J/ 2- Polite A/ 21- Fletcher C/ 24- McLeod N/ 35- Cleveland M/	2	13:44	2	12:39	01:05	2-0	2	2	0	1	1	1.0000
2- Polite A/ 21- Fletcher C/ 24- McLeod N/ 31- Wilkes W/ 35- Cleveland M/	2	12:39	2	10:32	02:07	2-5	-3	1	0	0	0	1.0000
1- Warley J/ 2- Polite A/ 21- Fletcher C/ 24- McLeod N/ 31- Wilkes W/	2	10:32	2	07:56	02:36	2-2	0	4	0	0	0	0.6667
1- Warley J/ 21- Fletcher C/ 24- McLeod N/ 31- Wilkes W/ 35- Cleveland M/	2	07:56	2	06:30	01:26	4-8	-4	0	0	0	1	1.3889
1- Warley J/ 2- Polite A/ 11- Ngom T/ 21- Fletcher C/ 35- Cleveland M/	2	06:30	2	04:32	01:58	0-8	-8	1	0	1	0	0.0000
1- Warley J/ 2- Polite A/ 21- Fletcher C/ 22- Butler J/ 35- Cleveland M/	2	04:32	2	00:00	04:32	12-9	3	1	3	3	2	1.3699



Officials: Clarence Armstrong, John Gaffney, Justin Porterfield

Virginia Tech

Lineup	Time	Score	Score Diff	Pts/Min	Reb	Stl	Tov	Ass	PPP
0- Cattoor H/ 1- N'Guessan D/ 3- Pedulla S/ 13- Maddox D/ 22- Aluma K/	06:34	11-4	7	1.6751	2	1	0	3	1.3033
0- Cattoor H/ 4- Alleyne N/ 5- Murphy S/ 22- Aluma K/ 25- Mutts J/	05:30	13-12	1	2.3636	4	0	1	3	1.6497
0- Cattoor H/ 1- N'Guessan D/ 3- Pedulla S/ 13- Maddox D/ 25- Mutts J/	05:09	12-11	1	2.3301	3	0	2	3	1.5000
0- Cattoor H/ 1- N'Guessan D/ 5- Murphy S/ 13- Maddox D/ 22- Aluma K/	04:14	10-5	5	2.3622	1	1	1	1	1.7007
0- Cattoor H/ 1- N'Guessan D/ 3- Pedulla S/ 4- Alleyne N/ 25- Mutts J/	03:42	13-8	5	3.5135	3	0	1	1	2.1667
0- Cattoor H/ 3- Pedulla S/ 5- Murphy S/ 13- Maddox D/ 25- Mutts J/	03:36	7-10	-3	1.9444	1	1	3	2	1.0000
0- Cattoor H/ 1- N'Guessan D/ 4- Alleyne N/ 5- Murphy S/ 25- Mutts J/	02:51	5-7	-2	1.7544	1	0	0	1	1.2500
0- Cattoor H/ 1- N'Guessan D/ 4- Alleyne N/ 5- Murphy S/ 22- Aluma K/	02:31	2-3	-1	0.7947	1	0	1	1	0.6667
0- Cattoor H/ 3- Pedulla S/ 4- Alleyne N/ 22- Aluma K/ 25- Mutts J/	01:50	3-2	1	1.6364	1	2	1	1	0.7500
1- N'Guessan D/ 4- Alleyne N/ 5- Murphy S/ 13- Maddox D/ 22- Aluma K/	01:46	4-6	-2	2.2642	0	0	0	0	1.3333
0- Cattoor H/ 3- Pedulla S/ 4- Alleyne N/ 13- Maddox D/ 25- Mutts J/	00:42	2-0	2	2.8571	1	1	0	0	2.0000
0- Cattoor H/ 3- Pedulla S/ 4- Alleyne N/ 13- Maddox D/ 22- Aluma K/	00:41	0-2	-2	0.0000	0	0	0	0	0.0000
0- Cattoor H/ 3- Pedulla S/ 13- Maddox D/ 21- Ojiako J/ 22- Aluma K/	00:36	3-2	1	5.0000	0	0	0	0	3.0000
0- Cattoor H/ 1- N'Guessan D/ 5- Murphy S/ 13- Maddox D/ 25- Mutts J/	00:18	0-0	0	0.0000	0	0	0	0	0.0000



Officials: Clarence Armstrong, John Gaffney, Justin Porterfield

Florida State

Lineup	Time	Score	Score Diff	Pts/Min	Reb	Stl	Tov	Ass	PPP
1- Warley J/ 2- Polite A/ 22- Butler J/ 24- McLeod N/ 35- Cleveland M/	09:46	21-21	0	2.1502	5	3	1	5	1.4344
1- Warley J/ 2- Polite A/ 21- Fletcher C/ 24- McLeod N/ 31- Wilkes W/	06:12	7-7	0	1.1290	7	1	3	1	0.7778
1- Warley J/ 2- Polite A/ 11- Ngom T/ 22- Butler J/ 35- Cleveland M/	04:32	11-7	4	2.4265	2	0	1	2	1.5027
1- Warley J/ 2- Polite A/ 21- Fletcher C/ 22- Butler J/ 35- Cleveland M/	04:32	12-9	3	2.6471	1	3	3	2	1.3699
2- Polite A/ 11- Ngom T/ 21- Fletcher C/ 31- Wilkes W/ 35- Cleveland M/	02:28	5-9	-4	2.0270	1	0	1	1	1.2500
2- Polite A/ 4- Mills C/ 15- Ballard Q/ 22- Butler J/ 35- Cleveland M/	02:18	0-8	-8	0.0000	2	0	2	0	0.0000
2- Polite A/ 21- Fletcher C/ 24- McLeod N/ 31- Wilkes W/ 35- Cleveland M/	02:07	2-5	-3	0.9449	1	0	0	0	1.0000
1- Warley J/ 2- Polite A/ 11- Ngom T/ 21- Fletcher C/ 35- Cleveland M/	02:05	0-8	-8	0.0000	1	0	1	0	0.0000
1- Warley J/ 2- Polite A/ 21- Fletcher C/ 24- McLeod N/ 35- Cleveland M/	01:55	4-3	1	2.0870	2	0	1	2	1.3333
1- Warley J/ 21- Fletcher C/ 24- McLeod N/ 31- Wilkes W/ 35- Cleveland M/	01:26	4-8	-4	2.7907	0	0	0	1	1.3889
1- Warley J/ 22- Butler J/ 24- McLeod N/ 31- Wilkes W/ 35- Cleveland M/	01:05	2-0	2	1.8462	2	0	0	1	2.0000
2- Polite A/ 4- Mills C/ 21- Fletcher C/ 24- McLeod N/ 35- Cleveland M/	00:35	0-0	0	0.0000	0	0	1	0	0.0000
1- Warley J/ 11- Ngom T/ 21- Fletcher C/ 31- Wilkes W/ 35- Cleveland M/	00:32	2-0	2	3.7500	0	0	0	1	2.0000
1- Warley J/ 2- Polite A/ 15- Ballard Q/ 21- Fletcher C/ 35- Cleveland M/	00:27	2-0	2	4.4444	1	0	0	0	1.0638
2- Polite A/ 4- Mills C/ 22- Butler J/ 24- McLeod N/ 35- Cleveland M/	00:00	0-0	0	NaN	0	0	0	0	0.0000