



**Virginia Tech at Villanova**

11/28/20 Mohegan Sun, Montville, Conn.

Air Force Reserve Hall of Fame Tip-Off: Villanova vs Virginia Tech

Officials: DJ Carstenson, Lee Cassell, Todd Austin

**Virginia Tech - 81**

Record: 2-0

| NO.           | Name           | Min     | FG    |       |       | Rebounds |    |     | Fouls |    | TP | AS | TO | ST | Blocks |    | +/- |
|---------------|----------------|---------|-------|-------|-------|----------|----|-----|-------|----|----|----|----|----|--------|----|-----|
|               |                |         | M-A   | M-A   | M-A   | OR       | DR | TOT | PF    | FD |    |    |    |    | BS     | BA |     |
| 22            | Keve Aluma     | F 38:55 | 9-14  | 1-1   | 4-7   | 2        | 6  | 8   | 2     | 5  | 23 | 1  | 3  | 0  | 2      | 3  | 6   |
| 25            | Justyn Mutts   | F 38:19 | 3-3   | 2-2   | 4-6   | 1        | 5  | 6   | 4     | 6  | 12 | 1  | 4  | 2  | 0      | 0  | 8   |
| 0             | Hunter Cattoor | G 14:12 | 1-3   | 1-2   | 2-2   | 0        | 1  | 1   | 0     | 2  | 5  | 0  | 0  | 0  | 0      | 0  | -7  |
| 3             | Wabissa Bede   | G 22:42 | 3-8   | 2-4   | 0-0   | 1        | 2  | 3   | 5     | 0  | 8  | 3  | 1  | 0  | 0      | 0  | 7   |
| 23            | Tyrece Radford | G 44:23 | 3-6   | 0-0   | 2-2   | 2        | 11 | 13  | 1     | 3  | 8  | 5  | 2  | 0  | 0      | 0  | 8   |
| 2             | Cartier Diarra | 24:18   | 1-8   | 0-3   | 3-4   | 2        | 1  | 3   | 5     | 2  | 5  | 3  | 3  | 0  | 0      | 1  | -1  |
| 4             | Nahiem Alleyne | 29:13   | 7-12  | 4-6   | 2-2   | 0        | 1  | 1   | 2     | 4  | 20 | 1  | 0  | 0  | 0      | 0  | 15  |
| 1             | Joe Bamisile   | 06:01   | 0-2   | 0-2   | 0-0   | 0        | 0  | 0   | 0     | 0  | 0  | 0  | 0  | 0  | 0      | 0  | 0   |
| 35            | Cordell Pemsli | 06:57   | 0-1   | 0-0   | 0-0   | 0        | 1  | 1   | 0     | 1  | 0  | 0  | 0  | 0  | 0      | 0  | 4   |
| Team          |                |         |       |       |       | 2        | 2  | 4   |       |    | 0  |    | 1  |    |        |    |     |
| <b>Totals</b> |                |         | 27-57 | 10-20 | 17-23 | 10       | 30 | 40  | 19    | 23 | 81 | 14 | 14 | 2  | 2      | 4  | 8   |

| Shooting By Period  |       |       |
|---------------------|-------|-------|
| 1 <sup>st</sup> FG% | 13-25 | 52.0% |
| 3PT%                | 3-8   | 37.5% |
| FT%                 | 0-0   | 0%    |
| 2 <sup>nd</sup> FG% | 11-27 | 40.7% |
| 3PT%                | 6-9   | 66.7% |
| FT%                 | 7-10  | 70%   |
| OT FG%              | 3-5   | 60.0% |
| 3PT%                | 1-3   | 33.3% |
| FT%                 | 10-13 | 76.9% |
| GM FG%              | 27-57 | 47.4% |
| 3PT%                | 10-20 | 50.0% |
| FT%                 | 17-23 | 73.9% |

Technical Fouls: NONE

Dead Ball Rebounds: 2, 1

**Villanova - 73**

Record: 2-1

| NO.           | Name                   | Min     | FG    |      |       | Rebounds |    |     | Fouls |    | TP | AS | TO | ST | Blocks |    | +/- |
|---------------|------------------------|---------|-------|------|-------|----------|----|-----|-------|----|----|----|----|----|--------|----|-----|
|               |                        |         | M-A   | M-A  | M-A   | OR       | DR | TOT | PF    | FD |    |    |    |    | BS     | BA |     |
| 23            | Jermaine Samuels       | F 37:23 | 1-6   | 0-3  | 0-1   | 0        | 6  | 6   | 4     | 3  | 2  | 2  | 0  | 0  | 0      | 0  | -5  |
| 24            | Jeremiah Robinson-Earl | F 41:02 | 5-15  | 0-3  | 4-4   | 4        | 5  | 9   | 3     | 3  | 14 | 2  | 2  | 0  | 1      | 1  | -4  |
| 2             | Collin Gillespie       | G 43:13 | 8-14  | 4-7  | 5-8   | 0        | 3  | 3   | 4     | 6  | 25 | 4  | 2  | 2  | 0      | 0  | -8  |
| 5             | Justin Moore           | G 37:46 | 2-8   | 1-5  | 2-3   | 0        | 4  | 4   | 5     | 5  | 7  | 1  | 1  | 0  | 0      | 0  | -11 |
| 14            | Caleb Daniels          | G 40:33 | 7-14  | 2-5  | 1-1   | 0        | 2  | 2   | 4     | 2  | 17 | 1  | 3  | 0  | 0      | 1  | -9  |
| 3             | Brandon Slater         | 04:15   | 0-0   | 0-0  | 0-0   | 0        | 0  | 0   | 2     | 0  | 0  | 0  | 0  | 0  | 1      | 0  | -6  |
| 10            | Cole Swider            | 19:00   | 3-4   | 2-2  | 0-0   | 2        | 3  | 5   | 1     | 0  | 8  | 1  | 0  | 0  | 1      | 0  | 1   |
| 43            | Eric Dixon             | 01:48   | 0-0   | 0-0  | 0-0   | 0        | 0  | 0   | 0     | 0  | 0  | 0  | 0  | 0  | 1      | 0  | 2   |
| Team          |                        |         |       |      |       | 1        | 1  | 2   |       |    | 0  |    | 0  |    |        |    |     |
| <b>Totals</b> |                        |         | 26-61 | 9-25 | 12-17 | 7        | 24 | 31  | 23    | 19 | 73 | 11 | 8  | 2  | 4      | 2  | -8  |

| Shooting By Period  |       |       |
|---------------------|-------|-------|
| 1 <sup>st</sup> FG% | 10-26 | 38.5% |
| 3PT%                | 6-14  | 42.9% |
| FT%                 | 3-3   | 100%  |
| 2 <sup>nd</sup> FG% | 13-24 | 54.2% |
| 3PT%                | 2-4   | 50.0% |
| FT%                 | 7-12  | 58.3% |
| OT FG%              | 3-11  | 27.3% |
| 3PT%                | 1-7   | 14.3% |
| FT%                 | 2-2   | 100%  |
| GM FG%              | 26-61 | 42.6% |
| 3PT%                | 9-25  | 36.0% |
| FT%                 | 12-17 | 70.6% |

Technical Fouls: NONE

Dead Ball Rebounds: 2, 0

|                  | VT                          | Vil                        |
|------------------|-----------------------------|----------------------------|
| Biggest lead     | 9 (1 <sup>st</sup> OT 0:09) | 12 (2 <sup>nd</sup> 8:48)  |
| Best Scoring Run | 8 (2 <sup>nd</sup> 6:44)    | 11 (2 <sup>nd</sup> 10:38) |
| Lead Changes     | 12                          |                            |
| Times Tied       | 7                           |                            |
| Time with Lead   | 20:07                       | 18:39                      |

|               | VT | Vil |
|---------------|----|-----|
| Points from   |    |     |
| Turnovers     | 5  | 20  |
| Paint         | 32 | 22  |
| Second Chance | 9  | 12  |
| Fast Breaks   | 16 | 5   |
| Bench         | 25 | 8   |

|     | Period by Period Scoring |     |     |     |
|-----|--------------------------|-----|-----|-----|
|     | 1st                      | 2nd | OT1 | TOT |
| VT  | 29                       | 35  | 17  | 81  |
| Vil | 29                       | 35  | 9   | 73  |



**Period 1**

**Quarter Starters:**

|     |               |           |              |              |                    |
|-----|---------------|-----------|--------------|--------------|--------------------|
| Vil | 2 Gillespie C | 5 Moore J | 14 Daniels C | 23 Samuels J | 24 Robinson-Earl J |
| VT  | 0 Cattoor H   | 3 Bede W  | 22 Aluma K   | 23 Radford T | 25 Mutts J         |

| Game Time | Vil   | Score       | Diff      | VT  |
|-----------|---|-------------|-----------|---|
| 20:00     | 24 ROBINSON-EARL J jumpball won                                     |             |           | 22 ALUMA K jumpball lost                                  |
| 19:35     | 2 GILLESPIE C 3pt FG , jump shot missed                             |             |           |   |
| 19:31     |   |             |           | 3 BEDE W defensive rebound (1)                            |
| 19:06     |   | <b>0-2</b>  | <b>-2</b> | 22 ALUMA K 2pt FG in the paint, jump shot made (2)        |
| 18:37     | 24 ROBINSON-EARL J 2pt FG in the paint, layup blocked               |             |           |   |
| 18:37     |   |             |           | 22 ALUMA K block (1)                                      |
| 18:35     | 24 ROBINSON-EARL J offensive rebound (1)                            |             |           |   |
| 18:32     | 14 DANIELS C turnover lost ball (1)                                 |             |           |   |
| 18:06     |   |             |           | 3 BEDE W 2pt FG from turnover in the paint, layup missed  |
| 18:02     | 14 DANIELS C defensive rebound (1)                                  |             |           |   |
| 17:56     | 5 MOORE J foul offensive (1 - 1)                                    |             |           | 0 CATTOOR H foul drawn (1)                                |
| 17:56     | 5 MOORE J turnover offensive (1)                                    |             |           |   |
| 17:39     |   |             |           | 3 BEDE W turnover bad pass (1)                            |
| 17:23     | 2 GILLESPIE C 3pt FG from turnover, jump shot made (3)              | <b>3-2</b>  | <b>1</b>  |   |
| 17:23     | 14 DANIELS C assist (1)   |             |           |   |
| 16:49     |   | <b>3-4</b>  | <b>-1</b> | 22 ALUMA K 2pt FG in the paint, jump shot made (4)        |
| 16:20     | 5 MOORE J foul drawn (1)  |             |           | 3 BEDE W foul personal (1 - 1)                            |
| 16:02     | 14 DANIELS C 3pt FG , jump shot missed                              |             |           |   |
| 15:58     |   |             |           | 25 MUTTS J defensive rebound (1)                          |
| 15:52     |   |             |           | 0 CATTOOR H 3pt FG , jump shot missed                     |
| 15:47     | 2 GILLESPIE C defensive rebound (1)                                 |             |           |   |
| 15:40     | 2 GILLESPIE C 3pt FG , jump shot made (6)                           | <b>6-4</b>  | <b>2</b>  |   |
| 15:10     |   | <b>6-7</b>  | <b>-1</b> | 3 BEDE W 3pt FG , jump shot made (3)                      |
| 15:10     |   |             |           | 25 MUTTS J assist (1)                                     |
| 14:50     | 23 SAMUELS J foul drawn (1)   |             |           | 25 MUTTS J foul personal (1 - 2)                          |
| 14:50     | Timeout media   |             |           |   |
| 14:50     |   |             |           | 0 CATTOOR H substitution out                              |
| 14:50     |   |             |           | 3 BEDE W substitution out                                 |
| 14:50     |   |             |           | 2 DIARRA C substitution in                                |
| 14:50     |   |             |           | 4 ALLEYNE N substitution in                               |
| 14:48     | 24 ROBINSON-EARL J 2pt FG outside the paint, jump shot missed       |             |           |   |
| 14:44     |   |             |           | 23 RADFORD T defensive rebound (1)                        |
| 14:39     | 23 SAMUELS J foul drawn (2)   |             |           | 22 ALUMA K foul offensive (1 - 3)                         |
| 14:39     |   |             |           | 22 ALUMA K turnover offensive (1)                         |
| 14:29     | 2 GILLESPIE C 2pt FG from turnover in the paint, jump shot made (8) | <b>8-7</b>  | <b>1</b>  |   |
| 13:57     |   | <b>8-10</b> | <b>-2</b> | 4 ALLEYNE N 3pt FG , jump shot made (3)                   |
| 13:31     | 23 SAMUELS J 2pt FG in the paint, layup missed                      |             |           |   |
| 13:27     |   |             |           | 23 RADFORD T defensive rebound (2)                        |
| 13:23     |   | <b>8-12</b> | <b>-4</b> | 22 ALUMA K 2pt FG fast break in the paint, layup made (6) |
| 13:23     |   |             |           | 2 DIARRA C assist (1)                                     |
| 12:57     | 2 GILLESPIE C 3pt FG , jump shot missed                             |             |           |   |
| 12:54     |   |             |           | 23 RADFORD T defensive rebound (3)                        |



**Virginia Tech at Villanova**

11/28/20 Mohegan Sun, Montville, Conn.

Air Force Reserve Hall of Fame Tip-Off: Villanova vs Virginia Tech

Officials: DJ Carstenson, Lee Cassell, Todd Austin

| Game Time | Vil   | Score        | Diff      | VT   |
|-----------|---|--------------|-----------|--|
| 12:37     | 2 GILLESPIE C steal (1)                                       |              |           | 23 RADFORD T turnover lost ball (1)                        |
| 12:32     | 24 ROBINSON-EARL J turnover lost ball (1)                     |              |           | 25 MUTTS J steal (1)                                       |
| 12:15     |   |              |           | 2 DIARRA C 2pt FG from turnover in the paint, layup missed |
| 12:11     | 23 SAMUELS J defensive rebound (1)                            |              |           |  |
| 12:05     | 23 SAMUELS J 3pt FG , jump shot missed                        |              |           |  |
| 12:02     |   |              |           | 23 RADFORD T defensive rebound (4)                         |
| 11:35     |   |              |           | 2 DIARRA C 3pt FG , jump shot missed                       |
| 11:31     | 5 MOORE J defensive rebound (1)                               |              |           |  |
| 11:23     | 5 MOORE J 3pt FG , jump shot missed                           |              |           |  |
| 11:19     | 24 ROBINSON-EARL J offensive rebound (2)                      |              |           |  |
| 11:10     | 14 DANIELS C 3pt FG second chance, jump shot made (3)         | <b>11-12</b> | <b>-1</b> |  |
| 11:10     | 2 GILLESPIE C assist (1)                                      |              |           |  |
| 10:40     |   | <b>11-14</b> | <b>-3</b> | 23 RADFORD T 2pt FG in the paint, jump shot made (2)       |
| 10:13     | 23 SAMUELS J 3pt FG , jump shot missed                        |              |           |  |
| 10:11     |   |              |           | defensive dead ball rebound (1)                            |
| 10:11     | 24 ROBINSON-EARL J foul personal (1 - 2)                      |              |           | 4 ALLEYNE N foul drawn (1)                                 |
| 10:11     | Timeout media   |              |           |  |
| 10:11     | 2 GILLESPIE C substitution out                                |              |           |  |
| 10:11     | 23 SAMUELS J substitution out                                 |              |           |  |
| 10:11     | 3 SLATER B substitution in                                    |              |           |  |
| 10:11     | 10 SWIDER C substitution in                                   |              |           |  |
| 10:11     |   |              |           | 2 DIARRA C substitution out                                |
| 10:11     |   |              |           | 22 ALUMA K substitution out                                |
| 10:11     |   |              |           | 25 MUTTS J substitution out                                |
| 10:11     |   |              |           | 1 BAMISILE J substitution in                               |
| 10:11     |   |              |           | 3 BEDE W substitution in                                   |
| 10:11     |   |              |           | 35 PEMSL C substitution in                                 |
| 09:58     | 3 SLATER B foul personal (1 - 3)                              |              |           | 35 PEMSL C foul drawn (1)                                  |
| 09:54     |   | <b>11-16</b> | <b>-5</b> | 4 ALLEYNE N 2pt FG in the paint, layup made (5)            |
| 09:21     | 5 MOORE J 2pt FG in the paint, jump shot missed               |              |           |  |
| 09:17     |   |              |           | 35 PEMSL C defensive rebound (1)                           |
| 09:14     | 3 SLATER B substitution out                                   |              |           |  |
| 09:14     | 14 DANIELS C substitution out                                 |              |           |  |
| 09:14     | 2 GILLESPIE C substitution in                                 |              |           |  |
| 09:14     | 23 SAMUELS J substitution in                                  |              |           |  |
| 09:14     |   |              |           | 4 ALLEYNE N substitution out                               |
| 09:14     |   |              |           | 0 CATTOOR H substitution in                                |
| 08:54     |   |              |           | 3 BEDE W 3pt FG , jump shot missed                         |
| 08:51     | defensive rebound (7)   |              |           |  |
| 08:40     | 24 ROBINSON-EARL J 2pt FG outside the paint, jump shot missed |              |           |  |
| 08:37     |   |              |           | defensive rebound (8)                                      |
| 08:20     |   | <b>11-18</b> | <b>-7</b> | 3 BEDE W 2pt FG in the paint, jump shot made (5)           |
| 07:55     | 2 GILLESPIE C 2pt FG outside the paint, jump shot made (10)   | <b>13-18</b> | <b>-5</b> |  |
| 07:41     |   |              |           | 3 BEDE W 2pt FG in the paint, jump shot missed             |
| 07:37     | 24 ROBINSON-EARL J defensive rebound (3)                      |              |           |  |
| 07:33     | 2 GILLESPIE C foul offensive (1 - 4)                          |              |           | 0 CATTOOR H foul drawn (2)                                 |
| 07:33     | 2 GILLESPIE C turnover offensive (1)                          |              |           |  |
| 07:33     | Timeout media   |              |           |  |



**Virginia Tech at Villanova**

11/28/20 Mohegan Sun, Montville, Conn.

Air Force Reserve Hall of Fame Tip-Off: Villanova vs Virginia Tech

Officials: DJ Carstenson, Lee Cassell, Todd Austin

| Game Time | Vil  | Score        | Diff      | VT   |
|-----------|--|--------------|-----------|--|
| 07:33     | 5 MOORE J substitution out   |              |           |  |
| 07:33     | 24 ROBINSON-EARL J substitution out                                |              |           |  |
| 07:33     | 3 SLATER B substitution in   |              |           |  |
| 07:33     | 14 DANIELS C substitution in                                       |              |           |  |
| 07:33     |  |              |           | 3 BEDE W substitution out                                      |
| 07:33     |  |              |           | 2 DIARRA C substitution in                                     |
| 07:19     |  | <b>13-21</b> | <b>-8</b> | 0 CATTOOR H 3pt FG from turnover, jump shot made (3)           |
| 07:19     |  |              |           | 2 DIARRA C assist (2)  |
| 06:53     | 10 SWIDER C 3pt FG , jump shot made (3)                            | <b>16-21</b> | <b>-5</b> |  |
| 06:53     | 2 GILLESPIE C assist (2)   |              |           |  |
| 06:27     |  |              |           | 1 BAMISILE J 3pt FG , jump shot missed                         |
| 06:20     |  |              |           | 23 RADFORD T offensive rebound (5)                             |
| 06:20     |  | <b>16-23</b> | <b>-7</b> | 23 RADFORD T 2pt FG second chance in the paint, layup made (4) |
| 06:02     | 2 GILLESPIE C foul drawn (1)                                       |              |           | 23 RADFORD T foul personal (1 - 4)                             |
| 06:02     | 3 SLATER B substitution out  |              |           |  |
| 06:02     | 43 DIXON E substitution in   |              |           |  |
| 06:02     |  |              |           | 23 RADFORD T substitution out                                  |
| 06:02     |  |              |           | 25 MUTTS J substitution in                                     |
| 05:49     | 2 GILLESPIE C 2pt FG outside the paint, jump shot missed           |              |           |  |
| 05:46     |  |              |           | 0 CATTOOR H defensive rebound (1)                              |
| 05:39     |  |              |           | 2 DIARRA C turnover lost ball (1)                              |
| 05:39     |  |              |           | 35 PEMSL C substitution out                                    |
| 05:39     |  |              |           | 22 ALUMA K substitution in                                     |
| 05:39     |  |              |           | 1 BAMISILE J substitution out                                  |
| 05:39     |  |              |           | 23 RADFORD T substitution in                                   |
| 05:27     | 14 DANIELS C 2pt FG from turnover in the paint, jump shot made (5) | <b>18-23</b> | <b>-5</b> |  |
| 05:27     | 14 DANIELS C foul drawn (1)  |              |           | 2 DIARRA C foul shooting (1 - 5)                               |
| 05:27     | 14 DANIELS C free throw 1 - 1 made (6)                             | <b>19-23</b> | <b>-4</b> |  |
| 05:18     |  |              |           | 22 ALUMA K 2pt FG in the paint, layup blocked                  |
| 05:18     | 43 DIXON E block (1)   |              |           |  |
| 05:14     | 23 SAMUELS J defensive rebound (2)                                 |              |           |  |
| 05:02     | 14 DANIELS C 2pt FG in the paint, jump shot missed                 |              |           |  |
| 04:58     |  |              |           | 23 RADFORD T defensive rebound (6)                             |
| 04:56     |  | <b>19-25</b> | <b>-6</b> | 2 DIARRA C 2pt FG fast break in the paint, layup made (2)      |
| 04:56     |  |              |           | 23 RADFORD T assist (1)  |
| 04:33     | 14 DANIELS C 2pt FG in the paint, jump shot missed                 |              |           |  |
| 04:30     |  |              |           | 22 ALUMA K defensive rebound (1)                               |
| 04:26     |  |              |           | 2 DIARRA C turnover lost ball (2)                              |
| 04:26     | 43 DIXON E substitution out  |              |           |  |
| 04:26     | 24 ROBINSON-EARL J substitution in                                 |              |           |  |
| 04:06     | 2 GILLESPIE C 3pt FG from turnover, jump shot made (13)            | <b>22-25</b> | <b>-3</b> |  |
| 04:06     | 24 ROBINSON-EARL J assist (1)                                      |              |           |  |
| 03:35     |  |              |           | 22 ALUMA K 2pt FG in the paint, jump shot blocked              |
| 03:35     | 10 SWIDER C block (1)  |              |           |  |
| 03:31     | 10 SWIDER C defensive rebound (1)                                  |              |           |  |
| 03:26     | 2 GILLESPIE C 3pt FG , jump shot made (16)                         | <b>25-25</b> | <b>0</b>  |  |
| 03:00     | 23 SAMUELS J foul personal (1 - 5)                                 |              |           | 23 RADFORD T foul drawn (1)                                    |
| 03:00     |  |              |           | Timeout media  |



**Virginia Tech at Villanova**

11/28/20 Mohegan Sun, Montville, Conn.

Air Force Reserve Hall of Fame Tip-Off: Villanova vs Virginia Tech

Officials: DJ Carstenson, Lee Cassell, Todd Austin

| Game Time            | Vil  | Score        | Diff      | VT   |
|----------------------|--|--------------|-----------|--|
| 03:00                | 10 SWIDER C substitution out   |              |           |  |
| 03:00                | 5 MOORE J substitution in  |              |           |  |
| 02:56                |  |              |           | 0 CATTOOR H 2pt FG outside the paint, jump shot missed |
| 02:54                | 2 GILLESPIE C defensive rebound (2)                                  |              |           |  |
| 02:36                | 23 SAMUELS J 3pt FG , jump shot missed                               |              |           |  |
| 02:31                |  |              |           | 23 RADFORD T defensive rebound (7)                     |
| 02:27                |  |              |           | 25 MUTTS J turnover lost ball (1)                      |
| 02:27                |  |              |           | 0 CATTOOR H substitution out                           |
| 02:27                |  |              |           | 3 BEDE W substitution in                               |
| 02:13                | 24 ROBINSON-EARL J 2pt FG from turnover in the paint, layup made (2) | <b>27-25</b> | <b>2</b>  |  |
| 02:13                | 23 SAMUELS J assist (1)  |              |           |  |
| 01:44                |  | <b>27-27</b> | <b>0</b>  | 25 MUTTS J 2pt FG in the paint, layup made (2)         |
| 01:44                |  |              |           | 3 BEDE W assist (1)                                    |
| 01:18                | 24 ROBINSON-EARL J foul drawn (1)                                    |              |           | 25 MUTTS J foul personal (2 - 6)                       |
| 01:08                | 24 ROBINSON-EARL J 3pt FG , jump shot missed                         |              |           |  |
| 01:03                |  |              |           | 23 RADFORD T defensive rebound (8)                     |
| 01:03                | 23 SAMUELS J foul personal (2 - 6)                                   |              |           | 23 RADFORD T foul drawn (2)                            |
| 01:03                | 23 SAMUELS J substitution out  |              |           |  |
| 01:03                | 3 SLATER B substitution in   |              |           |  |
| 01:03                |  |              |           | 25 MUTTS J substitution out                            |
| 01:03                |  |              |           | 35 PEMSL C substitution in                             |
| 00:39                |  | <b>27-29</b> | <b>-2</b> | 22 ALUMA K 2pt FG in the paint, layup made (8)         |
| 00:25                | Timeout 30 Sec   |              |           |  |
| 00:25                | 3 SLATER B substitution out  |              |           |  |
| 00:25                | 10 SWIDER C substitution in  |              |           |  |
| 00:25                |  |              |           | 23 RADFORD T substitution out                          |
| 00:25                |  |              |           | 0 CATTOOR H substitution in                            |
| 00:10                |  |              |           | 0 CATTOOR H substitution out                           |
| 00:10                |  |              |           | 23 RADFORD T substitution in                           |
| 00:10                | 10 SWIDER C substitution out   |              |           |  |
| 00:10                | 3 SLATER B substitution in   |              |           |  |
| 00:10                | 14 DANIELS C foul drawn (2)  |              |           | 3 BEDE W foul personal (2 - 7)                         |
| 00:10                |  |              |           | Timeout 30 Sec   |
| 00:10                |  |              |           | 35 PEMSL C substitution out                            |
| 00:10                |  |              |           | 0 CATTOOR H substitution in                            |
| 00:10                | 2 GILLESPIE C 1&1 free throw 1 made (17)                             | <b>28-29</b> | <b>-1</b> |  |
| 00:10                | 2 GILLESPIE C 1&1 free throw 2 made (18)                             | <b>29-29</b> | <b>0</b>  |  |
| 00:10                | 2 GILLESPIE C substitution out                                       |              |           |  |
| 00:10                | 43 DIXON E substitution in   |              |           |  |
| 00:04                |  |              |           | 2 DIARRA C 2pt FG in the paint, layup blocked          |
| 00:04                | 3 SLATER B block (1)   |              |           |  |
| 00:00                |  |              |           | 3 BEDE W offensive rebound (2)                         |
| 00:01                |  |              |           | 3 BEDE W 3pt FG second chance, jump shot missed        |
| 00:01                | 14 DANIELS C defensive rebound (2)                                   |              |           |  |
| <b>END OF PERIOD</b> |  |              |           |  |
| <b>Vil 29-29 VT</b>  |  |              |           |  |



Virginia Tech at Villanova

11/28/20 Mohegan Sun, Montville, Conn.

Air Force Reserve Hall of Fame Tip-Off: Villanova vs Virginia Tech

Officials: DJ Carstenson, Lee Cassell, Todd Austin

Virginia Tech - 29

| NO.           | Name           | F | Min   | FG    | 3P  | FT  | Rebounds |    |     | Fouls |    | TP | AS | TO | ST | Blocks |    | +/- |
|---------------|----------------|---|-------|-------|-----|-----|----------|----|-----|-------|----|----|----|----|----|--------|----|-----|
|               |                |   |       | M-A   | M-A | M-A | OR       | DR | TOT | PF    | FD |    |    |    |    | BS     | BA |     |
| 22            | Keve Aluma     | F | 15:28 | 4-6   | 0-0 | 0-0 | 0        | 1  | 1   | 1     | 0  | 8  | 0  | 1  | 0  | 1      | 2  | -4  |
| 25            | Justyn Mutts   | F | 14:48 | 1-1   | 0-0 | 0-0 | 0        | 1  | 1   | 2     | 0  | 2  | 1  | 1  | 1  | 0      | 0  | -4  |
| 0             | Hunter Cattoor | G | 12:22 | 1-3   | 1-2 | 0-0 | 0        | 1  | 1   | 0     | 2  | 3  | 0  | 0  | 0  | 0      | 0  | -6  |
| 3             | Wabissa Bede   | G | 10:15 | 2-6   | 1-3 | 0-0 | 1        | 1  | 2   | 2     | 0  | 5  | 1  | 1  | 0  | 0      | 0  | 3   |
| 23            | Tyrece Radford | G | 19:23 | 2-2   | 0-0 | 0-0 | 1        | 7  | 8   | 1     | 2  | 4  | 1  | 1  | 0  | 0      | 0  | 0   |
| 2             | Cartier Diarra |   | 12:12 | 1-4   | 0-1 | 0-0 | 0        | 0  | 0   | 1     | 0  | 2  | 2  | 2  | 0  | 0      | 1  | -3  |
| 4             | Nahiem Alleyne |   | 05:36 | 2-2   | 1-1 | 0-0 | 0        | 0  | 0   | 0     | 1  | 5  | 0  | 0  | 0  | 0      | 0  | 4   |
| 1             | Joe Bamisile   |   | 04:32 | 0-1   | 0-1 | 0-0 | 0        | 0  | 0   | 0     | 0  | 0  | 0  | 0  | 0  | 0      | 0  | 4   |
| 35            | Cordell Pemsil |   | 05:24 | 0-0   | 0-0 | 0-0 | 0        | 1  | 1   | 0     | 1  | 0  | 0  | 0  | 0  | 0      | 0  | 6   |
| Team          |                |   |       |       |     |     | 0        | 1  | 1   |       |    | 0  |    | 0  |    |        |    |     |
| <b>Totals</b> |                |   |       | 13-25 | 3-8 | 0-0 | 2        | 13 | 15  | 7     | 6  | 29 | 5  | 6  | 1  | 1      | 3  | 0   |

| Shooting By Period |       |       |
|--------------------|-------|-------|
| 1st FG%            | 13-25 | 52.0% |
| 3PT%               | 3-8   | 37.5% |
| FT%                | 0-0   | 0%    |
| GM FG%             | 13-25 | 52.0% |
| 3PT%               | 3-8   | 37.5% |
| FT%                | 0-0   | 0.0%  |

Dead Ball Rebounds: 0, 1

Technical Fouls::NONE

Villanova - 29

| NO.           | Name                   | F | Min   | FG    | 3P   | FT  | Rebounds |    |     | Fouls |    | TP | AS | TO | ST | Blocks |    | +/- |
|---------------|------------------------|---|-------|-------|------|-----|----------|----|-----|-------|----|----|----|----|----|--------|----|-----|
|               |                        |   |       | M-A   | M-A  | M-A | OR       | DR | TOT | PF    | FD |    |    |    |    | BS     | BA |     |
| 23            | Jermaine Samuels       | F | 18:00 | 0-4   | 0-3  | 0-0 | 0        | 2  | 2   | 2     | 2  | 0  | 1  | 0  | 0  | 0      | 0  | 2   |
| 24            | Jeremiah Robinson-Earl | F | 16:53 | 1-5   | 0-1  | 0-0 | 2        | 1  | 3   | 1     | 1  | 2  | 1  | 1  | 0  | 0      | 1  | 1   |
| 2             | Collin Gillespie       | G | 18:52 | 6-9   | 4-6  | 2-2 | 0        | 2  | 2   | 1     | 1  | 18 | 2  | 1  | 1  | 0      | 0  | 2   |
| 5             | Justin Moore           | G | 15:27 | 0-2   | 0-1  | 0-0 | 0        | 1  | 1   | 1     | 1  | 0  | 0  | 1  | 0  | 0      | 0  | -5  |
| 14            | Caleb Daniels          | G | 18:19 | 2-5   | 1-2  | 1-1 | 0        | 2  | 2   | 0     | 2  | 6  | 1  | 1  | 0  | 0      | 0  | 0   |
| 3             | Brandon Slater         |   | 03:17 | 0-0   | 0-0  | 0-0 | 0        | 0  | 0   | 1     | 0  | 0  | 0  | 0  | 0  | 1      | 0  | -4  |
| 10            | Cole Swider            |   | 07:25 | 1-1   | 1-1  | 0-0 | 0        | 1  | 1   | 0     | 0  | 3  | 0  | 0  | 0  | 1      | 0  | 3   |
| 43            | Eric Dixon             |   | 01:47 | 0-0   | 0-0  | 0-0 | 0        | 0  | 0   | 0     | 0  | 0  | 0  | 0  | 0  | 1      | 0  | 1   |
| Team          |                        |   |       |       |      |     | 0        | 1  | 1   |       |    | 0  |    | 0  |    |        |    |     |
| <b>Totals</b> |                        |   |       | 10-26 | 6-14 | 3-3 | 2        | 10 | 12  | 6     | 7  | 29 | 5  | 4  | 1  | 3      | 1  | 0   |

| Shooting By Period |       |        |
|--------------------|-------|--------|
| 1st FG%            | 10-26 | 38.5%  |
| 3PT%               | 6-14  | 42.9%  |
| FT%                | 3-3   | 100%   |
| GM FG%             | 10-26 | 38.5%  |
| 3PT%               | 6-14  | 42.9%  |
| FT%                | 3-3   | 100.0% |

Dead Ball Rebounds: 0, 0

Technical Fouls::NONE

|                  | VT                       | Vil                       |
|------------------|--------------------------|---------------------------|
| Biggest lead     | 8 (1 <sup>st</sup> 7:19) | 2 (1 <sup>st</sup> 15:40) |
| Best Scoring Run | 6 (1 <sup>st</sup> 8:20) | 8 (1 <sup>st</sup> 2:13)  |
| Lead Changes     | 8                        |                           |
| Times Tied       | 3                        |                           |
| Time with Lead   | 14:33                    | 02:05                     |

| Points from   | VT | Vil |
|---------------|----|-----|
| Turnovers     | 3  | 13  |
| Paint         | 20 | 6   |
| Second Chance | 2  | 3   |
| Fast Breaks   | 4  | 0   |
| Bench         | 7  | 3   |

|     | Period by Period Scoring |     |     |     |
|-----|--------------------------|-----|-----|-----|
|     | 1st                      | 2nd | OT1 | TOT |
| VT  | 29                       | 35  | 17  | 81  |
| Vil | 29                       | 35  | 9   | 73  |



**Period 2**

**Quarter Starters:**

|            |               |             |              |              |                    |
|------------|---------------|-------------|--------------|--------------|--------------------|
| <b>Vil</b> | 2 Gillespie C | 5 Moore J   | 14 Daniels C | 23 Samuels J | 24 Robinson-Earl J |
| <b>VT</b>  | 3 Bede W      | 4 Alleyne N | 22 Aluma K   | 23 Radford T | 25 Mutts J         |

| Game Time | Vil   | Score        | Diff      | VT   |
|-----------|---|--------------|-----------|--|
| 20:00     | 3 SLATER B substitution out                                 |              |           |  |
| 20:00     | 43 DIXON E substitution out                                 |              |           |  |
| 20:00     | 2 GILLESPIE C substitution in                               |              |           |  |
| 20:00     | 23 SAMUELS J substitution in                                |              |           |  |
| 20:00     |   |              |           | 0 CATTOOR H substitution out                           |
| 20:00     |   |              |           | 2 DIARRA C substitution out                            |
| 20:00     |   |              |           | 4 ALLEYNE N substitution in                            |
| 20:00     |   |              |           | 25 MUTTS J substitution in                             |
| 19:45     | 14 DANIELS C foul shooting (1 - 1)                          |              |           | 22 ALUMA K foul drawn (1)                              |
| 19:45     |   | <b>29-30</b> | <b>-1</b> | 22 ALUMA K free throw 1 - 2 made (9)                   |
| 19:45     |   |              |           | 22 ALUMA K free throw 2 - 2 missed                     |
| 19:44     | 24 ROBINSON-EARL J defensive rebound (4)                    |              |           |  |
| 19:34     | 2 GILLESPIE C 2pt FG outside the paint, jump shot made (20) | <b>31-30</b> | <b>1</b>  |  |
| 19:20     | 2 GILLESPIE C foul drawn (2)                                |              |           | 22 ALUMA K foul offensive (2 - 1)                      |
| 19:20     |   |              |           | 22 ALUMA K turnover offensive (2)                      |
| 19:03     | 5 MOORE J 2pt FG from turnover in the paint, layup missed   |              |           |  |
| 18:59     |   |              |           | 23 RADFORD T defensive rebound (9)                     |
| 18:37     | 2 GILLESPIE C foul shooting (2 - 2)                         |              |           | 25 MUTTS J foul drawn (1)                              |
| 18:37     |   |              |           | 25 MUTTS J free throw 1 - 2 missed                     |
| 18:37     |   |              |           | offensive dead ball rebound (2)                        |
| 18:37     |   | <b>31-31</b> | <b>0</b>  | 25 MUTTS J free throw 2 - 2 made (3)                   |
| 18:18     | 24 ROBINSON-EARL J 2pt FG in the paint, layup missed        |              |           |  |
| 18:15     |   |              |           | 22 ALUMA K defensive rebound (2)                       |
| 17:55     |   | <b>31-34</b> | <b>-3</b> | 4 ALLEYNE N 3pt FG , jump shot made (8)                |
| 17:55     |   |              |           | 23 RADFORD T assist (2)                                |
| 17:34     | 14 DANIELS C 2pt FG outside the paint, jump shot made (8)   | <b>33-34</b> | <b>-1</b> |  |
| 17:17     |   |              |           | 4 ALLEYNE N 2pt FG outside the paint, jump shot missed |
| 17:14     | 23 SAMUELS J defensive rebound (3)                          |              |           |  |
| 17:09     | 24 ROBINSON-EARL J 3pt FG , jump shot missed                |              |           |  |
| 17:05     |   |              |           | 3 BEDE W defensive rebound (3)                         |
| 16:53     |   |              |           | 22 ALUMA K 2pt FG outside the paint, jump shot missed  |
| 16:49     | 24 ROBINSON-EARL J defensive rebound (5)                    |              |           |  |
| 16:45     | 5 MOORE J 3pt FG fast break, jump shot made (3)             | <b>36-34</b> | <b>2</b>  |  |
| 16:45     | 2 GILLESPIE C assist (3)                                    |              |           |  |
| 16:23     |   | <b>36-36</b> | <b>0</b>  | 23 RADFORD T 2pt FG in the paint, layup made (6)       |
| 15:59     | Timeout media   |              |           |  |
| 15:59     | 23 SAMUELS J substitution out                               |              |           |  |
| 15:59     | 10 SWIDER C substitution in                                 |              |           |  |
| 15:59     |   |              |           | 22 ALUMA K substitution out                            |
| 15:59     |   |              |           | 35 PEMSL C substitution in                             |
| 15:52     | 24 ROBINSON-EARL J 2pt FG in the paint, layup made (4)      | <b>38-36</b> | <b>2</b>  |  |
| 15:52     | 2 GILLESPIE C assist (4)                                    |              |           |  |
| 15:31     |   |              |           | 35 PEMSL C 2pt FG in the paint, layup missed           |



**Virginia Tech at Villanova**

11/28/20 Mohegan Sun, Montville, Conn.

Air Force Reserve Hall of Fame Tip-Off: Villanova vs Virginia Tech

Officials: DJ Carstenson, Lee Cassell, Todd Austin

| Game Time | Vil  | Score        | Diff     | VT   |
|-----------|--|--------------|----------|--|
| 15:29     |  |              |          | offensive rebound (19)   |
| 15:18     |  | <b>38-38</b> | <b>0</b> | 4 ALLEYNE N 2pt FG second chance in the paint, jump shot made (10) |
| 14:54     | 2 GILLESPIE C foul drawn (3)   |              |          | 3 BEDE W foul personal (3 - 2)                                     |
| 14:54     |  |              |          | 3 BEDE W substitution out  |
| 14:54     |  |              |          | 2 DIARRA C substitution in   |
| 14:42     | 14 DANIELS C 2pt FG in the paint, jump shot made (10)                    | <b>40-38</b> | <b>2</b> |  |
| 14:26     |  |              |          | 25 MUTTS J turnover lost ball (2)                                  |
| 14:26     |  |              |          | 25 MUTTS J substitution out  |
| 14:26     |  |              |          | 22 ALUMA K substitution in   |
| 14:26     |  |              |          | 35 PEMSL C substitution out  |
| 14:26     |  |              |          | 1 BAMISILE J substitution in                                       |
| 14:10     | 24 ROBINSON-EARL J 2pt FG from turnover in the paint, layup missed       |              |          |  |
| 14:09     | 24 ROBINSON-EARL J offensive rebound (6)                                 |              |          |  |
| 14:09     | 24 ROBINSON-EARL J foul drawn (2)  |              |          | 4 ALLEYNE N foul shooting (1 - 3)                                  |
| 14:09     | 24 ROBINSON-EARL J free throw 1 - 2 made (5)                             | <b>41-38</b> | <b>3</b> |  |
| 14:09     | 24 ROBINSON-EARL J free throw 2 - 2 made (6)                             | <b>42-38</b> | <b>4</b> |  |
| 13:36     |  |              |          | 1 BAMISILE J 3pt FG , jump shot missed                             |
| 13:32     | 5 MOORE J defensive rebound (2)  |              |          |  |
| 13:27     | 2 GILLESPIE C 2pt FG outside the paint, jump shot made (22)              | <b>44-38</b> | <b>6</b> |  |
| 13:10     |  |              |          | 2 DIARRA C 2pt FG in the paint, layup missed                       |
| 13:07     | 10 SWIDER C defensive rebound (2)  |              |          |  |
| 12:58     | 5 MOORE J 3pt FG , jump shot missed                                      |              |          |  |
| 12:56     | offensive rebound (19)   |              |          |  |
| 12:57     | 14 DANIELS C substitution out  |              |          |  |
| 12:57     | 23 SAMUELS J substitution in   |              |          |  |
| 12:57     |  |              |          | 4 ALLEYNE N substitution out                                       |
| 12:57     |  |              |          | 0 CATTOOR H substitution in  |
| 12:57     |  |              |          | 1 BAMISILE J substitution out                                      |
| 12:57     |  |              |          | 25 MUTTS J substitution in   |
| 12:37     | 2 GILLESPIE C foul drawn (4)   |              |          | 2 DIARRA C foul shooting (2 - 4)                                   |
| 12:37     | 2 GILLESPIE C free throw 1 - 3 missed                                    |              |          |  |
| 12:37     | offensive dead ball rebound (1)  |              |          |  |
| 12:37     | 2 GILLESPIE C free throw 2 - 3 missed                                    |              |          |  |
| 12:37     | offensive dead ball rebound (2)  |              |          |  |
| 12:37     | 2 GILLESPIE C free throw 3 - 3 made (23)                                 | <b>45-38</b> | <b>7</b> |  |
| 12:37     | 2 GILLESPIE C substitution out   |              |          |  |
| 12:37     | 3 SLATER B substitution in   |              |          |  |
| 12:09     | 5 MOORE J foul drawn (2)   |              |          | 25 MUTTS J foul offensive (3 - 5)                                  |
| 12:09     |  |              |          | 25 MUTTS J turnover offensive (3)                                  |
| 12:09     | 3 SLATER B substitution out  |              |          |  |
| 12:09     | 14 DANIELS C substitution in   |              |          |  |
| 11:59     | Timeout media  |              |          |  |
| 11:59     | 5 MOORE J substitution out   |              |          |  |
| 11:59     | 2 GILLESPIE C substitution in  |              |          |  |
| 11:49     | 14 DANIELS C 2pt FG from turnover outside the paint, jump shot made (12) | <b>47-38</b> | <b>9</b> |  |
| 11:34     |  |              |          | 23 RADFORD T turnover travel (2)                                   |
| 11:34     |  |              |          | 0 CATTOOR H substitution out                                       |





**Virginia Tech at Villanova**

11/28/20 Mohegan Sun, Montville, Conn.

Air Force Reserve Hall of Fame Tip-Off: Villanova vs Virginia Tech

Officials: DJ Carstenson, Lee Cassell, Todd Austin

| Game Time | Vil  | Score        | Diff      | VT   |
|-----------|--|--------------|-----------|--|
| 11:34     |  |              |           | 2 DIARRA C substitution out  |
| 11:34     |  |              |           | 3 BEDE W substitution in   |
| 11:34     |  |              |           | 4 ALLEYNE N substitution in  |
| 11:20     | 14 DANIELS C foul offensive (2 - 3)                                      |              |           | 4 ALLEYNE N foul drawn (2)   |
| 11:20     | 14 DANIELS C turnover offensive (2)                                      |              |           |  |
| 10:59     |  |              |           | 4 ALLEYNE N 3pt FG from turnover, jump shot missed                   |
| 10:56     | 23 SAMUELS J defensive rebound (4)                                       |              |           |  |
| 10:43     | 10 SWIDER C 2pt FG in the paint, layup missed                            |              |           |  |
| 10:40     | 10 SWIDER C offensive rebound (3)  |              |           |  |
| 10:40     | jump ball situation  |              |           |  |
| 10:38     | 14 DANIELS C 2pt FG second chance outside the paint, jump shot made (14) | <b>49-38</b> | <b>11</b> |  |
| 10:38     | 10 SWIDER C assist (1)   |              |           |  |
| 10:35     | Timeout media  |              |           |  |
| 10:13     |  | <b>49-40</b> | <b>9</b>  | 22 ALUMA K 2pt FG in the paint, layup made (11)                      |
| 09:44     | 14 DANIELS C foul offensive (3 - 4)                                      |              |           | 4 ALLEYNE N foul drawn (3)   |
| 09:44     | 14 DANIELS C turnover offensive (3)                                      |              |           |  |
| 09:44     | 14 DANIELS C substitution out  |              |           |  |
| 09:44     | 5 MOORE J substitution in  |              |           |  |
| 09:19     |  |              |           | 4 ALLEYNE N 2pt FG from turnover outside the paint, jump shot missed |
| 09:14     |  |              |           | 23 RADFORD T offensive rebound (10)                                  |
| 09:14     |  |              |           | turnover shot clock (11)   |
| 08:48     | 10 SWIDER C 3pt FG from turnover, jump shot made (6)                     | <b>52-40</b> | <b>12</b> |  |
| 08:48     | 24 ROBINSON-EARL J assist (2)  |              |           |  |
| 08:31     |  | <b>52-43</b> | <b>9</b>  | 4 ALLEYNE N 3pt FG , jump shot made (13)                             |
| 08:31     |  |              |           | 3 BEDE W assist (2)  |
| 07:58     | 23 SAMUELS J 2pt FG in the paint, layup missed                           |              |           |  |
| 07:55     |  |              |           | 22 ALUMA K defensive rebound (3)                                     |
| 07:46     |  |              |           | 23 RADFORD T 2pt FG in the paint, layup missed                       |
| 07:44     |  |              |           | offensive rebound (22)   |
| 07:46     | Timeout media  |              |           |  |
| 07:46     | 23 SAMUELS J substitution out  |              |           |  |
| 07:46     | 24 ROBINSON-EARL J substitution out                                      |              |           |  |
| 07:46     | 3 SLATER B substitution in   |              |           |  |
| 07:46     | 14 DANIELS C substitution in   |              |           |  |
| 07:43     |  | <b>52-46</b> | <b>6</b>  | 22 ALUMA K 3pt FG second chance, jump shot made (14)                 |
| 07:43     |  |              |           | 3 BEDE W assist (3)  |
| 07:19     | 5 MOORE J foul drawn (3)   |              |           | 3 BEDE W foul personal (4 - 6)                                       |
| 07:19     | 3 SLATER B substitution out  |              |           |  |
| 07:19     | 23 SAMUELS J substitution in   |              |           |  |
| 07:19     |  |              |           | 3 BEDE W substitution out  |
| 07:19     |  |              |           | 2 DIARRA C substitution in   |
| 07:05     | 2 GILLESPIE C 2pt FG in the paint, jump shot missed                      |              |           |  |
| 06:59     |  |              |           | 22 ALUMA K defensive rebound (4)                                     |
| 06:55     | 23 SAMUELS J foul personal (3 - 5)                                       |              |           | 25 MUTTS J foul drawn (2)  |
| 06:55     | 10 SWIDER C substitution out   |              |           |  |
| 06:55     | 24 ROBINSON-EARL J substitution in                                       |              |           |  |
| 06:44     |  | <b>52-48</b> | <b>4</b>  | 22 ALUMA K 2pt FG in the paint, layup made (16)                      |
| 06:44     |  |              |           | 23 RADFORD T assist (3)  |



**Virginia Tech at Villanova**

11/28/20 Mohegan Sun, Montville, Conn.

Air Force Reserve Hall of Fame Tip-Off: Villanova vs Virginia Tech

Officials: DJ Carstenson, Lee Cassell, Todd Austin

| Game Time | Vil   | Score        | Diff     | VT  |
|-----------|---|--------------|----------|---|
| 06:22     | 2 GILLESPIE C turnover lost ball (2)  |              |          |   |
| 06:09     |   |              |          | 4 ALLEYNE N 2pt FG from turnover in the paint, layup missed               |
| 06:06     |   |              |          | 25 MUTTS J offensive rebound (2)  |
| 06:06     | 5 MOORE J foul personal (2 - 6)   |              |          | 25 MUTTS J foul drawn (3)   |
| 06:02     |   |              |          | 22 ALUMA K 2pt FG from turnover second chance in the paint, layup blocked |
| 06:02     | 24 ROBINSON-EARL J block (1)  |              |          |   |
| 05:58     | 2 GILLESPIE C defensive rebound (3)   |              |          |   |
| 05:48     | 23 SAMUELS J 2pt FG in the paint, layup made (2)                            | <b>54-48</b> | <b>6</b> |   |
| 05:20     |   |              |          | 2 DIARRA C 3pt FG , jump shot missed                                      |
| 05:15     | 24 ROBINSON-EARL J defensive rebound (7)                                    |              |          |   |
| 04:52     | 24 ROBINSON-EARL J 2pt FG in the paint, jump shot missed                    |              |          |   |
| 04:48     |   |              |          | 23 RADFORD T defensive rebound (11)                                       |
| 04:44     |   | <b>54-51</b> | <b>3</b> | 25 MUTTS J 3pt FG fast break, jump shot made (6)                          |
| 04:44     |   |              |          | 4 ALLEYNE N assist (1)  |
| 04:40     | Timeout 30 Sec  |              |          |   |
| 04:26     | 14 DANIELS C 2pt FG in the paint, jump shot missed                          |              |          |   |
| 04:18     | 24 ROBINSON-EARL J offensive rebound (8)                                    |              |          |   |
| 04:18     | 24 ROBINSON-EARL J 2pt FG second chance in the paint, layup made (8)        | <b>56-51</b> | <b>5</b> |   |
| 04:04     |   | <b>56-54</b> | <b>2</b> | 4 ALLEYNE N 3pt FG , jump shot made (16)                                  |
| 03:41     | 2 GILLESPIE C foul drawn (5)  |              |          | 2 DIARRA C foul shooting (3 - 7)  |
| 03:41     | Timeout media   |              |          |   |
| 03:41     | 2 GILLESPIE C free throw 1 - 2 made (24)                                    | <b>57-54</b> | <b>3</b> |   |
| 03:41     | 2 GILLESPIE C free throw 2 - 2 made (25)                                    | <b>58-54</b> | <b>4</b> |   |
| 03:36     |   |              |          | 2 DIARRA C turnover travel (3)  |
| 03:36     |   |              |          | 2 DIARRA C substitution out   |
| 03:36     |   |              |          | 3 BEDE W substitution in  |
| 03:23     | 24 ROBINSON-EARL J 2pt FG from turnover outside the paint, jump shot missed |              |          |   |
| 03:19     |   |              |          | 23 RADFORD T defensive rebound (12)                                       |
| 02:56     |   |              |          | 23 RADFORD T 2pt FG outside the paint, jump shot missed                   |
| 02:54     | 23 SAMUELS J defensive rebound (5)  |              |          |   |
| 02:49     | 2 GILLESPIE C foul drawn (6)  |              |          | 4 ALLEYNE N foul personal (2 - 8)   |
| 02:49     | 2 GILLESPIE C 1&1 free throw 1 missed                                       |              |          |   |
| 02:48     |   |              |          | 22 ALUMA K defensive rebound (5)  |
| 02:23     | 5 MOORE J foul personal (3 - 7)   |              |          | 23 RADFORD T foul drawn (3)   |
| 02:23     |   | <b>58-55</b> | <b>3</b> | 23 RADFORD T 1&1 free throw 1 made (7)                                    |
| 02:23     |   | <b>58-56</b> | <b>2</b> | 23 RADFORD T 1&1 free throw 2 made (8)                                    |
| 02:08     | 24 ROBINSON-EARL J 2pt FG in the paint, layup made (10)                     | <b>60-56</b> | <b>4</b> |   |
| 01:44     |   | <b>60-59</b> | <b>1</b> | 3 BEDE W 3pt FG , jump shot made (8)                                      |
| 01:44     |   |              |          | 22 ALUMA K assist (1)   |
| 01:44     |   |              |          | Timeout 60 Sec  |
| 01:16     | 24 ROBINSON-EARL J 2pt FG in the paint, layup made (12)                     | <b>62-59</b> | <b>3</b> |   |
| 01:16     | 5 MOORE J assist (1)  |              |          |   |
| 00:59     |   |              |          | 3 BEDE W 2pt FG in the paint, jump shot missed                            |
| 00:58     |   |              |          | 22 ALUMA K offensive rebound (6)  |
| 00:58     | 24 ROBINSON-EARL J foul personal (2 - 8)                                    |              |          | 22 ALUMA K foul drawn (2)   |
| 00:58     |   |              |          | 22 ALUMA K 1&1 free throw 1 missed  |
| 00:57     | 23 SAMUELS J defensive rebound (6)  |              |          |   |



**Virginia Tech at Villanova**

11/28/20 Mohegan Sun, Montville, Conn.

Air Force Reserve Hall of Fame Tip-Off: Villanova vs Virginia Tech

Officials: DJ Carstenson, Lee Cassell, Todd Austin

| Game Time            | Vil                                  | Score        | Diff      | VT   |
|----------------------|--------------------------------------|--------------|-----------|--|
| 00:30                | 23 SAMUELS J foul drawn (3)          |              |           | 3 BEDE W foul personal (5 - 9)                             |
| 00:30                |                                      |              |           | 3 BEDE W substitution out                                  |
| 00:30                |                                      |              |           | 2 DIARRA C substitution in                                 |
| 00:27                | 23 SAMUELS J 1&1 free throw 1 missed |              |           |  |
| 00:26                |                                      |              |           | 25 MUTTS J defensive rebound (3)                           |
| 00:19                |                                      |              |           | 23 RADFORD T 2pt FG outside the paint, jump shot missed    |
| 00:16                |                                      |              |           | 22 ALUMA K offensive rebound (7)                           |
| 00:16                |                                      |              |           | 22 ALUMA K 2pt FG second chance in the paint, layup missed |
| 00:12                |                                      |              |           | 2 DIARRA C offensive rebound (1)                           |
| 00:12                |                                      |              |           | 2 DIARRA C 2pt FG second chance in the paint, layup missed |
| 00:12                |                                      |              |           | 2 DIARRA C offensive rebound (2)                           |
| 00:12                | 5 MOORE J foul shooting (4 - 9)      |              |           | 2 DIARRA C foul drawn (1)                                  |
| 00:12                |                                      |              |           | Timeout 30 Sec   |
| 00:12                |                                      | <b>62-60</b> | <b>2</b>  | 2 DIARRA C free throw 1 - 2 made (3)                       |
| 00:12                |                                      | <b>62-61</b> | <b>1</b>  | 2 DIARRA C free throw 2 - 2 made (4)                       |
| 00:10                | 5 MOORE J foul drawn (4)             |              |           | 2 DIARRA C foul personal (4 - 10)                          |
| 00:10                | Timeout media                        |              |           |  |
| 00:10                | 5 MOORE J 1&1 free throw 1 missed    |              |           |  |
| 00:08                |                                      |              |           | 23 RADFORD T defensive rebound (13)                        |
| 00:01                |                                      | <b>62-63</b> | <b>-1</b> | 22 ALUMA K 2pt FG in the paint, layup made (18)            |
| 00:01                |                                      |              |           | 2 DIARRA C assist (3)                                      |
| 00:01                | 2 GILLESPIE C foul shooting (3 - 10) |              |           | 22 ALUMA K foul drawn (3)                                  |
| 00:01                | 23 SAMUELS J substitution out        |              |           |  |
| 00:01                | 43 DIXON E substitution in           |              |           |  |
| 00:01                |                                      | <b>62-64</b> | <b>-2</b> | 22 ALUMA K free throw 1 - 1 made (19)                      |
| 00:01                | 5 MOORE J foul drawn (5)             |              |           | 25 MUTTS J foul personal (4 - 11)                          |
| 00:01                | 5 MOORE J free throw 1 - 2 made (4)  | <b>63-64</b> | <b>-1</b> |  |
| 00:01                | 5 MOORE J free throw 2 - 2 made (5)  | <b>64-64</b> | <b>0</b>  |  |
| <b>END OF PERIOD</b> |                                      |              |           |  |
| <b>Vil 64-64 VT</b>  |                                      |              |           |  |



Virginia Tech at Villanova

11/28/20 Mohegan Sun, Montville, Conn.

Air Force Reserve Hall of Fame Tip-Off: Villanova vs Virginia Tech

Officials: DJ Carstenson, Lee Cassell, Todd Austin

Virginia Tech - 35

| NO.           | Name           | Min     | FG    |     |      | Rebounds |    |     | Fouls |    | TP | AS | TO | ST | Blocks |    | +/- |
|---------------|----------------|---------|-------|-----|------|----------|----|-----|-------|----|----|----|----|----|--------|----|-----|
|               |                |         | M-A   | M-A | M-A  | OR       | DR | TOT | PF    | FD |    |    |    |    | BS     | BA |     |
| 22            | Keve Aluma     | F 18:27 | 4-7   | 1-1 | 2-4  | 2        | 4  | 6   | 1     | 3  | 11 | 1  | 1  | 0  | 0      | 1  | 2   |
| 25            | Justyn Mutts   | F 18:31 | 1-1   | 1-1 | 1-2  | 1        | 1  | 2   | 2     | 3  | 4  | 0  | 2  | 0  | 0      | 0  | 4   |
| 0             | Hunter Cattoor | G 01:23 | 0-0   | 0-0 | 0-0  | 0        | 0  | 0   | 0     | 0  | 0  | 0  | 0  | 0  | 0      | 0  | -3  |
| 3             | Wabissa Bede   | G 12:27 | 1-2   | 1-1 | 0-0  | 0        | 1  | 1   | 3     | 0  | 3  | 2  | 0  | 0  | 0      | 0  | 4   |
| 23            | Tyrece Radford | G 20:00 | 1-4   | 0-0 | 2-2  | 1        | 4  | 5   | 0     | 1  | 4  | 2  | 1  | 0  | 0      | 0  | 0   |
| 4             | Nahiem Alleyne | 18:37   | 4-8   | 3-4 | 0-0  | 0        | 0  | 0   | 2     | 2  | 11 | 1  | 0  | 0  | 0      | 0  | 3   |
| 35            | Cordell Pems   | 01:33   | 0-1   | 0-0 | 0-0  | 0        | 0  | 0   | 0     | 0  | 0  | 0  | 0  | 0  | 0      | 0  | -2  |
| 2             | Cartier Diarra | 07:33   | 0-3   | 0-1 | 2-2  | 2        | 0  | 2   | 3     | 1  | 2  | 1  | 1  | 0  | 0      | 0  | -4  |
| 1             | Joe Bamisile   | 01:29   | 0-1   | 0-1 | 0-0  | 0        | 0  | 0   | 0     | 0  | 0  | 0  | 0  | 0  | 0      | 0  | -4  |
| Team          |                |         |       |     |      | 2        | 0  | 2   |       |    | 0  |    | 1  |    |        |    |     |
| <b>Totals</b> |                |         | 11-27 | 6-9 | 7-10 | 8        | 10 | 18  | 11    | 10 | 35 | 7  | 6  | 0  | 0      | 1  | 0   |

| Shooting By Period |       |       |
|--------------------|-------|-------|
| 2nd FG%            | 11-27 | 40.7% |
| 3PT%               | 6-9   | 66.7% |
| FT%                | 7-10  | 70%   |
| GM FG%             | 11-27 | 40.7% |
| 3PT%               | 6-9   | 66.7% |
| FT%                | 7-10  | 70.0% |

Dead Ball Rebounds: 1, 0

Technical Fouls::NONE

Villanova - 35

| NO.           | Name                   | Min     | FG    |     |      | Rebounds |    |     | Fouls |    | TP | AS | TO | ST | Blocks |    | +/- |
|---------------|------------------------|---------|-------|-----|------|----------|----|-----|-------|----|----|----|----|----|--------|----|-----|
|               |                        |         | M-A   | M-A | M-A  | OR       | DR | TOT | PF    | FD |    |    |    |    | BS     | BA |     |
| 23            | Jermaine Samuels       | F 16:30 | 1-2   | 0-0 | 0-1  | 0        | 4  | 4   | 1     | 1  | 2  | 0  | 0  | 0  | 0      | 0  | -4  |
| 24            | Jeremiah Robinson-Earl | F 19:09 | 4-9   | 0-1 | 2-2  | 2        | 3  | 5   | 1     | 1  | 10 | 1  | 0  | 0  | 1      | 0  | 3   |
| 2             | Collin Gillespie       | G 19:22 | 2-3   | 0-0 | 3-6  | 0        | 1  | 1   | 2     | 5  | 7  | 2  | 1  | 0  | 0      | 0  | 0   |
| 5             | Justin Moore           | G 17:45 | 1-3   | 1-2 | 2-3  | 0        | 1  | 1   | 3     | 4  | 5  | 1  | 0  | 0  | 0      | 0  | -2  |
| 14            | Caleb Daniels          | G 17:14 | 4-5   | 0-0 | 0-0  | 0        | 0  | 0   | 3     | 0  | 8  | 0  | 2  | 0  | 0      | 0  | -1  |
| 10            | Cole Swider            | 09:04   | 1-2   | 1-1 | 0-0  | 1        | 1  | 2   | 0     | 0  | 3  | 1  | 0  | 0  | 0      | 0  | 6   |
| 3             | Brandon Slater         | 00:55   | 0-0   | 0-0 | 0-0  | 0        | 0  | 0   | 0     | 0  | 0  | 0  | 0  | 0  | 0      | 0  | -3  |
| 43            | Eric Dixon             | 00:01   | 0-0   | 0-0 | 0-0  | 0        | 0  | 0   | 0     | 0  | 0  | 0  | 0  | 0  | 0      | 0  | 1   |
| Team          |                        |         |       |     |      | 1        | 0  | 1   |       |    | 0  |    | 0  |    |        |    |     |
| <b>Totals</b> |                        |         | 13-24 | 2-4 | 7-12 | 4        | 10 | 14  | 10    | 11 | 35 | 5  | 3  | 0  | 1      | 0  | 0   |

| Shooting By Period |       |       |
|--------------------|-------|-------|
| 2nd FG%            | 13-24 | 54.2% |
| 3PT%               | 2-4   | 50.0% |
| FT%                | 7-12  | 58.3% |
| GM FG%             | 13-24 | 54.2% |
| 3PT%               | 2-4   | 50.0% |
| FT%                | 7-12  | 58.3% |

Dead Ball Rebounds: 2, 0

Technical Fouls::NONE

|                  | VT                        | Vil                       |
|------------------|---------------------------|---------------------------|
| Biggest lead     | 3 (2 <sup>nd</sup> 17:55) | 12 (2 <sup>nd</sup> 8:48) |
| Best Scoring Run | 8(2 <sup>nd</sup> 6:44)   | 11(2 <sup>nd</sup> 10:38) |
| Lead Changes     | 5                         |                           |
| Times Tied       | 4                         |                           |
| Time with Lead   | 01:21                     | 16:34                     |

| Points from   | VT | Vil |
|---------------|----|-----|
| Turnovers     | 0  | 7   |
| Paint         | 10 | 12  |
| Second Chance | 7  | 7   |
| Fast Breaks   | 3  | 3   |
| Bench         | 13 | 3   |

|     | Period by Period Scoring |     |     |     |
|-----|--------------------------|-----|-----|-----|
|     | 1st                      | 2nd | OT1 | TOT |
| VT  | 29                       | 35  | 17  | 81  |
| Vil | 29                       | 35  | 9   | 73  |



**Overtime 1**

**Quarter Starters:**

|            |               |             |             |              |                    |
|------------|---------------|-------------|-------------|--------------|--------------------|
| <b>Vil</b> | 2 Gillespie C | 5 Moore J   | 10 Swider C | 14 Daniels C | 24 Robinson-Earl J |
| <b>VT</b>  | 2 Diarra C    | 4 Alleyne N | 22 Aluma K  | 23 Radford T | 25 Mutts J         |

| Game Time | Vil  | Score        | Diff      | VT  |
|-----------|--|--------------|-----------|---|
| 05:00     | 43 DIXON E substitution out  |              |           |   |
| 05:00     | 10 SWIDER C substitution in  |              |           |   |
| 05:00     | 24 ROBINSON-EARL J jumpball lost                                       |              |           | 22 ALUMA K jumpball won                                   |
| 04:40     |  |              |           | 22 ALUMA K turnover lost ball (3)                         |
| 04:29     | 2 GILLESPIE C 2pt FG from turnover outside the paint, jump shot missed |              |           |   |
| 04:26     |  |              |           | 25 MUTTS J defensive rebound (4)                          |
| 04:13     |  | <b>64-67</b> | <b>-3</b> | 25 MUTTS J 3pt FG , jump shot made (9)                    |
| 04:13     |  |              |           | 23 RADFORD T assist (4)                                   |
| 03:45     | 24 ROBINSON-EARL J turnover lost ball (2)                              |              |           | 25 MUTTS J steal (2)                                      |
| 03:45     | 24 ROBINSON-EARL J foul personal (3 - 11)                              |              |           | 25 MUTTS J foul drawn (4)                                 |
| 03:45     |  | <b>64-68</b> | <b>-4</b> | 25 MUTTS J free throw fast break 1 - 2 made (10)          |
| 03:45     |  | <b>64-69</b> | <b>-5</b> | 25 MUTTS J free throw fast break 2 - 2 made (11)          |
| 03:33     | 14 DANIELS C 2pt FG in the paint, layup blocked                        |              |           |   |
| 03:33     |  |              |           | 22 ALUMA K block (2)                                      |
| 03:29     |  |              |           | 25 MUTTS J defensive rebound (5)                          |
| 03:17     | 2 GILLESPIE C steal (2)  |              |           | 25 MUTTS J turnover bad pass (4)                          |
| 03:09     | 5 MOORE J 3pt FG from turnover, jump shot missed                       |              |           |   |
| 03:06     |  |              |           | defensive rebound (36)                                    |
| 02:59     | 10 SWIDER C substitution out   |              |           |   |
| 02:59     | 23 SAMUELS J substitution in   |              |           |   |
| 02:37     |  |              |           | 4 ALLEYNE N 3pt FG , jump shot missed                     |
| 02:32     | 5 MOORE J defensive rebound (3)  |              |           |   |
| 02:25     | 5 MOORE J 2pt FG in the paint, layup made (7)                          | <b>66-69</b> | <b>-3</b> |   |
| 01:56     |  |              |           | 2 DIARRA C 3pt FG , jump shot missed                      |
| 01:53     | 5 MOORE J defensive rebound (4)  |              |           |   |
| 01:46     | 5 MOORE J 3pt FG , jump shot missed                                    |              |           |   |
| 01:43     |  |              |           | 22 ALUMA K defensive rebound (8)                          |
| 01:18     |  | <b>66-71</b> | <b>-5</b> | 4 ALLEYNE N 2pt FG outside the paint, jump shot made (18) |
| 00:58     | 14 DANIELS C 3pt FG , jump shot made (17)                              | <b>69-71</b> | <b>-2</b> |   |
| 00:58     | 23 SAMUELS J assist (2)  |              |           |   |
| 00:44     |  | <b>69-73</b> | <b>-4</b> | 22 ALUMA K 2pt FG in the paint, layup made (21)           |
| 00:44     |  |              |           | 23 RADFORD T assist (5)                                   |
| 00:44     | 2 GILLESPIE C foul shooting (4 - 12)                                   |              |           | 22 ALUMA K foul drawn (4)                                 |
| 00:44     |  | <b>69-74</b> | <b>-5</b> | 22 ALUMA K free throw 1 - 1 made (22)                     |
| 00:37     | 14 DANIELS C 3pt FG , jump shot missed                                 |              |           |   |
| 00:34     |  |              |           | 2 DIARRA C defensive rebound (3)                          |
| 00:33     | 14 DANIELS C foul personal (4 - 13)                                    |              |           | 2 DIARRA C foul drawn (2)                                 |
| 00:33     |  | <b>69-75</b> | <b>-6</b> | 2 DIARRA C free throw fast break 1 - 2 made (5)           |
| 00:33     | 23 SAMUELS J substitution out  |              |           |   |
| 00:33     | 10 SWIDER C substitution in  |              |           |   |
| 00:33     |  |              |           | 2 DIARRA C free throw fast break 2 - 2 missed             |
| 00:32     | 10 SWIDER C defensive rebound (4)                                      |              |           |   |



**Virginia Tech at Villanova**

11/28/20 Mohegan Sun, Montville, Conn.

Air Force Reserve Hall of Fame Tip-Off: Villanova vs Virginia Tech

Officials: DJ Carstenson, Lee Cassell, Todd Austin

| Game Time           | Vil   | Score        | Diff      | VT  |
|---------------------|---|--------------|-----------|---|
| 00:27               | 24 ROBINSON-EARL J foul drawn (3)                             |              |           | 2 DIARRA C foul personal (5 - 12)                 |
| 00:27               | 2 GILLESPIE C substitution out                                |              |           |   |
| 00:27               | 10 SWIDER C substitution out                                  |              |           |   |
| 00:27               | 3 SLATER B substitution in                                    |              |           |   |
| 00:27               | 23 SAMUELS J substitution in                                  |              |           |   |
| 00:27               |   |              |           | 2 DIARRA C substitution out                       |
| 00:27               |   |              |           | 0 CATTOOR H substitution in                       |
| 00:27               | 24 ROBINSON-EARL J free throw fast break 1 - 2 made (13)      | <b>70-75</b> | <b>-5</b> |   |
| 00:27               | 24 ROBINSON-EARL J free throw fast break 2 - 2 made (14)      | <b>71-75</b> | <b>-4</b> |   |
| 00:25               | 5 MOORE J foul personal (5 - 14)                              |              |           | 25 MUTTS J foul drawn (5)                         |
| 00:25               | 3 SLATER B substitution out                                   |              |           |   |
| 00:25               | 5 MOORE J substitution out                                    |              |           |   |
| 00:25               | 2 GILLESPIE C substitution in                                 |              |           |   |
| 00:25               | 10 SWIDER C substitution in                                   |              |           |   |
| 00:25               |   | <b>71-76</b> | <b>-5</b> | 0 CATTOOR H free throw fast break 1 - 2 made (4)  |
| 00:25               |   | <b>71-77</b> | <b>-6</b> | 0 CATTOOR H free throw fast break 2 - 2 made (5)  |
| 00:19               | 24 ROBINSON-EARL J 3pt FG , jump shot missed                  |              |           |   |
| 00:16               |   |              |           | 25 MUTTS J defensive rebound (6)                  |
| 00:16               | 23 SAMUELS J foul personal (4 - 15)                           |              |           | 25 MUTTS J foul drawn (6)                         |
| 00:16               |   |              |           | 25 MUTTS J free throw fast break 1 - 2 missed     |
| 00:16               |   |              |           | offensive dead ball rebound (3)                   |
| 00:16               |   | <b>71-78</b> | <b>-7</b> | 25 MUTTS J free throw fast break 2 - 2 made (12)  |
| 00:12               | 2 GILLESPIE C 3pt FG , jump shot missed                       |              |           |   |
| 00:09               |   |              |           | 4 ALLEYNE N defensive rebound (1)                 |
| 00:09               | 10 SWIDER C foul personal (1 - 16)                            |              |           | 4 ALLEYNE N foul drawn (4)                        |
| 00:09               |   | <b>71-79</b> | <b>-8</b> | 4 ALLEYNE N free throw fast break 1 - 2 made (19) |
| 00:09               |   | <b>71-80</b> | <b>-9</b> | 4 ALLEYNE N free throw fast break 2 - 2 made (20) |
| 00:04               | 14 DANIELS C 3pt FG , jump shot missed                        |              |           |   |
| 00:00               | 10 SWIDER C offensive rebound (5)                             |              |           |   |
| 00:02               | 10 SWIDER C 2pt FG second chance in the paint, layup made (8) | <b>73-80</b> | <b>-7</b> |   |
| 00:02               | 10 SWIDER C substitution out                                  |              |           |   |
| 00:02               | 3 SLATER B substitution in                                    |              |           |   |
| 00:01               | 3 SLATER B foul personal (2 - 17)                             |              |           | 22 ALUMA K foul drawn (5)                         |
| 00:01               |   | <b>73-81</b> | <b>-8</b> | 22 ALUMA K free throw fast break 1 - 2 made (23)  |
| 00:01               |   |              |           | 22 ALUMA K free throw fast break 2 - 2 missed     |
| 00:00               | 24 ROBINSON-EARL J defensive rebound (9)                      |              |           |   |
| <b>END OF GAME</b>  |   |              |           |   |
| <b>Vil 73-81 VT</b> |   |              |           |   |



**Virginia Tech at Villanova**

11/28/20 Mohegan Sun, Montville, Conn.

Air Force Reserve Hall of Fame Tip-Off: Villanova vs Virginia Tech

Officials: DJ Carstenson, Lee Cassell, Todd Austin

**Virginia Tech - 17**

| NO.           | Name           | F | Min   | FG  |     |       | Rebounds |    |     | Fouls |    | TP | AS | TO | ST | Blocks |    | +/- |
|---------------|----------------|---|-------|-----|-----|-------|----------|----|-----|-------|----|----|----|----|----|--------|----|-----|
|               |                |   |       | M-A | M-A | M-A   | OR       | DR | TOT | PF    | FD |    |    |    |    | BS     | BA |     |
| 22            | Keve Aluma     | F | 05:00 | 1-1 | 0-0 | 2-3   | 0        | 1  | 1   | 0     | 2  | 4  | 0  | 1  | 0  | 1      | 0  | 8   |
| 25            | Justyn Mutts   | F | 05:00 | 1-1 | 1-1 | 3-4   | 0        | 3  | 3   | 0     | 3  | 6  | 0  | 1  | 1  | 0      | 0  | 8   |
| 0             | Hunter Cattoor | G | 00:27 | 0-0 | 0-0 | 2-2   | 0        | 0  | 0   | 0     | 0  | 2  | 0  | 0  | 0  | 0      | 0  | 2   |
| 3             | Wabissa Bede   | G | 00:00 |     |     |       |          |    |     |       |    |    |    |    |    |        |    |     |
| 23            | Tyrece Radford | G | 05:00 | 0-0 | 0-0 | 0-0   | 0        | 0  | 0   | 0     | 0  | 0  | 2  | 0  | 0  | 0      | 0  | 8   |
| 2             | Cartier Diarra |   | 04:33 | 0-1 | 0-1 | 1-2   | 0        | 1  | 1   | 1     | 1  | 1  | 0  | 0  | 0  | 0      | 0  | 6   |
| 4             | Nahiem Alleyne |   | 05:00 | 1-2 | 0-1 | 2-2   | 0        | 1  | 1   | 0     | 1  | 4  | 0  | 0  | 0  | 0      | 0  | 8   |
| Team          |                |   |       |     |     |       | 0        | 1  | 1   |       | 0  |    | 0  |    |    |        |    |     |
| <b>Totals</b> |                |   |       | 3-5 | 1-3 | 10-13 | 0        | 7  | 7   | 1     | 7  | 17 | 2  | 2  | 1  | 1      | 0  | 8   |

| Shooting By Period |       |       |
|--------------------|-------|-------|
| OT FG%             | 3-5   | 60.0% |
| 3PT%               | 1-3   | 33.3% |
| FT%                | 10-13 | 76.9% |
| GM FG%             | 3-5   | 60.0% |
| 3PT%               | 1-3   | 33.3% |
| FT%                | 10-13 | 76.9% |

Dead Ball Rebounds: 1, 0

Technical Fouls::NONE

**Villanova - 9**

| NO.           | Name                   | F | Min   | FG   |     |     | Rebounds |    |     | Fouls |    | TP | AS | TO | ST | Blocks |    | +/- |
|---------------|------------------------|---|-------|------|-----|-----|----------|----|-----|-------|----|----|----|----|----|--------|----|-----|
|               |                        |   |       | M-A  | M-A | M-A | OR       | DR | TOT | PF    | FD |    |    |    |    | BS     | BA |     |
| 23            | Jermaine Samuels       | F | 02:53 | 0-0  | 0-0 | 0-0 | 0        | 0  | 0   | 1     | 0  | 0  | 1  | 0  | 0  | 0      | 0  | -3  |
| 24            | Jeremiah Robinson-Earl | F | 05:00 | 0-1  | 0-1 | 2-2 | 0        | 1  | 1   | 1     | 1  | 2  | 0  | 1  | 0  | 0      | 0  | -8  |
| 2             | Collin Gillespie       | G | 04:59 | 0-2  | 0-1 | 0-0 | 0        | 0  | 0   | 1     | 0  | 0  | 0  | 0  | 1  | 0      | 0  | -10 |
| 5             | Justin Moore           | G | 04:34 | 1-3  | 0-2 | 0-0 | 0        | 2  | 2   | 1     | 0  | 2  | 0  | 0  | 0  | 0      | 0  | -4  |
| 14            | Caleb Daniels          | G | 05:00 | 1-4  | 1-3 | 0-0 | 0        | 0  | 0   | 1     | 0  | 3  | 0  | 0  | 0  | 0      | 1  | -8  |
| 43            | Eric Dixon             |   | 00:00 |      |     |     |          |    |     |       |    |    |    |    |    |        |    |     |
| 10            | Cole Swider            |   | 02:31 | 1-1  | 0-0 | 0-0 | 1        | 1  | 2   | 1     | 0  | 2  | 0  | 0  | 0  | 0      | 0  | -8  |
| 3             | Brandon Slater         |   | 00:03 | 0-0  | 0-0 | 0-0 | 0        | 0  | 0   | 1     | 0  | 0  | 0  | 0  | 0  | 0      | 0  | 1   |
| Team          |                        |   |       |      |     |     | 0        | 0  | 0   |       | 0  |    | 0  |    |    |        |    |     |
| <b>Totals</b> |                        |   |       | 3-11 | 1-7 | 2-2 | 1        | 4  | 5   | 7     | 1  | 9  | 1  | 1  | 1  | 0      | 1  | -8  |

| Shooting By Period |      |       |
|--------------------|------|-------|
| OT FG%             | 3-11 | 27.3% |
| 3PT%               | 1-7  | 14.3% |
| FT%                | 2-2  | 100%  |
| GM FG%             | 3-11 | 27.3% |
| 3PT%               | 1-7  | 14.3% |
| FT%                | 2-2  | 100%  |

Dead Ball Rebounds: 0, 0

Technical Fouls::NONE

|                  | VT                          | Vil                         |
|------------------|-----------------------------|-----------------------------|
| Biggest lead     | 9 (1 <sup>st</sup> OT 0:09) | 0 (1 <sup>st</sup> 20:00)   |
| Best Scoring Run | 5 (1 <sup>st</sup> OT 3:45) | 3 (1 <sup>st</sup> OT 0:58) |
| Lead Changes     | 1                           |                             |
| Times Tied       | 0                           |                             |
| Time with Lead   | 04:13                       | 00:00                       |

| Points from   | VT | Vil |
|---------------|----|-----|
| Turnovers     | 2  | 0   |
| Paint         | 2  | 4   |
| Second Chance | 0  | 2   |
| Fast Breaks   | 9  | 2   |
| Bench         | 5  | 2   |

|     | Period by Period Scoring |     |     |     |
|-----|--------------------------|-----|-----|-----|
|     | 1st                      | 2nd | OT1 | TOT |
| VT  | 29                       | 35  | 17  | 81  |
| Vil | 29                       | 35  | 9   | 73  |



**Virginia Tech at Villanova**

11/28/20 Mohegan Sun, Montville, Conn.

Air Force Reserve Hall of Fame Tip-Off: Villanova vs Virginia Tech

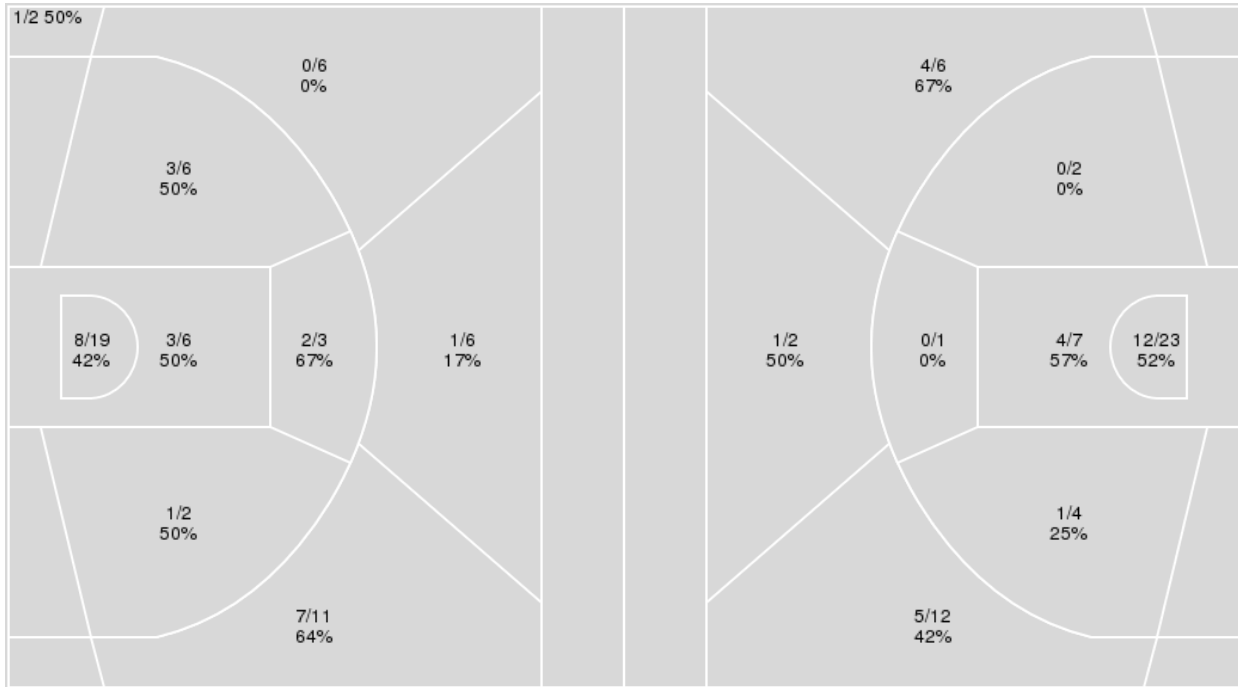
Officials: DJ Carstenson, Lee Cassell, Todd Austin

{ Players => 1, 2, 3, 4, 5, 10, 13, 14, 20, 21, 23, 24, 43; } FG Types => All; Results => All;

{ Players => 0, 1, 2, 3, 4, 5, 10, 11, 13, 15, 21, 22, 23, 25, 35; } FG Types => All; Results => All;

**Villanova**

**Virginia Tech**



| Villanova   | M/A   | %  |
|-------------|-------|----|
| Field Goals | 26/61 | 43 |
| 2 Points    | 17/36 | 47 |
| 3 Points    | 9/25  | 36 |
| Free Throws | 12/17 | 71 |

| Virginia Tech | M/A   | %  |
|---------------|-------|----|
| Field Goals   | 27/57 | 47 |
| 2 Points      | 17/37 | 46 |
| 3 Points      | 10/20 | 50 |
| Free Throws   | 17/23 | 74 |





**Virginia Tech at Villanova**

11/28/20 Mohegan Sun, Montville, Conn.

Air Force Reserve Hall of Fame Tip-Off: Villanova vs Virginia Tech

Officials: DJ Carstenson, Lee Cassell, Todd Austin

**Virginia Tech**

| No | Name           | Mins  |       | Score   |         | Points Diff |     | Points per Min |      | Assists |     | Rebounds |     | Steals |     | Turnovers |     |
|----|----------------|-------|-------|---------|---------|-------------|-----|----------------|------|---------|-----|----------|-----|--------|-----|-----------|-----|
|    |                | On    | Off   | On      | Off     | On          | Off | On             | Off  | On      | Off | On       | Off | On     | Off | On        | Off |
| 0  | Hunter Cattoor | 14:12 | 30:48 | 22 - 29 | 59 - 44 | -7          | 15  | 1.55           | 1.92 | 3       | 11  | 11       | 29  | 0      | 2   | 6         | 8   |
| 1  | Joe Bamisile   | 06:01 | 38:59 | 9 - 9   | 72 - 64 | 0           | 8   | 1.50           | 1.85 | 1       | 13  | 4        | 36  | 0      | 2   | 1         | 13  |
| 2  | Cartier Diarra | 24:18 | 20:42 | 42 - 43 | 39 - 30 | -1          | 9   | 1.73           | 1.88 | 9       | 5   | 24       | 16  | 2      | 0   | 11        | 3   |
| 3  | Wabissa Bede   | 22:42 | 22:18 | 37 - 30 | 44 - 43 | 7           | 1   | 1.63           | 1.97 | 6       | 8   | 16       | 24  | 0      | 2   | 3         | 11  |
| 4  | Nahiem Alleyne | 29:13 | 15:47 | 61 - 46 | 20 - 27 | 15          | -7  | 2.09           | 1.27 | 10      | 4   | 30       | 10  | 2      | 0   | 8         | 6   |
| 22 | Keve Aluma     | 38:55 | 06:05 | 70 - 64 | 11 - 9  | 6           | 2   | 1.80           | 1.81 | 13      | 1   | 35       | 5   | 2      | 0   | 12        | 2   |
| 23 | Tyrece Radford | 44:23 | 00:37 | 81 - 73 | 0 - 0   | 8           | 0   | 1.83           | 0.00 | 14      | 0   | 39       | 1   | 2      | 0   | 13        | 1   |
| 25 | Justyn Mutts   | 38:19 | 06:41 | 70 - 62 | 11 - 11 | 8           | 0   | 1.83           | 1.65 | 13      | 1   | 36       | 4   | 2      | 0   | 14        | 0   |
| 35 | Cordell Pemsli | 06:57 | 38:03 | 13 - 9  | 68 - 64 | 4           | 4   | 1.87           | 1.79 | 1       | 13  | 5        | 35  | 0      | 2   | 2         | 12  |

**Villanova**

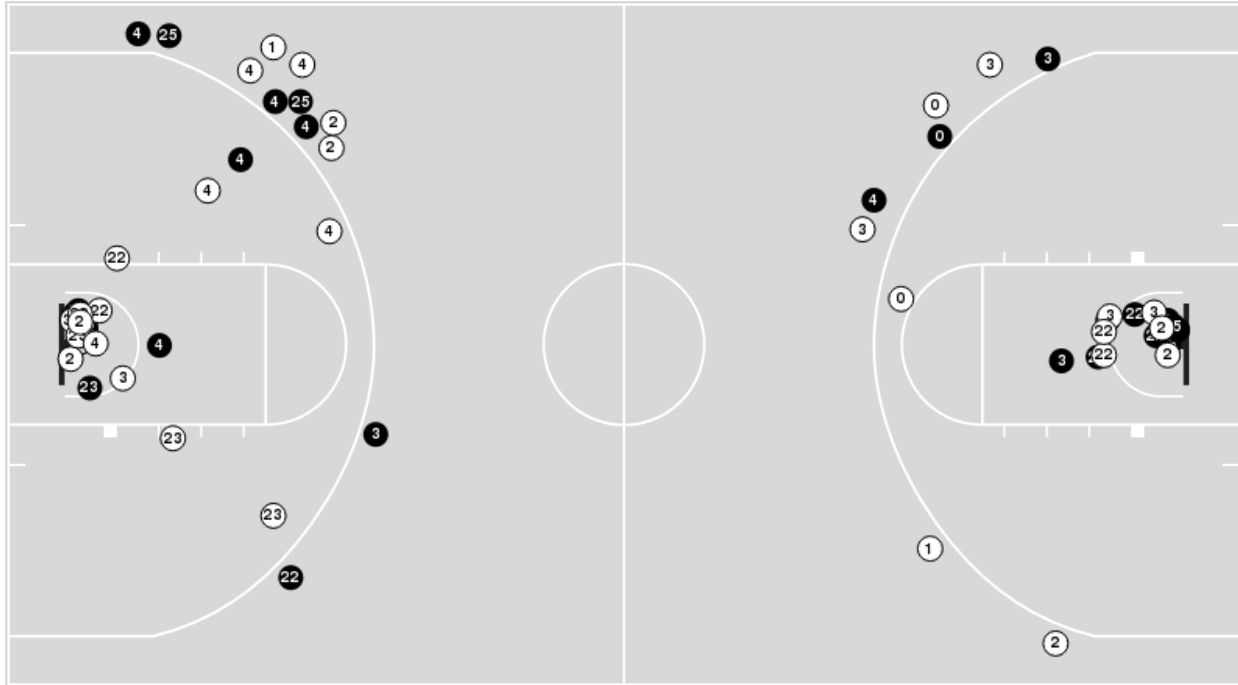
| No | Name                   | Mins  |       | Score   |         | Points Diff |     | Points per Min |      | Assists |     | Rebounds |     | Steals |     | Turnovers |     |
|----|------------------------|-------|-------|---------|---------|-------------|-----|----------------|------|---------|-----|----------|-----|--------|-----|-----------|-----|
|    |                        | On    | Off   | On      | Off     | On          | Off | On             | Off  | On      | Off | On       | Off | On     | Off | On        | Off |
| 2  | Collin Gillespie       | 43:13 | 01:47 | 71 - 79 | 2 - 2   | -8          | 0   | 1.64           | 1.12 | 11      | 0   | 30       | 1   | 2      | 0   | 8         | 0   |
| 3  | Brandon Slater         | 04:15 | 40:45 | 7 - 13  | 66 - 68 | -6          | -2  | 1.65           | 1.62 | 1       | 10  | 2        | 29  | 0      | 2   | 0         | 8   |
| 5  | Justin Moore           | 37:46 | 07:14 | 55 - 66 | 18 - 15 | -11         | 3   | 1.46           | 2.49 | 8       | 3   | 25       | 6   | 2      | 0   | 6         | 2   |
| 10 | Cole Swider            | 19:00 | 26:00 | 32 - 31 | 41 - 50 | 1           | -9  | 1.68           | 1.58 | 5       | 6   | 12       | 19  | 1      | 1   | 4         | 4   |
| 14 | Caleb Daniels          | 40:33 | 04:27 | 67 - 76 | 6 - 5   | -9          | 1   | 1.65           | 1.35 | 10      | 1   | 29       | 2   | 2      | 0   | 7         | 1   |
| 23 | Jermaine Samuels       | 37:23 | 07:37 | 61 - 66 | 12 - 15 | -5          | -3  | 1.63           | 1.58 | 10      | 1   | 25       | 6   | 1      | 1   | 7         | 1   |
| 24 | Jeremiah Robinson-Earl | 41:02 | 03:58 | 67 - 71 | 6 - 10  | -4          | -4  | 1.63           | 1.51 | 10      | 1   | 30       | 1   | 2      | 0   | 8         | 0   |
| 43 | Eric Dixon             | 01:48 | 43:12 | 5 - 3   | 68 - 78 | 2           | -10 | 2.78           | 1.57 | 0       | 11  | 2        | 29  | 0      | 2   | 0         | 8   |



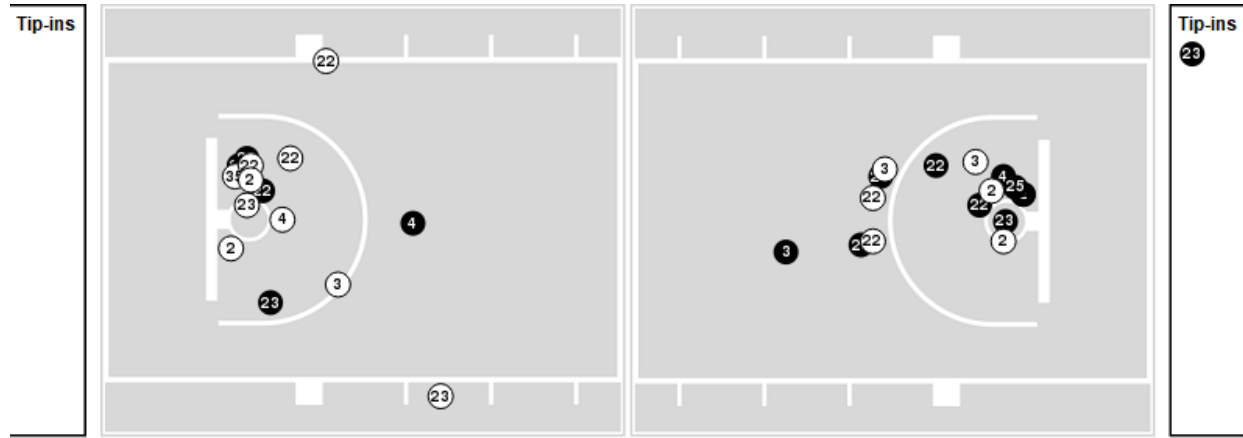
Players => 0, 1, 2, 3, 4, 5, 10, 11, 13, 15, 21, 22, 23, 25, 35 FG Types=>All Results=>All

**Virginia Tech**

**All Field Goals**



**Blow Up Chart**



**N** Made    **O** Missed    N - Player Number

| Virginia Tech | M/A   | %  |
|---------------|-------|----|
| Field Goals   | 27/57 | 47 |
| 2 Points      | 17/37 | 46 |
| 3 Points      | 10/20 | 50 |
| Free Throws   | 17/23 | 74 |

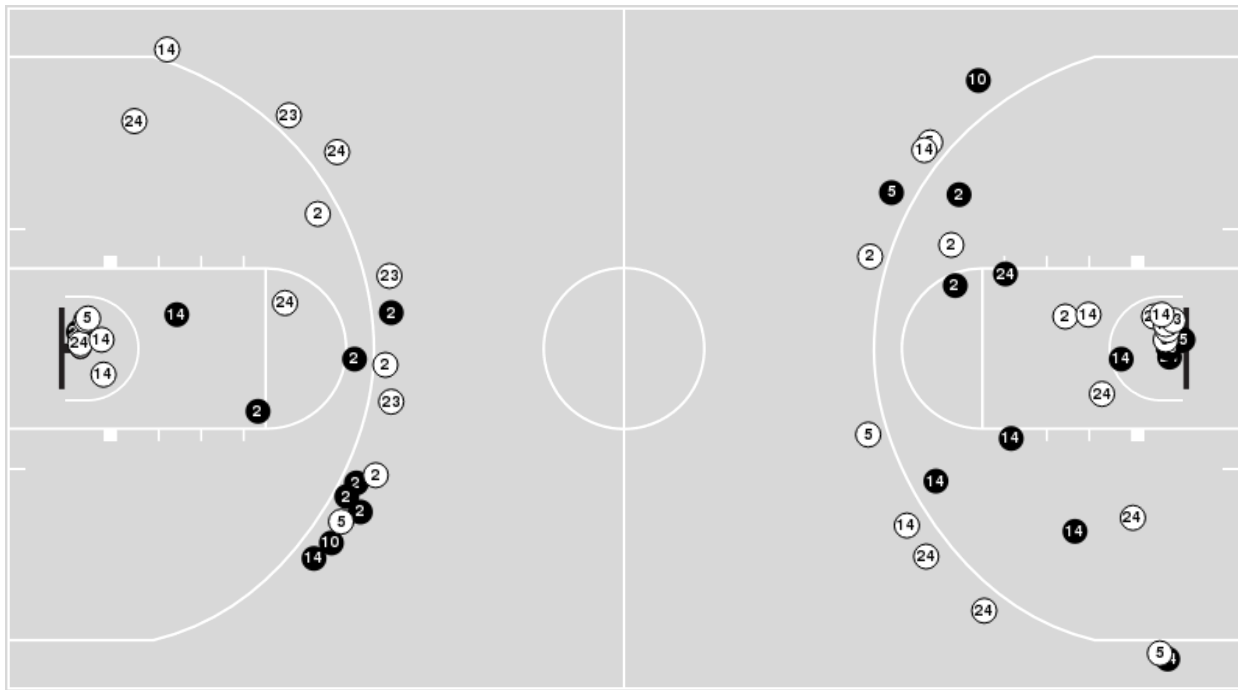
| Virginia Tech        | M/A          | %  |
|----------------------|--------------|----|
| Points in the Paint  | 32 (16 / 30) | 53 |
| Fast Break Points    | 16 (12/15)   | 80 |
| Second Chance Points | 9 (5/10)     | 50 |
| Effective FG%        | 56           |    |



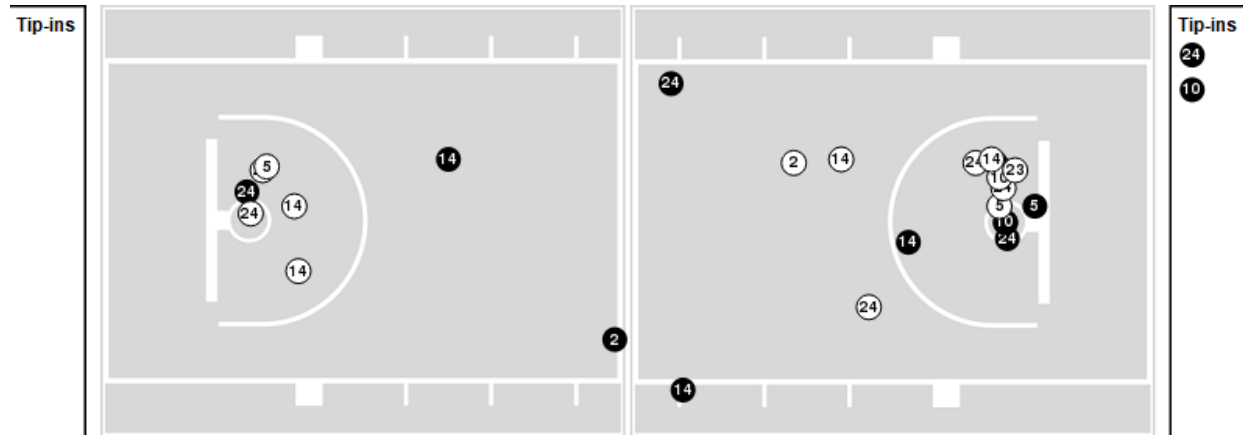
Players => 1, 2, 3, 4, 5, 10, 13, 14, 20, 21, 23, 24, 43FG Types=>AllResults=>All

**Villanova**

**All Field Goals**



**Blow Up Chart**



● Made ○ Missed N - Player Number

| Villanova   | M/A   | %  |
|-------------|-------|----|
| Field Goals | 26/61 | 43 |
| 2 Points    | 17/36 | 47 |
| 3 Points    | 9/25  | 36 |
| Free Throws | 12/17 | 71 |

| Villanova            | M/A          | %  |
|----------------------|--------------|----|
| Points in the Paint  | 22 (11 / 25) | 44 |
| Fast Break Points    | 5 (3/5)      | 60 |
| Second Chance Points | 12 (7/9)     | 78 |
| Effective FG%        | 50           |    |



**Virginia Tech at Villanova**

11/28/20 Mohegan Sun, Montville, Conn.

Air Force Reserve Hall of Fame Tip-Off: Villanova vs Virginia Tech

Officials: DJ Carstenson, Lee Cassell, Todd Austin

**Virginia Tech**

| Lineup  | Quarter On | Time On | Quarter Off | Time Off | Time on Court | Score | Score Diff | Reb | Stl | Tov | Ass | PPP    |
|---|------------|---------|-------------|----------|---------------|-------|------------|-----|-----|-----|-----|--------|
| 0- Cattoor H/ 3- Bede W/ 22- Aluma K/ 23- Radford T/ 25- Mutts J/     | 1          | 20:00   | 1           | 14:50    | 05:10         | 7-6   | 1          | 2   | 0   | 1   | 1   | 1.1667 |
| 2- Diarra C/ 4- Alleyne N/ 22- Aluma K/ 23- Radford T/ 25- Mutts J/   | 1          | 14:50   | 1           | 10:11    | 04:39         | 7-5   | 2          | 4   | 1   | 2   | 1   | 1.0000 |
| 1- Bamisile J/ 3- Bede W/ 4- Alleyne N/ 23- Radford T/ 35- Pems C/    | 1          | 10:11   | 1           | 09:14    | 00:57         | 2-0   | 2          | 1   | 0   | 0   | 0   | 2.0000 |
| 0- Cattoor H/ 1- Bamisile J/ 3- Bede W/ 23- Radford T/ 35- Pems C/    | 1          | 09:14   | 1           | 07:33    | 01:41         | 2-2   | 0          | 1   | 0   | 0   | 0   | 0.6667 |
| 0- Cattoor H/ 1- Bamisile J/ 2- Diarra C/ 23- Radford T/ 35- Pems C/  | 1          | 07:33   | 1           | 06:02    | 01:31         | 5-3   | 2          | 1   | 0   | 0   | 1   | 2.5000 |
| 0- Cattoor H/ 1- Bamisile J/ 2- Diarra C/ 25- Mutts J/ 35- Pems C/    | 1          | 06:02   | 1           | 05:39    | 00:23         | 0-0   | 0          | 1   | 0   | 1   | 0   | 0.0000 |
| 0- Cattoor H/ 1- Bamisile J/ 2- Diarra C/ 22- Aluma K/ 25- Mutts J/   | 1          | 05:39   | 1           | 05:39    | 00:00         | 0-0   | 0          | 0   | 0   | 0   | 0   | 0.0000 |
| 0- Cattoor H/ 2- Diarra C/ 22- Aluma K/ 23- Radford T/ 25- Mutts J/   | 1          | 05:39   | 1           | 02:27    | 03:12         | 2-9   | -7         | 3   | 0   | 2   | 1   | 0.3333 |
| 2- Diarra C/ 3- Bede W/ 22- Aluma K/ 23- Radford T/ 25- Mutts J/      | 1          | 02:27   | 1           | 01:03    | 01:24         | 2-2   | 0          | 1   | 0   | 0   | 1   | 2.0000 |
| 2- Diarra C/ 3- Bede W/ 22- Aluma K/ 23- Radford T/ 35- Pems C/       | 1          | 01:03   | 1           | 00:25    | 00:38         | 2-0   | 2          | 0   | 0   | 0   | 0   | 2.0000 |
| 0- Cattoor H/ 2- Diarra C/ 3- Bede W/ 22- Aluma K/ 35- Pems C/        | 1          | 00:25   | 1           | 00:10    | 00:14         | 0-0   | 0          | 0   | 0   | 0   | 0   | 0.0000 |
| 2- Diarra C/ 3- Bede W/ 22- Aluma K/ 23- Radford T/ 35- Pems C/       | 1          | 00:10   | 1           | 00:10    | 00:00         | 0-0   | 0          | 0   | 0   | 0   | 0   | 0.0000 |
| 0- Cattoor H/ 2- Diarra C/ 3- Bede W/ 22- Aluma K/ 23- Radford T/     | 1          | 00:10   | 2           | 20:00    | 00:11         | 0-2   | -2         | 1   | 0   | 0   | 0   | 0.0000 |
| 3- Bede W/ 4- Alleyne N/ 22- Aluma K/ 23- Radford T/ 25- Mutts J/     | 2          | 20:00   | 2           | 15:59    | 04:01         | 7-7   | 0          | 3   | 0   | 1   | 1   | 1.0355 |
| 3- Bede W/ 4- Alleyne N/ 23- Radford T/ 25- Mutts J/ 35- Pems C/      | 2          | 15:59   | 2           | 14:54    | 01:05         | 2-2   | 0          | 1   | 0   | 0   | 0   | 2.0000 |
| 2- Diarra C/ 4- Alleyne N/ 23- Radford T/ 25- Mutts J/ 35- Pems C/    | 2          | 14:54   | 2           | 14:26    | 00:28         | 0-2   | -2         | 0   | 0   | 1   | 0   | 0.0000 |
| 2- Diarra C/ 4- Alleyne N/ 22- Aluma K/ 23- Radford T/ 35- Pems C/    | 2          | 14:26   | 2           | 14:26    | 00:00         | 0-0   | 0          | 0   | 0   | 0   | 0   | 0.0000 |
| 1- Bamisile J/ 2- Diarra C/ 4- Alleyne N/ 22- Aluma K/ 23- Radford T/ | 2          | 14:26   | 2           | 12:57    | 01:29         | 0-4   | -4         | 0   | 0   | 0   | 0   | 0.0000 |
| 0- Cattoor H/ 1- Bamisile J/ 2- Diarra C/ 22- Aluma K/ 23- Radford T/ | 2          | 12:57   | 2           | 12:57    | 00:00         | 0-0   | 0          | 0   | 0   | 0   | 0   | 0.0000 |
| 0- Cattoor H/ 2- Diarra C/ 22- Aluma K/ 23- Radford T/ 25- Mutts J/   | 2          | 12:57   | 2           | 11:34    | 01:23         | 0-3   | -3         | 0   | 0   | 2   | 0   | 0.0000 |
| 3- Bede W/ 4- Alleyne N/ 22- Aluma K/ 23- Radford T/ 25- Mutts J/     | 2          | 11:34   | 2           | 07:19    | 04:15         | 8-5   | 3          | 3   | 0   | 1   | 2   | 1.6000 |
| 2- Diarra C/ 4- Alleyne N/ 22- Aluma K/ 23- Radford T/ 25- Mutts J/   | 2          | 07:19   | 2           | 03:36    | 03:43         | 8-6   | 2          | 3   | 0   | 1   | 2   | 1.3333 |
| 3- Bede W/ 4- Alleyne N/ 22- Aluma K/ 23- Radford T/ 25- Mutts J/     | 2          | 03:36   | 2           | 00:30    | 03:06         | 5-4   | 1          | 3   | 0   | 0   | 1   | 1.5060 |
| 2- Diarra C/ 4- Alleyne N/ 22- Aluma K/ 23- Radford T/ 25- Mutts J/   | 2          | 00:30   | OT1         | 00:27    | 05:03         | 16-7  | 9          | 10  | 1   | 2   | 3   | 1.3889 |
| 0- Cattoor H/ 4- Alleyne N/ 22- Aluma K/ 23- Radford T/ 25- Mutts J/  | OT1        | 00:27   | OT1         | 00:00    | 00:27         | 6-4   | 2          | 2   | 0   | 0   | 0   | 1.7045 |



**Virginia Tech at Villanova**

11/28/20 Mohegan Sun, Montville, Conn.

Air Force Reserve Hall of Fame Tip-Off: Villanova vs Virginia Tech

Officials: DJ Carstenson, Lee Cassell, Todd Austin

**Villanova**

| Lineup   | Quarter On | Time On | Quarter Off | Time Off | Time on Court | Score | Score Diff | Reb | Stl | Tov | Ass | PPP    |
|--|------------|---------|-------------|----------|---------------|-------|------------|-----|-----|-----|-----|--------|
| 2- Gillespie C/ 5- Moore J/ 14- Daniels C/ 23- Samuels J/ 24- Robinson-Earl J/   | 1          | 20:00   | 1           | 10:11    | 09:49         | 11-14 | -3         | 6   | 1   | 3   | 2   | 0.7857 |
| 3- Slater B/ 5- Moore J/ 10- Swider C/ 14- Daniels C/ 24- Robinson-Earl J/       | 1          | 10:11   | 1           | 09:14    | 00:57         | 0-2   | -2         | 0   | 0   | 0   | 0   | 0.0000 |
| 2- Gillespie C/ 5- Moore J/ 10- Swider C/ 23- Samuels J/ 24- Robinson-Earl J/    | 1          | 09:14   | 1           | 07:33    | 01:41         | 2-2   | 0          | 2   | 0   | 1   | 0   | 0.6667 |
| 2- Gillespie C/ 3- Slater B/ 10- Swider C/ 14- Daniels C/ 23- Samuels J/         | 1          | 07:33   | 1           | 06:02    | 01:31         | 3-5   | -2         | 0   | 0   | 0   | 1   | 3.0000 |
| 2- Gillespie C/ 10- Swider C/ 14- Daniels C/ 23- Samuels J/ 43- Dixon E/         | 1          | 06:02   | 1           | 04:26    | 01:36         | 3-2   | 1          | 1   | 0   | 0   | 0   | 0.6757 |
| 2- Gillespie C/ 10- Swider C/ 14- Daniels C/ 23- Samuels J/ 24- Robinson-Earl J/ | 1          | 04:26   | 1           | 03:00    | 01:26         | 6-0   | 6          | 1   | 0   | 0   | 1   | 3.0000 |
| 2- Gillespie C/ 5- Moore J/ 14- Daniels C/ 23- Samuels J/ 24- Robinson-Earl J/   | 1          | 03:00   | 1           | 01:03    | 01:57         | 2-2   | 0          | 1   | 0   | 0   | 1   | 0.6667 |
| 2- Gillespie C/ 3- Slater B/ 5- Moore J/ 14- Daniels C/ 24- Robinson-Earl J/     | 1          | 01:03   | 1           | 00:25    | 00:38         | 0-2   | -2         | 0   | 0   | 0   | 0   | 0.0000 |
| 2- Gillespie C/ 5- Moore J/ 10- Swider C/ 14- Daniels C/ 24- Robinson-Earl J/    | 1          | 00:25   | 1           | 00:10    | 00:14         | 0-0   | 0          | 0   | 0   | 0   | 0   | 0.0000 |
| 2- Gillespie C/ 3- Slater B/ 5- Moore J/ 14- Daniels C/ 24- Robinson-Earl J/     | 1          | 00:10   | 1           | 00:10    | 00:00         | 2-0   | 2          | 0   | 0   | 0   | 0   | 2.2727 |
| 3- Slater B/ 5- Moore J/ 14- Daniels C/ 24- Robinson-Earl J/ 43- Dixon E/        | 1          | 00:10   | 2           | 20:00    | 00:11         | 0-0   | 0          | 1   | 0   | 0   | 0   | 0.0000 |
| 2- Gillespie C/ 5- Moore J/ 14- Daniels C/ 23- Samuels J/ 24- Robinson-Earl J/   | 2          | 20:00   | 2           | 15:59    | 04:01         | 7-7   | 0          | 3   | 0   | 0   | 1   | 1.1667 |
| 2- Gillespie C/ 5- Moore J/ 10- Swider C/ 14- Daniels C/ 24- Robinson-Earl J/    | 2          | 15:59   | 2           | 12:57    | 03:02         | 8-2   | 6          | 4   | 0   | 0   | 1   | 2.0619 |
| 2- Gillespie C/ 5- Moore J/ 10- Swider C/ 23- Samuels J/ 24- Robinson-Earl J/    | 2          | 12:57   | 2           | 12:37    | 00:20         | 1-0   | 1          | 0   | 0   | 0   | 0   | 0.7576 |
| 3- Slater B/ 5- Moore J/ 10- Swider C/ 23- Samuels J/ 24- Robinson-Earl J/       | 2          | 12:37   | 2           | 12:09    | 00:28         | 0-0   | 0          | 0   | 0   | 0   | 0   | 0.0000 |
| 5- Moore J/ 10- Swider C/ 14- Daniels C/ 23- Samuels J/ 24- Robinson-Earl J/     | 2          | 12:09   | 2           | 11:59    | 00:10         | 0-0   | 0          | 0   | 0   | 0   | 0   | 0.0000 |
| 2- Gillespie C/ 10- Swider C/ 14- Daniels C/ 23- Samuels J/ 24- Robinson-Earl J/ | 2          | 11:59   | 2           | 09:44    | 02:15         | 4-2   | 2          | 2   | 0   | 2   | 1   | 1.0000 |
| 2- Gillespie C/ 5- Moore J/ 10- Swider C/ 23- Samuels J/ 24- Robinson-Earl J/    | 2          | 09:44   | 2           | 07:46    | 01:58         | 3-3   | 0          | 0   | 0   | 0   | 1   | 1.5000 |
| 2- Gillespie C/ 3- Slater B/ 5- Moore J/ 10- Swider C/ 14- Daniels C/            | 2          | 07:46   | 2           | 07:19    | 00:27         | 0-3   | -3         | 0   | 0   | 0   | 0   | 0.0000 |
| 2- Gillespie C/ 5- Moore J/ 10- Swider C/ 14- Daniels C/ 23- Samuels J/          | 2          | 07:19   | 2           | 06:55    | 00:24         | 0-0   | 0          | 0   | 0   | 0   | 0   | 0.0000 |
| 2- Gillespie C/ 5- Moore J/ 14- Daniels C/ 23- Samuels J/ 24- Robinson-Earl J/   | 2          | 06:55   | 2           | 00:01    | 06:54         | 10-17 | -7         | 5   | 0   | 1   | 1   | 1.0870 |
| 2- Gillespie C/ 5- Moore J/ 14- Daniels C/ 24- Robinson-Earl J/ 43- Dixon E/     | 2          | 00:01   | OT1         | 05:00    | 00:01         | 2-1   | 1          | 0   | 0   | 0   | 0   | 2.2727 |
| 2- Gillespie C/ 5- Moore J/ 10- Swider C/ 14- Daniels C/ 24- Robinson-Earl J/    | OT1        | 05:00   | OT1         | 02:59    | 02:01         | 0-5   | -5         | 0   | 1   | 1   | 0   | 0.0000 |
| 2- Gillespie C/ 5- Moore J/ 14- Daniels C/ 23- Samuels J/ 24- Robinson-Earl J/   | OT1        | 02:59   | OT1         | 00:33    | 02:26         | 5-6   | -1         | 2   | 0   | 0   | 1   | 1.2500 |
| 2- Gillespie C/ 5- Moore J/ 10- Swider C/ 14- Daniels C/ 24- Robinson-Earl J/    | OT1        | 00:33   | OT1         | 00:27    | 00:06         | 0-0   | 0          | 1   | 0   | 0   | 0   | 0.0000 |
| 3- Slater B/ 5- Moore J/ 14- Daniels C/ 23- Samuels J/ 24- Robinson-Earl J/      | OT1        | 00:27   | OT1         | 00:25    | 00:01         | 2-0   | 2          | 0   | 0   | 0   | 0   | 2.2727 |
| 2- Gillespie C/ 10- Swider C/ 14- Daniels C/ 23- Samuels J/ 24- Robinson-Earl J/ | OT1        | 00:25   | OT1         | 00:02    | 00:24         | 2-5   | -3         | 1   | 0   | 0   | 0   | 0.6667 |
| 2- Gillespie C/ 3- Slater B/ 14- Daniels C/ 23- Samuels J/ 24- Robinson-Earl J/  | OT1        | 00:02   | OT1         | 00:00    | 00:02         | 0-1   | -1         | 1   | 0   | 0   | 0   | 0.0000 |



**Virginia Tech at Villanova**

11/28/20 Mohegan Sun, Montville, Conn.

Air Force Reserve Hall of Fame Tip-Off: Villanova vs Virginia Tech

Game Time: 8:00 PM

Game Duration: 2:19

Officials: DJ Carstenson, Lee Cassell, Todd Austin

**Virginia Tech**

| Lineup  | Time  | Score | Score Diff | Pts/Min | Reb | Stl | Tov | Ass | PPP    |
|---|-------|-------|------------|---------|-----|-----|-----|-----|--------|
| 2- Diarra C/ 4- Alleyne N/ 22- Aluma K/ 23- Radford T/ 25- Mutts J/   | 13:25 | 31-18 | 13         | 2.3106  | 17  | 2   | 5   | 6   | 1.2643 |
| 3- Bede W/ 4- Alleyne N/ 22- Aluma K/ 23- Radford T/ 25- Mutts J/     | 11:22 | 20-16 | 4          | 1.7595  | 9   | 0   | 2   | 4   | 1.3263 |
| 0- Cattoor H/ 3- Bede W/ 22- Aluma K/ 23- Radford T/ 25- Mutts J/     | 05:10 | 7-6   | 1          | 1.3548  | 2   | 0   | 1   | 1   | 1.1667 |
| 0- Cattoor H/ 2- Diarra C/ 22- Aluma K/ 23- Radford T/ 25- Mutts J/   | 04:35 | 2-12  | -10        | 0.4364  | 3   | 0   | 4   | 1   | 0.2500 |
| 0- Cattoor H/ 1- Bamisile J/ 3- Bede W/ 23- Radford T/ 35- PemsI C/   | 01:41 | 2-2   | 0          | 1.1881  | 1   | 0   | 0   | 0   | 0.6667 |
| 0- Cattoor H/ 1- Bamisile J/ 2- Diarra C/ 23- Radford T/ 35- PemsI C/ | 01:31 | 5-3   | 2          | 3.2967  | 1   | 0   | 0   | 1   | 2.5000 |
| 1- Bamisile J/ 2- Diarra C/ 4- Alleyne N/ 22- Aluma K/ 23- Radford T/ | 01:29 | 0-4   | -4         | 0.0000  | 0   | 0   | 0   | 0   | 0.0000 |
| 2- Diarra C/ 3- Bede W/ 22- Aluma K/ 23- Radford T/ 25- Mutts J/      | 01:24 | 2-2   | 0          | 1.4286  | 1   | 0   | 0   | 1   | 2.0000 |
| 3- Bede W/ 4- Alleyne N/ 23- Radford T/ 25- Mutts J/ 35- PemsI C/     | 01:05 | 2-2   | 0          | 1.8462  | 1   | 0   | 0   | 0   | 2.0000 |
| 1- Bamisile J/ 3- Bede W/ 4- Alleyne N/ 23- Radford T/ 35- PemsI C/   | 00:57 | 2-0   | 2          | 2.1053  | 1   | 0   | 0   | 0   | 2.0000 |
| 2- Diarra C/ 3- Bede W/ 22- Aluma K/ 23- Radford T/ 35- PemsI C/      | 00:38 | 2-0   | 2          | 3.1579  | 0   | 0   | 0   | 0   | 2.0000 |
| 2- Diarra C/ 4- Alleyne N/ 23- Radford T/ 25- Mutts J/ 35- PemsI C/   | 00:28 | 0-2   | -2         | 0.0000  | 0   | 0   | 1   | 0   | 0.0000 |
| 0- Cattoor H/ 4- Alleyne N/ 22- Aluma K/ 23- Radford T/ 25- Mutts J/  | 00:27 | 6-4   | 2          | 13.3333 | 2   | 0   | 0   | 0   | 1.7045 |
| 0- Cattoor H/ 1- Bamisile J/ 2- Diarra C/ 25- Mutts J/ 35- PemsI C/   | 00:23 | 0-0   | 0          | 0.0000  | 1   | 0   | 1   | 0   | 0.0000 |
| 0- Cattoor H/ 2- Diarra C/ 3- Bede W/ 22- Aluma K/ 35- PemsI C/       | 00:14 | 0-0   | 0          | 0.0000  | 0   | 0   | 0   | 0   | 0.0000 |
| 0- Cattoor H/ 2- Diarra C/ 3- Bede W/ 22- Aluma K/ 23- Radford T/     | 00:11 | 0-2   | -2         | 0.0000  | 1   | 0   | 0   | 0   | 0.0000 |
| 0- Cattoor H/ 1- Bamisile J/ 2- Diarra C/ 22- Aluma K/ 25- Mutts J/   | 00:00 | 0-0   | 0          | NaN     | 0   | 0   | 0   | 0   | 0.0000 |
| 2- Diarra C/ 4- Alleyne N/ 22- Aluma K/ 23- Radford T/ 35- PemsI C/   | 00:00 | 0-0   | 0          | NaN     | 0   | 0   | 0   | 0   | 0.0000 |
| 0- Cattoor H/ 1- Bamisile J/ 2- Diarra C/ 22- Aluma K/ 23- Radford T/ | 00:00 | 0-0   | 0          | NaN     | 0   | 0   | 0   | 0   | 0.0000 |



**Virginia Tech at Villanova**

11/28/20 Mohegan Sun, Montville, Conn.

Air Force Reserve Hall of Fame Tip-Off: Villanova vs Virginia Tech

Game Time: 8:00 PM

Game Duration: 2:19

Officials: DJ Carstenson, Lee Cassell, Todd Austin

**Villanova**

| Lineup   | Time  | Score | Score Diff | Pts/Min  | Reb | Stl | Tov | Ass | PPP    |
|--|-------|-------|------------|----------|-----|-----|-----|-----|--------|
| 2- Gillespie C/ 5- Moore J/ 14- Daniels C/ 23- Samuels J/ 24- Robinson-Earl J/   | 25:07 | 35-46 | -11        | 1.3935   | 17  | 1   | 4   | 6   | 0.9669 |
| 2- Gillespie C/ 5- Moore J/ 10- Swider C/ 14- Daniels C/ 24- Robinson-Earl J/    | 05:23 | 8-7   | 1          | 1.4861   | 5   | 1   | 1   | 1   | 1.0152 |
| 2- Gillespie C/ 10- Swider C/ 14- Daniels C/ 23- Samuels J/ 24- Robinson-Earl J/ | 04:05 | 12-7  | 5          | 2.9388   | 4   | 0   | 2   | 2   | 1.3333 |
| 2- Gillespie C/ 5- Moore J/ 10- Swider C/ 23- Samuels J/ 24- Robinson-Earl J/    | 03:59 | 6-5   | 1          | 1.5063   | 2   | 0   | 1   | 1   | 0.9494 |
| 2- Gillespie C/ 10- Swider C/ 14- Daniels C/ 23- Samuels J/ 43- Dixon E/         | 01:36 | 3-2   | 1          | 1.8750   | 1   | 0   | 0   | 0   | 0.6757 |
| 2- Gillespie C/ 3- Slater B/ 10- Swider C/ 14- Daniels C/ 23- Samuels J/         | 01:31 | 3-5   | -2         | 1.9780   | 0   | 0   | 0   | 1   | 3.0000 |
| 3- Slater B/ 5- Moore J/ 10- Swider C/ 14- Daniels C/ 24- Robinson-Earl J/       | 00:57 | 0-2   | -2         | 0.0000   | 0   | 0   | 0   | 0   | 0.0000 |
| 2- Gillespie C/ 3- Slater B/ 5- Moore J/ 14- Daniels C/ 24- Robinson-Earl J/     | 00:38 | 2-2   | 0          | 3.1579   | 0   | 0   | 0   | 0   | 2.2727 |
| 3- Slater B/ 5- Moore J/ 10- Swider C/ 23- Samuels J/ 24- Robinson-Earl J/       | 00:28 | 0-0   | 0          | 0.0000   | 0   | 0   | 0   | 0   | 0.0000 |
| 2- Gillespie C/ 3- Slater B/ 5- Moore J/ 10- Swider C/ 14- Daniels C/            | 00:27 | 0-3   | -3         | 0.0000   | 0   | 0   | 0   | 0   | 0.0000 |
| 2- Gillespie C/ 5- Moore J/ 10- Swider C/ 14- Daniels C/ 23- Samuels J/          | 00:24 | 0-0   | 0          | 0.0000   | 0   | 0   | 0   | 0   | 0.0000 |
| 3- Slater B/ 5- Moore J/ 14- Daniels C/ 24- Robinson-Earl J/ 43- Dixon E/        | 00:11 | 0-0   | 0          | 0.0000   | 1   | 0   | 0   | 0   | 0.0000 |
| 5- Moore J/ 10- Swider C/ 14- Daniels C/ 23- Samuels J/ 24- Robinson-Earl J/     | 00:10 | 0-0   | 0          | 0.0000   | 0   | 0   | 0   | 0   | 0.0000 |
| 2- Gillespie C/ 3- Slater B/ 14- Daniels C/ 23- Samuels J/ 24- Robinson-Earl J/  | 00:02 | 0-1   | -1         | 0.0000   | 1   | 0   | 0   | 0   | 0.0000 |
| 2- Gillespie C/ 5- Moore J/ 14- Daniels C/ 24- Robinson-Earl J/ 43- Dixon E/     | 00:01 | 2-1   | 1          | 120.0000 | 0   | 0   | 0   | 0   | 2.2727 |
| 3- Slater B/ 5- Moore J/ 14- Daniels C/ 23- Samuels J/ 24- Robinson-Earl J/      | 00:01 | 2-0   | 2          | 120.0000 | 0   | 0   | 0   | 0   | 2.2727 |