



# KNIGHTS

## SOFTBALL



### 2022 SCHEDULE

| DATE    | OPPONENT                            | TV                    | RESULT/TIME |
|---------|-------------------------------------|-----------------------|-------------|
| Feb. 10 | #12 GEORGIA <sup>1</sup>            | ESPN+                 | W, 7-6 (8)  |
| Feb. 11 | RV MINNESOTA <sup>1</sup>           | ESPN+                 | L, 3-1      |
| Feb. 12 | RV FRESNO STATE <sup>1</sup>        | ESPN+                 | W, 6-1      |
|         | LONGWOOD <sup>1</sup>               | ESPN+                 | W, 9-1 (5)  |
| Feb. 15 | RV LIBERTY                          | ESPN+                 | W, 3-0      |
| Feb. 17 | vs. Wisconsin <sup>2</sup>          | ESPNU                 | L, 9-1 (5)  |
| Feb. 18 | vs. #19 Michigan <sup>2</sup>       | ESPN+                 | L, 6-0      |
|         | vs. Texas Tech <sup>2</sup>         | ESPN+                 | W, 7-3 (8)  |
| Feb. 19 | vs. #18 Tennessee <sup>2</sup>      | ESPN+                 | L, 6-2      |
|         | vs. #11 Texas <sup>2</sup>          | Longhorn Network      | W, 15-10    |
| Feb. 20 | vs. #5 Florida State <sup>2</sup>   | ESPN+                 | L, 8-0 (5)  |
| Feb. 23 | at FIU                              | C-USA TV              | W, 11-0 (5) |
| Feb. 25 | OLE MISS <sup>3</sup>               | ESPN+                 | W, 6-3      |
| Feb. 26 | RV JAMES MADISON <sup>3</sup>       | UCFKnights.com        | W, 11-0 (5) |
|         | DEPAUL <sup>3</sup>                 | UCFKnights.com        | W, 2-0      |
| Feb. 27 | #4 FLORIDA <sup>3</sup>             | ESPN+                 | L, 12-11    |
| Feb. 28 | OAKLAND <sup>3</sup>                | ESPN+                 | W, 3-0      |
| Mar. 4  | SOUTH CAROLINA                      | ESPN+                 | L, 5-2      |
|         | FGCU                                | ESPN+                 | W, 9-2      |
| Mar. 5  | SOUTH CAROLINA                      | ESPN+                 | W, 5-4      |
|         | FGCU                                | ESPN+                 | W, 11-2 (5) |
| Mar. 6  | FGCU                                | ESPN+                 | W, 10-2 (5) |
| Mar. 8  | at Pacific                          | WCC TV                | W, 8-0 (5)  |
| Mar. 9  | at Fresno State                     | Mountain West Network | W, 10-2     |
| Mar. 11 | vs. Boston <sup>4</sup>             | -                     | 12:00 p.m.  |
| Mar. 12 | vs. Iowa State <sup>4</sup>         | -                     | 3:00 p.m.   |
|         | at Cal State Fullerton <sup>4</sup> | ESPN+                 | 5:30 p.m.   |
| Mar. 13 | vs. Nebraska <sup>4</sup>           | -                     | 12:00 p.m.  |
|         | at Long Beach State <sup>4</sup>    | ESPN+                 | 2:30 p.m.   |
| Mar. 15 | OHIO STATE                          | ESPN+                 | 6:00 p.m.   |
| Mar. 19 | FURMAN                              | ESPN+                 | 2:00 p.m.   |
|         | FURMAN                              | ESPN+                 | 4:00 p.m.   |
|         | FURMAN                              | ESPN+                 | 12:00 p.m.  |
| Mar. 20 | at South Florida <sup>*</sup>       | ESPN+                 | 4:00 p.m.   |
| Mar. 25 | at South Florida <sup>*</sup>       | ESPN+                 | 6:00 p.m.   |
| Mar. 26 | at South Florida <sup>*</sup>       | ESPN+                 | 6:00 p.m.   |
| Mar. 27 | at South Florida <sup>*</sup>       | ESPN+                 | 4:00 p.m.   |
| Mar. 30 | at Florida                          | -                     | 6:00 p.m.   |
| Apr. 3  | VIRGINIA TECH                       | ESPN+                 | 2:00 p.m.   |
|         | VIRGINIA TECH                       | ESPN+                 | 4:00 p.m.   |
| Apr. 4  | VIRGINIA TECH                       | ESPN+                 | 6:00 p.m.   |
| Apr. 6  | at North Florida                    | SWOOPLife Live        | 6:00 p.m.   |
| Apr. 8  | MEMPHIS <sup>*</sup>                | ESPN+                 | 6:00 p.m.   |
| Apr. 9  | MEMPHIS <sup>*</sup>                | ESPN+                 | 2:00 p.m.   |
| Apr. 10 | MEMPHIS <sup>*</sup>                | ESPN+                 | 12:00 p.m.  |
| Apr. 14 | ECU <sup>*</sup>                    | ESPN+                 | 6:00 p.m.   |
| Apr. 15 | ECU <sup>*</sup>                    | ESPN+                 | 6:00 p.m.   |
| Apr. 16 | ECU <sup>*</sup>                    | -                     | 2:00 p.m.   |
| Apr. 22 | at Houston <sup>*</sup>             | -                     | 7:00 p.m.   |
| Apr. 23 | at Houston <sup>*</sup>             | -                     | 3:00 p.m.   |
| Apr. 24 | at Houston <sup>*</sup>             | -                     | 1:00 p.m.   |
| Apr. 29 | TULSA <sup>*</sup>                  | ESPN+                 | 6:00 p.m.   |
| Apr. 30 | TULSA <sup>*</sup>                  | ESPN+                 | 2:00 p.m.   |
| May 1   | TULSA <sup>*</sup>                  | ESPN+                 | 12:00 p.m.  |
| May 6   | at Wichita State <sup>*</sup>       | -                     | 7:00 p.m.   |
| May 7   | at Wichita State <sup>*</sup>       | -                     | 2:00 p.m.   |
| May 8   | at Wichita State <sup>*</sup>       | -                     | TBD         |

May 12-14 American Athletic Conference Tournament, Greenville, N.C.

All times ET | All caps & bold indicates home game

<sup>1</sup>American Athletic Conference Game

<sup>2</sup>- The CFX Classic

<sup>3</sup>- St. Pete / Clearwater Elite Invitational

<sup>4</sup>- The Knights Classic sponsored by Knight Pass

<sup>\*</sup>- Louisville Slugger Invitational

### SOCIAL KNIGHTS

- Twitter .....@UCF\_Softball
- Instagram.....@UCF.Softball
- Facebook...../UCFSoftball
- UCF Athletics (Twitter).....@UCFKnights
- Hashtags.....#ChargeOn, #TeamXXI
- Website.....www.ucfknight.com

### UCF, NOT CENTRAL FLORIDA

Please refer to the University of Central Florida as UCF, not Central Florida, on all references. Also, UCF is no longer the "Golden Knights" and instead simply known as the "Knights." No "Lady Knights" either.

# #CHARGEON

### LOUISVILLE SLUGGER INVITATIONAL

Games 25-29 | Long Beach, Calif. | Fullerton, Calif.



#### UCF KNIGHTS

STREAK: W6  
LAST 10: 8-2  
2021 RECORD: 41-19-1

RECORD  
17-7

ARECORD  
0-0

RANKING  
RV

U.S. RANKING  
RV

HEAD COACH  
Cindy Ball-Malone

RECORD  
212-168-2

YEAR  
8th

U.S. RECORD  
113-52-2

U.S. YEAR  
4th

#### BOSTON TERRIERS | MAR. 11 | NOON



RECORD: 11-10  
STREAK: W6  
LAST 10: 7-3  
SERIES HISTORY: Boston leads 2-1

RANKINGS:  
NCAA Coaches - NR  
USA Softball - NR  
Softball America - NR  
DI Softball - NR

Head Coach: Ashley Waters  
Record at Boston: 190-113 (7th)  
Career Record: 190-113 (7th)

#### IOWA STATE CYCLONES | MAR. 12 | 3 PM



RECORD: 12-7  
STREAK: W1  
LAST 10: 4-6  
SERIES HISTORY: UCF leads 2-1

RANKINGS:  
NCAA Coaches - NR  
USA Softball - NR  
Softball America - NR  
DI Softball - NR

Head Coach: Jamie Pinkerton  
Record at Iowa St: 117-101 (5th)  
Career Record: 466-472 (17th)

#### CAL STATE FULLERTON TITANS | MAR. 12 | 5:30 PM



RECORD: 14-8  
STREAK: L1  
LAST 10: 5-5  
SERIES HISTORY: Series tied 1-1

RANKINGS:  
NCAA Coaches - NR  
USA Softball - NR  
Softball America - NR  
DI Softball - NR

Head Coach: Kelly Ford  
Record at CSU: 314-186-1 (10th)  
Career Record: 314-186-1 (10th)

#### NEBRASKA CORNHUSKERS | MAR. 13 | NOON



RECORD: 11-6  
STREAK: L1  
LAST 10: 8-2  
SERIES HISTORY: UCF leads 1-0

RANKINGS:  
NCAA Coaches - NR  
USA Softball - NR  
Softball America - NR  
DI Softball - NR

Head Coach: Rhonda Revelle  
Record at NEB: 1034-610 (30th)  
Career Record: 1042-626 (31st)

#### LONG BEACH STATE 49ERS | MAR. 13 | 2:30 PM



RECORD: 8-11  
STREAK: L1  
LAST 10: 6-4  
SERIES HISTORY: First meeting

RANKINGS:  
NCAA Coaches - NR  
USA Softball - NR  
Softball America - NR  
DI Softball - NR

Head Coach: Kim Sowder  
Record at LBS: 475-319-1 (16th)  
Career Record: 475-319-1 (16th)

### LEADING OFF - KNIGHT NOTES

#### CODY CRUSHING THE COMPETITION

- Jada Cody had one of the more memorable weekends in UCF history, going 8-for-15 with 4 homers and 14 RBI. Her performance over the entire week earned her American Athletic Conference Player of the Week honors.
- Cody's 14 RBI brought her to a total of 30 this season in just 22 games, a new career high for her. She tallied 28 RBI through 61 games last season.
- She now at 32 RBI this season which is tied for first in the country in RBI by a single player.
- It's not the first time that Cody has done well in a single this weekend as she collected 8 RBI in a double header on 2/12.

#### CALIFORNIA GIRLS

- UCF's California roadtrip may feel like home for the 11 student-athletes on the team that are from the state of California. Head coach Cindy Ball-Malone and assistant coach Whitney Jones also hail from The Golden State
- By class, UCF has 4 seniors, 3 sophomores and 4 freshmen from Cali. Each one is from a different city in California.
- The Knights are out to a 2-0 start in their California, while putting up a total of 10 runs in the first innings of both games combined.

#### BEAR IS BACK

- UCF head coach Cindy "Bear" Ball-Malone returns to Pacific for the first time as an opposing head coach after playing there.
- Bear graduated from Pacific in 2002 with a bachelor's degree in sports sciences and earned her master's in education in 2006. She is considered the greatest two-way player in Pacific's history, earning back-to-back All-America honors and holds nine career pitching records for the Tigers.

#### HEY! WE'RE WALKIN' HERE!

- UCF is first in the country in drawing walks, earning 101 free passes through 22 games. They have had two separate games where they have worked 10 walks each and drew a total of 9 against #4 Florida.
- Shannon Doherty and Kennedy Searcy are ranked nationally in walks per game, with Doherty averaging .82 walks a game (35th nationally) and Searcy recording .64 per game.

#### SHANNON'S SHOTS HEARD 'ROUND THE WORLD

- Doherty has had two walk-off homers this season, both over SEC teams and both with bat flips that have been viewed all over the internet.
- In total, Doherty's two bat flips combined have tallied over 1.48 million views on Twitter alone, as other accounts such as NCAA Softball, Fox Sports, MLB, B/R Walk-Off, Barstool Sports, and Baseball Quotes sharing one or both videos.
- The 8-second clip of her posted on social media celebrating the win over Georgia to begin the year generated over 946,000 views on Twitter.

#### MIGHTY MICAELA

- Freshman Micaela Macario, known as "Lala", has had a phenomenal freshman season so far.
- Last week, she earned 10 RBI and hit for a .462 average and a 1.178 OPS, earning her the American Athletic Conference Player of the Week.
- The week prior, Macario made some ridiculous plays at shortstop, including a diving snag that landed her at #9 on SportsCenter's Top 10 Plays on 2/16. She followed that up with two more incredible back-to-back diving plays against Texas Tech, one of them being a 6-3 double play.
- Macario is now 8-for-8 this season in stolen bases and is ranked in the top 40 nationally in stolen bases.

more notes on page 4



**QUICK FACTS**

**UNIVERSITY INFORMATION**

|                            |                               |
|----------------------------|-------------------------------|
| Name                       | University of Central Florida |
| Location                   | Orlando, Fla.                 |
| Founded                    | 1963                          |
| Enrollment                 | 71,000+                       |
| Nickname                   | Knights                       |
| Colors                     | Black and Gold                |
| Ballpark (Capacity)        | UCF Softball Complex (600)    |
| Dimensions                 | 200/220/200                   |
| Surface                    | Natural Grass                 |
| Affiliation                | NCAA Division I               |
| Conference                 | American Athletic Conference  |
| President                  | Dr. Alexander Cartwright      |
| Athletics Director         | Terry Mohajir                 |
| Softball Administrator     | Dr. Abby Wilson               |
| Athletics Department Phone | 407-823-4114                  |
| Ticket Office Phone        | 407-823-1000                  |
| Website                    | ucfknight.com                 |
| Television/Streaming       | ESPN+                         |

**UCF SOFTBALL HISTORY**

|                                  |  |
|----------------------------------|--|
| First Season of Competition      | 2002 (21st Season)                             |
| All-Time Record                  | 733-454-3 (.616)                               |
| AAC Tournament Championships     | 2015   |
| AAC Regular Season Championships | 2014, 2015                                     |
| Total Conference Championships   | 5  |
| Postseason Trips                 | 8  |
|                                  | 2005, 2008, 2010, 2012, 2014, 2015, 2016, 2021 |
| Times in NCAA Super Regionals    | 0  |
| WCWS Appearances                 | 0  |
| Highest NFCA Ranking             | 13   |
| All-American Selections          | 1  |

**2021 RECAP**

|                          |                        |
|--------------------------|------------------------|
| Overall Record           | 41-19-1                |
| Final Ranking            | Receiving Votes (27th) |
| Conference Record/Finish | 16-7-1/3rd             |

**2022 TEAM INFORMATION**

|                                 |                                    |
|---------------------------------|------------------------------------|
| Players Returning/Lost          | 15/12                              |
| Starters Returning/Lost         | 4/5                                |
| Position Players Returning/Lost | 12/8                               |
| Pitchers Returning/Lost         | 3/4                                |
| Newcomers                       | 8                                  |
| Preseason Conference Pick       | 3rd (2 First Place Votes, 29 pts.) |

**COACHING STAFF**

|                            |                                 |
|----------------------------|---------------------------------|
| Head Coach                 | Cindy "Bear" Ball-Malone        |
| Alma Mater, Year           | Pacific, 2002                   |
| Record at UCF              | 113-52-2 (4th Year)             |
| Career Record (Years)      | 212-168-2 (8th Year)            |
| Assistant Coach            | Tyler Heil (1st Year at UCF)    |
| Assistant Coach            | Whitney Jones (1st Year at UCF) |
| Volunteer Assistant Coach  | Kaija Gibson (1st Year at UCF)  |
| Graduate Student Assistant | Alea White (1st Year at UCF)    |

**STRATEGIC COMMUNICATIONS**

|                  |                           |
|------------------|---------------------------|
| Softball Contact | Ken Landis                |
| Email            | klandis@athletics.ucf.edu |
| Cell Phone       | 954-531-4322              |

**KNIGHTS TO THE BIG 12**

UCF has accepted an invitation to join the Big 12 Conference, as announced by Big 12 commissioner, Bob Bowlsby, UCF director of athletics Terry Mohajir, and UCF President Alex Cartwright on Sept. 10. The Knights athletics program has now moved from Division III, Division II, the FCS level, the FBS level that included time in the MAC, Conference USA, the AAC, and now to the Big 12 Conference.

*"This is a landmark day for anyone ever associated with UCF or UCF Athletics. As we anticipate a future move to the Big 12 Conference, we first owe a vote of thanks to all those at UCF who have gone before us. There's a long list of student-athletes, coaches, athletics directors, university presidents and support staff, fans and donors and, of course, our student body, plus so many others whose hard work and successes have helped pave the way for today's announcement. The bases were already loaded, and I feel very blessed and honored to get to step up to the plate on behalf of UCF." - Terry Mohajir*

**MEDIA INFORMATION**

**INTERVIEW REQUESTS**

Coach Ball-Malone, staff and players are available for interviews, roughly every weekday afternoon during the season and following practices. All player and coach interview requests must go through Ken Landis. Please give at least 24 hours advance notice for all interview requests.

Please DO NOT attempt to contact players, coaches or other team personnel directly by any means of communications, including personal phone numbers, email addresses and social media accounts.

**GAME CREDENTIALS**

All requests for media and/or photography credentials must be made by emailing Ken Landis preferably 48 hours before a game. They can be picked up prior to the game at the will call window at the UCF Softball Complex.

**POSTGAME PRESS CONFERENCE**

All postgame press conferences will take place on the field following every home game near the third base line just beyond the infield of the UCF Softball Complex. Postgame press conferences only occur following home games.

**GAMEDAY LIVESTATS**

Live in-game statistics will be provided for the media at [ucf.statbroadcast.com](http://ucf.statbroadcast.com).

**UCFKNIGHTS.COM**

For updated game notes, statistics, player bios and all the latest information on UCF Softball, visit [UCFKnight.com](http://UCFKnight.com)

**UCF SOFTBALL COMPLEX**

Since its groundbreaking on March 14, 2006, the UCF Softball Complex is where the Knights call home. The state-of-the-art facility speaks volumes for how far the program has come under the direction of head coach Cindy Ball and where it is headed. The 600-capacity stadium is one of the finest in the American Athletic Conference and on the national scene.

The entire facility received massive upgrades in the fall of 2021, giving "The Plex" a fresh look. The upgrades included a brand new locker room, padded outfield walls and backstop, new foul poles, a fresh coat of paint on the exterior of all buildings, and updated branding in team offices.

The field is professionally manicured by the UCF Facilities and Operations staff and includes a covered batting pavilion, roomy dugouts, home and visitor bullpens and an outfield fence lined with trees.

UCF student-athletes have access to everything they need to prepare for gameday at the UCF Softball Complex. The Knights have a spacious locker room, a lounge area complete with a television, couches and chairs, an equipment room and their own training room complete with a top-notch athletic training staff.

Along with having comfortable offices for each coach, the UCF Softball Complex also has a conference room, a video room and locker rooms for both the coaching staff and for umpires. The press box at the stadium has room enough for home and visitor radio broadcasts, as well as multi-level media seating.

On game days, fans have access to a ticket booth, concession stand and gift shop, while also being able to participate in multiple promotions and events throughout the season.



**Top Attended Games in Ball-Malone Era**

| Matchup                                   | Attn. |
|---|-------|
| 1. March 3, 2019, vs. Florida State       | 1,161 |
| 2. February 27, 2022, vs. Florida         | 1,152 |
| 3. February 10, 2022, vs. Georgia         | 1,093 |
| 4. February 25, 2022, vs. Ole Miss        | 931   |
| 5. February 26, 2022, DH vs. JMU, DePaul  | 889   |
| 6. February 8, 2020, vs. Duke             | 873   |
| 7. February 12, 2022, DH vs. FS, Longwood | 864   |
| 8. March 4, 2019, vs. Florida State       | 844   |
| 9. March 2, 2019, vs. Louisiana Tech      | 640   |
| 10. February 11, 2022, vs. Minnesota      | 634   |

**BY THE NUMBERS**

|   |   |
|---|---|
| <b>41</b> <b>WINS:</b> The Knights topped 40 wins in 2021, their first time doing so since the 2015 season, in which the Knights achieved 50 wins.                    | <b>18</b> <b>NO-HITTERS:</b> Gianna Mancha tossed the 17th no-hitter in program history on April 23, 2021 at Memphis. It was the team's first no-no since 2019.         |
| <b>22</b> <b>STRAIGHT GAMES IN FLA. TO START 2022:</b> UCF will play its first 22 games of '22 in The Sunshine State, with 15 of them being played at home.           | <b>16</b> <b>UNDERCLASSMEN:</b> 16 of UCF's 23 players are underclassmen, with seven freshmen and seven of eight total newcomers being underclassmen                    |
| <b>16</b> <b>OPPONENTS THAT MADE THE TOURNAMENT:</b> UCF will face 16 teams that were in last year's NCAA Tourney, including 6 Supers participants and 3 WCWS teams   | <b>10</b> <b>RANKED OPPONENTS:</b> UCF will face 10 opponents in the NFCA's Preseason Top 25 during 2022 and an additional four that were receiving votes               |
| <b>21</b> <b>VOTING POINTS:</b> The Knights began the 2022 season receiving votes in the NFCA poll, sitting as the first RV team and collecting 21 voting points      | <b>8</b> <b>NCAA TOURNAMENT APPS:</b> The Knights punched their ticket to their 8th NCAA Tournament last season as an at large bid and reached their 5th regional final |
| <b>2</b> <b>NATIONAL TV GAMES:</b> UCF will play on national TV at least twice this season, airing on ESPNU and the Longhorn Network during St. Pete/Clearwater Tour. | <b>4</b> <b>NEW COACHES:</b> Head Coach Cindy Ball-Malone added four new members to her staff for 2022, with all of them connecting to her along her coaching journey   |



2022 ROSTER

| #  | Player             | Pos  | Ht.  | B/T | Cl.   | Hometown              |
|----|--------------------|------|------|-----|-------|-----------------------|
| 1  | Maddie Bejarano    | OF   | 5-5  | L/R | So.   | Cottonwood, Ariz.     |
| 5  | Denali Schappacher | OF   | 5-6  | L/R | Sr.   | Bradenton, Fla.       |
| 6  | Angelina DeVoe     | LHP  | 5-0  | L/L | So.   | Carson, Calif.        |
| 7  | Johneisha Rowe     | OF   | 5-5  | L/R | So.   | Avon Park, Fla.       |
| 8  | Gianna Mancha      | RHP  | 5-7  | R/R | Sr.   | Fresno, Calif.        |
| 9  | Emmerson Lee       | IF   | 5-8  | R/R | R-Fr. | Clovis, Calif.        |
| 10 | Juliana Wilson     | C    | 5-6  | L/R | So.   | Watsonville, Calif.   |
| 12 | Justene Molina     | 2B   | 5-3  | R/R | Sr.   | Corona, Calif.        |
| 15 | Kama Woodall       | RHP  | 5-10 | R/R | R-Sr. | Spring Hill, Fla.     |
| 17 | Jada Cody          | UTL  | 5-9  | R/R | So.   | Murrieta, Calif.      |
| 18 | Kaitlyn Felton     | RHP  | 5-8  | R/R | Fr.   | Valrico, Fla.         |
| 20 | Katie Burge        | UTL  | 5-4  | L/R | So.   | Miami, Fla.           |
| 22 | Kennedy Searcy     | UTL  | 5-7  | L/R | So.   | Jacksonville, Fla.    |
| 23 | Allyse Volpe       | OF   | 5-3  | L/R | Jr.   | Ontario, Canada       |
| 24 | Cassidy Cangemi    | IF   | 5-7  | R/R | Sr.   | Agua Dulce, Calif.    |
| 27 | Ashleigh Griffin   | C/IF | 5-7  | R/R | Fr.   | Newnan, Ga.           |
| 28 | Micaela Macario    | IF   | 5-6  | L/R | Fr.   | Chula Vista, Calif.   |
| 29 | Damaria Cannon     | OF   | 5-3  | R/R | Sr.   | Moreno Valley, Calif. |
| 33 | Averi Wong         | OF   | 5-2  | L/R | Fr.   | Arcadia, Calif.       |
| 35 | Carson Frier       | C/IF | 5-5  | R/R | Fr.   | Live Oak, Fla.        |
| 42 | Savannah Adams     | 1B   | 5-8  | R/R | Fr.   | La Mirada, Calif.     |
| 46 | Shannon Doherty    | 1B   | 5-8  | R/R | So.   | Coral Springs, Fla.   |
| 55 | Grace Jewell       | RHP  | 6-1  | R/R | So.   | Chesapeake, Va.       |

COACHING AND SUPPORT STAFF

Head Coach: Cindy Ball-Malone - Fourth Season (University of the Pacific '02, '06)

Assistant Coach: Tyler Heil - First Season (San Jose State '09)

Assistant Coach: Whitney Jones - First Season (Washington '14)

Volunteer Assistant Coach: Kaija Gibson - First Season (Washington '21)

Graduate Student Assistant: Alea White - First Season (UCF '21)

Director of Operations: Adam DeRusha - First Season (Florida '15)

Sports Performance Assistant: Katelyn Kight

Athletic Trainer: Aleaha Evans

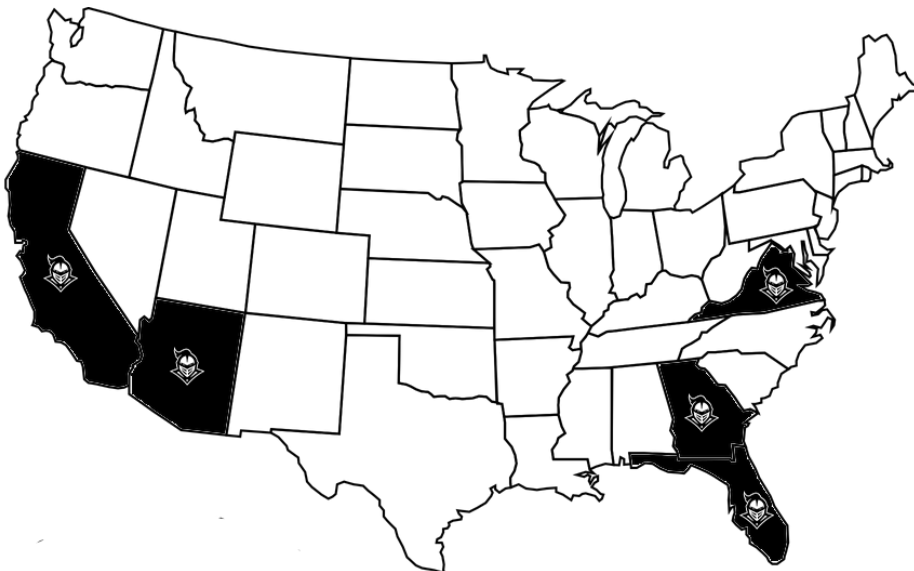
By Eligibility

| Seniors (6)        | Juniors (1)  | Sophomores (9)   | Freshmen (7)       |
|--------------------|--------------|------------------|--------------------|
| Cassidy Cangemi    | Allyse Volpe | Maddie Bejarano  | Savannah Adams *   |
| Damaria Cannon     |              | Katie Burge      | Kaitlyn Felton *   |
| Gianna Mancha      |              | Jada Cody        | Carson Frier *     |
| Justene Molina     |              | Angelina DeVoe   | Ashleigh Griffin * |
| Denali Schappacher |              | Shannon Doherty  | Emmerson Lee       |
| Kama Woodall *     |              | Grace Jewell     | Micaela Macario *  |
|                    |              | Johneisha Rowe * | Averi Wong *       |
|                    |              | Kennedy Searcy   |                    |
|                    |              | Juliana Wilson   |                    |

\* - indicates first season at UCF

Pronunciation Guide

- #1 Maddie **Bay-her-AH-no**
- #5 **Duh-NAL-E SHAW-pock-er**
- #7 **John-ee-sha Row**
- #8 **Gee-ah-nuh Mahn-chuh**
- #15 **KAY-muh** Woodall
- #17 **JAY-duh Koh-dee**
- #23 **Uh-Lease Vohl-PAY**
- #27 **Ashley** Griffin
- #29 **Duh-marr-ee-uh** Cannon
- #46 Shannon **DOH-er-tee**
- Coach Tyler **High-ull**
- Dir. Ops Adam **De-ROO-shuh**



By State

- |  |  |
|--|--|
| <b>California (11)</b><br>Savannah Adams - La Mirada<br>Cassidy Cangemi - Agua Dulce<br>Damaria Cannon - Moreno Valley<br>Jada Cody - Murrieta<br>Angelina DeVoe - Carson<br>Emmerson Lee - Clovis<br>Micaela Macario - Chula Vista<br>Gianna Mancha - Fresno<br>Justene Molina - Corona<br>Juliana Wilson - Watsonville<br>Averi Wong - Arcadia | <b>Florida (8)</b><br>Katie Burge - Miami<br>Shannon Doherty - Coral Springs<br>Kaitlyn Felton - Valrico<br>Carson Frier - Live Oak<br>Johneisha Rowe - Avon Park<br>Denali Schappacher - Bradenton<br>Kennedy Searcy - Jacksonville<br>Kama Woodall - Spring Hill |
|  | <b>Arizona (1)</b><br>Maddie Bejarano - Cottonwood   |
|  | <b>Georgia (1)</b><br>Ashleigh Griffin - Newnan  |
|  | <b>Virginia (1)</b><br>Grace Jewell - Chesapeake   |
|  | <b>Canada (1)</b><br>Allyse Volpe - Ontario  |

KNIGHT NOTES - CONTINUED

**A GAME OF FIRSTS**

- The Knights' 11-0 victory over FIU their last time out had plenty of story lines in it, including a handful of first for individual players.
- Grace Jewell and Emmerson Lee both earned their first career hits, both happening to be multi-RBI homers. Jewell, in just her second career AB smashed a pinch-hit grand slam off the top of the fence to put UCF up 8-0 before Lee's three-run homer made it 11-0.
- Denali Schappacher earned her first triple of 2022, putting her in a tie of 7th place on UCF's all-time triples list with six.

**BIG 12 PREVIEW**

- The Knights earned two victories against future Big 12 opponents during the St. Pete/Clearwater Elite Invitational, topping Texas Tech 7-3 in eight innings and #11 Texas 15-10 in a wild softball game that few will forget.
- UCF beat both teams in comeback fashion, erasing a 3-2 deficit against Texas Tech heading into the 6th inning and a 7-4 deficit against #11 Texas, a game that the Black and Gold found themselves trailing in three different times. They used a 7 run 6th inning to beat the Longhorns 15-10.

**A SAVVY DISPLAY OF HITTING**

- Freshman Savannah Adams made her first collegiate start while in Clearwater and had a week to remember. The freshman's performance at the plate earned her a spot on the American Athletic Conference's Weekly Honor Roll.
- Adams hit .444 in four games, three of which she started, collecting a double and 5 RBI, including two that came in clutch against #11 Texas, tying the game at 9-9 in the sixth inning. Her line drive up the middle to even the game sparked the 7-run sixth inning.

**MANCHA MOWS 'EM DOWN**

- Gianna Mancha was perfect in relief against Texas Tech, pitching four innings and punching out 10 batters while facing just 12.
- Her performance earned her the win and was reminiscent of her no-hit performance at Memphis in April of 2021, where she struck out 13.
- Mancha has two one hitters this season. Her first was against Longwood on 2/12 before pitching a one-hit shutout at FIU on 2/23.

**WALKING OFF GEORGIA**

- UCF started the college softball season off with a bang, earning the first "upset" of 2022. The Knights hosted #12/19 Georgia and went back and forth, seeing 12 runs scored in the first four and a half innings.
- The game was even at 6-6 after five innings and sent the game into extras. With one out and a 1-0 count, Shannon Doherty blasted a mammoth home run down the left field line to walkoff the Bulldogs and give UCF an opening night victory in the eighth. Doherty had gone 0-for-4 prior.

- Kama Woodall played a big part in relief for the Knights, pitching 3.2 innings of hitless softball out of the bullpen, walking just one and earning her first inw in a UCF uniform.

**FELTON FEARLESS IN DEBUT**

- Freshman right handed pitcher Kaitlyn Felton had a debut to remember, pitching six innings of two hit softball against Fresno State.
- Felton earned two punchouts to end her first inning of work and looked sharp from there. She didn't record an out in the sixth, allowing one hit before being relieved in the inning. She went on to earn the win with no earned runs in the 6-1 contest.

**A LOOK BACK**

- The Knights finished the 2021 season with a record of 41-19-1, the winningest season since the 2015 campaign when UCF posted a 50-9 record. The campaign was one of seven seasons that the Black and Gold earned 40 or more wins.
- UCF finished the year sitting third in the American Athletic Conference standings with a 16-7-1 mark. The conference tournament saw the Black and Gold reach the championship game, where they were defeated by Wichita State 7-4.
- The Knights earned a nod to the NCAA Tournament and competed in the Tallahassee regional, in which they reached the final, defeating Auburn and Kennesaw State along the way with a Florida State loss. They matched up with the Seminoles again in the final, falling 2-0.

**BACK TO THE TOURNAY**

- UCF is looking to return to the NCAA Tournament in consecutive seasons for the first time since the 2014-16 campaigns.
- The Knights have reached the regional final in each of their last four appearances in the NCAA Tournament, but have yet to make the Supers.
- Overall, the Knights have been to the NCAA Tournament eight times, making a regional final in five trips.

**STRENGTH OF SCHEDULE**

- The Knights are scheduled to play 10 teams who begin the 2022 season in the USA Today/NFCA Preseason Poll
- Three opponents begin the season ranked in the top 10 (#4 Florida State, #6 Florida, #10 Texas)
- Four additional teams on UCF's schedule were receiving votes in the first edition of the poll

**BEATING THE BEST OF THE BEST**

- The Knights earned three top-five victories in 2021, beating No. 2 Arizona 2-0 at home on March 8 and sweeping No. 5 Florida in a home-and-home, with UCF posting a three-run seventh to walk it off at home on Mar. 24 and taking a 7-0 win back from Gainesville on Apr. 14.
- The Black and Gold earned four ranked wins in 2021, the first time in program history that has happened.

- In total, the Knights went 4-6-1 against ranked opponents during the regular season. Since head coach Cindy Ball-Malone's arrival, UCF is 8-18-2 against ranked opponents.
- Each season under Ball-Malone has seen the Knights pick up more ranked wins than the last, earning one ranked win in 2019, three in 2020 and four in 2021.

**NEW STAFF, WHO THIS?**

- Ball-Malone has brought in an entirely new staff for the 2022 campaign, her fourth year at the helm of the Knights.
- Assistant Coaches Whitney Jones and Tyler Heil, Volunteer Assistant Coach Kajja Gibson and Graduate Student Assistant Alea White make up the new staff, with all parts having a connection to at least one other member in some way shape or form.
- Heil was an assistant coach for three seasons at New Mexico while Ball-Malone was a head coach at Boise State. Heil works on the defensive side of the game and will coach first base when the Knights are at-bat.
- Jones joins the Knights and will help coach the offense after being a volunteer assistant coach at Washington, which is her alma-mater. As an assistant coach, Ball-Malone coached Jones during her freshman and sophomore seasons as a Husky.
- The Washington connection continues as Gibson just finished her five-year playing career as a Husky, with four of them with Jones on staff as a volunteer assistant. Gibson's connection to Washington goes all the way back to 2008 where she was a bat girl for the Husky team.
- White is a name that Knight fans know and love, as she wrapped up her legendary career at the end of the 2021 season. She holds the UCF career records for wins (99), appearances (180), games started (139), complete games (103), innings pitched (969.1) and most batters faced (4142). She held batters to a .189 batting average (4th all-time at UCF) and struck out 688 batters (4th all-time at UCF).

**THE UPGRADED PLEX**

- The UCF Softball Complex has received a number of upgrades since the Knights last took the field.
- The most notable upgrades to the fan's eyes are the freshly padded walls in the outfield, new foul poles and freshly renovated dugouts. Every building's exterior around The Plex has received a fresh coat of paint, going from gold to anthracite.
- The Knights will enjoy a brand new locker room with state of the art locker units as well as fresh, updated branding in the team offices.

**CHOP SCHAPP**

- Denali Schappacher returns for her fifth season as a Knight and has to improve on an already impressive career which has her name littered all over the record book.
- Schappacher enters 2022 in the top 10 all-time at UCF in batting average (2nd, .333), on-base percentage (6th, .398), stolen base

THE LAST TIME

|   |                                       |
|---|---------------------------------------|
| UCF   |                                       |
| Scored 10+ runs in a game.....                    | 3/9/22, at Fresno State, 10-2 W       |
| Scored 15+ runs in a game.....                    | 2/19/22, vs. #11 Texas, 15-10 W       |
| Scored 20+ runs in a game.....                    | 2/2/03, vs. Morris Brown, 24-0 W      |
| Allowed 10+ runs in game.....                     | 2/27/22, vs. #4 Florida, 12-11 L      |
| Allowed 15+ runs in a game.....                   | 2/20/16, vs. #9 Arizona, 19-4 L       |
| Allowed 20+ runs in a game.....                   | Never                                 |
| Recorded 15+ hits in a game.....                  | 2/27/22, vs. #4 Florida, 12-11 L      |
| Recorded 20+ hits in a game.....                  | 3/15/07, vs. Bethune-Cookman, 18-2 W  |
| Allowed 20+ hits in a game.....                   | 5/20/05, vs. South Florida, 14-3 L    |
| Defeated a top-five ranked team.....              | 4/14/21, at #5 Florida, 7-0 W         |
| Defeated a ranked opponent at home.....           | 2/10/22, vs. #12 Georgia, 7-6 W (8)   |
| Defeated a ranked opponent on the road.....       | 4/14/21, at #5 Florida, 7-0 W         |
| Defeated a ranked opponent at a neutral site..... | 2/19/22, vs. #11 Texas, 15-10 W       |
| Won a run-rule game.....                          | 3/8/22, at Pacific, 8-0 W (5)         |
| Lost a run-rule game.....                         | 2/20/22, vs. #5 FSU, 8-0 L (5)        |
| Won an extra-inning game.....                     | 2/18/22, vs. Texas Tech, 7-3 W (8)    |
| Lost an extra-inning game.....                    | 5/1/21, at Ole Miss (DH Gm. 1), 5-4 L |
| Turned a triple play.....                         | 4/9/17, at Memphis, 10-6 W            |

**A Knight**

|   |   |
|---|---|
| Recorded 4+ hits in a game.....         | 4, Jada Cody, vs. #11 Texas, 2/19/22                  |
| Scored 4+ runs in a game.....           | 4, Allyse Volpe, vs. #11 Texas, 2/19/22               |
| Drove in 5+ runs in a game.....         | 5, Jada Cody, vs. FGCU, 3/5/22                        |
| Hit 3+ home runs in a game.....         | Never   |
| Hit a grand slam.....                   | Grace Jewell, at FIU, 2/23/22                         |
| Hit back-to-back home runs.....         | C. Rotton & K. Jensen, vs. Southern Illinois, 3/10/18 |
| Hit back-to-back-to-back home runs..... | Never   |
| Drew 4+ walks in a game.....            | 4, Shannon Doherty, vs. St. Johns, 2/9/20             |
| Stole 3+ bases in a game.....           | 3, Micaela Macario, vs. #11 Texas, 2/19/22            |
| Hit a walk-off home run.....            | Shannon Doherty, vs. Ole Miss, 2/25/22                |
| Hit an inside-the-park home run.....    | Research not complete                                 |

|  |   |
|--|---|
| Pitched a seven-inning complete-game shutout.....  | Gianna Mancha, vs. Oakland, 2/28/22                 |
| Pitched an extra-inning complete-game shutout..... | 11.0 IP, Alea White, vs. Wichita State, 4/18/21     |
| Pitched a perfect game.....                        | Taylor Sawyer, vs. Bucknell, 3/13/03                |
| Pitched a solo no-hitter.....                      | Gianna Mancha, at Memphis, 4/23/21                  |
| Pitched a combined no-hitter.....                  | Mackenzie Audas & Mackenzie Huhn, vs. Iona, 3/18/14 |
| Recorded 12+ strikeouts in a game.....             | 13, Gianna Mancha, at Memphis, 4/23/21              |
| Pitched 10+ innings in a game.....                 | 11.0 IP, Alea White, vs. Wichita State, 4/18/21     |

AWARDS AND HONORS

|  |  |
|--|--|
| <b>American Athletic Conference Weekly Honors</b>                          |  |
| <i>Player of the Week</i>  |  |
| Micaela Macario - Feb. 28  |  |
| 5 GP, 5 GS, .462 BA, 1.178 OPS, 2 2B, 10 RBI, SB                           |  |
| <b>Jada Cody - Mar. 7</b>  |  |
| 6 GP, 6 GS, .444 BA, 1.746 OPS, 2 2B, 4 HR, 14 RBI                         |  |
| <i>Honor Roll</i>  |  |
| Jada Cody - Feb. 14  |  |
| 4 GP, 4 GS, .500 BA, 1.571 OPS, 2B, 3B, HR, 8 RBI                          |  |
| <b>Savannah Adams - Feb. 21</b>  |  |
| 4 GP, 3 GS, .444 BA, 1.011 OPS, 2B, 5 RBI, BB                              |  |
| <b>Kaitlyn Felton - Feb. 28</b>  |  |
| 2, APP, 1 GS, 1-0, 0.00 ERA, 0 ER, 1 CG, 1 SHO, 6.1 IP, 8 SO, 1 BB, 2 H    |  |
| <b>Gianna Mancha - Mar. 7</b>  |  |
| 3, APP, 3 GS, 2-0, 1.47 ERA, 4 ER, 2 CG, 1 SHO, 19.0 IP, 22 SO, 6 BB, 15 H |  |



| UCF RECORD WHEN                             |         |     |      |      |     |     |
|---|---------|-----|------|------|-----|-----|
|   | OVERALL | AAC |      |      |     |     |
| <b>BY GAME</b>                              |         |     |      |      |     |     |
| Home  | 12-3    | 0-0 |      |      |     |     |
| Away  | 3-0     | 0-0 |      |      |     |     |
| Neutral                                     | 2-4     | 0-0 |      |      |     |     |
| Day games (before 5 p.m.)                   | 6-5     | 0-0 |      |      |     |     |
| Night Games (5 p.m. or later)               | 11-2    | 0-0 |      |      |     |     |
| vs. Ranked Opponents                        | 2-4     | 0-0 |      |      |     |     |
| vs. Top 10 Opponents                        | 0-2     | 0-0 |      |      |     |     |
| <b>BY OPPOSING STARTER</b>                  |         |     |      |      |     |     |
| vs. Right-handed starter                    | 16-5    | 0-0 |      |      |     |     |
| vs. Left-handed starter                     | 1-2     | 0-0 |      |      |     |     |
| <b>BY UCF STARTER</b>                       |         |     |      |      |     |     |
| Starter goes 5+ innings                     | 7-2     | 0-0 |      |      |     |     |
| Starter goes less than 5 innings            | 6-4     | 0-0 |      |      |     |     |
| <b>BY SCORING/MARGIN</b>                    |         |     |      |      |     |     |
| Scoring first                               | 12-2    | 0-0 |      |      |     |     |
| Opponent scores first                       | 5-5     | 0-0 |      |      |     |     |
| In one-run games                            | 2-1     | 0-0 |      |      |     |     |
| In two-run games                            | 1-1     | 0-0 |      |      |     |     |
| In five or more run games                   | 14-4    | 0-0 |      |      |     |     |
| Shutouts                                    | 6-2     | 0-0 |      |      |     |     |
| In Extra Innings                            | 2-0     | 0-0 |      |      |     |     |
| Scoring 0-2 runs                            | 1-6     | 0-0 |      |      |     |     |
| Scoring 3-5 runs                            | 3-0     | 0-0 |      |      |     |     |
| Scoring 6-9 runs                            | 7-0     | 0-0 |      |      |     |     |
| Scoring 10+ runs                            | 6-1     | 0-0 |      |      |     |     |
| Allowing 0-2 runs                           | 12-0    | 0-0 |      |      |     |     |
| Allowing 3-5 runs                           | 3-2     | 0-0 |      |      |     |     |
| Allowing 6-9 runs                           | 1-4     | 0-0 |      |      |     |     |
| Allowing 10+ runs                           | 1-1     | 0-0 |      |      |     |     |
| <b>BY STATS</b>                             |         |     |      |      |     |     |
| Earning 0-3 hits                            | 0-3     | 0-0 |      |      |     |     |
| Earning 4-6 hits                            | 4-3     | 0-0 |      |      |     |     |
| Earning 7-9 hits                            | 8-0     | 0-0 |      |      |     |     |
| Earning 10+ hits                            | 5-1     | 0-0 |      |      |     |     |
| Out-hit opponent                            | 16-1    | 0-0 |      |      |     |     |
| Out-hit by opponent                         | 2-6     | 0-0 |      |      |     |     |
| Hits are equal                              | 1-0     | 0-0 |      |      |     |     |
| Hitting a home run                          | 11-1    | 0-0 |      |      |     |     |
| Going homer-less                            | 6-6     | 0-0 |      |      |     |     |
| Opponent hits a home run                    | 4-6     | 0-0 |      |      |     |     |
| Opponent goes homer-less                    | 13-1    | 0-0 |      |      |     |     |
| Errorless                                   | 7-2     | 0-0 |      |      |     |     |
| Committing one error                        | 5-2     | 0-0 |      |      |     |     |
| Committing two or more errors               | 5-3     | 0-0 |      |      |     |     |
| Opponent goes errorless                     | 3-6     | 0-0 |      |      |     |     |
| Opponent commits at least one error         | 14-1    | 0-0 |      |      |     |     |
| <b>BY SCHEDULE</b>                          |         |     |      |      |     |     |
| February                                    | 11-6    | 0-0 |      |      |     |     |
| March                                       | 6-1     | 0-0 |      |      |     |     |
| April                                       | 0-0     | 0-0 |      |      |     |     |
| May   | 0-0     | 0-0 |      |      |     |     |
| Sunday                                      | 1-2     | 0-0 |      |      |     |     |
| Monday                                      | 1-0     | 0-0 |      |      |     |     |
| Tuesday                                     | 2-0     | 0-0 |      |      |     |     |
| Wednesday                                   | 2-0     | 0-0 |      |      |     |     |
| Thursday                                    | 1-1     | 0-0 |      |      |     |     |
| Friday                                      | 3-3     | 0-0 |      |      |     |     |
| Saturday                                    | 7-1     | 0-0 |      |      |     |     |
| Game 1 of series                            | 0-0     | 0-0 |      |      |     |     |
| Game 2 of series                            | 0-0     | 0-0 |      |      |     |     |
| Game 3 of series                            | 0-0     | 0-0 |      |      |     |     |
| <b>BY JERSEY</b>                            |         |     |      |      |     |     |
| All White                                   | 2-2     | 0-0 |      |      |     |     |
| Anthracite w/ striped sleeves (New for '22) | 5-3     | 0-0 |      |      |     |     |
| NEW COMING SOON (New for '22)               | -       | -   |      |      |     |     |
| Wolf Gray "Knights"                         | 5-2     | 0-0 |      |      |     |     |
| Black with White piping                     | 4-0     | 0-0 |      |      |     |     |
| White with Black Piping                     | 1-0     | 0-0 |      |      |     |     |
| <b>LEADING AFTER</b>                        |         |     |      |      |     |     |
| Inn.  | 1       | 2   | 3    | 4    | 5   | 6   |
| W-L   | 7-1     | 9-0 | 11-0 | 13-1 | 7-0 | 8-0 |
| <b>TRAILING AFTER</b>                       |         |     |      |      |     |     |
| Inn.  | 1       | 2   | 3    | 4    | 5   | 6   |
| W-L   | 4-1     | 5-2 | 4-5  | 2-6  | 3-3 | 0-5 |
| <b>TIED AFTER</b>                           |         |     |      |      |     |     |
| Inn.  | 1       | 2   | 3    | 4    | 5   | 6   |
| W-L   | 6-5     | 3-5 | 2-2  | 2-0  | 1-2 | 3-0 |

| 2022 MULTI-HIT GAMES |         |      |        |    |       |
|----------------------|---------|------|--------|----|-------|
| PLAYER               | 2       | 3    | 4      | 5+ | TOTAL |
| Jada Cody            | 6       | 1    | 1      | -  | 8     |
| Johneisha Rowe       | 6       | -    | -      | -  | 6     |
| Shannon Doherty      | 3       | 2    | -      | -  | 5     |
| Denali Schappacher   | 4       | -    | -      | -  | 4     |
| Justene Molina       | 2       | 1    | -      | -  | 3     |
| Allyse Volpe         | 2       | 1    | -      | -  | 3     |
| Kennedy Searcy       | 2       | 1    | -      | -  | 3     |
| Maddie Bejarano      | 2       | -    | -      | -  | 2     |
| Micaela Macario      | 2       | -    | -      | -  | 2     |
| Savannah Adams       | 1       | -    | -      | -  | 1     |
| Katie Burge          | 1       | -    | -      | -  | 1     |
| Ashleigh Griffin     | 1       | -    | -      | -  | 1     |
| 2022 MULTI-RBI GAMES |         |      |        |    |       |
| PLAYER               | 2       | 3    | 4      | 5+ | TOTAL |
| Jada Cody            | 3       | 2    | 3      | 1  | 9     |
| Micaela Macario      | 2       | 1    | -      | 1  | 4     |
| Shannon Doherty      | 2       | 1    | -      | -  | 3     |
| Maddie Bejarano      | 2       | 1    | -      | -  | 3     |
| Ashleigh Griffin     | 3       | -    | -      | -  | 3     |
| Savannah Adams       | 1       | 1    | -      | -  | 2     |
| Justene Molina       | 2       | -    | -      | -  | 2     |
| Emmerson Lee         | -       | 1    | -      | -  | 1     |
| Johneisha Rowe       | 1       | -    | -      | -  | 1     |
| Grace Jewell         | -       | -    | 1      | -  | 1     |
| HITTING STREAKS      |         |      |        |    |       |
| PLAYER               | CURRENT | 2022 | CAREER |    |       |
| Johneisha Rowe       | -       | 4    | 17     |    |       |
| Jada Cody            | 1       | 5    | 15     |    |       |
| Shannon Doherty      | 4       | 4    | 10     |    |       |
| Kennedy Searcy       | 2       | 3    | 9      |    |       |
| Denali Schappacher   | 2       | 3    | 8      |    |       |
| Allyse Volpe         | 2       | 6    | 8      |    |       |
| Juliana Wilson       | -       | -    | 7      |    |       |
| Micaela Macario      | -       | 6    | 6      |    |       |
| Justene Molina       | 2       | 4    | 5      |    |       |
| Damaria Cannon       | -       | 1    | 5      |    |       |
| Maddie Bejarano      | -       | 5    | 5      |    |       |
| Emmerson Lee         | 1       | 4    | 4      |    |       |
| Ashleigh Griffin     | 1       | 3    | 3      |    |       |
| Savannah Adams       | -       | 3    | 3      |    |       |
| Katie Burge          | -       | 1    | 2      |    |       |
| Grace Jewell         | -       | 1    | 1      |    |       |
| Carson Frier         | -       | 1    | 1      |    |       |
| REACHED-BASE STREAKS |         |      |        |    |       |
| PLAYER               | CURRENT | 2022 | CAREER |    |       |
| Johneisha Rowe       | 4       | 5    | 23     |    |       |
| Shannon Doherty      | 9       | 12   | 20     |    |       |
| Jada Cody            | 1       | 5    | 19     |    |       |
| Kennedy Searcy       | 7       | 8    | 9      |    |       |
| Denali Schappacher   | 4       | 8    | 9      |    |       |
| Justene Molina       | 9       | 9    | 9      |    |       |
| Allyse Volpe         | 9       | 9    | 9      |    |       |
| Juliana Wilson       | -       | -    | 8      |    |       |
| Damaria Cannon       | -       | 2    | 8      |    |       |
| Savannah Adams       | -       | 7    | 7      |    |       |
| Micaela Macario      | -       | 6    | 6      |    |       |
| Ashleigh Griffin     | 6       | 6    | 6      |    |       |
| Maddie Bejarano      | -       | 5    | 5      |    |       |
| Katie Burge          | -       | 4    | 4      |    |       |
| Emmerson Lee         | 1       | 4    | 4      |    |       |
| Carson Frier         | -       | 1    | 1      |    |       |
| Grace Jewell         | -       | 1    | 1      |    |       |
| Averi Wong           | 1       | 1    | 1      |    |       |

| TEAM HOME RUN TOTALS                          |                      |          |         |      |       |           |
|---|----------------------|----------|---------|------|-------|-----------|
| 2022 BREAKDOWN                                |                      |          |         |      |       |           |
| Total   | 15                   |          |         |      |       |           |
| Home  | 11                   |          |         |      |       |           |
| Road  | 2                    |          |         |      |       |           |
| Neutral                                       | 2                    |          |         |      |       |           |
| vs. RHP                                       | 14                   |          |         |      |       |           |
| vs. LHP                                       | 1                    |          |         |      |       |           |
| With 0 outs                                   | 8                    |          |         |      |       |           |
| With 1 out                                    | 3                    |          |         |      |       |           |
| With 2 outs                                   | 4                    |          |         |      |       |           |
| Solo  | 4                    |          |         |      |       |           |
| Two-Run                                       | 3                    |          |         |      |       |           |
| Three-Run                                     | 7                    |          |         |      |       |           |
| Grand Slam                                    | 1                    |          |         |      |       |           |
| Back-to-Back                                  | 0                    |          |         |      |       |           |
| Pinch-Hit                                     | 1                    |          |         |      |       |           |
| Walk-Off                                      | 2                    |          |         |      |       |           |
| Consecutive Games with a HR (Season Long)     | 0 (4)                |          |         |      |       |           |
| Consecutive Games without HR (Season Long)    | 2 (4)                |          |         |      |       |           |
| HOME RUN TRACKER                              |                      |          |         |      |       |           |
| Player (HR #)                                 | Opp. (Date)          | Runs     | Inn.    | Outs | Count | Final     |
| Shannon Doherty (1)                           | Georgia (2/10)       | 1        | 8       | 1    | 1-0   | W,7-6(8)  |
| Maddie Bejarano (1)                           | Minnesota (2/11)     | 1        | 5       | 2    | 3-1   | L,3-1     |
| Jada Cody (1)                                 | Fresno St. (2/12)    | 3        | 1       | 0    | 3-1   | W,6-1     |
| Shannon Doherty (2)                           | Texas Tech (2/18)    | 1        | 2       | 0    | 2-2   | W,7-3(8)  |
| Ashleigh Griffin (1)                          | Texas (2/19)         | 2        | 3       | 2    | 3-2   | W,15-10   |
| Grace Jewell (1)                              | FIU (2/23)           | 4        | 5       | 0    | 2-2   | W,11-0(5) |
| Emmerson Lee (1)                              | FIU (2/23)           | 3        | 5       | 1    | 0-2   | W,11-0(5) |
| Shannon Doherty (2)                           | Ole Miss (2/25)      | 3        | 7       | 0    | 1-2   | W,6-3     |
| Kennedy Searcy (1)                            | James Madison (2/26) | 1        | 3       | 0    | 1-1   | W,11-0(5) |
| Jada Cody (2)                                 | FGCU (3/4)           | 2        | 1       | 0    | 2-2   | W,9-2     |
| Maddie Bejarano (2)                           | FGCU (3/4)           | 2        | 5       | 2    | 0-0   | W,9-2     |
| Jada Cody (3)                                 | South Carolina (3/5) | 3        | 4       | 0    | 2-2   | W,5-4     |
| Maddie Bejarano (3)                           | FGCU (3/5)           | 3        | 5       | 0    | 1-0   | W,11-2(5) |
| Jada Cody (4)                                 | FGCU (3/5)           | 3        | 5       | 2    | 3-2   | W,11-2(5) |
| Jada Cody (5)                                 | FGCU (3/6)           | 3        | 3       | 1    | 3-2   | W,10-2(5) |
| HOME RUN BREAKDOWN                            |                      |          |         |      |       |           |
| PLAYER  | SOLO                 | 2R       | 3R      | GS   | TOTAL |           |
| Jada Cody                                     | -                    | 1        | 4       | -    | 5     |           |
| Shannon Doherty                               | 2                    | -        | 1       | -    | 3     |           |
| Maddie Bejarano                               | 1                    | 1        | 1       | -    | 3     |           |
| Ashleigh Griffin                              | -                    | 1        | -       | -    | 1     |           |
| Grace Jewell                                  | -                    | -        | -       | 1    | 1     |           |
| Emmerson Lee                                  | -                    | -        | 1       | -    | 1     |           |
| Kennedy Searcy                                | 1                    | -        | -       | -    | 1     |           |
| COME FROM BEHIND WINS                         |                      |          |         |      |       |           |
| DATE  | OPPONENT             | DEFICIT  | FINAL   |      |       |           |
| Feb. 18                                       | Texas Tech           | 3-2      | 7-3 (8) |      |       |           |
| Feb. 19                                       | #11 Texas            | 7-4      | 15-10   |      |       |           |
| Feb. 25                                       | Ole Miss             | 3-1      | 6-3     |      |       |           |
| <i>5th inning or later, or 3+ run deficit</i> |                      |          |         |      |       |           |
| WALK-OFF WINS                                 |                      |          |         |      |       |           |
| DATE  | OPPONENT             | DEFICIT  | FINAL   |      |       |           |
| Feb. 10                                       | #12 Georgia          | Tied 6-6 | 7-6 (8) |      |       |           |
| Feb. 25                                       | Ole Miss             | 3-1      | 6-3     |      |       |           |
| Mar. 5  | South Carolina       | Tied 4-4 | 5-4     |      |       |           |

| Score by Innings |    |    |    |    |    |    |   |   |       |
|------------------|----|----|----|----|----|----|---|---|-------|
| Inn.             | 1  | 2  | 3  | 4  | 5  | 6  | 7 | 8 | Total |
| UCF              | 23 | 11 | 36 | 23 | 26 | 18 | 8 | 5 | 150   |
| Opponents        | 8  | 11 | 21 | 23 | 11 | 5  | 6 | 0 | 85    |

**UCF RECORD WATCH**

**CAREER HITTING**

**Career Batting Average (Min. 250 ABs)**

- Stephanie Best (2002-05) ..... 384
- Shannon Doherty (2020-pres.)** ..... **348**
- Denali Schappacher (2018-pres.)** ..... **329**
- Jada Cody (2020-pres.)** ..... **325**
- Linnea Goodman (2014-17) ..... 323
- Tiffany Lane (2008-11) ..... 322
- Breanne Javier (2006-09) ..... 322
- Natalie Land (2009-12) ..... 316

**Career Slugging Percentage (Min. 250 ABs)**

- Stephanie Best (2002-05) ..... 756
- Shannon Doherty (2020-pres.)** ..... **570**
- Jada Cody (2020-pres.)** ..... **535**
- Jessica Ujvari (2014-16) ..... 523
- Jania Shinhoster (2002-05) ..... 522
- Cassady Brewer (2016-19) ..... 479

**Career On-Base Percentage (Min. 250 ABs)**

- Stephanie Best (2002-05) ..... 487
- Shannon Doherty (2020-pres.)** ..... **455**
- Cassady Brewer (2016-19) ..... 437
- Jada Cody (2020-pres.)** ..... **411**
- Tiffany Lane (2008-11) ..... 403
- Jessica Ujvari (2014-16) ..... 401
- Natalie Land (2009-12) ..... 397
- Denali Schappacher (2018-pres.)** ..... **397**
- Farrah Sullivan (2012-15) ..... 392

**Career Stolen Bases**

- Kahley Novack (2012-15) ..... 125
- Natalie Land (2009-12) ..... 102
- Cici Alvarez (2004-07) ..... 79
- Jania Shinhoster (2002-05) ..... 74
- Megan Greenwell (2015-18) ..... 60
- Tiffany Lane (2008-11) ..... 58
- Maddy Schroeder (2012-15) ..... 55
- Denali Schappacher (2018-pres.)** ..... **55**

**Career Runs Scored**

- Stephanie Best (2002-05) ..... 216
- Jania Shinhoster (2002-05) ..... 163
- Tiffany Lane (2008-11) ..... 145
- Natalie Land (2009-12) ..... 134
- Cici Alvarez (2004-07) ..... 132
- Kahley Novack (2012-15) ..... 128
- Linnea Goodman (2014-17) ..... 118
- Denali Schappacher (2018-pres.)** ..... **117**

**Career Home Runs**

- Stephanie Best (2002-05) ..... 71
- Jania Shinhoster (2002-05) ..... 33
- Samantha McCloskey (2013-16) ..... 23
- Farrah Sullivan (2012-15) ..... 23
- Jessica Ujvari (2014-16) ..... 22
- Georgia Blair (2020-21) ..... 17
- Abby McClain (2008-11) ..... 17
- Jasmine Esparza (2017-21) ..... 17
- Shannon Doherty (2020-pres.)** ..... **16**
- Kalyn Cenal (2013-16) ..... 16
- Cassady Brewer (2016-19) ..... 16

**Career Triples**

- Tiffany Lane (2008-11) ..... 23
- Stephanie Best (2002-05) ..... 13
- Jania Shinhoster (2002-05) ..... 13
- Natalie Land (2009-12) ..... 10
- Kahley Novak (2012-15) ..... 8
- Tawny Swan (2011-12) ..... 7
- Denali Schappacher (2018-pres.)** ..... **6**
- Courtney Rotton (2015-18) ..... 6
- Linnea Goodman (2014-17) ..... 6

**Career Hits**

- Stephanie Best (2002-04) ..... 285
- Jania Shinhoster (2002-04) ..... 268
- Breanne Javier (2006-09) ..... 245
- Linnea Goodman (2014-17) ..... 241
- Kahley Novak (2012-15) ..... 217
- Tiffany Lane (2008-11) ..... 216
- Cici Alvarez (2004-07) ..... 207
- Natalie Land (2009-12) ..... 206
- Amber Lamb (2004-07) ..... 200
- Farrah Sullivan (2012-15) ..... 193
- Denali Schappacher (2018-pres.)** ..... **190**

**CAREER PITCHING**

**Career Lowest Batting Average Against (Min. 200.0 IP)**

- Allison Kime (2006-08) ..... 183
- Mackenzie Audas (2012-15) ..... 185
- Shelby Turnier (2013-16) ..... 188
- Alea White (2017-21) ..... 189
- Dottie Cupp (2002-03) ..... 200
- Lindsay Enders (2004-05) ..... 203
- Gianna Mancha (2020-pres.)** ..... **209**
- Ashleigh Cole (2007-10) ..... 221

**Career Wins**

- Alea White (2017-21) ..... 99
- Shelby Turnier (2013-16) ..... 80
- Mackenzie Audas (2012-15) ..... 78
- Allison Kime (2006-08) ..... 71
- Ashleigh Cole (2007-10) ..... 62
- Lindsay Enders (2004-05) ..... 46
- Dottie Cupp (2002-03) ..... 44
- Taylor Sawyer (2003-04) ..... 27
- Gianna Mancha (2020-pres.)** ..... **26**
- Kelly McIntyre (2004-05) ..... 20

**Career Complete Games**

- Alea White (2017-21) ..... 103
- Allison Kime (2006-08) ..... 96
- Mackenzie Audas (2012-15) ..... 85
- Ashleigh Cole (2007-10) ..... 73
- Lindsay Enders (2004-05) ..... 60
- Shelby Turnier (2013-16) ..... 59
- Dottie Cupp (2002-03) ..... 49
- Taylor Sawyer (2003-04) ..... 28
- Pyscha Simmons (2002-03) ..... 21
- Gianna Mancha (2020-pres.)** ..... **21**

**Career Shutouts**

- Allison Kime (2006-08) ..... 34
- Mackenzie Audas (2012-15) ..... 29
- Alea White (2017-21) ..... 26
- Shelby Turnier (2013-16) ..... 23
- Dottie Cupp (2002-03) ..... 20
- Lindsay Enders (2004-05) ..... 15
- Ashleigh Cole (2007-10) ..... 12
- Gianna Mancha (2020-pres.)** ..... **8**
- Taylor Sawyer (2003-04) ..... 7

**Career Strikeouts**

- Mackenzie Audas (2012-15) ..... 975
- Allison Kime (2006-08) ..... 847
- Shelby Turnier (2013-16) ..... 830
- Alea White (2017-21) ..... 688
- Ashleigh Cole (2007-10) ..... 438
- Dottie Cupp (2002-03) ..... 403
- Lindsay Enders (2004-05) ..... 320
- Gianna Mancha (2020-pres.)** ..... **257**
- Breanna Vasquez (2019-21) ..... 175

**Career Saves**

- Mackenzie Audas (2012-15) ..... 10
- Jamie Ujvari (2014-16) ..... 8
- Gianna Mancha (2020-pres.)** ..... **7**
- Alea White (2017-21) ..... 7
- Shelby Turnier (2013-16) ..... 5

**Career Innings Pitched**

- Alea White (2017-21) ..... 969.1
- Mackenzie Audas (2012-15) ..... 823.0
- Allison Kime (2006-08) ..... 798.1
- Shelby Turnier (2013-16) ..... 742.1
- Ashleigh Cole (2007-10) ..... 702.2
- Lindsay Enders (2004-05) ..... 484.0
- Dottie Cupp (2002-03) ..... 432.1
- Taylor Sawyer (2003-04) ..... 284.0
- Gianna Mancha (2020-pres.)** ..... **267.0**
- Diana Rojas (2008-11) ..... 223.0

**Career Most Strikeouts/7 inn. (Min. 200.0 IP)**

- Mackenzie Audas (2012-15) ..... 8.29
- Shelby Turnier (2013-16) ..... 7.83
- Allison Kime (2006-08) ..... 7.43
- Gianna Mancha (2020-pres.)** ..... **6.74**
- Dottie Cupp (2002-03) ..... 6.53
- Breanna Vasquez (2019-21) ..... 5.82



2022 RANKINGS

NFCA / USA TODAY - WK. 4

| RK. | TEAM           | PTS. | RECORD | PREV. |
|-----|----------------|------|--------|-------|
| 1   | Oklahoma (32)  | 800  | 15-0   | 1     |
| 2   | Alabama        | 768  | 20-0   | 2     |
| 3   | Florida State  | 721  | 19-1   | 3     |
| 4   | Florida        | 696  | 21-1   | 4     |
| 5   | UCLA           | 680  | 17-3   | 5     |
| 6   | Virginia Tech  | 628  | 14-3   | 6     |
| 7   | Washington     | 575  | 15-5   | 7     |
| 8   | Arizona        | 530  | 15-4   | 9     |
| 9   | Kentucky       | 511  | 16-2   | 10    |
| 10  | Oklahoma State | 503  | 12-5   | 8     |
| 11  | Oregon         | 470  | 16-3   | 12    |
| 12  | Arkansas       | 445  | 14-4   | 11    |
| 13  | Duke           | 417  | 16-3   | 13    |
| 14  | Missouri       | 392  | 16-4   | 15    |
| 15  | Georgia        | 343  | 19-2   | 16    |
| 16  | Northwestern   | 331  | 15-4   | 17    |
| 17  | Clemson        | 282  | 12-6   | 14    |
| 18  | Tennessee      | 268  | 15-6   | 18    |
| 19  | Michigan       | 255  | 13-6   | 19    |
| 20  | Auburn         | 233  | 21-1   | 20    |
| 21  | LSU            | 146  | 17-6   | 22    |
| 22  | Louisiana      | 101  | 12-4   | 21    |
| 23  | Arizona State  | 94   | 13-5   | 23    |
| 24  | Notre Dame     | 50   | 16-4   | 25    |
| 25  | Charlotte      | 42   | 18-3   | RV    |

RECEIVING VOTES: UCF (38), South Florida (36), Stanford (25), Liberty (7), Texas (7), Boise State (2), Oregon State (2), USC Upstate (1), Wisconsin (1).

ESPN / USA SOFTBALL - WK. 4

| RK. | TEAM           | RECORD | PTS. | PREV. |
|-----|----------------|--------|------|-------|
| 1.  | Oklahoma (22)  | 15-0   | 620  | 1     |
| 2.  | Alabama (2)    | 20-0   | 599  | 2     |
| 3.  | Florida State  | 19-1   | 563  | 3     |
| 4.  | Florida        | 21-1   | 544  | 4     |
| 5.  | UCLA (1)       | 17-3   | 536  | 5     |
| 6.  | Virginia Tech  | 14-3   | 509  | 6     |
| 7.  | Washington     | 15-5   | 427  | 7     |
| 8.  | Missouri       | 16-4   | 416  | 8     |
| 9.  | Duke           | 16-3   | 395  | 12    |
| 10. | Oklahoma State | 12-5   | 372  | 10    |
| 11. | Arkansas       | 14-4   | 347  | 11    |
| 12. | Kentucky       | 16-2   | 346  | 13    |
| 13. | Northwestern   | 15-4   | 328  | 14    |
| 14. | Oregon         | 16-3   | 305  | 15    |
| 15. | Clemson        | 12-6   | 299  | 9     |
| 16. | Arizona        | 15-4   | 252  | 16    |
| 17. | Michigan       | 13-6   | 210  | 19    |
| 18. | Tennessee      | 15-6   | 209  | 17    |
| 19. | Georgia        | 19-2   | 204  | 18    |
| 20. | Auburn         | 21-1   | 178  | 20    |
| 21. | LSU            | 17-6   | 124  | T21   |
| 22. | South Florida  | 17-3   | 94   | 24    |
| 23. | Arizona State  | 13-5   | 77   | 23    |
| 24. | Oregon State   | 17-3   | 44   | RV    |
| 25. | Louisiana      | 12-4   | 37   | T21   |

RECEIVING VOTES: UCF (30), Charlotte (20), Stanford (11), Texas (10), Notre Dame (6), San Diego State (4), Southern Miss (3), Troy (2), USC Upstate (2), Boise State (1), Texas A&M (1).

SOFTBALL AMERICA - WK. 4

| RK. | TEAM           | RECORD | PREV. |
|-----|----------------|--------|-------|
| 1   | Oklahoma       | 16-0   | 1     |
| 2   | Alabama        | 20-0   | 2     |
| 3   | Florida State  | 19-1   | 3     |
| 4   | Florida        | 21-1   | 4     |
| 5   | UCLA           | 17-3   | 6     |
| 6   | Virginia Tech  | 14-3   | 7     |
| 7   | Northwestern   | 15-4   | 10    |
| 8   | Duke           | 16-3   | 9     |
| 9   | Oregon         | 16-3   | 13    |
| 10  | Washington     | 15-5   | 7     |
| 11  | Missouri       | 16-4   | 12    |
| 12  | Arkansas       | 14-4   | 14    |
| 13  | Oklahoma State | 12-5   | 8     |
| 14  | Arizona        | 15-4   | 16    |
| 15  | Kentucky       | 16-2   | 15    |
| 16  | Michigan       | 13-6   | 17    |
| 17  | Clemson        | 12-6   | 11    |
| 18  | Tennessee      | 15-6   | 18    |
| 19  | Georgia        | 19-2   | 19    |
| 20  | Auburn         | 21-1   | 22    |
| 21  | South Florida  | 17-3   | 24    |
| 22  | LSU            | 17-6   | 21    |
| 23  | Oregon State   | 19-3   | NR    |
| 24  | Charlotte      | 18-3   | NR    |
| 25  | Arizona State  | 13-5   | 25    |

Team - indicates 2022 opponent

DISOFTBALL.COM - WK. 3

| RK. | TEAM           | RECORD | REC. LAST WK. | PREV. |
|-----|----------------|--------|---------------|-------|
| 1   | Oklahoma       | 15-0   | 5-0           | 1     |
| 2   | Alabama        | 15-0   | 6-0           | 2     |
| 3   | Florida        | 15-0   | 5-0           | 3     |
| 4   | Florida State  | 15-0   | 5-0           | 4     |
| 5   | UCLA           | 12-3   | 5-0           | 6     |
| 6   | Virginia Tech  | 11-2   | 3-0           | 7     |
| 7   | Duke           | 13-3   | 5-1           | 9     |
| 8   | Arkansas       | 8-3    | 1-0           | 8     |
| 9   | Oklahoma State | 10-4   | 4-0           | 11    |
| 10  | Washington     | 11-4   | 2-3           | 5     |
| 11  | Northwestern   | 10-4   | 3-2           | 10    |
| 12  | Missouri       | 12-4   | 4-1           | 14    |
| 13  | Clemson        | 10-3   | 4-0           | 13    |
| 14  | Kentucky       | 13-1   | 4-0           | 15    |
| 15  | Oregon         | 11-3   | 3-2           | 12    |
| 16  | Michigan       | 8-5    | 3-1           | 17    |
| 17  | Tennessee      | 9-6    | 3-3           | 20    |
| 18  | Arizona        | 10-4   | 3-2           | 16    |
| 19  | Georgia        | 14-2   | 5-0           | 19    |
| 20  | Auburn         | 15-1   | 6-0           | 21    |
| 21  | Louisiana      | 10-2   | 4-2           | 18    |
| 22  | LSU            | 12-5   | 6-0           | 25    |
| 23  | South Florida  | 10-3   | 4-1           | 22    |
| 24  | Arizona State  | 9-4    | 2-1           | 23    |
| 25  | Oregon State   | 12-3   | 5-0           | NR    |

NATIONALLY RANKED KNIGHTS

| TEAM                     | Value | Nat'l Rk. | Conf. Rk. |
|--------------------------|-------|-----------|-----------|
| <b>Batting</b>           |       |           |           |
| Batting Average          | .301  | 59        | 2         |
| Slugging Percentage      | .452  | 63        | 2         |
| On Base Percentage       | .423  | 17        | 1         |
| Scoring                  | 6.25  | 30        | 2         |
| Doubles                  | 33    | 20        | 2         |
| Walks                    | 106   | 1         | 1         |
| Home Runs Per Game       | 0.62  | 119       | 3         |
| Stolen Bases Per Game    | 1.67  | 38        | 2         |
| <b>Pitching/Fielding</b> |       |           |           |
| Earned Run Average       | 3.01  | 89        | 2         |
| Strikeout to Walk Ratio  | 2.00  | 123       | 2         |
| Hit Batters              | 12    | 197       | 2         |
| Shutouts                 | 6     | 28        | 2         |
| Fielding Percentage      | .956  | 158       | 5         |

| Player                 | Value | Nat'l Rk. | Conf. Rk. |
|------------------------|-------|-----------|-----------|
| <b>Jada Cody</b>       |       |           |           |
| RBI                    | 32    | T-1       | 1         |
| RBI Per Game           | 1.33  | 12        | 1         |
| Hits                   | 25    | 67        | 4         |
| Home Runs              | 5     | 68        | 4         |
| Slugging Percentage    | 0.635 | 227       | 5         |
| Total Bases            | 47    | 43        | 3         |
| <b>Shannon Doherty</b> |       |           |           |
| Hit by Pitch Per Game  | 0.38  | 15        | 1         |
| Home Runs              | 3     | 226       | 8         |
| On Base Percentage     | 0.560 | 28        | 1         |
| Slugging Percentage    | 0.625 | 241       | 6         |
| Walks Per Game         | 0.75  | 48        | 2         |
| <b>Gianna Mancha</b>   |       |           |           |
| Strikeouts             | 65    | 42        | 2         |
| Strikeouts Per 7 IP    | 8.4   | 93        | 2         |

| UCF WEEK-BY-WEEK |      |     |    |    |     |        |
|------------------|------|-----|----|----|-----|--------|
|                  | NFCA | USA | SA | DI | RPI | Record |
| Preseason        | RV   | RV  | NR | NR | -   | 0-0    |
| Week 1           | 24   | 24  | 25 | 24 | -   | 3-1    |
| Week 2           | RV   | RV  | NR | NR | -   | 6-5    |
| Week 3           | 24   | 25  | NR | NR | -   | 10-6   |
| Week 4           | RV   | RV  | NR | NR | 19  | 15-7   |
| Week 5           |      |     |    |    |     |        |
| Week 6           |      |     |    |    |     |        |
| Week 7           |      |     |    |    |     |        |
| Week 8           |      |     |    |    |     |        |
| Week 9           |      |     |    |    |     |        |
| Week 10          |      |     |    |    |     |        |
| Week 11          |      |     |    |    |     |        |
| Week 12          |      |     |    |    |     |        |
| Week 13          |      |     |    |    |     |        |
| Week 14          |      |     |    |    |     |        |
| Week 15          |      |     |    |    |     |        |
| Final            |      |     |    |    |     |        |

| VS. RANKED OPPONENTS |               |           |            |
|----------------------|---------------|-----------|------------|
| Date                 | Opp.          | NFCA Rank | Result     |
| Feb. 10              | Georgia       | 12        | W, 7-6 (8) |
| Feb. 18              | Michigan      | 19        | L, 6-0     |
| Feb. 19              | Tennessee     | 18        | L, 6-2     |
| Feb. 19              | Texas         | 11        | W, 15-10   |
| Feb. 20              | Florida State | 5         | L, 8-0 (5) |
| Feb. 27              | Florida       | 4         | L, 12-11   |

RECORD: 2-4

RANKING HISTORY

| NFCA/USA Today                   | USA Softball                    |
|----------------------------------|---------------------------------|
| Highest: 13 (Week 15, 2015)      | Highest: 14 (Week 14, 2015)     |
| First Top 5: -                   | First Top 5: -                  |
| First Top 10: -                  | First Top 10: -                 |
| First Top 25: 119 (Week 3, 2015) | First Top 25: 19 (Week 2, 2015) |
| Last Top 25: 24 (Week 3, 2022)   | Last Top 25: 25 (Week 3, 2022)  |

THE AMERICAN STANDINGS

|               | Conf. | Conf. W% | GB | Overall     | Ovr. W%     | Stk.      |
|---------------|-------|----------|----|-------------|-------------|-----------|
| South Fla.    | -     | -        | -  | 19-3        | .864        | W11       |
| <b>UCF</b>    | -     | -        | -  | <b>17-7</b> | <b>.708</b> | <b>W6</b> |
| Wichita State | -     | -        | -  | 11-7        | .611        | L1        |
| ECU           | -     | -        | -  | 8-10        | .444        | L2        |
| Houston       | -     | -        | -  | 10-12       | .455        | W1        |
| Memphis       | -     | -        | -  | 8-14        | .364        | L2        |
| Tulsa         | -     | -        | -  | 6-12        | .333        | L3        |

updated as of 3/2/22

**2022 STARTERS BY POSITION**

| Date          | Opponent             | C       | 1B      | 2B     | 3B     | SS      | LF       | CF   | RF          | DP       | SP      |
|---------------|----------------------|---------|---------|--------|--------|---------|----------|------|-------------|----------|---------|
| Feb. 10       | #12 Georgia          | Griffin | Doherty | Molina | Cody   | Macario | Burge    | Rowe | Schappacher | Searcy   | Mancha  |
| Feb. 11       | RV Minnesota         | Griffin | Doherty | Molina | Cody   | Macario | Bejarano | Rowe | Schappacher | Searcy   | Jewell  |
| Feb. 12 (DH1) | RV Fresno State      | Griffin | Doherty | Molina | Cody   | Lee     | Bejarano | Rowe | Schappacher | Volpe    | Felton  |
| Feb. 12 (DH2) | Longwood             | Cody    | Doherty | Molina | Burge  | Macario | Bejarano | Rowe | Schappacher | Searcy   | Mancha  |
| Feb. 15       | Liberty              | Griffin | Doherty | Molina | Cody   | Macario | Bejarano | Rowe | Schappacher | Searcy   | Woodall |
| Feb. 17       | vs. Wisconsin        | Griffin | Doherty | Molina | Cody   | Macario | Bejarano | Rowe | Schappacher | Searcy   | Mancha  |
| Feb. 18 (DH1) | vs. #19 Michigan     | Griffin | Doherty | Molina | Cody   | Macario | Volpe    | Rowe | Schappacher | Searcy   | Felton  |
| Feb. 18 (DH2) | vs. Texas Tech       | Cody    | Doherty | Molina | Searcy | Macario | Bejarano | Rowe | Schappacher | Adams    | Woodall |
| Feb. 19 (DH1) | vs. #18 Tennessee    | Cody    | Doherty | Molina | Adams  | Macario | Searcy   | Rowe | Schappacher | Lee      | Jewell  |
| Feb. 19 (DH2) | vs. #11 Texas        | Griffin | Doherty | Molina | Cody   | Macario | Volpe    | Rowe | Schappacher | Searcy   | Felton  |
| Feb. 20       | vs. #5 Florida State | Griffin | Doherty | Lee    | Cody   | Macario | Volpe    | Rowe | Adams       | Searcy   | Woodall |
| Feb. 23       | at FIU               | Cody    | Doherty | Burge  | Searcy | Macario | Volpe    | Rowe | Schappacher | Adams    | Mancha  |
| Feb. 25       | Ole Miss             | Cody    | Doherty | Molina | Searcy | Macario | Volpe    | Rowe | Schappacher | Adams    | Mancha  |
| Feb. 26 (DH1) | RV James Madison     | Frier   | Doherty | Molina | Cody   | Macario | Volpe    | Rowe | Schappacher | Searcy   | Felton  |
| Feb. 26 (DH2) | DePaul               | Griffin | Doherty | Searcy | Cody   | Macario | Volpe    | Rowe | Schappacher | Burge    | Jewell  |
| Feb. 27       | #4 Florida           | Griffin | Doherty | Molina | Cody   | Macario | Volpe    | Rowe | Schappacher | Searcy   | Woodall |
| Feb. 28       | Oakland              | Cody    | Doherty | Molina | Cody   | Macario | Volpe    | Rowe | Schappacher | Griffin  | Mancha  |
| Mar. 4 (DH1)  | South Carolina       | Cody    | Doherty | Molina | Searcy | Macario | Volpe    | Rowe | Schappacher | Adams    | Felton  |
| Mar. 4 (DH2)  | FGCU                 | Cody    | Doherty | Molina | Searcy | Lee     | Burge    | Rowe | Adams       | Griffin  | Mancha  |
| Mar. 5 (DH1)  | South Carolina       | Cody    | Doherty | Molina | Searcy | Macario | Bejarano | Rowe | Schappacher | Adams    | Mancha  |
| Mar. 5 (DH2)  | FGCU                 | Griffin | Doherty | Molina | Cody   | Macario | Searcy   | Rowe | Adams       | Bejarano | Jewell  |
| Mar. 6        | FGCU                 | Frier   | Doherty | Cody   | Searcy | Macario | Bejarano | Rowe | Schappacher | Griffin  | Felton  |
| Mar. 8        | at Pacific           | Griffin | Doherty | Molina | Cody   | Macario | Bejarano | Rowe | Schappacher | Searcy   | Woodall |
| Mar. 9        | at Fresno State      | Cody    | Doherty | Molina | Searcy | Macario | Volpe    | Rowe | Schappacher | Adams    | Mancha  |





## 2022 BATTING ORDERS

| Date          | Opponent             | 1           | 2           | 3      | 4       | 5           | 6           | 7           | 8        | 9       |
|---------------|----------------------|-------------|-------------|--------|---------|-------------|-------------|-------------|----------|---------|
| Feb. 10       | #12 Georgia          | Searcy      | Doherty     | Cody   | Griffin | Schappacher | Rowe        | Burge       | Molina   | Macario |
| Feb. 11       | RV Minnesota         | Searcy      | Doherty     | Cody   | Griffin | Schappacher | Rowe        | Molina      | Bejarano | Macario |
| Feb. 12 (DH1) | RV Fresno State      | Schappacher | Rowe        | Cody   | Doherty | Volpe       | Griffin     | Molina      | Bejarano | Lee     |
| Feb. 12 (DH2) | Longwood             | Schappacher | Searcy      | Cody   | Doherty | Rowe        | Macario     | Molina      | Bejarano | Burge   |
| Feb. 15       | Liberty              | Schappacher | Searcy      | Cody   | Doherty | Rowe        | Bejarano    | Griffin     | Molina   | Macario |
| Feb. 17       | vs. Wisconsin        | Schappacher | Searcy      | Cody   | Doherty | Molina      | Rowe        | Bejarano    | Griffin  | Macario |
| Feb. 18 (DH1) | vs. #19 Michigan     | Volpe       | Searcy      | Cody   | Doherty | Schappacher | Rowe        | Molina      | Macario  | Griffin |
| Feb. 18 (DH2) | vs. Texas Tech       | Rowe        | Searcy      | Cody   | Doherty | Schappacher | Adams       | Bejarano    | Molina   | Macario |
| Feb. 19 (DH1) | vs. #18 Tennessee    | Rowe        | Searcy      | Cody   | Doherty | Schappacher | Adams       | Molina      | Lee      | Macario |
| Feb. 19 (DH2) | vs. #11 Texas        | Rowe        | Searcy      | Cody   | Doherty | Schappacher | Volpe       | Griffin     | Molina   | Macario |
| Feb. 20       | vs. #5 Florida State | Rowe        | Searcy      | Cody   | Doherty | Adams       | Volpe       | Griffin     | Lee      | Macario |
| Feb. 23       | at FIU               | Schappacher | Searcy      | Cody   | Doherty | Macario     | Adams       | Rowe        | Burge    | Volpe   |
| Feb. 25       | Ole Miss             | Rowe        | Searcy      | Cody   | Doherty | Schappacher | Adams       | Volpe       | Molina   | Macario |
| Feb. 26 (DH1) | RV James Madison     | Rowe        | Searcy      | Cody   | Doherty | Schappacher | Frier       | Volpe       | Molina   | Macario |
| Feb. 26 (DH2) | DePaul               | Rowe        | Searcy      | Cody   | Doherty | Schappacher | Griffin     | Vollpe      | Burge    | Macario |
| Feb. 27       | #4 Florida           | Rowe        | Searcy      | Cody   | Doherty | Schappacher | Griffin     | Volpe       | Molina   | Macario |
| Feb. 28       | Oakland              | Rowe        | Searcy      | Cody   | Doherty | Schappacher | Griffin     | Volpe       | Molina   | Macario |
| Mar. 4 (DH1)  | South Carolina       | Rowe        | Schappacher | Searcy | Doherty | Cody        | Adams       | Volpe       | Molina   | Macario |
| Mar. 4 (DH2)  | FGCU                 | Rowe        | Searcy      | Cody   | Doherty | Burge       | Adams       | Griffin     | Molina   | Lee     |
| Mar. 5 (DH1)  | South Carolina       | Rowe        | Searcy      | Cody   | Doherty | Schappacher | Adams       | Bejarano    | Molina   | Macario |
| Mar. 5 (DH2)  | FGCU                 | Rowe        | Searcy      | Cody   | Doherty | Griffin     | Adams       | Bejarano    | Molina   | Macario |
| Mar. 6        | FGCU                 | Rowe        | Searcy      | Cody   | Doherty | Griffin     | Schappacher | Bejarano    | Frier    | Macario |
| Mar. 8        | at Pacific           | Rowe        | Searcy      | Cody   | Doherty | Griffin     | Bejarano    | Schappacher | Molina   | Macario |
| Mar. 9        | at Fresno State      | Rowe        | Searcy      | Cody   | Doherty | Adams       | Volpe       | Schappacher | Molina   | Macario |

PLAYER PROFILES



# 1 MADDIE BEJARANO



Outfield | So. | L/R | 5-5 | Cottonwood, Ariz. | Mingus Union HS

| Season Highs                            |  |
|---|--|
| At-Bats: 3, 4x, last vs. FGCU (3/6/22)  | Home Runs: 1, 3x, last vs. FGCU (3/5/22)       |
| Runs: 2, vs. Longwood (2/12/22)         | RBI: 3, vs. FGCU (3/5/22)                      |
| Hits: 2, 2x, last vs. Liberty (2/15/22) | Walks: 1, 2x, last vs. South Carolina (3/5/22) |
| Doubles: 1, vs. Liberty (2/15/22)       | Stolen Bases: -                                |
| Triples: -                              |  |

| Career Highs                                  |  |
|---|--|
| At-Bats: 3, 5x, last vs. Fresno St. (2/12/22) | Home Runs: 1, 3x, last vs. FGCU (3/5/22)       |
| Runs: 2, vs. Longwood (2/12/22)               | RBI: 3, vs. FGCU (3/5/22)                      |
| Hits: 2, 2x, last vs. Liberty (2/15/22)       | Walks: 1, 5x, last vs. South Carolina (3/5/22) |
| Doubles: 1, vs. Liberty (2/15/22)             | Stolen Bases: -                                |
| Triples: -                                    |  |

**Quick Facts**

- Saw time in 29 games in 2021, primarily as a defensive replacement or as a pinch runner
- Went 3-for-9 in 2021, all singles
- Grabbed two RBI in an 18-1 win over New Mexico State on 2/19/21

- At Mingus Union HS, she set school records in batting average, hits, extra base hits, doubles, triples and stolen bases
- Named team MVP in her sophomore season at Mingus Union, along with earning an all-state selection

**Did You Know?**

**Major:** Human Communication  
**Minors:** Mass Media, Digital Media  
**Favorite Pro Athlete:** Devin Booker  
**Pre-game Ritual:** I get a cake pop with Shannon  
**Fun Fact:** I've broken my nose twice  
**Hidden Talent:** I can play the piano  
**Favorite Off-day Activity:** Shopping  
**Favorite Food:** Tacos  
**Favorite Movie:** Girls Trip

**Favorite TV Show:** Keeping Up With The Kardashians  
**Favorite Music Artist:** Doja Cat  
**Go-to Karaoke Song:** This Girl is on Fire  
**Nickname Growing Up:** Maddie B  
**Second Favorite Sport:** Football

**Walk-up Songs:**  
 1. Jenny from the Block - Jennifer Lopez  
 2. Let It Go - Keyshia Cole  
**Instagram Handle:** @maddie.beja

Bejarano's Career Stats

| YEAR          | AVG.        | GP        | GS       | AB        | R        | H        | 2B       | 3B       | HR       | RBI      | OBP         | SLG         | OPS         | BB       | HBP      | SO       | GDP      | SF       | SH       | SB       | SBA      | PO        | A        | E        | FLD%         |
|---------------|-------------|-----------|----------|-----------|----------|----------|----------|----------|----------|----------|-------------|-------------|-------------|----------|----------|----------|----------|----------|----------|----------|----------|-----------|----------|----------|--------------|
| 2020          | .143        | 22        | 2        | 14        | 2        | 2        | 0        | 0        | 0        | 1        | .294        | .143        | .437        | 3        | 0        | 5        | 0        | 0        | 0        | 0        | 1        | 8         | 0        | 0        | 1.000        |
| 2021          | .333        | 29        | 0        | 9         | 3        | 3        | 0        | 0        | 0        | 2        | .333        | .333        | .666        | 0        | 0        | 3        | 0        | 0        | 0        | 0        | 1        | 9         | 1        | 0        | 1.000        |
| <b>TOTALS</b> | <b>.217</b> | <b>51</b> | <b>2</b> | <b>23</b> | <b>5</b> | <b>5</b> | <b>0</b> | <b>0</b> | <b>0</b> | <b>3</b> | <b>.308</b> | <b>.217</b> | <b>.525</b> | <b>3</b> | <b>0</b> | <b>8</b> | <b>0</b> | <b>0</b> | <b>0</b> | <b>0</b> | <b>2</b> | <b>17</b> | <b>1</b> | <b>0</b> | <b>1.000</b> |



# 5 DENALI SCHAPPACHER



Outfield | Sr. | L/R | 5-6 | Bradenton, Fla. | Lakewood Ranch HS

| Season Highs                                  |  |
|---|--|
| At-Bats: 4, 4x, last at Fresno State (3/9/22) | Home Runs: -                                   |
| Runs: 3, vs. FGCU (3/5/22)                    | RBI: 1, 4x, last vs. Pacific (3/8/22)          |
| Hits: 2, 4x, last at Fresno State (3/9/22)    | Walks: 2, vs. Fresno State (2/12/22)           |
| Doubles: -                                    | Stolen Bases: 1, 7x, last vs. Pacific (3/8/22) |
| Triples: 1, at FIU (2/23/22)                  |  |

| Career Highs  |  |
|---|--|
| At-Bats: 5, twice, last at South Carolina (3/21/21) | Home Runs: -                               |
| Runs: 4, vs. Western Carolina (2/14/18)             | RBI: 3, vs. ECU (3/29/19)                  |
| Hits: 4, vs. Pitt (2/22/19)                         | Walks: 3, vs. LIU (2/28/20)                |
| Doubles: 2, at Memphis (4/23/21)                    | Stolen Bases: 3, 2x, last at UNF (3/17/21) |
| Triples: 1, 6x, last at FIU (2/23/22)               |  |

**Quick Facts**

- Two-time AAC First Team All-Conference honoree (2018, 2021)
- Earned a spot on the AAC All-Rookie Team in her freshman year
- Led the team with a .353 batting average in 2021, which ranks 7th in UCF single-season history
- Boasts a .333 career batting average which ranks second all-time in UCF history behind Stephanie Best's .384 lifetime average

- Posted a '21 season high three hits in a 7-1 win over FIU on 3/11
- Started all 27 games in corner outfield in the shortened 2020 season
- A two-time all-state and all-area honoree while at Lakewood Ranch High and was a nationally ranked recruit her senior year

**Did You Know?**

**Masters:** Kinesiology  
**Pre-game Ritual:** Hacky sack  
**Fun Fact:** I love hiking  
**Hidden Talent:** Rollerblading  
**Favorite Off-day Activity:** Going to the beach  
**Favorite Food:** Desserts  
**Favorite Movie:** Harry Potter  
**Favorite TV Show:** Peaky Blinders  
**Favorite Music Artist:** Chris Brown

**Go-to Karaoke Song:** Country Roads  
**Nickname Growing Up:** Schop  
**Second Favorite Sport:** Beach Volleyball and Wake Surfing

**Walk-up Songs:**  
 1. Got It On Me - Pop Smoke  
 2. Desperado - Rihanna  
**Instagram Handle:** @denali\_schappacher

Schappacher's Career Stats

| YEAR          | AVG.        | GP         | GS         | AB         | R         | H          | 2B        | 3B       | HR       | RBI       | OBP         | SLG         | OPS         | BB        | HBP      | SO        | GDP      | SF       | SH        | SB        | SBA       | PO         | A        | E         | FLD%        |
|---------------|-------------|------------|------------|------------|-----------|------------|-----------|----------|----------|-----------|-------------|-------------|-------------|-----------|----------|-----------|----------|----------|-----------|-----------|-----------|------------|----------|-----------|-------------|
| 2018          | .340        | 55         | 53         | 147        | 30        | 50         | 7         | 2        | 0        | 12        | .394        | .415        | .809        | 12        | 1        | 22        | 0        | 0        | 7         | 9         | 11        | 70         | 5        | 5         | .938        |
| 2019          | .326        | 52         | 49         | 144        | 23        | 47         | 3         | 0        | 0        | 9         | .401        | .347        | .748        | 15        | 3        | 21        | 0        | 0        | 4         | 15        | 19        | 52         | 2        | 4         | .931        |
| 2020          | .290        | 27         | 27         | 69         | 19        | 20         | 0         | 1        | 0        | 6         | .402        | .319        | .721        | 13        | 0        | 8         | 0        | 0        | 4         | 8         | 10        | 36         | 1        | 1         | .974        |
| 2021          | .353        | 60         | 49         | 156        | 30        | 55         | 4         | 2        | 0        | 10        | .395        | .404        | .799        | 11        | 0        | 17        | 0        | 0        | 5         | 16        | 19        | 59         | 1        | 0         | 1.000       |
| <b>TOTALS</b> | <b>.333</b> | <b>194</b> | <b>178</b> | <b>516</b> | <b>30</b> | <b>172</b> | <b>14</b> | <b>5</b> | <b>0</b> | <b>37</b> | <b>.398</b> | <b>.380</b> | <b>.778</b> | <b>51</b> | <b>4</b> | <b>68</b> | <b>0</b> | <b>0</b> | <b>20</b> | <b>48</b> | <b>59</b> | <b>217</b> | <b>9</b> | <b>10</b> | <b>.958</b> |



# 6 ANGELINA DEVOE



Pitcher | So. | L/L | 5-0 | Carson, Calif. | Phineas Banning HS

| Season Highs                                     |  |
|--|--|
| Innings Pitched: 3.2, vs. Texas (2/19/22)        | Most Hits: 4, vs. FGCU (3/5/22)        |
| Strikeouts: 1, 2x, last at Fresno State (3/9/22) | Fewest Walks (Min. 5 IP): -            |
| Fewest Runs (Min. 5 IP): -                       | Most Walks: 2, vs. Minnesota (2/11/22) |
| Most Runs: 2, vs. Florida (2/27/22)              |  |
| Fewest Hits (Min. 5 IP): -                       |  |

| Career Highs                                     |  |
|--|--|
| Innings Pitched: 3.2, vs. Texas (2/19/22)        | Most Hits: 4, 3x, last vs. FGCU (3/5/22) |
| Strikeouts: 1, 2x, last at Fresno State (3/9/22) | Fewest Walks (Min. 5 IP): -              |
| Fewest Runs (Min. 5 IP): -                       | Most Walks: 2, vs. Minnesota (2/11/22)   |
| Most Runs: 3, at Tulsa (4/3/21)                  |  |
| Fewest Hits (Min. 5 IP): -                       |  |

**Quick Facts**

- Earned her first career win at the St. Pete/Clearwater Elite Invitational, tossing 3.2 IP while allowing just one earned run and two hits, beating #11 Texas 15-10
- Made her debut on 2/19/21, pitching a perfect inning against New Mexico State in an 18-1 win

- In each season at Phineas Banning High, she earned honors of being named first team all-league, all-city and all-area, league pitcher of the year and team pitcher of the year
- Two-time team MVP at Phineas Banning

**Did You Know?**

**Major:** Criminal Justice  
**Favorite Pro Athlete:** Serena Williams  
**Favorite Pro Team:** Lakers & Dodgers  
**Pre-Game Ritual:** Coffee & Handshakes  
**Fun Fact:** I make the best cookies  
**Hidden Talent:** Juggling  
**Favorite Off-Day Activity:** Cooking  
**Favorite Food:** Vietnamese Food  
**Favorite Movie(s):** The Devil Wears Prada and Crazy Rich Asians

**Favorite TV Show:** Criminal Minds  
**Favorite Musical Artist:** Frank Ocean  
**Go-to Karaoke Song:** Levitating by Dua Lipa ft DaBaby  
**Nickname Growing Up:** Angel  
**Second Favorite Sport:** Football and Basketball

**Walk-up Song:** Big Poppa - B.I.G.  
**Instagram Handle:** @angelinadevoe

Devoe's Career Stats

| YEAR          | ERA         | W        | L        | App      | GS       | CG       | SHO      | CBO      | SV       | IP         | H         | R        | ER       | BB       | SO       | 2B       | 3B       | HR       | BF        | B/Avg.      | WP       | HBP      | BK       | SHA      | SFA      |
|---------------|-------------|----------|----------|----------|----------|----------|----------|----------|----------|------------|-----------|----------|----------|----------|----------|----------|----------|----------|-----------|-------------|----------|----------|----------|----------|----------|
| 2021          | 5.48        | 0        | 1        | 7        | 1        | 0        | 0        | 0        | 0        | 7.2        | 13        | 7        | 6        | 2        | 0        | 1        | 0        | 1        | 37        | .382        | 0        | 0        | 0        | 1        | 0        |
| <b>TOTALS</b> | <b>5.48</b> | <b>0</b> | <b>1</b> | <b>7</b> | <b>1</b> | <b>0</b> | <b>0</b> | <b>0</b> | <b>0</b> | <b>7.2</b> | <b>13</b> | <b>7</b> | <b>6</b> | <b>2</b> | <b>0</b> | <b>1</b> | <b>0</b> | <b>1</b> | <b>37</b> | <b>.382</b> | <b>0</b> | <b>0</b> | <b>0</b> | <b>1</b> | <b>0</b> |



PLAYER PROFILES



# 7 JOHNEISHA ROWE

Outfield | So. | L/R | 5-5 | Avon Park, Fla. | Sebring HS | FGCU

| Season Highs                             |  |
|--|--|
| At-Bats: 4, 7x, last at Pacific (3/8/22) | Home Runs: -                                       |
| Runs: 2, vs. Florida (2/27/22)           | RBI: 2, vs. James Madison (2/26/22)                |
| Hits: 2, 6x, last at Pacific (3/8/22)    | Walks: 3, 2x, last vs. Florida (2/27/22)           |
| Doubles: 1, vs. Florida (2/27/22)        | Stolen Bases: 1, 7x, last at Fresno State (3/9/22) |
| Triples: 1, vs. FGCU (3/6/22)            |  |

| Career Highs                               |  |
|--|--|
| At-Bats: 5, 3x, last vs. Stetson (5/7/21)  | Home Runs: 1, vs. Quinnipiac (3/7/20)    |
| Runs: 3, 3x, last vs. Bellarmine (4/9/21)  | RBI: 4, vs. Quinnipiac (3/7/20)          |
| Hits: 3, 6x, last at UNF (4/2/21)          | Walks: 3, 2x, last vs. Florida (2/27/22) |
| Doubles: 1, 4x, last vs. Florida (2/27/22) | Stolen Bases: 3, at UNF (4/2/21)         |
| Triples: 1, 4x, last vs. FGCU (3/6/22)     |  |

**Quick Facts**

- Transferred to UCF from FGCU after two seasons with the Eagles
- Earned ASUN First Team All-Conference and All-Freshman Team honors in 2021 after her first full season of collegiate softball
- Led FGCU with a .336 batting average in 2021 and a .481 clip in 2020
- Had a 17-game hitting streak from Feb. 27-Mar. 27 2021 and had a five-game stolen base streak during that time

- Had 17 multi-hit games in 2021
- Led the FGCU in steals and runs in 2021 with 31 swiped bags and 26 runs scored
- Was all-highlands softball player of the year in 2017 and was first team all-state in 2018 at Sebring HS

**Did You Know?**

Major: Communication  
 Favorite Pro Athlete: Kobe Bryant  
 Fun Fact: I love Dance Moms  
 Hidden Talent: Can play the piano  
 Favorite Off-Day Activity: Watching TV  
 Favorite Food: Pasta  
 Favorite Movie(s): Love and Basketball  
 Favorite TV Show: All-American  
 Go-To Karaoke Song: National Anthem  
 Nickname Growing Up: NeNe

**Second Favorite Sport:** Track and Field

**Walk-up Song:**  
 1. Tone it Down - Gucci Mane, Chris Brown  
 2. Forever - Drake, Kanye, Lil Wayne, Eminem  
**Instagram Handle:** johneisharowe

| Rowe's Career Stats |             |           |           |            |           |           |          |          |          |           |             |             |             |           |          |           |          |          |          |           |           |           |           |          |             |
|---------------------|-------------|-----------|-----------|------------|-----------|-----------|----------|----------|----------|-----------|-------------|-------------|-------------|-----------|----------|-----------|----------|----------|----------|-----------|-----------|-----------|-----------|----------|-------------|
| YEAR                | AVG.        | GP        | GS        | AB         | R         | H         | 2B       | 3B       | HR       | RBI       | OBP         | SLG         | OPS         | BB        | HBP      | SO        | GDP      | SF       | SH       | SB        | SBA       | PO        | A         | E        | FLD%        |
| 2020 ^              | .481        | 27        | 25        | 81         | 25        | 39        | 3        | 2        | 1        | 14        | .517        | .605        | 1.122       | 5         | 1        | 6         | 0        | 0        | 1        | 18        | 20        | 21        | 5         | 1        | .963        |
| 2021 ^              | .336        | 45        | 43        | 146        | 36        | 49        | 0        | 1        | 0        | 6         | .374        | .349        | .723        | 5         | 4        | 23        | 0        | 0        | 1        | 31        | 32        | 69        | 6         | 1        | .987        |
| <b>TOTALS</b>       | <b>.388</b> | <b>72</b> | <b>68</b> | <b>227</b> | <b>61</b> | <b>88</b> | <b>3</b> | <b>3</b> | <b>1</b> | <b>20</b> | <b>.426</b> | <b>.441</b> | <b>.867</b> | <b>10</b> | <b>5</b> | <b>29</b> | <b>0</b> | <b>0</b> | <b>2</b> | <b>49</b> | <b>52</b> | <b>90</b> | <b>11</b> | <b>2</b> | <b>.981</b> |

^ - Played at FGCU



# 8 GIANNA MANCHA

Pitcher | Sr. | R/R | 5-7 | Fresno, Calif. | Central HS | Boise State

| Season Highs   |   |
|--|---|
| Innings Pitched: 7.0, 2x, last vs. FGCU (3/4/22)           | Most Hits: 7, vs. Georgia (2/10/22)                     |
| Strikeouts: 10, 2x, last vs. FGCU (3/4/22)                 | Fewest Walks (Min. 5 IP): 1, 3x, last vs. FGCU (3/4/22) |
| Fewest Runs (Min. 5 IP): 0, 2x, last vs. Oakland (2/28/22) | Most Walks: 4, vs. Florida (2/28/22)                    |
| Most Runs: 6, vs. Georgia (2/10/22)                        |   |
| Fewest Hits (Min. 5 IP): 1, 2x, last at FIU (2/23/22)      |   |

| Career Highs  |   |
|---|---|
| Innings Pitched: 8.0, 2x, last vs. UNLV (4/13/18)           | Most Hits: 13, vs. Colorado State (5/3/19)              |
| Strikeouts: 13, at Memphis (4/23/21)                        | Fewest Walks (Min. 5 IP): 0, 3x, last vs. LIU (2/28/20) |
| Fewest Runs (Min. 5 IP): 0, 14x, last vs. Oakland (2/28/22) | Most Walks: 6, 2x, last vs. Wichita State (4/16/21)     |
| Most Runs: 7, 2x, last at Ole Miss (5/1/21)                 |   |
| Fewest Hits (Min. 5 IP): 0, at Memphis (4/23/21)            |   |

**Quick Facts**

- Earned NFCA Midwest Third Team All Region and AAC Second Team All-Conference honors in 2021
- Posted UCF's 17th no-hitter in program history on 4/23/21 on the road against Memphis, tossing six innings, striking out 13 and walking just one in an 8-0 win. It was UCF's first no-hitter since 2015, a season in which the Knights threw for no-nos

- Despite starting in 63 percent of her appearances in 2021, she earned four saves which ranks 2nd in a single season in UCF history
- Named NFCA Pitcher of the Week on March 16, 2021
- Earned a pair of AAC Pitcher of the Week honors on March 8 & 15
- Threw a complete-game, three-hit shutout with nine strikeouts against No. 2 Arizona on March 8
- Was a two-way player in high school, batted .478 her senior year

**Did You Know?**

Major (graduated): Interdisciplinary Studies  
 Minor (graduated): Sports Business Management  
 Favorite pro athlete: Derek Jeter  
 Favorite pro team: New York Yankees  
 Pre-Game ritual: Drink an energy drink, pray  
 Fun fact: I have a rescue cat named Stachie  
 Hidden talent: I have double jointed fingers  
 Favorite off-day activity: Beach  
 Favorite food: Sushi  
 Favorite movie(s): Creed/Creed 2

**Favorite TV show:** Jane the Virgin

**Favorite music artist:** Drake  
**Go-to karaoke song:** I look good by Charlie Boy  
**Nickname growing up:** Gigi  
**Second Favorite Sport:** Baseball

**Walk-up Song:** I Look Good - Charlie Boy  
**Instagram Handle:** @ggiannaaa\_

| Mancha's Career Stats |             |           |           |            |           |           |           |          |          |              |            |            |            |            |            |           |          |           |             |             |           |           |           |           |
|-----------------------|-------------|-----------|-----------|------------|-----------|-----------|-----------|----------|----------|--------------|------------|------------|------------|------------|------------|-----------|----------|-----------|-------------|-------------|-----------|-----------|-----------|-----------|
| YEAR                  | ERA         | W         | L         | App        | GS        | CG        | SHO       | CBO      | SV       | IP           | H          | R          | ER         | BB         | SO         | 2B        | 3B       | HR        | BF          | B/Avg.      | WP        | HBP       | SHA       | SFA       |
| 2018 ^                | 3.16        | 13        | 4         | 26         | 23        | 8         | 2         | 0        | 1        | 113.0        | 87         | 61         | 51         | 81         | 103        | 18        | 1        | 20        | 513         | .216        | 4         | 13        | 11        | 5         |
| 2019 ^                | 3.18        | 12        | 8         | 25         | 19        | 10        | 3         | 0        | 1        | 114.1        | 108        | 59         | 52         | 48         | 67         | 21        | 3        | 12        | 501         | .247        | 10        | 7         | 8         | 1         |
| 2020                  | 3.11        | 6         | 2         | 14         | 8         | 5         | 1         | 1        | 2        | 65.1         | 56         | 31         | 29         | 21         | 53         | 10        | 1        | 6         | 276         | .226        | 4         | 3         | 1         | 3         |
| 2021                  | 2.42        | 14        | 6         | 35         | 22        | 12        | 5         | 2        | 4        | 147.2        | 108        | 58         | 51         | 60         | 139        | 19        | 2        | 12        | 626         | .197        | 6         | 12        | 6         | 1         |
| <b>TOTALS</b>         | <b>2.91</b> | <b>45</b> | <b>20</b> | <b>100</b> | <b>72</b> | <b>35</b> | <b>11</b> | <b>3</b> | <b>8</b> | <b>440.1</b> | <b>359</b> | <b>209</b> | <b>183</b> | <b>210</b> | <b>362</b> | <b>68</b> | <b>7</b> | <b>50</b> | <b>1916</b> | <b>.220</b> | <b>24</b> | <b>35</b> | <b>26</b> | <b>10</b> |

^ - Played at Boise State



# 9 EMMERSON LEE

Infield | Redshirt Fr. | R/R | 5-8 | Clovis, Calif | Bullard HS

| Season Highs                               |                                     |
|--|-------------------------------------|
| At-Bats: 3, at Fresno State (3/9/22)       | Home Runs: 1, at FIU (2/23/22)      |
| Runs: 2, at FIU (2/23/22)                  | RBI: 3, at FIU (2/23/22)            |
| Hits: 1, 5x, last at Fresno State (3/9/22) | Walks: 1, 3x, last at FIU (2/23/22) |
| Doubles: 1, vs. FGCU (3/4/22)              | Stolen Bases: -                     |
| Triples: -                                 |                                     |

| Career Highs                               |                                     |
|--|-------------------------------------|
| At-Bats: 3, at Fresno State (3/9/22)       | Home Runs: 1, at FIU (2/23/22)      |
| Runs: 2, at FIU (2/23/22)                  | RBI: 3, at FIU (2/23/22)            |
| Hits: 1, 5x, last at Fresno State (3/9/22) | Walks: 1, 3x, last at FIU (2/23/22) |
| Doubles: 1, vs. FGCU (3/4/22)              | Stolen Bases: -                     |
| Triples: -                                 |                                     |

**Quick Facts**

- First career hit was a 3-run homer at FIU on 2/23/22
- Helped lead her high school squad to a 23-6 record and an appearance in the Valley Championship in her junior year
- Earned Valley defensive player of the year and was named first team all-league in her junior year...also named Bullard High Gold Glove winner with a .980 fielding percentage

**Did You Know?**

Major: Kinesiology  
 Favorite Pro Athlete: Mike Trout  
 Favorite Pro Team: L.A. Dodgers  
 Pre-Game Ritual: Hacky sack  
 Fun Fact: I can sing like Shakira  
 Hidden Talent: Dancing  
 Favorite Off-Day Activity: Movies  
 Favorite Food: Hamburger  
 Favorite Movie(s): Greatest Showman  
 Favorite TV Show: Outer Banks

**Favorite Musical Artist:** Doja Cat

**Go-To Karaoke Song:** Diamonds by Rihanna  
**Nickname Growing Up:** Nines  
**Second Favorite Sport:** Volleyball

**Walk-up Song:** Swag Surfin - F.L.Y.  
**Instagram Handle:** emmerson\_lee

| Lee's Career Stats |                                     |          |          |          |          |          |          |          |          |          |             |             |             |          |          |          |          |          |          |          |          |          |          |          |            |
|--------------------|-------------------------------------|----------|----------|----------|----------|----------|----------|----------|----------|----------|-------------|-------------|-------------|----------|----------|----------|----------|----------|----------|----------|----------|----------|----------|----------|------------|
| YEAR               | AVG.                                | GP       | GS       | AB       | R        | H        | 2B       | 3B       | HR       | RBI      | OBP         | SLG         | OPS         | BB       | HBP      | SO       | GDP      | SF       | SH       | SB       | SBA      | PO       | A        | E        | FLD%       |
| 2021               | DID NOT PLAY DURING THE 2021 SEASON |          |          |          |          |          |          |          |          |          |             |             |             |          |          |          |          |          |          |          |          |          |          |          |            |
| <b>TOTALS</b>      | <b>.000</b>                         | <b>0</b> | <b>0</b> | <b>0</b> | <b>0</b> | <b>0</b> | <b>0</b> | <b>0</b> | <b>0</b> | <b>0</b> | <b>.000</b> | <b>.000</b> | <b>.000</b> | <b>0</b> | <b>0</b> | <b>0</b> | <b>0</b> | <b>0</b> | <b>0</b> | <b>0</b> | <b>0</b> | <b>0</b> | <b>0</b> | <b>0</b> | <b>N/A</b> |

PLAYER PROFILES



# 10 JULIANA WILSON



Catcher | So. | L/R | 5-6 | Watsonville, Calif. |

| Season Highs |                 |
|--------------|-----------------|
| At-Bats: -   | Home Runs: -    |
| Runs: -      | RBI: -          |
| Hits: -      | Walks: -        |
| Doubles: -   | Stolen Bases: - |
| Triples: -   |                 |

| Career Highs                               |   |
|--|---|
| At-Bats: 5, vs. Wichita State (4/18/21)    | Home Runs: 1, 10x, last at Memphis (4/24/21)          |
| Runs: 3, vs. New Mexico State (2/19/21)    | RBI: 4, vs. Iowa State (2/15/20)                      |
| Hits: 3, vs. New Mexico State (2/19/21)    | Walks: 2, 3x, vs. Kennesaw State (3/7/21)             |
| Doubles: 1, 15x, last vs. Auburn (5/21/21) | Stolen Bases: 1, 3x, last vs. Wichita State (4/18/21) |
| Triples: -                                 |   |

**Quick Facts**

- Named to the AAC All-Rookie Team in 2021
- Finished third on the team in doubles in 2021 with nine
- Finished fourth on the team in homers in 2021 with eight
- Primarily played catcher, right field and designated player in 2021

**Did You Know?**

N/A  
 Walk-up Song: 2 of Amerikaz Most Wanted - 2Pac, Snoop Dogg  
 Instagram Handle: jbiggs\_10

Wilson's Career Stats

| YEAR          | AVG.        | GP        | GS        | AB         | R         | H         | 2B        | 3B       | HR        | RBI       | OBP         | SLG         | OPS         | BB        | HBP      | SO        | GDP      | SF       | SH       | SB       | SBA      | PO         | A        | E        | FLD%        |
|---------------|-------------|-----------|-----------|------------|-----------|-----------|-----------|----------|-----------|-----------|-------------|-------------|-------------|-----------|----------|-----------|----------|----------|----------|----------|----------|------------|----------|----------|-------------|
| 2020          | .321        | 26        | 21        | 56         | 14        | 18        | 6         | 0        | 2         | 13        | .441        | .536        | .977        | 12        | 0        | 8         | 0        | 0        | 0        | 1        | 1        | 29         | 1        | 0        | 1.000       |
| 2021          | .280        | 55        | 42        | 125        | 25        | 35        | 9         | 0        | 8         | 31        | .361        | .544        | .905        | 17        | 0        | 14        | 0        | 2        | 0        | 2        | 3        | 77         | 4        | 1        | .988        |
| <b>TOTALS</b> | <b>.293</b> | <b>81</b> | <b>63</b> | <b>181</b> | <b>39</b> | <b>53</b> | <b>15</b> | <b>0</b> | <b>10</b> | <b>44</b> | <b>.387</b> | <b>.541</b> | <b>.928</b> | <b>29</b> | <b>0</b> | <b>22</b> | <b>0</b> | <b>2</b> | <b>0</b> | <b>3</b> | <b>4</b> | <b>106</b> | <b>5</b> | <b>1</b> | <b>.991</b> |



# 12 JUSTENE MOLINA



Infield | Sr. | R/R | 5-3 | Corona, Calif. | Boise State

| Season Highs                               |   |
|--|---|
| At-Bats: 4, 2x, last vs. FGCU (3/4/22)     | Home Runs: -                                  |
| Runs: 2, at Pacific (3/8/22)               | RBI: 2, 2x, last at Pacific (3/8/22)          |
| Hits: 3, vs. FGCU (3/4/22)                 | Walks: 2, vs. Liberty (2/15/22)               |
| Doubles: 1, 5x, last vs. Oakland (2/28/22) | Stolen Bases: 1, 2x, last vs. Texas (2/19/22) |
| Triples: 1, at Pacific (3/8/22)            |   |

| Career Highs                             |  |
|--|--|
| At-Bats: 5, 3x, last at Nevada (4/21/18) | Home Runs: 1, 4x, last vs. McNeese State (2/27/21) |
| Runs: 3, at LMU (3/19/19)                | RBI: 3, 4x, last vs. Clemson (2/8/20)              |
| Hits: 3, 2x, last vs. FGCU (3/4/22)      | Walks: 2, 3x, last vs. Liberty (2/15/22)           |
| Doubles: 2, 2x, last at Nevada (4/22/18) | Stolen Bases: 2, vs. Minnesota (3/8/20)            |
| Triples: 1, 3x, last at Pacific (3/8/22) |  |

**Quick Facts**

- Played second base for the Knights in 2021 with 56 starts
- Was named AAC player of the week on Feb. 10, 2020. In that week she slashed .600/.647/.943 and collected a homer and ten RBI, leading the Knights to a 5-1 record.

**DID YOU KNOW?**

Major: Interdisciplinary Studies  
 Favorite Pro Athlete: Cody Bellinger  
 Favorite Pro Team: Los Angeles Dodgers  
 Pre-game Ritual: Starbucks  
 Fun Fact: I'm a Taurus  
 Hidden Talent: I can sleep anywhere  
 Favorite Off-day Activity: Going to the Beach  
 Favorite Food: Pizza  
 Favorite Movie: Marvel Movies

Favorite TV Show: Walking Dead  
 Favorite Music Artist: Summer Walker  
 Go-to Karaoke Song: Car Wash by Rose Royce  
 Nickname Growing Up: Steeny Weenie  
 Second Favorite Sport: Football

Walk-up Song: Let Me Clear My Throat (Reunion Remix) - DJ Kool  
 Instagram Handle: @justenemolina

Molina's Career Stats

| YEAR          | AVG.        | GP         | GS         | AB         | R         | H         | 2B        | 3B       | HR       | RBI       | OBP         | SLG         | OPS         | BB        | HBP      | SO        | GDP      | SF       | SH        | SB        | SBA       | PO         | A          | E         | FLD%        |
|---------------|-------------|------------|------------|------------|-----------|-----------|-----------|----------|----------|-----------|-------------|-------------|-------------|-----------|----------|-----------|----------|----------|-----------|-----------|-----------|------------|------------|-----------|-------------|
| 2018 ^        | .246        | 53         | 42         | 126        | 34        | 31        | 9         | 1        | 1        | 16        | .324        | .357        | .681        | 13        | 2        | 9         | 1        | 1        | 2         | 9         | 10        | 79         | 60         | 5         | .965        |
| 2019 ^        | .208        | 31         | 17         | 53         | 14        | 11        | 0         | 0        | 1        | 7         | .283        | .264        | .547        | 8         | 2        | 5         | 1        | 1        | 1         | 2         | 2         | 34         | 39         | 5         | .936        |
| 2020          | .319        | 27         | 27         | 72         | 18        | 23        | 0         | 1        | 1        | 17        | .402        | .389        | .791        | 8         | 2        | 8         | 0        | 0        | 2         | 8         | 8         | 37         | 49         | 7         | .925        |
| 2021          | .234        | 60         | 56         | 124        | 13        | 29        | 5         | 0        | 1        | 13        | .278        | .298        | .576        | 5         | 3        | 9         | 2        | 1        | 6         | 7         | 9         | 97         | 82         | 8         | .957        |
| <b>TOTALS</b> | <b>.251</b> | <b>171</b> | <b>142</b> | <b>375</b> | <b>79</b> | <b>94</b> | <b>14</b> | <b>2</b> | <b>4</b> | <b>53</b> | <b>.319</b> | <b>.331</b> | <b>.650</b> | <b>30</b> | <b>9</b> | <b>31</b> | <b>3</b> | <b>3</b> | <b>11</b> | <b>26</b> | <b>29</b> | <b>247</b> | <b>230</b> | <b>25</b> | <b>.950</b> |

^ - Played at Boise State



# 15 KAMA WOODALL



Pitcher | Redshirt Sr. | R/R | 5-10 | Spring Hill, Fla. | F.W. Springstead | ECU

| Season Highs                                      |  |
|---|--|
| Innings Pitched: 6.1, vs. Liberty (2/15/22)       | Most Hits: 8, vs. Florida (2/27/22)                |
| Strikeouts: 6, at Pacific (3/8/22)                | Fewest Walks (Min. 5 IP): 1, vs. Liberty (2/15/22) |
| Fewest Runs (Min. 5 IP): 0, vs. Liberty (2/15/22) | Most Walks: 4, vs. Florida (2/27/22)               |
| Most Runs: 8, vs. Florida (2/27/22)               |  |
| Fewest Hits (Min. 5 IP): 3, vs. Liberty (2/15/22) |  |

| Career Highs   |  |
|--|--|
| Innings Pitched: 11, vs. UCF (4/9/21)                        | Most Hits: 11, 2x, last vs. Tulsa (4/23/21)                |
| Strikeouts: 8, vs. Ohio (2/27/21)                            | Fewest Walks (Min. 5 IP): 0, 5x, last vs. Memphis (5/2/21) |
| Fewest Runs (Min. 5 IP): 0, 4x, last vs. Liberty (2/15/22)   | Most Walks: 8, at James Madison (3/20/21)                  |
| Most Runs: 11, at Wichita State (3/26/21)                    |  |
| Fewest Hits (Min. 5 IP): 2, 2x, last vs. South Fla. (5/2/21) |  |

**Quick Facts**

- Transferred to UCF from ECU. Began college career with NC State
- Faced the Knights four times in 2021, working 28.2 innings against the Black and Gold and going 0-3 in some tight contests
- In her first meeting with UCF in 2021, she tossed 11 innings as the Knights took the win in a 4-3 extra-inning thriller

- Had a big game in the circle against Ohio on 2/27/21, punching out a career-best eight and tossing seven-innings of one-hit ball
- Was the No. 8 ranked recruit in the state of Florida her senior year

**Did You Know?**

Major: Cognitive Science  
 Favorite Pro Athlete: Peyton Manning  
 Favorite Pro Team: Indianapolis Colts  
 Pre-game Ritual: Listen to hype music  
 Hidden Talent: I'm flexible  
 Favorite Off-day Activity: Reading  
 Favorite Movie: Interstellar  
 Favorite TV Show: Greys Anatomy  
 Favorite Music Artist: Pop Smoke  
 Go-to Karaoke Song: Mr. Brightside

**Second Favorite Sport:** Volleyball

Walk-up Song: Buzzin - Manna  
 Instagram Handle: @kama\_woodall

Woodall's Career Stats

| YEAR          | ERA         | W         | L         | App       | GS        | CG        | SHO      | CBO      | SV       | IP           | H          | R          | ER         | BB         | SO         | 2B        | 3B       | HR        | BF           | B/Avg.      | WP        | HBP       | SHA       | SFA       |
|---------------|-------------|-----------|-----------|-----------|-----------|-----------|----------|----------|----------|--------------|------------|------------|------------|------------|------------|-----------|----------|-----------|--------------|-------------|-----------|-----------|-----------|-----------|
| 2018 ^        | 3.31        | 9         | 10        | 29        | 18        | 7         | 0        | 2        | 1        | 105.2        | 119        | 66         | 50         | 38         | 67         | 19        | 1        | 11        | 482          | .288        | 6         | 9         | 16        | 6         |
| 2019 ^        | 3.06        | 3         | 3         | 22        | 4         | 1         | 1        | 0        | 2        | 50.1         | 53         | 27         | 22         | 19         | 27         | 5         | 2        | 9         | 234          | .256        | 4         | 4         | 2         | 2         |
| 2020 @        | 3.75        | 3         | 2         | 12        | 6         | 1         | 1        | 1        | 0        | 46.2         | 57         | 31         | 25         | 9          | 29         | 8         | 1        | 2         | 208          | .298        | 0         | 5         | 2         | 1         |
| 2021 @        | 3.36        | 9         | 19        | 36        | 28        | 16        | 2        | 1        | 1        | 187.1        | 197        | 107        | 90         | 73         | 103        | 28        | 4        | 15        | 842          | .271        | 17        | 18        | 14        | 10        |
| <b>TOTALS</b> | <b>3.36</b> | <b>24</b> | <b>34</b> | <b>99</b> | <b>56</b> | <b>25</b> | <b>3</b> | <b>4</b> | <b>4</b> | <b>390.0</b> | <b>426</b> | <b>231</b> | <b>187</b> | <b>139</b> | <b>226</b> | <b>60</b> | <b>8</b> | <b>37</b> | <b>1,766</b> | <b>.277</b> | <b>27</b> | <b>36</b> | <b>34</b> | <b>19</b> |

^ - Played at NC State; @ - Played at ECU



PLAYER PROFILES



# 17 JADA CODY

Utility | So. | R/R | 5-9 | Murrieta, Calif. | Murrieta Mesa HS

| Season Highs                           |   |
|--|---|
| At-Bats: 5, vs. Texas (2/19/22)        | Home Runs: 1, 5x, last vs. FGCU (3/6/22)      |
| Runs: 3, vs. Texas (2/19/22)           | RBI: 5, vs. FGCU (3/5/22)                     |
| Hits: 4, vs. Texas (2/19/22)           | Walks: 2, at Fresno State (3/9/22)            |
| Doubles: 1, 5x, last vs. FGCU (3/6/22) | Stolen Bases: 1, 2x, last vs. Texas (2/19/22) |
| Triples: 1, vs. Longwood (2/12/22)     |   |

| Career Highs                                |   |
|---|---|
| At-Bats: 5, 2x, last vs. Texas (2/19/22)    | Home Runs: 2, at Memphis (4/23/21)          |
| Runs: 4, at UNF (3/17/21)                   | RBI: 5, 2x, last vs. FGCU (3/5/22)          |
| Hits: 4, 2x, last vs. Texas (2/19/22)       | Walks: 2, 7x, last at Fresno State (3/9/22) |
| Doubles: 1, 20x, last vs. FGCU (3/6/22)     | Stolen Bases: 2, at Memphis (4/23/21)       |
| Triples: 1, 2x, last vs. Longwood (2/12/22) |   |

**Quick Facts**

- Attended the Team USA Softball Selection Trials this January
- Earned NFCA Midwest Third Team All-Region, AAC First Team All-Conference and AAC All-Rookie Team honors in 2021
- Was the only Knight to start in all 61 games last season and one of two to play in every game
- Has struck out just 13 times in 255 AB's heading into 2022

- Named AAC player of the week on 4/26/21 after three homers that weekend...was also named AAC player of the week on 2/24/20
- Led the Knights with 44 runs scored in 2021
- Blasted a solo walk-off homer on 3/26 to beat Houston 2-1
- Hit her first career grand slam on 3/11/20, beating CS Fullerton 7-0
- Team captain of Murrieta Mesa High her senior year, where she hit .471 with 21 RBI and was 2018 Corona Angels triple crown champ

**Did You Know?**

Major: Interdisciplinary Studies  
 Favorite Pro Athlete: Cody Bellinger  
 Favorite Pro Team: Los Angeles Dodgers  
 Pre-game Ritual: Starbucks  
 Fun Fact: I'm a Taurus  
 Hidden Talent: I can sleep anywhere  
 Favorite Off-day Activity: Beach  
 Favorite Food: Pizza  
 Favorite Movie: Marvel Movies  
 Favorite TV Show: Walking Dead

Favorite Music Artist: Summer Walker  
 Go-to Karaoke Song: Car Wash by Rose Royce  
 Nickname Growing Up: Steeny Weenie  
 Second Favorite Sport: Football  
 Walk-up Song:  
 1. Walk Thru - Rich Homie Quan  
 2. Praise God - Kanye West  
 Instagram Handle: @\_jaycody

Cody's Career Stats

| YEAR          | AVG.        | GP        | GS        | AB         | R         | H         | 2B        | 3B       | HR        | RBI       | OBP         | SLG         | OPS         | BB        | HBP      | SO        | GDP      | SF       | SH       | SB        | SBA       | PO         | A          | E         | FLD%        |
|---------------|-------------|-----------|-----------|------------|-----------|-----------|-----------|----------|-----------|-----------|-------------|-------------|-------------|-----------|----------|-----------|----------|----------|----------|-----------|-----------|------------|------------|-----------|-------------|
| 2020          | .315        | 27        | 25        | 73         | 17        | 23        | 4         | 1        | 3         | 18        | .405        | .521        | .926        | 10        | 1        | 2         | 0        | 0        | 2        | 4         | 6         | 30         | 33         | 7         | .900        |
| 2021          | .324        | 61        | 61        | 182        | 44        | 59        | 11        | 0        | 7         | 28        | .412        | .500        | .912        | 23        | 5        | 11        | 0        | 1        | 5        | 9         | 10        | 107        | 91         | 12        | .943        |
| <b>TOTALS</b> | <b>.322</b> | <b>88</b> | <b>86</b> | <b>255</b> | <b>61</b> | <b>82</b> | <b>15</b> | <b>1</b> | <b>10</b> | <b>46</b> | <b>.410</b> | <b>.506</b> | <b>.916</b> | <b>33</b> | <b>6</b> | <b>13</b> | <b>0</b> | <b>1</b> | <b>7</b> | <b>13</b> | <b>16</b> | <b>137</b> | <b>124</b> | <b>19</b> | <b>.932</b> |



# 18 KAITLYN FELTON

Pitcher | Fr. | R/R | 5-8 | Valrico, Fla. | Newsome HS

| Season Highs  |  |
|---|--|
| Innings Pitched: 6.0, 2x, last vs. Michigan (2/17/22)   | Most Hits: 10, vs. Michigan (2/17/22)                |
| Strikeouts: 5, vs. James Madison (2/26/22)              | Fewest Walks (Min. 5 IP): 0, James Madison (2/26/22) |
| Fewest Runs (Min. 5 IP): 0, vs. James Madison (2/26/22) | Most Walks: 3, 2x, last vs. Texas (2/19/22)          |
| Most Runs: 6, vs. Michigan (2/17/22)                    |  |
| Fewest Hits (Min. 5 IP): 2, vs. James Madison (2/26/22) |  |

| Career Highs  |  |
|---|--|
| Innings Pitched: 6.0, 2x, last vs. Michigan (2/17/22)   | Most Hits: 10, vs. Michigan (2/17/22)                |
| Strikeouts: 5, vs. James Madison (2/26/22)              | Fewest Walks (Min. 5 IP): 0, James Madison (2/26/22) |
| Fewest Runs (Min. 5 IP): 0, vs. James Madison (2/26/22) | Most Walks: 3, 2x, last vs. Texas (2/19/22)          |
| Most Runs: 6, vs. Michigan (2/17/22)                    |  |
| Fewest Hits (Min. 5 IP): 2, vs. James Madison (2/26/22) |  |

**Quick Facts**

- Earned a win in her collegiate debut, dominating Fresno State on Feb. 12 with 6 innings of two-hit softball.
- Earned her first career complete game shutout against James Madison, pitching 5 innings in an 11-0 win.
- Led her high school team to a state runner-up finish in her sophomore season.

- Earned second team all-conference honors in her freshman season
- Played for the Tampa Mustangs and NJ Intensity KOD Premier club softball teams

**Did You Know?**

Major: Health Sciences  
 Favorite Pro Athlete: Tom Brady  
 Favorite Pro Team: Tampa Bay Rays  
 Pre-Game Ritual: Switch my socks (right on left and left on right)  
 Fun Fact: My dad has nine fingers  
 Hidden Talent: Can cry on command  
 Favorite Off-day Activity: Lose time on Tik Tok and spend money  
 Favorite Food: Acai Bowls

Favorite Movie(s): Any Hallmark movie ever made  
 Favorite TV Show: The Vampire Diaries  
 Favorite Musical Artist: Travis Scott  
 Go-to Karaoke Song: Fergalicious by Fergie  
 Nickname Growing Up: KK  
 Second Favorite Sport: Baseball  
 Walk-up Song: I'm Upset - Drake  
 Instagram Handle: @kaitlynfelton

Felton's Career Stats

| YEAR                              | ERA         | W        | L        | App      | GS       | CG       | SHO      | CBO      | SV       | IP       | H        | R        | ER       | BB       | SO       | 2B       | 3B       | HR       | BF       | B/Avg.      | WP       | HBP      | SHA      | SFA      |  |
|-----------------------------------|-------------|----------|----------|----------|----------|----------|----------|----------|----------|----------|----------|----------|----------|----------|----------|----------|----------|----------|----------|-------------|----------|----------|----------|----------|--|
| FIRST YEAR OF COLLEGIATE SOFTBALL |             |          |          |          |          |          |          |          |          |          |          |          |          |          |          |          |          |          |          |             |          |          |          |          |  |
| <b>TOTALS</b>                     | <b>0.00</b> | <b>0</b> | <b>0</b> | <b>0</b> | <b>0</b> | <b>0</b> | <b>0</b> | <b>0</b> | <b>0</b> | <b>0</b> | <b>0</b> | <b>0</b> | <b>0</b> | <b>0</b> | <b>0</b> | <b>0</b> | <b>0</b> | <b>0</b> | <b>0</b> | <b>.000</b> | <b>0</b> | <b>0</b> | <b>0</b> | <b>0</b> |  |



# 20 KATIE BURGE

Utility | So. | L/R | 5-4 | Miami, Fla. | Miami Palmetto Senior HS

| Season Highs                               |                                    |
|--|------------------------------------|
| At-Bats: 3, 3x, last vs. Florida (2/27/22) | Home Runs: -                       |
| Runs: 2, 2x, last vs. Florida (2/27/22)    | RBI: 1, 3x, last vs. FGCU (3/4/22) |
| Hits: 2, vs. Florida (2/27/22)             | Walks: 1, vs. Longwood (2/12/22)   |
| Doubles: 1, vs. Florida (2/27/22)          | Stolen Bases: -                    |
| Triples: -                                 |                                    |

| Career Highs                               |  |
|--|--|
| At-Bats: 5, at ECU (4/9/21)                | Home Runs: -                               |
| Runs: 2, 2x, last vs. Florida (2/27/22)    | RBI: 3, vs. McNeese State (2/27/21)        |
| Hits: 4, at ECU (4/9/21)                   | Walks: 1, 4x, last Longwood (2/12/22)      |
| Doubles: 1, 2x, last vs. Florida (2/27/22) | Stolen Bases: 1, 2x, last at ECU (4/10/21) |
| Triples: -                                 |  |

**Quick Facts**

- Saw time at second base and in the outfield for UCF in 2021
- Went 4-for-5 in a thrilling 11 inning contest on 4/9 that saw the Knights earn a 4-3 win
- Knocked in a career-high three RBI in an 11-3 win over McNeese State on 2/27

- Named first team all-Dade County, first team all-state and team MVP in her junior season at Miami Palmetto Senior High
- Named offensive player of the year and first team all-state in her sophomore year of high school

**Did You Know?**

Major: Finance  
 Favorite Pro Athlete: Naomi Osaka  
 Favorite Pro Team: Miami Heat  
 Pre-game Ritual: Hacky sack  
 Fun Fact: I have dual citizenship  
 Hidden Talent: I'm ambidextrous  
 Favorite Off-day Activity: Beach  
 Favorite Food: Thai food  
 Favorite Movie: A Star is Born  
 Favorite TV Show: Game of Thrones

Favorite Music Artist: Drake  
 Go-to Karaoke Song: Shallow by Lady Gaga and Bradley Cooper  
 Nickname Growing Up: Fire  
 Second Favorite Sport: Tennis  
 Walk-up Song:  
 1. March Madness - Future  
 2. Element - Pop Smoke  
 Instagram Handle: @katieburgee

Burge's Career Stats

| YEAR          | AVG.        | GP        | GS        | AB        | R         | H         | 2B       | 3B       | HR       | RBI       | OBP         | SLG         | OPS         | BB       | HBP      | SO       | GDP      | SF       | SH       | SB       | SBA      | PO        | A         | E        | FLD%        |
|---------------|-------------|-----------|-----------|-----------|-----------|-----------|----------|----------|----------|-----------|-------------|-------------|-------------|----------|----------|----------|----------|----------|----------|----------|----------|-----------|-----------|----------|-------------|
| 2021          | .284        | 38        | 15        | 67        | 12        | 19        | 1        | 0        | 0        | 10        | .310        | .299        | .609        | 3        | 0        | 9        | 0        | 1        | 2        | 2        | 2        | 19        | 16        | 3        | .921        |
| <b>TOTALS</b> | <b>.284</b> | <b>38</b> | <b>15</b> | <b>67</b> | <b>12</b> | <b>19</b> | <b>1</b> | <b>0</b> | <b>0</b> | <b>10</b> | <b>.310</b> | <b>.299</b> | <b>.609</b> | <b>3</b> | <b>0</b> | <b>9</b> | <b>0</b> | <b>1</b> | <b>2</b> | <b>2</b> | <b>2</b> | <b>19</b> | <b>16</b> | <b>3</b> | <b>.921</b> |

PLAYER PROFILES



# 22 KENNEDY SEARCY



Utility | So. | L/R | 5-7 | Jacksonville, Fla. | Atlantic Coast HS

| Season Highs                                     |   |
|--|---|
| At-Bats: 4, 2x, last at Fresno State (3/9/22)    | Home Runs: 1, vs. James Madison (2/26/22) |
| Runs: 2, at Fresno State (3/9/22)                | RBI: 1, 8x, last at Fresno State (3/9/22) |
| Hits: 3, at Fresno State (3/9/22)                | Walks: 2, 4x, last vs. Florida (2/27/22)  |
| Doubles: 1, 3x, last vs. South Carolina (3/5/22) | Stolen Bases: 2, vs. Florida (2/27/22)    |
| Triples: 1, at Fresno State (3/9/22)             |   |

| Career Highs                                     |  |
|--|--|
| At-Bats: 5, at South Carolina (3/21/21)          | Home Runs: 1, 2x, last at FAU (3/13/21)    |
| Runs: 2, 6x, last at Fresno State (3/9/22)       | RBI: 4, at FGCU (2/14/21)                  |
| Hits: 3, at Fresno State (3/9/22)                | Walks: 2, 5x, last vs. Florida (2/27/22)   |
| Doubles: 1, 6x, last vs. South Carolina (3/5/22) | Stolen Bases: 2, 3x, vs. Florida (2/27/22) |
| Triples: 1, 4x, last at at Fresno State (3/9/22) |  |

**Quick Facts**

- Earned AAC All-Rookie Team honors in 2021
- Suffered a season-ending injury on 4/9 at ECU
- Posted an impressive campaign before her injury, collecting nine extra base hits in 33 starts while mostly leading off and playing LF
- Led the team with 17 steals in 19 attempts
- Had three straight multi-hit games to begin her career

- Got at least a hit and a stolen base in her first five career games
- Earned all-conference honors each year in high school
- Earned second-team all-first coast honors in her sophomore year and first-team all-first coast honors in her junior season
- Also played golf in high school

**Did You Know?**

**Major/Minor:** Kinesiology  
**Favorite Pro Athlete:** Derek Jeter  
**Favorite Pro Team:** Jacksonville Jaguars  
**Pre-Game Ritual:** Starbucks  
**Fun Fact:** Can tumble  
**Hidden Talent:** Can do a handstand push-up  
**Favorite Off-Day Activity:** Pool Day  
**Favorite Food:** Chicken Alfredo  
**Favorite Movies:** Freedom Writers, The Help, and Taken

**Favorite TV Show:** Grey's Anatomy  
**Favorite Musical Artist:** Adele  
**Go-To Karaoke Song:** Wannabe by Spice Girls  
**Nickname Growing Up:** Kenn-Kenn  
**Second Favorite Sports:** Basketball and Football

**Walk-up Song:** Press - Cardi B  
**Instagram Handle:** @ksearc2

Searcy's Career Stats

| YEAR          | AVG.        | GP        | GS        | AB         | R         | H         | 2B       | 3B       | HR       | RBI       | OBP         | SLG         | OPS         | BB        | HBP      | SO        | GDP      | SF       | SH       | SB        | SBA       | PO        | A        | E        | FLD%         |
|---------------|-------------|-----------|-----------|------------|-----------|-----------|----------|----------|----------|-----------|-------------|-------------|-------------|-----------|----------|-----------|----------|----------|----------|-----------|-----------|-----------|----------|----------|--------------|
| 2021          | .321        | 35        | 33        | 112        | 27        | 36        | 4        | 3        | 2        | 15        | .392        | .464        | .856        | 11        | 2        | 11        | 0        | 0        | 1        | 17        | 19        | 44        | 2        | 0        | 1.000        |
| <b>TOTALS</b> | <b>.321</b> | <b>35</b> | <b>33</b> | <b>112</b> | <b>27</b> | <b>36</b> | <b>4</b> | <b>3</b> | <b>2</b> | <b>15</b> | <b>.392</b> | <b>.464</b> | <b>.856</b> | <b>11</b> | <b>2</b> | <b>11</b> | <b>0</b> | <b>0</b> | <b>1</b> | <b>17</b> | <b>19</b> | <b>44</b> | <b>2</b> | <b>0</b> | <b>1.000</b> |



# 23 ALLYSE VOLPE



Outfield | Jr. | L/R | 5-3 | Scarborough, Ontario | Bucknell

| Season Highs                      |   |
|-----------------------------------|---|
| At-Bats: 4, vs. Florida (2/27/22) | Home Runs: -                            |
| Runs: 4, vs. Texas (2/19/22)      | RBI: 1, 2x, last vs. Florida (2/27/22)  |
| Hits: 3, vs. Florida (2/27/22)    | Walks: 2, vs. Texas (2/19/22)           |
| Doubles: 2, vs. Florida (2/27/22) | Stolen Bases: 1, vs. Ole Miss (2/25/22) |
| Triples: -                        |   |

| Career Highs                              |   |
|---|---|
| At-Bats: 5, at Harvard (3/2/19)           | Home Runs: 1, 2x, last at Army (4/20/19)              |
| Runs: 4, vs. Texas (2/19/22)              | RBI: 3, vs. Howard (3/2/19)                           |
| Hits: 4, vs. Lafayette (4/6/19)           | Walks: 2, 2x, last vs. Texas (2/19/22)                |
| Doubles: 2, vs. Florida (2/27/22)         | Stolen Bases: 3, 2x, last vs. Saint Francis (2/15/20) |
| Triples: 2, 2x, last vs. Rutgers (3/8/20) |   |

**Quick Facts**

- Earned NFCA Third-Team All-Region, First-Team All-Patriot League and Patriot League Rookie of the Year honors in 2019 at Bucknell
- Was the Patriot League batting champion with a .399 batting average, while also leading in on-base percentage with a .442 clip in her freshman season
- Named to the AAC Championship all-tournament team in 2021

- Led the Patriot League in stolen bases in the shortened 2020 season, swiping 14 in 16 tries
- Led the 2020 Bucknell squad in batting average, hits, triples, stolen bases and runs
- Named to Patriot League Academic Honor Roll in 2020
- Was a member of the Canadian Junior National Team
- Earned 8 national all-star awards and two national top batter awards

**Did You Know?**

**Majors:** Political Science and Psychology  
**Favorite Pro Team:** Toronto Raptors  
**Pre-Game Ritual:** Find tallest tree, look at the top, list people I'm thankful for  
**Fun Fact:** I like skiing and cliff jumping  
**Hidden Talent:** I can speak French  
**Favorite Off-Day Activity:** Pool/Beach  
**Favorite Food:** I eat everything  
**Favorite Movie(s):** Lilo and Stitch  
**Favorite TV Show:** Suits

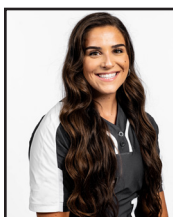
**Favorite Musical Artists:** Rap: Drake, Lil Baby, and Polo G...RnB: Kiana Lede and Brent Faiyaz  
**Go-To Karaoke Song:** Put Your Head On My Shoulder by Paul Anka  
**Nickname Growing Up:** Boo (Monsters Inc.)  
**Second Favorite Sports:** Spike Ball, Skiing

**Walk-up Song:** Let me Blow Ya Mind - Eve  
**Instagram Handle:** @allysevolpe

Volpe's Career Stats

| YEAR          | AVG.        | GP         | GS        | AB         | R         | H          | 2B       | 3B       | HR       | RBI       | OBP         | SLG         | OPS         | BB        | HBP      | SO        | GDP      | SF       | SH       | SB        | SBA       | PO         | A        | E        | FLD%        |
|---------------|-------------|------------|-----------|------------|-----------|------------|----------|----------|----------|-----------|-------------|-------------|-------------|-----------|----------|-----------|----------|----------|----------|-----------|-----------|------------|----------|----------|-------------|
| 2019 ^        | .399        | 44         | 43        | 143        | 29        | 57         | 5        | 4        | 2        | 19        | .442        | .531        | .973        | 10        | 2        | 19        | 1        | 1        | 2        | 18        | 23        | 58         | 3        | 3        | .953        |
| 2020 ^        | .352        | 21         | 21        | 71         | 15        | 25         | 3        | 4        | 0        | 6         | .412        | .507        | .919        | 8         | 0        | 14        | 0        | 1        | 1        | 14        | 16        | 35         | 1        | 0        | 1.000       |
| 2021          | .286        | 47         | 20        | 77         | 20        | 22         | 1        | 1        | 0        | 2         | .321        | .325        | .646        | 4         | 0        | 11        | 0        | 0        | 3        | 5         | 9         | 32         | 0        | 0        | 1.000       |
| <b>TOTALS</b> | <b>.357</b> | <b>112</b> | <b>84</b> | <b>291</b> | <b>64</b> | <b>104</b> | <b>9</b> | <b>9</b> | <b>2</b> | <b>27</b> | <b>.404</b> | <b>.471</b> | <b>.875</b> | <b>22</b> | <b>2</b> | <b>44</b> | <b>1</b> | <b>2</b> | <b>6</b> | <b>37</b> | <b>48</b> | <b>125</b> | <b>4</b> | <b>3</b> | <b>.977</b> |

^ - Played at Bucknell



# 24 CASSIDY CANGEMI



Infield | Sr. | R/R | 5-7 | Agua Dulce, Calif. | Boise State

| Season Highs                          |                 |
|---------------------------------------|-----------------|
| At-Bats: 1, 2x, last at FIU (2/23/22) | Home Runs: -    |
| Runs: -                               | RBI: -          |
| Hits: -                               | Walks: -        |
| Doubles: -                            | Stolen Bases: - |
| Triples: -                            |                 |

| Career Highs                          |                 |
|---------------------------------------|-----------------|
| At-Bats: 1, 2x, last at FIU (2/23/22) | Home Runs: -    |
| Runs: -                               | RBI: -          |
| Hits: -                               | Walks: -        |
| Doubles: -                            | Stolen Bases: - |
| Triples: -                            |                 |

**Quick Facts**

- Converted from a pitcher to an infielder for the 2022 season
- Was a two-way player in high school, going 17-4 with a 1.41 ERA in the circle and a .426 batting average with 17 RBI and seven doubles in her senior season
- Helped lead Golden Valley to an appearance in the CIF-SS playoffs
- Four-time letter winner and three-time scholar-athlete in HS

- Struck out 509 batters over her final three years of prep career
- Named the Most Memorable Female Athlete from Los Angeles County
- Named homecoming queen and Athletic Scholar of the Year in her senior campaign

**Did You Know?**

**Major:** Interdisciplinary Studies  
**Minor:** Physiology and Sociology  
**Favorite Pro Athlete:** Kobe Bryant  
**Favorite Pro Team:** Los Angeles Lakers  
**Pre-Game Ritual:** Call my family  
**Fun Fact:** I have a twin brother  
**Hidden Talent:** Impressions  
**Favorite Food:** Sushi  
**Favorite Movie:** The Dark Knight  
**Favorite TV Show:** New Girl

**Favorite Musical Artist:** Luke Bryan  
**Go-To Karaoke Song:** Stronger by Sarah Evans  
**Nickname Growing Up:** Deedle  
**Second Favorite Sport:** Basketball

**Walk-up Song:** 1. Streets - Doja Cat  
 2. Ric Flair Drip - Offset, Metro Boomin  
**Instagram Handle:** @cass.c24

Cangemi's Career Stats

| YEAR          | ERA         | W        | L        | App      | GS       | CG       | SHO      | CBO      | SV       | IP         | H                                   | R        | ER       | BB       | SO       | 2B       | 3B       | HR       | BF       | B/Avg.      | WP       | HBP      | SHA      | SFA      |
|---------------|-------------|----------|----------|----------|----------|----------|----------|----------|----------|------------|-------------------------------------|----------|----------|----------|----------|----------|----------|----------|----------|-------------|----------|----------|----------|----------|
| 2019 ^        |             |          |          |          |          |          |          |          |          |            | DID NOT PLAY DURING THE 2019 SEASON |          |          |          |          |          |          |          |          |             |          |          |          |          |
| 2020          | 0.00        | 0        | 0        | 2        | 0        | 0        | 0        | 0        | 0        | 0.2        | 0                                   | 0        | 0        | 2        | 0        | 0        | 0        | 0        | 4        | .000        | 1        | 0        | 0        | 0        |
| 2021          | 14.00       | 0        | 0        | 1        | 0        | 0        | 0        | 0        | 0        | 1.0        | 2                                   | 2        | 2        | 0        | 0        | 1        | 0        | 1        | 5        | .500        | 0        | 0        | 0        | 1        |
| <b>TOTALS</b> | <b>8.40</b> | <b>0</b> | <b>0</b> | <b>3</b> | <b>0</b> | <b>0</b> | <b>0</b> | <b>0</b> | <b>0</b> | <b>1.2</b> | <b>2</b>                            | <b>2</b> | <b>2</b> | <b>2</b> | <b>0</b> | <b>1</b> | <b>0</b> | <b>1</b> | <b>9</b> | <b>.333</b> | <b>1</b> | <b>0</b> | <b>0</b> | <b>1</b> |

^ - Played at Boise State



PLAYER PROFILES



# 27 ASHLEIGH GRIFFIN



Catcher/Infield | Fr. | R/R | 5-7 | Newnan, Ga. | East Coweta HS

| Season Highs                           |   |
|--|---|
| At-Bats: 4, vs. FGCU (3/4/22)          | Home Runs: 1, vs. Texas (2/19/22)         |
| Runs: 2, vs. Texas (2/19/22)           | RBI: 2, 3x, last at Fresno State (3/9/22) |
| Hits: 2, vs. FGCU (3/5/22)             | Walks: 1, 5x, last vs. FGCU (3/6/22)      |
| Doubles: 1, 3x, last vs. FGCU (3/5/22) | Stolen Bases: -                           |
| Triples: -                             |   |

| Career Highs                           |   |
|--|---|
| At-Bats: 4, vs. FGCU (3/4/22)          | Home Runs: 1, vs. Texas (2/19/22)         |
| Runs: 2, vs. Texas (2/19/22)           | RBI: 2, 3x, last at Fresno State (3/9/22) |
| Hits: 2, vs. FGCU (3/5/22)             | Walks: 1, 5x, last vs. FGCU (3/6/22)      |
| Doubles: 1, 3x, last vs. FGCU (3/5/22) | Stolen Bases: -                           |
| Triples: -                             |   |

**Quick Facts**

- Hit .547 with 54 RBI and eight home runs in her HS junior season
- Won three state championships in high school
- Named to the senior all-star team
- Named first team all-state her junior year
- Played for the Georgia Impact club softball team

**Did You Know?**

Major: Exercise Science  
 Favorite Pro Athlete: Freddie Freeman  
 Favorite Pro Team: Atlanta Braves  
 Pre-Game Ritual: Pray  
 Fun Fact: I played football before softball  
 Hidden Talent: I know the Greek alphabet  
 Favorite Off-Day Activity: Fishing  
 Favorite Food: Steak or Pizza  
 Favorite Movies: Blindsight, Forrest Gump, Sandlot, Toy Story, and Cars

**Favorite TV Shows:** Outer Banks, All-American, and Manifest  
**Favorite Musical Artist:** Juice World and Morgan Wallen  
**Nickname Growing Up:** Beast  
**Second Favorite Sport:** College Football  
**Walk-up Songs:**  
 1. Shinning - YSB Skola  
 2. Danger - Migos & Marshmello  
**Instagram Handle:** @ashleigh.griffin27

Griffin's Career Stats

| YEAR                              | AVG. | GP | GS | AB | R | H | 2B | 3B | HR | RBI | OBP  | SLG  | OPS  | BB | HBP | SO | GDP | SF | SH | SB | SBA | PO | A | E | FLD% |      |
|-----------------------------------|------|----|----|----|---|---|----|----|----|-----|------|------|------|----|-----|----|-----|----|----|----|-----|----|---|---|------|------|
| FIRST YEAR OF COLLEGIATE SOFTBALL |      |    |    |    |   |   |    |    |    |     |      |      |      |    |     |    |     |    |    |    |     |    |   |   |      |      |
| TOTALS                            | .000 | 0  | 0  | 0  | 0 | 0 | 0  | 0  | 0  | 0   | .000 | .000 | .000 | 0  | 0   | 0  | 0   | 0  | 0  | 0  | 0   | 0  | 0 | 0 | 0    | .000 |



# 28 MICAELA MACARIO



Infield | Fr. | L/R | 5-6 | Chula Vista, Calif. | Bonita Vista HS

| Season Highs                                  |                                      |
|---|--------------------------------------|
| At-Bats: 3, 9x, last at Fresno State (3/9/22) | Home Runs: -                         |
| Runs: 2, 3x, last vs. FGCU (3/6/22)           | RBI: 6, vs. James Madison (2/27/22)  |
| Hits: 2, 2x, last vs. James Madison (2/26/22) | Walks: 2, 3x, last vs. FGCU (3/6/22) |
| Doubles: 2, vs. James Madison (2/26/22)       | Stolen Bases: 3, vs. Texas (2/19/22) |
| Triples: -                                    |                                      |

| Career Highs                                  |                                      |
|---|--------------------------------------|
| At-Bats: 3, 9x, last at Fresno State (3/9/22) | Home Runs: -                         |
| Runs: 2, 3x, last vs. FGCU (3/6/22)           | RBI: 6, vs. James Madison (2/27/22)  |
| Hits: 2, 2x, last vs. James Madison (2/26/22) | Walks: 2, 3x, last vs. FGCU (3/6/22) |
| Doubles: 2, vs. James Madison (2/26/22)       | Stolen Bases: 3, vs. Texas (2/19/22) |
| Triples: -                                    |                                      |

**Quick Facts**

- Was also a track and field athlete in high school, participating in the 4x100m, 100m and long jump
- Named school varsity MVP and Metromesa all-league team in her sophomore season
- Named school varsity best defensive player and Metromesa all-league team in her freshman season

- Played for the California Cruisers club softball team

**Did You Know?**

Major: Health Sciences (Pre-Clinical)  
 Favorite Pro Athlete: Jake Cronenworth  
 Favorite Pro Team: San Diego Padres  
 Pre-Game Ritual: I put everything on the left first (left shoe)  
 Fun Fact: I ran track and played softball  
 Hidden Talent: I can do a cartwheel  
 Favorite Off-Day Activity: Listen to music  
 Favorite Food: Carne asada fries  
 Favorite Movie(s): Finding Nemo and

10 Things I Hate About You  
**Favorite TV Show:** New Girl and Friends  
**Favorite Musical Artist:** Kolohe Kai Go-To  
**Karaoke Song:** Love Me by Fia  
**Nickname Growing Up:** Lala  
**Second Favorite Sport:** Baseball  
**Walk-up Songs:**  
 1. Dare (La La La) - Shakira  
 2. Who You Foolin? - Gunna  
**Instagram Handle:** @michaela

Macario's Career Stats

| YEAR                              | AVG. | GP | GS | AB | R | H | 2B | 3B | HR | RBI | OBP  | SLG  | OPS  | BB | HBP | SO | GDP | SF | SH | SB | SBA | PO | A | E | FLD% |      |
|-----------------------------------|------|----|----|----|---|---|----|----|----|-----|------|------|------|----|-----|----|-----|----|----|----|-----|----|---|---|------|------|
| FIRST YEAR OF COLLEGIATE SOFTBALL |      |    |    |    |   |   |    |    |    |     |      |      |      |    |     |    |     |    |    |    |     |    |   |   |      |      |
| TOTALS                            | .000 | 0  | 0  | 0  | 0 | 0 | 0  | 0  | 0  | 0   | .000 | .000 | .000 | 0  | 0   | 0  | 0   | 0  | 0  | 0  | 0   | 0  | 0 | 0 | 0    | .000 |



# 29 DAMARIA CANNON



Outfield | Sr. | R/R | 5-3 | Moreno Valley, Calif. | Cannon Springs HS

| Season Highs                                  |                                  |
|---|----------------------------------|
| At-Bats: 1, 4x, last at Fresno State (3/9/22) | Home Runs: -                     |
| Runs: 1, 2x, last vs. FGCU (3/5/22)           | RBI: 1, vs. Longwood (2/12/22)   |
| Hits: 1, at FIU (2/23/22)                     | Walks: 1, vs. Longwood (2/12/22) |
| Doubles: -                                    | Stolen Bases: -                  |
| Triples: -                                    |                                  |

| Career Highs                                    |   |
|---|---|
| At-Bats: 4, 2x, last vs. Wichita State (5/9/19) | Home Runs: -                            |
| Runs: 2, vs. UNF (5/1/19)                       | RBI: 1, 5x, last vs. Longwood (2/12/22) |
| Hits: 2, 4x, last at Memphis (5/3/19)           | Walks: 2, vs. Bethune-Cookman (4/24/19) |
| Doubles: 1, 4x, last vs. UNF (5/1/19)           | Stolen Bases: -                         |
| Triples: 1, at Memphis (5/3/19)                 |   |

**Quick Facts**

- Saw action in five games off the bench in 2021 and a total of 13 games in 2020, starting in one
- Hit .537 in her senior year of high school with a .558 on-base percentage
- Her junior year of high school saw her bat .443 with a .534 slugging percentage, tallying 32 runs in 26 games

**Did You Know?**

Major: Social Science  
 Minor: Sports Business Management  
 Favorite Pro Athletes: Tom Brady and Natasha Watley  
 Favorite Pro Teams: LA Dodgers & Lakers  
 Pre-Game Ritual: Shotgun an energy drink  
 Fun Fact About You: Used to Dance before playing Softball  
 Hidden Talent: Binge watching Netflix  
 Favorite Food: Carne Asada Fries

**Favorite Movies:** Lion King or Bring It On  
**Favorite TV Shows:** Degraasi and Vampire Diaries  
**Favorite Musical Artists:** 2Pac, Lil Baby, Meg The Stallion  
**Nickname Growing Up:** Mar Mar or DBaby  
**Second Favorite Sport:** Football  
**Walk-up Song:** Set It Off - Boosie  
**Instagram Handle:** @damariacannon

Cannon's Career Stats

| YEAR   | AVG. | GP | GS | AB | R | H  | 2B | 3B | HR | RBI | OBP  | SLG  | OPS  | BB | HBP | SO | GDP | SF | SH | SB | SBA | PO | A | E | FLD%  |
|--------|------|----|----|----|---|----|----|----|----|-----|------|------|------|----|-----|----|-----|----|----|----|-----|----|---|---|-------|
| 2019   | .327 | 24 | 15 | 49 | 8 | 16 | 4  | 1  | 0  | 4   | .421 | .449 | .870 | 6  | 2   | 10 | 0   | 0  | 0  | 0  | 0   | 3  | 0 | 0 | 1.000 |
| 2020   | .333 | 13 | 1  | 12 | 1 | 4  | 0  | 0  | 0  | 0   | .333 | .333 | .666 | 0  | 0   | 3  | 0   | 0  | 0  | 0  | 0   | 1  | 0 | 0 | 1.000 |
| 2021   | .000 | 5  | 0  | 3  | 0 | 0  | 0  | 0  | 0  | 0   | .000 | .000 | .000 | 0  | 0   | 0  | 0   | 0  | 0  | 0  | 0   | -  | - | - | -     |
| TOTALS | .312 | 42 | 16 | 42 | 9 | 20 | 4  | 1  | 0  | 4   | .389 | .406 | .795 | 6  | 2   | 13 | 0   | 0  | 0  | 0  | 0   | 4  | 0 | 0 | 1.000 |

PLAYER PROFILES



# 33 AVERI WONG



Outfield | Fr. | L/R | 5-2 | Arcadia, Calif. | Arcadia HS

| Season Highs                           |                                    |
|--|------------------------------------|
| At-Bats: 1, 3x, last vs. FGCU (3/4/22) | Home Runs: -                       |
| Runs: 2, vs. FGCU (3/4/22)             | RBI: 1, vs. FGCU (3/4/22)          |
| Hits: -                                | Walks: 1, vs. FGCU (3/4/22)        |
| Doubles: -                             | Stolen Bases: 1, vs. FGCU (3/4/22) |
| Triples: -                             |                                    |

| Career Highs                           |                                    |
|--|------------------------------------|
| At-Bats: 1, 3x, last vs. FGCU (3/4/22) | Home Runs: -                       |
| Runs: 2, vs. FGCU (3/4/22)             | RBI: 1, vs. FGCU (3/4/22)          |
| Hits: -                                | Walks: 1, vs. FGCU (3/4/22)        |
| Doubles: -                             | Stolen Bases: 1, vs. FGCU (3/4/22) |
| Triples: -                             |                                    |

**Quick Facts**

- Earned the US Army Scholar-Athlete award in her senior yr. of HS
- Named first-team All-Pacific League in her sophomore and junior years of high school
- Honored with scholar-athlete awards in her freshman and sophomore seasons.
- Played club softball for the Corona Angels under Kimbo Howard

**Did You Know?**

Major: Health Sciences  
 Favorite Pro Athlete: Mookie Betts  
 Favorite Pro Team: L.A. Dodgers  
 Fun Fact: I know the Greek Alphabet  
 Hidden Talent: I can juggle  
 Favorite Off-Day Activity: Sit in bed and watch Netflix  
 Favorite Food: Sushi  
 Favorite Movie(s): Knives Out  
 Favorite TV Show: New Girl

**Favorite Musical Artist:** Harry Styles  
**Go-To Karaoke Song:** FourFiveSeconds by Rihanna, Kanye West, and Paul McCartney  
**Second Favorite Sport:** Basketball

**Walk-up Songs:**  
 1. Tokyo Drift (F&F) - Teriyaki Boyz  
 2. Paramedic! - SOB X RBE  
**Instagram Handle:** @averiwong

| Wong's Career Stats               |      |    |    |    |   |   |    |    |    |     |      |      |      |    |     |    |     |    |    |    |     |    |   |   |      |
|-----------------------------------|------|----|----|----|---|---|----|----|----|-----|------|------|------|----|-----|----|-----|----|----|----|-----|----|---|---|------|
| YEAR                              | AVG. | GP | GS | AB | R | H | 2B | 3B | HR | RBI | OBP  | SLG  | OPS  | BB | HBP | SO | GDP | SF | SH | SB | SBA | PO | A | E | FLD% |
| FIRST YEAR OF COLLEGIATE SOFTBALL |      |    |    |    |   |   |    |    |    |     |      |      |      |    |     |    |     |    |    |    |     |    |   |   |      |
| TOTALS                            | .000 | 0  | 0  | 0  | 0 | 0 | 0  | 0  | 0  | 0   | .000 | .000 | .000 | 0  | 0   | 0  | 0   | 0  | 0  | 0  | 0   | 0  | 0 | 0 | .000 |



# 35 CARSON FRIER



Catcher/Infield | Fr. | R/R | 5-5 | Live Oak, Fla. | Suwanee HS

| Season Highs                                     |                                     |
|--|-------------------------------------|
| At-Bats: 3, 2x, last vs. James Madison (2/26/22) | Home Runs: -                        |
| Runs: 2, vs. James Madison (2/26/22)             | RBI: 1, vs. James Madison (2/26/22) |
| Hits: 1, 2x, last vs. James Madison (2/26/22)    | Walks: -                            |
| Doubles: -                                       | Stolen Bases: -                     |
| Triples: -                                       |                                     |

| Career Highs                                     |                                     |
|--|-------------------------------------|
| At-Bats: 3, 2x, last vs. James Madison (2/26/22) | Home Runs: -                        |
| Runs: 2, vs. James Madison (2/26/22)             | RBI: 1, vs. James Madison (2/26/22) |
| Hits: 1, 2x, last vs. James Madison (2/26/22)    | Walks: -                            |
| Doubles: -                                       | Stolen Bases: -                     |
| Triples: -                                       |                                     |

**Quick Facts**

- Played club ball for the Gold Coast Hurricanes, the USSSA elite select world fast pitch champions and 16U Junior Olympic Cup runner-ups in 2020
- Played four other sports in high school, excelling in all of them
- Member of the her HS soccer team, scored 40 goals her soph. yr. & was offensive & overall MVP and first-team all-state

- Broke school record in weightlifting for clean and jerk and total in the 154-weight class.
- Won three matches as a member of her high school's golf team
- Member of the school's volleyball team where she was the junior offensive MVP

**Did You Know?**

Major: Business Finance  
 Favorite Pro Athlete: Aubree Munro  
 Favorite Pro Team: Boston Red Sox  
 Pre-game Ritual: Eating fruit  
 Hidden Talent: I can wake board  
 Favorite Off-day Activity: Beach  
 Favorite Food: French fries  
 Favorite Movie: The Greatest Showman  
 Favorite TV Show: The Originals  
 Favorite Music Artist: Bruno Mars

**Go-To Karaoke Song:** Teenage Dream by Katy Perry  
**Nickname Growing Up:** Frier  
**Second Favorite Sport:** Men's basketball

**Walk-up Song:**  
 Turn My Swag On - Soulja Boy  
**Instagram Handle:** @carson\_frier

| Frier's Career Stats              |      |    |    |    |   |   |    |    |    |     |      |      |      |    |     |    |     |    |    |    |     |    |   |   |      |
|-----------------------------------|------|----|----|----|---|---|----|----|----|-----|------|------|------|----|-----|----|-----|----|----|----|-----|----|---|---|------|
| YEAR                              | AVG. | GP | GS | AB | R | H | 2B | 3B | HR | RBI | OBP  | SLG  | OPS  | BB | HBP | SO | GDP | SF | SH | SB | SBA | PO | A | E | FLD% |
| FIRST YEAR OF COLLEGIATE SOFTBALL |      |    |    |    |   |   |    |    |    |     |      |      |      |    |     |    |     |    |    |    |     |    |   |   |      |
| TOTALS                            | .000 | 0  | 0  | 0  | 0 | 0 | 0  | 0  | 0  | 0   | .000 | .000 | .000 | 0  | 0   | 0  | 0   | 0  | 0  | 0  | 0   | 0  | 0 | 0 | .000 |



# 42 SAVANNAH ADAMS



First Base | Fr. | R/R | 5-8 | La Mirada, Calif. | La Mirada HS

| Season Highs                            |  |
|---|--|
| At-Bats: 4, 2x, last vs. FGCU (3/4/22)  | Home Runs: -                                   |
| Runs: 1, 4x, last vs. Oakland (2/28/22) | RBI: 3, vs. Texas (2/19/22)                    |
| Hits: 2, vs. Texas Tech (2/18/22)       | Walks: 1, 5x, last vs. South Carolina (3/5/22) |
| Doubles: 1, 2x, last vs. FGCU (3/4/22)  | Stolen Bases: -                                |
| Triples: -                              |  |

| Career Highs                            |  |
|---|--|
| At-Bats: 4, 2x, last vs. FGCU (3/4/22)  | Home Runs: -                                   |
| Runs: 1, 4x, last vs. Oakland (2/28/22) | RBI: 3, vs. Texas (2/19/22)                    |
| Hits: 2, vs. Texas Tech (2/18/22)       | Walks: 1, 5x, last vs. South Carolina (3/5/22) |
| Doubles: 1, 2x, last vs. FGCU (3/4/22)  | Stolen Bases: -                                |
| Triples: -                              |  |

**Quick Facts**

- Earned a spot on the AAC Honor Roll in week 2 of the season, batting .444 with 5 RBI and a double, including a big base knock to tie UCF's game against No. 11 Texas, a game UCF went on to win.
- Named Suburban first-team all-league her sophomore year
- Earned 2019 Silver Slugger and Gold Glove honors
- Named San Gabriel Valley Softball All-Star (Platinum) her sophomore year

- Won two league championships with her high school team
- Played for the Corona Angels club team

**Did You Know?**

Major: Kinesiology  
 Favorite Pro Athlete: Kobe Bryant  
 Favorite Pro Team: LA Dodgers & Lakers  
 Pre-Game Ritual: Always tie my ribbon before I step out  
 Fun Fact: I know how to juggle  
 Hidden Talent: Juggling and making bracelets  
 Favorite Off-Day Activity: Beach  
 Favorite Food: Fettuccine alfredo & bread

**Favorite Movie(s):** Hacksaw Ridge  
**Favorite TV Show:** Criminal Minds  
**Favorite Musical Artist:** Drake  
**Go-To Karaoke Song:** Love by Keyshia Cole  
**Nickname Growing Up:** Savvy  
**Second Favorite Sport:** Football and Basketball

**Walk-up Song:** In Paris - Jay Z  
**Instagram Handle:** @savvy.adams

| Adams' Career Stats               |      |    |    |    |   |   |    |    |    |     |      |      |      |    |     |    |     |    |    |    |     |    |   |   |      |
|-----------------------------------|------|----|----|----|---|---|----|----|----|-----|------|------|------|----|-----|----|-----|----|----|----|-----|----|---|---|------|
| YEAR                              | AVG. | GP | GS | AB | R | H | 2B | 3B | HR | RBI | OBP  | SLG  | OPS  | BB | HBP | SO | GDP | SF | SH | SB | SBA | PO | A | E | FLD% |
| FIRST YEAR OF COLLEGIATE SOFTBALL |      |    |    |    |   |   |    |    |    |     |      |      |      |    |     |    |     |    |    |    |     |    |   |   |      |
| TOTALS                            | .000 | 0  | 0  | 0  | 0 | 0 | 0  | 0  | 0  | 0   | .000 | .000 | .000 | 0  | 0   | 0  | 0   | 0  | 0  | 0  | 0   | 0  | 0 | 0 | .000 |





PLAYER PROFILES



# 46 SHANNON DOHERTY



First Base | So. | R/R | 5-8 | Coral Springs, Fla. | Coral Springs Charter HS

| Season Highs                                  |   |
|---|---|
| At-Bats: 5, 3x, last at Fresno State (3/9/22) | Home Runs: 1, 3x, last vs. Ole Miss (2/25/22)         |
| Runs: 2, 3x, last vs. James Madison (2/26/22) | RBI: 3, vs. Ole Miss (2/25/22)                        |
| Hits: 3, 2x, last vs. Florida (2/27/22)       | Walks: 3, vs. FGCU (3/4/22)                           |
| Doubles: 2, vs. FGCU (3/6/22)                 | Stolen Bases: 1, 4x, last vs. South Carolina (3/4/22) |
| Triples: 1, vs. Fresno State (2/12/22)        |   |

| Career Highs                                  |   |
|---|---|
| At-Bats: 5, 3x, last at Fresno State (3/9/22) | Home Runs: 2, at ECU (4/9/21)                         |
| Runs: 2, 5x, last vs. James Madison (2/26/22) | RBI: 4, 2x, last at Florida (4/14/21)                 |
| Hits: 4, at ECU (4/9/21)                      | Walks: 4, vs. St. John's (2/9/20)                     |
| Doubles: 2, vs. FGCU (3/6/22)                 | Stolen Bases: 1, 7x, last vs. South Carolina (3/4/22) |
| Triples: 1, vs. Fresno State (2/12/22)        |   |

**Quick Facts**

- Started the year 0-for-4 before smashing a walk off homer to lift the Knights over Georgia in the 8th inning on opening night
- Named to the AAC All-Rookie team in 2021
- Led the Knights with 11 home runs in 2021
- Posted a perfect 4-for-4 day with two home runs and three RBI in a 9-5 win over ECU on 4-9

- Primarily played DP and 1B in her first two seasons with UCF
- Posted a team high .443 batting average during the 202 season
- Posted a .541 slugging percentage in 2020 which was second best on the team
- Was a two-time first team all-state selection, including second team honors her freshman year
- Won a state championship all four seasons of high school

**Did You Know?**

**Major/Minor:** Psychology/Communications  
**Favorite Pro Team:** Tampa Bay Rays  
**Pre-game Ritual:** Prayer/Devotionals  
**Fun Fact:** I won a state championship all four years of high school  
**Hidden Talent:** I'm a dog trainer  
**Favorite Off-day Activity:** Hanging out with my dog, Coach  
**Favorite Food:** Chicken Parm

**Favorite Movie:** Miracle  
**Favorite TV Show:** Friends  
**Go-to Karaoke Song:** Love by Keshia Cole  
**Nickname Growing Up:** Shan  
**Second Favorite Sport:** Basketball

**Walk-up Songs:**  
 1. Roll in Peace - Kodak Black  
 2. Get Like Me - David Banner  
**Instagram Handle:** @shannon.doherty13

| Doherty's Career Stats |             |           |           |            |           |           |          |          |           |           |             |             |             |           |          |           |          |          |          |          |          |           |          |          |             |
|------------------------|-------------|-----------|-----------|------------|-----------|-----------|----------|----------|-----------|-----------|-------------|-------------|-------------|-----------|----------|-----------|----------|----------|----------|----------|----------|-----------|----------|----------|-------------|
| YEAR                   | AVG.        | GP        | GS        | AB         | R         | H         | 2B       | 3B       | HR        | RBI       | OBP         | SLG         | OPS         | BB        | HBP      | SO        | GDP      | SF       | SH       | SB       | SBA      | PO        | A        | E        | FLD%        |
| 2020                   | .443        | 25        | 23        | 61         | 8         | 27        | 0        | 0        | 2         | 15        | .507        | .541        | 1.048       | 9         | 1        | 10        | 0        | 2        | 0        | 1        | 1        | 10        | 0        | 0        | 1.000       |
| 2021                   | .307        | 60        | 55        | 153        | 19        | 47        | 6        | 0        | 11        | 37        | .382        | .562        | .944        | 14        | 5        | 12        | 3        | 1        | 2        | 2        | 2        | 53        | 0        | 1        | .981        |
| <b>TOTALS</b>          | <b>.346</b> | <b>85</b> | <b>78</b> | <b>214</b> | <b>27</b> | <b>74</b> | <b>6</b> | <b>0</b> | <b>13</b> | <b>52</b> | <b>.419</b> | <b>.556</b> | <b>.975</b> | <b>23</b> | <b>6</b> | <b>22</b> | <b>3</b> | <b>3</b> | <b>2</b> | <b>3</b> | <b>3</b> | <b>63</b> | <b>0</b> | <b>1</b> | <b>.984</b> |



# 55 GRACE JEWELL



Pitcher | So. | R/R | 6-1 | Chesapeake, Va. | Grassfield HS

| Season Highs (Pitching)                          |   |
|--|---|
| Innings Pitched: 7.0, vs. DePaul (2/26/22)       | Most Hits: 5, 2x, last vs. FGCU (3/5/22)          |
| Strikeouts: 6, vs. DePaul (2/26/22)              | Fewest Walks (Min. 5 IP): 1, vs. DePaul (2/26/22) |
| Fewest Runs (Min. 5 IP): 0, vs. DePaul (2/26/22) | Most Walks: 4, vs. Tennessee (2/19/22)            |
| Most Runs: 3, 2x, last vs. Tennessee (2/19/22)   |   |
| Fewest Hits (Min. 5 IP): 4, vs. DePaul (2/26/22) |   |

| Career Highs (Pitching)                                 |  |
|---|--|
| Innings Pitched: 7.0, vs. DePaul (2/26/22)              | Most Hits: 5, 2x, last vs. FGCU (3/5/22)                   |
| Strikeouts: 6, vs. DePaul (2/26/22)                     | Fewest Walks (Min. 5 IP): 1, 2x, last vs. DePaul (2/26/22) |
| Fewest Runs (Min. 5 IP): 0, vs. DePaul (2/26/22)        | Most Walks: 4, vs. Tennessee (2/19/22)                     |
| Most Runs: 4, vs. Kennesaw State (3/7/21)               |  |
| Fewest Hits (Min. 5 IP): 1, vs. Wichita State (4/17/21) |  |

| Season Highs (Batting)                           |                                |
|--|--------------------------------|
| At-Bats: 1, 6x, last vs. South Carolina (3/5/22) | Home Runs: 1, at FIU (2/23/22) |
| Runs: 1, at FIU (2/23/22)                        | RBI: 4, at FIU (2/23/22)       |
| Hits: 1, at FIU (2/23/22)                        | Walks: -                       |
| Doubles: -                                       | Stolen Bases: -                |
| Triples: -                                       |                                |

| Career Highs (Batting)                           |                                |
|--|--------------------------------|
| At-Bats: 1, 6x, last vs. South Carolina (3/5/22) | Home Runs: 1, at FIU (2/23/22) |
| Runs: 1, at FIU (2/23/22)                        | RBI: 4, at FIU (2/23/22)       |
| Hits: 1, at FIU (2/23/22)                        | Walks: -                       |
| Doubles: -                                       | Stolen Bases: -                |
| Triples: -                                       |                                |

**Quick Facts**

- In her second career at bat, Jewell hit a pinch-hit grand slam for her first collegiate hit (at FIU, 2/23). Her first career at bat came against Tennessee (2/19)
- Tossed first career complete game shutout against DePaul (2/26)
- Best outing of the 2021 season was 5.2 innings of work against Wichita State (4/17) where she allowed just one earned run and

- punched out four
- Brings the heat from the circle, touching 70 mph at times
- Made collegiate debut on 2/14/21 at FGCU
- Was a two-way player in high school, earning first team all-class 6 Region A in her junior season, earning the Silver Bat Award after posting a .429 batting average with six home runs

**Did You Know?**

**Major/Minor:** Sports Communication  
**Favorite Pro Athlete:** Shohei Ohtani  
**Favorite Pro Team:** Washington Nationals  
**Pre-Game Ritual:** Coffee  
**Fun Fact:** I can surf  
**Hidden Talent:** I can make shirts  
**Favorite Off-day Activity:** The Beach  
**Favorite Food:** Steak  
**Favorite Movie(s):** Nerve  
**Favorite TV Show:** Vampire Diaries

**Favorite Musical Artist:** Don Toliver  
**Go-To Karaoke Song:** Levitating by Dua Lipa ft DaBaby  
**Nickname Growing Up:** Big Mike  
**Second Favorite Sport:** Football

**Walk-up Songs:**  
 Pitching 1. Back in Blood - Pooh Shiesty  
 Pitching 2. GO! - Moneybagg Yo  
 Hitting. EA - Young Nudy  
**Instagram Handle:** @gracejewell55

| Jewell's Career Stats |             |          |          |          |          |          |          |          |          |             |           |           |           |          |          |          |          |          |           |             |          |          |          |          |          |
|-----------------------|-------------|----------|----------|----------|----------|----------|----------|----------|----------|-------------|-----------|-----------|-----------|----------|----------|----------|----------|----------|-----------|-------------|----------|----------|----------|----------|----------|
| YEAR                  | ERA         | W        | L        | App      | GS       | CG       | SHO      | CBO      | SV       | IP          | H         | R         | ER        | BB       | SO       | 2B       | 3B       | HR       | BF        | B/Avg.      | WP       | HBP      | BK       | SHA      | SFA      |
| 2021                  | 6.30        | 1        | 1        | 7        | 2        | 0        | 0        | 0        | 0        | 13.1        | 12        | 12        | 12        | 6        | 6        | 2        | 0        | 1        | 63        | .226        | 2        | 3        | 0        | 0        | 1        |
| <b>TOTALS</b>         | <b>6.30</b> | <b>1</b> | <b>1</b> | <b>7</b> | <b>2</b> | <b>0</b> | <b>0</b> | <b>0</b> | <b>0</b> | <b>13.1</b> | <b>12</b> | <b>12</b> | <b>12</b> | <b>6</b> | <b>6</b> | <b>2</b> | <b>0</b> | <b>1</b> | <b>63</b> | <b>.226</b> | <b>2</b> | <b>3</b> | <b>0</b> | <b>0</b> | <b>1</b> |

**2022 OVERALL STATS**
**Overall Statistics for UCF (as of Mar 10, 2022)  
(All games Sorted by Batting avg)**

Record: 17-7 Home: 12-3 Away: 3-0 Neutral: 2-4 Conference: 0-0

| Player               | avg  | gp-gs | ab  | r   | h   | 2b | 3b | hr | rbi | tb  | slg% | bb  | hp | so  | gdp | ob%  | sf | sh | sb-att | po  | a   | e  | fld%  |
|----------------------|------|-------|-----|-----|-----|----|----|----|-----|-----|------|-----|----|-----|-----|------|----|----|--------|-----|-----|----|-------|
| 46 Shannon Doherty   | .357 | 24-24 | 56  | 14  | 20  | 4  | 1  | 3  | 14  | 35  | .625 | 18  | 9  | 6   | 1   | .560 | 1  | 0  | 4-4    | 172 | 3   | 0  | 1.000 |
| 1 Maddie Bejarano    | .355 | 20-10 | 31  | 10  | 11  | 1  | 0  | 3  | 9   | 21  | .677 | 2   | 1  | 7   | 0   | .412 | 0  | 1  | 0-0    | 11  | 0   | 0  | 1.000 |
| 23 Allyse Volpe      | .353 | 16-12 | 34  | 15  | 12  | 3  | 0  | 0  | 2   | 15  | .441 | 3   | 2  | 6   | 0   | .436 | 0  | 0  | 1-2    | 7   | 0   | 1  | .875  |
| 17 Jada Cody         | .338 | 24-24 | 74  | 16  | 25  | 5  | 1  | 5  | 32  | 47  | .635 | 9   | 1  | 7   | 0   | .412 | 1  | 1  | 2-2    | 81  | 33  | 3  | .974  |
| 22 Kennedy Searcy    | .314 | 24-23 | 51  | 11  | 16  | 3  | 1  | 1  | 9   | 24  | .471 | 14  | 3  | 7   | 0   | .478 | 1  | 1  | 5-6    | 9   | 19  | 1  | .966  |
| 12 Justene Molina    | .313 | 20-20 | 48  | 10  | 15  | 5  | 1  | 0  | 7   | 22  | .458 | 10  | 0  | 5   | 1   | .431 | 0  | 0  | 2-3    | 19  | 36  | 4  | .932  |
| 5 Denali Schappacher | .295 | 24-21 | 61  | 15  | 18  | 0  | 1  | 0  | 4   | 20  | .328 | 9   | 1  | 9   | 0   | .394 | 0  | 0  | 7-8    | 17  | 1   | 2  | .900  |
| 28 Micaela Macario   | .294 | 22-22 | 51  | 14  | 15  | 4  | 0  | 0  | 18  | 19  | .373 | 11  | 0  | 9   | 0   | .419 | 0  | 2  | 10-10  | 21  | 41  | 6  | .912  |
| 9 Emmerson Lee       | .294 | 15-4  | 17  | 6   | 5   | 1  | 0  | 1  | 5   | 9   | .529 | 3   | 0  | 6   | 0   | .400 | 0  | 2  | 0-0    | 4   | 19  | 2  | .920  |
| 7 Johnisha Rowe      | .292 | 24-24 | 65  | 10  | 19  | 1  | 1  | 0  | 8   | 22  | .338 | 12  | 3  | 11  | 0   | .425 | 0  | 2  | 8-10   | 26  | 3   | 0  | 1.000 |
| 42 Savannah Adams    | .269 | 16-10 | 26  | 4   | 7   | 2  | 0  | 0  | 6   | 9   | .346 | 5   | 1  | 6   | 1   | .394 | 1  | 0  | 0-0    | 4   | 0   | 1  | .800  |
| 29 Damaria Cannon    | .250 | 7-0   | 4   | 2   | 1   | 0  | 0  | 0  | 1   | 1   | .250 | 1   | 0  | 0   | 0   | .400 | 0  | 0  | 0-0    | 1   | 0   | 0  | 1.000 |
| 27 Ashleigh Griffin  | .225 | 18-15 | 40  | 6   | 9   | 3  | 0  | 1  | 8   | 15  | .375 | 6   | 1  | 6   | 2   | .340 | 0  | 1  | 0-0    | 55  | 6   | 5  | .924  |
| 35 Carson Frier      | .200 | 9-2   | 10  | 3   | 2   | 0  | 0  | 0  | 1   | 2   | .200 | 0   | 0  | 3   | 0   | .200 | 0  | 0  | 0-0    | 18  | 1   | 0  | 1.000 |
| 20 Katie Burge       | .188 | 17-5  | 16  | 10  | 3   | 1  | 0  | 0  | 3   | 4   | .250 | 2   | 2  | 2   | 0   | .333 | 1  | 1  | 0-0    | 4   | 4   | 1  | .889  |
| 55 Grace Jewell      | .167 | 6-2   | 6   | 1   | 1   | 0  | 0  | 1  | 4   | 4   | .667 | 0   | 0  | 1   | 0   | .167 | 0  | 1  | 0-0    | 1   | 2   | 0  | 1.000 |
| 33 Averii Wong       | .000 | 6-0   | 3   | 3   | 0   | 0  | 0  | 0  | 1   | 0   | .000 | 1   | 0  | 2   | 0   | .250 | 0  | 0  | 1-1    | 0   | 0   | 0  | .000  |
| 24 Cassidy Cangemi   | .000 | 2-0   | 2   | 0   | 0   | 0  | 0  | 0  | 0   | 0   | .000 | 0   | 0  | 2   | 0   | .000 | 0  | 0  | 0-0    | 0   | 0   | 1  | .000  |
| Totals               | .301 | 24    | 595 | 150 | 179 | 33 | 6  | 15 | 132 | 269 | .452 | 106 | 24 | 95  | 5   | .423 | 5  | 12 | 40-46  | 454 | 198 | 30 | .956  |
| Opponents            | .257 | 24    | 592 | 85  | 152 | 25 | 3  | 14 | 70  | 225 | .380 | 66  | 12 | 132 | 8   | .341 | 5  | 6  | 27-31  | 432 | 181 | 35 | .946  |

LOB - Team (161), Opp (143). DPs turned - Team (11), Opp (6). IBB - Team (1), J. Cody 1. Picked off - A. Volpe 1, K. Burge 1, E. Lee 1.

**(All games Sorted by Earned run avg)**

| Player            | era  | w-l  | app | gs | cg | sho | sv | ip    | h   | r   | er  | bb  | so  | 2b | 3b | hr | b/avg | wp | hp | bk | sfa | sha |
|-------------------|------|------|-----|----|----|-----|----|-------|-----|-----|-----|-----|-----|----|----|----|-------|----|----|----|-----|-----|
| 8 Gianna Mancha   | 2.46 | 6-2  | 15  | 9  | 4  | 2/2 | 1  | 54.0  | 45  | 27  | 19  | 22  | 65  | 10 | 1  | 5  | .220  | 7  | 2  | 0  | 2   | 2   |
| 55 Grace Jewell   | 2.71 | 1-2  | 6   | 4  | 1  | 1/0 | 0  | 20.2  | 22  | 9   | 8   | 10  | 13  | 4  | 0  | 2  | .259  | 4  | 2  | 0  | 1   | 0   |
| 15 Kama Woodall   | 3.24 | 6-1  | 13  | 5  | 0  | 0/2 | 0  | 41.0  | 43  | 25  | 19  | 20  | 35  | 5  | 1  | 3  | .265  | 2  | 4  | 0  | 1   | 2   |
| 18 Kaitlyn Felton | 3.68 | 2-2  | 7   | 6  | 2  | 1/0 | 0  | 26.2  | 32  | 19  | 14  | 11  | 17  | 4  | 1  | 3  | .305  | 5  | 4  | 0  | 0   | 2   |
| 6 Angelina DeVoe  | 3.89 | 2-0  | 6   | 0  | 0  | 0/0 | 0  | 9.0   | 10  | 5   | 5   | 3   | 2   | 2  | 0  | 1  | .286  | 1  | 0  | 0  | 1   | 0   |
| Totals            | 3.01 | 17-7 | 24  | 24 | 7  | 6/2 | 1  | 151.1 | 152 | 85  | 65  | 66  | 132 | 25 | 3  | 14 | .257  | 19 | 12 | 0  | 5   | 6   |
| Opponents         | 6.03 | 7-17 | 24  | 24 | 4  | 2/1 | 2  | 144.0 | 179 | 150 | 124 | 106 | 95  | 33 | 6  | 15 | .301  | 21 | 24 | 0  | 5   | 12  |

PB - Team (8), J. Cody 3, A. Griffin 3, C. Frier 2, Opp (3). Pickoffs - Team (0), Opp (3). SBA/ATT - A. Griffin (15-17), J. Cody (11-13), K. Woodall (7-8), G. Mancha (7-8), K. Felton (6-7), G. Jewell (6-7), C. Frier (1-1), A. DeVoe (1-1).

**2021 CONFERENCE STATS**

Record: 16-7-1 Home: 7-4-1 Away: 9-3 Conference: 16-7-1

| Player               | avg  | gp-gs | ab  | r   | h   | 2b | 3b | hr | rbi | tb  | slg% | bb | hp | so  | gdp | ob%  | sf | sh | sb-att | po  | a   | e  | fld%  |
|----------------------|------|-------|-----|-----|-----|----|----|----|-----|-----|------|----|----|-----|-----|------|----|----|--------|-----|-----|----|-------|
| 23 Allyse Volpe      | .357 | 17-8  | 28  | 7   | 10  | 1  | 1  | 0  | 1   | 13  | .464 | 2  | 0  | 1   | 0   | .400 | 0  | 2  | 1-4    | 19  | 0   | 0  | 1.000 |
| 7 Jazmine Esparza    | .339 | 23-22 | 59  | 7   | 20  | 7  | 0  | 3  | 18  | 36  | .610 | 8  | 2  | 6   | 0   | .435 | 0  | 2  | 2-2    | 144 | 4   | 2  | .987  |
| 33 Kaitlyn Jensen    | .333 | 11-5  | 15  | 3   | 5   | 0  | 0  | 1  | 3   | 8   | .533 | 2  | 0  | 2   | 0   | .412 | 0  | 1  | 1-1    | 7   | 18  | 4  | .862  |
| 17 Jada Cody         | .320 | 24-24 | 75  | 16  | 24  | 4  | 0  | 5  | 13  | 43  | .573 | 9  | 2  | 3   | 0   | .407 | 0  | 2  | 6-6    | 40  | 43  | 4  | .954  |
| 46 Shannon Doherty   | .308 | 24-24 | 65  | 8   | 20  | 0  | 0  | 6  | 14  | 38  | .585 | 4  | 3  | 6   | 1   | .370 | 1  | 1  | 2-2    | 31  | 0   | 1  | .969  |
| 5 Denali Schappacher | .305 | 24-18 | 59  | 10  | 18  | 2  | 0  | 0  | 1   | 20  | .339 | 2  | 0  | 6   | 0   | .328 | 0  | 3  | 4-6    | 20  | 0   | 0  | 1.000 |
| 10 Juliana Wilson    | .296 | 24-14 | 54  | 8   | 16  | 4  | 0  | 3  | 14  | 29  | .537 | 6  | 0  | 7   | 0   | .355 | 2  | 0  | 2-3    | 18  | 1   | 1  | .950  |
| 4 Takiya London      | .286 | 20-1  | 7   | 4   | 2   | 0  | 0  | 1  | 3   | 5   | .714 | 1  | 1  | 3   | 0   | .444 | 0  | 0  | 1-1    | 11  | 9   | 0  | 1.000 |
| 20 Katie Burge       | .278 | 17-8  | 36  | 5   | 10  | 0  | 0  | 0  | 3   | 10  | .278 | 1  | 0  | 5   | 0   | .297 | 0  | 1  | 1-1    | 10  | 11  | 2  | .913  |
| 22 Kyra Klarkowski   | .277 | 24-21 | 47  | 8   | 13  | 3  | 0  | 1  | 5   | 19  | .404 | 9  | 1  | 10  | 0   | .397 | 1  | 2  | 3-3    | 30  | 2   | 0  | 1.000 |
| 13 Karissa Ornelas   | .274 | 23-22 | 62  | 6   | 17  | 1  | 0  | 1  | 3   | 21  | .339 | 11 | 1  | 5   | 0   | .392 | 0  | 1  | 1-1    | 92  | 4   | 2  | .980  |
| 12 Justene Molina    | .171 | 23-22 | 41  | 6   | 7   | 2  | 0  | 0  | 3   | 9   | .220 | 3  | 2  | 4   | 1   | .261 | 0  | 3  | 2-2    | 42  | 25  | 3  | .957  |
| 2 Hayley Bejarano    | .167 | 6-1   | 6   | 0   | 1   | 0  | 0  | 0  | 1   | 1   | .167 | 0  | 0  | 0   | 0   | .167 | 0  | 0  | 0-0    | 0   | 0   | 1  | .000  |
| 16 Kennedy Searcy    | .154 | 9-7   | 26  | 4   | 4   | 1  | 0  | 0  | 1   | 5   | .192 | 3  | 1  | 2   | 0   | .267 | 0  | 1  | 8-8    | 20  | 2   | 0  | 1.000 |
| 25 Georgia Blair     | .148 | 23-19 | 61  | 4   | 9   | 1  | 0  | 1  | 6   | 13  | .213 | 10 | 1  | 12  | 0   | .278 | 0  | 0  | 1-1    | 16  | 20  | 6  | .857  |
| 14 Kasey Fava        | .000 | 9-0   | 7   | 3   | 0   | 0  | 0  | 0  | 0   | 0   | .000 | 1  | 0  | 0   | 0   | .125 | 0  | 0  | 2-2    | 1   | 0   | 0  | 1.000 |
| 1 Madelyn Bejarano   | .000 | 15-0  | 2   | 1   | 0   | 0  | 0  | 0  | 0   | 0   | .000 | 0  | 0  | 1   | 0   | .000 | 0  | 0  | 0-1    | 3   | 0   | 0  | 1.000 |
| -----                |      |       |     |     |     |    |    |    |     |     |      |    |    |     |     |      |    |    |        |     |     |    |       |
| 29 Damaria Cannon    | .000 | 1-0   | 0   | 0   | 0   | 0  | 0  | 0  | 0   | 0   | .000 | 0  | 0  | 0   | 0   | .000 | 0  | 0  | 0-0    | 0   | 0   | 0  | .000  |
| Totals               | .271 | 24    | 650 | 100 | 176 | 26 | 1  | 22 | 89  | 270 | .415 | 72 | 14 | 73  | 2   | .354 | 4  | 19 | 37-44  | 507 | 169 | 26 | .963  |
| Opponents            | .202 | 24    | 630 | 56  | 127 | 25 | 0  | 10 | 52  | 182 | .289 | 47 | 12 | 121 | 3   | .268 | 4  | 13 | 17-20  | 496 | 220 | 23 | .969  |

LOB - Team (163), Opp (144). DPs turned - Team (3), Opp (3). CI - Team (2), K. Ornelas 2. IBB - Team (2), G. Blair 1, J. Esparza 1.

**(Conference Sorted by Earned run avg)**

| Player             | era   | w-l  | app | gs | cg | sho | sv | ip    | h   | r   | er | bb | so  | 2b | 3b | hr | b/avg | wp | hp | bk | sfa | sha |
|--------------------|-------|------|-----|----|----|-----|----|-------|-----|-----|----|----|-----|----|----|----|-------|----|----|----|-----|-----|
| 55 Grace Jewell    | 1.11  | 0-0  | 2   | 0  | 0  | 0/0 | 0  | 6.1   | 1   | 1   | 1  | 1  | 4   | 1  | 0  | 0  | .053  | 0  | 0  | 0  | 1   | 0   |
| 27 Alea White      | 1.34  | 8-4  | 15  | 12 | 9  | 3/1 | 0  | 89.0  | 60  | 25  | 17 | 19 | 63  | 8  | 0  | 5  | .183  | 2  | 3  | 0  | 2   | 8   |
| 8 Gianna Mancha    | 2.01  | 5-1  | 12  | 9  | 5  | 2/1 | 2  | 59.1  | 45  | 18  | 17 | 23 | 45  | 12 | 0  | 3  | .205  | 1  | 8  | 0  | 0   | 4   |
| 21 Breanna Vasquez | 3.00  | 3-1  | 6   | 2  | 0  | 0/0 | 0  | 11.2  | 14  | 7   | 5  | 4  | 9   | 3  | 0  | 0  | .275  | 3  | 1  | 0  | 0   | 0   |
| 18 Angelina DeVoe  | 10.50 | 0-1  | 2   | 1  | 0  | 0/0 | 0  | 2.0   | 5   | 3   | 3  | 0  | 0   | 0  | 0  | 1  | .500  | 0  | 0  | 0  | 0   | 1   |
| 24 Cassidy Cangemi | 14.00 | 0-0  | 1   | 0  | 0  | 0/0 | 0  | 1.0   | 2   | 2   | 2  | 0  | 0   | 1  | 0  | 1  | .500  | 0  | 0  | 0  | 1   | 0   |
| Totals             | 1.86  | 16-7 | 24  | 24 | 14 | 6/1 | 2  | 169.1 | 127 | 56  | 45 | 47 | 121 | 25 | 0  | 10 | .202  | 6  | 12 | 0  | 4   | 13  |
| Opponents          | 3.85  | 7-16 | 24  | 24 | 11 | 4/0 | 1  | 165.1 | 176 | 100 | 91 | 72 | 73  | 26 | 1  | 22 | .271  | 15 | 14 | 0  | 4   | 19  |

PB - Team (1), K. Ornelas 1, Opp (3). SBA/ATT - K. Ornelas (14-16), A. White (10-11), G. Mancha (6-8), J. Wilson (3-3), A. DeVoe (1-1), J. Cody (0-1).

**2022 BATTING LEADERS**
**Batting Leaders for UCF (as of Mar 10, 2022)  
(All games)**

 Hitting minimums - 4 Games 1 AB 1.0 AB/Game 2.0 TPA/Game  
 Pitching minimums - 1 Games 1 IP 1 Decisions 1.0 IP/Game

|                         |      |                         |      |                                |       |
|-------------------------|------|-------------------------|------|--------------------------------|-------|
| <b>Batting avg</b>      |      | <b>Slugging pct</b>     |      | <b>On base pct</b>             |       |
| 1. 46 Shannon Doherty   | .357 | 1. 17 Jada Cody         | .635 | 1. 46 Shannon Doherty          | .560  |
| 2. 17 Jada Cody         | .338 | 2. 46 Shannon Doherty   | .625 | 2. 22 Kennedy Searcy           | .478  |
| 3. 22 Kennedy Searcy    | .314 | 3. 22 Kennedy Searcy    | .471 | 3. 12 Justene Molina           | .431  |
| 4. 12 Justene Molina    | .313 | 4. 12 Justene Molina    | .458 | 4. 7 Johneisha Rowe            | .425  |
| 5. 5 Denali Schappacher | .295 | 5. 27 Ashleigh Griffin  | .375 | 5. 28 Micaela Macario          | .419  |
| <b>Runs scored</b>      |      | <b>Hits</b>             |      | <b>Runs batted in</b>          |       |
| 1. 17 Jada Cody         | 16   | 1. 17 Jada Cody         | 25   | 1. 17 Jada Cody                | 32    |
| 2. 5 Denali Schappacher | 15   | 2. 46 Shannon Doherty   | 20   | 2. 28 Micaela Macario          | 18    |
| 23 Allyse Volpe         | 15   | 3. 7 Johneisha Rowe     | 19   | 3. 46 Shannon Doherty          | 14    |
| 4. 28 Micaela Macario   | 14   | 4. 5 Denali Schappacher | 18   | 4. 22 Kennedy Searcy           | 9     |
| 46 Shannon Doherty      | 14   | 5. 22 Kennedy Searcy    | 16   | 1 Maddie Bejarano              | 9     |
| <b>Doubles</b>          |      | <b>Triples</b>          |      | <b>Home runs</b>               |       |
| 1. 17 Jada Cody         | 5    | 1. 6 tied at.....       | 1    | 1. 17 Jada Cody                | 5     |
| 12 Justene Molina       | 5    |                         |      | 2. 1 Maddie Bejarano           | 3     |
| 3. 46 Shannon Doherty   | 4    |                         |      | 46 Shannon Doherty             | 3     |
| 28 Micaela Macario      | 4    |                         |      | 4. 4 tied at.....              | 1     |
| 5. 3 tied at.....       | 3    |                         |      |                                |       |
| <b>Total bases</b>      |      | <b>Walks</b>            |      | <b>Hit by pitch</b>            |       |
| 1. 17 Jada Cody         | 47   | 1. 46 Shannon Doherty   | 18   | 1. 46 Shannon Doherty          | 9     |
| 2. 46 Shannon Doherty   | 35   | 2. 22 Kennedy Searcy    | 14   | 2. 22 Kennedy Searcy           | 3     |
| 3. 22 Kennedy Searcy    | 24   | 3. 7 Johneisha Rowe     | 12   | 7 Johneisha Rowe               | 3     |
| 4. 12 Justene Molina    | 22   | 4. 28 Micaela Macario   | 11   | 4. 23 Allyse Volpe             | 2     |
| 7 Johneisha Rowe        | 22   | 5. 12 Justene Molina    | 10   | 20 Katie Burge                 | 2     |
| <b>Sac bunts</b>        |      | <b>Sac flies</b>        |      | <b>Stolen bases</b>            |       |
| 1. 7 Johneisha Rowe     | 2    | 1. 20 Katie Burge       | 1    | 1. 28 Micaela Macario          | 10    |
| 9 Emmerson Lee          | 2    | 46 Shannon Doherty      | 1    | 2. 7 Johneisha Rowe            | 8     |
| 28 Micaela Macario      | 2    | 42 Savannah Adams       | 1    | 3. 5 Denali Schappacher        | 7     |
| 4. 6 tied at...         | 1    | 17 Jada Cody            | 1    | 4. 22 Kennedy Searcy           | 5     |
|                         |      | 22 Kennedy Searcy       | 1    | 5. 46 Shannon Doherty          | 4     |
| <b>Caught stealing</b>  |      | <b>Steal attempts</b>   |      | <b>Stolen base pct</b>         |       |
| 1. 7 Johneisha Rowe     | 2    | 1. 7 Johneisha Rowe     | 10   | 1. 17 Jada Cody                | 1.000 |
| 2. 5 Denali Schappacher | 1    | 28 Micaela Macario      | 10   | 46 Shannon Doherty             | 1.000 |
| 23 Allyse Volpe         | 1    | 3. 5 Denali Schappacher | 8    | 28 Micaela Macario             | 1.000 |
| 22 Kennedy Searcy       | 1    | 4. 22 Kennedy Searcy    | 6    | 4. 5 Denali Schappacher        | .875  |
| 12 Justene Molina       | 1    | 5. 46 Shannon Doherty   | 4    | 5. 22 Kennedy Searcy           | .833  |
| <b>Strikeouts</b>       |      | <b>Grounded into DP</b> |      | <b>Total plate appearances</b> |       |
| 1. 7 Johneisha Rowe     | 11   | 1. 27 Ashleigh Griffin  | 2    | 1. 17 Jada Cody                | 86    |
| 2. 28 Micaela Macario   | 9    | 2. 12 Justene Molina    | 1    | 2. 46 Shannon Doherty          | 84    |
| 5 Denali Schappacher    | 9    | 42 Savannah Adams       | 1    | 3. 7 Johneisha Rowe            | 82    |
| 4. 3 tied at.....       | 7    | 46 Shannon Doherty      | 1    | 4. 5 Denali Schappacher        | 71    |
|                         |      |                         |      | 5. 22 Kennedy Searcy           | 70    |
| <b>At bats</b>          |      | <b>Games played</b>     |      | <b>Game starts</b>             |       |
| 1. 17 Jada Cody         | 74   | 1. 7 Johneisha Rowe     | 24   | 1. 7 Johneisha Rowe            | 24    |
| 2. 7 Johneisha Rowe     | 65   | 17 Jada Cody            | 24   | 17 Jada Cody                   | 24    |
| 3. 5 Denali Schappacher | 61   | 5 Denali Schappacher    | 24   | 46 Shannon Doherty             | 24    |
| 4. 46 Shannon Doherty   | 56   | 46 Shannon Doherty      | 24   | 4. 22 Kennedy Searcy           | 23    |
| 5. 2 tied at.....       | 51   | 22 Kennedy Searcy       | 24   | 5. 28 Micaela Macario          | 22    |
| <b>Games as sub</b>     |      |                         |      |                                |       |
| 1. 20 Katie Burge       | 12   |                         |      |                                |       |
| 2. 9 Emmerson Lee       | 11   |                         |      |                                |       |
| 3. 1 Maddie Bejarano    | 10   |                         |      |                                |       |
| 4. 35 Carson Frier      | 7    |                         |      |                                |       |
| 29 Damaria Cannon       | 7    |                         |      |                                |       |

2022 PITCHING LEADERS

Pitching Leaders for UCF (as of Mar 10, 2022)  
(All games)

Hitting minimums - 4 Games 1 AB 1.0 AB/Game 2.0 TPA/Game  
Pitching minimums - 1 Games 1 IP 1 Decisions 1.0 IP/Game

|   |   |   |
|---|---|---|
| <p><b>Earned run avg</b></p> <p>1. 8 Gianna Mancha 2.46<br/>2. 15 Kama Woodall 3.24<br/>3. 18 Kaitlyn Felton 3.68</p>   | <p><b>Opposing bat avg</b></p> <p>1. 8 Gianna Mancha .220<br/>2. 15 Kama Woodall .265<br/>3. 18 Kaitlyn Felton .305</p>   | <p><b>Won-loss pct</b></p> <p>1. 15 Kama Woodall .857<br/>2. 8 Gianna Mancha .750<br/>3. 18 Kaitlyn Felton .500</p>   |
| <p><b>Wins</b></p> <p>1. 15 Kama Woodall 6<br/>8 Gianna Mancha 6<br/>3. 6 Angelina DeVoe 2<br/>18 Kaitlyn Felton 2<br/>5. 55 Grace Jewell 1</p>               | <p><b>Losses</b></p> <p>1. 18 Kaitlyn Felton 2<br/>8 Gianna Mancha 2<br/>55 Grace Jewell 2<br/>4. 15 Kama Woodall 1</p>   | <p><b>Saves</b></p> <p>1. 8 Gianna Mancha 1</p>   |
| <p><b>Innings pitched</b></p> <p>1. 8 Gianna Mancha 54.0<br/>2. 15 Kama Woodall 41.0<br/>3. 18 Kaitlyn Felton 26.2</p>  | <p><b>Batters struck out</b></p> <p>1. 8 Gianna Mancha 65<br/>2. 15 Kama Woodall 35<br/>3. 18 Kaitlyn Felton 17<br/>4. 55 Grace Jewell 13<br/>5. 6 Angelina DeVoe 2</p> | <p><b>Appearances</b></p> <p>1. 8 Gianna Mancha 15<br/>2. 15 Kama Woodall 13<br/>3. 18 Kaitlyn Felton 7<br/>4. 6 Angelina DeVoe 6<br/>55 Grace Jewell 6</p>   |
| <p><b>Games started</b></p> <p>1. 8 Gianna Mancha 9<br/>2. 18 Kaitlyn Felton 6<br/>3. 15 Kama Woodall 5<br/>4. 55 Grace Jewell 4</p>                          | <p><b>Games finished</b></p> <p>1. 15 Kama Woodall 6<br/>2. 6 Angelina DeVoe 5<br/>3. 8 Gianna Mancha 4<br/>4. 18 Kaitlyn Felton 1<br/>55 Grace Jewell 1</p>            | <p><b>Games in relief</b></p> <p>1. 15 Kama Woodall 8<br/>2. 8 Gianna Mancha 6<br/>6 Angelina DeVoe 6<br/>4. 55 Grace Jewell 2<br/>5. 18 Kaitlyn Felton 1</p> |
| <p><b>Wild pitches</b></p> <p>1. 8 Gianna Mancha 7<br/>2. 18 Kaitlyn Felton 5<br/>3. 55 Grace Jewell 4<br/>4. 15 Kama Woodall 2<br/>5. 6 Angelina DeVoe 1</p> | <p><b>Balks</b></p>   | <p><b>Hit batters</b></p> <p>1. 15 Kama Woodall 4<br/>18 Kaitlyn Felton 4<br/>3. 55 Grace Jewell 2<br/>8 Gianna Mancha 2</p>                                  |
| <p><b>Intentional BB allowed</b></p>  | <p><b>Runners picked off</b></p>  | <p><b>Batters SO out looking</b></p> <p>1. 8 Gianna Mancha 11<br/>2. 15 Kama Woodall 5<br/>3. 55 Grace Jewell 2<br/>18 Kaitlyn Felton 2</p>                   |
| <p><b>Sac bunts allowed</b></p> <p>1. 8 Gianna Mancha 2<br/>18 Kaitlyn Felton 2<br/>15 Kama Woodall 2</p>   | <p><b>Sac flies allowed</b></p> <p>1. 8 Gianna Mancha 2<br/>2. 55 Grace Jewell 1<br/>15 Kama Woodall 1<br/>6 Angelina DeVoe 1</p>                                       | <p><b>Hits allowed</b></p> <p>1. 18 Kaitlyn Felton 32<br/>2. 15 Kama Woodall 43<br/>3. 8 Gianna Mancha 45</p>   |
| <p><b>Runs allowed</b></p> <p>1. 18 Kaitlyn Felton 19<br/>2. 15 Kama Woodall 25<br/>3. 8 Gianna Mancha 27</p>   | <p><b>Earned runs allowed</b></p> <p>1. 18 Kaitlyn Felton 14<br/>2. 15 Kama Woodall 19<br/>8 Gianna Mancha 19</p>   | <p><b>Walks allowed</b></p> <p>1. 18 Kaitlyn Felton 11<br/>2. 15 Kama Woodall 20<br/>3. 8 Gianna Mancha 22</p>  |
| <p><b>Doubles allowed</b></p> <p>1. 18 Kaitlyn Felton 4<br/>2. 15 Kama Woodall 5<br/>3. 8 Gianna Mancha 10</p>  | <p><b>Triples allowed</b></p> <p>1. 15 Kama Woodall 1<br/>18 Kaitlyn Felton 1<br/>8 Gianna Mancha 1</p>   | <p><b>Home runs allowed</b></p> <p>1. 18 Kaitlyn Felton 3<br/>15 Kama Woodall 3<br/>3. 8 Gianna Mancha 5</p>  |

**TEAM GAME HIGHS**
**Batting**

|                  |    |   |   |
|------------------|----|---|---|
| At bats:         | 35 | - | at Fresno State (Mar 09, 2022)              |
| Runs scored:     | 15 | - | vs Texas (Feb 19, 2022 at Clearwater, Fla.) |
| Hits:            | 15 | - | vs Florida (Feb 27, 2022)                   |
| RBIs:            | 11 | - | vs James Madison (Feb 26, 2022)             |
|                  | 11 | - | vs FGCU (Mar 05, 2022)                      |
| Doubles:         | 6  | - | vs Florida (Feb 27, 2022)                   |
| Triples:         | 1  | - | (6 times )                                  |
| Home runs:       | 2  | - | at FIU (Feb 23, 2022)                       |
|                  | 2  | - | vs FGCU (Mar 04, 2022)                      |
|                  | 2  | - | vs FGCU (Mar 05, 2022)                      |
| Total bases:     | 21 | - | vs Florida (Feb 27, 2022)                   |
|                  | 21 | - | vs FGCU (Mar 04, 2022)                      |
| Walks:           | 10 | - | vs Georgia (Feb 10, 2022)                   |
|                  | 10 | - | vs Longwood (Feb 12, 2022)                  |
| Strikeouts:      | 9  | - | vs Georgia (Feb 10, 2022)                   |
| Sac hits:        | 2  | - | vs South Carolina (Mar 04, 2022)            |
|                  | 2  | - | vs FGCU (Mar 04, 2022)                      |
| Sac flies:       | 2  | - | vs DePaul (Feb 26, 2022)                    |
| Stolen bases:    | 5  | - | vs Texas (Feb 19, 2022 at Clearwater, Fla.) |
| Hit by pitch:    | 3  | - | vs Liberty (Feb 15, 2022)                   |
|                  | 3  | - | at Pacific (3/8/2022)                       |
| Caught stealing: | 1  | - | (6 times )                                  |
| Runners LOB:     | 12 | - | vs Florida (Feb 27, 2022)                   |
| Hit into DP:     | 1  | - | (6 times )                                  |

**Fielding**

|               |    |   |  |
|---------------|----|---|--|
| Putouts:      | 24 | - | vs Georgia (Feb 10, 2022)                      |
|               | 24 | - | vs Texas Tech (Feb 18, 2022 at Clearwater, FL) |
| Assists:      | 17 | - | vs Texas (Feb 19, 2022 at Clearwater, Fla.)    |
| Errors:       | 4  | - | vs Georgia (Feb 10, 2022)                      |
|               | 4  | - | vs Texas (Feb 19, 2022 at Clearwater, Fla.)    |
|               | 4  | - | vs Florida (Feb 27, 2022)                      |
| Passed balls: | 2  | - | vs Tennessee (Feb 19, 2022 at Clearwater, FL)  |
| DPs turned:   | 2  | - | vs Liberty (Feb 15, 2022)                      |
|               | 2  | - | vs South Carolina (Mar 04, 2022)               |

**Pitching**

|                  |     |   |  |
|------------------|-----|---|--|
| Innings pitched: | 8.0 | - | vs Georgia (Feb 10, 2022)                      |
|                  | 8.0 | - | vs Texas Tech (Feb 18, 2022 at Clearwater, FL) |
| Runs allowed:    | 12  | - | vs Florida (Feb 27, 2022)                      |
| Earned runs:     | 9   | - | vs Florida (Feb 27, 2022)                      |
| Walks allowed:   | 9   | - | vs Florida (Feb 27, 2022)                      |
| Strikeouts:      | 13  | - | vs Texas Tech (Feb 18, 2022 at Clearwater, FL) |
| Hits allowed:    | 12  | - | vs Florida (Feb 27, 2022)                      |
| Doubles allowed: | 4   | - | vs Texas (Feb 19, 2022 at Clearwater, Fla.)    |
| Triples allowed: | 1   | - | vs Michigan (Feb 18, 2022 at Clearwater, Fla.) |
|                  | 1   | - | vs Texas Tech (Feb 18, 2022 at Clearwater, FL) |
|                  | 1   | - | at Fresno State (Mar 09, 2022)                 |



## 2022 GAME HIGHS (INDIVIDUAL)

## Batting

|                  |   |   |
|------------------|---|---|
| At bats:         | 5 | - (4 times )  |
| Runs scored:     | 4 | - Allyse Volpe vs Texas (Feb 19, 2022 at Clearwater, Fla.)    |
| Hits:            | 4 | - Jada Cody vs Texas (Feb 19, 2022 at Clearwater, Fla.)       |
| RBI:             | 6 | - Micaela Macario vs James Madison (Feb 26, 2022)             |
| Doubles:         | 2 | - Micaela Macario vs James Madison (Feb 26, 2022)             |
|                  | 2 | - Allyse Volpe vs Florida (Feb 27, 2022)                      |
|                  | 2 | - Shannon Doherty vs FGCU (Mar 06, 2022)                      |
| Triples:         | 1 | - (6 times )  |
| Home runs:       | 1 | - (15 times )   |
| Total bases:     | 6 | - Jada Cody vs Fresno State (Feb 12, 2022)                    |
|                  | 6 | - Jada Cody vs FGCU (Mar 05, 2022)                            |
|                  | 6 | - Jada Cody vs FGCU (Mar 06, 2022)                            |
| Walks:           | 3 | - Johnneisha Rowe vs Georgia (Feb 10, 2022)                   |
|                  | 3 | - Johnneisha Rowe vs Florida (Feb 27, 2022)                   |
|                  | 3 | - Shannon Doherty vs FGCU (Mar 04, 2022)                      |
| Strikeouts:      | 2 | - (8 times )  |
| Sac hits:        | 2 | - Emmerson Lee vs FGCU (Mar 04, 2022)                         |
| Sac flies:       | 1 | - (5 times )  |
| Stolen bases:    | 3 | - Micaela Macario vs Texas (Feb 19, 2022 at Clearwater, Fla.) |
| Hit by pitch:    | 3 | - Shannon Doherty at Pacific (3/8/2022)                       |
| Caught stealing: | 1 | - (6 times )  |
| Runners LOB:     | 4 | - Ashleigh Griffin vs Liberty (Feb 15, 2022)                  |
|                  | 4 | - Johnneisha Rowe vs Ole Miss (Feb 25, 2022)                  |
|                  | 4 | - Shannon Doherty at Fresno State (Mar 09, 2022)              |

## Fielding

|               |    |  |
|---------------|----|--|
| Putouts:      | 15 | - Shannon Doherty vs Georgia (Feb 10, 2022)                        |
| Assists:      | 8  | - Kennedy Searcy vs South Carolina (Mar 04, 2022)                  |
| Errors:       | 2  | - Ashleigh Griffin vs Wisconsin (Feb 17, 2022 at Clearwater, Fla.) |
| Passed balls: | 1  | - (8 times )   |

## Pitching

|                  |     |   |
|------------------|-----|---|
| Innings pitched: | 7.0 | - Grace Jewell vs DePaul (Feb 26, 2022)                         |
|                  | 7.0 | - Gianna Mancha vs Oakland (Feb 28, 2022)                       |
|                  | 7.0 | - Gianna Mancha vs FGCU (Mar 04, 2022)                          |
| Runs allowed:    | 8   | - Kama Woodall vs Florida (Feb 27, 2022)                        |
| Earned runs:     | 7   | - Kama Woodall vs Florida (Feb 27, 2022)                        |
| Walks allowed:   | 4   | - Grace Jewell vs Tennessee (Feb 19, 2022 at Clearwater, FL)    |
|                  | 4   | - Kama Woodall vs Florida (Feb 27, 2022)                        |
|                  | 4   | - Gianna Mancha vs Florida (Feb 27, 2022)                       |
| Strikeouts:      | 10  | - Gianna Mancha vs Texas Tech (Feb 18, 2022 at Clearwater, FL)  |
|                  | 10  | - Gianna Mancha vs FGCU (Mar 04, 2022)                          |
| Hits allowed:    | 10  | - Kaitlyn Felton vs Michigan (Feb 18, 2022 at Clearwater, Fla.) |
| Doubles allowed: | 2   | - (6 times )  |
| Triples allowed: | 1   | - Kaitlyn Felton vs Michigan (Feb 18, 2022 at Clearwater, Fla.) |
|                  | 1   | - Kama Woodall vs Texas Tech (Feb 18, 2022 at Clearwater, FL)   |
|                  | 1   | - Gianna Mancha at Fresno State (Mar 09, 2022)                  |
| Homers allowed:  | 2   | - Gianna Mancha vs Georgia (Feb 10, 2022)                       |

**2022 GAME RESULTS**
**Game Results for UCF (as of Mar 10, 2022)  
(All games)**

| <b>Date</b>  | <b>Opponent</b>    | <b>Score</b> | <b>Inns</b> | <b>Overall</b> | <b>Conference</b> | <b>Pitcher of record</b> | <b>Attend</b> | <b>Time</b> |
|--------------|--------------------|--------------|-------------|----------------|-------------------|--------------------------|---------------|-------------|
| Feb 10, 2022 | #12 GEORGIA        | w 7-6        | (8)         | 1-0-0          | 0-0-0             | K. Woodall (W 1-0)       | 1093          | 3:17        |
| Feb 11, 2022 | MINNESOTA          | L 1-3        | 7           | 1-1-0          | 0-0-0             | G. Jewell (L 0-1)        | 634           | 2:32        |
| Feb 12, 2022 | FRESNO STATE       | w 6-1        | 7           | 2-1-0          | 0-0-0             | K. Felton (W 1-0)        | 575           | 2:16        |
| Feb 12, 2022 | LONGWOOD           | w 9-1        | 5           | 3-1-0          | 0-0-0             | G. Mancha (W 1-0)        | 864           | 2:09        |
| Feb 15, 2022 | LIBERTY            | w 3-0        | 7           | 4-1-0          | 0-0-0             | K. Woodall (W 2-0)       | 379           | 2:22        |
| Feb 17, 2022 | vs Wisconsin       | L 1-9        | 5           | 4-2-0          | 0-0-0             | G. Mancha (L 1-1)        | 0             | 1:56        |
| Feb 18, 2022 | vs #19 Michigan    | L 0-6        | 7           | 4-3-0          | 0-0-0             | K. Felton (L 1-1)        | 0             | 2:19        |
| Feb 18, 2022 | vs Texas Tech      | w 7-3        | (8)         | 5-3-0          | 0-0-0             | G. Mancha (W 2-1)        | 0             | 1:45        |
| Feb 19, 2022 | vs #15 Tennessee   | L 2-6        | 7           | 5-4-0          | 0-0-0             | G. Jewell (L 0-2)        | 0             | 2:58        |
| Feb 19, 2022 | vs #11 Texas       | w 15-10      | 7           | 6-4-0          | 0-0-0             | A. DeVoe (W 1-0)         | 4853          | 3:36        |
| Feb 20, 2022 | vs #6 Fresno State | L 0-8        | 5           | 6-5-0          | 0-0-0             | K. Woodall (L 2-1)       | 0             | 1:39        |
| Feb 23, 2022 | at FIU             | w 11-0       | 5           | 7-5-0          | 0-0-0             | G. Mancha (W 3-1)        | 247           | 1:52        |
| Feb 25, 2022 | OLE MISS           | w 6-3        | 7           | 8-5-0          | 0-0-0             | K. Woodall (W 3-1)       | 931           | 3:00        |
| Feb 26, 2022 | JAMES MADISON      | w 11-0       | 5           | 9-5-0          | 0-0-0             | K. Felton (W 2-1)        | 889           | 1:34        |
| Feb 26, 2022 | DEPAUL             | w 2-0        | 7           | 10-5-0         | 0-0-0             | G. Jewell (W 1-2)        | 889           | 1:55        |
| Feb 27, 2022 | #4 FLORIDA         | L 11-12      | 7           | 10-6-0         | 0-0-0             | G. Mancha (L 3-2)        | 1152          | 3:40        |
| Feb 28, 2022 | OAKLAND            | w 3-0        | 7           | 11-6-0         | 0-0-0             | G. Mancha (W 4-2)        | 230           | 1:59        |
| Mar 04, 2022 | SOUTH CAROLINA     | L 2-5        | 7           | 11-7-0         | 0-0-0             | K. Felton (L 2-2)        | 466           | 2:25        |
| Mar 04, 2022 | FGCU               | w 9-2        | 7           | 12-7-0         | 0-0-0             | G. Mancha (W 5-2)        | 466           | 2:17        |
| Mar 05, 2022 | SOUTH CAROLINA     | w 5-4        | 7           | 13-7-0         | 0-0-0             | K. Woodall (W 4-1)       | 528           | 2:41        |
| Mar 05, 2022 | FGCU               | w 11-2       | 5           | 14-7-0         | 0-0-0             | A. DeVoe (W 2-0)         | 528           | 1:59        |
| Mar 06, 2022 | FGCU               | w 10-2       | 5           | 15-7-0         | 0-0-0             | K. Woodall (W 5-1)       | 421           | 2:15        |
| 3/8/2022     | at Pacific         | w 8-0        | 5           | 16-7-0         | 0-0-0             | K. Woodall (W 6-1)       | 196           | 1:40        |
| Mar 09, 2022 | at Fresno State    | w 10-2       | 7           | 17-7-0         | 0-0-0             | G. Mancha (W 6-2)        | 1041          | 2:22        |

() extra inning game





TV ROSTER



**#1 - Maddie Bejarano**  
So. | OF | 5-5  
Cottonwood, Ariz.



**#5 - Denali Schappacher**  
Sr. | OF | 5-6  
Bradenton, Fla.



**#6 - Angelina Devoe**  
So. | LHP | 5-0  
Carson, Calif.



**#7 - Johneisha Rowe**  
So. | OF | 5-5  
Avon Park, Fla.



**#8 - Gianna Mancha**  
Sr. | RHP | 5-7  
Fresno, Calif.



**#9 - Emerson Lee**  
R-Fr. | INF | 5-8  
Clovis, Calif.



**#10 - Juliana Wilson**  
So. | C | 5-6  
Watsonville, Calif.



**#12 - Justene Molina**  
Sr. | INF | 5-3  
Corona, Calif.



**#15 - Kama Woodall**  
R-Sr. | RHP | 5-10  
Spring Hill, Fla.



**#17 - Jada Cody**  
So. | UTL | 5-9  
Murrieta, Calif.



**#18 - Kaitlyn Felton**  
Fr. | RHP | 5-8  
Valrico, Fla.



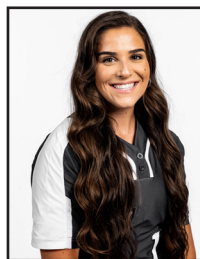
**#20 - Katie Burge**  
So. | UTL | 5-4  
Miami, Fla.



**#22 - Kennedy Searcy**  
So. | UTL | 5-7  
Jacksonville, Fla.



**#23 - Allyse Volpe**  
Jr. | OF | 5-3  
Scarborough, Ontario



**#24 - Cassidy Cangemi**  
Sr. | RHP | 5-7  
Agua Dulce, Calif.



**#27 - Ashleigh Griffin**  
Fr. | C/IF | 5-7  
Newnan, Ga.



**#28 - Micaela Macario**  
Fr. | IF | 5-6  
Chula Vista, Calif.



**#29 - Damaris Cannon**  
Sr. | OF | 5-3  
Moreno Valley, Calif.



**#33 - Averi Wong**  
Fr. | OF | 5-2  
Arcadia, Calif.



**#35 - Carson Frier**  
Fr. | C/IF | 5-5  
Live Oak, Fla.



**#42 - Savannah Adams**  
Fr. | 1B | 5-8  
La Mirada, Calif.



**#46 - Shannon Doherty**  
So. | 1B | 5-8  
Avon Park, Fla.

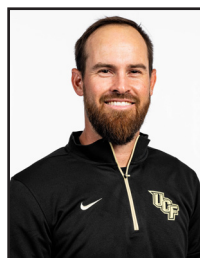


**#55 - Grace Jewell**  
So. | RHP | 6-1  
Chesapeake, Va.

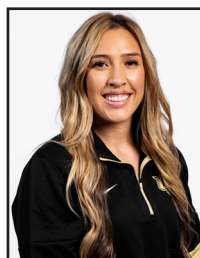
Coaching Staff



**Cindy Ball-Malone**  
Head Coach  
4th Season with UCF



**Tyler Heil**  
Assistant Coach  
1st Season with UCF



**Whitney Jones**  
Assistant Coach  
1st Season with UCF



**Kaija Gibson**  
Vol. Assistant Coach  
1st Season with UCF



**Alea White**  
Graduate Student Assistant  
1st Season with UCF



**Adam DeRusha**  
Director of Operations  
1st Season with UCF