



PURDUE BOILERMAKERS

2024 VOLLEYBALL GAME NOTES

BIG

SID: Rachel Coe | coer@purdue.edu | Office: 765-496-7842 | Cell: 518-729-9960
900 John R. Wooden Drive, West Lafayette, IN 47907

2024 PURDUE VOLLEYBALL SCHEDULE

Overall Record: 25-6 (16-4 Big Ten)
Home: 11-2 Away: 10-3

Neutral: 4-1

AUGUST

30 #RV K-State (BIG+)* W, 3-1
31 UMBC (BIG+)* W, 3-0

SEPTEMBER

1 UC Davis (BIG+)* W, 3-0
5 vs. California W, 3-1
6 at Utah W, 3-0
7 at Utah State (MWN) W, 3-0
13 vs. Houston* W, 3-0
14 vs. #10 Kentucky* W, 3-1
19 at #10 Kansas# L, 1-3
20 vs. #9 Creighton# L, 1-3
21 vs. Tulsa# W, 3-0
25 #4 PENN STATE (BTN)* L, 0-3
28 at #16 Minnesota (BTN)* W, 3-2

OCTOBER

4 at Northwestern (BIG+)* W, 3-1
6 MICHIGAN STATE (BTN)* W, 3-0
11 at #2 Nebraska (BTN)* L, 2-3
12 at Iowa (BIG+)* W, 3-1
17 #RV UCLA (BIG+)* W, 3-2
19 INDIANA (Mackey Arena | BTN)* W, 3-0
23 OHIO STATE (BTN)* W, 3-0
26 #8 WISCONSIN (Mackey Arena | NBC)* L, 0-3

NOVEMBER

1 at Maryland (BTN)* W, 3-0
2 at Rutgers (BIG+)* W, 3-0
8 at Indiana (BIG+)* W, 3-1
10 MICHIGAN (BIG+)* W, 3-0
14 RUTGERS (BIG+)* W, 3-0
17 ILLINOIS (BTN)* W, 3-0
21 at #4 Penn State (BTN)* L, 0-3
23 #21 USC (BIG+)* W, 3-0
27 at #13 Oregon (BTN)* W, 3-2
29 at #RV Washington (BTN)* W, 3-0

DECEMBER

5 Western Michigan (ESPN+)% 6:30 p.m.
6 NCAA Second Round (ESPN+)% 6 p.m.

All Times Eastern
* Big Ten match
% NCAA Tournament
^ Stacey Clark Classic
+ SMU Doubletree Invitational
Jayhawk Classic

NCAA FIRST ROUND ON ESPN+

#5 BYU

19-9 | 12-6 Big 12

Coach: Heather Olmstead (10th season)
Record at Purdue: 257-45

VS

LOYOLA CHICAGO

21-11 | 13-5 A10

Coach: Amanda Berkley (7th season)
Record at Loyola Chicago: 135-76

THUR. 12/5 - 3:30 PM ET - WEST LAFAYETTE, IND. - HOLLOWAY GYMNASIUM

#4 PURDUE BOILERMAKERS

25-6 | 16-4 Big Ten

Coach: Dave Shondell (22nd season)
Record at Purdue: 484-231

VS

WESTERN MICHIGAN

20-12 | 13-5 MAC

Coach: Colleen Munson (20th season)
Record at WMU: 400-235

THUR. 12/5 - 6:30 PM ET - WEST LAFAYETTE, IND. - HOLLOWAY GYMNASIUM - ESPN+

SERIES HISTORY: 14-9-1 | LAST MEETING: W, 3-1 IN BOWLING GREEN, KY. (9/13/14)

NCAA SECOND ROUND ON ESPN+

#4 PURDUE BOILERMAKERS

OR
WESTERN MICHIGAN

VS

#5 BYU

OR
LOYOLA CHICAGO

SERIES HISTORY VS. BYU: 2-4 | LAST MEETING: W, 3-2 AT PITTSBURGH - NCAA REGIONAL SEMIFINALS (12/9/21)

SERIES HISTORY VS. LOYOLA CHICAGO | LAST MEETING: L, 2-3 AT PURDUE (8/27/23)

SCHEDULE NOTES

- Purdue ended the regular-season with the toughest final four matches in Purdue volleyball history, with all four vs. teams ranked or receiving votes, with three on the road: at #4 Penn State (L, 0-3), vs. #23 USC (W, 3-0), at #13 Oregon (W, 3-2 in reverse sweep fashion) and at #RV Washington (W, 3-0).
- Purdue had a stretch of five top-16 foes in six matches, which included three straight top-10 showdowns.
- Not only are 100% of Purdue's losses to current top-12 teams, 60% (4 of 5) are to current top-6 teams.
- The schedule featured six non-conference matchups vs. 2023 NCAA Tournament teams.
- A total of 12 matches were against teams ranked or receiving votes in the 2023 final poll.
- Purdue played two matches in its historic **Mackey Arena**: vs. Indiana (10/19) and vs. #8 Wisconsin (10/26).
- The year marked the **most road matches** in non-conference action since 2008, with Purdue at home for two matches in the month of September.

PURDUE'S 16-4 BIG TEN RECORD

- Purdue finished fourth in the Big Ten standings, marking the third time in the last four seasons Purdue's finished as high in the toughest conference in America.
- It is the eighth time under HC Dave Shondell the team's finished fourth or better in the Big Ten standings.
- The team entered November with just three Big Ten losses, marking the second straight year and seventh time Purdue has had such few losses under Shondell that far into league play.
- It is the fourth time under HC Shondell Purdue has finished Big Ten play with five losses or less (2023's 15-5 record, 2021's 15-5 record and 2011's 16-4 record).

25-WIN SEASONS

- Purdue's 25 regular-season wins are the second-most since the 1980's (most: 26 in 2011).
- It is the 10th season in Purdue history, including fifth under HC Dave Shondell, Purdue has started the year with a 20-5 record or better.
- Dave Shondell has reached the 20-win benchmark 16 times in his 22-season career.
- When Purdue has reached 20 wins as quickly as the 2024 squad, Purdue's reached the NCAA Regional Semifinals 86% of the time.

50 SEASONS

25 NCAA
TOURNAMENT
APPEARANCES

23 AVCA
ALL-AMERICANS

AVCA/Taraflex
Top-25 Coaches Poll (12/2)

Rank	School	Record	Previous Rank
1	Pittsburgh	29-1	1
2	Penn State	29-2	4
3	Nebraska	29-2	2
4	Louisville	25-5	3
5	Stanford	25-4	6
6	Creighton	29-2	5
7	Wisconsin	23-6	7
8	Arizona State	29-2	8
9	Purdue	25-6	9
10	SMU	24-7	10
11	Kentucky	20-7	12
12	Kansas	24-4	11
13	Texas	18-6	14
14	Oregon	22-7	13
15	Minnesota	20-10	15
16	Baylor	22-7	16
17	Utah	24-5	17
18	Georgia Tech	20-9	19
19	Southern California	21-9	20
20	TCU	21-7	22
21	Florida State	21-9	21
22	Florida	21-7	18
23	Dayton	29-2	23
24	BYU	19-9	RV
25	Missouri	20-8	24

Receiving votes: North Carolina 69; Miami (FL) 40; Texas A&M 32; Marquette 30; Western Kentucky 13; South Dakota State 5

Purdue In The AVCA/Taraflex Poll

Date	Rank	Date	Rank
2023 Final	#13	W7 (10/14)	#10
2024 Preseason	#8	W8 (10/21)	#10
W1 (9/2)	#8	W9 (10/28)	#11
W2 (9)	#7	W10 (11/4)	#9
W3 (9/16)	#6	W11 (11/11)	#8
W4 (9/23)	#10	W12 (11/18)	#8
W5 (9/30)	#10	W13 (11/25)	#9
W6 (10/7)	#10	W14 (12/2)	#9
		Final	

Big Ten of the Week Awards

Player 9/2:	Eva Hudson
Setter 9/9:	Taylor Anderson
Defensive 9/16:	Raven Colvin
Defensive 10/7:	Ali Hornung
Defensive 11/4:	Ali Hornung
Player 11/11:	Eva Hudson

AVCA National Player of the Week

Player 9/2:	Eva Hudson
-------------	------------

THREE ALL-AMERICANS RETURN FOR 2024 SEASON

- Purdue returns all three AVCA All-America honorees: junior Eva Hudson (second team), sophomore Chloe Chicoine (third team) and senior Raven Colvin (honorable mention).
- Hudson is the youngest Boilermaker to receive Second Team All-America honors since 1986.
- Chicoine's third team accolade was the highest-ever AVCA All-America honor by a Purdue newcomer.

PURDUE VOLLEYBALL'S ALL-TIME WINNINGEST HEAD COACH

- With the sweep vs. Michigan State on 10/6, HC Dave Shondell became the all-time winningest head coach in Purdue volleyball history, surpassing AVCA Hall of Famer Carol Dewey, with his 470th win.
- Shondell is one of two active head coaches in the Big Ten with as many wins at their institution (joined by John Cook) and is one of seven among Power 4 programs.

PROGRAM RECORDS FALLING

- Since Big Ten play has started, nine program records have been set or tied: two Big Ten regular-season match and Purdue home attendance record (14,876 fans vs. Indiana, 10/19 and again vs. #8 Wisconsin, 10/26); Longest match (2:53 at #2 Nebraska); Most team aces in a 5-set match during the rally-scoring era (17 at then-#16 Minnesota); Most aces by an individual in a 5-set match during the rally-scoring era (7 by Raven Colvin at then-#16 Minnesota); Most aces by a freshman (6 by Ryan McAleer); Most team digs in a 3-set match in the current 25-point rally scoring (71 vs. Michigan State); Most wins in program history (Dave Shondell, 470).
- Raven Colvin will have the opportunity to break the Purdue record for block assists in a single-season. She needs four block assists to tie the current record of 550 by Stephanie Lynch (2008) and five to set a new Boilermaker all-time high.

THE #7 OVERALL DRAFT PICK: RAVEN COLVIN

- With the seventh overall pick of the Pro Volleyball Federation draft, the Grand Rapids Rise selected Raven Colvin.
- One of Purdue's best blockers in program history, Colvin ranks #2 in Purdue history in career total blocks, block assists and blocks per set and #8 in block solos. She is also #3 in the nation among Division I active players in career blocks per set.
- The Grand Rapids Rise, which includes Purdue alums Jena Otec (2017-21) and Sherridan Atkinson (2016-18), will begin its season January 10 and runs through May 2, 2025.

PURDUE WELCOMED 4 ON NATIONAL SIGNING DAY

- Purdue ushered in a loaded 2025 signing class featuring three 6'3" players, including the #1 player out of the state of Indiana, and a 5'9" defensive specialist, who is rated as the top libero in the nation.
- Joining for the 2025 season: setter Isabelle Bardin, outside hitter Addy Tindall, defensive specialist Aniya Warren and middle blocker Morgan Williams.
- Warren and Tindall were named First Team AVCA All-America and Addy Tindall Second Team All-America on Wednesday.

SWEET SWEEPS

- Purdue totaled 16 sweeps during the regular season, the most since 2017.

FULL STEAM AHEAD

- Purdue had just one loss in the month of November (at #4 Penn State). Meanwhile, over the last two months, Purdue is

PURDUE: QUICK HITS

- Eva Hudson was named an AVCA Player of the Year Semifinalist, one of 14 in the nation to receive the honor. Chicoine was also included on the watch list released in September.
- The Boilermakers have posted 16 sweeps this season and competed in just four five-set matches, which Purdue owns a 3-1 record in.
- This season, Purdue's only losses come to top-11 programs, with five in the top-6 in the nation.
- Three Boilers are averaging more than 2.0 kills per set: Hudson (4.73), Chicoine (3.08) and Colvin (2.55).
- Purdue's hitting % (.274) would rank as #3 in Purdue single-season history if things were to end today. It would be **just the second time this century the Boilers have hit so efficiently**.
- Since Big Ten play started, Purdue is averaging two more digs per set compared to their non-con action.
- Eva Hudson has stepped up in the biggest matches of the season. She set a season-high 28 kills at #13 Oregon for a reverse-sweep, 26 kills on a .349% at #2 Nebraska (and matched it with 26 kills on .350% at Indiana, 11/8), 17 kills vs. now-#7 Wisconsin and nearly had an errorless match at now-#12 Kansas, committing just one attack error in the final points of the match. This season, she is averaging 4.63 kills per set and 5.06 points per set this season.

DEFENSE LIVES HERE

- In the last seven years, Purdue has held opponents to a .191 average attack % or lower in 2024 (.190), 2022 (.194%), 2021 (.173), 2020 (.180), 2019 (.189), 2018 (.191).
- When looking at the back row, Purdue's owns 15.86 digs per set this season. **To put in perspective, it is just the second time in the last 10 years the Boilermakers have posted that kind of number (other: 2020's 16.00 digs per set).**

HUDSON: IMPROVING AS THE SEASON GOES

- Like last year, Hudson is improving during Big Ten action. She has increased her kills per set (4.34 in non-con vs. 4.97 in Big Ten play), hitting % (.279 in non-con vs. .282 in Big Ten), digs per set (2.21 in non-con vs. 2.59 in Big Ten).
- In a head-to-head comparison of Hudson's first 10 matches of the season vs. the last 10, she has upped offensive production: 5.39 kills/set vs. 4.40, .283 hitting % vs. .272% and 194.5 total points vs. 169.5.

PURDUE IN THE NATIONAL RANKINGS: 124 CONSECUTIVE WEEKS

- The program has been ranked for 124 consecutive weeks (since preseason 2017), the longest active streak in Purdue Athletics.
- Since the 2021 spring season, Purdue has been ranked among the top-10 for 40 weeks.
- The Boilermakers' history of excellence includes 59 of the last 74 weeks ranked among the top-15 (79%).
- Purdue has spent the entirety of the 2024 season in the top-11 (includes preseason poll).

TEAM EFFICIENCY

- Purdue is hitting .274% on the season, which ranks #3 in program history as the most efficient season.
- It's on track to be the second time this century for Purdue to hit over .263% in an entire season.
- Number of matches hitting over .300%: 12
- Number of matches hitting over .360%: 5
- Number of matches hitting over .400%: 2

PURDUE VS TOP-25 TEAMS

- The Boilermakers had a stretch of playing six ranked opponents in a 10 match span, all of which are currently ranked in the top-15.
- Notable Stats:: .311 team attack % and 15 blocks at #2 Nebraska; reverse sweep at #13 Oregon.
- The Boilers totaled 79 digs at then-#16 Minnesota, a season-high, along with 17 aces, a program record-tying number in a Big Ten match.

All-Big Ten Team History Under HC Dave Shondell

Year	Name
2024	Eva Hudson (1st Team) Raven Colvin (1st Team) Chloe Chicoine (2nd Team) Taylor Anderson (2nd Team)
2023	Eva Hudson (1st Team, unanimous) Raven Colvin (1st Team) Chloe Chicoine (1st Team) Maddie Schermerhorn (2nd Team)
2022	Eva Hudson (1st Team) Raven Colvin (2nd Team) Maddie Schermerhorn (2nd Team)
2021	Hayley Bush (1st Team) Grace Clevenald (1st Team) Caitlyn Newton (1st Team) Jena Otec (2nd Team)
2020	Hayley Bush (1st Team) Grace Clevenald (1st Team) Caitlyn Newton (1st Team) Jena Otec (1st Team)
2019	Grace Cleveland (1st Team) Blake Mohler (1st Team) Caitlyn Newton (2nd Team)
2018	Sherridan Atkinson (1st Team) Blake Mohler (1st Team)
2017	Sherridan Atkinson (1st Team) Danielle Cuttino (1st Team)
2016	Danielle Cuttino (1st Team) Faye Adelaja (HM)
2015	Annie Drews (1st Team) Faye Adelaja (HM)
2014	Val Nichol (1st Team) Annie Drews (1st Team)
2013	Val Nichol (1st Team) Carly Cramer (HM)
2012	Ariel Turner (1st Team) Carly Cramer (HM)
2011	Tiffany Fisher (1st Team) Ariel Turner (1st Team)
2010	Jaclyn Hart (1st Team)
2009	Tiffany Fisher (HM)
2008	Stephanie Lynch (HM)
2007	Stephanie Lynch (1st Team)
2006	Stephanie Lynch (1st Team)
2005	Renata Dargan (1st Team) Stephanie Lynch (HM)
2004	Kim McConaha (1st Team) Renata Dargan (HM)
2003	Renata Dargan (HM) Kim McConaha (HM)

#4 SEED PURDUE IN THE NCAA TOURNAMENT

- Purdue's hosted the 1st/2nd Rounds in four of the last five eligible years (2020's tournament was held in Omaha).
- The Boilermakers have earned an NCAA tournament bid for the past 10 straight years.
- Dave Shondell has led Purdue to the tournament 19 times in his 22 years of coaching and owns a 32-17 record in the Big Dance (65%).
- Purdue made back-to-back Regional Final berths in 2020 and 2021.
- Purdue NCAA Tournament Record: 37-25 (.593%)
- Number of Second Round Appearances: 22
- Number of Regional Semifinal Appearances: 16
- Regional Semifinals record under Shondell: 4-6 (Last: 2021)
- Number of Regional Finals Appearances: 5 (1982, 2010, 2013, 2020, 2021)
- Dave Shondell has never lost a First Round match.
- Overall, Purdue is 23-2 in First Round matches, with the last loss coming in 1990 (other: 1984).

LOOK BACK AT PURDUE VS. #5-SEED BYU IN THE REGIONAL SEMIFINALS (2021 AT PITT)

- Purdue took down BYU in the sweet sixteen in 2021 in the biggest comeback in program history, fending off four consecutive set points as Purdue stormed back to win Set 5, 18-16. Purdue out-scored BYU 8-2 to advance to the elite eight.
- BYU has two players on its roster (Alyssa Erickson and Elyze Stowell) who were on the Regional Semifinal Team, however neither saw action in the match.
- Raven Colvin recorded 11 kills on a .444 hitting % and a match-leading eight blocks.

BIG DANCE. BIG NUMBERS

- Last year, two individual records for postseason play was broken in the NCAA Second Round match vs. Marquette in Holloway Gymnasium: freshman setter Taylor Anderson recorded a career-high 60 kills and libero fifth-year libero Maddie Schermerhorn totaled 25 digs.
- Last year, Hudson averaged 5.50 kills per set. Meanwhile as a freshman she averaged 4.38 per set.

5-SETTERS IN POSTSEASON PLAY

- Purdue's last five setter came in 2022 during the first round vs. Tennessee (14-25, 25-14, 22-25, 25-22, 15-11).

FIRST ROUND RESULTS

- Purdue has earned 10 sweeps in Round 1, four have gone to 4 Sets and three have gone to 5 Sets. Purdue has won every First Round match under Shondell's leadership.

4 RECEIVE BIG TEN POSTSEASON AWARDS

- Four Boilermakers were named to the Big Ten volleyball postseason awards with Eva Hudson and Raven Colvin named First Team All-Big Ten while Chloe Chicoine and Taylor Anderson received Second Team honors.
- It is the fourth time Purdue has earned as many first or second teamers in the last five years.
- It is Hudson's third consecutive year as a first team honoree, Colvin's second straight first team and third overall all-conference team nod, Chicoine's second all-conference nod (first team in 2023) and Anderson's first.
- Picking up where she left off, junior Hudson led the Big Ten in kills for the third consecutive year, totaling 516 kills during the regular season (4.73 per set).
- Senior middle blocker Colvin leads the Big Ten in blocks and ranks No. 4 nationally with 1.56 blocks per set.
- Chicoine, a sophomore outside hitter and second team honoree, had a well-rounded season which saw sound passing, an increase in digs and blocking and season-highs in the top matches of the year.
- Anderson, a sophomore setter, has guided the team to the second-highest hitting % in a single Purdue season (.274%) this century.
- Additionally, Sydney Yim was selected as Purdue's Sportsmanship Award recipient, earned by one student-athlete per institution.

Purdue Records NCAA Tournament Matches-Only

Kills

30, Joan King, vs. Nebraska, 12/11/82

Attempts

76, Ariel Turner, twice
vs. #21 Florida State, 12/9/11
vs. #11 Minnesota, 12/7/12

Hitting Percentage (minimum 10 attempts)

.750 (9-0-12), Jaclyn Hart vs. Kentucky, 12/3/10

Assists

60, Taylor Anderson, vs. Marquette, 12/1/23

Aces

5, Jan Hoosline, vs. Rutgers, 12/5/82
5, Natalie Haben vs. Iowa State, 12/1/16

Blocks Solo

7, Kate Crandell, vs. Nebraska, 12/11/82

Block Assists

9, Stephanie Lynch, vs. Louisville, 12/5/08

Total Blocks

12 (5-7), Kate Crandell,
vs. Western Michigan, 12/9/83

Digs

25, Maddie Schermerhorn
vs. Marquette, 12/1/23

Kills

92 vs. Nebraska, 12/11/82

Attempts

215, vs. Nebraska, 12/11/82

Hitting Percentage

.454 (52-8-97), vs. Iowa State, 12/1/16

Assists

76, vs. Colorado State, 12/2/04

Aces

13, vs. Penn State, 12/4/87

Solo Blocks

14, vs. Nebraska, 12/11/82

Block Assists

26, at Florida State, 12/1/12
26, vs. Dayton, 12/3/21

Total Blocks

22, vs. Nebraska, 12/11/82

Digs

90, vs. Western Michigan, 12/9/83
vs. Nebraska, 12/13/85

Purdue Seeding in the NCAA Tournament by Year

2024: 4 seed

2023: 3 seed

2022: 8 seed

NCAA changes from 16-seed to 32-seed style

2021: 6 seed

2020: 7 seed

2019: 16 seed



Big Ten Individual Rankings

Blocks Per Set
No. 1 Raven Colvin (1.56)

Total Assists
No. 2 Taylor Anderson (1,208)

Total Kills
No. 1 Eva Hudson (516)

Total Blocks
No. 1 Raven Colvin (170)

Digs Per Set
No. 2 Ali Hornung (4.24)

Kills Per Set
No. 1 Eva Hudson (4.73)

Total Attacks
No. 1 Eva Hudson (1,368)
No. 11 Chloe Chicoine (1,028)

Points Per Set
No. 2 Eva Hudson (5.17)

Big Ten Team Rankings

No. 1 | Attacks Per Set (35.82)

No. 1 | Digs Per Set (15.86)

No. 2 | Receive % (94.9)

No. 2 | Total Kills (1,551)

No. 2 | Total Digs (1,729)

No. 2 | Assists Per Set (13.19)

No. 2 | Kills Per Set (14.23)

No. 4 | Hitting % (.274)

No. 3 | Points Per Set (18.26)

No. 4 | Blocks Per Set (2.76)

NCAA 2024 Attendance Rankings

Attendance	Match, Date
1. 15,084	Marquette at Wisconsin, 9/17
2. 14,876	Indiana at #10 Purdue, 10/19
14,876	#8 Wisconsin at #10 Purdue, 10/26
3. 14,126	Nebraska at Louisville, 9/22
4. 14,035	Texas vs. Wisconsin, 9/1
14,035	Stanford vs. Minnesota, 9/1

2024 Indiv. National Rankings

Blocks Per Set
No. 4 Raven Colvin (1.56)

Total Blocks
No. 5 Raven Colvin (170)

Assists Per Set
No. 9 Taylor Anderson (11.08)

Attacks Per Set
No. 8 Eva Hudson (12.55)

Points Per Set
No. 18 Eva Hudson (5.17)

Total Kills
No. 11 Eva Hudson (516)

Kills Per Set
No. 10 Eva Hudson (4.73)

Career Blocks Per Set
No. 3 Raven Colvin (1.39)

Career Total Blocks
No. 4 Raven Colvin (628)

Career Kills Per Set
No. 4 Eva Hudson (4.47)

Career Attacks Per Set
No. 3 Eva Hudson (12.07)

Career Assists Per Set
No. 9 Taylor Anderson (10.48)

CHICOINE'S ERRORLESS PERFORMANCE VS. INDIANA

- Chloe Chicoine went errorless on the attack vs. Indiana (10/19), recording 12 kills on 30 attacks for a .400 clip.
- The last time a Purdue outside hitter went errorless with a 30 attack minimum was All-American Grace Cleveland vs. Indiana in 2021.
- In fact, Chicoine is just the third Boilermaker in the last 10 years to go errorless on the attack with a 30-attempt minimum. In addition to Cleveland's match, she is joined by a performance by Sherridan Atkinson.
- She is the only outside hitter in the Big Ten to go errorless on the attack in league action this year, and is just the second overall this season, joined by Oregon's Mimi Colyer's 12-0-33 (.364%) show vs. San Diego on Sept. 14.
- Meanwhile, she went errorless in seven of eight sets (vs. UCLA and vs. Indiana).

600 CAREER BLOCKS AND COUNTING: RAVEN COLVIN

- Colvin reached her 600th career block vs. Rutgers. She is the second Boilermaker to ever reach the milestone, joining Purdue record-holder Stephanie (Lynch) Harpenau (660 TB, 2005-08).
- She ranks #2 in program history with 628 career blocks and 1.39 career blocks per set.
- She has the opportunity to break the Purdue record for block assists in a single-season. She needs four block assists to tie the current record of 550 by Stephanie Lynch and five to set a new Boilermaker all-time high.
- Meanwhile, she is 15 kills away from reaching 1,000.

PURDUE IN 5-SET MATCHES

- Purdue is 12-6 in five-set matches over the last three seasons, including 3-1 in 2024.
- The Boilermakers have gone errorless in 2 of 3 fifth sets this year: 13-0-27 at #2 Nebraska and 9-0-20 vs. #RV UCLA).
- The Boilers have hit over .30000 in every 5th set this season (.429 at #16 Minnesota, .481% at #2 Nebraska, .450 vs. #RV UCLA and .304% at #13 Oregon).

HORNUNG STEPPING UP

- Libero Ali Hornung is averaging 4.24 digs per set this season, on track to rank #6 in Purdue single-season history, surpassing Carly Cramer in 2012).
- She's improved as the season's gone on, averaging 4.38 digs/set in Big Ten play and 5.03 over the last 10 matches.
- She reached 1,000 career digs at Penn State, becoming the 21st Boilermaker to reach the milestone, including the second Hornung.

PURDUE AT #2 NEBRASKA

- Purdue's 2-hour 53-minute five-setter at #2 Nebraska was the longest match in known-program history (research available through 1999). The second-longest match in program history was also last year's five-setter vs. #2 Nebraska, which clocked in at 2 hours and 51 minutes.
- The Boilermakers held match point, 14-13 and went errorless in Set 5 (13-0-27) for a .481 set clip.
- In addition to Purdue edging Nebraska in efficiency, .311% vs. .242%, Purdue blew Nebraska's previous opponents away as the most efficient team the Huskers have faced (previous opponent-high: SMU's .242% on 9/3/24).
- Purdue out-blocked Nebraska, 15-5, holding the Huskers to a season-low. Raven Colvin was on 11 of those 15 blocks.
- Eva Hudson and Chloe Chicoine went off, combining for 48 kills and each hitting over .300% in the match.
- The Achilles heel for Purdue was service errors, tallying 19 errors in the match, including four in Set 5.

HUDSON NAMED AVCA NATIONAL PLAYER OF THE WEEK: W1

- The Stacey Clark Classic MVP led the league with 46 kills and 50.5 points.
- Averaged 4.60 kills per set
- Hit over .430 in back-to-back matches (.467% vs. UMBC and .433 vs. UC Davis)
- Recorded just one attack error vs. UMBC (8/31)
- Posted a double-double in the season-opener vs. K-State, recording 16 kills, 12 digs and a career-high-tying 5 blocks, which were the most since her freshman season.
- Was one dig shy of her second double-double of the season with her 15-kill, 9 dig performance vs. UC Davis.

2024 Team National Rankings

No. 9 | Assists Per Set (13.19)

No. 10 | Kills Per Set (14.23)

No. 12 | Blocks Per Set (2.76)

No. 21 | Hitting % (.274)

BIG
S T A N D I N G S
Final

School	Big Ten Record	Overall Record	Overall Pct.
Nebraska	19-1	29-2	.935
Penn State	19-1	29-2	.935
Wisconsin	17-3	23-6	.793
Purdue	16-4	25-6	.806
Oregon	14-6	22-7	.759
USC	13-7	21-9	.700
Minnesota	13-7	20-10	.667
Illinois	10-10	18-12	.600
Washington	9-11	19-11	.633
Michigan	8-12	18-13	.581
Indiana	8-12	15-15	.500
UCLA	8-12	14-15	.483
Ohio State	7-13	14-16	.467
Michigan State	6-14	13-18	.419
Maryland	5-15	14-17	.452
Iowa	4-16	10-22	.312
Northwestern	3-17	5-23	.179
Rutgers	1-19	6-25	.194

Wins vs. Top-10 Opponents

Last 8 Years (2017-present)

Opponent	Score	Date
vs. #10 Kentucky	3-1	9/14/24
vs. #3 Wisconsin	3-2	11/17/23
vs. #8 Minnesota	3-0	9/23/22
vs. #3 Ohio State	3-2	9/24/21
vs. #3 Wisconsin	3-1	10/31/21
at #4 Wisconsin	3-1	11/12/21
at #8 Minnesota	3-1	11/14/21
vs. #5 BYU	3-2	12/9/21
at #10 Penn State	3-1	3/5/21
at #9 Ohio State	3-1	3/26/21
at #9 Ohio State	3-1	3/27/21
vs. #5 Nebraska	3-2	10/26/19
at #4 Penn State	3-2	10/27/18
vs. #9 Creighton	3-1	9/8/17
vs. #5 Minnesota	3-1	11/10/17
vs. #10 Wisconsin	3-0	11/11/17
vs. #10 Michigan State	3-1	11/24/17
vs. #9 Stanford	3-2	9/9/16
vs. #4 Kansas	3-1	9/16/16
vs. #3 Minnesota	3-2	11/21/15

Top-25 Wins in Holloway

By Most Recent (Since 2011)

Opponent	Score	Date
vs. #21 USC	3-0	11/23/2024
vs. #3 Wisconsin	3-2	11/17/2023
vs. #16 Penn State	3-2	11/5/2023
vs. #19 Kentucky	3-2	9/9/2023
vs. #8 Minnesota	3-0	9/23/2022
vs. #3 Wisconsin	3-1	10/31/2021
vs. #15 Penn State	3-2	10/17/2021
vs. #3 Ohio State	3-2	9/24/2021
vs. #22 Tennessee	3-0	9/18/2021
vs. #16 Marquette*	3-1	12/7/2019
vs. #23 Michigan	3-0	11/23/2019
vs. #5 Nebraska	3-2	10/26/2019
vs. #10 Michigan State	3-1	11/24/2017
vs. #10 Wisconsin	3-0	11/11/2017
vs. #13 Michigan	3-1	10/28/2016
vs. #4 Kansas	3-1	9/16/2016
vs. #3 Minnesota	3-2	11/21/2015
vs. #18 Illinois	3-2	10/25/2015
vs. #22 Ohio State	3-2	10/18/2014
vs. #19 Michigan State	3-2	11/30/2013
vs. #6 Nebraska	3-0	11/22/2013
vs. #15 Wisconsin	3-2	11/2/2013
vs. #12 Ohio State	3-0	10/4/2013
vs. #21 Illinois	3-2	9/29/2012
vs. #21 Northern Iowa	3-0	8/24/2012

The Snapshot: Last Week in Review

NATIONAL RANKINGS

- No. 5 | Eva Hudson (15.25 attacks per set)
- No. 7 | Ali Hornung (43 digs)
- No. 10 | Taylor Anderson (94 assists)
- No. 12 | Eva Hudson (41 kills)

AMONG THE BIG TEN

- T-No. 1 | Ali Hornung (5.38 digs per set)
- No. 2 | Taylor Anderson (11.75 assists per set)
- No. 4 | Eva Hudson (5.13 kills per set)
- No. 5 | Eva Hudson (5.56 points per set)
- No. 8 | Lourdes Myers (.387 attack %)
- No. 1 | Team Digs Per Set (18.13)
- No. 2 | Team Kills per Set (14.88)
- T-No. 4 | Team Assists per Set (13.50)

LAST WEEK'S NEED-TO-KNOW

- Purdue closed out the regular season with a reverse sweep at #13 Oregon (19-25, 22-25, 29-27, 25-23, 15-13) and a sweep at #RV Washington (25-14, 25-23, 29-27).
- In both matches, the team came from behind to take sets: at Oregon, they erased two match point opportunities in Set 3. Then at Washington, they stormed back from a 14-22 deficit to take the sweep, 29-27.
- Eva Hudson posted a Big Ten-match leading and season-high 28 kills at #13 Oregon, including 20 kills once Purdue began its reverse sweep (included 7 kills in Set 3, 9 kills in Set 4). She totaled 29 points in Eugene, just .5 off from her season-high. Hudson had a double-double in each match.
- Ali Hornung averaged a Big Ten-leading 5.38 digs per set, helping lead Purdue to the #1 mark in the league with 18.13 digs per set. She also posted 21 digs at Washington, the most by a Big Ten player in a 3-set match last week.
- At #13 Oregon, Purdue set a season-high 72 kills, Taylor Anderson set a season-high 57 assists, Eva Hudson had a season-high 28 kills, Chloe Chicoine had a season-high 20 digs.

14,876 STRONG: SETTING A BIG TEN-MATCH ATTENDANCE RECORD

- Purdue set the Big Ten regular-season match attendance record, the state of Indiana attendance record for volleyball, and the Purdue volleyball home attendance record vs. Indiana (10/19) and then tied it a week later vs. #8 Wisconsin (10/26).
- Purdue eclipsed the old attendance record for a regular-season match between two Big Ten opponents, which stood at 10,927 (#23 Illinois at #2 Minnesota, 10/16/04).
- The matches sold out a month in advance (sold out on Friday, September 20).
- The last time Purdue volleyball played in Mackey Arena was in 2016 vs. Indiana, which also happened to be the Monon Spike match in front of a crowd of 8,240 fans.
- Last week's match was the **second-largest crowd in women's volleyball this year**.
- The last and only time Purdue and Wisconsin met in Mackey Arena was in 2008, which the attendance of 10,570 fans was second-largest crowd to witness a Big Ten regular-season match in conference history.

SHONDELL QUOTE: "It's time to take our Boilermakers back into Mackey Arena. The opportunity to grow our program, as well as our sport, is essential right now. Holloway is a special home, but for a few matches this fall, our team and Boilermaker Nation, must make Mackey Arena the best home-court environment in the land."

HISTORY OF ATTENDANCE SUCCESS

- Purdue set a previous NCAA women's volleyball attendance record in Mackey Arena on Oct. 29, 1985 with 10,645 fans watching Purdue defeating Western Michigan 3-1 (11-15, 15-6, 15-5, 15-2). The event was dubbed "Pac Mac" with promotions that allowed patrons to attend for just \$1.

TOP-10 TAKEDOWNS

- In every season for the last 10 years, Purdue has picked up at least one top-10 victory. In fact, Purdue's won 20 top-10 showdowns since 2015 (last: vs. #10 Kentucky, 3-1 on 9/14/24).

ACED IT: 17 ACES AT #16 MINNESOTA

- The team's 17 service aces included five in the fifth set. Three came during libero Julia Kane's serving tear, which was a career-high.
- Raven Colvin tied a program record in five-set matches with her seven service aces.
- Freshman Ryan McAleer generated six aces, the third freshman in Purdue history, including the only one this century to do so (joining Lauri Grimes and Brooke White, both accomplished in 1993).
- The Boilermakers' 17 aces were the most by any team in the nation last week and are the most by a Big Ten team this season.

SMOOTH & STEADY: SETTER TAYLOR ANDERSON

- She leads not only all Big Ten setters with 93 blocks this season, but **all setters at Power 4 programs. In perspective, Anderson led many of the top middles in the league through the first half of the season, including Big Ten middles** Andi Jackson (Nebraska) and Taylor Trammell (Penn State), Carter Booth (Wisconsin) and Devyn Robinson (Wisconsin).
- Her 44 assists vs. Illinois was just the second time a setter has posted as many in a 3-setter in the last seven years (other: Hayley Bush, 45 vs. Washington, 9/3/21).
- Anderson has set Purdue to 12 matches over .300%, including the highest mark by Purdue in a Big Ten match since 2017 with .424% at Rutgers, .343% vs. Illinois, .311% at #2 Nebraska, .310% vs. #10 Kentucky and .450% vs. UC Davis.
- Anderson has gotten more aggressive on the attack compared to her freshman season, averaging .64 kills per set compared to .31 from last season (35 kills in 2023 vs. 70 in 2024). In fact, her numbers are up in virtually every category including digs per set (1.97 vs. 2.22), assists per set (9.88 vs. 11.08).
- She set a season-high 13 digs alongside 47 assists in the four-set victory at Northwestern (10/4).
- Has posted 7 or more blocks four times this season (last: 7 at #2 Nebraska)
- 40 or more assist in a match this season: 13
- 45 or more assists in a match this season: 9
- 50 or more assists in a match this season: 5
- Double-doubles this season: 11

SENIOR LEADER RAVEN COLVIN

- **Colvin leads the Big Ten and** ranks #3 in the nation in blocks per set (1.56). She led the nation in blocks for the first 4 straight weeks and ranked among the top-12 in hitting % until Week 7.
- For 16 of the last 24 matches, Colvin has hit .308% or higher.
- She set a **career-high 19 kills** at #16 Minnesota (9/28) alongside a Purdue 5-set record-tying 7 aces in a five-set match.
- She is hitting, blocking and serving more efficiently than ever before and leads the team in aces.
- Colvin has **increased her hitting efficiency** compared to 2023: .340% this season vs. .280% last year.
- Hit **.440% or higher in eight of 10 consecutive matches (9/7-10/6)**. Her lowest % in the stretch was .308% at Penn State.
- Named **Big Ten Defensive Player of the Week** (9/16) after back-to-back .571% performances, 7 blocks vs. #10 Kentucky and four vs. Houston.
- The Boiler has recorded three 10-block performances: 11 at #2 Nebraska, 10 vs. K-State and 10 at Utah State (9/7).
- Number of matches with one or fewer attack errors: 10
- Number of matches hitting .300 or above: 24
- Number of matches hitting .400 or above: 17
- Number of matches hitting .500 or above: 8
- Number of matches hitting .700 or above: 3
- Number of matches with six or more blocks: 16

THE BOILERMAKER FAITHFUL

- Purdue secured its second straight complete season-sell-out, which included two Mackey Arena matches (14,876 fans).
- The first match sold out within 20 minutes of the general public on-sale (vs. USC, 11/23).
- The lower bowl for each of the Mackey Arena matches filled up with just John Purdue Club member purchases before it opened up to the general public on-sale.
- Within the first hour, there were three sellouts: USC, Michigan and Penn State. Within an hour and 20 minutes, there were four sellouts.
- Within two hours of on-sale, over 9,800 tickets were sold for the Wisconsin match. That is the equivalent of filling Holloway four times over.
- Only five matches had tickets left just two hours into on-sale.
- Every ticket for every match was sold last year, making 2023 a complete-season sell-out.
- The student section: The Block Party sold out its season tickets in 20 minutes. That is up from the 40 minutes it took in 2023 and just under two-hour mark in 2022.
- Fans looking for season tickets have had to join a waiting list for at least the last three years. Due to the high renewal rate, only two people were able to move off the wait list in 2023 to buy season tickets.

EVA HUDSON: A FORCE

- Hudson finished the regular-season as the Big Ten leader in kills, going 3-for-3 over her collegiate career.
- She **led the league in Big Ten play** in kills (351), kills per set (4.94), total points (383) and points per set (5.39).
- She's still improving, averaging 5.39 kills/set over the last 10 matches while a 4.97 in Big Ten play and 4.73 overall this year.
- Posted 16 kills over just two sets at #13 Oregon (7 in Set 3, 9 in Set 4) to push the match to a Set 5.
- Set a Big Ten season-high hitting % three times in the span of five matches, beginning with a .349 clip at #2 Nebraska (26-4-63), and most recently with a .417 clip, the second-highest overall this season, vs. Indiana (17-2-36).
- She has posted a double-double in all but two weeks of Big Ten play.
- At #2 Nebraska, went errorless and hit .500 (5-0-10) in Set 2, hit .500% in Set 3 (7-1-12) and errorless in Set 5 (7-0-18).
- Hudson went errorless in Set 2 vs. #10 Kentucky to help turn the tides, posting an 8-0-11 (.727) performance on the way to Purdue's 3-1 victory.
- She went errorless (4-0-12) in Set 5 at #13 Oregon to secure the reverse sweep. In total, she recorded 20 kills in the last 3 sets.
- Has posted at least one errorless set in every match but six this season.
- Went errorless for nearly the entire match at #10 Kansas until the very end, forfeiting one attack error with the score 20-20 in Set 4. She finished the match 17-1-53.
- Posted 15 kills over just two sets of action vs. #10 Kentucky and seven of Purdue's 15 points in Set 5 at #2 Nebraska.
- She is averaging a .278 clip, but hit over .400 in back-to-back matches over opening weekend.
- She's hit over .300 in 3 of 7 matches vs. top-10 foes, including just one error at Kansas.
- Hudson is on track to become Purdue's all-time leader in career kills/set (4.47 currently; record is 3.96).
- Last year, the 2023 AVCA Second Team All-America honoree ranked #1 in the Big Ten and #5 in the nation in kills (560) and #2 in the Big Ten, #12 in the nation in total points (605.5).
- She is the fastest Boilermaker to reach 1,000 career kills in the rally-scoring era and recorded more kills over her first two years than any Boilermaker to come through the program (1,075).
- Number of season / career double-doubles: 11 / 28
- Number of matches in season / career with 15+ kills: 22 / 68
- Number of matches in season / career with 20+ kills: 4 / 17
- Number of matches in season / career hitting .300% or above: 14 / 36
- Number of matches in season / career hitting .350% or above: 8 / 21
- Number of matches in season / career hitting .400% or above: 4 / 12
- Number of errorless sets in season: 34

The Last Time....

A Match Went to 5 Sets

Nov. 27, 2024 at #13 Oregon
W, 3-2 (19-25, 22-25, 29-27, 25-23, 15-13)

Last Victory over a Top-5 Team

Nov. 17, 2023 vs. #3 Wisconsin
W, 3-2 (22-25, 25-19, 25-20, 12-25, 16-14)

Team Hitting % of .400 or Better

.424 | Nov. 2, 2024 at Rutgers | W, 3-0

60 or More Team Kills

72 | Nov. 27, 2024 at #13 Oregon | W, 3-2

15 or More Total Team Blocks

16 | Oct. 17, 2024 vs. UCLA | W, 3-2

80 or More Team Digs

83 | Dec. 2, 2023 vs. Marquette | W, 3-1

10 or More Team Aces

10 | Oct. 12, 2024 at Iowa | W, 3-1

Team Season-Highs

Total Kills

72 | Nov. 27 at #13 Oregon

Hitting % in a Match

.450 | Sept. 1 vs. UC Davis

Hitting % in a Set

.552 (Set 4) | Nov. 8 at Indiana

Total Digs

79 | Sept. 28 at #16 Minnesota

Total Blocks

17 | Sept. 7 vs. Utah State

Fewest Attack Errors

7 | Aug. 31 vs. UMBC

Lowest Opponent Hitting %

.065 | Sept. 7 vs. Utah St.

Total Attacks

195 | Nov. 27 at #13 Oregon

Service Aces

17 | Sept. 28 at #16 Minnesota

Top Individual Performances: 2024 Season

Category	Purdue	Opponent
Points	29.5 (Hudson at Indiana, 11/8)	29 (Cheridyn Leverette, UCLA)
Kills	28 (Hudson at #13 Oregon, 11/27)	22 (Cheridyn Leverette, UCLA)
Attacks	77 (Hudson at #13 Oregon, 11/27)	54 (Merritt Beason, Nebraska)
Service Aces	7 (Colvin at #16 Minnesota, 9/28)	4 (Kamryn Gibadlo, Utah)
Total Blocks	11 (Colvin at #2 Nebraska, 10/11)	9 (Carter Booth, Wisconsin)
Block Solos	3 (Last: Colvin vs. #21 USC, 11/23)	3 (Jess Mruzik, Penn State)
Block Assists	9 (twice by Colvin; last: at #2 Nebraska, 10/11)	7 (twice, last: Carter Booth, Wisconsin)
Digs	24 (Hornung at #16 Minnesota, 9/28)	28 (Mackenzie Morris, Oregon)
Assists	57 (Anderson at #16 Minnesota, 9/28)	60 (Bergen Reilly, Nebraska)
Attack % (10 attempt, min.)	.733% (Colvin, 12-1-15 vs. UC Davis, 9/1)	.545% (Caroline Jurevicius, Penn State, 6-0-11)

Purdue's Record When...

3-Set Matches: 16-3

4-Set Matches: 6-2

5-Set Matches: 3-1

Team attack % is .200 or better: 24-2

Team attack % is .250 or better: 18-1

Team attack % is .300 or better: 11-1

10 or more team blocks: 12-1

After dropping Set 1: 4-6

After winning Set 1: 20-0

Trailing after Set 3: 1-2

Leading after Set 3: 8-1

Record By Class

Seniors: 95-33 (win %: 74)

Juniors: 69-26 (win %: 73)

Sophomores: 48-15 (win %: 76)

Freshmen: 25-6 (win %: 81)

NCAA D1 Single-Match Attendance

Attendance	Match, Date
1. 15,084	Marquette at Wisconsin, 9/17
2. 14,876	Indiana at #10 Purdue, 10/19
14,876	#8 Wisconsin at #10 Purdue, 10/26
3. 14,126	Nebraska at Louisville, 9/22
4. 14,035	Texas vs. Wisconsin, 9/1

Undefeated Starts Under Shondell

- 2011 (14-0)
- 2018 (11-0)
- 2005 (11-0)
- 2024 (8-0)**
- 2017 (7-0)
- 2014 (7-0)
- 2008 (7-0)

Purdue Career Total Blocks

Name	TB	Years
1. Stephanie Lynch	660	2005-08
2. Raven Colvin	628	2021-
3. Marianne Smith	567	1982-85
4. Kate Crandell	563	1981-84
5. KiKi Jones	510	2011-14

Purdue Career Block Assists

Name	TB	Years
1. Stephanie Lynch	550	2005-08
2. Raven Colvin	546	2021-
3. KiKi Jones	454	2011-14
4. Grace Cleveland	423	201-21
5. Kristen Arthurs	403	2007-10

CHLOE CHICOINE: YEAR 2

- Went errorless for the entire match vs. Indiana, recording 12 kills, 0 errors on 30 attacks for a then-Big Ten season-high .400 hitting % in addition to recording her 11th double-double of the season (12 digs).
- Has reached double-digit kills in 21 matches this season.
- She is averaging 3.08 kills per set, 2.89 digs per set and 3.39 points per set as a sophomore.
- Set a season-high 22 kills (22-4-55) on a then-Big Ten-season-high .327 clip at #2 Nebraska.
- Led the team vs. Rutgers with 16 kills (.542 clip).
- Led the team in both kills (11) and digs (10) vs. Houston (9/13).
- Posted a season-high 20 digs at #13 Oregon (11/27).
- Recorded a career-high four blocks (2 solo, 2 assisted) alongside 14 kills at a .310 clip at Utah State (9/7).
- Was named Player of the Week once and Big Ten Freshman of the Week five times last season, including a Week 7 performance in which she earned Freshman of the Week after leading the entire Big Ten, Pac-12 and ACC in points per set (5.63).
- Chicoine produced in the biggest matches last season, hitting .359% vs. #2 Nebraska with 18 kills and just four errors on 39 swings. At #11 Penn State, the freshman recorded a Big Ten season-high 20 kills with her second-highest hitting % of the year with a .405 clip in the match, including an errorless six kills on nine attacks (.667%) to seal the win in Set 4. She went on to best her kills at home vs. Penn State, totaling a career-high 27 kills. Moreover, vs. Minnesota, she recorded just one error in the match with a .333 hitting % with 11 kills and six digs. Against #3 Wisconsin, she obliterated her previous career-high of 14 digs, totaling 23 in the win.
- Number of season / career double-doubles: 13 / 23
- Number of matches in season / career with 15+ kills: 6 / 22
- Number of matches in season / career with 20+ kills: 1 / 6
- Number of matches in season / career with 10+ digs: 17 / 26
- Number of errorless sets in season / career: 35 / 75

HC DAVE SHONDELL & COACHING STAFF

- In the 2024 calendar year, Dave Shondell began it with a four-year contract extension running through the 2027 season and has now reached GOAT status as the all-time winningest head coach in program history (470 wins).
- Under Shondell's guidance, Purdue has won 12 matches vs. top-5 opponents in the last 13 years.
- Led Purdue to a 135-48 record over the last five years alone.
- On the national stage, he is one of seven active coaches to lead a program for at least 21 years and one of seven with as many wins in the Power 4 (470 wins).
- In the last 21 seasons, Shondell has led the team to 19 NCAA tournament appearances and a perfect 18-0 record in first round matches.
- Last season, Shondell coached one of the youngest squads in program history, leading them to a third-place Big Ten finish and an NCAA Regional Semifinal berth. Three Boilermakers received All-America nods while tying a Purdue record of six Big Ten postseason honors, including two unanimous selections.
- He owns a .670 winning % at Purdue and is one of three active Big Ten coaches to be at their institution for 10 years.
- He is one of eight head coaches in Big Ten history to produce as many wins and one of two active coaches, joined by John Cook. Moreover, Shondell is the only one of the two to produce those wins at the same institution (Cook: Wisconsin & Nebraska).
- Coaching Staff Updates For 2024:** Kathy Jewell (22nd season) was promoted to associate head coach - recruiting coordinator; John Klanac was hired as assistant coach in January; Ben Cutrone (previously the GA) was hired as volleyball analyst in May.
- John Klanac was previously at Rice and graduated from Ohio State, where he was a 2011 national champion.

RECORD BOOK WATCH: CAREER RECORDS

- Colvin is 4 block assists away from tying the Purdue career record, 32 total blocks away from tying the Purdue career record and 15 kills away from reaching 1,000.
- Colvin is averaging a .308 career hitting %, T-9 in Purdue's annals.
- Colvin moved into T-#6 in Purdue's career annals with 82 career block solos. She will tie #5 with her 95th.

RECORD BOOK WATCH: SINGLE-SEASON RECORDS

- Purdue's .274 team hitting % checks in at #3 all-time and is just the second time this century the Boilermakers have hit as efficiently in a season.
- Eva Hudson's 4.73 kills per set this season currently rank T-#3 in Purdue single-season history. She is the second Boilermaker this century, joining Ariel Turner to post as many kills per set in a single season. She is also approaching entering the kills list, owning 516 currently, with #10 Danielle Cuttino posting 530 in 2016.
- Colvin's 1.56 blocks per set currently rank #2 in single-season history. It is the second time this century a Boilermaker has posted as many blocks/set in a season.
- Colvin is T-#6 in Purdue's top-10 with 142 block assists this season.
- Libero Ali Horning is averaging 4.24 digs per set this season, on track to rank #6 in Purdue single-season history, surpassing Carly Cramer in 2012).

ANNIE DREWS INDUCTED TO THE PURDUE HALL OF FAME

- Two-time Olympian Annie Drews (2012-15) will be inducted to the Leroy Keyes Purdue Athletics Hall of Fame on Friday.
- A four-year letterwinner as an outside hitter, she was a gold medalist at the 2020 Tokyo Olympics, playing a key role in Team USA's historic run on the world stage and a silver medalist at the 2024 Paris Olympics as well as a regular with the U.S. Senior National Team.
- Before her international glory, she led the Boilermakers to three NCAA Tournament trips, including two Sweet 16s and one Elite Eight. Drews closed out her Purdue career with Second Team All-America honors in 2015 along with back-to-back First Team All-Big Ten accolades.
- She is the seventh volleyball player to be inducted to elite group, joining Ariel (Turner) Gebhardt (Class of 2020), Stephanie (Lynch) Harpenau (Class of 2018), Carol Dewey and Debbie (McDonald) West (Class of 2003), Marianne (Smith) Orr (Class of 1999) and Jane Neff (inaugural Class of 1994).

RETURNING 2023 ALL-AMERICANS

- Purdue returns all three AVCA All-America honorees: junior Eva Hudson (second team), sophomore Chloe Chicoine (third team) and senior Raven Colvin (honorable mention).
- Hudson is the youngest Boilermaker to receive Second Team All-America honors since 1986.
- Chicoine's third team accolade was the highest-ever AVCA All-America honor by a Purdue newcomer.

THE 2024 TEAM AT A GLANCE

- Purdue returns nearly its entire 2023 starting lineup with the exception of libero Maddie Schermerhorn, who led the Big Ten last season in digs per set. Meanwhile, the team has lost two players to injury over the off-season: senior #22 Emily Rastovski and sophomore #14 Grace Heaney at the same position as right side hitters.
- Three freshmen (DS Ryen McAlear, S Allie Shondell and DS Sienna Foster) and one senior transfer (OH/RS Raven Gray) join the team.
- The roster is one of the most talented and decorated in program history: returning all three 2023 All-America recognized players: Hudson, Chicoine, Colvin.

PURDUE VOLLEYBALL

2024 ROSTER

No.	Name	Ht.	Pos.	Yr.	Hometown / High School / Last School
1	Rachel Williams	5-7	DS	RS-Fr.	West Lafayette, Ind. / West Lafayette
2	Chloe Chicoine	5-10	OH	So.	Lafayette, Ind. / McCutcheon
3	Ryan McAleer	5-6	DS	Fr.	Overland Park, Kan. / Blue Valley
4	Kenna Wollard	6-1	OH	So.	Dunlap, Ill. / Illinois Valley Central
5	Taylor Anderson	6-1	S	So.	San Antonio, Texas / Cornerstone Christian
6	Sienna Foster	5-9	DS	Fr.	Lafayette, Ind. / Benton Central
7	Raven Colvin	6-1	MB	Sr.	Indianapolis, Ind. / Heritage Christian
8	Raven Gray	6-1	OH/RS	Sr.	Charlotte, N.C. / Cox Mill / Winston-Salem State
9	Lourdès Myers	6-3	MB	RS-Sr.	Alliance, Ohio / St. Thomas Aquinas
10	Ali Hornung	5-10	DS/OH	Sr.	New Albany, Ind. / Providence
11	Allie Shondell	5-10	S	Fr.	Lafayette, Ind. / McCutcheon
14	Grace Heaney	6-2	OPP/RS	So.	Omaha, Neb. / Elkhorn North
15	Lizzie Carr	6-6	MB	RS-So.	West Chester, Pa. / West Chester East
17	Eva Hudson	6-1	OH	Jr.	Fort Wayne, Ind. / Bishop Dwenger
19	Sydney Yim	6-1	S	Sr.	Newburyport, Mass. / Newburyport
21	Julia Kane	5-11	DS	So.	Windermere, Fla. / Windermere Prep
22	Emily Rastovski	6-2	OH	Sr.	Valparaiso, Ind. / Morgan Township

Head Coach: Dave Shondell, 22nd season

Associate Head Coach - Recruiting Coordinator: Kathy Jewell, 22nd season

Assistant Coach: John Klanac, 1st season

Assistant Coach: Michael Bouril, 2nd season | 5th overall at Purdue

Supervisor of Volleyball Operations: Carrie Gurnell, 4th season

Volleyball Analyst: Ben Cutrone, 1st season | 3rd overall at Purdue

Graduate Assistant: Owen Mahin, 1st season

Pronunciation Guide

Chloe Chicoine: SHIH-coin (starts like Chicago)

Lourdès Myers: LORD-is

Ali Hornung: HORN-nung

Ryan McAleer: MAC-uh-leer

Eva Hudson: EE-va (think eve)

Emily Rastovski: RAZ-taw-v-skee

John Klanac: Klan-ICK

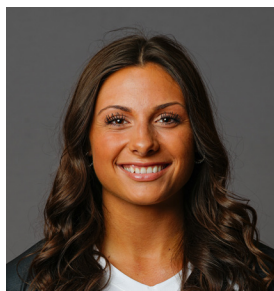
Michael Bouril: BURR-ill



2024 PURDUE VOLLEYBALL ROSTER



#1 Rachel Williams
R-Fr. | DS | 5-7 | West Lafayette, Ind.



#2 Chloe Chicoine
So. | OH | 5-10 | Lafayette, Ind.



#3 Ryan McAleer
Fr. | DS | 5-6 | Overland Park, Kan.



#4 Kenna Wollard
So. | OH | 6-1 | Dunlap, Ill.



#5 Taylor Anderson
So. | S | 6-1 | San Antonio, Texas



#6 Sienna Foster
Fr. | DS | 5-9 | West Lafayette, Ind



#7 Raven Colvin
Sr. | MB | 6-1 | Indianapolis, Ind.



#8 Raven Gray
Sr. | OH/RS | 6-1 | Charlotte, N.C.



#9 Lourdès Myers
RS-Sr. | MB | 6-3 | Alliance, Ohio



#10 Ali Hornung
Sr. | DS/OH | 5-10 | New Albany, Ind.



#11 Allie Shondell
Fr. | S | 5-10 | Lafayette, Ind.



#14 Grace Heaney
So. | OPP/RS | 6-2 | Omaha, Neb.



#15 Lizzie Carr
RS-So. | MB | 6-6 | West Chester, Pa.



#17 Eva Hudson
Jr. | OH | 6-1 | Fort Wayne, Ind.



#19 Sydney Yim
Sr. | S | 6-1 | Newburyport, Mass.



#21 Julia Kane
So. | DS | 5-11 | Windermere, Fla.



#22 Emily Rastovski
RS-Jr. | OH | 6-2 | Valparaiso, Ind.



Graduate Assistant
Owen Mahin | 1st Season



Volleyball Analyst
Ben Cutrone | 1st Season



Head Coach
Dave Shondell
22nd Season



Assoc. Head Coach
& Recruiting Coordinator
Kathy Jewell
22nd Season



Assistant Coach
Michael Bouril
5th Season



Assistant Coach
John Klanac
1st Season



Director of Operations
Carrie Gurnell
4th Season



2024-25 Purdue Women's Volleyball Combined Team Statistics All games

Page 1/1
as of Nov 30, 2024

Game Records

Overall	Conference	Home	Away	Neutral
25 - 6	16 - 4	11 - 2	10 - 3	4 - 1

Team Box Score

			Attack					Set		Serve				Dig		Blocking							
##	Player	SP	K	K/S	E	TA	PCT	A	A/S	SA	SE	SA/S	RE	DIG	DIG/S	BS	BA	TOT/S	BLK/S	BE	BHE	PTS	
1	Williams, Rachel	44	1	0.02	0	3	.333	1	0.02	7	13	0.16	0	11	0.25	0	0	0	0.00	0	0	8.0	
2	Chicoine, Chloe	109	336	3.08	116	1028	.214	40	0.37	18	27	0.17	15	315	2.89	2	27	29	0.27	4	0	369.5	
3	McAlee, Ryan	108	2	0.02	1	5	.200	31	0.29	16	39	0.15	16	269	2.49	0	0	0	0.00	0	0	18.0	
4	Wollard, Kenna	85	139	1.64	62	342	.225	2	0.02	0	0	0.00	0	35	0.41	1	47	48	0.56	9	0	163.5	
5	Anderson, Taylor	109	70	0.64	15	159	.346	1208	11.08	23	37	0.21	1	242	2.22	7	86	93	0.85	3	3	143.0	
7	Colvin, Raven	109	278	2.55	95	539	.340	8	0.07	37	54	0.34	1	52	0.48	28	142	170	1.56	18	1	414.0	
8	Gray, Raven	4	1	0.25	0	1	1.000	0	0.00	0	1	0.00	0	0	0.00	0	0	0	0.00	0	0	1.0	
9	Myers, Lourdes	105	135	1.29	35	286	.350	4	0.04	0	0	0.00	2	29	0.28	11	96	107	1.02	30	0	194.0	
10	Hornung, Ali	109	0	0.00	0	6	.000	99	0.91	11	16	0.10	27	462	4.24	0	1	1	0.01	0	0	11.5	
11	Shondell, Allie	7	0	0.00	1	1	-1.000	23	3.29	0	1	0.00	0	3	0.43	0	3	3	0.43	0	0	1.5	
15	Carr, Lizzie	45	72	1.60	19	165	.321	1	0.02	0	0	0.00	0	10	0.22	4	25	29	0.64	4	0	88.5	
17	Hudson, Eva	109	516	4.73	136	1368	.278	10	0.09	14	23	0.13	22	273	2.50	5	58	63	0.58	4	1	564.0	
19	Yim, Sydney	3	1	0.33	0	1	1.000	3	1.00	0	0	0.00	0	1	0.33	0	0	0	0.00	0	0	1.0	
21	Kane, Julia	74	0	0.00	0	0	.000	8	0.11	13	34	0.18	1	27	0.36	0	0	0	0.00	0	0	13.0	
PURDUE		109	1551	14.23	480	3904	.274	1438	13.19	139	245	1.28	103	1729	15.86	58	485	300.5	2.76	72	5	1,990.5	
Opponents		109	1411	12.94	630	4100	.190	1316	12.07	103	237	0.94	139	1614	14.81	36	368	220	2.02	40	7	1,734.0	

Team statistics

	PURDUE	OPP
ATTACK		
Kills	1551	1411
Errors	480	630
Total Attacks	3904	4100
Attack Pct	.274	.190
Kills/Set	14.23	12.94
SET		
Assists	1438	1316
Attempts	3795	4026
Assist Pct	.379	.327
Assists/Set	13.19	12.07
SERVE		
Aces	139	103
Errors	245	237
Attempts	2576	2276
Serve Pct	.905	.896
Aces/Set	1.28	0.94
SERVE RECEPTIONS		
Errors	103	139
Errors/Set	0.94	1.28
Attempts	2039	2331
Reception Pct	.949	.999
DEFENSE		
Digs	1729	1614
Digs/Set	15.86	14.81
BLOCKING		
Block solo	58	36
Block Assist	485	368
Total Blocks	300.5	220
Blocks/Set	2.76	2.02
Block Errors	72	40
Ball handling errors	5	7
ATTENDANCE		
Total	56317	36684
Dates/Avg Per Date	13/4332	13/2822
Neutral Site #/Avg	5/904	-
Current win streak	0	-
Home win streak	0	-

Team Results

Date	Opponent	Score	Score-by-set	Att.
08/30/2024	Kansas St.	W 3-1	25-21,18-25,25-22,25-23	2415
08/31/2024	UMBC	W 3-0	25-20,25-20,25-17	2415
09/01/2024	UC Davis	W 3-0	25-18,25-19,25-18	2415
09/05/2024	vs California	W 3-1	29-27,25-12,18-25,25-23	52
09/06/2024	at Utah	W 3-0	29-27,25-20,25-13	3766
09/07/2024	at Utah St.	W 3-0	25-18,25-16,25-22	1029
09/13/2024	vs Houston	W 3-0	25-12,25-21,25-20	891
09/14/2024	vs Kentucky	W 3-1	21-25,25-13,25-23,25-16	1883
09/19/2024	at Kansas	L 1-3	29-31,25-21,22-25,23-25	1640
09/20/2024	vs Creighton	L 1-3	21-25,25-17,16-25,25-27	1696
09/21/2024	vs Tulsa	W 3-0	25-21,25-17,25-10	0
* 09/25/2024	Penn St.	L 0-3	14-25,21-25,20-25	2415
* 09/28/2024	at Minnesota	W 3-2	26-24,23-25,25-20,23-25,15-10	4866
* 10/04/2024	at Northwestern	W 3-1	23-25,25-20,25-16,29-27	1618
* 10/06/2024	Michigan St.	W 3-0	25-19,25-22,25-18	2415
* 10/11/2024	at Nebraska	L 2-3	22-25,25-22,25-23,22-25,15-17	8715
* 10/12/2024	at Iowa	W 3-1	25-17,19-25,25-18,25-21	1036
* 10/17/2024	UCLA	W 3-2	23-25,27-25,25-20,19-25,15-11	2415
* 10/19/2024	Indiana	W 3-0	25-18,25-14,25-9	14876
* 10/23/2024	Ohio St.	W 3-0	28-26,25-19,27-25	2415
* 10/26/2024	Wisconsin	L 0-3	20-25,23-25,13-25	14876
* 11/01/2024	at Maryland	W 3-0	25-23,25-20,25-20	570
* 11/02/2024	at Rutgers	W 3-0	25-14,25-12,25-16	1072
* 11/08/2024	at Indiana	W 3-1	25-21,21-25,25-22,25-17	2857
* 11/10/2024	Michigan	W 3-0	25-20,25-21,25-18	2415
* 11/14/2024	Rutgers	W 3-0	25-14,25-14,25-16	2415
* 11/17/2024	Illinois	W 3-0	25-17,25-20,25-19	2415
* 11/21/2024	at Penn St.	L 0-3	20-25,23-25,16-25	2610
* 11/23/2024	Southern California	W 3-0	25-22,29-27,25-20	2415
* 11/27/2024	at Oregon	W 3-2	19-25,22-25,29-27,25-23,15-13	3030
* 11/29/2024	at Washington	W 3-0	25-14,25-23,29-27	3875



2024-25 Purdue Women's Volleyball
Individual Match-by-Match
All games

Page 1/14
as of Nov 30, 2024

#1 WILLIAMS, Rachel

Date	Opponent	SP	Attack				Set			Serve				Recept			DIG	Blocking				Team			
			K	E	TA	PCT	A	TA	PCT	SA	SE	TA	PCT	RE	TA	PCT		BS	BA	BE	TOTAL	BHE	POINTS	HIT%	SCORE
08/31/2024	UMBC	2	0	0	0	.000	0	0	.000	1	0	10	1.000	0	0	.000	4	0	0	0	0.0	0	1.0	.371	3-0
09/01/2024	UC Davis	3	0	0	0	.000	0	0	.000	0	1	11	.909	0	0	.000	0	0	0	0	0.0	0	0.0	.450	3-0
09/05/2024	vs California	3	1	0	1	1.000	0	0	.000	0	1	10	.900	0	0	.000	1	0	0	0	0.0	0	1.0	.235	3-1
09/06/2024	at Utah	2	0	0	0	.000	0	0	.000	1	1	3	.667	0	0	.000	1	0	0	0	0.0	0	1.0	.246	3-0
09/07/2024	at Utah St.	1	0	0	0	.000	0	0	.000	0	0	1	1.000	0	0	.000	0	0	0	0	0.0	0	0.0	.290	3-0
09/13/2024	vs Houston	1	0	0	0	.000	0	0	.000	1	0	2	1.000	0	0	.000	0	0	0	0	0.0	0	1.0	.292	3-0
09/14/2024	vs Kentucky	4	0	0	0	.000	0	0	.000	0	1	4	.750	0	0	.000	0	0	0	0	0.0	0	0.0	.310	3-1
09/19/2024	at Kansas	3	0	0	0	.000	0	0	.000	0	0	4	1.000	0	0	.000	0	0	0	0	0.0	0	0.0	.278	1-3
09/20/2024	vs Creighton	3	0	0	1	.000	1	2	.500	1	2	15	.867	0	0	.000	2	0	0	0	0.0	0	1.0	.209	1-3
09/21/2024	vs Tulsa	2	0	0	0	.000	0	0	.000	1	0	6	1.000	0	0	.000	1	0	0	0	0.0	0	1.0	.365	3-0
09/25/2024	Penn St.	1	0	0	1	.000	0	0	.000	0	0	1	1.000	0	0	.000	0	0	0	0	0.0	0	0.0	.176	0-3
09/28/2024	at Minnesota	3	0	0	0	.000	0	0	.000	0	0	3	1.000	0	0	.000	0	0	0	0	0.0	0	0.0	.252	3-2
10/04/2024	at Northwestern	1	0	0	0	.000	0	0	.000	0	1	1	.000	0	0	.000	0	0	0	0	0.0	0	0.0	.287	3-1
10/06/2024	Michigan St.	2	0	0	0	.000	0	0	.000	0	0	4	1.000	0	0	.000	0	0	0	0	0.0	0	0.0	.252	3-0
10/11/2024	at Nebraska	5	0	0	0	.000	0	0	.000	0	4	12	.667	0	0	.000	0	0	0	0	0.0	0	0.0	.311	2-3
10/19/2024	Indiana	3	0	0	0	.000	0	0	.000	2	0	5	1.000	0	0	.000	0	0	0	0	0.0	0	2.0	.333	3-0
11/01/2024	at Maryland	1	0	0	0	.000	0	0	.000	0	0	3	1.000	0	0	.000	2	0	0	0	0.0	0	0.0	.313	3-0
11/02/2024	at Rutgers	2	0	0	0	.000	0	0	.000	0	1	2	.500	0	0	.000	0	0	0	0	0.0	0	0.0	.424	3-0
11/08/2024	at Indiana	1	0	0	0	.000	0	0	.000	0	1	1	.000	0	0	.000	0	0	0	0	0.0	0	0.0	.305	3-1
11/14/2024	Rutgers	1	0	0	0	.000	0	0	.000	0	0	2	1.000	0	0	.000	0	0	0	0	0.0	0	0.0	.370	3-0
Totals		44	1	0	3	.333	1	2	.500	7	13	100	.870	0	0	.000	11	0	0	0	0.0	0	8.0		

Player Averages

Sets Played	Kills per set	Assists per set	Service aces per set	Digs per set	Blocks per set	Points per set
44	0.02	0.02	0.16	0.25	0.00	0.18



2024-25 Purdue Women's Volleyball
Individual Match-by-Match
All games

Page 2/14
as of Nov 30, 2024

#2 CHICOINE, Chloe

Date	Opponent	SP	Attack				Set			Serve				Recept			Blocking					Team			
			K	E	TA	PCT	A	TA	PCT	SA	SE	TA	PCT	RE	TA	PCT	DIG	BS	BA	BE	TOTAL	BHE	POINTS	HIT%	SCORE
08/30/2024	Kansas St.	*4	17	6	52	.212	0	4	.000	0	1	17	.941	2	12	.833	6	0	1	0	1.0	0	17.5	.234	3-1
08/31/2024	UMBC	*3	11	2	33	.273	2	5	.400	1	3	9	.667	0	14	1.000	11	0	1	0	1.0	0	12.5	.371	3-0
09/01/2024	UC Davis	*3	9	2	26	.269	4	5	.800	1	2	16	.875	0	12	1.000	5	0	0	1	0.0	0	10.0	.450	3-0
09/05/2024	vs California	*4	10	6	36	.111	0	3	.000	1	1	21	.952	0	10	1.000	15	0	1	0	1.0	0	11.5	.235	3-1
09/06/2024	at Utah	*3	8	4	31	.129	1	3	.333	1	0	23	1.000	0	2	1.000	13	0	0	0	0.0	0	9.0	.246	3-0
09/07/2024	at Utah St.	*3	14	5	29	.310	0	2	.000	0	0	10	1.000	0	19	1.000	8	2	2	0	4.0	0	17.0	.290	3-0
09/13/2024	vs Houston	*3	11	4	27	.259	0	3	.000	2	1	21	.952	0	13	1.000	10	0	3	0	3.0	0	14.5	.292	3-0
09/14/2024	vs Kentucky	*4	10	3	32	.219	0	5	.000	1	0	22	1.000	0	4	1.000	9	0	2	0	2.0	0	12.0	.310	3-1
09/19/2024	at Kansas	*4	16	3	39	.333	2	5	.400	1	2	24	.917	1	15	.933	12	0	0	0	0.0	0	17.0	.278	1-3
09/20/2024	vs Creighton	*4	14	8	44	.136	1	8	.125	0	0	15	1.000	1	18	.944	6	0	0	1	0.0	0	14.0	.209	1-3
09/21/2024	vs Tulsa	*3	10	2	23	.348	2	6	.333	0	1	17	.941	1	4	.750	6	0	2	0	2.0	0	11.0	.365	3-0
09/25/2024	Penn St.	*3	10	5	29	.172	1	4	.250	0	2	11	.818	1	12	.917	11	0	0	0	0.0	0	10.0	.176	0-3
09/28/2024	at Minnesota	*5	14	8	48	.125	1	7	.143	0	2	19	.895	0	8	1.000	11	0	0	0	0.0	0	14.0	.252	3-2
10/04/2024	at Northwestern	*4	10	3	33	.212	1	9	.111	1	2	19	.895	0	26	1.000	3	0	2	0	2.0	0	12.0	.287	3-1
10/06/2024	Michigan St.	*3	10	6	41	.098	0	1	.000	3	2	17	.882	0	9	1.000	13	0	1	0	1.0	0	13.5	.252	3-0
10/11/2024	at Nebraska	*5	22	4	55	.327	5	9	.556	0	1	26	.962	0	5	1.000	13	0	1	0	1.0	0	22.5	.311	2-3
10/12/2024	at Iowa	*4	7	7	36	.000	1	1	1.000	1	1	20	.950	1	20	.950	6	0	1	0	1.0	0	8.5	.213	3-1
10/17/2024	UCLA	*5	15	3	52	.231	4	8	.500	0	1	14	.929	0	10	1.000	13	0	2	1	2.0	0	16.0	.325	3-2
10/19/2024	Indiana	*3	12	0	30	.400	1	4	.250	0	1	10	.900	0	0	.000	10	0	1	0	1.0	0	12.5	.333	3-0
10/23/2024	Ohio St.	*3	11	5	33	.182	1	4	.250	1	2	18	.889	1	2	.500	9	0	0	0	0.0	0	12.0	.215	3-0
10/26/2024	Wisconsin	*3	3	5	21	-.095	1	3	.333	0	0	13	1.000	0	6	1.000	14	0	0	0	0.0	0	3.0	.089	0-3
11/01/2024	at Maryland	*3	10	1	28	.321	2	5	.400	0	1	13	.923	0	4	1.000	14	0	0	0	0.0	0	10.0	.313	3-0
11/02/2024	at Rutgers	*3	14	1	23	.565	0	0	.000	2	0	14	1.000	0	6	1.000	13	0	1	0	1.0	0	16.5	.424	3-0
11/08/2024	at Indiana	*4	4	3	24	.042	0	1	.000	0	1	16	.938	0	26	1.000	10	0	0	0	0.0	0	4.0	.305	3-1
11/10/2024	Michigan	*3	9	2	32	.219	4	5	.800	1	0	14	1.000	1	20	.950	7	0	1	0	1.0	0	10.5	.279	3-0
11/14/2024	Rutgers	*3	16	3	24	.542	0	2	.000	0	0	17	1.000	2	20	.900	9	0	0	1	0.0	0	16.0	.370	3-0
11/17/2024	Illinois	*3	5	1	16	.250	2	4	.500	0	0	20	1.000	2	13	.846	11	0	2	0	2.0	0	6.0	.343	3-0
11/21/2024	at Penn St.	*3	5	6	31	-.032	0	5	.000	0	0	10	1.000	0	22	1.000	7	0	1	0	1.0	0	5.5	.142	0-3
11/23/2024	Southern California	*3	6	1	24	.208	2	5	.400	0	0	14	1.000	0	24	1.000	7	0	0	0	0.0	0	6.0	.265	3-0
11/27/2024	at Oregon	*5	16	4	47	.255	2	11	.182	1	0	18	1.000	1	21	.952	20	0	0	0	0.0	0	17.0	.215	3-2
11/29/2024	at Washington	*3	7	3	29	.138	0	5	.000	0	0	11	1.000	1	7	.857	13	0	2	0	2.0	0	8.0	.264	3-0
Totals		109	336	116	1028	.214	40	142	.282	18	27	509	.947	15	384	.961	315	2	27	4	29.0	0	369.5		

Player Averages

Sets Played	Kills per set	Assists per set	Service aces per set	Digs per set	Blocks per set	Points per set
109	3.08	0.37	0.17	2.89	0.27	3.39



2024-25 Purdue Women's Volleyball
Individual Match-by-Match
All games

Page 3/14
as of Nov 30, 2024

#3 MCALEER, Ryan

Date	Opponent	SP	Attack				Set			Serve				Recept			Blocking					Team			
			K	E	TA	PCT	A	TA	PCT	SA	SE	TA	PCT	RE	TA	PCT	DIG	BS	BA	BE	TOTAL	BHE	POINTS	HIT%	SCORE
08/30/2024	Kansas St.	*4	0	0	0	.000	0	2	.000	0	4	18	.778	0	19	1.000	11	0	0	0	0.0	0	0.0	.234	3-1
08/31/2024	UMBC	*2	0	0	0	.000	1	2	.500	0	0	10	1.000	2	12	.833	3	0	0	0	0.0	0	0.0	.371	3-0
09/01/2024	UC Davis	*3	0	0	0	.000	0	0	.000	0	0	8	1.000	0	16	1.000	5	0	0	0	0.0	0	0.0	.450	3-0
09/05/2024	vs California	*4	0	0	0	.000	0	1	.000	0	1	14	.929	3	32	.906	7	0	0	0	0.0	0	0.0	.235	3-1
09/06/2024	at Utah	*3	0	0	0	.000	1	3	.333	0	2	9	.778	0	4	1.000	7	0	0	0	0.0	0	0.0	.246	3-0
09/07/2024	at Utah St.	*3	0	0	0	.000	0	1	.000	1	1	16	.938	0	5	1.000	5	0	0	0	0.0	0	1.0	.290	3-0
09/13/2024	vs Houston	*3	0	0	0	.000	3	5	.600	1	0	8	1.000	0	15	1.000	6	0	0	0	0.0	0	1.0	.292	3-0
09/14/2024	vs Kentucky	*4	1	0	1	1.000	1	1	1.000	0	2	15	.867	0	18	1.000	11	0	0	0	0.0	0	1.0	.310	3-1
09/19/2024	at Kansas	*4	0	1	1	-1.000	1	2	.500	0	1	12	.917	0	5	1.000	10	0	0	0	0.0	0	0.0	.278	1-3
09/20/2024	vs Creighton	4	0	0	0	.000	1	2	.500	0	1	13	.923	1	18	.944	7	0	0	0	0.0	0	0.0	.209	1-3
09/21/2024	vs Tulsa	3	1	0	1	1.000	3	4	.750	0	2	12	.833	0	10	1.000	6	0	0	0	0.0	0	1.0	.365	3-0
09/25/2024	Penn St.	3	0	0	0	.000	0	0	.000	0	1	8	.875	0	3	1.000	5	0	0	0	0.0	0	0.0	.176	0-3
09/28/2024	at Minnesota	*5	0	0	0	.000	2	7	.286	6	3	30	.900	4	31	.871	10	0	0	0	0.0	0	6.0	.252	3-2
10/04/2024	at Northwestern	4	0	0	1	.000	1	4	.250	1	2	17	.882	1	11	.909	11	0	0	0	0.0	0	1.0	.287	3-1
10/06/2024	Michigan St.	3	0	0	0	.000	0	2	.000	0	2	13	.846	0	9	1.000	11	0	0	0	0.0	0	0.0	.252	3-0
10/11/2024	at Nebraska	*5	0	0	0	.000	2	4	.500	0	3	14	.786	0	14	1.000	13	0	0	0	0.0	0	0.0	.311	2-3
10/12/2024	at Iowa	*4	0	0	0	.000	2	2	1.000	1	0	13	1.000	1	11	.909	7	0	0	0	0.0	0	1.0	.213	3-1
10/17/2024	UCLA	*5	0	0	0	.000	3	6	.500	3	0	26	1.000	1	27	.963	7	0	0	0	0.0	0	3.0	.325	3-2
10/19/2024	Indiana	*3	0	0	0	.000	0	1	.000	1	0	8	1.000	0	17	1.000	15	0	0	0	0.0	0	1.0	.333	3-0
10/23/2024	Ohio St.	*3	0	0	0	.000	1	7	.143	0	2	13	.846	0	3	1.000	11	0	0	0	0.0	0	0.0	.215	3-0
10/26/2024	Wisconsin	*3	0	0	0	.000	1	2	.500	0	2	7	.714	0	11	1.000	6	0	0	0	0.0	0	0.0	.089	0-3
11/01/2024	at Maryland	*3	0	0	0	.000	0	3	.000	0	1	8	.875	0	12	1.000	8	0	0	0	0.0	0	0.0	.313	3-0
11/02/2024	at Rutgers	*3	0	0	0	.000	1	1	1.000	0	0	11	1.000	0	6	1.000	10	0	0	0	0.0	0	0.0	.424	3-0
11/08/2024	at Indiana	*4	0	0	0	.000	2	5	.400	0	2	11	.818	0	7	1.000	9	0	0	0	0.0	0	0.0	.305	3-1
11/10/2024	Michigan	*3	0	0	0	.000	0	2	.000	0	0	7	1.000	0	1	1.000	10	0	0	0	0.0	0	0.0	.279	3-0
11/14/2024	Rutgers	*3	0	0	0	.000	1	2	.500	0	1	6	.833	0	1	1.000	11	0	0	0	0.0	0	0.0	.370	3-0
11/17/2024	Illinois	*3	0	0	1	.000	0	0	.000	1	1	11	.909	0	5	1.000	6	0	0	0	0.0	0	1.0	.343	3-0
11/21/2024	at Penn St.	*3	0	0	0	.000	0	3	.000	0	2	8	.750	1	8	.875	8	0	0	0	0.0	0	0.0	.142	0-3
11/23/2024	Southern California	*3	0	0	0	.000	3	3	1.000	0	1	9	.889	1	16	.938	7	0	0	0	0.0	0	0.0	.265	3-0
11/27/2024	at Oregon	*5	0	0	0	.000	1	6	.167	0	2	14	.857	1	17	.941	14	0	0	0	0.0	0	0.0	.215	3-2
11/29/2024	at Washington	*3	0	0	0	.000	0	2	.000	1	0	13	1.000	0	15	1.000	12	0	0	0	0.0	0	1.0	.264	3-0
Totals		108	2	1	5	.200	31	85	.365	16	39	382	.898	16	379	.958	269	0	0	0	0.0	0	18.0		

Player Averages

Sets Played	Kills per set	Assists per set	Service aces per set	Digs per set	Blocks per set	Points per set
108	0.02	0.29	0.15	2.49	0.00	0.17



2024-25 Purdue Women's Volleyball
Individual Match-by-Match
All games

Page 4/14
as of Nov 30, 2024

#4 WOLLARD, Kenna

Date	Opponent	SP	Attack				Set			Serve				Recept			Blocking					Team			
			K	E	TA	PCT	A	TA	PCT	SA	SE	TA	PCT	RE	TA	PCT	DIG	BS	BA	BE	TOTAL	BHE	POINTS	HIT%	SCORE
08/30/2024	Kansas St.	4	8	2	20	.300	0	0	.000	0	0	0	.000	0	0	.000	1	0	2	1	2.0	0	9.0	.234	3-1
09/01/2024	UC Davis	3	10	2	17	.471	0	0	.000	0	0	0	.000	0	1	1.000	1	0	2	1	2.0	0	11.0	.450	3-0
09/05/2024	vs California	4	11	2	24	.375	0	1	.000	0	0	0	.000	0	0	.000	3	0	3	2	3.0	0	12.5	.235	3-1
09/06/2024	at Utah	3	7	2	15	.333	0	0	.000	0	0	0	.000	0	0	.000	3	0	1	0	1.0	0	7.5	.246	3-0
09/07/2024	at Utah St.	3	5	2	10	.300	0	1	.000	0	0	0	.000	0	0	.000	0	0	2	0	2.0	0	6.0	.290	3-0
09/13/2024	vs Houston	2	3	3	13	.000	0	0	.000	0	0	0	.000	0	0	.000	3	0	5	0	5.0	0	5.5	.292	3-0
09/14/2024	vs Kentucky	4	6	2	13	.308	0	0	.000	0	0	0	.000	0	0	.000	2	0	1	0	1.0	0	6.5	.310	3-1
09/19/2024	at Kansas	4	9	7	22	.091	0	0	.000	0	0	0	.000	0	0	.000	0	0	2	0	2.0	0	10.0	.278	1-3
09/20/2024	vs Creighton	*4	3	3	13	.000	0	0	.000	0	0	0	.000	0	0	.000	1	1	1	1	2.0	0	4.5	.209	1-3
09/21/2024	vs Tulsa	*2	2	0	7	.286	0	1	.000	0	0	1	1.000	0	1	1.000	0	0	0	0	0.0	0	2.0	.365	3-0
09/25/2024	Penn St.	*3	4	3	17	.059	0	1	.000	0	0	0	.000	0	0	.000	2	0	1	0	1.0	0	4.5	.176	0-3
09/28/2024	at Minnesota	5	7	0	15	.467	0	6	.000	0	0	0	.000	0	0	.000	3	0	2	1	2.0	0	8.0	.252	3-2
10/04/2024	at Northwestern	*4	18	4	32	.438	0	2	.000	0	0	0	.000	0	0	.000	2	0	1	0	1.0	0	18.5	.287	3-1
10/06/2024	Michigan St.	*3	8	2	20	.300	0	2	.000	0	0	0	.000	0	0	.000	3	0	3	0	3.0	0	9.5	.252	3-0
10/11/2024	at Nebraska	5	7	2	17	.294	0	2	.000	0	0	0	.000	0	0	.000	1	0	4	1	4.0	0	9.0	.311	2-3
10/12/2024	at Iowa	4	8	5	20	.150	0	2	.000	0	0	0	.000	0	0	.000	1	0	4	0	4.0	0	10.0	.213	3-1
10/17/2024	UCLA	5	1	3	8	-.250	0	1	.000	0	0	0	.000	0	0	.000	1	0	2	0	2.0	0	2.0	.325	3-2
10/19/2024	Indiana	3	1	2	5	-.200	1	1	1.000	0	0	0	.000	0	1	1.000	2	0	1	0	1.0	0	1.5	.333	3-0
10/23/2024	Ohio St.	3	5	3	12	.167	0	1	.000	0	0	0	.000	0	0	.000	0	0	3	1	3.0	0	6.5	.215	3-0
10/26/2024	Wisconsin	2	1	1	5	.000	0	0	.000	0	0	0	.000	0	0	.000	3	0	2	0	2.0	0	2.0	.089	0-3
11/01/2024	at Maryland	2	1	2	4	-.250	0	1	.000	0	0	0	.000	0	0	.000	1	0	0	0	0.0	0	1.0	.313	3-0
11/02/2024	at Rutgers	3	5	2	9	.333	1	3	.333	0	0	0	.000	0	0	.000	2	0	3	0	3.0	0	6.5	.424	3-0
11/08/2024	at Indiana	1	0	3	4	-.750	0	0	.000	0	0	0	.000	0	0	.000	0	0	1	0	1.0	0	0.5	.305	3-1
11/14/2024	Rutgers	1	2	1	3	.333	0	0	.000	0	0	0	.000	0	0	.000	0	0	0	0	0.0	0	2.0	.370	3-0
11/17/2024	Illinois	1	1	0	2	.500	0	0	.000	0	0	0	.000	0	3	1.000	0	0	0	1	0.0	0	1.0	.343	3-0
11/21/2024	at Penn St.	2	2	2	7	.000	0	0	.000	0	0	0	.000	0	0	.000	0	0	0	0	0.0	0	2.0	.142	0-3
11/23/2024	Southern California	2	1	1	3	.000	0	0	.000	0	0	0	.000	0	0	.000	0	0	1	0	1.0	0	1.5	.265	3-0
11/27/2024	at Oregon	3	3	1	5	.400	0	0	.000	0	0	0	.000	0	0	.000	0	0	0	0	0.0	0	3.0	.215	3-2
Totals		85	139	62	342	.225	2	25	.080	0	0	1	1.000	0	6	1.000	35	1	47	9	48.0	0	163.5		

Player Averages

Sets Played	Kills per set	Assists per set	Service aces per set	Digs per set	Blocks per set	Points per set
85	1.64	0.02	0.00	0.41	0.56	1.92



2024-25 Purdue Women's Volleyball
Individual Match-by-Match
All games

Page 5/14
as of Nov 30, 2024

#5 ANDERSON, Taylor

			Attack				Set			Serve				Recept				Blocking				Team			
Date	Opponent	SP	K	E	TA	PCT	A	TA	PCT	SA	SE	TA	PCT	RE	TA	PCT	DIG	BS	BA	BE	TOTAL	BHE	POINTS	HIT%	SCORE
08/30/2024	Kansas St.	*4	0	1	2	.500	43	109	.394	1	1	13	.923	0	0	.000	7	0	8	0	8.0	0	5.0	.234	3-1
08/31/2024	UMBC	*3	3	0	4	.750	34	76	.447	0	2	8	.750	0	0	.000	5	0	3	0	3.0	0	4.5	.371	3-0
09/01/2024	UC Davis	*3	1	0	3	.333	45	78	.577	2	2	11	.818	0	0	.000	9	1	1	0	2.0	0	4.5	.450	3-0
09/05/2024	vs California	*4	1	1	3	.000	52	118	.441	3	2	20	.900	0	1	1.000	11	0	2	0	2.0	0	5.0	.235	3-1
09/06/2024	at Utah	*3	3	0	5	.600	34	85	.400	0	1	14	.929	0	0	.000	10	0	7	0	7.0	0	6.5	.246	3-0
09/07/2024	at Utah St.	*3	0	0	1	.000	29	69	.420	0	2	10	.800	0	0	.000	3	0	2	1	2.0	0	1.0	.290	3-0
09/13/2024	vs Houston	*3	4	0	7	.571	31	70	.443	0	1	10	.900	0	2	1.000	7	1	1	0	2.0	0	5.5	.292	3-0
09/14/2024	vs Kentucky	*4	2	0	6	.333	28	86	.326	2	1	15	.933	0	0	.000	8	0	4	0	4.0	0	6.0	.310	3-1
09/19/2024	at Kansas	*4	2	0	7	.286	49	128	.383	1	2	17	.882	0	0	.000	11	0	7	0	7.0	2	6.5	.278	1-3
09/20/2024	vs Creighton	*4	2	0	7	.286	44	124	.355	1	2	13	.846	0	0	.000	9	0	5	0	5.0	0	5.5	.209	1-3
09/21/2024	vs Tulsa	*3	2	2	10	.000	27	57	.474	0	1	7	.857	0	0	.000	5	0	3	0	3.0	0	3.5	.365	3-0
09/25/2024	Penn St.	*3	0	1	5	-.200	29	84	.345	0	0	11	1.000	0	0	.000	2	0	1	0	1.0	0	0.5	.176	0-3
09/28/2024	at Minnesota	*5	3	3	9	.000	54	130	.415	1	0	14	1.000	0	0	.000	12	0	4	0	4.0	0	6.0	.252	3-2
10/04/2024	at Northwestern	*4	2	1	8	.125	47	111	.423	1	4	15	.733	0	0	.000	13	1	0	0	1.0	1	4.0	.287	3-1
10/06/2024	Michigan St.	*3	0	0	3	.000	37	101	.366	0	0	14	1.000	0	0	.000	8	0	2	0	2.0	0	1.0	.252	3-0
10/11/2024	at Nebraska	*5	3	0	4	.750	52	140	.371	1	3	18	.833	0	0	.000	10	1	6	1	7.0	0	8.0	.311	2-3
10/12/2024	at Iowa	*4	6	1	8	.625	42	110	.382	1	0	11	1.000	1	1	.000	7	0	0	0	0.0	0	7.0	.213	3-1
10/17/2024	UCLA	*5	7	1	12	.500	51	127	.402	1	0	18	1.000	0	0	.000	12	1	4	0	5.0	0	11.0	.325	3-2
10/19/2024	Indiana	*3	1	0	2	.500	28	68	.412	3	2	15	.867	0	0	.000	10	0	2	0	2.0	0	5.0	.333	3-0
10/23/2024	Ohio St.	*3	2	0	6	.333	38	94	.404	2	1	14	.929	0	0	.000	7	0	4	0	4.0	0	6.0	.215	3-0
10/26/2024	Wisconsin	*3	2	1	4	.250	24	80	.300	0	1	10	.900	0	0	.000	8	1	1	0	2.0	0	3.5	.089	0-3
11/01/2024	at Maryland	*3	3	0	4	.750	39	101	.386	1	1	16	.938	0	0	.000	6	0	1	0	1.0	0	4.5	.313	3-0
11/02/2024	at Rutgers	*3	1	0	3	.333	33	68	.485	1	3	19	.842	0	0	.000	3	0	2	0	2.0	0	3.0	.424	3-0
11/08/2024	at Indiana	*4	4	0	5	.800	45	108	.417	0	2	24	.917	0	1	1.000	11	0	1	0	1.0	0	4.5	.305	3-1
11/10/2024	Michigan	*3	4	1	5	.600	34	82	.415	0	0	12	1.000	0	0	.000	8	0	0	1	0.0	0	4.0	.279	3-0
11/14/2024	Rutgers	*3	4	0	6	.667	35	76	.461	0	1	10	.900	0	0	.000	2	0	3	0	3.0	0	5.5	.370	3-0
11/17/2024	Illinois	*3	2	1	3	.333	44	87	.506	0	0	12	1.000	0	0	.000	10	0	4	0	4.0	0	4.0	.343	3-0
11/21/2024	at Penn St.	*3	0	0	3	.000	29	95	.305	0	0	12	1.000	0	0	.000	6	0	2	0	2.0	0	1.0	.142	0-3
11/23/2024	Southern California	*3	4	0	6	.667	37	99	.374	1	0	16	1.000	0	0	.000	10	0	3	0	3.0	0	6.5	.265	3-0
11/27/2024	at Oregon	*5	2	1	4	.250	57	150	.380	0	2	28	.929	0	1	1.000	6	1	1	0	2.0	0	3.5	.215	3-2
11/29/2024	at Washington	*3	0	0	4	.000	37	99	.374	0	0	9	1.000	0	0	.000	6	0	2	0	2.0	0	1.0	.264	3-0
Totals		109	70	15	159	.346	1208	3010	.401	23	37	436	.915	1	6	.833	242	7	86	3	93.0	3	143.0		

Player Averages

Sets Played	Kills per set	Assists per set	Service aces per set	Digs per set	Blocks per set	Points per set
109	0.64	11.08	0.21	2.22	0.85	1.31



2024-25 Purdue Women's Volleyball
Individual Match-by-Match
All games

Page 6/14
as of Nov 30, 2024

#7 COLVIN, Raven

Date	Opponent	SP	Attack				Set			Serve				Recept			Blocking					Team			
			K	E	TA	PCT	A	TA	PCT	SA	SE	TA	PCT	RE	TA	PCT	DIG	BS	BA	BE	TOTAL	BHE	POINTS	HIT%	SCORE
08/30/2024	Kansas St.	*4	7	3	14	.286	0	4	.000	3	4	18	.778	0	2	1.000	1	1	9	0	10.0	0	15.5	.234	3-1
08/31/2024	UMBC	*3	7	3	13	.308	0	1	.000	0	2	9	.778	0	0	.000	1	0	5	2	5.0	0	9.5	.371	3-0
09/01/2024	UC Davis	*3	12	1	15	.733	0	0	.000	0	2	2	.000	1	1	.000	0	1	3	2	4.0	0	14.5	.450	3-0
09/05/2024	vs California	*4	16	5	26	.423	0	0	.000	2	4	12	.667	0	0	.000	4	1	5	0	6.0	0	21.5	.235	3-1
09/06/2024	at Utah	*3	3	2	11	.091	0	1	.000	1	1	9	.889	0	0	.000	2	0	9	0	9.0	0	8.5	.246	3-0
09/07/2024	at Utah St.	*3	7	0	10	.700	1	2	.500	1	1	10	.900	0	0	.000	1	3	7	0	10.0	0	14.5	.290	3-0
09/13/2024	vs Houston	*3	5	1	7	.571	0	1	.000	1	2	10	.800	0	0	.000	2	1	3	1	4.0	0	8.5	.292	3-0
09/14/2024	vs Kentucky	*4	9	1	14	.571	1	2	.500	2	2	10	.800	0	0	.000	5	1	6	0	7.0	0	15.0	.310	3-1
09/19/2024	at Kansas	*4	14	3	25	.440	0	1	.000	2	2	13	.846	0	0	.000	3	0	7	1	7.0	0	19.5	.278	1-3
09/20/2024	vs Creighton	*4	8	1	15	.467	0	1	.000	0	1	7	.857	0	0	.000	1	1	5	0	6.0	0	11.5	.209	1-3
09/21/2024	vs Tulsa	*3	7	1	13	.462	0	3	.000	2	1	7	.857	0	0	.000	1	2	7	1	9.0	0	14.5	.365	3-0
09/25/2024	Penn St.	*3	6	2	13	.308	0	1	.000	1	2	13	.846	0	0	.000	3	0	1	1	1.0	0	7.5	.176	0-3
09/28/2024	at Minnesota	*5	19	7	31	.387	0	2	.000	7	3	23	.870	0	0	.000	5	1	4	0	5.0	0	29.0	.252	3-2
10/04/2024	at Northwestern	*4	14	3	24	.458	0	0	.000	0	1	12	.917	0	0	.000	1	1	2	1	3.0	0	16.0	.287	3-1
10/06/2024	Michigan St.	*3	8	1	15	.467	0	2	.000	0	1	3	.667	0	0	.000	0	2	4	2	6.0	0	12.0	.252	3-0
10/11/2024	at Nebraska	*5	5	5	20	.000	1	2	.500	0	3	3	.000	0	0	.000	0	2	9	0	11.0	0	11.5	.311	2-3
10/12/2024	at Iowa	*4	12	4	23	.348	0	1	.000	4	2	16	.875	0	1	1.000	4	0	3	0	3.0	0	17.5	.213	3-1
10/17/2024	UCLA	*5	17	2	27	.556	0	3	.000	1	4	11	.636	0	2	1.000	3	1	5	0	6.0	0	21.5	.325	3-2
10/19/2024	Indiana	*3	7	4	16	.188	1	2	.500	0	1	1	.000	0	0	.000	0	0	2	0	2.0	0	8.0	.333	3-0
10/23/2024	Ohio St.	*3	5	7	14	.143	1	2	.500	1	4	11	.636	0	0	.000	2	0	6	0	6.0	0	9.0	.215	3-0
10/26/2024	Wisconsin	*3	4	4	13	.000	0	2	.000	0	3	12	.750	0	0	.000	2	0	1	1	1.0	0	4.5	.089	0-3
11/01/2024	at Maryland	*3	7	4	18	.167	0	3	.000	2	1	6	.833	0	0	.000	2	0	0	2	0.0	0	9.0	.313	3-0
11/02/2024	at Rutgers	*3	9	2	17	.412	1	2	.500	1	0	4	1.000	0	0	.000	0	1	3	0	4.0	0	12.5	.424	3-0
11/08/2024	at Indiana	*4	7	5	15	.133	0	2	.000	1	0	6	1.000	0	1	1.000	2	0	5	1	5.0	0	10.5	.305	3-1
11/10/2024	Michigan	*3	8	2	16	.375	0	2	.000	0	0	2	1.000	0	0	.000	0	2	7	0	9.0	0	13.5	.279	3-0
11/14/2024	Rutgers	*3	4	3	11	.091	1	1	1.000	2	1	5	.800	0	1	1.000	2	1	3	1	4.0	1	8.5	.370	3-0
11/17/2024	Illinois	*3	8	3	15	.333	0	2	.000	0	1	3	.667	0	0	.000	2	0	6	1	6.0	0	11.0	.343	3-0
11/21/2024	at Penn St.	*3	6	3	16	.188	1	1	1.000	0	1	1	.000	0	2	1.000	0	0	4	0	4.0	0	8.0	.142	0-3
11/23/2024	Southern California	*3	14	3	22	.500	0	1	.000	1	1	6	.833	0	0	.000	2	3	4	0	7.0	0	20.0	.265	3-0
11/27/2024	at Oregon	*5	11	7	28	.143	0	2	.000	0	3	6	.500	0	0	.000	0	2	4	1	6.0	0	15.0	.215	3-2
11/29/2024	at Washington	*3	12	3	22	.409	0	2	.000	2	0	10	1.000	0	0	.000	1	1	3	0	4.0	0	16.5	.264	3-0
Totals		109	278	95	539	.340	8	51	.157	37	54	261	.793	1	10	.900	52	28	142	18	170.0	1	414.0		

Player Averages

Sets Played	Kills per set	Assists per set	Service aces per set	Digs per set	Blocks per set	Points per set
109	2.55	0.07	0.34	0.48	1.56	3.80



2024-25 Purdue Women's Volleyball
Individual Match-by-Match
All games

Page 7/14
as of Nov 30, 2024

#8 GRAY, Raven

			Attack				Set			Serve				Recept				Blocking				Team				
Date	Opponent	SP	K	E	TA	PCT	A	TA	PCT	SA	SE	TA	PCT	RE	TA	PCT	DIG	BS	BA	BE	TOTAL	BHE	POINTS	HIT%	SCORE	
08/31/2024	UMBC	1	1	0	1	1.000	0	1	.000	0	0	0	.000	0	0	.000	0	0	0	0	0.0	0	1.0	.371	3-0	
11/02/2024	at Rutgers	2	0	0	0	.000	0	0	.000	0	1	1	.000	0	0	.000	0	0	0	0	0.0	0	0.0	.424	3-0	
11/14/2024	Rutgers	1	0	0	0	.000	0	0	.000	0	0	0	.000	0	0	.000	0	0	0	0	0.0	0	0.0	.370	3-0	
Totals			4	1	0	1	1.000	0	1	.000	0	1	1	.000	0	0	.000	0	0	0	0	0.0	0	1.0		

Player Averages

Sets Played	Kills per set	Assists per set	Service aces per set	Digs per set	Blocks per set	Points per set
4	0.25	0.00	0.00	0.00	0.00	0.25



2024-25 Purdue Women's Volleyball
Individual Match-by-Match
All games

Page 8/14
as of Nov 30, 2024

#9 MYERS, Lourdes

Date	Opponent	SP	Attack				Set			Serve				Recept			Blocking					Team			
			K	E	TA	PCT	A	TA	PCT	SA	SE	TA	PCT	RE	TA	PCT	DIG	BS	BA	BE	TOTAL	BHE	POINTS	HIT%	SCORE
08/30/2024	Kansas St.	*4	4	1	9	.333	0	1	.000	0	0	0	.000	0	2	1.000	0	0	6	4	6.0	0	7.0	.234	3-1
08/31/2024	UMBC	*3	3	1	9	.222	0	0	.000	0	0	0	.000	0	0	.000	1	0	5	1	5.0	0	5.5	.371	3-0
09/01/2024	UC Davis	*3	6	1	9	.556	0	0	.000	0	0	0	.000	0	0	.000	2	1	1	0	2.0	0	7.5	.450	3-0
09/05/2024	vs California	*4	6	2	13	.308	0	1	.000	0	0	0	.000	0	2	1.000	0	0	4	1	4.0	0	8.0	.235	3-1
09/06/2024	at Utah	*3	2	1	7	.143	0	0	.000	0	0	0	.000	0	0	.000	1	0	2	2	2.0	0	3.0	.246	3-0
09/07/2024	at Utah St.	*2	2	1	3	.333	0	1	.000	0	0	0	.000	0	0	.000	1	1	0	0	1.0	0	3.0	.290	3-0
09/13/2024	vs Houston	*3	1	0	6	.167	0	1	.000	0	0	0	.000	0	3	1.000	1	1	7	1	8.0	0	5.5	.292	3-0
09/14/2024	vs Kentucky	*4	1	1	3	.000	0	1	.000	0	0	0	.000	0	0	.000	2	0	2	0	2.0	0	2.0	.310	3-1
09/19/2024	at Kansas	*1	1	1	4	.000	0	0	.000	0	0	0	.000	0	0	.000	0	0	1	3	1.0	0	1.5	.278	1-3
09/20/2024	vs Creighton	*4	5	1	12	.333	0	1	.000	0	0	0	.000	0	0	.000	2	0	2	2	2.0	0	6.0	.209	1-3
09/21/2024	vs Tulsa	*3	6	1	8	.625	0	0	.000	0	0	0	.000	0	1	1.000	0	0	2	0	2.0	0	7.0	.365	3-0
09/25/2024	Penn St.	*3	3	0	7	.429	0	0	.000	0	0	0	.000	0	0	.000	2	0	1	0	1.0	0	3.5	.176	0-3
09/28/2024	at Minnesota	*5	4	1	9	.333	0	1	.000	0	0	0	.000	0	1	1.000	1	0	4	2	4.0	0	6.0	.252	3-2
10/04/2024	at Northwestern	*4	4	1	9	.333	0	1	.000	0	0	0	.000	0	0	.000	2	0	3	3	3.0	0	5.5	.287	3-1
10/06/2024	Michigan St.	*3	5	0	9	.556	0	0	.000	0	0	0	.000	1	2	.500	1	0	5	0	5.0	0	7.5	.252	3-0
10/11/2024	at Nebraska	*5	5	1	8	.500	0	0	.000	0	0	0	.000	0	1	1.000	0	0	3	0	3.0	0	6.5	.311	2-3
10/12/2024	at Iowa	*4	5	1	8	.500	0	1	.000	0	0	0	.000	0	2	1.000	0	1	4	0	5.0	0	8.0	.213	3-1
10/17/2024	UCLA	*5	4	2	10	.200	1	1	1.000	0	0	0	.000	0	1	1.000	2	3	6	1	9.0	0	10.0	.325	3-2
10/19/2024	Indiana	*3	1	0	3	.333	1	1	1.000	0	0	0	.000	0	0	.000	0	0	2	0	2.0	0	2.0	.333	3-0
10/23/2024	Ohio St.	*3	7	0	13	.538	0	1	.000	0	0	0	.000	0	0	.000	1	1	5	1	6.0	0	10.5	.215	3-0
10/26/2024	Wisconsin	*3	5	3	13	.154	0	1	.000	0	0	0	.000	0	0	.000	2	0	5	0	5.0	0	7.5	.089	0-3
11/01/2024	at Maryland	*3	4	1	10	.300	0	0	.000	0	0	0	.000	0	0	.000	0	0	2	1	2.0	0	5.0	.313	3-0
11/02/2024	at Rutgers	*3	6	2	11	.364	0	0	.000	0	0	0	.000	0	0	.000	1	1	3	0	4.0	0	8.5	.424	3-0
11/08/2024	at Indiana	*4	9	1	14	.571	0	1	.000	0	0	0	.000	0	0	.000	0	0	1	0	1.0	0	9.5	.305	3-1
11/10/2024	Michigan	*3	1	3	6	.333	0	0	.000	0	0	0	.000	0	0	.000	1	0	2	1	2.0	0	2.0	.279	3-0
11/14/2024	Rutgers	*3	2	0	6	.333	0	0	.000	0	0	0	.000	0	0	.000	2	0	4	0	4.0	0	4.0	.370	3-0
11/17/2024	Illinois	*3	6	2	13	.308	0	0	.000	0	0	0	.000	0	1	1.000	3	0	6	0	6.0	0	9.0	.343	3-0
11/21/2024	at Penn St.	*3	6	1	8	.625	0	1	.000	0	0	0	.000	1	3	.667	0	1	1	5	2.0	0	7.5	.142	0-3
11/23/2024	Southern California	*3	7	3	15	.267	0	0	.000	0	0	0	.000	0	1	1.000	0	0	4	1	4.0	0	9.0	.265	3-0
11/27/2024	at Oregon	*5	6	2	15	.267	1	3	.333	0	0	0	.000	0	0	.000	0	0	1	0	1.0	0	6.5	.215	3-2
11/29/2024	at Washington	*3	8	0	16	.500	1	1	1.000	0	0	0	.000	0	0	.000	1	1	2	1	3.0	0	10.0	.264	3-0
Totals		105	135	35	286	.350	4	19	.211	0	0	0	.000	2	20	.900	29	11	96	30	107.0	0	194.0		

Player Averages

Sets Played	Kills per set	Assists per set	Service aces per set	Digs per set	Blocks per set	Points per set
105	1.29	0.04	0.00	0.28	1.02	1.85



2024-25 Purdue Women's Volleyball
Individual Match-by-Match
All games

Page 9/14
as of Nov 30, 2024

#10 HORNING, Ali

		Attack					Set			Serve				Recept			Blocking					Team			
Date	Opponent	SP	K	E	TA	PCT	A	TA	PCT	SA	SE	TA	PCT	RE	TA	PCT	DIG	BS	BA	BE	TOTAL	BHE	POINTS	HIT%	SCORE
08/30/2024	Kansas St.	4	0	0	0	.000	6	17	.353	1	0	14	1.000	4	36	.889	17	0	0	0	0.0	0	1.0	.234	3-1
08/31/2024	UMBC	3	0	0	0	.000	1	7	.143	0	0	15	1.000	2	10	.800	14	0	0	0	0.0	0	0.0	.371	3-0
09/01/2024	UC Davis	3	0	0	0	.000	3	11	.273	1	1	15	.933	0	9	1.000	18	0	0	0	0.0	0	1.0	.450	3-0
09/05/2024	vs California	4	0	0	0	.000	3	18	.167	0	0	3	1.000	1	16	.938	18	0	1	0	1.0	0	0.5	.235	3-1
09/06/2024	at Utah	3	0	0	0	.000	1	14	.071	1	0	9	1.000	1	36	.972	14	0	0	0	0.0	0	1.0	.246	3-0
09/07/2024	at Utah St.	3	0	0	0	.000	3	6	.500	0	0	6	1.000	0	18	1.000	8	0	0	0	0.0	0	0.0	.290	3-0
09/13/2024	vs Houston	3	0	0	0	.000	1	8	.125	0	0	0	.000	0	7	1.000	9	0	0	0	0.0	0	0.0	.292	3-0
09/14/2024	vs Kentucky	4	0	0	1	.000	7	14	.500	0	0	1	1.000	1	24	.958	10	0	0	0	0.0	0	0.0	.310	3-1
09/19/2024	at Kansas	4	0	0	0	.000	5	13	.385	0	0	1	1.000	0	42	1.000	14	0	0	0	0.0	0	0.0	.278	1-3
09/20/2024	vs Creighton	4	0	0	1	.000	3	9	.333	0	0	0	.000	0	20	1.000	15	0	0	0	0.0	0	0.0	.209	1-3
09/21/2024	vs Tulsa	3	0	0	0	.000	0	7	.000	0	0	2	1.000	1	21	.952	6	0	0	0	0.0	0	0.0	.365	3-0
09/25/2024	Penn St.	3	0	0	0	.000	1	3	.333	0	1	4	.750	0	18	1.000	11	0	0	0	0.0	0	0.0	.176	0-3
09/28/2024	at Minnesota	5	0	0	0	.000	3	14	.214	0	0	0	.000	1	38	.974	24	0	0	0	0.0	0	0.0	.252	3-2
10/04/2024	at Northwestern	4	0	0	1	.000	2	10	.200	0	0	0	.000	0	27	1.000	18	0	0	0	0.0	0	0.0	.287	3-1
10/06/2024	Michigan St.	3	0	0	0	.000	4	8	.500	0	0	0	.000	2	10	.800	22	0	0	0	0.0	0	0.0	.252	3-0
10/11/2024	at Nebraska	5	0	0	0	.000	6	12	.500	0	1	9	.889	2	51	.961	12	0	0	0	0.0	0	0.0	.311	2-3
10/12/2024	at Iowa	4	0	0	0	.000	2	12	.167	0	1	13	.923	0	21	1.000	17	0	0	0	0.0	0	0.0	.213	3-1
10/17/2024	UCLA	5	0	0	1	.000	7	17	.412	0	1	14	.929	3	43	.930	19	0	0	0	0.0	0	0.0	.325	3-2
10/19/2024	Indiana	3	0	0	0	.000	5	12	.417	1	0	14	1.000	0	16	1.000	6	0	0	0	0.0	0	1.0	.333	3-0
10/23/2024	Ohio St.	3	0	0	1	.000	3	12	.250	0	0	9	1.000	1	58	.983	15	0	0	0	0.0	0	0.0	.215	3-0
10/26/2024	Wisconsin	3	0	0	1	.000	2	10	.200	0	1	6	.833	5	37	.865	9	0	0	0	0.0	0	0.0	.089	0-3
11/01/2024	at Maryland	3	0	0	0	.000	1	3	.333	1	3	16	.813	0	21	1.000	17	0	0	0	0.0	0	1.0	.313	3-0
11/02/2024	at Rutgers	3	0	0	0	.000	2	3	.667	1	0	12	1.000	0	20	1.000	14	0	0	0	0.0	0	1.0	.424	3-0
11/08/2024	at Indiana	4	0	0	0	.000	6	8	.750	0	1	16	.938	0	32	1.000	14	0	0	0	0.0	0	0.0	.305	3-1
11/10/2024	Michigan	3	0	0	0	.000	4	9	.444	0	0	16	1.000	0	24	1.000	13	0	0	0	0.0	0	0.0	.279	3-0
11/14/2024	Rutgers	3	0	0	0	.000	3	5	.600	2	0	18	1.000	0	17	1.000	15	0	0	0	0.0	0	2.0	.370	3-0
11/17/2024	Illinois	3	0	0	0	.000	2	10	.200	0	1	13	.923	0	17	1.000	16	0	0	0	0.0	0	0.0	.343	3-0
11/21/2024	at Penn St.	3	0	0	0	.000	2	8	.250	1	1	14	.929	2	13	.846	19	0	0	0	0.0	0	1.0	.142	0-3
11/23/2024	Southern California	3	0	0	0	.000	5	12	.417	1	2	19	.895	1	14	.929	15	0	0	0	0.0	0	1.0	.265	3-0
11/27/2024	at Oregon	5	0	0	0	.000	3	16	.188	1	1	16	.938	0	39	1.000	22	0	0	0	0.0	0	1.0	.215	3-2
11/29/2024	at Washington	3	0	0	0	.000	3	8	.375	0	1	17	.941	0	18	1.000	21	0	0	0	0.0	0	0.0	.264	3-0
Totals		109	0	0	6	.000	99	316	.313	11	16	292	.945	27	773	.965	462	0	1	0	1.0	0	11.5		

Player Averages

Sets Played	Kills per set	Assists per set	Service aces per set	Digs per set	Blocks per set	Points per set
109	0.00	0.91	0.10	4.24	0.01	0.11



2024-25 Purdue Women's Volleyball
Individual Match-by-Match
All games

Page 10/14
as of Nov 30, 2024

#11 SHONDELL, Allie

			Attack				Set			Serve				Recept			Blocking					Team			
Date	Opponent	SP	K	E	TA	PCT	A	TA	PCT	SA	SE	TA	PCT	RE	TA	PCT	DIG	BS	BA	BE	TOTAL	BHE	POINTS	HIT%	SCORE
08/31/2024	UMBC	1	0	0	0	.000	3	6	.500	0	1	2	.500	0	0	.000	0	0	0	0	0.0	0	0.0	.371	3-0
09/07/2024	at Utah St.	1	0	1	1	-1.000	3	8	.375	0	0	0	.000	0	0	.000	1	0	1	0	1.0	0	0.5	.290	3-0
09/21/2024	vs Tulsa	1	0	0	0	.000	5	8	.625	0	0	0	.000	0	0	.000	0	0	2	0	2.0	0	1.0	.365	3-0
10/26/2024	Wisconsin	1	0	0	0	.000	2	7	.286	0	0	0	.000	0	0	.000	1	0	0	0	0.0	0	0.0	.089	0-3
11/02/2024	at Rutgers	1	0	0	0	.000	5	10	.500	0	0	1	1.000	0	0	.000	0	0	0	0	0.0	0	0.0	.424	3-0
11/14/2024	Rutgers	1	0	0	0	.000	2	3	.667	0	0	1	1.000	0	0	.000	1	0	0	0	0.0	0	0.0	.370	3-0
11/29/2024	at Washington	1	0	0	0	.000	3	6	.500	0	0	0	.000	0	0	.000	0	0	0	0	0.0	0	0.0	.264	3-0
Totals		7	0	1	1	-1.000	23	48	.479	0	1	4	.750	0	0	.000	3	0	3	0	3.0	0	1.5		

Player Averages

Sets Played	Kills per set	Assists per set	Service aces per set	Digs per set	Blocks per set	Points per set
7	0.00	3.29	0.00	0.43	0.43	0.21



2024-25 Purdue Women's Volleyball
Individual Match-by-Match
All games

Page 11/14
as of Nov 30, 2024

#15 CARR, Lizzie

Date	Opponent	SP	Attack				Set			Serve				Recept			Blocking					Team			
			K	E	TA	PCT	A	TA	PCT	SA	SE	TA	PCT	RE	TA	PCT	DIG	BS	BA	BE	TOTAL	BHE	POINTS	HIT%	SCORE
08/31/2024	UMBC	3	6	0	15	.400	0	0	.000	0	0	0	.000	0	0	.000	0	0	4	0	4.0	0	8.0	.371	3-0
09/06/2024	at Utah	1	0	0	0	.000	0	0	.000	0	0	0	.000	0	0	.000	0	0	0	0	0.0	0	0.0	.246	3-0
09/07/2024	at Utah St.	2	2	0	5	.400	0	0	.000	0	0	0	.000	0	0	.000	0	1	2	0	3.0	0	4.0	.290	3-0
09/13/2024	vs Houston	1	3	0	3	1.000	0	1	.000	0	0	0	.000	0	0	.000	0	0	0	0	0.0	0	3.0	.292	3-0
09/19/2024	at Kansas	3	5	3	11	.182	0	2	.000	0	0	0	.000	0	1	1.000	0	0	1	1	1.0	0	5.5	.278	1-3
09/21/2024	vs Tulsa	2	5	1	10	.400	0	1	.000	0	0	0	.000	0	0	.000	1	0	1	0	1.0	0	5.5	.365	3-0
10/17/2024	UCLA	2	1	1	3	.000	0	0	.000	0	0	0	.000	0	0	.000	0	0	0	0	0.0	0	1.0	.325	3-2
10/19/2024	Indiana	1	1	0	4	.250	0	0	.000	0	0	0	.000	0	0	.000	0	0	0	0	0.0	0	1.0	.333	3-0
10/26/2024	Wisconsin	2	1	0	5	.200	1	1	1.000	0	0	0	.000	0	0	.000	2	0	1	0	1.0	0	1.5	.089	0-3
11/01/2024	at Maryland	2	5	0	10	.500	0	0	.000	0	0	0	.000	0	0	.000	0	0	0	0	0.0	0	5.0	.313	3-0
11/02/2024	at Rutgers	2	0	0	3	.000	0	0	.000	0	0	0	.000	0	0	.000	0	0	0	0	0.0	0	0.0	.424	3-0
11/08/2024	at Indiana	4	10	1	18	.500	0	1	.000	0	0	0	.000	0	0	.000	1	0	1	2	1.0	0	10.5	.305	3-1
11/10/2024	Michigan	3	4	1	12	.250	0	1	.000	0	0	0	.000	0	0	.000	2	1	5	1	6.0	0	7.5	.279	3-0
11/14/2024	Rutgers	2	5	0	7	.714	0	0	.000	0	0	0	.000	0	0	.000	0	0	1	0	1.0	0	5.5	.370	3-0
11/17/2024	Illinois	3	8	1	13	.538	0	0	.000	0	0	0	.000	0	0	.000	2	0	5	0	5.0	0	10.5	.343	3-0
11/21/2024	at Penn St.	3	2	2	7	.000	0	1	.000	0	0	0	.000	0	0	.000	0	0	1	0	1.0	0	2.5	.142	0-3
11/23/2024	Southern California	2	1	2	7	-.143	0	1	.000	0	0	0	.000	0	0	.000	1	0	1	0	1.0	0	1.5	.265	3-0
11/27/2024	at Oregon	4	6	5	19	.053	0	1	.000	0	0	0	.000	0	0	.000	0	1	2	0	3.0	0	8.0	.215	3-2
11/29/2024	at Washington	3	7	2	13	.385	0	0	.000	0	0	0	.000	0	0	.000	1	1	0	0	1.0	0	8.0	.264	3-0
Totals		45	72	19	165	.321	1	10	.100	0	0	0	.000	0	1	1.000	10	4	25	4	29.0	0	88.5		

Player Averages

Sets Played	Kills per set	Assists per set	Service aces per set	Digs per set	Blocks per set	Points per set
45	1.60	0.02	0.00	0.22	0.64	1.97



2024-25 Purdue Women's Volleyball
Individual Match-by-Match
All games

Page 12/14
as of Nov 30, 2024

#17 HUDSON, Eva

Date	Opponent	SP	Attack				Set			Serve				Recept			Blocking					Team			
			K	E	TA	PCT	A	TA	PCT	SA	SE	TA	PCT	RE	TA	PCT	DIG	BS	BA	BE	TOTAL	BHE	POINTS	HIT%	SCORE
08/30/2024	Kansas St.	*4	16	5	48	.229	0	0	.000	0	1	12	.917	0	12	1.000	12	1	4	1	5.0	0	19.0	.234	3-1
08/31/2024	UMBC	*3	15	1	30	.467	0	4	.000	0	1	4	.750	1	8	.875	8	0	2	0	2.0	0	16.0	.371	3-0
09/01/2024	UC Davis	*3	15	2	30	.433	0	1	.000	0	1	11	.909	0	13	1.000	9	0	1	1	1.0	0	15.5	.450	3-0
09/05/2024	vs California	*4	14	7	50	.140	0	6	.000	0	1	16	.938	1	22	.955	8	0	4	0	4.0	0	16.0	.235	3-1
09/06/2024	at Utah	*3	18	4	45	.311	0	1	.000	3	0	11	1.000	3	10	.700	6	0	3	0	3.0	0	22.5	.246	3-0
09/07/2024	at Utah St.	*3	10	4	34	.176	0	0	.000	0	1	13	.923	1	7	.857	8	1	2	0	3.0	0	12.0	.290	3-0
09/13/2024	vs Houston	*3	10	3	26	.269	1	1	1.000	0	1	11	.909	0	7	1.000	6	0	1	0	1.0	0	10.5	.292	3-0
09/14/2024	vs Kentucky	*4	20	6	46	.304	1	3	.333	1	2	12	.833	1	11	.909	3	0	1	0	1.0	0	21.5	.310	3-1
09/19/2024	at Kansas	*4	17	1	53	.302	1	3	.333	0	0	14	1.000	1	25	.960	11	0	0	0	0.0	0	17.0	.278	1-3
09/20/2024	vs Creighton	*4	19	7	55	.218	0	3	.000	0	0	11	1.000	0	25	1.000	9	0	1	0	1.0	0	19.5	.209	1-3
09/21/2024	vs Tulsa	*3	11	2	24	.375	1	1	1.000	0	1	6	.833	0	5	1.000	4	0	1	1	1.0	0	11.5	.365	3-0
09/25/2024	Penn St.	*3	10	4	30	.200	0	1	.000	0	1	5	.800	1	31	.968	5	0	0	0	0.0	0	10.0	.176	0-3
09/28/2024	at Minnesota	*5	18	5	51	.255	1	4	.250	0	1	7	.857	2	17	.882	11	0	2	0	2.0	0	19.0	.252	3-2
10/04/2024	at Northwestern	*4	13	6	42	.167	0	5	.000	3	0	17	1.000	1	13	.923	16	0	2	0	2.0	0	17.0	.287	3-1
10/06/2024	Michigan St.	*3	11	2	35	.257	0	0	.000	0	1	11	.909	1	22	.955	9	0	3	0	3.0	0	12.5	.252	3-0
10/11/2024	at Nebraska	*5	26	4	63	.349	0	1	.000	0	2	19	.895	1	33	.970	15	0	1	0	1.0	0	26.5	.311	2-3
10/12/2024	at Iowa	*4	18	8	46	.217	2	3	.667	3	0	18	1.000	0	20	1.000	8	0	2	0	2.0	0	22.0	.213	3-1
10/17/2024	UCLA	*5	24	2	56	.393	0	2	.000	0	1	17	.941	2	15	.867	17	0	3	0	3.0	0	25.5	.325	3-2
10/19/2024	Indiana	*3	17	2	36	.417	1	1	1.000	0	1	3	.667	0	4	1.000	6	0	0	0	0.0	0	17.0	.333	3-0
10/23/2024	Ohio St.	*3	19	6	51	.255	0	1	.000	0	1	11	.909	0	4	1.000	8	0	4	0	4.0	0	21.0	.215	3-0
10/26/2024	Wisconsin	*3	17	9	50	.160	0	2	.000	0	0	4	1.000	0	13	1.000	5	0	2	0	2.0	0	18.0	.089	0-3
11/01/2024	at Maryland	*3	15	1	41	.341	0	0	.000	0	2	9	.778	0	13	1.000	7	0	1	0	1.0	0	15.5	.313	3-0
11/02/2024	at Rutgers	*3	14	1	32	.406	0	1	.000	0	1	6	.833	0	7	1.000	6	0	0	0	0.0	0	14.0	.424	3-0
11/08/2024	at Indiana	*4	26	7	51	.373	0	3	.000	0	2	13	.846	0	9	1.000	10	2	3	0	5.0	0	29.5	.305	3-1
11/10/2024	Michigan	*3	19	5	40	.350	0	3	.000	1	1	13	.923	0	8	1.000	6	0	3	0	3.0	0	21.5	.279	3-0
11/14/2024	Rutgers	*3	15	4	43	.256	2	2	1.000	0	0	12	1.000	0	3	1.000	10	0	3	0	3.0	0	16.5	.370	3-0
11/17/2024	Illinois	*3	18	4	42	.333	0	0	.000	0	0	11	1.000	0	13	1.000	7	1	1	0	2.0	0	19.5	.343	3-0
11/21/2024	at Penn St.	*3	12	3	41	.220	0	1	.000	0	0	11	1.000	1	17	.941	9	0	1	1	1.0	0	12.5	.142	0-3
11/23/2024	Southern California	*3	18	6	55	.218	0	4	.000	1	0	9	1.000	1	10	.900	7	0	4	0	4.0	0	21.0	.265	3-0
11/27/2024	at Oregon	*5	28	10	77	.234	0	1	.000	0	0	19	1.000	2	25	.920	14	0	2	0	2.0	0	29.0	.215	3-2
11/29/2024	at Washington	*3	13	5	45	.178	0	4	.000	2	0	18	1.000	2	14	.857	13	0	1	0	1.0	1	15.5	.264	3-0
Totals		109	516	136	1368	.278	10	62	.161	14	23	354	.935	22	436	.950	273	5	58	4	63.0	1	564.0		

Player Averages

Sets Played	Kills per set	Assists per set	Service aces per set	Digs per set	Blocks per set	Points per set
109	4.73	0.09	0.13	2.50	0.58	5.17



2024-25 Purdue Women's Volleyball
Individual Match-by-Match
All games

#19 YIM, Sydney

			Attack				Set			Serve				Recept				Blocking				Team			
Date	Opponent	SP	K	E	TA	PCT	A	TA	PCT	SA	SE	TA	PCT	RE	TA	PCT	DIG	BS	BA	BE	TOTAL	BHE	POINTS	HIT%	SCORE
10/19/2024	Indiana	1	0	0	0	.000	1	2	.500	0	0	0	.000	0	0	.000	0	0	0	0	0.0	0	0.0	.333	3-0
11/02/2024	at Rutgers	1	1	0	1	1.000	0	1	.000	0	0	0	.000	0	0	.000	0	0	0	0	0.0	0	1.0	.424	3-0
11/14/2024	Rutgers	1	0	0	0	.000	2	2	1.000	0	0	0	.000	0	0	.000	1	0	0	0	0.0	0	0.0	.370	3-0
Totals		3	1	0	1	1.000	3	5	.600	0	0	0	.000	0	0	.000	1	0	0	0	0.0	0	1.0		

Player Averages

Sets Played	Kills per set	Assists per set	Service aces per set	Digs per set	Blocks per set	Points per set
3	0.33	1.00	0.00	0.33	0.00	0.33



2024-25 Purdue Women's Volleyball
Individual Match-by-Match
All games

Page 14/14
as of Nov 30, 2024

#21 KANE, Julia

		Attack				Set			Serve				Recept			Blocking					Team				
Date	Opponent	SP	K	E	TA	PCT	A	TA	PCT	SA	SE	TA	PCT	RE	TA	PCT	DIG	BS	BA	BE	TOTAL	BHE	POINTS	HIT%	SCORE
08/31/2024	UMBC	2	0	0	0	.000	1	1	1.000	1	0	7	1.000	1	6	.833	1	0	0	0	0.0	0	1.0	.371	3-0
09/07/2024	at Utah St.	2	0	0	0	.000	0	0	.000	1	1	8	.875	0	0	.000	0	0	0	0	0.0	0	1.0	.290	3-0
09/13/2024	vs Houston	3	0	0	0	.000	0	0	.000	0	1	12	.917	0	0	.000	1	0	0	0	0.0	0	0.0	.292	3-0
09/14/2024	vs Kentucky	4	0	0	0	.000	1	1	1.000	1	2	17	.882	0	0	.000	3	0	0	0	0.0	0	1.0	.310	3-1
09/19/2024	at Kansas	4	0	0	0	.000	2	2	1.000	1	3	15	.800	0	0	.000	0	0	0	0	0.0	0	1.0	.278	1-3
09/20/2024	vs Creighton	4	0	0	0	.000	0	2	.000	0	1	14	.929	0	0	.000	3	0	0	0	0.0	0	0.0	.209	1-3
09/21/2024	vs Tulsa	3	0	0	0	.000	1	1	1.000	1	2	16	.875	0	0	.000	6	0	0	0	0.0	0	1.0	.365	3-0
09/25/2024	Penn St.	2	0	0	0	.000	0	1	.000	0	1	4	.750	0	0	.000	0	0	0	0	0.0	0	0.0	.176	0-3
09/28/2024	at Minnesota	5	0	0	0	.000	0	1	.000	3	2	15	.867	0	0	.000	2	0	0	0	0.0	0	3.0	.252	3-2
10/04/2024	at Northwestern	4	0	0	0	.000	2	2	1.000	1	4	20	.800	0	0	.000	0	0	0	0	0.0	0	1.0	.287	3-1
10/06/2024	Michigan St.	3	0	0	0	.000	0	2	.000	0	1	12	.917	0	0	.000	4	0	0	0	0.0	0	0.0	.252	3-0
10/11/2024	at Nebraska	5	0	0	0	.000	1	2	.500	0	2	9	.778	0	0	.000	0	0	0	0	0.0	0	0.0	.311	2-3
10/12/2024	at Iowa	1	0	0	0	.000	0	0	.000	0	0	2	1.000	0	0	.000	0	0	0	0	0.0	0	0.0	.213	3-1
10/17/2024	UCLA	4	0	0	0	.000	0	0	.000	0	2	8	.750	0	0	.000	1	0	0	0	0.0	0	0.0	.325	3-2
10/19/2024	Indiana	3	0	0	0	.000	0	0	.000	2	1	18	.944	0	0	.000	2	0	0	0	0.0	0	2.0	.333	3-0
10/23/2024	Ohio St.	2	0	0	0	.000	0	0	.000	0	1	3	.667	0	0	.000	0	0	0	0	0.0	0	0.0	.215	3-0
10/26/2024	Wisconsin	3	0	0	0	.000	0	0	.000	0	1	6	.833	0	0	.000	0	0	0	0	0.0	0	0.0	.089	0-3
11/01/2024	at Maryland	2	0	0	0	.000	0	0	.000	0	0	3	1.000	0	0	.000	0	0	0	0	0.0	0	0.0	.313	3-0
11/02/2024	at Rutgers	2	0	0	0	.000	0	0	.000	0	1	4	.750	0	0	.000	0	0	0	0	0.0	0	0.0	.424	3-0
11/08/2024	at Indiana	3	0	0	0	.000	0	2	.000	0	1	8	.875	0	0	.000	0	0	0	0	0.0	0	0.0	.305	3-1
11/10/2024	Michigan	2	0	0	0	.000	0	2	.000	0	1	10	.900	0	0	.000	3	0	0	0	0.0	0	0.0	.279	3-0
11/14/2024	Rutgers	1	0	0	0	.000	0	0	.000	0	1	3	.667	0	0	.000	0	0	0	0	0.0	0	0.0	.370	3-0
11/17/2024	Illinois	2	0	0	0	.000	0	0	.000	0	0	4	1.000	0	0	.000	0	0	0	0	0.0	0	0.0	.343	3-0
11/21/2024	at Penn St.	3	0	0	0	.000	0	0	.000	0	2	5	.600	0	0	.000	0	0	0	0	0.0	0	0.0	.142	0-3
11/23/2024	Southern California	2	0	0	0	.000	0	0	.000	1	1	5	.800	0	0	.000	0	0	0	0	0.0	0	1.0	.265	3-0
11/27/2024	at Oregon	3	0	0	0	.000	0	0	.000	1	2	8	.750	0	0	.000	1	0	0	0	0.0	0	1.0	.215	3-2
Totals		74	0	0	0	.000	8	19	.421	13	34	236	.856	1	6	.833	27	0	0	0	0.0	0	13.0		

Player Averages

Sets Played	Kills per set	Assists per set	Service aces per set	Digs per set	Blocks per set	Points per set
74	0.00	0.11	0.18	0.36	0.00	0.18



Purdue Women's Volleyball
Individual Career Summaries
All games

Page 1/7
as of Nov 30, 2024

ANDERSON, Taylor

SEASON	TEAM	SM-MP	K	K/S	E	TA	PCT	A	A/S	SA	SA/S	SE	DIG	D/S	RE	BS	BA	TB	B/S	BE	BHE	PTS	PTS/S
2023-24	Purdue	112-31	35	0.31	13	101	.218	1107	9.88	17	0.15	30	221	1.97	2	7	88	95	0.85	6	7	103.0	0.92
2024-25	Purdue	109-31	70	0.64	15	159	.346	1208	11.08	23	0.21	37	242	2.22	1	7	86	93	0.85	3	3	143.0	1.31
TOTAL		221 - 62	105	0.48	28	260	.296	2315	10.48	40	0.18	67	463	2.10	3	14	174	188	0.85	9	10	246.0	1.11

Single Game Highs

Statistic	Value	
Kills	7	vs UCLA 10/17/24
Attacks	12	vs UCLA 10/17/24
Assists	60	vs Marquette 12/01/23
Serve Aces	3	vs Illinois 10/04/23, vs Indiana 10/19/24, vs California 09/05/24
Digs	16	vs Marquette 12/01/23
Blocks	8	vs Kansas St. 08/30/24
Block solos	1	14 times
Block assists	8	vs Kansas St. 08/30/24

CARR, Lizzie

SEASON	TEAM	SM-MP	K	K/S	E	TA	PCT	A	A/S	SA	SA/S	SE	DIG	D/S	RE	BS	BA	TB	B/S	BE	BHE	PTS	PTS/S
2023-24	Purdue	30-18	14	0.47	6	34	.235	0	0.00	0	0.00	0	2	0.07	1	0	8	8	0.27	1	0	18.0	0.60
2024-25	Purdue	45-19	72	1.60	19	165	.321	1	0.02	0	0.00	0	10	0.22	0	4	25	29	0.64	4	0	88.5	1.97
TOTAL		75 - 37	86	1.15	25	199	.307	1	0.01	0	0.00	0	12	0.16	1	4	33	37	0.49	5	0	106.5	1.42

Single Game Highs

Statistic	Value	
Kills	10	at Indiana 11/08/24
Attacks	19	at Oregon 11/27/24
Assists	1	vs Wisconsin 10/26/24
Digs	2	vs Illinois 11/17/24, vs Michigan 11/10/24, vs Wisconsin 10/26/24
Blocks	6	vs Michigan 11/10/24
Block solos	1	vs Michigan 11/10/24, at Utah St. 09/07/24, at Oregon 11/27/24, at Washington 11/29/24
Block assists	5	vs Illinois 11/17/24, vs Michigan 11/10/24
PCT	1.000	vs Houston 09/13/24



Purdue Women's Volleyball
Individual Career Summaries
All games

Page 2/7
as of Nov 30, 2024

CHICOINE, Chloe

SEASON	TEAM	SM-MP	K	K/S	E	TA	PCT	A	A/S	SA	SA/S	SE	DIG	D/S	RE	BS	BA	TB	B/S	BE	BHE	PTS	PTS/S
2023-24	Purdue	125-32	478	3.82	142	1315	.256	27	0.22	39	0.31	53	283	2.26	30	5	24	29	0.23	7	1	534.0	4.27
2024-25	Purdue	109-31	336	3.08	116	1028	.214	40	0.37	18	0.17	27	315	2.89	15	2	27	29	0.27	4	0	369.5	3.39
TOTAL		234 - 63	814	3.48	258	2343	.237	67	0.29	57	0.24	80	598	2.56	45	7	51	58	0.25	11	1	903.5	3.86

Single Game Highs

Statistic	Value	
Kills	27	vs Penn St. 11/05/23
Attacks	61	vs Penn St. 11/05/23
Assists	5	at Nebraska 10/11/24
Serve Aces	4	vs Illinois 10/04/23, vs Michigan St. 11/12/23
Digs	23	vs Wisconsin 11/17/23
Blocks	4	at Utah St. 09/07/24
Block solos	2	at Utah St. 09/07/24
Block assists	3	vs Indiana 10/18/23, at Wisconsin 11/01/23, vs Michigan St. 11/12/23, vs Houston 09/13/24
PCT	.565	at Rutgers 11/02/24

COLVIN, Raven

SEASON	TEAM	SM-MP	K	K/S	E	TA	PCT	A	A/S	SA	SA/S	SE	DIG	D/S	RE	BS	BA	TB	B/S	BE	BHE	PTS	PTS/S
2021-22	Purdue	96-30	169	1.76	54	330	.348	4	0.04	2	0.02	4	12	0.13	0	13	105	118	1.23	20	1	236.5	2.46
2022-23	Purdue	122-32	269	2.20	98	599	.285	6	0.05	43	0.35	59	74	0.61	1	22	151	173	1.42	19	1	409.5	3.36
2023-24	Purdue	125-32	269	2.15	105	586	.280	11	0.09	26	0.21	40	61	0.49	3	19	148	167	1.34	16	0	388.0	3.10
2024-25	Purdue	109-31	278	2.55	95	539	.340	8	0.07	37	0.34	54	52	0.48	1	28	142	170	1.56	18	1	414.0	3.80
TOTAL		452 - 125	985	2.18	352	2054	.308	29	0.06	108	0.24	157	199	0.44	5	82	546	628	1.39	73	3	1448	3.20

Single Game Highs

Statistic	Value	
Kills	19	at Minnesota 09/28/24
Attacks	32	vs Utah 09/02/22, vs Marquette 12/01/23
Assists	2	vs Illinois 10/04/23, vs Marquette 12/01/23
Serve Aces	7	at Minnesota 09/28/24
Digs	8	vs Marquette 09/01/23
Blocks	16	at Maryland 11/23/22
Block solos	5	at Maryland 11/23/22
Block assists	11	at Maryland 11/23/22



Purdue Women's Volleyball
Individual Career Summaries
All games

Page 3/7
as of Nov 30, 2024

GRAY, Raven

SEASON	TEAM	SM-MP	K	K/S	E	TA	PCT	A	A/S	SA	SA/S	SE	DIG	D/S	RE	BS	BA	TB	B/S	BE	BHE	PTS	PTS/S
2024-25	Purdue	4-3	1	0.25	0	1	1.000	0	0.00	0	0.00	1	0	0.00	0	0	0	0	0.00	0	0	1.0	0.25
TOTAL		4 - 3	1	0.25	0	1	1.000	0	0.00	0	0.00	1	0	0.00	0	0	0	0	0.00	0	0	1.0	0.25

Single Game Highs

Statistic	Value	
Kills	1	vs UMBC 08/31/24
Attacks	1	vs UMBC 08/31/24
PCT	1.000	vs UMBC 08/31/24

HEANEY, Grace

SEASON	TEAM	SM-MP	K	K/S	E	TA	PCT	A	A/S	SA	SA/S	SE	DIG	D/S	RE	BS	BA	TB	B/S	BE	BHE	PTS	PTS/S
2023-24	Purdue	69-22	92	1.33	44	249	.193	3	0.04	0	0.00	0	23	0.33	0	4	46	50	0.72	5	0	119.0	1.72
TOTAL		69 - 22	92	1.33	44	249	.193	3	0.04	0	0.00	0	23	0.33	0	4	46	50	0.72	5	0	119.0	1.72

Single Game Highs

Statistic	Value	
Kills	13	at Ohio St. 10/15/23
Attacks	24	at Ohio St. 10/15/23
Assists	1	at Wisconsin 11/01/23, vs Northwestern 10/01/23, at Ohio St. 10/15/23
Digs	3	at Ohio St. 10/15/23, at Penn St. 10/22/23
Blocks	6	vs Indiana 10/18/23
Block solos	1	vs SMU 09/08/23, at Penn St. 10/22/23, vs Kentucky 09/09/23, vs Oregon 12/07/23
Block assists	6	vs Indiana 10/18/23



Purdue Women's Volleyball
Individual Career Summaries
All games

Page 4/7
as of Nov 30, 2024

HORNUNG, Ali

SEASON	TEAM	SM-MP	K	K/S	E	TA	PCT	A	A/S	SA	SA/S	SE	DIG	D/S	RE	BS	BA	TB	B/S	BE	BHE	PTS	PTS/S
2021-22	Purdue	63-22	0	0.00	1	1	-1.000	3	0.05	7	0.11	11	32	0.51	3	0	2	2	0.03	0	0	8.0	0.13
2022-23	Purdue	122-32	2	0.02	4	17	-.118	29	0.24	28	0.23	26	303	2.48	15	0	0	0	0.00	1	0	30.0	0.25
2023-24	Purdue	114-31	0	0.00	0	3	.000	15	0.13	15	0.13	18	277	2.43	25	1	0	1	0.01	0	0	16.0	0.14
2024-25	Purdue	109-31	0	0.00	0	6	.000	99	0.91	11	0.10	16	462	4.24	27	0	1	1	0.01	0	0	11.5	0.11
TOTAL		408 - 116	2	0.00	5	27	-.111	146	0.36	61	0.15	71	1074	2.63	70	1	3	4	0.01	1	0	65.5	0.16

Single Game Highs

Statistic	Value	
Kills	1	at Penn St. 11/25/22, vs Penn St. 11/12/22
Attacks	3	at Minnesota 10/22/22
Assists	7	vs Kentucky 09/14/24, vs UCLA 10/17/24
Serve Aces	4	vs Bradley 09/02/22
Digs	24	at Minnesota 09/28/24
Blocks	2	vs Rutgers 10/02/21
Block solos	1	at Kansas 08/31/23
Block assists	2	vs Rutgers 10/02/21

HUDSON, Eva

SEASON	TEAM	SM-MP	K	K/S	E	TA	PCT	A	A/S	SA	SA/S	SE	DIG	D/S	RE	BS	BA	TB	B/S	BE	BHE	PTS	PTS/S
2022-23	Purdue	122-32	515	4.22	176	1420	.239	10	0.08	34	0.28	15	249	2.04	21	7	54	61	0.50	5	0	583.0	4.78
2023-24	Purdue	125-32	560	4.48	167	1509	.260	8	0.06	14	0.11	17	255	2.04	29	8	47	55	0.44	3	0	605.5	4.84
2024-25	Purdue	109-31	516	4.73	136	1368	.278	10	0.09	14	0.13	23	273	2.50	22	5	58	63	0.58	4	1	564.0	5.17
TOTAL		356 - 95	1591	4.47	479	4297	.259	28	0.08	62	0.17	55	777	2.18	72	20	159	179	0.50	12	1	1753	4.92

Single Game Highs

Statistic	Value	
Kills	30	vs Wisconsin 11/17/23
Attacks	77	at Oregon 11/27/24
Assists	2	6 times
Serve Aces	4	at Michigan St. 11/04/22
Digs	17	at Illinois 09/30/22, vs UCLA 10/17/24
Blocks	5	5 times
Block solos	2	vs Wisconsin 11/17/23, at Indiana 11/08/24
Block assists	5	vs Utah 09/02/22, at Northwestern 10/28/22



Purdue Women's Volleyball
Individual Career Summaries
All games

Page 5/7
as of Nov 30, 2024

KANE, Julia

SEASON	TEAM	SM-MP	K	K/S	E	TA	PCT	A	A/S	SA	SA/S	SE	DIG	D/S	RE	BS	BA	TB	B/S	BE	BHE	PTS	PTS/S
2023-24	Purdue	1-1	0	0.00	0	0	.000	0	0.00	0	0.00	0	0	0.00	0	0	0	0	0.00	0	0	0.0	0.00
2024-25	Purdue	74-26	0	0.00	0	0	.000	8	0.11	13	0.18	34	27	0.36	1	0	0	0	0.00	0	0	13.0	0.18
TOTAL		75 - 27	0	0.00	0	0	.000	8	0.11	13	0.17	34	27	0.36	1	0	0	0	0.00	0	0	13.0	0.17

Single Game Highs

Statistic	Value	
Assists	2	at Northwestern 10/04/24, at Kansas 09/19/24
Serve Aces	3	at Minnesota 09/28/24
Digs	6	vs Tulsa 09/21/24

MCALÉER, Ryan

SEASON	TEAM	SM-MP	K	K/S	E	TA	PCT	A	A/S	SA	SA/S	SE	DIG	D/S	RE	BS	BA	TB	B/S	BE	BHE	PTS	PTS/S
2024-25	Purdue	108-31	2	0.02	1	5	.200	31	0.29	16	0.15	39	269	2.49	16	0	0	0	0.00	0	0	18.0	0.17
TOTAL		108 - 31	2	0.02	1	5	.200	31	0.29	16	0.15	39	269	2.49	16	0	0	0	0.00	0	0	18.0	0.17

Single Game Highs

Statistic	Value	
Kills	1	vs Kentucky 09/14/24, vs Tulsa 09/21/24
Attacks	1	5 times
Assists	3	vs Houston 09/13/24, vs Tulsa 09/21/24, vs UCLA 10/17/24, vs Southern California 11/23/24
Serve Aces	6	at Minnesota 09/28/24
Digs	15	vs Indiana 10/19/24
PCT	1.000	vs Kentucky 09/14/24, vs Tulsa 09/21/24

MYERS, Lourdes

SEASON	TEAM	SM-MP	K	K/S	E	TA	PCT	A	A/S	SA	SA/S	SE	DIG	D/S	RE	BS	BA	TB	B/S	BE	BHE	PTS	PTS/S
2022-23	Purdue	29-16	25	0.86	8	54	.315	0	0.00	0	0.00	0	3	0.10	0	0	16	16	0.55	3	0	33.0	1.14
2023-24	Purdue	112-32	164	1.46	53	333	.333	4	0.04	0	0.00	0	28	0.25	1	11	99	110	0.98	33	1	224.5	2.00
2024-25	Purdue	105-31	135	1.29	35	286	.350	4	0.04	0	0.00	0	29	0.28	2	11	96	107	1.02	30	0	194.0	1.85
TOTAL		246 - 79	324	1.32	96	673	.339	8	0.03	0	0.00	0	60	0.24	3	22	211	233	0.95	66	1	451.5	1.84

Single Game Highs

Statistic	Value	
Kills	11	vs Indiana 10/18/23
Attacks	24	vs Indiana 10/18/23
Assists	1	8 times
Digs	3	vs Illinois 11/17/24, vs Southern California 09/15/23
Blocks	9	vs UCLA 10/17/24, vs Michigan St. 11/12/23
Block solos	3	vs UCLA 10/17/24
Block assists	9	vs Michigan St. 11/12/23



Purdue Women's Volleyball
Individual Career Summaries
All games

Page 6/7
as of Nov 30, 2024

RASTOVSKI, Emily

SEASON	TEAM	SM-MP	K	K/S	E	TA	PCT	A	A/S	SA	SA/S	SE	DIG	D/S	RE	BS	BA	TB	B/S	BE	BHE	PTS	PTS/S
2022-23	Purdue	10-8	8	0.80	4	20	.200	0	0.00	0	0.00	0	0	0.00	0	0	2	2	0.20	0	0	9.0	0.90
2023-24	Purdue	15-7	10	0.67	5	25	.200	1	0.07	0	0.00	0	4	0.27	0	0	7	7	0.47	0	0	13.5	0.90
TOTAL		25 - 15	18	0.72	9	45	.200	1	0.04	0	0.00	0	4	0.16	0	0	9	9	0.36	0	0	22.5	0.90

Single Game Highs

Statistic	Value	
Kills	4	vs Xavier 09/10/22
Attacks	10	vs Penn St. 11/05/23
Assists	1	vs Penn St. 11/05/23
Digs	4	vs Penn St. 11/05/23
Blocks	3	vs Penn St. 11/05/23
Block assists	3	vs Penn St. 11/05/23

SHONDELL, Allie

SEASON	TEAM	SM-MP	K	K/S	E	TA	PCT	A	A/S	SA	SA/S	SE	DIG	D/S	RE	BS	BA	TB	B/S	BE	BHE	PTS	PTS/S
2024-25	Purdue	7-7	0	0.00	1	1	-1.000	23	3.29	0	0.00	1	3	0.43	0	0	3	3	0.43	0	0	1.5	0.21
TOTAL		7 - 7	0	0.00	1	1	-1.000	23	3.29	0	0.00	1	3	0.43	0	0	3	3	0.43	0	0	1.5	0.21

Single Game Highs

Statistic	Value	
Attacks	1	at Utah St. 09/07/24
Assists	5	vs Tulsa 09/21/24, at Rutgers 11/02/24
Digs	1	at Utah St. 09/07/24, vs Wisconsin 10/26/24, vs Rutgers 11/14/24
Blocks	2	vs Tulsa 09/21/24
Block assists	2	vs Tulsa 09/21/24
PCT	-1.000	at Utah St. 09/07/24

WILLIAMS, Rachel

SEASON	TEAM	SM-MP	K	K/S	E	TA	PCT	A	A/S	SA	SA/S	SE	DIG	D/S	RE	BS	BA	TB	B/S	BE	BHE	PTS	PTS/S
2024-25	Purdue	44-20	1	0.02	0	3	.333	1	0.02	7	0.16	13	11	0.25	0	0	0	0	0.00	0	0	8.0	0.18
TOTAL		44 - 20	1	0.02	0	3	.333	1	0.02	7	0.16	13	11	0.25	0	0	0	0	0.00	0	0	8.0	0.18

Single Game Highs

Statistic	Value	
Kills	1	vs California 09/05/24
Attacks	1	vs California 09/05/24, vs Creighton 09/20/24, vs Penn St. 09/25/24
Assists	1	vs Creighton 09/20/24
Serve Aces	2	vs Indiana 10/19/24
Digs	4	vs UMBC 08/31/24
PCT	1.000	vs California 09/05/24



Purdue Women's Volleyball
Individual Career Summaries
All games

Page 7/7
as of Nov 30, 2024

WOLLARD, Kenna

SEASON	TEAM	SM-MP	K	K/S	E	TA	PCT	A	A/S	SA	SA/S	SE	DIG	D/S	RE	BS	BA	TB	B/S	BE	BHE	PTS	PTS/S
2023-24	Purdue	60-21	57	0.95	36	184	.114	0	0.00	0	0.00	0	22	0.37	0	3	35	38	0.63	9	0	77.5	1.29
2024-25	Purdue	85-28	139	1.64	62	342	.225	2	0.02	0	0.00	0	35	0.41	0	1	47	48	0.56	9	0	163.5	1.92
TOTAL		145 - 49	196	1.35	98	526	.186	2	0.01	0	0.00	0	57	0.39	0	4	82	86	0.59	18	0	241.0	1.66

Single Game Highs

Statistic	Value	
Kills	18	at Northwestern 10/04/24
Attacks	32	at Northwestern 10/04/24
Assists	1	vs Indiana 10/19/24, at Rutgers 11/02/24
Digs	5	vs Illinois 10/04/23
Blocks	5	vs Houston 09/13/24
Block solos	1	at Michigan 11/24/23, vs Creighton 09/20/24, at Michigan St. 11/25/23, at Rutgers 09/24/23
Block assists	5	vs Houston 09/13/24

YIM, Sydney

SEASON	TEAM	SM-MP	K	K/S	E	TA	PCT	A	A/S	SA	SA/S	SE	DIG	D/S	RE	BS	BA	TB	B/S	BE	BHE	PTS	PTS/S
2022-23	Purdue	4-4	0	0.00	0	0	.000	2	0.50	0	0.00	0	2	0.50	0	0	1	1	0.25	0	0	0.5	0.13
2023-24	Purdue	1-1	0	0.00	0	0	.000	1	1.00	0	0.00	0	0	0.00	0	0	0	0	0.00	0	0	0.0	0.00
2024-25	Purdue	3-3	1	0.33	0	1	1.000	3	1.00	0	0.00	0	1	0.33	0	0	0	0	0.00	0	0	1.0	0.33
TOTAL		8 - 8	1	0.13	0	1	1.000	6	0.75	0	0.00	0	3	0.38	0	0	1	1	0.13	0	0	1.5	0.19

Single Game Highs

Statistic	Value	
Kills	1	at Rutgers 11/02/24
Attacks	1	at Rutgers 11/02/24
Assists	2	vs Rutgers 11/14/24
Digs	2	vs Bradley 09/02/22
Blocks	1	vs Rutgers 10/02/22
Block assists	1	vs Rutgers 10/02/22
PCT	1.000	at Rutgers 11/02/24