



PURDUE BOILERMAKERS

2024 VOLLEYBALL GAME NOTES

BIG

SID: Rachel Coe | coer@purdue.edu | Office: 765-496-7842 | Cell: 518-729-9960
900 John R. Wooden Drive, West Lafayette, IN 47907

2024 PURDUE VOLLEYBALL SCHEDULE

Overall Record: 23-6 (14-4 Big Ten)

Home: 11-2

Away: 8-3

Neutral: 4-1

AUGUST

30 #RV K-State (BIG+)* W, 3-1
31 UMBC (BIG+)* W, 3-0

SEPTEMBER

1 UC Davis (BIG+)* W, 3-0
5 vs. California W, 3-1
6 at Utah W, 3-0
7 at Utah State (MWN) W, 3-0
13 vs. Houston* W, 3-0
14 vs. #10 Kentucky* W, 3-1
19 at #10 Kansas# L, 1-3
20 vs. #9 Creighton# L, 1-3
21 vs. Tulsa# W, 3-0
25 #4 PENN STATE (BTN)* L, 0-3
28 at #16 Minnesota (BTN)* W, 3-2

OCTOBER

4 at Northwestern (BIG+)* W, 3-1
6 MICHIGAN STATE (BTN)* W, 3-0
11 at #2 Nebraska (BTN)* L, 2-3
12 at Iowa (BIG+)* W, 3-1
17 #RV UCLA (BIG+)* W, 3-2
19 INDIANA (Mackey Arena | BTN)* W, 3-0
23 OHIO STATE (BTN)* W, 3-0
26 #8 WISCONSIN (Mackey Arena | NBC)* L, 0-3

NOVEMBER

1 at Maryland (BTN)* W, 3-0
2 at Rutgers (BIG+)* W, 3-0
8 at Indiana (BIG+)* W, 3-1
10 MICHIGAN (BIG+)* W, 3-0
14 RUTGERS (BIG+)* W, 3-0
17 ILLINOIS (BTN)* W, 3-0
21 at #4 Penn State (BTN)* L, 0-3
23 #21 USC (BIG+)* W, 3-0
27 at #13 Oregon (BTN)* 10:30 p.m.
29 at #RV Washington (BTN)* 7:30 p.m.

All Times Eastern

* Big Ten match

^ Stacey Clark Classic

+ SMU Doubletree Invitational

Jayhawk Classic

#8 PURDUE BOILERMAKERS

23-6 | 14-4 Big Ten

Coach: Dave Shondell (22nd season)

Record at Purdue: 482-231

AT

WED. 11/27 - 10:30 PM ET - EUGENE, ORE. - MATTHEW KNIGHT ARENA - BTN

SERIES HISTORY: 3-1 | LAST MEETING: L, 0-3 AT REGIONAL SEMIS IN MADISON, WIS. (12/7/23)

#9 PURDUE BOILERMAKERS

23-6 | 14-4 Big Ten

Coach: Dave Shondell (22nd season)

Record at Purdue: 482-231

AT

FRI. 11/29 - 7:30 PM ET - SEATTLE, WASH. - ALASKA AIRLINES ARENA - BTN

SERIES HISTORY: 0-0 | LAST MEETING: L, 1-3 AT PURDUE (9/15/23)

#13 OREGON DUCKS

21-6 | 13-5 Big Ten

Coach: Matt Ulmer (8th season)

Record at Oregon: 163-75

#RV WASHINGTON HUSKIES

19-9 | 9-9 Big Ten

Coach: Leslie Gabriel (2nd season)

Record at Washington: 35-24

SCHEDULE NOTES

- The last four matches of the season will be **vs. teams ranked or receiving votes, with three on the road**: at #4 Penn State (11/21), vs. #23 USC (11/23), at #13 Oregon (11/27) and at receiving votes (RV) Washington (11/29).
- It is the toughest schedule to end the regular-season in Purdue volleyball history.**
- Purdue had a stretch of five top-16 foes in six matches, which included three straight top-10 showdowns.
- Not only are 100% of Purdue's losses to current top-11 teams, 60% (4 of 5) are to current top-6 teams.
- The schedule featured **six** non-conference matchups vs. 2023 NCAA Tournament teams.
- A total of 12 matches were against teams ranked or receiving votes in the 2023 final poll.
- Purdue played two matches in its historic **Mackey Arena**: vs. Indiana (10/19) and vs. #8 Wisconsin (10/26).
- The year marked the **most road matches** in non-conference action since 2008, with Purdue at home for two matches in the month of September.

PURDUE'S 13-3 BIG TEN RECORD

- The team entered November with just three Big Ten losses, marking the second straight year and seventh time Purdue has had such few losses under Shondell that far into league play.
- In comparison with Purdue's seasons with the fewest Big Ten losses under Dave Shondell (2023's 15-5 record, 2021's 15-5 record and 2011's 16-4 record), the 2024 season and 2011 season are the only years the team has had three losses heading into its final four matches of the regular season.

20-WIN SEASONS

- Purdue reached its 20th win of the season vs. Michigan and are one of three Big Ten teams (joined by Nebraska and Penn State) to already reach the benchmark.
- It is the 10th season in Purdue history, including fifth under HC Dave Shondell, Purdue has started the year with a 20-5 record or better.
- Dave Shondell has reached the benchmark 16 times in his 22-season career.
- When Purdue has reached 20 wins this quickly, the team has reached the NCAA Regional Semifinals 86% of the time.

A GLANCE AT THE SERIES HISTORY VS. OREGON

- Purdue and Oregon have met just four times in its series history (1984, 2007, Spring 2021, 2023), including three times under HC Dave Shondell.
- The Boilermakers have never played at Oregon before. In fact, every matchup has come at a neutral site.
- Last time Purdue and Oregon met (12/7/23), the Ducks defeated the Boilermakers 3-0 (14-25, 19-25, 27-25) in the NCAA Regional Semifinal. In the matchup, Purdue started four freshman while Oregon's lineup was nearly entirely made up of seniors or 5th-year players.

50 SEASONS

25 NCAA
TOURNAMENT
APPEARANCES

23 AVCA
ALL-AMERICANS

AVCA/Taraflex
Top-25 Coaches Poll (11/18)

			Previous
Rank	School	Record	Rank
1	Pittsburgh [47]	27-1	1
2	Nebraska [14]	28-1	2
3	Louisville	25-3	3
4	Penn State	27-2	4
5	Creighton	27-2	5
6	Stanford	23-4	7
7	Wisconsin	21-6	6
8	Arizona State	28-2	9
9	Purdue	23-6	8
10	SMU	23-6	10
11	Kansas	23-3	11
12	Kentucky	19-7	12
13	Oregon	21-6	13
14	Texas	16-6	14
15	Minnesota	18-10	16
16	Baylor	20-7	17
17	Utah	23-5	19
18	Florida	21-5	20
19	Georgia Tech	20-7	15
20	Southern California	19-9	21
21	Florida State	20-8	23
22	TCU	19-7	22
23	Dayton	29-2	18
24	Missouri	19-7	25
25	North Carolina	20-7	RV

Receiving votes: BYU 65; Miami (FL) 65; Marquette 30; Western Kentucky 20; Texas A&M 13; Washington 9; South Dakota State 4

Purdue In The AVCA/Taraflex Poll

Date	Rank	Date	Rank
2023 Final	#13	W7 (10/14)	#10
2024 Preseason	#8	W8 (10/21)	#10
W1 (9/2)	#8	W9 (10/28)	#11
W2 (9)	#7	W10 (11/4)	#9
W3 (9/16)	#6	W11 (11/11)	#8
W4 (9/23)	#10	W12 (11/18)	#8
W5 (9/30)	#10	W13 (11/25)	#9
W6 (10/7)	#10	W14 (12/2)	
		Final	

Big Ten of the Week Awards

Player 9/2:	Eva Hudson
Setter 9/9:	Taylor Anderson
Defensive 9/16:	Raven Colvin
Defensive 10/7:	Ali Hornung
Defensive 11/4:	Ali Hornung
Player 11/11:	Eva Hudson

AVCA National Player of the Week

Player 9/2:	Eva Hudson
-------------	------------

RETURNING 2023 ALL-AMERICANS

- Purdue returns all three AVCA All-America honorees: junior Eva Hudson (second team), sophomore Chloe Chicoine (third team) and senior Raven Colvin (honorable mention).
- Hudson is the youngest Boilermaker to receive Second Team All-America honors since 1986.
- Chicoine's third team accolade was the highest-ever AVCA All-America honor by a Purdue newcomer.

PURDUE VOLLEYBALL'S ALL-TIME WINNINGEST HEAD COACH

- With the sweep vs. Michigan State on 10/6, HC Dave Shondell became the all-time winningest head coach in Purdue volleyball history, surpassing AVCA Hall of Famer Carol Dewey, with his 470th win.
- Shondell is one of two active head coaches in the Big Ten with as many wins at their institution (joined by John Cook) and is one of seven among Power 4 programs.

PROGRAM RECORDS FALLING

- Since Big Ten play has started, nine program records have been set or tied: two Big Ten regular-season match and Purdue home attendance record (14,876 fans vs. Indiana, 10/19 and again vs. #8 Wisconsin, 10/26); Longest match (2:53 at #2 Nebraska); Most team aces in a 5-set match during the rally-scoring era (17 at then-#16 Minnesota); Most aces by an individual in a 5-set match during the rally-scoring era (7 by Raven Colvin at then-#16 Minnesota); Most aces by a freshman (6 by Ryan McAleer); Most team digs in a 3-set match in the current 25-point rally scoring (71 vs. Michigan State); Most wins in program history (Dave Shondell, 470).

THE #7 OVERALL DRAFT PICK: RAVEN COLVIN

- With the seventh overall pick of the Real Pro Volleyball Federation draft, the Grand Rapids Rise selected Raven Colvin.
- One of Purdue's best blockers in program history, Colvin ranks #2 in Purdue history in career total blocks, block assists and blocks per set and #8 in block solos. She is also #3 in the nation among Division I active players in career blocks per set.
- The Grand Rapids Rise, which includes Purdue alums Jena Otec (2017-21) and Sherridan Atkinson (2016-18), will begin its season January 10 and runs through May 2, 2025.

PURDUE WELCOMED 4 ON NATIONAL SIGNING DAY

- Purdue ushered in a loaded 2025 signing class featuring three 6'3" players, including the #1 player out of the state of Indiana, and a 5'8" defensive specialist, who is rated as the top libero in the nation.
- Joining for the 2025 season: setter Isabelle Bardin, outside hitter Addy Tindall, defensive specialist Aniya Warren and middle blocker Morgan Williams.
- Warren and Tindall were named First Team AVCA All-America and Addy Tindall Second Team All-America on Wednesday.

PURDUE'S LAST 10 MATCHES

- Ali Hornung is averaging 4.74 digs per set. Meanwhile as a team, Purdue is averaging 16.97 digs per set as a team.
- Offensively, Purdue is averaging 2 more kills per set than opponents with an efficiency or .271% while holding opponents to a .172%.
- Eva Hudson is averaging 5.58 kills per set on a .285% and 2.42 digs per set.
- Chloe Chicoine is totaling 3.26 dig per set, second on the team in kills with 2.68 per set.
- Taylor Anderson is averaging 11.55 assists per set with a .511 attack %.
- Middles Raven Colvin and Lourdes Myers are each averaging over a block per set, including Colvin's 1.48 and 2.32 kills per set. Meanwhile, Myers holds a .339 attack %.

PURDUE: QUICK HITS

- Eva Hudson was named an AVCA Player of the Year Semifinalist, one of 14 in the nation to receive the honor. Chicoine was also included on the watch list released in September.
- The Boilermakers have posted 15 sweeps this season and competed in just three five-set matches, which Purdue owns a 2-1 record in.
- Purdue is 8-2 over its last 10 matches and 24-7 in sets won during the stretch.
- This season, Purdue's only losses come to top-11 programs, with five in the top-6 in the nation.
- In seven of the last 11 matches, Purdue has held opponents under a .200 attack %. In those matches, Purdue's hit above .300 in six and above .340 in three.
- Three Boilers are averaging more than 2.0 kills per set: Hudson (4.70), Chicoine (3.10) and Colvin (2.52).
- Purdue is 73-28 in sets won this season.
- Purdue's hitting % (.278) would rank as #3 in Purdue single-season history if things were to end today. It would be **just the second time this century the Boilers have hit so efficiently**.
- Since Big Ten play started, Purdue is averaging two more digs per set compared to their non-con action.
- Freshman DS Ryan McAleer has recorded a perfect reception % in 20 matches including nine of the last 11 straight. Moreover, she recorded six aces at then-#16 Minnesota, tying as the most-ever by a Purdue freshman.
- Eva Hudson has stepped up in the biggest matches of the season. She set a season-high 26 kills on a .349% at #2 Nebraska (and matched it with 26 kills on .350% at Indiana, 11/8), 17 kills vs. now-#7 Wisconsin and nearly had an errorless match at now-#12 Kansas, committing just one attack error in the final points of the match. This season, she is averaging 4.63 kills per set and 5.06 points per set this season.

DEFENSE LIVES HERE

- In the last seven years, Purdue has held opponents to a .191 average attack % or lower in 2024 (.188), 2022 (.194%), 2021 (.173), 2020 (.180), 2019 (.189), 2018 (.191).
- When looking at the back row, Purdue's owns 15.68 digs per set this season. To put in perspective, it is just the second time in the last 10 years the Boilermakers have posted that kind of number (other: 2020's 16.00 digs per set).

HUDSON: IMPROVING AS THE SEASON GOES

- Like last year, Hudson is improving during Big Ten action. She has increased her kills per set (4.34 in non-con vs. 4.92 in Big Ten play), hitting % (.279 in non-con vs. .287 in Big Ten), digs per set (2.21 in non-con vs. 2.57 in Big Ten).
- In a head-to-head comparison of Hudson's first 10 matches of the season vs. the last 10, she has upped offensive production: 5.58 kills/set vs. 4.40, .285 hitting % vs. .272% and 189.5 total points vs. 169.5.

PURDUE IN THE NATIONAL RANKINGS: 123 CONSECUTIVE WEEKS

- The program has been ranked for 123 consecutive weeks (since preseason 2017), the longest active streak in Purdue Athletics.
- Since the 2021 spring season, Purdue has been ranked among the top-10 for 39 weeks.
- The Boilermakers' history of excellence includes 58 of the last 73 weeks ranked among the top-15 (79%).
- Purdue has spent the entirety of the 2024 season in the top-11 (includes preseason poll).

TEAM EFFICIENCY

- Purdue is hitting .278% on the season, which ranks #3 in program history as the most efficient season.
- It's on track to be the second time this century for Purdue to hit over .263% in an entire season.
- Number of matches hitting over .300%: 12
- Number of matches hitting over .360%: 5
- Number of matches hitting over .400%: 2

Big Ten Individual Rankings

Blocks Per Set
No. 1 Raven Colvin (1.58)

Total Assists
No. 2 Taylor Anderson (1,114)

Total Kills
No. 2 Eva Hudson (475)

Total Blocks
No. 1 Raven Colvin (160)

Digs Per Set
No. 2 Ali Hornung (4.15)

Kills Per Set
No. 1 Eva Hudson (4.70)

Total Attacks
No. 1 Eva Hudson (1,246)
No. 11 Chloe Chicoine (952)

Total Points
No. 3 Eva Hudson (519.5)

Big Ten Team Rankings

No. 1 | Attacks Per Set (35.45)

No. 1 | Digs Per Set (15.68)

No. 2 | Receive % (94.9)

No. 2 | Total Kills (1,432)

No. 2 | Total Digs (1,584)

No. 3 | Assists Per Set (13.17)

No. 3 | Kills Per Set (14.18)

No. 4 | Hitting % (.278)

No. 3 | Points Per Set (18.28)

No. 4 | Blocks Per Set (2.81)

NCAA 2024 Attendance Rankings

Attendance	Match, Date
1. 15,084	Marquette at Wisconsin, 9/17
2. 14,876	Indiana at #10 Purdue, 10/19
14,876	#8 Wisconsin at #10 Purdue, 10/26
3. 14,126	Nebraska at Louisville, 9/22
4. 14,035	Texas vs. Wisconsin, 9/1
14,035	Stanford vs. Minnesota, 9/1

2024 Indiv. National Rankings

Blocks Per Set
No. 3 Raven Colvin (1.58)

Total Blocks
No. 5 Raven Colvin (160)

Assists Per Set
No. 9 Taylor Anderson (11.03)

Attacks Per Set
No. 8 Eva Hudson (12.34)

Points Per Set
No. 19 Eva Hudson (5.14)

Total Kills
No. 19 Eva Hudson (475)

Kills Per Set
No. 4 Eva Hudson (4.45)

Career Blocks Per Set
No. 3 Raven Colvin (1.39)

Career Total Blocks
No. 3 Raven Colvin (618)

Career Kills Per Set
No. 4 Eva Hudson (4.45)

Career Attacks Per Set
No. 4 Eva Hudson (12.00)

Career Assists Per Set
No. 10 Taylor Anderson (10.43)

2024 Team National Rankings

No. 11 | Assists Per Set (13.17)

No. 11 | Kills Per Set (14.18)

No. 10 | Blocks Per Set (2.81)

No. 16 | Hitting % (.278)

BIG
S T A N D I N G S
Through Monday, Nov. 25

PURDUE VS TOP-25 TEAMS

- The Boilmakers had a stretch of playing six ranked opponents in a 10 match span, all of which are currently ranked in the top-15.
- Purdue match highs: .311% at #2 Nebraska | 15 blocks at #2 Nebraska
- The Boilers totaled 79 digs at then-#16 Minnesota, a season-high, along with 17 aces, a program record-tying number in a Big Ten match.

CHICOINE'S ERRORLESS PERFORMANCE VS. INDIANA

- Chloe Chicoine went errorless on the attack vs. Indiana (10/19), recording 12 kills on 30 attacks for a .400 clip.
- The last time a Purdue outside hitter went errorless with a 30 attack minimum was All-American Grace Cleveland vs. Indiana in 2021.
- In fact, Chicoine is just the third Boilmaker in the last 10 years to go errorless on the attack with a 30-attempt minimum. In addition to Cleveland's match, she is joined by Sherridan Atkinson's.
- She is the only outside hitter in the Big Ten to go errorless on the attack in league action this year, and is just the second overall this season, joined by Oregon's Mimi Colyer's 12-0-33 (.364%) show vs. San Diego on Sept. 14.
- Meanwhile, she went errorless in seven of eight sets (vs. UCLA and vs. Indiana).

600 CAREER BLOCKS AND COUNTING: RAVEN COLVIN

- Colvin reached her 600th career block vs. Rutgers. She is the second Boilmaker to ever reach the milestone, joining Purdue record-holder Stephanie (Lynch) Harpenau (660 TB, 2005-08).
- She is also 11 block assists away from tying Purdue's all-time leader Stephanie Lynch in career block assists.
- She ranks #2 in program history with 618 career blocks and 1.39 career blocks per set.

HUDSON: STRONG STARTS IN SET 1

- She's gone errorless in the opening game in 13 of 29 matches, including four of seven top-25 matchups.

PURDUE IN 5-SET MATCHES

- Purdue is 11-6 in five-set matches over the last three seasons, including 2-1 in 2024.
- The Boilmakers have gone errorless in the last two fifth sets: 13-0-27 at #2 Nebraska and 9-0-20 vs. #RV UCLA).
- The Boilers have hit over .400 in every 5th set this season (.429 at #16 Minnesota, .481% at #2 Nebraska, .450 vs. #RV UCLA).

HUDSON NAMED BIG TEN CO-PLAYER OF THE WEEK (11/11)

- Hudson led all Power 4 players in both kills per set (6.43) and points per set (7.29) all while averaging a .336 hitting %.
- Hudson began the week with one of the best overall performances of the season, recording a double-double, which included a Big Ten season-high-tying 26 kills (tied the performance earlier this season at No. 2 Nebraska) on a .373 clip, 10 digs and five blocks. Not only did her five stuffs tie her career-high, she did so with a career-high-tying two block solos.
- followed it on Sunday with 21.5 points in just three sets vs. Michigan, where she hit .350% with 19 kills. She went errorless in Set 3, posting 11 kills on 16 attacks for a .688%.
- In all, she hit above the team's hitting % in each of the matches.

BIG TEN DEFENSIVE PLAYER OF THE WEEK (11/4): ALI HORNUNG

- Libero Ali Hornung received her second Defensive Player of the Week award after guiding the team to a Big Ten-leading 17.67. Meanwhile her passing set Purdue up for a Big Ten-leading .364 hitting % and 15.83 kills per set.
- She registered a perfect reception % at Maryland and at Rutgers.
- Began the week with 17 digs at Maryland, followed by 14 at Rutgers.
- It was Hornung's second career DPOW, earning one as well a month ago (10/7) after totaling 64 digs (5.33 per set) over three matches, including 22 digs in three sets vs. Michigan State and a near-double-double vs. #10 Kentucky.
- Hornung is averaging more digs per set during conference-play vs. non-con: 4.18 vs. 3.76.

School	Big Ten Record	Overall Record	Overall Pct.
Nebraska	18-0	28-1	.966
Penn State	17-1	27-2	.931
Wisconsin	15-3	21-6	.778
Purdue	14-4	23-6	.793
Oregon	13-5	21-6	.778
USC	11-7	19-9	.692
Minnesota	11-7	18-10	.643
Illinois	10-8	18-10	.643
Washington	9-9	19-9	.679
Michigan	7-11	17-12	.586
Ohio State	7-11	14-14	.500
UCLA	7-11	13-14	.481
Indiana	6-12	13-15	.464
Michigan State	5-13	12-17	.414
Maryland	4-14	13-16	.448
Iowa	4-14	10-20	.333
Northwestern	3-15	5-21	.192
Rutgers	1-17	6-23	.207

Wins vs. Top-10 Opponents

Last 8 Years (2017-present)

Opponent	Score	Date
vs. #10 Kentucky	3-1	9/14/24
vs. #3 Wisconsin	3-2	11/17/23
vs. #8 Minnesota	3-0	9/23/22
vs. #3 Ohio State	3-2	9/24/21
vs. #3 Wisconsin	3-1	10/31/21
at #4 Wisconsin	3-1	11/12/21
at #8 Minnesota	3-1	11/14/21
vs. #5 BYU	3-2	12/9/21
at #10 Penn State	3-1	3/5/21
at #9 Ohio State	3-1	3/26/21
at #9 Ohio State	3-1	3/27/21
vs. #5 Nebraska	3-2	10/26/19
at #4 Penn State	3-2	10/27/18
vs. #9 Creighton	3-1	9/8/17
vs. #5 Minnesota	3-1	11/10/17
vs. #10 Wisconsin	3-0	11/11/17
vs. #10 Michigan State	3-1	11/24/17
vs. #9 Stanford	3-2	9/9/16
vs. #4 Kansas	3-1	9/16/16
vs. #3 Minnesota	3-2	11/21/15

Top-25 Wins in Holloway

By Most Recent (Since 2011)

Opponent	Score	Date
vs. #21 USC	3-0	11/23/2024
vs. #3 Wisconsin	3-2	11/17/2023
vs. #16 Penn State	3-2	11/5/2023
vs. #19 Kentucky	3-2	9/9/2023
vs. #8 Minnesota	3-0	9/23/2022
vs. #3 Wisconsin	3-1	10/31/2021
vs. #15 Penn State	3-2	10/17/2021
vs. #3 Ohio State	3-2	9/24/2021
vs. #22 Tennessee	3-0	9/18/2021
vs. #16 Marquette*	3-1	12/7/2019
vs. #23 Michigan	3-0	11/23/2019
vs. #5 Nebraska	3-2	10/26/2019
vs. #10 Michigan State	3-1	11/24/2017
vs. #10 Wisconsin	3-0	11/11/2017
vs. #13 Michigan	3-1	10/28/2016
vs. #4 Kansas	3-1	9/16/2016
vs. #3 Minnesota	3-2	11/21/2015
vs. #18 Illinois	3-2	10/25/2015
vs. #22 Ohio State	3-2	10/18/2014
vs. #19 Michigan State	3-2	11/30/2013
vs. #6 Nebraska	3-0	11/22/2013
vs. #15 Wisconsin	3-2	11/2/2013
vs. #12 Ohio State	3-0	10/4/2013
vs. #21 Illinois	3-2	9/29/2012
vs. #21 Northern Iowa	3-0	8/24/2012

The Snapshot: Last Week in Review

NATIONAL RANKINGS

No. 4 | Eva Hudson (11.00 attacks per set)

AMONG THE BIG TEN

No. 1 | Ali Hornung (5.67 digs per set)

No. 3 | Raven Colvin (1.83 blocks per set)

No. 4 | Eva Hudson (5.00 kills per set)

No. 5 | Eva Hudson (5.58 points per set)

No. 8 | Lourdes Myers (.391 attack %)

No. 3 | Team Digs Per Set (16.33)

No. 4 | Team Kills per Set (14.00)

No. 4 | Team Assists per Set (13.17)

No. 4 | Team Blocks per Set (2.92)

LAST WEEK'S NEED-TO-KNOW

- Purdue has improved to its sixth-straight win and 13-2 over its last 15 matches after sweeps vs. Rutgers (25-14, 25-14, 25-16) and vs. Illinois (25-17, 25-20, 25-19).
- Ali Hornung reached 1,000 career digs, becoming the 21st Boilermaker in program history to do so. Her performance this past week also pushed her up to 4.15 digs per set on the season, which ranks as T-#9 in Purdue single-season history, surpassing Brooke Peters (2018).
- Raven Colvin had one of her most balanced performances of the Big Ten season with her 14 kills, .500 attack % and 7 block showing vs. #21 USC.
- At Penn State, Purdue held the lead in Sets 1 and 2 before Penn State came back to win the set. Similarly, Purdue stormed back in Sets 1 and 2 vs. USC to take the wins.
- Chloe Chicoine went perfect on serve-receive, seeing a team-leading 46 receptions last week with zero errors, while also keeping the ball in on every serve she had.

PURDUE AT #2 NEBRASKA

- Purdue's 2-hour 53-minute five-setter at #2 Nebraska was the longest match in known-program history (research available through 1999). The second-longest match in program history was also last year's five-setter vs. #2 Nebraska, which clocked in at 2 hours and 51 minutes.
- The Boilermakers held match point, 14-13 and went errorless in Set 5 (13-0-27) for a .481 set clip.
- In addition to Purdue edging Nebraska in efficiency, .311% vs. .242%, Purdue blew Nebraska's previous opponents away as the most efficient team the Huskers have faced (previous opponent-high: SMU's .242% on 9/3/24).
- Purdue out-blocked Nebraska, 15-5, holding the Huskers to a season-low. Raven Colvin was on 11 of those 15 blocks.
- Eva Hudson and Chloe Chicoine went off, combining for 48 kills and each hitting over .300% in the match.
- The Achilles heel for Purdue was service errors, tallying 19 errors in the match, including four in Set 5.

14,876 STRONG: SETTING A BIG TEN-MATCH ATTENDANCE RECORD

- Purdue set the Big Ten regular-season match attendance record, the state of Indiana attendance record for volleyball, and the Purdue volleyball home attendance record vs. Indiana (10/19) and then tied it a week later vs. #8 Wisconsin (10/26).
- Purdue eclipsed the old attendance record for a regular-season match between two Big Ten opponents, which stood at 10,927 (#23 Illinois at #2 Minnesota, 10/16/04).
- The matches sold out a month in advance (sold out on Friday, September 20).
- The last time Purdue volleyball played in Mackey Arena was in 2016 vs. Indiana, which also happened to be the Monon Spike match in front of a crowd of 8,240 fans.
- Last week's match was the **second-largest crowd in women's volleyball this year**.
- The last and only time Purdue and Wisconsin met in Mackey Arena was in 2008, which the attendance of 10,570 fans was second-largest crowd to witness a Big Ten regular-season match in conference history.

SHONDELL QUOTE: "It's time to take our Boilermakers back into Mackey Arena. The opportunity to grow our program, as well as our sport, is essential right now. Holloway is a special home, but for a few matches this fall, our team and Boilermaker Nation, must make Mackey Arena the best home-court environment in the land."

HISTORY OF ATTENDANCE SUCCESS

- Purdue set a previous NCAA women's volleyball attendance record in Mackey Arena on Oct. 29, 1985 with 10,645 fans watching Purdue defeating Western Michigan 3-1 (11-15, 15-6, 15-5, 15-2). The event was dubbed "Pac Mac" with promotions that allowed patrons to attend for just \$1.

TOP-10 TAKEDOWNS

- In every season for the last 10 years, Purdue has picked up at least one top-10 victory. In fact, Purdue's won 20 top-10 showdowns since 2015 (last: vs. #10 Kentucky, 3-1 on 9/14/24).

ACED IT: 17 ACES AT #16 MINNESOTA

- The team's 17 service aces included five in the fifth set. Three came during libero Julia Kane's serving tear, which was a career-high.
- Raven Colvin tied a program record in five-set matches with her seven service aces.
- Freshman Ryan McAleer generated six aces, the third freshman in Purdue history, including the only one this century to do so (joining Lauri Grimes and Brooke White, both accomplished in 1993).
- The Boilermakers' 17 aces were the most by any team in the nation last week and are the most by a Big Ten team this season.

SMOOTH & STEADY: SETTER TAYLOR ANDERSON

- She leads not only all Big Ten setters with 89 blocks this season, but **all setters at Power 4 programs. In perspective, Anderson led many of the top middles in the league through the first half of the season, including Big Ten middles** Andi Jackson (Nebraska) and Taylor Trammell (Penn State), Carter Booth (Wisconsin) and Devyn Robinson (Wisconsin).
- Her 44 assists vs. Illinois was just the second time a setter has posted as many in a 3-setter in the last seven years (other: Hayley Bush, 45 vs. Washington, 9/3/21).
- Anderson has set Purdue to 12 matches over .300%, including the highest mark by Purdue in a Big Ten match since 2017 with .424% at Rutgers, .343% vs. Illinois, .311% at #2 Nebraska, .310% vs. #10 Kentucky and .450% vs. UC Davis.
- Anderson has gotten more aggressive on the attack compared to her freshman season, averaging .67 kills per set compared to .31 from last season (35 kills in 2023 vs. 68 in 2024). In fact, her numbers are up in virtually every category including digs per set (1.97 vs. 2.28), assists per set (9.88 vs. 11.03) and blocks (.85 vs. .88).
- She set a season-high 13 digs alongside 47 assists in the four-set victory at Northwestern (10/4).
- Has posted 7 or more blocks four times this season (last: 7 at #2 Nebraska)
- 40 or more assist in a match this season: 12
- 45 or more assists in a match this season: 8
- 50 or more assists in a match this season: 4
- Double-doubles this season: 11

SENIOR LEADER RAVEN COLVIN

- Colvin leads the Big Ten and ranks #3 in the nation in blocks per set (1.58). She led the nation in blocks for the first 4 straight weeks and ranked among the top-12 in hitting % until Week 7.
- For 15 of the last 22 matches, Colvin has hit .308% or higher.
- She set a career-high 19 kills at #16 Minnesota (9/28) alongside a Purdue 5-set record-tying 7 aces in a five-set match.
- She is hitting, blocking and serving more efficiently than ever before and leads the team in aces.
- Colvin has increased her hitting efficiency compared to 2023: .348% this season vs. .280% last year.
- Already owning three top-10 marks in Purdue single-season history entering the year, the senior ranks #2 in program history for career total blocks, career block assists, career blocks/set and season blocks/set. She is joined by First Team All-American Stephanie Lynch as the best blockers in Purdue history during the 21st century.
- She hit .440% or higher in eight of 10 consecutive matches (9/7-10/6).
- Named Big Ten Defensive Player of the Week (9/16) after back-to-back .571% performances, 7 blocks vs. #10 Kentucky and four vs. Houston.
- The Boiler has recorded three 10-block performances: 11 at #2 Nebraska, 10 vs. K-State and 10 at Utah State (9/7).
- Number of matches with one or fewer attack errors: 10
- Number of matches hitting .300 or above: 23
- Number of matches hitting .400 or above: 16
- Number of matches hitting .500 or above: 8
- Number of matches hitting .700 or above: 3
- Number of matches with six or more blocks: 15

THE BOILERMAKER FAITHFUL

- Purdue secured its second straight complete season-sell-out, which included two Mackey Arena matches (14,876 fans).
- The first match sold out within 20 minutes of the general public on-sale (vs. USC, 11/23).
- The lower bowl for each of the Mackey Arena matches filled up with just John Purdue Club member purchases before it opened up to the general public on-sale.
- Within the first hour, there were three sellouts: USC, Michigan and Penn State. Within an hour and 20 minutes, there were four sellouts.
- Within two hours of on-sale, over 9,800 tickets were sold for the Wisconsin match. That is the equivalent of filling Holloway four times over.
- Only five matches had tickets left just two hours into on-sale.
- Every ticket for every match was sold last year, making 2023 a complete-season sell-out.
- The student section: The Block Party sold out its season tickets in 20 minutes. That is up from the 40 minutes it took in 2023 and just under two-hour mark in 2022.
- Fans looking for season tickets have had to join a waiting list for at least the last three years. Due to the high renewal rate, only two people were able to move off the wait list in 2023 to buy season tickets.

EVA HUDSON: A FORCE

- Hudson leads the Big Ten during league action in kills (310), kills per set (4.92) and is second in total points (346.5) and points per set (5.37).
- In comparison with other Big Ten top outside hitters like Sarah Franklin (Wisconsin) and Jess Mruzik (Penn State), Hudson leads in both overall and conference-only matches in kills, kills per set, points per set, digs per set.
- No one who produces nearly as many kills also receives as strongly as Eva Hudson since Big Ten play started - in fact, she leads the league's top-15 kills per set leaders with her 96% reception rating.
- Hudson is averaging 4.70 kills per set, 2.44 digs per set and 5.14 points per set as a junior.
- Set a Big Ten season-high hitting % three times in the span of five matches, beginning with a .349 clip at #2 Nebraska (26-4-63), and most recently with a .417 clip, the second-highest overall this season, vs. Indiana (17-2-36).
- She has posted a double-double in all but two weeks of Big Ten play.
- At #2 Nebraska, went errorless and hit .500 (5-0-10) in Set 2, hit .500% in Set 3 (7-1-12) and errorless in Set 5 (7-0-18).
- Hudson went errorless in Set 2 vs. #10 Kentucky to help turn the tides, posting an 8-0-11 (.727) performance on the way to Purdue's 3-1 victory.
- Has posted at least one errorless set in every match but five this season.
- Went errorless for nearly the entire match at #10 Kansas until the very end, forfeiting one attack error with the score 20-20 in Set 4. She finished the match 17-1-53.
- Posted 15 kills over just two sets of action vs. #10 Kentucky and seven of Purdue's 15 points in Set 5 at #2 Nebraska.
- She is averaging a .284 clip, but hit over .400 in back-to-back matches over opening weekend.
- She's hit over .300 in 3 of 7 matches vs. top-10 foes, including just one error at Kansas.
- Hudson is on track to become Purdue's all-time leader in career kills/set (4.45 currently; record is 3.96).
- Last year, the 2023 AVCA Second Team All-America honoree ranked #1 in the Big Ten and #5 in the nation in kills (560) and #2 in the Big Ten, #12 in the nation in total points (605.5).
- She is the fastest Boilermaker to reach 1,000 career kills in the rally-scoring era and recorded more kills over her first two years than any Boilermaker to come through the program (1,075).
- Number of season / career double-doubles: 9 / 26
- Number of matches in season / career with 15+ kills: 21 / 67
- Number of matches in season / career with 20+ kills: 3 / 16
- Number of matches in season / career hitting .300% or above: 14 / 36
- Number of matches in season / career hitting .350% or above: 8 / 21
- Number of matches in season / career hitting .400% or above: 4 / 12
- Number of errorless sets in season: 33

The Last Time....

A Match Went to 5 Sets

Oct. 17, 2024 vs. UCLA
W, 3-2 (23-25, 27-25, 25-20, 19-25, 15-11)

Last Victory over a Top-5 Team

Nov. 17, 2023 vs. #3 Wisconsin
W, 3-2 (22-25, 25-19, 25-20, 12-25, 16-14)

Team Hitting % of .400 or Better

.424 | Nov. 2, 2024 at Rutgers | W, 3-0

60 or More Team Kills

60 | Nov. 8, 2024 at Indiana | W, 3-1

15 or More Total Team Blocks

16 | Oct. 17, 2024 vs. UCLA | W, 3-2

80 or More Team Digs

83 | Dec. 2, 2023 vs. Marquette | W, 3-1

10 or More Team Aces

10 | Oct. 12, 2024 at Iowa | W, 3-1

Team Season-Highs

Total Kills

69 | Oct. 17 vs. UCLA

Hitting % in a Match

.450 | Sept. 1 vs. UC Davis

Hitting % in a Set

.552 (Set 4) | Nov. 8 at Indiana

Total Digs

79 | Sept. 28 at #16 Minnesota

Total Blocks

17 | Sept. 7 vs. Utah State

Fewest Attack Errors

7 | Aug. 31 vs. UMBC

Lowest Opponent Hitting %

.065 | Sept. 7 vs. Utah St.

Total Attacks

169 | Oct. 17 vs. UCLA

Service Aces

17 | Sept. 28 at #16 Minnesota

Top Individual Performances: 2024 Season

Category	Purdue	Opponent
Points	29.5 (Hudson at Indiana, 11/8)	29 (Cheridyn Leverette, UCLA)
Kills	26 (Hudson at #2 Nebraska, 10/11)	22 (Cheridyn Leverette, UCLA)
Attacks	63 (Hudson at #2 Nebraska, 10/11)	54 (Merritt Beason, Nebraska)
Service Aces	7 (Colvin at #16 Minnesota, 9/28)	4 (Kamryn Gibadlo, Utah)
Total Blocks	11 (Colvin at #2 Nebraska, 10/11)	9 (Carter Booth, Wisconsin)
Block Solos	3 (Last: Colvin vs. #21 USC, 11/23)	3 (Jess Mruzik, Penn State)
Block Assists	9 (twice by Colvin; last: at #2 Nebraska, 10/11)	7 (twice, last: Carter Booth, Wisconsin)
Digs	24 (Hornung at #16 Minnesota, 9/28)	20 (last: Gillian Grimes, Penn State)
Assists	54 (Anderson at #16 Minnesota, 9/28)	60 (Bergen Reilly, Nebraska)
Attack % (10 attempt, min.)	.733% (Colvin, 12-1-15 vs. UC Davis, 9/1)	.545% (Caroline Jurevicius, Penn State, 6-0-11)

Purdue's Record When....

3-Set Matches: 15-3

4-Set Matches: 6-2

5-Set Matches: 2-1

Team attack % is .200 or better: 22-2

Team attack % is .250 or better: 18-1

Team attack % is .300 or better: 11-1

10 or more team blocks: 12-1

After dropping Set 1: 3-6

After winning Set 1: 19-0

Trailing after Set 3: 0-2

Leading after Set 3: 8-1

Record By Class

Seniors: 93-33 (win %: 74)

Juniors: 67-26 (win %: 73)

Sophomores: 46-15 (win %: 76)

Freshmen: 23-6 (win %: 81)

NCAA D1 Single-Match Attendance

Attendance	Match, Date
1. 15,084	Marquette at Wisconsin, 9/17
2. 14,876	Indiana at #10 Purdue, 10/19
14,876	#8 Wisconsin at #10 Purdue, 10/26
3. 14,126	Nebraska at Louisville, 9/22
4. 14,035	Texas vs. Wisconsin, 9/1

Undefeated Starts Under Shondell

1. 2011 (14-0)
2. 2018 (11-0)
- 2005 (11-0)
4. **2024 (8-0)**
5. 2017 (7-0)
- 2014 (7-0)
- 2008 (7-0)

Purdue Career Total Blocks

Name	TB	Years
1. Stephanie Lynch	660	2005-08
2. Raven Colvin	618	2021-
3. Marianne Smith	567	1982-85
4. Kate Crandell	563	1981-84
5. KiKi Jones	510	2011-14

Purdue Career Block Assists

Name	TB	Years
1. Stephanie Lynch	550	2005-08
2. Raven Colvin	539	2021-
3. KiKi Jones	454	2011-14
4. Grace Cleveland	423	201-21
5. Kristen Arthurs	403	2007-10

CHLOE CHICOINE: YEAR 2

- Went errorless for the entire match vs. Indiana, recording 12 kills, 0 errors on 30 attacks for a then-Big Ten season-high .400 hitting % in addition to recording her 11th double-double of the season (12 digs).
- Has reached double-digit kills in 20 of 27 matches this season.
- She is averaging 3.10 kills per set, 2.79 digs per set and 3.41 points per set as a sophomore.
- Set a season-high 22 kills (22-4-55) on a then-Big Ten-season-high .327 clip at #2 Nebraska.
- Led the team vs. Rutgers with 16 kills (.542 clip).
- Led the team in both kills (11) and digs (10) vs. Houston (9/13).
- Posted a season-high 15 digs vs. Cal (9/5).
- Recorded a career-high four blocks (2 solo, 2 assisted) alongside 14 kills at a .310 clip at Utah State (9/7).
- Was named Player of the Week once and Big Ten Freshman of the Week five times last season, including a Week 7 performance in which she earned Freshman of the Week after leading the entire Big Ten, Pac-12 and ACC in points per set (5.63).
- Chicoine produced in the biggest matches last season, hitting .359% vs. #2 Nebraska with 18 kills and just four errors on 39 swings. At #11 Penn State, the freshman recorded a Big Ten season-high 20 kills with her second-highest hitting % of the year with a .405 clip in the match, including an errorless six kills on nine attacks (.667%) to seal the win in Set 4. She went on to best her kills at home vs. Penn State, totaling a career-high 27 kills. Moreover, vs. Minnesota, she recorded just one error in the match with a .333 hitting % with 11 kills and six digs. Against #3 Wisconsin, she obliterated her previous career-high of 14 digs, totaling 23 in the win.
- Number of season / career double-doubles: 12 / 22
- Number of matches in season / career with 15+ kills: 5 / 21
- Number of matches in season / career with 20+ kills: 1 / 6
- Number of matches in season / career with 10+ digs: 15 / 24
- Number of errorless sets in season / career: 32 / 72

HUDSON NAMED AVCA NATIONAL PLAYER OF THE WEEK: W1

- The Stacey Clark Classic MVP led the league with 46 kills and 50.5 points.
- Averaged 4.60 kills per set
- Hit over .430 in back-to-back matches (.467% vs. UMBC and .433 vs. UC Davis)
- Recorded just one attack error vs. UMBC (8/31)
- Posted a double-double in the season-opener vs. K-State, recording 16 kills, 12 digs and a career-high-tying 5 blocks, which were the most since her freshman season.
- Was one dig shy of her second double-double of the season with her 15-kill, 9 dig performance vs. UC Davis.

HC DAVE SHONDELL & COACHING STAFF

- In the 2024 calendar year, Dave Shondell began it with a four-year contract extension running through the 2027 season and has now reached GOAT status as the all-time winningest head coach in program history (470 wins).
- Under Shondell's guidance, Purdue has won 12 matches vs. top-5 opponents in the last 13 years.
- Led Purdue to a 133-48 record over the last five years alone.
- On the national stage, he is one of seven active coaches to lead a program for at least 21 years and one of seven with as many wins in the Power 4 (470 wins)
- In the last 21 seasons, Shondell has led the team to 18 NCAA tournament appearances and a perfect 18-0 record in first round matches.
- Last season, Shondell coached one of the youngest squads in program history, leading them to a third-place Big Ten finish and an NCAA Regional Semifinal berth. Three Boilermakers received All-America nods while tying a Purdue record of six Big Ten postseason honors, including two unanimous selections.
- He owns a .670 winning % at Purdue and is one of three active Big Ten coaches to be at their institution for 10 years.
- He is one of eight head coaches in Big Ten history to produce as many wins and one of two active coaches, joined by John Cook. Moreover, Shondell is the only one of the two to produce those wins at the same institution (Cook: Wisconsin & Nebraska).
- Coaching Staff Updates For 2024:** Kathy Jewell (22nd season) was promoted to associate head coach - recruiting coordinator; John Klanac was hired as assistant coach in January; Ben Cutrone (previously the GA) was hired as volleyball analyst in May.
- John Klanac was previously at Rice and graduated from Ohio State, where he was a 2011 national champion.

RECORD BOOK WATCH: CAREER RECORDS

- Colvin is 11 block assists away from tying the Purdue career record, 42 total blocks away from tying the Purdue career record and 38 kills away from reaching 1,000.
- Colvin is averaging a .309 career hitting %, #9 in Purdue's annals.
- Colvin moved into #8 in Purdue's career annals with 79 career block solos, and could rise to #6 with four more.

RECORD BOOK WATCH: SINGLE-SEASON RECORDS

- Purdue's .278 team hitting % checks in at #3 all-time and is just the second time this century the Boilermakers have hit as efficiently in a season.
- Eva Hudson's 4.70 kills per set this season currently rank T-#4 in Purdue single-season history. She is the second Boilermaker this century, joining Ariel Turner to post as many kills per set in a single season.
- Colvin's 1.58 blocks per set currently rank #2 in single-season history. It is the second time this century a Boilermaker has posted as many blocks/set in a season.
- Colvin is 2 #8 in Purdue's top-10 with 130 block assists this season. She is five blocks away from entering the top-10 in block assists, and would be set to rise quickly, with four spots within a 12-block-span.
- Ali Horning has entered the top-10, ranking T-#9 with 4.15 digs per set, surpassing Brooke Peters (4.05 in 2018) and tying Becky Kanitz (1988).

ANNIE DREWS INDUCTED TO THE PURDUE HALL OF FAME

- Two-time Olympian Annie Drews (2012-15) will be inducted to the Leroy Keyes Purdue Athletics Hall of Fame on Friday.
- A four-year letterwinner as an outside hitter, she was a gold medalist at the 2020 Tokyo Olympics, playing a key role in Team USA's historic run on the world stage and a silver medalist at the 2024 Paris Olympics as well as a regular with the U.S. Senior National Team.
- Before her international glory, she led the Boilermakers to three NCAA Tournament trips, including two Sweet 16s and one Elite Eight. Drews closed out her Purdue career with Second Team All-America honors in 2015 along with back-to-back First Team All-Big Ten accolades.
- She is the seventh volleyball player to be inducted to elite group, joining Ariel (Turner) Gebhardt (Class of 2020), Stephanie (Lynch) Harpenau (Class of 2018), Carol Dewey and Debbie (McDonald) West (Class of 2003), Marianne (Smith) Orr (Class of 1999) and Jane Neff (inaugural Class of 1994).

THE 2024 TEAM AT A GLANCE

- Purdue returns nearly its entire 2023 starting lineup with the exception of libero Maddie Schermerhorn, who led the Big Ten last season in digs per set. Meanwhile, the team has lost two players to injury this season: senior #22 Emily Rastovski and sophomore #14 Grace Heaney at the same position as right side hitters.
- Three freshmen (DS Ryen McAlear, S Allie Shondell and DS Sienna Foster) and one senior transfer (OH/RS Raven Gray) join the team.

PURDUE VOLLEYBALL

2024 ROSTER

No.	Name	Ht.	Pos.	Yr.	Hometown / High School / Last School
1	Rachel Williams	5-7	DS	RS-Fr.	West Lafayette, Ind. / West Lafayette
2	Chloe Chicoine	5-10	OH	So.	Lafayette, Ind. / McCutcheon
3	Ryan McAleer	5-6	DS	Fr.	Overland Park, Kan. / Blue Valley
4	Kenna Wollard	6-1	OH	So.	Dunlap, Ill. / Illinois Valley Central
5	Taylor Anderson	6-1	S	So.	San Antonio, Texas / Cornerstone Christian
6	Sienna Foster	5-9	DS	Fr.	Lafayette, Ind. / Benton Central
7	Raven Colvin	6-1	MB	Sr.	Indianapolis, Ind. / Heritage Christian
8	Raven Gray	6-1	OH/RS	Sr.	Charlotte, N.C. / Cox Mill / Winston-Salem State
9	Lourdès Myers	6-3	MB	RS-Sr.	Alliance, Ohio / St. Thomas Aquinas
10	Ali Hornung	5-10	DS/OH	Sr.	New Albany, Ind. / Providence
11	Allie Shondell	5-10	S	Fr.	Lafayette, Ind. / McCutcheon
14	Grace Heaney	6-2	OPP/RS	So.	Omaha, Neb. / Elkhorn North
15	Lizzie Carr	6-6	MB	RS-So.	West Chester, Pa. / West Chester East
17	Eva Hudson	6-1	OH	Jr.	Fort Wayne, Ind. / Bishop Dwenger
19	Sydney Yim	6-1	S	Sr.	Newburyport, Mass. / Newburyport
21	Julia Kane	5-11	DS	So.	Windermere, Fla. / Windermere Prep
22	Emily Rastovski	6-2	OH	Sr.	Valparaiso, Ind. / Morgan Township

Head Coach: Dave Shondell, 22nd season

Associate Head Coach - Recruiting Coordinator: Kathy Jewell, 22nd season

Assistant Coach: John Klanac, 1st season

Assistant Coach: Michael Bouril, 2nd season | 5th overall at Purdue

Supervisor of Volleyball Operations: Carrie Gurnell, 4th season

Volleyball Analyst: Ben Cutrone, 1st season | 3rd overall at Purdue

Graduate Assistant: Owen Mahin, 1st season

Pronunciation Guide

Chloe Chicoine: SHIH-coin (starts like Chicago)

Lourdès Myers: LORD-is

Ali Hornung: HORN-nung

Ryan McAleer: MAC-uh-leer

Eva Hudson: EE-va (think eve)

Emily Rastovski: RAZ-taw-v-skee

John Klanac: Klan-ICK

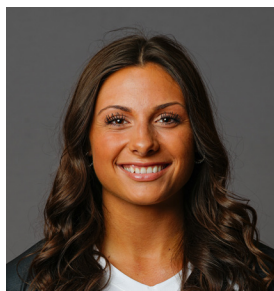
Michael Bouril: BURR-ill



2024 PURDUE VOLLEYBALL ROSTER



#1 Rachel Williams
R-Fr. | DS | 5-7 | West Lafayette, Ind.



#2 Chloe Chicoine
So. | OH | 5-10 | Lafayette, Ind.



#3 Ryan McAleer
Fr. | DS | 5-6 | Overland Park, Kan.



#4 Kenna Wollard
So. | OH | 6-1 | Dunlap, Ill.



#5 Taylor Anderson
So. | S | 6-1 | San Antonio, Texas



#6 Sienna Foster
Fr. | DS | 5-9 | West Lafayette, Ind



#7 Raven Colvin
Sr. | MB | 6-1 | Indianapolis, Ind.



#8 Raven Gray
Sr. | OH/RS | 6-1 | Charlotte, N.C.



#9 Lourdes Myers
RS-Sr. | MB | 6-3 | Alliance, Ohio



#10 Ali Hornung
Sr. | DS/OH | 5-10 | New Albany, Ind.



#11 Allie Shondell
Fr. | S | 5-10 | Lafayette, Ind.



#14 Grace Heaney
So. | OPP/RS | 6-2 | Omaha, Neb.



#15 Lizzie Carr
RS-So. | MB | 6-6 | West Chester, Pa.



#17 Eva Hudson
Jr. | OH | 6-1 | Fort Wayne, Ind.



#19 Sydney Yim
Sr. | S | 6-1 | Newburyport, Mass.



#21 Julia Kane
So. | DS | 5-11 | Windermere, Fla.



#22 Emily Rastovski
RS-Jr. | OH | 6-2 | Valparaiso, Ind.



Graduate Assistant
Owen Mahin | 1st Season



Volleyball Analyst
Ben Cutrone | 1st Season



Head Coach
Dave Shondell
22nd Season



Assoc. Head Coach
& Recruiting Coordinator
Kathy Jewell
22nd Season



Assistant Coach
Michael Bouril
5th Season



Assistant Coach
John Klanac
1st Season



Director of Operations
Carrie Gurnell
4th Season

TEAM MATCH RECORDS

TEAM RECORDS

Kills	106	vs. Duke, 10/15/86
Total Attempts	275	at Wisconsin, 10/12/90
Hitting Percentage .560 (30-2-50)		vs. Notre Dame, 9/8/83
Assists	100	vs. Michigan, 11/22/96
Service Aces	22	at Minnesota, 10/2/82
Solo Blocks	18	vs. Northwestern, 10/15/83
Block Assists	42	vs. Indiana, 10/21/92
Total Blocks	27.5 (10-35)	at Illinois State, 10/20/82
Digs	144	at Western Michigan,

OPPONENT TEAM RECORDS

Kills	113	Illinois, 10/22/86
Total Attempts	276	at Wisconsin, 10/12/90
Hitting Percentage .527 (48-9-74)		at Illinois, 10/2/93
Assists	109	at Indiana, 11/7/98
Service Aces	20	Pittsburgh, 10/7/83
Solo Blocks	11	at Ohio State, 10/6/84
Block Assists	38	Wisconsin, 10/27/07
Total Blocks	21 (5-32) 21 (2-38)	Kansas State, 9/12/87 Wisconsin, 10/27/07
Digs	146	at Western Michigan, 11/19/85

Note: Team records date to 1977, except service aces (1979), solo blocks and block assists (1981) and assists and digs (1983).

TEAM MATCH RECORDS

Kills			Assists			Solo Blocks		
106	Duke	10/15/86	100	Michigan	11/22/96	18	Northwestern	10/15/83
105	Michigan	11/22/96	93	at Indiana	11/7/98	16	Minnesota	9/16/81
103	Illinois	10/11/96	91	vs. Houston	9/14/96	15	vs. Oregon	9/7/84
101	at #19 Texas A&M	10/12/85	90	Illinois	10/11/96		#19 Northwestern	11/21/82
99	at Indiana	11/7/98	89	at #19 Texas A&M	10/12/85		Hawaii	11/11/81
98	vs. Penn State	9/14/84		Indiana	10/20/90	14	#15 Nebraska	12/11/82
	at #17 Western Michigan	11/13/84	88	at Northwestern	11/19/83	13	Indiana	9/11/82
97	Indiana	10/20/90	87	Minnesota	11/15/96	12	Pittsburgh	10/7/83
	vs. Houston	9/14/96		at Michigan	11/5/99		Illinois State	10/2/83
96	Michigan State	11/18/89		Indiana	11/24/00		vs. #8 Arizona	9/9/83
Total Attempts			Service Aces			Block Assists		
275	at #16 Wisconsin	10/12/90	18	Bowling Green	9/2/87	42	Indiana	10/21/92
269	Duke	10/15/86		Illinois State	10/20/87	38*	Utah	9/1/07
266	vs. Houston	9/14/96	17	vs. Penn State	9/14/84	36	#14 Penn State	10/5/91
265	at #14 Western Michigan	11/19/85		Loyola	10/15/85		Michigan	11/22/91
261	at #15 Western Michigan	11/10/87		at Minnesota	10/16/87	35	at Illinois State	10/20/82
249	Illinois	10/4/00		Indiana State	11/6/01	34	LSU	9/19/87
248	vs. Northern Illinois	9/11/92	16	Northwestern	10/15/83		at Rutgers	3/19/21
246	#18 Michigan	10/2/99		Michigan	11/28/86		at #7 Ohio State	10/15/21
244	Bowling Green	9/2/87	15	Six times,		33	#23 Illinois	10/30/99
243	at #19 Texas A&M	10/12/85		last at Texas-Arlington	9/4/93		at Michigan State	11/6/99
	Michigan State	11/18/89				32	Ohio State	10/3/86
Hitting Percentage			Digs			Total Blocks		
.560	Notre Dame	9/8/83	144	at #15 Western Michigan	11/10/87	27.5	at Illinois State	10/20/82
.548	Texas A&M Corpus Christi	9/20/19	130	at #16 Wisconsin	10/12/90	25	Northwestern	10/15/83
.534	Michigan	9/24/83	124	at #19 Texas A&M	10/12/85	24*	Utah	9/1/07
.529	George Washington	8/25/12	119	at #15 Ohio State	11/17/90	23.5	Hawaii	11/11/81
.522	Kentucky	10/16/82	118	at Wisconsin	11/3/89	23	Michigan	11/22/91
.517	Indiana	9/24/16	117	Michigan State	11/18/89	22	#15 Nebraska	12/11/82
.500	Eastern Kentucky	9/1/00	115	vs. Kansas State	9/12/87		at #18 Northwestern	9/27/83
.495*	East Tennessee State	9/18/04		Iowa	9/24/88		Pittsburgh	10/7/83
.490	Syracuse	9/6/97	113	Northwestern	9/28/91		Indiana	10/21/92
.482	Michigan	9/22/84	110	at #14 Western Michigan	11/19/85	21.5	#15 Western Michigan	12/9/83
				vs. Northern Illinois	9/11/92			

INDIVIDUAL MATCH RECORDS

PURDUE INDIVIDUAL RECORDS

Kills	38	Bev Krupa at Indiana, 11/7/98
Total Attempts	88	Joanna Lowry vs. Indiana, 11/24/00
Hitting Percentage	1.000 (13-0-13)	Debbie McDonald at North Carolina State, 9/25/87
	1.000 (10-0-10)	Kristen Arthurs vs. Ball State, 8/28/09
Assists	87	Linda Menconi vs. Houston, 9/14/96
Service Aces	9	Marianne Smith vs. Butler, 9/13/85
Solo Blocks	8	Kate Crandell vs. Pittsburgh, 10/7/83
Block Assists	16	Donna Gill vs. Indiana, 10/21/92 Amy Warner vs. Indiana, 10/21/92
Total Blocks	16	Donna Gill (3-13) vs. Michigan, 11/22/91 Donna Gill (0-16) vs. Indiana, 10/21/92 Amy Warner (0-16) vs. Indiana, 10/21/92

OPPONENT INDIVIDUAL RECORDS

Kills	41	Stacey Gordon, vs. Ohio State, 11/7/03
Total Attempts	89	Sarah Powers, at West. Michigan, 11/19/85
Hitting Percentage	.909 (10-0-11)	Ariana Filho, Minnesota, 10/2/09
Assists	99	Disa Johnson, Illinois, 10/22/86
Service Aces	11	Connie Wolter, Florida, 9/3/88
Solo Blocks	6	Sherri Rinker, at Ohio State, 11/1/86 Tiffany Meligan, Iowa, 11/19/93 Ashley Wittman, Minnesota, 10/1/10
Block Assists	13	Taylor Reineke, Wisconsin, 10/27/07 Johannah Bangert, at Illinois, 10/9/09
Total Blocks	14 (1-13)	Taylor Reineke, Wisconsin, 10/27/07
Digs	38	Jessica Granquist, Minnesota,

INDIVIDUAL MATCH RECORDS

Kills

- 38 Bev Krupa at Indiana, 11/7/98
- 34 Aneska Arosarena, Minnesota, 10/23/98
- Aneska Arosarena vs. Michigan, 10/2/99
- 33 Bev Krupa vs. Michigan, 11/14/98
- Annie Drews at Western Kentucky, 9/12/14
- 32 Marianne Smith at Texas A&M, 10/12/85
- Darcy Jones vs. Northern Illinois, 9/11/92
- Brooke White vs. Weber State, 8/31/96
- Brooke White vs. Illinois, 10/11/96
- Joanna Lowry vs. Indiana, 11/24/00
- Sherridan Atkinson at #4 Penn State, 10/27/2018)

Total Attempts

- 88 Joanna Lowry vs. Indiana, 11/24/00
- 87 Aneska Arosarena vs. Michigan, 10/2/99
- 85 Ariel Turner at Northwestern, 9/25/10
- 84 Caitlyn Newton vs. Minnesota, 2/5/2021
- 81 Ariel Turner vs. Illinois, 11/2/11

Hitting Percentage

- 1.000* Debbie McDonald (13-0-13) at North Carolina State, 9/25/87
- Kristen Arthurs (10-0-10) vs. Ball State, 8/28/09
- .900 Raven Colvin (9-0-10) vs. Purdue Fort Wayne (9/17/2021)
- .875 Tiffany Fisher (14-0-16) vs. Air Force, 9/2/11
- .818 Kierra Jones (9-0-11) vs. College of Charleston, 8/27/11
- .813 Debbie McDonald (13-0-16) at Michigan State, 11/21/87

Assists

- 87 Linda Menconi vs. Houston, 9/14/96
- 79 Taryn Catlin at Indiana, 11/7/98
- 76 Taryn Catlin at Michigan, 11/5/99
- Darcy Orin vs. Duke, 10/15/86
- 75 Taryn Catlin vs. Minnesota, 11/15/96

Service Aces

- 9 Marianne Smith vs. Butler, 9/13/85
- 8 Becky Kanitz vs. Illinois State, 10/20/87
- Debbie McDonald at Minnesota, 11/24/89
- 7 Marianne Smith at Indiana, 10/5/84
- Debbie McDonald at Wisconsin, 11/6/87
- Carey Burvis at N.C. State, 9/11/93
- Brooke White vs. Murray State, 9/18/93
- Carey Burvis at Michigan State, 11/13/93
- Katie Gibbons at Michigan State, 11/8/97
- Ariel Turner at Cincinnati, 9/8/12
- Caitlyn Newton at Michigan, 11/27/19

Digs

- 40 Kelli Miller at Indiana, 10/17/07
- 39 Blair Bashen at Baylor, 9/5/09
- 37 Becky Kanitz at Northwestern, 11/7/87
- Becky Kanitz at Western Michigan, 11/10/87
- 36 Kelli Miller at Michigan, 10/20/07

Solo Blocks

- 8 Kate Crandell vs. Pittsburgh, 10/7/83
- 7 Kate Crandell vs. Wisconsin, 10/31/82
- Kate Crandell vs. Nebraska, 12/11/82
- Marianne Smith at Illinois State, 9/10/83
- Marianne Smith vs. SW Missouri State, 9/7/84

Block Assists

- 16* Donna Gill vs. Indiana, 10/21/92
- 16* Amy Warner vs. Indiana, 10/21/92
- 13 Jan Hoosline at Illinois State, 10/20/82
- Donna Gill vs. Michigan, 11/22/91
- 12 Jane Neff at Illinois State, 10/20/82
- Stephanie Lynch at Wisconsin, 11/29/08
- Kristen Arthurs vs. Michigan, 10/23/10
- Taylor Trammell at Rutgers, 3/19/21

Total Blocks

- 16 (3-13) Donna Gill vs. Michigan, 11/22/91
- 16 (0-16) Donna Gill vs. Indiana, 10/21/92
- 16 (0-16) Amy Warner vs. Indiana, 10/21/92
- 15 (2-13) Jan Hoosline at Illinois State, 10/20/82
- 15 (3-12) Jane Neff at Illinois State, 10/20/82
- 15 (4-11) Stephanie Lynch vs. Utah, 9/1/07

* denotes Big Ten Conference record.



2024-25 Purdue Women's Volleyball Combined Team Statistics All games

Page 1/1
as of Nov 24, 2024

Game Records

Overall	Conference	Home	Away	Neutral
23 - 6	14 - 4	11 - 2	8 - 3	4 - 1

Team Box Score

			Attack					Set		Serve				Dig		Blocking						
##	Player	SP	K	K/S	E	TA	PCT	A	A/S	SA	SE	SA/S	RE	DIG	DIG/S	BS	BA	TOT/S	BLK/S	BE	BHE	PTS
1	Williams, Rachel	44	1	0.02	0	3	.333	1	0.02	7	13	0.16	0	11	0.25	0	0	0	0.00	0	0	8.0
2	Chicoine, Chloe	101	313	3.10	109	952	.214	38	0.38	17	27	0.17	13	282	2.79	2	25	27	0.27	4	0	344.5
3	McAlee, Ryan	100	2	0.02	1	5	.200	30	0.30	15	37	0.15	15	243	2.43	0	0	0	0.00	0	0	17.0
4	Wollard, Kenna	82	136	1.66	61	337	.223	2	0.02	0	0	0.00	0	35	0.43	1	47	48	0.59	9	0	160.5
5	Anderson, Taylor	101	68	0.67	14	151	.358	1114	11.03	23	35	0.23	1	230	2.28	6	83	89	0.88	3	3	138.5
7	Colvin, Raven	101	255	2.52	85	489	.348	8	0.08	35	51	0.35	1	51	0.50	25	135	160	1.58	17	1	382.5
8	Gray, Raven	4	1	0.25	0	1	1.000	0	0.00	0	1	0.00	0	0	0.00	0	0	0	0.00	0	0	1.0
9	Myers, Lourdes	97	121	1.25	33	255	.345	2	0.02	0	0	0.00	2	28	0.29	10	93	103	1.06	29	0	177.5
10	Hornung, Ali	101	0	0.00	0	6	.000	93	0.92	10	14	0.10	27	419	4.15	0	1	1	0.01	0	0	10.5
11	Shondell, Allie	6	0	0.00	1	1	-1.000	20	3.33	0	1	0.00	0	3	0.50	0	3	3	0.50	0	0	1.5
15	Carr, Lizzie	38	59	1.55	12	133	.353	1	0.03	0	0	0.00	0	9	0.24	2	23	25	0.66	4	0	72.5
17	Hudson, Eva	101	475	4.70	121	1246	.284	10	0.10	12	23	0.12	18	246	2.44	5	55	60	0.59	4	0	519.5
19	Yim, Sydney	3	1	0.33	0	1	1.000	3	1.00	0	0	0.00	0	1	0.33	0	0	0	0.00	0	0	1.0
21	Kane, Julia	71	0	0.00	0	0	.000	8	0.11	12	32	0.17	1	26	0.37	0	0	0	0.00	0	0	12.0
PURDUE		101	1432	14.18	437	3580	.278	1330	13.17	131	234	1.30	95	1584	15.68	51	465	283.5	2.81	70	4	1,846.5
Opponents		101	1299	12.86	589	3777	.188	1210	11.98	95	216	0.94	131	1477	14.62	35	329	199.5	1.98	38	7	1,593.5

Team statistics

	PURDUE	OPP
ATTACK		
Kills	1432	1299
Errors	437	589
Total Attacks	3580	3777
Attack Pct	.278	.188
Kills/Set	14.18	12.86
SET		
Assists	1330	1210
Attempts	3478	3690
Assist Pct	.382	.328
Assists/Set	13.17	11.98
SERVE		
Aces	131	95
Errors	234	216
Attempts	2389	2097
Serve Pct	.902	.897
Aces/Set	1.30	0.94
SERVE RECEPTIONS		
Errors	95	131
Errors/Set	0.94	1.30
Attempts	1881	2155
Reception Pct	.949	.999
DEFENSE		
Digs	1584	1477
Digs/Set	15.68	14.62
BLOCKING		
Block solo	51	35
Block Assist	465	329
Total Blocks	283.5	199.5
Blocks/Set	2.81	1.98
Block Errors	70	38
Ball handling errors	4	7
ATTENDANCE		
Total	56317	29779
Dates/Avg Per Date	13/4332	11/2707
Neutral Site #/Avg	5/904	-
Current win streak	0	-
Home win streak	0	-

Team Results

Date	Opponent	Score	Score-by-set	Att.
08/30/2024	Kansas St.	W 3-1	25-21,18-25,25-22,25-23	2415
08/31/2024	UMBC	W 3-0	25-20,25-20,25-17	2415
09/01/2024	UC Davis	W 3-0	25-18,25-19,25-18	2415
09/05/2024	vs California	W 3-1	29-27,25-12,18-25,25-23	52
09/06/2024	at Utah	W 3-0	29-27,25-20,25-13	3766
09/07/2024	at Utah St.	W 3-0	25-18,25-16,25-22	1029
09/13/2024	vs Houston	W 3-0	25-12,25-21,25-20	891
09/14/2024	vs Kentucky	W 3-1	21-25,25-13,25-23,25-16	1883
09/19/2024	at Kansas	L 1-3	29-31,25-21,22-25,23-25	1640
09/20/2024	vs Creighton	L 1-3	21-25,25-17,16-25,25-27	1696
09/21/2024	vs Tulsa	W 3-0	25-21,25-17,25-10	0
* 09/25/2024	Penn St.	L 0-3	14-25,21-25,20-25	2415
* 09/28/2024	at Minnesota	W 3-2	26-24,23-25,25-20,23-25,15-10	4866
* 10/04/2024	at Northwestern	W 3-1	23-25,25-20,25-16,29-27	1618
* 10/06/2024	Michigan St.	W 3-0	25-19,25-22,25-18	2415
* 10/11/2024	at Nebraska	L 2-3	22-25,25-22,25-23,22-25,15-17	8715
* 10/12/2024	at Iowa	W 3-1	25-17,19-25,25-18,25-21	1036
* 10/17/2024	UCLA	W 3-2	23-25,27-25,25-20,19-25,15-11	2415
* 10/19/2024	Indiana	W 3-0	25-18,25-14,25-9	14876
* 10/23/2024	Ohio St.	W 3-0	28-26,25-19,27-25	2415
* 10/26/2024	Wisconsin	L 0-3	20-25,23-25,13-25	14876
* 11/01/2024	at Maryland	W 3-0	25-23,25-20,25-20	570
* 11/02/2024	at Rutgers	W 3-0	25-14,25-12,25-16	1072
* 11/08/2024	at Indiana	W 3-1	25-21,21-25,25-22,25-17	2857
* 11/10/2024	Michigan	W 3-0	25-20,25-21,25-18	2415
* 11/14/2024	Rutgers	W 3-0	25-14,25-14,25-16	2415
* 11/17/2024	Illinois	W 3-0	25-17,25-20,25-19	2415
* 11/21/2024	at Penn St.	L 0-3	20-25,23-25,16-25	2610
* 11/23/2024	Southern California	W 3-0	25-22,29-27,25-20	2415



2024-25 Purdue Women's Volleyball
Team Match-by-Match
All games

Page 1/1
as of Nov 24, 2024

Date	Opponent	SP	Attack				Set			Serve				Recept			Blocking					BHE POINTS SCORE		
			K	E	TA	PCT	A	TA	PCT	SA	SE	TA	PCT	RE	TA	PCT	DIG	BS	BA	BE	TOTAL			
08/30/2024	Kansas St.	4	52	18	145	.234	49	137	.358	5	11	92	.880	6	83	.928	55	2	30	6	17.0	0	74.0	3-1
08/31/2024	UMBC	3	46	7	105	.371	42	103	.408	3	9	74	.878	6	50	.880	48	0	20	3	10.0	0	59.0	3-0
09/01/2024	UC Davis	3	53	8	100	.450	52	95	.547	4	9	74	.878	1	52	.981	49	3	8	5	7.0	0	64.0	3-0
09/05/2024	vs California	4	59	23	153	.235	55	148	.372	6	10	96	.896	5	83	.940	67	1	20	3	11.0	0	76.0	3-1
09/06/2024	at Utah	3	41	13	114	.246	37	107	.346	7	5	78	.936	4	52	.923	57	0	22	2	11.0	0	59.0	3-0
09/07/2024	at Utah St.	3	40	13	93	.290	36	90	.400	3	6	74	.919	3	51	.941	35	8	18	1	17.0	0	60.0	3-0
09/13/2024	vs Houston	3	37	11	89	.292	36	90	.400	5	6	74	.919	0	47	1.000	45	3	20	2	13.0	0	55.0	3-0
09/14/2024	vs Kentucky	4	49	13	116	.310	39	113	.345	7	10	96	.896	3	58	.948	53	1	16	0	9.0	0	65.0	3-1
09/19/2024	at Kansas	4	64	19	162	.278	60	156	.385	5	10	100	.900	2	88	.977	61	0	18	5	9.0	2	78.0	1-3
09/20/2024	vs Creighton	4	51	20	148	.209	50	152	.329	2	7	88	.920	4	83	.952	55	2	14	4	9.0	0	62.0	1-3
09/21/2024	vs Tulsa	3	44	9	96	.365	39	89	.438	4	8	74	.892	3	43	.930	36	2	18	2	11.0	0	59.0	3-0
09/25/2024	Penn St.	3	33	15	102	.176	31	95	.326	1	8	57	.860	2	64	.969	41	0	4	1	2.0	0	36.0	0-3
09/28/2024	at Minnesota	5	65	24	163	.252	61	172	.355	17	11	111	.901	7	95	.926	79	1	16	3	9.0	0	91.0	3-2
10/04/2024	at Northwestern	4	61	18	150	.287	53	144	.368	7	14	101	.861	6	81	.926	66	2	10	4	7.0	1	75.0	3-1
10/06/2024	Michigan St.	3	42	11	123	.252	41	118	.347	3	7	74	.905	5	53	.906	71	2	18	2	11.0	0	56.0	3-0
10/11/2024	at Nebraska	5	68	16	167	.311	67	172	.390	1	19	110	.827	3	104	.971	64	3	24	2	15.0	0	84.0	2-3
10/12/2024	at Iowa	4	56	26	141	.213	49	132	.371	10	4	93	.957	3	76	.961	50	1	14	0	8.0	0	74.0	3-1
10/17/2024	UCLA	5	69	14	169	.325	66	165	.400	5	9	108	.917	6	98	.939	75	5	22	2	16.0	0	90.0	3-2
10/19/2024	Indiana	3	40	8	96	.333	39	92	.424	9	6	74	.919	0	38	1.000	51	0	8	0	4.0	0	53.0	3-0
10/23/2024	Ohio St.	3	49	21	130	.215	44	122	.361	4	11	79	.861	2	67	.970	53	1	22	2	12.0	0	65.0	3-0
10/26/2024	Wisconsin	3	33	23	112	.089	31	108	.287	0	8	58	.862	5	67	.925	52	1	12	1	7.0	0	40.0	0-3
11/01/2024	at Maryland	3	45	9	115	.313	42	116	.362	4	9	74	.878	3	53	.943	57	0	4	3	2.0	0	51.0	3-0
11/02/2024	at Rutgers	3	50	8	99	.424	43	89	.483	5	7	74	.905	1	40	.975	49	2	12	0	8.0	0	63.0	3-0
11/08/2024	at Indiana	4	60	20	131	.305	53	131	.405	1	10	95	.895	2	78	.974	57	2	12	3	8.0	0	69.0	3-1
11/10/2024	Michigan	3	45	14	111	.279	42	106	.396	2	2	74	.973	1	53	.981	50	3	18	3	12.0	0	59.0	3-0
11/14/2024	Rutgers	3	48	11	100	.370	46	93	.495	4	4	74	.946	2	42	.952	53	1	14	2	8.0	1	60.0	3-0
11/17/2024	Illinois	3	48	12	105	.343	48	103	.466	1	3	74	.959	2	52	.962	57	1	24	2	13.0	0	62.0	3-0
11/21/2024	at Penn St.	3	33	17	113	.142	32	115	.278	1	6	61	.902	5	65	.923	49	1	10	6	6.0	0	40.0	0-3
11/23/2024	Southern California	3	51	16	132	.265	47	125	.376	5	5	78	.936	3	65	.954	49	3	17	1	11.5	0	67.5	3-0
Totals		101	1432	437	3580	.278	1330	3478	.382	131	234	2389	.902	95	1881	.949	1584	51	465	70	283.5	4	1846.5	
Opponents		101	1299	589	3777	.188	1210	3690	.328	95	216	2097	.897	131	2155	.939	1477	35	329	38	199.5	7	1593.5	

Team Averages

Sets Played	Kills per set	Assists per set	Service aces per set	Digs per set	Blocks per set	Points per set	Ball handling error per set	Reception errors per set
101	14.18	13.17	1.30	15.68	2.81	18.28	0.04	0.94



2024-25 Purdue Women's Volleyball Opponents Match-by-Match All games

Page 1/1
as of Nov 24, 2024

Date	Opponent	SP	Attack				Set			Serve				Recept			Blocking					BHE	POINTS	SCORE
			K	E	TA	PCT	A	TA	PCT	SA	SE	TA	PCT	RE	TA	PCT	DIG	BS	BA	BE	TOTAL			
08/30/2024	Kansas St.	4	55	25	148	.203	54	141	.383	6	9	92	.902	5	81	.938	68	1	10	1	6.0	0	67.0	3-1
08/31/2024	UMBC	3	34	16	109	.165	30	106	.283	6	8	58	.862	3	65	.954	43	0	6	3	3.0	1	43.0	3-0
09/01/2024	UC Davis	3	37	12	103	.243	33	98	.337	1	4	56	.929	4	65	.938	35	0	2	1	1.0	0	39.0	3-0
09/05/2024	vsCalifornia	4	49	27	155	.142	46	144	.319	5	5	88	.943	6	86	.930	61	1	19	2	10.5	0	64.5	3-1
09/06/2024	at Utah	3	37	22	126	.119	34	119	.286	4	9	61	.852	7	73	.904	50	1	14	0	8.0	0	49.0	3-0
09/07/2024	at Utah St.	4	32	25	107	.065	31	111	.279	3	6	57	.895	3	68	.956	35	1	6	1	4.0	0	39.0	3-0
09/13/2024	vsHouston	3	35	26	116	.078	32	112	.286	0	7	54	.870	5	68	.926	32	2	6	2	5.0	0	40.0	3-0
09/14/2024	vsKentucky	4	50	20	141	.213	46	141	.326	3	19	77	.753	7	86	.919	46	0	8	2	4.0	0	57.0	3-1
09/19/2024	at Kansas	4	69	17	163	.319	68	172	.395	2	13	101	.871	5	90	.944	73	3	10	4	8.0	0	79.0	1-3
09/20/2024	vsCreighton	4	63	23	146	.274	57	136	.419	4	10	93	.892	2	81	.975	59	2	20	2	12.0	1	79.0	1-3
09/21/2024	vsTulsa	3	27	20	84	.083	27	99	.273	3	6	49	.878	4	66	.939	33	0	4	2	2.0	0	32.0	3-0
09/25/2024	Penn St.	3	50	12	103	.369	47	96	.490	2	9	73	.877	1	49	.980	49	3	6	0	6.0	0	58.0	0-3
09/28/2024	at Minnesota	5	61	20	171	.240	56	156	.359	7	10	105	.905	17	100	.830	61	1	18	4	10.0	0	78.0	3-2
10/04/2024	at Northwestern	4	49	21	153	.183	43	151	.285	6	8	89	.910	7	87	.920	58	0	22	3	11.0	0	66.0	3-1
10/06/2024	Michigan St.	3	35	21	134	.104	32	122	.262	5	7	60	.883	3	67	.955	61	1	10	1	6.0	1	46.0	3-0
10/11/2024	at Nebraska	5	74	31	178	.242	68	167	.407	3	7	111	.937	1	91	.989	69	0	11	1	5.5	0	82.5	2-3
10/12/2024	at Iowa	4	48	21	125	.216	45	127	.354	3	6	82	.927	10	89	.888	48	0	27	0	13.5	1	64.5	3-1
10/17/2024	UCLA	5	74	25	188	.261	66	179	.369	6	9	107	.916	5	99	.949	73	1	10	1	6.0	1	86.0	3-2
10/19/2024	Indiana	3	27	20	115	.061	25	111	.225	0	4	42	.905	9	68	.868	44	2	2	0	3.0	0	30.0	3-0
10/23/2024	Ohio St.	3	36	22	125	.112	31	122	.254	2	4	71	.944	4	68	.941	52	2	12	0	8.0	0	46.0	3-0
10/26/2024	Wisconsin	3	39	17	118	.186	38	115	.330	5	6	73	.918	0	50	1.000	53	2	26	1	15.0	0	59.0	0-3
11/01/2024	at Maryland	3	42	15	129	.209	37	124	.298	3	11	64	.828	4	65	.938	54	3	4	0	5.0	0	50.0	3-0
11/02/2024	at Rutgers	3	26	17	97	.093	24	102	.235	1	3	43	.930	5	67	.925	39	0	4	2	2.0	0	29.0	3-0
11/08/2024	at Indiana	4	52	24	144	.194	45	137	.328	2	8	86	.907	1	85	.988	45	6	10	2	11.0	1	65.0	3-1
11/10/2024	Michigan	3	42	18	119	.202	41	120	.342	1	7	60	.883	2	72	.972	47	2	14	0	9.0	1	52.0	3-0
11/14/2024	Rutgers	3	26	18	109	.073	25	110	.227	2	3	45	.933	4	70	.943	37	0	8	0	4.0	0	32.0	3-0
11/17/2024	Illinois	3	39	21	124	.145	38	119	.319	2	5	57	.912	1	71	.986	43	0	8	1	4.0	0	45.0	3-0
11/21/2024	at Penn St.	3	47	16	128	.242	47	131	.359	5	8	73	.890	1	55	.982	57	1	16	0	9.0	0	61.0	0-3
11/23/2024	Southern California	3	44	17	119	.227	44	122	.361	3	5	70	.929	5	73	.932	52	0	16	2	8.0	0	55.0	3-0
Opponent totals		101	1299	589	3777	.188	1210	3690	.328	95	216	2097	.897	131	2155	.939	1477	35	329	38	199.5	7	1593.5	
Purdue totals		101	1432	437	3580	.278	1330	3478	.382	131	234	2389	.902	95	1881	.949	1584	51	465	70	283.5	4	1846.5	

Team Averages

Sets Played	Kills per set	Assists per set	Service aces per set	Digs per set	Blocks per set	Points per set	Ball handling error per set	Reception errors per set
101	12.86	11.98	0.94	14.62	1.98	15.78	0.07	1.30



2024-25 Purdue Women's Volleyball
Team Match-by-Match Comparison
All games

Page 1/1
as of Nov 24, 2024

Date	Opponent	Score	Kills	Errors	TA	Hit%	Assists	SA	SE	RE	Digs	Blocks	BS	BA	BE	BHE
08/30/2024	Kansas St.	3-1	52/55	18/25	145/148	.234/.203	49/54	5/6	11/9	6/5	55/68	17.0/6.0	2/1	30/10	6/1	0/0
08/31/2024	UMBC	3-0	46/34	7/16	105/109	.371/.165	42/30	3/6	9/8	6/3	48/43	10.0/3.0	0/0	20/6	3/3	0/1
09/01/2024	UC Davis	3-0	53/37	8/12	100/103	.450/.243	52/33	4/1	9/4	1/4	49/35	7.0/1.0	3/0	8/2	5/1	0/0
09/05/2024	California	3-1	59/49	23/27	153/155	.235/.142	55/46	6/5	10/5	5/6	67/61	11.0/10.5	1/1	20/19	3/2	0/0
09/06/2024	Utah	3-0	41/37	13/22	114/126	.246/.119	37/34	7/4	5/9	4/7	57/50	11.0/8.0	0/1	22/14	2/0	0/0
09/07/2024	Utah St.	3-0	40/32	13/25	93/107	.290/.065	36/31	3/3	6/6	3/3	35/35	17.0/4.0	8/1	18/6	1/1	0/0
09/13/2024	Houston	3-0	37/35	11/26	89/116	.292/.078	36/32	5/0	6/7	0/5	45/32	13.0/5.0	3/2	20/6	2/2	0/0
09/14/2024	Kentucky	3-1	49/50	13/20	116/141	.310/.213	39/46	7/3	10/19	3/7	53/46	9.0/4.0	1/0	16/8	0/2	0/0
09/19/2024	Kansas	1-3	64/69	19/17	162/163	.278/.319	60/68	5/2	10/13	2/5	61/73	9.0/8.0	0/3	18/10	5/4	2/0
09/20/2024	Creighton	1-3	51/63	20/23	148/146	.209/.274	50/57	2/4	7/10	4/2	55/59	9.0/12.0	2/2	14/20	4/2	0/1
09/21/2024	Tulsa	3-0	44/27	9/20	96/84	.365/.083	39/27	4/3	8/6	3/4	36/33	11.0/2.0	2/0	18/4	2/2	0/0
09/25/2024	Penn St.	0-3	33/50	15/12	102/103	.176/.369	31/47	1/2	8/9	2/1	41/49	2.0/6.0	0/3	4/6	1/0	0/0
09/28/2024	Minnesota	3-2	65/61	24/20	163/171	.252/.240	61/56	17/7	11/10	7/17	79/61	9.0/10.0	1/1	16/18	3/4	0/0
10/04/2024	Northwestern	3-1	61/49	18/21	150/153	.287/.183	53/43	7/6	14/8	6/7	66/58	7.0/11.0	2/0	10/22	4/3	1/0
10/06/2024	Michigan St.	3-0	42/35	11/21	123/134	.252/.104	41/32	3/5	7/7	5/3	71/61	11.0/6.0	2/1	18/10	2/1	0/1
10/11/2024	Nebraska	2-3	68/74	16/31	167/178	.311/.242	67/68	1/3	19/7	3/1	64/69	15.0/5.5	3/0	24/11	2/1	0/0
10/12/2024	Iowa	3-1	56/48	26/21	141/125	.213/.216	49/45	10/3	4/6	3/10	50/48	8.0/13.5	1/0	14/27	0/0	0/1
10/17/2024	UCLA	3-2	69/74	14/25	169/188	.325/.261	66/66	5/6	9/9	6/5	75/73	16.0/6.0	5/1	22/10	2/1	0/1
10/19/2024	Indiana	3-0	40/27	8/20	96/115	.333/.061	39/25	9/0	6/4	0/9	51/44	4.0/3.0	0/2	8/2	0/0	0/0
10/23/2024	Ohio St.	3-0	49/36	21/22	130/125	.215/.112	44/31	4/2	11/4	2/4	53/52	12.0/8.0	1/2	22/12	2/0	0/0
10/26/2024	Wisconsin	0-3	33/39	23/17	112/118	.089/.186	31/38	0/5	8/6	5/0	52/53	7.0/15.0	1/2	12/26	1/1	0/0
11/01/2024	Maryland	3-0	45/42	9/15	115/129	.313/.209	42/37	4/3	9/11	3/4	57/54	2.0/5.0	0/3	4/4	3/0	0/0
11/02/2024	Rutgers	3-0	50/26	8/17	99/97	.424/.093	43/24	5/1	7/3	1/5	49/39	8.0/2.0	2/0	12/4	0/2	0/0
11/08/2024	Indiana	3-1	60/52	20/24	131/144	.305/.194	53/45	1/2	10/8	2/1	57/45	8.0/11.0	2/6	12/10	3/2	0/1
11/10/2024	Michigan	3-0	45/42	14/18	111/119	.279/.202	42/41	2/1	2/7	1/2	50/47	12.0/9.0	3/2	18/14	3/0	0/1
11/14/2024	Rutgers	3-0	48/26	11/18	100/109	.370/.073	46/25	4/2	4/3	2/4	53/37	8.0/4.0	1/0	14/8	2/0	1/0
11/17/2024	Illinois	3-0	48/39	12/21	105/124	.343/.145	48/38	1/2	3/5	2/1	57/43	13.0/4.0	1/0	24/8	2/1	0/0
11/21/2024	Penn St.	0-3	33/47	17/16	113/128	.142/.242	32/47	1/5	6/8	5/1	49/57	6.0/9.0	1/1	10/16	6/0	0/0
11/23/2024	Southern California	3-0	51/44	16/17	132/119	.265/.227	47/44	5/3	5/5	3/5	49/52	11.5/8.0	3/0	17/16	1/2	0/0

Note: Match totals are displayed in the format TEAM/OPPONENT for each category



2024-25 Purdue Women's Volleyball
Individual Match-by-Match
All games

Page 1/14
as of Nov 24, 2024

#1 WILLIAMS, Rachel

Date	Opponent	SP	Attack				Set			Serve				Recept			DIG	Blocking				Team			
			K	E	TA	PCT	A	TA	PCT	SA	SE	TA	PCT	RE	TA	PCT		BS	BA	BE	TOTAL	BHE	POINTS	HIT%	SCORE
08/31/2024	UMBC	2	0	0	0	.000	0	0	.000	1	0	10	1.000	0	0	.000	4	0	0	0	0.0	0	1.0	.371	3-0
09/01/2024	UC Davis	3	0	0	0	.000	0	0	.000	0	1	11	.909	0	0	.000	0	0	0	0	0.0	0	0.0	.450	3-0
09/05/2024	vs California	3	1	0	1	1.000	0	0	.000	0	1	10	.900	0	0	.000	1	0	0	0	0.0	0	1.0	.235	3-1
09/06/2024	at Utah	2	0	0	0	.000	0	0	.000	1	1	3	.667	0	0	.000	1	0	0	0	0.0	0	1.0	.246	3-0
09/07/2024	at Utah St.	1	0	0	0	.000	0	0	.000	0	0	1	1.000	0	0	.000	0	0	0	0	0.0	0	0.0	.290	3-0
09/13/2024	vs Houston	1	0	0	0	.000	0	0	.000	1	0	2	1.000	0	0	.000	0	0	0	0	0.0	0	1.0	.292	3-0
09/14/2024	vs Kentucky	4	0	0	0	.000	0	0	.000	0	1	4	.750	0	0	.000	0	0	0	0	0.0	0	0.0	.310	3-1
09/19/2024	at Kansas	3	0	0	0	.000	0	0	.000	0	0	4	1.000	0	0	.000	0	0	0	0	0.0	0	0.0	.278	1-3
09/20/2024	vs Creighton	3	0	0	1	.000	1	2	.500	1	2	15	.867	0	0	.000	2	0	0	0	0.0	0	1.0	.209	1-3
09/21/2024	vs Tulsa	2	0	0	0	.000	0	0	.000	1	0	6	1.000	0	0	.000	1	0	0	0	0.0	0	1.0	.365	3-0
09/25/2024	Penn St.	1	0	0	1	.000	0	0	.000	0	0	1	1.000	0	0	.000	0	0	0	0	0.0	0	0.0	.176	0-3
09/28/2024	at Minnesota	3	0	0	0	.000	0	0	.000	0	0	3	1.000	0	0	.000	0	0	0	0	0.0	0	0.0	.252	3-2
10/04/2024	at Northwestern	1	0	0	0	.000	0	0	.000	0	1	1	.000	0	0	.000	0	0	0	0	0.0	0	0.0	.287	3-1
10/06/2024	Michigan St.	2	0	0	0	.000	0	0	.000	0	0	4	1.000	0	0	.000	0	0	0	0	0.0	0	0.0	.252	3-0
10/11/2024	at Nebraska	5	0	0	0	.000	0	0	.000	0	4	12	.667	0	0	.000	0	0	0	0	0.0	0	0.0	.311	2-3
10/19/2024	Indiana	3	0	0	0	.000	0	0	.000	2	0	5	1.000	0	0	.000	0	0	0	0	0.0	0	2.0	.333	3-0
11/01/2024	at Maryland	1	0	0	0	.000	0	0	.000	0	0	3	1.000	0	0	.000	2	0	0	0	0.0	0	0.0	.313	3-0
11/02/2024	at Rutgers	2	0	0	0	.000	0	0	.000	0	1	2	.500	0	0	.000	0	0	0	0	0.0	0	0.0	.424	3-0
11/08/2024	at Indiana	1	0	0	0	.000	0	0	.000	0	1	1	.000	0	0	.000	0	0	0	0	0.0	0	0.0	.305	3-1
11/14/2024	Rutgers	1	0	0	0	.000	0	0	.000	0	0	2	1.000	0	0	.000	0	0	0	0	0.0	0	0.0	.370	3-0
Totals		44	1	0	3	.333	1	2	.500	7	13	100	.870	0	0	.000	11	0	0	0	0.0	0	8.0		

Player Averages

Sets Played	Kills per set	Assists per set	Service aces per set	Digs per set	Blocks per set	Points per set
44	0.02	0.02	0.16	0.25	0.00	0.18



2024-25 Purdue Women's Volleyball
Individual Match-by-Match
All games

Page 2/14
as of Nov 24, 2024

#2 CHICOINE, Chloe

			Attack				Set			Serve				Recept				Blocking				Team				
Date	Opponent	SP	K	E	TA	PCT	A	TA	PCT	SA	SE	TA	PCT	RE	TA	PCT	DIG	BS	BA	BE	TOTAL	BHE	POINTS	HIT%	SCORE	
08/30/2024	Kansas St.	*4	17	6	52	.212	0	4	.000	0	1	17	.941	2	12	.833	6	0	1	0	1.0	0	17.5	.234	3-1	
08/31/2024	UMBC	*3	11	2	33	.273	2	5	.400	1	3	9	.667	0	14	1.000	11	0	1	0	1.0	0	12.5	.371	3-0	
09/01/2024	UC Davis	*3	9	2	26	.269	4	5	.800	1	2	16	.875	0	12	1.000	5	0	0	1	0.0	0	10.0	.450	3-0	
09/05/2024	vs California	*4	10	6	36	.111	0	3	.000	1	1	21	.952	0	10	1.000	15	0	1	0	1.0	0	11.5	.235	3-1	
09/06/2024	at Utah	*3	8	4	31	.129	1	3	.333	1	0	23	1.000	0	2	1.000	13	0	0	0	0.0	0	9.0	.246	3-0	
09/07/2024	at Utah St.	*3	14	5	29	.310	0	2	.000	0	0	10	1.000	0	19	1.000	8	2	2	0	4.0	0	17.0	.290	3-0	
09/13/2024	vs Houston	*3	11	4	27	.259	0	3	.000	2	1	21	.952	0	13	1.000	10	0	3	0	3.0	0	14.5	.292	3-0	
09/14/2024	vs Kentucky	*4	10	3	32	.219	0	5	.000	1	0	22	1.000	0	4	1.000	9	0	2	0	2.0	0	12.0	.310	3-1	
09/19/2024	at Kansas	*4	16	3	39	.333	2	5	.400	1	2	24	.917	1	15	.933	12	0	0	0	0.0	0	17.0	.278	1-3	
09/20/2024	vs Creighton	*4	14	8	44	.136	1	8	.125	0	0	15	1.000	1	18	.944	6	0	0	1	0.0	0	14.0	.209	1-3	
09/21/2024	vs Tulsa	*3	10	2	23	.348	2	6	.333	0	1	17	.941	1	4	.750	6	0	2	0	2.0	0	11.0	.365	3-0	
09/25/2024	Penn St.	*3	10	5	29	.172	1	4	.250	0	2	11	.818	1	12	.917	11	0	0	0	0.0	0	10.0	.176	0-3	
09/28/2024	at Minnesota	*5	14	8	48	.125	1	7	.143	0	2	19	.895	0	8	1.000	11	0	0	0	0.0	0	14.0	.252	3-2	
10/04/2024	at Northwestern	*4	10	3	33	.212	1	9	.111	1	2	19	.895	0	26	1.000	3	0	2	0	2.0	0	12.0	.287	3-1	
10/06/2024	Michigan St.	*3	10	6	41	.098	0	1	.000	3	2	17	.882	0	9	1.000	13	0	1	0	1.0	0	13.5	.252	3-0	
10/11/2024	at Nebraska	*5	22	4	55	.327	5	9	.556	0	1	26	.962	0	5	1.000	13	0	1	0	1.0	0	22.5	.311	2-3	
10/12/2024	at Iowa	*4	7	7	36	.000	1	1	1.000	1	1	20	.950	1	20	.950	6	0	1	0	1.0	0	8.5	.213	3-1	
10/17/2024	UCLA	*5	15	3	52	.231	4	8	.500	0	1	14	.929	0	10	1.000	13	0	2	1	2.0	0	16.0	.325	3-2	
10/19/2024	Indiana	*3	12	0	30	.400	1	4	.250	0	1	10	.900	0	0	.000	10	0	1	0	1.0	0	12.5	.333	3-0	
10/23/2024	Ohio St.	*3	11	5	33	.182	1	4	.250	1	2	18	.889	1	2	.500	9	0	0	0	0.0	0	12.0	.215	3-0	
10/26/2024	Wisconsin	*3	3	5	21	-.095	1	3	.333	0	0	13	1.000	0	6	1.000	14	0	0	0	0.0	0	3.0	.089	0-3	
11/01/2024	at Maryland	*3	10	1	28	.321	2	5	.400	0	1	13	.923	0	4	1.000	14	0	0	0	0.0	0	10.0	.313	3-0	
11/02/2024	at Rutgers	*3	14	1	23	.565	0	0	.000	2	0	14	1.000	0	6	1.000	13	0	1	0	1.0	0	16.5	.424	3-0	
11/08/2024	at Indiana	*4	4	3	24	.042	0	1	.000	0	1	16	.938	0	26	1.000	10	0	0	0	0.0	0	4.0	.305	3-1	
11/10/2024	Michigan	*3	9	2	32	.219	4	5	.800	1	0	14	1.000	1	20	.950	7	0	1	0	1.0	0	10.5	.279	3-0	
11/14/2024	Rutgers	*3	16	3	24	.542	0	2	.000	0	0	17	1.000	2	20	.900	9	0	0	1	0.0	0	16.0	.370	3-0	
11/17/2024	Illinois	*3	5	1	16	.250	2	4	.500	0	0	20	1.000	2	13	.846	11	0	2	0	2.0	0	6.0	.343	3-0	
11/21/2024	at Penn St.	*3	5	6	31	-.032	0	5	.000	0	0	10	1.000	0	22	1.000	7	0	1	0	1.0	0	5.5	.142	0-3	
11/23/2024	Southern California	*3	6	1	24	.208	2	5	.400	0	0	14	1.000	0	24	1.000	7	0	0	0	0.0	0	6.0	.265	3-0	
Totals			101	313	109	.952	.214	38	126	.302	17	27	480	.944	13	356	.963	282	2	25	4	27.0	0	344.5		

Player Averages

Sets Played	Kills per set	Assists per set	Service aces per set	Digs per set	Blocks per set	Points per set
101	3.10	0.38	0.17	2.79	0.27	3.41



2024-25 Purdue Women's Volleyball
Individual Match-by-Match
All games

Page 3/14
as of Nov 24, 2024

#3 MCALEER, Ryan

Date	Opponent	SP	Attack				Set			Serve				Recept			Blocking					Team			
			K	E	TA	PCT	A	TA	PCT	SA	SE	TA	PCT	RE	TA	PCT	DIG	BS	BA	BE	TOTAL	BHE	POINTS	HIT%	SCORE
08/30/2024	Kansas St.	*4	0	0	0	.000	0	2	.000	0	4	18	.778	0	19	1.000	11	0	0	0	0.0	0	0.0	.234	3-1
08/31/2024	UMBC	*2	0	0	0	.000	1	2	.500	0	0	10	1.000	2	12	.833	3	0	0	0	0.0	0	0.0	.371	3-0
09/01/2024	UC Davis	*3	0	0	0	.000	0	0	.000	0	0	8	1.000	0	16	1.000	5	0	0	0	0.0	0	0.0	.450	3-0
09/05/2024	vs California	*4	0	0	0	.000	0	1	.000	0	1	14	.929	3	32	.906	7	0	0	0	0.0	0	0.0	.235	3-1
09/06/2024	at Utah	*3	0	0	0	.000	1	3	.333	0	2	9	.778	0	4	1.000	7	0	0	0	0.0	0	0.0	.246	3-0
09/07/2024	at Utah St.	*3	0	0	0	.000	0	1	.000	1	1	16	.938	0	5	1.000	5	0	0	0	0.0	0	1.0	.290	3-0
09/13/2024	vs Houston	*3	0	0	0	.000	3	5	.600	1	0	8	1.000	0	15	1.000	6	0	0	0	0.0	0	1.0	.292	3-0
09/14/2024	vs Kentucky	*4	1	0	1	1.000	1	1	1.000	0	2	15	.867	0	18	1.000	11	0	0	0	0.0	0	1.0	.310	3-1
09/19/2024	at Kansas	*4	0	1	1	-1.000	1	2	.500	0	1	12	.917	0	5	1.000	10	0	0	0	0.0	0	0.0	.278	1-3
09/20/2024	vs Creighton	4	0	0	0	.000	1	2	.500	0	1	13	.923	1	18	.944	7	0	0	0	0.0	0	0.0	.209	1-3
09/21/2024	vs Tulsa	3	1	0	1	1.000	3	4	.750	0	2	12	.833	0	10	1.000	6	0	0	0	0.0	0	1.0	.365	3-0
09/25/2024	Penn St.	3	0	0	0	.000	0	0	.000	0	1	8	.875	0	3	1.000	5	0	0	0	0.0	0	0.0	.176	0-3
09/28/2024	at Minnesota	*5	0	0	0	.000	2	7	.286	6	3	30	.900	4	31	.871	10	0	0	0	0.0	0	6.0	.252	3-2
10/04/2024	at Northwestern	4	0	0	1	.000	1	4	.250	1	2	17	.882	1	11	.909	11	0	0	0	0.0	0	1.0	.287	3-1
10/06/2024	Michigan St.	3	0	0	0	.000	0	2	.000	0	2	13	.846	0	9	1.000	11	0	0	0	0.0	0	0.0	.252	3-0
10/11/2024	at Nebraska	*5	0	0	0	.000	2	4	.500	0	3	14	.786	0	14	1.000	13	0	0	0	0.0	0	0.0	.311	2-3
10/12/2024	at Iowa	*4	0	0	0	.000	2	2	1.000	1	0	13	1.000	1	11	.909	7	0	0	0	0.0	0	1.0	.213	3-1
10/17/2024	UCLA	*5	0	0	0	.000	3	6	.500	3	0	26	1.000	1	27	.963	7	0	0	0	0.0	0	3.0	.325	3-2
10/19/2024	Indiana	*3	0	0	0	.000	0	1	.000	1	0	8	1.000	0	17	1.000	15	0	0	0	0.0	0	1.0	.333	3-0
10/23/2024	Ohio St.	*3	0	0	0	.000	1	7	.143	0	2	13	.846	0	3	1.000	11	0	0	0	0.0	0	0.0	.215	3-0
10/26/2024	Wisconsin	*3	0	0	0	.000	1	2	.500	0	2	7	.714	0	11	1.000	6	0	0	0	0.0	0	0.0	.089	0-3
11/01/2024	at Maryland	*3	0	0	0	.000	0	3	.000	0	1	8	.875	0	12	1.000	8	0	0	0	0.0	0	0.0	.313	3-0
11/02/2024	at Rutgers	*3	0	0	0	.000	1	1	1.000	0	0	11	1.000	0	6	1.000	10	0	0	0	0.0	0	0.0	.424	3-0
11/08/2024	at Indiana	*4	0	0	0	.000	2	5	.400	0	2	11	.818	0	7	1.000	9	0	0	0	0.0	0	0.0	.305	3-1
11/10/2024	Michigan	*3	0	0	0	.000	0	2	.000	0	0	7	1.000	0	1	1.000	10	0	0	0	0.0	0	0.0	.279	3-0
11/14/2024	Rutgers	*3	0	0	0	.000	1	2	.500	0	1	6	.833	0	1	1.000	11	0	0	0	0.0	0	0.0	.370	3-0
11/17/2024	Illinois	*3	0	0	1	.000	0	0	.000	1	1	11	.909	0	5	1.000	6	0	0	0	0.0	0	1.0	.343	3-0
11/21/2024	at Penn St.	*3	0	0	0	.000	0	3	.000	0	2	8	.750	1	8	.875	8	0	0	0	0.0	0	0.0	.142	0-3
11/23/2024	Southern California	*3	0	0	0	.000	3	3	1.000	0	1	9	.889	1	16	.938	7	0	0	0	0.0	0	0.0	.265	3-0
Totals		100	2	1	5	.200	30	77	.390	15	37	355	.896	15	347	.957	243	0	0	0	0.0	0	17.0		

Player Averages

Sets Played	Kills per set	Assists per set	Service aces per set	Digs per set	Blocks per set	Points per set
100	0.02	0.30	0.15	2.43	0.00	0.17



2024-25 Purdue Women's Volleyball
Individual Match-by-Match
All games

Page 4/14
as of Nov 24, 2024

#4 WOLLARD, Kenna

Date	Opponent	SP	Attack				Set			Serve				Recept			Blocking					Team			
			K	E	TA	PCT	A	TA	PCT	SA	SE	TA	PCT	RE	TA	PCT	DIG	BS	BA	BE	TOTAL	BHE	POINTS	HIT%	SCORE
08/30/2024	Kansas St.	4	8	2	20	.300	0	0	.000	0	0	0	.000	0	0	.000	1	0	2	1	2.0	0	9.0	.234	3-1
09/01/2024	UC Davis	3	10	2	17	.471	0	0	.000	0	0	0	.000	0	1	1.000	1	0	2	1	2.0	0	11.0	.450	3-0
09/05/2024	vs California	4	11	2	24	.375	0	1	.000	0	0	0	.000	0	0	.000	3	0	3	2	3.0	0	12.5	.235	3-1
09/06/2024	at Utah	3	7	2	15	.333	0	0	.000	0	0	0	.000	0	0	.000	3	0	1	0	1.0	0	7.5	.246	3-0
09/07/2024	at Utah St.	3	5	2	10	.300	0	1	.000	0	0	0	.000	0	0	.000	0	0	2	0	2.0	0	6.0	.290	3-0
09/13/2024	vs Houston	2	3	3	13	.000	0	0	.000	0	0	0	.000	0	0	.000	3	0	5	0	5.0	0	5.5	.292	3-0
09/14/2024	vs Kentucky	4	6	2	13	.308	0	0	.000	0	0	0	.000	0	0	.000	2	0	1	0	1.0	0	6.5	.310	3-1
09/19/2024	at Kansas	4	9	7	22	.091	0	0	.000	0	0	0	.000	0	0	.000	0	0	2	0	2.0	0	10.0	.278	1-3
09/20/2024	vs Creighton	*4	3	3	13	.000	0	0	.000	0	0	0	.000	0	0	.000	1	1	1	1	2.0	0	4.5	.209	1-3
09/21/2024	vs Tulsa	*2	2	0	7	.286	0	1	.000	0	0	1	1.000	0	1	1.000	0	0	0	0	0.0	0	2.0	.365	3-0
09/25/2024	Penn St.	*3	4	3	17	.059	0	1	.000	0	0	0	.000	0	0	.000	2	0	1	0	1.0	0	4.5	.176	0-3
09/28/2024	at Minnesota	5	7	0	15	.467	0	6	.000	0	0	0	.000	0	0	.000	3	0	2	1	2.0	0	8.0	.252	3-2
10/04/2024	at Northwestern	*4	18	4	32	.438	0	2	.000	0	0	0	.000	0	0	.000	2	0	1	0	1.0	0	18.5	.287	3-1
10/06/2024	Michigan St.	*3	8	2	20	.300	0	2	.000	0	0	0	.000	0	0	.000	3	0	3	0	3.0	0	9.5	.252	3-0
10/11/2024	at Nebraska	5	7	2	17	.294	0	2	.000	0	0	0	.000	0	0	.000	1	0	4	1	4.0	0	9.0	.311	2-3
10/12/2024	at Iowa	4	8	5	20	.150	0	2	.000	0	0	0	.000	0	0	.000	1	0	4	0	4.0	0	10.0	.213	3-1
10/17/2024	UCLA	5	1	3	8	-.250	0	1	.000	0	0	0	.000	0	0	.000	1	0	2	0	2.0	0	2.0	.325	3-2
10/19/2024	Indiana	3	1	2	5	-.200	1	1	1.000	0	0	0	.000	0	1	1.000	2	0	1	0	1.0	0	1.5	.333	3-0
10/23/2024	Ohio St.	3	5	3	12	.167	0	1	.000	0	0	0	.000	0	0	.000	0	0	3	1	3.0	0	6.5	.215	3-0
10/26/2024	Wisconsin	2	1	1	5	.000	0	0	.000	0	0	0	.000	0	0	.000	3	0	2	0	2.0	0	2.0	.089	0-3
11/01/2024	at Maryland	2	1	2	4	-.250	0	1	.000	0	0	0	.000	0	0	.000	1	0	0	0	0.0	0	1.0	.313	3-0
11/02/2024	at Rutgers	3	5	2	9	.333	1	3	.333	0	0	0	.000	0	0	.000	2	0	3	0	3.0	0	6.5	.424	3-0
11/08/2024	at Indiana	1	0	3	4	-.750	0	0	.000	0	0	0	.000	0	0	.000	0	0	1	0	1.0	0	0.5	.305	3-1
11/14/2024	Rutgers	1	2	1	3	.333	0	0	.000	0	0	0	.000	0	0	.000	0	0	0	0	0.0	0	2.0	.370	3-0
11/17/2024	Illinois	1	1	0	2	.500	0	0	.000	0	0	0	.000	0	3	1.000	0	0	0	1	0.0	0	1.0	.343	3-0
11/21/2024	at Penn St.	2	2	2	7	.000	0	0	.000	0	0	0	.000	0	0	.000	0	0	0	0	0.0	0	2.0	.142	0-3
11/23/2024	Southern California	2	1	1	3	.000	0	0	.000	0	0	0	.000	0	0	.000	0	0	1	0	1.0	0	1.5	.265	3-0
Totals		82	136	61	337	.223	2	25	.080	0	0	1	1.000	0	6	1.000	35	1	47	9	48.0	0	160.5		

Player Averages

Sets Played	Kills per set	Assists per set	Service aces per set	Digs per set	Blocks per set	Points per set
82	1.66	0.02	0.00	0.43	0.59	1.96



2024-25 Purdue Women's Volleyball
Individual Match-by-Match
All games

Page 5/14
as of Nov 24, 2024

#5 ANDERSON, Taylor

			Attack				Set			Serve				Recept				Blocking				Team				
Date	Opponent	SP	K	E	TA	PCT	A	TA	PCT	SA	SE	TA	PCT	RE	TA	PCT	DIG	BS	BA	BE	TOTAL	BHE	POINTS	HIT%	SCORE	
08/30/2024	Kansas St.	*4	0	1	2	.500	43	109	.394	1	1	13	.923	0	0	.000	7	0	8	0	8.0	0	5.0	.234	3-1	
08/31/2024	UMBC	*3	3	0	4	.750	34	76	.447	0	2	8	.750	0	0	.000	5	0	3	0	3.0	0	4.5	.371	3-0	
09/01/2024	UC Davis	*3	1	0	3	.333	45	78	.577	2	2	11	.818	0	0	.000	9	1	1	0	2.0	0	4.5	.450	3-0	
09/05/2024	vs California	*4	1	1	3	.000	52	118	.441	3	2	20	.900	0	1	1.000	11	0	2	0	2.0	0	5.0	.235	3-1	
09/06/2024	at Utah	*3	3	0	5	.600	34	85	.400	0	1	14	.929	0	0	.000	10	0	7	0	7.0	0	6.5	.246	3-0	
09/07/2024	at Utah St.	*3	0	0	1	.000	29	69	.420	0	2	10	.800	0	0	.000	3	0	2	1	2.0	0	1.0	.290	3-0	
09/13/2024	vs Houston	*3	4	0	7	.571	31	70	.443	0	1	10	.900	0	2	1.000	7	1	1	0	2.0	0	5.5	.292	3-0	
09/14/2024	vs Kentucky	*4	2	0	6	.333	28	86	.326	2	1	15	.933	0	0	.000	8	0	4	0	4.0	0	6.0	.310	3-1	
09/19/2024	at Kansas	*4	2	0	7	.286	49	128	.383	1	2	17	.882	0	0	.000	11	0	7	0	7.0	2	6.5	.278	1-3	
09/20/2024	vs Creighton	*4	2	0	7	.286	44	124	.355	1	2	13	.846	0	0	.000	9	0	5	0	5.0	0	5.5	.209	1-3	
09/21/2024	vs Tulsa	*3	2	2	10	.000	27	57	.474	0	1	7	.857	0	0	.000	5	0	3	0	3.0	0	3.5	.365	3-0	
09/25/2024	Penn St.	*3	0	1	5	-.200	29	84	.345	0	0	11	1.000	0	0	.000	2	0	1	0	1.0	0	0.5	.176	0-3	
09/28/2024	at Minnesota	*5	3	3	9	.000	54	130	.415	1	0	14	1.000	0	0	.000	12	0	4	0	4.0	0	6.0	.252	3-2	
10/04/2024	at Northwestern	*4	2	1	8	.125	47	111	.423	1	4	15	.733	0	0	.000	13	1	0	0	1.0	1	4.0	.287	3-1	
10/06/2024	Michigan St.	*3	0	0	3	.000	37	101	.366	0	0	14	1.000	0	0	.000	8	0	2	0	2.0	0	1.0	.252	3-0	
10/11/2024	at Nebraska	*5	3	0	4	.750	52	140	.371	1	3	18	.833	0	0	.000	10	1	6	1	7.0	0	8.0	.311	2-3	
10/12/2024	at Iowa	*4	6	1	8	.625	42	110	.382	1	0	11	1.000	1	1	.000	7	0	0	0	0.0	0	7.0	.213	3-1	
10/17/2024	UCLA	*5	7	1	12	.500	51	127	.402	1	0	18	1.000	0	0	.000	12	1	4	0	5.0	0	11.0	.325	3-2	
10/19/2024	Indiana	*3	1	0	2	.500	28	68	.412	3	2	15	.867	0	0	.000	10	0	2	0	2.0	0	5.0	.333	3-0	
10/23/2024	Ohio St.	*3	2	0	6	.333	38	94	.404	2	1	14	.929	0	0	.000	7	0	4	0	4.0	0	6.0	.215	3-0	
10/26/2024	Wisconsin	*3	2	1	4	.250	24	80	.300	0	1	10	.900	0	0	.000	8	1	1	0	2.0	0	3.5	.089	0-3	
11/01/2024	at Maryland	*3	3	0	4	.750	39	101	.386	1	1	16	.938	0	0	.000	6	0	1	0	1.0	0	4.5	.313	3-0	
11/02/2024	at Rutgers	*3	1	0	3	.333	33	68	.485	1	3	19	.842	0	0	.000	3	0	2	0	2.0	0	3.0	.424	3-0	
11/08/2024	at Indiana	*4	4	0	5	.800	45	108	.417	0	2	24	.917	0	1	1.000	11	0	1	0	1.0	0	4.5	.305	3-1	
11/10/2024	Michigan	*3	4	1	5	.600	34	82	.415	0	0	12	1.000	0	0	.000	8	0	0	1	0.0	0	4.0	.279	3-0	
11/14/2024	Rutgers	*3	4	0	6	.667	35	76	.461	0	1	10	.900	0	0	.000	2	0	3	0	3.0	0	5.5	.370	3-0	
11/17/2024	Illinois	*3	2	1	3	.333	44	87	.506	0	0	12	1.000	0	0	.000	10	0	4	0	4.0	0	4.0	.343	3-0	
11/21/2024	at Penn St.	*3	0	0	3	.000	29	95	.305	0	0	12	1.000	0	0	.000	6	0	2	0	2.0	0	1.0	.142	0-3	
11/23/2024	Southern California	*3	4	0	6	.667	37	99	.374	1	0	16	1.000	0	0	.000	10	0	3	0	3.0	0	6.5	.265	3-0	
Totals			101	68	14	151	.358	1114	2761	.403	23	35	399	.912	1	5	.800	230	6	83	3	89.0	3	138.5		

Player Averages

Sets Played	Kills per set	Assists per set	Service aces per set	Digs per set	Blocks per set	Points per set
101	0.67	11.03	0.23	2.28	0.88	1.37



2024-25 Purdue Women's Volleyball
Individual Match-by-Match
All games

Page 6/14
as of Nov 24, 2024

#7 COLVIN, Raven

Date	Opponent	SP	Attack				Set			Serve				Recept			Blocking					Team			
			K	E	TA	PCT	A	TA	PCT	SA	SE	TA	PCT	RE	TA	PCT	DIG	BS	BA	BE	TOTAL	BHE	POINTS	HIT%	SCORE
08/30/2024	Kansas St.	*4	7	3	14	.286	0	4	.000	3	4	18	.778	0	2	1.000	1	1	9	0	10.0	0	15.5	.234	3-1
08/31/2024	UMBC	*3	7	3	13	.308	0	1	.000	0	2	9	.778	0	0	.000	1	0	5	2	5.0	0	9.5	.371	3-0
09/01/2024	UC Davis	*3	12	1	15	.733	0	0	.000	0	2	2	.000	1	1	.000	0	1	3	2	4.0	0	14.5	.450	3-0
09/05/2024	vs California	*4	16	5	26	.423	0	0	.000	2	4	12	.667	0	0	.000	4	1	5	0	6.0	0	21.5	.235	3-1
09/06/2024	at Utah	*3	3	2	11	.091	0	1	.000	1	1	9	.889	0	0	.000	2	0	9	0	9.0	0	8.5	.246	3-0
09/07/2024	at Utah St.	*3	7	0	10	.700	1	2	.500	1	1	10	.900	0	0	.000	1	3	7	0	10.0	0	14.5	.290	3-0
09/13/2024	vs Houston	*3	5	1	7	.571	0	1	.000	1	2	10	.800	0	0	.000	2	1	3	1	4.0	0	8.5	.292	3-0
09/14/2024	vs Kentucky	*4	9	1	14	.571	1	2	.500	2	2	10	.800	0	0	.000	5	1	6	0	7.0	0	15.0	.310	3-1
09/19/2024	at Kansas	*4	14	3	25	.440	0	1	.000	2	2	13	.846	0	0	.000	3	0	7	1	7.0	0	19.5	.278	1-3
09/20/2024	vs Creighton	*4	8	1	15	.467	0	1	.000	0	1	7	.857	0	0	.000	1	1	5	0	6.0	0	11.5	.209	1-3
09/21/2024	vs Tulsa	*3	7	1	13	.462	0	3	.000	2	1	7	.857	0	0	.000	1	2	7	1	9.0	0	14.5	.365	3-0
09/25/2024	Penn St.	*3	6	2	13	.308	0	1	.000	1	2	13	.846	0	0	.000	3	0	1	1	1.0	0	7.5	.176	0-3
09/28/2024	at Minnesota	*5	19	7	31	.387	0	2	.000	7	3	23	.870	0	0	.000	5	1	4	0	5.0	0	29.0	.252	3-2
10/04/2024	at Northwestern	*4	14	3	24	.458	0	0	.000	0	1	12	.917	0	0	.000	1	1	2	1	3.0	0	16.0	.287	3-1
10/06/2024	Michigan St.	*3	8	1	15	.467	0	2	.000	0	1	3	.667	0	0	.000	0	2	4	2	6.0	0	12.0	.252	3-0
10/11/2024	at Nebraska	*5	5	5	20	.000	1	2	.500	0	3	3	.000	0	0	.000	0	2	9	0	11.0	0	11.5	.311	2-3
10/12/2024	at Iowa	*4	12	4	23	.348	0	1	.000	4	2	16	.875	0	1	1.000	4	0	3	0	3.0	0	17.5	.213	3-1
10/17/2024	UCLA	*5	17	2	27	.556	0	3	.000	1	4	11	.636	0	2	1.000	3	1	5	0	6.0	0	21.5	.325	3-2
10/19/2024	Indiana	*3	7	4	16	.188	1	2	.500	0	1	1	.000	0	0	.000	0	0	2	0	2.0	0	8.0	.333	3-0
10/23/2024	Ohio St.	*3	5	7	14	.143	1	2	.500	1	4	11	.636	0	0	.000	2	0	6	0	6.0	0	9.0	.215	3-0
10/26/2024	Wisconsin	*3	4	4	13	.000	0	2	.000	0	3	12	.750	0	0	.000	2	0	1	1	1.0	0	4.5	.089	0-3
11/01/2024	at Maryland	*3	7	4	18	.167	0	3	.000	2	1	6	.833	0	0	.000	2	0	0	2	0.0	0	9.0	.313	3-0
11/02/2024	at Rutgers	*3	9	2	17	.412	1	2	.500	1	0	4	1.000	0	0	.000	0	1	3	0	4.0	0	12.5	.424	3-0
11/08/2024	at Indiana	*4	7	5	15	.133	0	2	.000	1	0	6	1.000	0	1	1.000	2	0	5	1	5.0	0	10.5	.305	3-1
11/10/2024	Michigan	*3	8	2	16	.375	0	2	.000	0	0	2	1.000	0	0	.000	0	2	7	0	9.0	0	13.5	.279	3-0
11/14/2024	Rutgers	*3	4	3	11	.091	1	1	1.000	2	1	5	.800	0	1	1.000	2	1	3	1	4.0	1	8.5	.370	3-0
11/17/2024	Illinois	*3	8	3	15	.333	0	2	.000	0	1	3	.667	0	0	.000	2	0	6	1	6.0	0	11.0	.343	3-0
11/21/2024	at Penn St.	*3	6	3	16	.188	1	1	1.000	0	1	1	.000	0	2	1.000	0	0	4	0	4.0	0	8.0	.142	0-3
11/23/2024	Southern California	*3	14	3	22	.500	0	1	.000	1	1	6	.833	0	0	.000	2	3	4	0	7.0	0	20.0	.265	3-0
Totals		101	255	85	489	.348	8	47	.170	35	51	245	.792	1	10	.900	51	25	135	17	160.0	1	382.5		

Player Averages

Sets Played	Kills per set	Assists per set	Service aces per set	Digs per set	Blocks per set	Points per set
101	2.52	0.08	0.35	0.50	1.58	3.79



2024-25 Purdue Women's Volleyball
Individual Match-by-Match
All games

#8 GRAY, Raven

			Attack				Set			Serve				Recept				Blocking					Team			
Date	Opponent	SP	K	E	TA	PCT	A	TA	PCT	SA	SE	TA	PCT	RE	TA	PCT	DIG	BS	BA	BE	TOTAL	BHE	POINTS	HIT%	SCORE	
08/31/2024	UMBC	1	1	0	1	1.000	0	1	.000	0	0	0	.000	0	0	.000	0	0	0	0	0.0	0	1.0	.371	3-0	
11/02/2024	at Rutgers	2	0	0	0	.000	0	0	.000	0	1	1	.000	0	0	.000	0	0	0	0	0.0	0	0.0	.424	3-0	
11/14/2024	Rutgers	1	0	0	0	.000	0	0	.000	0	0	0	.000	0	0	.000	0	0	0	0	0.0	0	0.0	.370	3-0	
Totals		4	1	0	1	1.000	0	1	.000	0	1	1	.000	0	0	.000	0	0	0	0	0.0	0	1.0			

Player Averages

Sets Played	Kills per set	Assists per set	Service aces per set	Digs per set	Blocks per set	Points per set
4	0.25	0.00	0.00	0.00	0.00	0.25



2024-25 Purdue Women's Volleyball
Individual Match-by-Match
All games

Page 8/14
as of Nov 24, 2024

#9 MYERS, Lourdes

			Attack				Set			Serve				Recept				Blocking				Team			
Date	Opponent	SP	K	E	TA	PCT	A	TA	PCT	SA	SE	TA	PCT	RE	TA	PCT	DIG	BS	BA	BE	TOTAL	BHE	POINTS	HIT%	SCORE
08/30/2024	Kansas St.	*4	4	1	9	.333	0	1	.000	0	0	0	.000	0	2	1.000	0	0	6	4	6.0	0	7.0	.234	3-1
08/31/2024	UMBC	*3	3	1	9	.222	0	0	.000	0	0	0	.000	0	0	.000	1	0	5	1	5.0	0	5.5	.371	3-0
09/01/2024	UC Davis	*3	6	1	9	.556	0	0	.000	0	0	0	.000	0	0	.000	2	1	1	0	2.0	0	7.5	.450	3-0
09/05/2024	vs California	*4	6	2	13	.308	0	1	.000	0	0	0	.000	0	2	1.000	0	0	4	1	4.0	0	8.0	.235	3-1
09/06/2024	at Utah	*3	2	1	7	.143	0	0	.000	0	0	0	.000	0	0	.000	1	0	2	2	2.0	0	3.0	.246	3-0
09/07/2024	at Utah St.	*2	2	1	3	.333	0	1	.000	0	0	0	.000	0	0	.000	1	1	0	0	1.0	0	3.0	.290	3-0
09/13/2024	vs Houston	*3	1	0	6	.167	0	1	.000	0	0	0	.000	0	3	1.000	1	1	7	1	8.0	0	5.5	.292	3-0
09/14/2024	vs Kentucky	*4	1	1	3	.000	0	1	.000	0	0	0	.000	0	0	.000	2	0	2	0	2.0	0	2.0	.310	3-1
09/19/2024	at Kansas	*1	1	1	4	.000	0	0	.000	0	0	0	.000	0	0	.000	0	0	1	3	1.0	0	1.5	.278	1-3
09/20/2024	vs Creighton	*4	5	1	12	.333	0	1	.000	0	0	0	.000	0	0	.000	2	0	2	2	2.0	0	6.0	.209	1-3
09/21/2024	vs Tulsa	*3	6	1	8	.625	0	0	.000	0	0	0	.000	0	1	1.000	0	0	2	0	2.0	0	7.0	.365	3-0
09/25/2024	Penn St.	*3	3	0	7	.429	0	0	.000	0	0	0	.000	0	0	.000	2	0	1	0	1.0	0	3.5	.176	0-3
09/28/2024	at Minnesota	*5	4	1	9	.333	0	1	.000	0	0	0	.000	0	1	1.000	1	0	4	2	4.0	0	6.0	.252	3-2
10/04/2024	at Northwestern	*4	4	1	9	.333	0	1	.000	0	0	0	.000	0	0	.000	2	0	3	3	3.0	0	5.5	.287	3-1
10/06/2024	Michigan St.	*3	5	0	9	.556	0	0	.000	0	0	0	.000	1	2	.500	1	0	5	0	5.0	0	7.5	.252	3-0
10/11/2024	at Nebraska	*5	5	1	8	.500	0	0	.000	0	0	0	.000	0	1	1.000	0	0	3	0	3.0	0	6.5	.311	2-3
10/12/2024	at Iowa	*4	5	1	8	.500	0	1	.000	0	0	0	.000	0	2	1.000	0	1	4	0	5.0	0	8.0	.213	3-1
10/17/2024	UCLA	*5	4	2	10	.200	1	1	1.000	0	0	0	.000	0	1	1.000	2	3	6	1	9.0	0	10.0	.325	3-2
10/19/2024	Indiana	*3	1	0	3	.333	1	1	1.000	0	0	0	.000	0	0	.000	0	0	2	0	2.0	0	2.0	.333	3-0
10/23/2024	Ohio St.	*3	7	0	13	.538	0	1	.000	0	0	0	.000	0	0	.000	1	1	5	1	6.0	0	10.5	.215	3-0
10/26/2024	Wisconsin	*3	5	3	13	.154	0	1	.000	0	0	0	.000	0	0	.000	2	0	5	0	5.0	0	7.5	.089	0-3
11/01/2024	at Maryland	*3	4	1	10	.300	0	0	.000	0	0	0	.000	0	0	.000	0	0	2	1	2.0	0	5.0	.313	3-0
11/02/2024	at Rutgers	*3	6	2	11	.364	0	0	.000	0	0	0	.000	0	0	.000	1	1	3	0	4.0	0	8.5	.424	3-0
11/08/2024	at Indiana	*4	9	1	14	.571	0	1	.000	0	0	0	.000	0	0	.000	0	0	1	0	1.0	0	9.5	.305	3-1
11/10/2024	Michigan	*3	1	3	6	.333	0	0	.000	0	0	0	.000	0	0	.000	1	0	2	1	2.0	0	2.0	.279	3-0
11/14/2024	Rutgers	*3	2	0	6	.333	0	0	.000	0	0	0	.000	0	0	.000	2	0	4	0	4.0	0	4.0	.370	3-0
11/17/2024	Illinois	*3	6	2	13	.308	0	0	.000	0	0	0	.000	0	1	1.000	3	0	6	0	6.0	0	9.0	.343	3-0
11/21/2024	at Penn St.	*3	6	1	8	.625	0	1	.000	0	0	0	.000	1	3	.667	0	1	1	5	2.0	0	7.5	.142	0-3
11/23/2024	Southern California	*3	7	3	15	.267	0	0	.000	0	0	0	.000	0	1	1.000	0	0	4	1	4.0	0	9.0	.265	3-0
Totals		97	121	33	255	.345	2	15	.133	0	0	0	.000	2	20	.900	28	10	93	29	103.0	0	177.5		

Player Averages

Sets Played	Kills per set	Assists per set	Service aces per set	Digs per set	Blocks per set	Points per set
97	1.25	0.02	0.00	0.29	1.06	1.83



2024-25 Purdue Women's Volleyball
Individual Match-by-Match
All games

Page 9/14
as of Nov 24, 2024

#10 HORNING, Ali

		Attack				Set			Serve				Recept				Blocking				Team				
Date	Opponent	SP	K	E	TA	PCT	A	TA	PCT	SA	SE	TA	PCT	RE	TA	PCT	DIG	BS	BA	BE	TOTAL	BHE	POINTS	HIT%	SCORE
08/30/2024	Kansas St.	4	0	0	0	.000	6	17	.353	1	0	14	1.000	4	36	.889	17	0	0	0	0.0	0	1.0	.234	3-1
08/31/2024	UMBC	3	0	0	0	.000	1	7	.143	0	0	15	1.000	2	10	.800	14	0	0	0	0.0	0	0.0	.371	3-0
09/01/2024	UC Davis	3	0	0	0	.000	3	11	.273	1	1	15	.933	0	9	1.000	18	0	0	0	0.0	0	1.0	.450	3-0
09/05/2024	vs California	4	0	0	0	.000	3	18	.167	0	0	3	1.000	1	16	.938	18	0	1	0	1.0	0	0.5	.235	3-1
09/06/2024	at Utah	3	0	0	0	.000	1	14	.071	1	0	9	1.000	1	36	.972	14	0	0	0	0.0	0	1.0	.246	3-0
09/07/2024	at Utah St.	3	0	0	0	.000	3	6	.500	0	0	6	1.000	0	18	1.000	8	0	0	0	0.0	0	0.0	.290	3-0
09/13/2024	vs Houston	3	0	0	0	.000	1	8	.125	0	0	0	.000	0	7	1.000	9	0	0	0	0.0	0	0.0	.292	3-0
09/14/2024	vs Kentucky	4	0	0	1	.000	7	14	.500	0	0	1	1.000	1	24	.958	10	0	0	0	0.0	0	0.0	.310	3-1
09/19/2024	at Kansas	4	0	0	0	.000	5	13	.385	0	0	1	1.000	0	42	1.000	14	0	0	0	0.0	0	0.0	.278	1-3
09/20/2024	vs Creighton	4	0	0	1	.000	3	9	.333	0	0	0	.000	0	20	1.000	15	0	0	0	0.0	0	0.0	.209	1-3
09/21/2024	vs Tulsa	3	0	0	0	.000	0	7	.000	0	0	2	1.000	1	21	.952	6	0	0	0	0.0	0	0.0	.365	3-0
09/25/2024	Penn St.	3	0	0	0	.000	1	3	.333	0	1	4	.750	0	18	1.000	11	0	0	0	0.0	0	0.0	.176	0-3
09/28/2024	at Minnesota	5	0	0	0	.000	3	14	.214	0	0	0	.000	1	38	.974	24	0	0	0	0.0	0	0.0	.252	3-2
10/04/2024	at Northwestern	4	0	0	1	.000	2	10	.200	0	0	0	.000	0	27	1.000	18	0	0	0	0.0	0	0.0	.287	3-1
10/06/2024	Michigan St.	3	0	0	0	.000	4	8	.500	0	0	0	.000	2	10	.800	22	0	0	0	0.0	0	0.0	.252	3-0
10/11/2024	at Nebraska	5	0	0	0	.000	6	12	.500	0	1	9	.889	2	51	.961	12	0	0	0	0.0	0	0.0	.311	2-3
10/12/2024	at Iowa	4	0	0	0	.000	2	12	.167	0	1	13	.923	0	21	1.000	17	0	0	0	0.0	0	0.0	.213	3-1
10/17/2024	UCLA	5	0	0	1	.000	7	17	.412	0	1	14	.929	3	43	.930	19	0	0	0	0.0	0	0.0	.325	3-2
10/19/2024	Indiana	3	0	0	0	.000	5	12	.417	1	0	14	1.000	0	16	1.000	6	0	0	0	0.0	0	1.0	.333	3-0
10/23/2024	Ohio St.	3	0	0	1	.000	3	12	.250	0	0	9	1.000	1	58	.983	15	0	0	0	0.0	0	0.0	.215	3-0
10/26/2024	Wisconsin	3	0	0	1	.000	2	10	.200	0	1	6	.833	5	37	.865	9	0	0	0	0.0	0	0.0	.089	0-3
11/01/2024	at Maryland	3	0	0	0	.000	1	3	.333	1	3	16	.813	0	21	1.000	17	0	0	0	0.0	0	1.0	.313	3-0
11/02/2024	at Rutgers	3	0	0	0	.000	2	3	.667	1	0	12	1.000	0	20	1.000	14	0	0	0	0.0	0	1.0	.424	3-0
11/08/2024	at Indiana	4	0	0	0	.000	6	8	.750	0	1	16	.938	0	32	1.000	14	0	0	0	0.0	0	0.0	.305	3-1
11/10/2024	Michigan	3	0	0	0	.000	4	9	.444	0	0	16	1.000	0	24	1.000	13	0	0	0	0.0	0	0.0	.279	3-0
11/14/2024	Rutgers	3	0	0	0	.000	3	5	.600	2	0	18	1.000	0	17	1.000	15	0	0	0	0.0	0	2.0	.370	3-0
11/17/2024	Illinois	3	0	0	0	.000	2	10	.200	0	1	13	.923	0	17	1.000	16	0	0	0	0.0	0	0.0	.343	3-0
11/21/2024	at Penn St.	3	0	0	0	.000	2	8	.250	1	1	14	.929	2	13	.846	19	0	0	0	0.0	0	1.0	.142	0-3
11/23/2024	Southern California	3	0	0	0	.000	5	12	.417	1	2	19	.895	1	14	.929	15	0	0	0	0.0	0	1.0	.265	3-0
Totals		101	0	0	6	.000	93	292	.318	10	14	259	.946	27	716	.962	419	0	1	0	1.0	0	10.5		

Player Averages

Sets Played	Kills per set	Assists per set	Service aces per set	Digs per set	Blocks per set	Points per set
101	0.00	0.92	0.10	4.15	0.01	0.10



2024-25 Purdue Women's Volleyball
Individual Match-by-Match
All games

Page 10/14
as of Nov 24, 2024

#11 SHONDELL, Allie

			Attack				Set			Serve				Recept				Blocking				Team			
Date	Opponent	SP	K	E	TA	PCT	A	TA	PCT	SA	SE	TA	PCT	RE	TA	PCT	DIG	BS	BA	BE	TOTAL	BHE	POINTS	HIT%	SCORE
08/31/2024	UMBC	1	0	0	0	.000	3	6	.500	0	1	2	.500	0	0	.000	0	0	0	0	0.0	0	0.0	.371	3-0
09/07/2024	at Utah St.	1	0	1	1	-1.000	3	8	.375	0	0	0	.000	0	0	.000	1	0	1	0	1.0	0	0.5	.290	3-0
09/21/2024	vs Tulsa	1	0	0	0	.000	5	8	.625	0	0	0	.000	0	0	.000	0	0	2	0	2.0	0	1.0	.365	3-0
10/26/2024	Wisconsin	1	0	0	0	.000	2	7	.286	0	0	0	.000	0	0	.000	1	0	0	0	0.0	0	0.0	.089	0-3
11/02/2024	at Rutgers	1	0	0	0	.000	5	10	.500	0	0	1	1.000	0	0	.000	0	0	0	0	0.0	0	0.0	.424	3-0
11/14/2024	Rutgers	1	0	0	0	.000	2	3	.667	0	0	1	1.000	0	0	.000	1	0	0	0	0.0	0	0.0	.370	3-0
Totals		6	0	1	1	-1.000	20	42	.476	0	1	4	.750	0	0	.000	3	0	3	0	3.0	0	1.5		

Player Averages

Sets Played	Kills per set	Assists per set	Service aces per set	Digs per set	Blocks per set	Points per set
6	0.00	3.33	0.00	0.50	0.50	0.25



2024-25 Purdue Women's Volleyball
Individual Match-by-Match
All games

Page 11/14
as of Nov 24, 2024

#15 CARR, Lizzie

Date	Opponent	SP	Attack				Set			Serve				Recept			Blocking					Team			
			K	E	TA	PCT	A	TA	PCT	SA	SE	TA	PCT	RE	TA	PCT	DIG	BS	BA	BE	TOTAL	BHE	POINTS	HIT%	SCORE
08/31/2024	UMBC	3	6	0	15	.400	0	0	.000	0	0	0	.000	0	0	.000	0	0	4	0	4.0	0	8.0	.371	3-0
09/06/2024	at Utah	1	0	0	0	.000	0	0	.000	0	0	0	.000	0	0	.000	0	0	0	0	0.0	0	0.0	.246	3-0
09/07/2024	at Utah St.	2	2	0	5	.400	0	0	.000	0	0	0	.000	0	0	.000	0	1	2	0	3.0	0	4.0	.290	3-0
09/13/2024	vs Houston	1	3	0	3	1.000	0	1	.000	0	0	0	.000	0	0	.000	0	0	0	0	0.0	0	3.0	.292	3-0
09/19/2024	at Kansas	3	5	3	11	.182	0	2	.000	0	0	0	.000	0	1	1.000	0	0	1	1	1.0	0	5.5	.278	1-3
09/21/2024	vs Tulsa	2	5	1	10	.400	0	1	.000	0	0	0	.000	0	0	.000	1	0	1	0	1.0	0	5.5	.365	3-0
10/17/2024	UCLA	2	1	1	3	.000	0	0	.000	0	0	0	.000	0	0	.000	0	0	0	0	0.0	0	1.0	.325	3-2
10/19/2024	Indiana	1	1	0	4	.250	0	0	.000	0	0	0	.000	0	0	.000	0	0	0	0	0.0	0	1.0	.333	3-0
10/26/2024	Wisconsin	2	1	0	5	.200	1	1	1.000	0	0	0	.000	0	0	.000	2	0	1	0	1.0	0	1.5	.089	0-3
11/01/2024	at Maryland	2	5	0	10	.500	0	0	.000	0	0	0	.000	0	0	.000	0	0	0	0	0.0	0	5.0	.313	3-0
11/02/2024	at Rutgers	2	0	0	3	.000	0	0	.000	0	0	0	.000	0	0	.000	0	0	0	0	0.0	0	0.0	.424	3-0
11/08/2024	at Indiana	4	10	1	18	.500	0	1	.000	0	0	0	.000	0	0	.000	1	0	1	2	1.0	0	10.5	.305	3-1
11/10/2024	Michigan	3	4	1	12	.250	0	1	.000	0	0	0	.000	0	0	.000	2	1	5	1	6.0	0	7.5	.279	3-0
11/14/2024	Rutgers	2	5	0	7	.714	0	0	.000	0	0	0	.000	0	0	.000	0	0	1	0	1.0	0	5.5	.370	3-0
11/17/2024	Illinois	3	8	1	13	.538	0	0	.000	0	0	0	.000	0	0	.000	2	0	5	0	5.0	0	10.5	.343	3-0
11/21/2024	at Penn St.	3	2	2	7	.000	0	1	.000	0	0	0	.000	0	0	.000	0	0	1	0	1.0	0	2.5	.142	0-3
11/23/2024	Southern California	2	1	2	7	-.143	0	1	.000	0	0	0	.000	0	0	.000	1	0	1	0	1.0	0	1.5	.265	3-0
Totals		38	59	12	133	.353	1	9	.111	0	0	0	.000	0	1	1.000	9	2	23	4	25.0	0	72.5		

Player Averages

Sets Played	Kills per set	Assists per set	Service aces per set	Digs per set	Blocks per set	Points per set
38	1.55	0.03	0.00	0.24	0.66	1.91



2024-25 Purdue Women's Volleyball
Individual Match-by-Match
All games

Page 12/14
as of Nov 24, 2024

#17 HUDSON, Eva

			Attack				Set			Serve				Recept			Blocking					Team				
Date	Opponent	SP	K	E	TA	PCT	A	TA	PCT	SA	SE	TA	PCT	RE	TA	PCT	DIG	BS	BA	BE	TOTAL	BHE	POINTS	HIT%	SCORE	
08/30/2024	Kansas St.	*4	16	5	48	.229	0	0	.000	0	1	12	.917	0	12	1.000	12	1	4	1	5.0	0	19.0	.234	3-1	
08/31/2024	UMBC	*3	15	1	30	.467	0	4	.000	0	1	4	.750	1	8	.875	8	0	2	0	2.0	0	16.0	.371	3-0	
09/01/2024	UC Davis	*3	15	2	30	.433	0	1	.000	0	1	11	.909	0	13	1.000	9	0	1	1	1.0	0	15.5	.450	3-0	
09/05/2024	vs California	*4	14	7	50	.140	0	6	.000	0	1	16	.938	1	22	.955	8	0	4	0	4.0	0	16.0	.235	3-1	
09/06/2024	at Utah	*3	18	4	45	.311	0	1	.000	3	0	11	1.000	3	10	.700	6	0	3	0	3.0	0	22.5	.246	3-0	
09/07/2024	at Utah St.	*3	10	4	34	.176	0	0	.000	0	1	13	.923	1	7	.857	8	1	2	0	3.0	0	12.0	.290	3-0	
09/13/2024	vs Houston	*3	10	3	26	.269	1	1	1.000	0	1	11	.909	0	7	1.000	6	0	1	0	1.0	0	10.5	.292	3-0	
09/14/2024	vs Kentucky	*4	20	6	46	.304	1	3	.333	1	2	12	.833	1	11	.909	3	0	1	0	1.0	0	21.5	.310	3-1	
09/19/2024	at Kansas	*4	17	1	53	.302	1	3	.333	0	0	14	1.000	1	25	.960	11	0	0	0	0.0	0	17.0	.278	1-3	
09/20/2024	vs Creighton	*4	19	7	55	.218	0	3	.000	0	0	11	1.000	0	25	1.000	9	0	1	0	1.0	0	19.5	.209	1-3	
09/21/2024	vs Tulsa	*3	11	2	24	.375	1	1	1.000	0	1	6	.833	0	5	1.000	4	0	1	1	1.0	0	11.5	.365	3-0	
09/25/2024	Penn St.	*3	10	4	30	.200	0	1	.000	0	1	5	.800	1	31	.968	5	0	0	0	0.0	0	10.0	.176	0-3	
09/28/2024	at Minnesota	*5	18	5	51	.255	1	4	.250	0	1	7	.857	2	17	.882	11	0	2	0	2.0	0	19.0	.252	3-2	
10/04/2024	at Northwestern	*4	13	6	42	.167	0	5	.000	3	0	17	1.000	1	13	.923	16	0	2	0	2.0	0	17.0	.287	3-1	
10/06/2024	Michigan St.	*3	11	2	35	.257	0	0	.000	0	1	11	.909	1	22	.955	9	0	3	0	3.0	0	12.5	.252	3-0	
10/11/2024	at Nebraska	*5	26	4	63	.349	0	1	.000	0	2	19	.895	1	33	.970	15	0	1	0	1.0	0	26.5	.311	2-3	
10/12/2024	at Iowa	*4	18	8	46	.217	2	3	.667	3	0	18	1.000	0	20	1.000	8	0	2	0	2.0	0	22.0	.213	3-1	
10/17/2024	UCLA	*5	24	2	56	.393	0	2	.000	0	1	17	.941	2	15	.867	17	0	3	0	3.0	0	25.5	.325	3-2	
10/19/2024	Indiana	*3	17	2	36	.417	1	1	1.000	0	1	3	.667	0	4	1.000	6	0	0	0	0.0	0	17.0	.333	3-0	
10/23/2024	Ohio St.	*3	19	6	51	.255	0	1	.000	0	1	11	.909	0	4	1.000	8	0	4	0	4.0	0	21.0	.215	3-0	
10/26/2024	Wisconsin	*3	17	9	50	.160	0	2	.000	0	0	4	1.000	0	13	1.000	5	0	2	0	2.0	0	18.0	.089	0-3	
11/01/2024	at Maryland	*3	15	1	41	.341	0	0	.000	0	2	9	.778	0	13	1.000	7	0	1	0	1.0	0	15.5	.313	3-0	
11/02/2024	at Rutgers	*3	14	1	32	.406	0	1	.000	0	1	6	.833	0	7	1.000	6	0	0	0	0.0	0	14.0	.424	3-0	
11/08/2024	at Indiana	*4	26	7	51	.373	0	3	.000	0	2	13	.846	0	9	1.000	10	2	3	0	5.0	0	29.5	.305	3-1	
11/10/2024	Michigan	*3	19	5	40	.350	0	3	.000	1	1	13	.923	0	8	1.000	6	0	3	0	3.0	0	21.5	.279	3-0	
11/14/2024	Rutgers	*3	15	4	43	.256	2	2	1.000	0	0	12	1.000	0	3	1.000	10	0	3	0	3.0	0	16.5	.370	3-0	
11/17/2024	Illinois	*3	18	4	42	.333	0	0	.000	0	0	11	1.000	0	13	1.000	7	1	1	0	2.0	0	19.5	.343	3-0	
11/21/2024	at Penn St.	*3	12	3	41	.220	0	1	.000	0	0	11	1.000	1	17	.941	9	0	1	1	1.0	0	12.5	.142	0-3	
11/23/2024	Southern California	*3	18	6	55	.218	0	4	.000	1	0	9	1.000	1	10	.900	7	0	4	0	4.0	0	21.0	.265	3-0	
Totals			101	475	121	1246	.284	10	57	.175	12	23	317	.927	18	397	.955	246	5	55	4	60.0	0	519.5		

Player Averages

Sets Played	Kills per set	Assists per set	Service aces per set	Digs per set	Blocks per set	Points per set
101	4.70	0.10	0.12	2.44	0.59	5.14



2024-25 Purdue Women's Volleyball
Individual Match-by-Match
All games

Page 13/14
as of Nov 24, 2024

#19 YIM, Sydney

			Attack				Set			Serve				Recept					Blocking				Team			
Date	Opponent	SP	K	E	TA	PCT	A	TA	PCT	SA	SE	TA	PCT	RE	TA	PCT	DIG	BS	BA	BE	TOTAL	BHE	POINTS	HIT%	SCORE	
10/19/2024	Indiana	1	0	0	0	.000	1	2	.500	0	0	0	.000	0	0	.000	0	0	0	0	0.0	0	0.0	.333	3-0	
11/02/2024	at Rutgers	1	1	0	1	1.000	0	1	.000	0	0	0	.000	0	0	.000	0	0	0	0	0.0	0	1.0	.424	3-0	
11/14/2024	Rutgers	1	0	0	0	.000	2	2	1.000	0	0	0	.000	0	0	.000	1	0	0	0	0.0	0	0.0	.370	3-0	
Totals			3	1	0	1	1.000	3	5	.600	0	0	0	.000	0	0	.000	1	0	0	0	0.0	0	1.0		

Player Averages

Sets Played	Kills per set	Assists per set	Service aces per set	Digs per set	Blocks per set	Points per set
3	0.33	1.00	0.00	0.33	0.00	0.33



2024-25 Purdue Women's Volleyball
Individual Match-by-Match
All games

Page 14/14
as of Nov 24, 2024

#21 KANE, Julia

Date	Opponent	SP	Attack				Set			Serve				Recept			DIG	Blocking				Team			
			K	E	TA	PCT	A	TA	PCT	SA	SE	TA	PCT	RE	TA	PCT		BS	BA	BE	TOTAL	BHE	POINTS	HIT%	SCORE
08/31/2024	UMBC	2	0	0	0	.000	1	1	1.000	1	0	7	1.000	1	6	.833	1	0	0	0	0.0	0	1.0	.371	3-0
09/07/2024	at Utah St.	2	0	0	0	.000	0	0	.000	1	1	8	.875	0	0	.000	0	0	0	0	0.0	0	1.0	.290	3-0
09/13/2024	vs Houston	3	0	0	0	.000	0	0	.000	0	1	12	.917	0	0	.000	1	0	0	0	0.0	0	0.0	.292	3-0
09/14/2024	vs Kentucky	4	0	0	0	.000	1	1	1.000	1	2	17	.882	0	0	.000	3	0	0	0	0.0	0	1.0	.310	3-1
09/19/2024	at Kansas	4	0	0	0	.000	2	2	1.000	1	3	15	.800	0	0	.000	0	0	0	0	0.0	0	1.0	.278	1-3
09/20/2024	vs Creighton	4	0	0	0	.000	0	2	.000	0	1	14	.929	0	0	.000	3	0	0	0	0.0	0	0.0	.209	1-3
09/21/2024	vs Tulsa	3	0	0	0	.000	1	1	1.000	1	2	16	.875	0	0	.000	6	0	0	0	0.0	0	1.0	.365	3-0
09/25/2024	Penn St.	2	0	0	0	.000	0	1	.000	0	1	4	.750	0	0	.000	0	0	0	0	0.0	0	0.0	.176	0-3
09/28/2024	at Minnesota	5	0	0	0	.000	0	1	.000	3	2	15	.867	0	0	.000	2	0	0	0	0.0	0	3.0	.252	3-2
10/04/2024	at Northwestern	4	0	0	0	.000	2	2	1.000	1	4	20	.800	0	0	.000	0	0	0	0	0.0	0	1.0	.287	3-1
10/06/2024	Michigan St.	3	0	0	0	.000	0	2	.000	0	1	12	.917	0	0	.000	4	0	0	0	0.0	0	0.0	.252	3-0
10/11/2024	at Nebraska	5	0	0	0	.000	1	2	.500	0	2	9	.778	0	0	.000	0	0	0	0	0.0	0	0.0	.311	2-3
10/12/2024	at Iowa	1	0	0	0	.000	0	0	.000	0	0	2	1.000	0	0	.000	0	0	0	0	0.0	0	0.0	.213	3-1
10/17/2024	UCLA	4	0	0	0	.000	0	0	.000	0	2	8	.750	0	0	.000	1	0	0	0	0.0	0	0.0	.325	3-2
10/19/2024	Indiana	3	0	0	0	.000	0	0	.000	2	1	18	.944	0	0	.000	2	0	0	0	0.0	0	2.0	.333	3-0
10/23/2024	Ohio St.	2	0	0	0	.000	0	0	.000	0	1	3	.667	0	0	.000	0	0	0	0	0.0	0	0.0	.215	3-0
10/26/2024	Wisconsin	3	0	0	0	.000	0	0	.000	0	1	6	.833	0	0	.000	0	0	0	0	0.0	0	0.0	.089	0-3
11/01/2024	at Maryland	2	0	0	0	.000	0	0	.000	0	0	3	1.000	0	0	.000	0	0	0	0	0.0	0	0.0	.313	3-0
11/02/2024	at Rutgers	2	0	0	0	.000	0	0	.000	0	1	4	.750	0	0	.000	0	0	0	0	0.0	0	0.0	.424	3-0
11/08/2024	at Indiana	3	0	0	0	.000	0	2	.000	0	1	8	.875	0	0	.000	0	0	0	0	0.0	0	0.0	.305	3-1
11/10/2024	Michigan	2	0	0	0	.000	0	2	.000	0	1	10	.900	0	0	.000	3	0	0	0	0.0	0	0.0	.279	3-0
11/14/2024	Rutgers	1	0	0	0	.000	0	0	.000	0	1	3	.667	0	0	.000	0	0	0	0	0.0	0	0.0	.370	3-0
11/17/2024	Illinois	2	0	0	0	.000	0	0	.000	0	0	4	1.000	0	0	.000	0	0	0	0	0.0	0	0.0	.343	3-0
11/21/2024	at Penn St.	3	0	0	0	.000	0	0	.000	0	2	5	.600	0	0	.000	0	0	0	0	0.0	0	0.0	.142	0-3
11/23/2024	Southern California	2	0	0	0	.000	0	0	.000	1	1	5	.800	0	0	.000	0	0	0	0	0.0	0	1.0	.265	3-0
Totals		71	0	0	0	.000	8	19	.421	12	32	228	.860	1	6	.833	26	0	0	0	0.0	0	12.0		

Player Averages

Sets Played	Kills per set	Assists per set	Service aces per set	Digs per set	Blocks per set	Points per set
71	0.00	0.11	0.17	0.37	0.00	0.17



Purdue Women's Volleyball
Individual Career Summaries
All games

Page 1/7
as of Nov 24, 2024

ANDERSON, Taylor

SEASON	TEAM	SM-MP	K	K/S	E	TA	PCT	A	A/S	SA	SA/S	SE	DIG	D/S	RE	BS	BA	TB	B/S	BE	BHE	PTS	PTS/S
2023-24	Purdue	112-31	35	0.31	13	101	.218	1107	9.88	17	0.15	30	221	1.97	2	7	88	95	0.85	6	7	103.0	0.92
2024-25	Purdue	101-29	68	0.67	14	151	.358	1114	11.03	23	0.23	35	230	2.28	1	6	83	89	0.88	3	3	138.5	1.37
TOTAL		213 - 60	103	0.48	27	252	.302	2221	10.43	40	0.19	65	451	2.12	3	13	171	184	0.86	9	10	241.5	1.13

Single Game Highs

Statistic	Value	
Kills	7	vs UCLA 10/17/24
Attacks	12	vs UCLA 10/17/24
Assists	60	vs Marquette 12/01/23
Serve Aces	3	vs Illinois 10/04/23, vs Indiana 10/19/24, vs California 09/05/24
Digs	16	vs Marquette 12/01/23
Blocks	8	vs Kansas St. 08/30/24
Block solos	1	13 times
Block assists	8	vs Kansas St. 08/30/24

CARR, Lizzie

SEASON	TEAM	SM-MP	K	K/S	E	TA	PCT	A	A/S	SA	SA/S	SE	DIG	D/S	RE	BS	BA	TB	B/S	BE	BHE	PTS	PTS/S
2023-24	Purdue	30-18	14	0.47	6	34	.235	0	0.00	0	0.00	0	2	0.07	1	0	8	8	0.27	1	0	18.0	0.60
2024-25	Purdue	38-17	59	1.55	12	133	.353	1	0.03	0	0.00	0	9	0.24	0	2	23	25	0.66	4	0	72.5	1.91
TOTAL		68 - 35	73	1.07	18	167	.329	1	0.01	0	0.00	0	11	0.16	1	2	31	33	0.49	5	0	90.5	1.33

Single Game Highs

Statistic	Value	
Kills	10	at Indiana 11/08/24
Attacks	18	at Indiana 11/08/24
Assists	1	vs Wisconsin 10/26/24
Digs	2	vs Illinois 11/17/24, vs Michigan 11/10/24, vs Wisconsin 10/26/24
Blocks	6	vs Michigan 11/10/24
Block solos	1	vs Michigan 11/10/24, at Utah St. 09/07/24
Block assists	5	vs Illinois 11/17/24, vs Michigan 11/10/24
PCT	1.000	vs Houston 09/13/24



Purdue Women's Volleyball
Individual Career Summaries
All games

Page 2/7
as of Nov 24, 2024

CHICOINE, Chloe

SEASON	TEAM	SM-MP	K	K/S	E	TA	PCT	A	A/S	SA	SA/S	SE	DIG	D/S	RE	BS	BA	TB	B/S	BE	BHE	PTS	PTS/S
2023-24	Purdue	125-32	478	3.82	142	1315	.256	27	0.22	39	0.31	53	283	2.26	30	5	24	29	0.23	7	1	534.0	4.27
2024-25	Purdue	101-29	313	3.10	109	952	.214	38	0.38	17	0.17	27	282	2.79	13	2	25	27	0.27	4	0	344.5	3.41
TOTAL		226 - 61	791	3.50	251	2267	.238	65	0.29	56	0.25	80	565	2.50	43	7	49	56	0.25	11	1	878.5	3.89

Single Game Highs

Statistic	Value	
Kills	27	vs Penn St. 11/05/23
Attacks	61	vs Penn St. 11/05/23
Assists	5	at Nebraska 10/11/24
Serve Aces	4	vs Illinois 10/04/23, vs Michigan St. 11/12/23
Digs	23	vs Wisconsin 11/17/23
Blocks	4	at Utah St. 09/07/24
Block solos	2	at Utah St. 09/07/24
Block assists	3	vs Indiana 10/18/23, at Wisconsin 11/01/23, vs Michigan St. 11/12/23, vs Houston 09/13/24
PCT	.565	at Rutgers 11/02/24

COLVIN, Raven

SEASON	TEAM	SM-MP	K	K/S	E	TA	PCT	A	A/S	SA	SA/S	SE	DIG	D/S	RE	BS	BA	TB	B/S	BE	BHE	PTS	PTS/S
2021-22	Purdue	96-30	169	1.76	54	330	.348	4	0.04	2	0.02	4	12	0.13	0	13	105	118	1.23	20	1	236.5	2.46
2022-23	Purdue	122-32	269	2.20	98	599	.285	6	0.05	43	0.35	59	74	0.61	1	22	151	173	1.42	19	1	409.5	3.36
2023-24	Purdue	125-32	269	2.15	105	586	.280	11	0.09	26	0.21	40	61	0.49	3	19	148	167	1.34	16	0	388.0	3.10
2024-25	Purdue	101-29	255	2.52	85	489	.348	8	0.08	35	0.35	51	51	0.50	1	25	135	160	1.58	17	1	382.5	3.79
TOTAL		444 - 123	962	2.17	342	2004	.309	29	0.07	106	0.24	154	198	0.45	5	79	539	618	1.39	72	3	1417	3.19

Single Game Highs

Statistic	Value	
Kills	19	at Minnesota 09/28/24
Attacks	32	vs Utah 09/02/22, vs Marquette 12/01/23
Assists	2	vs Illinois 10/04/23, vs Marquette 12/01/23
Serve Aces	7	at Minnesota 09/28/24
Digs	8	vs Marquette 09/01/23
Blocks	16	at Maryland 11/23/22
Block solos	5	at Maryland 11/23/22
Block assists	11	at Maryland 11/23/22



Purdue Women's Volleyball
Individual Career Summaries
All games

Page 3/7
as of Nov 24, 2024

GRAY, Raven

SEASON	TEAM	SM-MP	K	K/S	E	TA	PCT	A	A/S	SA	SA/S	SE	DIG	D/S	RE	BS	BA	TB	B/S	BE	BHE	PTS	PTS/S
2024-25	Purdue	4-3	1	0.25	0	1	1.000	0	0.00	0	0.00	1	0	0.00	0	0	0	0	0.00	0	0	1.0	0.25
TOTAL		4 - 3	1	0.25	0	1	1.000	0	0.00	0	0.00	1	0	0.00	0	0	0	0	0.00	0	0	1.0	0.25

Single Game Highs

Statistic	Value	
Kills	1	vs UMBC 08/31/24
Attacks	1	vs UMBC 08/31/24
PCT	1.000	vs UMBC 08/31/24

HEANEY, Grace

SEASON	TEAM	SM-MP	K	K/S	E	TA	PCT	A	A/S	SA	SA/S	SE	DIG	D/S	RE	BS	BA	TB	B/S	BE	BHE	PTS	PTS/S
2023-24	Purdue	69-22	92	1.33	44	249	.193	3	0.04	0	0.00	0	23	0.33	0	4	46	50	0.72	5	0	119.0	1.72
TOTAL		69 - 22	92	1.33	44	249	.193	3	0.04	0	0.00	0	23	0.33	0	4	46	50	0.72	5	0	119.0	1.72

Single Game Highs

Statistic	Value	
Kills	13	at Ohio St. 10/15/23
Attacks	24	at Ohio St. 10/15/23
Assists	1	at Wisconsin 11/01/23, vs Northwestern 10/01/23, at Ohio St. 10/15/23
Digs	3	at Ohio St. 10/15/23, at Penn St. 10/22/23
Blocks	6	vs Indiana 10/18/23
Block solos	1	vs SMU 09/08/23, at Penn St. 10/22/23, vs Kentucky 09/09/23, vs Oregon 12/07/23
Block assists	6	vs Indiana 10/18/23



Purdue Women's Volleyball
Individual Career Summaries
All games

Page 4/7
as of Nov 24, 2024

HORNUNG, Ali

SEASON	TEAM	SM-MP	K	K/S	E	TA	PCT	A	A/S	SA	SA/S	SE	DIG	D/S	RE	BS	BA	TB	B/S	BE	BHE	PTS	PTS/S
2021-22	Purdue	63-22	0	0.00	1	1	-1.000	3	0.05	7	0.11	11	32	0.51	3	0	2	2	0.03	0	0	8.0	0.13
2022-23	Purdue	122-32	2	0.02	4	17	-.118	29	0.24	28	0.23	26	303	2.48	15	0	0	0	0.00	1	0	30.0	0.25
2023-24	Purdue	114-31	0	0.00	0	3	.000	15	0.13	15	0.13	18	277	2.43	25	1	0	1	0.01	0	0	16.0	0.14
2024-25	Purdue	101-29	0	0.00	0	6	.000	93	0.92	10	0.10	14	419	4.15	27	0	1	1	0.01	0	0	10.5	0.10
TOTAL		400 - 114	2	0.01	5	27	-.111	140	0.35	60	0.15	69	1031	2.58	70	1	3	4	0.01	1	0	64.5	0.16

Single Game Highs

Statistic	Value	
Kills	1	at Penn St. 11/25/22, vs Penn St. 11/12/22
Attacks	3	at Minnesota 10/22/22
Assists	7	vs Kentucky 09/14/24, vs UCLA 10/17/24
Serve Aces	4	vs Bradley 09/02/22
Digs	24	at Minnesota 09/28/24
Blocks	2	vs Rutgers 10/02/21
Block solos	1	at Kansas 08/31/23
Block assists	2	vs Rutgers 10/02/21

HUDSON, Eva

SEASON	TEAM	SM-MP	K	K/S	E	TA	PCT	A	A/S	SA	SA/S	SE	DIG	D/S	RE	BS	BA	TB	B/S	BE	BHE	PTS	PTS/S
2022-23	Purdue	122-32	515	4.22	176	1420	.239	10	0.08	34	0.28	15	249	2.04	21	7	54	61	0.50	5	0	583.0	4.78
2023-24	Purdue	125-32	560	4.48	167	1509	.260	8	0.06	14	0.11	17	255	2.04	29	8	47	55	0.44	3	0	605.5	4.84
2024-25	Purdue	101-29	475	4.70	121	1246	.284	10	0.10	12	0.12	23	246	2.44	18	5	55	60	0.59	4	0	519.5	5.14
TOTAL		348 - 93	1550	4.45	464	4175	.260	28	0.08	60	0.17	55	750	2.16	68	20	156	176	0.51	12	0	1708	4.91

Single Game Highs

Statistic	Value	
Kills	30	vs Wisconsin 11/17/23
Attacks	73	vs Marquette 12/01/23
Assists	2	6 times
Serve Aces	4	at Michigan St. 11/04/22
Digs	17	at Illinois 09/30/22, vs UCLA 10/17/24
Blocks	5	5 times
Block solos	2	vs Wisconsin 11/17/23, at Indiana 11/08/24
Block assists	5	vs Utah 09/02/22, at Northwestern 10/28/22



Purdue Women's Volleyball
Individual Career Summaries
All games

Page 5/7
as of Nov 24, 2024

KANE, Julia

SEASON	TEAM	SM-MP	K	K/S	E	TA	PCT	A	A/S	SA	SA/S	SE	DIG	D/S	RE	BS	BA	TB	B/S	BE	BHE	PTS	PTS/S
2023-24	Purdue	1-1	0	0.00	0	0	.000	0	0.00	0	0.00	0	0	0.00	0	0	0	0	0.00	0	0	0.0	0.00
2024-25	Purdue	71-25	0	0.00	0	0	.000	8	0.11	12	0.17	32	26	0.37	1	0	0	0	0.00	0	0	12.0	0.17
TOTAL		72 - 26	0	0.00	0	0	.000	8	0.11	12	0.17	32	26	0.36	1	0	0	0	0.00	0	0	12.0	0.17

Single Game Highs

Statistic	Value	
Assists	2	at Northwestern 10/04/24, at Kansas 09/19/24
Serve Aces	3	at Minnesota 09/28/24
Digs	6	vs Tulsa 09/21/24

MCALÉER, Ryan

SEASON	TEAM	SM-MP	K	K/S	E	TA	PCT	A	A/S	SA	SA/S	SE	DIG	D/S	RE	BS	BA	TB	B/S	BE	BHE	PTS	PTS/S
2024-25	Purdue	100-29	2	0.02	1	5	.200	30	0.30	15	0.15	37	243	2.43	15	0	0	0	0.00	0	0	17.0	0.17
TOTAL		100 - 29	2	0.02	1	5	.200	30	0.30	15	0.15	37	243	2.43	15	0	0	0	0.00	0	0	17.0	0.17

Single Game Highs

Statistic	Value	
Kills	1	vs Kentucky 09/14/24, vs Tulsa 09/21/24
Attacks	1	5 times
Assists	3	vs Houston 09/13/24, vs Tulsa 09/21/24, vs UCLA 10/17/24, vs Southern California 11/23/24
Serve Aces	6	at Minnesota 09/28/24
Digs	15	vs Indiana 10/19/24
PCT	1.000	vs Kentucky 09/14/24, vs Tulsa 09/21/24

MYERS, Lourdes

SEASON	TEAM	SM-MP	K	K/S	E	TA	PCT	A	A/S	SA	SA/S	SE	DIG	D/S	RE	BS	BA	TB	B/S	BE	BHE	PTS	PTS/S
2022-23	Purdue	29-16	25	0.86	8	54	.315	0	0.00	0	0.00	0	3	0.10	0	0	16	16	0.55	3	0	33.0	1.14
2023-24	Purdue	112-32	164	1.46	53	333	.333	4	0.04	0	0.00	0	28	0.25	1	11	99	110	0.98	33	1	224.5	2.00
2024-25	Purdue	97-29	121	1.25	33	255	.345	2	0.02	0	0.00	0	28	0.29	2	10	93	103	1.06	29	0	177.5	1.83
TOTAL		238 - 77	310	1.30	94	642	.336	6	0.03	0	0.00	0	59	0.25	3	21	208	229	0.96	65	1	435.0	1.83

Single Game Highs

Statistic	Value	
Kills	11	vs Indiana 10/18/23
Attacks	24	vs Indiana 10/18/23
Assists	1	6 times
Digs	3	vs Illinois 11/17/24, vs Southern California 09/15/23
Blocks	9	vs UCLA 10/17/24, vs Michigan St. 11/12/23
Block solos	3	vs UCLA 10/17/24
Block assists	9	vs Michigan St. 11/12/23



Purdue Women's Volleyball
Individual Career Summaries
All games

Page 6/7
as of Nov 24, 2024

RASTOVSKI, Emily

SEASON	TEAM	SM-MP	K	K/S	E	TA	PCT	A	A/S	SA	SA/S	SE	DIG	D/S	RE	BS	BA	TB	B/S	BE	BHE	PTS	PTS/S
2022-23	Purdue	10-8	8	0.80	4	20	.200	0	0.00	0	0.00	0	0	0.00	0	0	2	2	0.20	0	0	9.0	0.90
2023-24	Purdue	15-7	10	0.67	5	25	.200	1	0.07	0	0.00	0	4	0.27	0	0	7	7	0.47	0	0	13.5	0.90
TOTAL		25 - 15	18	0.72	9	45	.200	1	0.04	0	0.00	0	4	0.16	0	0	9	9	0.36	0	0	22.5	0.90

Single Game Highs

Statistic	Value	
Kills	4	vs Xavier 09/10/22
Attacks	10	vs Penn St. 11/05/23
Assists	1	vs Penn St. 11/05/23
Digs	4	vs Penn St. 11/05/23
Blocks	3	vs Penn St. 11/05/23
Block assists	3	vs Penn St. 11/05/23

SHONDELL, Allie

SEASON	TEAM	SM-MP	K	K/S	E	TA	PCT	A	A/S	SA	SA/S	SE	DIG	D/S	RE	BS	BA	TB	B/S	BE	BHE	PTS	PTS/S
2024-25	Purdue	6-6	0	0.00	1	1	-1.000	20	3.33	0	0.00	1	3	0.50	0	0	3	3	0.50	0	0	1.5	0.25
TOTAL		6 - 6	0	0.00	1	1	-1.000	20	3.33	0	0.00	1	3	0.50	0	0	3	3	0.50	0	0	1.5	0.25

Single Game Highs

Statistic	Value	
Attacks	1	at Utah St. 09/07/24
Assists	5	vs Tulsa 09/21/24, at Rutgers 11/02/24
Digs	1	at Utah St. 09/07/24, vs Wisconsin 10/26/24, vs Rutgers 11/14/24
Blocks	2	vs Tulsa 09/21/24
Block assists	2	vs Tulsa 09/21/24
PCT	-1.000	at Utah St. 09/07/24

WILLIAMS, Rachel

SEASON	TEAM	SM-MP	K	K/S	E	TA	PCT	A	A/S	SA	SA/S	SE	DIG	D/S	RE	BS	BA	TB	B/S	BE	BHE	PTS	PTS/S
2024-25	Purdue	44-20	1	0.02	0	3	.333	1	0.02	7	0.16	13	11	0.25	0	0	0	0	0.00	0	0	8.0	0.18
TOTAL		44 - 20	1	0.02	0	3	.333	1	0.02	7	0.16	13	11	0.25	0	0	0	0	0.00	0	0	8.0	0.18

Single Game Highs

Statistic	Value	
Kills	1	vs California 09/05/24
Attacks	1	vs California 09/05/24, vs Creighton 09/20/24, vs Penn St. 09/25/24
Assists	1	vs Creighton 09/20/24
Serve Aces	2	vs Indiana 10/19/24
Digs	4	vs UMBC 08/31/24
PCT	1.000	vs California 09/05/24



Purdue Women's Volleyball
Individual Career Summaries
All games

Page 7/7
as of Nov 24, 2024

WOLLARD, Kenna

SEASON	TEAM	SM-MP	K	K/S	E	TA	PCT	A	A/S	SA	SA/S	SE	DIG	D/S	RE	BS	BA	TB	B/S	BE	BHE	PTS	PTS/S
2023-24	Purdue	60-21	57	0.95	36	184	.114	0	0.00	0	0.00	0	22	0.37	0	3	35	38	0.63	9	0	77.5	1.29
2024-25	Purdue	82-27	136	1.66	61	337	.223	2	0.02	0	0.00	0	35	0.43	0	1	47	48	0.59	9	0	160.5	1.96
TOTAL		142 - 48	193	1.36	97	521	.184	2	0.01	0	0.00	0	57	0.40	0	4	82	86	0.61	18	0	238.0	1.68

Single Game Highs

Statistic	Value	
Kills	18	at Northwestern 10/04/24
Attacks	32	at Northwestern 10/04/24
Assists	1	vs Indiana 10/19/24, at Rutgers 11/02/24
Digs	5	vs Illinois 10/04/23
Blocks	5	vs Houston 09/13/24
Block solos	1	at Rutgers 09/24/23, vs Creighton 09/20/24, at Michigan St. 11/25/23, at Michigan 11/24/23
Block assists	5	vs Houston 09/13/24

YIM, Sydney

SEASON	TEAM	SM-MP	K	K/S	E	TA	PCT	A	A/S	SA	SA/S	SE	DIG	D/S	RE	BS	BA	TB	B/S	BE	BHE	PTS	PTS/S
2022-23	Purdue	4-4	0	0.00	0	0	.000	2	0.50	0	0.00	0	2	0.50	0	0	1	1	0.25	0	0	0.5	0.13
2023-24	Purdue	1-1	0	0.00	0	0	.000	1	1.00	0	0.00	0	0	0.00	0	0	0	0	0.00	0	0	0.0	0.00
2024-25	Purdue	3-3	1	0.33	0	1	1.000	3	1.00	0	0.00	0	1	0.33	0	0	0	0	0.00	0	0	1.0	0.33
TOTAL		8 - 8	1	0.13	0	1	1.000	6	0.75	0	0.00	0	3	0.38	0	0	1	1	0.13	0	0	1.5	0.19

Single Game Highs

Statistic	Value	
Kills	1	at Rutgers 11/02/24
Attacks	1	at Rutgers 11/02/24
Assists	2	vs Rutgers 11/14/24
Digs	2	vs Bradley 09/02/22
Blocks	1	vs Rutgers 10/02/22
Block assists	1	vs Rutgers 10/02/22
PCT	1.000	at Rutgers 11/02/24