



# PURDUE BOILERMAKERS

## 2024 VOLLEYBALL GAME NOTES

# BIG

SID: Rachel Coe | coer@purdue.edu | Office: 765-496-7842 | Cell: 518-729-9960

900 John R. Wooden Drive, West Lafayette, IN 47907

### 2024 PURDUE VOLLEYBALL SCHEDULE

Overall Record: 22-5 (13-3 Big Ten)

Home: 10-2

Away: 8-2

Neutral: 4-1

#### AUGUST

30 #RV K-State (BIG+)\* W, 3-1  
31 UMBC (BIG+)\* W, 3-0

#### SEPTEMBER

1 UC Davis (BIG+)\* W, 3-0  
5 vs. California W, 3-1  
6 at Utah W, 3-0  
7 at Utah State (MWN) W, 3-0  
13 vs. Houston+ W, 3-0  
14 vs. #10 Kentucky+ W, 3-1  
19 at #10 Kansas# L, 1-3  
20 vs. #9 Creighton# L, 1-3  
21 vs. Tulsa# W, 3-0  
25 #4 PENN STATE (BTN)\* L, 0-3  
28 at #16 Minnesota (BTN)\* W, 3-2

#### OCTOBER

4 at Northwestern (BIG+)\* W, 3-1  
6 MICHIGAN STATE (BTN)\* W, 3-0  
11 at #2 Nebraska\* L, 2-3  
12 at Iowa (BIG+)\* W, 3-1  
17 #RV UCLA (BIG+)\* W, 3-2  
19 INDIANA (Mackey Arena | BTN)\* W, 3-0  
23 OHIO STATE (BTN)\* W, 3-0  
26 #8 WISCONSIN (Mackey Arena | NBC)\* L, 0-3

#### NOVEMBER

1 at Maryland (BTN)\* W, 3-0  
2 at Rutgers (BIG+)\* W, 3-0  
8 at Indiana (BIG+)\* W, 3-1  
10 MICHIGAN (BIG+)\* W, 3-0  
14 RUTGERS (BIG+)\* W, 3-0  
17 ILLINOIS (BTN)\* W, 3-0  
21 at #4 Penn State (BTN)\* 6 p.m.  
23 #21 USC (BIG+)\* 7 p.m.  
27 at #13 Oregon (BTN)\* 10:30 p.m.  
29 at #RV Washington (BTN)\* 7:30 p.m.

All Times Eastern

\* Big Ten match

^ Stacey Clark Classic

+ SMU Doubletree Invitational

# Jayhawk Classic

### #8 PURDUE BOILERMAKERS

22-5 | 13-3 Big Ten

Coach: Dave Shondell (22nd season)

Record at Purdue: 480-231

AT

### #4 PENN STATE NITTANY LIONS

25-2 | 15-1 Big Ten

Coach: Katie Schumacher-Cawley (3rd season)

Record at Penn State: 74-19

THUR. 11/21 - 6 PM ET - WEST LAFAYETTE, IND. - HOLLOWAY GYMNASIUM - BTN

SERIES HISTORY: 11-60 | LAST MEETING: L, 0-3 AT PURDUE (9/25/24)

### #8 PURDUE BOILERMAKERS

21-5 | 12-3 Big Ten

Coach: Dave Shondell (22nd season)

Record at Purdue: 480-231

VS

### #21 USC TROJANS

18-8 | 10-6 Big Ten

Coach: Brad Keller (5th season)

Record at Illinois: 81-55

SAT. 11/23 - 6 PM ET - SENIOR NIGHT - WEST LAFAYETTE, IND. - HOLLOWAY GYMNASIUM - BIG+

SERIES HISTORY: 0-6 | LAST MEETING: L, 1-3 AT PURDUE (9/15/23)

#### SCHEDULE NOTES

- Only four matches (two weeks) remain in the regular-season, with three on the road.
- Every match remaining will be **vs. teams ranked or receiving votes, with three on the road**: at #4 Penn State (11/21), vs. #23 USC (11/23), at #11 Oregon (11/27) and at receiving votes (RV) Washington (11/29).
- **It is the toughest schedule to end the regular-season in Purdue volleyball history.**
- Purdue had a stretch of five top-16 foes in six matches, which included three straight top-10 showdowns.
- Not only are 100% of Purdue's losses to current top-11 teams, 60% (4 of 5) are to current top-6 teams.
- The schedule featured **six** non-conference matchups vs. 2023 NCAA Tournament teams.
- A total of 12 matches were against teams ranked or receiving votes in the 2023 final poll.
- Purdue played two matches in its historic **Mackey Arena**: vs. Indiana (10/19) and vs. #8 Wisconsin (10/26).
- The year marked the **most road matches** in non-conference action since 2008, with Purdue at home for two matches in the month of September.

#### PURDUE'S 13-3 BIG TEN RECORD

- The team entered November with just three Big Ten losses, marking the second straight year and seventh time Purdue has had such few losses under Shondell that far into league play.
- In comparison with Purdue's seasons with the fewest Big Ten losses under Dave Shondell (2023's 15-5 record, 2021's 15-5 record and 2011's 16-4 record), the 2024 season and 2011 season are the only years the team has had three losses heading into its final four matches of the regular season.

#### 20-WIN SEASONS

- Purdue reached its 20th win of the season on Sunday vs. Michigan and are one of three Big Ten teams (joined by Nebraska and Penn State) to already reach the benchmark.
- It is the 10th season in Purdue history, including fifth under HC Dave Shondell, Purdue has started the year with a 20-5 record or better.
- Dave Shondell has reached the benchmark 16 times in his 22-season career.
- When Purdue has reached 20 wins this quickly, the team has reached the NCAA Regional Semifinals 86% of the time.

#### SERIES HISTORY VS. PENN STATE AT A GLANCE

- In the last three years, Purdue owns a 3-3 record vs. Penn State.
- Purdue swept the series vs. Penn State last year: W, 3-2 at home on 11/5/23 and W, 3-1 on 10/22/23.
- Last season, both teams reached the NCAA Regional Semifinals in Madison, Wisconsin.
- Penn State was #12 and Purdue #13 in the AVCA final poll.
- Penn State's sweep in Holloway earlier this season was the first 3-0 result between the two teams since 2016.

50 SEASONS

25 NCAA  
TOURNAMENT  
APPEARANCES

23 AVCA  
ALL-AMERICANS

## AVCA/Taraflex Top-25 Coaches Poll (11/18)

Rank	School	Record	Previous Rank
1	Pittsburgh	25-1	1
2	Nebraska	26-1	2
3	Louisville	23-3	3
4	Penn State	25-2	4
5	Creighton	25-2	5
6	Wisconsin	20-5	6
7	Stanford	21-4	7
8	Purdue	22-5	8
9	Arizona State	26-2	9
10	SMU	21-6	10
11	Kansas	22-3	12
12	Kentucky	17-7	13
13	Oregon	19-6	11
14	Texas	15-6	14
15	Georgia Tech	20-5	15
16	Minnesota	17-9	16
17	Baylor	18-7	17
18	Dayton	28-1	19
19	Utah	21-5	20
20	Florida	19-5	21
21	Southern California	18-8	23
22	TCU	17-7	18
23	Florida State	18-8	22
24	BYU	16-8	24
25	Missouri	18-6	25

**Receiving votes:** North Carolina; Washington; Miami (FL); Texas A&M; Miami (FL); Marquette; Western Kentucky; South Dakota State

## Purdue In The AVCA/Taraflex Poll

Date	Rank	Date	Rank
2023 Final	#13	W7 (10/14)	#10
2024 Preseason	#8	W8 (10/21)	#10
W1 (9/2)	#8	W9 (10/28)	#11
W2 (9)	#7	W10 (11/4)	#9
W3 (9/16)	#6	W11 (11/11)	#8
W4 (9/23)	#10	W12 (11/18)	#8
W5 (9/30)	#10	W13 (11/25)	
W6 (10/7)	#10	W14 (12/2)	
		Final	

## Big Ten of the Week Awards

<b>Player 9/2:</b>	Eva Hudson
<b>Setter 9/9:</b>	Taylor Anderson
<b>Defensive 9/16:</b>	Raven Colvin
<b>Defensive 10/7:</b>	Ali Hornung
<b>Defensive 11/4:</b>	Ali Hornung
<b>Player 11/11:</b>	Eva Hudson

## AVCA National Player of the Week

Player 9/2:	Eva Hudson
-------------	------------

## RETURNING 2023 ALL-AMERICANS

- Purdue returns all three AVCA All-America honorees: junior Eva Hudson (second team), sophomore Chloe Chicoine (third team) and senior Raven Colvin (honorable mention).
- Hudson is the youngest Boilermaker to receive Second Team All-America honors since 1986.
- Chicoine's third team accolade was the highest-ever AVCA All-America honor by a Purdue newcomer.

## PURDUE VOLLEYBALL'S ALL-TIME WINNINGEST HEAD COACH

- With the sweep vs. Michigan State on 10/6, HC Dave Shondell became the all-time winningest head coach in Purdue volleyball history, surpassing AVCA Hall of Famer Carol Dewey, with his 470th win.
- Shondell is one of two active head coaches in the Big Ten with as many wins at their institution (joined by John Cook) and is one of seven among Power 4 programs.

## PROGRAM RECORDS FALLING

- Since Big Ten play has started, nine program records have been set or tied: two Big Ten regular-season match and Purdue home attendance record (14,876 fans vs. Indiana, 10/19 and again vs. #8 Wisconsin, 10/26); Longest match (2:53 at #2 Nebraska); Most team aces in a 5-set match during the rally-scoring era (17 at then-#16 Minnesota); Most aces by an individual in a 5-set match during the rally-scoring era (7 by Raven Colvin at then-#16 Minnesota); Most aces by a freshman (6 by Ryan McAleer); Most team digs in a 3-set match in the current 25-point rally scoring (71 vs. Michigan State); Most wins in program history (Dave Shondell, 470).

## PURDUE WELCOMED 4 ON NATIONAL SIGNING DAY

- Purdue ushered in a loaded 2025 signing class featuring three 6'3" players, including the #1 player out of the state of Indiana, and a 5'8" defensive specialist, who is rated as the top libero in the nation.
- Joining for the 2025 season: setter Isabelle Bardin, outside hitter Addy Tindall, defensive specialist Aniya Warren and middle blocker Morgan Williams.
- Warren and Tindall were named First Team AVCA All-America and Addy Tindall Second Team All-America on Wednesday.

## PURDUE: QUICK HITS

- Eva Hudson was named an AVCA Player of the Year Semifinalist, one of 14 in the nation to receive the honor. Chicoine was also included on the watch list released in September.
- Purdue is 27-6 in sets won over the last 10 matches.
- The team is riding a six-match winning streak and has won 13 of its last 15 matches. This season, Purdue's only losses come to top-11 programs, with four in the top-6 in the nation.
- The team ranks in the top-14 in the nation in four different categories: kills/set, assists/set, hitting % and blocks/set.
- In seven of the last nine matches, Purdue has held opponents under a .200 attack %. In those matches, Purdue's hit above .300 in six and above .340 in three.
- Three Boilers are averaging more than 2.0 kills per set: Hudson (4.68), Chicoine (3.18) and Colvin (2.46).
- Purdue is 70-25 in sets won this season.
- Purdue's hitting % (.283) would rank as #3 in Purdue single-season history if things were to end today. It would be **just the second time this century the Boilers have hit so efficiently**.
- Since Big Ten play started, Purdue is averaging two more digs per set compared to their non-con action.
- Freshman DS Ryan McAleer has recorded a perfect reception % in 20 matches including the last nine straight. Moreover, she recorded six aces at then-#16 Minnesota, tying as the most-ever by a Purdue freshman.
- Eva Hudson has stepped up in the biggest matches of the season. She set a season-high 26 kills on a .349% at #2 Nebraska (and matched it with 26 kills on .350% at Indiana, 11/8), 17 kills vs. now-#7 Wisconsin and nearly had an errorless match at now-#12 Kansas, committing just one attack error in the final points of the match. This season, she is averaging 4.63 kills per set and 5.06 points per set this season.

## HUDSON: IMPROVING AS THE SEASON GOES

- Like last year, Hudson is improving during Big Ten action. She has increased her kills per set (4.34 in non-con vs. 4.91 in Big Ten play), hitting % (.279 in non-con vs. .296 in Big Ten), digs per set (2.21 in non-con vs. 2.56 in Big Ten).
- In a head-to-head comparison of Hudson's first 10 matches of the season vs. the last 10, she has upped offensive production: 5.58 kills/set vs. 4.40, .324 hitting % vs. .272% and 198.0 total points vs. 169.5.

## PURDUE IN THE NATIONAL RANKINGS: 122 CONSECUTIVE WEEKS

- The program has been ranked for 122 consecutive weeks (since preseason 2017), the longest active streak in Purdue Athletics.
- Since the 2021 spring season, Purdue has been ranked among the top-10 for 38 weeks.
- The Boilermakers' history of excellence includes 57 of the last 72 weeks ranked among the top-15 (79%).
- Purdue has spent the entirety of the 2024 season in the top-11 (includes preseason poll).

## TEAM EFFICIENCY

- Purdue is hitting .283% on the season, which ranks #3 in program history as the most efficient season.
- It's on track to be the second time this century for Purdue to hit over .263% in an entire season.
- Number of matches hitting over .300%: 12
- Number of matches hitting over .360%: 5
- Number of matches hitting over .400%: 2

## PURDUE VS TOP-25 TEAMS

- The Boilermakers had a stretch of playing six ranked opponents in a 10 match span, all of which are currently ranked in the top-15.
- Purdue Match Highs: .311% at #2 Nebraska | 15 blocks at #2 Nebraska
- The Boilers totaled 79 digs at then-#16 Minnesota, a season-high, along with 17 aces, a program record-tying number in a Big Ten match.

## CHICOINE'S ERRORLESS PERFORMANCE VS. INDIANA

- Chloe Chicoine went errorless on the attack vs. Indiana (10/19), recording 12 kills on 30 attacks for a .400 clip.
- The last time a Purdue outside hitter went errorless with a 30 attack minimum was All-American Grace Cleveland vs. Indiana in 2021.
- In fact, Chicoine is just the third Boilermaker in the last 10 years to go errorless on the attack with a 30-attempt minimum. In addition to Cleveland's match, she is joined by Sherridan Atkinson's.
- She is the only outside hitter in the Big Ten to go errorless on the attack in league action this year, and is just the second overall this season, joined by Oregon's Mimi Colyer's 12-0-33 (.364%) show vs. San Diego on Sept. 14.
- Meanwhile, she went errorless in seven of eight sets last week (vs. UCLA and vs. Indiana).

## 600 CAREER BLOCKS: RAVEN COLVIN

- Colvin reached her 600th career block vs. Rutgers.
- She is the second Boilermaker to ever reach the milestone, joining Purdue record-holder Stephanie (Lynch) Harpenau (660 TB, 2005-08).
- She is also 19 block assists away from tying Purdue's all-time leader Stephanie Lynch in career block assists.
- She ranks #2 in program history with 607 career blocks and 1.39 blocks per set.

Big Ten Individual Rankings

<b>Blocks Per Set</b> No. 1 Raven Colvin (1.57)
<b>Total Assists</b> No. 2 Taylor Anderson (1048)
<b>Total Kills</b> No. 1 Eva Hudson (445)
<b>Total Blocks</b> No. 1 Raven Colvin (149)
<b>Digs Per Set</b> No. 3 Ali Hornung (4.05)
<b>Kills Per Set</b> No.1 Eva Hudson (4.68)
<b>Total Attacks</b> No. 2 Eva Hudson (1150) No. 10 Chloe Chicoine (897)
<b>Total Points</b> No. 3 Eva Hudson (486.0)

Big Ten Team Rankings

<b>No. 1   Attacks Per Set (35.11)</b>
<b>No. 1   Digs Per Set (15.64)</b>
<b>No. 2   Receive % (95.0)</b>
<b>No. 2   Total Kills (1,348)</b>
<b>No. 2   Total Digs (1,486)</b>
<b>No. 2   Assists Per Set (13.17)</b>
<b>No. 3   Kills Per Set (14.19)</b>
<b>No. 3   Points Per Set (18.31)</b>
<b>No. 4   Blocks Per Set (2.80)</b>

NCAA 2024 Attendance Rankings

Attendance	Match, Date
1. 15,084	Marquette at Wisconsin, 9/17
2. 14,876	Indiana at #10 Purdue, 10/19
14,876	#8 Wisconsin at #10 Purdue, 10/26
3. 14,126	Nebraska at Louisville, 9/22
4. 14,035	Texas vs. Wisconsin, 9/1
14,035	Stanford vs. Minnesota, 9/1

2024 Indiv. National Rankings

<b>Blocks Per Set</b> No. 4 Raven Colvin (1.57)
<b>Total Blocks</b> No. 6 Raven Colvin (149)
<b>Total Assists</b> No. 26 Taylor Anderson (1,048)
<b>Assists Per Set</b> No. 9 Taylor Anderson (11.03)
<b>Attacks Per Set</b> No. 11 Eva Hudson (12.11)
<b>Total Kills</b> No. 20 Eva Hudson (445)
<b>Kills Per Set</b> No. 11 Eva Hudson (4.68)
<b>Career Blocks Per Set</b> No. 3 Raven Colvin (1.39)
<b>Career Total Blocks</b> No. 4 Raven Colvin (607)
<b>Career Kills Per Set</b> No. 4 Eva Hudson (4.44)
<b>Career Attacks Per Set</b> No. 4 Eva Hudson (11.93)

HUDSON: STRONG STARTS IN SET 1

- She's gone errorless in the opening game in 13 of 27 matches, including four of six top-25 matchups.

PURDUE IN 5-SET MATCHES

- Purdue is 11-6 in five-set matches over the last three seasons, including 2-1 in 2024.
- The Boilermakers have gone errorless in the last two fifth sets: 13-0-27 at #2 Nebraska and 9-0-20 vs. #RV UCLA).
- The Boilers have hit over .400 in every 5th set this season (.429 at #16 Minnesota, .481% at #2 Nebraska, .450 vs. #RV UCLA).

HUDSON NAMED BIG TEN CO-PLAYER OF THE WEEK (11/11)

- Hudson led all Power 4 players in both kills per set (6.43) and points per set (7.29) all while averaging a .336 hitting %.
- Hudson began the week with one of the best overall performances of the season, recording a double-double, which included a Big Ten season-high-tying 26 kills (tied the performance earlier this season at No. 2 Nebraska) on a .373 clip, 10 digs and five blocks. Not only did her five stuffs tie her career-high, she did so with a career-high-tying two block solos.
- followed it on Sunday with 21.5 points in just three sets vs. Michigan, where she hit .350% with 19 kills. She went errorless in Set 3, posting 11 kills on 16 attacks for a .688%.
- In all, she hit above the team's hitting % in each of the matches.

BIG TEN DEFENSIVE PLAYER OF THE WEEK (11/4): ALI HORNING

- Libero Ali Hornung received her second Defensive Player of the Week award after guiding the team to a Big Ten-leading 17.67. Meanwhile her passing set Purdue up for a Big Ten-leading .364 hitting % and 15.83 kills per set.
- She registered a perfect reception % at Maryland and at Rutgers.
- Began the week with 17 digs at Maryland, followed by 14 at Rutgers.
- It was Hornung's second career DPOW, earning one as well a month ago (10/7) after totaling 64 digs (5.33 per set) over three matches, including 22 digs in three sets vs. Michigan State and a near-double-double vs. #10 Kentucky.
- Hornung is averaging more digs per set during conference-play vs. non-con: 4.18 vs. 3.76.

PURDUE AT #2 NEBRASKA

- Purdue's 2-hour 53-minute five-setter at #2 Nebraska was the longest match in known-program history (research available through 1999). The second-longest match in program history was also last year's five-setter vs. #2 Nebraska, which clocked in at 2 hours and 51 minutes.
- The Boilermakers held match point, 14-13 and went errorless in Set 5 (13-0-27) for a .481 set clip.
- In addition to Purdue edging Nebraska in efficiency, .311% vs. .242%, Purdue blew Nebraska's previous opponents away as the most efficient team the Huskers have faced (previous opponent-high: SMU's .242% on 9/3/24).
- Purdue out-blocked Nebraska, 15-5, holding the Huskers to a season-low. Raven Colvin was on 11 of those 15 blocks.
- Eva Hudson and Chloe Chicoine went off, combining for 48 kills and each hitting over .300% in the match.
- The Achilles heel for Purdue was service errors, tallying 19 errors in the match, including four in Set 5.

14,876 STRONG: SETTING A BIG TEN-MATCH ATTENDANCE RECORD

- Purdue set the Big Ten regular-season match attendance record, the state of Indiana attendance record for volleyball, and the Purdue volleyball home attendance record vs. Indiana (10/19) and then tied it a week later vs. #8 Wisconsin (10/26).
- Purdue eclipsed the old attendance record for a regular-season match between two Big Ten opponents, which stood at 10,927 (#23 Illinois at #2 Minnesota, 10/16/04).
- The matches sold out a month in advance (sold out on Friday, September 20).
- The last time Purdue volleyball played in Mackey Arena was in 2016 vs. Indiana, which also happened to be the Monon Spike match in front of a crowd of 8,240 fans.
- Last week's match was **the second-largest crowd in women's volleyball this year.**
- The last and only time Purdue and Wisconsin met in Mackey Arena was in 2008, which the attendance of 10,570 fans was second-largest crowd to witness a Big Ten regular-season match in conference history.

SHONDELL QUOTE: "It's time to take our Boilermakers back into Mackey Arena. The opportunity to grow our program, as well as our sport, is essential right now. Holloway is a special home, but for a few matches this fall, our team and Boilermaker Nation, must make Mackey Arena the best home-court environment in the land."

2024 Team National Rankings

<b>No. 9   Assists Per Set (13.17)</b>
<b>No. 10   Kills Per Set (14.19)</b>
<b>No. 11   Blocks Per Set (2.80)</b>
<b>No. 14   Hitting % (.283)</b>



School	Big Ten Record	Overall Record	Overall Pct.
Nebraska	16-0	26-1	.963
Penn State	15-1	25-2	.926
Wisconsin	14-2	20-5	.800
Purdue	13-3	22-5	.815
Oregon	11-5	19-6	.760
USC	10-6	18-8	.692
Minnesota	10-6	17-9	.654
Washington	9-7	19-7	.731
Illinois	9-7	17-9	.654
Michigan	6-10	16-11	.593
UCLA	6-10	12-13	.480
Indiana	5-11	12-14	.462
Ohio State	5-11	12-14	.462
Maryland	4-12	13-14	.481
Michigan State	4-12	11-16	.407
Iowa	4-12	10-18	.357
Northwestern	3-13	5-19	.208
Rutgers	0-16	5-22	.185

## Wins vs. Top-10 Opponents

### Last 8 Years (2017-present)

Opponent	Score	Date
vs. #10 Kentucky	3-1	9/14/24
vs. #3 Wisconsin	3-2	11/17/23
vs. #8 Minnesota	3-0	9/23/22
vs. #3 Ohio State	3-2	9/24/21
vs. #3 Wisconsin	3-1	10/31/21
at #4 Wisconsin	3-1	11/12/21
at #8 Minnesota	3-1	11/14/21
vs. #5 BYU	3-2	12/9/21
at #10 Penn State	3-1	3/5/21
at #9 Ohio State	3-1	3/26/21
at #9 Ohio State	3-1	3/27/21
vs. #5 Nebraska	3-2	10/26/19
at #4 Penn State	3-2	10/27/18
vs. #9 Creighton	3-1	9/8/17
vs. #5 Minnesota	3-1	11/10/17
vs. #10 Wisconsin	3-0	11/11/17
vs. #10 Michigan State	3-1	11/24/17
vs. #9 Stanford	3-2	9/9/16
vs. #4 Kansas	3-1	9/16/16
vs. #3 Minnesota	3-2	11/21/15

## Top-25 Wins in Holloway

### By Most Recent (Since 2011)

Opponent	Score	Date
vs. #3 Wisconsin	3-2	11/17/2023
vs. #16 Penn State	3-2	11/5/2023
vs. #19 Kentucky	3-2	9/9/2023
vs. #8 Minnesota	3-0	9/23/2022
vs. #3 Wisconsin	3-1	10/31/2021
vs. #15 Penn State	3-2	10/17/2021
vs. #3 Ohio State	3-2	9/24/2021
vs. #22 Tennessee	3-0	9/18/2021
vs. #16 Marquette*	3-1	12/7/2019
vs. #23 Michigan	3-0	11/23/2019
vs. #5 Nebraska	3-2	10/26/2019
vs. #10 Michigan State	3-1	11/24/2017
vs. #10 Wisconsin	3-0	11/11/2017
vs. #13 Michigan	3-1	10/28/2016
vs. #4 Kansas	3-1	9/16/2016
vs. #3 Minnesota	3-2	11/21/2015
vs. #18 Illinois	3-2	10/25/2015
vs. #22 Ohio State	3-2	10/18/2014
vs. #19 Michigan State	3-2	11/30/2013
vs. #6 Nebraska	3-0	11/22/2013
vs. #15 Wisconsin	3-2	11/2/2013
vs. #12 Ohio State	3-0	10/4/2013
vs. #21 Illinois	3-2	9/29/2012
vs. #21 Northern Iowa	3-0	8/24/2012

\* NCAA Tournament match

## The Snapshot: Last Week in Review

### NATIONAL RANKINGS

**No. 8** | Taylor Anderson (13.17 assists per set)

**No. 12** | Lizzie Carr (.600 hitting %)

**No. 18** | Eva Hudson (5.50 kills per set)

### AMONG THE BIG TEN

**No. 1** | Lizzie Carr (.600 attack %)

**No. 1** | Ali Hornung (5-17 digs per set)

**No. 1** | Taylor Anderson (13.17 assists per set)

**No. 3** | Eva Hudson (33 kills)

**No. 2** | Eva Hudson (6.00 points per set)

**No. 2** | Eva Hudson (5.50 kills per set)

**No. 1** | Team Kills per Set (16.00)

**No. 1** | Team Assists per Set (15.67)

**No. 2** | Team Hitting % (.356)

**No. 3** | Team Opponent Hitting % (.112)

**No. 2** | Team Digs Per Set (18.33)

### LAST WEEK'S NEED-TO-KNOW

- Purdue has improved to its sixth-straight win and 13-2 over its last 15 matches after sweeps vs. Rutgers (25-14, 25-14, 25-16) and vs. Illinois (25-17, 25-20, 25-19).
- The Boilermakers had one of the best offenses last week in the league, leading the way in kills per set and assists per set, ranking second in hitting % and with three separate Boilermakers topping the charts on the individual side: Lizzie Carr (.600%), Ali Hornung (5.17 digs per set) and Taylor Anderson (13.17 assists per set).
- Raven Colvin reached her 600th career block, the second Boiler in program history to reach the benchmark.
- The Boilers allowed just one lead change total last week (Set 2 vs. Illinois).
- Purdue hit .370% vs. Rutgers, led by Chloe Chicoine's team-leading 16 kills on a .542 clip and just one dig away from a double-double.
- Taylor Anderson's 44 assists vs. Illinois was just the second time a setter has posted as many in a 3-setter in the last seven years (other: Hayley Bush, 45 vs. Washington, 9/3/21).

### HISTORY OF ATTENDANCE SUCCESS

- Purdue set a previous NCAA women's volleyball attendance record in Mackey Arena on Oct. 29, 1985 with 10,645 fans watching Purdue defeating Western Michigan 3-1 (11-15, 15-6, 15-5, 15-2). The event was dubbed "Pac Mac" with promotions that allowed patrons to attend for just \$1.

### TOP-10 TAKEDOWNS

- In every season for the last 10 years, Purdue has picked up at least one top-10 victory. In fact, Purdue's won 20 top-10 showdowns since 2015 (last: vs. #10 Kentucky, 3-1 on 9/14/24).

### ACED IT: 17 ACES AT #16 MINNESOTA

- The team's 17 service aces included five in the fifth set. Three came during libero Julia Kane's serving tear, which was a career-high.
- Raven Colvin tied a program record in five-set matches with her seven service aces.
- Freshman Ryan McAleer generated six aces, the third freshman in Purdue history, including the only one this century to do so (joining Lauri Grimes and Brooke White, both accomplished in 1993).
- The Boilermakers' 17 aces were the most by any team in the nation last week and are the most by a Big Ten team this season.

### SMOOTH & STEADY: SETTER TAYLOR ANDERSON

- She leads not only all Big Ten setters with 77 blocks this season, but **all setters at Power 4 programs. In perspective, Anderson led many of the top middles in the league through the first half of the season, including Big Ten middles** Andi Jackson (Nebraska) and Taylor Trammell (Penn State), Carter Booth (Wisconsin) and Devyn Robinson (Wisconsin).
- Her 44 assists vs. Illinois was just the second time a setter has posted as many in a 3-setter in the last seven years (other: Hayley Bush, 45 vs. Washington, 9/3/21).
- Anderson has set Purdue to 12 matches over .300%, including the highest mark by Purdue in a Big Ten match since 2017 with 424% at Rutgers, .343% vs. Illinois, .311% at #2 Nebraska, .310 vs. #10 Kentucky and .450 vs. UC Davis.
- Anderson has gotten more aggressive on the attack compared to her freshman season, averaging .67 kills per set compared to .31 from last season (35 kills in 2023 vs. 64 in 2024). In fact, her numbers are up in virtually every category including digs per set (1.97 vs. 2.25), assists per set (9.88 vs. 11.03) and blocks (.85 vs. .86).
- She set a season-high 13 digs alongside 47 assists in the four-set victory at Northwestern (10/4).
- Has posted 7 or more blocks four times this season (last: 7 at #2 Nebraska)
- 40 or more assist in a match this season: 12
- 45 or more assists in a match this season: 8
- 50 or more assists in a match this season: 4
- Double-doubles this season: 10

### SENIOR LEADER RAVEN COLVIN

- Colvin leads the Big Ten and ranks #5 in the nation in blocks per set (1.56).** She led the nation in blocks for the first 4 straight weeks and ranked among the top-12 in hitting % until Week 7.
- For 14 of the last 20 matches, Colvin has hit .308% or higher.
- She set a **career-high 19 kills** at #16 Minnesota (9/28) alongside a Purdue 5-set record-tying 7 aces in a five-set match.
- She is hitting, blocking and serving more efficiently than ever before and leads the team in aces.
- Colvin has **increased her hitting efficiency** compared to 2023: .308% this season vs. .280% last year.
- Already owning three top-10 marks in Purdue single-season history entering the year, the senior ranks #2 in program history for career total blocks, career block assists, career blocks/set and season blocks/set. She is joined by First Team All-American Stephanie Lynch as the best blockers in Purdue history during the 21st century.
- She hit **.440% or higher in eight of 10 consecutive matches (9/7-10/6).**
- Named **Big Ten Defensive Player of the Week** (9/16) after back-to-back .571% performances, 7 blocks vs. #10 Kentucky and four vs. Houston.
- The Boiler has recorded three 10-block performances: 11 at #2 Nebraska, 10 vs. K-State and 10 at Utah State (9/7).
- Number of matches with one or fewer attack errors: 10
- Number of matches hitting .300 or above: 22
- Number of matches hitting .400 or above: 15
- Number of matches hitting .500 or above: 7
- Number of matches hitting .700 or above: 3
- Number of matches with six or more blocks: 14

THE BOILERMAKER FAITHFUL

- Purdue secured its second straight complete season-sell-out, which included two Mackey Arena matches (14,876 fans).
- The first match sold out within 20 minutes of the general public on-sale (vs. USC, 11/23).
- The lower bowl for each of the Mackey Arena matches filled up with just John Purdue Club member purchases before it opened up to the general public on-sale.
- Within the first hour, there were three sellouts: USC, Michigan and Penn State. Within an hour and 20 minutes, there were four sellouts.
- Within two hours of on-sale, over 9,800 tickets were sold for the Wisconsin match. That is the equivalent of filling Holloway four times over.
- Only five matches had tickets left just two hours into on-sale.
- Every ticket for every match was sold last year, making 2023 a complete-season sell-out.
- The student section: The Block Party sold out its season tickets in 20 minutes. That is up from the 40 minutes it took in 2023 and just under two-hour mark in 2022.
- Fans looking for season tickets have had to join a waiting list for at least the last three years. Due to the high renewal rate, only two people were able to move off the wait list in 2023 to buy season tickets.

EVA HUDSON: A FORCE

- Hudson leads the Big Ten in kills (445), kills per set (4.68) and is third in total points (486) and points per set (5.12).
- In comparison with other Big Ten top outside hitters like Sarah Franklin (Wisconsin) and Jess Mruzik (Penn State), Hudson leads in both overall and conference-only matches in kills, kills per set, points per set, digs per set.
- No one who produces nearly as many kills also receives as strongly as Eva Hudson since Big Ten play started - in fact, she leads the league's top-15 kills per set leaders with her 96% reception rating.
- Hudson is averaging 4.68 kills per set, 2.42 digs per set and 5.12 points per set as a junior.
- Set a Big Ten season-high hitting % three times in the span of five matches, beginning with a .349 clip at #2 Nebraska (26-4-63), and most recently with a .417 clip, the second-highest overall this season, vs. Indiana (17-2-36).
- She has posted a double-double in all but one week of Big Ten play.
- At #2 Nebraska, went errorless and hit .500 (5-0-10) in Set 2, hit .500% in Set 3 (7-1-12) and errorless in Set 5 (7-0-18).
- Hudson went errorless in Set 2 vs. #10 Kentucky to help turn the tides, posting an 8-0-11 (.727) performance on the way to Purdue's 3-1 victory.
- Has posted at least one errorless set in every match but three this season.
- Went errorless for nearly the entire match at #10 Kansas until the very end, forfeiting one attack error with the score 20-20 in Set 4. She finished the match 17-1-53.
- Posted 15 kills over just two sets of action vs. #10 Kentucky and seven of Purdue's 15 points in Set 5 at #2 Nebraska.
- She is averaging a .289 clip, but hit over .400 in back-to-back matches over opening weekend.
- She's hit over .300 in 3 of 6 matches vs. top-10 foes, including just one error at Kansas.
- Hudson is on track to become Purdue's all-time leader in career kills/set (4.43 currently; record is 3.96).
- Last year, the 2023 AVCA Second Team All-America honoree ranked #1 in the Big Ten and #5 in the nation in kills (560) and #2 in the Big Ten, #12 in the nation in total points (605.5).
- She is the fastest Boilermaker to reach 1,000 career kills in the rally-scoring era and recorded more kills over her first two years than any Boilermaker to come through the program (1,075).
- Number of season / career double-doubles: 9 / 26
- Number of matches in season / career with 15+ kills: 20 / 66
- Number of matches in season / career with 20+ kills: 3 / 16
- Number of matches in season / career hitting .300% or above: 14 / 36
- Number of matches in season / career hitting .350% or above: 8 / 21
- Number of matches in season / career hitting .400% or above: 4 / 12
- Number of errorless sets in season: 33

CHLOE CHICOINE: YEAR 2

- Went errorless for the entire match vs. Indiana, recording 12 kills, 0 errors on 30 attacks for a then-Big Ten season-high .400 hitting % in addition to recording her 11th double-double of the season (12 digs).
- Has reached double-digit kills in 20 of 27 matches this season.
- She is averaging 3.18 kills per set, 2.82 digs per set and 3.51 points per set as a sophomore.
- Set a season-high 22 kills (22-4-55) on a then-Big Ten-season-high .327 clip at #2 Nebraska.
- Led the team vs. Rutgers with 16 kills (.542 clip).
- Led the team in both kills (11) and digs (10) vs. Houston (9/13).
- Posted a season-high 15 digs vs. Cal (9/5).
- Recorded a career-high four blocks (2 solo, 2 assisted) alongside 14 kills at a .310 clip at Utah State (9/7).
- Was named Player of the Week once and Big Ten Freshman of the Week five times last season, including a Week 7 performance in which she earned Freshman of the Week after leading the entire Big Ten, Pac-12 and ACC in points per set (5.63).
- Chicoine produced in the biggest matches last season, hitting .359% vs. #2 Nebraska with 18 kills and just four errors on 39 swings. At #11 Penn State, the freshman recorded a Big Ten season-high 20 kills with her second-highest hitting % of the year with a .405 clip in the match, including an errorless six kills on nine attacks (.667%) to seal the win in Set 4. She went on to best her kills at home vs. Penn State, totaling a career-high 27 kills. Moreover, vs. Minnesota, she recorded just one error in the match with a .333 hitting % with 11 kills and six digs. Against #3 Wisconsin, she obliterated her previous career-high of 14 digs, totaling 23 in the win.
- Number of season / career double-doubles: 12 / 22
- Number of matches in season / career with 15+ kills: 5 / 21
- Number of matches in season / career with 20+ kills: 1 / 6
- Number of matches in season / career with 10+ digs: 15 / 24
- Number of errorless sets in season / career: 29 / 69

The Last Time....

A Match Went to 5 Sets

Oct. 17, 2024 vs. UCLA  
W, 3-2 (23-25, 27-25, 25-20, 19-25, 15-11)

Last Victory over a Top-5 Team

Nov. 17, 2023 vs. #3 Wisconsin  
W, 3-2 (22-25, 25-19, 25-20, 12-25, 16-14)

Team Hitting % of .400 or Better

.424 | Nov. 2, 2024 at Rutgers | W, 3-0

60 or More Team Kills

60 | Nov. 8, 2024 at Indiana | W, 3-1

15 or More Total Team Blocks

16 | Oct. 17, 2024 vs. UCLA | W, 3-2

80 or More Team Digs

83 | Dec. 2, 2023 vs. Marquette | W, 3-1

10 or More Team Aces

10 | Oct. 12, 2024 at Iowa | W, 3-1

Team Season-Highs

Total Kills

69 | Oct. 17 vs. UCLA

Hitting % in a Match

.450 | Sept. 1 vs. UC Davis

Hitting % in a Set

.552 (Set 4) | Nov. 8 at Indiana

Total Digs

79 | Sept. 28 at #16 Minnesota

Total Blocks

17 | Sept. 7 vs. Utah State

Fewest Attack Errors

7 | Aug. 31 vs. UMBC

Lowest Opponent Hitting %

.065 | Sept. 7 vs. Utah St.

Total Attacks

169 | Oct. 17 vs. UCLA

Service Aces

17 | Sept. 28 at #16 Minnesota

Top Individual Performances: 2024 Season

Category	Purdue	Opponent
Points	29.5 (Hudson at Indiana, 11/8)	29 (Cheridyn Leverette, UCLA)
Kills	26 (Hudson at #2 Nebraska, 10/11)	22 (Cheridyn Leverette, UCLA)
Attacks	63 (Hudson at #2 Nebraska, 10/11)	54 (Merritt Beason, Nebraska)
Service Aces	7 (Colvin at #16 Minnesota, 9/28)	4 (Kamryn Gibadlo, Utah)
Total Blocks	11 (Colvin at #2 Nebraska, 10/11)	9 (Carter Booth, Wisconsin)
Block Solos	3 (Colvin vs. Utah State, 9/7)	3 (Jess Mruzik, Penn State)
Block Assists	9 (twice by Colvin; last: at #2 Nebraska, 10/11)	7 (twice, last: Carter Booth, Wisconsin)
Digs	24 (Hornung at #16 Minnesota, 9/28)	20 (last: Nalani Iosia, Michigan State)
Assists	54 (Anderson at #16 Minnesota, 9/28)	60 (Bergen Reilly, Nebraska)
Attack % (10 attempt, min.)	.733% (Colvin, 12-1-15 vs. UC Davis, 9/1)	.545% (Caroline Jurevicius, Penn State, 6-0-11)

## Purdue's Record When...

**3-Set Matches:** 14-2

**4-Set Matches:** 6-2

**5-Set Matches:** 2-1

**Team attack % is .200 or better:** 21-2

**Team attack % is .250 or better:** 17-1

**Team attack % is .300 or better:** 11-1

**10 or more team blocks:** 11-1

**After dropping Set 1:** 3-5

**After winning Set 1:** 18-0

**Trailing after Set 3:** 0-2

**Leading after Set 3:** 8-1

## Record By Class

**Seniors:** 92-32 (win %: 74)

**Juniors:** 66-25 (win %: 73)

**Sophomores:** 45-14 (win %: 76)

**Freshmen:** 22-5 (win %: 81)

## NCAA D1 Single-Match Attendance

Attendance	Match, Date
1. 15,084	Marquette at Wisconsin, 9/17
2. 14,876	Indiana at #10 Purdue, 10/19
14,876	#8 Wisconsin at #10 Purdue, 10/26
3. 14,126	Nebraska at Louisville, 9/22
4. 14,035	Texas vs. Wisconsin, 9/1

## Undefeated Starts Under Shondell

- 2011 (14-0)
- 2018 (11-0)
- 2005 (11-0)
- 2024 (8-0)**
- 2017 (7-0)
- 2014 (7-0)
- 2008 (7-0)

## Purdue Career Total Blocks

Name	TB	Years
1. Stephanie Lynch	660	2005-08
<b>2. Raven Colvin</b>	<b>607</b>	<b>2021-</b>
3. Marianne Smith	567	1982-85
4. Kate Crandell	563	1981-84
5. KiKi Jones	510	2011-14

## Purdue Career Block Assists

Name	TB	Years
1. Stephanie Lynch	550	2005-08
<b>2. Raven Colvin</b>	<b>531</b>	<b>2021-</b>
3. KiKi Jones	454	2011-14
4. Grace Cleveland	423	201-21
5. Kristen Arthurs	403	2007-10

## HUDSON NAMED AVCA NATIONAL PLAYER OF THE WEEK: W1

- The Stacey Clark Classic MVP led the league with 46 kills and 50.5 points.
- Averaged 4.60 kills per set
- Hit over .430 in back-to-back matches (.467% vs. UMBC and .433 vs. UC Davis)
- Recorded just one attack error vs. UMBC (8/31)
- Posted a double-double in the season-opener vs. K-State, recording 16 kills, 12 digs and a career-high-tying 5 blocks, which were the most since her freshman season.
- Was one dig shy of her second double-double of the season with her 15-kill, 9 dig performance vs. UC Davis.

## HC DAVE SHONDELL & COACHING STAFF

- In the 2024 calendar year, Dave Shondell began it with a four-year contract extension running through the 2027 season and has now reached GOAT status as the all-time winningest head coach in program history (470 wins).
- Under Shondell's guidance, Purdue has won 12 matches vs. top-5 opponents in the last 13 years.
- Led Purdue to a 132-47 record over the last five years alone.
- On the national stage, he is one of seven active coaches to lead a program for at least 21 years and one of seven with as many wins in the Power 4 (470 wins)
- In the last 21 seasons, Shondell has led the team to 18 NCAA tournament appearances and a perfect 18-0 record in first round matches.
- Last season, Shondell coached one of the youngest squads in program history, leading them to a third-place Big Ten finish and an NCAA Regional Semifinal berth. Three Boilermakers received All-America nods while tying a Purdue record of six Big Ten postseason honors, including two unanimous selections.
- He owns a .670 winning % at Purdue and is one of three active Big Ten coaches to be at their institution for 10 years.
- He is one of eight head coaches in Big Ten history to produce as many wins and one of two active coaches, joined by John Cook. Moreover, Shondell is the only one of the two to produce those wins at the same institution (Cook: Wisconsin & Nebraska).
- Coaching Staff Updates For 2024:** Kathy Jewell (22nd season) was promoted to associate head coach - recruiting coordinator; John Klanac was hired as assistant coach in January; Ben Cutrone (previously the GA) was hired as volleyball analyst in May.
- John Klanac was previously at Rice and graduated from Ohio State, where he was a 2011 national champion.

## RECORD BOOK WATCH: CAREER RECORDS

- Colvin is 19 block assists away from tying the Purdue career record, 53 total blocks away from setting a new Purdue career record and 58 kills away from reaching 1,000.
- Colvin is averaging a .308 career hitting %, tying #9 Danielle Cuttino in Purdue's annals.
- Colvin is one block solo away from moving up to T#8 in Purdue's career annals and six away from tying for #6.

## RECORD BOOK WATCH: SINGLE-SEASON RECORDS

- Purdue's .283 team hitting % checks in at #3 all-time and is just the second time this century the Boilermakers have hit as efficiently in a season.
- Eva Hudson's 4.68 kills per set this season currently rank #5 in Purdue single-season history.
- Colvin's 1.57 blocks per set currently rank #2 in single-season history. It would be the second time this century a Boilermaker has posted as many blocks/set in a season.
- Colvin is 2 block assists away from entering Purdue's top-10.
- Ali Horning's 4.05 digs per set tie as #10 in Purdue history (joins Brooke Peters, 2018).

## ANNIE DREWS INDUCTED TO THE PURDUE HALL OF FAME

- Two-time Olympian Annie Drews (2012-15) will be inducted to the Leroy Keyes Purdue Athletics Hall of Fame on Friday.
- A four-year letterwinner as an outside hitter, she was a gold medalist at the 2020 Tokyo Olympics, playing a key role in Team USA's historic run on the world stage and a silver medalist at the 2024 Paris Olympics as well as a regular with the U.S. Senior National Team.
- Before her international glory, she led the Boilermakers to three NCAA Tournament trips, including two Sweet 16s and one Elite Eight. Drews closed out her Purdue career with Second Team All-America honors in 2015 along with back-to-back First Team All-Big Ten accolades.
- She is the seventh volleyball player to be inducted to elite group, joining Ariel (Turner) Gebhardt (Class of 2020), Stephanie (Lynch) Harpenau (Class of 2018), Carol Dewey and Debbie (McDonald) West (Class of 2003), Marianne (Smith) Orr (Class of 1999) and Jane Neff (inaugural Class of 1994).

## THE 2024 TEAM AT A GLANCE

- Purdue returns nearly its entire 2023 starting lineup with the exception of libero Maddie Schermerhorn, who led the Big Ten last season in digs per set. Meanwhile, the team has lost two players to injury this season: senior #22 Emily Rastovski and sophomore #14 Grace Heaney at the same position as right side hitters.
- Three freshmen (DS Ryen McAlear, S Allie Shondell and DS Sienna Foster) and one senior transfer (OH/RS Raven Gray) join the team.
- The roster is one of the most talented and decorated in program history: returning all three 2023 All-America recognized players: Hudson, Chicoine, Colvin.
- Of Purdue's record-tying six 2023 Big Ten postseason honors, five are returning for the coming season.
- Hudson and Chicoine entered 2024 as the top-rated offensive duo in the nation, leading all of Division I (kills and points).
- For the last two consecutive seasons, All-America Honorable Mention and First Team All-Big Ten middle Raven Colvin has posted some of the most blocks in program history, ranking #2 for her 2022 season (151) and T-#3 in 2023 (148 blocks).
- One of the best freshman setters in Purdue history, Taylor Anderson led the entire Big Ten in five separate weeks and was the most productive blocker among all Big Ten setters (.89 blocks per set). Additionally, she guided Purdue to a pair of its best offensive productions in the last five years.

## PURDUE ATHLETICS INVESTING IN THE PROGRAM

- New this season, Purdue will play two matches in the history Mackey Arena.
- Holloway Gymnasium is home to a **brand-new Taraflex court**.
- The team received new **updates to their locker room, player lounge and film room**.
- A new \$11 million Purdue **Student-Athlete Dining Facility** opened on July 31.
- The **weight room** used by volleyball, men's and women's basketball has undergone construction and entirely new equipment has been purchased.

## CONSISTENTLY UNDERRATED: AVCA PRESEASON POLL HISTORY

# PURDUE VOLLEYBALL

## 2024 ROSTER

No.	Name	Ht.	Pos.	Yr.	Hometown / High School / Last School
1	Rachel Williams	5-7	DS	RS-Fr.	West Lafayette, Ind. / West Lafayette
2	Chloe Chicoine	5-10	OH	So.	Lafayette, Ind. / McCutcheon
3	Ryan McAleer	5-6	DS	Fr.	Overland Park, Kan. / Blue Valley
4	Kenna Wollard	6-1	OH	So.	Dunlap, Ill. / Illinois Valley Central
5	Taylor Anderson	6-1	S	So.	San Antonio, Texas / Cornerstone Christian
6	Sienna Foster	5-9	DS	Fr.	Lafayette, Ind. / Benton Central
7	Raven Colvin	6-1	MB	Sr.	Indianapolis, Ind. / Heritage Christian
8	Raven Gray	6-1	OH/RS	Sr.	Charlotte, N.C. / Cox Mill / Winston-Salem State
9	Lourdès Myers	6-3	MB	RS-Sr.	Alliance, Ohio / St. Thomas Aquinas
10	Ali Hornung	5-10	DS/OH	Sr.	New Albany, Ind. / Providence
11	Allie Shondell	5-10	S	Fr.	Lafayette, Ind. / McCutcheon
14	Grace Heaney	6-2	OPP/RS	So.	Omaha, Neb. / Elkhorn North
15	Lizzie Carr	6-6	MB	RS-So.	West Chester, Pa. / West Chester East
17	Eva Hudson	6-1	OH	Jr.	Fort Wayne, Ind. / Bishop Dwenger
19	Sydney Yim	6-1	S	Sr.	Newburyport, Mass. / Newburyport
21	Julia Kane	5-11	DS	So.	Windermere, Fla. / Windermere Prep
22	Emily Rastovski	6-2	OH	Sr.	Valparaiso, Ind. / Morgan Township

**Head Coach:** Dave Shondell, 22nd season

**Associate Head Coach - Recruiting Coordinator:** Kathy Jewell, 22nd season

**Assistant Coach:** John Klanac, 1st season

**Assistant Coach:** Michael Bouril, 2nd season | 5th overall at Purdue

**Supervisor of Volleyball Operations:** Carrie Gurnell, 4th season

**Volleyball Analyst:** Ben Cutrone, 1st season | 3rd overall at Purdue

**Graduate Assistant:** Owen Mahin, 1st season

### Pronunciation Guide

Chloe Chicoine: SHIH-coin (starts like Chicago)

Lourdès Myers: LORD-is

Ali Hornung: HORN-nung

Ryan McAleer: MAC-uh-leer

Eva Hudson: EE-va (think eve)

Emily Rastovski: RAZ-taw-v-skee

John Klanac: Klan-ICK

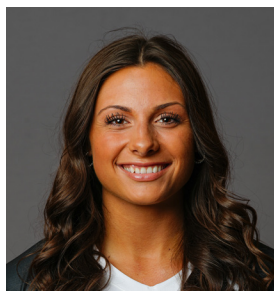
Michael Bouril: BURR-ill



# 2024 PURDUE VOLLEYBALL ROSTER



**#1 Rachel Williams**  
R-Fr. | DS | 5-7 | West Lafayette, Ind.



**#2 Chloe Chicoine**  
So. | OH | 5-10 | Lafayette, Ind.



**#3 Ryan McAleer**  
Fr. | DS | 5-6 | Overland Park, Kan.



**#4 Kenna Wollard**  
So. | OH | 6-1 | Dunlap, Ill.



**#5 Taylor Anderson**  
So. | S | 6-1 | San Antonio, Texas



**#6 Sienna Foster**  
Fr. | DS | 5-9 | West Lafayette, Ind



**#7 Raven Colvin**  
Sr. | MB | 6-1 | Indianapolis, Ind.



**#8 Raven Gray**  
Sr. | OH/RS | 6-1 | Charlotte, N.C.



**#9 Lourdès Myers**  
RS-Sr. | MB | 6-3 | Alliance, Ohio



**#10 Ali Hornung**  
Sr. | DS/OH | 5-10 | New Albany, Ind.



**#11 Allie Shondell**  
Fr. | S | 5-10 | Lafayette, Ind.



**#14 Grace Heaney**  
So. | OPP/RS | 6-2 | Omaha, Neb.



**#15 Lizzie Carr**  
RS-So. | MB | 6-6 | West Chester, Pa.



**#17 Eva Hudson**  
Jr. | OH | 6-1 | Fort Wayne, Ind.



**#19 Sydney Yim**  
Sr. | S | 6-1 | Newburyport, Mass.



**#21 Julia Kane**  
So. | DS | 5-11 | Windermere, Fla.



**#22 Emily Rastovski**  
RS-Jr. | OH | 6-2 | Valparaiso, Ind.



**Graduate Assistant**  
Owen Mahin | 1st Season



**Volleyball Analyst**  
Ben Cutrone | 1st Season



**Head Coach**  
**Dave Shondell**  
22nd Season



**Assoc. Head Coach**  
**& Recruiting Coordinator**  
**Kathy Jewell**  
22nd Season



**Assistant Coach**  
**Michael Bouril**  
5th Season



**Assistant Coach**  
**John Klanac**  
1st Season



**Director of Operations**  
**Carrie Gurnell**  
4th Season



# 2024-25 Purdue Women's Volleyball Combined Team Statistics All games

Page 1/1  
as of Nov 18, 2024

## Game Records

Overall	Conference	Home	Away	Neutral
22 - 5	13 - 3	10 - 2	8 - 2	4 - 1

## Team Box Score

			Attack					Set		Serve					Dig		Blocking									
##	Player	SP	K	K/S	E	TA	PCT	A	A/S	SA	SE	SA/S	RE	DIG	DIG/S	BS	BA	TOT/S	BLK/S	BE	BHE	PTS				
1	Williams, Rachel	44	1	0.02	0	3	.333	1	0.02	7	13	0.16	0	11	0.25	0	0	0	0.00	0	0	8.0				
2	Chicoine, Chloe	95	302	3.18	102	897	.223	36	0.38	17	27	0.18	13	268	2.82	2	24	26	0.27	4	0	333.0				
3	McAleer, Ryan	94	2	0.02	1	5	.200	27	0.29	15	34	0.16	13	228	2.43	0	0	0	0.00	0	0	17.0				
4	Wollard, Kenna	78	133	1.71	58	327	.229	2	0.03	0	0	0.00	0	35	0.45	1	46	47	0.60	9	0	157.0				
5	Anderson, Taylor	95	64	0.67	14	142	.352	1048	11.03	22	35	0.23	1	214	2.25	6	78	84	0.88	3	3	131.0				
7	Colvin, Raven	95	235	2.47	79	451	.346	7	0.07	34	49	0.36	1	49	0.52	22	127	149	1.57	17	1	354.5				
8	Gray, Raven	4	1	0.25	0	1	1.000	0	0.00	0	1	0.00	0	0	0.00	0	0	0	0.00	0	0	1.0				
9	Myers, Lourdes	91	108	1.19	29	232	.341	2	0.02	0	0	0.00	1	28	0.31	9	88	97	1.07	23	0	161.0				
10	Hornung, Ali	95	0	0.00	0	6	.000	86	0.91	8	11	0.08	24	385	4.05	0	1	1	0.01	0	0	8.5				
11	Shondell, Allie	6	0	0.00	1	1	-1.000	20	3.33	0	1	0.00	0	3	0.50	0	3	3	0.50	0	0	1.5				
15	Carr, Lizzie	33	56	1.70	8	119	.403	1	0.03	0	0	0.00	0	8	0.24	2	21	23	0.70	4	0	68.5				
17	Hudson, Eva	95	445	4.68	112	1150	.290	10	0.11	11	23	0.12	16	230	2.42	5	50	55	0.58	3	0	486.0				
19	Yim, Sydney	3	1	0.33	0	1	1.000	3	1.00	0	0	0.00	0	1	0.33	0	0	0	0.00	0	0	1.0				
21	Kane, Julia	66	0	0.00	0	0	.000	8	0.12	11	29	0.17	1	26	0.39	0	0	0	0.00	0	0	11.0				
PURDUE		95	1348	14.19	404	3335	.283	1251	13.17	125	223	1.32	87	1486	15.64	47	438	266	2.80	63	4	1,739.0				
Opponents		95	1208	12.72	556	3530	.185	1119	11.78	87	203	0.92	125	1368	14.40	34	297	182.5	1.92	36	7	1,477.5				

## Team statistics

	PURDUE	OPP
ATTACK		
Kills	1348	1208
Errors	404	556
Total Attacks	3335	3530
Attack Pct	.283	.185
Kills/Set	14.19	12.72
SET		
Assists	1251	1119
Attempts	3238	3437
Assist Pct	.386	.326
Assists/Set	13.17	11.78
SERVE		
Aces	125	87
Errors	223	203
Attempts	2250	1954
Serve Pct	.901	.896
Aces/Set	1.32	0.92
SERVE RECEPTIONS		
Errors	87	125
Errors/Set	0.92	1.32
Attempts	1751	2027
Reception Pct	.950	.999
DEFENSE		
Digs	1486	1368
Digs/Set	15.64	14.40
BLOCKING		
Block solo	47	34
Block Assist	438	297
Total Blocks	266	182.5
Blocks/Set	2.80	1.92
Block Errors	63	36
Ball handling errors	4	7
ATTENDANCE		
Total	53902	27169
Dates/Avg Per Date	12/4492	10/2717
Neutral Site #/Avg	5/904	-
Current win streak	0	-
Home win streak	0	-

## Team Results

Date	Opponent		Score	Score-by-set	Att.
08/30/2024	Kansas St.	W	3-1	25-21,18-25,25-22,25-23	2415
08/31/2024	UMBC	W	3-0	25-20,25-20,25-17	2415
09/01/2024	UC Davis	W	3-0	25-18,25-19,25-18	2415
09/05/2024	vs California	W	3-1	29-27,25-12,18-25,25-23	52
09/06/2024	at Utah	W	3-0	29-27,25-20,25-13	3766
09/07/2024	at Utah St.	W	3-0	25-18,25-16,25-22	1029
09/13/2024	vs Houston	W	3-0	25-12,25-21,25-20	891
09/14/2024	vs Kentucky	W	3-1	21-25,25-13,25-23,25-16	1883
09/19/2024	at Kansas	L	1-3	29-31,25-21,22-25,23-25	1640
09/20/2024	vs Creighton	L	1-3	21-25,25-17,16-25,25-27	1696
09/21/2024	vs Tulsa	W	3-0	25-21,25-17,25-10	0
* 09/25/2024	Penn St.	L	0-3	14-25,21-25,20-25	2415
* 09/28/2024	at Minnesota	W	3-2	26-24,23-25,25-20,23-25,15-10	4866
* 10/04/2024	at Northwestern	W	3-1	23-25,25-20,25-16,29-27	1618
* 10/06/2024	Michigan St.	W	3-0	25-19,25-22,25-18	2415
* 10/11/2024	at Nebraska	L	2-3	22-25,25-22,25-23,22-25,15-17	8715
* 10/12/2024	at Iowa	W	3-1	25-17,19-25,25-18,25-21	1036
* 10/17/2024	UCLA	W	3-2	23-25,27-25,25-20,19-25,15-11	2415
* 10/19/2024	Indiana	W	3-0	25-18,25-14,25-9	14876
* 10/23/2024	Ohio St.	W	3-0	28-26,25-19,27-25	2415
* 10/26/2024	Wisconsin	L	0-3	20-25,23-25,13-25	14876
* 11/01/2024	at Maryland	W	3-0	25-23,25-20,25-20	570
* 11/02/2024	at Rutgers	W	3-0	25-14,25-12,25-16	1072
* 11/08/2024	at Indiana	W	3-1	25-21,21-25,25-22,25-17	2857
* 11/10/2024	Michigan	W	3-0	25-20,25-21,25-18	2415
* 11/14/2024	Rutgers	W	3-0	25-14,25-14,25-16	2415
* 11/17/2024	Illinois	W	3-0	25-17,25-20,25-19	2415



2024-25 Purdue Women's Volleyball  
Individual Match-by-Match  
All games

Page 1/14  
as of Nov 18, 2024

#1 WILLIAMS, Rachel

Date	Opponent	SP	Attack				Set			Serve				Recept			DIG	Blocking				Team			
			K	E	TA	PCT	A	TA	PCT	SA	SE	TA	PCT	RE	TA	PCT		BS	BA	BE	TOTAL	BHE	POINTS	HIT%	SCORE
08/31/2024	UMBC	2	0	0	0	.000	0	0	.000	1	0	10	1.000	0	0	.000	4	0	0	0	0.0	0	1.0	.371	3-0
09/01/2024	UC Davis	3	0	0	0	.000	0	0	.000	0	1	11	.909	0	0	.000	0	0	0	0	0.0	0	0.0	.450	3-0
09/05/2024	vs California	3	1	0	1	1.000	0	0	.000	0	1	10	.900	0	0	.000	1	0	0	0	0.0	0	1.0	.235	3-1
09/06/2024	at Utah	2	0	0	0	.000	0	0	.000	1	1	3	.667	0	0	.000	1	0	0	0	0.0	0	1.0	.246	3-0
09/07/2024	at Utah St.	1	0	0	0	.000	0	0	.000	0	0	1	1.000	0	0	.000	0	0	0	0	0.0	0	0.0	.290	3-0
09/13/2024	vs Houston	1	0	0	0	.000	0	0	.000	1	0	2	1.000	0	0	.000	0	0	0	0	0.0	0	1.0	.292	3-0
09/14/2024	vs Kentucky	4	0	0	0	.000	0	0	.000	0	1	4	.750	0	0	.000	0	0	0	0	0.0	0	0.0	.310	3-1
09/19/2024	at Kansas	3	0	0	0	.000	0	0	.000	0	0	4	1.000	0	0	.000	0	0	0	0	0.0	0	0.0	.278	1-3
09/20/2024	vs Creighton	3	0	0	1	.000	1	2	.500	1	2	15	.867	0	0	.000	2	0	0	0	0.0	0	1.0	.209	1-3
09/21/2024	vs Tulsa	2	0	0	0	.000	0	0	.000	1	0	6	1.000	0	0	.000	1	0	0	0	0.0	0	1.0	.365	3-0
09/25/2024	Penn St.	1	0	0	1	.000	0	0	.000	0	0	1	1.000	0	0	.000	0	0	0	0	0.0	0	0.0	.176	0-3
09/28/2024	at Minnesota	3	0	0	0	.000	0	0	.000	0	0	3	1.000	0	0	.000	0	0	0	0	0.0	0	0.0	.252	3-2
10/04/2024	at Northwestern	1	0	0	0	.000	0	0	.000	0	1	1	.000	0	0	.000	0	0	0	0	0.0	0	0.0	.287	3-1
10/06/2024	Michigan St.	2	0	0	0	.000	0	0	.000	0	0	4	1.000	0	0	.000	0	0	0	0	0.0	0	0.0	.252	3-0
10/11/2024	at Nebraska	5	0	0	0	.000	0	0	.000	0	4	12	.667	0	0	.000	0	0	0	0	0.0	0	0.0	.311	2-3
10/19/2024	Indiana	3	0	0	0	.000	0	0	.000	2	0	5	1.000	0	0	.000	0	0	0	0	0.0	0	2.0	.333	3-0
11/01/2024	at Maryland	1	0	0	0	.000	0	0	.000	0	0	3	1.000	0	0	.000	2	0	0	0	0.0	0	0.0	.313	3-0
11/02/2024	at Rutgers	2	0	0	0	.000	0	0	.000	0	1	2	.500	0	0	.000	0	0	0	0	0.0	0	0.0	.424	3-0
11/08/2024	at Indiana	1	0	0	0	.000	0	0	.000	0	1	1	.000	0	0	.000	0	0	0	0	0.0	0	0.0	.305	3-1
11/14/2024	Rutgers	1	0	0	0	.000	0	0	.000	0	0	2	1.000	0	0	.000	0	0	0	0	0.0	0	0.0	.370	3-0
Totals		44	1	0	3	.333	1	2	.500	7	13	100	.870	0	0	.000	11	0	0	0	0.0	0	8.0		

Player Averages

Sets Played	Kills per set	Assists per set	Service aces per set	Digs per set	Blocks per set	Points per set
44	0.02	0.02	0.16	0.25	0.00	0.18



2024-25 Purdue Women's Volleyball  
Individual Match-by-Match  
All games

Page 2/14  
as of Nov 18, 2024

#2 CHICOINE, Chloe

			Attack				Set			Serve				Recept			Blocking					Team				
Date	Opponent	SP	K	E	TA	PCT	A	TA	PCT	SA	SE	TA	PCT	RE	TA	PCT	DIG	BS	BA	BE	TOTAL	BHE	POINTS	HIT%	SCORE	
08/30/2024	Kansas St.	*4	17	6	52	.212	0	4	.000	0	1	17	.941	2	12	.833	6	0	1	0	1.0	0	17.5	.234	3-1	
08/31/2024	UMBC	*3	11	2	33	.273	2	5	.400	1	3	9	.667	0	14	1.000	11	0	1	0	1.0	0	12.5	.371	3-0	
09/01/2024	UC Davis	*3	9	2	26	.269	4	5	.800	1	2	16	.875	0	12	1.000	5	0	0	1	0.0	0	10.0	.450	3-0	
09/05/2024	vs California	*4	10	6	36	.111	0	3	.000	1	1	21	.952	0	10	1.000	15	0	1	0	1.0	0	11.5	.235	3-1	
09/06/2024	at Utah	*3	8	4	31	.129	1	3	.333	1	0	23	1.000	0	2	1.000	13	0	0	0	0.0	0	9.0	.246	3-0	
09/07/2024	at Utah St.	*3	14	5	29	.310	0	2	.000	0	0	10	1.000	0	19	1.000	8	2	2	0	4.0	0	17.0	.290	3-0	
09/13/2024	vs Houston	*3	11	4	27	.259	0	3	.000	2	1	21	.952	0	13	1.000	10	0	3	0	3.0	0	14.5	.292	3-0	
09/14/2024	vs Kentucky	*4	10	3	32	.219	0	5	.000	1	0	22	1.000	0	4	1.000	9	0	2	0	2.0	0	12.0	.310	3-1	
09/19/2024	at Kansas	*4	16	3	39	.333	2	5	.400	1	2	24	.917	1	15	.933	12	0	0	0	0.0	0	17.0	.278	1-3	
09/20/2024	vs Creighton	*4	14	8	44	.136	1	8	.125	0	0	15	1.000	1	18	.944	6	0	0	1	0.0	0	14.0	.209	1-3	
09/21/2024	vs Tulsa	*3	10	2	23	.348	2	6	.333	0	1	17	.941	1	4	.750	6	0	2	0	2.0	0	11.0	.365	3-0	
09/25/2024	Penn St.	*3	10	5	29	.172	1	4	.250	0	2	11	.818	1	12	.917	11	0	0	0	0.0	0	10.0	.176	0-3	
09/28/2024	at Minnesota	*5	14	8	48	.125	1	7	.143	0	2	19	.895	0	8	1.000	11	0	0	0	0.0	0	14.0	.252	3-2	
10/04/2024	at Northwestern	*4	10	3	33	.212	1	9	.111	1	2	19	.895	0	26	1.000	3	0	2	0	2.0	0	12.0	.287	3-1	
10/06/2024	Michigan St.	*3	10	6	41	.098	0	1	.000	3	2	17	.882	0	9	1.000	13	0	1	0	1.0	0	13.5	.252	3-0	
10/11/2024	at Nebraska	*5	22	4	55	.327	5	9	.556	0	1	26	.962	0	5	1.000	13	0	1	0	1.0	0	22.5	.311	2-3	
10/12/2024	at Iowa	*4	7	7	36	.000	1	1	1.000	1	1	20	.950	1	20	.950	6	0	1	0	1.0	0	8.5	.213	3-1	
10/17/2024	UCLA	*5	15	3	52	.231	4	8	.500	0	1	14	.929	0	10	1.000	13	0	2	1	2.0	0	16.0	.325	3-2	
10/19/2024	Indiana	*3	12	0	30	.400	1	4	.250	0	1	10	.900	0	0	.000	10	0	1	0	1.0	0	12.5	.333	3-0	
10/23/2024	Ohio St.	*3	11	5	33	.182	1	4	.250	1	2	18	.889	1	2	.500	9	0	0	0	0.0	0	12.0	.215	3-0	
10/26/2024	Wisconsin	*3	3	5	21	.095	1	3	.333	0	0	13	1.000	0	6	1.000	14	0	0	0	0.0	0	3.0	.089	0-3	
11/01/2024	at Maryland	*3	10	1	28	.321	2	5	.400	0	1	13	.923	0	4	1.000	14	0	0	0	0.0	0	10.0	.313	3-0	
11/02/2024	at Rutgers	*3	14	1	23	.565	0	0	.000	2	0	14	1.000	0	6	1.000	13	0	1	0	1.0	0	16.5	.424	3-0	
11/08/2024	at Indiana	*4	4	3	24	.042	0	1	.000	0	1	16	.938	0	26	1.000	10	0	0	0	0.0	0	4.0	.305	3-1	
11/10/2024	Michigan	*3	9	2	32	.219	4	5	.800	1	0	14	1.000	1	20	.950	7	0	1	0	1.0	0	10.5	.279	3-0	
11/14/2024	Rutgers	*3	16	3	24	.542	0	2	.000	0	0	17	1.000	2	20	.900	9	0	0	1	0.0	0	16.0	.370	3-0	
11/17/2024	Illinois	*3	5	1	16	.250	2	4	.500	0	0	20	1.000	2	13	.846	11	0	2	0	2.0	0	6.0	.343	3-0	
Totals			95	302	102	897	.223	36	116	.310	17	27	456	.941	13	310	.958	268	2	24	4	26.0	0	333.0		

Player Averages

Sets Played	Kills per set	Assists per set	Service aces per set	Digs per set	Blocks per set	Points per set
95	3.18	0.38	0.18	2.82	0.27	3.51



2024-25 Purdue Women's Volleyball  
Individual Match-by-Match  
All games

Page 3/14  
as of Nov 18, 2024

#3 MCALEER, Ryan

Date	Opponent	SP	Attack				Set			Serve				Recept			Blocking					Team			
			K	E	TA	PCT	A	TA	PCT	SA	SE	TA	PCT	RE	TA	PCT	DIG	BS	BA	BE	TOTAL	BHE	POINTS	HIT%	SCORE
08/30/2024	Kansas St.	*4	0	0	0	.000	0	2	.000	0	4	18	.778	0	19	1.000	11	0	0	0	0.0	0	0.0	.234	3-1
08/31/2024	UMBC	*2	0	0	0	.000	1	2	.500	0	0	10	1.000	2	12	.833	3	0	0	0	0.0	0	0.0	.371	3-0
09/01/2024	UC Davis	*3	0	0	0	.000	0	0	.000	0	0	8	1.000	0	16	1.000	5	0	0	0	0.0	0	0.0	.450	3-0
09/05/2024	vs California	*4	0	0	0	.000	0	1	.000	0	1	14	.929	3	32	.906	7	0	0	0	0.0	0	0.0	.235	3-1
09/06/2024	at Utah	*3	0	0	0	.000	1	3	.333	0	2	9	.778	0	4	1.000	7	0	0	0	0.0	0	0.0	.246	3-0
09/07/2024	at Utah St.	*3	0	0	0	.000	0	1	.000	1	1	16	.938	0	5	1.000	5	0	0	0	0.0	0	1.0	.290	3-0
09/13/2024	vs Houston	*3	0	0	0	.000	3	5	.600	1	0	8	1.000	0	15	1.000	6	0	0	0	0.0	0	1.0	.292	3-0
09/14/2024	vs Kentucky	*4	1	0	1	1.000	1	1	1.000	0	2	15	.867	0	18	1.000	11	0	0	0	0.0	0	1.0	.310	3-1
09/19/2024	at Kansas	*4	0	1	1	-1.000	1	2	.500	0	1	12	.917	0	5	1.000	10	0	0	0	0.0	0	0.0	.278	1-3
09/20/2024	vs Creighton	4	0	0	0	.000	1	2	.500	0	1	13	.923	1	18	.944	7	0	0	0	0.0	0	0.0	.209	1-3
09/21/2024	vs Tulsa	3	1	0	1	1.000	3	4	.750	0	2	12	.833	0	10	1.000	6	0	0	0	0.0	0	1.0	.365	3-0
09/25/2024	Penn St.	3	0	0	0	.000	0	0	.000	0	1	8	.875	0	3	1.000	5	0	0	0	0.0	0	0.0	.176	0-3
09/28/2024	at Minnesota	*5	0	0	0	.000	2	7	.286	6	3	30	.900	4	31	.871	10	0	0	0	0.0	0	6.0	.252	3-2
10/04/2024	at Northwestern	4	0	0	1	.000	1	4	.250	1	2	17	.882	1	11	.909	11	0	0	0	0.0	0	1.0	.287	3-1
10/06/2024	Michigan St.	3	0	0	0	.000	0	2	.000	0	2	13	.846	0	9	1.000	11	0	0	0	0.0	0	0.0	.252	3-0
10/11/2024	at Nebraska	*5	0	0	0	.000	2	4	.500	0	3	14	.786	0	14	1.000	13	0	0	0	0.0	0	0.0	.311	2-3
10/12/2024	at Iowa	*4	0	0	0	.000	2	2	1.000	1	0	13	1.000	1	11	.909	7	0	0	0	0.0	0	1.0	.213	3-1
10/17/2024	UCLA	*5	0	0	0	.000	3	6	.500	3	0	26	1.000	1	27	.963	7	0	0	0	0.0	0	3.0	.325	3-2
10/19/2024	Indiana	*3	0	0	0	.000	0	1	.000	1	0	8	1.000	0	17	1.000	15	0	0	0	0.0	0	1.0	.333	3-0
10/23/2024	Ohio St.	*3	0	0	0	.000	1	7	.143	0	2	13	.846	0	3	1.000	11	0	0	0	0.0	0	0.0	.215	3-0
10/26/2024	Wisconsin	*3	0	0	0	.000	1	2	.500	0	2	7	.714	0	11	1.000	6	0	0	0	0.0	0	0.0	.089	0-3
11/01/2024	at Maryland	*3	0	0	0	.000	0	3	.000	0	1	8	.875	0	12	1.000	8	0	0	0	0.0	0	0.0	.313	3-0
11/02/2024	at Rutgers	*3	0	0	0	.000	1	1	1.000	0	0	11	1.000	0	6	1.000	10	0	0	0	0.0	0	0.0	.424	3-0
11/08/2024	at Indiana	*4	0	0	0	.000	2	5	.400	0	2	11	.818	0	7	1.000	9	0	0	0	0.0	0	0.0	.305	3-1
11/10/2024	Michigan	*3	0	0	0	.000	0	2	.000	0	0	7	1.000	0	1	1.000	10	0	0	0	0.0	0	0.0	.279	3-0
11/14/2024	Rutgers	*3	0	0	0	.000	1	2	.500	0	1	6	.833	0	1	1.000	11	0	0	0	0.0	0	0.0	.370	3-0
11/17/2024	Illinois	*3	0	0	1	.000	0	0	.000	1	1	11	.909	0	5	1.000	6	0	0	0	0.0	0	1.0	.343	3-0
Totals		94	2	1	5	.200	27	71	.380	15	34	338	.899	13	323	.960	228	0	0	0	0.0	0	17.0		

Player Averages

Sets Played	Kills per set	Assists per set	Service aces per set	Digs per set	Blocks per set	Points per set
94	0.02	0.29	0.16	2.43	0.00	0.18



2024-25 Purdue Women's Volleyball  
Individual Match-by-Match  
All games

Page 4/14  
as of Nov 18, 2024

#4 WOLLARD, Kenna

Date	Opponent	SP	Attack				Set			Serve				Recept			Blocking					Team			
			K	E	TA	PCT	A	TA	PCT	SA	SE	TA	PCT	RE	TA	PCT	DIG	BS	BA	BE	TOTAL	BHE	POINTS	HIT%	SCORE
08/30/2024	Kansas St.	4	8	2	20	.300	0	0	.000	0	0	0	.000	0	0	.000	1	0	2	1	2.0	0	9.0	.234	3-1
09/01/2024	UC Davis	3	10	2	17	.471	0	0	.000	0	0	0	.000	0	1	1.000	1	0	2	1	2.0	0	11.0	.450	3-0
09/05/2024	vs California	4	11	2	24	.375	0	1	.000	0	0	0	.000	0	0	.000	3	0	3	2	3.0	0	12.5	.235	3-1
09/06/2024	at Utah	3	7	2	15	.333	0	0	.000	0	0	0	.000	0	0	.000	3	0	1	0	1.0	0	7.5	.246	3-0
09/07/2024	at Utah St.	3	5	2	10	.300	0	1	.000	0	0	0	.000	0	0	.000	0	0	2	0	2.0	0	6.0	.290	3-0
09/13/2024	vs Houston	2	3	3	13	.000	0	0	.000	0	0	0	.000	0	0	.000	3	0	5	0	5.0	0	5.5	.292	3-0
09/14/2024	vs Kentucky	4	6	2	13	.308	0	0	.000	0	0	0	.000	0	0	.000	2	0	1	0	1.0	0	6.5	.310	3-1
09/19/2024	at Kansas	4	9	7	22	.091	0	0	.000	0	0	0	.000	0	0	.000	0	0	2	0	2.0	0	10.0	.278	1-3
09/20/2024	vs Creighton	*4	3	3	13	.000	0	0	.000	0	0	0	.000	0	0	.000	1	1	1	1	2.0	0	4.5	.209	1-3
09/21/2024	vs Tulsa	*2	2	0	7	.286	0	1	.000	0	0	1	1.000	0	1	1.000	0	0	0	0	0.0	0	2.0	.365	3-0
09/25/2024	Penn St.	*3	4	3	17	.059	0	1	.000	0	0	0	.000	0	0	.000	2	0	1	0	1.0	0	4.5	.176	0-3
09/28/2024	at Minnesota	5	7	0	15	.467	0	6	.000	0	0	0	.000	0	0	.000	3	0	2	1	2.0	0	8.0	.252	3-2
10/04/2024	at Northwestern	*4	18	4	32	.438	0	2	.000	0	0	0	.000	0	0	.000	2	0	1	0	1.0	0	18.5	.287	3-1
10/06/2024	Michigan St.	*3	8	2	20	.300	0	2	.000	0	0	0	.000	0	0	.000	3	0	3	0	3.0	0	9.5	.252	3-0
10/11/2024	at Nebraska	5	7	2	17	.294	0	2	.000	0	0	0	.000	0	0	.000	1	0	4	1	4.0	0	9.0	.311	2-3
10/12/2024	at Iowa	4	8	5	20	.150	0	2	.000	0	0	0	.000	0	0	.000	1	0	4	0	4.0	0	10.0	.213	3-1
10/17/2024	UCLA	5	1	3	8	-.250	0	1	.000	0	0	0	.000	0	0	.000	1	0	2	0	2.0	0	2.0	.325	3-2
10/19/2024	Indiana	3	1	2	5	-.200	1	1	1.000	0	0	0	.000	0	1	1.000	2	0	1	0	1.0	0	1.5	.333	3-0
10/23/2024	Ohio St.	3	5	3	12	.167	0	1	.000	0	0	0	.000	0	0	.000	0	0	3	1	3.0	0	6.5	.215	3-0
10/26/2024	Wisconsin	2	1	1	5	.000	0	0	.000	0	0	0	.000	0	0	.000	3	0	2	0	2.0	0	2.0	.089	0-3
11/01/2024	at Maryland	2	1	2	4	-.250	0	1	.000	0	0	0	.000	0	0	.000	1	0	0	0	0.0	0	1.0	.313	3-0
11/02/2024	at Rutgers	3	5	2	9	.333	1	3	.333	0	0	0	.000	0	0	.000	2	0	3	0	3.0	0	6.5	.424	3-0
11/08/2024	at Indiana	1	0	3	4	-.750	0	0	.000	0	0	0	.000	0	0	.000	0	0	1	0	1.0	0	0.5	.305	3-1
11/14/2024	Rutgers	1	2	1	3	.333	0	0	.000	0	0	0	.000	0	0	.000	0	0	0	0	0.0	0	2.0	.370	3-0
11/17/2024	Illinois	1	1	0	2	.500	0	0	.000	0	0	0	.000	0	3	1.000	0	0	0	1	0.0	0	1.0	.343	3-0
Totals		78	133	58	327	.229	2	25	.080	0	0	1	1.000	0	6	1.000	35	1	46	9	47.0	0	157.0		

Player Averages

Sets Played	Kills per set	Assists per set	Service aces per set	Digs per set	Blocks per set	Points per set
78	1.71	0.03	0.00	0.45	0.60	2.01



2024-25 Purdue Women's Volleyball  
Individual Match-by-Match  
All games

Page 5/14  
as of Nov 18, 2024

#5 ANDERSON, Taylor

Date	Opponent	SP	Attack				Set			Serve				Recept			Blocking					Team			
			K	E	TA	PCT	A	TA	PCT	SA	SE	TA	PCT	RE	TA	PCT	DIG	BS	BA	BE	TOTAL	BHE	POINTS	HIT%	SCORE
08/30/2024	Kansas St.	*4	0	1	2	.500	43	109	.394	1	1	13	.923	0	0	.000	7	0	8	0	8.0	0	5.0	.234	3-1
08/31/2024	UMBC	*3	3	0	4	.750	34	76	.447	0	2	8	.750	0	0	.000	5	0	3	0	3.0	0	4.5	.371	3-0
09/01/2024	UC Davis	*3	1	0	3	.333	45	78	.577	2	2	11	.818	0	0	.000	9	1	1	0	2.0	0	4.5	.450	3-0
09/05/2024	vs California	*4	1	1	3	.000	52	118	.441	3	2	20	.900	0	1	1.000	11	0	2	0	2.0	0	5.0	.235	3-1
09/06/2024	at Utah	*3	3	0	5	.600	34	85	.400	0	1	14	.929	0	0	.000	10	0	7	0	7.0	0	6.5	.246	3-0
09/07/2024	at Utah St.	*3	0	0	1	.000	29	69	.420	0	2	10	.800	0	0	.000	3	0	2	1	2.0	0	1.0	.290	3-0
09/13/2024	vs Houston	*3	4	0	7	.571	31	70	.443	0	1	10	.900	0	2	1.000	7	1	1	0	2.0	0	5.5	.292	3-0
09/14/2024	vs Kentucky	*4	2	0	6	.333	28	86	.326	2	1	15	.933	0	0	.000	8	0	4	0	4.0	0	6.0	.310	3-1
09/19/2024	at Kansas	*4	2	0	7	.286	49	128	.383	1	2	17	.882	0	0	.000	11	0	7	0	7.0	2	6.5	.278	1-3
09/20/2024	vs Creighton	*4	2	0	7	.286	44	124	.355	1	2	13	.846	0	0	.000	9	0	5	0	5.0	0	5.5	.209	1-3
09/21/2024	vs Tulsa	*3	2	2	10	.000	27	57	.474	0	1	7	.857	0	0	.000	5	0	3	0	3.0	0	3.5	.365	3-0
09/25/2024	Penn St.	*3	0	1	5	.200	29	84	.345	0	0	11	1.000	0	0	.000	2	0	1	0	1.0	0	0.5	.176	0-3
09/28/2024	at Minnesota	*5	3	3	9	.000	54	130	.415	1	0	14	1.000	0	0	.000	12	0	4	0	4.0	0	6.0	.252	3-2
10/04/2024	at Northwestern	*4	2	1	8	.125	47	111	.423	1	4	15	.733	0	0	.000	13	1	0	0	1.0	1	4.0	.287	3-1
10/06/2024	Michigan St.	*3	0	0	3	.000	37	101	.366	0	0	14	1.000	0	0	.000	8	0	2	0	2.0	0	1.0	.252	3-0
10/11/2024	at Nebraska	*5	3	0	4	.750	52	140	.371	1	3	18	.833	0	0	.000	10	1	6	1	7.0	0	8.0	.311	2-3
10/12/2024	at Iowa	*4	6	1	8	.625	42	110	.382	1	0	11	1.000	1	1	.000	7	0	0	0	0.0	0	7.0	.213	3-1
10/17/2024	UCLA	*5	7	1	12	.500	51	127	.402	1	0	18	1.000	0	0	.000	12	1	4	0	5.0	0	11.0	.325	3-2
10/19/2024	Indiana	*3	1	0	2	.500	28	68	.412	3	2	15	.867	0	0	.000	10	0	2	0	2.0	0	5.0	.333	3-0
10/23/2024	Ohio St.	*3	2	0	6	.333	38	94	.404	2	1	14	.929	0	0	.000	7	0	4	0	4.0	0	6.0	.215	3-0
10/26/2024	Wisconsin	*3	2	1	4	.250	24	80	.300	0	1	10	.900	0	0	.000	8	1	1	0	2.0	0	3.5	.089	0-3
11/01/2024	at Maryland	*3	3	0	4	.750	39	101	.386	1	1	16	.938	0	0	.000	6	0	1	0	1.0	0	4.5	.313	3-0
11/02/2024	at Rutgers	*3	1	0	3	.333	33	68	.485	1	3	19	.842	0	0	.000	3	0	2	0	2.0	0	3.0	.424	3-0
11/08/2024	at Indiana	*4	4	0	5	.800	45	108	.417	0	2	24	.917	0	1	1.000	11	0	1	0	1.0	0	4.5	.305	3-1
11/10/2024	Michigan	*3	4	1	5	.600	34	82	.415	0	0	12	1.000	0	0	.000	8	0	0	1	0.0	0	4.0	.279	3-0
11/14/2024	Rutgers	*3	4	0	6	.667	35	76	.461	0	1	10	.900	0	0	.000	2	0	3	0	3.0	0	5.5	.370	3-0
11/17/2024	Illinois	*3	2	1	3	.333	44	87	.506	0	0	12	1.000	0	0	.000	10	0	4	0	4.0	0	4.0	.343	3-0
Totals		95	64	14	142	.352	1048	2567	.408	22	35	371	.906	1	5	.800	214	6	78	3	84.0	3	131.0		

Player Averages

Sets Played	Kills per set	Assists per set	Service aces per set	Digs per set	Blocks per set	Points per set
95	0.67	11.03	0.23	2.25	0.88	1.38



2024-25 Purdue Women's Volleyball  
Individual Match-by-Match  
All games

Page 6/14  
as of Nov 18, 2024

#7 COLVIN, Raven

			Attack				Set			Serve				Recept				Blocking					Team			
Date	Opponent	SP	K	E	TA	PCT	A	TA	PCT	SA	SE	TA	PCT	RE	TA	PCT	DIG	BS	BA	BE	TOTAL	BHE	POINTS	HIT%	SCORE	
08/30/2024	Kansas St.	*4	7	3	14	.286	0	4	.000	3	4	18	.778	0	2	1.000	1	1	9	0	10.0	0	15.5	.234	3-1	
08/31/2024	UMBC	*3	7	3	13	.308	0	1	.000	0	2	9	.778	0	0	.000	1	0	5	2	5.0	0	9.5	.371	3-0	
09/01/2024	UC Davis	*3	12	1	15	.733	0	0	.000	0	2	2	.000	1	1	.000	0	1	3	2	4.0	0	14.5	.450	3-0	
09/05/2024	vs California	*4	16	5	26	.423	0	0	.000	2	4	12	.667	0	0	.000	4	1	5	0	6.0	0	21.5	.235	3-1	
09/06/2024	at Utah	*3	3	2	11	.091	0	1	.000	1	1	9	.889	0	0	.000	2	0	9	0	9.0	0	8.5	.246	3-0	
09/07/2024	at Utah St.	*3	7	0	10	.700	1	2	.500	1	1	10	.900	0	0	.000	1	3	7	0	10.0	0	14.5	.290	3-0	
09/13/2024	vs Houston	*3	5	1	7	.571	0	1	.000	1	2	10	.800	0	0	.000	2	1	3	1	4.0	0	8.5	.292	3-0	
09/14/2024	vs Kentucky	*4	9	1	14	.571	1	2	.500	2	2	10	.800	0	0	.000	5	1	6	0	7.0	0	15.0	.310	3-1	
09/19/2024	at Kansas	*4	14	3	25	.440	0	1	.000	2	2	13	.846	0	0	.000	3	0	7	1	7.0	0	19.5	.278	1-3	
09/20/2024	vs Creighton	*4	8	1	15	.467	0	1	.000	0	1	7	.857	0	0	.000	1	1	5	0	6.0	0	11.5	.209	1-3	
09/21/2024	vs Tulsa	*3	7	1	13	.462	0	3	.000	2	1	7	.857	0	0	.000	1	2	7	1	9.0	0	14.5	.365	3-0	
09/25/2024	Penn St.	*3	6	2	13	.308	0	1	.000	1	2	13	.846	0	0	.000	3	0	1	1	1.0	0	7.5	.176	0-3	
09/28/2024	at Minnesota	*5	19	7	31	.387	0	2	.000	7	3	23	.870	0	0	.000	5	1	4	0	5.0	0	29.0	.252	3-2	
10/04/2024	at Northwestern	*4	14	3	24	.458	0	0	.000	0	1	12	.917	0	0	.000	1	1	2	1	3.0	0	16.0	.287	3-1	
10/06/2024	Michigan St.	*3	8	1	15	.467	0	2	.000	0	1	3	.667	0	0	.000	0	2	4	2	6.0	0	12.0	.252	3-0	
10/11/2024	at Nebraska	*5	5	5	20	.000	1	2	.500	0	3	3	.000	0	0	.000	0	2	9	0	11.0	0	11.5	.311	2-3	
10/12/2024	at Iowa	*4	12	4	23	.348	0	1	.000	4	2	16	.875	0	1	1.000	4	0	3	0	3.0	0	17.5	.213	3-1	
10/17/2024	UCLA	*5	17	2	27	.556	0	3	.000	1	4	11	.636	0	2	1.000	3	1	5	0	6.0	0	21.5	.325	3-2	
10/19/2024	Indiana	*3	7	4	16	.188	1	2	.500	0	1	1	.000	0	0	.000	0	0	2	0	2.0	0	8.0	.333	3-0	
10/23/2024	Ohio St.	*3	5	7	14	.143	1	2	.500	1	4	11	.636	0	0	.000	2	0	6	0	6.0	0	9.0	.215	3-0	
10/26/2024	Wisconsin	*3	4	4	13	.000	0	2	.000	0	3	12	.750	0	0	.000	2	0	1	1	1.0	0	4.5	.089	0-3	
11/01/2024	at Maryland	*3	7	4	18	.167	0	3	.000	2	1	6	.833	0	0	.000	2	0	0	2	0.0	0	9.0	.313	3-0	
11/02/2024	at Rutgers	*3	9	2	17	.412	1	2	.500	1	0	4	1.000	0	0	.000	0	1	3	0	4.0	0	12.5	.424	3-0	
11/08/2024	at Indiana	*4	7	5	15	.133	0	2	.000	1	0	6	1.000	0	1	1.000	2	0	5	1	5.0	0	10.5	.305	3-1	
11/10/2024	Michigan	*3	8	2	16	.375	0	2	.000	0	0	2	1.000	0	0	.000	0	2	7	0	9.0	0	13.5	.279	3-0	
11/14/2024	Rutgers	*3	4	3	11	.091	1	1	1.000	2	1	5	.800	0	1	1.000	2	1	3	1	4.0	1	8.5	.370	3-0	
11/17/2024	Illinois	*3	8	3	15	.333	0	2	.000	0	1	3	.667	0	0	.000	2	0	6	1	6.0	0	11.0	.343	3-0	
Totals		95	235	79	451	.346	7	45	.156	34	49	238	.794	1	8	.875	49	22	127	17	149.0	1	354.5			

Player Averages

Sets Played	Kills per set	Assists per set	Service aces per set	Digs per set	Blocks per set	Points per set
95	2.47	0.07	0.36	0.52	1.57	3.73



2024-25 Purdue Women's Volleyball  
Individual Match-by-Match  
All games

Page 7/14  
as of Nov 18, 2024

#8 GRAY, Raven

			Attack				Set			Serve				Recept				Blocking				Team				
Date	Opponent	SP	K	E	TA	PCT	A	TA	PCT	SA	SE	TA	PCT	RE	TA	PCT	DIG	BS	BA	BE	TOTAL	BHE	POINTS	HIT%	SCORE	
08/31/2024	UMBC	1	1	0	1	1.000	0	1	.000	0	0	0	.000	0	0	.000	0	0	0	0	0.0	0	1.0	.371	3-0	
11/02/2024	at Rutgers	2	0	0	0	.000	0	0	.000	0	1	1	.000	0	0	.000	0	0	0	0	0.0	0	0.0	.424	3-0	
11/14/2024	Rutgers	1	0	0	0	.000	0	0	.000	0	0	0	.000	0	0	.000	0	0	0	0	0.0	0	0.0	.370	3-0	
Totals			4	1	0	1	1.000	0	1	.000	0	1	1	.000	0	0	.000	0	0	0	0	0.0	0	1.0		

Player Averages

Sets Played	Kills per set	Assists per set	Service aces per set	Digs per set	Blocks per set	Points per set
4	0.25	0.00	0.00	0.00	0.00	0.25



2024-25 Purdue Women's Volleyball  
Individual Match-by-Match  
All games

Page 8/14  
as of Nov 18, 2024

#9 MYERS, Lourdes

Date	Opponent	SP	Attack				Set			Serve				Recept			Blocking					Team			
			K	E	TA	PCT	A	TA	PCT	SA	SE	TA	PCT	RE	TA	PCT	DIG	BS	BA	BE	TOTAL	BHE	POINTS	HIT%	SCORE
08/30/2024	Kansas St.	*4	4	1	9	.333	0	1	.000	0	0	0	.000	0	2	1.000	0	0	6	4	6.0	0	7.0	.234	3-1
08/31/2024	UMBC	*3	3	1	9	.222	0	0	.000	0	0	0	.000	0	0	.000	1	0	5	1	5.0	0	5.5	.371	3-0
09/01/2024	UC Davis	*3	6	1	9	.556	0	0	.000	0	0	0	.000	0	0	.000	2	1	1	0	2.0	0	7.5	.450	3-0
09/05/2024	vs California	*4	6	2	13	.308	0	1	.000	0	0	0	.000	0	2	1.000	0	0	4	1	4.0	0	8.0	.235	3-1
09/06/2024	at Utah	*3	2	1	7	.143	0	0	.000	0	0	0	.000	0	0	.000	1	0	2	2	2.0	0	3.0	.246	3-0
09/07/2024	at Utah St.	*2	2	1	3	.333	0	1	.000	0	0	0	.000	0	0	.000	1	1	0	0	1.0	0	3.0	.290	3-0
09/13/2024	vs Houston	*3	1	0	6	.167	0	1	.000	0	0	0	.000	0	3	1.000	1	1	7	1	8.0	0	5.5	.292	3-0
09/14/2024	vs Kentucky	*4	1	1	3	.000	0	1	.000	0	0	0	.000	0	0	.000	2	0	2	0	2.0	0	2.0	.310	3-1
09/19/2024	at Kansas	*1	1	1	4	.000	0	0	.000	0	0	0	.000	0	0	.000	0	0	1	3	1.0	0	1.5	.278	1-3
09/20/2024	vs Creighton	*4	5	1	12	.333	0	1	.000	0	0	0	.000	0	0	.000	2	0	2	2	2.0	0	6.0	.209	1-3
09/21/2024	vs Tulsa	*3	6	1	8	.625	0	0	.000	0	0	0	.000	0	1	1.000	0	0	2	0	2.0	0	7.0	.365	3-0
09/25/2024	Penn St.	*3	3	0	7	.429	0	0	.000	0	0	0	.000	0	0	.000	2	0	1	0	1.0	0	3.5	.176	0-3
09/28/2024	at Minnesota	*5	4	1	9	.333	0	1	.000	0	0	0	.000	0	1	1.000	1	0	4	2	4.0	0	6.0	.252	3-2
10/04/2024	at Northwestern	*4	4	1	9	.333	0	1	.000	0	0	0	.000	0	0	.000	2	0	3	3	3.0	0	5.5	.287	3-1
10/06/2024	Michigan St.	*3	5	0	9	.556	0	0	.000	0	0	0	.000	1	2	.500	1	0	5	0	5.0	0	7.5	.252	3-0
10/11/2024	at Nebraska	*5	5	1	8	.500	0	0	.000	0	0	0	.000	0	1	1.000	0	0	3	0	3.0	0	6.5	.311	2-3
10/12/2024	at Iowa	*4	5	1	8	.500	0	1	.000	0	0	0	.000	0	2	1.000	0	1	4	0	5.0	0	8.0	.213	3-1
10/17/2024	UCLA	*5	4	2	10	.200	1	1	1.000	0	0	0	.000	0	1	1.000	2	3	6	1	9.0	0	10.0	.325	3-2
10/19/2024	Indiana	*3	1	0	3	.333	1	1	1.000	0	0	0	.000	0	0	.000	0	0	2	0	2.0	0	2.0	.333	3-0
10/23/2024	Ohio St.	*3	7	0	13	.538	0	1	.000	0	0	0	.000	0	0	.000	1	1	5	1	6.0	0	10.5	.215	3-0
10/26/2024	Wisconsin	*3	5	3	13	.154	0	1	.000	0	0	0	.000	0	0	.000	2	0	5	0	5.0	0	7.5	.089	0-3
11/01/2024	at Maryland	*3	4	1	10	.300	0	0	.000	0	0	0	.000	0	0	.000	0	0	2	1	2.0	0	5.0	.313	3-0
11/02/2024	at Rutgers	*3	6	2	11	.364	0	0	.000	0	0	0	.000	0	0	.000	1	1	3	0	4.0	0	8.5	.424	3-0
11/08/2024	at Indiana	*4	9	1	14	.571	0	1	.000	0	0	0	.000	0	0	.000	0	0	1	0	1.0	0	9.5	.305	3-1
11/10/2024	Michigan	*3	1	3	6	.333	0	0	.000	0	0	0	.000	0	0	.000	1	0	2	1	2.0	0	2.0	.279	3-0
11/14/2024	Rutgers	*3	2	0	6	.333	0	0	.000	0	0	0	.000	0	0	.000	2	0	4	0	4.0	0	4.0	.370	3-0
11/17/2024	Illinois	*3	6	2	13	.308	0	0	.000	0	0	0	.000	0	1	1.000	3	0	6	0	6.0	0	9.0	.343	3-0
Totals		91	108	29	232	.341	2	14	.143	0	0	0	.000	1	16	.938	28	9	88	23	97.0	0	161.0		

Player Averages

Sets Played	Kills per set	Assists per set	Service aces per set	Digs per set	Blocks per set	Points per set
91	1.19	0.02	0.00	0.31	1.07	1.77



2024-25 Purdue Women's Volleyball  
Individual Match-by-Match  
All games

Page 9/14  
as of Nov 18, 2024

#10 HORNING, Ali

		Attack				Set			Serve				Recept				Blocking				Team				
Date	Opponent	SP	K	E	TA	PCT	A	TA	PCT	SA	SE	TA	PCT	RE	TA	PCT	DIG	BS	BA	BE	TOTAL	BHE	POINTS	HIT%	SCORE
08/30/2024	Kansas St.	4	0	0	0	.000	6	17	.353	1	0	14	1.000	4	36	.889	17	0	0	0	0.0	0	1.0	.234	3-1
08/31/2024	UMBC	3	0	0	0	.000	1	7	.143	0	0	15	1.000	2	10	.800	14	0	0	0	0.0	0	0.0	.371	3-0
09/01/2024	UC Davis	3	0	0	0	.000	3	11	.273	1	1	15	.933	0	9	1.000	18	0	0	0	0.0	0	1.0	.450	3-0
09/05/2024	vs California	4	0	0	0	.000	3	18	.167	0	0	3	1.000	1	16	.938	18	0	1	0	1.0	0	0.5	.235	3-1
09/06/2024	at Utah	3	0	0	0	.000	1	14	.071	1	0	9	1.000	1	36	.972	14	0	0	0	0.0	0	1.0	.246	3-0
09/07/2024	at Utah St.	3	0	0	0	.000	3	6	.500	0	0	6	1.000	0	18	1.000	8	0	0	0	0.0	0	0.0	.290	3-0
09/13/2024	vs Houston	3	0	0	0	.000	1	8	.125	0	0	0	.000	0	7	1.000	9	0	0	0	0.0	0	0.0	.292	3-0
09/14/2024	vs Kentucky	4	0	0	1	.000	7	14	.500	0	0	1	1.000	1	24	.958	10	0	0	0	0.0	0	0.0	.310	3-1
09/19/2024	at Kansas	4	0	0	0	.000	5	13	.385	0	0	1	1.000	0	42	1.000	14	0	0	0	0.0	0	0.0	.278	1-3
09/20/2024	vs Creighton	4	0	0	1	.000	3	9	.333	0	0	0	.000	0	20	1.000	15	0	0	0	0.0	0	0.0	.209	1-3
09/21/2024	vs Tulsa	3	0	0	0	.000	0	7	.000	0	0	2	1.000	1	21	.952	6	0	0	0	0.0	0	0.0	.365	3-0
09/25/2024	Penn St.	3	0	0	0	.000	1	3	.333	0	1	4	.750	0	18	1.000	11	0	0	0	0.0	0	0.0	.176	0-3
09/28/2024	at Minnesota	5	0	0	0	.000	3	14	.214	0	0	0	.000	1	38	.974	24	0	0	0	0.0	0	0.0	.252	3-2
10/04/2024	at Northwestern	4	0	0	1	.000	2	10	.200	0	0	0	.000	0	27	1.000	18	0	0	0	0.0	0	0.0	.287	3-1
10/06/2024	Michigan St.	3	0	0	0	.000	4	8	.500	0	0	0	.000	2	10	.800	22	0	0	0	0.0	0	0.0	.252	3-0
10/11/2024	at Nebraska	5	0	0	0	.000	6	12	.500	0	1	9	.889	2	51	.961	12	0	0	0	0.0	0	0.0	.311	2-3
10/12/2024	at Iowa	4	0	0	0	.000	2	12	.167	0	1	13	.923	0	21	1.000	17	0	0	0	0.0	0	0.0	.213	3-1
10/17/2024	UCLA	5	0	0	1	.000	7	17	.412	0	1	14	.929	3	43	.930	19	0	0	0	0.0	0	0.0	.325	3-2
10/19/2024	Indiana	3	0	0	0	.000	5	12	.417	1	0	14	1.000	0	16	1.000	6	0	0	0	0.0	0	1.0	.333	3-0
10/23/2024	Ohio St.	3	0	0	1	.000	3	12	.250	0	0	9	1.000	1	58	.983	15	0	0	0	0.0	0	0.0	.215	3-0
10/26/2024	Wisconsin	3	0	0	1	.000	2	10	.200	0	1	6	.833	5	37	.865	9	0	0	0	0.0	0	0.0	.089	0-3
11/01/2024	at Maryland	3	0	0	0	.000	1	3	.333	1	3	16	.813	0	21	1.000	17	0	0	0	0.0	0	1.0	.313	3-0
11/02/2024	at Rutgers	3	0	0	0	.000	2	3	.667	1	0	12	1.000	0	20	1.000	14	0	0	0	0.0	0	1.0	.424	3-0
11/08/2024	at Indiana	4	0	0	0	.000	6	8	.750	0	1	16	.938	0	32	1.000	14	0	0	0	0.0	0	0.0	.305	3-1
11/10/2024	Michigan	3	0	0	0	.000	4	9	.444	0	0	16	1.000	0	24	1.000	13	0	0	0	0.0	0	0.0	.279	3-0
11/14/2024	Rutgers	3	0	0	0	.000	3	5	.600	2	0	18	1.000	0	17	1.000	15	0	0	0	0.0	0	2.0	.370	3-0
11/17/2024	Illinois	3	0	0	0	.000	2	10	.200	0	1	13	.923	0	17	1.000	16	0	0	0	0.0	0	0.0	.343	3-0
Totals		95	0	0	6	.000	86	272	.316	8	11	226	.951	24	689	.965	385	0	1	0	1.0	0	8.5		

Player Averages

Sets Played	Kills per set	Assists per set	Service aces per set	Digs per set	Blocks per set	Points per set
95	0.00	0.91	0.08	4.05	0.01	0.09



2024-25 Purdue Women's Volleyball  
Individual Match-by-Match  
All games

Page 10/14  
as of Nov 18, 2024

#11 SHONDELL, Allie

			Attack				Set			Serve				Recept				Blocking				Team				
Date	Opponent	SP	K	E	TA	PCT	A	TA	PCT	SA	SE	TA	PCT	RE	TA	PCT	DIG	BS	BA	BE	TOTAL	BHE	POINTS	HIT%	SCORE	
08/31/2024	UMBC	1	0	0	0	.000	3	6	.500	0	1	2	.500	0	0	.000	0	0	0	0	0.0	0	0.0	.371	3-0	
09/07/2024	at Utah St.	1	0	1	1	-1.000	3	8	.375	0	0	0	.000	0	0	.000	1	0	1	0	1.0	0	0.5	.290	3-0	
09/21/2024	vs Tulsa	1	0	0	0	.000	5	8	.625	0	0	0	.000	0	0	.000	0	0	2	0	2.0	0	1.0	.365	3-0	
10/26/2024	Wisconsin	1	0	0	0	.000	2	7	.286	0	0	0	.000	0	0	.000	1	0	0	0	0.0	0	0.0	.089	0-3	
11/02/2024	at Rutgers	1	0	0	0	.000	5	10	.500	0	0	1	1.000	0	0	.000	0	0	0	0	0.0	0	0.0	.424	3-0	
11/14/2024	Rutgers	1	0	0	0	.000	2	3	.667	0	0	1	1.000	0	0	.000	1	0	0	0	0.0	0	0.0	.370	3-0	
Totals			6	0	1	1	-1.000	20	42	.476	0	1	4	.750	0	0	.000	3	0	3	0	3.0	0	1.5		

Player Averages

Sets Played	Kills per set	Assists per set	Service aces per set	Digs per set	Blocks per set	Points per set
6	0.00	3.33	0.00	0.50	0.50	0.25



2024-25 Purdue Women's Volleyball  
Individual Match-by-Match  
All games

Page 11/14  
as of Nov 18, 2024

#15 CARR, Lizzie

Date	Opponent	SP	Attack				Set			Serve				Recept			Blocking					Team			
			K	E	TA	PCT	A	TA	PCT	SA	SE	TA	PCT	RE	TA	PCT	DIG	BS	BA	BE	TOTAL	BHE	POINTS	HIT%	SCORE
08/31/2024	UMBC	3	6	0	15	.400	0	0	.000	0	0	0	.000	0	0	.000	0	0	4	0	4.0	0	8.0	.371	3-0
09/06/2024	at Utah	1	0	0	0	.000	0	0	.000	0	0	0	.000	0	0	.000	0	0	0	0	0.0	0	0.0	.246	3-0
09/07/2024	at Utah St.	2	2	0	5	.400	0	0	.000	0	0	0	.000	0	0	.000	0	1	2	0	3.0	0	4.0	.290	3-0
09/13/2024	vs Houston	1	3	0	3	1.000	0	1	.000	0	0	0	.000	0	0	.000	0	0	0	0	0.0	0	3.0	.292	3-0
09/19/2024	at Kansas	3	5	3	11	.182	0	2	.000	0	0	0	.000	0	1	1.000	0	0	1	1	1.0	0	5.5	.278	1-3
09/21/2024	vs Tulsa	2	5	1	10	.400	0	1	.000	0	0	0	.000	0	0	.000	1	0	1	0	1.0	0	5.5	.365	3-0
10/17/2024	UCLA	2	1	1	3	.000	0	0	.000	0	0	0	.000	0	0	.000	0	0	0	0	0.0	0	1.0	.325	3-2
10/19/2024	Indiana	1	1	0	4	.250	0	0	.000	0	0	0	.000	0	0	.000	0	0	0	0	0.0	0	1.0	.333	3-0
10/26/2024	Wisconsin	2	1	0	5	.200	1	1	1.000	0	0	0	.000	0	0	.000	2	0	1	0	1.0	0	1.5	.089	0-3
11/01/2024	at Maryland	2	5	0	10	.500	0	0	.000	0	0	0	.000	0	0	.000	0	0	0	0	0.0	0	5.0	.313	3-0
11/02/2024	at Rutgers	2	0	0	3	.000	0	0	.000	0	0	0	.000	0	0	.000	0	0	0	0	0.0	0	0.0	.424	3-0
11/08/2024	at Indiana	4	10	1	18	.500	0	1	.000	0	0	0	.000	0	0	.000	1	0	1	2	1.0	0	10.5	.305	3-1
11/10/2024	Michigan	3	4	1	12	.250	0	1	.000	0	0	0	.000	0	0	.000	2	1	5	1	6.0	0	7.5	.279	3-0
11/14/2024	Rutgers	2	5	0	7	.714	0	0	.000	0	0	0	.000	0	0	.000	0	0	1	0	1.0	0	5.5	.370	3-0
11/17/2024	Illinois	3	8	1	13	.538	0	0	.000	0	0	0	.000	0	0	.000	2	0	5	0	5.0	0	10.5	.343	3-0
Totals		33	56	8	119	.403	1	7	.143	0	0	0	.000	0	1	1.000	8	2	21	4	23.0	0	68.5		

Player Averages

Sets Played	Kills per set	Assists per set	Service aces per set	Digs per set	Blocks per set	Points per set
33	1.70	0.03	0.00	0.24	0.70	2.08



2024-25 Purdue Women's Volleyball  
Individual Match-by-Match  
All games

Page 12/14  
as of Nov 18, 2024

#17 HUDSON, Eva

			Attack				Set			Serve				Recept				Blocking					Team			
Date	Opponent	SP	K	E	TA	PCT	A	TA	PCT	SA	SE	TA	PCT	RE	TA	PCT	DIG	BS	BA	BE	TOTAL	BHE	POINTS	HIT%	SCORE	
08/30/2024	Kansas St.	*4	16	5	48	.229	0	0	.000	0	1	12	.917	0	12	1.000	12	1	4	1	5.0	0	19.0	.234	3-1	
08/31/2024	UMBC	*3	15	1	30	.467	0	4	.000	0	1	4	.750	1	8	.875	8	0	2	0	2.0	0	16.0	.371	3-0	
09/01/2024	UC Davis	*3	15	2	30	.433	0	1	.000	0	1	11	.909	0	13	1.000	9	0	1	1	1.0	0	15.5	.450	3-0	
09/05/2024	vs California	*4	14	7	50	.140	0	6	.000	0	1	16	.938	1	22	.955	8	0	4	0	4.0	0	16.0	.235	3-1	
09/06/2024	at Utah	*3	18	4	45	.311	0	1	.000	3	0	11	1.000	3	10	.700	6	0	3	0	3.0	0	22.5	.246	3-0	
09/07/2024	at Utah St.	*3	10	4	34	.176	0	0	.000	0	1	13	.923	1	7	.857	8	1	2	0	3.0	0	12.0	.290	3-0	
09/13/2024	vs Houston	*3	10	3	26	.269	1	1	1.000	0	1	11	.909	0	7	1.000	6	0	1	0	1.0	0	10.5	.292	3-0	
09/14/2024	vs Kentucky	*4	20	6	46	.304	1	3	.333	1	2	12	.833	1	11	.909	3	0	1	0	1.0	0	21.5	.310	3-1	
09/19/2024	at Kansas	*4	17	1	53	.302	1	3	.333	0	0	14	1.000	1	25	.960	11	0	0	0	0.0	0	17.0	.278	1-3	
09/20/2024	vs Creighton	*4	19	7	55	.218	0	3	.000	0	0	11	1.000	0	25	1.000	9	0	1	0	1.0	0	19.5	.209	1-3	
09/21/2024	vs Tulsa	*3	11	2	24	.375	1	1	1.000	0	1	6	.833	0	5	1.000	4	0	1	1	1.0	0	11.5	.365	3-0	
09/25/2024	Penn St.	*3	10	4	30	.200	0	1	.000	0	1	5	.800	1	31	.968	5	0	0	0	0.0	0	10.0	.176	0-3	
09/28/2024	at Minnesota	*5	18	5	51	.255	1	4	.250	0	1	7	.857	2	17	.882	11	0	2	0	2.0	0	19.0	.252	3-2	
10/04/2024	at Northwestern	*4	13	6	42	.167	0	5	.000	3	0	17	1.000	1	13	.923	16	0	2	0	2.0	0	17.0	.287	3-1	
10/06/2024	Michigan St.	*3	11	2	35	.257	0	0	.000	0	1	11	.909	1	22	.955	9	0	3	0	3.0	0	12.5	.252	3-0	
10/11/2024	at Nebraska	*5	26	4	63	.349	0	1	.000	0	2	19	.895	1	33	.970	15	0	1	0	1.0	0	26.5	.311	2-3	
10/12/2024	at Iowa	*4	18	8	46	.217	2	3	.667	3	0	18	1.000	0	20	1.000	8	0	2	0	2.0	0	22.0	.213	3-1	
10/17/2024	UCLA	*5	24	2	56	.393	0	2	.000	0	1	17	.941	2	15	.867	17	0	3	0	3.0	0	25.5	.325	3-2	
10/19/2024	Indiana	*3	17	2	36	.417	1	1	1.000	0	1	3	.667	0	4	1.000	6	0	0	0	0.0	0	17.0	.333	3-0	
10/23/2024	Ohio St.	*3	19	6	51	.255	0	1	.000	0	1	11	.909	0	4	1.000	8	0	4	0	4.0	0	21.0	.215	3-0	
10/26/2024	Wisconsin	*3	17	9	50	.160	0	2	.000	0	0	4	1.000	0	13	1.000	5	0	2	0	2.0	0	18.0	.089	0-3	
11/01/2024	at Maryland	*3	15	1	41	.341	0	0	.000	0	2	9	.778	0	13	1.000	7	0	1	0	1.0	0	15.5	.313	3-0	
11/02/2024	at Rutgers	*3	14	1	32	.406	0	1	.000	0	1	6	.833	0	7	1.000	6	0	0	0	0.0	0	14.0	.424	3-0	
11/08/2024	at Indiana	*4	26	7	51	.373	0	3	.000	0	2	13	.846	0	9	1.000	10	2	3	0	5.0	0	29.5	.305	3-1	
11/10/2024	Michigan	*3	19	5	40	.350	0	3	.000	1	1	13	.923	0	8	1.000	6	0	3	0	3.0	0	21.5	.279	3-0	
11/14/2024	Rutgers	*3	15	4	43	.256	2	2	1.000	0	0	12	1.000	0	3	1.000	10	0	3	0	3.0	0	16.5	.370	3-0	
11/17/2024	Illinois	*3	18	4	42	.333	0	0	.000	0	0	11	1.000	0	13	1.000	7	1	1	0	2.0	0	19.5	.343	3-0	
Totals			95	445	112	1150	.290	10	52	.192	11	23	297	.923	16	370	.957	230	5	50	3	55.0	0	486.0		

Player Averages

Sets Played	Kills per set	Assists per set	Service aces per set	Digs per set	Blocks per set	Points per set
95	4.68	0.11	0.12	2.42	0.58	5.12



2024-25 Purdue Women's Volleyball  
Individual Match-by-Match  
All games

Page 13/14  
as of Nov 18, 2024

#19 YIM, Sydney

			Attack				Set			Serve				Recept					Blocking				Team			
Date	Opponent	SP	K	E	TA	PCT	A	TA	PCT	SA	SE	TA	PCT	RE	TA	PCT	DIG	BS	BA	BE	TOTAL	BHE	POINTS	HIT%	SCORE	
10/19/2024	Indiana	1	0	0	0	.000	1	2	.500	0	0	0	.000	0	0	.000	0	0	0	0	0.0	0	0.0	.333	3-0	
11/02/2024	at Rutgers	1	1	0	1	1.000	0	1	.000	0	0	0	.000	0	0	.000	0	0	0	0	0.0	0	1.0	.424	3-0	
11/14/2024	Rutgers	1	0	0	0	.000	2	2	1.000	0	0	0	.000	0	0	.000	1	0	0	0	0.0	0	0.0	.370	3-0	
Totals			3	1	0	1	1.000	3	5	.600	0	0	0	.000	0	0	.000	1	0	0	0	0.0	0	1.0		

Player Averages

Sets Played	Kills per set	Assists per set	Service aces per set	Digs per set	Blocks per set	Points per set
3	0.33	1.00	0.00	0.33	0.00	0.33



2024-25 Purdue Women's Volleyball  
Individual Match-by-Match  
All games

Page 14/14  
as of Nov 18, 2024

#21 KANE, Julia

			Attack				Set			Serve				Recept			Blocking					Team			
Date	Opponent	SP	K	E	TA	PCT	A	TA	PCT	SA	SE	TA	PCT	RE	TA	PCT	DIG	BS	BA	BE	TOTAL	BHE	POINTS	HIT%	SCORE
08/31/2024	UMBC	2	0	0	0	.000	1	1	1.000	1	0	7	1.000	1	6	.833	1	0	0	0	0.0	0	1.0	.371	3-0
09/07/2024	at Utah St.	2	0	0	0	.000	0	0	.000	1	1	8	.875	0	0	.000	0	0	0	0	0.0	0	1.0	.290	3-0
09/13/2024	vs Houston	3	0	0	0	.000	0	0	.000	0	1	12	.917	0	0	.000	1	0	0	0	0.0	0	0.0	.292	3-0
09/14/2024	vs Kentucky	4	0	0	0	.000	1	1	1.000	1	2	17	.882	0	0	.000	3	0	0	0	0.0	0	1.0	.310	3-1
09/19/2024	at Kansas	4	0	0	0	.000	2	2	1.000	1	3	15	.800	0	0	.000	0	0	0	0	0.0	0	1.0	.278	1-3
09/20/2024	vs Creighton	4	0	0	0	.000	0	2	.000	0	1	14	.929	0	0	.000	3	0	0	0	0.0	0	0.0	.209	1-3
09/21/2024	vs Tulsa	3	0	0	0	.000	1	1	1.000	1	2	16	.875	0	0	.000	6	0	0	0	0.0	0	1.0	.365	3-0
09/25/2024	Penn St.	2	0	0	0	.000	0	1	.000	0	1	4	.750	0	0	.000	0	0	0	0	0.0	0	0.0	.176	0-3
09/28/2024	at Minnesota	5	0	0	0	.000	0	1	.000	3	2	15	.867	0	0	.000	2	0	0	0	0.0	0	3.0	.252	3-2
10/04/2024	at Northwestern	4	0	0	0	.000	2	2	1.000	1	4	20	.800	0	0	.000	0	0	0	0	0.0	0	1.0	.287	3-1
10/06/2024	Michigan St.	3	0	0	0	.000	0	2	.000	0	1	12	.917	0	0	.000	4	0	0	0	0.0	0	0.0	.252	3-0
10/11/2024	at Nebraska	5	0	0	0	.000	1	2	.500	0	2	9	.778	0	0	.000	0	0	0	0	0.0	0	0.0	.311	2-3
10/12/2024	at Iowa	1	0	0	0	.000	0	0	.000	0	0	2	1.000	0	0	.000	0	0	0	0	0.0	0	0.0	.213	3-1
10/17/2024	UCLA	4	0	0	0	.000	0	0	.000	0	2	8	.750	0	0	.000	1	0	0	0	0.0	0	0.0	.325	3-2
10/19/2024	Indiana	3	0	0	0	.000	0	0	.000	2	1	18	.944	0	0	.000	2	0	0	0	0.0	0	2.0	.333	3-0
10/23/2024	Ohio St.	2	0	0	0	.000	0	0	.000	0	1	3	.667	0	0	.000	0	0	0	0	0.0	0	0.0	.215	3-0
10/26/2024	Wisconsin	3	0	0	0	.000	0	0	.000	0	1	6	.833	0	0	.000	0	0	0	0	0.0	0	0.0	.089	0-3
11/01/2024	at Maryland	2	0	0	0	.000	0	0	.000	0	0	3	1.000	0	0	.000	0	0	0	0	0.0	0	0.0	.313	3-0
11/02/2024	at Rutgers	2	0	0	0	.000	0	0	.000	0	1	4	.750	0	0	.000	0	0	0	0	0.0	0	0.0	.424	3-0
11/08/2024	at Indiana	3	0	0	0	.000	0	2	.000	0	1	8	.875	0	0	.000	0	0	0	0	0.0	0	0.0	.305	3-1
11/10/2024	Michigan	2	0	0	0	.000	0	2	.000	0	1	10	.900	0	0	.000	3	0	0	0	0.0	0	0.0	.279	3-0
11/14/2024	Rutgers	1	0	0	0	.000	0	0	.000	0	1	3	.667	0	0	.000	0	0	0	0	0.0	0	0.0	.370	3-0
11/17/2024	Illinois	2	0	0	0	.000	0	0	.000	0	0	4	1.000	0	0	.000	0	0	0	0	0.0	0	0.0	.343	3-0
Totals		66	0	0	0	.000	8	19	.421	11	29	218	.867	1	6	.833	26	0	0	0	0.0	0	11.0		

Player Averages

Sets Played	Kills per set	Assists per set	Service aces per set	Digs per set	Blocks per set	Points per set
66	0.00	0.12	0.17	0.39	0.00	0.17



Purdue Women's Volleyball  
Individual Career Summaries  
All games

Page 1/7  
as of Nov 18, 2024

**ANDERSON, Taylor**

SEASON	TEAM	SM-MP	K	K/S	E	TA	PCT	A	A/S	SA	SA/S	SE	DIG	D/S	RE	BS	BA	TB	B/S	BE	BHE	PTS	PTS/S
2023-24	Purdue	112-31	35	0.31	13	101	.218	1107	9.88	17	0.15	30	221	1.97	2	7	88	95	0.85	6	7	103.0	0.92
2024-25	Purdue	95-27	64	0.67	14	142	.352	1048	11.03	22	0.23	35	214	2.25	1	6	78	84	0.88	3	3	131.0	1.38
TOTAL		207 - 58	99	0.48	27	243	.296	2155	10.41	39	0.19	65	435	2.10	3	13	166	179	0.86	9	10	234.0	1.13

**Single Game Highs**

Statistic	Value	
Kills	7	vs UCLA 10/17/24
Attacks	12	vs UCLA 10/17/24
Assists	60	vs Marquette 12/01/23
Serve Aces	3	vs Illinois 10/04/23, vs Indiana 10/19/24, vs California 09/05/24
Digs	16	vs Marquette 12/01/23
Blocks	8	vs Kansas St. 08/30/24
Block solos	1	13 times
Block assists	8	vs Kansas St. 08/30/24

**CARR, Lizzie**

SEASON	TEAM	SM-MP	K	K/S	E	TA	PCT	A	A/S	SA	SA/S	SE	DIG	D/S	RE	BS	BA	TB	B/S	BE	BHE	PTS	PTS/S
2023-24	Purdue	30-18	14	0.47	6	34	.235	0	0.00	0	0.00	0	2	0.07	1	0	8	8	0.27	1	0	18.0	0.60
2024-25	Purdue	33-15	56	1.70	8	119	.403	1	0.03	0	0.00	0	8	0.24	0	2	21	23	0.70	4	0	68.5	2.08
TOTAL		63 - 33	70	1.11	14	153	.366	1	0.02	0	0.00	0	10	0.16	1	2	29	31	0.49	5	0	86.5	1.37

**Single Game Highs**

Statistic	Value	
Kills	10	at Indiana 11/08/24
Attacks	18	at Indiana 11/08/24
Assists	1	vs Wisconsin 10/26/24
Digs	2	vs Illinois 11/17/24, vs Michigan 11/10/24, vs Wisconsin 10/26/24
Blocks	6	vs Michigan 11/10/24
Block solos	1	vs Michigan 11/10/24, at Utah St. 09/07/24
Block assists	5	vs Illinois 11/17/24, vs Michigan 11/10/24
PCT	1.000	vs Houston 09/13/24



Purdue Women's Volleyball  
Individual Career Summaries  
All games

Page 2/7  
as of Nov 18, 2024

CHICOINE, Chloe

SEASON	TEAM	SM-MP	K	K/S	E	TA	PCT	A	A/S	SA	SA/S	SE	DIG	D/S	RE	BS	BA	TB	B/S	BE	BHE	PTS	PTS/S
2023-24	Purdue	125-32	478	3.82	142	1315	.256	27	0.22	39	0.31	53	283	2.26	30	5	24	29	0.23	7	1	534.0	4.27
2024-25	Purdue	95-27	302	3.18	102	897	.223	36	0.38	17	0.18	27	268	2.82	13	2	24	26	0.27	4	0	333.0	3.51
TOTAL		220 - 59	780	3.55	244	2212	.242	63	0.29	56	0.25	80	551	2.50	43	7	48	55	0.25	11	1	867.0	3.94

Single Game Highs

Statistic	Value	
Kills	27	vs Penn St. 11/05/23
Attacks	61	vs Penn St. 11/05/23
Assists	5	at Nebraska 10/11/24
Serve Aces	4	vs Illinois 10/04/23, vs Michigan St. 11/12/23
Digs	23	vs Wisconsin 11/17/23
Blocks	4	at Utah St. 09/07/24
Block solos	2	at Utah St. 09/07/24
Block assists	3	vs Indiana 10/18/23, at Wisconsin 11/01/23, vs Michigan St. 11/12/23, vs Houston 09/13/24
PCT	.565	at Rutgers 11/02/24

COLVIN, Raven

SEASON	TEAM	SM-MP	K	K/S	E	TA	PCT	A	A/S	SA	SA/S	SE	DIG	D/S	RE	BS	BA	TB	B/S	BE	BHE	PTS	PTS/S
2021-22	Purdue	96-30	169	1.76	54	330	.348	4	0.04	2	0.02	4	12	0.13	0	13	105	118	1.23	20	1	236.5	2.46
2022-23	Purdue	122-32	269	2.20	98	599	.285	6	0.05	43	0.35	59	74	0.61	1	22	151	173	1.42	19	1	409.5	3.36
2023-24	Purdue	125-32	269	2.15	105	586	.280	11	0.09	26	0.21	40	61	0.49	3	19	148	167	1.34	16	0	388.0	3.10
2024-25	Purdue	95-27	235	2.47	79	451	.346	7	0.07	34	0.36	49	49	0.52	1	22	127	149	1.57	17	1	354.5	3.73
TOTAL		438 - 121	942	2.15	336	1966	.308	28	0.06	105	0.24	152	196	0.45	5	76	531	607	1.39	72	3	1389	3.17

Single Game Highs

Statistic	Value	
Kills	19	at Minnesota 09/28/24
Attacks	32	vs Utah 09/02/22, vs Marquette 12/01/23
Assists	2	vs Illinois 10/04/23, vs Marquette 12/01/23
Serve Aces	7	at Minnesota 09/28/24
Digs	8	vs Marquette 09/01/23
Blocks	16	at Maryland 11/23/22
Block solos	5	at Maryland 11/23/22
Block assists	11	at Maryland 11/23/22



Purdue Women's Volleyball  
Individual Career Summaries  
All games

Page 3/7  
as of Nov 18, 2024

GRAY, Raven

SEASON	TEAM	SM-MP	K	K/S	E	TA	PCT	A	A/S	SA	SA/S	SE	DIG	D/S	RE	BS	BA	TB	B/S	BE	BHE	PTS	PTS/S
2024-25	Purdue	4-3	1	0.25	0	1	1.000	0	0.00	0	0.00	1	0	0.00	0	0	0	0	0.00	0	0	1.0	0.25
TOTAL		4 - 3	1	0.25	0	1	1.000	0	0.00	0	0.00	1	0	0.00	0	0	0	0	0.00	0	0	1.0	0.25

Single Game Highs

Statistic	Value	
Kills	1	vs UMBC 08/31/24
Attacks	1	vs UMBC 08/31/24
PCT	1.000	vs UMBC 08/31/24

HEANEY, Grace

SEASON	TEAM	SM-MP	K	K/S	E	TA	PCT	A	A/S	SA	SA/S	SE	DIG	D/S	RE	BS	BA	TB	B/S	BE	BHE	PTS	PTS/S
2023-24	Purdue	69-22	92	1.33	44	249	.193	3	0.04	0	0.00	0	23	0.33	0	4	46	50	0.72	5	0	119.0	1.72
TOTAL		69 - 22	92	1.33	44	249	.193	3	0.04	0	0.00	0	23	0.33	0	4	46	50	0.72	5	0	119.0	1.72

Single Game Highs

Statistic	Value	
Kills	13	at Ohio St. 10/15/23
Attacks	24	at Ohio St. 10/15/23
Assists	1	at Wisconsin 11/01/23, vs Northwestern 10/01/23, at Ohio St. 10/15/23
Digs	3	at Ohio St. 10/15/23, at Penn St. 10/22/23
Blocks	6	vs Indiana 10/18/23
Block solos	1	vs SMU 09/08/23, at Penn St. 10/22/23, vs Kentucky 09/09/23, vs Oregon 12/07/23
Block assists	6	vs Indiana 10/18/23



Purdue Women's Volleyball  
Individual Career Summaries  
All games

Page 4/7  
as of Nov 18, 2024

**HORNUNG, Ali**

SEASON	TEAM	SM-MP	K	K/S	E	TA	PCT	A	A/S	SA	SA/S	SE	DIG	D/S	RE	BS	BA	TB	B/S	BE	BHE	PTS	PTS/S
2021-22	Purdue	63-22	0	0.00	1	1	-1.000	3	0.05	7	0.11	11	32	0.51	3	0	2	2	0.03	0	0	8.0	0.13
2022-23	Purdue	122-32	2	0.02	4	17	-.118	29	0.24	28	0.23	26	303	2.48	15	0	0	0	0.00	1	0	30.0	0.25
2023-24	Purdue	114-31	0	0.00	0	3	.000	15	0.13	15	0.13	18	277	2.43	25	1	0	1	0.01	0	0	16.0	0.14
2024-25	Purdue	95-27	0	0.00	0	6	.000	86	0.91	8	0.08	11	385	4.05	24	0	1	1	0.01	0	0	8.5	0.09
<b>TOTAL</b>		<b>394 - 112</b>	<b>2</b>	<b>0.01</b>	<b>5</b>	<b>27</b>	<b>-.111</b>	<b>133</b>	<b>0.34</b>	<b>58</b>	<b>0.15</b>	<b>66</b>	<b>997</b>	<b>2.53</b>	<b>67</b>	<b>1</b>	<b>3</b>	<b>4</b>	<b>0.01</b>	<b>1</b>	<b>0</b>	<b>62.5</b>	<b>0.16</b>

**Single Game Highs**

Statistic	Value	
Kills	1	at Penn St. 11/25/22, vs Penn St. 11/12/22
Attacks	3	at Minnesota 10/22/22
Assists	7	vs Kentucky 09/14/24, vs UCLA 10/17/24
Serve Aces	4	vs Bradley 09/02/22
Digs	24	at Minnesota 09/28/24
Blocks	2	vs Rutgers 10/02/21
Block solos	1	at Kansas 08/31/23
Block assists	2	vs Rutgers 10/02/21

**HUDSON, Eva**

SEASON	TEAM	SM-MP	K	K/S	E	TA	PCT	A	A/S	SA	SA/S	SE	DIG	D/S	RE	BS	BA	TB	B/S	BE	BHE	PTS	PTS/S
2022-23	Purdue	122-32	515	4.22	176	1420	.239	10	0.08	34	0.28	15	249	2.04	21	7	54	61	0.50	5	0	583.0	4.78
2023-24	Purdue	125-32	560	4.48	167	1509	.260	8	0.06	14	0.11	17	255	2.04	29	8	47	55	0.44	3	0	605.5	4.84
2024-25	Purdue	95-27	445	4.68	112	1150	.290	10	0.11	11	0.12	23	230	2.42	16	5	50	55	0.58	3	0	486.0	5.12
<b>TOTAL</b>		<b>342 - 91</b>	<b>1520</b>	<b>4.44</b>	<b>455</b>	<b>4079</b>	<b>.261</b>	<b>28</b>	<b>0.08</b>	<b>59</b>	<b>0.17</b>	<b>55</b>	<b>734</b>	<b>2.15</b>	<b>66</b>	<b>20</b>	<b>151</b>	<b>171</b>	<b>0.50</b>	<b>11</b>	<b>0</b>	<b>1675</b>	<b>4.90</b>

**Single Game Highs**

Statistic	Value	
Kills	30	vs Wisconsin 11/17/23
Attacks	73	vs Marquette 12/01/23
Assists	2	6 times
Serve Aces	4	at Michigan St. 11/04/22
Digs	17	at Illinois 09/30/22, vs UCLA 10/17/24
Blocks	5	5 times
Block solos	2	vs Wisconsin 11/17/23, at Indiana 11/08/24
Block assists	5	vs Utah 09/02/22, at Northwestern 10/28/22



Purdue Women's Volleyball  
Individual Career Summaries  
All games

Page 5/7  
as of Nov 18, 2024

KANE, Julia

SEASON	TEAM	SM-MP	K	K/S	E	TA	PCT	A	A/S	SA	SA/S	SE	DIG	D/S	RE	BS	BA	TB	B/S	BE	BHE	PTS	PTS/S
2023-24	Purdue	1-1	0	0.00	0	0	.000	0	0.00	0	0.00	0	0	0.00	0	0	0	0	0.00	0	0	0.0	0.00
2024-25	Purdue	66-23	0	0.00	0	0	.000	8	0.12	11	0.17	29	26	0.39	1	0	0	0	0.00	0	0	11.0	0.17
TOTAL		67 - 24	0	0.00	0	0	.000	8	0.12	11	0.16	29	26	0.39	1	0	0	0	0.00	0	0	11.0	0.16

Single Game Highs

Statistic	Value	
Assists	2	at Northwestern 10/04/24, at Kansas 09/19/24
Serve Aces	3	at Minnesota 09/28/24
Digs	6	vs Tulsa 09/21/24

MCALCER, Ryan

SEASON	TEAM	SM-MP	K	K/S	E	TA	PCT	A	A/S	SA	SA/S	SE	DIG	D/S	RE	BS	BA	TB	B/S	BE	BHE	PTS	PTS/S
2024-25	Purdue	94-27	2	0.02	1	5	.200	27	0.29	15	0.16	34	228	2.43	13	0	0	0	0.00	0	0	17.0	0.18
TOTAL		94 - 27	2	0.02	1	5	.200	27	0.29	15	0.16	34	228	2.43	13	0	0	0	0.00	0	0	17.0	0.18

Single Game Highs

Statistic	Value	
Kills	1	vs Kentucky 09/14/24, vs Tulsa 09/21/24
Attacks	1	5 times
Assists	3	vs Houston 09/13/24, vs Tulsa 09/21/24, vs UCLA 10/17/24
Serve Aces	6	at Minnesota 09/28/24
Digs	15	vs Indiana 10/19/24
PCT	1.000	vs Kentucky 09/14/24, vs Tulsa 09/21/24

MYERS, Lourdes

SEASON	TEAM	SM-MP	K	K/S	E	TA	PCT	A	A/S	SA	SA/S	SE	DIG	D/S	RE	BS	BA	TB	B/S	BE	BHE	PTS	PTS/S
2022-23	Purdue	29-16	25	0.86	8	54	.315	0	0.00	0	0.00	0	3	0.10	0	0	16	16	0.55	3	0	33.0	1.14
2023-24	Purdue	112-32	164	1.46	53	333	.333	4	0.04	0	0.00	0	28	0.25	1	11	99	110	0.98	33	1	224.5	2.00
2024-25	Purdue	91-27	108	1.19	29	232	.341	2	0.02	0	0.00	0	28	0.31	1	9	88	97	1.07	23	0	161.0	1.77
TOTAL		232 - 75	297	1.28	90	619	.334	6	0.03	0	0.00	0	59	0.25	2	20	203	223	0.96	59	1	418.5	1.80

Single Game Highs

Statistic	Value	
Kills	11	vs Indiana 10/18/23
Attacks	24	vs Indiana 10/18/23
Assists	1	6 times
Digs	3	vs Illinois 11/17/24, vs Southern California 09/15/23
Blocks	9	vs UCLA 10/17/24, vs Michigan St. 11/12/23
Block solos	3	vs UCLA 10/17/24
Block assists	9	vs Michigan St. 11/12/23



Purdue Women's Volleyball  
Individual Career Summaries  
All games

Page 6/7  
as of Nov 18, 2024

**RASTOVSKI, Emily**

SEASON	TEAM	SM-MP	K	K/S	E	TA	PCT	A	A/S	SA	SA/S	SE	DIG	D/S	RE	BS	BA	TB	B/S	BE	BHE	PTS	PTS/S
2022-23	Purdue	10-8	8	0.80	4	20	.200	0	0.00	0	0.00	0	0	0.00	0	0	2	2	0.20	0	0	9.0	0.90
2023-24	Purdue	15-7	10	0.67	5	25	.200	1	0.07	0	0.00	0	4	0.27	0	0	7	7	0.47	0	0	13.5	0.90
<b>TOTAL</b>		<b>25 - 15</b>	<b>18</b>	<b>0.72</b>	<b>9</b>	<b>45</b>	<b>.200</b>	<b>1</b>	<b>0.04</b>	<b>0</b>	<b>0.00</b>	<b>0</b>	<b>4</b>	<b>0.16</b>	<b>0</b>	<b>0</b>	<b>9</b>	<b>9</b>	<b>0.36</b>	<b>0</b>	<b>0</b>	<b>22.5</b>	<b>0.90</b>

**Single Game Highs**

Statistic	Value	
Kills	4	vs Xavier 09/10/22
Attacks	10	vs Penn St. 11/05/23
Assists	1	vs Penn St. 11/05/23
Digs	4	vs Penn St. 11/05/23
Blocks	3	vs Penn St. 11/05/23
Block assists	3	vs Penn St. 11/05/23

**SHONDELL, Allie**

SEASON	TEAM	SM-MP	K	K/S	E	TA	PCT	A	A/S	SA	SA/S	SE	DIG	D/S	RE	BS	BA	TB	B/S	BE	BHE	PTS	PTS/S
2024-25	Purdue	6-6	0	0.00	1	1	-1.000	20	3.33	0	0.00	1	3	0.50	0	0	3	3	0.50	0	0	1.5	0.25
<b>TOTAL</b>		<b>6 - 6</b>	<b>0</b>	<b>0.00</b>	<b>1</b>	<b>1</b>	<b>-1.000</b>	<b>20</b>	<b>3.33</b>	<b>0</b>	<b>0.00</b>	<b>1</b>	<b>3</b>	<b>0.50</b>	<b>0</b>	<b>0</b>	<b>3</b>	<b>3</b>	<b>0.50</b>	<b>0</b>	<b>0</b>	<b>1.5</b>	<b>0.25</b>

**Single Game Highs**

Statistic	Value	
Attacks	1	at Utah St. 09/07/24
Assists	5	vs Tulsa 09/21/24, at Rutgers 11/02/24
Digs	1	at Utah St. 09/07/24, vs Wisconsin 10/26/24, vs Rutgers 11/14/24
Blocks	2	vs Tulsa 09/21/24
Block assists	2	vs Tulsa 09/21/24
PCT	-1.000	at Utah St. 09/07/24

**WILLIAMS, Rachel**

SEASON	TEAM	SM-MP	K	K/S	E	TA	PCT	A	A/S	SA	SA/S	SE	DIG	D/S	RE	BS	BA	TB	B/S	BE	BHE	PTS	PTS/S
2024-25	Purdue	44-20	1	0.02	0	3	.333	1	0.02	7	0.16	13	11	0.25	0	0	0	0	0.00	0	0	8.0	0.18
<b>TOTAL</b>		<b>44 - 20</b>	<b>1</b>	<b>0.02</b>	<b>0</b>	<b>3</b>	<b>.333</b>	<b>1</b>	<b>0.02</b>	<b>7</b>	<b>0.16</b>	<b>13</b>	<b>11</b>	<b>0.25</b>	<b>0</b>	<b>0</b>	<b>0</b>	<b>0</b>	<b>0.00</b>	<b>0</b>	<b>0</b>	<b>8.0</b>	<b>0.18</b>

**Single Game Highs**

Statistic	Value	
Kills	1	vs California 09/05/24
Attacks	1	vs California 09/05/24, vs Creighton 09/20/24, vs Penn St. 09/25/24
Assists	1	vs Creighton 09/20/24
Serve Aces	2	vs Indiana 10/19/24
Digs	4	vs UMBC 08/31/24
PCT	1.000	vs California 09/05/24



Purdue Women's Volleyball  
Individual Career Summaries  
All games

Page 7/7  
as of Nov 18, 2024

WOLLARD, Kenna

SEASON	TEAM	SM-MP	K	K/S	E	TA	PCT	A	A/S	SA	SA/S	SE	DIG	D/S	RE	BS	BA	TB	B/S	BE	BHE	PTS	PTS/S
2023-24	Purdue	60-21	57	0.95	36	184	.114	0	0.00	0	0.00	0	22	0.37	0	3	35	38	0.63	9	0	77.5	1.29
2024-25	Purdue	78-25	133	1.71	58	327	.229	2	0.03	0	0.00	0	35	0.45	0	1	46	47	0.60	9	0	157.0	2.01
TOTAL		138 - 46	190	1.38	94	511	.188	2	0.01	0	0.00	0	57	0.41	0	4	81	85	0.62	18	0	234.5	1.70

Single Game Highs

Statistic	Value	
Kills	18	at Northwestern 10/04/24
Attacks	32	at Northwestern 10/04/24
Assists	1	vs Indiana 10/19/24, at Rutgers 11/02/24
Digs	5	vs Illinois 10/04/23
Blocks	5	vs Houston 09/13/24
Block solos	1	at Rutgers 09/24/23, vs Creighton 09/20/24, at Michigan St. 11/25/23, at Michigan 11/24/23
Block assists	5	vs Houston 09/13/24

YIM, Sydney

SEASON	TEAM	SM-MP	K	K/S	E	TA	PCT	A	A/S	SA	SA/S	SE	DIG	D/S	RE	BS	BA	TB	B/S	BE	BHE	PTS	PTS/S
2022-23	Purdue	4-4	0	0.00	0	0	.000	2	0.50	0	0.00	0	2	0.50	0	0	1	1	0.25	0	0	0.5	0.13
2023-24	Purdue	1-1	0	0.00	0	0	.000	1	1.00	0	0.00	0	0	0.00	0	0	0	0	0.00	0	0	0.0	0.00
2024-25	Purdue	3-3	1	0.33	0	1	1.000	3	1.00	0	0.00	0	1	0.33	0	0	0	0	0.00	0	0	1.0	0.33
TOTAL		8 - 8	1	0.13	0	1	1.000	6	0.75	0	0.00	0	3	0.38	0	0	1	1	0.13	0	0	1.5	0.19

Single Game Highs

Statistic	Value	
Kills	1	at Rutgers 11/02/24
Attacks	1	at Rutgers 11/02/24
Assists	2	vs Rutgers 11/14/24
Digs	2	vs Bradley 09/02/22
Blocks	1	vs Rutgers 10/02/22
Block assists	1	vs Rutgers 10/02/22
PCT	1.000	at Rutgers 11/02/24