

WOMEN'S BASKETBALL

 2023-24 PURDUE BOILERMAKERS

 TALE OF THE TAPE
2023-24 SCHEDULE

29	-/-	Quincy (ex)	2 PM	W, 106-45
----	-----	-------------	------	-----------

6	-/4	at UCLA	8:30 PM	L, 92-49
---	-----	---------	---------	----------

3 -/- Valparaiso 2 PM B1G+

Case	Year	Incidence	Survival	Notes
1	1998	1.2	5.0	First case
2	1999	1.5	6.0	Second case
3	2000	1.8	7.0	Third case
4	2001	2.1	8.0	Fourth case
5	2002	2.4	9.0	Fifth case
6	2003	2.7	10.0	Sixth case
7	2004	3.0	11.0	Seventh case
8	2005	3.3	12.0	Eighth case
9	2006	3.6	13.0	Ninth case
10	2007	3.9	14.0	Tenth case
11	2008	4.2	15.0	Eleventh case
12	2009	4.5	16.0	Twelfth case
13	2010	4.8	17.0	Thirteenth case
14	2011	5.1	18.0	Fourteenth case
15	2012	5.4	19.0	Fifteenth case
16	2013	5.7	20.0	Sixteenth case
17	2014	6.0	21.0	Seventeenth case
18	2015	6.3	22.0	Eighteenth case
19	2016	6.6	23.0	Nineteenth case
20	2017	6.9	24.0	Twentieth case
21	2018	7.2	25.0	Twenty-first case
22	2019	7.5	26.0	Twenty-second case
23	2020	7.8	27.0	Twenty-third case
24	2021	8.1	28.0	Twenty-fourth case
25	2022	8.4	29.0	Twenty-fifth case
26	2023	8.7	30.0	Twenty-sixth case
27	2024	9.0	31.0	Twenty-seventh case
28	2025	9.3	32.0	Twenty-eighth case
29	2026	9.6	33.0	Twenty-ninth case
30	2027	9.9	34.0	Thirtieth case
31	2028	10.2	35.0	Thirty-first case
32	2029	10.5	36.0	Thirty-second case
33	2030	10.8	37.0	Thirty-third case
34	2031	11.1	38.0	Thirty-fourth case
35	2032	11.4	39.0	Thirty-fifth case
36	2033	11.7	40.0	Thirty-sixth case
37	2034	12.0	41.0	Thirty-seventh case
38	2035	12.3	42.0	Thirty-eighth case
39	2036	12.6	43.0	Thirty-ninth case
40	2037	12.9	44.0	Fortieth case
41	2038	13.2	45.0	Forty-first case
42	2039	13.5	46.0	Forty-second case
43	2040	13.8	47.0	Forty-third case
44	2041	14.1	48.0	Forty-fourth case
45	2042	14.4	49.0	Forty-fifth case
46	2043	14.7	50.0	Forty-sixth case
47	2044	15.0	51.0	Forty-seventh case
48	2045	15.3	52.0	Forty-eighth case
49	2046	15.6	53.0	Forty-ninth case
50	2047	15.9	54.0	Fiftieth case
51	2048	16.2	55.0	Fifty-first case
52	2049	16.5	56.0	Fifty-second case
53	2050	16.8	57.0	Fifty-third case
54	2051	17.1	58.0	Fifty-fourth case
55	2052	17.4	59.0	Fifty-fifth case
56	2053	17.7	60.0	Fifty-sixth case
57	2054	18.0	61.0	Fifty-seventh case
58	2055	18.3	62.0	Fifty-eighth case
59	2056	18.6	63.0	Fifty-ninth case
60	2057	18.9	64.0	Sixtieth case
61	2058	19.2	65.0	Sixty-first case
62	2059	19.5	66.0	Sixty-second case
63	2060	19.8	67.0	Sixty-third case
64	2061	20.1	68.0	Sixty-fourth case
65	2062	20.4	69.0	Sixty-fifth case
66	2063	20.7	70.0	Sixty-sixth case
67	2064	21.0	71.0	Sixty-seventh case
68	2065	21.3	72.0	Sixty-eighth case
69	2066	21.6	73.0	Sixty-ninth case
70	2067	21.9	74.0	Seventieth case
71	2068	22.2	75.0	Seventy-first case
72	2069	22.5	76.0	Seventy-second case
73	2070	22.8	77.0	Seventy-third case
74	2071	23.1	78.0	Seventy-fourth case
75	2072	23.4	79.0	Seventy-fifth case
76	2073	23.7	80.0	Seventy-sixth case
77	2074	24.0	81.0	Seventy-seventh case
78	2075	24.3	82.0	Seventy-eighth case
79	2076	24.6	83.0	Seventy-ninth case
80	2077	24.9	84.0	Eightieth case
81	2078	25.2	85.0	Eighty-first case
82	2079	25.5	86.0	Eighty-second case
83	2080	25.8	87.0	Eighty-third case
84	2081	26.1	88.0	Eighty-fourth case
85	2082	26.4	89.0	Eighty-fifth case
86	2083	26.7	90.0	Eighty-sixth case
87	2084	27.0	91.0	Eighty-seventh case
88	2085	27.3	92.0	Eighty-eighth case
89	2086	27.6	93.0	Eighty-ninth case
90	2087	27.9	94.0	Ninetieth case
91	2088	28.2	95.0	Ninety-first case
92	2089	28.5	96.0	Ninety-second case
93	2090	28.8	97.0	Ninety-third case
94	2091	29.1	98.0	Ninety-fourth case
95	2092	29.4	99.0	Ninety-fifth case
96	2093	29.7	100.0	Ninety-sixth case
97	2094	30.0	101.0	Ninety-seventh case
98	2095	30.3	102.0	Ninety-eighth case
99	2096	30.6	103.0	Ninety-ninth case
100	2097	30.9	104.0	Hundredth case

6 -/- at Maryland 4:30 PM BTN

11	-/-	at Indiana	2 PM	B1G+
----	-----	------------	------	------

3/6-10 Big Ten Tournament

THE MATCHUP

Sunday, Dec. 3, 2023 | 2 PM | West Lafayette, Ind. | Mackey Arena (14,876)

THE OPENING TTD

THE OPENING TIP

 SERIES HISTORY

NUMBERS TO KNOW

THE ROSTER

DUE WOMEN'S BASKETBALL | PURDUESPORTS.COM | @PURDUIEWBB

PURDUE QUICK FACTS**UNIVERSITY INFO**

Location: West Lafayette, Ind. Founded: 1869
 Conference: Big Ten Enrollment: 52,211
 Colors: Old Gold & Black Nickname: Boilermakers
 President: Dr. Mung Chiang Athletics Director: Mike Bobinski
 Deputy A.D. / Senior Woman Administrator: Tiffini Grimes

COMMUNICATIONS CONTACT

Ian MacDougall - Associate Director (WBB Contact)
 Email - imacdoug@purdue.edu | Cell - 317.313.7486 | Office - 765.494.0529

PROGRAM HISTORY

First Season - 1975-76 (49th Season)
 All-Time Record - 927-539 All-Time Big Ten Record - 429-269
 Home Record - 494-176 Home Big Ten Record - 245-105
 Away Record - 291-274 Away Big Ten Record - 184-164
 Neutral Site Record - 142-89

POSTSEASON HISTORY

NCAA Championships - **1999** (Only one by a Big Ten program)
 Final Fours - **3** (1994-99-2001)
 Sweet 16 - **12** (1990-92-94-95-98-99-01-03-04-06-07-09)
 NCAA Appearances - **27** (1989-90-91-92-94-95-96-97-98-99-00-01-02-03-04-05-06-07-08-09-11-12-13-14-16-17-23)
 All-Time NCAA Tournament Record - **47-26**
 WNIT/WNIT Appearances - **4** (1988-10-18-22)
 Big Ten Regular Season Titles - **7** (1991-94-95-97-99-01-02)
 Big Ten Tournament Titles - **9** (1998-99-00-03-04-07-08-12-13)

MACKEY ARENA

Broke Ground: **July 1965** | First Game: **Dec. 2, 1967** | Capacity: **14,876**
 First Women's Game: **Dec. 2, 1975** | **Purdue 78, Illinois 74**
 Gearlds Overall: **21-10** | Non-Con: **13-1** | BIG: **8-9**
 Purdue Overall: **491-176** | Non-Con: **246-71** | BIG: **245-105**
 Home Wins vs. Ranked Teams: **5**

LARGEST CROWDS OF KG ERA

Attendance	Date	Opponent	Result
14,876	2/5/23	No. 4 Indiana	L, 69-46
8,005	1/16/22	No. 5 Indiana	L, 73-78 (OT)
5,457	12/21/21	North Alabama	W, 86-53
5,223	11/16/23	Texas A&M	W, 72-58
5,003	11/12/23	Southern	W, 67-50

LAST TIME OUT**PURDUE 67, DAYTON 59**

- Purdue picked up its first road win of the year with a gritty display at Dayton.
- The Boilermakers opened with 24 points in the first quarter.
- Abbey Ellis scored 12 points and went 8-of-10 from the line.
- Madison Layden and Caitlyn Harper each finished with 13 points.
- Mary Ashley Stevenson added eight points and seven boards.
- Purdue pulled away with a nine-point run to start the fourth.
- Purdue went 13-of-18 at the charity stripe in the fourth quarter.

STARTING LINEUPS

Lineup (Record)	Games
1. Smith, Terry, Ellis, Layden, Harper (0-1)	1
2. Terry, Stevenson, Ellis, Layden, Harper (4-2)	2-7

Player	19/20	21	22	23	24	Total	Record [^]
1 Reynolds	-	-	-	-			
2 Jones	-	-	-	-			
3 Smith	-	-	1	3	1	5	1-4
10 Terry	-/11*	23*	32	30	7	103*	39-30
11 Layden	-	-	-	-			
15 Reynolds	-	-	-	-			
21 Monson	-	-	-	-			
20 Stevenson	-	-	-	-	6	6	4-2
23 Ellis	-/29*	23*	31	18	7	108*	32-24
31 Swanson	-	-	-	-			
32 Harper	-	-	-	2		2*	
33 Layden	-	21	28	13	7	69	35-34
34 Harper	3*/5*	10*	32*	29	7	86*	22-14

* Includes starts at previous school | ^ Record at Purdue

BOILER NOTES**BOILERMAKER BASKETBALL**

- Purdue Women's Basketball is in its 49th season in 2023-24.
- Purdue was the 40th program in NCAA Division I history to reach 900 wins.
- The Boilermakers are the only team from the Big Ten to win a national championship, hoisting the title in 1999.
- The program has reached the NCAA Tournament 27 times with 12 Sweet 16s, eight Elite 8s, three final fours and a trio of national championship game appearances.
- In addition to its NCAA success, Purdue owns the Big Ten record for most tournament titles with nine.

THIRD SEASON OF THE KG ERA

- Head coach Katie Gearlds is in her third season at her alma mater after guiding the Boilermakers to back-to-back postseason appearances, including the first NCAA Tournament appearance since 2017.
- In two short seasons, Gearlds has transformed Purdue back into an NCAA Tournament squad with eyes on taking the Boilermakers back to the nation spotlight when she was on the floor 20 years ago.
- Gearlds took over the program 47 days before her first campaign in 2021-22 when Purdue was coming off a seven-win season. She guided Purdue to a 17-15 mark and reached the WNIT after the program failed to reach the postseason in the previous three years.
- Purdue finished the 2022-23 season with a 19-11 record and its first return to the NCAA Tournament since 2017.
- Gearlds joined Boilermaker legends Carolyn Peck and Lin Dunn as the only Purdue head coaches to post win improvements in each of their first two seasons.
- When Gearlds moved into the head coach role, Purdue had lost 19 straight games to ranked opponents. Over her first two years, Gearlds has racked up three ranked wins, including the program's first true road AP top-5 victory against No. 2 Ohio State in 2022-23.
- Gearlds was initially hired as the associate head coach with plans to become the head coach at the start of the 2022-23 season.

WAIT, HOW MANY SISTERS ARE ON THIS TEAM?

- If a team is a family, Purdue is taking that to a whole new level with three sets of siblings on the 2023-24 roster - Madison & McKenna Layden, Mila & Amiyah Reynolds, Caitlyn & Alaina Harper.
- The Boilermakers are the only team in the nation with three sets of sisters. Utah Tech is the only other program with more than one pair of siblings.
- Based on the tireless research of a communications intern, 39 teams across Division I have one pair of sisters of the roster this year.
- McKenna and Madison Layden became the first Boilermakers to play on the floor together in program history, playing 6:29 together in the season opener at UCLA.
- Alaina Harper and Caitlyn Harper were the second set of siblings to play in the same game at Purdue, when Alaina checked in for her big sister in the fourth quarter against UCLA.

STEVENSON & SPIDER

- Mary Ashley Stevenson and Rashunda Jones have been instant impacts for the Boilermakers as freshmen.
- They are two of the five freshmen from the Big Ten averaging over eight points and three rebounds per game.
- They rank fourth and fifth among conference rookies in scoring.

BIG FRESHMEN AVERAGING 8 PPG, 3 RPG

Player	School	PPG	RPG
Natalie Potts	Nebraska	12.6	5.1
D'Yanis Jimenez	Wisconsin	11.0	3.0
Grace Grocholski	Minnesota	11.0	5.4
Rashunda Jones	Purdue	9.3	3.0
Mary Ashley Stevenson	Purdue	8.6	3.9

FRESHMAN OUTPUT

- With six freshmen on the roster, five active, the rookie class for the Boilermakers have quickly made an impact in West Lafayette.
- The six-player class was Gearlds' primary focus during her first years back at Purdue.
- Purdue were the only team in the Big Ten with two freshmen averaging over 8.0 points and 3.0 rebound per game - Stevenson (8.7 ppg, 3.3 rpg) and Jones (9.7 ppg, 3.3 rpg) - through the first five games of the year.
- Mary Ashley Stevenson jumped into the starting lineup for the first time in her career against Southern, tallying 13 points, all in the second half.
- Stevenson (8 pts, 2 rebs, 1 stl, 1 blk, 1 ast) became the first Boilermaker rookie to go for at least five points and one rebound, assist, steal and a block since Sam Ostarelo in 2009.
- Rashunda Jones scored 20 points against Texas A&M, the first 20-point game by a Purdue rookie since 2017-18.
- McKenna Layden sprang for eight points and six rebounds against Southern Indiana.
- Emily Monson connected on a 3-pointer in her collegiate debut on the road at No. 4 UCLA.
- Sophie Swanson made her collegiate debut against Southern Indiana after missing the first five games rehabbing her knee injury that ended her senior year of high school.

BEST FRESHMAN OUTINGS

Stat	Combined	Leader
Points	38, vs. Southern Ind.	20, Jones vs. Texas A&M
3-Pointers	4, vs. Southern Ind.	2, 2 times
Rebounds	15, vs. Southern Ind.	6, 2 times
Assists	5, vs. Southern Ind.	3, Jones vs. Southern Ind.
Steals	4, vs. Southern Ind.	2, Jones vs. Southern Ind.
Blocks	2, vs. Southern	1, 3 times
Minutes	96, vs. Southern Ind.	32, Stevenson vs. Georgia

HARPER HITTING HER STRIDE

- In her sixth year of college basketball, Caitlyn Harper might be in the best shape of her life with a five of performances that topped 30 minutes. She bested 30 minutes just thrice last year.
- Harper scored in double figures in five outings, sitting second on the team with 10.3 points per game.
- The Hartland, Wis., native is shooting at a 52.7% clip.

ELITE ELLIS

- Abbey Ellis is her final campaign in West Lafayette after honorable mention All-Big Ten nods each of the last two years.
- The Australian leads the team in scoring with 15.6 points per game and has reached double figures in all seven games.
- Ellis is fifth in the Big Ten with a 88.2% mark at the line (30-34).
- Ellis paired with Rashunda Jones to become the first Boilermaker duo to score 20 points in a game since 2019-20 when they both scored 20 against Texas A&M.

THE NAME IS MARY ASHLEY STEVENSON

- Mary Ashley Stevenson looks to be a force her first season in West Lafayette, joining the starting lineup in her second career game.
- In her college debut at UCLA, she finished with eight points, two rebounds one assist, one steal and one block in 27 minutes in the season opener at No. 4 UCLA, becoming the first Purdue rookie since Sam Ostarelo in 2009 to record at least five points and one block, rebound, assist and steal in the first game of the year.
- Coming straight from the Big Apple, Stevenson joined Purdue after an impressive prep career.
- Stevenson was an McDonald's All-America Game nominee, the runner-up for New York Miss Basketball and Gatorade Player of the Year, as well as the No. 97 recruit by ESPN.
- She won three state championships, two in New York and one in South Carolina. Stevenson tallied an 80-12 record over four years of high school and finished her career with 2,552 points and 1,575 rebounds in 125 career games.
- Stevenson set The Dalton School record for boys or girls with 53 points in a 75-70 win over Staten Island Academy on Feb. 1, 2023, scoring her team's final 31 points.
- Before she stepped on campus, she legally changed her last name from Groot to Stevenson, taking the name of her stepfather Gary.

BOILER NOTES**THE FIVE ON THE FLOOR**

- When Mary Ashley Stevenson checked in with 1:58 to play in the fourth quarter against Southern Indiana, the Boilermakers had all five of their active freshmen on the court.
- The last time Purdue had five true freshmen on the court at the same time was Nov. 26, 2004, when Purdue played in the Flint Hills Islander Classic against Texas A&M-Corpus Christi in a 73-44 win – Lakisha Freeman Brina Pollack, Natasha Bogdanova, Tye Jackson and Lindsay Wisdom-Hylton.
- The last time five true freshmen scored in the same game was the 2004 season opener against IPFW when No. 16 Purdue won 107-39.

NON-CONFERENCE DOMINANCE

- Purdue has an 22-6 non-conference mark under Gearlds.
- The 18 wins in non-conference regular season action over her first two seasons tied for third in the Big Ten.
- Last season, the Boilermakers went 9-1 for the third-best clip in team history and the best since Gearlds' freshman season in 2003-04.
- Purdue went 9-2 in regular season non-conference action during Gearlds' first campaign, which tied for the second best mark by a first-year head coach at Purdue.

EARLY ATTENDANCE RETURNS

- Head coach Katie Gearlds continues to bring the magic back to Mackey Arena, as more fans come through the turnstiles.
- Purdue's first two games topped 5,000 fans to rank in the top-five best attended games of the Gearlds era.
- Purdue set the program attendance record against Indiana last season with a sellout of 14,876.
- Going into the 2023-24 season, Purdue had sold its most season tickets since 2012-13.

JT - START UNKNOWN, FINISH UNFORGETTABLE

- "Start Unknown, Finish Unforgettable" is the mantra Jeanae Terry lives by so much she has a tattoo featuring that phrase.
- During her time in West Lafayette, Terry has set the program record for triple-doubles and non-point double-doubles.
- With 16 assists over games against Georgia, Southern Indiana and Dayton, Terry passed Katie Gearlds, Kelly Komara and Ukari Figgs to move into 11th on the career assist chart. She has 412 assists as a Boilermaker.
- Terry is 12th in the nation with three games over five points, rebounds and assists. She trails Caitlin Clark (57) for the most 5-5-5 games since she joined Purdue with 35 outings.
- Last season, she was one of three players (Iowa's Caitlin Clark and Notre Dame's Olivia Miles) to record at least 6.0 points, rebounds and assists per game.
- Terry and Clark are the only two players in the nation to dish out 150 assists and haul in 200 rebounds in each of the last two years.
- Terry holds the second and third spots on the single-season assist lists, as well as the program's lead for career assist-to-turnover ratio.
- Terry and Purdue legend Carol Emanuel are the only Boilermakers to lead the team in rebounds and assists in two seasons.
- Terry made her 100th career start against Florida.

THE SPIDER - RASHUNDA JONES

- Rashunda Jones was the first South Bend Washington commit before the Reynolds sisters joined to reunite the powerful trio.
- Coming off the bench, Jones is averaging 9.3 points per game while shooting 41.7% from the field with three 3-pointers.
- The South Bend native was the first Boilermaker freshman since Karissa McLaughlin in 2017-18 to score 20 points in a game, after dropping a career-high 20 points against Texas A&M.
- Jones was tabbed the 2023 Indiana Miss Basketball and a member of the Max Preps National Player of the Year Watch List.
- She guided the Panthers to a 95-18 record in her career and a 2022 IHSA 3A Championship and three conference titles.
- Her versatility earned her the nickname "Spider" from her high school head coach and Amiyah & Mila's father - Steven.
- She finished her career with 1,791 points, 497 rebounds, 427 assists and 419 steals.

NUMBERS TO KNOW IN THE GEARLDS ERA

- Purdue is 33-5 when leading after the first quarter and 37-5 when taking a lead into the fourth quarter.
- Purdue is 24-14 when knocking down seven or more 3-pointers.
- Purdue is 16-9 when shooting 35% from distance or better and 32-9 when shooting 40% or better overall, including 14-1 with a field goal clip above 50%.
- The Boilermakers are 25-4 when outrebounding opponents.
- The Boilermakers hold a 27-3 record when scoring 70 or more points, while also posting a 35-8 mark when holding opponents below that mark.

MILESTONE WATCH

- Abbey Ellis is 198 points away from joining the 1,000-point club at Purdue. The Australian already has over 1,500 points in her career.
- Caitlyn Harper is nine 3-pointers away from 100 in her career.
- Madison Layden needs 211 points to join the 1,000-point club.
- Jayla Smith is 97 points away from 500 for her career.
- Jeanae Terry needs 216 rebounds for 1,000 in her career and six to reach 500 during her time at Purdue.
- Terry is 88 assists away from 500 during her time in West Lafayette, which would make her the seventh player in program history to hit that mark.

TOUGH SLATE TO START

- Purdue's schedule featured four major conference teams in its first five outings this season, going 2-3 in those games.
- The five-game start was ranked the 12th hardest schedule by Massey Ratings.
- After the road battle at No. 4 UCLA, which was the first ranked season-opening contest for Purdue since 2003-04, the Boilermakers downed Texas A&M 72-58 on Nov. 16.
- Purdue dropped back-to-back games against Florida and Georgia in the Baha Mar Pink Flamingo Championship in The Bahamas.
- The Boilermakers will travel to Notre Dame on Dec. 17 for the first regular season matchup with the Fighting Irish in over a decade.
- Purdue plays eight games against teams ranked in the initial AP Top-25, including seven against teams in the top 14.

MONEY MADs

- Senior Madison Layden is in her fourth campaign as one of the top all-around producers for the Boilermakers.
- Layden is second on the team with 10.3 points per game.
- She opened her home campaign with a career-high 21 points against Southern on 5-of-6 shooting with four triples.
- Layden went 11-of-17 from behind the arc in games against Georgia, Southern Indiana and Dayton.
- Layden was a perfect 6-of-6 with four 3-pointers for 16 points against Southern Indiana.
- A scorer, shooter, facilitator, rebounder and defender, Layden was one of 12 players in the Big Ten last season to tally six points, four rebounds, three assists and one steal per game.
- Layden has climbed up to 13th in program history in career triples.
- She set the single-game Purdue freshman record for triples in a game with six triples in a game.
- She was tabbed All-Big Ten honorable mention as a sophomore and named to the All-Freshman team in 2020-21.

SNIPER SOPHIE SWANSON

- A pure shooter and scorer, Sophie Swanson joined the program after a stellar prep career at Barrington Prep in Illinois.
- Swanson made her collegiate debut against Southern Indiana with two points and two rebounds after missing the opening five games rehabbing from her high school injury.
- Swanson was named the 2022 Illinois Miss Basketball and 4A Player of the Year following her junior campaign.
- Swanson tallied 23.1 points per game as a senior before her season was ended with a knee injury in February.
- She set the school record for points in a season (750), 3-pointers in a year (86), thrice set the school mark for points in a game (40, 37, 36)

25 YEARS FOR THE CHAMPS

Record - 34-1, 16-0 Big Ten

Big Ten Finish - 1st Place

Big Ten Tournament - Champions

Championship Game

Purdue 62, Duke 45 (Ukari Figgs 18 pts)

Season Honors

USBWA All-America - Stephanie White

AP & WBCA All-America - Stephanie White, Ukari Figgs

Honda Award & Wade Trophy - Stephanie White

Big Ten Player of the Year - Stephanie White

NCAA Tournament Most Outstanding Player - Ukari Figgs

All-Tournament Team - Ukari Figgs, Stephanie White, Katie Douglas

AP & Naismith National Coach of the Year - Carolyn Peck



Purdue celebrates the 25th anniversary of its 1999 National Championship, the only one in the Big Ten in women's basketball. Led by National Coach of the Year Carolyn Peck and a star-studded list of greats in Stephanie White, Ukari Figgs, Camille Cooper, Katie Douglas, Michelle Duhart and Kelly Komara, the Boilermakers knocked off 10 ranked opponents, including No. 1 Tennessee in the season opener.

After posting a perfect 16-0 record in Big Ten play and winning the league tournament, Purdue carved through the NCAA Tournament as a No. 1 seed, before defeating Duke 62-45 in the National Championship Game.

INDIANA MISS BASKETBALL

- Jayla Smith is the 10th Indiana Miss Basketball to play at Purdue, winning the award in 2021.
 - The long history of Purdue welcoming the state's top player extended back to 2003, when Katie Gearlds became the fifth honoree to pick West Lafayette.
 - Madison Layden (2020) and Rashunda Jones (2023) finished as runner-ups in their senior campaigns.
 - Purdue holds the record for most Indiana Miss Basketball winners, followed by Indiana, Notre Dame, Tennessee tied for second with four.
- | | |
|------------------------------------|----------------------------------|
| 1984 Sharon Versyp, Mishawaka | 1991 Jennifer Jacoby, Rossville |
| 1995 Stephanie White, Seeger | 1998 Kelly Komara, Lake Central |
| 2003 Katie Gearlds, Beech Grove | 2005 Jodi Howell, Alexandria |
| 2008 Brittany Rayburn, Attica | 2010 Courtney Moses, Oak Hill |
| 2017 Karissa McLaughlin, Homestead | 2021 Jayla Smith, Lawrence North |

RANDOM ODDS AND ENDS

	Consecutive Made	Straight Games	Consecutive
Name	Free Throws	with a Three	Starts
1 - Reynolds	-	-	-
2 - Jones	1	-	-
3 - Smith	-	-	-
10 - Terry	-	-	103*
11 - Layden	3	-	-
15 - Reynolds	-	-	-
20 - Stevenson	2	-	6
21 - Monson	1	-	-
23 - Ellis	2	6	22
31 - Swanson	-	-	-
32 - Harper	-	-	-
33 - Layden	6	3	7
34 - Harper	20	1	11

Opening Tips		Won-Lost		Record in Games	
Jayla Smith		0-1		0-1	
Mary Ashley Stevenson		2-4		4-2	
Scoring First	2	3	FT	Record in Games	
Abbey Ellis	4			2-2	
Madison Layden	1	1		2-0	
Mary Ashley Stevenson	1			0-1	



BIG TEN STANDINGS

	Big Ten	Overall	Streak
Iowa	0-0	8-1	W5
Michigan	0-0	7-1	W3
Minnesota	0-0	7-1	W4
Penn State	0-0	7-1	W2
Indiana	0-0	6-1	W5
Michigan State	0-0	6-1	W1
Ohio State	0-0	5-1	W5
Nebraska	0-0	6-2	W2
Wisconsin	0-0	5-2	W2
Illinois	0-0	4-2	W2
Maryland	0-0	5-3	W3
Purdue	0-0	4-3	W2
Rutgers	0-0	5-5	W2
Northwestern	0-0	3-4	L3

NATIONAL RANKINGS

	National	BIG	Stat
Assist-to-Turnover	170	13	.83
Assists per Game	184	14	13.0
Bench Points Per Game	225	11	16.9
Blocked Shots per Game	214	11	2.7
Field-Goal %	171	14	41.1
Field-Goal % Defense	115	6	37.4
Fouls Per Game	30	3	14.0
FT Attempts Per Game	157	9	15.6
FT Percentage	11	1	80.5
FT Made Per Game	85	5	14.1
Rebound Margin	257	13	-2.3
Defensive Rebounds Per Game	140	11	26.0
Offensive Rebounds Per Game	301	12	9.3
Rebounds Per Game	249	14	35.3
Scoring Defense	136	7	61.9
Scoring Margin	171	13	3.3
Scoring Offense	198	14	65.1
Steals Per Game	244	11	7.0
3-Point Attempts Per Game	203	10	18.7
3-Point Percentage	198	13	29.8
3-Point Percentage Defense	221	12	31.4
3-Pointers Per Game	198	14	5.6
Turnover Margin	193	11	.14
Turnovers Forced Per Game	225	10	15.7
Turnovers Per Game	135	9	15.7
Winning Percentage	155	12	57.1

INDIVIDUAL NATIONAL RANKINGS (TOP-50)

TOP 50 RANKINGS	National	BIG	Stat
Abbey Ellis			
Free Throw Percentage	49	5	88.2

Madison Layden

3-Point Percentage	21	2	50.0
--------------------	----	---	------

Jeanae Terry

Assist-to-Turnover	44	3	2.6
Assists	35	5	39
Assists Per Game	28	4	5.6

BOILER NOTES**FRESHMEN STAND STALL IN OPENER**

- Against UCLA, the active freshman quartet of Mary Ashley Stevenson, McKenna Layden, Rashunda Jones and Emily Monson combined for 20 points.
- The output was the most by a Purdue freshman class in a season opener since Karissa McLaughlin went for 21 points in the season opener against Central Michigan in the 2017-18 season.
- Stevenson finished with a rookie best eight points, two rebounds, two assists, one block and one steal. She was the first Purdue freshman to score five points and record a block, steal, rebound and assist to start a year since Sam Ostarello against Western Illinois in 2009-10.
- Stevenson, Layden and saw early action against the Bruins. The trio were on the floor together for a combined 10:57 during their career game at Purdue.

DISHING OUT DIMES

- The Boilermakers are 15-0 over the last three seasons when dishing out 20 or more assists.
- Against Southern, the Boilermakers dished out 19 assists on 20 made field goals. They were the fifth most of the Gearlds era, while the 95% assist rate was the best by Purdue since 2015 against Minnesota (24 ast, 25 FGM).
- Purdue then dished out 24 assists against Southern Indiana, which ranked third in the Gearlds era.

TERRY'S DOUBLE TROUBLE

- Jeanae Terry has etched her name into the history books at Purdue in several categories.
- The Detroit native is the only player in Purdue men's or women's basketball history to amass multiple triple-doubles in a season and a career, a feat she achieved during the 2021-22 campaign.
- In both of her triple-double performances, the last category Terry hit double digits in was points.
- Terry is also the only Boilermaker to record a non-point double-double. Jeanae Terry recorded the mark three times last season, the most of any player in the nation since 2009.

PURDUE TRIPLE-DOUBLES

Name	Opponent, Date	Pts	Rebs	Asts/Blks
Jeanae Terry	Minnesota, 1/27/22	10	11	12 asts
Jeanae Terry	Miami, 12/19/21	11	12	10 asts
Stephanie White	Indiana, 1/22/99	20	11	10 asts
Daniel Campbell	Butler, 11/17/07	12	11	11 blks

MURFREESBORO MONSON

- Emily Monson came to West Lafayette after garnering an Naismith High School All-America honorable mention nod.
- Monson powered Blackman High School throughout her career going 107-16 with an 81-8 mark as a three-year starter.
- Monson finished her career with 1,066 points, tallying a career-best 15.8 points per game as a senior. She recorded more points her senior season than her first three years combined.

PURE LEADER AMIAH REYNOLDS

- Amiyah Reynolds completed a prolific career for South Bend Washington, going 95-18, winning an IHSAA State Champion and three conference titles.
- Reynolds ranked second in South Bend Washington history with 564 assists.
- Her 1,000th point came off an assist from Rashunda Jones.
- Sadly, due to an injury that ended her senior campaign in February, Reynolds will redshirt for the 2023-24 season.
- Despite sitting out drills, Gearlds has made a point to work with Reynolds during practice to ingrain her in the offense.

MAGIC MCKENNA

- McKenna Layden reunited with her sister Madison following a 78-17 career record at Northwestern High School.
- Scoring 1,616 points and pulling down 573 rebounds, Layden was named an Indiana All-Star as a junior and senior.
- She set the Northwestern single-game record with 47 points with nine 3-pointers against Taylor in 2021.
- In addition to her success playing for her mother Kathie, including reaching the IHSAA 4A Championship Game as a freshman alongside Madison, Layden won two sectional titles in volleyball and tennis each.

JAYLA'S JUMP

- Jayla Smith emerged as the top sub off the bench last season when she set career highs for single-game and season stats.
- Smith tallied 7.8 points per game while shooting 45.5% from the field and finished second on the team with 30 steals.
- Smith's biggest impact came with the Boilermakers' season on the line in the Big Ten Tournament. The Indianapolis native laced a wing 3-pointer with less than five seconds remaining and down one to beat Wisconsin 57-55, a victory that likely edged Purdue into the NCAA Tournament.

RANKED MATCHUPS

- Head coach Katie Gearlds has guided Purdue to three ranked wins during her time in West Lafayette. Purdue had dropped their previous 25 contests to ranked opponents before the Gearlds era started.
- Purdue recorded back-to-back ranked wins for the first time since 2018 during the 2022-23 campaign.
- With a 73-65 win over No. 2 Ohio State in Columbus, the Boilermakers tallied their first ever top-five win on the road.
- Purdue snapped the program's 19-game skid to ranked teams with a 66-61 win over No. 17 Florida State last season.
- Gearlds was 23-22 against ranked teams during her playing days in West Lafayette. Her highest ranked win was over No. 5 Kansas State as a freshman in 2003, her first game as a Boilermaker.

THE NEXT GENERATION

- National Signing Day brought Purdue a trio of talented high schools seniors, as Katie Gearlds welcomed Jordyn Poole, Lana McCarthy and Kendall Puryear to the Boilermaker family.
- Out of Fort Wayne Snider High School, Poole is a 5-7 guard and a candidate for Indiana Miss Basketball. Poole was the No. 54 player in the nation and averaged 16.7 points, 3.6 rebounds and 4 assists per game as a junior. Her uncle is Purdue legend Roosevelt Barnes and cousin was Purdue Big Ten Player of the Year Caleb Swanigan.
- Puryear, a 6-2 forward from Lee's Summit, Mo., averaged 15.9 points, 9.9 rebounds and 1.6 assists per game as a junior to be ranked the No. 2 player in the state.
- McCarthy, a 6-4 forward from Bedford, N.H., is the No. 1 player in the state and averaged 21.7 points per game while reaching her third straight state championship game. McCarthy also won four straight volleyball state titles and set the state record in career blocks.

DOWN UNDER DOWNTOWN ABBEY

- Abbey Ellis is her final campaign in West Lafayette after honorable mention All-Big Ten nods each of the last two years.
- Ellis was one of the most clutch free throw shooters in the country last season finishing third nationally at 91.7% while leading the Big Ten overall.
- Ellis is one of Purdue's go-to options in tight situations averaging 11.5 points per game during her time in West Lafayette with a 45.9% clip from the field and 33.3% from behind the arc.
- She joined the 1,500-point club for her career last season.
- In the Big Ten Tournament quarterfinals against Iowa last year, Ellis made her 100th career start.
- She earned a spot on the Big Ten Honor Roll following wins over No. 22 Illinois and No. 2 Ohio State last season.
- Purdue's first Australian rocks a ribbon in her hair during games from a selection that her mother sends her to wear.
- The senior has also gained a following on TikTok \ @abbeye_22 with videos shared by BarstoolSports, Slam and more.

BOILER NOTES**PACKING A PUNCH IN THE PORTAL**

- While setting up her first true high school signing class, Katie Gearlds has found some instant impacts in the transfer portal during her time back at Purdue.
- Gearlds landed Abbey Ellis and Jeanae Terry mere weeks after she was hired on staff. Terry started every game for the Boilermakers during her first two seasons, while Ellis has been a spark plug that has lit up Mackey Arena on numerous occasions.
- Last season, Caitlyn Harper and Lasha Petree provided some much-needed veteran experience and scoring talent into the starting lineup. Petree paced Purdue with 14.7 points per game and Harper was one of 12 players in the Big Ten to average double figures and shoot over 50% from the field.
- Gearlds dipped back into the portal to bring two sisters to the program who played their freshman campaigns elsewhere. Alaina Harper joined after a rookie season at Grand Canyon, and Mila Reynolds made the move to West Lafayette after reaching the Elite Eight last season with Maryland.

CAITLYN CASHING IN

- Caitlyn Harper is in her sixth and final year of her collegiate career, utilizing her extra season granted by the NCAA for the 2020-21 season.
- She finished third on the team in scoring with 10.4 points per game during her first season in West Lafayette.
- Harper was 1 of 11 players in the Big Ten averaging over 10 points per game while shooting 50% or better from the field.
- Harper paced Purdue with a season-high 20 points on the road at Penn State to top her 15 games in double figures.
- With her 10 points against Illinois, Harper joined the 1,500-point club for her career, following 1,286 points at Cal Baptist.
- The redshirt senior was named the 11th best transfer from a mid-major to a high-major by HerHoopsStats.com last year.
- The Hartland, Wisc., native came to Purdue after leading the WAC in scoring in 2021-22 with 17.7 points per game.
- Harper's honor haul also includes 2022 CoSIDA Academic All-America, 2021-22 WAC Player of the Year, 2021 WAC Tournament MVP.

BEEN THERE. THEY'RE BACK

- Purdue's coaching staff features a trio of alumnae who left their marks on the program during their playing days.
- Head coach Katie Gearlds was one of the best pure scorers in Purdue history, reaching four NCAA Tournaments, three Sweet 16s and an Elite Eight. She continues to rank in the top-10 of numerous career stat categories and was named an All-American in 2007 as a senior.
- 1999 National Champion and new associate head coach Kelly Komara returned to West Lafayette for her second stint on the sidelines. Komara was the 2002 Big Ten Defensive Player of the Year and helped the Boilermakers reach two national title games, winning the lone championship in Big Ten women's basketball.
- Alex Guyton is in her fifth season on staff and third as an assistant coach. Guyton reached three NCAA Tournaments and one the Big Ten championship her four-year career for the Boilermakers.
- Another new addition to the coaching ranks at Purdue is dynamic recruiting assistant coach Mark Stephens. After spending the last five seasons on staff at Toledo and Xavier, Stephens returns to the state to lead the Boilermakers' posts and recruiting operations. Stephens' in-state ties run deep after serving as a coach at several high schools and managing Indiana Elite as well as other AAU programs.
- While they didn't play for Purdue, director of video and recruiting Lakan Hasser-Smith and graduate assistant Abby Downard are in-state products with deep ties to Katie Gearlds after playing their entire careers for her at Marian.
- Director of operations Amie Anthrop is well-accustomed to the bright lights of Purdue. After an award-winning career as a guard at Southern Indiana, she married Jade Anthrop, brother to Dru (basketball), Danny (football) and Jackson (football).

WHAT LEFT. WHAT CAME BACK

- Purdue brings back five key contributors from a season ago, including four starters in Jeanae Terry, Abbey Ellis, Madison Layden and Caitlyn Harper.
- Lasha Petree powered the Boilermakers' offense last season with 14.7 points per game. Ellis and Harper joined her in double figures with 11.2 and 10.4 points per game, respectively.

Category	Total	Returns	% Returning	Left
Games Started		93	62.0	57
Minutes		3,797	63.1	2,225
Points	2,114	1,244	58.8	870
3-Pointers	213	105	49.3	108
Rebounds	1,061	724	68.2	337
Assists	473	371	78.4	102
Turnovers	460	303	65.9	157
Blocked Shots	99	61	61.6	38
Steals	231	169	73.2	62
Field Goal Percentage of Returners			458-1,014 (45.2%)	

2 VETERANS DEPARTING

- The Boilermakers saw two of their most impactful players from the 2022-23 season depart after graduation.
- Fifth-year senior Cassidy Hardin, who postponed her entry to medical school to come back and play a final season in West Lafayette to get Purdue back to the NCAA Tournament, departed after setting the Purdue men's and women's basketball record for most career games played with 142. Hardin was the fifth player in program history to knock down more than 200 3-pointers in a career, finishing fourth on the career charts with 214.
- Lasha Petree made an instant impact in her lone season at Purdue. The Detroit native tallied 14.7 points per game to finish 15th in the Big Ten in scoring.

PURDUE SPECIALTY STATS (PURDUE/OPP)

	Off TO	Paint	2nd-Ch.	Fast B.	Bench
UCLA	9-26	20-40	8-13	2-9	20-18
Southern	6-14	22-14	3-2	4-0	4-10
Texas A&M	26-7	34-22	8-9	7-4	20-13
Florida	15-10	30-24	7-12	4-2	17-10
Georgia	8-20	26-36	14-19	15-14	10-36
USI	19-12	36-26	10-6	11-0	36-16
Dayton	13-12	30-26	9-20	5-2	11-26

Valparaiso
SEMO
Minnesota
Notre Dame
Indiana State
Wisconsin
Rutgers
Maryland
Iowa
Penn State
Indiana
MSU
Ohio State
Nebraska
Illinois
Indiana
Northwestern
Nebraska
MSU
Wisconsin
Penn State
Michigan

Totals	95-101	198-200	59-81	48-31	118-129
Averages	13.6-14.4	28.3-28.6	8.4-11.6	6.7-4.4	16.9-18.4

PURDUE SCORING BY CLASS

	Fr.	So.	Jr.	Sr.	5th/6th
UCLA	20	0	4	0	25
Southern	17	0	0	21	29
Texas A&M	22	0	0	8	42
Florida	10	0	13	0	26
Georgia	21	0	0	14	22
USI	38	2	8	16	31
Dayton	15	0	4	13	35

Valparaiso
SEMO
Minnesota
Notre Dame
Indiana State
Wisconsin
Rutgers
Maryland
Iowa
Penn State
Indiana
MSU
Ohio State
Nebraska
Illinois
Indiana
Northwestern
Nebraska
MSU
Wisconsin
Penn State
Michigan

Totals	143	2	29	72	210
Averages	20.4	0.3	4.1	10.3	30.0

TOP PERFORMANCES *includes previous school

Triple-Double	23-24	Career
Jeanae Terry		2
Double-Double	23-24	Career
Jeanae Terry		14*
Caitlyn Harper	1	1
Score 10+ Points	23-24	Career
Caitlyn Harper	5	86*
Abbey Ellis	7	75*
Madison Layden	4	40
Jeanae Terry		31*
Jayla Smith	1	15
Mary Ashley Stevenson	3	3
Rashunda Jones	3	3
Scored 20+ Points	23-24	Career
Abbey Ellis	2	23*
Caitlyn Harper		20*
Jeanae Terry		3*
Madison Layden	1	3
Rashunda Jones	1	1
Made 1 3-Pointer	23-24	Career
Abbey Ellis	6	77*
Madison Layden	5	67
Caitlyn Harper	4	26*
Jeanae Terry		24*
Jayla Smith	1	23
McKenna Layden	1	1
Rashunda Jones	2	2
Emily Monson	1	1
McKenna Layden	1	1
Made 2+ 3-Pointers	23-24	Career
Madison Layden	3	46
Abbey Ellis	2	43*
Caitlyn Harper	1	22*
Jayla Smith		8
Jeanae Terry		7*
Rashunda Jones	1	1
McKenna Layden	1	1
Recorded 10+ Rebounds	23-24	Career
Jeanae Terry	1	22*
Caitlyn Harper	1	11*
Abbey Ellis		2*
Recorded 5+ Assists	23-24	Career
Jeanae Terry	3	60*
Madison Layden		14
Abbey Ellis	1	14*
Recorded 3+ Steals	23-24	Career
Jeanae Terry	2	26*
Madison Layden	1	20
Abbey Ellis	1	19*
Caitlyn Harper	1	8*
Jayla Smith		4
Recorded 3+ Blocks	23-24	Career
Caitlyn Harper		15*
Jayla Smith		1
Jeanae Terry		1*
Played a Complete Game	23-24	Career
Madison Layden		2
Caitlyn Harper		1*

BOILER NOTES**THE VOICE OF THE BOILERMAKERS**

- In his 34th season calling Purdue women's basketball, play-by-play man Tim Newton is closing in on his 1,000th game with Purdue women's basketball.
- He has called 994 games in his time with the Boilermakers.
- Purdue is 677-317 in games called by Newton. He has been on the air for 994 of Purdue's 1,466 total games.
- Newton has provided the call for all seven Big Ten regular season titles, all nine Big Ten Tournament Championships, three Final Fours and 25 of 27 NCAA Tournament appearances.
- Perhaps Newton's best call came in the final seconds of the 1999 National Championship as Purdue became the only Big Ten team to capture the national title.
- "Ladies and gentlemen, the national champion team resides in West Lafayette, Indiana, as Katie Douglas throws the ball skyward. It's over. Purdue wins 62-45, capturing the national championship."
- Based on the best research available, Newton and LSU's play-by-play voice Patrick Wright will be the only active radio voices to reach 1,000 games called. Both should hit the mark in December.

A WEEKEND FOR THE CHAMPS

- Purdue welcomed home its legendary 1998-99 team this weekend to celebrate the 25-year anniversary of the Big Ten's only national championship in women's basketball over the weekend of Nov. 10-12.
- The championship squad was honored in front of a sold-out Mackey Arena for the men's basketball game on Friday, before an on-field ceremony at the football game on Saturday. The weekend culminated with a halftime ceremony at the women's game in front of 5,002 fans on Sunday.
- Head coach Katie Gearlds unveiled a new trophy display for the Sears Trophy at the front of Mackey Arena, complete with photos and quotes of players from that magical year.
- A major piece from the celebration involved a Boilermaker who was gone too soon. Tiffany Young, a charismatic junior guard passed away four months after winning the title in a car accident. Throughout the 2023-24 season, Purdue will reopen the Tiffany Young Scholarship Endowment to provide a women's basketball student-athlete a scholarship in her name.

THE BIG TEN'S ONLY NATIONAL CHAMPIONS

- Led by National Coach of the Year Carolyn Peck, the Boilermakers finished the year with a program-best 34-1 record, a perfect 16-0 mark in Big Ten play, a Big Ten Tournament title and a 62-45 win in the National Championship Game over Duke.
- The 1998-99 season opened when Purdue knocked off three-time defending national champion and No. 1-ranked Tennessee at Mackey Arena 78-68.
- Stephanie White was named an All-American, the Honda Award winner and the Wade Trophy honoree, as well as the Big Ten Player and Athlete of the Year. Ukari Figgs earned an honorable mention All-America nod and was named the 1999 Most Outstanding Player of the NCAA Tournament.
- The victory was bittersweet as guard Tiffany Young tragically died when she was killed by a drunk driver just over four months after winning the national championship. The 1998-99 team have continued to bring back their memories and love for Young over the last 25 years to ensure her impact on their lives will never be forgotten.

PROBOILERS

- Purdue has four players currently rostered on professional teams in Europe.
- Aya Traore, a teammate of Gearlds' during her playing time in West Lafayette, plays for Lleida in the Spanish LF2 Division.
- Ae'Rianna Harris, a 2020 Purdue graduate, is with Picken Claret in the Spanish LF2 Division.
- Andreona Keys signed to play for Arad in the Romanian Liga Nationala.
- Lasha Petree is suiting up for Vimpelin Veto in the Finnish Korisliiga.

SELLING OUT MACKEY

- For the third time in program history and the first since 2000, Mackey Arena sold out for a women's basketball game when the Boilermakers faced No. 4 Indiana last season.
- The crowd of 14,876 set a new record for the program and was the then-16th highest-attended game in Big Ten history.
- Following an Indiana-record 17,222 fans when Purdue and Indiana played on Feb. 19, the grand total of fans who watched the best rivalry in college basketball came to a record 32,098.
- The attendance, at the time, was the second largest on campus nation this season behind Missouri at South Carolina (15,444) and Florida at Oklahoma (19,236).
- Purdue was the fifth Big Ten team to go over 10,000 in attendance this season (Michigan, Maryland, Iowa, Indiana).
- In the regular season, Purdue played in the third and ninth most attended games in the nation last year.

BACK IN THE BIG DANCE

- The Boilermakers made their return to the NCAA Tournament for the 27th time in program history in 2022-23.
- Led by Carolyn Peck, the Boilermakers won the 1999 national title, the only women's basketball championship earned by a Big Ten program.
- In addition to the championship, Purdue has reached two title games (2001 loss to Notre Dame), three Final Fours, eight Elite Eights and 12 Sweet 16s.
- Six Boilermakers have been named to the Final Four All-Tournament Team, including 1999 Most Outstanding Player Ukari Figgs.
- Eighteen players have garnered NCAA Regional All-Tournament Team honors, with Katie Gearlds garnering the laurel in 2007.
- Purdue has a 47-25 all-time record in March Madness.

A WINNING HISTORY

- Putting on the Old Gold & Black carries with it a standard that was set more than three decades ago when the Boilermakers lifted their first Big Ten title in 1991.
- Purdue is the only Big Ten team to win a national championship in women's basketball.
- Despite not reaching the Big Dance since 2016-17, the Boilermakers' 26 NCAA Tournament appearances are tied with Ohio State for second in the Big Ten behind Iowa's 28.
- With its last Big Ten Tournament title coming in 2013, Purdue owns the record for most league tourney championships with nine (1998-99-2000-03-04-07-08-12-13)
- Purdue has won seven Big Ten regular season championships, good for fourth in the league, with the last one coming in 2002.

SOMETHING ABOUT A TRUCK

- A heartfelt story told by the Big Ten Network during the 2022-23 season centered around Gearlds' relationship with her parents.
- As a freshman at Beech Grove High School, Gearlds made a deal with her parents that if she was named Indiana Miss Basketball, they would buy her the car of her dreams.
- Four years and an incredible high school career later, her father Tony traded in his truck to surprise Katie with a 2002 yellow Ford Mustang in the family garage. Tony took over Katie's 1988 Chevy Celebrity, driving it until the wheels fell off.
- In the summer of 2022, Katie returned the favor and surprised her dad to buy him any brand new he wanted. The only rule, it could not be red.

SISTER SISTER**Madison Layden** - Feb. 7, 2002**McKenna Layden** - Jan. 11, 2005**Age Gap** - 1,069 days or 2 years, 11 months, 4 days**Parents** - Kathie & Jeff Layden**Hometown** - Kokomo, Ind.

• Madison and McKenna Layden are back together for the first time since Madison's senior year of high school in 2020, when the duo guided Northwestern to the 4A IHSA State Championship game.

• Their mother Kathie was the head coach of the basketball team assisted by their father Jeff. The Laydens won back-to-back state titles in 2018 and 2019.

• The tandem played basketball, volleyball and tennis together throughout their high school careers.

• Kathie won five Indiana State championships as a head coach, the most by a non-private school head coach, during her career that she retired from in 2023 after 23 seasons.

• Madison claimed a trio of sectional titles and back-to-back 3A state titles, before McKenna joined the high school ranks.

• McKenna owns the Northwestern High School record for points in a game with 47 off nine 3-pointers during her senior year.

• The Laydens were honored in a Hamburger Helper commercial when McKenna and Madison were children.

**Mila Reynolds** - July 1, 2003**Amiyah Reynolds** - June 25, 2004**Age Gap** - 360 days or 11 months, 24 days**Parents** - Steve & Marcy Reynolds**Hometown** - South Bend, Ind.

• After an impressive three years together at South Bend Washington, Mila and Amiyah Reynolds are reunited on the same roster after a year hiatus.

• Combined, the duo won the 2022 Class 3A State Championship and posted a 68-17 record together over three years.

• Mila finished her career with a 78-30 mark and amassed 2,099 career points, second in program history to Skylar Diggins-Smith.

• Amiyah was the No. 43 player in the nation and the second highest Big Ten signee in the class of 2023, per ESPN. She finished her career ranked second in assists with 564 and in the top 10 in points. Reynolds' senior season came to an abrupt ending due to an foot/ankle injury that will rule her out of the 2023-24 season.

• The unofficial third sister of the group is fellow South Bend Washington Panther Rashunda Jones who created an unstoppable backcourt with Amiyah. The duo went 95-18 over their four years on the court.

• Rashunda finished as the runner up for the 2023 Indiana Miss Basketball.

• Their father Steve was the head coach of South Bend Washington assisted by their mother Marcy, both of whom played professionally overseas.

• Mila and Amiyah are two of the seven Reynolds children.

• The Reynolds and Rashunda Jones have played together since grade school after attending church together as children.

**Caitlyn Harper** - Feb. 12, 2000**Alaina Harper** - Dec. 4, 2003**Age Gap** - 1,391 days or 3 years, 9 months, 22 days**Parents** - Dale & Rhonda Harper**Hometown** - Heartland, Wis.

• Due to the long age gap, Caitlyn and Alaina Harper will play on the same team for the first time in their lives.

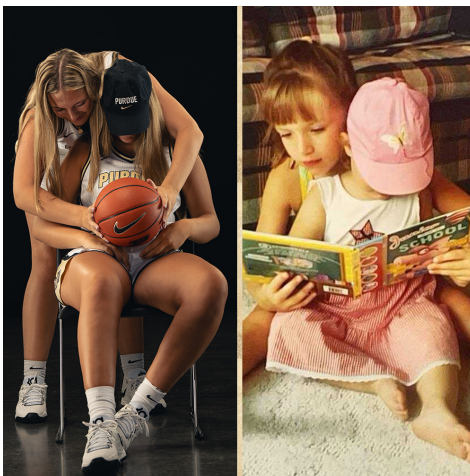
• After Caitlyn had a standout career at Arrowhead High School, Alaina followed suit wearing the same No. 34 her sister wore.

• Prior to transferring to Purdue ahead of the 2022-23 season, Caitlyn was an all-conference player at Arrowhead before earning WAC Player of the Year honors at Cal Baptist.

• Alaina spent her freshman campaign at Grand Canyon following an all-conference career at Arrowhead.

• Their father Dale played collegiately at Bemidji State.

• Strong academics have always played a major role in their lives. Caitlyn was a 2022 CoSIDA All-American and earned a 3.9 GPA at Arrowhead. Alaina bettered that with a perfect 4.0 GPA in high school.

**PURDUE IN THE POLLS**

Week	AP	Coaches	NET
Preseason	-	-	-
Week 1	-	-	-
Week 2	-	-	-
Week 3	-	-	-
Week 4	-	-	-
Week 5	-	-	-
Week 6	-	-	-
Week 7	-	-	-
Week 8	-	-	-
Week 9	-	-	-
Week 10	-	-	-
Week 11	-	-	-
Week 12	-	-	-
Week 13	-	-	-
Week 14	-	-	-
Week 15	-	-	-
Week 16	-	-	-
Week 17	-	-	-
Week 18	-	-	-
FINAL	-	-	-

SINGLE-GAME RECORDS**SINGLE-GAME POINTS**

Overall	41	Katie Gearlds	at Wisconsin	2/18/07
Senior	41	Katie Gearlds	at Wisconsin	2/18/07
Junior	37	MaChelle Joseph	at Michigan State	2/15/91
Sophomore	40	Shereka Wright	at Michigan	2/17/02
Freshman	34	Leslie Johnson	at Vanderbilt	12/5/93

SINGLE-GAME FIELD GOALS

Overall	16	MaChelle Joseph	at Michigan State	2/15/91
Senior	14	Jannon Roland	at Ohio state	1/23/97
Junior	16	MaChelle Joseph	at Michigan State	2/15/91
Sophomore	15	Shereka Wright	at Michigan	2/17/02
Freshman	13	Leslie Johnson	Northwestern	2/27/94

SINGLE-GAME 3-POINTERS

Overall	12	Brittany Rayburn	at Minnesota	1/12/12
Senior	12	Brittany Rayburn	at Minnesota	1/12/12
Junior	7	Karissa McLaughlin	at Michigan State	1/30/20
Sophomore	9	2x, K. McLaughlin	Northwestern	2/17/19
Freshman	6	5x, Madison Layden	at Iowa	1/18/21

SINGLE-GAME FREE THROWS MADE

Overall	16	Shereka Wright	Penn State	1/16/03
Senior	13	2x, Shereka Wright	at Northwestern	2/15/04
Junior	16	Shereka Wright	Penn State	1/16/03
Sophomore	14	3x, Courtney Moses	at Northwestern	1/26/12
Freshman	14	Leslie Johnson	Ohio State	2/13/94

SINGLE-GAME REBOUNDING

Overall	25	Leslie Schultz	at Miami (OH)	12/2/81
Senior	20	Joy Holmes	at Wisconsin	1/27/91
Junior	25	Leslie Schultz	at Miami (OH)	12/2/81
Sophomore	20	Cathery Tyree	at Michigan State	1/11/85
Freshman	23	Natasha Cender	Michigan	2/7/76
Offensive	12	Joy Holmes	Minnesota	2/10/91
Defensive	16	2x, Whitney Bays	at Dayton	12/7/14

SINGLE-GAME ASSISTS

Overall	16	MaChelle Joseph	Northern Illinois	3/22/92
Senior	16	MaChelle Joseph	Northern Illinois	3/22/92
Junior	14	Lisa Jahner	Michigan	3/7/87
Sophomore	12	MaChelle Joseph	New Mexico State	12/29/89
Freshman	11	3x, K. McLaughlin	Penn State	1/28/18

SINGLE-GAME BLOCKS

Overall	11	Danielle Campbell	Butler	11/17/07
Senior	9	Ae'Rianna Harris	at #5 South Carolina	12/15/19
Junior	11	Danielle Campbell	Butler	11/17/07
Sophomore	7	3x, Ae'Rianna Harris	Lamar	11/18/17
Freshman	7	2x, Nora Kiesler	at Penn State	1/30/16

SINGLE-GAME STEALS

Overall	12	Joy Holmes	Minnesota	1/13/89
Senior	9	Michelle Duhart	Michigan State	2/24/00
Junior	10	Cherelle George	South Carolina	11/26/05
Sophomore	12	Joy Holmes	Minnesota	1/13/89
Freshman	8	FahKara Malone	Illinois	2/8/07

WINNING MARGINS**When Leading**

Largest Margin of Victory	38, vs. Southern Indiana, 11/26/23
Largest Overall Lead	43, vs. Southern Indiana, 11/26/23
Largest Halftime Lead	21, vs. Southern Indiana, 11/26/23
Largest Lead in a Loss	5, vs. Georgia, 11/22/23
Largest Halftime Lead in a Loss	
Largest Purdue Run	17, vs. Southern Indiana, 11/26/23

When Trailing

Largest Margin of Defeat	43, at UCLA, 11/6/23
Largest Overall Deficit	45, at UCLA, 11/6/23
Largest Halftime Deficit	28, at UCLA, 11/6/23
Largest Deficit Overcome to Win	8, vs. Texas A&M, 11/16/23
Largest Halftime Deficit in a Win	
Largest Opponent Run	10, at UCLA, 11/6/23

Games When the Margin is

Win	Loss
1 Point	
2 Points	
3 Points	1
4 Points	
5 Points	
6 Points	
7 Points	
8 Points	1
9 Points	
10-19 Points	2
20-29 Points	
30+ Points	1

HONORS AT PURDUE**Abbey Ellis**

Team Captain for first time - 2023-24
All-Big Ten Honorable Mention - 2021-22, 2022-23

Caitlyn Harper

Team Captain for first time - 2023-24

Rashunda Jones

Big Ten Freshman of the Week - Nov. 20

Madison Layden

Team Captain for third season - 2021-2024

Jeanae Terry

Team Captain for third season - 2021-2024
Second Team All-Big Ten - 2022-23
Big Ten All-Defensive Team - 2022-23

RECORDS WATCH

• Check out which Boilermakers are climbing the single-season and career charts this year.

CAREER ASSISTS AT PURDUE

6. FahKara Malone	513	2007-10
7. Erika Valek	479	2001-04
8. KK Houser	455	2010-14
9. Jennifer Jacoby	427	1992-95
10. Sharon Versyp	418	1985-88
11. Jeanae Terry	412	2022-Present
12. Ukari Figgs	409	1996-99
13. Kelly Komara	402	1999-02
14. Katie Gearlds	399	2004-07

CAREER ASSIST TO TURNOVER RATIO AT PURDUE (MIN. 200 ASTS)

1. Jeanae Terry	1.98	2022-Present
2. April Wilson	1.68	2013-16
3. Jennifer Jacoby	1.64	1992-95
Katie Gearlds	1.64	2004-07
5. Karissa McLaughlin	1.54	2018-2021
6. Lisa Jahner	1.46	1985-88
7. Madison Layden	1.45	2021-Present
8. Cindy Lamping	1.40	1992-95
9. Dominique Oden	1.38	2017-20
10. Ukari Figgs	1.37	1996-99

CAREER FREE THROW PERCENTAGE AT PURDUE (MIN. 175 ATT)

1. Courtney Moses	90.6 - 290-320	2011-14
2. Abbey Ellis	88.3 - 189-214	2022-Present
3. Karissa McLaughlin	86.7 - 176-203	2017-21
4. Katie Gearlds	86.3 - 314-364	2004-07
5. Ukari Figgs	84.1 - 359-427	1996-99
6. Brittany Rayburn	82.1 - 538-665	2009-12
Drey Mingo	82.1 - 183-223	2010-13

CAREER 3-POINTERS

5. Brittany Rayburn	201	2009-12
6. Dominique Oden	193	2017-20
7. Jodi Howell	188	2006-10
8. Stephanie White	183	1996-99
9. Ashley Morrisette	181	2014-17
10. Ukari Figgs	174	1996-99
11. KK Houser	167	2010-14
12. Madison Layden	158	2021-Present

CAREER TRIPLE-DOUBLES

1. Jeanae Terry	2	2022-Present
-----------------	---	--------------

2023-24 ROSTER

No.	Name	Yr.	Pos.	Ht.	Hometown/High School/Previous School
1	Amiyah Reynolds	Fr.	G	6-0	South Bend, Ind. / South Bend Washington
2	Rashunda Jones	Fr.	G	5-8	South Bend, Ind. / South Bend Washington
3	Jayla Smith	Jr.	G	6-0	Indianapolis, Ind. / Lawrence North
10	Jeanae Terry	5th	G	5-11	Detroit, Mich. / Wayne Memorial / Illinois
11	McKenna Layden	Fr.	G	6-2	Kokomo, Ind. / Northwestern
15	Mila Reynolds	So.	F	6-3	South Bend, Ind. / South Bend Washington / Maryland
20	Mary Ashley Stevenson	Fr.	F	6-2	New York City, N.Y. / The Dalton School
21	Emily Monson	Fr.	G	6-1	Murfreesboro, Tenn. / Blackman
23	Abbey Ellis	5th	G	5-6	Melbourne, Australia / Our Lady of Mercy / Cal Poly
31	Sophie Swanson	Fr.	G	5-10	Barrington, Ill / Barrington Prep
32	Alaina Harper	So.	F	6-3	Hartland, Wis. / Arrowhead / Grand Canyon
33	Madison Layden	Sr.	G	6-1	Kokomo, Ind. / Northwestern
34	Caitlyn Harper	6th	F	6-3	Hartland, Wis. / Arrowhead / Cal Baptist

Name	Position	Year at Purdue	Year Coaching	Alma Mater
Katie Gearlds	Head Coach	3rd Year	11th Year	Purdue - '07
Kelly Komara	Associate Head Coach	1st Year / 3rd Year*	20th Year	Purdue - '02
Mark Stephens	Assistant Coach / Recruiting	1st Year	7th Year	Morehead State - '02
Alex Guyton	Assistant Coach	5th Year	7th Year	Purdue - '12
Tiffini Grimes	Deputy Athletic Director / SWA	2nd Year		Purdue - '05
Amie Anthrop	Director of Operations	1st Year		Southern Indiana - '11
Chaz Calloway	Director of Strength & Conditioning	1st Year		Cincinnati - '14
Jessica Lipsett	Director Athletic Training and Physical Therapy	21st Year		Illinois - '00
Lakan Hasser-Smith	Director Video/Recruiting Assistant	2nd Year		Marian - '16
Abby Downard	Graduate Assistant	1st Year		Marian - '21

*Served on staff from 2014-16

Amiyah Reynolds	ah-MY-yah	Alaina Harper	ah-LAY-na
Rashunda Jones	ra-SHUN-da	Katie Gearlds	soft g (like the first name)
Mila Reynolds	MEE-la	Kelly Komara	kom-AIR-ah

Associate Head Coach Kelly Komara

Alma Mater: Purdue '02 | **Season at Purdue/Career:** 1st/3rd/20th
Select Experience: Marquette - Assistant (22-23), Vanderbilt - Associate Head Coach (19-21), Vanderbilt - Assistant (17-18), Purdue - Assistant (15-16)

Select Highlights: 1999 National Champion, 2002 Big Ten Defensive Player of the Year, 3-time All-Big Ten selection, 4 NCAA Tournaments, 2 National Championship Games, 5 Big Ten titles, father has been an Indiana high school football coach for over 50 years

Assistant Coach Mark Stephens

Alma Mater: Morehead State '02 | **Season at Purdue/Career:** 1st/7th
Select Experience: Toledo - Assistant (20-23), Xavier - Assistant (17-19), Crispus Attucks - Head Coach (2012-16), Indiana Elite - Club Director

Select Highlights: Helped Toledo to three MAC titles and an NCAA Appearance, mentored numerous Indiana Miss Basketball winners during his AAU coaching career

Assistant Coach Alex Guyton

Alma Mater: Purdue '12 | **Season at Purdue/Career:** 5th/7th
Select Experience: Purdue - Director of Player Development (19-21), Eastern Illinois - Assistant (17-19), Carmel HS - Assistant (14-17)

Select Highlights: Played 124 games won a pair of Big Ten Tournament titles, 3 NCAA Tournaments and an Elite Eight, coached Michigan's Amy Dilk while at Carmel



1 AMIYAH REYNOLDS



2 RASHUNDA JONES



3 JAYLA SMITH



10 JEANAE TERRY



11 MCKENNA LAYDEN



15 MILA REYNOLDS



20 MARY ASHLEY STEVENSON



21 EMILY MONSON



23 ABBEY ELLIS



31 SOPHIE SWANSON



32 ALAINA HARPER



33 MADISON LAYDEN



34 CAITLYN HARPER



KATIE GEARLDS



KELLY KOMARA



MARK STEPHENS



ALEX GUYTON



KATIE GEARLDS

HEAD COACH | 3RD SEASON AT PURDUE | 11TH SEASON OVERALL | PURDUE '07

@katiegearlds4
@katiegearlds4

Year	Overall	BIG	Non-Con.	BIG Tourney	NCAAs	WNIT	Home	Road	Neutral	vs. Top-25	Unranked
2021-22	17-15	7-11	9-2	0-1	-	1-1	11-6	5-7	1-2	1-6	16-9
2022-23	19-11	9-8	9-1	1-1	0-1	-	10-4	6-4	3-2	2-6	17-4
2023-24	4-3	-	4-3	-	-	-	3-0	1-1	0-2	0-1	4-2
Totals	40-29	16-19	22-6	1-2	0-1	1-1	24-10	12-12	4-7	3-13	37-15
Pct.	.580	.457	.786	.333	.000	.500	.706	.500	.364	.188	.712

AN IMPACT BACK IN WEST LAFAYETTE

- In two seasons back at her alma mater, Katie Gearlds has guided the Boilermakers back to the postseason twice.
- After posting a 19-win campaign in 2022-23, Gearlds joined the elite company of Carolyn Peck and Lin Dunn as the only Boilermaker head coaches to post win improvements in each of their first two campaigns.
- The Boilermakers made their return to the NCAA Tournament for the first time since 2017 with a bid to the First Four last year.
- Prior to her arrival, Purdue had dropped its last 19 games against a ranked opponent. In two seasons, Gearlds has racked up three, including the program's first AP top-5 win in a true road game against No. 2 Ohio State in 2022-23.
- Katie Gearlds reached the 250-win plateau for her career against Harvard, reaching the feat in 315 career games.

HITTING THE RECRUITING TRAIL

- The 2023-24 freshmen made up Gearlds' first true recruiting class through an entire cycle.
- Landing five signees in November of 2022, the 2023 class ranked No. 21 in the nation, before Gearlds welcomed in top-50 player Amiyah Reynolds to the program the following May.
- A former Indiana Miss Basketball, Gearlds has placed a major emphasis on recruiting and ensuring the best talent in the state comes to Purdue.
- Gearlds has also found success in the transfer portal with Jeanae Terry and Abbey Ellis garnering All-Big Ten nods, while Lasha Petree and Caitlyn Harper powered the offense in 2022-23.

THE JOB SO FAR

- Gearlds guided the Boilermakers on another step forward in 2022-23, making the NCAA Tournament for the first time since 2017.
- After having a full offseason to prepare, the Boilermakers went 19-11 and tallied a pair of ranked wins over No. 22 Illinois and No. 2 Ohio State.
- The Katie Gearlds era started sooner than expected in 2021-22, when she took over the program a mere 47 days prior to the season opener.
- Purdue finished 17-15 on the year, winning 10 more games than the previous campaign. It was the best win improvement by first-year head coach at Purdue and the third best in program history.
- The Boilermakers finished 10-2 in the non-conference, marking the second-best clip by a first-year head coach.
- The Boilermakers reached the postseason for the first time since 2017-18, ending the campaign in the second round of the WNIT.

COACHING EXPERIENCE

- Spent eight seasons taking Marian University winning back-to-back NAIA National Championships in 2016 and 2017.
- Went 228-50 record, an 82% clip with the Knights.
- Three-time NAIA National Coach of the Year, won 10 total Crossroads League titles and made seven appearances in the NAIA Tournament.
- Guided 12 WBCA NAIA All-America selections, compared to just five in the first 37 years of the program's existence.

PROFESSIONAL CAREER

- Played professionally over six seasons
- Spent three seasons in the WNBA with the Seattle Storm,
- Was taken with the seventh overall pick in the 2007 WNBA Draft, the highest selection ever from Purdue
- Two of her closest teammates and friends over the years are WNBA legend Sue Bird and fellow WNBA great and New Orleans Pelicans Vice President of Basketball Operations Swin Cash.
- Gearlds is the highest draft pick in Purdue history, going seventh overall to the Seattle Storm in 2007.

ALL-AMERICAN AT PURDUE CAREER

- Was a three-year starter from 2004-07.
- Ranks fourth in program history with 1,974 points and was the ninth fastest to join the 1,000-point club.
- Named a Legend of Mackey Arena for the 50th season.
- Won two Big Ten Tournament titles and never missed the NCAA Tournament with Gearlds in the squad
- Reached three Sweet 16s and one Elite Eight.
- Set the Purdue single-game record with 41 points at Wisconsin on Feb. 18, 2007, and scored 707 points to tie the single-season program record.
- 2007 Third Team AP All-America WBCA Honorable Mention
- Four-time All-Big Ten and the 2004 Big Ten Freshman of the Year.
- Earned a bachelor's degree in sociology and minored in psychology and communications from Purdue in 2007.

ONE-OF-A-KIND PREP CAREER

- Named the Indiana Miss Basketball in 2003.
- Amassed 2,521 career points, good for sixth in IHSAA history.
- Averaged 30.1 points, 9.4 rebounds, 5.4 assists and 5.1 steals per game to lead Beach Grove High School to the 2003 Class 3A State Championship.
- Nike/WBCA All-America, First Team All-State and the Gatorade Indiana Player of the Year.
- A McDonald's All-American, was named the MVP of the McDonald's All-America Game the same season as a young talent from Akron, Ohio - LeBron James.

INSPIRED BY GREATNESS

- Gearlds has a deep bench of basketball legends who have touched and continue to influence her career.
- One of the few people who can say they've worked with two G.O.A.T.s, Gearlds was the MVP of the 2003 McDonald's All-America Game with LeBron James.
- Sue Bird, her teammate with the Storm and a mentor over the last 15 years, inspired Gearlds to go into coaching.
- She also shared the court in Seattle with Swin Cash (V.P. New Orleans Pelicans), Adia Barnes (Arizona head coach) and Lauren Jackson (owner Melbourne Boomers).
- She competed against Chris Paul in the skills challenge ahead of the 2003 McDonald's All-America Game.

AN INDIANA LEGEND

- One of the best products of Indiana basketball, Gearlds claimed a state title, a Big Ten championship and a national title with programs from the Crossroads State.
- Named Indiana Miss Basketball as a senior at Beech Grove in 2003, Gearlds guided the Hornets to a 3A state championship, setting a state record across all classes with 33 points in the final. Today, she ranks 11th in state history with 2,521 career points.
- As a Boilermaker from 2003-07, Gearlds reached the NCAA Tournament four times, won two Big Ten Tournament titles, sits fourth in Purdue history with 1,974 career points and holds the record for points in a season with 707 with Stephanie White.
- Following a six-year professional career, Gearlds took over the reins at Marian in Indianapolis, posting a 227-49 record over eight years, winning three NAIA Coach of the Year honors and claiming two national championships.

GEARLDS' YEAR-BY-YEAR					
Year	School	Overall	Conf.	Post.	Rank
2013-14	Marian	16-16	8-10	-	-
2014-15	Marian	28-6	14-4	NAIA R32	-
2015-16	Marian	32-6	16-2	NAIA Champ	No. 1
2016-17	Marian	35-3	17-1	NAIA Champ	No. 1
2017-18	Marian	32-3	17-1	NAIA R16	No. 8
2018-19	Marian	27-7	16-2	NAIA R32	No. 17
2019-20	Marian	31-3	16-2	NAIA R16	No. 13
2020-21	Marian	27-6	16-0	NAIA R32	No. 9
2021-22	Purdue	17-15	7-11	WNIT 2nd Rd	-
2022-23	Purdue	19-11	9-8	NCAA First Four	-
2023-24	Purdue	4-3	-	-	-
11th Year		268-79	16-19	-	-

GEARLDS' TIMELINE	
2021-Present	Head Coach, Purdue
2013-21	Head Coach, Marian
2013	Toyota Huelva, Spain
2011-12	Orion Ibaizabal Galdakao, Portugal
2010	FEA Neas Halkindonas, Greece
2008	Kosit Kosice, Slovakia
2007-09	Seattle Storm, WNBA
2003-07	All-America Guard, Purdue
1999-03	All-America Guard, Beech Grove High School

POWER 5 COACHES UNDER 40			
Age	Name	School	Birthdate
36	Jacie Hoyt	Oklahoma State	4/2/1987
38	Kelly Rae Finley	Florida	4/27/1985
39	Katie Gearlds	Purdue	10/26/1984
39	Carolyn Kieger	Penn State	8/17/1983

GEARLDS IN THE PURDUE RECORD BOOK			
Stat	Rank	Total	Year/Game
Single Game Points	1	41	Wisconsin, 2/18/07
Season Points	T1	707	2006-07
Career Points	4	1,974	2004-07
Career Average	4	14.8	2004-07
Season 10+ Point Games	3	33	2006-07
Career 10+ Point Games	4	102	2004-07
Season 30+ Point Games	2	4	2006-07
Career 30+ Point Games	2	6	2004-07
Season Field Goals	2	250	2006-07
Career Field Goals	3	711	2004-07
Season 3-Pointers	T1	88	2006-07
Career 3-Pointers	3	238	2004-07
Season Asst/TO	1	2.57	2005-06
Career Asst/TO	T2	1.64	2004-07
Season Minutes	1	1,359	2006-07
Career Minutes	2	4,475	2004-07

KG ERA BESTS**MOST POINTS SCORED**

1.	101	vs. Denver	12/12/21
2.	100	vs. SIUE	11/17/22
3.	95	vs. Southern Indiana	11/26/23
4.	90	vs. Murray St.	11/13/22
5.	89	vs. Illinois	1/20/22

MOST POINTS ALLOWED

1.	92	at UCLA	11/6/23
2.	86	vs. Maryland	12/08/21
	83	vs. Indiana	02/19/23
4.	83	vs. Iowa	12/29/22
5.	81	vs. Nebraska	1/30/22

FEWEST POINTS ALLOWED

1.	50	vs. Southern	11/12/23
2.	51	vs. Illinois State	12/11/22
3.	52	vs. Florida	11/20/23
	52	at Illinois	1/26/23
	52	vs. Georgia Tech	12/1/21

LARGEST MARGIN OF VICTORY

1.	42	vs. SIUE	11/17/22
2.	38	vs. Southern Indiana	11/26/23
3.	33	vs. North Ala.	12/21/21
	33	vs. Denver	12/12/21
5.	29	vs. Murray St.	11/13/22

MOST FIELD GOALS MADE

1.	38	vs. Denver	12/12/21
	38	vs. Southern Indiana	11/26/23
3.	37	vs. North Ala.	12/21/21
4.	35	vs. SIUE	11/17/22
	35	vs. Murray St.	11/13/22

HIGHEST FIELD GOAL PERCENTAGE

1.	.633	vs. Denver	12/12/21
2.	.607	vs. Harvard	11/24/22
3.	.576	vs. Southern Indiana	11/26/23
4.	.569	vs. Southern Ill.	3/16/22
5.	.565	vs. SIUE	11/17/22

LOWEST FIELD GOAL PERCENTAGE ALLOWED

1.	.275	vs. Minnesota	1/21/23
2.	.281	vs. Southern	11/12/23
3.	.293	vs. Illinois St.	12/11/22
4.	.317	vs. Indiana St.	11/20/22
5.	.318	vs. North Ala.	12/21/21

MOST 3-POINTERS MADE

1.	15	vs. Illinois	1/20/22
2.	13	vs. Ohio St.	1/29/23
	13	vs. Denver	12/12/21
4.	12	vs. Florida St.	11/25/22
	12	vs. Maryland	12/8/21
	12	vs. Florida St.	11/27/21

HIGHEST 3-POINT PERCENTAGE

1.	.652	vs. Illinois	1/20/22
2.	.600	vs. St. John's (NY)	3/16/23
3.	.500	vs. Denver	12/12/21
4.	.474	vs. Indiana St.	11/20/22
	.474	vs. Illinois St.	11/17/21
	.474	vs. Southern Indiana	11/26/23

FEWEST 3-POINTERS ALLOWED

1.	0	vs. Rutgers	1/2/22
	0	vs. Iowa	1/13/22
3.	1	vs. Marshall	11/22/21
	1	vs. Illinois	2/17/22
5.	2	vs. West Virginia	11/25/21
	2	vs. Michigan St.	1/9/22

LOWEST 3-POINT PERCENTAGE ALLOWED

1.	.000	vs. Rutgers	1/2/22
	.000	vs. Iowa	1/13/22
3.	.059	vs. Marshall	11/22/21
4.	.077	vs. Illinois	2/17/22
5.	.111	vs. Michigan St.	1/9/22

MOST FREE THROWS MADE

1.	26	vs. Northwestern	2/12/23
2.	25	vs. SIUE	11/17/22
3.	22	vs. Western Ky.	11/10/21
4.	21	vs. Marshall	11/22/21
	21	vs. Southern	11/12/23

MOST ASSISTS

1.	26	vs. North Ala.	12/21/21
2.	25	vs. Murray St.	11/13/22
3.	24	vs. Western Mich.	11/14/21
	24	vs. Southern Indiana	11/26/23
5.	23	vs. Miami (OH)	12/19/21
	23	vs. Denver	12/12/21

FEWEST ASSISTS ALLOWED

1.	5	vs. Southern	11/12/23
	5	vs. Florida	11/20/23
3.	6	vs. Marshall	11/22/21
4.	7	vs. Illinois St.	11/17/21
	7	vs. Rutgers	1/2/22
	7	vs. Syracuse	11/30/22

MOST REBOUNDS

1.	50	vs. Michigan St.	12/5/22
2.	47	vs. North Ala.	12/21/21
3.	45	vs. Illinois	2/17/22
4.	44	vs. Syracuse	11/30/22
	44	vs. Southern	11/12/23

MOST DEFENSIVE REBOUNDS

1.	39	vs. Michigan St.	12/5/22
2.	37	vs. Southern	11/12/23
3.	35	vs. Syracuse	11/30/22
4.	34	vs. Southern Ill.	3/16/22
	34	vs. North Ala.	12/21/21

MOST OFFENSIVE REBOUNDS

1.	18	vs. Illinois	2/17/22
	18	vs. Miami (OH)	12/19/21
3.	17	vs. West Virginia	11/25/21
4.	16	vs. Marshall	11/22/21
5.	15	vs. Wisconsin	3/2/23
	15	vs. Nebraska	1/30/22

MOST STEALS

1.	16	vs. Wisconsin	1/1/23
2.	14	vs. SIUE	11/17/22
3.	13	vs. Northwestern	1/14/23
	13	vs. Denver	12/12/21
5.	12	vs. Wisconsin	2/27/22
	12	vs. Rutgers	2/20/22
	12	vs. Western Ky.	11/10/21

MOST BLOCKS

1.	9	vs. Iowa	3/3/23
	9	vs. Indiana	2/6/22
3.	8	vs. Northwestern	2/24/22
	8	vs. Illinois St.	11/17/21
5.	7	vs. Rutgers	2/9/23

FEWEST TURNOVERS

1.	7	vs. Murray State	11/13/22
2.	8	vs. Minnesota	1/21/23
	8	at Texas A&M	12/21/22
4.	9	vs. Texas A&M	11/16/23
	9	vs. Minnesota	1/27/22
	9	at Michigan	1/24/22

MOST POINTS SCORED BY A PLAYER

1.	31	Lasha Petree, vs. Syracuse	11/30/22
2.	29	Abbey Ellis, vs. SIUE	11/17/22
3.	27	Brooke Moore, vs. Southern Ill.	3/16/22
4.	26	Abbey Ellis, vs. Ohio St.	1/29/23
	26	Lasha Petree, vs. Minnesota	2/26/23

MOST FIELD GOALS MADE BY A PLAYER

1.	13	Lasha Petree, vs. Syracuse	11/30/22
2.	10	Brooke Moore, vs. Southern Ill.	3/16/22
	10	Lasha Petree, vs. Minnesota	2/26/23
4.	9	9x last Abbey Ellis, vs. Texas A&M	11/16/23

MOST 3-POINTERS MADE BY A PLAYER

1.	7	Cassidy Hardin, vs. Denver	12/12/21
2.	6	Abbey Ellis, vs. Illinois	1/20/22
	6	Cassidy Hardin, vs. Florida St.	11/27/21
	6	Brooke Moore, vs. Maryland	12/8/21
5.	5	6x last Lasha Petree, vs. Indiana	2/19/23

MOST FREE THROWS MADE BY A PLAYER

1.	9	Abbey Ellis, vs. Western Ky.	11/10/21
	9	Jeanae Terry, vs. Miami (OH)	12/10/21
3.	8	Abbey Ellis, vs. SIUE	11/17/22
	8	Caitlyn Harper, vs. Nebraska	1/18/23
	8	Ava Learn, vs. Oklahoma St.	11/26/22

MOST REBOUNDS BY A PLAYER

1.	17	Jeanae Terry, vs. Wisconsin	2/13/22
	17	Jeanae Terry, vs. Illinois	2/17/22
3.	14	Jeanae Terry, vs. Illinois	1/26/23
4.	13	Jeanae Terry, vs. Ohio St.	12/5/21
	13	Jeanae Terry, vs. Harvard	11/24/22

MOST ASSISTS BY A PLAYER

1.	12	Jeanae Terry, vs. Minnesota	1/27/22
	12	Jeanae Terry, vs. Northwestern	2/24/22
	12	Jeanae Terry, vs. Indiana St.	11/20/22
4.	11	Abbey Ellis, vs. Western Mich.	11/14/21
5.	10	7x last Jeanae Terry, vs. Texas A&M	11/16/23

MOST STEALS BY A PLAYER

1.	8	Jeanae Terry, vs. Penn St.	2/22/23
2.	6	Madison Layden, vs. Rutgers	2/20/22
3.	5	Abbey Ellis, vs. Western Mich.	11/14/21
	5	Jeanae Terry, vs. Nebraska	1/30/22
	5	Jeanae Terry, vs. Wisconsin	1/1/23
	5	Jeanae Terry, vs. Wisconsin	3/2/23

MOST BLOCKS BY A PLAYER

1.	4	Caitlyn Harper, vs. Marshall	11/10/22
	4	Caitlyn Harper, vs. Michigan	1/10/23
	4	Rickie Woltman, vs. Illinois St.	11/17/21
4.	3	9x last Rickie Woltman, vs. Iowa	3/3/23

MOST POINTS ALLOWED BY A PLAYER

1.	32	Naz Hillmon, at Michigan	1/24/22
2.	31	Makenna Marisa, Penn St.	2/9/22
3.	27	Monika Czinano, Iowa	1/13/22
	27	Lauren Van Kleunen, at Marquette	3/21/22
5.	26	4x last Teisha Hyman, Syracuse	11/30/22

KG'S RECORD VS. OPPONENTS

Illinois	3-0
Indiana	0-4
Iowa	0-3
Maryland	0-2
Michigan	0-2
Michigan State	2-1
Minnesota	2-1
Nebraska	0-2
Northwestern	2-2
Ohio State	1-1
Penn State	2-1
Rutgers	3-0
Wisconsin	2-2
Big Ten	17-21
Florida State	1-1
Georgia Tech	1-0
Notre Dame	
Syracuse	1-0
ACC	3-1
Oklahoma State	1-0
West Virginia	0-1
Big 12	1-1
UCLA	0-1
Pac-12	0-1
Florida	0-1
Georgia	0-1
Texas A&M	2-0
SEC	2-2
Marquette	0-1
St. John's	0-1
Big East	0-2
Miami	1-0
Western Michigan	1-0
MAC	2-0
Illinois State	2-0
Indiana State	1-0
Murray State	1-0
Southern Illinois	1-0
Valparaiso	semo
Missouri Valley	5-0
Denver	1-0
Summit	1-0
North Alabama	1-0
ASUN	1-0
Harvard	1-0
Ivy	1-0
Marshall	2-0
Sun Belt	2-0
Western Kentucky	1-0
C-USA	1-0
Southeast Missouri State	
Southern Illinois Edwardsville	1-0
Southern Indiana	1-0
Ohio Valley	2-0
Southern	1-0
SWAC	1-0
Dayton	1-1
A-10	1-1

TEAM GAME-BY-GAME COMPARISON

P | | **12**



TEAM STATISTICS BREAKDOWN

All Games	Record	FG-FGA	FG%	3P-3PA	3%	FT-FTA	FT%	Off.	Def.	Tot.	Avg.	F	DQ	Ast.	TO	Blk.	Stl.	Pts.	Avg.
All Games	4-3	159-387	.411	39-131	.298	99-123	.805	65	182	247	35.3	98	1	91	110	19	49	456	65.1
		161-431	.374	38-121	.314	73-98	.745	95	168	263	37.6	124	1	81	111	24	56	433	61.9
Home	3-0	81-168	.482	20-54	.370	52-65	.800	24	90	114	38.0	46	0	57	40	9	23	234	78.0
		57-173	.329	14-53	.264	37-53	.698	33	65	98	32.7	58	1	28	49	12	23	165	55.0
Away	1-1	39-105	.371	11-36	.306	27-35	.771	18	44	62	31.0	24	0	21	37	8	14	116	58.0
		60-136	.441	18-43	.419	13-17	.765	34	51	85	42.5	37	0	39	33	8	14	151	75.5
Neutral	0-2	39-114	.342	8-41	.195	20-23	.870	23	48	71	35.5	28	1	13	33	2	12	106	53.0
		44-122	.361	6-25	.240	23-28	.821	28	52	80	40.0	29	0	14	29	4	19	117	58.5
Won	4-0	103-223	.462	27-69	.391	68-86	.791	34	120	154	38.5	57	0	70	58	15	31	301	75.3
		82-245	.335	19-68	.279	41-58	.707	51	92	143	35.8	77	1	38	67	16	27	224	56.0
Lost	0-3	56-164	.341	12-62	.194	31-37	.838	31	62	93	31.0	41	1	21	52	4	18	155	51.7
		79-186	.425	19-53	.358	32-40	.800	44	76	120	40.0	47	0	43	44	8	29	209	69.7

Big Ten	Record	FG-FGA	FG%	3P-3PA	3%	FT-FTA	FT%	Off.	Def.	Tot.	Avg.	F	DQ	Ast.	TO	Blk.	Stl.	Pts.	Avg.
All Games																			

Home

Away

Non-Conference Record	Record	FG-FGA	FG%	3P-3PA	3%	FT-FTA	FT%	Off.	Def.	Tot.	Avg.	F	DQ	Ast.	TO	Blk.	Stl.	Pts.	Avg.
All Games	4-3	159-387	.411	39-131	.298	99-123	.805	65	182	247	35.3	98	1	91	110	19	49	456	65.1
		161-431	.374	38-121	.314	73-98	.745	95	168	263	37.6	124	1	81	111	24	56	433	61.9
Current Streak Record	Record	FG-FGA	FG%	3P-3PA	3%	FT-FTA	FT%	Off.	Def.	Tot.	Avg.	F	DQ	Ast.	TO	Blk.	Stl.	Pts.	Avg.
Overall	2-0	56-114	.491	16-34	.471	34-44	.773	19	60	79	39.5	27	0	37	28	10	17	162	81.0
		46-132	.348	9-35	.257	15-19	.789	29	45	74	37.0	38	0	21	31	7	7	116	58.0

Month	Record	FG-FGA	FG%	3P-3PA	3%	FT-FTA	FT%	Off.	Def.	Tot.	Avg.	F	DQ	Ast.	TO	Blk.	Stl.	Pts.	Avg.
November	3-3	137-332	.413	32-116	.276	83-102	.814	55	152	207	34.5	87	1	78	92	13	41	389	64.8
		136-359	.379	33-106	.311	69-93	.742	77	141	218	36.3	105	1	71	93	20	52	374	62.3
December	1-0	22-55	.400	7-15	.467	16-21	.762	10	30	40	40.0	11	0	13	18	6	8	67	67.0
		25-72	.347	5-15	.333	4-5	.800	18	27	45	45.0	19	0	10	18	4	4	59	59.0

January

February

March

Ranked/UR	Record	FG-FGA	FG%	3P-3PA	3%	FT-FTA	FT%	Off.	Def.	Tot.	Avg.	F	DQ	Ast.	TO	Blk.	Stl.	Pts.	Avg.
vs. Ranked	0-1	17-50	.340	4-21	.190	11-14	.786	8	14	22	22.0	13	0	8	19	2	6	49	49.0
		35-64	.547	13-28	.464	9-12	.750	16	24	40	40.0	18	0	29	15	4	10	92	92.0
vs. Unranked	4-2	142-337	.421	35-110	.318	88-109	.807	57	168	225	37.5	85	1	83	91	17	43	407	67.8
		126-367	.343	25-93	.269	64-86	.744	79	144	223	37.2	106	1	52	96	20	46	341	56.8

5-Game	Record	FG-FGA	FG%	3P-3PA	3%	FT-FTA	FT%	Off.	Def.	Tot.	Avg.	F	DQ	Ast.	TO	Blk.	Stl.	Pts.	Avg.
1-5	2-3	103-273	.377	23-97	.237	65-79	.823	46	122	168	33.6	71	1	54	82	9	32	294	58.8
		115-299	.385	29-86	.337	58-79	.734	66	123	189	37.8	86	1	60	80	17	49	317	63.4
6-10	2-0	56-114	.491	16-34	.471	34-44	.773	19	60	79	39.5	27	0	37	28	10	17	162	81.0
		46-132	.348	9-35	.257	15-19	.789	29	45	74	37.0	38	0	21	31	7	7	116	58.0

11-15

16-20

21-25

26-30

31-35

36-40

Postseason	Record	FG-FGA	FG%	3P-3PA	3%	FT-FTA	FT%	Off.	Def.	Tot.	Avg.	F	DQ	Ast.	TO	Blk.	Stl.	Pts.	Avg.
Overall																			

BIG Tourney

NCAA



SCORING BY QUARTERS

 PURDUE WHEN

P | | 14



TEAM HIGHS & LOWS

Stat	Purdue High	Purdue Low	Opp. High	Opp. Low
Points	95 Southern Ind. (11/26/2023)	49 2x last vs Florida (N) (11/20/2023)	92 at UCLA (11/06/2023)	50 Southern U. (11/12/2023)
Field Goals Made	34 Southern Ind. (11/26/2023)	17 at UCLA (11/06/2023)	35 at UCLA (11/06/2023)	16 Southern U. (11/12/2023)
Field Goal Attempts	59 Southern Ind. (11/26/2023)	50 at UCLA (11/06/2023)	72 at Dayton (12/1/2023)	56 Texas A&M (11/16/2023)
Field Goal Percentage	.576 (34-59) Southern Ind. (11/26/2023)	.316 (18-57) vs Florida (N) (11/20/2023)	.547 (35-64) at UCLA (11/06/2023)	.200 (4-20) Southern Ind. (11/26/2023)
3-Pointers Made	9 Southern Ind. (11/26/2023)	2 vs Florida (N) (11/20/2023)	13 at UCLA (11/06/2023)	2 vs Georgia (N) (11/22/2023)
3-Pointers Attempted	22 vs Florida (N) (11/20/2023)	15 2x last at Dayton (12/1/2023)	28 at UCLA (11/06/2023)	9 vs Georgia (N) (11/22/2023)
3-Point Percentage	.474 (9-19) Southern Ind. (11/26/2023)	.091 (2-22) vs Florida (N) (11/20/2023)	.464 (13-28) at UCLA (11/06/2023)	.222 (2-9) vs Georgia (N) (11/22/2023)
Free Throws Made	21 Southern U. (11/12/2023)	9 vs Georgia (N) (11/22/2023)	14 Southern U. (11/12/2023)	4 at Dayton (12/1/2023)
Free Throws Attempted	26 Southern U. (11/12/2023)	10 vs Georgia (N) (11/22/2023)	21 Southern U. (11/12/2023)	5 at Dayton (12/1/2023)
Free Throw Percentage	.900 (9-10) vs Georgia (N) (11/22/2023)	.762 (16-21) at Dayton (12/1/2023)	.923 (12-13) vs Florida (N) (11/20/2023)	.667 (14-21) Southern U. (11/12/2023)
Rebounds	44 Southern U. (11/12/2023)	22 at UCLA (11/06/2023)	45 at Dayton (12/1/2023)	28 Southern U. (11/12/2023)
Assists	24 Southern Ind. (11/26/2023)	5 vs Florida (N) (11/20/2023)	29 at UCLA (11/06/2023)	5 2x last vs Florida (N) (11/20/2023)
Steals	7 Texas A&M (11/16/2023)	6 vs Georgia (N) (11/22/2023)	15 vs Georgia (N) (11/22/2023)	3 Southern Ind. (11/26/2023)
Blocks	6 at Dayton (12/1/2023)	1 vs Georgia (N) (11/22/2023)	6 Texas A&M (11/16/2023)	2 2x last vs Georgia (N) (11/22/2023)
Turnovers	21 Southern U. (11/12/2023)	9 Texas A&M (11/16/2023)	20 Texas A&M (11/16/2023)	13 Southern Ind. (11/26/2023)
Fouls	16 2x last Southern Ind. (11/26/2023)	11 at Dayton (12/1/2023)	24 Southern U. (11/12/2023)	13 vs Georgia (N) (11/22/2023)

INDIVIDUAL HIGHS

Stat	Purdue Ind. High	Opponent Ind. High
Points	21, 2x last Abbey Ellis at Dayton (12/1/2023)	20, Lauren Betts/Londynn Jones, at UCLA (11/6/2023)
Field Goals Made	9, Abbey Ellis vs Texas A&M (11/16/2023)	9, Lauren Betts, at UCLA (11/6/2023)
Field Goals Attempted	18, Abbey Ellis vs Texas A&M (11/16/2023)	15, 3x last Vanessa Shafford vs Southern Ind. (11/26/2023)
3-Pointers Made	4, 2x last Madison Layden, vs. Georgia (11/22/2023)	6, Londynn Jones, at UCLA (11/6/2023)
3-Pointers Attempted	9, Abbey Ellis, vs. Georgia (11/22/2023)	11, Londynn Jones, at UCLA (11/6/2023)
Free Throws Made	8, Abbey Ellis at Dayton (12/1/2023)	7, Aliyah Matharu, vs. Florida (11/20/2023)
Free Throws Attempted	9, Abbey Ellis, vs. Southern (11/12/2023)	8, Lauren Ware vs Texas A&M (11/16/2023)
Rebounds	11, 2x last Caitlyn Harper vs Texas A&M (11/16/2023)	13, Lauern Ware vs Texas A&M (11/16/2023)
Assists	10, Jeanae Terry vs Texas A&M (11/16/2023)	10, Kiki Rice, at UCLA (11/6/2023)
Steals	3, 5x last Caitlyn Harper at Dayton (12/1/2023)	4, 2x last Zoesha Smith, vs. Georgia (11/22/2023)
Blocks	2, Jeanae Terry at Dayton (12/1/2023)	4, Lauren Ware vs Texas A&M (11/16/2023)

RESULTS/LEADERS

Date	P / O	Opponent	W/L	Score	High Scorer	High Rebounds	High Assists	High Steals	High Blocks	Attend
N6	-/4	at UCLA	L	92-49	10, Ellis/Harper	7, Terry	4, Terry	1, 5 tied	1, Harper/Stevenson	2,157
N12	-/-	Southern	W	67-50	21, Layden	11, Terry	7, Terry	3, Ellis/Layden	1, Stevenson/Jones	5,002
N16	-/RV	Texas A&M	W	72-58	20, Jones/Ellis	11, Harper	10, Terry	3, Terry	1, 3 tied	5,223
N20 Bahamas	-/-	vs. Florida	W	52-49	14, Ellis	6, Stevenson	2, Terry	3, Ellis	1, Stevenson	437
N22 Bahamas	-/-	vs. Georgia	W	65-57	14, Layden	6, Ellis	4, Terry	2, Harper	1, Harper	278
N26	-/-	Southern Indiana	W	95-57	19, Ellis	6, 3 tied	8, Terry	3, Terry	1, 4 tied	3,683
D1	-/-	at Dayton	W	67-59	21, Ellis	8, Terry	4, Terry	3, Harper	2, Terry	3,250
D3	-/-	Valparaiso								
D6	-/-	SEMO								
D10 Big Ten	-/-	at Minnesota								
D17	-/-	at Notre Dame								
D20	-/-	Indiana State								
D30 Big Ten	-/-	Wisconsin								
J2 Big Ten	-/-	Rutgers								
J6 Big Ten	-/-	at Maryland								
J10 Big Ten	-/-	Iowa								
J18 Big Ten	-/-	at Penn State								
J21 Big Ten	-/-	Indiana								
J24 Big Ten	-/-	at Michigan State								
J28 Big Ten	-/-	Ohio State								
J31 Big Ten	-/-	at Nebraska								
F5 Big Ten	-/-	Illinois								
F11 Big Ten	-/-	at Indiana								
F14 Big Ten	-/-	at Northwestern								
F17 Big Ten	-/-	Nebraska								
F25 Big Ten	-/-	at Wisconsin								
F28 Big Ten	-/-	Penn State								
M3 Big Ten	-/-	at Michigan								

LEADERBOARD

Led in Points	23-24	Career	Led in Rebounds	23-24	Career	Led in Assists	23-24	Career	Led in Steals	23-24	Career	Led in Blocks	23-24	Career
Abbey Ellis	5	24	Jeanae Terry	4	41	Jeanae Terry	7	57	Jeanae Terry	3	33	Jayla Smith	2	20
Madison Layden	2	12	Madison Layden		9	Madison Layden		20	Madison Layden	1	32	Madison Layden	2	19
Caitlyn Harper	1	5	Abbey Ellis	2	5	Abbey Ellis		5	Abbey Ellis	3	13	Jeanae Terry	2	13
Jayla Smith			Caitlyn Harper	1	4				Jayla Smith		10	Caitlyn Harper	2	12
Rashunda Jones	1	1	Mary Ashley Stevenson	1	1				Caitlyn Harper	3	6	Abbey Ellis		5
			McKenna Layden	1	1				Mary Ashley Stevenson	1	1	Mary Ashley Stevenson	3	3
									McKenna Layden	1	1	Rashunda Jones	2	2
												Emily Monson	1	1



THE LAST TIME A PLAYER**INDIVIDUAL SCORING**

Scored 20 Points:	21, Abbey Ellis, at Dayton (12/1/23)
Scored 30 Points:	31, Lasha Petree vs. Syracuse (11/30/22)
Scored 35 Points:	38, Brittany Rayburn at Minnesota (1/12/12)
Scored 40 Points:	41, Katie Gearlds at Wisconsin (2/18/07)
Scored 20 Points in Back-to-Back Games:	Lasha Petree 23 vs. Penn State (2/22/23), 26 at Minnesota (2/26/23)
Scored 20 Points in Three Straight Games:	Lasha Petree 23 vs. Indiana (2/19/23), 23 vs. Penn State (2/22/23) 26 at Minnesota (2/26/23)
Two Players w/ 20+:	20, Rashunda Jones and Abbey Ellis vs. Texas A&M (11/16/23)
Three Players w/ 20+:	Whitney Bays (24), KK Houser (21), Liza Clemons (20) & Courtney Moses (20) vs. Central Michigan (12/28/13)
Four Players w/ 20+:	Whitney Bays (24), KK Houser (21), Liza Clemons (20) & Courtney Moses (20) vs. Central Michigan (12/28/13)
Five Players in Double Figures:	Karissa McLaughlin (23), Kayana Traylor (15), Ae'Rianna Harris (13), Dominique Oden (12), Jenelle Grant (11) vs. Illinois (1/17/20)
10+Points in 10 Straight Games:	11, Lasha Petree (11/10/22-12/11/22)
10+Points in 20 Straight Games:	35, Shereka Wright (11/29/01 - 12/29/02)
10+Points in 30 Straight Games:	35, Shereka Wright (11/29/01 - 12/29/02)

INDIVIDUAL DOUBLE-DOUBLES

Double-Double:	14 points, 11 rebounds, Caitlyn Harper vs. Texas A&M (11/16/23)
Points-Rebounds:	14-11, Caitlyn Harper vs. Texas A&M (11/16/23)
Points-Assists:	19-11 Karissa McLaughlin at Wisconsin (12/31/18)
Points-Steals:	27-12, Joy Holmes vs. Minnesota (1/13/89)
Points-Blocks:	12-11, Danielle Campbell vs. Butler (11/17/07)
Freshman:	10-11 ast, Karissa McLaughlin vs. PSU (1/28/18)
Non-Point:	10 reb, 10 ast, Jeanae Terry vs. Penn State (2/22/23)
20-10 Game:	21 pts, 12 rebs, Ae'Rianna Harris vs. PSU (1/26/20)
30-10 Game:	30 pts, 10 reb, Stephanie White vs. Washington (3/14/98)
20-20 Game:	29 pts, 20 reb, Joy Holmes at Wisconsin (1/27/91)
Consecutive Double-Doubles:	2, Jeanae Terry (11/10-13/22)
in Three Straight Games:	4, Fatou Diagne, (1/18-1/31)
in Five Straight Games:	9, Whitney Bays (12/20/14 - 1/19/15)
Two Players with a Double-Double:	11 pts, 12 reb, Fatou Diagne, 15 pts, 10 reb, Ae'Rianna Harris, vs. Michigan State (3/5/20)
Three Players with a Double-Double:	Ae'Rianna Harris (14 pts, 17 rebs) & Tamara Farquhar (13 pts, 14 rebs), vs. Western Illinois (11/17/20)

INDIVIDUAL TRIPLE-DOUBLES

Triple-Double:	10 pts, 11 rebs, 12 assts - Jeanae Terry - vs. Minnesota (1/27/22)
Before that	11 pts, 12 rebs, 10 assts - Jeanae Terry - vs. Miami (12/19/21)
Before that	12 pts, 11 rebs, 11 blks - Danielle Campbell - vs. Butler (11/17/07)
Before that	20 pts, 11 rebs, 10 assts - Stephanie White - vs. Indiana (1/22/99)

INDIVIDUAL FIELD GOALS

Made 13 Field Goals:	13, Lasha Petree vs. Syracuse (11/30/22)
Made 15 Field Goals:	15, Shereka Wright at Michigan (2/17/02)
Attempted 20 Field Goals:	20 Lasha Petree 26 at Minnesota (2/26/23)
Attempted 25 Field Goals:	25, KK Houser vs. Penn State (1/30/14)
Attempted 30 Field Goals:	33, MaChelle Joseph at Wisconsin (2/21/92)

INDIVIDUAL 3-POINTERS

Made Six 3-Pointers:	6, Abbey Ellis at Illinois (1/20/22)
Made Seven 3-Pointers:	7, Cassidy Hardin vs. Denver (12/12/21)
Made Eight 3-Pointers:	9, Karissa McLaughlin vs. NU (2/17/19)
Attempted 12 3-Pointers:	12, Cassidy Hardin at Nebraska (1/30/22)
Attempted 13 3-Pointers:	14, Madison Layden vs. Ohio State (12/5/21)
Made a 3-Pointer in 20 Straight Games:	24, Madison Layden (12/9/20-11/17/21) 23, Cassidy Hardin (3/10/21-2/4/22)

INDIVIDUAL FREE THROWS

Made 13 FTs:	14, Courtney Moses at Northwestern (1/26/12)
Made 15 FTs:	15, Ukari Figgs vs. Washington (3/14/98)
Attempted 16 FTs:	18, Brittany Rayburn vs. Gardner-Webb (12/21/09)
Attempted 18 FTs:	18, Brittany Rayburn vs. Gardner-Webb (12/21/09)
Attempted 20 FTs:	20, Shereka Wright at Northwestern (2/15/04)

INDIVIDUAL STEALS

Grabbed Five Steals:	5, Jeanae Terry vs. Wisconsin (3/2/23)
Grabbed Six Steals:	8, Jeanae Terry vs. Penn State (2/22/23)
Grabbed Seven Steals:	8, Jeanae Terry vs. Penn State (2/22/23)
Grabbed Eight Steals:	8, Jeanae Terry vs. Penn State (2/22/23)

INDIVIDUAL REBOUNDS

Grabbed 15 Rebounds:	17, Jeanae Terry vs. Illinois (2/17/22)
Grabbed 16 Rebounds:	17, Jeanae Terry vs. Illinois (2/17/22)
Grabbed 17 Rebounds:	17, Jeanae Terry vs. Illinois (2/17/22)
Grabbed 18 Rebounds:	18, Fatou Diagne vs. Penn State (1/31/21)
Grabbed 19 Rebounds:	19, Whitney Bays vs. Ohio State (1/25/15)
Grabbed 20 Rebounds:	20, Joy Holmes at Wisconsin (1/27/91)
Grabbed Eight Off. Rebounds:	9, Jeanae Terry at Wisconsin (2/13/22)
10+ Rebounds in Three Straight Games:	3, Ae'Rianna Harris (11/17/19-11/29/19)
Two Players with 10+ Rebounds in a Game:	Tamara Farquhar (14) & Ae'Rianna Harris (17) vs. Western Illinois (11/17/19)
Three Players 10+ Rebounds in a Game:	Bridget Perry (11), Whitney Bays (11) & Liza Clemons (13) vs. Northwestern (2/11/15)

INDIVIDUAL ASSISTS

Dished Out 10 Assists:	10, Jeanae Terry vs. Texas A&M (11/16/23)
Dished Out 11 Assists:	12, Jeanae Terry vs. Indiana State (11/20/22)
Dished Out 12 Assists:	12, Jeanae Terry vs. Indiana State (11/20/22)
Dished Out 5+ Assists in Five Straight Games:	11 Jeanae Terry (11/20/22-12/29/22)
Dished Out 10+ Assists in Two Straight Games:	Jeanae Terry vs. Marshall (11/10/22) & Murray State (11/14/22)

INDIVIDUAL BLOCKED SHOTS

Posted Five Blocks:	7, Ae'Rianna Harris vs. Michigan State (3/5/20)
Posted Six Blocks:	7, Ae'Rianna Harris vs. Michigan State (3/5/20)
Posted Seven Blocks:	7, Ae'Rianna Harris vs. Michigan State (3/5/20)
Posted Eight Blocks:	9, Ae'Rianna Harris at South Carolina (12/15/19)
Blocked 5+ Shots in Back-to-Back Games:	Ae'Rianna Harris vs. UT Martin, 5 (12/18/17), Saint Mary's, 5 (12/20/17) & at Rutgers, 7 (12/28/17)

INDIVIDUAL MINUTES

Played a Complete Game:	Madison Layden vs. Michigan State (3/3/22)
Played at Least 40 Minutes:	Jeanae Terry vs. Michigan State (12/4/22)
Played Every Minute of an Overtime Game:	Dominique Oden (45)
Freshman Played 40 Minutes:	Karissa McLaughlin (45) at Rutgers (1/16/19)
Freshman Played a Complete Game:	Madison Layden (40) vs. Rutgers (2/14/21)
Played Consecutive Complete Games:	Madison Layden (40) vs. Rutgers (2/14/21) Kayana Traylor, 2 vs. Michigan (2/11/21)

INDIVIDUAL FOULS

Technical Foul - Player:	Ra Shaya Kyle vs. Florida State (11/27/21)
Technical Foul - Coach:	Katie Gearlds vs. SIUE (11/17/22)
Fouled Out:	Madison Layden vs. Iowa (3/3/23)
Two Players Fouled Out:	Ra Shaya Kyle, Fatou Diagne vs. Michigan (2/11/21)
Three Players Fouled Out:	Tamara Farquhar, Ae'Rianna Harris & Dominique Oden vs. South Carolina (12/16/18 - 2 OT)

THE LAST TIME PURDUE

TEAM SCORING (GAME)

Won by 40+:	42 (80-38) at Ball State (11/7/18)
Won by 40+ (Big Ten):	43 (88-45) vs. Nebraska (1/26/17)
Lost by 20+:	43 (92-49) at UCLA (11/6/23)
Lost by 30+:	43 (92-49) at UCLA (11/6/23)
Scored 90+:	95 vs. (95-57) vs. Southern Indiana (11/26/23)
Scored 90+ (Big Ten):	91 at Penn State (12/20/20)
Scored 100+:	100 vs. SIUE (11/17/22)
Scored 100+ (Big Ten):	110 (110-51) at Michigan (3/12/94)
Scored 40 or Fewer:	40 (40-86) vs. Connecticut (11/24/18)
Scored 50 or Fewer:	49 vs. Florida (11/20/23)
Scored 50 or Fewer and Won:	48 (48-46) at IUPUI (3/15/18)
Allowed 90+:	92 at UCLA (11/6/23)
Allowed 90+ (Big Ten):	100 at Ohio State (2/18/21)
Allowed 100+:	100 at Ohio State (2/18/21)
Allowed 50 or Fewer:	50, at Ohio State (12/28/19)
Allowed 40 or Fewer:	38 at Ball State (11/7/18)

TEAM SCORING (HALF)

Scored 60 in the First Half:	68 vs. Kent State (12/8/90)
Scored 60 in the Second Half:	60 vs. South Alabama (12/27/94)
Scored 50 Points or More:	55 (1st) vs. Southern Indiana (11/26/23)
Scored 15 Points or Less:	15 (1st) vs. No. 18 Indiana (1/14/21)
Scored 20 Points or Less:	20 (2nd) vs. Indiana (2/5/23)
Allowed 50+:	50 (2nd) at UCLA (11/6/23)
Allowed 15 Points or Less:	15 (1st) at Wisconsin (2/13/22)
Allowed 20 Points or Less:	19 (1st) vs. Southern (11/12/23)

TEAM SCORING (QUARTER)

Scored 30+:	35 (1st) vs. Southern Indiana (11/26/23)
Scored 25+:	35 (1st) vs. Southern Indiana (11/26/23)
Scored 10 Points or Less:	9 (3rd), at Dayton (12/1/23)
Scored 5 Points or Less:	2 (3rd) vs. Indiana (2/5/23)
Allowed 30+:	32 (4th) vs. Penn State (2/9/22)
Allowed 25+:	27 (4th) at UCLA (11/6/23)
Allowed 10 Points or Less:	7 (3rd) vs. Southern Indiana (11/26/23)
Allowed 5 Points or Less:	2 (1st) at Wisconsin (2/13/22)

TEAM SHOOTING

Shot 65% or Higher:	.735 (36-59) vs. Penn State (1/28/18)
Shot 60% or Higher:	.607 (34-56) vs. Harvard (11/24/22)
Shot 55% or Higher:	.576 (34-59) vs. Southern Indiana (11/26/23)
Shot 50% or Higher:	.576 (34-59) vs. Southern Indiana (11/26/23)
Shot 30% or Lower:	.296 (21-71) vs. Ohio State (12/5/21)
Shot 25% or Lower:	.241 (13-54) at No. 12 Maryland (1/10/20)
Shot 35% or Lower and Won:	.308 (20-65) vs. Wisconsin (1/21/21)
Opponent Shot 55% or Higher:	.582 (39-67) at Ohio State (2/18/21)
Opponent Shot 50% or Higher:	.547 (35-64) at UCLA (11/6/23)
Opponent Shot 30% or Lower:	.281 (16-57) vs. Southern (11/12/23)
Opponent Shot 25% or Lower:	.242 (16-66) at Rutgers (2/19/17)

TEAM 3-POINT SHOOTING

Made 10+:	10 at Rutgers (2/9/23)
Made 12+:	15 at Illinois (1/20/22)
Made 15+:	15 vs. Central Michigan (12/28/13), at Illinois (1/20/22)
Made 0:	0 vs. Valparaiso (12/6/20)
Attempted 25+:	28 vs. Iowa (3/3/23)
Attempted 30+:	30 at Rutgers (2/9/23)
Attempted Five or Less:	4 at UCLA (11/6/23)
Shot 50%+:	.600 (6-10) vs. St. John's (3/16/23)
Shot 60%+:	.600 (6-10) vs. St. John's (3/16/23)

TEAM FREE THROW SHOOTING

Made 25+:	26 vs. Southern (11/12/23)
Made 30+:	32 vs. DePaul (11/21/10)
Made Five or Less:	2 at Rutgers (2/9/23)
Made All Attempted:	7-7 at No. 5 Indiana (2/6/22)
Attempted 30+:	36 vs. SIUE (11/17/22)
Attempted 40+:	41 vs. Minnesota (1/18/04)
Attempted 10 or Less:	3 at Rutgers (2/9/23)
Attempted Five or Less:	3 at Rutgers (2/9/23)

TEAM REBOUNDS

Had 20+ Rebound Margin:	20 (50-30) vs. Michigan State (12/4/22)
Had 25+ Rebound Margin:	30 (55-25) vs. USC Upstate (11/17/16)
Outrebounded by 20+:	24 (50-26) vs. No. 8 Maryland (2/25/21)
Outrebounded by 25+:	28 (28-56) at Notre Dame (12/29/13)

TEAM ASSISTS

Had 25:	25 vs. Murray State (11/13/22)
Had 30:	31 vs. Incarnate Word (12/10/15)
Had Five or Fewer:	5 at Indiana (3/6/21)

TEAM TURNOVERS

Committed 10 or Fewer:	10 vs. Southern Indiana (11/26/23)
Committed 20+:	21 vs. Southern (11/12/23)
Forced 10 or Fewer:	8 at Ohio State (2/18/21)
Forced 20+:	26 vs. Wisconsin (1/1/23)

TEAM CLOSE GAMES

One-Point Games:	L, 76-75 vs. Florida State (11/25/22)
Two-Point or less Games:	L, 66-64 vs. St. John's (3/16/23)
Three-Point or less Games:	L, 77-74 vs. Maryland (12/8/22)
Back-to-Back Games Decided by Three Points or Less:	L, 63-65 (OT) at Rutgers (1/16/19); W 56-53 vs. Indiana (1/20/19)
Last Second Shot to Win:	Jeanae Terry, 2, vs. Georgia Tech (12/1/21)
	Jeanae Terry, 2, vs. Rutgers (1/3/22)
Lost on a Last Second Shot:	Shyanne Sellers, 3-pt vs. Maryland (12/8/22)

TEAM OVERTIME

Overtime Game:	W, 76-71 vs. Michigan State (12/4/22)
Double Overtime Game:	L, 73-82 vs. South Carolina (12/16/18)
Triple Overtime Game:	W, 82-75 vs. Nebraska (2/2/12)
Consecutive Overtime Games:	W, 90-88 at Minnesota (1/22/15); L, 71-79 vs. Ohio State (1/25/15)

TEAM COMEBACKS

Came Back from 10+ Down to Win:	18 - W, 57-55 vs. Wisconsin (3/2/23) (3/2/23; down 30-12 w/ 4:27 left in the 2nd)
Came Back from 15+ Down to Win:	18 - W, 57-55 vs. Wisconsin (3/2/23) (3/2/23; down 30-12 w/ 4:27 left in the 2nd)

TEAM RANKED OPPONENTS

Beat a Ranked Team:	#2 Ohio State (1/29/23)
Beat Back-to-Back Ranked Team:	#22 Illinois, 62-52 (1/26/23)
	#2 Ohio State (1/29/23)
Beat a Ranked Team on the Road:	#2 Ohio State (1/29/23)
Beat a Top-10 Ranked Team:	at #2 Ohio State (1/29/23)
Beat a Top-10 Ranked Team on the Road:	at #2 Ohio State (1/29/23)
Beat a Top-5 Ranked Team:	at #2 Ohio State (1/29/23)
Beat a Top-5 Ranked Team on the Road:	at #2 Ohio State (1/29/23)

TRANSFERS' PURDUE BESTS

Jeanae Terry's Purdue Highs

Points	17, vs. SIUE, 11/17/22
Rebounds	17, 2x last vs. Illinois, 2/17/22
Assists	12, 2x last vs. Indiana State, 11/22/22
Steals	8, vs. Penn State, 2/22/23
Blocks	2, 3x last at Dayton, 12/1/23
Field Goals	7, at Indiana, 2/6/22
3-Pointers	2, vs. Michigan State, 3/3/22
Free Throws	9, vs. Miami (OH), 12/19/21
Minutes	41, at Michigan State, 12/5/22

Mila Reynolds' Purdue Highs

Points	
Rebounds	
Assists	1, at UCLA, 11/6/23
Steals	
Blocks	
Field Goals	
3-Pointers	
Free Throws	
Minutes	5, at UCLA, 11/6/23

Abbey Ellis' Purdue Highs

Points	29, vs. SIUE, 11/17/22
Rebounds	9, vs. Southern Illinois, 3/16/22
Assists	11, vs. Western Michigan, 11/14/21
Steals	5, vs. Western Michigan, 11/14/21
Blocks	1, 5x last vs. Nebraska, 1/18/23
Field Goals	9, 3x last vs. Texas A&M, 11/16/23
3-Pointers	6, at Illinois, 1/20/22
Free Throws	9, vs. Southern Illinois, 3/16/22
Minutes	44, vs. Indiana, 1/16/22

Alaina Harper's Purdue Highs

Points	2, vs. Southern Indiana, 11/26/23
Rebounds	2, vs. Southern Indiana, 11/26/23
Assists	
Steals	
Blocks	
Field Goals	1, vs. Southern Indiana, 11/26/23
3-Pointers	
Free Throws	
Minutes	14, vs. Southern Indiana, 11/26/23

Caitlyn Harper's Purdue Highs

Points	20, at Penn State, 1/7/23
Rebounds	11, vs. Texas A&M, 11/16/23
Assists	3, 3x last vs. Southern, 11/12/23
Steals	3, at Dayton, 12/1/23
Blocks	4, vs. Michigan, 1/10/23
Field Goals	9, at Penn State, 1/7/23
3-Pointers	2, 6x last vs. Texas A&M, 11/16/23
Free Throws	8, vs. Nebraska, 1/18/23
Minutes	37, vs. Texas A&M, 11/16/23

AMIYAH REYNOLDS 1



Height - 6-0 | **Position** - Guard | **Year** - Sophomore | **Major** - Business | **Hometown** - Indianapolis, Ind. | **High School** - Lawrence North
Instagram - s.jaylasmith | **Twitter** - _JaylaSmith | **TikTok** - s.jaylasmith

REYNOLDS QUICK HITS

- No. 43 player in the nation by ESPN HoopGurlz, second highest signee in the Big Ten for the 2023 class
- Finished third as a finalist for the 2023 Indiana Miss Basketball
- Joined 2010 South Bend Washington graduate Skylar Diggins-Smith as the only Panthers to total over 1,000 points and 500 assists in a career
- Named an Indiana All-Star and All-State Supreme 15 as a junior and senior
- Went 95-18 over four years with the Panthers, with a 68-17 record when playing with her sister Mila
- Won 2022 IHSAA 3A State Championship, helping set the championship game record for 3A as the Panthers scored 93 points
- Ended career ranked second in assists at Washington with 564 • Scored 1,000th career point off an assist from Rashunda Jones

RASHUNDA JONES

2

Height - 5-8 | **Position** - Guard | **Year** - Freshman | **Major** - Sports Marketing
Hometown - South Bend, Ind. | **High School** - South Bend Washington
Instagram - rashunda_jones | **TikTok** - itzshunda



	Season High	Career High
Points	20, vs. Texas A&M, 11/16/23	20, vs. Texas A&M, 11/16/23
Rebounds	5, 3x last vs. USI, 11/26/23	5, 3x last vs. USI, 11/26/23
Assists	3, 2x last, at Dayton, 12/1/23	3, 2x last, at Dayton, 12/1/23
Steals	2, vs. USI, 11/26/23	2, vs. USI, 11/26/23
Blocks	1, 2x last, vs. Texas A&M, 11/16/23	1, 2x last, vs. Texas A&M, 11/16/23
Field Goals	8, vs. Texas A&M, 11/16/23	8, vs. Texas A&M, 11/16/23
3-Pointers	1, vs. Southern, 11/12/23	1, vs. Southern, 11/12/23
Free Throws	4, vs. Texas A&M, 11/16/23	4, vs. Texas A&M, 11/16/23
Minutes	26, vs. USI, 11/26/23	26, vs. USI, 11/26/23

SEASON	GP-GS	MIN/AVG	FG-FGA	FG%	3FG-FGA	3FG%	FT-FTA	FT%	OFF	DEF	TOT	AVG	PF-FO	AST	TO	BLK	STL	PTS	AVG
2023-24	7-0	140/20.1	25-60	.417	3-11	.273	12-18	.667	3	18	21	3.0	20-1	8	18	2	5	65	9.3

JONES QUICK HITS

- Named Big Ten Freshman of the Week after scoring 20 points against Texas A&M
- 2023 Indiana Miss Basketball runner-up
- No. 79 player in the nation by ESPN HoopGurlz
- 2022 IHSAA Class 3A State Champion
- Indiana All-Star & IBCA Supreme 15 as a junior and senior
- Won 2022 IHSAA 3A State Championship
- Finished career with 1,791 points, 497 rebounds, 427 assists and 419 steals
- Recorded a career-high 19.8 points, 4.5 assists and 3.7 steals per game as a senior
- Assisted on Amiyah Reynolds' 1,000th career point

JAYLA SMITH

3

Height - 6-0 | **Position** - Guard | **Year** - Junior | **Major** - Business
Hometown - Indianapolis, Ind. | **High School** - Lawrence North
Instagram - s.jaylasmith | **Twitter** - _JaylaSmith | **TikTok** - s.jaylasmith



	Season High	Career High
Points	13, vs. Florida, 11/20/23	16, 3x last vs. Iowa, 3/3/23
Rebounds	5, vs. Florida, 11/20/23	7, 3x last vs. Nebraska, 1/18/23
Assists	1, 3x last, vs. USI, 11/26/23	4, 2x last vs. Nebraska, 1/18/23
Steals		4, 2x last, vs. SIUE, 11/17/22
Blocks	1, 3x last, at Dayton, 12/1/23	3, 2x last vs. Indiana, 2/5/23
Field Goals	6, vs. Florida, 11/20/23	7 vs. Iowa, 3/3/23
3-Pointers	1, vs. Florida, 11/20/23	4, at Nebraska, 1/30/22
Free Throws		3, 2x last, vs. SIUE, 11/17/22
Minutes	23, vs. Florida, 11/20/23	30 at Penn State, 1/7/23

SEASON	GP-GS	MIN/AVG	FG-FGA	FG%	3FG-FGA	3FG%	FT-FTA	FT%	OFF	DEF	TOT	AVG	PF-FO	AST	TO	BLK	STL	PTS	AVG
2021-22	30-1	473/15.8	54-140	.386	16-55	.291	16-26	.615	13	39	52	1.7	25-0	21	29	11	22	140	4.7
2022-23	30-3	569/19.0	95-209	.455	18-64	.281	26-46	.565	24	40	64	2.1	32-0	37	38	17	30	234	7.8
2023-24	6-1	105/17.5	14-38	.368	1-13	.077	0-2	.000	4	11	15	2.5	5-0	3	10	3	0	29	4.8
TOTAL	66-5	1147/17.4	163-387	.421	35-132	.265	42-74	.568	41	90	131	2.0	62-0	61	77	31	52	403	6.1

SMITH QUICK HITS

- Sank game-winning 3-pointer vs. Wisconsin in Big Ten Tournament, helping send Purdue to the NCAA Tournament
- Primary substitute as a freshman with one start
- 2021 Indiana Miss Basketball, 10th in program history
- Won the 2020 Indiana 3A State Championship, over Madison Layden's Northwestern, hitting 8 3-pointers
- No. 49 player in the nation and No. 1 in Indiana by MaxPreps
- 3-time First Team All-State selection
- Set season-long career highs in nearly every statistical category in 2022-23
- Ranked No. 49 player in the nation and the No. 1 player in the state of Indiana by MaxPreps

JEANAE TERRY

10

Height - 5-11 | **Position** - Guard | **Year** - Fifth Year | **Major** - Sociology
Hometown - Detroit, Mich. | **High School** - Wayne Memorial | **Previous** - Illinois
Instagram - saucy__nae | **Twitter** - basquetbol_nae | **TikTok** - saucytiktok10



	Season High	Career High	(*prior school)
Points	8, vs. Texas A&M, 11/16/23	28, at Wisconsin, 1/31/21*	
Rebounds	11, vs. Southern, 11/12/23	17, 2x last vs. Illinois, 2/17/22	
Assists	10, vs. Texas A&M, 11/16/23	12, 3x last, vs. Indiana St., 11/20/22	
Steals	3, 2x last, vs. USI, 11/26/23	8 vs. Penn State, 2/22/23	
Blocks	2, at Dayton, 12/1/23	4, vs. Chicago State, 11/5/19*	
Field Goals	2, 3x last, vs. USI, 11/26/23	9, vs. Penn State, 1/28/21*	
3-Pointers		3, 3x last vs. Ohio State, 1/7/21*	
Free Throws	4, vs. Texas A&M, 11/16/23	11, at Wisconsin, 1/31/21*	
Minutes	38, vs. Texas A&M, 11/16/23	41, at Michigan State, 12/4/22	

SEASON	GP-GS	MIN/AVG	FG-FGA	FG%	3FG-FGA	3FG%	FT-FTA	FT%	OFF	DEF	TOT	AVG	PF-FO	AST	TO	BLK	STL	PTS	AVG
2019-20	30-11	693/23.1	65-225	.289	15-57	.263	40-66	.606	34	79	113	3.8	55-1	91	50	17	35	185	6.2
2020-21	23-23	690/30.0	89-226	.394	15-58	.259	54-74	.730	48	131	179	7.8	48-1	101	96	6	41	247	10.7
2021-22	32-32	949/29.6	88-215	.409	3-21	.143	51-74	.689	66	157	223	7.0	80-2	183	100	14	41	230	7.2
2022-23	30-30	898/29.9	74-185	.400	1-10	.100	45-71	.634	60	167	227	7.6	62-0	190	93	12	70	194	6.5
2023-24	7-7	201/28.8	8-29	.276	0-0	.000	13-17	.765	8	34	42	6.0	8-0	39	15	3	8	29	4.1
PURDUE	69-69	2048/29.7	170-429	.396	4-31	.129	109-162	.673	134	358	492	7.1	150-2	412	208	29	119	453	6.6
TOTAL	122-103	3431/28.1	324-880	.368	34-146	.233	203-302	.672	216	568	784	6.4	253-4	604	354	52	195	885	7.3

TERRY QUICK HITS

- Passed Katie Gearlds and Kelly Komara for 12th in Purdue career assists this season
- 2nd Team All-Big Ten, All-Defensive Team honoree last year
- Joined Caitlin Clark hit 150 ast, 200 reb the last two seasons
- Joined 500-assist club with a pair of dimes vs. Nebraska
- Has only three non-point double-doubles in Purdue history
- Only Boilermaker (men or women) in history to record multiple triple-doubles in a season and a career
- Joined Stephanie White as the only Boilermaker to ever record over 150 assists and 200 rebounds in a season
- Two-time Class A All-State honoree

MCKENNA LAYDEN

11

Height - 6-2 | **Position** - Guard | **Year** - Freshman | **Major** - Pre-dental
Hometown - Kokomo, Ind. | **High School** - Northwestern
Instagram - mckenna.layden | **Twitter** - _mckennalayden | **TikTok** - mckenna.layden



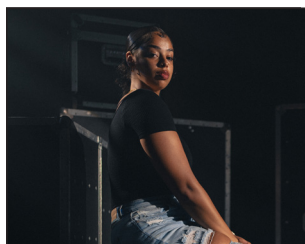
	Season High	Career High
Points	8, vs. USI, 11/26/23	8, vs. USI, 11/26/23
Rebounds	6, vs. USI, 11/26/23	6, vs. USI, 11/26/23
Assists	2, vs. Southern, 11/12/23	2, vs. Southern, 11/12/23
Steals	1, 4x last, vs. USI, 11/26/23	1, 4x last, vs. USI, 11/26/23
Blocks	1, at Dayton, 12/1/23	1, at Dayton, 12/1/23
Field Goals	2, vs. USI, 11/26/23	2, vs. USI, 11/26/23
3-Pointers	2, vs. USI, 11/26/23	2, vs. USI, 11/26/23
Free Throws	2, vs. USI, 11/26/23	2, vs. USI, 11/26/23
Minutes	22, vs. USI, 11/26/23	22, vs. USI, 11/26/23

SEASON	GP-GS	MIN/AVG	FG-FGA	FG%	3FG-FGA	3FG%	FT-FTA	FT%	OFF	DEF	TOT	AVG	PF-FO	AST	TO	BLK	STL	PTS	AVG
2023-24	7-0	88/12.6	3-14	.214	3-11	.273	3-4	.750	1	15	16	2.3	1-0	4	1	1	4	12	1.7

LAYDEN QUICK HITS

- Playing alongside Madison for the first time since her freshman year, when they reached the IHSAA State Championship Game
- Tabbed Elite 150 by Prospects Nation
- Indiana All-Star & IBCA Supreme 15 as a junior and senior
- Two-time sectional champion, won regional and semi-state once, appeared in one state final
- Named an Indiana Junior Core Six All-Star as a junior
- Posted a 78-17 record in high school
- Won two sectional titles in volleyball and two in tennis
- Her mother Kathie was her head coach in high school, won five state titles during coaching career - most by non-private coach

MILA REYNOLDS 15



Height - 6-3 | **Position** - Forward | **Year** - Sophomore | **Major** - African American Studies
Hometown - South Bend, Ind. | **High School** - South Bend Washington | **Previous** - Maryland
Instagram - milareynolds15 | **Twitter** - 15milareynolds | **TikTok** - milamarie_15

Season High	Career High
Points	5, 2x last vs. Penn State, 1/30/23*
Rebounds	3, 2x last vs. Pitt, 11/27/22*
Assists	1, at UCLA, 11/6/23
Steals	2, at Northwestern, 29/23*
Blocks	1, 2x last vs. Pitt, 11/27/22*
Field Goals	1, vs. Pitt, 11/27/22*
3-Pointers	2, 2x last vs. Penn State, 1/30/23*
Free Throws	2, at Wisconsin, 1/19/23*
Minutes	12, vs. Pitt, 11/27/22*

SEASON	GP-GS	MIN/AVG	FG-FGA	FG%	3FG-FGA	3FG%	FT-FTA	FT%	OFF	DEF	TOT	AVG	PF-FO	AST	TO	BLK	STL	PTS	AVG
2022-23	22-0	111/5.1	9-29	.310	0-2	.000	5-6	.833	7	12	19	0.9	13-0	4	6	1	2	23	1.0
2023-24	2-0	9/4.4	0-2	.000	0-1	.000	0-0	.000	0	0	0	0.0	2-0	1	1	0	0	0	0.0
TOTAL	24-0	120/5.0	9-31	.290	0-3	.000	5-6	.833	7	12	19	0.8	15-0	5	7	1	2	23	1.0

REYNOLDS QUICK HITS

- Transferred to Purdue in May of 2023
- Saw action in 22 games with the Terrapins
- No. 60 player, No. 16 forward, four-star, 94 rating by ESPN HoopGurlz- Finished third in voting for the 2022 Indiana Miss Basketball
- Tabbed Indiana All-Star & IBCA Academic All-State as a senior
- Played alongside Amiyah Reynolds and Rashunda Jones for three seasons, going 78-30 over four years and 68-17 with Amiyah
- Totaled 2,099 career points, second in Panther history behind 2010 graduate Skylar Diggins-Smith

MARY ASHLEY STEVENSON 20



Height - 6-2 | **Position** - Forward | **Year** - Freshman | **Major** - Communications
Hometown - New York City, N.Y. | **High School** - The Dalton School
Instagram - maryashleystevenson | **Twitter** - _MA_Stevenson20

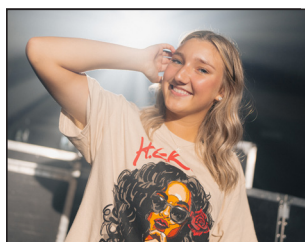
Season High	Career High
Points	13, vs. Southern, 11/12/23
Rebounds	13, vs. Southern, 11/12/23
Assists	7, at Dayton, 12/1/23
Steals	2, 3x last, at Dayton, 12/1/23
Blocks	2, 3x last, at Dayton, 12/1/23
Field Goals	1, 4x last, at Dayton, 12/1/23
3-Pointers	1, 3x last vs. Florida, 11/20/23
Free Throws	1, 3x last vs. Florida, 11/20/23
Minutes	5, vs. Southern, 11/12/23
	5, vs. Southern, 11/12/23
	6, vs. USI, 11/26/23
	6, vs. USI, 11/26/23
	32, 2x last, at Dayton, 12/1/23
	32, 2x last, at Dayton, 12/1/23

SEASON	GP-GS	MIN/AVG	FG-FGA	FG%	3FG-FGA	3FG%	FT-FTA	FT%	OFF	DEF	TOT	AVG	PF-FO	AST	TO	BLK	STL	PTS	AVG
2023-24	7-6	177/25.4	21-49	.429	0-6	.000	18-22	.818	13	14	27	3.9	16-0	7	14	3	4	60	8.6

STEVENSON QUICK HITS

- First Purdue freshman to score at least five pts and have an rebounds, assist, steal and block in a season opener since 2009 (8 pts, 2 rebs, 1 asts, 1 stls, 1 blks)
- Runner-up N.Y. Miss Basketball and Gatorade Player of the Year
- No. 97 player in the nation, four-star prospect with a 91 grade from ESPN HoopGurlz
- ew- Played in the WHO'S NXT? All-American Games
- 3x state champion, two in New York and one in South Carolina
- Back-to-back New York State Sportswriters Association State Player of the Year (Class B&C) in 2021-22 and 2022-23
- Played high school ball under assistant coach Doug Feinberg

EMILY MONSON 21



Height - 6-1 | **Position** - Guard | **Year** - Freshman | **Major** - Psychology
Hometown - Murfreesboro, Tenn. | **High School** - Blackman
Instagram - emilymonson_ | **Twitter** - _emily_monson21 | **TikTok** - emilyymonson

Season High	Career High
Points	4, at UCLA, 11/6/23
Rebounds	4, at UCLA, 11/6/23
Assists	1, 2x last, vs. USI, 11/26/23
Steals	1, 2x last, vs. USI, 11/26/23
Blocks	1, vs. USI, 11/26/23
Field Goals	1, at UCLA, 11/6/23
3-Pointers	1, at UCLA, 11/6/23
Free Throws	1, at UCLA, 11/6/23
Minutes	1, at UCLA, 11/6/23
	14, vs. USI, 11/26/23
	14, vs. USI, 11/26/23

SEASON	GP-GS	MIN/AVG	FG-FGA	FG%	3FG-FGA	3FG%	FT-FTA	FT%	OFF	DEF	TOT	AVG	PF-FO	AST	TO	BLK	STL	PTS	AVG
2023-24	4-0	22/5.6	1-5	.200	1-2	.500	1-2	.500	1	1	2	0.5	1-0	1	3	1	1	4	1.0

MONSON QUICK HITS

- Naismith High School All-America honorable mention
- No. 15 player in the state by Prep Girls Hoops
- Guided the Blaze to a 2021 Tennessee 3A State Championship
- Won four regional championships and three district titles
- Went 107-16 over high school career, including 81-8 as a starter for three seasons
- Scored 1,066 points with 337 rebounds and 117 steals in career
- Connected on 104 3-pointers at a 41% rate in final campaign
- Scored more points as a senior than her first three seasons combined
- Guided Blackman to the Elite Eight of the TSSAA 4A State Tournament

ABBEY ELLIS 23



Height - 5-6 | **Position** - Guard | **Year** - Fifth Year | **Major** - Early Childhood Education
Hometown - Melbourne, Australia | **High School** - Our Lady of Mercy | **Previous** - Cal Poly
Instagram - _abbeyellis | **Twitter** - _abbeyellis | **TikTok** - abbeye_22

Season High	Career High	(*prior school)
Points	21, at Dayton, 12/1/23	39, at San Diego St., 12/21/20*
Rebounds	6, 2x last, vs. USI, 11/26/23	10, vs. Long Beach St., 3/10/21*
Assists	7, vs. USI, 11/26/23	11, vs. Western Michigan, 11/14/21
Steals	3, vs. Southern, 11/12/23	8, vs. Santa Clara, 12/15/20*
Blocks		1, 16x last vs. Nebraska, 1/18/23
Field Goals	9, vs. Texas A&M, 11/16/23	14, vs. UC Riverside, 1/23/20*
3-Pointers	2, vs. Texas A&M, 11/16/23	8, at UC San Diego, 1/1/21*
Free Throws	8, at Dayton, 12/1/23	10, at UC San Diego, 1/2/21*
Minutes	36, vs. Florida, 11/20/23	44 vs. Indiana, 1/16/22

SEASON	GP-GS	MIN/AVG	FG-FGA	FG%	3FG-FGA	3FG%	FT-FTA	FT%	OFF	DEF	TOT	AVG	PF-FO	AST	TO	BLK	STL	PTS	AVG
2019-20	29-29	950/32.8	165-392	.421	48-148	.324	73-87	.839	10	124	134	4.6	75-2	84	94	3	42	451	15.6
2020-21	24-23	753/31.4	127-322	.394	42-116	.362	71-80	.888	17	95	112	4.7	51-2	62	70	3	62	367	15.3
2021-22	32-31	928/29.0	128-275	.465	31-93	.333	82-96	.854	27	74	101	3.2	52-0	95	71	7	35	369	11.5
2022-23	29-18	801/27.6	106-223	.475	35-94	.372	77-84	.917	15	69	84	2.9	50-0	43	49	3	21	324	11.2
2023-24	7-7	203/29.0	35-86	.407	9-35	.257	30-34	.882	5	20	25	3.6	14-0	15	18	0	10	109	15.6
PURDUE	68-56	1932/28.4	269-584	.461	75-222	.338	189-214	.883	47	163	210	3.1	116-0	153	138	10	66	802	11.8
TOTAL	121-108	3636/30.0	561-1298	.432	165-486	.340	333-381	.874	74	382	456	3.8	242-4	299	302	16	170	1620	13.4

ELLIS QUICK HITS

- Saw career-best streak of 27 made free throws come to an end against Southern
- Elected to use fifth year of eligibility for the 2023-24 season
- Two-time All-Big Ten honorable mention
- Shot a career-best 91.7% at the line to finish third in the nation and first in the Big Ten last year, good for third in Purdue history
- Crossed the career 1,000-point plateau in 2021-22
- Mother Libbie sends several ribbons in different colors for her to wear in games
- Father Martin was an Australian Rules Football official who refereed 244 matches in 13 years, including the 2001 Grand Final.
- First Australian in Purdue history

SOPHIE SWANSON 31



Height - 5-10 | **Position** - Guard | **Year** - Freshman | **Major** - Elementary Education
Hometown - Barrington, Ill. | **High School** - Barrington Prep
Instagram - sophieswanson | **Twitter** - sophieswanson31 | **TikTok** - sophieswanson

	Season High	Career High
Points	2, vs. USI, 11/26/23	2, vs. USI, 11/26/23
Rebounds	2, vs. USI, 11/26/23	2, vs. USI, 11/26/23
Assists		
Steals		
Blocks		
Field Goals	1, vs. USI, 11/26/23	1, vs. USI, 11/26/23
3-Pointers		
Free Throws		
Minutes	8, vs. USI, 11/26/23	8, vs. USI, 11/26/23

SEASON	GP-GS	MIN/AVG	FG-FGA	FG%	3FG-FGA	3FG%	FT-FTA	FT%	OFF	DEF	TOT	AVG	PF-FO	AST	TO	BLK	STL	PTS	AVG
2023-24	1-0	8/7.7	1-3	.333	0-2	.000	0-0	.000	0	2	2	2.0	0-0	0	1	0	0	2	2.0

ALAINA HARPER 32



Height - 6-3 | **Position** - Guard | **Year** - Sophomore | **Major** - Biomedical Health
Hometown - Hartland, Wis. | **High School** - Arrowhead | **Previous** - Grand Canyon
Instagram - alaina_harper32 | **Twitter** - alainaharper32

	Season High	Career High
Points	2, vs. USI, 11/26/23	18, vs. Lindenwood, 11/26/22*
Rebounds	2, vs. USI, 11/26/23	8, vs. Columbia, 12/11/22*
Assists		1, 5x last at Southern Utah, 3/2/23*
Steals		2, vs. Seattle, 2/18/23*
Blocks		1, 3x last vs. Seattle, 2/18/23
Field Goals	1, vs. USI, 11/26/23	8, vs. Lindenwood, 11/26/22*
3-Pointers		1, 3x last at Southern Utah, 3/2/23*
Free Throws		5, at Southern Utah, 3/2/23*
Minutes	14, vs. USI, 11/26/23	35, vs. Southern Utah, 3/10/23*

SEASON	GP-GS	MIN/AVG	FG-FGA	FG%	3FG-FGA	3FG%	FT-FTA	FT%	OFF	DEF	TOT	AVG	PF-FO	AST	TO	BLK	STL	PTS	AVG
2022-23	29-2	334/11.5	58-102	.569	3-5	.600	26-40	.650	35	29	64	2.2	35-0	5	21	3	3	145	5.0
2023-24	7-0	40/5.7	1-1	1.000	0-0	.000	0-0	.000	2	3	5	0.7	3-0	0	3	0	0	2	0.3
TOTAL	36-2	374/10.4	59-103	.573	3-5	.600	26-40	.650	37	32	69	1.9	38-0	5	24	3	3	147	4.1

MADISON LAYDEN 33



Height - 6-1 | **Position** - Guard | **Year** - Senior | **Major** - Selling & Sales Management
Hometown - Kokomo, Ind. | **High School** - Northwestern
Instagram - madison_layden | **Twitter** - madison_layden | **TikTok** - madison_layden

	Season High	Career High
Points	21, vs. Southern, 11/12/23	21, vs. Southern, 11/12/23
Rebounds	5, 2x last, at Dayton, 12/1/23	8 4x last, at Michigan State, 12/4/22
Assists	2, 2x last, at Dayton, 12/1/23	7, vs. Michigan State - 1/3/21
Steals	3, vs. Southern, 11/12/23	6, at Rutgers, 2/20/22
Blocks	1, 3x last, at Dayton, 12/1/23	2 6x last vs. Northwestern, 2/12/23
Field Goals	6, vs. USI, 11/26/23	8, 2x last vs. Penn State, 2/9/22
3-Pointers	4, 3x last, vs. USI, 11/26/23	6, at Iowa - 1/18/21
Free Throws	7, vs. Southern, 11/12/23	6, vs. Dayton, 11/20/21
Minutes	36, vs. Southern, 11/12/23	44 vs. Indiana, 1/16/22

SEASON	GP-GS	MIN/AVG	FG-FGA	FG%	3FG-FGA	3FG%	FT-FTA	FT%	OFF	DEF	TOT	AVG	PF-FO	AST	TO	BLK	STL	PTS	AVG
2020-21	23-21	729/31.7	70-163	.429	45-111	.405	15-20	.750	12	61	73	3.2	43-0	69	44	5	48	200	8.7
2021-22	29-28	986/34.0	117-337	.347	63-190	.332	40-47	.851	24	110	134	4.6	71-1	80	55	15	49	337	11.6
2022-23	28-13	816/29.2	56-165	.339	34-124	.274	34-38	.895	2	115	117	4.2	72-1	83	53	10	30	180	6.4
2023-24	7-7	196/28.0	21-45	.467	16-32	.500	14-16	.875	2	19	21	3.0	15-0	6	12	3	8	72	10.3
TOTAL	87-69	2728/31.4	264-710	.372	158-457	.346	103-121	.851	40	305	345	4.0	201-2	238	164	33	135	789	9.1

CAITLYN HARPER 34



Height - 6-3 | **Position** - Forward | **Year** - Sixth Year | **Major** - Master's Management
Hometown - Hartland, Wisc. | **High School** - Arrowhead | **Previous** - Cal Baptist
Instagram - caitlynharper32 | **Twitter** - C_harp32 | **TikTok** - caitlynharper32

	Season High	Career High	(*prior school)
Points	14, vs. Texas A&M, 11/16/23	30, at Utah Valley, 1/15/22*	
Rebounds	11, vs. Texas A&M, 11/16/23	14, 3x last, vs. Chicago State*	
Assists	3, vs. Southern, 11/12/23	5, at UTRGV, 2/13/21*	
Steals	3, at Dayton, 12/1/23	5, at Sam Houston State, 1/27/22*	
Blocks	1, 3x last, at Dayton, 12/1/23	8, at Chicago State, 3/2/22*	
Field Goals	6, 2x last, at Dayton, 12/1/23	12, vs. Utah Valley, 2/26/22	
3-Pointers	2, 2x last, vs. Texas A&M, 11/16/23	4, vs. Rice, 3/22/21*	
Free Throws	2, 4x last, vs. USI, 11/26/23	10, vs. Sam Houston State, 3/10/22*	
Minutes	37, vs. Texas A&M, 11/16/23	41, at Chicago State, 3/2/22*	

SEASON	GP-GS	MIN/AVG	FG-FGA	FG%	3FG-FGA	3FG%	FT-FTA	FT%	OFF	DEF	TOT	AVG	PF-FO	AST	TO	BLK	STL	PTS	AVG
2018-19	29-3	470/16.2	100-203	.493	11-52	.212	40-58	.690	36	84	120	4.1	49-0	23	38	21	11	251	8.7
2019-20	5-5	121/24.3	32-56	.571	1-2	.500	16-18	.889	13	32	45	9.0	17-0	7	10	10	2	81	16.2
2020-21	27-10	642/23.8	149-281	.530	27-70	.386	60-76	.789	62	140	202	7.5	67-0	35	50	34	31	385	14.3
2021-22	32-32	964/30.1	223-421	.530	29-95	.305	94-127	.740	36	153	189	5.9	68-0	40	58	51	41	569	17.8
2022-23	30-29	713/23.8	127-232	.547	17-52	.327	41-53	.774	38	78	116	3.9	65-1	18	49	18	18	312	10.4
2023-24	7-7	210/30.0	29-55	.527	6-18	.333	8-8	1.000	8	29	37	5.3	13-0	7	7	3	9	72	10.3
PURDUE	37-36	923/24.9	156-287	.544	23-70	.329	49-61	.803	46	107	153	4.1	78-1	25	56	21	27	384	10.4
TOTAL	130-86	3119/24.0	660-1248	.529	91-289	.315	259-340	.762	193	516	709	5.5	279-1	130	212	137	112	1670	12.8

SWANSON QUICK HITS

- Coming off knee injury that ended senior campaign
- 2022 Illinois Miss Basketball and Illinois 4A Player of the Year
- Invited to the U18 USA Team Trials
- Four-time all-state, all-conference and all-area honoree
- Honored as the Barrington Female Athlete of the Year in 2021-22
- Won conference, regional, sectional, super-sectional titles as a junior, reaching the state finals
- Invited to U18 Team USA camp as a junior
- Set the school record for points in a season (750), 3-pointers (86), thrice set the school mark for points in a game (40, 37, 36)
- Averaged 23.1 points per game with 3.8 rebounds, 3.0 assists and 3.0 steals as a senior before her injury

HARPER QUICK HITS

- Teammates with her sister Caitlyn for the first time
- Transferred to Purdue in May of 2023
- Appeared in 29 games with a pair of starts at Grand Canyon
- Was named WAC Freshman of the Week early in the season
- No. 6 player in Wisconsin by Prep Girls Hoops
- Garnered back-to-back WBCA Division I First Team All-State honors as a junior and senior
- Tabbed the 2022 Wisconsin Sports Network's top post player
- 2021 USA Today High School Sports Awards (Milwaukee) nominee

LAYDEN QUICK HITS

- Playing alongside her sister freshman McKenna
- Dropped a career-best 21 points against Southern
- 14th on Purdue's career 3-point list
- Big Ten All-Freshman (2021), honorable mention (2022)
- One of 12 players to have 30 3-pointers, 30 steals and 65 assists each of the last three seasons
- Invited to the USA Basketball U19 World Cup Trials
- Named to the All-Freshman Team in 2020-21
- Tied freshman record with 7 3pts in a game at Iowa
- First in IHSA history to lead three Final Fours in scoring
- Ranked 13th in IHSA in career scoring and one of 46 2,000-point scorers in state history

HARPER QUICK HITS

- Playing with her sister Alaina this season for the first time
- Tallied 1,500th career point against Illinois last year
- Finished third on the team in scoring last season
- One of 11 players from the Big Ten to average double figures and shoot better than 50% in 2022-23
- Transferred to Purdue after spending four seasons at Cal Baptist
- 2022 WAC Player of the Year and CoSIDA All-American
- Played parts of four seasons at Cal Baptist, starting in 2018-19
- Named the 2022 CoSIDA Academic All-America, 2021-22 WAC Player of the Year, 2021 WAC Tournament MVP

2023-24 PURDUE WOMEN'S BASKETBALL GAME NOTES

2 | Rashunda Jones

2023-24	Min.	FG	3FG	FT	O-D-T	PF	Pts	A	To	S	B	+/-
UCLA*	20	2-7	0-2	0-0	0-1-1	3	4	0	1	0	0	-33
Southern	15	1-8	1-3	1-2	0-2-2	3	4	1	4	0	1	4
Texas A&M	23	8-11	0-1	4-6	0-2-2	3	20	0	1	0	1	11
Florida	18	1-6	0-0	2-2	1-4-5	5	4	1	3	1	0	9
Georgia	21	4-8	0-0	2-2	1-4-5	2	10	0	3	1	0	-10
USI	26	6-11	2-4	2-4	1-4-5	2	16	3	3	2	0	22
Dayton	19	3-9	0-1	1-2	0-1-1	2	7	3	3	1	0	5
Valpo												
SEMO												
Minnesota												
Notre Dame												
Indiana State												
Wisconsin												
Rutgers												
Maryland												
Iowa												
Penn State												
Indiana												
MSU												
Ohio State												
Nebraska												
Illinois												
Indiana												
NU												
Nebraska												
MSU												
Wisconsin												
Penn State												
Michigan												

* Started

^Big Ten Tournament

10 | Jeanae Terry

2023-24	Min.	FG	3FG	FT	O-D-T	PF	Pts	A	To	S	B	+/-
UCLA*	30	1-5	0-0	3-4	1-6-7	2	5	4	2	1	0	-23
Southern*	35	1-6	0-0	3-4	1-10-11	0	5	7	2	0	0	15
Texas A&M*	38	2-6	0-0	4-4	1-4-5	2	8	10	3	3	0	9
Florida*	25	0-2	0-0	0-0	2-2-4	0	0	2	0	1	0	-10
Georgia*	26	2-4	0-0	0-1	0-1-1	2	4	4	4	0	0	-9
USI*	18	2-3	0-0	2-2	2-4-6	2	6	8	1	3	1	31
Dayton*	30	0-3	0-0	1-2	1-7-8	0	1	4	3	0	2	5
Valpo												
SEMO												
Minnesota												
Notre Dame												
Indiana State												
Wisconsin												
Rutgers												
Maryland												
Iowa												
Penn State												
Indiana												
MSU												
Ohio State												
Nebraska												
Illinois												
Indiana												
NU												
Nebraska												
MSU												
Wisconsin												
Penn State												
Michigan												

* Started

^Big Ten Tournament

3 | Jayla Smith

2023-24	Min.	FG	3FG	FT	O-D-T	PF	Pts	A	To	S	B	+/-
UCLA	17	2-7	0-3	0-0	1-2-3	1	4	0	3	0	0	-23
Southern	DNP											
Texas A&M	20	0-4	0-2	0-0	0-1-1	0	0	1	0	0	1	22
Florida	24	6-10	1-4	0-0	0-5-5	1	13	1	3	0	0	-6
Georgia	17	0-4	0-2	0-0	0-2-2	0	0	0	0	0	0	1
USI	16	4-7	0-2	0-2	0-0-0	3	8	1	2	0	1	17
Dayton	11	2-6	0-0	0-0	3-1-4	0	4	0	2	0	1	4
Valpo												
SEMO												
Minnesota												
Notre Dame												
Indiana State												
Wisconsin												
Rutgers												
Maryland												
Iowa												
Penn State												
Indiana												
MSU												
Ohio State												
Nebraska												
Illinois												
Indiana												
NU												
Nebraska												
MSU												
Wisconsin												
Penn State												
Michigan												

* Started

^Big Ten Tournament

11 | McKenna Layden

2023-24	Min.	FG	3FG	FT	O-D-T	PF	Pts	A	To	S	B	+/-
UCLA	15	1-4	1-2	1-2	1-0-1	0	4	0	0	1	0	-25
Southern	19	0-3	0-3	0-0	0-4-4	0	0	2	1	1	0	-5
Texas A&M	10	0-0	0-0	0-0	0-0-0	0	0	0	0	0	0	9
Florida	11	0-0	0-0	0-0	0-1-1	0	0	0	0	0	0	-3
Georgia	4	0-2	0-2	0-0	0-1-1	0	0	0	0	1	0	-2
USI	22	2-4	2-3	2-2	0-6-6	1	8	1	0	1	0	14
Dayton	10	0-1	0-1	0-0	0-3-3	0	0	1	0	0	1	-2
Valpo												
SEMO												
Minnesota												
Notre Dame												
Indiana State												
Wisconsin												
Rutgers												
Maryland												
Iowa												
Penn State												
Indiana												
MSU												
Ohio State												
Nebraska												
Illinois												
Indiana												
NU												
Nebraska												
MSU												
Wisconsin												
Penn State												
Michigan												

* Started

^Big Ten Tournament

2023-24 PURDUE WOMEN'S BASKETBALL GAME NOTES

15 | Mila Reynolds

2023-24	Min.	FG	3FG	FT	O-D-T	PF	Pts	A	To	S	B	+/-
UCLA	5	0-2	0-1	0-0	0-0-0	1	0	1	1	0	0	-14
Southern	4	0-0	0-0	0-0	0-0-0	1	0	0	0	0	0	-4
Texas A&M	DNP											
Florida	DNP											
Georgia	DNP											
USI	DNP											
Dayton	DNP											
Valpo												
SEMO												
Minnesota												
Notre Dame												
Indiana State												
Wisconsin												
Rutgers												
Maryland												
Iowa												
Penn State												
Indiana												
MSU												
Ohio State												
Nebraska												
Illinois												
Indiana												
NU												
Nebraska												
MSU												
Wisconsin												
Penn State												
Michigan												

* Started

^Big Ten Tournament

21 | Emily Monson

2023-24	Min.	FG	3FG	FT	O-D-T	PF	Pts	A	To	S	B	+/-
UCLA	4	1-1	1-1	1-2	0-0-0	0	4	0	2	1	0	-2
Southern	3	0-0	0-0	0-0	1-0-1	0	0	0	1	0	0	-1
Texas A&M	DNP											
Florida	3	0-1	0-1	0-0	0-0-0	0	0	0	0	0	0	4
Georgia	DNP											
USI	14	0-3	0-0	0-0	0-1-1	1	0	1	0	0	1	-6
Dayton	DNP											
Valpo												
SEMO												
Minnesota												
Notre Dame												
Indiana State												
Wisconsin												
Rutgers												
Maryland												
Iowa												
Penn State												
Indiana												
MSU												
Ohio State												
Nebraska												
Illinois												
Indiana												
NU												
Nebraska												
MSU												
Wisconsin												
Penn State												
Michigan												

* Started

^Big Ten Tournament

20 | Mary Ashley Stevenson

2023-24	Min.	FG	3FG	FT	O-D-T	PF	Pts	A	To	S	B	+/-
UCLA	27	3-5	0-1	2-2	2-0-2	3	8	2	3	1	1	-25
Southern*	28	5-9	0-1	3-3	1-4-5	2	13	0	4	0	1	22
Texas A&M*	9	1-3	0-0	0-0	2-1-3	3	2	0	0	0	0	-1
Florida*	26	2-8	0-2	2-4	4-2-6	3	6	0	0	0	1	2
Georgia*	32	4-11	0-1	3-3	2-1-3	1	11	2	3	1	0	-12
USI*	26	3-5	0-0	6-7	0-1-1	3	12	1	1	1	0	26
Dayton*	32	3-8	0-1	2-3	2-5-7	1	8	2	3	1	0	11
Valpo												
SEMO												
Minnesota												
Notre Dame												
Indiana State												
Wisconsin												
Rutgers												
Maryland												
Iowa												
Penn State												
Indiana												
MSU												
Ohio State												
Nebraska												
Illinois												
Indiana												
NU												
Nebraska												
MSU												
Wisconsin												
Penn State												
Michigan												

* Started

^Big Ten Tournament

23 | Abbey Ellis

2023-24	Min.	FG	3FG	FT	O-D-T	PF	Pts	A	To	S	B	+/-
UCLA*	22	4-8	0-3	2-2	0-2-2	0	10	0	4	1	0	-9
Southern*	28	3-11	1-6	7-9	0-4-4	3	14	4	3	3	0	14
Texas A&M*	34	9-18	2-4	0-0	0-0-0	2	20	2	1	1	0	8
Florida*	36	3-13	1-9	7-7	0-5-5	4	14	1	4	3	0	-4
Georgia*	30	4-12	1-4	2-2	3-3-6	1	11	1	4	0	0	-2
USI*	21	7-11	1-3	4-4	1-5-6	2	19	7	1	1	0	38
Dayton*	34	5-13	3-6	8-10	1-1-2	2	21	0	1	1	0	10
Valpo												
SEMO												
Minnesota												
Notre Dame												
Indiana State												
Wisconsin												
Rutgers												
Maryland												
Iowa												
Penn State												
Indiana												
MSU												
Ohio State												
Nebraska												
Illinois												
Indiana												
NU												
Nebraska												
MSU												
Wisconsin												
Penn State												
Michigan												

* Started

^Big Ten Tournament



2023-24 PURDUE WOMEN'S BASKETBALL GAME NOTES

31 | Sophie Swanson

2023-24	Min.	FG	3FG	FT	O-D-T	PF	Pts	A	To	S	B	+/-
UCLA	DNP											
Southern	DNP											
Texas A&M	DNP											
Florida	DNP											
Georgia	DNP											
USI	8	1-3	0-2	0-0	0-2-2	0	2	0	1	0	0	-8
Dayton	DNP											
Valpo												
SEMO												
Minnesota												
Notre Dame												
Indiana State												
Wisconsin												
Rutgers												
Maryland												
Iowa												
Penn State												
Indiana												
MSU												
Ohio State												
Nebraska												
Illinois												
Indiana												
NU												
Nebraska												
MSU												
Wisconsin												
Penn State												
Michigan												

* Started

^Big Ten Tournament

33 | Madison Layden

2023-24	Min.	FG	3FG	FT	O-D-T	PF	Pts	A	To	S	B	+/-
UCLA*	28	0-3	0-2	0-0	0-1-1	0	0	1	1	0	0	-33
Southern*	36	5-6	4-5	7-8	1-3-4	4	21	2	1	3	0	17
Texas A&M*	27	2-8	1-5	3-4	1-4-5	3	8	0	2	2	1	-2
Florida*	23	0-5	0-3	0-0	0-2-2	1	0	0	2	0	0	-7
Georgia*	32	5-12	4-8	0-0	0-2-2	4	14	1	2	1	0	2
USI*	19	6-6	4-4	0-0	0-2-2	2	16	0	1	0	1	21
Dayton*	32	3-5	3-5	4-4	0-5-5	1	13	2	3	2	1	4
Valpo												
SEMO												
Minnesota												
Notre Dame												
Indiana State												
Wisconsin												
Rutgers												
Maryland												
Iowa												
Penn State												
Indiana												
MSU												
Ohio State												
Nebraska												
Illinois												
Indiana												
NU												
Nebraska												
MSU												
Wisconsin												
Penn State												
Michigan												

* Started

^Big Ten Tournament

32 | Alaina Harper

2023-24	Min.	FG	3FG	FT	O-D-T	PF	Pts	A	To	S	B	+/-
UCLA	3	0-0	0-0	0-0	0-0-0	1	0	0	0	0	0	-3
Southern	2	0-0	0-0	0-0	0-0-0	0	0	0	0	0	0	2
Texas A&M	3	0-0	0-0	0-0	0-1-1	1	0	0	1	0	0	1
Florida	2	0-0	0-0	0-0-0	0	0	0	0	0	0	0	0
Georgia	11	0-0	0-0	0-0	0-1-1	0	0	0	1	0	0	-5
USI	14	1-1	0-0	0-0	2-0-2	0	2	0	0	0	0	4
Dayton	6	0-0	0-0	0-0	0-1-1	1	0	0	1	0	0	-10
Valpo												
SEMO												
Minnesota												
Notre Dame												
Indiana State												
Wisconsin												
Rutgers												
Maryland												
Iowa												
Penn State												
Indiana												
MSU												
Ohio State												
Nebraska												
Illinois												
Indiana												
NU												
Nebraska												
MSU												
Wisconsin												
Penn State												
Michigan												

* Started

^Big Ten Tournament

34 | Caitlyn Harper

2023-24	Min.	FG	3FG	FT	O-D-T	PF	Pts	A	To	S	B	+/-
UCLA*	31	3-8	2-6	2-2	0-2-2	2	10	0	1	1	1	-25
Southern*	32	5-8	0-2	0-0	1-6-7	3	10	3	4	0	0	21
Texas A&M*	37	5-8	2-3	2-2	3-8-11	0	14	1	1	1	0	13
Florida*	36	6-12	0-3	0-0	0-5-5	1	12	0	1	1	0	0
Georgia*	31	2-4	1-2	2-2	2-2-4	3	7	0	0	2	1	-3
USI*	18	2-5	0-1	2-2	2-2-4	0	6	2	0	1	0	31
Dayton*	27	6-10	1-1	0-0	0-4-4	4	13	1	0	3	1	13
Valpo												
SEMO												
Minnesota												
Notre Dame												
Indiana State												
Wisconsin												
Rutgers												
Maryland												
Iowa												
Penn State												
Indiana												
MSU												
Ohio State												
Nebraska												
Illinois												
Indiana												
NU												
Nebraska												
MSU												
Wisconsin												
Penn State												
Michigan												

* Started

^Big Ten Tournament





2023-24 Purdue Women's Basketball Combined Team Statistics All games

Page 1/1
as of Dec 02, 2023

Game Records

Record	Overall	Home	Away	Neutral
ALL GAMES	4-3	3-0	1-1	0-2
CONFERENCE	0-0	0-0	0-0	0-0
NON-CONFERENCE	4-3	3-0	1-1	0-2

Score by Periods

Team	1st	2nd	3rd	4th	OT	TOT
Purdue	122	105	134	95	0	456
Opponents	109	94	110	120	0	433

Team Box Score

No.	Player				Total		3-Point		F-Throw		Rebounds											
		GP-GS	MIN	AVG	FG-FGA	FG%	3FG-3FGA	3FG%	FT-FTA	FT%	OFF	DEF	TOT	AVG	PF	DQ	A	TO	BLK	STL	PTS	AVG
23	ELLIS, Abbey	7-7	203:18	29.0	35-86	.407	9-35	.257	30-34	.882	5	20	25	3.6	14	0	15	18	0	10	109	15.6
34	HARPER, Caitlyn	7-7	209:46	30.0	29-55	.527	6-18	.333	8-8	1.000	8	29	37	5.3	13	0	7	7	3	9	72	10.3
33	LAYDEN, Madison	7-7	196:11	28.0	21-45	.467	16-32	.500	14-16	.875	2	19	21	3.0	15	0	6	12	3	8	72	10.3
2	JONES, Rashunda	7-0	140:29	20.1	25-60	.417	3-11	.273	12-18	.667	3	18	21	3.0	20	1	8	18	2	5	65	9.3
20	STEVENSON, Mary Ashley	7-6	177:29	25.4	21-49	.429	0-6	.000	18-22	.818	13	14	27	3.9	16	0	7	14	3	4	60	8.6
3	SMITH, Jayla	6-1	104:44	17.5	14-38	.368	1-13	.077	0-2	.000	4	11	15	2.5	5	0	3	10	3	0	29	4.8
10	TERRY, Jeanae	7-7	201:19	28.8	8-29	.276	0-0	.000	13-17	.765	8	34	42	6.0	8	0	39	15	3	8	29	4.1
31	SWANSON, Sophie	1-0	07:41	7.7	1-3	.333	0-2	.000	0-0	.000	0	2	2	2.0	0	0	0	1	0	0	2	2.0
11	LAYDEN, McKenna	7-0	87:56	12.6	3-14	.214	3-11	.273	3-4	.750	1	15	16	2.3	1	0	4	1	1	4	12	1.7
21	MONSON, Emily	4-0	22:16	5.6	1-5	.200	1-2	.500	1-2	.500	1	1	2	0.5	1	0	1	3	1	1	4	1.0
32	HARPER, Alaina	7-0	40:09	5.7	1-1	1.000	0-0	.000	0-0	.000	2	3	5	0.7	3	0	0	3	0	0	2	0.3
15	REYNOLDS, Mila	2-0	08:42	4.4	0-2	.000	0-1	.000	0-0	.000	0	0	0	0.0	2	0	1	1	0	0	0	0.0
Team											18	16	34					7				
Total		7	1400		159-387	.411	39-131	.298	99-123	.805	65	182	247	35.3	98	1	91	110	19	49	456	65.1
Opponents		7	1400		161-431	.374	38-121	.314	73-98	.745	95	168	263	37.6	124	1	81	111	24	56	433	61.9

Team Statistics

	PURDUE	OPP
Scoring	456	433
Points per game	65.1	61.9
Scoring margin	+3.3	-
Field goals-att	159-387	161-431
Field goal pct	.411	.374
3 point fg-att	39-131	38-121
3-point FG pct	.298	.314
3-pt FG made per game	5.6	5.4
Free throws-att	99-123	73-98
Free throw pct	.805	.745
F-Throws made per game	14.1	10.4
Rebounds	247	263
Rebounds per game	35.3	37.6
Rebounding margin	-2.3	-
Assists	91	81
Assists per game	13.0	11.6
Turnovers	110	111
Turnovers per game	15.7	15.9
Turnover margin	+0.1	-
Assist/turnover ratio	0.8	0.7
Steals	49	56
Steals per game	7.0	8.0
Blocks	19	24
Blocks per game	2.7	3.4
Winning streak	2	-
Home win streak	3	-
Attendance	13908	5407
Home games-Avg/Game	3-4636	2-2704
Neutral site-Avg/Game	-	2-358

Team Results

Date	Opponent		Score	Att.
11/06/2023	at UCLA	L	49-92	2157
11/12/2023	Southern U.	W	67-50	5002
11/16/2023	Texas A&M	W	72-58	5223
11/20/2023	vs Florida	L	49-52	437
11/22/2023	vs Georgia	L	57-65	278
11/26/2023	Southern Ind.	W	95-57	3683
12/01/2023	at Dayton	W	67-59	3250

2023-24 PURDUE WOMEN'S BASKETBALL GAME NOTES

Official Basketball Box Score - Final

Purdue at Dayton

12/01/23 University of Dayton Arena, Dayton, Ohio
2023-24 NCAA Women's Basketball

Game Time: 7:02 PM

Game Duration: 1:58

Attendance: 3,250

Officials: Joseph Vaszily, John Capolino, Shanade Bernard

Purdue - 67

Record: 4-3

NO.	Name	Min	FG M-A	3P M-A	FT M-A	Rebounds OR DR TOT	Fouls PF FD	TP	AS	TO	ST	Blocks BS BA	+/-
20	Mary Ashley Stevenson	F 32:01	3-8	0-1	2-3	2 5 7	1 3	8	2	3	1	0 2	11
34	Caitlyn Harper	F 26:27	6-10	1-1	0-0	0 4 4	4 1	13	1	0	3	1 0	13
10	Jeanae Terry	G 30:04	0-3	0-0	1-2	1 7 8	0 3	1	4	3	0	2 0	5
23	Abbey Ellis	G 34:07	5-13	3-6	8-10	1 1 2	2 5	21	0	1	1	0 0	10
33	Madison Layden	G 32:10	3-5	3-5	4-4	0 5 5	1 5	13	2	3	2	1 0	4
2	Rashunda Jones	18:55	3-9	0-1	1-2	0 1 1	2 1	7	3	3	1	0 2	5
3	Jayla Smith	11:13	2-6	0-0	0-0	3 1 4	0 0	4	0	2	0	1 0	4
11	McKenna Layden	09:37	0-1	0-1	0-0	0 3 3	0 0	0	1	0	0	1 0	-2
32	Alaina Harper	05:26	0-0	0-0	0-0	0 1 1	1 1	0	0	1	0	0 0	-10
Team						3 2 5		0		2			
Totals			22-55	7-15	16-21	10 30 40	11 19	67	13	18	8	6 4	8

Technical Fouls::NONE

Shooting By Period		
1 st FG%	9-20	45.0%
3PT%	4-6	66.7%
FT%	2-2	100%
2 nd FG%	5-15	33.3%
3PT%	1-4	25.0%
FT%	0-0	0%
3 rd FG%	4-12	33.3%
3PT%	0-2	0.0%
FT%	1-1	100%
4 th FG%	4-8	50.0%
3PT%	2-3	66.7%
FT%	13-18	72.2%
GM FG%	22-55	40.0%
3PT%	7-15	46.7%
FT%	16-21	76.2%

Dead Ball Rebounds: 1, 0

Dayton - 59

Record: 4-4

NO.	Name	Min	FG M-A	3P M-A	FT M-A	Rebounds OR DR TOT	Fouls PF FD	TP	AS	TO	ST	Blocks BS BA	+/-
5	Arianna Smith	F 21:46	4-9	0-1	0-0	6 6 12	4 0	8	1	1	0	1 1	-3
23	Mariah Perez	F 20:19	3-9	0-0	2-3	3 4 7	2 3	8	0	1	0	0 2	-11
0	Denika Lightbourne	G 09:57	0-1	0-0	0-0	0 0 0	2 1	0	1	0	0	0 0	-4
10	Ivy Wolf	G 34:02	3-10	2-6	2-2	0 1 1	4 3	10	6	4	0	0 1	-12
53	Destiny Bohanon	G 23:06	3-9	1-2	0-0	1 1 2	4 2	7	0	3	1	0 0	-5
13	Shannon Wheeler	22:44	4-7	0-1	0-0	3 0 3	1 0	8	0	1	1	3 0	-7
3	Anyssa Jones	35:20	5-14	0-2	0-0	2 3 5	2 0	10	0	1	0	0 1	0
1	Nayo Lear	17:35	1-8	0-0	0-0	0 2 2	0 0	2	2	6	2	0 0	-3
30	Riley Rismiller	15:11	2-5	2-3	0-0	2 6 8	0 2	6	0	1	0	0 1	5
Team						1 4 5		0		0			
Totals			25-72	5-15	4-5	18 27 45	19 11	59	10	18	4	4 6	-8

Technical Fouls::NONE

Shooting By Period		
1 st FG%	7-22	31.8%
3PT%	1-4	25.0%
FT%	0-1	0%
2 nd FG%	5-14	35.7%
3PT%	1-4	25.0%
FT%	1-1	100%
3 rd FG%	5-14	35.7%
3PT%	0-1	0.0%
FT%	1-1	100%
4 th FG%	8-22	36.4%
3PT%	3-6	50.0%
FT%	2-2	100%
GM FG%	25-72	34.7%
3PT%	5-15	33.3%
FT%	4-5	80.0%

Dead Ball Rebounds: 0, 0

	PUR	DAY
Biggest lead	15 (4 th 6:54)	0 (1 st 10:00)
Best Scoring Run	11 (1 st 6:25)	6 (2 nd 9:07)
Lead Changes	0	
Times Tied	0	
Time with Lead	39:18	00:00

	PUR	DAY
Points from		
Turnovers	13	12
Paint	30	26
Second Chance	9	20
Fast Breaks	5	2
Bench	11	26

Period by Period Scoring					
	1st	2nd	3rd	4th	TOT
PUR	24	11	9	23	67
DAY	15	12	11	21	59

2023-24 PURDUE WOMEN'S BASKETBALL GAME NOTES



PURDUE BOILERMAKERS

Overall - 4-3 | BIG - 0-0 | Streak - W2 | AP - - | Coaches - - | NET - - | Home - 3-0 | Away - 1-1 | Neutral - 0-2 | Post - 0-0
 Offense - 65.1 | Defense - 61.9 | Scoring Margin - 3.3 | Field Goal% - .411 | Field Goal% Defense - .374 | 3-Pt.(PG) - .298 (5.6)
 Opp 3-Pt.(PG) - .314 (5.4) | FT %(PG) - .805 (14.1) | Rebounding - 35.3 | Rebound Margin - -2.3 | Assists - 13.0 | Turnovers - 15.7 | TO Margin - 0.1

2023-24 SCHEDULE

Opponent	Date/Result
Quincy (ex)	W, 106-45
at #4 UCLA	L, 92-49
Southern	W, 67-50
Texas A&M	W, 72-58
vs. Florida (1)	L, 52-49
vs. Georgia (1)	L, 65-57
Southern Indiana	W, 95-57
Dayton	W, 67-59
Valparaiso	Dec. 3
SEMO	Dec. 6
at Minnesota	Dec. 10
at Notre Dame	Dec. 17
Indiana State	Dec. 20
Wisconsin	Dec. 30
Rutgers	Jan. 2
at Maryland	Jan. 6
Iowa	Jan. 10
at Penn State	Jan. 18
Indiana	Jan. 21
at Michigan State	Jan. 24
Ohio State	Jan. 28
at Nebraska	Jan. 31
Illinois	Feb. 5
at Indiana	Feb. 11
at Northwestern	Feb. 14
Nebraska	Feb. 17
Michigan State	Feb. 21
at Wisconsin	Feb. 25
Penn State	Feb. 28
at Michigan	March 3
Big Ten Tournament	March 6-10

- 1 - Baha Mar Pink Flamingo Championship (The Bahamas)
 2 - BIG Tournament (Minneapolis)

HEAD COACH KATIE GEARLDS

Purdue Record - 40-29 (2nd)
 Career Record - 268-79 (10th)
 Alma Mater - Purdue '07
 Highlights - 2x NAIA National Champ, 3x NAIA Coach of the Year, 8 years at Marian, 7th Overall to Seattle in 2007 Draft, Legend of Mackey, 2007 All-America

COACHING STAFF

Asso. Head Coach Kelly Komara
 Assistant Coach Mark Stephens
 Assistant Coach Alex Guyton

PRONUNCIATIONS

1 - Amiyah Reynolds ah-MY-yah
 2 - Rashunda Jones ra-SHUN-da
 15 - Mila Reynolds MEE-la
 32 - Alaina Harper ah-LAY-na
 Katie Gearlds soft g
 (like the first name)
 Kelly Komara kom-AIR-ah

1 • Amiyah Reynolds • Fr. • G • 6-1 • South Bend, Ind • South Bend Washington

GP/GS	MIN.	PPG	RPG	APG	STLS	BLKS	FG%	3P%	FT%
-	-	-	-	-	-	-	-	-	-

LAST GAME: Will miss the season due to injury from her senior year of high school

2 • Rashunda Jones • Fr. • G • 5-8 • South Bend, Ind. • South Bend Washington

GP/GS	MIN.	PPG	RPG	APG	STLS	BLKS	FG%	3P%	FT%
7/0	20.1	9.3	3.0	1.1	0.7	0.3	.417	.273	.667

LAST GAME: 7 pts, 1 reb, 3 asts, 1 stl, 19 mins

3 • Jayla Smith • Jr. • G • 6-0 • Indianapolis, Ind. • Lawrence North

GP/GS	MIN.	PPG	RPG	APG	STLS	BLKS	FG%	3P%	FT%
6/1	17.5	4.8	2.5	0.5	0.0	0.5	.368	.077	.000

LAST GAME: 4 pts, 4 rebs, 1 blk, 12 mins

10 • Jeanae Terry • 5th • G • 5-11 • Detroit, Mich. • Wayne Memorial • Illinois

GP/GS	MIN.	PPG	RPG	APG	STLS	BLKS	FG%	3P%	FT%
7/7	28.8	4.1	3.0	5.6	1.1	0.4	.276	.000	.765

LAST GAME: 1 pt, 8 rebs, 4 asts, 2 blks, 30 mins

11 • McKenna Layden • Fr. • G • 6-2 • Kokomo, Ind. • Northwestern

GP/GS	MIN.	PPG	RPG	APG	STLS	BLKS	FG%	3P%	FT%
7/0	12.6	1.7	2.3	0.6	0.6	0.1	.214	.273	.750

LAST GAME: 3 rebs, 1 blk, 10 mins

15 • Mila Reynolds • So. • F • 6-3 • South Bend, Ind. • South Bend Washington • Maryland

GP/GS	MIN.	PPG	RPG	APG	STLS	BLKS	FG%	3P%	FT%
2/0	4.4	0.0	0.0	0.0	0.0	0.0	.000	.000	.000

LAST GAME: Did not play

20 • Mary Ashley Stevenson • Fr. • F • 6-2 • New York City, N.Y. • The Dalton School

GP/GS	MIN.	PPG	RPG	APG	STLS	BLKS	FG%	3P%	FT%
7/6	25.4	8.6	3.9	1.0	0.6	0.4	.429	.000	.818

LAST GAME: 8 pts, 7 rebs, 2 asts, 1 stl, 32 mins

21 • Emily Monson • Fr. • G • 6-1 • Murfreesboro, Tenn. • Blackman

GP/GS	MIN.	PPG	RPG	APG	STLS	BLKS	FG%	3P%	FT%
4/0	5.6	1.0	0.5	0.3	0.3	0.3	.200	.500	.500

LAST GAME: Did not play

23 • Abbey Ellis • 5th • G • 5-6 • Melbourne, Australia • Our Lady of Mercy • Cal Poly

GP/GS	MIN.	PPG	RPG	APG	STLS	BLKS	FG%	3P%	FT%
7/7	29.0	15.6	3.6	2.1	1.4	0.0	.407	.257	.882

LAST GAME: 21 pts, 2 rebs, 1 stl, 3 3pts 8-10 ft, 34 mins

31 • Sophie Swanson • Fr. • 5-10 • Barrington, Ill. • Barrington Prep

GP/GS	MIN.	PPG	RPG	APG	STLS	BLKS	FG%	3P%	FT%
1/0	7.7	2.0	2.0	0.0	0.0	0.0	.333	.000	.000

LAST GAME: Did not play

32 • Alaina Harper • So. • F • 6-3 • Hartland, Wis. • Arrowhead • Grand Canyon

GP/GS	MIN.	PPG	RPG	APG	STLS	BLKS	FG%	3P%	FT%
7/0	5.7	0.3	0.7	0.0	0.0	0.0	1.00	.000	.000

LAST GAME: 1 reb, 6 mins

33 • Madison Layden • Jr. • G • 6-1 • Kokomo, Ind. • Northwestern

GP/GS	MIN.	PPG	RPG	APG	STLS	BLKS	FG%	3P%	FT%
7/7	28.0	10.3	3.0	0.9	1.1	0.4	.467	.500	.875

LAST GAME: 13 pts, 5 rebs, 2 asts, 2 stls, 3 3pts, 32 mins

34 • Caitlyn Harper • R-Sr. • F • 6-2 • Hartland, Wisc. • Arrowhead • Cal Baptist

GP/GS	MIN.	PPG	RPG	APG	STLS	BLKS	FG%	3P%	FT%
7/7	30.0	10.3	5.3	1.0	1.3	0.4	.527	.333	1.000

LAST GAME: 13 pts, 4 rebs, 1 ast, 3 stls, 1 blk, 27 mins

- Will miss the season due to a senior-year injury
- Won 2022 3A Championship with her sister Mila and teammate Rashunda Jones
- No. 43 player by ESPN HoopGurlz
- Ended career ranked second in assists at Washington with 564 and eighth in points with 1,122

Career Highs:

P	-
R	-
A	-
M	-

- 4th among BIG freshmen in scoring
- 1-of-5 BIG freshmen averaging 8 pts, 3 rebs
- BIG Freshman of the Week - Nov. 20
- 20 pts vs. A&M - First rookie with 20 pts since 2017-18
- 2022 IHSA 3A State Champion with the Reynolds
- Went 95-18 over four years with the Panthers

Career Highs:

P	20, vs. Texas A&M, 11/16/23
R	5, 3 times
A	3, 2 times
M	26, vs. USI, 11/26/23

- Made game-winning 3 against Wisconsin in BTT
- Finished second on the team with 17 blocks last year
- Scored in double digits in nine games and shot 45.5% from the field as a sophomore
- Purdue's 10th Indiana Miss Basketball

Career Highs:

P	16, 3 times
R	7, 3 times
A	4, 2 times
M	30, at Penn State, 1/7/23

- Passed Katie Gearlds & Kelly Komara for 12th on Purdue's all-time assist chart with 400 dimes
- 2nd Team All-Big Ten, All-Defensive Team in 2022-23
- Her and Caitlin Clark only players nationally with 150 assists and 200 rebounds each of the last two years
- Only Purdue player w/multiple triple-doubles

Career Highs:

P	28, at Wisconsin, 1/31/21*
R	17, 2 times
A	12, 2 times
M	41, Michigan State, 12/5/22

- Playing with sister Madison for the first time since 2020
- Won two sectional titles, one regional and reached the 2020 IHSA 4A State Championship Game
- Set Northwestern scoring record with 47 points
- Posted a 78-17 record in high school

Career Highs:

P	8, vs. USI, 11/26/23
R	6, vs. USI, 11/26/23
A	2, vs. Southern, 11/12/23
M	22, vs. USI, 11/26/23

- Playing with sister Amiyah and former teammate Rashunda Jones after one year apart
- Played at Maryland as a freshman
- No. 60 player, No. 16 forward ESPN HoopGurlz
- Totaled 2,099 career points, second in Panther history behind Skylar Diggins-Smith

Career Highs:

P	5, 2 times*
R	3, 2 times*
A	2, at Northwestern, 2/9/23*
M	12, vs. Pitt, 11/27/22*

- 5th among BIG freshmen in scoring
- 1-of-5 BIG freshmen averaging 8 pts, 3 rebs
- First Purdue freshman with 8 pts, 2 reb, 1 ast, 1 stl, 1 blk in an opener in 2009
- NY Miss Basketball & Gatorade POTY Runner-Up
- Three-time state champion (2 in NY, 1 in SC)

Career Highs:

P	13, vs. Southern, 11/12/23
R	7, at Dayton, 12/1/23
A	2, vs. Georgia, 11/22/23
M	32, vs. Georgia, 11/22/23

- Naismith High School All-America honorable mention
- Won four regional and three district titles
- Scored more points as a senior than her first three seasons combined (15.8 ppg)

Career Highs:

P	4, at UCLA, 11/6/23
R	1, 2 time
A	-
M	14, vs. USI, 11/26/23

- Scored in double figures in every game this year
- All-Big Ten honorable mention two years in a row
- Free throw streak ended vs. Southern at 27 games
- Third in the nation, led BIG in FT percentage last year
- Always wears ribbons sent from her mom Libbie
- First Australian in program history

Career Highs:

P	39, at San Diego St, 12/21/20*
R	10, Long Beach State, 3/10/21*
A	11, Western Michigan, 11/14/21*
M	44, Indiana, 1/16/22*

- Made college debut vs. Southern Indiana - 2 pts, 2 rebs
- 2022 Illinois Miss Basketball and 4A Player of the Year as a junior
- Invited to the U18 USA Team Trials
- Four-time all-state, all-conference and all-area honoree
- Closed career scoring 23.1 points per game

Career Highs:

P	2, vs. USI, 11/26/23
R	2, vs. USI, 11/26/23
A	-
M	8, vs. USI, 11/26/23

- Scored first Purdue points vs. Southern Indiana
- Playing on the same team as Caitlyn for the first time
- Transferred to Purdue after one year at Grand Canyon
- No. 6 player in Wisconsin by Prep Girls Hoops
- Tabbed the 2022 Wisconsin Sports Network as the state's top post player

Career Highs:

P	18, Lindenwood, 11/26/22*
R	8, Columbia, 12/11/22*
A	1, 5 times
M	35, Southern Utah, 3/10/23*

- 14th in Purdue history in 3-pointers
- Dropped a career-high 21 points against Southern
- Playing with McKenna for first time since 2021-20
- Big Ten All-Freshman & honorable mention in 2020-21
- First in IHSA history to lead three Final Fours in scoring

Career Highs:

P	21, vs. Southern, 11/12/23
R	8, 4 times
A	7, Michigan State, 1/3/21
M	44, Indiana, 1/16/22

- Hit double figures in five games this year
- 14 pts, 11 rebs vs. A&M - first double-double at Purdue
- Playing with Alaina for the first time ever
- Finished third on the team in scoring last year
- 1-of-6 from BIG with 10 ppg & 55 FG% last season
- 2022 WAC Player of the Year and CoSIDA All-American

Career Highs:

P	30, at Utah Valley, 1/15/22
R	14, 3 times
A	5, at UTRGV, 2/13/21
M	41, at Chicago State, 3/2/22

