

N NEBRASKA SOFTBALL

NEBRASKA AT HILLENBRAND INVITATIONAL

FRIDAY, MARCH 3	SATURDAY, MARCH 4	SUNDAY, MARCH 5
vs. Weber State 11 a.m. (CT) Video: FloSoftball (\$)	vs. Weber State 1 p.m. (CT) Video: FloSoftball (\$)	vs. CSUN 10 a.m. (CT) Video: FloSoftball (\$)
Radio: Huskers Radio Network	Radio: Huskers Radio Network	Radio: Huskers Radio Network
vs. TAMU - Commerce 2 p.m. (CT) Video: FloSoftball (\$)	at #16 Arizona 4 p.m. (CT) Video: Pac-12.com	
Radio: Huskers Radio Network	Radio: Huskers Radio Network	

The Nebraska softball team (9-6) continues its non-conference schedule as the Huskers travel to Tucson, Ariz., this weekend, March 3-5. NU will face four teams including its sixth-ranked opponent in No. 16 Arizona while playing a total of five games.

The Big Red will open with Weber State on Friday, March 3. The game is set to begin at 11 a.m. (CT). Following game one, Nebraska will face TAMU - Commerce. First pitch will be at approximately 2 p.m. (CT).

On Saturday, the Huskers will take on Weber State for the second time at 1 p.m. (CT). Nebraska will face No. 16 Arizona following the completion of the first game. First pitch with the Wildcats will be at approximately 4 p.m. (CT).

NU will finish the weekend on Sunday with a game against CSUN at 10 a.m. (CT).

Fans can listen to all five games live on the Huskers Radio Network and Huskers.com with the call from Nate Rohr. Four of the games will be streamed live on FloSoftball (subscription required) while the game against Arizona will be on Pac-12.com.

LEADING OFF...

- The Huskers will play their sixth game against a top-16 opponent this season when they face No. 16 Arizona.
- Nebraska's pitching staff leads the conference with seven shutouts. The Huskers are just two shutouts away from matching the 2022 shutout total (9).
- In the circle, NU has better than a 2:1 strikeout to walk ratio.
- The Huskers are 7-1 when scoring more than two runs in a game this season.
- NU has held nine opponents to one run or less through the first 15 games.
- **Billie Andrews** has hit four of her six home runs in the lead off at-bat.
- The Big Red will travel to Arizona this weekend, the home state of four Huskers (**Alina Felix, Sydney Gray, Caitlynn Neal** and **Haidyn Warner**).
- In 10 games against non-top-10 teams, the Husker pitching staff is 9-1 with a 0.44 ERA and seven shutouts.
- NU will face four opponents this weekend. The Huskers will take on Weber State, Arizona, CSUN and Texas A&M Commerce. This will be the first meeting between Nebraska and Texas A&M Commerce.

HUSKERS TO WATCH



Billie Andrews leads the Big Red in hits (17), doubles (4), home runs (6), RBIs (13) and slugging percentage (.780).



Courtney Wallace leads the Huskers in the circle with a 5-3 record. She has made the most appearances in the circle for NU with 38.0 innings pitched.

HUSKER SCHEDULE (9-6)

Date	Opponent	Time (CT)/Results
<i>Houston Invitational</i>		
Feb. 10	Lamar	W, 8-0 (5)
Feb. 10	South Dakota St.	L, 0-1
Feb. 11	Lamar	W, 7-0
Feb. 11	at Houston	W, 7-0
Feb. 12	Virginia	W, 2-0
<i>TaxAct Clearwater Invitational</i>		
Feb. 16	#5 Oklahoma State	L, 0-10 (5)
Feb. 16	#2 UCLA	L, 0-8 (6)
Feb. 17	#8 Virginia Tech	L, 4-6
Feb. 18	RV Texas A&M	W, 4-3
Feb. 19	#4 Arkansas	L, 1-6
<i>Troy Cox Classic</i>		
Feb. 24	#4 Oklahoma State	L, 1-3
Feb. 24	at New Mexico State	W, 5-0
Feb. 25	CSU Bakersfield	W, 10-1 (5)
Feb. 25	New Mexico	W, 15-0 (5)
Feb. 26	New Mexico	W, 1-0
<i>Hillenbrand Invitational</i>		
March 3	Weber State	11 a.m.
March 3	TAMU-Commerce	2 p.m.
March 4	Weber State	1 p.m.
March 4	#16 at Arizona	4 p.m.
March 5	CSUN	10 a.m.
<i>Wichita State Round Robin Tournament</i>		
March 10	at Wichita State	5 p.m.
March 11	Missouri State	12 p.m.
March 11	at Wichita State	2:30 p.m.
March 12	Missouri State	12 p.m.
March 15	at Omaha	4 p.m.
<i>Jayhawk Invitational</i>		
March 17	Fairfield	10 a.m.
March 17	Kansas City	12:30 p.m.
March 18	Fairfield	12:30 p.m.
March 18	at Kansas	3 p.m.
March 19	Kansas City	11 a.m.
March 22	Iowa State	4 p.m.
March 24	Purdue	5:30 p.m.
March 25	Purdue	1 p.m.
March 26	Purdue	12 p.m.
March 29	at Iowa	3 p.m.
March 29	at Iowa	5 p.m.
March 31	Michigan	5:30 p.m.
April 1	Michigan	1 p.m.
April 2	Michigan	12 p.m.
April 7	at Maryland	5 p.m.
April 8	at Maryland	1 p.m.
April 9	at Maryland	11 a.m.
April 14	at Indiana	5 p.m.
April 15	at Indiana	1 p.m.
April 16	at Indiana	11 a.m.
April 19	Creighton	6 p.m.
April 21	Wisconsin	5:30 p.m.
April 22	Wisconsin	1 p.m.
April 23	Wisconsin	12 p.m.
April 28	at Northwestern	4 p.m.
April 29	at Northwestern	1 p.m.
April 30	at Northwestern	12 p.m.
May 5	Ohio State	5:30 p.m.
May 6	Ohio State	1 p.m.
May 7	Ohio State	12 p.m.
<i>Big Ten Tournament - May 10-13</i>		



NEBRASKA SOFTBALL FACTS

NEBRASKA SOFTBALL QUICK FACTS

Location Lincoln, Neb.
 Population 280,369
 Founded 1869
 Enrollment 24,431
 Nickname Cornhuskers, Huskers
 Colors Scarlet & Cream
 Conference Big Ten
 Stadium (capacity) Bowlin Stadium (2,530)
 Vice Chancellor of Athletics Trev Alberts
 Senior Woman Administrator ... Marquita Armstead

COACHING INFORMATION

Head Coach Rhonda Revelle (31st year)
 Record at Nebraska (years) 1,070-629 (30 years)
 Career Record (years) 1,078-642 (31 years)
 Alma Mater Nebraska (1984)
 Associate Head Coach Lori Sippel (34th year)
 Alma Mater Nebraska (1988)
 Assistant Coach Diane Miller (15th year)
 Alma Mater Missouri Southern (1992)
 Director of Operations Erin Bohling (4th year)
 Alma Mater Nebraska (2018)

TEAM INFORMATION

2022 Record 41-16
 Big Ten Record (finish) 17-5 (2nd)
 Postseason Finish (record) 1-2
 Final Ranking NR
 Letterwinners Returning/Lost 12/5
 Starters Returning/Lost 8/4
 2023 Newcomers 8

PROGRAM HISTORY

First Year of Softball 1976
 All-Time Record 1,551-921 (.627)
 All-Time Conference Record 427-308 (.580)
 Overall Conference Titles 19
 Big Eight Conference Titles 12
 Big 12 Conference Titles 6
 Big Ten Conference Titles 2
 NCAA Tournament Appearances 25
 NCAA Tournament Record 63-54 (.538)
 NCAA Regional Record 53-37 (.588)
 NCAA Super Regional Record 2-3 (.400)
 Women's College World Series Appearances 7
 Women's College World Series Record 8-14 (.363)
 Honda Award Winners 1
 Honda Award Nominees 3
 NFCA All-America Honors 28
 CoSIDA Academic All-Americans 30

SOFTBALL DIRECTORY

Head Coach Rhonda Revelle (402) 472-6465
 Associate Head Coach Lori Sippel .. (402) 472-6595
 Assistant Coach Diane Miller (402) 472-6499
 Director of Operations Erin Bohling .. (402) 472-6485
 Office Manager Teri Higgins (402) 472-8801
 Media Contact Cassidy Otteman (402) 472-2264
 Communications Office Fax (402) 472-2005
 Softball Office Fax (402) 472-6488
 Softball Office Address
 Bowlin Stadium at Haymarket Park
 400 Line Drive Circle
 Lincoln, NE 68588-0142

MEDIA SERVICES

The communications contact for Nebraska softball is Graduate Intern Cassidy Otteman. All interviews must be arranged through Otteman, who can be reached by e-mail (kotteman@huskers.com) or phone (402) 689-9504. Interviews are generally conducted after practice during the week and following the final game of the day on game day.

NEBRASKA 2023 SEASON NOTEBOOK

HUSKER HOMES

Arizona (4): Alina Felix, Sydney Gray, Caitlynn Neal, Haidyn Warner
California (5): Dakota Carter, Katelyn Caneda, Mya Felder, Kendall Mangel, Talia Tokheim
Kansas (1): Ava Bredwell
Iowa (1): Kaylin Kinney
Minnesota (1): Mckinley Malecha
Missouri (1): Sarah Harness
Nebraska (5): Billie Andrews, Brooke Andrews, Ashley Smetter, Abbie Squier, Courtney Wallace
Texas (1): Abbey Newlun

HUSKERS BY MAJOR

Business Administration (2): Sydney Gray, Ashley Smetter
Education Administration (2): Mya Felder (PhD), Courtney Wallace (MA)
Graphic Design (1): Billie Andrews
Finance (1): Abbie Squier
Child, Youth & Family Studies (4): Sarah Harness, Kaylin Kinney, Caitlynn Neal, Abbey Newlun
Management (1): Mckinley Malecha
Marketing (1): Talia Tokheim
Nutrition & Health Sciences (1): Haidyn Warner
Psychology (4): Brooke Andrews, Ava Bredwell, Dakota Carter, Kendall Mangel
Undecided (2): Katelyn Caneda, Alina Felix

RETURNING ALL-REGION PLAYERS

Billie Andrews, So., INF
 • Third-Team NFCA All-Midwest Region (2022)

Mya Felder, Sr., INF
 • First-Team All-Midwest Region (2022)
 • Third-Team NFCA All-Pacific Region (2021)

Sydney Gray, Jr., INF
 • Third-Team NFCA All-Midwest Region (2022)

Abbie Squier, Jr., OF
 • Second-Team NFCA All-Midwest Region (2022)

Courtney Wallace, Sr., RHP/UTL

- Third-Team NFCA All-Midwest Region (2022)
- Second-Team NFCA All-Midwest Region (2021)

RETURNING ALL-CONFERENCE PLAYERS

Billie Andrews, Jr., INF
 • Second-Team All-Big Ten (2022)
 • First-Team All-Big Ten (2021)
 • All-Freshman Team (2021)

Ava Bredwell, So., C/UTL
 • Big Ten Freshman of the Year (2022)
 • All-Freshman Team (2022)

Mya Felder, Sr., INF
 • Second-Team All-Big Ten (2022)
 • Big Ten All-Defensive Team (2022)
 • Big Ten Tournament Team (2022)
 • First-Team All-WAC (2019 at NMSU)
 • WAC Freshman of the Year (2019 at NMSU)

Abbie Squier, Jr., OF
 • First-Team All-Big Ten (2022)
 • Big Ten All-Defensive Team (2022)

Courtney Wallace, Sr., RHP/UTL
 • Big Ten All-Defensive Team (2022)
 • Big Ten Tournament Team (2022)

PRONUNCIATION GUIDE

Katelyn **Caneda** kuh-NADE-uh
 Mckinley **Malecha** ma-lake-a
 Kendall **Mangel** MAIN-gull
 Caitlynn **Neal** KNEEL
 Rhonda **Revelle** ruh-VELL
 Abbie **Squier** SKWHY-er
 Talia **Tokheim** tall-E-uh TOKE-heim
 Haidyn **Warner** WERE-ner

NEBRASKA NUMERICAL ROSTER

No.	Name	B/T	Pos.	Ht.	Yr.	Hometown
00	Mckinley Malecha	R/R	C	5-8	So.	Lakeville, Minn.
2	Sarah Harness	R/R	RHP	5-9	Jr.	Bowling Green, Mo.
5	Mya Felder	R/R	INF	5-6	Sr.	Fresno, Calif.
6	Billie Andrews	R/R	INF	5-8	Jr.	Gretna, Neb.
7	Sydney Gray	R/R	INF	5-5	Jr.	Tucson, Ariz.
8	Abbie Squier	R/R	OF	5-7	Jr.	Lincoln, Neb.
11	Talia Tokheim	R/R	OF	5-7	Fr.	San Carlos, Calif.
19	Caitlynn Neal	L/R	OF	5-3	Jr.	Dewey, Ariz.
20	Abbey Newlun	R/R	INF	5-7	Jr.	The Woodlands, Texas
23	Courtney Wallace	R/R	RHP	5-5	Sr.	Omaha, Neb.
24	Ava Bredwell	R/R	C/UTL	5-7	So.	Shawnee, Kan.
26	Alina Felix	L/R	INF/OF	5-7	Fr.	Tucson, Ariz.
27	Brooke Andrews	R/R	INF/OF	5-8	Jr.	Gretna, Neb.
32	Ashley Smetter	R/R	INF	5-5	Fr.	Lincoln, Neb.
44	Kaylin Kinney	R/R	RHP	5-10	So.	Cedar Rapids, Iowa
55	Dakota Carter	L/R	OF	5-6	Fr.	Eastvale, Calif.
66	Katelyn Caneda	L/R	INF/OF	5-2	Fr.	Cerritos, Calif.
77	Haidyn Warner	R/R	C	5-9	Fr.	Oro Valley, Ariz.
88	Kendall Mangel	R/R	RHP	5-5	Fr.	Chino, Calif.

Head Coach: Rhonda Revelle (31st season)
Associate Head Coach: Lori Sippel (34th season)
Assistant Coach: Dianne Miller (15th season)

NEBRASKA BY THE NUMBERS

- The Huskers lead the Big Ten in shutouts with seven and are ranked seventh in the NCAA.
- **Billie Andrews** is second in the conference and 10th in the NCAA in home runs with six to start the season.
- **Kaylin Kinney** has made seven appearances in the circle. She holds a 0.84 ERA, the third-lowest mark in the Big Ten.
- **Courtney Wallace** has tallied three shutouts this season, the most in the conference and sixth-most in the nation.
- **Wallace** has recorded the second-most wins in the circle across the Big Ten this season with five.
- Nebraska returns 11 players from a 2022 squad that claimed the Big Ten Tournament title and reached the NCAA Tournament.
- The Huskers 2023 team features seven newcomers including six freshmen and one transfer.

OPPONENTS BY THE NUMBERS

- No. 16 Arizona is currently eighth in the nation and first in the Pac-12 in scoring. The Wildcats average 7.62 runs per game.
- Arizona also leads the Pac-12 in on-base percentage with a team average of 0.428.
- Junior Carlie Scupin has tallied 19 RBIs this season for the Wildcats, a number that ranks 20th in the NCAA.
- CSUN leads the Big West with a .967 fielding percentage.
- The Matadors hold a .210 batting average and a
- Sophomore Kaylee Escutia leads CSUN with 11 hits and a .379 batting average.
- Texas A&M - Commerce holds a .184 batting average through 16 games this season.
- Freshman Kaydee Bennett leads the Lions with a .313 batting average.
- Weber State is second in the Big Sky with a .276 batting average.
- Fifth year McKell McCuiston has been dominate for the Wildcats this season, tallying 22 hits including five doubles and nine RBIs while holding a .478 batting average.

HUSKER QUICK HITS

- NU will play its sixth game against a top-20 team this season when they face No. 16 Arizona this weekend. The last time time Nebraska beat a top-10 team was in 2018 when the Huskers defeated No. 6 Texas A&M, 6-3.
- **Billie Andrews** has tallied six home runs this seasons, she is now eighth all-time in Nebraska history in career homers with 33.
- **Andrews** is one of 12 returning players in the NCAA who hit 20 or more home runs last season.
- **Mya Felder** is the only returning Big Ten player who received All-Big Ten, All-Defensive and All-Tournament honors in 2022.
- **Courtney Wallace** is one of six returning Rawlings/NFCA Gold Glove recipients from last season.

FRESHMEN START STRONG ON OFFENSE

The Nebraska freshmen have had a strong start on offense. At the Troy Cox Classic last weekend, three Huskers recorded their first home run of their collegiate careers.

Katelyn Canada got the offense going in the game against New Mexico State. The Cerritos,

NEBRASKA'S 2023 RECORD WHEN...

Overall	9-6	Out-Hitting Opponent	7-0
Non-Conference	9-6	Out-Hit by Opponent	2-5
Big Ten Conference	0-0	Scoring First	8-1
Home	0-0	Opponent Scores First	1-5
Neutral	7-6	Scoring in the First Inning	5-1
Road	2-0	Scoring Fewer than 3 Runs	2-5
Night Games	1-1	Scoring 5 or More Runs	5-0
Day Games	8-5	Scoring 10 or More Runs	2-0
Sunday	2-1	Allowing Fewer Than 3 Runs	8-1
Monday	0-0	Allowing 5 or More Runs	0-4
Tuesday	0-0	Allowing 10 or More Runs	0-1
Wednesday	0-0	Leading After Five Innings	6-0
Thursday	0-2	Leading After Six Innings	6-0
Friday	2-3	Trailing After Five Innings	0-4
Saturday	5-0	Trailing After Six Innings	0-3
vs. Ranked Opponents	0-5	Tied After Five Innings	1-2
vs. Unranked Opponents	9-1	Tied After Six Innings	0-1
Extra Innings	0-0	Committing 0 Errors	4-4
1-Run Games	2-1	Committing 2 or More Errors	1-2

2023 SCHEDULE NOTES

NU SET FOR 55-GAME SCHEDULE

Nebraska is scheduled to play 55 games in 2023, including 14 home games, 18 away games and 23 games at neutral sites.

HUSKERS TRAVEL TO NINE STATES

Nebraska will travel to nine states this season, playing games in Texas, Florida, New Mexico, Arizona, Kansas, Iowa, Maryland, Indiana and Illinois.

NU SET FOR 26 GAMES AGAINST 2022 NCAA TOURNAMENT TEAMS

Nebraska is slated to play 14 teams that reached the 2022 NCAA Tournament last season including South Dakota State, Oklahoma State, UCLA, Virginia Tech, Texas A&M, Arkansas, Weber State, Arizona, Wichita State, Missouri State, Michigan, Wisconsin, Northwestern and Ohio State.

The Huskers will see South Dakota State their first weekend of play at the Houston Invitational.

NU faces Oklahoma State, UCLA, Virginia Tech, Texas A&M and Arkansas at the TaxAct Clearwater Invitational.

Nebraska will see Weber State and Arizona in the third week of the season at the Hillenbrand Invitational.

At the Wichita State Round Robin Tournament, NU will face Wichita State and Missouri State twice each.

The Big Red will host Iowa State for a midweek matchup.

The Huskers will play three-game series vs. Michigan, Wisconsin, Northwestern and Ohio State during the conference regular season schedule.

HOME SWEET HOME

Nebraska will have 14 home games at Bowlin Stadium in 2023.

ILLINOIS HOSTS BIG TEN TOURNAMENT

The 2023 Big Ten Tournament is set for May 10-13 at Illinois' Eichelberger Field. The top 12 teams in the final regular-season standings will compete in the tournament, with the top four seeds earning a bye.

OKC HOSTS WCWS

The 2023 Women's College World Series will be held at ASA Hall of Fame Stadium in Oklahoma City for the 25th straight season and the 32nd time overall.

BIG TEN STANDINGS

Rk.	Team	Big Ten Record
1.	Illinois	0-0
2.	Indiana	0-0
3.	Iowa	0-0
4.	Maryland	0-0
5.	Michigan	0-0
6.	Michigan State	0-0
7.	Minnesota	0-0
8.	Nebraska	0-0
9.	Northwestern	0-0
10.	Ohio State	0-0
11.	Penn State	0-0
12.	Purdue	0-0
13.	Rutgers	0-0
14.	Wisconsin	0-0

NEBRASKA CONFERENCE TITLES

BIG EIGHT CONFERENCE (1976-1995)

Year	Record	Finish	Tournament
1977	1-4	t-4th	N/A
1978	4-3	7th	t-6th
1979	3-8	6th	t-6th
1980	8-9	4th	N/A
1981	5-6	3rd	3rd
1982	9-3	1st	1st
1983	3-7	7th	N/A
1984	6-2	1st	1st
1985	11-1	1st	1st
1986	9-3	1st	1st
1987	8-2	1st	1st
1988	7-3	1st	1st
1989	6-4	3rd	t-5th
1990	3-5	5th	2nd
1991	3-5	5th	t-4th
1992	2-6	5th	t-4th
1993	5-11	5th	N/A
1994	5-15	6th	N/A
1995	10-6	3rd	N/A
TOTAL	108-103		12 total titles

BIG 12 CONFERENCE (1996-2011)

Year	Record	Finish	Tournament
1996	10-8	4th	2nd
1997	10-6	4th	5th
1998	16-0	1st	1st
1999	10-8	4th	2nd
2000	15-2	2nd	1st
2001	16-2	1st	5th
2002	11-5	2nd	2nd
2003	10-8	6th	t-4th
2004	14-3	1st	1st
2005	9-9	7th	t-5th
2006	13-4	2nd	t-3rd
2007	10-8	5th	t-5th
2008	4-14	t-9th	2nd
2009	9-9	5th	t-5th
2010	7-11	t-6th	t-5th
2011	9-9	6th	N/A
TOTAL	173-106		6 total titles

BIG TEN CONFERENCE (2012-PRES.)

Year	Record	Finish	Tournament
2012	14-9	3rd	N/A
2013	16-6	2nd	t-3rd
2014	18-5	t-1st	t-5th
2015	17-6	3rd	2nd
2016	13-9	5th	t-5th
2017	13-10	5th	t-9th
2018	9-13	9th	t-9th
2019	9-14	t-8th	t-9th
2020	No Big Ten Season Due to Pandemic		
2021	22-22	8th	N/A
2022	17-5	2nd	1st
TOTAL	148-99		2 total titles

Calif. native, hit a three-run homer in the top of the fifth inning to extend NU's lead to 4-0.

Alina Felix made her first career start against CSU Bakersfield as the designated player. Felix added her first career homer during this game, hitting a solo shot to left field.

Talia Tokheim entered in the the game against the Roadrunners as a pinch hitter, smashing a two-run homer to left center to ensure Nebraska's 10-1 victory.

BILLIE ANDREWS LEAVING HER MARK ON HUSKER RECORD BOOK

Billie Andrews has made her mark on the Husker record book already by setting the sophomore home run record last season with 20 and continues to climb the all-time career home run record.

NEBRASKA CAREER HOME RUN RECORDS

Name, Years	Total
1. Taylor Edwards, 2011-14	54
2. Ali Viola, 1995-98	53
3. Tristen Edwards, 2017-21	49
4. Jennifer Lizama, 1997-2000	47
5. Tatum Edwards, 2011-14	46
6. MJ Knighten, 2014-17	41
7. Brooke Thomason, 2010-13	35
8. Billie Andrews, 2021-Present	33
9. Crystal Carwile, 2006-09	32
10. Jenny Smith, 1995-98	31

Andrews is looking to become Nebraska's 16th player to reach 100 runs, 100 hits and 100 RBIs. She also looks to join an elite group of players that reached this career milestone before their senior year.

The list of athletes who have accomplished this include:

- Crystal Carwile
- MJ Knighten
- Ali Viola
- Taylor Edwards

ANDREWS' CURRENT TOTALS

Runs	Hits	RBIs
96	121	95

HARNESS RECEIVES WEEK ONE BIG TEN PITCHER OF THE WEEK HONORS

Junior right-hander Sarah Harness was named the Big Ten Co-Pitcher of the Week the conference announced Monday, Feb. 27. This marks Harness' first career Big Ten pitcher-of-the-week honor.

Harness was honored after posting a 2-0 record last weekend, starting two games and holding opponents scoreless through 11.0 innings. She gave up only one hit while striking out 12 over

THE LAST TIME A HUSKER...

Had 6+ At Bats	5 players vs. Wisconsin (5/8/16)
Had 5+ Hits	Lizzy Rock (5) vs. Illinois (2/24/06)
Scored 4+ Runs	Tristen Edwards (4) vs. Pittsburgh (2/17/19)
Had 3+ Doubles	Cam Ybarra (4) vs. Lehigh (3/7/20)
Had 2+ Homers	Billie Andrews (2) vs. Texas A&M (2/18/23)
Had 3+ Homers	Kaylan Jablonski (3) at Cal State Fullerton (3/17/18)
Homered in 1st Career AB	Hailey Decker vs. UIC (2/8/13)
Stole 3+ Bases	Nikki Haget (3) vs. La Salle (3/12/11)
Drew 4+ Walks	Billie Andrews (4) vs. Rutgers (4/2/22)
Had 2+ HBP	Abbie Squier (2) vs. Lamar (2/10/23)
Had 5+ RBIs	Caitlynn Neal (6) vs. Minnesota (4/16/22)
Threw a No-Hitter	Sarah Harness at New Mexico State (2/24/23)
Threw a Perfect Game	Ashley DeBuhr vs. Iowa St. (4/13/05)
Had 10+ Strikeouts	Sarah Harness (11) vs. Lamar (2/11/23)
Had 15+ Strikeouts	Ashley Hagemann (17) at Omaha (4/19/12)
Had a 10-Game Hit Streak	Mya Felder (11) in 2022
Had a 15-Game Hit Streak	Billie Andrews (23) in 2022
Had a 20-Game Hit Streak	Billie Andrews (23) in 2022
Had a 25-Game Hit Streak	Taylor Edwards (25) in 2013-14

the weekend.

Harness opened the weekend with a win at New Mexico State. Against the Aggies, Harness fired the 40th no-hitter in school history and the first since 2016. She was just one out away from the fourth perfect game in program history, as the Aggies' only base runner reached on a two-out error in the bottom of the seventh inning.

In the final game of the weekend, Harness pitched 4.0 innings against New Mexico. The Bowling Green, Mo., native combined with Kaylin Kinney to shut out the Lobos.

Harness is the second Husker to be named the Big Ten Pitcher of the Week this season as Courtney Wallace received the honors after the first week of competition.

Alongside Harness, Maryland's Trin Schlotterbeck was the Co-Pitcher of the Week. Minnesota's Taylor Krapf was recognized as the Big Ten Player of the Week and Rutgers' Ryann Orange was honored as the Big Ten Freshman of the Week.

NUMEROUS HUSKERS RECEIVE PRESEASON RECOGNITION

Four Huskers were named to the preseason position rankings announced by Extra Innings. Billie Andrews leads the Huskers on both the Extra Elite 100 and Shortstop lists while Courtney Wallace, Mya Felder and Sydney Gray were named to their respective lists as well. Katelyn Caneda was also recognized as a notable freshman going into the season.

Andrews was named No. 46 in the Extra Elite 100 list and ranked No. 8 on the list of preseason shortstops. The junior started every game at the position during the 2022 season. Andrews earned All-Region and All-Big Ten honors after leading the Huskers in runs (54), home runs (20) and RBIs (51) last season.

A two-time All-Region selection, Wallace earned a No. 11 ranking as a two-way player. The senior compiled a 17-5 record during the 2022 season, appearing in the circle 34 times for the Big Red. Wallace received the inaugural Rawlings/Gold Glove Award after finishing the year with a perfect fielding percentage. On offense, Wallace tallied a .284 batting average.

Gray was ranked No. 14 on the third base preseason list. The junior started every game of the 2022 season at the position. At the plate, Gray tallied a .313 batting average and a .549 slugging percentage. The Tucson, Ariz., native, notched 57 hits including eight doubles and 11 home runs.

An All-Big Ten selection, Felder earned a spot at No. 16 on the first base preseason list. The senior led the Huskers on offense last season, finishing with a .373 batting average. Felder compiled 60 hits including nine doubles and four home runs. The Fresno, Calif., native, started 50 games at first base during the 2022 season and finished with a .991 fielding percentage.

Caneda received recognition from D1Softball when she was named a Top 80 Freshmen Name to Know ahead of the 2023 season.

THE LAST TIME NEBRASKA...

Beat a No. 1 Team	vs. No. 1 Michigan (1-0 on 4/8/16)
Beat a Top-5 Team	vs. No. 1 Michigan (1-0 on 4/8/16)
Beat a Top-10 Team	vs. No. 6 Texas A&M (6-3 on 2/22/18)
Beat a Ranked Team	vs. No. 23 Michigan (3-1 on 5/14/22)
Won When Trailing After 6 Innings	vs. Tulsa (3/10/18)
Lost When Leading After 6 Innings	at No. 24 Minnesota (4/16/21)
Had a Walk-Off Victory	vs. Indiana (5/8/22)
Scored 10+ Runs	vs. New Mexico [15] (2/25/23)
Scored 15+ Runs	vs. New Mexico [15] (2/25/23)
Scored 20+ Runs	at Maryland [26] (4/3/16)
Allowed 10+ Runs	vs. #5 Oklahoma State [10] (2/16/23)
Allowed 15+ Runs	vs. South Dakota State [16] (3/5/22)
Allowed 20+ Runs	never
Recorded 15+ Hits	at New Mexico State [15] (2/17/22)
Recorded 20+ Hits	at Maryland [21] (4/3/16)
Hit 6+ Doubles	vs. Lamar [7] (2/8/19)
Hit 4+ Home Runs	vs. South Dakota State [4] (3/4/22)
Hit Back-to-Back Home Runs	at No. 19 Michigan (3/26/22)
Hit Back-to-Back-to-Back Home Runs	at New Mexico State (2/17/22)
Hit 2+ Grand Slams	vs. Northern Colorado (2/20/22)
Stole 6+ Bases	at Purdue [60] (4/13/19)
Drew 10+ Walks	vs. Omaha [10] (2/11/22)
Was No-Hit	at No. 24 Minnesota (Game 2, 4/7/21)

BOWLIN STADIUM



The 2023 season marks the 22nd season Nebraska has called Bowlin Stadium home. The stadium's inaugural season was in 2002.

One of the top facilities in the country, Bowlin Stadium features seating for 2,530 fans, an underground system that heats the field, a large video board, FieldTurf and a padded wall. Just past the right field fence is the Alex Gordon Training Complex, a spacious indoor facility that is large enough for Nebraska to take live batting practice inside the complex. The clubhouse features a locker room, players' lounge, training room and coaches' offices.

Nebraska has won nearly 70 percent of its games at Bowlin Stadium. The Huskers have hosted four NCAA Regionals at Bowlin Stadium and ranked in the top 25 nationally in attendance 14 times, including four seasons ranked in the top 10.

YEARLY RECORDS

Year	Record	Pct.
2002	9-5	.643
2003	14-7	.667
2004	14-6	.700
2005	9-7	.563
2006	20-1	.952
2007	18-5	.783
2008	13-9	.591
2009	13-5	.722
2010	12-8	.600
2011	10-4	.714
2012	15-1	.938
2013	18-4	.818
2014	13-3	.813
2015	11-6	.647
2016	11-5	.688
2017	13-6	.684
2018	10-7	.588
2019	7-10	.412
2020	0-0	.000
2021	11-5	.687
2022	3-1	.750
TOTAL	244-105	.699

LARGEST CROWDS

1. 2,302	Michigan	April 9, 2016
2. 2,204	Ohio State	April 19, 2014
3. 1,960	Texas	April 9, 2011
4. 1,844	Iowa	May 17, 2003
5. 1,840	Michigan	April 27, 2013
6. 1,752	Wisconsin	May 12, 2012
7. 1,692	Indiana	May 3, 2014
8. 1,673	Illinois	April 22, 2017
9. 1,601	Wisconsin	April 28, 2018
10. 1,585	Lehigh	May 20, 2004

HEAD COACH RHONDA REVELLE

COACHING STOPS

Nebraska (Head Coach)	1993-present
San Jose State (Assistant)	1989-92
Cal State-Hayward (Assistant)	1988
Nebraska Wesleyan (Head Coach)	1987
Nebraska Wesleyan (Assistant)	1986

NEBRASKA WESLEYAN (1987)

Year	Record	Conf.	Finish	Tourn.	Finish
1987	8-16	7-5	N/A	--	--

NEBRASKA (1993-PRESENT)

Year	Record	Conf.	Finish	Tourn.	Finish
1993	18-23	5-11	5th	--	--
1994	25-33	5-15	6th	--	--
1995	43-20	10-6	3rd	--	--
1996	42-23	10-8	4th	3-2	2nd
1997	29-24	10-6	4th	1-2	t-5th
1998	48-12	16-0	1st	4-0	1st
1999	35-21	10-8	4th	3-1	2nd
2000	52-21	15-2	2nd	4-1	1st
2001	51-15	16-2	1st	2-2	t-3rd
2002	50-14	11-5	3rd	3-1	2nd
2003	39-17	10-8	6th	2-2	t-3rd
2004	45-17	14-3	1st	4-0	1st
2005	36-23	9-9	7th	2-2	t-5th
2006	44-12	13-4	2nd	2-2	t-3rd
2007	37-20	10-8	5th	0-1	t-7th
2008	25-28	4-14	t-9th	3-1	2nd
2009	35-19	9-9	5th	0-1	t-7th
2010	30-29	7-11	t-6th	0-1	t-7th
2011	41-14	9-9	6th	--	--
2012	33-22	14-9	3rd	--	--
2013	45-16	16-6	2nd	1-1	t-3rd
2014	44-18	18-5	t-1st	0-1	t-5th
2015	35-23	17-6	3rd	2-1	2nd
2016	35-21	13-9	5th	1-1	t-5th
2017	24-29	13-11	5th	0-1	t-9th
2018	31-23	9-13	9th	0-1	t-9th
2019	21-31	9-14	9th	0-1	t-9th
2020	9-14	0-0	--	--	--
2021	22-22	22-22	8th	--	--
2022	41-16	17-5	2nd	3-0	1st
2023	9-6	0-0	--	--	--

NEBRASKA RECORD: 1,070-626
CAREER RECORD: 1,079-642

NCAA TOURNAMENT (NEBRASKA)

Year	Round	Record	Finish	Rank
1993	--	--	--	--
1994	--	--	--	--
1995	Regional	1-2	t-17th	18th
1996	Regional	1-2	t-17th	18th
1997	Regional	2-2	t-9th	25th
1998	WCWS	4-2	t-5th	5th
1999	Regional	4-2	t-9th	20th
2000	Regional	3-2	t-17th	14th
2001	Regional	2-2	t-17th	14th
2002	WCWS	5-2	t-5th	6th
2003	Regional	3-2	t-17th	13th
2004	Regional	3-2	t-9th	14th
2005	Regional	1-2	t-33rd	25th
2006	Regional	2-2	t-17th	15th
2007	Regional	0-2	t-49th	--
2009	Regional	1-2	t-33rd	--
2010	Regional	1-2	t-33rd	--
2011	Regional	2-2	t-17th	21st
2013	WCWS	5-3	t-7th	8th
2014	Super Reg.	4-3	t-9th	16th
2015	Regional	1-2	t-33rd	--
2016	Regional	2-2	t-17th	--
2022	Regional	1-2	t-33rd	--
Totals	20 app.	48-44	--	--



RHONDA REVELLE

31ST SEASON AT NEBRASKA

1,070-626 RECORD

32ND CAREER SEASON

1,079-642 RECORD

WINNINGEST COACH IN THE HISTORY OF HUSKER ATHLETICS

COACH OF THE YEAR IN 3 MAJOR CONFERENCES

NFCA HALL OF FAME

COACHING NUMBERS

Conference Coach-of-the-Year Awards	4
Big Ten Coach of the Year	1
Big 12 Coach of the Year	2
Big Eight Coach of the Year	1
Conference Titles	8
Big Ten Conference Titles	2
Big 12 Conference Titles	6
NCAA Tournament Appearances	21
Women's College World Series	3
NFCA All-Americans	22
CoSIDA Academic All-Americans	14

NFCA HALL-OF-FAME COACHES

(ACTIVE DIVISION I COACHES ONLY)

Coach	Induction Year
Rhonda Revelle, Nebraska	2010
Patty Gasso, Oklahoma	2012
Donna Papa, North Carolina	2012
Patrick Murphy, Alabama	2013
Jo Evans, UC Santa Barbara	2015
Karen Weekly, Tennessee	2018

ACADEMIC ALL-AMERICANS

(ALL-TIME AMONG DIVISION I COACHES)

1. Patrick Murphy, Alabama	35
2. Karen Weekly, Tennessee	26
3. Tim Walton, Florida	22
4. Rhonda Revelle, Nebraska	14

MOST NCAA TOURNAMENT

APPEARANCES AT CURRENT SCHOOL

(ACTIVE DIVISION I COACHES ONLY)

1. Patty Gasso, Oklahoma	27
2. Patrick Murphy, Alabama	23
3. Rhonda Revelle, Nebraska	21
4. Karen Weekly, Tennessee	19
5. Heather Tarr, Washington	17
6. Tim Walton, Florida	16
7. Kelly Inouye-Perez, UCLA	15

WINS AT CURRENT SCHOOL

(ACTIVE DIVISION I COACHES ONLY)

1. Donna Papa, North Carolina	1,348
2. Patty Gasso, Oklahoma	1,349
3. Patrick Murphy, Alabama	1,204
4. Bob Coolen, Hawaii	1,071
5. Rhonda Revelle, Nebraska	1,070
6. Ken Eriksen, South Florida	1,012
7. Karen Weekly, Tennessee	1,001

(LIST INCLUDES GAMES THROUGH MARCH 1, 2023)

OPPONENT SCOUTING REPORTS

WEBER STATE WILDCATS (5-9)

Weber State boasts a 5-9 record and is coming off of a 2-2 weekend at the Utah Tech Tournament where they split games with Saint Louis and Utah Tech.

The Wildcats are led by fifth-year McKell McCuiston, who is hitting .478 through the first three weekend of the season. McCuiston has added 22 hits including two doubles and nine RBIs. She is a returning second-team All-Big Sky selection.

Mia Rushton (.367) and Lauren Hoe (.316) have added strength on offense as well for Weber State. Hoe has tallied 12 hits including three doubles and four homers for the Wildcats.

In the circle, Amanda Johnson has seen the most time for Weber State. Johnson has pitched 43.0 innings and holds a 5-3 record. The senior has tallied 26 strikeouts. Johnson was a first-team All-Big Sky selection in 2021.

Brooke Hatfield has pitched the second-most innings for Weber State, appearing in 19.2 innings. Hatfield holds a 0-4 record.

The Wildcats are coming off of a 2022 season that ended at the NCAA Seattle Regional. Weber State finished 38-12 and claimed the Big Sky Tournament title.

HEAD COACH MARY KAY AMICONE

- Record at Weber State: 262-177-1
- Career Record: Same
- 10th season as head coach for the Wildcats
- Graduated from Utah with a degree in elementary education

SERIES HISTORY

- This marks the second meeting between the two teams.
- The only other meeting was Feb. 18, 2012, when Nebraska won, 12-4.

2023 SEASON STATS

Category	Nebraska	Weber State
Record	9-6	5-9
Batting Average	.283	.276
Home Runs	14	8
Runs/Games	4.3	3.79
ERA	2.42	6.38
Runs Allowed/Game	2.53	6.21
Strikeouts/Game	5.2	3.57
Fielding Pct.	.974	.959



TEXAS A&M - COMMERCE LIONS (2-14)

Texas A&M - Commerce holds a 2-14 record and fell to two ranked opponents in Maryland and Baylor as well as Minnesota at the Baylor Invitational last weekend.

The Lions are led by freshman Kaydee Bennett who has tallied 10 hits including a double and holds a .313 batting average.

Diamond Sefe has also helped power the TAMU - Commerce offense, hitting .297 with two homers and eight RBIs.

In the circle, Anissa Arredondo has seen the most time for the Lions. Arredondo has pitched 34.0 innings and holds a 2-6 record. The junior has pitched two complete games and struck out 10 batters.

Julia Sanchez has pitched the second-most innings for TAMU - Commerce, appearing in 27.1 innings. Sanchez has a 0-3 record and has recorded the most strikeouts with 26.

The Lions went 43-15 during the 2022 season, finishing their season at the NCAA Division II Tournament. TAMU - Commerce fell in its third game of the tournament.

HEAD COACH BRITTANY MILLER

- Record at Texas A&M Commerce: 2-14
- Career Record: Same
- First season at Texas A&M Commerce
- Graduated from Iowa in 2009

SERIES HISTORY

- This is the first meeting between the two teams.

2023 SEASON STATS

Category	Nebraska	TAMU
Record	9-6	2-14
Batting Average	.283	.184
Home Runs	14	4
Runs/Games	4.3	1.88
ERA	2.42	9.69
Runs Allowed/Game	2.53	8.94
Strikeouts/Game	5.2	2.69
Fielding Pct.	.974	.941



OPPONENT SCOUTING REPORTS

#16 ARIZONA WILDCATS (11-5)

No. 16 Arizona holds an 11-5 record to start the 2023 season. The Wildcats are coming off of a 3-2 weekend at the Razorback Invitational, claiming a win over No. 7 Arkansas and two wins over Drake. They also picked up a midweek victory over CSU Bakersfield.

Freshman Olivia DiNardo leads the Wildcats on offense, holding a .400 batting average. DiNardo has tallied 16 hits including one double, two homers and seven RBIs. Leading the team with 20 hits is Blaise Biringir. The junior is hitting .392 with 17 RBIs.

Carlie Scupin and Devyn Netz have been power hitters for the Wildcats, both adding five home runs of the team's 16 homers this season.

In the circle, Netz leads Arizona with a 5-3 record and 44.0 innings pitched. Netz has tallied 28 strikeouts through 10 appearances.

Sydney Somerndike has seen the second-most innings in the circle with 18.1 innings pitched. Somerndike is 3-1, holding opponents to 10 hits and three runs.

In 2022, Arizona finished its season at the Women's College World Series. The Wildcats went 1-2, losing its final game to Texas.

HEAD COACH CAITLIN LOWE

- Record at Arizona: 50-27
- Career Record: Same
- Second season at Arizona
- Graduated from Arizona in 2007

SERIES HISTORY

- This is the 18th meeting between the two teams.
- Arizona currently leads the series, 3-15.
- The last time the teams met was Feb. 21, 2014, when the Wildcats won, 7-0.
- The first meeting between the two teams was in 1983.

2023 SEASON STATS

Category	Nebraska	Arizona
Record	9-6	11-5
Batting Average	.283	.334
Home Runs	14	16
Runs/Games	4.3	7.63
ERA	2.42	8.3
Runs Allowed/Game	2.53	2.02
Strikeouts/Game	5.2	4.13
Fielding Pct.	.974	.979



CSUN MATADORS (5-9)

CSUN holds a 5-9 record and is coming off of a 0-4 record at the Mary Nutter Collegiate Classic. The Matadors fell to No. 19 Texas A&M, Oregon State, Ohio State and Iowa.

Two of CSUN's losses have come from top-25 opponents including No. 22 Arizona State and No. 19 Texas A&M.

Leading the Matador offense is Kaylee Escutia and Mikayla Carman. Escutia holds a .379 batting average and 11 hits including two doubles and a triple. Carman has added 10 hits with four RBIs.

In the circle, Alexis Martinez has pitched the most for CSUN, as she has pitched 31.0 innings. The sophomore holds a 3-4 record with a 3.39 ERA.

Isabella Alonso has added 26.1 innings of work in the circle for the Matadors. The freshman is 1-1 with a 2.66 ERA.

In 2022, CSUN went 24-30 and 14-13 in the Big West. The Matadors ended their season sixth in the conference standings.

HEAD COACH CHARLOTTE MORGAN

- Record at CSUN: 35-59
- Career Record: Same
- Third season at CSUN
- Graduated from Alabama in 2009

SERIES HISTORY

- This is the 10th meeting between the two teams.
- The series is currently even at 5-5.
- The last meeting between the two teams was March 16, 2018, when the Matadors won, 5-10.
- The first meeting between the two teams was in 1985.

2023 SEASON STATS

Category	Nebraska	CSUN
Record	9-6	5-9
Batting Average	.283	.210
Home Runs	14	3
Runs/Games	4.3	3.14
ERA	2.42	3.12
Runs Allowed/Game	2.53	3.86
Strikeouts/Game	5.2	3.93
Fielding Pct.	.974	.967



HUSKER INDIVIDUAL NOTES



#00 | MCKINLEY MALECHA • C

	AVG.	G-GS	R	H	2B	HR	RBI	BB	SLG%	OB%
2023	.000	5-3	0	0	0	0	0	0	.000	.000
Career	.000	6-3	0	0	0	0	0	0	.000	.000

- Made her first career-start at catcher vs. Lamar
- Two-time Nebraska Scholar-Athlete Honor Roll Member
- All-State catcher at Lakeville North HS
- Played varsity softball for Lakeville North HS as an eighth grader
- NU's first player from Minnesota since All-American Anne Steffan



#2 | SARAH HARNESS • RHP

	W-L	ERA	APP	GS	CG	SHO	SV	IP	SO	AVG.
2023	3-2	2.69	6	6	2	2	0	28.2	39	.144
Career	50-23	2.43	55	38	46	10	5	481.1	481	.234

- Transfer from Southern Illinois
- All-MVC First Team (2022)
- All-Mideast Region Second Team (2021)
- NFCA D1 Freshman of the Year Finalist (2020)
- Seven-time MVC Pitcher of the Week



#5 | MYA FELDER • INF

	AVG.	G-GS	R	H	2B	HR	RBI	BB	SLG%	OB%
2023	.238	15-15	6	10	3	1	6	4	.381	.333
Career	.333	192-183	80	174	35	24	120	66	.542	.415

- 2023 Team Captain
- Currently pursuing her PhD in Education Administration
- Two-time NFCA All-Region honoree
- Big Ten All-Tournament Team, Second-Team All-Big Ten and All-Defensive Team honoree (2022)



#6 | BILLIE ANDREWS • INF

	AVG.	G-GS	R	H	2B	HR	RBI	BB	SLG%	OB%
2023	.340	15-15	10	17	4	6	13	2	.780	.358
Career	.326	116-116	96	121	15	33	95	50	.650	.405

- Eighth all-time in Nebraska history in career home runs
- NFCA All-Region Selection (2022)
- Two-time All-Big Ten selection
- Nebraska Female Athlete of the Year (All Sports, 2022)
- Older sister, Brooke, is also on the team



#7 | SYDNEY GRAY • INF

	AVG.	G-GS	R	H	2B	HR	RBI	BB	SLG%	OB%
2023	.132	15-15	5	5	1	0	5	5	.158	.239
Career	.295	87-86	45	77	14	12	57	32	.494	.372

- Preseason No. 14 Third Base Position Player to Watch (Extra Innings)
- NFCA All-Region Selection (2022)
- Received Big Ten Player of the Week honors in 2022
- Academic All-Big Ten and Big Ten Distinguished Scholar
- Four-time Nebraska Scholar-Athlete Honor Roll Member



#8 | ABBIE SQUIER • OF

	AVG.	G-GS	R	H	2B	HR	RBI	BB	SLG%	OB%
2023	.219	14-14	4	7	1	0	5	1	.250	.333
Career	.310	99-81	52	72	13	7	33	19	.457	.399

- 2023 Captain
- NFCA All-Region Selection (2022)
- First-Team All-Big Ten and All-Defensive Team selection (2022)
- Four-time Nebraska Scholar-Athlete Honor Roll Member
- One of two Lincoln (Neb.) natives on the team



#11 | TALIA TOKHEIM • OF

	AVG.	G-GS	R	H	2B	HR	RBI	BB	SLG%	OB%
2023	.500	3-0	2	2	0	1	2	0	1.250	.500
Career	.500	3-0	2	2	0	1	2	0	1.250	.500

- Ranked as the No. 44 overall recruit by Extra Innings Softball
- One of five California natives on the team
- Played softball for Sequoia High School
- Played club softball for West Bay Warriors



#19 | CAITLYNN NEAL • OF

	AVG.	G-GS	R	H	2B	HR	RBI	BB	SLG%	OB%
2023	.372	15-15	7	16	2	2	6	2	.605	.413
Career	.258	98-77	42	54	12	5	37	8	.407	.294

- Academic All-Big Ten
- Four-time Nebraska Scholar-Athlete Honor Roll Member
- Tom Osborne Citizenship Team (2021, 2022)
- One of four Arizona natives on the team



#20 | ABBEY NEWLUN • INF

	AVG.	G-GS	R	H	2B	HR	RBI	BB	SLG%	OB%
2023	.000	3-0	0	0	0	0	0	0	.000	.000
Career	.083	14-7	1	1	0	0	0	2	.091	.231

- Four-time Nebraska Scholar-Athlete Honor Roll Member
- Nebraska Bronze Academic Medallion
- Academic All-Big Ten
- Tom Osborne Citizenship Team
- Only Texas native on the team



#23 | COURTNEY WALLACE • RHP

	W-L	ERA	APP	GS	CG	SHO	SV	IP	SO	AVG.
2023	5-3	2.39	9	6	4	3	0	38.0	25	.275
Career	39-29	3.68	111	67	27	6	6	449.0	269	.285

- Big Ten Pitcher of the Week (Feb. 13, 2023)
- 2023 Captain
- Preseason No. 11 Two-Way Position Player to Watch (Extra Innings)
- Working towards her master's degree in education administration
- Inaugural Rawlings/NFCA Gold Glove Recipient (Pitcher, 2022)



#23 | COURTNEY WALLACE • UTL

	AVG.	G-GS	R	H	2B	HR	RBI	BB	SLG%	OB%
2023	.326	15-15	4	14	1	0	1	2	.349	.370
Career	.249	149-118	54	89	13	5	36	29	.366	.309

- Big Ten All-Defensive Team (2022)
- Big Ten All-Tournament Team (2022)
- Two-time NFCA All-Region selection
- Sam Foltz 27 Hero Leadership Award Recipient
- Two-time Academic All-Big Ten Honoree



#24 | AVA BREDWELL • C/UTL

	AVG.	G-GS	R	H	2B	HR	RBI	BB	SLG%	OB%
2023	.306	14-13	11	11	3	0	5	5	.389	.405
Career	.302	61-49	36	39	6	2	20	12	.426	.364

- Big Ten Freshman of the Year (2022)
- Big Ten All-Freshman Team (2022)
- Two-time Nebraska Scholar-Athlete Honor Roll Member
- Helps run the team's pen pal program with local nursing homes

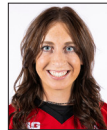
HUSKER INDIVIDUAL NOTES



#26 | ALINA FELIX • INF/OF

	AVG.	G-GS	R	H	2B	HR	RBI	BB	SLG%	OB%
2023	.400	3-2	3	2	1	1	3	2	1.200	.571
Career	.400	3-2	3	2	1	1	3	2	1.200	.571

- All-Region first-team selection for Canyon del Oro High School
- Played club softball with teammate Haidyn Warner
- One of four Arizona natives on the team



#27 | BROOKE ANDREWS • UTL

	AVG.	G-GS	R	H	2B	HR	RBI	BB	SLG%	OB%
2023	.278	15-15	6	10	2	2	4	3	.500	.350
Career	.258	126-95	48	66	14	10	37	18	.445	.325

- Younger sister, Billie, is also on the team
- Six-Time Nebraska Scholar-Athlete Honor Roll Member
- Nebraska Bronze Academic Medallion
- Two-time Academic All-Big Ten honoree



#32 | ASHLEY SMETTER • INF

	AVG.	G-GS	R	H	2B	HR	RBI	BB	SLG%	OB%
2023	.667	4-0	1	2	1	0	0	0	1.000	.667
Career	.667	4-0	1	2	1	0	0	0	1.000	.667

- Appeared in one game as a pinch runner at the Houston Invitational
- NFCA High School All-American
- Two-Time Lincoln Journal Star Super State First-Team Selection
- Won two state championships in high school (Lincoln Southwest HS)
- One of two Lincoln (Neb.) natives on the roster



#44 | KAYLIN KINNEY • RHP

	W-L	ERA	APP	GS	CG	SHO	SV	IP	SO	AVG.
2023	1-1	0.84	7	3	2	1	1	25.0	14	.237
Career	6-4	3.37	44	14	4	3	3	114.1	67	.269

- Appeared in the circle 21 times during the 2022 season
- Came in at relief in 16 games last season
- Academic All-Big Ten honoree
- Nebraska Silver Academic Medallion



#44 | KAYLIN KINNEY • UTL

	AVG.	G-GS	R	H	2B	HR	RBI	BB	SLG%	OB%
2023	.000	3-3	0	0	0	0	0	0	.000	.167
Career	.230	75-56	27	35	7	8	30	27	.434	.370

- Only Iowa native on the team
- Big Ten Player of the Week (May 2021)
- Two-Time Tom Osborne Citizenship Team honoree
- Four-Time Nebraska Scholar-Athlete Honor Roll Member



#55 | DAKOTA CARTER • OF

	AVG.	G-GS	R	H	2B	HR	RBI	BB	SLG%	OB%
2023	.000	12-0	2	0	0	0	0	0	.000	.000
Career	.000	12-0	2	0	0	0	0	0	.000	.000

- Appeared in four games as a pinch runner at the Houston Invitational
- Four-year letterwinner at Roosevelt High School
- 2020-21 Big VIII All-League first team
- First-Team All-CIF with Roosevelt HS
- One of five players from California on the team



#66 | KATELYN CANADA • INF/OF

	AVG.	G-GS	R	H	2B	HR	RBI	BB	SLG%	OB%
2023	.303	15-15	4	10	0	1	7	2	.394	.395
Career	.303	15-15	4	10	0	1	7	2	.394	.395

- 605 first-team All-League selection
- Helped Cerritos High School to three CIF Southern Section Division 3 Semifinals
- One of five players from California on the team
- D1 Softball Preseason Top 80 Freshmen Names to Know list



#77 | HAIDYN WARNER • C

	AVG.	G-GS	R	H	2B	HR	RBI	BB	SLG%	OB%
2023	.000	1-0	0	0	0	0	0	0	.000	.000
Career	.000	0-0	0	0	0	0	0	0	.000	.000

- Helped Ironwood Ridge High School to the 5A State Championships
- 5A Freshman of the Year (2019)
- All-Region Second Team (2019)
- 5A All-Region First Team (2021)
- Played club softball with teammate Alina Felix



#88 | KENDALL MANGEL • RHP

	W-L	ERA	APP	GS	CG	SHO	SV	IP	SO	AVG.
2023	0-0	35.00	1	0	0	0	0	1.0	0	.714
Career	0-0	0.00	0	0	0	0	0	0	0	.000

- Four-year member of the varsity team at Chino Hills High School
- PGF Regional All-American (2021)
- MaxPreps First-Team All-America Honors (2018)
- MaxPreps Freshman of the Year (2018)
- One of five players from California on the team

INDIVIDUAL SEASON & CAREER HIGHS

#00 MCKINLEY MALECHA • C • SO.

SEASON HIGH	CATEGORY	CAREER HIGH
none	Hits	none
none	Runs	none
none	RBIs	none
none	2B	none
none	HR	none

#19 CAITLYNN NEAL • OF • JR.

SEASON HIGH	CATEGORY	CAREER HIGH
2 four times	Hits	3 four times
2 vs. CSU Bakersfield	Runs	3 vs. Creighton
2 vs. #8 Virginia Tech	RBIs	6 vs. Minnesota (2022)
1 vs. CSU Bakersfield	2B	1 eight times
1 twice	HR	1 five times

#5 MYA FELDER • INF • SR.

SEASON HIGH	CATEGORY	CAREER HIGH
2 three times	Hits	4 at CSU Bakersfield (at NMSU)
2 vs. New Mexico	Runs	3 vs. Minnesota (2022)
2 twice	RBIs	6 at CSU Bakersfield (at NMSU)
1 three times	2B	2 four times
1 vs. Virginia	HR	2 three times (at NMSU)

#20 ABBEY NEWLUN • INF • JR.

SEASON HIGH	CATEGORY	CAREER HIGH
none	Hits	1 vs. Northern Colorado (2022)
none	Runs	1 vs. UT Arlington (2022)
none	RBIs	none
none	2B	none
none	HR	none

#6 BILLIE ANDREWS • INF • JR.

SEASON HIGH	CATEGORY	CAREER HIGH
3 vs. Lamar	Hits	4 at Rutgers (2021)
2 three times	Runs	3 six times
4 vs. New Mexico	RBIs	5 at Long Beach State (2022)
1 twice	2B	1 nine times
2 vs. Texas A&M	HR	2 four times

#23 COURTNEY WALLACE • UTL • SR.

SEASON HIGH	CATEGORY	CAREER HIGH
2 four times	Hits	2 eighteen times
1 three times	Runs	3 twice
1 twice	RBIs	4 at New Mexico State (2022)
1 vs. Houston	2B	2 vs. Texas Tech (2019)
none	HR	1 five times

#7 SYDNEY GRAY • INF • JR.

SEASON HIGH	CATEGORY	CAREER HIGH
1 five times	Hits	3 five times
1 five times	Runs	3 three times
2 twice	RBIs	5 vs. Drake (2022)
1 vs. Lamar	2B	2 vs. UCF (2022)
none	HR	2 twice

#24 AVA BREDWELL • C • SO.

SEASON HIGH	CATEGORY	CAREER HIGH
2 three times	Hits	3 vs. Minnesota (2022)
3 vs. New Mexico	Runs	3 vs. Wichita State (2022)
2 twice	RBIs	5 vs. Iowa (2022)
1 vs. Lamar	2B	1 four times
none	HR	1 twice

#8 ABBIE SQUIER • OF • JR.

SEASON HIGH	CATEGORY	CAREER HIGH
1 seven times	Hits	3 three times
2 vs. Houston	Runs	3 twice
1 five times	RBIs	3 twice
none	2B	1 seven times
none	HR	1 twice

#26 ALINA FELIX • INF/OF • FR.

SEASON HIGH	CATEGORY	CAREER HIGH
1 twice	Hits	1 twice
2 vs. CSU Bakersfield	Runs	2 vs. CSU Bakersfield
2 vs. New Mexico	RBIs	2 vs. New Mexico
1 vs. New Mexico	2B	1 vs. New Mexico
1 vs. CSU Bakersfield	HR	1 vs. CSU Bakersfield

#11 TALIA TOKHEIM • OF • FR.

SEASON HIGH	CATEGORY	CAREER HIGH
1 vs. CSU Bakersfield	Hits	1 vs. CSU Bakersfield
1 vs. CSU Bakersfield	Runs	1 vs. CSU Bakersfield
2 vs. CSU Bakersfield	RBIs	2 vs. CSU Bakersfield
none	2B	none
1 vs. CSU Bakersfield	HR	1 vs. CSU Bakersfield

#27 BROOKE ANDREWS • UTL • JR.

SEASON HIGH	CATEGORY	CAREER HIGH
3 vs. Lamar	Hits	3 twice
2 vs. New Mexico State	Runs	3 at Rutgers (2021)
1 four times	RBIs	5 at Rutgers (2021)
none	2B	2 twice
none	HR	2 at Rutgers (2021)

INDIVIDUAL SEASON & CAREER HIGHS

#32 ASHLEY SMETTER • INF • FR.

SEASON HIGH	CATEGORY	CAREER HIGH
1 twice	Hits	1 twice
1 vs. New Mexico	Runs	1 vs. New Mexico
none	RBI	none
1 vs. New Mexico	2B	1 vs. New Mexico
none	HR	none

#44 KAYLIN KINNEY • SO. • UTL

SEASON HIGH	CATEGORY	CAREER HIGH
none	Hits	2 five times
none	Runs	3 vs. Wichita State (2022)
none	RBI	6 vs. Wichita State (2022)
none	2B	1 five times
none	HR	2 twice

#55 DAKOTA CARTER • OF • FR.

SEASON HIGH	CATEGORY	CAREER HIGH
none	Hits	none
1 twice	Runs	1 twice
none	RBI	none
none	2B	none
none	HR	none

#66 KATELYN CANEDA • INF/OF • FR.

SEASON HIGH	CATEGORY	CAREER HIGH
2 three times	Hits	2 three times
1 four times	Runs	1 four times
3 vs. CSU Bakersfield	RBI	3 vs. CSU Bakersfield
none	2B	none
1 vs. CSU Bakersfield	HR	1 vs. CSU Bakersfield

#77 HAIDYN WARNER • C • FR.

SEASON HIGH	CATEGORY	CAREER HIGH
none	Hits	none
none	Runs	none
none	RBI	none
none	2B	none
none	HR	none

#2 SARAH HARNES • RHP • JR.

SEASON HIGH	CATEGORY	CAREER HIGH
7.0 vs. New Mexico State	IP	15.0 vs. Missouri State (2022)
11 vs. Lamar	Ks	15 vs. Eastern Kentucky (2022)
0 vs. New Mexico State	H (low)*	0 twice
7 vs. #2 UCLA	H (high)	14 vs. Georgia Tech (2022)
0 vs. New Mexico State	BB (low)*	0 twenty times
6 vs. Lamar	BB (high)	8 twice
0 three times	R (low)*	0 twenty-three times
8 vs. #2 UCLA	R (high)	11 vs. Eastern Illinois (2022)
0 twice	ER (low)*	0 eighteen times
5 vs. #2 UCLA	ER (high)	11 vs. Eastern Illinois (2022)

*starts only

#23 COURTNEY WALLACE • UTL • SR.

SEASON HIGH	CATEGORY	CAREER HIGH
7.0 twice	IP	7.0 thirteen times
5 three times	Ks	10 vs. UCF (2022)
1 vs. Lamar	H (low)*	1 three times
8 vs. #8 Virginia Tech	H (high)	12 vs. UCF (2022)
1 three times	BB (low)*	0 nine times
3 vs. #8 Virginia Tech	BB (high)	7 twice
0 three times	R (low)*	0 five times
5 twice	R (high)	10 vs. #3 Oklahoma (2020)
0 three times	ER (low)*	0 eight times
5 vs. #3 Oklahoma State	ER (high)	9 vs. #3 Oklahoma (2020)

*starts only

#44 KAYLIN KINNEY • RHP • JR.

SEASON HIGH	CATEGORY	CAREER HIGH
6.0 twice	IP	6.0 twice
8 vs. New Mexico	Ks	8 vs. New Mexico (2023)
4 twice	H (low)*	2 vs. #23 Michigan (2021)
9 vs. #4 Oklahoma State	H (high)	10 at Kansas (2022)
0 twice	BB (low)*	0 three times
1 vs. South Dakota State	BB (high)	5 at Iowa (2021)
0 vs. New Mexico	R (low)*	0 three times
1 twice	R (high)	7 at Kansas (2022)
1 twice	ER (low)*	0 three times
1 vs. South Dakota State	ER (high)	6 twice

*starts only

#88 KENDALL MANGEL • RHP • RFR.

SEASON HIGH	CATEGORY	CAREER HIGH
1.0 vs. #3 Oklahoma State	IP	1.0 vs. #3 Oklahoma State
none	Ks	none
none	H (low)*	none
5 vs. #3 Oklahoma State	H (high)	5 vs. #3 Oklahoma State
none	BB (low)*	none
3 vs. #3 Oklahoma State	BB (high)	3 vs. #3 Oklahoma State
none	R (low)*	none
5 vs. #3 Oklahoma State	R (high)	5 vs. #3 Oklahoma State
none	ER (low)*	none
5 vs. #3 Oklahoma State	ER (high)	5 vs. #3 Oklahoma State

*starts only

2023 OVERALL STATISTICS

2023 Nebraska Softball
Overall Statistics for Nebraska (as of Feb 20, 2023)
(All games Sorted by Batting avg)

Record: 9-6 Home: 0-0 Away: 1-0 Neutral: 8-6 Big Ten: 0-0

Player	avg	gp-gs	ab	r	h	2b	3b	hr	rbi	tb	slg%	bb	hp	so	gdp	ob%	sf	sh	sb-att	po	a	e	fld%
Smetter, Ashley	.667	4-0	3	1	2	1	0	0	0	3	1.000	0	0	0	0	.667	0	0	0-0	0	0	0	.000
Tokheim, Talia	.500	3-0	4	2	2	0	0	1	2	5	1.250	0	0	0	0	.500	0	0	0-0	0	0	0	.000
Felix, Alina	.400	3-2	5	3	2	1	0	1	3	6	1.200	2	0	0	0	.571	0	0	0-0	0	0	0	.000
Neal, Caitlynn	.372	15-15	43	7	16	2	1	2	6	26	.605	2	1	3	0	.413	0	2	1-1	13	0	0	1.000
Andrews, Billie	.340	15-15	50	10	17	4	0	6	13	39	.780	2	0	9	0	.358	1	0	0-0	19	19	2	.950
Wallace, Courtney	.326	15-15	43	4	14	1	0	0	1	15	.349	2	1	5	1	.370	0	0	2-5	2	8	1	.909
Bredwell, Ava	.306	14-13	36	11	11	3	0	0	5	14	.389	5	1	7	0	.405	0	0	2-2	75	3	0	1.000
Caneda, Katelyn	.303	15-15	33	4	10	0	0	1	7	13	.394	2	3	7	0	.395	0	0	2-2	21	30	3	.944
Andrews, Brooke	.278	15-15	36	6	10	2	0	2	4	18	.500	3	1	9	0	.350	0	0	2-2	19	1	0	1.000
Felder, Mya	.238	15-15	42	6	10	3	0	1	6	16	.381	4	2	4	1	.333	0	0	1-1	91	1	1	.989
Squier, Abbie	.219	14-14	32	4	7	1	0	0	5	8	.250	1	5	7	0	.333	1	2	1-1	19	0	0	1.000
Gray, Sydney	.132	15-15	38	5	5	1	0	0	5	6	.158	5	1	7	0	.239	2	0	0-0	11	33	2	.957
Kinney, Kaylin	.000	8-4	5	0	0	0	0	0	0	0	.000	0	1	1	0	.167	0	0	0-0	0	2	0	1.000
Newlun, Abbey	.000	3-0	3	0	0	0	0	0	0	0	.000	0	0	2	0	.000	0	0	0-0	1	0	0	1.000
Carter, Dakota	.000	12-0	2	2	0	0	0	0	0	0	.000	0	0	0	0	.000	0	0	0-0	0	0	0	.000
Malecha, Mckinley	.000	5-3	0	0	0	0	0	0	0	0	.000	0	0	0	0	.000	0	0	0-0	3	1	0	1.000
Warner, Haidyn	.000	1-0	0	0	0	0	0	0	0	0	.000	0	0	0	0	.000	0	0	0-0	4	0	0	1.000
Mangel, Kendall	.000	1-0	0	0	0	0	0	0	0	0	.000	0	0	0	0	.000	0	0	0-0	0	0	0	.000
Harness, Sarah	.000	7-7	0	0	0	0	0	0	0	0	.000	0	0	0	0	.000	0	0	0-0	0	4	1	.800
Totals	.283	15	375	65	106	19	1	14	57	169	.451	28	16	61	2	.355	4	4	11-14	278	102	10	.974
Opponents	.235	15	361	38	85	10	5	6	34	123	.341	35	5	78	2	.312	0	1	7-8	280	113	11	.973

LOB - Team (82), Opp (86). DPs turned - Team (5), Opp (7).

(All games Sorted by Earned run avg)

Player	era	w-l	app	gs	cg	sho	sv	ip	h	r	er	bb	so	2b	3b	hr	b/avg	wp	hp	bk	sfa	sha
Kinney, Kaylin	0.84	1-1	7	3	2	1/2	1	25.0	23	3	3	1	14	1	0	2	.237	0	0	0	0	1
Wallace, Courtney	2.39	5-3	9	6	4	3/0	0	38.0	42	15	13	13	25	4	2	2	.275	4	2	0	0	0
Harness, Sarah	2.69	3-2	6	6	2	1/2	0	28.2	15	15	11	18	39	5	2	1	.144	0	3	0	0	0
Mangel, Kendall	35.00	0-0	1	0	0	0/0	0	1.0	5	5	5	3	0	0	1	1	.714	0	0	0	0	0
Totals	2.42	9-6	15	15	8	7/2	1	92.2	85	38	32	35	78	10	5	6	.235	4	5	0	0	1
Opponents	4.28	6-9	15	15	7	3/0	1	93.1	106	65	57	28	61	19	1	14	.283	6	16	0	4	4

PB - Team (1), Bredwell 1, Opp (4). SBA/ATT - Bredwell (6-6), Wallace (4-5), Harness (2-2), Malecha (1-2), Kinney (1-1).

HUSKER STARTERS IN 2023 - BY POSITION

	Pitcher	Catcher	First	Second	Third	Shortstop	Left	Center	Right	DP
Lamar	Wallace	Bredwell	Felder	Caneda	Gray	Bi. Andrews	Squier	Neal	Br. Andrews	-
South Dakota St.	Kinney	Malecha	Felder	Caneda	Gray	Bi. Andrews	Squier	Neal	Br. Andrews	Wallace
Lamar	Harness	Bredwell	Felder	Caneda	Gray	Bi. Andrews	Squier	Neal	Br. Andrews	Wallace
at Houston	Wallace	Bredwell	Felder	Caneda	Gray	Bi. Andrews	Squier	Neal	Br. Andrews	Kinney
Virginia	Wallace	Bredwell	Felder	Caneda	Gray	Bi. Andrews	Squier	Neal	Br. Andrews	-
Oklahoma St.	Wallace	Bredwell	Felder	Caneda	Gray	Bi. Andrews	Squier	Neal	Br. Andrews	-
UCLA	Harness	Bredwell	Felder	Caneda	Gray	Bi. Andrews	Squier	Neal	Br. Andrews	Wallace
Virginia Tech	Wallace	Malecha	Felder	Caneda	Gray	Bi. Andrews	Squier	Br. Andrews	Neal	Bredwell
Texas A&M	Harness	Bredwell	Felder	Caneda	Gray	Bi. Andrews	Squier	Br. Andrews	Neal	Wallace
Arkansas	Harness	Bredwell	Felder	Caneda	Gray	Bi. Andrews	Squier	Br. Andrews	Neal	Wallace
Oklahoma St.	Kinney	Bredwell	Felder	Caneda	Gray	Bi. Andrews	Squier	Br. Andrews	Neal	Wallace
at New Mexico St.	Harness	Bredwell	Felder	Caneda	Gray	Bi. Andrews	Squier	Br. Andrews	Neal	Wallace
CSU Bakersfield	Wallace	Malecha	Felder	Caneda	Gray	Bi. Andrews	Squier	Br. Andrews	Neal	Felix
New Mexico	Kinney	Bredwell	Felder	Caneda	Gray	Bi. Andrews	Felix	Br. Andrews	Neal	Wallace
New Mexico	Harness	Bredwell	Felder	Caneda	Gray	Bi. Andrews	Squier	Br. Andrwes	Neal	Wallace
Weber St.										
TAMU-Commerce										
Weber St.										
at Arizona										
CSUN										
at Wichita St.										
Missouri St.										
at Wichita St.										
Missouri St.										
at Omaha										
Fairfield										
Kansas City										
Fairfield										
at Kansas										
Kansas City										
Iowa St.										
Purdue										
Purdue										
Purdue										
at Iowa										
at Iowa										
Michigan										
Michigan										
Michigan										
at Maryland										
at Maryland										
at Maryland										
at Indiana										
at Indiana										
at Indiana										
Creighton										
Wisconsin										
Wisconsin										
Wisconsin										
at Northwestern										
at Northwestern										
at Northwestern										
Ohio St.										
Ohio St.										
Ohio St.										

HUSKER STARTERS IN 2023 - BY BATTING ORDER

	1	2	3	4	5	6	7	8	9
Lamar	Bi. Andrews	Wallace	Gray	Felder	Squier	Br. Andrews	Neal	Bredwell	Caneda
South Dakota St.	Bi. Andrews	Wallace	Gray	Felder	Squier	Br. Andrews	Neal	Kinney	Caneda
Lamar	Bi. Andrews	Wallace	Gray	Felder	Squier	Neal	Bredwell	Br. Andrews	Caneda
at Houston	Bi. Andrews	Wallace	Gray	Felder	Squier	Neal	Bredwell	Kinney	Caneda
Virginia	Bi. Andrews	Wallace	Gray	Felder	Squier	Neal	Bredwell	Br. Andrews	Caneda
Oklahoma St.	Bi. Andrews	Wallace	Gray	Felder	Squier	Neal	Bredwell	Caneda	Br. Andrews
UCLA	Bi. Andrews	Wallace	Gray	Felder	Squier	Neal	Bredwell	Caneda	Br. Andrews
Virginia Tech	Bi. Andrews	Wallace	Felder	Bredwell	Neal	Br. Andrews	Squier	Gray	Caneda
Texas A&M	Bi. Andrews	Wallace	Felder	Bredwell	Neal	Br. Andrews	Squier	Gray	Caneda
Arkansas	Bi. Andrews	Wallace	Neal	Bredwell	Felder	Br. Andrews	Squier	Gray	Caneda
Oklahoma St.	Bi. Andrews	Neal	Wallace	Felder	Gray	Bredwell	Br. Andrews	Caneda	Squier
at New Mexico St.	Bi. Andrews	Neal	Felder	Gray	Wallace	Bredwell	Br. Andrews	Squier	Caneda
CSU Bakersfield	Bi. Andrews	Br. Andrews	Neal	Wallace	Felder	Caneda	Squier	Gray	Felix
New Mexico	Bi. Andrews	Br. Andrews	Neal	Wallace	Felder	Bredwell	Gray	Caneda	Felix
New Mexico	Bi. Andrews	Br. Andrews	Neal	Felder	Wallace	Bredwell	Caneda	Squier	Gray
Weber St.									
TAMU-Commerce									
Weber St.									
at Arizona									
CSUN									
at Wichita St.									
Missouri St.									
at Wichita St.									
Missouri St.									
at Omaha									
Fairfield									
Kansas City									
Fairfield									
at Kansas									
Kansas City									
Iowa St.									
Purdue									
Purdue									
Purdue									
at Iowa									
at Iowa									
Michigan									
Michigan									
Michigan									
at Maryland									
at Maryland									
at Maryland									
at Indiana									
at Indiana									
at Indiana									
Creighton									
Wisconsin									
Wisconsin									
Wisconsin									
at Northwestern									
at Northwestern									
at Northwestern									
Ohio St.									
Ohio St.									
Ohio St.									

2023 NEBRASKA PHOTO ROSTER



#00 Mckinley Malecha
C - So.



#2 Sarah Harness
RHP - Jr.



#5 Mya Felder
INF - Sr.



#6 Billie Andrews
INF - Jr.



#7 Sydney Gray
INF - Jr.



#8 Abbie Squier
OF - Jr.



#11 Talia Tokheim
OF - Fr.



#19 Caitlynn Neal
OF - Jr.



#20 Abbey Newlun
INF - Jr.



#23 Courtney Wallace
RHP/UTL - Sr.



#24 Ava Bredwell
C/UTL - So.



#26 Alina Felix
INF/OF - Fr.



#27 Brooke Andrews
UTL - Sr.



#32 Ashley Smetter
INF - Fr.



#44 Kaylin Kinney
RHP/UTL - Jr.



#55 Dakota Carter
OF - Fr.



#66 Katelyn Caneda
INF - Fr.



#77 Haidyn Warner
C - Fr.



#88 Kendall Mangel
RHP - RFr.