

N NEBRASKA

SOFTBALL

NEBRASKA AT IOWA		
FRIDAY	SATURDAY	SUNDAY
at Iowa 3 p.m. (CT) Video: BTN+ (\$)	at Iowa (1) 1 p.m. (CT) at Iowa (2) 3:30 p.m. (CT) Video: BTN+ (\$)	at Iowa Noon (CT) Video: BTN+ (\$)

The Nebraska softball team travels to Iowa this weekend for a four-game series with the Hawkeyes at Bob Pearl Field. The series begins with a single game on Friday at 3 p.m. before a Saturday doubleheader at 1 p.m. The series finale is set for Noon on Sunday.

Nebraska and Iowa are both looking to climb the Big Ten Conference standings with two weeks remaining in the regular season. The Huskers and Hawkeyes are tied for fifth in the league standings with identical 20-16 records. Both teams are also coming off four-game sweeps last weekend, as Iowa won all four of its games at Rutgers and Nebraska posted its first Big Ten sweep of the season by going 4-0 at home against Maryland.

The Huskers won a pair of one-run decisions in the first two games against Maryland before outscoring the Terrapins 16-4 over the final two games. Nebraska's freshmen led the way at the plate, with four freshmen starters combining to go 14-for-30 (.467) in the series with two doubles, six home runs and 14 RBIs. Billie Andrews and Kaylin Kinney each hit three home runs and drove in six runs in the four-game series, while Caitlynn Neal doubled twice and Abbie Squier had a pair of RBIs. Kinney was named the Big Ten Player of the Week for her performance, while Andrews was selected as the Big Ten co-Freshman of the Week.

In the circle, Olivia Ferrell went 2-0 with one save last weekend, factoring into three of NU's four wins. Courtney Wallace also went 2-0 with her first career shutout on Sunday. Kinney contributed by starting the third game of the series and allowing just one run in 5.0 innings.

QUICK HITTERS

- Nebraska's next win will mark the 1,500th victory in program history.
- The sweep of Maryland last weekend was the first four-game conference sweep in school history (this is the fourth season in program history Nebraska has played four-game conference series).
- Ten of Nebraska's 16 losses this season have been by either one or two runs.
- Nebraska's 3.10 team ERA is its lowest since the 2014 season.
- The Huskers rank third in the Big Ten in scoring, averaging 4.8 runs per game.
- Nebraska is 13-1 this season when it has more hits than its opponent.
- All four Big Ten weekly award winners (two Huskers and two Hawkeyes) will be on the same field this weekend.
- **Billie Andrews** leads all Big Ten freshmen in hits (36), runs (28), home runs (7), RBIs (28) and stolen bases (10).
- **Tristen Edwards** is either walked or hit by a pitch an average of 1.44 times per game, the highest average in the nation.
- **Courtney Wallace** went 2-0 last week with a 0.68 ERA, ending her week with 7.2 consecutive scoreless innings.

HUSKERS TO WATCH



Billie Andrews was named the Big Ten Freshman of the Week for the fourth time this season after going 6-for-11 (.545) with three home runs and six RBIs in last week's sweep of Maryland.



Kaylin Kinney reached base in seven of eight trips to the plate last week. The Big Ten Player of the Week was 4-for-5 with three homers and six RBIs and allowed one run in 5.0 innings pitched.

HUSKER SCHEDULE (20-16 RECORD)

<i>Sleepy Hollow Sports Complex (Leesburg, Fla.)</i>		
Feb. 26	vs. Indiana (Game 1)	L, 1-3
Feb. 26	vs. Indiana (Game 2)	W, 4-2
Feb. 27	vs. Michigan St. (Game 1)	W, 7-1
Feb. 27	vs. Michigan St. (Game 2)	L, 3-6 (8)
Feb. 28	vs. Ohio St. (Game 1)	L, 2-4
Feb. 28	vs. Ohio St. (Game 2)	W, 2-1
<i>Sleepy Hollow Sports Complex (Leesburg, Fla.)</i>		
March 11	vs. #23 Michigan (Game 1)	L, 1-2 (8)
March 11	vs. #23 Michigan (Game 2)	L, 0-2
March 12	vs. #23 Michigan	W, 5-4 (8)
March 13	vs. Purdue (Game 1)	W, 8-1
March 13	vs. Purdue (Game 2)	L, 0-7
March 14	vs. Purdue	W, 3-1
March 26	Penn St.	W, 9-0 (5)
March 27	Penn St. (Game 1)	W, 8-2
March 27	Penn St. (Game 2)	W, 10-2 (5)
March 28	Penn St.	L, 5-7 (8)
April 2	at Rutgers	W, 12-4 (6)
April 3	at Rutgers (Game 1)	W, 8-1
April 3	at Rutgers (Game 2)	L, 6-10
April 4	at Rutgers	L, 1-2
April 9	Illinois	L, 0-4
April 10	Illinois (Game 1)	W, 5-4
April 10	Illinois (Game 2)	W, 10-6
April 11	Illinois	W, 8-6
April 16	at #24 Minnesota	L, 7-8
April 17	at #24 Minnesota (Game 1)	L, 0-2
April 17	at #24 Minnesota (Game 2)	L, 0-9 (6)
April 18	at #24 Minnesota	W, 6-4
April 23	Wisconsin	L, 4-6
April 24	Wisconsin (Game 1)	W, 9-4
April 24	Wisconsin (Game 2)	L, 3-4
April 25	Wisconsin	L, 3-9
April 30	Maryland (Game 1)	W, 2-1
April 30	Maryland (Game 2)	W, 4-3
May 1	Maryland	W, 8-4
May 2	Maryland	W, 8-0 (5)
May 7	at Iowa	3 p.m.
May 8	at Iowa (Game 1)	1 p.m.
May 8	at Iowa (Game 2)	3:30 p.m.
May 9	at Iowa	Noon
May 14	at Northwestern (BTN)	3 p.m.
May 15	at Northwestern (1)	Noon
May 15	at Northwestern (2) (BTN)	3 p.m.
May 16	at Northwestern (BTN)	1 p.m.
May 21-23	NCAA Regionals	
May 27-30	NCAA Super Regionals	
June 3-9	NCAA Women's College World Series	



NEBRASKA SOFTBALL FACTS

UNIVERSITY INFORMATION

Location	Lincoln, Neb.
Population	280,369
Founded	1869
Enrollment	25,057
Nickname	Cornhuskers, Huskers
Colors	Scarlet & Cream
Conference	Big Ten
Chancellor	Ronnie Green
Athletic Director	Bill Moos

ATHLETIC COMMUNICATIONS

Softball Contact	Matt Smith
E-Mail	msmith@huskers.com
Phone	(402) 770-5926

2021 COACHING STAFF

Head Coach	Rhonda Revelle
Nebraska Record	1,018-598 (29th year)
Career Record	1,026-614 (30th year)
Assoc. Head Coach	Lori Sippel (32nd year)
Assistant Coach	Diane Miller (13th year)
Dir. of Softball Oper.	Erin Bohling (2nd year)

2020 SEASON REVIEW

Overall Record	9-14
Big Ten Record (Finish)	N/A

2021 TEAM OUTLOOK

Letterwinners Returning/Lost	14/5
Total Starters Returning/Lost	10/1
Position Starters Returning/Lost	8/0
Pitchers Returning/Lost	3/1
Returning All-Conference Players	2*
Returning All-Region Players	2*
Returning All-Americans	0
Newcomers	8

*includes honors at a player's previous school

STADIUM INFORMATION

Stadium	Bowlin Stadium (2,500)
First Season	2002
Record at Bowlin Stadium	241-104 (.699)

PROGRAM HISTORY

First Year of Softball	1976
All-Time Record	1,499-893 (.627)
All-Time Conference Record	406-297 (.578)
Big Ten Record	129-88 (.594)
Overall Conference Titles	19
Big Eight Titles	12
Big 12 Titles	6
Big Ten Titles	1
NCAA Tournament Appearances	24
WCWS Appearances	7
NCAA Tournament Record	62-52 (.544)
NCAA Regional Record	52-35 (.598)
NCAA Super Regional Record	2-3 (.400)
WCWS Record	8-14 (.363)
NFCA All-Americans	27
CoSIDA Academic All-Americans	30

PRONUNCIATION GUIDE

Camyl Armendariz	kuh-MEAL
	are-men-DARE-iz
Abbie Squier	SKWHY-er
Annie Raley	AW-knee
Rhonda Revelle	ruh-VELL
Cam Ybarra	ee-BAR-uh
Sarah Yocom	YO-come

NEBRASKA 2021 SEASON NOTEBOOK

- Nebraska's roster features 21 players, tied for the largest roster in school history.
- The roster features 10 Nebraska natives, the most in-state players since 1980.
- The roster features the most freshmen (8) and most seniors (7) in the 29-year tenure of **Rhonda Revelle** as Nebraska's head coach.
- **Rhonda Revelle** is in her 29th season leading her alma mater in 2021. Revelle is the second-longest serving female head coach in the history of Nebraska Athletics.
- Revelle owns 1,014 wins at Nebraska. She is the all-time wins leader (male or female) in the history of Nebraska Athletics.
- Associate Head Coach **Lori Sippel** is in her 32nd year at Nebraska. Sippel is the longest-tenured female assistant coach in the history of Nebraska Athletics.
- Revelle (1981-83) and Sippel (1985-88) also played for NU. Including their playing and coaching careers, Revelle and Sippel have been a part of 1,322 of Nebraska's 1,499 all-time victories (88 percent).
- Assistant coach **Diane Miller** rounds out the Husker coaching staff. In her 13th season, Miller has helped Nebraska's offense set more than 40 school records.
- NU will play a conference-only schedule for the first time in program history in 2021. The Huskers are scheduled to play 44 Big Ten Conference games, which would nearly double the previous high for most conference games played in one season (24 Big Ten games in 2013).
- Fifth-year seniors **Tristen Edwards** and **Samantha Owen** both took advantage of the NCAA waiver for an extra year of eligibility following the cancellation of the 2020 season due to the COVID-19 pandemic.
- Edwards and Owen are also the only two Huskers who have been an all-conference or all-region performer in their careers. Edwards is a two-time first-team All-Big Ten selection and was a 2019 third-team all-region honoree. Owen was a first-team All-WAC pick and third-team all-region selection at Pacific in 2018.
- **Tristen Edwards** is already one of only five Huskers to be a two-time first-team All-Big Ten selection. In 2021, Edwards will look to become the first Husker to earn three first-team All-Big Ten awards, in addition to becoming the eighth three-time first-team all-conference selection in program history.

2-TIME 1ST-TEAM ALL-BIG TEN PICKS

- **Tristen Edwards, SS (2018-19)**
- MJ Knighten, 3B (2015-16)
- Kiki Stokes, OF (2015-16)
- Tatum Edwards, RHP/UTL (2013-14)
- Taylor Edwards, C (2013-14)

3-TIME 1ST-TEAM ALL-CONFERENCE PICKS

- Jessica Yoachim, 3B (2004-06)*
- Peaches James, RHP/UTL (2001-04)*
- Jenny Voss, RHP (1997-98, 2000)*
- Jennifer Lizama, INF (1997-2000)*
- Tobin Echo-Hawk, INF (1993-96)^*
- Jane Kremer, SS (1986-88)^
- Lori Sippel, RHP (1985-88)*

*Big 12 Conference (1996-2011)

^Big Eight Conference (1977-95)

2021 NEBRASKA NUMERICAL ROSTER

NO.	NAME	B/T	POS.	HT.	YR.	HOMETOWN
1	Rylie Unzicker	L/R	OF	5-5	Sr.	Omaha, Neb.
2	Payton Huscroft	L/L	INF	5-9	Jr.	Omaha, Neb.
5	MJ Green	R/R	INF	5-2	Fr.	Henderson, Texas
6	Billie Andrews	R/R	INF	5-8	Fr.	Gretna, Neb.
7	Sydney Gray	R/R	INF	5-5	Fr.	Tucson, Ariz.
8	Abbie Squier	R/R	OF	5-7	Fr.	Lincoln, Neb.
13	Peyton Glatter	L/R	OF	5-5	Jr.	Omaha, Neb.
14	Camyl Armendariz	R/R	INF	5-7	Fr.	La Verne, Calif.
19	Caitlynn Neal	L/R	RHP/UTL	5-3	Fr.	Dewey, Ariz.
20	Abbey Newlun	R/R	INF	5-7	Fr.	The Woodlands, Texas
21	Sarah Yocom	R/R	INF	5-9	Sr.	Cozad, Neb.
23	Courtney Wallace	R/R	RHP/UTL	5-5	Jr.	Omaha, Neb.
24	Tristen Edwards	R/R	OF	5-6	Sr.	Murrieta, Calif.
27	Brooke Andrews	R/R	INF	5-8	So.	Gretna, Neb.
28	Ally Riley	R/R	C	5-9	Sr.	Alva, Okla.
30	Karlee Seevers	R/R	RHP	5-6	Jr.	York, Neb.
32	Cam Ybarra	L/R	INF	5-6	Sr.	Mission Viejo, Calif.
33	Anni Raley	R/R	C	5-6	Jr.	Clovis, Calif.
39	Olivia Ferrell	R/R	RHP/UTL	5-9	Sr.	Omaha, Neb.
44	Kaylin Kinney	R/R	RHP/UTL	5-10	Fr.	Cedar Rapids, Iowa
77	Samantha Owen	R/R	INF	5-5	Sr.	Manteca, Calif.

FRESHMEN MAKE MARK AGAINST MARYLAND

Nebraska's freshmen played a large part in the Huskers' four-game sweep of Maryland last weekend in the final home games of the season.

- Offensively, five freshmen played in the Maryland series, including four who started multiple games. Collectively, the freshmen went 14-for-30 (.467) with 10 runs, two doubles, six home runs, 14 RBIs, a 1.133 slugging percentage and a .556 on-base percentage. The freshmen accounted for 52 percent of NU's hits last weekend and 64 percent of the team's RBIs.
- Kaylin Kinney** was 4-for-5 in the series with three home runs, four runs scored and six RBIs. She was 4-for-4 with a walk, three homers and six RBIs in her two starts. In game three of the series, Kinney hit two home runs and started in the circle, allowing only one run in 5.0 innings.
- For her efforts, Kinney was named the Big Ten Player of the Week, becoming the first Husker freshman named the conference player of the week since the 2011 Big 12 season.
- Billie Andrews** went 6-for-11 (.545) last weekend and matched Kinney with three home runs and six RBIs. She had at least one run, one hit and one RBI in all four games against Maryland, including homering in three of the four games.
- For her performance, Andrews was named the Big Ten co-Freshman of the Week. She has won four of the eight freshman-of-the-week honors the Big Ten has awarded this season.
- Abbie Squier** started the final two games last weekend in left field, her first career starts at the position. Squier was 2-for-6 in those starts with a pair of walks and two RBIs.
- Caitlynn Neal** started three games in right field against Maryland, going 2-for-8 with her first two career doubles.
- Camyl Armendariz** also contributed, scoring one run as a pinch runner last weekend.

NEBRASKA FRESHMEN LAST WEEKEND

AVG	AB	R	H	2B	HR	RBI	BB	HBP	OB%	SLG%
.467	30	10	14	2	6	14	5	1	.556	1.133

EDWARDS WALKING TO FIRST WITH FREQUENCY

Tristen Edwards has been able to walk to first base 52 times this season as teams have elected to frequently pitch around the senior slugger.

- With 52 combined walks and hit-by-pitches - in only 36 games - Edwards leads the nation with an average of 1.44 "free passes" per game this season.
- Edwards is the only player from a "Power Five" conference (ACC, Big 12, Big Ten, Pac-12, SEC) who reaches base at least 1.0 time per game due to "free passes".
- Edwards has walked 37 times in 36 games this season, including 10 intentional walks. She ranks third nationally in walks per game (1.3) and fourth in total walks.
- Edwards is bidding to become just the fourth Big Ten player to average 1.0 walk per game over an entire season since Nebraska joined the conference in 2012. She would join Minnesota's Kendyl Lindaman (1.02 in 2017), Michigan's Sierra Romero (1.08 in 2014) and Ohio State's Alicia Herron (1.00 in 2012).
- Edwards has been hit by 15 pitches in 36 games. She ranks seventh nationally in hit-by-pitches per game (0.42) and 12th in total hit-by-pitches.

DIVISION I PLAYERS AVERAGING 1.0 "FREE PASS" PER GAME (BB + HBP)

Rk.	Player	School	Games	BB	HBP	Per Game
1.	Tristen Edwards	Nebraska	36	37	15	1.44
2.	Maddy Vermejan	Southern Illinois	45	35	27	1.38
3.	Kendra Allen	Massachusetts	29	30	5	1.21
4.	Jessica Lindquist	George Washington	37	35	8	1.16
5.	Delaney Cumbie	UNC Greensboro	41	37	10	1.15
6.	Sierra Huerta	Marshall	24	19	8	1.13
7.	Baylee Morton	Appalachian State	40	34	10	1.10
	Lynsey Meeks	James Madison	31	34	0	1.10
9.	Allie Cummins	Miami (Ohio)	44	46	1	1.07
10.	Sammy Bunch	Northern Iowa	44	32	12	1.00

DIVISION I PLAYERS AVERAGING 1.0 WALK PER GAME (MIN. 5 GAMES PLAYED)

Rk.	Player	School	Games	BB	Per Game
1.	Lynsey Meeks	James Madison	31	34	1.10
2.	Allie Cummins	Miami (Ohio)	44	46	1.05
3.	Tristen Edwards	Nebraska	36	37	1.03
	Kendra Allen	Massachusetts	29	30	1.03

PROJECTED LINEUP (LAST GAME)

1	#24 TRISTEN EDWARDS • RF .316 • 27 R • 24 H • 7 2B • 5 HR • 15 RBI 212 Career Starts • 71 Starts in RF
2	#1 RYLIE UNZICKER • CF .274 • 22 R • 26 H • 5 2B • 2 HR • 9 RBI 108 Career Starts • 75 Starts in CF
3	#6 BILLIE ANDREWS • SS .310 • 28 R • 36 H • 4 2B • 7 HR • 28 RBI 36 Career Starts • 36 Starts at SS
4	#32 CAM YBARRA • 2B .289 • 12 R • 33 H • 9 2B • 4 HR • 22 RBI 139 Career Starts • 116 Starts at 2B
5	#44 KAYLIN KINNEY • DP .266 • 8 R • 17 H • 3 2B • 4 HR • 11 RBI 21 Career Starts • 17 Starts at DP
6	#28 ALLY RILEY • C .222 • 2 R • 10 H • 3 2B • 1 HR • 2 RBI 56 Career Starts • 42 Starts at C
7	#23 COURTNEY WALLACE • P .215 • 14 H • 10 RBI 9-7 • 2.84 ERA 68 Career Starts • 32 Starts at P
8	#8 ABBIE SQUIER • LF .167 • 3 R • 3 H • 1 2B • 0 HR • 3 RBI 5 Career Starts • 2 Starts at LF
9	#27 BROOKE ANDREWS • 3B .234 • 11 R • 15 H • 4 2B • 2 HR • 13 RBI 37 Career Starts • 22 Starts at 3B
	#21 SARAH YOCOM • 1B .000 • 7 R • 0 H • 0 2B • 0 HR • 1 RBI 65 Career Starts • 30 Starts at 1B

PROJECTED SUBSTITUTES

#2 PAYTON HUSCROFT • INF .000 • 0 R • 0 H • 0 2B • 0 HR • 0 RBI
#5 MJ GREEN • INF .600 • 0 R • 3 H • 0 2B • 0 HR • 0 RBI
#7 SYDNEY GRAY • INF .366 • 8 R • 15 H • 5 2B • 1 HR • 8 RBI
#13 PEYTON GLATTER • OF .225 • 8 R • 16 H • 2 2B • 3 HR • 17 RBI
#14 CAMYL ARMENDARIZ • INF .000 • 8 R • 0 H • 0 2B • 0 HR • 0 RBI
#19 CAITLYNN NEAL • RHP/UTL .214 • 11 R • 9 H • 6 RBI 0-0 • 10.50 ERA
#20 ABBEY NEWLUN • INF .000 • 0 R • 0 H • 0 2B • 0 HR • 0 RBI
#30 KARLEE SEEVERS • RHP 0-0 • 7.00 ERA • 2.0 IP • 0 SO • 0 BB
#33 ANNI RALEY • C .297 • 8 R • 11 H • 1 2B • 1 HR • 6 RBI
#39 OLIVIA FERRELL • RHP/UTL .095 • 2 R • 4 H • 0 RBI 10-8 • 2.89 ERA
#77 SAMANTHA OWEN • INF .000 • 0 R • 0 H • 0 2B • 0 HR • 0 RBI

BIG TEN STANDINGS

Rk.	Team	Big Ten Record
1.	Michigan	28-5
2.	Minnesota	25-7
3.	Northwestern	24-12
4.	Illinois	22-14
5.	Nebraska	20-16
	Iowa	20-16
7.	Indiana	19-17
8.	Ohio State	18-17
9.	Wisconsin	15-17
10.	Maryland	14-22
11.	Michigan State	10-19
12.	Purdue	13-23
13.	Rutgers	7-29
14.	Penn State	5-26

NEBRASKA CONFERENCE TITLES

BIG EIGHT CONFERENCE (1976-1995)

Year	Record	Finish	Tournament
1977	1-4	t-4th	N/A
1978	4-3	7th	t-6th
1979	3-8	6th	t-6th
1980	8-9	4th	N/A
1981	5-6	3rd	3rd
1982	9-3	1st	1st
1983	3-7	7th	N/A
1984	6-2	1st	1st
1985	11-1	1st	1st
1986	9-3	1st	1st
1987	8-2	1st	1st
1988	7-3	1st	1st
1989	6-4	3rd	t-5th
1990	3-5	5th	2nd
1991	3-5	5th	t-4th
1992	2-6	5th	t-4th
1993	5-11	5th	N/A
1994	5-15	6th	N/A
1995	10-6	3rd	N/A
TOTAL	108-103		12 total titles

BIG 12 CONFERENCE (1996-2011)

Year	Record	Finish	Tournament
1996	10-8	4th	2nd
1997	10-6	4th	5th
1998	16-0	1st	1st
1999	10-8	4th	2nd
2000	15-2	2nd	1st
2001	16-2	1st	5th
2002	11-5	2nd	2nd
2003	10-8	6th	t-4th
2004	14-3	1st	1st
2005	9-9	7th	t-5th
2006	13-4	2nd	t-3rd
2007	10-8	5th	t-5th
2008	4-14	t-9th	2nd
2009	9-9	5th	t-5th
2010	7-11	t-6th	t-5th
2011	9-9	6th	N/A
TOTAL	173-106		6 total titles

BIG TEN CONFERENCE (2012-PRES.)

Year	Record	Finish	Tournament
2012	14-9	3rd	N/A
2013	16-6	2nd	t-3rd
2014	18-5	t-1st	t-5th
2015	17-6	3rd	2nd
2016	13-9	5th	t-5th
2017	13-10	5th	t-9th
2018	9-13	9th	t-9th
2019	9-14	t-8th	t-9th
2020	No Big Ten Season Due to Pandemic		
2021	20-16	-	N/A
TOTAL	129-88		1 total title

EDWARDS ON PACE FOR NEBRASKA'S TOP ON-BASE PERCENTAGE

Senior outfielder **Tristen Edwards** is getting on base at a record-breaking clip this season, reaching base nearly 60 percent of the time she steps up to the plate.

- Edwards ranks sixth nationally with a .585 on-base percentage. She is on pace to shatter the current Nebraska season on-base percentage record of .532, set by Kiki Stokes in 2015.

2021 NCAA ON-BASE PCT. LEADERS

Rk.	Player, School	OB%
1.	Allie Cummins, Miami (OH)	.625
2.	Linda Rush, Drexel	.622
3.	Jayda Coleman, Oklahoma	.599
4.	Jocelyn Alo, Oklahoma	.589
5.	Sammy Bunch, UNI	.585
6.	Tristen Edwards, Nebraska	.585

TOP ON-BASE PCT. IN HUSKER HISTORY

Rk.	Player	Year	OB%
1.	Tristen Edwards	2021	.585
2.	Kiki Stokes	2015	.532
3.	Ali Viola	1998	.531
4.	Ashley Guile	2010	.520
5.	Ali Viola	1996	.517

BILLIE ANDREWS AMONG BIG TEN'S TOP FRESHMEN HITTERS

With two weeks left in the regular season, **Billie Andrews** has arguably been the Big Ten's top freshman hitter from a statistical standpoint.

- Andrews leads all Big Ten freshmen in hits (36), runs (28), homers (7), RBIs (28) and steals (10), while ranking second in average (.310) and slugging (.560) and third in triples (2).
- Among all Big Ten hitters regardless of class, Andrews ranks fourth in the conference in runs and RBIs, fifth in home runs, sixth in steals and 10th in triples.

BILLIE ANDREWS' RANKS AMONG BIG TEN FRESHMAN HITTERS

AVG.	HITS	RUNS	HR	3B	RBIs	SLG%	STEALS
2nd (.310)	1st (36)	1st (28)	1st (7)	t-3rd (2)	1st (28)	2nd (.560)	t-1st (10)

BROOKE ANDREWS STEPS UP AT THIRD BASE

Sophomore **Brooke Andrews** has been an impressive addition to the lineup while starting the past 20 games at third base for Nebraska following a season-ending injury to Sydney Gray.

- In her streak of 20 straight starts, Andrews has slugged four doubles, one triple and two home runs while driving in 13 runs with five multi-hit games. During that stretch, she leads Nebraska in doubles and triples and ranks fourth on the team in home runs and RBIs.

KINNEY FINDING HER WAY AT THE PLATE & IN THE CIRCLE

Freshman **Kaylin Kinney**, the reigning Big Ten Player of the Week, has been the most productive of her young career the past two weeks.

- Over the last eight games, Kinney is 6-for-14 (.429) at the plate with three home runs, seven RBIs, a .571 on-base percentage and a 1.071 slugging percentage. Kinney was 4-for-5 in the Maryland series with three home runs, including her first career multi-homer game.
- In the circle, Kinney earned her first career win on her birthday against Wisconsin on April 24, allowing only two runs in a career-high 5.2 innings. She also pitched 2.0 hitless innings of relief that same day. Last Saturday against Maryland, Kinney started and allowed just one run in 5.0 innings. She left the game with the lead but did not factor into the decision.

THE LAST TIME A HUSKER

Had 6+ At Bats	5 players vs. Wisconsin (5/8/16)
Had 5+ Hits	Lizzy Rock (5) vs. Illinois (2/24/06)
Scored 4+ Runs	Tristen Edwards (4) vs. Pittsburgh (2/17/19)
Had 3+ Doubles	Cam Ybarra (4) vs. Lehigh (3/7/20)
Had 2+ Homers	Kaylin Kinney (2) vs. Maryland (5/1/21)
Had 3+ Homers	Kaylan Jablonski (3) at Cal State Fullerton (3/17/18)
Homered in 1st Career AB	Hailey Decker vs. UIC (2/8/13)
Stole 3+ Bases	Nikki Haget (3) vs. La Salle (3/12/11)
Drew 4+ Walks	MJ Knighten (4) at Northwestern (4/17/16)
Had 2+ HBP	Tristen Edwards (2) vs. Illinois (4/9/21)
Had 5+ RBIs	Brooke Andrews (5) at Rutgers (4/2/21)
Threw a No-Hitter	Kaylan Jablonski vs. Purdue (4/29/16)
Threw a Perfect Game	Ashley DeBuhr vs. Iowa St. (4/13/05)
Had 10+ Strikeouts	Cassie McClure (10) vs. South Dakota St. (3/29/16)
Had 15+ Strikeouts	Ashley Hagemann (17) at Omaha (4/19/12)
Had a 10-Game Hit Streak	Billie Andrews (12) in 2021
Had a 15-Game Hit Streak	MJ Knighten (21) in 2015
Had a 20-Game Hit Streak	MJ Knighten (21) in 2015
Had a 25-Game Hit Streak	Taylor Edwards (25) in 2013-14

CAM IN THE CLUTCH

Senior second baseman **Cam Ybarra** has been a clutch hitter for Nebraska. That has been especially true the last five weeks as teams have elected to pitch around Tristen Edwards, with Ybarra routinely making the opponent pay for that decision. Ybarra has hit behind Edwards in the lineup 17 of the last 20 games and in 29 of Nebraska's 36 games this season.

- Ybarra is hitting .289 on the year, but her average climbs to .324 with runners on base.
- Seventy-four of Ybarra's 114 at bats this season (65 percent) have come with runners on base, as have 24 of her 33 hits (73 percent).
- Over 20 games the last four weeks - as Edwards has reached base at a .657 clip - Ybarra leads Nebraska with a .328 batting average. She is hitting .340 (16-for-47) with runners on base during that span.

HUSKER OFFENSE NEAR THE TOP OF THE BIG TEN

Nebraska ranks near the top of the Big Ten in several offensive categories, ranking second in the league in home runs (31), third in scoring (4.8 runs per game) and fourth in doubles (52).

- Individually, senior **Tristen Edwards** leads the Big Ten in on-base percentage (.585), walks (37) and hit-by-pitches (15). She also ranks sixth in runs scored (27), ninth in slugging percentage (.605) and 10th in home runs (5).
- Senior **Cam Ybarra** ranks eighth in the league in doubles (9).
- Freshman **Billie Andrews** ranks fourth in runs (28) and RBIs (28), fifth in home runs (7), sixth in stolen bases (10) and 10th in triples (2).

BIG RED BATS HAVE COME ALIVE

Nebraska's offense got off to a slow start in the first two weekends in Florida. But since the scheduled moved to campus sites, the Huskers' offense has fared much better.

- Nebraska is batting .283 and averaging 5.7 runs per game over 24 games the past six weeks. NU hit just .203 and averaged only 3.0 runs per game over 12 games the first two weeks in Florida.
- The Huskers' numbers have increased across the board since games moved to campus sites. Nebraska's batting average is .080 higher, its slugging percentage is .205 higher and its on-base percentage is .092 higher.
- Nebraska has hit 28 home runs the past 24 games after homering only three times in the first 12 games of the season.

HITTING COMPARISON

Games	AVG	R/GM	H/GM	2B/GM	HR/GM	RBI/GM	SLG%	OB%
First 2 Weeks	.203	3.0	5.3	1.3	0.3	2.5	.288	.285
Last 6 Weeks	.283	5.7	7.3	1.5	1.2	5.1	.493	.377
DIFF.	+.080	+2.7	+2.0	+0.2	+0.9	+2.6	+.205	+.092

THE LAST TIME NEBRASKA...

Beat a No. 1 Team	vs. No. 1 Michigan (1-0 on 4/8/16)
Beat a Top-5 Team	vs. No. 1 Michigan (1-0 on 4/8/16)
Beat a Top-10 Team	vs. No. 6 Texas A&M (6-3 on 2/22/18)
Beat a Ranked Team	at No. 24 Minnesota (6-4 on 4/18/21)
Won When Trailing After 6 Innings	vs. Tulsa (3/10/18)
Lost When Leading After 6 Innings	at No. 24 Minnesota (4/16/2021)
Scored 10+ Runs	vs. Illinois - 2 [10] (4/10/21)
Scored 15+ Runs	vs. UTEP [16] (2/8/20)
Scored 20+ Runs	at Maryland [26] (4/3/16)
Allowed 10+ Runs	at Rutgers - 2 [10] (4/3/21)
Allowed 15+ Runs	vs. Wichita St. [17] (2/29/20)
Allowed 20+ Runs	never
Recorded 15+ Hits	at Rutgers - 2 [19] (4/8/17)
Recorded 20+ Hits	at Maryland [21] (4/3/16)
Hit 6+ Doubles	vs. Lamar [7] (2/8/19)
Hit 4+ Home Runs	vs. Illinois - 1 [4] (3/31/19)
Stole 6+ Bases	at Purdue [60] (4/13/19)
Drew 10+ Walks	at Creighton [11] (4/25/17)
Was No-Hit	at No. 24 Minnesota (Game 2, 4/17/2021)

BOWLIN STADIUM



The 2021 season marked the 20th season Nebraska has called Bowlin Stadium home. The stadium's inaugural season was in 2002.

One of the top facilities in the country, Bowlin Stadium features seating for 2,500 fans, an underground system that heats the field and a large video board. Just past the right field fence is the Alex Gordon Training Complex, a spacious indoor facility that is large enough for Nebraska to take live batting practice inside the complex. The clubhouse features a locker room, players' lounge, training room and coaches' offices.

Nebraska has won nearly 70 percent of its games at Bowlin Stadium. The Huskers have hosted four NCAA Regionals at Bowlin Stadium and ranked in the top 25 nationally in attendance 14 times, including four seasons ranked in the top 10.

YEARLY RECORDS

Year	Record	Pct.
2002	9-5	.643
2003	14-7	.667
2004	14-6	.700
2005	9-7	.563
2006	20-1	.952
2007	18-5	.783
2008	13-9	.591
2009	13-5	.722
2010	12-8	.600
2011	10-4	.714
2012	15-1	.938
2013	18-4	.818
2014	13-3	.813
2015	11-6	.647
2016	11-5	.688
2017	13-6	.684
2018	10-7	.588
2019	7-10	.412
2020	0-0	.000
2021	11-5	.688
TOTAL	241-104	.699

LARGEST CROWDS

1. 2,302	Michigan	April 9, 2016
2. 2,204	Ohio State	April 19, 2014
3. 1,960	Texas	April 9, 2011
4. 1,844	Iowa	May 17, 2003
5. 1,840	Michigan	April 27, 2013
6. 1,752	Wisconsin	May 12, 2012
7. 1,692	Indiana	May 3, 2014
8. 1,673	Illinois	April 22, 2017
9. 1,601	Wisconsin	April 28, 2018
10. 1,585	Lehigh	May 20, 2004

NEBRASKA BY THE NUMBERS

62 NCAA TOURNAMENT WINS
Nebraska has won 62 games in its 24 NCAA Tournament appearances (62-52). The 62 postseason wins rank 19th in NCAA history.

30 ACADEMIC ALL-AMERICANS
A total of 22 Huskers have combined to earn 30 CoSIDA Academic All-America honors, the most of any softball program in NCAA history.

27 ALL-AMERICANS
Nebraska has produced 27 All-Americans, including eight first-team selections, seven two-time picks and two three-time All-Americans.

24 NCAA TOURNAMENTS
The Huskers have made 24 appearances in the NCAA Tournament, including 13 straight from 1995 to 2007. Nebraska's 24 postseason appearances rank 13th in NCAA history.

21 REVELLE ALL-AMERICANS
Rhonda Revelle has guided 13 players to a total of 21 All-America honor in her first 28 seasons as Nebraska's head coach.

19 CONFERENCE TITLES
Nebraska has won a total of 19 conference championships. The Huskers won 12 Big Eight titles, six Big 12 crowns and captured their first Big Ten title in 2014.

15 TOP-25 RANKINGS
Nebraska has been ranked in the final NFCA poll in 15 of the 26 years the poll has existed. The Huskers were one of only six teams nationally to be ranked in the final poll in each of the first 12 years it existed (1995 to 2006).

14 REVELLE ACADEMIC ALL-AMERICANS
Rhonda Revelle has produced 14 academic All-Americans at Nebraska. That total ranks fourth among all softball head coaches in NCAA history.

7 WCWS APPEARANCES
Nebraska has advanced to the Women's College World Series seven times to rank 14th in NCAA history.

4 SOFTBALL OLYMPIANS
Four former Huskers have competed in the Olympics, with a pair of former players competing in each of the last two Olympics.

HUSKER PITCHING STAFF SHOWING IMPROVEMENT

Nebraska's pitching staff has been much improved this season. Through 36 games, the Huskers boast a 3.10 ERA and are allowing 3.8 runs per game. Both of those averages are on pace to be the lowest for a Nebraska team since the 2014 season, when the Huskers were co-Big Ten champions and advanced to an NCAA Super Regional.

- NU has allowed two or fewer runs 15 times in 36 games this year (42 percent). In the previous two seasons, Nebraska allowed two or fewer runs only 19 times in 75 games (25 percent).
- Nebraska has allowed fewer than two runs eight times in 36 games this season. In the previous two seasons, the Huskers allowed fewer than two runs only seven times in 75 games.
- Senior **Olivia Ferrell** is 10-8 with two saves and a 2.89 ERA after entering the year with a 15-21 career record, one save and a 4.47 ERA. Ferrell has pitched in 24 of Nebraska's 36 games this spring with 17 starts. She ranks sixth in the Big Ten in saves, seventh in wins and eighth in strikeouts (90).
- Junior **Courtney Wallace** has appeared in 23 games with 15 starts. Wallace is 9-7 with a 2.84 ERA and one save in 103.2 innings this season after entering the year with a 6-9 career record and 5.50 ERA. Wallace ranks eighth in the Big Ten in saves and ninth in wins.
- Freshman **Kaylin Kinney** has appeared in 14 games with four starts, posting a 1-0 record and a 4.02 ERA. Kinney ranks sixth in the Big Ten in saves.

PITCHING COMPARISON (2020 TO 2021)

Season	ERA	SHO	HITS/GM	RUNS/GM	BB/GM	HR/GM	AVG.
2020	5.54	0	8.5	6.0	3.9	1.2	.313
2021	3.10	2	6.6	3.8	2.6	0.6	.256
DIFF.	-2.44	+2	-1.9	-2.2	-1.3	-0.6	-.057

CLOSE CALLS

Nebraska has been accustomed to playing close games so far this spring, as 19 of the Huskers' 36 contests (53 percent) have been decided by either one or two runs.

- Nebraska is 9-10 in games decided by two runs or less this season. In 23 games last year, the Huskers played only six games decided by two or fewer runs (3-3 record in those games).
- Ten of Nebraska's 16 losses have been by either one or two runs.
- Twenty-two of Nebraska's 36 games have been either a tie, one-run or two-run game entering the sixth inning. The Huskers are 13-1 when leading after five innings, 1-13 when trailing after five innings and 3-2 when tied after five innings.
- Nebraska is 74-2 the past five seasons when leading after six innings of play, with both losses to Minnesota. The Huskers had won 63 consecutive games when leading after six innings, dating back to March 25, 2017, before Minnesota rallied from a one-run deficit to win 8-7 on April 16.

NEBRASKA'S 2021 RECORD WHEN...

Overall	20-16	Out-Hitting Opponent	13-1
Non-Conference	0-0	Out-Hit by Opponent	5-14
Big Ten Conference	20-16	Scoring First	15-4
Home	11-5	Opponent Scores First	5-12
Neutral	6-6	Scoring in the First Inning	9-3
Road	3-5	Scoring Fewer than 3 Runs	2-9
Night Games	2-5	Scoring 5 or More Runs	15-3
Day Games	18-11	Scoring 10 or More Runs	3-0
Sunday	5-4	Allowing Fewer Than 3 Runs	11-4
Monday	0-0	Allowing 5 or More Runs	2-8
Tuesday	0-0	Allowing 10 or More Runs	0-1
Wednesday	0-0	Leading After Five Innings	13-1
Thursday	0-2	Leading After Six Innings	15-1
Friday	6-4	Trailing After Five Innings	1-13
Saturday	9-6	Trailing After Six Innings	0-11
vs. Ranked Opponents	2-5	Tied After Five Innings	3-2
vs. Unranked Opponents	18-11	Tied After Six Innings	1-3
Extra Innings	1-3	Committing 0 Errors	7-7
1-Run Games	5-4	Committing 2 or More Errors	6-2

EDWARDS' STREAK FALLS JUST SHORT OF NCAA RECORD

Senior outfielder **Tristen Edwards** nearly set an NCAA record for most consecutive plate appearances reaching base safely. In a seven-game span from April 2-10, Edwards reached base safely in 24 straight trips to the plate. Her streak ranked third in NCAA history.

- During the streak of reaching base in 24 consecutive plate appearances, Edwards was 4-for-4 with a double and a homer with 12 walks and eight hit-by-pitches.
- The streak began at Rutgers, when Edwards reached base all 15 times in the series. She homered in her only official at bat, walked nine times and was hit by five pitches.
- Edwards then reached base safely in her first nine trips to the plate in the Illinois series. She went 3-for-3 with three walks and three-hit-by-pitches before her streak ended with a pop out.
- Over 20 games the last five weeks, Edwards has posted a .657 on-base percentage. Although she is 9-for-33 (.273) in that stretch, Edwards has walked 27 times and been hit by 10 pitches.

LONGEST REACH BASE STREAKS IN NCAA HISTORY

RK.	PLAYER	TEAM	DATES	STREAK
1.	Amber Schisler	Campbell	May 5-17, 2017	26
2.	Adrienne Monka	Northwestern	April 16-May 4, 2011	25
3.	Tristen Edwards	Nebraska	April 2-10, 2021	24

EDWARDS SETS NEBRASKA'S ALL-TIME DOUBLES RECORD

Tristen Edwards hit her school-record 49th career double last Sunday against Maryland. Edwards broke the tie she shared with three-time All-American Ali Viola (1995-98), two-time All-American Tobin Echo-Hawk (1993-96) and All-American Kim Ogee (2000-03).

EDWARDS LEAVING HER MARK ON HUSKER RECORD BOOK

Senior outfielder **Tristen Edwards** has joined one elite club in Nebraska history, is nearing another and is poised to challenge several Husker career records.

- Edwards is one of only three Huskers who have totaled 40 career doubles and 40 career home runs. The other two members of that group are three-time All-American Ali Viola and two-time All-American Taylor Edwards, Tristen's older sister.
- Edwards is also looking to become the first Husker to hit 50 career doubles and 50 career home runs. Edwards currently owns 49 career doubles and 47 career home runs.
- Edwards is just the fourth Husker to record 150 career hits, runs and RBIs. The other three members of that group were all All-Americans (Ali Viola, Taylor Edwards and MJ Knighten).
- Edwards has set Nebraska's career doubles record and entered the year on pace to break the extra-base hits record in addition to challenging several other top marks. Edwards is seven shy of tying Nebraska's home run record and eight shy of matching the extra-base hits record.

NEBRASKA PLAYERS WITH 40 CAREER 2B & HR

Player	Years	2B	HR
Ali Viola	1995-98	48	53
Taylor Edwards	2011-14	41	54
Tristen Edwards	2017-pres.	49	47

NEBRASKA PLAYERS WITH 150 CAREER HITS, RUNS & RBIs

Player	Years	Hits	Runs	RBIs
Ali Viola	1995-98	263	157	213
Taylor Edwards	2011-14	220	177	202
MJ Knighten	2014-17	253	183	186
Tristen Edwards	2017-pres.	209	167	155

EDWARDS' ASSAULT ON NEBRASKA'S ALL-TIME RECORDS

Category	Record Holder	Record	Edwards' Total	Projection*
Doubles	Tristen Edwards	49	49	52
Home Runs	Taylor Edwards	54	47	52
Extra-Base Hits	Ali Viola	105	97	106

*Based on Edwards' career per-game averages played out over a 44-game 2021 schedule

EDWARDS CAREER RECORD WATCH

DOUBLES

1. Tristen Edwards (2017-present)	49
2. Tobin Echo-Hawk (1993-96)	48
Ali Viola (1995-98)	48
Kim Ogee (2000-03)	48

HOME RUNS

1. Taylor Edwards (2011-14)	54
2. Ali Viola (1995-98)	53
3. Jennifer Lizama (1997-2000)	47
Tristen Edwards (2017-present)	47
5. Tatum Edwards (2011-14)	46

EXTRA-BASE HITS

1. Ali Viola (1995-98)	105
2. Tristen Edwards (2017-present)	97
3. Taylor Edwards (2011-14)	95

RUNS

1. Kiki Stokes (2013-16)	200
2. Jennifer Lizama (1997-2000)	199
3. MJ Knighten (2014-17)	183
4. Kim Ogee (2000-03)	182
5. Taylor Edwards (2011-14)	177
6. Tobin Echo-Hawk (1993-96)	168
7. Tristen Edwards (2017-present)	167

RBIs

1. Ali Viola (1995-98)	213
2. Taylor Edwards (2011-14)	202
3. MJ Knighten (2014-17)	186
4. Brooke Thomason (2010-13)	177
5. Nicole Trimboli (2001-04)	173
6. Tatum Edwards (2011-14)	158
7. Tristen Edwards (2017-present)	155

WALKS

1. Taylor Edwards (2011-14)	150
2. Jennifer Lizama (1997-2000)	124
3. Kiki Stokes (2013-16)	120
4. Tristen Edwards (2017-present)	116
Ali Viola (1995-98)	116

BATTING AVERAGE

1. Ali Viola (1995-98)	.418
2. Tobin Echo-Hawk (1993-96)	.379
3. Jennifer Lizama (1997-2000)	.378
4. Lizzy Rock (2005-06)	.374
5. MJ Knighten (2014-17)	.357
6. Kiki Stokes (2013-16)	.350
7. Tristen Edwards (2017-present)	.348

SLUGGING PERCENTAGE

1. Ali Viola (1995-98)	.760
2. Tristen Edwards (2017-present)	.668
3. Christie McCoy (1997-98)	.642
4. Jennifer Lizama (1997-2000)	.635
5. Taylor Edwards (2011-14)	.629

ON-BASE PERCENTAGE

1. Ali Viola (1995-98)	.508
2. Tristen Edwards (2017-present)	.474
3. Taylor Edwards (2011-14)	.471
4. Kiki Stokes (2013-16)	.469
5. Jennifer Lizama (1997-2000)	.456

HIT-BY-PITCHES

1. Taylor Edwards (2011-14)	39
2. Tristen Edwards (2017-present)	37

MULTI-HOME RUN GAMES

1. Tristen Edwards (2017-present)	7
2. Tatum Edwards (2011-14)	6
Ali Viola (1995-98)	6

COLLEGE SOFTBALL POLLS

USA TODAY/NFCA COACHES POLL

Rk.	Team	Pts.	Record	LW
1.	Oklahoma (32)	800	39-1	1
2.	UCLA	768	32-3	2
3.	Alabama	718	39-7	4
4.	Florida	705	37-8	3
5.	Washington	673	35-9	5
6.	Florida State	622	36-8-1	6
7.	Arizona	569	33-8	9
8.	Arkansas	558	39-7	10
9.	Oklahoma State	536	39-6	11
10.	Arizona State	518	31-12	12
11.	Texas	462	35-9	7
12.	Oregon	460	31-13	8
13.	Clemson	418	37-4	13
14.	Louisiana	387	38-9	14
15.	Missouri	324	35-13	15
16.	LSU	300	28-16	16
17.	Tennessee	296	38-8	18
18.	Kentucky	290	35-12	17
19.	Michigan	229	28-5	19
20.	Virginia Tech	162	32-12	20
21.	Duke	159	34-10	22
22.	Georgia	126	29-17	21
23.	Minnesota	92	25-7	23
24.	JMU	86	30-1	24
25.	Wichita State	45	37-10-1	RV

ESPN.COM/USA SOFTBALL POLL

Rk.	Team	Record	Pts.	LW
1.	Oklahoma (19)	39-1	499	1
2.	UCLA (1)	32-3	479	2
3.	Alabama	39-7	447	4
4.	Florida	37-8	443	3
5.	Washington	35-9	399	5
6.	Arkansas	39-7	390	7
7.	Oklahoma State	39-6	358	9
8.	Arizona State	31-12	350	8
9.	Florida State	36-8-1	345	6
10.	Arizona	33-8	296	11
11.	Clemson	37-4	277	13
12.	Oregon	31-13	260	10
13.	LSU	28-16	244	14
14.	Texas	35-9	236	12
15.	Tennessee	38-8	212	16
16.	Missouri	35-13	206	15
17.	Kentucky	35-12	188	17
18.	Louisiana	38-9	167	18
19.	Michigan	28-5	139	20
20.	Virginia Tech	32-12	112	19
21.	Duke	34-10	97	21
22.	James Madison	30-1	74	23
23.	Minnesota	25-7	60	T24
24.	Georgia	29-17	56	22
25.	Ole Miss	34-16	46	RV

EDWARDS AMONG NATION'S TOP RETURNING STATISTICAL LEADERS

Tristen Edwards was in the midst of a stellar season in 2020 before the season was cut short. In 23 games last season, Edwards hit .434 with 10 doubles, 11 home runs and 22 RBIs.

- Edwards' 21 extra-base hits ranked second nationally in the shortened 2020 season. She was one of only three players in the country with 20 extra-base hits.
- Edwards was the only player in the country last season with at least 10 doubles and 10 home runs. She ranked fourth nationally in home runs (11) and 14th in doubles (10). Edwards was the only player in the nation to rank in the top 15 in both doubles and home runs in 2020.
- In addition to her lofty ranking in doubles and home runs, Edwards ranked third nationally in slugging percentage (1.000) and total bases (76), fourth in home runs per game (0.48) and 15th in runs per game (1.22).
- Entering 2021, Edwards ranked 18th among all active Division I players in career RBIs (140) and total bases (354), 19th in home runs (44), 22nd in doubles (42) and 23rd in runs (139).
- Entering this weekend's series at Iowa, Edwards is one of only 20 active Division I players with 40 career doubles and 40 career home runs. She is also one of only 11 active players from a Power Five conference with 200 career hits and 100 career walks.

EDWARDS' CAREER RANKINGS AMONG ACTIVE DIVISION I PLAYERS (AS OF MAY 2)

Category	Total	Rank
Walks	116	14th
Home Runs	47	24th
Doubles	49	25th
Runs	167	29th
Total Bases	401	34th
RBIs	155	41st

EDWARDS NAMED PLAYER OF THE WEEK FOR RECORD SIXTH TIME

Senior Tristen Edwards was named the first Big Ten Player of the Week of the 2021 season on March 2. She was honored after hitting .444 in six games with one double, three homers and six RBIs. Her three homers were more than any other Big Ten team hit in the first week.

- Edwards was named the Big Ten Player of the Week for the sixth time in her career. That set a Nebraska record for most career conference player-of-the-week honors and tied the Big Ten record for most career player-of-the-week awards.
- Edwards became the first Husker to win six conference player-of-the-week awards. Overall, Edwards is one shy of the most conference weekly awards in school history. All-American Peaches James won seven total conference weekly awards in her decorated career.

MOST PLAYER-OF-THE-WEEK AWARDS IN BIG TEN HISTORY

Player	School	Years	Awards
Tristen Edwards	Nebraska	2017-present	6
Sierra Romero	Michigan	2013-16	6
Adrienne Monka	Northwestern	2009-12	6

BILLIE ANDREWS IS A FOUR-TIME BIG TEN FRESHMAN OF THE WEEK

Billie Andrews has won four Big Ten Freshman of the Week awards in eight weeks this season. She won the award in three consecutive weeks from March 30 to April 13.

- Andrews' four freshman-of-the-week awards are the most by any freshman in Nebraska history. Andrews is also just the eighth player in Big Ten Conference history to win four freshman-of-the-week accolades in a season.
- Andrews is also one of only four Big Ten players to be honored as the freshman of the week in three consecutive weeks.

MOST BIG TEN FRESHMEN OF THE WEEK AWARDS IN BIG TEN HISTORY

Rk.	Player	School	Awards	Season
1.	Kendyl Lindaman	Minnesota	8	2017
2.	Sierra Romero	Michigan	7	2013
3.	Meghan Beaubien	Michigan	5	2018
t-4.	Billie Andrews	Nebraska	4	2021

THREE CONSECUTIVE BIG TEN FRESHMEN OF THE WEEK WINNERS

Player	School	Season
Sierra Romero	Michigan	2013
Kendyl Lindaman	Minnesota	2017
Meghan Beaubien	Michigan	2018
Billie Andrews	Nebraska	2021

STATISTICAL COMPARISON

TEAM	W-L	AVG.	SCORING	OPP. SCORING	ERA	FLD%
Nebraska	20-16	.256	4.8	3.8	3.10	.967
Iowa	20-16	.238	3.8	3.1	2.45	.968
NEB DIFF.	+0.0	+0.018	+1.0	+0.7	+0.65	-.001

SCOUTING THE IOWA HAWKEYES (20-16)

Iowa enters this weekend tied with Nebraska for fifth place in the Big Ten Conference standings with a 20-16 record. Iowa is coming off a four-game sweep at Rutgers last weekend. Prior to the sweep of the Scarlet Knights, the Hawkeyes had lost three straight series.

Nebraska and Iowa have each played 10 of the other 12 Big Ten teams. Both teams split a doubleheader with Michigan State and Ohio State and lost three of four games to Minnesota and Wisconsin. Both the Huskers and Hawkeyes won series against Maryland, Penn State and Purdue and lost their series to Michigan. Iowa fared better than Nebraska against Indiana and Rutgers, as the Hawkeyes went 3-1 against the Hoosiers and 4-0 against the Scarlet Knights, while the Huskers were 1-1 against Indiana and 2-2 against Rutgers.

- Iowa is batting .238 as a team and averaging 3.8 runs per game. A pair of Hawkeye starters are batting above .300 and three more are hitting above .265. Iowa has been proficient at playing small ball this season, ranking second in the conference with 30 sacrifices.
- Denali Loecker** leads the team with a .327 average, 32 hits, eight doubles, 24 RBIs, a .531 slugging percentage and a .411 on-base percentage. She is also tied for the team lead with four home runs.
- Brylee Klosterman**, the Big Ten co-Freshman of the Week, boasts a .316 average. She leads the Hawkeyes with a pair of triples and ranks second on the team in runs (15) and third in hits (30).
- Riley Sheehy** is third on the team with a .284 average, and she is tied for the team lead with 13 walks and five stolen bases.
- Kalena Burns** (.278) and **Nia Carter** (.267) are both hitting above .265. Burns is tied for the team lead with four home runs and ranks second among all Hawkeyes with 19 RBIs. Carter is second on the team with 31 hits. **Grace Baner** is the Iowa runs leader, as she has crossed home plate 18 times this season.
- Defensively, Iowa is allowing 3.1 runs per game this season. The Hawkeyes rank fifth in the Big Ten with a 2.45 ERA and have primarily used a three-pitcher rotation.
- Right-hander **Sarah Lehman** leads the Hawkeyes with 94.0 innings and 10 complete games this season, and she is tied for the team lead with 17 appearances. Lehman owns a 5-8 record with a 2.90 ERA and opponents are hitting only .238 against her.
- Right-hander **Allison Doocy**, the Big Ten Pitcher of the Week, has started a team-high 13 games and is 8-4 with a 2.11 ERA in 79.2 innings. She owns the most wins of any Hawkeye and is tied for the team lead with one save and 17 appearances. Doocy has struck out 85 batters while walking only 20. Opponents are hitting .238 against her. In her most recent outing last Sunday at Rutgers, Doocy tossed a 5.0-inning no-hitter. She also did not issue a walk but did hit three batters.
- Left-hander **Lauren Shaw** is the third of Iowa's primary pitchers. She is 7-3 with a team-low 2.01 ERA in 76.2 innings. Shaw is also tied for the team lead with two saves.
- Right-handers **Denali Loecker** (0-1, 8.40 ERA in 3.1 IP) and **Maggie Peterson** (0-0, 0.00 ERA in 1.0 IP) round out the Hawkeye staff.
- Renee Gillispie** is in her third season as the head coach at Iowa, where she owns a 56-53 record. In her 27th season as a collegiate head coach, Gillispie is 885-632-3 in her career. Prior to Iowa, Gillispie led UCF to a 625-403-1 record in 17 seasons from 2002 to 2018. She spent four seasons at Texas Tech from 1996 to 1999, posting a 118-123-1 record. Gillispie began her head coaching career at Bradley, leading the program to an 86-53-1 record in three seasons from 1993 to 1995.

NEBRASKA VS. IOWA

SERIES HISTORY

- Series Record:** Nebraska leads, 21-15
- In Big Ten Play:** Nebraska leads, 12-7
- In Lincoln:** Nebraska leads, 9-3
- At Iowa City:** Series tied, 9-8
- At a Neutral Site:** Iowa leads, 4-3
- Current Win Streak:** Iowa, 1 game
- Revelle vs. Iowa:** 18-12
- Gillispie vs. Nebraska:** 4-8
- Revelle vs. Gillispie:** 8-4

ALL-TIME MEETINGS

DATE	LOCATION	RESULT
4/6/1979	Lincoln	W, 4-1
5/9/1981	Neutral	W, 1-0 (9)
3/24/1982	Iowa City	L, 0-1
4/14/1990	Iowa City	W, 3-1
4/15/1990	Iowa City	L, 0-1
3/22/1991	Neutral	L, 0-4
3/23/1993	Neutral	L, 0-5
3/22/1997	Neutral	L, 1-15 (5)
3/22/1998	Neutral	W, 2-1
5/16/1998	Lincoln	W, 1-0
3/19/1999	Neutral	L, 0-1
5/17/2002	Iowa City	W, 3-0
5/17/2003	Lincoln	L, 1-2
5/20/2005	Lincoln	W, 4-0
5/21/2005	Lincoln	L, 0-1
5/19/2006	Iowa City	W, 1-0 (10)
4/14/2012	Iowa City	W, 7-4
4/14/2012	Iowa City	L, 6-7
4/15/2012	Iowa City	L, 4-6
4/5/2013	Iowa City	L, 2-6
4/6/2013	Iowa City	W, 11-1 (5)
4/7/2013	Iowa City	W, 3-2
4/11/2014	Lincoln	W, 5-2
4/11/2014	Lincoln	W, 9-1 (6)
4/12/2014	Lincoln	W, 18-0 (5)
3/25/2015	Iowa City	W, 12-2 (6)
3/25/2015	Iowa City	W, 16-7
5/9/2015	Neutral	W, 9-6
4/6/2016	Lincoln	W, 6-5
4/6/2016	Lincoln	W, 3-1
4/12/2017	Iowa City	L, 3-4
4/12/2017	Iowa City	L, 2-5
4/10/2018	Lincoln	L, 1-2
4/10/2018	Lincoln	W, 3-0
4/24/2019	Iowa City	W, 7-5
4/24/2019	Iowa City	L, 1-3

NOTABLE GAMES

**NEBRASKA 18, IOWA 0 (5 INN.)
APRIL 12, 2014**

Nebraska scored 14 times in the second inning en route to an 18-0 victory to complete a three-game sweep of Iowa. The Huskers' 14-run second marked the highest-scoring inning in program history, while the 18 runs and 18-run margin of victory are the largest in a conference game in Nebraska softball history.

**NEBRASKA 1, IOWA 0 (10 INN.)
MAY 19, 2006**

One of six NCAA Tournament meetings between Nebraska and Iowa from 1998 to 2006, the Huskers walked off with a 1-0 10-inning victory at Iowa in the 2006 Iowa City Regional opener. Jamie Waldecker won it with a two-out, RBI single in the bottom of the 10th inning. Ashley DeBuhr fired a three-hit shutout, facing only two batters over the minimum. No Hawkeye advanced past first base in the game.



#1 | RYLIE UNZICKER • OF

	AVG.	G-GS	R	H	2B	HR	RBI	BB	SLG%	OB%
2021	.274	36-34	22	26	5	2	9	15	.411	.400
Career	.230	142-108	62	69	17	6	28	47	.360	.347

- 108 career starts at Nebraska rank 2nd on the team
- Ranks in the top three on the team in hits, runs, doubles, triples & walks
- 7-time Nebraska Scholar-Athlete Honor Roll member
- 2-time Academic All-Big Ten & 2020 Big Ten Distinguished Scholar
- Sister Madi was a four-year Husker letterwinner (2015-19)



#2 | PAYTON HUSCROFT • INF

	AVG.	G-GS	R	H	2B	HR	RBI	BB	SLG%	OB%
2021	.000	2-0	0	0	0	0	0	0	.000	.000
Career	.167	26-19	2	7	1	1	6	5	.262	.271

- Has been slowed after recovering from offseason surgery
- Had 5 two-out RBIs in shortened 2020 season, one shy of the team high
- 1 of 3 Millard South products on the Husker roster (Glatter & Unzicker)
- 5-time Nebraska Scholar-Athlete Honor Roll member
- 2-time Tom Osborne Citizenship Team member



#5 | MJ GREEN • INF

	AVG.	G-GS	R	H	2B	HR	RBI	BB	SLG%	OB%
2021	.600	5-1	0	3	0	0	0	0	.600	.600
Career	.600	5-1	0	3	0	0	0	0	.600	.600

- Is 3-for-5 at the plate this season
- Named a top-100 recruit by FloSoftball
- No. 141 (Extra Inning Softball) & No. 153 (FastPitch News) recruit nationally
- All-state & 2-time all-district pick for Henderson (Texas) High School
- Travel ball teammate of Husker Abbey Newlun (Scrap Yard International)



#6 | BILLIE ANDREWS • INF

	AVG.	G-GS	R	H	2B	HR	RBI	BB	SLG%	OB%
2021	.310	36-36	28	36	4	7	28	8	.560	.357
Career	.310	36-36	28	36	4	7	28	8	.560	.357

- 4-time Big Ten Freshman of the Week (4th-most awards in Big Ten history)
- Ranks 4th in the Big Ten in runs & RBIs, 6th in steals and 10th in triples
- 4-time Omaha World-Herald All-Nebraska pick at Gretna High School
- Hit .434 with a .625 OB% and 1.200 SLG% in her prep career
- Older sister Brooke is a sophomore infielder with the Huskers



#7 | SYDNEY GRAY • INF

	AVG.	G-GS	R	H	2B	HR	RBI	BB	SLG%	OB%
2021	.366	15-14	8	15	5	1	8	1	.561	.381
Career	.366	15-14	8	15	5	1	8	1	.561	.381

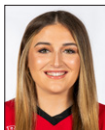
- Suffered a season-ending injury on March 28 against Penn State
- Was leading NU in average and was 2nd in hits & doubles prior to her injury
- Hit .503 at Sabino High School in Tucson, Ariz. with 16 3B, 16 HR & 87 RBIs
- Helped Sabino to an Arizona 3A state championship as a junior
- Travel ball teammate of Husker Caitlynn Neal (Arizona Desert Thunder)



#8 | ABBIE SQUIER • OF

	AVG.	G-GS	R	H	2B	HR	RBI	BB	SLG%	OB%
2021	.167	20-5	3	3	1	0	3	3	.222	.318
Career	.167	20-5	3	3	1	0	3	3	.222	.318

- Started the past two games in LF going 2-for-5 with a walk and two RBIs
- No. 95 recruit nationally; 3rd-team High School All-American as a junior
- .490 career average with a .994 SLG% at Lincoln Southwest High School
- Was the state shot put champion as a junior
- Lone Lincoln native on Nebraska's 2021 roster



#13 | PEYTON GLATTER • OF

	AVG.	G-GS	R	H	2B	HR	RBI	BB	SLG%	OB%
2021	.225	29-25	8	16	2	3	17	8	.380	.300
Career	.234	90-79	29	55	9	8	42	25	.374	.311

- Ranks 2nd among active Huskers with 42 career RBIs at Nebraska
- Has started 79 of Nebraska's 111 games the past three seasons
- 3-time member of the Nebraska Scholar-Athlete Honor Roll
- Member of the 2019 Tom Osborne Citizenship Team
- 1 of 3 Millard South products on the Husker roster (Huscroft & Unzicker)



#14 | CAMYL ARMENDARIZ • INF

	AVG.	G-GS	R	H	2B	HR	RBI	BB	SLG%	OB%
2021	.000	21-1	8	0	0	0	0	0	.000	.000
Career	.000	21-1	8	0	0	0	0	0	.000	.000

- Has appeared in 21 games (1 start at DP; 17 games as a PR & 3 as a PH)
- Four-year varsity player for Bonita (Calif.) High School
- Totaled 113 hits, 23 doubles, 5 triples, 20 homers & 80 RBIs in prep career
- 3-time all-league & All-San Gabriel Valley selection
- 1 of 3 current Huskers from the Corona Angels travel ball team



#19 | CAITLYNN NEAL • RHP

	W-L	ERA	APP	GS	CG	SHO	SV	IP	SO	AVG.
2021	0-0	10.50	3	0	0	0	0	2.2	0	.500
Career	0-0	10.50	3	0	0	0	0	2.2	0	.500

- Named the preseason Big Ten Newcomer of the Year by D1Softball
- Tossed a scoreless inning vs. No. 23 Michigan in her career debut
- Member of the United States Under-17 Women's National Team
- 2-hit shutout in the Pan American Championships Gold Medal game
- 23-2 record with a 0.71 ERA & 15 shutouts in her high school career



#19 | CAITLYNN NEAL • UTL

	AVG.	G-GS	R	H	2B	HR	RBI	BB	SLG%	OB%
2021	.214	25-15	11	9	2	0	6	0	.262	.209
Career	.214	25-15	11	9	2	0	6	0	.262	.209

- Named the preseason Big Ten Newcomer of the Year by D1Softball
- All 9 of her hits & all 6 of her RBIs have come in her last 13 starts
- Ranked as the No. 30 recruit nationally by Extra Inning Softball
- .613 career hitter with 17 HR & 68 RBIs at Bradshaw Mountain High School
- Travel ball teammate of Husker Sydney Gray (Arizona Desert Thunder)



#20 | ABBEY NEWLUN • INF

	AVG.	G-GS	R	H	2B	HR	RBI	BB	SLG%	OB%
2021	.000	1-0	0	0	0	0	0	0	.000	.000
Career	.000	1-0	0	0	0	0	0	0	.000	.000

- Four-year varsity player at The Woodlands High School in Texas
- Totaled 69 hits, 16 doubles, 3 triples & 9 home runs in her prep career
- Was an all-district selection as a junior
- Travel ball teammate of Husker MJ Green (Scrap Yard International)
- Father Craig graduated from Nebraska & was born & raised in Auburn, Neb.



#21 | SARAH YOCOM • INF

	AVG.	G-GS	R	H	2B	HR	RBI	BB	SLG%	OB%
2021	.000	30-30	7	0	0	0	1	1	.000	.091
Career	.130	97-65	20	7	0	0	4	4	.130	.186

- Has started 30 straight games at first base, her first starts at the position
- Has started multiple games at 1B, 2B, 3B & SS in her Husker career
- 2-time Academic All-Big Ten & 2019 Big Ten Distinguished Scholar
- 5-time Nebraska Scholar-Athlete Honor Roll member
- 3-time member of the Tom Osborne Citizenship Team



#23 | COURTNEY WALLACE • RHP

	W-L	ERA	APP	GS	CG	SHO	SV	IP	SO	AVG.
2021	9-7	2.84	23	15	5	1	1	103.2	46	.259
Career	15-16	4.33	62	32	9	1	2	234.2	134	.298

- Ranks 8th in the Big Ten in wins (9) and 9th in saves (1)
- Ranks 2nd among current Huskers in career innings pitched (234.2)
- 3-time Nebraska Scholar-Athlete Honor Roll member
- 2-time member of the Tom Osborne Citizenship Team
- Her cousin, Alex Smith, is a cornerback on the Wisconsin football team



#23 | COURTNEY WALLACE • UTL

	AVG.	G-GS	R	H	2B	HR	RBI	BB	SLG%	OB%
2021	.215	26-21	7	14	2	1	10	5	.323	.268
Career	.224	88-66	32	46	7	4	26	18	.376	.291

- Has been in the batting order during starts at P, DP, 3B & LF in her career
- 17 of her 46 career hits have gone for extra bases (7 2B, 6 3B, 4 HR)
- Tied the Nebraska single-game record with two triples vs. Lamar in 2019
- 6 career triples are the most of any current Husker
- Nebraska Gatorade Player of the Year as a high school senior



#24 | TRISTEN EDWARDS • OF

	AVG.	G-GS	R	H	2B	HR	RBI	BB	SLG%	OB%
2021	.316	36-36	27	24	7	5	15	37	.605	.585
Career	.348	215-212	167	209	49	47	155	116	.668	.476

- Ranks 3rd nationally in walks per game (1.03) & 6th in on-base pct. (.585)
- Named the preseason Big Ten Player of the Year by D1Softball
- 2-time member of USA Softball Collegiate Player of the Year watch list
- 2-time 1st-team All-Big Ten & record 6-time Big Ten Player of the Week
- Older twin sisters Tatum & Taylor were both 2-time Husker All-Americans



#27 | BROOKE ANDREWS • INF

	AVG.	G-GS	R	H	2B	HR	RBI	BB	SLG%	OB%
2021	.234	30-23	11	15	4	2	13	3	.422	.286
Career	.247	48-37	13	24	5	2	16	4	.381	.295

- 20 straight starts at 3B; 4 2B, 1 3B, 2 HR & 13 RBIs in those 20 starts
- Started a team-high 14 games at shortstop as a freshman in 2020
- Ranked 5th on the team with a .273 batting average last season
- 3-time Nebraska Scholar-Athlete Honor Roll member
- Younger sister Billie is a freshman infielder with the Huskers



#28 | ALLY RILEY • C

	AVG.	G-GS	R	H	2B	HR	RBI	BB	SLG%	OB%
2021	.222	20-20	2	10	3	1	2	1	.356	.255
Career	.265	75-56	6	41	9	2	24	6	.361	.302

- Is Nebraska's most experienced catcher with 42 career starts at the position
- Started 36 of Nebraska's 59 games at catcher the past two seasons
- Her .265 career average ranks 3rd among all Huskers with at least 100 AB
- 2-time Academic All-Big Ten selection
- 7-time Nebraska Scholar-Athlete Honor Roll member



#30 | KARLEE SEEVERS • RHP

	W-L	ERA	APP	GS	CG	SHO	SV	IP	SO	AVG.
2021	0-0	7.00	2	0	0	0	0	2.0	0	.500
Career	0-0	17.77	4	0	0	0	0	4.1	0	.500

- Tossed a scoreless inning vs. Purdue after making two appearances in 2020
- Is also a pinch runner, scoring a run in 2 of her 4 career appearances
- 2020 Academic All-Big Ten selection & 2020 Big Ten Distinguished Scholar
- 5-time member of the Nebraska Scholar-Athlete Honor Roll
- 2-time Tom Osborne Citizenship Team member



#32 | CAM YBARRA • INF

	AVG.	G-GS	R	H	2B	HR	RBI	BB	SLG%	OB%
2021	.289	36-36	12	33	9	4	23	8	.474	.331
Career	.259	149-143	32	115	32	9	51	37	.396	.319

- Ranks 8th in the Big Ten in doubles (9)
- In her 2nd year at Nebraska after spending two seasons at Oregon State
- Started all 59 games at second base for Nebraska the past two seasons
- Was a 2018 Pac-12 All-Defensive & All-Freshman Team honoree at OSU
- 1 of 3 current Huskers from the Corona Angels travel ball team



#33 | ANNI RALEY • C

	AVG.	G-GS	R	H	2B	HR	RBI	BB	SLG%	OB%
2021	.297	26-17	8	11	2	1	6	2	.486	.395
Career	.241	68-24	21	13	3	1	7	4	.426	.349

- Has started 17 games at catcher in 2021 & caught in 25 games total
- Is 10-for-26 with a triple, a homer, 7 runs & 6 RBIs in her last 11 starts
- Has also appeared as a pinch runner 31 times her career
- 2020 Academic All-Big Ten selection
- 5-time member of the Nebraska Scholar-Athlete Honor Roll



#39 | OLIVIA FERRELL • RHP

	W-L	ERA	APP	GS	CG	SHO	SV	IP	SO	AVG.
2021	10-8	2.89	24	17	6	1	2	101.2	90	.238
Career	25-29	4.00	91	56	14	1	4	336.1	231	.281

- Ranks 6th in the Big Ten in saves (2), 7th in wins (10) & 8th in strikeouts (90)
- Leads all current Huskers in career wins, ERA, appearances, starts & innings
- Has allowed 2 ER or fewer in 30 of her 56 career starts
- 2-time Academic All-Big Ten & 2-time Big Ten Distinguished Scholar
- 7-time member of the Nebraska Scholar-Athlete Honor Roll



#39 | OLIVIA FERRELL • UTL

	AVG.	G-GS	R	H	2B	HR	RBI	BB	SLG%	OB%
2021	.095	22-16	2	4	2	0	0	2	.143	.136
Career	.216	64-44	14	25	7	3	18	12	.353	.298

- Owns a .216 career average and 10 of her 25 hits are extra-base hits
- Hit .344 in the shortened 2020 season with 10 RBIs in only 32 at bats
- Ranked 2nd on the team in average, OB% & SLG% in 2020
- Was 3rd on the team last season in home runs (2) and RBIs (10)
- In addition to softball, had Division I scholarship offers as a hockey goalie



#44 | KAYLIN KINNEY • RHP

	W-L	ERA	APP	GS	CG	SHO	SV	IP	SO	AVG.
2021	1-1	4.02	14	4	0	0	2	31.1	14	.260
Career	1-1	4.02	14	4	0	0	2	31.1	14	.260

- Tied for the team lead and ranks 6th in the Big Ten with 2 saves
- 2019 Iowa Gatorade Player of the Year at Kennedy High School
- 2-time all-state selection & 4-time all-conference & all-metro pick
- Went 67-7 in her prep career with a 0.77 ERA and 527 strikeouts
- First Iowa native to play for Nebraska since 2004



#44 | KAYLIN KINNEY • UTL

	AVG.	G-GS	R	H	2B	HR	RBI	BB	SLG%	OB%
2021	.266	32-21	8	17	3	4	11	10	.500	.382
Career	.266	32-21	8	17	3	4	11	10	.500	.382

- B1G Player of the Week (5/4); 1st NU frosh to be player of the week since 2010
- Went 4-for-5 in the Maryland series with 3 home runs and 6 RBIs
- 2019 Iowa Gatorade Player of the Year at Kennedy High School
- Hit .501 in her high school career with a 1.054 slugging percentage
- Finished third in state history with 55 career home runs



#77 | SAMANTHA OWEN • INF

	AVG.	G-GS	R	H	2B	HR	RBI	BB	SLG%	OB%
2021	.000	6-1	0	0	0	0	0	0	.000	.000
Career	.287	169-159	68	135	30	17	86	47	.481	.360

- Is in her 3rd season at Nebraska after playing at Pacific her first two years
- Owns 159 career starts, including 63 starts as a Husker
- Ranks 2nd among current Huskers in career average, 2B, HR & RBIs
- 2-time All-West Coast Conference & 2018 All-West Region pick at Pacific
- Younger sister Izabella is a junior infielder at New Mexico

INDIVIDUAL SEASON & CAREER HIGHS

#1 RYLIE UNZICKER • SR. • OF

SEASON HIGH	CATEGORY	CAREER HIGH
3 at Rutgers - 2	Hits	same
3 vs. #23 Michigan	Runs	3 twice
2 four times	RBIs	2 seven times
1 five times	2B	2 twice
1 twice	HR	1 six times

#14 CAMYL ARMENDARIZ • FR. • INF

SEASON HIGH	CATEGORY	CAREER HIGH
none	Hits	none
1 eight times	Runs	same
none	RBIs	none
none	2B	none
none	HR	none

#2 PAYTON HUSCROFT • JR. • INF

SEASON HIGH	CATEGORY	CAREER HIGH
none	Hits	1 seven times
none	Runs	1 twice
none	RBIs	3 vs. Bradley (2020)
none	2B	1 vs. UTEP (2020)
none	HR	1 vs. Bradley (2020)

#19 CAITLYNN NEAL • FR. • UTL

SEASON HIGH	CATEGORY	CAREER HIGH
3 vs. Purdue	Hits	same
2 twice	Runs	same
2 vs. Purdue - 1	RBIs	same
1 twice	2B	same
none	HR	none

#5 MJ GREEN • FR. • INF

SEASON HIGH	CATEGORY	CAREER HIGH
2 vs. Purdue	Hits	same
none	Runs	none
none	RBIs	none
none	2B	none
none	HR	none

#20 ABBEY NEWLUN • FR. • INF

SEASON HIGH	CATEGORY	CAREER HIGH
none	Hits	none
none	Runs	none
none	RBIs	none
none	2B	none
none	HR	none

#6 BILLIE ANDREWS • FR. • INF

SEASON HIGH	CATEGORY	CAREER HIGH
4 at Rutgers	Hits	same
2 three times	Runs	same
3 twice	RBIs	same
1 four times	2B	same
2 vs. Illinois - 2	HR	same

#21 SARAH YOCOM • SR. • INF

SEASON HIGH	CATEGORY	CAREER HIGH
none	Hits	2 vs. Wisconsin (2018)
1 seven times	Runs	1 20 times
1 vs. Penn St. - 2	RBIs	1 four times
none	2B	none
none	HR	none

#7 SYDNEY GRAY • FR. • INF

SEASON HIGH	CATEGORY	CAREER HIGH
3 vs. Purdue	Hits	same
2 twice	Runs	same
2 twice	RBIs	same
1 five times	2B	same
1 vs. Penn St.	HR	same

#23 COURTNEY WALLACE • JR. • UTL

SEASON HIGH	CATEGORY	CAREER HIGH
2 three times	Hits	2 eight times
2 at #24 Minnesota	Runs	3 vs. Lamar (2019)
3 at Rutgers	RBIs	3 three times
1 twice	2B	2 vs. Texas Tech (2019)
1 at Rutgers	HR	1 four times

#8 ABBIE SQUIER • FR. • OF

SEASON HIGH	CATEGORY	CAREER HIGH
1 three times	Hits	same
2 vs. Michigan St. - 1	Runs	same
2 vs. Maryland	RBIs	same
1 vs. Michigan St. - 1	2B	same
none	HR	none

#24 TRISTEN EDWARDS • SR. • OF

SEASON HIGH	CATEGORY	CAREER HIGH
3 vs. Michigan St. - 1	Hits	4 three times
2 six times	Runs	4 vs. Pittsburgh (2019)
3 at #24 Minnesota	RBIs	8 vs. Pittsburgh (2019)
1 seven times	2B	2 three times
1 five times	HR	2 seven times

#13 PEYTON GLATTER • JR. • OF

SEASON HIGH	CATEGORY	CAREER HIGH
2 three times	Hits	3 twice
2 at Rutgers - 1	Runs	3 twice
4 at Rutgers - 1	RBIs	4 twice
1 twice	2B	1 nine times
1 three times	HR	1 eight times

#27 BROOKE ANDREWS • SO. • INF

SEASON HIGH	CATEGORY	CAREER HIGH
3 vs. Wisconsin - 1	Hits	same
3 at Rutgers	Runs	same
5 at Rutgers	RBIs	same
2 vs. Wisconsin - 1	2B	same
2 at Rutgers	HR	same

INDIVIDUAL SEASON & CAREER HIGHS

#28 ALLY RILEY • SR. • C

SEASON HIGH	CATEGORY	CAREER HIGH
2 three times	Hits	3 twice
1 twice	Runs	1 six times
1 twice	RBIs	3 vs. UTEP (2020)
1 three times	2B	2 vs. South Dakota St. (2018)
1 vs. Wisconsin	HR	1 twice

#32 CAM YBARRA • SR. • INF

SEASON HIGH	CATEGORY	CAREER HIGH
4 at Rutgers - 2	Hits	4 twice
2 twice	Runs	2 three times
4 vs. Purdue - 1	RBIs	same
2 vs. Purdue - 1	2B	3 vs. Lehigh (2020)*
1 four times	HR	1 nine times

**tied school record*

#33 ANNI RALEY • JR. • C

SEASON HIGH	CATEGORY	CAREER HIGH
3 at #24 Minnesota	Hits	same
2 twice	Runs	same
2 three times	RBIs	same
1 twice	2B	1 three times
1 at #24 Minnesota	HR	same

#39 OLIVIA FERRELL • SR. • UTL

SEASON HIGH	CATEGORY	CAREER HIGH
2 at Rutgers	Hits	3 at #21 Missouri (2020)
1 twice	Runs	2 twice
none	RBIs	3 twice
1 twice	2B	1 seven times
none	HR	1 three times

#44 KAYLIN KINNEY • FR. • UTL

SEASON HIGH	CATEGORY	CAREER HIGH
2 twice	Hits	same
2 twice	Runs	same
3 twice	RBIs	same
1 three times	2B	same
2 vs. Maryland	HR	same

#77 SAMANTHA OWEN • SR. • INF

SEASON HIGH	CATEGORY	CAREER HIGH
none	Hits	4 at North Texas (2018 at Pacific)
none	Runs	2 10 times
none	RBIs	4 six times
none	2B	2 at Purdue - 2 (2019)
none	HR	1 17 times

#19 CAITLYNN NEAL • FR. • UTL

SEASON HIGH	CATEGORY	CAREER HIGH
1.1 at Rutgers - 2	IP	same
none	Ks	none
N/A	H (low)*	N/A
3 at Rutgers - 2	H (high)	same
N/A	BB (low)*	N/A
1 at #24 Minnesota	BB (high)	same
N/A	R (low)*	N/A
3 at #24 Minnesota	R (high)	same
N/A	ER (low)*	N/A
3 at #24 Minnesota	ER (high)	same

**starts only*

#23 COURTNEY WALLACE • JR. • UTL

SEASON HIGH	CATEGORY	CAREER HIGH
7.0 four times	IP	7.0 five times
6 vs. Ohio St. - 2	Ks	8 at Georgia Tech (2020)
3 three times	H (low)*	1 vs. Maryland (2019)
8 at #24 Minnesota	H (high)	10 three times
0 four times	BB (low)*	0 five times
7 at #24 Minnesota	BB (high)	7 twice
0 vs. Maryland	R (low)*	0 twice
6 at #24 Minnesota	R (high)	10 vs. #3 Oklahoma (2020)
0 vs. Maryland	ER (low)*	0 twice
4 three times	ER (high)	9 vs. #3 Oklahoma (2020)

**starts only*

#30 KARLEE SEEVERS • JR. • RHP

SEASON HIGH	CATEGORY	CAREER HIGH
1.0 twice	IP	1.1 vs. Wichita St. - 1 (2020)
none	Ks	none
N/A	H (low)*	N/A
3 at #24 Minnesota	H (high)	6 vs. Wichita St. (2020)
N/A	BB (low)*	N/A
none	BB (high)	6 vs. Wichita St. (2020)
N/A	R (low)*	N/A
2 at #24 Minnesota	R (high)	9 vs. Wichita St. (2020)
N/A	ER (low)*	N/A
2 at #24 Minnesota	ER (high)	7 vs. Wichita St. (2020)

**starts only*

#39 OLIVIA FERRELL • SR. • RHP

SEASON HIGH	CATEGORY	CAREER HIGH
7.2 vs. #23 Michigan - 1	IP	same
7 four times	Ks	9 vs. Lamar (2019)
1 vs. Penn St. - 2	H (low)*	1 twice
10 vs. Illinois - 2	H (high)	11 at #21 Missouri (2020)
0 at Rutgers	BB (low)*	0 seven times
6 at Rutgers - 2	BB (high)	7 at Minnesota (2018)
0 twice	R (low)*	0 five times
6 vs. Illinois - 2	R (high)	8 twice
0 three times	ER (low)*	0 six times
5 twice	ER (high)	7 three times

**starts only*

#44 KAYLIN KINNEY • FR. • RHP

SEASON HIGH	CATEGORY	CAREER HIGH
5.2 vs. Wisconsin - 1	IP	same
4 vs. Wisconsin - 1	Ks	same
2 vs. #23 Michigan	H (low)*	same
6 vs. Purdue - 2	H (high)	same
1 vs. #23 Michigan	BB (low)*	same
4 at #24 Minnesota	BB (high)	same
1 twice	R (low)*	same
4 twice	R (high)	same
1 twice	ER (low)*	same
4 vs. Penn St.	ER (high)	same

**starts only*

HEAD COACH RHONDA REVELLE

COACHING STOPS

Nebraska (Head Coach)	1993-present
San Jose State (Assistant)	1989-92
Cal State-Hayward (Assistant)	1988
Nebraska Wesleyan (Head Coach)	1987
Nebraska Wesleyan (Assistant)	1986

NEBRASKA WESLEYAN (1987)

Year	Record	Conf.	Finish	Tourn.	Finish
1987	8-16	7-5	N/A	--	--

NEBRASKA (1993-PRESENT)

Year	Record	Conf.	Finish	Tourn.	Finish
1993	18-23	5-11	5th	--	--
1994	25-33	5-15	6th	--	--
1995	43-20	10-6	3rd	--	--
1996	42-23	10-8	4th	3-2	2nd
1997	29-24	10-6	4th	1-2	t-5th
1998	48-12	16-0	1st	4-0	1st
1999	35-21	10-8	4th	3-1	2nd
2000	52-21	15-2	2nd	4-1	1st
2001	51-15	16-2	1st	2-2	t-3rd
2002	50-14	11-5	3rd	3-1	2nd
2003	39-17	10-8	6th	2-2	t-3rd
2004	45-17	14-3	1st	4-0	1st
2005	36-23	9-9	7th	2-2	t-5th
2006	44-12	13-4	2nd	2-2	t-3rd
2007	37-20	10-8	5th	0-1	t-7th
2008	25-28	4-14	t-9th	3-1	2nd
2009	35-19	9-9	5th	0-1	t-7th
2010	30-29	7-11	t-6th	0-1	t-7th
2011	41-14	9-9	6th	--	--
2012	33-22	14-9	3rd	--	--
2013	45-16	16-6	2nd	1-1	t-3rd
2014	44-18	18-5	t-1st	0-1	t-5th
2015	35-23	17-6	3rd	2-1	2nd
2016	35-21	13-9	5th	1-1	t-5th
2017	24-29	13-11	5th	0-1	t-9th
2018	31-23	9-13	9th	0-1	t-9th
2019	21-31	9-14	9th	0-1	t-9th
2020	9-14	0-0	--	--	--
2021	20-16	16-16	--	--	--

NEBRASKA RECORD: 1,018-598
CAREER RECORD: 1,026-614

NCAA TOURNAMENT (NEBRASKA)

Year	Round	Record	Finish	Rank
1993	--	--	--	--
1994	--	--	--	--
1995	Regional	1-2	t-17th	18th
1996	Regional	1-2	t-17th	18th
1997	Regional	2-2	t-9th	25th
1998	WCWS	4-2	t-5th	5th
1999	Regional	4-2	t-9th	20th
2000	Regional	3-2	t-17th	14th
2001	Regional	2-2	t-17th	14th
2002	WCWS	5-2	t-5th	6th
2003	Regional	3-2	t-17th	13th
2004	Regional	3-2	t-9th	14th
2005	Regional	1-2	t-33rd	25th
2006	Regional	2-2	t-17th	15th
2007	Regional	0-2	t-49th	--
2009	Regional	1-2	t-33rd	--
2010	Regional	1-2	t-33rd	--
2011	Regional	2-2	t-17th	21st
2013	WCWS	5-3	t-7th	8th
2014	Super Reg.	4-3	t-9th	16th
2015	Regional	1-2	t-33rd	--
2016	Regional	2-2	t-17th	--
Totals	20 app.	47-42	--	--



RHONDA REVELLE

29TH SEASON AT NEBRASKA
1,018-598 RECORD

30TH CAREER SEASON
1,026-614 RECORD

WINNINGEST COACH IN THE HISTORY OF HUSKER ATHLETICS

COACH OF THE YEAR IN 3 MAJOR CONFERENCES

NFCA HALL OF FAME

COACHING NUMBERS

Conference Coach-of-the-Year Awards	4
Big Ten Coach of the Year	1
Big 12 Coach of the Year	2
Big Eight Coach of the Year	1
Conference Titles	7
Big Ten Conference Titles	1
Big 12 Conference Titles	6
NCAA Tournament Appearances	20
Women's College World Series	3
NFCA All-Americans	21
CoSIDA Academic All-Americans	14

NFCA HALL-OF-FAME COACHES

(ACTIVE DIVISION I COACHES ONLY)

Coach	Induction Year
Mike Candrea, Arizona	1996
Carol Hutchins, Michigan	2006
Rhonda Revelle, Nebraska	2010
Melinda Fischer, Illinois State	2010
Ralph Weekly, Tennessee	2011
Patty Gasso, Oklahoma	2012
Donna Papa, North Carolina	2012
Joan Joyce, Florida Atlantic	2013
Patrick Murphy, Alabama	2013
Jo Evans, Texas A&M	2015
Bob Brock, Sam Houston State	2016
Jacquie Joseph, Michigan State*	2016
Karen Weekly, Tennessee	2018

*inducted as member of Pioneer Category

WINS AT CURRENT SCHOOL

(ACTIVE DIVISION I COACHES ONLY)

1. Mike Candrea, Arizona	1,667
2. Carol Hutchins, Michigan	1,636
3. Patty Gasso, Oklahoma	1,319
4. Donna Papa, North Carolina	1,288
5. Patrick Murphy, Alabama	1,136
6. Melinda Fischer, Illinois State	1,091
7. Bob Coolen, Hawaii	1,036
8. Rhonda Revelle, Nebraska	1,018

(LIST INCLUDES GAMES THROUGH MAY 2)

MOST NCAA TOURNAMENTS

(ACTIVE DIVISION I COACHES ONLY)

1. Mike Candrea, Arizona	33
2. Carol Hutchins, Michigan	27
3. Patty Gasso, Oklahoma	22
4. Patrick Murphy, Alabama	21
5. Rhonda Revelle, Nebraska	20
Jo Evans, Texas A&M	20

ACADEMIC ALL-AMERICANS

(ALL-TIME AMONG DIVISION I COACHES)

1. Patrick Murphy, Alabama	29
2. Ralph & Karen Weekly, Tennessee	23
3. Tim Walton, Florida	19
4. Rhonda Revelle, Nebraska	14

2021 SEASON STATISTICS

Record: 20-16 Home: 11-5 Away: 3-5 Neutral: 6-6 Big Ten: 20-16

Player	avg	gp-gs	ab	r	h	2b	3b	hr	rbi	tb	slg%	bb	hp	so	gdp	ob%	sf	sh	sb-att	po	a	e	fld%
5 MJ Green	.600	5-1	5	0	3	0	0	0	0	3	.600	0	0	0	0	.600	0	0	0-1	0	0	0	.000
7 Sydney Gray	.366	15-14	41	8	15	5	0	1	8	23	.561	1	0	10	0	.381	0	1	1-1	17	31	3	.941
24 Tristen Edwards	.316	36-36	76	27	24	7	0	5	15	46	.605	37	15	13	1	.585	2	0	8-8	33	4	2	.949
6 Billie Andrews	.310	36-36	116	28	36	4	2	7	28	65	.560	8	2	25	0	.357	3	1	10-13	50	83	16	.893
33 Anni Raley	.297	26-17	37	8	11	2	1	1	6	18	.486	2	4	12	0	.395	0	0	0-0	78	14	0	1.000
32 Cam Ybarra	.289	36-36	114	12	33	9	0	4	23	54	.474	8	0	6	1	.331	2	0	2-4	62	57	2	.983
1 Rylie Unzicker	.274	36-34	95	22	26	5	1	2	9	39	.411	15	5	26	0	.400	0	3	7-7	45	4	0	1.000
44 Kaylin Kinney	.266	32-21	64	8	17	3	0	4	11	32	.500	10	2	18	1	.382	0	0	0-0	2	8	0	1.000
27 Brooke Andrews	.234	30-23	64	11	15	4	1	2	13	27	.422	3	2	7	0	.286	1	0	2-6	21	46	6	.918
13 Peyton Glatter	.225	29-25	71	8	16	2	0	3	17	27	.380	8	0	17	2	.300	1	2	1-2	13	0	0	1.000
28 Ally Riley	.222	20-20	45	2	10	3	0	1	2	16	.356	1	1	5	0	.255	0	1	0-0	75	11	0	1.000
23 Courtney Wallace	.215	26-21	65	7	14	2	1	1	10	21	.323	5	0	10	2	.268	1	0	1-1	9	29	1	.974
19 Caitlynn Neal	.214	25-15	42	11	9	2	0	0	6	11	.262	0	0	9	0	.209	1	0	3-3	20	4	1	.960
11 Keana "KP" Pola	.211	8-5	19	0	4	1	0	0	0	5	.263	0	0	5	1	.211	0	0	0-0	26	0	1	.963
8 Abbie Squier	.167	20-5	18	3	3	1	0	0	3	4	.222	3	1	4	0	.318	0	0	0-0	3	0	1	.750
39 Olivia Ferrell	.095	22-16	42	2	4	2	0	0	0	6	.143	2	0	11	0	.136	0	1	1-1	2	25	1	.964
21 Sarah Yocom	.000	30-30	9	7	0	0	0	0	1	0	.000	1	0	3	0	.091	1	0	1-1	252	1	1	.996
77 Samantha Owen	.000	6-1	7	0	0	0	0	0	0	0	.000	0	0	0	0	.000	0	0	0-0	15	0	0	1.000
14 Camyl Armendariz	.000	21-1	5	8	0	0	0	0	0	0	.000	0	0	2	0	.000	0	0	1-1	0	0	0	.000
2 Payton Huscroft	.000	2-0	1	0	0	0	0	0	0	0	.000	0	0	0	0	.000	0	0	0-0	1	0	0	1.000
20 Abbey Newlun	.000	1-0	1	0	0	0	0	0	0	0	.000	0	0	0	0	.000	0	0	0-0	0	0	0	.000

30 Karlee SeEVERS	.000	1-0	0	0	0	0	0	0	0	0	.000	0	0	0	0	.000	0	0	0-0	0	0	0	.000
Totals	.256	36	937	172	240	52	6	31	152	397	.424	104	32	183	8	.347	12	9	38-49	724	317	35	.967
Opponents	.256	36	926	135	237	39	6	21	125	351	.379	93	15	150	8	.332	6	19	30-38	707	244	56	.944

LOB - Team (217), Opp (203). DPs turned - Team (17), Opp (16). IBB - Team (10), Edwards 10, Opp (2).

(All games Sorted by Earned run avg)

Player	era	w-l	app	gs	cg	sho	sv	ip	h	r	er	bb	so	2b	3b	hr	b/avg	wp	hp	bksfa	sha	
23 Courtney Wallace	2.84	9-7	23	15	5	1/0	1	103.2	103	59	42	40	46	16	3	9	.259	8	6	0	4	9
39 Olivia Ferrell	2.89	10-8	24	17	6	1/0	2	101.2	91	51	42	40	90	19	1	8	.238	2	9	0	2	5
44 Kaylin Kinney	4.02	1-1	14	4	0	0/0	2	31.1	33	19	18	12	14	4	2	1	.260	9	0	0	0	4
30 Karlee SeEVERS	7.00	0-0	2	0	0	0/0	0	2.0	4	2	2	0	0	0	0	1	.500	0	0	0	0	0
19 Caitlynn Neal	10.50	0-0	3	0	0	0/0	0	2.2	6	4	4	1	0	0	0	2	.500	0	0	0	0	1
Totals	3.10	20-16	36	36	11	2/0	5	241.1	237	135	107	93	150	39	6	21	.256	19	15	0	6	19
Opponents	3.89	16-20	36	36	10	5/2	0	235.2	240	172	131	104	183	52	6	31	.256	9	32	0	12	9

PB - Team (9), Riley 7, Raley 2, Opp (6). SBA/ATT - Raley (15-20), Riley (15-18), Ferrell (12-17), Wallace (11-13), Kinney (7-8).