

N NEBRASKA

SOFTBALL

NEBRASKA vs ILLINOIS

FRIDAY	SATURDAY	SUNDAY
<p>vs. Illinois 5:30 p.m. (CT)</p> <p>Video: BTN+ (\$) Audio: Huskers.com</p>	<p>vs. Illinois (1) Noon (CT)</p> <p>vs. Illinois (2) 3 p.m. (CT)</p> <p>Video: BTN+ (\$) Audio: Huskers.com</p>	<p>vs. Illinois 11 a.m. (CT)</p> <p>Video: BTN+ (\$) Audio: Huskers.com</p>

The Nebraska softball team hosts the Illinois Fighting Illini this weekend for a four-game series at Bowlin Stadium. The series begins with a single game Friday at 5:30 p.m. followed by a Noon doubleheader on Saturday. The final game of the series is set for 11 a.m. Sunday.

A limited number of tickets are available for each game as part of a reduced capacity at Bowlin Stadium due to the pandemic. Fans are encouraged to purchase tickets in advance at Huskers.com, and all fans are required to wear a face covering inside Bowlin Stadium.

A live video stream of each game will be available to Big Ten Network+ subscribers, while a free radio call will be available on Huskers.com, courtesy of the Husker Sports Network and the UNL College of Journalism and Mass Communications.

This weekend's series features two of the seven Big Ten teams with winning records in the conference-only schedule this season. Illinois (14-6) enters the series in fourth place in the Big Ten standings, while Nebraska (11-9) sits in seventh place. The Huskers' 11 wins are already their most conference victories since the 2017 season.

Two of the three Big Ten weekly award winners will be in action this weekend at Bowlin Stadium. Nebraska's Billie Andrews was named the Big Ten Freshman of the Week, while Illinois' Sydney Sickels was named the Big Ten Pitcher of the Week.

QUICK HITTERS

- Nebraska's 11 Big Ten wins are its most since the 2017 season.
- Six of Nebraska's nine losses have come by either one or two runs.
- The Huskers' .980 fielding percentage is currently on pace to break the school record of .973 set in 2006.
- Nebraska has used a different batting lineup in all 20 games this season.
- **Billie Andrews** has both had a hit and scored a run in nine consecutive games.
- **Billie Andrews** has been named the Big Ten Freshman of the Week each of the past two weeks.
- **Billie Andrews** had four hits in the series opener at Rutgers last Friday. She is just the seventh Husker freshman to have a four-hit game and the first since 2011.
- **Tristen Edwards** ranks 7th nationally with a .600 on-base percentage this season.
- **Tristen Edwards** enters this weekend with 46 career doubles, two shy of the Husker career record of 48 doubles.
- **Tristen Edwards** is expected to play in her 200th career game on Friday.
- Fourteen of **Cam Ybarra's** 19 hits have come with runners on base, as she is batting .368 with runners on base this season.

HUSKERS TO WATCH



Tristen Edwards homered in her only official at bat last weekend while also walking nine times and being hit by five pitches. She has reached base safely in 15 consecutive plate appearances.



The reigning two-time Big Ten Freshman of the Week, **Billie Andrews** is 18-for-33 (.545) with three doubles, two triples, two homers, 11 runs and nine RBIs in her nine-game hitting streak.

HUSKER SCHEDULE (11-9 RECORD)

Sleepy Hollow Sports Complex (Leesburg, Fla.)

Feb. 26	vs. Indiana (Game 1)	L, 1-3
Feb. 26	vs. Indiana (Game 2)	W, 4-2
Feb. 27	vs. Michigan St. (Game 1)	W, 7-1
Feb. 27	vs. Michigan St. (Game 2)	L, 3-6 (8)
Feb. 28	vs. Ohio St. (Game 1)	L, 2-4
Feb. 28	vs. Ohio St. (Game 2)	W, 2-1

Sleepy Hollow Sports Complex (Leesburg, Fla.)

March 11	vs. #23 Michigan (Game 1)	L, 1-2 (8)
March 11	vs. #23 Michigan (Game 2)	L, 0-2
March 12	vs. #23 Michigan	W, 5-4 (8)
March 13	vs. Purdue (Game 1)	W, 8-1
March 13	vs. Purdue (Game 2)	L, 0-7
March 14	vs. Purdue	W, 3-1

March 26	Penn St.	W, 9-0 (5)
March 27	Penn St. (Game 1)	W, 8-2
March 27	Penn St. (Game 2)	W, 10-2 (5)
March 28	Penn St.	L, 5-7 (8)

April 2	at Rutgers	W, 12-4 (6)
April 3	at Rutgers (Game 1)	W, 8-1
April 3	at Rutgers (Game 2)	L, 6-10
April 4	at Rutgers	L, 1-2

April 9	Illinois	5:30 p.m.
April 10	Illinois (Game 1)	Noon
April 10	Illinois (Game 2)	3 p.m.
April 11	Illinois	11 a.m.

April 16	at Minnesota	5 p.m.
April 17	at Minnesota (Game 1)	Noon
April 17	at Minnesota (Game 2)	3 p.m.
April 18	at Minnesota	Noon

April 23	Wisconsin	5:30 p.m.
April 24	Wisconsin (Game 1)	Noon
April 24	Wisconsin (Game 2)	3 p.m.
April 25	Wisconsin (BTN)	1 p.m.

April 30	Maryland (Game 1)	3 p.m.
April 30	Maryland (Game 2)	6 p.m.
May 1	Maryland	3 p.m.
May 2	Maryland	11 a.m.

May 7	at Iowa	3 p.m.
May 8	at Iowa (Game 1)	1 p.m.
May 8	at Iowa (Game 2)	3:30 p.m.
May 9	at Iowa	Noon

May 14	at Northwestern	3 p.m.
May 15	at Northwestern (Game 1)	Noon
May 15	at Northwestern (Game 2)	2:30 p.m.
May 16	at Northwestern (BTN)	1 p.m.

May 21-23	NCAA Regionals	
May 27-30	NCAA Super Regionals	
June 3-9	NCAA Women's College World Series	



NEBRASKA SOFTBALL FACTS

UNIVERSITY INFORMATION

Location	Lincoln, Neb.
Population	280,369
Founded	1869
Enrollment	25,057
Nickname	Cornhuskers, Huskers
Colors	Scarlet & Cream
Conference	Big Ten
Chancellor	Ronnie Green
Athletic Director	Bill Moos

ATHLETIC COMMUNICATIONS

Softball Contact	Matt Smith
E-Mail	msmith@huskers.com
Phone	(402) 770-5926

2021 COACHING STAFF

Head Coach	Rhonda Revelle
Nebraska Record	1,009-591 (29th year)
Career Record	1,017-607 (30th year)
Assoc. Head Coach	Lori Sippel (32nd year)
Assistant Coach	Diane Miller (13th year)
Dir. of Softball Oper.	Erin Bohling (2nd year)

2020 SEASON REVIEW

Overall Record	9-14
Big Ten Record (Finish)	N/A

2021 TEAM OUTLOOK

Letterwinners Returning/Lost	14/5
Total Starters Returning/Lost	10/1
Position Starters Returning/Lost	8/0
Pitchers Returning/Lost	3/1
Returning All-Conference Players	2*
Returning All-Region Players	2*
Returning All-Americans	0
Newcomers	8

*includes honors at a player's previous school

STADIUM INFORMATION

Stadium	Bowlin Stadium (2,500)
First Season	2002
Record at Bowlin Stadium	233-100 (.700)

PROGRAM HISTORY

First Year of Softball	1976
All-Time Record	1,490-886 (.627)
All-Time Conference Record	401-290 (.580)
Big Ten Record	120-81 (.597)
Overall Conference Titles	19
Big Eight Titles	12
Big 12 Titles	6
Big Ten Titles	1
NCAA Tournament Appearances	24
WCWS Appearances	7
NCAA Tournament Record	62-52 (.544)
NCAA Regional Record	52-35 (.598)
NCAA Super Regional Record	2-3 (.400)
WCWS Record	8-14 (.363)
NFCA All-Americans	27
CoSIDA Academic All-Americans	30

PRONUNCIATION GUIDE

Camyl Armendariz	kuh-MEAL are-men-DARE-iz
Abbie Squier	SKWHY-er
Rhonda Revelle	ruh-VELL
Cam Ybarra	ee-BAR-uh
Sarah Yocom	YO-come

NEBRASKA 2021 SEASON NOTEBOOK

- Nebraska's roster features 21 players, tied for the largest roster in school history.
- The roster features 10 Nebraska natives, the most in-state players since 1980.
- The roster features the most freshmen (8) and most seniors (7) in the 29-year tenure of **Rhonda Revelle** as Nebraska's head coach.
- **Rhonda Revelle** is in her 29th season leading her alma mater in 2021. Revelle is the second-longest serving female head coach in the history of Nebraska Athletics.
- Revelle owns 1,009 wins at Nebraska. She is the all-time wins leader (male or female) in the history of Nebraska Athletics.
- Associate Head Coach **Lori Sippel** is in her 32nd year at Nebraska. Sippel is the longest-tenured female assistant coach in the history of Nebraska Athletics.
- Revelle (1981-83) and Sippel (1985-88) also played for NU. Including their playing and coaching careers, Revelle and Sippel have been a part of 1,313 of Nebraska's 1,490 all-time victories (88 percent).
- Assistant coach **Diane Miller** rounds out the Husker coaching staff. In her 13th season, Miller has helped Nebraska's offense set more than 40 school records.
- NU will play a conference-only schedule for the first time in program history in 2021. The Huskers are scheduled to play 44 Big Ten Conference games, which would nearly double the previous high for most conference games played in one season (24 Big Ten games in 2013).

- Fifth-year seniors **Tristen Edwards** and **Samantha Owen** both took advantage of the NCAA waiver for an extra year of eligibility following the cancellation of the 2020 season due to the COVID-19 pandemic.
- Edwards and Owen are also the only two Huskers who have been an all-conference or all-region performer in their careers. Edwards is a two-time first-team All-Big Ten selection and was a 2019 third-team all-region honoree. Owen was a first-team All-WAC pick and third-team all-region selection at Pacific in 2018.
- **Tristen Edwards** is already one of only five Huskers to be a two-time first-team All-Big Ten selection. In 2021, Edwards will look to become the first Husker to earn three first-team All-Big Ten awards, in addition to becoming the eighth three-time first-team all-conference selection in program history.

2-TIME 1ST-TEAM ALL-BIG TEN PICKS

- **Tristen Edwards, SS (2018-19)**
- MJ Knighten, 3B (2015-16)
- Kiki Stokes, OF (2015-16)
- Tatum Edwards, RHP/UTL (2013-14)
- Taylor Edwards, C (2013-14)

3-TIME 1ST-TEAM ALL-CONFERENCE PICKS

- Jessica Yoachim, 3B (2004-06)*
- Peaches James, RHP/UTL (2001-04)*
- Jenny Voss, RHP (1997-98, 2000)*
- Jennifer Lizama, INF (1997-2000)*
- Tobin Echo-Hawk, INF (1993-96)^*
- Jane Kremer, SS (1986-88)^
- Lori Sippel, RHP (1985-88)*

*Big 12 Conference (1996-2011)

^Big Eight Conference (1977-95)

2021 NEBRASKA NUMERICAL ROSTER

NO.	NAME	B/T	POS.	HT.	YR.	HOMETOWN
1	Rylie Unzicker	L/R	OF	5-5	Sr.	Omaha, Neb.
2	Payton Huscroft	L/L	INF	5-9	Jr.	Omaha, Neb.
5	MJ Green	R/R	INF	5-2	Fr.	Henderson, Texas
6	Billie Andrews	R/R	INF	5-8	Fr.	Gretna, Neb.
7	Sydney Gray	R/R	INF	5-5	Fr.	Tucson, Ariz.
8	Abbie Squier	R/R	OF	5-7	Fr.	Lincoln, Neb.
13	Peyton Glatter	L/R	OF	5-5	Jr.	Omaha, Neb.
14	Camyl Armendariz	R/R	INF	5-7	Fr.	La Verne, Calif.
19	Caitlynn Neal	L/R	RHP/UTL	5-3	Fr.	Dewey, Ariz.
20	Abbey Newlun	R/R	INF	5-7	Fr.	The Woodlands, Texas
21	Sarah Yocom	R/R	INF	5-9	Sr.	Cozad, Neb.
23	Courtney Wallace	R/R	RHP/UTL	5-5	Jr.	Omaha, Neb.
24	Tristen Edwards	R/R	OF	5-6	Sr.	Murrieta, Calif.
27	Brooke Andrews	R/R	INF	5-8	So.	Gretna, Neb.
28	Ally Riley	R/R	C	5-9	Sr.	Alva, Okla.
30	Karlee Seevers	R/R	RHP	5-6	Jr.	York, Neb.
32	Cam Ybarra	L/R	INF	5-6	Sr.	Mission Viejo, Calif.
33	Anni Raley	R/R	C	5-6	Jr.	Clovis, Calif.
39	Olivia Ferrell	R/R	RHP/UTL	5-9	Sr.	Omaha, Neb.
44	Kaylin Kinney	R/R	RHP/UTL	5-10	Fr.	Cedar Rapids, Iowa
77	Samantha Owen	R/R	INF	5-5	Sr.	Manteca, Calif.

NEBRASKA NATIVES POWER HUSKER OFFENSE AT RUTGERS

Nebraska hit .318, scored 27 runs and slugged six home runs while averaging 1.0 run per inning in its four-game series at Rutgers last weekend. That production was powered by five Nebraska natives, who drove in 19 of the Huskers' 27 runs in the series.

- **Billie Andrews** was 7-for-14 in the Rutgers series with two doubles, a triple, four runs scored and three RBIs. She had a hit and scored a run in all four games, extending her streak to nine consecutive games with both a hit and run scored. In the series opener, Andrews became just the seventh freshman in program history to have a four-hit game. For her performance, Andrews was named the Big Ten Freshman of the Week for the second straight week.
- **Brooke Andrews** stepped into the starting lineup for the injured Sydney Gray and made an immediate impact. In the opener, she was 2-for-3 with her first two career home runs and career highs of three runs scored and five RBIs. Andrews went 4-for-14 in the series with one double, two home runs, three runs scored and five RBIs.
- **Peyton Glatter** started all four games in left field at Rutgers, her longest streak of consecutive starts this season. She responded with a 5-for-14 weekend that included a homer, three runs and five RBIs. Glatter hit her first career grand slam in the game two victory.
- **Rylie Unzicker** played the role of table setter in the Huskers' offensive outburst at Rutgers. Batting leadoff in three of the four games, Unzicker reached base in eight of her 16 plate appearances against the Scarlet Knights, totaling five hits - including a double - two walks and one hit-by-pitch, while tying for the team lead with five runs scored.
- **Courtney Wallace** made the most of her opportunities at Rutgers, reaching base five times in 11 trips to the plate. She produced three walks and two hits, one of which was a three-run homer. Wallace scored twice and drove in five runs in Piscataway.
- Although not a Nebraska native, California product **Cam Ybarra** also helped power the offense last weekend. Ybarra went 7-for-14 in the Rutgers series with a double and four RBIs. She tied her career high with four hits in game three of the series.

EDWARDS PERFECT IN PISCATAWAY

Senior outfielder **Tristen Edwards** was statistically perfect in Nebraska's four-game series at Rutgers last weekend.

- Edwards reached base all 15 times she came to the plate in the Rutgers series. She homered in her only official at bat of the weekend, walked nine times - including a pair of intentional walks - and was hit by nine pitches.
- Edwards posted the highest possible batting average (1.000), slugging percentage (4.000) and on-base percentage (1.000). She was also perfect defensively (1.000) and threw out a runner at home plate.

EDWARDS ON PACE FOR NEBRASKA'S TOP ON-BASE PERCENTAGE

Senior outfielder **Tristen Edwards** is getting on base at a record-breaking clip this season, reaching base 60 percent of the time she steps up to the plate. Edwards also brings an impressive streak into this weekend's series with Illinois.

- Edwards leads the Big Ten and ranks seventh nationally with a .600 on-base percentage. Edwards' on-base percentage climbs to fourth nationally among players with at least 50 plate appearances this season.
- Nebraska has played 45 percent of its scheduled regular-season games, and Edwards' on-base percentage is on pace to be a school record. Based on available records, only nine times has a Husker finished a season with an on-base percentage above .500. The top mark is a .532 on-base percentage by All-American Kiki Stokes in 2015.
- Entering Friday's series opener with Illinois, Edwards has reached base safely in 15 consecutive plate appearances, which is believed to be the longest streak in school history. She has also reached base safely in 12 consecutive games.

TOP ON-BASE PERCENTAGES IN HUSKER HISTORY

Rk.	Player	Year	OB%	Rk.	Player	Year	OB%
1.	Tristen Edwards	2021	.600	6.	Jennifer Lizama	1999	.512
2.	Kiki Stokes	2015	.532	7.	Kiki Stokes	2016	.509
3.	Ali Viola	1998	.531	8.	MJ Knighten	2016	.509
4.	Ashley Guile	2010	.520	9.	Sheena Lawrick	2004	.508
5.	Ali Viola	1996	.517	10.	Ali Viola	1995	.504

PROJECTED LINEUP

1	#24 TRISTEN EDWARDS • RF .364 • 15 R • 16 H • 4 2B • 4 HR • 12 RBI 196 Career Starts • 58 Starts in RF
2	#1 RYLIE UNZICKER • CF .295 • 13 R • 13 H • 4 2B • 0 HR • 4 RBI 92 Career Starts • 59 Starts in CF
3	#6 BILLIE ANDREWS • SS .338 • 16 R • 23 H • 3 2B • 2 HR • 15 RBI 20 Career Starts • 20 Starts at SS
4	#32 CAM YBARRA • 2B .297 • 4 R • 19 H • 7 2B • 1 HR • 13 RBI 127 Career Starts • 104 Starts at 2B
5	#13 PEYTON GLATTER • LF .235 • 4 R • 8 H • 0 2B • 2 HR • 8 RBI 65 Career Starts • 20 Starts in LF
6	#27 BROOKE ANDREWS • 3B .227 • 7 R • 5 H • 1 2B • 2 HR • 6 RBI 21 Career Starts • 6 Starts at 3B
7	#23 COURTNEY WALLACE • DP .200 • 4 R • 7 H • 1 2B • 1 HR • 7 RBI 58 Career Starts • 25 Starts at DP
8	#39 OLIVIA FERRELL • P .103 • 3 H • 0 RBI 6-6 • 2.57 ERA 57 Career Starts • 50 Starts at P
9	#21 SARAH YOCOM • 1B .000 • 2 R • 0 H • 0 2B • 0 HR • 1 RBI 49 Career Starts • 14 Starts at 1B
	#28 ALLY RILEY • C .167 • 4 R • 1 H • 0 2B • 0 HR • 0 RBI 48 Career Starts • 34 Starts at C

PROJECTED SUBSTITUTES

#2 PAYTON HUSCROFT • INF .000 • 0 R • 0 H • 0 2B • 0 HR • 0 RBI
#5 MJ GREEN • INF .600 • 0 R • 3 H • 0 2B • 0 HR • 0 RBI
#7 SYDNEY GRAY • INF .366 • 8 R • 15 H • 5 2B • 1 HR • 8 RBI
#8 ABBIE SQUIER • OF .100 • 3 R • 1 H • 1 2B • 0 HR • 1 RBI
#14 CAMYL ARMENDARIZ • INF .000 • 4 R • 0 H • 0 2B • 0 HR • 0 RBI
#19 CAITLYNN NEAL • RHP/UTL .240 • 6 R • 6 H • 5 RBI 0-0 • 3.00 ERA
#20 ABBEY NEWLUN • INF .000 • 0 R • 0 H • 0 2B • 0 HR • 0 RBI
#30 KARLEE SEEVERS • RHP 0-0 • 0.00 ERA • 1.0 IP • 0 SO • 0 BB
#33 ANNI RALEY • C .333 • 4 R • 5 H • 1 2B • 0 HR • 3 RBI
#44 KAYLIN KINNEY • RHP/UTL .176 • 3 R • 6 H • 3 RBI 0-0 • 4.97 ERA
#77 SAMANTHA OWEN • INF .000 • 0 R • 0 H • 0 2B • 0 HR • 0 RBI

BIG TEN STANDINGS

Rk.	Team	Big Ten Record
1.	Northwestern	18-2
2.	Michigan	13-3
3.	Minnesota	14-6
	Illinois	14-6
5.	Iowa	13-7
6.	Ohio State	12-7
7.	Nebraska	11-9
8.	Indiana	8-12
	Maryland	8-12
10.	Michigan State	6-10
11.	Purdue	7-13
12.	Rutgers	5-15
	Wisconsin	5-15
14.	Penn State	1-18

NEBRASKA CONFERENCE TITLES

BIG EIGHT CONFERENCE (1976-1995)

Year	Record	Finish	Tournament
1977	1-4	t-4th	N/A
1978	4-3	7th	t-6th
1979	3-8	6th	t-6th
1980	8-9	4th	N/A
1981	5-6	3rd	3rd
1982	9-3	1st	1st
1983	3-7	7th	N/A
1984	6-2	1st	1st
1985	11-1	1st	1st
1986	9-3	1st	1st
1987	8-2	1st	1st
1988	7-3	1st	1st
1989	6-4	3rd	t-5th
1990	3-5	5th	2nd
1991	3-5	5th	t-4th
1992	2-6	5th	t-4th
1993	5-11	5th	N/A
1994	5-15	6th	N/A
1995	10-6	3rd	N/A
TOTAL	108-103		12 total titles

BIG 12 CONFERENCE (1996-2011)

Year	Record	Finish	Tournament
1996	10-8	4th	2nd
1997	10-6	4th	5th
1998	16-0	1st	1st
1999	10-8	4th	2nd
2000	15-2	2nd	1st
2001	16-2	1st	5th
2002	11-5	2nd	2nd
2003	10-8	6th	t-4th
2004	14-3	1st	1st
2005	9-9	7th	t-5th
2006	13-4	2nd	t-3rd
2007	10-8	5th	t-5th
2008	4-14	t-9th	2nd
2009	9-9	5th	t-5th
2010	7-11	t-6th	t-5th
2011	9-9	6th	N/A
TOTAL	173-106		6 total titles

BIG TEN CONFERENCE (2012-PRES.)

Year	Record	Finish	Tournament
2012	14-9	3rd	N/A
2013	16-6	2nd	t-3rd
2014	18-5	t-1st	t-5th
2015	17-6	3rd	2nd
2016	13-9	5th	t-5th
2017	13-10	5th	t-9th
2018	9-13	9th	t-9th
2019	9-14	t-8th	t-9th
2020	No Big Ten Season Due to Pandemic		
2021	11-9	-	N/A
TOTAL	120-81		1 total title

DIGGING IN ON DEFENSE

Nebraska's defense has been impressive this season, as the Huskers boast a .980 fielding percentage that is on pace to be the top mark in program history.

- Nebraska ranks 13th nationally in fielding percentage, and its current mark of .980 would break the school record of a .973 fielding percentage in 2006.

HUSKER TEAMS FIELDING .970 OR HIGHER

Season	FLD%
2021	.980
2006	.973
2018	.973
2001	.972
2011	.970

BIG RED OFFENSE AT THE TOP OF THE BIG TEN

Despite a slow start, Nebraska ranks near the top of the Big Ten Conference in several offensive categories.

- The Huskers rank second in scoring (4.8 runs per game), doubles (31), home runs (14) and slugging percentage (.412) and third in on-base percentage (.352) and stolen bases (30).
- Individually, senior **Tristen Edwards** leads the Big Ten in on-base percentage (.600), walks (19) and hit-by-pitches (10), and ranks second in slugging percentage (.727). Senior **Cam Ybarra** ranks second in the league in doubles (7), while freshman **Billie Andrews** ranks fourth in runs (16) and triples (2) and fifth in RBIs (15) and steals (8).

BIG RED BATS COMING ALIVE

Nebraska's offense got off to a slow start this season, which should not have come as much of a surprise considering it had been almost a year since hitters had faced an opposing pitcher and considering the Huskers have started multiple freshmen in the lineup every game. But the bats have begun to come alive, helping NU to an 8-4 record over its last 12 games.

- Nebraska is batting .333 and averaging 6.3 runs per game over its last 12 contests after hitting just .145 and averaging only 2.5 runs per game over its first eight games.
- The Huskers are averaging 9.0 hits per game over the last 12 games, including seven contests with double-digit hits. In the first eight games this season, Nebraska had only one game with double-digit hits and averaged just 3.8 hits per game.
- Nebraska has hit 11 home runs in the past 12 games. The Huskers have homered in a season-high four straight games and have hit three home runs in each of the last two series openers (Penn State on March 262 and Rutgers on April 2).

HITTING COMPARISON

Games	AVG	R/GM	H/GM	2B	3B	HR	RBI	SLG%	OB%
First 8 Games	.145	2.5	3.8	6	0	3	16	.217	.233
Last 12 Games	.333	6.3	9.0	25	4	11	70	.537	.424
DIFF.	+.188	+3.8	+5.2	+19	+4	+8	+54	+.320	+.191

THE LAST TIME A HUSKER

Had 6+ At Bats	5 players vs. Wisconsin (5/8/16)
Had 5+ Hits	Lizzy Rock (5) vs. Illinois (2/24/06)
Scored 4+ Runs	Tristen Edwards (4) vs. Pittsburgh (2/17/19)
Had 3+ Doubles	Cam Ybarra (4) vs. Lehigh (3/7/20)
Had 2+ Homers	Brooke Andrews (2) at Rutgers (4/2/21)
Had 3+ Homers	Kaylan Jablonski (3) at Cal State Fullerton (3/17/18)
Homered in 1st Career AB	Hailey Decker vs. UIC (2/8/13)
Stole 3+ Bases	Nikki Haget (3) vs. La Salle (3/12/11)
Drew 4+ Walks	MJ Knighten (4) at Northwestern (4/17/16)
Had 2+ HBP	Tristen Edwards (3) at Rutgers - 1 (4/3/21)
Had 5+ RBIs	Brooke Andrews (5) at Rutgers (4/2/21)
Threw a No-Hitter	Kaylan Jablonski vs. Purdue (4/29/16)
Threw a Perfect Game	Ashley DeBuhr vs. Iowa St. (4/13/05)
Had 10+ Strikeouts	Cassie McClure (10) vs. South Dakota St. (3/29/16)
Had 15+ Strikeouts	Ashley Hagemann (17) at Omaha (4/19/12)
Had a 10-Game Hit Streak	Tristen Edwards (12) in 2019-20
Had a 15-Game Hit Streak	MJ Knighten (21) in 2015
Had a 20-Game Hit Streak	MJ Knighten (21) in 2015
Had a 25-Game Hit Streak	Taylor Edwards (25) in 2013-14

HUSKER PITCHING STAFF SHOWING IMPROVEMENT

Nebraska's pitching staff has been much improved this season. Through 20 games, the Huskers boast a 2.64 ERA and are allowing only 3.1 runs per game. Both of those averages are on pace to be the lowest for a Nebraska team since the 2014 season.

- The Huskers have allowed two or fewer runs 12 times in 20 games this season (60 percent). In the previous two seasons, Nebraska allowed two or fewer runs only 19 times in 75 games (25 percent).
- Nebraska has allowed fewer than two runs six times in 20 games this season. In the previous two seasons, the Huskers allowed fewer than two runs only seven times in 75 games.
- Senior **Olivia Ferrell** is 6-6 with a 2.57 ERA. Ferrell has pitched in 13 of Nebraska's 20 games with 11 starts. She ranks fifth in the Big Ten in innings (65.1), sixth in wins and seventh in strikeouts (63).
- Junior **Courtney Wallace** has appeared in 11 games with seven starts. Wallace is 5-3 with a 2.35 ERA and one save in 53.2 innings. Wallace ranks fifth in the Big Ten in saves and eighth in wins.
- Freshman **Kaylin Kinney** has appeared in eight games with two starts. She has excelled in relief, posting a 2.62 ERA with two saves in six relief outings. Kinney ranks second in the Big Ten and 21st nationally in saves.
- Junior **Karlee SeEVERS** has thrown 1.0 scoreless inning this season, while freshman **Caitlynn Neal** has allowed only one run in 2.1 innings pitched.

PITCHING COMPARISON (2020 TO 2021)

Season	ERA	SV	HITS/GM	RUNS/GM	BB/GM	HR/GM	AVG.
2020	5.54	1	8.5	6.0	3.9	1.2	.313
2021	2.64	3	6.2	3.1	2.4	0.5	.246
DIFF.	-2.90	+2	-2.3	-2.9	-1.5	-0.7	-.067

CLOSE CALLS

Nebraska has been accustomed to playing close games so far this spring, as 10 of the Huskers' 20 contests have been decided by either one or two runs.

- Nebraska is 4-6 in games decided by two runs or less this season, including 2-2 in one-run games and 2-4 in two-run games. In 23 games last year, the Huskers played only six games decided by two or fewer runs (3-3 record in those games).
- Six of Nebraska's nine losses have been by either one or two runs.
- Twelve of Nebraska's 20 games have been either a tie, one-run or two-run game entering the sixth inning. The Huskers are 7-0 when leading after five innings, 0-7 when trailing after five innings and 2-2 when tied after five innings.
- NU has played four extra-inning games this season, posting a 1-3 record in those games. The Huskers have already played their most extra-inning games since the 2016 season.

THE LAST TIME NEBRASKA...

Beat a No. 1 Team	vs. No. 1 Michigan (1-0 on 4/8/16)
Beat a Top-5 Team	vs. No. 1 Michigan (1-0 on 4/8/16)
Beat a Top-10 Team	vs. No. 6 Texas A&M (6-3 on 2/22/18)
Beat a Ranked Team	vs. No. 23 Michigan (5-4 [8] on 3/12/21)
Won When Trailing After 6 Innings	vs. Tulsa (3/10/18)
Lost When Leading After 6 Innings	vs. Minnesota (3/25/17)
Scored 10+ Runs	at Rutgers [12] (4/2/21)
Scored 15+ Runs	vs. UTEP [16] (2/8/20)
Scored 20+ Runs	at Maryland [26] (4/3/16)
Allowed 10+ Runs	at Rutgers - 2 [10] (4/3/21)
Allowed 15+ Runs	vs. Wichita St. [17] (2/29/20)
Allowed 20+ Runs	never
Recorded 15+ Hits	at Rutgers - 2 [19] (4/8/17)
Recorded 20+ Hits	at Maryland [21] (4/3/16)
Hit 6+ Doubles	vs. Lamar [7] (2/8/19)
Hit 4+ Home Runs	vs. Illinois - 1 [4] (3/31/19)
Stole 6+ Bases	at Purdue [60] (4/13/19)
Drew 10+ Walks	at Creighton [11] (4/25/17)
Was No-Hit	vs. No. 23 Michigan (Game 1: 3/11/21)

BOWLIN STADIUM



The 2020 season marks the 20th season Nebraska has called Bowlin Stadium home. The stadium's inaugural season was in 2002.

One of the top facilities in the country, Bowlin Stadium features seating for 2,500 fans, an underground system that heats the field and a large video board. Just past the right field fence is the Alex Gordon Training Complex, a spacious indoor facility that is large enough for Nebraska to take live batting practice inside the complex. The clubhouse features a locker room, players' lounge, training room and coaches' offices.

Nebraska has won nearly 70 percent of its games at Bowlin Stadium. The Huskers have hosted four NCAA Regionals at Bowlin Stadium and ranked in the top 25 nationally in attendance 14 times, including four seasons ranked in the top 10.

YEARLY RECORDS

Year	Record	Pct.
2002	9-5	.643
2003	14-7	.667
2004	14-6	.700
2005	9-7	.563
2006	20-1	.952
2007	18-5	.783
2008	13-9	.591
2009	13-5	.722
2010	12-8	.600
2011	10-4	.714
2012	15-1	.938
2013	18-4	.818
2014	13-3	.813
2015	11-6	.647
2016	11-5	.688
2017	13-6	.684
2018	10-7	.588
2019	7-10	.412
2020	0-0	.000
2021	3-1	.750
TOTAL	233-100	.700

LARGEST CROWDS

1. 2,302	Michigan	April 9, 2016
2. 2,204	Ohio State	April 19, 2014
3. 1,960	Texas	April 9, 2011
4. 1,844	Iowa	May 17, 2003
5. 1,840	Michigan	April 27, 2013
6. 1,752	Wisconsin	May 12, 2012
7. 1,692	Indiana	May 3, 2014
8. 1,673	Illinois	April 22, 2017
9. 1,601	Wisconsin	April 28, 2018
10. 1,585	Lehigh	May 20, 2004

NEBRASKA BY THE NUMBERS

62 NCAA TOURNAMENT WINS
Nebraska has won 62 games in its 24 NCAA Tournament appearances (62-52). The 62 postseason wins rank 19th in NCAA history.

30 ACADEMIC ALL-AMERICANS
A total of 22 Huskers have combined to earn 30 CoSIDA Academic All-America honors, the most of any softball program in NCAA history.

27 ALL-AMERICANS
Nebraska has produced 27 All-Americans, including eight first-team selections, seven two-time picks and two three-time All-Americans.

24 NCAA TOURNAMENTS
The Huskers have made 24 appearances in the NCAA Tournament, including 13 straight from 1995 to 2007. Nebraska's 24 postseason appearances rank 13th in NCAA history.

21 REVELLE ALL-AMERICANS
Rhonda Revelle has guided 13 players to a total of 21 All-America honor in her first 28 seasons as Nebraska's head coach.

19 CONFERENCE TITLES
Nebraska has won a total of 19 conference championships. The Huskers won 12 Big Eight titles, six Big 12 crowns and captured their first Big Ten title in 2014.

15 TOP-25 RANKINGS
Nebraska has been ranked in the final NFCA poll in 15 of the 26 years the poll has existed. The Huskers were one of only six teams nationally to be ranked in the final poll in each of the first 12 years it existed (1995 to 2006).

14 REVELLE ACADEMIC ALL-AMERICANS
Rhonda Revelle has produced 14 academic All-Americans at Nebraska. That total ranks fourth among all softball head coaches in NCAA history.

7 WCWS APPEARANCES
Nebraska has advanced to the Women's College World Series seven times to rank 14th in NCAA history.

4 SOFTBALL OLYMPIANS
Four former Huskers have competed in the Olympics, with a pair of former players competing in each of the last two Olympics.

BILLIE ANDREWS REPEATS AS BIG TEN FRESHMAN OF THE WEEK

Shortstop **Billie Andrews** has won the Big Ten Freshman of the Week award each of the last two weeks. She earned the first weekly award of her career following her performance against Penn State, and she was recognized this week after an outstanding series at Rutgers.

- Andrews is just the second Husker to be named the Big Ten Freshman of the Week in consecutive weeks, joining All-American MJ Knighten, who took home the honor in the first two weeks of April in the 2014 season.
- Andrews produced multiple hits in each of the four games against Penn State. She finished the series 10-for-15 (.667) with a 1.133 slugging percentage. Andrews scored six runs, drove in five and produced the first two triples and first home run of her career.
- Andrews went 7-for-14 in the four-game series at Rutgers with two doubles, a homer, three RBIs and four runs scored. She had at least one hit and scored at least one run in every game of the series, extending her streak to nine consecutive games with both a hit and run scored.

GRAY OUT FOR THE SEASON

Freshman third baseman **Sydney Gray** suffered a season-ending injury in the series finale against Penn State on March 28.

- Gray started 14 of Nebraska's first 16 games at third base, and she hit .366. She finished her abbreviated freshman season with a flurry, going 13-for-25 over her final eight games with five doubles, one homer, seven runs scored and seven RBIs.
- At the time of her injury, Gray was leading Nebraska in batting average and was second in hits, doubles and slugging percentage (.561).

EDWARDS NEARS NEBRASKA ALL-TIME DOUBLES RECORD

Tristen Edwards owns 46 career doubles, entering this weekend needing two doubles to tie the school record and three to set the new top mark.

- Edwards ranks fourth in school history with her 46 career doubles. The record of 48 doubles is shared by three-time All-American Ali Viola (1995-98), two-time All-American Tobin Echo-Hawk (1993-96) and All-American Kim Ogee (2000-03).

EDWARDS LEAVING HER MARK ON HUSKER RECORD BOOK

Senior outfielder **Tristen Edwards** has joined one elite club in Nebraska history, is nearing another and is poised to challenge several Husker career records.

- Edwards is one of only three Huskers who have totaled 40 career doubles and 40 career home runs. The other two members of that group are three-time All-American Ali Viola and two-time All-American Taylor Edwards, Tristen's older sister.
- Edwards is also looking to become the first Husker to hit 50 career doubles and 50 career home runs. Edwards currently owns 46 career doubles and 46 career home runs.
- Edwards is just the fourth Husker to record 150 career hits, runs and RBIs. The other three members of that group were all All-Americans (Ali Viola, Taylor Edwards and MJ Knighten).

NEBRASKA'S 2021 RECORD WHEN...

Overall	11-9	Out-Hitting Opponent	8-0
Non-Conference	0-0	Out-Hit by Opponent	1-8
Big Ten Conference	11-9	Scoring First	10-3
Home	3-1	Opponent Scores First	1-6
Neutral	6-6	Scoring in the First Inning	5-1
Road	2-2	Scoring Fewer than 3 Runs	1-6
Night Games	1-2	Scoring 5 or More Runs	8-2
Day Games	10-7	Scoring 10 or More Runs	2-0
Sunday	2-3	Allowing Fewer Than 3 Runs	9-2
Monday	0-0	Allowing 5 or More Runs	0-5
Tuesday	0-0	Allowing 10 or More Runs	0-1
Wednesday	0-0	Leading After Five Innings	7-0
Thursday	0-2	Leading After Six Innings	7-0
Friday	4-1	Trailing After Five Innings	0-7
Saturday	5-3	Trailing After Six Innings	0-5
vs. Ranked Opponents	1-2	Tied After Five Innings	2-2
vs. Unranked Opponents	10-7	Tied After Six Innings	1-3
Extra Innings	1-3	Committing 0 Errors	5-5
1-Run Games	2-2	Committing 2 or More Errors	2-0

- Edwards is on track to break Nebraska's all-time records in doubles and extra-base hits in addition to challenging several other top marks. Edwards is three shy of breaking Nebraska's double record and nine shy of bettering the top home run mark.

NEBRASKA PLAYERS WITH 40 CAREER 2B & HR

Player	Years	2B	HR
Ali Viola	1995-98	48	53
Taylor Edwards	2011-14	41	54
Tristen Edwards	2017-pres.	46	46

NEBRASKA PLAYERS WITH 150 CAREER HITS, RUNS & RBIs

Player	Years	Hits	Runs	RBIs
Ali Viola	1995-98	263	157	213
Taylor Edwards	2011-14	220	177	202
MJ Knighten	2014-17	253	183	186
Tristen Edwards	2017-pres.	201	155	152

EDWARDS' ASSAULT ON NEBRASKA'S ALL-TIME RECORDS

Category	Record Holder	Record	Edwards Total	Projection*
Doubles	Three players	48	46	52
Home Runs	Taylor Edwards	54	46	52
Extra-Base Hits	Ali Viola	105	93	106

*Based on Edwards' career per-game averages played out over a 44-game 2021 schedule

EDWARDS NAMED PLAYER OF THE WEEK FOR RECORD SIXTH TIME

Senior **Tristen Edwards** was named the first Big Ten Player of the Week of the 2021 season on March 2. She was honored after hitting .444 in six games with one double, three homers and six RBIs. Her three homers were more than any other Big Ten team hit in the first week.

- Edwards was named the Big Ten Player of the Week for the sixth time in her career. That set a Nebraska record for most career conference player-of-the-week honors and tied the Big Ten record for most career player-of-the-week awards.
- Edwards became only the third player in Big Ten history to be a six-time player of the week. The other two are two-time Northwestern All-American Adrienne Monka and four-time Michigan All-American Sierra Romero.
- Edwards became the first Husker to win six conference player-of-the-week awards. Overall, Edwards is one shy of the most conference weekly awards in school history. All-American Peaches James won seven total conference weekly awards in her decorated career.

MOST PLAYER-OF-THE-WEEK AWARDS IN BIG TEN HISTORY

Player	School	Years	Awards
Tristen Edwards	Nebraska	2017-present	6
Sierra Romero	Michigan	2013-16	6
Adrienne Monka	Northwestern	2009-12	6

EDWARDS THREATENED SCHOOL RECORDS IN 2020

Senior outfielder **Tristen Edwards** was in the midst of a potentially historic year in 2020 before the season was cut short due to the COVID-19 pandemic. In 23 games last season, Edwards hit .434 with 10 doubles, 11 home runs, 21 extra-base hits and a 1.000 slugging percentage.

- Edwards was second nationally in extra-base hits (21) during the shortened 2020 season and was third in slugging percentage (1.000), fourth in home runs (11) and 14th in doubles (10).
- Edwards was on pace to re-write the Nebraska softball season record book in 2020. With 10 doubles, 11 home runs and 21 extra-base hits through 23 games, Edwards was on pace to finish with 24 doubles, 27 home runs and 51 extra-base hits in a typical 56-game regular season. Each of those totals would have been a school record.
- Edwards was also on pace to set a Nebraska season record for slugging percentage (1.000) in addition to finishing with the third-highest average in school history (.434).

EDWARDS' RECORD PACE IN 2020

Category	23-Game Total	56-Game Pace*	NU Season Record
Doubles	10	24	22
Home Runs	11	27	22
Extra-Base Hits	21	51	35
Total Bases	76	185	150
Slugging Percentage	1.000	1.000	.865

*a normal full regular-season softball schedule consists of 56 games

EDWARDS CAREER RECORD WATCH

DOUBLES

1. Tobin Echo-Hawk (1993-96)	48
Ali Viola (1995-98)	48
Kim Ogee (2000-03)	48
4. Tristen Edwards (2017-present)	46

HOME RUNS

1. Taylor Edwards (2011-14)	54
2. Ali Viola (1995-98)	53
3. Jennifer Lizama (1997-2000)	47
4. Tatum Edwards (2011-14)	46
Tristen Edwards (2017-present)	46

EXTRA-BASE HITS

1. Ali Viola (1995-98)	105
2. Taylor Edwards (2011-14)	95
3. Jennifer Lizama (1997-2000)	93
Tristen Edwards (2017-present)	93

RUNS

1. Kiki Stokes (2013-16)	200
2. Jennifer Lizama (19997-2000)	199
3. MJ Knighten (2014-17)	183
4. Kim Ogee (2000-03)	182
5. Taylor Edwards (2011-14)	177
6. Tobin Echo-Hawk (1993-96)	168
7. Ali Viola (1995-98)	157
8. Tristen Edwards (2017-present)	155

RBIs

1. Ali Viola (1995-98)	213
2. Taylor Edwards (2011-14)	202
3. MJ Knighten (2014-17)	186
4. Brooke Thomason (2010-13)	177
5. Nicole Trimboli (2001-04)	173
6. Tatum Edwards (2011-14)	158
7. Tristen Edwards (2017-present)	150

WALKS

1. Taylor Edwards (2011-14)	150
2. Jennifer Lizama (1997-2000)	124
3. Kiki Stokes (2013-16)	120
4. Ali Viola (1995-98)	116
5. Kim Ogee (2000-03)	115
6. Ashley Guile (2008-12)	103
7. MJ Knighten (2014-17)	101
8. Tristen Edwards (2017-present)	98

BATTING AVERAGE

1. Ali Viola (1995-98)	.418
2. Tobin Echo-Hawk (1993-96)	.379
3. Jennifer Lizama (19997-2000)	.378
4. Lizzy Rock (2005-06)	.374
5. MJ Knighten (2014-17)	.357
6. Tristen Edwards (2017-present)	.354

SLUGGING PERCENTAGE

1. Ali Viola (1995-98)	.760
2. Tristen Edwards (2017-present)	.681
3. Christie McCoy (1997-98)	.642
4. Jennifer Lizama (1997-2000)	.635
5. Taylor Edwards (2011-14)	.629
6. MJ Knighten (2014-17)	.597
7. Denise Day (1982-85)	.579
8. Tatum Edwards (2011-14)	.566
9. Hailey Decker (2013-14)	.558
10. Brooke Thomason (2010-13)	.546

ON-BASE PERCENTAGE

1. Ali Viola (1995-98)	.508
2. Taylor Edwards (2011-14)	.471
3. Tristen Edwards (2017-present)	.470

MULTI-HOME RUN GAMES

1. Tristen Edwards (2017-present)	7
2. Tatum Edwards (2011-14)	6
Ali Viola (1995-98)	6

COLLEGE SOFTBALL POLLS

USA TODAY/NFCA COACHES POLL

Rk.	Team	Record	Pts.	LW
1.	Oklahoma (32)	800	28-0	1
2.	UCLA	762	19-1	2
3.	Oregon	721	26-2	3
4.	Alabama	698	29-4	4
5.	Florida	658	26-4	5
6.	Washington	640	28-4	6
7.	Texas	581	27-3	7
8.	Arizona	580	22-5	9
9.	Florida State	531	24-6	10
10.	Arkansas	474	31-3	13
	Kentucky	474	27-6	8
12.	Oklahoma State	472	29-5	11
13.	Arizona State	370	21-9	14
14.	Louisiana	343	25-6	16
15.	Virginia Tech	322	23-6	19
16.	Duke	304	27-6	12
17.	LSU	301	21-12	15
18.	Clemson	288	26-4	18
19.	Missouri	287	28-7	17
20.	Georgia	198	23-6	20
21.	Tennessee	193	28-6	21
22.	Northwestern	113	18-2	24
23.	Michigan	101	13-3	23
24.	UCF	48	25-9	22
25.	Texas State	42	24-3	RV

ESPN.COM/USA SOFTBALL POLL

Rk.	Team	Record	Pts.	LW
1.	Oklahoma (19)	28-0	498	1
2.	UCLA	19-1	479	2
3.	Alabama (1)	29-4	442	4
4.	Oregon	26-2	435	3
5.	Florida	26-4	421	5
6.	Washington	28-4	386	6
7.	Arizona	22-5	354	8
8.	Arkansas	31-3	341	11
	Texas	27-3	341	9
10.	Florida State	24-6	335	10
11.	Kentucky	27-6	304	7
12.	Oklahoma State	29-5	280	12
13.	Virginia Tech	23-6	241	16
14.	Arizona State	21-9	230	13
15.	LSU	21-12	214	15
16.	Tennessee	28-6	190	18
17.	Louisiana	25-6	180	17
18.	Clemson	26-4	153	19
19.	Missouri	28-7	143	20
20.	Duke	26-7	140	14
21.	Northwestern	18-2	102	T21
22.	Georgia	23-6	80	23
23.	Texas State	24-3	50	RV
24.	Michigan	13-3	37	RV
25.	Texas A&M	25-8	33	24

EDWARDS AMONG NATION'S TOP RETURNING STATISTICAL LEADERS

Tristen Edwards was in the midst of a stellar season in 2020 before the season was cut short. In 23 games last season, Edwards hit .434 with 10 doubles, 11 home runs and 22 RBIs.

- Edwards' 21 extra-base hits ranked second nationally in the shortened 2020 season. She was one of only three players in the country with 20 extra-base hits.
- Edwards was the only player in the country last season with at least 10 doubles and 10 home runs. She ranked fourth nationally in home runs (11) and 14th in doubles (10). Edwards was the only player in the nation to rank in the top 15 in both doubles and home runs in 2020.
- In addition to her lofty ranking in doubles and home runs, Edwards ranked third nationally in slugging percentage (1.000) and total bases (76), fourth in home runs per game (0.48) and 15th in runs per game (1.22).
- Entering 2021, Edwards ranked 18th among all active Division I players in career RBIs (140) and total bases (354), 19th in home runs (44), 22nd in doubles (42) and 23rd in runs (139).

PLAYERS RANKED IN TOP 25 NATIONALLY IN 2B & HR (2020)

Player	School	2B Rank	HR Rank
Tristen Edwards	Nebraska	14th	4th
Maddi Hackbarth	Arizona St.	25th	15th
Alex Martens	Kentucky	25th	15th

EDWARDS' CAREER RANKINGS AMONG ACTIVE DIVISION I PLAYERS (AS OF APRIL 5)

Category	Total	Rank
Home Runs	46	23rd
Doubles	46	24th
Runs	155	30th
Walks	98	31st
Total Bases	387	33rd
RBIs	152	35th
Slugging Pct.	.681	49th

ACTIVE DIVISION I PLAYERS WITH 40 CAREER 2B & HR (AS OF APRIL 5)

Player	School	2B	HR
Amber Bishop	Liberty	56	60
Suzy Brookshire	Long Beach St.	42	57
Georgia Capell	Tarleton State	50	48
Madison Cathcart	Seattle	55	41
Jenna Cone	George Washington	45	65
Tristen Edwards	Nebraska	46	46
Alysen Febrey	Oklahoma St.	54	42
Morganne Flores	Washington	41	55
Kate Gordon	James Madison	51	56
Jessie Harper	Arizona	46	84
Rachel McCollum	East Carolina	51	56
Bubba Nickles	UCLA	42	42
Alyssa Palomino	Arizona	47	65
Madison Perrigan	Wichita St.	49	47
Linda Rush	Drexel	54	62
Sami Williams	Iowa State	73	61

REVELLE WINS 1,000TH GAME AT NEBRASKA

Nebraska head coach Rhonda Revelle won her 1,000 game at Nebraska on Feb. 27, when the Huskers defeated Michigan State, 7-1 in game one of a doubleheader. She achieved the milestone in her 29th season and her 1,582nd game. The all-time wins leader in the history of Nebraska Athletics, Revelle is the first Husker coach to record 1,000 wins at Nebraska.

- She is the eighth active Division I coach who has won 1,000 games at his or her current school. She is joined on that list by Michigan's Carol Hutchins, as the Big Ten is the only conference in the country with two head coaches who have won 1,000 games at their respective schools.
- With 1,017 career wins, Revelle is one of 14 active Division I coaches and 24 Division I coaches all-time to reach 1,000 career victories.

STATISTICAL COMPARISON

TEAM	W-L	AVG.	SCORING	OPP. SCORING	ERA	FLD%
Nebraska	11-9	.260	4.8	3.1	2.64	.980
Illinois	14-6	.297	4.3	2.3	1.54	.962
NEB DIFF.	-3	-.037	+0.5	+0.8	+1.10	+.018

SCOUTING THE ILLINOIS FIGHTING ILLINI (14-6)

Illinois enters this weekend's series in fourth place in the Big Ten Conference standings with a 14-6 record. The Fighting Illini won three of four games against Wisconsin last weekend.

Nebraska and Illinois share four common opponents this season in Michigan, Michigan State, Penn State and Rutgers. The Huskers went 7-6 against that group, while the Illini were 9-1.

- Illinois boasts the second-best batting average in the Big Ten, hitting .297 as a team. The Illini have three of the top nine hitters in the Big Ten based on batting average.
- **Avrey Steiner** leads the Big Ten with 31 hits and ranks fourth in the league with a team-high .429 batting average. Steiner also ranks third in the Big Ten with three triples and eighth with 14 runs scored.
- **Kailee Powell** is also hitting above .400, ranking fifth in the league with a .407 average. Ten of Powell's 24 hits have gone for extra bases, as she owns six doubles, two triples and two home runs. Powell ranks fourth in the Big Ten in triples, fifth in RBIs (15), sixth in hits (24), slugging percentage (.678) and on-base percentage (.493) and seventh in doubles.
- **Jaelyn Vickery** is the Illini's final .300 hitter, as she boasts a .389 average. Vickery ranks ninth in the Big Ten in batting average and is sixth in the league with 15 runs scored. She also leads Illinois with eight stolen bases.
- Defensively, Illinois' 1.54 ERA ranks third in the league, and the Illini are allowing only 2.3 runs per game. Opponents are hitting just .203 against the Illinois pitching staff, the third-lowest opponent batting average in the Big Ten.
- Right-hander **Sydney Sickels**, the reigning Big Ten Pitcher of the Week, has thrown nearly half of the team's innings this season. Sickles is 8-2 with one save and a 0.68 ERA in 61.2 innings. She averages more than 10 strikeouts per seven innings and opponents are hitting just .144 against her with only five extra-base hits in 208 at bats. Sickels ranks second in the Big Ten in wins, ERA, opponent average and strikeouts (89) and is eighth in innings pitched.
- Right-hander **Addy Jarvis** has seen the most action behind Sickels, compiling a 4-1 record with a 1.68 ERA. She has thrown 33.1 innings over eight appearances and four starts. Opponents are hitting only .242 against her.
- Left-hander **Tori McQueen** has also seen extensive action this season, appearing in six games with four starts. McQueen is 2-2 on the year with a 2.22 ERA in 28.1 innings pitched.
- Right-handers **Morgan Scivally** (0-0, 1.75 ERA in 4.0 IP) and **Kelsie Packard** (0-1, 4.85 ERA in 8.2 IP) round out the Illini staff.
- **Tyra Perry** is in her sixth season at Illinois and her 20th season as a collegiate head coach. Perry owns an 170-103 record at Illinois, with a career mark of 579-491-1. Her previous head coaching stops include Ball State (67-44 record in two seasons from 2014-15), Western Kentucky (196-146-1 record in six seasons from 2008-13) and Birmingham-Southern (146-198 record in the program's first six seasons from 2001 to 2007).

NEBRASKA VS. ILLINOIS

SERIES HISTORY

- **Series Record:** Nebraska leads, 15-11
- **In Big Ten Play:** Nebraska leads, 14-10
- **In Lincoln:** Nebraska leads, 8-4
- **At Champaign:** Nebraska leads, 5-4
- **At a Neutral Site:** Series tied, 1-1
- **Current Win Streak:** Illinois, 1 game
- **Revelle vs. Illinois:** 15-11
- **Perry vs. Nebraska:** 8-5
- **Revelle vs. Perry:** 5-8

ALL-TIME MEETINGS

DATE	LOCATION	RESULT
2/24/2006	Neutral	W, 21-1 (5)
4/6/2012	Lincoln	W, 11-0 (6)
4/6/2012	Lincoln	W, 5-1
4/7/2012	Lincoln	W, 7-1
3/30/2013	Champaign	W, 6-2
3/30/2013	Champaign	L, 4-5
3/31/2013	Champaign	W, 7-1
4/5/2014	Champaign	L, 4-11
4/5/2014	Champaign	W, 9-4
4/6/2014	Champaign	W, 12-3 (5)
5/1/2015	Lincoln	W, 8-0 (5)
5/2/2015	Lincoln	L, 10-12
5/3/2015	Lincoln	W, 9-1
3/25/2016	Champaign	W, 10-2 (5)
3/26/2016	Champaign	L, 3-8
3/26/2016	Champaign	L, 2-10 (6)
4/21/2017	Lincoln	L, 0-1
4/22/2017	Lincoln	L, 3-5
4/23/2017	Lincoln	W, 14-0 (5)
5/4/2018	Champaign	L, 4-5
5/5/2018	Champaign	W, 6-3
5/6/2018	Champaign	W, 6-3
3/30/2019	Lincoln	W, 3-2
3/31/2019	Lincoln	L, 8-11 (8)
3/31/2019	Lincoln	W, 5-4
5/9/2019	Neutral	L, 4-6

NOTABLE GAMES

**NEBRASKA 21, ILLINOIS 1 (5 INN.)
FEB. 24, 2006**

In the first meeting in series history - and the only meeting before Nebraska joined the Big Ten - the Huskers scored 20 runs for just the second time in school history at the time. Lizzy Rock went 5-for-5, tying the Nebraska record for hits in a regulation-length game.

**NEBRASKA 11, ILLINOIS 0 (6 INN.)
APRIL 6, 2012**

In the first meeting as Big Ten foes, Ashley Hagemann tossed a no-hitter with 11 strikeouts. Hagemann's no-hitter was actually clinched by the Husker offense, as Brooke Thomason hit a walk-off grand slam in the bottom of the sixth inning to end the game early.

**NEBRASKA 12, ILLINOIS 3 (5 INN.)
APRIL 6, 2014**

Two years to the day after Hagemann's no-hitter, Alicia Armstrong tied the Nebraska record with three doubles in a 9-4 win.

**NEBRASKA 3, ILLINOIS 2
MARCH 30, 2019**

Facing Sydney Sickels, Courtney Wallace tied the school record with two triples and Tristen Edwards doubled and homered as NU scored twice in the bottom of the sixth for a 3-2 win.



#1 | RYLIE UNZICKER • OF

	AVG.	G-GS	R	H	2B	HR	RBI	BB	SLG%	OB%
2021	.295	20-18	13	13	4	0	4	10	.432	.466
Career	.225	126-92	53	56	16	4	23	42	.353	.350

- 92 career starts at Nebraska rank 2nd on the team
- Ranks 8th in the Big Ten in walks (10)
- 7-time Nebraska Scholar-Athlete Honor Roll member
- 2-time Academic All-Big Ten & 2020 Big Ten Distinguished Scholar
- Sister Madi was a four-year Husker letterwinner (2015-19)



#2 | PAYTON HUSCROFT • INF

	AVG.	G-GS	R	H	2B	HR	RBI	BB	SLG%	OB%
2021	.000	0-0	0	0	0	0	0	0	.000	.000
Career	.171	24-19	2	7	1	1	6	5	.268	.277

- Has been slowed after recovering from offseason surgery
- Had 5 two-out RBIs in shortened 2020 season, one shy of the team high
- 1 of 3 Millard South products on the Husker roster (Glatter & Unzicker)
- 5-time Nebraska Scholar-Athlete Honor Roll member
- 2-time Tom Osborne Citizenship Team member



#5 | MJ GREEN • INF

	AVG.	G-GS	R	H	2B	HR	RBI	BB	SLG%	OB%
2021	.600	5-1	0	3	0	0	0	0	.600	.600
Career	.600	5-1	0	3	0	0	0	0	.600	.600

- Is 3-for-5 at the plate this season
- Named a top-100 recruit by FloSoftball
- No. 141 (Extra Inning Softball) & No. 153 (FastPitch News) recruit nationally
- All-state & 2-time all-district pick for Henderson (Texas) High School
- Travel ball teammate of Husker Abbey Newlun (Scrap Yard International)



#6 | BILLIE ANDREWS • INF

	AVG.	G-GS	R	H	2B	HR	RBI	BB	SLG%	OB%
2021	.338	20-20	16	23	3	2	15	3	.529	.370
Career	.338	20-20	16	23	3	2	15	3	.529	.370

- 2-time Big Ten Freshman of the Week ranks 5th in the league in RBIs
- 4-time Omaha World-Herald All-Nebraska pick at Gretna High School
- Hit .434 with a .625 OB% and 1.200 SLG% in her prep career
- Produced 93 extra-base hits, 139 RBIs & 159 runs in 116 career games
- Older sister Brooke is a sophomore infielder with the Huskers



#7 | SYDNEY GRAY • INF

	AVG.	G-GS	R	H	2B	HR	RBI	BB	SLG%	OB%
2021	.366	15-14	8	15	5	1	8	1	.561	.381
Career	.366	15-14	8	15	5	1	8	1	.561	.381

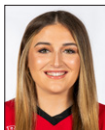
- Suffered a season-ending injury on March 28 against Penn State
- Was leading NU in average and was 2nd in hits & doubles prior to her injury
- Hit .503 at Sabino High School in Tucson, Ariz. with 16 3B, 16 HR & 87 RBIs
- Helped Sabino to an Arizona 3A state championship as a junior
- Travel ball teammate of Husker Caitlynn Neal (Arizona Desert Thunder)



#8 | ABBIE SQUIER • OF

	AVG.	G-GS	R	H	2B	HR	RBI	BB	SLG%	OB%
2021	.100	12-3	3	1	1	0	1	1	.200	.250
Career	.100	12-3	3	1	1	0	1	1	.200	.250

- Ranked as the No. 95 recruit nationally by Extra Inning Softball
- 3rd-team NFCA High School All-American as a junior
- .490 career average with a .994 SLG% at Lincoln Southwest High School
- Was the state shot put champion as a junior
- Lone Lincoln native on Nebraska's 2021 roster



#13 | PEYTON GLATTER • OF

	AVG.	G-GS	R	H	2B	HR	RBI	BB	SLG%	OB%
2021	.235	15-11	4	8	0	2	8	5	.412	.333
Career	.237	76-65	25	47	7	7	33	22	.379	.318

- Ranks 3rd among active Huskers with 33 career RBIs at Nebraska
- Has started 65 of Nebraska's 95 games the past three seasons
- 3-time member of the Nebraska Scholar-Athlete Honor Roll
- Member of the 2019 Tom Osborne Citizenship Team
- 1 of 3 Millard South products on the Husker roster (Huscroft & Unzicker)



#14 | CAMYL ARMENDARIZ • INF

	AVG.	G-GS	R	H	2B	HR	RBI	BB	SLG%	OB%
2021	.000	12-0	4	0	0	0	0	0	.000	.000
Career	.000	12-0	4	0	0	0	0	0	.000	.000

- Has appeared in 12 games (9 as a pinch runner & 3 as a pinch hitter)
- Four-year varsity player for Bonita (Calif.) High School
- Totaled 113 hits, 23 doubles, 5 triples, 20 homers & 80 RBIs in prep career
- 3-time all-league & All-San Gabriel Valley selection
- 1 of 4 current Huskers from the Corona Angels travel ball team



#19 | CAITLYNN NEAL • RHP

	W-L	ERA	APP	GS	CG	SHO	SV	IP	SO	AVG.
2021	0-0	3.00	2	0	0	0	0	2.1	0	.444
Career	0-0	3.00	2	0	0	0	0	2.1	0	.444

- Named the preseason Big Ten Newcomer of the Year by D1Softball
- Tossed a scoreless inning vs. No. 23 Michigan in her career debut
- Member of the United States Under-17 Women's National Team
- 2-hit shutout in the Pan American Championships Gold Medal game
- 23-2 record with a 0.71 ERA & 15 shutouts in her high school career



#19 | CAITLYNN NEAL • UTL

	AVG.	G-GS	R	H	2B	HR	RBI	BB	SLG%	OB%
2021	.240	16-9	6	6	0	0	5	0	.240	.240
Career	.240	16-9	6	6	0	0	5	0	.240	.240

- Named the preseason Big Ten Newcomer of the Year by D1Softball
- All 6 of her hits & all 5 of her RBIs have come in her last 7 starts
- Ranked as the No. 30 recruit nationally by Extra Inning Softball
- .613 career hitter with 17 HR & 68 RBIs at Bradshaw Mountain High School
- Travel ball teammate of Husker Sydney Gray (Arizona Desert Thunder)



#20 | ABBEY NEWLUN • INF

	AVG.	G-GS	R	H	2B	HR	RBI	BB	SLG%	OB%
2021	.000	1-0	0	0	0	0	0	0	.000	.000
Career	.000	1-0	0	0	0	0	0	0	.000	.000

- Four-year varsity player at The Woodlands High School in Texas
- Totaled 69 hits, 16 doubles, 3 triples & 9 home runs in her prep career
- Was an all-district selection as a junior
- Travel ball teammate of Husker MJ Green (Scrap Yard International)
- Father Craig graduated from Nebraska & was born & raised in Auburn, Neb.



#21 | SARAH YOCOM • INF

	AVG.	G-GS	R	H	2B	HR	RBI	BB	SLG%	OB%
2021	.000	14-14	2	0	0	0	1	1	.000	.091
Career	.130	81-49	15	7	0	0	4	4	.130	.186

- Has started 14 straight games at first base; leads NU with 14 starts at 1B
- Has started multiple games at 1B, 2B, 3B & SS in her Husker career
- 2-time Academic All-Big Ten & 2019 Big Ten Distinguished Scholar
- 5-time Nebraska Scholar-Athlete Honor Roll member
- 3-time member of the Tom Osborne Citizenship Team



#23 | COURTNEY WALLACE • RHP

	W-L	ERA	APP	GS	CG	SHO	SV	IP	SO	AVG.
2021	5-3	2.35	12	7	3	0	1	53.2	21	.244
Career	11-12	4.59	51	24	7	0	2	184.2	109	.304

- Ranks 5th in the Big Ten in saves (1) & 8th in wins (5)
- Ranks 2nd among current Huskers in career innings pitched (184.2)
- 3-time Nebraska Scholar-Athlete Honor Roll member
- 2-time member of the Tom Osborne Citizenship Team
- Her cousin, Alex Smith, is a cornerback on the Wisconsin football team



#23 | COURTNEY WALLACE • UTL

	AVG.	G-GS	R	H	2B	HR	RBI	BB	SLG%	OB%
2021	.200	14-11	4	7	1	1	7	5	.314	.300
Career	.223	76-56	29	39	6	4	23	18	.383	.301

- Has been in the batting order during starts at P, DP, 3B & LF in her career
- 15 of her 39 career hits have gone for extra bases (6 2B, 5 3B, 4 HR)
- Tied the Nebraska single-game record with two triples vs. Lamar in 2019
- 5 career triples are the most of any current Husker
- Nebraska Gatorade Player of the Year as a high school senior



#24 | TRISTEN EDWARDS • OF

	AVG.	G-GS	R	H	2B	HR	RBI	BB	SLG%	OB%
2021	.364	20-20	15	16	4	4	12	19	.727	.600
Career	.354	199-196	155	201	46	46	152	98	.681	.470

- Named the preseason Big Ten Player of the Year by D1Softball
- 2-time member of USA Softball Collegiate Player of the Year watch list
- Only player in the country with 10 2B & 10 HR in shortened 2020 season
- 2-time 1st-team All-Big Ten & record 6-time Big Ten Player of the Week
- Older twin sisters Tatum & Taylor were both 2-time Husker All-Americans



#27 | BROOKE ANDREWS • INF

	AVG.	G-GS	R	H	2B	HR	RBI	BB	SLG%	OB%
2021	.227	14-7	7	5	1	2	6	1	.545	.292
Career	.255	32-21	9	14	2	2	9	2	.400	.305

- 4 straight starts at 3B; 4-for-14 with 1 2B, 2 HR & 6 RBIs in those starts
- Started a team-high 14 games at shortstop as a freshman in 2020
- Ranked 5th on the team with a .273 batting average last season
- 3-time Nebraska Scholar-Athlete Honor Roll member
- Younger sister Billie is a freshman infielder with the Huskers



#28 | ALLY RILEY • C

	AVG.	G-GS	R	H	2B	HR	RBI	BB	SLG%	OB%
2021	.167	12-12	0	4	1	0	0	1	.208	.231
Career	.261	67-48	4	35	7	1	22	6	.336	.304

- Is Nebraska's most experienced catcher with 34 career starts at the position
- Started 28 of Nebraska's 44 games at catcher the past two seasons
- Her .261 career average ranks 3rd among all Huskers with at least 100 AB
- 2-time Academic All-Big Ten selection
- 7-time Nebraska Scholar-Athlete Honor Roll member



#30 | KARLEE SEEVERS • RHP

	W-L	ERA	APP	GS	CG	SHO	SV	IP	SO	AVG.
2021	0-0	0.00	1	0	0	0	0	1.0	0	.333
Career	0-0	18.90	3	0	0	0	0	3.1	0	.474

- Tossed a scoreless inning vs. Purdue after making two appearances in 2020
- Is also a pinch runner, scoring a run in each of her two career appearances
- 2020 Academic All-Big Ten selection & 2020 Big Ten Distinguished Scholar
- 5-time member of the Nebraska Scholar-Athlete Honor Roll
- 2-time Tom Osborne Citizenship Team member



#32 | CAM YBARRA • INF

	AVG.	G-GS	R	H	2B	HR	RBI	BB	SLG%	OB%
2021	.297	20-20	4	19	7	1	13	6	.453	.347
Career	.256	133-127	28	101	30	6	41	35	.383	.320

- In her 2nd year at Nebraska after spending two seasons at Oregon State
- Started all 43 games at second base for Nebraska the past two seasons
- 30 career doubles rank 2nd among all current Huskers & 101 hits rank 3rd
- Was a 2018 Pac-12 All-Defensive & All-Freshman Team honoree at OSU
- 1 of 4 current Huskers from the Corona Angels travel ball team



#33 | ANNI RALEY • C

	AVG.	G-GS	R	H	2B	HR	RBI	BB	SLG%	OB%
2021	.333	13-9	4	5	1	0	3	0	.533	.375
Career	.219	55-16	17	7	2	0	4	2	.406	.306

- Has started 9 of 20 games at catcher in 2021 & caught in 13 games total
- Has gone 4-for-7 with a triple, 4 runs & 2 RBIs in her last three starts
- Has also appeared as a pinch runner 30 times her career, scoring 13 runs
- 2020 Academic All-Big Ten selection
- 5-time member of the Nebraska Scholar-Athlete Honor Roll



#39 | OLIVIA FERRELL • RHP

	W-L	ERA	APP	GS	CG	SHO	SV	IP	SO	AVG.
2021	6-6	2.57	13	11	4	1	0	65.1	63	.224
Career	21-27	4.06	80	50	12	1	2	300.0	204	.283

- Ranks 5th in the Big Ten in innings (65.1), 6th wins (6) & 7th in strikeouts (63)
- Leads all current Huskers in career wins, ERA, appearances, starts & innings
- Has allowed 2 ER or fewer in 26 of her 50 career starts
- 2-time Academic All-Big Ten & 2-time Big Ten Distinguished Scholar
- 7-time member of the Nebraska Scholar-Athlete Honor Roll



#39 | OLIVIA FERRELL • UTL

	AVG.	G-GS	R	H	2B	HR	RBI	BB	SLG%	OB%
2021	.103	12-10	2	3	1	0	0	1	.138	.133
Career	.233	54-38	14	24	6	3	18	11	.379	.316

- Her .233 career average ranks 5th among all Huskers with at least 100 AB
- Hit .344 in the shortened 2020 season with 10 RBIs in only 32 at bats
- Ranked 2nd on the team in average, OB% & SLG% in 2020
- Was 3rd on the team last season in home runs (2) and RBIs (10)
- In addition to softball, had Division I scholarship offers as a hockey goalie



#44 | KAYLIN KINNEY • RHP

	W-L	ERA	APP	GS	CG	SHO	SV	IP	SO	AVG.
2021	0-0	4.97	8	2	0	0	2	12.2	9	.315
Career	0-0	4.97	8	2	0	0	2	12.2	9	.315

- Ranks 2nd in the Big Ten & 27th nationally with 2 saves
- 2019 Iowa Gatorade Player of the Year at Kennedy High School
- 2-time all-state selection & 4-time all-conference & all-metro pick
- Went 67-7 in her prep career with a 0.77 ERA and 527 strikeouts
- First Iowa native to play for Nebraska since 2004



#44 | KAYLIN KINNEY • UTL

	AVG.	G-GS	R	H	2B	HR	RBI	BB	SLG%	OB%
2021	.176	17-12	3	6	1	1	3	5	.294	.300
Career	.176	17-12	3	6	1	1	3	5	.294	.300

- Has 1 2B & 1 HR while ranking 4th on the team with 5 walks
- 2019 Iowa Gatorade Player of the Year at Kennedy High School
- Helped Kennedy to a state championship as a senior
- Hit .501 in her high school career with a 1.054 slugging percentage
- Finished third in state history with 55 career home runs



#77 | SAMANTHA OWEN • INF

	AVG.	G-GS	R	H	2B	HR	RBI	BB	SLG%	OB%
2021	.000	4-1	0	0	0	0	0	0	.000	.000
Career	.288	167-159	68	135	30	17	86	47	.483	.361

- Is in her 3rd season at Nebraska after playing at Pacific her first two years
- Owns 159 career starts, including 63 starts as a Husker
- Ranks 2nd among current Huskers in career average, 2B, HR & RBIs
- 2-time All-West Coast Conference & 2018 All-West Region pick at Pacific
- Younger sister Izabella is a junior infielder at New Mexico

INDIVIDUAL SEASON & CAREER HIGHS

#1 RYLIE UNZICKER • SR. • OF

SEASON HIGH	CATEGORY	CAREER HIGH
3 at Rutgers - 2	Hits	same
3 vs. #23 Michigan	Runs	3 twice
2 twice	RBIs	2 five times
1 four times	2B	2 twice
none	HR	1 four times

#14 CAMYL ARMENDARIZ • FR. • INF

SEASON HIGH	CATEGORY	CAREER HIGH
none	Hits	none
1 four times	Runs	same
none	RBIs	none
none	2B	none
none	HR	none

#2 PAYTON HUSCROFT • JR. • INF

SEASON HIGH	CATEGORY	CAREER HIGH
none	Hits	1 seven times
none	Runs	1 twice
none	RBIs	3 vs. Bradley (2020)
none	2B	1 vs. UTEP (2020)
none	HR	1 vs. Bradley (2020)

#19 CAITLYNN NEAL • FR. • UTL

SEASON HIGH	CATEGORY	CAREER HIGH
3 vs. Purdue	Hits	same
2 vs. Purdue - 1	Runs	same
2 vs. Purdue - 1	RBIs	same
none	2B	none
none	HR	none

#5 MJ GREEN • FR. • INF

SEASON HIGH	CATEGORY	CAREER HIGH
2 vs. Purdue	Hits	same
none	Runs	none
none	RBIs	none
none	2B	none
none	HR	none

#20 ABBEY NEWLUN • FR. • INF

SEASON HIGH	CATEGORY	CAREER HIGH
none	Hits	none
none	Runs	none
none	RBIs	none
none	2B	none
none	HR	none

#6 BILLIE ANDREWS • FR. • INF

SEASON HIGH	CATEGORY	CAREER HIGH
4 at Rutgers	Hits	same
2 twice	Runs	same
3 vs. Penn St. - 1	RBIs	same
1 three times	2B	same
1 twice	HR	same

#21 SARAH YOCOM • SR. • INF

SEASON HIGH	CATEGORY	CAREER HIGH
none	Hits	2 vs. Wisconsin (2018)
1 twice	Runs	1 15 times
1 vs. Penn St. - 2	RBIs	1 four times
none	2B	none
none	HR	none

#7 SYDNEY GRAY • FR. • INF

SEASON HIGH	CATEGORY	CAREER HIGH
3 vs. Purdue	Hits	same
2 twice	Runs	same
2 twice	RBIs	same
1 five times	2B	same
1 vs. Penn St.	HR	same

#23 COURTNEY WALLACE • JR. • UTL

SEASON HIGH	CATEGORY	CAREER HIGH
2 twice	Hits	2 seven times
1 four times	Runs	3 vs. Lamar (2019)
3 at Rutgers	RBIs	3 three times
1 vs. Penn St.	2B	2 vs. Texas Tech (2019)
1 at Rutgers	HR	1 four times

#8 ABBIE SQUIER • FR. • OF

SEASON HIGH	CATEGORY	CAREER HIGH
1 vs. Michigan St. - 1	Hits	same
2 vs. Michigan St. - 1	Runs	same
1 vs. Michigan St. - 2	RBIs	same
1 vs. Michigan St. - 1	2B	same
none	HR	none

#24 TRISTEN EDWARDS • SR. • OF

SEASON HIGH	CATEGORY	CAREER HIGH
3 vs. Michigan St. - 1	Hits	4 three times
2 four times	Runs	4 vs. Pittsburgh (2019)
2 twice	RBIs	8 vs. Pittsburgh (2019)
1 four times	2B	2 three times
1 four times	HR	2 seven times

#13 PEYTON GLATTER • JR. • OF

SEASON HIGH	CATEGORY	CAREER HIGH
2 at Rutgers - 1	Hits	3 twice
2 at Rutgers - 1	Runs	3 twice
4 at Rutgers - 1	RBIs	4 twice
none	2B	1 seven times
1 twice	HR	1 seven times

#27 BROOKE ANDREWS • SO. • INF

SEASON HIGH	CATEGORY	CAREER HIGH
2 twice	Hits	2 four times
3 at Rutgers	Runs	same
5 at Rutgers	RBIs	same
1 at Rutgers - 1	2B	1 twice
2 at Rutgers	HR	same

INDIVIDUAL SEASON & CAREER HIGHS

#28 ALLY RILEY • SR. • C

SEASON HIGH	CATEGORY	CAREER HIGH
2 vs. Purdue - 1	Hits	3 twice
none	Runs	1 four times
none	RBI	3 vs. UTEP (2020)
1 vs. Purdue - 1	2B	2 vs. South Dakota St. (2018)
none	HR	1 vs. UTEP (2020)

#32 CAM YBARRA • SR. • INF

SEASON HIGH	CATEGORY	CAREER HIGH
4 at Rutgers - 2	Hits	4 twice
2 vs. Penn St. - 1	Runs	2 twice
4 vs. Purdue - 1	RBI	same
2 vs. Purdue - 1	2B	3 vs. Lehigh (2020)*
1 vs. Penn St. - 1	HR	1 six times

**tied school record*

#33 ANNI RALEY • JR. • C

SEASON HIGH	CATEGORY	CAREER HIGH
2 twice	Hits	2 three times
2 vs. Penn St.	Runs	same
2 vs. Penn St.	RBI	same
1 vs. #23 Michigan	2B	1 twice
none	HR	none

#39 OLIVIA FERRELL • SR. • UTL

SEASON HIGH	CATEGORY	CAREER HIGH
2 at Rutgers	Hits	3 at #21 Missouri (2020)
1 twice	Runs	2 twice
none	RBI	3 twice
1 at Rutgers	2B	1 six times
none	HR	1 three times

#44 KAYLIN KINNEY • FR. • UTL

SEASON HIGH	CATEGORY	CAREER HIGH
1 six times	Hits	same
1 three times	Runs	same
2 vs. Penn St.	RBI	same
1 vs. Purdue - 3	2B	same
1 vs. Penn St.	HR	same

#77 SAMANTHA OWEN • SR. • INF

SEASON HIGH	CATEGORY	CAREER HIGH
none	Hits	4 at North Texas (2018 at Pacific)
none	Runs	2 10 times
none	RBI	4 six times
none	2B	2 at Purdue - 2 (2019)
none	HR	1 17 times

#19 CAITLYNN NEAL • FR. • UTL

SEASON HIGH	CATEGORY	CAREER HIGH
1.1 at Rutgers - 2	IP	same
none	Ks	none
N/A	H (low)*	N/A
3 at Rutgers - 2	H (high)	same
N/A	BB (low)*	N/A
none	BB (high)	none
N/A	R (low)*	N/A
1 at Rutgers - 2	R (high)	none
N/A	ER (low)*	N/A
1 at Rutgers - 2	ER (high)	none

**starts only*

#23 COURTNEY WALLACE • JR. • UTL

SEASON HIGH	CATEGORY	CAREER HIGH
7.0 three times	IP	7.0 four times
6 vs. Ohio St. - 2	Ks	8 at Georgia Tech (2020)
3 vs. Penn St. - 1	H (low)*	1 vs. Maryland (2019)
7 twice	H (high)	10 three times
0 twice	BB (low)*	0 three times
4 at Rutgers - 1	BB (high)	7 at Georgia Tech (2020)
1 twice	R (low)*	0 vs. Maryland (2019)
4 vs. Purdue - 2	R (high)	10 vs. #3 Oklahoma (2020)
1 twice	ER (low)*	0 vs. Maryland (2019)
4 vs. Purdue - 2	ER (high)	9 vs. #3 Oklahoma (2020)

**starts only*

#30 KARLEE SEEVERS • JR • RHP

SEASON HIGH	CATEGORY	CAREER HIGH
1.0 vs. Purdue - 2	IP	1.1 vs. Wichita St. - 1 (2020)
none	Ks	none
N/A	H (low)*	N/A
1 vs. Purdue - 2	H (high)	6 vs. Wichita St. (2020)
N/A	BB (low)*	N/A
none	BB (high)	6 vs. Wichita St. (2020)
N/A	R (low)*	N/A
none	R (high)	9 vs. Wichita St. (2020)
N/A	ER (low)*	N/A
none	ER (high)	7 vs. Wichita St. (2020)

**starts only*

#39 OLIVA FERRELL • SR • RHP

SEASON HIGH	CATEGORY	CAREER HIGH
7.2 vs. #23 Michigan - 1	IP	same
7 four times	Ks	9 vs. Lamar (2019)
1 vs. Penn St. - 2	H (low)*	1 twice
7 vs. Indiana - 1	H (high)	11 at #21 Missouri (2020)
1 six times	BB (low)*	0 six times
3 twice	BB (high)	7 at Minnesota (2018)
0 twice	R (low)*	0 five times
5 at Rutgers - 2	R (high)	8 twice
0 twice	ER (low)*	0 five times
5 at Rutgers - 2	ER (high)	7 three times

**starts only*

#44 KAYLIN KINNEY • FR • RHP

SEASON HIGH	CATEGORY	CAREER HIGH
4.1 vs. Purdue - 2	IP	same
2 three times	Ks	same
2 vs. #23 Michigan	H (low)*	same
6 vs. Purdue - 2	H (high)	same
1 vs. #23 Michigan	BB (low)*	same
1 five times	BB (high)	same
1 vs. #23 Michigan	R (low)*	same
4 vs. Penn St.	R (high)	same
1 vs. #23 Michigan	ER (low)*	same
4 vs. Penn St.	ER (high)	same

**starts only*

HEAD COACH RHONDA REVELLE

COACHING STOPS

Nebraska (Head Coach)	1993-present
San Jose State (Assistant)	1989-92
Cal State-Hayward (Assistant)	1988
Nebraska Wesleyan (Head Coach)	1987
Nebraska Wesleyan (Assistant)	1986

NEBRASKA WESLEYAN (1987)

Year	Record	Conf.	Finish	Tourn.	Finish
1987	8-16	7-5	N/A	--	--

NEBRASKA (1993-PRESENT)

Year	Record	Conf.	Finish	Tourn.	Finish
1993	18-23	5-11	5th	--	--
1994	25-33	5-15	6th	--	--
1995	43-20	10-6	3rd	--	--
1996	42-23	10-8	4th	3-2	2nd
1997	29-24	10-6	4th	1-2	t-5th
1998	48-12	16-0	1st	4-0	1st
1999	35-21	10-8	4th	3-1	2nd
2000	52-21	15-2	2nd	4-1	1st
2001	51-15	16-2	1st	2-2	t-3rd
2002	50-14	11-5	3rd	3-1	2nd
2003	39-17	10-8	6th	2-2	t-3rd
2004	45-17	14-3	1st	4-0	1st
2005	36-23	9-9	7th	2-2	t-5th
2006	44-12	13-4	2nd	2-2	t-3rd
2007	37-20	10-8	5th	0-1	t-7th
2008	25-28	4-14	t-9th	3-1	2nd
2009	35-19	9-9	5th	0-1	t-7th
2010	30-29	7-11	t-6th	0-1	t-7th
2011	41-14	9-9	6th	--	--
2012	33-22	14-9	3rd	--	--
2013	45-16	16-6	2nd	1-1	t-3rd
2014	44-18	18-5	t-1st	0-1	t-5th
2015	35-23	17-6	3rd	2-1	2nd
2016	35-21	13-9	5th	1-1	t-5th
2017	24-29	13-11	5th	0-1	t-9th
2018	31-23	9-13	9th	0-1	t-9th
2019	21-31	9-14	9th	0-1	t-9th
2020	9-14	0-0	--	--	--
2021	11-9	11-9	--	--	--

NEBRASKA RECORD: 1,009-591

CAREER RECORD: 1,017-607

NCAA TOURNAMENT (NEBRASKA)

Year	Round	Record	Finish	Rank
1993	--	--	--	--
1994	--	--	--	--
1995	Regional	1-2	t-17th	18th
1996	Regional	1-2	t-17th	18th
1997	Regional	2-2	t-9th	25th
1998	WCWS	4-2	t-5th	5th
1999	Regional	4-2	t-9th	20th
2000	Regional	3-2	t-17th	14th
2001	Regional	2-2	t-17th	14th
2002	WCWS	5-2	t-5th	6th
2003	Regional	3-2	t-17th	13th
2004	Regional	3-2	t-9th	14th
2005	Regional	1-2	t-33rd	25th
2006	Regional	2-2	t-17th	15th
2007	Regional	0-2	t-49th	--
2009	Regional	1-2	t-33rd	--
2010	Regional	1-2	t-33rd	--
2011	Regional	2-2	t-17th	21st
2013	WCWS	5-3	t-7th	8th
2014	Super Reg.	4-3	t-9th	16th
2015	Regional	1-2	t-33rd	--
2016	Regional	2-2	t-17th	--
Totals	20 app.	47-42	--	--



RHONDA REVELLE

29TH SEASON AT NEBRASKA

1,004-588 RECORD

30TH CAREER SEASON

1,012-604 RECORD

WINNINGEST COACH IN THE HISTORY OF HUSKER ATHLETICS

COACH OF THE YEAR IN 3 MAJOR CONFERENCES

NFCA HALL OF FAME

COACHING NUMBERS

Conference Coach-of-the-Year Awards	4
Big Ten Coach of the Year	1
Big 12 Coach of the Year	2
Big Eight Coach of the Year	1
Conference Titles	7
Big Ten Conference Titles	1
Big 12 Conference Titles	6
NCAA Tournament Appearances	20
Women's College World Series	3
NFCA All-Americans	21
CoSIDA Academic All-Americans	14

NFCA HALL-OF-FAME COACHES

(ACTIVE DIVISION I COACHES ONLY)

Coach	Induction Year
Mike Candrea, Arizona	1996
Carol Hutchins, Michigan	2006
Rhonda Revelle, Nebraska	2010
Melinda Fischer, Illinois State	2010
Ralph Weekly, Tennessee	2011
Patty Gasso, Oklahoma	2012
Donna Papa, North Carolina	2012
Joan Joyce, Florida Atlantic	2013
Patrick Murphy, Alabama	2013
Jo Evans, Texas A&M	2015
Bob Brock, Sam Houston State	2016
Jacquie Joseph, Michigan State*	2016
Karen Weekly, Tennessee	2018

*inducted as member of Pioneer Category

WINS AT CURRENT SCHOOL

(ACTIVE DIVISION I COACHES ONLY)

1. Mike Candrea, Arizona	1,655
2. Carol Hutchins, Michigan	1,621
3. Patty Gasso, Oklahoma	1,308
4. Donna Papa, North Carolina	1,286
5. Patrick Murphy, Alabama	1,126
6. Melinda Fischer, Illinois State	1,083
7. Bob Coolen, Hawaii	1,031
8. Rhonda Revelle, Nebraska	1,009

(LIST INCLUDES GAMES THROUGH APRIL 4)

MOST NCAA TOURNAMENTS

(ACTIVE DIVISION I COACHES ONLY)

1. Mike Candrea, Arizona	33
2. Carol Hutchins, Michigan	27
3. Patty Gasso, Oklahoma	22
4. Patrick Murphy, Alabama	21
5. Rhonda Revelle, Nebraska	20
Jo Evans, Texas A&M	20

ACADEMIC ALL-AMERICANS

(ALL-TIME AMONG DIVISION I COACHES)

1. Patrick Murphy, Alabama	29
2. Ralph & Karen Weekly, Tennessee	23
3. Tim Walton, Florida	19
4. Rhonda Revelle, Nebraska	14

2021 SEASON STATISTICS

Record: 11-9 Home: 3-1 Away: 2-2 Neutral: 6-6 Big Ten: 11-9

Player	avg	gp-gs	ab	r	h	2b	3b	hr	rbi	tb	slg%	bb	hp	so	gdp	ob%	sf	sh	sb-att	po	a	e	fld%
5 MJ Green	.600	5-1	5	0	3	0	0	0	0	3	.600	0	0	0	0	.600	0	0	0-1	0	0	0	.000
7 Sydney Gray	.366	15-14	41	8	15	5	0	1	8	23	.561	1	0	10	0	.381	0	1	1-1	17	31	3	.941
24 Tristen Edwards	.364	20-20	44	15	16	4	0	4	12	32	.727	19	10	10	1	.600	2	0	6-6	27	2	0	1.000
6 Billie Andrews	.338	20-20	68	16	23	3	2	2	15	36	.529	3	1	17	0	.370	1	0	8-10	28	43	5	.934
33 Anni Raley	.333	13-9	15	4	5	1	1	0	3	8	.533	0	1	5	0	.375	0	0	0-0	51	9	0	1.000
32 Cam Ybarra	.297	20-20	64	4	19	7	0	1	13	29	.453	6	0	5	0	.347	2	0	1-3	41	29	0	1.000
1 Rylie Unzicker	.295	20-18	44	13	13	4	1	0	4	19	.432	10	4	11	0	.466	0	2	6-6	18	3	0	1.000
19 Caitlynn Neal	.240	16-9	25	6	6	0	0	0	5	6	.240	0	0	9	0	.240	0	0	2-2	10	2	1	.923
13 Peyton Glatter	.235	15-11	34	4	8	0	0	2	8	14	.412	5	0	8	0	.333	0	0	1-2	0	0	0	.000
27 Brooke Andrews	.227	14-7	22	7	5	1	0	2	6	12	.545	1	1	3	0	.292	0	0	2-4	7	13	1	.952
11 Keana "KP" Pola	.211	8-5	19	0	4	1	0	0	0	5	.263	0	0	5	1	.211	0	0	0-0	26	0	1	.963
23 Courtney Wallace	.200	14-11	35	4	7	1	0	1	7	11	.314	5	0	7	1	.300	0	0	1-1	4	17	0	1.000
44 Kaylin Kinney	.176	17-12	34	3	6	1	0	1	3	10	.294	5	1	10	1	.300	0	0	0-0	1	4	0	1.000
28 Ally Riley	.167	12-12	24	0	4	1	0	0	0	5	.208	1	1	2	0	.231	0	1	0-0	43	6	0	1.000
39 Olivia Ferrell	.103	12-10	29	2	3	1	0	0	0	4	.138	1	0	9	0	.133	0	1	1-1	1	15	1	.941
8 Abbie Squier	.100	12-3	10	3	1	1	0	0	1	2	.200	1	1	3	0	.250	0	0	0-0	1	0	0	1.000
21 Sarah Yocom	.000	14-14	9	2	0	0	0	0	1	0	.000	1	0	3	0	.091	1	0	0-0	115	1	0	1.000
77 Samantha Owen	.000	4-1	5	0	0	0	0	0	0	0	.000	0	0	0	0	.000	0	0	0-0	15	0	0	1.000
14 Camyl Armendariz	.000	12-0	3	4	0	0	0	0	0	0	.000	0	0	1	0	.000	0	0	1-1	0	0	0	.000
20 Abbey Newlun	.000	1-0	1	0	0	0	0	0	0	0	.000	0	0	0	0	.000	0	0	0-0	0	0	0	.000
30 Karlee Seevers	.000	0-0	0	0	0	0	0	0	0	0	.000	0	0	0	0	.000	0	0	0-0	0	0	0	.000
Totals	.260	20	531	95	138	31	4	14	86	219	.412	59	20	118	4	.352	6	5	30-38	405	175	12	.980
Opponents	.246	20	500	61	123	19	4	9	58	177	.354	47	7	93	3	.318	3	11	16-21	404	128	29	.948

LOB - Team (124), Opp (105). DPs turned - Team (9), Opp (11). IBB - Team (4), Edwards 4, Opp (1).

(All games Sorted by Earned run avg)

Player	era	w-l	app	gs	cg	sho	sv	ip	h	r	er	bb	so	2b	3b	hr	b/avg	wp	hp	bksfa	sha	
30 Karlee Seevers	0.00	0-0	1	0	0	0/0	0	1.0	1	0	0	0	0	0	0	0	.333	0	0	0	0	0
23 Courtney Wallace	2.35	5-3	12	7	3	0/0	1	53.2	48	23	18	19	21	6	2	3	.244	3	2	0	2	4
39 Olivia Ferrell	2.57	6-6	13	11	4	1/0	0	65.1	53	28	24	23	63	12	1	5	.224	2	5	0	1	3
19 Caitlynn Neal	3.00	0-0	2	0	0	0/0	0	2.1	4	1	1	0	0	0	0	1	.444	0	0	0	0	1
44 Kaylin Kinney	4.97	0-0	8	2	0	0/0	2	12.2	17	9	9	5	9	1	1	0	.315	4	0	0	0	3
Totals	2.64	11-9	20	20	7	1/0	3	135.0	123	61	51	47	93	19	4	9	.246	9	7	0	3	11
Opponents	4.00	9-11	20	20	5	2/1	0	134.2	138	95	77	59	118	31	4	14	.260	3	20	0	6	5

PB - Team (5), Riley 4, Raley 1, Opp (2). SBA/ATT - Ferrell (7-12), Riley (9-11), Raley (7-10), Wallace (6-6), Kinney (3-3).