

N

NEBRASKA

SOFTBALL

NEBRASKA vs MARYLAND

FRIDAY	SATURDAY	SUNDAY
vs. Maryland (1) 3 p.m. (CT)	vs. Maryland 3 p.m. (CT) Video: BTN+ (\$) Audio: Huskers.com	vs. Maryland 11 a.m. (CT) Video: BTN+ (\$) Audio: Huskers.com
vs. Maryland (2) 6 p.m. (CT) Video: BTN+ (\$) Audio: Huskers.com		

The Nebraska softball team hosts its final home games of the season this weekend when the Huskers welcome the Maryland Terrapins to Bowlin Stadium for a four-game series. The teams will open the series with a Friday doubleheader at 3 p.m. followed by a single game at 3 p.m. on Saturday. The series finale is set for 11 a.m. on Sunday.

Following Sunday's game, Nebraska will honor its senior class with an on-field ceremony for Tristen Edwards, Samantha Owen, Ally Riley, Rylie Unzicker and Sarah Yocom. The Huskers' two additional seniors - Olivia Ferrell and Cam Ybarra - intend return for a sixth season next year, utilizing the extra year the NCAA granted after the 2020 season was canceled.

The 2021 senior class has combined to play in nearly 600 games at Nebraska. A two-time All-Big Ten selection, Edwards has started 208 games in her career and ranks in the top five all-time at Nebraska in doubles, home runs, extra-base hits, slugging percentage and on-base percentage. Owen has started 63 games in her three seasons as a Husker, batting .256 with 13 doubles, six home runs and 33 RBIs. Riley, who went 2-for-3 with a double and a home run in Nebraska's last game, is a .260 career hitter in her 54 starts in a Big Red uniform. Unzicker, who brings a five-game hitting streak into this weekend, has started 104 games in her Husker career and has produced 25 extra-base hits. Yocom has started multiple games at every infield position in her career. She has made 61 career starts and brings a streak of 26 consecutive starts at first base into this weekend's series.

QUICK HITTERS

- Friday's games will mark Nebraska's 11th doubleheader of the season. The Huskers have split six of their first 10 doubleheaders while sweeping both games twice and losing both games twice.
- Ten of Nebraska's 16 losses have been by either one or two runs.
- NU owns a .970 fielding percentage, and the Huskers have posted a .970 mark or better only three times in school history.
- Nebraska's 3.28 team ERA is on pace to be its lowest since the 2014 season.
- The Huskers rank third in the Big Ten in scoring, averaging 4.7 runs per game.
- Billie Andrews** leads all Big Ten freshmen in runs (24), RBIs (22) and steals (10).
- Tristen Edwards** needs four extra-base hits to become the second Husker with 100 career extra-base hits.
- Tristen Edwards** is either walked or hit by a pitch an average of 1.5 times per game, the highest average in the nation.
- Tristen Edwards** enters this weekend with a streak of 198 consecutive starts.
- Rylie Unzicker** has hit leadoff in 14 of the past 15 games and is hitting .313 in those 14 games with 13 runs scored.

HUSKERS TO WATCH



Tristen Edwards ranks in the top 10 nationally among all Division I players in walks per game (3rd, 1.0), hit-by-pitches per game (6th, 0.5) and on-base percentage (7th, .585).



Peyton Glatter went 4-for-9 in the Wisconsin series with a double, a home run and five RBIs. She is hitting .381 (8-for-21) in her last eight games with eight RBIs.

HUSKER SCHEDULE (16-16 RECORD)

Sleepy Hollow Sports Complex (Leesburg, Fla.)		
Feb. 26	vs. Indiana (Game 1)	L, 1-3
Feb. 26	vs. Indiana (Game 2)	W, 4-2
Feb. 27	vs. Michigan St. (Game 1)	W, 7-1
Feb. 27	vs. Michigan St. (Game 2)	L, 3-6 (8)
Feb. 28	vs. Ohio St. (Game 1)	L, 2-4
Feb. 28	vs. Ohio St. (Game 2)	W, 2-1
Sleepy Hollow Sports Complex (Leesburg, Fla.)		
March 11	vs. #23 Michigan (Game 1)	L, 1-2 (8)
March 11	vs. #23 Michigan (Game 2)	L, 0-2
March 12	vs. #23 Michigan	W, 5-4 (8)
March 13	vs. Purdue (Game 1)	W, 8-1
March 13	vs. Purdue (Game 2)	L, 0-7
March 14	vs. Purdue	W, 3-1
March 26	Penn St.	W, 9-0 (5)
March 27	Penn St. (Game 1)	W, 8-2
March 27	Penn St. (Game 2)	W, 10-2 (5)
March 28	Penn St.	L, 5-7 (8)
April 2	at Rutgers	W, 12-4 (6)
April 3	at Rutgers (Game 1)	W, 8-1
April 3	at Rutgers (Game 2)	L, 6-10
April 4	at Rutgers	L, 1-2
April 9	Illinois	L, 0-4
April 10	Illinois (Game 1)	W, 5-4
April 10	Illinois (Game 2)	W, 10-6
April 11	Illinois	W, 8-6
April 16	at #24 Minnesota	L, 7-8
April 17	at #24 Minnesota (Game 1)	L, 0-2
April 17	at #24 Minnesota (Game 2)	L, 0-9 (6)
April 18	at #24 Minnesota	W, 6-4
April 23	Wisconsin	L, 4-6
April 24	Wisconsin (Game 1)	W, 9-4
April 24	Wisconsin (Game 2)	L, 3-4
April 25	Wisconsin (BTN)	L, 3-9
April 30	Maryland (Game 1)	3 p.m.
April 30	Maryland (Game 2)	6 p.m.
May 1	Maryland	3 p.m.
May 2	Maryland	11 a.m.
May 7	at Iowa	3 p.m.
May 8	at Iowa (Game 1)	1 p.m.
May 8	at Iowa (Game 2)	3:30 p.m.
May 9	at Iowa	Noon
May 14	at Northwestern	3 p.m.
May 15	at Northwestern (Game 1)	Noon
May 15	at Northwestern (Game 2)	2:30 p.m.
May 16	at Northwestern (BTN)	1 p.m.
May 21-23	NCAA Regionals	
May 27-30	NCAA Super Regionals	
June 3-9	NCAA Women's College World Series	



@HUSKERSOFTBALL



FACEBOOK.COM/HUSKERSOFTBALL



HUSKERS.COM/SOFTBALL

NEBRASKA SOFTBALL FACTS

UNIVERSITY INFORMATION

Location	Lincoln, Neb.
Population	280,369
Founded	1869
Enrollment	25,057
Nickname	Cornhuskers, Huskers
Colors	Scarlet & Cream
Conference	Big Ten
Chancellor	Ronnie Green
Athletic Director	Bill Moos

ATHLETIC COMMUNICATIONS

Softball Contact	Matt Smith
E-Mail	msmith@huskers.com
Phone	(402) 770-5926

2021 COACHING STAFF

Head Coach	Rhonda Revelle
Nebraska Record	1,014-598 (29th year)
Career Record	1,022-614 (30th year)
Assoc. Head Coach	Lori Sippel (32nd year)
Assistant Coach	Diane Miller (13th year)
Dir. of Softball Oper.	Erin Bohling (2nd year)

2020 SEASON REVIEW

Overall Record	9-14
Big Ten Record (Finish)	N/A

2021 TEAM OUTLOOK

Letterwinners Returning/Lost	14/5
Total Starters Returning/Lost	10/1
Position Starters Returning/Lost	8/0
Pitchers Returning/Lost	3/1
Returning All-Conference Players	2*
Returning All-Region Players	2*
Returning All-Americans	0
Newcomers	8

*includes honors at a player's previous school

STADIUM INFORMATION

Stadium	Bowlin Stadium (2,500)
First Season	2002
Record at Bowlin Stadium	237-104 (.695)

PROGRAM HISTORY

First Year of Softball	1976
All-Time Record	1,495-893 (.626)
All-Time Conference Record	402-297 (.575)
Big Ten Record	125-88 (.587)
Overall Conference Titles	19
Big Eight Titles	12
Big 12 Titles	6
Big Ten Titles	1
NCAA Tournament Appearances	24
WCWS Appearances	7
NCAA Tournament Record	62-52 (.544)
NCAA Regional Record	52-35 (.598)
NCAA Super Regional Record	2-3 (.400)
WCWS Record	8-14 (.363)
NFCA All-Americans	27
CoSIDA Academic All-Americans	30

PRONUNCIATION GUIDE

Camyl Armendariz	kuh-MEAL
	are-men-DARE-iz
Abbie Squier	SKWHY-er
Annie Raley	AW-knee
Rhonda Revelle	ruh-VELL
Cam Ybarra	ee-BAR-uh
Sarah Yocom	YO-come

NEBRASKA 2021 SEASON NOTEBOOK

- Nebraska's roster features 21 players, tied for the largest roster in school history.
- The roster features 10 Nebraska natives, the most in-state players since 1980.
- The roster features the most freshmen (8) and most seniors (7) in the 29-year tenure of **Rhonda Revelle** as Nebraska's head coach.
- **Rhonda Revelle** is in her 29th season leading her alma mater in 2021. Revelle is the second-longest serving female head coach in the history of Nebraska Athletics.
- Revelle owns 1,014 wins at Nebraska. She is the all-time wins leader (male or female) in the history of Nebraska Athletics.
- Associate Head Coach **Lori Sippel** is in her 32nd year at Nebraska. Sippel is the longest-tenured female assistant coach in the history of Nebraska Athletics.
- Revelle (1981-83) and Sippel (1985-88) also played for NU. Including their playing and coaching careers, Revelle and Sippel have been a part of 1,318 of Nebraska's 1,495 all-time victories (88 percent).
- Assistant coach **Diane Miller** rounds out the Husker coaching staff. In her 13th season, Miller has helped Nebraska's offense set more than 40 school records.
- NU will play a conference-only schedule for the first time in program history in 2021. The Huskers are scheduled to play 44 Big Ten Conference games, which would nearly double the previous high for most conference games played in one season (24 Big Ten games in 2013).
- Fifth-year seniors **Tristen Edwards** and **Samantha Owen** both took advantage of the NCAA waiver for an extra year of eligibility following the cancellation of the 2020 season due to the COVID-19 pandemic.
- Edwards and Owen are also the only two Huskers who have been an all-conference or all-region performer in their careers. Edwards is a two-time first-team All-Big Ten selection and was a 2019 third-team all-region honoree. Owen was a first-team All-WAC pick and third-team all-region selection at Pacific in 2018.
- **Tristen Edwards** is already one of only five Huskers to be a two-time first-team All-Big Ten selection. In 2021, Edwards will look to become the first Husker to earn three first-team All-Big Ten awards, in addition to becoming the eighth three-time first-team all-conference selection in program history.

2-TIME 1ST-TEAM ALL-BIG TEN PICKS

- **Tristen Edwards, SS (2018-19)**
- MJ Knighten, 3B (2015-16)
- Kiki Stokes, OF (2015-16)
- Tatum Edwards, RHP/UTL (2013-14)
- Taylor Edwards, C (2013-14)

3-TIME 1ST-TEAM ALL-CONFERENCE PICKS

- Jessica Yoachim, 3B (2004-06)*
- Peaches James, RHP/UTL (2001-04)*
- Jenny Voss, RHP (1997-98, 2000)*
- Jennifer Lizama, INF (1997-2000)*
- Tobin Echo-Hawk, INF (1993-96)^*
- Jane Kremer, SS (1986-88)^
- Lori Sippel, RHP (1985-88)*

*Big 12 Conference (1996-2011)

^Big Eight Conference (1977-95)

2021 NEBRASKA NUMERICAL ROSTER

NO.	NAME	B/T	POS.	HT.	YR.	HOMETOWN
1	Rylie Unzicker	L/R	OF	5-5	Sr.	Omaha, Neb.
2	Payton Huscroft	L/L	INF	5-9	Jr.	Omaha, Neb.
5	MJ Green	R/R	INF	5-2	Fr.	Henderson, Texas
6	Billie Andrews	R/R	INF	5-8	Fr.	Gretna, Neb.
7	Sydney Gray	R/R	INF	5-5	Fr.	Tucson, Ariz.
8	Abbie Squier	R/R	OF	5-7	Fr.	Lincoln, Neb.
13	Peyton Glatter	L/R	OF	5-5	Jr.	Omaha, Neb.
14	Camyl Armendariz	R/R	INF	5-7	Fr.	La Verne, Calif.
19	Caitlynn Neal	L/R	RHP/UTL	5-3	Fr.	Dewey, Ariz.
20	Abbey Newlun	R/R	INF	5-7	Fr.	The Woodlands, Texas
21	Sarah Yocom	R/R	INF	5-9	Sr.	Cozad, Neb.
23	Courtney Wallace	R/R	RHP/UTL	5-5	Jr.	Omaha, Neb.
24	Tristen Edwards	R/R	OF	5-6	Sr.	Murrieta, Calif.
27	Brooke Andrews	R/R	INF	5-8	So.	Gretna, Neb.
28	Ally Riley	R/R	C	5-9	Sr.	Alva, Okla.
30	Karlee Seevers	R/R	RHP	5-6	Jr.	York, Neb.
32	Cam Ybarra	L/R	INF	5-6	Sr.	Mission Viejo, Calif.
33	Anni Raley	R/R	C	5-6	Jr.	Clovis, Calif.
39	Olivia Ferrell	R/R	RHP/UTL	5-9	Sr.	Omaha, Neb.
44	Kaylin Kinney	R/R	RHP/UTL	5-10	Fr.	Cedar Rapids, Iowa
77	Samantha Owen	R/R	INF	5-5	Sr.	Manteca, Calif.

GLATTER PACING HUSKER OFFENSE THE PAST TWO WEEKS

Junior **Peyton Glatter** has been Nebraska's top hitter the past two weeks.

- Glatter is batting .333 (7-for-21) the last two weeks, the top average on the team. She also leads Nebraska with eight RBIs during that stretch and is tied for the team lead in hits, doubles (2) and home runs (1).
- Glatter has been especially productive in clutch situations. Over the past two weeks, she is batting .556 (5-for-9) with runners on base and .714 (5-for-7) with runners in scoring position. Glatter is also 5-for-9 with two outs over the last two series with five two-out RBIs.
- Entering this weekend's series Glatter has produced an RBI in four straight games.

EDWARDS WALKING TO FIRST WITH FREQUENCY

Tristen Edwards has been able to walk to first base 47 times this season as teams have elected to frequently pitch around the senior slugger.

- With 47 combined walks and hit-by-pitches - in only 32 games - Edwards leads the nation with an average of 1.47 "free passes" per game this season.
- Edwards is one of only two players from a "Power Five" conference (ACC, Big 12, Big Ten, Pac-12, SEC) who reaches base at least 1.0 time per game due to walks and/or hit-by-pitches. The other is Arkansas' Hannah McEwen.
- Edwards has walked 32 times in 32 games this season, including eight intentional walks. She ranks third nationally in walks per game (1.0) and 15th nationally in total walks. Edwards is one of only three players nationally averaging 1.0 walk per game.
- Edwards is bidding to become just the fourth Big Ten player to average 1.0 walk per game over an entire season since Nebraska joined the conference in 2012. She would join Minnesota's Kendyl Lindaman (1.02 in 2017), Michigan's Sierra Romero (1.08 in 2014) and Ohio State's Alicia Herron (1.00 in 2012).
- Edwards has been hit by 15 pitches in 32 games. She ranks sixth nationally in hit-by-pitches per game (0.47) and 10th nationally in total hit-by-pitches.

DIVISION I PLAYERS AVERAGING 1.0 "FREE PASS" PER GAME (BB + HBP)

Rk.	Player	School	Games	BB	HBP	Per Game
1.	Tristen Edwards	Nebraska	32	32	15	1.47
2.	Maddy Vermejan	Southern Illinois	42	33	27	1.43
3.	Kendra Allen	Massachusetts	23	27	4	1.35
4.	Jessica Lindquist	George Washington	33	32	8	1.21
5.	Baylee Morton	Appalachian State	37	34	9	1.16
6.	Delaney Cumbie	UNC Greensboro	37	34	8	1.14
7.	Sierra Huerta	Marshall	24	19	8	1.13
8.	Allie Cummins	Miami (Ohio)	38	39	0	1.03
9.	Sammey Bunch	Northern Iowa	40	30	11	1.03
10.	Hannah McEwen	Arkansas	35	31	4	1.00

DIVISION I PLAYERS AVERAGING 1.0 WALK PER GAME (MIN. 5 GAMES PLAYED)

Rk.	Player	School	Games	BB	Per Game
1.	Kendra Allen	Massachusetts	23	27	1.17
2.	Allie Cummins	Miami (Ohio)	38	39	1.03
3.	Tristen Edwards	Nebraska	32	32	1.00

EDWARDS ON PACE FOR NEBRASKA'S TOP ON-BASE PERCENTAGE

Senior outfielder **Tristen Edwards** is getting on base at a record-breaking clip this season, reaching base nearly 60 percent of the time she steps up to the plate.

- Edwards ranks seventh nationally with a .585 on-base percentage. She is on pace to shatter the current Nebraska season on-base percentage record of .532.

2021 NCAA ON-BASE PCT. LEADERS

Rk.	Player, School	OB%
1.	Allie Cummins, Miami (OH)	.628
2.	Jayda Coleman, Oklahoma	.611
3.	Sammey Bunch, UNI	.604
4.	Jessia Linquist, George Wash.	.603
5.	Linda Rush, Drexel	.602
6.	Jocelyn Alo, Oklahoma	.594
7.	Tristen Edwards, Nebraska	.585

TOP ON-BASE PCT. IN HUSKER HISTORY

Rk.	Player	Year	OB%
1.	Tristen Edwards	2021	.585
2.	Kiki Stokes	2015	.532
3.	Ali Viola	1998	.531
4.	Ashley Guile	2010	.520
5.	Ali Viola	1996	.517

PROJECTED LINEUP

1	#1 RYLIE UNZICKER • CF .286 • 21 R • 24 H • 5 2B • 2 HR • 7 RBI 104 Career Starts • 71 Starts in CF
2	#6 BILLIE ANDREWS • SS .286 • 24 R • 30 H • 4 2B • 4 HR • 22 RBI 32 Career Starts • 32 Starts at SS
3	#24 TRISTEN EDWARDS • RF .319 • 22 R • 22 H • 6 2B • 5 HR • 15 RBI 208 Career Starts • 70 Starts in RF
4	#32 CAM YBARRA • 2B .288 • 8 R • 30 H • 9 2B • 2 HR • 20 RBI 139 Career Starts • 116 Starts at 2B
5	#13 PEYTON GLATTER • DP .239 • 8 R • 16 H • 2 2B • 3 HR • 17 RBI 77 Career Starts • 6 Starts at DP
6	#23 COURTNEY WALLACE • P .217 • 13 H • 10 RBI 7-7 • 3.08 ERA 66 Career Starts • 30 Starts at P
7	#27 BROOKE ANDREWS • 3B .255 • 10 R • 14 H • 4 2B • 2 HR • 12 RBI 33 Career Starts • 18 Starts at 3B
8	#19 CAITLYNN NEAL • LF .206 • 10 R • 7 H • 0 2B • 0 HR • 6 RBI 12 Career Starts • 12 Starts at LF
9	#28 ALLY RILEY • C .200 • 2 R • 8 H • 3 2B • 1 HR • 1 RBI 54 Career Starts • 40 Starts at C
	#21 SARAH YOCOM • 1B .000 • 6 R • 0 H • 0 2B • 0 HR • 1 RBI 61 Career Starts • 26 Starts at 1B

PROJECTED SUBSTITUTES

#2 PAYTON HUSCROFT • INF .000 • 0 R • 0 H • 0 2B • 0 HR • 0 RBI
#5 MJ GREEN • INF .600 • 0 R • 3 H • 0 2B • 0 HR • 0 RBI
#7 SYDNEY GRAY • INF .366 • 8 R • 15 H • 5 2B • 1 HR • 8 RBI
#8 ABBIE SQUIER • OF .083 • 3 R • 1 H • 1 2B • 0 HR • 1 RBI
#14 CAMYL ARMENDARIZ • INF .000 • 7 R • 0 H • 0 2B • 0 HR • 0 RBI
#20 ABBEY NEWLUN • INF .000 • 0 R • 0 H • 0 2B • 0 HR • 0 RBI
#30 KARLEE SEEVERS • RHP 0-0 • 7.00 ERA • 2.0 IP • 0 SO • 0 BB
#33 ANNI RALEY • C .281 • 8 R • 9 H • 1 2B • 1 HR • 5 RBI
#39 OLIVIA FERRELL • RHP/UTL .105 • 2 R • 4 H • 0 RBI 8-8 • 2.92 ERA
#44 KAYLIN KINNEY • RHP/UTL .220 • 4 R • 13 H • 5 RBI 1-0 • 4.52 ERA
#77 SAMANTHA OWEN • INF .000 • 0 R • 0 H • 0 2B • 0 HR • 0 RBI

BIG TEN STANDINGS

Rk.	Team	Big Ten Record
1.	Michigan	24-5
2.	Minnesota	25-7
3.	Northwestern	22-10
4.	Illinois	20-12
5.	Ohio State	17-14
6.	Nebraska	16-16
	Indiana	16-16
	Iowa	16-16
9.	Wisconsin	15-17
10.	Maryland	14-18
11.	Michigan State	9-16
12.	Purdue	10-22
13.	Rutgers	7-25
14.	Penn State	5-22

NEBRASKA CONFERENCE TITLES

BIG EIGHT CONFERENCE (1976-1995)

Year	Record	Finish	Tournament
1977	1-4	t-4th	N/A
1978	4-3	7th	t-6th
1979	3-8	6th	t-6th
1980	8-9	4th	N/A
1981	5-6	3rd	3rd
1982	9-3	1st	1st
1983	3-7	7th	N/A
1984	6-2	1st	1st
1985	11-1	1st	1st
1986	9-3	1st	1st
1987	8-2	1st	1st
1988	7-3	1st	1st
1989	6-4	3rd	t-5th
1990	3-5	5th	2nd
1991	3-5	5th	t-4th
1992	2-6	5th	t-4th
1993	5-11	5th	N/A
1994	5-15	6th	N/A
1995	10-6	3rd	N/A
TOTAL	108-103		12 total titles

BIG 12 CONFERENCE (1996-2011)

Year	Record	Finish	Tournament
1996	10-8	4th	2nd
1997	10-6	4th	5th
1998	16-0	1st	1st
1999	10-8	4th	2nd
2000	15-2	2nd	1st
2001	16-2	1st	5th
2002	11-5	2nd	2nd
2003	10-8	6th	t-4th
2004	14-3	1st	1st
2005	9-9	7th	t-5th
2006	13-4	2nd	t-3rd
2007	10-8	5th	t-5th
2008	4-14	t-9th	2nd
2009	9-9	5th	t-5th
2010	7-11	t-6th	t-5th
2011	9-9	6th	N/A
TOTAL	173-106		6 total titles

BIG TEN CONFERENCE (2012-PRES.)

Year	Record	Finish	Tournament
2012	14-9	3rd	N/A
2013	16-6	2nd	t-3rd
2014	18-5	t-1st	t-5th
2015	17-6	3rd	2nd
2016	13-9	5th	t-5th
2017	13-10	5th	t-9th
2018	9-13	9th	t-9th
2019	9-14	t-8th	t-9th
2020	No Big Ten Season Due to Pandemic		
2021	16-16	-	N/A
TOTAL	125-88		1 total title

KINNEY EARNS FIRST WIN ON HER BIRTHDAY

Freshman **Kaylin Kinney** earned her first career win as part of two outstanding relief efforts in last Saturday's doubleheader against Wisconsin. The win came on her birthday (April 24).

- In the doubleheader, Kinney allowed only two runs on just four hits in 7.2 innings with four strikeouts and just one walk. In game one, she picked up her first career victory with 5.2 innings of relief. Kinney then tossed 2.0 scoreless innings of relief in game two and did not allow a hit.

BROOKE ANDREWS THRIVING AT THIRD BASE

Sophomore **Brooke Andrews** has been an impressive addition to the batting lineup while starting the past 16 games at third base for Nebraska.

- In her streak of 16 straight starts, Andrews is batting .277 (13-for-34). She has slugged four doubles, one triple and two home runs during that stretch while driving in 12 runs.
- Over the past four weeks, Andrews leads Nebraska in doubles and triples and ranks second in home runs, RBIs and slugging percentage (.532).
- Defensively, Andrews has committed only three errors in her streak of 16 straight starts.

EDWARDS' STREAK FALLS JUST SHORT OF NCAA RECORD

Senior outfielder **Tristen Edwards** nearly set an NCAA record for most consecutive plate appearances reaching base safely. In a seven-game span from April 2-10, Edwards reached base safely in 24 straight trips to the plate. Her streak ranked third in NCAA history.

- During the streak of reaching base in 24 consecutive plate appearances, Edwards was 4-for-4 with a double and a homer with 12 walks and eight hit-by-pitches.
- The streak began at Rutgers, when Edwards reached base all 15 times in the series. She homered in her only official at bat, walked nine times and was hit by five pitches.
- Edwards then reached base safely in her first nine trips to the plate in the Illinois series. She went 3-for-3 with three walks and three-hit-by-pitches before her streak ended with a pop out.
- Over 16 games the last four weeks, Edwards has posted a .672 on-base percentage. Although she is 7-for-26 (.269) in that stretch, Edwards has walked 22 times and been hit by 10 pitches. Edwards has reached base safely in 39 of her 58 plate appearances the past three series.

LONGEST REACH BASE STREAKS IN NCAA HISTORY

RK.	PLAYER	TEAM	DATES	STREAK
1.	Amber Schisler	Campbell	May 5-17, 2017	26
2.	Adrienne Monka	Northwestern	April 16-May 4, 2011	25
3.	Tristen Edwards	Nebraska	April 2-10, 2021	24

THE LAST TIME A HUSKER

Had 6+ At Bats	5 players vs. Wisconsin (5/8/16)
Had 5+ Hits	Lizzy Rock (5) vs. Illinois (2/24/06)
Scored 4+ Runs	Tristen Edwards (4) vs. Pittsburgh (2/17/19)
Had 3+ Doubles	Cam Ybarra (4) vs. Lehigh (3/7/20)
Had 2+ Homers	Billie Andrews (2) vs. Illinois - 2 (4/11/21)
Had 3+ Homers	Kaylan Jablonski (3) at Cal State Fullerton (3/17/18)
Homered in 1st Career AB	Hailey Decker vs. UIC (2/8/13)
Stole 3+ Bases	Nikki Haget (3) vs. La Salle (3/12/11)
Drew 4+ Walks	MJ Knighten (4) at Northwestern (4/17/16)
Had 2+ HBP	Tristen Edwards (2) vs. Illinois (4/9/21)
Had 5+ RBIs	Brooke Andrews (5) at Rutgers (4/2/21)
Threw a No-Hitter	Kaylan Jablonski vs. Purdue (4/29/16)
Threw a Perfect Game	Ashley DeBuhr vs. Iowa St. (4/13/05)
Had 10+ Strikeouts	Cassie McClure (10) vs. South Dakota St. (3/29/16)
Had 15+ Strikeouts	Ashley Hagemann (17) at Omaha (4/19/12)
Had a 10-Game Hit Streak	Billie Andrews (12) in 2021
Had a 15-Game Hit Streak	MJ Knighten (21) in 2015
Had a 20-Game Hit Streak	MJ Knighten (21) in 2015
Had a 25-Game Hit Streak	Taylor Edwards (25) in 2013-14

CAM IN THE CLUTCH

Senior second baseman **Cam Ybarra** has been a clutch hitter for Nebraska. That has been especially true the last four weeks as teams have elected to pitch around Tristen Edwards, with Ybarra routinely making the opponent pay for that decision. Ybarra has hit behind Edwards in the lineup 15 of the last 17 games and in 26 of Nebraska's 32 games this season.

- Ybarra is hitting .288 on the year, but her average climbs to .333 with runners on base.
- Sixty-six of Ybarra's 104 at bats this season (63 percent) have come with runners on base, as have 22 of her 30 hits (73 percent).
- Over 16 games the last four weeks - as Edwards has reached base at a .672 clip - Ybarra leads Nebraska with a .333 batting average. She is hitting .359 (14-for-39) with runners on base during that span.

HUSKER OFFENSE NEAR THE TOP OF THE BIG TEN

Nebraska ranks near the top of the Big Ten in several offensive categories, ranking second in the league in doubles (48), third in scoring (4.7 runs per game) and fourth in home runs (23).

- Individually, senior **Tristen Edwards** leads the Big Ten in on-base percentage (.585), walks (32) and hit-by-pitches (15). She also ranks sixth in slugging percentage (.623), seventh in home runs (5) and ninth in runs (22).
- Senior **Cam Ybarra** ranks seventh in the league in doubles (9).
- Senior **Rylie Unzicker** ranks eighth in the conference in walks (15).
- Freshman **Billie Andrews** ranks fifth in runs (24), sixth in RBIs (22) and stolen bases (10) and eighth in triples (2). Andrews is first in the Big Ten among freshmen in runs, RBIs and steals.

BIG RED BATS HAVE COME ALIVE

Nebraska's offense got off to a slow start in the first two weekends in Florida. But since the scheduled moved to campus sites, the Huskers' offense has fared much better.

- Nebraska is batting .281 and averaging 5.7 runs per game over 20 games the past five weeks. NU hit just .203 and averaged only 3.0 runs per game over 12 games the first two weeks in Florida.
- The Huskers' numbers have increased across the board since games moved to campus sites. Nebraska's batting average is .078 higher, its slugging percentage is .186 higher and its on-base percentage is .090 higher.
- Nebraska has hit 20 home runs the past 20 games after homering only three times in the first 12 games of the season.

HITTING COMPARISON

Games	AVG	R/GM	H/GM	2B/GM	HR/GM	RBI/GM	SLG%	OB%
First 2 Weeks	.203	3.0	5.3	1.3	0.3	2.5	.288	.285
Last 5 Weeks	.281	5.7	7.5	1.6	1.0	5.0	.474	.375
DIFF.	+.078	+2.7	+2.2	+0.3	+0.7	+2.5	+.186	+.090

THE LAST TIME NEBRASKA...

Beat a No. 1 Team	vs. No. 1 Michigan (1-0 on 4/8/16)
Beat a Top-5 Team	vs. No. 1 Michigan (1-0 on 4/8/16)
Beat a Top-10 Team	vs. No. 6 Texas A&M (6-3 on 2/22/18)
Beat a Ranked Team	at No. 24 Minnesota (6-4 on 4/18/21)
Won When Trailing After 6 Innings	vs. Tulsa (3/10/18)
Lost When Leading After 6 Innings	at No. 24 Minnesota (4/16/2021)
Scored 10+ Runs	vs. Illinois - 2 [10] (4/10/21)
Scored 15+ Runs	vs. UTEP [16] (2/8/20)
Scored 20+ Runs	at Maryland [26] (4/3/16)
Allowed 10+ Runs	at Rutgers - 2 [10] (4/3/21)
Allowed 15+ Runs	vs. Wichita St. [17] (2/29/20)
Allowed 20+ Runs	never
Recorded 15+ Hits	at Rutgers - 2 [19] (4/8/17)
Recorded 20+ Hits	at Maryland [21] (4/3/16)
Hit 6+ Doubles	vs. Lamar [7] (2/8/19)
Hit 4+ Home Runs	vs. Illinois - 1 [4] (3/31/19)
Stole 6+ Bases	at Purdue [60] (4/13/19)
Drew 10+ Walks	at Creighton [11] (4/25/17)
Was No-Hit	at No. 24 Minnesota (Game 2, 4/17/2021)

BOWLIN STADIUM



The 2020 season marks the 20th season Nebraska has called Bowlin Stadium home. The stadium's inaugural season was in 2002.

One of the top facilities in the country, Bowlin Stadium features seating for 2,500 fans, an underground system that heats the field and a large video board. Just past the right field fence is the Alex Gordon Training Complex, a spacious indoor facility that is large enough for Nebraska to take live batting practice inside the complex. The clubhouse features a locker room, players' lounge, training room and coaches' offices.

Nebraska has won nearly 70 percent of its games at Bowlin Stadium. The Huskers have hosted four NCAA Regionals at Bowlin Stadium and ranked in the top 25 nationally in attendance 14 times, including four seasons ranked in the top 10.

YEARLY RECORDS

Year	Record	Pct.
2002	9-5	.643
2003	14-7	.667
2004	14-6	.700
2005	9-7	.563
2006	20-1	.952
2007	18-5	.783
2008	13-9	.591
2009	13-5	.722
2010	12-8	.600
2011	10-4	.714
2012	15-1	.938
2013	18-4	.818
2014	13-3	.813
2015	11-6	.647
2016	11-5	.688
2017	13-6	.684
2018	10-7	.588
2019	7-10	.412
2020	0-0	.000
2021	7-5	.583
TOTAL	237-104	.695

LARGEST CROWDS

1. 2,302	Michigan	April 9, 2016
2. 2,204	Ohio State	April 19, 2014
3. 1,960	Texas	April 9, 2011
4. 1,844	Iowa	May 17, 2003
5. 1,840	Michigan	April 27, 2013
6. 1,752	Wisconsin	May 12, 2012
7. 1,692	Indiana	May 3, 2014
8. 1,673	Illinois	April 22, 2017
9. 1,601	Wisconsin	April 28, 2018
10. 1,585	Lehigh	May 20, 2004

NEBRASKA BY THE NUMBERS

62 NCAA TOURNAMENT WINS
Nebraska has won 62 games in its 24 NCAA Tournament appearances (62-52). The 62 postseason wins rank 19th in NCAA history.

30 ACADEMIC ALL-AMERICANS
A total of 22 Huskers have combined to earn 30 CoSIDA Academic All-America honors, the most of any softball program in NCAA history.

27 ALL-AMERICANS
Nebraska has produced 27 All-Americans, including eight first-team selections, seven two-time picks and two three-time All-Americans.

24 NCAA TOURNAMENTS
The Huskers have made 24 appearances in the NCAA Tournament, including 13 straight from 1995 to 2007. Nebraska's 24 postseason appearances rank 13th in NCAA history.

21 REVELLE ALL-AMERICANS
Rhonda Revelle has guided 13 players to a total of 21 All-America honor in her first 28 seasons as Nebraska's head coach.

19 CONFERENCE TITLES
Nebraska has won a total of 19 conference championships. The Huskers won 12 Big Eight titles, six Big 12 crowns and captured their first Big Ten title in 2014.

15 TOP-25 RANKINGS
Nebraska has been ranked in the final NFCA poll in 15 of the 26 years the poll has existed. The Huskers were one of only six teams nationally to be ranked in the final poll in each of the first 12 years it existed (1995 to 2006).

14 REVELLE ACADEMIC ALL-AMERICANS
Rhonda Revelle has produced 14 academic All-Americans at Nebraska. That total ranks fourth among all softball head coaches in NCAA history.

7 WCWS APPEARANCES
Nebraska has advanced to the Women's College World Series seven times to rank 14th in NCAA history.

4 SOFTBALL OLYMPIANS
Four former Huskers have competed in the Olympics, with a pair of former players competing in each of the last two Olympics.

HUSKER PITCHING STAFF SHOWING IMPROVEMENT

Nebraska's pitching staff has been much improved this season. Through 32 games, the Huskers boast a 3.28 ERA and are allowing 4.0 runs per game. Both of those averages are on pace to be the lowest for a Nebraska team since the 2014 season, when the Huskers were co-Big Ten champions and advanced to an NCAA Super Regional.

- NU has allowed two or fewer runs 13 times in 32 games this year (41 percent). In the previous two seasons, Nebraska allowed two or fewer runs only 19 times in 75 games (25 percent).
- Nebraska has allowed fewer than two runs six times in 32 games this season. In the previous two seasons, the Huskers allowed fewer than two runs only seven times in 75 games.
- Senior **Olivia Ferrell** is 8-8 with one save and a 2.92 ERA after entering the year with a 15-21 career record, one save and a 4.47 ERA. Ferrell has pitched in 21 of Nebraska's 32 games this spring with 16 starts. She ranks seventh in the Big Ten in saves and 10th in wins and strikeouts (84).
- Junior **Courtney Wallace** has appeared in 21 games with 13 starts. Wallace is 7-7 with a 3.08 ERA and one save in 93.1 innings this season after entering the year with a 6-9 career record and 5.50 ERA. Wallace ranks seventh in the Big Ten in saves and 10th in innings.
- Freshman **Kaylin Kinney** has appeared in 13 games with three starts. She has excelled in relief, posting a 3.10 ERA with one win and two saves in 10 relief outings. Kinney ranks fourth in the Big Ten in saves.

PITCHING COMPARISON (2020 TO 2021)

Season	ERA	SV	HITS/GM	RUNS/GM	BB/GM	HR/GM	AVG.
2020	5.54	1	8.5	6.0	3.9	1.2	.313
2021	3.28	4	6.7	4.0	2.8	0.6	.258
DIFF.	-2.26	+3	-1.8	-2.0	-1.1	-0.6	-.055

CLOSE CALLS

Nebraska has been accustomed to playing close games so far this spring, as 17 of the Huskers' 32 contests (53 percent) have been decided by either one or two runs.

- Nebraska is 7-10 in games decided by two runs or less this season. In 23 games last year, the Huskers played only six games decided by two or fewer runs (3-3 record in those games).
- Ten of Nebraska's 16 losses have been by either one or two runs.
- Twenty of Nebraska's 32 games have been either a tie, one-run or two-run game entering the sixth inning. The Huskers are 10-1 when leading after five innings, 1-13 when trailing after five innings and 3-2 when tied after five innings.
- Nebraska is 71-2 the past five seasons when leading after six innings of play, with both losses to Minnesota. The Huskers had won 63 consecutive games when leading after six innings, dating back to March 25, 2017, before Minnesota rallied from a one-run deficit to win 8-7 on April 16.

NEBRASKA'S 2021 RECORD WHEN...

Overall	16-16	Out-Hitting Opponent	11-1
Non-Conference	0-0	Out-Hit by Opponent	3-14
Big Ten Conference	16-16	Scoring First	13-4
Home	7-5	Opponent Scores First	3-12
Neutral	6-6	Scoring in the First Inning	7-3
Road	3-5	Scoring Fewer than 3 Runs	1-9
Night Games	1-5	Scoring 5 or More Runs	13-3
Day Games	15-11	Scoring 10 or More Runs	3-0
Sunday	4-4	Allowing Fewer Than 3 Runs	9-4
Monday	0-0	Allowing 5 or More Runs	2-8
Tuesday	0-0	Allowing 10 or More Runs	0-1
Wednesday	0-0	Leading After Five Innings	10-1
Thursday	0-2	Leading After Six Innings	12-1
Friday	4-4	Trailing After Five Innings	1-13
Saturday	8-6	Trailing After Six Innings	0-11
vs. Ranked Opponents	2-5	Tied After Five Innings	3-2
vs. Unranked Opponents	14-11	Tied After Six Innings	1-3
Extra Innings	1-3	Committing 0 Errors	5-7
1-Run Games	3-4	Committing 2 or More Errors	4-2

EDWARDS TIES NEBRASKA'S ALL-TIME DOUBLES RECORD

Tristen Edwards hit her 48th career double in game one at No. 24 Minnesota on April 16, tying the Nebraska all-time record. Edwards now shares the record with three-time All-American Ali Viola (1995-98), two-time All-American Tobin Echo-Hawk (1993-96) and All-American Kim Ogee (2000-03).

EDWARDS LEAVING HER MARK ON HUSKER RECORD BOOK

Senior outfielder **Tristen Edwards** has joined one elite club in Nebraska history, is nearing another and is poised to challenge several Husker career records.

- Edwards is one of only three Huskers who have totaled 40 career doubles and 40 career home runs. The other two members of that group are three-time All-American Ali Viola and two-time All-American Taylor Edwards, Tristen's older sister.
- Edwards is also looking to become the first Husker to hit 50 career doubles and 50 career home runs. Edwards currently owns 48 career doubles and 47 career home runs.
- Edwards is just the fourth Husker to record 150 career hits, runs and RBIs. The other three members of that group were all All-Americans (Ali Viola, Taylor Edwards and MJ Knighten).
- Edwards has tied Nebraska's career doubles record and is on pace to break the extra-base hits record in addition to challenging several other top marks. Edwards is seven shy of tying Nebraska's home run record and nine shy of matching the extra-base hits record.

NEBRASKA PLAYERS WITH 40 CAREER 2B & HR

Player	Years	2B	HR
Ali Viola	1995-98	48	53
Taylor Edwards	2011-14	41	54
Tristen Edwards	2017-pres.	48	47

NEBRASKA PLAYERS WITH 150 CAREER HITS, RUNS & RBIs

Player	Years	Hits	Runs	RBIs
Ali Viola	1995-98	263	157	213
Taylor Edwards	2011-14	220	177	202
MJ Knighten	2014-17	253	183	186
Tristen Edwards	2017-pres.	207	162	155

EDWARDS' ASSAULT ON NEBRASKA'S ALL-TIME RECORDS

Category	Record Holder	Record	Edwards' Total	Projection*
Doubles	Four players	48	48	52
Home Runs	Taylor Edwards	54	47	52
Extra-Base Hits	Ali Viola	105	96	106

*Based on Edwards' career per-game averages played out over a 44-game 2021 schedule

EDWARDS NAMED PLAYER OF THE WEEK FOR RECORD SIXTH TIME

Senior **Tristen Edwards** was named the first Big Ten Player of the Week of the 2021 season on March 2. She was honored after hitting .444 in six games with one double, three homers and six RBIs. Her three homers were more than any other Big Ten team hit in the first week.

- Edwards was named the Big Ten Player of the Week for the sixth time in her career. That set a Nebraska record for most career conference player-of-the-week honors and tied the Big Ten record for most career player-of-the-week awards.
- Edwards became only the third player in Big Ten history to be a six-time player of the week. The other two are two-time Northwestern All-American Adrienne Monka and four-time Michigan All-American Sierra Romero.
- Edwards became the first Husker to win six conference player-of-the-week awards. Overall, Edwards is one shy of the most conference weekly awards in school history. All-American Peaches James won seven total conference weekly awards in her decorated career.

MOST PLAYER-OF-THE-WEEK AWARDS IN BIG TEN HISTORY

Player	School	Years	Awards
Tristen Edwards	Nebraska	2017-present	6
Sierra Romero	Michigan	2013-16	6
Adrienne Monka	Northwestern	2009-12	6

EDWARDS CAREER RECORD WATCH

DOUBLES

1. Tobin Echo-Hawk (1993-96)	48
Ali Viola (1995-98)	48
Kim Ogee (2000-03)	48
Tristen Edwards (2017-present)	48

HOME RUNS

1. Taylor Edwards (2011-14)	54
2. Ali Viola (1995-98)	53
3. Jennifer Lizama (1997-2000)	47
Tristen Edwards (2017-present)	47
5. Tatum Edwards (2011-14)	46

EXTRA-BASE HITS

1. Ali Viola (1995-98)	105
2. Tristen Edwards (2017-present)	96
3. Taylor Edwards (2011-14)	95

RUNS

1. Kiki Stokes (2013-16)	200
2. Jennifer Lizama (1997-2000)	199
3. MJ Knighten (2014-17)	183
4. Kim Ogee (2000-03)	182
5. Taylor Edwards (2011-14)	177
6. Tobin Echo-Hawk (1993-96)	168
7. Tristen Edwards (2017-present)	162

RBIs

1. Ali Viola (1995-98)	213
2. Taylor Edwards (2011-14)	202
3. MJ Knighten (2014-17)	186
4. Brooke Thomason (2010-13)	177
5. Nicole Trimboli (2001-04)	173
6. Tatum Edwards (2011-14)	158
7. Tristen Edwards (2017-present)	155

WALKS

1. Taylor Edwards (2011-14)	150
2. Jennifer Lizama (1997-2000)	124
3. Kiki Stokes (2013-16)	120
4. Ali Viola (1995-98)	116
5. Kim Ogee (2000-03)	115
6. Tristen Edwards (2017-present)	111

BATTING AVERAGE

1. Ali Viola (1995-98)	.418
2. Tobin Echo-Hawk (1993-96)	.379
3. Jennifer Lizama (1997-2000)	.378
4. Lizzy Rock (2005-06)	.374
5. MJ Knighten (2014-17)	.357
6. Kiki Stokes (2013-16)	.350
7. Tristen Edwards (2017-present)	.349

SLUGGING PERCENTAGE

1. Ali Viola (1995-98)	.760
2. Tristen Edwards (2017-present)	.671
3. Christie McCoy (1997-98)	.642
4. Jennifer Lizama (1997-2000)	.635
5. Taylor Edwards (2011-14)	.629

ON-BASE PERCENTAGE

1. Ali Viola (1995-98)	.508
2. Tristen Edwards (2017-present)	.475
3. Taylor Edwards (2011-14)	.471
4. Kiki Stokes (2013-16)	.469
5. Jennifer Lizama (1997-2000)	.456

HIT-BY-PITCHES

1. Taylor Edwards (2011-14)	39
2. Tristen Edwards (2017-present)	37

MULTI-HOME RUN GAMES

1. Tristen Edwards (2017-present)	7
2. Tatum Edwards (2011-14)	6
Ali Viola (1995-98)	6

COLLEGE SOFTBALL POLLS

USA TODAY/NFCA COACHES POLL

Rk.	Team	Pts.	Record	LW
1.	Oklahoma (32)	800	37-1	1
2.	UCLA	768	28-3	2
3.	Florida	720	35-7	3
4.	Alabama	698	36-7	5
5.	Washington	674	35-9	4
6.	Florida State	606	33-7-1	7
7.	Texas	564	35-6	9
8.	Oregon	559	30-10	6
9.	Arizona	535	31-8	10
10.	Arkansas	514	37-7	8
11.	Oklahoma State	497	36-5	11
12.	Arizona State	473	28-11	12
13.	Clemson	376	37-4	16
	Louisiana	376	35-9	13
15.	Missouri	335	34-10	18
16.	LSU	310	28-15	17
17.	Kentucky	300	32-12	14
18.	Tennessee	251	35-8	19
19.	Michigan	201	24-5	20
20.	Virginia Tech	182	28-11	15
21.	Georgia	179	29-14	21
22.	Duke	159	34-10	22
23.	Minnesota	82	25-7	24
24.	James Madison	61	27-1	t25
25.	UCF	49	34-12-1	t25

ESPN.COM/USA SOFTBALL POLL

Rk.	Team	Record	Pts.	LW
1.	Oklahoma (18)	37-1	498	1
2.	UCLA (2)	28-3	482	2
3.	Florida	35-7	454	3
4.	Alabama	36-7	429	5
5.	Washington	35-9	422	4
6.	Florida State	33-7-1	366	T7
7.	Arkansas	37-7	360	6
8.	Arizona State	28-11	342	T9
9.	Oklahoma State	36-5	332	T9
10.	Oregon	30-10	322	T7
11.	Arizona	31-8	303	11
12.	Texas	35-6	275	12
13.	Clemson	37-4	244	16
14.	LSU	28-15	241	15
15.	Missouri	34-10	195	19
16.	Tennessee	35-8	192	17
17.	Kentucky	32-12	186	14
18.	Louisiana	35-9	160	18
19.	Virginia Tech	28-11	128	13
20.	Michigan	24-5	122	20
21.	Duke	34-10	105	21
22.	Georgia	29-14	80	22
23.	James Madison	27-1	63	24
24.	Minnesota	25-7	35	25
	UCF	34-12-1	35	RV

BILLIE ANDREWS WINS THREE STRAIGHT WEEKLY AWARDS

Billie Andrews won the Big Ten Freshman of the Week award in three consecutive weeks from March 30 to April 13. She is the first Husker to be honored as a three-time Big Ten Freshman of the Week, and Andrews is just the fourth freshman in Big Ten history to win the award in three straight weeks.

- Andrews produced multiple hits in each of the four games against Penn State to win her first award. She finished the series 10-for-15 (.667) with a 1.133 slugging percentage. Andrews scored six runs, drove in five and produced her first two career triples and first home run.
- The next week, Andrews went 7-for-14 in the four-game series at Rutgers with two doubles, a homer, three RBIs and four runs. She had at least one hit and one run in every game of the series, extending her streak to nine consecutive games with both a hit and run scored.
- Two weeks ago, Andrews was 4-for-11 (.364) with two home runs, four runs scored and four RBIs against an Illinois pitching staff that entered the series ranked 11th nationally in ERA. Andrews hit two home runs in game three of the series for her first career multi-homer game.

THREE CONSECUTIVE BIG TEN FRESHMEN OF THE WEEK WINNERS

Player	School	Season
Sierra Romero	Michigan	2013
Kendyl Lindaman	Minnesota	2017
Meghan Beaubien	Michigan	2018
Billie Andrews	Nebraska	2021

EDWARDS AMONG NATION'S TOP RETURNING STATISTICAL LEADERS

Tristen Edwards was in the midst of a stellar season in 2020 before the season was cut short. In 23 games last season, Edwards hit .434 with 10 doubles, 11 home runs and 22 RBIs.

- Edwards' 21 extra-base hits ranked second nationally in the shortened 2020 season. She was one of only three players in the country with 20 extra-base hits.
- Edwards was the only player in the country last season with at least 10 doubles and 10 home runs. She ranked fourth nationally in home runs (11) and 14th in doubles (10). Edwards was the only player in the nation to rank in the top 15 in both doubles and home runs in 2020.
- In addition to her lofty ranking in doubles and home runs, Edwards ranked third nationally in slugging percentage (1.000) and total bases (76), fourth in home runs per game (0.48) and 15th in runs per game (1.22).
- Entering 2021, Edwards ranked 18th among all active Division I players in career RBIs (140) and total bases (354), 19th in home runs (44), 22nd in doubles (42) and 23rd in runs (139).
- Entering this weekend's series with Maryland, Edwards is one of only 19 active Division I players with 40 career doubles and 40 career home runs. She is also one of only 11 active players from a Power Five conference with 200 career hits and 100 career walks.

EDWARDS' CAREER RANKINGS AMONG ACTIVE DIVISION I PLAYERS (AS OF APRIL 26)

Category	Total	Rank
Walks	111	19th
Doubles	48	27th
Home Runs	47	23rd
Total Bases	398	33rd
Runs	162	35th
RBIs	155	37th

GRAY OUT FOR THE SEASON

Freshman third baseman **Sydney Gray** suffered a season-ending injury in the series finale against Penn State on March 28.

- Gray started 14 of Nebraska's first 16 games at third base, and she hit .366. She finished her abbreviated freshman season with a flurry, going 13-for-25 over her final eight games with five doubles, one homer, seven runs scored and seven RBIs.

STATISTICAL COMPARISON

TEAM	W-L	AVG.	SCORING	OPP. SCORING	ERA	FLD%
Nebraska	16-16	.252	4.7	4.0	3.28	.970
Maryland	14-18	.242	3.0	3.7	3.23	.968
NEB DIFF.	+2.0	+0.010	+1.7	+0.3	+0.05	+0.002

SCOUTING THE MARYLAND TERRAPINS (14-18)

Maryland enters this weekend's series in 10th place in the Big Ten standings with a 14-18 record, although the Terrapins are only two games out of sixth. Maryland has won two of its last three Big Ten series, winning three of four games against Michigan State three weeks ago and going 3-1 at home against Penn State last weekend.

Nebraska and Maryland have each played Illinois, Michigan, Michigan State, Ohio State, Penn State, Purdue, Rutgers and Wisconsin this season. The Huskers posted a 14-12 record against that group, while Wisconsin went 12-13 against those eight opponents.

- Maryland is batting .242 as a team and averaging 3.0 runs per game. The Terrapins have been held to two or fewer runs in six of their last eight games, but four of those games came against a Michigan pitching staff which entered play this week leading the nation in ERA.
- A pair of Terrapins are hitting above .300 this season led by **Taylor Okada**. The junior is hitting a team-high .337 and leads Maryland with 32 hits.
- Freshman **Jaeda McFarland** has been one of the Big Ten's best freshmen this season. McFarland is batting .304 and she leads the team with 17 runs, four triples, 14 RBIs, eight stolen bases, a .480 slugging percentage and a .394 on-base percentage and is one of four Terps tied for the team lead with two home runs. McFarland's four triples are also tied for the Big Ten lead.
- **JoJo McRae** is batting .282 but only has 39 at bats on the season. **Regan Kerr** (.264) and **Campbell Kline** (.262) are the only other Terrapins hitting above .250. Kerr is also tied for the team lead with eight stolen bases, while Kline is tied for third in the Big Ten with three triples.
- Defensively, Maryland boasts a 3.23 team ERA, a .968 fielding percentage and is allowing 3.7 runs per game. The Terrapins have primarily used three pitchers this season.
- **Trinity Schlotterbeck** leads the team with 16 appearances, 13 starts and 72.1 innings pitched. She has compiled a 6-5 record with a 3.19 ERA and opponents are hitting only .238 against her.
- **Courtney Wyche** has appeared in 13 games with 10 starts, and her seven complete games lead the Terps. Wyche boasts a team-low 2.27 ERA in 61.2 innings, and she is 3-6 on the season.
- **Jennifer Brann** has also made 13 appearances with nine starts. She is 4-5 on the season with a 2.75 ERA and one save in 56.0 innings. Brann leads the team in strikeouts (38) despite ranking third in innings pitched. She also has the lowest opponent batting average (.237) of any Terrapin pitcher.
- **Haley Ellefson** (1-2, 7.70 ERA in 20.0 IP) rounds out the Maryland staff.
- **Mark Montgomery** is in his second season as the head coach at Maryland and his 21st season as a collegiate head coach. He owns a 26-29 record at Maryland after previously compiling a 72-31 record in two seasons at Georgetown (Ky.) from 2001 to 2002, a 216-226 records in eight seasons at Centenary from 2003 to 2010, a 42-63 record in two years at Northern Colorado in 2011 and 2012 and a 226-163 record in seven seasons at Louisiana Tech from 2013 to 2019. Montgomery boasts a 582-512 career record in 21 seasons.

NEBRASKA VS. MARYLAND

SERIES HISTORY

- **Series Record:** Nebraska leads, 8-1
- **In Big Ten Play:** Nebraska leads, 5-1
- **In Lincoln:** Nebraska leads, 3-0
- **At College Park:** Nebraska leads, 2-1
- **At a Neutral Site:** Nebraska leads, 3-0
- **Current Win Streak:** Nebraska, 5 games
- **Revelle vs. Maryland:** 8-1
- **Montgomery vs. Nebraska:** 0-1
- **Revelle vs. Montgomery:** 1-0

ALL-TIME MEETINGS

DATE	LOCATION	RESULT
2/12/1999	Neutral	W, 3-1
2/11/2011	Neutral	W, 6-4
2/22/2013	Neutral	W, 8-1
4/1/2016	College Park	L, 4-7
4/2/2016	College Park	W, 14-2 (6)
4/3/2016	College Park	W, 26-4 (5)
4/26/2019	Lincoln	W, 11-2 (5)
4/27/2019	Lincoln	W, 14-0 (5)
4/28/2019	Lincoln	W, 9-1 (6)

NOTABLE GAMES

**NEBRASKA 26, MARYLAND 4 (5 INN.)
APRIL 3, 2016**

Nebraska set school records with 23 RBIs and 26 runs scored in Rhonda Revelle's 900th win as Husker head coach. Nebraska scored in every inning, including an 11-run second, an eight-run third and a four-run fourth. The Huskers totaled 21 hits, their first game with 20 hits in 20 years. Individually, seven Huskers had multiple hits, including six players who had three-hit games. Kiki Stokes scored a school-record five runs and Cassie McClure and MJ Knighten each drove in five runs, with McClure slugging a pair of home runs.

**NEBRASKA 14, MARYLAND 0 (5 INN.)
APRIL 27, 2019**

Nebraska celebrated its 2019 Senior Day with a 14-0 five-inning victory over Maryland. Several current Huskers had impressive performances in the win. Courtney Wallace allowed only one hit in 4.0 innings in the circle and was 2-for-2 at the plate with a double and a career-high three RBIs. Tristen Edwards went 3-for-4 with an RBI, Rylie Unzicker was 2-for-2 with a career-high three runs scored and Peyton Glatter drove in two runs.

**NEBRASKA 9, MARYLAND 1 (6 INN.)
APRIL 28, 2019**

Nebraska completed a three-game sweep of Maryland with a 9-1 win in the final home game of the 2019 season, which also proved to be NU's last home game until March 26 of this year. With the win, the Huskers swept a Big Ten series with each game ending early due to the run-rule for only the second time in school history. The win marked Nebraska's fifth straight run-rule victory against Maryland.



#1 | RYLIE UNZICKER • OF

	AVG.	G-GS	R	H	2B	HR	RBI	BB	SLG%	OB%
2021	.286	32-30	21	24	5	2	7	15	.440	.423
Career	.232	138-104	61	67	17	6	26	47	.367	.353

- 104 career starts at Nebraska rank 2nd on the team
- Ranks 8th in the Big Ten in walks (15)
- 7-time Nebraska Scholar-Athlete Honor Roll member
- 2-time Academic All-Big Ten & 2020 Big Ten Distinguished Scholar
- Sister Madi was a four-year Husker letterwinner (2015-19)



#2 | PAYTON HUSCROFT • INF

	AVG.	G-GS	R	H	2B	HR	RBI	BB	SLG%	OB%
2021	.000	2-0	0	0	0	0	0	0	.000	.000
Career	.167	26-19	2	7	1	1	6	5	.262	.271

- Has been slowed after recovering from offseason surgery
- Had 5 two-out RBIs in shortened 2020 season, one shy of the team high
- 1 of 3 Millard South products on the Husker roster (Glatter & Unzicker)
- 5-time Nebraska Scholar-Athlete Honor Roll member
- 2-time Tom Osborne Citizenship Team member



#5 | MJ GREEN • INF

	AVG.	G-GS	R	H	2B	HR	RBI	BB	SLG%	OB%
2021	.600	5-1	0	3	0	0	0	0	.600	.600
Career	.600	5-1	0	3	0	0	0	0	.600	.600

- Is 3-for-5 at the plate this season
- Named a top-100 recruit by FloSoftball
- No. 141 (Extra Inning Softball) & No. 153 (FastPitch News) recruit nationally
- All-state & 2-time all-district pick for Henderson (Texas) High School
- Travel ball teammate of Husker Abbey Newlun (Scrap Yard International)



#6 | BILLIE ANDREWS • INF

	AVG.	G-GS	R	H	2B	HR	RBI	BB	SLG%	OB%
2021	.286	32-32	24	30	4	4	22	7	.476	.333
Career	.286	32-32	24	30	4	4	22	7	.476	.333

- 3-time Big Ten Freshman of the Week (consecutive awards from 3/30-4/14)
- Ranks 5th in the Big Ten in runs, 6th in RBIs & steals and 8th in triples
- 4-time Omaha World-Herald All-Nebraska pick at Gretna High School
- Hit .434 with a .625 OB% and 1.200 SLG% in her prep career
- Older sister Brooke is a sophomore infielder with the Huskers



#7 | SYDNEY GRAY • INF

	AVG.	G-GS	R	H	2B	HR	RBI	BB	SLG%	OB%
2021	.366	15-14	8	15	5	1	8	1	.561	.381
Career	.366	15-14	8	15	5	1	8	1	.561	.381

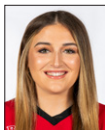
- Suffered a season-ending injury on March 28 against Penn State
- Was leading NU in average and was 2nd in hits & doubles prior to her injury
- Hit .503 at Sabino High School in Tucson, Ariz. with 16 3B, 16 HR & 87 RBIs
- Helped Sabino to an Arizona 3A state championship as a junior
- Travel ball teammate of Husker Caitlynn Neal (Arizona Desert Thunder)



#8 | ABBIE SQUIER • OF

	AVG.	G-GS	R	H	2B	HR	RBI	BB	SLG%	OB%
2021	.083	16-3	3	1	1	0	1	1	.167	.214
Career	.083	16-3	3	1	1	0	1	1	.167	.214

- Ranked as the No. 95 recruit nationally by Extra Inning Softball
- 3rd-team NFCA High School All-American as a junior
- .490 career average with a .994 SLG% at Lincoln Southwest High School
- Was the state shot put champion as a junior
- Lone Lincoln native on Nebraska's 2021 roster



#13 | PEYTON GLATTER • OF

	AVG.	G-GS	R	H	2B	HR	RBI	BB	SLG%	OB%
2021	.239	27-23	8	16	2	3	17	8	.403	.316
Career	.238	88-77	29	55	9	8	42	25	.381	.315

- Ranks 2nd among active Huskers with 42 career RBIs at Nebraska
- Has started 77 of Nebraska's 107 games the past three seasons
- 3-time member of the Nebraska Scholar-Athlete Honor Roll
- Member of the 2019 Tom Osborne Citizenship Team
- 1 of 3 Millard South products on the Husker roster (Huscroft & Unzicker)



#14 | CAMYL ARMENDARIZ • INF

	AVG.	G-GS	R	H	2B	HR	RBI	BB	SLG%	OB%
2021	.000	18-1	7	0	0	0	0	0	.000	.000
Career	.000	18-1	7	0	0	0	0	0	.000	.000

- Has appeared in 18 games (1 start at DP; 14 games as a PR & 3 as a PH)
- Four-year varsity player for Bonita (Calif.) High School
- Totaled 113 hits, 23 doubles, 5 triples, 20 homers & 80 RBIs in prep career
- 3-time all-league & All-San Gabriel Valley selection
- 1 of 3 current Huskers from the Corona Angels travel ball team



#19 | CAITLYNN NEAL • RHP

	W-L	ERA	APP	GS	CG	SHO	SV	IP	SO	AVG.
2021	0-0	10.50	3	0	0	0	0	2.2	0	.500
Career	0-0	10.50	3	0	0	0	0	2.2	0	.500

- Named the preseason Big Ten Newcomer of the Year by D1Softball
- Tossed a scoreless inning vs. No. 23 Michigan in her career debut
- Member of the United States Under-17 Women's National Team
- 2-hit shutout in the Pan American Championships Gold Medal game
- 23-2 record with a 0.71 ERA & 15 shutouts in her high school career



#19 | CAITLYNN NEAL • UTL

	AVG.	G-GS	R	H	2B	HR	RBI	BB	SLG%	OB%
2021	.206	22-12	10	7	0	0	6	0	.206	.200
Career	.206	22-12	10	7	0	0	6	0	.206	.200

- Named the preseason Big Ten Newcomer of the Year by D1Softball
- All 7 of her hits & all 6 of her RBIs have come in her last 10 starts
- Ranked as the No. 30 recruit nationally by Extra Inning Softball
- .613 career hitter with 17 HR & 68 RBIs at Bradshaw Mountain High School
- Travel ball teammate of Husker Sydney Gray (Arizona Desert Thunder)



#20 | ABBEY NEWLUN • INF

	AVG.	G-GS	R	H	2B	HR	RBI	BB	SLG%	OB%
2021	.000	1-0	0	0	0	0	0	0	.000	.000
Career	.000	1-0	0	0	0	0	0	0	.000	.000

- Four-year varsity player at The Woodlands High School in Texas
- Totaled 69 hits, 16 doubles, 3 triples & 9 home runs in her prep career
- Was an all-district selection as a junior
- Travel ball teammate of Husker MJ Green (Scrap Yard International)
- Father Craig graduated from Nebraska & was born & raised in Auburn, Neb.



#21 | SARAH YOCOM • INF

	AVG.	G-GS	R	H	2B	HR	RBI	BB	SLG%	OB%
2021	.000	26-26	5	0	0	0	1	1	.000	.091
Career	.130	93-61	19	7	0	0	4	4	.130	.186

- Has started 26 straight games at first base, her first starts at the position
- Has started multiple games at 1B, 2B, 3B & SS in her Husker career
- 2-time Academic All-Big Ten & 2019 Big Ten Distinguished Scholar
- 5-time Nebraska Scholar-Athlete Honor Roll member
- 3-time member of the Tom Osborne Citizenship Team



#23 | COURTNEY WALLACE • RHP

	W-L	ERA	APP	GS	CG	SHO	SV	IP	SO	AVG.
2021	7-7	3.07	21	13	4	0	1	93.1	39	.261
Career	13-16	4.49	60	30	8	0	2	224.1	127	.301

- Ranks 7th in the Big Ten in saves (1) and 10th in innings pitched (93.1)
- Ranks 2nd among current Huskers in career innings pitched (224.1)
- 3-time Nebraska Scholar-Athlete Honor Roll member
- 2-time member of the Tom Osborne Citizenship Team
- Her cousin, Alex Smith, is a cornerback on the Wisconsin football team



#23 | COURTNEY WALLACE • UTL

	AVG.	G-GS	R	H	2B	HR	RBI	BB	SLG%	OB%
2021	.217	24-19	7	13	2	1	10	5	.333	.273
Career	.225	86-64	32	45	7	4	26	18	.380	.293

- Has been in the batting order during starts at P, DP, 3B & LF in her career
- 17 of her 45 career hits have gone for extra bases (7 2B, 6 3B, 4 HR)
- Tied the Nebraska single-game record with two triples vs. Lamar in 2019
- 6 career triples are the most of any current Husker
- Nebraska Gatorade Player of the Year as a high school senior



#24 | TRISTEN EDWARDS • OF

	AVG.	G-GS	R	H	2B	HR	RBI	BB	SLG%	OB%
2021	.319	32-32	22	22	6	5	15	32	.623	.585
Career	.349	211-207	162	207	48	47	155	111	.671	.475

- Ranks 3rd nationally in walks per game (1.00) & 7th in on-base pct. (.585)
- Named the preseason Big Ten Player of the Year by D1Softball
- 2-time member of USA Softball Collegiate Player of the Year watch list
- 2-time 1st-team All-Big Ten & record 6-time Big Ten Player of the Week
- Older twin sisters Tatum & Taylor were both 2-time Husker All-Americans



#27 | BROOKE ANDREWS • INF

	AVG.	G-GS	R	H	2B	HR	RBI	BB	SLG%	OB%
2021	.255	26-19	10	14	4	2	12	3	.473	.317
Career	.261	44-33	12	23	5	2	15	4	.409	.316

- 16 straight starts at 3B; 4 2B, 1 3B, 2 HR & 12 RBIs in those 16 starts
- Started a team-high 14 games at shortstop as a freshman in 2020
- Ranked 5th on the team with a .273 batting average last season
- 3-time Nebraska Scholar-Athlete Honor Roll member
- Younger sister Billie is a freshman infielder with the Huskers



#28 | ALLY RILEY • C

	AVG.	G-GS	R	H	2B	HR	RBI	BB	SLG%	OB%
2021	.200	18-18	2	8	3	1	1	1	.350	.238
Career	.260	73-54	6	39	9	2	23	6	.360	.299

- Is Nebraska's most experienced catcher with 40 career starts at the position
- Started 34 of Nebraska's 54 games at catcher the past two seasons
- Her .260 career average ranks 3rd among all Huskers with at least 100 AB
- 2-time Academic All-Big Ten selection
- 7-time Nebraska Scholar-Athlete Honor Roll member



#30 | KARLEE SEEVERS • RHP

	W-L	ERA	APP	GS	CG	SHO	SV	IP	SO	AVG.
2021	0-0	7.00	2	0	0	0	0	2.0	0	.500
Career	0-0	17.77	4	0	0	0	0	4.1	0	.500

- Tossed a scoreless inning vs. Purdue after making two appearances in 2020
- Is also a pinch runner, scoring a run in each of her two career appearances
- 2020 Academic All-Big Ten selection & 2020 Big Ten Distinguished Scholar
- 5-time member of the Nebraska Scholar-Athlete Honor Roll
- 2-time Tom Osborne Citizenship Team member



#32 | CAM YBARRA • INF

	AVG.	G-GS	R	H	2B	HR	RBI	BB	SLG%	OB%
2021	.288	32-32	8	30	9	2	20	6	.433	.321
Career	.258	145-139	32	112	32	7	48	35	.385	.317

- Ranks 7th in the Big Ten in doubles (8)
- In her 2nd year at Nebraska after spending two seasons at Oregon State
- Started all 54 games at second base for Nebraska the past two seasons
- Was a 2018 Pac-12 All-Defensive & All-Freshman Team honoree at OSU
- 1 of 3 current Huskers from the Corona Angels travel ball team



#33 | ANNI RALEY • C

	AVG.	G-GS	R	H	2B	HR	RBI	BB	SLG%	OB%
2021	.281	23-15	8	9	1	1	5	2	.469	.378
Career	.224	65-22	21	11	2	1	6	4	.408	.333

- Has started 15 games at catcher in 2021 & caught in 22 games total
- Has gone 8-for-21 with a triple, a homer, 7 runs & 5 RBIs in her last 9 starts
- Has also appeared as a pinch runner 31 times her career
- 2020 Academic All-Big Ten selection
- 5-time member of the Nebraska Scholar-Athlete Honor Roll



#39 | OLIVIA FERRELL • RHP

	W-L	ERA	APP	GS	CG	SHO	SV	IP	SO	AVG.
2021	8-8	2.92	21	16	5	1	1	91.0	84	.238
Career	23-29	4.04	88	55	13	1	3	325.2	225	.282

- Ranks 7th in the Big Ten in saves (1) and 10th in wins (8) & strikeouts (84)
- Leads all current Huskers in career wins, ERA, appearances, starts & innings
- Has allowed 2 ER or fewer in 29 of her 55 career starts
- 2-time Academic All-Big Ten & 2-time Big Ten Distinguished Scholar
- 7-time member of the Nebraska Scholar-Athlete Honor Roll



#39 | OLIVIA FERRELL • UTL

	AVG.	G-GS	R	H	2B	HR	RBI	BB	SLG%	OB%
2021	.105	19-15	2	4	2	0	0	2	.158	.150
Career	.223	61-43	14	25	7	3	18	12	.366	.307

- Owns a .223 career average and 10 of her 25 hits are extra-base hits
- Hit .344 in the shortened 2020 season with 10 RBIs in only 32 at bats
- Ranked 2nd on the team in average, OB% & SLG% in 2020
- Was 3rd on the team last season in home runs (2) and RBIs (10)
- In addition to softball, had Division I scholarship offers as a hockey goalie



#44 | KAYLIN KINNEY • RHP

	W-L	ERA	APP	GS	CG	SHO	SV	IP	SO	AVG.
2021	1-1	4.52	13	3	0	0	2	26.1	14	.262
Career	1-1	4.52	13	3	0	0	2	26.1	14	.262

- Leads Nebraska and ranks 4th in the Big Ten with 2 saves
- 2019 Iowa Gatorade Player of the Year at Kennedy High School
- 2-time all-state selection & 4-time all-conference & all-metro pick
- Went 67-7 in her prep career with a 0.77 ERA and 527 strikeouts
- First Iowa native to play for Nebraska since 2004



#44 | KAYLIN KINNEY • UTL

	AVG.	G-GS	R	H	2B	HR	RBI	BB	SLG%	OB%
2021	.220	28-19	4	13	3	1	5	8	.322	.324
Career	.220	28-19	4	13	3	1	5	8	.322	.324

- Is 7-for-24 (.292) with two doubles and three walks in her last 11 games
- 2019 Iowa Gatorade Player of the Year at Kennedy High School
- Helped Kennedy to a state championship as a senior
- Hit .501 in her high school career with a 1.054 slugging percentage
- Finished third in state history with 55 career home runs



#77 | SAMANTHA OWEN • INF

	AVG.	G-GS	R	H	2B	HR	RBI	BB	SLG%	OB%
2021	.000	5-1	0	0	0	0	0	0	.000	.000
Career	.288	168-159	68	135	30	17	86	47	.482	.361

- Is in her 3rd season at Nebraska after playing at Pacific her first two years
- Owns 159 career starts, including 63 starts as a Husker
- Ranks 2nd among current Huskers in career average, 2B, HR & RBIs
- 2-time All-West Coast Conference & 2018 All-West Region pick at Pacific
- Younger sister Izabella is a junior infielder at New Mexico

INDIVIDUAL SEASON & CAREER HIGHS

#1 RYLIE UNZICKER • SR. • OF

SEASON HIGH	CATEGORY	CAREER HIGH
3 at Rutgers - 2	Hits	same
3 vs. #23 Michigan	Runs	3 twice
2 three times	RBIs	2 six times
1 five times	2B	2 twice
1 twice	HR	1 six times

#14 CAMYL ARMENDARIZ • FR. • INF

SEASON HIGH	CATEGORY	CAREER HIGH
none	Hits	none
1 seven times	Runs	same
none	RBIs	none
none	2B	none
none	HR	none

#2 PAYTON HUSCROFT • JR. • INF

SEASON HIGH	CATEGORY	CAREER HIGH
none	Hits	1 seven times
none	Runs	1 twice
none	RBIs	3 vs. Bradley (2020)
none	2B	1 vs. UTEP (2020)
none	HR	1 vs. Bradley (2020)

#19 CAITLYNN NEAL • FR. • UTL

SEASON HIGH	CATEGORY	CAREER HIGH
3 vs. Purdue	Hits	same
2 twice	Runs	same
2 vs. Purdue - 1	RBIs	same
none	2B	none
none	HR	none

#5 MJ GREEN • FR. • INF

SEASON HIGH	CATEGORY	CAREER HIGH
2 vs. Purdue	Hits	same
none	Runs	none
none	RBIs	none
none	2B	none
none	HR	none

#20 ABBEY NEWLUN • FR. • INF

SEASON HIGH	CATEGORY	CAREER HIGH
none	Hits	none
none	Runs	none
none	RBIs	none
none	2B	none
none	HR	none

#6 BILLIE ANDREWS • FR. • INF

SEASON HIGH	CATEGORY	CAREER HIGH
4 at Rutgers	Hits	same
2 three times	Runs	same
3 twice	RBIs	same
1 four times	2B	same
2 vs. Illinois - 2	HR	same

#21 SARAH YOCOM • SR. • INF

SEASON HIGH	CATEGORY	CAREER HIGH
none	Hits	2 vs. Wisconsin (2018)
1 six times	Runs	1 19 times
1 vs. Penn St. - 2	RBIs	1 four times
none	2B	none
none	HR	none

#7 SYDNEY GRAY • FR. • INF

SEASON HIGH	CATEGORY	CAREER HIGH
3 vs. Purdue	Hits	same
2 twice	Runs	same
2 twice	RBIs	same
1 five times	2B	same
1 vs. Penn St.	HR	same

#23 COURTNEY WALLACE • JR. • UTL

SEASON HIGH	CATEGORY	CAREER HIGH
2 three times	Hits	2 eight times
2 at #24 Minnesota	Runs	3 vs. Lamar (2019)
3 at Rutgers	RBIs	3 three times
1 twice	2B	2 vs. Texas Tech (2019)
1 at Rutgers	HR	1 four times

#8 ABBIE SQUIER • FR. • OF

SEASON HIGH	CATEGORY	CAREER HIGH
1 vs. Michigan St. - 1	Hits	same
2 vs. Michigan St. - 1	Runs	same
1 vs. Michigan St. - 2	RBIs	same
1 vs. Michigan St. - 1	2B	same
none	HR	none

#24 TRISTEN EDWARDS • SR. • OF

SEASON HIGH	CATEGORY	CAREER HIGH
3 vs. Michigan St. - 1	Hits	4 three times
2 five times	Runs	4 vs. Pittsburgh (2019)
3 at #24 Minnesota	RBIs	8 vs. Pittsburgh (2019)
1 six times	2B	2 three times
1 five times	HR	2 seven times

#13 PEYTON GLATTER • JR. • OF

SEASON HIGH	CATEGORY	CAREER HIGH
2 three times	Hits	3 twice
2 at Rutgers - 1	Runs	3 twice
4 at Rutgers - 1	RBIs	4 twice
1 twice	2B	1 nine times
1 three times	HR	1 eight times

#27 BROOKE ANDREWS • SO. • INF

SEASON HIGH	CATEGORY	CAREER HIGH
3 vs. Wisconsin - 1	Hits	same
3 at Rutgers	Runs	same
5 at Rutgers	RBIs	same
2 vs. Wisconsin - 1	2B	same
2 at Rutgers	HR	same

INDIVIDUAL SEASON & CAREER HIGHS

#28 ALLY RILEY • SR. • C

SEASON HIGH	CATEGORY	CAREER HIGH
2 three times	Hits	3 twice
1 twice	Runs	1 six times
1 vs. Wisconsin	RBIs	3 vs. UTEP (2020)
1 three times	2B	2 vs. South Dakota St. (2018)
1 vs. Wisconsin	HR	1 twice

#32 CAM YBARRA • SR. • INF

SEASON HIGH	CATEGORY	CAREER HIGH
4 at Rutgers - 2	Hits	4 twice
2 vs. Penn St. - 1	Runs	2 twice
4 vs. Purdue - 1	RBIs	same
2 vs. Purdue - 1	2B	3 vs. Lehigh (2020)*
1 twice	HR	1 seven times

**tied school record*

#33 ANNI RALEY • JR. • C

SEASON HIGH	CATEGORY	CAREER HIGH
3 at #24 Minnesota	Hits	same
2 twice	Runs	same
2 three times	RBIs	same
1 vs. #23 Michigan	2B	1 twice
1 at #24 Minnesota	HR	same

#39 OLIVIA FERRELL • SR. • UTL

SEASON HIGH	CATEGORY	CAREER HIGH
2 at Rutgers	Hits	3 at #21 Missouri (2020)
1 twice	Runs	2 twice
none	RBIs	3 twice
1 twice	2B	1 seven times
none	HR	1 three times

#44 KAYLIN KINNEY • FR. • UTL

SEASON HIGH	CATEGORY	CAREER HIGH
1 13 times	Hits	same
1 four times	Runs	same
2 vs. Penn St.	RBIs	same
1 three times	2B	same
1 vs. Penn St.	HR	same

#77 SAMANTHA OWEN • SR. • INF

SEASON HIGH	CATEGORY	CAREER HIGH
none	Hits	4 at North Texas (2018 at Pacific)
none	Runs	2 10 times
none	RBIs	4 six times
none	2B	2 at Purdue - 2 (2019)
none	HR	1 17 times

#19 CAITLYNN NEAL • FR. • UTL

SEASON HIGH	CATEGORY	CAREER HIGH
1.1 at Rutgers - 2	IP	same
none	Ks	none
N/A	H (low)*	N/A
3 at Rutgers - 2	H (high)	same
N/A	BB (low)*	N/A
1 at #24 Minnesota	BB (high)	same
N/A	R (low)*	N/A
3 at #24 Minnesota	R (high)	same
N/A	ER (low)*	N/A
3 at #24 Minnesota	ER (high)	same

**starts only*

#23 COURTNEY WALLACE • JR. • UTL

SEASON HIGH	CATEGORY	CAREER HIGH
7.0 four times	IP	7.0 five times
6 vs. Ohio St. - 2	Ks	8 at Georgia Tech (2020)
3 twice	H (low)*	1 vs. Maryland (2019)
8 at #24 Minnesota	H (high)	10 three times
0 three times	BB (low)*	0 four times
7 at #24 Minnesota	BB (high)	7 twice
1 twice	R (low)*	0 vs. Maryland (2019)
6 at #24 Minnesota	R (high)	10 vs. #3 Oklahoma (2020)
1 twice	ER (low)*	0 vs. Maryland (2019)
4 three times	ER (high)	9 vs. #3 Oklahoma (2020)

**starts only*

#30 KARLEE SEEVERS • JR. • RHP

SEASON HIGH	CATEGORY	CAREER HIGH
1.0 twice	IP	1.1 vs. Wichita St. - 1 (2020)
none	Ks	none
N/A	H (low)*	N/A
3 at #24 Minnesota	H (high)	6 vs. Wichita St. (2020)
N/A	BB (low)*	N/A
none	BB (high)	6 vs. Wichita St. (2020)
N/A	R (low)*	N/A
2 at #24 Minnesota	R (high)	9 vs. Wichita St. (2020)
N/A	ER (low)*	N/A
2 at #24 Minnesota	ER (high)	7 vs. Wichita St. (2020)

**starts only*

#39 OLIVIA FERRELL • SR. • RHP

SEASON HIGH	CATEGORY	CAREER HIGH
7.2 vs. #23 Michigan - 1	IP	same
7 four times	Ks	9 vs. Lamar (2019)
1 vs. Penn St. - 2	H (low)*	1 twice
10 vs. Illinois - 2	H (high)	11 at #21 Missouri (2020)
0 at Rutgers	BB (low)*	0 seven times
6 at Rutgers - 2	BB (high)	7 at Minnesota (2018)
0 twice	R (low)*	0 five times
6 vs. Illinois - 2	R (high)	8 twice
0 three times	ER (low)*	0 six times
5 twice	ER (high)	7 three times

**starts only*

#44 KAYLIN KINNEY • FR. • RHP

SEASON HIGH	CATEGORY	CAREER HIGH
5.2 vs. Wisconsin - 1	IP	same
4 vs. Wisconsin - 1	Ks	same
2 vs. #23 Michigan	H (low)*	same
6 vs. Purdue - 2	H (high)	same
1 vs. #23 Michigan	BB (low)*	same
4 at #24 Minnesota	BB (high)	same
1 vs. #23 Michigan	R (low)*	same
4 twice	R (high)	same
1 vs. #23 Michigan	ER (low)*	same
4 vs. Penn St.	ER (high)	same

**starts only*

HEAD COACH RHONDA REVELLE

COACHING STOPS

Nebraska (Head Coach)	1993-present
San Jose State (Assistant)	1989-92
Cal State-Hayward (Assistant)	1988
Nebraska Wesleyan (Head Coach)	1987
Nebraska Wesleyan (Assistant)	1986

NEBRASKA WESLEYAN (1987)

Year	Record	Conf.	Finish	Tourn.	Finish
1987	8-16	7-5	N/A	--	--

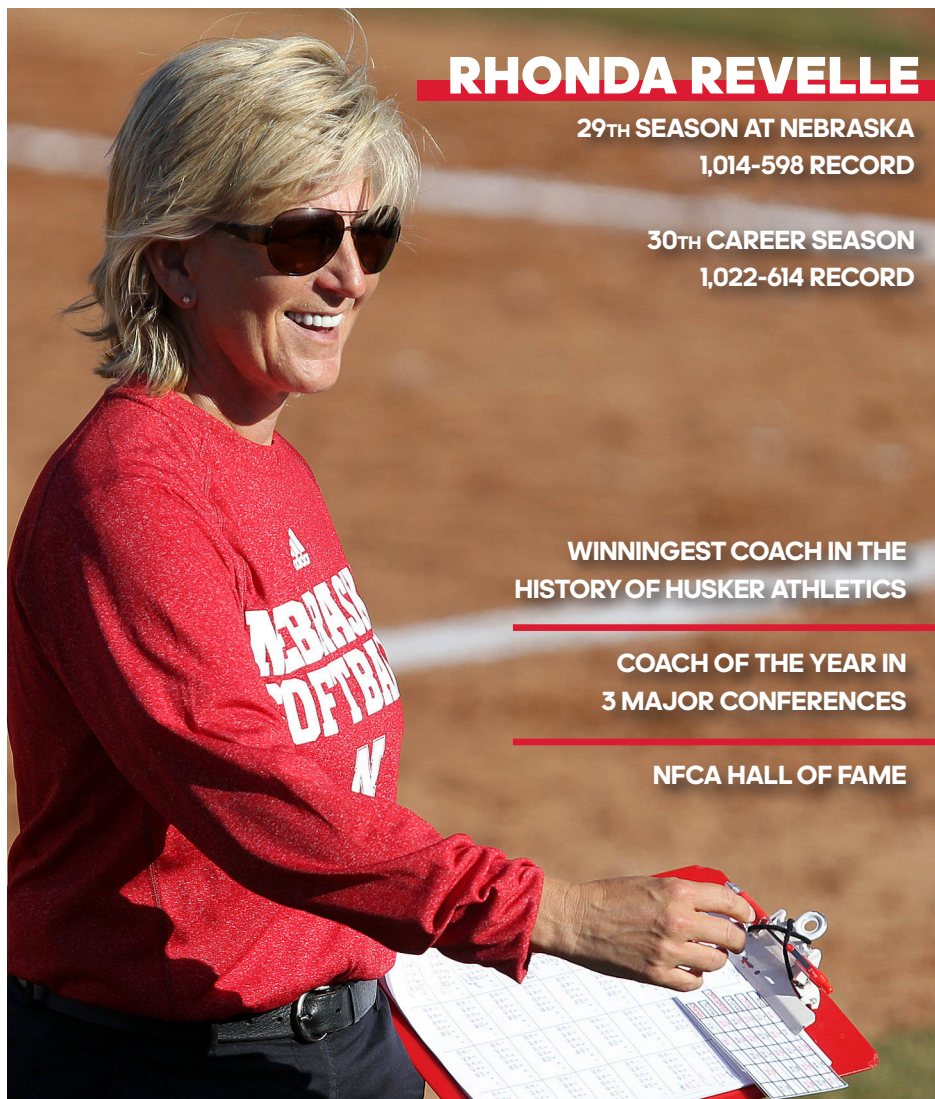
NEBRASKA (1993-PRESENT)

Year	Record	Conf.	Finish	Tourn.	Finish
1993	18-23	5-11	5th	--	--
1994	25-33	5-15	6th	--	--
1995	43-20	10-6	3rd	--	--
1996	42-23	10-8	4th	3-2	2nd
1997	29-24	10-6	4th	1-2	t-5th
1998	48-12	16-0	1st	4-0	1st
1999	35-21	10-8	4th	3-1	2nd
2000	52-21	15-2	2nd	4-1	1st
2001	51-15	16-2	1st	2-2	t-3rd
2002	50-14	11-5	3rd	3-1	2nd
2003	39-17	10-8	6th	2-2	t-3rd
2004	45-17	14-3	1st	4-0	1st
2005	36-23	9-9	7th	2-2	t-5th
2006	44-12	13-4	2nd	2-2	t-3rd
2007	37-20	10-8	5th	0-1	t-7th
2008	25-28	4-14	t-9th	3-1	2nd
2009	35-19	9-9	5th	0-1	t-7th
2010	30-29	7-11	t-6th	0-1	t-7th
2011	41-14	9-9	6th	--	--
2012	33-22	14-9	3rd	--	--
2013	45-16	16-6	2nd	1-1	t-3rd
2014	44-18	18-5	t-1st	0-1	t-5th
2015	35-23	17-6	3rd	2-1	2nd
2016	35-21	13-9	5th	1-1	t-5th
2017	24-29	13-11	5th	0-1	t-9th
2018	31-23	9-13	9th	0-1	t-9th
2019	21-31	9-14	9th	0-1	t-9th
2020	9-14	0-0	--	--	--
2021	16-16	16-16	--	--	--

NEBRASKA RECORD: 1,014-598
CAREER RECORD: 1,022-614

NCAA TOURNAMENT (NEBRASKA)

Year	Round	Record	Finish	Rank
1993	--	--	--	--
1994	--	--	--	--
1995	Regional	1-2	t-17th	18th
1996	Regional	1-2	t-17th	18th
1997	Regional	2-2	t-9th	25th
1998	WCWS	4-2	t-5th	5th
1999	Regional	4-2	t-9th	20th
2000	Regional	3-2	t-17th	14th
2001	Regional	2-2	t-17th	14th
2002	WCWS	5-2	t-5th	6th
2003	Regional	3-2	t-17th	13th
2004	Regional	3-2	t-9th	14th
2005	Regional	1-2	t-33rd	25th
2006	Regional	2-2	t-17th	15th
2007	Regional	0-2	t-49th	--
2009	Regional	1-2	t-33rd	--
2010	Regional	1-2	t-33rd	--
2011	Regional	2-2	t-17th	21st
2013	WCWS	5-3	t-7th	8th
2014	Super Reg.	4-3	t-9th	16th
2015	Regional	1-2	t-33rd	--
2016	Regional	2-2	t-17th	--
Totals	20 app.	47-42	--	--



RHONDA REVELLE

29TH SEASON AT NEBRASKA

1,014-598 RECORD

30TH CAREER SEASON

1,022-614 RECORD

WINNINGEST COACH IN THE HISTORY OF HUSKER ATHLETICS

COACH OF THE YEAR IN 3 MAJOR CONFERENCES

NFCA HALL OF FAME

COACHING NUMBERS

Conference Coach-of-the-Year Awards	4
Big Ten Coach of the Year	1
Big 12 Coach of the Year	2
Big Eight Coach of the Year	1
Conference Titles	7
Big Ten Conference Titles	1
Big 12 Conference Titles	6
NCAA Tournament Appearances	20
Women's College World Series	3
NFCA All-Americans	21
CoSIDA Academic All-Americans	14

NFCA HALL-OF-FAME COACHES

(ACTIVE DIVISION I COACHES ONLY)

Coach	Induction Year
Mike Candrea, Arizona	1996
Carol Hutchins, Michigan	2006
Rhonda Revelle, Nebraska	2010
Melinda Fischer, Illinois State	2010
Ralph Weekly, Tennessee	2011
Patty Gasso, Oklahoma	2012
Donna Papa, North Carolina	2012
Joan Joyce, Florida Atlantic	2013
Patrick Murphy, Alabama	2013
Jo Evans, Texas A&M	2015
Bob Brock, Sam Houston State	2016
Jacquie Joseph, Michigan State*	2016
Karen Weekly, Tennessee	2018

*inducted as member of Pioneer Category

WINS AT CURRENT SCHOOL

(ACTIVE DIVISION I COACHES ONLY)

1. Mike Candrea, Arizona	1,665
2. Carol Hutchins, Michigan	1,632
3. Patty Gasso, Oklahoma	1,317
4. Donna Papa, North Carolina	1,288
5. Patrick Murphy, Alabama	1,133
6. Melinda Fischer, Illinois State	1,090
7. Bob Coolen, Hawaii	1,036
8. Rhonda Revelle, Nebraska	1,014

(LIST INCLUDES GAMES THROUGH APRIL 25)

MOST NCAA TOURNAMENTS

(ACTIVE DIVISION I COACHES ONLY)

1. Mike Candrea, Arizona	33
2. Carol Hutchins, Michigan	27
3. Patty Gasso, Oklahoma	22
4. Patrick Murphy, Alabama	21
5. Rhonda Revelle, Nebraska	20
Jo Evans, Texas A&M	20

ACADEMIC ALL-AMERICANS

(ALL-TIME AMONG DIVISION I COACHES)

1. Patrick Murphy, Alabama	29
2. Ralph & Karen Weekly, Tennessee	23
3. Tim Walton, Florida	19
4. Rhonda Revelle, Nebraska	14

2021 SEASON STATISTICS

Record: 16-16 Home: 7-5 Away: 3-5 Neutral: 6-6 Big Ten: 16-16

Player	avg	gp-gs	ab	r	h	2b	3b	hr	rbi	tb	slg%	bb	hp	so	gdp	ob%	sf	sh	sb-att	po	a	e	fld%
5 MJ Green	.600	5-1	5	0	3	0	0	0	0	3	.600	0	0	0	0	.600	0	0	0-1	0	0	0	.000
7 Sydney Gray	.366	15-14	41	8	15	5	0	1	8	23	.561	1	0	10	0	.381	0	1	1-1	17	31	3	.941
24 Tristen Edwards	.319	32-32	69	22	22	6	0	5	15	43	.623	32	15	13	1	.585	2	0	7-7	33	4	2	.949
32 Cam Ybarra	.288	32-32	104	8	30	9	0	2	20	45	.433	6	0	6	1	.321	2	0	2-4	56	49	2	.981
6 Billie Andrews	.286	32-32	105	24	30	4	2	4	22	50	.476	7	2	23	0	.333	3	1	10-12	44	73	14	.893
1 Rylie Unzicker	.286	32-30	84	21	24	5	1	2	7	37	.440	15	5	21	0	.423	0	2	7-7	39	3	0	1.000
33 Anni Raley	.281	23-15	32	8	9	1	1	1	5	15	.469	2	3	9	0	.378	0	0	0-0	69	14	0	1.000
27 Brooke Andrews	.255	26-19	55	10	14	4	1	2	12	26	.473	3	2	7	0	.317	0	0	2-6	20	41	4	.938
13 Peyton Glatter	.239	27-23	67	8	16	2	0	3	17	27	.403	8	0	16	2	.316	1	2	1-2	13	0	0	1.000
44 Kaylin Kinney	.220	28-19	59	4	13	3	0	1	5	19	.322	8	1	18	1	.324	0	0	0-0	1	6	0	1.000
23 Courtney Wallace	.217	24-19	60	7	13	2	1	1	10	20	.333	5	0	10	2	.273	1	0	1-1	8	27	0	1.000
11 Keana "KP" Pola	.211	8-5	19	0	4	1	0	0	0	5	.263	0	0	5	1	.211	0	0	0-0	26	0	1	.963
19 Caitlynn Neal	.206	22-12	34	10	7	0	0	0	6	7	.206	0	0	9	0	.200	1	0	3-3	17	3	1	.952
28 Ally Riley	.200	18-18	40	2	8	3	0	1	1	14	.350	1	1	4	0	.238	0	1	0-0	68	10	0	1.000
39 Olivia Ferrell	.105	19-15	38	2	4	2	0	0	0	6	.158	2	0	11	0	.150	0	1	1-1	1	21	1	.957
8 Abbie Squier	.083	16-3	12	3	1	1	0	0	1	2	.167	1	1	4	0	.214	0	0	0-0	1	0	0	1.000
21 Sarah Yocom	.000	26-26	9	6	0	0	0	0	1	0	.000	1	0	3	0	.091	1	0	0-0	217	1	1	.995
77 Samantha Owen	.000	5-1	6	0	0	0	0	0	0	0	.000	0	0	0	0	.000	0	0	0-0	15	0	0	1.000
14 Camyl Armendariz	.000	18-1	5	7	0	0	0	0	0	0	.000	0	0	2	0	.000	0	0	1-1	0	0	0	.000
20 Abbey Newlun	.000	1-0	1	0	0	0	0	0	0	0	.000	0	0	0	0	.000	0	0	0-0	0	0	0	.000
2 Payton Huscroft	.000	2-0	1	0	0	0	0	0	0	0	.000	0	0	0	0	.000	0	0	0-0	1	0	0	1.000
Totals	.252	32	846	150	213	48	6	23	130	342	.404	92	30	171	8	.342	11	8	36-46	646	283	29	.970
Opponents	.258	32	827	127	213	37	6	20	117	322	.389	88	15	137	7	.338	5	18	26-33	641	223	54	.941

LOB - Team (198), Opp (183). DPs turned - Team (15), Opp (15). IBB - Team (8), Edwards 8, Opp (2).

(All games Sorted by Earned run avg)

Player	era	w-l	app	gs	cg	sho	sv	ip	h	r	er	bb	so	2b	3b	hr	b/avg	wp	hp	bks	sfa	sha
39 Olivia Ferrell	2.92	8-8	21	16	5	1/0	1	91.0	82	47	38	39	84	19	1	8	.238	2	9	0	1	4
23 Courtney Wallace	3.07	7-7	21	13	4	0/0	1	93.1	93	56	41	38	39	15	3	9	.261	8	6	0	4	9
44 Kaylin Kinney	4.52	1-1	13	3	0	0/0	2	26.1	28	18	17	10	14	3	2	0	.262	9	0	0	0	4
30 Karlee Seevers	7.00	0-0	2	0	0	0/0	0	2.0	4	2	2	0	0	0	0	1	.500	0	0	0	0	0
19 Caitlynn Neal	10.50	0-0	3	0	0	0/0	0	2.2	6	4	4	1	0	0	0	2	.500	0	0	0	0	1
Totals	3.28	16-16	32	32	9	1/0	4	215.1	213	127	101	88	137	37	6	20	.258	19	15	0	5	18
Opponents	3.67	16-16	32	32	9	5/2	0	213.2	213	150	112	92	171	48	6	23	.252	8	30	0	11	8

PB - Team (8), Riley 6, Raley 2, Opp (6). SBA/ATT - Raley (12-17), Riley (14-16), Ferrell (9-14), Wallace (10-12), Kinney (7-7).