

N NEBRASKA

SOFTBALL

NEBRASKA vs WISCONSIN

FRIDAY	SATURDAY	SUNDAY
vs. Wisconsin 5:30 p.m. (CT) <i>Video: BTN+ (\$) Audio: Huskers.com</i>	vs. Wisconsin (1) Noon (CT) vs. Wisconsin (2) 3 p.m. (CT) <i>Video: BTN+ (\$) Audio: Huskers.com</i>	vs. Wisconsin 1 p.m. (CT) <i>TV: Big Ten Network Audio: Huskers.com</i>

The Nebraska softball team begins an eight-game homestand this weekend when the Huskers welcome the Wisconsin Badgers to Bowlin Stadium for a four-game series. The series begins with a single game on Friday at 5:30 p.m. before the teams face off in a Saturday doubleheader at Noon. The series finale is set for 1 p.m. on Sunday.

Fans with a subscription to Big Ten Network+ can watch the first three games. Sunday's contest will be televised live on the Big Ten Network, with Kevin Kugler and Leigh Dakich on the call. Free radio coverage of every game will also be available on Huskers.com, courtesy of the Husker Sports Network and the UNL College of Journalism and Mass Communications.

Nebraska has gone 4-4 the past two weeks in four-game series against two of the Big Ten's top teams, including a 6-4 win at No. 24 Minnesota on Sunday. Wisconsin has gone 7-1 the last two weeks, winning series over Iowa and Rutgers. The Badgers swept the Scarlet Knights in Piscataway, N.J., last weekend to push their win streak to five games.

The Huskers have been tough at home this season, posting a 6-2 record. Nebraska is batting .315 in its eight home games with nine home runs while averaging nearly seven runs per game. Freshman Billie Andrews is 14-for-26 (.538) at home with two triples, three homers and nine RBIs. Senior Cam Ybarra has homered twice and driven in 11. In the circle, Nebraska boasts a 2.91 ERA at Bowlin Stadium, led by senior Olivia Ferrell (4-1, 1.88 ERA).

QUICK HITTERS

- The road team has won seven of the last nine matchups between Nebraska and Wisconsin.
- Nebraska is in fifth place in the Big Ten, and the Huskers have already played series against three of the four teams ahead of them in the standings.
- The Huskers' .973 fielding percentage is currently on pace to be the top fielding percentage in school history.
- Nebraska's 3.10 team ERA is on pace to be its lowest since the 2014 season.
- NU ranks third in the Big Ten in scoring (4.7 runs per game) and home runs (20).
- **Billie Andrews** leads all Big Ten freshmen in hits (27), RBIs (20) and stolen bases (9).
- **Tristen Edwards** needs four extra-base hits to become the second Husker with 100 career extra-base hits.
- **Tristen Edwards** is either walked or hit by a pitch an average of 1.5 times per game, the highest average in the nation.
- **Olivia Ferrell** and **Courtney Wallace** have combined for 15 wins and a 2.80 ERA. Entering 2021, the duo had 21 wins and a 4.84 ERA in their combined careers.
- **Rylie Unzicker** has hit leadoff in 11 of the past 12 games and is hitting .333 in those 11 games with 11 runs scored.

HUSKERS TO WATCH



Tristen Edwards ranks in the top 10 nationally among all Division I players in three categories: walks per game (2nd, 1.0), on-base percentage (6th, .606) and hit-by-pitches per game (6th 0.5).



Anni Raley has started a career-high three straight games at catcher. She is 3-for-6 with a homer in those starts and over her last seven starts, Raley is 7-for-15 with 7 runs & 4 RBIs.

HUSKER SCHEDULE (15-13 RECORD)

<i>Sleepy Hollow Sports Complex (Leesburg, Fla.)</i>		
Feb. 26	vs. Indiana (Game 1)	L, 1-3
Feb. 26	vs. Indiana (Game 2)	W, 4-2
Feb. 27	vs. Michigan St. (Game 1)	W, 7-1
Feb. 27	vs. Michigan St. (Game 2)	L, 3-6 (8)
Feb. 28	vs. Ohio St. (Game 1)	L, 2-4
Feb. 28	vs. Ohio St. (Game 2)	W, 2-1
<i>Sleepy Hollow Sports Complex (Leesburg, Fla.)</i>		
March 11	vs. #23 Michigan (Game 1)	L, 1-2 (8)
March 11	vs. #23 Michigan (Game 2)	L, 0-2
March 12	vs. #23 Michigan	W, 5-4 (8)
March 13	vs. Purdue (Game 1)	W, 8-1
March 13	vs. Purdue (Game 2)	L, 0-7
March 14	vs. Purdue	W, 3-1
March 26	Penn St.	W, 9-0 (5)
March 27	Penn St. (Game 1)	W, 8-2
March 27	Penn St. (Game 2)	W, 10-2 (5)
March 28	Penn St.	L, 5-7 (8)
April 2	at Rutgers	W, 12-4 (6)
April 3	at Rutgers (Game 1)	W, 8-1
April 3	at Rutgers (Game 2)	L, 6-10
April 4	at Rutgers	L, 1-2
April 9	Illinois	L, 0-4
April 10	Illinois (Game 1)	W, 5-4
April 10	Illinois (Game 2)	W, 10-6
April 11	Illinois	W, 8-6
April 16	at #24 Minnesota	L, 7-8
April 17	at #24 Minnesota (Game 1)	L, 0-2
April 17	at #24 Minnesota (Game 2)	L, 0-9 (6)
April 18	at #24 Minnesota	W, 6-4
April 23	Wisconsin	5:30 p.m.
April 24	Wisconsin (Game 1)	Noon
April 24	Wisconsin (Game 2)	3 p.m.
April 25	Wisconsin (BTN)	1 p.m.
April 30	Maryland (Game 1)	3 p.m.
April 30	Maryland (Game 2)	6 p.m.
May 1	Maryland	3 p.m.
May 2	Maryland	11 a.m.
May 7	at Iowa	3 p.m.
May 8	at Iowa (Game 1)	1 p.m.
May 8	at Iowa (Game 2)	3:30 p.m.
May 9	at Iowa	Noon
May 14	at Northwestern	3 p.m.
May 15	at Northwestern (Game 1)	Noon
May 15	at Northwestern (Game 2)	2:30 p.m.
May 16	at Northwestern (BTN)	1 p.m.
May 21-23	NCAA Regionals	
May 27-30	NCAA Super Regionals	
June 3-9	NCAA Women's College World Series	

NEBRASKA SOFTBALL FACTS

UNIVERSITY INFORMATION

Location	Lincoln, Neb.
Population	280,369
Founded	1869
Enrollment	25,057
Nickname	Cornhuskers, Huskers
Colors	Scarlet & Cream
Conference	Big Ten
Chancellor	Ronnie Green
Athletic Director	Bill Moos

ATHLETIC COMMUNICATIONS

Softball Contact	Matt Smith
E-Mail	msmith@huskers.com
Phone	(402) 770-5926

2021 COACHING STAFF

Head Coach	Rhonda Revelle
Nebraska Record	1,013-595 (29th year)
Career Record	1,021-611 (30th year)
Assoc. Head Coach	Lori Sippel (32nd year)
Assistant Coach	Diane Miller (13th year)
Dir. of Softball Oper.	Erin Bohling (2nd year)

2020 SEASON REVIEW

Overall Record	9-14
Big Ten Record (Finish)	N/A

2021 TEAM OUTLOOK

Letterwinners Returning/Lost	14/5
Total Starters Returning/Lost	10/1
Position Starters Returning/Lost	8/0
Pitchers Returning/Lost	3/1
Returning All-Conference Players	2*
Returning All-Region Players	2*
Returning All-Americans	0
Newcomers	8

*includes honors at a player's previous school

STADIUM INFORMATION

Stadium	Bowlin Stadium (2,500)
First Season	2002
Record at Bowlin Stadium	236-101 (.700)

PROGRAM HISTORY

First Year of Softball	1976
All-Time Record	1,494-890 (.627)
All-Time Conference Record	401-294 (.576)
Big Ten Record	124-85 (.593)
Overall Conference Titles	19
Big Eight Titles	12
Big 12 Titles	6
Big Ten Titles	1
NCAA Tournament Appearances	24
WCWS Appearances	7
NCAA Tournament Record	62-52 (.544)
NCAA Regional Record	52-35 (.598)
NCAA Super Regional Record	2-3 (.400)
WCWS Record	8-14 (.363)
NFCA All-Americans	27
CoSIDA Academic All-Americans	30

PRONUNCIATION GUIDE

Camyl Armendariz	kuh-MEAL
	are-men-DARE-iz
Abbie Squier	SKWHY-er
Annie Raley	AW-knee
Rhonda Revelle	ruh-VELL
Cam Ybarra	ee-BAR-uh
Sarah Yocom	YO-come

NEBRASKA 2021 SEASON NOTEBOOK

- Nebraska's roster features 21 players, tied for the largest roster in school history.
- The roster features 10 Nebraska natives, the most in-state players since 1980.
- The roster features the most freshmen (8) and most seniors (7) in the 29-year tenure of **Rhonda Revelle** as Nebraska's head coach.
- **Rhonda Revelle** is in her 29th season leading her alma mater in 2021. Revelle is the second-longest serving female head coach in the history of Nebraska Athletics.
- Revelle owns 1,013 wins at Nebraska. She is the all-time wins leader (male or female) in the history of Nebraska Athletics.
- Associate Head Coach **Lori Sippel** is in her 32nd year at Nebraska. Sippel is the longest-tenured female assistant coach in the history of Nebraska Athletics.
- Revelle (1981-83) and Sippel (1985-88) also played for NU. Including their playing and coaching careers, Revelle and Sippel have been a part of 1,317 of Nebraska's 1,494 all-time victories (88 percent).
- Assistant coach **Diane Miller** rounds out the Husker coaching staff. In her 13th season, Miller has helped Nebraska's offense set more than 40 school records.
- NU will play a conference-only schedule for the first time in program history in 2021. The Huskers are scheduled to play 44 Big Ten Conference games, which would nearly double the previous high for most conference games played in one season (24 Big Ten games in 2013).
- Fifth-year seniors **Tristen Edwards** and **Samantha Owen** both took advantage of the NCAA waiver for an extra year of eligibility following the cancellation of the 2020 season due to the COVID-19 pandemic.
- Edwards and Owen are also the only two Huskers who have been an all-conference or all-region performer in their careers. Edwards is a two-time first-team All-Big Ten selection and was a 2019 third-team all-region honoree. Owen was a first-team All-WAC pick and third-team all-region selection at Pacific in 2018.
- **Tristen Edwards** is already one of only five Huskers to be a two-time first-team All-Big Ten selection. In 2021, Edwards will look to become the first Husker to earn three first-team All-Big Ten awards, in addition to becoming the eighth three-time first-team all-conference selection in program history.

2-TIME 1ST-TEAM ALL-BIG TEN PICKS

- **Tristen Edwards, SS (2018-19)**
- MJ Knighten, 3B (2015-16)
- Kiki Stokes, OF (2015-16)
- Tatum Edwards, RHP/UTL (2013-14)
- Taylor Edwards, C (2013-14)

3-TIME 1ST-TEAM ALL-CONFERENCE PICKS

- Jessica Yoachim, 3B (2004-06)*
- Peaches James, RHP/UTL (2001-04)*
- Jenny Voss, RHP (1997-98, 2000)*
- Jennifer Lizama, INF (1997-2000)*
- Tobin Echo-Hawk, INF (1993-96)^*
- Jane Kremer, SS (1986-88)^
- Lori Sippel, RHP (1985-88)*

*Big 12 Conference (1996-2011)

^Big Eight Conference (1977-95)

2021 NEBRASKA NUMERICAL ROSTER

NO.	NAME	B/T	POS.	HT.	YR.	HOMETOWN
1	Rylie Unzicker	L/R	OF	5-5	Sr.	Omaha, Neb.
2	Payton Huscroft	L/L	INF	5-9	Jr.	Omaha, Neb.
5	MJ Green	R/R	INF	5-2	Fr.	Henderson, Texas
6	Billie Andrews	R/R	INF	5-8	Fr.	Gretna, Neb.
7	Sydney Gray	R/R	INF	5-5	Fr.	Tucson, Ariz.
8	Abbie Squier	R/R	OF	5-7	Fr.	Lincoln, Neb.
13	Peyton Glatter	L/R	OF	5-5	Jr.	Omaha, Neb.
14	Camyl Armendariz	R/R	INF	5-7	Fr.	La Verne, Calif.
19	Caitlynn Neal	L/R	RHP/UTL	5-3	Fr.	Dewey, Ariz.
20	Abbey Newlun	R/R	INF	5-7	Fr.	The Woodlands, Texas
21	Sarah Yocom	R/R	INF	5-9	Sr.	Cozad, Neb.
23	Courtney Wallace	R/R	RHP/UTL	5-5	Jr.	Omaha, Neb.
24	Tristen Edwards	R/R	OF	5-6	Sr.	Murrieta, Calif.
27	Brooke Andrews	R/R	INF	5-8	So.	Gretna, Neb.
28	Ally Riley	R/R	C	5-9	Sr.	Alva, Okla.
30	Karlee Seevers	R/R	RHP	5-6	Jr.	York, Neb.
32	Cam Ybarra	L/R	INF	5-6	Sr.	Mission Viejo, Calif.
33	Anni Raley	R/R	C	5-6	Jr.	Clovis, Calif.
39	Olivia Ferrell	R/R	RHP/UTL	5-9	Sr.	Omaha, Neb.
44	Kaylin Kinney	R/R	RHP/UTL	5-10	Fr.	Cedar Rapids, Iowa
77	Samantha Owen	R/R	INF	5-5	Sr.	Manteca, Calif.

BROOKE ANDREWS THRIVING AT THIRD BASE

After starting third baseman Sydney Gray suffered a season-ending injury on March 28, sophomore **Brooke Andrews** has started the past 12 games at third base for Nebraska. Andrews has been productive in her new starting role.

- In her streak of 12 straight starts at third, Andrews is batting .278 (10-for-36) after beginning the year just 1-for-8 in her first 10 games of the season, which included three starts.
- Andrews has two doubles, one triple and two homers over the past 12 games after having only one extra-base hit - a double - in her first 28 career games. Over the past three weeks, Andrews is tied for the team lead in doubles and triples and ranks second in home runs.
- Andrews also ranks second on the team with nine RBIs over the last three weeks. She has nine RBIs in her past 12 games after totaling three RBIs in the first 28 games of her career.
- In her first start following Gray's injury, Andrews had a career day with a 2-for-3 performance with a walk, two home runs, three runs scored and five RBIs at Rutgers on April 2.
- Defensively, Andrews has committed only one error in 43 chances since becoming the full-time starter at third base, posting a .977 fielding percentage.

RALEY EMERGING IN BID TO BE THE EVERYDAY CATCHER

Nebraska has split the catching duties this season, as senior Ally Riley has started 15 games behind the plate and junior **Anni Raley** has made 13 starts. But Raley is playing the best softball of her career recently in a bid to become Nebraska's everyday catcher.

- In her last seven starts dating back to March 26, Raley is hitting .467 (7-for-15) with an .800 slugging percentage and a .556 on-base percentage. She has hit one triple, one home run and driven in four runs in that span.
- Raley went 4-for-5 with a triple, two RBIs and three runs scored in two starts against Penn State the final week of March. She was limited to only six plate appearances over the next two weeks after being plunked by a pitch in the series opener at Rutgers on April 2.
- Raley started the final three games at No. 24 Minnesota last weekend and posted a .625 on-base percentage. She was hit by a pitch in both games Saturday and went 3-for-4 with her first career homer on Sunday, when she set or tied career highs in hits, runs (2) and RBIs (2).

DIGGING IN ON DEFENSE

Nebraska's defense has been impressive this season, as the Huskers boast a .973 fielding percentage that is on pace to be the top mark in program history. Entering this weekend's series, Nebraska's .973 mark is percentage points ahead of the top fielding percentage in school history (2006). NU ranks 30th nationally in fielding percentage and fourth in the Big Ten, one spot behind Wisconsin (.975).

TOP NU FIELDING PERCENTAGES

Season	FLD%
2021	.973
2006	.973
2018	.973
2001	.972
2011	.970

EDWARDS' STREAK FALLS JUST SHORT OF NCAA RECORD

Senior outfielder **Tristen Edwards** nearly set an NCAA record for most consecutive plate appearances reaching base safely. In a seven-game span from April 2-10, Edwards reached base safely in 24 straight trips to the plate. Her streak ranked third in NCAA history.

- During the streak of reaching base in 24 consecutive plate appearances, Edwards was 4-for-4 with a double and a homer with 12 walks and eight hit-by-pitches.
- The streak began at Rutgers, when Edwards reached base all 15 times in the series. She homered in her only official at bat, walked nine times and was hit by five pitches.
- Edwards then reached base safely in her first nine trips to the plate in the Illinois series. She went 3-for-3 with three walks and three-hit-by-pitches before her streak ended with a pop out.
- Over 12 games the last three weeks, Edwards has posted a .750 on-base percentage. She is 7-for-18 (.389) in that stretch with 18 walks and eight hit-by-pitches, reaching base safely in 33 of her 44 plate appearances the past three series.

LONGEST REACH BASE STREAKS IN NCAA HISTORY

RK.	PLAYER	TEAM	DATES	STREAK
1.	Amber Schisler	Campbell	May 5-17, 2017	26
2.	Adrienne Monka	Northwestern	April 16-May 4, 2011	25
3.	Tristen Edwards	Nebraska	April 2-10, 2021	24

PROJECTED LINEUP

1	#1 RYLIE UNZICKER • CF .290 • 19 R • 20 H • 5 2B • 1 HR • 6 RBI 100 Career Starts • 67 Starts in CF
2	#6 BILLIE ANDREWS • SS .297 • 21 R • 27 H • 3 2B • 4 HR • 20 RBI 28 Career Starts • 28 Starts at SS
3	#24 TRISTEN EDWARDS • RF .361 • 20 R • 22 H • 6 2B • 5 HR • 15 RBI 204 Career Starts • 66 Starts in RF
4	#32 CAM YBARRA • 2B .286 • 7 R • 26 H • 8 2B • 2 HR • 20 RBI 135 Career Starts • 112 Starts at 2B
5	#23 COURTNEY WALLACE • P .218 • 12 H • 10 RBI 7-5 • 2.91 ERA 64 Career Starts • 28 Starts at P
6	#13 PEYTON GLATTER • LF .207 • 6 R • 12 H • 1 2B • 2 HR • 12 RBI 73 Career Starts • 28 Starts in LF
7	#44 KAYLIN KINNEY • DP .220 • 4 R • 11 H • 3 2B • 1 HR • 4 RBI 18 Career Starts • 15 Starts at DP
8	#33 ANNI RALEY • C .308 • 7 R • 8 H • 1 2B • 1 HR • 5 RBI 20 Career Starts • 19 Starts at C
9	#27 BROOKE ANDREWS • 3B .250 • 9 R • 11 H • 2 2B • 2 HR • 9 RBI 29 Career Starts • 14 Starts at 3B
	#21 SARAH YOCOM • 1B .000 • 4 R • 0 H • 0 2B • 0 HR • 1 RBI 57 Career Starts • 22 Starts at 1B

PROJECTED SUBSTITUTES

#2 PAYTON HUSCROFT • INF .000 • 0 R • 0 H • 0 2B • 0 HR • 0 RBI
#5 MJ GREEN • INF .600 • 0 R • 3 H • 0 2B • 0 HR • 0 RBI
#7 SYDNEY GRAY • INF .366 • 8 R • 15 H • 5 2B • 1 HR • 8 RBI
#8 ABBIE SQUIER • OF .083 • 3 R • 1 H • 1 2B • 0 HR • 1 RBI
#14 CAMYL ARMENDARIZ • INF .000 • 5 R • 0 H • 0 2B • 0 HR • 0 RBI
#19 CAITLYNN NEAL • RHP/UTL .231 • 8 R • 6 H • 5 RBI 0-0 • 10.50 ERA
#20 ABBEY NEWLUN • INF .000 • 0 R • 0 H • 0 2B • 0 HR • 0 RBI
#28 ALLY RILEY • C .176 • 1 R • 6 H • 2 2B • 0 HR • 0 RBI
#30 KARLEE SEEVERS • RHP 0-0 • 7.00 ERA • 2.0 IP • 0 SO • 0 BB
#39 OLIVIA FERRELL • RHP/UTL .108 • 2 R • 4 H • 0 RBI 8-7 • 2.70 ERA
#77 SAMANTHA OWEN • INF .000 • 0 R • 0 H • 0 2B • 0 HR • 0 RBI

BIG TEN STANDINGS

Rk.	Team	Big Ten Record
1.	Michigan	21-4
2.	Minnesota	22-6
3.	Northwestern	21-7
4.	Illinois	18-10
5.	Iowa	15-13
	Nebraska	15-13
7.	Ohio State	14-13
8.	Indiana	14-14
9.	Wisconsin	12-16
10.	Maryland	11-17
11.	Michigan State	7-14
12.	Purdue	8-20
13.	Rutgers	6-21
14.	Penn State	4-19

NEBRASKA CONFERENCE TITLES

BIG EIGHT CONFERENCE (1976-1995)

Year	Record	Finish	Tournament
1977	1-4	t-4th	N/A
1978	4-3	7th	t-6th
1979	3-8	6th	t-6th
1980	8-9	4th	N/A
1981	5-6	3rd	3rd
1982	9-3	1st	1st
1983	3-7	7th	N/A
1984	6-2	1st	1st
1985	11-1	1st	1st
1986	9-3	1st	1st
1987	8-2	1st	1st
1988	7-3	1st	1st
1989	6-4	3rd	t-5th
1990	3-5	5th	2nd
1991	3-5	5th	t-4th
1992	2-6	5th	t-4th
1993	5-11	5th	N/A
1994	5-15	6th	N/A
1995	10-6	3rd	N/A
TOTAL	108-103		12 total titles

BIG 12 CONFERENCE (1996-2011)

Year	Record	Finish	Tournament
1996	10-8	4th	2nd
1997	10-6	4th	5th
1998	16-0	1st	1st
1999	10-8	4th	2nd
2000	15-2	2nd	1st
2001	16-2	1st	5th
2002	11-5	2nd	2nd
2003	10-8	6th	t-4th
2004	14-3	1st	1st
2005	9-9	7th	t-5th
2006	13-4	2nd	t-3rd
2007	10-8	5th	t-5th
2008	4-14	t-9th	2nd
2009	9-9	5th	t-5th
2010	7-11	t-6th	t-5th
2011	9-9	6th	N/A
TOTAL	173-106		6 total titles

BIG TEN CONFERENCE (2012-PRES.)

Year	Record	Finish	Tournament
2012	14-9	3rd	N/A
2013	16-6	2nd	t-3rd
2014	18-5	t-1st	t-5th
2015	17-6	3rd	2nd
2016	13-9	5th	t-5th
2017	13-10	5th	t-9th
2018	9-13	9th	t-9th
2019	9-14	t-8th	t-9th
2020	No Big Ten Season Due to Pandemic		
2021	15-13	-	N/A
TOTAL	124-85		1 total title

EDWARDS WALKING TO FIRST WITH FREQUENCY

Tristen Edwards has been able to walk to first base 41 times this season as teams have elected to frequently pitch around the senior slugger.

- With 41 combined walks and hit-by-pitches - in only 28 games - Edwards leads the nation with an average of 1.46 "free passes" per game this season.
- Edwards is the only player from a "Power Five" conference (ACC, Big 12, Big Ten, Pac-12, SEC) who reaches base at least 1.0 time per game due to walks and/or hit-by-pitches.
- Edwards has walked 28 times in 28 games this season. She ranks second nationally in walks per game and 15th nationally in total walks. Edwards is one of only three players nationally averaging 1.0 walk per game.
- Edwards has been hit by 13 pitches in 28 games. She ranks sixth nationally in hit-by-pitches per game and 12th nationally in total hit-by-pitches.

DIVISION I PLAYERS AVERAGING 1.0 "FREE PASS" PER GAME*

Rk.	Player	School	Games	BB	HBP	Per Game
1.	Tristen Edwards	Nebraska	28	28	13	1.46
2.	Maddy Vermejan	Southern Illinois	38	30	25	1.45
3.	Kendra Allen	Massachusetts	21	23	4	1.29
4.	Jessica Lindquist	George Washington	29	27	8	1.21
5.	Sierra Huerta	Marshall	20	17	7	1.20
6.	Delaney Cumbie	UNC Greensboro	33	33	6	1.18
7.	Lynsey Meeks	James Madison	23	23	0	1.00

*free passes are walks + hit-by-pitches

DIVISION I PLAYERS AVERAGING 1.0 WALK PER GAME (MIN. 15 PLATE APPEARANCES)

Rk.	Player	School	Games	BB	Per Game
1.	Kendra Allen	Massachusetts	21	23	1.10
2.	Tristen Edwards	Nebraska	28	28	1.00
3.	Lynsey Meeks	James Madison	23	23	1.00

EDWARDS ON PACE FOR NEBRASKA'S TOP ON-BASE PERCENTAGE

Senior outfielder **Tristen Edwards** is getting on base at a record-breaking clip this season, reaching base more than 60 percent of the time she steps up to the plate.

- Edwards ranks sixth nationally with a .606 on-base percentage. Nebraska has played 64 percent of its scheduled regular-season games, and Edwards' on-base percentage is on pace to shatter the current Nebraska season record (.532).

TOP ON-BASE PCT. IN HUSKER HISTORY

Rk.	Player	Year	OB%
1.	Tristen Edwards	2021	.603
2.	Kiki Stokes	2015	.532
3.	Ali Viola	1998	.531
4.	Ashley Guile	2010	.520
5.	Ali Viola	1996	.517

2021 NCAA ON-BASE PCT. LEADERS

Rk.	Player, School	OB%
1.	Allie Cummins, Miami (OH)	.611
2.	Jocelyn Alo, Oklahoma	.610
3.	Sammey Bunch, UNI	.610
4.	Jayda Coleman, Oklahoma	.609
5.	Linda Rush, Drexel	.607
6.	Tristen Edwards, Nebraska	.606

THE LAST TIME A HUSKER

Had 6+ At Bats	5 players vs. Wisconsin (5/8/16)
Had 5+ Hits	Lizzy Rock (5) vs. Illinois (2/24/06)
Scored 4+ Runs	Tristen Edwards (4) vs. Pittsburgh (2/17/19)
Had 3+ Doubles	Cam Ybarra (4) vs. Lehigh (3/7/20)
Had 2+ Homers	Billie Andrews (2) vs. Illinois - 2 (4/11/21)
Had 3+ Homers	Kaylan Jablonski (3) at Cal State Fullerton (3/17/18)
Homered in 1st Career AB	Hailey Decker vs. UIC (2/8/13)
Stole 3+ Bases	Nikki Haget (3) vs. La Salle (3/12/11)
Drew 4+ Walks	MJ Knighten (4) at Northwestern (4/17/16)
Had 2+ HBP	Tristen Edwards (2) vs. Illinois (4/9/21)
Had 5+ RBIs	Brooke Andrews (5) at Rutgers (4/2/21)
Threw a No-Hitter	Kaylan Jablonski vs. Purdue (4/29/16)
Threw a Perfect Game	Ashley DeBuhr vs. Iowa St. (4/13/05)
Had 10+ Strikeouts	Cassie McClure (10) vs. South Dakota St. (3/29/16)
Had 15+ Strikeouts	Ashley Hageman (17) at Omaha (4/19/12)
Had a 10-Game Hit Streak	Billie Andrews (12) in 2021
Had a 15-Game Hit Streak	MJ Knighten (21) in 2015
Had a 20-Game Hit Streak	MJ Knighten (21) in 2015
Had a 25-Game Hit Streak	Taylor Edwards (25) in 2013-14

BILLIE ANDREWS AMONG BIG TEN'S TOP FRESHMEN HITTERS

Freshman shortstop **Billie Andrews** has been making her case this season as arguably the Big Ten's top freshman hitter.

- Andrews enters the Wisconsin series leading all Big Ten freshmen in hits (27), RBIs (20) and stolen bases (9), ranking second in runs (21) and triples (2), third in home runs (4) and slugging percentage and seventh in batting average (.297). Before an 0-for-12 series at No. 24 Minnesota last weekend, Andrews led all Big Ten freshmen in average, hits, runs, homers, RBIs, steals and slugging percentage.

BILLIE ANDREWS' RANKS AMONG BIG TEN FRESHMAN HITTERS

AVG.	HITS	RUNS	HR	3B	RBIs	SLG%	STEALS
7th	1st	2nd	3rd	2nd	1st	3rd	1st
(.297)	(27)	(21)	(4)	(2)	(20)	(.505)	(9)

CAM IN THE CLUTCH

Senior second baseman **Cam Ybarra** has been a clutch hitter for Nebraska. That has been especially true the last three weeks as teams have elected to pitch around Tristen Edwards, with Ybarra routinely making the opponent pay for that decision. Ybarra has hit behind Edwards in the lineup 11 of the last 12 games and in 22 of Nebraska's 28 games this season.

- Ybarra is hitting .298, but her average climbs to .325 with runners in scoring position. Ybarra is also batting .175 higher with runners on base (.351) than with the bases empty (.176).
- Fifty-seven of Ybarra's 91 at bats this season (63 percent) have come with runners on base, as have 20 of her 26 hits (77 percent).
- Over 12 games the last three weeks - as Edwards has reached base at a .750 clip - Ybarra is batting .400 (12-for-30) with runners on base and .381 (8-for-21) with runners in scoring position. Seven of Ybarra's 11 RBIs the past 12 games have come with two outs.
- Ybarra has driven in the game-winning run in two of Nebraska's last three wins. She broke a 5-5 tie against Illinois in the second game of an April 10 doubleheader with a two-out, three-run double. The next day, Ybarra hit a three-run homer in the bottom of the sixth inning with Nebraska trailing by one.

HUSKER OFFENSE AT THE TOP OF THE BIG TEN

Despite a slow start, Nebraska ranks near the top of the Big Ten Conference in several offensive categories.

- The Huskers rank second in the league in doubles (48) and are third in scoring (4.7 runs per game) and home runs (20).
- Individually, senior **Tristen Edwards** leads the Big Ten in on-base percentage (.606), walks (28) and hit-by-pitches (13) and ranks third in slugging percentage (.705), fifth in homers (5), eighth in average (.361) and ninth in runs (20). Senior **Cam Ybarra** ranks sixth in the league in doubles (8) and seventh in RBIs (20), while freshman **Billie Andrews** ranks fifth in triples (2), sixth in runs (21) and steals (9), seventh in RBIs (20) and 10th in home runs (4). Senior **Rylie Unzicker** ranks seventh in the Big Ten in walks (15) and 10th in on-base percentage (.443).

THE LAST TIME NEBRASKA...

Beat a No. 1 Team	vs. No. 1 Michigan (1-0 on 4/8/16)
Beat a Top-5 Team	vs. No. 1 Michigan (1-0 on 4/8/16)
Beat a Top-10 Team	vs. No. 6 Texas A&M (6-3 on 2/22/18)
Beat a Ranked Team	at No. 24 Minnesota (6-4 on 4/18/21)
Won When Trailing After 6 Innings	vs. Tulsa (3/10/18)
Lost When Leading After 6 Innings	at No. 24 Minnesota (4/16/2021)
Scored 10+ Runs	vs. Illinois - 2 [10] (4/10/21)
Scored 15+ Runs	vs. UTEP [16] (2/8/20)
Scored 20+ Runs	at Maryland [26] (4/3/16)
Allowed 10+ Runs	at Rutgers - 2 [10] (4/3/21)
Allowed 15+ Runs	vs. Wichita St. [17] (2/29/20)
Allowed 20+ Runs	never
Recorded 15+ Hits	at Rutgers - 2 [19] (4/8/17)
Recorded 20+ Hits	at Maryland [21] (4/3/16)
Hit 6+ Doubles	vs. Lamar [7] (2/8/19)
Hit 4+ Home Runs	vs. Illinois - 1 [4] (3/31/19)
Stole 6+ Bases	at Purdue [60] (4/13/19)
Drew 10+ Walks	at Creighton [11] (4/25/17)
Was No-Hit	at No. 24 Minnesota (Game 2, 4/17/2021)

BOWLIN STADIUM



The 2020 season marks the 20th season Nebraska has called Bowlin Stadium home. The stadium's inaugural season was in 2002.

One of the top facilities in the country, Bowlin Stadium features seating for 2,500 fans, an underground system that heats the field and a large video board. Just past the right field fence is the Alex Gordon Training Complex, a spacious indoor facility that is large enough for Nebraska to take live batting practice inside the complex. The clubhouse features a locker room, players' lounge, training room and coaches' offices.

Nebraska has won nearly 70 percent of its games at Bowlin Stadium. The Huskers have hosted four NCAA Regionals at Bowlin Stadium and ranked in the top 25 nationally in attendance 14 times, including four seasons ranked in the top 10.

YEARLY RECORDS

Year	Record	Pct.
2002	9-5	.643
2003	14-7	.667
2004	14-6	.700
2005	9-7	.563
2006	20-1	.952
2007	18-5	.783
2008	13-9	.591
2009	13-5	.722
2010	12-8	.600
2011	10-4	.714
2012	15-1	.938
2013	18-4	.818
2014	13-3	.813
2015	11-6	.647
2016	11-5	.688
2017	13-6	.684
2018	10-7	.588
2019	7-10	.412
2020	0-0	.000
2021	6-2	.750
TOTAL	233-101	.700

LARGEST CROWDS

1. 2,302	Michigan	April 9, 2016
2. 2,204	Ohio State	April 19, 2014
3. 1,960	Texas	April 9, 2011
4. 1,844	Iowa	May 17, 2003
5. 1,840	Michigan	April 27, 2013
6. 1,752	Wisconsin	May 12, 2012
7. 1,692	Indiana	May 3, 2014
8. 1,673	Illinois	April 22, 2017
9. 1,601	Wisconsin	April 28, 2018
10. 1,585	Lehigh	May 20, 2004

NEBRASKA BY THE NUMBERS

62 NCAA TOURNAMENT WINS
Nebraska has won 62 games in its 24 NCAA Tournament appearances (62-52). The 62 postseason wins rank 19th in NCAA history.

30 ACADEMIC ALL-AMERICANS
A total of 22 Huskers have combined to earn 30 CoSIDA Academic All-America honors, the most of any softball program in NCAA history.

27 ALL-AMERICANS
Nebraska has produced 27 All-Americans, including eight first-team selections, seven two-time picks and two three-time All-Americans.

24 NCAA TOURNAMENTS
The Huskers have made 24 appearances in the NCAA Tournament, including 13 straight from 1995 to 2007. Nebraska's 24 postseason appearances rank 13th in NCAA history.

21 REVELLE ALL-AMERICANS
Rhonda Revelle has guided 13 players to a total of 21 All-America honor in her first 28 seasons as Nebraska's head coach.

19 CONFERENCE TITLES
Nebraska has won a total of 19 conference championships. The Huskers won 12 Big Eight titles, six Big 12 crowns and captured their first Big Ten title in 2014.

15 TOP-25 RANKINGS
Nebraska has been ranked in the final NFCA poll in 15 of the 26 years the poll has existed. The Huskers were one of only six teams nationally to be ranked in the final poll in each of the first 12 years it existed (1995 to 2006).

14 REVELLE ACADEMIC ALL-AMERICANS
Rhonda Revelle has produced 14 academic All-Americans at Nebraska. That total ranks fourth among all softball head coaches in NCAA history.

7 WCWS APPEARANCES
Nebraska has advanced to the Women's College World Series seven times to rank 14th in NCAA history.

4 SOFTBALL OLYMPIANS
Four former Huskers have competed in the Olympics, with a pair of former players competing in each of the last two Olympics.

BIG RED BATS HAVE COME ALIVE

Nebraska's offense got off to a slow start this season. But the bats have come alive, helping NU to a 12-8 record over its last 20 games, which includes nine contests against teams that have either been ranked or received votes in the coaches' top-25 poll this season.

- Nebraska is batting .297 and averaging 5.6 runs per game over its last 20 contests. NU hit just .145 and averaged only 2.5 runs per game over the season's first eight games.
- The Huskers are averaging 7.9 hits per game over the last 20 games. Nebraska has produced double-digit hits in 10 of its last 20 games. NU had only one game with double-digit hits and averaged just 3.8 hits per game over the first eight games this season
- Nebraska has hit 17 home runs in the past 20 games after homering only three times in the first eight games of the season.

HITTING COMPARISON

Games	AVG	R/GM	H/GM	2B/GM	HR/GM	RBI/GM	SLG%	OB%
First 8 Games	.145	2.5	3.8	0.8	0.4	2.0	.217	.233
Last 20 Games	.297	5.6	7.9	1.8	0.9	5.0	.483	.386
DIFF.	+1.152	+3.1	+4.1	+1.0	+0.5	+3.0	+0.266	+0.153

HUSKER PITCHING STAFF SHOWING IMPROVEMENT

Nebraska's pitching staff has been much improved this season. Through 28 games, the Huskers boast a 3.10 ERA and are allowing only 3.7 runs per game. Both of those averages are on pace to be the lowest for a Nebraska team since the 2014 season, when the Huskers were co-Big Ten champions and advanced to an NCAA Super Regional.

- NU has allowed two or fewer runs 13 times in 28 games this year (46 percent). In the previous two seasons, Nebraska allowed two or fewer runs only 19 times in 75 games (25 percent).
- Nebraska has allowed fewer than two runs six times in 28 games this season. In the previous two seasons, the Huskers allowed fewer than two runs only seven times in 75 games.
- Senior **Olivia Ferrell** is 8-7 with one save and a 2.70 ERA after entering the year with a 15-21 career record, one save and a 4.47 ERA. Ferrell has pitched in 19 of Nebraska's 28 games this spring with 14 starts. She ranks seventh in the Big Ten in wins, saves and innings (85.2), ninth in strikeouts (76) and 10th in opponent average (.227).
- Junior **Courtney Wallace** has appeared in 18 games with 11 starts. Wallace is 7-5 with a 2.91 ERA and one save in 79.1 innings this season after entering the year with a 6-9 career record and 5.50 ERA. Wallace ranks seventh in the Big Ten in saves and ninth in wins.
- Freshman **Kaylin Kinney** has appeared in 10 games with three starts. She has excelled in relief, posting a 2.40 ERA with two saves in seven relief outings. Kinney ranks third in the Big Ten in saves.

PITCHING COMPARISON (2020 TO 2021)

Season	ERA	SV	HITS/GM	RUNS/GM	BB/GM	HR/GM	AVG.
2020	5.54	1	8.5	6.0	3.9	1.2	.313
2021	3.10	4	6.4	3.7	2.9	0.5	.251
DIFF.	-2.44	+3	-2.1	-2.3	-1.0	-0.7	-.062

NEBRASKA'S 2021 RECORD WHEN...

Overall	15-13	Out-Hitting Opponent	10-1
Non-Conference	0-0	Out-Hit by Opponent	3-11
Big Ten Conference	15-13	Scoring First	13-3
Home	6-2	Opponent Scores First	2-10
Neutral	6-6	Scoring in the First Inning	7-1
Road	3-5	Scoring Fewer than 3 Runs	1-9
Night Games	1-4	Scoring 5 or More Runs	12-3
Day Games	14-9	Scoring 10 or More Runs	3-0
Sunday	4-3	Allowing Fewer Than 3 Runs	9-4
Monday	0-0	Allowing 5 or More Runs	2-6
Tuesday	0-0	Allowing 10 or More Runs	0-1
Wednesday	0-0	Leading After Five Innings	9-1
Thursday	0-2	Leading After Six Innings	11-1
Friday	4-3	Trailing After Five Innings	1-10
Saturday	7-5	Trailing After Six Innings	0-8
vs. Ranked Opponents	2-5	Tied After Five Innings	3-2
vs. Unranked Opponents	13-8	Tied After Six Innings	1-3
Extra Innings	1-3	Committing 0 Errors	5-6
1-Run Games	3-3	Committing 2 or More Errors	3-1

CLOSE CALLS

Nebraska has been accustomed to playing close games so far this spring, as 15 of the Huskers' 28 contests (54 percent) have been decided by either one or two runs.

- Nebraska is 7-8 in games decided by two runs or less this season. In 23 games last year, the Huskers played only six games decided by two or fewer runs (3-3 record in those games).
- Eight of Nebraska's 13 losses have been by either one or two runs.
- Eighteen of Nebraska's 28 games have been either a tie, one-run or two-run game entering the sixth inning. The Huskers are 9-1 when leading after five innings, 1-10 when trailing after five innings and 3-2 when tied after five innings.
- Nebraska led 7-6 after six innings in the series opener at No. 24 Minnesota last Friday, but the Gophers scored twice in the bottom of the seventh inning to win. The Huskers had won 63 consecutive games when leading after six innings, dating back to March 25, 2017, when Minnesota scored twice in the top of the seventh to rally for a 5-4 win at Bowlin Stadium.

EDWARDS TIES NEBRASKA'S ALL-TIME DOUBLES RECORD

Tristen Edwards hit her 48th career double in game one at No. 24 Minnesota last Friday, tying the Nebraska all-time record. Edwards now shares the record with three-time All-American Ali Viola (1995-98), two-time All-American Tobin Echo-Hawk (1993-96) and All-American Kim Ogee (2000-03).

EDWARDS LEAVING HER MARK ON HUSKER RECORD BOOK

Senior outfielder **Tristen Edwards** has joined one elite club in Nebraska history, is nearing another and is poised to challenge several Husker career records.

- Edwards is one of only three Huskers who have totaled 40 career doubles and 40 career home runs. The other two members of that group are three-time All-American Ali Viola and two-time All-American Taylor Edwards, Tristen's older sister.
- Edwards is also looking to become the first Husker to hit 50 career doubles and 50 career home runs. Edwards currently owns 48 career doubles and 47 career home runs.
- Edwards is just the fourth Husker to record 150 career hits, runs and RBIs. The other three members of that group were all All-Americans (Ali Viola, Taylor Edwards and MJ Knighten).
- Edwards has tied Nebraska's career doubles record and is on pace to break the extra-base hits record in addition to challenging several other top marks. Edwards is seven shy of tying Nebraska's home run record and nine shy of matching the extra-base hits record.

NEBRASKA PLAYERS WITH 40 CAREER 2B & HR

Player	Years	2B	HR
Ali Viola	1995-98	48	53
Taylor Edwards	2011-14	41	54
Tristen Edwards	2017-pres.	48	47

NEBRASKA PLAYERS WITH 150 CAREER HITS, RUNS & RBIs

Player	Years	Hits	Runs	RBIs
Ali Viola	1995-98	263	157	213
Taylor Edwards	2011-14	220	177	202
MJ Knighten	2014-17	253	183	186
Tristen Edwards	2017-pres.	207	160	155

EDWARDS' ASSAULT ON NEBRASKA'S ALL-TIME RECORDS

Category	Record Holder	Record	Edwards' Total	Projection*
Doubles	Four players	48	48	52
Home Runs	Taylor Edwards	54	47	52
Extra-Base Hits	Ali Viola	105	96	106

*Based on Edwards' career per-game averages played out over a 44-game 2021 schedule

EDWARDS NAMED PLAYER OF THE WEEK FOR RECORD SIXTH TIME

Senior **Tristen Edwards** was named the first Big Ten Player of the Week of the 2021 season on March 2. She was honored after hitting .444 in six games with one double, three homers and six RBIs. Her three homers were more than any other Big Ten team hit in the first week.

- Edwards was named the Big Ten Player of the Week for the sixth time in her career. That set a Nebraska record for most career conference player-of-the-week honors and tied the Big Ten record for most career player-of-the-week awards.

EDWARDS CAREER RECORD WATCH

DOUBLES

1. Tobin Echo-Hawk (1993-96)	48
Ali Viola (1995-98)	48
Kim Ogee (2000-03)	48
Tristen Edwards (2017-present)	48

HOME RUNS

1. Taylor Edwards (2011-14)	54
2. Ali Viola (1995-98)	53
3. Jennifer Lizama (1997-2000)	47
Tristen Edwards (2017-present)	47
5. Tatum Edwards (2011-14)	46

EXTRA-BASE HITS

1. Ali Viola (1995-98)	105
2. Tristen Edwards (2017-present)	96
3. Taylor Edwards (2011-14)	95

RUNS

1. Kiki Stokes (2013-16)	200
2. Jennifer Lizama (1997-2000)	199
3. MJ Knighten (2014-17)	183
4. Kim Ogee (2000-03)	182
5. Taylor Edwards (2011-14)	177
6. Tobin Echo-Hawk (1993-96)	168
7. Tristen Edwards (2017-present)	160

RBIs

1. Ali Viola (1995-98)	213
2. Taylor Edwards (2011-14)	202
3. MJ Knighten (2014-17)	186
4. Brooke Thomason (2010-13)	177
5. Nicole Trimboli (2001-04)	173
6. Tatum Edwards (2011-14)	158
7. Tristen Edwards (2017-present)	155

WALKS

1. Taylor Edwards (2011-14)	150
2. Jennifer Lizama (1997-2000)	124
3. Kiki Stokes (2013-16)	120
4. Ali Viola (1995-98)	116
5. Kim Ogee (2000-03)	115
6. Tristen Edwards (2017-present)	107

BATTING AVERAGE

1. Ali Viola (1995-98)	.418
2. Tobin Echo-Hawk (1993-96)	.379
3. Jennifer Lizama (1997-2000)	.378
4. Lizzy Rock (2005-06)	.374
5. MJ Knighten (2014-17)	.357
6. Tristen Edwards (2017-present)	.354

SLUGGING PERCENTAGE

1. Ali Viola (1995-98)	.760
2. Tristen Edwards (2017-present)	.680
3. Christie McCoy (1997-98)	.642
4. Jennifer Lizama (1997-2000)	.635
5. Taylor Edwards (2011-14)	.629

ON-BASE PERCENTAGE

1. Ali Viola (1995-98)	.508
2. Tristen Edwards (2017-present)	.475
3. Taylor Edwards (2011-14)	.471
4. Kiki Stokes (2013-16)	.469
5. Jennifer Lizama (1997-2000)	.456

HIT-BY-PITCHES

1. Taylor Edwards (2011-14)	39
2. Tristen Edwards (2017-present)	35

MULTI-HOME RUN GAMES

1. Tristen Edwards (2017-present)	7
2. Tatum Edwards (2011-14)	6
Ali Viola (1995-98)	6

COLLEGE SOFTBALL POLLS

USA TODAY/NFCA COACHES POLL

Rk.	Team	Pts.	Record	LW
1.	Oklahoma (32)	800	33-0	1
2.	UCLA	768	25-2	2
3.	Florida	717	32-6	5
4.	Washington	692	34-6	6
5.	Alabama	673	33-7	3
6.	Oregon	613	28-8	4
7.	Florida State	597	31-6	9
8.	Arkansas	564	36-5	10
9.	Texas	544	31-6	7
10.	Arizona	503	27-8	8
11.	Oklahoma State	487	35-5	11
12.	Arizona State	472	28-11	13
13.	Louisiana	371	34-7	14
14.	Kentucky	359	30-10	12
15.	Virginia Tech	351	28-7	15
16.	Clemson	331	32-4	17
17.	LSU	303	26-14	16
18.	Missouri	243	32-10	18
19.	Tennessee	226	32-7	19
20.	Michigan	164	21-4	22
21.	Georgia	148	27-11	20
22.	Duke	117	30-10	21
23.	Wichita State	114	32-5-1	25
24.	Minnesota	87	22-6	24
25.	James Madison	41	22-1	RV
	UCF	41	30-12-1	23

ESPN.COM/USA SOFTBALL POLL

Rk.	Team	Record	Pts.	LW
1.	Oklahoma (20)	33-0	500	1
2.	UCLA	25-2	480	2
3.	Florida	32-6	443	4
4.	Washington	34-6	428	6
5.	Alabama	33-7	421	3
6.	Arkansas	36-5	375	10
7.	Florida State	31-6	365	9
	Oregon	28-8	365	5
9.	Arizona State	28-11	315	13
	Oklahoma State	35-5	315	11
11.	Arizona	27-8	292	7
12.	Texas	31-6	290	8
13.	Virginia Tech	28-7	241	14
14.	Kentucky	30-10	213	12
15.	LSU	26-14	211	15
16.	Clemson	32-4	184	18
17.	Tennessee	32-7	177	16
18.	Louisiana	34-7	170	17
19.	Missouri	32-10	144	19
20.	Michigan	21-4	107	22
21.	Duke	30-10	81	21
22.	Georgia	27-11	78	20
23.	Wichita State	32-5-1	71	RV
24.	James Madison	22-1	63	24
25.	Minnesota	22-6	52	23

- Edwards became only the third player in Big Ten history to be a six-time player of the week. The other two are two-time Northwestern All-American Adrienne Monka and four-time Michigan All-American Sierra Romero.

- Edwards became the first Husker to win six conference player-of-the week awards. Overall, Edwards is one shy of the most conference weekly awards in school history. All-American Peaches James won seven total conference weekly awards in her decorated career.

MOST PLAYER-OF-THE-WEEK AWARDS IN BIG TEN HISTORY

Player	School	Years	Awards
Tristen Edwards	Nebraska	2017-present	6
Sierra Romero	Michigan	2013-16	6
Adrienne Monka	Northwestern	2009-12	6

BILLIE ANDREWS WINS 3RD STRAIGHT WEEKLY AWARD

Billie Andrews won the Big Ten Freshman of the Week award in three consecutive weeks from March 30 to April 13. She is the first Husker to be honored as a three-time Big Ten Freshman of the Week, and Andrews is just the fourth freshman in Big Ten history to win the award in three straight weeks.

- Andrews produced multiple hits in each of the four games against Penn State to win her first award. She finished the series 10-for-15 (.667) with a 1.133 slugging percentage. Andrews scored six runs, drove in five and produced her first two career triples and first home run.

- The next week, Andrews went 7-for-14 in the four-game series at Rutgers with two doubles, a homer, three RBIs and four runs. She had at least one hit and one run in every game of the series, extending her streak to nine consecutive games with both a hit and run scored.

- Two weeks ago, Andrews was 4-for-11 (.364) with two home runs, four runs scored and four RBIs against an Illinois pitching staff that entered the series ranked 11th nationally in ERA. Andrews hit two home runs in game three of the series for her first career multi-homer game.

THREE CONSECUTIVE BIG TEN FRESHMEN OF THE WEEK WINNERS

Player	School	Season
Sierra Romero	Michigan	2013
Kendyl Lindaman	Minnesota	2017
Meghan Beaubien	Michigan	2018
Billie Andrews	Nebraska	2021

EDWARDS AMONG NATION'S TOP RETURNING STATISTICAL LEADERS

Tristen Edwards was in the midst of a stellar season in 2020 before the season was cut short. In 23 games last season, Edwards hit .434 with 10 doubles, 11 home runs and 22 RBIs.

- Edwards' 21 extra-base hits ranked second nationally in the shortened 2020 season. She was one of only three players in the country with 20 extra-base hits.

- Edwards was the only player in the country last season with at least 10 doubles and 10 home runs. She ranked fourth nationally in home runs (11) and 14th in doubles (10). Edwards was the only player in the nation to rank in the top 15 in both doubles and home runs in 2020.

- In addition to her lofty ranking in doubles and home runs, Edwards ranked third nationally in slugging percentage (1.000) and total bases (76), fourth in home runs per game (0.48) and 15th in runs per game (1.22).

- Entering 2021, Edwards ranked 18th among all active Division I players in career RBIs (140) and total bases (354), 19th in home runs (44), 22nd in doubles (42) and 23rd in runs (139).

- Entering this weekend's series with Wisconsin, Edwards is one of only 17 active Division I players with 40 career doubles and 40 career home runs.

EDWARDS' CAREER RANKINGS AMONG ACTIVE DIVISION I PLAYERS (AS OF APRIL 11)

Category	Total	Rank
Doubles	48	22nd
Home Runs	47	23rd
Walks	106	23rd
Runs	160	29th
Total Bases	398	32nd
RBIs	155	35th
Slugging Pct.	.680	50th

STATISTICAL COMPARISON

TEAM	W-L	AVG.	SCORING	OPP. SCORING	ERA	FLD%
Nebraska	15-13	.254	4.7	3.7	3.10	.973
Wisconsin	12-16	.236	3.6	3.5	2.50	.975
NEB DIFF.	+3	+0.018	+1.1	+0.2	+0.60	-.002

SCOUTING THE WISCONSIN BADGERS (12-16)

Wisconsin enters this weekend's series with a 12-16 record, but the Badgers have outscored their opponents on the season. Wisconsin brings a five-game winning streak to Bowlin Stadium, and the Badgers have won seven of their eight games the past two weekends.

Nebraska and Wisconsin have each played Illinois, Indiana, Michigan, Ohio State, Penn State and Rutgers this season. The Huskers posted an 11-8 record against that group, while Wisconsin went 8-10.

- Wisconsin is batting .236 as a team and averaging 3.6 runs per game. But the Badger bats broke out last week, as Wisconsin 32 runs in a four-game sweep of Rutgers.
- A pair of Badgers are batting above .300. **Fiona Girardot** leads the team with a .324 average. Her team-best .471 on-base percentage is nearly .100 higher than any other player, and Girardot has slugged seven doubles, one triple and one home run while totaling 12 RBIs.
- **Peyton Bannon** is hitting .319 with a team-high .583 slugging percentage that is .083 points higher than any other Badger. Bannon leads the team with 20 runs, eight doubles and three home runs but she has only driven in seven runs despite her production in other categories.
- **Christaana Angelopulos** is Wisconsin's top power hitter, as she leads the team with three home runs and 18 RBIs.
- **Ally Miklesh** is a threat on the base paths as she is 14-of-16 on stolen bases this season.
- In the circle, Wisconsin boasts a 2.50 ERA and a .975 fielding percentage, which have helped the Badgers limit opponents to only 3.6 runs per game.
- Although Wisconsin has utilized six pitchers this season, **Maddie Schwartz** has been the Badgers' primary pitcher. Schwartz has thrown more than half of Wisconsin's innings, appearing in 19 of the Badgers' 28 games with 15 starts. Schwartz has compiled a 6-8 record with a 2.77 ERA in 103.2 innings. She has surrendered only two home runs in 380 opponent at bats, and Schwartz has struck out 74 batters while walking only 17.
- Behind Schwartz, **Haley Hestekin** has seen the most action. Hestekin has earned the start in eight of her nine appearances this season, posting a 4-2 record with a 2.65 ERA in 39.2 innings. The only Badger with a winning record, Hestekin has thrown three complete games.
- **Tessa Magnanimo** is 1-1 with a 2.95 ERA in 19.0 innings. She has appeared in seven games with four starts and has walked only one batter.
- **Abby Herbst** has started one game and made four relief appearances. She owns Wisconsin's only save of the season, and Herbst is 0-1 with a 1.58 ERA in 13.1 innings.
- **Ava Justman** (1-1, 0.84 ERA in 8.1 IP), the lone left-hander on the Badger roster, and **Gabi Salo** (0-2, 4.67 ERA in 9.0 IP) round out the Wisconsin staff.
- **Yvette Healy** is in her 11th season as the head coach at Wisconsin and her 18th season as a collegiate head coach. She owns a 326-211-1 record at Wisconsin, after previously compiling a 131-172-1 record in six seasons at Loyola-Chicago from 2004 to 2010. Healy boasts a 457-383-2 career record in 17 seasons.

NEBRASKA VS. WISCONSIN

SERIES HISTORY

- **Series Record:** Nebraska leads, 20-9
- **In Big Ten Play:** Nebraska leads, 14-9
- **In Lincoln:** Nebraska leads, 10-6
- **At Madison:** Nebraska leads, 8-3
- **At a Neutral Site:** Nebraska leads, 2-0
- **Current Win Streak:** Wisconsin, 2 games
- **Revelle vs. Wisconsin:** 20-9
- **Healy vs. Nebraska:** 9-17
- **Revelle vs. Healy:** 17-8

ALL-TIME MEETINGS

DATE	LOCATION	RESULT
2/11/2000	Neutral	W, 5-4
4/26/2000	Lincoln	W, 1-0
4/26/2000	Lincoln	W, 8-0 (5)
3/15/2002	Neutral	W, 2-1
3/24/2010	Lincoln	W, 8-0 (5)
3/24/2010	Lincoln	W, 4-3
5/11/2012	Lincoln	L, 1-3
5/11/2012	Lincoln	W, 6-4
5/12/2012	Lincoln	W, 4-1
4/12/2013	Lincoln	W, 4-0
4/13/2013	Lincoln	L, 2-5
4/14/2013	Lincoln	W, 11-2 (5)
4/30/2014	Madison	W, 14-0 (5)
4/30/2014	Madison	L, 4-6
4/25/2015	Madison	W, 13-5 (5)
4/26/2015	Madison	W, 3-2
4/27/2015	Madison	W, 9-0 (5)
5/6/2016	Lincoln	W, 13-8
5/7/2016	Lincoln	L, 4-6 (14)
5/7/2016	Lincoln	W, 6-5 (9)
3/31/2017	Madison	W, 7-4 (8)
4/1/2017	Madison	W, 8-3
4/2/2017	Madison	W, 9-4
4/27/2018	Lincoln	L, 1-6
4/28/2018	Lincoln	L, 4-11
4/29/2018	Lincoln	L, 2-11 (6)
5/3/2019	Madison	W, 5-3
5/4/2019	Madison	L, 4-5
5/5/2019	Madison	L, 2-4

NOTABLE GAMES

NEBRASKA 14, WISCONSIN 0 (5 INN.)
APRIL 30, 2014

Nebraska won its 11th straight game and 12th consecutive Big Ten Conference game in dominating fashion. Taylor Edwards and Hailey Decker each hit grand slams in the win, with Edwards' blast coming on the 16th pitch of her at bat after she had fouled off 11 two-strike pitches. Emily Lockman tossed a four-hit shutout - her fourth consecutive shutout - to win her eighth straight decision.

NEBRASKA SWEEPS NO. 22 WISCONSIN
MARCH 31 - APRIL 2, 2017

Nebraska entered the 2017 series between the teams with an 8-20 record, while Wisconsin was ranked 22nd and brought a 23-3 record into the series. Nebraska fell behind in the first inning in all three games, but rallied to win each game thanks in large part to the efforts of Kaylan Jablonski. Jablonski pitched in all three games and threw nearly 350 pitches over 20.0 innings, all in relief. In addition to going 3-0, Jablonski went 6-for-11 at the plate with three doubles, one homer and four RBIs. Tristen Edwards had seven RBIs in the series, including the game-winning two-run homer in the eighth inning of game one.



#1 | RYLIE UNZICKER • OF

	AVG.	G-GS	R	H	2B	HR	RBI	BB	SLG%	OB%
2021	.290	28-26	19	20	5	1	6	15	.435	.443
Career	.230	134-100	59	63	17	5	25	47	.361	.355

- 100 career starts at Nebraska rank 2nd on the team
- Ranks 7th in the Big Ten in walks (15) & 10th in on-base percentage (.443)
- 7-time Nebraska Scholar-Athlete Honor Roll member
- 2-time Academic All-Big Ten & 2020 Big Ten Distinguished Scholar
- Sister Madi was a four-year Husker letterwinner (2015-19)



#2 | PAYTON HUSCROFT • INF

	AVG.	G-GS	R	H	2B	HR	RBI	BB	SLG%	OB%
2021	.000	1-0	0	0	0	0	0	0	.000	.000
Career	.171	25-19	2	7	1	1	6	5	.268	.277

- Has been slowed after recovering from offseason surgery
- Had 5 two-out RBIs in shortened 2020 season, one shy of the team high
- 1 of 3 Millard South products on the Husker roster (Glatter & Unzicker)
- 5-time Nebraska Scholar-Athlete Honor Roll member
- 2-time Tom Osborne Citizenship Team member



#5 | MJ GREEN • INF

	AVG.	G-GS	R	H	2B	HR	RBI	BB	SLG%	OB%
2021	.600	5-1	0	3	0	0	0	0	.600	.600
Career	.600	5-1	0	3	0	0	0	0	.600	.600

- Is 3-for-5 at the plate this season
- Named a top-100 recruit by FloSoftball
- No. 141 (Extra Inning Softball) & No. 153 (FastPitch News) recruit nationally
- All-state & 2-time all-district pick for Henderson (Texas) High School
- Travel ball teammate of Husker Abbey Newlun (Scrap Yard International)



#6 | BILLIE ANDREWS • INF

	AVG.	G-GS	R	H	2B	HR	RBI	BB	SLG%	OB%
2021	.297	28-28	21	27	3	4	20	6	.505	.337
Career	.297	28-28	21	27	3	4	20	6	.505	.337

- 3-time Big Ten Freshman of the Week (consecutive awards from 3/30-4/14)
- Ranks 5th in the Big Ten in triples, 6th in runs & steals and 7th in RBIs
- 4-time Omaha World-Herald All-Nebraska pick at Gretna High School
- Hit .434 with a .625 OB% and 1.200 SLG% in her prep career
- Older sister Brooke is a sophomore infielder with the Huskers



#7 | SYDNEY GRAY • INF

	AVG.	G-GS	R	H	2B	HR	RBI	BB	SLG%	OB%
2021	.366	15-14	8	15	5	1	8	1	.561	.381
Career	.366	15-14	8	15	5	1	8	1	.561	.381

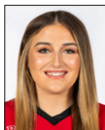
- Suffered a season-ending injury on March 28 against Penn State
- Was leading NU in average and was 2nd in hits & doubles prior to her injury
- Hit .503 at Sabino High School in Tucson, Ariz. with 16 3B, 16 HR & 87 RBIs
- Helped Sabino to an Arizona 3A state championship as a junior
- Travel ball teammate of Husker Caitlynn Neal (Arizona Desert Thunder)



#8 | ABBIE SQUIER • OF

	AVG.	G-GS	R	H	2B	HR	RBI	BB	SLG%	OB%
2021	.083	15-3	3	1	1	0	1	1	.167	.214
Career	.083	15-3	3	1	1	0	1	1	.167	.214

- Ranked as the No. 95 recruit nationally by Extra Inning Softball
- 3rd-team NFCA High School All-American as a junior
- .490 career average with a .994 SLG% at Lincoln Southwest High School
- Was the state shot put champion as a junior
- Lone Lincoln native on Nebraska's 2021 roster



#13 | PEYTON GLATTER • OF

	AVG.	G-GS	R	H	2B	HR	RBI	BB	SLG%	OB%
2021	.207	23-19	6	12	1	2	12	5	.328	.266
Career	.230	84-73	27	51	8	7	37	22	.360	.302

- Ranks 2nd among active Huskers with 37 career RBIs at Nebraska
- Has started 73 of Nebraska's 103 games the past three seasons
- 3-time member of the Nebraska Scholar-Athlete Honor Roll
- Member of the 2019 Tom Osborne Citizenship Team
- 1 of 3 Millard South products on the Husker roster (Huscroft & Unzicker)



#14 | CAMYL ARMENDARIZ • INF

	AVG.	G-GS	R	H	2B	HR	RBI	BB	SLG%	OB%
2021	.000	15-1	5	0	0	0	0	0	.000	.000
Career	.000	15-1	5	0	0	0	0	0	.000	.000

- Has appeared in 15 games (1 start at DP; 11 games as a PR & 3 as a PH)
- Four-year varsity player for Bonita (Calif.) High School
- Totaled 113 hits, 23 doubles, 5 triples, 20 homers & 80 RBIs in prep career
- 3-time all-league & All-San Gabriel Valley selection
- 1 of 4 current Huskers from the Corona Angels travel ball team



#19 | CAITLYNN NEAL • RHP

	W-L	ERA	APP	GS	CG	SHO	SV	IP	SO	AVG.
2021	0-0	10.50	3	0	0	0	0	2.2	0	.500
Career	0-0	10.50	3	0	0	0	0	2.2	0	.500

- Named the preseason Big Ten Newcomer of the Year by D1Softball
- Tossed a scoreless inning vs. No. 23 Michigan in her career debut
- Member of the United States Under-17 Women's National Team
- 2-hit shutout in the Pan American Championships Gold Medal game
- 23-2 record with a 0.71 ERA & 15 shutouts in her high school career



#19 | CAITLYNN NEAL • UTL

	AVG.	G-GS	R	H	2B	HR	RBI	BB	SLG%	OB%
2021	.231	19-9	8	6	0	0	5	0	.231	.231
Career	.231	19-9	8	6	0	0	5	0	.231	.231

- Named the preseason Big Ten Newcomer of the Year by D1Softball
- All 6 of her hits & all 5 of her RBIs have come in her last 7 starts
- Ranked as the No. 30 recruit nationally by Extra Inning Softball
- .613 career hitter with 17 HR & 68 RBIs at Bradshaw Mountain High School
- Travel ball teammate of Husker Sydney Gray (Arizona Desert Thunder)



#20 | ABBEY NEWLUN • INF

	AVG.	G-GS	R	H	2B	HR	RBI	BB	SLG%	OB%
2021	.000	1-0	0	0	0	0	0	0	.000	.000
Career	.000	1-0	0	0	0	0	0	0	.000	.000

- Four-year varsity player at The Woodlands High School in Texas
- Totaled 69 hits, 16 doubles, 3 triples & 9 home runs in her prep career
- Was an all-district selection as a junior
- Travel ball teammate of Husker MJ Green (Scrap Yard International)
- Father Craig graduated from Nebraska & was born & raised in Auburn, Neb.



#21 | SARAH YOCOM • INF

	AVG.	G-GS	R	H	2B	HR	RBI	BB	SLG%	OB%
2021	.000	22-22	4	0	0	0	1	1	.000	.091
Career	.130	89-57	17	7	0	0	4	4	.130	.186

- Has started 22 straight games at first base, her first starts at the position
- Has started multiple games at 1B, 2B, 3B & SS in her Husker career
- 2-time Academic All-Big Ten & 2019 Big Ten Distinguished Scholar
- 5-time Nebraska Scholar-Athlete Honor Roll member
- 3-time member of the Tom Osborne Citizenship Team



#23 | COURTNEY WALLACE • RHP

	W-L	ERA	APP	GS	CG	SHO	SV	IP	SO	AVG.
2021	7-5	2.91	18	11	3	0	1	79.1	32	.254
Career	13-14	4.53	57	28	7	0	2	210.1	120	.301

- Ranks 7th in the Big Ten in saves (1) and 9th in wins (7)
- Ranks 2nd among current Huskers in career innings pitched (210.1)
- 3-time Nebraska Scholar-Athlete Honor Roll member
- 2-time member of the Tom Osborne Citizenship Team
- Her cousin, Alex Smith, is a cornerback on the Wisconsin football team



#23 | COURTNEY WALLACE • UTL

	AVG.	G-GS	R	H	2B	HR	RBI	BB	SLG%	OB%
2021	.218	21-17	7	12	2	1	10	5	.345	.279
Career	.226	83-62	32	44	7	4	26	18	.385	.295

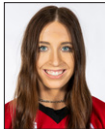
- Has been in the batting order during starts at P, DP, 3B & LF in her career
- 17 of her 44 career hits have gone for extra bases (7 2B, 6 3B, 4 HR)
- Tied the Nebraska single-game record with two triples vs. Lamar in 2019
- 6 career triples are the most of any current Husker
- Nebraska Gatorade Player of the Year as a high school senior



#24 | TRISTEN EDWARDS • OF

	AVG.	G-GS	R	H	2B	HR	RBI	BB	SLG%	OB%
2021	.361	28-28	20	22	6	5	15	28	.705	.606
Career	.354	207-204	160	207	48	47	152	107	.680	.475

- Ranks 2nd nationally in walks per game (1.00) & 6th in on-base pct. (.606)
- Named the preseason Big Ten Player of the Year by D1Softball
- 2-time member of USA Softball Collegiate Player of the Year watch list
- 2-time 1st-team All-Big Ten & record 6-time Big Ten Player of the Week
- Older twin sisters Tatum & Taylor were both 2-time Husker All-Americans



#27 | BROOKE ANDREWS • INF

	AVG.	G-GS	R	H	2B	HR	RBI	BB	SLG%	OB%
2021	.250	22-15	9	11	2	2	9	2	.477	.313
Career	.260	40-29	11	20	3	2	12	3	.403	.313

- 12 straight starts at 3B; 2 2B, 1 3B, 2 HR & 9 RBIs in those 12 starts
- Started a team-high 14 games at shortstop as a freshman in 2020
- Ranked 5th on the team with a .273 batting average last season
- 3-time Nebraska Scholar-Athlete Honor Roll member
- Younger sister Billie is a freshman infielder with the Huskers



#28 | ALLY RILEY • C

	AVG.	G-GS	R	H	2B	HR	RBI	BB	SLG%	OB%
2021	.176	16-16	1	6	2	0	0	1	.235	.222
Career	.257	71-52	5	37	8	1	22	6	.333	.297

- Is Nebraska's most experienced catcher with 38 career starts at the position
- Started 32 of Nebraska's 51 games at catcher the past two seasons
- Her .257 career average ranks 3rd among all Huskers with at least 100 AB
- 2-time Academic All-Big Ten selection
- 7-time Nebraska Scholar-Athlete Honor Roll member



#30 | KARLEE SEEVERS • RHP

	W-L	ERA	APP	GS	CG	SHO	SV	IP	SO	AVG.
2021	0-0	7.00	2	0	0	0	0	2.0	0	.500
Career	0-0	17.77	4	0	0	0	0	4.1	0	.500

- Tossed a scoreless inning vs. Purdue after making two appearances in 2020
- Is also a pinch runner, scoring a run in each of her two career appearances
- 2020 Academic All-Big Ten selection & 2020 Big Ten Distinguished Scholar
- 5-time member of the Nebraska Scholar-Athlete Honor Roll
- 2-time Tom Osborne Citizenship Team member



#32 | CAM YBARRA • INF

	AVG.	G-GS	R	H	2B	HR	RBI	BB	SLG%	OB%
2021	.286	28-28	7	26	8	2	20	6	.440	.323
Career	.257	141-135	31	108	31	7	48	35	.385	.317

- Ranks 6th in the Big Ten in doubles (8) and 7th in RBIs (20)
- In her 2nd year at Nebraska after spending two seasons at Oregon State
- Started all 51 games at second base for Nebraska the past two seasons
- Was a 2018 Pac-12 All-Defensive & All-Freshman Team honoree at OSU
- 1 of 4 current Huskers from the Corona Angels travel ball team



#33 | ANNI RALEY • C

	AVG.	G-GS	R	H	2B	HR	RBI	BB	SLG%	OB%
2021	.308	19-13	7	8	1	1	5	1	.538	.400
Career	.233	61-20	20	10	2	1	6	3	.442	.340

- Has started 13 games at catcher in 2021 & caught in 18 games total
- Has gone 7-for-15 with a triple, a homer, 7 runs & 5 RBIs in her last 7 starts
- Has also appeared as a pinch runner 30 times her career
- 2020 Academic All-Big Ten selection
- 5-time member of the Nebraska Scholar-Athlete Honor Roll



#39 | OLIVIA FERRELL • RHP

	W-L	ERA	APP	GS	CG	SHO	SV	IP	SO	AVG.
2021	8-7	2.70	19	14	5	1	1	85.2	76	.227
Career	23-28	4.00	86	53	13	1	3	320.1	217	.280

- Ranks 7th in the Big Ten in wins, saves & innings and 9th in strikeouts
- Leads all current Huskers in career wins, ERA, appearances, starts & innings
- Has allowed 2 ER or fewer in 28 of her 53 career starts
- 2-time Academic All-Big Ten & 2-time Big Ten Distinguished Scholar
- 7-time member of the Nebraska Scholar-Athlete Honor Roll



#39 | OLIVIA FERRELL • UTL

	AVG.	G-GS	R	H	2B	HR	RBI	BB	SLG%	OB%
2021	.108	17-13	2	4	2	0	0	1	.162	.132
Career	.225	59-41	14	25	7	3	18	11	.369	.304

- Owns a .225 career average and 10 of her 25 hits are extra-base hits
- Hit .344 in the shortened 2020 season with 10 RBIs in only 32 at bats
- Ranked 2nd on the team in average, OB% & SLG% in 2020
- Was 3rd on the team last season in home runs (2) and RBIs (10)
- In addition to softball, had Division I scholarship offers as a hockey goalie



#44 | KAYLIN KINNEY • RHP

	W-L	ERA	APP	GS	CG	SHO	SV	IP	SO	AVG.
2021	0-1	4.75	10	3	0	0	2	17.2	10	.274
Career	0-1	4.75	10	3	0	0	2	17.2	10	.274

- Leads Nebraska and ranks 3rd in the Big Ten with 2 saves
- 2019 Iowa Gatorade Player of the Year at Kennedy High School
- 2-time all-state selection & 4-time all-conference & all-metro pick
- Went 67-7 in her prep career with a 0.77 ERA and 527 strikeouts
- First Iowa native to play for Nebraska since 2004



#44 | KAYLIN KINNEY • UTL

	AVG.	G-GS	R	H	2B	HR	RBI	BB	SLG%	OB%
2021	.220	25-18	4	11	3	1	4	8	.340	.339
Career	.220	25-18	4	11	3	1	4	8	.340	.339

- Is 5-for-15 with two doubles and three walks in her last seven games
- 2019 Iowa Gatorade Player of the Year at Kennedy High School
- Helped Kennedy to a state championship as a senior
- Hit .501 in her high school career with a 1.054 slugging percentage
- Finished third in state history with 55 career home runs



#77 | SAMANTHA OWEN • INF

	AVG.	G-GS	R	H	2B	HR	RBI	BB	SLG%	OB%
2021	.000	4-1	0	0	0	0	0	0	.000	.000
Career	.288	167-159	68	135	30	17	86	47	.483	.361

- Is in her 3rd season at Nebraska after playing at Pacific her first two years
- Owns 159 career starts, including 63 starts as a Husker
- Ranks 2nd among current Huskers in career average, 2B, HR & RBIs
- 2-time All-West Coast Conference & 2018 All-West Region pick at Pacific
- Younger sister Izabella is a junior infielder at New Mexico

INDIVIDUAL SEASON & CAREER HIGHS

#1 RYLIE UNZICKER • SR. • OF

SEASON HIGH	CATEGORY	CAREER HIGH
3 at Rutgers - 2	Hits	same
3 vs. #23 Michigan	Runs	3 twice
2 three times	RBIs	2 six times
1 five times	2B	2 twice
1 vs. Illinois - 2	HR	1 five times

#14 CAMYL ARMENDARIZ • FR. • INF

SEASON HIGH	CATEGORY	CAREER HIGH
none	Hits	none
1 five times	Runs	same
none	RBIs	none
none	2B	none
none	HR	none

#2 PAYTON HUSCROFT • JR. • INF

SEASON HIGH	CATEGORY	CAREER HIGH
none	Hits	1 seven times
none	Runs	1 twice
none	RBIs	3 vs. Bradley (2020)
none	2B	1 vs. UTEP (2020)
none	HR	1 vs. Bradley (2020)

#19 CAITLYNN NEAL • FR. • UTL

SEASON HIGH	CATEGORY	CAREER HIGH
3 vs. Purdue	Hits	same
2 vs. Purdue - 1	Runs	same
2 vs. Purdue - 1	RBIs	same
none	2B	none
none	HR	none

#5 MJ GREEN • FR. • INF

SEASON HIGH	CATEGORY	CAREER HIGH
2 vs. Purdue	Hits	same
none	Runs	none
none	RBIs	none
none	2B	none
none	HR	none

#20 ABBEY NEWLUN • FR. • INF

SEASON HIGH	CATEGORY	CAREER HIGH
none	Hits	none
none	Runs	none
none	RBIs	none
none	2B	none
none	HR	none

#6 BILLIE ANDREWS • FR. • INF

SEASON HIGH	CATEGORY	CAREER HIGH
4 at Rutgers	Hits	same
2 three times	Runs	same
3 twice	RBIs	same
1 three times	2B	same
2 vs. Illinois - 2	HR	same

#21 SARAH YOCOM • SR. • INF

SEASON HIGH	CATEGORY	CAREER HIGH
none	Hits	2 vs. Wisconsin (2018)
1 four times	Runs	1 16 times
1 vs. Penn St. - 2	RBIs	1 four times
none	2B	none
none	HR	none

#7 SYDNEY GRAY • FR. • INF

SEASON HIGH	CATEGORY	CAREER HIGH
3 vs. Purdue	Hits	same
2 twice	Runs	same
2 twice	RBIs	same
1 five times	2B	same
1 vs. Penn St.	HR	same

#23 COURTNEY WALLACE • JR. • UTL

SEASON HIGH	CATEGORY	CAREER HIGH
2 three times	Hits	2 eight times
2 at #24 Minnesota	Runs	3 vs. Lamar (2019)
3 at Rutgers	RBIs	3 three times
1 vs. Penn St.	2B	2 vs. Texas Tech (2019)
1 at Rutgers	HR	1 four times

#8 ABBIE SQUIER • FR. • OF

SEASON HIGH	CATEGORY	CAREER HIGH
1 vs. Michigan St. - 1	Hits	same
2 vs. Michigan St. - 1	Runs	same
1 vs. Michigan St. - 2	RBIs	same
1 vs. Michigan St. - 1	2B	same
none	HR	none

#24 TRISTEN EDWARDS • SR. • OF

SEASON HIGH	CATEGORY	CAREER HIGH
3 vs. Michigan St. - 1	Hits	4 three times
2 five times	Runs	4 vs. Pittsburgh (2019)
3 at #24 Minnesota	RBIs	8 vs. Pittsburgh (2019)
1 six times	2B	2 three times
1 five times	HR	2 seven times

#13 PEYTON GLATTER • JR. • OF

SEASON HIGH	CATEGORY	CAREER HIGH
2 twice	Hits	3 twice
2 at Rutgers - 1	Runs	3 twice
4 at Rutgers - 1	RBIs	4 twice
1 at #24 Minnesota	2B	1 eight times
1 twice	HR	1 seven times

#27 BROOKE ANDREWS • SO. • INF

SEASON HIGH	CATEGORY	CAREER HIGH
2 four times	Hits	2 six times
3 at Rutgers	Runs	same
5 at Rutgers	RBIs	same
1 twice	2B	1 three times
2 at Rutgers	HR	same

INDIVIDUAL SEASON & CAREER HIGHS

#28 ALLY RILEY • SR. • C

SEASON HIGH	CATEGORY	CAREER HIGH
2 twice	Hits	3 twice
1 vs. Illinois - 2	Runs	1 five times
none	RBIs	3 vs. UTEP (2020)
1 twice	2B	2 vs. South Dakota St. (2018)
none	HR	1 vs. UTEP (2020)

#32 CAM YBARRA • SR. • INF

SEASON HIGH	CATEGORY	CAREER HIGH
4 at Rutgers - 2	Hits	4 twice
2 vs. Penn St. - 1	Runs	2 twice
4 vs. Purdue - 1	RBIs	same
2 vs. Purdue - 1	2B	3 vs. Lehigh (2020)*
1 twice	HR	1 seven times

**tied school record*

#33 ANNI RALEY • JR. • C

SEASON HIGH	CATEGORY	CAREER HIGH
3 at #24 Minnesota	Hits	same
2 twice	Runs	same
2 three times	RBIs	same
1 vs. #23 Michigan	2B	1 twice
1 at #24 Minnesota	HR	same

#39 OLIVIA FERRELL • SR. • UTL

SEASON HIGH	CATEGORY	CAREER HIGH
2 at Rutgers	Hits	3 at #21 Missouri (2020)
1 twice	Runs	2 twice
none	RBIs	3 twice
1 twice	2B	1 seven times
none	HR	1 three times

#44 KAYLIN KINNEY • FR. • UTL

SEASON HIGH	CATEGORY	CAREER HIGH
1 11 times	Hits	same
1 four times	Runs	same
2 vs. Penn St.	RBIs	same
1 three times	2B	same
1 vs. Penn St.	HR	same

#77 SAMANTHA OWEN • SR. • INF

SEASON HIGH	CATEGORY	CAREER HIGH
none	Hits	4 at North Texas (2018 at Pacific)
none	Runs	2 10 times
none	RBIs	4 six times
none	2B	2 at Purdue - 2 (2019)
none	HR	1 17 times

#19 CAITLYNN NEAL • FR. • UTL

SEASON HIGH	CATEGORY	CAREER HIGH
1.1 at Rutgers - 2	IP	same
none	Ks	none
N/A	H (low)*	N/A
3 at Rutgers - 2	H (high)	same
N/A	BB (low)*	N/A
1 at #24 Minnesota	BB (high)	same
N/A	R (low)*	N/A
3 at #24 Minnesota	R (high)	same
N/A	ER (low)*	N/A
3 at #24 Minnesota	ER (high)	same

**starts only*

#23 COURTNEY WALLACE • JR. • UTL

SEASON HIGH	CATEGORY	CAREER HIGH
7.0 three times	IP	7.0 four times
6 vs. Ohio St. - 2	Ks	8 at Georgia Tech (2020)
3 twice	H (low)*	1 vs. Maryland (2019)
8 at #24 Minnesota	H (high)	10 three times
0 three times	BB (low)*	0 four times
7 at #24 Minnesota	BB (high)	7 twice
1 twice	R (low)*	0 vs. Maryland (2019)
6 at #24 Minnesota	R (high)	10 vs. #3 Oklahoma (2020)
1 twice	ER (low)*	0 vs. Maryland (2019)
4 three times	ER (high)	9 vs. #3 Oklahoma (2020)

**starts only*

#30 KARLEE SEEVERS • JR • RHP

SEASON HIGH	CATEGORY	CAREER HIGH
1.0 twice	IP	1.1 vs. Wichita St. - 1 (2020)
none	Ks	none
N/A	H (low)*	N/A
3 at #24 Minnesota	H (high)	6 vs. Wichita St. (2020)
N/A	BB (low)*	N/A
none	BB (high)	6 vs. Wichita St. (2020)
N/A	R (low)*	N/A
2 at #24 Minnesota	R (high)	9 vs. Wichita St. (2020)
N/A	ER (low)*	N/A
2 at #24 Minnesota	ER (high)	7 vs. Wichita St. (2020)

**starts only*

#39 OLIVA FERRELL • SR • RHP

SEASON HIGH	CATEGORY	CAREER HIGH
7.2 vs. #23 Michigan - 1	IP	same
7 four times	Ks	9 vs. Lamar (2019)
1 vs. Penn St. - 2	H (low)*	1 twice
10 vs. Illinois - 2	H (high)	11 at #21 Missouri (2020)
0 at Rutgers	BB (low)*	0 seven times
6 at Rutgers - 2	BB (high)	7 at Minnesota (2018)
0 twice	R (low)*	0 five times
6 vs. Illinois - 2	R (high)	8 twice
0 three times	ER (low)*	0 six times
5 at Rutgers - 2	ER (high)	7 three times

**starts only*

#44 KAYLIN KINNEY • FR • RHP

SEASON HIGH	CATEGORY	CAREER HIGH
4.0 at #24 Minnesota	IP	same
2 three times	Ks	same
2 vs. #23 Michigan	H (low)*	same
6 vs. Purdue - 2	H (high)	same
1 vs. #23 Michigan	BB (low)*	same
4 at #24 Minnesota	BB (high)	same
1 vs. #23 Michigan	R (low)*	same
4 twice	R (high)	same
1 vs. #23 Michigan	ER (low)*	same
4 vs. Penn St.	ER (high)	same

**starts only*

HEAD COACH RHONDA REVELLE

COACHING STOPS

Nebraska (Head Coach)	1993-present
San Jose State (Assistant)	1989-92
Cal State-Hayward (Assistant)	1988
Nebraska Wesleyan (Head Coach)	1987
Nebraska Wesleyan (Assistant)	1986

NEBRASKA WESLEYAN (1987)

Year	Record	Conf.	Finish	Tourn.	Finish
1987	8-16	7-5	N/A	--	--

NEBRASKA (1993-PRESENT)

Year	Record	Conf.	Finish	Tourn.	Finish
1993	18-23	5-11	5th	--	--
1994	25-33	5-15	6th	--	--
1995	43-20	10-6	3rd	--	--
1996	42-23	10-8	4th	3-2	2nd
1997	29-24	10-6	4th	1-2	t-5th
1998	48-12	16-0	1st	4-0	1st
1999	35-21	10-8	4th	3-1	2nd
2000	52-21	15-2	2nd	4-1	1st
2001	51-15	16-2	1st	2-2	t-3rd
2002	50-14	11-5	3rd	3-1	2nd
2003	39-17	10-8	6th	2-2	t-3rd
2004	45-17	14-3	1st	4-0	1st
2005	36-23	9-9	7th	2-2	t-5th
2006	44-12	13-4	2nd	2-2	t-3rd
2007	37-20	10-8	5th	0-1	t-7th
2008	25-28	4-14	t-9th	3-1	2nd
2009	35-19	9-9	5th	0-1	t-7th
2010	30-29	7-11	t-6th	0-1	t-7th
2011	41-14	9-9	6th	--	--
2012	33-22	14-9	3rd	--	--
2013	45-16	16-6	2nd	1-1	t-3rd
2014	44-18	18-5	t-1st	0-1	t-5th
2015	35-23	17-6	3rd	2-1	2nd
2016	35-21	13-9	5th	1-1	t-5th
2017	24-29	13-11	5th	0-1	t-9th
2018	31-23	9-13	9th	0-1	t-9th
2019	21-31	9-14	9th	0-1	t-9th
2020	9-14	0-0	--	--	--
2021	15-13	15-13	--	--	--

NEBRASKA RECORD: 1,013-595

CAREER RECORD: 1,021-611

NCAA TOURNAMENT (NEBRASKA)

Year	Round	Record	Finish	Rank
1993	--	--	--	--
1994	--	--	--	--
1995	Regional	1-2	t-17th	18th
1996	Regional	1-2	t-17th	18th
1997	Regional	2-2	t-9th	25th
1998	WCWS	4-2	t-5th	5th
1999	Regional	4-2	t-9th	20th
2000	Regional	3-2	t-17th	14th
2001	Regional	2-2	t-17th	14th
2002	WCWS	5-2	t-5th	6th
2003	Regional	3-2	t-17th	13th
2004	Regional	3-2	t-9th	14th
2005	Regional	1-2	t-33rd	25th
2006	Regional	2-2	t-17th	15th
2007	Regional	0-2	t-49th	--
2009	Regional	1-2	t-33rd	--
2010	Regional	1-2	t-33rd	--
2011	Regional	2-2	t-17th	21st
2013	WCWS	5-3	t-7th	8th
2014	Super Reg.	4-3	t-9th	16th
2015	Regional	1-2	t-33rd	--
2016	Regional	2-2	t-17th	--
Totals	20 app.	47-42	--	--



RHONDA REVELLE

29TH SEASON AT NEBRASKA

1,013-595 RECORD

30TH CAREER SEASON

1,021-611 RECORD

WINNINGEST COACH IN THE HISTORY OF HUSKER ATHLETICS

COACH OF THE YEAR IN 3 MAJOR CONFERENCES

NFCA HALL OF FAME

COACHING NUMBERS

Conference Coach-of-the-Year Awards	4
Big Ten Coach of the Year	1
Big 12 Coach of the Year	2
Big Eight Coach of the Year	1
Conference Titles	7
Big Ten Conference Titles	1
Big 12 Conference Titles	6
NCAA Tournament Appearances	20
Women's College World Series	3
NFCA All-Americans	21
CoSIDA Academic All-Americans	14

NFCA HALL-OF-FAME COACHES

(ACTIVE DIVISION I COACHES ONLY)

Coach	Induction Year
Mike Candrea, Arizona	1996
Carol Hutchins, Michigan	2006
Rhonda Revelle, Nebraska	2010
Melinda Fischer, Illinois State	2010
Ralph Weekly, Tennessee	2011
Patty Gasso, Oklahoma	2012
Donna Papa, North Carolina	2012
Joan Joyce, Florida Atlantic	2013
Patrick Murphy, Alabama	2013
Jo Evans, Texas A&M	2015
Bob Brock, Sam Houston State	2016
Jacquie Joseph, Michigan State*	2016
Karen Weekly, Tennessee	2018

*inducted as member of Pioneer Category

WINS AT CURRENT SCHOOL

(ACTIVE DIVISION I COACHES ONLY)

1. Mike Candrea, Arizona	1,661
2. Carol Hutchins, Michigan	1,629
3. Patty Gasso, Oklahoma	1,313
4. Donna Papa, North Carolina	1,288
5. Patrick Murphy, Alabama	1,130
6. Melinda Fischer, Illinois State	1,086
7. Bob Coolen, Hawaii	1,036
8. Rhonda Revelle, Nebraska	1,013

(LIST INCLUDES GAMES THROUGH APRIL 18)

MOST NCAA TOURNAMENTS

(ACTIVE DIVISION I COACHES ONLY)

1. Mike Candrea, Arizona	33
2. Carol Hutchins, Michigan	27
3. Patty Gasso, Oklahoma	22
4. Patrick Murphy, Alabama	21
5. Rhonda Revelle, Nebraska	20
Jo Evans, Texas A&M	20

ACADEMIC ALL-AMERICANS

(ALL-TIME AMONG DIVISION I COACHES)

1. Patrick Murphy, Alabama	29
2. Ralph & Karen Weekly, Tennessee	23
3. Tim Walton, Florida	19
4. Rhonda Revelle, Nebraska	14

2021 SEASON STATISTICS

Record: 15-13 Home: 6-2 Away: 3-5 Neutral: 6-6 Big Ten: 15-13

Player	avg	gp-gs	ab	r	h	2b	3b	hr	rbi	tb	slg%	bb	hp	so	gdp	ob%	sf	sh	sb-att	po	a	e	fld%
5 MJ Green	.600	5-1	5	0	3	0	0	0	0	3	.600	0	0	0	0	.600	0	0	0-1	0	0	0	.000
7 Sydney Gray	.366	15-14	41	8	15	5	0	1	8	23	.561	1	0	10	0	.381	0	1	1-1	17	31	3	.941
24 Tristen Edwards	.361	28-28	61	20	22	6	0	5	15	43	.705	28	13	11	1	.606	2	0	7-7	32	3	2	.946
33 Anni Raley	.308	19-13	26	7	8	1	1	1	5	14	.538	1	3	8	0	.400	0	0	0-0	64	10	0	1.000
6 Billie Andrews	.297	28-28	91	21	27	3	2	4	20	46	.505	6	1	21	0	.337	3	1	9-11	41	60	10	.910
1 Rylie Unzicker	.290	28-26	69	19	20	5	1	1	6	30	.435	15	4	18	0	.443	0	2	6-6	35	3	0	1.000
32 Cam Ybarra	.286	28-28	91	7	26	8	0	2	20	40	.440	6	0	6	0	.323	2	0	2-4	49	41	1	.989
27 Brooke Andrews	.250	22-15	44	9	11	2	1	2	9	21	.477	2	2	5	0	.313	0	0	2-6	17	35	2	.963
19 Caitlynn Neal	.231	19-9	26	8	6	0	0	0	5	6	.231	0	0	9	0	.231	0	0	3-3	10	2	1	.923
44 Kaylin Kinney	.220	25-18	50	4	11	3	0	1	4	17	.340	8	1	14	1	.339	0	0	0-0	1	4	0	1.000
23 Courtney Wallace	.218	21-17	55	7	12	2	1	1	10	19	.345	5	0	9	1	.279	1	0	1-1	7	22	0	1.000
11 Keana "KP" Pola	.211	8-5	19	0	4	1	0	0	0	5	.263	0	0	5	1	.211	0	0	0-0	26	0	1	.963
13 Peyton Glatter	.207	23-19	58	6	12	1	0	2	12	19	.328	5	0	14	1	.266	1	1	1-2	11	0	0	1.000
28 Ally Riley	.176	16-16	34	1	6	2	0	0	0	8	.235	1	1	4	0	.222	0	1	0-0	56	9	0	1.000
39 Olivia Ferrell	.108	17-13	37	2	4	2	0	0	0	6	.162	1	0	11	0	.132	0	1	1-1	1	21	1	.957
8 Abbie Squier	.083	15-3	12	3	1	1	0	0	1	2	.167	1	1	4	0	.214	0	0	0-0	1	0	0	1.000
21 Sarah Yocom	.000	22-22	9	4	0	0	0	0	1	0	.000	1	0	3	0	.091	1	0	0-0	178	1	1	.994
77 Samantha Owen	.000	4-1	5	0	0	0	0	0	0	0	.000	0	0	0	0	.000	0	0	0-0	15	0	0	1.000
14 Camyl Armendariz	.000	15-1	5	5	0	0	0	0	0	0	.000	0	0	2	0	.000	0	0	1-1	0	0	0	.000
20 Abbey Newlun	.000	1-0	1	0	0	0	0	0	0	0	.000	0	0	0	0	.000	0	0	0-0	0	0	0	.000
2 Payton Huscroft	.000	1-0	0	0	0	0	0	0	0	0	.000	0	0	0	0	.000	0	0	0-0	1	0	0	1.000
Totals	.254	28	739	131	188	42	6	20	116	302	.409	81	26	154	5	.345	10	7	34-44	562	242	22	.973
Opponents	.251	28	709	104	178	32	5	15	96	265	.374	80	12	118	5	.335	4	17	20-25	560	178	46	.941

LOB - Team (174), Opp (159). DPs turned - Team (12), Opp (12). IBB - Team (7), Edwards 7, Opp (2).

(All games Sorted by Earned run avg)

Player	era	w-l	app	gs	cg	sho	sv	ip	h	r	er	bb	so	2b	3b	hr	b/avg	wp	hp	bksfa	sha	
39 Olivia Ferrell	2.70	8-7	19	14	5	1/0	1	85.2	72	40	33	35	76	18	1	5	.227	2	8	0	1	4
23 Courtney Wallace	2.91	7-5	18	11	3	0/0	1	79.1	76	45	33	35	32	12	3	7	.254	8	4	0	3	9
44 Kaylin Kinney	4.75	0-1	10	3	0	0/0	2	17.2	20	13	12	9	10	2	1	0	.274	7	0	0	0	3
30 Karlee Seevers	7.00	0-0	2	0	0	0/0	0	2.0	4	2	2	0	0	0	0	1	.500	0	0	0	0	0
19 Caitlynn Neal	10.50	0-0	3	0	0	0/0	0	2.2	6	4	4	1	0	0	0	2	.500	0	0	0	0	1
Totals	3.10	15-13	28	28	8	1/0	4	187.1	178	104	83	80	118	32	5	15	.251	17	12	0	4	17
Opponents	3.71	13-15	28	28	7	5/2	0	186.2	188	131	99	81	154	42	6	20	.254	8	26	0	10	7

PB - Team (7), Riley 6, Raley 1, Opp (5). SBA/ATT - Raley (11-14), Ferrell (8-13), Riley (9-11), Wallace (9-9), Kinney (3-3).