

N NEBRASKA

SOFTBALL

NEBRASKA AT #24 MINNESOTA

FRIDAY	SATURDAY	SUNDAY
at #24 Minnesota 5 p.m. (CT) Video: BTN+ (\$)	at #24 Minnesota (1) Noon (CT) at #24 Minnesota (2) 2 p.m. (CT) Video: BTN+ (\$)	at #24 Minnesota Noon (CT) Video: BTN+ (\$)

The Nebraska softball team will play its second series of the season against a ranked opponent this weekend, when the Huskers travel to Minneapolis to take on No. 24 Minnesota. The teams will open the series on Friday at 5 p.m., then play a Noon doubleheader on Saturday with the series finale at Noon on Sunday. All four games will be available to watch for subscribers to Big Ten Network+.

This weekend's series features two of the Big Ten's best teams. Minnesota sits in second place in the conference standings with a 19-5 record, leading the league in wins. Nebraska is tied for fifth in the Big Ten standings with a 14-10 record.

Both teams are coming off impressive performances last week. The Huskers earned a 3-1 series victory at home against an Illinois team who entered last week tied with Minnesota for third place in the Big Ten standings. Minnesota swept a four-game series at then-No. 22 Northwestern after the Wildcats entered the series atop the standings with an 18-2 record.

Minnesota (27) and Nebraska (18) are the Big Ten's top two home-run hitting teams, and the Huskers rank second in the league in scoring and Minnesota ranks third. Nebraska has averaged 6.8 runs per game over its first three four-game Big Ten series. The Huskers scored 23 runs over the final three games of the Illinois series - an average of 7.7 runs per game - against an Illini pitching staff that entered the series ranked 11th nationally in ERA.

QUICK HITTERS

- Nebraska (5-4) and Minnesota (8-2) are the only two Big Ten teams with a winning record against top-100 NCAA RPI teams.
- Nebraska's 14 Big Ten wins are its most since the Huskers won 17 times in a 23-game conference schedule in 2015.
- The Huskers' .978 fielding percentage is currently on pace to break the school record of .973 set in 2006.
- Nebraska ranks second in the Big Ten in scoring (4.9 runs per game), doubles (37) and home runs (18).
- **Billie Andrews** leads all Big Ten freshmen in hits (27), average (.342), runs (20), home runs (4), RBIs (19) and stolen bases (19).
- **Tristen Edwards** has hit 47 career doubles, one shy of the school record.
- **Tristen Edwards** has only been retired three times in 30 trips to the plate the last two weekends (eight games).
- **Tristen Edwards** is 2nd nationally in on-base percentage (.633) & walks per game (1.04).
- **Olivia Ferrell** ranks 4th in the Big Ten in innings pitched (77.1), 5th in wins (8) and 9th in strikeouts (career-high 71).
- **Rylie Unzicker** has batted leadoff in seven of the past eight games. Nebraska is averaging 7.0 runs per game in those games, as Unzicker has hit .364, reached base at a .500 clip and scored 10 times.

HUSKERS TO WATCH



Billie Andrews has been the Big Ten Freshman of the Week each of the last three weeks. She is only the fourth freshman in Big Ten history to win three straight freshman-of-the-week awards.



Cam Ybarra is 21-for-50 (.420) in her last 15 games with six doubles, two homers and 19 RBIs. She drove in seven runs last week and ranks third in the Big Ten with 20 RBIs.

HUSKER SCHEDULE (14-10 RECORD)

<i>Sleepy Hollow Sports Complex (Leesburg, Fla.)</i>		
Feb. 26	vs. Indiana (Game 1)	L, 1-3
Feb. 26	vs. Indiana (Game 2)	W, 4-2
Feb. 27	vs. Michigan St. (Game 1)	W, 7-1
Feb. 27	vs. Michigan St. (Game 2)	L, 3-6 (8)
Feb. 28	vs. Ohio St. (Game 1)	L, 2-4
Feb. 28	vs. Ohio St. (Game 2)	W, 2-1
<i>Sleepy Hollow Sports Complex (Leesburg, Fla.)</i>		
March 11	vs. #23 Michigan (Game 1)	L, 1-2 (8)
March 11	vs. #23 Michigan (Game 2)	L, 0-2
March 12	vs. #23 Michigan	W, 5-4 (8)
March 13	vs. Purdue (Game 1)	W, 8-1
March 13	vs. Purdue (Game 2)	L, 0-7
March 14	vs. Purdue	W, 3-1
March 26	Penn St.	W, 9-0 (5)
March 27	Penn St. (Game 1)	W, 8-2
March 27	Penn St. (Game 2)	W, 10-2 (5)
March 28	Penn St.	L, 5-7 (8)
April 2	at Rutgers	W, 12-4 (6)
April 3	at Rutgers (Game 1)	W, 8-1
April 3	at Rutgers (Game 2)	L, 6-10
April 4	at Rutgers	L, 1-2
April 9	Illinois	L, 0-4
April 10	Illinois (Game 1)	W, 5-4
April 10	Illinois (Game 2)	W, 10-6
April 11	Illinois	W, 8-6
April 16	at #24 Minnesota	5 p.m.
April 17	at #24 Minnesota (Game 1)	Noon
April 17	at #24 Minnesota (Game 2)	3 p.m.
April 18	at #24 Minnesota	Noon
April 23	Wisconsin	5:30 p.m.
April 24	Wisconsin (Game 1)	Noon
April 24	Wisconsin (Game 2)	3 p.m.
April 25	Wisconsin (BTN)	1 p.m.
April 30	Maryland (Game 1)	3 p.m.
April 30	Maryland (Game 2)	6 p.m.
May 1	Maryland	3 p.m.
May 2	Maryland	11 a.m.
May 7	at Iowa	3 p.m.
May 8	at Iowa (Game 1)	1 p.m.
May 8	at Iowa (Game 2)	3:30 p.m.
May 9	at Iowa	Noon
May 14	at Northwestern	3 p.m.
May 15	at Northwestern (Game 1)	Noon
May 15	at Northwestern (Game 2)	2:30 p.m.
May 16	at Northwestern (BTN)	1 p.m.
May 21-23	NCAA Regionals	
May 27-30	NCAA Super Regionals	
June 3-9	NCAA Women's College World Series	



NEBRASKA SOFTBALL FACTS

UNIVERSITY INFORMATION

Location	Lincoln, Neb.
Population	280,369
Founded	1869
Enrollment	25,057
Nickname	Cornhuskers, Huskers
Colors	Scarlet & Cream
Conference	Big Ten
Chancellor	Ronnie Green
Athletic Director	Bill Moos

ATHLETIC COMMUNICATIONS

Softball Contact	Matt Smith
E-Mail	msmith@huskers.com
Phone	(402) 770-5926

2021 COACHING STAFF

Head Coach	Rhonda Revelle
Nebraska Record	1,012-592 (29th year)
Career Record	1,020-608 (30th year)
Assoc. Head Coach	Lori Sippel (32nd year)
Assistant Coach	Diane Miller (13th year)
Dir. of Softball Oper.	Erin Bohling (2nd year)

2020 SEASON REVIEW

Overall Record	9-14
Big Ten Record (Finish)	N/A

2021 TEAM OUTLOOK

Letterwinners Returning/Lost	14/5
Total Starters Returning/Lost	10/1
Position Starters Returning/Lost	8/0
Pitchers Returning/Lost	3/1
Returning All-Conference Players	2*
Returning All-Region Players	2*
Returning All-Americans	0
Newcomers	8

*includes honors at a player's previous school

STADIUM INFORMATION

Stadium	Bowlin Stadium (2,500)
First Season	2002
Record at Bowlin Stadium	236-101 (.700)

PROGRAM HISTORY

First Year of Softball	1976
All-Time Record	1,493-887 (.627)
All-Time Conference Record	404-291 (.581)
Big Ten Record	123-82 (.600)
Overall Conference Titles	19
Big Eight Titles	12
Big 12 Titles	6
Big Ten Titles	1
NCAA Tournament Appearances	24
WCWS Appearances	7
NCAA Tournament Record	62-52 (.544)
NCAA Regional Record	52-35 (.598)
NCAA Super Regional Record	2-3 (.400)
WCWS Record	8-14 (.363)
NFCA All-Americans	27
CoSIDA Academic All-Americans	30

PRONUNCIATION GUIDE

Camyl Armendariz	kuh-MEAL are-men-DARE-iz
Abbie Squier	SKWHY-er
Rhonda Revelle	ruh-VELL
Cam Ybarra	ee-BAR-uh
Sarah Yocom	YO-come

NEBRASKA 2021 SEASON NOTEBOOK

- Nebraska's roster features 21 players, tied for the largest roster in school history.
- The roster features 10 Nebraska natives, the most in-state players since 1980.
- The roster features the most freshmen (8) and most seniors (7) in the 29-year tenure of **Rhonda Revelle** as Nebraska's head coach.
- **Rhonda Revelle** is in her 29th season leading her alma mater in 2021. Revelle is the second-longest serving female head coach in the history of Nebraska Athletics.
- Revelle owns 1,012 wins at Nebraska. She is the all-time wins leader (male or female) in the history of Nebraska Athletics.
- Associate Head Coach **Lori Sippel** is in her 32nd year at Nebraska. Sippel is the longest-tenured female assistant coach in the history of Nebraska Athletics.
- Revelle (1981-83) and Sippel (1985-88) also played for NU. Including their playing and coaching careers, Revelle and Sippel have been a part of 1,316 of Nebraska's 1,493 all-time victories (88 percent).
- Assistant coach **Diane Miller** rounds out the Husker coaching staff. In her 13th season, Miller has helped Nebraska's offense set more than 40 school records.
- NU will play a conference-only schedule for the first time in program history in 2021. The Huskers are scheduled to play 44 Big Ten Conference games, which would nearly double the previous high for most conference games played in one season (24 Big Ten games in 2013).

- Fifth-year seniors **Tristen Edwards** and **Samantha Owen** both took advantage of the NCAA waiver for an extra year of eligibility following the cancellation of the 2020 season due to the COVID-19 pandemic.
- Edwards and Owen are also the only two Huskers who have been an all-conference or all-region performer in their careers. Edwards is a two-time first-team All-Big Ten selection and was a 2019 third-team all-region honoree. Owen was a first-team All-WAC pick and third-team all-region selection at Pacific in 2018.
- **Tristen Edwards** is already one of only five Huskers to be a two-time first-team All-Big Ten selection. In 2021, Edwards will look to become the first Husker to earn three first-team All-Big Ten awards, in addition to becoming the eighth three-time first-team all-conference selection in program history.

2-TIME 1ST-TEAM ALL-BIG TEN PICKS

- **Tristen Edwards, SS (2018-19)**
- MJ Knighten, 3B (2015-16)
- Kiki Stokes, OF (2015-16)
- Tatum Edwards, RHP/UTL (2013-14)
- Taylor Edwards, C (2013-14)

3-TIME 1ST-TEAM ALL-CONFERENCE PICKS

- Jessica Yoachim, 3B (2004-06)*
- Peaches James, RHP/UTL (2001-04)*
- Jenny Voss, RHP (1997-98, 2000)*
- Jennifer Lizama, INF (1997-2000)*
- Tobin Echo-Hawk, INF (1993-96)^*
- Jane Kremer, SS (1986-88)^
- Lori Sippel, RHP (1985-88)*

*Big 12 Conference (1996-2011)

^Big Eight Conference (1977-95)

2021 NEBRASKA NUMERICAL ROSTER

NO.	NAME	B/T	POS.	HT.	YR.	HOMETOWN
1	Rylie Unzicker	L/R	OF	5-5	Sr.	Omaha, Neb.
2	Payton Huscroft	L/L	INF	5-9	Jr.	Omaha, Neb.
5	MJ Green	R/R	INF	5-2	Fr.	Henderson, Texas
6	Billie Andrews	R/R	INF	5-8	Fr.	Gretna, Neb.
7	Sydney Gray	R/R	INF	5-5	Fr.	Tucson, Ariz.
8	Abbie Squier	R/R	OF	5-7	Fr.	Lincoln, Neb.
13	Peyton Glatter	L/R	OF	5-5	Jr.	Omaha, Neb.
14	Camyl Armendariz	R/R	INF	5-7	Fr.	La Verne, Calif.
19	Caitlynn Neal	L/R	RHP/UTL	5-3	Fr.	Dewey, Ariz.
20	Abbey Newlun	R/R	INF	5-7	Fr.	The Woodlands, Texas
21	Sarah Yocom	R/R	INF	5-9	Sr.	Cozad, Neb.
23	Courtney Wallace	R/R	RHP/UTL	5-5	Jr.	Omaha, Neb.
24	Tristen Edwards	R/R	OF	5-6	Sr.	Murrieta, Calif.
27	Brooke Andrews	R/R	INF	5-8	So.	Gretna, Neb.
28	Ally Riley	R/R	C	5-9	Sr.	Alva, Okla.
30	Karlee Seevers	R/R	RHP	5-6	Jr.	York, Neb.
32	Cam Ybarra	L/R	INF	5-6	Sr.	Mission Viejo, Calif.
33	Anni Raley	R/R	C	5-6	Jr.	Clovis, Calif.
39	Olivia Ferrell	R/R	RHP/UTL	5-9	Sr.	Omaha, Neb.
44	Kaylin Kinney	R/R	RHP/UTL	5-10	Fr.	Cedar Rapids, Iowa
77	Samantha Owen	R/R	INF	5-5	Sr.	Manteca, Calif.

LONGEST REACH BASE STREAKS IN NCAA HISTORY

RK.	PLAYER	TEAM	DATES	STREAK
1.	Amber Schisler	Campbell	May 5-17, 2017	26
2.	Adrienne Monka	Northwestern	April 16-May 4, 2011	25
3.	Tristen Edwards	Nebraska	April 2-10, 2021	24

EDWARDS' STREAK FALLS JUST SHORT OF NCAA RECORD

Senior outfielder **Tristen Edwards** nearly set an NCAA record for most consecutive plate appearances reaching base safely. In a seven-game span from April 2-10, Edwards reached base safely in 24 straight trips to the plate. Her streak ranked third in NCAA history.

- During the streak of reaching base in 24 consecutive plate appearances, Edwards was 4-for-4 with a double and a homer with 12 walks and eight hit-by-pitches.
- The streak began at Rutgers, when Edwards reached base all 15 times in the series. She homered in her only official at bat, walked nine times and was hit by five pitches.
- Edwards then reached base safely in her first nine trips to the plate in the Illinois series. She went 3-for-3 with three walks and three-hit-by-pitches before her streak ended with a pop out.
- Edwards has reached base safely in 27 of her 30 plate appearances over the last two weekends (eight games). She has also reached base safely in 16 consecutive games.

EDWARDS WALKING TO FIRST WITH FREQUENCY

Tristen Edwards has been able to walk to first base 38 times this season as teams have elected to frequently pitch around the senior slugger.

- With 38 combined walks and hit-by-pitches - in only 24 games - Edwards leads the nation with an average of 1.58 "free passes" per game this season.
- Edwards has walked 25 times in 24 games this season. She ranks second nationally in walks per game and 14th nationally in total walks.
- Edwards has been hit by 13 pitches in 24 games. She ranks fourth nationally in hit-by-pitches per game and eighth nationally in total hit-by-pitches.

DIVISION I LEADERS IN "FREE PASSES" PER GAME IN 2021*

Rk.	Player	School	Games	BB	HBP	Per Game
1.	Tristen Edwards	Nebraska	24	25	13	1.58
2.	Maddy Vermejan	Southern Illinois	35	29	24	1.51
3.	Kendra Allen	Massachusetts	15	19	3	1.47
4.	Marissa Rizzi	St. John's	21	23	5	1.33
5.	Jessica Lindquist	George Washington	27	26	7	1.22

*free passes are walks + hit-by-pitches

DIVISION I PLAYERS AVERAGING 1.0 WALK PER GAME (MIN. 15 PLATE APPEARANCES)

Rk.	Player	School	Games	BB	Per Game
1.	Kendra Allen	Massachusetts	15	19	1.27
2.	Tristen Edwards	Nebraska	24	25	1.04

EDWARDS ON PACE FOR NEBRASKA'S TOP ON-BASE PERCENTAGE

Senior outfielder **Tristen Edwards** is getting on base at a record-breaking clip this season, reaching base more than 63 percent of the time she steps up to the plate.

- Edwards ranks second nationally with a .633 on-base percentage. Drexel's Linda Rush leads the nation with a .636 mark but has had 23 fewer plate appearances than Edwards.
- Nebraska has played 55 percent of its scheduled regular-season games, and Edwards' on-base percentage is on pace to be a school record. Based on available records, only nine times has a Husker finished a season with an on-base percentage above .500. The school record is a .532 on-base percentage by All-American Kiki Stokes in 2015, a mark Edwards currently tops by more than .100.

TOP ON-BASE PERCENTAGES IN HUSKER HISTORY

Rk.	Player	Year	OB%	Rk.	Player	Year	OB%
1.	Tristen Edwards	2021	.633	6.	Jennifer Lizama	1999	.512
2.	Kiki Stokes	2015	.532	7.	Kiki Stokes	2016	.509
3.	Ali Viola	1998	.531	8.	MJ Knighten	2016	.509
4.	Ashley Guile	2010	.520	9.	Sheena Lawrick	2004	.508
5.	Ali Viola	1996	.517	10.	Ali Viola	1995	.504

PROJECTED LINEUP

1	#1 RYLIE UNZICKER • CF .291 • 18 R • 16 H • 4 2B • 1 HR • 6 RBI 96 Career Starts • 63 Starts in CF
2	#6 BILLIE ANDREWS • SS .342 • 20 R • 27 H • 3 2B • 4 HR • 19 RBI 24 Career Starts • 24 Starts at SS
3	#24 TRISTEN EDWARDS • RF .380 • 18 R • 19 H • 5 2B • 4 HR • 12 RBI 200 Career Starts • 62 Starts in RF
4	#32 CAM YBARRA • 2B .304 • 6 R • 24 H • 8 2B • 2 HR • 20 RBI 131 Career Starts • 108 Starts at 2B
5	#23 COURTNEY WALLACE • DP .239 • 5 R • 11 H • 1 2B • 1 HR • 10 RBI 61 Career Starts • 26 Starts at DP
6	#13 PEYTON GLATTER • LF .196 • 5 R • 9 H • 0 2B • 2 HR • 9 RBI 69 Career Starts • 24 Starts in LF
7	#39 OLIVIA FERRELL • P .114 • 4 H • 0 RBI 8-6 • 2.62 ERA 59 Career Starts • 52 Starts at P
8	#28 ALLY RILEY • C .188 • 1 R • 6 H • 2 2B • 0 HR • 0 RBI 51 Career Starts • 37 Starts at C
9	#27 BROOKE ANDREWS • 3B .212 • 8 R • 7 H • 2 2B • 2 HR • 8 RBI 25 Career Starts • 10 Starts at 3B
	#21 SARAH YOCOM • 1B .000 • 3 R • 0 H • 0 2B • 0 HR • 1 RBI 53 Career Starts • 18 Starts at 1B

PROJECTED SUBSTITUTES

#2 PAYTON HUSCROFT • INF .000 • 0 R • 0 H • 0 2B • 0 HR • 0 RBI
#5 MJ GREEN • INF .600 • 0 R • 3 H • 0 2B • 0 HR • 0 RBI
#7 SYDNEY GRAY • INF .366 • 8 R • 15 H • 5 2B • 1 HR • 8 RBI
#8 ABBIE SQUIER • OF .091 • 3 R • 1 H • 1 2B • 0 HR • 1 RBI
#14 CAMYL ARMENDARIZ • INF .000 • 5 R • 0 H • 0 2B • 0 HR • 0 RBI
#19 CAITLYNN NEAL • RHP/UTL .231 • 7 R • 6 H • 5 RBI 0-0 • 3.00 ERA
#20 ABBEY NEWLUN • INF .000 • 0 R • 0 H • 0 2B • 0 HR • 0 RBI
#30 KARLEE SEEVERS • RHP 0-0 • 0.00 ERA • 1.0 IP • 0 SO • 0 BB
#33 ANNI RALEY • C .278 • 5 R • 5 H • 1 2B • 0 HR • 3 RBI
#44 KAYLIN KINNEY • RHP/UTL .195 • 4 R • 8 H • 3 RBI 0-0 • 4.61 ERA
#77 SAMANTHA OWEN • INF .000 • 0 R • 0 H • 0 2B • 0 HR • 0 RBI

BIG TEN STANDINGS

Rk.	Team	Big Ten Record
1.	Michigan	16-4
2.	Minnesota	19-5
3.	Northwestern	18-6
4.	Illinois	15-9
5.	Iowa	14-10
	Nebraska	14-10
7.	Ohio State	13-10
8.	Maryland	11-13
	Indiana	11-13
10.	Michigan State	7-13
11.	Wisconsin	8-16
12.	Purdue	7-17
13.	Rutgers	6-18
14.	Penn State	4-19

NEBRASKA CONFERENCE TITLES

BIG EIGHT CONFERENCE (1976-1995)

Year	Record	Finish	Tournament
1977	1-4	t-4th	N/A
1978	4-3	7th	t-6th
1979	3-8	6th	t-6th
1980	8-9	4th	N/A
1981	5-6	3rd	3rd
1982	9-3	1st	1st
1983	3-7	7th	N/A
1984	6-2	1st	1st
1985	11-1	1st	1st
1986	9-3	1st	1st
1987	8-2	1st	1st
1988	7-3	1st	1st
1989	6-4	3rd	t-5th
1990	3-5	5th	2nd
1991	3-5	5th	t-4th
1992	2-6	5th	t-4th
1993	5-11	5th	N/A
1994	5-15	6th	N/A
1995	10-6	3rd	N/A
TOTAL	108-103		12 total titles

BIG 12 CONFERENCE (1996-2011)

Year	Record	Finish	Tournament
1996	10-8	4th	2nd
1997	10-6	4th	5th
1998	16-0	1st	1st
1999	10-8	4th	2nd
2000	15-2	2nd	1st
2001	16-2	1st	5th
2002	11-5	2nd	2nd
2003	10-8	6th	t-4th
2004	14-3	1st	1st
2005	9-9	7th	t-5th
2006	13-4	2nd	t-3rd
2007	10-8	5th	t-5th
2008	4-14	t-9th	2nd
2009	9-9	5th	t-5th
2010	7-11	t-6th	t-5th
2011	9-9	6th	N/A
TOTAL	173-106		6 total titles

BIG TEN CONFERENCE (2012-PRES.)

Year	Record	Finish	Tournament
2012	14-9	3rd	N/A
2013	16-6	2nd	t-3rd
2014	18-5	t-1st	t-5th
2015	17-6	3rd	2nd
2016	13-9	5th	t-5th
2017	13-10	5th	t-9th
2018	9-13	9th	t-9th
2019	9-14	t-8th	t-9th
2020	No Big Ten Season Due to Pandemic		
2021	14-10	-	N/A
TOTAL	123-82		1 total title

BILLIE ANDREWS WINS 3RD STRAIGHT WEEKLY AWARD

Billie Andrews has won the Big Ten Freshman of the Week award in three consecutive weeks. She is the first Husker to be honored as a three-time Big Ten Freshman of the Week, and Andrews is just the fourth freshman in Big Ten history to win the award in three straight weeks.

- Andrews produced multiple hits in each of the four games against Penn State to win her first award. She finished the series 10-for-15 (.667) with a 1.133 slugging percentage. Andrews scored six runs, drove in five and produced her first two career triples and first home run.
- The next week, Andrews went 7-for-14 in the four-game series at Rutgers with two doubles, a homer, three RBIs and four runs. She had at least one hit and one run in every game of the series, extending her streak to nine consecutive games with both a hit and run scored.
- Last week, Andrews was 4-for-11 (.364) with two home runs, four runs scored and four RBIs against an Illinois pitching staff that entered the series ranked 11th nationally in ERA. Andrews hit two home runs in game three of the series for her first career multi-homer game.

THREE CONSECUTIVE BIG TEN FRESHMEN OF THE WEEK WINNERS

Player	School	Season
Sierra Romero	Michigan	2013
Kendyl Lindaman	Minnesota	2017
Meghan Beaubien	Michigan	2018
Billie Andrews	Nebraska	2021

BILLIE ANDREWS MAKING HER CASE AS BIG TEN'S TOP FRESHMAN

Freshman shortstop **Billie Andrews** has put up the top statistics of any Big Ten freshman hitter this season as she looks to become Nebraska's first Big Ten Freshman of the Year winner.

- Andrews leads all Big Ten freshmen in runs (20), home runs (4), RBIs (19), stolen bases (9) and slugging percentage (.582). She is tied for the Big Ten freshman lead in hits and batting average with Maryland's Jaeda McFarland, as both players are batting .342 this season (27-for-79). Andrews also ranks second among all Big Ten freshmen in triples (2).
- Andrews enter this weekend leading all Big Ten freshman in the three "triple crown" categories (batting average, home runs and RBIs).
- Additionally, Andrews is batting an impressive .457 (16-for-35) with runners on base this season and .455 (10-for-22) with runners in scoring position.
- As the top statistical freshman hitter in the Big Ten, Andrews' top competition for Big Ten Freshman-of-the-Year honors may come from a pitcher. Michigan State's Ashley Miller and Ohio State's Allison Smith have been the top statistical freshmen pitchers in the conference. Miller ranks in the top 10 among all Big Ten pitchers in saves (6th) and ERA (7th), while Smith ranks in the top 10 in saves (6th), wins (7th), strikeouts (7th) and innings pitched (7th). By comparison, Andrews ranks in the top five among all Big Ten hitters in runs (3rd), home runs (4th), RBIs (4th), triples (5th) and stolen bases (5th).

BILLIE ANDREWS' RANKS AMONG BIG TEN FRESHMAN HITTERS

AVG.	HITS	RUNS	HR	3B	RBIs	SLG%	STEALS
1st	1st	1st	1st	2nd	1st	1st	1st
(.342)	(27)	(20)	(4)	(2)	(19)	(.582)	(9)

THE LAST TIME A HUSKER

Had 6+ At Bats	5 players vs. Wisconsin (5/8/16)
Had 5+ Hits	Lizzy Rock (5) vs. Illinois (2/24/06)
Scored 4+ Runs	Tristen Edwards (4) vs. Pittsburgh (2/17/19)
Had 3+ Doubles	Cam Ybarra (4) vs. Lehigh (3/7/20)
Had 2+ Homers	Billie Andrews (2) vs. Illinois - 2 (4/11/21)
Had 3+ Homers	Kaylan Jablonski (3) at Cal State Fullerton (3/17/18)
Homered in 1st Career AB	Hailey Decker vs. UIC (2/8/13)
Stole 3+ Bases	Nikki Haget (3) vs. La Salle (3/12/11)
Drew 4+ Walks	MJ Knighten (4) at Northwestern (4/17/16)
Had 2+ HBP	Tristen Edwards (2) vs. Illinois (4/9/21)
Had 5+ RBIs	Brooke Andrews (5) at Rutgers (4/2/21)
Threw a No-Hitter	Kaylan Jablonski vs. Purdue (4/29/16)
Threw a Perfect Game	Ashley DeBuhr vs. Iowa St. (4/13/05)
Had 10+ Strikeouts	Cassie McClure (10) vs. South Dakota St. (3/29/16)
Had 15+ Strikeouts	Ashley Hagemann (17) at Omaha (4/19/12)
Had a 10-Game Hit Streak	Billie Andrews (12) in 2021
Had a 15-Game Hit Streak	MJ Knighten (21) in 2015
Had a 20-Game Hit Streak	MJ Knighten (21) in 2015
Had a 25-Game Hit Streak	Taylor Edwards (25) in 2013-14

CAM IN THE CLUTCH

Senior second baseman **Cam Ybarra** has been a clutch hitter for Nebraska. That has been especially true the last two weeks as teams have elected to pitch around Tristen Edwards, with Ybarra routinely making the opponent pay for that decision. Ybarra has hit behind Edwards in the lineup in seven of the last eight games and in 18 of Nebraska's 24 games this season.

- Ybarra is hitting .304, but her average climbs to .343 with runners in scoring position. Ybarra is also batting .180 higher with runners on base (.385) than with the bases empty (.185).
- Fifty-two of Ybarra's 79 at bats this season (66 percent) have come with runners on base, as have 19 of her 24 hits (79 percent).
- Over eight games the last two weeks - as Edwards has reached base at a .900 clip - Ybarra is batting .414 (12-for-29) with two doubles, a homer and 11 RBIs. In that stretch, Ybarra has hit with at least one runner on base in 25 of her 29 at bats. She is 11-for-25 (.440) with runners on base the past two weeks and 7-for-16 (.438) with runners in scoring position. Seven of Ybarra's 11 RBIs the past eight games have come with two outs.
- Ybarra has driven in the game-winning run in each of Nebraska's last two wins. She broke a 5-5 tie against Illinois in game three last weekend with a two-out, three-run double. Then in the series finale, Ybarra hit a three-run homer in the bottom of the sixth inning with Nebraska trailing by one.

DIGGING IN ON DEFENSE

Nebraska's defense has been impressive this season, as the Huskers boast a .978 fielding percentage that is on pace to be the top mark in program history.

Nebraska ranks 18th nationally in fielding percentage, and its current mark of .978 would break the school record of a .973 fielding percentage in 2006.

TOP NU FIELDING PERCENTAGES

Season	FLD%
2021	.978
2006	.973
2018	.973
2001	.972
2011	.970

HUSKER OFFENSE AT THE TOP OF THE BIG TEN

Despite a slow start, Nebraska ranks near the top of the Big Ten Conference in several offensive categories.

- The Huskers rank second in the league in scoring (4.9 runs per game), doubles (37) and home runs (18) and are fourth in slugging percentage (.417) and on-base percentage (.351).
- Individually, senior **Tristen Edwards** leads the Big Ten in on-base percentage (.633), walks (21) and hit-by-pitches (13) and ranks second in slugging percentage (.720). Senior **Cam Ybarra** ranks second in the league in doubles (8) and third in RBIs (20), while freshman **Billie Andrews** ranks third in runs (20), fourth in homers (4), triples (2) and RBIs (19) and fifth in steals (9).
- Nebraska has a league-high three players ranked in the top 10 in runs scored (Billie Andrews, Tristen Edwards and Rylie Unzicker) and the Huskers and Minnesota are the only two teams with multiple players on the Big Ten top-10 list in RBIs and home runs.

THE LAST TIME NEBRASKA...

Beat a No. 1 Team	vs. No. 1 Michigan (1-0 on 4/8/16)
Beat a Top-5 Team	vs. No. 1 Michigan (1-0 on 4/8/16)
Beat a Top-10 Team	vs. No. 6 Texas A&M (6-3 on 2/22/18)
Beat a Ranked Team	vs. No. 23 Michigan (5-4 [8] on 3/12/21)
Won When Trailing After 6 Innings	vs. Tulsa (3/10/18)
Lost When Leading After 6 Innings	vs. Minnesota (3/25/17)
Scored 10+ Runs	vs. Illinois - 2 [10] (4/10/21)
Scored 15+ Runs	vs. UTEP [16] (2/8/20)
Scored 20+ Runs	at Maryland [26] (4/3/16)
Allowed 10+ Runs	at Rutgers - 2 [10] (4/3/21)
Allowed 15+ Runs	vs. Wichita St. [17] (2/29/20)
Allowed 20+ Runs	never
Recorded 15+ Hits	at Rutgers - 2 [19] (4/8/17)
Recorded 20+ Hits	at Maryland [21] (4/3/16)
Hit 6+ Doubles	vs. Lamar [7] (2/8/19)
Hit 4+ Home Runs	vs. Illinois - 1 [4] (3/31/19)
Stole 6+ Bases	at Purdue [60] (4/13/19)
Drew 10+ Walks	at Creighton [11] (4/25/17)
Was No-Hit	vs. No. 23 Michigan (Game 1: 3/11/21)

BOWLIN STADIUM



The 2020 season marks the 20th season Nebraska has called Bowlin Stadium home. The stadium's inaugural season was in 2002.

One of the top facilities in the country, Bowlin Stadium features seating for 2,500 fans, an underground system that heats the field and a large video board. Just past the right field fence is the Alex Gordon Training Complex, a spacious indoor facility that is large enough for Nebraska to take live batting practice inside the complex. The clubhouse features a locker room, players' lounge, training room and coaches' offices.

Nebraska has won nearly 70 percent of its games at Bowlin Stadium. The Huskers have hosted four NCAA Regionals at Bowlin Stadium and ranked in the top 25 nationally in attendance 14 times, including four seasons ranked in the top 10.

YEARLY RECORDS

Year	Record	Pct.
2002	9-5	.643
2003	14-7	.667
2004	14-6	.700
2005	9-7	.563
2006	20-1	.952
2007	18-5	.783
2008	13-9	.591
2009	13-5	.722
2010	12-8	.600
2011	10-4	.714
2012	15-1	.938
2013	18-4	.818
2014	13-3	.813
2015	11-6	.647
2016	11-5	.688
2017	13-6	.684
2018	10-7	.588
2019	7-10	.412
2020	0-0	.000
2021	6-2	.750
TOTAL	233-101	.700

LARGEST CROWDS

1. 2,302	Michigan	April 9, 2016
2. 2,204	Ohio State	April 19, 2014
3. 1,960	Texas	April 9, 2011
4. 1,844	Iowa	May 17, 2003
5. 1,840	Michigan	April 27, 2013
6. 1,752	Wisconsin	May 12, 2012
7. 1,692	Indiana	May 3, 2014
8. 1,673	Illinois	April 22, 2017
9. 1,601	Wisconsin	April 28, 2018
10. 1,585	Lehigh	May 20, 2004

NEBRASKA BY THE NUMBERS

62 NCAA TOURNAMENT WINS
Nebraska has won 62 games in its 24 NCAA Tournament appearances (62-52). The 62 postseason wins rank 19th in NCAA history.

30 ACADEMIC ALL-AMERICANS
A total of 22 Huskers have combined to earn 30 CoSIDA Academic All-America honors, the most of any softball program in NCAA history.

27 ALL-AMERICANS
Nebraska has produced 27 All-Americans, including eight first-team selections, seven two-time picks and two three-time All-Americans.

24 NCAA TOURNAMENTS
The Huskers have made 24 appearances in the NCAA Tournament, including 13 straight from 1995 to 2007. Nebraska's 24 postseason appearances rank 13th in NCAA history.

21 REVELLE ALL-AMERICANS
Rhonda Revelle has guided 13 players to a total of 21 All-America honor in her first 28 seasons as Nebraska's head coach.

19 CONFERENCE TITLES
Nebraska has won a total of 19 conference championships. The Huskers won 12 Big Eight titles, six Big 12 crowns and captured their first Big Ten title in 2014.

15 TOP-25 RANKINGS
Nebraska has been ranked in the final NFCA poll in 15 of the 26 years the poll has existed. The Huskers were one of only six teams nationally to be ranked in the final poll in each of the first 12 years it existed (1995 to 2006).

14 REVELLE ACADEMIC ALL-AMERICANS
Rhonda Revelle has produced 14 academic All-Americans at Nebraska. That total ranks fourth among all softball head coaches in NCAA history.

7 WCWS APPEARANCES
Nebraska has advanced to the Women's College World Series seven times to rank 14th in NCAA history.

4 SOFTBALL OLYMPIANS
Four former Huskers have competed in the Olympics, with a pair of former players competing in each of the last two Olympics.

BIG RED BATS HAVE COME ALIVE

Nebraska's offense got off to a slow start this season. But the bats have come alive, helping NU to an 11-5 record over its last 16 games.

- Nebraska is batting .315 and averaging 6.1 runs per game over its last 16 contests after hitting just .145 and averaging only 2.5 runs per game over its first eight games.
- The Huskers are averaging 8.4 hits per game over the last 16 games, including eight contests with double-digit hits. In the first eight games this season, Nebraska had only one game with double-digit hits and averaged just 3.8 hits per game.
- Nebraska has hit 15 home runs in the past 16 games after homering only three times in the first eight games of the season.

HITTING COMPARISON

Games	AVG	R/GM	H/GM	2B/GM	HR/GM	RBI/GM	SLG%	OB%
First 8 Games	.145	2.5	3.8	0.8	0.4	2.0	.217	.233
Last 16 Games	.315	6.1	8.4	1.9	0.9	5.6	.515	.407
DIFF.	+1.70	+3.6	+4.6	+1.1	+0.5	+3.6	+2.98	+1.74

HUSKER PITCHING STAFF SHOWING IMPROVEMENT

Nebraska's pitching staff has been much improved this season. Through 24 games, the Huskers boast a 2.75 ERA and are allowing only 3.4 runs per game. Both of those averages are on pace to be the lowest for a Nebraska team since the 2014 season.

- NU has allowed two or fewer runs 12 times in 24 games this year (50 percent). In the previous two seasons, Nebraska allowed two or fewer runs only 19 times in 75 games (25 percent).
- Nebraska has allowed fewer than two runs six times in 24 games this season. In the previous two seasons, the Huskers allowed fewer than two runs only seven times in 75 games.
- Senior **Olivia Ferrell** is 8-6 with a 2.63 ERA after entering the year with a 15-21 career record and 4.47 ERA. Ferrell has pitched in 16 of Nebraska's 24 games this spring with 13 starts. She ranks fourth in the Big Ten in innings (77.1), fifth in wins and ninth in strikeouts (71).
- Junior **Courtney Wallace** has also appeared in 16 games with nine starts. Wallace is 6-4 with a 2.65 ERA and one save in 53.2 innings this season after entering the year with a 6-9 career record and 5.50 ERA. Wallace ranks sixth in the Big Ten in saves and eighth in wins.
- Freshman **Kaylin Kinney** has appeared in nine games with two starts. She has excelled in relief, posting a 2.40 ERA with two saves in seven relief outings. Kinney ranks third in the Big Ten and 37th nationally in saves.
- Junior **Karlee SeEVERS** has thrown 1.0 scoreless inning this season, while freshman **Caitlynn Neal** has allowed only one run in 2.1 innings pitched.

PITCHING COMPARISON (2020 TO 2021)

Season	ERA	SV	HITS/GM	RUNS/GM	BB/GM	HR/GM	AVG.
2020	5.54	1	8.5	6.0	3.9	1.2	.313
2021	2.75	3	6.9	3.4	2.5	0.4	.259
DIFF.	-2.79	+2	-1.6	-2.6	-1.4	-0.8	-.054

NEBRASKA'S 2021 RECORD WHEN...

Overall	14-10	Out-Hitting Opponent	9-0
Non-Conference	0-0	Out-Hit by Opponent	3-9
Big Ten Conference	14-10	Scoring First	12-3
Home	6-2	Opponent Scores First	3-4
Neutral	6-6	Scoring in the First Inning	7-1
Road	2-2	Scoring Fewer than 3 Runs	1-7
Night Games	1-3	Scoring 5 or More Runs	11-2
Day Games	13-7	Scoring 10 or More Runs	3-0
Sunday	3-3	Allowing Fewer Than 3 Runs	9-3
Monday	0-0	Allowing 5 or More Runs	2-4
Tuesday	0-0	Allowing 10 or More Runs	0-1
Wednesday	0-0	Leading After Five Innings	9-0
Thursday	0-2	Leading After Six Innings	10-0
Friday	4-2	Trailing After Five Innings	1-8
Saturday	7-3	Trailing After Six Innings	0-7
vs. Ranked Opponents	1-2	Tied After Five Innings	2-2
vs. Unranked Opponents	13-8	Tied After Six Innings	1-3
Extra Innings	1-3	Committing 0 Errors	5-6
1-Run Games	3-2	Committing 2 or More Errors	3-0

EDWARDS NEARS NEBRASKA'S ALL-TIME DOUBLES RECORD

Tristen Edwards owns 47 career doubles, entering this weekend needing only one double to tie the school record and two to set the new top mark.

- Edwards ranks fourth in school history with her 47 career doubles. The record of 48 doubles is shared by three-time All-American Ali Viola (1995-98), two-time All-American Tobin Echo-Hawk (1993-96) and All-American Kim Ogee (2000-03).

EDWARDS LEAVING HER MARK ON HUSKER RECORD BOOK

Senior outfielder **Tristen Edwards** has joined one elite club in Nebraska history, is nearing another and is poised to challenge several Husker career records.

- Edwards is one of only three Huskers who have totaled 40 career doubles and 40 career home runs. The other two members of that group are three-time All-American Ali Viola and two-time All-American Taylor Edwards, Tristen's older sister.
- Edwards is also looking to become the first Husker to hit 50 career doubles and 50 career home runs. Edwards currently owns 47 career doubles and 46 career home runs.
- Edwards is just the fourth Husker to record 150 career hits, runs and RBIs. The other three members of that group were all All-Americans (Ali Viola, Taylor Edwards and MJ Knighten).
- Edwards is on track to break Nebraska's all-time records in doubles and extra-base hits in addition to challenging several other top marks. Edwards is three shy of breaking Nebraska's double record and nine shy of bettering the top home run mark.

NEBRASKA PLAYERS WITH 40 CAREER 2B & HR

Player	Years	2B	HR
Ali Viola	1995-98	48	53
Taylor Edwards	2011-14	41	54
Tristen Edwards	2017-pres.	47	46

NEBRASKA PLAYERS WITH 150 CAREER HITS, RUNS & RBIs

Player	Years	Hits	Runs	RBIs
Ali Viola	1995-98	263	157	213
Taylor Edwards	2011-14	220	177	202
MJ Knighten	2014-17	253	183	186
Tristen Edwards	2017-pres.	204	158	152

EDWARDS' ASSAULT ON NEBRASKA'S ALL-TIME RECORDS

Category	Record Holder	Record	Edwards Total	Projection*
Doubles	Three players	48	47	52
Home Runs	Taylor Edwards	54	46	52
Extra-Base Hits	Ali Viola	105	94	106

*Based on Edwards' career per-game averages played out over a 44-game 2021 schedule

EDWARDS NAMED PLAYER OF THE WEEK FOR RECORD SIXTH TIME

Senior **Tristen Edwards** was named the first Big Ten Player of the Week of the 2021 season on March 2. She was honored after hitting .444 in six games with one double, three homers and six RBIs. Her three homers were more than any other Big Ten team hit in the first week.

- Edwards was named the Big Ten Player of the Week for the sixth time in her career. That set a Nebraska record for most career conference player-of-the-week honors and tied the Big Ten record for most career player-of-the-week awards.
- Edwards became only the third player in Big Ten history to be a six-time player of the week. The other two are two-time Northwestern All-American Adrienne Monka and four-time Michigan All-American Sierra Romero.
- Edwards became the first Husker to win six conference player-of-the-week awards. Overall, Edwards is one shy of the most conference weekly awards in school history. All-American Peaches James won seven total conference weekly awards in her decorated career.

MOST PLAYER-OF-THE-WEEK AWARDS IN BIG TEN HISTORY

Player	School	Years	Awards
Tristen Edwards	Nebraska	2017-present	6
Sierra Romero	Michigan	2013-16	6
Adrienne Monka	Northwestern	2009-12	6

EDWARDS CAREER RECORD WATCH

DOUBLES

1. Tobin Echo-Hawk (1993-96)	48
Ali Viola (1995-98)	48
Kim Ogee (2000-03)	48
4. Tristen Edwards (2017-present)	47

HOME RUNS

1. Taylor Edwards (2011-14)	54
2. Ali Viola (1995-98)	53
3. Jennifer Lizama (1997-2000)	47
4. Tatum Edwards (2011-14)	46
Tristen Edwards (2017-present)	46

EXTRA-BASE HITS

1. Ali Viola (1995-98)	105
2. Taylor Edwards (2011-14)	95
3. Tristen Edwards (2017-present)	94

RUNS

1. Kiki Stokes (2013-16)	200
2. Jennifer Lizama (1997-2000)	199
3. MJ Knighten (2014-17)	183
4. Kim Ogee (2000-03)	182
5. Taylor Edwards (2011-14)	177
6. Tobin Echo-Hawk (1993-96)	168
7. Tristen Edwards (2017-present)	158

RBIs

1. Ali Viola (1995-98)	213
2. Taylor Edwards (2011-14)	202
3. MJ Knighten (2014-17)	186
4. Brooke Thomason (2010-13)	177
5. Nicole Trimboli (2001-04)	173
6. Tatum Edwards (2011-14)	158
7. Tristen Edwards (2017-present)	152

WALKS

1. Taylor Edwards (2011-14)	150
2. Jennifer Lizama (1997-2000)	124
3. Kiki Stokes (2013-16)	120
4. Ali Viola (1995-98)	116
5. Kim Ogee (2000-03)	115
6. Tristen Edwards (2017-present)	104

BATTING AVERAGE

1. Ali Viola (1995-98)	.418
2. Tobin Echo-Hawk (1993-96)	.379
3. Jennifer Lizama (1997-2000)	.378
4. Lizzy Rock (2005-06)	.374
5. MJ Knighten (2014-17)	.357
6. Tristen Edwards (2017-present)	.355

SLUGGING PERCENTAGE

1. Ali Viola (1995-98)	.760
2. Tristen Edwards (2017-present)	.681
3. Christie McCoy (1997-98)	.642
4. Jennifer Lizama (1997-2000)	.635
5. Taylor Edwards (2011-14)	.629

ON-BASE PERCENTAGE

1. Ali Viola (1995-98)	.508
2. Tristen Edwards (2017-present)	.476
3. Taylor Edwards (2011-14)	.471
4. Kiki Stokes (2013-16)	.469
5. Jennifer Lizama (1997-2000)	.456

HIT-BY-PITCHES

1. Taylor Edwards (2011-14)	39
2. Tristen Edwards (2017-present)	35

MULTI-HOME RUN GAMES

1. Tristen Edwards (2017-present)	7
2. Tatum Edwards (2011-14)	6
Ali Viola (1995-98)	6

COLLEGE SOFTBALL POLLS

USA TODAY/NFCA COACHES POLL

Rk.	Team	Record	Pts.	LW
1.	Oklahoma (32)	800	30-0	1
2.	UCLA	768	22-2	2
3.	Alabama	702	31-5	4
4.	Oregon	686	27-5	3
5.	Florida	683	30-4	5
6.	Washington	616	31-5	6
7.	Texas	595	31-3	7
8.	Arizona	585	24-5	8
9.	Florida State	564	27-6	9
10.	Arkansas	504	33-5	t10
11.	Oklahoma State	476	32-5	12
12.	Kentucky	401	28-7	t10
13.	Arizona State	394	25-10	13
14.	Louisiana	392	31-6	14
15.	Virginia Tech	355	25-6	15
16.	LSU	310	24-13	17
17.	Clemson	296	26-4	18
18.	Missouri	244	29-9	19
19.	Tennessee	206	28-6	21
20.	Georgia	204	25-8	20
21.	Duke	186	27-9	16
22.	Michigan	113	16-4	23
23.	UCF	85	29-9	24
24.	Minnesota	73	19-5	RV
25.	Wichita State	61	28-5	RV

ESPN.COM/USA SOFTBALL POLL

Rk.	Team	Record	Pts.	LW
1.	Oklahoma (19)	30-0	499	1
2.	UCLA	22-2	476	2
3.	Alabama (1)	31-5	452	3
4.	Florida	30-4	430	5
5.	Oregon	27-5	409	4
6.	Washington	31-5	386	6
7.	Arizona	24-5	361	7
8.	Texas	31-3	357	T8
9.	Florida State	27-6	350	10
10.	Arkansas	33-5	338	T8
11.	Oklahoma State	32-5	289	12
12.	Kentucky	28-7	265	11
13.	Arizona State	25-10	233	14
14.	Virginia Tech	25-6	232	13
15.	LSU	24-13	225	15
16.	Tennessee	28-6	184	16
17.	Louisiana	31-6	179	17
18.	Clemson	26-4	156	18
19.	Missouri	29-9	139	19
20.	Georgia	25-8	109	22
21.	Duke	27-9	89	20
22.	Michigan	16-4	69	24
23.	Minnesota	19-5	65	RV
24.	James Madison	19-1	54	RV
25.	UCF	29-9	46	RV

EDWARDS AMONG NATION'S TOP RETURNING STATISTICAL LEADERS

Tristen Edwards was in the midst of a stellar season in 2020 before the season was cut short. In 23 games last season, Edwards hit .434 with 10 doubles, 11 home runs and 22 RBIs.

- Edwards' 21 extra-base hits ranked second nationally in the shortened 2020 season. She was one of only three players in the country with 20 extra-base hits.
- Edwards was the only player in the country last season with at least 10 doubles and 10 home runs. She ranked fourth nationally in home runs (11) and 14th in doubles (10). Edwards was the only player in the nation to rank in the top 15 in both doubles and home runs in 2020.
- In addition to her lofty ranking in doubles and home runs, Edwards ranked third nationally in slugging percentage (1.000) and total bases (76), fourth in home runs per game (0.48) and 15th in runs per game (1.22).
- Entering 2021, Edwards ranked 18th among all active Division I players in career RBIs (140) and total bases (354), 19th in home runs (44), 22nd in doubles (42) and 23rd in runs (139).

EDWARDS' CAREER RANKINGS AMONG ACTIVE DIVISION I PLAYERS (AS OF APRIL 11)

Category	Total	Rank
Home Runs	46	23rd
Doubles	47	23rd
Walks	103	26th
Runs	158	30th
Total Bases	391	34th
RBIs	152	36th
Slugging Pct.	.681	50th

ACTIVE DIVISION I PLAYERS WITH 40 CAREER 2B & HR (AS OF APRIL 11)

Player	School	2B	HR
Amber Bishop	Liberty	57	61
Suzy Brookshire	Long Beach St.	42	60
Georgia Capell	Tarleton State	51	48
Madison Cathcart	Seattle	47	41
Jenna Cone	George Washington	46	65
Kristi DiMeo	Drexel	42	43
Tristen Edwards	Nebraska	47	46
Alysen Febrey	Oklahoma St.	55	43
Morganne Flores	Washington	43	55
Kate Gordon	James Madison	51	58
Jessie Harper	Arizona	46	84
Rachel McCollum	East Carolina	52	57
Bubba Nickles	UCLA	42	42
Alyssa Palomino	Arizona	47	65
Madison Perrigan	Wichita St.	51	49
Linda Rush	Drexel	56	62
Sami Williams	Iowa State	74	61

CLOSE CALLS

Nebraska has been accustomed to playing close games so far this spring, as 12 of the Huskers' 24 contests have been decided by either one or two runs.

- Nebraska is 6-6 in games decided by two runs or less this season and six of Nebraska's 10 losses have been by either one or two runs. In 23 games last year, the Huskers played only six games decided by two or fewer runs (3-3 record in those games).
- Six of Nebraska's 10 losses have been by either one or two runs.
- Fifteen of Nebraska's 24 games have been either a tie, one-run or two-run game entering the sixth inning. The Huskers are 9-0 when leading after five innings, 1-8 when trailing after five innings and 2-2 when tied after five innings.
- NU has played four extra-inning games this season, posting a 1-3 record in those games. The Huskers have already played their most extra-inning games since the 2016 season.

GRAY OUT FOR THE SEASON

Freshman third baseman **Sydney Gray** suffered a season-ending injury in the series finale against Penn State on March 28.

- Gray started 14 of Nebraska's first 16 games at third base, and she hit .366. She finished her abbreviated freshman season with a flurry, going 13-for-25 over her final eight games with five doubles, one homer, seven runs scored and seven RBIs.

STATISTICAL COMPARISON

TEAM	W-L	AVG.	SCORING	OPP. SCORING	ERA	FLD%
Nebraska	14-10	.259	4.9	3.4	2.75	.978
Minnesota	19-5	.241	4.6	2.7	1.69	.972
NEB DIFF.	-5	+0.018	+0.3	+0.7	+1.06	+0.006

SCOUTING THE NO. 24 MINNESOTA GOLDEN GOPHERS (19-5)

Minnesota is ranked 24th in this week's NFCA coaches' poll. The Golden Gophers are in second place in the Big Ten standings with a 19-5 record. Minnesota has won five games in a row, including a four-game sweep of Northwestern last weekend when the Wildcats entered the series in first place in the Big Ten with an 18-2 record.

Nebraska and Minnesota share six common opponents this season in Illinois, Indiana, Ohio State, Michigan State, Purdue and Rutgers. The Huskers posted a 10-7 record against that group while Minnesota went 14-4.

- Minnesota leads the Big Ten with 27 home runs - nine more than second-place Nebraska - and the Golden Gophers are third in the league in scoring, one spot behind the Huskers.
- Minnesota is batting .241 as a team with a pair of .300 hitters. Senior **Katelyn Kemmetmueller** leads the team with a .362 average, which ranks ninth in the Big Ten. Kemmetmueller also ranks second in the conference in home runs (5), third in on-base percentage (.513) and fifth in slugging percentage (.655) and walks (15).
- Senior **MaKenna Partain**, the reigning Big Ten Player of the Week, is hitting .346 this season. She leads the team and is tied for the Big Ten lead with 21 runs scored. Partain also ranks second in the Big Ten in triples (3) and walks (18) and is sixth in on-base percentage (.469).
- Junior **Natalie DenHartog** is third on the team with a .286 average but is the Gophers' top slugger. DenHartog leads the Big Ten with eight home runs, three more than any other player has hit. She also ranks second in the league in RBIs (20), third in slugging percentage (.700) and fourth in walks (16).
- In the circle, Minnesota ranks second in the Big Ten and 16th nationally with a 1.65 ERA. Opponents are hitting only .218 against the Gophers and have struck out 162 times in 174.0 innings.
- **Amber Fiser**, the 2019 Big Ten Pitcher of the Year and a first-team All-American, has appeared in 16 of Minnesota's 24 games with 13 starts. She is 9-4 with a 1.86 ERA in a team-high 94.0 innings. Fiser ranks second in the Big Ten in saves (3), third in wins and innings pitched, sixth in strikeouts (80) and 10th in ERA.
- **Autumn Pease** is 9-1 this spring with four saves and a 1.19 ERA in 70.2 innings. Her four saves lead the Big Ten and rank second nationally. Pease also ranks third in the league in wins, fourth in ERA, seventh in opponent average (.201) and eighth in strikeouts (75).
- **Ava Dueck** (1-0, 2.52 ERA in 8.1 IP) and **Kianna Jones** (0-0, 14.00 ERA in 1.0 IP) round out the Gopher pitching staff.
- **Piper Ritter** is in her first season as the head coach at Minnesota after spending the previous 13 seasons as the Gophers' pitching coach. The first-time head coach owns a 19-5 record.

NEBRASKA VS. MINNESOTA

SERIES HISTORY

- **Series Record:** Minnesota leads, 23-18
- **In Big Ten Play:** Minnesota leads, 17-5
- **In Lincoln:** Minnesota leads, 12-5
- **At Minneapolis:** Minnesota leads, 7-2
- **At a Neutral Site:** Nebraska leads, 11-4
- **Current Win Streak:** Minnesota, 11 games
- **Revelle vs. Minnesota:** 13-18
- **Ritter vs. Nebraska:** 0-0
- **Revelle vs. Ritter:** 0-0

ALL-TIME MEETINGS

DATE	LOCATION	RESULT
3/21/1979	Neutral	L, 0-7
3/23/1979	Neutral	L, 2-4 (5)
4/10/1981	Home	L, 1-2
4/12/1981	Home	W, 1-0
3/5/1986	Neutral	W, 6-2
3/5/1986	Neutral	W, 6-0
3/6/1986	Neutral	L, 6-7
3/24/1990	Neutral	W, 1-0
2/9/1991	Away	W, 3-0
3/7/1992	Neutral	L, 1-4
2/19/1995	Neutral	W, 8-0 (5)
5/17/1996	Neutral	W, 5-0
2/28/1998	Neutral	W, 3-2
3/9/2001	Neutral	W, 3-0
3/8/2002	Neutral	W, 4-0
3/10/2002	Neutral	W, 4-0
3/9/2007	Neutral	W, 3-2
3/10/2007	Neutral	W, 4-2
3/31/2012	Away	L, 7-13
3/31/2012	Away	L, 5-8
4/1/2012	Away	W, 5-4 (8)
4/16/2013	Home	W, 3-2
4/16/2013	Home	W, 4-0
5/11/2013	Home	L, 0-1
3/21/2014	Home	L, 2-7
3/23/2014	Home	L, 4-13
3/23/2014	Home	W, 3-2
3/27/2015	Home	L, 7- 8
3/28/2015	Home	L, 3-8
3/29/2015	Home	W, 5-3
4/22/2016	Away	L, 0-6
4/23/2016	Away	L, 10-11
3/24/2017	Home	L, 0-16 (5)
3/25/2017	Home	L, 4-5
3/26/2017	Home	L, 1-8
4/20/2018	Away	L, 1-10 (5)
4/21/2018	Away	L, 0-6
4/22/2018	Away	L, 1-5
4/19/2019	Home	L, 0-3
4/20/2019	Home	L, 3-8
4/21/2019	Home	L, 3-9

NOTABLE GAMES

**NEBRASKA 5, MINNESOTA 3
MARCH 29, 2015**

Nebraska upset No. 12 Minnesota in the Huskers' last win in the series. Nebraska never trailed and withstood a two-run seventh inning rally to snap the Gophers' 15-game win streak.

**NEBRASKA 4, MINNESOTA 0
APRIL 16, 2013**

Nebraska completed a doubleheader sweep of Minnesota thanks to Tatum Edwards, who threw a three-hit shutout and hit the game-winning grand slam in the bottom of the sixth inning.



#1 | RYLIE UNZICKER • OF

	AVG.	G-GS	R	H	2B	HR	RBI	BB	SLG%	OB%
2021	.291	24-22	18	16	4	1	6	14	.455	.466
Career	.227	130-96	58	59	16	5	25	46	.362	.356

- 96 career starts at Nebraska rank 2nd on the team
- Ranks 6th in the Big Ten in walks (14) and runs (18) & 7th in OB% (.466)
- 7-time Nebraska Scholar-Athlete Honor Roll member
- 2-time Academic All-Big Ten & 2020 Big Ten Distinguished Scholar
- Sister Madi was a four-year Husker letterwinner (2015-19)



#2 | PAYTON HUSCROFT • INF

	AVG.	G-GS	R	H	2B	HR	RBI	BB	SLG%	OB%
2021	.000	0-0	0	0	0	0	0	0	.000	.000
Career	.171	24-19	2	7	1	1	6	5	.268	.277

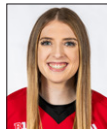
- Has been slowed after recovering from offseason surgery
- Had 5 two-out RBIs in shortened 2020 season, one shy of the team high
- 1 of 3 Millard South products on the Husker roster (Glatter & Unzicker)
- 5-time Nebraska Scholar-Athlete Honor Roll member
- 2-time Tom Osborne Citizenship Team member



#5 | MJ GREEN • INF

	AVG.	G-GS	R	H	2B	HR	RBI	BB	SLG%	OB%
2021	.600	5-1	0	3	0	0	0	0	.600	.600
Career	.600	5-1	0	3	0	0	0	0	.600	.600

- Is 3-for-5 at the plate this season
- Named a top-100 recruit by FloSoftball
- No. 141 (Extra Inning Softball) & No. 153 (FastPitch News) recruit nationally
- All-state & 2-time all-district pick for Henderson (Texas) High School
- Travel ball teammate of Husker Abbey Newlun (Scrap Yard International)



#6 | BILLIE ANDREWS • INF

	AVG.	G-GS	R	H	2B	HR	RBI	BB	SLG%	OB%
2021	.342	24-24	20	27	3	4	19	5	.582	.379
Career	.342	24-24	20	27	3	4	19	5	.582	.379

- 3-time Big Ten Freshman of the Week (each of the last three weeks)
- Ranks 3rd in the Big Ten in runs (20) & 4th in 3B (2), HR (4), & RBIs (19)
- 4-time Omaha World-Herald All-Nebraska pick at Gretna High School
- Hit .434 with a .625 OB% and 1.200 SLG% in her prep career
- Older sister Brooke is a sophomore infielder with the Huskers



#7 | SYDNEY GRAY • INF

	AVG.	G-GS	R	H	2B	HR	RBI	BB	SLG%	OB%
2021	.366	15-14	8	15	5	1	8	1	.561	.381
Career	.366	15-14	8	15	5	1	8	1	.561	.381

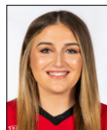
- Suffered a season-ending injury on March 28 against Penn State
- Was leading NU in average and was 2nd in hits & doubles prior to her injury
- Hit .503 at Sabino High School in Tucson, Ariz. with 16 3B, 16 HR & 87 RBIs
- Helped Sabino to an Arizona 3A state championship as a junior
- Travel ball teammate of Husker Caitlynn Neal (Arizona Desert Thunder)



#8 | ABBIE SQUIER • OF

	AVG.	G-GS	R	H	2B	HR	RBI	BB	SLG%	OB%
2021	.091	13-3	3	1	1	0	1	1	.182	.231
Career	.091	13-3	3	1	1	0	1	1	.182	.231

- Ranked as the No. 95 recruit nationally by Extra Inning Softball
- 3rd-team NFCA High School All-American as a junior
- .490 career average with a .994 SLG% at Lincoln Southwest High School
- Was the state shot put champion as a junior
- Lone Lincoln native on Nebraska's 2021 roster



#13 | PEYTON GLATTER • OF

	AVG.	G-GS	R	H	2B	HR	RBI	BB	SLG%	OB%
2021	.196	19-15	5	9	0	2	9	5	.326	.269
Career	.229	80-69	26	48	7	7	34	22	.362	.305

- Ranks 2nd among active Huskers with 34 career RBIs at Nebraska
- Has started 69 of Nebraska's 99 games the past three seasons
- 3-time member of the Nebraska Scholar-Athlete Honor Roll
- Member of the 2019 Tom Osborne Citizenship Team
- 1 of 3 Millard South products on the Husker roster (Huscroft & Unzicker)



#14 | CAMYL ARMENDARIZ • INF

	AVG.	G-GS	R	H	2B	HR	RBI	BB	SLG%	OB%
2021	.000	14-1	5	0	0	0	0	0	.000	.000
Career	.000	14-1	5	0	0	0	0	0	.000	.000

- Has appeared in 14 games (1 start at DP; 10 games as a PR & 3 as a PH)
- Four-year varsity player for Bonita (Calif.) High School
- Totaled 113 hits, 23 doubles, 5 triples, 20 homers & 80 RBIs in prep career
- 3-time all-league & All-San Gabriel Valley selection
- 1 of 4 current Huskers from the Corona Angels travel ball team



#19 | CAITLYNN NEAL • RHP

	W-L	ERA	APP	GS	CG	SHO	SV	IP	SO	AVG.
2021	0-0	3.00	2	0	0	0	0	2.1	0	.444
Career	0-0	3.00	2	0	0	0	0	2.1	0	.444

- Named the preseason Big Ten Newcomer of the Year by D1Softball
- Tossed a scoreless inning vs. No. 23 Michigan in her career debut
- Member of the United States Under-17 Women's National Team
- 2-hit shutout in the Pan American Championships Gold Medal game
- 23-2 record with a 0.71 ERA & 15 shutouts in her high school career



#19 | CAITLYNN NEAL • UTL

	AVG.	G-GS	R	H	2B	HR	RBI	BB	SLG%	OB%
2021	.231	18-9	7	6	0	0	5	0	.231	.231
Career	.231	18-9	7	6	0	0	5	0	.231	.231

- Named the preseason Big Ten Newcomer of the Year by D1Softball
- All 6 of her hits & all 5 of her RBIs have come in her last 7 starts
- Ranked as the No. 30 recruit nationally by Extra Inning Softball
- .613 career hitter with 17 HR & 68 RBIs at Bradshaw Mountain High School
- Travel ball teammate of Husker Sydney Gray (Arizona Desert Thunder)



#20 | ABBEY NEWLUN • INF

	AVG.	G-GS	R	H	2B	HR	RBI	BB	SLG%	OB%
2021	.000	1-0	0	0	0	0	0	0	.000	.000
Career	.000	1-0	0	0	0	0	0	0	.000	.000

- Four-year varsity player at The Woodlands High School in Texas
- Totaled 69 hits, 16 doubles, 3 triples & 9 home runs in her prep career
- Was an all-district selection as a junior
- Travel ball teammate of Husker MJ Green (Scrap Yard International)
- Father Craig graduated from Nebraska & was born & raised in Auburn, Neb.



#21 | SARAH YOCOM • INF

	AVG.	G-GS	R	H	2B	HR	RBI	BB	SLG%	OB%
2021	.000	18-18	3	0	0	0	1	1	.000	.091
Career	.130	85-53	16	7	0	0	4	4	.130	.186

- Has started 18 straight games at first base; leads NU with 18 starts at 1B
- Has started multiple games at 1B, 2B, 3B & SS in her Husker career
- 2-time Academic All-Big Ten & 2019 Big Ten Distinguished Scholar
- 5-time Nebraska Scholar-Athlete Honor Roll member
- 3-time member of the Tom Osborne Citizenship Team



#23 | COURTNEY WALLACE • RHP

	W-L	ERA	APP	GS	CG	SHO	SV	IP	SO	AVG.
2021	6-4	2.65	16	9	3	0	1	68.2	26	.246
Career	12-13	4.52	55	26	7	0	2	199.2	114	.301

- Ranks 6th in the Big Ten in saves (1) & 8th in wins (6)
- Ranks 2nd among current Huskers in career innings pitched (199.2)
- 3-time Nebraska Scholar-Athlete Honor Roll member
- 2-time member of the Tom Osborne Citizenship Team
- Her cousin, Alex Smith, is a cornerback on the Wisconsin football team



#23 | COURTNEY WALLACE • UTL

	AVG.	G-GS	R	H	2B	HR	RBI	BB	SLG%	OB%
2021	.239	18-14	5	11	1	1	10	5	.370	.308
Career	.231	80-59	30	43	6	4	26	18	.392	.303

- Has been in the batting order during starts at P, DP, 3B & LF in her career
- 16 of her 43 career hits have gone for extra bases (6 2B, 6 3B, 4 HR)
- Tied the Nebraska single-game record with two triples vs. Lamar in 2019
- 5 career triples are the most of any current Husker
- Nebraska Gatorade Player of the Year as a high school senior



#24 | TRISTEN EDWARDS • OF

	AVG.	G-GS	R	H	2B	HR	RBI	BB	SLG%	OB%
2021	.380	24-24	18	19	5	4	12	25	.720	.633
Career	.355	203-200	158	204	47	46	152	104	.681	.476

- Ranks 2nd nationally in on-base percentage (.633) & walks per game (1.04)
- Named the preseason Big Ten Player of the Year by D1Softball
- 2-time member of USA Softball Collegiate Player of the Year watch list
- 2-time 1st-team All-Big Ten & record 6-time Big Ten Player of the Week
- Older twin sisters Tatum & Taylor were both 2-time Husker All-Americans



#27 | BROOKE ANDREWS • INF

	AVG.	G-GS	R	H	2B	HR	RBI	BB	SLG%	OB%
2021	.212	18-11	8	7	2	2	8	2	.455	.278
Career	.242	36-25	10	16	3	2	11	3	.379	.296

- 8 straight starts at 3B; 2 2B, 2 HR & 8 RBIs in those eight starts
- Started a team-high 14 games at shortstop as a freshman in 2020
- Ranked 5th on the team with a .273 batting average last season
- 3-time Nebraska Scholar-Athlete Honor Roll member
- Younger sister Billie is a freshman infielder with the Huskers



#28 | ALLY RILEY • C

	AVG.	G-GS	R	H	2B	HR	RBI	BB	SLG%	OB%
2021	.188	15-15	1	6	2	0	0	1	.250	.235
Career	.261	70-51	5	37	8	1	22	6	.338	.301

- Is Nebraska's most experienced catcher with 37 career starts at the position
- Started 31 of Nebraska's 47 games at catcher the past two seasons
- Her .261 career average ranks 3rd among all Huskers with at least 100 AB
- 2-time Academic All-Big Ten selection
- 7-time Nebraska Scholar-Athlete Honor Roll member



#30 | KARLEE SEEVERS • RHP

	W-L	ERA	APP	GS	CG	SHO	SV	IP	SO	AVG.
2021	0-0	0.00	1	0	0	0	0	1.0	0	.333
Career	0-0	18.90	3	0	0	0	0	3.1	0	.474

- Tossed a scoreless inning vs. Purdue after making two appearances in 2020
- Is also a pinch runner, scoring a run in each of her two career appearances
- 2020 Academic All-Big Ten selection & 2020 Big Ten Distinguished Scholar
- 5-time member of the Nebraska Scholar-Athlete Honor Roll
- 2-time Tom Osborne Citizenship Team member



#32 | CAM YBARRA • INF

	AVG.	G-GS	R	H	2B	HR	RBI	BB	SLG%	OB%
2021	.304	24-24	6	24	8	2	20	6	.481	.345
Career	.259	137-131	30	106	31	7	48	35	.391	.321

- Ranks 2nd in the Big Ten in doubles (8) and 3rd in RBIs (20)
- In her 2nd year at Nebraska after spending two seasons at Oregon State
- Started all 47 games at second base for Nebraska the past two seasons
- Was a 2018 Pac-12 All-Defensive & All-Freshman Team honoree at OSU
- 1 of 4 current Huskers from the Corona Angels travel ball team



#33 | ANNI RALEY • C

	AVG.	G-GS	R	H	2B	HR	RBI	BB	SLG%	OB%
2021	.278	15-10	5	5	1	0	3	1	.444	.350
Career	.200	57-17	18	7	2	0	4	3	.371	.300

- Has started 10 games at catcher in 2021 & caught in 15 games total
- Has gone 4-for-9 with a triple, 5 runs & 2 RBIs in her last four starts
- Has also appeared as a pinch runner 30 times her career
- 2020 Academic All-Big Ten selection
- 5-time member of the Nebraska Scholar-Athlete Honor Roll



#39 | OLIVIA FERRELL • RHP

	W-L	ERA	APP	GS	CG	SHO	SV	IP	SO	AVG.
2021	8-6	2.62	16	13	4	1	0	77.1	71	.236
Career	23-27	4.02	83	52	12	1	2	312.0	212	.283

- Ranks 4th in the Big Ten in innings (77.1), 5th wins (8) & 9th in strikeouts (71)
- Leads all current Huskers in career wins, ERA, appearances, starts & innings
- Has allowed 2 ER or fewer in 27 of her 52 career starts
- 2-time Academic All-Big Ten & 2-time Big Ten Distinguished Scholar
- 7-time member of the Nebraska Scholar-Athlete Honor Roll



#39 | OLIVIA FERRELL • UTL

	AVG.	G-GS	R	H	2B	HR	RBI	BB	SLG%	OB%
2021	.114	15-12	2	4	2	0	0	1	.171	.139
Career	.229	57-40	14	25	7	3	18	11	.376	.309

- Her .229 career average ranks 5th among all Huskers with at least 100 AB
- Hit .344 in the shortened 2020 season with 10 RBIs in only 32 at bats
- Ranked 2nd on the team in average, OB% & SLG% in 2020
- Was 3rd on the team last season in home runs (2) and RBIs (10)
- In addition to softball, had Division I scholarship offers as a hockey goalie



#44 | KAYLIN KINNEY • RHP

	W-L	ERA	APP	GS	CG	SHO	SV	IP	SO	AVG.
2021	0-0	4.61	9	2	0	0	2	13.2	9	.298
Career	0-0	4.61	9	2	0	0	2	13.2	9	.298

- Ranks 3rd in the Big Ten & 37th nationally with 2 saves
- 2019 Iowa Gatorade Player of the Year at Kennedy High School
- 2-time all-state selection & 4-time all-conference & all-metro pick
- Went 67-7 in her prep career with a 0.77 ERA and 527 strikeouts
- First Iowa native to play for Nebraska since 2004



#44 | KAYLIN KINNEY • UTL

	AVG.	G-GS	R	H	2B	HR	RBI	BB	SLG%	OB%
2021	.195	21-14	4	8	2	1	3	5	.317	.298
Career	.195	21-14	4	8	2	1	3	5	.317	.298

- Has 1 2B & 1 HR while ranking 4th on the team with 5 walks
- 2019 Iowa Gatorade Player of the Year at Kennedy High School
- Helped Kennedy to a state championship as a senior
- Hit .501 in her high school career with a 1.054 slugging percentage
- Finished third in state history with 55 career home runs



#77 | SAMANTHA OWEN • INF

	AVG.	G-GS	R	H	2B	HR	RBI	BB	SLG%	OB%
2021	.000	4-1	0	0	0	0	0	0	.000	.000
Career	.288	167-159	68	135	30	17	86	47	.483	.361

- Is in her 3rd season at Nebraska after playing at Pacific her first two years
- Owns 159 career starts, including 63 starts as a Husker
- Ranks 2nd among current Huskers in career average, 2B, HR & RBIs
- 2-time All-West Coast Conference & 2018 All-West Region pick at Pacific
- Younger sister Izabella is a junior infielder at New Mexico

INDIVIDUAL SEASON & CAREER HIGHS

#1 RYLIE UNZICKER • SR. • OF

SEASON HIGH	CATEGORY	CAREER HIGH
3 at Rutgers - 2	Hits	same
3 vs. #23 Michigan	Runs	3 twice
2 three times	RBIs	2 six times
1 four times	2B	2 twice
1 vs. Illinois - 2	HR	1 five times

#14 CAMYL ARMENDARIZ • FR. • INF

SEASON HIGH	CATEGORY	CAREER HIGH
none	Hits	none
1 five times	Runs	same
none	RBIs	none
none	2B	none
none	HR	none

#2 PAYTON HUSCROFT • JR. • INF

SEASON HIGH	CATEGORY	CAREER HIGH
none	Hits	1 seven times
none	Runs	1 twice
none	RBIs	3 vs. Bradley (2020)
none	2B	1 vs. UTEP (2020)
none	HR	1 vs. Bradley (2020)

#19 CAITLYNN NEAL • FR. • UTL

SEASON HIGH	CATEGORY	CAREER HIGH
3 vs. Purdue	Hits	same
2 vs. Purdue - 1	Runs	same
2 vs. Purdue - 1	RBIs	same
none	2B	none
none	HR	none

#5 MJ GREEN • FR. • INF

SEASON HIGH	CATEGORY	CAREER HIGH
2 vs. Purdue	Hits	same
none	Runs	none
none	RBIs	none
none	2B	none
none	HR	none

#20 ABBEY NEWLUN • FR. • INF

SEASON HIGH	CATEGORY	CAREER HIGH
none	Hits	none
none	Runs	none
none	RBIs	none
none	2B	none
none	HR	none

#6 BILLIE ANDREWS • FR. • INF

SEASON HIGH	CATEGORY	CAREER HIGH
4 at Rutgers	Hits	same
2 three times	Runs	same
3 twice	RBIs	same
1 three times	2B	same
2 vs. Illinois - 2	HR	same

#21 SARAH YOCOM • SR. • INF

SEASON HIGH	CATEGORY	CAREER HIGH
none	Hits	2 vs. Wisconsin (2018)
1 three times	Runs	1 16 times
1 vs. Penn St. - 2	RBIs	1 four times
none	2B	none
none	HR	none

#7 SYDNEY GRAY • FR. • INF

SEASON HIGH	CATEGORY	CAREER HIGH
3 vs. Purdue	Hits	same
2 twice	Runs	same
2 twice	RBIs	same
1 five times	2B	same
1 vs. Penn St.	HR	same

#23 COURTNEY WALLACE • JR. • UTL

SEASON HIGH	CATEGORY	CAREER HIGH
2 three times	Hits	2 eight times
1 five times	Runs	3 vs. Lamar (2019)
3 at Rutgers	RBIs	3 three times
1 vs. Penn St.	2B	2 vs. Texas Tech (2019)
1 at Rutgers	HR	1 four times

#8 ABBIE SQUIER • FR. • OF

SEASON HIGH	CATEGORY	CAREER HIGH
1 vs. Michigan St. - 1	Hits	same
2 vs. Michigan St. - 1	Runs	same
1 vs. Michigan St. - 2	RBIs	same
1 vs. Michigan St. - 1	2B	same
none	HR	none

#24 TRISTEN EDWARDS • SR. • OF

SEASON HIGH	CATEGORY	CAREER HIGH
3 vs. Michigan St. - 1	Hits	4 three times
2 five times	Runs	4 vs. Pittsburgh (2019)
2 twice	RBIs	8 vs. Pittsburgh (2019)
1 five times	2B	2 three times
1 four times	HR	2 seven times

#13 PEYTON GLATTER • JR. • OF

SEASON HIGH	CATEGORY	CAREER HIGH
2 at Rutgers - 1	Hits	3 twice
2 at Rutgers - 1	Runs	3 twice
4 at Rutgers - 1	RBIs	4 twice
none	2B	1 seven times
1 twice	HR	1 seven times

#27 BROOKE ANDREWS • SO. • INF

SEASON HIGH	CATEGORY	CAREER HIGH
2 twice	Hits	2 four times
3 at Rutgers	Runs	same
5 at Rutgers	RBIs	same
1 twice	2B	1 three times
2 at Rutgers	HR	same

INDIVIDUAL SEASON & CAREER HIGHS

#28 ALLY RILEY • SR. • C

SEASON HIGH	CATEGORY	CAREER HIGH
2 twice	Hits	3 twice
1 vs. Illinois - 2	Runs	1 five times
none	RBI	3 vs. UTEP (2020)
1 twice	2B	2 vs. South Dakota St. (2018)
none	HR	1 vs. UTEP (2020)

#32 CAM YBARRA • SR. • INF

SEASON HIGH	CATEGORY	CAREER HIGH
4 at Rutgers - 2	Hits	4 twice
2 vs. Penn St. - 1	Runs	2 twice
4 vs. Purdue - 1	RBI	same
2 vs. Purdue - 1	2B	3 vs. Lehigh (2020)*
1 twice	HR	1 seven times

**tied school record*

#33 ANNI RALEY • JR. • C

SEASON HIGH	CATEGORY	CAREER HIGH
2 twice	Hits	2 three times
2 vs. Penn St.	Runs	same
2 vs. Penn St.	RBI	same
1 vs. #23 Michigan	2B	1 twice
none	HR	none

#39 OLIVIA FERRELL • SR. • UTL

SEASON HIGH	CATEGORY	CAREER HIGH
2 at Rutgers	Hits	3 at #21 Missouri (2020)
1 twice	Runs	2 twice
none	RBI	3 twice
1 twice	2B	1 seven times
none	HR	1 three times

#44 KAYLIN KINNEY • FR. • UTL

SEASON HIGH	CATEGORY	CAREER HIGH
1 eight times	Hits	same
1 four times	Runs	same
2 vs. Penn St.	RBI	same
1 twice	2B	same
1 vs. Penn St.	HR	same

#77 SAMANTHA OWEN • SR. • INF

SEASON HIGH	CATEGORY	CAREER HIGH
none	Hits	4 at North Texas (2018 at Pacific)
none	Runs	2 10 times
none	RBI	4 six times
none	2B	2 at Purdue - 2 (2019)
none	HR	1 17 times

#19 CAITLYNN NEAL • FR. • UTL

SEASON HIGH	CATEGORY	CAREER HIGH
1.1 at Rutgers - 2	IP	same
none	Ks	none
N/A	H (low)*	N/A
3 at Rutgers - 2	H (high)	same
N/A	BB (low)*	N/A
none	BB (high)	none
N/A	R (low)*	N/A
1 at Rutgers - 2	R (high)	none
N/A	ER (low)*	N/A
1 at Rutgers - 2	ER (high)	none

**starts only*

#23 COURTNEY WALLACE • JR. • UTL

SEASON HIGH	CATEGORY	CAREER HIGH
7.0 three times	IP	7.0 four times
6 vs. Ohio St. - 2	Ks	8 at Georgia Tech (2020)
3 twice	H (low)*	1 vs. Maryland (2019)
7 twice	H (high)	10 three times
0 three times	BB (low)*	0 four times
4 at Rutgers - 1	BB (high)	7 at Georgia Tech (2020)
1 twice	R (low)*	0 vs. Maryland (2019)
5 vs. Illinois	R (high)	10 vs. #3 Oklahoma (2020)
1 twice	ER (low)*	0 vs. Maryland (2019)
4 twice	ER (high)	9 vs. #3 Oklahoma (2020)

**starts only*

#30 KARLEE SEEVERS • JR • RHP

SEASON HIGH	CATEGORY	CAREER HIGH
1.0 vs. Purdue - 2	IP	1.1 vs. Wichita St. - 1 (2020)
none	Ks	none
N/A	H (low)*	N/A
1 vs. Purdue - 2	H (high)	6 vs. Wichita St. (2020)
N/A	BB (low)*	N/A
none	BB (high)	6 vs. Wichita St. (2020)
N/A	R (low)*	N/A
none	R (high)	9 vs. Wichita St. (2020)
N/A	ER (low)*	N/A
none	ER (high)	7 vs. Wichita St. (2020)

**starts only*

#39 OLIVA FERRELL • SR • RHP

SEASON HIGH	CATEGORY	CAREER HIGH
7.2 vs. #23 Michigan - 1	IP	same
7 four times	Ks	9 vs. Lamar (2019)
1 vs. Penn St. - 2	H (low)*	1 twice
10 vs. Illinois - 2	H (high)	11 at #21 Missouri (2020)
0 at Rutgers	BB (low)*	0 seven times
6 at Rutgers - 2	BB (high)	7 at Minnesota (2018)
0 twice	R (low)*	0 five times
6 vs. Illinois - 2	R (high)	8 twice
0 three times	ER (low)*	0 six times
5 at Rutgers - 2	ER (high)	7 three times

**starts only*

#44 KAYLIN KINNEY • FR • RHP

SEASON HIGH	CATEGORY	CAREER HIGH
4.1 vs. Purdue - 2	IP	same
2 three times	Ks	same
2 vs. #23 Michigan	H (low)*	same
6 vs. Purdue - 2	H (high)	same
1 vs. #23 Michigan	BB (low)*	same
1 five times	BB (high)	same
1 vs. #23 Michigan	R (low)*	same
4 vs. Penn St.	R (high)	same
1 vs. #23 Michigan	ER (low)*	same
4 vs. Penn St.	ER (high)	same

**starts only*

HEAD COACH RHONDA REVELLE

COACHING STOPS

Nebraska (Head Coach)	1993-present
San Jose State (Assistant)	1989-92
Cal State-Hayward (Assistant)	1988
Nebraska Wesleyan (Head Coach)	1987
Nebraska Wesleyan (Assistant)	1986

NEBRASKA WESLEYAN (1987)

Year	Record	Conf.	Finish	Tourn.	Finish
1987	8-16	7-5	N/A	--	--

NEBRASKA (1993-PRESENT)

Year	Record	Conf.	Finish	Tourn.	Finish
1993	18-23	5-11	5th	--	--
1994	25-33	5-15	6th	--	--
1995	43-20	10-6	3rd	--	--
1996	42-23	10-8	4th	3-2	2nd
1997	29-24	10-6	4th	1-2	t-5th
1998	48-12	16-0	1st	4-0	1st
1999	35-21	10-8	4th	3-1	2nd
2000	52-21	15-2	2nd	4-1	1st
2001	51-15	16-2	1st	2-2	t-3rd
2002	50-14	11-5	3rd	3-1	2nd
2003	39-17	10-8	6th	2-2	t-3rd
2004	45-17	14-3	1st	4-0	1st
2005	36-23	9-9	7th	2-2	t-5th
2006	44-12	13-4	2nd	2-2	t-3rd
2007	37-20	10-8	5th	0-1	t-7th
2008	25-28	4-14	t-9th	3-1	2nd
2009	35-19	9-9	5th	0-1	t-7th
2010	30-29	7-11	t-6th	0-1	t-7th
2011	41-14	9-9	6th	--	--
2012	33-22	14-9	3rd	--	--
2013	45-16	16-6	2nd	1-1	t-3rd
2014	44-18	18-5	t-1st	0-1	t-5th
2015	35-23	17-6	3rd	2-1	2nd
2016	35-21	13-9	5th	1-1	t-5th
2017	24-29	13-11	5th	0-1	t-9th
2018	31-23	9-13	9th	0-1	t-9th
2019	21-31	9-14	9th	0-1	t-9th
2020	9-14	0-0	--	--	--
2021	14-10	14-10	--	--	--

NEBRASKA RECORD: 1,012-592

CAREER RECORD: 1,020-608

NCAA TOURNAMENT (NEBRASKA)

Year	Round	Record	Finish	Rank
1993	--	--	--	--
1994	--	--	--	--
1995	Regional	1-2	t-17th	18th
1996	Regional	1-2	t-17th	18th
1997	Regional	2-2	t-9th	25th
1998	WCWS	4-2	t-5th	5th
1999	Regional	4-2	t-9th	20th
2000	Regional	3-2	t-17th	14th
2001	Regional	2-2	t-17th	14th
2002	WCWS	5-2	t-5th	6th
2003	Regional	3-2	t-17th	13th
2004	Regional	3-2	t-9th	14th
2005	Regional	1-2	t-33rd	25th
2006	Regional	2-2	t-17th	15th
2007	Regional	0-2	t-49th	--
2009	Regional	1-2	t-33rd	--
2010	Regional	1-2	t-33rd	--
2011	Regional	2-2	t-17th	21st
2013	WCWS	5-3	t-7th	8th
2014	Super Reg.	4-3	t-9th	16th
2015	Regional	1-2	t-33rd	--
2016	Regional	2-2	t-17th	--
Totals	20 app.	47-42	--	--



RHONDA REVELLE

29TH SEASON AT NEBRASKA

1,012-592 RECORD

30TH CAREER SEASON

1,020-608 RECORD

WINNINGEST COACH IN THE HISTORY OF HUSKER ATHLETICS

COACH OF THE YEAR IN 3 MAJOR CONFERENCES

NFCA HALL OF FAME

COACHING NUMBERS

Conference Coach-of-the-Year Awards	4
Big Ten Coach of the Year	1
Big 12 Coach of the Year	2
Big Eight Coach of the Year	1
Conference Titles	7
Big Ten Conference Titles	1
Big 12 Conference Titles	6
NCAA Tournament Appearances	20
Women's College World Series	3
NFCA All-Americans	21
CoSIDA Academic All-Americans	14

NFCA HALL-OF-FAME COACHES

(ACTIVE DIVISION I COACHES ONLY)

Coach	Induction Year
Mike Candrea, Arizona	1996
Carol Hutchins, Michigan	2006
Rhonda Revelle, Nebraska	2010
Melinda Fischer, Illinois State	2010
Ralph Weekly, Tennessee	2011
Patty Gasso, Oklahoma	2012
Donna Papa, North Carolina	2012
Joan Joyce, Florida Atlantic	2013
Patrick Murphy, Alabama	2013
Jo Evans, Texas A&M	2015
Bob Brock, Sam Houston State	2016
Jacquie Joseph, Michigan State*	2016
Karen Weekly, Tennessee	2018

**inducted as member of Pioneer Category*

WINS AT CURRENT SCHOOL

(ACTIVE DIVISION I COACHES ONLY)

1. Mike Candrea, Arizona	1,657
2. Carol Hutchins, Michigan	1,624
3. Patty Gasso, Oklahoma	1,310
4. Donna Papa, North Carolina	1,288
5. Patrick Murphy, Alabama	1,128
6. Melinda Fischer, Illinois State	1,083
7. Bob Coolen, Hawaii	1,034
8. Rhonda Revelle, Nebraska	1,012

(LIST INCLUDES GAMES THROUGH APRIL 11)

MOST NCAA TOURNAMENTS

(ACTIVE DIVISION I COACHES ONLY)

1. Mike Candrea, Arizona	33
2. Carol Hutchins, Michigan	27
3. Patty Gasso, Oklahoma	22
4. Patrick Murphy, Alabama	21
5. Rhonda Revelle, Nebraska	20
Jo Evans, Texas A&M	20

ACADEMIC ALL-AMERICANS

(ALL-TIME AMONG DIVISION I COACHES)

1. Patrick Murphy, Alabama	29
2. Ralph & Karen Weekly, Tennessee	23
3. Tim Walton, Florida	19
4. Rhonda Revelle, Nebraska	14

2021 SEASON STATISTICS

Record: 14-10 Home: 6-2 Away: 2-2 Neutral: 6-6 Big Ten: 14-10

Player	avg	gp-gs	ab	r	h	2b	3b	hr	rbi	tb	slg%	bb	hp	so	gdp	ob%	sf	sh	sb-att	po	a	e	fld%
5 MJ Green	.600	5-1	5	0	3	0	0	0	0	3	.600	0	0	0	0	.600	0	0	0-1	0	0	0	.000
24 Tristen Edwards	.380	24-24	50	18	19	5	0	4	12	36	.720	25	13	10	1	.633	2	0	7-7	30	2	0	1.000
7 Sydney Gray	.366	15-14	41	8	15	5	0	1	8	23	.561	1	0	10	0	.381	0	1	1-1	17	31	3	.941
6 Billie Andrews	.342	24-24	79	20	27	3	2	4	19	46	.582	5	1	18	0	.379	2	1	9-11	36	52	8	.917
32 Cam Ybarra	.304	24-24	79	6	24	8	0	2	20	38	.481	6	0	5	0	.345	2	0	2-4	44	31	1	.987
1 Rylie Unzicker	.291	24-22	55	18	16	4	1	1	6	25	.455	14	4	14	0	.466	0	2	6-6	27	3	0	1.000
33 Anni Raley	.278	15-10	18	5	5	1	1	0	3	8	.444	1	1	7	0	.350	0	0	0-0	57	9	0	1.000
23 Courtney Wallace	.239	18-14	46	5	11	1	1	1	10	17	.370	5	0	9	1	.308	1	0	1-1	5	20	0	1.000
19 Caitlynn Neal	.231	18-9	26	7	6	0	0	0	5	6	.231	0	0	9	0	.231	0	0	3-3	10	2	1	.923
27 Brooke Andrews	.212	18-11	33	8	7	2	0	2	8	15	.455	2	1	5	0	.278	0	0	2-5	13	24	1	.974
11 Keana "KP" Pola	.211	8-5	19	0	4	1	0	0	0	5	.263	0	0	5	1	.211	0	0	0-0	26	0	1	.963
13 Peyton Glatter	.196	19-15	46	5	9	0	0	2	9	15	.326	5	0	10	0	.269	1	1	1-2	5	0	0	1.000
44 Kaylin Kinney	.195	21-14	41	4	8	2	0	1	3	13	.317	5	1	11	1	.298	0	0	0-0	1	4	0	1.000
28 Ally Riley	.188	15-15	32	1	6	2	0	0	0	8	.250	1	1	3	0	.235	0	1	0-0	52	8	0	1.000
39 Olivia Ferrell	.114	15-12	35	2	4	2	0	0	0	6	.171	1	0	11	0	.139	0	1	1-1	1	20	1	.955
8 Abbie Squier	.091	13-3	11	3	1	1	0	0	1	2	.182	1	1	3	0	.231	0	0	0-0	1	0	0	1.000
21 Sarah Yocom	.000	18-18	9	3	0	0	0	0	1	0	.000	1	0	3	0	.091	1	0	0-0	149	1	0	1.000
77 Samantha Owen	.000	4-1	5	0	0	0	0	0	0	0	.000	0	0	0	0	.000	0	0	0-0	15	0	0	1.000
14 Camyl Armendariz	.000	14-1	5	5	0	0	0	0	0	0	.000	0	0	2	0	.000	0	0	1-1	0	0	0	.000
20 Abbey Newlun	.000	1-0	1	0	0	0	0	0	0	0	.000	0	0	0	0	.000	0	0	0-0	0	0	0	.000
Totals	.259	24	636	118	165	37	5	18	105	266	.418	73	23	135	4	.352	9	7	34-43	489	207	16	.978
Opponents	.250	24	613	81	153	29	4	10	77	220	.359	59	10	106	4	.324	4	14	19-24	479	151	40	.940

LOB - Team (153), Opp (133). DPs turned - Team (10), Opp (11). IBB - Team (6), Edwards 6, Opp (1).

(All games Sorted by Earned run avg)

Player	era	w-l	app	gs	cg	sho	sv	ip	h	r	er	bb	so	2b	3b	hr	b/avg	wp	hp	bks	sfa	sha
30 Karlee Seevers	0.00	0-0	1	0	0	0/0	0	1.0	1	0	0	0	0	0	0	0	.333	0	0	0	0	0
39 Olivia Ferrell	2.62	8-6	16	13	4	1/0	0	77.1	68	36	29	30	71	17	1	5	.236	2	7	0	1	4
23 Courtney Wallace	2.65	6-4	16	9	3	0/0	1	68.2	63	35	26	24	26	11	2	4	.246	5	3	0	3	6
19 Caitlynn Neal	3.00	0-0	2	0	0	0/0	0	2.1	4	1	1	0	0	0	0	1	.444	0	0	0	0	1
44 Kaylin Kinney	4.61	0-0	9	2	0	0/0	2	13.2	17	9	9	5	9	1	1	0	.298	4	0	0	0	3
Totals	2.75	14-10	24	24	7	1/0	3	163.0	153	81	64	59	106	29	4	10	.250	11	10	0	4	14
Opponents	3.99	10-14	24	24	6	3/1	0	159.2	165	118	91	73	135	37	5	18	.259	8	23	0	9	7

PB - Team (5), Riley 4, Raley 1, Opp (3). SBA/ATT - Raley (10-13), Ferrell (7-12), Riley (9-11), Wallace (9-9), Kinney (3-3).