

N NEBRASKA

SOFTBALL

NEBRASKA AT RUTGERS

FRIDAY	SATURDAY	SUNDAY
at Rutgers 2 p.m. (CT) Video: BTN+ (\$)	at Rutgers (1) Noon (CT) Video: BTN+ (\$)	at Rutgers 10 a.m. (CT) Video: BTN+ (\$)
	at Rutgers (2) 2:30 p.m. (CT) Video: None	

The Nebraska softball team travels to Piscataway, N.J., this weekend for a four-game Big Ten Conference series with the Rutgers Scarlet Knights. The teams will open the series with a single game Friday at 2 p.m. (Central) before playing a doubleheader on Saturday at Noon (Central). The series finale is set for 10 a.m. (Central) on Sunday. All four games will be available to watch online for subscribers to Big Ten Network+.

Nebraska (9-7) has won six of its last eight games. The Huskers are in sixth place in the Big Ten standings, and Nebraska has won two straight conference series.

With its nine wins, Nebraska has already matched its highest Big Ten win total since 2018. The Huskers also won nine Big Ten games during a 22-game conference schedule in 2018 and a 23-game slate in 2019. Nebraska's 9-7 record could be even better, as three of the Huskers' four losses have come in extra innings. Overall, five of the Huskers' seven losses have been by two runs or less.

Nebraska nearly pulled off the first four-game conference series sweep in program history last weekend. The Huskers won the first three games against Penn State by a combined score of 27-4, including their first two run-rule victories of the season. Nebraska then rallied from a 4-0 deficit in the series finale and had the bases loaded with only one out in the bottom of the seventh inning before losing in eight innings, snapping a four-game winning streak.

QUICK HITTERS

- Nine of Nebraska's 16 games have been decided by two runs or less, and five of the Huskers' seven losses have come by either one or two runs.
- The Huskers have already played four extra-inning games this season. Nebraska has not played five extra-inning games in a season since 2016 (6).
- Nebraska has used a different batting lineup in all 16 games this season. In fact, the Huskers have started at least three different players at each spot in the lineup.
- The Huskers are batting .341 and averaging 6.0 runs per game over the last eight games.
- Nebraska has outscored its opponents 15-1 in the second inning this season.
- NU ranks second in the Big Ten with eight home runs this season, five of which have come in the past four games.
- The Huskers' .977 fielding percentage is currently on pace to break the school record of .973 set in 2006.
- **Tristen Edwards** enters this weekend with 46 career doubles, two shy of the Husker career record of 48 doubles.
- **Billie Andrews** is hitting .522 (12-for-23) this season with runners on base and .615 (8-for-13) with runners in scoring position.

HUSKERS TO WATCH



Olivia Ferrell is 4-0 with a 0.67 ERA in 21.0 innings over her last four starts. In two five-inning complete games last weekend, Ferrell gave up only four hits and did not allow an earned run.



The Big Ten Freshman of the Week, **Billie Andrews** went 10-for-15 with five RBIs in the four games with Penn State. She ranks 2nd in the Big Ten in triples (2) and 4th in RBIs (12).

HUSKER SCHEDULE (9-7 RECORD)

<i>Sleepy Hollow Sports Complex (Leesburg, Fla.)</i>		
Feb. 26	vs. Indiana (Game 1)	L, 1-3
Feb. 26	vs. Indiana (Game 2)	W, 4-2
Feb. 27	vs. Michigan St. (Game 1)	W, 7-1
Feb. 27	vs. Michigan St. (Game 2)	L, 3-6 (8)
Feb. 28	vs. Ohio St. (Game 1)	L, 2-4
Feb. 28	vs. Ohio St. (Game 2)	W, 2-1
<i>Sleepy Hollow Sports Complex (Leesburg, Fla.)</i>		
March 11	vs. #23 Michigan (Game 1)	L, 1-2 (8)
March 11	vs. #23 Michigan (Game 2)	L, 0-2
March 12	vs. #23 Michigan	W, 5-4 (8)
March 13	vs. Purdue (Game 1)	W, 8-1
March 13	vs. Purdue (Game 2)	L, 0-7
March 14	vs. Purdue	W, 3-1
March 26	Penn St.	W, 9-0 (5)
March 27	Penn St. (Game 1)	W, 8-2
March 27	Penn St. (Game 2)	W, 10-2 (5)
March 28	Penn St.	L, 5-7 (8)
April 2	at Rutgers	2 p.m.
April 3	at Rutgers (Game 1)	Noon
April 3	at Rutgers (Game 2)	2:30 p.m.
April 4	at Rutgers	10 a.m.
April 9	Illinois	5:30 p.m.
April 10	Illinois (Game 1)	Noon
April 10	Illinois (Game 2)	3 p.m.
April 11	Illinois	11 a.m.
April 16	at Minnesota	5 p.m.
April 17	at Minnesota (Game 1)	Noon
April 17	at Minnesota (Game 2)	3 p.m.
April 18	at Minnesota	Noon
April 23	Wisconsin	5:30 p.m.
April 24	Wisconsin (Game 1)	Noon
April 24	Wisconsin (Game 2)	3 p.m.
April 25	Wisconsin (BTN)	1 p.m.
April 30	Maryland	5:30 p.m.
May 1	Maryland (Game 1)	Noon
May 1	Maryland (Game 2)	3 p.m.
May 2	Maryland	Noon
May 7	at Iowa	3 p.m.
May 8	at Iowa (Game 1)	1 p.m.
May 8	at Iowa (Game 2)	3:30 p.m.
May 9	at Iowa	Noon
May 14	at Northwestern	TBA
May 15	at Northwestern (Game 1)	TBA
May 15	at Northwestern (Game 2)	TBA
May 16	at Northwestern (BTN)	1 p.m.
May 21-23	NCAA Regionals	
May 27-30	NCAA Super Regionals	
June 3-9	NCAA Women's College World Series	



NEBRASKA SOFTBALL FACTS

UNIVERSITY INFORMATION

Location	Lincoln, Neb.
Population	280,369
Founded	1869
Enrollment	25,057
Nickname	Cornhuskers, Huskers
Colors	Scarlet & Cream
Conference	Big Ten
Chancellor	Ronnie Green
Athletic Director	Bill Moos

ATHLETIC COMMUNICATIONS

Softball Contact	Matt Smith
E-Mail	msmith@huskers.com
Phone	(402) 770-5926

2021 COACHING STAFF

Head Coach	Rhonda Revelle
Nebraska Record	1,007-589 (29th year)
Career Record	1,015-605 (30th year)
Assoc. Head Coach	Lori Sippel (32nd year)
Assistant Coach	Diane Miller (13th year)
Dir. of Softball Oper.	Erin Bohling (2nd year)

2020 SEASON REVIEW

Overall Record	9-14
Big Ten Record (Finish)	N/A

2021 TEAM OUTLOOK

Letterwinners Returning/Lost	14/5
Total Starters Returning/Lost	10/1
Position Starters Returning/Lost	8/0
Pitchers Returning/Lost	3/1
Returning All-Conference Players	2*
Returning All-Region Players	2*
Returning All-Americans	0
Newcomers	8

*includes honors at a player's previous school

STADIUM INFORMATION

Stadium	Bowlin Stadium (2,500)
First Season	2002
Record at Bowlin Stadium	233-100 (.700)

PROGRAM HISTORY

First Year of Softball	1976
All-Time Record	1,488-884 (.627)
All-Time Conference Record	397-288 (.580)
Big Ten Record	118-79 (.599)
Overall Conference Titles	19
Big Eight Titles	12
Big 12 Titles	6
Big Ten Titles	1
NCAA Tournament Appearances	24
WCWS Appearances	7
NCAA Tournament Record	62-52 (.544)
NCAA Regional Record	52-35 (.598)
NCAA Super Regional Record	2-3 (.400)
WCWS Record	8-14 (.363)
NFCA All-Americans	27
CoSIDA Academic All-Americans	30

PRONUNCIATION GUIDE

Camyl Armendariz	kuh-MEAL ARM-en-DARE-iz
Abbie Squier	SKWHY-er
Rhonda Revelle	ruh-VELL
Cam Ybarra	ee-BAR-uh
Sarah Yocom	YO-come

NEBRASKA 2021 SEASON NOTEBOOK

- Nebraska's roster features 21 players, tied for the largest roster in school history.
- The roster features 10 Nebraska natives, the most in-state players since 1980.
- The roster features the most freshmen (8) and most seniors (7) in the 29-year tenure of **Rhonda Revelle** as Nebraska's head coach.
- **Rhonda Revelle** is in her 29th season leading her alma mater in 2021. Revelle is the second-longest serving female head coach in the history of Nebraska Athletics.
- Revelle owns 1,007 wins at Nebraska. She is the all-time wins leader (male or female) in the history of Nebraska Athletics.
- Associate Head Coach **Lori Sippel** is in her 32nd year at Nebraska. Sippel is the longest-tenured female assistant coach in the history of Nebraska Athletics.
- Revelle (1981-83) and Sippel (1985-88) also played for NU. Including their playing and coaching careers, Revelle and Sippel have been a part of 1,311 of Nebraska's 1,488 all-time victories (88 percent).
- Assistant coach **Diane Miller** rounds out the Husker coaching staff. In her 13th season, Miller has helped Nebraska's offense set more than 40 school records.
- NU will play a conference-only schedule for the first time in program history in 2021. The Huskers are scheduled to play 44 Big Ten Conference games, which would nearly double the previous high for most conference games played in one season (24 Big Ten games in 2013).

- Fifth-year seniors **Tristen Edwards** and **Samantha Owen** both took advantage of the NCAA waiver for an extra year of eligibility following the cancellation of the 2020 season due to the COVID-19 pandemic.
- Edwards and Owen are also the only two Huskers who have been an all-conference or all-region performer in their careers. Edwards is a two-time first-team All-Big Ten selection and was a 2019 third-team all-region honoree. Owen was a first-team All-WAC pick and third-team all-region selection at Pacific in 2018.
- **Tristen Edwards** is already one of only five Huskers to be a two-time first-team All-Big Ten selection. In 2021, Edwards will look to become the first Husker to earn three first-team All-Big Ten awards, in addition to becoming the eighth three-time first-team all-conference selection in program history.

2-TIME 1ST-TEAM ALL-BIG TEN PICKS

- **Tristen Edwards, SS (2018-19)**
- MJ Knighten, 3B (2015-16)
- Kiki Stokes, OF (2015-16)
- Tatum Edwards, RHP/UTL (2013-14)
- Taylor Edwards, C (2013-14)

3-TIME 1ST-TEAM ALL-CONFERENCE PICKS

- Jessica Yoachim, 3B (2004-06)*
- Peaches James, RHP/UTL (2001-04)*
- Jenny Voss, RHP (1997-98, 2000)*
- Jennifer Lizama, INF (1997-2000)*
- Tobin Echo-Hawk, INF (1993-96)^*
- Jane Kremer, SS (1986-88)^
- Lori Sippel, RHP (1985-88)*

*Big 12 Conference (1996-2011)

^Big Eight Conference (1977-95)

2021 NEBRASKA NUMERICAL ROSTER

NO.	NAME	B/T	POS.	HT.	YR.	HOMETOWN
1	Rylie Unzicker	L/R	OF	5-5	Sr.	Omaha, Neb.
2	Payton Huscroft	L/L	INF	5-9	Jr.	Omaha, Neb.
5	MJ Green	R/R	INF	5-2	Fr.	Henderson, Texas
6	Billie Andrews	R/R	INF	5-8	Fr.	Gretna, Neb.
7	Sydney Gray	R/R	INF	5-5	Fr.	Tucson, Ariz.
8	Abbie Squier	R/R	OF	5-7	Fr.	Lincoln, Neb.
13	Peyton Glatter	L/R	OF	5-5	Jr.	Omaha, Neb.
14	Camyl Armendariz	R/R	INF	5-7	Fr.	La Verne, Calif.
19	Caitlynn Neal	L/R	RHP/UTL	5-3	Fr.	Dewey, Ariz.
20	Abbey Newlun	R/R	INF	5-7	Fr.	The Woodlands, Texas
21	Sarah Yocom	R/R	INF	5-9	Sr.	Cozad, Neb.
23	Courtney Wallace	R/R	RHP/UTL	5-5	Jr.	Omaha, Neb.
24	Tristen Edwards	R/R	OF	5-6	Sr.	Murrieta, Calif.
27	Brooke Andrews	R/R	INF	5-8	So.	Gretna, Neb.
28	Ally Riley	R/R	C	5-9	Sr.	Alva, Okla.
30	Karlee Seevers	R/R	RHP	5-6	Jr.	York, Neb.
32	Cam Ybarra	L/R	INF	5-6	Sr.	Mission Viejo, Calif.
33	Anni Raley	R/R	C	5-6	Jr.	Clovis, Calif.
39	Olivia Ferrell	R/R	RHP/UTL	5-9	Sr.	Omaha, Neb.
44	Kaylin Kinney	R/R	RHP/UTL	5-10	Fr.	Cedar Rapids, Iowa
77	Samantha Owen	R/R	INF	5-5	Sr.	Manteca, Calif.

BILLIE ANDREWS NAMED BIG TEN FRESHMAN OF THE WEEK

Shortstop **Billie Andrews** was named the Big Ten Freshman of the Week on Tuesday following a big weekend in the Huskers' series victory over Penn State.

- Andrews produced multiple hits in each of the four games against the Nittany Lions. She finished the series 10-for-15 (.667) with a 1.133 slugging percentage. Andrews scored six runs, drove in five and produced the first two triples and first home run of her career.
- In the series opener, Andrews went 2-for-3 with a triple, producing her first career multi-hit game. In a doubleheader the next day, Andrews was 5-for-7 with another triple, a homer, four runs scored and four RBIs. She set career highs with three hits, two extra-base hits, three RBIs and two runs in the first game. Andrews was 3-for-5 with an RBI and a run scored in the series finale, including a game-tying RBI single in the bottom of the sixth inning.
- Andrews is batting .302 this season, and she leads the Huskers with 16 hits, two triples, 12 runs and 12 RBIs. Among all Big Ten hitters, Andrews ranks second in triples, fourth in RBIs and eighth in runs scored.

HOME SWEET HOME FOR HUSKERS

The return to Bowlin Stadium last weekend for the first home games in nearly two years sparked big performances for several Huskers. As a team, Nebraska hit .370 in its four-game series with Penn State and averaged 8.0 runs per game. Defensively, the Huskers posted a .982 fielding percentage and 2.52 ERA, while limiting Penn State to a .207 batting average.

- As noted above, **Billie Andrews** was impressive last weekend, going 10-for-15 with multiple hits in all four games en route to being named the Big Ten Freshman of the Week.
- Freshman **Sydney Gray** also put up big numbers before suffering an injury late in the final game last weekend. Gray went 7-for-12 (.583) in the Penn State series with five RBIs and six runs scored. She had at least one extra-base hit in all four games, finishing with three doubles and her first career home run.
- Junior **Anni Raley** made the most of her two starts at catcher last weekend, producing a pair of three-hit games. Raley went 4-for-5 on the weekend with a triple, two RBIs and three runs scored. Raley was 2-for-2 in the opener with Penn State, setting career highs with two hits, two runs and two RBIs.
- Junior **Peyton Glatter** made the most of her at bats against Penn State. Glatter collected her first hits of the season, going 3-for-6 with a three-run homer.
- Senior **Cam Ybarra** hit .462 (6-for-13) in the four games last weekend with two doubles and her first home run as a Husker. She scored her first four runs of the year and added four RBIs.
- Freshman **Kaylin Kinney** also hit her first career home run last weekend, while senior **Rylie Unzicker** posted a .400 average (2-for-5) and a .571 on-base percentage, reaching base in four of her seven plate appearances against Penn State.
- Senior right-hander **Olivia Ferrell** went 2-1 with a 1.00 ERA over three appearances and 14.0 innings against the Nittany Lions. Ferrell was 2-0 and did not allow an earned run in her two starts last weekend, both of which were complete games. She threw a three-hit shutout in game one and tossed a one-hitter in game three.

DIGGING IN ON DEFENSE

Nebraska's defense has been impressive this season, as the Huskers boast a .977 fielding percentage that is on pace to be the top mark in program history.

- Nebraska has played more than one-third of its scheduled games, and its .977 fielding percentage would currently rank as the top season fielding percentage in school history.
- The Huskers rank 21st nationally in fielding percentage and 11th in double plays per game (0.56).

HUSKER TEAMS FIELDING .970 OR HIGHER

Season	FLD%
2021	.977
2006	.973
2018	.973
2001	.972
2011	.970

PROJECTED LINEUP

1	#24 TRISTEN EDWARDS • RF .349 • 10 R • 15 H • 4 2B • 3 HR • 9 RBI 192 Career Starts • 54 Starts in RF
2	#6 BILLIE ANDREWS • SS .302 • 12 R • 6 H • 1 2B • 1 HR • 12 RBI 16 Career Starts • 16 Starts at SS
3	#32 CAM YBARRA • 2B .240 • 4 R • 12 H • 6 2B • 1 HR • 9 RBI 123 Career Starts • 100 Starts at 2B
4	#7 SYDNEY GRAY • 3B .366 • 8 R • 15 H • 5 2B • 1 HR • 8 RBI 14 Career Starts • 14 Starts in 3B
5	#44 KAYLIN KINNEY • DP .167 • 1 R • 5 H • 1 2B • 1 HR • 3 RBI 11 Career Starts • 9 Starts at DP
6	#1 RYLIE UNZICKER • CF .258 • 8 R • 8 H • 3 2B • 0 HR • 4 RBI 88 Career Starts • 55 Starts in CF
7	#33 ANNI RALEY • C .385 • 3 R • 5 H • 1 2B • 0 HR • 3 RBI 15 Career Starts • 14 Starts at C
8	#21 SARAH YOCOM • 1B .000 • 1 R • 0 H • 0 2B • 0 HR • 1 RBI 45 Career Starts • 10 Starts at 1B
9	#19 CAITLYNN NEAL • LF .250 • 6 R • 6 H • 0 2B • 0 HR • 5 RBI 9 Career Starts • 9 Starts in LF
	#39 OLIVIA FERRELL • P 5-5 • 1.96 ERA • 50.0 IP • 51 SO 54 Career Starts • 47 Starts at P

PROJECTED SUBSTITUTES

#2 PAYTON HUSCROFT • INF .000 • 0 R • 0 H • 0 2B • 0 HR • 0 RBI
#5 MJ GREEN • INF .600 • 0 R • 3 H • 0 2B • 0 HR • 0 RBI
#8 ABBIE SQUIER • OF .125 • 3 R • 1 H • 1 2B • 0 HR • 1 RBI
#13 PEYTON GLATTER • OF .150 • 1 R • 3 H • 0 2B • 1 HR • 3 RBI
#14 CAMYL ARMENDARIZ • INF .000 • 4 R • 0 H • 0 2B • 0 HR • 0 RBI
#20 ABBEY NEWLUN • INF .000 • 0 R • 0 H • 0 2B • 0 HR • 0 RBI
#23 COURTNEY WALLACE • RHP/UTL .185 • 2 R • 5 H • 2 RBI 4-2 • 2.63 ERA
#27 BROOKE ANDREWS • INF .125 • 4 R • 1 H • 0 2B • 0 HR • 0 RBI
#28 ALLY RILEY • C .211 • 0 R • 4 H • 1 2B • 0 HR • 0 RBI
#30 KARLEE SEEVERS • RHP 0-0 • 0.00 ERA • 1.0 IP • 0 SO • 0 BB
#77 SAMANTHA OWEN • INF .000 • 0 R • 0 H • 0 2B • 0 HR • 0 RBI

BIG TEN STANDINGS

Rk.	Team	Big Ten Record
1.	Northwestern	15-1
2.	Michigan	13-3
3.	Minnesota	12-4
4.	Illinois	11-5
5.	Iowa	10-6
6.	Nebraska	9-7
	Ohio State	9-7
8.	Indiana	7-9
	Maryland	7-9
10.	Michigan State	6-10
11.	Purdue	5-11
12.	Wisconsin	4-12
13.	Rutgers	3-13
14.	Penn State	1-15

NEBRASKA CONFERENCE TITLES

BIG EIGHT CONFERENCE (1976-1995)

Year	Record	Finish	Tournament
1977	1-4	t-4th	N/A
1978	4-3	7th	t-6th
1979	3-8	6th	t-6th
1980	8-9	4th	N/A
1981	5-6	3rd	3rd
1982	9-3	1st	1st
1983	3-7	7th	N/A
1984	6-2	1st	1st
1985	11-1	1st	1st
1986	9-3	1st	1st
1987	8-2	1st	1st
1988	7-3	1st	1st
1989	6-4	3rd	t-5th
1990	3-5	5th	2nd
1991	3-5	5th	t-4th
1992	2-6	5th	t-4th
1993	5-11	5th	N/A
1994	5-15	6th	N/A
1995	10-6	3rd	N/A
TOTAL	108-103		12 total titles

BIG 12 CONFERENCE (1996-2011)

Year	Record	Finish	Tournament
1996	10-8	4th	2nd
1997	10-6	4th	5th
1998	16-0	1st	1st
1999	10-8	4th	2nd
2000	15-2	2nd	1st
2001	16-2	1st	5th
2002	11-5	2nd	2nd
2003	10-8	6th	t-4th
2004	14-3	1st	1st
2005	9-9	7th	t-5th
2006	13-4	2nd	t-3rd
2007	10-8	5th	t-5th
2008	4-14	t-9th	2nd
2009	9-9	5th	t-5th
2010	7-11	t-6th	t-5th
2011	9-9	6th	N/A
TOTAL	173-106		6 total titles

BIG TEN CONFERENCE (2012-PRES.)

Year	Record	Finish	Tournament
2012	14-9	3rd	N/A
2013	16-6	2nd	t-3rd
2014	18-5	t-1st	t-5th
2015	17-6	3rd	2nd
2016	13-9	5th	t-5th
2017	13-10	5th	t-9th
2018	9-13	9th	t-9th
2019	9-14	t-8th	t-9th
2020	No Big Ten Season Due to Pandemic		
2021	9-7	-	N/A
TOTAL	118-79		1 total title

BIG RED BATS COMING ALIVE

Nebraska's offense got off to a slow start this season, which should not have come as much of a surprise considering it had been almost a year since hitters had faced an opposing pitcher and considering the Huskers have started multiple freshmen in the lineup every game. But the bats have begun to come alive, helping NU to a 6-2 record over its last eight games.

- Nebraska is batting .341 and averaging 6.0 runs per game over its last eight contests after hitting just .145 and averaging only 2.5 runs per game over its first eight games.
- The Huskers are averaging 9.3 hits per game over the last eight games, including five contests with double-digit hits. In the first eight games this season, Nebraska had only one game with double-digit hits and averaged just 3.8 hits per game.
- Nebraska has hit five home runs in the past four games, helping the Huskers rank second in the Big Ten with eight home runs this season. NU also ranks fourth in the league in runs (68) and RBIs (60) and fifth in slugging percentage (.380).

HITTING COMPARISON

Games	AVG	AB	R	H	2B	3B	HR	RBI	SLG%	OB%
First 8 Games	.145	207	20	30	6	0	3	16	.217	.233
Last 8 Games	.341	217	48	74	19	4	5	44	.535	.407
DIFF.	+.196	+10	+28	+44	+7	+4	+8	+28	+.318	+.174

HUSKER PITCHING STAFF SHOWING IMPROVEMENT

Nebraska's pitching staff has been much improved this season. Through 16 games, the Huskers boast a 2.48 ERA, have allowed only three home runs and have a strikeout-to-walk ratio of better than 2-to-1.

- The Huskers have allowed two or fewer runs 10 times in 16 games this season. In the previous two seasons, Nebraska allowed two or fewer runs only 19 times in 75 games (13 times in 52 games in 2019; 6 times in 23 games in 2020).
- Nebraska has allowed fewer than two runs five times in 16 games this season. In the previous two seasons, the Huskers allowed fewer than two runs only seven times in 75 games (6 times in 52 games in 2019; 1 time in 23 games in 2020).
- NU is limiting opposing hitters to a .239 batting average. That is on pace to be the lowest opponent batting average since 2014, when Nebraska made an NCAA Super Regional.
- Nebraska is averaging just 2.0 walks per game this season after averaging at least 3.2 walks per game each of the previous six seasons.
- The Huskers have allowed only three home runs in 16 games and 406 opponent at bats. Opponents are averaging one home run every 135 at bats this season. In the shortened 23-game season last year, opponents homered an average of every 23 at bats.
- Senior **Olivia Ferrell** is leading the way with a 5-5 record and a 1.96 ERA. Ferrell has pitched in 10 of Nebraska's 16 games with eight starts. She ranks fifth in the Big Ten in wins, seventh in strikeouts (51), eighth in innings pitched (50.0) and ninth in opponent batting average (.208). Ferrell has now allowed one earned run or fewer in each of her last five starts.

THE LAST TIME A HUSKER

Had 6+ At Bats	5 players vs. Wisconsin (5/8/16)
Had 5+ Hits	Lizzy Rock (5) vs. Illinois (2/24/06)
Scored 4+ Runs	Tristen Edwards (4) vs. Pittsburgh (2/17/19)
Had 3+ Doubles	Cam Ybarra (4) vs. Lehigh (3/7/20)
Had 2+ Homers	Tristen Edwards (2) vs. Oregon St. (3/6/20)
Had 3+ Homers	Kaylan Jablonski (3) at Cal State Fullerton (3/17/18)
Homered in 1st Career AB	Hailey Decker vs. UIC (2/8/13)
Stole 3+ Bases	Nikki Haget (3) vs. La Salle (3/12/11)
Drew 4+ Walks	MJ Knighten (4) at Northwestern (4/17/16)
Had 2+ HBP	Samantha Owen (3) vs. Pittsburgh (2/17/19)
Had 5+ RBIs	Tristen Edwards (5) vs. Cal (2/22/20)
Threw a No-Hitter	Kaylan Jablonski vs. Purdue (4/29/16)
Threw a Perfect Game	Ashley DeBuhr vs. Iowa St. (4/13/05)
Had 10+ Strikeouts	Cassie McClure (10) vs. South Dakota St. (3/29/16)
Had 15+ Strikeouts	Ashley Hagemann (17) at Omaha (4/19/12)
Had a 10-Game Hit Streak	Tristen Edwards (12) in 2019-20
Had a 15-Game Hit Streak	MJ Knighten (21) in 2015
Had a 20-Game Hit Streak	MJ Knighten (21) in 2015
Had a 25-Game Hit Streak	Taylor Edwards (25) in 2013-14

- Junior **Courtney Wallace** has also appeared in 10 games this season, while starting six contests. Wallace is 4-2 with a 2.63 ERA and one save in 45.1 innings. Wallace ranks fourth in the Big Ten in saves and 10th in wins.
- Freshman **Kaylin Kinney** has appeared in eight games with two starts. She has excelled in relief, posting a 2.62 ERA with two saves in six relief outings. Kinney is tied for the Big Ten lead and ranks 21st nationally in saves.
- Junior **Karlee Seevers** and freshmen **Caitlynn Neal** have each thrown 1.0 scoreless inning this season.

PITCHING COMPARISON (2020 TO 2021)

Season	ERA	SV	HITS/GM	RUNS/GM	BB/GM	HR/GM	AVG.
2020	5.54	1	8.5	6.0	3.9	1.2	.313
2021	2.48	3	6.0	2.8	2.0	0.2	.239
DIFF.	-3.06	+2	-2.5	-3.2	-1.9	-1.0	-.074

HOME RUNS ALLOWED (2018-2021)

Season	HR Allowed	Opponent ABs	AB Per HR Allowed
2021	3	406	135
2020	27	626	23
2019	44	1,354	31
2018	39	1,418	36

STRIKEOUT-TO-WALK COMPARISON (2015-2021)

Season	SO	BB	IP	SO/GM	BB/GM	RATIO
2021	77	32	110.0	4.9	2.0	+2.9
2020	113	82	146.2	5.4	3.9	+1.5
2019	250	185	328.2	5.3	3.9	+1.4
2018	217	165	352.2	4.3	3.3	+1.0
2017	202	188	346.1	4.1	3.8	+0.3
2016	237	170	377.2	4.4	3.2	+1.2
2015	196	194	363.2	3.8	3.7	+0.1

CLOSE CALLS

Nebraska has been accustomed to playing close games so far this spring, as nine of the Huskers' 16 contests have been decided by either one or two runs.

- Nebraska is 4-5 in games decided by two runs or less this season, including 2-1 in one-run games and 2-4 in two-run games. In 23 games last year, the Huskers played only six games decided by two or fewer runs (3-3 record in those games).
- Ten of Nebraska's 16 games have been either a tie, one-run or two-run game entering the sixth inning. The Huskers are 5-0 when leading after five innings, 0-6 when trailing after five innings and 2-1 when tied after five innings.
- NU has played four extra-inning games this season, posting a 1-3 record in those games.
- Five of Nebraska's seven losses have been by either one or two runs. Nebraska had the tying runner in scoring position in its final at bat in three of those five losses.

THE LAST TIME NEBRASKA...

Beat a No. 1 Team	vs. No. 1 Michigan (1-0 on 4/8/16)
Beat a Top-5 Team	vs. No. 1 Michigan (1-0 on 4/8/16)
Beat a Top-10 Team	vs. No. 6 Texas A&M (6-3 on 2/22/18)
Beat a Ranked Team	vs. No. 23 Michigan (5-4 [8] on 3/12/21)
Won When Trailing After 6 Innings	vs. Tulsa (3/10/18)
Lost When Leading After 6 Innings	vs. Minnesota (3/25/17)
Scored 10+ Runs	vs. Penn St. [10] (3/27/21)
Scored 15+ Runs	vs. UTEP [16] (2/8/20)
Scored 20+ Runs	at Maryland [26] (4/3/16)
Allowed 10+ Runs	vs. No. 2 Washington [10] (2/22/20)
Allowed 15+ Runs	vs. Wichita St. [17] (2/29/20)
Allowed 20+ Runs	never
Recorded 15+ Hits	at Rutgers - 2 [19] (4/8/17)
Recorded 20+ Hits	at Maryland [21] (4/3/16)
Hit 6+ Doubles	vs. Lamar [7] (2/8/19)
Hit 4+ Home Runs	vs. Illinois - 1 [4] (3/31/19)
Stole 6+ Bases	at Purdue [60] (4/13/19)
Drew 10+ Walks	at Creighton [11] (4/25/17)
Was No-Hit	vs. No. 23 Michigan (Game 1: 3/11/21)

BOWLIN STADIUM



The 2020 season marks the 20th season Nebraska has called Bowlin Stadium home. The stadium's inaugural season was in 2002.

One of the top facilities in the country, Bowlin Stadium features seating for 2,500 fans, an underground system that heats the field and a large video board. Just past the right field fence is the Alex Gordon Training Complex, a spacious indoor facility that is large enough for Nebraska to take live batting practice inside the complex. The clubhouse features a locker room, players' lounge, training room and coaches' offices.

Nebraska has won nearly 70 percent of its games at Bowlin Stadium. The Huskers have hosted four NCAA Regionals at Bowlin Stadium and ranked in the top 25 nationally in attendance 14 times, including four seasons ranked in the top 10.

YEARLY RECORDS

Year	Record	Pct.
2002	9-5	.643
2003	14-7	.667
2004	14-6	.700
2005	9-7	.563
2006	20-1	.952
2007	18-5	.783
2008	13-9	.591
2009	13-5	.722
2010	12-8	.600
2011	10-4	.714
2012	15-1	.938
2013	18-4	.818
2014	13-3	.813
2015	11-6	.647
2016	11-5	.688
2017	13-6	.684
2018	10-7	.588
2019	7-10	.412
2020	0-0	.000
2021	3-1	.750
TOTAL	233-100	.700

LARGEST CROWDS

1. 2,302	Michigan	April 9, 2016
2. 2,204	Ohio State	April 19, 2014
3. 1,960	Texas	April 9, 2011
4. 1,844	Iowa	May 17, 2003
5. 1,840	Michigan	April 27, 2013
6. 1,752	Wisconsin	May 12, 2012
7. 1,692	Indiana	May 3, 2014
8. 1,673	Illinois	April 22, 2017
9. 1,601	Wisconsin	April 28, 2018
10. 1,585	Lehigh	May 20, 2004

NEBRASKA BY THE NUMBERS

62 NCAA TOURNAMENT WINS
Nebraska has won 62 games in its 24 NCAA Tournament appearances (62-52). The 62 postseason wins rank 19th in NCAA history.

30 ACADEMIC ALL-AMERICANS
A total of 22 Huskers have combined to earn 30 CoSIDA Academic All-America honors, the most of any softball program in NCAA history.

27 ALL-AMERICANS
Nebraska has produced 27 All-Americans, including eight first-team selections, seven two-time picks and two three-time All-Americans.

24 NCAA TOURNAMENTS
The Huskers have made 24 appearances in the NCAA Tournament, including 13 straight from 1995 to 2007. Nebraska's 24 postseason appearances rank 13th in NCAA history.

21 REVELLE ALL-AMERICANS
Rhonda Revelle has guided 13 players to a total of 21 All-America honor in her first 28 seasons as Nebraska's head coach.

19 CONFERENCE TITLES
Nebraska has won a total of 19 conference championships. The Huskers won 12 Big Eight titles, six Big 12 crowns and captured their first Big Ten title in 2014.

15 TOP-25 RANKINGS
Nebraska has been ranked in the final NFCA poll in 15 of the 26 years the poll has existed. The Huskers were one of only six teams nationally to be ranked in the final poll in each of the first 12 years it existed (1995 to 2006).

14 REVELLE ACADEMIC ALL-AMERICANS
Rhonda Revelle has produced 14 academic All-Americans at Nebraska. That total ranks fourth among all softball head coaches in NCAA history.

7 WCWS APPEARANCES
Nebraska has advanced to the Women's College World Series seven times to rank 14th in NCAA history.

4 SOFTBALL OLYMPIANS
Four former Huskers have competed in the Olympics, with a pair of former players competing in each of the last two Olympics.

EDWARDS NEARS NEBRASKA ALL-TIME DOUBLES RECORD

Tristen Edwards had two doubles in the four-game series with Penn State last weekend. The senior outfielder now owns 46 career doubles, two shy of the school record.

- Edwards ranks fourth in school history with her 46 career doubles. The record of 48 doubles is shared by three-time All-American Ali Viola (1995-98), two-time All-American Tobin Echo-Hawk (1993-96) and All-American Kim Ogee (2000-03).

- Edwards also enters this weekend with 92 career extra-base hits. Three-time All-American Jennifer Lizama ranks third in Husker history with 93 career extra-base hits and Tristen's older sister Taylor, a two-time All-American, ranks second with 95 career extra-base hits. Three-time All-American Ali Viola owns the school record with 105 career extra-base hits.

EDWARDS NAMED PLAYER OF THE WEEK FOR RECORD SIXTH TIME

Senior **Tristen Edwards** was named the first Big Ten Player of the Week of the 2021 season on March 2. She was honored after hitting .444 in six games with one double, three homers and six RBIs. Her three homers were more than any other Big Ten team hit in the first week.

- Edwards was named the Big Ten Player of the Week for the sixth time in her career. That set a Nebraska record for most career conference player-of-the-week honors and tied the Big Ten record for most career player-of-the-week awards.

- Edwards became only the third player in Big Ten history to be a six-time player of the week. The other two are two-time Northwestern All-American Adrienne Monka and four-time Michigan All-American Sierra Romero.

- Edwards became the first Husker to win six conference player-of-the week awards. Overall, Edwards is one shy of the most conference weekly awards in school history. All-American Peaches James won seven total conference weekly awards in her decorated career.

MOST PLAYER-OF-THE-WEEK AWARDS IN BIG TEN HISTORY

Player	School	Years	Awards
Tristen Edwards	Nebraska	2017-present	6
Sierra Romero	Michigan	2013-16	6
Adrienne Monka	Northwestern	2009-12	6

Note: *Tristen Edwards & Sierra Romero attended the same high school (Vista Murrieta)*

MOST CONFERENCE PLAYER-OF-THE-WEEK AWARDS IN NEBRASKA HISTORY

Player	Years	Awards
Tristen Edwards	2017-present	6
Ali Viola	1995-98	5
Tobin Echo-Hawk	1993-96	4

MOST CONFERENCE WEEKLY AWARDS IN NEBRASKA HISTORY

Player	Years	Player Awards	Pitcher Awards	Total
Peaches James	2001-04	1	6	7
Tristen Edwards	2017-present	6	0	6
Lori Sippel	1985-88	0	6	6

NEBRASKA'S 2021 RECORD WHEN...

Overall	9-7	Out-Hitting Opponent	6-0
Non-Conference	0-0	Out-Hit by Opponent	1-7
Big Ten Conference	9-7	Scoring First	8-1
Home	3-1	Opponent Scores First	1-6
Neutral	6-6	Scoring in the First Inning	3-0
Road	0-0	Scoring Fewer than 3 Runs	1-5
Night Games	1-2	Scoring 5 or More Runs	6-1
Day Games	8-5	Scoring 10 or More Runs	1-0
Sunday	2-2	Allowing Fewer Than 3 Runs	8-2
Monday	0-0	Allowing 5 or More Runs	0-3
Tuesday	0-0	Allowing 10 or More Runs	0-0
Wednesday	0-0	Leading After Five Innings	5-0
Thursday	0-2	Leading After Six Innings	6-0
Friday	3-1	Trailing After Five Innings	0-6
Saturday	4-2	Trailing After Six Innings	0-4
vs. Ranked Opponents	1-2	Tied After Five Innings	2-1
vs. Unranked Opponents	8-5	Tied After Six Innings	1-3
Extra Innings	1-3	Committing 0 Errors	3-4
1-Run Games	2-1	Committing 2 or More Errors	2-0

EDWARDS LEAVING HER MARK ON HUSKER RECORD BOOK

Senior outfielder **Tristen Edwards** has joined one elite club in Nebraska history, is nearing another and is poised to challenge several Husker career records.

- Edwards is one of only three Huskers who have totaled 40 career doubles and 40 career home runs. The other two members of that group are three-time All-American Ali Viola and two-time All-American Taylor Edwards, Tristen's older sister.
- Edwards is also looking to become the first Husker to hit 50 career doubles and 50 career home runs. Edwards currently owns 46 career doubles and 45 career home runs.
- Edwards is nearing another elite group as she needs only one RBI to become the fourth Husker to record 150 career hits, runs and RBIs. The other three members of that group were all All-Americans (Ali Viola, Taylor Edwards and MJ Knighten).
- Edwards is on track to break Nebraska's all-time records in doubles and extra-base hits in addition to challenging several other top marks. Edwards is three shy of breaking Nebraska's double record and 10 shy of bettering the top home run mark.

NEBRASKA PLAYERS WITH 40 CAREER 2B & HR

Player	Years	2B	HR
Ali Viola	1995-98	48	53
Taylor Edwards	2011-14	41	54
Tristen Edwards	2017-pres.	46	45

NEBRASKA PLAYERS WITH 150 CAREER HITS, RUNS & RBIs

Player	Years	Hits	Runs	RBIs
Ali Viola	1995-98	263	157	213
Taylor Edwards	2011-14	220	177	202
MJ Knighten	2014-17	253	183	186
Tristen Edwards	2017-pres.	200	150	149

EDWARDS' ASSAULT ON NEBRASKA'S ALL-TIME RECORDS

Category	Record Holder	Record	Edwards Total	Projection*
Doubles	Three players	48	46	52
Home Runs	Taylor Edwards	54	45	52
Extra-Base Hits	Ali Viola	105	92	106

*Based on Edwards' career per-game averages played out over a 44-game 2021 schedule

EDWARDS THREATENED SCHOOL RECORDS IN 2020

Senior outfielder **Tristen Edwards** was in the midst of a potentially historic year in 2020 before the season was cut short due to the COVID-19 pandemic. In 23 games last season, Edwards hit .434 with 10 doubles, 11 home runs, 21 extra-base hits and a 1.000 slugging percentage.

- Edwards was second nationally in extra-base hits (21) during the shortened 2020 season and was third in slugging percentage (1.000), fourth in home runs (11) and 14th in doubles (10).
- Edwards was on pace to re-write the Nebraska softball season record book in 2020. With 10 doubles, 11 home runs and 21 extra-base hits through 23 games, Edwards was on pace to finish with 24 doubles, 27 home runs and 51 extra-base hits in a typical 56-game regular season. Each of those totals would have been a school record.
- Edwards was also on pace to set a Nebraska season record for slugging percentage (1.000) in addition to finishing with the third-highest average in school history (.434).

EDWARDS' RECORD PACE IN 2020

Category	23-Game Total	56-Game Pace*	NU Season Record
Doubles	10	24	22
Home Runs	11	27	22
Extra-Base Hits	21	51	35
Total Bases	76	185	150
Slugging Percentage	1.000	1.000	.865

*a normal full regular-season softball schedule consists of 56 games

EDWARDS CAREER RECORD WATCH

DOUBLES

1. Tobin Echo-Hawk (1993-96)	48
Ali Viola (1995-98)	48
Kim Ogee (2000-03)	48
4. Tristen Edwards (2017-present)	46

HOME RUNS

1. Taylor Edwards (2011-14)	54
2. Ali Viola (1995-98)	53
3. Jennifer Lizama (1997-2000)	47
4. Tatum Edwards (2011-14)	46
5. Tristen Edwards (2017-present)	45

EXTRA-BASE HITS

1. Ali Viola (1995-98)	105
2. Taylor Edwards (2011-14)	95
3. Jennifer Lizama (1997-2000)	93
4. Tristen Edwards (2017-present)	92

RUNS

1. Kiki Stokes (2013-16)	200
2. Jennifer Lizama (1997-2000)	199
3. MJ Knighten (2014-17)	183
4. Kim Ogee (2000-03)	182
5. Taylor Edwards (2011-14)	177
6. Tobin Echo-Hawk (1993-96)	168
7. Ali Viola (1995-98)	157
8. Tristen Edwards (2017-present)	150

RBIs

1. Ali Viola (1995-98)	213
2. Taylor Edwards (2011-14)	202
3. MJ Knighten (2014-17)	186
4. Brooke Thomason (2010-13)	177
5. Nicole Trimboli (2001-04)	173
6. Tatum Edwards (2011-14)	158
7. Tristen Edwards (2017-present)	149

BATTING AVERAGE

1. Ali Viola (1995-98)	.418
2. Tobin Echo-Hawk (1993-96)	.379
3. Jennifer Lizama (1997-2000)	.378
4. Lizzy Rock (2005-06)	.374
5. MJ Knighten (2014-17)	.357
6. Tristen Edwards (2017-present)	.353
7. Kiki Stokes (2013-16)	.350
8. Anne Steffan (2002-05)	.347
9. Lisa Wangler (2000-03)	.346
10. Denise Day (1982-85)	.336

SLUGGING PERCENTAGE

1. Ali Viola (1995-98)	.760
2. Tristen Edwards (2017-present)	.675
3. Christie McCoy (1997-98)	.642
4. Jennifer Lizama (1997-2000)	.635
5. Taylor Edwards (2011-14)	.629
6. MJ Knighten (2014-17)	.597
7. Denise Day (1982-85)	.579
8. Tatum Edwards (2011-14)	.566
9. Hailey Decker (2013-14)	.558
10. Brooke Thomason (2010-13)	.546

MULTI-HOME RUN GAMES

1. Tristen Edwards (2017-present)	7
2. Tatum Edwards (2011-14)	6
Ali Viola (1995-98)	6

COLLEGE SOFTBALL POLLS

USA TODAY/NFCA COACHES POLL

Rk.	Team	Record	Pts.	LW
1.	Oklahoma (32)	800	25-0	1
2.	UCLA	765	19-1	2
3.	Oregon	727	23-1	3
4.	Alabama	693	26-3	4
5.	Florida	690	24-3	5
6.	Washington	611	24-4	6
7.	Texas	572	24-3	8
8.	Kentucky	555	24-4	7
9.	Arizona	552	18-5	9
10.	Florida State	495	20-6	12
11.	Oklahoma State	448	26-5	10
12.	Duke	434	26-3	11
13.	Arkansas	404	28-3	15
14.	Arizona State	403	19-8	14
15.	LSU	350	18-11	13
16.	Louisiana	331	20-6	16
17.	Missouri	244	24-7	18
18.	Clemson	227	22-4	20
19.	Virginia Tech	222	19-5	19
20.	Georgia	201	22-5	17
21.	Tennessee	177	23-5	21
22.	UCF	170	24-6	22
23.	Michigan	84	13-3	25
24.	Northwestern	73	15-1	RV
25.	Baylor	38	21-5	RV

ESPN.COM/USA SOFTBALL POLL

Rk.	Team	Record	Pts.	LW
1.	Oklahoma (19)	25-0	499	1
2.	UCLA	19-1	479	2
3.	Oregon	23-1	448	4
4.	Alabama (1)	26-3	439	3
5.	Florida	24-3	426	5
6.	Washington	24-4	383	6
7.	Kentucky	24-4	347	7
8.	Arizona	18-5	344	8
9.	Texas	24-3	336	10
10.	Florida State	20-6	293	13
11.	Arkansas	28-3	272	15
12.	Oklahoma State	26-5	264	9
13.	Arizona State	19-8	255	14
14.	Duke	26-3	246	12
15.	LSU	18-11	233	11
16.	Virginia Tech	19-5	201	16
17.	Louisiana	20-6	168	17
18.	Tennessee	23-5	129	19
19.	Clemson	22-4	119	21
20.	Missouri	24-7	118	20
21.	Northwestern	15-1	87	22
	UCF	24-6	87	24
23.	Georgia	22-5	79	18
24.	Texas A&M	23-5	65	RV
25.	Auburn	19-8	32	25

EDWARDS AMONG NATION'S TOP RETURNING STATISTICAL LEADERS

Tristen Edwards was in the midst of a stellar season in 2020 before the season was cut short. In 23 games last season, Edwards hit .434 with 10 doubles, 11 home runs and 22 RBIs.

- Edwards' 21 extra-base hits ranked second nationally in the shortened 2020 season. She was one of only three players in the country with 20 extra-base hits.
- Edwards was the only player in the country last season with at least 10 doubles and 10 home runs. She ranked fourth nationally in home runs (11) and 14th in doubles (10). Edwards was the only player in the nation to rank in the top 15 in both doubles and home runs in 2020.
- In addition to her lofty ranking in doubles and home runs, Edwards ranked third nationally in slugging percentage (1.000) and total bases (76), fourth in home runs per game (0.48) and 15th in runs per game (1.22).
- Entering 2021, Edwards ranked 18th among all active Division I players in career RBIs (140) and total bases (354), 19th in home runs (44), 22nd in doubles (42) and 23rd in runs (139).

PLAYERS RANKED IN TOP 25 NATIONALLY IN 2B & HR (2020)

Player	School	2B Rank	HR Rank
Tristen Edwards	Nebraska	14th	4th
Maddi Hackbarth	Arizona St.	25th	15th
Alex Martens	Kentucky	25th	15th

EDWARDS' CAREER RANKINGS AMONG ACTIVE DIVISION I PLAYERS (AS OF MARCH 29)

Category	Total	Rank
Home Runs	45	22nd
Doubles	46	21st
Total Bases	383	31st
RBIs	149	33rd
Runs	150	35th
Slugging Pct.	.675	47th

ACTIVE DIVISION I PLAYERS WITH 40 CAREER 2B & HR (AS OF MARCH 29)

Player	School	2B	HR
Amber Bishop	Liberty	54	58
Suzu Brookshire	Long Beach St.	41	57
Georgia Capell	Tarleton State	48	47
Madison Cathcart	Seattle	55	41
Jenna Cone	George Washington	45	65
Kristi DiMeo	Drexel	40	41
Tristen Edwards	Nebraska	46	45
Alysen Febrey	Oklahoma St.	51	41
Morganne Flores	Washington	41	53
Kate Gordon	James Madison	50	54
Jessie Harper	Arizona	45	84
Rachel McCollum	East Carolina	51	56
Bubba Nickles	UCLA	42	42
Alyssa Palomino	Arizona	46	65
Madison Perrigan	Wichita St.	48	45
Linda Rush	Drexel	54	62
Sami Williams	Iowa State	73	60

REVELLE WINS 1,000TH GAME AT NEBRASKA

Nebraska head coach Rhonda Revelle won her 1,000 game at Nebraska on Feb. 27, when the Huskers defeated Michigan State, 7-1 in game one of a doubleheader. She achieved the milestone in her 29th season and her 1,582nd game. The all-time wins leader in the history of Nebraska Athletics, Revelle is the first Husker coach to record 1,000 wins at Nebraska.

- She is the eighth active Division I coach who has won 1,000 games at his or her current school. She is joined on that list by Michigan's Carol Hutchins, as the Big Ten is the only conference in the country with two head coaches who have won 1,000 games at their respective schools.
- With 1,015 career wins, Revelle is one of 14 active Division I coaches and 24 Division I coaches all-time to reach 1,000 career victories.

STATISTICAL COMPARISON

TEAM	W-L	AVG.	SCORING	OPP. SCORING	ERA	FLD%
Nebraska	9-7	.245	4.3	2.8	2.48	.977
Rutgers	3-13	.221	3.0	6.8	6.44	.956
NEB DIFF.	+6	+0.024	+1.3	-4.0	-3.96	+0.021

SCOUTING THE RUTGERS SCARLET KNIGHTS (3-13)

Rutgers enters this weekend in 13th place in the Big Ten Conference standings with a 3-13 record. The Scarlet Knights went 2-4 the opening weekend in Florida but are just 1-9 since. Last week, Rutgers won the first game of a four-game series at Michigan State but lost the next three games.

Nebraska and Rutgers share three common opponents this season in Indiana, Michigan State and Purdue. The Huskers went 4-4 against that trio, while the Scarlet Knights were 3-6.

- Rutgers is batting .221 as a team and averaging 3.0 runs per game. The Scarlet Knights have scored five or more runs four times.
- **Payton Lincavage** leads the Rutgers' regulars with a .333 batting average. One of three Scarlet Knights to homer this season, Lincavage leads the team in runs (10), slugging percentage (.426) and on-base percentage (.379).
- **Gabrielle Callaway** is hitting .309 with two doubles, one homer and five RBIs. Although all other Scarlet Knights with at least 10 at bats are hitting below .250, **Kiersten Withstandley** leads Rutgers with eight RBIs and **Kiana Workman** leads the team with three doubles.
- Defensively, Rutgers is allowing 6.8 runs per game, the highest average in the Big Ten. The Scarlet Knights have the highest ERA among Big Ten teams (6.44) and boast a .958 fielding percentage.
- In the circle, right-hander **Ashley Hitchcock** is the ace of the staff. Hitchcock is 1-5 with a 5.35 ERA in a team-high 51.0 innings this season. She also leads the Scarlet Knights in appearances (12), starts (9), complete games (3), saves (1) and strikeouts (33). Opponents are hitting .308 against her and have homered eight times.
- Right-hander **Izzy Berouty** has seen the most action behind Hitchcock. Berouty is 2-5 with a 7.74 ERA in 31.2 innings. She has made four starts and appeared in relief seven times. Opponents are batting .355 against Berouty.
- Left-hander **Jaden Vickers** rounds out the staff. Vickers has also seen extensive action in the circle, posting an 0-3 record with a 7.79 ERA in 20.2 innings. She has struck out 20 batters - averaging nearly 1.0 strikeout per inning - but has hit 10 batters and walked 14. Opponents are hitting .337 against her.
- **Kristen Butler** is in her third season at Rutgers and her seventh season as a collegiate head coach. Butler was the 2018 Mid-American Conference Coach of the Year at Toledo, where she coached for four seasons before taking the Rutgers job. Butler owns an 42-53 record at Rutgers, with a career mark of 146-175.

NEBRASKA VS. RUTGERS

SERIES HISTORY

- **Series Record:** Nebraska leads, 4-1
- **In Big Ten Play:** Nebraska leads, 3-0
- **At Piscataway:** Nebraska leads, 3-0
- **In Lincoln:** Never played in Lincoln
- **At a Neutral Site:** Series tied, 1-1
- **Current Win Streak:** Nebraska, 4 games
- **Revelle vs. Rutgers:** 3-0
- **Butler vs. Nebraska:** 0-0
- **Revelle vs. Butler:** 0-0

ALL-TIME MEETINGS

DATE	LOCATION	RESULT
3/18/1981	Neutral	L, 2-0
3/22/1990	Neutral	W, 4-2
4/8/2017	Away	W, 7-4
4/8/2017	Away	W, 15-12
4/9/2017	Away	W, 7-2

NOTABLE GAME

**NEBRASKA 15, RUTGERS 12
APRIL 8, 2017**

Nebraska trailed 8-1 after one inning before completing the largest come-from-behind win in school history. The Huskers rallied to tie the game at 8-8 but then fell behind 12-8 after four innings. But Nebraska scored seven times over the final three innings to win 15-12. The 12 runs are the most Nebraska has ever allowed in a win, and the Huskers homered five times in the game, one shy of the school record. Alyvia Simmons went 5-for-5 in the game, tying the Nebraska record for most hits in a regulation-length game.



#1 | RYLIE UNZICKER • OF

	AVG.	G-GS	R	H	2B	HR	RBI	BB	SLG%	OB%
2021	.258	16-14	31	8	3	0	4	8	.419	.452
Career	.216	122-88	48	51	15	4	23	40	.347	.342

- 88 career starts at Nebraska rank 2nd on the team
- Ranks 8th in the Big Ten in walks (8)
- 7-time Nebraska Scholar-Athlete Honor Roll member
- 2-time Academic All-Big Ten & 2020 Big Ten Distinguished Scholar
- Sister Madi was a four-year Husker letterwinner (2015-19)



#2 | PAYTON HUSCROFT • INF

	AVG.	G-GS	R	H	2B	HR	RBI	BB	SLG%	OB%
2021	.000	0-0	0	0	0	0	0	0	.000	.000
Career	.171	24-19	2	7	1	1	6	5	.268	.277

- Has been slowed after recovering from offseason surgery
- Had 5 two-out RBIs in shortened 2020 season, one shy of the team high
- 1 of 3 Millard South products on the Husker roster (Glatter & Unzicker)
- 5-time Nebraska Scholar-Athlete Honor Roll member
- 2-time Tom Osborne Citizenship Team member



#5 | MJ GREEN • INF

	AVG.	G-GS	R	H	2B	HR	RBI	BB	SLG%	OB%
2021	.600	5-1	0	3	0	0	0	0	.600	.600
Career	.600	5-1	0	3	0	0	0	0	.600	.600

- Is 3-for-5 at the plate this season
- Named a top-100 recruit by FloSoftball
- No. 141 (Extra Inning Softball) & No. 153 (FastPitch News) recruit nationally
- All-state & 2-time all-district pick for Henderson (Texas) High School
- Travel ball teammate of Husker Abbey Newlun (Scrap Yard International)



#6 | BILLIE ANDREWS • INF

	AVG.	G-GS	R	H	2B	HR	RBI	BB	SLG%	OB%
2021	.302	16-16	12	16	1	1	12	2	.453	.333
Career	.302	16-16	12	16	1	1	12	2	.453	.333

- Reigning Big Ten Freshman of the Week ranks 4th in the league in RBIs
- 4-time Omaha World-Herald All-Nebraska pick at Gretna High School
- Hit .434 with a .625 OB% and 1.200 SLG% in her prep career
- Produced 93 extra-base hits, 139 RBIs & 159 runs in 116 career games
- Older sister Brooke is a sophomore infielder with the Huskers



#7 | SYDNEY GRAY • INF

	AVG.	G-GS	R	H	2B	HR	RBI	BB	SLG%	OB%
2021	.366	15-14	8	15	5	1	8	1	.561	.381
Career	.366	15-14	8	15	5	1	8	1	.561	.381

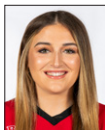
- Left Nebraska's last game early due to an injury
- Is leading Nebraska in batting average and ranks 2nd in hits & doubles
- Hit .503 at Sabino High School in Tucson, Ariz. with 16 3B, 16 HR & 87 RBIs
- Helped Sabino to an Arizona 3A state championship as a junior
- Travel ball teammate of Husker Caitlynn Neal (Arizona Desert Thunder)



#8 | ABBIE SQUIER • OF

	AVG.	G-GS	R	H	2B	HR	RBI	BB	SLG%	OB%
2021	.125	9-2	3	1	1	0	1	1	.250	.222
Career	.125	9-2	3	1	1	0	1	1	.250	.222

- Ranked as the No. 95 recruit nationally by Extra Inning Softball
- 3rd-team NFCA High School All-American as a junior
- .490 career average with a .994 SLG% at Lincoln Southwest High School
- Was the state shot put champion as a junior
- Lone Lincoln native on Nebraska's 2021 roster



#13 | PEYTON GLATTER • OF

	AVG.	G-GS	R	H	2B	HR	RBI	BB	SLG%	OB%
2021	.150	11-7	1	3	0	1	3	4	.300	.292
Career	.228	72-61	22	42	7	6	28	21	.364	.313

- Ranks 3rd among active Huskers with 28 career RBIs at Nebraska
- Has started 61 of Nebraska's 91 games the past three seasons
- 3-time member of the Nebraska Scholar-Athlete Honor Roll
- Member of the 2019 Tom Osborne Citizenship Team
- 1 of 3 Millard South products on the Husker roster (Huscroft & Unzicker)



#14 | CAMYL ARMENDARIZ • INF

	AVG.	G-GS	R	H	2B	HR	RBI	BB	SLG%	OB%
2021	.000	10-0	4	0	0	0	0	0	.000	.000
Career	.000	10-0	4	0	0	0	0	0	.000	.000

- Has appeared in 10 games (8 as a pinch runner & 2 as a pinch hitter)
- Four-year varsity player for Bonita (Calif.) High School
- Totaled 113 hits, 23 doubles, 5 triples, 20 homers & 80 RBIs in prep career
- 3-time all-league & All-San Gabriel Valley selection
- 1 of 4 current Huskers from the Corona Angels travel ball team



#19 | CAITLYNN NEAL • RHP

	W-L	ERA	APP	GS	CG	SHO	SV	IP	SO	AVG.
2021	0-0	0.00	1	0	0	0	0	1.0	0	.333
Career	0-0	0.00	1	0	0	0	0	1.0	0	.333

- Named the preseason Big Ten Newcomer of the Year by D1Softball
- Tossed a scoreless inning vs. No. 23 Michigan in her only outing of the year
- Member of the United States Under-17 Women's National Team
- 2-hit shutout in the Pan American Championships Gold Medal game
- 23-2 record with a 0.71 ERA & 15 shutouts in her high school career



#19 | CAITLYNN NEAL • UTL

	AVG.	G-GS	R	H	2B	HR	RBI	BB	SLG%	OB%
2021	.250	14-9	6	6	0	0	5	0	.250	.250
Career	.250	14-9	6	6	0	0	5	0	.250	.250

- Named the preseason Big Ten Newcomer of the Year by D1Softball
- All 6 of her hits & all 5 of her RBIs have come in her last 7 starts
- Ranked as the No. 30 recruit nationally by Extra Inning Softball
- .613 career hitter with 17 HR & 68 RBIs at Bradshaw Mountain High School
- Travel ball teammate of Husker Sydney Gray (Arizona Desert Thunder)



#20 | ABBEY NEWLUN • INF

	AVG.	G-GS	R	H	2B	HR	RBI	BB	SLG%	OB%
2021	.000	1-0	0	0	0	0	0	0	.000	.000
Career	.000	1-0	0	0	0	0	0	0	.000	.000

- Four-year varsity player at The Woodlands High School in Texas
- Totaled 69 hits, 16 doubles, 3 triples & 9 home runs in her prep career
- Was an all-district selection as a junior
- Travel ball teammate of Husker MJ Green (Scrap Yard International)
- Father Craig graduated from Nebraska & was born & raised in Auburn, Neb.



#21 | SARAH YOCOM • INF

	AVG.	G-GS	R	H	2B	HR	RBI	BB	SLG%	OB%
2021	.000	10-10	1	0	0	0	1	1	.000	.125
Career	.137	77-45	14	7	0	0	4	4	.137	.196

- Has started 10 straight games at first base; leads NU with 10 starts at 1B
- Has started multiple games at 1B, 2B, 3B & SS in her Husker career
- 2-time Academic All-Big Ten & 2019 Big Ten Distinguished Scholar
- 5-time Nebraska Scholar-Athlete Honor Roll member
- 3-time member of the Tom Osborne Citizenship Team



#23 | COURTNEY WALLACE • RHP

	W-L	ERA	APP	GS	CG	SHO	SV	IP	SO	AVG.
2021	4-2	2.62	10	6	2	0	1	45.1	17	.244
Career	10-11	4.76	49	23	6	0	2	176.1	105	.307

- Ranks 4th in the Big Ten in saves (1) & 10th in wins (4)
- Ranks 2nd among current Huskers in career innings pitched (176.1)
- 3-time Nebraska Scholar-Athlete Honor Roll member
- 2-time member of the Tom Osborne Citizenship Team
- Her cousin, Alex Smith, is a cornerback on the Wisconsin football team



#23 | COURTNEY WALLACE • UTL

	AVG.	G-GS	R	H	2B	HR	RBI	BB	SLG%	OB%
2021	.185	11-8	2	5	1	0	2	2	.222	.241
Career	.222	73-53	27	37	6	3	18	15	.371	.292

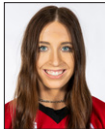
- Has been in the batting order during starts at P, DP, 3B & LF in her career
- 14 of her 37 career hits have gone for extra bases (6 2B, 5 3B, 3 HR)
- Tied the Nebraska single-game record with two triples vs. Lamar in 2019
- 5 career triples are the most of any current Husker
- Nebraska Gatorade Player of the Year as a high school senior



#24 | TRISTEN EDWARDS • OF

	AVG.	G-GS	R	H	2B	HR	RBI	BB	SLG%	OB%
2021	.349	16-16	10	15	4	3	9	10	.651	.500
Career	.353	195-192	150	200	46	56	149	89	.675	.458

- Named the preseason Big Ten Player of the Year by D1Softball
- 2-time member of USA Softball Collegiate Player of the Year watch list
- Only player in the country with 10 2B & 10 HR in shortened 2020 season
- 2-time 1st-team All-Big Ten & record 6-time Big Ten Player of the Week
- Older twin sisters Tatum & Taylor were both 2-time Husker All-Americans



#27 | BROOKE ANDREWS • INF

	AVG.	G-GS	R	H	2B	HR	RBI	BB	SLG%	OB%
2021	.125	10-3	4	1	0	0	0	0	.125	.222
Career	.244	28-17	6	10	1	0	3	1	.268	.295

- Started a team-high 14 games at shortstop as a freshman in 2020
- Ranked 5th on the team with a .273 batting average last season
- Went 2-for-6 in three games against ranked opponents in 2020
- 3-time Nebraska Scholar-Athlete Honor Roll member
- Younger sister Billie is a freshman infielder with the Huskers



#28 | ALLY RILEY • C

	AVG.	G-GS	R	H	2B	HR	RBI	BB	SLG%	OB%
2021	.211	9-9	0	4	1	0	0	1	.263	.250
Career	.271	64-45	4	35	7	1	22	6	.349	.310

- Is Nebraska's most experienced catcher with 31 career starts at the position
- Started 25 of Nebraska's 39 games at catcher the past two seasons
- Her .271 career average ranks 3rd among all Huskers with at least 100 AB
- 2-time Academic All-Big Ten selection
- 7-time Nebraska Scholar-Athlete Honor Roll member



#30 | KARLEE SEEVERS • RHP

	W-L	ERA	APP	GS	CG	SHO	SV	IP	SO	AVG.
2021	0-0	0.00	1	0	0	0	0	1.0	0	.333
Career	0-0	18.90	3	0	0	0	0	3.1	0	.474

- Tossed a scoreless inning vs. Purdue after making two appearances in 2020
- Is also a pinch runner, scoring a run in each of her two career appearances
- 2020 Academic All-Big Ten selection & 2020 Big Ten Distinguished Scholar
- 5-time member of the Nebraska Scholar-Athlete Honor Roll
- 2-time Tom Osborne Citizenship Team member



#32 | CAM YBARRA • INF

	AVG.	G-GS	R	H	2B	HR	RBI	BB	SLG%	OB%
2021	.240	16-16	4	12	6	1	9	6	.420	.316
Career	.247	129-123	28	94	29	6	37	35	.376	.315

- In her 2nd year at Nebraska after spending two seasons at Oregon State
- Started all 39 games at second base for Nebraska the past two seasons
- 94 career hits & 29 career doubles rank 3rd among all current Huskers
- Was a 2018 Pac-12 All-Defensive & All-Freshman Team honoree at OSU
- 1 of 4 current Huskers from the Corona Angels travel ball team



#33 | ANNI RALEY • C

	AVG.	G-GS	R	H	2B	HR	RBI	BB	SLG%	OB%
2021	.385	12-8	3	5	1	0	3	0	.615	.385
Career	.233	54-15	16	7	2	0	4	2	.433	.303

- Has started 8 of 16 games at catcher in 2021 & caught in 12 games total
- Has gone 4-for-5 with a triple, 3 runs & 2 RBIs in her last two starts
- Has also appeared as a pinch runner 30 times her career, scoring 13 runs
- 2020 Academic All-Big Ten selection
- 5-time member of the Nebraska Scholar-Athlete Honor Roll



#39 | OLIVIA FERRELL • RHP

	W-L	ERA	APP	GS	CG	SHO	SV	IP	SO	AVG.
2021	5-5	1.96	10	8	2	1	0	50.0	51	.208
Career	20-26	4.03	77	47	10	1	2	284.2	192	.283

- Ranks 5th in the Big Ten in wins (5) & 7th in strikeouts (51)
- Leads all current Huskers in career wins, ERA, appearances, starts & innings
- Has allowed 2 ER or fewer in 26 of her 47 career starts
- 2-time Academic All-Big Ten & 2-time Big Ten Distinguished Scholar
- 7-time member of the Nebraska Scholar-Athlete Honor Roll



#39 | OLIVIA FERRELL • UTL

	AVG.	G-GS	R	H	2B	HR	RBI	BB	SLG%	OB%
2021	.053	9-7	1	1	0	0	0	1	.053	.100
Career	.237	51-35	13	22	5	3	18	11	.387	.327

- Her .247 career average ranks 4th among all Huskers with at least 100 AB
- Hit .344 in the shortened 2020 season with 10 RBIs in only 32 at bats
- Ranked 2nd on the team in average, OB% & SLG% in 2020
- Was 3rd on the team last season in home runs (2) and RBIs (10)
- In addition to softball, had Division I scholarship offers as a hockey goalie



#44 | KAYLIN KINNEY • RHP

	W-L	ERA	APP	GS	CG	SHO	SV	IP	SO	AVG.
2021	0-0	4.97	8	2	0	0	2	12.2	9	.315
Career	0-0	4.97	8	2	0	0	2	12.2	9	.315

- Leads the Big Ten & ranks 21st nationally with 2 saves
- 2019 Iowa Gatorade Player of the Year at Kennedy High School
- 2-time all-state selection & 4-time all-conference & all-metro pick
- Went 67-7 in her prep career with a 0.77 ERA and 527 strikeouts
- First Iowa native to play for Nebraska since 2004



#44 | KAYLIN KINNEY • UTL

	AVG.	G-GS	R	H	2B	HR	RBI	BB	SLG%	OB%
2021	.167	14-11	1	5	1	1	3	4	.300	.265
Career	.167	14-11	1	5	1	1	3	4	.300	.265

- Has 1 2B & 1 HR while ranking 4th on the team with 4 walks
- 2019 Iowa Gatorade Player of the Year at Kennedy High School
- Helped Kennedy to a state championship as a senior
- Hit .501 in her high school career with a 1.054 slugging percentage
- Finished third in state history with 55 career home runs



#77 | SAMANTHA OWEN • INF

	AVG.	G-GS	R	H	2B	HR	RBI	BB	SLG%	OB%
2021	.000	4-1	0	0	0	0	0	0	.000	.000
Career	.288	167-159	68	135	30	17	86	47	.483	.361

- Is in her 3rd season at Nebraska after playing at Pacific her first two years
- Owns 159 career starts, including 63 starts as a Husker
- Ranks 2nd among current Huskers in career average, 2B, HR & RBIs
- 2-time All-West Coast Conference & 2018 All-West Region pick at Pacific
- Younger sister Izabella is a junior infielder at New Mexico

INDIVIDUAL SEASON & CAREER HIGHS

#1 RYLIE UNZICKER • SR. • OF

SEASON HIGH	CATEGORY	CAREER HIGH
2 twice	Hits	2 11 times
3 vs. #23 Michigan	Runs	3 twice
2 twice	RBI	2 five times
1 three times	2B	2 twice
none	HR	1 four times

#14 CAMYL ARMENDARIZ • FR. • INF

SEASON HIGH	CATEGORY	CAREER HIGH
none	Hits	none
1 four times	Runs	same
none	RBI	none
none	2B	none
none	HR	none

#2 PAYTON HUSCROFT • JR. • INF

SEASON HIGH	CATEGORY	CAREER HIGH
none	Hits	1 seven times
none	Runs	1 twice
none	RBI	3 vs. Bradley (2020)
none	2B	1 vs. UTEP (2020)
none	HR	1 vs. Bradley (2020)

#19 CAITLYNN NEAL • FR. • UTL

SEASON HIGH	CATEGORY	CAREER HIGH
3 vs. Purdue	Hits	same
2 vs. Purdue - 1	Runs	same
2 vs. Purdue - 1	RBI	same
none	2B	none
none	HR	none

#5 MJ GREEN • FR. • INF

SEASON HIGH	CATEGORY	CAREER HIGH
2 vs. Purdue	Hits	same
none	Runs	none
none	RBI	none
none	2B	none
none	HR	none

#20 ABBEY NEWLUN • FR. • INF

SEASON HIGH	CATEGORY	CAREER HIGH
none	Hits	none
none	Runs	none
none	RBI	none
none	2B	none
none	HR	none

#6 BILLIE ANDREWS • FR. • INF

SEASON HIGH	CATEGORY	CAREER HIGH
3 twice	Hits	same
2 twice	Runs	same
3 vs. Penn St. - 1	RBI	same
1 vs. Purdue	2B	same
1 vs. Penn St. - 1	HR	same

#21 SARAH YOCOM • SR. • INF

SEASON HIGH	CATEGORY	CAREER HIGH
none	Hits	2 vs. Wisconsin (2018)
1 vs. Penn St.	Runs	1 14 times
1 vs. Penn St. - 2	RBI	1 four times
none	2B	none
none	HR	none

#7 SYDNEY GRAY • FR. • INF

SEASON HIGH	CATEGORY	CAREER HIGH
3 vs. Purdue	Hits	same
2 twice	Runs	same
2 twice	RBI	same
1 five times	2B	same
1 vs. Penn St.	HR	same

#23 COURTNEY WALLACE • JR. • UTL

SEASON HIGH	CATEGORY	CAREER HIGH
2 twice	Hits	2 seven times
1 twice	Runs	3 vs. Lamar (2019)
2 vs. Penn St.	RBI	3 twice
1 vs. Penn St.	2B	2 vs. Texas Tech (2019)
none	HR	1 three times

#8 ABBIE SQUIER • FR. • OF

SEASON HIGH	CATEGORY	CAREER HIGH
1 vs. Michigan St. - 1	Hits	same
2 vs. Michigan St. - 1	Runs	same
1 vs. Michigan St. - 2	RBI	same
1 vs. Michigan St. - 1	2B	same
none	HR	none

#24 TRISTEN EDWARDS • SR. • OF

SEASON HIGH	CATEGORY	CAREER HIGH
3 vs. Michigan St. - 1	Hits	4 three times
2 twice	Runs	4 vs. Pittsburgh (2019)
2 vs. Michigan St. - 1	RBI	8 vs. Pittsburgh (2019)
1 four times	2B	2 three times
1 three times	HR	2 seven times

#13 PEYTON GLATTER • JR. • OF

SEASON HIGH	CATEGORY	CAREER HIGH
1 three times	Hits	3 twice
1 vs. Penn St.	Runs	3 twice
2 vs. Penn St.	RBI	4 vs. Maryland (2019)
none	2B	1 seven times
1 vs. Penn St.	HR	1 six times

#27 BROOKE ANDREWS • SO. • INF

SEASON HIGH	CATEGORY	CAREER HIGH
1 vs. #23 Michigan	Hits	2 twice
1 four times	Runs	1 six times
none	RBI	1 three times
none	2B	1 vs. Boston College (2020)
none	HR	none

INDIVIDUAL SEASON & CAREER HIGHS

#28 ALLY RILEY • SR. • C

SEASON HIGH	CATEGORY	CAREER HIGH
2 vs. Purdue - 1	Hits	3 twice
none	Runs	1 four times
none	RBI	3 vs. UTEP (2020)
1 vs. Purdue - 1	2B	2 vs. South Dakota St. (2018)
none	HR	1 vs. UTEP (2020)

#32 CAM YBARRA • SR. • INF

SEASON HIGH	CATEGORY	CAREER HIGH
3 vs. Penn St. - 1	Hits	4 vs. Lehigh (2020)
2 vs. Penn St. - 1	Runs	2 twice
4 vs. Purdue - 1	RBI	same
2 vs. Purdue - 1	2B	3 vs. Lehigh (2020)*
1 vs. Penn St. - 1	HR	1 six times

**tied school record*

#33 ANNI RALEY • JR. • C

SEASON HIGH	CATEGORY	CAREER HIGH
2 twice	Hits	2 three times
2 vs. Penn St.	Runs	same
2 vs. Penn St.	RBI	same
1 vs. #23 Michigan	2B	1 twice
none	HR	none

#39 OLIVIA FERRELL • SR. • UTL

SEASON HIGH	CATEGORY	CAREER HIGH
1 vs. Michigan St. - 1	Hits	3 at #21 Missouri (2020)
1 vs. Michigan St. - 1	Runs	2 twice
none	RBI	3 twice
none	2B	1 five times
none	HR	1 three times

#44 KAYLIN KINNEY • FR. • UTL

SEASON HIGH	CATEGORY	CAREER HIGH
1 five times	Hits	same
1 vs. Penn St.	Runs	same
2 vs. Penn St.	RBI	same
1 vs. Purdue - 3	2B	same
1 vs. Penn St.	HR	same

#77 SAMANTHA OWEN • SR. • INF

SEASON HIGH	CATEGORY	CAREER HIGH
none	Hits	4 at North Texas (2018 at Pacific)
none	Runs	2 10 times
none	RBI	4 six times
none	2B	2 at Purdue - 2 (2019)
none	HR	1 17 times

#19 CAITLYNN NEAL • FR. • UTL

SEASON HIGH	CATEGORY	CAREER HIGH
1.0 vs. #23 Michigan - 2	IP	same
none	Ks	none
N/A	H (low)*	N/A
1 vs. #23 Michigan - 2	H (high)	same
N/A	BB (low)*	N/A
none	BB (high)	none
N/A	R (low)*	N/A
none	R (high)	none
N/A	ER (low)*	N/A
none	ER (high)	none

**starts only*

#23 COURTNEY WALLACE • JR. • UTL

SEASON HIGH	CATEGORY	CAREER HIGH
7.0 twice	IP	7.0 three times
6 vs. Ohio St. - 2	Ks	8 at Georgia Tech (2020)
3 vs. Penn St. - 1	H (low)*	1 vs. Maryland (2019)
7 twice	H (high)	10 three times
0 twice	BB (low)*	0 three times
2 twice	BB (high)	7 at Georgia Tech (2020)
1 vs. Ohio St. - 2	R (low)*	0 vs. Maryland (2019)
4 vs. Purdue - 2	R (high)	10 vs. #3 Oklahoma (2020)
1 vs. Ohio St. - 2	ER (low)*	0 vs. Maryland (2019)
4 vs. Purdue - 2	ER (high)	9 vs. #3 Oklahoma (2020)

**starts only*

#30 KARLEE SEEVERS • JR • RHP

SEASON HIGH	CATEGORY	CAREER HIGH
1.0 vs. Purdue - 2	IP	1.1 vs. Wichita St. - 1 (2020)
none	Ks	none
N/A	H (low)*	N/A
1 vs. Purdue - 2	H (high)	6 vs. Wichita St. (2020)
N/A	BB (low)*	N/A
none	BB (high)	6 vs. Wichita St. (2020)
N/A	R (low)*	N/A
none	R (high)	9 vs. Wichita St. (2020)
N/A	ER (low)*	N/A
none	ER (high)	7 vs. Wichita St. (2020)

**starts only*

#39 OLIVA FERRELL • SR • RHP

SEASON HIGH	CATEGORY	CAREER HIGH
7.2 vs. #23 Michigan - 1	IP	same
7 three times	Ks	9 vs. Lamar (2019)
1 vs. Penn St. - 2	H (low)*	1 twice
7 vs. Indiana - 1	H (high)	11 at #21 Missouri (2020)
1 six times	BB (low)*	0 six times
3 twice	BB (high)	7 at Minnesota (2018)
0 twice	R (low)*	0 five times
4 vs. Ohio St. - 1	R (high)	8 twice
0 twice	ER (low)*	0 five times
4 vs. Ohio St. - 1	ER (high)	7 three times

**starts only*

#44 KAYLIN KINNEY • FR • RHP

SEASON HIGH	CATEGORY	CAREER HIGH
4.1 vs. Purdue - 2	IP	same
2 three times	Ks	same
2 vs. #23 Michigan	H (low)*	same
6 vs. Purdue - 2	H (high)	same
1 vs. #23 Michigan	BB (low)*	same
1 five times	BB (high)	same
1 vs. #23 Michigan	R (low)*	same
4 vs. Penn St.	R (high)	same
1 vs. #23 Michigan	ER (low)*	same
4 vs. Penn St.	ER (high)	same

**starts only*

HEAD COACH RHONDA REVELLE

COACHING STOPS

Nebraska (Head Coach)	1993-present
San Jose State (Assistant)	1989-92
Cal State-Hayward (Assistant)	1988
Nebraska Wesleyan (Head Coach)	1987
Nebraska Wesleyan (Assistant)	1986

NEBRASKA WESLEYAN (1987)

Year	Record	Conf.	Finish	Tourn.	Finish
1987	8-16	7-5	N/A	--	--

NEBRASKA (1993-PRESENT)

Year	Record	Conf.	Finish	Tourn.	Finish
1993	18-23	5-11	5th	--	--
1994	25-33	5-15	6th	--	--
1995	43-20	10-6	3rd	--	--
1996	42-23	10-8	4th	3-2	2nd
1997	29-24	10-6	4th	1-2	t-5th
1998	48-12	16-0	1st	4-0	1st
1999	35-21	10-8	4th	3-1	2nd
2000	52-21	15-2	2nd	4-1	1st
2001	51-15	16-2	1st	2-2	t-3rd
2002	50-14	11-5	3rd	3-1	2nd
2003	39-17	10-8	6th	2-2	t-3rd
2004	45-17	14-3	1st	4-0	1st
2005	36-23	9-9	7th	2-2	t-5th
2006	44-12	13-4	2nd	2-2	t-3rd
2007	37-20	10-8	5th	0-1	t-7th
2008	25-28	4-14	t-9th	3-1	2nd
2009	35-19	9-9	5th	0-1	t-7th
2010	30-29	7-11	t-6th	0-1	t-7th
2011	41-14	9-9	6th	--	--
2012	33-22	14-9	3rd	--	--
2013	45-16	16-6	2nd	1-1	t-3rd
2014	44-18	18-5	t-1st	0-1	t-5th
2015	35-23	17-6	3rd	2-1	2nd
2016	35-21	13-9	5th	1-1	t-5th
2017	24-29	13-11	5th	0-1	t-9th
2018	31-23	9-13	9th	0-1	t-9th
2019	21-31	9-14	9th	0-1	t-9th
2020	9-14	0-0	--	--	--
2021	9-7	9-7	--	--	--

NEBRASKA RECORD: 1,007-589

CAREER RECORD: 1,015-605

NCAA TOURNAMENT (NEBRASKA)

Year	Round	Record	Finish	Rank
1993	--	--	--	--
1994	--	--	--	--
1995	Regional	1-2	t-17th	18th
1996	Regional	1-2	t-17th	18th
1997	Regional	2-2	t-9th	25th
1998	WCWS	4-2	t-5th	5th
1999	Regional	4-2	t-9th	20th
2000	Regional	3-2	t-17th	14th
2001	Regional	2-2	t-17th	14th
2002	WCWS	5-2	t-5th	6th
2003	Regional	3-2	t-17th	13th
2004	Regional	3-2	t-9th	14th
2005	Regional	1-2	t-33rd	25th
2006	Regional	2-2	t-17th	15th
2007	Regional	0-2	t-49th	--
2009	Regional	1-2	t-33rd	--
2010	Regional	1-2	t-33rd	--
2011	Regional	2-2	t-17th	21st
2013	WCWS	5-3	t-7th	8th
2014	Super Reg.	4-3	t-9th	16th
2015	Regional	1-2	t-33rd	--
2016	Regional	2-2	t-17th	--
Totals	20 app.	47-42	--	--



RHONDA REVELLE

29TH SEASON AT NEBRASKA

1,004-588 RECORD

30TH CAREER SEASON

1,012-604 RECORD

WINNINGEST COACH IN THE HISTORY OF HUSKER ATHLETICS

COACH OF THE YEAR IN 3 MAJOR CONFERENCES

NFCA HALL OF FAME

COACHING NUMBERS

Conference Coach-of-the-Year Awards	4
Big Ten Coach of the Year	1
Big 12 Coach of the Year	2
Big Eight Coach of the Year	1
Conference Titles	7
Big Ten Conference Titles	1
Big 12 Conference Titles	6
NCAA Tournament Appearances	20
Women's College World Series	3
NFCA All-Americans	21
CoSIDA Academic All-Americans	14

NFCA HALL-OF-FAME COACHES

(ACTIVE DIVISION I COACHES ONLY)

Coach	Induction Year
Mike Candrea, Arizona	1996
Carol Hutchins, Michigan	2006
Rhonda Revelle, Nebraska	2010
Melinda Fischer, Illinois State	2010
Ralph Weekly, Tennessee	2011
Patty Gasso, Oklahoma	2012
Donna Papa, North Carolina	2012
Joan Joyce, Florida Atlantic	2013
Patrick Murphy, Alabama	2013
Jo Evans, Texas A&M	2015
Bob Brock, Sam Houston State	2016
Jacquie Joseph, Michigan State*	2016
Karen Weekly, Tennessee	2018

*inducted as member of Pioneer Category

WINS AT CURRENT SCHOOL

(ACTIVE DIVISION I COACHES ONLY)

1. Mike Candrea, Arizona	1,651
2. Carol Hutchins, Michigan	1,621
3. Patty Gasso, Oklahoma	1,305
4. Donna Papa, North Carolina	1,286
5. Patrick Murphy, Alabama	1,123
6. Melinda Fischer, Illinois State	1,081
7. Bob Coolen, Hawaii	1,029
8. Rhonda Revelle, Nebraska	1,007

(LIST INCLUDES GAMES THROUGH MARCH 29)

MOST NCAA TOURNAMENTS

(ACTIVE DIVISION I COACHES ONLY)

1. Mike Candrea, Arizona	33
2. Carol Hutchins, Michigan	27
3. Patty Gasso, Oklahoma	22
4. Patrick Murphy, Alabama	21
5. Rhonda Revelle, Nebraska	20
Jo Evans, Texas A&M	20

ACADEMIC ALL-AMERICANS

(ALL-TIME AMONG DIVISION I COACHES)

1. Patrick Murphy, Alabama	29
2. Ralph & Karen Weekly, Tennessee	23
3. Tim Walton, Florida	19
4. Rhonda Revelle, Nebraska	14

2021 SEASON STATISTICS

Record: 9-7 Home: 3-1 Away: 0-0 Neutral: 6-6 Big Ten: 9-7

Player	avg	gp-gs	ab	r	h	2b	3b	hr	rbi	tb	slg%	bb	hp	so	gdp	ob%	sf	sh	sb-att	po	a	e	fld%
5 MJ Green	.600	5-1	5	0	3	0	0	0	0	3	.600	0	0	0	0	.600	0	0	0-1	0	0	0	.000
33 Anni Raley	.385	12-8	13	3	5	1	1	0	3	8	.615	0	0	4	0	.385	0	0	0-0	44	7	0	1.000
7 Sydney Gray	.366	15-14	41	8	15	5	0	1	8	23	.561	1	0	10	0	.381	0	1	1-1	17	31	3	.941
24 Tristen Edwards	.349	16-16	43	10	15	4	0	3	9	28	.651	10	5	10	1	.500	2	0	4-4	22	1	0	1.000
6 Billie Andrews	.302	16-16	53	12	16	1	2	1	12	24	.453	2	1	16	0	.333	1	0	6-7	24	37	4	.938
1 Rylie Unzicker	.258	16-14	31	8	8	3	1	0	4	13	.419	8	3	10	0	.452	0	2	4-4	11	2	0	1.000
19 Caitlynn Neal	.250	14-9	24	6	6	0	0	0	5	6	.250	0	0	8	0	.250	0	0	2-2	10	1	1	.917
32 Cam Ybarra	.240	16-16	50	4	12	6	0	1	9	21	.420	6	0	5	0	.316	1	0	1-2	33	23	0	1.000
11 Keana "KP" Pola	.211	8-5	19	0	4	1	0	0	0	5	.263	0	0	5	1	.211	0	0	0-0	26	0	1	.963
28 Ally Riley	.211	9-9	19	0	4	1	0	0	0	5	.263	1	0	2	0	.250	0	0	0-0	32	5	0	1.000
23 Courtney Wallace	.185	11-8	27	2	5	1	0	0	2	6	.222	2	0	6	1	.241	0	0	1-1	3	15	0	1.000
44 Kaylin Kinney	.167	14-11	30	1	5	1	0	1	3	9	.300	4	0	9	1	.265	0	0	0-0	1	4	0	1.000
13 Peyton Glatter	.150	11-7	20	1	3	0	0	1	3	6	.300	4	0	6	0	.292	0	0	0-0	0	0	0	.000
27 Brooke Andrews	.125	10-3	8	4	1	0	0	0	0	1	.125	0	1	2	0	.222	0	0	2-3	3	7	1	.909
8 Abbie Squier	.125	9-2	8	3	1	1	0	0	1	2	.250	1	0	2	0	.222	0	0	0-0	1	0	0	1.000
39 Olivia Ferrell	.053	9-7	19	1	1	0	0	0	0	1	.053	1	0	9	0	.100	0	1	1-1	1	10	1	.917
21 Sarah Yocom	.000	10-10	6	1	0	0	0	0	1	0	.000	1	0	3	0	.125	1	0	0-0	87	1	0	1.000
77 Samantha Owen	.000	4-1	5	0	0	0	0	0	0	0	.000	0	0	0	0	.000	0	0	0-0	15	0	0	1.000
14 Camyl Armendariz	.000	10-0	2	4	0	0	0	0	0	0	.000	0	0	0	0	.000	0	0	1-1	0	0	0	.000
20 Abbey Newlun	.000	1-0	1	0	0	0	0	0	0	0	.000	0	0	0	0	.000	0	0	0-0	0	0	0	.000
30 Karlee Seevers	.000	0-0	0	0	0	0	0	0	0	0	.000	0	0	0	0	.000	0	0	0-0	0	0	0	.000
Totals	.245	16	424	68	104	25	4	8	60	161	.380	41	10	107	4	.323	5	4	23-27	330	144	11	.977
Opponents	.239	16	406	45	97	15	3	3	42	127	.313	32	6	77	3	.303	2	10	14-17	323	94	27	.939

LOB - Team (95), Opp (84). DPs turned - Team (9), Opp (8). IBB - Team (2), Edwards 2, Opp (1).

(All games Sorted by Earned run avg)

Player	era	w-l	app	gs	cg	sho	sv	ip	h	r	er	bb	so	2b	3b	hr	b/avg	wp	hp	bksfa	sha	
30 Karlee Seevers	0.00	0-0	1	0	0	0/0	0	1.0	1	0	0	0	0	0	0	0	.333	0	0	0	0	0
19 Caitlynn Neal	0.00	0-0	1	0	0	0/0	0	1.0	1	0	0	0	0	0	0	0	.333	0	0	0	0	0
39 Olivia Ferrell	1.96	5-5	10	8	2	1/0	0	50.0	37	18	14	14	51	8	0	1	.208	1	5	0	0	3
23 Courtney Wallace	2.62	4-2	10	6	2	0/0	1	45.1	41	18	17	13	17	6	2	2	.244	2	1	0	2	4
44 Kaylin Kinney	4.97	0-0	8	2	0	0/0	2	12.2	17	9	9	5	9	1	1	0	.315	4	0	0	0	3
Totals	2.48	9-7	16	16	4	1/0	3	110.0	97	45	39	32	77	15	3	3	.239	7	6	0	2	10
Opponents	3.25	7-9	16	16	4	2/1	0	107.2	104	68	50	41	107	25	4	8	.245	3	10	0	5	4

PB - Team (5), Riley 4, Raley 1, Opp (2). SBA/ATT - Raley (7-9), Ferrell (6-9), Riley (7-8), Wallace (5-5), Kinney (3-3).