

N

NEBRASKA

SOFTBALL

NEBRASKA vs. PENN STATE

FRIDAY	SATURDAY	SUNDAY
Penn St. 5:30 p.m. Video: BTN+ (\$) Audio: Huskers.com	Penn St. (1) Noon Video: BTN+ (\$) Audio: Huskers.com Penn St. (2) 3 p.m. Video: BTN+ (\$) Audio: Huskers.com	Penn St. 11 a.m. Video: BTN+ (\$) Audio: Huskers.com

The Nebraska softball team will play at Bowlin Stadium for the first time in nearly two years this weekend when the Huskers welcome the Penn State Nittany Lions to Lincoln for a four-game series. The teams will play a single game Friday at 5:30 p.m., followed by a doubleheader on Saturday at Noon and the series finale on Sunday at 11 a.m.

Per the revised Big Ten Conference attendance policy announced on Wednesday, fans will be allowed attend this weekend's games with a limited number of tickets available each day. Social distancing protocols will be in effect and all fans must wear a face covering.

Big Ten Network+ subscribers can watch all four games live this weekend. A free radio broadcast will also be available on Huskers.com, courtesy of the Husker Sports Network and the UNL College of Journalism and Mass Communications.

Nebraska brings a 6-6 record into its home opener. The Huskers split doubleheaders with Indiana, Michigan State and Ohio State in Florida as part of a Big Ten-only event the final week in February. Nebraska then lost a three-game series against No. 23 Michigan (1-2) in its second trip to Florida before winning a three-game series against Purdue (2-1).

Beginning with this weekend, Nebraska will play each of the remaining eight Big Ten teams in four-game series on campus sites over the next eight weekends.

QUICK HITTERS

- Friday will mark Nebraska's first home game in 698 days. The last time the Huskers played at Bowlin Stadium was against Maryland on April 28, 2019.
- This weekend will mark Nebraska's first four-game conference series since the Huskers played a quartet of four-game conference series in the final year of Big Eight softball in 1995.
- Nebraska has allowed two runs or less in 7 of its 12 games. Last year, NU allowed two runs or less in only 6 of its 23 games.
- Nebraska started four freshmen in its last game against Purdue on March 14, and those four freshmen combined to go 9-for-12, producing nine of NU's 11 hits.
- The Huskers have totaled 34 hits and 11 extra-base hits in their past four games. In the season's first eight games, NU totaled only 30 hits and nine extra-base hits.
- Nebraska ranks fifth nationally in double players per game this season (0.75).
- The Huskers' .976 fielding percentage is currently on pace to break the school record of .973 set in 2006.
- Tristen Edwards** leads the Big Ten with three home runs this season. Her three home runs are more than the team total of nine other Big Ten schools.
- Kaylin Kinney** leads the Big Ten and ranks 15th nationally with two saves.

HUSKERS TO WATCH



Olivia Ferrell went 2-1 with a 1.12 ERA in Nebraska's last weekend of games. She allowed only one earned run in each of her three starts against No. 23 Michigan and Purdue (twice).



Sydney Gray has six hits, two doubles and two RBIs in her last 13 at bats, which includes a walk-off two-run single with two outs in the eighth inning of NU's 5-4 win over No. 23 Michigan.

HUSKER SCHEDULE (6-6 RECORD)

Sleepy Hollow Sports Complex (Leesburg, Fla.)		
Feb. 26	vs. Indiana (Game 1)	L, 1-3
Feb. 26	vs. Indiana (Game 2)	W, 4-2
Feb. 27	vs. Michigan St. (Game 1)	W, 7-1
Feb. 27	vs. Michigan St. (Game 2)	L, 3-6 (8)
Feb. 28	vs. Ohio St. (Game 1)	L, 2-4
Feb. 28	vs. Ohio St. (Game 2)	W, 2-1

Sleepy Hollow Sports Complex (Leesburg, Fla.)		
March 11	vs. #23 Michigan (Game 1)	L, 1-2 (8)
March 11	vs. #23 Michigan (Game 2)	L, 0-2
March 12	vs. #23 Michigan	W, 5-4 (8)
March 13	vs. Purdue (Game 1)	W, 8-1
March 13	vs. Purdue (Game 2)	L, 0-7
March 14	vs. Purdue	W, 3-1

March 26	Penn St.	5:30 p.m.
March 27	Penn St. (Game 1)	Noon
March 27	Penn St. (Game 2)	3 p.m.
March 28	Penn St.	11 a.m.

April 2	at Rutgers	2 p.m.
April 3	at Rutgers (Game 1)	Noon
April 3	at Rutgers (Game 2)	3 p.m.
April 4	at Rutgers	10 a.m.

April 9	Illinois	5:30 p.m.
April 10	Illinois (Game 1)	Noon
April 10	Illinois (Game 2)	3 p.m.
April 11	Illinois	11 a.m.

April 16	at Minnesota	5 p.m.
April 17	at Minnesota (Game 1)	Noon
April 17	at Minnesota (Game 2)	3 p.m.
April 18	at Minnesota	Noon

April 23	Wisconsin	5:30 p.m.
April 24	Wisconsin (Game 1)	Noon
April 24	Wisconsin (Game 2)	3 p.m.
April 25	Wisconsin (BTN)	1 p.m.

April 30	Maryland	5:30 p.m.
May 1	Maryland (Game 1)	Noon
May 1	Maryland (Game 2)	3 p.m.
May 2	Maryland	Noon

May 7	at Iowa	TBA
May 8	at Iowa (Game 1)	TBA
May 8	at Iowa (Game 2)	TBA
May 9	at Iowa	TBA

May 14	at Northwestern	TBA
May 15	at Northwestern (Game 1)	TBA
May 15	at Northwestern (Game 2)	TBA
May 16	at Northwestern (BTN)	1 p.m.

May 21-23	NCAA Regionals	
May 27-30	NCAA Super Regionals	
June 3-9	NCAA Women's College World Series	



@HUSKERSOFTBALL



FACEBOOK.COM/HUSKERSOFTBALL



HUSKERS.COM/SOFTBALL

NEBRASKA SOFTBALL FACTS

UNIVERSITY INFORMATION

Location	Lincoln, Neb.
Population	280,369
Founded	1869
Enrollment	25,057
Nickname	Cornhuskers, Huskers
Colors	Scarlet & Cream
Conference	Big Ten
Chancellor	Ronnie Green
Athletic Director	Bill Moos

ATHLETIC COMMUNICATIONS

Softball Contact	Matt Smith
E-Mail	msmith@huskers.com
Phone	(402) 770-5926

2021 COACHING STAFF

Head Coach	Rhonda Revelle
Nebraska Record	1,004-588 (29th year)
Career Record	1,012-604 (30th year)
Assoc. Head Coach	Lori Sippel (32nd year)
Assistant Coach	Diane Miller (13th year)
Dir. of Softball Oper.	Erin Bohling (2nd year)

2020 SEASON REVIEW

Overall Record	9-14
Big Ten Record (Finish)	N/A

2021 TEAM OUTLOOK

Letterwinners Returning/Lost	14/5
Total Starters Returning/Lost	10/1
Position Starters Returning/Lost	8/0
Pitchers Returning/Lost	3/1
Returning All-Conference Players	2*
Returning All-Region Players	2*
Returning All-Americans	0
Newcomers	8

*includes honors at a player's previous school

STADIUM INFORMATION

Stadium	Bowlin Stadium (2,500)
First Season	2002
Record at Bowlin Stadium	230-98 (.701)

PROGRAM HISTORY

First Year of Softball	1976
All-Time Record	1,485-883 (.627)
All-Time Conference Record	394-287 (.579)
Big Ten Record	115-78 (.596)
Overall Conference Titles	19
Big Eight Titles	12
Big 12 Titles	6
Big Ten Titles	1
NCAA Tournament Appearances	24
WCWS Appearances	7
NCAA Tournament Record	62-52 (.544)
NCAA Regional Record	52-35 (.598)
NCAA Super Regional Record	2-3 (.400)
WCWS Record	8-14 (.363)
NFCA All-Americans	27
CoSIDA Academic All-Americans	30

PRONUNCIATION GUIDE

Camyl Armendariz	kuh-MEAL
	ARM-en-DARE-iz
Keana "KP" Pola	key-AW-nuh
Abbie Squier	SKWHY-er
Rhonda Revelle	ruh-VELL
Cam Ybarra	ee-BAR-uh
Sarah Yocom	YO-come

NEBRASKA 2021 SEASON NOTEBOOK

- Nebraska's roster features 22 players, the largest roster in school history.
- The roster features 10 Nebraska natives, the most in-state players since 1980.
- The roster features the most freshmen (8) and most seniors (7) in the 29-year tenure of **Rhonda Revelle** as Nebraska's head coach.
- **Rhonda Revelle** is in her 29th season leading her alma mater in 2021. Revelle is the second-longest serving female head coach in the history of Nebraska Athletics.
- Revelle owns 1,004 wins at Nebraska. She is the all-time wins leader (male or female) in the history of Nebraska Athletics.
- Associate Head Coach **Lori Sippel** is in her 32nd year at Nebraska. Sippel is the longest-tenured female assistant coach in the history of Nebraska Athletics.
- Revelle (1981-83) and Sippel (1985-88) also played for NU. Including their playing and coaching careers, Revelle and Sippel have been a part of 1,308 of Nebraska's 1,485 all-time victories (88 percent).
- Assistant coach **Diane Miller** rounds out the Husker coaching staff. In her 13th season, Miller has helped Nebraska's offense set more than 40 school records.
- NU will play a conference-only schedule for the first time in program history in 2021. The Huskers are scheduled to play 44 Big Ten Conference games, which would nearly double the previous high for most conference games played in one season (24 Big Ten games in 2013).

- Fifth-year seniors **Tristen Edwards** and **Samantha Owen** both took advantage of the NCAA waiver for an extra year of eligibility following the cancellation of the 2020 season due to the COVID-19 pandemic.
- Edwards and Owen are also the only two Huskers who have been an all-conference or all-region performer in their careers. Edwards is a two-time first-team All-Big Ten selection and was a 2019 third-team all-region honoree. Owen was a first-team All-WAC pick and third-team all-region selection at Pacific in 2018.
- **Tristen Edwards** is already one of only five Huskers to be a two-time first-team All-Big Ten selection. In 2021, Edwards will look to become the first Husker to earn three first-team All-Big Ten awards, in addition to becoming the eighth three-time first-team all-conference selection in program history.

2-TIME 1ST-TEAM ALL-BIG TEN PICKS

- **Tristen Edwards, SS (2018-19)**
- MJ Knighten, 3B (2015-16)
- Kiki Stokes, OF (2015-16)
- Tatum Edwards, RHP/UTL (2013-14)
- Taylor Edwards, C (2013-14)

3-TIME 1ST-TEAM ALL-CONFERENCE PICKS

- Jessica Yoachim, 3B (2004-06)*
- Peaches James, RHP/UTL (2001-04)*
- Jenny Voss, RHP (1997-98, 2000)*
- Jennifer Lizama, INF (1997-2000)*
- Tobin Echo-Hawk, INF (1993-96)^*
- Jane Kremer, SS (1986-88)^
- Lori Sippel, RHP (1985-88)*

*Big 12 Conference (1996-2011)

^Big Eight Conference (1977-95)

2021 NEBRASKA NUMERICAL ROSTER

NO.	NAME	B/T	POS.	HT.	YR.	HOMETOWN
1	Rylie Unzicker	L/R	OF	5-5	Sr.	Omaha, Neb.
2	Payton Huscroft	L/L	INF	5-9	Jr.	Omaha, Neb.
5	MJ Green	R/R	INF	5-2	Fr.	Henderson, Texas
6	Billie Andrews	R/R	INF	5-8	Fr.	Gretna, Neb.
7	Sydney Gray	R/R	INF	5-5	Fr.	Tucson, Ariz.
8	Abbie Squier	R/R	OF	5-7	Fr.	Lincoln, Neb.
11	Keana "KP" Pola	L/R	INF	5-2	So.	Santa Ana, Calif.
13	Peyton Glatter	L/R	OF	5-5	Jr.	Omaha, Neb.
14	Camyl Armendariz	R/R	INF	5-7	Fr.	La Verne, Calif.
19	Caitlynn Neal	L/R	RHP/UTL	5-3	Fr.	Dewey, Ariz.
20	Abbey Newlun	R/R	INF	5-7	Fr.	The Woodlands, Texas
21	Sarah Yocom	R/R	INF	5-9	Sr.	Cozad, Neb.
23	Courtney Wallace	R/R	RHP/UTL	5-5	Jr.	Omaha, Neb.
24	Tristen Edwards	R/R	OF	5-6	Sr.	Murrieta, Calif.
27	Brooke Andrews	R/R	INF	5-8	So.	Gretna, Neb.
28	Ally Riley	R/R	C	5-9	Sr.	Alva, Okla.
30	Karlee SeEVERS	R/R	RHP	5-6	Jr.	York, Neb.
32	Cam Ybarra	L/R	INF	5-6	Sr.	Mission Viejo, Calif.
33	Anni Raley	R/R	C	5-6	Jr.	Clovis, Calif.
39	Olivia Ferrell	R/R	RHP/UTL	5-9	Sr.	Omaha, Neb.
44	Kaylin Kinney	R/R	RHP/UTL	5-10	Fr.	Cedar Rapids, Iowa
77	Samantha Owen	R/R	INF	5-5	Sr.	Manteca, Calif.

HUSKER PITCHING SHINES IN THE SUNSHINE STATE

Nebraska's pitching shined during the opening two weekends in Florida. The Huskers posted a 2.39 ERA and allowed only 2.8 runs per game over 12 games in the Sunshine State.

- The Huskers have held their opponent to two or fewer runs seven times in 12 games after allowing two or fewer runs only six times in 23 games during last year's shortened season.
- Nebraska has allowed fewer than two runs four times in 12 games this season after limiting only one opponent to fewer than two runs in 23 games a season ago.
- NU boasts a 2.39 ERA and is limiting opponents to a .248 batting average. In 23 games a season ago, the Huskers posted a 5.54 ERA and a .313 opponent average.
- Nebraska is averaging just 1.8 walks per game this season after averaging at least 3.2 walks per game each of the previous six seasons.
- The Huskers have allowed only two home runs in 12 games and 314 opponent at bats. Opponents are averaging one home run every 157 at bats this season. Last year, opponents homered an average of every 23 at bats against the Huskers.
- Senior **Olivia Ferrell** has posted a 2.33 ERA this season after entering the year with a 4.47 career ERA. Ferrell was fantastic for the Huskers two weeks ago, posting a 2-1 record with 1.12 ERA in three starts. She has allowed one earned run or less in three straight starts.
- Junior **Courtney Wallace** is 3-2 this season with a 2.80 ERA. She entered this year with a 5.50 career ERA. Wallace has also struck out 14 batters this season and walked only seven after entering the year with more career walks (89) than strikeouts (88).
- Junior **Karlee Seevers** and freshmen **Kaylin Kinney** and **Caitlynn Neal** have also pitched well. Seevers made her season debut with a scoreless inning against Purdue on March 13. Kinney has logged a 2.69 ERA with nine strikeouts in 13.0 innings. Neal made her collegiate debut two weeks ago in relief against No. 23 Michigan, pitching a scoreless inning.
- Ferrell and Wallace are tied for ninth in the Big Ten in wins (3). Ferrell also ranks 10th in strikeouts (35), while Kinney leads the league with two saves and Wallace ranks fourth (1).

PITCHING COMPARISON (2020 TO 2021)

Season	ERA	SV	HITS/GM	RUNS/GM	BB/GM	HR/GM	AVG.
2020	5.54	1	8.5	6.0	3.9	1.2	.313
2021	2.39	2	6.5	2.8	1.8	0.2	.248
DIFF.	-3.15	+1	-2.0	-3.2	-2.1	-1.0	-.065

STRIKEOUT-TO-WALK COMPARISON (2015-2021)

Season	SO	BB	IP	SO/GM	BB/GM	RATIO
2021	58	22	85.0	4.8	1.8	+3.0
2020	113	82	146.2	5.4	3.9	+1.5
2019	250	185	328.2	5.3	3.9	+1.4
2018	217	165	352.2	4.3	3.3	+1.0
2017	202	188	346.1	4.1	3.8	+0.3
2016	237	170	377.2	4.4	3.2	+1.2
2015	196	194	363.2	3.8	3.7	+0.1

HOME RUNS ALLOWED (2018-2021)

Season	HR Allowed	Opponent ABs	AB Per HR Allowed
2021	2	314	157
2020	27	626	23
2019	44	1,354	31
2018	39	1,418	36

DIGGING IN ON DEFENSE

Aiding the improvement of the Husker pitching staff has been the play of the Nebraska defense. NU boasts a .976 fielding percentage, an outstanding mark especially considering the Huskers are starting freshmen at shortstop and third base.

- The Huskers rank fifth nationally in double plays per game (0.75) and in the top 35 in the country in fielding percentage.
- Nebraska has played more than one-quarter of its scheduled games, and its .976 fielding percentage would currently rank as the top season fielding percentage in school history. The Huskers have finished a season with a .970 fielding percentage or better only four times: 2001 (.972), 2006 (.973), 2011 (.970) and 2018 (.973).

PROJECTED LINEUP

1	#1 RYLIE UNZICKER • CF .231 • 6 R • 6 H • 2 2B • 0 HR • 2 RBI 85 Career Starts • 52 Starts in CF
2	#24 TRISTEN EDWARDS • RF .375 • 6 R • 12 H • 2 2B • 3 HR • 8 RBI 188 Career Starts • 51 Starts in RF
3	#32 CAM YBARRA • 2B .162 • 0 R • 6 H • 4 2B • 0 HR • 5 RBI 119 Career Starts • 96 Starts at 2B
4	#28 ALLY RILEY • C .235 • 0 R • 4 H • 1 2B • 0 HR • 0 RBI 43 Career Starts • 29 Starts at C
5	#39 OLIVIA FERRELL • P .067 • 1 H • 0 RBI 3-4 • 2.33 ERA 51 Career Starts • 45 Starts at P
6	#5 MJ GREEN • DP .600 • 0 R • 3 H • 0 2B • 0 HR • 0 RBI 1 Career Start • 1 Start as the DP
7	#7 SYDNEY GRAY • 3B .276 • 2 R • 8 H • 2 2B • 0 HR • 3 RBI 10 Career Starts • 10 Starts in 3B
8	#6 BILLIE ANDREWS • SS .158 • 6 R • 6 H • 1 2B • 0 HR • 7 RBI 12 Career Starts • 12 Starts at SS
9	#19 CAITLYNN NEAL • LF .313 • 4 R • 5 H • 0 2B • 0 HR • 3 RBI 6 Career Starts • 6 Starts in LF
	#21 SARAH YOCOM • 1B .000 • 0 R • 0 H • 0 2B • 0 HR • 0 RBI 41 Career Starts • 6 Starts at 1B

PROJECTED SUBSTITUTES

#2 PAYTON HUSCROFT • INF .000 • 0 R • 0 H • 0 2B • 0 HR • 0 RBI
#8 ABBIE SQUIER • OF .143 • 3 R • 1 H • 1 2B • 0 HR • 1 RBI
#11 KEANA "KP" POLA • INF .211 • 0 R • 4 H • 1 2B • 0 HR • 0 RBI
#13 PEYTON GLATTER • OF .000 • 0 R • 0 H • 0 2B • 0 HR • 0 RBI
#14 CAMYL ARMENDARIZ • INF .000 • 3 R • 0 H • 0 2B • 0 HR • 0 RBI
#20 ABBEY NEWLUN • INF .000 • 0 R • 0 H • 0 2B • 0 HR • 0 RBI
#23 COURTNEY WALLACE • RHP/UTL .150 • 2 R • 3 H • 0 RBI 3-2 • 2.80 ERA
#27 BROOKE ANDREWS • INF .143 • 2 R • 1 H • 0 2B • 0 HR • 0 RBI
#30 KARLEE SEEVERS • RHP 0-0 • 0.00 ERA • 0 IP • 0 SO • 0 BB
#33 ANNI RALEY • C .125 • 0 R • 1 H • 1 2B • 0 HR • 1 RBI
#44 KAYLIN KINNEY • RHP/UTL .167 • 0 R • 3 H • 1 RBI 0-0 • 2.69 ERA
#77 SAMANTHA OWEN • INF .000 • 0 R • 0 H • 0 2B • 0 HR • 0 RBI

BIG TEN STANDINGS

Rk.	Team	Big Ten Record
1.	Northwestern	11-1
2.	Illinois	10-2
3.	Michigan	9-3
	Minnesota	9-3
5.	Indiana	7-5
	Iowa	7-5
7.	Nebraska	6-6
	Maryland	6-6
	Ohio State	6-6
10.	Purdue	4-8
	Wisconsin	4-8
12.	Michigan State	3-9
13.	Rutgers	2-10
14.	Penn State	0-12

NEBRASKA CONFERENCE TITLES

BIG EIGHT CONFERENCE (1976-1995)

Year	Record	Finish	Tournament
1977	1-4	t-4th	N/A
1978	4-3	7th	t-6th
1979	3-8	6th	t-6th
1980	8-9	4th	N/A
1981	5-6	3rd	3rd
1982	9-3	1st	1st
1983	3-7	7th	N/A
1984	6-2	1st	1st
1985	11-1	1st	1st
1986	9-3	1st	1st
1987	8-2	1st	1st
1988	7-3	1st	1st
1989	6-4	3rd	t-5th
1990	3-5	5th	2nd
1991	3-5	5th	t-4th
1992	2-6	5th	t-4th
1993	5-11	5th	N/A
1994	5-15	6th	N/A
1995	10-6	3rd	N/A
TOTAL	108-103		12 total titles

BIG 12 CONFERENCE (1996-2011)

Year	Record	Finish	Tournament
1996	10-8	4th	2nd
1997	10-6	4th	5th
1998	16-0	1st	1st
1999	10-8	4th	2nd
2000	15-2	2nd	1st
2001	16-2	1st	5th
2002	11-5	2nd	2nd
2003	10-8	6th	t-4th
2004	14-3	1st	1st
2005	9-9	7th	t-5th
2006	13-4	2nd	t-3rd
2007	10-8	5th	t-5th
2008	4-14	t-9th	2nd
2009	9-9	5th	t-5th
2010	7-11	t-6th	t-5th
2011	9-9	6th	N/A
TOTAL	173-106		6 total titles

BIG TEN CONFERENCE (2012-PRES.)

Year	Record	Finish	Tournament
2012	14-9	3rd	N/A
2013	16-6	2nd	t-3rd
2014	18-5	t-1st	t-5th
2015	17-6	3rd	2nd
2016	13-9	5th	t-5th
2017	13-10	5th	t-9th
2018	9-13	9th	t-9th
2019	9-14	t-8th	t-9th
2020	No Big Ten Season Due to Pandemic		
2021	6-6	-	N/A
TOTAL	115-78		1 total title

CLOSE CALLS

Nebraska has been accustomed to playing close games so far this spring, as eight of the Huskers' 12 contests have been decided by either one or two runs.

- Nebraska is 4-4 in games decided by two runs or less this season, including 2-1 in one-run games and 2-3 in two-run games. In 23 games last year, the Huskers played only six games decided by two or fewer runs (3-3 record in those games).
- Nine of Nebraska's 12 games have been either a tie, one-run or two-run game entering the sixth inning. The Huskers are 4-0 when leading after five innings, 0-5 when trailing after five innings and 2-1 when tied after five innings.
- NU has played three extra-inning games this season, posting a 1-2 record in those games.
- Four of Nebraska's six losses have been by either one or two runs. Nebraska had the tying runner in scoring position in its final at bat in two of those four losses.

FRESHMEN FINDING THEIR WAY

Nebraska has started multiple freshmen every game this season, including four games where four freshmen were in the starting batting order. The freshmen, without the benefit of a fall season, have been thrown right into the mix against conference competition, but the group is beginning to find its way.

- In Nebraska's last game against Purdue, **MJ Green, Sydney Gray, Billie Andrews** and **Caitlynn Neal** batted 6th, 7th, 8th and 9th, respectively. Those four freshmen combined to go 9-for-12 with two doubles, two RBIs and three runs scored. The quartet accounted for nine of Nebraska's 11 hits and all of the Huskers' extra-base hits, runs and RBIs.
- Green went 2-for-3 against Purdue in her first career start and she is 3-for-5 this season.
- Andrews is tied for the team lead with four stolen bases and two multi-RBI games this season and ranks second with six runs scored and seven RBIs and third with six hits.
- Gray is tied for the team lead with three multi-hit games this season and ranks second with eight hits and two doubles. She is batting .276 on the season after going 6-for-13 with two doubles and two RBIs in her last four games, which included a walk-off two-out, two-run single to give Nebraska a 5-4 upset of No. 23 Michigan.
- Neal is batting .313 this season after going 5-for-9 with three runs and three RBIs in the three-game series with Purdue. Neal also pitched a scoreless inning against No. 23 Michigan.
- **Kaylin Kinney** has collected three hits and **Abbie Squier** has totaled one hit, one RBI and three runs this season. **Camyl Armendariz** has also scored three runs in her rookie season.
- As a group, the Huskers' eight freshmen have combined to bat .226 this season (26-for-115), while the remainder of the roster is hitting a collective .189 (38-for-201). The freshmen have also accounted for 18 of the Huskers' 36 runs scored and 14 of the team's 30 RBIs.

THE LAST TIME A HUSKER

Had 6+ At Bats	5 players vs. Wisconsin (5/8/16)
Had 5+ Hits	Lizzy Rock (5) vs. Illinois (2/24/06)
Scored 4+ Runs	Tristen Edwards (4) vs. Pittsburgh (2/17/19)
Had 3+ Doubles	Cam Ybarra (4) vs. Lehigh (3/7/20)
Had 2+ Homers	Tristen Edwards (2) vs. Oregon St. (3/6/20)
Had 3+ Homers	Kaylan Jablonski (3) at Cal State Fullerton (3/17/18)
Homered in 1st Career AB	Hailey Decker vs. UIC (2/8/13)
Stole 3+ Bases	Nikki Haget (3) vs. La Salle (3/12/11)
Drew 4+ Walks	MJ Knighten (4) at Northwestern (4/17/16)
Had 2+ HBP	Samantha Owen (3) vs. Pittsburgh (2/17/19)
Had 5+ RBIs	Tristen Edwards (5) vs. Cal (2/22/20)
Threw a No-Hitter	Kaylan Jablonski vs. Purdue (4/30/16)
Threw a Perfect Game	Ashley DeBuhr vs. Iowa St. (4/13/05)
Had 10+ Strikeouts	Cassie McClure (10) vs. South Dakota St. (3/29/16)
Had 15+ Strikeouts	Ashley Hagemann (17) at Omaha (4/19/12)
Had a 10-Game Hit Streak	Tristen Edwards (12) in 2019-20
Had a 15-Game Hit Streak	MJ Knighten (21) in 2015
Had a 20-Game Hit Streak	MJ Knighten (21) in 2015
Had a 25-Game Hit Streak	Taylor Edwards (25) in 2013-14

EDWARDS & KINNEY LEADING THE LEAGUE

After two weekends of play where all 14 Big Ten teams played 12 games, **Tristen Edwards** and **Kaylin Kinney** both find themselves leading the league in at least one category.

- Senior **Tristen Edwards** leads the Big Ten in home runs (3) and slugging percentage (.719). Her three home runs are more than nine of the other 13 Big Ten schools have hit as a team.
- Freshman **Kaylin Kinney** leads the Big Ten and ranks 15th nationally with two saves.

EDWARDS LEAVING HER MARK ON HUSKER RECORD BOOK

Senior outfielder **Tristen Edwards** has joined one elite club in Nebraska history, is nearing another and is poised to challenge several Husker career records.

- Edwards is one of only three Huskers who have totaled 40 career doubles and 40 career home runs. The other two members of that group are three-time All-American Ali Viola and two-time All-American Taylor Edwards, Tristen's older sister.
- Edwards is also looking to become the first Husker to hit 50 career doubles and 50 career home runs. Edwards currently owns 44 career doubles and 45 career home runs.
- Edwards is nearing another elite group as she needs four runs and two RBIs to become the fourth Husker to record 150 career hits, runs and RBIs. The other three members of that group were all multi-time All-Americans (Ali Viola, Taylor Edwards and MJ Knighten).
- Edwards is on track to break Nebraska's all-time records in doubles and extra-base hits in addition to challenging several other top marks. Edwards is five shy of Nebraska's double record and nine shy of the top home run mark.

NEBRASKA PLAYERS WITH 40 CAREER 2B & HR

Player	Years	2B	HR
Ali Viola	1995-98	48	53
Taylor Edwards	2011-14	41	54
Tristen Edwards	2017-pres.	44	45

NEBRASKA PLAYERS WITH 150 CAREER HITS, RUNS & RBIs

Player	Years	Hits	Runs	RBIs
Ali Viola	1995-98	263	157	213
Taylor Edwards	2011-14	220	177	202
MJ Knighten	2014-17	253	183	186
Tristen Edwards	2017-pres.	197	146	148

EDWARDS' ASSAULT ON NEBRASKA'S ALL-TIME RECORDS

Category	Record Holder	Record	Edwards Total	Projection*
Doubles	Three players	48	44	52
Home Runs	Taylor Edwards	54	45	52
Extra-Base Hits	Ali Viola	105	90	106

*Based on Edwards' career per-game averages played out over a 44-game 2021 schedule

THE LAST TIME NEBRASKA...

Beat a No. 1 Team	vs. No. 1 Michigan (1-0 on 4/8/16)
Beat a Top-5 Team	vs. No. 1 Michigan (1-0 on 4/8/16)
Beat a Top-10 Team	vs. No. 6 Texas A&M (6-3 on 2/22/18)
Beat a Ranked Team	vs. No. 23 Michigan (5-4 [8] on 3/12/21)
Won When Trailing After 6 Innings	vs. Tulsa (3/10/18)
Lost When Leading After 6 Innings	vs. Minnesota (3/25/17)
Scored 10+ Runs	at No. 21 Missouri [10] (3/1/20)
Scored 15+ Runs	vs. UTEP [16] (2/8/20)
Scored 20+ Runs	at Maryland [26] (4/3/16)
Allowed 10+ Runs	vs. No. 2 Washington [10] (2/22/20)
Allowed 15+ Runs	vs. Wichita St. [17] (2/29/20)
Allowed 20+ Runs	never
Recorded 15+ Hits	at Rutgers - 2 [19] (4/8/17)
Recorded 20+ Hits	at Maryland [21] (4/3/16)
Hit 6+ Doubles	vs. Lamar [7] (2/8/19)
Hit 4+ Home Runs	vs. Illinois - 1 [4] (3/31/19)
Stole 6+ Bases	at Purdue [60] (4/13/19)
Drew 10+ Walks	at Creighton [11] (4/25/17)
Was No-Hit	vs. No. 23 Michigan (Game 1: 3/11/21)

EDWARDS CAREER RECORD WATCH

DOUBLES

1. Tobin Echo-Hawk (1993-96)	48
Ali Viola (1995-98)	48
Kim Ogee (2000-03)	48
4. Tristen Edwards (2017-present)	44

HOME RUNS

1. Taylor Edwards (2011-14)	54
2. Ali Viola (1995-98)	53
3. Jennifer Lizama (1997-2000)	47
4. Tatum Edwards (2011-14)	46
5. Tristen Edwards (2017-present)	45

EXTRA-BASE HITS

1. Ali Viola (1995-98)	105
2. Taylor Edwards (2011-14)	95
3. Jennifer Lizama (1997-2000)	93
4. Tristen Edwards (2017-present)	90

RUNS

1. Kiki Stokes (2013-16)	200
2. Jennifer Lizama (1997-2000)	199
3. MJ Knighten (2014-17)	183
4. Kim Ogee (2000-03)	182
5. Taylor Edwards (2011-14)	177
6. Tobin Echo-Hawk (1993-96)	168
7. Ali Viola (1995-98)	157
8. Tristen Edwards (2017-present)	146

RBIs

1. Ali Viola (1995-98)	213
2. Taylor Edwards (2011-14)	202
3. MJ Knighten (2014-17)	186
4. Brooke Thomason (2010-13)	177
5. Nicole Trimboli (2001-04)	173
6. Tatum Edwards (2011-14)	158
7. Tristen Edwards (2017-present)	148

BATTING AVERAGE

1. Ali Viola (1995-98)	.418
2. Tobin Echo-Hawk (1993-96)	.379
3. Jennifer Lizama (1997-2000)	.378
4. Lizzy Rock (2005-06)	.374
5. MJ Knighten (2014-17)	.357
6. Tristen Edwards (2017-present)	.354
7. Kiki Stokes (2013-16)	.350
8. Anne Steffan (2002-05)	.347
9. Lisa Wangler (2000-03)	.346
10. Denise Day (1982-85)	.336

SLUGGING PERCENTAGE

1. Ali Viola (1995-98)	.760
2. Tristen Edwards (2017-present)	.680
3. Christie McCoy (1997-98)	.642
4. Jennifer Lizama (1997-2000)	.635
5. Taylor Edwards (2011-14)	.629
6. MJ Knighten (2014-17)	.597
7. Denise Day (1982-85)	.579
8. Tatum Edwards (2011-14)	.566
9. Hailey Decker (2013-14)	.558
10. Brooke Thomason (2010-13)	.546

MULTI-HOME RUN GAMES

1. Tristen Edwards (2017-present)	7
2. Tatum Edwards (2011-14)	6
Ali Viola (1995-98)	6

NEBRASKA BY THE NUMBERS

62 NCAA TOURNAMENT WINS
Nebraska has won 62 games in its 24 NCAA Tournament appearances (62-52). The 62 postseason wins rank 19th in NCAA history.

30 ACADEMIC ALL-AMERICANS
A total of 22 Huskers have combined to earn 30 CoSIDA Academic All-America honors, the most of any softball program in NCAA history.

27 ALL-AMERICANS
Nebraska has produced 27 All-Americans, including eight first-team selections, seven two-time picks and two three-time All-Americans.

24 NCAA TOURNAMENTS
The Huskers have made 24 appearances in the NCAA Tournament, including 13 straight from 1995 to 2007. Nebraska's 24 postseason appearances rank 13th in NCAA history.

21 REVELLE ALL-AMERICANS
Rhonda Revelle has guided 13 players to a total of 21 All-America honor in her first 28 seasons as Nebraska's head coach.

19 CONFERENCE TITLES
Nebraska has won a total of 19 conference championships. The Huskers won 12 Big Eight titles, six Big 12 crowns and captured their first Big Ten title in 2014.

15 TOP-25 RANKINGS
Nebraska has been ranked in the final NFCA poll in 15 of the 26 years the poll has existed. The Huskers were one of only six teams nationally to be ranked in the final poll in each of the first 12 years it existed (1995 to 2006).

14 REVELLE ACADEMIC ALL-AMERICANS
Rhonda Revelle has produced 14 academic All-Americans at Nebraska. That total ranks fourth among all softball head coaches in NCAA history.

7 WCWS APPEARANCES
Nebraska has advanced to the Women's College World Series seven times to rank 14th in NCAA history.

4 SOFTBALL OLYMPIANS
Four former Huskers have competed in the Olympics, with a pair of former players competing in each of the last two Olympics.

EDWARDS THREATENED SCHOOL RECORDS IN 2020

Senior outfielder **Tristen Edwards** was in the midst of a potentially historic year in 2020 before the season was cut short due to the COVID-19 pandemic. In 23 games last season, Edwards hit .434 with 10 doubles, 11 home runs, 21 extra-base hits and a 1.000 slugging percentage.

- Edwards was second nationally in extra-base hits (21) during the shortened 2020 season and was third in slugging percentage (1.000), fourth in home runs (11) and 14th in doubles (10).
- Edwards was on pace to re-write the Nebraska softball season record book in 2020. With 10 doubles, 11 home runs and 21 extra-base hits through 23 games, Edwards was on pace to finish with 24 doubles, 27 home runs and 51 extra-base hits in a typical 56-game regular season. Each of those totals would have been a school record.
- Edwards was also on pace to set a Nebraska season record for slugging percentage (1.000) in addition to finishing with the third-highest average in school history (.434).

EDWARDS' RECORD PACE IN 2020

Category	23-Game Total	56-Game Pace*	NU Season Record
Doubles	10	24	22
Home Runs	11	27	22
Extra-Base Hits	21	51	35
Total Bases	76	185	150
Slugging Percentage	1.000	1.000	.865

*a normal full regular-season softball schedule consists of 56 games

EDWARDS AMONG NATION'S TOP RETURNING STATISTICAL LEADERS

Tristen Edwards was in the midst of a stellar season in 2020 before the season was cut short. In 23 games last season, Edwards hit .434 with 10 doubles, 11 home runs and 22 RBIs.

- Edwards' 21 extra-base hits ranked second nationally in the shortened 2020 season. She was one of only three players in the country with 20 extra-base hits.
- Edwards was the only player in the country last season with at least 10 doubles and 10 home runs. She ranked fourth nationally in home runs (11) and 14th in doubles (10). Edwards was the only player in the nation to rank in the top 15 in both doubles and home runs in 2020.
- In addition to her lofty ranking in doubles and home runs, Edwards ranked third nationally in slugging percentage (1.000) and total bases (76), fourth in home runs per game (0.48) and 15th in runs per game (1.22).
- Entering 2021, Edwards ranked 18th among all active Division I players in career RBIs (140) and total bases (354), 19th in home runs (44), 22nd in doubles (42) and 23rd in runs (139).

PLAYERS RANKED IN TOP 25 NATIONALLY IN 2B & HR (2020)

Player	School	2B Rank	HR Rank
Tristen Edwards	Nebraska	14th	4th
Maddi Hackbarth	Arizona St.	25th	15th
Alex Martens	Kentucky	25th	15th

NEBRASKA'S 2021 RECORD WHEN...

Overall	6-6	Out-Hitting Opponent	3-0
Non-Conference	0-0	Out-Hit by Opponent	1-6
Big Ten Conference	6-6	Scoring First	5-1
Home	0-0	Opponent Scores First	1-5
Neutral	6-6	Scoring in the First Inning	2-0
Road	0-0	Scoring Fewer than 3 Runs	1-5
Night Games	1-2	Scoring 5 or More Runs	2-0
Day Games	5-4	Scoring 10 or More Runs	0-0
Sunday	2-1	Allowing Fewer Than 3 Runs	5-2
Monday	0-0	Allowing 5 or More Runs	0-2
Tuesday	0-0	Allowing 10 or More Runs	0-0
Wednesday	0-0	Leading After Five Innings	4-0
Thursday	0-2	Leading After Six Innings	5-0
Friday	2-1	Trailing After Five Innings	0-5
Saturday	2-2	Trailing After Six Innings	0-4
vs. Ranked Opponents	1-2	Tied After Five Innings	2-1
vs. Unranked Opponents	5-4	Tied After Six Innings	1-2
Extra Innings	0-1	Committing 0 Errors	2-3
1-Run Games	2-1	Committing 2 or More Errors	2-0

EDWARDS' CAREER RANKINGS AMONG ACTIVE DIVISION I PLAYERS (AS OF MARCH 21)

Category	Total	Rank
Home Runs	45	22nd
Doubles	43	25th
Total Bases	372	31st
RBI's	146	32nd
Runs	142	34th
Slugging Pct.	.682	49th

ACTIVE DIVISION I PLAYERS WITH 40 CAREER 2B & HR (AS OF MARCH 21)

Player	School	2B	HR
Amber Bishop	Liberty	53	55
Suzy Brookshire	Long Beach St.	41	52
Georgia Capell	Tarleton State	44	46
Madison Cathcart	Seattle	55	40
Jenna Cone	George Washington	42	62
Tristen Edwards	Nebraska	43	45
Alysen Febrey	Oklahoma St.	50	40
Morganne Flores	Washington	41	51
Kate Gordon	James Madison	45	50
Jessie Harper	Arizona	42	78
Rachel McCollum	East Carolina	50	56
Bubba Nickles	UCLA	42	42
Alyssa Palomino	Arizona	44	63
Madison Perrigan	Wichita St.	45	41
Linda Rush	Drexel	52	53
Sami Williams	Iowa State	70	56

EDWARDS NAMED PLAYER OF THE WEEK FOR RECORD SIXTH TIME

Senior **Tristen Edwards** was named the first Big Ten Player of the Week of the 2021 season on March 2. She was honored after hitting .444 in six games with one double, three homers and six RBI's. Her three homers were more than any other Big Ten team hit in the first week.

- Edwards was named the Big Ten Player of the Week for the sixth time in her career. That set a Nebraska record for most career conference player-of-the-week honors and tied the Big Ten record for most career player-of-the-week awards.
- Edwards became only the third player in Big Ten history to be a six-time player of the week. The other two are two-time Northwestern All-American Adrienne Monka and four-time Michigan All-American Sierra Romero.
- Edwards became the first Husker to win six conference player-of-the-week awards. Overall, Edwards is one shy of the most conference weekly awards in school history. All-American Peaches James won seven total conference weekly awards in her decorated career.

MOST PLAYER-OF-THE-WEEK AWARDS IN BIG TEN HISTORY

Player	School	Years	Awards
Tristen Edwards	Nebraska	2017-present	6
Sierra Romero	Michigan	2013-16	6
Adrienne Monka	Northwestern	2009-12	6

Note: *Tristen Edwards & Sierra Romero attended the same high school (Vista Murrieta)*

MOST CONFERENCE PLAYER-OF-THE-WEEK AWARDS IN NEBRASKA HISTORY

Player	Years	Awards
Tristen Edwards	2017-present	6
Ali Viola	1995-98	5
Tobin Echo-Hawk	1993-96	4

MOST CONFERENCE WEEKLY AWARDS IN NEBRASKA HISTORY

Player	Years	Player Awards	Pitcher Awards	Total
Peaches James	2001-04	1	6	7
Tristen Edwards	2017-present	6	0	6
Lori Sippel	1985-88	0	6	6

REVELLE WINS 1,000TH GAME AT NEBRASKA

Nebraska head coach **Rhonda Revelle** won her 1,000 game at Nebraska on Feb. 27, when the Huskers defeated Michigan State, 7-1 in game one of a doubleheader. She achieved the milestone in her 29th season and her 1,582nd game. The all-time wins leader in the history of Nebraska Athletics, Revelle is the first Husker coach to record 1,000 wins at Nebraska.

BOWLIN STADIUM



The 2020 season marks the 20th season Nebraska has called Bowlin Stadium home. The stadium's inaugural season was in 2002.

One of the top facilities in the country, Bowlin Stadium features seating for 2,500 fans, an underground system that heats the field and a large video board. Just past the right field fence is the Alex Gordon Training Complex, a spacious indoor facility that is large enough for Nebraska to take live batting practice inside the complex. The clubhouse features a locker room, players' lounge, training room and coaches' offices.

Nebraska has won nearly 70 percent of its games at Bowlin Stadium. The Huskers have hosted four NCAA Regionals at Bowlin Stadium and ranked in the top 25 nationally in attendance 14 times, including four seasons ranked in the top 10.

YEARLY RECORDS

Year	Record	Pct.
2002	9-5	.643
2003	14-7	.667
2004	14-6	.700
2005	9-7	.563
2006	20-1	.952
2007	18-5	.783
2008	13-9	.591
2009	13-5	.722
2010	12-8	.600
2011	10-4	.714
2012	15-1	.938
2013	18-4	.818
2014	13-3	.813
2015	11-6	.647
2016	11-5	.688
2017	13-6	.684
2018	10-7	.588
2019	7-10	.412
2020	0-0	.000
2021	0-0	.000
TOTAL	230-99	.699

LARGEST CROWDS

1. 2,302	Michigan	April 9, 2016
2. 2,204	Ohio State	April 19, 2014
3. 1,960	Texas	April 9, 2011
4. 1,844	Iowa	May 17, 2003
5. 1,840	Michigan	April 27, 2013
6. 1,752	Wisconsin	May 12, 2012
7. 1,692	Indiana	May 3, 2014
8. 1,673	Illinois	April 22, 2017
9. 1,601	Wisconsin	April 28, 2018
10. 1,585	Lehigh	May 20, 2004

COLLEGE SOFTBALL POLLS

USA TODAY/NFCA COACHES POLL

Rk.	Team	Record	Pts.	LW
1.	Oklahoma (32)	800	22-0	1
2.	UCLA	765	19-1	2
3.	Oregon	710	20-1	4
4.	Alabama	690	24-2	3
5.	Florida	678	21-2	5
6.	Washington	653	22-2	6
7.	Kentucky	573	23-2	9
8.	Texas	532	20-3	10
9.	Arizona	493	14-5	7
10.	Oklahoma State	480	23-4	8
11.	Duke	475	24-1	14
12.	Florida State	472	16-6	13
13.	LSU	440	17-8	12
14.	Arizona State	410	17-6	11
15.	Arkansas	337	23-3	17
16.	Louisiana	317	16-6	15
17.	Georgia	316	21-3	19
18.	Missouri	249	20-6	16
19.	Virginia Tech	224	15-4	18
20.	Clemson	176	20-2	23
21.	Tennessee	164	21-5	21
22.	UCF	96	19-6	20
23.	South Carolina	89	17-7	24
24.	Auburn	61	18-6	22
25.	Michigan	54	9-3	25

ESPN.COM/USA SOFTBALL POLL

Rk.	Team	Record	Pts.	LW
1.	Oklahoma (20)	22-0	500	1
2.	UCLA	19-1	476	3
3.	Alabama	24-2	446	2
4.	Oregon	20-1	418	4
5.	Florida	21-2	417	5
6.	Washington	22-2	405	7
7.	Kentucky	23-2	327	10
8.	Arizona	14-5	310	8
9.	Oklahoma State	23-4	306	6
10.	Texas	20-3	302	11
11.	LSU	17-8	293	12
12.	Duke	24-1	270	14
13.	Florida State	16-6	252	13
14.	Arizona State	17-6	246	9
15.	Arkansas	23-3	232	17
16.	Virginia Tech	15-4	180	16
17.	Louisiana	16-6	172	15
18.	Georgia	21-3	166	20
19.	Tennessee	21-5	158	19
20.	Missouri	20-6	109	18
21.	Clemson	20-2	85	25
22.	Northwestern	11-1	77	22
23.	South Carolina	17-7	66	24
24.	UCF	19-6	37	21
25.	Auburn	18-6	36	23

SCOUTING THE PENN STATE NITTANY LIONS (0-12)

Penn State enters this weekend looking for its first victory of the season, but the Nittany Lions' 0-12 record doesn't tell the whole story. Under first-year head coach **Clarisa Crowell**, six of Penn State's 12 losses have been by two or fewer runs. In their last five games, the Nittany Lions lost twice in extra innings to an Iowa team (7-5) in fifth place in the Big Ten Conference standings, and PSU suffered a pair of one-run defeats to second-place Illinois (10-2).

Nebraska and Penn State share one common opponent this season in Purdue. The Nittany Lions were swept in a doubleheader by Purdue on the second day of the season, while the Huskers went 2-1 against the Boilermakers in a three-game series two weeks ago.

- Penn State has been solid in the circle, posting a 2.41 ERA that ranks just behind Nebraska's 2.39 ERA. Opponents are hitting only .238 against Nittany Lion pitching and have hit only one home run in 328 at bats.
- While Penn State's pitching has been formidable, the staff has been hurt by the Nittany Lion defense. Penn State has committed 20 errors in 12 games, posting a .942 fielding percentage. The Nittany Lions have allowed almost as many unearned runs (25) as earned runs (29). Penn State is allowing an average of 4.5 runs per game despite its 2.41 ERA.
- Individually, Penn State has relied heavily on left-hander **Bailey Parshall**, who has thrown 44 percent of the team's innings. Parshall is 0-6 with a 2.27 ERA and 39 strikeouts in 37.0 innings. She has walked only nine batters and has gone the distance in three of her five starts.
- Right-hander **Kylee Lingenfelter** ranks behind Parshall with four starts in 2021. Lingenfelter is 0-4 with a 1.19 ERA this spring, as only three of the 13 runs she has allowed in 17.2 innings have been earned.
- Left-hander **Vanessa Oatley** ranks second on the team with six appearances and 19.2 innings pitched. She is 0-1 with a 1.42 ERA, and opponents are hitting just .174 against her.
- Omaha native and Creighton transfer **Logan Black** rounds out the Nittany Lion staff. Black is 0-1 this season with a 7.00 ERA in 10.0 innings.
- Offensively, Penn State is hitting just .148 as a team, ranking last in the Big Ten in batting average. The Nittany Lions are averaging 1.5 runs per game and are the only Big Ten team yet to homer this season.
- **Dani Fey** and **Michelle Leone** are the only Nittany Lions batting over .190. Fey leads the team with a .280 average and .333 on-base percentage, while Leone is batting .240 with a pair of doubles, and she leads the team with a .320 slugging percentage.
- **Lilia Crouthamel** paces Penn State with four RBIs and four stolen bases.
- **Clarisa Crowell** is in her first season at Penn State and her ninth season as a head coach. She spent the previous eight seasons as the head coach at Miami (Ohio). Crowell owns an 0-12 record at Penn State, with a career mark of 209-194.

STATISTICAL COMPARISON			SERIES HISTORY	
CATEGORY	NEB	PSU	CATEGORY	RECORD
2021 Record	6-6	0-12	Overall Record	NEB, 8-5
Batting Average	.203	.148	In Big Ten Play	NEB, 5-1
Runs/Game	3.0	1.5	Current Win Streak	PSU, 1 game
Runs Allowed/Game	2.8	4.5	At Bowlin Stadium	NEB, 3-0
ERA	2.39	2.41	Revelle vs. Penn St.	9-10
Fielding Percentage	.976	.942	Crowell vs. Nebraska	0-0



RHONDA REVELLE

29TH SEASON AT NEBRASKA
1,004-588 RECORD

30TH CAREER SEASON
1,012-604 RECORD

WINNINGEST COACH IN THE
HISTORY OF HUSKER ATHLETICS

COACH OF THE YEAR IN
3 MAJOR CONFERENCES

NFCA HALL OF FAME

COACHING NUMBERS

Conference Coach-of-the-Year Awards	4
Big Ten Coach of the Year	1
Big 12 Coach of the Year	2
Big Eight Coach of the Year	1
Conference Titles	7
Big Ten Conference Titles	1
Big 12 Conference Titles	6
NCAA Tournament Appearances	20
Women's College World Series	3
NFCA All-Americans	21
CoSIDA Academic All-Americans	14

NFCA HALL-OF-FAME COACHES

(ACTIVE DIVISION I COACHES ONLY)

Coach	Induction Year
Mike Candrea, Arizona	1996
Carol Hutchins, Michigan	2006
Rhonda Revelle, Nebraska	2010
Melinda Fischer, Illinois State	2010
Ralph Weekly, Tennessee	2011
Patty Gasso, Oklahoma	2012
Donna Papa, North Carolina	2012
Joan Joyce, Florida Atlantic	2013
Patrick Murphy, Alabama	2013
Jo Evans, Texas A&M	2015
Bob Brock, Sam Houston State	2016
Jacquie Joseph, Michigan State*	2016
Karen Weekly, Tennessee	2018

*inducted as member of Pioneer Category

WINS AT CURRENT SCHOOL

(ACTIVE DIVISION I COACHES ONLY)

1. Mike Candrea, Arizona	1,647
2. Carol Hutchins, Michigan	1,617
3. Patty Gasso, Oklahoma	1,302
4. Donna Papa, North Carolina	1,286
5. Patrick Murphy, Alabama	1,121
6. Melinda Fischer, Illinois State	1,078
7. Bob Coolen, Hawaii	1,027
8. Rhonda Revelle, Nebraska	1,004

(LIST INCLUDES GAMES THROUGH MARCH 21)

MOST NCAA TOURNAMENTS

(ACTIVE DIVISION I COACHES ONLY)

1. Mike Candrea, Arizona	33
2. Carol Hutchins, Michigan	27
3. Patty Gasso, Oklahoma	22
4. Patrick Murphy, Alabama	21
5. Rhonda Revelle, Nebraska	20
Jo Evans, Texas A&M	20

ACADEMIC ALL-AMERICANS

(ALL-TIME AMONG DIVISION I COACHES)

1. Patrick Murphy, Alabama	29
2. Ralph & Karen Weekly, Tennessee	23
3. Tim Walton, Florida	19
4. Rhonda Revelle, Nebraska	14

HEAD COACH RHONDA REVELLE

COACHING STOPS

Nebraska (Head Coach)	1993-present
San Jose State (Assistant)	1989-92
Cal State-Hayward (Assistant)	1988
Nebraska Wesleyan (Head Coach)	1987
Nebraska Wesleyan (Assistant)	1986

NEBRASKA WESLEYAN (1987)

Year	Record	Conf.	Finish	Tourn.	Finish
1987	8-16	7-5	N/A	--	--

NEBRASKA (1993-PRESENT)

Year	Record	Conf.	Finish	Tourn.	Finish
1993	18-23	5-11	5th	--	--
1994	25-33	5-15	6th	--	--
1995	43-20	10-6	3rd	--	--
1996	42-23	10-8	4th	3-2	2nd
1997	29-24	10-6	4th	1-2	t-5th
1998	48-12	16-0	1st	4-0	1st
1999	35-21	10-8	4th	3-1	2nd
2000	52-21	15-2	2nd	4-1	1st
2001	51-15	16-2	1st	2-2	t-3rd
2002	50-14	11-5	3rd	3-1	2nd
2003	39-17	10-8	6th	2-2	t-3rd
2004	45-17	14-3	1st	4-0	1st
2005	36-23	9-9	7th	2-2	t-5th
2006	44-12	13-4	2nd	2-2	t-3rd
2007	37-20	10-8	5th	0-1	t-7th
2008	25-28	4-14	t-9th	3-1	2nd
2009	35-19	9-9	5th	0-1	t-7th
2010	30-29	7-11	t-6th	0-1	t-7th
2011	41-14	9-9	6th	--	--
2012	33-22	14-9	3rd	--	--
2013	45-16	16-6	2nd	1-1	t-3rd
2014	44-18	18-5	t-1st	0-1	t-5th
2015	35-23	17-6	3rd	2-1	2nd
2016	35-21	13-9	5th	1-1	t-5th
2017	24-29	13-11	5th	0-1	t-9th
2018	31-23	9-13	9th	0-1	t-9th
2019	21-31	9-14	9th	0-1	t-9th
2020	9-14	0-0	--	--	--
2021	6-6	6-6	--	--	--

NEBRASKA RECORD: 1,004-588

CAREER RECORD: 1,012-604

NCAA TOURNAMENT (NEBRASKA)

Year	Round	Record	Finish	Rank
1993	--	--	--	--
1994	--	--	--	--
1995	Regional	1-2	t-17th	18th
1996	Regional	1-2	t-17th	18th
1997	Regional	2-2	t-9th	25th
1998	WCWS	4-2	t-5th	5th
1999	Regional	4-2	t-9th	20th
2000	Regional	3-2	t-17th	14th
2001	Regional	2-2	t-17th	14th
2002	WCWS	5-2	t-5th	6th
2003	Regional	3-2	t-17th	13th
2004	Regional	3-2	t-9th	14th
2005	Regional	1-2	t-33rd	25th
2006	Regional	2-2	t-17th	15th
2007	Regional	0-2	t-49th	--
2009	Regional	1-2	t-33rd	--
2010	Regional	1-2	t-33rd	--
2011	Regional	2-2	t-17th	21st
2013	WCWS	5-3	t-7th	8th
2014	Super Reg.	4-3	t-9th	16th
2015	Regional	1-2	t-33rd	--
2016	Regional	2-2	t-17th	--
Totals	20 app.	47-42	--	--



#1 | RYLIE UNZICKER • OF

	AVG.	G-GS	R	H	2B	HR	RBI	BB	SLG%	OB%
2021	.231	12-11	7	6	2	0	2	7	.385	.429
Career	.212	118-85	47	49	14	4	21	39	.342	.336

- 85 career starts at Nebraska rank 2nd on the team
- Ranks 6th in the Big Ten in walks (7) & 8th in triples (1)
- 7-time Nebraska Scholar-Athlete Honor Roll member
- 2-time Academic All-Big Ten & 2020 Big Ten Distinguished Scholar
- Sister Madi was a four-year Husker letterwinner (2015-19)



#2 | PAYTON HUSCROFT • INF

	AVG.	G-GS	R	H	2B	HR	RBI	BB	SLG%	OB%
2021	.000	0-0	0	0	0	0	0	0	.000	.000
Career	.171	24-19	2	7	1	1	6	5	.268	.277

- Has been slowed after recovering from offseason surgery
- Had 5 two-out RBIs in shortened 2020 season, one shy of the team high
- 1 of 3 Millard South products on the Husker roster (Glatter & Unzicker)
- 5-time Nebraska Scholar-Athlete Honor Roll member
- 2-time Tom Osborne Citizenship Team member



#5 | MJ GREEN • INF

	AVG.	G-GS	R	H	2B	HR	RBI	BB	SLG%	OB%
2021	.600	4-1	0	3	0	0	0	0	.600	.600
Career	.600	4-1	0	3	0	0	0	0	.600	.600

- Is 3-for-5 this season with all 5 at bats coming the last 3 games
- Named a top-100 recruit by FloSoftball
- No. 141 (Extra Inning Softball) & No. 153 (FastPitch News) recruit nationally
- All-state & 2-time all-district pick for Henderson (Texas) High School
- Travel ball teammate of Husker Abbey Newlun (Scrap Yard International)



#6 | BILLIE ANDREWS • INF

	AVG.	G-GS	R	H	2B	HR	RBI	BB	SLG%	OB%
2021	.158	12-12	6	6	1	0	7	2	.184	.214
Career	.158	12-12	6	6	1	0	7	2	.184	.214

- Has started every game at shortstop & ranks 2nd on the team with 7 RBIs
- 4-time Omaha World-Herald All-Nebraska pick at Gretna High School
- Hit .434 with a .625 OB% and 1.200 SLG% in her prep career
- Produced 93 extra-base hits, 139 RBIs & 159 runs in 116 career games
- Older sister Brooke is a sophomore infielder with the Huskers



#7 | SYDNEY GRAY • INF

	AVG.	G-GS	R	H	2B	HR	RBI	BB	SLG%	OB%
2021	.276	11-10	2	8	2	0	3	0	.345	.276
Career	.276	11-10	2	8	2	0	3	0	.345	.276

- Is tied for the team lead with 3 multi-hit games
- Hit .503 at Sabino High School in Tucson, Ariz. with 16 3B, 16 HR & 87 RBIs
- Helped Sabino to an Arizona 3A state championship as a junior
- 3-time all-conference pick & 3-time all-district selection
- Travel ball teammate of Husker Caitlynn Neal (Arizona Desert Thunder)



#8 | ABBIE SQUIER • OF

	AVG.	G-GS	R	H	2B	HR	RBI	BB	SLG%	OB%
2021	.143	6-2	3	1	1	0	1	1	.286	.250
Career	.143	6-2	3	1	1	0	1	1	.286	.250

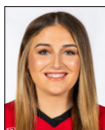
- Ranked as the No. 95 recruit nationally by Extra Inning Softball
- 3rd-team NFCA High School All-American as a junior
- .490 career average with a .994 SLG% at Lincoln Southwest High School
- Was the state shot put champion as a junior
- Lone Lincoln native on Nebraska's 2021 roster



#11 | KEANA "KP" POLA • INF

	AVG.	G-GS	R	H	2B	HR	RBI	BB	SLG%	OB%
2021	.211	8-5	0	4	1	0	0	0	.263	.211
Career	.174	22-16	7	8	2	1	6	3	.283	.250

- Has started her first 5 career games at first base in 2021
- Ranked as the No. 57 recruit nationally in 2019 by Extra Inning Softball
- 1 of 4 current Huskers from the Corona Angels travel ball team
- Cousin Noa Pola-Gates is a safety on the Nebraska football team
- 3-time Nebraska Scholar-Athlete Honor Roll member



#13 | PEYTON GLATTER • OF

	AVG.	G-GS	R	H	2B	HR	RBI	BB	SLG%	OB%
2021	.000	7-5	0	0	0	0	0	0	.000	.125
Career	.219	68-59	21	39	7	5	25	19	.343	.300

- Ranks 3rd among active Huskers with 25 career RBIs at Nebraska
- Has started 59 of Nebraska's 87 games the past three seasons
- 3-time member of the Nebraska Scholar-Athlete Honor Roll
- Member of the 2019 Tom Osborne Citizenship Team
- 1 of 3 Millard South products on the Husker roster (Huscroft & Unzicker)



#14 | CAMYL ARMENDARIZ • INF

	AVG.	G-GS	R	H	2B	HR	RBI	BB	SLG%	OB%
2021	.000	8-0	3	0	0	0	0	0	.000	.000
Career	.000	8-0	3	0	0	0	0	0	.000	.000

- Has appeared in 8 games (7 as a pinch runner & 1 as a pinch hitter)
- Four-year varsity player for Bonita (Calif.) High School
- Totaled 113 hits, 23 doubles, 5 triples, 20 homers & 80 RBIs in prep career
- 3-time all-league & All-San Gabriel Valley selection
- 1 of 4 current Huskers from the Corona Angels travel ball team



#19 | CAITLYNN NEAL • RHP

	W-L	ERA	APP	GS	CG	SHO	SV	IP	SO	AVG.
2021	0-0	0.00	1	0	0	0	0	1.0	0	.333
Career	0-0	0.00	1	0	0	0	0	1.0	0	.333

- Named the preseason Big Ten Newcomer of the Year by D1Softball
- Tossed a scoreless inning vs. No. 23 Michigan in her only outing of the year
- Member of the United States Under-17 Women's National Team
- 2-hit shutout in the Pan American Championships Gold Medal game
- 23-2 record with a 0.71 ERA & 15 shutouts in her high school career



#19 | CAITLYNN NEAL • UTL

	AVG.	G-GS	R	H	2B	HR	RBI	BB	SLG%	OB%
2021	.313	10-6	4	5	0	0	3	0	.313	.313
Career	.313	10-6	4	5	0	0	3	0	.313	.313

- Named the preseason Big Ten Newcomer of the Year by D1Softball
- Ranks 2nd on the team with a .313 average; 5 hits in her last 9 at bats
- Ranked as the No. 30 recruit nationally by Extra Inning Softball
- .613 career hitter with 17 HR & 68 RBIs at Bradshaw Mountain High School
- Travel ball teammate of Husker Sydney Gray (Arizona Desert Thunder)



#20 | ABBEY NEWLUN • INF

	AVG.	G-GS	R	H	2B	HR	RBI	BB	SLG%	OB%
2021	.000	1-0	0	0	0	0	0	0	.000	.000
Career	.000	1-0	0	0	0	0	0	0	.000	.000

- Four-year varsity player at The Woodlands High School in Texas
- Totaled 69 hits, 16 doubles, 3 triples & 9 home runs in her prep career
- Was an all-district selection as a junior
- Travel ball teammate of Husker MJ Green (Scrap Yard International)
- Father Craig graduated from Nebraska & was born & raised in Auburn, Neb.



#21 | SARAH YOCOM • INF

	AVG.	G-GS	R	H	2B	HR	RBI	BB	SLG%	OB%
2021	.000	6-6	0	0	0	0	0	0	.000	.000
Career	.149	73-41	13	7	0	0	3	3	.149	.200

- Has started 6 straight games at first base; leads NU with 6 starts at 1B
- Has started multiple games at 1B, 2B, 3B & SS in her Husker career
- 2-time Academic All-Big Ten & 2019 Big Ten Distinguished Scholar
- 5-time Nebraska Scholar-Athlete Honor Roll member
- 3-time member of the Tom Osborne Citizenship Team



#23 | COURTNEY WALLACE • RHP

	W-L	ERA	APP	GS	CG	SHO	SV	IP	SO	AVG.
2021	3-2	2.80	8	5	1	0	1	35.0	14	.265
Career	9-11	4.93	47	22	5	0	2	166.0	102	.314

- Ranks 4th in the Big Ten in saves (1) & 9th in wins (3)
- Ranks 2nd among current Huskers in career innings pitched (166.0)
- 3-time Nebraska Scholar-Athlete Honor Roll member
- 2-time member of the Tom Osborne Citizenship Team
- Her cousin, Alex Smith, is a cornerback on the Wisconsin football team



#23 | COURTNEY WALLACE • UTL

	AVG.	G-GS	R	H	2B	HR	RBI	BB	SLG%	OB%
2021	.150	9-6	2	3	0	0	0	2	.150	.227
Career	.219	71-51	27	35	5	3	16	15	.369	.292

- Has been in the batting order during starts at P, DP, 3B & LF in her career
- 13 of her 35 career hits have gone for extra bases (5 2B, 5 3B, 3 HR)
- Tied the Nebraska single-game record with two triples vs. Lamar in 2019
- 5 career triples are the most of any current Husker
- Nebraska Gatorade Player of the Year as a high school senior



#24 | TRISTEN EDWARDS • OF

	AVG.	G-GS	R	H	2B	HR	RBI	BB	SLG%	OB%
2021	.375	12-12	6	12	2	3	8	9	.719	.511
Career	.354	191-188	146	197	44	45	148	88	.680	.458

- Named the preseason Big Ten Player of the Year by D1Softball
- 2-time member of USA Softball Collegiate Player of the Year watch list
- Only player in the country with 10 2B & 10 HR in shortened 2020 season
- 2-time 1st-team All-Big Ten & record 6-time Big Ten Player of the Week
- Older twin sisters Tatum & Taylor were both 2-time Husker All-Americans



#27 | BROOKE ANDREWS • INF

	AVG.	G-GS	R	H	2B	HR	RBI	BB	SLG%	OB%
2021	.143	7-3	2	1	0	0	0	0	.143	.143
Career	.250	25-17	4	10	1	0	3	1	.275	.286

- Started a team-high 14 games at shortstop as a freshman in 2020
- Ranked 5th on the team with a .273 batting average last season
- Went 2-for-6 in three games against ranked opponents in 2020
- 3-time Nebraska Scholar-Athlete Honor Roll member
- Younger sister Billie is a freshman infielder with the Huskers



#28 | ALLY RILEY • C

	AVG.	G-GS	R	H	2B	HR	RBI	BB	SLG%	OB%
2021	.235	7-7	0	4	1	0	0	1	.294	.278
Career	.276	62-43	4	35	7	1	22	6	.354	.314

- Is Nebraska's most experienced catcher with 29 career starts at the position
- Started 23 of Nebraska's 32 games at catcher the past two seasons
- Boasts a .276 career average that ranks 4th among all current Huskers
- 2-time Academic All-Big Ten selection
- 7-time Nebraska Scholar-Athlete Honor Roll member



#30 | KARLEE SEEVERS • RHP

	W-L	ERA	APP	GS	CG	SHO	SV	IP	SO	AVG.
2021	0-0	0.00	1	0	0	0	0	1.0	0	.333
Career	0-0	18.92	3	0	0	0	0	3.1	0	.474

- Tossed a scoreless inning vs. Purdue after making two appearances in 2020
- Is also a pinch runner, scoring a run in each of her two career appearances
- 2020 Academic All-Big Ten selection & 2020 Big Ten Distinguished Scholar
- 5-time member of the Nebraska Scholar-Athlete Honor Roll
- 2-time Tom Osborne Citizenship Team member



#32 | CAM YBARRA • INF

	AVG.	G-GS	R	H	2B	HR	RBI	BB	SLG%	OB%
2021	.162	12-12	0	6	4	0	5	4	.270	.238
Career	.240	125-119	24	88	27	5	33	33	.360	.307

- In her 2nd year at Nebraska after spending two seasons at Oregon State
- Started all 35 games at second base for Nebraska the past two seasons
- 88 career hits & 27 career doubles rank 3rd among all current Huskers
- Was a 2018 Pac-12 All-Defensive & All-Freshman Team honoree at OSU
- 1 of 4 current Huskers from the Corona Angels travel ball team



#33 | ANNI RALEY • C

	AVG.	G-GS	R	H	2B	HR	RBI	BB	SLG%	OB%
2021	.125	9-6	0	1	1	0	1	0	.250	.125
Career	.120	51-13	13	3	2	0	2	2	.280	.214

- 1 of 2 catchers on Nebraska's roster
- Has started 6 of 12 games at catcher in 2021 & caught in 9 games total
- Has also appeared as a pinch runner 30 times her career, scoring 13 runs
- 2020 Academic All-Big Ten selection
- 5-time member of the Nebraska Scholar-Athlete Honor Roll



#39 | OLIVIA FERRELL • RHP

	W-L	ERA	APP	GS	CG	SHO	SV	IP	SO	AVG.
2021	3-4	2.33	7	6	0	0	0	36.0	35	.219
Career	18-25	4.19	74	45	8	0	2	270.2	176	.288

- Ranks 9th in the Big Ten in wins (3) & 10th in strikeouts (35)
- Leads all current Huskers in career wins, ERA, appearances, starts & innings
- Has allowed 2 ER or fewer in 24 of her 45 career starts
- 2-time Academic All-Big Ten & 2-time Big Ten Distinguished Scholar
- 7-time member of the Nebraska Scholar-Athlete Honor Roll



#39 | OLIVIA FERRELL • UTL

	AVG.	G-GS	R	H	2B	HR	RBI	BB	SLG%	OB%
2021	.067	7-6	1	1	0	0	0	1	.067	.125
Career	.247	49-34	13	22	5	3	18	11	.404	.340

- Her .247 career average ranks 3rd among all Huskers with at least 100 AB
- Hit .344 in the shortened 2020 season with 10 RBIs in only 32 at bats
- Ranked 2nd on the team in average, OB% & SLG% in 2020
- Was 3rd on the team last season in home runs (2) and RBIs (10)
- In addition to softball, had Division I scholarship offers as a hockey goalie



#44 | KAYLIN KINNEY • RHP

	W-L	ERA	APP	GS	CG	SHO	SV	IP	SO	AVG.
2021	0-0	2.69	7	1	0	0	2	13.0	9	.275
Career	0-0	2.69	7	1	0	0	2	13.0	9	.275

- Leads the Big Ten & ranks 15th nationally with 2 saves
- 2019 Iowa Gatorade Player of the Year at Kennedy High School
- 2-time all-state selection & 4-time all-conference & all-metro pick
- Went 67-7 in her prep career with a 0.77 ERA and 527 strikeouts
- First Iowa native to play for Nebraska since 2004



#44 | KAYLIN KINNEY • UTL

	AVG.	G-GS	R	H	2B	HR	RBI	BB	SLG%	OB%
2021	.167	10-7	0	3	1	0	0	4	.222	.318
Career	.167	10-7	0	3	1	0	0	4	.222	.318

- Has 3 hits and 1 double while ranking 3rd on the team with 4 walks
- 2019 Iowa Gatorade Player of the Year at Kennedy High School
- Helped Kennedy to a state championship as a senior
- Hit .501 in her high school career with a 1.054 slugging percentage
- Finished third in state history with 55 career home runs



#77 | SAMANTHA OWEN • INF

	AVG.	G-GS	R	H	2B	HR	RBI	BB	SLG%	OB%
2021	.000	3-1	0	0	0	0	0	0	.000	.000
Career	.289	166-159	68	135	30	17	86	47	.484	.362

- Is in her 3rd season at Nebraska after playing at Pacific her first two years
- Owns 159 career starts, including 63 of 87 games at NU the last 3 years
- Ranks 2nd among current Huskers in career average, 2B, HR & RBIs
- 2-time All-West Coast Conference & 2018 All-West Region pick at Pacific
- Younger sister Izabella is a junior infielder at New Mexico

INDIVIDUAL SEASON & CAREER HIGHS

#1 RYLIE UNZICKER • SR. • OF

SEASON HIGH	CATEGORY	CAREER HIGH
2 twice	Hits	2 11 times
3 vs. #23 Michigan	Runs	3 twice
2 vs. Michigan St. - 1	RBIs	2 four times
1 vs. Michigan St. - 1	2B	2 twice
none	HR	1 four times

#13 PEYTON GLATTER • JR. • OF

SEASON HIGH	CATEGORY	CAREER HIGH
none	Hits	3 twice
none	Runs	3 twice
none	RBIs	4 vs. Maryland (2019)
none	2B	1 seven times
none	HR	1 five times

#2 PAYTON HUSCROFT • JR. • INF

SEASON HIGH	CATEGORY	CAREER HIGH
none	Hits	1 seven times
none	Runs	1 twice
none	RBIs	3 vs. Bradley (2020)
none	2B	1 vs. UTEP (2020)
none	HR	1 vs. Bradley (2020)

#14 CAMYL ARMENDARIZ • FR. • INF

SEASON HIGH	CATEGORY	CAREER HIGH
none	Hits	none
1 three times	Runs	same
none	RBIs	none
none	2B	none
none	HR	none

#5 MJ GREEN • FR. • INF

SEASON HIGH	CATEGORY	CAREER HIGH
2 vs. Purdue	Hits	same
none	Runs	none
none	RBIs	none
none	2B	none
none	HR	none

#19 CAITLYNN NEAL • FR. • UTL

SEASON HIGH	CATEGORY	CAREER HIGH
3 vs. Purdue	Hits	same
2 vs. Purdue	Runs	same
2 vs. Purdue	RBIs	same
none	2B	none
none	HR	none

#6 BILLIE ANDREWS • FR. • INF

SEASON HIGH	CATEGORY	CAREER HIGH
1 six times	Hits	same
1 six times	Runs	same
2 twice	RBIs	same
1 vs. Purdue	2B	none
none	HR	none

#20 ABBEY NEWLUN • FR. • INF

SEASON HIGH	CATEGORY	CAREER HIGH
none	Hits	none
none	Runs	none
none	RBIs	none
none	2B	none
none	HR	none

#7 SYDNEY GRAY • FR. • INF

SEASON HIGH	CATEGORY	CAREER HIGH
3 vs. Purdue	Hits	same
1 twice	Runs	same
2 vs. #23 Michigan	RBIs	same
1 twice	2B	same
none	HR	none

#21 SARAH YOCOM • SR. • INF

SEASON HIGH	CATEGORY	CAREER HIGH
none	Hits	2 vs. Wisconsin (2018)
none	Runs	1 13 times
none	RBIs	1 three times
none	2B	none
none	HR	none

#8 ABBIE SQUIER • FR. • OF

SEASON HIGH	CATEGORY	CAREER HIGH
1 vs. Michigan St. - 1	Hits	same
2 vs. Michigan St. - 1	Runs	same
1 vs. Michigan St. - 2	RBIs	same
1 vs. Michigan St. - 1	2B	same
none	HR	none

#23 COURTNEY WALLACE • JR. • UTL

SEASON HIGH	CATEGORY	CAREER HIGH
2 vs. Indiana - 2	Hits	2 six times
1 twice	Runs	3 vs. Lamar (2019)
none	RBIs	3 twice
none	2B	2 vs. Texas Tech (2019)
none	HR	1 three times

#11 KEANA "KP" POLA • SO. • INF

SEASON HIGH	CATEGORY	CAREER HIGH
1 four times	Hits	2 at Georgia Tech (2020)
none	Runs	2 vs. Bradley (2020)
none	RBIs	3 vs. Boston College (2020)
1 vs. Indiana - 1	2B	1 twice
none	HR	1 vs. #3 Oklahoma (2020)

#24 TRISTEN EDWARDS • SR. • OF

SEASON HIGH	CATEGORY	CAREER HIGH
3 vs. Michigan St. - 1	Hits	4 three times
1 six times	Runs	4 vs. Pittsburgh (2019)
2 vs. Michigan St. - 1	RBIs	8 vs. Pittsburgh (2019)
1 twice	2B	2 three times
1 three times	HR	2 seven times

INDIVIDUAL SEASON & CAREER HIGHS

#27 BROOKE ANDREWS • SO. • INF

SEASON HIGH	CATEGORY	CAREER HIGH
1 vs. #23 Michigan	Hits	2 twice
1 twice	Runs	1 four times
none	RBI	1 three times
none	2B	1 vs. Boston College (2020)
none	HR	none

#28 ALLY RILEY • SR. • C

SEASON HIGH	CATEGORY	CAREER HIGH
2 vs. Purdue - 1	Hits	3 twice
none	Runs	1 four times
none	RBI	3 vs. UTEP (2020)
1 vs. Purdue - 1	2B	2 vs. South Dakota St. (2018)
none	HR	1 vs. UTEP (2020)

#32 CAM YBARRA • SR. • INF

SEASON HIGH	CATEGORY	CAREER HIGH
2 vs. Purdue - 1	Hits	4 vs. Lehigh (2020)
none	Runs	2 vs. Utah (2018 at Oregon St.)
4 vs. Purdue - 1	RBI	same
2 vs. Purdue - 1	2B	3 vs. Lehigh (2020)*
none	HR	1 five times (all at Oregon St.)

*tied school record

#33 ANNI RALEY • JR. • C

SEASON HIGH	CATEGORY	CAREER HIGH
1 vs. #23 Michigan	Hits	2 at New Mexico St. (2020)
none	Runs	1 13 times
1 vs. #23 Michigan	RBI	1 at Georgia Tech (2020)
1 vs. #23 Michigan	2B	1 at New Mexico St. (2020)
none	HR	none

#39 OLIVIA FERRELL • SR. • UTL

SEASON HIGH	CATEGORY	CAREER HIGH
1 vs. Michigan St. - 1	Hits	3 at #21 Missouri (2020)
1 vs. Michigan St. - 1	Runs	2 twice
none	RBI	3 twice
none	2B	1 five times
none	HR	1 three times

#44 KAYLIN KINNEY • FR. • UTL

SEASON HIGH	CATEGORY	CAREER HIGH
1 three times	Hits	same
none	Runs	none
none	RBI	none
1 vs. Purdue - 3	2B	same
none	HR	none

#77 SAMANTHA OWEN • SR. • INF

SEASON HIGH	CATEGORY	CAREER HIGH
none	Hits	4 at North Texas (2018 at Pacific)
none	Runs	2 10 times
none	RBI	4 six times
none	2B	2 at Purdue - 2 (2019)
none	HR	1 17 times

#19 CAITLYNN NEAL • FR. • UTL

SEASON HIGH	CATEGORY	CAREER HIGH
1.0 vs. #23 Michigan - 2	IP	same
none	Ks	none
N/A	H (low)*	N/A
1 vs. #23 Michigan - 2	H (high)	same
N/A	BB (low)*	N/A
none	BB (high)	none
N/A	R (low)*	N/A
none	R (high)	none
N/A	ER (low)*	N/A
none	ER (high)	none

*starts only

#23 COURTNEY WALLACE • JR. • UTL

SEASON HIGH	CATEGORY	CAREER HIGH
7.0 vs. Ohio St. - 2	IP	7.0 twice
6 vs. Ohio St. - 2	Ks	8 at Georgia Tech (2020)
4 vs. Indiana - 2	H (low)*	1 vs. Maryland (2019)
7 twice	H (high)	10 three times
0 twice	BB (low)*	0 three times
2 twice	BB (high)	7 at Georgia Tech (2020)
1 vs. Ohio St. - 2	R (low)*	0 vs. Maryland (2019)
4 vs. Purdue - 2	R (high)	10 vs. #3 Oklahoma (2020)
1 vs. Ohio St. - 2	ER (low)*	0 vs. Maryland (2019)
4 vs. Purdue - 2	ER (high)	9 vs. #3 Oklahoma (2020)

*starts only

#30 KARLEE SEEVERS • JR • RHP

SEASON HIGH	CATEGORY	CAREER HIGH
1.0 vs. Purdue - 2	IP	1.1 vs. Wichita St. - 1 (2020)
none	Ks	none
N/A	H (low)*	N/A
1 vs. Purdue - 2	H (high)	6 vs. Wichita St. (2020)
N/A	BB (low)*	N/A
none	BB (high)	6 vs. Wichita St. (2020)
N/A	R (low)*	N/A
none	R (high)	9 vs. Wichita St. (2020)
N/A	ER (low)*	N/A
none	ER (high)	7 vs. Wichita St. (2020)

*starts only

#39 OLIVA FERRELL • SR • RHP

SEASON HIGH	CATEGORY	CAREER HIGH
7.2 vs. #23 Michigan - 1	IP	same
7 twice	Ks	9 vs. Lamar (2019)
2 twice	H (low)*	1 vs. Pittsburgh (2019)
7 vs. Indiana - 1	H (high)	11 at #21 Missouri (2020)
1 five times	BB (low)*	0 six times
2 vs. Michigan St. - 2	BB (high)	7 at Minnesota (2018)
0 vs. Michigan St. - 1	R (low)*	0 four times
4 vs. Ohio St. - 1	R (high)	8 twice
0 vs. Michigan St. - 1	ER (low)*	0 four times
4 vs. Ohio St. - 1	ER (high)	7 three times

*starts only

#44 KAYLIN KINNEY • FR • RHP

SEASON HIGH	CATEGORY	CAREER HIGH
4.1 vs. Purdue - 2	IP	same
2 three times	Ks	same
2 vs. #23 Michigan	H (low)*	same
3 vs. Michigan St. - 1	H (high)	same
1 vs. #23 Michigan	BB (low)*	same
1 five times	BB (high)	same
1 vs. #23 Michigan	R (low)*	same
3 vs. Purdue - 2	R (high)	same
1 vs. #23 Michigan	ER (low)*	same
3 vs. Purdue - 2	ER (high)	same

*starts only

2021 SEASON STATISTICS

Record: 6-6 Home: 0-0 Away: 0-0 Neutral: 6-6 Big Ten: 6-6

Player	avg	gp-gs	ab	r	h	2b	3b	hr	rbi	tb	slg%	bb	hp	so	gdp	ob%	sf	sh	sb-att	po	a	e	fld%
5 MJ Green	.600	4-1	5	0	3	0	0	0	0	3	.600	0	0	0	0	.600	0	0	0-1	0	0	0	.000
24 Tristen Edwards	.375	12-12	32	6	12	2	0	3	8	23	.719	9	2	8	1	.511	2	0	3-3	15	1	0	1.000
19 Caitlynn Neal	.313	10-6	16	4	5	0	0	0	3	5	.313	0	0	6	0	.313	0	0	2-2	9	1	0	1.000
7 Sydney Gray	.276	11-10	29	2	8	2	0	0	3	10	.345	0	0	10	0	.276	0	1	0-0	11	21	2	.941
28 Ally Riley	.235	7-7	17	0	4	1	0	0	0	5	.294	1	0	2	0	.278	0	0	0-0	31	3	0	1.000
1 Rylie Unzicker	.231	12-11	26	7	6	2	1	0	2	10	.385	7	2	8	0	.429	0	1	4-4	9	1	0	1.000
11 Keana "KP" Pola	.211	8-5	19	0	4	1	0	0	0	5	.263	0	0	5	1	.211	0	0	0-0	26	0	1	.963
44 Kaylin Kinney	.167	10-7	18	0	3	1	0	0	0	4	.222	4	0	7	1	.318	0	0	0-0	1	4	0	1.000
32 Cam Ybarra	.162	12-12	37	0	6	4	0	0	5	10	.270	4	0	5	0	.238	1	0	1-2	28	20	0	1.000
6 Billie Andrews	.158	12-12	38	6	6	1	0	0	7	7	.184	2	1	15	0	.214	1	0	4-5	20	32	4	.929
23 Courtney Wallace	.150	9-6	20	2	3	0	0	0	0	3	.150	2	0	5	1	.227	0	0	1-1	2	10	0	1.000
8 Abbie Squier	.143	6-2	7	3	1	1	0	0	1	2	.286	1	0	2	0	.250	0	0	0-0	1	0	0	1.000
27 Brooke Andrews	.143	7-3	7	2	1	0	0	0	0	1	.143	0	0	2	0	.143	0	0	1-2	2	6	1	.889
33 Anni Raley	.125	9-6	8	0	1	1	0	0	1	2	.250	0	0	4	0	.125	0	0	0-0	27	5	0	1.000
39 Olivia Ferrell	.067	7-6	15	1	1	0	0	0	0	1	.067	1	0	7	0	.125	0	1	1-1	1	7	1	.889
13 Peyton Glatter	.000	7-5	14	0	0	0	0	0	0	0	.000	2	0	6	0	.125	0	0	0-0	0	0	0	.000
77 Samantha Owen	.000	3-1	4	0	0	0	0	0	0	0	.000	0	0	0	0	.000	0	0	0-0	15	0	0	1.000
21 Sarah Yocom	.000	6-6	2	0	0	0	0	0	0	0	.000	0	0	2	0	.000	0	0	0-0	57	0	0	1.000
20 Abbey Newlun	.000	1-0	1	0	0	0	0	0	0	0	.000	0	0	0	0	.000	0	0	0-0	0	0	0	.000
14 Camyl Armendariz	.000	8-0	1	3	0	0	0	0	0	0	.000	0	0	0	0	.000	0	0	1-1	0	0	0	.000
30 Karlee Seevers	.000	0-0	0	0	0	0	0	0	0	0	.000	0	0	0	0	.000	0	0	0-0	0	0	0	.000
Totals	.203	12	316	36	64	16	1	3	30	91	.288	33	5	94	4	.285	4	3	18-22	255	111	9	.976
Opponents	.248	12	314	34	78	10	3	2	33	100	.318	22	6	58	3	.308	2	8	8-11	257	72	21	.940

LOB - Team (70), Opp (66). DPs turned - Team (9), Opp (8). IBB - Team (2), Edwards 2, Opp (1).

(All games Sorted by Earned run avg)

Player	era	w-l	app	gs	cg	sho	sv	ip	h	r	er	bb	so	2b	3b	hr	b/avg	wp	hp	bks	sfa	sha
19 Caitlynn Neal	0.00	0-0	1	0	0	0/0	0	1.0	1	0	0	0	0	0	0	0	.333	0	0	0	0	0
30 Karlee Seevers	0.00	0-0	1	0	0	0/0	0	1.0	1	0	0	0	0	0	0	0	.333	0	0	0	0	0
39 Olivia Ferrell	2.33	3-4	7	6	0	0/0	0	36.0	28	14	12	10	35	6	0	1	.219	0	5	0	0	2
23 Courtney Wallace	2.80	3-2	8	5	1	0/0	1	35.0	35	15	14	7	14	3	2	1	.265	1	1	0	2	4
44 Kaylin Kinney	2.92	0-0	7	1	0	0/0	2	12.0	13	5	5	5	9	1	1	0	.271	4	0	0	0	2
Totals	2.47	6-6	12	12	1	0/0	3	85.0	78	34	30	22	58	10	3	2	.248	5	6	0	2	8
Opponents	1.80	6-6	12	12	4	2/1	0	85.2	64	36	22	33	94	16	1	3	.203	3	5	0	4	3

PB - Team (1), Riley 1, Opp (2). SBA/ATT - Ferrell (4-7), Riley (5-6), Raley (3-5), Wallace (3-3), Kinney (1-1).