

# RUTGERS®

## GYMNASTICS

2021 • @RUGYMNASTICS • SCARLETKNIGHTS.COM

### 2021 SCHEDULE/RESULTS

OVERALL: 0-3 BIG TEN: 0-2

HOME: 0-3 | AWAY: 0-0 | NEUTRAL: 0-0

Jan. 16	at Michigan vs. Ohio State	Ann Arbor, Mich. Ann Arbor, Mich.	Withdrew Withdrew
<b>JAN. 23</b>	<b>ILLINOIS*</b>	<b>THE RAC</b>	<b>L, 195.525-192.500</b>
	<b>MARYLAND</b>	<b>THE RAC</b>	<b>L, 195.300-192.500</b>
<b>JAN. 30</b>	<b>MARYLAND*</b>	<b>THE RAC</b>	<b>L, 194.925-192.750</b>
Feb. 7	at Nebraska*	Lincoln, Neb.	5 pm
<b>FEB. 14</b>	<b>OHIO STATE*</b>	<b>THE RAC</b>	<b>1 PM</b>
Feb. 20	at Minnesota*	Minneapolis, Minn.	6 pm
Feb. 26	<i>Big Five Meet</i>	<i>Ann Arbor, Mich.</i>	<i>TBA</i>
	<i>Iowa*</i>	<i>Ann Arbor, Mich.</i>	<i>TBA</i>
	<i>Michigan*</i>	<i>Ann Arbor, Mich.</i>	<i>TBA</i>
	<i>Michigan State*</i>	<i>Ann Arbor, Mich.</i>	<i>TBA</i>
	<i>Penn State*</i>	<i>Ann Arbor, Mich.</i>	<i>TBA</i>
Mar. 3	at Maryland	College Park, Md.	5 pm
<b>MAR. 13</b>	<b>PENN STATE</b>	<b>THE RAC</b>	<b>1 PM</b>
Mar. 20	<i>Big Ten Championships</i>	<i>TBA</i>	<i>TBA</i>

\* - Big Ten Conference meet  
**BOLD CAPS** denotes home meet  
*Italics* denotes weekend of competition, exact date/time TBA  
**RAC** - at Rutgers Athletic Center  
**CAG** - at College Avenue Gym

### WEEK 3:

### MARYLAND

Sunday, Feb. 7 • 5 P.M. ET

Lincoln, Neb. • Big Ten Network +



### RUTGERS SCARLET KNIGHTS

**Coach:** Umme Salim-Beasley (Third Season)

**2020 NQS:** 192.625

**2020 Season High:** 192.750

**Website:** ScarletKnights.com/Gymnastics

### 2021 STATISTICS

	NQS	RANK	SEASON HIGH
<b>TEAM</b>	192.625	47	192.750
<b>VAULT</b>	47.975	48	48.025
<b>BARS</b>	47.750	46	47.950
<b>BEAM</b>	48.513	32	48.875
<b>FLOOR</b>	48.388	46	48.625

### RETURNING LEADERS BY EVENT



ALL-AROUND	VAULT	BARS	BEAM	FLOOR
HUANG	JOYNER	JOYNER	HUANG	HUANG
<b>NQS:39.012</b>	<b>NQS:9.800</b>	<b>NQS:9.875</b>	<b>NQS:9.838</b>	<b>NQS:9.863</b>

### 2021 ROSTER

NAME	YEAR	HEIGHT	HOMETOWN/HIGH SCHOOL/PREVIOUS SCHOOL
Sophia Atienza	Sr.	5-4	Copley, Ohio/Walsh Jesuit
Avery Balsler	Fr.	5-2	Carroll, Ohio/Bloom Carroll
Kaitlyn Bertola	So.	5-3	Southington, Conn./Southington
Mia Betancourt	Jr.	5-3	Reading, Pa./Berks Catholic
Myra Daniels	Fr.	5-1	Moorestown, N.J./Moorestown
Kiera Doherty-Herwitz	Jr.	5-4	Bedford, Mass./Bedford
Emily Drauss	Sr.	5-6	Longwood, Fla./Lake Brantley
Jordyn Duffield	So.	5-3	Laguna Hills, Calif./Pacific Coast
Jenna Ferguson	So.	5-4	Wellsville, Pa./Northern
Kylie Haffner	Fr.	5-1	Tampa, Fla./Sickles
Rees Hagler	Fr.	5-2	Colorado Springs, Colo./Liberty
Jordan Halcom	Fr.	5-3	Raleigh, N.C./South Carolina Connections Academy
Lizzy Henshall	So.	5-3	Raleigh, N.C./Leesville Road
Belle Huang	Sr.	5-2	Gaithersburg, Md./Tuscarora
Hannah Joyner	So.	5-2	Waldorf, Md./Braden River
Abigail Karolewski	Jr.	5-0	Hillsborough, N.J./Hillsborough
Emily Leese	Fr.	5-2	Lancaster, Pa./PA Cyber Charter School
Sage Littlejohn	Jr.	5-4	Orlando, Fla./West Orange
Calah Newman	Fr.	5-2	Jacksonville, Fla./Trinity Christian Academy
Jaidyn Raby	Fr.	5-7	Calvert County, Md./Northern
Alexis Rogers	So.	5-3	Manalapan, N.J./Freehold Township
Kieran Ross	Fr.	5-6	Reno, Nev./Reno
Christiana Thompson	Fr.	4-10	Clementon, N.J./Highland Regional/Camden County College
Toni Williams	Sr.	5-7	Olney, Md./Sherwood
Emily Wood	Fr.	5-1	Kingsland, Ga./Camden County
Stephanie Zannella	Fr.	5-4	Belle Mead, N.J./Immaculata
Jordyn Zieden-Weber	So.	5-1	Marlboro, N.J./Marlboro

### COACHING STAFF

**Head Coach:** Umme Salim-Beasley (West Virginia '98) - Third Season

**Assistant Coach:** Anastasia Halbig (Rutgers '15) - Third Season

**Assistant Coach:** Michael Rosso (Rutgers '15) - Third Season

**Vol. Assistant Coach:** Makenzey Shank (Rutgers '18) - First Season

**Director of Operations:** Brittney Harris (Pittsburgh '14) - Second Season

**Student Assistant Coach:** Shannon Farrell (Rutgers '20) - First Season

## QUICK FACTS

### GENERAL INFORMATION

Location	New Brunswick, N.J.
Founded	1766
Enrollment	69,000
Nickname	Scarlet Knights
Color	Scarlet
Affiliation	NCAA Division I
Conference	Big Ten
President	Jonathan Holloway
Director of Athletics	Patrick Hobbs
Mascot	Scarlet Knight

### HEAD COACH UMME SALIM-BEASLEY

Head Coach	Umme Salim-Beasley
Season	Third
Alma Mater	West Virginia '98
Career Record	70-87
Rutgers Record	19-31

### PREVIOUS TEAM INFORMATION

2020 High Score	195.900
2020 Postseason	Cancelled due to pandemic
Letterwinners R/L	15/4
Newcomers	12

### ATHLETIC COMMUNICATIONS

Gymnastics Contact	Stephanie Mamakas
Office Phone	(732) 445-6028
Email	smamakas@scarletknights.com
Twitter	@RUGymnastics
Instagram	@RutgersGymnastics
Website	www.ScarletKnights.com/Gymnastics

## 2021 HONORS

### BIG TEN GYMNASTS TO WATCH

BELLE HUANG  
HANNAH JOYNER

### 2021 FIRST-PLACE FINISHES

#### VS. ILLINOIS & MARYLAND (JAN. 23)

BELLE HUANG (BEAM)  
BELLE HUANG (FLOOR)

## KNIGHT NOTES

- Rutgers improved their overall team score from a week ago to 192.750 in their second consecutive meeting with Maryland on the year.
- Senior **Belle Huang** leads the team with six top 3 finishes this season. She was the runner-up for the title on beam (9.800), on floor (9.850) and in all-around (39.050) this past Saturday. In the season opener, Huang placed first on beam (9.9875) and floor (9.850), while finishing third in all-around (38.975).
- Sophomore **Hannah Joyner**, in her season debut on Saturday, earned two second-place finishes of her own with strong performances on vault (9.800) and bars (9.875).
- Seven Scarlet Knight freshmen have made their collegiate debuts for RU across the first two meets of the year. Newcomers **Avery Balsler**, **Myra Daniels**, **Calah Newman**, **Jaidyn Raby Kieran Ross**, **Emily Wood** and **Stephanie Zannella** have all earned a spot in one or more line-ups this season.

### 2020 RECAP

- Rutgers looks to carry momentum from its 2020 campaign, when the program produced its highest road score ever with a 195.900 to cap the shortened season. The score lifted RU over #15 Auburn for the Scarlet Knights' highest recorded ranked win and first win over an SEC opponent.
- Last year, the Scarlet Knights rewrote the record books, posting three of the Top 10 best total team scores in program history. The record-breaking road score of 195.900 ranks fourth overall on the charts.
- RU also posted the highest team vault score in program history with a 49.225 and the second highest team beam score at 49.250. The team recorded team event scores that rank in the top five on bars and floor as well.
- The program brings back 15 letterwinners, including senior captains **Emily Drauss** and **Belle Huang**, and fellow classmates **Sophia Atienza** and **Toni Williams**. Additionally, twelve newcomers will begin their first years "On the Banks".

### 2021 BIG TEN GYMNASTS TO WATCH

- Sophomore **Hannah Joyner** and senior **Belle Huang** were named Big Ten Gymnasts to Watch.
- Huang, an NCAA qualifier and All-Big Ten honoree, returns as the leader on floor after posting a team-best NQS of 9.855 in the event. The senior registered a season-high of 9.900 on floor, as well as a season-best all-around mark of 39.300 last year.
- Joyner, a 2020 All-Big Ten First Team honoree, will build off a rookie year where she posted career-highs of 9.925 on beam, 9.900 on bars, 9.850 on floor and vault, and 39.350 in all-around. She returns as the team leader in numerous events, having ranked as high as 10th nationally on beam with an NQS of 9.910 and 24th nationally in all-around with an NQS of 39.310 last season.

## KNIGHT NOTES

### 2021 SCHEDULE

- The 2021 schedule consists of four home meets and four away meets, in addition to the Big Five Meet and Big Ten Championships.
- Week 1 meets are non-conference matchups, Weeks 2-6 are conference contests, Week 7 is slated for the Big Five, and Weeks 8-9 are non-conference for all schools.
- Location, date and time for the Big Five Meet and Big Ten Championships will be announced at a later date.

### MOST IMPROVED TEAM IN 2019

- After climbing nine spots in the national rankings from 2018 to 2019, Rutgers gymnastics was recognized as the most improved team with a first year head coach in data collected by College Gym News. The Scarlet Knights tied for fifth-most improved overall.
- The Scarlet Knights scored as high as 196.050 last year, earned two Big Ten wins over ranked opponents and saw **Belle Huang** score a 9.900 at NCAA Regionals to tie the individual program record at the meet. Huang became the second gymnast to garner All-Big Ten honors.
- Overall, RU had 12 routines of 9.900 or better across the four events.
- The team recorded a 194 or better in the last nine meets and in 10 of the last 11, including a victory over No. 25 Penn State to reach 196 for the second time in school history.
- Posting a 194.650 at the Big Five meet, Rutgers topped No. 22 Ohio State for its second Big Ten win of the season. The Scarlet Knights had two combined regular season Big Ten wins in the previous four years.

### RWJBARNABAS HEALTH ATHLETIC PERFORMANCE CENTER

- This past September, Rutgers gymnastics moved into the RWJBarnabas Health APC, which houses its new practice facility, locker room and offices.
- The APC features a 11,850 square foot training area with two foam pits, Olympic-caliber equipment, stationary bikes, Pelotons and Stairmaster.
- A sports medicine training area, connecting locker room and lounge area are also featured in the practice facility.
- Coaching and administrative offices (1,625sf) overlooks training area as well.
- Overall, the 307,000-square-foot, four-story sports facility and parking deck serves as headquarters for a world-class sports medicine program for gymnastics, men's and women's basketball and wrestling.

### MEDIA AVAILABILITY

#### IN-SEASON INTERVIEW POLICY

Requests for head coach Umme Salim-Beasley and student-athletes should be made 24-48 hours in advance. All interviews MUST be coordinated through the Office of Athletic Communications, and interviews will not be granted on the day of competition until after the event has concluded. Please note all interviews for the 2021 season will be conducted virtually.

#### POST-MEET INTERVIEW POLICY

Rutgers head coach Umme Salim-Beasley and student-athletes will be made available to the media following a brief cooling-off period. All interviews for the 2021 season will be conducted virtually. Please direct all requests 24-48 hours before meet day to Assistant Director of Athletic Communications Stephanie Mamakas (smamakas@scarletknights.com).



**Umme Salim-Beasley** was hired as the eighth head coach in Rutgers gymnastics history on May 11, 2018. Now in her third season leading the Scarlet Knights in 2020-21, Salim-Beasley was previously on the RU staff as an assistant from 2012-15 before spending three seasons rewriting the record books as the Temple head coach.

#### **RUTGERS HEAD COACH**

In just her second season at the helm, Rutgers set new standards for the program. The Scarlet Knights capped a shortened year with a 5-0 record across its final weekend. After dominating a home

tri-meet on March 6, RU recorded the highest road score in program history with a 195.900 at New Hampshire. The mark helped Rutgers defeat its highest ranked opponent ever in No. 15 Auburn, also marking the first win over an SEC foe.

The program also set top three scores on three events, including a new standard on vault at 49.225. The season-highs of 49.250 on beam and 49.150 on bars rank second and third on the charts, respectively. Additionally, Erin McLachlan reset the school's beam record with a 9.950.

Rutgers produced two All-Big Ten selections in a single season for the first time, with Hannah Joyner earning a First Team nod and Kaitlyn Hall garnering Second Team honors. In the classroom, 12 student-athletes were named WCGA Scholastic All-Americans, eight were tabbed Academic All-Big Ten, and three were honored as Big Ten Distinguished Scholars.

Rutgers exceeded expectations and set a foundation in year one under Salim-Beasley and her staff, earning the distinction as the most improved team in the nation with a first-year head coach. RU finished as the fifth-most improved in the national rankings overall. The Scarlet Knights scored as high as 196.050 in 2019, earned two Big Ten wins over ranked opponents and saw Belle Huang score a 9.900 at NCAA Regionals to tie the individual program record at the meet. The team recorded a 194 or better in the last nine meets and in 10 of the last 11, including the victory over No. 25 Penn State to reach 196 for the second time in school history. Huang became the second gymnast to garner All-Big Ten honors.

Salim-Beasley, who leads unit, saw marked improvement on uneven bars. Shannon Farrell highlighted the efforts with a 9.925, the best number by a Scarlet Knight on the event since 2003. Overall, RU had 12 routines of 9.900 or better across the four events.

Academically, the gymnastics program had 14-of-16 eligible earn Academic All-Big Ten status with at least a 3.0 GPA, with five notching Big Ten Distinguished Scholar status with a 3.7 GPA or better. In addition, Eriel Santagado collected the Female Chancellor's Scholar-Athlete Award at the annual athletic department banquet.

#### **TEMPLE HEAD COACH**

Each of the top 10 team scores in Temple history came under Salim-Beasley's watch. The Owls reset the school record twice in 2018 with marks of 196.050 and 195.800 to post a program-high RQS of 195.015. Earning ECAC Coach of the Year, Salim-Beasley sent two specialists to NCAA Regionals, making it the first time the program sent multiple representatives. A total of 11 gymnasts earned spots on the All-ECAC Teams, including seven on the All-Academic Team.

Salim-Beasley and her squad finished the 2017 season ranking first in the ECAC with the highest RQS in school history at the time at 194.155. She was a finalist for the Philadelphia Coaches Association Head Coach of the Year and was named Northeast Region Co-Coach of the Year. Salim-Beasley also helped lead her team to the best ECAC Championships total in program history with a 193.675. The 2017 Championship performance included the highest ECAC bar total in school history with a 48.825 and the second-highest beam total at a conference championship with a 48.450.

Overall, the Owls tallied 36 total individual scores of 9.800 or above, an improvement from 14 in 2016 and just nine in 2015. Those scores helped Salim-Beasley's squad to 22 individual event titles that included the program's first ever ECAC uneven bars champion in Alexa Phillip.

In her first season with the Owls, Salim-Beasley guided the team to a season-high score of 192.525 at the ECAC Championships to cap off the season. At the meet, four Owls brought home a collective six conference medals, including a gold from Briana Odom. Salim-Beasley also coached Odom to a second-place all-around finish with the programs' second-highest score of 39.050. That would be topped by Tori Edwards in 2018 after registering a 39.125.

#### **RUTGERS ASSISTANT COACH**

During her four years at Rutgers, Salim-Beasley served as the recruiting coordinator and worked with the uneven bars, among other day-to-day duties for the program. Salim-Beasley helped the Scarlet Knights to a NCAA Regional berth in 2014 and its best EAGL finish in school history, winning EAGL Assistant Coach of the Year in the process. Uneven bars were a big part of the success, as four gymnasts earned all-conference in the event.

In addition, Salim-Beasley guided one of her student-athletes, Alexis Gunzelman, to the top regional qualifying score (RQS) in the conference on bars (9.845) on the way to the first NCAA National all-around appearance by a Scarlet Knight in program history. Gunzelman posted a 9.800 at the national meet, her eighth consecutive meet with at least that score to end the season.

#### **COLLEGIATE CAREER AT WEST VIRGINIA**

Salim-Beasley competed collegiately at West Virginia University from 1995 to 1998, earning a 10.0 on uneven bars on March 14, 1998 in a meet against Rutgers. She scored as high as 39.475 all-around in 1997.

Salim-Beasley was named Atlantic 10 Rookie of the Year as a freshman for the Mountaineers, and earned spots on the All-EAGL First Team in all-around, bars and beam her sophomore and junior seasons. She finished off her career by being named the EAGL Gymnast of the Year and Most Outstanding Senior Gymnast in her final season in Morgantown in addition to winning the EAGL all-around, bar and beam titles that year. Her accomplishments also ranked her as the fifth-best gymnast in the country and as a finalist for the AAI Award in 1998.

A native of Pasadena, Maryland, she was a two-time national qualifier at Hill's Gymnastic Training Center in Gaithersburg, Maryland, before earning a full scholarship to West Virginia.

#### **EARLY COACHING**

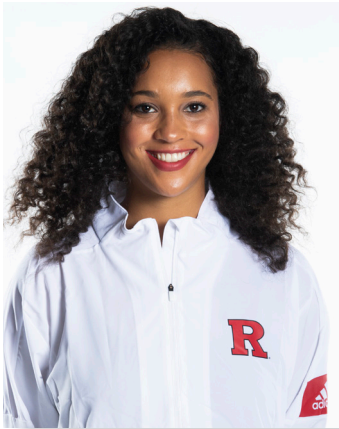
After graduating from West Virginia with a degree in early childhood education, Salim-Beasley went into coaching, starting as an assistant coach at Penn in 1999. During her one season with the Quakers, the team won the Ivy League Championships in addition to an undefeated regular season, breaking team records in every event. Salim-Beasley returned to Morgantown as a volunteer assistant coach during the 2006-07 season.

For three years, she coached the Severna Park High School gymnastics team to two county championships, including an undefeated regular season in her first year. Additionally, she coached two different gymnasts to all-around championships.

#### **PERSONAL**

Salim-Beasley was also a teacher at Eagle Cove School in Pasadena, Maryland, for four years. She is married to former WVU football All-American and NFL veteran, Aaron Beasley, and the couple have three daughters: Amirah, Dahlia and Layla.





**Anastasia Halbig**, a four-year letterwinner across three events for the Scarlet Knights from 2012-15, is in her third season as an assistant coach in 2020-21 after being hired in the summer of 2018. She primarily coaches balance beam.

In 2020, Halbig, who leads the unit, rewrote the balance beam records with four of the top five team scores ever in the event. The season-best mark of 49.250 in a tri-meet home victory ranks second all-time. Additionally, Erin McLachlan set the school record in the event with a 9.950 in a road win at Penn. That same season, Rutgers recorded its highest road score ever with a 195.900, topping No. 15 Auburn for its highest ranked victory and first defeat of an SEC foe.

In Halbig's first season as a coach at her alma mater, the Scarlet Knights reached 196 for the second time in program history and earned two Big Ten wins over ranked opponents. The beam unit totaled a 49.000, tied for fourth-best in program history, in the win over No. 25 Penn State, as Belle Huang tied the school record with a 9.925 routine on the event.

Halbig spent three seasons on Salim-Beasley's staff at Temple after being hired as a graduate assistant coach. During that time, she specialized in balance beam technique and skill. The group tied the school record on the event in 2018 with a 49.050 and saw one gymnast earn first team all-conference and two claim spots on the second team.

As a Scarlet Knight, Halbig played a key role to numerous successes such as the program's highest team score set in her senior season. During that record-setting meet she earned a new career high of 9.875 on balance beam. Also in 2014, she was named the most improved gymnast of the year during her junior season for showing the most growth and reaching three career bests overall. Halbig wrapped up her career at the Big Ten Championships at Michigan posting a 9.800 on the balance beam.

In addition, Halbig ensured the academic success of the student-athletes, improving the team GPA from 3.07 to 3.38 over three years. Originally from Pipersville, Pennsylvania, Halbig earned her undergraduate degree from Rutgers as a psychology major and achieved a master's degree from Temple in counseling psychology. She is working towards a doctorate degree in sport psychology at Temple, earning an academic grant to work with collegiate student-athletes on preventing burnout in sport.



A 2015 Rutgers graduate, Michael Rosso is in his third season as an assistant coach in 2020-21. He primarily coaches vault and floor exercise. Rosso returned after working on the Temple staff for three seasons (2016-18). Helping to elevate the team RQS from 190.930 to 195.015 over that span, he coached two conference event champions in Briana Odom (2016, floor) and Daisy Todd (2018, vault).

Last season, Rosso coached the Scarlet Knights to a new school record on vault, recording a team score of 49.225 in the event at the Big Five meet. Kaitlyn Hall was named Second Team All-Big Ten with a resume that included pushing her career-high on vault to 9.875 three times on the year, aiding in the new program-record at Big Five's as well. In the historic victory at New Hampshire, the Scarlet Knights posted a top 5 program floor score of 49.250 to help boast the best road score in program history with a 195.900. The mark led RU to victory over No. 15 for its highest ranked victory and first defeat of an SEC foe.

In 2019, Rosso was part of leading the Scarlet Knights to a 196 and two wins over ranked Big Ten opponents. Belle Huang, a Second Team All-Big Ten selection, qualified for NCAA Regionals on floor exercise and posted a 9.900, which tied for the highest individual mark at the meet in program history. RU had seven routines of 9.900 or better on floor throughout the season, with Jenna Rizkalla recording the seventh mark of at least 9.900 in Rutgers history on vault. As a unit, floor exercise scored as high as 49.300, fourth-best in the school record books, and ended with a 49.200 at

Big Ten Championships to place 35th nationally with a 49.090 NQS.

In 2018, the Owls sent two vault specialists to NCAA Regionals for the first time in program history after having a representative in 2017 for the first time since 2009. Rosso mentored five first team all-conference performers and three second team athletes between vault and floor this past season. The team established new event score records under Rosso's watch, posting a 49.300 on floor and a 49.125 on vault. That was part of raising the RQS from over four years, bringing the vault mark from 47.995 to 48.890 and the floor number from 48.200 to 49.015.

While studying communications at Rutgers, Rosso was a student assistant coach for the women's gymnastics team for two years. His responsibilities included equipment management and set up, gymnastics drill set up and hands-on spotting on all four events. During his time, Rutgers gymnastics saw its first NCAA regional appearance since 2007 and recorded six of the top 10 highest team scores in program history, including the current record score of 196.225.

Rosso was a gymnast at Surgents Elite School of Gymnastics in Roselle Park, New Jersey, where he was a five-time junior Olympic national qualifier. He is originally from Marlboro, New Jersey. His brother, Ralph, is an assistant coach for the University of Washington women's gymnastics team.



**Makenzey Shank**, a four-year letterwinner of the program and NCAA qualifier, returns "to the banks" as a volunteer assistant coach for the 2020-21 season. Shank competed in 39 meets as a Scarlet Knight from 2015-2018, finishing her career with a total of 37 marks of 9.800 or better across bars, beam and floor exercise. The Phoenix, Arizona, native claimed the team's 9.9 award every year of her career, recording career bests of 9.900 on bars and 9.925 on beam.

Following a rookie season that saw her named Most Improved Gymnast for the team, Shank concluded her junior campaign by placing tied for first with a 9.850 balance beam routine in the opening session of Big Ten Championships to earn a spot on the All-Championships Team. As a senior, Shank's inclusion on the 2018 Big Ten Gymnasts to Watch list was a precursor to a standout year. Shank matched the then-school record score of 9.925 on beam, earning Big Ten Specialist of the Week as her mark helped guide RU to a quad meet victory at the RAC. She closed out her career with an NCAA Regionals appearance, qualifying for beam with a team-high 9.855 RQS in the event.

Shank's success carried over into the classroom, being named a two-time Academic-All Big Ten and two-time NACG-C/W Scholastic All-America honoree. She graduated with a journalism and media studies degree in 2018.

Since graduating, Shank worked with NJ.com her first year out of college as a sports writer. She has continued to stay current in the sport of gymnastics by coaching at Magma Gymnastics in New Jersey.

# SCHOOL RECORDS

## INDIVIDUAL

### ALL-AROUND

39.500 - Luisa Leal: March 8, 2013

### VAULT

9.925 - Luisa Leal: March 2, 2013

### BARS

10.000 - Dawn Campbell: March 1, 2000

### BALANCE BEAM

**9.950 - Erin McLachlan: Jan. 26, 2020**

### FLOOR EXERCISE

10.000 - Courtney Turner: March 8, 2002

## TEAM

### VAULT

1. **49.225 - Feb. 21, 2020**
2. 49.200 - Feb. 9, 2014
3. 49.100 - March 8, 2013
4. **49.075 - Jan. 31, 2020**
- 49.075 - Feb. 14, 2016
- 49.075 - March 1, 2014

### UNEVEN BARS

1. 49.400 - March 1, 2000
2. 49.300 - Feb. 26, 2000
3. **49.150 - March 8, 2020**
4. 49.100 - Jan. 24, 2015

### BALANCE BEAM

1. 49.325 - Feb. 28, 2004
2. **49.250 - March 8, 2020**
3. **49.200 - Jan. 31, 2020**
4. **49.125 - Jan. 26, 2020**

### FLOOR EXERCISE

1. 49.375 - March 7, 2015
2. 49.325 - March 8, 2014
3. 49.300 - Jan. 19, 2019
4. 49.250 - March 2, 2013
5. **49.250 - March 1, 2020**

### TOTAL (\* - road meet)

1. 196.225 - March 8, 2014
2. 196.050 - Feb. 9, 2019
3. 195.975 - March 2, 2013
4. **195.900 - March 8, 2020\***
5. 195.825 - March 1, 2014\*
6. **195.700 - Jan. 31, 2020\***
7. 195.550 - March 8, 2013\*
8. 195.475 - Feb. 28, 2016\*
9. 195.400 - Feb. 26, 2000
10. 195.375 - Jan. 24, 2015
11. **195.300 - March 1, 2020\***

## 2021 MEET-BY-MEET

DATE	LOCATION	RESULT	TEAM	VAULT	BARS	BEAM	FLOOR	TOP OPPONENT
Jan. 23	RUTGERS	3/3	192.500	47.925	47.550	48.875	48.150	ILLINOIS* (195.525)
Jan. 30	RUTGERS	2/2	<b>192.750</b>	<b>48.025</b>	<b>47.950</b>	48.150	<b>48.625</b>	MARYLAND* (194.925)
Feb. 7	NEBRASKA*							
Feb. 14	OHIO STATE*							
Feb. 20	MINNESOTA*							
Feb. 26*	BIG FIVE*							
March 3	MARYLAND							
March 6	PENN STATE							
March 8	BIG TEN'S							

**BOLD** denotes season-high | \*Denotes conference matchup

## 2021 HEADSHOT ROSTER



**SOPHIA ATIENZA**  
Senior  
Copley, Ohio



**AVERY BALSER**  
Freshman  
Carroll, Ohio



**KAITLYN BERTOLA**  
Sophomore  
Southington, Conn.



**MIA BETANCOURT**  
Junior  
Reading, Pa.



**MYRA DANIELS**  
Freshman  
Moorestown, N.J.



**KIERA DOHERTY-HERWITZ**  
Junior  
Bedford, Mass.



**EMILY DRAUSS**  
Senior  
Longwood, Fla.



**JORDYN DUFFIELD**  
Sophomore  
Laguna Hills, Calif.



**JENNA FERGUSON**  
Sophomore  
Wellsville, Pa.



**KYLIE HAFFNER**  
Freshman  
Tampa, Fla.



**REES HAGLER**  
Freshman  
Colorado Springs, Colo.



**JORDAN HALCOM**  
Freshman  
Raleigh, N.C.



**LIZZY HENSHALL**  
Sophomore  
Raleigh, N.C.



**BELLE HUANG**  
Senior  
Gaithersburg, Md.



**HANNAH JOYNER**  
Sophomore  
Waldorf, Md.



**ABIGAIL KAROLEWSKI**  
Junior  
Hillsborough, N.J.



**EMILY LEESE**  
Freshman  
Lancaster, Pa.



**SAGE LITTLEJOHN**  
Junior  
Orlando, Fla.



**CALAH NEWMAN**  
Freshman  
Jacksonville, Fla.



**JAIIDYN RABY**  
Freshman  
Calvert County, Md.



**ALEXIS ROGERS**  
Sophomore  
Manalapan, N.J.



**KIERAN ROSS**  
Freshman  
Reno, Nev.



**CHRISTIANA THOMPSON**  
Freshman  
Clementon, N.J.



**TONI WILLIAMS**  
Senior  
Olney, Md.



**EMILY WOOD**  
Freshman  
Kingsland, Ga.



**STEPHANIE ZANELLA**  
Freshman  
Belle Mead, N.J.



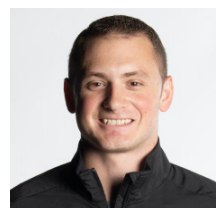
**JORDYN ZIEDEN-WEBER**  
Sophomore  
Marlboro, N.J.



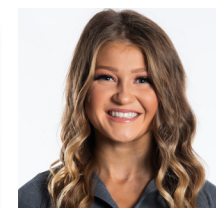
**UMME SALIM-BEASLEY**  
Head Coach  
Third Season



**ANASTASIA HALBIG**  
Assistant Coach  
Third Season



**MICHAEL ROSSO**  
Assistant Coach  
Third Season



**MAKENSEY SHANK**  
Volunteer Assistant Coach  
First Season

# Statistics by Gymnast

Rutgers: 2020 - 2021 Season

Page: 1

## Avery Balseer

Date	Team	Vault	Bars	Beam	Floor	AllArr
H 1/23/2021	Rutgers, Illinois, Maryland	9.550	9.775		9.775	
H 1/30/2021	Rutgers, Maryland	9.525	9.675		9.650	
Career Total Points: 57.950		Average	9.538	9.725	9.713	
		Season High	9.550	9.775	9.775	
		Career High	9.550	9.775	9.775	

## Myra Daniels

Date	Team	Vault	Bars	Beam	Floor	AllArr
H 1/23/2021	Rutgers, Illinois, Maryland				9.625	
H 1/30/2021	Rutgers, Maryland		9.000	8.950	9.450	
Career Total Points: 37.025		Average	9.000		9.538	
		Season High	9.000		9.625	
		Career High	9.000	8.950	9.625	

## Kiera Doherty-Herwitz

Date	Team	Vault	Bars	Beam	Floor	AllArr
H 1/23/2021	Rutgers, Illinois, Maryland		8.550	9.675		
H 1/30/2021	Rutgers, Maryland			9.725		
Career Total Points: 264.850		Average	8.550	9.700		
		Season High	8.550	9.725		
		Career High	8.550	9.850		

## Emily Drauss

Date	Team	Vault	Bars	Beam	Floor	AllArr
H 1/23/2021	Rutgers, Illinois, Maryland		9.700	9.625		
H 1/30/2021	Rutgers, Maryland		9.725			
Career Total Points: 302.700		Average	9.713	9.625		
		Season High	9.725	9.625		
		Career High	9.825	9.825		

## Jenna Ferguson

Date	Team	Vault	Bars	Beam	Floor	AllArr
H 1/23/2021	Rutgers, Illinois, Maryland	9.500		9.775		
H 1/30/2021	Rutgers, Maryland			9.775		
Career Total Points: 261.550		Average	9.500	9.775		
		Season High	9.500	9.775		
		Career High	9.750	9.800	9.850	

## Belle Huang

Date	Team	Vault	Bars	Beam	Floor	AllArr	
H 1/23/2021	Rutgers, Illinois, Maryland	9.600	9.625	9.875	9.875	38.975	
H 1/30/2021	Rutgers, Maryland	9.725	9.675	9.800	9.850	39.050	
Career Total Points: 1,483.750		Average	9.663	9.650	9.838	9.863	39.013
		Season High	9.725	9.675	9.875	9.875	39.050
		Career High	9.875	9.800	9.925	9.925	39.300

## Hannah Joyner

Date	Team	Vault	Bars	Beam	Floor	AllArr	
H 1/30/2021	Rutgers, Maryland	9.800	9.875	9.125	9.775	38.575	
Career Total Points: 509.000		Average	9.800	9.875	9.125	9.775	38.575
		Season High	9.800	9.875	9.125	9.775	38.575
		Career High	9.850	9.900	9.925	9.850	39.350

Scores in italic set or tied a personal record. Scores in bold set or tied a team record. Scores in light gray were exhibition.



# Statistics by Gymnast

Rutgers: 2020 - 2021 Season

Page: 2

## Abigail Karolewski

Date	Team	Vault	Bars	Beam	Floor	AllArr
H 1/23/2021	Rutgers, Illinois, Maryland		9.650			
Career Total Points: 332.975		Average	9.650			
		Season High	9.650			
		Career High	9.850		9.675	

## Sage Littlejohn

Date	Team	Vault	Bars	Beam	Floor	AllArr
H 1/23/2021	Rutgers, Illinois, Maryland			9.625		
Career Total Points: 185.150		Average				
		Season High				
		Career High	9.400	9.775	9.650	

## Calah Newman

Date	Team	Vault	Bars	Beam	Floor	AllArr
H 1/23/2021	Rutgers, Illinois, Maryland	9.700	8.800	9.775	9.700	37.975
H 1/30/2021	Rutgers, Maryland	9.625	8.625	8.450	9.675	36.375
Career Total Points: 74.350		Average	9.663	8.713	9.113	9.688
		Season High	9.700	8.800	9.775	9.700
		Career High	9.700	8.800	9.775	9.700

## Jaidyn Raby

Date	Team	Vault	Bars	Beam	Floor	AllArr
H 1/30/2021	Rutgers, Maryland	9.175				
Career Total Points: 9.175		Average	9.175			
		Season High	9.175			
		Career High	9.175			

## Kieran Ross

Date	Team	Vault	Bars	Beam	Floor	AllArr
H 1/23/2021	Rutgers, Illinois, Maryland	9.425				
Career Total Points: 9.425		Average	9.425			
		Season High	9.425			
		Career High	9.425			

## Emily Wood

Date	Team	Vault	Bars	Beam	Floor	AllArr
H 1/23/2021	Rutgers, Illinois, Maryland				9.175	
H 1/30/2021	Rutgers, Maryland				9.675	
Career Total Points: 18.850		Average			9.425	
		Season High			9.675	
		Career High			9.675	

## Stephanie Zannella

Date	Team	Vault	Bars	Beam	Floor	AllArr
H 1/23/2021	Rutgers, Illinois, Maryland	9.575		9.775	8.950	
H 1/30/2021	Rutgers, Maryland	9.350		9.725		
Career Total Points: 47.375		Average	9.463	9.750	8.950	
		Season High	9.575	9.775	8.950	
		Career High	9.575	9.775	8.950	

Scores in italic set or tied a personal record. Scores in bold set or tied a team record. Scores in light gray were exhibition.



# Statistics by Gymnast

Rutgers: 2020 - 2021 Season

Page: 3

## Jordyn Zieden-Weber

Date	Team	Vault	Bars	Beam	Floor	AllArr
H 1/30/2021	Rutgers, Maryland		9.650			
Career Total Points:		59.700	Average			
			Season High			
			Career High	9.650		

Scores in italic set or tied a personal record. Scores in bold set or tied a team record. Scores in light gray were exhibition.