

# NEBRASKA SOFTBALL

SOFTBALL WEEKLY NOTES | TROY COX CLASSIC | FEB. 6-9 | LAS CRUCES, N.M.



**GAME 01**  
at NEW MEXICO STATE  
FEB. 6 | 5 PM CT



**GAME 02**  
vs. UTEP  
FEB. 7 | 12:30 PM CT



**GAME 03**  
vs. BRADLEY  
FEB. 8 | 10:30 AM CT



**GAME 04**  
vs. UTEP  
FEB. 8 | 3 PM CT



**GAME 05**  
vs. #20/24 ARKANSAS  
FEB. 9 | 10 AM CT

## HUSKERS OPEN 2020 SEASON THIS WEEKEND AT TROY COX CLASSIC

The Nebraska softball team opens its 2020 season this weekend in Las Cruces, N.M., at the Troy Cox Classic. The tournament is hosted by New Mexico State and will take place at the NM State Softball Complex. The Huskers will play a total of five games from Feb. 6-9.

On Thursday, Nebraska plays host school New Mexico State at 5 p.m. CT. On Friday, the Huskers compete against UTEP at 12:30 p.m. CT. On Saturday, NU plays Bradley (10:30 a.m. CT) and UTEP (3 p.m. CT). The Huskers conclude the tournament against No. 20/24 Arkansas on Sunday at 10 a.m. CT.

### SCOUTING THE OPPONENTS

New Mexico State finished the 2019 season with a 33-22 record which included a 12-6 WAC record.

The Aggies lost their three major offensive weapons from last season in Mya Felder, Victoria Castro and Kelsey Horton. They each started every game last season and batted above .300. The trio combined for 40 of the team's 70 home runs. Felder led the team, hitting .357. Horton

had a team-best .711 slugging percentage and 18 home runs.

UTEP begins a new era in 2020 under first-year head coach T.J. Hubbard.

The Miners return two of their top three hitters from last season in sophomores Kasey Flores and Pate Cathey.

Flores played in all but two games last season and ranked second on the team with a .352 batting average and a .607 slugging percentage. The utility player lead the team with 39 RBIs in 2019 and ranked second with 10 doubles. She also added nine homers. Flores was named to the 2020 Conference USA Preseason All-Conference team in January.

Bradley is coming off a 29-21 finish from 2019. The Braves finished their season at the 2019 Missouri Valley Conference Tournament, where they fell to eventual champion Drake in the semifinals.

Bradley returns several key players from last year's squad, including its top five hitters from 2019 in Allison Apke, Kealia Wysocki, Lucy Mead, Taise Thompson and Stacia Seeton.

All five hitters finished the 2019 season with a batting average above .300.

Arkansas enters the 2020 season ranked in both major softball polls. The Razorbacks are ranked No. 20 in the USA Softball/ESPN Poll and hold the No. 24 spot in the USA Today/NFCA Poll. Arkansas finished the 2019 season with a 38-20 record and advanced to the NCAA Tournament.

The Razorbacks return three of their top four offensive players for the 2019 squad including Hannah McEwen, Danielle Gibson and Sydney Parr.

### FOLLOW THE HUSKERS

A live radio broadcast will be available on Huskers.com and the official Huskers App for all of Nebraska's games this season. Fans can also follow the action on Twitter (@HuskerSoftball). Additionally, Nebraska's game against New Mexico State will be streamed on the WAC Digital Network, while all other games will be available on FloSoftball (subscription required).

### NEBRASKA NUMERICAL ROSTER

No.	Name	B/T	Pos.	Ht.	Yr.	Hometown
00	Lexey Kneib	L/R	INF	5-6	Sr.	Webb City, Mo.
1	Rylie Unzicker	L/R	OF	5-7	Jr.	Omaha, Neb.
2	Payton Huscroft	L/L	INF	5-8	So.	Omaha, Neb.
11	Keana "KP" Pola	L/R	INF	5-2	Fr.	Santa Ana, Calif.
13	Peyton Glatter	L/R	OF	5-4	So.	Omaha, Neb.
17	Carson Fischer	R/R	OF	5-7	So.	Denton, Neb.
18	Mikaela Forcum	L/R	C	5-4	RFr.	Walla Walla, Wash.
21	Sarah Yocom	R/R	INF	5-6	Jr.	Cozad, Neb.
23	Courtney Wallace	R/R	RHP/UTL	5-4	So.	Omaha, Neb.
24	Tristen Edwards	R/R	OF	5-7	Sr.	Murrieta, Calif.
25	Lindsey Walljasper	R/R	RHP/UTL	5-11	So.	Manteca, Calif.
27	Brooke Andrews	R/R	INF	5-8	Fr.	Gretna, Neb.
28	Ally Riley	R/R	C	5-10	Jr.	Alva, Okla.
30	Karlee Seevers	R/R	RHP	5-7	So.	York, Neb.
32	Cam Ybarra	L/R	INF	5-6	Jr.	Mission Viejo, Calif.
33	Anni Raley	R/R	C	5-7	So.	Clovis, Calif.
39	Olivia Ferrell	R/R	RHP	5-10	Jr.	Omaha, Neb.
64	Bree Boruff	L/L	OF	5-8	Sr.	Mead, Colo.
77	Samantha Owen	R/R	INF	5-5	Sr.	Manteca, Calif.

Head Coach: Rhonda Revelle (28th season)

### PRONUNCIATION GUIDE

Bree Boruff ..... BORE-off  
Mikaela Forcum ..... four-COME  
Lexey Kneib ..... NIBE  
Keana "KP" Pola ..... key-AH-na

Anni Raley ..... AWE-knee RAY-lee  
Rhonda Revelle ..... ruh-VELL  
Cam Ybarra ..... EE-bar-uh  
Sarah Yocom ..... YO-come

### ALL-REGION PLAYERS

#### TRISTEN EDWARDS, SR., OF

- Third-Team NFCA All-Midwest Region (2019)

#### SAMANTHA OWEN, SR., INF

- Third-Team NFCA All-West Region (2018)

### ALL-CONFERENCE PLAYERS

#### TRISTEN EDWARDS, SR., OF

- First-Team All-Big Ten (2019)
- First-Team All-Big Ten (2018)

#### SAMANTHA OWEN, SR., INF

- First-Team All-WCC (2018)
- All-WCC Honorable Mention (2017)

#### CAM YBARRA, JR., INF

- All Pac-12 Freshman Team (2018)
- All-Pac-12 Defensive Team (2018)

SOFTBALL COMMUNICATIONS CONTACT: ERICA NETT | enett@huskers.com | 402.472.2264

# 2020 NEBRASKA SCHEDULE

Day	Date	Opponent	Location	Time (CT)
<b>Troy Cox Challenge (at New Mexico State)</b>				
Thursday	Feb. 6	at New Mexico State	Las Cruces, N.M.	5 p.m.
Friday	Feb. 7	vs. UTEP	Las Cruces, N.M.	12:30 p.m.
Saturday	Feb. 8	vs. Bradley	Las Cruces, N.M.	10:30 a.m.
Saturday	Feb. 8	vs. UTEP	Las Cruces, N.M.	3 p.m.
Sunday	Feb. 9	vs. Arkansas	Las Cruces, N.M.	10 a.m.
<b>Big Ten/ACC Challenge (at Georgia Tech)</b>				
Friday	Feb. 14	at Georgia Tech	Atlanta, Ga.	3 p.m.
Saturday	Feb. 15	vs. Boston College	Atlanta, Ga.	9 a.m.
Saturday	Feb. 15	at Georgia Tech	Atlanta, Ga.	11:30 a.m.
Sunday	Feb. 16	vs. Boston College	Atlanta, Ga.	9 a.m.
<b>Mary Nutter Collegiate Classic (privately hosted)</b>				
Friday	Feb. 21	vs. Oklahoma	Cathedral City, Calif.	12:30 p.m.
Friday	Feb. 21	vs. BYU	Cathedral City, Calif.	5:30 p.m.
Saturday	Feb. 22	vs. California	Cathedral City, Calif.	4:30 p.m.
Saturday	Feb. 22	vs. Washington	Cathedral City, Calif.	7 p.m.
Sunday	Feb. 23	vs. Florida	Cathedral City, Calif.	11 a.m.
<b>Mizzou Tournament (at Missouri)</b>				
Saturday	Feb. 29	at Missouri	Columbia, Mo.	11:30 a.m.
Saturday	Feb. 29	vs. Wichita State	Columbia, Mo.	2 p.m.
Sunday	March 1	at Missouri	Columbia, Mo.	10 a.m.
Sunday	March 1	vs. Wichita State	Columbia, Mo.	12:30 p.m.
<b>Arizona State Invitational (at Arizona State)</b>				
Friday	March 6	vs. Oregon State	Tempe, Ariz.	10 a.m.
Friday	March 6	vs. Wright State	Tempe, Ariz.	12:30 p.m.
Saturday	March 7	vs. Lehigh	Tempe, Ariz.	3 p.m.
Saturday	March 7	at Arizona State	Tempe, Ariz.	5:30 p.m.
Sunday	March 8	vs. New Mexico State	Tempe, Ariz.	11 a.m.
<b>Saturday</b>	<b>March 14</b>	<b>vs. North Dakota</b>	<b>Bowlin Stadium</b>	<b>Noon</b>
<b>Saturday</b>	<b>March 14</b>	<b>vs. Northern Colorado</b>	<b>Bowlin Stadium</b>	<b>2 p.m.</b>
<b>Sunday</b>	<b>March 15</b>	<b>vs. North Dakota</b>	<b>Bowlin Stadium</b>	<b>Noon</b>
<b>Sunday</b>	<b>March 15</b>	<b>vs. Northern Colorado</b>	<b>Bowlin Stadium</b>	<b>2 p.m.</b>
Friday	March 20	at Illinois*	Champaign, Ill.	5 p.m.
Saturday	March 21	at Illinois*	Champaign, Ill.	1 p.m.
Sunday	March 22	at Illinois*	Champaign, Ill.	Noon
Tuesday	March 24	at Kansas (1)	Lawrence, Kan.	5 p.m.
Tuesday	March 24	at Kansas (2)	Lawrence, Kan.	7 p.m.
Friday	March 27	at Minnesota*	Minneapolis, Minn.	3 p.m.
Saturday	March 28	at Minnesota*	Minneapolis, Minn.	1 p.m.
Sunday	March 29	at Minnesota*	Minneapolis, Minn.	Noon
<b>Tuesday</b>	<b>March 31</b>	<b>South Dakota State</b>	<b>Bowlin Stadium</b>	<b>5 p.m.</b>
<b>Friday</b>	<b>April 3</b>	<b>Wisconsin*</b>	<b>Bowlin Stadium</b>	<b>5:30 p.m.</b>
<b>Saturday</b>	<b>April 4</b>	<b>Wisconsin*</b>	<b>Bowlin Stadium</b>	<b>1 p.m.</b>
<b>Sunday</b>	<b>April 5</b>	<b>Wisconsin*</b>	<b>Bowlin Stadium</b>	<b>Noon</b>
<b>Tuesday</b>	<b>April 7</b>	<b>South Dakota</b>	<b>Bowlin Stadium</b>	<b>6 p.m.</b>
<b>Friday</b>	<b>April 10</b>	<b>Indiana*</b>	<b>Bowlin Stadium</b>	<b>5:30 p.m.</b>
<b>Saturday</b>	<b>April 11</b>	<b>Indiana*</b>	<b>Bowlin Stadium</b>	<b>1 p.m.</b>
<b>Sunday</b>	<b>April 12</b>	<b>Indiana*</b>	<b>Bowlin Stadium</b>	<b>Noon</b>
Friday	April 17	at Maryland*	College Park, Md.	5 p.m.
Saturday	April 18	at Maryland*	College Park, Md.	1 p.m.
Sunday	April 19	at Maryland*	College Park, Md.	11 a.m.
<b>Tuesday</b>	<b>April 21</b>	<b>Iowa (1)*</b>	<b>Bowlin Stadium</b>	<b>3 p.m.</b>
<b>Tuesday</b>	<b>April 21</b>	<b>Iowa (2)*</b>	<b>Bowlin Stadium</b>	<b>5 p.m.</b>
Friday	April 24	at Michigan State*	East Lansing, Mich.	5 p.m.
Saturday	April 25	at Michigan State*	East Lansing, Mich.	1 p.m.
Sunday	April 26	at Michigan State*	East Lansing, Mich.	Noon
<b>Tuesday</b>	<b>April 28</b>	<b>Creighton</b>	<b>Bowlin Stadium</b>	<b>6 p.m.</b>
<b>Friday</b>	<b>May 1</b>	<b>Purdue*</b>	<b>Bowlin Stadium</b>	<b>5:30 p.m.</b>
<b>Saturday</b>	<b>May 2</b>	<b>Purdue*</b>	<b>Bowlin Stadium</b>	<b>1 p.m.</b>
<b>Sunday</b>	<b>May 3</b>	<b>Purdue*</b>	<b>Bowlin Stadium</b>	<b>Noon</b>
May 7-9	Big Ten Tournament		Champaign, Ill.	TBA
May 14-17	NCAA Regional		Campus Site	TBA
May 21-24	NCAA Super Regional		Campus Site	TBA
May 28-June 3	NCAA WCWS		Oklahoma City, Okla.	TBA

\*Conference game; All times Central and subject to change; All games will air on Huskers.com (radio), courtesy of the IMG Husker Sports Network

## SCHEDULE NOTES

### NU SET FOR 55-GAME SCHEDULE

Nebraska is scheduled to play 55 games in 2020, including 18 home games, 20 road games and 17 games at a neutral site.

### HUSKERS TRAVEL TO 11 STATES IN 2020

Nebraska will travel to 10 states this season, playing games in Arizona, California, Georgia, Illinois, Kansas, Maryland, Michigan, Minnesota, Missouri, Nebraska and New Mexico.

### NU SET FOR SIX OF GAMES AGAINST 2019 WCWS TEAMS

Nebraska is slated to play four of the eight teams that advanced to the Women's College World Series last season, Oklahoma, Florida, Washington and Minnesota. The Huskers will see the first three at the Mary Nutter Collegiate Classic, before traveling to Minnesota for a three-game conference series against the Golden Gophers. Additionally, Nebraska will play six more teams that made it to the NCAA Tournament in 2019 when the team takes on Arkansas, Arizona State, BYU, Illinois, Missouri and Wisconsin.

### HOME SWEET HOME

Nebraska hosts a 10-game homestand in April and 2020 is the fourth straight year the Huskers have played at least 10 home games in one month.

### ILLINOIS HOSTS BIG TEN TOURNAMENT

The 2020 Big Ten Tournament is set for May 7-9 at Illinois' Eichelberger Field. The top 12 teams in the final regular-season standings will compete in the tournament, with the top four seeds earning a bye.

### POSTSEASON FORMAT UNCHANGED

The NCAA Tournament will feature a 64-team field for the 18th consecutive season in 2020 and will include a regional-super regional format for the 16th straight year, with super regionals lasting three days.

### OKC HOSTS WCWS

The 2020 Women's College World Series will be held at ASA Hall of Fame Stadium in Oklahoma City for the 23rd straight season and the 30th time overall.



# 2020 NEBRASKA PHOTO ROSTER



**#00 Lexey Kneib**  
INF - Sr.



**#1 Rylie Unzicker**  
OF - Jr.



**#2 Payton Huscroft**  
INF - So.



**#11 Keana "KP" Pola**  
INF - Fr.



**#13 Peyton Glatter**  
OF - So.



**#17 Carson Fischer**  
OF - So.



**#18 Mikaela Forcum**  
C - RFr.



**#21 Sarah Yocom**  
INF - Jr.



**#23 Courtney Wallace**  
RHP/UTL - So.



**#24 Tristen Edwards**  
OF - Sr.



**#25 Lindsey Walljasper**  
RHP/UTL - So.



**#27 Brooke Andrews**  
INF - Fr.



**#28 Ally Riley**  
C - Jr.



**#30 Karlee Seevers**  
RHP - So.



**#32 Cam Ybarra**  
INF - Jr.



**#33 Anni Raley**  
C - So.



**#39 Olivia Ferrell**  
RHP - Jr.



**#64 Bree Boruff**  
OF - Sr.



**#77 Samantha Owen**  
INF - Sr.

# NEBRASKA NOTES

## LINEUP NOTES

Player	GP-GS
Tristen Edwards, Sr., OF	156-153
Samantha Owen, Sr. INF	145-142
Bree Boruff, Sr., OF	107-32
Lexey Kneib, Sr., INF	95-87
Cam Ybarra, Jr., INF	90-84
Rylie Unzicker, Jr., OF	83-55
Sarah Yocom, Jr., INF	53-26
Lindsey Walljasper, So., RHP/UTL	51-50
Olivia Ferrell, Jr., RHP	49-28
Courtney Wallace, So., RHP/UTL	47-40
Peyton Glatte, So., OF	38-32
Ally Riley, Jr., C	36-19
Anni Raley, So., C	33-0
Carson Fischer, So., OF	28-2
Payton Huscroft, So. INF	6-1
Karlee Seevers, So., RHP	1-0

## RETURNING STARTS BY POSITION\*

### PITCHER

Player	GS
Olivia Ferrell	28
Lindsey Walljasper	20
Courtney Wallace	14
<b>TOTAL</b>	<b>62</b>

### CATCHER

Player	GS
Ally Riley	6
<b>TOTAL</b>	<b>6</b>

### FIRST BASE

Player	GS
<b>NONE</b>	

### SECOND BASE

Player	GS
Lexey Kneib	41
Sarah Yocom	9
Carson Fischer	2
<b>TOTAL</b>	<b>52</b>

### THIRD BASE

Player	GS
Samantha Owen	45
Lexey Kneib	38
Sarah Yocom	9
Courtney Wallace	5
<b>TOTAL</b>	<b>97</b>

### SHORTSTOP

Player	GS
Tristen Edwards	98
Sarah Yocom	8
Lexey Kneib	7
<b>TOTAL</b>	<b>113</b>

### LEFT FIELD

Player	GS
Bree Boruff	25
Peyton Glatte	14
Tristen Edwards	8
Courtney Wallace	4
Rylie Unzicker	3
Lindsey Walljasper	1
<b>TOTAL</b>	<b>55</b>

### CENTER FIELD

Player	GS
Rylie Unzicker	46
Bree Boruff	1
<b>TOTAL</b>	<b>47</b>

### RIGHT FIELD

Player	GS
Tristen Edwards	46
Peyton Glatte	15
Rylie Unzicker	2
<b>TOTAL</b>	<b>63</b>

### DESIGNATED PLAYER

Player	GS
Lindsey Walljasper	29
Courtney Wallace	17
Ally Riley	13
Bree Boruff	6
Rylie Unzicker	4
Peyton Glatte	3
Tristen Edwards	1
Lexey Kneib	1
Payton Huscroft	1
Samantha Owen	1
<b>TOTAL</b>	<b>76</b>

\*Only shows starts at Nebraska. Samantha Owen started 96 additional games at Pacific from 2017 to 2018. Cam Ybarra started 84 games at Oregon State from 2018 to 2019.

## SEASON OPENERS

Nebraska owns a 27-16 all-time record in season openers. The Huskers have won six of their last seven. Head Coach Rhonda Revelle owns an 18-9 record in her 27 season openers, including a 3-6 mark against ranked opponents.

## NEBRASKA'S SEASON OPENERS (27-16)

Year	Opponent	Result
1977	at Kansas State	L, 11-12
1978	at Wichita State	L, 3-4
1979	Ohio State	L, 1-2
1980	Central Oklahoma	W, 3-1
1981	Rutgers	L, 0-2
1982	Central Arizona	L, 1-2
1983	Northern Arizona	W, 6-1
1984	Mesa College	W, 4-1
1985	Wichita State	W, 8-0 (6)
1986	Minnesota	W, 6-2
1987	Arizona	W, 1-0
1988	Baylor	W, 9-1
1989	Hawaii	W, 7-4 (8)
1990	NE Louisiana	W, 7-0
1991	Concordia-St. Paul	W, 9-0 (6)
1992	Ohio State	L, 2-6
1993	Creighton	W, 14-7
1994	Oklahoma	L, 5-6
1995	Stephen F. Austin	W, 6-1
1996	New Mexico	W, 5-2
1997	Illinois State	L, 5-6
1998	Cal Poly SLO	W, 1-0
1999	Maryland	W, 3-1
2000	Wisconsin	W, 5-4
2001	No. 18 South Carolina	L, 1-2 (8)
2002	No. 10 Cal St. Fullerton	W, 3-2
2003	No. 15 Fresno State	W, 1-0
2004	No. 1 UCLA	L, 1-10 (5)
2005	No. 14 Tennessee	L, 0-5
2006	No. 7 Stanford	L, 3-7
2007	No. 24 Auburn	W, 1-0 (8)
2008	California	L, 1-6
2009	Dayton	W, 10-0 (5)
2010	at New Mexico State	L, 2-4
2011	Portland State	W, 11-2 (5)
2012	No. 12 Washington	L, 0-4
2013	Illinois-Chicago	W, 14-5 (6)
2014	UTEP	W, 7-0
2015	Colorado State	W, 9-1 (5)
2016	at Northern Iowa	W, 7-4 (8)
2017	BYU	L, 12-1 (5)
2018	No. 19 BYU	W, 5-4 (8)
2019	Lamar	W, 14-2 (5)

## OPENING WEEKEND SUCCESS

Senior Bree Boruff has performed well in the opening weekend the last two seasons. Boruff is 7-for-18 (.389) in her last two season-opening tournaments with five runs, one double and two RBIs.

Fellow senior Tristen Edwards is 13-for-37 (.351) in the past two opening weekends. She has also added seven runs, two doubles, one home run and nine RBIs.

Last season, Rylie Unzicker went 5-for-13 (.385), with five runs, two doubles, one triple and one home run.

In her first weekend as a Husker, Courtney Wallace went 6-for-16 (.375) with four runs, two doubles, two triples and two RBIs.

## TROY COX CLASSIC HISTORY

Nebraska last played in the Troy Cox Classic in 2012 At the tournament, Nebraska went 5-0 beating New Mexico State (twice), Stephen F. Austin, Weber State and Colorado State.

## NEBRASKA SOFTBALL QUICK FACTS

Location	Lincoln, Neb.
Population	280,369
Founded	1869
Enrollment	25,897
Nickname	Cornhuskers, Huskers
Colors	Scarlet & Cream
Conference	Big Ten
Stadium (capacity)	Bowlin Stadium (2,500)
Athletic Director	Bill Moos
Senior Woman Administrator	Pat Logsdon

## COACHING INFORMATION

Head Coach	Rhonda Revelle (28th year)
Record at Nebraska (years)	989-568 (27 years)
Career Record (years)	997-584 (28 years)
Alma Mater	Nebraska (1984)
Associate Head Coach	Lori Sippel (31st year)
Alma Mater	Nebraska (1988)
Assistant Coach	Diane Miller (12th year)
Alma Mater	Missouri Southern (1992)
Director of Operations	Erin Bohling (First year)
Alma Mater	Nebraska (2018)

## TEAM INFORMATION

2019 Record	21-31
Big Ten Record (finish)	9-14 (T8th)
Postseason Finish (record) ... B1G Tournament (0-1)	
Final Ranking	NR
Letterwinners Returning/Lost	16/4
Starters Returning/Lost	8/3
2020 Newcomers	3

## PROGRAM HISTORY

First Year of Softball	1976
All-Time Record	1,470-863 (.630)
All-Time Conference Record	388-281 (.580)
Overall Conference Titles	19
Big Eight Conference Titles	12
Big 12 Conference Titles	6
Big Ten Conference Titles	1
NCAA Tournament Appearances	24
NCAA Tournament Record	62-52 (.544)
NCAA Regional Record	52-35 (.598)
NCAA Super Regional Record	2-3 (.400)
Women's College World Series Appearances	7
Women's College World Series Record	8-14 (.363)
Honda Award Winners	1
Honda Award Nominees	3
NFCA All-Americans	27
CoSIDA Academic All-Americans	30

## SOFTBALL DIRECTORY

Head Coach Rhonda Revelle	(402) 472-6465
Associate Head Coach Lori Sippel	(402) 472-6595
Assistant Coach Diane Miller	(402) 472-6499
Director of Operations Erin Bohling	(402) 472-6485
Office Manager Anne Hackbart	(402) 472-8801
Media Contact Erica Nett	(402) 472-2264
Communications Office Fax	(402) 472-2005
Softball Office Fax	(402) 472-6488
Softball Office Address	
Bowlin Stadium at Haymarket Park	
400 Line Drive Circle	
Lincoln, NE 68588-0142	

## MEDIA SERVICES

The communications contact for Nebraska softball is Assistant Communications Director Erica Nett. All interviews must be arranged through Nett, who can be reached by e-mail (enett@huskers.com) or phone (402) 472-2264. Interviews are generally conducted after practice during the week and following the final game of the day on game day.



# NEBRASKA NOTES

## SENIOR TRISTEN EDWARDS WILL LEAD HUSKER OFFENSIVE IN 2020

Senior outfielder Tristen Edwards returns for her senior season in 2020 after an explosive junior campaign. Edwards earned back-to-back first-team All-Big Ten honors in 2018 and 2019. She also was an NFCA All-Region pick in 2019.

Nebraska's best hitter in 2019, Edwards led the team with a .376 batting average, a .758 slugging percentage, 42 runs, 56 hits, 12 doubles, 15 homers, 50 RBIs and 33 walks. Her 15 home runs as a junior brought her career total to 31 which is tied for eighth on Nebraska's all-time home run list. In addition to career home runs, Edwards is on her way towards several other Husker records.

## NEBRASKA CAREER HOME RUNS

1. Taylor Edwards, 2011-14.....	54
2. Ali Viola, 1995-98.....	53
3. Jennifer Lizama, 1997-2000 .....	47
4. Tatum Edwards, 2011-14.....	46
5. MJ Knighten, 2014-17.....	41
6. Brooke Thomason, 2010-13 .....	35
7. Crystal Carwile, 2006-09 .....	32
8. Jenny Smith, 1995-98.....	31
<b>Tristen Edwards, 2017-pres. ....</b>	<b>31</b>
10. Denise Day, 1982-85.....	28

## NEBRASKA CAREER EXTRA-BASE HITS

1. Ali Viola, 1995-98.....	105
2. Taylor Edwards, 2011-14.....	95
3. Jennifer Lizama, 1997-2000 .....	93
4. Tatum Edwards, 2011-14.....	85
5. MJ Knighten, 2014-17.....	81
6. Brooke Thomason, 2010-13.....	78
7. Crystal Carwile, 2006-09 .....	74
8. Kim Ogee, 2000-03.....	69
9. Nicole Trimboli, 2001-04.....	68
10. Kiki Stokes, 2013-16.....	65
<b>Tristen Edwards, 2017-pres. ....</b>	<b>64</b>

## NEBRASKA CAREER RBIs

1. Ali Viola, 1995-98.....	213
2. Taylor Edwards, 2011-14.....	202
3. MJ Knighten, 2014-17.....	186
4. Brooke Thomason, 2010-13 .....	177
5. Nicole Trimboli, 2001-04.....	173
6. Tatum Edwards, 2011-14.....	158
7. Crystal Carwile, 2006-09 .....	141
8. Jenny Smith, 1995-98.....	137
9. Jennifer Lizama, 1997-2000 .....	135
10. Tobin Echo-Hawk, 1993-96 .....	134
Alicia Armstrong, 2013-16.....	134
<b>Tristen Edwards, 2017-pres. ....</b>	<b>118</b>

## EDWARDS IN ELITE COMPANY

Edwards made Husker history on last season against South Dakota State. The junior finished with two home runs, marking her fourth multi-home run game of the season and the sixth in her career, putting herself elite company.

The only other Huskers to have at least five multi-home run career games are Tatum Edwards and Jennifer Lizama. Both Tatum Edwards and Jennifer Lizama earned multiple All-America awards while at Nebraska. Additionally, her four multi-home run games in 2019 were the most multi-home run games in a single season in school history. Previously, MJ Knighten and Ali Viola held the record at three and both Knighten and Viola were first-team All-Americans.

Edwards also became one of just 13 players in Nebraska history to have at least 10 doubles and 10 homers in the same year. She is also one of just three Huskers to do it twice in their careers, joining Ali Viola and Tatum Edwards, who both earned multiple All-America awards at Nebraska.

Edwards primarily played shortstop in 2019, but will move back to the outfield in 2020.

## EDWARDS GAINES NATIONAL ATTENTION

Edwards was one of 50 players nationally named to the preseason USA Softball Player-of-the-Year Watch List. She became the first Husker on the watch list since former All-American MJ Knighten.

## HUSKERS ADD OREGON STATE TRANSFER

During the offseason, Nebraska added junior infielder Cam Ybarra to its roster. Ybarra spent two seasons at Oregon State before coming to Nebraska.

As a sophomore in 2019, Ybarra appeared in 35 games, which included 31 starts. The Mission Viejo, Calif., native spent most of the season as the designated player. Hitting in the three spot, Ybarra averaged .326 in Pac-12 play, which ranked second on the team. Overall, Ybarra recorded 23 hits and 10 RBIs, while leading the team with nine doubles. In her first season with the Beavers, Ybarra started all 53 games at second base and was named to the Pac-12 All-Freshman and All-Defensive teams. She hit .226 overall and .259 in conference-only games. Ybarra registered 35 hits, scored 14 runs, had five doubles, three homers and 14 RBIs in 2018.

## EXPERIENCED PITCHING STAFF IN 2020

Nebraska's core pitching staff consists of junior Olivia Ferrell and sophomores Lindsey Walljasper and Courtney Wallace.

Ferrell begins the season as Nebraska's most experienced pitcher with 168.2 innings pitched over the last two years. She leads the group with 49 career appearances.

In 2018, Ferrell became the first Husker freshman pitcher to start a season opener against a ranked opponent when she kicked off the season against No. 19 BYU. She'll help lead a pitching staff as the only upperclassmen this season.

With only one upperclassmen pitcher, Wallace and Walljasper are expected to carry a large load this season. While they are young, the duo saw a lot of action and impacted the team right away as freshman in 2019. Walljasper made a team-high 31 appearances and racked up 91 strikeouts. Wallace appeared 29 times which ranked second on the team and recorded 63 strikeouts.

Sophomore Karlee Seevers will also look to make her first appearance in the circle as a Husker in 2020.

## IT'S IN THE CLUB

Several Huskers have been teammates long before arriving in Lincoln, playing together in high school and on the same club team. California natives Tristen Edwards, Cam Ybarra and Keana "KP" Pola played for the Corona Angels. In Nebraska, Rylie Unzicker, Payton Huscroft, Olivia Ferrell, Carson Fischer, Peyton Glatte, Courtney Wallace and Brooke Andrews all played for Nebraska Gold.

## WALLACE, WALLJASPER RETURN AFTER BIG FRESHMAN SEASONS IN 2019

Sophomore pitchers/utility players Courtney Wallace and Lindsey Walljasper had impressive freshman seasons in 2019 both offensively and defensively and look to build upon that momentum in 2020.

Wallace played in 47 games last season and hit .227. She tied a Nebraska single-game record with two triples in two separate games. She became the first Husker to record multiple triples in multiple games. The Omaha, Neb., native finished

the season with four triples which tied for second in school history among freshman and tied for 10th in school history across all classes.

Lindsey Walljasper started in the circle in the 2019 season opener, becoming just the third freshman to start a season opener since 1995. She saw the most action in 2019, pitching 106.1 innings and recorded a team-high 91 strikeouts.

At the plate, Walljasper hit .255 which ranked second among freshman and fourth overall among regular hitters.

## HUSKERS WILL SEE A FAMILIAR FACE IN LAS CRUCES THIS WEEKEND

Earlier this year, New Mexico State announced the addition of former Husker All-American Tobin Echo-Hawk to its coaching staff. Echo-Hawk will serve as the Aggies' volunteer coach in 2020 after previous stops at Portland State and Ute.

Echo-Hawk has 11 seasons of head coaching experience. Most recently, she served as the head coach of the UTEP softball program, leading the Miners for six seasons (2014-19) and advancing to the Conference USA Tournament twice.

Echo-Hawk was a four-year letterwinner for Nebraska from 1993 to 1996. She earned first-team All-Conference (Big Eight/Big XII) honors four times and was a three-time NFCA All-Region honoree before earning All-America honors as a junior and senior. She holds the Nebraska records for single-season batting average (.439) and single-season doubles (22).

## REVELLE APPROACHING MILESTONE

With 997 career victories, Nebraska Head Coach Rhonda Revelle is approaching her 1,000th win overall as a head coach. Revelle has won 989 games at Nebraska in addition to winning eight games with Nebraska Wesleyan in 1987.

Currently, there are only 13 active D1 softball coaches with 1,000 career wins. Revelle and Linda Kalafatis (College of Charleston) both have 997 entering the 2020 season and look to become the 14th and 15th current DI coaches with 1,000 career victories.

## NEBRASKA NICE

The 2020 Husker roster includes nine native Nebraskans, which ties for the most in Rhonda Revelle's 28 seasons as Nebraska's head coach. The Huskers had nine Nebraskans on the 2019 roster as well. Previously, Nebraska had never had more than eight Nebraskans on its roster under Revelle.

The group consists of juniors Olivia Ferrell, Rylie Unzicker and Sarah Yocom, sophomores Payton Huscroft, Carson Fischer, Peyton Glatte, Karlee Seevers and Courtney Wallace and freshman Brooke Andrews.

## SUPPORT STAFF UPDATE

Nebraska's Volunteer Coach, former All-American and professional player Taylor Edwards will not be seen in the dugout this spring as she was named to Team USA and will represent the United States in the 2020 Tokyo Olympics this summer. Edwards spent last season as NU's volunteer coach and was with the team up until January before leaving to train with Team USA.

Former Howard pitcher Mackenzi Steele begins her first season as a graduate manager. Steele played under former Husker Tori Tyson at Howard.

## 2020 NEBRASKA SOFTBALL'S RECORD BREAKDOWN

Overall	0-0	When Out-Hitting Opponent	0-0
Non-Conference	0-0	When Out-Hit by Opponent	0-0
Big Ten Conference	0-0	When Scoring First	0-0
Home	0-0	When Opponent Scores First	0-0
Neutral	0-0	When Scoring in the First Inning	0-0
Road	0-0	When Scoring Fewer than 3 Runs	0-0
Night Games	0-0	When Scoring 5 or More Runs	0-0
Day Games	0-0	When Scoring 10 or More Runs	0-0
Sunday	0-0	When Allowing Fewer Than 3 Runs	0-0
Monday	0-0	When Allowing 5 or More Runs	0-0
Tuesday	0-0	When allowing 10 or More Runs	0-0
Wednesday	0-0	When Leading After Five Innings	0-0
Thursday	0-0	When Leading After Six Innings	0-0
Friday	0-0	When Trailing After Five Innings	0-0
Saturday	0-0	When Trailing After Six Innings	0-0
vs. Ranked Opponents	0-0	When Tied After Five Innings	0-0
vs. Unranked Opponents	0-0	When Tied After Six Innings	0-0
Extra Innings	0-0	When Committing 0 Errors	0-0
1-Run Games	0-0	When Committing 2 or More Errors	0-0

### THE LAST TIME A HUSKER

Had 6+ At Bats	5 players vs. Wisconsin (5/8/16)
Had 4+ Hits	Tristen Edwards vs. Tulsa [4] (3/16/19)
Scored 4+ Runs	Tristen Edwards vs. Pittsburgh [4] (2/17/19)
Had 3+ Doubles	Bri Cassidy vs. Lamar [3] (2/8/19)
Had 2+ Homers	Tristen Edwards vs. South Dakota State [2] (4/3/19)
Had 3+ Homers	Kaylan Jablonski [3] at Cal State Fullerton (3/17/18)
Hit a Grand Slam	Tristen Edwards vs. Pittsburgh (2/17/19)
Homered in 1st Career AB	Hailey Decker vs. UIC (2/8/13)
Stole 3+ Bases	Nikki Haget [3] vs. La Salle (3/12/11)
Drew 4+ Walks	MJ Knighten [4] at Northwestern (4/17/16)
Had 2+ HBP	Samantha Owen [3] vs. Pittsburgh (2/17/19)
Had 5+ RBIs	Tristen Edwards [8] vs. Pittsburgh (2/17/19)
Threw a No-Hitter	Kaylan Jablonski vs. Purdue (4/30/16)
Threw a Perfect Game	Ashley DeBuhr vs. Iowa St. (4/13/05)
Had 10+ Strikeouts	Cassie McClure [10] vs. So. Dakota St. (3/29/16)
Had 15+ Strikeouts	Ashley Hagemann [17] at UNO (4/19/12)
Had a 10-Game Hit Streak	Gina Metzler [10] (2017)
Had a 15-Game Hit Streak	MJ Knighten [21] (2015)
Had a 20-Game Hit Streak	MJ Knighten [21] (2015)
Had a 25-Game Hit Streak	Taylor Edwards [25] (2013-14)

### THE LAST TIME NEBRASKA

Beat a No. 1 Team	vs. No. 1 Michigan [1-0] (4/8/16)
Beat a Top-5 Team	vs. No. 1 Michigan [1-0] (4/8/16)
Beat a Top-10 Team	vs. No. 6 Texas A&M [6-3] (2/22/18)
Beat a Ranked Team	at No. 17 NC State [6-0] (2/16/19)
Won When Trailing After 6 Innings	vs. Tulsa [3-2] (3/10/18)
Lost When Leading After 6 Innings	vs. Minnesota (3/25/17)
Scored 10+ Runs	vs. Maryland [14] (4/27/19)
Scored 15+ Runs	vs. Pittsburgh [16] (2/17/19)
Scored 20+ Runs	at Maryland [26] (4/3/16)
Allowed 10+ Runs	vs. Illinois [11] (3/31/19-Game 1)
Allowed 15+ Runs	vs. Minnesota [16] (3/24/17)
Allowed 20+ Runs	never
Recorded 15+ Hits	at Rutgers - 2 [19] (4/8/17)
Recorded 20+ Hits	at Maryland [21] (4/3/16)
Hit 6+ Doubles	vs. Lamar [7] (2/8/19)
Hit 4+ Home Runs	vs. Illinois [4] (3/31/19-Game 1)
Stole 6+ Bases	at Purdue [6] (4/13/19)
Drew 10+ Walks	at Creighton [11] (4/25/17)
Was No-Hit	vs. Tulsa (3/17/19)

## USA TODAY/NFCA COACHES POLL

Rk.	Team	2019 Record	2019 Rk.
1.	Washington	52-9	3
2.	Alabama	60-10	4
3.	Oklahoma	57-6	2
4.	UCLA	56-6	1
5.	Arizona	48-14	5
6.	Texas	46-17	11
7.	Florida	49-18	7
8.	Minnesota	46-14	8
9.	Florida State	55-10	9
10.	Louisiana	52-6	18
11.	LSU 499	43-19	10
12.	Tennessee	43-17	12
13.	Oklahoma State	45-17	6
14.	Northwestern	47-13	14
15.	Kentucky	36-24	16
16.	Georgia	42-19	17
17.	Michigan	45-13	20
18.	Texas Tech	42-16	19
19.	South Carolina	38-19	21
20.	James Madison	51-10	13
21.	Ole Miss	41-20	15
22.	Arizona State	35-20	24
23.	Auburn	39-21	22
24.	Arkansas	38-20	RV
25.	Wisconsin	43-14	25

Receiving Votes: Virginia Tech, Oregon, North Carolina, Missouri, USF, Cal State Fullerton, Notre Dame, Boise State, Houston, Baylor, Stanford, Ohio State, Fresno State, Louisville, Tulsa, San Jose State.

## USA SOFTBALL/ESPN POLL

Rk.	Team	2019 Record	2019 Rk.
1.	Alabama	60-10	4
2.	Washington	52-9	3
3.	Oklahoma	57-5	2
4.	UCLA	55-6	1
5.	Arizona	48-14	5
6.	Texas	46-17	10
7.	Minnesota	46-14	8
8.	Florida State	55-10	9
9.	Florida	49-18	7
10.	Louisiana	52-6	17
T11.	LSU	43-19	12
T11.	Tennessee	43-17	11
13.	Oklahoma State	45-17	6
14.	Michigan	45-13	18
15.	Northwestern	47-13	16
16.	Kentucky	36-24	15
17.	Georgia	42-19	20
18.	James Madison	51-10	13
19.	Texas Tech	42-16	19
20.	Arkansas	38-20	RV
21.	South Carolina	42-14	T23
22.	Arizona State	35-20	RV
23.	Wisconsin	43-14	22
24.	Oregon	22-30	NR
25.	Ole Miss	41-20	14

Receiving Votes: Auburn, Virginia Tech, Louisville, North Carolina, Baylor, Houston, Missouri, Indiana, Stanford, South Florida, Mississippi State, Notre Dame, Ohio State, Boise State, Drake, San Diego State

## HUSKER WEEK-BY-WEEK RANKINGS

Week	NFCA	ESPN.com	Record
Preseason	NR	NR	0-0

## BOWLIN: HOME SWEET HOME HOME WINNING PERCENTAGE

Nebraska has won 70 percent of its games at Bowlin Stadium, posting a 230-98 record since the facility opened in 2002. The Huskers have posted a winning record in 17 of their 18 seasons at Bowlin Stadium.

## SEASONS AT BOWLIN STADIUM

The 2019 season marked NU's 18th season calling Bowlin Stadium home. Although the Huskers hosted a fall tournament at the stadium in 2001, Bowlin Stadium's inaugural year was in 2002. The facility has seen upgrades since then, including a new indoor practice facility.

## TOP-25 ATTENDANCE RANKINGS

In the first 18 seasons Nebraska has played softball at Bowlin Stadium, the Huskers have ranked in the top 25 nationally in attendance 14 times. NU has ranked in the top 10 nationally in attendance four times.

## NCAA REGIONALS

In the first 18 seasons Nebraska has called Bowlin Stadium home, the Huskers have been selected to host five NCAA Regionals at the facility, most recently in 2013.

## WORLD'S LARGEST SOFTBALL TAILGATE

Nebraska set a world record when 2,302 fans showed up for the World's Largest Softball Tailgate against Michigan on April 9, 2016. NU broke its previous record of 2,204 set in 2014.

## BOWLIN STADIUM YEARLY RECORDS

YEAR	RECORD	PCT.
2002	9-5	.643
2003	14-7	.667
2004	14-6	.700
2005	9-7	.563
2006	20-1	.952
2007	18-5	.783
2008	13-9	.591
2009	13-5	.722
2010	12-8	.600
2011	10-4	.714
2012	15-1	.938
2013	18-4	.818
2014	13-3	.813
2015	11-6	.647
2016	11-5	.688
2017	13-6	.684
2018	10-7	.588
2019	7-9	.438
<b>TOTAL</b>	<b>230-98</b>	<b>.701</b>

## LARGEST CROWDS AT BOWLIN STADIUM

1. 2,302	Michigan	April 9, 2016
2. 2,204	Ohio State	April 19, 2014
3. 1,960	Texas	April 9, 2011
4. 1,844	Iowa	May 17, 2003
5. 1,840	Michigan	April 27, 2013
6. 1,752	Wisconsin	May 12, 2012
7. 1,692	Indiana	May 3, 2014
8. 1,673	Illinois	April 22, 2017
9. 1,601	Wisconsin	April 28, 2018
10. 1,585	Lehigh	May 20, 2004

## CONFERENCE INFORMATION

### BIG TEN CONFERENCE STANDINGS (2019)

Rank	Team	Big Ten	Overall
1.	Michigan	22-1	45-13
2.	Northwestern	21-2	47-13
3.	Minnesota	20-2	46-14
4.	Ohio State	17-6	35-18
5.	Wisconsin	15-8	43-14
6.	Rutgers	11-12	29-26
7.	Indiana	10-13	36-21
8.	Illinois	9-14	33-25
<b>9.</b>	<b>Nebraska</b>	<b>9-14</b>	<b>21-31</b>
10.	Penn State	7-16	24-32
11.	Purdue	6-17	34-29
12.	Iowa	5-18	19-32
13.	Michigan State	4-18	16-34
14.	Maryland	4-19	20-31

### NEBRASKA'S CONFERENCE TITLES (19)

Year	Conference	Title(s)
1982	Big Eight	Regular Season & Tourn.
1984	Big Eight	Regular Season & Tourn.
1985	Big Eight	Regular Season & Tourn.
1986	Big Eight	Regular Season & Tourn.
1987	Big Eight	Regular Season & Tourn.
1988	Big Eight	Regular Season & Tourn.
1998	Big 12	Regular Season & Tourn.
2000	Big 12	Tournament
2001	Big 12	Regular Season
2004	Big 12	Regular Season & Tourn.
2014	Big Ten	Regular Season

### NEBRASKA'S CONFERENCE FINISHES

Year	Record	Finish	Tournament
1977	1-4	t-4th	N/A
1978	4-3	7th	t-6th
1979	3-8	6th	t-6th
1980	8-9	4th	N/A
1981	5-6	3rd	3rd
1982	9-3	1st	1st
1983	3-7	7th	N/A
1984	6-2	1st	1st
1985	11-1	1st	1st
1986	9-3	1st	1st
1987	8-2	1st	1st
1988	7-3	1st	1st
1989	6-4	3rd	t-5th
1990	3-5	5th	2nd
1991	3-5	5th	t-4th
1992	2-6	5th	t-4th
1993	5-11	5th	N/A
1994	5-15	6th	N/A
1995	10-6	3rd	N/A

### BIG 12 CONFERENCE (1996-2011)

Year	Record	Finish	Tournament
1996	10-8	4th	2nd
1997	10-6	4th	5th
1998	16-0	1st	1st
1999	10-8	4th	2nd
2000	15-2	2nd	1st
2001	16-2	1st	5th
2002	11-5	2nd	2nd
2003	10-8	6th	t-4th
2004	14-3	1st	1st
2005	9-9	7th	t-5th
2006	13-4	2nd	t-3rd
2007	10-8	5th	t-5th
2008	4-14	t-9th	2nd
2009	9-9	5th	t-5th
2010	7-11	t-6th	t-5th
2011	9-9	6th	N/A

### BIG TEN CONFERENCE (2012-PRESENT)

Year	Record	Finish	Tournament
2012	14-9	3rd	N/A
2013	16-6	2nd	t-3rd
2014	18-5	t-1st	t-5th
2015	17-6	3rd	2nd
2016	13-9	5th	t-5th
2017	13-10	5th	t-9th
2018	9-13	9th	t-9th
2019	9-14	t-8th	t-9th

## 62 NCAA TOURNAMENT VICTORIES

Nebraska has won 62 games in its 24 NCAA Tournament appearances while posting an overall record of 62-52 (.544 winning percentage). The Huskers' 62 postseason wins rank 19th in NCAA history.

## 30 ACADEMIC ALL-AMERICANS

A total of 22 Huskers have combined to earn 30 CoSIDA Academic All-America honors, including eight first-team accolades. The 30 academic All-Americans are the most of any softball program in the country and rank third among all female athletic programs in NCAA history.

## 27 ALL-AMERICANS

Nebraska has produced 27 All-Americans in school history, including eight first-team All-Americans, seven two-time honorees and a pair of three-time All-Americans.

## 24 NCAA TOURNAMENT APPEARANCES

In the 39 years softball has been an NCAA sport, the Huskers have made 24 appearances in the NCAA Tournament, including 13 straight from 1995 to 2007. Nebraska's 24 postseason appearances rank 13th in NCAA history.

## 21 ALL-AMERICANS UNDER REVELLE

In her first 27 years as Nebraska's head coach, Rhonda Revelle has guided 13 players to a total of 21 All-America honors.

## 19 CONFERENCE TITLES

Nebraska has won 19 conference titles in its 43 seasons as a varsity sport. The Huskers won 12 Big Eight titles, six Big 12 crowns and captured their first Big Ten title in 2014.

## 15 TOP-25 NATIONAL RANKINGS

Nebraska has been ranked in the final NFCA poll in 15 of the 26 years the poll has existed. The Huskers were one of only six teams nationally to be ranked in the final poll in each of the first 12 years it existed (1995 to 2006).

## 14 REVELLE ACADEMIC ALL-AMERICANS

Rhonda Revelle has produced 14 academic All-Americans in her first 27 seasons at Nebraska. Over that time frame, Revelle has produced the fourth-highest total of academic All-Americans of any coach in the country.

## 7 WOMEN'S COLLEGE WORLD SERIES

Nebraska has advanced to the Women's College World Series seven times to rank 14th in NCAA history.

## 5 SOFTBALL OLYMPIANS

A total of five former Huskers have competed in the Olympics, beginning with Lori Sippel at the 1996 Olympics in Atlanta. The 2008 Beijing Olympics and the 2004 Athens Games featured a pair of former Huskers. Taylor Edwards will represent Nebraska as part of Team USA in the 2020 Tokyo Olympics.

# OPPONENT SCOUTING REPORTS

## NEW MEXICO STATE (0-0)

New Mexico State finished the 2019 season with a 33-22 record which included a 12-6 WAC record.

The Aggies lost their three major offensive weapons from last season in Mya Felder, Victoria Castro and Kelsey Horton. They each started every game last season and batted above .300. The trio combined for 40 of the team's 70 home runs. Felder led the team, hitting .357. Horton had a team-best .711 slugging percentage and 18 home runs.

The Aggies will be led by their five seniors, including Nikki Butler, who started all but two games last season. The 2019 WAC Player of the Year finished with a .299 batting average and a .529 slugging percentage. NM State welcomes nine freshmen in 2020.

In the circle, New Mexico State returns Analise De La Roca and Chloe Rivas. De La Roca finished last season with a 3.90 ERA and a record of 8-6. She had 32 strikeouts and pitched four complete games. She made 24 appearances, including 18 starts. Rivas made 14 appearances and finished with a 2-1 record. She had an ERA of 5.00 and 20 strikeouts.

The Aggies will have to replace Samaria Diaz, who transferred to Oregon. The 2019 WAC Pitcher of the Year carried most of the workload for NM State last season. Diaz appeared 43 times which included 27 starts. She pitched 177.0 of the team's 362.0 innings. She had a team-low ERA of 2.10 and a record of 16-9. She also recorded 228 of the team's 329 strikeouts.

### HEAD COACH KATHY RODOLPH

- Head Coach Record: 694-504
- Record at New Mexico State: 498-412
- 17th season at NM State
- Is the winningest head coach currently at New Mexico State
- Previously coached at Angelo State (DII) and El Paso Community College
- Graduated from UTEP in 1985

### SERIES HISTORY

- Nebraska leads the series 17-6 dating back to 1982
- The teams last met in 2017 when Nebraska swept the Aggies in a three-game series at home
- The Huskers have won 12 of the last 13 meetings dating back to 2011

Category (2019)	Nebraska	NM State
Record	21-31	33-22
Batting Average	.267	.288
Home Runs	44	70
Runs/Games	4.9	5.2
ERA	4.58	3.42
Runs Allowed/Game	5.3	4.1
Strikeouts/Game	4.8	6.0
Fielding Pct.	.946	.963

## UTEP (0-0)

UTEP begins a new era in 2020 under first-year head coach T.J. Hubbard.

The Miners return two of their top three hitters from last season in sophomores Kasey Flores and Pate Cathey.

Flores played in all but two games last season and ranked second on the team with a .352 batting average and a .607 slugging percentage. The utility player lead the team with 39 RBIs in 2019 and ranked second with 10 doubles. She also added nine homers. Flores was named to the 2020 Conference USA Preseason All-Conference team in January.

Cathey ranked third on the team, hitting .324. An infielder, Cathey played in all but five games and finished with eight doubles, one triple, five home runs and 21 RBIs last season.

In the circle, the Miners graduated its two top pitchers from 2019 in Kira McKechnie and Julie Wright. Together, the duo made 58 appearances and started 46 of 50 games. They pitched a combined 242.2 of 300.0 innings. McKechnie finished the season with a 5.84 ERA and a 5-14 record. She also had 89 strikeouts. Wright finished with an 11-15 record and a 5.92 ERA, while adding 66 strikeouts.

A young team, UTEP will need its 11 underclassmen to step up in big ways this season.

### HEAD COACH T.J. HUBBARD

- Head Coach Record: 213-247-1
- Record at UTEP: 0-0
- First season at UTEP and was hired just a few months before the season on Dec. 11, 2019
- Spent three season at Utah Valley University
- 2018 WAC Coach of the Year
- Also coached at North Texas from 2008-13, finishing as the winningest coach in program history
- Played baseball at Oklahoma Wesleyan

### SERIES HISTORY

- Nebraska leads the series 4-0 dating
- The teams first met in 2010
- Nebraska has not allowed a run in the last three meetings
- Two of the last three meetings have been run-rule victories
- The teams last met in 2014 when Nebraska won 7-0

Category (2019)	Nebraska	UTEP
Record	21-31	17-33
Batting Average	.267	.286
Home Runs	44	49
Runs/Games	4.9	4.4
ERA	4.58	7.00
Runs Allowed/Game	5.3	6.7
Strikeouts/Game	4.8	3.8
Fielding Pct.	.946	.966

## BRADLEY (0-0)

Bradley is coming off a 29-21 finish from 2019.

The Braves finished their season at the 2019 Missouri Valley Conference Tournament, where they fell to eventual champion Drake in the semifinals.

Bradley returns several key players from last year's squad, including its top five hitters in Allison Apke, Kealia Wysocki, Lucy Mead, Taise Thompson and Stacia Seeton. All five hitters finished the 2019 season with a batting average above .300.

Apke led the way with .349 while slugging .675. She added 12 homers, 39 RBIs and 25 walks. Wysocki hit .342 and finished with a team-high .775 slugging percentage. Mead hit .337, while Thompson and Seeton finished with averages of .316 and .306, respectively.

In the circle, Bradley returns Grace French, Emma Jackson and Taise Thompson.

Jackson returns as the most experience pitcher from last season. She threw 79.0 innings and made 18 appearances with 15 starts. She finished with an ERA of 4.43 and a 5-7 record, while adding 53 strikeouts.

French finished with a team-low ERA of 1.79 last season as a freshman after making 15 appearances and six starts. She pitched a total of 47.0 innings.

Thompson pitched 28.1 innings in 2019, finishing with a 1-2 record and an ERA of 4.45.

### HEAD COACH AMY HAYES

- Head Coach Record: 448-514
- Record at Bradley: 235-338
- 12th season at Bradley
- 19th season overall as a head coach
- Became the program's winningest coach in 2019

### SERIES HISTORY

- Nebraska leads the series 3-0
- The teams have met in 2001, 2006 and 2014
- Last time, Nebraska beat Bradley 9-0 in five innings
- The last two games have been shutouts for the Huskers

Category (2019)	Nebraska	Bradley
Record	21-31	29-21
Batting Average	.267	.295
Home Runs	44	68
Runs/Games	4.9	5.9
ERA	4.58	3.78
Runs Allowed/Game	5.3	4.6
Strikeouts/Game	4.8	4.3
Fielding Pct.	.946	.954



# OPPONENT SCOUTING REPORTS

## NO. 20/24 ARKANSAS (0-0)

Arkansas enters the 2020 season ranked in both major softball polls. The Razorbacks are ranked No. 20 in the USA Softball/ESPN Poll and hold the No. 24 spot in the USA Today/NFCA Poll.

Arkansas finished the 2019 season with a 38-20 record and advanced to the NCAA Tournament.

The Razorbacks return three of their top four offensive players for the 2019 squad including Hannah McEwen, Danielle Gibson and Sydney Parr.

McEwen started all 58 games and led the team with a .386 batting average. An All-SEC first-team pick and an NFCA All-Region honoree, McEwen had a team-best 73 hits, 43 runs and 12 doubles.

Gibson hit .372 on the year and slugged .605. The NFCA All-Region pick made history last season when she tied the SEC record for home runs in a game (four). She finished with 45 RBIs on the season, which ranked second on the team.

Sydney Parr hit .326 with 44 hits and 14 RBIs.

In the circle, senior Autumn Storms is expected to carry a heavy load after making 43 appearances and 32 starts last season. The NFCA second-team All-American pitched 201.2 innings for the Razorbacks last season and 15 complete games. She finished with a 1.63 ERA and a record of 20-9. Storms added 172 strikeouts which ranked second on the team.

### HEAD COACH COURTNEY DEIFEL

- Head Coach Record: 155-127
- Record at Arkansas: 128-100
- Fifth season at Arkansas
- Previously coached at Maryland and was an assistant at Louisville
- Was an All-America catcher at Cal
- Helped the Bears to four WCWS appearances and won the 2002 national title

### SERIES HISTORY

- Arkansas leads the series 4-2 dating back to 2007
- Nebraska won the first two meetings but has since lost the last four
- Most recently in 2017, Arkansas won 2-0 on its home field

Category (2019)	Nebraska	Arkansas
Record	21-31	38-20
Batting Average	.267	.288
Home Runs	44	50
Runs/Games	4.9	4.9
ERA	4.58	2.00
Runs Allowed/Game	5.3	3.2
Strikeouts/Game	4.8	6.2
Fielding Pct.	.946	.947



# RHONDA REVELLE

28<sup>TH</sup> SEASON AT NEBRASKA | 29<sup>TH</sup> CAREER SEASON  
 989-568 (.635) RECORD AT NEBRASKA | 997-584 (.631) CAREER RECORD

## COACHING STOPS

Nebraska (Head Coach)	1993-present
San Jose State (Assistant Coach)	1989-92
Cal State-Hayward (Assistant Coach)	1987-88
Nebraska Wesleyan (Head Coach)	1986

## NEBRASKA WESLEYAN (1987)

Year	Record	Conf.	Finish	Tourn.	Finish
1987	8-16	7-5	N/A	--	--
Totals	8-16	7-5	N/A	--	--

## NEBRASKA (1993-PRESENT)

Year	Record	Conf.	Finish	Tourn.	Finish
1993	18-23	5-11	5th	--	--
1994	25-33	5-15	6th	--	--
1995	43-20	10-6	3rd	--	--
1996	42-23	10-8	4th	3-2	2nd
1997	29-24	10-6	4th	1-2	t-5th
1998	48-12	16-0	1st	4-0	1st
1999	35-21	10-8	4th	3-1	2nd
2000	52-21	15-2	2nd	4-1	1st
2001	51-15	16-2	1st	2-2	t-3rd
2002	50-14	11-5	3rd	3-1	2nd
2003	39-17	10-8	6th	2-2	t-3rd
2004	45-17	14-3	1st	4-0	1st
2005	36-23	9-9	7th	2-2	t-5th
2006	44-12	13-4	2nd	2-2	t-3rd
2007	37-20	10-8	5th	0-1	t-7th
2008	25-28	4-14	t-9th	3-1	2nd
2009	35-19	9-9	5th	0-1	t-7th
2010	30-29	7-11	t-6th	0-1	t-7th
2011	41-14	9-9	6th	--	--
2012	33-22	14-9	3rd	--	--
2013	45-16	16-6	2nd	1-1	t-3rd
2014	44-18	18-5	t-1st	0-1	t-5th
2015	35-23	17-6	3rd	2-1	2nd
2016	35-21	13-9	5th	1-1	t-5th
2017	24-29	13-11	5th	0-1	t-9th
2018	31-23	9-13	9th	0-1	t-9th
2019	21-31	9-14	9th	0-1	t-9th
Totals	989-568	298-211	t-8th	37-26	t-9th
Career	997-584	605-216		37-26	

## NCAA TOURNAMENT (NEBRASKA ONLY)

Year	Round	Record	Finish	Rank
1993	--	--	--	--
1994	--	--	--	--
1995	Regional	1-2	t-17th	18th
1996	Regional	1-2	t-17th	18th
1997	Regional	2-2	t-9th	25th
1998	Regional	4-2	t-5th	5th
1999	Regional	4-2	t-9th	20th
2000	Regional	3-2	t-17th	14th
2001	Regional	2-2	t-17th	14th
2002	WCWS	5-2	t-5th	6th
2003	Regional	3-2	t-17th	13th
2004	Regional	3-2	t-9th	14th
2005	Regional	1-2	t-33rd	25th
2006	Regional	2-2	t-17th	15th
2007	Regional	0-2	t-49th	--
2008	--	--	--	--
2009	Regional	1-2	t-33rd	--
2010	Regional	1-2	t-33rd	--
2011	Regional	2-2	t-17th	21st
2012	--	--	--	--
2013	WCWS	5-3	t-7th	8th
2014	Super Regional	4-3	t-9th	16th
2015	Regional	1-2	t-33rd	--
2016	Regional	2-2	t-17th	--
2017	--	--	--	--
2018	--	--	--	--
2019	--	--	--	--
Totals	20 app.	47-42	--	--

## NFCA HALL OF FAME

### WINNINGEST COACH IN THE HISTORY OF HUSKER ATHLETICS (ALL SPORTS)

### COACH OF THE YEAR IN THREE MAJOR CONFERENCES (BIG 8, BIG 12, BIG TEN)

### FIVE-TIME REGIONAL COACHING STAFF OF THE YEAR

### THREE-TIME NFCA PRESIDENT

Rhonda Revelle is truly one of the nation's elite coaches. One of only 14 active Division I coaches enshrined in the National Fastpitch Coaches Association (NFCA) Hall of Fame, Revelle has helped her student-athletes succeed athletically and academically. On the field, she has taken 20 teams to the NCAA Tournament, a total that ranks sixth nationally among active coaches. In the classroom, Revelle has coached 14 players to academic All-America honors in 27 seasons, the fourth-highest total of any coach nationally during that span. Revelle has also given back to the profession, as she served as NFCA President for three separate terms.

## COACHING TOTALS AT NEBRASKA

Conference Coach-of-the-Year Awards	4
Big Ten Coach of the Year	1
Big 12 Coach of the Year	2
Big Eight Coach of the Year	1
Regional Coaching Staff-of-the-Year Awards	5
Conference Titles	7
Big Ten Conference Titles	1
Big 12 Conference Titles	6
NCAA Tournament Appearances	19
NCAA Regional Titles	4
Women's College World Series Appearances	3
NFCA All-Americans	19
Multi-Time All-Americans	5
CoSIDA Academic All-Americans	13

## MOST NCAA TOURNAMENTS AT CURRENT SCHOOL (ACTIVE COACHES)

1. Mike Candrea, Arizona	33
2. Diane Ninemire, Cal	30
3. Carol Hutchins, Michigan	27
4. Patty Gasso, Oklahoma	25
5. Patrick Murphy, Alabama	21
6. Rhonda Revelle, Nebraska	20
Jo Evans, Texas A&M	20

## MOST ACADEMIC ALL-AMERICANS (ACTIVE DI COACHES)

1. Patrick Murphy, Alabama	24
2. Ralph & Karen Weekly, Tennessee	22
3. Tim Walton, Florida	18
4. Rhonda Revelle, Nebraska	14

## WINS AT CURRENT SCHOOL (ACTIVE DI COACHES)\*

1. Mike Candrea, Arizona	1,611
2. Carol Hutchins, Michigan	1,593
3. Diane Ninemire, California	1,345
4. Donna Papa, North Carolina	1,266
5. Patrick Murphy, Alabama	1,083
6. Melinda Fischer, Illinois State	1,051
7. Patty Gasso, Oklahoma	1,042
8. Bob Coolen, Hawaii	1,006
9. Rhonda Revelle, Nebraska	989

## ACTIVE DIVISION I NFCA HALL-OF-FAME COACHES

Mike Candrea, Arizona	Inducted 1996
Margo Jonker, Central Michigan	Inducted 2003
Carol Hutchins, Michigan	Inducted 2006
Diane Ninemire, Cal	Inducted 2009
Rhonda Revelle, Nebraska	Inducted 2010
Melinda Fischer, Illinois State	Inducted 2010
Ralph Weekly, Tennessee	Inducted 2011
Patty Gasso, Oklahoma	Inducted 2012
Donna Papa, North Carolina	Inducted 2012
Joan Joyce, Florida Atlantic	Inducted 2013
Patrick Murphy, Alabama	Inducted 2013
Jo Evans, Texas A&M	Inducted 2015
Bob Brock, Sam Houston State	Inducted 2016
Jacquie Joseph, Michigan State*	Inducted 2016

\*inducted as member of Pioneer Category

# HUSKER SEASON & CAREER HIGHS



#27 BROOKE ANDREWS • INF		
SEASON HIGH	CATEGORY	CAREER HIGH
none	IPs	none
none	Ks	none
none	Hits (CG)	none
none	ER (CG)	none



#11 KEANA "KP" POLA • INF		
SEASON HIGH	CATEGORY	CAREER HIGH
none	Hits	none
none	Runs	none
none	RBI's	none
none	HR's	none



#64 BREE BORUFF • OF		
SEASON HIGH	CATEGORY	CAREER HIGH
none	Hits	3 (2019)
none	Runs	3 (2019)
none	RBI's	3 (2019)
none	HR's	none



#33 ANNI RALEY • C		
SEASON HIGH	CATEGORY	CAREER HIGH
none	Hits	none
none	Runs	1, 13 times
none	RBI's	none
none	HR's	none



#24 TRISTEN EDWARDS • OF		
SEASON HIGH	CATEGORY	CAREER HIGH
none	Hits	4 three times
none	Runs	4 (2019)
none	RBI's	8 (2019)
none	HR's	2 six times



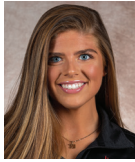
#28 ALLY RILEY • C		
SEASON HIGH	CATEGORY	CAREER HIGH
none	Hits	3 (2018)
none	Runs	1, three times
none	RBI's	2 three times
none	HR's	none



#39 OLIVIA FERRELL • RHP		
SEASON HIGH	CATEGORY	CAREER HIGH
none	IPs	7.0 three times
none	Ks	9 (2019)
none	Hits (low)	0 three times
none	ER (low)	0-14 times



#30 KARLEE SEEVERS • RHP		
SEASON HIGH	CATEGORY	CAREER HIGH
none	IPs	none
none	Ks	none
none	Hits	none
none	ER	none



#39 OLIVIA FERRELL • UTL		
SEASON HIGH	CATEGORY	CAREER HIGH
none	Hits	2 (2018)
none	Runs	1 five times
none	RBI's	3 twice
none	HR's	1 (2019)



#1 RYLIE UNZICKER • OF		
SEASON HIGH	CATEGORY	CAREER HIGH
none	Hits	2 five times
none	Runs	3 (2019)
none	RBI's	2 (2019)
none	HR's	1 twice



#17 CARSON FISCHER • OF		
SEASON HIGH	CATEGORY	CAREER HIGH
none	Hits	none
none	Runs	2 (2019)
none	RBI's	none
none	HR's	none



#23 COURTNEY WALLACE • RHP		
SEASON HIGH	CATEGORY	CAREER HIGH
none	IPs	6.0 (2019)
none	Ks	7 (2019)
none	Hits (low)	0 twice
none	ER (low)	0 five times



#18 MIKAELA FORCUM • C		
SEASON HIGH	CATEGORY	CAREER HIGH
none	Hits	none
none	Runs	none
none	RBI's	none
none	HR's	none



#23 COURTNEY WALLACE • UTL		
SEASON HIGH	CATEGORY	CAREER HIGH
none	Hits	2 five times
none	Runs	3 (2019)
none	RBI's	3 twice
none	HR's	1 three times



#13 PEYTON GLATTER • OF		
SEASON HIGH	CATEGORY	CAREER HIGH
none	Hits	3 twice
none	Runs	3 twice
none	RBI's	4 (2019)
none	HR's	1 twice



#25 LINDSEY WALLJASPER • RHP		
SEASON HIGH	CATEGORY	CAREER HIGH
none	IPs	7.0 twice
none	Ks	9 (2019)
none	Hits (low)	0 twice
none	ER (low)	none



#2 PAYTON HUSCROFT • INF		
SEASON HIGH	CATEGORY	CAREER HIGH
none	Hits	1 (2019)
none	Runs	none
none	RBI's	none
none	HR's	none



#25 LINDSEY WALLJASPER • UTL		
SEASON HIGH	CATEGORY	CAREER HIGH
none	Hits	3 (2019)
none	Runs	2 twice
none	RBI's	4 twice
none	HR's	0-10 times



#00 LEXEY KNEIB • INF		
SEASON HIGH	CATEGORY	CAREER HIGH
none	Hits	2 six times
none	Runs	2 three times
none	RBI's	2 three times
none	HR's	none



#32 CAM YBARRA • INF		
SEASON HIGH	CATEGORY	CAREER HIGH
none	Hits	2-14 times
none	Runs	2 (2018 - at OSU)
none	RBI's	3 (2018 - at OSU)
none	HR's	1 five times



#77 SAMANTHA OWEN • INF		
SEASON HIGH	CATEGORY	CAREER HIGH
none	Hits	4 (2018 - at Pacific)
none	Runs	2 nine times
none	RBI's	4 five times
none	HR's	1 - 16 times



#21 SARAH YOCOM • INF		
SEASON HIGH	CATEGORY	CAREER HIGH
none	Hits	2 (2018)
none	Runs	1 nine times
none	RBI's	1 twice
none	HR's	none



# N HUSKER INDIVIDUAL NOTES



**#27 BROOKE ANDREWS • INF • FR**

- A four-year starter for Gretna High School
- Was a three-time member of the Lincoln Journal Star Super State and Omaha World-Herald All-Nebraska Team
- Played in 110 games
- Hit .445 in her career, with 36 homers.



**#33 ANNI RALEY • C • SO**

- Will compete for the starting catcher position in 2020
- Played in 33 games last season, but primarily came in as a pinch runner
- Scored 13 runs and recorded six at bats, but she'll look to record her first hit as a sophomore



**#64 BREE BORUFF • OF • SR**

- Will compete for a starting spot in the Husker outfield
- Made 25 starts in left and one start in center in 2019
- Scored 15 runs in 2019
- Hit .280 on the season, which ranked fourth on the team



**#28 ALLY RILEY • C • JR**

- Will compete for the starting catcher position
- Is the only catcher on the team to play the position as a Husker, starting six games as a freshman behind the plate
- Has a career batting average of .313 and could help the Huskers on offense as well



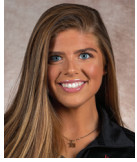
**#24 TRISTEN EDWARDS • OF • SR**

- Led the team in nearly every offensive category the last two seasons
- Hit .376 with 12 homers and slugged .758 in 2019
- Is a two-time All-Big Ten and one-time NFCA All-Region honoree



**#30 KARLEE SEEVERS • RHP • SO**

- Looks to make her first appearance in the circle as a sophomore
- Has never pitched for Nebraska, but appeared in one game as a freshman in 2019, coming in to pinch run for the Huskers



**#39 OLIVIA FERRELL • RHP • JR**

- Returns as NU's most experienced pitcher,
- Pitched 168.2 innings and made 49 appearances in the circle, while adding 91 strikeouts in her career
- Pitched 59.1 innings in 2019 and recorded 38 strikeouts
- Has a career batting average of .238



**#1 RYLIE UNZICKER • OF • JR**

- Will compete for playing time at all three outfield spots after starting at least once in each spot in her career
- Made 44 starts a center as a sophomore and played in all but four games
- Hit .237 with 27 runs in 2019



**#17 CARSON FISCHER • OF • SO**

- Will compete for a spot in the outfield for Nebraska
- Played in 28 games last season as a freshman, primarily as a pinch runner
- Scored 10 runs in 2019, while making six plate appearances
- Seeks to record her first hit in 2020 as a sophomore



**#23 COURTNEY WALLACE • RHP • SO**

- Appeared 29 times in the circle in 2019
- Recorded 63 strikeouts in 97.1 innings pitched
- Pitched two complete games and pitched in one of Nebraska's three shutouts
- Finished with an ERA of 4.82 and a 4-7 record



**#18 MIKAELA FORCUM • C • R-FR**

- Will compete for the starting catcher position as a redshirt freshman in 2020
- Did not appear for the Huskers as a true freshman in 2019
- Had a successful high school career, earning second-team all-conference honors for Walla Walla High School



**#23 COURTNEY WALLACE • UTL • SO**

- Played in 47 of Nebraska's 52 games
- Started at third, left field, pitcher and designated player last season - the only Husker to start at four different positions
- Hit .227, while recording a team-best four triples in 2019
- Tied a Nebraska single-game record with two triples



**#13 PEYTON GLATTER • OF • SO**

- Had an impressive freshman season and will compete for a starting spot in 2020
- Played in 38 games, which included 32 starts
- Hit .265 which ranked sixth on the team and led the freshmen
- Slugged .388 with two homers and six doubles



**#25 LINDSEY WALLJASPER • RHP • SO**

- Was a key contributor as a freshman and is expected to carry a heavy load in 2020
- Made a team-high 31 appearances last season
- Pitched four complete games, including one shutout
- Finished with a team-high 91 strikeouts



**#2 PAYTON HUSCROFT • INF • SO**

- Will compete for a spot in the infield for Nebraska as a sophomore in 2020
- Missed 2018 with an injury, but played six games, including one start, as a redshirt freshman last season
- Had one hit, scored one run and drew one walk in 2019



**#25 LINDSEY WALLJASPER • UTL • SO**

- Played in all but one of Nebraska's 52 games
- Hit .225 and slugged .434, with six homers and 25 RBIs
- Started at pitcher, left field and as the designated player
- Ranked second on the team in total bases (63)
- Ranked third on the team in hits (37) and home runs (6)



**#00 LEXEY KNEIB • INF • SR**

- Served as NU's primary starting second baseman in 2019
- Made 41 starts at the position
- Made 38 starts at third as a sophomore
- At the plate, she hit .205 last season, with seven doubles and one triple



**#32 CAM YBARRA • INF • JR**

- Spent 2018 and 2019 at Oregon State
- Made 84 career starts at OSU
- Was named to the Pac-12 All-Defensive and All-Freshman Team in 2018
- Hit .229 over the past two seasons.



**#77 SAMANTHA OWEN • INF • SR**

- Made 45 starts at third base in 2019
- Ranked second on the team in slugging (.492) and doubles (10), while hitting .278.
- Spent 2017 and 2018 at Pacific
- Two-time All-WCC and NFCA All-Region pick



**#21 SARAH YOCOM • INF • JR**

- Has appeared in 53 games for Nebraska over the last two seasons
- Has made 26 career starts, including at second, third and shortstop
- Has scored 10 career runs for NU



**#11 KEANA "KP" POLA • INF • FR**

- Ranked the No. 57 recruit in her class by Extra Innings Softball
- Finished her high school career with a .578 batting average, an on-base percentage of .642 and a .939 slugging percentage

# HUSKER INDIVIDUAL CAREER STATS

## Bree Boruff

Year	avg	gp-gs	ab	r	h	2b	3b	hr	rbi	tb	slg%	bb	hbp	so	gdp	ob%	sf	sh	sb-att	po	a	e	fld%
2017	.000	25-0	0	7	0	0	0	0	0	0	.000	0	0	0	0	.000	0	0	3-4	0	0	0	.000
2018	.063	40-6	16	12	1	0	0	0	0	1	.063	1	0	4	0	.118	0	0	2-3	1	0	0	1.000
2019	.280	42-26	75	15	21	3	0	0	9	24	.320	1	1	10	0	.299	0	1	9-10	28	2	3	.909
TOTAL	.242	107-32	91	34	22	3	0	0	9	25	.275	2	1	14	0	.266	0	1	14-17	29	2	3	.912

## Tristen Edwards

Year	avg	gp-gs	ab	r	h	2b	3b	hr	rbi	tb	slg%	bb	hbp	so	gdp	ob%	sf	sh	sb-att	po	a	e	fld%
2017	.281	50-47	139	29	39	9	1	4	25	62	.446	17	6	19	2	.383	0	0	3-4	39	3	3	.933
2018	.356	54-54	160	41	57	11	0	12	43	104	.650	23	9	15	0	.459	2	0	7-8	65	92	14	.918
2019	.376	52-52	149	42	56	12	0	15	50	113	.758	33	5	28	1	.497	2	0	13-16	63	73	23	.855
TOTAL	.339	156-153	448	112	152	32	1	31	118	279	.623	73	20	62	3	.450	4	0	23-28	167	168	40	.893

## Olivia Ferrell

Year	avg	gp-gs	ab	r	h	2b	3b	hr	rbi	tb	slg%	bb	hbp	so	gdp	ob%	sf	sh	sb-att	po	a	e	fld%
2018	.333	16-11	21	3	7	2	0	0	4	9	.429	2	2	3	1	.440	0	0	0-0	6	16	1	.957
2019	.143	11-4	21	2	3	1	0	1	4	7	.333	0	0	6	0	.136	1	0	0-0	3	13	2	.889
TOTAL	.238	27-15	42	5	10	3	0	1	8	16	.381	2	2	9	1	.298	1	0	0-0	9	29	3	.927

Year	era	w-l	app	gs	cq	sho	sv	ip	h	r	er	bb	so	2b	3b	hr	bf	bavg	wp	hbp	bk	sfa	sha
2018	5.60	9-8	31	20	3	0/3	2	109.1	141	72	68	47	53	26	2	19	516	.316	5	6	0	5	12
2019	6.52	3-6	18	8	2	0/0	0	59.1	73	56	43	30	38	14	0	10	291	.294	4	2	0	2	9
TOTAL	5.92	12-14	49	28	5	0/3	2	168.2	214	128	111	77	91	40	2	29	807	.308	9	8	0	7	21

## Carson Fischer

Year	avg	gp-gs	ab	r	h	2b	3b	hr	rbi	tb	slg%	bb	hbp	so	gdp	ob%	sf	sh	sb-att	po	a	e	fld%
2019	.000	28-2	6	10	0	0	0	0	0	0	.000	0	0	2	0	.000	0	0	0-0	6	3	1	.900
TOTAL	.000	28-2	6	10	0	0	0	0	0	0	.000	0	0	2	0	.000	0	0	0-0	6	3	1	.900

## Mikaela Forcum

Year	avg	gp-gs	ab	r	h	2b	3b	hr	rbi	tb	slg%	bb	hbp	so	gdp	ob%	sf	sh	sb-att	po	a	e	fld%
------	-----	-------	----	---	---	----	----	----	-----	----	------	----	-----	----	-----	-----	----	----	--------	----	---	---	------

## Peyton Glatter

Year	avg	gp-gs	ab	r	h	2b	3b	hr	rbi	tb	slg%	bb	hbp	so	gdp	ob%	sf	sh	sb-att	po	a	e	fld%
2019	.265	38-32	98	11	26	6	0	2	14	38	.388	10	1	25	0	.336	1	0	2-3	26	3	2	.935
TOTAL	.265	38-32	98	11	26	6	0	2	14	38	.388	10	1	25	0	.336	1	0	2-3	26	3	2	.935

## Payton Huscroft

Year	avg	gp-gs	ab	r	h	2b	3b	hr	rbi	tb	slg%	bb	hbp	so	gdp	ob%	sf	sh	sb-att	po	a	e	fld%
2019	.250	6-1	4	1	1	0	0	0	0	1	.250	1	0	2	0	.400	0	1	0-0	0	0	0	.000
TOTAL	.250	6-1	4	1	1	0	0	0	0	1	.250	1	0	2	0	.400	0	1	0-0	0	0	0	.000

## Lexey Kneib

Year	avg	gp-gs	ab	r	h	2b	3b	hr	rbi	tb	slg%	bb	hbp	so	gdp	ob%	sf	sh	sb-att	po	a	e	fld%
2017	.185	14-8	27	2	5	1	0	0	3	6	.222	1	0	2	1	.214	0	0	0-0	5	11	3	.842
2018	.171	39-38	82	7	14	4	0	0	5	18	.220	12	2	15	0	.292	0	4	1-1	35	78	6	.950
2019	.205	42-41	83	8	17	7	1	0	13	26	.313	7	1	16	0	.272	1	1	3-3	82	61	9	.941
TOTAL	.188	95-87	192	17	36	12	1	0	21	50	.260	20	3	33	1	.273	1	5	4-4	122	150	18	.938

# N HUSKER INDIVIDUAL CAREER STATS

## Samantha Owen

Year	avg	gp-gs	ab	r	h	2b	3b	hr	rbi	tb	slg%	bb	hbp	so	gdp	ob%	sf	sh	sb-att	po	a	e	fld%
2017*	.259	50-50	139	19	36	5	2	4	16	57	.410	9	2	23	2	.311	1	12	2-2	60	56	6	.951
2018*	.353	46-46	150	27	53	12	2	7	37	90	.600	7	0	21	2	.382	0	1	0-0	36	2	1	.974
2019	.278	49-46	126	15	35	10	1	5	27	62	.492	27	5	32	3	.421	1	2	2-2	47	86	9	.937
TOTAL	.278	49-46	126	15	35	10	1	5	27	62	.492	27	5	32	3	.421	1	2	2-2	47	86	9	.937
All*	.299	145-142	415	61	124	27	5	16	80	209	.504	43	7	76	7	.373	2	15	4-4	143	144	16	.947

\* Statistics from prior team/school

## Anni Raley

Year	avg	gp-gs	ab	r	h	2b	3b	hr	rbi	tb	slg%	bb	hbp	so	gdp	ob%	sf	sh	sb-att	po	a	e	fld%
2019	.000	33-0	6	13	0	0	0	0	0	0	.000	0	0	1	0	.000	0	0	0-1	0	2	1	.667
TOTAL	.000	33-0	6	13	0	0	0	0	0	0	.000	0	0	1	0	.000	0	0	0-1	0	2	1	.667

## Ally Riley

Year	avg	gp-gs	ab	r	h	2b	3b	hr	rbi	tb	slg%	bb	hbp	so	gdp	ob%	sf	sh	sb-att	po	a	e	fld%
2018	.317	31-19	63	3	20	4	0	0	14	24	.381	3	2	12	0	.357	2	0	1-1	24	2	0	1.000
2019	.250	5-0	4	0	1	0	0	0	1	1	.250	0	0	1	0	.250	0	0	0-0	4	0	0	1.000
TOTAL	.313	36-19	67	3	21	4	0	0	15	25	.373	3	2	13	0	.351	2	0	1-1	28	2	0	1.000

## Karlee Seevers

Year	avg	gp-gs	ab	r	h	2b	3b	hr	rbi	tb	slg%	bb	hbp	so	gdp	ob%	sf	sh	sb-att	po	a	e	fld%
2019	.000	1-0	0	0	0	0	0	0	0	0	.000	0	0	0	0	.000	0	0	0-0	0	0	0	.000
TOTAL	.000	1-0	0	0	0	0	0	0	0	0	.000	0	0	0	0	.000	0	0	0-0	0	0	0	.000

## Rylie Unzicker

Year	avg	gp-gs	ab	r	h	2b	3b	hr	rbi	tb	slg%	bb	hbp	so	gdp	ob%	sf	sh	sb-att	po	a	e	fld%
2018	.077	35-11	39	4	3	1	0	0	1	4	.103	5	0	16	0	.182	0	1	3-6	7	0	0	1.000
2019	.237	48-44	114	27	27	6	1	2	9	41	.360	18	1	31	0	.346	0	3	9-10	46	0	0	1.000
TOTAL	.196	83-55	153	31	30	7	1	2	10	45	.294	23	1	47	0	.305	0	4	12-16	53	0	0	1.000

## Courtney Wallace

Year	avg	gp-gs	ab	r	h	2b	3b	hr	rbi	tb	slg%	bb	hbp	so	gdp	ob%	sf	sh	sb-att	po	a	e	fld%
2019	.227	47-40	119	17	27	5	4	3	15	49	.412	11	2	16	2	.301	1	0	6-8	30	37	5	.931
TOTAL	.227	47-40	119	17	27	5	4	3	15	49	.412	11	2	16	2	.301	1	0	6-8	30	37	5	.931

Year	era	w-l	app	qs	cq	sho	sv	ip	h	r	er	bb	so	2b	3b	hr	bf	bavg	wp	hbp	bk	sfa	sha
2019	6.20	4-7	29	14	2	0/1	1	97.1	124	83	67	63	63	25	3	7	489	.305	7	6	0	6	7
TOTAL	6.20	4-7	29	14	2	0/1	1	97.1	124	83	67	63	63	25	3	7	489	.305	7	6	0	6	7

## Lindsey Walljasper

Year	avg	gp-gs	ab	r	h	2b	3b	hr	rbi	tb	slg%	bb	hbp	so	gdp	ob%	sf	sh	sb-att	po	a	e	fld%
2019	.255	51-50	145	14	37	8	0	6	25	63	.434	13	5	32	0	.333	2	0	3-3	3	21	0	1.000
TOTAL	.255	51-50	145	14	37	8	0	6	25	63	.434	13	5	32	0	.333	2	0	3-3	3	21	0	1.000

Year	era	w-l	app	qs	cq	sho	sv	ip	h	r	er	bb	so	2b	3b	hr	bf	bavg	wp	hbp	bk	sfa	sha
2019	6.18	11-12	31	20	4	1/0	0	106.1	128	88	73	50	91	19	5	21	508	.291	4	10	0	1	7
TOTAL	6.18	11-12	31	20	4	1/0	0	106.1	128	88	73	50	91	19	5	21	508	.291	4	10	0	1	7



# HUSKER INDIVIDUAL CAREER STATS

Cam Ybarra

Year	avg	gp-gs	ab	r	h	2b	3b	hr	rbi	tb	slg%	bb	hbp	so	gdp	ob%	sf	sh	sb-att	po	a	e	fld%
2018*	.226	55-53	155	14	35	5	0	3	14	49	.316	16	1	19	2	.302	0	1	0-0	81	91	4	.977
2019*	.235	35-31	98	6	23	9	0	2	10	38	.388	9	2	12	1	.309	1	0	0-0	22	11	3	.917
All*	.229	90-84	253	20	58	14	0	5	24	87	.344	25	3	31	3	.305	1	1	0-0	103	102	7	.967

\* Statistics from prior team/school

Sarah Yocom

Year	avg	gp-gs	ab	r	h	2b	3b	hr	rbi	tb	slg%	bb	hbp	so	gdp	ob%	sf	sh	sb-att	po	a	e	fld%
2018	.200	24-7	20	5	4	0	0	0	2	4	.200	3	0	6	0	.304	0	0	1-1	8	18	0	1.000
2019	.087	29-19	23	5	2	0	0	0	0	2	.087	0	0	10	0	.087	0	0	2-2	42	34	12	.864
TOTAL	.140	53-26	43	10	6	0	0	0	2	6	.140	3	0	16	0	.196	0	0	3-3	50	52	12	.895

# N OVERALL STATISTICS (2019)

Record: 21-31 Home: 7-10 Away: 6-14 Neutral: 8-7 : 9-14

Player	avg	gp-gs	ab	r	h	2b	3b	hr	rbi	tb	slg%	bb	hp	so	gdp	ob%	sf	sh	sb-att	po	a	e	fld%
24 Tristen Edwards	.376	52-52	149	42	56	12	0	15	50	113	.758	33	5	28	1	.497	2	0	13-16	63	73	23	.855
32 Alyvia Simmons	.315	48-44	130	32	41	6	3	3	21	62	.477	31	0	25	0	.444	1	1	14-20	37	0	3	.925
44 Bri Cassidy	.283	52-52	113	14	32	8	0	0	14	40	.354	9	1	11	3	.336	2	2	1-1	275	24	2	.993
64 Bree Boruff	.280	42-26	75	15	21	3	0	0	9	24	.320	1	1	10	0	.299	0	1	9-10	28	2	3	.909
77 Samantha Owen	.278	49-46	126	15	35	10	1	5	27	62	.492	27	5	32	3	.421	1	2	2-2	47	86	9	.937
13 Peyton Glatter	.265	38-32	98	11	26	6	0	2	14	38	.388	10	1	25	0	.336	1	0	2-3	26	3	2	.935
25 Lindsey Walljasper	.255	51-50	145	14	37	8	0	6	25	63	.434	13	5	32	0	.333	2	0	3-3	3	21	0	1.000
7 Madi Unzicker	.254	52-52	126	28	32	6	1	7	29	61	.484	23	9	32	0	.403	1	5	11-12	293	8	4	.987
28 Ally Riley	.250	5-0	4	0	1	0	0	0	1	1	.250	0	0	1	0	.250	0	0	0-0	4	0	0	1.000
2 Payton Huscroft	.250	6-1	4	1	1	0	0	0	0	1	.250	1	0	2	0	.400	0	1	0-0	0	0	0	.000
1 Rylie Unzicker	.237	48-44	114	27	27	6	1	2	9	41	.360	18	1	31	0	.346	0	3	9-10	46	0	0	1.000
23 Courtney Wallace	.227	47-40	119	17	27	5	4	3	15	49	.412	11	2	16	2	.301	1	0	6-8	30	37	5	.931
0 Lexey Kneib	.205	42-41	83	8	17	7	1	0	13	26	.313	7	1	16	0	.272	1	1	3-3	82	61	9	.941
39 Olivia Ferrell	.143	11-4	21	2	3	1	0	1	4	7	.333	0	0	6	0	.136	1	0	0-0	3	13	2	.889
21 Sarah Yocom	.087	29-19	23	5	2	0	0	0	0	2	.087	0	0	10	0	.087	0	0	2-2	42	34	12	.864
17 Carson Fischer	.000	28-2	6	10	0	0	0	0	0	0	.000	0	0	2	0	.000	0	0	0-0	6	3	1	.900
33 Anni Raley	.000	33-0	6	13	0	0	0	0	0	0	.000	0	0	1	0	.000	0	0	0-1	0	2	1	.667
30 Karlee Seevers	.000	1-0	0	0	0	0	0	0	0	0	.000	0	0	0	0	.000	0	0	0-0	0	0	0	.000
19 Regan Mergele	.000	2-2	0	0	0	0	0	0	0	0	.000	0	0	0	0	.000	0	0	0-0	1	9	1	.909
Totals	.267	52	1342	254	358	78	11	44	231	590	.440	184	31	280	9	.365	13	16	75-91	986	376	77	.946
Opponents	.285	52	1354	276	386	76	9	44	246	612	.452	185	22	250	9	.377	10	29	28-39	1002	354	63	.956

LOB - Team (334), Opp (342). DPs turned - Team (18), Opp (19). IBB - Team (7), Edwards 7, Opp (1).

### (All games Sorted by Earned run avg)

Player	era	w-l	app	gs	cg	sho	sv	ip	h	r	er	bb	so	2b	3b	hr	b/avg	wp	hp	bk	sfa	sha
19 Regan Mergele	3.41	3-6	24	10	1	1/1	3	65.2	61	49	32	42	58	18	1	6	.236	2	4	0	1	6
25 Lindsey Walljasper	4.81	11-12	31	20	4	1/0	0	106.1	128	88	73	50	91	19	5	21	.291	4	10	0	1	7
23 Courtney Wallace	4.82	4-7	29	14	2	0/1	1	97.1	124	83	67	63	63	25	3	7	.305	7	6	0	6	7
39 Olivia Ferrell	5.07	3-6	18	8	2	0/0	0	59.1	73	56	43	30	38	14	0	10	.294	4	2	0	2	9
Totals	4.58	21-31	52	52	9	3/1	4	328.2	386	276	215	185	250	76	9	44	.285	17	22	0	10	29
Opponents	4.32	31-21	52	52	20	10/2	5	334.0	358	254	206	184	280	78	11	44	.267	30	31	0	13	16

PB - Team (2), Cassidy 2, Opp (7). Pickoffs - Team (2), Cassidy 2. SBA/ATT - Cassidy (26-37), Walljasper (11-15), Wallace (8-10), Mergele (7-9), Ferrell (2-5), Raley (2-2).

# N CONFERENCE STATISTICS (2019)

Record: 9-14 Home: 5-7 Away: 4-7 : 9-14

Player	avg	gp-gs	ab	r	h	2b	3b	hr	rbi	tb	slg%	bb	hp	so	gdp	ob%	sf	sh	sb-att	po	a	e	fld%
2 Payton Huscroft	.500	3-0	2	1	1	0	0	0	0	1	.500	1	0	0	0	.667	0	0	0-0	0	0	0	.000
24 Tristen Edwards	.397	23-23	68	17	27	6	0	4	17	45	.662	12	3	16	0	.500	1	0	6-8	33	29	8	.886
32 Alyvia Simmons	.333	23-23	69	11	23	5	1	0	11	30	.435	18	0	10	0	.466	1	0	6-11	27	0	2	.931
28 Ally Riley	.333	3-0	3	0	1	0	0	0	1	1	.333	0	0	0	0	.333	0	0	0-0	0	0	0	.000
13 Peyton Glatter	.315	19-18	54	7	17	4	0	1	9	24	.444	6	1	11	0	.393	0	0	1-2	13	1	1	.933
23 Courtney Wallace	.259	22-19	58	8	15	2	2	2	9	27	.466	4	0	7	0	.302	1	0	1-3	12	23	1	.972
7 Madi Unzicker	.254	23-23	59	11	15	2	1	4	17	31	.525	8	3	23	0	.366	1	4	5-5	126	6	2	.985
77 Samantha Owen	.254	23-23	63	7	16	5	0	2	11	27	.429	14	1	20	1	.397	0	2	0-0	21	43	5	.928
1 Rylie Unzicker	.219	21-18	32	10	7	2	0	0	1	9	.281	4	0	9	0	.306	0	1	3-3	15	0	0	1.000
25 Lindsey Walljasper	.217	22-22	60	4	13	4	0	1	4	20	.333	9	2	17	0	.333	1	0	2-2	2	10	0	1.000
0 Lexey Kneib	.184	16-16	38	2	7	4	0	0	4	11	.289	1	0	9	0	.200	1	0	1-1	40	27	2	.971
44 Bri Cassidy	.182	23-23	44	5	8	1	0	0	4	9	.205	4	0	7	2	.250	0	1	1-1	115	6	1	.992
39 Olivia Ferrell	.143	3-2	7	2	1	0	0	1	3	4	.571	0	0	2	0	.143	0	0	0-0	1	4	0	1.000
64 Bree Boruff	.125	17-6	16	5	2	1	0	0	2	3	.188	0	0	2	0	.125	0	1	3-4	8	1	1	.900
21 Sarah Yocom	.083	15-10	12	3	1	0	0	0	0	1	.083	0	0	3	0	.083	0	0	1-1	23	18	8	.837
33 Anni Raley	.000	10-0	3	3	0	0	0	0	0	0	.000	0	0	0	0	.000	0	0	0-1	0	0	0	.000
17 Carson Fischer	.000	11-1	0	3	0	0	0	0	0	0	.000	0	0	0	0	.000	0	0	0-0	6	2	1	.889
19 Regan Mergele	.000	0-0	0	0	0	0	0	0	0	0	.000	0	0	0	0	.000	0	0	0-0	0	4	1	.800
Totals	.262	23	588	99	154	36	4	15	93	243	.413	81	10	136	3	.358	6	9	30-42	442	174	33	.949
Opponents	.288	23	611	125	176	34	5	21	116	283	.463	86	10	101	6	.381	6	14	13-15	449	155	26	.959

LOB - Team (146), Opp (160). DPs turned - Team (9), Opp (7). IBB - Team (5), Edwards 5.

### ( games only Sorted by Earned run avg)

Player	era	w-l	app	gs	cg	sho	sv	ip	h	r	er	bb	so	2b	3b	hr	b/avg	wp	hp	bk	sfa	sha
19 Regan Mergele	3.82	2-1	9	1	0	0/1	1	18.1	18	11	10	13	18	6	1	1	.234	1	1	0	0	0
25 Lindsey Walljasper	4.31	5-6	14	10	2	0/0	0	50.1	60	40	31	23	34	9	3	11	.290	0	5	0	0	6
23 Courtney Wallace	4.43	2-4	15	8	0	0/1	1	55.1	66	45	35	32	39	14	1	4	.295	3	3	0	5	6
39 Olivia Ferrell	6.90	0-3	8	4	0	0/0	0	23.1	32	29	23	18	10	5	0	5	.311	2	1	0	1	2
Totals	4.70	9-14	23	23	2	1/1	2	147.1	176	125	99	86	101	34	5	21	.288	6	10	0	6	14
Opponents	3.98	14-9	23	23	11	5/0	3	149.2	154	99	85	81	136	36	4	15	.262	7	10	0	6	9

PB - Team (0), Opp (5). Pickoffs - Team (1), Cassidy 1. SBA/ATT - Cassidy (13-15), Wallace (6-7), Walljasper (6-7), Ferrell (1-1).