



STANFORD MEN'S VOLLEYBALL



CONTACT: Regina Verlengiere • 805.478.4198 • rverleng@stanford.edu

2020 Schedule

Overall Record: 6-11 MPSF Record: 2-4

Date	Opponent	Location	Result/ PT
1/3	Menlo College	Stanford, Calif. (B)	W, 3-0
1/4	UC Santa Cruz	Stanford, Calif.	W, 3-0
1/8	Saint Francis	Loretto, Pa.	L, 3-2
1/10	NJIT	Fairfax, Va.	W, 3-1
1/11	George Mason	Fairfax, Va.	W, 3-0
1/17	#7 UC Irvine	Irvine, Calif.	L, 3-1
1/25	#3 UC Santa Barbara	Stanford, Calif.	L, 3-0
2/1	Grand Canyon*	Phoenix, Ariz.	L, 3-0
2/6	#8 Pepperdine*	Stanford, Calif.	L, 3-2
2/8	#7 UCLA*	Stanford, Calif.	W, 3-0#
2/14	#1 Hawaii	Stanford, Calif.	L, 3-0
2/15	#1 Hawaii	Stanford, Calif. (B)	L, 3-0
2/20	USC*	Stanford, Calif.	L, 3-1#
2/22	Concordia*	Stanford, Calif.	W, 3-0
2/29	#2 BYU*	Provo, Utah	L, 3-0&
3/6	#5 Lewis	Stanford, Calif. (B)	L, 3-1
3/7	#5 Lewis	Stanford, Calif. (B)	L, 3-1
3/13	#1 BYU*	Stanford, Calif.	Canceled
3/26	Concordia*	Irvine, Calif.	Canceled
3/28	USC*	Los Angeles, Calif.	Canceled#
4/4	Grand Canyon*	Stanford, Calif.	Canceled
4/9	UCLA*	Los Angeles, Calif.	Canceled#
4/11	Pepperdine*	Malibu, Calif.	Canceled

*MPSF match

Bold indicates home match played at Maples Pavilion

(B) match played in Burnham Pavilion

#Broadcast on the Pac-12 Networks | &Broadcast on BYUtv

STANFORD VOLLEYBALL BY THE NUMBERS

NCAA Championships.....	2
Final Four Appearances.....	5
National Championship Matches.....	5
NCAA Tournament Wins	9
MPSF Conference Championships.....	3
20+ Win Seasons	11
National Players of the Year	2
All-America Awards.....	72
MPSF Players of the Year	3
MPSF Freshman of the Year.....	2
All-Conference Selections	105

Season in Review

2020 RECAP: Stanford finished the 2020 campaign at 6-11 overall and 2-4 in the MPSF before the season was shortened by the COVID-19 global pandemic. The Cardinal maintained a top-15 standing in the AVCA poll throughout the season as head coach John Kosty wrapped up his 14th season at the helm of the program. Stanford produced three all-conference selections and Jaylen Jasper was named an AVCA All-American for the third straight season.

ALL-AMERICAN: Stanford junior Jaylen Jasper was tabbed an AVCA All-America honorable mention selection for the third straight season. The opposite led the MPSF and was seventh nationally with 4.11 kills per set. He ranked third in the conference and ninth in the nation in points per set (4.64), while finishing seventh in the MPSF in digs per set (1.70). Stanford now has 72 All-America awards all-time.

ALL-MPSF: Junior Jaylen Jasper was selected to the All-MPSF first team, while junior Kyler Presho and freshman Will Rottman landed on the honorable mention list. Rottman was also named to the All-MPSF Freshman Team. Stanford now has 105 all-conference selections all-time.

2020 Stanford Volleyball Roster

No	Name	Pos	Ht	Yr	Hometown (High School)
1	Adam Chang	MB	6-6	FR	San Diego, Calif. (Westview)
2	Justin Lui	L	5-10	RS FR	Pickering, Ontario, Canada (Pickering)
3	Paul Bischoff	S	6-6	SR	Wheaton, Ill. (Glenbard West)
4	Eric Beatty	OH	6-7	SR	Huntington Beach, Calif. (Huntington Beach)
5	JP Reilly	OH	6-4	JR	Manhattan Beach, Calif. (Loyola)
8	Leo Henken	OH	6-6	JR	Webster Grove, Mo. (Saint Louis University HS)
9	Stephen Moye	MB	6-9	SR	El Segundo, Calif. (El Segundo)
10	Kevin Lamp	OH	6-6	FR	Lake Bluff, Ill. (Lake Forest)
12	Nathan Lietzke	S	6-6	FR	Austin, Texas (St. Andrew's Episcopal School)
14	Kyler Presho	MB	6-8	JR	San Clemente, Calif. (San Clemente)
15	Will Rottman	OH	6-6	FR	Santa Barbara, Calif. (Santa Barbara)
16	Nathaniel Gates	MB	6-8	FR	La Jolla, Calif. (La Jolla)
17	Eli Wopat	OPP	6-7	SR	Santa Barbara, Calif. (Dos Pueblos)
22	Gabriel Miranda	MB	6-6	FR	Rio de Janeiro, Brazil (Redondo Union)
23	Jaylen Jasper	OPP	6-7	JR	Annapolis, Md. (Broadneck Senior)

Head Coach: John Kosty, 14th season (UC Santa Barbara '87)

Associate Head Coach: Ken Shibuya, 14th season (Virginia '93)

Assistant Coach: Daniel Rasay, 11th season (Hawai'i '05)

Pronunciation Guide:

Eric Beatty (BAY-tee)	Paul Bischoff (BISH-off)	Nathan Lietzke - LIT-ski
Justin Lui (Louie)	Stephen Moy - Steven Moy (rhymes with boy)	
Kyler Presho (PRESH-o)	Eli Wopat (WHOA-pat)	
John Kosty (COST-ee)	Daniel Rasay (ruh-SIGH)	Ken Shibuya (shi-BOO-yuh)

STANFORD IN THE 2020 POLL

Date	Rank	Date	Rank
Preseason	7	March 9	14
Jan. 13	9		
Jan. 20	8		
Jan. 27	9		
Feb. 3	13		
Feb. 10	11		
Feb. 17	12		
Feb. 24	13		
March 2	13		

Ranking Records...

- 483 total weeks in the poll
- 208 all-time weeks in the top-5
- 24 weeks ranked No. 1

2020 SEASON FACTS

Stanford's Record When...

Playing at home: 4-7
 Playing on the road: 1-4
 Playing at a neutral site: 1-0
 Longest winning streak: 2
 Longest losing streak: 4
 In three sets: 5-5
 In four sets: 1-4
 In five sets: 0-2
 Stanford wins first set: 5-3
 Opponent wins first set: 1-8
 Winning first two sets: 5-1
 Losing first two sets: 0-6
 Splitting first two sets: 1-4
 Hitting .300 or better: 5-1
 Hitting below .300: 1-10
 Ouhit opponents: 6-3
 Ouhit by opponents: 0-8
 Vs. ranked opponents: 1-9
 Vs. unranked opponents: 5-2
 In the MPSF: 2-4
 Non-conference: 4-7
 Last five matches: 1-4
 Last 10 matches: 2-8

2020 DOUBLE-DOUBLES

Jaylen Jasper (3)

1/17 at UC Irvine 15 Kills 12 Digs
 2/1 at GCU 12 Kills 11 Digs
 2/6 vs. Pepperdine 28 Kills 11 Digs

Justin Lui (1)

2/6 vs. Pepperdine 52 Assists 15 Digs

ALL-ACADEMIC: Five Cardinal were named to the MPSF All-Academic Team in 2020. Joining three-time selection Eric Beatty and repeat honoree Stephen Moye were Justin Lui, Kyler Presho and JP Reilly. The group was recognized for its combined work athletically and in the classroom.

2010 REUNION: Stanford celebrated the 10-year anniversary of its 2010 NCAA Collegiate Championship in February. Members of the 2010 squad were back on campus for Stanford's sweep over UCLA on Feb. 8. In 2010, Stanford's run from 'Worst to First' was realized in front of a raucous crowd at Maples Pavilion as the Cardinal swept Penn State for the program's second national title.

COACHES POLL: Stanford was picked to finish third in the MPSF by the league's coaches prior to the start of the season. BYU, which received five first-place votes, was selected to win the MPSF, while UCLA collected the remaining two first-place votes and was second.

OFFENSIVE MARK: Stanford hit a season-best .565 against UCLA (Feb. 8) - the best in an MPSF match in six years, and it ranks 10th overall in the rally-scoring era.

INTERNATIONAL EXPERIENCE: Juniors Jaylen Jasper and Kyler Presho and freshmen Nathan Lietzke and Will Rottman were selected to the United States Collegiate National Team, but unfortunately will not be competing in the summer of 2020 due to the COVID-19 pandemic. Additionally, Rottman and fellow freshman Nathaniel Gates were named to the U.S. Junior National Training Team.

THE LAST TIME STANFORD...

Won a matchvs. Concordia, 2/22/20
 Lost a match vs. Lewis, 3/7/20
 Won at home.....vs. Concordia, 2/22/20
 Lost at home vs. Lewis, 3/7/20
 Won on the road at George Mason, 1/11/20
 Lost on the road..... at BYU, 2/29/20
 Won 3-0vs. Concordia, 2/22/20
 Lost 3-0 at BYU, 2/29/20
 Won 3-0 at home.....vs. Concordia, 2/22/20
 Lost 3-0 at home vs. Hawaii, 2/15/20
 Won 3-0 on the road at George Mason, 1/11/20
 Lost 3-0 on the road..... at BYU, 2/29/20
 Won in four setsvs. NJIT, 1/10/20
 Lost in four sets..... vs. Lewis, 3/7/20
 Won in five setsvs. UCLA, 3/16/19
 Lost in five sets vs. Pepperdine, 2/6/20
 Beat an MPSF opponent.....vs. Concordia, 2/22/20
 Lost to an MPSF opponent..... at BYU, 2/29/20
 Beat a ranked opponentvs. No. 7 UCLA, 2/8/20
 Lost to an unranked opponentvs. USC, 2/20/20

CARDINAL QUICK FACTS

General Information

Location Stanford, Calif.
 Enrollment 15,870 (6,999 undergraduates)
 Nickname Cardinal
 Colors Cardinal and White
 Home Arena (Capacity) Maples Pavilion (7,223)
 Conference Mountain Pacific Sports Federation (MPSF)
 President Marc Tessier-Lavigne
 Athletic Director Bernard Muir
 Senior Woman Administrator Beth Goode
 Website www.GoStanford.com

History

First year of men's volleyball 1976
 All-time record 686-538-2 (.560)
 NCAA Appearances 9
 NCAA Final Four Appearances 5
 NCAA Championships 2
 Last Postseason Appearance 2019
 Last Postseason Opponent BYU
 MPSF Quarterfinals (L, 3-2)

Coaching Staff

Head Coach John Kosty (UC Santa Barbara '87)
 Record at Stanford 214-170 (14 years)
 Career Record same
 Associate Head Coach Ken Shibuya
 Assistant Coach Daniel Rasay

OFF THE BLOCK PRESEASON RECOGNITION: Prior to the start of the year, junior Jaylen Jasper landed on the Off The Block/Springbak Preseason All-America first team, while senior Paul Bischoff was a second-team pick. Additionally, Jasper, Bischoff, junior Kyler Presho and freshman Kevin Lamp were named to preseason watch lists:

Paul Bischoff, Jr. (Lloy Ball Award - best setter)
 Jaylen Jasper, So. (Bryan Ivie Award - best opposite)
 Kyler Presho, So. (Ryan Millar Award - best middle blocker)
 Kevin Lamp, Fr. (Freshman Watch List)

HEAD COACH JOHN KOSTY: Stanford head coach John Kosty completed his 14th season at the helm of the Cardinal program and his 30th overall on staff. He is now 214-170 in his career. He guided Stanford to the 2010 NCAA national championship and the 2014 NCAA finals. The Cardinal has produced a first team AVCA All-America selection in eight of the past 13 seasons under Kosty. Stanford has appeared in the MPSF Tournament in 11 of Kosty's 14 seasons (missing out in 2007 and 2015. The tournament was canceled in 2020).

2020 STARTERS

MATCH	S	MB	MB	OH	OH	OPP	L
Menlo College	Bischoff	Presho	Moye	Rottman	Henken	Jasper	Lui
UC Santa Cruz	Bischoff	Presho	Moye	Rottman	Beatty	Jasper	Lui
at Saint Francis	Bischoff	Presho	Moye	Rottman	Beatty	Jasper	Lui
vs. NJIT	Bischoff	Presho	Moye	Rottman	Beatty	Jasper	Lui
at George Mason	Bischoff	Presho	Moye	Rottman	Beatty	Jasper	Lui
at UC Irvine	Lamp	Presho	Moye	Rottman	Beatty	Jasper	Lui
UC Santa Barbara	Lui	Presho	Moye	Rottman	Beatty	Jasper	Reilly
at Grand Canyon	Lui	Presho	Moye	Rottman	Beatty	Jasper	Reilly
Pepperdine	Lui	Presho	Moye	Rottman	Beatty	Jasper	Henken
UCLA	Lui	Presho	Moye	Rottman	Beatty	Jasper	Henken
Hawaii	Lietzke	Presho	Moye	Rottman	Beatty	Jasper	Lui
Hawaii	Lui	Presho	Moye	Rottman	Beatty	Jasper	Henken
USC	Lietzke	Presho	Moye	Rottman	Beatty	Jasper	Lui
Concordia	Lietzke	Presho	Moye	Rottman	Beatty	Jasper	Lui
at BYU	Lietzke	Presho	Moye	Rottman	Beatty	Jasper	Lui
Lewis	Lietzke	Presho	Moye	Rottman	Beatty	Jasper	Lui
Lewis	Lietzke	Gates	Moye	Rottman	Beatty	Jasper	Lui

2020 SEASON HIGHS

	<u>TEAM</u>		<u>INDIVIDUAL</u>
Hitting %:	.565 vs. UCLA (2/8) .444 vs. Menlo College (1/3) .402 vs. NJIT (1/10) .391 vs. USC (2/20)	Hitting %:	.688 (11-0-16), Beatty vs. UCLA (2/8) .600 (10-1-15), Rottman vs. UCLA (2/8) .571 (9-1-14), Moye at George Mason (1/11) .545 (7-1-11), Moye vs. Pepperdine (2/6) .545 (7-1-11), Moye vs. Hawaii (2/15)
Kills	5 sets: 60 vs. Pepperdine (2/6) 4 sets: 59 at UC Irvine (1/17) 3 sets: 45 at George Mason (1/11)	Kills	5 sets: 28, Jasper vs. Pepperdine (2/6) 4 sets: 20, Jasper vs. USC (2/20) 3 sets: 15, Jasper vs. Concordia (2/22)
Assists:	57 at UC Irvine (1/17) 56 at Saint Francis (1/8) 56 vs. Pepperdine (2/6) 49 vs. Lewis (3/7)	Assists:	52, Lui vs. Pepperdine (2/6) 50, Lamp at UC Irvine (1/17) 48, Bischoff at Saint Francis (1/8) 44, Lietzke vs. Lewis (3/7)
Aces:	9 vs. Lewis (3/6) 6 vs. NJIT (1/10) 6 vs. UCLA (2/8) 6 vs. Lewis (3/7)	Aces:	4, Rottman vs. UCLA (2/8) 3, Beatty at BYU (2/29) 3, Beatty vs. Lewis (3/6)
Digs:	50 vs. Pepperdine (2/6) 43 vs. Concordia (2/22) 42 at UC Irvine (1/17)	Digs:	15, Lui vs. Pepperdine (2/6) 12, Lui vs. UC Santa Cruz (1/4) 12, Jasper at UC Irvine (1/17) 12, Lui at UC Irvine (1/17) 12, Reilly vs. UC Santa Barbara (1/25)
Total Blocks:	15.5 vs. UC Santa Cruz (1/4) 13.0 vs. NJIT (1/10) 11.0 vs. Concordia (2/22)	Solo Blocks:	3, Presho vs. NJIT (1/10) 2, Reilly vs. UC Santa Cruz (1/4)
Opp Hitting %:	-.058 vs. UC Santa Cruz (1/4) .089 vs. NJIT (1/10) .077 at George Mason (1/11) .115 vs. Menlo College (1/3)	Total Blocks:	8, Presho vs. NJIT (1/10) 7, Presho vs. Concordia (2/22) 6, Presho at Saint Francis (1/8) 6, Moye vs. UC Santa Barbara (1/25) 6, Presho at BYU (2/29) 6, Moye vs. Lewis (3/7)

**2015 Stanford Men's Volleyball
Stanford Combined Team Statistics (as of Mar 07, 2020)
All matches**

Overall record: 6-11 Conf: 2-4 Home: 4-7 Away: 1-4 Neutral: 1-0

##	Player	sp	Attack				Set		Serve			Dig		Blocking					points			
			k	k/s	e	ta	pct	a	a/s	sa	se	sa/s	re	dig	dig/s	bs	ba	total		blk/s	be	bhe
23	Jasper, Jaylen	57	234	4.11	91	510	.280	6	0.11	12	46	0.21	0	97	1.70	2	33	35	0.61	6	1	264.5
15	Rottman, Will	58	155	2.67	60	376	.253	16	0.28	14	51	0.24	26	64	1.10	2	25	27	0.47	5	0	183.5
4	Beatty, Eric	57	122	2.14	65	304	.188	10	0.18	12	32	0.21	20	84	1.47	1	31	32	0.56	2	2	150.5
9	Moye, Stephen	58	75	1.29	17	142	.408	2	0.03	8	28	0.14	0	18	0.31	4	44	48	0.83	2	0	109.0
14	Presho, Kyler	54	62	1.15	20	118	.356	4	0.07	4	30	0.07	0	12	0.22	7	48	55	1.02	7	0	97.0
3	Bischoff, Paul	17	11	0.65	6	20	.250	180	10.5	1	7	0.06	0	25	1.47	3	11	14	0.82	0	0	20.5
16	Gates, Nathaniel	7	4	0.57	2	10	.200	1	0.14	0	2	0.00	0	5	0.71	0	7	7	1.00	0	0	7.5
1	Chang, Adam	2	1	0.50	0	2	.500	0	0.00	1	2	0.50	0	0	0.00	0	3	3	1.50	0	0	3.5
12	Lietzke, Nathan	24	12	0.50	3	26	.346	201	8.38	1	12	0.04	0	31	1.29	2	8	10	0.42	1	2	19.0
8	Henken, Leo	18	7	0.39	0	16	.438	5	0.28	0	2	0.00	6	21	1.17	0	1	1	0.06	0	1	7.5
17	Wopat, Eli	32	12	0.38	4	27	.296	2	0.06	3	10	0.09	1	5	0.16	1	1	2	0.06	0	0	16.5
5	Reilly, JP	24	4	0.17	1	12	.250	4	0.17	1	9	0.04	6	20	0.83	2	2	4	0.17	0	0	8.0
10	Lamp, Kevin	15	1	0.07	0	2	.500	62	4.13	3	8	0.20	0	7	0.47	0	4	4	0.27	0	2	6.0
22	Miranda, Gabriel	23	1	0.04	1	2	.000	0	0.00	1	6	0.04	0	1	0.04	0	0	0	0.00	0	0	2.0
2	Lui, Justin	60	1	0.02	0	7	.143	179	2.98	1	4	0.02	9	134	2.23	0	4	4	0.07	0	0	4.0
STANFORD		60	702	11.7	270	157	.274	672	11.2	62	249	1.03	71	524	8.73	24	222	135	2.25	23	8	899.0
Opponents		60	684	11.4	286	161	.247	647	10.7	71	238	1.18	62	482	8.03	14	238	133	2.22	20	4	888.0

Team Statistics	STAN	OPP
ATTACK		
Kills	702	684
Errors	270	286
Total Attacks	1574	1613
Attack Pct	.274	.247
Kills/Set	11.7	11.4
SET		
Assists	672	647
Attempts	1586	1611
Assist Pct	.424	.402
Assists/Set	11.2	10.8
SERVE		
Aces	62	71
Errors	249	238
Attempts	1315	1293
Serve Pct	.811	.816
Aces/Set	1.0	1.2
SERVE RECEPTIO		
Errors	71	62
Errors/Set	1.2	1.0
Attempts	1051	1064
Reception Pct	.932	.942
DEFENSE		
Digs	524	482
Digs/Set	8.7	8.0
BLOCKING		
Block Solo	24	14
Block Assist	222	238
Total Blocks	135.0	133.0
Blocks/Set	2.2	2.2
Block Errors	23	20
Ball handling errors	8	4
ATTENDANCE		
Total	6087	8912
Dates/Avg Per Da	11/553	5/1782
Neutral site #/Avg	1/0	
Current win streak	0	-
Home win streak	0	-

Date	Opponent	Score	Score by set	Att.
Jan 03	MENLO COLLEGE	3-0	25-23,25-17,25-18	294
Jan 04	UC SANTA CRUZ	3-0	25-17,25-18,25-13	383
Jan 8	at Saint Francis (PA)	L 2-3	25-15,25-19,19-25,23-25,1	420
Jan 10	vs NJIT	3-1	21-25,25-16,25-14,25-14	0
Jan 11	at George Mason	3-0	25-17,25-20,25-17	608
Jan 17	at #8 UC Irvine	L 1-3	18-25,23-25,25-21,21-25	955
Jan 25	#3 UC SANTA BARBARA	L 0-3	21-25,18-25,18-25	478
*Feb 1	at Grand Canyon	L 0-3	20-25,18-25,19-25	1112
*Feb 06	#8 PEPPERDINE	L 2-3	25-18,22-25,22-25,25-20,9	364
*Feb 08	#7 UCLA	3-0	25-17,25-19,25-17	970
Feb 14	#1 HAWAII	L 0-3	15-25,18-25,22-25	996
Feb 15	#1 HAWAII	L 0-3	23-25,13-25,20-25	1414
*Feb 20	USC	L 1-3	21-25,25-19,23-25,21-25	326
*Feb 22	CONCORDIA	3-0	25-23,25-23,25-18	259
*Feb 29	at #2 BYU	L 0-3	12-25,21-25,22-25	5817
Mar 06	#5 LEWIS	L 1-3	25-15,14-25,23-25,23-25	313
Mar 07	#5 LEWIS	L 1-3	18-25,25-22,23-25,23-25	290

Record in 3-set matches:5-5 • Record in 4-set matches:1-4 • Record in 5-set matches:0-2

Stanford Combined Team Statistics (as of Feb 29, 2020)
Conference matches

RECORD:	OVERALL	HOME	AWAY	NEUTRAL
ALL GAMES	2-4	2-2	0-2	0-0
CONFERENCE	2-4	2-2	0-2	0-0
NON-CONFERENCE	0-0	0-0	0-0	0-0

##	Player	sp	Attack					Set		Serve			re	Dig		Blocking					points	
			k	k/s	e	ta	pct	a	a/s	sa	se	sa/s		dig	dig/s	bs	ba	total	blk/s	be		bhe
23	Jasper, Jaylen	21	96	4.57	26	185	.378	2	0.10	4	13	0.19	0	39	1.86	1	10	11	0.52	3	0	106.0
15	Rottman, Will	21	61	2.90	27	136	.250	2	0.10	7	18	0.33	15	24	1.14	2	9	11	0.52	5	0	74.5
4	Beatty, Eric	20	37	1.85	18	93	.204	2	0.10	5	11	0.25	6	26	1.30	0	11	11	0.55	0	0	47.5
9	Moye, Stephen	21	23	1.10	5	44	.409	2	0.10	3	12	0.14	0	7	0.33	0	10	10	0.48	0	0	31.0
14	Presho, Kyler	21	22	1.05	7	43	.349	2	0.10	1	12	0.05	0	7	0.33	2	21	23	1.10	2	0	35.5
12	Lietzke, Nathan	13	5	0.38	2	13	.231	101	7.77	0	3	0.00	0	16	1.23	0	6	6	0.46	1	2	8.0
8	Henken, Leo	11	3	0.27	0	5	.600	4	0.36	0	1	0.00	3	19	1.73	0	1	1	0.09	0	1	3.5
2	Lui, Justin	21	1	0.05	0	4	.250	118	5.62	0	2	0.00	4	44	2.10	0	2	2	0.10	0	0	2.0
17	Wopat, Eli	13	0	0.00	0	3	.000	0	0.00	0	4	0.00	0	0	0.00	0	0	0	0.00	0	0	0.0
22	Miranda, Gabriel	1	0	0.00	0	0	.000	0	0.00	0	1	0.00	0	0	0.00	0	0	0	0.00	0	0	0.0
5	Reilly, JP	4	0	0.00	0	0	.000	2	0.50	0	1	0.00	3	1	0.25	0	0	0	0.00	0	0	0.0
	TEAM	-	-	-	-	-	-	-	-	-	-	-	2	-	-	-	-	-	-	-	-	-
	STANFORD	21	248	11.8	85	526	.310	235	11.1	20	78	0.95	33	183	8.71	5	70	40.0	1.90	11	3	308.0
	Opponents	21	258	12.2	89	571	.296	245	11.6	33	95	1.57	20	152	7.24	3	88	47.0	2.24	9	1	338.0

Team Statistics	STAN	OPP	Date	Opponent	Score	Score by set	Att.
ATTACK			*Feb 1	at Grand Canyon	L 0-3	20-25,18-25,19-25	1112
Kills	248	258	*Feb 06	#8 PEPPERDINE	L 2-3	25-18,22-25,22-25,25-20,9	364
Errors	85	89	*Feb 08	#7 UCLA	3-0	25-17,25-19,25-17	970
Total Attacks	526	571	*Feb 20	USC	L 1-3	21-25,25-19,23-25,21-25	326
Attack Pct	.310	.296	*Feb 22	CONCORDIA	3-0	25-23,25-23,25-18	259
Kills/Set	11.8	12.3	*Feb 29	at #2 BYU	L 0-3	12-25,21-25,22-25	5817
SET							
Assists	235	245					
Attempts	534	560					
Assist Pct	.440	.438					
Assists/Set	11.2	11.7					
SERVE							
Aces	20	33					
Errors	78	95					
Attempts	460	460					
Serve Pct	.830	.793					
Aces/Set	1.0	1.6					
SERVE RECEPTIO							
Errors	33	20					
Errors/Set	1.6	1.0					
Attempts	365	381					
Reception Pct	.910	.948					
DEFENSE							
Digs	183	152					
Digs/Set	8.7	7.2					
BLOCKING							
Block Solo	5	3					
Block Assist	70	88					
Total Blocks	40.0	47.0					
Blocks/Set	1.9	2.2					
Block Errors	11	9					
Ball handling errors	3	1					
ATTENDANCE							
Total	1919	6929					
Dates/Avg Per Da	4/480	2/3464					
Neutral site #/Avg	0/0	-					
Current win streak	0	-					
Home win streak	1	-					

Record in 3-set matches: 2-2
Record in 4-set matches: 0-1
Record in 5-set matches: 0-1

TV/RADIO ROSTER



**#1
ADAM CHANG
MB • 6-6 • FR
SAN DIEGO, CALIF.
WESTVIEW**



**#2
JUSTIN LUI
L • 5-10 • RS FR
PICKERING, ONTARIO
PICKERING**



**#3
PAUL BISCHOFF
S • 6-6 • SR
WHEATON, ILL.
GLENBARD WEST**



**#4
ERIC BEATTY
OH • 6-7 • SR
HUNTINGTON BEACH, CALIF.
HUNTINGTON BEACH**



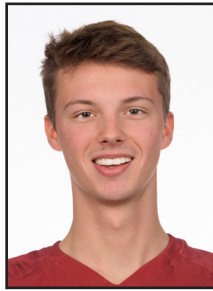
**#5
JP REILLY
OH • 6-4 • JR
MANHATTAN BEACH, CALIF.
LOYOLA HS**



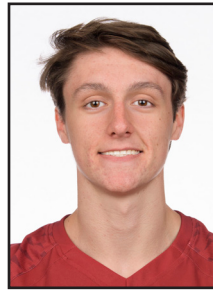
**#8
LEO HENKEN
OH • 6-6 • JR
WEBSTER GROVES, MO.
SAINT LOUIS UNIVERSITY HS**



**#9
STEPHEN MOYE
MB • 6-9 • SR
EL SEGUNDO, CALIF.
EL SEGUNDO**



**#10
KEVIN LAMP
OH • 6-6 • FR
LAKE BLUFF, ILL.
LAKE FOREST**



**#12
NATHAN LIETZKE
S • 6-6 • FR
AUSTIN, TEXAS
ST. ANDREW'S EPISCOPAL**



**#14
KYLER PRESHO
MB • 6-8 • JR
SAN CLEMENTE, CALIF.
SAN CLEMENTE**



**#15
WILL ROTTMAN
OH • 6-6 • FR
SANTA BARBARA, CALIF.
SANTA BARBARA**



**#16
NATHANIEL GATES
MB • 6-8 • FR
LA JOLLA, CALIF.
LA JOLLA**



**#17
ELI WOPAT
OPP • 6-7 • SR
SANTA BARBARA, CALIF.
DOS PUEBLOS**



**#22
GABRIEL MIRANDA
MB • 6-6 • FR
RIO DE JANEIRO, BRAZIL
REDONDO UNION**



**#23
JAYLEN JASPER
OPP • 6-7 • JR
ANNAPOLIS, MD.
BROADNECK SENIOR**



**JOHN KOSTY
HEAD COACH
14TH SEASON**



**KEN SHIBUYA
ASSOCIATE HEAD COACH
14TH SEASON**



**DANIEL RASAY
ASSISTANT COACH
11TH SEASON**