



Officials: Mark Resch, Bryan Enterline, Erika Herriman

Penn St. - 82

Record: 12-9 (3-7)

NO.	Name	F	Min	FG			Rebounds			Fouls		TP	AS	TO	ST	Blocks		+/-
				M-A	M-A	M-A	OR	DR	TOT	PF	FD					BS	BA	
24	Alexa Williamson	F	28:29	5-11	0-0	3-4	2	7	9	4	5	13	1	2	2	2	0	-8
4	Shay Ciezki	G	33:50	5-12	2-6	0-0	0	2	2	3	1	12	1	3	0	0	0	-2
5	Leilani Kapinus	G	41:13	4-11	0-2	3-9	2	4	6	4	7	11	5	3	3	1	1	0
20	Makenna Marisa	G	38:20	8-20	4-10	4-4	0	4	4	5	3	24	5	0	0	0	1	3
23	Taniyah Thompson	G	41:31	4-11	1-3	1-1	3	4	7	2	4	10	2	0	1	0	1	-2
1	Ali Brigham		11:58	2-2	0-0	0-2	2	0	2	0	2	4	0	0	0	2	0	1
10	Chanaya Pinto		15:57	1-3	0-0	0-0	0	4	4	4	1	2	3	0	1	0	0	-6
33	Johnasia Cash		12:19	3-6	0-0	0-0	3	2	5	4	1	6	0	1	1	0	1	-6
2	Aicha Dia		01:23	0-0	0-0	0-0	0	0	0	1	0	0	0	0	0	0	0	0
Team							3	3	6			0		2				
<b>Totals</b>				32-76	7-21	11-20	15	30	45	27	24	82	17	11	8	5	4	-4

Technical Fouls: Cash 1<sup>st</sup>OT 0:00

Shooting By Period		
1 <sup>st</sup> FG%	10-16	62.5%
3PT%	2-4	50.0%
FT%	1-3	33.3%
2 <sup>nd</sup> FG%	4-16	25.0%
3PT%	0-5	0.0%
FT%	2-3	66.7%
3 <sup>rd</sup> FG%	9-21	42.9%
3PT%	2-3	66.7%
FT%	3-3	100%
4 <sup>th</sup> FG%	8-17	47.1%
3PT%	2-6	33.3%
FT%	4-9	44.4%
OT FG%	1-6	16.7%
3PT%	1-3	33.3%
FT%	1-2	50%
GM FG%	32-76	42.1%
3PT%	7-21	33.3%
FT%	11-20	55.0%

Dead Ball Rebounds: 6, 0

Rutgers - 86

Record: 9-13 (3-7)

NO.	Name	F	Min	FG			Rebounds			Fouls		TP	AS	TO	ST	Blocks		+/-
				M-A	M-A	M-A	OR	DR	TOT	PF	FD					BS	BA	
20	Erica Lafayette	F	27:44	5-9	0-2	0-1	1	2	3	3	1	10	1	2	0	0	0	2
54	Chyna Cornwell	F	24:18	7-11	0-0	2-4	4	6	10	5	3	16	0	0	0	1	2	-8
22	Kassondra Brown	C	26:48	4-7	0-1	1-2	3	7	10	4	4	9	2	1	0	0	1	16
2	Kaylene Smikle	G	36:02	4-13	1-5	5-6	3	1	4	3	5	14	2	3	0	1	1	-4
11	Awa Sidibe	G	42:16	1-9	0-3	8-12	1	6	7	3	6	10	3	6	0	2	0	-1
24	Kai Carter		39:17	5-10	0-0	7-9	3	5	8	2	6	17	6	3	1	0	1	7
4	Antonia Bates		12:26	1-3	0-1	1-2	0	4	4	2	1	3	0	1	1	0	0	-5
31	Abby Streeter		16:09	3-6	1-4	0-0	1	1	2	3	0	7	1	0	0	0	0	13
Team							1	0	1			0		0				
<b>Totals</b>				30-68	2-16	24-36	17	32	49	25	26	86	15	16	2	4	5	4

Technical Fouls: Bates 1<sup>st</sup>OT 0:00

Shooting By Period		
1 <sup>st</sup> FG%	6-15	40.0%
3PT%	0-2	0.0%
FT%	0-1	0%
2 <sup>nd</sup> FG%	8-14	57.1%
3PT%	0-1	0.0%
FT%	4-6	66.7%
3 <sup>rd</sup> FG%	8-16	50.0%
3PT%	0-5	0.0%
FT%	13-18	72.2%
4 <sup>th</sup> FG%	6-18	33.3%
3PT%	2-8	25.0%
FT%	3-4	75%
OT FG%	2-5	40.0%
3PT%	0-0	0.0%
FT%	4-7	57.1%
GM FG%	30-68	44.1%
3PT%	2-16	12.5%
FT%	24-36	66.7%

Dead Ball Rebounds: 3, 0

	PSU	RU
Biggest lead	11 (1 <sup>st</sup> 0:01)	8 (4 <sup>th</sup> 6:36)
Best Scoring Run	6 (4 <sup>th</sup> 0:40)	8 (2 <sup>nd</sup> 6:52)
Lead Changes	10	
Times Tied	10	
Time with Lead	22:16	18:36

Points from	PSU	RU
Turnovers	12	7
Paint	46	50
Second Chance	11	16
Fast Breaks	20	20
Bench	12	27

	Period by Period Scoring					
	1st	2nd	3rd	4th	OT1	TOT
PSU	23	10	23	22	4	82
RU	12	20	29	17	8	86

**Period 1****Quarter Starters:**

<b>RU</b>	2 Smikle K	11 Sidibe A	20 Lafayette E	22 Brown K	54 Cornwell C
<b>PSU</b>	4 Ciezki S	5 Kapinus L	20 Marisa M	23 Thompson T	24 Williamson A

Game Time	RU	Score	Diff	PSU
10:00	22 BROWN K jumpball won			24 WILLIAMSON A jumpball lost
09:45	jump ball situation			
09:45	22 BROWN K turnover lost ball (1)			24 WILLIAMSON A steal (1)
09:24				24 WILLIAMSON A 2pt FG from turnover in the paint, layup missed
09:21	22 BROWN K defensive rebound (1)			
09:18	2 SMIKLE K 2pt FG in the paint, layup made (2)	<b>2-0</b>	<b>2</b>	
09:18	2 SMIKLE K foul drawn (1)			20 MARISA M foul shooting (1 - 1)
09:18	2 SMIKLE K free throw 1 - 1 missed			
09:16	20 LAFAYETTE E offensive rebound (1)			
08:59	11 SIDIBE A 2pt FG second chance outside the paint, pull up jump shot missed			
08:57				5 KAPINUS L defensive rebound (1)
08:43				23 THOMPSON T 2pt FG outside the paint, jump shot blocked
08:43	2 SMIKLE K block (1)			
08:40				23 THOMPSON T offensive rebound (1)
08:28				turnover shot clock (1)
08:28	22 BROWN K substitution out			
08:28	24 CARTER K substitution in			
08:18	20 LAFAYETTE E 2pt FG from turnover outside the paint, pull up jump shot missed			
08:15				24 WILLIAMSON A defensive rebound (1)
07:57		<b>2-2</b>	<b>0</b>	24 WILLIAMSON A 2pt FG in the paint, layup made (2)
07:57				5 KAPINUS L assist (1)
07:43	20 LAFAYETTE E 2pt FG in the paint, layup made (2)	<b>4-2</b>	<b>2</b>	
07:43	24 CARTER K assist (1)			
07:36		<b>4-4</b>	<b>0</b>	24 WILLIAMSON A 2pt FG fast break in the paint, layup made (4)
07:36				5 KAPINUS L assist (2)
07:36	54 CORNWELL C foul shooting (1 - 1)			24 WILLIAMSON A foul drawn (1)
07:36	54 CORNWELL C substitution out			
07:36	22 BROWN K substitution in			
07:36		<b>4-5</b>	<b>-1</b>	24 WILLIAMSON A free throw fast break 1 - 1 made (5)
07:24	22 BROWN K 2pt FG fast break in the paint, layup made (2)	<b>6-5</b>	<b>1</b>	
07:24	11 SIDIBE A assist (1)			
07:10		<b>6-7</b>	<b>-1</b>	4 CIEZKI S 2pt FG outside the paint, pull up jump shot made (2)
06:56	11 SIDIBE A turnover bad pass (1)			24 WILLIAMSON A steal (2)
06:51		<b>6-9</b>	<b>-3</b>	20 MARISA M 2pt FG fast break from turnover outside the paint, pull up jump shot made (2)
06:34	22 BROWN K 2pt FG fast break in the paint, layup made (4)	<b>8-9</b>	<b>-1</b>	
06:34	2 SMIKLE K assist (1)			
06:18	20 LAFAYETTE E foul personal (1 - 2)			5 KAPINUS L foul drawn (1)
06:09		<b>8-11</b>	<b>-3</b>	5 KAPINUS L 2pt FG in the paint, driving layup made (2)
05:51	22 BROWN K 2pt FG in the paint, layup blocked			
05:51				24 WILLIAMSON A block (1)



**Penn St. at Rutgers**

01/26/23 Jersey Mike's Arena, Piscataway  
2022-23 Women's Basketball

**Game Time:** 7:00 PM  
**Game Duration:** 2:26  
**Attendance:** 1,204

**Officials:** Mark Resch, Bryan Enterline, Erika Herriman

Game Time	RU	Score	Diff	PSU
05:47				24 WILLIAMSON A defensive rebound (2)
05:45		<b>8-13</b>	<b>-5</b>	5 KAPINUS L 2pt FG fast break in the paint, layup made (4)
05:45				20 MARISA M assist (1)
05:31	jump ball situation			
05:31	20 LAFAYETTE E substitution out			
05:31	4 BATES A substitution in			
05:10	24 CARTER K 2pt FG outside the paint, pull up jump shot made (2)	<b>10-13</b>	<b>-3</b>	
04:45		<b>10-15</b>	<b>-5</b>	20 MARISA M 2pt FG in the paint, layup made (4)
04:32	2 SMIKLE K foul drawn (2)			24 WILLIAMSON A foul personal (1 - 2)
04:32	Timeout media			
04:32	24 CARTER K substitution out			
04:32	31 STREETER A substitution in			
04:32				5 KAPINUS L substitution out
04:32				24 WILLIAMSON A substitution out
04:32				1 BRIGHAM A substitution in
04:32				10 PINTO C substitution in
04:12	11 SIDIBE A 3pt FG , jump shot missed			
04:09	2 SMIKLE K offensive rebound (1)			
04:08	2 SMIKLE K 2pt FG second chance in the paint, layup blocked			
04:08				1 BRIGHAM A block (1)
04:02				20 MARISA M defensive rebound (1)
03:41		<b>10-18</b>	<b>-8</b>	20 MARISA M 3pt FG , jump shot made (7)
03:41				10 PINTO C assist (1)
03:22	2 SMIKLE K 2pt FG in the paint, layup missed			
03:21				4 CIEZKI S defensive rebound (1)
03:02				20 MARISA M 2pt FG outside the paint, jump shot missed
02:58				23 THOMPSON T offensive rebound (2)
02:57				4 CIEZKI S 3pt FG second chance, jump shot missed
02:54				1 BRIGHAM A offensive rebound (1)
02:54	2 SMIKLE K foul personal (1 - 3)			1 BRIGHAM A foul drawn (1)
02:54	4 BATES A substitution out			
02:54	22 BROWN K substitution out			
02:54	24 CARTER K substitution in			
02:54	54 CORNWELL C substitution in			
02:54				4 CIEZKI S substitution out
02:54				5 KAPINUS L substitution in
02:48				20 MARISA M 3pt FG second chance, jump shot missed
02:46	54 CORNWELL C defensive rebound (1)			
02:40	24 CARTER K 2pt FG outside the paint, jump shot missed			
02:36	54 CORNWELL C offensive rebound (2)			
02:36	54 CORNWELL C 2pt FG second chance in the paint, layup blocked			
02:36				1 BRIGHAM A block (2)
02:33				23 THOMPSON T defensive rebound (3)
02:18	31 STREETER A foul personal (1 - 4)			5 KAPINUS L foul drawn (2)
02:18	2 SMIKLE K substitution out			
02:18	20 LAFAYETTE E substitution in			
02:10				5 KAPINUS L turnover travel (1)
02:01	11 SIDIBE A turnover bad pass (2)			



Official Basketball Play by Play - 1st Period

### Penn St. at Rutgers

01/26/23 Jersey Mike's Arena, Piscataway  
2022-23 Women's Basketball

**Game Time:** 7:00 PM  
**Game Duration:** 2:26  
**Attendance:** 1,204

**Officials:** Mark Resch, Bryan Enterline, Erika Herriman

Game Time	RU	Score	Diff	PSU
01:45				5 KAPINUS L 2pt FG from turnover in the paint, layup missed
01:43	54 CORNWELL C defensive rebound (3)			
01:34	20 LAFAYETTE E 3pt FG , jump shot missed			
01:32				10 PINTO C defensive rebound (1)
01:32	jump ball situation			
01:32	31 STREETER A substitution out			
01:32	2 SMIKLE K substitution in			
01:21	11 SIDIBE A foul personal (1 - 5)			1 BRIGHAM A foul drawn (2)
01:21				1 BRIGHAM A free throw 1 - 2 missed
01:21				offensive dead ball rebound (1)
01:18				1 BRIGHAM A free throw 2 - 2 missed
01:17	54 CORNWELL C defensive rebound (4)			
01:01	54 CORNWELL C 2pt FG in the paint, layup made (2)	<b>12-18</b>	<b>-6</b>	
01:01	2 SMIKLE K assist (2)			
00:44		<b>12-20</b>	<b>-8</b>	1 BRIGHAM A 2pt FG in the paint, layup made (2)
00:44				10 PINTO C assist (2)
00:20	2 SMIKLE K turnover lost ball (1)			10 PINTO C steal (1)
00:01		<b>12-23</b>	<b>-11</b>	23 THOMPSON T 3pt FG from turnover, jump shot made (3)
00:01				20 MARISA M assist (2)
<b>END OF PERIOD</b>				
<b>RU 12-23 PSU</b>				



**Penn St. at Rutgers**

01/26/23 Jersey Mike's Arena, Piscataway  
2022-23 Women's Basketball

Game Time: 7:00 PM  
Game Duration: 2:26  
Attendance: 1,204

Officials: Mark Resch, Bryan Enterline, Erika Herriman

**Penn St. - 23**

NO.	Name	F/G	Min	FG	3P	FT	Rebounds			Fouls		TP	AS	TO	ST	Blocks		+/-
							M-A	M-A	M-A	OR	DR					TOT	PF	
24	Alexa Williamson	F	05:28	2-3	0-0	1-1	0	2	2	1	1	5	0	0	2	1	0	5
4	Shay Ciezki	G	07:06	1-2	0-1	0-0	0	1	1	0	0	2	0	0	0	0	0	8
5	Leilani Kapinus	G	08:22	2-3	0-0	0-0	0	1	1	0	2	4	2	1	0	0	0	8
20	Makenna Marisa	G	10:00	3-5	1-2	0-0	0	1	1	1	0	7	2	0	0	0	0	11
23	Taniyah Thompson	G	10:00	1-2	1-1	0-0	2	1	3	0	0	3	0	0	0	0	1	11
1	Ali Brigham		04:32	1-1	0-0	0-2	1	0	1	0	2	2	0	0	0	2	0	6
10	Chanaya Pinto		04:32	0-0	0-0	0-0	0	1	1	0	0	0	2	0	1	0	0	6
Team							0	0	0			0		1				
<b>Totals</b>				10-16	2-4	1-3	3	7	10	2	5	23	6	2	3	3	1	11

Shooting By Period		
1st FG%	10-16	62.5%
3PT%	2-4	50.0%
FT%	1-3	33.3%
GM FG%	10-16	62.5%
3PT%	2-4	50.0%
FT%	1-3	33.3%

Dead Ball Rebounds: 1, 0

Technical Fouls::NONE

**Rutgers - 12**

NO.	Name	F/G	Min	FG	3P	FT	Rebounds			Fouls		TP	AS	TO	ST	Blocks		+/-
							M-A	M-A	M-A	OR	DR					TOT	PF	
20	Erica Lafayette	F	06:47	1-3	0-1	0-0	1	0	1	1	0	2	0	0	0	0	0	-8
54	Chyna Cornwell	F	05:18	1-2	0-0	0-0	1	3	4	1	0	2	0	0	0	0	1	-3
22	Kassondra Brown	C	06:14	2-3	0-0	0-0	0	1	1	0	0	4	0	1	0	0	1	-6
2	Kaylene Smikle	G	09:14	1-3	0-0	0-1	1	0	1	1	2	2	2	1	0	1	1	-11
11	Awa Sidibe	G	10:00	0-2	0-1	0-0	0	0	0	1	0	0	1	2	0	0	0	-11
24	Kai Carter		06:50	1-2	0-0	0-0	0	0	0	0	0	2	1	0	0	0	0	-10
4	Antonia Bates		02:37	0-0	0-0	0-0	0	0	0	0	0	0	0	0	0	0	0	-3
31	Abby Streeter		03:00	0-0	0-0	0-0	0	0	0	1	0	0	0	0	0	0	0	-3
Team							0	0	0			0		0				
<b>Totals</b>				6-15	0-2	0-1	3	4	7	5	2	12	4	4	0	1	3	-11

Shooting By Period		
1st FG%	6-15	40.0%
3PT%	0-2	0.0%
FT%	0-1	0%
GM FG%	6-15	40.0%
3PT%	0-2	0.0%
FT%	0-1	0.0%

Dead Ball Rebounds: 0, 0

Technical Fouls::NONE

	PSU	RU
Biggest lead	11 (1 <sup>st</sup> 0:01)	2 (1 <sup>st</sup> 9:18)
Best Scoring Run	5(1 <sup>st</sup> 3:41)	2(1 <sup>st</sup> 9:18)
Lead Changes	3	
Times Tied	2	
Time with Lead	07:22	01:42

Points from	PSU	RU
Turnovers	5	0
Paint	12	10
Second Chance	0	0
Fast Breaks	7	4
Bench	2	2

	Period by Period Scoring					
	1st	2nd	3rd	4th	OT1	TOT
PSU	23	10	23	22	4	82
RU	12	20	29	17	8	86



**Penn St. at Rutgers**

01/26/23 Jersey Mike's Arena, Piscataway  
2022-23 Women's Basketball

**Game Time:** 7:00 PM  
**Game Duration:** 2:26  
**Attendance:** 1,204

**Officials:** Mark Resch, Bryan Enterline, Erika Herriman

**Period 2**

**Quarter Starters:**

<b>RU</b>	2 Smikle K	20 Lafayette E	24 Carter K	31 Streeter A	54 Cornwell C
<b>PSU</b>	1 Brigham A	5 Kapinus L	10 Pinto C	20 Marisa M	23 Thompson T

Game Time	RU	Score	Diff	PSU
10:00	11 SIDIBE A substitution out			
10:00	31 STREETER A substitution in			
09:29	54 CORNWELL C 2pt FG in the paint, turnaround jump shot missed			
09:27				10 PINTO C defensive rebound (2)
09:11				5 KAPINUS L 3pt FG , jump shot missed
09:08	2 SMIKLE K defensive rebound (2)			
08:41	24 CARTER K 2pt FG in the paint, layup made (4)	<b>14-23</b>	<b>-9</b>	
08:17	24 CARTER K steal (1)			5 KAPINUS L turnover bad pass (2)
08:12	2 SMIKLE K foul offensive (2 - 1)			10 PINTO C foul drawn (1)
08:12	2 SMIKLE K turnover offensive (2)			
08:12	2 SMIKLE K substitution out			
08:12	54 CORNWELL C substitution out			
08:12	11 SIDIBE A substitution in			
08:12	22 BROWN K substitution in			
08:12				1 BRIGHAM A substitution out
08:12				5 KAPINUS L substitution out
08:12				4 CIEZKI S substitution in
08:12				24 WILLIAMSON A substitution in
07:58				24 WILLIAMSON A turnover travel (1)
07:46	20 LAFAYETTE E 2pt FG from turnover in the paint, layup made (4)	<b>16-23</b>	<b>-7</b>	
07:46	31 STREETER A assist (1)			
07:23				20 MARISA M 3pt FG , jump shot missed
07:21	24 CARTER K defensive rebound (1)			
07:17	20 LAFAYETTE E 2pt FG fast break in the paint, layup made (6)	<b>18-23</b>	<b>-5</b>	
07:17	24 CARTER K assist (2)			
07:17	20 LAFAYETTE E foul drawn (1)			10 PINTO C foul shooting (1 - 1)
07:17				23 THOMPSON T substitution out
07:17				33 CASH J substitution in
07:17	20 LAFAYETTE E free throw fast break 1 - 1 missed			
07:16				defensive rebound (12)
07:02				20 MARISA M 3pt FG , jump shot missed
07:00	22 BROWN K defensive rebound (2)			
06:52	11 SIDIBE A 2pt FG in the paint, layup made (2)	<b>20-23</b>	<b>-3</b>	
06:52	24 CARTER K assist (3)			
06:20				4 CIEZKI S 2pt FG outside the paint, jump shot missed
06:17	20 LAFAYETTE E defensive rebound (2)			
06:16	22 BROWN K foul drawn (1)			33 CASH J foul personal (1 - 2)
06:16				10 PINTO C substitution out
06:16				5 KAPINUS L substitution in
06:16				24 WILLIAMSON A substitution out
06:16				23 THOMPSON T substitution in
06:12	24 CARTER K 2pt FG outside the paint, jump shot missed			

**Penn St. at Rutgers**01/26/23 Jersey Mike's Arena, Piscataway  
2022-23 Women's Basketball

Game Time: 7:00 PM

Game Duration: 2:26

Attendance: 1,204

Officials: Mark Resch, Bryan Enterline, Erika Herriman

Game Time	RU	Score	Diff	PSU
06:10				23 THOMPSON T defensive rebound (4)
06:10	jump ball situation			
05:51				4 CIEZKI S turnover out of bounds (1)
05:51				33 CASH J substitution out
05:51				1 BRIGHAM A substitution in
05:51	31 STREETER A substitution out			
05:51	4 BATES A substitution in			
05:41	20 LAFAYETTE E turnover travel (1)			
05:41				4 CIEZKI S substitution out
05:41				2 DIA A substitution in
05:17	22 BROWN K foul personal (1 - 2)			23 THOMPSON T foul drawn (1)
05:13				23 THOMPSON T 2pt FG from turnover outside the paint, turnaround jump shot missed
05:11				1 BRIGHAM A offensive rebound (2)
05:10		<b>20-25</b>	<b>-5</b>	1 BRIGHAM A 2pt FG from turnover second chance in the paint, layup made (4)
04:54	4 BATES A 2pt FG in the paint, layup made (2)	<b>22-25</b>	<b>-3</b>	
04:54	11 SIDIBE A assist (2)			
04:23				23 THOMPSON T 3pt FG , jump shot missed
04:20	4 BATES A defensive rebound (1)			
04:18	24 CARTER K foul drawn (1)			2 DIA A foul shooting (1 - 3)
04:18	Timeout media			
04:18				2 DIA A substitution out
04:18				4 CIEZKI S substitution in
04:18	24 CARTER K free throw fast break 1 - 2 made (5)	<b>23-25</b>	<b>-2</b>	
04:18	24 CARTER K free throw fast break 2 - 2 made (6)	<b>24-25</b>	<b>-1</b>	
03:50				23 THOMPSON T substitution out
03:50				24 WILLIAMSON A substitution in
03:44				24 WILLIAMSON A 2pt FG outside the paint, jump shot missed
03:42	11 SIDIBE A defensive rebound (1)			
03:40	11 SIDIBE A 2pt FG outside the paint, pull up jump shot missed			
03:37				5 KAPINUS L defensive rebound (2)
03:19	20 LAFAYETTE E foul personal (2 - 3)			4 CIEZKI S foul drawn (1)
03:19	20 LAFAYETTE E substitution out			
03:19	31 STREETER A substitution in			
03:19	22 BROWN K substitution out			
03:19	54 CORNWELL C substitution in			
03:02		<b>24-27</b>	<b>-3</b>	24 WILLIAMSON A 2pt FG in the paint, layup made (7)
03:02				20 MARISA M assist (3)
02:50	11 SIDIBE A turnover bad pass (3)			5 KAPINUS L steal (1)
02:46				20 MARISA M 3pt FG from turnover, jump shot blocked
02:46	11 SIDIBE A block (1)			
02:46				offensive rebound (16)
02:46	31 STREETER A substitution out			
02:46	22 BROWN K substitution in			
02:26				20 MARISA M 2pt FG from turnover second chance in the paint, driving layup missed
02:23	24 CARTER K defensive rebound (2)			
02:08	54 CORNWELL C 2pt FG in the paint, layup made (4)	<b>26-27</b>	<b>-1</b>	
02:08	22 BROWN K assist (1)			

**Penn St. at Rutgers**01/26/23 Jersey Mike's Arena, Piscataway  
2022-23 Women's Basketball

Game Time: 7:00 PM

Game Duration: 2:26

Attendance: 1,204

Officials: Mark Resch, Bryan Enterline, Erika Herriman

Game Time	RU	Score	Diff	PSU
01:58		<b>26-29</b>	<b>-3</b>	24 WILLIAMSON A 2pt FG in the paint, layup made (9)
01:58				5 KAPINUS L assist (3)
01:58	4 BATES A foul shooting (1 - 4)			24 WILLIAMSON A foul drawn (2)
01:58				5 KAPINUS L substitution out
01:58				23 THOMPSON T substitution in
01:58		<b>26-30</b>	<b>-4</b>	24 WILLIAMSON A free throw 1 - 1 made (10)
01:45	11 SIDIBE A 2pt FG in the paint, layup missed			
01:45	54 CORNWELL C offensive rebound (5)			
01:45	54 CORNWELL C 2pt FG second chance in the paint, layup made (6)	<b>28-30</b>	<b>-2</b>	
01:45	54 CORNWELL C foul drawn (1)			23 THOMPSON T foul shooting (1 - 4)
01:45				1 BRIGHAM A substitution out
01:45				5 KAPINUS L substitution in
01:45	54 CORNWELL C free throw 1 - 1 made (7)	<b>29-30</b>	<b>-1</b>	
01:29				24 WILLIAMSON A 2pt FG in the paint, layup missed
01:28	11 SIDIBE A defensive rebound (2)			
01:22	11 SIDIBE A 2pt FG outside the paint, pull up jump shot missed			
01:20	11 SIDIBE A offensive rebound (3)			
01:18	54 CORNWELL C foul drawn (2)			20 MARISA M foul personal (2 - 5)
01:18				20 MARISA M substitution out
01:18				33 CASH J substitution in
01:18	54 CORNWELL C free throw 1 - 2 made (8)	<b>30-30</b>	<b>0</b>	
01:17	54 CORNWELL C free throw 2 - 2 missed			
01:16				33 CASH J defensive rebound (1)
00:55				23 THOMPSON T 2pt FG in the paint, pull up jump shot missed
00:50	54 CORNWELL C defensive rebound (6)			
00:46	54 CORNWELL C 2pt FG outside the paint, jump shot made (10)	<b>32-30</b>	<b>2</b>	
00:46	24 CARTER K assist (4)			
00:21				4 CIEZKI S 2pt FG outside the paint, jump shot missed
00:21				5 KAPINUS L offensive rebound (3)
00:21	24 CARTER K foul personal (1 - 5)			5 KAPINUS L foul drawn (3)
00:21				5 KAPINUS L free throw 1 - 2 missed
00:21				offensive dead ball rebound (2)
00:21		<b>32-31</b>	<b>1</b>	5 KAPINUS L free throw 2 - 2 made (5)
00:21	22 BROWN K substitution out			
00:21	31 STREETER A substitution in			
00:08	4 BATES A 3pt FG , jump shot missed			
00:06				24 WILLIAMSON A defensive rebound (3)
00:00		<b>32-33</b>	<b>-1</b>	4 CIEZKI S 2pt FG in the paint, driving layup made (4)
<b>END OF PERIOD</b>				
<b>RU 32-33 PSU</b>				





**Penn St. at Rutgers**

01/26/23 Jersey Mike's Arena, Piscataway  
2022-23 Women's Basketball

Game Time: 7:00 PM  
Game Duration: 2:26  
Attendance: 1,204

Officials: Mark Resch, Bryan Enterline, Erika Herriman

**Penn St. - 10**

NO.	Name	F	Min	FG	3P	FT	Rebounds			Fouls		TP	AS	TO	ST	Blocks		+/-
				M-A	M-A	M-A	OR	DR	TOT	PF	FD					BS	BA	
24	Alexa Williamson	F	05:46	2-4	0-0	1-1	0	1	1	0	1	5	0	1	0	0	0	-6
4	Shay Ciezki	G	06:49	1-3	0-0	0-0	0	0	0	0	1	2	0	1	0	0	0	-8
5	Leilani Kapinus	G	07:51	0-1	0-1	1-2	1	1	2	0	1	1	1	1	1	0	0	-3
20	Makenna Marisa	G	08:42	0-4	0-3	0-0	0	0	0	1	0	0	1	0	0	0	1	-10
23	Taniyah Thompson	G	07:07	0-3	0-1	0-0	0	1	1	1	1	0	0	0	0	0	0	-10
10	Chanaya Pinto		03:44	0-0	0-0	0-0	0	1	1	1	1	0	0	0	0	0	0	-8
33	Johnasia Cash		02:44	0-0	0-0	0-0	0	1	1	1	0	0	0	0	0	0	0	-2
1	Ali Brigham		05:54	1-1	0-0	0-0	1	0	1	0	0	2	0	0	0	0	0	-3
2	Aicha Dia		01:23	0-0	0-0	0-0	0	0	0	1	0	0	0	0	0	0	0	0
Team							1	1	2			0		0				
<b>Totals</b>				4-16	0-5	2-3	3	6	9	5	5	10	2	3	1	0	1	-10

Shooting By Period		
2 <sup>nd</sup> FG%	4-16	25.0%
3PT%	0-5	0.0%
FT%	2-3	66.7%
GM FG%	4-16	25.0%
3PT%	0-5	0.0%
FT%	2-3	66.7%

Dead Ball Rebounds: 1, 0

Technical Fouls::NONE

**Rutgers - 20**

NO.	Name	F	Min	FG	3P	FT	Rebounds			Fouls		TP	AS	TO	ST	Blocks		+/-
				M-A	M-A	M-A	OR	DR	TOT	PF	FD					BS	BA	
20	Erica Lafayette	F	06:41	2-2	0-0	0-1	0	1	1	1	1	4	0	1	0	0	0	10
54	Chyna Cornwell	F	05:07	3-4	0-0	2-3	1	1	2	0	2	8	0	0	0	0	0	2
22	Kassondra Brown	C	07:18	0-0	0-0	0-0	0	1	1	1	1	0	1	0	0	0	0	12
2	Kaylene Smikle	G	01:48	0-0	0-0	0-0	0	1	1	1	0	0	0	1	0	0	0	2
11	Awa Sidibe	G	08:12	1-4	0-0	0-0	1	2	3	0	0	2	1	1	0	1	0	8
24	Kai Carter		10:00	1-2	0-0	2-2	0	2	2	1	1	4	3	0	1	0	0	10
31	Abby Streeter		05:03	0-0	0-0	0-0	0	0	0	0	0	0	1	0	0	0	0	4
4	Antonia Bates		05:51	1-2	0-1	0-0	0	1	1	1	0	2	0	0	0	0	0	2
Team							0	0	0			0		0				
<b>Totals</b>				8-14	0-1	4-6	2	9	11	5	5	20	6	3	1	1	0	10

Shooting By Period		
2 <sup>nd</sup> FG%	8-14	57.1%
3PT%	0-1	0.0%
FT%	4-6	66.7%
GM FG%	8-14	57.1%
3PT%	0-1	0.0%
FT%	4-6	66.7%

Dead Ball Rebounds: 0, 0

Technical Fouls::NONE

	PSU	RU
Biggest lead	11 (2 <sup>nd</sup> 9:29)	2 (2 <sup>nd</sup> 0:46)
Best Scoring Run	3(2 <sup>nd</sup> 1:58)	8(2 <sup>nd</sup> 6:52)
Lead Changes	2	
Times Tied	1	
Time with Lead	08:11	00:47

Points from	PSU	RU
Turnovers	2	2
Paint	8	14
Second Chance	3	4
Fast Breaks	0	4
Bench	2	6

Period by Period Scoring						
	1st	2nd	3rd	4th	OT1	TOT
PSU	23	10	23	22	4	82
RU	12	20	29	17	8	86



**Penn St. at Rutgers**

01/26/23 Jersey Mike's Arena, Piscataway  
2022-23 Women's Basketball

Game Time: 7:00 PM  
Game Duration: 2:26  
Attendance: 1,204

Officials: Mark Resch, Bryan Enterline, Erika Herriman

**Penn St. - 33**

NO.	Name	F	Min	FG			Rebounds			Fouls		TP	AS	TO	ST	Blocks		+/-
				M-A	M-A	M-A	OR	DR	TOT	PF	FD					BS	BA	
24	Alexa Williamson	F	11:14	4-7	0-0	2-2	0	3	3	1	2	10	0	1	2	1	0	-1
4	Shay Ciezki	G	13:55	2-5	0-1	0-0	0	1	1	0	1	4	0	1	0	0	0	0
5	Leilani Kapinus	G	16:13	2-4	0-1	1-2	1	2	3	0	3	5	3	2	1	0	0	5
20	Makenna Marisa	G	18:42	3-9	1-5	0-0	0	1	1	2	0	7	3	0	0	0	1	1
23	Taniyah Thompson	G	17:07	1-5	1-2	0-0	2	2	4	1	1	3	0	0	0	0	1	1
1	Ali Brigham		10:26	2-2	0-0	0-2	2	0	2	0	2	4	0	0	0	2	0	3
10	Chanaya Pinto		08:16	0-0	0-0	0-0	0	2	2	1	1	0	2	0	1	0	0	-2
33	Johnasia Cash		02:44	0-0	0-0	0-0	0	1	1	1	0	0	0	0	0	0	0	-2
2	Aicha Dia		01:23	0-0	0-0	0-0	0	0	0	1	0	0	0	0	0	0	0	0
Team							1	1	2			0		1				
<b>Totals</b>				14-32	2-9	3-6	6	13	19	7	10	33	8	5	4	3	2	1

Shooting By Period		
1 <sup>st</sup> FG%	10-16	62.5%
3PT%	2-4	50.0%
FT%	1-3	33.3%
2 <sup>nd</sup> FG%	4-16	25.0%
3PT%	0-5	0.0%
FT%	2-3	66.7%
GM FG%	14-32	43.8%
3PT%	2-9	22.2%
FT%	3-6	50.0%

Dead Ball Rebounds: 2, 0

Technical Fouls::NONE

**Rutgers - 32**

NO.	Name	F	Min	FG			Rebounds			Fouls		TP	AS	TO	ST	Blocks		+/-
				M-A	M-A	M-A	OR	DR	TOT	PF	FD					BS	BA	
20	Erica Lafayette	F	13:28	3-5	0-1	0-1	1	1	2	2	1	6	0	1	0	0	0	2
54	Chyna Cornwell	F	10:25	4-6	0-0	2-3	2	4	6	1	2	10	0	0	0	0	1	-1
22	Kassondra Brown	C	13:32	2-3	0-0	0-0	0	2	2	1	1	4	1	1	0	0	1	6
2	Kaylene Smikle	G	11:02	1-3	0-0	0-1	1	1	2	2	2	2	2	2	0	1	1	-9
11	Awa Sidibe	G	18:12	1-6	0-1	0-0	1	2	3	1	0	2	2	3	0	1	0	-3
24	Kai Carter		16:50	2-4	0-0	2-2	0	2	2	1	1	6	4	0	1	0	0	0
4	Antonia Bates		08:28	1-2	0-1	0-0	0	1	1	1	0	2	0	0	0	0	0	-1
31	Abby Streeter		08:03	0-0	0-0	0-0	0	0	0	1	0	0	1	0	0	0	0	1
Team							0	0	0			0		0				
<b>Totals</b>				14-29	0-3	4-7	5	13	18	10	7	32	10	7	1	2	3	-1

Shooting By Period		
1 <sup>st</sup> FG%	6-15	40.0%
3PT%	0-2	0.0%
FT%	0-1	0%
2 <sup>nd</sup> FG%	8-14	57.1%
3PT%	0-1	0.0%
FT%	4-6	66.7%
GM FG%	14-29	48.3%
3PT%	0-3	0.0%
FT%	4-7	57.1%

Dead Ball Rebounds: 0, 0

Technical Fouls::NONE

	PSU	RU
Biggest lead	11 (1 <sup>st</sup> 0:01)	2 (1 <sup>st</sup> 9:18)
Best Scoring Run	5 (1 <sup>st</sup> 3:41)	8 (2 <sup>nd</sup> 6:52)
Lead Changes	5	
Times Tied	3	
Time with Lead	16:04	02:29

Points from	PSU	RU
Turnovers	7	2
Paint	20	24
Second Chance	3	4
Fast Breaks	7	8
Bench	4	8

	Period by Period Scoring					
	1st	2nd	3rd	4th	OT1	TOT
PSU	23	10	23	22	4	82
RU	12	20	29	17	8	86



**Penn St. at Rutgers**

01/26/23 Jersey Mike's Arena, Piscataway  
2022-23 Women's Basketball

**Game Time:** 7:00 PM  
**Game Duration:** 2:26  
**Attendance:** 1,204

**Officials:** Mark Resch, Bryan Enterline, Erika Herriman

**Period 3**

**Quarter Starters:**

<b>RU</b>	2 Smikle K	11 Sidibe A	20 Lafayette E	22 Brown K	54 Cornwell C
<b>PSU</b>	4 Ciezki S	5 Kapinus L	20 Marisa M	23 Thompson T	24 Williamson A

Game Time	RU	Score	Diff	PSU
10:00	4 BATES A substitution out			
10:00	24 CARTER K substitution out			
10:00	31 STREETER A substitution out			
10:00	2 SMIKLE K substitution in			
10:00	20 LAFAYETTE E substitution in			
10:00	22 BROWN K substitution in			
10:00				33 CASH J substitution out
10:00				20 MARISA M substitution in
09:48	22 BROWN K foul drawn (2)			4 CIEZKI S foul shooting (1 - 1)
09:48	22 BROWN K free throw 1 - 2 made (5)	<b>33-33</b>	<b>0</b>	
09:48	22 BROWN K free throw 2 - 2 missed			
09:45				24 WILLIAMSON A defensive rebound (4)
09:36	54 CORNWELL C foul shooting (2 - 1)			20 MARISA M foul drawn (1)
09:36		<b>33-34</b>	<b>-1</b>	20 MARISA M free throw 1 - 2 made (8)
09:36		<b>33-35</b>	<b>-2</b>	20 MARISA M free throw 2 - 2 made (9)
09:18	54 CORNWELL C 2pt FG in the paint, layup made (12)	<b>35-35</b>	<b>0</b>	
09:18	20 LAFAYETTE E assist (1)			
09:18	54 CORNWELL C foul drawn (3)			24 WILLIAMSON A foul shooting (2 - 2)
09:13	54 CORNWELL C free throw 1 - 1 missed			
09:12				24 WILLIAMSON A defensive rebound (5)
08:53				24 WILLIAMSON A 2pt FG in the paint, turnaround jump shot missed
08:52				23 THOMPSON T offensive rebound (5)
08:52		<b>35-37</b>	<b>-2</b>	23 THOMPSON T 2pt FG second chance in the paint, layup made (5)
08:52	22 BROWN K foul shooting (2 - 2)			23 THOMPSON T foul drawn (2)
08:52		<b>35-38</b>	<b>-3</b>	23 THOMPSON T free throw 1 - 1 made (6)
08:43	20 LAFAYETTE E 3pt FG , jump shot missed			
08:40				23 THOMPSON T defensive rebound (6)
08:28		<b>35-40</b>	<b>-5</b>	23 THOMPSON T 2pt FG in the paint, driving layup made (8)
08:08	54 CORNWELL C 2pt FG in the paint, layup missed			
08:06	2 SMIKLE K offensive rebound (3)			
08:05	2 SMIKLE K 2pt FG second chance in the paint, layup made (4)	<b>37-40</b>	<b>-3</b>	
07:51	22 BROWN K foul personal (3 - 3)			23 THOMPSON T foul drawn (3)
07:51	22 BROWN K substitution out			
07:51	24 CARTER K substitution in			
07:51				24 WILLIAMSON A substitution out
07:51				33 CASH J substitution in
07:48				20 MARISA M 2pt FG outside the paint, jump shot missed
07:46	24 CARTER K defensive rebound (3)			
07:43	20 LAFAYETTE E 2pt FG fast break in the paint, driving layup made (8)	<b>39-40</b>	<b>-1</b>	
07:43	24 CARTER K assist (5)			
07:24				33 CASH J 2pt FG in the paint, hook shot missed



**Penn St. at Rutgers**

01/26/23 Jersey Mike's Arena, Piscataway  
2022-23 Women's Basketball

**Game Time:** 7:00 PM  
**Game Duration:** 2:26  
**Attendance:** 1,204

**Officials:** Mark Resch, Bryan Enterline, Erika Herriman

Game Time	RU	Score	Diff	PSU
07:21	11 SIDIBE A defensive rebound (4)			
07:17	11 SIDIBE A turnover bad pass (4)			33 CASH J steal (1)
07:13		<b>39-42</b>	<b>-3</b>	5 KAPINUS L 2pt FG fast break from turnover in the paint, driving layup made (7)
07:13				23 THOMPSON T assist (1)
07:06	24 CARTER K turnover lost ball (1)			5 KAPINUS L steal (2)
07:01				5 KAPINUS L 2pt FG from turnover in the paint, layup missed
07:00	24 CARTER K defensive rebound (4)			
06:50	24 CARTER K 2pt FG in the paint, layup missed			
06:48				20 MARISA M defensive rebound (2)
06:45		<b>39-44</b>	<b>-5</b>	20 MARISA M 2pt FG fast break in the paint, layup made (11)
06:41	Timeout 30 Sec			
06:41	Timeout media			
06:41	54 CORNWELL C substitution out			
06:41	22 BROWN K substitution in			
06:28	22 BROWN K 2pt FG in the paint, layup made (7)	<b>41-44</b>	<b>-3</b>	
06:21		<b>41-46</b>	<b>-5</b>	33 CASH J 2pt FG fast break in the paint, layup made (2)
06:21				4 CIEZKI S assist (1)
06:06	2 SMIKLE K 2pt FG outside the paint, pull up jump shot missed			
06:04	24 CARTER K offensive rebound (5)			
06:04	jump ball situation			
06:04	24 CARTER K turnover lost ball (2)			23 THOMPSON T steal (1)
06:04	20 LAFAYETTE E substitution out			
06:04	31 STREETER A substitution in			
05:52				20 MARISA M 2pt FG from turnover in the paint, layup missed
05:50	22 BROWN K defensive rebound (3)			
05:46	2 SMIKLE K 2pt FG in the paint, driving layup made (6)	<b>43-46</b>	<b>-3</b>	
05:46	2 SMIKLE K foul drawn (3)			4 CIEZKI S foul shooting (2 - 3)
05:46				4 CIEZKI S substitution out
05:46				10 PINTO C substitution in
05:46	2 SMIKLE K free throw 1 - 1 made (7)	<b>44-46</b>	<b>-2</b>	
05:31				23 THOMPSON T 3pt FG , jump shot missed
05:29	22 BROWN K defensive rebound (4)			
05:29	22 BROWN K foul drawn (3)			10 PINTO C foul personal (2 - 4)
05:17	22 BROWN K 3pt FG , jump shot missed			
05:13	2 SMIKLE K offensive rebound (4)			
04:58	11 SIDIBE A foul drawn (1)			5 KAPINUS L foul shooting (1 - 5)
04:58	Timeout media			
04:58	11 SIDIBE A free throw 1 - 2 made (3)	<b>45-46</b>	<b>-1</b>	
04:55	11 SIDIBE A free throw 2 - 2 made (4)	<b>46-46</b>	<b>0</b>	
04:38	31 STREETER A foul personal (2 - 4)			20 MARISA M foul drawn (2)
04:18				5 KAPINUS L 2pt FG in the paint, layup missed
04:18				33 CASH J offensive rebound (2)
04:18				turnover shot clock (6)
04:06	2 SMIKLE K foul drawn (4)			33 CASH J foul shooting (2 - 6)
04:06				10 PINTO C substitution out
04:06				33 CASH J substitution out
04:06				1 BRIGHAM A substitution in
04:06				4 CIEZKI S substitution in



**Penn St. at Rutgers**

01/26/23 Jersey Mike's Arena, Piscataway  
2022-23 Women's Basketball

**Game Time:** 7:00 PM  
**Game Duration:** 2:26  
**Attendance:** 1,204

**Officials:** Mark Resch, Bryan Enterline, Erika Herriman

Game Time	RU	Score	Diff	PSU
04:06	2 SMIKLE K free throw 1 - 2 made (8)	<b>47-46</b>	<b>1</b>	
04:06	2 SMIKLE K free throw 2 - 2 made (9)	<b>48-46</b>	<b>2</b>	
03:49		<b>48-49</b>	<b>-1</b>	4 CIEZKI S 3pt FG , jump shot made (7)
03:49				20 MARISA M assist (4)
03:32	31 STREETER A 3pt FG , jump shot missed			
03:30	22 BROWN K offensive rebound (5)			
03:28	22 BROWN K 2pt FG second chance in the paint, layup made (9)	<b>50-49</b>	<b>1</b>	
03:13				20 MARISA M 2pt FG in the paint, driving layup missed
03:11	22 BROWN K defensive rebound (6)			
03:06	31 STREETER A 2pt FG in the paint, layup made (2)	<b>52-49</b>	<b>3</b>	
02:56		<b>52-52</b>	<b>0</b>	20 MARISA M 3pt FG , jump shot made (14)
02:42	31 STREETER A 3pt FG , jump shot missed			
02:40	22 BROWN K offensive rebound (7)			
02:37	2 SMIKLE K 3pt FG second chance, jump shot missed			
02:34	31 STREETER A offensive rebound (1)			
02:34	31 STREETER A 2pt FG second chance in the paint, layup made (4)	<b>54-52</b>	<b>2</b>	
02:34				Timeout 30 Sec
02:34	22 BROWN K substitution out			
02:34	54 CORNWELL C substitution in			
02:34				1 BRIGHAM A substitution out
02:34				23 THOMPSON T substitution out
02:34				10 PINTO C substitution in
02:34				24 WILLIAMSON A substitution in
02:20				4 CIEZKI S turnover bad pass (2)
02:09	11 SIDIBE A foul drawn (2)			4 CIEZKI S foul shooting (3 - 7)
02:09				4 CIEZKI S substitution out
02:09				23 THOMPSON T substitution in
02:09	11 SIDIBE A free throw 1 - 2 missed			
02:09	offensive dead ball rebound (1)			
02:09	11 SIDIBE A free throw 2 - 2 made (5)	<b>55-52</b>	<b>3</b>	
01:46		<b>55-54</b>	<b>1</b>	23 THOMPSON T 2pt FG in the paint, layup made (10)
01:46				10 PINTO C assist (3)
01:29	2 SMIKLE K foul drawn (5)			23 THOMPSON T foul shooting (2 - 8)
01:29	2 SMIKLE K free throw 1 - 2 made (10)	<b>56-54</b>	<b>2</b>	
01:29	2 SMIKLE K free throw 2 - 2 made (11)	<b>57-54</b>	<b>3</b>	
01:10		<b>57-56</b>	<b>1</b>	10 PINTO C 2pt FG in the paint, layup made (2)
00:58	11 SIDIBE A foul drawn (3)			5 KAPINUS L foul personal (2 - 9)
00:58	11 SIDIBE A free throw 1 - 2 missed			
00:58	offensive dead ball rebound (2)			
00:58	11 SIDIBE A free throw 2 - 2 made (6)	<b>58-56</b>	<b>2</b>	
00:45				10 PINTO C 2pt FG in the paint, driving layup missed
00:42	31 STREETER A defensive rebound (2)			
00:35	24 CARTER K foul drawn (2)			20 MARISA M foul shooting (3 - 10)
00:35	31 STREETER A substitution out			
00:35	4 BATES A substitution in			
00:35				10 PINTO C substitution out
00:35				4 CIEZKI S substitution in
00:35	24 CARTER K free throw 1 - 2 made (7)	<b>59-56</b>	<b>3</b>	



Official Basketball Play by Play - 3rd Period

### Penn St. at Rutgers

01/26/23 Jersey Mike's Arena, Piscataway  
2022-23 Women's Basketball

**Game Time:** 7:00 PM  
**Game Duration:** 2:26  
**Attendance:** 1,204

**Officials:** Mark Resch, Bryan Enterline, Erika Herriman

Game Time	RU	Score	Diff	PSU
00:34	24 CARTER K free throw 2 - 2 missed			
00:33				5 KAPINUS L defensive rebound (4)
00:19				5 KAPINUS L 2pt FG in the paint, layup missed
00:18	4 BATES A defensive rebound (2)			
00:18	24 CARTER K foul drawn (3)			20 MARISA M foul personal (4 - 11)
00:18				20 MARISA M substitution out
00:18				10 PINTO C substitution in
00:18	24 CARTER K free throw fast break 1 - 2 made (8)	<b>60-56</b>	<b>4</b>	
00:18	24 CARTER K free throw fast break 2 - 2 made (9)	<b>61-56</b>	<b>5</b>	
00:01				4 CIEZKI S 2pt FG in the paint, layup missed
00:00				24 WILLIAMSON A offensive rebound (6)
00:01				24 WILLIAMSON A 2pt FG second chance in the paint, layup missed
00:00	4 BATES A defensive rebound (3)			
<b>END OF PERIOD</b>				
<b>RU 61-56 PSU</b>				



Penn St. at Rutgers

01/26/23 Jersey Mike's Arena, Piscataway  
2022-23 Women's Basketball

Game Time: 7:00 PM  
Game Duration: 2:26  
Attendance: 1,204

Officials: Mark Resch, Bryan Enterline, Erika Herriman

Penn St. - 23

NO.	Name	Min	FG			Rebounds			Fouls		TP	AS	TO	ST	Blocks		+/-
			M-A	3P	FT	OR	DR	TOT	PF	FD					BS	BA	
24	Alexa Williamson	F 04:43	0-2	0-0	0-0	1	2	3	1	0	0	0	0	0	0	0	-1
4	Shay Ciezki	G 06:46	1-2	1-1	0-0	0	0	0	3	0	3	1	1	0	0	0	-3
5	Leilani Kapinus	G 10:00	1-4	0-0	0-0	0	1	1	2	0	2	0	0	1	0	0	-6
20	Makenna Marisa	G 09:42	2-5	1-1	2-2	0	1	1	2	2	7	1	0	0	0	0	-4
23	Taniyah Thompson	G 09:35	3-4	0-1	1-1	1	1	2	1	2	7	1	0	1	0	0	-6
33	Johnasia Cash	03:45	1-2	0-0	0-0	1	0	1	1	0	2	0	0	1	0	0	-3
10	Chanaya Pinto	03:57	1-2	0-0	0-0	0	0	0	1	0	2	1	0	0	0	0	-5
1	Ali Brigham	01:32	0-0	0-0	0-0	0	0	0	0	0	0	0	0	0	0	0	-2
Team						0	0	0			0		1				
<b>Totals</b>			9-21	2-3	3-3	3	5	8	11	4	23	4	2	3	0	0	-6

Shooting By Period		
3rd FG%	9-21	42.9%
3PT%	2-3	66.7%
FT%	3-3	100%
GM FG%	9-21	42.9%
3PT%	2-3	66.7%
FT%	3-3	100.0%

Dead Ball Rebounds: 0, 0

Technical Fouls::NONE

Rutgers - 29

NO.	Name	Min	FG			Rebounds			Fouls		TP	AS	TO	ST	Blocks		+/-
			M-A	3P	FT	OR	DR	TOT	PF	FD					BS	BA	
20	Erica Lafayette	F 03:56	1-2	0-1	0-0	0	0	0	0	0	2	1	0	0	0	0	-4
54	Chyna Cornwell	F 05:53	1-2	0-0	0-1	0	0	0	1	1	2	0	0	0	0	0	-1
22	Kassondra Brown	C 06:16	2-3	0-1	1-2	2	3	5	2	2	5	0	0	0	0	0	5
2	Kaylene Smikle	G 10:00	2-4	0-1	5-5	2	0	2	0	3	9	0	0	0	0	0	6
11	Awa Sidibe	G 10:00	0-0	0-0	4-6	0	1	1	0	3	4	0	1	0	0	0	6
24	Kai Carter	07:51	0-1	0-0	3-4	1	2	3	0	2	3	1	2	0	0	0	8
31	Abby Streeter	05:29	2-4	0-2	0-0	1	1	2	1	0	4	0	0	0	0	0	7
4	Antonia Bates	00:35	0-0	0-0	0-0	0	2	2	0	0	0	0	0	0	0	0	3
Team						0	0	0			0		0				
<b>Totals</b>			8-16	0-5	13-18	6	9	15	4	11	29	2	3	0	0	0	6

Shooting By Period		
3rd FG%	8-16	50.0%
3PT%	0-5	0.0%
FT%	13-18	72.2%
GM FG%	8-16	50.0%
3PT%	0-5	0.0%
FT%	13-18	72.2%

Dead Ball Rebounds: 2, 0

Technical Fouls::NONE

	PSU	RU
Biggest lead	5 (3 <sup>rd</sup> 8:28)	5 (3 <sup>rd</sup> 0:18)
Best Scoring Run	5(3 <sup>rd</sup> 8:28)	7(3 <sup>rd</sup> 4:06)
Lead Changes	3	
Times Tied	4	
Time with Lead	04:36	03:23

Points from	PSU	RU
Turnovers	2	3
Paint	14	16
Second Chance	3	8
Fast Breaks	6	4
Bench	4	7

	Period by Period Scoring					
	1st	2nd	3rd	4th	OT1	TOT
PSU	23	10	23	22	4	82
RU	12	20	29	17	8	86



**Penn St. at Rutgers**

01/26/23 Jersey Mike's Arena, Piscataway  
2022-23 Women's Basketball

**Game Time:** 7:00 PM  
**Game Duration:** 2:26  
**Attendance:** 1,204

**Officials:** Mark Resch, Bryan Enterline, Erika Herriman

**Period 4**

**Quarter Starters:**

<b>RU</b>	2 Smikle K	4 Bates A	11 Sidibe A	24 Carter K	54 Cornwell C
<b>PSU</b>	4 Ciezki S	5 Kapinus L	10 Pinto C	23 Thompson T	24 Williamson A

Game Time	RU	Score	Diff	PSU
09:34	11 SIDIBE A 2pt FG in the paint, jump shot missed			
09:32	54 CORNWELL C offensive rebound (7)			
09:30	54 CORNWELL C 2pt FG second chance in the paint, layup blocked			
09:30				24 WILLIAMSON A block (2)
09:26				10 PINTO C defensive rebound (3)
09:10				5 KAPINUS L 2pt FG outside the paint, jump shot blocked
09:10	11 SIDIBE A block (2)			
09:09				offensive rebound (29)
08:59		<b>61-58</b>	<b>3</b>	4 CIEZKI S 2pt FG second chance in the paint, layup made (9)
08:42	4 BATES A 2pt FG outside the paint, jump shot missed			
08:38				23 THOMPSON T defensive rebound (7)
08:33				10 PINTO C 2pt FG in the paint, layup missed
08:30	11 SIDIBE A defensive rebound (5)			
08:27	11 SIDIBE A foul drawn (4)			5 KAPINUS L foul shooting (3 - 1)
08:27	4 BATES A substitution out			
08:27	31 STREETER A substitution in			
08:27				10 PINTO C substitution out
08:27				33 CASH J substitution in
08:27	11 SIDIBE A free throw fast break 1 - 2 missed			
08:27	offensive dead ball rebound (3)			
08:27	11 SIDIBE A free throw fast break 2 - 2 made (7)	<b>62-58</b>	<b>4</b>	
08:21				33 CASH J 2pt FG in the paint, layup missed
08:17				33 CASH J offensive rebound (3)
08:16		<b>62-60</b>	<b>2</b>	33 CASH J 2pt FG second chance in the paint, layup made (4)
07:53	31 STREETER A 3pt FG , jump shot made (7)	<b>65-60</b>	<b>5</b>	
07:53	24 CARTER K assist (6)			
07:26				5 KAPINUS L 3pt FG , jump shot missed
07:23				33 CASH J offensive rebound (4)
07:22				33 CASH J 2pt FG second chance in the paint, layup blocked
07:22	54 CORNWELL C block (1)			
07:19				5 KAPINUS L offensive rebound (5)
07:10	54 CORNWELL C foul personal (3 - 1)			33 CASH J foul drawn (1)
07:10	11 SIDIBE A substitution out			
07:10	54 CORNWELL C substitution out			
07:10	20 LAFAYETTE E substitution in			
07:10	22 BROWN K substitution in			
07:07				4 CIEZKI S 3pt FG second chance, jump shot missed
07:03	22 BROWN K defensive rebound (8)			
06:36	2 SMIKLE K 3pt FG , jump shot made (14)	<b>68-60</b>	<b>8</b>	
06:14	31 STREETER A foul shooting (3 - 2)			5 KAPINUS L foul drawn (4)
06:14	24 CARTER K substitution out			
06:14	11 SIDIBE A substitution in			



**Penn St. at Rutgers**01/26/23 Jersey Mike's Arena, Piscataway  
2022-23 Women's Basketball**Game Time:** 7:00 PM**Game Duration:** 2:26**Attendance:** 1,204**Officials:** Mark Resch, Bryan Enterline, Erika Herriman

Game Time	RU	Score	Diff	PSU
06:14				33 CASH J substitution out
06:14				20 MARISA M substitution in
06:14				5 KAPINUS L free throw 1 - 2 missed
06:14				offensive dead ball rebound (3)
06:14				5 KAPINUS L free throw 2 - 2 missed
06:12	22 BROWN K defensive rebound (9)			
06:04	31 STREETER A 3pt FG , jump shot missed			
06:01				20 MARISA M defensive rebound (3)
05:50	22 BROWN K foul shooting (4 - 3)			5 KAPINUS L foul drawn (5)
05:50	22 BROWN K substitution out			
05:50	31 STREETER A substitution out			
05:50	24 CARTER K substitution in			
05:50	54 CORNWELL C substitution in			
05:50				5 KAPINUS L free throw 1 - 2 missed
05:50				offensive dead ball rebound (4)
05:50		<b>68-61</b>	<b>7</b>	5 KAPINUS L free throw 2 - 2 made (8)
05:28	2 SMIKLE K 3pt FG , jump shot missed			
05:26	24 CARTER K offensive rebound (6)			
05:09	20 LAFAYETTE E 2pt FG second chance outside the paint, jump shot missed			
05:07				4 CIEZKI S defensive rebound (2)
05:03	11 SIDIBE A foul personal (2 - 4)			24 WILLIAMSON A foul drawn (3)
04:53		<b>68-64</b>	<b>4</b>	20 MARISA M 3pt FG , jump shot made (17)
04:53				24 WILLIAMSON A assist (1)
04:43	24 CARTER K 2pt FG in the paint, driving layup made (11)	<b>70-64</b>	<b>6</b>	
04:42				Timeout media
04:29		<b>70-66</b>	<b>4</b>	5 KAPINUS L 2pt FG in the paint, layup made (10)
04:29				23 THOMPSON T assist (2)
04:29	20 LAFAYETTE E foul shooting (3 - 5)			5 KAPINUS L foul drawn (6)
04:28				5 KAPINUS L free throw 1 - 1 missed
04:27	54 CORNWELL C defensive rebound (8)			
04:18	24 CARTER K turnover bad pass (3)			5 KAPINUS L steal (3)
04:11				20 MARISA M 3pt FG from turnover, jump shot missed
04:08	54 CORNWELL C defensive rebound (9)			
04:03	11 SIDIBE A foul drawn (5)			5 KAPINUS L foul shooting (4 - 2)
04:03	11 SIDIBE A free throw fast break 1 - 2 made (8)	<b>71-66</b>	<b>5</b>	
04:03	11 SIDIBE A free throw fast break 2 - 2 made (9)	<b>72-66</b>	<b>6</b>	
03:44		<b>72-68</b>	<b>4</b>	20 MARISA M 2pt FG in the paint, driving layup made (19)
03:29	54 CORNWELL C 2pt FG in the paint, layup made (14)	<b>74-68</b>	<b>6</b>	
03:29	11 SIDIBE A assist (3)			
03:17		<b>74-70</b>	<b>4</b>	24 WILLIAMSON A 2pt FG in the paint, layup made (12)
03:17				5 KAPINUS L assist (4)
03:04	Timeout 30 Sec			
02:49	2 SMIKLE K 2pt FG in the paint, layup missed			
02:47	54 CORNWELL C offensive rebound (10)			
02:46	54 CORNWELL C 2pt FG second chance in the paint, layup made (16)	<b>76-70</b>	<b>6</b>	
02:22				4 CIEZKI S 3pt FG , jump shot missed
02:22				24 WILLIAMSON A offensive rebound (7)
02:22	54 CORNWELL C foul personal (4 - 6)			24 WILLIAMSON A foul drawn (4)



**Penn St. at Rutgers**

01/26/23 Jersey Mike's Arena, Piscataway  
2022-23 Women's Basketball

**Game Time:** 7:00 PM  
**Game Duration:** 2:26  
**Attendance:** 1,204

**Officials:** Mark Resch, Bryan Enterline, Erika Herriman

Game Time	RU	Score	Diff	PSU
02:22				20 MARISA M substitution out
02:22				10 PINTO C substitution in
02:22				24 WILLIAMSON A free throw 1 - 2 missed
02:22				offensive dead ball rebound (5)
02:22		<b>76-71</b>	<b>5</b>	24 WILLIAMSON A free throw 2 - 2 made (13)
02:16	11 SIDIBE A foul offensive (3 - 7)			24 WILLIAMSON A foul drawn (5)
02:16	11 SIDIBE A turnover offensive (5)			
02:16				10 PINTO C substitution out
02:16				20 MARISA M substitution in
01:54				23 THOMPSON T 2pt FG from turnover in the paint, layup missed
01:51	11 SIDIBE A defensive rebound (6)			
01:31	2 SMIKLE K 3pt FG , jump shot missed			
01:27	24 CARTER K offensive rebound (7)			
01:24	11 SIDIBE A 3pt FG second chance, jump shot missed			
01:22	offensive rebound (44)			
01:22				24 WILLIAMSON A substitution out
01:22				33 CASH J substitution in
01:05	11 SIDIBE A 3pt FG second chance, jump shot missed			
01:02				33 CASH J defensive rebound (5)
00:57		<b>76-74</b>	<b>2</b>	4 CIEZKI S 3pt FG fast break, jump shot made (12)
00:46	20 LAFAYETTE E turnover travel (2)			
00:46				Timeout 30 Sec
00:46	20 LAFAYETTE E substitution out			
00:46	4 BATES A substitution in			
00:40	54 CORNWELL C foul shooting (5 - 8)			20 MARISA M foul drawn (3)
00:40	54 CORNWELL C substitution out			
00:40	22 BROWN K substitution in			
00:40				4 CIEZKI S substitution out
00:40				10 PINTO C substitution in
00:40		<b>76-75</b>	<b>1</b>	20 MARISA M free throw fast break 1 - 2 made (20)
00:40		<b>76-76</b>	<b>0</b>	20 MARISA M free throw fast break 2 - 2 made (21)
00:40	Timeout 30 Sec			
00:40	4 BATES A substitution out			
00:40	20 LAFAYETTE E substitution in			
00:40				20 MARISA M substitution out
00:40				24 WILLIAMSON A substitution in
00:27	24 CARTER K 2pt FG in the paint, layup missed			
00:24	22 BROWN K offensive rebound (10)			
00:23	20 LAFAYETTE E 2pt FG second chance outside the paint, jump shot made (10)	<b>78-76</b>	<b>2</b>	
00:23	22 BROWN K assist (2)			
00:23				Timeout 60 Sec
00:23	20 LAFAYETTE E substitution out			
00:23	4 BATES A substitution in			
00:23				10 PINTO C substitution out
00:23				24 WILLIAMSON A substitution out
00:23				4 CIEZKI S substitution in
00:23				20 MARISA M substitution in
00:20		<b>78-78</b>	<b>0</b>	33 CASH J 2pt FG fast break in the paint, driving layup made (6)



Official Basketball Play by Play - 4th Period

**Penn St. at Rutgers**

01/26/23 Jersey Mike's Arena, Piscataway  
2022-23 Women's Basketball

**Game Time:** 7:00 PM  
**Game Duration:** 2:26  
**Attendance:** 1,204

**Officials:** Mark Resch, Bryan Enterline, Erika Herriman

Game Time	RU	Score	Diff	PSU
00:20				20 MARISA M assist (5)
00:20	Timeout 60 Sec			
00:20	4 BATES A substitution out			
00:20	20 LAFAYETTE E substitution in			
00:20				4 CIEZKI S substitution out
00:20				20 MARISA M substitution out
00:20				10 PINTO C substitution in
00:20				24 WILLIAMSON A substitution in
00:04	24 CARTER K foul drawn (4)			10 PINTO C foul personal (3 - 3)
00:04	20 LAFAYETTE E substitution out			
00:04	4 BATES A substitution in			
00:00	2 SMIKLE K 3pt FG , jump shot missed			
00:00				defensive rebound (38)
<b>END OF PERIOD</b>				
<b>RU 78-78 PSU</b>				



**Penn St. at Rutgers**

01/26/23 Jersey Mike's Arena, Piscataway  
2022-23 Women's Basketball

Game Time: 7:00 PM  
Game Duration: 2:26  
Attendance: 1,204

Officials: Mark Resch, Bryan Enterline, Erika Herriman

**Penn St. - 22**

NO.	Name	F	Min	FG			Rebounds			Fouls		TP	AS	TO	ST	Blocks		+/-
				M-A	3P	FT	OR	DR	TOT	PF	FD					BS	BA	
24	Alexa Williamson	F	09:14	1-1	0-0	1-2	1	0	1	0	3	3	1	0	0	1	0	-2
4	Shay Ciezki	G	09:24	2-4	1-3	0-0	0	1	1	0	0	5	0	0	0	0	0	5
5	Leilani Kapinus	G	10:00	1-3	0-1	1-5	1	0	1	2	3	3	1	0	1	0	1	5
20	Makenna Marisa	G	05:32	2-3	1-2	2-2	0	1	1	0	1	7	1	0	0	0	0	9
23	Taniyah Thompson	G	10:00	0-1	0-0	0-0	0	1	1	0	0	0	1	0	0	0	0	5
33	Johnasia Cash		03:35	2-4	0-0	0-0	2	1	3	0	1	4	0	0	0	0	1	0
10	Chanaya Pinto		02:15	0-1	0-0	0-0	0	1	1	1	0	0	0	0	0	0	0	3
Team							1	1	2			0		0				
<b>Totals</b>				8-17	2-6	4-9	5	6	11	3	8	22	4	0	1	1	2	5

Shooting By Period		
4 <sup>th</sup> FG%	8-17	47.1%
3PT%	2-6	33.3%
FT%	4-9	44.4%
GM FG%	8-17	47.1%
3PT%	2-6	33.3%
FT%	4-9	44.4%

Dead Ball Rebounds: 3, 0

Technical Fouls::NONE

**Rutgers - 17**

NO.	Name	F	Min	FG			Rebounds			Fouls		TP	AS	TO	ST	Blocks		+/-
				M-A	3P	FT	OR	DR	TOT	PF	FD					BS	BA	
20	Erica Lafayette	F	06:55	1-2	0-0	0-0	0	0	0	1	0	2	0	1	0	0	0	-1
54	Chyna Cornwell	F	08:00	2-3	0-0	0-0	2	2	4	3	0	4	0	0	0	1	1	-6
22	Kassondra Brown	C	02:00	0-0	0-0	0-0	1	2	3	1	0	0	1	0	0	0	0	1
2	Kaylene Smikle	G	10:00	1-5	1-4	0-0	0	0	0	0	0	3	0	0	0	0	0	-5
11	Awa Sidibe	G	09:04	0-3	0-2	3-4	0	2	2	2	2	3	1	1	0	1	0	-8
31	Abby Streeter		02:37	1-2	1-2	0-0	0	0	0	1	0	3	0	0	0	0	0	5
24	Kai Carter		09:36	1-2	0-0	0-0	2	0	2	0	1	2	1	1	0	0	0	-5
4	Antonia Bates		01:48	0-1	0-0	0-0	0	0	0	0	0	0	0	0	0	0	0	-6
Team							1	0	1			0		0				
<b>Totals</b>				6-18	2-8	3-4	6	6	12	8	3	17	3	3	0	2	1	-5

Shooting By Period		
4 <sup>th</sup> FG%	6-18	33.3%
3PT%	2-8	25.0%
FT%	3-4	75%
GM FG%	6-18	33.3%
3PT%	2-8	25.0%
FT%	3-4	75.0%

Dead Ball Rebounds: 1, 0

Technical Fouls::NONE

	PSU	RU
Biggest lead	0 (1 <sup>st</sup> 10:00)	8 (4 <sup>th</sup> 6:36)
Best Scoring Run	6(4 <sup>th</sup> 0:40)	6(4 <sup>th</sup> 6:36)
Lead Changes	0	
Times Tied	2	
Time with Lead	00:00	08:57

Points from	PSU	RU
Turnovers	2	0
Paint	12	6
Second Chance	5	4
Fast Breaks	7	3
Bench	4	5

	Period by Period Scoring					
	1st	2nd	3rd	4th	OT1	TOT
PSU	23	10	23	22	4	82
RU	12	20	29	17	8	86



**Penn St. at Rutgers**

01/26/23 Jersey Mike's Arena, Piscataway  
2022-23 Women's Basketball

Game Time: 7:00 PM  
Game Duration: 2:26  
Attendance: 1,204

Officials: Mark Resch, Bryan Enterline, Erika Herriman

**Penn St. - 45**

NO.	Name	Min	FG			Rebounds			Fouls		TP	AS	TO	ST	Blocks		+/-
			M-A	3P	FT	OR	DR	TOT	PF	FD					BS	BA	
24	Alexa Williamson	F 13:57	1-3	0-0	1-2	2	2	4	1	3	3	1	0	0	1	0	-3
4	Shay Ciezki	G 16:10	3-6	2-4	0-0	0	1	1	3	0	8	1	1	0	0	0	2
5	Leilani Kapinus	G 20:00	2-7	0-1	1-5	1	1	2	4	3	5	1	0	2	0	1	-1
20	Makenna Marisa	G 15:14	4-8	2-3	4-4	0	2	2	2	3	14	2	0	0	0	0	5
23	Taniyah Thompson	G 19:35	3-5	0-1	1-1	1	2	3	1	2	7	2	0	1	0	0	-1
33	Johnasia Cash	07:20	3-6	0-0	0-0	3	1	4	1	1	6	0	0	1	0	1	-3
10	Chanaya Pinto	06:12	1-3	0-0	0-0	0	1	1	2	0	2	1	0	0	0	0	-2
1	Ali Brigham	01:32	0-0	0-0	0-0	0	0	0	0	0	0	0	0	0	0	0	-2
Team						1	1	2			0			1			
<b>Totals</b>			17-38	4-9	7-12	8	11	19	14	12	45	8	2	4	1	2	-1

Shooting By Period		
3 <sup>rd</sup> FG%	9-21	42.9%
3PT%	2-3	66.7%
FT%	3-3	100%
4 <sup>th</sup> FG%	8-17	47.1%
3PT%	2-6	33.3%
FT%	4-9	44.4%
GM FG%	17-38	44.7%
3PT%	4-9	44.4%
FT%	7-12	58.3%

Dead Ball Rebounds: 3, 0

Technical Fouls::NONE

**Rutgers - 46**

NO.	Name	Min	FG			Rebounds			Fouls		TP	AS	TO	ST	Blocks		+/-
			M-A	3P	FT	OR	DR	TOT	PF	FD					BS	BA	
20	Erica Lafayette	F 10:51	2-4	0-1	0-0	0	0	0	1	0	4	1	1	0	0	0	-5
54	Chyna Cornwell	F 13:53	3-5	0-0	0-1	2	2	4	4	1	6	0	0	0	1	1	-7
22	Kassondra Brown	C 08:16	2-3	0-1	1-2	3	5	8	3	2	5	1	0	0	0	0	6
2	Kaylene Smikle	G 20:00	3-9	1-5	5-5	2	0	2	0	3	12	0	0	0	0	0	1
11	Awa Sidibe	G 19:04	0-3	0-2	7-10	0	3	3	2	5	7	1	2	0	1	0	-2
24	Kai Carter	17:27	1-3	0-0	3-4	3	2	5	0	3	5	2	3	0	0	0	3
31	Abby Streeter	08:06	3-6	1-4	0-0	1	1	2	2	0	7	0	0	0	0	0	12
4	Antonia Bates	02:23	0-1	0-0	0-0	0	2	2	0	0	0	0	0	0	0	0	-3
Team						1	0	1			0			0			
<b>Totals</b>			14-34	2-13	16-22	12	15	27	12	14	46	5	6	0	2	1	1

Shooting By Period		
3 <sup>rd</sup> FG%	8-16	50.0%
3PT%	0-5	0.0%
FT%	13-18	72.2%
4 <sup>th</sup> FG%	6-18	33.3%
3PT%	2-8	25.0%
FT%	3-4	75%
GM FG%	14-34	41.2%
3PT%	2-13	15.4%
FT%	16-22	72.7%

Dead Ball Rebounds: 3, 0

Technical Fouls::NONE

	PSU	RU
Biggest lead	5 (3 <sup>rd</sup> 8:28)	8 (4 <sup>th</sup> 6:36)
Best Scoring Run	6(4 <sup>th</sup> 0:40)	7(3 <sup>rd</sup> 4:06)
Lead Changes	3	
Times Tied	6	
Time with Lead	04:36	12:46

Points from	PSU	RU
Turnovers	4	3
Paint	26	22
Second Chance	8	12
Fast Breaks	13	7
Bench	8	12

	Period by Period Scoring					
	1st	2nd	3rd	4th	OT1	TOT
PSU	23	10	23	22	4	82
RU	12	20	29	17	8	86



**Overtime 1**

**Quarter Starters:**

<b>RU</b>	2 Smikle K	11 Sidibe A	20 Lafayette E	22 Brown K	24 Carter K
<b>PSU</b>	4 Ciezki S	5 Kapinus L	20 Marisa M	23 Thompson T	33 Cash J

Game Time	RU	Score	Diff	PSU
05:00	4 BATES A substitution out			
05:00	20 LAFAYETTE E substitution in			
05:00				10 PINTO C substitution out
05:00				24 WILLIAMSON A substitution out
05:00				4 CIEZKI S substitution in
05:00				20 MARISA M substitution in
05:00	22 BROWN K jumpball won			33 CASH J jumpball lost
04:45	24 CARTER K 2pt FG in the paint, layup made (13)	<b>80-78</b>	<b>2</b>	
04:22				20 MARISA M 2pt FG in the paint, layup missed
04:20	20 LAFAYETTE E defensive rebound (3)			
04:18	11 SIDIBE A turnover bad pass (6)			
03:56	24 CARTER K foul personal (2 - 9)			5 KAPINUS L foul drawn (7)
03:56				4 CIEZKI S substitution out
03:56				20 MARISA M substitution out
03:56				10 PINTO C substitution in
03:56				24 WILLIAMSON A substitution in
03:56				5 KAPINUS L free throw 1 - 2 missed
03:56				offensive dead ball rebound (6)
03:56		<b>80-79</b>	<b>1</b>	5 KAPINUS L free throw 2 - 2 made (11)
03:34	24 CARTER K 2pt FG in the paint, layup blocked			
03:34				5 KAPINUS L block (1)
03:34				defensive rebound (39)
03:34	20 LAFAYETTE E substitution out			
03:34	4 BATES A substitution in			
03:34				10 PINTO C substitution out
03:34				24 WILLIAMSON A substitution out
03:34				4 CIEZKI S substitution in
03:34				20 MARISA M substitution in
03:20		<b>80-82</b>	<b>-2</b>	20 MARISA M 3pt FG , jump shot made (24)
03:20				5 KAPINUS L assist (5)
03:09				4 CIEZKI S substitution out
03:09				33 CASH J substitution out
03:09				10 PINTO C substitution in
03:09				24 WILLIAMSON A substitution in
03:09	22 BROWN K foul drawn (4)			24 WILLIAMSON A foul personal (3 - 4)
02:55	22 BROWN K 2pt FG in the paint, layup missed			
02:52				10 PINTO C defensive rebound (4)
02:30	4 BATES A steal (1)			24 WILLIAMSON A turnover lost ball (2)
02:26	2 SMIKLE K foul offensive (3 - 10)			23 THOMPSON T foul drawn (4)
02:26	2 SMIKLE K turnover offensive (3)			
02:26				10 PINTO C substitution out
02:26				4 CIEZKI S substitution in
02:26	4 BATES A substitution out			



**Penn St. at Rutgers**

01/26/23 Jersey Mike's Arena, Piscataway  
2022-23 Women's Basketball

**Game Time:** 7:00 PM  
**Game Duration:** 2:26  
**Attendance:** 1,204

**Officials:** Mark Resch, Bryan Enterline, Erika Herriman

Game Time	RU	Score	Diff	PSU
02:26	20 LAFAYETTE E substitution in			
02:03				23 THOMPSON T 2pt FG from turnover outside the paint, jump shot missed
02:01	24 CARTER K defensive rebound (8)			
01:56	24 CARTER K 2pt FG fast break in the paint, driving layup made (15)	<b>82-82</b>	<b>0</b>	
01:56	24 CARTER K foul drawn (5)			24 WILLIAMSON A foul shooting (4 - 5)
01:56	24 CARTER K free throw fast break 1 - 1 made (16)	<b>83-82</b>	<b>1</b>	
01:28				24 WILLIAMSON A 2pt FG outside the paint, jump shot missed
01:25	11 SIDIBE A defensive rebound (7)			
00:57	2 SMIKLE K 2pt FG in the paint, layup missed			
00:54				24 WILLIAMSON A defensive rebound (8)
00:33				20 MARISA M 3pt FG , jump shot missed
00:32				offensive rebound (42)
00:32	20 LAFAYETTE E substitution out			
00:32	4 BATES A substitution in			
00:23				4 CIEZKI S turnover bad pass (3)
00:23	Timeout 30 Sec			
00:23	4 BATES A substitution out			
00:23	20 LAFAYETTE E substitution in			
00:23				4 CIEZKI S substitution out
00:23				23 THOMPSON T substitution out
00:23				10 PINTO C substitution in
00:23				33 CASH J substitution in
00:20	11 SIDIBE A foul drawn (6)			10 PINTO C foul personal (4 - 6)
00:20	20 LAFAYETTE E substitution out			
00:20	4 BATES A substitution in			
00:20	11 SIDIBE A free throw fast break 1 - 2 made (10)	<b>84-82</b>	<b>2</b>	
00:19	11 SIDIBE A free throw fast break 2 - 2 missed			
00:17				20 MARISA M defensive rebound (4)
00:15				Timeout 30 Sec
00:15				24 WILLIAMSON A substitution out
00:15				4 CIEZKI S substitution in
00:15				5 KAPINUS L turnover bad pass (3)
00:15	4 BATES A substitution out			
00:15	20 LAFAYETTE E substitution in			
00:15				4 CIEZKI S substitution out
00:15				24 WILLIAMSON A substitution in
00:14	24 CARTER K foul drawn (6)			20 MARISA M foul personal (5 - 7)
00:14				20 MARISA M substitution out
00:14				4 CIEZKI S substitution in
00:14	24 CARTER K free throw fast break 1 - 2 made (17)	<b>85-82</b>	<b>3</b>	
00:13	24 CARTER K free throw fast break 2 - 2 missed			
00:13				24 WILLIAMSON A defensive rebound (9)
00:13				Timeout 30 Sec
00:13				24 WILLIAMSON A substitution out
00:13				23 THOMPSON T substitution in
00:13	20 LAFAYETTE E substitution out			
00:13	4 BATES A substitution in			
00:02				4 CIEZKI S 3pt FG , jump shot missed



Official Basketball Play by Play - 1st OT

### Penn St. at Rutgers

01/26/23 Jersey Mike's Arena, Piscataway  
2022-23 Women's Basketball

Game Time: 7:00 PM

Game Duration: 2:26

Attendance: 1,204

Officials: Mark Resch, Bryan Enterline, Erika Herriman

Game Time	RU	Score	Diff	PSU
00:00	4 BATES A defensive rebound (4)			
00:00	4 BATES A foul drawn (1)			33 CASH J foul personal (3 - 8)
00:00	4 BATES A foul player technical (2 - 11)			
00:00	4 BATES A turnover offensive (1)			
00:00				33 CASH J foul player technical (4 - 9)
00:00				33 CASH J turnover offensive (1)
00:00	4 BATES A free throw 1 - 2 made (3)	<b>86-82</b>	<b>4</b>	
00:00	4 BATES A free throw 2 - 2 missed			
00:00				5 KAPINUS L defensive rebound (6)
<b>END OF GAME</b>				
<b>RU 86-82 PSU</b>				





**Penn St. at Rutgers**

01/26/23 Jersey Mike's Arena, Piscataway  
2022-23 Women's Basketball

Game Time: 7:00 PM  
Game Duration: 2:26  
Attendance: 1,204

Officials: Mark Resch, Bryan Enterline, Erika Herriman

**Penn St. - 4**

NO.	Name	Min	FG			Rebounds			Fouls		TP	AS	TO	ST	Blocks		+/-
			M-A	M-A	M-A	OR	DR	TOT	PF	FD					BS	BA	
24	Alexa Williamson	F 03:18	0-1	0-0	0-0	0	2	2	2	0	0	1	0	0	0	-4	
4	Shay Ciezki	G 03:45	0-1	0-1	0-0	0	0	0	0	0	0	1	0	0	0	-4	
5	Leilani Kapinus	G 05:00	0-0	0-0	1-2	0	1	1	0	1	1	1	0	1	0	-4	
20	Makenna Marisa	G 04:24	1-3	1-2	0-0	0	1	1	1	0	3	0	0	0	0	-3	
23	Taniyah Thompson	G 04:49	0-1	0-0	0-0	0	0	0	0	1	0	0	0	0	0	-2	
10	Chanaya Pinto	01:29	0-0	0-0	0-0	0	1	1	1	0	0	0	0	0	0	-2	
33	Johnasia Cash	02:15	0-0	0-0	0-0	0	0	0	2	0	0	0	1	0	0	-1	
Team						1	1	2		0		0					
<b>Totals</b>			1-6	1-3	1-2	1	6	7	6	2	4	1	4	0	1	0	-4

Shooting By Period		
OT FG%	1-6	16.7%
3PT%	1-3	33.3%
FT%	1-2	50%
GM FG%	1-6	16.7%
3PT%	1-3	33.3%
FT%	1-2	50.0%

Dead Ball Rebounds: 1, 0

Technical Fouls: Cash 1<sup>st</sup>OT 0:00

**Rutgers - 8**

NO.	Name	Min	FG			Rebounds			Fouls		TP	AS	TO	ST	Blocks		+/-
			M-A	M-A	M-A	OR	DR	TOT	PF	FD					BS	BA	
20	Erica Lafayette	F 03:25	0-0	0-0	0-0	0	1	1	0	0	0	0	0	0	0	5	
54	Chyna Cornwell	F 00:00	0-0	0-0	0-0	0	0	0	0	0	0	0	0	0	0	0	
22	Kassondra Brown	C 05:00	0-1	0-0	0-0	0	0	0	0	1	0	0	0	0	0	4	
2	Kaylene Smikle	G 05:00	0-1	0-0	0-0	0	0	0	1	0	0	1	0	0	0	4	
11	Awa Sidibe	G 05:00	0-0	0-0	1-2	0	1	1	0	1	1	0	1	0	0	4	
24	Kai Carter	05:00	2-3	0-0	2-3	0	1	1	1	2	6	0	0	0	1	4	
4	Antonia Bates	01:35	0-0	0-0	1-2	0	1	1	1	1	1	0	1	1	0	-1	
Team						0	0	0		0		0					
<b>Totals</b>			2-5	0-0	4-7	0	4	4	3	5	8	0	3	1	0	1	4

Shooting By Period		
OT FG%	2-5	40.0%
3PT%	0-0	0.0%
FT%	4-7	57.1%
GM FG%	2-5	40.0%
3PT%	0-0	0.0%
FT%	4-7	57.1%

Dead Ball Rebounds: 0, 0

Technical Fouls: Bates 1<sup>st</sup>OT 0:00

	PSU	RU
Biggest lead	2 (1 <sup>st</sup> OT 3:20)	4 (1 <sup>st</sup> OT 0:00)
Best Scoring Run	4 (1 <sup>st</sup> OT 3:20)	6 (1 <sup>st</sup> OT 0:00)
Lead Changes	3	
Times Tied	1	
Time with Lead	01:24	03:21

Points from	PSU	RU
Turnovers	1	2
Paint	0	4
Second Chance	0	0
Fast Breaks	0	5
Bench	0	7

	Period by Period Scoring					
	1st	2nd	3rd	4th	OT1	TOT
PSU	23	10	23	22	4	82
RU	12	20	29	17	8	86



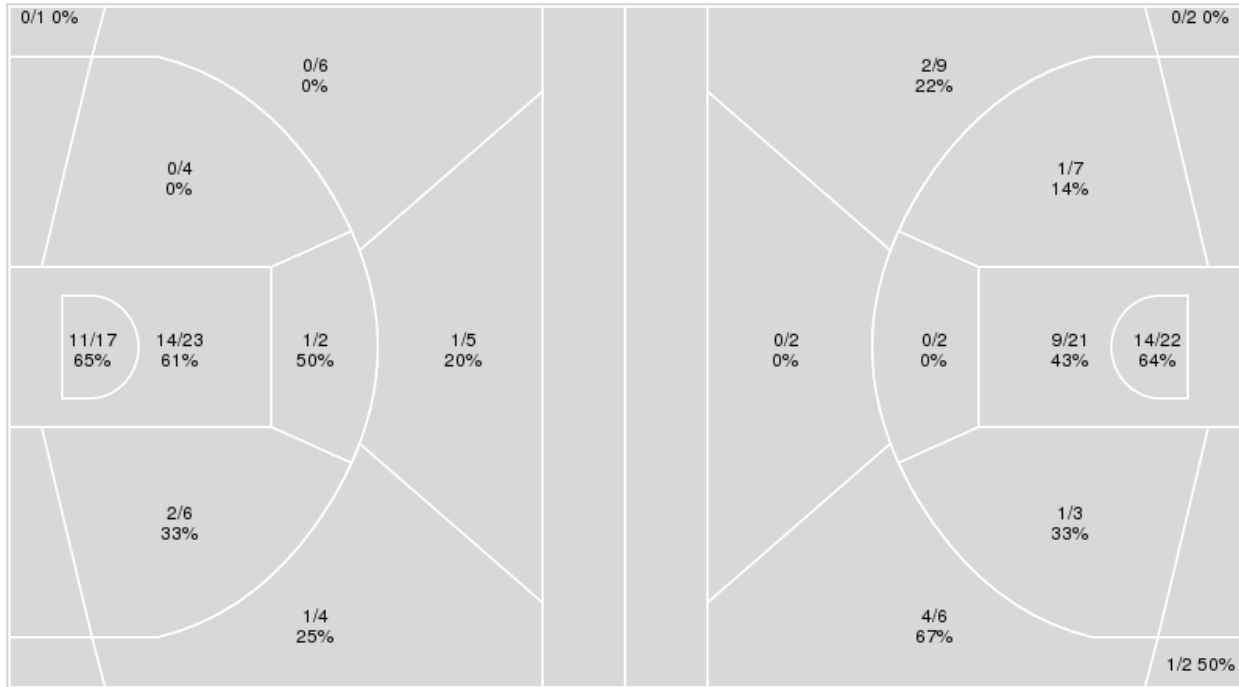
**Officials:** Mark Resch, Bryan Enterline, Erika Herriman

{ Players => All; } FG Types => All; Results => All;

{ Players => 0, 1, 2, 3, 4, 5, 10, 11, 12, 20, 22, 23, 24, 33; } FG Types  
 => All; Results => All;

**Rutgers**

**Penn St.**



Rutgers	M/A	%
Field Goals	30/68	44
2 Points	28/52	54
3 Points	2/16	12
Free Throws	24/36	67

Penn St.	M/A	%
Field Goals	32/76	42
2 Points	25/55	45
3 Points	7/21	33
Free Throws	11/20	55



**Penn St. at Rutgers**

01/26/23 Jersey Mike's Arena, Piscataway  
2022-23 Women's Basketball

Game Time: 7:00 PM  
Game Duration: 2:26  
Attendance: 1,204

Officials: Mark Resch, Bryan Enterline, Erika Herriman

**Penn St.**

No	Name	Mins		Score		Points Diff		Points per Min		Assists		Rebounds		Steals		Turnovers	
		On	Off	On	Off	On	Off	On	Off	On	Off	On	Off	On	Off	On	Off
1	Ali Brigham	11:58	33:02	21 - 20	61 - 66	1	-5	1.75	1.85	6	11	10	35	2	6	2	9
2	Aicha Dia	01:23	43:37	2 - 2	80 - 84	0	-4	1.45	1.83	0	17	1	44	0	8	0	11
4	Shay Ciezki	33:50	11:10	68 - 70	14 - 16	-2	-2	2.01	1.25	14	3	36	9	7	1	7	4
5	Leilani Kapinus	41:13	03:47	78 - 78	4 - 8	0	-4	1.89	1.06	16	1	40	5	8	0	10	1
10	Chanaya Pinto	15:57	29:03	18 - 24	64 - 62	-6	2	1.13	2.20	4	13	19	26	1	7	8	3
20	Makenna Marisa	38:20	06:40	73 - 70	9 - 16	3	-7	1.90	1.35	17	0	31	14	8	0	10	1
23	Taniyah Thompson	41:31	03:29	78 - 80	4 - 6	-2	-2	1.88	1.15	15	2	40	5	7	1	9	2
24	Alexa Williamson	28:29	16:31	50 - 58	32 - 28	-8	4	1.76	1.94	9	8	32	13	4	4	5	6
33	Johnasia Cash	12:19	32:41	22 - 28	60 - 58	-6	2	1.79	1.84	4	13	16	29	3	5	4	7

**Rutgers**

No	Name	Mins		Score		Points Diff		Points per Min		Assists		Rebounds		Steals		Turnovers	
		On	Off	On	Off	On	Off	On	Off	On	Off	On	Off	On	Off	On	Off
2	Kaylene Smikle	36:02	08:58	68 - 72	18 - 10	-4	8	1.89	2.01	9	6	38	11	2	0	13	3
4	Antonia Bates	12:26	32:34	19 - 24	67 - 58	-5	9	1.53	2.06	3	12	13	36	1	1	4	12
11	Awa Sidibe	42:16	02:44	81 - 82	5 - 0	-1	5	1.92	1.83	15	0	47	2	1	1	15	1
20	Erica Lafayette	27:44	17:16	50 - 48	36 - 34	2	2	1.80	2.08	12	3	28	21	1	1	13	3
22	Kassondra Brown	26:48	18:12	59 - 43	27 - 39	16	-12	2.20	1.48	10	5	29	20	1	1	7	9
24	Kai Carter	39:17	05:43	79 - 72	7 - 10	7	-3	2.01	1.22	14	1	44	5	2	0	15	1
31	Abby Streeter	16:09	28:51	32 - 19	54 - 63	13	-9	1.98	1.87	4	11	18	31	1	1	3	13
54	Chyna Cornwell	24:18	20:42	42 - 50	44 - 32	-8	12	1.73	2.13	8	7	28	21	1	1	10	6



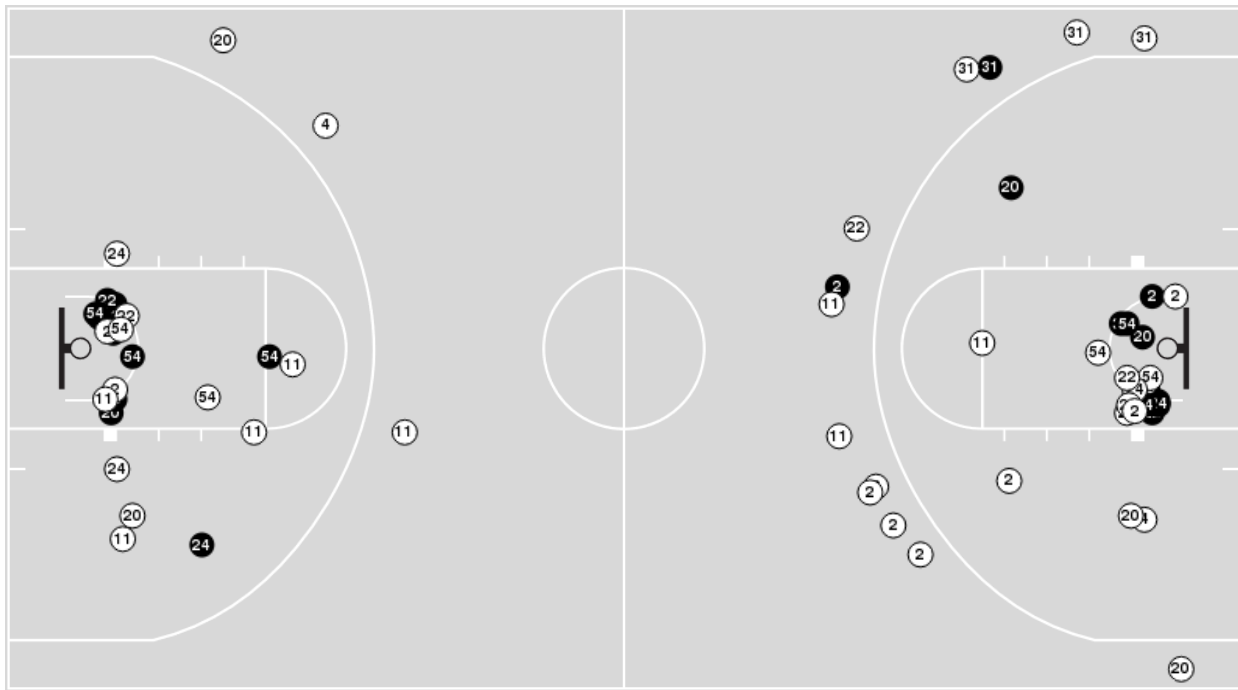


**Officials:** Mark Resch, Bryan Enterline, Erika Herriman

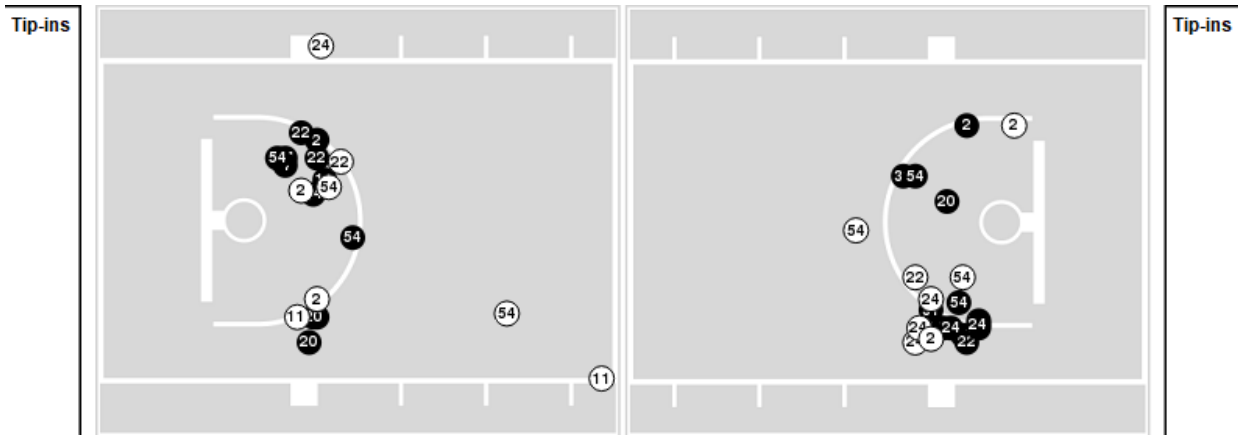
Players => AllFG Types=>AllResults=>All

### Rutgers

#### All Field Goals



#### Blow Up Chart



● Made    ○ Missed    N - Player Number

Rutgers	M/A	%
Field Goals	30/68	44
2 Points	28/52	54
3 Points	2/16	12
Free Throws	24/36	67

Rutgers	M/A	%
Points in the Paint	50 (25 / 40)	63
Fast Break Points	20 (15/19)	79
Second Chance Points	16 (10/19)	53
Effective FG%	46	



**Penn St. at Rutgers**

01/26/23 Jersey Mike's Arena, Piscataway  
2022-23 Women's Basketball

**Game Time:** 7:00 PM  
**Game Duration:** 2:26  
**Attendance:** 1,204

**Officials:** Mark Resch, Bryan Enterline, Erika Herriman

**Penn St.**

Lineup	Quarter On	Time On	Quarter Off	Time Off	Time on Court	Score	Score Diff	Reb	Stl	Tov	Ass	PPP
4- Ciezki S/ 5- Kapinus L/ 20- Marisa M/ 23- Thompson T/ 24- Williamson A/	1	10:00	1	04:32	05:28	15-10	5	4	2	1	3	1.5890
1- Brigham A/ 4- Ciezki S/ 10- Pinto C/ 20- Marisa M/ 23- Thompson T/	1	04:32	1	02:54	01:38	3-0	3	4	0	0	1	3.0000
1- Brigham A/ 5- Kapinus L/ 10- Pinto C/ 20- Marisa M/ 23- Thompson T/	1	02:54	2	08:12	04:42	5-4	1	3	1	2	2	0.6345
4- Ciezki S/ 10- Pinto C/ 20- Marisa M/ 23- Thompson T/ 24- Williamson A/	2	08:12	2	07:17	00:55	0-4	-4	0	0	1	0	0.0000
4- Ciezki S/ 10- Pinto C/ 20- Marisa M/ 24- Williamson A/ 33- Cash J/	2	07:17	2	06:16	01:01	0-2	-2	1	0	0	0	0.0000
4- Ciezki S/ 5- Kapinus L/ 20- Marisa M/ 24- Williamson A/ 33- Cash J/	2	06:16	2	06:16	00:00	0-0	0	0	0	0	0	0.0000
4- Ciezki S/ 5- Kapinus L/ 20- Marisa M/ 23- Thompson T/ 33- Cash J/	2	06:16	2	05:51	00:25	0-0	0	1	0	1	0	0.0000
1- Brigham A/ 4- Ciezki S/ 5- Kapinus L/ 20- Marisa M/ 23- Thompson T/	2	05:51	2	05:41	00:10	0-0	0	0	0	0	0	0.0000
1- Brigham A/ 2- Dia A/ 5- Kapinus L/ 20- Marisa M/ 23- Thompson T/	2	05:41	2	04:18	01:23	2-2	0	1	0	0	0	1.0000
1- Brigham A/ 4- Ciezki S/ 5- Kapinus L/ 20- Marisa M/ 23- Thompson T/	2	04:18	2	03:50	00:28	0-2	-2	0	0	0	0	0.0000
1- Brigham A/ 4- Ciezki S/ 5- Kapinus L/ 20- Marisa M/ 24- Williamson A/	2	03:50	2	01:58	01:52	4-2	2	2	1	0	2	1.0000
1- Brigham A/ 4- Ciezki S/ 20- Marisa M/ 23- Thompson T/ 24- Williamson A/	2	01:58	2	01:45	00:13	1-2	-1	0	0	0	0	2.2727
4- Ciezki S/ 5- Kapinus L/ 20- Marisa M/ 23- Thompson T/ 24- Williamson A/	2	01:45	2	01:18	00:27	0-1	-1	0	0	0	0	0.0000
4- Ciezki S/ 5- Kapinus L/ 23- Thompson T/ 24- Williamson A/ 33- Cash J/	2	01:18	3	10:00	01:18	3-3	0	3	0	0	0	1.0417
4- Ciezki S/ 5- Kapinus L/ 20- Marisa M/ 23- Thompson T/ 24- Williamson A/	3	10:00	3	07:51	02:09	7-5	2	4	0	0	0	2.1084
4- Ciezki S/ 5- Kapinus L/ 20- Marisa M/ 23- Thompson T/ 33- Cash J/	3	07:51	3	05:46	02:05	6-6	0	1	3	0	2	0.8571
5- Kapinus L/ 10- Pinto C/ 20- Marisa M/ 23- Thompson T/ 33- Cash J/	3	05:46	3	04:06	01:40	0-3	-3	1	0	1	0	0.0000
1- Brigham A/ 4- Ciezki S/ 5- Kapinus L/ 20- Marisa M/ 23- Thompson T/	3	04:06	3	02:34	01:32	6-8	-2	0	0	0	1	2.0000
4- Ciezki S/ 5- Kapinus L/ 10- Pinto C/ 20- Marisa M/ 24- Williamson A/	3	02:34	3	02:09	00:25	0-0	0	0	0	1	0	0.0000
5- Kapinus L/ 10- Pinto C/ 20- Marisa M/ 23- Thompson T/ 24- Williamson A/	3	02:09	3	00:35	01:34	4-4	0	0	0	0	1	1.3333
4- Ciezki S/ 5- Kapinus L/ 20- Marisa M/ 23- Thompson T/ 24- Williamson A/	3	00:35	3	00:18	00:17	0-1	-1	1	0	0	0	0.0000
4- Ciezki S/ 5- Kapinus L/ 10- Pinto C/ 23- Thompson T/ 24- Williamson A/	3	00:18	4	08:27	01:51	2-2	0	4	0	0	0	0.6667
4- Ciezki S/ 5- Kapinus L/ 23- Thompson T/ 24- Williamson A/ 33- Cash J/	4	08:27	4	06:14	02:13	2-7	-5	3	0	0	0	1.0000
4- Ciezki S/ 5- Kapinus L/ 20- Marisa M/ 23- Thompson T/ 24- Williamson A/	4	06:14	4	02:22	03:52	10-8	2	3	1	0	3	1.3889
4- Ciezki S/ 5- Kapinus L/ 10- Pinto C/ 23- Thompson T/ 24- Williamson A/	4	02:22	4	02:16	00:06	1-0	1	0	0	0	0	1.1364
4- Ciezki S/ 5- Kapinus L/ 20- Marisa M/ 23- Thompson T/ 24- Williamson A/	4	02:16	4	01:22	00:54	0-0	0	0	0	0	0	0.0000
4- Ciezki S/ 5- Kapinus L/ 20- Marisa M/ 23- Thompson T/ 33- Cash J/	4	01:22	4	00:40	00:42	3-0	3	1	0	0	0	3.0000
5- Kapinus L/ 10- Pinto C/ 20- Marisa M/ 23- Thompson T/ 33- Cash J/	4	00:40	4	00:40	00:00	2-0	2	0	0	0	0	2.2727
5- Kapinus L/ 10- Pinto C/ 23- Thompson T/ 24- Williamson A/ 33- Cash J/	4	00:40	4	00:23	00:16	0-2	-2	0	0	0	0	0.0000
4- Ciezki S/ 5- Kapinus L/ 20- Marisa M/ 23- Thompson T/ 33- Cash J/	4	00:23	4	00:20	00:04	2-0	2	0	0	0	1	2.0000
5- Kapinus L/ 10- Pinto C/ 23- Thompson T/ 24- Williamson A/ 33- Cash J/	4	00:20	OT1	05:00	00:20	0-0	0	1	0	0	0	0.0000
4- Ciezki S/ 5- Kapinus L/ 20- Marisa M/ 23- Thompson T/ 33- Cash J/	OT1	05:00	OT1	03:56	01:04	0-2	-2	0	0	0	0	0.0000
5- Kapinus L/ 10- Pinto C/ 23- Thompson T/ 24- Williamson A/ 33- Cash J/	OT1	03:56	OT1	03:34	00:22	1-0	1	1	0	0	0	1.1364
4- Ciezki S/ 5- Kapinus L/ 20- Marisa M/ 23- Thompson T/ 33- Cash J/	OT1	03:34	OT1	03:09	00:25	3-0	3	0	0	0	1	3.0000
5- Kapinus L/ 10- Pinto C/ 20- Marisa M/ 23- Thompson T/ 24- Williamson A/	OT1	03:09	OT1	02:26	00:43	0-0	0	1	0	1	0	0.0000
4- Ciezki S/ 5- Kapinus L/ 20- Marisa M/ 23- Thompson T/ 24- Williamson A/	OT1	02:26	OT1	00:23	02:02	0-3	-3	2	0	1	0	0.0000
5- Kapinus L/ 10- Pinto C/ 20- Marisa M/ 24- Williamson A/ 33- Cash J/	OT1	00:23	OT1	00:15	00:08	0-1	-1	1	0	0	0	0.0000
4- Ciezki S/ 5- Kapinus L/ 10- Pinto C/ 20- Marisa M/ 33- Cash J/	OT1	00:15	OT1	00:15	00:00	0-0	0	0	0	1	0	0.0000
5- Kapinus L/ 10- Pinto C/ 20- Marisa M/ 24- Williamson A/ 33- Cash J/	OT1	00:15	OT1	00:14	00:02	0-0	0	0	0	0	0	0.0000
4- Ciezki S/ 5- Kapinus L/ 10- Pinto C/ 24- Williamson A/ 33- Cash J/	OT1	00:14	OT1	00:13	00:01	0-1	-1	1	0	0	0	0.0000
4- Ciezki S/ 5- Kapinus L/ 10- Pinto C/ 23- Thompson T/ 33- Cash J/	OT1	00:13	OT1	00:00	00:13	0-1	-1	1	0	1	0	0.0000



Penn St. at Rutgers

01/26/23 Jersey Mike's Arena, Piscataway  
2022-23 Women's Basketball

Game Time: 7:00 PM  
Game Duration: 2:26  
Attendance: 1,204

Officials: Mark Resch, Bryan Enterline, Erika Herriman

Rutgers

Lineup	Quarter On	Time On	Quarter Off	Time Off	Time on Court	Score	Score Diff	Reb	Stl	Tov	Ass	PPP
2- Smikle K/ 11- Sidibe A/ 20- Lafayette E/ 22- Brown K/ 54- Cornwell C/	1	10:00	1	08:28	01:32	2-0	2	2	0	1	0	0.8197
2- Smikle K/ 11- Sidibe A/ 20- Lafayette E/ 24- Carter K/ 54- Cornwell C/	1	08:28	1	07:36	00:52	2-4	-2	0	0	0	1	1.0000
2- Smikle K/ 11- Sidibe A/ 20- Lafayette E/ 22- Brown K/ 24- Carter K/	1	07:36	1	05:31	02:05	4-9	-5	0	0	1	2	1.0000
2- Smikle K/ 4- Bates A/ 11- Sidibe A/ 22- Brown K/ 24- Carter K/	1	05:31	1	04:32	00:59	2-2	0	0	0	0	0	2.0000
2- Smikle K/ 4- Bates A/ 11- Sidibe A/ 22- Brown K/ 31- Streeter A/	1	04:32	1	02:54	01:38	0-3	-3	1	0	0	0	0.0000
2- Smikle K/ 11- Sidibe A/ 24- Carter K/ 31- Streeter A/ 54- Cornwell C/	1	02:54	1	02:18	00:36	0-0	0	2	0	0	0	0.0000
11- Sidibe A/ 20- Lafayette E/ 24- Carter K/ 31- Streeter A/ 54- Cornwell C/	1	02:18	1	01:32	00:46	0-0	0	1	0	1	0	0.0000
2- Smikle K/ 11- Sidibe A/ 20- Lafayette E/ 24- Carter K/ 54- Cornwell C/	1	01:32	2	10:00	01:32	2-5	-3	1	0	1	1	1.0000
2- Smikle K/ 20- Lafayette E/ 24- Carter K/ 31- Streeter A/ 54- Cornwell C/	2	10:00	2	08:12	01:48	2-0	2	1	1	1	0	0.6667
11- Sidibe A/ 20- Lafayette E/ 22- Brown K/ 24- Carter K/ 31- Streeter A/	2	08:12	2	05:51	02:21	6-0	6	3	0	0	3	1.3514
4- Bates A/ 11- Sidibe A/ 20- Lafayette E/ 22- Brown K/ 24- Carter K/	2	05:51	2	03:19	02:32	4-2	2	2	0	1	1	1.0309
4- Bates A/ 11- Sidibe A/ 22- Brown K/ 24- Carter K/ 31- Streeter A/	2	03:19	2	03:19	00:00	0-0	0	0	0	0	0	0.0000
4- Bates A/ 11- Sidibe A/ 24- Carter K/ 31- Streeter A/ 54- Cornwell C/	2	03:19	2	02:46	00:33	0-2	-2	0	0	1	0	0.0000
4- Bates A/ 11- Sidibe A/ 22- Brown K/ 24- Carter K/ 54- Cornwell C/	2	02:46	2	00:21	02:25	8-4	4	5	0	0	2	1.8519
4- Bates A/ 11- Sidibe A/ 24- Carter K/ 31- Streeter A/ 54- Cornwell C/	2	00:21	3	10:00	00:21	0-2	-2	0	0	0	0	0.0000
2- Smikle K/ 11- Sidibe A/ 20- Lafayette E/ 22- Brown K/ 54- Cornwell C/	3	10:00	3	07:51	02:09	5-7	-2	1	0	0	1	1.1574
2- Smikle K/ 11- Sidibe A/ 20- Lafayette E/ 24- Carter K/ 54- Cornwell C/	3	07:51	3	06:41	01:10	2-4	-2	3	0	2	1	0.5000
2- Smikle K/ 11- Sidibe A/ 20- Lafayette E/ 22- Brown K/ 24- Carter K/	3	06:41	3	06:04	00:37	2-2	0	1	0	1	0	1.0000
2- Smikle K/ 11- Sidibe A/ 22- Brown K/ 24- Carter K/ 31- Streeter A/	3	06:04	3	02:34	03:30	13-6	7	7	0	0	0	2.0968
2- Smikle K/ 11- Sidibe A/ 24- Carter K/ 31- Streeter A/ 54- Cornwell C/	3	02:34	3	00:35	01:59	4-4	0	1	0	0	0	1.5152
2- Smikle K/ 4- Bates A/ 11- Sidibe A/ 24- Carter K/ 54- Cornwell C/	3	00:35	4	08:27	02:08	3-2	1	4	0	0	0	0.7979
2- Smikle K/ 11- Sidibe A/ 24- Carter K/ 31- Streeter A/ 54- Cornwell C/	4	08:27	4	07:10	01:17	4-2	2	0	0	0	1	2.1277
2- Smikle K/ 20- Lafayette E/ 22- Brown K/ 24- Carter K/ 31- Streeter A/	4	07:10	4	06:14	00:56	3-0	3	1	0	0	0	3.0000
2- Smikle K/ 11- Sidibe A/ 20- Lafayette E/ 22- Brown K/ 31- Streeter A/	4	06:14	4	05:50	00:24	0-0	0	1	0	0	0	0.0000
2- Smikle K/ 11- Sidibe A/ 20- Lafayette E/ 24- Carter K/ 54- Cornwell C/	4	05:50	4	00:46	05:04	8-14	-6	7	0	3	1	0.9009
2- Smikle K/ 4- Bates A/ 11- Sidibe A/ 24- Carter K/ 54- Cornwell C/	4	00:46	4	00:40	00:06	0-0	0	0	0	0	0	0.0000
2- Smikle K/ 4- Bates A/ 11- Sidibe A/ 22- Brown K/ 24- Carter K/	4	00:40	4	00:40	00:00	0-2	-2	0	0	0	0	0.0000
2- Smikle K/ 11- Sidibe A/ 20- Lafayette E/ 22- Brown K/ 24- Carter K/	4	00:40	4	00:23	00:16	2-0	2	1	0	0	1	2.0000
2- Smikle K/ 4- Bates A/ 11- Sidibe A/ 22- Brown K/ 24- Carter K/	4	00:23	4	00:20	00:04	0-2	-2	0	0	0	0	0.0000
2- Smikle K/ 11- Sidibe A/ 20- Lafayette E/ 22- Brown K/ 24- Carter K/	4	00:20	4	00:04	00:15	0-0	0	0	0	0	0	0.0000
2- Smikle K/ 4- Bates A/ 11- Sidibe A/ 22- Brown K/ 24- Carter K/	4	00:04	OT1	05:00	00:05	0-0	0	0	0	0	0	0.0000
2- Smikle K/ 11- Sidibe A/ 20- Lafayette E/ 22- Brown K/ 24- Carter K/	OT1	05:00	OT1	03:34	01:26	2-1	1	1	0	1	0	0.6667
2- Smikle K/ 4- Bates A/ 11- Sidibe A/ 22- Brown K/ 24- Carter K/	OT1	03:34	OT1	02:26	01:08	0-3	-3	0	1	1	0	0.0000
2- Smikle K/ 11- Sidibe A/ 20- Lafayette E/ 22- Brown K/ 24- Carter K/	OT1	02:26	OT1	00:32	01:53	3-0	3	2	0	0	0	1.2295
2- Smikle K/ 4- Bates A/ 11- Sidibe A/ 22- Brown K/ 24- Carter K/	OT1	00:32	OT1	00:23	00:09	0-0	0	0	0	0	0	0.0000
2- Smikle K/ 11- Sidibe A/ 20- Lafayette E/ 22- Brown K/ 24- Carter K/	OT1	00:23	OT1	00:20	00:03	0-0	0	0	0	0	0	0.0000
2- Smikle K/ 4- Bates A/ 11- Sidibe A/ 22- Brown K/ 24- Carter K/	OT1	00:20	OT1	00:15	00:05	1-0	1	0	0	0	0	1.1364
2- Smikle K/ 11- Sidibe A/ 20- Lafayette E/ 22- Brown K/ 24- Carter K/	OT1	00:15	OT1	00:13	00:03	1-0	1	0	0	0	0	1.1364
2- Smikle K/ 4- Bates A/ 11- Sidibe A/ 22- Brown K/ 24- Carter K/	OT1	00:13	OT1	00:00	00:13	1-0	1	1	0	1	0	0.5319



**Penn St. at Rutgers**

01/26/23 Jersey Mike's Arena, Piscataway  
2022-23 Women's Basketball

**Game Time:** 7:00 PM  
**Game Duration:** 2:26  
**Attendance:** 1,204

**Officials:** Mark Resch, Bryan Enterline, Erika Herriman

**Penn St.**

Lineup	Time	Score	Score Diff	Pts/Min	Reb	Stl	Tov	Ass	PPP
4- Ciezki S/ 5- Kapinus L/ 20- Marisa M/ 23- Thompson T/ 24- Williamson A/	15:09	32-28	4	2.1122	14	3	2	6	1.2327
4- Ciezki S/ 5- Kapinus L/ 20- Marisa M/ 23- Thompson T/ 33- Cash J/	04:45	14-8	6	2.9474	3	3	1	4	1.1667
1- Brigham A/ 5- Kapinus L/ 10- Pinto C/ 20- Marisa M/ 23- Thompson T/	04:42	5-4	1	1.0638	3	1	2	2	0.6345
4- Ciezki S/ 5- Kapinus L/ 23- Thompson T/ 24- Williamson A/ 33- Cash J/	03:31	5-10	-5	1.4218	6	0	0	0	1.0246
5- Kapinus L/ 10- Pinto C/ 20- Marisa M/ 23- Thompson T/ 24- Williamson A/	02:17	4-4	0	1.7518	1	0	1	1	1.0000
1- Brigham A/ 4- Ciezki S/ 5- Kapinus L/ 20- Marisa M/ 23- Thompson T/	02:10	6-10	-4	2.7692	0	0	0	1	2.0000
4- Ciezki S/ 5- Kapinus L/ 10- Pinto C/ 23- Thompson T/ 24- Williamson A/	01:57	3-2	1	1.5385	4	0	0	0	0.7732
1- Brigham A/ 4- Ciezki S/ 5- Kapinus L/ 20- Marisa M/ 24- Williamson A/	01:52	4-2	2	2.1429	2	1	0	2	1.0000
5- Kapinus L/ 10- Pinto C/ 20- Marisa M/ 23- Thompson T/ 33- Cash J/	01:40	2-3	-1	1.2000	1	0	1	0	0.6944
1- Brigham A/ 4- Ciezki S/ 10- Pinto C/ 20- Marisa M/ 23- Thompson T/	01:38	3-0	3	1.8367	4	0	0	1	3.0000
1- Brigham A/ 2- Dia A/ 5- Kapinus L/ 20- Marisa M/ 23- Thompson T/	01:23	2-2	0	1.4458	1	0	0	0	1.0000
4- Ciezki S/ 10- Pinto C/ 20- Marisa M/ 24- Williamson A/ 33- Cash J/	01:01	0-2	-2	0.0000	1	0	0	0	0.0000
5- Kapinus L/ 10- Pinto C/ 23- Thompson T/ 24- Williamson A/ 33- Cash J/	00:58	1-2	-1	1.0345	2	0	0	0	1.1364
4- Ciezki S/ 10- Pinto C/ 20- Marisa M/ 23- Thompson T/ 24- Williamson A/	00:55	0-4	-4	0.0000	0	0	1	0	0.0000
4- Ciezki S/ 5- Kapinus L/ 10- Pinto C/ 20- Marisa M/ 24- Williamson A/	00:25	0-0	0	0.0000	0	0	1	0	0.0000
1- Brigham A/ 4- Ciezki S/ 20- Marisa M/ 23- Thompson T/ 24- Williamson A/	00:13	1-2	-1	4.6154	0	0	0	0	2.2727
4- Ciezki S/ 5- Kapinus L/ 10- Pinto C/ 23- Thompson T/ 33- Cash J/	00:13	0-1	-1	0.0000	1	0	1	0	0.0000
5- Kapinus L/ 10- Pinto C/ 20- Marisa M/ 24- Williamson A/ 33- Cash J/	00:10	0-1	-1	0.0000	1	0	0	0	0.0000
4- Ciezki S/ 5- Kapinus L/ 10- Pinto C/ 24- Williamson A/ 33- Cash J/	00:01	0-1	-1	0.0000	1	0	0	0	0.0000
4- Ciezki S/ 5- Kapinus L/ 20- Marisa M/ 24- Williamson A/ 33- Cash J/	00:00	0-0	0	NaN	0	0	0	0	0.0000
4- Ciezki S/ 5- Kapinus L/ 10- Pinto C/ 20- Marisa M/ 33- Cash J/	00:00	0-0	0	NaN	0	0	1	0	0.0000





**Penn St. at Rutgers**

01/26/23 Jersey Mike's Arena, Piscataway  
2022-23 Women's Basketball

**Game Time:** 7:00 PM  
**Game Duration:** 2:26  
**Attendance:** 1,204

**Officials:** Mark Resch, Bryan Enterline, Erika Herriman

**Rutgers**

Lineup	Time	Score	Score Diff	Pts/Min	Reb	Stl	Tov	Ass	PPP
2- Smikle K/ 11- Sidibe A/ 20- Lafayette E/ 24- Carter K/ 54- Cornwell C/	08:38	14-27	-13	1.6216	11	0	6	4	0.8294
2- Smikle K/ 11- Sidibe A/ 20- Lafayette E/ 22- Brown K/ 24- Carter K/	06:38	14-12	2	2.1106	5	0	3	3	1.0511
2- Smikle K/ 11- Sidibe A/ 24- Carter K/ 31- Streeter A/ 54- Cornwell C/	03:52	8-6	2	2.0690	3	0	0	1	1.4493
2- Smikle K/ 11- Sidibe A/ 20- Lafayette E/ 22- Brown K/ 54- Cornwell C/	03:41	7-7	0	1.9005	3	0	1	1	1.0355
2- Smikle K/ 11- Sidibe A/ 22- Brown K/ 24- Carter K/ 31- Streeter A/	03:30	13-6	7	3.7143	7	0	0	0	2.0968
2- Smikle K/ 4- Bates A/ 11- Sidibe A/ 22- Brown K/ 24- Carter K/	02:43	4-9	-5	1.4724	1	1	2	0	0.5917
4- Bates A/ 11- Sidibe A/ 20- Lafayette E/ 22- Brown K/ 24- Carter K/	02:32	4-2	2	1.5789	2	0	1	1	1.0309
4- Bates A/ 11- Sidibe A/ 22- Brown K/ 24- Carter K/ 54- Cornwell C/	02:25	8-4	4	3.3103	5	0	0	2	1.8519
11- Sidibe A/ 20- Lafayette E/ 22- Brown K/ 24- Carter K/ 31- Streeter A/	02:21	6-0	6	2.5532	3	0	0	3	1.3514
2- Smikle K/ 4- Bates A/ 11- Sidibe A/ 24- Carter K/ 54- Cornwell C/	02:14	3-2	1	1.3433	4	0	0	0	0.7979
2- Smikle K/ 20- Lafayette E/ 24- Carter K/ 31- Streeter A/ 54- Cornwell C/	01:48	2-0	2	1.1111	1	1	1	0	0.6667
2- Smikle K/ 4- Bates A/ 11- Sidibe A/ 22- Brown K/ 31- Streeter A/	01:38	0-3	-3	0.0000	1	0	0	0	0.0000
2- Smikle K/ 20- Lafayette E/ 22- Brown K/ 24- Carter K/ 31- Streeter A/	00:56	3-0	3	3.2143	1	0	0	0	3.0000
4- Bates A/ 11- Sidibe A/ 24- Carter K/ 31- Streeter A/ 54- Cornwell C/	00:54	0-4	-4	0.0000	0	0	1	0	0.0000
11- Sidibe A/ 20- Lafayette E/ 24- Carter K/ 31- Streeter A/ 54- Cornwell C/	00:46	0-0	0	0.0000	1	0	1	0	0.0000
2- Smikle K/ 11- Sidibe A/ 20- Lafayette E/ 22- Brown K/ 31- Streeter A/	00:24	0-0	0	0.0000	1	0	0	0	0.0000
4- Bates A/ 11- Sidibe A/ 22- Brown K/ 24- Carter K/ 31- Streeter A/	00:00	0-0	0	NaN	0	0	0	0	0.0000