



Rutgers at Penn St.

03/02/22 Gainbridge Fieldhouse, Indianapolis, IN  
2022 Big Ten Women's Basketball Tournament

Officials: Felicia Grinter, Gina Cross, Kevin Pethtel

Rutgers - 75

Record: 11-19

NO.	Name	F	Min	FG			3P			FT			Rebounds			Fouls		TP	AS	TO	ST	Blocks		+/-
				M-A	M-A	M-A	OR	DR	TOT	PF	FD	OR	DR	TOT	BS	BA								
22	Tyia Singleton	F	20:51	4-10	0-0	2-4	5	2	7	3	4	10	0	2	0	0	3	0	2	0	0	3	17	
32	Osh Brown	F	31:18	8-11	0-0	2-3	5	8	13	2	5	18	3	3	1	0	0	3	3	1	0	0	24	
0	Lasha Petree	G	19:32	3-5	0-1	0-0	0	3	3	1	1	6	0	2	1	0	0	0	2	1	0	0	14	
3	Shug Dickson	G	30:10	5-14	1-1	3-3	3	4	7	3	3	14	9	6	0	1	0	9	6	0	1	0	21	
14	Jailyn Mason	G	30:33	1-5	1-5	0-0	0	6	6	1	0	3	3	0	3	0	1	0	3	0	1	0	26	
15	Awa Sidibe		18:12	0-3	0-0	0-0	2	4	6	2	0	0	2	1	1	1	2	0	1	1	2	0	8	
35	Sayawni Lassiter		11:38	3-7	1-3	2-2	0	1	1	2	2	9	0	0	0	0	1	0	0	0	1	0	1	
5	Victoria Morris		18:42	3-7	1-2	0-0	0	1	1	0	1	7	0	1	0	0	1	0	1	0	0	1	12	
1	Destiny Marshall		04:13	1-1	0-0	0-0	0	2	2	1	0	2	0	0	0	1	0	0	1	0	0	0	2	
54	Chyna Cornwell		03:40	2-3	0-0	0-1	0	1	1	1	1	4	0	0	0	0	0	0	0	0	0	0	3	
11	Stephanie Guihon		04:17	0-0	0-0	0-0	0	0	0	0	1	0	1	0	0	0	0	0	0	0	0	0	0	
10	Erica Lafayette		02:18	0-1	0-0	2-2	0	0	0	1	1	2	0	0	0	0	0	0	0	0	0	0	-1	
20	Joiya Maddox		02:18	0-1	0-1	0-0	0	1	1	1	0	0	0	0	0	0	0	0	0	0	0	0	-1	
24	Kierra Sanderlin		02:18	0-1	0-0	0-0	1	0	1	0	0	0	0	0	0	0	0	0	0	0	0	0	-1	
Team							3	2	5			0				0								
<b>Totals</b>				30-69	4-13	11-15	19	35	54	18	19	75	18	15	5	4	4	4	25					

Shooting By Period		
1st FG%	7-15	46.7%
3PT%	1-3	33.3%
FT%	2-4	50%
2nd FG%	5-12	41.7%
3PT%	3-4	75.0%
FT%	1-1	100%
3rd FG%	9-23	39.1%
3PT%	0-3	0.0%
FT%	5-5	100%
4th FG%	9-19	47.4%
3PT%	0-3	0.0%
FT%	3-5	60%
GM FG%	30-69	43.5%
3PT%	4-13	30.8%
FT%	11-15	73.3%

Dead Ball Rebounds: 2, 0

Technical Fouls::NONE

Penn St. - 50

Record: 11-18

NO.	Name	F	Min	FG			3P			FT			Rebounds			Fouls		TP	AS	TO	ST	Blocks		+/-
				M-A	M-A	M-A	OR	DR	TOT	PF	FD	OR	DR	TOT	BS	BA								
11	Anna Camden	F	18:09	0-3	0-1	2-2	2	0	2	3	1	2	0	1	0	1	0	1	0	1	0	0	-11	
4	Niya Beverley	G	34:14	2-9	1-6	0-0	0	2	2	1	0	5	0	0	0	0	0	0	0	0	0	0	-27	
5	Leilani Kapinus	G	36:50	3-14	1-5	9-11	5	8	13	2	8	16	1	2	3	1	3	1	3	1	3	-16		
20	Makenna Marisa	G	38:23	5-19	0-3	5-8	0	7	7	1	6	15	5	3	3	1	0	1	0	0	0	-24		
25	Kelly Jekot	G	11:24	0-1	0-1	0-0	0	1	1	1	0	0	0	1	0	0	0	0	0	0	0	0	-6	
23	Shay Hagans		20:04	1-5	1-2	0-0	1	0	1	0	0	3	0	0	0	0	0	0	0	0	1	-14		
1	Ali Brigham		06:14	1-1	0-0	0-0	0	0	0	4	0	2	1	2	0	0	0	0	0	0	0	-6		
15	Maddie Burke		11:17	1-2	0-1	0-0	0	1	1	4	0	2	1	0	1	0	0	0	0	0	0	-5		
10	Tova Sabel		16:50	1-5	1-4	1-2	0	0	0	3	2	4	0	1	1	0	0	0	0	0	0	-14		
12	Kayla Thomas		06:35	0-0	0-0	1-2	2	2	4	0	1	1	0	0	0	0	1	0	0	1	0	-2		
Team							0	1	1			0				0								
<b>Totals</b>				14-59	4-23	18-25	10	22	32	19	18	50	8	10	8	4	4	4	-25					

Shooting By Period		
1st FG%	4-16	25.0%
3PT%	1-9	11.1%
FT%	2-4	50%
2nd FG%	5-16	31.3%
3PT%	2-5	40.0%
FT%	2-4	50%
3rd FG%	2-14	14.3%
3PT%	1-7	14.3%
FT%	6-8	75%
4th FG%	3-13	23.1%
3PT%	0-2	0.0%
FT%	8-9	88.9%
GM FG%	14-59	23.7%
3PT%	4-23	17.4%
FT%	18-25	72.0%

Dead Ball Rebounds: 7, 0

Technical Fouls::NONE

	RU	PSU
Biggest lead	28 (4 <sup>th</sup> 3:06)	4 (1 <sup>st</sup> 7:22)
Best Scoring Run	10 (1 <sup>st</sup> 2:42)	8 (2 <sup>nd</sup> 3:35)
Lead Changes	5	
Times Tied	0	
Time with Lead	34:05	03:55

	RU	PSU
Points from	RU	PSU
Turnovers	11	9
Paint	40	20
Second Chance	11	7
Fast Breaks	10	15
Bench	24	12

Period by Period Scoring					
	1st	2nd	3rd	4th	TOT
RU	17	14	23	21	75
PSU	11	14	11	14	50



**Rutgers at Penn St.**

**Period 1**

**Quarter Starters:**

<b>PSU</b>	4 Beverley N	5 Kapinus L	11 Camden A	20 Marisa M	25 Jekot K
<b>RU</b>	0 Petree L	3 Dickson S	14 Mason J	22 Singleton T	32 Brown O

Game Time	PSU	Score	Diff	RU
10:00	5 KAPINUS L jumpball won			22 SINGLETON T jumpball lost
09:46	11 CAMDEN A foul offensive (1 - 1)			3 DICKSON S foul drawn (1)
09:46	11 CAMDEN A turnover offensive (1)			
09:32				0 PETREE L 2pt FG from turnover in the paint, driving layup missed
09:29	25 JEKOT K defensive rebound (1)			
09:13	4 BEVERLEY N 3pt FG , jump shot missed			
09:10	11 CAMDEN A offensive rebound (1)			
09:08	20 MARISA M 3pt FG second chance, jump shot missed			
09:06				defensive rebound (1)
08:47				0 PETREE L turnover dribbling violation (1)
08:29	25 JEKOT K 3pt FG from turnover, jump shot missed			
08:26				14 MASON J defensive rebound (1)
08:10				3 DICKSON S 2pt FG in the paint, pull up jump shot missed
08:07				3 DICKSON S offensive rebound (1)
08:06	5 KAPINUS L steal (1)			3 DICKSON S turnover lost ball (1)
08:00	20 MARISA M 2pt FG fast break from turnover in the paint, pull up jump shot made (2)	<b>2-0</b>	<b>2</b>	
07:35	jump ball situation			
07:28				14 MASON J 3pt FG , jump shot missed
07:25	20 MARISA M defensive rebound (1)			
07:22	4 BEVERLEY N 2pt FG fast break in the paint, driving layup made (2)	<b>4-0</b>	<b>4</b>	
07:22	20 MARISA M assist (1)			
07:12				Timeout 30 Sec
07:12	25 JEKOT K substitution out			
07:12	23 HAGANS S substitution in			
06:57				3 DICKSON S 2pt FG outside the paint, pull up jump shot missed
06:54				22 SINGLETON T offensive rebound (1)
06:54	11 CAMDEN A foul shooting (2 - 2)			22 SINGLETON T foul drawn (1)
06:54	11 CAMDEN A substitution out			
06:54	1 BRIGHAM A substitution in			
06:54		<b>4-1</b>	<b>3</b>	22 SINGLETON T free throw 1 - 2 made (1)
06:51				22 SINGLETON T free throw 2 - 2 missed
06:50	5 KAPINUS L defensive rebound (1)			
06:39	5 KAPINUS L 2pt FG in the paint, driving layup missed			
06:39				32 BROWN O defensive rebound (1)
06:23	20 MARISA M steal (1)			32 BROWN O turnover bad pass (1)
05:43	20 MARISA M 2pt FG from turnover in the paint, jump shot missed			
05:40				0 PETREE L defensive rebound (1)
05:38		<b>4-3</b>	<b>1</b>	22 SINGLETON T 2pt FG fast break in the paint, layup made (3)
05:38				3 DICKSON S assist (1)
05:31	5 KAPINUS L 3pt FG , jump shot missed			



**Rutgers at Penn St.**

03/02/22 Gainbridge Fieldhouse, Indianapolis, IN  
2022 Big Ten Women's Basketball Tournament

Officials: Felicia Grinter, Gina Cross, Kevin Pethtel

Game Time	PSU	Score	Diff	RU
05:27	23 HAGANS S offensive rebound (1)			
05:25	4 BEVERLEY N 3pt FG second chance, jump shot missed			
05:22				0 PETREE L defensive rebound (2)
05:21				32 BROWN O turnover travel (2)
05:21	5 KAPINUS L substitution out			
05:21	23 HAGANS S substitution out			
05:21	15 BURKE M substitution in			
05:21	25 JEKOT K substitution in			
04:58	20 MARISA M 3pt FG from turnover, jump shot missed			
04:55				32 BROWN O defensive rebound (2)
04:43		4-5	-1	22 SINGLETON T 2pt FG in the paint, jump shot made (5)
04:26	20 MARISA M 2pt FG in the paint, driving layup made (4)	6-5	1	
04:26	1 BRIGHAM A assist (1)			
04:12		6-7	-1	3 DICKSON S 2pt FG outside the paint, pull up jump shot made (2)
04:05	15 BURKE M 3pt FG , jump shot missed			
04:01				14 MASON J defensive rebound (2)
03:57	1 BRIGHAM A foul shooting (1 - 3)			22 SINGLETON T foul drawn (2)
03:57	1 BRIGHAM A substitution out			
03:57	10 SABEL T substitution in			
03:57		6-8	-2	22 SINGLETON T free throw fast break 1 - 2 made (6)
03:57				22 SINGLETON T free throw fast break 2 - 2 missed
03:54				32 BROWN O offensive rebound (3)
03:50		6-11	-5	14 MASON J 3pt FG second chance, jump shot made (3)
03:50				32 BROWN O assist (1)
03:27	25 JEKOT K turnover lost ball (1)			14 MASON J steal (1)
03:16		6-13	-7	22 SINGLETON T 2pt FG from turnover in the paint, layup made (8)
03:16				3 DICKSON S assist (2)
03:13	Timeout 30 Sec			
03:13	15 BURKE M substitution out			
03:13	25 JEKOT K substitution out			
03:13	5 KAPINUS L substitution in			
03:13	12 THOMAS K substitution in			
02:46	20 MARISA M turnover bad pass (1)			32 BROWN O steal (1)
02:42		6-15	-9	0 PETREE L 2pt FG fast break from turnover in the paint, driving layup made (2)
02:42				32 BROWN O assist (2)
02:35	20 MARISA M foul drawn (1)			3 DICKSON S foul shooting (1 - 1)
02:35	20 MARISA M free throw fast break 1 - 2 missed			
02:35	offensive dead ball rebound (1)			
02:35	20 MARISA M free throw fast break 2 - 2 made (5)	7-15	-8	
02:26				22 SINGLETON T 2pt FG outside the paint, jump shot missed
02:22				32 BROWN O offensive rebound (4)
02:20				22 SINGLETON T 2pt FG second chance in the paint, layup blocked
02:20	12 THOMAS K block (1)			
02:17	12 THOMAS K defensive rebound (1)			
02:13	20 MARISA M 2pt FG outside the paint, pull up jump shot missed			
02:10				32 BROWN O defensive rebound (5)



**Rutgers at Penn St.**

03/02/22 Gainbridge Fieldhouse, Indianapolis, IN  
2022 Big Ten Women's Basketball Tournament

**Officials:** Felicia Grinter, Gina Cross, Kevin Pethtel

Game Time	PSU	Score	Diff	RU
01:54				14 MASON J 3pt FG , jump shot missed
01:51	12 THOMAS K defensive rebound (2)			
01:45	5 KAPINUS L foul drawn (1)			32 BROWN O foul shooting (1 - 2)
01:45	4 BEVERLEY N substitution out			
01:45	23 HAGANS S substitution in			
01:45				22 SINGLETON T substitution out
01:45				15 SIDIBE A substitution in
01:45	5 KAPINUS L free throw 1 - 2 missed			
01:45	offensive dead ball rebound (2)			
01:45	5 KAPINUS L free throw 2 - 2 made (1)	<b>8-15</b>	<b>-7</b>	
01:33				3 DICKSON S turnover out of bounds (2)
01:20				3 DICKSON S substitution out
01:20				35 LASSITER S substitution in
01:19	10 SABEL T 3pt FG from turnover, jump shot missed			
01:15				0 PETREE L defensive rebound (3)
00:54		<b>8-17</b>	<b>-9</b>	32 BROWN O 2pt FG outside the paint, jump shot made (2)
00:54				15 SIDIBE A assist (1)
00:46	10 SABEL T 3pt FG , jump shot made (3)	<b>11-17</b>	<b>-6</b>	
00:46	20 MARISA M assist (2)			
00:26	5 KAPINUS L steal (2)			0 PETREE L turnover bad pass (2)
00:25	5 KAPINUS L foul drawn (2)			35 LASSITER S foul personal (1 - 3)
00:25				0 PETREE L substitution out
00:25				5 MORRIS V substitution in
00:06	20 MARISA M 2pt FG from turnover in the paint, driving layup missed			
00:04				15 SIDIBE A defensive rebound (1)
00:01				5 MORRIS V 2pt FG in the paint, layup blocked
00:01	20 MARISA M block (1)			
00:00				offensive rebound (15)
<b>END OF PERIOD</b>				
<b>PSU 11-17 RU</b>				



**Rutgers at Penn St.**

03/02/22 Gainbridge Fieldhouse, Indianapolis, IN  
2022 Big Ten Women's Basketball Tournament

Officials: Felicia Grinter, Gina Cross, Kevin Pethtel

**Rutgers - 17**

NO.	Name	F	Min	FG			Rebounds			Fouls		TP	AS	TO	ST	Blocks		+/-
				M-A	3P	FT	OR	DR	TOT	PF	FD					BS	BA	
22	Tyia Singleton	F	08:15	3-5	0-0	2-4	1	0	1	0	2	8	0	0	0	0	1	8
32	Osh Brown	F	10:00	1-1	0-0	0-0	2	3	5	1	0	2	2	2	1	0	0	6
0	Lasha Petree	G	09:34	1-2	0-0	0-0	0	3	3	0	0	2	0	2	0	0	0	6
3	Shug Dickson	G	08:40	1-3	0-0	0-0	1	0	1	1	1	2	2	2	0	0	0	7
14	Jailyn Mason	G	10:00	1-3	1-3	0-0	0	2	2	0	0	3	0	0	1	0	0	6
15	Awa Sidibe		01:45	0-0	0-0	0-0	0	1	1	0	0	0	1	0	0	0	0	-2
35	Sayawni Lassiter		01:20	0-0	0-0	0-0	0	0	0	1	0	0	0	0	0	0	0	-1
5	Victoria Morris		00:26	0-1	0-0	0-0	0	0	0	0	0	0	0	0	0	0	1	0
Team							1	1	2			0		0				
<b>Totals</b>				7-15	1-3	2-4	5	10	15	3	3	17	5	6	2	0	2	6

Shooting By Period		
1st FG%	7-15	46.7%
3PT%	1-3	33.3%
FT%	2-4	50%
GM FG%	7-15	46.7%
3PT%	1-3	33.3%
FT%	2-4	50.0%

Dead Ball Rebounds: 0, 0

Technical Fouls::NONE

**Penn St. - 11**

NO.	Name	F	Min	FG			Rebounds			Fouls		TP	AS	TO	ST	Blocks		+/-
				M-A	3P	FT	OR	DR	TOT	PF	FD					BS	BA	
11	Anna Camden	F	03:06	0-0	0-0	0-0	1	0	1	2	0	0	0	1	0	0	0	4
4	Niya Beverley	G	08:15	1-3	0-2	0-0	0	0	0	0	0	2	0	0	0	0	0	-8
5	Leilani Kapinus	G	07:52	0-2	0-1	1-2	0	1	1	0	2	1	0	0	2	0	0	2
20	Makenna Marisa	G	10:00	2-7	0-2	1-2	0	1	1	0	1	5	2	1	1	1	0	-6
25	Kelly Jekot	G	04:56	0-1	0-1	0-0	0	1	1	0	0	0	0	1	0	0	0	-4
23	Shay Hagans		03:36	0-0	0-0	0-0	1	0	1	0	0	0	0	0	0	0	0	-1
1	Ali Brigham		02:57	0-0	0-0	0-0	0	0	0	1	0	0	1	0	0	0	0	-5
15	Maddie Burke		02:08	0-1	0-1	0-0	0	0	0	0	0	0	0	0	0	0	0	-8
10	Tova Sabel		03:57	1-2	1-2	0-0	0	0	0	0	0	3	0	0	0	0	0	-5
12	Kayla Thomas		03:13	0-0	0-0	0-0	0	2	2	0	0	0	0	0	0	1	0	1
Team							0	0	0			0		0				
<b>Totals</b>				4-16	1-9	2-4	2	5	7	3	3	11	3	3	3	2	0	-6

Shooting By Period		
1st FG%	4-16	25.0%
3PT%	1-9	11.1%
FT%	2-4	50%
GM FG%	4-16	25.0%
3PT%	1-9	11.1%
FT%	2-4	50.0%

Dead Ball Rebounds: 2, 0

Technical Fouls::NONE

	RU	PSU
Biggest lead	9 (1st 2:42)	4 (1st 7:22)
Best Scoring Run	10(1st 2:42)	4(1st 7:22)
Lead Changes	3	
Times Tied	0	
Time with Lead	04:29	03:31

Points from	RU	PSU
Turnovers	4	2
Paint	8	6
Second Chance	4	0
Fast Breaks	5	5
Bench	0	3

	Period by Period Scoring				
	1st	2nd	3rd	4th	TOT
RU	17	14	23	21	75
PSU	11	14	11	14	50



**Rutgers at Penn St.**

03/02/22 Gainbridge Fieldhouse, Indianapolis, IN  
2022 Big Ten Women's Basketball Tournament

Officials: Felicia Grinter, Gina Cross, Kevin Pethtel

**Period 2**

**Quarter Starters:**

<b>PSU</b>	5 Kapinus L	10 Sabel T	12 Thomas K	20 Marisa M	23 Hagans S
<b>RU</b>	5 Morris V	14 Mason J	15 Sidibe A	32 Brown O	35 Lassiter S

Game Time	PSU	Score	Diff	RU
09:31	10 SABEL T 2pt FG in the paint, pull up jump shot missed			
09:27				5 MORRIS V defensive rebound (1)
09:05	12 THOMAS K substitution out			
09:05	23 HAGANS S substitution out			
09:05	1 BRIGHAM A substitution in			
09:05	25 JEKOT K substitution in			
09:05				14 MASON J substitution out
09:05				3 DICKSON S substitution in
08:59				15 SIDIBE A 2pt FG in the paint, pull up jump shot missed
08:55	5 KAPINUS L defensive rebound (2)			
08:52	5 KAPINUS L foul drawn (3)			15 SIDIBE A foul personal (1 - 1)
08:52				32 BROWN O substitution out
08:52				22 SINGLETON T substitution in
08:52	10 SABEL T substitution out			
08:52	4 BEVERLEY N substitution in			
08:31	1 BRIGHAM A 2pt FG in the paint, turnaround jump shot made (2)	<b>13-17</b>	<b>-4</b>	
08:11				22 SINGLETON T 2pt FG in the paint, driving layup missed
08:08	5 KAPINUS L defensive rebound (3)			
08:03	5 KAPINUS L 2pt FG in the paint, driving layup missed			
08:00				15 SIDIBE A defensive rebound (2)
07:54		<b>13-20</b>	<b>-7</b>	35 LASSITER S 3pt FG fast break, jump shot made (3)
07:54				3 DICKSON S assist (3)
07:41	25 JEKOT K substitution out			
07:41	23 HAGANS S substitution in			
07:34	20 MARISA M 2pt FG in the paint, driving layup missed			
07:32	5 KAPINUS L offensive rebound (4)			
07:31	5 KAPINUS L 2pt FG second chance in the paint, layup blocked			
07:31				15 SIDIBE A block (1)
07:30				15 SIDIBE A defensive rebound (3)
07:30				15 SIDIBE A turnover dribbling violation (1)
07:09	1 BRIGHAM A foul offensive (2 - 1)			35 LASSITER S foul drawn (1)
07:09	1 BRIGHAM A turnover offensive (1)			
07:09	1 BRIGHAM A substitution out			
07:09	15 BURKE M substitution in			
06:53				5 MORRIS V turnover bad pass (1)
06:33	20 MARISA M 2pt FG from turnover in the paint, driving layup made (7)	<b>15-20</b>	<b>-5</b>	
06:33	5 KAPINUS L assist (1)			
06:08				22 SINGLETON T turnover 3 seconds (1)
06:08				15 SIDIBE A substitution out
06:08				32 BROWN O substitution in
05:47	23 HAGANS S 2pt FG from turnover in the paint, driving layup blocked			



**Rutgers at Penn St.**

03/02/22 Gainbridge Fieldhouse, Indianapolis, IN  
2022 Big Ten Women's Basketball Tournament

Officials: Felicia Grinter, Gina Cross, Kevin Pethtel

Game Time	PSU	Score	Diff	RU
05:47				35 LASSITER S block (1)
05:43				22 SINGLETON T defensive rebound (2)
05:22				35 LASSITER S 2pt FG outside the paint, pull up jump shot missed
05:19				32 BROWN O offensive rebound (6)
05:18				32 BROWN O 2pt FG second chance in the paint, layup missed
05:15				32 BROWN O offensive rebound (7)
05:11				5 MORRIS V 2pt FG second chance in the paint, pull up jump shot missed
05:07	20 MARISA M defensive rebound (2)			
04:47	20 MARISA M foul drawn (2)			35 LASSITER S foul personal (2 - 2)
04:47	Timeout media			
04:47	23 HAGANS S substitution out			
04:47	10 SABEL T substitution in			
04:47				5 MORRIS V substitution out
04:47				35 LASSITER S substitution out
04:47				0 PETREE L substitution in
04:47				14 MASON J substitution in
04:42	20 MARISA M 2pt FG in the paint, driving layup missed			
04:39				32 BROWN O defensive rebound (8)
04:15	jump ball situation			
04:12	15 BURKE M steal (1)			3 DICKSON S turnover bad pass (3)
04:07	4 BEVERLEY N 3pt FG fast break from turnover, jump shot made (5)	<b>18-20</b>	<b>-2</b>	
04:07	15 BURKE M assist (1)			
03:44				3 DICKSON S 2pt FG outside the paint, pull up jump shot missed
03:40	20 MARISA M defensive rebound (3)			
03:35	5 KAPINUS L 3pt FG fast break, jump shot made (4)	<b>21-20</b>	<b>1</b>	
03:35	20 MARISA M assist (3)			
03:18	15 BURKE M foul personal (1 - 2)			22 SINGLETON T foul drawn (3)
03:11		<b>21-23</b>	<b>-2</b>	3 DICKSON S 3pt FG , jump shot made (5)
03:11				14 MASON J assist (1)
03:10	15 BURKE M foul loose ball (2 - 3)			0 PETREE L foul drawn (1)
03:10	15 BURKE M substitution out			
03:10	1 BRIGHAM A substitution in			
03:04	1 BRIGHAM A foul personal (3 - 4)			32 BROWN O foul drawn (1)
03:04	1 BRIGHAM A substitution out			
03:04	12 THOMAS K substitution in			
03:04				22 SINGLETON T substitution out
03:04				5 MORRIS V substitution in
03:01	10 SABEL T steal (1)			3 DICKSON S turnover bad pass (4)
02:43	5 KAPINUS L 2pt FG from turnover in the paint, pull up jump shot missed			
02:40	5 KAPINUS L offensive rebound (5)			
02:35	20 MARISA M 2pt FG from turnover second chance in the paint, driving layup missed			
02:32				32 BROWN O defensive rebound (9)
02:32	jump ball situation			
02:32	20 MARISA M steal (2)			32 BROWN O turnover lost ball (3)
02:32				0 PETREE L substitution out

**Rutgers at Penn St.**03/02/22 Gainbridge Fieldhouse, Indianapolis, IN  
2022 Big Ten Women's Basketball Tournament

Officials: Felicia Grinter, Gina Cross, Kevin Pethtel

Game Time	PSU	Score	Diff	RU
02:32				1 MARSHALL D substitution in
02:18	10 SABEL T 3pt FG from turnover, jump shot missed			
02:14	12 THOMAS K offensive rebound (3)			
02:13	4 BEVERLEY N 3pt FG from turnover second chance, jump shot missed			
02:10				3 DICKSON S defensive rebound (2)
02:00		<b>21-25</b>	<b>-4</b>	32 BROWN O 2pt FG in the paint, turnaround jump shot made (4)
01:50	5 KAPINUS L 3pt FG , jump shot missed			
01:48	12 THOMAS K offensive rebound (4)			
01:48	12 THOMAS K foul drawn (1)			32 BROWN O foul shooting (2 - 3)
01:48	12 THOMAS K free throw 1 - 2 made (1)	<b>22-25</b>	<b>-3</b>	
01:48	12 THOMAS K free throw 2 - 2 missed			
01:47				1 MARSHALL D defensive rebound (1)
01:31		<b>22-28</b>	<b>-6</b>	5 MORRIS V 3pt FG , jump shot made (3)
01:31				32 BROWN O assist (3)
01:07	5 KAPINUS L turnover lost ball (1)			1 MARSHALL D steal (1)
00:56				14 MASON J 3pt FG from turnover, jump shot missed
00:53	4 BEVERLEY N defensive rebound (1)			
00:52	20 MARISA M foul drawn (3)			1 MARSHALL D foul intentional (1 - 4)
00:52	20 MARISA M free throw 1 - 2 made (8)	<b>23-28</b>	<b>-5</b>	
00:52	20 MARISA M free throw 2 - 2 missed			
00:52	offensive dead ball rebound (3)			
00:37	12 THOMAS K substitution out			
00:37	25 JEKOT K substitution in			
00:37				1 MARSHALL D substitution out
00:37				15 SIDIBE A substitution in
00:33	10 SABEL T turnover dribbling violation (1)			
00:08		<b>23-30</b>	<b>-7</b>	3 DICKSON S 2pt FG from turnover in the paint, layup made (7)
00:08	25 JEKOT K foul shooting (1 - 5)			3 DICKSON S foul drawn (2)
00:08		<b>23-31</b>	<b>-8</b>	3 DICKSON S free throw 1 - 1 made (8)
00:03	5 KAPINUS L 2pt FG fast break in the paint, driving layup made (6)	<b>25-31</b>	<b>-6</b>	
<b>END OF PERIOD</b>				
<b>PSU 25-31 RU</b>				





**Rutgers at Penn St.**

03/02/22 Gainbridge Fieldhouse, Indianapolis, IN  
2022 Big Ten Women's Basketball Tournament

Officials: Felicia Grinter, Gina Cross, Kevin Pethtel

**Rutgers - 14**

NO.	Name	F	Min	FG			Rebounds			Fouls		TP	AS	TO	ST	Blocks		+/-
				M-A	M-A	M-A	OR	DR	TOT	PF	FD					BS	BA	
22	Tyia Singleton	F	05:48	0-1	0-0	0-0	0	1	1	0	1	0	0	1	0	0	0	-4
32	Osh Brown	F	07:16	1-2	0-0	0-0	2	2	4	1	1	2	1	1	0	0	0	1
0	Lasha Petree	G	02:15	0-0	0-0	0-0	0	0	0	0	1	0	0	0	0	0	0	-3
3	Shug Dickson	G	09:05	2-3	1-1	1-1	0	1	1	0	1	6	1	2	0	0	0	0
14	Jailyn Mason	G	05:42	0-1	0-1	0-0	0	0	0	0	0	0	1	0	0	0	0	1
35	Sayawni Lassiter		05:13	1-2	1-1	0-0	0	0	0	1	1	3	0	0	0	1	0	-1
5	Victoria Morris		08:17	1-2	1-1	0-0	0	1	1	0	0	3	0	1	0	0	0	3
1	Destiny Marshall		01:55	0-0	0-0	0-0	0	1	1	1	0	0	0	0	1	0	0	3
15	Awa Sidibe		04:29	0-1	0-0	0-0	0	2	2	1	0	0	0	1	0	1	0	0
Team							0	0	0			0						
<b>Totals</b>				5-12	3-4	1-1	2	8	10	4	5	14	3	6	1	2	0	0

Shooting By Period		
2nd FG%	5-12	41.7%
3PT%	3-4	75.0%
FT%	1-1	100%
GM FG%	5-12	41.7%
3PT%	3-4	75.0%
FT%	1-1	100.0%

Dead Ball Rebounds: 0, 0

Technical Fouls::NONE

**Penn St. - 14**

NO.	Name	F	Min	FG			Rebounds			Fouls		TP	AS	TO	ST	Blocks		+/-
				M-A	M-A	M-A	OR	DR	TOT	PF	FD					BS	BA	
11	Anna Camden	F	00:00	0-0	0-0	0-0	0	0	0	0	0	0	0	0	0	0	0	0
4	Niya Beverley	G	08:52	1-2	1-2	0-0	0	1	1	0	0	3	0	0	0	0	0	0
5	Leilani Kapinus	G	10:00	2-6	1-2	0-0	2	2	4	0	1	5	1	1	0	0	1	0
20	Makenna Marisa	G	10:00	1-4	0-0	1-2	0	2	2	0	2	3	1	0	1	0	0	0
25	Kelly Jekot	G	02:01	0-0	0-0	0-0	0	0	0	1	0	0	0	0	0	0	0	-2
1	Ali Brigham		02:02	1-1	0-0	0-0	0	0	0	2	0	2	0	1	0	0	0	-1
23	Shay Hagans		03:49	0-1	0-0	0-0	0	0	0	0	0	0	0	0	0	0	1	2
15	Maddie Burke		03:59	0-0	0-0	0-0	0	0	0	2	0	0	1	0	1	0	0	5
10	Tova Sabel		05:55	0-2	0-1	0-0	0	0	0	0	0	0	0	1	1	0	0	-1
12	Kayla Thomas		03:22	0-0	0-0	1-2	2	0	2	0	1	1	0	0	0	0	0	-3
Team							0	0	0			0						
<b>Totals</b>				5-16	2-5	2-4	4	5	9	5	4	14	3	3	3	0	2	0

Shooting By Period		
2nd FG%	5-16	31.3%
3PT%	2-5	40.0%
FT%	2-4	50%
GM FG%	5-16	31.3%
3PT%	2-5	40.0%
FT%	2-4	50.0%

Dead Ball Rebounds: 1, 0

Technical Fouls::NONE

	RU	PSU
Biggest lead	8 (2 <sup>nd</sup> 0:08)	1 (2 <sup>nd</sup> 3:35)
Best Scoring Run	5 (2 <sup>nd</sup> 2:00)	8 (2 <sup>nd</sup> 3:35)
Lead Changes	2	
Times Tied	0	
Time with Lead	09:07	00:24

Points from	RU	PSU
Turnovers	3	5
Paint	4	6
Second Chance	0	1
Fast Breaks	3	8
Bench	6	3

Period by Period Scoring					
	1st	2nd	3rd	4th	TOT
RU	17	14	23	21	75
PSU	11	14	11	14	50



**Rutgers at Penn St.**

03/02/22 Gainbridge Fieldhouse, Indianapolis, IN  
2022 Big Ten Women's Basketball Tournament

Officials: Felicia Grinter, Gina Cross, Kevin Pethtel

**Rutgers - 31**

NO.	Name	F	Min	FG	3P	FT	Rebounds			Fouls		TP	AS	TO	ST	Blocks		+/-
				M-A	M-A	M-A	OR	DR	TOT	PF	FD					BS	BA	
22	Tyia Singleton	F	14:03	3-6	0-0	2-4	1	1	2	0	3	8	0	1	0	0	1	4
32	Osh Brown	F	17:16	2-3	0-0	0-0	4	5	9	2	1	4	3	3	1	0	0	7
0	Lasha Petree	G	11:49	1-2	0-0	0-0	0	3	3	0	1	2	0	2	0	0	0	3
3	Shug Dickson	G	17:45	3-6	1-1	1-1	1	1	2	1	2	8	3	4	0	0	0	7
14	Jailyn Mason	G	15:42	1-4	1-4	0-0	0	2	2	0	0	3	1	0	1	0	0	7
15	Awa Sidibe		06:14	0-1	0-0	0-0	0	3	3	1	0	0	1	1	0	1	0	-2
35	Sayawni Lassiter		06:33	1-2	1-1	0-0	0	0	0	2	1	3	0	0	0	1	0	-2
5	Victoria Morris		08:43	1-3	1-1	0-0	0	1	1	0	0	3	0	1	0	0	1	3
1	Destiny Marshall		01:55	0-0	0-0	0-0	0	1	1	1	0	0	0	0	1	0	0	3
Team							1	1	2			0		0				
<b>Totals</b>				12-27	4-7	3-5	7	18	25	7	8	31	8	12	3	2	2	6

Shooting By Period		
1 <sup>st</sup> FG%	7-15	46.7%
3PT%	1-3	33.3%
FT%	2-4	50%
2 <sup>nd</sup> FG%	5-12	41.7%
3PT%	3-4	75.0%
FT%	1-1	100%
GM FG%	12-27	44.4%
3PT%	4-7	57.1%
FT%	3-5	60.0%

Dead Ball Rebounds: 0, 0

Technical Fouls::NONE

**Penn St. - 25**

NO.	Name	F	Min	FG	3P	FT	Rebounds			Fouls		TP	AS	TO	ST	Blocks		+/-
				M-A	M-A	M-A	OR	DR	TOT	PF	FD					BS	BA	
11	Anna Camden	F	03:06	0-0	0-0	0-0	1	0	1	2	0	0	0	1	0	0	0	4
4	Niya Beverley	G	17:07	2-5	1-4	0-0	0	1	1	0	0	5	0	0	0	0	0	-8
5	Leilani Kapinus	G	17:52	2-8	1-3	1-2	2	3	5	0	3	6	1	1	2	0	1	2
20	Makenna Marisa	G	20:00	3-11	0-2	2-4	0	3	3	0	3	8	3	1	2	1	0	-6
25	Kelly Jekot	G	06:57	0-1	0-1	0-0	0	1	1	1	0	0	0	1	0	0	0	-6
23	Shay Hagans		07:25	0-1	0-0	0-0	1	0	1	0	0	0	0	0	0	0	1	1
1	Ali Brigham		04:59	1-1	0-0	0-0	0	0	0	3	0	2	1	1	0	0	0	-6
15	Maddie Burke		06:07	0-1	0-1	0-0	0	0	0	2	0	0	1	0	1	0	0	-3
10	Tova Sabel		09:52	1-4	1-3	0-0	0	0	0	0	0	3	0	1	1	0	0	-6
12	Kayla Thomas		06:35	0-0	0-0	1-2	2	2	4	0	1	1	0	0	0	1	0	-2
Team							0	0	0			0		0				
<b>Totals</b>				9-32	3-14	4-8	6	10	16	8	7	25	6	6	6	2	2	-6

Shooting By Period		
1 <sup>st</sup> FG%	4-16	25.0%
3PT%	1-9	11.1%
FT%	2-4	50%
2 <sup>nd</sup> FG%	5-16	31.3%
3PT%	2-5	40.0%
FT%	2-4	50%
GM FG%	9-32	28.1%
3PT%	3-14	21.4%
FT%	4-8	50.0%

Dead Ball Rebounds: 3, 0

Technical Fouls::NONE

	RU	PSU
Biggest lead	9 (1 <sup>st</sup> 2:42)	4 (1 <sup>st</sup> 7:22)
Best Scoring Run	10 (1 <sup>st</sup> 2:42)	8 (2 <sup>nd</sup> 3:35)
Lead Changes	5	
Times Tied	0	
Time with Lead	14:05	03:55

Points from	RU	PSU
Turnovers	7	7
Paint	12	12
Second Chance	4	1
Fast Breaks	8	13
Bench	6	6

	Period by Period Scoring				
	1st	2nd	3rd	4th	TOT
RU	17	14	23	21	75
PSU	11	14	11	14	50



**Rutgers at Penn St.**

**Period 3**

**Quarter Starters:**

<b>PSU</b>	4 Beverley N	5 Kapinus L	10 Sabel T	11 Camden A	20 Marisa M
<b>RU</b>	0 Petree L	3 Dickson S	14 Mason J	22 Singleton T	32 Brown O

Game Time	PSU	Score	Diff	RU
10:00	25 JEKOT K substitution out			
10:00	11 CAMDEN A substitution in			
10:00				5 MORRIS V substitution out
10:00				15 SIDIBE A substitution out
10:00				0 PETREE L substitution in
10:00				22 SINGLETON T substitution in
09:36		<b>25-33</b>	<b>-8</b>	32 BROWN O 2pt FG outside the paint, jump shot made (6)
09:36				3 DICKSON S assist (4)
09:09	4 BEVERLEY N 2pt FG outside the paint, pull up jump shot missed			
09:06				14 MASON J defensive rebound (3)
08:58				0 PETREE L 3pt FG , jump shot missed
08:57				22 SINGLETON T offensive rebound (3)
08:57				22 SINGLETON T 2pt FG second chance in the paint, layup blocked
08:57	5 KAPINUS L block (1)			
08:57				offensive rebound (28)
08:41				32 BROWN O 2pt FG second chance outside the paint, turnaround jump shot missed
08:39				offensive dead ball rebound (1)
08:39	10 SABEL T foul loose ball (1 - 1)			22 SINGLETON T foul drawn (4)
08:36				14 MASON J 3pt FG second chance, jump shot missed
08:34				3 DICKSON S offensive rebound (3)
08:33		<b>25-35</b>	<b>-10</b>	3 DICKSON S 2pt FG second chance in the paint, layup made (10)
08:18	10 SABEL T 3pt FG , jump shot missed			
08:15	11 CAMDEN A offensive rebound (2)			
08:14	11 CAMDEN A 2pt FG second chance in the paint, layup missed			
08:11				14 MASON J defensive rebound (4)
07:48		<b>25-37</b>	<b>-12</b>	32 BROWN O 2pt FG in the paint, pull up jump shot made (8)
07:48				14 MASON J assist (2)
07:36	11 CAMDEN A 3pt FG , jump shot missed			
07:36	offensive dead ball rebound (4)			
07:36	10 SABEL T foul drawn (1)			0 PETREE L foul loose ball (1 - 1)
07:34	5 KAPINUS L foul drawn (4)			22 SINGLETON T foul shooting (1 - 2)
07:34	5 KAPINUS L free throw 1 - 2 made (7)	<b>26-37</b>	<b>-11</b>	
07:34	5 KAPINUS L free throw 2 - 2 made (8)	<b>27-37</b>	<b>-10</b>	
07:21		<b>27-39</b>	<b>-12</b>	32 BROWN O 2pt FG in the paint, layup made (10)
07:21				3 DICKSON S assist (5)
07:13	5 KAPINUS L 2pt FG in the paint, layup blocked			
07:13				3 DICKSON S block (1)
07:10				14 MASON J defensive rebound (5)
07:08	10 SABEL T foul shooting (2 - 2)			3 DICKSON S foul drawn (3)
07:08	10 SABEL T substitution out			



**Rutgers at Penn St.**

03/02/22 Gainbridge Fieldhouse, Indianapolis, IN  
2022 Big Ten Women's Basketball Tournament

Officials: Felicia Grinter, Gina Cross, Kevin Pethtel

Game Time	PSU	Score	Diff	RU
07:08	23 HAGANS S substitution in			
07:08		<b>27-40</b>	<b>-13</b>	3 DICKSON S free throw fast break 1 - 2 made (11)
07:08		<b>27-41</b>	<b>-14</b>	3 DICKSON S free throw fast break 2 - 2 made (12)
06:46	20 MARISA M 3pt FG , jump shot missed			
06:43	5 KAPINUS L offensive rebound (6)			
06:41	20 MARISA M turnover travel (2)			
06:32				22 SINGLETON T 2pt FG from turnover in the paint, layup blocked
06:32	11 CAMDEN A block (1)			
06:29	4 BEVERLEY N defensive rebound (2)			
06:24	5 KAPINUS L 3pt FG , jump shot missed			
06:21				3 DICKSON S defensive rebound (4)
06:16				3 DICKSON S 2pt FG in the paint, driving layup missed
06:13				22 SINGLETON T offensive rebound (4)
06:13		<b>27-43</b>	<b>-16</b>	22 SINGLETON T 2pt FG second chance in the paint, layup made (10)
06:12	Timeout 30 Sec			
06:12	Timeout media			
05:50	23 HAGANS S 2pt FG in the paint, driving layup missed			
05:47				32 BROWN O defensive rebound (10)
05:26				3 DICKSON S 2pt FG in the paint, pull up jump shot missed
05:22				22 SINGLETON T offensive rebound (5)
05:21				22 SINGLETON T turnover bad pass (2)
04:54	4 BEVERLEY N 3pt FG from turnover, jump shot missed			
04:51				22 SINGLETON T defensive rebound (6)
04:34				32 BROWN O 2pt FG outside the paint, jump shot missed
04:30				22 SINGLETON T offensive rebound (7)
04:30				22 SINGLETON T 2pt FG second chance in the paint, layup missed
04:29	5 KAPINUS L defensive rebound (7)			
04:22	4 BEVERLEY N 3pt FG , jump shot missed			
04:18	5 KAPINUS L offensive rebound (8)			
04:16	5 KAPINUS L foul drawn (5)			22 SINGLETON T foul shooting (2 - 3)
04:16	Timeout media			
04:16	4 BEVERLEY N substitution out			
04:16	23 HAGANS S substitution out			
04:16	10 SABEL T substitution in			
04:16	15 BURKE M substitution in			
04:16				0 PETREE L substitution out
04:16				14 MASON J substitution out
04:16				5 MORRIS V substitution in
04:16				15 SIDIBE A substitution in
04:16	5 KAPINUS L free throw 1 - 2 missed			
04:16	offensive dead ball rebound (5)			
04:16	5 KAPINUS L free throw 2 - 2 made (9)	<b>28-43</b>	<b>-15</b>	
04:06		<b>28-45</b>	<b>-17</b>	3 DICKSON S 2pt FG in the paint, pull up jump shot made (14)
03:41	20 MARISA M 2pt FG outside the paint, pull up jump shot missed			
03:37				15 SIDIBE A defensive rebound (4)
03:22		<b>28-47</b>	<b>-19</b>	5 MORRIS V 2pt FG in the paint, jump shot made (5)



**Rutgers at Penn St.**

03/02/22 Gainbridge Fieldhouse, Indianapolis, IN  
2022 Big Ten Women's Basketball Tournament

Officials: Felicia Grinter, Gina Cross, Kevin Pethtel

Game Time	PSU	Score	Diff	RU
03:22				15 SIDIBE A assist (2)
03:12	20 MARISA M foul drawn (4)			22 SINGLETON T foul shooting (3 - 4)
03:12				22 SINGLETON T substitution out
03:12				35 LASSITER S substitution in
03:12	20 MARISA M free throw 1 - 2 missed			
03:12	offensive dead ball rebound (6)			
03:12	20 MARISA M free throw 2 - 2 made (9)	<b>29-47</b>	<b>-18</b>	
03:06				5 MORRIS V 2pt FG in the paint, pull up jump shot missed
03:04				offensive dead ball rebound (2)
03:04	15 BURKE M foul loose ball (3 - 3)			32 BROWN O foul drawn (2)
02:53				5 MORRIS V 3pt FG second chance, jump shot missed
02:50	20 MARISA M defensive rebound (4)			
02:37	20 MARISA M 2pt FG in the paint, driving layup made (11)	<b>31-47</b>	<b>-16</b>	
02:18				3 DICKSON S 2pt FG in the paint, driving layup missed
02:15				15 SIDIBE A offensive rebound (5)
02:15				15 SIDIBE A 2pt FG second chance in the paint, layup missed
02:15	20 MARISA M defensive rebound (5)			
02:15	11 CAMDEN A foul drawn (1)			3 DICKSON S foul personal (2 - 5)
02:15	15 BURKE M substitution out			
02:15	23 HAGANS S substitution in			
02:15	20 MARISA M substitution out			
02:15	4 BEVERLEY N substitution in			
02:15	11 CAMDEN A free throw 1 - 2 made (1)	<b>32-47</b>	<b>-15</b>	
02:15	11 CAMDEN A free throw 2 - 2 made (2)	<b>33-47</b>	<b>-14</b>	
02:10	11 CAMDEN A foul personal (3 - 4)			5 MORRIS V foul drawn (1)
02:09		<b>33-49</b>	<b>-16</b>	32 BROWN O 2pt FG in the paint, layup made (12)
02:09				3 DICKSON S assist (6)
02:09	10 SABEL T foul shooting (3 - 5)			32 BROWN O foul drawn (3)
02:09		<b>33-50</b>	<b>-17</b>	32 BROWN O free throw 1 - 1 made (13)
02:09	10 SABEL T substitution out			
02:09	25 JEKOT K substitution in			
01:52	23 HAGANS S 2pt FG in the paint, pull up jump shot missed			
01:48				35 LASSITER S defensive rebound (1)
01:29				3 DICKSON S 2pt FG in the paint, driving layup missed
01:28				offensive rebound (41)
01:25	jump ball situation			
01:25	5 KAPINUS L steal (3)			3 DICKSON S turnover lost ball (5)
01:25	23 HAGANS S substitution out			
01:25	20 MARISA M substitution in			
01:25				3 DICKSON S substitution out
01:25				14 MASON J substitution in
01:09	5 KAPINUS L turnover bad pass (2)			15 SIDIBE A steal (1)
01:02	5 KAPINUS L foul personal (1 - 6)			35 LASSITER S foul drawn (2)
01:02	5 KAPINUS L substitution out			
01:02	23 HAGANS S substitution in			
01:02		<b>33-51</b>	<b>-18</b>	35 LASSITER S free throw 1 - 2 made (4)
01:02		<b>33-52</b>	<b>-19</b>	35 LASSITER S free throw 2 - 2 made (5)
00:41	23 HAGANS S 3pt FG , jump shot made (3)	<b>36-52</b>	<b>-16</b>	
00:41	20 MARISA M assist (4)			



Official Basketball Play by Play - 3rd Period

### Rutgers at Penn St.

03/02/22 Gainbridge Fieldhouse, Indianapolis, IN  
2022 Big Ten Women's Basketball Tournament

**Game Time:** 2:00 PM  
**Game Duration:** 1:56

**Officials:** Felicia Grinter, Gina Cross, Kevin Pethtel

Game Time	PSU	Score	Diff	RU
00:19		36-54	-18	35 LASSITER S 2pt FG outside the paint, pull up jump shot made (7)
<b>END OF PERIOD</b>				
<b>PSU 36-54 RU</b>				



**Rutgers at Penn St.**

03/02/22 Gainbridge Fieldhouse, Indianapolis, IN  
2022 Big Ten Women's Basketball Tournament

Officials: Felicia Grinter, Gina Cross, Kevin Pethtel

**Rutgers - 23**

NO.	Name	F	Min	FG			Rebounds			Fouls		TP	AS	TO	ST	Blocks		+/-
				M-A	3P	FT	OR	DR	TOT	PF	FD					BS	BA	
22	Tyia Singleton	F	06:48	1-4	0-0	0-0	4	1	5	3	1	2	0	1	0	0	2	13
32	Osh Brown	F	10:00	4-6	0-0	1-1	0	1	1	0	2	9	0	0	0	0	0	12
0	Lasha Petree	G	05:44	0-1	0-1	0-0	0	0	0	1	0	0	0	0	0	0	0	10
3	Shug Dickson	G	08:35	2-6	0-0	2-2	1	1	2	1	1	6	3	1	0	1	0	11
14	Jailyn Mason	G	07:09	0-1	0-1	0-0	0	3	3	0	0	0	1	0	0	0	0	11
5	Victoria Morris		04:16	1-3	0-1	0-0	0	0	0	0	1	2	0	0	0	0	0	2
15	Awa Sidibe		04:16	0-1	0-0	0-0	1	1	2	0	0	0	1	0	1	0	0	2
35	Sayawni Lassiter		03:12	1-1	0-0	2-2	0	1	1	0	1	4	0	0	0	0	0	-1
Team							2	0	2			0			0			
<b>Totals</b>				9-23	0-3	5-5	8	8	16	5	6	23	5	2	1	1	2	12

Shooting By Period		
3 <sup>rd</sup> FG%	9-23	39.1%
3PT%	0-3	0.0%
FT%	5-5	100%
GM FG%	9-23	39.1%
3PT%	0-3	0.0%
FT%	5-5	100.0%

Dead Ball Rebounds: 2, 0

Technical Fouls::NONE

**Penn St. - 11**

NO.	Name	F	Min	FG			Rebounds			Fouls		TP	AS	TO	ST	Blocks		+/-
				M-A	3P	FT	OR	DR	TOT	PF	FD					BS	BA	
11	Anna Camden	F	10:00	0-2	0-1	2-2	1	0	1	1	1	2	0	0	0	1	0	-12
4	Niya Beverley	G	07:59	0-3	0-2	0-0	0	1	1	0	0	0	0	0	0	0	0	-12
5	Leilani Kapinus	G	08:58	0-2	0-1	3-4	2	1	3	1	2	3	0	1	1	1	1	-11
20	Makenna Marisa	G	09:10	1-3	0-1	1-2	0	2	2	0	1	3	1	1	0	0	0	-11
25	Kelly Jekot	G	02:09	0-0	0-0	0-0	0	0	0	0	0	0	0	0	0	0	0	-1
23	Shay Hagans		04:44	1-3	1-1	0-0	0	0	0	0	0	3	0	0	0	0	0	-6
10	Tova Sabel		04:59	0-1	0-1	0-0	0	0	0	3	1	0	0	0	0	0	0	-7
15	Maddie Burke		02:01	0-0	0-0	0-0	0	0	0	1	0	0	0	0	0	0	0	0
Team							0	0	0			0			0			
<b>Totals</b>				2-14	1-7	6-8	3	4	7	6	5	11	1	2	1	2	1	-12

Shooting By Period		
3 <sup>rd</sup> FG%	2-14	14.3%
3PT%	1-7	14.3%
FT%	6-8	75%
GM FG%	2-14	14.3%
3PT%	1-7	14.3%
FT%	6-8	75.0%

Dead Ball Rebounds: 3, 0

Technical Fouls::NONE

	RU	PSU	Points from		RU	PSU	Period by Period Scoring				
Biggest lead	19 (3 <sup>rd</sup> 3:22)	0 (1 <sup>st</sup> 10:00)	Turnovers	2	0	1st	2nd	3rd	4th	TOT	
Best Scoring Run	6(3 <sup>rd</sup> 7:48)	5(3 <sup>rd</sup> 2:15)	Paint	14	2	RU	17	14	23	21	75
Lead Changes	0		Second Chance	4	3	PSU	11	14	11	14	50
Times Tied	0		Fast Breaks	2	0						
Time with Lead	09:36	00:00	Bench	6	3						



**Rutgers at Penn St.**

**Period 4**

**Quarter Starters:**

<b>PSU</b>	4 Beverley N	5 Kapinus L	11 Camden A	20 Marisa M	23 Hagans S
<b>RU</b>	5 Morris V	14 Mason J	15 Sidibe A	32 Brown O	35 Lassiter S

Game Time	PSU	Score	Diff	RU
10:00	25 JEKOT K substitution out			
10:00	5 KAPINUS L substitution in			
09:46				35 LASSITER S 2pt FG outside the paint, pull up jump shot missed
09:42				15 SIDIBE A offensive rebound (6)
09:41				35 LASSITER S 3pt FG second chance, jump shot missed
09:38				32 BROWN O offensive rebound (11)
09:24		<b>36-56</b>	<b>-20</b>	32 BROWN O 2pt FG second chance in the paint, pull up jump shot made (15)
09:13	20 MARISA M 2pt FG in the paint, driving layup missed			
09:10				32 BROWN O defensive rebound (12)
08:54		<b>36-58</b>	<b>-22</b>	35 LASSITER S 2pt FG outside the paint, pull up jump shot made (9)
08:33	5 KAPINUS L 2pt FG in the paint, driving layup blocked			
08:33				15 SIDIBE A block (2)
08:30				32 BROWN O defensive rebound (13)
08:11				35 LASSITER S 3pt FG , jump shot missed
08:07	defensive rebound (24)			
08:07	11 CAMDEN A substitution out			
08:07	1 BRIGHAM A substitution in			
08:07				35 LASSITER S substitution out
08:07				3 DICKSON S substitution in
08:00	1 BRIGHAM A foul offensive (4 - 1)			32 BROWN O foul drawn (4)
08:00	1 BRIGHAM A turnover offensive (2)			
07:37		<b>36-60</b>	<b>-24</b>	32 BROWN O 2pt FG from turnover in the paint, driving layup made (17)
07:37				3 DICKSON S assist (7)
07:29	20 MARISA M foul drawn (5)			3 DICKSON S foul personal (3 - 1)
07:25	20 MARISA M 2pt FG in the paint, pull up jump shot missed			
07:24				defensive rebound (46)
07:22	20 MARISA M steal (3)			3 DICKSON S turnover bad pass (6)
07:18	20 MARISA M 2pt FG from turnover in the paint, layup made (13)	<b>38-60</b>	<b>-22</b>	
07:08				3 DICKSON S 2pt FG in the paint, driving layup missed
07:05				3 DICKSON S offensive rebound (5)
06:52	5 KAPINUS L foul shooting (2 - 2)			32 BROWN O foul drawn (5)
06:52	1 BRIGHAM A substitution out			
06:52	15 BURKE M substitution in			
06:52		<b>38-61</b>	<b>-23</b>	32 BROWN O free throw 1 - 2 made (18)
06:52				32 BROWN O free throw 2 - 2 missed
06:51	5 KAPINUS L defensive rebound (9)			
06:21	5 KAPINUS L 3pt FG , pull up jump shot missed			
06:17				3 DICKSON S defensive rebound (6)
06:00				15 SIDIBE A 2pt FG outside the paint, pull up jump shot missed
05:58	15 BURKE M defensive rebound (1)			





**Rutgers at Penn St.**

03/02/22 Gainbridge Fieldhouse, Indianapolis, IN  
2022 Big Ten Women's Basketball Tournament

**Officials:** Felicia Grinter, Gina Cross, Kevin Pethtel

Game Time	PSU	Score	Diff	RU
05:58	jump ball situation			
05:58				32 BROWN O substitution out
05:58				54 CORNWELL C substitution in
05:47	20 MARISA M 2pt FG in the paint, driving layup missed			
05:44				3 DICKSON S defensive rebound (7)
05:44	jump ball situation			
05:36		<b>38-63</b>	<b>-25</b>	54 CORNWELL C 2pt FG in the paint, turnaround jump shot made (2)
05:36				3 DICKSON S assist (8)
05:36	15 BURKE M foul shooting (4 - 3)			54 CORNWELL C foul drawn (1)
05:36				54 CORNWELL C free throw 1 - 1 missed
05:35	5 KAPINUS L defensive rebound (10)			
05:27	23 HAGANS S 3pt FG , pull up jump shot missed			
05:23				14 MASON J defensive rebound (6)
05:02		<b>38-65</b>	<b>-27</b>	5 MORRIS V 2pt FG in the paint, floating jump shot made (7)
05:02				3 DICKSON S assist (9)
04:52	15 BURKE M 2pt FG in the paint, layup made (2)	<b>40-65</b>	<b>-25</b>	
04:52	20 MARISA M assist (5)			
04:23				3 DICKSON S 2pt FG in the paint, pull up jump shot missed
04:21	5 KAPINUS L defensive rebound (11)			
04:17	5 KAPINUS L foul drawn (6)			14 MASON J foul shooting (1 - 2)
04:17	Timeout media			
04:17	23 HAGANS S substitution out			
04:17	10 SABEL T substitution in			
04:17				3 DICKSON S substitution out
04:17				5 MORRIS V substitution out
04:17				0 PETREE L substitution in
04:17				11 GUIHON S substitution in
04:17	5 KAPINUS L free throw fast break 1 - 2 made (10)	<b>41-65</b>	<b>-24</b>	
04:17	5 KAPINUS L free throw fast break 2 - 2 made (11)	<b>42-65</b>	<b>-23</b>	
04:05				Timeout 30 Sec
03:51		<b>42-67</b>	<b>-25</b>	0 PETREE L 2pt FG in the paint, driving layup made (4)
03:43	10 SABEL T foul drawn (2)			15 SIDIBE A foul shooting (2 - 3)
03:43	10 SABEL T free throw 1 - 2 missed			
03:43	offensive dead ball rebound (7)			
03:43	10 SABEL T free throw 2 - 2 made (4)	<b>43-67</b>	<b>-24</b>	
03:43	15 BURKE M substitution out			
03:43	23 HAGANS S substitution in			
03:33		<b>43-69</b>	<b>-26</b>	54 CORNWELL C 2pt FG in the paint, driving layup made (4)
03:33				14 MASON J assist (3)
03:20	4 BEVERLEY N 2pt FG in the paint, driving layup missed			
03:18				54 CORNWELL C defensive rebound (1)
03:10	4 BEVERLEY N foul personal (1 - 4)			11 GUIHON S foul drawn (1)
03:10	4 BEVERLEY N substitution out			
03:10	11 CAMDEN A substitution in			
03:06		<b>43-71</b>	<b>-28</b>	0 PETREE L 2pt FG outside the paint, step back jump shot made (6)
02:59	20 MARISA M turnover bad pass (3)			0 PETREE L steal (1)
02:31				54 CORNWELL C 2pt FG from turnover outside the paint, turnaround jump shot missed



**Rutgers at Penn St.**

03/02/22 Gainbridge Fieldhouse, Indianapolis, IN  
2022 Big Ten Women's Basketball Tournament

**Officials:** Felicia Grinter, Gina Cross, Kevin Pethtel

Game Time	PSU	Score	Diff	RU
02:27	20 MARISA M defensive rebound (6)			
02:20	11 CAMDEN A 2pt FG in the paint, driving layup missed			
02:18	5 KAPINUS L offensive rebound (12)			
02:18	5 KAPINUS L 2pt FG second chance in the paint, pull up jump shot made (13)	<b>45-71</b>	<b>-26</b>	
02:18	5 KAPINUS L foul drawn (7)			54 CORNWELL C foul shooting (1 - 4)
02:18				0 PETREE L substitution out
02:18				11 GUIHON S substitution out
02:18				14 MASON J substitution out
02:18				15 SIDIBE A substitution out
02:18				1 MARSHALL D substitution in
02:18				10 LAFAYETTE E substitution in
02:18				20 MADDOX J substitution in
02:18				24 SANDERLIN K substitution in
02:18				54 CORNWELL C substitution out
02:18				11 GUIHON S substitution in
02:18	10 SABEL T substitution out			
02:18	23 HAGANS S substitution out			
02:18	4 BEVERLEY N substitution in			
02:18	25 JEKOT K substitution in			
02:18	5 KAPINUS L free throw 1 - 1 made (14)	<b>46-71</b>	<b>-25</b>	
02:09		<b>46-73</b>	<b>-27</b>	1 MARSHALL D 2pt FG in the paint, driving layup made (2)
02:09				11 GUIHON S assist (1)
01:52	20 MARISA M foul drawn (6)			10 LAFAYETTE E foul shooting (1 - 5)
01:52	20 MARISA M free throw 1 - 2 made (14)	<b>47-73</b>	<b>-26</b>	
01:52	20 MARISA M free throw 2 - 2 made (15)	<b>48-73</b>	<b>-25</b>	
01:30				20 MADDOX J 3pt FG , pull up jump shot missed
01:25				24 SANDERLIN K offensive rebound (1)
01:25				24 SANDERLIN K 2pt FG second chance in the paint, pull up jump shot missed
01:22	20 MARISA M defensive rebound (7)			
01:16	20 MARISA M 2pt FG in the paint, driving layup missed			
01:13				20 MADDOX J defensive rebound (1)
00:58	20 MARISA M foul shooting (1 - 5)			10 LAFAYETTE E foul drawn (1)
00:58		<b>48-74</b>	<b>-26</b>	10 LAFAYETTE E free throw 1 - 2 made (1)
00:58		<b>48-75</b>	<b>-27</b>	10 LAFAYETTE E free throw 2 - 2 made (2)
00:46	5 KAPINUS L foul drawn (8)			20 MADDOX J foul shooting (1 - 6)
00:46	5 KAPINUS L free throw 1 - 2 made (15)	<b>49-75</b>	<b>-26</b>	
00:46	5 KAPINUS L free throw 2 - 2 made (16)	<b>50-75</b>	<b>-25</b>	
00:46	20 MARISA M substitution out			
00:46	23 HAGANS S substitution in			
00:26				10 LAFAYETTE E 2pt FG in the paint, pull up jump shot missed
00:23	5 KAPINUS L defensive rebound (13)			
00:17	5 KAPINUS L 2pt FG in the paint, driving layup missed			
00:14				1 MARSHALL D defensive rebound (2)
<b>END OF GAME</b>				
<b>PSU 50-75 RU</b>				



Rutgers at Penn St.

03/02/22 Gainbridge Fieldhouse, Indianapolis, IN  
2022 Big Ten Women's Basketball Tournament

Officials: Felicia Grinter, Gina Cross, Kevin Pethtel

Rutgers - 21

NO.	Name	Min	FG			Rebounds			Fouls		TP	AS	TO	ST	Blocks		+/-
			M-A	M-A	M-A	OR	DR	TOT	PF	FD					BS	BA	
22	Tyia Singleton	F 00:00	0-0	0-0	0-0	0	0	0	0	0	0	0	0	0	0	0	0
32	Osh Brown	F 04:02	2-2	0-0	1-2	1	2	3	0	2	5	0	0	0	0	0	5
0	Lasha Petree	G 01:59	2-2	0-0	0-0	0	0	0	0	0	4	0	0	1	0	0	1
3	Shug Dickson	G 03:50	0-2	0-0	0-0	1	2	3	1	0	0	3	1	0	0	0	3
14	Jailyn Mason	G 07:42	0-0	0-0	0-0	0	1	1	1	0	0	1	0	0	0	0	8
5	Victoria Morris	05:43	1-1	0-0	0-0	0	0	0	0	0	2	0	0	0	0	0	7
15	Awa Sidibe	07:42	0-1	0-0	0-0	1	0	1	1	0	0	0	0	0	1	0	8
35	Sayawni Lassiter	01:53	1-4	0-2	0-0	0	0	0	0	0	2	0	0	0	0	0	4
54	Chyna Cornwell	03:40	2-3	0-0	0-1	0	1	1	1	1	4	0	0	0	0	0	3
11	Stephanie Guihon	04:17	0-0	0-0	0-0	0	0	0	0	1	0	1	0	0	0	0	0
1	Destiny Marshall	02:18	1-1	0-0	0-0	0	1	1	0	0	2	0	0	0	0	0	-1
10	Erica Lafayette	02:18	0-1	0-0	2-2	0	0	0	1	1	2	0	0	0	0	0	-1
20	Joiya Maddox	02:18	0-1	0-1	0-0	0	1	1	1	0	0	0	0	0	0	0	-1
24	Kierra Sanderlin	02:18	0-1	0-0	0-0	1	0	1	0	0	0	0	0	0	0	0	-1
Team						0	1	1		0		0					
<b>Totals</b>			9-19	0-3	3-5	4	9	13	6	5	21	5	1	1	1	0	7

Shooting By Period		
4 <sup>th</sup> FG%	9-19	47.4%
3PT%	0-3	0.0%
FT%	3-5	60%
GM FG%	9-19	47.4%
3PT%	0-3	0.0%
FT%	3-5	60.0%

Dead Ball Rebounds: 0, 0

Technical Fouls::NONE

Penn St. - 14

NO.	Name	Min	FG			Rebounds			Fouls		TP	AS	TO	ST	Blocks		+/-
			M-A	M-A	M-A	OR	DR	TOT	PF	FD					BS	BA	
11	Anna Camden	F 05:03	0-1	0-0	0-0	0	0	0	0	0	0	0	0	0	0	0	-3
4	Niya Beverley	G 09:08	0-1	0-0	0-0	0	0	0	1	0	0	0	0	0	0	0	-7
5	Leilani Kapinus	G 10:00	1-4	0-1	5-5	1	4	5	1	3	7	0	0	0	0	1	-7
20	Makenna Marisa	G 09:13	1-5	0-0	2-2	0	2	2	1	2	4	1	1	1	0	0	-7
25	Kelly Jekot	G 02:18	0-0	0-0	0-0	0	0	0	0	0	0	0	0	0	0	0	1
1	Ali Brigham	01:15	0-0	0-0	0-0	0	0	0	1	0	0	0	1	0	0	0	0
15	Maddie Burke	03:09	1-1	0-0	0-0	0	1	1	1	0	2	0	0	0	0	0	-2
10	Tova Sabel	01:59	0-0	0-0	1-2	0	0	0	0	1	1	0	0	0	0	0	-1
23	Shay Hagans	07:55	0-1	0-1	0-0	0	0	0	0	0	0	0	0	0	0	0	-9
Team						0	1	1		0		0					
<b>Totals</b>			3-13	0-2	8-9	1	8	9	5	6	14	1	2	1	0	1	-7

Shooting By Period		
4 <sup>th</sup> FG%	3-13	23.1%
3PT%	0-2	0.0%
FT%	8-9	88.9%
GM FG%	3-13	23.1%
3PT%	0-2	0.0%
FT%	8-9	88.9%

Dead Ball Rebounds: 1, 0

Technical Fouls::NONE

	RU	PSU
Biggest lead	28 (4 <sup>th</sup> 3:06)	0 (1 <sup>st</sup> 10:00)
Best Scoring Run	6(4 <sup>th</sup> 7:37)	4(4 <sup>th</sup> 4:17)
Lead Changes	0	
Times Tied	0	
Time with Lead	09:46	00:00

	RU	PSU
Points from		
Turnovers	2	2
Paint	14	6
Second Chance	3	3
Fast Breaks	0	2
Bench	12	3

Period by Period Scoring					
	1st	2nd	3rd	4th	TOT
RU	17	14	23	21	75
PSU	11	14	11	14	50



Rutgers at Penn St.

03/02/22 Gainbridge Fieldhouse, Indianapolis, IN  
2022 Big Ten Women's Basketball Tournament

Officials: Felicia Grinter, Gina Cross, Kevin Pethtel

Rutgers - 44

NO.	Name	Min	FG			Rebounds			Fouls		TP	AS	TO	ST	Blocks		+/-
			M-A	M-A	M-A	OR	DR	TOT	PF	FD					BS	BA	
22	Tyia Singleton	F 06:48	1-4	0-0	0-0	4	1	5	3	1	2	0	1	0	0	2	13
32	Osh Brown	F 14:02	6-8	0-0	2-3	1	3	4	0	4	14	0	0	0	0	0	17
0	Lasha Petree	G 07:43	2-3	0-1	0-0	0	0	0	1	0	4	0	0	1	0	0	11
3	Shug Dickson	G 12:25	2-8	0-0	2-2	2	3	5	2	1	6	6	2	0	1	0	14
14	Jailyn Mason	G 14:51	0-1	0-1	0-0	0	4	4	1	0	0	2	0	0	0	0	19
5	Victoria Morris	09:59	2-4	0-1	0-0	0	0	0	0	1	4	0	0	0	0	0	9
15	Awa Sidibe	11:58	0-2	0-0	0-0	2	1	3	1	0	0	1	0	1	1	0	10
35	Sayawni Lassiter	05:05	2-5	0-2	2-2	0	1	1	0	1	6	0	0	0	0	0	3
54	Chyna Cornwell	03:40	2-3	0-0	0-1	0	1	1	1	1	4	0	0	0	0	0	3
11	Stephanie Guihon	04:17	0-0	0-0	0-0	0	0	0	0	1	0	1	0	0	0	0	0
1	Destiny Marshall	02:18	1-1	0-0	0-0	0	1	1	0	0	2	0	0	0	0	0	-1
10	Erica Lafayette	02:18	0-1	0-0	2-2	0	0	0	1	1	2	0	0	0	0	0	-1
20	Joiya Maddox	02:18	0-1	0-1	0-0	0	1	1	1	0	0	0	0	0	0	0	-1
24	Kierra Sanderlin	02:18	0-1	0-0	0-0	1	0	1	0	0	0	0	0	0	0	0	-1
Team						2	1	3			0			0			
<b>Totals</b>			18-42	0-6	8-10	12	17	29	11	11	44	10	3	2	2	2	19

Shooting By Period		
3 <sup>rd</sup> FG%	9-23	39.1%
3PT%	0-3	0.0%
FT%	5-5	100%
4 <sup>th</sup> FG%	9-19	47.4%
3PT%	0-3	0.0%
FT%	3-5	60%
GM FG%	18-42	42.9%
3PT%	0-6	0.0%
FT%	8-10	80.0%

Dead Ball Rebounds: 2, 0

Technical Fouls::NONE

Penn St. - 25

NO.	Name	Min	FG			Rebounds			Fouls		TP	AS	TO	ST	Blocks		+/-
			M-A	M-A	M-A	OR	DR	TOT	PF	FD					BS	BA	
11	Anna Camden	F 15:03	0-3	0-1	2-2	1	0	1	1	1	2	0	0	0	1	0	-15
4	Niya Beverley	G 17:07	0-4	0-2	0-0	0	1	1	1	0	0	0	0	0	0	0	-19
5	Leilani Kapinus	G 18:58	1-6	0-2	8-9	3	5	8	2	5	10	0	1	1	1	2	-18
20	Makenna Marisa	G 18:23	2-8	0-1	3-4	0	4	4	1	3	7	2	2	1	0	0	-18
25	Kelly Jekot	G 04:27	0-0	0-0	0-0	0	0	0	0	0	0	0	0	0	0	0	0
23	Shay Hagans	12:39	1-4	1-2	0-0	0	0	0	0	0	3	0	0	0	0	0	-15
10	Tova Sabel	06:58	0-1	0-1	1-2	0	0	0	3	2	1	0	0	0	0	0	-8
15	Maddie Burke	05:10	1-1	0-0	0-0	0	1	1	2	0	2	0	0	0	0	0	-2
1	Ali Brigham	01:15	0-0	0-0	0-0	0	0	0	1	0	0	0	1	0	0	0	0
Team						0	1	1			0			0			
<b>Totals</b>			5-27	1-9	14-17	4	12	16	11	11	25	2	4	2	2	2	-19

Shooting By Period		
3 <sup>rd</sup> FG%	2-14	14.3%
3PT%	1-7	14.3%
FT%	6-8	75%
4 <sup>th</sup> FG%	3-13	23.1%
3PT%	0-2	0.0%
FT%	8-9	88.9%
GM FG%	5-27	18.5%
3PT%	1-9	11.1%
FT%	14-17	82.4%

Dead Ball Rebounds: 4, 0

Technical Fouls::NONE

	RU	PSU
Biggest lead	28 (4 <sup>th</sup> 3:06)	0 (1 <sup>st</sup> 10:00)
Best Scoring Run	8(4 <sup>th</sup> 7:37)	5(3 <sup>rd</sup> 2:15)
Lead Changes	0	
Times Tied	0	
Time with Lead	19:36	00:00

	RU	PSU
Points from		
Turnovers	4	2
Paint	28	8
Second Chance	7	6
Fast Breaks	2	2
Bench	18	6

Period by Period Scoring					
	1st	2nd	3rd	4th	TOT
RU	17	14	23	21	75
PSU	11	14	11	14	50



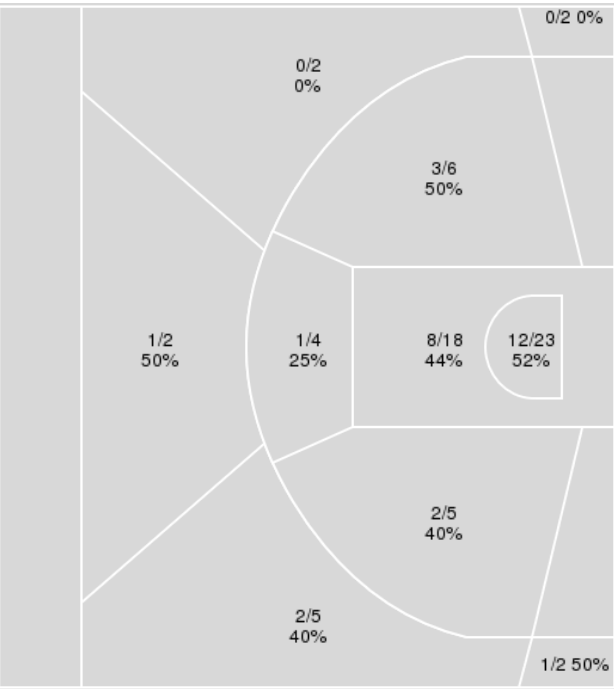
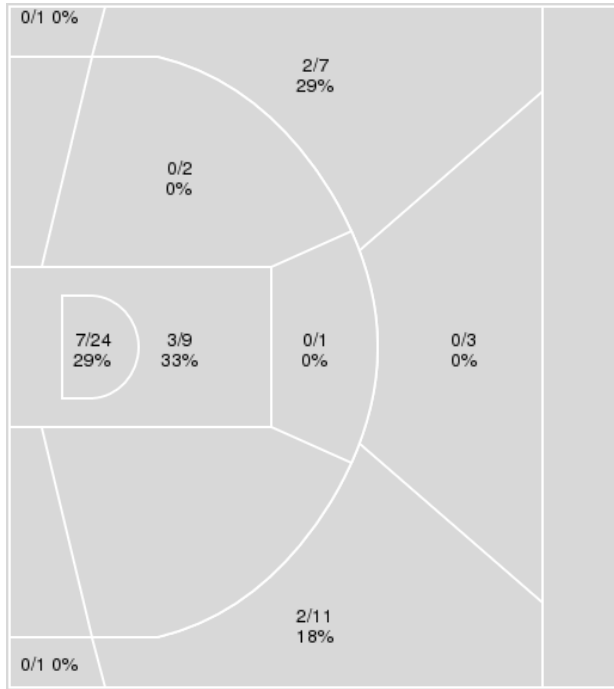
**Officials:** Felicia Grinter, Gina Cross, Kevin Pethtel

{ Players => 0, 1, 3, 4, 5, 10, 11, 12, 15, 20, 22, 23, 25; } FG Types => All; Results => All;

{ Players => 0, 1, 2, 3, 5, 10, 11, 12, 14, 15, 20, 22, 24, 32, 35, 54; } FG Types => All; Results => All;

**Penn St.**

**Rutgers**



Penn St.	M/A	%
Field Goals	14/59	24
2 Points	10/36	28
3 Points	4/23	17
Free Throws	18/25	72

Rutgers	M/A	%
Field Goals	30/69	43
2 Points	26/56	46
3 Points	4/13	31
Free Throws	11/15	73



**Rutgers at Penn St.**

03/02/22 Gainbridge Fieldhouse, Indianapolis, IN  
2022 Big Ten Women's Basketball Tournament

Officials: Felicia Grinter, Gina Cross, Kevin Pethtel

**Rutgers**

No	Name	Mins		Score		Points Diff		Points per Min		Assists		Rebounds		Steals		Turnovers	
		On	Off	On	Off	On	Off	On	Off	On	Off	On	Off	On	Off	On	Off
0	Lasha Petree	19:32	20:28	38 - 24	37 - 26	14	11	1.95	1.81	10	8	28	26	3	2	10	5
1	Destiny Marshall	04:13	35:47	9 - 7	66 - 43	2	23	2.13	1.84	2	16	5	49	1	4	0	15
3	Shug Dickson	30:10	09:50	55 - 34	20 - 16	21	4	1.82	2.03	15	3	42	12	3	2	14	1
5	Victoria Morris	18:42	21:18	33 - 21	42 - 29	12	13	1.76	1.97	7	11	24	30	2	3	7	8
10	Erica Lafayette	02:18	37:42	4 - 5	71 - 45	-1	26	1.74	1.88	1	17	3	51	0	5	0	15
11	Stephanie Guihon	04:17	35:43	10 - 10	65 - 40	0	25	2.33	1.82	2	16	4	50	1	4	0	15
14	Jailyn Mason	30:33	09:27	61 - 35	14 - 15	26	-1	2.00	1.48	14	4	42	12	5	0	11	4
15	Awa Sidibe	18:12	21:48	36 - 28	39 - 22	8	17	1.98	1.79	8	10	20	34	2	3	7	8
20	Joiya Maddox	02:18	37:42	4 - 5	71 - 45	-1	26	1.74	1.88	1	17	3	51	0	5	0	15
22	Tyia Singleton	20:51	19:09	37 - 20	38 - 30	17	8	1.77	1.98	10	8	31	23	2	3	9	6
24	Kierra Sanderlin	02:18	37:42	4 - 5	71 - 45	-1	26	1.74	1.88	1	17	3	51	0	5	0	15
32	Osh Brown	31:18	08:42	58 - 34	17 - 16	24	1	1.85	1.95	13	5	46	8	4	1	12	3
35	Sayawni Lassiter	11:38	28:22	16 - 15	59 - 35	1	24	1.38	2.08	3	15	16	38	1	4	5	10
54	Chyna Cornwell	03:40	36:20	10 - 7	65 - 43	3	22	2.73	1.79	3	15	3	51	1	4	0	15

**Penn St.**

No	Name	Mins		Score		Points Diff		Points per Min		Assists		Rebounds		Steals		Turnovers	
		On	Off	On	Off	On	Off	On	Off	On	Off	On	Off	On	Off	On	Off
1	Ali Brigham	06:14	33:46	6 - 12	44 - 63	-6	-19	0.96	1.30	1	7	5	27	2	6	2	8
4	Niya Beverley	34:14	05:46	40 - 67	10 - 8	-27	2	1.17	1.73	7	1	27	5	7	1	9	1
5	Leilani Kapinus	36:50	03:10	45 - 61	5 - 14	-16	-9	1.22	1.58	6	2	32	0	8	0	9	1
10	Tova Sabel	16:50	23:10	28 - 42	22 - 33	-14	-11	1.66	0.95	3	5	13	19	4	4	5	5
11	Anna Camden	18:09	21:51	22 - 33	28 - 42	-11	-14	1.21	1.28	2	6	15	17	2	6	4	6
12	Kayla Thomas	06:35	33:25	7 - 9	43 - 66	-2	-23	1.06	1.29	1	7	6	26	3	5	2	8
15	Maddie Burke	11:17	28:43	19 - 24	31 - 51	-5	-20	1.68	1.08	5	3	8	24	1	7	1	9
20	Makenna Marisa	38:23	01:37	48 - 72	2 - 3	-24	-1	1.25	1.24	8	0	31	1	7	1	10	0
23	Shay Hagans	20:04	19:56	17 - 31	33 - 44	-14	-11	0.85	1.66	4	4	16	16	4	4	4	6
25	Kelly Jekot	11:24	28:36	18 - 24	32 - 51	-6	-19	1.58	1.12	3	5	7	25	2	6	4	6

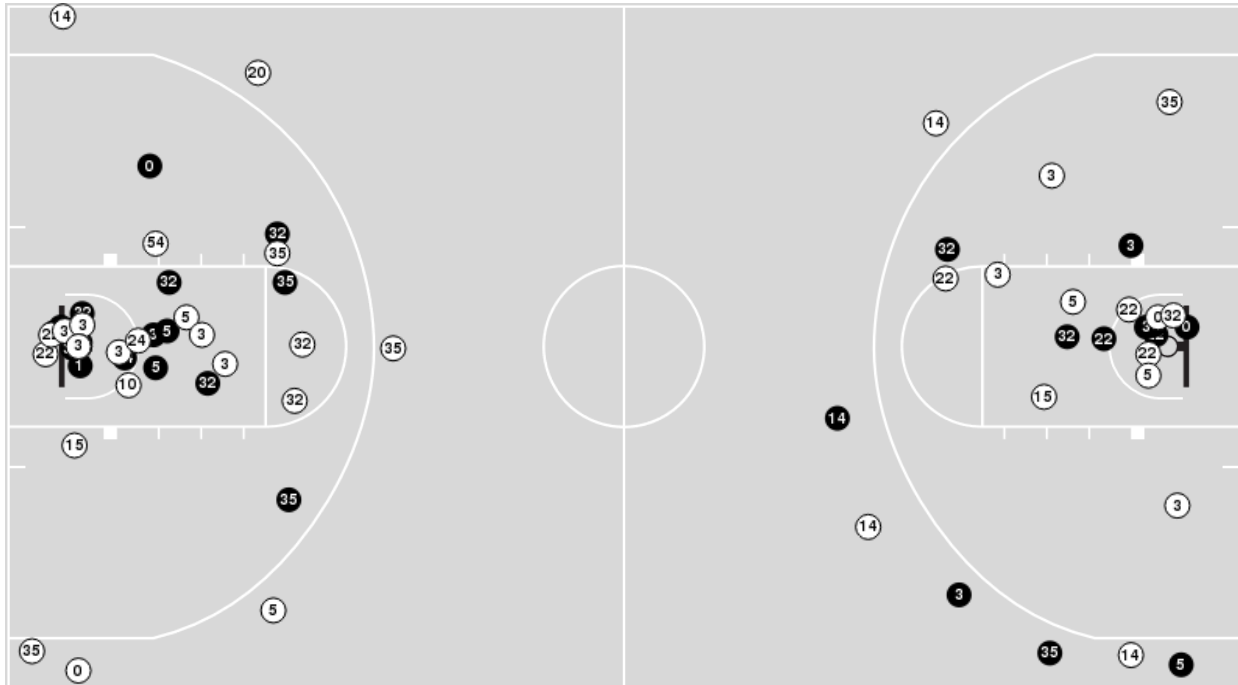


Officials: Felicia Grinter, Gina Cross, Kevin Pethtel

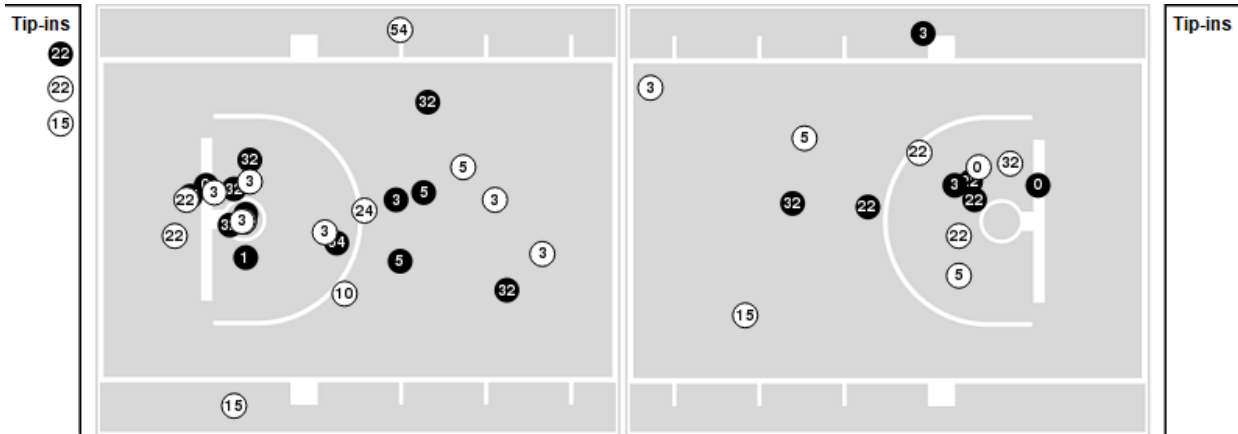
Players => 0, 1, 2, 3, 5, 10, 11, 12, 14, 15, 20, 22, 24, 32, 35, 54 FG Types=>All Results=>All

## Rutgers

### All Field Goals



### Blow Up Chart



● Made ○ Missed N - Player Number

Rutgers	M/A	%
Field Goals	30/69	43
2 Points	26/56	46
3 Points	4/13	31
Free Throws	11/15	73

Rutgers	M/A	%
Points in the Paint	40 (20 / 41)	49
Fast Break Points	10 (6/7)	86
Second Chance Points	11 (6/19)	32
Effective FG%	46	



**Rutgers at Penn St.**

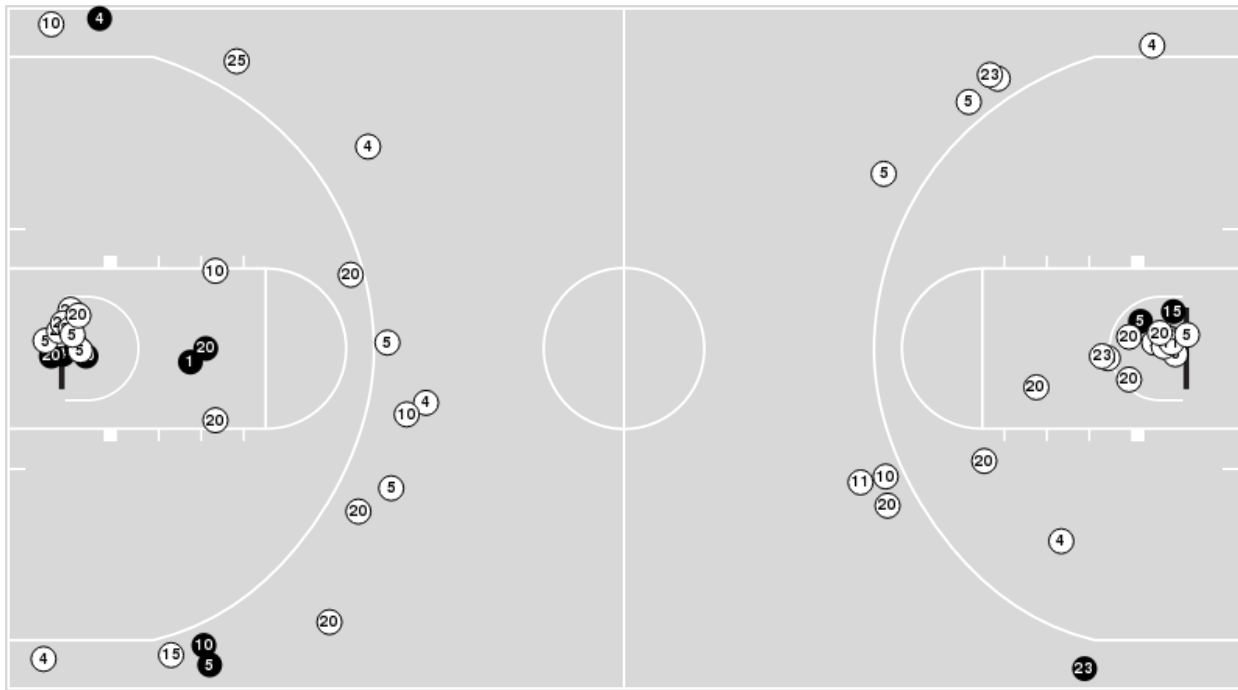
03/02/22 Gainbridge Fieldhouse, Indianapolis, IN  
2022 Big Ten Women's Basketball Tournament

Officials: Felicia Grinter, Gina Cross, Kevin Pethtel

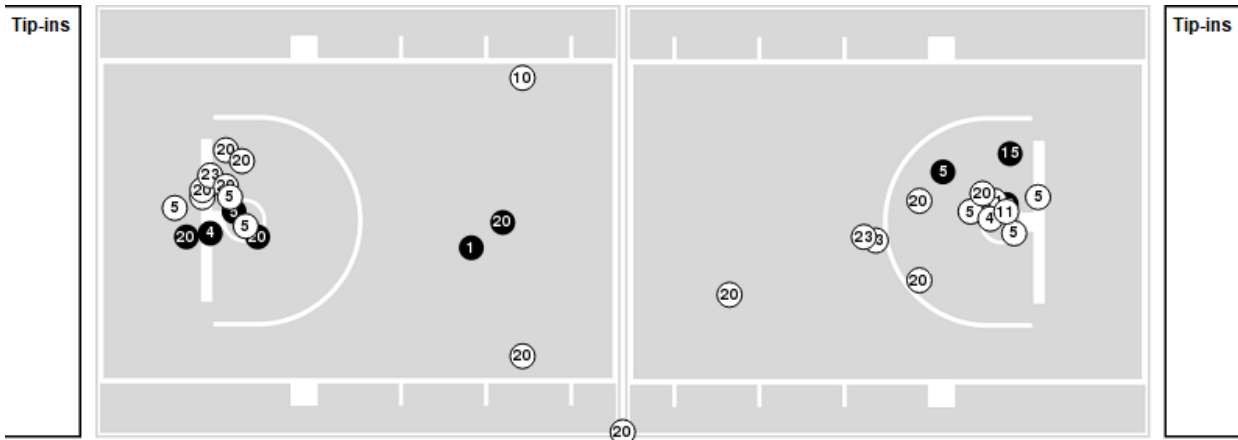
Players => 0, 1, 3, 4, 5, 10, 11, 12, 15, 20, 22, 23, 25FG Types=>AllResults=>All

**Penn St.**

**All Field Goals**



**Blow Up Chart**



● Made ○ Missed N - Player Number

Penn St.	M/A	%
Field Goals	14/59	24
2 Points	10/36	28
3 Points	4/23	17
Free Throws	18/25	72

Penn St.	M/A	%
Points in the Paint	20 (10 / 33)	30
Fast Break Points	15 (8/9)	89
Second Chance Points	7 (6/14)	43
Effective FG%	27	





**Rutgers at Penn St.**

03/02/22 Gainbridge Fieldhouse, Indianapolis, IN  
2022 Big Ten Women's Basketball Tournament

Officials: Felicia Grinter, Gina Cross, Kevin Pethtel

**Rutgers**

Lineup	Quarter On	Time On	Quarter Off	Time Off	Time on Court	Score	Score Diff	Reb	Stl	Tov	Ass	PPP
0- Petree L/3- Dickson S/14- Mason J/22- Singleton T/32- Brown O/	1	10:00	1	01:45	08:15	15-7	8	12	2	4	4	1.0163
0- Petree L/3- Dickson S/14- Mason J/15- Sidibe A/32- Brown O/	1	01:45	1	01:20	00:25	0-1	-1	0	0	1	0	0.0000
0- Petree L/14- Mason J/15- Sidibe A/32- Brown O/35- Lassiter S/	1	01:20	1	00:25	00:54	2-3	-1	1	0	1	1	1.0000
5- Morris V/14- Mason J/15- Sidibe A/32- Brown O/35- Lassiter S/	1	00:25	2	09:05	01:21	0-0	0	3	0	0	0	0.0000
3- Dickson S/5- Morris V/15- Sidibe A/32- Brown O/35- Lassiter S/	2	09:05	2	08:52	00:13	0-0	0	0	0	0	0	0.0000
3- Dickson S/5- Morris V/15- Sidibe A/22- Singleton T/35- Lassiter S/	2	08:52	2	06:08	02:44	3-4	-1	2	0	3	1	0.6000
3- Dickson S/5- Morris V/22- Singleton T/32- Brown O/35- Lassiter S/	2	06:08	2	04:47	01:21	0-0	0	3	0	0	0	0.0000
0- Petree L/3- Dickson S/14- Mason J/22- Singleton T/32- Brown O/	2	04:47	2	03:04	01:43	3-6	-3	1	0	1	1	1.0000
0- Petree L/3- Dickson S/5- Morris V/14- Mason J/32- Brown O/	2	03:04	2	02:32	00:32	0-0	0	1	0	2	0	0.0000
1- Marshall D/3- Dickson S/5- Morris V/14- Mason J/32- Brown O/	2	02:32	2	00:37	01:55	5-2	3	2	1	0	1	1.6667
3- Dickson S/5- Morris V/14- Mason J/15- Sidibe A/32- Brown O/	2	00:37	3	10:00	00:37	3-2	1	0	0	0	0	2.0833
0- Petree L/3- Dickson S/14- Mason J/22- Singleton T/32- Brown O/	3	10:00	3	04:16	05:44	12-2	10	12	0	1	3	1.2146
3- Dickson S/5- Morris V/15- Sidibe A/22- Singleton T/32- Brown O/	3	04:16	3	03:12	01:04	4-1	3	1	0	0	1	2.0000
3- Dickson S/5- Morris V/15- Sidibe A/32- Brown O/35- Lassiter S/	3	03:12	3	01:25	01:47	3-5	-2	3	0	1	1	0.5515
5- Morris V/14- Mason J/15- Sidibe A/32- Brown O/35- Lassiter S/	3	01:25	4	08:07	03:18	8-3	5	4	1	0	0	1.6393
3- Dickson S/5- Morris V/14- Mason J/15- Sidibe A/32- Brown O/	4	08:07	4	05:58	02:09	3-2	1	3	0	1	1	0.7732
3- Dickson S/5- Morris V/14- Mason J/15- Sidibe A/54- Cornwell C/	4	05:58	4	04:17	01:41	4-2	2	2	0	0	2	1.1628
0- Petree L/11- Guihon S/14- Mason J/15- Sidibe A/54- Cornwell C/	4	04:17	4	02:18	01:59	6-5	1	1	1	0	1	1.5000
1- Marshall D/10- Lafayette E/20- Maddox J/24- Sanderlin K/54- Cornwell C/	4	02:18	4	02:18	00:00	0-0	0	0	0	0	0	0.0000
1- Marshall D/10- Lafayette E/11- Guihon S/20- Maddox J/24- Sanderlin K/	4	02:18	4	00:00	02:18	4-5	-1	3	0	0	1	1.0309



**Rutgers at Penn St.**

03/02/22 Gainbridge Fieldhouse, Indianapolis, IN  
2022 Big Ten Women's Basketball Tournament

Game Time: 2:00 PM  
Game Duration: 1:56

Officials: Felicia Grinter, Gina Cross, Kevin Pethtel

**Penn St.**

Lineup	Quarter On	Time On	Quarter Off	Time Off	Time on Court	Score	Score Diff	Reb	Stl	Tov	Ass	PPP
4- Beverley N/ 5- Kapinus L/ 11- Camden A/ 20- Marisa M/ 25- Jekot K/	1	10:00	1	07:12	02:48	4-0	4	3	1	1	1	0.8000
4- Beverley N/ 5- Kapinus L/ 11- Camden A/ 20- Marisa M/ 23- Hagans S/	1	07:12	1	06:54	00:18	0-0	0	0	0	0	0	0.0000
1- Brigham A/ 4- Beverley N/ 5- Kapinus L/ 20- Marisa M/ 23- Hagans S/	1	06:54	1	05:21	01:33	0-3	-3	2	1	0	0	0.0000
1- Brigham A/ 4- Beverley N/ 15- Burke M/ 20- Marisa M/ 25- Jekot K/	1	05:21	1	03:57	01:24	2-4	-2	0	0	0	1	0.6667
4- Beverley N/ 10- Sabel T/ 15- Burke M/ 20- Marisa M/ 25- Jekot K/	1	03:57	1	03:13	00:44	0-6	-6	0	0	1	0	0.0000
4- Beverley N/ 5- Kapinus L/ 10- Sabel T/ 12- Thomas K/ 20- Marisa M/	1	03:13	1	01:45	01:28	1-2	-1	2	0	1	0	0.3472
5- Kapinus L/ 10- Sabel T/ 12- Thomas K/ 20- Marisa M/ 23- Hagans S/	1	01:45	2	09:05	02:40	4-2	2	0	1	0	1	0.8197
1- Brigham A/ 5- Kapinus L/ 10- Sabel T/ 20- Marisa M/ 25- Jekot K/	2	09:05	2	08:52	00:13	0-0	0	1	0	0	0	0.0000
1- Brigham A/ 4- Beverley N/ 5- Kapinus L/ 20- Marisa M/ 25- Jekot K/	2	08:52	2	07:41	01:11	2-3	-1	1	0	0	0	1.0000
1- Brigham A/ 4- Beverley N/ 5- Kapinus L/ 20- Marisa M/ 23- Hagans S/	2	07:41	2	07:09	00:32	0-0	0	1	0	1	0	0.0000
4- Beverley N/ 5- Kapinus L/ 15- Burke M/ 20- Marisa M/ 23- Hagans S/	2	07:09	2	04:47	02:22	2-0	2	1	0	0	1	1.0000
4- Beverley N/ 5- Kapinus L/ 10- Sabel T/ 15- Burke M/ 20- Marisa M/	2	04:47	2	03:10	01:37	6-3	3	1	1	0	2	2.0000
1- Brigham A/ 4- Beverley N/ 5- Kapinus L/ 10- Sabel T/ 20- Marisa M/	2	03:10	2	03:04	00:06	0-0	0	0	0	0	0	0.0000
4- Beverley N/ 5- Kapinus L/ 10- Sabel T/ 12- Thomas K/ 20- Marisa M/	2	03:04	2	00:37	02:27	2-5	-3	4	2	1	0	0.4202
4- Beverley N/ 5- Kapinus L/ 10- Sabel T/ 20- Marisa M/ 25- Jekot K/	2	00:37	3	10:00	00:37	2-3	-1	0	0	1	0	1.0000
4- Beverley N/ 5- Kapinus L/ 10- Sabel T/ 11- Camden A/ 20- Marisa M/	3	10:00	3	07:08	02:52	2-8	-6	1	0	0	0	0.4098
4- Beverley N/ 5- Kapinus L/ 11- Camden A/ 20- Marisa M/ 23- Hagans S/	3	07:08	3	04:16	02:52	0-4	-4	4	0	1	0	0.0000
5- Kapinus L/ 10- Sabel T/ 11- Camden A/ 15- Burke M/ 20- Marisa M/	3	04:16	3	02:15	02:01	4-4	0	2	0	0	0	1.0638
5- Kapinus L/ 10- Sabel T/ 11- Camden A/ 20- Marisa M/ 23- Hagans S/	3	02:15	3	02:15	00:00	0-0	0	0	0	0	0	0.0000
4- Beverley N/ 5- Kapinus L/ 10- Sabel T/ 11- Camden A/ 23- Hagans S/	3	02:15	3	02:09	00:06	2-3	-1	0	0	0	0	2.2727
4- Beverley N/ 5- Kapinus L/ 11- Camden A/ 23- Hagans S/ 25- Jekot K/	3	02:09	3	01:25	00:44	0-0	0	0	1	0	0	0.0000
4- Beverley N/ 5- Kapinus L/ 11- Camden A/ 20- Marisa M/ 25- Jekot K/	3	01:25	3	01:02	00:23	0-0	0	0	0	1	0	0.0000
4- Beverley N/ 11- Camden A/ 20- Marisa M/ 23- Hagans S/ 25- Jekot K/	3	01:02	4	10:00	01:02	3-4	-1	0	0	0	1	3.0000
4- Beverley N/ 5- Kapinus L/ 11- Camden A/ 20- Marisa M/ 23- Hagans S/	4	10:00	4	08:07	01:53	0-4	-4	1	0	0	0	0.0000
1- Brigham A/ 4- Beverley N/ 5- Kapinus L/ 20- Marisa M/ 23- Hagans S/	4	08:07	4	06:52	01:15	2-2	0	0	1	1	0	0.6667
4- Beverley N/ 5- Kapinus L/ 15- Burke M/ 20- Marisa M/ 23- Hagans S/	4	06:52	4	04:17	02:35	2-5	-3	4	0	0	1	0.5000
4- Beverley N/ 5- Kapinus L/ 10- Sabel T/ 15- Burke M/ 20- Marisa M/	4	04:17	4	03:43	00:34	3-2	1	0	0	0	0	1.7045
4- Beverley N/ 5- Kapinus L/ 10- Sabel T/ 20- Marisa M/ 23- Hagans S/	4	03:43	4	03:10	00:33	0-2	-2	0	0	0	0	0.0000
5- Kapinus L/ 10- Sabel T/ 11- Camden A/ 20- Marisa M/ 23- Hagans S/	4	03:10	4	02:18	00:52	2-2	0	2	0	1	0	1.0000
4- Beverley N/ 5- Kapinus L/ 11- Camden A/ 20- Marisa M/ 25- Jekot K/	4	02:18	4	00:46	01:31	5-4	1	1	0	0	0	1.5625
4- Beverley N/ 5- Kapinus L/ 11- Camden A/ 23- Hagans S/ 25- Jekot K/	4	00:46	4	00:00	00:47	0-0	0	1	0	0	0	0.0000



**Rutgers at Penn St.**

03/02/22 Gainbridge Fieldhouse, Indianapolis, IN  
2022 Big Ten Women's Basketball Tournament

Officials: Felicia Grinter, Gina Cross, Kevin Pethtel

**Rutgers**

Lineup	Time	Score	Score Diff	Pts/Min	Reb	Stl	Tov	Ass	PPP
0- Petree L/ 3- Dickson S/ 14- Mason J/ 22- Singleton T/ 32- Brown O/	15:42	30-15	15	1.9108	25	2	6	8	1.0854
5- Morris V/ 14- Mason J/ 15- Sidibe A/ 32- Brown O/ 35- Lassiter S/	04:39	8-3	5	1.7204	7	1	0	0	1.6393
3- Dickson S/ 5- Morris V/ 14- Mason J/ 15- Sidibe A/ 32- Brown O/	02:46	6-4	2	2.1687	3	0	1	1	1.1278
3- Dickson S/ 5- Morris V/ 15- Sidibe A/ 22- Singleton T/ 35- Lassiter S/	02:44	3-4	-1	1.0976	2	0	3	1	0.6000
1- Marshall D/ 10- Lafayette E/ 11- Guihon S/ 20- Maddox J/ 24- Sanderlin K/	02:18	4-5	-1	1.7391	3	0	0	1	1.0309
3- Dickson S/ 5- Morris V/ 15- Sidibe A/ 32- Brown O/ 35- Lassiter S/	02:00	3-5	-2	1.5000	3	0	1	1	0.4658
0- Petree L/ 11- Guihon S/ 14- Mason J/ 15- Sidibe A/ 54- Cornwell C/	01:59	6-5	1	3.0252	1	1	0	1	1.5000
1- Marshall D/ 3- Dickson S/ 5- Morris V/ 14- Mason J/ 32- Brown O/	01:55	5-2	3	2.6087	2	1	0	1	1.6667
3- Dickson S/ 5- Morris V/ 14- Mason J/ 15- Sidibe A/ 54- Cornwell C/	01:41	4-2	2	2.3762	2	0	0	2	1.1628
3- Dickson S/ 5- Morris V/ 22- Singleton T/ 32- Brown O/ 35- Lassiter S/	01:21	0-0	0	0.0000	3	0	0	0	0.0000
3- Dickson S/ 5- Morris V/ 15- Sidibe A/ 22- Singleton T/ 32- Brown O/	01:04	4-1	3	3.7500	1	0	0	1	2.0000
0- Petree L/ 14- Mason J/ 15- Sidibe A/ 32- Brown O/ 35- Lassiter S/	00:54	2-3	-1	2.2222	1	0	1	1	1.0000
0- Petree L/ 3- Dickson S/ 5- Morris V/ 14- Mason J/ 32- Brown O/	00:32	0-0	0	0.0000	1	0	2	0	0.0000
0- Petree L/ 3- Dickson S/ 14- Mason J/ 15- Sidibe A/ 32- Brown O/	00:25	0-1	-1	0.0000	0	0	1	0	0.0000
1- Marshall D/ 10- Lafayette E/ 20- Maddox J/ 24- Sanderlin K/ 54- Cornwell C/	00:00	0-0	0	NaN	0	0	0	0	0.0000



**Rutgers at Penn St.**

03/02/22 Gainbridge Fieldhouse, Indianapolis, IN  
2022 Big Ten Women's Basketball Tournament

Game Time: 2:00 PM  
Game Duration: 1:56

Officials: Felicia Grinter, Gina Cross, Kevin Pethtel

**Penn St.**

Lineup	Time	Score	Score Diff	Pts/Min	Reb	Stl	Tov	Ass	PPP
4- Beverley N/ 5- Kapinus L/ 11- Camden A/ 20- Marisa M/ 23- Hagans S/	05:03	0-8	-8	0.0000	5	0	1	0	0.0000
4- Beverley N/ 5- Kapinus L/ 15- Burke M/ 20- Marisa M/ 23- Hagans S/	04:57	4-5	-1	0.8081	5	0	0	2	0.6667
4- Beverley N/ 5- Kapinus L/ 11- Camden A/ 20- Marisa M/ 25- Jekot K/	04:42	9-4	5	1.9149	4	1	2	1	0.9783
4- Beverley N/ 5- Kapinus L/ 10- Sabel T/ 12- Thomas K/ 20- Marisa M/	03:55	3-7	-4	0.7660	6	2	2	0	0.3927
1- Brigham A/ 4- Beverley N/ 5- Kapinus L/ 20- Marisa M/ 23- Hagans S/	03:20	2-5	-3	0.6000	3	2	2	0	0.2500
4- Beverley N/ 5- Kapinus L/ 10- Sabel T/ 11- Camden A/ 20- Marisa M/	02:52	2-8	-6	0.6977	1	0	0	0	0.4098
5- Kapinus L/ 10- Sabel T/ 12- Thomas K/ 20- Marisa M/ 23- Hagans S/	02:40	4-2	2	1.5000	0	1	0	1	0.8197
4- Beverley N/ 5- Kapinus L/ 10- Sabel T/ 15- Burke M/ 20- Marisa M/	02:11	9-5	4	4.1221	1	1	0	2	1.8908
5- Kapinus L/ 10- Sabel T/ 11- Camden A/ 15- Burke M/ 20- Marisa M/	02:01	4-4	0	1.9835	2	0	0	0	1.0638
4- Beverley N/ 5- Kapinus L/ 11- Camden A/ 23- Hagans S/ 25- Jekot K/	01:31	0-0	0	0.0000	1	1	0	0	0.0000
1- Brigham A/ 4- Beverley N/ 15- Burke M/ 20- Marisa M/ 25- Jekot K/	01:24	2-4	-2	1.4286	0	0	0	1	0.6667
1- Brigham A/ 4- Beverley N/ 5- Kapinus L/ 20- Marisa M/ 25- Jekot K/	01:11	2-3	-1	1.6901	1	0	0	0	1.0000
4- Beverley N/ 11- Camden A/ 20- Marisa M/ 23- Hagans S/ 25- Jekot K/	01:02	3-4	-1	2.9032	0	0	0	1	3.0000
5- Kapinus L/ 10- Sabel T/ 11- Camden A/ 20- Marisa M/ 23- Hagans S/	00:52	2-2	0	2.3077	2	0	1	0	1.0000
4- Beverley N/ 10- Sabel T/ 15- Burke M/ 20- Marisa M/ 25- Jekot K/	00:44	0-6	-6	0.0000	0	0	1	0	0.0000
4- Beverley N/ 5- Kapinus L/ 10- Sabel T/ 20- Marisa M/ 25- Jekot K/	00:37	2-3	-1	3.2432	0	0	1	0	1.0000
4- Beverley N/ 5- Kapinus L/ 10- Sabel T/ 20- Marisa M/ 23- Hagans S/	00:33	0-2	-2	0.0000	0	0	0	0	0.0000
1- Brigham A/ 5- Kapinus L/ 10- Sabel T/ 20- Marisa M/ 25- Jekot K/	00:13	0-0	0	0.0000	1	0	0	0	0.0000
1- Brigham A/ 4- Beverley N/ 5- Kapinus L/ 10- Sabel T/ 20- Marisa M/	00:06	0-0	0	0.0000	0	0	0	0	0.0000
4- Beverley N/ 5- Kapinus L/ 10- Sabel T/ 11- Camden A/ 23- Hagans S/	00:06	2-3	-1	20.0000	0	0	0	0	2.2727