



**Penn St. at Wisconsin**

02/05/22 Kohl Center, Madison, WI  
2021-22 Men's Basketball

Game Time: 5:00 PM  
Game Duration: 1:58  
Attendance: 17,287

Officials: Lamont Simpson, Rob Kueneman, Brandon Cruz

Penn St. - 49

Record: 9-10 (4-7)

| NO.           | Name            | F | Min   | FG    |      |     | 3P |    |     | FT |    |    | Rebounds |    |   | Fouls |   | TP | AS | TO | ST | Blocks |    | +/- |
|---------------|-----------------|---|-------|-------|------|-----|----|----|-----|----|----|----|----------|----|---|-------|---|----|----|----|----|--------|----|-----|
|               |                 |   |       | M-A   | M-A  | M-A | OR | DR | TOT | PF | FD | BS | BA       |    |   |       |   |    |    |    |    |        |    |     |
| 1             | Seth Lundy      | F | 29:38 | 2-9   | 2-7  | 0-0 | 1  | 3  | 4   | 3  | 0  | 6  | 0        | 2  | 1 | 1     | 0 | 0  | 2  | 1  | 1  | 0      | -5 |     |
| 21            | John Harrar     | F | 20:05 | 0-2   | 0-0  | 2-2 | 4  | 5  | 9   | 1  | 3  | 2  | 0        | 0  | 0 | 0     | 0 | 0  | 0  | 0  | 0  | 1      | -9 |     |
| 2             | Myles Dread     | G | 22:56 | 2-8   | 0-6  | 0-0 | 1  | 2  | 3   | 2  | 1  | 4  | 1        | 2  | 3 | 0     | 0 | 4  | 1  | 2  | 3  | 0      | 4  |     |
| 22            | Jalen Pickett   | G | 36:58 | 2-13  | 0-4  | 0-0 | 0  | 2  | 2   | 2  | 3  | 4  | 3        | 1  | 1 | 2     | 1 | 4  | 3  | 1  | 1  | 2      | -7 |     |
| 23            | Dallion Johnson | G | 11:55 | 2-4   | 2-3  | 0-0 | 0  | 4  | 4   | 1  | 0  | 6  | 0        | 0  | 0 | 0     | 0 | 6  | 0  | 0  | 0  | 0      | -2 |     |
| 3             | Sam Sessoms     |   | 24:59 | 5-9   | 2-3  | 2-2 | 0  | 0  | 0   | 2  | 4  | 14 | 2        | 3  | 1 | 0     | 0 | 14 | 2  | 3  | 1  | 0      | 2  |     |
| 5             | Greg Lee        |   | 25:43 | 3-6   | 2-4  | 0-0 | 0  | 9  | 9   | 2  | 0  | 8  | 1        | 0  | 1 | 0     | 0 | 8  | 1  | 0  | 1  | 0      | 10 |     |
| 14            | Jalanni White   |   | 05:14 | 0-1   | 0-0  | 0-0 | 0  | 1  | 1   | 1  | 0  | 0  | 0        | 0  | 1 | 0     | 0 | 0  | 0  | 1  | 0  | 0      | -5 |     |
| 10            | Jaheam Cornwall |   | 22:32 | 2-5   | 1-3  | 0-1 | 0  | 1  | 1   | 0  | 2  | 5  | 0        | 1  | 0 | 0     | 0 | 5  | 0  | 1  | 0  | 0      | 2  |     |
| Team          |                 |   |       |       |      |     | 2  | 2  | 4   |    |    | 0  |          |    | 0 |       |   | 0  |    |    |    |        |    |     |
| <b>Totals</b> |                 |   |       | 18-57 | 9-30 | 4-5 | 8  | 29 | 37  | 14 | 13 | 49 | 7        | 10 | 7 | 3     | 4 | -2 |    |    |    |        |    |     |

| Shooting By Period  |       |       |
|---------------------|-------|-------|
| 1 <sup>st</sup> FG% | 5-30  | 16.7% |
| 3PT%                | 1-12  | 8.3%  |
| FT%                 | 2-3   | 66.7% |
| 2 <sup>nd</sup> FG% | 13-27 | 48.1% |
| 3PT%                | 8-18  | 44.4% |
| FT%                 | 2-2   | 100%  |
| GM FG%              | 18-57 | 31.6% |
| 3PT%                | 9-30  | 30.0% |
| FT%                 | 4-5   | 80.0% |

Dead Ball Rebounds: 1, 1

Technical Fouls::NONE

Wisconsin - 51

Record: 18-4 (9-3)

| NO.           | Name            | F | Min   | FG    |      |     | 3P |    |     | FT |    |    | Rebounds |   |   | Fouls |   | TP | AS | TO | ST | Blocks |    | +/- |
|---------------|-----------------|---|-------|-------|------|-----|----|----|-----|----|----|----|----------|---|---|-------|---|----|----|----|----|--------|----|-----|
|               |                 |   |       | M-A   | M-A  | M-A | OR | DR | TOT | PF | FD | BS | BA       |   |   |       |   |    |    |    |    |        |    |     |
| 5             | Tyler Wahl      | F | 32:28 | 6-9   | 0-1  | 0-0 | 0  | 7  | 7   | 1  | 2  | 12 | 0        | 4 | 0 | 1     | 0 | 12 | 0  | 4  | 0  | 1      | 0  | -3  |
| 22            | Steven Crowl    | F | 25:28 | 5-8   | 3-5  | 0-0 | 0  | 4  | 4   | 2  | 0  | 13 | 5        | 0 | 1 | 1     | 0 | 13 | 5  | 0  | 1  | 1      | 0  | 9   |
| 1             | Johnny Davis    | G | 35:03 | 2-13  | 0-2  | 0-0 | 0  | 9  | 9   | 2  | 3  | 4  | 3        | 1 | 1 | 2     | 3 | 4  | 3  | 1  | 1  | 2      | 3  | 3   |
| 23            | Chucky Hepburn  | G | 26:59 | 4-7   | 2-4  | 0-0 | 0  | 2  | 2   | 4  | 2  | 10 | 1        | 1 | 0 | 0     | 0 | 10 | 1  | 1  | 0  | 0      | 11 |     |
| 34            | Brad Davison    | G | 35:16 | 3-10  | 1-6  | 2-2 | 1  | 3  | 4   | 3  | 1  | 9  | 1        | 1 | 0 | 0     | 0 | 9  | 1  | 1  | 0  | 0      | 2  |     |
| 33            | Chris Vogt      |   | 14:23 | 1-3   | 0-0  | 0-0 | 3  | 1  | 4   | 0  | 1  | 2  | 0        | 1 | 1 | 0     | 0 | 2  | 0  | 1  | 1  | 0      | -7 |     |
| 0             | Jahcobi Neath   |   | 09:18 | 0-0   | 0-0  | 0-0 | 0  | 2  | 2   | 0  | 1  | 0  | 0        | 0 | 0 | 0     | 0 | 0  | 0  | 0  | 0  | 0      | -2 |     |
| 20            | Ben Carlson     |   | 07:35 | 0-1   | 0-1  | 0-0 | 1  | 0  | 1   | 0  | 2  | 0  | 0        | 0 | 0 | 0     | 0 | 0  | 0  | 0  | 0  | 0      | 5  |     |
| 11            | Lorne Bowman II |   | 12:06 | 0-4   | 0-2  | 1-4 | 0  | 3  | 3   | 1  | 2  | 1  | 0        | 0 | 0 | 0     | 0 | 1  | 0  | 0  | 0  | 0      | -7 |     |
| 2             | Jordan Davis    |   | 01:24 | 0-1   | 0-0  | 0-0 | 0  | 0  | 0   | 0  | 0  | 0  | 0        | 0 | 0 | 0     | 0 | 0  | 0  | 0  | 0  | 0      | -1 |     |
| Team          |                 |   |       |       |      |     | 1  | 0  | 1   |    |    | 0  |          |   | 0 |       |   | 0  |    |    |    |        |    |     |
| <b>Totals</b> |                 |   |       | 21-56 | 6-21 | 3-6 | 6  | 31 | 37  | 13 | 14 | 51 | 10       | 8 | 3 | 4     | 3 | 2  |    |    |    |        |    |     |

| Shooting By Period  |       |       |
|---------------------|-------|-------|
| 1 <sup>st</sup> FG% | 8-31  | 25.8% |
| 3PT%                | 1-10  | 10.0% |
| FT%                 | 1-4   | 25%   |
| 2 <sup>nd</sup> FG% | 13-25 | 52.0% |
| 3PT%                | 5-11  | 45.5% |
| FT%                 | 2-2   | 100%  |
| GM FG%              | 21-56 | 37.5% |
| 3PT%                | 6-21  | 28.6% |
| FT%                 | 3-6   | 50.0% |

Dead Ball Rebounds: 2, 0

Technical Fouls::NONE

|                  | PSU                      | UW                        |
|------------------|--------------------------|---------------------------|
| Biggest lead     | 4 (2 <sup>nd</sup> 7:42) | 12 (1 <sup>st</sup> 6:34) |
| Best Scoring Run | 9(2 <sup>nd</sup> 0:51)  | 13(2 <sup>nd</sup> 3:44)  |
| Lead Changes     | 6                        |                           |
| Times Tied       | 2                        |                           |
| Time with Lead   | 05:02                    | 32:01                     |

| Points from   | PSU | UW |
|---------------|-----|----|
| Turnovers     | 8   | 4  |
| Paint         | 14  | 22 |
| Second Chance | 4   | 5  |
| Fast Breaks   | 0   | 2  |
| Bench         | 27  | 3  |

|     | Period by Period Scoring |     |     |
|-----|--------------------------|-----|-----|
|     | 1st                      | 2nd | TOT |
| PSU | 13                       | 36  | 49  |
| UW  | 18                       | 33  | 51  |



**Period 1**

**Quarter Starters:**

|            |           |           |             |              |              |
|------------|-----------|-----------|-------------|--------------|--------------|
| <b>UW</b>  | 1 Davis J | 5 Wahl T  | 22 Crawl S  | 23 Hepburn C | 34 Davison B |
| <b>PSU</b> | 1 Lundy S | 2 Dread M | 21 Harrar J | 22 Pickett J | 23 Johnson D |

| Game Time | UW  | Score      | Diff      | PSU   |
|-----------|---|------------|-----------|---|
| 20:00     | 22 CROWL S jumpball lost  |            |           | 21 HARRAR J jumpball won  |
| 19:46     |   |            |           | 21 HARRAR J 2pt FG in the paint, hook shot blocked                          |
| 19:46     | 5 WAHL T block (1)  |            |           |   |
| 19:44     |   |            |           | offensive rebound (1)   |
| 19:44     |   |            |           | 22 PICKETT J 2pt FG second chance in the paint, turnaround jump shot missed |
| 19:41     |   |            |           | 21 HARRAR J offensive rebound (1)   |
| 19:39     |   |            |           | 2 DREAD M 3pt FG second chance, jump shot missed                            |
| 19:35     | 34 DAVISON B defensive rebound (1)                                      |            |           |   |
| 19:18     | 5 WAHL T turnover lost ball (1)   |            |           | 2 DREAD M steal (1)   |
| 19:04     |   |            |           | 1 LUNDY S 3pt FG from turnover, jump shot missed                            |
| 19:01     | 1 DAVIS J defensive rebound (1)   |            |           |   |
| 18:41     | 34 DAVISON B 3pt FG , jump shot missed                                  |            |           |   |
| 18:37     |   |            |           | 23 JOHNSON D defensive rebound (1)  |
| 18:26     |   |            |           | 1 LUNDY S 2pt FG outside the paint, step back jump shot missed              |
| 18:23     |   |            |           | 21 HARRAR J offensive rebound (2)   |
| 18:06     |   |            |           | 22 PICKETT J 3pt FG second chance, jump shot missed                         |
| 18:02     | 5 WAHL T defensive rebound (1)  |            |           |   |
| 17:53     | 5 WAHL T 2pt FG in the paint, layup made (2)                            | <b>2-0</b> | <b>2</b>  |   |
| 17:53     | 22 CROWL S assist (1)   |            |           |   |
| 17:26     |   | <b>2-3</b> | <b>-1</b> | 1 LUNDY S 3pt FG , step back jump shot made (3)                             |
| 17:08     | 22 CROWL S 3pt FG , jump shot missed                                    |            |           |   |
| 17:05     |   |            |           | 1 LUNDY S defensive rebound (1)   |
| 16:50     |   |            |           | 2 DREAD M turnover lost ball (1)  |
| 16:50     | 22 CROWL S substitution out   |            |           |   |
| 16:50     | 33 VOGT C substitution in   |            |           |   |
| 16:36     | 1 DAVIS J 2pt FG from turnover outside the paint, jump shot blocked     |            |           |   |
| 16:36     |   |            |           | 1 LUNDY S block (1)   |
| 16:33     | 34 DAVISON B offensive rebound (2)                                      |            |           |   |
| 16:31     | 23 HEPBURN C 3pt FG from turnover second chance, jump shot missed       |            |           |   |
| 16:26     | 33 VOGT C offensive rebound (1)   |            |           |   |
| 16:23     | 33 VOGT C 2pt FG from turnover second chance in the paint, layup missed |            |           |   |
| 16:20     |   |            |           | 21 HARRAR J defensive rebound (3)   |
| 16:12     |   |            |           | 1 LUNDY S 3pt FG , jump shot missed   |
| 16:09     | 1 DAVIS J defensive rebound (2)   |            |           |   |
| 16:05     | 1 DAVIS J 2pt FG in the paint, driving layup missed                     |            |           |   |
| 15:59     |   |            |           | 2 DREAD M defensive rebound (1)   |
| 15:42     |   |            |           | 22 PICKETT J 3pt FG , step back jump shot missed                            |
| 15:38     | 1 DAVIS J defensive rebound (3)   |            |           |   |
| 15:24     | 33 VOGT C 2pt FG in the paint, turnaround jump shot missed              |            |           |   |
| 15:21     |   |            |           | 23 JOHNSON D defensive rebound (2)  |



**Penn St. at Wisconsin**

02/05/22 Kohl Center, Madison, WI  
2021-22 Men's Basketball

**Game Time:** 5:00 PM  
**Game Duration:** 1:58  
**Attendance:** 17,287

**Officials:** Lamont Simpson, Rob Kueneman, Brandon Cruz

| Game Time | UW  | Score      | Diff     | PSU   |
|-----------|---|------------|----------|---|
| 15:08     | Timeout media   |            |          |   |
| 15:08     | 1 DAVIS J substitution out  |            |          |   |
| 15:08     | 5 WAHL T substitution out   |            |          |   |
| 15:08     | 0 NEATH J substitution in   |            |          |   |
| 15:08     | 20 CARLSON B substitution in  |            |          |   |
| 15:08     |   |            |          | 1 LUNDY S substitution out                                      |
| 15:08     |   |            |          | 21 HARRAR J substitution out                                    |
| 15:08     |   |            |          | 23 JOHNSON D substitution out                                   |
| 15:08     |   |            |          | 3 SESSOMS S substitution in                                     |
| 15:08     |   |            |          | 5 LEE G substitution in   |
| 15:08     |   |            |          | 14 WHITE J substitution in                                      |
| 14:57     |   |            |          | 22 PICKETT J 2pt FG outside the paint, pull up jump shot missed |
| 14:52     | 0 NEATH J defensive rebound (1)   |            |          |   |
| 14:26     | 23 HEPBURN C 2pt FG in the paint, driving layup made (2)                                      | <b>4-3</b> | <b>1</b> |   |
| 14:03     | 0 NEATH J foul drawn (1)  |            |          | 2 DREAD M foul offensive (1 - 1)                                |
| 14:03     |   |            |          | 2 DREAD M turnover offensive (2)                                |
| 13:49     | 33 VOGT C turnover lost ball (1)  |            |          | 3 SESSOMS S steal (1)   |
| 13:44     | 23 HEPBURN C foul drawn (1)   |            |          | 3 SESSOMS S foul offensive (1 - 2)                              |
| 13:44     |   |            |          | 3 SESSOMS S turnover offensive (1)                              |
| 13:44     | 33 VOGT C substitution out  |            |          |   |
| 13:44     | 22 CROWL S substitution in  |            |          |   |
| 13:33     | 34 DAVISON B 3pt FG from turnover, jump shot missed   |            |          |   |
| 13:28     | offensive rebound (9)   |            |          |   |
| 13:28     |   |            |          | 2 DREAD M substitution out                                      |
| 13:28     |   |            |          | 1 LUNDY S substitution in                                       |
| 13:28     | 34 DAVISON B substitution out   |            |          |   |
| 13:28     | 1 DAVIS J substitution in   |            |          |   |
| 13:22     | 23 HEPBURN C 2pt FG from turnover second chance outside the paint, pull up jump shot made (4) | <b>6-3</b> | <b>3</b> |   |
| 13:06     | 1 DAVIS J foul personal (1 - 1)   |            |          | 22 PICKETT J foul drawn (1)                                     |
| 13:06     |   |            |          | 3 SESSOMS S substitution out                                    |
| 13:06     |   |            |          | 10 CORNWALL J substitution in                                   |
| 13:05     |   |            |          | 1 LUNDY S turnover out of bounds (1)                            |
| 12:51     | 22 CROWL S 2pt FG from turnover in the paint, hook shot made (2)                              | <b>8-3</b> | <b>5</b> |   |
| 12:37     | 23 HEPBURN C substitution out   |            |          |   |
| 12:37     | 11 BOWMAN II L substitution in  |            |          |   |
| 12:37     |   |            |          | 14 WHITE J substitution out                                     |
| 12:37     |   |            |          | 2 DREAD M substitution in                                       |
| 12:24     |   |            |          | 5 LEE G 3pt FG , jump shot missed                               |
| 12:20     |   |            |          | 1 LUNDY S offensive rebound (2)                                 |
| 12:19     |   |            |          | 1 LUNDY S 2pt FG second chance in the paint, layup missed       |
| 12:17     | 0 NEATH J defensive rebound (2)   |            |          |   |
| 12:03     | 1 DAVIS J 2pt FG outside the paint, jump shot blocked   |            |          |   |
| 12:03     |   |            |          | 22 PICKETT J block (1)  |
| 11:58     |   |            |          | 5 LEE G defensive rebound (1)                                   |
| 11:52     |   |            |          | 1 LUNDY S 3pt FG , jump shot missed                             |
| 11:48     | 1 DAVIS J defensive rebound (4)   |            |          |   |
| 11:36     | 20 CARLSON B foul drawn (1)   |            |          | 2 DREAD M foul personal (2 - 3)                                 |



**Penn St. at Wisconsin**

02/05/22 Kohl Center, Madison, WI  
2021-22 Men's Basketball

**Game Time:** 5:00 PM  
**Game Duration:** 1:58  
**Attendance:** 17,287

**Officials:** Lamont Simpson, Rob Kueneman, Brandon Cruz

| Game Time | UW  | Score       | Diff     | PSU  |
|-----------|---|-------------|----------|--|
| 11:36     | Timeout media   |             |          |  |
| 11:36     | 0 NEATH J substitution out                                      |             |          |  |
| 11:36     | 20 CARLSON B substitution out                                   |             |          |  |
| 11:36     | 5 WAHL T substitution in  |             |          |  |
| 11:36     | 34 DAVISON B substitution in                                    |             |          |  |
| 11:36     |   |             |          | 2 DREAD M substitution out   |
| 11:36     |   |             |          | 5 LEE G substitution out   |
| 11:36     |   |             |          | 3 SESSOMS S substitution in  |
| 11:36     |   |             |          | 21 HARRAR J substitution in  |
| 11:22     | 5 WAHL T 2pt FG in the paint, layup made (4)                    | <b>10-3</b> | <b>7</b> |  |
| 10:55     |   |             |          | 22 PICKETT J turnover travel (1)                                   |
| 10:42     | 11 BOWMAN II L 3pt FG from turnover, jump shot missed           |             |          |  |
| 10:39     |   |             |          | 21 HARRAR J defensive rebound (4)                                  |
| 10:30     |   |             |          | 3 SESSOMS S 2pt FG in the paint, driving layup missed              |
| 10:26     | 11 BOWMAN II L defensive rebound (1)                            |             |          |  |
| 10:09     | 22 CROWL S 2pt FG in the paint, hook shot missed                |             |          |  |
| 10:06     |   |             |          | 21 HARRAR J defensive rebound (5)                                  |
| 09:57     | 11 BOWMAN II L foul personal (1 - 2)                            |             |          | 3 SESSOMS S foul drawn (1)   |
| 09:53     |   |             |          | 22 PICKETT J 2pt FG in the paint, turnaround jump shot missed      |
| 09:51     |   |             |          | 21 HARRAR J offensive rebound (6)                                  |
| 09:51     | 22 CROWL S foul personal (1 - 3)                                |             |          | 21 HARRAR J foul drawn (1)   |
| 09:51     | 22 CROWL S substitution out                                     |             |          |  |
| 09:51     | 33 VOGT C substitution in                                       |             |          |  |
| 09:51     |   |             |          | 1 LUNDY S 3pt FG , jump shot missed                                |
| 09:51     | 1 DAVIS J defensive rebound (5)                                 |             |          |  |
| 09:48     | 5 WAHL T 2pt FG fast break in the paint, dunk, made (6)         | <b>12-3</b> | <b>9</b> |  |
| 09:48     | 1 DAVIS J assist (1)  |             |          |  |
| 09:06     |   |             |          | 22 PICKETT J 2pt FG outside the paint, turnaround jump shot missed |
| 09:03     | 33 VOGT C defensive rebound (2)                                 |             |          |  |
| 08:51     | 11 BOWMAN II L 2pt FG in the paint, pull up jump shot missed    |             |          |  |
| 08:48     |   |             |          | 22 PICKETT J defensive rebound (1)                                 |
| 08:32     |   |             |          | 22 PICKETT J 3pt FG , jump shot missed                             |
| 08:30     |   |             |          | 21 HARRAR J offensive rebound (7)                                  |
| 08:30     | 34 DAVISON B foul personal (1 - 4)                              |             |          | 21 HARRAR J foul drawn (2)   |
| 08:30     | 11 BOWMAN II L substitution out                                 |             |          |  |
| 08:30     | 23 HEPBURN C substitution in                                    |             |          |  |
| 08:30     |   |             |          | 1 LUNDY S substitution out   |
| 08:30     |   |             |          | 3 SESSOMS S substitution out                                       |
| 08:30     |   |             |          | 5 LEE G substitution in  |
| 08:30     |   |             |          | 23 JOHNSON D substitution in                                       |
| 08:28     |   |             |          | 23 JOHNSON D 3pt FG second chance, jump shot missed                |
| 08:25     | 23 HEPBURN C defensive rebound (1)                              |             |          |  |
| 08:09     | 23 HEPBURN C 2pt FG outside the paint, pull up jump shot missed |             |          |  |
| 08:05     | offensive dead ball rebound (1)                                 |             |          |  |
| 08:05     | 33 VOGT C foul drawn (1)  |             |          | 5 LEE G foul personal (1 - 4)                                      |
| 07:59     | 5 WAHL T 3pt FG second chance, jump shot missed                 |             |          |  |
| 07:54     |   |             |          | 23 JOHNSON D defensive rebound (3)                                 |
| 07:50     |   |             |          | 23 JOHNSON D 2pt FG in the paint, layup blocked                    |



**Penn St. at Wisconsin**

02/05/22 Kohl Center, Madison, WI  
2021-22 Men's Basketball

**Game Time:** 5:00 PM  
**Game Duration:** 1:58  
**Attendance:** 17,287

**Officials:** Lamont Simpson, Rob Kueneman, Brandon Cruz

| Game Time | UW  | Score       | Diff      | PSU   |
|-----------|---|-------------|-----------|---|
| 07:50     | 1 DAVIS J block (1)   |             |           |   |
| 07:46     | 5 WAHL T defensive rebound (2)  |             |           |   |
| 07:46     | 1 DAVIS J foul drawn (1)  |             |           | 22 PICKETT J foul personal (1 - 5)                                    |
| 07:46     | Timeout media   |             |           |   |
| 07:32     | 5 WAHL T 2pt FG in the paint, layup missed                                  |             |           |   |
| 07:32     | 33 VOGT C offensive rebound (3)   |             |           |   |
| 07:28     | 33 VOGT C 2pt FG second chance in the paint, layup made (2)                 | <b>14-3</b> | <b>11</b> |   |
| 07:02     |   | <b>14-5</b> | <b>9</b>  | 22 PICKETT J 2pt FG in the paint, pull up jump shot made (2)          |
| 06:34     | 23 HEPBURN C 3pt FG , jump shot made (7)                                    | <b>17-5</b> | <b>12</b> |   |
| 06:12     |   | <b>17-7</b> | <b>10</b> | 10 CORNWALL J 2pt FG in the paint, hook shot made (2)                 |
| 06:12     | 23 HEPBURN C foul shooting (1 - 5)  |             |           | 10 CORNWALL J foul drawn (1)  |
| 06:12     | 5 WAHL T substitution out   |             |           |   |
| 06:12     | 20 CARLSON B substitution in  |             |           |   |
| 06:12     |   |             |           | 23 JOHNSON D substitution out   |
| 06:12     |   |             |           | 3 SESSOMS S substitution in   |
| 06:12     |   |             |           | 10 CORNWALL J free throw 1 - 1 missed                                 |
| 06:11     | 1 DAVIS J defensive rebound (6)   |             |           |   |
| 05:45     | 1 DAVIS J 2pt FG outside the paint, jump shot blocked                       |             |           |   |
| 05:45     |   |             |           | 22 PICKETT J block (2)  |
| 05:45     |   |             |           | 5 LEE G defensive rebound (2)   |
| 05:32     |   |             |           | 10 CORNWALL J 3pt FG , jump shot missed                               |
| 05:29     | 34 DAVISON B defensive rebound (3)  |             |           |   |
| 05:19     | 20 CARLSON B 3pt FG , jump shot missed                                      |             |           |   |
| 05:15     | 33 VOGT C offensive rebound (4)   |             |           |   |
| 05:06     | 34 DAVISON B 2pt FG second chance in the paint, turnaround jump shot missed |             |           |   |
| 05:02     |   |             |           | 21 HARRAR J defensive rebound (8)                                     |
| 04:50     |   |             |           | 22 PICKETT J 2pt FG in the paint, driving layup missed                |
| 04:46     | 34 DAVISON B defensive rebound (4)  |             |           |   |
| 04:38     | 34 DAVISON B 2pt FG in the paint, pull up jump shot missed                  |             |           |   |
| 04:34     |   |             |           | 5 LEE G defensive rebound (3)   |
| 04:16     | 23 HEPBURN C foul personal (2 - 6)  |             |           | 10 CORNWALL J foul drawn (2)  |
| 04:16     | 23 HEPBURN C substitution out   |             |           |   |
| 04:16     | 33 VOGT C substitution out  |             |           |   |
| 04:16     | 11 BOWMAN II L substitution in  |             |           |   |
| 04:16     | 22 CROWL S substitution in  |             |           |   |
| 04:16     |   |             |           | 21 HARRAR J substitution out  |
| 04:16     |   |             |           | 14 WHITE J substitution in  |
| 04:06     | 1 DAVIS J steal (1)   |             |           | 3 SESSOMS S turnover lost ball (2)                                    |
| 03:47     | 34 DAVISON B turnover bad pass (1)  |             |           | 22 PICKETT J steal (1)  |
| 03:42     |   |             |           | 22 PICKETT J 2pt FG from turnover in the paint, driving layup blocked |
| 03:42     | 1 DAVIS J block (2)   |             |           |   |
| 03:38     | 22 CROWL S defensive rebound (1)  |             |           |   |
| 03:36     | 20 CARLSON B foul drawn (2)   |             |           | 3 SESSOMS S foul personal (2 - 6)                                     |
| 03:36     | Timeout media   |             |           |   |
| 03:36     | 34 DAVISON B substitution out   |             |           |   |
| 03:36     | 2 DAVIS J substitution in   |             |           |   |
| 03:27     | 2 DAVIS J 2pt FG outside the paint, jump shot missed                        |             |           |   |
| 03:24     |   |             |           | 5 LEE G defensive rebound (4)   |



**Penn St. at Wisconsin**

02/05/22 Kohl Center, Madison, WI  
2021-22 Men's Basketball

**Game Time:** 5:00 PM  
**Game Duration:** 1:58  
**Attendance:** 17,287

**Officials:** Lamont Simpson, Rob Kueneman, Brandon Cruz

| Game Time | UW  | Score        | Diff     | PSU   |
|-----------|---|--------------|----------|---|
| 03:10     |   |              |          | 14 WHITE J 2pt FG in the paint, layup blocked                         |
| 03:10     | 22 CROWL S block (1)                                  |              |          |   |
| 03:06     | 11 BOWMAN II L defensive rebound (2)                  |              |          |   |
| 03:05     | 11 BOWMAN II L foul drawn (1)                         |              |          | 22 PICKETT J foul shooting (2 - 7)                                    |
| 03:05     | 11 BOWMAN II L free throw fast break 1 - 2 missed     |              |          |   |
| 03:05     | offensive dead ball rebound (2)                       |              |          |   |
| 03:05     |   |              |          | 22 PICKETT J substitution out   |
| 03:05     |   |              |          | 1 LUNDY S substitution in   |
| 03:05     | 11 BOWMAN II L free throw fast break 2 - 2 missed     |              |          |   |
| 03:05     |   |              |          | 5 LEE G defensive rebound (5)   |
| 02:49     |   | <b>17-9</b>  | <b>8</b> | 5 LEE G 2pt FG in the paint, hook shot made (2)                       |
| 02:26     | 11 BOWMAN II L 2pt FG in the paint, jump shot missed  |              |          |   |
| 02:22     | 20 CARLSON B offensive rebound (1)                    |              |          |   |
| 02:12     | 11 BOWMAN II L foul drawn (2)                         |              |          | 14 WHITE J foul shooting (1 - 8)                                      |
| 02:12     | 11 BOWMAN II L free throw 1 - 2 made (1)              | <b>18-9</b>  | <b>9</b> |   |
| 02:12     | 2 DAVIS J substitution out                            |              |          |   |
| 02:12     | 20 CARLSON B substitution out                         |              |          |   |
| 02:12     | 5 WAHL T substitution in                              |              |          |   |
| 02:12     | 34 DAVISON B substitution in                          |              |          |   |
| 02:12     | 11 BOWMAN II L free throw 2 - 2 missed                |              |          |   |
| 02:10     |   |              |          | 5 LEE G defensive rebound (6)   |
| 02:01     |   |              |          | 14 WHITE J turnover bad pass (1)                                      |
| 01:46     | 11 BOWMAN II L 3pt FG from turnover, jump shot missed |              |          |   |
| 01:42     |   |              |          | 14 WHITE J defensive rebound (1)                                      |
| 01:36     |   |              |          | 10 CORNWALL J 2pt FG in the paint, pull up jump shot missed           |
| 01:33     |   |              |          | offensive rebound (24)  |
| 01:33     |   |              |          | 10 CORNWALL J substitution out  |
| 01:33     |   |              |          | 14 WHITE J substitution out   |
| 01:33     |   |              |          | 21 HARRAR J substitution in   |
| 01:33     |   |              |          | 23 JOHNSON D substitution in  |
| 01:22     |   |              |          | 3 SESSOMS S 2pt FG second chance in the paint, driving layup missed   |
| 01:21     |   |              |          | offensive dead ball rebound (1)                                       |
| 01:21     | 22 CROWL S foul personal (2 - 7)                      |              |          | 21 HARRAR J foul drawn (3)  |
| 01:21     |   |              |          | 23 JOHNSON D substitution out   |
| 01:21     |   |              |          | 10 CORNWALL J substitution in   |
| 01:21     | 22 CROWL S substitution out                           |              |          |   |
| 01:21     | 33 VOGT C substitution in                             |              |          |   |
| 01:21     |   | <b>18-10</b> | <b>8</b> | 21 HARRAR J 1&1 free throw 1 made (1)                                 |
| 01:21     |   | <b>18-11</b> | <b>7</b> | 21 HARRAR J 1&1 free throw 2 made (2)                                 |
| 01:02     | 5 WAHL T turnover bad pass (2)                        |              |          | 1 LUNDY S steal (1)   |
| 00:55     | 33 VOGT C steal (1)                                   |              |          | 10 CORNWALL J turnover bad pass (1)                                   |
| 00:55     | 11 BOWMAN II L substitution out                       |              |          |   |
| 00:55     | 0 NEATH J substitution in                             |              |          |   |
| 00:47     | 5 WAHL T turnover travel (3)                          |              |          |   |
| 00:26     |   | <b>18-13</b> | <b>5</b> | 3 SESSOMS S 2pt FG from turnover in the paint, driving layup made (2) |
| 00:17     | Timeout 30 Sec  |              |          |   |
| 00:17     | 33 VOGT C substitution out                            |              |          |   |
| 00:17     | 22 CROWL S substitution in                            |              |          |   |



Official Basketball Play by Play - First Half

**Penn St. at Wisconsin**

02/05/22 Kohl Center, Madison, WI  
2021-22 Men's Basketball

**Game Time:** 5:00 PM

**Game Duration:** 1:58

**Attendance:** 17,287

**Officials:** Lamont Simpson, Rob Kueneman, Brandon Cruz

| Game Time            | UW                                     | Score | Diff | PSU                             |
|----------------------|--|-------|------|---------------------------------|
| 00:17                |  |       |      | 3 SESSOMS S substitution out    |
| 00:17                |  |       |      | 2 DREAD M substitution in       |
| 00:06                | 34 DAVISON B 3pt FG , jump shot missed |       |      |                                 |
| 00:03                |  |       |      | defensive dead ball rebound (2) |
| 00:03                |  |       |      | Timeout 30 Sec                  |
| 00:03                | 22 CROWL S substitution out            |       |      |                                 |
| 00:03                | 20 CARLSON B substitution in           |       |      |                                 |
| 00:03                |  |       |      | 5 LEE G substitution out        |
| 00:03                |  |       |      | 21 HARRAR J substitution out    |
| 00:03                |  |       |      | 3 SESSOMS S substitution in     |
| 00:03                |  |       |      | 22 PICKETT J substitution in    |
| <b>END OF PERIOD</b> |  |       |      |                                 |
| <b>UW 18-13 PSU</b>  |  |       |      |                                 |



**Penn St. at Wisconsin**

02/05/22 Kohl Center, Madison, WI  
2021-22 Men's Basketball

Game Time: 5:00 PM  
Game Duration: 1:58  
Attendance: 17,287

Officials: Lamont Simpson, Rob Kueneman, Brandon Cruz

**Penn St. - 13**

| NO.           | Name            | F | Min   | FG   |      |     | Rebounds |    |     | Fouls |    | TP | AS | TO | ST | Blocks |    | +/- |
|---------------|-----------------|---|-------|------|------|-----|----------|----|-----|-------|----|----|----|----|----|--------|----|-----|
|               |                 |   |       | M-A  | 3P   | FT  | OR       | DR | TOT | PF    | FD |    |    |    |    | BS     | BA |     |
| 1             | Seth Lundy      | F | 12:55 | 1-7  | 1-5  | 0-0 | 1        | 1  | 2   | 0     | 0  | 3  | 0  | 1  | 1  | 1      | 0  | -2  |
| 21            | John Harrar     | F | 13:42 | 0-1  | 0-0  | 2-2 | 4        | 4  | 8   | 0     | 3  | 2  | 0  | 0  | 0  | 0      | 1  | 0   |
| 2             | Myles Dread     | G | 07:50 | 0-1  | 0-1  | 0-0 | 0        | 1  | 1   | 2     | 0  | 0  | 0  | 2  | 1  | 0      | 0  | -1  |
| 22            | Jalen Pickett   | G | 16:58 | 1-10 | 0-3  | 0-0 | 0        | 1  | 1   | 2     | 1  | 2  | 0  | 1  | 1  | 2      | 1  | -10 |
| 23            | Dallion Johnson | G | 07:22 | 0-2  | 0-1  | 0-0 | 0        | 3  | 3   | 0     | 0  | 0  | 0  | 0  | 0  | 0      | 1  | 0   |
| 3             | Sam Sessoms     |   | 11:06 | 1-3  | 0-0  | 0-0 | 0        | 0  | 0   | 2     | 1  | 2  | 0  | 2  | 1  | 0      | 0  | -3  |
| 5             | Greg Lee        |   | 11:59 | 1-2  | 0-1  | 0-0 | 0        | 6  | 6   | 1     | 0  | 2  | 0  | 0  | 0  | 0      | 0  | -2  |
| 14            | Jalanni White   |   | 05:14 | 0-1  | 0-0  | 0-0 | 0        | 1  | 1   | 1     | 0  | 0  | 0  | 1  | 0  | 0      | 1  | -5  |
| 10            | Jaheam Cornwall |   | 12:54 | 1-3  | 0-1  | 0-1 | 0        | 0  | 0   | 0     | 2  | 2  | 0  | 1  | 0  | 0      | 0  | -2  |
| Team          |                 |   |       |      |      |     | 2        | 0  | 2   |       |    | 0  |    | 0  |    |        |    |     |
| <b>Totals</b> |                 |   |       | 5-30 | 1-12 | 2-3 | 7        | 17 | 24  | 8     | 7  | 13 | 0  | 8  | 4  | 3      | 4  | -5  |

| Shooting By Period |      |       |
|--------------------|------|-------|
| 1st FG%            | 5-30 | 16.7% |
| 3PT%               | 1-12 | 8.3%  |
| FT%                | 2-3  | 66.7% |
| GM FG%             | 5-30 | 16.7% |
| 3PT%               | 1-12 | 8.3%  |
| FT%                | 2-3  | 66.7% |

Dead Ball Rebounds: 1, 1

Technical Fouls::NONE

**Wisconsin - 18**

| NO.           | Name            | F | Min   | FG   |      |     | Rebounds |    |     | Fouls |    | TP | AS | TO | ST | Blocks |    | +/- |
|---------------|-----------------|---|-------|------|------|-----|----------|----|-----|-------|----|----|----|----|----|--------|----|-----|
|               |                 |   |       | M-A  | 3P   | FT  | OR       | DR | TOT | PF    | FD |    |    |    |    | BS     | BA |     |
| 5             | Tyler Wahl      | F | 12:28 | 3-5  | 0-1  | 0-0 | 0        | 2  | 2   | 0     | 0  | 6  | 0  | 3  | 0  | 1      | 0  | 0   |
| 22            | Steven Crowl    | F | 10:12 | 1-3  | 0-1  | 0-0 | 0        | 1  | 1   | 2     | 0  | 2  | 1  | 0  | 0  | 1      | 0  | 4   |
| 1             | Johnny Davis    | G | 18:20 | 0-4  | 0-0  | 0-0 | 0        | 6  | 6   | 1     | 1  | 0  | 1  | 0  | 1  | 2      | 3  | 3   |
| 23            | Chucky Hepburn  | G | 11:37 | 3-5  | 1-2  | 0-0 | 0        | 1  | 1   | 2     | 1  | 7  | 0  | 0  | 0  | 0      | 0  | 6   |
| 34            | Brad Davison    | G | 16:44 | 0-5  | 0-3  | 0-0 | 1        | 3  | 4   | 1     | 0  | 0  | 0  | 1  | 0  | 0      | 0  | 2   |
| 33            | Chris Vogt      |   | 09:45 | 1-3  | 0-0  | 0-0 | 3        | 1  | 4   | 0     | 1  | 2  | 0  | 1  | 1  | 0      | 0  | 1   |
| 0             | Jahcobi Neath   |   | 04:27 | 0-0  | 0-0  | 0-0 | 0        | 2  | 2   | 0     | 1  | 0  | 0  | 0  | 0  | 0      | 0  | 4   |
| 20            | Ben Carlson     |   | 07:35 | 0-1  | 0-1  | 0-0 | 1        | 0  | 1   | 0     | 2  | 0  | 0  | 0  | 0  | 0      | 0  | 5   |
| 11            | Lorne Bowman II |   | 07:28 | 0-4  | 0-2  | 1-4 | 0        | 2  | 2   | 1     | 2  | 1  | 0  | 0  | 0  | 0      | 0  | 1   |
| 2             | Jordan Davis    |   | 01:24 | 0-1  | 0-0  | 0-0 | 0        | 0  | 0   | 0     | 0  | 0  | 0  | 0  | 0  | 0      | 0  | -1  |
| Team          |                 |   |       |      |      |     | 1        | 0  | 1   |       |    | 0  |    | 0  |    |        |    |     |
| <b>Totals</b> |                 |   |       | 8-31 | 1-10 | 1-4 | 6        | 18 | 24  | 7     | 8  | 18 | 2  | 5  | 2  | 4      | 3  | 5   |

| Shooting By Period |      |       |
|--------------------|------|-------|
| 1st FG%            | 8-31 | 25.8% |
| 3PT%               | 1-10 | 10.0% |
| FT%                | 1-4  | 25%   |
| GM FG%             | 8-31 | 25.8% |
| 3PT%               | 1-10 | 10.0% |
| FT%                | 1-4  | 25.0% |

Dead Ball Rebounds: 2, 0

Technical Fouls::NONE

|                  | PSU           | UW            |
|------------------|---------------|---------------|
| Biggest lead     | 1 (1st 17:26) | 12 (1st 6:34) |
| Best Scoring Run | 4 (1st 2:49)  | 12 (1st 7:28) |
| Lead Changes     | 2             |               |
| Times Tied       | 0             |               |
| Time with Lead   | 03:00         | 14:53         |

|               | PSU | UW |
|---------------|-----|----|
| Points from   |     |    |
| Turnovers     | 2   | 4  |
| Paint         | 8   | 12 |
| Second Chance | 2   | 5  |
| Fast Breaks   | 0   | 2  |
| Bench         | 6   | 3  |

|     | Period by Period Scoring |     |     |
|-----|--------------------------|-----|-----|
|     | 1st                      | 2nd | TOT |
| PSU | 13                       | 36  | 49  |
| UW  | 18                       | 33  | 51  |





**Penn St. at Wisconsin**

02/05/22 Kohl Center, Madison, WI  
2021-22 Men's Basketball

**Game Time:** 5:00 PM  
**Game Duration:** 1:58  
**Attendance:** 17,287

**Officials:** Lamont Simpson, Rob Kueneman, Brandon Cruz

**Period 2**

**Quarter Starters:**

|            |           |           |             |              |              |
|------------|-----------|-----------|-------------|--------------|--------------|
| <b>UW</b>  | 1 Davis J | 5 Wahl T  | 22 Crowl S  | 23 Hepburn C | 34 Davison B |
| <b>PSU</b> | 1 Lundy S | 2 Dread M | 21 Harrar J | 22 Pickett J | 23 Johnson D |

| Game Time | UW  | Score        | Diff     | PSU  |
|-----------|---|--------------|----------|--|
| 20:00     | 0 NEATH J substitution out                              |              |          |  |
| 20:00     | 20 CARLSON B substitution out                           |              |          |  |
| 20:00     | 22 CROWL S substitution in                              |              |          |  |
| 20:00     | 23 HEPBURN C substitution in                            |              |          |  |
| 20:00     |   |              |          | 3 SESSOMS S substitution out                                 |
| 20:00     |   |              |          | 10 CORNWALL J substitution out                               |
| 20:00     |   |              |          | 21 HARRAR J substitution in                                  |
| 20:00     |   |              |          | 23 JOHNSON D substitution in                                 |
| 19:48     | 22 CROWL S 2pt FG in the paint, jump shot made (4)      | <b>20-13</b> | <b>7</b> |  |
| 19:48     | 23 HEPBURN C assist (1)                                 |              |          |  |
| 19:32     |   |              |          | 22 PICKETT J 2pt FG in the paint, layup missed               |
| 19:28     | 22 CROWL S defensive rebound (2)                        |              |          |  |
| 19:11     | 1 DAVIS J 2pt FG in the paint, pull up jump shot missed |              |          |  |
| 19:07     |   |              |          | 21 HARRAR J defensive rebound (9)                            |
| 18:48     |   | <b>20-15</b> | <b>5</b> | 22 PICKETT J 2pt FG in the paint, pull up jump shot made (4) |
| 18:36     | 1 DAVIS J foul drawn (2)                                |              |          | 21 HARRAR J foul personal (1 - 1)                            |
| 18:35     | 23 HEPBURN C 3pt FG , jump shot made (10)               | <b>23-15</b> | <b>8</b> |  |
| 18:35     | 22 CROWL S assist (2)                                   |              |          |  |
| 18:01     |   | <b>23-18</b> | <b>5</b> | 23 JOHNSON D 3pt FG , jump shot made (3)                     |
| 17:39     | 23 HEPBURN C foul drawn (2)                             |              |          | 23 JOHNSON D foul personal (1 - 2)                           |
| 17:34     | 1 DAVIS J 3pt FG , jump shot missed                     |              |          |  |
| 17:33     |   |              |          | defensive rebound (26)                                       |
| 17:26     |   | <b>23-21</b> | <b>2</b> | 23 JOHNSON D 3pt FG , jump shot made (6)                     |
| 17:26     |   |              |          | 2 DREAD M assist (1)   |
| 17:03     | 5 WAHL T 2pt FG in the paint, hook shot made (8)        | <b>25-21</b> | <b>4</b> |  |
| 17:03     | 22 CROWL S assist (3)                                   |              |          |  |
| 16:32     |   |              |          | 21 HARRAR J 2pt FG outside the paint, hook shot missed       |
| 16:29     | 5 WAHL T defensive rebound (3)                          |              |          |  |
| 16:24     | 22 CROWL S 3pt FG , jump shot missed                    |              |          |  |
| 16:20     |   |              |          | 23 JOHNSON D defensive rebound (4)                           |
| 16:11     |   |              |          | 2 DREAD M 3pt FG , jump shot missed                          |
| 16:08     | 1 DAVIS J defensive rebound (7)                         |              |          |  |
| 15:50     | 22 CROWL S 3pt FG , jump shot made (7)                  | <b>28-21</b> | <b>7</b> |  |
| 15:50     | 1 DAVIS J assist (2)                                    |              |          |  |
| 15:31     |   |              |          | 2 DREAD M 3pt FG , jump shot missed                          |
| 15:27     | 5 WAHL T defensive rebound (4)                          |              |          |  |
| 15:27     | 5 WAHL T foul drawn (1)                                 |              |          | 1 LUNDY S foul personal (1 - 3)                              |
| 15:27     | Timeout media   |              |          |  |
| 15:27     | 1 DAVIS J substitution out                              |              |          |  |
| 15:27     | 0 NEATH J substitution in                               |              |          |  |
| 15:27     |   |              |          | 21 HARRAR J substitution out                                 |
| 15:27     |   |              |          | 23 JOHNSON D substitution out                                |
| 15:27     |   |              |          | 5 LEE G substitution in                                      |



**Penn St. at Wisconsin**

02/05/22 Kohl Center, Madison, WI  
2021-22 Men's Basketball

**Game Time:** 5:00 PM  
**Game Duration:** 1:58  
**Attendance:** 17,287

**Officials:** Lamont Simpson, Rob Kueneman, Brandon Cruz

| Game Time | UW   | Score        | Diff     | PSU  |
|-----------|--|--------------|----------|--|
| 15:27     |  |              |          | 10 CORNWALL J substitution in                                    |
| 15:06     | 34 DAVISON B 3pt FG , jump shot missed                                     |              |          |  |
| 15:03     |  |              |          | 1 LUNDY S defensive rebound (3)                                  |
| 14:45     |  |              |          | 1 LUNDY S turnover travel (2)                                    |
| 14:30     | 5 WAHL T 2pt FG from turnover in the paint, hook shot missed               |              |          |  |
| 14:28     |  |              |          | 2 DREAD M defensive rebound (2)                                  |
| 14:19     |  |              |          | 5 LEE G 2pt FG outside the paint, jump shot missed               |
| 14:16     | 22 CROWL S defensive rebound (3)   |              |          |  |
| 14:08     | 23 HEPBURN C turnover lost ball (1)  |              |          | 2 DREAD M steal (2)  |
| 14:00     |  |              |          | 1 LUNDY S substitution out                                       |
| 14:00     |  |              |          | 3 SESSOMS S substitution in                                      |
| 13:46     |  | <b>28-24</b> | <b>4</b> | 10 CORNWALL J 3pt FG from turnover, jump shot made (5)           |
| 13:46     |  |              |          | 22 PICKETT J assist (1)  |
| 13:20     | 34 DAVISON B foul drawn (1)  |              |          | 5 LEE G foul shooting (2 - 4)                                    |
| 13:20     | 34 DAVISON B free throw 1 - 2 made (1)                                     | <b>29-24</b> | <b>5</b> |  |
| 13:20     | 34 DAVISON B free throw 2 - 2 made (2)                                     | <b>30-24</b> | <b>6</b> |  |
| 13:04     | 34 DAVISON B foul personal (2 - 1)   |              |          | 22 PICKETT J foul drawn (2)                                      |
| 12:44     |  | <b>30-26</b> | <b>4</b> | 3 SESSOMS S 2pt FG outside the paint, pull up jump shot made (4) |
| 12:17     | 23 HEPBURN C 3pt FG , jump shot missed                                     |              |          |  |
| 12:13     |  |              |          | 22 PICKETT J defensive rebound (2)                               |
| 12:10     | 22 CROWL S steal (1)   |              |          | 3 SESSOMS S turnover lost ball (3)                               |
| 12:10     | 22 CROWL S substitution out  |              |          |  |
| 12:10     | 23 HEPBURN C substitution out  |              |          |  |
| 12:10     | 34 DAVISON B substitution out  |              |          |  |
| 12:10     | 1 DAVIS J substitution in  |              |          |  |
| 12:10     | 11 BOWMAN II L substitution in   |              |          |  |
| 12:10     | 33 VOGT C substitution in  |              |          |  |
| 11:49     | 1 DAVIS J 2pt FG from turnover outside the paint, pull up jump shot missed |              |          |  |
| 11:45     |  |              |          | 10 CORNWALL J defensive rebound (1)                              |
| 11:28     |  |              |          | 2 DREAD M 3pt FG , jump shot missed                              |
| 11:25     | 1 DAVIS J defensive rebound (8)  |              |          |  |
| 11:20     | 1 DAVIS J 3pt FG , jump shot missed  |              |          |  |
| 11:17     |  |              |          | 5 LEE G defensive rebound (7)                                    |
| 11:11     |  | <b>30-29</b> | <b>1</b> | 5 LEE G 3pt FG , jump shot made (5)                              |
| 11:11     |  |              |          | 3 SESSOMS S assist (1)   |
| 10:43     | 5 WAHL T turnover lost ball (4)  |              |          | 2 DREAD M steal (3)  |
| 10:43     | Timeout media  |              |          |  |
| 10:43     |  |              |          | 2 DREAD M substitution out                                       |
| 10:43     |  |              |          | 1 LUNDY S substitution in  |
| 10:42     | 0 NEATH J substitution out   |              |          |  |
| 10:42     | 34 DAVISON B substitution in   |              |          |  |
| 10:30     |  |              |          | 10 CORNWALL J 3pt FG , jump shot missed                          |
| 10:26     | 11 BOWMAN II L defensive rebound (3)                                       |              |          |  |
| 10:16     | 1 DAVIS J 2pt FG outside the paint, step back jump shot made (2)           | <b>32-29</b> | <b>3</b> |  |
| 09:53     |  | <b>32-32</b> | <b>0</b> | 3 SESSOMS S 3pt FG , jump shot made (7)                          |
| 09:53     |  |              |          | 22 PICKETT J assist (2)  |
| 09:23     | 34 DAVISON B 2pt FG outside the paint, jump shot made (4)                  | <b>34-32</b> | <b>2</b> |  |



**Penn St. at Wisconsin**

02/05/22 Kohl Center, Madison, WI  
2021-22 Men's Basketball

**Game Time:** 5:00 PM  
**Game Duration:** 1:58  
**Attendance:** 17,287

**Officials:** Lamont Simpson, Rob Kueneman, Brandon Cruz

| Game Time | UW   | Score        | Diff      | PSU  |
|-----------|--|--------------|-----------|--|
| 09:13     |  | <b>34-35</b> | <b>-1</b> | 3 SESSOMS S 3pt FG , jump shot made (10)                       |
| 08:54     | 5 WAHL T 2pt FG in the paint, layup made (10)                    | <b>36-35</b> | <b>1</b>  |  |
| 08:26     |  | <b>36-37</b> | <b>-1</b> | 3 SESSOMS S 2pt FG in the paint, driving layup made (12)       |
| 08:02     | 1 DAVIS J turnover bad pass (1)                                  |              |           | 5 LEE G steal (1)  |
| 07:42     |  | <b>36-40</b> | <b>-4</b> | 5 LEE G 3pt FG from turnover, jump shot made (8)               |
| 07:42     |  |              |           | 22 PICKETT J assist (3)  |
| 07:32     | Timeout 30 Sec   |              |           |  |
| 07:32     | 11 BOWMAN II L substitution out                                  |              |           |  |
| 07:32     | 33 VOGT C substitution out                                       |              |           |  |
| 07:32     | 22 CROWL S substitution in                                       |              |           |  |
| 07:32     | 23 HEPBURN C substitution in                                     |              |           |  |
| 07:32     |  |              |           | 5 LEE G substitution out                                       |
| 07:32     |  |              |           | 21 HARRAR J substitution in                                    |
| 07:18     | 1 DAVIS J 2pt FG outside the paint, step back jump shot made (4) | <b>38-40</b> | <b>-2</b> |  |
| 06:58     |  |              |           | 3 SESSOMS S 2pt FG outside the paint, pull up jump shot missed |
| 06:55     | 5 WAHL T defensive rebound (5)                                   |              |           |  |
| 06:43     | 22 CROWL S 3pt FG , jump shot made (10)                          | <b>41-40</b> | <b>1</b>  |  |
| 06:43     | 34 DAVISON B assist (1)  |              |           |  |
| 06:24     |  |              |           | 22 PICKETT J 3pt FG , jump shot missed                         |
| 06:20     | 1 DAVIS J defensive rebound (9)                                  |              |           |  |
| 06:08     | 34 DAVISON B 2pt FG in the paint, driving layup made (6)         | <b>43-40</b> | <b>3</b>  |  |
| 06:08     | 22 CROWL S assist (4)  |              |           |  |
| 05:49     | 23 HEPBURN C foul personal (3 - 2)                               |              |           | 3 SESSOMS S foul drawn (2)                                     |
| 05:49     | Timeout media  |              |           |  |
| 05:49     |  |              |           | 10 CORNWALL J substitution out                                 |
| 05:49     |  |              |           | 21 HARRAR J substitution out                                   |
| 05:49     |  |              |           | 2 DREAD M substitution in                                      |
| 05:49     |  |              |           | 5 LEE G substitution in  |
| 05:29     |  |              |           | 3 SESSOMS S 3pt FG , step back jump shot missed                |
| 05:25     | 22 CROWL S defensive rebound (4)                                 |              |           |  |
| 05:11     | Timeout 30 Sec   |              |           |  |
| 05:01     | 22 CROWL S 3pt FG , jump shot made (13)                          | <b>46-40</b> | <b>6</b>  |  |
| 05:01     | 1 DAVIS J assist (3)   |              |           |  |
| 04:41     |  |              |           | 2 DREAD M 3pt FG , jump shot missed                            |
| 04:38     | 23 HEPBURN C defensive rebound (2)                               |              |           |  |
| 04:26     | 1 DAVIS J 2pt FG in the paint, driving layup missed              |              |           |  |
| 04:22     |  |              |           | 5 LEE G defensive rebound (8)                                  |
| 04:11     |  |              |           | 1 LUNDY S 3pt FG , jump shot missed                            |
| 04:06     | 5 WAHL T defensive rebound (6)                                   |              |           |  |
| 04:00     | 5 WAHL T foul drawn (2)  |              |           | 1 LUNDY S foul personal (2 - 5)                                |
| 04:00     | Timeout media  |              |           |  |
| 03:44     | 34 DAVISON B 3pt FG , jump shot made (9)                         | <b>49-40</b> | <b>9</b>  |  |
| 03:44     | 22 CROWL S assist (5)  |              |           |  |
| 03:25     |  |              |           | 5 LEE G 3pt FG , jump shot missed                              |
| 03:23     |  |              |           | 2 DREAD M offensive rebound (3)                                |
| 03:23     | jump ball situation  |              |           |  |
| 03:23     | 5 WAHL T foul personal (1 - 3)                                   |              |           | 2 DREAD M foul drawn (1)                                       |
| 03:17     | 23 HEPBURN C foul shooting (4 - 4)                               |              |           | 3 SESSOMS S foul drawn (3)                                     |



**Penn St. at Wisconsin**

02/05/22 Kohl Center, Madison, WI  
2021-22 Men's Basketball

**Game Time:** 5:00 PM  
**Game Duration:** 1:58  
**Attendance:** 17,287

**Officials:** Lamont Simpson, Rob Kueneman, Brandon Cruz

| Game Time           | UW  | Score        | Diff     | PSU  |
|---------------------|---|--------------|----------|--|
| 03:17               |   | <b>49-41</b> | <b>8</b> | 3 SESSOMS S free throw 1 - 2 made (13)                           |
| 03:17               |   | <b>49-42</b> | <b>7</b> | 3 SESSOMS S free throw 2 - 2 made (14)                           |
| 03:05               | 1 DAVIS J foul drawn (3)                              |              |          | 1 LUNDY S foul personal (3 - 6)                                  |
| 02:49               | 34 DAVISON B 3pt FG , jump shot missed                |              |          |  |
| 02:46               |   |              |          | defensive rebound (35)   |
| 02:19               |   | <b>49-45</b> | <b>4</b> | 1 LUNDY S 3pt FG , jump shot made (6)                            |
| 02:19               |   |              |          | 3 SESSOMS S assist (2)   |
| 01:54               | 1 DAVIS J 2pt FG in the paint, layup missed           |              |          |  |
| 01:49               |   |              |          | 1 LUNDY S defensive rebound (4)                                  |
| 01:26               |   | <b>49-47</b> | <b>2</b> | 2 DREAD M 2pt FG outside the paint, step back jump shot made (2) |
| 01:09               | 1 DAVIS J 2pt FG in the paint, driving layup missed   |              |          |  |
| 01:06               |   |              |          | 5 LEE G defensive rebound (9)                                    |
| 00:51               |   | <b>49-49</b> | <b>0</b> | 2 DREAD M 2pt FG in the paint, driving layup made (4)            |
| 00:51               |   |              |          | 5 LEE G assist (1)   |
| 00:31               | 5 WAHL T 2pt FG in the paint, driving layup made (12) | <b>51-49</b> | <b>2</b> |  |
| 00:27               |   |              |          | Timeout 30 Sec   |
| 00:13               | 1 DAVIS J foul personal (2 - 5)                       |              |          | 3 SESSOMS S foul drawn (4)                                       |
| 00:13               |   |              |          | Timeout 30 Sec   |
| 00:13               | 22 CROWL S substitution out                           |              |          |  |
| 00:13               | 0 NEATH J substitution in                             |              |          |  |
| 00:10               |   |              |          | Timeout 60 Sec   |
| 00:06               | 34 DAVISON B foul personal (3 - 6)                    |              |          | 22 PICKETT J foul drawn (3)                                      |
| 00:06               | 0 NEATH J substitution out                            |              |          |  |
| 00:06               | 22 CROWL S substitution in                            |              |          |  |
| 00:06               |   |              |          | 5 LEE G substitution out   |
| 00:06               |   |              |          | 21 HARRAR J substitution in                                      |
| 00:06               |   |              |          | 3 SESSOMS S substitution out                                     |
| 00:06               |   |              |          | 5 LEE G substitution in  |
| 00:04               |   |              |          | 2 DREAD M 3pt FG , jump shot missed                              |
| 00:00               | 5 WAHL T defensive rebound (7)                        |              |          |  |
| <b>END OF GAME</b>  |   |              |          |  |
| <b>UW 51-49 PSU</b> |   |              |          |  |



**Penn St. at Wisconsin**

02/05/22 Kohl Center, Madison, WI  
2021-22 Men's Basketball

Game Time: 5:00 PM  
Game Duration: 1:58  
Attendance: 17,287

Officials: Lamont Simpson, Rob Kueneman, Brandon Cruz

**Penn St. - 36**

| NO.           | Name            | F | Min   | FG    | 3P   | FT  | Rebounds |    |     | Fouls |    | TP | AS | TO | ST | Blocks |    | +/- |
|---------------|-----------------|---|-------|-------|------|-----|----------|----|-----|-------|----|----|----|----|----|--------|----|-----|
|               |                 |   |       | M-A   | M-A  | M-A | OR       | DR | TOT | PF    | FD |    |    |    |    | BS     | BA |     |
| 1             | Seth Lundy      | F | 16:43 | 1-2   | 1-2  | 0-0 | 0        | 2  | 2   | 3     | 0  | 3  | 0  | 1  | 0  | 0      | 0  | -3  |
| 21            | John Harrar     | F | 06:23 | 0-1   | 0-0  | 0-0 | 0        | 1  | 1   | 1     | 0  | 0  | 0  | 0  | 0  | 0      | 0  | -9  |
| 2             | Myles Dread     | G | 15:06 | 2-7   | 0-5  | 0-0 | 1        | 1  | 2   | 0     | 1  | 4  | 1  | 0  | 2  | 0      | 0  | 5   |
| 22            | Jalen Pickett   | G | 20:00 | 1-3   | 0-1  | 0-0 | 0        | 1  | 1   | 0     | 2  | 2  | 3  | 0  | 0  | 0      | 0  | 3   |
| 23            | Dallion Johnson | G | 04:33 | 2-2   | 2-2  | 0-0 | 0        | 1  | 1   | 1     | 0  | 6  | 0  | 0  | 0  | 0      | 0  | -2  |
| 5             | Greg Lee        |   | 13:44 | 2-4   | 2-3  | 0-0 | 0        | 3  | 3   | 1     | 0  | 6  | 1  | 0  | 1  | 0      | 0  | 12  |
| 10            | Jaheam Cornwall |   | 09:38 | 1-2   | 1-2  | 0-0 | 0        | 1  | 1   | 0     | 0  | 3  | 0  | 0  | 0  | 0      | 0  | 4   |
| 3             | Sam Sessoms     |   | 13:53 | 4-6   | 2-3  | 2-2 | 0        | 0  | 0   | 0     | 3  | 12 | 2  | 1  | 0  | 0      | 0  | 5   |
| Team          |                 |   |       |       |      |     | 0        | 2  | 2   |       |    | 0  |    | 0  |    |        |    |     |
| <b>Totals</b> |                 |   |       | 13-27 | 8-18 | 2-2 | 1        | 12 | 13  | 6     | 6  | 36 | 7  | 2  | 3  | 0      | 0  | 3   |

| Shooting By Period  |       |        |
|---------------------|-------|--------|
| 2 <sup>nd</sup> FG% | 13-27 | 48.1%  |
| 3PT%                | 8-18  | 44.4%  |
| FT%                 | 2-2   | 100%   |
| GM FG%              | 13-27 | 48.1%  |
| 3PT%                | 8-18  | 44.4%  |
| FT%                 | 2-2   | 100.0% |

Dead Ball Rebounds: 0, 0

Technical Fouls::NONE

**Wisconsin - 33**

| NO.           | Name            | F | Min   | FG    | 3P   | FT  | Rebounds |    |     | Fouls |    | TP | AS | TO | ST | Blocks |    | +/- |
|---------------|-----------------|---|-------|-------|------|-----|----------|----|-----|-------|----|----|----|----|----|--------|----|-----|
|               |                 |   |       | M-A   | M-A  | M-A | OR       | DR | TOT | PF    | FD |    |    |    |    | BS     | BA |     |
| 5             | Tyler Wahl      | F | 20:00 | 3-4   | 0-0  | 0-0 | 0        | 5  | 5   | 1     | 2  | 6  | 0  | 1  | 0  | 0      | 0  | -3  |
| 22            | Steven Crowl    | F | 15:16 | 4-5   | 3-4  | 0-0 | 0        | 3  | 3   | 0     | 0  | 11 | 4  | 0  | 1  | 0      | 0  | 5   |
| 1             | Johnny Davis    | G | 16:43 | 2-9   | 0-2  | 0-0 | 0        | 3  | 3   | 1     | 2  | 4  | 2  | 1  | 0  | 0      | 0  | 0   |
| 23            | Chucky Hepburn  | G | 15:22 | 1-2   | 1-2  | 0-0 | 0        | 1  | 1   | 2     | 1  | 3  | 1  | 1  | 0  | 0      | 0  | 5   |
| 34            | Brad Davison    | G | 18:32 | 3-5   | 1-3  | 2-2 | 0        | 0  | 0   | 2     | 1  | 9  | 1  | 0  | 0  | 0      | 0  | 0   |
| 20            | Ben Carlson     |   | 00:00 | 0-0   | 0-0  | 0-0 | 0        | 0  | 0   | 0     | 0  | 0  | 0  | 0  | 0  | 0      | 0  | 0   |
| 0             | Jahcobi Neath   |   | 04:51 | 0-0   | 0-0  | 0-0 | 0        | 0  | 0   | 0     | 0  | 0  | 0  | 0  | 0  | 0      | 0  | -6  |
| 11            | Lorne Bowman II |   | 04:38 | 0-0   | 0-0  | 0-0 | 0        | 1  | 1   | 0     | 0  | 0  | 0  | 0  | 0  | 0      | 0  | -8  |
| 33            | Chris Vogt      |   | 04:38 | 0-0   | 0-0  | 0-0 | 0        | 0  | 0   | 0     | 0  | 0  | 0  | 0  | 0  | 0      | 0  | -8  |
| Team          |                 |   |       |       |      |     | 0        | 0  | 0   |       |    | 0  |    | 0  |    |        |    |     |
| <b>Totals</b> |                 |   |       | 13-25 | 5-11 | 2-2 | 0        | 13 | 13  | 6     | 6  | 33 | 8  | 3  | 1  | 0      | 0  | -3  |

| Shooting By Period  |       |        |
|---------------------|-------|--------|
| 2 <sup>nd</sup> FG% | 13-25 | 52.0%  |
| 3PT%                | 5-11  | 45.5%  |
| FT%                 | 2-2   | 100%   |
| GM FG%              | 13-25 | 52.0%  |
| 3PT%                | 5-11  | 45.5%  |
| FT%                 | 2-2   | 100.0% |

Dead Ball Rebounds: 0, 0

Technical Fouls::NONE

|                  | PSU                      | UW                       |
|------------------|--------------------------|--------------------------|
| Biggest lead     | 4 (2 <sup>nd</sup> 7:42) | 9 (2 <sup>nd</sup> 3:44) |
| Best Scoring Run | 9(2 <sup>nd</sup> 0:51)  | 13(2 <sup>nd</sup> 3:44) |
| Lead Changes     | 4                        |                          |
| Times Tied       | 2                        |                          |
| Time with Lead   | 02:02                    | 16:56                    |

| Points from   | PSU | UW |
|---------------|-----|----|
| Turnovers     | 6   | 0  |
| Paint         | 6   | 10 |
| Second Chance | 2   | 0  |
| Fast Breaks   | 0   | 0  |
| Bench         | 21  | 0  |

|     | Period by Period Scoring |     |     |
|-----|--------------------------|-----|-----|
|     | 1st                      | 2nd | TOT |
| PSU | 13                       | 36  | 49  |
| UW  | 18                       | 33  | 51  |

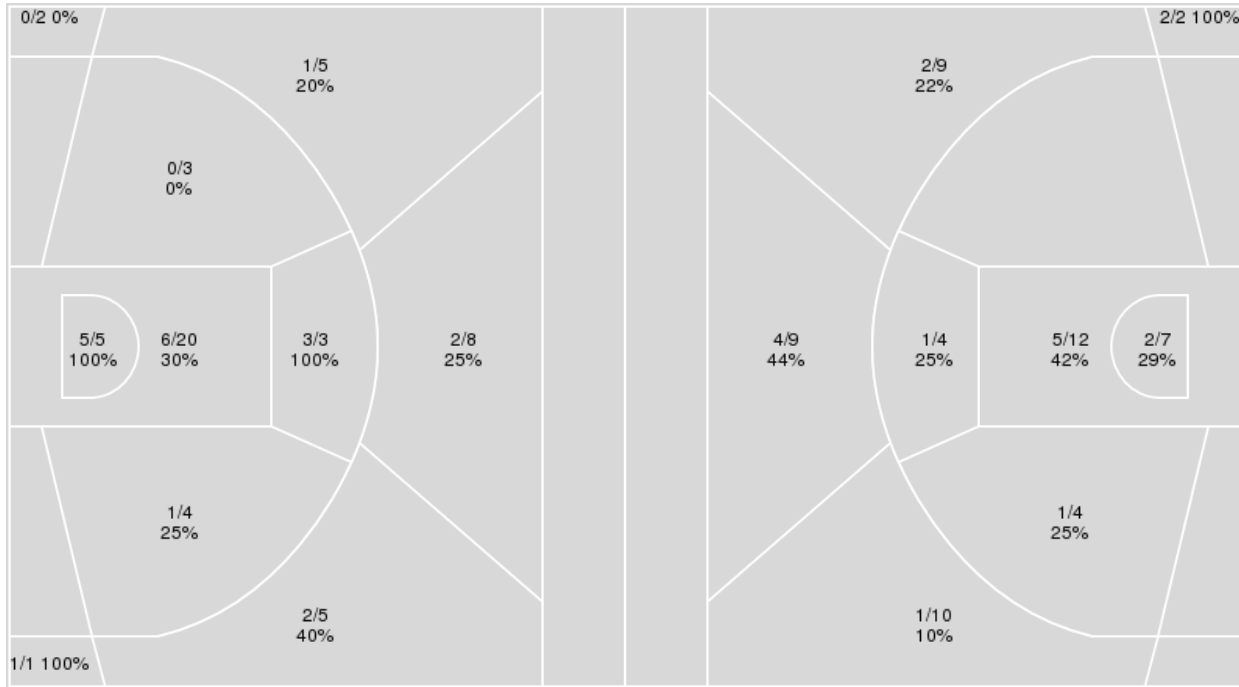


{ Players => All; } FG Types => All; Results => All;

{ Players => All; } FG Types => All; Results => All;

**Wisconsin**

**Penn St.**



| Wisconsin   | M/A   | %  |
|-------------|-------|----|
| Field Goals | 21/56 | 38 |
| 2 Points    | 15/35 | 43 |
| 3 Points    | 6/21  | 29 |
| Free Throws | 3/6   | 50 |

| Penn St.    | M/A   | %  |
|-------------|-------|----|
| Field Goals | 18/57 | 32 |
| 2 Points    | 9/27  | 33 |
| 3 Points    | 9/30  | 30 |
| Free Throws | 4/5   | 80 |



**Penn St. at Wisconsin**

02/05/22 Kohl Center, Madison, WI  
2021-22 Men's Basketball

Game Time: 5:00 PM  
Game Duration: 1:58  
Attendance: 17,287

Officials: Lamont Simpson, Rob Kueneman, Brandon Cruz

**Penn St.**

| No | Name            | Mins  |       | Score   |         | Points Diff |     | Points per Min |      | Assists |     | Rebounds |     | Steals |     | Turnovers |     |
|----|-----------------|-------|-------|---------|---------|-------------|-----|----------------|------|---------|-----|----------|-----|--------|-----|-----------|-----|
|    |                 | On    | Off   | On      | Off     | On          | Off | On             | Off  | On      | Off | On       | Off | On     | Off | On        | Off |
| 1  | Seth Lundy      | 29:38 | 10:22 | 37 - 42 | 12 - 9  | -5          | 3   | 1.25           | 1.16 | 5       | 2   | 29       | 8   | 4      | 3   | 6         | 4   |
| 2  | Myles Dread     | 22:56 | 17:04 | 28 - 24 | 21 - 27 | 4           | -6  | 1.22           | 1.23 | 5       | 2   | 23       | 14  | 4      | 3   | 5         | 5   |
| 3  | Sam Sessoms     | 24:59 | 15:01 | 34 - 32 | 15 - 19 | 2           | -4  | 1.36           | 1.00 | 6       | 1   | 21       | 16  | 5      | 2   | 7         | 3   |
| 5  | Greg Lee        | 25:43 | 14:17 | 38 - 28 | 11 - 23 | 10          | -12 | 1.48           | 0.77 | 6       | 1   | 21       | 16  | 6      | 1   | 8         | 2   |
| 10 | Jaheam Cornwall | 22:32 | 17:28 | 29 - 27 | 20 - 24 | 2           | -4  | 1.29           | 1.15 | 4       | 3   | 21       | 16  | 5      | 2   | 7         | 3   |
| 14 | Jalanni White   | 05:14 | 34:46 | 2 - 7   | 47 - 44 | -5          | 3   | 0.38           | 1.35 | 0       | 7   | 5        | 32  | 2      | 5   | 5         | 5   |
| 21 | John Harrar     | 20:05 | 19:55 | 19 - 28 | 30 - 23 | -9          | 7   | 0.95           | 1.51 | 1       | 6   | 20       | 17  | 2      | 5   | 3         | 7   |
| 22 | Jalen Pickett   | 36:58 | 03:02 | 43 - 50 | 6 - 1   | -7          | 5   | 1.16           | 1.98 | 7       | 0   | 33       | 4   | 6      | 1   | 8         | 2   |
| 23 | Dallion Johnson | 11:55 | 28:05 | 15 - 17 | 34 - 34 | -2          | 0   | 1.26           | 1.21 | 1       | 6   | 12       | 25  | 1      | 6   | 1         | 9   |

**Wisconsin**

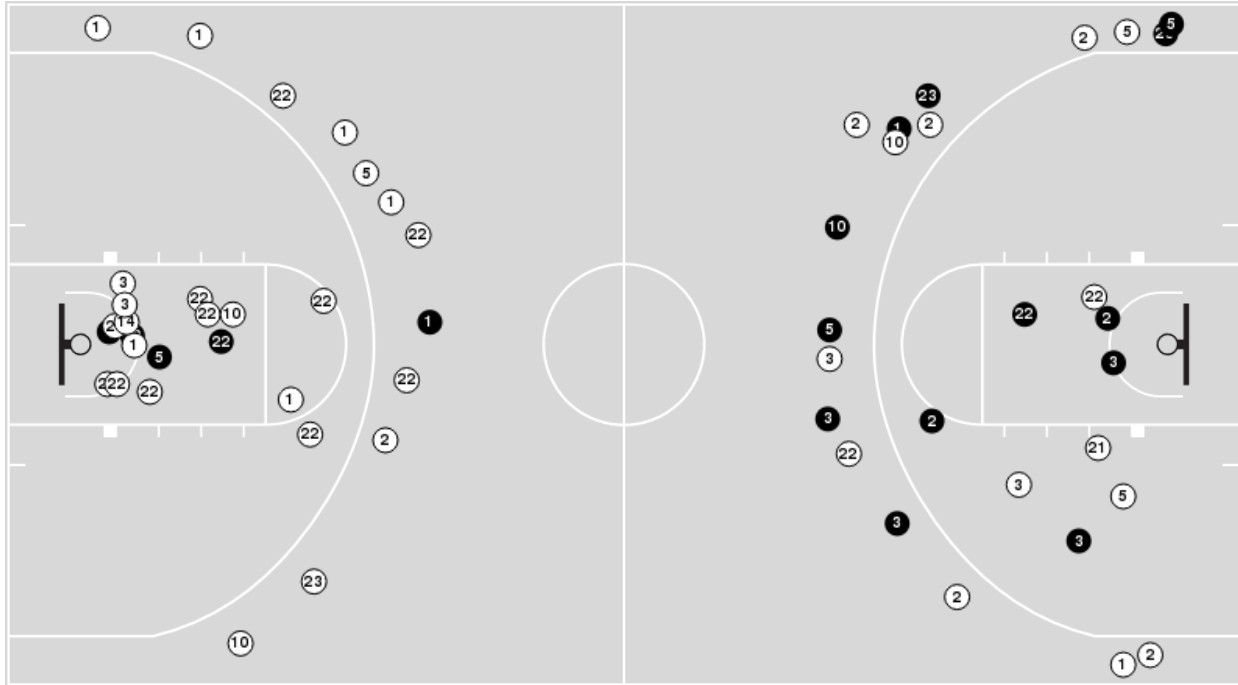
| No | Name            | Mins  |       | Score   |         | Points Diff |     | Points per Min |      | Assists |     | Rebounds |     | Steals |     | Turnovers |     |
|----|-----------------|-------|-------|---------|---------|-------------|-----|----------------|------|---------|-----|----------|-----|--------|-----|-----------|-----|
|    |                 | On    | Off   | On      | Off     | On          | Off | On             | Off  | On      | Off | On       | Off | On     | Off | On        | Off |
| 0  | Jahcobi Neath   | 09:18 | 30:42 | 8 - 10  | 43 - 39 | -2          | 4   | 0.86           | 1.40 | 0       | 10  | 6        | 31  | 1      | 2   | 4         | 4   |
| 1  | Johnny Davis    | 35:03 | 04:57 | 47 - 44 | 4 - 5   | 3           | -1  | 1.34           | 0.81 | 10      | 0   | 34       | 3   | 2      | 1   | 6         | 2   |
| 2  | Jordan Davis    | 01:24 | 38:36 | 1 - 2   | 50 - 47 | -1          | 3   | 0.71           | 1.30 | 0       | 10  | 2        | 35  | 0      | 3   | 0         | 8   |
| 5  | Tyler Wahl      | 32:28 | 07:32 | 44 - 47 | 7 - 2   | -3          | 5   | 1.36           | 0.93 | 10      | 0   | 26       | 11  | 2      | 1   | 6         | 2   |
| 11 | Lorne Bowman II | 12:06 | 27:54 | 11 - 18 | 40 - 31 | -7          | 9   | 0.91           | 1.43 | 1       | 9   | 10       | 27  | 2      | 1   | 4         | 4   |
| 20 | Ben Carlson     | 07:35 | 32:25 | 7 - 2   | 44 - 47 | 5           | -3  | 0.92           | 1.36 | 0       | 10  | 11       | 26  | 1      | 2   | 2         | 6   |
| 22 | Steven Crawl    | 25:28 | 14:32 | 36 - 27 | 15 - 22 | 9           | -7  | 1.41           | 1.03 | 9       | 1   | 21       | 16  | 2      | 1   | 3         | 5   |
| 23 | Chucky Hepburn  | 26:59 | 13:01 | 40 - 29 | 11 - 20 | 11          | -9  | 1.48           | 0.85 | 9       | 1   | 27       | 10  | 1      | 2   | 3         | 5   |
| 33 | Chris Vogt      | 14:23 | 25:37 | 15 - 22 | 36 - 27 | -7          | 9   | 1.04           | 1.41 | 1       | 9   | 16       | 21  | 1      | 2   | 5         | 3   |
| 34 | Brad Davison    | 35:16 | 04:44 | 46 - 44 | 5 - 5   | 2           | 0   | 1.30           | 1.06 | 10      | 0   | 32       | 5   | 3      | 0   | 7         | 1   |



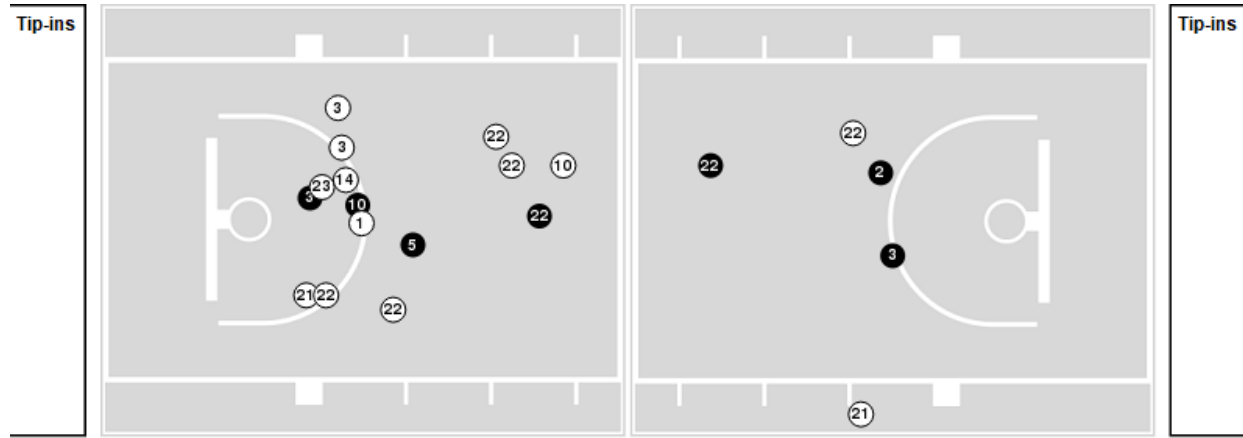
**Officials:** Lamont Simpson, Rob Kueneman, Brandon Cruz

Players => AllFG Types=>AllResults=>All  
**Penn St.**

**All Field Goals**



**Blow Up Chart**



● Made ○ Missed N - Player Number

| Penn St.    | M/A   | %  |
|-------------|-------|----|
| Field Goals | 18/57 | 32 |
| 2 Points    | 9/27  | 33 |
| 3 Points    | 9/30  | 30 |
| Free Throws | 4/5   | 80 |

| Penn St.             | M/A         | %  |
|----------------------|-------------|----|
| Points in the Paint  | 14 (7 / 19) | 37 |
| Fast Break Points    | 0 (0/0)     | 0  |
| Second Chance Points | 4 (4/10)    | 40 |
| Effective FG%        | 39          |    |



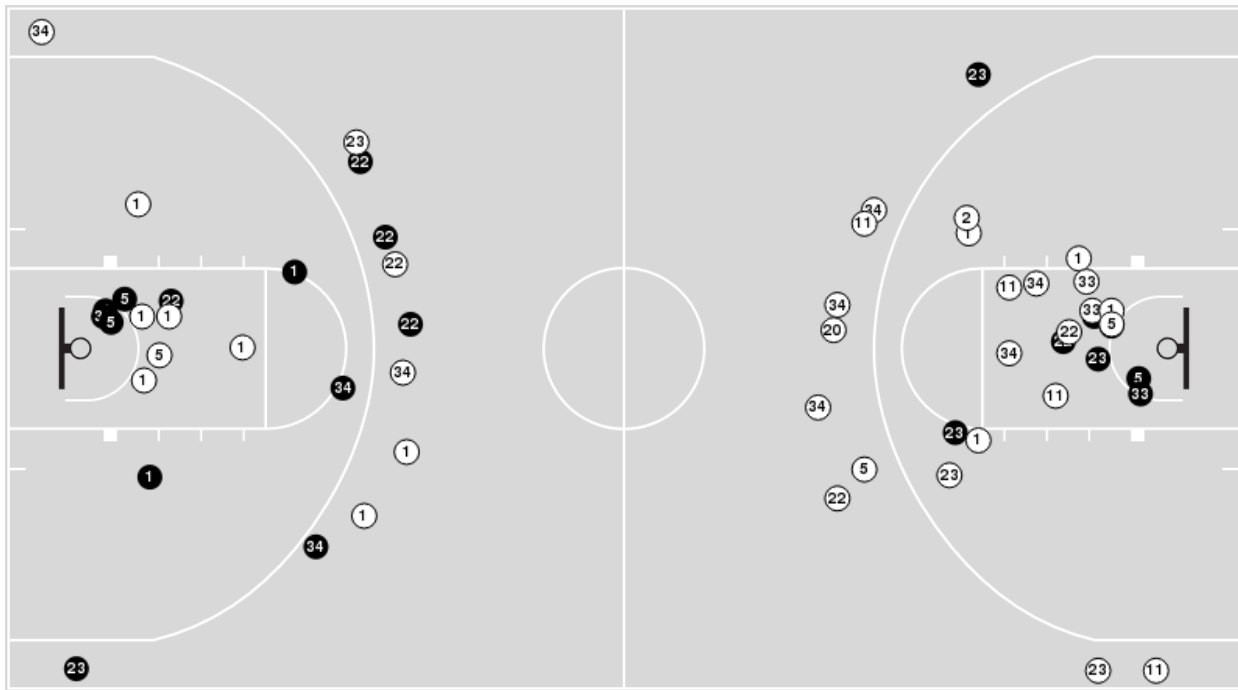


**Officials:** Lamont Simpson, Rob Kueneman, Brandon Cruz

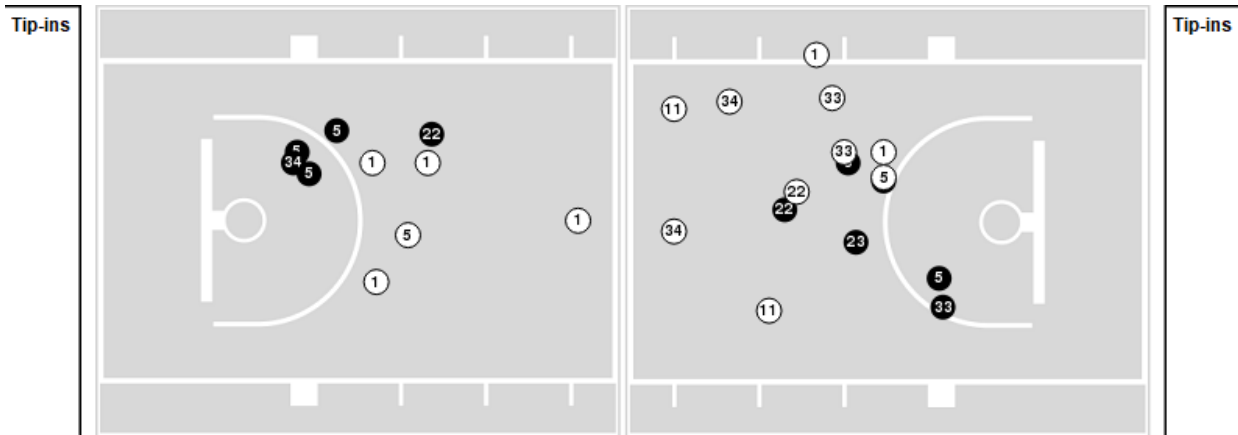
Players => AllFG Types=>AllResults=>All

**Wisconsin**

**All Field Goals**



**Blow Up Chart**



**N** Made    **(N)** Missed    N - Player Number

| Wisconsin   | M/A   | %  |
|-------------|-------|----|
| Field Goals | 21/56 | 38 |
| 2 Points    | 15/35 | 43 |
| 3 Points    | 6/21  | 29 |
| Free Throws | 3/6   | 50 |

| Wisconsin            | M/A          | %  |
|----------------------|--------------|----|
| Points in the Paint  | 22 (11 / 25) | 44 |
| Fast Break Points    | 2 (1/3)      | 33 |
| Second Chance Points | 5 (3/8)      | 38 |
| Effective FG%        | 43           |    |



**Penn St. at Wisconsin**

02/05/22 Kohl Center, Madison, WI  
2021-22 Men's Basketball

**Game Time:** 5:00 PM  
**Game Duration:** 1:58  
**Attendance:** 17,287

**Officials:** Lamont Simpson, Rob Kueneman, Brandon Cruz

**Penn St.**

| Lineup   | Quarter On | Time On | Quarter Off | Time Off | Time on Court | Score | Score Diff | Reb | Stl | Tov | Ass | PPP    |
|--|------------|---------|-------------|----------|---------------|-------|------------|-----|-----|-----|-----|--------|
| 1- Lundy S/ 2- Dread M/ 21- Harrar J/ 22- Pickett J/ 23- Johnson D/    | 1          | 20:00   | 1           | 15:08    | 04:52         | 3-2   | 1          | 8   | 1   | 1   | 0   | 0.4286 |
| 2- Dread M/ 3- Sessoms S/ 5- Lee G/ 14- White J/ 22- Pickett J/        | 1          | 15:08   | 1           | 13:28    | 01:40         | 0-2   | -2         | 0   | 1   | 2   | 0   | 0.0000 |
| 1- Lundy S/ 3- Sessoms S/ 5- Lee G/ 14- White J/ 22- Pickett J/        | 1          | 13:28   | 1           | 13:06    | 00:22         | 0-2   | -2         | 0   | 0   | 0   | 0   | 0.0000 |
| 1- Lundy S/ 5- Lee G/ 10- Cornwall J/ 14- White J/ 22- Pickett J/      | 1          | 13:06   | 1           | 12:37    | 00:29         | 0-2   | -2         | 0   | 0   | 1   | 0   | 0.0000 |
| 1- Lundy S/ 2- Dread M/ 5- Lee G/ 10- Cornwall J/ 22- Pickett J/       | 1          | 12:37   | 1           | 11:36    | 01:01         | 0-0   | 0          | 2   | 0   | 0   | 0   | 0.0000 |
| 1- Lundy S/ 3- Sessoms S/ 10- Cornwall J/ 21- Harrar J/ 22- Pickett J/ | 1          | 11:36   | 1           | 08:30    | 03:06         | 0-4   | -4         | 5   | 0   | 1   | 0   | 0.0000 |
| 5- Lee G/ 10- Cornwall J/ 21- Harrar J/ 22- Pickett J/ 23- Johnson D/  | 1          | 08:30   | 1           | 06:12    | 02:18         | 4-5   | -1         | 1   | 0   | 0   | 0   | 1.0000 |
| 3- Sessoms S/ 5- Lee G/ 10- Cornwall J/ 21- Harrar J/ 22- Pickett J/   | 1          | 06:12   | 1           | 04:16    | 01:56         | 0-0   | 0          | 3   | 0   | 0   | 0   | 0.0000 |
| 3- Sessoms S/ 5- Lee G/ 10- Cornwall J/ 14- White J/ 22- Pickett J/    | 1          | 04:16   | 1           | 03:05    | 01:11         | 0-0   | 0          | 1   | 1   | 1   | 0   | 0.0000 |
| 1- Lundy S/ 3- Sessoms S/ 5- Lee G/ 10- Cornwall J/ 14- White J/       | 1          | 03:05   | 1           | 01:33    | 01:32         | 2-1   | 1          | 4   | 0   | 1   | 0   | 1.0000 |
| 1- Lundy S/ 3- Sessoms S/ 5- Lee G/ 21- Harrar J/ 23- Johnson D/       | 1          | 01:33   | 1           | 01:21    | 00:12         | 0-0   | 0          | 0   | 0   | 0   | 0   | 0.0000 |
| 1- Lundy S/ 3- Sessoms S/ 5- Lee G/ 10- Cornwall J/ 21- Harrar J/      | 1          | 01:21   | 1           | 00:17    | 01:04         | 4-0   | 4          | 0   | 1   | 1   | 0   | 1.3889 |
| 1- Lundy S/ 2- Dread M/ 5- Lee G/ 10- Cornwall J/ 21- Harrar J/        | 1          | 00:17   | 1           | 00:03    | 00:14         | 0-0   | 0          | 0   | 0   | 0   | 0   | 0.0000 |
| 1- Lundy S/ 2- Dread M/ 3- Sessoms S/ 10- Cornwall J/ 22- Pickett J/   | 1          | 00:03   | 2           | 20:00    | 00:03         | 0-0   | 0          | 0   | 0   | 0   | 0   | 0.0000 |
| 1- Lundy S/ 2- Dread M/ 21- Harrar J/ 22- Pickett J/ 23- Johnson D/    | 2          | 20:00   | 2           | 15:27    | 04:33         | 8-10  | -2         | 3   | 0   | 0   | 1   | 1.1429 |
| 1- Lundy S/ 2- Dread M/ 5- Lee G/ 10- Cornwall J/ 22- Pickett J/       | 2          | 15:27   | 2           | 14:00    | 01:27         | 0-0   | 0          | 2   | 1   | 1   | 0   | 0.0000 |
| 2- Dread M/ 3- Sessoms S/ 5- Lee G/ 10- Cornwall J/ 22- Pickett J/     | 2          | 14:00   | 2           | 10:43    | 03:17         | 8-2   | 6          | 3   | 1   | 1   | 2   | 1.6000 |
| 1- Lundy S/ 3- Sessoms S/ 5- Lee G/ 10- Cornwall J/ 22- Pickett J/     | 2          | 10:43   | 2           | 07:32    | 03:11         | 11-6  | 5          | 0   | 1   | 0   | 2   | 2.2000 |
| 1- Lundy S/ 3- Sessoms S/ 10- Cornwall J/ 21- Harrar J/ 22- Pickett J/ | 2          | 07:32   | 2           | 05:49    | 01:43         | 0-7   | -7         | 0   | 0   | 0   | 0   | 0.0000 |
| 1- Lundy S/ 2- Dread M/ 3- Sessoms S/ 5- Lee G/ 22- Pickett J/         | 2          | 05:49   | 2           | 00:06    | 05:42         | 9-8   | 1          | 5   | 0   | 0   | 2   | 1.3081 |
| 1- Lundy S/ 2- Dread M/ 3- Sessoms S/ 21- Harrar J/ 22- Pickett J/     | 2          | 00:06   | 2           | 00:06    | 00:00         | 0-0   | 0          | 0   | 0   | 0   | 0   | 0.0000 |
| 1- Lundy S/ 2- Dread M/ 5- Lee G/ 21- Harrar J/ 22- Pickett J/         | 2          | 00:06   | 2           | 00:00    | 00:07         | 0-0   | 0          | 0   | 0   | 0   | 0   | 0.0000 |



**Penn St. at Wisconsin**

02/05/22 Kohl Center, Madison, WI  
2021-22 Men's Basketball

**Game Time:** 5:00 PM  
**Game Duration:** 1:58  
**Attendance:** 17,287

**Officials:** Lamont Simpson, Rob Kueneman, Brandon Cruz

**Wisconsin**

| Lineup  | Quarter On | Time On | Quarter Off | Time Off | Time on Court | Score | Score Diff | Reb | Stl | Tov | Ass | PPP    |
|---|------------|---------|-------------|----------|---------------|-------|------------|-----|-----|-----|-----|--------|
| 1- Davis J/ 5- Wahl T/ 22- Crowl S/ 23- Hepburn C/ 34- Davison B/       | 1          | 20:00   | 1           | 16:50    | 03:10         | 2-3   | -1         | 3   | 0   | 1   | 1   | 0.5000 |
| 1- Davis J/ 5- Wahl T/ 23- Hepburn C/ 33- Vogt C/ 34- Davison B/        | 1          | 16:50   | 1           | 15:08    | 01:42         | 0-0   | 0          | 4   | 0   | 0   | 0   | 0.0000 |
| 0- Neath J/ 20- Carlson B/ 23- Hepburn C/ 33- Vogt C/ 34- Davison B/    | 1          | 15:08   | 1           | 13:44    | 01:24         | 2-0   | 2          | 1   | 0   | 1   | 0   | 1.0000 |
| 0- Neath J/ 20- Carlson B/ 22- Crowl S/ 23- Hepburn C/ 34- Davison B/   | 1          | 13:44   | 1           | 13:28    | 00:16         | 0-0   | 0          | 1   | 0   | 0   | 0   | 0.0000 |
| 0- Neath J/ 1- Davis J/ 20- Carlson B/ 22- Crowl S/ 23- Hepburn C/      | 1          | 13:28   | 1           | 12:37    | 00:51         | 4-0   | 4          | 0   | 0   | 0   | 0   | 2.0000 |
| 0- Neath J/ 1- Davis J/ 11- Bowman II L/ 20- Carlson B/ 22- Crowl S/    | 1          | 12:37   | 1           | 11:36    | 01:01         | 0-0   | 0          | 2   | 0   | 0   | 0   | 0.0000 |
| 1- Davis J/ 5- Wahl T/ 11- Bowman II L/ 22- Crowl S/ 34- Davison B/     | 1          | 11:36   | 1           | 09:51    | 01:45         | 2-0   | 2          | 1   | 0   | 0   | 0   | 0.6667 |
| 1- Davis J/ 5- Wahl T/ 11- Bowman II L/ 33- Vogt C/ 34- Davison B/      | 1          | 09:51   | 1           | 08:30    | 01:21         | 2-0   | 2          | 2   | 0   | 0   | 1   | 1.0000 |
| 1- Davis J/ 5- Wahl T/ 23- Hepburn C/ 33- Vogt C/ 34- Davison B/        | 1          | 08:30   | 1           | 06:12    | 02:18         | 5-4   | 1          | 3   | 0   | 0   | 0   | 1.2500 |
| 1- Davis J/ 20- Carlson B/ 23- Hepburn C/ 33- Vogt C/ 34- Davison B/    | 1          | 06:12   | 1           | 04:16    | 01:56         | 0-0   | 0          | 4   | 0   | 0   | 0   | 0.0000 |
| 1- Davis J/ 11- Bowman II L/ 20- Carlson B/ 22- Crowl S/ 34- Davison B/ | 1          | 04:16   | 1           | 03:36    | 00:40         | 0-0   | 0          | 1   | 1   | 1   | 0   | 0.0000 |
| 1- Davis J/ 2- Davis J/ 11- Bowman II L/ 20- Carlson B/ 22- Crowl S/    | 1          | 03:36   | 1           | 02:12    | 01:24         | 1-2   | -1         | 2   | 0   | 0   | 0   | 0.4310 |
| 1- Davis J/ 5- Wahl T/ 11- Bowman II L/ 22- Crowl S/ 34- Davison B/     | 1          | 02:12   | 1           | 01:21    | 00:51         | 0-0   | 0          | 0   | 0   | 0   | 0   | 0.0000 |
| 1- Davis J/ 5- Wahl T/ 11- Bowman II L/ 33- Vogt C/ 34- Davison B/      | 1          | 01:21   | 1           | 00:55    | 00:26         | 0-2   | -2         | 0   | 1   | 1   | 0   | 0.0000 |
| 0- Neath J/ 1- Davis J/ 5- Wahl T/ 33- Vogt C/ 34- Davison B/           | 1          | 00:55   | 1           | 00:17    | 00:38         | 0-2   | -2         | 0   | 0   | 1   | 0   | 0.0000 |
| 0- Neath J/ 1- Davis J/ 5- Wahl T/ 22- Crowl S/ 34- Davison B/          | 1          | 00:17   | 1           | 00:03    | 00:14         | 0-0   | 0          | 0   | 0   | 0   | 0   | 0.0000 |
| 0- Neath J/ 1- Davis J/ 5- Wahl T/ 20- Carlson B/ 34- Davison B/        | 1          | 00:03   | 2           | 20:00    | 00:03         | 0-0   | 0          | 0   | 0   | 0   | 0   | 0.0000 |
| 1- Davis J/ 5- Wahl T/ 22- Crowl S/ 23- Hepburn C/ 34- Davison B/       | 2          | 20:00   | 2           | 15:27    | 04:33         | 10-8  | 2          | 4   | 0   | 0   | 4   | 1.4286 |
| 0- Neath J/ 5- Wahl T/ 22- Crowl S/ 23- Hepburn C/ 34- Davison B/       | 2          | 15:27   | 2           | 12:10    | 03:17         | 2-5   | -3         | 1   | 1   | 1   | 0   | 0.4098 |
| 0- Neath J/ 1- Davis J/ 5- Wahl T/ 11- Bowman II L/ 33- Vogt C/         | 2          | 12:10   | 2           | 10:42    | 01:28         | 0-3   | -3         | 1   | 0   | 1   | 0   | 0.0000 |
| 1- Davis J/ 5- Wahl T/ 11- Bowman II L/ 33- Vogt C/ 34- Davison B/      | 2          | 10:42   | 2           | 07:32    | 03:10         | 6-11  | -5         | 1   | 0   | 1   | 0   | 1.5000 |
| 1- Davis J/ 5- Wahl T/ 22- Crowl S/ 23- Hepburn C/ 34- Davison B/       | 2          | 07:32   | 2           | 00:13    | 07:19         | 15-9  | 6          | 5   | 0   | 0   | 4   | 1.5000 |
| 0- Neath J/ 1- Davis J/ 5- Wahl T/ 23- Hepburn C/ 34- Davison B/        | 2          | 00:13   | 2           | 00:06    | 00:06         | 0-0   | 0          | 0   | 0   | 0   | 0   | 0.0000 |
| 1- Davis J/ 5- Wahl T/ 22- Crowl S/ 23- Hepburn C/ 34- Davison B/       | 2          | 00:06   | 2           | 00:00    | 00:07         | 0-0   | 0          | 1   | 0   | 0   | 0   | 0.0000 |



**Penn St. at Wisconsin**

02/05/22 Kohl Center, Madison, WI  
2021-22 Men's Basketball

**Game Time:** 5:00 PM  
**Game Duration:** 1:58  
**Attendance:** 17,287

**Officials:** Lamont Simpson, Rob Kueneman, Brandon Cruz

**Penn St.**

| Lineup   | Time  | Score | Score Diff | Pts/Min | Reb | Stl | Tov | Ass | PPP    |
|--|-------|-------|------------|---------|-----|-----|-----|-----|--------|
| 1- Lundy S/ 2- Dread M/ 21- Harrar J/ 22- Pickett J/ 23- Johnson D/    | 09:25 | 11-12 | -1         | 1.1681  | 11  | 1   | 1   | 1   | 0.7857 |
| 1- Lundy S/ 2- Dread M/ 3- Sessoms S/ 5- Lee G/ 22- Pickett J/         | 05:42 | 9-8   | 1          | 1.5789  | 5   | 0   | 0   | 2   | 1.3081 |
| 1- Lundy S/ 3- Sessoms S/ 10- Cornwall J/ 21- Harrar J/ 22- Pickett J/ | 04:49 | 0-11  | -11        | 0.0000  | 5   | 0   | 1   | 0   | 0.0000 |
| 2- Dread M/ 3- Sessoms S/ 5- Lee G/ 10- Cornwall J/ 22- Pickett J/     | 03:17 | 8-2   | 6          | 2.4365  | 3   | 1   | 1   | 2   | 1.6000 |
| 1- Lundy S/ 3- Sessoms S/ 5- Lee G/ 10- Cornwall J/ 22- Pickett J/     | 03:11 | 11-6  | 5          | 3.4555  | 0   | 1   | 0   | 2   | 2.2000 |
| 1- Lundy S/ 2- Dread M/ 5- Lee G/ 10- Cornwall J/ 22- Pickett J/       | 02:28 | 0-0   | 0          | 0.0000  | 4   | 1   | 1   | 0   | 0.0000 |
| 5- Lee G/ 10- Cornwall J/ 21- Harrar J/ 22- Pickett J/ 23- Johnson D/  | 02:18 | 4-5   | -1         | 1.7391  | 1   | 0   | 0   | 0   | 1.0000 |
| 3- Sessoms S/ 5- Lee G/ 10- Cornwall J/ 21- Harrar J/ 22- Pickett J/   | 01:56 | 0-0   | 0          | 0.0000  | 3   | 0   | 0   | 0   | 0.0000 |
| 2- Dread M/ 3- Sessoms S/ 5- Lee G/ 14- White J/ 22- Pickett J/        | 01:40 | 0-2   | -2         | 0.0000  | 0   | 1   | 2   | 0   | 0.0000 |
| 1- Lundy S/ 3- Sessoms S/ 5- Lee G/ 10- Cornwall J/ 14- White J/       | 01:32 | 2-1   | 1          | 1.3043  | 4   | 0   | 1   | 0   | 1.0000 |
| 3- Sessoms S/ 5- Lee G/ 10- Cornwall J/ 14- White J/ 22- Pickett J/    | 01:11 | 0-0   | 0          | 0.0000  | 1   | 1   | 1   | 0   | 0.0000 |
| 1- Lundy S/ 3- Sessoms S/ 5- Lee G/ 10- Cornwall J/ 21- Harrar J/      | 01:04 | 4-0   | 4          | 3.7500  | 0   | 1   | 1   | 0   | 1.3889 |
| 1- Lundy S/ 5- Lee G/ 10- Cornwall J/ 14- White J/ 22- Pickett J/      | 00:29 | 0-2   | -2         | 0.0000  | 0   | 0   | 1   | 0   | 0.0000 |
| 1- Lundy S/ 3- Sessoms S/ 5- Lee G/ 14- White J/ 22- Pickett J/        | 00:22 | 0-2   | -2         | 0.0000  | 0   | 0   | 0   | 0   | 0.0000 |
| 1- Lundy S/ 2- Dread M/ 5- Lee G/ 10- Cornwall J/ 21- Harrar J/        | 00:14 | 0-0   | 0          | 0.0000  | 0   | 0   | 0   | 0   | 0.0000 |
| 1- Lundy S/ 3- Sessoms S/ 5- Lee G/ 21- Harrar J/ 23- Johnson D/       | 00:12 | 0-0   | 0          | 0.0000  | 0   | 0   | 0   | 0   | 0.0000 |
| 1- Lundy S/ 2- Dread M/ 5- Lee G/ 21- Harrar J/ 22- Pickett J/         | 00:07 | 0-0   | 0          | 0.0000  | 0   | 0   | 0   | 0   | 0.0000 |
| 1- Lundy S/ 2- Dread M/ 3- Sessoms S/ 10- Cornwall J/ 22- Pickett J/   | 00:03 | 0-0   | 0          | 0.0000  | 0   | 0   | 0   | 0   | 0.0000 |
| 1- Lundy S/ 2- Dread M/ 3- Sessoms S/ 21- Harrar J/ 22- Pickett J/     | 00:00 | 0-0   | 0          | NaN     | 0   | 0   | 0   | 0   | 0.0000 |



**Penn St. at Wisconsin**

02/05/22 Kohl Center, Madison, WI  
2021-22 Men's Basketball

**Game Time:** 5:00 PM  
**Game Duration:** 1:58  
**Attendance:** 17,287

**Officials:** Lamont Simpson, Rob Kueneman, Brandon Cruz

**Wisconsin**

| Lineup  | Time  | Score | Score Diff | Pts/Min | Reb | Stl | Tov | Ass | PPP    |
|---|-------|-------|------------|---------|-----|-----|-----|-----|--------|
| 1- Davis J/ 5- Wahl T/ 22- Crowl S/ 23- Hepburn C/ 34- Davison B/       | 15:09 | 27-20 | 7          | 1.7822  | 13  | 0   | 1   | 9   | 1.2857 |
| 1- Davis J/ 5- Wahl T/ 11- Bowman II L/ 33- Vogt C/ 34- Davison B/      | 04:57 | 8-13  | -5         | 1.6162  | 3   | 1   | 2   | 1   | 1.1429 |
| 1- Davis J/ 5- Wahl T/ 23- Hepburn C/ 33- Vogt C/ 34- Davison B/        | 04:00 | 5-4   | 1          | 1.2500  | 7   | 0   | 0   | 0   | 0.7143 |
| 0- Neath J/ 5- Wahl T/ 22- Crowl S/ 23- Hepburn C/ 34- Davison B/       | 03:17 | 2-5   | -3         | 0.6091  | 1   | 1   | 1   | 0   | 0.4098 |
| 1- Davis J/ 5- Wahl T/ 11- Bowman II L/ 22- Crowl S/ 34- Davison B/     | 02:36 | 2-0   | 2          | 0.7692  | 1   | 0   | 0   | 0   | 0.4505 |
| 1- Davis J/ 20- Carlson B/ 23- Hepburn C/ 33- Vogt C/ 34- Davison B/    | 01:56 | 0-0   | 0          | 0.0000  | 4   | 0   | 0   | 0   | 0.0000 |
| 0- Neath J/ 1- Davis J/ 5- Wahl T/ 11- Bowman II L/ 33- Vogt C/         | 01:28 | 0-3   | -3         | 0.0000  | 1   | 0   | 1   | 0   | 0.0000 |
| 0- Neath J/ 20- Carlson B/ 23- Hepburn C/ 33- Vogt C/ 34- Davison B/    | 01:24 | 2-0   | 2          | 1.4286  | 1   | 0   | 1   | 0   | 1.0000 |
| 1- Davis J/ 2- Davis J/ 11- Bowman II L/ 20- Carlson B/ 22- Crowl S/    | 01:24 | 1-2   | -1         | 0.7143  | 2   | 0   | 0   | 0   | 0.4310 |
| 0- Neath J/ 1- Davis J/ 11- Bowman II L/ 20- Carlson B/ 22- Crowl S/    | 01:01 | 0-0   | 0          | 0.0000  | 2   | 0   | 0   | 0   | 0.0000 |
| 0- Neath J/ 1- Davis J/ 20- Carlson B/ 22- Crowl S/ 23- Hepburn C/      | 00:51 | 4-0   | 4          | 4.7059  | 0   | 0   | 0   | 0   | 2.0000 |
| 1- Davis J/ 11- Bowman II L/ 20- Carlson B/ 22- Crowl S/ 34- Davison B/ | 00:40 | 0-0   | 0          | 0.0000  | 1   | 1   | 1   | 0   | 0.0000 |
| 0- Neath J/ 1- Davis J/ 5- Wahl T/ 33- Vogt C/ 34- Davison B/           | 00:38 | 0-2   | -2         | 0.0000  | 0   | 0   | 1   | 0   | 0.0000 |
| 0- Neath J/ 20- Carlson B/ 22- Crowl S/ 23- Hepburn C/ 34- Davison B/   | 00:16 | 0-0   | 0          | 0.0000  | 1   | 0   | 0   | 0   | 0.0000 |
| 0- Neath J/ 1- Davis J/ 5- Wahl T/ 22- Crowl S/ 34- Davison B/          | 00:14 | 0-0   | 0          | 0.0000  | 0   | 0   | 0   | 0   | 0.0000 |
| 0- Neath J/ 1- Davis J/ 5- Wahl T/ 23- Hepburn C/ 34- Davison B/        | 00:06 | 0-0   | 0          | 0.0000  | 0   | 0   | 0   | 0   | 0.0000 |
| 0- Neath J/ 1- Davis J/ 5- Wahl T/ 20- Carlson B/ 34- Davison B/        | 00:03 | 0-0   | 0          | 0.0000  | 0   | 0   | 0   | 0   | 0.0000 |