



**Penn St. at Maryland**

02/21/22 XFINITY Center, College Park  
2021-22 Men's Basketball

**Game Time:** 7:00 PM  
**Game Duration:** 1:55  
**Attendance:** 15,184

**Officials:** D.J. Carstensen, Rob Riley, Keith Kimble

**Penn St. - 61**

**Record: 11-13 (6-10)**

| NO.           | Name            | F | Min   | FG    |      |     | 3P |    |     | FT |    |    | Rebounds |    |   | Fouls |   | TP | AS | TO | ST | Blocks |    | +/- |
|---------------|-----------------|---|-------|-------|------|-----|----|----|-----|----|----|----|----------|----|---|-------|---|----|----|----|----|--------|----|-----|
|               |                 |   |       | M-A   | M-A  | M-A | OR | DR | TOT | PF | FD | BS | BA       |    |   |       |   |    |    |    |    |        |    |     |
| 1             | Seth Lundy      | F | 34:24 | 2-4   | 2-4  | 0-0 | 1  | 4  | 5   | 3  | 0  | 6  | 0        | 3  | 0 | 1     | 0 | 3  | 0  | 1  | 0  | 0      | -5 |     |
| 21            | John Harrar     | F | 31:19 | 7-10  | 0-0  | 0-2 | 4  | 9  | 13  | 3  | 3  | 14 | 2        | 0  | 0 | 0     | 0 | 0  | 0  | 0  | 0  | 0      | -2 |     |
| 2             | Myles Dread     | G | 20:02 | 2-4   | 2-4  | 0-0 | 0  | 3  | 3   | 4  | 0  | 6  | 0        | 2  | 2 | 0     | 0 | 2  | 2  | 0  | 0  | -16    |    |     |
| 22            | Jalen Pickett   | G | 40:00 | 6-18  | 1-5  | 0-0 | 1  | 5  | 6   | 0  | 4  | 13 | 6        | 3  | 4 | 0     | 1 | 1  | 0  | 0  | 1  | -6     |    |     |
| 23            | Dallion Johnson | G | 23:52 | 1-3   | 1-2  | 0-0 | 0  | 0  | 0   | 0  | 0  | 3  | 0        | 1  | 1 | 0     | 0 | 0  | 0  | 0  | 0  | -2     |    |     |
| 3             | Sam Sessoms     |   | 24:52 | 7-14  | 2-4  | 1-1 | 0  | 1  | 1   | 3  | 2  | 17 | 1        | 4  | 0 | 0     | 1 | 4  | 0  | 0  | 1  | -5     |    |     |
| 4             | Caleb Dorsey    |   | 09:18 | 0-0   | 0-0  | 0-0 | 0  | 1  | 1   | 0  | 0  | 0  | 0        | 0  | 0 | 0     | 0 | 0  | 0  | 1  | 0  | 6      |    |     |
| 13            | Jevonnie Scott  |   | 05:50 | 0-0   | 0-0  | 2-2 | 0  | 1  | 1   | 1  | 2  | 2  | 0        | 0  | 0 | 0     | 0 | 0  | 0  | 0  | 0  | -3     |    |     |
| 14            | Jalanni White   |   | 02:14 | 0-0   | 0-0  | 0-0 | 1  | 0  | 1   | 0  | 0  | 0  | 0        | 0  | 0 | 0     | 0 | 0  | 0  | 0  | 0  | 2      |    |     |
| 11            | Jaheam Cornwall |   | 08:09 | 0-0   | 0-0  | 0-0 | 0  | 0  | 0   | 2  | 0  | 0  | 0        | 0  | 0 | 0     | 0 | 0  | 0  | 0  | 0  | 1      |    |     |
| Team          |                 |   |       |       |      |     | 1  | 0  | 1   |    |    | 0  |          |    | 0 |       |   |    |    |    |    |        |    |     |
| <b>Totals</b> |                 |   |       | 25-53 | 8-19 | 3-5 | 8  | 24 | 32  | 16 | 11 | 61 | 9        | 13 | 7 | 2     | 2 |    |    |    |    |        | -6 |     |

| Shooting By Period  |       |       |
|---------------------|-------|-------|
| 1 <sup>st</sup> FG% | 11-27 | 40.7% |
| 3PT%                | 4-9   | 44.4% |
| FT%                 | 2-2   | 100%  |
| 2 <sup>nd</sup> FG% | 14-26 | 53.8% |
| 3PT%                | 4-10  | 40.0% |
| FT%                 | 1-3   | 33.3% |
| GM FG%              | 25-53 | 47.2% |
| 3PT%                | 8-19  | 42.1% |
| FT%                 | 3-5   | 60.0% |

Dead Ball Rebounds: 0, 0

**Technical Fouls::NONE**

**Maryland - 67**

**Record: 13-14 (5-11)**

| NO.           | Name          | F | Min   | FG    |      |       | 3P |    |     | FT |    |    | Rebounds |   |    | Fouls |    | TP | AS | TO | ST | Blocks |    | +/- |
|---------------|---------------|---|-------|-------|------|-------|----|----|-----|----|----|----|----------|---|----|-------|----|----|----|----|----|--------|----|-----|
|               |               |   |       | M-A   | M-A  | M-A   | OR | DR | TOT | PF | FD | BS | BA       |   |    |       |    |    |    |    |    |        |    |     |
| 24            | Donta Scott   | F | 33:45 | 5-10  | 0-2  | 2-4   | 0  | 3  | 3   | 1  | 3  | 12 | 0        | 3 | 0  | 1     | 1  | 9  | 0  | 3  | 0  | 1      | 1  | 9   |
| 33            | Qudus Wahab   | C | 21:56 | 3-5   | 0-0  | 1-1   | 2  | 5  | 7   | 1  | 2  | 7  | 0        | 0 | 0  | 1     | 0  | -2 | 0  | 0  | 0  | 1      | 0  | -2  |
| 4             | Fatts Russell | G | 27:53 | 4-13  | 1-4  | 9-11  | 0  | 5  | 5   | 3  | 7  | 18 | 2        | 1 | 2  | 0     | -3 | 2  | 1  | 2  | 0  | 0      | -3 |     |
| 11            | Xavier Green  | G | 29:02 | 1-4   | 0-3  | 0-0   | 2  | 2  | 4   | 1  | 0  | 2  | 1        | 1 | 0  | 0     | -8 | 2  | 1  | 1  | 0  | 0      | -8 |     |
| 13            | Hakim Hart    | G | 32:27 | 3-7   | 1-4  | 1-1   | 0  | 3  | 3   | 1  | 2  | 8  | 0        | 1 | 4  | 0     | 6  | 0  | 1  | 4  | 0  | 0      | 6  |     |
| 5             | Eric Ayala    |   | 17:13 | 5-8   | 3-6  | 0-0   | 0  | 1  | 1   | 1  | 1  | 13 | 0        | 3 | 1  | 0     | 11 | 0  | 3  | 1  | 0  | 0      | 11 |     |
| 10            | Julian Reese  |   | 17:15 | 1-2   | 1-1  | 0-0   | 0  | 1  | 1   | 1  | 0  | 3  | 0        | 0 | 0  | 0     | 7  | 0  | 0  | 0  | 0  | 1      | 7  |     |
| 23            | Ian Martinez  |   | 20:29 | 1-1   | 0-0  | 2-2   | 0  | 0  | 0   | 2  | 1  | 4  | 4        | 0 | 4  | 0     | 10 | 4  | 0  | 4  | 0  | 0      | 10 |     |
| Team          |               |   |       |       |      |       | 3  | 1  | 4   |    |    | 0  |          |   | 0  |       |    |    |    |    |    |        |    |     |
| <b>Totals</b> |               |   |       | 23-50 | 6-20 | 15-19 | 7  | 21 | 28  | 11 | 16 | 67 | 7        | 9 | 11 | 2     | 2  |    |    |    |    |        |    | 6   |

| Shooting By Period  |       |       |
|---------------------|-------|-------|
| 1 <sup>st</sup> FG% | 12-27 | 44.4% |
| 3PT%                | 3-10  | 30.0% |
| FT%                 | 1-1   | 100%  |
| 2 <sup>nd</sup> FG% | 11-23 | 47.8% |
| 3PT%                | 3-10  | 30.0% |
| FT%                 | 14-18 | 77.8% |
| GM FG%              | 23-50 | 46.0% |
| 3PT%                | 6-20  | 30.0% |
| FT%                 | 15-19 | 78.9% |

Dead Ball Rebounds: 0, 1

**Technical Fouls::NONE**

|                         | PSU                      | UMD                       |
|-------------------------|--------------------------|---------------------------|
| <b>Biggest lead</b>     | 4 (1 <sup>st</sup> 2:45) | 13 (2 <sup>nd</sup> 8:40) |
| <b>Best Scoring Run</b> | 6 (1 <sup>st</sup> 4:43) | 8 (2 <sup>nd</sup> 14:57) |
| <b>Lead Changes</b>     | 5                        |                           |
| <b>Times Tied</b>       | 6                        |                           |
| <b>Time with Lead</b>   | 06:25                    | 27:24                     |

| Points from          | PSU | UMD |
|----------------------|-----|-----|
| <b>Turnovers</b>     | 7   | 18  |
| <b>Paint</b>         | 24  | 26  |
| <b>Second Chance</b> | 10  | 10  |
| <b>Fast Breaks</b>   | 6   | 17  |
| <b>Bench</b>         | 19  | 20  |

|            | Period by Period Scoring |     |     |
|------------|--------------------------|-----|-----|
|            | 1st                      | 2nd | TOT |
| <b>PSU</b> | 28                       | 33  | 61  |
| <b>UMD</b> | 28                       | 39  | 67  |



**Penn St. at Maryland**

02/21/22 XFINITY Center, College Park  
2021-22 Men's Basketball

**Game Time:** 7:00 PM  
**Game Duration:** 1:55  
**Attendance:** 15,184

**Officials:** D.J. Carstensen, Rob Riley, Keith Kimble

**Period 1**

**Quarter Starters:**

|            |             |            |             |              |              |
|------------|-------------|------------|-------------|--------------|--------------|
| <b>UMD</b> | 4 Russell F | 11 Green X | 13 Hart H   | 24 Scott D   | 33 Wahab Q   |
| <b>PSU</b> | 1 Lundy S   | 2 Dread M  | 21 Harrar J | 22 Pickett J | 23 Johnson D |

| Game Time | UMD  | Score       | Diff      | PSU  |
|-----------|--|-------------|-----------|--|
| 20:00     | 33 WAHAB Q jumpball won  |             |           | 21 HARRAR J jumpball lost  |
| 19:38     | 33 WAHAB Q 2pt FG in the paint, jump shot missed                     |             |           |  |
| 19:35     |  |             |           | 1 LUNDY S defensive rebound (1)                                      |
| 19:19     |  | <b>0-2</b>  | <b>-2</b> | 21 HARRAR J 2pt FG outside the paint, jump shot made (2)             |
| 19:19     |  |             |           | 22 PICKETT J assist (1)  |
| 18:59     | 13 HART H 2pt FG outside the paint, jump shot made (2)               | <b>2-2</b>  | <b>0</b>  |  |
| 18:33     | 4 RUSSELL F steal (1)  |             |           | 1 LUNDY S turnover bad pass (1)                                      |
| 18:29     | 24 SCOTT D 2pt FG from turnover in the paint, driving layup missed   |             |           |  |
| 18:25     |  |             |           | 1 LUNDY S defensive rebound (2)                                      |
| 18:10     |  |             |           | 22 PICKETT J 3pt FG , jump shot missed                               |
| 18:06     | 4 RUSSELL F defensive rebound (1)                                    |             |           |  |
| 17:59     | 33 WAHAB Q 2pt FG in the paint, dunk, made (2)                       | <b>4-2</b>  | <b>2</b>  |  |
| 17:59     | 4 RUSSELL F assist (1)   |             |           |  |
| 17:59     | 33 WAHAB Q foul drawn (1)  |             |           | 2 DREAD M foul shooting (1 - 1)                                      |
| 17:59     | 33 WAHAB Q free throw 1 - 1 made (3)                                 | <b>5-2</b>  | <b>3</b>  |  |
| 17:32     |  | <b>5-5</b>  | <b>0</b>  | 2 DREAD M 3pt FG , jump shot made (3)                                |
| 17:04     | 33 WAHAB Q 2pt FG in the paint, layup made (5)                       | <b>7-5</b>  | <b>2</b>  |  |
| 16:45     |  |             |           | 1 LUNDY S 3pt FG , jump shot missed                                  |
| 16:43     | 4 RUSSELL F defensive rebound (2)                                    |             |           |  |
| 16:34     | 24 SCOTT D 2pt FG outside the paint, floating jump shot made (2)     | <b>9-5</b>  | <b>4</b>  |  |
| 16:02     |  |             |           | 22 PICKETT J 2pt FG in the paint, pull up jump shot missed           |
| 15:58     | 33 WAHAB Q defensive rebound (1)                                     |             |           |  |
| 15:45     | 4 RUSSELL F 2pt FG outside the paint, jump shot missed               |             |           |  |
| 13:45     | 33 WAHAB Q offensive rebound (2)                                     |             |           |  |
| 15:42     | 33 WAHAB Q 2pt FG second chance in the paint, dunk, made (7)         | <b>11-5</b> | <b>6</b>  |  |
| 15:24     |  |             |           | 21 HARRAR J 2pt FG in the paint, jump shot missed                    |
| 15:21     | 24 SCOTT D defensive rebound (1)                                     |             |           |  |
| 15:07     | 4 RUSSELL F turnover bad pass (1)                                    |             |           | 22 PICKETT J steal (1)   |
| 14:58     |  |             |           | 21 HARRAR J 2pt FG from turnover outside the paint, hook shot missed |
| 14:53     | 11 GREEN X defensive rebound (1)                                     |             |           |  |
| 14:37     | 11 GREEN X 3pt FG , jump shot missed                                 |             |           |  |
| 14:33     | 33 WAHAB Q offensive rebound (3)                                     |             |           |  |
| 14:22     | 4 RUSSELL F 2pt FG second chance outside the paint, jump shot missed |             |           |  |
| 14:19     | 11 GREEN X offensive rebound (2)                                     |             |           |  |
| 14:17     | 24 SCOTT D 3pt FG second chance, jump shot missed                    |             |           |  |
| 14:14     |  |             |           | 1 LUNDY S defensive rebound (3)                                      |
| 14:00     |  |             |           | 22 PICKETT J 2pt FG in the paint, layup missed                       |
| 13:57     |  |             |           | 21 HARRAR J offensive rebound (1)                                    |
| 13:56     |  | <b>11-7</b> | <b>4</b>  | 21 HARRAR J 2pt FG second chance in the paint, layup made (4)        |



**Penn St. at Maryland**

02/21/22 XFINITY Center, College Park  
2021-22 Men's Basketball

**Game Time:** 7:00 PM  
**Game Duration:** 1:55  
**Attendance:** 15,184

**Officials:** D.J. Carstensen, Rob Riley, Keith Kimble

| Game Time | UMD   | Score        | Diff     | PSU  |
|-----------|---|--------------|----------|--|
| 13:30     | 24 SCOTT D 2pt FG second chance outside the paint, jump shot made (4) | <b>13-7</b>  | <b>6</b> |  |
| 13:30     | 4 RUSSELL F assist (2)  |              |          |  |
| 12:58     |   | <b>13-9</b>  | <b>4</b> | 21 HARRAR J 2pt FG outside the paint, pull up jump shot made (6) |
| 12:58     |   |              |          | 22 PICKETT J assist (2)  |
| 12:40     | 13 HART H 3pt FG , jump shot missed                                   |              |          |  |
| 12:37     |   |              |          | 21 HARRAR J defensive rebound (2)                                |
| 12:18     |   |              |          | 22 PICKETT J 2pt FG in the paint, jump shot missed               |
| 12:14     | 4 RUSSELL F defensive rebound (3)                                     |              |          |  |
| 12:11     | 33 WAHAB Q foul drawn (2)   |              |          | 2 DREAD M foul personal (2 - 2)                                  |
| 12:11     | Timeout media   |              |          |  |
| 12:11     | 11 GREEN X substitution out   |              |          |  |
| 12:11     | 13 HART H substitution out  |              |          |  |
| 12:11     | 33 WAHAB Q substitution out   |              |          |  |
| 12:11     | 5 AYALA E substitution in   |              |          |  |
| 12:11     | 10 REESE J substitution in  |              |          |  |
| 12:11     | 23 MARTINEZ I substitution in   |              |          |  |
| 12:11     |   |              |          | 2 DREAD M substitution out                                       |
| 12:11     |   |              |          | 21 HARRAR J substitution out                                     |
| 12:11     |   |              |          | 23 JOHNSON D substitution out                                    |
| 12:11     |   |              |          | 3 SESSOMS S substitution in                                      |
| 12:11     |   |              |          | 4 DORSEY C substitution in                                       |
| 12:11     |   |              |          | 13 SCOTT J substitution in                                       |
| 11:49     | 24 SCOTT D 2pt FG in the paint, layup made (6)                        | <b>15-9</b>  | <b>6</b> |  |
| 11:36     | 4 RUSSELL F foul personal (1 - 1)                                     |              |          | 22 PICKETT J foul drawn (1)                                      |
| 11:36     | Timeout media   |              |          |  |
| 11:36     | 24 SCOTT D substitution out   |              |          |  |
| 11:36     | 11 GREEN X substitution in  |              |          |  |
| 11:19     |   | <b>15-12</b> | <b>3</b> | 22 PICKETT J 3pt FG , jump shot made (3)                         |
| 11:19     |   |              |          | 3 SESSOMS S assist (1)   |
| 11:00     | 4 RUSSELL F 3pt FG , jump shot missed                                 |              |          |  |
| 10:57     |   |              |          | 13 SCOTT J defensive rebound (1)                                 |
| 10:46     |   | <b>15-14</b> | <b>1</b> | 22 PICKETT J 2pt FG outside the paint, jump shot made (5)        |
| 10:18     | 5 AYALA E foul offensive (1 - 2)                                      |              |          | 13 SCOTT J foul drawn (1)  |
| 10:18     | 5 AYALA E turnover offensive (1)                                      |              |          |  |
| 10:18     | 4 RUSSELL F substitution out  |              |          |  |
| 10:18     | 13 HART H substitution in   |              |          |  |
| 10:05     | 13 HART H steal (1)   |              |          | 3 SESSOMS S turnover bad pass (1)                                |
| 09:49     | 13 HART H 3pt FG from turnover, jump shot made (5)                    | <b>18-14</b> | <b>4</b> |  |
| 09:23     | 23 MARTINEZ I steal (1)   |              |          | 22 PICKETT J turnover bad pass (1)                               |
| 09:15     | 11 GREEN X 3pt FG from turnover, jump shot missed                     |              |          |  |
| 09:12     |   |              |          | 22 PICKETT J defensive rebound (1)                               |
| 08:46     |   |              |          | 3 SESSOMS S 3pt FG , jump shot missed                            |
| 08:42     | 11 GREEN X defensive rebound (3)                                      |              |          |  |
| 08:37     | 5 AYALA E turnover bad pass (2)                                       |              |          | 22 PICKETT J steal (2)   |
| 08:32     |   | <b>18-17</b> | <b>1</b> | 1 LUNDY S 3pt FG fast break from turnover, jump shot made (3)    |
| 08:32     |   |              |          | 22 PICKETT J assist (3)  |
| 08:14     | 10 REESE J 3pt FG , jump shot made (3)                                | <b>21-17</b> | <b>4</b> |  |
| 08:14     | 23 MARTINEZ I assist (1)  |              |          |  |



**Penn St. at Maryland**

02/21/22 XFINITY Center, College Park  
2021-22 Men's Basketball

**Game Time:** 7:00 PM  
**Game Duration:** 1:55  
**Attendance:** 15,184

**Officials:** D.J. Carstensen, Rob Riley, Keith Kimble

| Game Time | UMD   | Score        | Diff      | PSU   |
|-----------|---|--------------|-----------|---|
| 07:46     | 10 REESE J foul shooting (1 - 3)                          |              |           | 13 SCOTT J foul drawn (2)   |
| 07:46     | Timeout media   |              |           |   |
| 07:46     | 23 MARTINEZ I substitution out                            |              |           |   |
| 07:46     | 4 RUSSELL F substitution in                               |              |           |   |
| 07:46     |   |              |           | 1 LUNDY S substitution out  |
| 07:46     |   |              |           | 23 JOHNSON D substitution in  |
| 07:46     |   | <b>21-18</b> | <b>3</b>  | 13 SCOTT J free throw 1 - 2 made (1)  |
| 07:46     |   | <b>21-19</b> | <b>2</b>  | 13 SCOTT J free throw 2 - 2 made (2)  |
| 07:46     |   |              |           | 13 SCOTT J substitution out   |
| 07:46     |   |              |           | 14 WHITE J substitution in  |
| 07:26     | 10 REESE J 2pt FG in the paint, jump shot blocked         |              |           |   |
| 07:26     |   |              |           | 4 DORSEY C block (1)  |
| 07:22     |   |              |           | 3 SESSOMS S defensive rebound (1)   |
| 06:59     |   |              |           | 22 PICKETT J 3pt FG , jump shot missed  |
| 06:56     |   |              |           | 14 WHITE J offensive rebound (1)  |
| 06:42     |   | <b>21-21</b> | <b>0</b>  | 3 SESSOMS S 2pt FG second chance in the paint, layup made (2)                 |
| 06:17     | 5 AYALA E 3pt FG , jump shot missed                       |              |           |   |
| 06:14     |   |              |           | 4 DORSEY C defensive rebound (1)  |
| 06:00     | 4 RUSSELL F foul personal (2 - 4)                         |              |           | 22 PICKETT J foul drawn (2)   |
| 06:00     | 4 RUSSELL F substitution out                              |              |           |   |
| 06:00     | 10 REESE J substitution out                               |              |           |   |
| 06:00     | 11 GREEN X substitution out                               |              |           |   |
| 06:00     | 23 MARTINEZ I substitution in                             |              |           |   |
| 06:00     | 24 SCOTT D substitution in                                |              |           |   |
| 06:00     | 33 WAHAB Q substitution in                                |              |           |   |
| 05:58     |   |              |           | 23 JOHNSON D 3pt FG , jump shot missed  |
| 05:54     | 33 WAHAB Q defensive rebound (4)                          |              |           |   |
| 05:34     | 24 SCOTT D 3pt FG , jump shot missed                      |              |           |   |
| 05:32     | offensive rebound (12)                                    |              |           |   |
| 05:32     |   |              |           | 4 DORSEY C substitution out   |
| 05:32     |   |              |           | 14 WHITE J substitution out   |
| 05:32     |   |              |           | 1 LUNDY S substitution in   |
| 05:32     |   |              |           | 21 HARRAR J substitution in   |
| 05:19     | 5 AYALA E foul drawn (1)                                  |              |           | 1 LUNDY S foul personal (1 - 3)   |
| 05:08     | 13 HART H 2pt FG second chance in the paint, layup missed |              |           |   |
| 05:04     |   |              |           | 21 HARRAR J defensive rebound (3)   |
| 04:45     |   |              |           | 21 HARRAR J 2pt FG in the paint, layup missed                                 |
| 04:34     |   |              |           | 21 HARRAR J offensive rebound (4)   |
| 04:43     |   | <b>21-23</b> | <b>-2</b> | 21 HARRAR J 2pt FG second chance in the paint, layup made (8)                 |
| 04:29     | 5 AYALA E 3pt FG , jump shot made (3)                     | <b>24-23</b> | <b>1</b>  |   |
| 04:29     | 23 MARTINEZ I assist (2)                                  |              |           |   |
| 04:06     |   |              |           | 3 SESSOMS S 2pt FG in the paint, driving layup blocked                        |
| 04:06     | 33 WAHAB Q block (1)                                      |              |           |   |
| 04:01     | 5 AYALA E defensive rebound (1)                           |              |           |   |
| 03:59     | 13 HART H turnover lost ball (1)                          |              |           | 23 JOHNSON D steal (1)  |
| 03:49     |   |              |           | 22 PICKETT J 2pt FG from turnover outside the paint, pull up jump shot missed |
| 03:45     |   |              |           | 22 PICKETT J offensive rebound (2)  |



Official Basketball Play by Play - First Half

**Penn St. at Maryland**

02/21/22 XFINITY Center, College Park  
2021-22 Men's Basketball

Game Time: 7:00 PM

Game Duration: 1:55

Attendance: 15,184

Officials: D.J. Carstensen, Rob Riley, Keith Kimble

| Game Time            | UMD  | Score        | Diff      | PSU   |
|----------------------|--|--------------|-----------|---|
| 03:44                |  |              |           | 22 PICKETT J 2pt FG from turnover second chance in the paint, jump shot blocked     |
| 03:44                | 24 SCOTT D block (1)   |              |           |   |
| 03:43                |  |              |           | offensive rebound (14)  |
| 03:43                | Timeout media  |              |           |   |
| 03:43                | 5 AYALA E substitution out   |              |           |   |
| 03:43                | 11 GREEN X substitution in   |              |           |   |
| 03:31                |  | <b>24-25</b> | <b>-1</b> | 3 SESSOMS S 2pt FG from turnover second chance in the paint, driving layup made (4) |
| 03:14                | 24 SCOTT D 2pt FG outside the paint, jump shot missed                              |              |           |   |
| 03:11                |  |              |           | 21 HARRAR J defensive rebound (5)   |
| 02:45                |  | <b>24-28</b> | <b>-4</b> | 23 JOHNSON D 3pt FG , jump shot made (3)  |
| 02:45                |  |              |           | 22 PICKETT J assist (4)   |
| 02:41                | Timeout 30 Sec   |              |           |   |
| 02:24                | 24 SCOTT D 2pt FG in the paint, hook shot made (8)                                 | <b>26-28</b> | <b>-2</b> |   |
| 01:55                |  |              |           | 3 SESSOMS S 2pt FG outside the paint, jump shot missed                              |
| 01:51                | 13 HART H defensive rebound (1)  |              |           |   |
| 01:25                | 24 SCOTT D turnover lost ball (1)  |              |           | 22 PICKETT J steal (3)  |
| 00:57                |  |              |           | 22 PICKETT J 2pt FG from turnover in the paint, jump shot missed                    |
| 00:54                | 33 WAHAB Q defensive rebound (5)   |              |           |   |
| 00:32                | 33 WAHAB Q 2pt FG in the paint, hook shot missed                                   |              |           |   |
| 00:28                |  |              |           | 21 HARRAR J defensive rebound (6)   |
| 00:25                | Timeout 30 Sec   |              |           |   |
| 00:07                | 23 MARTINEZ I steal (2)  |              |           | 3 SESSOMS S turnover bad pass (2)   |
| 00:03                | 23 MARTINEZ I 2pt FG fast break from turnover in the paint, driving layup made (2) | <b>28-28</b> | <b>0</b>  |   |
| <b>END OF PERIOD</b> |  |              |           |   |
| <b>UMD 28-28 PSU</b> |  |              |           |   |



**Penn St. at Maryland**

02/21/22 XFINITY Center, College Park  
2021-22 Men's Basketball

Game Time: 7:00 PM  
Game Duration: 1:55  
Attendance: 15,184

Officials: D.J. Carstensen, Rob Riley, Keith Kimble

**Penn St. - 28**

| NO.           | Name            | F | Min   | FG    |     |     | Rebounds |    |     | Fouls |    | TP | AS | TO | ST | Blocks |    | +/- |
|---------------|-----------------|---|-------|-------|-----|-----|----------|----|-----|-------|----|----|----|----|----|--------|----|-----|
|               |                 |   |       | M-A   | M-A | M-A | OR       | DR | TOT | PF    | FD |    |    |    |    | BS     | BA |     |
| 1             | Seth Lundy      | F | 17:46 | 1-2   | 1-2 | 0-0 | 0        | 3  | 3   | 1     | 0  | 3  | 0  | 1  | 0  | 0      | 0  | -4  |
| 21            | John Harrar     | F | 13:21 | 4-7   | 0-0 | 0-0 | 2        | 4  | 6   | 0     | 0  | 8  | 0  | 0  | 0  | 0      | 0  | -4  |
| 2             | Myles Dread     | G | 07:49 | 1-1   | 1-1 | 0-0 | 0        | 0  | 0   | 2     | 0  | 3  | 0  | 0  | 0  | 0      | 0  | -4  |
| 22            | Jalen Pickett   | G | 20:00 | 2-10  | 1-3 | 0-0 | 1        | 1  | 2   | 0     | 2  | 5  | 4  | 1  | 3  | 0      | 1  | 0   |
| 23            | Dallion Johnson | G | 15:35 | 1-2   | 1-2 | 0-0 | 0        | 0  | 0   | 0     | 0  | 3  | 0  | 0  | 1  | 0      | 0  | 0   |
| 3             | Sam Sessoms     |   | 12:11 | 2-5   | 0-1 | 0-0 | 0        | 1  | 1   | 0     | 0  | 4  | 1  | 2  | 0  | 0      | 1  | 4   |
| 4             | Caleb Dorsey    |   | 06:39 | 0-0   | 0-0 | 0-0 | 0        | 1  | 1   | 0     | 0  | 0  | 0  | 0  | 0  | 1      | 0  | 4   |
| 13            | Jevonnie Scott  |   | 04:25 | 0-0   | 0-0 | 2-2 | 0        | 1  | 1   | 0     | 2  | 2  | 0  | 0  | 0  | 0      | 0  | 2   |
| 14            | Jalanni White   |   | 02:14 | 0-0   | 0-0 | 0-0 | 1        | 0  | 1   | 0     | 0  | 0  | 0  | 0  | 0  | 0      | 0  | 2   |
| Team          |                 |   |       |       |     |     | 1        | 0  | 1   |       |    | 0  |    | 0  |    |        |    |     |
| <b>Totals</b> |                 |   |       | 11-27 | 4-9 | 2-2 | 5        | 11 | 16  | 3     | 4  | 28 | 5  | 4  | 4  | 1      | 2  | 0   |

| Shooting By Period |       |        |
|--------------------|-------|--------|
| 1st FG%            | 11-27 | 40.7%  |
| 3PT%               | 4-9   | 44.4%  |
| FT%                | 2-2   | 100%   |
| GM FG%             | 11-27 | 40.7%  |
| 3PT%               | 4-9   | 44.4%  |
| FT%                | 2-2   | 100.0% |

Dead Ball Rebounds: 0, 0

Technical Fouls::NONE

**Maryland - 28**

| NO.           | Name          | F | Min   | FG    |      |     | Rebounds |    |     | Fouls |    | TP | AS | TO | ST | Blocks |    | +/- |
|---------------|---------------|---|-------|-------|------|-----|----------|----|-----|-------|----|----|----|----|----|--------|----|-----|
|               |               |   |       | M-A   | M-A  | M-A | OR       | DR | TOT | PF    | FD |    |    |    |    | BS     | BA |     |
| 24            | Donta Scott   | F | 14:24 | 4-8   | 0-2  | 0-0 | 0        | 1  | 1   | 0     | 0  | 8  | 0  | 1  | 0  | 1      | 0  | 6   |
| 33            | Qudus Wahab   | C | 13:49 | 3-5   | 0-0  | 1-1 | 2        | 3  | 5   | 0     | 2  | 7  | 0  | 0  | 0  | 1      | 0  | 4   |
| 4             | Fatts Russell | G | 11:28 | 0-3   | 0-1  | 0-0 | 0        | 3  | 3   | 2     | 0  | 0  | 2  | 1  | 1  | 0      | 0  | -3  |
| 11            | Xavier Green  | G | 17:08 | 0-2   | 0-2  | 0-0 | 1        | 2  | 3   | 0     | 0  | 0  | 0  | 0  | 0  | 0      | 0  | -3  |
| 13            | Hakim Hart    | G | 18:07 | 2-4   | 1-2  | 0-0 | 0        | 1  | 1   | 0     | 0  | 5  | 0  | 1  | 1  | 0      | 0  | 3   |
| 5             | Eric Ayala    |   | 08:28 | 1-2   | 1-2  | 0-0 | 0        | 1  | 1   | 1     | 1  | 3  | 0  | 2  | 0  | 0      | 0  | -3  |
| 10            | Julian Reese  |   | 06:11 | 1-2   | 1-1  | 0-0 | 0        | 0  | 0   | 1     | 0  | 3  | 0  | 0  | 0  | 0      | 1  | -4  |
| 23            | Ian Martinez  |   | 10:25 | 1-1   | 0-0  | 0-0 | 0        | 0  | 0   | 0     | 0  | 2  | 2  | 0  | 2  | 0      | 0  | 0   |
| Team          |               |   |       |       |      |     | 1        | 0  | 1   |       |    | 0  |    | 0  |    |        |    |     |
| <b>Totals</b> |               |   |       | 12-27 | 3-10 | 1-1 | 4        | 11 | 15  | 4     | 3  | 28 | 4  | 5  | 4  | 2      | 1  | 0   |

| Shooting By Period |       |        |
|--------------------|-------|--------|
| 1st FG%            | 12-27 | 44.4%  |
| 3PT%               | 3-10  | 30.0%  |
| FT%                | 1-1   | 100%   |
| GM FG%             | 12-27 | 44.4%  |
| 3PT%               | 3-10  | 30.0%  |
| FT%                | 1-1   | 100.0% |

Dead Ball Rebounds: 0, 0

Technical Fouls::NONE

|                  | PSU                      | UMD                       |
|------------------|--------------------------|---------------------------|
| Biggest lead     | 4 (1 <sup>st</sup> 2:45) | 6 (1 <sup>st</sup> 15:42) |
| Best Scoring Run | 6(1 <sup>st</sup> 4:43)  | 6(1 <sup>st</sup> 15:42)  |
| Lead Changes     | 4                        |                           |
| Times Tied       | 4                        |                           |
| Time with Lead   | 04:02                    | 11:47                     |

| Points from   | PSU | UMD |
|---------------|-----|-----|
| Turnovers     | 5   | 5   |
| Paint         | 8   | 12  |
| Second Chance | 8   | 4   |
| Fast Breaks   | 3   | 2   |
| Bench         | 6   | 8   |

|     | Period by Period Scoring |     |     |
|-----|--------------------------|-----|-----|
|     | 1st                      | 2nd | TOT |
| PSU | 28                       | 33  | 61  |
| UMD | 28                       | 39  | 67  |

**Period 2****Quarter Starters:**

|            |             |            |             |              |              |
|------------|-------------|------------|-------------|--------------|--------------|
| <b>UMD</b> | 4 Russell F | 11 Green X | 13 Hart H   | 24 Scott D   | 33 Wahab Q   |
| <b>PSU</b> | 1 Lundy S   | 2 Dread M  | 21 Harrar J | 22 Pickett J | 23 Johnson D |

| Game Time | UMD   | Score        | Diff      | PSU   |
|-----------|---|--------------|-----------|---|
| 20:00     | 23 MARTINEZ I substitution out  |              |           |   |
| 20:00     | 4 RUSSELL F substitution in   |              |           |   |
| 20:00     |   |              |           | 3 SESSOMS S substitution out                              |
| 20:00     |   |              |           | 2 DREAD M substitution in                                 |
| 19:32     |   |              |           | 22 PICKETT J 2pt FG in the paint, jump shot missed        |
| 19:29     |   |              |           | 21 HARRAR J offensive rebound (7)                         |
| 19:21     |   |              |           | 2 DREAD M 3pt FG second chance, jump shot missed          |
| 19:18     | 4 RUSSELL F defensive rebound (4)                                     |              |           |   |
| 19:08     | 4 RUSSELL F 3pt FG , jump shot missed                                 |              |           |   |
| 19:04     |   |              |           | 2 DREAD M defensive rebound (1)                           |
| 18:57     |   |              |           | 1 LUNDY S turnover out of bounds (2)                      |
| 18:41     | 11 GREEN X turnover bad pass (1)                                      |              |           | 22 PICKETT J steal (4)                                    |
| 18:31     |   | <b>28-30</b> | <b>-2</b> | 22 PICKETT J 2pt FG outside the paint, jump shot made (7) |
| 18:01     | 4 RUSSELL F 2pt FG outside the paint, jump shot missed                |              |           |   |
| 18:01     | offensive rebound (17)  |              |           |   |
| 18:01     | 4 RUSSELL F 2pt FG second chance in the paint, layup made (2)         | <b>30-30</b> | <b>0</b>  |   |
| 18:01     | 4 RUSSELL F foul drawn (1)  |              |           | 1 LUNDY S foul personal (2 - 1)                           |
| 18:01     | 4 RUSSELL F 2pt FG in the paint, jump shot missed                     |              |           |   |
| 18:01     |   |              |           | 22 PICKETT J defensive rebound (3)                        |
| 17:30     |   | <b>30-32</b> | <b>-2</b> | 22 PICKETT J 2pt FG in the paint, jump shot made (9)      |
| 17:16     | 4 RUSSELL F 2pt FG in the paint, jump shot missed                     |              |           |   |
| 17:16     |   |              |           | 22 PICKETT J defensive rebound (4)                        |
| 16:44     |   | <b>30-34</b> | <b>-4</b> | 21 HARRAR J 2pt FG in the paint, jump shot made (10)      |
| 16:44     |   |              |           | 22 PICKETT J assist (5)                                   |
| 16:17     | 4 RUSSELL F 2pt FG in the paint, driving layup made (4)               | <b>32-34</b> | <b>-2</b> |   |
| 15:56     | 13 HART H steal (2)   |              |           | 22 PICKETT J turnover bad pass (2)                        |
| 15:49     | 13 HART H foul drawn (1)  |              |           | 21 HARRAR J foul personal (1 - 2)                         |
| 15:49     | 33 WAHAB Q substitution out   |              |           |   |
| 15:49     | 10 REESE J substitution in  |              |           |   |
| 15:49     |   |              |           | 21 HARRAR J substitution out                              |
| 15:49     |   |              |           | 23 JOHNSON D substitution out                             |
| 15:49     |   |              |           | 3 SESSOMS S substitution in                               |
| 15:49     |   |              |           | 13 SCOTT J substitution in                                |
| 15:37     | 4 RUSSELL F 2pt FG from turnover in the paint, driving layup made (6) | <b>34-34</b> | <b>0</b>  |   |
| 15:37     | 4 RUSSELL F foul drawn (2)  |              |           | 13 SCOTT J foul shooting (1 - 3)                          |
| 15:37     | 4 RUSSELL F free throw 1 - 1 made (7)                                 | <b>35-34</b> | <b>1</b>  |   |
| 15:16     |   |              |           | 1 LUNDY S 3pt FG , jump shot missed                       |
| 15:16     | 13 HART H defensive rebound (2)                                       |              |           |   |
| 15:16     | jump ball situation   |              |           |   |
| 15:16     | 11 GREEN X substitution out   |              |           |   |
| 15:16     | 13 HART H substitution out  |              |           |   |
| 15:16     | 5 AYALA E substitution in   |              |           |   |



**Penn St. at Maryland**

02/21/22 XFINITY Center, College Park  
2021-22 Men's Basketball

**Game Time:** 7:00 PM  
**Game Duration:** 1:55  
**Attendance:** 15,184

**Officials:** D.J. Carstensen, Rob Riley, Keith Kimble

| Game Time | UMD   | Score        | Diff     | PSU   |
|-----------|---|--------------|----------|---|
| 15:16     | 23 MARTINEZ I substitution in   |              |          |   |
| 14:57     | 5 AYALA E 3pt FG , jump shot made (6)   | <b>38-34</b> | <b>4</b> |   |
| 14:57     | 23 MARTINEZ I assist (3)  |              |          |   |
| 14:43     |   | <b>38-36</b> | <b>2</b> | 3 SESSOMS S 2pt FG outside the paint, floating jump shot made (6) |
| 14:24     | 24 SCOTT D foul drawn (1)   |              |          | 1 LUNDY S foul shooting (3 - 4)                                   |
| 14:24     | 24 SCOTT D free throw 1 - 2 made (9)  | <b>39-36</b> | <b>3</b> |   |
| 14:24     |   |              |          | 1 LUNDY S substitution out  |
| 14:24     |   |              |          | 13 SCOTT J substitution out                                       |
| 14:24     |   |              |          | 21 HARRAR J substitution in                                       |
| 14:24     |   |              |          | 23 JOHNSON D substitution in                                      |
| 14:24     | 24 SCOTT D free throw 2 - 2 made (10)   | <b>40-36</b> | <b>4</b> |   |
| 14:02     |   | <b>40-39</b> | <b>1</b> | 3 SESSOMS S 3pt FG , jump shot made (9)                           |
| 13:46     | 4 RUSSELL F 3pt FG , jump shot made (10)                                      | <b>43-39</b> | <b>4</b> |   |
| 13:15     | 23 MARTINEZ I foul personal (1 - 1)   |              |          | 3 SESSOMS S foul drawn (1)  |
| 13:04     | 5 AYALA E steal (1)   |              |          | 23 JOHNSON D turnover bad pass (1)                                |
| 12:58     | 5 AYALA E 3pt FG fast break from turnover, jump shot made (9)                 | <b>46-39</b> | <b>7</b> |   |
| 12:56     |   |              |          | Timeout 30 Sec  |
| 12:56     |   |              |          | Timeout media   |
| 12:56     |   |              |          | 2 DREAD M substitution out  |
| 12:56     |   |              |          | 1 LUNDY S substitution in   |
| 12:47     |   |              |          | 22 PICKETT J turnover bad pass (3)                                |
| 12:36     | 5 AYALA E 3pt FG from turnover, jump shot missed                              |              |          |   |
| 12:32     |   |              |          | 21 HARRAR J defensive rebound (8)                                 |
| 12:15     |   |              |          | 23 JOHNSON D 2pt FG in the paint, jump shot missed                |
| 12:15     | defensive dead ball rebound (1)   |              |          |   |
| 12:15     | 4 RUSSELL F substitution out  |              |          |   |
| 12:15     | 13 HART H substitution in   |              |          |   |
| 11:50     | 13 HART H 3pt FG , jump shot missed   |              |          |   |
| 11:47     |   |              |          | 22 PICKETT J defensive rebound (5)                                |
| 11:32     |   |              |          | 3 SESSOMS S 3pt FG , jump shot missed                             |
| 11:28     |   |              |          | 1 LUNDY S offensive rebound (4)                                   |
| 11:26     | 23 MARTINEZ I steal (3)   |              |          | 1 LUNDY S turnover bad pass (3)                                   |
| 11:11     | 5 AYALA E 2pt FG from turnover outside the paint, pull up jump shot made (11) | <b>48-39</b> | <b>9</b> |   |
| 10:59     |   | <b>48-41</b> | <b>7</b> | 3 SESSOMS S 2pt FG in the paint, driving layup made (11)          |
| 10:59     | 23 MARTINEZ I foul shooting (2 - 2)   |              |          | 3 SESSOMS S foul drawn (2)  |
| 10:59     |   |              |          | Timeout media   |
| 10:59     |   |              |          | 1 LUNDY S substitution out  |
| 10:59     |   |              |          | 23 JOHNSON D substitution out                                     |
| 10:59     |   |              |          | 2 DREAD M substitution in   |
| 10:59     |   |              |          | 11 CORNWALL J substitution in                                     |
| 10:59     |   | <b>48-42</b> | <b>6</b> | 3 SESSOMS S free throw 1 - 1 made (12)                            |
| 10:36     | 5 AYALA E turnover bad pass (3)   |              |          | 2 DREAD M steal (1)   |
| 10:18     |   |              |          | 2 DREAD M 3pt FG from turnover, jump shot missed                  |
| 10:15     | 24 SCOTT D defensive rebound (2)  |              |          |   |
| 09:50     | 24 SCOTT D turnover lost ball (2)   |              |          | 2 DREAD M steal (2)   |
| 09:47     | 23 MARTINEZ I steal (4)   |              |          | 3 SESSOMS S turnover lost ball (3)                                |
| 09:43     | 5 AYALA E 2pt FG fast break from turnover in the paint, layup made (13)       | <b>50-42</b> | <b>8</b> |   |





**Penn St. at Maryland**

02/21/22 XFINITY Center, College Park  
2021-22 Men's Basketball

**Game Time:** 7:00 PM  
**Game Duration:** 1:55  
**Attendance:** 15,184

**Officials:** D.J. Carstensen, Rob Riley, Keith Kimble

| Game Time | UMD  | Score        | Diff      | PSU   |
|-----------|--|--------------|-----------|---|
| 09:43     | 23 MARTINEZ I assist (4)   |              |           |   |
| 09:18     |  |              |           | 3 SESSOMS S 2pt FG in the paint, jump shot missed               |
| 09:15     | 13 HART H defensive rebound (3)  |              |           |   |
| 09:08     | 5 AYALA E 3pt FG , jump shot missed  |              |           |   |
| 09:05     | offensive rebound (21)   |              |           |   |
| 09:05     |  |              |           | 3 SESSOMS S substitution out                                    |
| 09:05     |  |              |           | 1 LUNDY S substitution in                                       |
| 09:05     | 23 MARTINEZ I foul drawn (1)   |              |           | 11 CORNWALL J foul shooting (1 - 5)                             |
| 09:05     | 23 MARTINEZ I free throw 1 - 2 made (3)  | <b>51-42</b> | <b>9</b>  |   |
| 09:05     | 23 MARTINEZ I free throw 2 - 2 made (4)  | <b>52-42</b> | <b>10</b> |   |
| 09:05     | 24 SCOTT D substitution out  |              |           |   |
| 09:05     | 11 GREEN X substitution in   |              |           |   |
| 08:42     | 13 HART H steal (3)  |              |           | 2 DREAD M turnover bad pass (1)                                 |
| 08:40     | 13 HART H 2pt FG fast break from turnover in the paint, driving layup made (7) | <b>54-42</b> | <b>12</b> |   |
| 08:40     | 13 HART H foul drawn (2)   |              |           | 11 CORNWALL J foul shooting (2 - 6)                             |
| 08:40     |  |              |           | 2 DREAD M substitution out                                      |
| 08:40     |  |              |           | 4 DORSEY C substitution in                                      |
| 08:40     | 13 HART H free throw fast break 1 - 1 made (8)                                 | <b>55-42</b> | <b>13</b> |   |
| 08:40     | 13 HART H substitution out   |              |           |   |
| 08:40     | 4 RUSSELL F substitution in  |              |           |   |
| 08:34     | 4 RUSSELL F foul personal (3 - 3)  |              |           | 22 PICKETT J foul drawn (3)                                     |
| 08:26     | 5 AYALA E substitution out   |              |           |   |
| 08:26     | 24 SCOTT D substitution in   |              |           |   |
| 08:13     |  | <b>55-45</b> | <b>10</b> | 1 LUNDY S 3pt FG , jump shot made (6)                           |
| 08:13     |  |              |           | 22 PICKETT J assist (6)   |
| 07:50     | 24 SCOTT D 2pt FG in the paint, jump shot blocked                              |              |           |   |
| 07:50     |  |              |           | 1 LUNDY S block (1)   |
| 07:46     | 11 GREEN X offensive rebound (4)   |              |           |   |
| 07:45     | 11 GREEN X 2pt FG second chance in the paint, pull up jump shot made (2)       | <b>57-45</b> | <b>12</b> |   |
| 07:17     |  | <b>57-47</b> | <b>10</b> | 21 HARRAR J 2pt FG in the paint, driving layup made (12)        |
| 06:54     | 24 SCOTT D foul offensive (1 - 4)  |              |           | 21 HARRAR J foul drawn (1)                                      |
| 06:54     | 24 SCOTT D turnover offensive (3)  |              |           |   |
| 06:54     | Timeout media  |              |           |   |
| 06:54     | 10 REESE J substitution out  |              |           |   |
| 06:54     | 33 WAHAB Q substitution in   |              |           |   |
| 06:42     |  | <b>57-49</b> | <b>8</b>  | 22 PICKETT J 2pt FG from turnover in the paint, layup made (11) |
| 06:42     |  |              |           | 21 HARRAR J assist (1)  |
| 06:20     | 24 SCOTT D 2pt FG in the paint, hook shot made (12)                            | <b>59-49</b> | <b>10</b> |   |
| 06:20     | 11 GREEN X assist (1)  |              |           |   |
| 06:01     | 11 GREEN X foul personal (1 - 5)   |              |           | 22 PICKETT J foul drawn (4)                                     |
| 06:01     | 33 WAHAB Q substitution out  |              |           |   |
| 06:01     | 13 HART H substitution in  |              |           |   |
| 06:01     |  |              |           | 4 DORSEY C substitution out                                     |
| 06:01     |  |              |           | 3 SESSOMS S substitution in                                     |
| 05:53     | 23 MARTINEZ I substitution out   |              |           |   |
| 05:53     | 33 WAHAB Q substitution in   |              |           |   |
| 05:40     |  |              |           | 22 PICKETT J 3pt FG , jump shot missed                          |



**Penn St. at Maryland**

02/21/22 XFINITY Center, College Park  
2021-22 Men's Basketball

**Game Time:** 7:00 PM  
**Game Duration:** 1:55  
**Attendance:** 15,184

**Officials:** D.J. Carstensen, Rob Riley, Keith Kimble

| Game Time | UMD   | Score        | Diff     | PSU  |
|-----------|---|--------------|----------|--|
| 05:40     | 33 WAHAB Q defensive rebound (6)                  |              |          |  |
| 05:20     | 11 GREEN X 3pt FG , jump shot missed              |              |          |  |
| 05:17     |   |              |          | 22 PICKETT J defensive rebound (6)                             |
| 04:53     |   | <b>59-51</b> | <b>8</b> | 22 PICKETT J 2pt FG in the paint, pull up jump shot made (13)  |
| 04:34     | 24 SCOTT D foul drawn (2)                         |              |          | 21 HARRAR J foul personal (2 - 7)                              |
| 04:34     | 24 SCOTT D 1&1 free throw 1 missed                |              |          |  |
| 04:33     |   |              |          | 1 LUNDY S defensive rebound (5)                                |
| 04:04     |   |              |          | 22 PICKETT J 2pt FG outside the paint, jump shot missed        |
| 04:00     | 24 SCOTT D defensive rebound (3)                  |              |          |  |
| 03:43     | 4 RUSSELL F 2pt FG in the paint, jump shot missed |              |          |  |
| 03:40     |   |              |          | 21 HARRAR J defensive rebound (9)                              |
| 03:22     |   |              |          | 3 SESSOMS S 2pt FG in the paint, jump shot missed              |
| 03:20     |   |              |          | 21 HARRAR J offensive rebound (10)                             |
| 03:20     |   | <b>59-53</b> | <b>6</b> | 21 HARRAR J 2pt FG second chance in the paint, layup made (14) |
| 03:20     | 33 WAHAB Q foul shooting (1 - 6)                  |              |          | 21 HARRAR J foul drawn (2)                                     |
| 03:20     | Timeout media                                     |              |          |  |
| 03:20     | 11 GREEN X substitution out                       |              |          |  |
| 03:20     | 5 AYALA E substitution in                         |              |          |  |
| 03:20     |   |              |          | 21 HARRAR J free throw 1 - 1 missed                            |
| 03:18     | 33 WAHAB Q defensive rebound (7)                  |              |          |  |
| 02:53     | 13 HART H 3pt FG , jump shot missed               |              |          |  |
| 02:50     |   |              |          | 21 HARRAR J defensive rebound (11)                             |
| 02:50     | 5 AYALA E substitution out                        |              |          |  |
| 02:50     | 33 WAHAB Q substitution out                       |              |          |  |
| 02:50     | 10 REESE J substitution in                        |              |          |  |
| 02:50     | 11 GREEN X substitution in                        |              |          |  |
| 02:50     |   |              |          | 11 CORNWALL J substitution out                                 |
| 02:50     |   |              |          | 2 DREAD M substitution in                                      |
| 02:21     |   |              |          | 3 SESSOMS S 2pt FG outside the paint, jump shot missed         |
| 02:19     | defensive rebound (26)                            |              |          |  |
| 02:19     | 11 GREEN X substitution out                       |              |          |  |
| 02:19     | 5 AYALA E substitution in                         |              |          |  |
| 01:52     | 4 RUSSELL F 3pt FG , jump shot missed             |              |          |  |
| 01:49     |   |              |          | 21 HARRAR J defensive rebound (12)                             |
| 01:46     |   |              |          | Timeout 30 Sec   |
| 01:46     | 5 AYALA E substitution out                        |              |          |  |
| 01:46     | 11 GREEN X substitution in                        |              |          |  |
| 01:46     | Timeout 30 Sec                                    |              |          |  |
| 01:36     | 13 HART H foul personal (1 - 7)                   |              |          | 21 HARRAR J foul drawn (3)                                     |
| 01:36     | 11 GREEN X substitution out                       |              |          |  |
| 01:36     | 5 AYALA E substitution in                         |              |          |  |
| 01:36     |   |              |          | 21 HARRAR J 1&1 free throw 1 missed                            |
| 01:35     | 10 REESE J defensive rebound (1)                  |              |          |  |
| 01:08     | 24 SCOTT D foul drawn (3)                         |              |          | 2 DREAD M foul personal (3 - 8)                                |
| 01:08     | 24 SCOTT D 1&1 free throw 1 missed                |              |          |  |
| 01:07     |   |              |          | 21 HARRAR J defensive rebound (13)                             |
| 00:57     |   |              |          | 22 PICKETT J 3pt FG , jump shot missed                         |
| 00:54     | 4 RUSSELL F defensive rebound (5)                 |              |          |  |



**Penn St. at Maryland**

02/21/22 XFINITY Center, College Park  
2021-22 Men's Basketball

**Game Time:** 7:00 PM  
**Game Duration:** 1:55  
**Attendance:** 15,184

**Officials:** D.J. Carstensen, Rob Riley, Keith Kimble

| Game Time            | UMD   | Score        | Diff     | PSU  |
|----------------------|---|--------------|----------|--|
| 00:53                | 4 RUSSELL F foul drawn (3)                        |              |          | 21 HARRAR J foul personal (3 - 9)                        |
| 00:53                | 5 AYALA E substitution out                        |              |          |  |
| 00:53                | 11 GREEN X substitution in                        |              |          |  |
| 00:53                | 4 RUSSELL F 1&1 free throw 1 made (11)            | <b>60-53</b> | <b>7</b> |  |
| 00:53                | 4 RUSSELL F 1&1 free throw 2 missed               |              |          |  |
| 00:52                |   |              |          | 2 DREAD M defensive rebound (2)                          |
| 00:43                |   | <b>60-56</b> | <b>4</b> | 3 SESSOMS S 3pt FG , jump shot made (15)                 |
| 00:40                | 4 RUSSELL F foul drawn (4)                        |              |          | 3 SESSOMS S foul personal (1 - 10)                       |
| 00:40                | 4 RUSSELL F free throw fast break 1 - 2 made (12) | <b>61-56</b> | <b>5</b> |  |
| 00:40                | 10 REESE J substitution out                       |              |          |  |
| 00:40                | 23 MARTINEZ I substitution in                     |              |          |  |
| 00:40                | 4 RUSSELL F free throw fast break 2 - 2 made (13) | <b>62-56</b> | <b>6</b> |  |
| 00:40                |   |              |          | 21 HARRAR J substitution out                             |
| 00:40                |   |              |          | 23 JOHNSON D substitution in                             |
| 00:32                |   | <b>62-58</b> | <b>4</b> | 3 SESSOMS S 2pt FG in the paint, driving layup made (17) |
| 00:27                | 4 RUSSELL F foul drawn (5)                        |              |          | 3 SESSOMS S foul personal (2 - 11)                       |
| 00:27                | 4 RUSSELL F free throw fast break 1 - 2 made (14) | <b>63-58</b> | <b>5</b> |  |
| 00:27                | 4 RUSSELL F free throw fast break 2 - 2 made (15) | <b>64-58</b> | <b>6</b> |  |
| 00:19                | 4 RUSSELL F steal (2)                             |              |          | 3 SESSOMS S turnover lost ball (4)                       |
| 00:15                | 4 RUSSELL F foul drawn (6)                        |              |          | 2 DREAD M foul shooting (4 - 12)                         |
| 00:15                | 4 RUSSELL F free throw fast break 1 - 2 made (16) | <b>65-58</b> | <b>7</b> |  |
| 00:15                | 4 RUSSELL F free throw fast break 2 - 2 missed    |              |          |  |
| 00:14                |   |              |          | 2 DREAD M defensive rebound (3)                          |
| 00:13                |   |              |          | 23 JOHNSON D substitution out                            |
| 00:13                |   |              |          | 21 HARRAR J substitution in                              |
| 00:13                |   |              |          | 3 SESSOMS S substitution out                             |
| 00:13                |   |              |          | 23 JOHNSON D substitution in                             |
| 00:09                |   | <b>65-61</b> | <b>4</b> | 2 DREAD M 3pt FG fast break, jump shot made (6)          |
| 00:09                |   |              |          | 21 HARRAR J assist (2)                                   |
| 00:09                |   |              |          | Timeout 60 Sec   |
| 00:09                | 11 GREEN X substitution out                       |              |          |  |
| 00:09                | 5 AYALA E substitution in                         |              |          |  |
| 00:09                |   |              |          | 21 HARRAR J substitution out                             |
| 00:09                |   |              |          | 3 SESSOMS S substitution in                              |
| 00:08                | 4 RUSSELL F foul drawn (7)                        |              |          | 3 SESSOMS S foul personal (3 - 13)                       |
| 00:08                | 4 RUSSELL F free throw fast break 1 - 2 made (17) | <b>66-61</b> | <b>5</b> |  |
| 00:08                | 4 RUSSELL F free throw fast break 2 - 2 made (18) | <b>67-61</b> | <b>6</b> |  |
| 00:07                | 13 HART H steal (4)                               |              |          | 2 DREAD M turnover bad pass (2)                          |
| <b>END OF GAME</b>   |   |              |          |  |
| <b>UMD 67-61 PSU</b> |   |              |          |  |



**Penn St. at Maryland**

02/21/22 XFINITY Center, College Park  
2021-22 Men's Basketball

Game Time: 7:00 PM  
Game Duration: 1:55  
Attendance: 15,184

Officials: D.J. Carstensen, Rob Riley, Keith Kimble

**Penn St. - 33**

| NO.           | Name            | Min     | FG    |      |     | Rebounds |    |     | Fouls |    | TP | AS | TO | ST | Blocks |    | +/- |
|---------------|-----------------|---------|-------|------|-----|----------|----|-----|-------|----|----|----|----|----|--------|----|-----|
|               |                 |         | M-A   | M-A  | M-A | OR       | DR | TOT | PF    | FD |    |    |    |    | BS     | BA |     |
| 1             | Seth Lundy      | F 16:38 | 1-2   | 1-2  | 0-0 | 1        | 1  | 2   | 2     | 0  | 3  | 0  | 2  | 0  | 1      | 0  | -1  |
| 21            | John Harrar     | F 17:58 | 3-3   | 0-0  | 0-2 | 2        | 5  | 7   | 3     | 3  | 6  | 2  | 0  | 0  | 0      | 0  | 2   |
| 2             | Myles Dread     | G 12:13 | 1-3   | 1-3  | 0-0 | 0        | 3  | 3   | 2     | 0  | 3  | 0  | 2  | 2  | 0      | 0  | -12 |
| 22            | Jalen Pickett   | G 20:00 | 4-8   | 0-2  | 0-0 | 0        | 4  | 4   | 0     | 2  | 8  | 2  | 2  | 1  | 0      | 0  | -6  |
| 23            | Dallion Johnson | G 08:17 | 0-1   | 0-0  | 0-0 | 0        | 0  | 0   | 0     | 0  | 0  | 0  | 1  | 0  | 0      | 0  | -2  |
| 3             | Sam Sessoms     | 12:41   | 5-9   | 2-3  | 1-1 | 0        | 0  | 0   | 3     | 2  | 13 | 0  | 2  | 0  | 0      | 0  | -9  |
| 13            | Jevonnie Scott  | 01:25   | 0-0   | 0-0  | 0-0 | 0        | 0  | 0   | 1     | 0  | 0  | 0  | 0  | 0  | 0      | 0  | -5  |
| 11            | Jaheam Cornwall | 08:09   | 0-0   | 0-0  | 0-0 | 0        | 0  | 0   | 2     | 0  | 0  | 0  | 0  | 0  | 0      | 0  | 1   |
| 4             | Caleb Dorsey    | 02:39   | 0-0   | 0-0  | 0-0 | 0        | 0  | 0   | 0     | 0  | 0  | 0  | 0  | 0  | 0      | 0  | 2   |
| Team          |                 |         |       |      |     | 0        | 0  | 0   |       |    | 0  |    | 0  |    |        |    |     |
| <b>Totals</b> |                 |         | 14-26 | 4-10 | 1-3 | 3        | 13 | 16  | 13    | 7  | 33 | 4  | 9  | 3  | 1      | 0  | -6  |

| Shooting By Period  |       |       |
|---------------------|-------|-------|
| 2 <sup>nd</sup> FG% | 14-26 | 53.8% |
| 3PT%                | 4-10  | 40.0% |
| FT%                 | 1-3   | 33.3% |
| GM FG%              | 14-26 | 53.8% |
| 3PT%                | 4-10  | 40.0% |
| FT%                 | 1-3   | 33.3% |

Dead Ball Rebounds: 0, 0

Technical Fouls::NONE

**Maryland - 39**

| NO.           | Name          | Min     | FG    |      |       | Rebounds |    |     | Fouls |    | TP | AS | TO | ST | Blocks |    | +/- |
|---------------|---------------|---------|-------|------|-------|----------|----|-----|-------|----|----|----|----|----|--------|----|-----|
|               |               |         | M-A   | M-A  | M-A   | OR       | DR | TOT | PF    | FD |    |    |    |    | BS     | BA |     |
| 24            | Donta Scott   | F 19:21 | 1-2   | 0-0  | 2-4   | 0        | 2  | 2   | 1     | 3  | 4  | 0  | 2  | 0  | 0      | 1  | 3   |
| 33            | Qudus Wahab   | C 08:07 | 0-0   | 0-0  | 0-0   | 0        | 2  | 2   | 1     | 0  | 0  | 0  | 0  | 0  | 0      | 0  | -6  |
| 4             | Fatts Russell | G 16:25 | 4-10  | 1-3  | 9-11  | 0        | 2  | 2   | 1     | 7  | 18 | 0  | 0  | 1  | 0      | 0  | 0   |
| 11            | Xavier Green  | G 11:54 | 1-2   | 0-1  | 0-0   | 1        | 0  | 1   | 1     | 0  | 2  | 1  | 1  | 0  | 0      | 0  | -5  |
| 13            | Hakim Hart    | G 14:20 | 1-3   | 0-2  | 1-1   | 0        | 2  | 2   | 1     | 2  | 3  | 0  | 0  | 3  | 0      | 0  | 3   |
| 10            | Julian Reese  | 11:04   | 0-0   | 0-0  | 0-0   | 0        | 1  | 1   | 0     | 0  | 0  | 0  | 0  | 0  | 0      | 0  | 11  |
| 5             | Eric Ayala    | 08:45   | 4-6   | 2-4  | 0-0   | 0        | 0  | 0   | 0     | 0  | 10 | 0  | 1  | 1  | 0      | 0  | 14  |
| 23            | Ian Martinez  | 10:04   | 0-0   | 0-0  | 2-2   | 0        | 0  | 0   | 2     | 1  | 2  | 2  | 0  | 2  | 0      | 0  | 10  |
| Team          |               |         |       |      |       | 2        | 1  | 3   |       |    | 0  |    | 0  |    |        |    |     |
| <b>Totals</b> |               |         | 11-23 | 3-10 | 14-18 | 3        | 10 | 13  | 7     | 13 | 39 | 3  | 4  | 7  | 0      | 1  | 6   |

| Shooting By Period  |       |       |
|---------------------|-------|-------|
| 2 <sup>nd</sup> FG% | 11-23 | 47.8% |
| 3PT%                | 3-10  | 30.0% |
| FT%                 | 14-18 | 77.8% |
| GM FG%              | 11-23 | 47.8% |
| 3PT%                | 3-10  | 30.0% |
| FT%                 | 14-18 | 77.8% |

Dead Ball Rebounds: 0, 1

Technical Fouls::NONE

|                  | PSU                       | UMD                       |
|------------------|---------------------------|---------------------------|
| Biggest lead     | 4 (2 <sup>nd</sup> 16:44) | 13 (2 <sup>nd</sup> 8:40) |
| Best Scoring Run | 4(2 <sup>nd</sup> 16:44)  | 8(2 <sup>nd</sup> 14:57)  |
| Lead Changes     | 2                         |                           |
| Times Tied       | 2                         |                           |
| Time with Lead   | 02:23                     | 15:37                     |

| Points from   | PSU | UMD |
|---------------|-----|-----|
| Turnovers     | 2   | 13  |
| Paint         | 16  | 14  |
| Second Chance | 2   | 6   |
| Fast Breaks   | 3   | 15  |
| Bench         | 13  | 12  |

|     | Period by Period Scoring |     |     |
|-----|--------------------------|-----|-----|
|     | 1st                      | 2nd | TOT |
| PSU | 28                       | 33  | 61  |
| UMD | 28                       | 39  | 67  |



**Penn St. at Maryland**

02/21/22 XFINITY Center, College Park  
2021-22 Men's Basketball

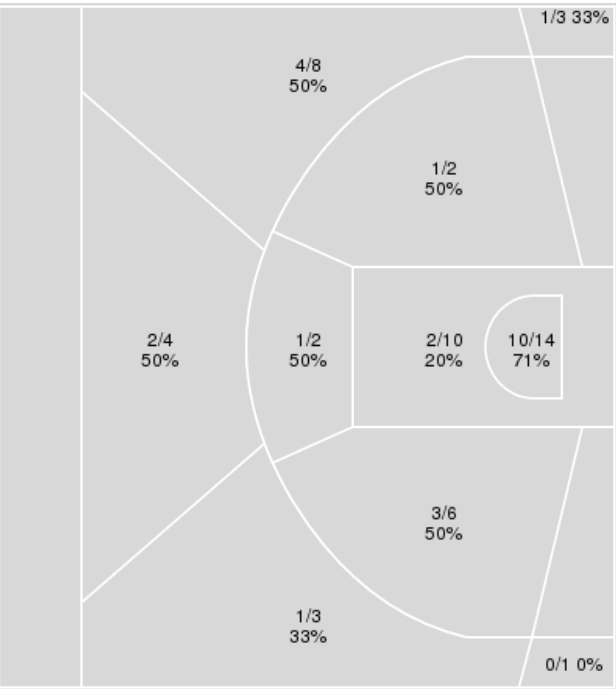
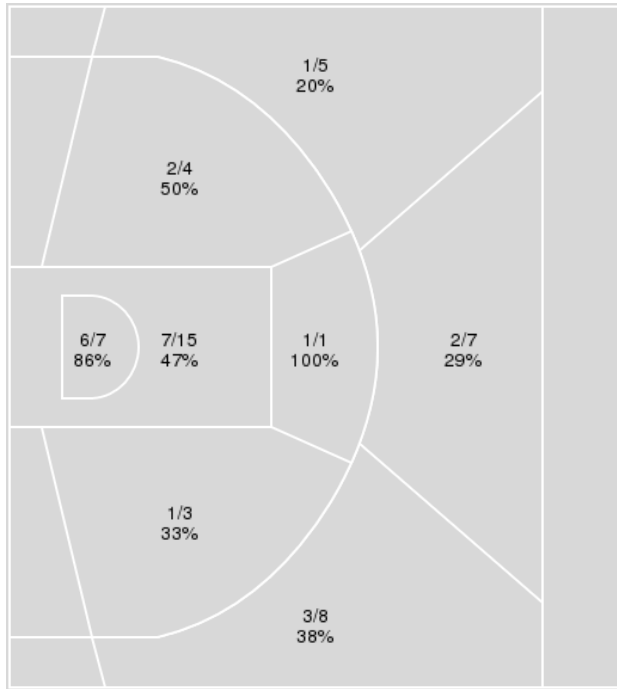
Officials: D.J. Carstensen, Rob Riley, Keith Kimble

{ Players => All; } FG Types => All; Results => All;

{ Players => 0, 1, 2, 3, 4, 5, 11, 13, 14, 15, 21, 22, 23, 33, 35; } FG  
Types => All; Results => All;

**Maryland**

**Penn St.**



| Maryland    | M/A   | %  |
|-------------|-------|----|
| Field Goals | 23/50 | 46 |
| 2 Points    | 17/30 | 57 |
| 3 Points    | 6/20  | 30 |
| Free Throws | 15/19 | 79 |

| Penn St.    | M/A   | %  |
|-------------|-------|----|
| Field Goals | 25/53 | 47 |
| 2 Points    | 17/34 | 50 |
| 3 Points    | 8/19  | 42 |
| Free Throws | 3/5   | 60 |



**Penn St. at Maryland**

02/21/22 XFINITY Center, College Park  
2021-22 Men's Basketball

Game Time: 7:00 PM  
Game Duration: 1:55  
Attendance: 15,184

Officials: D.J. Carstensen, Rob Riley, Keith Kimble

**Penn St.**

| No | Name            | Mins  |       | Score   |         | Points Diff |     | Points per Min |      | Assists |     | Rebounds |     | Steals |     | Turnovers |     |
|----|-----------------|-------|-------|---------|---------|-------------|-----|----------------|------|---------|-----|----------|-----|--------|-----|-----------|-----|
|    |                 | On    | Off   | On      | Off     | On          | Off | On             | Off  | On      | Off | On       | Off | On     | Off | On        | Off |
| 1  | Seth Lundy      | 34:24 | 05:36 | 53 - 58 | 8 - 9   | -5          | -1  | 1.54           | 1.43 | 9       | 0   | 29       | 3   | 5      | 2   | 11        | 2   |
| 2  | Myles Dread     | 20:02 | 19:58 | 29 - 45 | 32 - 22 | -16         | 10  | 1.45           | 1.60 | 4       | 5   | 13       | 19  | 4      | 3   | 8         | 5   |
| 3  | Sam Sessoms     | 24:52 | 15:08 | 36 - 41 | 25 - 26 | -5          | -1  | 1.45           | 1.65 | 3       | 6   | 23       | 9   | 5      | 2   | 9         | 4   |
| 4  | Caleb Dorsey    | 09:18 | 30:42 | 19 - 13 | 42 - 54 | 6           | -12 | 2.04           | 1.37 | 4       | 5   | 5        | 27  | 1      | 6   | 2         | 11  |
| 11 | Jaheam Cornwall | 08:09 | 31:51 | 12 - 11 | 49 - 56 | 1           | -7  | 1.47           | 1.54 | 2       | 7   | 5        | 27  | 2      | 5   | 2         | 11  |
| 13 | Jevonnie Scott  | 05:50 | 34:10 | 12 - 15 | 49 - 52 | -3          | -3  | 2.06           | 1.43 | 2       | 7   | 2        | 30  | 1      | 6   | 2         | 11  |
| 14 | Jalanni White   | 02:14 | 37:46 | 2 - 0   | 59 - 67 | 2           | -8  | 0.90           | 1.56 | 0       | 9   | 3        | 29  | 0      | 7   | 0         | 13  |
| 21 | John Harrar     | 31:19 | 08:41 | 45 - 47 | 16 - 20 | -2          | -4  | 1.44           | 1.84 | 7       | 2   | 26       | 6   | 6      | 1   | 9         | 4   |
| 22 | Jalen Pickett   | 40:00 | 00:00 | 61 - 67 | 0 - 0   | -6          | 0   | 1.53           | 0.00 | 9       | 0   | 32       | 0   | 7      | 0   | 13        | 0   |
| 23 | Dallion Johnson | 23:52 | 16:08 | 36 - 38 | 25 - 29 | -2          | -4  | 1.51           | 1.55 | 5       | 4   | 22       | 10  | 4      | 3   | 9         | 4   |

**Maryland**

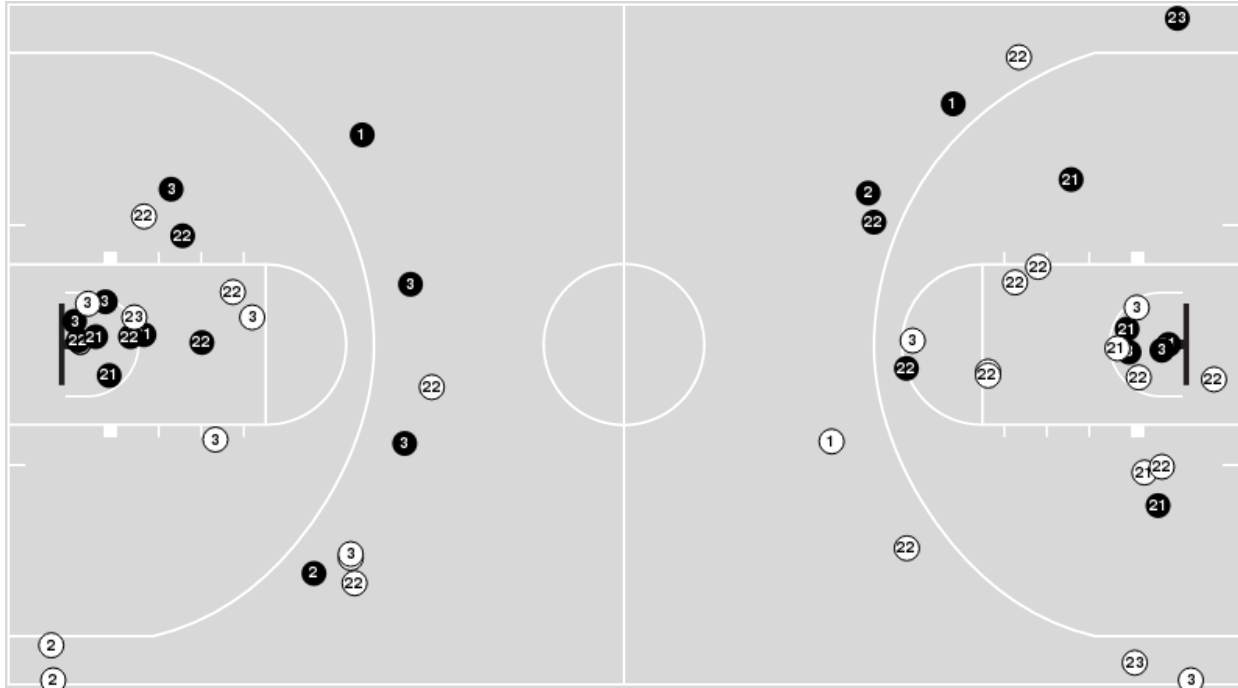
| No | Name          | Mins  |       | Score   |         | Points Diff |     | Points per Min |      | Assists |     | Rebounds |     | Steals |     | Turnovers |     |
|----|---------------|-------|-------|---------|---------|-------------|-----|----------------|------|---------|-----|----------|-----|--------|-----|-----------|-----|
|    |               | On    | Off   | On      | Off     | On          | Off | On             | Off  | On      | Off | On       | Off | On     | Off | On        | Off |
| 4  | Fatts Russell | 27:53 | 12:07 | 45 - 48 | 22 - 13 | -3          | 9   | 1.61           | 1.82 | 4       | 3   | 19       | 9   | 5      | 6   | 4         | 5   |
| 5  | Eric Ayala    | 17:13 | 22:47 | 33 - 22 | 34 - 39 | 11          | -5  | 1.92           | 1.49 | 4       | 3   | 10       | 18  | 7      | 4   | 5         | 4   |
| 10 | Julian Reese  | 17:15 | 22:45 | 35 - 28 | 32 - 33 | 7           | -1  | 2.03           | 1.41 | 3       | 4   | 9        | 19  | 6      | 5   | 5         | 4   |
| 11 | Xavier Green  | 29:02 | 10:58 | 43 - 51 | 24 - 10 | -8          | 14  | 1.48           | 2.19 | 4       | 3   | 19       | 9   | 7      | 4   | 6         | 3   |
| 13 | Hakim Hart    | 32:27 | 07:33 | 50 - 44 | 17 - 17 | 6           | 0   | 1.54           | 2.25 | 5       | 2   | 27       | 1   | 10     | 1   | 7         | 2   |
| 23 | Ian Martinez  | 20:29 | 19:31 | 45 - 35 | 22 - 26 | 10          | -4  | 2.20           | 1.13 | 5       | 2   | 10       | 18  | 9      | 2   | 7         | 2   |
| 24 | Donta Scott   | 33:45 | 06:15 | 58 - 49 | 9 - 12  | 9           | -3  | 1.72           | 1.44 | 6       | 1   | 27       | 1   | 8      | 3   | 7         | 2   |
| 33 | Qudus Wahab   | 21:56 | 18:04 | 26 - 28 | 41 - 33 | -2          | 8   | 1.19           | 2.27 | 4       | 3   | 19       | 9   | 3      | 8   | 4         | 5   |



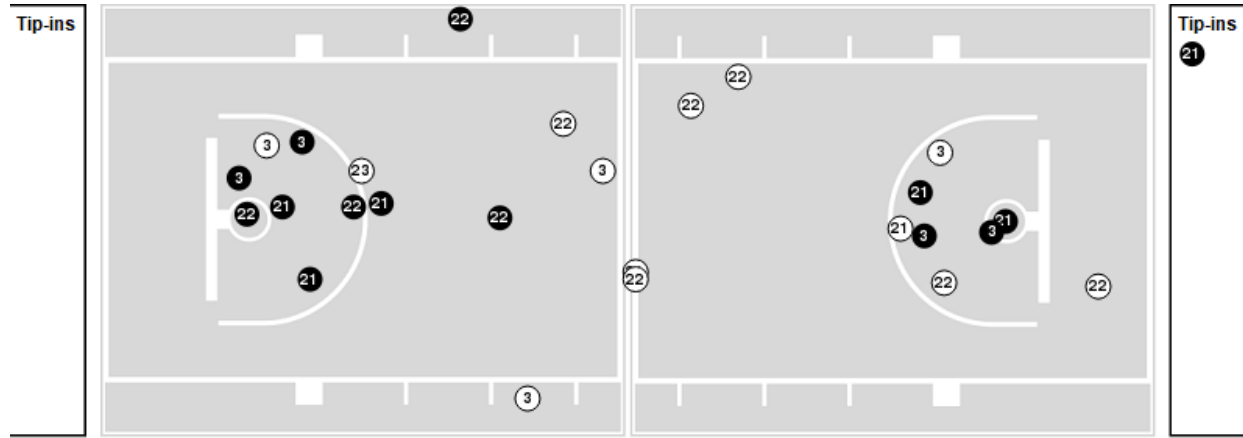
Players => 0, 1, 2, 3, 4, 5, 11, 13, 14, 15, 21, 22, 23, 33, 35FG Types=>AllResults=>All

**Penn St.**

**All Field Goals**



**Blow Up Chart**



● Made ○ Missed N - Player Number

| Penn St.    | M/A   | %  |
|-------------|-------|----|
| Field Goals | 25/53 | 47 |
| 2 Points    | 17/34 | 50 |
| 3 Points    | 8/19  | 42 |
| Free Throws | 3/5   | 60 |

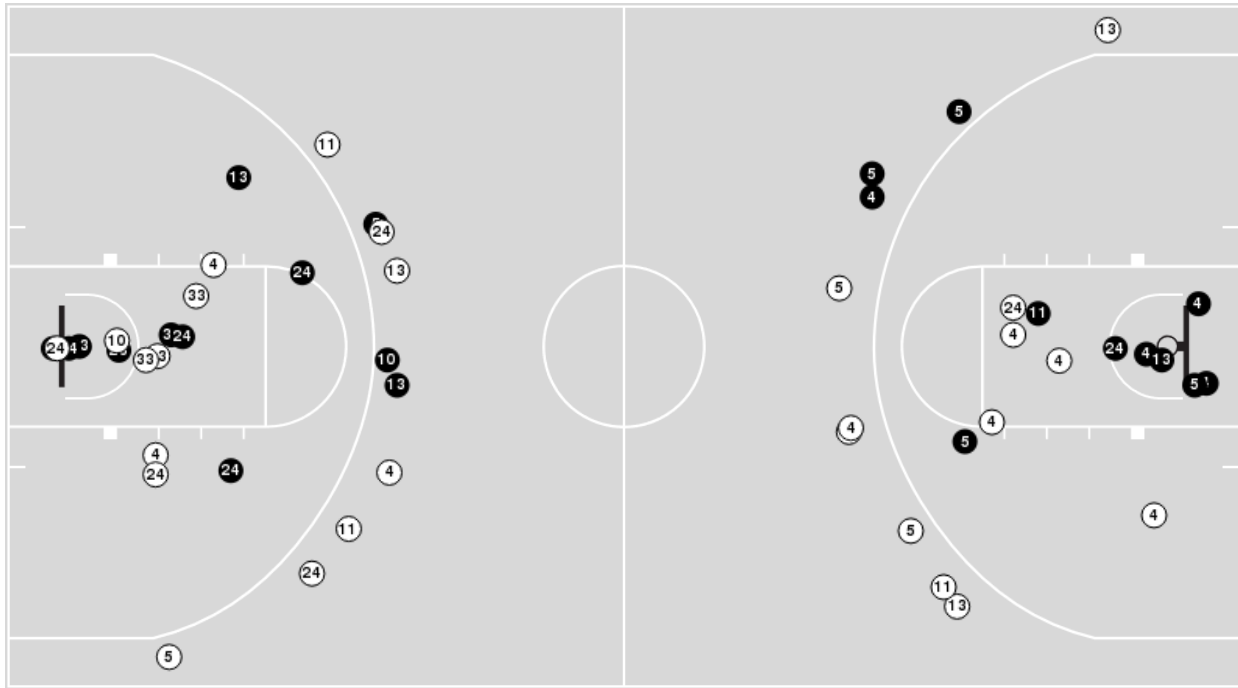
| Penn St.             | M/A          | %   |
|----------------------|--------------|-----|
| Points in the Paint  | 24 (12 / 24) | 50  |
| Fast Break Points    | 6 (2/2)      | 100 |
| Second Chance Points | 10 (5/8)     | 63  |
| Effective FG%        | 55           |     |



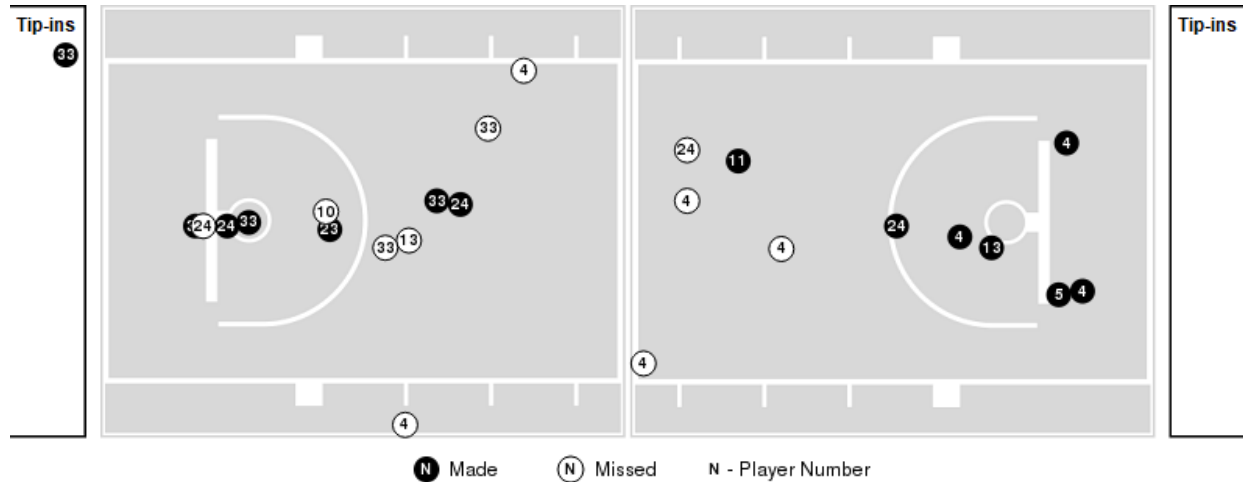
Players => AllFG Types=>AllResults=>All

**Maryland**

**All Field Goals**



**Blow Up Chart**



● Made ○ Missed N - Player Number

| Maryland    | M/A   | %  |
|-------------|-------|----|
| Field Goals | 23/50 | 46 |
| 2 Points    | 17/30 | 57 |
| 3 Points    | 6/20  | 30 |
| Free Throws | 15/19 | 79 |

| Maryland             | M/A          | %  |
|----------------------|--------------|----|
| Points in the Paint  | 26 (13 / 22) | 59 |
| Fast Break Points    | 17 (12/13)   | 92 |
| Second Chance Points | 10 (6/9)     | 67 |
| Effective FG%        | 52           |    |





**Penn St. at Maryland**

02/21/22 XFINITY Center, College Park  
2021-22 Men's Basketball

**Game Time:** 7:00 PM  
**Game Duration:** 1:55  
**Attendance:** 15,184

**Officials:** D.J. Carstensen, Rob Riley, Keith Kimble

**Penn St.**

| Lineup   | Quarter On | Time On | Quarter Off | Time Off | Time on Court | Score | Score Diff | Reb | Stl | Tov | Ass | PPP    |
|--|------------|---------|-------------|----------|---------------|-------|------------|-----|-----|-----|-----|--------|
| 1- Lundy S/ 2- Dread M/ 21- Harrar J/ 22- Pickett J/ 23- Johnson D/    | 1          | 20:00   | 1           | 12:11    | 07:49         | 9-13  | -4         | 5   | 1   | 1   | 2   | 0.8182 |
| 1- Lundy S/ 3- Sessoms S/ 4- Dorsey C/ 13- Scott J/ 22- Pickett J/     | 1          | 12:11   | 1           | 07:46    | 04:25         | 8-8   | 0          | 2   | 1   | 2   | 2   | 1.3333 |
| 3- Sessoms S/ 4- Dorsey C/ 13- Scott J/ 22- Pickett J/ 23- Johnson D/  | 1          | 07:46   | 1           | 07:46    | 00:00         | 2-0   | 2          | 0   | 0   | 0   | 0   | 2.2727 |
| 3- Sessoms S/ 4- Dorsey C/ 14- White J/ 22- Pickett J/ 23- Johnson D/  | 1          | 07:46   | 1           | 05:32    | 02:14         | 2-0   | 2          | 3   | 0   | 0   | 0   | 1.0000 |
| 1- Lundy S/ 3- Sessoms S/ 21- Harrar J/ 22- Pickett J/ 23- Johnson D/  | 1          | 05:32   | 2           | 20:00    | 05:32         | 7-7   | 0          | 6   | 2   | 1   | 1   | 1.0000 |
| 1- Lundy S/ 2- Dread M/ 21- Harrar J/ 22- Pickett J/ 23- Johnson D/    | 2          | 20:00   | 2           | 15:49    | 04:11         | 6-4   | 2          | 4   | 1   | 2   | 1   | 1.0000 |
| 1- Lundy S/ 2- Dread M/ 3- Sessoms S/ 13- Scott J/ 22- Pickett J/      | 2          | 15:49   | 2           | 14:24    | 01:25         | 2-7   | -5         | 0   | 0   | 0   | 0   | 1.0000 |
| 2- Dread M/ 3- Sessoms S/ 21- Harrar J/ 22- Pickett J/ 23- Johnson D/  | 2          | 14:24   | 2           | 12:56    | 01:28         | 3-7   | -4         | 0   | 0   | 1   | 0   | 1.5000 |
| 1- Lundy S/ 3- Sessoms S/ 21- Harrar J/ 22- Pickett J/ 23- Johnson D/  | 2          | 12:56   | 2           | 10:59    | 01:57         | 2-2   | 0          | 3   | 0   | 2   | 0   | 0.5000 |
| 2- Dread M/ 3- Sessoms S/ 11- Cornwall J/ 21- Harrar J/ 22- Pickett J/ | 2          | 10:59   | 2           | 09:05    | 01:54         | 1-2   | -1         | 0   | 2   | 1   | 0   | 0.2907 |
| 1- Lundy S/ 2- Dread M/ 11- Cornwall J/ 21- Harrar J/ 22- Pickett J/   | 2          | 09:05   | 2           | 08:40    | 00:25         | 0-4   | -4         | 0   | 0   | 1   | 0   | 0.0000 |
| 1- Lundy S/ 4- Dorsey C/ 11- Cornwall J/ 21- Harrar J/ 22- Pickett J/  | 2          | 08:40   | 2           | 06:01    | 02:39         | 7-5   | 2          | 0   | 0   | 0   | 2   | 2.3333 |
| 1- Lundy S/ 3- Sessoms S/ 11- Cornwall J/ 21- Harrar J/ 22- Pickett J/ | 2          | 06:01   | 2           | 02:50    | 03:11         | 4-0   | 4          | 5   | 0   | 0   | 0   | 0.9009 |
| 1- Lundy S/ 2- Dread M/ 3- Sessoms S/ 21- Harrar J/ 22- Pickett J/     | 2          | 02:50   | 2           | 00:40    | 02:09         | 3-3   | 0          | 3   | 0   | 0   | 0   | 0.8721 |
| 1- Lundy S/ 2- Dread M/ 3- Sessoms S/ 22- Pickett J/ 23- Johnson D/    | 2          | 00:40   | 2           | 00:13    | 00:28         | 2-3   | -1         | 1   | 0   | 1   | 0   | 1.0000 |
| 1- Lundy S/ 2- Dread M/ 3- Sessoms S/ 21- Harrar J/ 22- Pickett J/     | 2          | 00:13   | 2           | 00:13    | 00:00         | 0-0   | 0          | 0   | 0   | 0   | 0   | 0.0000 |
| 1- Lundy S/ 2- Dread M/ 21- Harrar J/ 22- Pickett J/ 23- Johnson D/    | 2          | 00:13   | 2           | 00:09    | 00:04         | 3-0   | 3          | 0   | 0   | 0   | 1   | 3.0000 |
| 1- Lundy S/ 2- Dread M/ 3- Sessoms S/ 22- Pickett J/ 23- Johnson D/    | 2          | 00:09   | 2           | 00:00    | 00:09         | 0-2   | -2         | 0   | 0   | 1   | 0   | 0.0000 |



**Penn St. at Maryland**

02/21/22 XFINITY Center, College Park  
2021-22 Men's Basketball

**Game Time:** 7:00 PM  
**Game Duration:** 1:55  
**Attendance:** 15,184

**Officials:** D.J. Carstensen, Rob Riley, Keith Kimble

**Maryland**

| Lineup   | Quarter On | Time On | Quarter Off | Time Off | Time on Court | Score | Score Diff | Reb | Stl | Tov | Ass | PPP    |
|--|------------|---------|-------------|----------|---------------|-------|------------|-----|-----|-----|-----|--------|
| 4- Russell F/ 11- Green X/ 13- Hart H/ 24- Scott D/ 33- Wahab Q/     | 1          | 20:00   | 1           | 12:11    | 07:49         | 13-9  | 4          | 9   | 1   | 1   | 2   | 1.1364 |
| 4- Russell F/ 5- Ayala E/ 10- Reese J/ 23- Martinez I/ 24- Scott D/  | 1          | 12:11   | 1           | 11:36    | 00:35         | 2-0   | 2          | 0   | 0   | 0   | 0   | 2.0000 |
| 4- Russell F/ 5- Ayala E/ 10- Reese J/ 11- Green X/ 23- Martinez I/  | 1          | 11:36   | 1           | 10:18    | 01:18         | 0-5   | -5         | 0   | 0   | 1   | 0   | 0.0000 |
| 5- Ayala E/ 10- Reese J/ 11- Green X/ 13- Hart H/ 23- Martinez I/    | 1          | 10:18   | 1           | 07:46    | 02:32         | 6-3   | 3          | 1   | 2   | 1   | 1   | 1.5000 |
| 4- Russell F/ 5- Ayala E/ 10- Reese J/ 11- Green X/ 13- Hart H/      | 1          | 07:46   | 1           | 06:00    | 01:46         | 0-4   | -4         | 0   | 0   | 0   | 0   | 0.0000 |
| 5- Ayala E/ 13- Hart H/ 23- Martinez I/ 24- Scott D/ 33- Wahab Q/    | 1          | 06:00   | 1           | 03:43    | 02:17         | 3-2   | 1          | 3   | 0   | 1   | 1   | 1.0000 |
| 11- Green X/ 13- Hart H/ 23- Martinez I/ 24- Scott D/ 33- Wahab Q/   | 1          | 03:43   | 2           | 20:00    | 03:43         | 4-5   | -1         | 2   | 1   | 1   | 0   | 0.8000 |
| 4- Russell F/ 11- Green X/ 13- Hart H/ 24- Scott D/ 33- Wahab Q/     | 2          | 20:00   | 2           | 15:49    | 04:11         | 4-6   | -2         | 2   | 1   | 1   | 0   | 0.6667 |
| 4- Russell F/ 10- Reese J/ 11- Green X/ 13- Hart H/ 24- Scott D/     | 2          | 15:49   | 2           | 15:16    | 00:33         | 3-0   | 3          | 1   | 0   | 0   | 0   | 2.0833 |
| 4- Russell F/ 5- Ayala E/ 10- Reese J/ 23- Martinez I/ 24- Scott D/  | 2          | 15:16   | 2           | 12:15    | 03:01         | 11-5  | 6          | 0   | 1   | 0   | 1   | 2.2541 |
| 5- Ayala E/ 10- Reese J/ 13- Hart H/ 23- Martinez I/ 24- Scott D/    | 2          | 12:15   | 2           | 09:05    | 03:10         | 6-3   | 3          | 3   | 2   | 2   | 1   | 1.0204 |
| 5- Ayala E/ 10- Reese J/ 11- Green X/ 13- Hart H/ 23- Martinez I/    | 2          | 09:05   | 2           | 08:40    | 00:25         | 3-0   | 3          | 0   | 1   | 0   | 0   | 2.0833 |
| 4- Russell F/ 5- Ayala E/ 10- Reese J/ 11- Green X/ 23- Martinez I/  | 2          | 08:40   | 2           | 08:26    | 00:14         | 0-0   | 0          | 0   | 0   | 0   | 0   | 0.0000 |
| 4- Russell F/ 10- Reese J/ 11- Green X/ 23- Martinez I/ 24- Scott D/ | 2          | 08:26   | 2           | 06:54    | 01:32         | 2-5   | -3         | 1   | 0   | 1   | 0   | 1.0000 |
| 4- Russell F/ 11- Green X/ 23- Martinez I/ 24- Scott D/ 33- Wahab Q/ | 2          | 06:54   | 2           | 06:01    | 00:53         | 2-2   | 0          | 0   | 0   | 0   | 1   | 2.0000 |
| 4- Russell F/ 11- Green X/ 13- Hart H/ 23- Martinez I/ 24- Scott D/  | 2          | 06:01   | 2           | 05:53    | 00:08         | 0-0   | 0          | 0   | 0   | 0   | 0   | 0.0000 |
| 4- Russell F/ 11- Green X/ 13- Hart H/ 24- Scott D/ 33- Wahab Q/     | 2          | 05:53   | 2           | 03:20    | 02:33         | 0-4   | -4         | 2   | 0   | 0   | 0   | 0.0000 |
| 4- Russell F/ 5- Ayala E/ 13- Hart H/ 24- Scott D/ 33- Wahab Q/      | 2          | 03:20   | 2           | 02:50    | 00:30         | 0-0   | 0          | 1   | 0   | 0   | 0   | 0.0000 |
| 4- Russell F/ 10- Reese J/ 11- Green X/ 13- Hart H/ 24- Scott D/     | 2          | 02:50   | 2           | 02:19    | 00:31         | 0-0   | 0          | 1   | 0   | 0   | 0   | 0.0000 |
| 4- Russell F/ 5- Ayala E/ 10- Reese J/ 13- Hart H/ 24- Scott D/      | 2          | 02:19   | 2           | 01:46    | 00:33         | 0-0   | 0          | 0   | 0   | 0   | 0   | 0.0000 |
| 4- Russell F/ 10- Reese J/ 11- Green X/ 13- Hart H/ 24- Scott D/     | 2          | 01:46   | 2           | 01:36    | 00:10         | 0-0   | 0          | 0   | 0   | 0   | 0   | 0.0000 |
| 4- Russell F/ 5- Ayala E/ 10- Reese J/ 13- Hart H/ 24- Scott D/      | 2          | 01:36   | 2           | 00:53    | 00:43         | 0-0   | 0          | 2   | 0   | 0   | 0   | 0.0000 |
| 4- Russell F/ 10- Reese J/ 11- Green X/ 13- Hart H/ 24- Scott D/     | 2          | 00:53   | 2           | 00:40    | 00:12         | 2-3   | -1         | 0   | 0   | 0   | 0   | 1.5152 |
| 4- Russell F/ 11- Green X/ 13- Hart H/ 23- Martinez I/ 24- Scott D/  | 2          | 00:40   | 2           | 00:09    | 00:32         | 4-5   | -1         | 0   | 1   | 0   | 0   | 1.8182 |
| 4- Russell F/ 5- Ayala E/ 13- Hart H/ 23- Martinez I/ 24- Scott D/   | 2          | 00:09   | 2           | 00:00    | 00:09         | 2-0   | 2          | 0   | 1   | 0   | 0   | 2.2727 |



**Penn St. at Maryland**

02/21/22 XFINITY Center, College Park  
2021-22 Men's Basketball

**Game Time:** 7:00 PM  
**Game Duration:** 1:55  
**Attendance:** 15,184

**Officials:** D.J. Carstensen, Rob Riley, Keith Kimble

**Penn St.**

| Lineup   | Time  | Score | Score Diff | Pts/Min | Reb | Stl | Tov | Ass | PPP    |
|--|-------|-------|------------|---------|-----|-----|-----|-----|--------|
| 1- Lundy S/ 2- Dread M/ 21- Harrar J/ 22- Pickett J/ 23- Johnson D/    | 12:04 | 18-17 | 1          | 1.4917  | 9   | 2   | 3   | 4   | 1.0000 |
| 1- Lundy S/ 3- Sessoms S/ 21- Harrar J/ 22- Pickett J/ 23- Johnson D/  | 07:29 | 9-9   | 0          | 1.2027  | 9   | 2   | 3   | 1   | 0.8182 |
| 1- Lundy S/ 3- Sessoms S/ 4- Dorsey C/ 13- Scott J/ 22- Pickett J/     | 04:25 | 8-8   | 0          | 1.8113  | 2   | 1   | 2   | 2   | 1.3333 |
| 1- Lundy S/ 3- Sessoms S/ 11- Cornwall J/ 21- Harrar J/ 22- Pickett J/ | 03:11 | 4-0   | 4          | 1.2565  | 5   | 0   | 0   | 0   | 0.9009 |
| 1- Lundy S/ 4- Dorsey C/ 11- Cornwall J/ 21- Harrar J/ 22- Pickett J/  | 02:39 | 7-5   | 2          | 2.6415  | 0   | 0   | 0   | 2   | 2.3333 |
| 3- Sessoms S/ 4- Dorsey C/ 14- White J/ 22- Pickett J/ 23- Johnson D/  | 02:14 | 2-0   | 2          | 0.8955  | 3   | 0   | 0   | 0   | 1.0000 |
| 1- Lundy S/ 2- Dread M/ 3- Sessoms S/ 21- Harrar J/ 22- Pickett J/     | 02:09 | 3-3   | 0          | 1.3953  | 3   | 0   | 0   | 0   | 0.8721 |
| 2- Dread M/ 3- Sessoms S/ 11- Cornwall J/ 21- Harrar J/ 22- Pickett J/ | 01:54 | 1-2   | -1         | 0.5263  | 0   | 2   | 1   | 0   | 0.2907 |
| 2- Dread M/ 3- Sessoms S/ 21- Harrar J/ 22- Pickett J/ 23- Johnson D/  | 01:28 | 3-7   | -4         | 2.0455  | 0   | 0   | 1   | 0   | 1.5000 |
| 1- Lundy S/ 2- Dread M/ 3- Sessoms S/ 13- Scott J/ 22- Pickett J/      | 01:25 | 2-7   | -5         | 1.4118  | 0   | 0   | 0   | 0   | 1.0000 |
| 1- Lundy S/ 2- Dread M/ 3- Sessoms S/ 22- Pickett J/ 23- Johnson D/    | 00:37 | 2-5   | -3         | 3.2432  | 1   | 0   | 2   | 0   | 0.6667 |
| 1- Lundy S/ 2- Dread M/ 11- Cornwall J/ 21- Harrar J/ 22- Pickett J/   | 00:25 | 0-4   | -4         | 0.0000  | 0   | 0   | 1   | 0   | 0.0000 |
| 3- Sessoms S/ 4- Dorsey C/ 13- Scott J/ 22- Pickett J/ 23- Johnson D/  | 00:00 | 2-0   | 2          | ∞       | 0   | 0   | 0   | 0   | 2.2727 |



**Penn St. at Maryland**

02/21/22 XFINITY Center, College Park  
2021-22 Men's Basketball

**Game Time:** 7:00 PM  
**Game Duration:** 1:55  
**Attendance:** 15,184

**Officials:** D.J. Carstensen, Rob Riley, Keith Kimble

**Maryland**

| Lineup   | Time  | Score | Score Diff | Pts/Min | Reb | Stl | Tov | Ass | PPP    |
|--|-------|-------|------------|---------|-----|-----|-----|-----|--------|
| 4- Russell F/ 11- Green X/ 13- Hart H/ 24- Scott D/ 33- Wahab Q/     | 14:33 | 17-19 | -2         | 1.1684  | 13  | 2   | 2   | 2   | 0.8551 |
| 11- Green X/ 13- Hart H/ 23- Martinez I/ 24- Scott D/ 33- Wahab Q/   | 03:43 | 4-5   | -1         | 1.0762  | 2   | 1   | 1   | 0   | 0.8000 |
| 4- Russell F/ 5- Ayala E/ 10- Reese J/ 23- Martinez I/ 24- Scott D/  | 03:36 | 13-5  | 8          | 3.6111  | 0   | 1   | 0   | 1   | 2.2109 |
| 5- Ayala E/ 10- Reese J/ 13- Hart H/ 23- Martinez I/ 24- Scott D/    | 03:10 | 6-3   | 3          | 1.8947  | 3   | 2   | 2   | 1   | 1.0204 |
| 5- Ayala E/ 10- Reese J/ 11- Green X/ 13- Hart H/ 23- Martinez I/    | 02:57 | 9-3   | 6          | 3.0508  | 1   | 3   | 1   | 1   | 1.6544 |
| 5- Ayala E/ 13- Hart H/ 23- Martinez I/ 24- Scott D/ 33- Wahab Q/    | 02:17 | 3-2   | 1          | 1.3139  | 3   | 0   | 1   | 1   | 1.0000 |
| 4- Russell F/ 5- Ayala E/ 10- Reese J/ 11- Green X/ 13- Hart H/      | 01:46 | 0-4   | -4         | 0.0000  | 0   | 0   | 0   | 0   | 0.0000 |
| 4- Russell F/ 5- Ayala E/ 10- Reese J/ 11- Green X/ 23- Martinez I/  | 01:32 | 0-5   | -5         | 0.0000  | 0   | 0   | 1   | 0   | 0.0000 |
| 4- Russell F/ 10- Reese J/ 11- Green X/ 23- Martinez I/ 24- Scott D/ | 01:32 | 2-5   | -3         | 1.3043  | 1   | 0   | 1   | 0   | 1.0000 |
| 4- Russell F/ 10- Reese J/ 11- Green X/ 13- Hart H/ 24- Scott D/     | 01:26 | 5-3   | 2          | 3.4884  | 2   | 0   | 0   | 0   | 1.8116 |
| 4- Russell F/ 5- Ayala E/ 10- Reese J/ 13- Hart H/ 24- Scott D/      | 01:16 | 0-0   | 0          | 0.0000  | 2   | 0   | 0   | 0   | 0.0000 |
| 4- Russell F/ 11- Green X/ 23- Martinez I/ 24- Scott D/ 33- Wahab Q/ | 00:53 | 2-2   | 0          | 2.2642  | 0   | 0   | 0   | 1   | 2.0000 |
| 4- Russell F/ 11- Green X/ 13- Hart H/ 23- Martinez I/ 24- Scott D/  | 00:40 | 4-5   | -1         | 6.0000  | 0   | 1   | 0   | 0   | 1.8182 |
| 4- Russell F/ 5- Ayala E/ 13- Hart H/ 24- Scott D/ 33- Wahab Q/      | 00:30 | 0-0   | 0          | 0.0000  | 1   | 0   | 0   | 0   | 0.0000 |
| 4- Russell F/ 5- Ayala E/ 13- Hart H/ 23- Martinez I/ 24- Scott D/   | 00:09 | 2-0   | 2          | 13.3333 | 0   | 1   | 0   | 0   | 2.2727 |