



2018 PENN STATE WOMEN'S SOCCER

2015 NCAA CHAMPIONS
23 STRAIGHT NCAA TOURNAMENT APPEARANCES
18-TIME BIG TEN REGULAR SEASON CHAMPIONS
SEVEN-TIME BIG TEN TOURNAMENT CHAMPIONS
FIVE COLLEGE CUP APPEARANCES

2018 SCHEDULE

AUGUST

| | | | |
|------|----|-------------------------|----|
| SUN. | 5 | BOSTON COLLEGE (EXHIB.) | -- |
| SAT. | 11 | GEORGETOWN (EXHIB.) | -- |

PENN STATE INVITATIONAL (Aug. 17-19)

| | | | |
|------|----|---------------------|--------|
| FRI. | 17 | No. 9 WEST VIRGINIA | W, 1-0 |
| SUN. | 19 | DUQUESNE | W, 6-0 |

| | | | |
|--------|----|--------------------|--------|
| SAT. | 25 | No. 2 UCLA (ESPNU) | 4 P.M. |
| Thurs. | 30 | at James Madison | 7 p.m. |

SEPTEMBER

| | | | |
|--------|----|------------------------|--------|
| Sun. | 2 | at Wake Forest | 6 p.m. |
| THURS. | 6 | SYRACUSE | 7 P.M. |
| SUN. | 9 | VIRGINIA | 1 P.M. |
| FRI. | 14 | OHIO STATE* | 6 P.M. |
| Thurs. | 20 | at Northwestern* (BTN) | 8 p.m. |
| Sat. | 22 | at Illinois* | 8 p.m. |
| THURS. | 27 | NEBRASKA* (BTN) | 6 P.M. |
| SUN. | 30 | IOWA* | 1 P.M. |

OCTOBER

| | | | |
|--------|----|--------------------|-----------|
| Fri. | 5 | at Michigan State* | 7 p.m. |
| Sun. | 7 | at Michigan* | Noon |
| FRI. | 12 | MARYLAND* | 7 P.M. |
| SUN. | 14 | RUTGERS* (BTN) | 3 P.M. |
| Thurs. | 18 | at Indiana* | 7:30 p.m. |
| SUN. | 21 | MINNESOTA* | 1 P.M. |

BIG TEN TOURNAMENT (Oct. 28-Nov. 4)

| | | | |
|------|----|---------------|-----|
| Sun. | 28 | Quarterfinals | TBA |
|------|----|---------------|-----|

NOVEMBER

| | | | |
|------|---|------------|-----|
| Fri. | 2 | Semifinals | TBA |
| Sun. | 4 | Final | TBA |

NCAA TOURNAMENT (Nov. 9-23)

| | | | |
|------|----|---------------|-----|
| Fri. | 9 | First Round | TBA |
| Fri. | 16 | Second Round | TBA |
| Sun. | 18 | Third Round | TBA |
| Fri. | 23 | Quarterfinals | TBA |

WOMEN'S COLLEGE CUP (Nov. 30-Dec. 2)

| | | | |
|------|----|-------------|-----|
| Fri. | 30 | Semifinal ! | TBA |
|------|----|-------------|-----|

DECEMBER

| | | | |
|------|---|---------|-----|
| Sun. | 2 | Final ! | TBA |
|------|---|---------|-----|

* - Big Ten match
 ESPNU - ESPN Broadcast
 BTN - Big Ten Network Broadcast
 Home matches in CAPS at Jeffrey Field
 ! - Cary, N.C.
 All times Eastern

TABLE OF CONTENTS

| | |
|--|-------|
| Schedule/The Starting XI | 1 |
| Quick Facts..... | 2 |
| Team Comparison/Series History | 3 |
| Honors/Awards..... | 4 |
| Rankings | 5 |
| Career Rankings/Big Ten Standings..... | 6 |
| The Last Time/Record When | 7 |
| Combined Stats/Individual Stats..... | 8-9 |
| Box Scores | 10 |
| Coach Dambach | 11-12 |
| Radio/TV Roster | 13 |

THIS WEEKEND

Game Three

No. 3 Penn State (2-0-0) vs. No. 2 UCLA (1-0-0)

TV: ESPNU

Stats: GoPSUsports.com

Jeffrey Field | University Park, Pa.

Saturday, Aug. 25 | 4 PM

THE STARTING XI

6

Saturday's match will be the sixth meeting between the two programs. Penn State leads the series, 3-2-0.

412

Since the start of the 2011 season, Penn State has scored 412 goals, which ranks third in the nation (Virginia - 457 & Stanford - 415).

12

Penn State is 11-0-1 in its last 12 matches at Jeffrey Field dating back to the 2016 season.

25

2018 marks the 25th season of Penn State women's soccer as a varsity program.

48

Since the start of the 2014 season, Penn State has tallied 48 shutouts.

0

The Nittany Lions allowed zero goals in their first two matches for the first time in program history.

234

Penn State has an all-time record of 234-26-13 at Jeffrey Field.

6

Six of the seven goals scored during the opening weekend of play were scored by underclassmen.

97

Since the start of the 2012 season, Penn State is 97-3-5 when scoring first.

8

Amanda Dennis tallied her eighth career solo shutout in Penn State's 1-0 win over then-No. 9 West Virginia.

2

Sophomore Frankie Tagliaferri recorded her second career two-goal outing in Penn State's 6-0 win over Duquesne.

2018 PENN STATE WOMEN'S SOCCER

NUMERICAL ROSTER

| No. | Name | Pos. | Elig. | Ht. | Hometown/Club Team |
|-----|------------------------|-------|-------|------|--|
| 0 | Sarafina Valenti | GK | JR | 5-6 | Bechtelsville, Pa./Berks Ajax |
| 00 | Amanda Dennis | GK | JR | 6-0 | San Diego, Calif./Slammers |
| 2 | Kerry Abello | D/M/F | SO | 5-5 | Batavia, Ill./Eclipse Select |
| 3 | Kaleigh Riehl | D | RS JR | 5-8 | Fairfax Station, Va./Braddock Road Youth Club |
| 4 | Caitlin Haislip | D | FR | 5-7 | Munster, Ind./Eclipse Select |
| 5 | Maddie (Elliston) Nolf | D | RS SR | 5-3 | Omaha, Neb./Elite Girls Academy |
| 7 | Maddie Myers | M | FR | 5-6 | Grand Rapids, Mich./Michigan Hawks |
| 8 | Kristin Schnurr | F | RS JR | 5-7 | Bristow, Va./McLean ECNL |
| 9 | Rachel Wasserman | M/F | FR | 5-6 | Dallas, Texas/D-Feeters 00/99 ECNL |
| 10 | Emily Ogle | M | RS SR | 5-5 | Strongsville, Ohio/Internationals SC |
| 12 | Charlotte Williams | M | SR | 5-4 | Rochester, N.Y./Penn Fusion |
| 14 | Ellie Jean | D | RS JR | 5-6 | Coventry, Conn./Oakwood Soccer Club |
| 16 | Becca Hamilton | D | JR | 5-8 | Howell, N.J./PDA |
| 17 | Alina Ortega Jurado | F/M | SR | 5-3 | Waldgirmes, Germany/FFC Frankfurt |
| 18 | Shea Moyer | M | SO | 5-4 | Wyomissing, Pa./FC Revolution/Penn Fusion |
| 19 | Frankie Tagliaferri | M/F | SO | 5-7 | Colts Neck, N.J./PDA |
| 22 | Kelli Beiler | M | FR | 5-7 | Mount Pleasant Mills, Pa./North Union United |
| 23 | Casey Ballow | F/M | SO | 5-6 | Ijamsville, Md./Bethesda SC |
| 24 | Kim Dubs | F | FR | 5-4 | Zurich, Switzerland/BSC Young Boys Switzerland |
| 26 | Katherine Asman | GK | FR | 5-10 | Roswell, Ga./NASA Tophat Soccer Club |
| 27 | Marissa Sheva | M | SR | 5-3 | Sellersville, Pa./Penn Fusion |
| 33 | Laura Suero | D | JR | 5-6 | Royersford, Pa./FC Bucks Freedom |
| 34 | Ally Schlegel | M | FR | 5-7 | Parker, Colo./Real Colorado |

POSITION BREAKDOWN

| GOALKEEPERS | DEFENDERS | MIDFIELDERS | FORWARDS |
|------------------|------------------------|---------------------|---------------------|
| Katherine Asman | Kerry Abello | Kerry Abello | Kerry Abello |
| Amanda Dennis | Caitlin Haislip | Casey Ballow | Casey Ballow |
| Sarafina Valenti | Becca Hamilton | Kelli Beiler | Kim Dubs |
| | Ellie Jean | Shea Moyer | Alina Ortega Jurado |
| | Maddie (Elliston) Nolf | Maddie Myers | Kristin Schnurr |
| | Kaleigh Riehl | Emily Ogle | Frankie Tagliaferri |
| | Laura Suero | Alina Ortega Jurado | Rachel Wasserman |
| | | Ally Schlegel | |
| | | Marissa Sheva | |
| | | Frankie Tagliaferri | |
| | | Rachel Wasserman | |
| | | Charlotte Williams | |

PENN STATE QUICK FACTS

LocationUniversity Park, Pa.
 Founded1855
 Enrollment40,835
 NicknameNittany Lions
 ColorsBlue and White
 ConferenceBig Ten
 Home FieldJeffrey Field (5,000)
 PresidentEric J. Barron
 Director of AthleticsSandy Barbour

PENN STATE STRATEGIC COMMUNICATIONS

Women's Soccer Contact Will Rottler
 Office Phone814-865-2498
 Cell Phone814-441-9130
 E-mailwdr13@psu.edu
 Fax814-863-3165
 Mailing Address101 Bryce Jordan Center
University Park, Pa. 16802

PENN STATE WOMEN'S SOCCER QUICK FACTS

2017 Overall Record 15-5-4
 2017 Big Ten Record (Finish) 6-2-3 (T-4th)
 2017 NCAA Tournament 3-1 (Quarterfinals)
 Letterwinners Returning/Lost 16/12
 Starters Returning/Lost 4-7
 Newcomers7
 2018 Captain Maddie (Elliston) Nolf
 First Varsity Year1994
 All-Time Record 428-113-37 (.772)
 All-Time Big Ten Record 193-29-16 (.844)
 NCAA Postseason Appearances23
 All-Time NCAA Tournament Record 50-21-2
 United Soccer Coaches All-America Honors...33
 United Soccer Coaches first-team All-America Honors...24
 MAC Hermann Trophy Winners2
 MAC Hermann Trophy Finalists9
 MAC Hermann Trophy Semifinalists17
 Big Ten Player of the Year Honors16
 First-team All-Big Ten Selections67
 Second-team All-Big Ten Selections46
 All-Big Ten Freshman Team Selections44

ALPHABETICAL ROSTER

| No. | Name | Pos. |
|-----|------------------------|-------|
| 2 | Kerry Abello | D/M/F |
| 26 | Katherine Asman | GK |
| 23 | Casey Ballow | F/M |
| 22 | Kelli Beiler | M |
| 0 | Amanda Dennis | GK |
| 24 | Kim Dubs | F |
| 4 | Caitlin Haislip | D |
| 16 | Becca Hamilton | D |
| 14 | Ellie Jean | D |
| 18 | Shea Moyer | M |
| 7 | Maddie Myers | M |
| 5 | Maddie (Elliston) Nolf | D |
| 10 | Emily Ogle | M |
| 17 | Alina Ortega Jurado | F/M |
| 3 | Kaleigh Riehl | D |
| 34 | Ally Schlegel | M |
| 8 | Kristin Schnurr | F |
| 27 | Marissa Sheva | M |
| 33 | Laura Suero | D |
| 19 | Frankie Tagliaferri | M/F |
| 0 | Sarafina Valenti | GK |
| 9 | Rachel Wasserman | M/F |
| 12 | Charlotte Williams | M |

PRONUNCIATION GUIDE

Kerry **Abello** Uh-bell-oh
 Kat **Asman** As-men
 Casey **Ballow** Ball-low
 Kelli **Beiler** By-lure
 Erica **Dambach** Rhymes with Wambach
 Caitlin **Haislip** Hay-slip
 Shea **Moyer** Shay Muy (muy bien) -er
 Maddie **Nolf** Nol-ph
 Emily **Ogle** OH-gull
 Alina **Ortega Jurado** AH-lean-AH
 OR-tay-gah Her-rah-doh
 Kaleigh **Riehl** Kay-lee Real
 Ally **Schlegel** Sh-leg-el
 Kristin **Schnurr** SH-NUR
 Marissa **Sheva** SHE-va
 Laura **Suero** Swear-oh
 Frankie **Tagliaferri** Tal-ee-a-ferri
 Sarafina **Valenti** Sara-V-Nah Va-lent-e
 Rachel **Wasserman** W-auce-er-men

All Nittany Lion audio pronunciations can be heard on the individual bio pages on GoPSUsports.com.

2018 PENN STATE WOMEN'S SOCCER

LOOKING AT UCLA

No. 2 UCLA enters the weekend with a 1-0-0 record after tallying a dramatic 1-0 win over Long Beach State on Aug. 17.

With two seconds remaining in regulation, **Hailie Mace** found the back of the net to put No. 2 UCLA in front of Long Beach State, 1-0.

Last season, the Bruins finished runner-up at the 2017 Women's College Cup after dropping a 3-2 contest to the Stanford Cardinal.

The 2018 UCLA Bruin roster features four student-athletes named to the MAC Hermann Trophy Watch List.

Jessie Fleming, Mace, **Kaiya McCullough** and **Ashley Sanchez** are the four Bruins named to the watch list. In 2017, Fleming was named a finalist, while Mace was tabbed a semifinalist.

In net, **Teagan Micah** returns after starting 24 of 25 matches last season.

On the year, Micah went 19-3-3, recorded nine shutouts, posted a save percentage of .759, a goals-against average of 0.75, made 60 saves, and allowed 19 goals.

Offensively, the Bruins return four student-athletes that tallied 20-or-more points last season. Mace led the Bruins last year with 33 points and 15 goals.

PSU VS. UCLA

This weekend marks the sixth meeting between the two programs with Penn State leading the series, 3-2-0.

The two teams first met on Sept. 8, 2002, with Penn State capturing a 1-0 win in double overtime.

The last meeting between the two teams on Sept. 2, 2016, saw UCLA tally a 1-0 victory in overtime.

UCLA is making the trek to Happy Valley for the second time in the series.

The previous matchup in Happy Valley on Aug. 25, 2006, saw No. 3 Penn State defeat No. 2 UCLA, 3-1. In net, freshman **Alyssa Naehner** made one save in her Penn State debut.

TOUGH COMPETITION

Penn State is scheduled to face five teams ranked in the United Soccer Coaches preseason poll. In 2018, Penn State is slated to face No. 2 UCLA, No. 8 Virginia, No. 9 West Virginia, No. 23 Ohio State and No. 24 Rutgers. All five of those aforementioned teams will make their way to Jeffrey Field this fall.

25 SEASONS OF VARSITY WOMEN'S SOCCER

2018 marks the 25th season of Penn State women's soccer as a varsity program. Over the first 24 seasons, Penn State has compiled a record of 426-113-37, won 18 Big Ten regular season titles, won seven Big Ten Tournament titles, captured the 2015 NCAA Championship, and has advanced to the NCAA Tournament every season since 1995.

THE POLLS

Penn State is No. 3 in the Soccer America poll, No. 3 according to the United Soccer Coaches and No. 6 by TopDrawerSoccer.

FIRST TIME FOR EVERYTHING

Even with just two matches in the books for the 2018 Nittany Lions, Penn State has already accomplished something for the first time in program history - opening the year with two shutouts.

PICKED TO WIN B1G

Prior to the start of the 2018 season, the Nittany Lions were selected to win the Big Ten regular season title.

Since the beginning of the Big Ten coaches' preseason poll in 2003, the Nittany Lions have been picked to win the conference every season.

MATCH DAY CENTRAL

PENN STATE vs. UCLA

TEAM STAT COMPARISON

| | PENN STATE | UCLA |
|--------------------------|------------|-------|
| Overall record | 2-0-0 | 1-0-0 |
| Conference record | 0-0 | 0-0-0 |
| Goals scored | 7 | 1 |
| Goals scored/gm. | 3.50 | 1.00 |
| Goals allowed/gm. | 0.00 | 0.00 |
| SOG-attempts | 21-40 | 8-13 |
| Shots/gm. | 20 | 13 |
| Assists | 6 | 2 |
| Corner kicks | 13 | 7 |
| Saves | 6 | 2 |
| Shutouts | 2 | 1 |

INDIVIDUAL STAT COMPARISON

| | NITTANY LIONS | BRUINS |
|------------------|-------------------|----------------|
| Points | Tagliaferri (4) | Mace (2) |
| Goals | Tagliaferri (2) | Mace (1) |
| Assists | Schnurr (2) | Two Tied (1) |
| Shots | Williams (8) | Castaneda (4) |
| Shot Pct. | Three Tied (.500) | Mace (.333) |
| SOG | Williams (5) | Three Tied (2) |
| GK Min. | Dennis (163:22) | Micah (90:00) |
| GAA | Two Tied (0.00) | Micah (0.00) |
| Saves | Dennis (6) | Micah (2) |
| Save Pct. | Dennis (1.000) | Micah (1.000) |
| Shutouts | Dennis (1) | Micah (1) |

SERIES HISTORY vs. UCLA

| | |
|-------------------------|-------------------------|
| All-Time Series: | Penn State Leads, 3-2-0 |
| PSU Streak: | One Loss |
| First Meeting: | 9/8/02, PSU - 1-0 (2OT) |
| Last Meeting: | 9/2/16, UCLA - 1-0 (OT) |
| Last PSU Win: | 8/25/06, 3-1 |
| Last UCLA Win: | 9/2/16, 1-0 (OT) |
| PSU at Home: | 1-0-0 |
| PSU at UCLA: | 2-2-0 |
| Neutral: | 0-0-0 |

2018 PENN STATE WOMEN'S SOCCER

HONORS & AWARDS

BIG TEN

| | |
|----------------------|------------------------------|
| Maddie Nolf | Preseason Honors List (8/13) |
| Emily Ogle | Preseason Honors List (8/13) |
| Kaleigh Riehl | Preseason Honors List (8/13) |

CoSIDA

ESPNW

TOPDRAWERSOCCER

| | |
|----------------------|--|
| Emily Ogle | Preseason Best XI First Team (8/13) Preseason Top-100 - No. 8 (8/15) |
| Kaleigh Riehl | Preseason Best XI First Team (8/13) Preseason Top-100 - No. 4 (8/15) Team of the Week (8/21) |
| Ally Schlegel | Preseason Best XI First Team (8/13) |

UNITED SOCCER COACHES

| | |
|-------------------|-------------------------------------|
| Emily Ogle | MAC Hermann Trophy Watch List (8/9) |
|-------------------|-------------------------------------|

STRIKE FIRST

Penn State has been very successful when scoring the first goal over the past few seasons. When scoring first, Penn State is 97-3-5 since the start of the 2012 season.

PROTECTING THE NET

Since the start of the 2014 season, Penn State goalkeepers have combined for 48 shutouts.

TOP OFFENSE

The Nittany Lions boast one of the top offensives in the nation over the past few seasons.

Heading into the UCLA match, Penn State has scored 412 goals since the start of the 2011 season, which ranks third in the nation.

Virginia leads the nation in goals scored since the start of 2011 with 457 followed by Stanford with 415 goals (Stats courtesy of the Virginia Sports Information Office).

YEAR 12 DONNING THE BLUE & WHITE

Head coach **Erica Dambach** enters her 12th season at the helm of the Penn State women's soccer program in 2018. Along with Dambach, **Ann Cook** enters her 12th season on the Nittany Lion coaching staff. Heading into year 12 at PSU, Dambach has amassed a record of 184-60-18, won nine Big Ten regular season titles, three Big Ten Tournament crowns, advanced to 11 straight NCAA Tournaments, and won the NCAA Championship in 2015.

OH CAPTAIN, MY CAPTAIN

Redshirt senior **Maddie Nolf** will don the captain's armband for the 2018 season. A mainstay on the Nittany Lion backline, Nolf has appeared in 66 matches, which included 52 starts. Nolf used a redshirt during the 2016 season as she was one of five Nittany Lions that joined the United States U-20 Women's National Team for the 2016 FIFA U-20 Women's World Cup.

WELCOME BACK

The Nittany Lions welcome back 16 letterwinners to the program for the 2018 season. Eight Nittany Lions return from the 2015 roster that won the program's first national championship.

PRESEASON HONORS

Four Nittany Lions were tabbed with preseason honors prior to the start of the 2018 season. For Penn State, **Maddie Nolf**, **Emily Ogle** and **Kaleigh Riehl** were named to the Big Ten preseason honors watch list.

According to TopDrawerSoccer, Ogle and Riehl were named to the Preseason Best XI First Team.

Along with Ogle and Riehl on the Preseason Best XI First Team honors, **Ally Schlegel** was named to the TopDrawerSoccer Freshman Best XI Team.

TopDrawerSoccer also announced its Preseason Top-100 list with Riehl at No. 4 overall and Ogle at No. 8 overall.

TEAM STAT LEADERS

POINTS

| | |
|---------------------|---|
| Frankie Tagliaferri | 4 |
| Kerry Abello | 3 |
| Shea Moyer | 3 |

GOALS

| | |
|---------------------|---|
| Frankie Tagliaferri | 2 |
| Five Tied | 1 |

ASSISTS

| | |
|-----------------|---|
| Kristin Schnurr | 2 |
| Four Tied | 1 |

SHOTS

| | |
|--------------------|---|
| Charlotte Williams | 8 |
| Kristin Schnurr | 7 |
| Emily Ogle | 5 |

SHOTS ON GOAL

| | |
|--------------------|---|
| Charlotte Williams | 5 |
| Three Tied | 3 |

GAME-WINNING GOALS

| | |
|------------|---|
| Shea Moyer | 1 |
| Emily Ogle | 1 |

2018 PENN STATE WOMEN'S SOCCER

WATCH OUT FOR OGLE

Not only did **Emily Ogle** garner preseason honors from the Big Ten and TopDrawerSoccer, she was also named to the MAC Hermann Trophy Watch List.

Ogle was also named to the MAC Hermann Trophy Watch List last season.

RECAPPING 2017

Despite not winning their 19th Big Ten regular season title last year, the Nittany Lions responded with a late-season run.

Penn State played a pair of double overtime contests before scoring a pair of late goals to defeat Northwestern, 2-1, to win its seventh Big Ten Tournament Championship.

The NCAA Tournament saw Penn State make a run to its third quarterfinal appearance in four seasons.

NEW FACES

Penn State women's soccer welcomed seven student-athletes to the program for the 2018 season. The incoming class features six Penn Staters from across the United States and one international.

The Penn State women's soccer class of 2022 is comprised of **Kat Asman, Kelli Beiler, Kim Dubs, Caitlin Haislip, Maddie Myers, Ally Schlegel** and **Rachel Wasserman**.

The freshman class is ranked No. 8 overall by TopDrawerSoccer, which marks the fourth top-10 class for Penn State in the past five years.

WEEKLY HONORS

After helping the Nittany Lions to a pair of shutout victories to open the season, **Kaleigh Riehl** was named to the TopDrawerSoccer Team of the Week for the second time in her career.

HOME SWEET HOME

The Nittany Lions boast an all-time record of 234-26-13 at Jeffrey Field and in Big Ten conference matches, Penn State is 106-6-6.

Since the start of the 2011 season, Penn State owns a record of 74-6-7 at Jeffrey Field.

Penn State opened the 2018 season with 3,126 fans against then-No. 9 West Virginia, which is the No. 8 crowd in program history at Jeffrey Field.

FOR CLUB & COUNTRY

Penn State has been represented at five training camps with the United States Women's National Team program since the end of the 2017 season.

Redshirt junior defender **Kaleigh Riehl** had a busy offseason with the United States Women's National Team program as she took part in four training camps with the U.S. U-23 WNT.

NON-CONFERENCE SLATE

The 2018 non-conference season for Penn State features seven matches.

The Nittany Lions open the season with regional rival West Virginia then following a contest Duquesne, Penn State welcomes 2017 Women's College Cup runner-up UCLA to Happy Valley.

Following a road trip to James Madison and Wake Forest, Penn State hosts Syracuse, and Virginia to close out its non-conference season.

BIG SLATE

The 2018 Big Ten regular season schedule consists of six matches at Jeffrey Field and five on the road.

The conference portion of the regular season gets underway with 2017 Big Ten regular season champion Ohio State on Sept. 14 at Jeffrey Field.

Due to a rotating schedule, Penn State will not play Purdue or Wisconsin during the regular season.

UNITED SOCCER COACHES POLL

(Week 1 - Aug. 21)

| # | Team | Prev. | W-L-T |
|----|----------------------|-------|-------|
| 1 | Stanford | 1 | 1-0-0 |
| 2 | <i>UCLA</i> | 2 | 1-0-0 |
| 3 | PENN STATE | 4 | 2-0-0 |
| 4 | North Carolina | 6 | 2-0-0 |
| 5 | Florida | 7 | 2-0-0 |
| 6 | Florida State | 10 | 2-0-0 |
| 7 | <i>Virginia</i> | 8 | 2-0-0 |
| 8 | USC | 12 | 1-0-0 |
| 9 | Texas A&M | 11 | 2-0-0 |
| 10 | South Carolina | 5 | 2-0-0 |
| 11 | Duke | 3 | 1-1-0 |
| 12 | Santa Clara | 19 | 1-0-0 |
| 13 | Tennessee | 25 | 2-0-0 |
| 14 | Princeton | NR | 0-0-0 |
| 15 | Georgetown | 22 | 1-0-1 |
| 16 | North Carolina State | 20 | 1-0-0 |
| 17 | Baylor | 15 | 2-0-0 |
| 18 | Kansas | NR | 2-0-0 |
| 19 | <i>Northwestern</i> | RV | 2-0-0 |
| 20 | Notre Dame | 14 | 2-0-0 |
| 21 | Texas | 17 | 1-0-0 |
| 22 | Washington State | 21 | 2-0-0 |
| 23 | UCF | 16 | 0-0-0 |
| 24 | Auburn | RV | 2-0-0 |
| 25 | <i>West Virginia</i> | 9 | 0-1-1 |

Also receiving votes: Rutgers (120), Texas Tech (109), South Florida (104), Minnesota (100), Pepperdine (72), Oklahoma State (40), California (38), Butler (18), Ole Miss (17), Cincinnati (11), North Dakota State (8), Clemson (6), Oregon (5), Arkansas (4), Long Beach State (4), North Texas (3), California-Irvine, (2), Nebraska (2), Illinois (2), Memphis (1), La Salle (1), Wisconsin-Milwaukee (1)

Italics indicate 2018 opponent

WEEKLY RANKINGS

| Poll | USC | RPI | SA | TDS |
|-----------|-----|-----|----|-----|
| PS | 4 | - | 3 | 6 |
| 1 | 3 | - | 3 | 6 |
| 2 | - | - | - | - |
| 3 | - | - | - | - |
| 4 | - | - | - | - |
| 5 | - | - | - | - |
| 6 | - | - | - | - |
| 7 | - | - | - | - |
| 8 | - | - | - | - |
| 9 | - | - | - | - |
| 10 | - | - | - | - |
| 11 | - | - | - | - |
| 12 | - | - | - | - |

USC - United Soccer Coaches

RPI - NCAA RPI

SA - Soccer America

TDS - TopDrawerSoccer.com

2018 PENN STATE WOMEN'S SOCCER

CAREER RANKINGS

POINTS

23. 49 - Lauren Olmsted (20g, 9a) - 1994-97
 49 - Liz Villamil (12g, 25a) - 1994-97
25. 46 - Emily Ogle (15g, 16a) - 2014-15, 17-
 26. 43 - Ali Krieger (12g, 19a) - 2003-06
27. 41 - Charlotte Williams (12g, 17a) - 2015-

GOALS

22. 20 - Lauren Olmsted - 1994-97
23. 15 - Emily Ogle - 2014-15, 17-
 24. 13 - Zoe Bouchelle - 2004-08
 13 - Shari Pickett - 1996, 98-00
26. 12 - Charlotte Williams - 2015-
 12 - Emily Hurd - 2010-14
 12 - Erin Killough - 1996-97
 12 - Ali Krieger - 2003-06
 12 - Liz Villamil - 1994-97

ASSISTS

22. 18 - Megan Schafer - 2014-17
 18 - Jess Rosenbluth - 2008-11
 18 - Tani Costa - 2009-13
25. 17 - Frannie Crouse - 2014-17
17 - Charlotte Williams - 2015-
27. 16 - Jeannine Verdrager - 1997-00
16 - Emily Ogle - 2014-15, 17-

SHOTS ATTEMPTED

14. 186 - Mallory Weber - 2012-15
 15. 175 - Bonnie Young - 1998-01
 16. 167 - Stephanie Smith - 2000-03
17. 161 - Charlotte Williams - 2015-

SAVES

8. 141 - Erin McLeod - 2004-05
9. 75 - Amanda Dennis - 2016-

WINS

8. 23 - Robyn Van Praag - 1994-96
 9. 15 - Rose Chandler - 2014-15, 17
10. 14 - Amanda Dennis - 2016-

MOST SHUTOUTS

8. 10.2 - Erin McNulty - 2011-12
 9. 9.7 - Rose Chandler - 2014-15, 17
10. 8.6 - Amanda Dennis - 2016-

WATCH #PSWS ON TV

Penn State women's soccer is slated to be aired live on TV four times during the 2018 regular season. For Penn State, the Nittany Lions will have three matches on the Big Ten Network and one match on ESPNU. Penn State's match against UCLA (Aug. 25) will be shown live on ESPNU at 4 p.m.

On BTN during the regular season, the Nittany Lions head to Northwestern on Sept. 20 (8 p.m. EDT), host Nebraska on Sept. 27 (6 p.m.) and host Rutgers on Oct. 14 (3 p.m.).

UP NEXT

The Nittany Lions hit the road for the first time in 2018 with a pair of matches at James Madison (Aug. 30) and Wake Forest (Sept. 2).

2018 BIG TEN STANDINGS/STATISTICS

| | Conf. | Pct. | Pts. | GF | GA | Overall | Pct. | GF | GA | Home | Away | Neutral | Last 10 | Streak |
|-------------------|--------------|-------------|----------|----------|----------|--------------|--------------|----------|----------|--------------|--------------|--------------|--------------|-----------|
| Michigan | 0-0-0 | .000 | 0 | 0 | 0 | 2-0-0 | 1.000 | 5 | 1 | 2-0-0 | 0-0-0 | 0-0-0 | 2-0-0 | W2 |
| Michigan State | 0-0-0 | .000 | 0 | 0 | 0 | 2-0-0 | 1.000 | 4 | 0 | 2-0-0 | 0-0-0 | 0-0-0 | 2-0-0 | W2 |
| Minnesota | 0-0-0 | .000 | 0 | 0 | 0 | 2-0-0 | 1.000 | 3 | 1 | 0-0-0 | 2-0-0 | 0-0-0 | 2-0-0 | W2 |
| Northwestern | 0-0-0 | .000 | 0 | 0 | 0 | 2-0-0 | 1.000 | 4 | 1 | 0-0-0 | 0-0-0 | 2-0-0 | 2-0-0 | W2 |
| PENN STATE | 0-0-0 | .000 | 0 | 0 | 0 | 2-0-0 | 1.000 | 7 | 0 | 2-0-0 | 0-0-0 | 0-0-0 | 2-0-0 | W2 |
| Rutgers | 0-0-0 | .000 | 0 | 0 | 0 | 2-0-0 | 1.000 | 5 | 1 | 2-0-0 | 0-0-0 | 0-0-0 | 2-0-0 | W2 |
| Indiana | 0-0-0 | .000 | 0 | 0 | 0 | 1-0-0 | 1.000 | 3 | 0 | 1-0-0 | 0-0-0 | 0-0-0 | 1-0-0 | W1 |
| Purdue | 0-0-0 | .000 | 0 | 0 | 0 | 1-0-0 | 1.000 | 3 | 0 | 1-0-0 | 0-0-0 | 0-0-0 | 1-0-0 | W1 |
| Wisconsin | 0-0-0 | .000 | 0 | 0 | 0 | 1-0-0 | 1.000 | 2 | 0 | 0-0-0 | 1-0-0 | 0-0-0 | 1-0-0 | W1 |
| Iowa | 0-0-0 | .000 | 0 | 0 | 0 | 1-0-1 | .750 | 2 | 0 | 1-0-1 | 0-0-0 | 0-0-0 | 1-0-1 | W1 |
| Nebraska | 0-0-0 | .000 | 0 | 0 | 0 | 1-0-1 | .750 | 4 | 3 | 0-0-1 | 1-0-0 | 0-0-0 | 1-0-1 | T1 |
| Illinois | 0-0-0 | .000 | 0 | 0 | 0 | 1-1-0 | .500 | 3 | 4 | 0-0-0 | 1-1-0 | 0-0-0 | 1-1-0 | W1 |
| Maryland | 0-0-0 | .000 | 0 | 0 | 0 | 1-1-0 | .500 | 2 | 4 | 0-0-0 | 0-1-0 | 1-0-0 | 1-1-0 | L1 |
| Ohio State | 0-0-0 | .000 | 0 | 0 | 0 | 0-2-0 | .000 | 0 | 4 | 0-0-0 | 0-2-0 | 0-0-0 | 0-2-0 | L2 |

2018 PENN STATE WOMEN'S SOCCER

THE LAST TIME

PENN STATE...

| | |
|-------------------------------------|----------|
| Scored 3 goals | 11/19/17 |
| Scored 4 goals | 10/8/17 |
| Scored 5 goals | 11/13/15 |
| Scored 6 goals | 8/19/18 |
| Scored 7 goals | 11/10/17 |
| Scored 8 goals | 10/9/05 |
| Scored 9 goals | 9/25/01 |
| Allowed 0 goals | 8/19/18 |
| Allowed 1 goal | 11/19/17 |
| Allowed 2 goals | 10/20/17 |
| Allowed 3 goals | 9/10/17 |
| Allowed 4 goals | 11/24/17 |
| Allowed 5+ goals | 8/30/13 |
| Won in overtime | 10/15/17 |
| Lost in overtime | 9/2/16 |
| Won in double overtime | 11/3/17 |
| Lost in double overtime | 9/5/14 |
| Tied after double overtime | 10/29/17 |
| Scoreless tie after double overtime | 10/29/17 |
| Won by multiple goals at home | 8/19/18 |
| Lost by multiple goals at home | 10/30/16 |
| Ranked in the USC Top 25 | 8/21/18 |
| Ranked in the USC Top 10 | 8/21/18 |
| Played a USC Top 10 Team | 8/17/18 |
| Played a USC Top 25 Team | 8/17/18 |
| Defeated a USC Top 10 Team | 8/17/18 |
| Defeated a USC Top 25 Team | 8/17/18 |
| Attempted less than 10 shots | 8/17/18 |
| Attempted 10-19 shots | 11/19/17 |
| Attempted 20-29 shots | 11/10/17 |
| Attempted 30-39 shots | 8/19/18 |
| Attempted 40+ shots | 11/7/10 |
| Allowed 4 or less shots | 11/10/17 |
| Allowed 5-9 shots | 8/19/18 |
| Allowed 10-15 shots | 8/17/18 |
| Allowed 16+ shots | 11/24/17 |
| Scored 15-24 points | 8/19/18 |
| Scored 25+ points | 9/25/01 |
| Made 10-14 saves | 9/5/14 |
| Made 15+ saves | 9/2/95 |
| Had 10+ corner kicks | 8/19/18 |
| Allowed 10+ corner kicks | 9/2/16 |
| Tallied 5-7 assists | 8/19/18 |
| Tallied 8+ assists | 11/20/15 |
| Won an NCAA Tourney game | 11/19/17 |
| Lost an NCAA Tourney game | 11/24/17 |
| Won a road NCAA Tourney game | 11/19/17 |
| Won a neutral NCAA Tourney game | 11/17/17 |
| Won a PK shootout | 10/29/17 |
| Lost a PK shootout | 11/9/07 |

A PENN STATE PLAYER...

| | |
|-------------------------------|----------|
| Scored 2 goals | 8/19/18 |
| Scored 3 goals | 11/10/17 |
| Scored 4 goals | 10/7/01 |
| Had 2 assists | 8/19/18 |
| Had 3 assists | 9/13/13 |
| Had 4 assists | 9/17/03 |
| Had 5-9 points | 11/10/17 |
| Had 10+ points | 10/7/01 |
| Attempted 10+ shots | 11/11/11 |
| Made 10-14 saves | 9/5/14 |
| Made 15+ saves | 9/3/94 |
| Scored in the Big Ten Tourney | 11/5/17 |
| Had a Big Ten Tourney shutout | 11/3/17 |
| Scored in the NCAA Tourney | 11/19/17 |
| Had an NCAA Tourney shutout | 11/17/17 |

| |
|-------------------------------|
| at #7 West Virginia (3-1) |
| vs. Michigan State (4-0) |
| vs. Albany (5-0) |
| vs. Duquesne (6-0) |
| vs. Stony Brook (7-0) |
| vs. Iowa (8-0) |
| vs. Bucknell (9-2) |
| vs. Duquesne (6-0) |
| at #7 West Virginia (3-1) |
| vs. Purdue (2-2, 2OT) |
| at #8 Virginia (2-3) |
| at #1 Stanford (0-4) |
| vs. Virginia (1-5) |
| at Maryland (1-0) |
| at #11 UCLA (0-1) |
| vs. #9 Ohio State (1-0) |
| vs. #14 UNC (0-1) |
| at #25 Rutgers (0-0, 4-3 PKs) |
| at #25 Rutgers (0-0, 4-3 PKs) |
| vs. Duquesne (6-0) |
| vs. Rutgers (0-2) |
| 3rd |
| 3rd |
| vs. #9 West Virginia (1-0) |
| vs. #9 West Virginia (1-0) |
| vs. #9 West Virginia (1-0) |
| vs. #9 West Virginia (1-0) |
| 7 vs. #9 West Virginia (1-0) |
| 10 at #7 West Virginia (3-1) |
| 29 vs. Stony Brook (7-0) |
| 33 vs. Duquesne (6-0) |
| 42 vs. Michigan (1-0) |
| 3 vs. Stony Brook (7-0) |
| 5 vs. Duquesne (6-0) |
| 13 vs. #9 West Virginia (1-0) |
| 16 at #1 Stanford (0-4) |
| 18 vs. Duquesne (6-0) |
| 26 vs. Bucknell (9-2) |
| 10 vs. #14 UNC (1-0, 2OT) |
| 17 vs. James Madison (4-2) |
| 10 vs. Duquesne (6-0) |
| 11 at #11 UCLA (0-1, OT) |
| 6 vs. Duquesne (6-0) |
| 10 vs. Boston U (6-0) |
| at #7 West Virginia (3-1) |
| at #1 Stanford (0-4) |
| at #7 West Virginia (3-1) |
| vs. #24 Wake Forest (2-0) |
| at #25 Rutgers (0-0, 4-3 PKs) |
| vs. Ohio State (2-2, 4-5 PKs) |

| |
|---|
| Frankie Tagliaferri vs. Duquesne (6-0) |
| Laura Freigang vs. Stony Brook (7-0) |
| Christie Welsh vs. Michigan (6-2) |
| Kristin Schnurr vs. Duquesne (6-0) |
| Tani Costa at Oklahoma St. (4-2) |
| Ali Krieger vs. Bucknell (6-0) |
| Freigang (6) & Tagliaferri (5) vs. Stony Brook (7-0) |
| 10, Christie Welsh vs. Michigan (6-2) |
| 10, Christine Naim vs. Army (1-0) |
| 10, Britt Eckerstrom vs. # 14 UNC (1-0, 2OT) |
| 15, Robin Van Praag at Minnesota (3-2) |
| Echard & Freigang vs. Northwestern (2-1) |
| Chandler vs. #9 Ohio State (1-0, 2OT) |
| Ortega Jurado, Ball, & Crouse at #7 West Virginia (3-1) |
| Chandler vs. #24 Wake Forest (2-0) |

MISCELLANEOUS STATISTICS

PENN STATE is...

| | |
|-------------------|--|
| 428-113-37 |All-time |
| 234-26-13 | All-time at Jeffrey Field |
| 106-6-6 | Conference Record at Jeffrey Field |
| In 2018... | |
| 2-0-0 |at home |
| 0-0-0 | on the road |
| 0-0-0 |at neutral site |
| 0-0-0 |in overtime |
| 1-0-0 |when leading at halftime |
| 0-0-0 |when trailing at halftime |
| 1-0-0 |when tied at halftime |
| 2-0-0 |when scoring first goal |
| 0-0-0 |when opponent scores first goal |
| 1-0-0 |when out-shooting opponent |
| 1-0-0 |when out-shot by opponent |
| 0-0-0 |when posting the same # of shots |
| 1-0-0 |when taking more corner kicks |
| 1-0-0 |when allowing more corner kicks |
| 0-0-0 |when taking the same corner kicks |
| 1-0-0 |against unranked opponents |
| 1-0-0 |against ranked opponents |
| 0-0-0 |against higher-ranked opponents |
| 1-0-0 |against lower-ranked opponents |
| 0-0-0 |when scoring 0 goals |
| 1-0-0 |when scoring 1 goal |
| 0-0-0 |when scoring 2 goals |
| 1-0-0 |when scoring 3+ goals |
| 2-0-0 |when allowing 0 goals |
| 0-0-0 |when allowing 1 goal |
| 0-0-0 |when allowing 2 goals |
| 0-0-0 |when allowing 3+ goals |
| 0-0-0 |on Thursday |
| 1-0-0 |on Friday |
| 0-0-0 |on Saturday |
| 1-0-0 |on Sunday |
| 1-0-0 |at night |
| 1-0-0 |during the day |
| 1-0-0 |when a freshman scores |
| 1-0-0 |in one-goal games |
| 0-0-0 |vs. ACC |
| 1-0-0 |vs. Atlantic 10 |
| 1-0-0 |vs. Big 12 |
| 0-0-0 |vs. Big Ten |
| 0-0-0 |vs. CAA |
| 0-0-0 |Pac-12 |

2018 PENN STATE WOMEN'S SOCCER

2018 Penn State Women's Soccer Penn State Combined Team Statistics (as of Aug 21, 2018) All games

| RECORD: | OVERALL | HOME | AWAY | NEUTRAL |
|----------------|---------|------|------|---------|
| ALL GAMES | 2-0 | 2-0 | 0-0 | 0-0 |
| CONFERENCE | 0-0 | 0-0 | 0-0 | 0-0 |
| NON-CONFERENCE | 2-0 | 2-0 | 0-0 | 0-0 |

| Date | Opponent | Score | Att. |
|--------|------------------|-------|------|
| Aug 17 | #9 WEST VIRGINIA | w 1-0 | 3126 |
| Aug 19 | DUQUESNE | w 6-0 | 1513 |

| TEAM STATISTICS | PSU | OPP |
|------------------------|--------|------|
| SHOT STATISTICS | | |
| Goals-Shot attempts | 7-40 | 0-18 |
| Goals scored per game | 3.50 | 0.00 |
| Shot pct. | .175 | .000 |
| Shots on goal-Attempts | 21-40 | 6-18 |
| SOG pct. | .525 | .333 |
| Shots/Game | 20.0 | 9.0 |
| CORNER KICKS | 13 | 9 |
| PENALTY KICKS | 1-1 | 0-0 |
| PENALTIES | | |
| Yellow cards | 0 | 0 |
| Red cards | 0 | 0 |
| ATTENDANCE | | |
| Total | 4639 | 0 |
| Dates/Avg Per Date | 2/2320 | 0/0 |
| Neutral Site #/Avg | 0/0 | |

| # | Player | gp | g | a | pts | sh | sh% | sog | sog% | qw | pk-att |
|-----------|---------------------|----|---|---|-----|----|------|-----|-------|----|--------|
| 19 | Frankie Tagliaferri | 2 | 2 | 0 | 4 | 4 | .500 | 3 | .750 | 0 | 0-0 |
| 18 | Shea Moyer | 2 | 1 | 1 | 3 | 3 | .333 | 2 | .667 | 1 | 0-0 |
| 2 | Kerry Abello | 2 | 1 | 1 | 3 | 2 | .500 | 2 | 1.000 | 0 | 0-0 |
| 10 | Emily Ogle | 2 | 1 | 0 | 2 | 5 | .200 | 3 | .600 | 1 | 1-1 |
| 24 | Kim Dubs | 2 | 1 | 0 | 2 | 3 | .333 | 2 | .667 | 0 | 0-0 |
| 9 | Rachel Wasserman | 1 | 1 | 0 | 2 | 2 | .500 | 1 | .500 | 0 | 0-0 |
| 8 | Kristin Schnurr | 2 | 0 | 2 | 2 | 7 | .000 | 3 | .429 | 0 | 0-0 |
| 27 | Marissa Sheva | 2 | 0 | 1 | 1 | 2 | .000 | 0 | .000 | 0 | 0-0 |
| 22 | Kelli Beiler | 1 | 0 | 1 | 1 | 1 | .000 | 0 | .000 | 0 | 0-0 |
| 12 | Charlotte Williams | 2 | 0 | 0 | 0 | 8 | .000 | 5 | .625 | 0 | 0-0 |
| 17 | Alina Ortega-Jurado | 2 | 0 | 0 | 0 | 1 | .000 | 0 | .000 | 0 | 0-0 |
| 14 | Ellie Jean | 2 | 0 | 0 | 0 | 1 | .000 | 0 | .000 | 0 | 0-0 |
| 5 | Maddie Nolf | 2 | 0 | 0 | 0 | 1 | .000 | 0 | .000 | 0 | 0-0 |
| 33 | Laura Suero | 2 | 0 | 0 | 0 | 0 | .000 | 0 | .000 | 0 | 0-0 |
| 23 | Casey Ballow | 1 | 0 | 0 | 0 | 0 | .000 | 0 | .000 | 0 | 0-0 |
| 16 | Becca Hamilton | 1 | 0 | 0 | 0 | 0 | .000 | 0 | .000 | 0 | 0-0 |
| 3 | Kaleigh Riehl | 2 | 0 | 0 | 0 | 0 | .000 | 0 | .000 | 0 | 0-0 |
| 00 | Amanda Dennis | 2 | 0 | 0 | 0 | 0 | .000 | 0 | .000 | 0 | 0-0 |
| 0 | Sarafina Valenti | 1 | 0 | 0 | 0 | 0 | .000 | 0 | .000 | 0 | 0-0 |
| Total | | 2 | 7 | 6 | 20 | 40 | .175 | 21 | .525 | 2 | 1-1 |
| Opponents | | 2 | 0 | 0 | 0 | 18 | .000 | 6 | .333 | 0 | 0-0 |

| # | Goalie | GP | Min. | GA | GAAvg | Saves | Pct | W-L-T | Sho |
|-----------|------------------|----|--------|----|-------|-------|-------|-------|-----|
| 00 | Amanda Dennis | 2 | 163:22 | 0 | 0.00 | 6 | 1.000 | 2-0-0 | 1/1 |
| 0 | Sarafina Valenti | 1 | 16:38 | 0 | 0.00 | 0 | .000 | 0-0-0 | 0/1 |
| Total | | 2 | 180:00 | 0 | 0.00 | 6 | 1.000 | 2-0-0 | 2 |
| Opponents | | 2 | 180:00 | 7 | 3.50 | 14 | .667 | 0-2-0 | 0 |

| Goals by Period | 1st | 2nd | Total |
|-----------------|-----|-----|-------|
| Penn State | 1 | 6 | 7 |
| Opponents | 0 | 0 | 0 |

| Shots by Period | 1st | 2nd | Total |
|-----------------|-----|-----|-------|
| Penn State | 13 | 27 | 40 |
| Opponents | 7 | 11 | 18 |

| Saves by Period | 1st | 2nd | Total |
|-----------------|-----|-----|-------|
| Penn State | 1 | 5 | 6 |
| Opponents | 6 | 8 | 14 |

| Corners by Period | 1st | 2nd | Total |
|-------------------|-----|-----|-------|
| Penn State | 6 | 7 | 13 |
| Opponents | 4 | 5 | 9 |

| Fouls by Period | 1st | 2nd | Total |
|-----------------|-----|-----|-------|
| Penn State | 4 | 8 | 12 |
| Opponents | 10 | 10 | 20 |

2018 PENN STATE WOMEN'S SOCCER

2018 Penn State Women's Soccer Penn State Overall Individual Statistics (as of Aug 21, 2018) All games

Overall: 2-0-0 Conf: 0-0-0 Home: 2-0-0 Away: 0-0-0 Neut: 0-0-0

| ## | Player | gp-gs | min | g | a | pts | sh | sh% | sog | sog% | yc | rc | gwg | pk-att |
|-----------|---------------------|-------|-----|---|---|-----|----|------|-----|-------|----|----|-----|--------|
| 19 | Frankie Tagliaferri | 2-1 | 136 | 2 | 0 | 4 | 4 | .500 | 3 | .750 | 0 | 0 | 0 | 0-0 |
| 18 | Shea Moyer | 2-2 | 136 | 1 | 1 | 3 | 3 | .333 | 2 | .667 | 0 | 0 | 1 | 0-0 |
| 2 | Kerry Abello | 2-1 | 116 | 1 | 1 | 3 | 2 | .500 | 2 | 1.000 | 0 | 0 | 0 | 0-0 |
| 10 | Emily Ogle | 2-2 | 154 | 1 | 0 | 2 | 5 | .200 | 3 | .600 | 0 | 0 | 1 | 1-1 |
| 24 | Kim Dubs | 2-0 | 81 | 1 | 0 | 2 | 3 | .333 | 2 | .667 | 0 | 0 | 0 | 0-0 |
| 9 | Rachel Wasserman | 1-0 | 14 | 1 | 0 | 2 | 2 | .500 | 1 | .500 | 0 | 0 | 0 | 0-0 |
| 8 | Kristin Schnurr | 2-2 | 127 | 0 | 2 | 2 | 7 | .000 | 3 | .429 | 0 | 0 | 0 | 0-0 |
| 27 | Marissa Sheva | 2-2 | 117 | 0 | 1 | 1 | 2 | .000 | 0 | .000 | 0 | 0 | 0 | 0-0 |
| 22 | Kelli Beiler | 1-0 | 38 | 0 | 1 | 1 | 1 | .000 | 0 | .000 | 0 | 0 | 0 | 0-0 |
| 12 | Charlotte Williams | 2-2 | 138 | 0 | 0 | 0 | 8 | .000 | 5 | .625 | 0 | 0 | 0 | 0-0 |
| 17 | Alina Ortega-Jurado | 2-2 | 128 | 0 | 0 | 0 | 1 | .000 | 0 | .000 | 0 | 0 | 0 | 0-0 |
| 14 | Ellie Jean | 2-2 | 172 | 0 | 0 | 0 | 1 | .000 | 0 | .000 | 0 | 0 | 0 | 0-0 |
| 5 | Maddie Nolf | 2-2 | 168 | 0 | 0 | 0 | 1 | .000 | 0 | .000 | 0 | 0 | 0 | 0-0 |
| 33 | Laura Suero | 2-0 | 73 | 0 | 0 | 0 | 0 | .000 | 0 | .000 | 0 | 0 | 0 | 0-0 |
| 23 | Casey Ballow | 1-0 | 20 | 0 | 0 | 0 | 0 | .000 | 0 | .000 | 0 | 0 | 0 | 0-0 |
| 16 | Becca Hamilton | 1-0 | 20 | 0 | 0 | 0 | 0 | .000 | 0 | .000 | 0 | 0 | 0 | 0-0 |
| 3 | Kaleigh Riehl | 2-2 | 160 | 0 | 0 | 0 | 0 | .000 | 0 | .000 | 0 | 0 | 0 | 0-0 |
| 00 | Amanda Dennis | 2-2 | 163 | 0 | 0 | 0 | 0 | .000 | 0 | .000 | 0 | 0 | 0 | 0-0 |
| 0 | Sarafina Valenti | 1-0 | 17 | 0 | 0 | 0 | 0 | .000 | 0 | .000 | 0 | 0 | 0 | 0-0 |
| Total | | 2 | - | 7 | 6 | 20 | 40 | .175 | 21 | .525 | 0 | 0 | 2 | 1-1 |
| Opponents | | 2 | - | 0 | 0 | 0 | 18 | .000 | 6 | .333 | 0 | 0 | 0 | 0-0 |

| # | Goalie | gp-gs | Goal Average | | | Saves | | Record | | | |
|-----------|------------------|-------|--------------|----|-------|-------|-------|--------|---|-----------|-----|
| | | | min | ga | gaavg | saves | pct | w | l | t sho/cbo | |
| 00 | Amanda Dennis | 2-2 | 163:22 | 0 | 0.00 | 6 | 1.000 | 2 | 0 | 0 | 1/1 |
| 0 | Sarafina Valenti | 1-0 | 16:38 | 0 | 0.00 | 0 | .000 | 0 | 0 | 0 | 0/1 |
| TM | TEAM | - | 0:00 | 0 | 0.00 | 0 | .000 | 0 | 0 | 0 | 1/0 |
| Total | | 2 | 180:00 | 0 | 0.00 | 6 | 1.000 | 2 | 0 | 0 | 2 |
| Opponents | | 2 | 180:00 | 7 | 3.50 | 14 | .667 | 0 | 2 | 0 | 0 |

Team saves: 0

| Goals by Period | 1st | 2nd | Total |
|-----------------|-----|-----|-------|
| Penn State | 1 | 6 | 7 |
| Opponents | 0 | 0 | 0 |

| Corners by Period | 1st | 2nd | Total |
|-------------------|-----|-----|-------|
| Penn State | 6 | 7 | 13 |
| Opponents | 4 | 5 | 9 |

| Shots by Period | 1st | 2nd | Total |
|-----------------|-----|-----|-------|
| Penn State | 13 | 27 | 40 |
| Opponents | 7 | 11 | 18 |

| Fouls by Period | 1st | 2nd | Total |
|-----------------|-----|-----|-------|
| Penn State | 4 | 8 | 12 |
| Opponents | 10 | 10 | 20 |

| Saves by Period | 1st | 2nd | Total |
|-----------------|-----|-----|-------|
| Penn State | 1 | 5 | 6 |
| Opponents | 6 | 8 | 14 |

| Attendance Summary | PSU | Opponent |
|--------------------|--------|----------|
| Total | 4639 | 0 |
| Dates/Avg Per Date | 2/2320 | 0/0 |
| Neutral Site #/Avg | 0/0 | |

2018 PENN STATE WOMEN'S SOCCER

MATCH 1 | No. 4 PSU vs. No. 9 WVU

Soccer Box Score (Final) 2018 Penn State Women's Soccer

#9 West Virginia vs #4 Penn State (Aug 17, 2018 at University Park, Pa.)

West Virginia (0-1-0) vs.
Penn State (1-0-0)
Date: Aug 17, 2018 • Attendance: 3126
Weather: 76, raining

| Goals by period | 1 | 2 | Total |
|-----------------|---|---|-------|
| West Virginia | 0 | 0 | 0 |
| Penn State | 0 | 1 | 1 |

| West Virginia | | Sh | SO | G | A | Fo | Min |
|-------------------|------------------------|----|----|---|---|----|-----|
| gk | 25 Rylee Foster | - | - | - | - | - | 90 |
| d | 4 Bianca St. Georges | 2 | 1 | - | - | - | 84 |
| m | 7 Grace Cutler | - | - | - | - | - | 90 |
| f | 9 Lauren Segalla | 1 | - | - | - | - | 62 |
| d | 10 Jordan Brewster | - | - | - | - | - | 90 |
| d | 16 Easther Mayi Kith | - | - | - | - | - | 90 |
| f | 20 Hannah Abraham | - | - | - | - | - | 58 |
| m | 21 S. Ferrer-vanGinkel | 2 | - | - | - | - | 45 |
| d | 26 Vanessa Flores | - | - | - | - | - | 90 |
| m | 77 Nadya Gill | 2 | 1 | - | - | - | 89 |
| f | 99 Sh'Nia Gordon | 3 | 1 | - | - | - | 82 |
| -- Substitutes -- | | | | | | | |
| | 2 Jade Gentile | - | - | - | - | - | 40 |
| | 11 Addison Clark | 2 | 1 | - | - | - | 45 |
| | 15 Lois Joel | - | - | - | - | - | 1 |
| | 19 Issy Sibley | - | - | - | - | - | 6 |
| | 24 Alina Stahl | 1 | 1 | - | - | - | 28 |
| Totals | | 13 | 5 | 0 | 0 | 13 | |

| # | Goalkeepers | Min | GA | Saves |
|----|--------------|-------|----|-------|
| 25 | Rylee Foster | 90:00 | 1 | 3 |

| Shots by period | 1 | 2 | Total |
|-----------------|---|---|-------|
| West Virginia | 5 | 8 | 13 |
| Penn State | 1 | 6 | 7 |

| Corner kicks | 1 | 2 | Total |
|---------------|---|---|-------|
| West Virginia | 4 | 3 | 7 |
| Penn State | 1 | 2 | 3 |

Scoring summary:

| No. | Time | Team | Goal scorer | Assist | Description |
|-----|-------|------|----------------|--------------|----------------------------------|
| 1. | 79:36 | PSU | Shea Moyer (1) | (unassisted) | 14 yards out, bottom-left corner |

Cautions and ejections:

Win-Amanda Dennis (1-0-0). Loss-Rylee Foster (0-1-0).

Stadium: Jeffrey Field

Officials: Referee: Tony Russo; Asst. Referee: Kyle Petty; Alan Robinson;

Alt. Official: Eric Samples; Scorer: PSU SID Staff;

Offsides: West Virginia 1, Penn State 2.

Official's signature

MATCH 2 | No. 4 PSU vs. Duquesne

Soccer Box Score (Final) 2018 Penn State Women's Soccer

Duquesne vs #4 Penn State (Aug 19, 2018 at University Park, Pa.)

Duquesne (0-2-0) vs.
Penn State (2-0-0)
Date: Aug 19, 2018 • Attendance: 1513
Weather: 68, cloudy

| Goals by period | 1 | 2 | Total |
|-----------------|---|---|-------|
| Duquesne | 0 | 0 | 0 |
| Penn State | 1 | 5 | 6 |

| Duquesne | | Sh | SO | G | A | Fo | Min |
|-------------------|------------------------|----|----|---|---|----|-----|
| gk | 1 Kyra Murphy | - | - | - | - | - | 90 |
| m | 2 Casey Aunket | 2 | - | - | - | - | 90 |
| m | 4 Alex Saturni | 1 | - | - | - | - | 90 |
| m | 10 Abby Losco | 1 | 1 | - | - | - | 90 |
| f | 15 Lauren Bell | - | - | - | - | - | 75 |
| f | 17 Tori Kopchak | - | - | - | - | - | 38 |
| f | 17 Tori Kopchak | - | - | - | - | - | 65 |
| m | 19 Deena Debaldo | - | - | - | - | - | 56 |
| d | 24 Kayla Winicki | - | - | - | - | - | 71 |
| d | 27 Missy Moore | - | - | - | - | - | 47 |
| m | 33 Sarah Wilkinson | - | - | - | - | - | 69 |
| -- Substitutes -- | | | | | | | |
| | 3 Ashley Rodriguez | - | - | - | - | - | 18 |
| | 7 Alyssa Victor | - | - | - | - | - | 27 |
| | 8 Sydney Routh | - | - | - | - | - | 50 |
| | 12 Allison Maliska | - | - | - | - | - | 8 |
| | 16 Lexi Kendro | - | - | - | - | - | 51 |
| | 20 Kelly Donovan | - | - | - | - | - | 30 |
| | 22 Taylor Requa | 1 | - | - | - | - | 18 |
| | 23 Kristen Kotsopoulos | - | - | - | - | - | 30 |
| | 28 Lexi Taylor | - | - | - | - | - | 10 |
| Totals | | 5 | 1 | 0 | 0 | 7 | |

| # | Goalkeepers | Min | GA | Saves |
|---|-------------|-------|----|-------|
| 1 | Kyra Murphy | 90:00 | 6 | 11 |

| Shots by period | 1 | 2 | Total |
|-----------------|----|----|-------|
| Duquesne | 2 | 3 | 5 |
| Penn State | 12 | 21 | 33 |

| Corner kicks | 1 | 2 | Total |
|--------------|---|---|-------|
| Duquesne | 0 | 2 | 2 |
| Penn State | 5 | 5 | 10 |

Scoring summary:

| No. | Time | Team | Goal scorer | Assist | Description |
|-----|-------|------|-------------------------|-------------------------------|--|
| 1. | 23:44 | PSU | Emily Ogle (1) | Penalty kick | |
| 2. | 58:15 | PSU | Frankie Tagliaferri (1) | Kerry Abello | From close range, a redirect from 2 |
| 3. | 61:35 | PSU | Frankie Tagliaferri (2) | Marissa Sheva | From four yards out, bottom-left corner |
| 4. | 69:35 | PSU | Kerry Abello (1) | Kelli Beiler | Left side of the box, upper-right corner |
| 5. | 82:15 | PSU | Rachel Wasserman (1) | Kristin Schnurr | From distance |
| 6. | 87:40 | PSU | Kim Dubs (1) | Shea Moyer Kristin Schnurr | Rebound off blocked shot |

Cautions and ejections:

Win-Amanda Dennis (2-0-0). Loss-Kyra Murphy (0-2-0).

Stadium: Jeffrey Field

Officials: Referee: John McCloskey; Asst. Referee: Dustin Killick; Michael Matlock;

Alt. Official: William Campbell; Scorer: PSU SID Staff;

Offsides: Duquesne 2, Penn State 5.

Official's signature

2018 PENN STATE WOMEN'S SOCCER



ERICA
DAMBACH

Head Coach • 12th Year
William & Mary, '97

RECORD AT PSU: 186-60-18 (.738)
Overall Record: 226-88-21 (.705)

Head coach Erica (Walsh) Dambach enters her 12th season at the helm of the Penn State women's soccer program in 2018.

During the 2017 season, the Nittany Lions advanced to the quarterfinal round of the NCAA Tournament for the third time in four seasons, and captured their seventh Big Ten Tournament title with a dramatic 2-1 win over Northwestern in Grand Park, Indiana, on Nov. 5, 2017.

Following the 2017 campaign, Frannie Crouse (No. 10 – North Carolina Courage) and Brittany Basinger (No. 21 – Washington Spirit) were selected in the 2018 National Women's Soccer League (NWSL) College Draft, which extended Penn State's streak of having at least one selection in every NWSL College Draft.

The 2016 campaign saw the Nittany Lions capture their 18th Big Ten regular season title in 19 seasons and they advanced to their 22nd-straight NCAA Tournament. The Blue and White opened the 2016 season with a 1-1 tie against No. 6 West Virginia in front of a program-record 5,791 fans at Jeffrey Field.

Along with a program-record crowd in the season opener, Penn State captured two milestone victories during the 2016 slate. On Aug. 21, the Nittany Lions topped Hofstra, 3-1, for their 400th victory in program history and on Sept. 9, the Nittany Lions defeated San Diego State, 3-0, for Coach Dambach's 200th career win as an NCAA Division I women's soccer head coach.

During the fall of 2015, the Penn State women's soccer team recorded a 3.49 GPA in the classroom to go along with the program's first NCAA title and a pair of Big Ten titles.

Dambach's squad finished the 2015 season with a 22-3-2 record, its eighth 20-win season, by defeating No. 20 Duke 1-0 in the College Cup Final on Dec. 6, 2015, in Cary, N.C. The NCAA title was the first in program history and the first by a Big Ten women's soccer program.

The Nittany Lions outscored the opposition 20-0 during their 2015 NCAA Tournament run, and did not allow a goal over the final 733:32 of the season.

Raquel Rodriguez capped off her historic career in the Blue and White by scoring the lone goal in the NCAA title match in the 72nd minute. Rodriguez followed up her game-winner in the title match by claiming the second MAC Hermann Trophy in program history in January 2016 (Welsh – 2001).

To go along with the MAC Hermann Trophy, Rodriguez garnered NSCAA Scholar Player of the Year honors, the Honda Sport Award winner for women's soccer and was named a NSCAA First Team All-American.

Following the 2015 season, Dambach received NSCAA Coach of the Year honors for the second time in her Nittany Lion career (2012).

In January 2016, all three Nittany Lion captains were selected in the National Women's Soccer League (NWSL) draft. Rodriguez was selected with the No. 2 pick by Sky Blue FC, Mallory Weber went to the Western New York Flash at No. 14 and Britt Eckerstrom was the first goalkeeper selected at No. 26 by the Western New York Flash.

In 2014, Dambach led the Blue and White to its 10th NCAA Tournament semifinal appearance and the seventh 20-win season in program history. Penn State, which had an 11-member freshman class, earned its third outright conference title in four years, maintaining a top-11 national ranking throughout the season and defeating five top-25 opponents.

Under Dambach's direction, picking up her third Big Ten Coach of the Year award, Penn State collected three of four Player of the Year awards. Whitney Church, the conference's Defender of the Year, was named a MAC Hermann Trophy semifinalist and an NSCAA All-America first team selection before she became the 30th overall pick in the NWSL draft by the Washington Spirit. Also earning individual Big Ten awards were Raquel Rodriguez, who bagged Midfielder of the Year honors, and Emily Ogle, the Freshman of the Year.

The Nittany Lions appeared in their 19th-straight NCAA Tournament in 2013, due in part to the success of senior Maya Hayes. The sixth-overall selection in the NWSL draft, Hayes set Penn State's single season record for points (79) and finished her career ranked third in goals scored (71) and points (163), sixth in game-winning goals (17) and seventh in shots (291). Hayes also became the seventh MAC Hermann Award Trophy semifinalist in program history.

Dambach's 2012 Nittany Lions were, at the time, the most successful team in program history after advancing to their first-ever national title game. The Nittany Lions won 21 of 27 games and were unbeaten in Big Ten action with a 10-0-1 record. The Lions registered their 15th consecutive Big Ten title and 18th-straight NCAA Tournament appearance. The 15-title mark stands as the most consecutive Big Ten Championships by a women's program, along with the Northwestern tennis team (1999-2014).

Senior Christine Nairn became just the seventh Nittany Lion to finish as a finalist for the prestigious Missouri Athletic Club's Hermann Trophy in 2012, under Dambach's tutelage, while junior Maya Hayes was named a semifinalist for the award.

Dambach's success was recognized at the conference and national level as she earned Big Ten Coach of the Year and NSCAA National Coach of the Year honors.

Her 2011 team was a dominant force, winning 21 of 26 matches, while out-scoring opponents 70-24. Penn State was 10-1-0 in Big Ten action and posted the seventh undefeated season at Jeffrey Field (9-0). Dambach helped guide the Lions to their 14th-straight Big Ten title and a spot to the NCAA Sweet Sixteen for the first time since 2007.

With Dambach's guidance, sophomore Maya Hayes became the nation's most prolific scorer in soccer in 2011 and was a finalist for the MAC Hermann Trophy. Hayes led the nation with 31 goals and 70 points, breaking the Penn State single-season record for points.

During the 2011 summer, Dambach had an extraordinary experience of being one of the top assistants to Pia Sundhage and the 2011 United States women's national team at the FIFA World Cup in Germany. The U.S. made a sparkling run through knockout play to the final, falling to eventual champion Japan.

DAMBACH'S COLLEGIATE RÉSUMÉ

| | |
|---------------------------|--|
| Head Coach | |
| Penn State | 2007-present |
| | <i>2012, 2015 NSCAA National Coach of the Year</i> |
| | <i>2009, 2012, 2014 Big Ten Coach of the Year</i> |
| Harvard | 2006 |
| Dartmouth | 2000-02 |
| Assistant Coach | |
| Florida State | 2005-06 |
| Dartmouth | 1998-99 |
| Graduate Assistant | |
| Lehigh | 2003-04 |
| Dartmouth | 1997 |
| Student-Athlete | |
| William & Mary | 1993-97 |
| | <i>2010 William & Mary Hall of Fame Inductee</i> |

DAMBACH'S NATIONAL RÉSUMÉ

| | |
|----------------------------|--|
| Head Coach | |
| U.S. Women's Under-17 | 2004-07 |
| Assistant Coach | |
| U.S. Women's Under-20 | 2013-14 |
| U.S. Women's National Team | 2008-11 |
| | <i>2008 Olympic Gold Medalists</i> |
| | <i>2011 World Cup Silver Medalists</i> |
| U.S Women's Under-19 | 2004 |

2018 PENN STATE WOMEN'S SOCCER

DAMBACH'S ACCOLADES

- 27 NCAA TOURNAMENT WINS**
- 15 YEARS OF COLLEGE HEAD COACHING EXPERIENCE**
- 14 NCAA TOURNAMENT APPEARANCES**
- 13 ALL-AMERICA HONORS**
- 9 BIG TEN CHAMPIONSHIPS**
- 3 BIG TEN COACH OF THE YEAR AWARDS**
- 3 BIG TEN TOURNAMENT TITLES**
- 2 COLLEGE CUP APPEARANCES**
- 2 NATIONAL CHAMPIONSHIP GAME APPEARANCES**
- 2 NATIONAL COACH OF THE YEAR AWARDS**
- 1 NCAA COLLEGE CUP TITLE**
- 1 OLYMPIC GOLD MEDAL**

During the 2010 season, Dambach's young club made a remarkable turnaround mid-season, overcoming a two-game deficit in the league standings over the final weeks to capture a share of its 13th straight Big Ten title.

After a tough 2-4 start to the 2009 season, Dambach led the Nittany Lions to a remarkable turnaround, going 10-1-2 in the last 13 games of the regular season, earning her the 2009 Big Ten Coach of the Year Award for her efforts.

With the impressive end to the season, Dambach and her charges captured the program's 12th straight Big Ten Championship. By winning the Big Ten, the Nittany Lions continued their string of NCAA Tournament berths, making their 15th straight appearance in the 64-team field in 2009. For the second time in three years, Penn State hosted the first and second rounds of tournament play.

Dambach also orchestrated one of the finest awards seasons in Penn State history when Katie Schoepfer, Alyssa Naeher and Christine Nairn swept the year-end Big Ten Player of the Year awards. Schoepfer was named the Offensive Player of the Year, Naeher the Defensive Player of the Year and Nairn the Freshman of the Year. Danielle Toney was named to the All-Big Ten first team, while Lexi Marton garnered a second-team mention. (Dambach has now coached two players of the year to three awards as Naeher was also the 2007 recipient of the Defensive Player of the Year honors in Dambach's first year in Happy Valley.)

Dambach continued her success from the 2007 campaign into a 16-8-0 record that saw Penn State capture its 11th straight Big Ten Championship and the 2008 Big Ten Tournament crown.

Her transition to Penn State was quite smooth as the 2007 team finished 18-4-2, including a 9-1-0 mark in conference play, and was ranked 12th in the final NSCAA poll of the season.

When she came to Penn State, Dambach brought with her a wealth of experience at both the international and collegiate levels. She already had coached at six different universities, including three stints as head coach, as well as serving as an assistant for the U.S. U-19 team in 2004. Dambach

served as head coach of the U-17 team from December 2004 until her arrival at Penn State in February 2007.

As of January 2009, Dambach was appointed as a member of the Panel of Instructors and Lecturers for FIFA Courses. In addition, she was appointed as the Chairman of the Women's Technical Committee for the period of January 1, 2009 to June 30, 2011.

In January of 2008, Dambach was named by Pia Sundhage as the assistant coach for the U.S. National Team. With Dambach's help and guidance the U.S. team completed its historic run with a gold medal at the 2008 Olympic Games in Beijing, China. Even sweeter was that Dambach's main responsibility was the U.S. team's defense, which held fellow world power Brazil scoreless in the gold medal game.

The head coach at Harvard University as well as the U.S. Under-17 team prior to her hiring at Penn State, Dambach has consistently been active among the coaching ranks both at the NCAA Division I level and the U.S. Youth National Team program for nearly a decade. Prior to her time with the Crimson, she was part of a Florida State staff that led the Seminoles to one of their most successful years to date. FSU joined Penn State in the 2005 Women's Soccer College Cup, with both programs reaching the national semifinals.

Dambach's coaching path began in 1997 as a graduate assistant with Bucknell University. In 1998, she accepted a position at Dartmouth, where she was an assistant coach for two seasons. After helping the team to a final NSCAA ranking of No. 8 at the conclusion of the team's 1998 NCAA quarterfinal run, as well as an Ivy League championship in 1999, Dambach assumed head coaching duties before the 2000 season.

As head coach, Dambach led the Big Green to back-to-back Ivy League co-championships in 2000 and 2001. Her squad was ranked in the NSCAA's top 25 each year, rising as high as No. 13 in 2001. In her three seasons as head coach, Dartmouth was invited to the NCAA Tournament each season and reached the round of 16 twice. All three of her teams earned the NSCAA's Academic Team Award.

Dambach left Dartmouth to earn her master's in business administration at Lehigh University where she served as a graduate assistant from 2003-04.

Beginning in the spring of 2004, Dambach joined the United States Under-19 team as an assistant coach where she helped with preparations for the Under-19 World Cup. The U.S. finished with the bronze medal in Thailand after defeating Brazil in the third-place match. After the World Cup, Dambach was appointed the U.S. National Team's U-17 head coach, a position she held for three years.

As a player, Dambach was an NSCAA All-Region selection at William & Mary. A two-time first team All-CAA pick, she propelled her team to four NCAA Tournament appearances as well as two CAA regular season and two CAA league championships. In March of 2010, Dambach's alma mater, William & Mary, honored her by inducting her into the W&M Athletics Hall of Fame.

A high school All-American at Lower Moreland, she was also a member of the U.S. Under-17 National Team.

Dambach earned her Bachelor of Science degree with a concentration in biology from William & Mary in 1997. The Huntingdon Valley, Pa., native holds an NSCAA Advanced National Degree and a USSF "A" Coaching License.

The former Erica Walsh married Jason Dambach in January 2016 and they currently reside in State College, Pennsylvania. Erica and Jason have two daughters, Addie and Kylie.

DAMBACH'S CAREER AT PENN STATE

| Season | Overall | Pct. | Big Ten | Pct. | Big Ten Finish | NCAA Finish |
|-------------------|------------------|-------------|----------------|-------------|----------------------------|---------------|
| 2007 | 18-4-2 | .792 | 9-1-0 | .900 | 1st | Third Round |
| 2008 | 16-8-0 | .667 | 8-2-0 | .800 | T-1st | First Round |
| 2009 | 13-6-2 | .667 | 8-1-1 | .850 | 1st | Second Round |
| 2010 | 11-9-1 | .548 | 8-2-0 | .800 | T-1st | Second Round |
| 2011 | 21-5-0 | .808 | 10-1-0 | .909 | 1st | Third Round |
| 2012 | 21-4-2 | .815 | 10-0-1 | .955 | 1st | Runner-Up |
| 2013 | 15-7-1 | .674 | 7-4-0 | .636 | 3rd | Second Round |
| 2014 | 20-4-0 | .833 | 12-1-0 | .923 | 1st | Quarterfinals |
| 2015 | 22-3-2 | .851 | 8-2-1 | .773 | T-1st | Champions |
| 2016 | 12-5-4 | .667 | 7-1-3 | .772 | T-1st | Second Round |
| 2017 | 15-5-4 | .708 | 6-2-3 | .682 | T-4th | Quarterfinals |
| 2018 | 2-0-0 | 1.000 | 0-0-0 | - | - | - |
| Penn State | 186-60-18 | .738 | 93-17-9 | .819 | 11 NCAAAs (24-10-1) | |
| Career | 226-88-21 | .705 | | | 14 NCAAAs (27-13-1) | |

2018 PENN STATE WOMEN'S SOCCER



0
SARAFINA VALENTI
 Jr. • GK
 Bechtelsville, Pa.



00
AMANDA DENNIS
 Jr. • GK
 San Diego, Calif.



2
KERRY ABELLO
 So. • D/M/F
 Batavia, Ill.



3
KALEIGH RIEHL
 RS-Jr. • D
 Fairfax Station, Va.



4
CAITLIN HAISLIP
 Fr. • D
 Munster, Ind.



5
MADDIE NOLF
 RS-Sr. • D
 Omaha, Neb.



7
MADDIE MYERS
 Fr. • M
 Grand Rapids, Mich.



8
KRISTIN SCHNURR
 RS-Jr. • F
 Bristow, Va.



9
RACHEL WASSERMAN
 Fr. • M/F
 Dallas, Texas



10
EMILY OGLE
 RS-Sr. • M
 Strongsville, Ohio



12
CHARLOTTE WILLIAMS
 Sr. • M
 Rochester, N.Y.



14
ELLIE JEAN
 RS-Jr. • D
 Coventry, Conn.



16
BECCA HAMILTON
 Jr. • D
 Howell, N.J.



17
ALINA ORTEGA JURADO
 Sr. • F/M
 Waldgirmes, Germany



18
SHEA MOYER
 So. • M
 Wyomissing, Pa.



19
FRANKIE TAGLIAFERRI
 So. • M/F
 Colts Neck, N.J.



22
KELLI BEILER
 Fr. • M
 Mount Pleasant Mills, Pa.



23
CASEY BALLOW
 So. • F/M
 Ijamsville, Md.



24
KIM DUBS
 Fr. • F
 Zurich, Switzerland



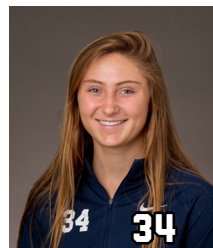
26
KAT ASMAN
 Fr. • GK
 Roswell, Ga.



27
MARISSA SHEVA
 Sr. • M
 Sellersville, Pa.



33
LAURA SUERO
 Jr. • D
 Royersford, Pa.



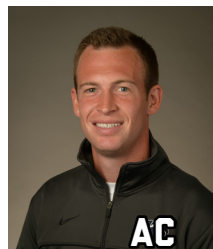
34
ALLY SCHLEGEL
 Fr. • M
 Parker, Colo.



HC
ERICA DAMBACH
 Head Coach • 12th Year
 William & Mary, '97



AHC
ANN COOK
 Associate Head Coach • 12th year
 William & Mary, '97



AC
TIM WASSELL
 Assistant Coach • 9th Year
 PSU Altoona, '06



DOPS
KARA LOWERY
 Director of Ops. • 6th Year
 Southern Nazarene, '97



VAC
HALEY MILLER
 Volunteer Assistant Coach • 1st Year
 James Madison, '14