



SAN DIEGO STATE AZTECS

2023 Volleyball Weekly Notes

Jim Solien (Primary Contact)
 Assistant Media Relations Director
Office Phone Number: (619) 594-2576
E-Mail Address: jsolien@sdsu.edu
News Release Date: Sept. 14, 2023

SDSU Official Athletics Website: goaztecs.com
SDSU Official Athletics Twitter: @GoAztecs
SDSU Official Athletics Instagram: @GoAztecs
SDSU Official Athletics Facebook: facebook.com/goaztecs
SDSU Official Athletics YouTube: youtube.com/goaztecscom

2023 AZTEC VOLLEYBALL SCHEDULE

Day/Date	Opponent	Time
Aug. 25	vs. Cal State Fullerton^	W, 3-1
Aug. 26	vs. Kansas State^	L, 0-3
Aug. 27	at Portland State^ (ESPN+)	L, 0-3
Aug. 31	Oregon~ (MWN)	L, 1-3
Sept. 1	Pepperdine~	L, 0-3
Sept. 2	UC Santa Barbara~ (MWN)	L, 0-3
Sept. 7	at UC San Diego+ (ESPN+)	W, 3-0
Sept. 8	vs. Denver+	W, 3-0
Sept. 9	vs. Navy+	L, 0-3
Sept. 15	at Gonzaga# (ESPN+)	6 p.m. PT
Sept. 16	vs. Eastern Washington#	11 a.m. PT
Sept. 19	at UNLV* (MWN)	6:30 p.m. PT
Sept. 23	San José State* (MWN)	1 p.m. PT
Sept. 28	at Colorado State* (MWN)	7 p.m. MT
Sept. 29	at Wyoming*	7 p.m. MT
Oct. 5	Air Force* (MWN)	6 p.m. PT
Oct. 7	New Mexico* (MWN)	1 p.m. PT
Oct. 12	at Fresno State* (MWN)	6 p.m. PT
Oct. 14	at Nevada* (MWN)	Noon PT
Oct. 19	Boise State* (MWN)	6 p.m. PT
Oct. 21	at Utah State* (MWN)	1 p.m. MT
Oct. 26	at New Mexico* (MWN)	6:30 p.m. MT
Oct. 28	at Air Force* (MWN)	1 p.m. MT
Nov. 2	Nevada* (MWN)	6 p.m. PT
Nov. 4	Fresno State* (MWN)	12:30 p.m. PT
Nov. 9	Wyoming* (MWN)	6 p.m. PT
Nov. 11	Colorado State* (MWN)	1 p.m. PT
Nov. 16	at San José State*	6 p.m. PT
Nov. 18	UNLV* (MWN)	1 p.m. PT

^ - Hotel Vance Rose City Showdown (Portland, Ore.)
 ~ - SDSU Invitational (San Diego, Calif.)
 + - UC San Diego Invitational (La Jolla, Calif.)
 # - Gonzaga Tournament (Spokane, Wash.)

* - Mountain West match
 (MWN) - Mountain West Network match

Socially

Twitter: @AztecVB
 Instagram: @Aztec_WVB

Gonzaga Tournament

Charlotte Y. Martin Centre | Spokane, Wash.

San Diego State (3-6) at Gonzaga (3-5)
 Friday, Sept. 15 | 6 p.m. PT
 ESPN+ | Live Stats

San Diego State (3-6) vs. Eastern Washington (4-5)
 Saturday, Sept. 16 | 11 a.m. PT
 Live Stats



AZTECS SET FOR GONZAGA TOURNAMENT

- > San Diego State closes out the non-conference portion of its 2023 regular-season schedule this weekend when it returns to the Pacific Northwest for the Gonzaga Tournament, Sept. 15-16, in Spokane, Washington. The Aztecs open the three-team event at Charlotte Y. Martin Centre on Friday when they battle the host Bulldogs, starting at 6 p.m. PT.
- > On Saturday, the Aztecs will conclude their brief visit with a clash against Eastern Washington, beginning at 11 a.m. PT.
- > Live stats will be available throughout the tournament, while Friday's encounter with the Bulldogs will air live on ESPN+ via subscription basis. Links to both platforms will be available on GoAztecs.com. Below is the complete event schedule.

Thursday, Sept. 14

Gonzaga at Eastern Washington 6 p.m. PT

Friday, Sept. 15

San Diego State at Gonzaga 6 p.m. PT (ESPN+)

Saturday, Sept. 16

San Diego State vs. Eastern Washington 11 a.m. PT
 Eastern Washington at Gonzaga 6 p.m. PT (ESPN+)

SERIES RECORD VS. GONZAGA

- > The Aztecs own a 2-1 advantage in their brief series with the Bulldogs, including a five-set nail-biter in their last meeting at the 2017 Denver Invitational.
- > In that match, SDSU maintained the statistical advantage in most categories, including attack percentage (.227-.153), kills (61-54), digs (62-52) and total blocks (11.0-7.0). After racing to a 2-0 in sets, however, the Aztecs hit a collective .019 over the third and fourth frames, allowing Gonzaga to climb back into contention.
- > Undaunted, the Scarlet and Black found its offensive rhythm in the decisive fifth set, blasting 10 kills with just four errors on 25 attempts (.280) while limiting the opposition to just four kills with four errors on 21 swings (.000). The Aztecs trailed 4-3 in the final frame before seizing momentum with a 12-6 closing run.
- > Prior to that meeting in the Mile High City, SDSU split two other encounters, both on the Zags' home floor. In 1993, the Aztecs rallied from a 2-1 deficit in sets to escape with a 3-2 decision, while GU prevailed in four sets at the Gonzaga Invitational in 2008.

SERIES RECORD VS. EASTERN WASHINGTON

- > The Aztecs have captured all three meetings vs. the Eagles, including a four-set triumph (25-16, 22-25, 28-26, 25-21) in 2019 at the GCU Invitational in Phoenix, Arizona.
- > In that contest, SDSU survived a pivotal third set that featured 21 ties and nine lead changes before engineering a timely 10-4 run late in the fourth frame to secure the victory.
- > The two sides committed 24 attack errors apiece, but the Aztecs still finished with a higher hitting percentage (.224 to .151) after maintaining a 60-47 advantage in kills. SDSU also held the statistical edge in assists (53-44), digs (71-59) and total blocks (11.0-8.0).
- > Prior to the 2019 match, the Aztecs registered a trio of wins over the Eastern Washington in the 2015 Outrigger Resorts Challenge at Hawai'i (3-0), the 1986 Fullerton Classic (2-0) and the 1984 Loyola Marymount Invitational (3-0).
- > The Aztecs are 19-8 all-time vs. the current alignment of the Big Sky Conference.
- > SDSU has faced one other Big Sky opponent this season, dropping a three-set decision at Portland State on Aug. 27.

ON THE HORIZON

- > Following the Gonzaga Tournament, San Diego State opens Mountain West play on Tuesday, Sept. 19, when it travels to the Silver State to face UNLV, starting at 6 p.m. PT. The Aztecs will conduct their home opener on Saturday, Sept. 23, playing host to San José State at 1 p.m. PT. Both matches will air live on the Mountain West Network.

GENERAL INFORMATION

Location San Diego, Calif.
 Founded 1897
 Enrollment 35,723
 Nickname Aztecs
 Colors Scarlet and Black (Pantone 187)
 Conference Mountain West
 Affiliation Division I
 President Dr. Adela de la Torre
 Director of Athletics John David Wicker
 Faculty Representative Dr. Frank Harris III
 Home Facility Aztec Court at Peterson Gym (2,000)

TEAM INFORMATION

Head Coach Brent Hilliard
 Alma Mater Long Beach State '93
 Record at SDSU 28-57 (Fourth year)
 Career Record 82-68 (Sixth year)
 E-Mail bhilliard@sdsu.edu
 Volleyball Office Phone (619) 594-5064
 Volleyball Office Fax (619) 594-1674
 Assistant Coach/Recruiting Coordinator Melanie Greene
 Assistant Coach Steve Timmons
 Assistant Coach Noly Mon
 Director of Volleyball Operations Bethany Kepner
 2022 Record 11-20
 2022 Conference Record 8-10 (Sixth)
 2022 Home Record 5-4
 2022 Road/Neutral Record 1-5
 Letterwinners Returning/Lost 10/5
 Starters Returning/Lost 4/2+Liberio

PROGRAM HISTORY

First Year of Volleyball 1976
 Overall Record 908-667 (.577)
 NCAA Appearances 14
 Last Postseason Appearance 2012
 NCAA Postseason Record 15-14

MEDIA RELATIONS

Assistant Media Relations Director Jim Solien
 E-Mail jsolien@sdsu.edu
 SID Office Phone (619) 594-2576
 SID Office Fax (619) 582-6541
 Official Athletic Website www.GoAztecs.com

2023 AZTEC VOLLEYBALL STATISTICAL LEADERS
(min. 50 percent of team sets played)

Hitting Percentage*	398	Julia Haynie
Kills	55	Madison Corf
Kills per set	2.93	Madison Corf
Assists	153	Sarena Gonzalez
Assists per set	6.12	Sarena Gonzalez
Service Aces	10	Taylor Underwood
Service Aces per set	0.34	Taylor Underwood
Digs	102	McKenna Douglas
Digs per set	3.52	McKenna Douglas
Blocks	17.0	Elly Schraeder
Blocks per set	0.71	Elly Schraeder

*. min 3.0 attempts per set

2023 AZTEC VOLLEYBALL FALL ROSTER

No.	Player	Pos.	Ht.	Yr.	Hometown (Last School)
1	Fatimah Hall	S	5-9	Fr.	Long Beach, Calif. (Lakewood HS)
2	Heipua Tautua'a	OH	6-2	Sr.	Wai'anae, Hawai'i (Wai'anae HS)
3	McKenna Douglas	DS/L	5-7	So.	Phoenix, Ariz. (Notre Dame Prep)
4	Amber Keen	MB	6-5	Fr.	Reno, Nev. (Reno HS)
6	Jordyn Goldsmith	OPP	6-1	Jr.	Valleyford, Wash. (Freeman HS)
7	Madison Corf	OH	5-11	So.	Kansas City, Mo. (Liberty HS)
8	Bailey Darnell	DS/L	5-8	Sr.	Honolulu, Hawai'i (UC Irvine)
10	Taylor Underwood	OPP/OH	6-2	So.	Narco, Calif. (DePaul)
11	Campbell Hague	MB/OH	6-2	Fr.	Cheney, Kan. (Cheney HS)
12	Cara Braun	OH	6-1	Fr.	Tempe, Ariz. (Valley Christian HS)
13	Julia Haynie	MB	6-2	Sr.	Temecula, Calif. (Portland State)
14	Reagan Merk	OH	5-11	Jr.	Huntington Beach, Calif. (Mater Dei HS)
15	Mikela Labno	OH	6-2	Jr.	Hilmar, Calif. (Hilmar HS)
16	Sarena Gonzalez	S	5-8	So.	Temecula, Calif. (Temecula Valley HS)
19	Natalie Hughes	OPP	6-4	Fr.	McKinney, Texas (McKinney North HS)
20	Elly Schraeder	MB	6-2	Jr.	Athol, Idaho (Univ. of San Diego)
21	Kat Cooper	MB	6-1	So.	Springdale, Ark. (Har-Ber HS)

Head Coach: Brent Hilliard (Long Beach State, 1993), Fourth season at SDSU
Assistant Coach/Recruiting Coordinator: Melanie Greene (San Diego State, 2007), 13th season at SDSU
Assistant Coach: Steve Timmons (USC), Fourth season at SDSU
Assistant Coach: Noly Mon, First season at SDSU
Director of Volleyball Operations: Bethany Kepner (Oregon, 2022), First season at SDSU

Pronunciations

#1 FATIMAH Hall	fa-TEE-ma
#2 HEIPUA TAUTUA'A	HEY-poo-ah TAW-too-AH-ah
#15 MIKELA Labno	ma-KAY-la
#21 Elly SCHRAEDER	SCHRAY-der



OPPONENT COMPARISON

2023 Overall Stats	SDSU	MW Rank	OPP	GONZ	Conf Rank	OPP	EWU	Conf Rank	OPP
Hitting Percentage	.206	5	.258	.169	8	.207	.207	6	.226
Kills per set	13.00	4	12.00	11.34	8	12.10	11.54	7	12.66
Assists per set	12.00	4	10.79	10.48	8	11.52	10.03	9	11.60
Service Aces per set	1.52	8	2.00	2.10	2	1.45	2.03	1	1.89
Digs per set	11.69	11	11.52	13.14	6	13.97	13.57	7	14.31
Blocks per set	1.53	11	2.59	2.16	3	2.55	2.03	4	1.49

SCOUTING THE OPPOSITION

> **Gonzaga (3-5)** split two matches at the Idaho State Tournament last weekend, falling to Utah Valley in four sets (25-10, 24-26, 23-25, 17-25) before rebounding with a 3-0 sweep of the host Bengals (22-25, 21-25, 22-25). In the finale against ISU, Zoe Thiros launched a match-high 18 kills and hit .333, narrowly missing a double-double after posting eight digs, while fellow outside hitter Tyra Schaub also reached double figures with 10 put-aways of her own. In addition to facing the Aztecs on Friday, the Bulldogs will twice battle local adversary Eastern Washington, traveling to the Eagles' home court on Thursday evening before playing host to the rematch on Saturday. Gonzaga was picked to finish eighth in the West Coast Conference preseason coaches poll after logging a 6-23 record and a ninth-place mark of 2-16 in 2022. The Bulldogs have squared off against one other Mountain West member this year, dropping a tough five-set decision to Air Force in its first home tournament on Sept. 1. The following day, Gonzaga faced another common opponent on SDSU's schedule, falling in four sets to UC San Diego on Sept. 2. Entering the weekend, Thiros ranks fifth in the WCC in kills (3.15/set, 82 overall), while outside hitter Autumn Larson (2.42/set, 63 overall) and opposite Juliette Russell (2.21/set, 64 overall) are also averaging over two put-aways per set. In addition, the Bulldogs have received a boost from setter Nia Damuni, who is slotted fourth in the league with 9.14 assists per set (265 overall), while libero Viktoriya Ivanova occupies the fifth position with 3.79 digs per frame (110 overall). At the net, outside hitter Fallon Thompson (25 blocks, 0.86/set) and middle blocker (18 blocks, 0.75/set) own the top two spots on the Gonzaga roster in blocks, while Thiros has served up a team-high 12 aces, with her 0.46 average ranking fourth in the league. Collectively, the Bulldogs are slotted second and third in the WCC, respectively, in service aces (2.10/set) and blocks (2.16/set) but rank just eighth out of nine teams in kills (11.34/set) and hitting percentage (.169). Gonzaga is led by second-year head coach Katie Wilson, who has compiled a 9-28 record overall. Prior to her arrival on the Spokane campus, Wilson spent seven seasons as an assistant at Notre Dame, including a four-year stint as the Irish's associate head coach. Under Wilson's tutelage, the Bulldogs set a single-season program record with 179 aces during the 2022 campaign. She earned her bachelor's degree in business administration from the University of Puget Sound in 1999.

> **Eastern Washington (4-5)** went 2-1 at the University of Portland Invitational last weekend in Portland, Oregon, recording a pair of grueling five-set victories over CSUN and the host Pilots, sandwiched around a 3-0 sweep at the hands of Mountain West member Wyoming. In the finale against Portland, outside hitters Sage Brustad (15 kills, 9 digs) and Kalista Lukovich (11 kills, 8 digs) narrowly missed double-doubles, helping the Eagles erase a 2-1 deficit in sets. EWU was picked to finish eighth out of 10 teams in the 2023 Big Sky Conference preseason coaches poll after posting an 11-18 overall record and a seventh-place mark of 6-10 in league play last year. Entering the weekend, Brustad leads the Big Sky in service aces (0.63/set, 22 overall) and is slotted second in kills (3.74/set, 131 overall), which rank 22nd and 79th in the nation, respec-

2022 MOUNTAIN WEST STANDINGS (AS OF SEPT. 14)

Team	---Conference---			-----Overall-----			
	W	L	Pct.	W	L	Pct.	Strk
Wyoming	0	0	.000	9	0	1.000	W9
Air Force	0	0	.000	8	1	.875	W4
New Mexico	0	0	.000	7	3	.700	W2
San José State	0	0	.000	7	3	.700	W2
Utah State	0	0	.000	6	3	.667	W1
Colorado State	0	0	.000	5	4	.556	W1
UNLV	0	0	.000	5	4	.556	W1
Fresno State	0	0	.000	4	4	.500	W1
San Diego State	0	0	.000	3	6	.333	L1
Nevada	0	0	.000	3	6	.333	W1
Boise State	0	0	.000	2	5	.286	L5

Upcoming Matches in the MW

Sept. 15-16 (Friday-Saturday)

San Diego State at Gonzaga Tournament (Spokane, Wash.)
(Gonzaga, Eastern Washington)

Sept. 14-16 (Thursday-Saturday)

Boise State hosting Boise State Classic (Boise, Idaho)
(Loyola Marymount, South Dakota State, Montana)

Fresno State at Central Cal Challenge (Stockton, Calif.)
(Pacific, Sacramento State, CSU Bakersfield)

San José State at USF Challenge (San Francisco, Calif.)
(San Francisco, CSUN, UTRGV)

UNLV hosting UNLV Tournament (Las Vegas, Nev.)
(Coppin State, Portland, Lamar)

Sept. 14 & Sept. 16 (Thursday & Saturday)

Nevada hosting Wolf Pack Tournament (Reno, Nev.)
(Montana State, California)

Wyoming hosting UniWyo Invitational (Laramie, Wyo.)
(Tennessee Tech, Idaho State)

This Weekend's Non-Tournament Matches

Thursday, Sep. 14

Utah State at Utah Valley, 6 p.m. MT
Colorado State at Colorado, 7 p.m. MT

Friday, Sept. 15

Air Force at Milwaukee, 6 p.m. CT
Northern Arizona at New Mexico, 6:30 p.m. MT
Colorado at Colorado State, 7 p.m. MT

Saturday, Sept. 16

Air Force at Marquette, 1 p.m. CT
Brigham Young at Utah State, 7 p.m. MT



tively, as of Sept. 13. In addition, Lukovich (2.68, 91 overall) is averaging over two kills per set, followed closely by middle blocker Bri Gunderson (1.82/set, 62 overall), who is tied for eighth in the conference in blocks (1.00/set, 34 overall). Elsewhere, setter Katie Hatch finds herself among the Big Sky leaders in two categories, ranking fifth in assists (8.20/set, 287 overall) and eighth in service aces (0.43/set, 15 overall), while libero Makenna Collins is also slotted eighth in digs (3.57/set, 125 overall). As a team, Ewu leads the league in service aces (2.03/set), which ranks 34th nationally, while occupying the fourth position in the Big Sky in blocks (2.09/set). However, the Eagles rank just sixth in hitting percentage (.207) and seventh in both kills (11.54/set) and digs (13.57/set). Jon Haruguchi is in his second season as head coach of the Eastern Washington program after spending the previous six years as an assistant at Northern Colorado, where he was promoted to associate head coach in December 2019. While at UNC, he helped guide the Bears to a pair of NCAA Tournament appearances in 2019 and 2021, winning Big Sky regular-season and tournament championships both seasons.

TOURNAMENT CONNECTIONS

- > Aztec freshman opposite Natalie Hughes and Gonzaga outside hitter Audrey Lowe faced one another as prep opponents in Texas. As a freshman at McKinney North High School in 2019, Hughes' squad lost in two sets to Plano West High in a non-district match, featuring Lowe, who was a junior that season.
- > SDSU outside hitter Reagan Merk and Gonzaga opposite Juliette Russell also squared off as high school seniors during the 2019 campaign. Merk's Mater Dei team won two out of three sets vs. Russell's Vista Murrieta squad at the Durango Fall Classic. Merk finished with eight kills, seven digs, three aces and one block assist, according to MaxPreps, while Russell compiled six kills, three total blocks and one dig.
- > Aztec opposite Jordyn Goldsmith hails from Valleyford, Washington, located approximately 15 miles southeast of the Gonzaga University campus.

SDSU IN MW RANKINGS

- > As of Sept. 13, middle blocker Julia Haynie ranks fourth in the Mountain West with a .398 hitting percentage. The Aztec super senior has knocked down 43 kills on 38 attempts this season with just 10 errors.
- > In addition, setter Sarena Gonzalez has climbed into ninth spot in assists (6.12/set), while outside hitter Madison Corf (2.93 kills/set) and libero McKenna Douglas (3.52 digs/set) are slotted 10th in their respective statistical categories.
- > Sophomore opposite hitter Taylor Underwood served up a career-best five aces in a sweep of Denver on Sept. 8, which tied for the Mountain West's second-highest total this season.
- > Additionally, Corf's collegiate-best four aces vs. Pepperdine on Sept. 1 is also tied for the league's fourth-highest figure this year. She also owns the MW's eighth-best hitting percentage this year at .565 after knocking down 14 kills on 23 attempts with just one error at UC San Diego on Sept. 7.
- > Corf's 14 put-aways against the Tritons are tied for the sixth-highest total in a three-set match this year.
- > Freshman setter Fatimah Hall shares the Mountain West's third-highest assist total for a four-set match this year after dishing out 47 helpers in SDSU's season-opening victory over Cal State Fullerton on Aug. 25.
- > Douglas' 21 digs vs. CSUF is also tied for the sixth-best figure in the conference for a four-set match this season.
- > Collectively, the Aztecs have climbed into the fourth spot in kills this week (13.00/set) while ranking fifth in hitting percentage (.206) and eighth in service aces (1.52/set).
- > San Diego State's total of 50 team kills at UCSD are tied for second-highest total in the conference thus far for a three-set match. Likewise, the Aztecs' 48 overall assists are also tied for the second-best total for a three-set contest.
- > Additionally, SDSU is tied for the fifth-best figure in four-set match with 150 attack attempts vs. Cal State Fullerton, while its 14.5 team blocks in that match against the Titans is tied for 10th.

UC SAN DIEGO INVITATIONAL REWIND

- > San Diego State posted a 2-1 record at the UCSD Invite last weekend, recording consecutive sweeps over the host Tritons (25-19, 25-22, 25-21) and Denver (25-19, 25-17, 25-22) before witnessing a reversal of fortune against Navy in its tournament finale (23-25, 24-26, 21-25).
- > Taylor Underwood led the Aztecs with 31.5 points for the weekend, finishing with 26 kills (2.89/set), five aces and one block assist to go with a .286 hitting percentage, earning all-tournament honors along with Heipua Tautua'a, who displayed her versatility with 2.22 kills (20 overall) and 2.11 digs per set (19 overall) while adding five service aces of her own.
- > Not to be outdone, Madison Corf blasted a team-high 27 kills (3.00/set) and also hit .286 while contributing four block assists.
- > Additionally, Julia Haynie (.419) and Mikela Labno (.318) launched 24 kills apiece (2.67/set), while Sarena Gonzalez (8.00 assists/set, 72 overall) and McKenna Douglas (3.33 digs/set, 30 overall) topped the squad in their respective statistical categories.
- > After suffering four sweeps in a five-match losing streak, SDSU turned the tables against UC San Diego, hitting at a season-high .311 efficiency and maintaining a sizable 50-31 advantage in kills. Despite trailing in team blocks (6.0 to 5.0), the Scarlet and Black also owned the statistical edge in digs (31-28) and served up three aces to help fuel the victory.
- > In addition, the Scarlet and Black limited the Tritons to their second-lowest attack percentage of the year with a .165 clip, improving to 15-0 in the all-time series, which dates back to 1977.
- > Individually, the Aztecs received season-high kills totals from four players, including Corf, who led all players with 14 put-aways to go with a .565 hitting percentage, committing just one error in 23 attempts, while Tautua'a (.333) launched 13 non-returnables of her own. Labno (8 kills) and Haynie (7 kills) also got into the act offensively, while Elly Schraeder set a match-high with four block assists.
- > The following day against Denver, San Diego State maintained a robust 44-26 advantage in kills and a 10-4 edge in service aces while limiting the Pioneers to a .173 hitting percentage.
- > Individually, the Aztecs featured a balanced offensive attack, as five players finished with at least five kills, including Haynie, who hit .438 on the day and tied teammate Underwood for match-high honors with nine put-aways.
- > The SDSU cause was also buoyed by Gonzalez's season-best 28 assists, which led all players, while Douglas reached double-figures in digs once again with a match-high 10 scoops.
- > In addition, Underwood served up a career-high five aces, while Gonzalez and Tautua'a added two apiece.
- > In the weekend finale vs. Navy, the Aztecs held the statistical advantage in kills (40-34), hitting percentage (.260 to .212) and digs (40-31) but were undone by nine service aces by the Mids, who also owned the edge in team blocks (9.0 to 4.0) to escape with

the victory.

- > Individually, Underwood led all players with 11 kills, while Haynie and Labno launched eight non-returnables apiece. Haynie (.467) and Labno (.462) posted nearly identical hitting percentage, combining for just three errors on an aggregate 28 attempts, while Corf contributed seven put-aways of her own.
- > The fiercely contested match witnessed a combined 22 ties and seven lead changes in the first two sets that saw the Aztecs own a collective 26-20 edge in kills.
- > SDSU held the lead in all three sets but was unable to prevent late Navy runs. The Mids closed with a 3-0 spurt in the opening frame and a 6-2 surge in the second stanza before utilizing a big 16-5 outburst in set three to overcome a 16-9 deficit.

ALL-TOURNAMENT AZTECS - UCSD INVITE

- > San Diego State's Taylor Underwood and Heipua Tautua'a were both named to the all-tournament team this past weekend at the UC San Diego Invitational after helping the Aztecs to a 2-1 record.
- > Underwood led all SDSU players with 31 points, blasting a combined 26 kills (2.89/set) to go with five aces, five digs and one block assist while hitting .286 in three matches. In the Aztecs' sweep of Denver on Sept. 8, the sophomore opposite hitter set a career best with five service aces and tied for match-high honors with nine kills, including four put-aways in both the second and third sets. She also contributed a season-best five digs, as the Scarlet and Black improved to 3-2 in five all-time meetings vs. the Pioneers.
- > In the Aztecs' narrow three-set loss to Navy the following day, Underwood launched a match-high 11 kills (3.66/set), committing just three errors in 27 attempts for a .296 efficiency while adding one block assist. In the tournament opener against host UCSD on Sept. 7, the Norco, California, native hit at a .333 clip, knocking down six kills against one miscue in 15 swings, helping SDSU to a 3-0 triumph and raise its record to 15-0

all-time against the Tritons.

- > Meanwhile, Tautua'a totaled 20 kills (2.22/set) and 19 digs (2.11/set) at the tournament while serving up five aces of her own to go with one block assist. In the Aztecs' sweep of UCSD, the senior outside hitter finished second on the team with 13 kills and hit .333 for the match while adding three digs and a pair of aces. With the Tritons closing the gap in set three looking to extend the match, she blasted a late kill and combined with Julia Haynie on a block for the clinching point to complete the sweep.
- > Tautua'a followed with three kills and two more aces in the Aztecs' whitewash of Denver, serving up both winners in a 4-0 closing run that secure the second set. The Wai'ane, Hawai'i, product followed with four additional put-aways against Navy and a setting assist while tying for match-high honors with nine digs.

AZTEC TIDBITS

- > Opposite hitter Taylor Underwood, libero McKenna Douglas and setter Fatimah Hall are the only Aztecs to play all 29 sets this season, while outside hitters Madison Corf and Heipua Tautua'a have missed just one set apiece.
- > Tautua'a notched her 12th career double-double in SDSU's season-opening victory over Cal State Fullerton with 10 kills and 13 digs.
- > Outside hitter Campbell Hague leads the SDSU freshman class with 12 kills, including six put-aways against No. 6 Oregon on Aug. 31, when she did not commit an error in 13 attempts for a .462 efficiency.
- > Middle blocker Amber Keen, another freshman, made her Aztec debut in the third set against UCSB and recorded her first career kill.
- > The Aztecs' 14.5 team blocks in that triumph over the Titans marked the squad's highest total since the 2021 spring campaign when the Scarlet and Black registered 15.0 rejections in a 3-2 upset at Boise State.

2023 AZTEC SUPERLATIVES

Individual

HITTING PERCENTAGE (min. 12 kills)

.565 (14-1-23) Madison Corf at UC San Diego (Sept. 7)

KILLS

14 Madison Corf at UC San Diego (Sept. 9) and Taylor Underwood vs. Cal State Fullerton (Aug. 25)
 5 sets N/A N/A
 4 sets 14 Taylor Underwood vs. Cal State Fullerton (Aug. 25)
 3 sets 14 Madison Corf at UC San Diego (Sept. 7)

TOTAL ATTEMPTS

39 Madison Corf vs. vs. Cal State Fullerton (Aug. 25)
 5 sets N/A N/A
 4 sets 39 Madison Corf vs. Cal State Fullerton (Aug. 25)
 3 sets 28 Madison Corf vs. Pepperdine (Sept. 1)

ASSISTS

47 Fatimah Hall vs. Cal State Fullerton (Aug. 25)
 5 sets N/A N/A
 4 sets 47 Fatimah Hall vs. Cal State Fullerton (Aug. 25)
 3 sets 28 Sarena Gonzalez vs. Denver (Sept. 8)

DIGS

21 McKenna Douglas vs. Cal State Fullerton (Aug. 25)
 5 sets N/A N/A
 4 sets 21 McKenna Douglas vs. Cal State Fullerton (Aug. 25)
 3 sets 14 McKenna Douglas at Portland State (Aug. 27)

SERVICE ACES

5 Taylor Underwood vs. Denver (Sept. 8)

BLOCK SOLOS

3 Elly Schraeder vs. Cal State Fullerton (Aug. 25)

BLOCK ASSISTS

4 Elly Schraeder at UC San Diego (Sept. 7) and Kat Cooper vs. Cal State Fullerton (Aug. 25)

TOTAL BLOCKS

6 Elly Schraeder vs. Cal State Fullerton (Aug. 25)

Team

HITTING PERCENTAGE

.311 (50-17-106) at UC San Diego (Sept. 7)

KILLS

58 vs. Cal State Fullerton (Aug. 25)
 5 sets N/A N/A
 4 sets 58 vs. Cal State Fullerton (Aug. 25)
 3 sets 50 at UC San Diego (Sept. 7)

TOTAL ATTEMPTS

150 vs. Cal State Fullerton (Aug. 25)
 5 sets N/A N/A
 4 sets 150 vs. Cal State Fullerton (Aug. 25)
 3 sets 111 vs. Pepperdine (Sept. 1)

ASSISTS

55 vs. Cal State Fullerton (Aug. 25)
 5 sets N/A N/A
 4 sets 55 vs. Cal State Fullerton (Aug. 25)
 3 sets 48 at UC San Diego (Sept. 7)

DIGS

69 vs. Cal State Fullerton (Aug. 25)
 5 sets N/A N/A
 4 sets 69 vs. Cal State Fullerton (Aug. 25)
 3 sets 40 vs. Navy (Sept. 9) and vs. UC Santa Barbara (Sept. 2)

SERVICE ACES

10 vs. Denver (Sept. 8)

TOTAL BLOCKS

14.5 vs. Cal State Fullerton (Aug. 25)

- > San Diego State is the lone team in the Mountain West not to have played a five-set match this season. The Aztecs are 2-5 in three-set contests and 1-1 in four-setters.
- > SDSU has won two of its three matches this season when played on a Friday.
- > The Aztecs' clash against Navy on Sept. 9 marked the 150th match of Brent Hilliard's head coaching career.

SETTING AN EXAMPLE

- > After a heralded prep career at Lakewood High School, setter Fatimah Hall cracked the starting lineup in her first three collegiate matches last month at the Hotel Vance Rose City Showdown in Portland, Oregon, averaging 7.60 assists and 1.00 digs in 10 sets played.
- > A native of Long Beach, Hall made her Aztec debut a memorable one, finishing with a double-double after posting 47 assists and 12 digs, helping SDSU defeat Cal State Fullerton in the season opener on Aug. 25. Her 47 assists marked the highest total by an Aztec player since Camryn Machado dished out 53 helpers at Utah State in the penultimate match of the 2019 regular season. The SDSU freshman also blasted her first four collegiate kills against the Titans and was credited with one block assist.
- > Additionally, Hall led the Aztecs in assists in their final two matches of the tournament vs. Kansas State (13) and Portland State (16), serving up one ace apiece against the Wildcats and Vikings.

ALL-TOURNAMENT AZTEC - ROSE CITY SHOWDOWN

- > San Diego State libero McKenna Douglas earned a spot on the all-tournament team at the Hotel Vance Rose City Showdown in Portland, Oregon, after posting 39 digs (3.90/set), 10 assists and three aces in three matches. In the Aztecs' 3-1 triumph over Cal State Fullerton, the SDSU sophomore anchored the back row with 21 digs while adding six assists and a service ace.
- > Douglas' 21 scoops are tied for the third-best figure in the conference for a four-set match this year. In addition, Douglas posted 14 scoops in the tournament finale at Portland State, which was the second-highest number for a three-set match.

WELCOME BACK

- > Despite a 11-20 overall record, the Scarlet and Black captured seven of its last 11 matches in 2022, punctuated by an appearance in the Mountain West Championship where the sixth-seeded Aztecs upset No. 3 seed Colorado State, 3-2, in the first round before falling to second-seeded San José State in the semifinals by a 3-1 tally.
- > Building on that momentum, San Diego State returns 10 letterwinners from last season, including the duo of outside hitters Madison Corf and Heipua Tautua'a.
- > Corf made an immediate impact during her freshman campaign in 2022, earning all-Mountain West honorable mention after averaging a team-best 2.61 kills across 109 sets and ranked second on the squad with 282 kills overall. The Kansas City, Missouri, product was also slotted third on the Aztecs with double-digit kills in 11 matches while occupying the fourth position with 172 digs (1.59/set). She also contributed 25 blocks, including five solo stops, to go with 16 service aces.
- > In the Aztecs' aforementioned upset of Colorado State in the Mountain West tournament, Corf posted her second double-double of the year, blasting a team-high 17 kills to go with 13 digs.
- > Tautua'a continued to exhibit her resourcefulness last season, finishing second on the team in digs (244) while ranking third in kills (260), kills per set (2.36) and digs per set (2.22). Additionally, the Wai'anae, Hawai'i, native led SDSU with seven double-doubles (kills-digs) and was slotted fourth on the squad with 39.0 total blocks, including 13 solo stops.
- > The Aztecs also welcome back a pair of middle blockers in super senior Julia Haynie and junior Elly Schraeder. In 2022, Haynie ranked fifth in the Mountain West with a career-best .356 hitting percentage while finishing third on the team in total blocks (43) and sixth in kills (137, 1.59/set). The Temecula native recorded multiple blocks in 10 matches and surpassed the double-digit kill plateau on four occasions, committing one attack error or less in 15 contests.
- > Schraeder, meanwhile, was slotted sixth in the league with 1.09 blocks per set, compiling a team-high 118 blocks overall in her first season on The Mesa after transferring across town from the University of San Diego. The Athol, Idaho, product notched at least one block in all but two matches and recorded multiple stops in all but three contests. She also ranked second on the team among qualifiers with a .291 hitting percentage and was slotted fifth in kills (152) and sixth in kills per set (1.41).
- > Outside hitter Mikela Labno was the only other Aztec to average more than two kills per set in 2022 (2.15, 204 overall), appearing in 95 sets across 26 matches, including nine starts. The Hilmar, California, native surpassed the double-digit kill plateau in eight matches during her sophomore campaign in 2022, including consecutive encounters with Army (12) and UC San Diego (13) at the SDSU Invitational, helping the Scarlet and Black close out its season-opening home tournament with a pair of victories.
- > Middle blocker Kat Cooper looks to assume an expanded role this year after posting 81 kills (1.01/set), 35 blocks (0.44/set) and 25 digs (0.31/set) in 80 sets played across 26 matches, which featured 10 starts. During her freshman campaign, the Springdale, Ark., product finished with at least five kills in eight different contests, tying her season best with seven put-aways against both UC San Diego (.600) and San José State (.429) at home.
- > Setter Sarena Gonzalez is back in the mix as well after she was one of three freshmen to appear in all 31 matches for SDSU during the 2022 season when she made 11 starts. The Temecula native averaged 4.58 assists and 1.00 digs across 107 sets, ranking second on the team in total assists (490) while occupying the fifth spot in digs (107). Gonzalez amassed double-digit assist totals in 24 matches and dished out 20 or more helpers on nine occasions, including four straight appearances from Aug. 27-Sept. 3.
- > Defensively, the Aztecs are hoping for the healthy return of libero McKenna Douglas, who played in just 10 matches during an injury-shortened freshman campaign. The Phoenix, Arizona, product finished second on the team with an average of 3.03 digs in 37 sets played. She also dished out 38 assists (1.03/set) and served up 12 aces (0.32), which ranked fifth and seventh on the squad, respectively. Douglas set an SDSU season-high with 26 digs in a 3-1 home triumph over Nevada, which was tied for the second-best total in a four-set Mountain West match during the 2022 campaign.
- > Rounding out the list of Aztec veterans are juniors Reagan Merk and Jordyn Goldsmith, along with redshirt freshman Cara Braun.

NEW KIDS IN TOWN

- > The prospects for the San Diego State volleyball program continue to improve after head coach Brent Hilliard retooled the Aztec roster with another solid newcomer class for the 2023 campaign.
- > SDSU's early signing class last November featured three prep stars in opposite hitter Natalie Hughes (McKinney, Texas), setter Fatimah Hall (Long Beach, Calif.) and middle blocker/outside hitter Campbell Hague (Cheney, Kan.).
- > During spring and summer, the Aztecs added a pair of Division I transfers in opposite hitter Taylor Underwood (DePaul) and defensive specialist Bailey Darnell (UC Irvine) while signing another prep standout in middle blocker Amber Keen (Reno, Nev.).
- > Underwood garnered Big East all-freshman accolades in her lone season at DePaul last year after ranking third on the Blue Demons with 264 kills

2023 SITUATIONAL RECORDS

GENERAL

Overall.....	3-6
Mountain West.....	0-0
Home.....	0-3
Away.....	1-1
Neutral.....	2-2
vs. Ranked Teams.....	0-1
vs. Unranked Teams.....	1-2
Matches Following a Win.....	1-2
Matches Following a Loss.....	1-4
Longest Winning Streak.....	2
Longest Losing Streak.....	5
Current Streak.....	Last 1

BY SETS

3 Sets.....	2-5
4 Sets.....	1-1
5 Sets.....	0-0
Leading After Two.....	2-0
Trailing After Two.....	0-3
Tied After Two.....	1-0
Leading 2-1.....	1-0
Trailing 2-1.....	0-0

BY MONTH

August.....	1-3
September.....	2-3
October.....	0-0
November.....	0-0

BY DAY

Tuesday.....	0-0
Thursday.....	1-1
Friday.....	2-1
Saturday.....	0-3
Sunday.....	0-1

BY KILLS

Leading in Kills.....	3-2
Trailing in Kills.....	0-3
Tied in Kills.....	0-1

BY DIGS

Leading in Digs.....	3-2
Trailing in Digs.....	0-4
Tied in Digs.....	0-0

BY BLOCKS

Leading in Blocks.....	1-0
Trailing in Blocks.....	2-6
Tied in Blocks.....	0-0

BY ATTACK PERCENTAGE

Greater Attack Percentage.....	3-1
Lower Attack Percentage.....	0-5
Equal Attack Percentage.....	0-0
Hitting above .300.....	1-0
Hitting between .200 and .300.....	1-4
Hitting between .100 and .200.....	1-0
Hitting below .100.....	0-2
Opponent Hitting above .300.....	0-4
Opponent Hitting between .200 and .300.....	0-2
Opponent Hitting between .100 and .200.....	2-0
Opponent Hitting below .100.....	1-0

BY INDIVIDUAL KILLS

3+ Double-Digit Individual Kill Totals.....	1-0
2 Double-Digit Individual Kill Totals.....	1-0
1 Double-Digit Individual Kill Totals.....	0-4
0 Double-Digit Individual Kill Totals.....	1-2

2023 MATCH-BY-MATCH LEADERS

Date	Opponent	Kills	Hitting Pct.*	Assists	Aces	Digs	Blocks
A.25	vs. Cal State Fullerton	Underwood - 14	Underwood (.360)	Hall - 47	Underwood - 2	Douglas - 21	Schraeder - 6
A.27	vs. Kansas State	Tautua'a - 9	Tautua'a (.300)	Hall - 13	Cooper/Tautua'a - 2	Hall/Tautua'a - 4	Schraeder - 2
A.28	at Portland State	Corf - 11	Corf (.474)	Hall - 16	Douglas - 2	Douglas - 14	Haynie/Hughes - 2
A.31	No. 6 Oregon	Underwood - 11	Underwood (.375)	Gonzalez - 21	Underwood - 2	Tautua'a - 9	Cooper/Schraeder - 3
S.2	Pepperdine	Corf - 12	Corf (.107)	Gonzalez - 19	Corf - 4	Douglas - 12	Cooper - 3
S.3	UC Santa Barbara	Corf - 9	Corf (.174)	Gonzalez - 14	Three players - 1	Douglas - 13	Labno - 3
S.7	at UC San Diego	Corf - 14	Corf (.565)	Gonzalez - 25	Tautua'a - 2	Douglas - 11	Schraeder - 4
S.8	vs. Denver	Haynie/Underwood - 9	Haynie (.438)	Gonzalez - 28	Underwood - 5	Douglas - 10	Corf/Cooper - 2
S.9	vs. Navy	Underwood - 11	Haynie (.467)	Gonzalez - 19	Three players - 1	Douglas/Tautua'a - 9	Haynie - 4
S.15	at Gonzaga						
S.16	vs. E. Washington						
S.19	at UNLV						
S.23	San José State						
S.28	at Colorado State						
S.30	at Wyoming						
O.5	Air Force						
O.7	New Mexico						
O.12	at Fresno State						
O.14	at Nevada						
O.19	Boise State						
O.21	at Utah State						
O.26	at New Mexico						
O.28	at Air Force						
N.2	Nevada						
N.4	Fresno State						
N.9	Wyoming						
N.11	Colorado State						
N.16	at San José State						
N.18	UNLV						

* - min. 7 kills

(2.47/set) while occupying the sixth spot with 36 blocks (0.34/set). The Norco, California, native also contributed 78 digs (0.73/set) and nine services aces (0.08/set). Additionally, she surpassed the double-digit kill plateau on 13 occasions, launching a career-high 18 put-aways (.351) at Seton Hall.

> Hughes, meanwhile, lifted McKinney (Texas) North High to its second straight Class 5A Region II quarterfinal playoff berth in 2022 after a finals appearance in 2020. During her senior campaign, she led the Bulldogs in kills (473), kills per set (4.4), hitting percentage (.316), total blocks (83), and blocks per set (0.8), according to MaxPreps, finishing her prep career with over 1,100 put-aways while setting an all-time school record with 353 total blocks.

> Hall was also a highly prized recruit out of Lakewood High, compiling over 800 assists and 200 digs as a senior, helping her squad secure berths in the prestigious CIF Southern Section Division I championships and CIF State Open Division playoffs, as the Lancers finished with a No. 8 state ranking in the Open Division. For her efforts, the Long Beach product earned first-team all-CIF Southern Section Division I honors and was named co-MVP in the Moore League. Hall was part of a Lakewood High program that compiled a 54-14 record over the past two seasons, highlighted by a pair of conference championships with a 24-0 mark in league play during which her squad dropped just one set.

> Like Hall, Hague brings a winning pedigree with her to The Mesa after helping Cheney (Kan.) High to a combined 106-14 record over three seasons, highlighted by a runner-up finish at the 2021 Kansas State High School Activities Association (KHSAA) Class 3A Championships during her junior campaign. As a senior, she collected Most Valuable Player honors from the Central Plains League after leading the Cardinals in numerous categories, including kills (338), kills per set (3.60), hitting percentage (.270), service aces (42), total blocks (73) and blocks per set (0.8), according to MaxPreps.

> Keen has also witnessed success at the prep level after propelling Reno High to the 2022 Nevada Interscholastic Activities Association (NIAA) Class 5A North Regional championship and a runner-up finish in the state tournament. Prior to last season, she was nominated for Senior Player of the Year by VBRrecruiter.com.

> Darnell will bring additional veteran leadership to the SDSU back row this year after competing for three seasons at UC Irvine where she compiled 269 digs, 36 setting assists, 13 services aces and seven kills in 181 sets across 59 matches. She enjoyed her best season in 2021, averaging 2.11 digs per set (114 overall) with 19 setting assists and five services aces.

PRESEASON PROGNOSTICATIONS

> In a vote of the league's 11 head coaches, San Diego State was pegged for a fourth-place finish in the 2023 Mountain West preseason coaches poll released on August 16.

> The Aztecs received 64 points to tie New Mexico for that position while trailing defending MW tournament champion Utah State (92 pts, 5 first-place votes), 2022 regular-season standard bearer UNLV (92 pts, 3 first-place votes) and Colorado State (86 pts, 3 first-place votes) for the top three spots, respectively.

> In the 24-year history of the Mountain West, SDSU has finished first (2012), second (2002, 2011), fourth (2000, 2001, 2003, 2013, 2017), fifth (2005, 2015, 2019), sixth (1999, 2004, 2006, 2009, 2010, 2014, 2016, 2022), seventh (2008), eighth (2007, 2018, 2020), and ninth (2021) in the final league standings.

2023 Mountain West Preseason Poll

Rk. Team (1st-place votes), Pts.

1. Utah State (5) - 92
- UNLV (3) - 92
3. Colorado State (3) - 86
4. San Diego State - 64
- New Mexico - 64
6. Boise State - 59
7. Air Force - 38
8. San José State - 35
9. Nevada - 32
10. Wyoming - 28
11. Fresno State - 15

TWO AZTECS WIN GOLD MEDALS FOR MW SQUAD IN EUROPE

> The San Diego State volleyball program was represented on the Mountain West touring squad that captured the gold medal at the 2023 Global Challenge, held July 13-23 in Europe.

> Middle blocker Julia Haynie was the lone Aztec player named to the league's traveling team, while Melanie Greene served as co-head coach of the MW delegation that featured 12 student-athletes from eight conference institutions.

> SDSU's participation in the 2023 Global Challenge was supported by the SDSU Athletics Women's Fund.

> The Mountain West touring squad spent the first four days of its excursion (July 13-16) in Maribor, Slovenia, for training and friendly competition against various club and national teams before traveling to Pula, Croatia, for the opening ceremony.

> After four days of competition (July 18-21), the triumphant MW all-star team enjoyed a spectacular day of sightseeing in Venice, Italy (July 22), followed by a return flight to the United States.



Brent HILLIARD

Head Coach - Fourth Season at San Diego State

San Diego State Director of Athletics John David Wicker ushered in a new era for the Aztec volleyball team with the hiring of Brent Hilliard as the fifth head coach in program history on Jan. 31, 2020.

In his third season on The Mesa in 2022, Hilliard's determined efforts to return the Aztecs to conference title contention began to bear fruit, as the Scarlet and Black won seven of its last 11 matches to secure the sixth and final spot in the Mountain West Championship. Facing elimination, SDSU rounded into tournament shape with a pair of crucial road victories over Nevada and San José State in the final two matches of the regular season before utilizing that momentum to pull off a thrilling 3-2 upset over No. 3 seed Colorado State in the first round of the MW Championship. The Aztecs' triumph over the Rams marked their first victory over CSU in Fort Collins since 2013, a span of eight visits.

SDSU showed dramatic statistical improvement for its stretch run, posting greater per-set averages and marks in most categories over the final 11 matches compared to the first 20 contests, including kills (13.6 to 12.1), hitting percentage (.222 to .174), service aces (1.58 to 1.24), digs (13.09 to 11.73) and blocks (2.16 to 1.78).

Although the Aztecs' advance was stymied in the semifinals, their defeat at the hands of SJSU did not dampen the enthusiasm generated by their late-season flourish, as Hilliard and the SDSU coaching staff eagerly await the 2023 campaign.

Under Hilliard's tutelage, outside hitter Madison Corf, a former AVCA High School All-American, received all-Mountain West honorable mention during her freshman season after she topped the squad with an average of 2.61 kills per set while ranking second with 282 kills overall.

In addition, opposite hitter Kayla Rivera blossomed under Hilliard's direction, earning all-tournament honors at the MW Championship after tying for the team lead with 25 kills (2.89/set) and seven total blocks (0.78/set) while ranking second with a .362 hitting percentage in two matches.

Scholastic achievement has been a trademark for the SDSU volleyball program, and the 2022 campaign was no different, as eight players landed on the Mountain West all-academic team following the fall semester.

In the fall of 2021, Hilliard and the Aztecs were faced with another demanding schedule, squaring off against 10 teams that qualified for postseason play.

However, San Diego State had its moments of glory, posting a 3-0 sweep at eventual Mountain West tournament champion Boise State before recording a five-set thriller on the road at UNLV, which went on to capture the MWC crown.

Individually, Hilliard oversaw the continued rise to prominence of Victoria O'Sullivan, who received all-Mountain West recognition for the second straight season after ranking second in the conference with 3.71 kills per set, as the SDSU outside hitter concluded her illustrious career with 1,026 kills overall.

Hilliard's charges enjoyed another successful year scholastically, with nine Aztecs landing on the Mountain West all-academic team, including Ashley Vanderpan, Kennedy Feuerborn and Serena Hodson, who were presented with the Malik Award, given to SDSU student-athletes who attain a 4.0 GPA.

In his first season with the Scarlet and Black, Hilliard endured a challenging season fraught with COVID-19 protocols, an abbreviated schedule that was postponed until spring, along with injuries to key players.

However, Hilliard and the Aztecs persevered through the 2021 spring campaign, posting a 6-9 record, highlighted by thrilling victories over Boise State on the road and Colorado State at home in the season finale, respectively. Against the Broncos, SDSU defeated a Boise State team that entered the contest with four consecutive 3-0 sweeps. Two weeks later, the Aztecs snapped an 11-match to the Rams dating back to 2014 and logged their first win over CSU in San Diego since 2012.

Under Hilliard's guidance, O'Sullivan garnered all-Mountain West accolades for the first time in her career, as the SDSU junior led the squad with 3.25 kills per set, which ranked seventh in the conference. In addition, seniors Lauren Lee and Erin Gillcrist received MW Defensive Player of the Week recognition following the team's aforementioned wins over Boise State and Colorado State, respectively.

Hilliard's Aztecs also excelled in the classroom, with 12 student-athletes selected to the Mountain West all-academic team, including Lauren Lee, who also merited first-team all-District 8 academic honors from the College Sports Information Directors of America (CoSIDA).

A 2018 inductee to the Southern California Indoor Volleyball Hall of Fame, Hilliard arrived at SDSU with a wealth of experience after achieving 19 years of unparalleled success as an assistant coach at the University of San Diego, where he served as the Toreros' associate head coach since 2007.

During his fruitful tenure, the Toreros qualified for the NCAA Tournament in all but one of his 19 seasons, advancing to the Sweet 16 in 2004, 2006, 2013 and 2018. In addition, Hilliard helped guide the Toreros to nine West Coast Conference championships while his players earned six All-America awards, 12 All-America honorable mentions, 44 all-WCC accolades and 15 freshman all-conference certificates.

Hilliard twice assumed the reins of the USD program on an interim basis while head coach Jennifer Petrie was absent on maternity leave. In 2006, Hilliard was honored as WCC Coach of the Year after guiding the Toreros to a conference championship and a Sweet 16 appearance in the NCAA Tournament. That season, he coached five all-conference honorees, including WCC Player of the Year Kristen Carlson, as USD finished 14th in the final USA Today/Coaches Poll.

The Toreros also flourished under Hilliard's guidance in 2011, racing to a 13-0 start en route a program-best 28-5 record, highlighted by a spot in the second round of the NCAA Tournament. Throughout his stint, USD was consistently ranked among the nation's top 25, climbing to as high as No. 2 during the 2013 campaign and rising to No. 5 in 2016.

Hilliard played collegiately at Long Beach State, earning All-America honors in each of his four years from 1990-93, including first-team recognition over his final three seasons. A right-side hitter for the 49ers, Hilliard was named the NCAA Men's Volleyball Player of the Year as a junior in 1992 after leading LBSU to a 31-1 record.

In 1991, Hilliard and the 49ers captured the NCAA Championship with a 3-1 victory over USC in the finals, avenging a loss to the Trojans in the title match the year before. He finished his career as the NCAA all-time leader with 3,034 kills.

Additionally, Hilliard was selected to play for Team USA in the 1992 Summer Olympics in Barcelona, Spain, where he helped the Americans capture the bronze medal. The following year, he won a silver medal at the 1993 Pan American Games in Argentina and also owns a bronze medal from the 1991 World Cup.

After receiving his undergraduate degree in 1993 from Long Beach State in political science, Hilliard continued his volleyball career as a professional in Europe from 1995-98, playing two seasons in Belgium and another in the Netherlands. In 1996, Hilliard and the Masiel Volleyball Club captured the Belgian national championship and competed in the European Champions League.

In addition to his collegiate experience, which included a stint as head coach at nearby Cuyamaca College in 1999 and 2000, Hilliard has also coached for over 10 years at Wave Volleyball Club in Del Mar, the premier volleyball club in San Diego County.

HILLIARD'S COLLEGIATE COACHING LEDGER (As an Assistant at USD)

Year	Overall Record	WCC Record (Finish)	Postseason
2001	22-9	10-4 (3rd)	NCAA Second Round
2002	25-8	10-4 (3rd)	NCAA First Round
2003	17-13	6-8 (T-5th)	NCAA First Round
2004	24-5	14-0 (1st)	NCAA Sweet 16
2005	23-6	10-4 (T-2nd)	NCAA Second Round
2006*	26-6	13-1 (1st)	NCAA Sweet 16
2007	21-8	11-3 (1st)	NCAA First Round
2008	23-5	12-2 (1st)	NCAA First Round
2009	18-7	10-4 (2nd)	None
2010	24-8	13-1 (1st)	NCAA Second Round
2011*	28-5	12-4 (2nd)	NCAA Second Round
2012	21-7	13-3 (T-1st)	NCAA First Round
2013	26-4	16-2 (1st)	NCAA Sweet 16
2014	19-12	12-6 (T-3rd)	NCAA First Round
2015	22-10	14-4 (2nd)	NCAA Second Round
2016	24-6	15-3 (2nd)	NCAA First Round
2017	25-5	17-1 (T-1st)	NCAA Second Round
2018	18-13	13-5 (3rd)	NCAA Sweet 16
2019	25-6	17-1 (1st)	NCAA Second Round
USD Total		431-143 (.751)	
WCC Total		238-60 (.799)	

As Head Coach at SDSU

Year	Overall Record	MW Record (Finish)	Postseason
2020	6-9	6-9 (8th)	
2021	8-22	5-13 (9th)	
2022	11-20	8-10 (6th)	MW Tourney Semifinals
2023	3-6	0-0	
SDSU Total		28-57 (.329)	
Career as Head Coach		82-68 (.547)	
Overall Total		459-200 (.697)	

Notes

- * - Served as interim head coach during the 2006 and 2011 seasons at USD. Record reflected in career totals.
- > Qualified for the NCAA Tournament in 18 of his 19 seasons at USD
- > Reached the NCAA Sweet 16 four times in 2004, 2006, 2013 and 2018
- > Won nine West Coast Conference championships

2023 AZTEC VOLLEYBALL PHOTO ROSTER



Fatimah HALL
S | 5-9 | Fr.

1



Heipua TAUTUA'A
OH | 6-2 | Sr.

2



McKenna DOUGLAS
DS/L | 5-7 | So.

3



Amber KEEN
MB | 6-5 | Fr.

4



Jordyn GOLDSMITH
OPP | 6-1 | Jr.

6



Madison CORF
OH | 5-11 | So.

7



Bailey DARNELL
DS/L | 5-8 | Sr.

8



Taylor UNDERWOOD
OPP/OH | 6-2 | So.

10



Campbell HAGUE
MB/OH | 6-2 | Fr.

11



Cara BRAUN
OH | 6-1 | RS-Fr.

12



Julia HAYNIE
MB | 6-2 | Sr.

13



Reagan MERK
OH | 5-11 | Jr.

14



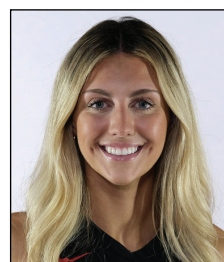
Mikela LABNO
OH | 6-2 | Jr.

15



Sarena GONZALEZ
S | 5-8 | So.

16



Natalie HUGHES
OPP | 6-4 | Fr.

19



Elly SCHRAEDER
MB | 6-2 | Jr.

20



Kat COOPER
MB | 6-1 | So.

21



Brent HILLIARD
Head Coach



Melanie GREENE
Assistant Coach/
Recruiting Coordinator



Steve TIMMONS
Assistant Coach



Noly MON
Assistant Coach



Bethany KEPNER
Director of
Volleyball Operations



2023-24 San Diego St. Women's Volleyball Combined Team Statistics All games

Game Records

Overall	Conference	Home	Away	Neutral
3 - 6	0 - 0	0 - 3	1 - 1	2 - 2

Team Box Score

##	Player	SP	Attack					Set		Serve			Dig		Blocking					PTS		
			K	K/S	E	TA	PCT	A	A/S	SA	SE	SA/S	RE	DIG	DIG/S	BS	BA	TOT/S	BLK/S		BE	BHE
1	Hall, Fatimah	29	4	0.14	2	12	.167	151	5.21	2	2	0.07	0	38	1.31	0	1	1	0.03	0	5	6.5
2	Tautua'a, Heipua	28	53	1.89	37	155	.103	7	0.25	9	3	0.32	17	64	2.29	1	3	4	0.14	2	1	64.5
3	Douglas, McKenna	29	0	0.00	1	4	-.250	30	1.03	5	6	0.17	16	102	3.52	0	0	0	0.00	0	0	5.0
4	Keen, Amber	2	2	1.00	2	6	.000	0	0.00	0	0	0.00	1	0	0.00	0	0	0	0.00	0	0	2.0
7	Corf, Madison	28	82	2.93	45	207	.179	3	0.11	6	17	0.21	10	44	1.57	2	10	12	0.43	2	0	95.0
8	Darnell, Bailey	18	0	0.00	0	2	.000	0	0.00	1	1	0.06	5	16	0.89	0	0	0	0.00	0	0	1.0
10	Underwood, Taylor	29	71	2.45	30	188	.218	1	0.03	10	18	0.34	1	14	0.48	0	6	6	0.21	2	1	84.0
11	Hague, Campbell	9	12	1.33	7	35	.143	0	0.00	0	0	0.00	0	1	0.11	0	2	2	0.22	0	0	13.0
12	Braun, Cara	6	5	0.83	2	9	.333	0	0.00	1	2	0.17	1	1	0.17	1	0	1	0.17	0	0	7.0
13	Haynie, Julia	19	43	2.26	10	83	.398	1	0.05	3	8	0.16	0	4	0.21	2	7	9	0.47	0	0	51.5
14	Merk, Reagan	4	0	0.00	0	0	.000	0	0.00	0	2	0.00	0	2	0.50	0	0	0	0.00	0	0	0.0
15	Labno, Mikela	25	44	1.76	17	97	.278	2	0.08	0	0	0.00	2	10	0.40	0	9	9	0.36	2	0	48.5
16	Gonzalez, Sarena	25	4	0.16	1	11	.273	153	6.12	4	14	0.16	0	37	1.48	0	0	0	0.00	0	3	8.0
19	Hughes, Natalie	5	3	0.60	3	10	.000	0	0.00	0	0	0.00	0	0	0.00	0	3	3	0.60	0	0	4.5
20	Schraeder, Ely	24	24	1.00	9	67	.224	0	0.00	0	0	0.00	0	1	0.04	4	13	17	0.71	6	0	34.5
21	Cooper, Kat	21	30	1.43	14	69	.232	0	0.00	3	5	0.14	0	5	0.24	1	13	14	0.67	3	0	40.5
SAN DIEGO ST.		29	377	13.00	180	955	.206	348	12.00	44	78	1.52	58	339	11.69	11	67	44.5	1.53	17	10	465.5
Opponents		29	348	12.00	126	860	.258	313	10.79	58	61	2.00	44	334	11.52	20	110	75	2.59	16	10	481.0

Team statistics

	SDSU	OPP
ATTACK		
Kills	377	348
Errors	180	126
Total Attacks	955	860
Attack Pct	.206	.258
Kills/Set	13.00	12.00
SET		
Assists	348	313
Attempts	976	855
Assist Pct	.357	.366
Assists/Set	12.00	10.79
SERVE		
Aces	44	58
Errors	78	61
Attempts	634	677
Serve Pct	.877	.910
Aces/Set	1.52	2.00
SERVE RECEPTIONS		
Errors	58	44
Errors/Set	2.00	1.52
Attempts	615	556
Reception Pct	.906	.997
DEFENSE		
Digs	339	334
Digs/Set	11.69	11.52
BLOCKING		
Block solo	11	20
Block Assist	67	110
Total Blocks	44.5	75
Blocks/Set	1.53	2.59
Block Errors	17	16
Ball handling errors	10	10
ATTENDANCE		
Total	1531	736
Dates/Avg Per Date	3/510	2/368
Neutral Site #/Avg	4/211	-
Current win streak	0	-
Home win streak	0	-

Team Results

Date	Opponent	Score	Score-by-set	Att.
08/25/2023	vs Cal St. Fullerton	W 3-1	21-25,25-19,30-28,25-16	280
08/26/2023	vs Kansas St.	L 0-3	14-25,13-25,25-27	347
08/27/2023	at Portland St.	L 0-3	22-25,22-25,19-25	521
08/31/2023	Oregon	L 1-3	19-25,15-25,25-22,10-25	555
09/01/2023	Pepperdine	L 0-3	17-25,26-28,21-25	465
09/02/2023	UC Santa Barbara	L 0-3	22-25,21-25,16-25	511
09/07/2023	at UC San Diego	W 3-0	25-19,25-22,25-21	215
09/08/2023	vs Denver	W 3-0	25-19,25-17,25-22	91
09/09/2023	vs Navy	L 0-3	23-25,24-26,21-25	125



**2023-24 San Diego St. Women's Volleyball
Team Match-by-Match Comparison
All games**

Date	Opponent	Score	Kills	Errors	TA	Hit%	Assists	SA	SE	RE	Digs	Blocks	BS	BA	BE	BHE
08/25/2023	Cal St. Fullerton	3-1	58/40	29/27	150/145	.193/.090	55/38	6/6	10/8	6/6	69/60	14.5/10.0	7/2	15/16	8/6	3/1
08/26/2023	Kansas St.	0-3	30/49	12/7	74/79	.243/.532	28/42	5/7	7/9	7/5	21/28	2.0/5.0	0/1	4/8	2/0	0/0
08/27/2023	Portland St.	0-3	40/40	17/12	104/90	.221/.311	34/37	5/7	9/5	7/5	34/41	5.0/6.0	1/4	8/4	3/1	1/0
08/31/2023	Oregon	1-3	46/52	20/17	121/105	.215/.333	0/0	3/9	11/3	9/3	33/40	6.0/10.0	1/2	10/16	3/2	2/0
09/01/2023	Pepperdine	0-3	39/35	30/7	111/85	.081/.329	0/0	6/7	6/8	7/6	38/35	3.0/11.0	0/2	6/18	1/1	0/1
09/02/2023	UC Santa Barbara	0-3	30/41	21/13	97/97	.093/.289	0/0	3/6	3/10	6/3	40/41	3.0/9.0	0/2	6/14	0/2	3/3
09/07/2023	UC San Diego	3-0	50/31	17/17	106/85	.311/.165	48/30	3/3	9/3	3/3	31/28	5.0/6.0	0/3	10/6	0/2	1/2
09/08/2023	Denver	3-0	44/26	19/13	96/75	.260/.173	41/21	10/4	9/5	4/10	33/30	2.0/9.0	0/3	4/12	0/2	0/3
09/09/2023	Navy	0-3	40/34	15/13	96/99	.260/.212	37/31	3/9	14/10	9/3	40/31	4.0/9.0	2/1	4/16	0/0	0/0

Note: Match totals are displayed in the format TEAM/OPPONENT for each category