



SAN DIEGO STATE AZTECS

2022 Volleyball Weekly Notes

Jim Solien (Primary Contact)
 Assistant Media Relations Director
Office Phone Number: (619) 594-2576
E-Mail Address: jsolien@sdsu.edu
News Release Date: Sept. 14, 2022

SDSU Official Athletics Website: goaztecs.com
SDSU Official Athletics Twitter: @GoAztecs
SDSU Official Athletics Instagram: @GoAztecs
SDSU Official Athletics Facebook: facebook.com/goaztecs
SDSU Official Athletics YouTube: youtube.com/goaztecscom

2022 AZTEC VOLLEYBALL SCHEDULE

Day/Date	Opponent	Time
Friday, Aug. 26	California [^] (MWN)	L, 0-3
Saturday, Aug. 27	Army West Point [^]	W, 3-1
Saturday, Aug. 27	UC San Diego [^] (MWN)	W, 3-1
Friday, Sept. 2	vs. No. 9 Baylor [#]	L, 1-3
Saturday, Sept. 3	at Pepperdine [#]	L, 0-3
Saturday, Sept. 3	vs. UC Santa Barbara [#]	L, 1-3
Friday, Sept. 9	Maryland [~]	L, 1-3
Friday, Sept. 9	Arizona [~] (MWN)	L, 0-3
Saturday, Sept. 10	Sacramento State [~]	L, 2-3
Thursday, Sept. 15	UCLA ⁺ (MWN)	7 p.m. PT
Saturday, Sept. 17	at San Diego ⁺	6 p.m. PT
Thursday, Sept. 22	San José State* (MWN)	7 p.m. PT
Saturday, Sept. 24	Nevada*	1 p.m. PT
Tuesday, Sept. 27	at Fresno State*	6 p.m. PT
Saturday, Oct. 1	at UNLV* (MWN)	1 p.m. PT
Thursday, Oct. 6	at Utah State* (MWN)	7 p.m. MT
Saturday, Oct. 8	at Boise State* (MWN)	Noon MT
Thursday, Oct. 13	Wyoming*	7 p.m. PT
Saturday, Oct. 15	Colorado State* (MWN)	1 p.m. PT
Thursday, Oct. 20	at New Mexico* (MWN)	5:30 p.m. MT
Saturday, Oct. 22	Air Force* (MWN)	1 p.m. PT
Thursday, Oct. 27	at Colorado State* (MWN)	7 p.m. MT
Saturday, Oct. 29	at Wyoming* (MWN)	1 p.m. MT
Thursday, Nov. 3	Boise State* (MWN)	7 p.m. PT
Saturday, Nov. 5	Utah State* (MWN)	1 p.m. PT
Monday, Nov. 7	Fresno State*	5 p.m. PT
Thursday, Nov. 10	UNLV* (MWN)	7 p.m. PT
Thursday, Nov. 17	at Nevada* (MWN)	7 p.m. PT
Saturday, Nov. 19	at San José State* (MWN)	1 p.m. PT

[^] - San Diego State Invitational (San Diego, Calif.)
[#] - Pepperdine ASICS Classic (Malibu, Calif.)
[~] - Aztec Classic (San Diego, Calif.)
⁺ - SDSU/USD Challenge (San Diego, Calif.)

* - Mountain West match
 (MWN) - Mountain West Network match

Socially
 Twitter: @AztecVB
 Instagram: @Aztec_WVB

Match Week Preview

Links to Mountain West Network streaming video and live stats on GoAztecs.com

UCLA (5-2 at San Diego State (2-7))
 Thursday, Sept. 15 | 7 p.m. PT | Live Stats | MW Network
 Series: UCLA leads 43-12

San Diego State (2-7) at No. 8 San Diego (7-1)
 Saturday, Sept. 17 | 6 p.m. PT | Live Stats
 Series: USD leads 32-27



AZTEC VOLLEYBALL SET TO FACE UCLA, USD THIS WEEK

- > San Diego State wraps up its non-conference schedule this week when it co-hosts the three-team SDSU/USD Challenge, which also features UCLA for the second year in a row.
- > The Aztecs will play host to the Bruins on Thursday, Sept. 15, starting at 7 p.m. PT, before traveling down Interstate 8 two days later for their annual clash with the Toreros at USD's Jenny Craig Pavilion on Sept. 17, beginning at 6 p.m.
- > Both matches will feature live stats, with the SDSU-UCLA showdown streaming live via the Mountain West Network on GoAztecs.com.
- > The first 250 fans in attendance for the Aztecs-Bruins encounter will receive a free SDSU Volleyball T-shirt.
- > The Scarlet and Black will also christen a brand new playing surface for the UCLA match on Thursday. SDSU last unveiled a new floor in time for the 2014 campaign, with its home volleyball facility earning the official name of Aztec Court at Peterson Gym.

SERIES RECORD VS. UCLA

- > SDSU has faced UCLA 55 times in the program's varsity history since 1976, posting a 12-43 record. The Aztecs have lost 13 straight to the Bruins dating back to 1986, when they won both encounters in a home-and-away series.
- > Thursday's match marks UCLA's second straight visit to Aztec Court at Peterson Gym and only the Bruins' third since 1997.
- > Last season, then-No. 16 UCLA claimed a three-set decision (25-17, 25-18, 25-13) over the Aztecs on Sept. 10, 2021.
- > Among SDSU's 2022 returners, Heipua Tautua'a blasted seven kills in that match to go with two block assists, while Noa Miller handed out 17 assists.
- > In that contest, the Aztecs kept within striking distance in each of the first two sets; however, the Bruins used an efficient attack, timely runs and a tight defense to keep the host school at bay.
- > Statistically, SDSU was out-hit .346 to .056 for the match, while UCLA maintained the advantage in kills (39-28), team blocks (13.0-7.0) and digs (29-27) to help key its victory.

SERIES RECORD VS. SAN DIEGO

- > SDSU trails the all-time series vs. San Diego, 27-32, after falling in four sets (25-20, 20-25, 20-25, 18-25) at Aztec Court last season on Sept. 11, 2021.
- > Among SDSU returners, Mikela Labno posted 11 kills in that match, while Heipua Tautua'a logged her second career double-double with 10 put-aways of her own to go with 12 digs.
- > In addition, setter Noa Miller accomplished the same feat for the first time in a Scarlet and Black uniform after finishing with 28 assists and 11 digs, while Sara Mukaj came up with three block assists.
- > Collectively, the Aztecs maintained the upper hand in kills (57-49) and digs (63-51) but were plagued by 27 attack errors and trailed in team blocks (15.0-7.0).
- > SDSU hit .203 for the match but ran out of steam in the final two sets when it posted a collective .129 efficiency.
- > The No. 8 position in the latest AVCA poll marks the highest-ranked Torero squad the Aztecs will have faced since Sept. 20, 2016, when the Aztecs dropped a hard-fought three-setter (21-25, 19-25, 24-26) to No. 7 USD at Peterson Gym.
- > SDSU will be looking to put the brakes on an eight-match slide to the Toreros at Jenny Craig Pavilion. The Aztecs were last victorious on USD's home floor in 2003 during the 30-point scoring era when they pulled off a reverse sweep over the No. 18 Toreros to prevail in five sets (23-30, 23-30, 30-24, 30-25, 15-11).

TOURNAMENT CONNECTIONS

- > Saturday's match against USD marks Brent Hilliard's second encounter against his former team after accepting the head coaching position at SDSU in January 2020. Hilliard was an assistant with the Toreros for 19 years, serving as the program's associate head coach from 2007-19.
- > San Diego State middle blocker Elly Schraeder played two seasons at USD in the spring and fall of 2021.

ON THE HORIZON

- > Following Saturday's match, San Diego State opens Mountain West play next week when it plays host to San José State (Sept. 22) and Nevada (Sept. 24). The Aztecs-Spartans clash will be streamed live via the Mountain West Network.

GENERAL INFORMATION

Location San Diego, Calif.
 Founded 1897
 Enrollment 35,782
 Nickname Aztecs
 Colors Scarlet and Black (Pantone 187)
 Conference Mountain West
 Affiliation Division I
 President Dr. Adela de la Torre
 Director of Athletics John David Wicker
 Faculty Representative Dr. Frank Harris III
 Home Facility Aztec Court at Peterson Gym (2,000)

TEAM INFORMATION

Head Coach Brent Hilliard
 Alma Mater Long Beach State '93
 Record at SDSU 16-38 (Third year)
 Career Record 70-49 (Fifth year)
 E-Mail bhilliard@sdsu.edu
 Volleyball Office Phone (619) 594-5064
 Volleyball Office Fax (619) 594-1674
 Assistant Coach/Recruiting Coordinator Melanie Greene
 Assistant Coach Steve Timmons
 Volleyball Operations Assistant Kara Barkdoll
 Fall 2021 Record 8-22
 Fall 2021 Conference Record 5-13 (Ninth)
 Fall 2021 Home Record 5-4
 Spring 2021 Road Record 1-5
 Letterwinners Returning/Lost 9/8
 Starters Returning/Lost 3/3+Libero

PROGRAM HISTORY

First Year of Volleyball 1976
 Overall Record 896-648 (.580)
 NCAA Appearances 14
 Last Postseason Appearance 2012
 NCAA Postseason Record 15-14

MEDIA RELATIONS

Assistant Media Relations Director Jim Solien
 E-Mail jsolien@sdsu.edu
 SID Office Phone (619) 594-2576
 SID Office Fax (619) 582-6541
 Official Athletic Website www.GoAztecs.com

**2022 AZTEC VOLLEYBALL
 STATISTICAL LEADERS**
(min. 50 percent of team sets played)

Hitting Percentage*	.377	Julia Haynie
Kills	97	Heipua Tautua'a
Kills per set	2.97	Heipua Tautua'a
Assists	170	Sarena Gonzalez
Assists per set	5.48	Sarena Gonzalez
Service Aces	15	Noa Miller
Service Aces per set	0.44	Noa Miller
Digs	96	Ellie Geoghegan
Digs per set	2.82	Ellie Geoghegan
Blocks	30.0	Elly Schraeder
Blocks per set	0.94	Elly Schraeder

*. min 3.0 attempts per set

2022 AZTEC VOLLEYBALL FALL ROSTER

No.	Player	Pos.	Ht.	Yr.	Hometown (Last School)
2	Heipua Tautua'a	OH	6-2	Jr.	Wai'anae, Hawaii (Wai'anae HS)
3	McKenna Douglas	DS/L	5-7	Fr.	Phoenix, Ariz. (Notre Dame Prep)
4	Kennedy Feuerborn	S	6-3	Jr.	Overland Park, Kan. (Johnson County CC)
6	Jordyn Goldsmith	OPP	6-1	So.	Valleyford, Wash. (Freeman HS)
7	Madison Corf	OH	5-11	Fr.	Kansas City, Mo. (Liberty HS)
8	Ellie Geoghegan	DS/L	5-8	Fr.	Manhattan Beach, Calif. (Mira Costa HS)
9	Sara Mukaj	MB	6-3	So.	Madena, Italy (Istituto Scaruffi-Levi Tricolore)
10	Cara Braun	OH	6-1	Fr.	Tempe, Ariz. (Valley Christian HS)
11	Kayla Rivera	OPP	6-1	Sr.	Ventura, Calif. (Univ. of Georgia)
13	Julia Haynie	MB	6-2	Sr.	Temecula, Calif. (Portland State)
14	Reagan Merk	OH	5-11	So.	Huntington Beach, Calif. (Mater Dei HS)
15	Mikela Labno	OH	6-2	So.	Hilmar, Calif. (Hilmar HS)
16	Sarena Gonzalez	S	5-8	Fr.	Temecula, Calif. (Temecula Valley HS)
19	Noa Miller	S	5-10	Sr.	Douglasville, Ga. (Arizona State)
20	Elly Schraeder	MB	6-2	So.	Athol, Idaho (Univ. of San Diego)
21	Kat Cooper	MB	6-1	Fr.	Springdale, Ark. (Har-Ber HS)

Head Coach: Brent Hilliard (Long Beach State, 1993), Third season at SDSU
Assistant Coach/Recruiting Coordinator: Melanie Greene (San Diego State, 2007), 12th season at SDSU
Assistant Coach: Steve Timmons (USC), Third season at SDSU
Volleyball Operations Assistant: Kara Barkdoll (Cal State San Marcos, 2015), Fifth season at SDSU

Pronunciations

#2 HEIPUA TAUTUA'A	HEY-poo-ah TAW-too-AH-AH
#4 Kennedy FEUERBORN	FEWER-born
#8 Ellie GEOGHEGAN	GAY-gun
#9 Sara MUKAJ	MOO-kye
#15 MIKELA Labno	ma-KAY-la
#19 NOA Miller	Noah
#21 Elly SCHRAEDER	SCHRAY-der



OPPONENT COMPARISON

2022 Overall Stats	SDSU	Conf. Rank	OPP	UCLA	Conf. Rank	OPP	USD	Conf. Rank	OPP
Hitting Percentage	.180	10	.265	.194	11	.125	.252	3	.161
Kills per set	12.35	7	12.18	12.52	11	10.32	12.86	5	11.62
Assists per set	11.65	8	11.47	11.68	9	9.80	12.10	3	10.69
Service Aces per set	1.32	11	2.03	1.72	5	0.96	1.59	4	1.28
Digs per set	11.41	10	10.74	12.40	8	10.92	13.69	4	12.90
Blocks per set	1.66	11	3.18	3.08	1	2.82	2.72	3	1.97

SCOUTING THE OPPOSITION

> After splitting two matches last week, UCLA (5-2) dropped out of the 22nd spot in the AVCA Top 25 Coaches Poll released Sept. 12. The Bruins lost in straight sets (24-26, 20-25, 19-25) at Loyola Marymount on Sept. 8, before rebounding with a 3-1 decision (14-25, 20-25, 26-24, 25-17) over Mountain West member San José State the following night in a neutral-site match played at LMU's Gersten Pavilion. Entering the week, UCLA occupies the third spot in the country with a Pac-12-leading 3.08 blocks per set as a team, trailing only Maryland (3.21) and Wisconsin (3.14). In addition, Bruin opponents are collectively hitting just .125, which ranks third in the conference and seventh nationally. UCLA is also slotted fifth in the Pac-12 with 1.72 service aces per set. However, the Bruins rank only 11th in the league in both hitting percentage (.125) and kills (12.52/set). Offensively, the Bruins sport four players who are averaging over two kills per set, including outside hitters élan McCall (2.88) and Grayce Olson (2.67), along with middle blocker Anna Dodson (2.36) and opposite hitter Iman Ndiaye (2.28). At the net, Francesca Alupe ranks third in the Pac-12 with 1.46 blocks per set, which is tied for 23rd nationally, while Dodson and Ndiaye are both averaging one block per frame. At the setter position, fifth-year senior Matti McKissock leads the team with 9.75 assists per set, while McCall (2.80/set) and libero Mackenzie Cole top the squad in digs. Patrolling the sidelines is head coach Michael Sealy, who is entering his 13th season at the helm of the Bruin program, highlighted by a national championship in 2011. Prior to his return to the Westwood campus, Sealy served as associate head coach at Hawaii from 2006-09, where he was part of a staff that guided the Rainbow Wahine to the national semifinals in his final season. He also spent four years as assistant coach with the UCLA men's team from 2003-06, as well as assisting with the Bruin women's team in 2005. One of the top setters in UCLA history, Sealy was a four-year letterwinner with the Bruins from 1990-93 and ranks fourth in program history in assists (4,749). In his senior season, Sealy helped UCLA capture the program's 14th national championship. His career record as a head coach stands at 262-117.

> San Diego (7-1) climbed four spots into the No. 8 position in the latest AVCA Top 25 Coaches Poll after winning all three matches at home last weekend in the USD Invitational. The Toreros swept SMU (25-22, 25-12, 25-17) and Connecticut (25-15, 25-12, 25-22) on Sept. 9 before outlasting Utah in five sets (22-25, 25-15, 25-18, 17-25, 15-9) in their tournament finale the following day. Prior to its showdown with the Aztecs, USD will square off against UCLA at Jenny Craig Pavilion on Friday night. The Toreros lead the West Coast Conference with a .161 opponent hitting percentage, which ranks 44th nationally as of Sept. 14. In addition, USD finds itself among the top half of the league in most statistical categories, including hitting percentage (3rd, .252), blocks (3rd, 2.72/set), service aces (4th, 1.59/set), digs (4th, 13.69/set) and kills (5th, 12.86). Individually, middle blocker Leyla Blackwell ranks second in the country with 1.83 kills per set, while setter Gabby Blossom occupies the

2022 MOUNTAIN WEST STANDINGS (AS OF SEPT. 15)

Team	---Conference---			-----Overall-----			
	W	L	Pct.	W	L	Pct.	Strk
New Mexico	0	0	.000	8	1	.889	W3
Boise State	0	0	.000	7	1	.875	W5
UNLV	0	0	.000	7	1	.875	W2
Air Force	0	0	.000	7	2	.778	L1
Utah State	0	0	.000	6	2	.750	W5
Colorado State	0	0	.000	6	3	.667	W2
San José State	0	0	.000	4	3	.571	L2
Nevada	0	0	.000	5	4	.556	W1
Fresno State	0	0	.000	4	5	.444	L1
San Diego State	0	0	.000	2	7	.222	L6
Wyoming	0	0	.000	2	7	.222	L1

Upcoming Matches in the MW

Sept. 15-17 (Thursday-Saturday)

San Diego State co-hosting SDSU/USD Challenge (San Diego, Calif.)
(San Diego, UCLA)

Air Force co-hosting Thin Air Challenge (Denver/USAFA, Colo.)
(Denver, San Francisco, UC San Diego)

San José State at Trojan Challenge (Los Angeles, Calif.)
(Milwaukee, New Mexico State, USC)

Sept. 16-17 (Friday-Saturday)

Fresno State at Central California Challenge (Bakersfield, Calif.)
(CSU Bakersfield, Pacific, Sacramento State)

Nevada at Oklahoma Tournament (Norman, Okla.)
(Oklahoma, Texas Southern)

UNLV at Southern Utah Invitational (Cedar City, Utah)
(Idaho State, Southern Utah, Utah Tech)

Wyoming hosting UniWyo Invitational (Laramie, Wyo.)
(Idaho, Morehead State, Nicholls)

This Weekend's Non-Tournament Matches

Wednesday, Sept. 14

Northern Arizona at New Mexico, 6:30 p.m. MST

Thursday, Sept. 15

Colorado at Colorado State, 7 p.m. MT

Friday, Sept. 16

Utah State at Utah, 6 p.m. MT

Colorado State at Colorado, 7 p.m. MT

New Mexico at Northern Arizona, 7:30 p.m. MDT

Saturday, Sept. 17

Utah State at Weber State, 2 p.m. MT



26th spot nationally with a conference-leading 10.55 assists per set. USD sports three players among the WCC top 10 in kills, including opposite hitter Grace Frohling (6th, 3.24/set) followed immediately by outside hitters Breana Edwards (7th, 3.14/set) and Katie Lukes (8th, 3.07/set). Frohling is also slotted eighth in the league with a .341 hitting percentage, while libero Annie Benbow tops the squad in digs (3.52/set). Now in her 24th year with the program, head coach Jennifer Petrie has led the Toreros to the NCAA Tournament on 21 occasions during her career, including their 12th straight appearance during the fall of 2021. She is a six-time West Coast Conference Coach of the Year recipient. Petrie's career record stands at 454-164.

SDSU IN MW RANKINGS

- > Entering the weekend, Noa Miller ranks sixth in the conference in service aces (0.44/set), while Sarena Gonzalez is slotted in the 10th position with 5.48 assists per set.
- > As a team, the Aztecs occupy the seventh and eighth spots in the conference, respectively, in kills (12.35/set and assists (11.65/set).
- > Miller's six service aces against UC San Diego is tied for the highest total in the Mountain West this season and marks the most by an SDSU player since Ashlynn Dunbar served up six of her own vs. Colorado State on Sept. 27, 2018. Dunbar also finished with seven service aces against CSU Bakersfield in the 2018 season opener.
- > Kayla Rivera's .647 hitting percentage (12-1-17) vs. Pepperdine on Sept. 3 is tied for the second-best efficiency in the conference this season.
- > Elly Schraeder's nine overall blocks vs. Army West Point is tied for the third-best figure in the MW this year and represents the most by an SDSU competitor since Lexie Hamrick's 11 rejections vs. UTEP on Sept. 15, 2018.
- > Meanwhile, Ellie Geoghegan's 23 digs vs. Sacramento State on Sept. 10 is tied for third-best total in a five-set match in the league this year.

A LOOK BACK AT THE AZTEC CLASSIC

- > Returning to The Mesa for its second home tournament of the regular season, San Diego State continued its demanding non-conference schedule last weekend when it welcomed three teams that combined for 54 victories in 2021.
- > The Aztecs opened the event with a four-set loss to Maryland (14-25, 25-21, 20-25, 18-25) before dropping a three-decision to Arizona (17-25, 15-25, 11-25) later that night.
- > SDSU then closed out the weekend with a tight battle against Sacramento State but ultimately fell in a five-set thriller (16-25, 26-28, 25-21, 25-22, 8-15).
- > Three Aztecs averaged over two kills per set for the tournament, led by Heipua Tautua'a (2.92), Madison Corf (2.50) and Mikela Labno (2.17).
- > In addition, Ellie Geoghegan averaged 3.83 digs per set, followed by Tautua'a (2.17).
- > As a team, however, SDSU was out-hit .304 to .186 for the weekend and trailed in both kills (147-130) and team blocks (30.0 to 15.0).
- > Against Sac State, the Aztecs fought back from a two-set deficit on Saturday but could not pull off the reverse sweep.
- > SDSU received a career-high 15 kills from Labno, while Corf tied her collegiate best with 15 put-aways as well.
- > Not to be outdone, Tautua'a finished with her third double-double of the season after posting 14 kills and 14 digs, providing ample back row support for Geoghegan, who set a career high with 23 scoops, while Noa Miller (27 assists) and Sarena Gonzalez (23 assists) split the setting chores.
- > Despite maintaining a 61-55 collective advantage in kills and a 55-49 margin in digs, however, the Aztecs committed more attack errors (28-21) and finished with a 12.0 to 6.0 deficiency in team blocks. Additionally, SDSU was plagued by 12 service errors, while the Hornets held a slight 10-6 edge in aces.
- > Still, the teams battled through an entertaining and competitive match, combining for 30 ties and 16 leads changes on the afternoon.
- > Against Maryland in a rare Friday matinee, the Terrapins maintained the statistical advantage in most categories, including kills (50-41), service aces (12-7) and team blocks (11.0 to 5.0) to help fuel their victory.
- > In addition, Maryland out-hit the Aztecs .289 to .179, posting a .462 clip in the opening set after knocking down 14 kills on 26 attempts with just two errors to help set the tone for the contest.
- > Individually, SDSU was led by Tautua'a (.300), who blasted a team-high 14 kills to go with nine digs. In addition, Labno and Julia Haynie recorded eight put-aways apiece.
- > Later that evening vs. Arizona, the Aztecs were unable to right the ship, as the Wildcats maintained a .438 hitting percentage compared to SDSU's .138 clip.
- > Arizona owned a sizable 42-28 advantage in kills and a 7.0 to 4.0 edge in team blocks while benefiting from 15 Aztec attack errors to complete the sweep.
- > Corf (9) and Tautua'a (7) combined for 16 of SDSU's 28 kills but no other player had more than three for the hosts.

RECAPING THE PEPPERDINE ASICS CLASSIC

- > Despite dropping three matches against teams that combined for 65 victories last season, the Aztecs kept things close in 10 of 11 sets, trailing by a combined seven kills on the weekend (148-141). However, SDSU committed twice as many attack errors (85-42), finishing with a .169 hitting percentage, compared to a .318 clip for the opposition. In addition, the Aztecs were victimized by 22 service aces and experienced a deficiency in team blocks (42.0 to 11.5).
- > The Aztecs had their moments against then-No. 9 Baylor in the tournament opener on Sept. 2, but were unable to sustain the momentum after a third-set rally, ultimately falling by a 3-1 count (18-25, 17-25, 29-27, 14-25).
- > Individually, SDSU was paced by Heipua Tautua'a, who recorded her second straight double-double and sixth of her career after posting 13 kills and 16 digs, while Madison Corf launched 11 put-aways of her own. The Aztecs' offensive fortunes also received a boost from Kayla Rivera (7 kills) and Mikela Labno (6 kills), while Elly Schraeder anchored the middle with five blocks, including a pair of solo stops.
- > Elsewhere, Sarena Gonzalez (25 assists) and Noa Miller (15 assists, 8 digs) shared the setting responsibilities, while Kat Cooper

contributed five kills and two block assists at the net.

> Trailing 0-2 in sets, SDSU entertained hopes of a comeback in the third stanza, as the teams combined for 13 ties and a pair of lead changes. The Aztecs enjoyed their most productive set of the match, blasting 16 kills, including four apiece by Corf and Tautua'a. In addition, the Scarlet and Black limited the Bears to their lowest hitting percentage of the day (.121).

> Nevertheless, San Diego State still found itself on the verge of defeat after Baylor took a 24-21 lead following a block by Lauren Harrison and Mallory Talbert. Unfazed, the Aztecs maintained their composure, fighting off five additional match points with an 8-3 closing spurt, clinching the set with three straight points to overcome a 27-26 deficit. Kills by Cooper and Labno, followed by Corf's service ace, afforded SDSU some new life. Unfortunately, the Aztecs' new-found enthusiasm was soon dashed early in the fourth frame, as the Bears grabbed a 9-4 lead and were never threatened.

> SDSU closed out its second tournament of the season the next day (Sept. 3) on a sour note, falling to host Pepperdine in three sets (18-25, 20-25, 32-34) before suffering a 3-1 defeat at the hands of UC Santa Barbara (18-25, 18-25, 25-22, 16-25).

> Against the Waves, the Aztecs were led by Kayla Rivera, who finished with a .647 efficiency on a match-high 12 kills in 17 swings with just one error, while Heipua Tautua'a racked up 11 non-returnables to go with a career-best four service aces. Mikela Labno also hit well on the afternoon, finishing with a .316 clip (7-1-19), while Ellie Geoghegan scooped up a match-high 16 digs.

> However, SDSU was outlit for the match .371 to .259, as Pepperdine benefited from 15 unforced Aztec attack errors. Although the Scarlet and Black maintained a 42-36 advantage in digs and each side served up six aces, the Waves also finished with more team blocks (9.0 to 4.5) to help fuel their win.

> The third set was the most entertaining, as the teams combined for 11 ties and four lead changes. Still, the

Aztecs seemed poised to extend the match to a fourth frame after building a 20-15 lead thanks to a Rivera kill. Pepperdine tightened the score at 23-21 moments later following a kill, a combined block and a Meg Brown ace.

> Labno responded with a kill of her own, which extended the SDSU lead to 24-21. Incredibly, the Waves fought off nine set points down the stretch, including a 32-31 deficit after another Labno put-away. Pepperdine finally closed off the match on a service ace following a kill and an Aztec attack error.

> In the nightcap against the Gauchos, San Diego State was stymied in the middle, as UCSB maintained a decisive advantage in team blocks (13.0 to 2.0) while serving up 12 aces compared to the Aztecs' two. In addition, the Gauchos owned the statistical edge in kills (50-45) and hitting percentage (.310 to .161), capitalizing on 13 SDSU unforced attack errors to help power their victory.

> The Aztecs were paced by Julia Haynie (.474) and Kayla Rivera (.368), who blasted 10 kills apiece, while Reagan Merk tied her career high with seven put-aways. In addition, Ellie Geoghegan anchored the SDSU back row with 17 digs.

NEWCOMERS SHINE

> Seven of eight Aztec newcomers have seen action for the Scarlet and Black this season, with several providing key contributions through nine matches.

> Freshman Madison Corf has started seven of nine matches and ranks second on the team in kills (2.33/set) and fourth in blocks (0.33/set). A former AVCA Prep All-American from Kansas City, Missouri, tied two season bests with 15 kills and seven digs in the Scarlet and Black's narrow 3-2 setback to Sacramento State at the Aztec Classic. In SDSU's three-set triumph over UC San Diego, Corf blasted 15 kills and finished with a .303 efficiency to go with a pair of blocks, including a solo stuff. She also reached the double-digit kill plateau

2022 AZTEC SUPERLATIVES

Individual

HITTING PERCENTAGE (min. 12 kills)

.647 (12-17) Kayla Rivera at Pepperdine (Sept. 3)

KILLS

15 Madison Corf, twice, last vs. Sacramento State w/Mikela Labno (Sept. 10)
 5 sets 15 Madison Corf and Mikela Labno vs. Sacramento State (Sept. 10)
 4 sets 15 Madison Corf vs. UC San Diego (Aug. 27)
 3 sets 12 Kayla Rivera at Pepperdine (Sept. 3)

TOTAL ATTEMPTS

37 Madison Corf vs. Sacramento State (Sept. 10)
 5 sets 37 Madison Corf vs. Sacramento State (Sept. 10)
 4 sets 34 Heipua Tautua'a vs. No. 9 Baylor (Sept. 2)
 3 sets 35 Heipua Tautua'a at Pepperdine (Sept. 3)

ASSISTS

30 Sarena Gonzalez vs. UC San Diego (Aug. 27)
 5 sets 27 Noa Miller vs. Sacramento State (Sept. 10)
 4 sets 30 Sarena Gonzalez vs. UC San Diego (Aug. 27)
 3 sets 24 Sarena Gonzalez at Pepperdine (Sept. 3)

DIGS

23 Ellie Geoghegan vs. Sacramento State (Sept. 10)
 5 sets 23 Ellie Geoghegan vs. Sacramento State (Sept. 10)
 4 sets 19 McKenna Douglas vs. UC San Diego (Aug. 27)
 3 sets 16 Ellie Geoghegan at Pepperdine (Sept. 3)

SERVICE ACES

6 Noa Miller vs. UC San Diego (Aug. 27)

BLOCK SOLOS

2 Elly Schraeder vs. No. 9 Baylor (Sept. 2)

BLOCK ASSISTS

8 Elly Schraeder vs. Army West Point (Aug. 27)

TOTAL BLOCKS

9 Elly Schraeder vs. Army West Point (Aug. 27)

Team

HITTING PERCENTAGE

.270 (67-27-148) vs. UC San Diego (Aug. 27)

KILLS

67 vs. UC San Diego (Aug. 27)
 5 sets N/A N/A
 4 sets 67 vs. UC San Diego (Aug. 27)
 3 sets 48 at Pepperdine (Sept. 3)

TOTAL ATTEMPTS

152 vs. Sacramento State (Sept. 10)
 5 sets 152 vs. Sacramento State (Sept. 10)
 4 sets 148 vs. UC San Diego (Aug. 27)
 3 sets 112 at Pepperdine (Sept. 3)

ASSISTS

61 vs. UC San Diego (Aug. 27)
 5 sets 58 vs. Sacramento State (Sept. 10)
 4 sets 61 vs. UC San Diego (Aug. 27)
 3 sets 48 at Pepperdine (Sept. 3)

DIGS

55 vs. Sacramento State (Sept. 10)
 5 sets 55 vs. Sacramento State (Sept. 10)
 4 sets 54 vs. Army West Point (Aug. 27)
 3 sets 42 at Pepperdine (Sept. 3)

SERVICE ACES

7 Four times, last: vs. Maryland (Sept. 9)

TOTAL BLOCKS

14.0 vs. Army West Point (Aug. 27)

with 11 non-returnables vs. No. 9 Baylor at the Pepperdine ASICS Classic before closing the tournament seven digs vs. UC Santa Barbara.

> Freshman defensive specialist Ellie Geoghegan has taken over the team lead with 96 digs overall including 79 in her last five matches (4.16/set), highlighted by a season-high 23 scoops vs. Sacramento State. The Manhattan Beach product made her first collegiate start a memorable one, posting seven digs, two service aces and a pair of setting assists in the Aztecs' 3-1 triumph over Army West Point.

> A senior transfer from Georgia, Kayla Rivera has started all nine matches for SDSU and ranks second on the team with 23 total blocks while occupying the fourth spot in kills (1.97/set). The Aztec opposite hitter was named to the all-tournament team at the Pepperdine ASICS Classic after posting 29 kills and a .313 hitting percentage, including a career-best .647 clip (12-1-17) vs. the host Waves. She also established a personal best with seven block assists vs. Army West Point at the SDSU Invitational.

> In her first season on The Mesa after transferring from USD, sophomore middle blocker Elly Schraeder has started all nine matches for the Scarlet and Black, compiling a team-high 30 blocks (0.94/set). The Athlhol, Idaho, native flashed her versatility against Army West Point, logging a career-high nine blocks, including a solo stuff, while hitting .375 on eight kills in 16 swings with just two errors.

> As previously mentioned, freshman setter Sarena Gonzalez is averaging 5.48 assists per set, which ranks 10th in the Mountain West as of Sept. 14. A starter in eight of nine matches, the Temecula product has dished at least 20 assists in five appearances, including a season-high 30 helpers vs. UCSD on Aug. 27. In addition, Gonzalez has 30 digs (0.97/set) and six aces (0.19/set) this season, the latter of which ranks third on the team. In the fourth set against Maryland at the Aztec Classic, she twirled three aces on consecutive serves.

> A starter in seven of eight appearances, freshman middle blocker Kat Cooper is slotted second on the team with 0.74 blocks per set and ranks third with 17 total blocks. A former AVCA Prep All-American, Cooper enjoyed a breakout performance against UC San Diego at the SDSU Invitational when she hit .600 on seven kills in 10 attempts against just one error while adding five blocks (1 solo) and five digs. Earlier that day, the Springdale, Arkansas, native recorded five additional blocks (1 solo) vs. Army West Point.

> Freshman McKenna Douglas has missed the last five matches after amassing 43 digs (2.87/set) in her first four outings. The Phoenix, Arizona, native finished with a match-high 19 digs against UC San Diego after posting 14 scoops earlier in the day vs. Army West Point. She has also contributed 14 setting assists and a pair of aces so far this year.

ALL-TOURNAMENT AZTEC

> Senior opposite hitter Kayla Rivera earned a spot on the all-tournament team for her performance in three matches at the Pepperdine ASICS Classic, Sept. 2-3, in Malibu, California.

> A native of Ventura, Rivera led the Aztecs with 29 kills overall and hit .333, including a career-best .647 against host Pepperdine on Sept. 3, when she launched 12 non-returnables on 17 attempts with just one error.

> She also contributed double-digit kills later that day vs. UC Santa Barbara when she tied for team-high honors with 10 put-aways to go with a .368 efficiency.

SDSU INVITATIONAL REWIND

> After dropping a hard-fought three-set decision to California (20-25, 23-25, 23-25) in their season opener on Aug. 26, the Aztecs rebounded with a pair of 3-1 victories the following day vs. Army West Point (25-22, 22-25, 25-16, 19-25) and UC San Diego (25-22, 25-20, 26-28, 25-20).

> Against Army West Point, the SDSU attack was powered by the combo of Heipua Tautua'a (13 kills) and Mikela Labno (12 kills), while setter Noa Miller recorded her first double-double of the season with 21 assists and 12 digs.

> However, it was the Aztec defense that proved to be the difference against the Black Knights, finishing with a 14.0 to 10.0 advantage in team blocks, to go with a 54-49 spread in digs.

> In addition to a career-high nine blocks, Elly Schraeder (.375) displayed her dual-threat capabilities with eight kills against only two errors, while Kayla Rivera finished with seven block assists to set her own personal best.

> The teams combined for 13 ties and three lead changes in the opening set. However, the match witnessed just two more deadlocks in the second stanza, as the Scarlet and Black led throughout the third and fourth frames.

> In the nightcap vs. UC San Diego, the Aztecs (2-1) owned a decisive 67-42 advantage in kills and served up seven aces to help fuel their win, overcoming a 14.0 to 9.0 deficiency in team blocks.

> In addition, SDSU outhit the Tritons .270 to .183 and maintained a sizable 51-42 in digs while benefiting from 20 opponent attack errors.

> Individually, four players posted double-digit kills for the Aztecs, including freshman Madison Corf (.303), who blasted a match-high 14 put-aways, while Tautua'a logged her first double-double of the year with 14 non-returnables to go with 10 digs.

> Elsewhere, SDSU also received a career-high tying 13 kills from Labno, while Rivera sparked the offense as well with 10 put-aways, followed by Kat Cooper, who hit .600 for the night (7-1-10) and contributed five total blocks, including a solo stop.

> Not to be outdone, Miller (28 assists) posted a career-high six service aces, sharing the setting duties with Sarena Gonzalez, who dished out 30 helpers of her own. Meanwhile, McKenna Douglas led all players with 19 digs to anchor the Aztec back row.

> In the opener against Cal, the teams combined for 36 ties and 20 lead changes, as seven of eight SDSU newcomers saw action in the see-saw affair.

> Despite maintaining a narrow 38-37 edge in kills and a 7-4 spread in service aces, however, the Aztecs were plagued by 25 attack errors, posting a .121 hitting percentage on the night.

> Conversely, the Golden Bears owned a decisive advantage in team blocks (12.0 to 5.0) and totaled just eight errant attacks, finishing with a .358 efficiency to help key their victory.

> Offensively, SDSU was led by the trio of Tautua'a, Labno and Madison Corf, who blasted seven kills each, while Kat Cooper (.357) and Kayla Rivera (3 block assists) launched six non-returnables apiece.

WELCOME BACK

> Outside hitter Heipua Tautua'a leads the group of eight Aztec letterwinners who return for the 2022 campaign.

> Tautua'a continued to display her tremendous versatility last season, finishing second on the team in kills (208), digs (239) and digs per set (2.28) while occupying the third spot in kills per set (1.96) and double-doubles (3).

> The SDSU junior also compiled double-digit digs in 11 matches and surpassed double figures in kills on six occasions last year.

> Tautua'a enters the 2022 season having started 43 of 44 matches she has appeared in.

> The Aztecs will also look for senior leadership from Noa Miller and Julia Haynie.

> A 5-10 setter, Miller led the Scarlet and Black in assists in all but one of her 20 matches played last season. The Arizona State transfer also tied for

2022 SITUATIONAL RECORDS

GENERAL

Overall.....	2-7
Mountain West.....	0-0
Home.....	2-4
Away.....	0-1
Neutral.....	0-2
vs. Ranked Teams.....	0-1
vs. Unranked Teams.....	2-3
Matches Following a Win.....	1-1
Matches Following a Loss.....	1-5
Longest Winning Streak.....	2
Longest Losing Streak.....	6
Current Streak.....	Last 6

BY SETS

3 Sets.....	0-3
4 Sets.....	2-3
5 Sets.....	0-1
Leading After Two.....	1-0
Trailing After Two.....	0-6
Tied After Two.....	1-1
Leading 2-1.....	2-0
Trailing 2-1.....	0-5

BY MONTH

August.....	2-1
September.....	0-6
October.....	0-0
November.....	0-0

BY DAY

Thursday.....	0-0
Friday.....	0-4
Saturday.....	2-3

BY KILLS

Leading in Kills.....	2-2
Trailing in Kills.....	0-5
Tied in Kills.....	0-0

BY DIGS

Leading in Digs.....	2-4
Trailing in Digs.....	0-3
Tied in Digs.....	0-0

BY BLOCKS

Leading in Blocks.....	1-0
Trailing in Blocks.....	1-7
Tied in Blocks.....	0-0

BY ATTACK PERCENTAGE

Greater Attack Percentage.....	2-0
Lower Attack Percentage.....	0-7
Equal Attack Percentage.....	0-0
Hitting above .300.....	0-0
Hitting between .200 and .300.....	1-3
Hitting between .100 and .200.....	1-4
Hitting below .100.....	0-1
Opponent Hitting above .300.....	0-4
Opponent Hitting between .200 and .300.....	0-3
Opponent Hitting between .100 and .200.....	1-0
Opponent Hitting below .100.....	1-0

BY INDIVIDUAL KILLS

3+ Double-Digit Individual Kill Totals.....	1-1
2 Double-Digit Individual Kill Totals.....	1-3
1 Double-Digit Individual Kill Totals.....	0-1
0 Double-Digit Individual Kill Totals.....	0-2

2022 MATCH-BY-MATCH LEADERS

Date	Opponent	Kills	Hitting Pct.*	Assists	Aces	Digs	Blocks
A.26	California	Three players - 7	Labno (.118)	Gonzalez - 16	Geoghegan - 2	Tautua'a - 8	Schraeder - 4
A.27	Army West Point	Tautua'a - 13	Tautua'a (.379)	Miller - 21	Miller - 3	Douglas - 14	Schraeder - 9
A.28	UC San Diego	Corf - 15	Cooper (.600)	Gonzalez - 30	Miller - 6	Douglas - 19	Cooper - 5
S.2	vs. No. 9 Baylor	Tautua'a - 13	Rivera (.048)	Gonzalez - 25	Corf - 1	Tautua'a - 16	Schraeder - 5
S.3	at Pepperdine	Rivera - 12	Rivera (.647)	Gonzalez - 24	Tautua'a - 4	Geoghegan - 16	Cooper - 3
S.3	vs. UC Santa Barbara	Rivera/Haynie - 10	Haynie (.474)	Gonzalez - 21	Corf/Miller - 1	Geoghegan - 17	Four players - 1
S.9	Maryland	Tautua'a - 14	Tautua'a (.300)	Miller - 17	Gonzalez - 3	Geoghegan - 12	Haynie/Rivera - 3
S.9	Arizona	Corf - 9	Corf (.227)	Gonzalez - 17	Haynie/Tautua'a - 1	Geoghegan - 11	Schraeder - 3
S.10	Sacramento State	Corf/Labno - 15	Labno (.407)	Miller - 27	Miller - 2	Geoghegan - 23	Schraeder - 4
S.15	UCLA						
S.17	at San Diego						
S.22	San José State						
S.24	Nevada						
S.27	at Fresno State						
O.1	at UNLV						
O.6	at Utah State						
O.8	at Boise State						
O.13	Wyoming						
O.15	Colorado State						
O.20	at New Mexico						
O.22	Air Force						
O.27	at Colorado State						
O.29	at Wyoming						
N.3	Boise State						
N.5	Utah State						
N.7	Fresno State						
N.10	UNLV						
N.17	at Nevada						
N.19	at San José State						

* - min. 7 kills

the top spot on the squad with four double-doubles in her first season at SDSU.

- > Despite missing the final seven matches of the 2021 campaign, Miller averaged a team-leading 6.01 assists per set, which ranked seventh in the Mountain West.
- > Haynie also brought previous Division I experience with her to "America's Finest City" after spending her first two seasons at Portland State. The 6-1 middle blocker led the Aztecs with 61 total blocks, including a team-high eight solo stops across 88 sets. She also ranked fifth on the team with 103 kills (1.17/set), finishing with a .222 hitting percentage.
- > In addition, Haynie topped the squad or tied for the team lead in blocks eight times. She also posted at least one kill in all 25 matches she played while recording at least one block assist in all but four contests, including eight straight to end the year.
- > San Diego State is also expecting continued improvement from a pair of sophomores - Mikela Labno and Jordyn Goldsmith.
- > Last season, Labno ranked fourth on the Aztecs with 132 kills and 1.81 kills per set while contributing 65 digs and 25 total blocks in 73 sets played. She also tied for second on the team with seven block solos and recorded at least one kill in all but two appearances.
- > A native of Hilmar, California, Labno surpassed the double-digit kill plateau on four occasions, logging a breakout performance vs. No. 17 Pepperdine at the Gaucho Invitational, where she launched a season-high 13 kills on 23 attempts with just one error for a stellar .522 hitting percentage, which ranked as the team's second-best clip of the year (min. 12 kills).
- > A 6-1 opposite hitter, Goldsmith also enjoyed a solid debut for the Scarlet and Black in 2021, ranking fifth on the team in kills (119) and kills per set (1.58). She also finished with 35 total blocks and 30 digs across 76 sets, making nine starts in 25 appearances.
- > Goldsmith posted her best hitting percentage of the 2021 season with a .636 clip in a three-set sweep of Air Force, blasting seven kills without an error in 11 attempts.
- > Also back in the mix are a trio of underclassmen in Kennedy Feuerborn, Reagan Merk and Sara Mukaj.
- > A 6-3 setter, Feuerborn appeared in 27 of 30 matches last year, starting six of the Aztecs' final eight contests. As a sophomore, she averaged 3.11 assists (230 overall) while registering 38 kills and 24 block assists. In addition, Feuerborn eclipsed the 20-assist plateau on three occasions, including a season-high 23 helpers at home vs. Boise State.
- > Merk saw action in 18 matches during her freshman campaign on The Mesa, earning two starts. The 5-11 outside hitter posted 29 kills, 40 digs, five service aces and three blocks in 42 sets last year. Against Texas Southern at the Arizona Wildcat Invitational, she came off the bench and played all three sets, recording season-highs of seven kills and six digs to help the Scarlet and Black complete the sweep.
- > A 6-3 middle blocker, Mukaj was off to a tremendous start in 2021 before suffering a season-ending ACL

injury vs. San Diego. A standout international player from Italy, Mukaj hit .333 with 16 kills on 36 attempts against four errors across 27 sets while finishing with 22 total blocks, 16 dig and seven aces. She posted a .636 hitting percentage on seven kills in 11 attempts without an error against Sam Houston in the finale of the Bearkat Invitational, adding five digs and four block assists.

NEW KIDS IN TOWN

- > The prospects for the San Diego State volleyball program continue to brighten after head coach Brent Hilliard reshaped the Aztec roster with a solid newcomer class for the 2022 campaign.
- > SDSU's early signing class last November featured three prep stars in outside hitters Madison Corf (Kansas City, Mo.) and Cara Braun (Tempe, Ariz.), along with middle blocker Kat Cooper (Springdale, Ark.).
- > Over the winter, the Aztecs added a pair of Division I transfers in middle blocker Ely Schraeder (San Diego) and opposite hitter Kayla Rivera (Georgia) before inking three more high school standouts during the spring in defensive specialists McKenna Douglas (Phoenix, Ariz.) and Ellie Geoghegan (Manhattan Beach, Calif.), along with setter Sarena Gonzalez (Temecula, Calif.).
- > As a senior at Liberty High School in suburban Kansas City, Missouri, Corf garnered second-team All-America accolades from the American Volleyball Coaches Association after earning a spot on the AVCA All-Region VI team. Last season, she established single-season career highs in kills (390, 4.1/set), digs (353, 3.7/set), blocks (50) and aces (33), helping the Blue Jays to a 26-5 overall record and a second-place district finish.
- > Cooper also received national acclaim last year, earning AVCA All-America honorable mention to go with AVCA All-Region IV distinction after leading Har-Ber High School to a 33-2 record and a runner-up finish in the 6A bracket at the 2021 Arkansas state championships. A four-time all-conference selection, Cooper merited all-state recognition and landed on the all-state tournament team in each of her final three seasons.
- > Braun brings a winning pedigree with her to SDSU as well after leading her Valley Christian High team to the 2021 Arizona 3A state championship, garnering Conference 3A Player of the Year and 3A Metro Region Offensive Player of the Year accolades. According to MaxPreps, Braun totaled 1,290 kills and hit .344 during her prep career, helping Valley Christian to an additional pair of runner-up state finishes in 2019 and 2020.
- > Not to be outdone, Douglas also starred on the Arizona prep volleyball scene, capping a brilliant senior campaign in 2021 with all-state honors from the Arizona Republic after leading Notre Dame Prep to a 37-5 record, highlighted by a Conference 4A state championship. Last season, Douglas was named both the Conference 4A Player of the Year and Defensive Player of the Year while receiving identical acclaim in the 4A West Valley Region after averaging a career-high 4.8 digs per set (307 overall) to go with 61 assists and 47 service aces, according to MaxPreps.
- > Geoghegan is also eager to display her defensive prowess this season after she was named the Bay League Division I Libero of the Year and received all-conference recognition at Mira Costa High School in

2021. The Manhattan Beach native led her Mustang squad to a 28-9 overall record and a regional semifinal appearance in the 2021 CIF Open Division state tournament. For her efforts, Geoghegan also collected first-team all-area honors by the Daily Breeze, as Mira Costa finished the year at No. 17 in the AVCA/USA Today Super 25 National High School Rankings.

> Gonzalez, meanwhile, is a local product who attended Temecula Valley High and received all-Southwestern Conference recognition as a senior after helping her Golden Bears squad advance to the second round of the 2021 CIF Southern Section Division II playoffs.

> The first of two transfers to last year's signing class, Schraeder was a part of two teams at USD that advanced to the NCAA Tournament, including a second-round appearance in the fall of 2021. During her freshman campaign that was shortened and delayed due to the COVID-19 pandemic, Schraeder ranked second in the West Coast Conference with a team-high 1.30 blocks per set, establishing a personal best with seven block assists in a road sweep at Gonzaga. A prep star at Coeur d'Alene High in Idaho, Schraeder merited the state's Girls Volleyball 5A/4A Athlete of the Year honors in 2019 and 2020.

> A native of Ventura, Rivera returns to the West Coast after playing three seasons at Georgia, where she started 34 matches in 76 appearances. In 2021, she enjoyed her most productive season as collegian, finishing with 201 kills (2.05/set), 77 total blocks (0.79/set) and 73 digs (0.75/set) in 98 sets played. In addition, Rivera surpassed the double-digit kill plateau eight times during the year and posted three or more blocks in 17 outings.

PRESEASON PROGNOSTICATIONS

> San Diego State was pegged for an eighth-place finish in the 2022 Mountain West preseason coaches poll released on Aug. 17.

> In the 23-year history of the Mountain West, SDSU has finished first (2012), second (2002, 2011), fourth (2000, 2001, 2003, 2013, 2017), fifth (2005, 2015, 2019), sixth (1999, 2004, 2006, 2009, 2010, 2014, 2016), seventh (2008), eighth (2007, 2018, 2020), and ninth (2021) in the final league standings.

2022 Mountain West Preseason Poll

Rk.	Team (1st-place votes)	Pts.
1.	Colorado State (6)	93
2.	Utah State (3)	91
3.	San José State (1)	75
	Boise State (1)	75
5.	New Mexico	68
6.	UNLV	57
7.	Wyoming	47
8.	San Diego State	33
9.	Fresno State	29
10.	Air Force	27
11.	Nevada	10

MOUNTAIN WEST VOLLEYBALL CHAMPIONSHIP TICKETS ON SALE

> Tickets are now on sale for the 2022 Mountain West Volleyball Championship in Fort Collins, Colorado. The three-day event will run from Nov. 23-25, at Moby Arena on the campus of Colorado State University.

> Single-session tickets range from \$7-15, while all-session passes are \$17-35.

> Tickets can be purchased at CSURams.com, at the Moby Arena box office or by phone at 800-491-RAMS (7267).

> The top six teams in the conference standings will qualify for the Mountain West Volleyball Championship. First-round action starts on Wednesday, Nov. 23, at 1 p.m. MT and 4 p.m. MT. Two semifinal contests will be featured on Thursday, Nov. 24, beginning at 1 p.m. MT and 4 p.m. MT, while the championship match is slated for Friday, Nov. 25, at 6:30 p.m. MT.

> All matches will air live on the Mountain West Network. The MW app is available on your TV through Apple TV, Android TV, Amazon Fire TV or Roku. Mobile applications are available through the iOS App Store and Google Play.

AVCA DIVISION I POLL

(As of Sept. 12, 2022)

Rk	Team	Points	Record	Prev
1	Texas (59)	1,595	6-0	1
2	Nebraska (5)	1,540	7-0	2
3	Louisville	1,444	7-1	4
4	Wisconsin	1,338	5-1	6
5	Ohio State	1,293	3-3	8
6	Minnesota	1,250	4-2	3
7	Georgia Tech	1,210	6-1	5
8	San Diego	1,152	7-1	12
9	Stanford	1,043	4-2	11
10	Purdue	995	7-1	9
11	Penn State	947	8-0	20
12	Pittsburgh	787	7-2	7
13	Kentucky	772	5-2	14
14	Baylor	731	6-2	15
15	BYU	705	5-3	10
16	Florida	656	6-2	16
17	Creighton	629	7-2	17
18	Washington	536	5-2	13
19	Marquette	403	6-1	23
20	Oregon	361	4-2	18
21	Western Kentucky	343	9-1	21
22	Pepperdine	261	7-2	24
23	Kansas	233	8-1	19
24	Arkansas	134	7-1	NR
25	Illinois	83	4-3	25

First-place votes in parentheses

Others receiving votes and listed on two or more ballots: Rice 73; Towson 51; UCLA 44; Utah 40; Mississippi State 33; UCF 26; Miami (FL) 15; UNLV 15; Washington State 13; Colorado 10; Northwestern 9; Michigan 7; USC 7; Houston 6

MW PLAYERS OF THE WEEK

MW Offensive Player of the Week

- A.29 Kylee Stokes, OPP, Sr., Utah State
- S.5 Kayla Afoa, OH, Sr., Nevada
- S.12 Paige Bartsch, OPP, So., Boise State

MW Defensive Player of the Week

- A.29 Joi Harvey, MB, Jr., Air Force
- S.5 Kia Kaohelaulii, L, Jr., Nevada
- S.12 Allison Casilla, L, Sr., Boise State

MW Freshman of the Week

- A.29 Leah Wilton-LaBoy, Sr., Utah State
- S.5 Gabby McLaughlin, OH, Nevada
- S.12 Lea Zurlinden, MB, New Mexico



Brent HILLIARD

Head Coach - Third Season at San Diego State

San Diego State Director of Athletics John David Wicker ushered in a new era for the Aztec volleyball team with the hiring of Brent Hilliard as the fifth head coach in program history on Jan. 31, 2020.

In his second season at SDSU, Hilliard and the Aztecs were faced with another demanding schedule, squaring off against 10 teams that qualified for postseason play.

However, San Diego State had its moments of glory in the fall of 2021, posting a 3-0 sweep at eventual Mountain West tournament champion Boise State before recording a five-set thriller on the road at UNLV, which ultimately captured the NIVC crown.

Individually, Hilliard oversaw the continued rise to prominence of Victoria O'Sullivan, who received all-Mountain West recognition for the second straight season after ranking second in the conference with 3.71 kills per set, as the SDSU outside hitter concluded her illustrious career with 1,026 kills overall.

Hilliard's charges enjoyed another successful year scholastically, with nine Aztecs landing on the Mountain West all-academic team, including Ashley Vanderpan, Kennedy Feuerborn and Serena Hodson, who took home the department's prestigious Malik Award, presented to SDSU student-athletes who attain a 4.0 GPA.

In his first season with the Scarlet and Black, Hilliard endured a challenging season fraught with COVID-19 protocols, an abbreviated schedule that was postponed until spring, along with injuries to key players.

However, Hilliard and the Aztecs persevered through the 2021 spring campaign, posting a 6-9 record, highlighted by thrilling victories over Boise State on the road and Colorado State at home in the season finale, respectively. Against the Broncos, SDSU defeated a Boise State team that entered the contest with four consecutive 3-0 sweeps. Two weeks later, the Aztecs snapped an 11-match to the Rams dating back to 2014 and logged their first win over CSU in San Diego since 2012.

Under Hilliard's guidance, O'Sullivan garnered all-Mountain West accolades for the first time in her career, as the SDSU junior led the squad with 3.25 kills per set, which ranked seventh in the conference. In addition, seniors Lauren Lee and Erin Gillcrest received MW Defensive Player of the Week recognition following the team's aforementioned wins over Boise State and Colorado State, respectively.

Hilliard's Aztecs also excelled in the classroom, with 12 student-athlete earning a spot on the Mountain West all-academic team, including Lauren Lee, who also merited first-team all-District 8 academic honors from the College Sports Information Directors of America (CoSIDA).

A 2018 inductee to the Southern California Indoor Volleyball Hall of Fame, Hilliard arrived at SDSU with a wealth of experience after achieving 19 years of unparalleled success as an assistant coach at the University of San Diego, where he served as the Toreros' associate head coach since 2007.

During his fruitful tenure, the Toreros qualified for the NCAA Tournament in all but one of his 19 seasons, advancing to the Sweet 16 in 2004, 2006, 2013 and 2018. In addition, Hilliard helped guide the Toreros to nine West Coast Conference championships while his players earned six All-America awards, 12 All-America honorable mentions, 44 all-WCC accolades and 15 freshman all-conference certificates.

Hilliard twice assumed the reins of the USD program on an interim basis while head coach Jennifer Petrie was absent on maternity leave. In 2006, Hilliard was honored as WCC Coach of the Year after guiding the Toreros to a conference championship and a Sweet 16 appearance in the NCAA Tournament. That season, he coached five all-conference honorees, including WCC Player of the Year Kristen Carlson, as USD finished 14th in the final USA Today/Coaches Poll.

The Toreros also flourished under Hilliard's guidance in 2011, racing to a 13-0 start en route a program-best 28-5 record, highlighted by a spot in the second round of the NCAA Tournament. Throughout his stint, USD was consistently ranked among the nation's top 25, climbing to as high as No. 2 during the 2013 campaign and rising to No. 5 in 2016.

"I would like to thank John David Wicker, Jenny Bramer, Dr. Adela de la Torre and the rest of the SDSU search committee for making me feel so welcome during the interview process," Hilliard said upon his hiring. "To be the head coach of such a remarkable women's volleyball program in my family's hometown is truly a once in a lifetime opportunity."

"We are fully committed to work tirelessly to elevate this program back to an elite status on the college volleyball landscape, one that the student body, faculty, community, alumni and, of course, all future Aztecs will take great pride in."

Hilliard played collegiately at Long Beach State, earning All-America honors in each of his four years from 1990-93, including first-team recognition over his final three seasons. A right-side hitter for the 49ers, Hilliard was named the NCAA Men's Volleyball Player of the Year as a junior in 1992 after leading LBSU to a 31-1 record.

In 1991, Hilliard and the 49ers captured the NCAA Championship with a 3-1 victory over USC in the finals, avenging a loss to the Trojans in the title match the year before. He finished his career as the NCAA all-time leader with 3,034 kills.

Additionally, Hilliard was selected to play for Team USA in the 1992 Summer Olympics in Barcelona, Spain, where he helped the Americans capture the bronze medal. The following year, he won a silver medal at the 1993 Pan American Games in Argentina and also owns a bronze medal from the 1991 World Cup.

After receiving his undergraduate degree in 1993 from Long Beach State in political science, Hilliard continued his volleyball career as a professional in Europe from 1995-98, playing two seasons in Belgium and another in the Netherlands. In 1996, Hilliard and the Masiek Volleyball Club captured the Belgian national championship and competed in the European Champions League.

In addition to his collegiate experience, which included a stint as head coach at nearby Cuyamaca College in 1999 and 2000, Hilliard has also coached for the past 12 years at Wave Volleyball Club in Del Mar, the premier volleyball club in San Diego County.

"Our priority at SDSU will be to engage, attract and secure exceptional student-athletes that strive for both academic and athletic excellence in their everyday lives," Hilliard added. "From day one, we will set expectations high and build from there. I am incredibly excited to get started and I look forward to the bright future ahead."

HILLIARD'S COLLEGIATE COACHING LEDGER (As an Assistant at USD)

Year	Overall Record	WCC Record (Finish)	Postseason
2001	22-9	10-4 (3rd)	NCAA Second Round
2002	25-8	10-4 (3rd)	NCAA First Round
2003	17-13	6-8 (T-5th)	NCAA First Round
2004	24-5	14-0 (1st)	NCAA Sweet 16
2005	23-6	10-4 (T-2nd)	NCAA Second Round
2006*	26-6	13-1 (1st)	NCAA Sweet 16
2007	21-8	11-3 (1st)	NCAA First Round
2008	23-5	12-2 (1st)	NCAA First Round
2009	18-7	10-4 (2nd)	None
2010	24-8	13-1 (1st)	NCAA Second Round
2011*	28-5	12-4 (2nd)	NCAA Second Round
2012	21-7	13-3 (T-1st)	NCAA First Round
2013	26-4	16-2 (1st)	NCAA Sweet 16
2014	19-12	12-6 (T-3rd)	NCAA First Round
2015	22-10	14-4 (2nd)	NCAA Second Round
2016	24-6	15-3 (2nd)	NCAA First Round
2017	25-5	17-1 (T-1st)	NCAA Second Round
2018	18-13	13-5 (3rd)	NCAA Sweet 16
2019	25-6	17-1 (1st)	NCAA Second Round
USD Total	431-143 (.751)		
WCC Total	238-60 (.799)		

As Head Coach at SDSU

Year	Overall Record	MW Record (Finish)	Postseason
2020	6-9	6-9 (8th)	
2021	8-22	5-13 (9th)	
2022	2-7		
SDSU Total	16-38		
Career as Head Coach	70-49 (.588)		
Overall Total	447-181 (.712)		

Notes

* - Served as interim head coach during the 2006 and 2011 seasons at USD. Record reflected in career totals.

- > Qualified for the NCAA Tournament in 18 of his 19 seasons at USD
- > Reached the NCAA Sweet 16 four times in 2004, 2006, 2013 and 2018
- > Won nine West Coast Conference championships

2022 AZTEC PHOTO ROSTER



Heipua TAUTUA'A
OH | 6-2 | Jr.

2



McKenna DOUGLAS
DS/L | 5-7 | Fr.

3



Kennedy FEUERBORN
S | 6-3 | Jr.

4



Jordyn GOLDSMITH
OPP | 6-1 | So.

6



Madison CORF
OH | 5-11 | Fr.

7



Ellie GEOGHEGAN
DS/L | 5-8 | Fr.

8



Sara MUKAJ
MB | 6-3 | So.

9



Cara BRAUN
OH | 6-1 | Fr.

10



Kayla RIVERA
OPP | 6-1 | Sr.

11



Julia HAYNIE
MB | 6-1 | Sr.

13



Reagan MERK
OH | 5-11 | So.

14



Mikela LABNO
OH | 6-2 | So.

15



Sarena GONZALEZ
S | 5-8 | Fr.

16



Noa MILLER
S | 5-10 | Sr.

19



Elly SCHRAEDER
MB | 6-2 | So.

20

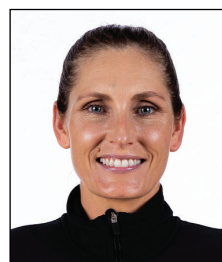


Kat COOPER
MB | 6-1 | MB

21



Brent HILLIARD
Head Coach



Melanie GREENE
Assistant Coach/
Recruiting Coordinator



STEVE TIMMONS
Assistant Coach



Kara BARKDOLL
Volleyball Operations
Assistant



**2022-23 San Diego St. Women's Volleyball
Combined Team Statistics
All games**

Game Records

Overall	Conference	Home	Away	Neutral
2 - 7	0 - 0	2 - 4	0 - 1	0 - 2

Team Box Score

#	Player	SP	Attack					Set		Serve			RE	Dig			Blocking				PTS	
			K	K/S	E	TA	PCT	A	A/S	SA	SE	SA/S		DIG	DIG/S	BS	BA	TOT/S	BLK/S	BE		BHE
2	Tautua'a, Heipua	33	97	2.94	47	248	.202	8	0.24	7	11	0.21	19	72	2.18	1	6	7	0.21	2	0	108.0
3	Douglas, McKenna	15	1	0.07	0	1	1.000	14	0.93	2	4	0.13	4	43	2.87	0	0	0	0.00	0	1	3.0
4	Feuerborn, Kennedy	4	1	0.25	1	8	.000	11	2.75	0	0	0.00	0	1	0.25	0	2	2	0.50	0	1	2.0
6	Goldsmith, Jordyn	3	3	1.00	2	10	.100	0	0.00	0	0	0.00	0	0	0.00	0	0	0	0.00	0	0	3.0
7	Corf, Madison	30	70	2.33	56	188	.074	3	0.10	2	10	0.07	17	24	0.80	1	9	10	0.33	3	0	77.5
8	Geoghegan, Ellie	34	2	0.06	0	2	1.000	15	0.44	4	17	0.12	17	96	2.82	0	0	0	0.00	0	0	6.0
9	Mukaj, Sara	7	2	0.29	0	12	.167	2	0.29	1	0	0.14	0	3	0.43	0	1	1	0.14	2	0	3.5
11	Rivera, Kayla	34	67	1.97	43	189	.127	0	0.00	0	0	0.00	0	3	0.09	0	23	23	0.68	1	0	78.5
13	Haynie, Julia	16	27	1.69	7	53	.377	1	0.06	1	0	0.06	0	4	0.25	1	5	6	0.38	2	0	31.5
14	Merk, Reagan	15	8	0.53	5	19	.158	2	0.13	5	5	0.33	3	23	1.53	0	0	0	0.00	1	0	13.0
15	Labno, Mikela	34	75	2.21	37	199	.191	2	0.06	0	2	0.00	3	22	0.65	0	9	9	0.26	0	0	79.5
16	Gonzalez, Sarena	31	0	0.00	0	1	.000	170	5.48	6	14	0.19	1	30	0.97	0	0	0	0.00	0	4	6.0
19	Miller, Noa	34	4	0.12	0	15	.267	165	4.85	15	7	0.44	0	57	1.68	0	0	0	0.00	1	7	19.0
20	Schraeder, Elly	32	38	1.19	14	95	.253	3	0.09	0	0	0.00	0	1	0.03	3	27	30	0.94	7	1	54.5
21	Cooper, Kat	23	25	1.09	10	60	.250	0	0.00	2	8	0.09	0	9	0.39	2	15	17	0.74	0	0	36.5
SAN DIEGO ST.		34	420	12.35	222	1100	.180	396	11.65	45	78	1.32	69	388	11.41	8	97	56.5	1.66	19	14	521.5
Opponents		34	414	12.18	149	1000	.265	390	11.47	69	70	2.03	45	365	10.74	8	200	108	3.18	12	18	591.0

Team statistics

	SDSU	OPP
ATTACK		
Kills	420	414
Errors	222	149
Total Attacks	1100	1000
Attack Pct	.180	.265
Kills/Set	12.4	12.2
SET		
Assists	396	390
Attempts	1029	914
Assist Pct	.385	.427
Assists/Set	11.6	11.5
SERVE		
Aces	45	69
Errors	78	70
Attempts	715	805
Serve Pct	.891	.913
Aces/Set	1.3	2
SERVE RECEPTIONS		
Errors	69	45
Errors/Set	2	1.3
Attempts	735	636
Reception Pct	.906	.998
DEFENSE		
Digs	388	365
Digs/Set	11.4	10.7
BLOCKING		
Block solo	8	8
Block Assist	97	200
Total Blocks	56.5	108
Blocks/Set	1.7	3.2
Block Errors	19	12
Ball handling errors	14	18
ATTENDANCE		
Total	1681	302
Dates/Avg Per Date	6/280	1/302
Neutral Site #/Avg	2/104	-
Current win streak	0	-
Home win streak	0	-

Team Results

Date	Opponent	Score	Score-by-set	Att.
08/26/2022	California	L 0-3	20-25,23-25,23-25	357
08/27/2022	Army West Point	W 3-1	25-22,22-25,25-16,25-19	287
08/27/2022	UC San Diego	W 3-1	25-22,25-20,26-28,25-20	341
09/02/2022	vs Baylor	L 1-3	18-25,17-25,29-27,14-25	125
09/03/2022	at Pepperdine	L 0-3	18-25,20-25,32-34	302
09/03/2022	vs UC Santa Barbara	L 1-3	18-25,18-25,25-22,16-25	82
09/09/2022	Maryland	L 1-3	14-25,25-21,20-25,18-25	122
09/09/2022	Arizona	L 0-3	17-25,15-25,11-25	388
09/10/2022	Sacramento St.	L 2-3	16-25,26-28,25-21,25-22,8-15	186

SEASON HIGHS

CAREER HIGHS

#2 HEIPUA TAUTUA'A

Hitting Percentage (*min. 7 kills*) .379 (13-29-29) vs. Army West Point, 8/27/22
 Total Attempts 35, at Pepperdine, 9/3/22
 Kills 14, three times, last: vs. Sacramento State, 9/10/22
 Assists 3, at Pepperdine, 9/3/22
 Aces 4, at Pepperdine, 9/3/22
 Digs 16, vs. No. 9 Baylor, 9/2/22
 Block Solos 1, vs. UC San Diego, 8/27/22
 Block Assists 2, three times, last: at Pepperdine, 9/3/22
 Total Blocks 2, three times, last: at Pepperdine, 9/3/22
 Points 16.0, at Pepperdine, 9/3/22

#3 MCKENNA DOUGLAS

Hitting Percentage (*min. 7 kills*) N/A
 Total Attempts 1, vs. UC San Diego, 8/27/22
 Kills 1, vs. UC San Diego, 8/27/22
 Assists 5, vs. Army West Point, 8/27/22
 Aces 1, twice, last: vs. Army West Point, 8/27/22
 Digs 19, vs. UC San Diego, 8/27/22
 Block Solos N/A
 Block Assists N/A
 Total Blocks N/A
 Points 1.0, three times, last: vs. UC San Diego, 8/27/22

#4 KENNEDY FEUERBORN

Hitting Percentage (*min. 7 kills*) N/A
 Total Attempts 5, vs. vs. Army West Point, 8/27/22
 Kills 1, vs. Army West Point, 8/27/22
 Assists 6, vs. Army West Point, 8/27/22
 Aces N/A
 Digs 1, vs. Maryland, 9/9/22
 Block Solos N/A
 Block Assists 1, twice, last: vs. Maryland, 9/9/22
 Total Blocks 1, twice, last: vs. Maryland, 9/9/22
 Points 1.5, vs. Army West Point, 8/27/22

#6 JORDYN GOLDSMITH

Hitting Percentage (*min. 7 kills*) N/A
 Total Attempts 9, vs. UC Santa Barbara, 9/3/22
 Kills 3, vs. UC Santa Barbara, 9/3/22
 Assists N/A
 Aces N/A
 Digs N/A
 Block Solos N/A
 Block Assists N/A
 Total Blocks N/A
 Points 3.0, vs. UC Santa Barbara, 9/3/22

#7 MADISON CORF

Hitting Percentage (*min. 7 kills*) .303, vs. UC San Diego, 8/27/22
 Total Attempts 37, vs. Sacramento State, 9/10/22
 Kills 15, twice, last: vs. Sacramento State, 9/10/22
 Assists 1, three times, last: vs. Arizona, 9/9/22
 Aces 1, vs. UC Santa Barbara, 9/3/22
 Digs 7, twice, last: vs. Sacramento State, 9/10/22
 Block Solos 1, vs. UC San Diego, 8/27/22
 Block Assists 2, twice, last: vs. Sacramento State, 9/10/22
 Total Blocks 2, three times, last: vs. Sacramento State, 9/10/22
 Points 16.5, vs. UC San Diego, 8/27/22

#8 ELLIE GEOGHEGAN

Hitting Percentage (*min. 7 kills*) N/A
 Total Attempts 1, twice, last: vs. UC Santa Barbara, 9/3/22
 Kills 1, twice, last: vs. UC Santa Barbara, 9/3/22
 Assists 4, three times, last: vs. Sacramento State, 9/10/22
 Aces 2, twice, last: vs. Army West Point, 8/27/22
 Digs 23, vs. Sacramento State, 9/10/22
 Block Solos N/A
 Block Assists N/A
 Total Blocks N/A
 Points 2.0, twice, last: vs. Army West Point, 8/27/22

.462 (14-2-26), at Boise State, 3/20/21
 38, vs. Nevada, 2/26/21
 15, vs. Nevada, 2/26/21
 5, vs. Fresno State, 10/7/21
 4, at Pepperdine, 9/3/22
 22, vs. New Mexico, 2/20/21
 3, at Wyoming, 3/5/21
 6, at Boise State, 3/20/21
 6, at Boise State, 3/20/21
 19.0, at Boise State, 3/20/21

N/A
 1, vs. UC San Diego, 8/27/22
 1, vs. UC San Diego, 8/27/22
 5, vs. Army West Point, 8/27/22
 1, twice, last: vs. Army West Point, 8/27/22
 19, vs. UC San Diego, 8/27/22
 N/A
 N/A
 N/A
 1.0, three times, last: vs. UC San Diego, 8/27/22

N/A
 15, vs. Fresno State, 10/7/21
 6, at UNLV, 2/5/21
 27, at UNLV, 2/5/21
 1, twice, last: vs. Boise State, 10/30/21
 7, vs. Fresno State, 2/12/21
 1, twice, last: vs. Fresno State, 2/12/21
 5, vs. Nevada, 11/18/21
 5, vs. Nevada, 11/18/21
 7.0, twice, last: vs. Utah State, 10/28/21

.636 (7-0-11), vs. Air Force 10/2/21
 27, vs. Colorado State, 10/21/21
 9, three times, last: at Wyoming, 10/23/21
 2, vs. Boise State, 10/30/21
 N/A
 3, four times, last: at Utah State, 10/16/21
 1, four times, last: at Wyoming, 10/23/21
 4, twice, last: vs. Fresno State, 10/7/21
 5, vs. Fresno State, 10/7/21
 10.0, at Wyoming, 10/23/21

.303, vs. UC San Diego, 8/27/22
 37, vs. Sacramento State, 9/10/22
 15, twice, last: vs. Sacramento State, 9/10/22
 1, three times, last: vs. Arizona, 9/9/22
 1, vs. UC Santa Barbara, 9/3/22
 7, twice, last: vs. Sacramento State, 9/10/22
 1, vs. UC San Diego, 8/27/22
 2, twice, last: vs. Sacramento State, 9/10/22
 2, three times, last: vs. Sacramento State, 9/10/22
 16.5, vs. UC San Diego, 8/27/22

N/A
 1, twice, last: vs. UC Santa Barbara, 9/3/22
 1, twice, last: vs. UC Santa Barbara, 9/3/22
 4, three times, last: vs. Sacramento State, 9/10/22
 2, twice, last: vs. Army West Point, 8/27/22
 23, vs. Sacramento State, 9/10/22
 N/A
 N/A
 N/A
 2.0, twice, last: vs. Army West Point, 8/27/22

SEASON HIGHS

CAREER HIGHS

#9 SARA MUKAJ

Hitting Percentage (<i>min. 7 kills</i>)	N/A
Total Attempts	6, vs. Arizona, 9/9/22
Kills	1, twice, last: vs. Arizona, 9/9/22
Assists	2, vs. Sacramento State, 9/10/22
Aces	1, vs. Sacramento State, 9/10/22
Digs	3, vs. Sacramento State, 9/10/22
Block Solos	N/A
Block Assists	1, vs. Sacramento State, 9/10/22
Total Blocks	1, vs. Sacramento State, 9/10/22
Points	1.5, vs. Sacramento State, 9/10/22

#10 CARA BRAUN

Hitting Percentage (<i>min. 7 kills</i>)	
Total Attempts	
Kills	
Assists	
Aces	
Digs	
Block Solos	
Block Assists	
Total Blocks	
Points	

#11 KAYLA RIVERA

Hitting Percentage (<i>min. 7 kills</i>)	.647 (12-1-17) at Pepperdine, 9/3/22
Total Attempts	34, vs. Sacramento State, 9/10/22
Kills	12, at Pepperdine, 9/3/22
Assists	N/A
Aces	N/A
Digs	1, twice, last: at Pepperdine, 9/3/22
Block Solos	N/A
Block Assists	7, vs. Army West Point, 8/27/22
Total Blocks	7, vs. Army West Point, 8/27/22
Points	13.0, at Pepperdine, 9/3/22

* - played at Georgia (Fall 2018-Fall 2021)

#13 JULIA HAYNIE

Hitting Percentage (<i>min. 7 kills</i>)	.474 (10-1-19), vs. UC Santa Barbara, 9/3/22
Total Attempts	19, vs. UC Santa Barbara, 9/3/22
Kills	10, vs. UC Santa Barbara, 9/3/22
Assists	1, vs. UC Santa Barbara, 9/3/22
Aces	N/A
Digs	2, vs. UC Santa Barbara, 9/3/22
Block Solos	1, vs. Maryland, 9/9/22
Block Assists	2, vs. Maryland, 9/9/22
Total Blocks	3, vs. Maryland, 9/9/22
Points	10.5, vs. UC Santa Barbara, 9/3/22

^ - played at Portland State (Fall 2019 & Spring 2021)

#14 REAGAN MERK

Hitting Percentage	.286 (7-3-14), vs. UC Santa Barbara, 9/3/22
Total Attempts	14, vs. UC Santa Barbara, 9/3/22
Kills	7, vs. UC Santa Barbara, 9/3/22
Assists	2, vs. Maryland, 9/9/22
Aces	2, twice, last: vs. Maryland, 9/9/22
Digs	7, vs. Maryland, 9/9/22
Block Solos	N/A
Block Assists	N/A
Total Blocks	N/A
Points	7.0, vs. UC Santa Barbara, 9/3/22

#15 MIKELA LABNO

Hitting Percentage (<i>min. 7 kills</i>)	.407 (15-4-27), vs. Sacramento State, 9/10/22
Total Attempts	31, vs. Maryland, 9/9/22
Kills	15, vs. Sacramento State, 9/10/22
Assists	N/A
Aces	N/A
Digs	6, vs. UC Santa Barbara, 9/3/22
Block Solos	N/A
Block Assists	2, Army West Point, 8/27/22
Total Blocks	2, Army West Point, 8/27/22
Points	14.0, vs. UC San Diego, 8/27/22

.636 (7-0-11) at Sam Houston, 8/28/21
11, at Sam Houston, 8/28/21
7, at Sam Houston, 8/28/21
4, twice, last: at UC Santa Barbara, 9/3/21
4, at Sam Houston, 8/27/21
5, at Sam Houston, 8/28/21
1, at UC Santa Barbara, 9/3/21
4, twice, last: vs. Pepperdine, 9/4/21
4, three times, last: vs. Pepperdine, 9/4/21
10.0, at Sam Houston, 8/28/21

.647 (12-1-17) at Pepperdine, 9/3/22
36, at Texas A&M, 10/8/21*
15, at Texas A&M, 10/8/21*
1, seven times, last: at Alabama, 10/30/21*
2, twice, last: at Texas A&M, 10/8/21*
18, at Texas A&M, 10/8/21*
5, vs. Arkansas, 2/5/21*
7, vs. Army West Point, 8/27/22
7, vs. Army West Point, 8/27/22
17.5, at Texas A&M, 10/8/21*

.571 (9-1-14), vs. Utah State, 10/28/21
25, vs. Idaho, 1/25/21^
11, vs. Idaho, 1/25/21^
2, at UNLV, 11/1/21
2, three times, last: vs. Nevada, 11/18/21
4, twice, last: at UNLV, 11/1/21
2, twice, last: at Fresno State, 11/6/21
7, vs. Northern Arizona, 1/31/21^
7, vs. Northern Arizona, 1/31/21^
13.5, vs. Idaho, 1/25/21^

.385 (7-2-13), vs. Texas Southern, 9/17/21
20, last: vs. UC Riverside, 9/18/21
7, three times: vs. UC Santa Barbara, 9/3/22
2, three times, last: vs. Maryland, 9/9/22
2, three times, last: vs. Maryland, 9/9/22
7, vs. Maryland, 9/9/22
1, vs. UC Riverside, 9/18/21
2, vs. UC Riverside, 9/18/21
3, vs. UC Riverside, 9/18/21
9.0, vs. UC Riverside, 9/18/21

.522 (13-1-23), vs. Pepperdine, 9/4/21
33, vs. San Diego, 9/11/21
15, vs. Sacramento State, 9/10/22
2, vs. Texas Southern, 9/17/21
2, at Long Beach State, 9/14/21
13, vs. UC Riverside, 9/18/21
2, vs. San Diego, 9/11/21
3, vs. New Mexico, 9/30/21
4, vs. New Mexico, 9/30/21
14.0, vs. UC San Diego, 8/27/22

SEASON HIGHS

#16 SARENA GONZALEZ

Hitting Percentage (<i>min. 7 kills</i>)	N/A
Total Attempts	1, at Pepperdine, 9/3/22
Kills	N/A
Assists	30, vs. UC San Diego, 8/27/22
Aces	3, vs. Maryland, 9/9/22
Digs	5, three times, last: vs. UC Santa Barbara, 9/3/22
Block Solos	N/A
Block Assists	N/A
Total Blocks	N/A
Points	3.0, vs. Maryland, 9/19/22

#19 NOA MILLER

Hitting Percentage (<i>min. 7 kills</i>)	N/A
Total Attempts	4, vs. UC Santa Barbara, 9/3/22
Kills	2, vs. UC Santa Barbara, 9/3/22
Assists	28, vs. UC San Diego, 8/27/22
Aces	6, vs. UC San Diego, 8/27/22
Digs	12, vs. Army West Point, 8/27/22
Block Solos	N/A
Block Assists	N/A
Total Blocks	N/A
Points	6.0, vs. UC San Diego, 8/27/22

* - played at Wofford in 2018 and at Arizona State in 2019

#20 ELLY SCHRAEDER

Hitting Percentage (<i>min. 7 kills</i>)	.375, (8-2-16), vs. Army West Point, 8/27/22
Total Attempts	16, vs. Army West Point, 8/27/22
Kills	8, vs. Army West Point, 8/27/22
Assists	1, three times, last: vs. Maryland, 9/9/22
Aces	N/A
Digs	1, twice, last: at Pepperdine, 9/3/22
Block Solos	2, vs. No. 9 Baylor, 9/3/22
Block Assists	8, vs. Army West Point, 8/27/22
Total Blocks	9.0, vs. Army West Point, 8/27/22
Points	13.0, vs. Army West Point, 8/27/22

+ - played at San Diego (Spring & Fall 2021)

#21 KAT COOPER

Hitting Percentage (<i>min. 7 kills</i>)	.600 (7-1-10), vs. UC San Diego, 8/27/22
Total Attempts	14, vs. California, 8/26/22
Kills	7, vs. UC San Diego, 8/27/22
Assists	N/A
Aces	1, twice, last: vs. Army West Point, 8/27/22
Digs	5, vs. UC San Diego, 8/27/22
Block Solos	1, twice, last: vs. UC San Diego, 8/27/22
Block Assists	4, twice, last: vs. UC San Diego, 8/27/22
Total Blocks	5, twice, last: vs. UC San Diego, 8/27/22
Points	10.0, vs. UC San Diego, 8/27/22

CAREER HIGHS

N/A
1, at Pepperdine, 9/3/22
N/A
30, vs. UC San Diego, 8/27/22
3, vs. Maryland, 9/9/22
5, three times, last: vs. UC Santa Barbara, 9/3/22
N/A
N/A
N/A
3.0, vs. Maryland, 9/19/22

N/A
6, vs. Fresno State, 10/7/21
6, vs. Fresno State, 10/7/21
31, at Chattanooga, 9/21/18*
6, vs. UC San Diego, 8/27/22
16, vs. Houston, 8/30/19*
N/A
1, four times, last: vs. Kansas State, 9/4/21
1, four times, last: vs. Kansas State, 9/4/21
6.0 twice, last: vs. UC San Diego, 8/27/22

.778 (7-0-9), vs. Portland (2/10/21)+
16, vs. Army West Point, 8/27/22
8, vs. Army West Point, 8/27/22
2, at Loyola Marymount, 3/13/21+
1, at Loyola Marymount, 3/13/21+
1, eight times, last: at Pepperdine, 9/3/22
2, three times, last: vs. No. 9 Baylor, 9/3/22
8, vs. Army West Point, 8/27/22
9.0, vs. Army West Point, 8/27/22
13.0, vs. Army West Point, 8/27/22

.600 (7-1-10), vs. UC San Diego, 8/27/22
14, vs. California, 8/26/22
7, vs. UC San Diego, 8/27/22
N/A
1, twice, last: vs. Army West Point, 8/27/22
5, vs. UC San Diego, 8/27/22
1, twice, last: vs. UC San Diego, 8/27/22
4, twice, last: vs. UC San Diego, 8/27/22
5, twice, last: vs. UC San Diego, 8/27/22
10.0, vs. UC San Diego, 8/27/22