



SAN DIEGO STATE AZTECS

2022 Volleyball Weekly Notes

Jim Solien (Primary Contact)
 Assistant Media Relations Director
Office Phone Number: (619) 594-2576
E-Mail Address: jsolien@sdsu.edu
News Release Date: Nov. 22, 2022

SDSU Official Athletics Website: goaztecs.com
SDSU Official Athletics Twitter: @GoAztecs
SDSU Official Athletics Instagram: @GoAztecs
SDSU Official Athletics Facebook: facebook.com/goaztecs
SDSU Official Athletics YouTube: youtube.com/goaztecs.com

2022 AZTEC VOLLEYBALL SCHEDULE

Day/Date	Opponent	Time
Friday, Aug. 26	California [^] (MWN)	L, 0-3
Saturday, Aug. 27	Army West Point [^]	W, 3-1
Saturday, Aug. 27	UC San Diego [^] (MWN)	W, 3-1
Friday, Sept. 2	vs. No. 9 Baylor#	L, 1-3
Saturday, Sept. 3	at Pepperdine#	L, 0-3
Saturday, Sept. 3	vs. UC Santa Barbara#	L, 1-3
Friday, Sept. 9	Maryland~	L, 1-3
Friday, Sept. 9	Arizona~ (MWN)	L, 0-3
Saturday, Sept. 10	Sacramento State~	L, 2-3
Thursday, Sept. 15	UCLA+ (MWN)	L, 0-3
Saturday, Sept. 17	at San Diego+	L, 1-3
Thursday, Sept. 22	San José State* (MWN)	L, 1-3
Saturday, Sept. 24	Nevada*	W, 3-1
Tuesday, Sept. 27	at Fresno State* (MWN)	W, 3-0
Saturday, Oct. 1	at UNLV* (MWN)	L, 1-3
Thursday, Oct. 6	at Utah State* (MWN)	L, 0-3
Saturday, Oct. 8	at Boise State* (MWN)	L, 1-3
Thursday, Oct. 13	Wyoming*	L, 1-3
Saturday, Oct. 15	Colorado State* (MWN)	L, 0-3
Thursday, Oct. 20	at New Mexico* (MWN)	L, 1-3
Saturday, Oct. 22	Air Force* (MWN)	W, 3-1
Thursday, Oct. 27	at Colorado State* (MWN)	L, 1-3
Saturday, Oct. 29	at Wyoming* (MWN)	W, 3-1
Thursday, Nov. 3	Boise State* (MWN)	W, 3-1
Saturday, Nov. 5	Utah State* (MWN)	L, 1-3
Monday, Nov. 7	Fresno State*	W, 3-0
Thursday, Nov. 10	UNLV* (MWN)	L, 1-3
Thursday, Nov. 17	at Nevada* (MWN)	W, 3-1
Saturday, Nov. 19	at San José State* (MWN)	W, 3-1
Wednesday, Nov. 23	at [3] Colorado State& (MWN)	4 p.m. MT
Thursday, Nov. 24	vs. [2] San José State&** (MWN)	4 p.m. MT
Friday, Nov. 25	TBD&** (MWN)	6:30 p.m. MT

[^] - San Diego State Invitational (San Diego, Calif.)
[#] - Pepperdine ASICS Classic (Malibu, Calif.)
[~] - Aztec Classic (San Diego, Calif.)
⁺ - SDSU/USD Challenge (San Diego, Calif.)
[&] - MW Championship (Fort Collins, Colo.)
^{**} - If Aztecs advance

* - Mountain West match
 (MWN) - Mountain West Network match

Socially
 Twitter: @AztecVB
 Instagram: @Aztec_WVB

Match Week Preview

Links to Mountain West Network streaming video and live stats on GoAztecs.com



[6] San Diego State 10-19, 8-10 MW) at [3] Colorado State (19-10, 12-6 MW)
 Wednesday, Nov. 23 | 4 p.m. MT/3 p.m. PT | Live Stats | MW Network
 Series: Colorado State leads 48-17
 Streak: Colorado State won three
 Last SDSU win: 3-0 in San Diego (April 3, 2021)
 Last CSU win: 3-1 in Fort Collins (Oct. 27, 2022)

AZTEC VOLLEYBALL SET TO FACE COLORADO STATE IN MW QUARTERFINALS

- > The San Diego State volleyball team has its sights set on postseason glory this week when it opens the Mountain West Championship with a quarterfinal match against tournament host Colorado State on Wednesday, Nov. 23, in Fort Collins, Colorado.
- > The Aztecs-Rams clash is scheduled to begin at 4 p.m. MT/3 p.m. PT, with links to live stats and streaming video via the Mountain West Network available on GoAztecs.com. Fans can also watch the action on their smartphones or TVs by downloading the MW app from the iOS App Store or Google Play.
- > SDSU clinched the sixth and final seed in the conference tournament after posting a pair of dramatic four-set road victories at Nevada (26-24, 25-23, 20-25, 25-16) and San José State (25-23, 25-20, 22-25, 26-24) last week.
- > If the Aztecs defeat CSU, they would face SJSU in the semifinals on Thursday, Nov. 24 at 4 p.m. MT/3 p.m. PT. The Spartans earned a bye in the quarterfinals by virtue of their second-place finish in MW play.
- > Top-seeded UNLV, the league's regular-season champion, will await the victor of the other quarterfinal showdown between fifth-seeded New Mexico and No. 4 seed Utah State.
- > The two semifinal winners will battle for the MW Championship and the league's automatic berth in the NCAA Tournament on Friday, Nov. 25, starting at 6:30 p.m. MT/5:30 p.m. PT.

SDSU IN THE MW CHAMPIONSHIP

- > The 2022 campaign marks the Aztecs' first trip to the MW Championship since the tournament was reinstated in its current format following the 2021 fall season.
- > SDSU owns a 5-10 record in all-time MW Championship appearances. The league's postseason tournament was held on an annual basis from 1999-2007 before returning for one season in 2011 after a three-year absence.
- > The Aztecs are 5-5 in MW first-round matchups. SDSU dropped a three-set decision to UNLV (20-25, 27-29, 23-25) in its last opening-round clash in 2011 at Albuquerque, New Mexico.
- > SDSU has faced Colorado State four times in the second round at the Mountain West Championship but has fallen short on every occasion, including a tough five-set defeat (30-28, 26-30, 16-30, 30-27, 10-15) during the 30-point scoring era in 2003 when the Aztecs played host to the event.
- > The SDSU volleyball program has traveled to Fort Collins for the conference tournament in three different years (2000, 2002 and 2004) posting a combined 2-3 record.
- > The Aztecs were swept in their lone meeting vs. Colorado State at Moby Arena in MW tournament play (12-15, 12-15, 5-15) during the side-out scoring era in 2000.

SERIES RECORD VS. COLORADO STATE/LAST MEETING

- > The Rams lead the all-time series 48-17.
- > The Aztecs dropped a four-set decision at Colorado State (25-21, 23-25, 20-25, 18-25) in the last meeting between the two squads on Oct. 27.
- > In that contest, the teams were evenly matched on the stat sheet, with the Rams maintaining a slight edge in kills (53-50) and team blocks (13.0 to 11.0) to help keep the Scarlet and Black at bay.
- > SDSU was led by Heipua Tautua'a, who notched her second straight double-double with 14 kills and 15 digs, while Kayla Rivera launched 11 put-aways of her own, equaling her career high with seven total blocks, including a solo stop.
- > Tautua'a and Rivera each served up an ace, while Madison Corf just missed out on a double-double as well after posting nine kills and nine digs.
- > The Aztec cause was also advanced by Ely Schraeder, who finished with six kills and six block assists, while Ellie Geoghegan scooped up 13 digs.
- > The two sides plodded through a sluggish opening set, combining for just 19 kills against 16 attack errors. Corf and Tautua'a led the Aztecs with three kills apiece in the frame, while Julia Haynie added two blocks, including a solo stuff.
- > Trailing 10-9, SDSU reeled off an 8-1 blitz to vault in front for good. Kills by Corf, Schraeder and Rivera fueled the run, while Tautua'a twirled her two aces on consecutive serves.
- > Shortly thereafter, the Aztecs reclaimed a six-point advantage at 20-14 following a Mikela Labno kill and a combined block by Rivera and Haynie.
- > However, CSU received consecutive solo blocks to cap a 6-1 spurt, which narrowed the gap to 21-20.
- > Unfazed, SDSU called timeout and closed with a 4-1 rush, benefiting from two errant serves sandwiched around kills by Tautua'a and Noa Miller to capture their only set of the night.

Week 14: at Mountain West Championship

GENERAL INFORMATION

Location San Diego, Calif.
 Founded 1897
 Enrollment 35,782
 Nickname Aztecs
 Colors Scarlet and Black (Pantone 187)
 Conference Mountain West
 Affiliation Division I
 President Dr. Adela de la Torre
 Director of Athletics John David Wicker
 Faculty Representative Dr. Frank Harris III
 Home Facility Aztec Court at Peterson Gym (2,000)

TEAM INFORMATION

Head Coach Brent Hilliard
 Alma Mater Long Beach State '93
 Record at SDSU 24-50 (Third year)
 Career Record 78-61 (Fifth year)
 E-Mail bhilliard@sdsu.edu
 Volleyball Office Phone (619) 594-5064
 Volleyball Office Fax (619) 594-1674
 Assistant Coach/Recruiting Coordinator Melanie Greene
 Assistant Coach Steve Timmons
 Volleyball Operations Assistant Kara Barkdoll
 2022 Record 10-19
 2022 Conference Record 8-10 (Sixth)
 2022 Home Record 6-10
 2022 Road/Neutral Record 4-9
 2021 Letterwinners Returning/Last 9/8
 2021 Starters Returning/Last 3/3+Libero

PROGRAM HISTORY

First Year of Volleyball 1976
 Overall Record 904-658 (.579)
 NCAA Appearances 14
 Last Postseason Appearance 2012
 NCAA Postseason Record 15-14

MEDIA RELATIONS

Assistant Media Relations Director Jim Solien
 E-Mail jsolien@sdsu.edu
 SID Office Phone (619) 594-2576
 SID Office Fax (619) 582-6541
 Official Athletic Website www.GoAztecs.com

2022 AZTEC VOLLEYBALL STATISTICAL LEADERS (min. 50 percent of team sets played)

Hitting Percentage*	.377	Julia Haynie
Kills	270	Kayla Rivera
Kills per set	2.56	Madison Corf
Assists	587	Noa Miller
Assists per set	5.41	Noa Miller
Service Aces	30	Noa Miller
Service Aces per set	0.29	Noa Miller
Digs	353	Ellie Geoghegan
Digs per set	3.27	Ellie Geoghegan
Blocks	111.0	Elly Schraeder
Blocks per set	1.12	Elly Schraeder

*. min 3.0 attempts per set

2022 AZTEC VOLLEYBALL FALL ROSTER

No.	Player	Pos.	Ht.	Yr.	Hometown (Last School)
2	Heipua Tautua'a	OH	6-2	Jr.	Wai'anae, Hawaii (Wai'anae HS)
3	McKenna Douglas	DS/L	5-7	Fr.	Phoenix, Ariz. (Notre Dame Prep)
4	Kennedy Feuerborn	S	6-3	Jr.	Overland Park, Kan. (Johnson County CC)
6	Jordyn Goldsmith	OPP	6-1	So.	Valleyford, Wash. (Freeman HS)
7	Madison Corf	OH	5-11	Fr.	Kansas City, Mo. (Liberty HS)
8	Ellie Geoghegan	DS/L	5-8	Fr.	Manhattan Beach, Calif. (Mira Costa HS)
9	Sara Mukaj	MB	6-3	So.	Madena, Italy (Istituto Scaruffi-Levi Tricolore)
10	Cara Braun	OH	6-1	Fr.	Tempe, Ariz. (Valley Christian HS)
11	Kayla Rivera	OPP	6-1	Sr.	Ventura, Calif. (Univ. of Georgia)
13	Julia Haynie	MB	6-2	Sr.	Temecula, Calif. (Portland State)
14	Reagan Merk	OH	5-11	So.	Huntington Beach, Calif. (Mater Dei HS)
15	Mikela Labno	OH	6-2	So.	Hilmar, Calif. (Hilmar HS)
16	Sarena Gonzalez	S	5-8	Fr.	Temecula, Calif. (Temecula Valley HS)
19	Noa Miller	S	5-10	Sr.	Douglasville, Ga. (Arizona State)
20	Elly Schraeder	MB	6-2	So.	Athol, Idaho (Univ. of San Diego)
21	Kat Cooper	MB	6-1	Fr.	Springdale, Ark. (Har-Ber HS)

Head Coach: Brent Hilliard (Long Beach State, 1993), Third season at SDSU

Assistant Coach/Recruiting Coordinator: Melanie Greene (San Diego State, 2007), 12th season at SDSU

Assistant Coach: Steve Timmons (USC), Third season at SDSU

Volleyball Operations Assistant: Kara Barkdoll (Cal State San Marcos, 2015), Fifth season at SDSU

Pronunciations

#2 HEIPIUA TAUTUA'A	HEY-poo-ah TAW-too-AH-AH
#4 Kennedy FEUERBORN	FEWER-born
#8 Ellie GEOGHEGAN	GAY-gun
#9 Sara MUKAJ	MOO-kye
#15 MIKELA Labno	ma-KAY-la
#19 NOA Miller	Noah
#21 Elly SCHRAEDER	SCHRAY-der



OPPONENT COMPARISON

2022 Overall Stats	SDSU	MW Rank	OPP	CSU	MW Rank	OPP	SJSU*	MW Rank	OPP
Hitting Percentage	.189	10	.251	.270	1	.226	.243	3	.207
Kills per set	12.69	5	12.27	12.79	3	12.90	14.04	1	11.39
Assists per set	11.86	4	11.17	11.70	6	11.94	13.21	1	10.38
Service Aces per set	1.35	9	1.81	1.31	10	1.49	1.79	1	1.10
Digs per set	12.16	11	11.37	12.38	10	12.42	13.18	5	11.36
Blocks per set	1.93	11	2.63	2.15	9	2.15	2.30	3	2.22

* - opponent if SDSU defeats CSU

SCOUTING THE OPPOSITION

> **Colorado State (19-10, 12-6 MW)** earned the No. 3 seed at the Mountain Championship this week after finishing behind UNLV (26-3, 17-1 MW) and San José State (20-8, 14-3 MW) in the conference race during the regular season. Since defeating the Aztecs in Fort Collins on Oct. 27, the Rams have posted a 3-4 record, capped by a 3-1 loss at UNLV (20-25, 25-22, 17-25, 12-25) in the regular-season finale on Nov. 19. During the 2022 campaign, Picked first in the MW preseason coaches poll, CSU has compiled an 11-5 record at home and a combined 8-5 ledger in road/neutral matches. Offensively, junior outside hitter Kennedy Stanford leads the Rams with 3.13 kills per set (341 overall), which ranks 10th in the league, while sophomore middle blocker Malaya Jones (2.71), senior outside hitter Annie Sullivan (2.39), and junior middle blocker Karina Leber (2.18), and are all averaging over two put-aways per frame. Entering the week, senior setter Ciera Pritchard (9.51 assists per set) and junior middle blocker Naeemah Weathers (.377 hitting percentage) are both slotted fourth in their respective statistical categories, while along the back row, freshman defensive specialist Kate Yoshimoto occupies the eighth position in the conference with 3.24 digs per set. As a team, CSU leads the MW with a .270 hitting percentage and finds itself near the middle of the back in kills (4th, 12.0/set) and assists (6th, 11.70/set), but ranks just ninth in blocks (9th, 2.15/set) and 10th in digs (12.38/set). The Rams are coached by Tom Hilbert, who has guided CSU to 23 NCAA Tournament appearances since his arrival on the Fort Collins campus in 1997. Previously, Hilbert was the head coach at Idaho from 1989-96. His career record stands at 811-235, including a 637-163 mark at Colorado State.

SERIES RECORDS VS OTHER MW CHAMPIONSHIP TEAMS

> If the Aztecs defeat Colorado State, they would face **San José State (20-8, 14 MW)** in the semifinals on Thursday. The second-seeded Spartans received a first-round bye after finishing second in conference play during the regular season. SDSU owns a 23-16 lead in 38 varsity meetings vs. San José State since 1977. The Aztecs snapped a four-match slide against the Spartans on Nov. 19 with a dramatic 3-1 victory in San Jose to clinch the final spot in the MW Championship. SDSU last played San José State in a postseason match in 1988 when the Aztecs claimed a four-set triumph in the first-round of the NCAA Northwest Regional on the Spartans' home floor.

> Despite dropping seven of the last nine encounters vs. **UNLV (26-3, 17-1 MW)**, San Diego State still leads the all-time series 29-27 dating back to 1985. The Rebels claimed a 3-0 decision on Nov. 10 in Peterson Gym to sweep the season series and spoil the Aztecs' Senior Night festivities. SDSU is 1-3 vs. UNLV all-time in the MW Championship, all first-round matchups. The Aztecs suffered defeats in 2001 (at Provo, Utah), 2005 (at Las Vegas) and 2011 (at Albuquerque), sandwiched around a three-set sweep on the Aztecs' home floor in 2003.

Week 14: at Mountain West Championship

2022 MOUNTAIN WEST FINAL STANDINGS

Team	---Conference---			-----Overall-----			
	W	L	Pct.	W	L	Pct.	Strk
xy-UNLV	17	1	.944	26	3	.897	W17
xy-San José State	14	4	.778	20	8	.714	L1
x-Colorado State	12	6	.667	19	10	.655	L1
x-Utah State	11	7	.611	19	10	.655	L2
x-New Mexico	8	10	.444	17	11	.607	L1
x-San Diego State	8	10	.444	10	19	.345	W2
Nevada	8	10	.444	14	15	.483	W1
Boise State	7	11	.389	15	14	.517	W1
Air Force	7	11	.389	15	15	.500	W2
Wyoming	6	12	.333	10	20	.333	L7
Fresno State	1	17	.056	7	23	.233	L4

x - clinched berth in MW Championship

y - clinched first-round bye

Mountain West Championship (Fort Collins, Colo.)

Wednesday, Nov. 23

[6] San Diego State at [3] Colorado State, 4 p.m. MT

[5] New Mexico vs. [4] Utah State, 1 p.m. MT

Thursday, Nov. 24

New Mexico-Utah State winner vs. [1] UNLV, 1 p.m. MT

San Diego State-Colorado State winner vs. [2] San José State, 4 p.m. MT

Friday, Nov. 25

Championship Final, 6:30 p.m. MT



> The Aztecs were dealt a four-set road defeat at [New Mexico \(17-11, 8-10 MW\)](#) on Oct. 20 in the lone meeting between the two squads this season. However, SDSU still leads the all-time series 41-24. The Aztecs are 2-0 vs. the Lobos in the MW Championship, winning both encounters in Fort Collins, Colorado, during the first round in 2000 and 2002. SDSU would not face UNM in the conference tournament this year unless both squads advance to the finals. The fifth-seeded Lobos will take on No. 4 seed Utah State in the quarterfinals on Wednesday, with the winner advancing to battle UNLV in the semifinals.

> Utah State (19-10, 11-7 MW) took both meetings from the Aztecs in 2022, but SDSU still leads the all-time series 18-11. Like New Mexico, the Aztecs would not play the Aggies in the MW Championship unless both teams progress through bracket to the final match.

SDSU IN MW RANKINGS

> Entering the week, Julia Haynie ranks third in the MW with a .398 hitting percentage for conference matches and a .377 efficiency for the season overall.

> Elly Schraeder remains in the third position for MW matches with 1.23 blocks per set and ranks fifth for all contests with 1.12 rejections per frame.

> Ellie Geoghegan occupies the sixth spot with 3.53 digs per set in league matches and ranks seventh with 3.27 scoops per frame for the season.

> Noa Miller is also slotted ninth in the league with 5.87 assists per sets against MW competition.

> Miller's six service aces against UC San Diego on Aug. 27 is tied for the second-highest total in the Mountain West this season and marks the most by an SDSU player since Ashlynn Dunbar served up six of her own vs. Colorado State on Sept. 27, 2018. Dunbar also finished with seven service aces against CSU Bakersfield in the 2018 season opener.

> McKenna Douglas' 26-dig effort vs. Nevada on Sept. 24 ranks second for a four-set MW match this season.

> Madison Corf's .667 hitting percentage (15-1-21) vs. Fresno State on Nov. 7 marks the fifth-best efficiency in the conference this season (min. 12 kills).

> Meanwhile, Schraeder's nine overall blocks vs. Army West Point is tied for the seventh-best figure in the MW this season and represents the most by an SDSU competitor since Lexie Hamrick's 11 rejections against UTEP on Sept. 15, 2018.

> Kayla Rivera's .647 hitting percentage (12-1-17) vs. Pepperdine on Sept. 3 is tied for the eighth-best clip in the league this year.

> Corf's 22 kills vs. Nevada is tied for the fifth-highest total in a four-set match this year, while her 21 put-aways against Air Force are tied for eighth in a four-set contest.

> Collectively, the Aztecs' 71 kills against Nevada is tied for the fourth-highest figure in the league this season and represents the most in a four-set match.

> In addition, SDSU's 67 kills against UC San Diego is tied for the fourth-highest total in the MW for a four-set match this year.

> The Aztecs' 14 team blocks vs. Army is tied for the 12th-highest total in the conference.

AZTECS PEAKING AT THE RIGHT TIME

> While other conference schools have faded down the stretch, San Diego State has found itself in an upward trajectory in the second half of its league schedule, posting a 6-3 record in its last nine matches.

> During that span, the Aztecs have averaged two kills more per set than their opponents (13.85 to 11.85), maintaining a 471-403 advantage in that statistic overall.

> Conversely, opponents held a 922-900 edge in kills (12.46 to 12.16 kills/set) over the first 20 matches of the year and outlit the Scarlet and Black .262 to .174.

> Over its last nine outings, San Diego State has narrowed the gap in hitting percentage, posting a .221 efficiency, compared to a .228 clip for the opposition.

> Additionally, the Aztecs have trimmed their deficiency in blocks per set during that stretch, averaging 2.26 rejections per frame, compared to a 2.47 pace by opponents.

> On the flip side, SDSU was averaging just 1.78 blocks per set over the first 20 matches, while its adversaries maintained a rate of 3.01 stops per frame.

> Not to be outdone, the Aztecs have witnessed more productive serves of late, averaging 1.59 aces per set to go with a .904 serve percentage over the last nine matches, compared to a clip of 1.24 and a .897 percentage for the first 20 contests of the year.

SDSU GARNERS TWO MW WEEKLY ACCOLADES

> The San Diego State volleyball program collected two conference awards on Nov. 21, as Heipua Tautua'a was named Mountain West Offensive Player of the Week, while Ellie Geoghegan received Freshman of the Week recognition.

> Both players were honored for their key contributions in two crucial road victories against Nevada (Nov. 17) and San José State (Nov. 19), helping the Aztecs clinch a spot in the Mountain West Championship.

> Tautua'a garnered the first weekly league accolade of her career after blasting a team-high 32 kills (4.00/set) and logging a .276 hitting percentage over the weekend. The SDSU outside hitter notched double-digit put-aways in back-to-back starts, while her attack efficiency was 123 points higher than her season clip of .153 heading into those matches.

> A native of Wai'anae, Hawai'i, Tautua'a launched 13 kills at Nevada last Thursday, which kept the Aztecs alive for the final spot in the conference tournament. In the decisive fourth set vs. the Wolf Pack, she saved her best for last with five kills, committing just one error in nine swings for a .444 efficiency. During a key 8-3 run, the SDSU junior floored two shots that helped break open a tight 10-8 score and give the Aztecs momentum.

> In a must-win situation at SJSU two days later, Tautua'a came through with a career-high 19 kills and a season-best .405 hitting percentage, completing her team-leading sixth double-double of the year with 16 digs. She set the tone with six put-aways in the opening set vs. the Spartans, taking matters into her own hands with three kills and a solo block down the stretch, as the Aztecs overcame a 20-18 deficit with a strong 7-3 closing run. Later in the second stanza, Tautua'a continued her barrage with five more non-returnables, including the clincher, capping another late 8-3 surge for the Scarlet and Black.

> For the season, Tautua'a is tied for the team lead with double-digit kills in 12 matches and is one of two SDSU players to compile at least 100 kills (134, 2.20/set) and 100 digs (123, 2.02/set) this season.

Week 14: at Mountain West Championship

- > Geoghegan, meanwhile, led the squad with a combined 36 digs, while her average of 4.50 digs per set was higher than her season clip of 3.17 entering the weekend. The freshman libero was part of an SDSU defense that limited two opponents to a combined .150 hitting percentage, which was 110 points lower than the opposition's .260 clip vs. the Aztecs prior to those matches.
- > A native of Manhattan Beach, California, Geoghegan led all players with 20 digs in the team's clutch win at Nevada, which marked her fifth outing this season with at least 20 scoops. She helped set the stage with seven digs in the first set vs. the Wolf Pack, as the Scarlet and Black limited the hosts to a .027 hitting percentage in that stretch.
- > Geoghegan came back with 16 digs against San José State to share team-high honors with Tautua'a. She contributed greatly to an SDSU defense that held the Spartans to a .113 hitting percentage for the day after they entered the contest with a .253 efficiency, which ranked third in the league.
- > Geoghegan, who merited conference weekly acclaim for the third time this year, did not commit an error in 39 chances for a clean 1.000 reception percentage over the weekend.
- > Against Mountain West foes, Geoghegan ranks sixth in the conference with 3.52 digs per set (236 total) while occupying the seventh spot in that category for all matches (3.27/set, 353 total).

HAYNIE ON THE RISE

- > Middle blocker Julia Haynie has started 16 of 18 conference matches this season, posting a .398 hitting percentage, which ranks third in the MW.
- > The Aztec senior has powered down 95 kills in 191 attempts with just 19 errors against league opponents.
- > Haynie has also recorded 33 total blocks in MW play, including five solo stops.

- > In the final two matches of the regular season at Nevada and San José State, the Temecula, California, product combined for 20 kills (2.50/set) and hit with a .529 efficiency (20-2-34), helping SDSU secure a spot in the MW Championship.
- > Against Nevada, Haynie tied her personal best with 11 kills before posting a career-high seven digs at SJSU two days later.
- > In a road match at New Mexico on Oct. 20, Haynie established a career high with a .769 hitting percentage after launching 10 kills in 13 swings without an error. She also set a season best with seven total blocks vs. the Lobos.
- > The former Portland State transfer has recorded multiple blocks in 10 matches this year.
- > For the season, Haynie ranks third in the Mountain West with a .377 efficiency and is currently third on the squad with 41 total blocks.

SCHRAEDER STYLIN'

- > Middle blocker Elly Schraeder has ramped up her production over the last nine matches, averaging 1.47 blocks and 1.76 kills per set while hitting at a .376 clip.
- > The SDSU sophomore has powered down 60 kills in 129 attempts during that stretch with just 15 errors.
- > Additionally, Schraeder has totaled at least four blocks in those nine starts
- > Against Fresno State on Nov. 7, the Athol, Idaho, native blasted nine kills with a season-best .667 hitting percentage, committing one error in 12 swings. She also set a collegiate high with three digs vs. the Bulldogs.
- > Schraeder completed consecutive matches against UNLV and Nevada without an error, smashing 15 kills on 27 attempts for a .556 efficiency. In that latter contest, she tied her career best with nine kills.

2022 AZTEC SUPERLATIVES

Individual

HITTING PERCENTAGE (min. 12 kills)

.667 (15-1-21) Madison Corf vs. Fresno State (Nov. 7)

KILLS

22 Madison Corf vs. Nevada (Sept. 24)
 5 sets 15 Madison Corf and Mikela Labno vs. Sacramento State (Sept. 10)
 4 sets 22 Madison Corf vs. Nevada (Sept. 24)
 3 sets 15 Madison Corf vs. Fresno State (Nov. 7) and Colorado State (Oct. 15)

TOTAL ATTEMPTS

47 Madison Corf vs. Nevada (Sept. 24)
 5 sets 37 Madison Corf vs. Sacramento State (Sept. 10)
 4 sets 47 Madison Corf vs. Nevada (Sept. 24)
 3 sets 35 Heipua Tautua'a at Pepperdine (Sept. 3)

ASSISTS

33 Noa Miller vs. Air Force (Oct. 22)
 5 sets 27 Noa Miller vs. Sacramento State (Sept. 10)
 4 sets 33 Noa Miller vs. Air Force (Oct. 22)
 3 sets 26 Noa Miller vs. Fresno State (Nov. 7)

DIGS

26 McKenna Douglas vs. Nevada (Sept. 24)
 5 sets 23 Ellie Geoghegan vs. Sacramento State (Sept. 10)
 4 sets 26 McKenna Douglas vs. Nevada (Sept. 24)
 3 sets 16 Ellie Geoghegan at Pepperdine (Sept. 3)

SERVICE ACES

6 Noa Miller vs. UC San Diego (Aug. 27)

BLOCK SOLOS

2 Elly Schraeder at San José State (Nov. 19), at Nevada (Nov. 17),
 at UNLV (Oct. 1) and vs. No. 9 Baylor (Sept. 2)
 and Heipua Tautua'a vs. San José State (Sept. 22)

BLOCK ASSISTS

8 Elly Schraeder vs. Boise State (Nov. 3) and Army West Point (Aug. 27)

TOTAL BLOCKS

9 Elly Schraeder vs. Army West Point (Aug. 27)

Team

HITTING PERCENTAGE

.349 (42-13-83) vs. Fresno State (Sept. 27)

KILLS

71 vs. Nevada (Sept. 24)
 5 sets 61 vs. Sacramento State (Sept. 10)
 4 sets 71 vs. Nevada (Sept. 24)
 3 sets 48 at Pepperdine (Sept. 3)

TOTAL ATTEMPTS

168 at San José State (Nov. 19)
 5 sets 152 vs. Sacramento State (Sept. 10)
 4 sets 168 at San José State (Nov. 19)
 3 sets 112 at Pepperdine (Sept. 3)

ASSISTS

64 vs. Nevada (Sept. 24)
 5 sets 58 vs. Sacramento State (Sept. 10)
 4 sets 64 vs. Nevada (Sept. 24)
 3 sets 48 at Pepperdine (Sept. 3)

DIGS

77 vs. Nevada (Sept. 24)
 5 sets 55 vs. Sacramento State (Sept. 10)
 4 sets 77 vs. Nevada (Sept. 24)
 3 sets 43 vs. Fresno State (Nov. 7)

SERVICE ACES

10 vs. Fresno State (Nov. 7) and at Fresno State (Sept. 27)

TOTAL BLOCKS

14.0 vs. Army West Point (Aug. 27)

Week 14: at MW Championship

- > Not to be outdone, Schraeder tied her collegiate best with eight block assists against Boise State on Nov. 3.
- > For the season, Schraeder ranks fifth in the MW for all matches with 1.12 blocks per set but has moved into the third spot during MW play with 1.23 blocks per frame.

SCHEDULE NAVIGATION

- > San Diego State finished with an 8-10 record in Mountain West play this season after logging a 2-9 mark through a difficult non-conference slate.
- > During their non-league schedule, the Aztecs faced four foes that appeared or were receiving votes in the AVCA poll at match time, including No. 8 San Diego, No. 9 Baylor, Pepperdine (rv), UCLA (rv), along with additional Power 5 opponents Maryland and Arizona. Pepperdine climbed to as high as No. 22 in the AVCA rankings this season, while UCLA opened at No. 12 in the AVCA preseason poll and was ranked in the first two weeks of the regular season prior to its clash at SDSU.
- > Similarly, the Aztecs have faced 12 opponents that are currently listed among the top 100 in the sixth NCAA Women's Volleyball RPI of the season released on Nov. 14, including San Diego (No. 9), Baylor (No. 15), UNLV (No. 21), Pepperdine (No. 43), Colorado State (No. 47), UCLA (No. 64), Utah State (No. 69), San José State (No. 79), New Mexico (No. 88), UC Santa Barbara (No. 92), Arizona (No. 99), and Army West Point (100).

ODDS & ENDS

- > With its four-set triumph over Wyoming on Oct. 29, San Diego State recorded the 900th victory in program history. Dating back to 1976, the Aztecs own an all-time record of 902-658 in almost 47 seasons of varsity volleyball competition.
- > Against the Cowgirls, the Aztecs posted more team blocks than their opponent (12.0 to 5.0) for just the fourth time this season, improving to 3-1 in that statistical situation.
- > Six of SDSU's 10 wins this year have been registered on a Saturday.
- > Elly Schraeder has totaled at least four blocks in nine straight matches and has come up with at least one rejection in 11 consecutive appearances.
- > Noa Miller has served up at least one ace in five of her last six matches and nine of her last 11 contests, including three apiece vs. Boise State and Utah State at home.
- > Heipua Tautua'a leads the Scarlet and Black with six double-doubles on the year.
- > Ellie Geoghegan has recorded double-digit dig totals in 10 of her last 12 matches, including a career-high 24 scoops at New Mexico on Oct. 20. She also set a collegiate best with four aces vs. Fresno State on Nov. 7.
- > All 10 of the Aztecs' victories have been recorded with SDSU maintaining the statistical advantage in kills and hitting percentage.
- > San Diego State is 7-0 this season when holding a 2-1 lead after three sets.

THE LAST TIME OUT

- > The San Diego State volleyball team clinched a spot in the Mountain West Championship with a dramatic 3-1 victory (25-23, 25-20, 22-25, 26-24) over San José State on Nov. 19 at Spartan Gym.

With the win, the Aztecs (10-19, 8-10 MW) secured the sixth and final seed in the conference tournament and dealt the Spartans (20-8, 14-4 MW) their only home loss of the 2022 campaign in 10 matches.

Individually, SDSU was led by Heipua Tautua'a, who notched her sixth double-double of the season with a career-best 19 kills and contributed 16 digs, tying Ellie Geoghegan in the latter statistic for match-high honors. In addition, the Aztecs received 14 kills from Kayla Rivera, while Elly Schraeder posted a team-best six blocks, including a pair of solo stuff.

Elsewhere, Julia Haynie hit .500 for the match, blasting nine kills in 16 attempts with one error, while Tautua'a finished with a .405 efficiency, committing just four miscues in the 37 swings.

As customary, the SDSU setter responsibilities were shared by Noa Miller, who just missed a double-double on a match-high 26 assists with nine digs, while Sarena Gonzalez dished out 16 helpers of her own.

Despite 10 service errors and a deficiency in team blocks (13.0 to 11.0), the Aztecs maintained a hefty 60-45 advantage in kills and a 67-63 edge in digs to help spark their win. Neither side hit particularly well, with the Scarlet and Black recording a .185 clip, compared to a .113 efficiency for the Spartans.

Nevertheless, the contest featured many ebbs and flows, with the two teams combining for 39 ties and 16 lead changes in the 2-hour-and-15-minute battle.

SDSU logged its best hitting percentage of the afternoon with a .333 clip in the opening set, launching 21 kills on 45 attempts with six errors. Tautua'a floored six shots in the frame, while Rivera blasted four put-aways of her own.

Still, the set witnessed nine ties and four lead changes. Trailing 20-18 after a wayward serve, the Aztecs fought themselves off the ropes with a 7-3 closing run to escape with the set. Tautua'a took matters into her own hands with three kills and a solo block down the stretch, while Rivera and Kennedy Feuerborn each floored a shot. SDSU was also the beneficiary of two off-target attacks by the hosts, including one on the final point to account for the clincher.

Tautua'a continued her barrage in the second stanza with five additional kills, while Rivera and Madison Corf contribute three apiece in that span.

The scored was deadlocked on nine occasions in the set, including a 17-17 tie following a kill by the Spartans' Jiana Lawson. However, the Aztecs never let the host school grab the upper hand for the remainder of the frame, as Rivera and Schraeder each smashed a kill sandwiched around a Corf service ace to put the visitors in front for good.

Rivera teamed with Schraeder on a block moments later, while Tautua'a provided two late kills, including the clincher, to cap another strong 8-3 closing run.

SDSU seemed poised for a sweep after building a 21-18 lead in the third set courtesy of a Corf kill. However, SJSU caught lightning in a bottle at this juncture, crafting a 7-1 outburst to extend the match. Haylee Nelson sparked the Spartans with three late put-aways, including the clincher, while Brooke Bryant came through with a solo stuff and another combined block with Madeline Boerstra.

The contest eroded into a defensive struggle in the fourth set, with each side committing more attack errors than kills. The Aztecs were victimized by 14 off-target swings against 13 kills (-.023), while SJSU mustered just eight put-aways against 10 miscues (-.051) in that stretch.

The set was no less dramatic, as the teams combined for 11 ties and four lead changes. SDSU raced to an early 8-2 lead following a combined block by Haynie and Rivera.

2022 SITUATIONAL RECORDS

GENERAL

Overall.....	10-19
Mountain West.....	8-10
Home.....	6-10
Away.....	4-7
Neutral.....	0-2
vs. Ranked Teams.....	0-2
vs. Unranked Teams.....	10-17
Matches Following a Win.....	4-5
Matches Following a Loss.....	6-13
Longest Winning Streak.....	2
Longest Losing Streak.....	9
Current Streak.....	Won 2

BY SETS

3 Sets.....	2-7
4 Sets.....	8-11
5 Sets.....	0-1
Leading After Two.....	7-0
Trailing After Two.....	0-14
Tied After Two.....	3-5
Leading 2-1.....	7-0
Trailing 2-1.....	0-10

BY MONTH

August.....	2-1
September.....	2-9
October.....	2-7
November.....	4-2

BY DAY

Monday.....	1-0
Tuesday.....	1-0
Thursday.....	2-7
Friday.....	0-4
Saturday.....	6-8

BY KILLS

Leading in Kills.....	10-3
Trailing in Kills.....	0-15
Tied in Kills.....	0-1

BY DIGS

Leading in Digs.....	9-9
Trailing in Digs.....	1-9
Tied in Digs.....	0-1

BY BLOCKS

Leading in Blocks.....	3-1
Trailing in Blocks.....	7-17
Tied in Blocks.....	0-1

BY ATTACK PERCENTAGE

Greater Attack Percentage.....	10-1
Lower Attack Percentage.....	0-18
Equal Attack Percentage.....	0-0
Hitting above .300.....	3-0
Hitting between .200 and .300.....	5-5
Hitting between .100 and .200.....	2-9
Hitting below .100.....	0-5
Opponent Hitting above .300.....	0-10
Opponent Hitting between .200 and .300.....	5-7
Opponent Hitting between .100 and .200.....	4-2
Opponent Hitting below .100.....	1-0

BY INDIVIDUAL KILLS

3+ Double-Digit Individual Kill Totals.....	5-2
2 Double-Digit Individual Kill Totals.....	3-4
1 Double-Digit Individual Kill Totals.....	2-7
0 Double-Digit Individual Kill Totals.....	0-6

2022 MATCH-BY-MATCH LEADERS

Date	Opponent	Kills	Hitting Pct.*	Assists	Aces	Digs	Blocks
A.26	California	Three players - 7	Labno (.118)	Gonzalez - 16	Geoghegan - 2	Tautua'a - 8	Schraeder - 4
A.27	Army West Point	Tautua'a - 13	Tautua'a (.379)	Miller - 21	Miller - 3	Douglas - 14	Schraeder - 9
A.28	UC San Diego	Corf - 15	Cooper (.600)	Gonzalez - 30	Miller - 6	Douglas - 19	Cooper - 5
S.2	vs. No. 9 Baylor	Tautua'a - 13	Rivera (.048)	Gonzalez - 25	Corf - 1	Tautua'a - 16	Schraeder - 5
S.3	at Pepperdine	Rivera - 12	Rivera (.647)	Gonzalez - 24	Tautua'a - 4	Geoghegan - 16	Cooper - 3
S.3	vs. UC Santa Barbara	Rivera/Haynie - 10	Haynie (.474)	Gonzalez - 21	Corf/Miller - 1	Geoghegan - 17	Four players - 1
S.9	Maryland	Tautua'a - 14	Tautua'a (.300)	Miller - 17	Gonzalez - 3	Geoghegan - 12	Haynie/Rivera - 3
S.9	Arizona	Corf - 9	Corf (.227)	Gonzalez - 17	Haynie/Tautua'a - 1	Geoghegan - 11	Schraeder - 3
S.10	Sacramento State	Corf/Labno - 15	Labno (.407)	Miller - 27	Miller - 2	Geoghegan - 23	Schraeder - 4
S.15	UCLA	Rivera - 8	Rivera (.227)	Gonzalez - 12	Geoghegan - 2	Tautua'a - 9	Schraeder - 3
S.17	at No. 8 San Diego	Labno - 10	Labno (.450)	Gonzalez - 19	Geoghegan - 3	Geoghegan - 14	Schraeder - 4
S.22	San José State	Corf - 10	Cooper (.429)	Miller - 19	Three players - 1	Douglas - 14	Schraeder - 8
S.24	Nevada	Corf - 22	Rivera (.385)	Miller - 31	Douglas - 2	Douglas - 26	Cooper - 2
S.27	at Fresno State	Labno - 12	Haynie (.636)	Miller - 14	Douglas - 5	Douglas/Geoghegan - 5	Three players - 2
O.1	at UNLV	Corf - 15	Rivera (.467)	Gonzalez - 15	Haynie - 2	Douglas - 9	Rivera/Schraeder - 4
O.6	at Utah State	Rivera - 9	Rivera (.211)	Miller - 14	Douglas/Geoghegan - 1	Douglas/Geoghegan - 7	Tautua'a - 5
O.8	at Boise State	Labno - 16	Labno (.355)	Miller - 24	Geoghegan - 2	Geoghegan/Tautua'a - 9	Haynie/Rivera - 3
O.13	Wyoming	Rivera - 9	Tautua'a (.167)	Miller - 17	Geoghegan - 3	Geoghegan - 18	Cooper/Rivera - 4
O.15	Colorado State	Corf - 15	Labno (.304)	Miller - 20	Miller - 2	Geoghegan - 14	Labno/Schraeder - 2
O.20	at New Mexico	Labno - 12	Haynie (.769)	Miller - 25	Geoghegan/Miller - 1	Geoghegan - 24	Haynie - 7
O.22	Air Force	Corf - 21	Haynie (.429)	Miller - 33	Corf - 3	Geoghegan - 23	Rivera/Schraeder - 5
O.27	at Colorado State	Tautua'a - 14	Rivera (.308)	Miller - 26	Rivera/Tautua'a - 2	Tautua'a - 15	Rivera - 7
O.29	at Wyoming	Rivera - 13	Haynie (.474)	Gonzalez - 31	Rivera - 2	Geoghegan - 17	Schraeder - 7
N.3	Boise State	Rivera - 13	Rivera (.375)	Miller - 23	Corf/Rivera - 2	Geoghegan - 21	Schraeder - 8
N.5	Utah State	Rivera - 12	Rivera (.286)	Miller - 20	Miller - 3	Geoghegan - 9	Three players - 4
N.7	Fresno State	Corf - 15	Corf/Schraeder (.667)	Miller - 26	Geoghegan - 4	Tautua'a - 9	Schraeder - 4
N.10	UNLV	Corf/Rivera - 7	Schraeder (.600)	Miller - 15	Three players - 1	Geoghegan - 11	Schraeder - 5
N.17	at Nevada	Rivera - 15	Haynie (.559)	Miller - 31	Rivera - 3	Geoghegan - 20	Schraeder - 5
N.19	at San José State	Tautua'a - 19	Haynie (.500)	Miller - 26	Three players - 1	Geoghegan - 16	Schraeder - 6

* - min. 7 kills

However, the host school fashioned a 13-5 blitz to take a 15-13 lead, as Lawson joined forces with Blaire Fleming and Bryant on a pair of blocks while adding a solo stop and a kill to ignite the outburst. In addition, Sarah Smevov served up a pair of aces.

The teams traded proverbial punches before the Spartans reached set point on another Lawson put-away. But SJSU abruptly ran out of steam, committing a service error along with an errant attack on the final point, while Haynie blasted a kill in the interim.

AZTECS INK THREE PREP STARS FOR 2023

> San Diego State volleyball head coach Brent Hilliard has announced the signing of high school standouts Natalie Hughes (McKinney, Texas), Campbell Hague (Cheney, Kan.) and Fatimah Hall (Long Beach, Calif.) to National Letters of Intent. The highly prized trio of future Aztecs will arrive on the SDSU campus in time for the 2023 campaign.

"We are very excited with the addition of Natalie, Campbell and Fatimah to our Aztec family," Hilliard said. "Each player provides a much-needed skill set that will help our team in its goal of winning a conference championship."

A 6-4 opposite hitter, Hughes earned first-team AVCA High School All-America honors after leading McKinney North High in kills (473), kills per set (4.4), hitting percentage (.316), total blocks (83) and blocks per set (0.8) this season, according to MaxPreps.

Hughes, who just completed her senior campaign, led the Bulldogs to their second straight Class 5A Region II quarterfinal playoff berth after a finals appearance in 2020.

Hughes has amassed over 1,100 kills during her prep career and has broken the school's all-time record with 353 total blocks, according to MaxPreps. She garnered first-team all-District 13 5A accolades in 2021 after collecting Blocker of the Year plaudits in 2019.

A Class of 2023 Top 150 player who received All-America honorable mention from PrepVolleyball.com, Hughes also competed for the renowned Madfrog Volleyball Club, helping her squad to a fifth-place tie in open competition at the 2022 Girls Junior National Championships.

"Natalie brings a dominant blocking presence on the right side that will help our team immediately," Hilliard said. "Her size and explosiveness should give her an early opportunity to see the court upon her arrival. Natalie also exudes unbridled enthusiasm and is extremely competitive in nature. We can't wait to see her play next fall."

A 6-2 middle blocker/outside hitter, Hague collected Most Valuable Player honors in the Central Plains League as a senior after leading Cheney High in numerous categories, including kills (338), kills per set (3.60), hitting percentage (.270), service aces (42), total blocks (73), blocks per set (0.8), according to

MaxPreps.

A two-time all-conference selection, Hague contributed to a winning tradition at Cheney High, helping the Cardinals to a combined 106-14 record in her three seasons as a prep, highlighted by a runner-up finish at the 2021 Kansas State High School Activities Association (KSHSAA) Class 3A Championship as a junior followed by a third-place standing this season.

A multi-sport athlete, Hague also excelled on the basketball court, earning a spot on the all-tournament team at the 2021 Kansas state championships after helping Cheney to the Class 3A title. Additionally, she garnered second-team all-conference accolades following her junior campaign last season.

Not to be outdone, Hague finished runner-up in the triple jump at the 2022 Kansas state track and field championships last spring and was a qualifier in the long jump, javelin and triple jump at the state meet as a sophomore in 2021.

"Campbell is a true diamond in the rough, and her size will translate to both the middle and outside hitting spots for our team moving forward," Hilliard said. "Our coaching staff has been looking for true athletes that are physical and dynamic in nature. Campbell provides both of these characteristics along with the skill that is unique for someone her size. I have no doubt that she will make an immediate impact on our team upon her arrival."

A 5-9 setter, Hall also brings a winning pedigree to The Mesa after helping her Lakewood High squad compile a 54-14 record over the past two seasons, highlighted by a pair of Moore League championships with a 24-0 mark in conference play, during which the Lancers lost just one set.

As a senior in 2022, Hall racked up over 800 assists and 200 digs, helping Lakewood High secure berths in the prestigious CIF Southern Section Division I championships and CIF State Open Division playoffs, as the Lancers finished with a No. 8 state ranking in the Open Division.

In mid-September, Hall was named Girls Athlete of the Week by the Long Beach Press-Telegram and additionally helped her squad finish 11th out of 64 teams at the renowned Durango Fall Classic tournament in Las Vegas, Nevada.

In 2021, Hall received second-team all-conference honors, helping the Lakewood squad to a high ranking of No. 2 in the state's Open Division.

"Fatimah is the setter we've been searching for quite some time, and she has great location, deception and athleticism to match," Hilliard said. "Her volleyball IQ is off the charts, and she knows how to make her hitters successful no matter what style of offense she is running. Since the first recruiting opportunity with Fatimah, I have been impressed with her work ethic. I truly believe she will lead our Aztecs to new heights once she arrives on The Mesa."

Week 14: at MW Championship

NEWCOMERS SHINE

- > Seven of eight Aztec newcomers have seen action for the Scarlet and Black this season, with several providing key contributions through 29 matches.
- > Freshman Madison Corf has started 23 of 29 matches, leading the team with 2.56 kills per set while ranking second with 256 put-aways overall. The former AVCA Prep All-American set a career high with 22 kills in SDSU's 3-1 triumph over Nevada on Sept. 24, which is tied for MW's fifth-highest total in a four-set match this year. In addition, Corf has recorded double-digit kills in 10 matches thus far, which ranks third on the squad behind Kayla Rivera and Heipua Tautua'a. Against Fresno State on Nov. 7, the Kansas City, Missouri, native set a collegiate best with a .667 hitting percentage, blasting 15 kills in 21 attempts with just one error. Corf also logged her first collegiate double-double with 15 kills and 11 digs vs. Colorado State on Oct. 15.
- > A senior transfer from Georgia, Kayla Rivera has started 27 of 29 matches for SDSU and has taken over the top spot on the team in kills (270) while holding down the No. 2 position in kills per set (2.50), total blocks (81.0) and blocks per set (0.75). The Aztec opposite hitter blasted double-digit kills in eight of her last 10 matches, including 15 put-aways in a crucial victory at Nevada on Nov. 17 to equal a career high. Last month at Wyoming, Rivera launched 13 non-returnables, accounting for the final two points of the match with a kill and solo block in the fourth set, leading the Aztecs to their first victory over the Cowgirls on the road since 2012. Earlier, the Ventura, California, native was named to the all-tournament team at the Pepperdine ASICS Classic after posting 29 kills and a .313 hitting percentage, including a career-best .647 clip (12-1-17) vs. the host Waves. She also came up with a collegiate-best seven block assists vs. Army West Point at the SDSU Invitational.
- > Freshman defensive specialist Ellie Geoghegan has taken over the team lead with 3.27 digs per set (353 overall), which ranks seventh in the MW. The Manhattan Beach product has surpassed the double-digit plateau in that category in 10 of her last 12 matches and on 17 occasions overall, including 20 scoops in a key victory at Nevada on Nov. 17. Two days later, she came up with 15 additional digs at San José State, helping the Scarlet and Black clinch a spot in the MW Championship. For her efforts, Geoghegan garnered MW Freshman of the Week accolades for the second time this season. Last month, she posted a season-high 24 digs at New Mexico on Oct. 20 before collecting 23 more scoops vs. Air Force two days later, earning MW Defensive Player of the Week and Freshman of the Week honors. Geoghegan has also recorded 25 of her 29 service aces for the season in her last 20 appearances, including a career-best four vs. Fresno State on Nov. 7.
- > In her first season on The Mesa after transferring from USD, sophomore middle blocker Elly Schraeder has started all 28 matches she has played, leading the team with 111 total blocks and 1.12 blocks per set, the latter of which ranks fifth in the Mountain West. The Athol, Idaho, native has flashed her versatility over the past nine matches, combining for 60 kills (1.76/set) and 50 blocks (1.47/set) while hitting at a .349 clip. Against Fresno State on Nov. 7, she posted a season-best .667 hitting percentage (min. 7 kills), matching her collegiate-best with nine kills on 12 attempts against one error while adding four blocks, including a solo stop. She did not commit an error in the following two matches vs. UNLV and at Nevada, combining for 15 kills on 27 attempts for a .556 efficiency. In the latter contest against the Wolf Pack, Schraeder equaled her career-best with nine kills and came up with five blocks, including two solo stuffs. Two days later, she contributed six more blocks at San José State, including another pair of solo rejections, helping the Scarlet and Black clinch a spot in the MW Championship. Earlier in the season vs. Army on Aug. 27, Schraeder registered a career-high nine blocks, including a solo stop, while hitting .375 on eight kills in 16 swings with just two errors.
- > A starter in 10 of 24 appearances, freshman middle blocker Kat Cooper ranks fourth on the team with 35 total blocks and 0.47 blocks per set. A former AVCA Prep All-American, Cooper enjoyed a breakout performance against UC San Diego at the SDSU Invitational when she hit .600 on seven kills in 10 attempts against just one error while adding five blocks (1 solo) and five digs. Earlier that day, the Springdale, Arkansas, native recorded five additional blocks (1 solo) vs. Army West Point. In the Mountain West opener against San José State, Cooper matched her season best with seven kills, posting a .429 efficiency with one error in 14 swings. Last Saturday, she logged some more valuable playing time, posting five kills and three block assists off the bench in the rematch at SJSU, helping the Aztecs clinch a spot in the Mountain West Championship.
- > Freshman setter Sarena Gonzalez ranks second on the squad with 4.67 assists per set. A starter in 11 of 29 matches, the Temecula product has dished at least 20 assists in eight appearances, including a season-high 31 helpers at Wyoming on Oct 29, as the Aztecs defeated the Cowgirls in Laramie for the first time since 2012. In addition, Gonzalez has 99 digs (1.01/set) and 10 aces (0.11/set) to her credit, including a season-best eight digs at Colorado State on Oct. 27. She also spun three aces on consecutive serves in the fourth set against Maryland at the Aztec Classic on Sept. 9.
- > Despite missing 19 matches this season, freshman libero McKenna Douglas ranks second on the Aztecs with 3.03 digs per set. The Phoenix, Arizona, native averaged 3.14 digs per frame in a six-match span from Sept. 22-Oct. 8, highlighted by a career-high 26 scoops vs. Nevada. In SDSU's 3-0 triumph at Fresno State on Sept. 27, Douglas served up a collegiate-best five aces, helping the Scarlet and Black record its first road sweep over the Bulldogs since 1996.

GEOGHEGAN EARNS TWO MW WEEKLY HONORS

- > Ellie Geoghegan picked up two Mountain West awards on Oct. 24 when she was named the league's Defensive Player of the Week and Freshman of the Week by the conference office for her performance in four-set matches vs. New Mexico and Air Force.
- > With her honors, Geoghegan garnered the first two MW weekly accolades of her career and the Aztecs' first two of the season.
- > A native of Manhattan Beach, California, Geoghegan led the Scarlet and Black with 47 digs and 5.88 digs per set, the latter of which was nearly three scoops higher than her season average of 2.74 heading into the weekend. The Aztec libero anchored a back row that helped limit SDSU's two opponents to a combined .159 hitting percentage.
- > In a road match at New Mexico on Oct. 20, Geoghegan set a career high with 24 digs (6.00/set) and was an integral part of an Aztec defense that held the Lobos to a .112 hitting percentage for the night, including a .037 clip over the final three sets. UNM's .112 efficiency was the second lowest for an SDSU foe this season.
- > Two days later, Geoghegan followed that effort with an additional 23 scoops against Air Force (5.75/set), helping the Aztecs snap a six-match losing streak. She contributed to a tremendous defensive effort that limited the Falcons to 17 kills over the final two sets, as the Scarlet and Black posted identical 25-16 scores in that stretch to win going away.
- > With her performance, Geoghegan eclipsed the 20-dig plateau in consecutive matches for the first time this year and has held or shared the team lead for digs in six straight outings and 13 for the season.
- > Geoghegan also aided the Aztec cause with 12 setting assists and two aces last week, dishing out a career-high eight helpers at UNM.

ALL-TOURNAMENT AZTEC

- > Senior opposite hitter Kayla Rivera earned a spot on the all-tournament team for her performance in three matches at the Pepperdine ASICS Classic, Sept. 2-3, in Malibu, California.
- > A native of Ventura, Rivera led the Aztecs with 29 kills overall and hit .333, including a career-best .647 against host Pepperdine on Sept. 3, when she launched 12 non-returnables on 17 attempts with just one error.

AVCA DIVISION I POLL

(As of Nov. 21, 2022)

Rk		Points	Record	Prev
1	Texas (57)	1,591	21-1	1
2	San Diego (2)	1,480	26-1	2
3	Wisconsin (3)	1,473	23-3	3
4	Louisville (2)	1,442	25-2	4
5	Nebraska	1,337	24-3	6
6	Stanford	1,285	22-4	8
7	Pittsburgh	1,218	25-3	7
8	Ohio State	1,069	19-8	5
9	Minnesota	1,023	18-8	9
10	Oregon	972	21-5	12
11	Penn State	916	22-7	14
12	Florida	903	21-5	10
13	Georgia Tech	822	19-6	13
14	Marquette	744	26-2	16
15	Creighton	674	25-4	11
16	Kentucky	662	18-7	18
17	Baylor	627	22-6	15
18	BYU	606	22-5	17
19	Purdue	465	19-9	19
20	Rice	355	26-3	22
21	Western Kentucky	269	28-3	20
22	Houston	251	27-2	23
23	UCF	204	25-1	24
24	Washington	163	19-9	21
25	Washington State	156	21-8	25

First-place votes in parentheses

Others receiving votes and listed on two or more ballots: USC 21; Towson 18; Arkansas 16; Loyola Marymount 8; Pepperdine 5; Colorado 4; James Madison 4.

MW PLAYERS OF THE WEEK

MW Offensive Player of the Week

- A.29 Kylee Stokes, OPP, Sr., Utah State
- S.5 Kayla Afoa, OH, Sr., Nevada
- S.12 Paige Bartsch, OPP, So., Boise State
- S.19 Blaire Fleming, OH, So., San José State
- S.26 Kennedy Stanford, OH, Jr., Colorado State
- O.3 Gabrielle Arreche-Ramos, OH, Jr., UNLV
- O.10 Tatum Stall, OH, Jr., Utah State
- O.17 Kennedy Stanford, OH, Jr., Colorado State
- O.24 Ellease Crumpton, MB, Sr., UNLV
- O.31 Isabel Martin, OH, Jr., UNLV
- N.7 Isabel Martin, OH, Jr., UNLV
- N.14 Uxue Guereca, OH, Jr., New Mexico
- N.21 Heipua Tautua'a OH, Jr., San Diego State

MW Defensive Player of the Week

- A.29 Joi Harvey, MB, Jr., Air Force
- S.5 Kia Kaohelauii, L, Jr., Nevada
- S.12 Allison Casillas, L, Sr., Boise State
- S.19 Maya Sands, L, Fr., UNLV
- S.26 Sarah Smevog, L, Sr., San José State
- O.3 Sarah Smevog, L, Sr., San José State
- O.10 Sarah Smevog, L, Sr., San José State
- O.17 Jordi Holdaway, L, So., Utah State
- O.24 Ellie Geoghegan, L, Fr., San Diego State
- O.31 Mac Russ, MB, So., Air Force
- N.7 Kayla Afoa, OH, Sr., Nevada
- N.14 Alena Molden, L, Sr., New Mexico

MW Freshman of the Week

- A.29 Leah Wilton-LaBoy, S, Utah State
- S.5 Gabby McLaughlin, OH, Nevada
- S.12 Lea Zurlinden, MB, New Mexico
- S.19 Maya Sands, L, UNLV
- S.26 Elle Cotton, S, Boise State
- O.3 Tierney Barlow, MB, Wyoming
- O.10 Bella Wooden, MB, Utah State
- O.17 Maya Sands, L, UNLV
- O.24 Ellie Geoghegan, L, San Diego State
- O.31 Leah Wilton-LaBoy, S, Utah State
- N.7 Bella Wooden, MB, Utah State
- N.14 Lea Zurlinden, MB, New Mexico
- N.21 Ellie Geoghegan, L, San Diego State

Week 14: at Mountain West Championship

> She also contributed double-digit kills later that day vs. UC Santa Barbara when she tied for team-high honors with 10 put-aways to go with a .368 efficiency.

SDSU INVITATIONAL REWIND

> After dropping a hard-fought three-set decision to California (20-25, 23-25, 23-25) in their season opener on Aug. 26, the Aztecs rebounded with a pair of 3-1 victories the following day vs. Army West Point (25-22, 22-25, 25-16, 19-25) and UC San Diego (25-22, 25-20, 26-28, 25-20).

> Against Army West Point, the SDSU attack was powered by the combo of Heipua Tautua'a (13 kills) and Mikela Labno (12 kills), while setter Noa Miller recorded her first double-double of the season with 21 assists and 12 digs.

> However, it was the Aztec defense that proved to be the difference against the Black Knights, finishing with a 14.0 to 10.0 advantage in team blocks, to go with a 54-49 spread in digs.

> In addition to a career-high nine blocks, Elly Schraeder (.375) displayed her dual-threat capabilities with eight kills against only two errors, while Kayla Rivera finished with seven block assists to set her own personal best.

> The teams combined for 13 ties and three lead changes in the opening set. However, the match witnessed just two more deadlocks in the second stanza, as the Scarlet and Black led throughout the third and fourth frames.

> In the nightcap vs. UC San Diego, the Aztecs (2-1) owned a decisive 67-42 advantage in kills and served up seven aces to help fuel their win, overcoming a 14.0 to 9.0 deficiency in team blocks.

> In addition, SDSU outthit the Tritons .270 to .183 and maintained a sizable 51-42 in digs while benefiting from 20 opponent attack errors.

> Individually, four players posted double-digit kills for the Aztecs, including freshman Madison Corf (.303), who blasted a match-high 14 put-aways, while Tautua'a logged her first double-double of the year with 14 non-returnables to go with 10 digs.

> Elsewhere, SDSU also received a career-high tying 13 kills from Labno, while Rivera sparked the offense as well with 10 put-aways, followed by Kat Cooper, who hit .600 for the night (7-1-10) and contributed five total blocks, including a solo stop.

> Not to be outdone, Miller (28 assists) posted a career-high six service aces, sharing the setting duties with Sarena Gonzalez, who dished out 30 helpers of her own. Meanwhile, McKenna Douglas led all players with 19 digs to anchor the Aztec back row.

> In the opener against Cal, the teams combined for 36 ties and 20 lead changes, as seven of eight SDSU newcomers saw action in the see-saw affair.

> Despite maintaining a narrow 38-37 edge in kills and a 7-4 spread in service aces, however, the Aztecs were plagued by 25 attack errors, posting a .121 hitting percentage on the night.

> Conversely, the Golden Bears owned a decisive advantage in team blocks (12.0 to 5.0) and totaled just eight errant attacks, finishing with a .358 efficiency to help key their victory.

> Offensively, SDSU was led by the trio of Tautua'a, Labno and Madison Corf, who blasted seven kills each, while Kat Cooper (.357) and Kayla Rivera (3 block assists) launched six non-returnables apiece.

WELCOME BACK

> Outside hitter Heipua Tautua'a leads the group of eight Aztec letterwinners who return for the 2022 campaign.

> Tautua'a continued to display her tremendous versatility last season, finishing second on the team in kills (208), digs (239) and digs per set (2.28) while occupying the third spot in kills per set (1.96) and double-doubles (3).

> The SDSU junior also compiled double-digit digs in 11 matches and surpassed double figures in kills on six occasions last year.

> Tautua'a enters the 2022 season having started 43 of 44 matches she has appeared in.

> The Aztecs will also look for senior leadership from Noa Miller and Julia Haynie.

> A 5-10 setter, Miller led the Scarlet and Black in assists in all but one of her 20 matches played last season. The Arizona State transfer also tied for the top spot on the squad with four double-doubles in her first season at SDSU.

> Despite missing the final seven matches of the 2021 campaign, Miller averaged a team-leading 6.01 assists per set, which ranked seventh in the Mountain West.

> Haynie also brought previous Division I experience with her to "America's Finest City" after spending her first two seasons at Portland State. The 6-1 middle blocker led the Aztecs with 61 total blocks, including a team-high eight solo stops across 88 sets. She also ranked fifth on the team with 103 kills (1.17/set), finishing with a .222 hitting percentage.

> In addition, Haynie topped the squad or tied for the team lead in blocks eight times. She also posted at least one kill in all 25 matches she played while recording at least one block assist in all but four contests, including eight straight to end the year.

> San Diego State is also expecting continued improvement from a pair of sophomores - Mikela Labno and Jordyn Goldsmith.

> Last season, Labno ranked fourth on the Aztecs with 132 kills and 1.81 kills per set while contributing 65 digs and 25 total blocks in 73 sets played. She also tied for second on the team with seven block solos and

recorded at least one kill in all but two appearances.

> A native of Hilmar, California, Labno surpassed the double-digit kill plateau on four occasions, logging a breakout performance vs. No. 17 Pepperdine at the Gaucho Invitational, where she launched a season-high 13 kills on 23 attempts with just one error for a stellar .522 hitting percentage, which ranked as the team's second-best clip of the year (min. 12 kills).

> A 6-1 opposite hitter, Goldsmith also enjoyed a solid debut for the Scarlet and Black in 2021, ranking fifth on the team in kills (119) and kills per set (1.58). She also finished with 35 total blocks and 30 digs across 76 sets, making nine starts in 25 appearances.

> Goldsmith posted her best hitting percentage of the 2021 season with a .636 clip in a three-set sweep of Air Force, blasting seven kills without an error in 11 attempts.

> Also back in the mix are a trio of underclassmen in Kennedy Feuerborn, Reagan Merk and Sara Mukaj.

> A 6-3 setter, Feuerborn appeared in 27 of 30 matches last year, starting six of the Aztecs' final eight contests. As a sophomore, she averaged 3.11 assists (230 overall) while registering 38 kills and 24 block assists. In addition, Feuerborn eclipsed the 20-assist plateau on three occasions, including a season-high 23 helpers at home vs. Boise State.

> Merk saw action in 18 matches during her freshman campaign on The Mesa, earning two starts. The 5-11 outside hitter posted 29 kills, 40 digs, five service aces and three blocks in 42 sets last year. Against Texas Southern at the Arizona Wildcat Invitational, she came off the bench and played all three sets, recording season-highs of seven kills and six digs to help the Scarlet and Black complete the sweep.

> A 6-3 middle blocker, Mukaj was off to a tremendous start in 2021 before suffering a season-ending ACL injury vs. San Diego. A standout international player from Italy, Mukaj hit .333 with 16 kills on 36 attempts against four errors across 27 sets while finishing with 22 total blocks, 16 dig and seven aces. She posted a .636 hitting percentage on seven kills in 11 attempts without an error against Sam Houston in the finale of the Bearkat Invitational, adding five digs and four block assists.

NEW KIDS IN TOWN

> The prospects for the San Diego State volleyball program continue to brighten after head coach Brent Hilliard reshaped the Aztec roster with a solid newcomer class for the 2022 campaign.

> SDSU's early signing class last November featured three prep stars in outside hitters Madison Corf (Kansas City, Mo.) and Cara Braun (Tempe, Ariz.), along with middle blocker Kat Cooper (Springdale, Ark.).

> Over the winter, the Aztecs added a pair of Division I transfers in middle blocker Elly Schraeder (San Diego) and opposite hitter Kayla Rivera (Georgia) before inking three more high school standouts during the spring in defensive specialists McKenna Douglas (Phoenix, Ariz.) and Ellie Geoghegan (Manhattan Beach, Calif.), along with setter Sarena Gonzalez (Temecula, Calif.).

> As a senior at Liberty High School in suburban Kansas City, Missouri, Corf garnered second-team All-America accolades from the American Volleyball Coaches Association after earning a spot on the AVCA All-Region VI team. Last season, she established single-season career highs in kills (390, 4.1/set), digs (353, 3.7/set), blocks (50) and aces (33), helping the Blue Jays to a 26-5 overall record and a second-place district finish.

> Cooper also received national acclaim last year, earning AVCA All-America honorable mention to go with AVCA All-Region IV distinction after leading Har-Ber High School to a 33-2 record and a runner-up finish in the 6A bracket at the 2021 Arkansas state championships. A four-time all-conference selection, Cooper merited all-state recognition and landed on the all-state tournament team in each of her final three seasons.

> Braun brings a winning pedigree with her to SDSU as well after leading her Valley Christian High team to the 2021 Arizona 3A state championship, garnering Conference 3A Player of the Year and 3A Metro Region Offensive Player of the Year accolades. According to MaxPreps, Braun totaled 1,290 kills and hit .344 during her prep career, helping Valley Christian to an additional pair of runner-up state finishes in 2019 and 2020.

> Not to be outdone, Douglas also starred on the Arizona prep volleyball scene, capping a brilliant senior campaign in 2021 with all-state honors from the Arizona Republic after leading Notre Dame Prep to a 37-5 record, highlighted by a Conference 4A state championship. Last season, Douglas was named both the Conference 4A Player of the Year and Defensive Player of the Year while receiving identical acclaim in the 4A West Valley Region after averaging a career-high 4.8 digs per set (307 overall) to go with 61 assists and 47 service aces, according to MaxPreps.

> Geoghegan is also eager to display her defensive prowess this season after she was named the Bay League Division I Libero of the Year and received all-conference recognition at Mira Costa High School in 2021. The Manhattan Beach native led her Mustang squad to a 28-9 overall record and a regional semifinal appearance in the 2021 CIF Open Division state tournament. For her efforts, Geoghegan also collected first-team all-area honors by the Daily Breeze, as Mira Costa finished the year at No. 17 in the AVCA/USA Today Super 25 National High School Rankings.

> Gonzalez, meanwhile, is a local product who attended Temecula Valley High and received all-Southwestern Conference recognition as a senior after helping her Golden Bears squad advance to the second round of the 2021 CIF Southern Section Division II playoffs.

> The first of two transfers to last year's signing class, Schraeder was a part of two teams at USD that advanced to the NCAA Tournament, including a second-round appearance in the fall of 2021. During her freshman campaign that was shortened and delayed due to the COVID-19 pandemic, Schraeder ranked second in the West Coast Conference with a team-high 1.30 blocks per set, establishing a personal best with seven block assists in a road sweep at Gonzaga. A prep star at Coeur d'Alene High in Idaho, Schraeder

Week 14: at Mountain West Championship

merited the state's Girls Volleyball 5A/4A Athlete of the Year honors in 2019 and 2020.

> A native of Ventura, Rivera returns to the West Coast after playing three seasons at Georgia, where she started 34 matches in 76 appearances. In 2021, she enjoyed her most productive season as collegian, finishing with 201 kills (2.05/set), 77 total blocks (0.79/set) and 73 digs (0.75/set) in 98 sets played. In addition, Rivera blasted 10+ kills eight times during the year and posted three or more blocks in 17 outings.

PRESEASON PROGNOSTICATIONS

> San Diego State was pegged for an eighth-place finish in the 2022 Mountain West preseason coaches poll released on Aug. 17.

> In the 23-year history of the Mountain West, SDSU has finished first (2012), second (2002, 2011), fourth (2000, 2001, 2003, 2013, 2017), fifth (2005, 2015, 2019), sixth (1999, 2004, 2006, 2009, 2010, 2014, 2016), seventh (2008), eighth (2007, 2018, 2020), and ninth (2021) in the final league standings.

2022 Mountain West Preseason Poll

Rk.	Team (1st-place votes)	Pts.
1.	Colorado State (6)	93
2.	Utah State (3)	91
3.	San José State (1)	75
	Boise State (1)	75
5.	New Mexico	68
6.	UNLV	57
7.	Wyoming	47
8.	San Diego State	33
9.	Fresno State	29
10.	Air Force	27
11.	Nevada	10

MOUNTAIN WEST VOLLEYBALL CHAMPIONSHIP TICKETS ON SALE

> Tickets are now on sale for the 2022 Mountain West Volleyball Championship in Fort Collins, Colorado. The three-day event will run from Nov. 23-25, at Moby Arena on the campus of Colorado State University.

> Single-session tickets range from \$7-15, while all-session passes are \$17-35.

> Tickets can be purchased at CSURams.com, at the Moby Arena box office or by phone at 800-491-RAMS (7267).

> The top six teams in the conference standings will qualify for the Mountain West Volleyball Championship. First-round action starts on Wednesday, Nov. 23, at 1 p.m. MT and 4 p.m. MT. Two semifinal contests will be featured on Thursday, Nov. 24, beginning at 1 p.m. MT and 4 p.m. MT, while the championship match is slated for Friday, Nov. 25, at 6:30 p.m. MT.

> All matches will air live on the Mountain West Network. The MW app is available on your TV through Apple TV, Android TV, Amazon Fire TV or Roku. Mobile applications are available through the iOS App Store and Google Play.



Brent HILLIARD

Head Coach - Third Season at San Diego State

San Diego State Director of Athletics John David Wicker ushered in a new era for the Aztec volleyball team with the hiring of Brent Hilliard as the fifth head coach in program history on Jan. 31, 2020.

In his second season at SDSU, Hilliard and the Aztecs were faced with another demanding schedule, squaring off against 10 teams that qualified for postseason play.

However, San Diego State had its moments of glory in the fall of 2021, posting a 3-0 sweep at eventual Mountain West tournament champion Boise State before recording a five-set thriller on the road at UNLV, which ultimately captured the NIVC crown.

Individually, Hilliard oversaw the continued rise to prominence of Victoria O'Sullivan, who received all-Mountain West recognition for the second straight season after ranking second in the conference with 3.71 kills per set, as the SDSU outside hitter concluded her illustrious career with 1,026 kills overall.

Hilliard's charges enjoyed another successful year scholastically, with nine Aztecs landing on the Mountain West all-academic team, including Ashley Vanderpan, Kennedy Feuerborn and Serena Hodson, who took home the department's prestigious Malik Award, presented to SDSU student-athletes who attain a 4.0 GPA.

In his first season with the Scarlet and Black, Hilliard endured a challenging season fraught with COVID-19 protocols, an abbreviated schedule that was postponed until spring, along with injuries to key players.

However, Hilliard and the Aztecs persevered through the 2021 spring campaign, posting a 6-9 record, highlighted by thrilling victories over Boise State on the road and Colorado State at home in the season finale, respectively. Against the Broncos, SDSU defeated a Boise State team that entered the contest with four consecutive 3-0 sweeps. Two weeks later, the Aztecs snapped an 11-match to the Rams dating back to 2014 and logged their first win over CSU in San Diego since 2012.

Under Hilliard's guidance, O'Sullivan garnered all-Mountain West accolades for the first time in her career, as the SDSU junior led the squad with 3.25 kills per set, which ranked seventh in the conference. In addition, seniors Lauren Lee and Erin Gillcrest received MW Defensive Player of the Week recognition following the team's aforementioned wins over Boise State and Colorado State, respectively.

Hilliard's Aztecs also excelled in the classroom, with 12 student-athlete earning a spot on the Mountain West all-academic team, including Lauren Lee, who also merited first-team all-District 8 academic honors from the College Sports Information Directors of America (CoSIDA).

A 2018 inductee to the Southern California Indoor Volleyball Hall of Fame, Hilliard arrived at SDSU with a wealth of experience after achieving 19 years of unparalleled success as an assistant coach at the University of San Diego, where he served as the Toreros' associate head coach since 2007.

During his fruitful tenure, the Toreros qualified for the NCAA Tournament in all but one of his 19 seasons, advancing to the Sweet 16 in 2004, 2006, 2013 and 2018. In addition, Hilliard helped guide the Toreros to nine West Coast Conference championships while his players earned six All-America awards, 12 All-America honorable mentions, 44 all-WCC accolades and 15 freshman all-conference certificates.

Hilliard twice assumed the reins of the USD program on an interim basis while head coach Jennifer Petrie was absent on maternity leave. In 2006, Hilliard was honored as WCC Coach of the Year after guiding the Toreros to a conference championship and a Sweet 16 appearance in the NCAA Tournament. That season, he coached five all-conference honorees, including WCC Player of the Year Kristen Carlson, as USD finished 14th in the final USA Today/Coaches Poll.

The Toreros also flourished under Hilliard's guidance in 2011, racing to a 13-0 start en route a program-best 28-5 record, highlighted by a spot in the second round of the NCAA Tournament. Throughout his stint, USD was consistently ranked among the nation's top 25, climbing to as high as No. 2 during the 2013 campaign and rising to No. 5 in 2016.

"I would like to thank John David Wicker, Jenny Bramer, Dr. Adela de la Torre and the rest of the SDSU search committee for making me feel so welcome during the interview process," Hilliard said upon his hiring. "To be the head coach of such a remarkable women's volleyball program in my family's hometown is truly a once in a lifetime opportunity."

"We are fully committed to work tirelessly to elevate this program back to an elite status on the college volleyball landscape, one that the student body, faculty, community, alumni and, of course, all future Aztecs will take great pride in."

Hilliard played collegiately at Long Beach State, earning All-America honors in each of his four years from 1990-93, including first-team recognition over his final three seasons. A right-side hitter for the 49ers, Hilliard was named the NCAA Men's Volleyball Player of the Year as a junior in 1992 after leading LBSU to a 31-1 record.

In 1991, Hilliard and the 49ers captured the NCAA Championship with a 3-1 victory over USC in the finals, avenging a loss to the Trojans in the title match the year before. He finished his career as the NCAA all-time leader with 3,034 kills.

Additionally, Hilliard was selected to play for Team USA in the 1992 Summer Olympics in Barcelona, Spain, where he helped the Americans capture the bronze medal. The following year, he won a silver medal at the 1993 Pan American Games in Argentina and also owns a bronze medal from the 1991 World Cup.

After receiving his undergraduate degree in 1993 from Long Beach State in political science, Hilliard continued his volleyball career as a professional in Europe from 1995-98, playing two seasons in Belgium and another in the Netherlands. In 1996, Hilliard and the Masiek Volleyball Club captured the Belgian national championship and competed in the European Champions League.

In addition to his collegiate experience, which included a stint as head coach at nearby Cuyamaca College in 1999 and 2000, Hilliard has also coached for the past 12 years at Wave Volleyball Club in Del Mar, the premier volleyball club in San Diego County.

"Our priority at SDSU will be to engage, attract and secure exceptional student-athletes that strive for both academic and athletic excellence in their everyday lives," Hilliard added. "From day one, we will set expectations high and build from there. I am incredibly excited to get started and I look forward to the bright future ahead."

HILLIARD'S COLLEGIATE COACHING LEDGER (As an Assistant at USD)

Year	Overall Record	WCC Record (Finish)	Postseason
2001	22-9	10-4 (3rd)	NCAA Second Round
2002	25-8	10-4 (3rd)	NCAA First Round
2003	17-13	6-8 (T-5th)	NCAA First Round
2004	24-5	14-0 (1st)	NCAA Sweet 16
2005	23-6	10-4 (T-2nd)	NCAA Second Round
2006*	26-6	13-1 (1st)	NCAA Sweet 16
2007	21-8	11-3 (1st)	NCAA First Round
2008	23-5	12-2 (1st)	NCAA First Round
2009	18-7	10-4 (2nd)	None
2010	24-8	13-1 (1st)	NCAA Second Round
2011*	28-5	12-4 (2nd)	NCAA Second Round
2012	21-7	13-3 (T-1st)	NCAA First Round
2013	26-4	16-2 (1st)	NCAA Sweet 16
2014	19-12	12-6 (T-3rd)	NCAA First Round
2015	22-10	14-4 (2nd)	NCAA Second Round
2016	24-6	15-3 (2nd)	NCAA First Round
2017	25-5	17-1 (T-1st)	NCAA Second Round
2018	18-13	13-5 (3rd)	NCAA Sweet 16
2019	25-6	17-1 (1st)	NCAA Second Round
USD Total	431-143 (.751)		
WCC Total	238-60 (.799)		

As Head Coach at SDSU

Year	Overall Record	MW Record (Finish)	Postseason
2020	6-9	6-9 (8th)	
2021	8-22	5-13 (9th)	
2022	10-19	8-10 (6th)	MW Tournament
SDSU Total	23-50		
Career as Head Coach	78-61 (.561)		
Overall Total	454-193 (.702)		

Notes

* - Served as interim head coach during the 2006 and 2011 seasons at USD. Record reflected in career totals.

- > Qualified for the NCAA Tournament in 18 of his 19 seasons at USD
- > Reached the NCAA Sweet 16 four times in 2004, 2006, 2013 and 2018
- > Won nine West Coast Conference championships

2022 AZTEC PHOTO ROSTER



Heipua TAUTUA'A
OH | 6-2 | Jr.

2



McKenna DOUGLAS
DS/L | 5-7 | Fr.

3



Kennedy FEUERBORN
S | 6-3 | Jr.

4



Jordyn GOLDSMITH
OPP | 6-1 | So.

6



Madison CORF
OH | 5-11 | Fr.

7



Ellie GEOGHEGAN
DS/L | 5-8 | Fr.

8



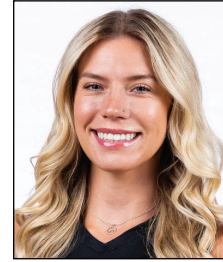
Sara MUKAJ
MB | 6-3 | So.

9



Cara BRAUN
OH | 6-1 | Fr.

10



Kayla RIVERA
OPP | 6-1 | Sr.

11



Julia HAYNIE
MB | 6-1 | Sr.

13



Reagan MERK
OH | 5-11 | So.

14



Mikela LABNO
OH | 6-2 | So.

15



Sarena GONZALEZ
S | 5-8 | Fr.

16



Noa MILLER
S | 5-10 | Sr.

19



Elly SCHRAEDER
MB | 6-2 | So.

20



Kat COOPER
MB | 6-1 | Fr.

21



Brent HILLIARD
Head Coach



Melanie GREENE
Assistant Coach/
Recruiting Coordinator



STEVE TIMMONS
Assistant Coach



Kara BARKDOLL
Volleyball Operations
Assistant



2022-23 San Diego St. Women's Volleyball Combined Team Statistics All games

Game Records

Overall	Conference	Home	Away	Neutral
10 - 19	8 - 10	6 - 10	4 - 7	0 - 2

Team Box Score

#	Player	SP	Attack					Set		Serve			Dig			Blocking					PTS	
			K	K/S	E	TA	PCT	A	A/S	SA	SE	SA/S	RE	DIG	DIG/S	BS	BA	TOT/S	BLK/S	BE		BHE
2	Tautua'a, Heipua	101	242	2.40	128	682	.167	20	0.20	16	34	0.16	39	211	2.09	8	24	32	0.32	6	1	278.0
3	Douglas, McKenna	37	2	0.05	0	7	.286	38	1.03	12	10	0.32	10	112	3.03	0	0	0	0.00	0	1	14.0
4	Feuerborn, Kennedy	20	8	0.40	5	22	.136	42	2.10	0	0	0.00	0	2	0.10	0	2	2	0.10	0	2	9.0
6	Goldsmith, Jordyn	15	10	0.67	12	38	-.053	0	0.00	0	0	0.00	0	3	0.20	0	6	6	0.40	0	0	13.0
7	Corf, Madison	100	256	2.56	171	680	.125	12	0.12	15	37	0.15	60	154	1.54	4	20	24	0.24	9	2	285.0
8	Geoghegan, Ellie	108	6	0.06	2	10	.400	87	0.81	29	48	0.27	52	353	3.27	0	0	0	0.00	0	0	35.0
9	Mukaj, Sara	9	2	0.22	0	13	.154	2	0.22	1	0	0.11	0	3	0.33	0	1	1	0.11	2	0	3.5
11	Rivera, Kayla	108	270	2.50	145	709	.176	5	0.05	15	23	0.14	0	40	0.37	8	73	81	0.75	6	0	329.5
13	Haynie, Julia	77	124	1.61	29	252	.377	10	0.13	10	13	0.13	0	25	0.32	6	35	41	0.53	5	0	157.5
14	Merk, Reagan	39	16	0.41	14	54	.037	4	0.10	5	10	0.13	8	44	1.13	0	1	1	0.03	1	0	21.5
15	Labno, Mikela	88	196	2.23	99	529	.183	9	0.10	0	2	0.00	10	42	0.48	4	21	25	0.28	0	0	210.5
16	Gonzalez, Sarena	98	3	0.03	0	11	.273	458	4.67	10	22	0.10	1	99	1.01	0	0	0	0.00	0	10	13.0
19	Miller, Noa	108	26	0.24	6	65	.308	584	5.41	31	22	0.29	0	185	1.71	0	5	5	0.05	2	14	59.5
20	Schraeder, Elly	99	131	1.32	44	314	.277	7	0.07	0	0	0.00	0	15	0.15	18	93	111	1.12	17	2	195.5
21	Cooper, Kat	74	79	1.07	34	219	.205	3	0.04	2	12	0.03	0	25	0.34	5	30	35	0.47	3	1	101.0
SAN DIEGO ST.		108	1371	12.69	689	3605	.189	1281	11.86	146	233	1.35	195	1313	12.16	53	311	208.5	1.93	51	33	1,725.5
Opponents		108	1325	12.27	491	3327	.251	1206	11.17	195	234	1.81	146	1208	11.19	42	529	306.5	2.84	54	32	1,826.5

Team statistics

	SDSU	OPP
ATTACK		
Kills	1371	1325
Errors	689	491
Total Attacks	3605	3327
Attack Pct	.189	.251
Kills/Set	12.69	12.27
SET		
Assists	1281	1206
Attempts	3603	3255
Assist Pct	.356	.371
Assists/Set	11.86	11.17
SERVE		
Aces	146	195
Errors	233	234
Attempts	2316	2515
Serve Pct	.899	.907
Aces/Set	1.35	1.81
SERVE RECEPTIONS		
Errors	195	146
Errors/Set	1.81	1.35
Attempts	2281	2084
Reception Pct	.915	.999
DEFENSE		
Digs	1313	1208
Digs/Set	12.16	11.19
BLOCKING		
Block solo	53	42
Block Assist	311	529
Total Blocks	208.5	306.5
Blocks/Set	1.93	2.84
Block Errors	51	54
Ball handling errors	33	32
ATTENDANCE		
Total	5399	9695
Dates/Avg Per Date	16/337	11/881
Neutral Site #/Avg	2/104	-
Current win streak	0	-
Home win streak	0	-

Team Results

Date	Opponent	Score	Score-by-set	Att.
08/26/2022	California	L 0-3	20-25,23-25,23-25	357
08/27/2022	Army West Point	W 3-1	25-22,22-25,25-16,25-19	287
08/27/2022	UC San Diego	W 3-1	25-22,25-20,26-28,25-20	341
09/02/2022	vs Baylor	L 1-3	18-25,17-25,29-27,14-25	125
09/03/2022	at Pepperdine	L 0-3	18-25,20-25,32-34	302
09/03/2022	vs UC Santa Barbara	L 1-3	18-25,18-25,22-16,25	82
09/09/2022	Maryland	L 1-3	14-25,25-21,20-25,18-25	122
09/09/2022	Arizona	L 0-3	17-25,15-25,11-25	388
09/10/2022	Sacramento St.	L 2-3	16-25,26-28,25-21,25-22,8-15	186
09/15/2022	UCLA	L 0-3	16-25,23-25,15-25	686
09/17/2022	at San Diego	L 1-3	25-20,13-25,14-25,12-25	1000
* 09/22/2022	San Jose St.	L 1-3	18-25,25-18,21-25,10-25	322
* 09/24/2022	Nevada	W 3-1	25-16,25-22,20-25,26-24	244
* 09/27/2022	at Fresno St.	W 3-0	25-18,25-21,25-21	641
* 10/01/2022	at UNLV	L 1-3	15-25,19-25,27-25,22-25	698
* 10/06/2022	at Utah St.	L 0-3	19-25,17-25,10-25	1084
* 10/08/2022	at Boise St.	L 1-3	21-25,16-25,25-22,23-25	1281
* 10/13/2022	Wyoming	L 1-3	14-25,22-25,25-20,17-25	441
* 10/15/2022	Colorado St.	L 0-3	21-25,21-25,23-25	387
* 10/20/2022	at New Mexico	L 1-3	21-25,23-25,25-18,21-25	727
* 10/22/2022	Air Force	W 3-1	25-21,27-29,25-16,25-16	320
* 10/27/2022	at Colorado St.	L 1-3	25-21,23-25,20-25,18-25	2239
* 10/29/2022	at Wyoming	W 3-1	31-29,20-25,25-17,26-24	787
* 11/03/2022	Boise St.	W 3-1	25-19,25-23,20-25,25-21	402
* 11/05/2022	Utah St.	L 1-3	27-25,18-25,18-25,14-25	355
* 11/07/2022	Fresno St.	W 3-0	25-14,25-23,25-18	188
* 11/10/2022	UNLV	L 0-3	19-25,12-25,23-25	373
* 11/17/2022	at Nevada	W 3-1	26-24,25-23,20-25,25-16	325
* 11/19/2022	at San Jose St.	W 3-1	25-23,25-20,22-25,26-24	611



2022-23 San Diego St. Women's Volleyball Combined Team Statistics In Conference games

Game Records

Overall	Conference	Home	Away	Neutral
8 - 10	8 - 10	4 - 5	4 - 5	0 - 0

Team Box Score

#	Player	SP	Attack					Set		Serve			Dig			Blocking					PTS	
			K	K/S	E	TA	PCT	A	A/S	SA	SE	SA/S	RE	DIG	DIG/S	BS	BA	TOT/S	BLK/S	BE		BHE
2	Tautua'a, Heipua	61	134	2.20	68	387	.171	10	0.16	9	19	0.15	18	123	2.02	6	16	22	0.36	2	1	157.0
3	Douglas, McKenna	22	1	0.05	0	6	.167	24	1.09	10	6	0.45	6	69	3.14	0	0	0	0.00	0	0	11.0
4	Feuerborn, Kennedy	16	7	0.44	4	14	.214	31	1.94	0	0	0.00	0	1	0.06	0	0	0	0.00	0	1	7.0
6	Goldsmith, Jordyn	12	7	0.58	10	28	-.107	0	0.00	0	0	0.00	0	3	0.25	0	6	6	0.50	0	0	10.0
7	Corf, Madison	63	171	2.71	110	451	.135	9	0.14	13	24	0.21	38	119	1.89	3	11	14	0.22	4	2	192.5
8	Geoghegan, Ellie	67	4	0.06	2	8	.250	64	0.96	20	27	0.30	34	236	3.52	0	0	0	0.00	0	0	24.0
9	Mukaj, Sara	2	0	0.00	0	1	.000	0	0.00	0	0	0.00	0	0	0.00	0	0	0	0.00	0	0	0.0
11	Rivera, Kayla	67	188	2.81	94	466	.202	5	0.07	15	23	0.22	0	37	0.55	8	47	55	0.82	4	0	234.5
13	Haynie, Julia	57	95	1.67	19	191	.398	9	0.16	9	13	0.16	0	21	0.37	5	28	33	0.58	3	0	123.0
14	Merk, Reagan	20	8	0.40	9	35	-.029	2	0.10	0	4	0.00	3	17	0.85	0	1	1	0.05	0	0	8.5
15	Labno, Mikela	47	106	2.26	55	289	.176	7	0.15	0	0	0.00	7	18	0.38	3	10	13	0.28	0	0	114.0
16	Gonzalez, Sarena	60	3	0.05	0	10	.300	257	4.28	4	6	0.07	0	66	1.10	0	0	0	0.00	0	6	7.0
19	Miller, Noa	67	21	0.31	6	49	.306	393	5.87	15	13	0.22	0	115	1.72	0	5	5	0.07	1	7	38.5
20	Schraeder, Elly	60	89	1.48	24	203	.320	3	0.05	0	0	0.00	0	14	0.23	13	61	74	1.23	9	1	132.5
21	Cooper, Kat	46	48	1.04	22	143	.182	3	0.07	0	4	0.00	0	14	0.30	2	15	17	0.37	3	1	57.5
SAN DIEGO ST.		67	882	13.16	423	2281	.201	817	12.19	95	139	1.42	115	853	12.73	40	200	140	2.09	26	19	1,117.0
Opponents		67	816	12.18	315	2121	.236	731	10.91	115	150	1.72	95	762	11.37	27	299	176.5	2.63	40	13	1,107.5

Team statistics

	SDSU	OPP
ATTACK		
Kills	882	816
Errors	423	315
Total Attacks	2281	2121
Attack Pct	.201	.236
Kills/Set	13.16	12.18
SET		
Assists	817	731
Attempts	2337	2139
Assist Pct	.350	.342
Assists/Set	12.19	10.91
SERVE		
Aces	95	115
Errors	139	150
Attempts	1480	1543
Serve Pct	.906	.903
Aces/Set	1.42	1.72
SERVE RECEPTIONS		
Errors	115	95
Errors/Set	1.72	1.42
Attempts	1393	1343
Reception Pct	.917	.999
DEFENSE		
Digs	853	762
Digs/Set	12.73	11.37
BLOCKING		
Block solo	40	27
Block Assist	200	299
Total Blocks	140	176.5
Blocks/Set	2.09	2.63
Block Errors	26	40
Ball handling errors	19	13
ATTENDANCE		
Total	3032	8393
Dates/Avg Per Date	9/337	9/933
Neutral Site #/Avg	0/0	-
Current win streak	0	-
Home win streak	0	-

Team Results

Date	Opponent	Score	Score-by-set	Att.
* 09/22/2022	San Jose St.	L 1-3	18-25, 25-18, 21-25, 10-25	322
* 09/24/2022	Nevada	W 3-1	25-16, 25-22, 20-25, 26-24	244
* 09/27/2022	at Fresno St.	W 3-0	25-18, 25-21, 25-21	641
* 10/01/2022	at UNLV	L 1-3	15-25, 19-25, 27-25, 22-25	698
* 10/06/2022	at Utah St.	L 0-3	19-25, 17-25, 10-25	1084
* 10/08/2022	at Boise St.	L 1-3	21-25, 16-25, 25-22, 23-25	1281
* 10/13/2022	Wyoming	L 1-3	14-25, 22-25, 25-20, 17-25	441
* 10/15/2022	Colorado St.	L 0-3	21-25, 21-25, 23-25	387
* 10/20/2022	at New Mexico	L 1-3	21-25, 23-25, 25-18, 21-25	727
* 10/22/2022	Air Force	W 3-1	25-21, 27-29, 25-16, 25-16	320
* 10/27/2022	at Colorado St.	L 1-3	25-21, 23-25, 20-25, 18-25	2239
* 10/29/2022	at Wyoming	W 3-1	31-29, 20-25, 25-17, 26-24	787
* 11/03/2022	Boise St.	W 3-1	25-19, 25-23, 20-25, 25-21	402
* 11/05/2022	Utah St.	L 1-3	27-25, 18-25, 18-25, 14-25	355
* 11/07/2022	Fresno St.	W 3-0	25-14, 25-23, 25-18	188
* 11/10/2022	UNLV	L 0-3	19-25, 12-25, 23-25	373
* 11/17/2022	at Nevada	W 3-1	26-24, 25-23, 20-25, 25-16	325
* 11/19/2022	at San Jose St.	W 3-1	25-23, 25-20, 22-25, 26-24	611

SEASON HIGHS

CAREER HIGHS

#2 HEIPUA TAUTUA'A

Hitting Percentage (*min. 7 kills*) .405 (19-4-37), at San José State, 11/19/22
 Total Attempts 39, at Nevada, 11/17/22
 Kills 19, at San José State, 11/19/22
 Assists 3, at Pepperdine, 9/3/22
 Aces 4, at Pepperdine, 9/3/22
 Digs 16, twice, last: at San José State, 11/19/22
 Block Solos 2, vs. San José State, 9/22/22
 Block Assists 5, vs. San José State, 9/22/22
 Total Blocks 7, vs. San José State, 9/22/22
 Points 20.0, at San José State, 11/19/22

#3 MCKENNA DOUGLAS

Hitting Percentage (*min. 7 kills*) N/A
 Total Attempts 4, at UNLV, 10/1/22
 Kills 1, twice, last: at Fresno State, 9/27/22
 Assists 7, vs. Nevada, 9/24/22
 Aces 5, at Fresno State, 9/27/22
 Digs 26, vs. Nevada, 9/24/22
 Block Solos N/A
 Block Assists N/A
 Total Blocks N/A
 Points 6.0, at Fresno State, 9/27/22

#4 KENNEDY FEUERBORN

Hitting Percentage (*min. 7 kills*) N/A
 Total Attempts 5, twice, last: vs. Wyoming, 10/13/22
 Kills 2, three times, last: vs. Wyoming, 10/13/22
 Assists 15, vs. Nevada, 9/24/22
 Aces N/A
 Digs 1, twice, last: at San José State, 11/19/22
 Block Solos N/A
 Block Assists 1, twice, last: vs. Maryland, 9/9/22
 Total Blocks 1, twice, last: vs. Maryland, 9/9/22
 Points 2.0, three times, last: vs. Wyoming, 10/13/22

#6 JORDYN GOLDSMITH

Hitting Percentage (*min. 7 kills*) N/A
 Total Attempts 11, vs. Utah State, 11/5/22
 Kills 3, twice, last: vs. Colorado State, 10/15/22
 Assists N/A
 Aces N/A
 Digs 2, vs. Nevada, 9/24/22
 Block Solos N/A
 Block Assists 4, vs. Utah State, 11/5/22
 Total Blocks 4, vs. Utah State, 11/5/22
 Points 3.5, vs. Colorado State, 10/15/22

#7 MADISON CORF

Hitting Percentage (*min. 7 kills*) .667, vs. Fresno State, 11/7/22
 Total Attempts 47, vs. Nevada, 9/24/22
 Kills 22, vs. Nevada, 9/24/22
 Assists 2, four times, last: at Nevada, 11/17/22
 Aces 3, vs. Air Force, 10/22/22
 Digs 19, at Nevada, 11/17/22
 Block Solos 1, four times, last: at Wyoming, 10/1/22
 Block Assists 2, twice, last: vs. Sacramento State, 9/10/22
 Total Blocks 2, three times, last: vs. Sacramento State, 9/10/22
 Points 24.5, vs. Air Force, 10/22/22

#8 ELLIE GEOGHEGAN

Hitting Percentage (*min. 7 kills*) N/A
 Total Attempts 3, at Fresno State, 9/27/22
 Kills 2, at Fresno State, 9/27/22
 Assists 8, twice, last: at Wyoming, 10/29/22
 Aces 4, vs. Fresno State, 11/7/22
 Digs 24, at New Mexico, 10/20/22
 Block Solos N/A
 Block Assists N/A
 Total Blocks N/A
 Points 4.0, vs. Fresno State, 11/7/22

.462 (14-2-26), at Boise State, 3/20/21
 39, at Nevada, 11/17/22
 19, at San José State, 11/19/22
 5, vs. Fresno State, 10/7/21
 4, at Pepperdine, 9/3/22
 22, vs. New Mexico, 2/20/21
 3, at Wyoming, 3/5/21
 6, at Boise State, 3/20/21
 7, vs. San José State, 9/22/22
 20.0, at San José State, 11/19/22

N/A
 4, at UNLV, 10/1/22
 1, twice, last: at Fresno State, 9/27/22
 7, vs. Nevada, 9/24/22
 5, at Fresno State, 9/27/22
 26, vs. Nevada, 9/24/22
 N/A
 N/A
 N/A
 6.0, at Fresno State, 9/27/22

N/A
 15, vs. Fresno State, 10/7/21
 6, at UNLV, 2/5/21
 27, at UNLV, 2/5/21
 1, twice, last: vs. Boise State, 10/30/21
 7, vs. Fresno State, 2/12/21
 1, twice, last: vs. Fresno State, 2/12/21
 5, vs. Nevada, 11/18/21
 5, vs. Nevada, 11/18/21
 7.0, twice, last: vs. Utah State, 10/28/21

.636 (7-0-11), vs. Air Force 10/2/21
 27, vs. Colorado State, 10/21/21
 9, three times, last: at Wyoming, 10/23/21
 2, vs. Boise State, 10/30/21
 N/A
 3, four times, last: at Utah State, 10/16/21
 1, four times, last: at Wyoming, 10/23/21
 4, three times, last: vs. Utah State, 11/5/22
 5, vs. Fresno State, 10/7/21
 10.0, at Wyoming, 10/23/21

.667, vs. Fresno State, 11/7/22
 47, vs. Nevada, 9/24/22
 22, vs. Nevada, 9/24/22
 2, four times, last: at Nevada, 11/17/22
 3, vs. Air Force, 10/22/22
 19, at Nevada, 11/17/22
 1, four times, last: at Wyoming, 10/1/22
 2, twice, last: vs. Sacramento State, 9/10/22
 2, three times, last: vs. Sacramento State, 9/10/22
 24.5, vs. Air Force, 10/22/22

N/A
 3, at Fresno State, 9/27/22
 2, at Fresno State, 9/27/22
 8, twice, last: at Wyoming, 10/29/22
 4, vs. Fresno State, 11/7/22
 24, at New Mexico, 10/20/22
 N/A
 N/A
 N/A
 4.0, vs. Fresno State, 11/7/22

SEASON HIGHS

CAREER HIGHS

#9 SARA MUKAJ

Hitting Percentage (<i>min. 7 kills</i>)	N/A
Total Attempts	6, vs. Arizona, 9/9/22
Kills	1, twice, last: vs. Arizona, 9/9/22
Assists	2, vs. Sacramento State, 9/10/22
Aces	1, vs. Sacramento State, 9/10/22
Digs	3, vs. Sacramento State, 9/10/22
Block Solos	N/A
Block Assists	1, vs. Sacramento State, 9/10/22
Total Blocks	1, vs. Sacramento State, 9/10/22
Points	1.5, vs. Sacramento State, 9/10/22

#10 CARA BRAUN

Hitting Percentage (<i>min. 7 kills</i>)	
Total Attempts	
Kills	
Assists	
Aces	
Digs	
Block Solos	
Block Assists	
Total Blocks	
Points	

#11 KAYLA RIVERA

Hitting Percentage (<i>min. 7 kills</i>)	.647 (12-1-17) at Pepperdine, 9/3/22
Total Attempts	37, at San José State, 11/19/22
Kills	15, at Nevada, 11/17/22
Assists	2, at Fresno State, 9/27/22
Aces	3, at Nevada, 11/17/22
Digs	5, twice, last: at New Mexico, 10/20/22
Block Solos	1, four times, last: at Colorado State, 10/27/22
Block Assists	7, vs. Army West Point, 8/27/22
Total Blocks	7, twice, last: at Colorado State, 10/27/22
Points	20.0, at Nevada, 11/17/22

* - played at Georgia (Fall 2018-Fall 2021)

#13 JULIA HAYNIE

Hitting Percentage (<i>min. 7 kills</i>)	.769 (10-0-13), at New Mexico, 10/20/22
Total Attempts	19, three times, last: at Wyoming, 10/29/22
Kills	11, at Nevada, 11/17/22
Assists	3, at Fresno State, 9/27/22
Aces	2, three times, last: at Utah State, 11/5/22
Digs	7, at San José State, 11/19/22
Block Solos	1, twice, last: at New Mexico, 10/20/22
Block Assists	6, at New Mexico, 10/20/22
Total Blocks	7, at New Mexico, 10/20/22
Points	14.0, at New Mexico, 10/20/22

^ - played at Portland State (Fall 2019 & Spring 2021)

#14 REAGAN MERK

Hitting Percentage	.286 (7-3-14), vs. UC Santa Barbara, 9/3/22
Total Attempts	14, vs. UC Santa Barbara, 9/3/22
Kills	7, vs. UC Santa Barbara, 9/3/22
Assists	2, vs. Maryland, 9/9/22
Aces	2, twice, last: vs. Maryland, 9/9/22
Digs	7, twice, last: at San José State, 11/19/22
Block Solos	N/A
Block Assists	1, at Fresno State, 9/27/22
Total Blocks	1, at Fresno State, 9/27/22
Points	7.0, vs. UC Santa Barbara, 9/3/22

#15 MIKELA LABNO

Hitting Percentage (<i>min. 7 kills</i>)	.450 (10-1-20), at No. 8 San Diego, 9/17/22
Total Attempts	35, at New Mexico, 10/20/22
Kills	16, at Boise State, 10/8/22
Assists	2, twice, last: at Fresno State, 9/27/22
Aces	N/A
Digs	6, twice, last: vs. Nevada, 9/24/22
Block Solos	1, three times, last: vs. Colorado State, 10/15/22
Block Assists	4, at Wyoming, 10/29/22
Total Blocks	4, at Wyoming, 10/29/22
Points	17.0, at Boise State, 10/8/22

.636 (7-0-11) at Sam Houston, 8/28/21
11, at Sam Houston, 8/28/21
7, at Sam Houston, 8/28/21
4, twice, last: at UC Santa Barbara, 9/3/21
4, at Sam Houston, 8/27/21
5, at Sam Houston, 8/28/21
1, at UC Santa Barbara, 9/3/21
4, twice, last: vs. Pepperdine, 9/4/21
4, three times, last: vs. Pepperdine, 9/4/21
10.0, at Sam Houston, 8/28/21

.647 (12-1-17) at Pepperdine, 9/3/22
37, at San José State, 11/19/22
15, at Nevada, 11/17/22; at Texas A&M, 10/8/21*
2, at Fresno State, 9/27/22
3, at Nevada, 11/17/22
18, at Texas A&M, 10/8/21*
5, vs. Arkansas, 2/5/21*
7, vs. Army West Point, 8/27/22
7, twice, last: at Colorado State, 10/27/22
20.0, at Nevada, 11/17/22

.769 (10-0-13), at New Mexico, 10/20/22
25, vs. Idaho, 1/25/21^
11, at Nevada, 11/17/22; vs. Idaho, 1/25/21^
3, at Fresno State, 9/27/22
3, vs. UC Davis, 9/7/19^
7, at San José State, 11/19/22
2, twice, last: at Fresno State, 11/6/21
9, vs. Eastern Washington, 10/31/19^
10, vs. Eastern Washington, 10/31/19^
14.0, at New Mexico, 10/20/22

.385 (7-2-13), vs. Texas Southern, 9/17/21
20, vs. UC Riverside, 9/18/21
7, three times: vs. UC Santa Barbara, 9/3/22
2, three times, last: vs. Maryland, 9/9/22
2, three times, last: vs. Maryland, 9/9/22
7, twice, last: at San José State, 11/19/22
1, vs. UC Riverside, 9/18/21
2, vs. UC Riverside, 9/18/21
3, vs. UC Riverside, 9/18/21
9.0, vs. UC Riverside, 9/18/21

.522 (13-1-23), vs. Pepperdine, 9/4/21
35, at New Mexico, 10/20/22
16, at Boise State, 10/8/22
2, three times, last: at Fresno State, 9/27/22
2, at Long Beach State, 9/14/21
13, vs. UC Riverside, 9/18/21
2, vs. San Diego, 9/11/21
4, at Wyoming, 10/29/22
4, twice last: at Wyoming, 10/29/22
17.0, at Boise State, 10/8/22

SEASON HIGHS

CAREER HIGHS

#16 SARENA GONZALEZ

Hitting Percentage (<i>min. 7 kills</i>)	N/A
Total Attempts	6, at UNLV, 10/1/22
Kills	1, three times, last: at Colorado State, 10/27/22
Assists	31, at Wyoming, 10/29/22
Aces	3, vs. Maryland, 9/9/22
Digs	8, at Colorado State, 10/27/22
Block Solos	N/A
Block Assists	N/A
Total Blocks	N/A
Points	3.0, twice, last: at Fresno State, 9/27/22

#19 NOA MILLER

Hitting Percentage (<i>min. 7 kills</i>)	N/A
Total Attempts	8, at UNLV, 10/1/22
Kills	4, vs. Boise State, 11/3/22
Assists	33, vs. Air Force, 10/22/22
Aces	6, vs. UC San Diego, 8/27/22
Digs	12, vs. Army West Point, 8/27/22
Block Solos	N/A
Block Assists	3, at New Mexico, 10/20/22
Total Blocks	3, at New Mexico, 10/20/22
Points	6.0, vs. UC San Diego, 8/27/22

* - played at Wofford in 2018 and at Arizona State in 2019

#20 ELLY SCHRAEDER

Hitting Percentage (<i>min. 7 kills</i>)	.667 (9-1-12), vs. Fresno State, 11/7/22
Total Attempts	21, at Wyoming, 10/29/22
Kills	9, twice, last: at Nevada, 11/17/22
Assists	1, seven times, last: at Nevada, 11/17/22
Aces	N/A
Digs	3, vs. Fresno State, 11/7/22
Block Solos	2, twice, last: at UNLV, 10/1/22
Block Assists	8, twice, last vs. Boise State, 11/3/22
Total Blocks	9.0, vs. Army West Point, 8/27/22
Points	13.0, vs. Army West Point, 8/27/22

+ - played at San Diego (Spring & Fall 2021)

#21 KAT COOPER

Hitting Percentage (<i>min. 7 kills</i>)	.600 (7-1-10), vs. UC San Diego, 8/27/22
Total Attempts	17, at New Mexico, 10/20/22
Kills	7, vs. UC San Diego, 8/27/22
Assists	1, three times, last: at Colorado State, 10/27/22
Aces	1, twice, last: vs. Army West Point, 8/27/22
Digs	5, vs. UC San Diego, 8/27/22
Block Solos	1, five times, last: vs. Wyoming, 10/13/22
Block Assists	4, twice, last: vs. UC San Diego, 8/27/22
Total Blocks	5, twice, last: vs. UC San Diego, 8/27/22
Points	10.0, vs. UC San Diego, 8/27/22

N/A
6, at UNLV, 10/1/22
1, three times, last: at Colorado State, 10/27/22
31, at Wyoming, 10/29/22
3, vs. Maryland, 9/9/22
8, at Colorado State, 10/27/22
N/A
N/A
N/A
3.0, twice, last: at Fresno State, 9/27/22

N/A
8, at UNLV, 10/1/22
6, vs. Fresno State, 10/7/21
33, vs. Air Force, 10/22/22
6, vs. UC San Diego, 8/27/22
16, vs. Houston, 8/30/19*
N/A
3, at New Mexico, 10/20/22
3, at New Mexico, 10/20/22
6.0 twice, last: vs. UC San Diego, 8/27/22

.778 (7-0-9), vs. Portland (2/10/21)+
21, at Wyoming, 10/29/22
9, twice, last: at Nevada, 11/17/22
2, at Loyola Marymount, 3/13/21+
1, at Loyola Marymount, 3/13/21+
3, vs. Fresno State, 11/7/22
2, four times, last: at UNLV, 10/1/22
8, twice, last vs. Boise State, 11/3/22
9.0, vs. Army West Point, 8/27/22
13.0, vs. Army West Point, 8/27/22

.600 (7-1-10), vs. UC San Diego, 8/27/22
17, at New Mexico, 10/20/22
7, vs. UC San Diego, 8/27/22
1, three times, last: at Colorado State, 10/27/22
1, twice, last: vs. Army West Point, 8/27/22
5, vs. UC San Diego, 8/27/22
1, five times, last: vs. Wyoming, 10/13/22
4, twice, last: vs. UC San Diego, 8/27/22
5, twice, last: vs. UC San Diego, 8/27/22
10.0, vs. UC San Diego, 8/27/22