



SAN DIEGO STATE AZTECS

2022 Volleyball Weekly Notes

Jim Solien (Primary Contact)
 Assistant Media Relations Director
Office Phone Number: (619) 594-2576
E-Mail Address: jsolien@sdsu.edu
News Release Date: Nov. 2, 2022

SDSU Official Athletics Website: goaztecs.com
SDSU Official Athletics Twitter: @GoAztecs
SDSU Official Athletics Instagram: @GoAztecs
SDSU Official Athletics Facebook: facebook.com/goaztecs
SDSU Official Athletics YouTube: youtube.com/goaztecs.com

2022 AZTEC VOLLEYBALL SCHEDULE

Day/Date	Opponent	Time
Friday, Aug. 26	California [^] (MWN)	L, 0-3
Saturday, Aug. 27	Army West Point [^]	W, 3-1
Saturday, Aug. 27	UC San Diego [^] (MWN)	W, 3-1
Friday, Sept. 2	vs. No. 9 Baylor#	L, 1-3
Saturday, Sept. 3	at Pepperdine#	L, 0-3
Saturday, Sept. 3	vs. UC Santa Barbara#	L, 1-3
Friday, Sept. 9	Maryland~	L, 1-3
Friday, Sept. 9	Arizona~ (MWN)	L, 0-3
Saturday, Sept. 10	Sacramento State~	L, 2-3
Thursday, Sept. 15	UCLA+ (MWN)	L, 0-3
Saturday, Sept. 17	at San Diego+	L, 1-3
Thursday, Sept. 22	San José State* (MWN)	L, 1-3
Saturday, Sept. 24	Nevada*	W, 3-1
Tuesday, Sept. 27	at Fresno State* (MWN)	W, 3-0
Saturday, Oct. 1	at UNLV* (MWN)	L, 1-3
Thursday, Oct. 6	at Utah State* (MWN)	L, 0-3
Saturday, Oct. 8	at Boise State* (MWN)	L, 1-3
Thursday, Oct. 13	Wyoming*	L, 1-3
Saturday, Oct. 15	Colorado State* (MWN)	L, 0-3
Thursday, Oct. 20	at New Mexico* (MWN)	L, 1-3
Saturday, Oct. 22	Air Force* (MWN)	W, 3-1
Thursday, Oct. 27	at Colorado State* (MWN)	L, 1-3
Saturday, Oct. 29	at Wyoming* (MWN)	W, 3-1
Thursday, Nov. 3	Boise State* (MWN)	7 p.m. PT
Saturday, Nov. 5	Utah State* (MWN)	1 p.m. PT
Monday, Nov. 7	Fresno State*	5 p.m. PT
Thursday, Nov. 10	UNLV* (MWN)	7 p.m. PT
Thursday, Nov. 17	at Nevada* (MWN)	7 p.m. PT
Saturday, Nov. 19	at San José State* (MWN)	1 p.m. PT

[^] - San Diego State Invitational (San Diego, Calif.)
[#] - Pepperdine ASICS Classic (Malibu, Calif.)
[~] - Aztec Classic (San Diego, Calif.)
⁺ - SDSU/USD Challenge (San Diego, Calif.)

* - Mountain West match
 (MWN) - Mountain West Network match

Socially
 Twitter: @AztecVB
 Instagram: @Aztec_WVB

Match Week Preview

Links to Mountain West Network streaming video and live stats on GoAztecs.com

Boise State (14-9, 6-6 MW) at San Diego State (6-17, 4-8 MW)
 Thursday, Nov. 3 | 7 p.m. PT | Live Stats | MW Network
 Series: Boise State leads 12-10

Utah State (15-8, 7-5 MW) at San Diego State (6-17, 4-8 MW)
 Saturday, Nov. 5 | 1 p.m. PT | Live Stats | MW Network
 Series: SDSU leads 18-10



AZTEC VOLLEYBALL OPENS HOMESTAND VS. BOISE STATE, UTAH STATE

- > Fresh off a satisfying victory at Wyoming, the San Diego State volleyball team returns to the friendly confines of Aztec Court at Peterson Gym this week for the first two encounters of its final homestand of the 2022 regular season.
- > The Aztecs will engage Boise State on Thursday, Nov. 3, at 7 p.m. PT before locking horns with Utah State on Saturday, Nov. 5, at 1 p.m.
- > In addition to live stats, both contests will be streamed live via the Mountain West Network on GoAztecs.com.
- > SDSU split two conference showdowns last week, dropping a tough four-set battle at Colorado State on Oct. 27, before posting a 3-1 triumph over Wyoming two days later, snapping a 10-match losing streak to the Cowgirls in Laramie dating back to Sept. 27, 2012.
- > With their results, the Aztecs (6-17, 4-8 MW) occupy the eighth spot in the conference this week with Nevada, two matches behind a pair of fifth-place squads in Boise State and Wyoming, as the top six teams qualify for the Mountain West Championship later this month.
- > Against the Cowgirls, four SDSU players surpassed the double-digit kill plateau, including Kayla Rivera, who tied her season best with 13 kills, followed by Madison Corf (11), Heipua Tautua'a (10) and Julia Haynie (10).
- > For just the fourth time this season, the Aztecs posted more team blocks than the opposition, maintaining a sizeable advantage in that statistic (12.0 to 6.0), along with a slight edge in kills (62-61). In addition, the SDSU out-hit the host school .312 to .279.
- > The Aztecs trailed 23-18 in the opening set but changed the complexion of the entire match with a valiant 13-6 run to escape by a 31-29 tally. After dropping the second stanza, 20-25, SDSU captured the next two frames 25-17, 26-24, to ice the victory.

SERIES RECORD VS. BOISE STATE

- > The Broncos own a slim 12-10 advantage against the Aztecs in a series that dates back to 2005, with the teams knotted at 5-5 in 10 matches played in San Diego.
- > San Diego State has dropped the last two meetings, including a 3-1 setback (21-25, 16-25, 25-22, 23-25) on Oct. 8 in Boise.
- > Mikela Labno blasted a career-high 16 kills and hit .355 for the match; however, the Broncos maintained the statistical advantage in kills (59-52), hitting percentage (.260 to .210) and team blocks (9.0 to 6.0) to stymie the Aztecs' bid for a third-straight upset in the Idaho state capital.
- > In addition to Labno's production, SDSU received nine kills and three block assists from Kayla Rivera, while Heipua Tautua'a launched seven put-aways of her own and tied Ellie Geoghegan for team-high honors with nine digs.
- > Kat Cooper (.364) also provided a spark off the bench with six kills, while Julia Haynie (4 kills) added support to the Aztec defense in the middle with three block assists.
- > Trailing 0-2 in sets and facing a 21-20 deficit in the third frame, SDSU surged into the lead on consecutive kills by Elly Schraeder and Labno, while Boise State self-destructed down the stretch with two attack errors, including the clinching point for the Aztecs, which kept the match alive.
- > The teams combined for 13 ties and seven lead changes in a spirited fourth set, but SDSU could not seize the upper hand after forging a late 23-23 deadlock, as the Broncos scored the final two points on a kill and an Aztec attack error to hold on for the win.

SERIES RECORD VS. UTAH STATE

- > Despite dropping three straight to the Aggies, the Aztecs still lead the all-time series 18-10, including a 12-2 mark in San Diego.
- > In the last meeting between the two squads, SDSU fell in three sets (19-25, 17-25, 10-25) on Oct. 6 in Logan, Utah.
- > The Aztecs were unable to keep pace with Utah State, which out-hit the Scarlet and Black .354 to .080 while maintaining the upper hand in kills (40-29) and team blocks (11.0 to 7.0).
- > Individually, SDSU was led by Kayla Rivera's nine kills, while Mikela Labno blasted seven put-aways, followed by Elly Schraeder, who hit .500 on the evening after flooring six of 12 shots without an error.
- > The competitive opening set witnessed six ties and three lead changes, as each side collected 13 kills. However, the Aggies totaled four team blocks and were gifted three additional points on unforced Aztec attack errors to keep the visitors at bay.

ON THE HORIZON

- > Following Saturday's clash, San Diego State continues its busy stretch with two more home matches next week, battling Fresno State on Monday, Nov. 7, at 5 p.m. PT, before engaging conference leader UNLV on Thursday, Nov. 10, at 5 p.m.
- > The Aztecs close out the second half of their Mountain West schedule in the inverse order of teams they faced in the first half of their conference slate.

GENERAL INFORMATION

Location San Diego, Calif.
 Founded 1897
 Enrollment 35,782
 Nickname Aztecs
 Colors Scarlet and Black (Pantone 187)
 Conference Mountain West
 Affiliation Division I
 President Dr. Adela de la Torre
 Director of Athletics John David Wicker
 Faculty Representative Dr. Frank Harris III
 Home Facility Aztec Court at Peterson Gym (2,000)

TEAM INFORMATION

Head Coach Brent Hilliard
 Alma Mater Long Beach State '93
 Record at SDSU 20-48 (Third year)
 Career Record 74-59 (Fifth year)
 E-Mail bhilliard@sdsu.edu
 Volleyball Office Phone (619) 594-5064
 Volleyball Office Fax (619) 594-1674
 Assistant Coach/Recruiting Coordinator Melanie Greene
 Assistant Coach Steve Timmons
 Volleyball Operations Assistant Kara Barkdoll
 Fall 2021 Record 8-22
 Fall 2021 Conference Record 5-13 (Ninth)
 Fall 2021 Home Record 5-4
 Spring 2021 Road Record 1-5
 Letterwinners Returning/Lost 9/8
 Starters Returning/Lost 3/3+Libero

PROGRAM HISTORY

First Year of Volleyball 1976
 Overall Record 900-656 (.578)
 NCAA Appearances 14
 Last Postseason Appearance 2012
 NCAA Postseason Record 15-14

MEDIA RELATIONS

Assistant Media Relations Director Jim Solien
 E-Mail jsolien@sdsu.edu
 SID Office Phone (619) 594-2576
 SID Office Fax (619) 582-6541
 Official Athletic Website www.GoAztecs.com

2022 AZTEC VOLLEYBALL STATISTICAL LEADERS
(min. 50 percent of team sets played)

Hitting Percentage*	.372	Julia Haynie
Kills	203	Madison Corf
Kills per set	2.60	Madison Corf
Assists	443	Noa Miller
Assists per set	5.15	Noa Miller
Service Aces	22	Noa Miller
Service Aces per set	0.26	Noa Miller
Digs	269	Ellie Geoghegan
Digs per set	3.13	Ellie Geoghegan
Blocks	79.0	Elly Schraeder
Blocks per set	1.02	Elly Schraeder

*. min 3.0 attempts per set

2022 AZTEC VOLLEYBALL FALL ROSTER

No.	Player	Pos.	Ht.	Yr.	Hometown (Last School)
2	Heipua Tautua'a	OH	6-2	Jr.	Wai'anae, Hawaii (Wai'anae HS)
3	McKenna Douglas	DS/L	5-7	Fr.	Phoenix, Ariz. (Notre Dame Prep)
4	Kennedy Feuerborn	S	6-3	Jr.	Overland Park, Kan. (Johnson County CC)
6	Jordyn Goldsmith	OPP	6-1	So.	Valleyford, Wash. (Freeman HS)
7	Madison Corf	OH	5-11	Fr.	Kansas City, Mo. (Liberty HS)
8	Ellie Geoghegan	DS/L	5-8	Fr.	Manhattan Beach, Calif. (Mira Costa HS)
9	Sara Mukaj	MB	6-3	So.	Madena, Italy (Istituto Scaruffi-Levi Tricolore)
10	Cara Braun	OH	6-1	Fr.	Tempe, Ariz. (Valley Christian HS)
11	Kayla Rivera	OPP	6-1	Sr.	Ventura, Calif. (Univ. of Georgia)
13	Julia Haynie	MB	6-2	Sr.	Temecula, Calif. (Portland State)
14	Reagan Merk	OH	5-11	So.	Huntington Beach, Calif. (Mater Dei HS)
15	Mikela Labno	OH	6-2	So.	Hilmar, Calif. (Hilmar HS)
16	Sarena Gonzalez	S	5-8	Fr.	Temecula, Calif. (Temecula Valley HS)
19	Noa Miller	S	5-10	Sr.	Douglasville, Ga. (Arizona State)
20	Elly Schraeder	MB	6-2	So.	Athol, Idaho (Univ. of San Diego)
21	Kat Cooper	MB	6-1	Fr.	Springdale, Ark. (Har-Ber HS)

Head Coach: Brent Hilliard (Long Beach State, 1993), Third season at SDSU
Assistant Coach/Recruiting Coordinator: Melanie Greene (San Diego State, 2007), 12th season at SDSU
Assistant Coach: Steve Timmons (USC), Third season at SDSU
Volleyball Operations Assistant: Kara Barkdoll (Cal State San Marcos, 2015), Fifth season at SDSU

Pronunciations

#2 HEIPUA TAUTUA'A	HEY-poo-ah TAW-too-AH-AH
#4 Kennedy FEUERBORN	FEWER-born
#8 Ellie GEOGHEGAN	GAY-gun
#9 Sara MUKAJ	MOO-kye
#15 MIKELA Labno	ma-KAY-la
#19 NOA Miller	Noah
#21 Elly SCHRAEDER	SCHRAY-der



OPPONENT COMPARISON

2022 Overall Stats	SDSU	MW Rank	OPP	BSVB	MW Rank	OPP	USU	MW Rank	OPP
Hitting Percentage	.185	10	.259	.220	5	.220	.218	6	.203
Kills per set	12.52	7	12.52	12.94	4	12.78	12.96	3	11.71
Assists per set	11.70	6	11.41	12.09	4	12.12	12.20	3	11.03
Service Aces per set	1.28	10	1.72	1.57	3	1.21	1.73	1	1.33
Digs per set	11.99	11	11.22	13.24	6	13.53	13.54	4	12.82
Blocks per set	1.90	11	2.90	2.33	3	2.15	2.28	4	2.60

SCOUTING THE OPPOSITION

> **Boise State (14-9, 6-6 MW)** have lost three straight to slip into a tie for fifth place in the Mountain West standings with Wyoming. Last week, the Broncos experienced a pair of home defeats, falling to Utah State (25-12, 20-25, 14-25, 19-25) before suffering a sweep at the hands of league leader UNLV (18-25, 19-25, 17-25). Boise State is 9-3 on its home floor this year and a combined 5-6 in road/neutral matches. Offensively, sophomore opposite hitter Paige Bartsch ranks 51st in the country with a conference-leading 3.95 kills per set, while senior outside hitter Lauren Ohlinger is slotted sixth in the MW with 3.37 put-aways per frame. Ohlinger also leads the conference in service aces (36) and aces per set (0.40), which ranks 54th and 84th in the country, respectively. Not to be outdone, junior middle blocker Annie Kaminski is perched atop the league and ranks 19th nationally with a .399 hitting percentage, while fellow classmate and middle Chey Dey occupies the second position in the MW with 1.19 blocks per set, which is also good for 67th in the country. In addition, sophomore setter Ashley Hayden finds herself among the conference leaders in assists (9.76/set), while senior libero Allison Casillas is slotted seventh in the MW in digs (3.28/set) and eighth in service aces (0.33/set). Collectively, the Broncos enter the week in the league's third position with 2.33 blocks per set, which ranks 75th in the nation. Boise State also finds itself among the top half of the Mountain West in most other statistical categories, including service aces (3rd, 1.57/set), kills (4th, 12.94/set), assists (4th, 12.09/set) and hitting percentage (5th, .220). Head coach Shawn Garus is in his 14th season in charge of the Boise State program, sporting a 359-288 career record and a 244-168 mark at the school. Garus captured back-to-back Mountain West Coach of the Year honors (2015-16) to go with 2016 AVCA Region Coach of the Year accolades.

> After defeating the Aztecs on Oct. 6, Saturday's opponent **Utah State (15-8, 7-5 MW)** has posted a 4-3 record, including a split of two matches last week. The Aggies topped Boise State on the road in four sets on Oct. 25 (12-25, 25-20, 25-14, 25-19) before dropping a 3-2 heartbreaker at home to conference front-runner UNLV four days later (24-26, 25-15, 25-18, 24-26, 8-15). With the results, USU finds itself in fourth place in this week's Mountain West standings. The Aggies sport a 7-3 record at home and an 8-5 mark in road/neutral contests. Prior to Saturday's clash at San Diego State, USU will pay a visit to Fresno State on Thursday night. Offensively, USU is led by junior outside hitter Tatum Snell, who ranks 13th in the MW with 3.07 kills per set, while senior outside hitter Shelby Capllonch (2.28) and senior opposite Kylee Stokes (2.16) are averaging more than two put-aways per frame. Along the back row, Jordi Holdaway occupies the fifth spot in the league with 3.74 digs per set, while setter Leah Wilton-LaBoy, the reigning MW Freshman of the Week, ranks ninth in assists (5.36/set). In addition, middle blocker Kennedi Boyd finds herself among the conference leaders, ranking sixth in blocks (1.09/set) and seventh in hitting percentage (.337). Snell is also tied for fourth in the league in service aces (0.33/set), while Capllonch is ninth (0.32/set). Capllonch and Holdaway have played at two other conference schools

2022 MOUNTAIN WEST STANDINGS (AS OF NOV. 2)

Team	---Conference---			-----Overall-----			
	W	L	Pct.	W	L	Pct.	Strk
UNLV	11	1	.917	20	3	.870	W11
Colorado State	10	2	.833	17	6	.739	W3
San José State	10	2	.833	16	6	.727	W1
Utah State	7	5	.583	15	8	.652	L1
Boise State	6	6	.500	14	9	.609	L3
Wyoming	6	6	.500	10	14	.417	L1
New Mexico	5	8	.385	14	9	.609	L2
Nevada	4	8	.333	10	13	.435	L4
San Diego State	4	8	.333	6	17	.261	W1
Air Force	4	9	.308	12	13	.480	W3
Fresno State	0	12	.000	6	18	.250	L12

Upcoming Matches in the MW

Thursday, Nov. 3

Boise State at San Diego State, 7 p.m. PT

Air Force at UNLV, 6 p.m. PT

Colorado State at San José State, 6 p.m. PT

Utah State at Fresno State, 6 p.m. PT

Wyoming at Nevada, 6 p.m. PT

Saturday, Nov. 5

Utah State at San Diego State, 1 p.m. PT

Colorado State at Nevada, Noon PT

New Mexico at UNLV, 1 p.m. PT

Boise State at Fresno State, TBA

Wyoming at San José State, TBA

Monday, Nov. 7

Fresno State at San Diego State, 5 p.m. PT

Thursday, Nov. 10

UNLV at San Diego State, 7 p.m. PT

Air Force at Wyoming, 6:30 p.m. MT

Nevada at Boise State, 7 p.m. MT

New Mexico at Colorado State 7 p.m. MT

San José State at Utah State, 7 p.m.MT

Saturday, Nov. 12

Air Force at Colorado State, Noon MT

San José State at Boise State, Noon MT

New Mexico at Wyoming, 1 p.m. MT

Nevada at Utah State, 1 p.m. MT

UNLV at Fresno State, 1 p.m. PT

Tuesday, Nov. 15

Colorado State at Wyoming, 6:30 p.m. MT



during their collegiate careers. Caplanoch transferred from UNLV, while Holdaway competed at Boise State for two seasons before sitting out the 2021 fall campaign. As a team, the Aggies lead the Mountain West with 1.73 service aces per set, which ranks 50th in the nation. USU also occupies the third spot in the league in assists (12.20/set), as well as the fourth position in blocks (2.28/set), which rank 81st and 89th in the country, respectively. The Aggies are also third in the MW this week in kills (12.94/set) and sixth in hitting percentage (.218). Utah State is under the direction of third-year head coach Rob Neilson, who arrived on the Logan campus after serving as the lead assistant coach for the U.S. men's national team from 2017-19. Prior to his stint with Team USA, Neilson spent 10 years on the Brigham Young men's volleyball coaching staff, including the final two as the program's associate head coach in 2014-15. In 2011, he served as the Cougars' interim head coach, leading the squad to a 20-8 record and a No. 2 national ranking. Neilson played collegiately at BYU from 2003-06, starting at setter during the 2005 and 2006 campaigns.

THIS WEEK'S SAN DIEGO MATCH CONNECTIONS

> Boise State sophomore libero Sam Beschell and freshman outside hitter Dana Branavets prepped at San Diego area high schools. Beschell hails from Solana Beach and graduated from Santa Fe Christian High, while Branavets is an alumna of Del Norte High.

SDSU IN MW RANKINGS

- > Entering the weekend, Julia Haynie is slotted second in the conference with a .372 hitting percentage for all matches and has compiled a .402 efficiency in conference action, where she ranks fifth.
- > Elly Schraeder has vaulted into the fifth position for MW matches with 1.11 blocks per set and ranks seventh for all matches with 1.03 rejections per frame.
- > Ellie Geoghegan occupies the eighth spot with 3.38 digs per set in league matches and ranks 11th in the conference with 269 digs for the season.
- > Noa Miller is also slotted ninth in the league with 5.60 assists per sets against MW competition.
- > Miller's six service aces against UC San Diego on Aug. 27 is tied for the second-highest total in the Mountain West this season and marks the most by an SDSU player since Ashlynn Dunbar served up six of her own vs. Colorado State on Sept. 27, 2018. Dunbar also finished with seven service aces against CSU Bakersfield in the 2018 season opener.
- > McKenna Douglas' 26 digs vs. Nevada on Sept. 24 mark the fifth-best total in a four-set match this season in the league.
- > Kayla Rivera's .647 hitting percentage (12-1-17) vs. Pepperdine on Sept. 3 is tied for the sixth-best efficiency in the conference this season.
- > Schraeder's nine overall blocks vs. Army West Point is tied for the seventh-best figure in the MW this year and represents the most by an SDSU competitor since Lexie Hamrick's 11 rejections against UTEP on Sept. 15, 2018.
- > Madison Corf's 22 kills vs. Nevada is tied for the fourth-highest total in a four-set match this season, while her 21 put-aways against Air Force are tied for sixth in a four-set contest.
- > Collectively, the Aztecs' 71 kills against Nevada is tied for the fourth-highest figure in the league this season and represents the most in a four-set match.
- > In addition, SDSU's 67 kills against UC San Diego is tied for the fourth-highest total in the MW for a four-set match this year.
- > The Aztecs' 48 kills at Pepperdine is tied for the sixth-best figure in the MW a three-set match in the league this year.
- > In addition, SDSU's 14 team blocks vs. Army is tied for the 10th-highest total in the conference.

HAYNIE ON THE RISE

- > Middle blocker Julia Haynie has started 10 of 12 conference matches thus far, posting a .402 hitting percentage in that span.
- > The Aztec senior has powered down 63 kills in 127 attempts with just 12 errors against league opponents.
- > Haynie has also recorded 23 total blocks in MW play, including four solo stops.
- > In a road match at New Mexico on Oct. 20, Haynie set a career high with a .769 hitting percentage after launching 10 kills in 13 swings without an error. She also established a season best with 7 total blocks vs. the Lobos.
- > The Temecula, California, product has recorded multiple blocks in four straight matches and eight for the season.
- > With six matches remaining, Haynie needs just 10 more put-aways to set a personal single-season high in that category after finishing with 103 kills in 2021.
- > For the season, she ranks second in the Mountain West with a .372 efficiency and is currently third on the squad with 31 total blocks.

SHE'S BACK

- > Outside hitter Heipua Tautua'a has regained her swagger over the past three matches, averaging 3.00 kills and 3.00 digs per set, both of which rank second on the team.
- > The SDSU junior recorded has double-digit kills in her last three starts, including consecutive double-doubles vs. Air Force (12 kills, 15 digs) and at Colorado State (14 kills, 15 digs), with her 14 put-aways against the Rams matching a season high.
- > Tautua'a also contributed five service aces and five total blocks during that stretch.
- > Against Wyoming, the Wai'anae, Hawai'i, native helped the Aztecs beat the Cowgirls on the road for the first time since 2012 after posting 10 kills, six digs and one ace.
- > For the season, Tautua'a leads the Aztecs with five double-doubles while ranking third in kills (2.29/set) and digs (2.09/set).

THE LAST TIME OUT

- > San Diego State received double-digit kills from four player to defeat Wyoming in a grueling four-set road match (31-29, 20-25, 25-17, 26-24) at UniWyo Sports Complex on Oct. 29.
- > With the victory the Aztecs snap a seven-match losing streak to the Cowgirls dating back to Sept. 29, 2018. In addition, SDSU emerged triumphant in Laramie for the first time since Sept. 27, 2012, a span of 10 meetings.
- > Trailing 23-18 in the opening frame, the Aztecs dug deep and responded with a valiant 13-6 run, overcoming three set points to escape and give themselves much-needed momentum for the remainder of the contest.

Week 11: vs. Boise State | vs. Utah State

- > Individually, SDSU was led by Kayla Rivera, who tied her season best with 13 kills and finished with three blocks, including a dramatic solo stop in the fourth set for the clinching point.
- > In addition, the Aztec cause was aided by Madison Corf's 11-kill performance, while Heipua Tautua'a and Julia Haynie recorded 10 put-aways each.
- > Haynie hit .474 for the day, committing just one error in 19 attempts to go with three blocks, including a solo rejection, while Mikela Labno (9 kills) compiled a .319 efficiency and contributed a career-high four block assists.
- > Elly Schraeder (8 kills) also came up huge defensively with seven total blocks, including a solo rejection, Ellie Geoghegan scooped up 17 digs.
- > Not to be outdone, Sarena Gonzalez set a personal-best with 31 assists, sharing the setting chores with Noa Miller, who just missed a double-double after dishing out 16 helpers to go with nine digs.
- > For just the fourth time this season, SDSU posted more team blocks, maintaining a sizeable advantage in that statistic (12.0 to 6.0) against the Cowgirls, along with a slight edge in kills (62-61). In addition, the Aztecs out-hit the host school .312 to .279.
- > The rather evenly matched encounter saw Wyoming hold the upper hand in digs (51-47) and service aces (6-4). However, the Cowgirls were plagued by 13 service errors and 22 errant attacks in the loss.
- > The Cowgirls need just two points to polish off the opening set after building a 23-18 advantage on a late put-away. However, the Aztecs displayed their resolve with a 6-0 surge, which effectively altered the complexion of the match. Tautua'a blasted two kills in that span and combined with Schraeder on a block, while a Geoghegan overpass landed in play before a Wyoming attack error.
- > Suddenly in front 24-23, the Cowgirls quickly turned the tables with a service ace and kill. However, SDSU

responded with a put-away from Schraeder, who also joined forces with Miller on a block, setting the stage for a dramatic finish.

- > The Aztecs fought off two additional set points down the stretch before crafting a 4-1 spurt to ultimately prevail in a 31-29 thriller. Trailing 28-27, the visitors received kills from Corf and Labno, sprinkled in between three untimely Wyoming attack errors.

After the sides combined for 12 ties and seven lead changes in the opening frame, the Cowgirls led throughout the second stanza, save for a pair of ties at 1-1 and 8-8. SDSU remained within striking distance at 16-15 following Schraeder's solo stop. However, the hosts kept the Aztecs at bay with a 9-5 closing run.

- > Unfazed, the Aztecs regrouped in the third frame, recording their highest hitting percentage of the day with a .519 clip, knocking down 16 kills in 27 attempts with just two errors. Corf hit .571 herself in that stretch with five kills on seven swings against one error, while Haynie floored four shots and added a solo block.

> Still, the teams battled through 10 ties and three lead changes before SDSU vaulted in front to stay after a Wyoming service error, a Corf kill and a Tautua'a ace. Shortly thereafter, the Aztecs received two put-aways from Haynie to build a 20-16 cushion.

- > The Cowgirls seemed poised for a comeback following a kill by Kasia Partyka; however, the hosts shot themselves in the proverbial foot with a bad set and an unforced attack error, while Schraeder and Rivera teamed up for a pair of blocks to give the Scarlet and Black a 2-1 lead on the set scoreboard.

> The fourth set witnessed another see-saw affair, as the teams combined for an additional 14 ties and six lead changes. Despite trailing in kills (14-13) and committing one more attack error (6-5), the Aztecs benefited from eight off-target Wyoming serves and held a slight advantage in team blocks (4.0 to 3.0) to

2022 AZTEC SUPERLATIVES

Individual

HITTING PERCENTAGE (min. 12 kills)

.647 (12-1-17) Kayla Rivera at Pepperdine (Sept. 3)

KILLS

22 Madison Corf vs. Nevada (Sept. 24)

5 sets 15 Madison Corf and Mikela Labno vs. Sacramento State (Sept. 10)

4 sets 22 Madison Corf vs. Nevada (Sept. 24)

3 sets 15 Madison Corf vs. Colorado State (Oct. 15)

TOTAL ATTEMPTS

47 Madison Corf vs. Nevada (Sept. 24)

5 sets 37 Madison Corf vs. Sacramento State (Sept. 10)

4 sets 47 Madison Corf vs. Nevada (Sept. 24)

3 sets 35 Heipua Tautua'a at Pepperdine (Sept. 3)

ASSISTS

33 Noa Miller vs. Air Force (Oct. 22)

5 sets 27 Noa Miller vs. Sacramento State (Sept. 10)

4 sets 33 Noa Miller vs. Air Force (Oct. 22)

3 sets 24 Sarena Gonzalez at Pepperdine (Sept. 3)

DIGS

26 McKenna Douglas vs. Nevada (Sept. 24)

5 sets 23 Ellie Geoghegan vs. Sacramento State (Sept. 10)

4 sets 26 McKenna Douglas vs. Nevada (Sept. 24)

3 sets 16 Ellie Geoghegan at Pepperdine (Sept. 3)

SERVICE ACES

6 Noa Miller vs. UC San Diego (Aug. 27)

BLOCK SOLOS

2 Elly Schraeder at UNLV (Oct. 1) and vs. No. 9 Baylor (Sept. 2)

..... and Heipua Tautua'a vs. San José State (Sept. 22)

BLOCK ASSISTS

8 Elly Schraeder vs. Army West Point (Aug. 27)

TOTAL BLOCKS

9 Elly Schraeder vs. Army West Point (Aug. 27)

Team

HITTING PERCENTAGE

.349 (42-13-83) vs. Nevada (Sept. 24)

KILLS

71 vs. Nevada (Sept. 24)

5 sets 61 vs. Sacramento State (Sept. 10)

4 sets 71 vs. Nevada (Sept. 24)

3 sets 48 at Pepperdine (Sept. 3)

TOTAL ATTEMPTS

159 vs. Air Force (Oct. 22) and at New Mexico (Oct. 20)

5 sets 152 vs. Sacramento State (Sept. 10)

4 sets 159 vs. Air Force (Oct. 22) and at New Mexico (Oct. 20)

3 sets 112 at Pepperdine (Sept. 3)

ASSISTS

64 vs. Nevada (Sept. 24)

5 sets 58 vs. Sacramento State (Sept. 10)

4 sets 64 vs. Nevada (Sept. 24)

3 sets 48 at Pepperdine (Sept. 3)

DIGS

77 vs. Nevada (Sept. 24)

5 sets 55 vs. Sacramento State (Sept. 10)

4 sets 77 vs. Nevada (Sept. 24)

3 sets 42 at Pepperdine (Sept. 3)

SERVICE ACES

10 at Fresno State (Sept. 27)

TOTAL BLOCKS

14.0 vs. Army West Point (Aug. 27)

Week 11: vs. Boise State | vs. Utah State

close out the match.

- > Nursing a slim 19-16 advantage after another kill by Corf, the Cowgirls called timeout and eventually tied the score at 23-23 on the strength of three put-aways.
- > SDSU had a chance to ice the contest after a Wyoming serve went awry; however, the hosts stayed alive on a KC McMahon kill, which knotted the score once again at 24-24.
- > However, Rivera took charge at the juncture, unleashing a kill before stuffing a shot from Garza on the ensuing point, as the Aztec bench erupted in jubilation.

SCHEDULE NAVIGATION

- > San Diego State is off to a 4-8 start in Mountain West play this season after logging a 2-9 mark through a difficult non-conference slate.
- > During their non-league schedule, the Aztecs faced four foes that appeared or were receiving votes in the AVCA poll at match time, including No. 8 San Diego, No. 9 Baylor, Pepperdine (rv), UCLA (rv), along with additional Power 5 opponents Maryland and Arizona. Pepperdine climbed to as high as No. 22 in the AVCA rankings this season, while UCLA opened at No. 12 in the AVCA preseason poll and was ranked in the first two weeks of the regular season prior to its clash at SDSU.
- > Similarly, the Aztecs have faced 11 opponents that are currently listed among the top 100 in the fourth NCAA Women's Volleyball RPI of the season released on Oct. 31, including San Diego (No. 9), Baylor (No. 17), UNLV (No. 23), Colorado State (No. 40), Pepperdine (No. 44), Utah State (No. 56), UCLA (No. 60), San José State (No. 70), New Mexico (No. 89), Boise State (No. 92) and UC Santa Barbara (No. 100).

GEOGHEGAN EARNS TWO MW WEEKLY HONORS

- > Ellie Geoghegan picked up two Mountain West awards on Oct. 24 when she was named the league's Defensive Player of the Week and Freshman of the Week by the conference office for her performance in four-set matches vs. New Mexico and Air Force.
- > With her honors, Geoghegan garnered the first two MW weekly accolades of her career and the Aztecs' first two of the season.
- > A native of Manhattan Beach, California, Geoghegan led the Scarlet and Black with 47 digs and 5.88 digs per set, the latter of which was nearly three scoops higher than her season average of 2.74 heading into the weekend. The Aztec libero anchored a back row that helped limit SDSU's two opponents to a combined .159 hitting percentage.
- > In a road match at New Mexico on Oct. 20, Geoghegan set a career high with 24 digs (6.00/set) and was an integral part of an Aztec defense that held the Lobos to a .112 hitting percentage for the night, including a .037 clip over the final three sets. UNM's .112 efficiency was the second lowest for an SDSU foe this season.
- > Two days later, Geoghegan followed that effort with an additional 23 scoops against Air Force (5.75/set), helping the Aztecs snap a six-match losing streak. She contributed to a tremendous defensive effort that limited the Falcons to a combined 17 kills over the final two sets, as the Scarlet and Black posted identical 25-16 scores in that stretch to win going away.
- > With her performance, Geoghegan eclipsed the 20-dig plateau in consecutive matches for the first time this year and has held or shared the team lead for digs in six straight outings and 13 for the season.
- > Geoghegan also aided the Aztec cause with 12 setting assists and two aces last week, dishing out a career-high eight helpers at UNM.

NEWCOMERS SHINE

- > Seven of eight Aztec newcomers have seen action for the Scarlet and Black this season, with several providing key contributions through 23 matches.
- > Freshman Madison Corf has started 17 of 23 matches and leads the team with 2.60 kills per set and 203 kills overall. The former AVCA Prep All-American set a career high with 22 put-aways in SDSU's 3-1 triumph over Nevada on Sept. 24, which is tied for the 14th-best performance in the Mountain West this season and is tied for the fourth-highest total in a four-set match. Corf has recorded double-digit kills in nine matches thus far, including 11 put-aways in her last outing at Wyoming on Oct. 29, when she logged her highest hitting percentage of the year, committing just three errors in 29 swings for a .381 efficiency. Corf also logged her first collegiate double-double with 15 kills and 11 digs vs. Colorado State on Oct. 15.
- > A senior transfer from Georgia, Kayla Rivera has started 21 of 23 matches for SDSU and has climbed into the second spot on the team in kills (200) and kills per set (2.33) while holding down the No. 2 position in total blocks (63.0) and blocks per set (0.73). The Aztec opposite hitter has blasted double-digit kills in three straight matches for the first time this year at New Mexico (10), vs. Air Force (11) and at Wyoming, where she equaled her season high with 13 kills and came through with three blocks. The Ventura, California, native accounted for the final two points of the match with a kill and solo block in the fourth set, leading the Aztecs to their first victory over the Cowgirls on the road since 2012. Earlier, Rivera was named to the all-tournament team at the Pepperdine ASICS Classic after posting 29 kills and a .313 hitting percentage, including a career-best .647 clip (12-1-17) vs. the host Waves. She also powered down 13 kills against Nevada and a collegiate-best seven block assists vs. Army West Point at the SDSU Invitational.
- > Freshman defensive specialist Ellie Geoghegan has taken over the team lead with 269 overall digs, which ranks 11th in the MW. The Manhattan Beach product has surpassed the double-digit plateau in that category in six straight matches and on 13 occasions overall, highlighted by a season-high 24 scoops at New Mexico on Oct. 22. She also contributed 23 scoops vs. Air Force two days later, earning MW Defensive Player of the Week and Freshman of the Week honors. Geoghegan has also recorded 17 of her 21 service aces for the season in her last 14 appearances, tying her career best with three vs. Wyoming on Oct. 13.
- > In her first season on The Mesa after transferring from USD, sophomore middle blocker Elly Schraeder has started all 22 matches she has played, leading the team with 79 total blocks and 1.03 blocks per set, the latter of which ranks seventh in the Mountain West. The Athol, Idaho, native has flashed her versatility over the past three matches, combining for 22 kills (1.83/set) and 17 blocks (1.42/set). Against Air Force on Oct. 22, she posted a season-best .467 hitting percentage (min. 7 kills), blasting eight kills on 15 attempts against one error to go with five block assists. The following week, she helped the Scarlet and Black defeat Wyoming on the road for the first time since 2012 after matching her season high with eight additional put-aways while contributing seven blocks, including a solo stop. Earlier in the season vs. Army on Aug. 27, Schraeder registered a career-high nine blocks, including a solo stuff, while hitting .375 on eight kills in 16 swings with just two errors.
- > A starter in 10 of 20 appearances, freshman middle blocker Kat Cooper ranks fourth on the team with 29 total blocks and 0.48 blocks per set. A former AVCA Prep All-American, Cooper enjoyed a breakout performance against UC San Diego at the SDSU Invitational when she hit .600 on seven kills in 10 attempts against just one error while adding five blocks (1 solo) and five digs. Earlier that day, the Springdale, Arkansas, native recorded five additional blocks (1 solo) vs. Army West Point. In the Mountain West opener against San José State, Cooper matched her season best with seven kills, posting a .429 efficiency with one error in 14 swings.

2022 SITUATIONAL RECORDS

GENERAL

Overall.....	6-17
Mountain West.....	4-8
Home.....	4-8
Away.....	2-7
Neutral.....	0-2
vs. Ranked Teams.....	0-2
vs. Unranked Teams.....	6-15
Matches Following a Win.....	2-3
Matches Following a Loss.....	4-13
Longest Winning Streak.....	2
Longest Losing Streak.....	9
Current Streak.....	Won 1

BY SETS

3 Sets.....	1-6
4 Sets.....	5-10
5 Sets.....	0-1
Leading After Two.....	3-0
Trailing After Two.....	0-13
Tied After Two.....	3-4
Leading 2-1.....	4-0
Trailing 2-1.....	0-9

BY MONTH

August.....	2-1
September.....	2-9
October.....	2-7
November.....	0-0

BY DAY

Tuesday.....	1-0
Thursday.....	0-6
Friday.....	0-4
Saturday.....	5-7

BY KILLS

Leading in Kills.....	6-3
Trailing in Kills.....	0-13
Tied in Kills.....	0-1

BY DIGS

Leading in Digs.....	5-9
Trailing in Digs.....	1-7
Tied in Digs.....	0-1

BY BLOCKS

Leading in Blocks.....	3-1
Trailing in Blocks.....	3-16
Tied in Blocks.....	0-0

BY ATTACK PERCENTAGE

Greater Attack Percentage.....	6-1
Lower Attack Percentage.....	0-16
Equal Attack Percentage.....	0-0
Hitting above .300.....	2-0
Hitting between .200 and .300.....	3-5
Hitting between .100 and .200.....	1-7
Hitting below .100.....	0-5
Opponent Hitting above .300.....	0-8
Opponent Hitting between .200 and .300.....	4-7
Opponent Hitting between .100 and .200.....	1-2
Opponent Hitting below .100.....	1-0

BY INDIVIDUAL KILLS

3+ Double-Digit Individual Kill Totals.....	4-2
2 Double-Digit Individual Kill Totals.....	1-4
1 Double-Digit Individual Kill Totals.....	1-6
0 Double-Digit Individual Kill Totals.....	0-5

2022 MATCH-BY-MATCH LEADERS

Date	Opponent	Kills	Hitting Pct.*	Assists	Aces	Digs	Blocks
A.26	California	Three players - 7	Labno (.118)	Gonzalez - 16	Geoghegan - 2	Tautua'a - 8	Schraeder - 4
A.27	Army West Point	Tautua'a - 13	Tautua'a (.379)	Miller - 21	Miller - 3	Douglas - 14	Schraeder - 9
A.28	UC San Diego	Corf - 15	Cooper (.600)	Gonzalez - 30	Miller - 6	Douglas - 19	Cooper - 5
S.2	vs. No. 9 Baylor	Tautua'a - 13	Rivera (.048)	Gonzalez - 25	Corf - 1	Tautua'a - 16	Schraeder - 5
S.3	at Pepperdine	Rivera - 12	Rivera (.647)	Gonzalez - 24	Tautua'a - 4	Geoghegan - 16	Cooper - 3
S.3	vs. UC Santa Barbara	Rivera/Haynie - 10	Haynie (.474)	Gonzalez - 21	Corf/Miller - 1	Geoghegan - 17	Four players - 1
S.9	Maryland	Tautua'a - 14	Tautua'a (.300)	Miller - 17	Gonzalez - 3	Geoghegan - 12	Haynie/Rivera - 3
S.9	Arizona	Corf - 9	Corf (.227)	Gonzalez - 17	Haynie/Tautua'a - 1	Geoghegan - 11	Schraeder - 3
S.10	Sacramento State	Corf/Labno - 15	Labno (.407)	Miller - 27	Miller - 2	Geoghegan - 23	Schraeder - 4
S.15	UCLA	Rivera - 8	Rivera (.227)	Gonzalez - 12	Geoghegan - 2	Tautua'a - 9	Schraeder - 3
S.17	at No. 8 San Diego	Labno - 10	Labno (.450)	Gonzalez - 19	Geoghegan - 3	Geoghegan - 14	Schraeder - 4
S.22	San José State	Corf - 10	Cooper (.429)	Miller - 19	Three players - 1	Douglas - 14	Schraeder - 8
S.24	Nevada	Corf - 22	Rivera (.385)	Miller - 31	Douglas - 2	Douglas - 26	Cooper - 2
S.27	at Fresno State	Labno - 12	Haynie (.636)	Miller - 14	Douglas - 5	Douglas/Geoghegan - 5	Three players - 2
O.1	at UNLV	Corf - 15	Rivera (.467)	Gonzalez - 15	Haynie - 2	Douglas - 9	Rivera/Schraeder - 4
O.6	at Utah State	Rivera - 9	Rivera (.211)	Miller - 14	Douglas/Geoghegan - 1	Douglas/Geoghegan - 7	Tautua'a - 5
O.8	at Boise State	Labno - 16	Labno (.355)	Miller - 24	Geoghegan - 2	Geoghegan/Tautua'a - 9	Haynie/Rivera - 3
O.13	Wyoming	Rivera - 9	Tautua'a (.167)	Miller - 17	Geoghegan - 3	Geoghegan - 18	Cooper/Rivera - 4
O.15	Colorado State	Corf - 15	Labno (.304)	Miller - 20	Miller - 2	Geoghegan - 14	Labno/Schraeder - 2
O.20	at New Mexico	Labno - 12	Haynie (.769)	Miller - 25	Geoghegan/Miller - 1	Geoghegan - 24	Haynie - 7
O.22	Air Force	Corf - 21	Haynie (.429)	Miller - 33	Corf - 3	Geoghegan - 23	Rivera/Schraeder - 5
O.27	at Colorado State	Tautua'a - 14	Rivera (.308)	Miller - 26	Rivera/Tautua'a - 2	Tautua'a - 15	Rivera - 7
O.29	at Wyoming	Rivera - 13	Haynie (.474)	Gonzalez - 31	Rivera - 2	Geoghegan - 17	Schraeder - 7
N.3	Boise State						
N.5	Utah State						
N.7	Fresno State						
N.10	UNLV						
N.17	at Nevada						
N.19	at San José State						

* - min. 7 kills

- > Freshman setter Sarena Gonzalez ranks second on the squad with 4.85 assists per set. A starter in 11 of 23 matches, the Temecula product has dished at least 20 assists in seven appearances, including a season-high 31 helpers at Wyoming on Oct. 29, as the Aztecs defeated the Cowgirls in Laramie for the first time since 2012. In addition, Gonzalez has 76 digs (0.94/set) and 10 aces (0.13/set) to her credit, including a season-best eight digs at Colorado State on Oct. 27. She also spun three aces on consecutive serves in the fourth set against Maryland at the Aztec Classic on Sept. 9.
- > Despite missing 13 matches this season, freshman libero McKenna Douglas ranks second on the Aztecs with 3.03 digs per set. The Phoenix, Arizona, native averaged 3.14 digs per frame in a six-match span from Sept. 22-Oct. 8, highlighted by a career-high 26 scoops vs. Nevada. In SDSU's 3-0 triumph at Fresno State on Sept. 27, Douglas served up a collegiate-best five aces, helping the Scarlet and Black record its first road sweep over the Bulldogs since 1996.

ODDS & ENDS

- > With its four-set triumph over Wyoming on Oct. 29, San Diego State recorded the 900th victory in program history. Dating back to 1976, the Aztecs own an all-time record of 900-658 in almost 47 seasons of varsity volleyball competition.
- > Against the Cowgirls, the Aztecs posted more team blocks than their opponent (12.0 to 5.0) for just the fourth time this season, improving to 3-1 in that statistical situation.
- > In addition, five of SDSU's six wins this year have been registered on a Saturday.
- > Ellie Geoghegan had her streak of nine matches with at least one ace snapped in a four-set loss at Colorado State on Oct. 27.
- > Kayla Rivera had at least one block to her credit in the first 18 matches of the season before that streak was halted at home vs. the same CSU squad on Oct. 15.
- > All six of the Aztecs' victories have been recorded with the Aztecs maintaining the statistical advantage in kills and hitting percentage.
- > San Diego State is 4-0 this season when holding a 2-1 lead after three sets.

REWIND: AZTECS WRAP UP NON-CONFERENCE SLATE

- > San Diego State concluded its challenging non-conference schedule against a pair of perennial heavyweights last month, dropping a three-set decision at home to UCLA (16-25, 23-25, 15-25) on Sept. 15 before falling to No. 8 San Diego on the road two days later (25-20, 13-25, 14-25, 12-25).
- > Kayla Rivera, Mikela Labno and Madison Corf led the Aztecs with 2.14 kills per set for the week (15 overall), while Elly Schraeder averaged one block per frame (7 total).

- > However, the Scarlet and Black was out-hit by a collective .330 to .112 in the two matches, committing 17 more attack errors, while trailing in team blocks 22.0 to 12.0.
- > Competing on its newly unveiled playing surface, UCLA spoiled San Diego State's festivities by maintaining a statistical advantage in hitting percentage (.273 to .078), kills (39-30) and team blocks (14.0 to 6.0) while capitalizing on 23 attack errors.
- > Despite the disparity, the Aztecs and Bruins combined for 23 ties and 13 lead changes in the match. However, UCLA employed timely runs in each of the three sets to keep the Scarlet and Black at bay.
- > Individually, SDSU was led by Rivera's eight kills, while Corf launched six non-returnables of her own, hitting .750 on eight attempts without an error.
- > The Aztec cause also included nine digs by Heipua Tautua'a, while Elly Schraeder totaled three blocks, including a solo stuff.
- > Against the Toreros on Sept. 17, SDSU claimed the opening set against the nation's eighth-ranked team but could not sustain the momentum.
- > The Aztecs came out firing on all cylinders, hitting .433 in the first stanza on 15 kills in 30 attempts with just two errors.
- > However, SDSU was stymied for the remainder of the match, compiling a meager .048 attack percentage on a combined 24 kills against 19 errors in 104 swings over the final three frames.
- > Conversely, USD switched on the afterburners in that span, hitting at a torrid .425 clip thanks to a collective 42 kills in 87 attempts with just five miscues.
- > For the match, the Toreros out-hit the Aztecs .373 to .134, maintaining the upper hand in kills (56-39), digs (51-43) and team blocks (8.0 to 6.0).
- > Individually, SDSU was led by Mikela Labno, who powered down 10 kills and hit .450 for the night after committing just one error in 20 attempts, while Madison Corf just missed her first career double-double following a nine-kill, 10-dig performance.
- > Aztec contributors also included Kayla Rivera, who launched seven kills and finished with a pair of block assists, while Heipua Tautua'a and Kat Cooper (.462) floored six shots apiece and recorded a solo block.

A LOOK BACK AT THE AZTEC CLASSIC

- > Returning to The Mesa for its second home tournament of the regular season, Sept. 9-10, San Diego State continued its demanding non-conference schedule when it welcomed three teams that combined for 54 victories in 2021.
- > The Aztecs opened the event with a four-set loss to Maryland (14-25, 25-21, 20-25, 18-25) before dropping a three-decision to Arizona (17-25, 15-25, 11-25) later that night.

Week 11: vs. Boise State | vs. Utah State

- > SDSU then closed out the weekend with a tight battle against Sacramento State but ultimately fell in a five-set thriller (16-25, 26-28, 25-21, 25-22, 8-15).
- > Three Aztecs averaged over two kills per set for the tournament, led by Heipua Tautua'a (2.92), Madison Corf (2.50) and Mikela Labno (2.17).
- > In addition, Ellie Geoghegan averaged 3.83 digs per set, followed by Tautua'a (2.17).
- > As a team, however, SDSU was out-hit .304 to .186 for the weekend and trailed in both kills (147-130) and team blocks (30.0 to 15.0).
- > Against Sac State, the Aztecs fought back from a two-set deficit on Saturday but could not pull off the reverse sweep.
- > Labno launched a career-high 15 kills, while Corf tied her collegiate best with 15 put-aways as well.
- > Not to be outdone, Tautua'a finished with her third double-double of the season after posting 14 kills and 14 digs, providing ample back row support for Geoghegan, who set a career high with 23 scoops, while Noa Miller (27 assists) and Sarena Gonzalez (23 assists) split the setting chores.
- > Despite maintaining a 61-55 collective advantage in kills and a 55-49 margin in digs, however, the Aztecs committed more attack errors (28-21) and finished with a 12.0 to 6.0 deficiency in team blocks. Additionally, SDSU was plagued by 12 service errors, while the Hornets held a slight 10-6 edge in aces.
- > Still, the teams battled through an entertaining and competitive match, combining for 30 ties and 16 leads changes on the afternoon.
- > Against Maryland in a rare Friday matinee, the Terrapins maintained the statistical advantage in most categories, including kills (50-41), service aces (12-7) and team blocks (11.0 to 5.0) to help fuel their victory.
- > In addition, Maryland out-hit the Aztecs .289 to .179, posting a .462 clip in the opening set after knocking down 14 kills on 26 attempts with just two errors to help set the tone for the contest.
- > Individually, SDSU was led by Tautua'a (.300), who blasted a team-high 14 kills to go with nine digs. In addition, Labno and Julia Haynie recorded eight put-aways apiece.
- > Later that evening vs. Arizona, the Aztecs were unable to right the ship, as the Wildcats maintained a .438 hitting percentage compared to SDSU's .138 clip.
- > Arizona owned a sizable 42-28 advantage in kills and a 7.0 to 4.0 edge in team blocks while benefiting from 15 Aztec attack errors to complete the sweep.
- > Corf (9) and Tautua'a (7) combined for 16 of SDSU's 28 kills but no other player had more than three for the hosts.

RECAPPING THE PEPPERDINE ASICS CLASSIC

- > Despite dropping three matches against teams that combined for 65 victories last season, the Aztecs kept things close in 10 of 11 sets, trailing by a combined seven kills for the tournament (148-141). However, SDSU committed twice as many attack errors (85-42), finishing with a .169 hitting percentage, compared to a .318 clip for the opposition. In addition, the Aztecs were victimized by 22 service aces and experienced a deficiency in team blocks (42.0 to 11.5).
- > The Aztecs had their moments against then-No. 9 Baylor in the tournament opener on Sept. 2, but were unable to sustain the momentum after a third-set rally, ultimately falling by a 3-1 count (18-25, 17-25, 29-27, 14-25).
- > Individually, SDSU was paced by Heipua Tautua'a, who recorded her second straight double-double and sixth of her career after posting 13 kills and 16 digs, while Madison Corf launched 11 put-aways of her own. The Aztecs' offensive fortunes also received a boost from Kayla Rivera (7 kills) and Mikela Labno (6 kills), while Elly Schraeder anchored the middle with five blocks, including a pair of solo stops.
- > Elsewhere, Sarena Gonzalez (25 assists) and Noa Miller (15 assists, 8 digs) shared the setting responsibilities, while Kat Cooper contributed five kills and two block assists at the net.
- > Trailing 0-2 in sets, SDSU entertained hopes of a comeback in the third stanza, as the teams combined for 13 ties and a pair of lead changes. The Aztecs enjoyed their most productive set of the match, blasting 16 kills, including four apiece by Corf and Tautua'a. In addition, the Scarlet and Black limited the Bears to their lowest hitting percentage of the day (.121).
- > Nevertheless, San Diego State still found itself on the verge of defeat after Baylor took a 24-21 lead following a block by Lauren Harrison and Mallory Talbert. Unfazed, the Aztecs maintained their composure, fighting off five additional match points with an 8-3 closing spurt, clinching the set with three straight points to overcome a 27-26 deficit. Kills by Cooper and Labno, followed by Corf's service ace, afforded SDSU some new life. Unfortunately, the Aztecs' newfound enthusiasm was soon dashed early in the fourth frame, as the Bears grabbed a 9-4 lead and were never threatened.
- > SDSU closed out its second tournament of the season the next day (Sept. 3) on a sour note, falling to host Pepperdine in three sets (18-25, 20-25, 32-34) before suffering a 3-1 defeat at the hands of UC Santa Barbara (18-25, 18-25, 25-22, 16-25).
- > Against the Waves, the Aztecs were led by Kayla Rivera, who finished with a .647 efficiency on a match-high 12 kills in 17 swings with just one error, while Heipua Tautua'a racked up 11 non-returnables to go with a career-best four service aces. Mikela Labno also hit well on the afternoon, finishing with a .316 clip (7-1-19), while Ellie Geoghegan scooped up a match-high 16 digs.
- > However, SDSU was out-hit for the match .371 to .259, as Pepperdine benefited from 15 unforced Aztec attack errors. Although the Scarlet and Black maintained a 42-36 advantage in digs and each side served up six aces, the Waves also finished with more team blocks (9.0 to 4.5) to help fuel their win.
- > The third set was the most entertaining, as the teams combined for 11 ties and four lead changes. Still, the Aztecs seemed poised to extend the match to a fourth frame after building a 20-15 lead thanks to a Rivera kill. Pepperdine tightened the score at 23-21 moments later following a kill, a combined block and a Meg Brown ace.
- > Labno responded with a kill of her own, which extended the SDSU lead to 24-21. Incredibly, the Waves fought off nine set points down the stretch, including a 32-31 deficit after another Labno put-away. Pepperdine finally closed off the match on a service ace following a kill and an Aztec attack error.
- > In the nightcap against the Gauchos, San Diego State was stymied in the middle, as UCSB maintained a decisive advantage in team blocks (13.0 to 2.0) while serving up 12 aces compared to the Aztecs' two. In addition, the Gauchos owned the statistical edge in kills (50-45) and hitting percentage (.310 to .161), capitalizing on 13 SDSU unforced attack errors to help power their victory.
- > The Aztecs were paced by Julia Haynie (.474) and Kayla Rivera (.368), who blasted 10 kills apiece, while Reagan Merk tied her career high with seven put-aways. In addition, Ellie Geoghegan anchored the SDSU back row with 17 digs.

ALL-TOURNAMENT AZTEC

- > Senior opposite hitter Kayla Rivera earned a spot on the all-tournament team for her performance in three matches at the Pepperdine ASICS Classic, Sept. 2-3, in Malibu, California.
- > A native of Ventura, Rivera led the Aztecs with 29 kills overall and hit .333, including a career-best .647 against host Pepperdine on Sept. 3, when she launched 12 non-returnables on 17 attempts with just one error.
- > She also contributed double-digit kills later that day vs. UC Santa Barbara when she tied for team-high honors with 10 put-aways to go with a .368 efficiency.

SDSU INVITATIONAL REWIND

- > After dropping a hard-fought three-set decision to California (20-25, 23-25, 23-25) in their season opener on Aug. 26, the Aztecs rebounded with a pair of

AVCA DIVISION I POLL

(As of Oct. 31, 2022)

Rk		Points	Record	Prev
1	Texas (54)	1572	17-1	2
2	San Diego (4)	1457	20-1	3
3	Wisconsin (4)	1437	17-3	5
4	Nebraska (1)	1427	19-2	1
5	Louisville (1)	1385	20-2	4
6	Ohio State	1269	15-5	6
7	Pittsburgh	1244	22-2	7
8	Stanford	1212	16-4	8
9	Minnesota	1036	13-7	9
10	Georgia Tech	1026	17-4	10
11	Baylor	867	19-4	13
12	Florida	819	18-4	14
13	Creighton	751	20-3	15
14	Purdue	687	16-6	12
15	Penn State	664	17-6	11
16	Oregon	619	15-5	18
17	Marquette	584	20-2	16
18	Brigham Young	555	16-5	17
19	Washington	494	16-6	19
20	Kentucky	470	14-6	20
21	Rice	372	20-2	21
22	Western Kentucky	286	23-2	22
23	Houston	224	21-2	23
24	UCF	153	19-1	25
25	Iowa State	57	16-7	NR

First-place votes in parentheses

Others receiving votes and listed on two or more ballots: Arkansas 23; Washington State 22; Michigan 17; Pepperdine 14; USC 13; Towson 13; Northwestern 6; Colorado 4.

MW PLAYERS OF THE WEEK

MW Offensive Player of the Week

- A.29 Kylee Stokes, OPP, Sr., Utah State
- S.5 Kayla Afoa, OH, Sr., Nevada
- S.12 Paige Bartsch, OPP, So., Boise State
- S.19 Blaire Fleming, OH, So., San José State
- S.26 Kennedy Stanford, OH, Jr., Colorado State
- 0.3 Gabrielle Arreche-Ramos, OH, Jr., UNLV
- 0.10 Tatum Stall, OH, Jr., Utah State
- 0.17 Kennedy Stanford, OH, Jr., Colorado State
- 0.24 Ellease Crumpton, MB, Sr., UNLV
- 0.31 Isabel Martin, OH, Jr., UNLV

MW Defensive Player of the Week

- A.29 Joi Harvey, MB, Jr., Air Force
- S.5 Kia Kaohelaalii, L, Jr., Nevada
- S.12 Allison Casillas, L, Sr., Boise State
- S.19 Maya Sands, L, Fr., UNLV
- S.26 Sarah Smevog, L, Sr., San José State
- 0.3 Sarah Smevog, L, Sr., San José State
- 0.10 Sarah Smevog, L, Sr., San José State
- 0.17 Jordi Holdaway, L, So., Utah State
- 0.24 Ellie Geoghegan, L, Fr., San Diego State
- 0.31 Mac Russ, MB, So., Air Force

MW Freshman of the Week

- A.29 Leah Wilton-LaBoy, S, Utah State
- S.5 Gabby McLaughlin, OH, Nevada
- S.12 Lea Zurlinden, MB, New Mexico
- S.19 Maya Sands, L, UNLV
- S.26 Elle Cotton, S, Boise State
- 0.3 Tierney Barlow, MB, Wyoming
- 0.10 Bella Wooden, MB, Utah State
- 0.17 Maya Sands, L, UNLV
- 0.24 Ellie Geoghegan, L, San Diego State
- 0.31 Leah Wilton-LaBoy, S, Utah State

Week 11: vs. Boise State | vs. Utah State

3-1 victories the following day vs. Army West Point (25-22, 22-25, 25-16, 19-25) and UC San Diego (25-22, 25-20, 26-28, 25-20).

- > Against Army West Point, the SDSU attack was powered by the combo of Heipua Tautua'a (13 kills) and Mikela Labno (12 kills), while setter Noa Miller recorded her first double-double of the season with 21 assists and 12 digs.
- > However, it was the Aztec defense that proved to be the difference against the Black Knights, finishing with a 14.0 to 10.0 advantage in team blocks, to go with a 54-49 spread in digs.
- > In addition to a career-high nine blocks, Ely Schraeder (.375) displayed her dual-threat capabilities with eight kills against only two errors, while Kayla Rivera finished with seven block assists to set her own personal best.
- > The teams combined for 13 ties and three lead changes in the opening set. However, the match witnessed just two more deadlocks in the second stanza, as the Scarlet and Black led throughout the third and fourth frames.
- > In the nightcap vs. UC San Diego, the Aztecs (2-1) owned a decisive 67-42 advantage in kills and served up seven aces to help fuel their win, overcoming a 14.0 to 9.0 deficiency in team blocks.
- > In addition, SDSU out-hit the Tritons .270 to .183 and maintained a sizable 51-42 in digs while benefiting from 20 opponent attack errors.
- > Individually, four players posted double-digit kills for the Aztecs, including freshman Madison Corf (.303), who blasted a match-high 14 put-aways, while Tautua'a logged her first double-double of the year with 14 non-returnables to go with 10 digs.
- > Elsewhere, SDSU also received a career-high tying 13 kills from Labno, while Rivera sparked the offense as well with 10 put-aways, followed by Kat Cooper, who hit .600 for the night (7-1-10) and contributed five total blocks, including a solo stop.
- > Not to be outdone, Miller (28 assists) posted a career-high six service aces, sharing the setting duties with Sarena Gonzalez, who dished out 30 helpers of her own. Meanwhile, McKenna Douglas led all players with 19 digs to anchor the Aztec back row.
- > In the opener against Cal, the teams combined for 36 ties and 20 lead changes, as seven of eight SDSU newcomers saw action in the see-saw affair.
- > Despite maintaining a narrow 38-37 edge in kills and a 7-4 spread in service aces, however, the Aztecs were plagued by 25 attack errors, posting a .121 hitting percentage on the night.
- > Conversely, the Golden Bears owned a decisive advantage in team blocks (12.0 to 5.0) and totaled just eight errant attacks, finishing with a .358 efficiency to help key their victory.
- > Offensively, SDSU was led by the trio of Tautua'a, Labno and Madison Corf, who blasted seven kills each, while Kat Cooper (.357) and Kayla Rivera (3 block assists) launched six non-returnables apiece.

WELCOME BACK

- > Outside hitter Heipua Tautua'a leads the group of eight Aztec letterwinners who return for the 2022 campaign.
- > Tautua'a continued to display her tremendous versatility last season, finishing second on the team in kills (208), digs (239) and digs per set (2.28) while occupying the third spot in kills per set (1.96) and double-doubles (3).
- > The SDSU junior also compiled double-digit digs in 11 matches and surpassed double figures in kills on six occasions last year.
- > Tautua'a enters the 2022 season having started 43 of 44 matches she has appeared in.
- > The Aztecs will also look for senior leadership from Noa Miller and Julia Haynie.
- > A 5-10 setter, Miller led the Scarlet and Black in assists in all but one of her 20 matches played last season. The Arizona State transfer also tied for the top spot on the squad with four double-doubles in her first season at SDSU.
- > Despite missing the final seven matches of the 2021 campaign, Miller averaged a team-leading 6.01 assists per set, which ranked seventh in the Mountain West.
- > Haynie also brought previous Division I experience with her to "America's Finest City" after spending her first two seasons at Portland State. The 6-1 middle blocker led the Aztecs with 61 total blocks, including a team-high eight solo stops across 88 sets. She also ranked fifth on the team with 103 kills (1.17/set), finishing with a .222 hitting percentage.
- > In addition, Haynie topped the squad or tied for the team lead in blocks eight times. She also posted at least one kill in all 25 matches she played while recording at least one block assist in all but four contests, including eight straight to end the year.
- > San Diego State is also expecting continued improvement from a pair of sophomores - Mikela Labno and Jordyn Goldsmith.
- > Last season, Labno ranked fourth on the Aztecs with 132 kills and 1.81 kills per set while contributing 65 digs and 25 total blocks in 73 sets played. She also tied for second on the team with seven block solos and recorded at least one kill in all but two appearances.
- > A native of Hilmar, California, Labno surpassed the double-digit kill plateau on four occasions, logging a breakout performance vs. No. 17 Pepperdine at the Gaucho Invitational, where she launched a season-high 13 kills on 23 attempts with just one error for a stellar .522 hitting percentage, which ranked as the team's second-best clip of the year (min. 12 kills).

- > A 6-1 opposite hitter, Goldsmith also enjoyed a solid debut for the Scarlet and Black in 2021, ranking fifth on the team in kills (119) and kills per set (1.58). She also finished with 35 total blocks and 30 digs across 76 sets, making nine starts in 25 appearances.
- > Goldsmith posted her best hitting percentage of the 2021 season with a .636 clip in a three-set sweep of Air Force, blasting seven kills without an error in 11 attempts.
- > Also back in the mix are a trio of underclassmen in Kennedy Feuerborn, Reagan Merk and Sara Mukaj.
- > A 6-3 setter, Feuerborn appeared in 27 of 30 matches last year, starting six of the Aztecs' final eight contests. As a sophomore, she averaged 3.11 assists (230 overall) while registering 38 kills and 24 block assists. In addition, Feuerborn eclipsed the 20-assist plateau on three occasions, including a season-high 23 helpers at home vs. Boise State.
- > Merk saw action in 18 matches during her freshman campaign on The Mesa, earning two starts. The 5-11 outside hitter posted 29 kills, 40 digs, five service aces and three blocks in 42 sets last year. Against Texas Southern at the Arizona Wildcat Invitational, she came off the bench and played all three sets, recording season-highs of seven kills and six digs to help the Scarlet and Black complete the sweep.
- > A 6-3 middle blocker, Mukaj was off to a tremendous start in 2021 before suffering a season-ending ACL injury vs. San Diego. A standout international player from Italy, Mukaj hit .333 with 16 kills on 36 attempts against four errors across 27 sets while finishing with 22 total blocks, 16 dig and seven aces. She posted a .636 hitting percentage on seven kills in 11 attempts without an error against Sam Houston in the finale of the Bearkat Invitational, adding five digs and four block assists.

NEW KIDS IN TOWN

- > The prospects for the San Diego State volleyball program continue to brighten after head coach Brent Hilliard reshaped the Aztec roster with a solid newcomer class for the 2022 campaign.
- > SDSU's early signing class last November featured three prep stars in outside hitters Madison Corf (Kansas City, Mo.) and Cara Braun (Tempe, Ariz.), along with middle blocker Kat Cooper (Springdale, Ark.).
- > Over the winter, the Aztecs added a pair of Division I transfers in middle blocker Ely Schraeder (San Diego) and opposite hitter Kayla Rivera (Georgia) before inking three more high school standouts during the spring in defensive specialists McKenna Douglas (Phoenix, Ariz.) and Ellie Geoghegan (Manhattan Beach, Calif.), along with setter Sarena Gonzalez (Temecula, Calif.).
- > As a senior at Liberty High School in suburban Kansas City, Missouri, Corf garnered second-team All-America accolades from the American Volleyball Coaches Association after earning a spot on the AVCA All-Region VI team. Last season, she established single-season career highs in kills (390, 4.1/set), digs (353, 3.7/set), blocks (50) and aces (33), helping the Blue Jays to a 26-5 overall record and a second-place district finish.
- > Cooper also received national acclaim last year, earning AVCA All-America honorable mention to go with AVCA All-Region IV distinction after leading Har-Ber High School to a 33-2 record and a runner-up finish in the 6A bracket at the 2021 Arkansas state championships. A four-time all-conference selection, Cooper merited all-state recognition and landed on the all-state tournament team in each of her final three seasons.
- > Braun brings a winning pedigree with her to SDSU as well after leading her Valley Christian High team to the 2021 Arizona 3A state championship, garnering Conference 3A Player of the Year and 3A Metro Region Offensive Player of the Year accolades. According to MaxPreps, Braun totaled 1,290 kills and hit .344 during her prep career, helping Valley Christian to an additional pair of runner-up state finishes in 2019 and 2020.
- > Not to be outdone, Douglas also starred on the Arizona prep volleyball scene, capping a brilliant senior campaign in 2021 with all-state honors from the Arizona Republic after leading Notre Dame Prep to a 37-5 record, highlighted by a Conference 4A state championship. Last season, Douglas was named both the Conference 4A Player of the Year and Defensive Player of the Year while receiving identical acclaim in the 4A West Valley Region after averaging a career-high 4.8 digs per set (307 overall) to go with 61 assists and 47 service aces, according to MaxPreps.
- > Geoghegan is also eager to display her defensive prowess this season after she was named the Bay League Division I Libro of the Year and received all-conference recognition at Mira Costa High School in 2021. The Manhattan Beach native led her Mustang squad to a 28-9 overall record and a regional semifinal appearance in the 2021 CIF Open Division state tournament. For her efforts, Geoghegan also collected first-team all-area honors by the Daily Breeze, as Mira Costa finished the year at No. 17 in the AVCA/USA Today Super 25 National High School Rankings.
- > Gonzalez, meanwhile, is a local product who attended Temecula Valley High and received all-Southwestern Conference recognition as a senior after helping her Golden Bears squad advance to the second round of the 2021 CIF Southern Section Division II playoffs.
- > The first of two transfers to last year's signing class, Schraeder was a part of two teams at USD that advanced to the NCAA Tournament, including a second-round appearance in the fall of 2021. During her freshman campaign that was shortened and delayed due to the COVID-19 pandemic, Schraeder ranked second in the West Coast Conference with a team-high 1.30 blocks per set, establishing a personal best with seven block assists in a road sweep at Gonzaga. A prep star at Coeur d'Alene High in Idaho, Schraeder merited the state's Girls Volleyball 5A/4A Athlete of the Year honors in 2019 and 2020.
- > A native of Ventura, Rivera returns to the West Coast after playing three seasons at Georgia, where she started 34 matches in 76 appearances. In 2021, she enjoyed her most productive season as collegian, finishing with 201 kills (2.05/set), 77 total blocks (0.79/set) and 73 digs (0.75/set) in 98 sets played. In addition, Rivera blasted 10+ kills eight times during the year and posted three or more blocks in 17 outings.

PRESEASON PROGNOSTICATIONS

> San Diego State was pegged for an eighth-place finish in the 2022 Mountain West preseason coaches poll released on Aug. 17.

> In the 23-year history of the Mountain West, SDSU has finished first (2012), second (2002, 2011), fourth (2000, 2001, 2003, 2013, 2017), fifth (2005, 2015, 2019), sixth (1999, 2004, 2006, 2009, 2010, 2014, 2016), seventh (2008), eighth (2007, 2018, 2020), and ninth (2021) in the final league standings.

2022 Mountain West Preseason Poll

Rk.	Team (1st-place votes)	Pts.
1.	Colorado State (6)	93
2.	Utah State (3)	91
3.	San José State (1)	75
	Boise State (1)	75
5.	New Mexico	68
6.	UNLV	57
7.	Wyoming	47
8.	San Diego State	33
9.	Fresno State	29
10.	Air Force	27
11.	Nevada	10

MOUNTAIN WEST VOLLEYBALL CHAMPIONSHIP TICKETS ON SALE

> Tickets are now on sale for the 2022 Mountain West Volleyball Championship in Fort Collins, Colorado. The three-day event will run from Nov. 23-25, at Moby Arena on the campus of Colorado State University.

> Single-session tickets range from \$7-15, while all-session passes are \$17-35.

> Tickets can be purchased at CSURams.com, at the Moby Arena box office or by phone at 800-491-RAMS (7267).

> The top six teams in the conference standings will qualify for the Mountain West Volleyball Championship. First-round action starts on Wednesday, Nov. 23, at 1 p.m. MT and 4 p.m. MT. Two semifinal contests will be featured on Thursday, Nov. 24, beginning at 1 p.m. MT and 4 p.m. MT, while the championship match is slated for Friday, Nov. 25, at 6:30 p.m. MT.

> All matches will air live on the Mountain West Network. The MW app is available on your TV through Apple TV, Android TV, Amazon Fire TV or Roku. Mobile applications are available through the iOS App Store and Google Play.



Brent HILLIARD

Head Coach - Third Season at San Diego State

San Diego State Director of Athletics John David Wicker ushered in a new era for the Aztec volleyball team with the hiring of Brent Hilliard as the fifth head coach in program history on Jan. 31, 2020.

In his second season at SDSU, Hilliard and the Aztecs were faced with another demanding schedule, squaring off against 10 teams that qualified for postseason play.

However, San Diego State had its moments of glory in the fall of 2021, posting a 3-0 sweep at eventual Mountain West tournament champion Boise State before recording a five-set thriller on the road at UNLV, which ultimately captured the NIVC crown.

Individually, Hilliard oversaw the continued rise to prominence of Victoria O'Sullivan, who received all-Mountain West recognition for the second straight season after ranking second in the conference with 3.71 kills per set, as the SDSU outside hitter concluded her illustrious career with 1,026 kills overall.

Hilliard's charges enjoyed another successful year scholastically, with nine Aztecs landing on the Mountain West all-academic team, including Ashley Vanderpan, Kennedy Feuerborn and Serena Hodson, who took home the department's prestigious Malik Award, presented to SDSU student-athletes who attain a 4.0 GPA.

In his first season with the Scarlet and Black, Hilliard endured a challenging season fraught with COVID-19 protocols, an abbreviated schedule that was postponed until spring, along with injuries to key players.

However, Hilliard and the Aztecs persevered through the 2021 spring campaign, posting a 6-9 record, highlighted by thrilling victories over Boise State on the road and Colorado State at home in the season finale, respectively. Against the Broncos, SDSU defeated a Boise State team that entered the contest with four consecutive 3-0 sweeps. Two weeks later, the Aztecs snapped an 11-match to the Rams dating back to 2014 and logged their first win over CSU in San Diego since 2012.

Under Hilliard's guidance, O'Sullivan garnered all-Mountain West accolades for the first time in her career, as the SDSU junior led the squad with 3.25 kills per set, which ranked seventh in the conference. In addition, seniors Lauren Lee and Erin Gillcrest received MW Defensive Player of the Week recognition following the team's aforementioned wins over Boise State and Colorado State, respectively.

Hilliard's Aztecs also excelled in the classroom, with 12 student-athlete earning a spot on the Mountain West all-academic team, including Lauren Lee, who also merited first-team all-District 8 academic honors from the College Sports Information Directors of America (CoSIDA).

A 2018 inductee to the Southern California Indoor Volleyball Hall of Fame, Hilliard arrived at SDSU with a wealth of experience after achieving 19 years of unparalleled success as an assistant coach at the University of San Diego, where he served as the Toreros' associate head coach since 2007.

During his fruitful tenure, the Toreros qualified for the NCAA Tournament in all but one of his 19 seasons, advancing to the Sweet 16 in 2004, 2006, 2013 and 2018. In addition, Hilliard helped guide the Toreros to nine West Coast Conference championships while his players earned six All-America awards, 12 All-America honorable mentions, 44 all-WCC accolades and 15 freshman all-conference certificates.

Hilliard twice assumed the reins of the USD program on an interim basis while head coach Jennifer Petrie was absent on maternity leave. In 2006, Hilliard was honored as WCC Coach of the Year after guiding the Toreros to a conference championship and a Sweet 16 appearance in the NCAA Tournament. That season, he coached five all-conference honorees, including WCC Player of the Year Kristen Carlson, as USD finished 14th in the final USA Today/Coaches Poll.

The Toreros also flourished under Hilliard's guidance in 2011, racing to a 13-0 start en route a program-best 28-5 record, highlighted by a spot in the second round of the NCAA Tournament. Throughout his stint, USD was consistently ranked among the nation's top 25, climbing to as high as No. 2 during the 2013 campaign and rising to No. 5 in 2016.

"I would like to thank John David Wicker, Jenny Bramer, Dr. Adela de la Torre and the rest of the SDSU search committee for making me feel so welcome during the interview process," Hilliard said upon his hiring. "To be the head coach of such a remarkable women's volleyball program in my family's hometown is truly a once in a lifetime opportunity.

"We are fully committed to work tirelessly to elevate this program back to an elite status on the college volleyball landscape, one that the student body, faculty, community, alumni and, of course, all future Aztecs will take great pride in."

Hilliard played collegiately at Long Beach State, earning All-America honors in each of his four years from 1990-93, including first-team recognition over his final three seasons. A right-side hitter for the 49ers, Hilliard was named the NCAA Men's Volleyball Player of the Year as a junior in 1992 after leading LBSU to a 31-1 record.

In 1991, Hilliard and the 49ers captured the NCAA Championship with a 3-1 victory over USC in the finals, avenging a loss to the Trojans in the title match the year before. He finished his career as the NCAA all-time leader with 3,034 kills.

Additionally, Hilliard was selected to play for Team USA in the 1992 Summer Olympics in Barcelona, Spain, where he helped the Americans capture the bronze medal. The following year, he won a silver medal at the 1993 Pan American Games in Argentina and also owns a bronze medal from the 1991 World Cup.

After receiving his undergraduate degree in 1993 from Long Beach State in political science, Hilliard continued his volleyball career as a professional in Europe from 1995-98, playing two seasons in Belgium and another in the Netherlands. In 1996, Hilliard and the Masiek Volleyball Club captured the Belgian national championship and competed in the European Champions League.

In addition to his collegiate experience, which included a stint as head coach at nearby Cuyamaca College in 1999 and 2000, Hilliard has also coached for the past 12 years at Wave Volleyball Club in Del Mar, the premier volleyball club in San Diego County.

"Our priority at SDSU will be to engage, attract and secure exceptional student-athletes that strive for both academic and athletic excellence in their everyday lives," Hilliard added. "From day one, we will set expectations high and build from there. I am incredibly excited to get started and I look forward to the bright future ahead."

HILLIARD'S COLLEGIATE COACHING LEDGER (As an Assistant at USD)

Year	Overall Record	WCC Record (Finish)	Postseason
2001	22-9	10-4 (3rd)	NCAA Second Round
2002	25-8	10-4 (3rd)	NCAA First Round
2003	17-13	6-8 (T-5th)	NCAA First Round
2004	24-5	14-0 (1st)	NCAA Sweet 16
2005	23-6	10-4 (T-2nd)	NCAA Second Round
2006*	26-6	13-1 (1st)	NCAA Sweet 16
2007	21-8	11-3 (1st)	NCAA First Round
2008	23-5	12-2 (1st)	NCAA First Round
2009	18-7	10-4 (2nd)	None
2010	24-8	13-1 (1st)	NCAA Second Round
2011*	28-5	12-4 (2nd)	NCAA Second Round
2012	21-7	13-3 (T-1st)	NCAA First Round
2013	26-4	16-2 (1st)	NCAA Sweet 16
2014	19-12	12-6 (T-3rd)	NCAA First Round
2015	22-10	14-4 (2nd)	NCAA Second Round
2016	24-6	15-3 (2nd)	NCAA First Round
2017	25-5	17-1 (T-1st)	NCAA Second Round
2018	18-13	13-5 (3rd)	NCAA Sweet 16
2019	25-6	17-1 (1st)	NCAA Second Round
USD Total	431-143 (.751)		
WCC Total	238-60 (.799)		

As Head Coach at SDSU

Year	Overall Record	MW Record (Finish)	Postseason
2020	6-9	6-9 (8th)	
2021	8-22	5-13 (9th)	
2022	6-17	4-8	
SDSU Total	20-48		
Career as Head Coach	74-59 (.556)		
Overall Total	451-191 (.702)		

Notes

* - Served as interim head coach during the 2006 and 2011 seasons at USD. Record reflected in career totals.

- > Qualified for the NCAA Tournament in 18 of his 19 seasons at USD
- > Reached the NCAA Sweet 16 four times in 2004, 2006, 2013 and 2018
- > Won nine West Coast Conference championships

2022 AZTEC PHOTO ROSTER



Heipua TAUTUA'A
OH | 6-2 | Jr.

2



McKenna DOUGLAS
DS/L | 5-7 | Fr.

3



Kennedy FEUERBORN
S | 6-3 | Jr.

4



Jordyn GOLDSMITH
OPP | 6-1 | So.

6



Madison CORF
OH | 5-11 | Fr.

7



Ellie GEOGHEGAN
DS/L | 5-8 | Fr.

8



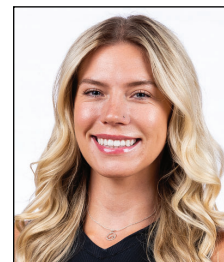
Sara MUKAJ
MB | 6-3 | So.

9



Cara BRAUN
OH | 6-1 | Fr.

10



Kayla RIVERA
OPP | 6-1 | Sr.

11



Julia HAYNIE
MB | 6-1 | Sr.

13



Reagan MERK
OH | 5-11 | So.

14



Mikela LABNO
OH | 6-2 | So.

15



Sarena GONZALEZ
S | 5-8 | Fr.

16



Noa MILLER
S | 5-10 | Sr.

19



Elly SCHRAEDER
MB | 6-2 | So.

20



Kat COOPER
MB | 6-1 | MB

21



Brent HILLIARD
Head Coach



Melanie GREENE
Assistant Coach/
Recruiting Coordinator



STEVE TIMMONS
Assistant Coach



Kara BARKDOLL
Volleyball Operations
Assistant



2022-23 San Diego St. Women's Volleyball Combined Team Statistics All games

Game Records

Overall	Conference	Home	Away	Neutral
6 - 17	4 - 8	4 - 8	2 - 7	0 - 2

Team Box Score

#	Player	SP	Attack					Set		Serve			Dig		Blocking					PTS		
			K	K/S	E	TA	PCT	A	A/S	SA	SE	SA/S	RE	DIG	DIG/S	BS	BA	TOT/S	BLK/S		BE	BHE
2	Tautua'a, Heipua	79	181	2.29	92	507	.176	15	0.19	14	24	0.18	33	165	2.09	7	21	28	0.35	5	1	212.5
3	Douglas, McKenna	37	2	0.05	0	7	.286	38	1.03	12	10	0.32	10	112	3.03	0	0	0	0.00	0	1	14.0
4	Feuerborn, Kennedy	12	7	0.58	4	20	.150	40	3.33	0	0	0.00	0	1	0.08	0	2	2	0.17	0	2	8.0
6	Goldsmith, Jordyn	8	7	0.88	8	25	-.040	0	0.00	0	0	0.00	0	2	0.25	0	1	1	0.13	0	0	7.5
7	Corf, Madison	78	203	2.60	135	527	.129	7	0.09	10	29	0.13	36	110	1.41	4	15	19	0.24	6	2	224.5
8	Geoghegan, Ellie	86	6	0.07	1	9	.556	55	0.64	21	39	0.24	39	269	3.13	0	0	0	0.00	0	0	27.0
9	Mukaj, Sara	9	2	0.22	0	13	.154	2	0.22	1	0	0.11	0	3	0.33	0	1	1	0.11	2	0	3.5
11	Rivera, Kayla	86	200	2.33	113	548	.159	4	0.05	7	11	0.08	0	27	0.31	6	57	63	0.73	6	0	241.5
13	Haynie, Julia	55	92	1.67	22	188	.372	5	0.09	6	9	0.11	0	13	0.24	5	26	31	0.56	4	0	116.0
14	Merk, Reagan	31	11	0.35	8	30	.100	4	0.13	5	7	0.16	6	34	1.10	0	1	1	0.03	1	0	16.5
15	Labno, Mikela	86	191	2.22	98	523	.178	9	0.10	0	2	0.00	10	42	0.49	4	21	25	0.29	0	0	205.5
16	Gonzalez, Sarena	76	3	0.04	0	11	.273	376	4.95	10	22	0.13	1	76	1.00	0	0	0	0.00	0	9	13.0
19	Miller, Noa	86	14	0.16	5	47	.191	443	5.15	22	17	0.26	0	149	1.73	0	5	5	0.06	2	11	38.5
20	Schraeder, Elly	77	93	1.21	35	236	.246	5	0.06	0	0	0.00	0	8	0.10	12	67	79	1.03	13	2	138.5
21	Cooper, Kat	60	65	1.08	27	172	.221	3	0.05	2	12	0.03	0	20	0.33	5	24	29	0.48	1	1	84.0
SAN DIEGO ST.		86	1077	12.52	548	2863	.185	1006	11.70	110	182	1.28	148	1031	11.99	43	241	163.5	1.90	40	29	1,350.5
Opponents		86	1077	12.52	390	2656	.259	981	11.41	148	182	1.72	110	965	11.22	33	433	249.5	2.90	39	28	1,474.5

Team statistics

	SDSU	OPP
ATTACK		
Kills	1077	1077
Errors	548	390
Total Attacks	2863	2656
Attack Pct	.185	.259
Kills/Set	12.52	12.52
SET		
Assists	1006	981
Attempts	2855	2575
Assist Pct	.352	.381
Assists/Set	11.70	11.41
SERVE		
Aces	110	148
Errors	182	182
Attempts	1822	2016
Serve Pct	.900	.910
Aces/Set	1.28	1.72
SERVE RECEPTIONS		
Errors	148	110
Errors/Set	1.72	1.28
Attempts	1834	1641
Reception Pct	.919	.999
DEFENSE		
Digs	1031	965
Digs/Set	11.99	11.22
BLOCKING		
Block solo	43	33
Block Assist	241	433
Total Blocks	163.5	249.5
Blocks/Set	1.90	2.90
Block Errors	40	39
Ball handling errors	29	28
ATTENDANCE		
Total	4081	8759
Dates/Avg Per Date	12/340	9/973
Neutral Site #/Avg	2/104	-
Current win streak	0	-
Home win streak	0	-

Team Results

Date	Opponent	Score	Score-by-set	Att.
08/26/2022	California	L 0-3	20-25,23-25,23-25	357
08/27/2022	Army West Point	W 3-1	25-22,22-25,25-16,25-19	287
08/27/2022	UC San Diego	W 3-1	25-22,25-20,26-28,25-20	341
09/02/2022	vs Baylor	L 1-3	18-25,17-25,29-27,14-25	125
09/03/2022	at Pepperdine	L 0-3	18-25,20-25,32-34	302
09/03/2022	vs UC Santa Barbara	L 1-3	18-25,18-25,25-22,16-25	82
09/09/2022	Maryland	L 1-3	14-25,25-21,20-25,18-25	122
09/09/2022	Arizona	L 0-3	17-25,15-25,11-25	388
09/10/2022	Sacramento St.	L 2-3	16-25,26-28,25-21,25-22,8-15	186
09/15/2022	UCLA	L 0-3	16-25,23-25,15-25	686
09/17/2022	at San Diego	L 1-3	25-20,13-25,14-25,12-25	1000
* 09/22/2022	San Jose St.	L 1-3	18-25,25-18,21-25,10-25	322
* 09/24/2022	Nevada	W 3-1	25-16,25-22,20-25,26-24	244
* 09/27/2022	at Fresno St.	W 3-0	25-18,25-21,25-21	641
* 10/01/2022	at UNLV	L 1-3	15-25,19-25,27-25,22-25	698
* 10/06/2022	at Utah St.	L 0-3	19-25,17-25,10-25	1084
* 10/08/2022	at Boise St.	L 1-3	21-25,16-25,25-22,23-25	1281
* 10/13/2022	Wyoming	L 1-3	14-25,22-25,25-20,17-25	441
* 10/15/2022	Colorado St.	L 0-3	21-25,21-25,23-25	387
* 10/20/2022	at New Mexico	L 1-3	21-25,23-25,25-18,21-25	727
* 10/22/2022	Air Force	W 3-1	25-21,27-29,25-16,25-16	320
* 10/27/2022	at Colorado St.	L 1-3	25-21,23-25,20-25,18-25	2239
* 10/29/2022	at Wyoming	W 3-1	31-29,20-25,25-17,26-24	787



2022-23 San Diego St. Women's Volleyball Combined Team Statistics In Conference games

Game Records

Overall	Conference	Home	Away	Neutral
4 - 8	4 - 8	2 - 3	2 - 5	0 - 0

Team Box Score

##	Player	SP	Attack				Set		Serve			Dig			Blocking				PTS			
			K	K/S	E	TA	PCT	A	A/S	SA	SE	SA/S	RE	DIG	DIG/S	BS	BA	TOT/S		BLK/S	BE	BHE
2	Tautua'a, Heipua	39	73	1.87	32	212	.193	5	0.13	7	9	0.18	12	77	1.97	5	13	18	0.46	1	1	91.5
3	Douglas, McKenna	22	1	0.05	0	6	.167	24	1.09	10	6	0.45	6	69	3.14	0	0	0	0.00	0	0	11.0
4	Feuerborn, Kennedy	8	6	0.75	3	12	.250	29	3.63	0	0	0.00	0	0	0.00	0	0	0	0.00	0	1	6.0
6	Goldsmith, Jordyn	5	4	0.80	6	15	-.133	0	0.00	0	0	0.00	0	2	0.40	0	1	1	0.20	0	0	4.5
7	Corf, Madison	41	118	2.88	74	298	.148	4	0.10	8	16	0.20	14	75	1.83	3	6	9	0.22	1	2	132.0
8	Geoghegan, Ellie	45	4	0.09	1	7	.429	32	0.71	12	18	0.27	21	152	3.38	0	0	0	0.00	0	0	16.0
9	Mukaj, Sara	2	0	0.00	0	1	.000	0	0.00	0	0	0.00	0	0	0.00	0	0	0	0.00	0	0	0.0
11	Rivera, Kayla	45	118	2.62	62	305	.184	4	0.09	7	11	0.16	0	24	0.53	6	31	37	0.82	4	0	146.5
13	Haynie, Julia	35	63	1.80	12	127	.402	4	0.11	5	9	0.14	0	9	0.26	4	19	23	0.66	2	0	81.5
14	Merk, Reagan	12	3	0.25	3	11	.000	2	0.17	0	1	0.00	1	7	0.58	0	1	1	0.08	0	0	3.5
15	Labno, Mikela	45	101	2.24	54	283	.166	7	0.16	0	0	0.00	7	18	0.40	3	10	13	0.29	0	0	109.0
16	Gonzalez, Sarena	38	3	0.08	0	10	.300	175	4.61	4	6	0.11	0	43	1.13	0	0	0	0.00	0	5	7.0
19	Miller, Noa	45	9	0.20	5	31	.129	252	5.60	6	8	0.13	0	79	1.76	0	5	5	0.11	1	4	17.5
20	Schraeder, Elly	38	51	1.34	15	125	.288	1	0.03	0	0	0.00	0	7	0.18	7	35	42	1.11	5	1	75.5
21	Cooper, Kat	32	34	1.06	15	96	.198	3	0.09	0	4	0.00	0	9	0.28	2	9	11	0.34	1	1	40.5
SAN DIEGO ST.		45	588	13.07	282	1539	.199	542	12.04	59	88	1.31	68	571	12.69	30	130	95	2.11	15	15	742.0
Opponents		45	568	12.62	214	1450	.244	506	11.24	68	98	1.51	59	519	11.53	18	203	119.5	2.66	25	9	755.5

Team statistics

	SDSU	OPP
ATTACK		
Kills	588	568
Errors	282	214
Total Attacks	1539	1450
Attack Pct	.199	.244
Kills/Set	13.07	12.62
SET		
Assists	542	506
Attempts	1589	1459
Assist Pct	.341	.347
Assists/Set	12.04	11.24
SERVE		
Aces	59	68
Errors	88	98
Attempts	986	1044
Serve Pct	.911	.906
Aces/Set	1.31	1.51
SERVE RECEPTIONS		
Errors	68	59
Errors/Set	1.51	1.31
Attempts	946	900
Reception Pct	.928	.999
DEFENSE		
Digs	571	519
Digs/Set	12.69	11.53
BLOCKING		
Block solo	30	18
Block Assist	130	203
Total Blocks	95	119.5
Blocks/Set	2.11	2.66
Block Errors	15	25
Ball handling errors	15	9
ATTENDANCE		
Total	1714	7457
Dates/Avg Per Date	5/343	7/1065
Neutral Site #/Avg	0/0	-
Current win streak	0	-
Home win streak	0	-

Team Results

Date	Opponent	Score	Score-by-set	Att.
* 09/22/2022	San Jose St.	L 1-3	18-25,25-18,21-25,10-25	322
* 09/24/2022	Nevada	W 3-1	25-16,25-22,20-25,26-24	244
* 09/27/2022	at Fresno St.	W 3-0	25-18,25-21,25-21	641
* 10/01/2022	at UNLV	L 1-3	15-25,19-25,27-25,22-25	698
* 10/06/2022	at Utah St.	L 0-3	19-25,17-25,10-25	1084
* 10/08/2022	at Boise St.	L 1-3	21-25,16-25,25-22,23-25	1281
* 10/13/2022	Wyoming	L 1-3	14-25,22-25,25-20,17-25	441
* 10/15/2022	Colorado St.	L 0-3	21-25,21-25,23-25	387
* 10/20/2022	at New Mexico	L 1-3	21-25,23-25,25-18,21-25	727
* 10/22/2022	Air Force	W 3-1	25-21,27-29,25-16,25-16	320
* 10/27/2022	at Colorado St.	L 1-3	25-21,23-25,20-25,18-25	2239
* 10/29/2022	at Wyoming	W 3-1	31-29,20-25,25-17,26-24	787

SEASON HIGHS

CAREER HIGHS

#2 HEIPUA TAUTUA'A

Hitting Percentage (*min. 7 kills*) .379 (13-29-29) vs. Army West Point, 8/27/22
 Total Attempts 35, at Pepperdine, 9/3/22
 Kills 14, four times, last: at Colorado State, 10/27/22
 Assists 3, at Pepperdine, 9/3/22
 Aces 4, at Pepperdine, 9/3/22
 Digs 16, vs. No. 9 Baylor, 9/2/22
 Block Solos 2, vs. San José State, 9/22/22
 Block Assists 5, vs. San José State, 9/22/22
 Total Blocks 7, vs. San José State, 9/22/22
 Points 17.5, at Colorado State, 10/27/22

#3 MCKENNA DOUGLAS

Hitting Percentage (*min. 7 kills*) N/A
 Total Attempts 4, at UNLV, 10/1/22
 Kills 1, twice, last: at Fresno State, 9/27/22
 Assists 7, vs. Nevada, 9/24/22
 Aces 5, at Fresno State, 9/27/22
 Digs 26, vs. Nevada, 9/24/22
 Block Solos N/A
 Block Assists N/A
 Total Blocks N/A
 Points 6.0, at Fresno State, 9/27/22

#4 KENNEDY FEUERBORN

Hitting Percentage (*min. 7 kills*) N/A
 Total Attempts 5, twice, last: vs. Wyoming, 10/13/22
 Kills 2, three times, last: vs. Wyoming, 10/13/22
 Assists 15, vs. Nevada, 9/24/22
 Aces N/A
 Digs 1, vs. Maryland, 9/9/22
 Block Solos N/A
 Block Assists 1, twice, last: vs. Maryland, 9/9/22
 Total Blocks 1, twice, last: vs. Maryland, 9/9/22
 Points 2.0, three times, last: vs. Wyoming, 10/13/22

#6 JORDYN GOLDSMITH

Hitting Percentage (*min. 7 kills*) N/A
 Total Attempts 9, vs. UC Santa Barbara, 9/3/22
 Kills 3, twice, last: vs. Colorado State, 10/15/22
 Assists N/A
 Aces N/A
 Digs 2, vs. Nevada, 9/24/22
 Block Solos N/A
 Block Assists 1, vs. Colorado State, 10/15/22
 Total Blocks 1, vs. Colorado State, 10/15/22
 Points 3.5, vs. Colorado State, 10/15/22

#7 MADISON CORF

Hitting Percentage (*min. 7 kills*) .381, at Wyoming, 10/29/22
 Total Attempts 47, vs. Nevada, 9/24/22
 Kills 22, vs. Nevada, 9/24/22
 Assists 2, vs. Colorado State, 10/15/22
 Aces 3, vs. Air Force, 10/22/22
 Digs 11, twice, last: at New Mexico, 10/20/22
 Block Solos 1, three times, last: at UNLV, 10/1/22
 Block Assists 2, twice, last: vs. Sacramento State, 9/10/22
 Total Blocks 2, three times, last: vs. Sacramento State, 9/10/22
 Points 24.5, vs. Air Force, 10/22/22

#8 ELLIE GEOGHEGAN

Hitting Percentage (*min. 7 kills*) N/A
 Total Attempts 3, at Fresno State, 9/27/22
 Kills 2, at Fresno State, 9/27/22
 Assists 8, twice, last: at Wyoming, 10/29/22
 Aces 3, twice, last: vs. Wyoming, 10/13/22
 Digs 24, at New Mexico, 10/20/22
 Block Solos N/A
 Block Assists N/A
 Total Blocks N/A
 Points 3.0, three times, last: vs. Wyoming, 10/13/22

.462 (14-2-26), at Boise State, 3/20/21
 38, vs. Nevada, 2/26/21
 15, vs. Nevada, 2/26/21
 5, vs. Fresno State, 10/7/21
 4, at Pepperdine, 9/3/22
 22, vs. New Mexico, 2/20/21
 3, at Wyoming, 3/5/21
 6, at Boise State, 3/20/21
 7, vs. San José State, 9/22/22
 19.0, at Boise State, 3/20/21

N/A
 4, at UNLV, 10/1/22
 1, twice, last: at Fresno State, 9/27/22
 7, vs. Nevada, 9/24/22
 5, at Fresno State, 9/27/22
 26, vs. Nevada, 9/24/22
 N/A
 N/A
 N/A
 6.0, at Fresno State, 9/27/22

N/A
 15, vs. Fresno State, 10/7/21
 6, at UNLV, 2/5/21
 27, at UNLV, 2/5/21
 1, twice, last: vs. Boise State, 10/30/21
 7, vs. Fresno State, 2/12/21
 1, twice, last: vs. Fresno State, 2/12/21
 5, vs. Nevada, 11/18/21
 5, vs. Nevada, 11/18/21
 7.0, twice, last: vs. Utah State, 10/28/21

.636 (7-0-11), vs. Air Force 10/2/21
 27, vs. Colorado State, 10/21/21
 9, three times, last: at Wyoming, 10/23/21
 2, vs. Boise State, 10/30/21
 N/A
 3, four times, last: at Utah State, 10/16/21
 1, four times, last: at Wyoming, 10/23/21
 4, twice, last: vs. Fresno State, 10/7/21
 5, vs. Fresno State, 10/7/21
 10.0, at Wyoming, 10/23/21

.381, at Wyoming, 10/29/22
 47, vs. Nevada, 9/24/22
 22, vs. Nevada, 9/24/22
 2, vs. Colorado State, 10/15/22
 3, vs. Air Force, 10/22/22
 11, twice, last: at New Mexico, 10/20/22
 1, three times, last: at UNLV, 10/1/22
 2, twice, last: vs. Sacramento State, 9/10/22
 2, three times, last: vs. Sacramento State, 9/10/22
 24.5, vs. Air Force, 10/22/22

N/A
 3, at Fresno State, 9/27/22
 2, at Fresno State, 9/27/22
 8, twice, last: at Wyoming, 10/29/22
 3, twice, last: vs. Wyoming, 10/13/22
 24, at New Mexico, 10/20/22
 N/A
 N/A
 N/A
 3.0, three times, last: vs. Wyoming, 10/13/22

SEASON HIGHS

CAREER HIGHS

#9 SARA MUKAJ

Hitting Percentage (<i>min. 7 kills</i>)	N/A
Total Attempts	6, vs. Arizona, 9/9/22
Kills	1, twice, last: vs. Arizona, 9/9/22
Assists	2, vs. Sacramento State, 9/10/22
Aces	1, vs. Sacramento State, 9/10/22
Digs	3, vs. Sacramento State, 9/10/22
Block Solos	N/A
Block Assists	1, vs. Sacramento State, 9/10/22
Total Blocks	1, vs. Sacramento State, 9/10/22
Points	1.5, vs. Sacramento State, 9/10/22

#10 CARA BRAUN

Hitting Percentage (<i>min. 7 kills</i>)	
Total Attempts	
Kills	
Assists	
Aces	
Digs	
Block Solos	
Block Assists	
Total Blocks	
Points	

#11 KAYLA RIVERA

Hitting Percentage (<i>min. 7 kills</i>)	.647 (12-1-17) at Pepperdine, 9/3/22
Total Attempts	36, at New Mexico, 10/20/22
Kills	13, twice, last: at Wyoming, 10/29/22
Assists	2, at Fresno State, 9/27/22
Aces	2, twice, last: at Wyoming, 10/29/22
Digs	5, twice, last: at New Mexico, 10/20/22
Block Solos	1, four times, last: at Colorado State, 10/27/22
Block Assists	7, vs. Army West Point, 8/27/22
Total Blocks	7, twice, last: at Colorado State, 10/27/22
Points	17.0, twice, last: at Wyoming, 10/29/22

* - played at Georgia (Fall 2018-Fall 2021)

#13 JULIA HAYNIE

Hitting Percentage (<i>min. 7 kills</i>)	.769 (10-0-13), at New Mexico, 10/20/22
Total Attempts	19, three times, last: at Wyoming, 10/29/22
Kills	10, three times, last: at Wyoming, 10/29/22
Assists	3, at Fresno State, 9/27/22
Aces	2, twice, last: at UNLV, 10/1/22
Digs	2, three times, last: at New Mexico, 10/20/22
Block Solos	1, twice, last: at New Mexico, 10/20/22
Block Assists	6, at New Mexico, 10/20/22
Total Blocks	7, at New Mexico, 10/20/22
Points	14.0, at New Mexico, 10/20/22

^ - played at Portland State (Fall 2019 & Spring 2021)

#14 REAGAN MERK

Hitting Percentage	.286 (7-3-14), vs. UC Santa Barbara, 9/3/22
Total Attempts	14, vs. UC Santa Barbara, 9/3/22
Kills	7, vs. UC Santa Barbara, 9/3/22
Assists	2, vs. Maryland, 9/9/22
Aces	2, twice, last: vs. Maryland, 9/9/22
Digs	7, vs. Maryland, 9/9/22
Block Solos	N/A
Block Assists	1, at Fresno State, 9/27/22
Total Blocks	1, at Fresno State, 9/27/22
Points	7.0, vs. UC Santa Barbara, 9/3/22

#15 MIKELA LABNO

Hitting Percentage (<i>min. 7 kills</i>)	.450 (10-1-20), at No. 8 San Diego, 9/17/22
Total Attempts	35, at New Mexico, 10/20/22
Kills	16, at Boise State, 10/8/22
Assists	2, twice, last: at Fresno State, 9/27/22
Aces	N/A
Digs	6, twice, last: vs. Nevada, 9/24/22
Block Solos	1, three times, last: vs. Colorado State, 10/15/22
Block Assists	4, at Wyoming, 10/29/22
Total Blocks	4, at Wyoming, 10/29/22
Points	17.0, at Boise State, 10/8/22

.636 (7-0-11) at Sam Houston, 8/28/21
11, at Sam Houston, 8/28/21
7, at Sam Houston, 8/28/21
4, twice, last: at UC Santa Barbara, 9/3/21
4, at Sam Houston, 8/27/21
5, at Sam Houston, 8/28/21
1, at UC Santa Barbara, 9/3/21
4, twice, last: vs. Pepperdine, 9/4/21
4, three times, last: vs. Pepperdine, 9/4/21
10.0, at Sam Houston, 8/28/21

.647 (12-1-17) at Pepperdine, 9/3/22
36, at New Mexico, 10/20/22; at Texas A&M, 10/8/21*
15, at Texas A&M, 10/8/21*
2, at Fresno State, 9/27/22
2, seven times, last: at Wyoming, 10/29/22
18, at Texas A&M, 10/8/21*
5, vs. Arkansas, 2/5/21*
7, vs. Army West Point, 8/27/22
7, twice, last: at Colorado State, 10/27/22
17.5, at Texas A&M, 10/8/21*

.769 (10-0-13), at New Mexico, 10/20/22
25, vs. Idaho, 1/25/21^
11, vs. Idaho, 1/25/21^
3, at Fresno State, 9/27/22
3, vs. UC Davis, 9/7/19^
4, twice, last: at UNLV, 11/1/21
2, twice, last: at Fresno State, 11/6/21
9, vs. Eastern Washington, 10/31/19^
10, vs. Eastern Washington, 10/31/19^
14.0, at New Mexico, 10/20/22

.385 (7-2-13), vs. Texas Southern, 9/17/21
20, vs. UC Riverside, 9/18/21
7, three times: vs. UC Santa Barbara, 9/3/22
2, three times, last: vs. Maryland, 9/9/22
2, three times, last: vs. Maryland, 9/9/22
7, vs. Maryland, 9/9/22
1, vs. UC Riverside, 9/18/21
2, vs. UC Riverside, 9/18/21
3, vs. UC Riverside, 9/18/21
9.0, vs. UC Riverside, 9/18/21

.522 (13-1-23), vs. Pepperdine, 9/4/21
35, at New Mexico, 10/20/22
16, at Boise State, 10/8/22
2, three times, last: at Fresno State, 9/27/22
2, at Long Beach State, 9/14/21
13, vs. UC Riverside, 9/18/21
2, vs. San Diego, 9/11/21
4, at Wyoming, 10/29/22
4, twice last: at Wyoming, 10/29/22
17.0, at Boise State, 10/8/22

SEASON HIGHS

CAREER HIGHS

#16 SARENA GONZALEZ

Hitting Percentage (<i>min. 7 kills</i>)	N/A
Total Attempts	6, at UNLV, 10/1/22
Kills	1, three times, last: at Colorado State, 10/27/22
Assists	31, at Wyoming, 10/29/22
Aces	3, vs. Maryland, 9/9/22
Digs	8, at Colorado State, 10/27/22
Block Solos	N/A
Block Assists	N/A
Total Blocks	N/A
Points	3.0, twice, last: at Fresno State, 9/27/22

#19 NOA MILLER

Hitting Percentage (<i>min. 7 kills</i>)	N/A
Total Attempts	8, at UNLV, 10/1/22
Kills	3, at Boise State, 10/8/22
Assists	33, vs. Air Force, 10/22/22
Aces	6, vs. UC San Diego, 8/27/22
Digs	12, vs. Army West Point, 8/27/22
Block Solos	N/A
Block Assists	3, at New Mexico, 10/20/22
Total Blocks	3, at New Mexico, 10/20/22
Points	6.0, vs. UC San Diego, 8/27/22

* - played at Wofford in 2018 and at Arizona State in 2019

#20 ELLY SCHRAEDER

Hitting Percentage (<i>min. 7 kills</i>)	.375, (8-2-16), vs. Army West Point, 8/27/22
Total Attempts	21, at Wyoming, 10/29/22
Kills	8, three times, last: at Wyoming, 10/29/22
Assists	1, five times, last: at Wyoming, 10/29/22
Aces	N/A
Digs	2, at Colorado State, 10/27/22
Block Solos	2, twice, last: at UNLV, 10/1/22
Block Assists	8, vs. Army West Point, 8/27/22
Total Blocks	9.0, vs. Army West Point, 8/27/22
Points	13.0, vs. Army West Point, 8/27/22

+ - played at San Diego (Spring & Fall 2021)

#21 KAT COOPER

Hitting Percentage (<i>min. 7 kills</i>)	.600 (7-1-10), vs. UC San Diego, 8/27/22
Total Attempts	17, at New Mexico, 10/20/22
Kills	7, vs. UC San Diego, 8/27/22
Assists	2, at Colorado State, 10/27/22
Aces	1, twice, last: vs. Army West Point, 8/27/22
Digs	5, vs. UC San Diego, 8/27/22
Block Solos	1, five times, last: vs. Wyoming, 10/13/22
Block Assists	4, twice, last: vs. UC San Diego, 8/27/22
Total Blocks	5, twice, last: vs. UC San Diego, 8/27/22
Points	10.0, vs. UC San Diego, 8/27/22

N/A
6, at UNLV, 10/1/22
1, three times, last: at Colorado State, 10/27/22
31, at Wyoming, 10/29/22
3, vs. Maryland, 9/9/22
8, at Colorado State, 10/27/22
N/A
N/A
N/A
3.0, twice, last: at Fresno State, 9/27/22

N/A
8, at UNLV, 10/1/22
6, vs. Fresno State, 10/7/21
33, vs. Air Force, 10/22/22
6, vs. UC San Diego, 8/27/22
16, vs. Houston, 8/30/19*
N/A
3, at New Mexico, 10/20/22
3, at New Mexico, 10/20/22
6.0 twice, last: vs. UC San Diego, 8/27/22

.778 (7-0-9), vs. Portland (2/10/21)+
21, at Wyoming, 10/29/22
8, three times, last: at Wyoming, 10/29/22
2, at Loyola Marymount, 3/13/21+
1, at Loyola Marymount, 3/13/21+
2, at Colorado State, 10/27/22
2, four times, last: at UNLV, 10/1/22
8, vs. Army West Point, 8/27/22
9.0, vs. Army West Point, 8/27/22
13.0, vs. Army West Point, 8/27/22

.600 (7-1-10), vs. UC San Diego, 8/27/22
17, at New Mexico, 10/20/22
7, vs. UC San Diego, 8/27/22
2, at Colorado State, 10/27/22
1, twice, last: vs. Army West Point, 8/27/22
5, vs. UC San Diego, 8/27/22
1, five times, last: vs. Wyoming, 10/13/22
4, twice, last: vs. UC San Diego, 8/27/22
5, twice, last: vs. UC San Diego, 8/27/22
10.0, vs. UC San Diego, 8/27/22