



SAN DIEGO STATE AZTECS

2022 Volleyball Weekly Notes

Jim Solien (Primary Contact)
 Assistant Media Relations Director
Office Phone Number: (619) 594-2576
E-Mail Address: jsolien@sdsu.edu
News Release Date: Oct. 26, 2022

SDSU Official Athletics Website: goaztecs.com
SDSU Official Athletics Twitter: @GoAztecs
SDSU Official Athletics Instagram: @GoAztecs
SDSU Official Athletics Facebook: facebook.com/goaztecs
SDSU Official Athletics YouTube: youtube.com/goaztecscom

2022 AZTEC VOLLEYBALL SCHEDULE

| Day/Date | Opponent | Time |
|--------------------|---------------------------------|-----------|
| Friday, Aug. 26 | California [^] (MWN) | L, 0-3 |
| Saturday, Aug. 27 | Army West Point [^] | W, 3-1 |
| Saturday, Aug. 27 | UC San Diego [^] (MWN) | W, 3-1 |
| Friday, Sept. 2 | vs. No. 9 Baylor# | L, 1-3 |
| Saturday, Sept. 3 | at Pepperdine# | L, 0-3 |
| Saturday, Sept. 3 | vs. UC Santa Barbara# | L, 1-3 |
| Friday, Sept. 9 | Maryland~ | L, 1-3 |
| Friday, Sept. 9 | Arizona~ (MWN) | L, 0-3 |
| Saturday, Sept. 10 | Sacramento State~ | L, 2-3 |
| Thursday, Sept. 15 | UCLA+ (MWN) | L, 0-3 |
| Saturday, Sept. 17 | at San Diego+ | L, 1-3 |
| Thursday, Sept. 22 | San José State* (MWN) | L, 1-3 |
| Saturday, Sept. 24 | Nevada* | W, 3-1 |
| Tuesday, Sept. 27 | at Fresno State* (MWN) | W, 3-0 |
| Saturday, Oct. 1 | at UNLV* (MWN) | L, 1-3 |
| Thursday, Oct. 6 | at Utah State* (MWN) | L, 0-3 |
| Saturday, Oct. 8 | at Boise State* (MWN) | L, 1-3 |
| Thursday, Oct. 13 | Wyoming* | L, 1-3 |
| Saturday, Oct. 15 | Colorado State* (MWN) | L, 0-3 |
| Thursday, Oct. 20 | at New Mexico* (MWN) | L, 1-3 |
| Saturday, Oct. 22 | Air Force* (MWN) | W, 3-1 |
| Thursday, Oct. 27 | at Colorado State* (MWN) | 7 p.m. MT |
| Saturday, Oct. 29 | at Wyoming* (MWN) | Noon MT |
| Thursday, Nov. 3 | Boise State* (MWN) | 7 p.m. PT |
| Saturday, Nov. 5 | Utah State* (MWN) | 1 p.m. PT |
| Monday, Nov. 7 | Fresno State* | 5 p.m. PT |
| Thursday, Nov. 10 | UNLV* (MWN) | 7 p.m. PT |
| Thursday, Nov. 17 | at Nevada* (MWN) | 7 p.m. PT |
| Saturday, Nov. 19 | at San José State* (MWN) | 1 p.m. PT |

[^] - San Diego State Invitational (San Diego, Calif.)
[#] - Pepperdine ASICS Classic (Malibu, Calif.)
[~] - Aztec Classic (San Diego, Calif.)
⁺ - SDSU/USD Challenge (San Diego, Calif.)

* - Mountain West match
 (MWN) - Mountain West Network match

Socially
 Twitter: @AztecVB
 Instagram: @Aztec_WVB

Match Week Preview

Links to Mountain West Network streaming video and live stats on GoAztecs.com

San Diego State (5-16, 3-7 MW) at Colorado State (15-6, 8-2 MW)
 Thursday, Oct. 27 | 7 p.m. MT (6 p.m. PT) | Live Stats | MW Network
 Series: Colorado State leads 47-17

San Diego State (5-16, 3-7 MW) at Wyoming (9-13, 5-5 MW)
 Saturday, Oct. 29 | Noon MT (11 a.m. PT) | Live Stats | MW Network
 Series: SDSU leads 36-25



AZTEC VOLLEYBALL HITS THE ROAD FOR MATCHES AT COLORADO STATE, WYOMING

- > The San Diego State volleyball team continues the second half of its Mountain West schedule when it travels to the Front Range of the Rocky Mountains to battle Colorado State and Wyoming this week.
- > The Aztecs will lock horns with the Rams in Fort Collins, Colorado, on Thursday, Oct. 27, beginning at 7 p.m. MT (6 p.m. PT), before continuing north to Laramie, Wyoming, for a clash with the Cowgirls on Saturday, Oct. 29, starting at noon MT (11 a.m. PT).
- > In addition to live stats, both contests will be streamed live via the Mountain West Network on GoAztecs.com.
- > SDSU split two conference showdowns last week, dropping a hard-fought 3-1 decision at New Mexico on Oct. 20, before returning home to defeat Air Force in four sets on Oct. 20, to snap a six-match slide.
- > With their results, the Aztecs (5-16, 3-7 MW) find themselves slotted ninth in the conference this week, two matches behind sixth-place Wyoming, as the top six teams qualify for the Mountain West Championship next month.
- > Against the Falcons, three SDSU players surpassed the double-digit kill plateau, including Madison Corf, who launched a match-high 21 non-returnables, followed Heipua Tautau'a, who notched her fourth double-double of the year with 12 kills and 15 digs, and Kayla Rivera, who added 11 put-aways of her own.
- > Not to be outdone, libero Ellie Geoghegan led the Scarlet and Black with a combined 47 digs (5.88) in those two matches to earn MW Defensive Player of the Week and conference Freshman of the Week.
- > With her awards, the Manhattan Beach, California, native becomes the just the second MW player to earn two league honors in the same week this season.
- > Entering the week, Geoghegan ranks eighth in the MW with 3.30 digs per set in conference matches.

SERIES RECORD VS. COLORADO STATE

- > The Rams lead the all-time series 47-17.
- > The Aztecs kept the score close in their last meeting with CSU but came up empty in three sets (21-25, 21-25, 23-25) on Oct. 15 in San Diego.
- > In that contest, Madison Corf logged her first collegiate double-double with 15 kills and 11 digs, while Kayla Rivera powered down nine shots, followed by Mikela Labno's eight put-aways.
- > Labno hit .304 for the match, committing one error in 23 attempts and registered a pair of blocks, while Ellie Geoghegan led all players with 14 digs.
- > SDSU blasted as many kills as the Rams (43-43) but were plagued by 19 attack errors, seven of which were the result of CSU blocks. In addition, the Aztecs maintained a 41-36 advantage in team digs but nine errant serves also contributed to their undoing.
- > Conversely, the Rams totaled just nine attack errors, out-hitting the Scarlet and Black .347 to .224 for the day while maintaining the edge in team blocks (7.0 to 4.0).
- > The teams combined for 10 ties and four lead changes in the third set, as the Aztecs fought to extend the match. However, CSU broke a 22-22 deadlock with a 3-1 spurt late in the frame to secure the sweep.

SERIES RECORD VS. WYOMING

- > Despite dropping the last seven encounters with the Cowgirls, San Diego State still leads the all-time series 36-25 in 61 encounters since 1984.
- > The Aztecs suffered a four-set defeat to Wyoming at home (14-25, 22-25, 25-20, 17-25) in the last match between the two sides on Oct 13.
- > SDSU was unable to erase an 0-2 deficit in sets after combining for just 17 kills and a .030 hitting percentage in that span.
- > Overall, the Cowgirls out-hit the Aztecs .258 to .028, maintaining the statistical advantage in kills (46-39), team blocks (13.0 to 8.0) and service aces (6-5) en route to the win.
- > Kayla Rivera led SDSU with nine kills and tied Kat Cooper for team-high honors with four blocks, including a solo stop, while Heipua Tautau'a finished with seven put-aways of her own and six digs.
- > The SDSU fortunes were also boosted by Ellie Geoghegan, who led all players with 18 digs and three service aces, while Noa Miller logged her second double-double of the year with 18 assists and 10 digs.

ON THE HORIZON

- > Following Saturday's clash, San Diego State opens a four-match homestand, starting next week when it plays host to Boise State on Thursday, Nov. 3, before battling Utah State on Saturday, Nov. 5.
- > The Aztecs close out the second half of their Mountain West schedule in the inverse order of teams they faced in the first half of their conference slate.

GENERAL INFORMATION

Location San Diego, Calif.
 Founded 1897
 Enrollment 35,782
 Nickname Aztecs
 Colors Scarlet and Black (Pantone 187)
 Conference Mountain West
 Affiliation Division I
 President Dr. Adela de la Torre
 Director of Athletics John David Wicker
 Faculty Representative Dr. Frank Harris III
 Home Facility Aztec Court at Peterson Gym (2,000)

TEAM INFORMATION

Head Coach Brent Hilliard
 Alma Mater Long Beach State '93
 Record at SDSU 19-47 (Third year)
 Career Record 73-58 (Fifth year)
 E-Mail bhilliard@sdsu.edu
 Volleyball Office Phone (619) 594-5064
 Volleyball Office Fax (619) 594-1674
 Assistant Coach/Recruiting Coordinator Melanie Greene
 Assistant Coach Steve Timmons
 Volleyball Operations Assistant Kara Barkdoll
 Fall 2021 Record 8-22
 Fall 2021 Conference Record 5-13 (Ninth)
 Fall 2021 Home Record 5-4
 Spring 2021 Road Record 1-5
 Letterwinners Returning/Lost 9/8
 Starters Returning/Lost 3/3+Libero

PROGRAM HISTORY

First Year of Volleyball 1976
 Overall Record 899-655 (.578)
 NCAA Appearances 14
 Last Postseason Appearance 2012
 NCAA Postseason Record 15-14

MEDIA RELATIONS

Assistant Media Relations Director Jim Solien
 E-Mail jsolien@sdsu.edu
 SID Office Phone (619) 594-2576
 SID Office Fax (619) 582-6541
 Official Athletic Website www.GoAztecs.com

**2022 AZTEC VOLLEYBALL
 STATISTICAL LEADERS**
(min. 50 percent of team sets played)

| | | |
|----------------------|------|------------------------|
| Hitting Percentage* | .367 | Julia Haynie |
| Kills | 183 | Madison Corf |
| Kills per set | 2.61 | Madison Corf |
| Assists | 401 | Noa Miller |
| Assists per set | 5.14 | Noa Miller |
| Service Aces | 21 | E. Geoghegan/N. Miller |
| Service Aces per set | 0.27 | E. Geoghegan/N. Miller |
| Digs | 239 | Ellie Geoghegan |
| Digs per set | 3.06 | Ellie Geoghegan |
| Blocks | 66.0 | Elly Schraeder |
| Blocks per set | 0.96 | Elly Schraeder |

*. min 3.0 attempts per set

2022 AZTEC VOLLEYBALL FALL ROSTER

| No. | Player | Pos. | Ht. | Yr. | Hometown (Last School) |
|-----|-------------------|------|------|-----|--|
| 2 | Heipua Tautua'a | OH | 6-2 | Jr. | Wai'anae, Hawaii (Wai'anae HS) |
| 3 | McKenna Douglas | DS/L | 5-7 | Fr. | Phoenix, Ariz. (Notre Dame Prep) |
| 4 | Kennedy Feuerborn | S | 6-3 | Jr. | Overland Park, Kan. (Johnson County CC) |
| 6 | Jordyn Goldsmith | OPP | 6-1 | So. | Valleyford, Wash. (Freeman HS) |
| 7 | Madison Corf | OH | 5-11 | Fr. | Kansas City, Mo. (Liberty HS) |
| 8 | Ellie Geoghegan | DS/L | 5-8 | Fr. | Manhattan Beach, Calif. (Mira Costa HS) |
| 9 | Sara Mukaj | MB | 6-3 | So. | Madena, Italy (Istituto Scaruffi-Levi Tricolore) |
| 10 | Cara Braun | OH | 6-1 | Fr. | Tempe, Ariz. (Valley Christian HS) |
| 11 | Kayla Rivera | OPP | 6-1 | Sr. | Ventura, Calif. (Univ. of Georgia) |
| 13 | Julia Haynie | MB | 6-2 | Sr. | Temecula, Calif. (Portland State) |
| 14 | Reagan Merk | OH | 5-11 | So. | Huntington Beach, Calif. (Mater Dei HS) |
| 15 | Mikela Labno | OH | 6-2 | So. | Hilmar, Calif. (Hilmar HS) |
| 16 | Sarena Gonzalez | S | 5-8 | Fr. | Temecula, Calif. (Temecula Valley HS) |
| 19 | Noa Miller | S | 5-10 | Sr. | Douglasville, Ga. (Arizona State) |
| 20 | Elly Schraeder | MB | 6-2 | So. | Athol, Idaho (Univ. of San Diego) |
| 21 | Kat Cooper | MB | 6-1 | Fr. | Springdale, Ark. (Har-Ber HS) |

Head Coach: Brent Hilliard (Long Beach State, 1993), Third season at SDSU
Assistant Coach/Recruiting Coordinator: Melanie Greene (San Diego State, 2007), 12th season at SDSU
Assistant Coach: Steve Timmons (USC), Third season at SDSU
Volleyball Operations Assistant: Kara Barkdoll (Cal State San Marcos, 2015), Fifth season at SDSU

Pronunciations

| | |
|----------------------|--------------------------|
| #2 HEIPIUA TAUTUA'A | HEY-poo-ah TAW-too-AH-AH |
| #4 Kennedy FEUERBORN | FEWER-born |
| #8 Ellie GEOGHEGAN | GAY-gun |
| #9 Sara MUKAJ | MOO-kye |
| #15 MIKELA Labno | ma-KAY-la |
| #19 NOA Miller | Noah |
| #21 Elly SCHRAEDER | SCHRAY-der |



OPPONENT COMPARISON

| 2022 Overall Stats | SDSU | MW Rank | OPP | CSU | MW Rank | OPP | WYO | MW Rank | OPP |
|----------------------|-------|---------|-------|-------|---------|-------|-------|---------|-------|
| Hitting Percentage | .179 | 10 | .272 | .270 | 1 | .207 | .221 | 5 | .201 |
| Kills per set | 12.37 | 7 | 12.53 | 12.71 | 5 | 12.54 | 11.93 | 8 | 12.61 |
| Assists per set | 11.58 | 6 | 11.33 | 11.60 | 5 | 11.66 | 10.90 | 9 | 11.65 |
| Service Aces per set | 1.28 | 11 | 1.79 | 1.35 | 9 | 1.29 | 1.38 | 8 | 1.52 |
| Digs per set | 11.92 | 11 | 10.79 | 12.03 | 10 | 11.96 | 12.84 | 7 | 13.64 |
| Blocks per set | 1.80 | 11 | 3.04 | 2.22 | 6 | 2.24 | 2.16 | 8 | 1.88 |

SCOUTING THE OPPOSITION

> **Colorado State (15-6, 8-2 MW)** remains in third place in the Mountain West after splitting a pair of matches last week. The Rams dropped a 3-1 decision at home to Boise State (26-28, 25-22, 21-25, 20-25) on Oct. 20 before rebounding with a four-set triumph at Utah State two days later (25-23, 25-14, 17-25, 25-22). Picked first in the MW preseason coaches poll, CSU is 8-4 on its home floor this year and a combined 7-2 in road/neutral matches. Offensively, junior outside hitter Kennedy Stanford leads the Rams with 3.20 kills per set (256 overall), which ranks ninth in the league, while sophomore middle blocker Malaya Jones (2.76), junior middle blocker Karina Leber (2.39), and senior outside hitter Annie Sullivan (2.28) are all averaging over two put-aways per frame. Entering the week, senior setter Ciera Pritchard has climbed into the second spot in the league with 9.82 assists per set, while junior middle blocker Naeemah Weathers (.357) and Leber (.329) find themselves among the MW leaders in hitting percentage, ranking fifth and eighth, respectively. Along the back row, freshman defensive specialist Kate Yoshimoto is slotted eighth in the conference with 3.21 digs per set. As a team, CSU leads the MW with a .270 hitting percentage and finds itself near the middle of the back in kills (5th, 12.54/set), assists (5th, 11.38/set) and blocks (6th, 2.24/set) but ranks 10th in digs (12.03/set). The Rams are coached by Tom Hilbert, who has guided CSU to 23 NCAA Tournament appearances since his arrival on the Fort Collins campus in 1997. Previously, Hilbert was the head coach at Idaho from 1989-96. His career record stands at 805-231, including a 630-158 mark at Colorado State.

> **Saturday's opponent Wyoming (9-13, 5-5 MW)** has won three of its last four to climb into sole possession of sixth place in the Mountain West standings. The Cowgirls are coming off a thrilling 3-2 upset at Boise State on Oct. 22 (19-25, 25-19, 22-25, 26-24, 15-12) after rallying from a 2-1 deficit in sets. Oddly, Wyoming is 2-8 at home this season but a combined 7-5 in road/neutral matches. Prior to their clash with the Aztecs, the Cowgirls will play host to Fresno State on Thursday evening. Offensively, Wyoming sports three players who are averaging over two kills per set in junior outside hitter Naya Shimé (2.99), fellow outside and classmate Corin Carruth (2.66) and graduate outside hitter KC McMahon (2.63). In addition, sophomore setter Kasia Partyka (9.76 assists/set) and freshman middle blocker Tierney Barlow (.359 hitting percentage) occupy the fourth spot in the Mountain West in their respective statistical categories, with the latter ranking 63rd nationally. The Cowgirls' back row is bolstered by senior Hailey Zuroske, who ranks fifth in the league with 3.75 digs per set, while sophomore Kayla Mazzocca leads the Wyoming defensive charge at the net and is slotted eighth in blocks (1.02/set). Collectively, the Cowgirls find themselves in the league's fifth position in hitting percentage (.221) but rank just eighth in both kills (11.93/set) and blocks (2.16/set). Wyoming is coached by Chad Callihan, who is in his 10th season on the Laramie campus after spending five years as head coach at Georgia Southern. He has also served as head coach at Appalachian State and Radford. Callihan's career record stands at 404-244, including a 177-108 mark with the Cowgirls.

2022 MOUNTAIN WEST STANDINGS (AS OF OCT. 26)

| Team | ---Conference--- | | | -----Overall----- | | | |
|-----------------|------------------|----|------|-------------------|----|------|------|
| | W | L | Pct. | W | L | Pct. | Strk |
| UNLV | 9 | 1 | .900 | 18 | 3 | .857 | W9 |
| San José State | 9 | 1 | .900 | 15 | 5 | .789 | L1 |
| Colorado State | 8 | 2 | .800 | 15 | 6 | .714 | W1 |
| Utah State | 7 | 4 | .636 | 15 | 7 | .682 | W2 |
| Boise State | 6 | 5 | .545 | 14 | 8 | .636 | L2 |
| Wyoming | 5 | 5 | .500 | 9 | 13 | .410 | W1 |
| New Mexico | 4 | 6 | .400 | 13 | 7 | .650 | W2 |
| Nevada | 4 | 6 | .400 | 10 | 12 | .409 | L2 |
| San Diego State | 3 | 7 | .300 | 5 | 16 | .238 | W1 |
| Air Force | 1 | 9 | .100 | 9 | 13 | .409 | L1 |
| Fresno State | 0 | 10 | .000 | 6 | 16 | .273 | L10 |

Upcoming Matches in the MW

Thursday, Oct. 27

San Diego State at Colorado State, 7 p.m. MT

- San José State at Air Force, 6 p.m. MT
- Fresno State at Wyoming, 6:30 p.m. MT
- Nevada at New Mexico, 6:30 p.m. MT
- UNLV at Boise State, 7 p.m. MT

Saturday, Oct. 29

San Diego State at Wyoming, 1 p.m. MT

- Nevada at Air Force, 11 a.m. MT
- Fresno State at Colorado State, 1 p.m. MT
- San José State at New Mexico, 1 p.m. MT
- UNLV, at Utah State, 1 p.m. MT

Tuesday, Nov. 1

- New Mexico at Air Force, 6 p.m. MT

Thursday, Nov. 3

Boise State at San Diego State, 7 p.m. PT

- Air Force at UNLV, 6 p.m. PT
- Colorado State at San José State, 6 p.m. PT
- Utah State at Fresno State, 6 p.m. PT
- Wyoming at Nevada, 6 p.m. PT

Saturday, Nov. 5

Utah State at San Diego State, 1 p.m. PT

- Colorado State at Nevada, Noon PT
- New Mexico at UNLV, 1 p.m. PT
- Boise State at Fresno State, TBA
- Wyoming at San José State, TBA

Monday, Nov. 7

Fresno State at San Diego State, 5 p.m. PT



THIS WEEK'S SAN DIEGO MATCH CONNECTIONS

- > Colorado State senior outside hitter Jacqi Van Liefde is a graduate of Eastlake High School in nearby Chula Vista.
- > Wyoming freshman outside hitter Rylee Schultz is a 2022 alumna of Carlsbad High School in San Diego County.

SDSU IN MW RANKINGS

- > Entering the weekend, Julia Haynie has climbed to second in the league with a .367 hitting percentage for all matches.
- > Ellie Geoghegan occupies the eighth spot in the MW with 3.30 digs per set in conference matches, while fellow freshman McKenna Douglas ranks 10th in that category (3.14/set).
- > Noa Miller is also slotted ninth in the league with 5.68 assists per sets in MW action.
- > Miller's six service aces against UC San Diego on Aug. 27 is tied for the second-highest total in the Mountain West this season and marks the most by an SDSU player since Ashlynn Dunbar served up six of her own vs. Colorado State on Sept. 27, 2018. Dunbar also finished with seven service aces against CSU Bakersfield in the 2018 season opener.
- > Kayla Rivera's .647 hitting percentage (12-1-17) vs. Pepperdine on Sept. 3 is tied for the fifth-best efficiency in the conference this season.
- > Douglas' 26 digs vs. Nevada on Sept. 24 mark the fifth-best total in a four-set match this season in the league.
- > Schraeder's nine overall blocks vs. Army West Point is tied for the sixth-best figure in the MW this year and represents the most by an SDSU competitor since Lexie Hamrick's 11 rejections against UTEP on Sept. 15, 2018.
- > Madison Corf's 22 kills vs. Nevada represent the fourth-highest total in a four-set match this season, while her 21 put-aways against Air Force are tied for fifth in a four-set contest.
- > Collectively, the Aztecs' 71 kills against Nevada is tied for the third-highest figure in the league this season and represents the most in a four-set match.
- > In addition, SDSU's 67 kills against UC San Diego is tied for the fourth-highest total in the MW for a four-set match this year.
- > The Aztecs' 48 kills at Pepperdine is tied for the fifth-best figure in the MW a three-set match in the league this year.
- > In addition, SDSU's 14 team blocks vs. Army is tied for the ninth-highest total in the conference.

GEOGHEGAN EARNS TWO MW WEEKLY HONORS

- > Ellie Geoghegan picked up two Mountain West awards on Oct. 24 when she was named the league's Defensive Player of the Week and Freshman of the Week by the conference office for her performance in four-set matches vs. New Mexico and Air Force.
- > With her honors, Geoghegan garnered the first two MW weekly accolades of her career and the Aztecs' first two of the season.
- > A native of Manhattan Beach, California, Geoghegan led the Scarlet and Black with 47 digs and 5.88 digs per set, the latter of which was nearly three scoops higher than her season average of 2.74 heading into the weekend. The Aztec libero anchored a back row that helped limit SDSU's two opponents to a combined .159 hitting percentage.
- > In a road match at New Mexico on Oct. 20, Geoghegan set a career high with 24 digs (6.00/set) and was an integral part of an Aztec defense that held the Lobos to a .112 hitting percentage for the night, including a .037 clip over the final three sets. UNM's .112 efficiency was the second lowest for an SDSU foe this season.
- > Two days later, Geoghegan followed that effort with an additional 23 scoops against Air Force (5.75/set), helping the Aztecs snap a six-match losing streak. She contributed to a tremendous defensive effort that limited the Falcons to a combined 17 kills over the final two sets, as the Scarlet and Black posted identical 25-16 scores in that stretch to win going away.
- > With her performance, Geoghegan eclipsed the 20-dig plateau in consecutive matches for the first time this year and has held or shared the team lead for digs in six straight outings and 13 for the season.
- > Geoghegan also aided the Aztec cause with 12 setting assists and two aces last week, dishing out a career-high eight helpers at UNM

THE LAST TIME OUT

- > Behind Madison Corf's match-high 21 kills, San Diego State pulled away for a four-set victory over visiting Air Force (25-21, 27-29, 25-16, 25-16) on Oct. 22 inside Aztec Court at Peterson Gym.
- > After the two teams combined for 29 ties and 11 lead changes in the first two sets, the contest witnessed just one more deadlock the rest of the way, as the Aztecs seized control to put the brakes on a six-match slide.
- > SDSU maintained a sizeable advantage in kills (62-41) and digs (65-50) while owning a slight edge in team blocks (9.0 to 8.0) and service aces (8-6) to hand the Falcons (9-13, 1-9 MW) their ninth loss in 10 conference outings.
- > Corf hit .333 for the afternoon, falling one kill short of matching her career high, while Heipua Tautua'a logged her fourth double-double of the season and first in MW play after posting 12 put-aways and 11 digs.
- > The Aztecs received plenty of other standout performances last Saturday, including Kayla Rivera, who reached the double-digit kill plateau with 11 non-returnables while tying Ely Schraeder for match-high honors with five block assists.
- > Schraeder (.467) and Julia Haynie (.429, 4 block assists) launched eight kills apiece, while Ellie Geoghegan surpassed the 20-dig barrier after leading all players with 23 scoops.
- > The teams battled through a highly competitive opening set, combining for 12 ties and three lead changes. SDSU posted a .333 clip, powering down 17 kills on 39 attempts with just four errors. Corf was on fire in that first frame, logging a .545 efficiency on six kills in 11 swings without a miscue.
- > With the score knotted at 21-21, the Aztecs closed with a 4-0 rush, as Corf floored a shot before serving up consecutive aces for the clinching points.
- > The second stanza was even more entertaining, highlighted by several long rallies, while the sides slugged it out through a whopping 17 ties and eight lead changes. Once again, the Scarlet and Black was led by Corf's five kills in the set, followed by Rivera (4) and Tautua'a (3), while Haynie contributed three block assists.
- > SDSU was seemingly in control, building a series of four-point leads past the midway point, including a 21-17 spread on the heels of an Air Force service error. However, the Aztecs faltered down the stretch, committing three attack errors on the next four points.
- > Despite two late kills by Corf, SDSU was plagued by its own mistakes, as the Falcons benefited from three errant serves and a wayward attack, while Air Force abruptly ended the set with a service ace.

Week 10: at Colorado State | at Wyoming

- > Undaunted, the Aztecs shrugged off the adversity and combined for 33 kills over the final two frames while limiting the Falcons to just 17 put-aways in that stretch. Save for a 1-1 tie in the third set, SDSU maintained the upper hand for the rest of the afternoon.
- > Corf, Haynie and Tautua'a led a balanced Aztec attack in the third stanza with four kills apiece, while Schraeder came through with a pair of block assists. Collectively, SDSU recorded its highest hitting percentage of the day with a .368 efficiency, smacking 18 kills against four errors in 38 attempts.
- > After Air Force trimmed the margin to 20-15, the Aztecs closed with a 5-1 surge to keep the visitors at bay. Tautua'a, Rivera and Schraeder each blasted a kill, including the latter, who provided the clinching point after powering down a free ball. In addition, Schraeder combined with Tautua'a on a block in that span, while Miller twirled an ace.
- > With Tautua'a serving to open the fourth set, SDSU exploded out of the gates to take an 8-1 lead and was never threatened, as Corf launched four kills in that span.

SCHEDULE NAVIGATION

- > San Diego State is off to a 3-7 start in Mountain West play this season after logging a 2-9 mark through a difficult non-conference slate.
- > During their non-league schedule, the Aztecs faced four foes that appeared or were receiving votes in the AVCA poll at match time, including No. 8 San Diego, No. 9 Baylor, Pepperdine (rv), UCLA (rv), along with additional Power 5 opponents Maryland and Arizona. Pepperdine climbed to as high as No. 22 in the AVCA rankings this season, while UCLA opened at No. 12 in the AVCA preseason poll and was ranked in the first two weeks of the regular season prior to its clash at SDSU.

- > Similarly, the Aztecs have played 11 opponents that are currently listed among the top 100 in the third NCAA Women's Volleyball RPI of the season released on Oct. 24, including San Diego (No. 8), Baylor (No. 20), UNLV (No. 27), Pepperdine (No. 36), Colorado State (No. 40), Utah State (No. 54), UCLA (No. 58), San José State (No. 59), New Mexico (No. 88), Boise State (No. 91) and Arizona (No. 96).

NEWCOMERS SHINE

- > Seven of eight Aztec newcomers have seen action for the Scarlet and Black this season, with several providing key contributions through 19 matches.
- > Freshman Madison Corf has started 15 of 21 matches and leads the team with 2.61 kills per set and 183 kills overall. The former AVCA Prep All-American set a career high with 22 put-aways in SDSU's 3-1 triumph over Nevada on Sept. 24, which is tied for the 14th-best performance in the Mountain West this season and marks the fourth-highest total in a four-set match. Corf has recorded double-digit kills in eight matches thus far, tying sophomore Mikela Labno for the team lead. In the Aztecs' 3-1 victory at home over Air Force, she finished with a season-best .333 efficiency, launching 21 kills to go with a season-high three service aces. On Oct. 15, Corf also logged her first collegiate double-double with 15 kills and 11 digs vs. Colorado State.
- > A senior transfer from Georgia, Kayla Rivera has started 20 of 21 matches for SDSU and ranks second on the team with 53 total blocks while occupying the third spot in kills (2.26/set). The Aztec opposite hitter has blasted double-digit kills in consecutive matches for the second time this year at New Mexico (10) and vs. Air Force (11) after a string of four straight outings with nine put-aways. Earlier, Rivera was named to the all-tournament team at the Pepperdine ASICS Classic after posting 29 kills and a .313 hitting percentage, including a career-best .647 clip (12-1-17) vs. the host Waves. She also logged a season-high 13 kills against

2022 AZTEC SUPERLATIVES

Individual

HITTING PERCENTAGE (min. 12 kills)

.647 (12-1-17) Kayla Rivera at Pepperdine (Sept. 3)

KILLS

22 Madison Corf vs. Nevada (Sept. 24)
 5 sets 15 Madison Corf and Mikela Labno vs. Sacramento State (Sept. 10)
 4 sets 22 Madison Corf vs. Nevada (Sept. 24)
 3 sets 15 Madison Corf vs. Colorado State (Oct. 15)

TOTAL ATTEMPTS

47 Madison Corf vs. Nevada (Sept. 24)
 5 sets 37 Madison Corf vs. Sacramento State (Sept. 10)
 4 sets 47 Madison Corf vs. Nevada (Sept. 24)
 3 sets 35 Heipua Tautua'a at Pepperdine (Sept. 3)

ASSISTS

33 Noa Miller vs. Air Force (Oct. 22)
 5 sets 27 Noa Miller vs. Sacramento State (Sept. 10)
 4 sets 33 Noa Miller vs. Air Force (Oct. 22)
 3 sets 24 Sarena Gonzalez at Pepperdine (Sept. 3)

DIGS

26 McKenna Douglas vs. Nevada (Sept. 24)
 5 sets 23 Ellie Geoghegan vs. Sacramento State (Sept. 10)
 4 sets 26 McKenna Douglas vs. Nevada (Sept. 24)
 3 sets 16 Ellie Geoghegan at Pepperdine (Sept. 3)

SERVICE ACES

6 Noa Miller vs. UC San Diego (Aug. 27)

BLOCK SOLOS

2 Elly Schraeder at UNLV (Oct. 1) and vs. No. 9 Baylor (Sept. 2)
 and Heipua Tautua'a vs. San José State (Sept. 22)

BLOCK ASSISTS

8 Elly Schraeder vs. Army West Point (Aug. 27)

TOTAL BLOCKS

9 Elly Schraeder vs. Army West Point (Aug. 27)

Team

HITTING PERCENTAGE

.349 (42-13-83) vs. Nevada (Sept. 24)

KILLS

71 vs. Nevada (Sept. 24)
 5 sets 61 vs. Sacramento State (Sept. 10)
 4 sets 71 vs. Nevada (Sept. 24)
 3 sets 48 at Pepperdine (Sept. 3)

TOTAL ATTEMPTS

159 vs. Air Force (Oct. 22) and at New Mexico (Oct. 20)
 5 sets 152 vs. Sacramento State (Sept. 10)
 4 sets 159 vs. Air Force (Oct. 22) and at New Mexico (Oct. 20)
 3 sets 112 at Pepperdine (Sept. 3)

ASSISTS

64 vs. Nevada (Sept. 24)
 5 sets 58 vs. Sacramento State (Sept. 10)
 4 sets 64 vs. Nevada (Sept. 24)
 3 sets 48 at Pepperdine (Sept. 3)

DIGS

77 vs. Nevada (Sept. 24)
 5 sets 55 vs. Sacramento State (Sept. 10)
 4 sets 77 vs. Nevada (Sept. 24)
 3 sets 42 at Pepperdine (Sept. 3)

SERVICE ACES

10 at Fresno State (Sept. 27)

TOTAL BLOCKS

14.0 vs. Army West Point (Aug. 27)

Week 10: at Colorado State | at Wyoming

Nevada and a collegiate-best seven block assists vs. Army West Point at the SDSU Invitational.

> Freshman defensive specialist Ellie Geoghegan has taken over the team lead with 239 digs overall and has surpassed the double-digit plateau in four straight matches and on 11 occasions overall, highlighted by a season-high 24 scoops at New Mexico. The Manhattan Beach product also contributed 23 scoops vs. Air Force, earning MW Defensive Player of the Week and Freshman of the Week honors. Geoghegan has also recorded 17 of her 21 service aces for the season in her last 12 appearances, tying her career best with three vs. Wyoming on Oct. 13.

> Despite missing 11 matches this season, freshman libero McKenna Douglas ranks second on the Aztecs with 3.03 digs per set. The Phoenix, Arizona, native averaged 3.14 digs per frame in a six-match span from Sept. 22-Oct. 8, highlighted by a career-high 26 scoops vs. Nevada. In SDSU's 3-0 triumph at Fresno State on Sept. 27, Douglas served up a collegiate-best five aces, helping the Scarlet and Black record its first road sweep over the Bulldogs since 1996.

> In her first season on The Mesa after transferring from USD, sophomore middle blocker Elly Schraeder has started all 20 matches she has played, leading the team with 66 total blocks and 0.96 blocks per set, the latter of which ranks 12th in the Mountain West. The Athol, Idaho, native flashed her versatility against Army West Point, posting a career-high nine blocks, including a solo stuff, while hitting .375 on eight kills in 16 swings with just two errors. Schraeder equaled her season high with eight additional put-aways vs. Air Force to go with five block assists.

> A starter in 10 of 19 appearances, freshman middle blocker Kat Cooper is tied for third on the team with 28 total blocks and ranks fourth with 0.49 blocks per set. A former AVCA Prep All-American, Cooper enjoyed a breakout performance against UC San Diego at the SDSU Invitational when she hit .600 on seven kills in 10 attempts against just one error while adding five blocks (1 solo) and five digs. Earlier that day, the Springdale, Arkansas, native recorded five additional blocks (1 solo) vs. Army West Point. In the Mountain West opener against San José State, Cooper matched her season best with seven kills, posting a .429 efficiency with one error in 14 swings.

> Freshman setter Sarena Gonzalez ranks second on the squad with 4.85 assists per set. A starter in 10 of 21 matches, the Temecula product has dished at least 20 assists in six appearances, including a season-high 30 helpers vs. UCSD on Aug. 27. In addition, Gonzalez has 64 digs (0.94/set) and 10 aces (0.15/set) this season, the latter of which ranks fifth on the team. In the fourth set against Maryland at the Aztec Classic, she spun three aces on consecutive serves.

ODDS & ENDS

> With one more victory, San Diego State will reach 900 wins in program history dating back to 1976. The Aztecs own an all-time record of 899-657 in almost 47 seasons of varsity competition.

> Ellie Geoghegan has served up at least one ace in nine straight matches, including three vs. No. 8 San Diego (Sept. 17) and Wyoming (Oct. 13).

> Kayla Rivera had at least one block to her credit in the first 18 matches of the season before her streak was snapped vs. Colorado State on Oct. 15.

> All five of SDSU's victories have been recorded with the Aztecs holding the statistical advantage in kills, hitting percentage and digs.

> San Diego State is also 3-0 this season when leading after two sets.

> Four of the Aztecs' five wins have been registered on a Saturday.

REWIND: AZTECS WRAP UP NON-CONFERENCE SLATE

> San Diego State concluded its challenging non-conference schedule against a pair of perennial heavyweights last month, dropping a three-set decision at home to UCLA (16-25, 23-25, 15-25) on Sept. 15 before falling to No. 8 San Diego on the road two days later (25-20, 13-25, 14-25, 12-25).

> Kayla Rivera, Mikela Labno and Madison Corf led the Aztecs with 2.14 kills per set for the week (15 overall), while Elly Schraeder averaged one block per frame (7 total).

> However, the Scarlet and Black was out-hit by a collective .330 to .112 in the two matches, committing 17 more attack errors, while trailing in team blocks 22.0 to 12.0.

> Competing on its newly unveiled playing surface, UCLA spoiled San Diego State's festivities by maintaining a statistical advantage in hitting percentage (.273 to .078), kills (39-30) and team blocks (14.0 to 6.0) while capitalizing on 23 attack errors.

> Despite the disparity, the Aztecs and Bruins combined for 23 ties and 13 lead changes in the match. However, UCLA employed timely runs in each of the three sets to keep the Scarlet and Black at bay.

> Individually, SDSU was led by Rivera's eight kills, while Corf launched six non-returnables of her own, hitting .750 on eight attempts without an error.

> The Aztec cause also included nine digs by Heipua Tautua'a, while Elly Schraeder totaled three blocks, including a solo stuff.

> Against the Toreros on Sept. 17, SDSU claimed the opening set against the nation's eighth-ranked team but could not sustain the momentum.

> The Aztecs came out firing on all cylinders, hitting .433 in the first stanza on 15 kills in 30 attempts with just two errors.

> However, SDSU was stymied for the remainder of the match, compiling a meager .048 attack percentage on a combined 24 kills against 19 errors in 104 swings over the final three frames.

> Conversely, USD switched on the afterburners in that span, hitting at a torrid .425 clip thanks to a collective 42 kills in 87 attempts with just five miscues.

> For the match, the Toreros out-hit the Aztecs .373 to .134, maintaining the upper hand in kills (56-39), digs (51-43) and team blocks (8.0 to 6.0).

> Individually, SDSU was led by Mikela Labno, who powered down 10 kills and hit .450 for the night after committing just one error in 20 attempts, while Madison Corf just missed her first career double-double following a nine-kill, 10-dig performance.

> Aztec contributors also included Kayla Rivera, who launched seven kills and finished with a pair of block assists, while Heipua Tautua'a and Kat Cooper (.462) floored six shots apiece and recorded a solo block.

A LOOK BACK AT THE AZTEC CLASSIC

> Returning to The Mesa for its second home tournament of the regular season, Sept. 9-10, San Diego State continued its demanding non-conference schedule when it welcomed three teams that combined for 54 victories in 2021.

> The Aztecs opened the event with a four-set loss to Maryland (14-25, 25-21, 20-25, 18-25) before dropping a three-decision to Arizona (17-25, 15-25, 11-25) later that night.

> SDSU then closed out the weekend with a tight battle against Sacramento State but ultimately fell in a five-set thriller (16-25, 26-28, 25-21, 25-22, 8-15).

> Three Aztecs averaged over two kills per set for the tournament, led by Heipua Tautua'a (2.92), Madison Corf (2.50) and Mikela Labno (2.17).

> In addition, Ellie Geoghegan averaged 3.83 digs per set, followed by Tautua'a (2.17).

2022 SITUATIONAL RECORDS

GENERAL

| | |
|--------------------------|-------|
| Overall | 5-16 |
| Mountain West | 3-7 |
| Home | 4-8 |
| Away | 1-6 |
| Neutral | 0-2 |
| vs. Ranked Teams | 0-2 |
| vs. Unranked Teams | 5-14 |
| Matches Following a Win | 2-2 |
| Matches Following a Loss | 3-13 |
| Longest Winning Streak | 2 |
| Longest Losing Streak | 9 |
| Current Streak | Won 1 |

BY SETS

| | |
|--------------------|------|
| 3 Sets | 1-6 |
| 4 Sets | 4-9 |
| 5 Sets | 0-1 |
| Leading After Two | 3-0 |
| Trailing After Two | 0-13 |
| Tied After Two | 2-3 |
| Leading 2-1 | 4-0 |
| Trailing 2-1 | 0-9 |

BY MONTH

| | |
|-----------|-----|
| August | 2-1 |
| September | 2-9 |
| October | 1-6 |
| November | 0-0 |

BY DAY

| | |
|----------|-----|
| Tuesday | 1-0 |
| Thursday | 0-5 |
| Friday | 0-4 |
| Saturday | 4-7 |

BY KILLS

| | |
|-------------------|------|
| Leading in Kills | 5-3 |
| Trailing in Kills | 0-12 |
| Tied in Kills | 0-1 |

BY DIGS

| | |
|------------------|-----|
| Leading in Digs | 5-8 |
| Trailing in Digs | 0-7 |
| Tied in Digs | 0-1 |

BY BLOCKS

| | |
|--------------------|------|
| Leading in Blocks | 2-1 |
| Trailing in Blocks | 3-15 |
| Tied in Blocks | 0-0 |

BY ATTACK PERCENTAGE

| | |
|--|------|
| Greater Attack Percentage | 5-1 |
| Lower Attack Percentage | 0-15 |
| Equal Attack Percentage | 0-0 |
| Hitting above .300 | 1-0 |
| Hitting between .200 and .300 | 3-5 |
| Hitting between .100 and .200 | 1-6 |
| Hitting below .100 | 0-5 |
| Opponent Hitting above .300 | 0-8 |
| Opponent Hitting between .200 and .300 | 3-6 |
| Opponent Hitting between .100 and .200 | 1-2 |
| Opponent Hitting below .100 | 1-0 |

BY INDIVIDUAL KILLS

| | |
|--|-----|
| 3+ Double-Digit Individual Kill Totals | 3-2 |
| 2 Double-Digit Individual Kill Totals | 1-3 |
| 1 Double-Digit Individual Kill Totals | 1-6 |
| 0 Double-Digit Individual Kill Totals | 0-5 |

2022 MATCH-BY-MATCH LEADERS

| Date | Opponent | Kills | Hitting Pct.* | Assists | Aces | Digs | Blocks |
|------|----------------------|--------------------|-----------------|---------------|-----------------------|------------------------|----------------------|
| A.26 | California | Three players - 7 | Labno (.118) | Gonzalez - 16 | Geoghegan - 2 | Tautua'a - 8 | Schraeder - 4 |
| A.27 | Army West Point | Tautua'a - 13 | Tautua'a (.379) | Miller - 21 | Miller - 3 | Douglas - 14 | Schraeder - 9 |
| A.28 | UC San Diego | Corf - 15 | Cooper (.600) | Gonzalez - 30 | Miller - 6 | Douglas - 19 | Cooper - 5 |
| S.2 | vs. No. 9 Baylor | Tautua'a - 13 | Rivera (.048) | Gonzalez - 25 | Corf - 1 | Tautua'a - 16 | Schraeder - 5 |
| S.3 | at Pepperdine | Rivera - 12 | Rivera (.647) | Gonzalez - 24 | Tautua'a - 4 | Geoghegan - 16 | Cooper - 3 |
| S.3 | vs. UC Santa Barbara | Rivera/Haynie - 10 | Haynie (.474) | Gonzalez - 21 | Corf/Miller - 1 | Geoghegan - 17 | Four players - 1 |
| S.9 | Maryland | Tautua'a - 14 | Tautua'a (.300) | Miller - 17 | Gonzalez - 3 | Geoghegan - 12 | Haynie/Rivera - 3 |
| S.9 | Arizona | Corf - 9 | Corf (.227) | Gonzalez - 17 | Haynie/Tautua'a - 1 | Geoghegan - 11 | Schraeder - 3 |
| S.10 | Sacramento State | Corf/Labno - 15 | Labno (.407) | Miller - 27 | Miller - 2 | Geoghegan - 23 | Schraeder - 4 |
| S.15 | UCLA | Rivera - 8 | Rivera (.227) | Gonzalez - 12 | Geoghegan - 2 | Tautua'a - 9 | Schraeder - 3 |
| S.17 | at No. 8 San Diego | Labno - 10 | Labno (.450) | Gonzalez - 19 | Geoghegan - 3 | Geoghegan - 14 | Schraeder - 4 |
| S.22 | San José State | Corf - 10 | Cooper (.429) | Miller - 19 | Three players - 1 | Douglas - 14 | Schraeder - 8 |
| S.24 | Nevada | Corf - 12 | Rivera (.385) | Miller - 31 | Douglas - 2 | Douglas - 26 | Cooper - 2 |
| S.27 | at Fresno State | Labno - 12 | Haynie (.636) | Miller - 14 | Douglas - 5 | Douglas/Geoghegan - 5 | Three players - 2 |
| O.1 | at UNLV | Corf - 15 | Rivera (.467) | Gonzalez - 15 | Haynie - 2 | Douglas - 9 | Rivera/Schraeder - 4 |
| O.6 | at Utah State | Rivera - 9 | Rivera (.211) | Miller - 14 | Douglas/Geoghegan - 1 | Douglas/Geoghegan - 7 | Tautua'a - 5 |
| O.8 | at Boise State | Labno - 16 | Labno (.355) | Miller - 24 | Geoghegan - 2 | Geoghegan/Tautua'a - 9 | Haynie/Rivera - 3 |
| O.13 | Wyoming | Rivera - 9 | Tautua'a (.167) | Miller - 17 | Geoghegan - 3 | Geoghegan - 18 | Cooper/Rivera - 4 |
| O.15 | Colorado State | Corf - 15 | Labno (.304) | Miller - 20 | Miller - 2 | Geoghegan - 14 | Labno/Schraeder - 2 |
| O.20 | at New Mexico | Labno - 12 | Haynie (.769) | Miller - 25 | Geoghegan/Miller - 1 | Geoghegan - 24 | Haynie - 7 |
| O.22 | Air Force | Corf - 21 | Haynie (.429) | Miller - 33 | Corf - 3 | Geoghegan - 23 | Rivera/Schraeder - 5 |
| O.27 | at Colorado State | | | | | | |
| O.29 | at Wyoming | | | | | | |
| N.3 | Boise State | | | | | | |
| N.5 | Utah State | | | | | | |
| N.7 | Fresno State | | | | | | |
| N.10 | UNLV | | | | | | |
| N.17 | at Nevada | | | | | | |
| N.19 | at San José State | | | | | | |

* - min. 7 kills

> As a team, however, SDSU was out-hit .304 to .186 for the weekend and trailed in both kills (147-130) and team blocks (30.0 to 15.0).

> Against Sac State, the Aztecs fought back from a two-set deficit on Saturday but could not pull off the reverse sweep.

> Labno launched a career-high 15 kills, while Corf tied her collegiate best with 15 put-aways as well.

> Not to be outdone, Tautua'a finished with her third double-double of the season after posting 14 kills and 14 digs, providing ample back row support for Geoghegan, who set a career high with 23 scoops, while Noa Miller (27 assists) and Sarena Gonzalez (23 assists) split the setting chores.

> Despite maintaining a 61-55 collective advantage in kills and a 55-49 margin in digs, however, the Aztecs committed more attack errors (28-21) and finished with a 12.0 to 6.0 deficiency in team blocks. Additionally, SDSU was plagued by 12 service errors, while the Hornets held a slight 10-6 edge in aces.

> Still, the teams battled through an entertaining and competitive match, combining for 30 ties and 16 leads changes on the afternoon.

> Against Maryland in a rare Friday matinee, the Terrapins maintained the statistical advantage in most categories, including kills (50-41), service aces (12-7) and team blocks (11.0 to 5.0) to help fuel their victory.

> In addition, Maryland out-hit the Aztecs .289 to .179, posting a .462 clip in the opening set after knocking down 14 kills on 26 attempts with just two errors to help set the tone for the contest.

> Individually, SDSU was led by Tautua'a (.300), who blasted a team-high 14 kills to go with nine digs. In addition, Labno and Julia Haynie recorded eight put-aways apiece.

> Later that evening vs. Arizona, the Aztecs were unable to right the ship, as the Wildcats maintained a .438 hitting percentage compared to SDSU's .138 clip.

> Arizona owned a sizable 42-28 advantage in kills and a 7.0 to 4.0 edge in team blocks while benefiting from 15 Aztec attack errors to complete the sweep.

> Corf (9) and Tautua'a (7) combined for 16 of SDSU's 28 kills but no other player had more than three for the hosts.

RECAPING THE PEPPERDINE ASICS CLASSIC

> Despite dropping three matches against teams that combined for 65 victories last season, the Aztecs kept things close in 10 of 11 sets, trailing by a combined seven kills for the tournament (148-141). However, SDSU committed twice as many attack errors (85-42), finishing with a .169 hitting percentage, compared to a .318 clip for the opposition. In addition, the Aztecs were victimized by 22 service aces and experienced a deficiency in team blocks (42.0 to 11.5).

> The Aztecs had their moments against then-No. 9 Baylor in the tournament opener on Sept. 2, but were

unable to sustain the momentum after a third-set rally, ultimately falling by a 3-1 count (18-25, 17-25, 29-27, 14-25).

> Individually, SDSU was paced by Heipua Tautua'a, who recorded her second straight double-double and sixth of her career after posting 13 kills and 16 digs, while Madison Corf launched 11 put-aways of her own. The Aztecs' offensive fortunes also received a boost from Kayla Rivera (7 kills) and Mikela Labno (6 kills), while Elly Schraeder anchored the middle with five blocks, including a pair of solo stops.

> Elsewhere, Sarena Gonzalez (25 assists) and Noa Miller (15 assists, 8 digs) shared the setting responsibilities, while Kat Cooper contributed five kills and two block assists at the net.

> Trailing 0-2 in sets, SDSU entertained hopes of a comeback in the third stanza, as the teams combined for 13 ties and a pair of lead changes. The Aztecs enjoyed their most productive set of the match, blasting 16 kills, including four apiece by Corf and Tautua'a. In addition, the Scarlet and Black limited the Bears to their lowest hitting percentage of the day (.121).

> Nevertheless, San Diego State still found itself on the verge of defeat after Baylor took a 24-21 lead following a block by Lauren Harrison and Mallory Talbert. Unfazed, the Aztecs maintained their composure, fighting off five additional match points with an 8-3 closing spurt, clinching the set with three straight points to overcome a 27-26 deficit. Kills by Cooper and Labno, followed by Corf's service ace, afforded SDSU some new life. Unfortunately, the Aztecs' new-found enthusiasm was soon dashed early in the fourth frame, as the Bears grabbed a 9-4 lead and were never threatened.

> SDSU closed out its second tournament of the season the next day (Sept. 3) on a sour note, falling to host Pepperdine in three sets (18-25, 20-25, 32-34) before suffering a 3-1 defeat at the hands of UC Santa Barbara (18-25, 18-25, 25-22, 16-25).

> Against the Waves, the Aztecs were led by Kayla Rivera, who finished with a .647 efficiency on a match-high 12 kills in 17 swings with just one error, while Heipua Tautua'a racked up 11 non-returnables to go with a career-best four service aces. Mikela Labno also hit well on the afternoon, finishing with a .316 clip (7-1-19), while Ellie Geoghegan scooped up a match-high 16 digs.

> However, SDSU was out-hit for the match .371 to .259, as Pepperdine benefited from 15 unforced Aztec attack errors. Although the Scarlet and Black maintained a 42-36 advantage in digs and each side served up six aces, the Waves also finished with more team blocks (9.0 to 4.5) to help fuel their win.

> The third set was the most entertaining, as the teams combined for 11 ties and four lead changes. Still, the Aztecs seemed poised to extend the match to a fourth frame after building a 20-15 lead thanks to a Rivera kill. Pepperdine tightened the score at 23-21 moments later following a kill, a combined block and a Meg Brown ace.

> Labno responded with a kill of her own, which extended the SDSU lead to 24-21. Incredibly, the Waves

Week 10: at Colorado State | at Wyoming

fought off nine set points down the stretch, including a 32-31 deficit after another Labno put-away. Pepperdine finally closed off the match on a service ace following a kill and an Aztec attack error.

- > In the nightcap against the Gauchos, San Diego State was stymied in the middle, as UCSB maintained a decisive advantage in team blocks (13.0 to 2.0) while serving up 12 aces compared to the Aztecs' two. In addition, the Gauchos owned the statistical edge in kills (50-45) and hitting percentage (.310 to .161), capitalizing on 13 SDSU unforced attack errors to help power their victory.
- > The Aztecs were paced by Julia Haynie (.474) and Kayla Rivera (.368), who blasted 10 kills apiece, while Reagan Merk tied her career high with seven put-aways. In addition, Ellie Geoghegan anchored the SDSU back row with 17 digs.

ALL-TOURNAMENT AZTEC

- > Senior opposite hitter Kayla Rivera earned a spot on the all-tournament team for her performance in three matches at the Pepperdine ASICS Classic, Sept. 2-3, in Malibu, California.
- > A native of Ventura, Rivera led the Aztecs with 29 kills overall and hit .333, including a career-best .647 against host Pepperdine on Sept. 3, when she launched 12 non-returnables on 17 attempts with just one error.
- > She also contributed double-digit kills later that day vs. UC Santa Barbara when she tied for team-high honors with 10 put-aways to go with a .368 efficiency.

SDSU INVITATIONAL REWIND

- > After dropping a hard-fought three-set decision to California (20-25, 23-25, 23-25) in their season opener on Aug. 26, the Aztecs rebounded with a pair of 3-1 victories the following day vs. Army West Point (25-22, 22-25, 25-16, 19-25) and UC San Diego (25-22, 25-20, 26-28, 25-20).
- > Against Army West Point, the SDSU attack was powered by the combo of Heipua Tautua'a (13 kills) and Mikela Labno (12 kills), while setter Noa Miller recorded her first double-double of the season with 21 assists and 12 digs.
- > However, it was the Aztec defense that proved to be the difference against the Black Knights, finishing with a 14.0 to 10.0 advantage in team blocks, to go with a 54-49 spread in digs.
- > In addition to a career-high nine blocks, Elly Schraeder (.375) displayed her dual-threat capabilities with eight kills against only two errors, while Kayla Rivera finished with seven block assists to set her own personal best.
- > The teams combined for 13 ties and three lead changes in the opening set. However, the match witnessed just two more deadlocks in the second stanza, as the Scarlet and Black led throughout the third and fourth frames.
- > In the nightcap vs. UC San Diego, the Aztecs (2-1) owned a decisive 67-42 advantage in kills and served up seven aces to help fuel their win, overcoming a 14.0 to 9.0 deficiency in team blocks.
- > In addition, SDSU out-hit the Tritons .270 to .183 and maintained a sizable 51-42 in digs while benefiting from 20 opponent attack errors.
- > Individually, four players posted double-digit kills for the Aztecs, including freshman Madison Corf (.303), who blasted a match-high 14 put-aways, while Tautua'a logged her first double-double of the year with 14 non-returnables to go with 10 digs.
- > Elsewhere, SDSU also received a career-high tying 13 kills from Labno, while Rivera sparked the offense as well with 10 put-aways, followed by Kat Cooper, who hit .600 for the night (7-1-10) and contributed five total blocks, including a solo stop.
- > Not to be outdone, Miller (28 assists) posted a career-high six service aces, sharing the setting duties with Sarena Gonzalez, who dished out 30 helpers of her own. Meanwhile, McKenna Douglas led all players with 19 digs to anchor the Aztec back row.
- > In the opener against Cal, the teams combined for 36 ties and 20 lead changes, as seven of eight SDSU newcomers saw action in the see-saw affair.
- > Despite maintaining a narrow 38-37 edge in kills and a 7-4 spread in service aces, however, the Aztecs were plagued by 25 attack errors, posting a .121 hitting percentage on the night.
- > Conversely, the Golden Bears owned a decisive advantage in team blocks (12.0 to 5.0) and totaled just eight errant attacks, finishing with a .358 efficiency to help key their victory.
- > Offensively, SDSU was led by the trio of Tautua'a, Labno and Madison Corf, who blasted seven kills each, while Kat Cooper (.357) and Kayla Rivera (3 block assists) launched six non-returnables apiece.

WELCOME BACK

- > Outside hitter Heipua Tautua'a leads the group of eight Aztec letterwinners who return for the 2022 campaign.
- > Tautua'a continued to display her tremendous versatility last season, finishing second on the team in kills (208), digs (239) and digs per set (2.28) while occupying the third spot in kills per set (1.96) and double-doubles (3).
- > The SDSU junior also compiled double-digit digs in 11 matches and surpassed double figures in kills on six occasions last year.
- > Tautua'a enters the 2022 season having started 43 of 44 matches she has appeared in.
- > The Aztecs will also look for senior leadership from Noa Miller and Julia Haynie.
- > A 5-10 setter, Miller led the Scarlet and Black in assists in all but one of her 20 matches played last season. The Arizona State transfer also tied for the top spot on the squad with four double-doubles in her first season at SDSU.
- > Despite missing the final seven matches of the 2021 campaign, Miller averaged a team-leading 6.01 assists per set, which ranked seventh in the Mountain West.
- > Haynie also brought previous Division I experience with her to "America's Finest City" after spending her first two seasons at Portland State. The 6-1 middle blocker led the Aztecs with 61 total blocks, including a team-high eight solo stops across 88 sets. She also ranked fifth on the team with 103 kills (1.17/set), finishing with a .222 hitting percentage.
- > In addition, Haynie topped the squad or tied for the team lead in blocks eight times. She also posted at least one kill in all 25 matches she played while recording at least one block assist in all but four contests, including eight straight to end the year.
- > San Diego State is also expecting continued improvement from a pair of sophomores - Mikela Labno and Jordyn Goldsmith.
- > Last season, Labno ranked fourth on the Aztecs with 132 kills and 1.81 kills per set while contributing 65 digs and 25 total blocks in 73 sets played. She also tied for second on the team with seven block solos and recorded at least one kill in all but two appearances.
- > A native of Hilmar, California, Labno surpassed the double-digit kill plateau on four occasions, logging a breakout performance vs. No. 17 Pepperdine at the Gaucho Invitational, where she launched a season-high 13 kills on 23 attempts with just one error for a stellar .522 hitting percentage, which ranked as the team's second-best clip of the year (min. 12 kills).
- > A 6-1 opposite hitter, Goldsmith also enjoyed a solid debut for the Scarlet and Black in 2021, ranking fifth on the team in kills (119) and kills per set (1.58).

AVCA DIVISION I POLL

(As of Oct. 24, 2022)

| Rk | | Points | Record | Prev |
|----|------------------|--------|--------|------|
| 1 | Nebraska (48) | 1,572 | 18-1 | 3 |
| 2 | Texas (14) | 1,506 | 15-1 | 1 |
| 3 | San Diego (1) | 1,440 | 18-1 | 4 |
| 4 | Louisville (1) | 1,411 | 18-2 | 2 |
| 5 | Wisconsin | 1,304 | 15-3 | 5 |
| 6 | Ohio State | 1,281 | 13-5 | 6 |
| 7 | Pittsburgh | 1,262 | 20-2 | 8 |
| 8 | Stanford | 1,217 | 14-4 | 7 |
| 9 | Minnesota | 1,065 | 12-6 | 9 |
| 10 | Georgia Tech | 1,012 | 15-4 | 10 |
| 11 | Penn State | 849 | 17-4 | 13 |
| 12 | Purdue | 818 | 15-5 | 12 |
| 13 | Baylor | 764 | 17-4 | 14 |
| 14 | Florida | 725 | 15-4 | 11 |
| 15 | Creighton | 679 | 18-3 | 18 |
| 16 | Marquette | 553 | 18-2 | 19 |
| 17 | BYU | 542 | 14-5 | 17 |
| 18 | Oregon | 533 | 13-5 | 20 |
| 19 | Washington | 505 | 15-5 | 15 |
| 20 | Kentucky | 466 | 12-6 | 16 |
| 21 | Rice | 355 | 18-2 | 21 |
| 22 | Western Kentucky | 261 | 21-2 | 23 |
| 23 | Houston | 190 | 19-2 | 24 |
| 24 | USC | 140 | 16-5 | NR |
| 25 | UCF | 117 | 17-1 | NR |

First-place votes in parentheses

Others receiving votes and listed on two or more ballots: Pepperdine 71; Arkansas 54; Iowa State 28; Washington State 26; Michigan 18; LSU 8; Loyola Marymount 7; Towson 3

MW PLAYERS OF THE WEEK

MW Offensive Player of the Week

- A.29 Kylee Stokes, OPP, Sr., Utah State
- S.5 Kayla Afoa, OH, Sr., Nevada
- S.12 Paige Bartsch, OPP, So., Boise State
- S.19 Blaire Fleming, OH, So., San José State
- S.26 Kennedy Stanford, OH, Jr., Colorado State
- 0.3 Gabrielle Arretche-Ramos, OH, Jr., UNLV
- 0.10 Tatum Stall, OH, Jr., Utah State
- 0.17 Kennedy Stanford, OH, Jr., Colorado State
- 0.24 Ellease Crumpton, MB, Sr. UNLV

MW Defensive Player of the Week

- A.29 Joi Harvey, MB, Jr., Air Force
- S.5 Kia Kaohelaulii, L, Jr., Nevada
- S.12 Allison Casillas, L, Sr., Boise State
- S.19 Maya Sands, L, Fr., UNLV
- S.26 Sarah Smevog, L, Sr., San José State
- 0.3 Sarah Smevog, L, Sr., San José State
- 0.10 Sarah Smevog, L, Sr., San José State
- 0.17 Jordi Holdaway, L, So., Utah State
- 0.24 Ellie Geoghegan, L, Fr., San Diego State

MW Freshman of the Week

- A.29 Leah Wilton-LaBoy, S, Utah State
- S.5 Gabby McLaughlin, OH, Nevada
- S.12 Lea Zurlinden, MB, New Mexico
- S.19 Maya Sands, L, UNLV
- S.26 Elle Cotton, S, Boise State
- 0.3 Tierney Barlow, MB, Wyoming
- 0.10 Bella Wooden, MB, Utah State
- 0.17 Maya Sands, L, UNLV
- 0.24 Ellie Geoghegan, L, San Diego State

Week 10: at Colorado State | at Wyoming

She also finished with 35 total blocks and 30 digs across 76 sets, making nine starts in 25 appearances.

- > Goldsmith posted her best hitting percentage of the 2021 season with a .636 clip in a three-set sweep of Air Force, blasting seven kills without an error in 11 attempts.
- > Also back in the mix are a trio of underclassmen in Kennedy Feuerborn, Reagan Merk and Sara Mukaj.
- > A 6-3 setter, Feuerborn appeared in 27 of 30 matches last year, starting six of the Aztecs' final eight contests. As a sophomore, she averaged 3.11 assists (230 overall) while registering 38 kills and 24 block assists. In addition, Feuerborn eclipsed the 20-assist plateau on three occasions, including a season-high 23 helpers at home vs. Boise State.
- > Merk saw action in 18 matches during her freshman campaign on The Mesa, earning two starts. The 5-11 outside hitter posted 29 kills, 40 digs, five service aces and three blocks in 42 sets last year. Against Texas Southern at the Arizona Wildcat Invitational, she came off the bench and played all three sets, recording season-highs of seven kills and six digs to help the Scarlet and Black complete the sweep.
- > A 6-3 middle blocker, Mukaj was off to a tremendous start in 2021 before suffering a season-ending ACL injury vs. San Diego. A standout international player from Italy, Mukaj hit .333 with 16 kills on 36 attempts against four errors across 27 sets while finishing with 22 total blocks, 16 dig and seven aces. She posted a .636 hitting percentage on seven kills in 11 attempts without an error against Sam Houston in the finale of the Bearkat Invitational, adding five digs and four block assists.

NEW KIDS IN TOWN

- > The prospects for the San Diego State volleyball program continue to brighten after head coach Brent Hilliard reshaped the Aztec roster with a solid newcomer class for the 2022 campaign.
- > SDSU's early signing class last November featured three prep stars in outside hitters Madison Corf (Kansas City, Mo.) and Cara Braun (Tempe, Ariz.), along with middle blocker Kat Cooper (Springdale, Ark.).
- > Over the winter, the Aztecs added a pair of Division I transfers in middle blocker Ely Schraeder (San Diego) and opposite hitter Kayla Rivera (Georgia) before inking three more high school standouts during the spring in defensive specialists McKenna Douglas (Phoenix, Ariz.) and Ellie Geoghegan (Manhattan Beach, Calif.), along with setter Sarena Gonzalez (Temecula, Calif.).
- > As a senior at Liberty High School in suburban Kansas City, Missouri, Corf garnered second-team All-America accolades from the American Volleyball Coaches Association after earning a spot on the AVCA All-Region VI team. Last season, she established single-season career highs in kills (390, 4.1/set), digs (353, 3.7/set), blocks (50) and aces (33), helping the Blue Jays to a 26-5 overall record and a second-place district finish.
- > Cooper also received national acclaim last year, earning AVCA All-America honorable mention to go with AVCA All-Region IV distinction after leading Har-Ber High School to a 33-2 record and a runner-up finish in the 6A bracket at the 2021 Arkansas state championships. A four-time all-conference selection, Cooper merited all-state recognition and landed on the all-state tournament team in each of her final three seasons.
- > Braun brings a winning pedigree with her to SDSU as well after leading her Valley Christian High team to the 2021 Arizona 3A state championship, garnering Conference 3A Player of the Year and 3A Metro Region Offensive Player of the Year accolades. According to MaxPreps, Braun totaled 1,290 kills and hit .344 during her prep career, helping Valley Christian to an additional pair of runner-up state finishes in 2019 and 2020.
- > Not to be outdone, Douglas also starred on the Arizona prep volleyball scene, capping a brilliant senior campaign in 2021 with all-state honors from the Arizona Republic after leading Notre Dame Prep to a 37-5 record, highlighted by a Conference 4A state championship. Last season, Douglas was named both the Conference 4A Player of the Year and Defensive Player of the Year while receiving identical acclaim in the 4A West Valley Region after averaging a career-high 4.8 digs per set (307 overall) to go with 61 assists and 47 service aces, according to MaxPreps.
- > Geoghegan is also eager to display her defensive prowess this season after she was named the Bay League Division I Libero of the Year and received all-conference recognition at Mira Costa High School in 2021. The Manhattan Beach native led her Mustang squad to a 28-9 overall record and a regional semifinal appearance in the 2021 CIF Open Division state tournament. For her efforts, Geoghegan also collected first-team all-area honors by the Daily Breeze, as Mira Costa finished the year at No. 17 in the AVCA/USA Today Super 25 National High School Rankings.
- > Gonzalez, meanwhile, is a local product who attended Temecula Valley High and received all-Southwestern Conference recognition as a senior after helping her Golden Bears squad advance to the second round of the 2021 CIF Southern Section Division II playoffs.
- > The first of two transfers to last year's signing class, Schraeder was a part of two teams at USD that advanced to the NCAA Tournament, including a second-round appearance in the fall of 2021. During her freshman campaign that was shortened and delayed due to the COVID-19 pandemic, Schraeder ranked second in the West Coast Conference with a team-high 1.30 blocks per set, establishing a personal best with seven block assists in a road sweep at Gonzaga. A prep star at Coeur d'Alene High in Idaho, Schraeder merited the state's Girls Volleyball 5A/4A Athlete of the Year honors in 2019 and 2020.
- > A native of Ventura, Rivera returns to the West Coast after playing three seasons at Georgia, where she started 34 matches in 76 appearances. In 2021, she enjoyed her most productive season as collegian, finishing with 201 kills (2.05/set), 77 total blocks (0.79/set) and 73 digs (0.75/set) in 98 sets played. In addition, Rivera surpassed the double-digit kill plateau eight times during the year and posted three or more blocks in 17 outings.

PRESEASON PROGNOSTICATIONS

- > San Diego State was pegged for an eighth-place finish in the 2022 Mountain West preseason coaches poll released on Aug. 17.
- > In the 23-year history of the Mountain West, SDSU has finished first (2012), second (2002, 2011), fourth (2000, 2001, 2003, 2013, 2017), fifth (2005, 2015, 2019), sixth (1999, 2004, 2006, 2009, 2010, 2014, 2016), seventh (2008), eighth (2007, 2018, 2020), and ninth (2021) in the final league standings.

2022 Mountain West Preseason Poll

| Rk. | Team (1st-place votes) | Pts. |
|-----|------------------------|-----------|
| 1. | Colorado State (6) | 93 |
| 2. | Utah State (3) | 91 |
| 3. | San José State (1) | 75 |
| | Boise State (1) | 75 |
| 5. | New Mexico | 68 |
| 6. | UNLV | 57 |
| 7. | Wyoming | 47 |
| 8. | San Diego State | 33 |
| 9. | Fresno State | 29 |
| 10. | Air Force | 27 |
| 11. | Nevada | 10 |

MOUNTAIN WEST VOLLEYBALL CHAMPIONSHIP TICKETS ON SALE

- > Tickets are now on sale for the 2022 Mountain West Volleyball Championship in Fort Collins, Colorado. The three-day event will run from Nov. 23-25, at Moby Arena on the campus of Colorado State University.
- > Single-session tickets range from \$7-15, while all-session passes are \$17-35.
- > Tickets can be purchased at CSURams.com, at the Moby Arena box office or by phone at 800-491-RAMS (7267).
- > The top six teams in the conference standings will qualify for the Mountain West Volleyball Championship. First-round action starts on Wednesday, Nov. 23, at 1 p.m. MT and 4 p.m. MT. Two semifinal contests will be featured on Thursday, Nov. 24, beginning at 1 p.m. MT and 4 p.m. MT, while the championship match is slated for Friday, Nov. 25, at 6:30 p.m. MT.
- > All matches will air live on the Mountain West Network. The MW app is available on your TV through Apple TV, Android TV, Amazon Fire TV or Roku. Mobile applications are available through the iOS App Store and Google Play.



Brent HILLIARD

Head Coach - Third Season at San Diego State

San Diego State Director of Athletics John David Wicker ushered in a new era for the Aztec volleyball team with the hiring of Brent Hilliard as the fifth head coach in program history on Jan. 31, 2020.

In his second season at SDSU, Hilliard and the Aztecs were faced with another demanding schedule, squaring off against 10 teams that qualified for postseason play.

However, San Diego State had its moments of glory in the fall of 2021, posting a 3-0 sweep at eventual Mountain West tournament champion Boise State before recording a five-set thriller on the road at UNLV, which ultimately captured the NIVC crown.

Individually, Hilliard oversaw the continued rise to prominence of Victoria O'Sullivan, who received all-Mountain West recognition for the second straight season after ranking second in the conference with 3.71 kills per set, as the SDSU outside hitter concluded her illustrious career with 1,026 kills overall.

Hilliard's charges enjoyed another successful year scholastically, with nine Aztecs landing on the Mountain West all-academic team, including Ashley Vanderpan, Kennedy Feuerborn and Serena Hodson, who took home the department's prestigious Malik Award, presented to SDSU student-athletes who attain a 4.0 GPA.

In his first season with the Scarlet and Black, Hilliard endured a challenging season fraught with COVID-19 protocols, an abbreviated schedule that was postponed until spring, along with injuries to key players.

However, Hilliard and the Aztecs persevered through the 2021 spring campaign, posting a 6-9 record, highlighted by thrilling victories over Boise State on the road and Colorado State at home in the season finale, respectively. Against the Broncos, SDSU defeated a Boise State team that entered the contest with four consecutive 3-0 sweeps. Two weeks later, the Aztecs snapped an 11-match to the Rams dating back to 2014 and logged their first win over CSU in San Diego since 2012.

Under Hilliard's guidance, O'Sullivan garnered all-Mountain West accolades for the first time in her career, as the SDSU junior led the squad with 3.25 kills per set, which ranked seventh in the conference. In addition, seniors Lauren Lee and Erin Gillcrest received MW Defensive Player of the Week recognition following the team's aforementioned wins over Boise State and Colorado State, respectively.

Hilliard's Aztecs also excelled in the classroom, with 12 student-athlete earning a spot on the Mountain West all-academic team, including Lauren Lee, who also merited first-team all-District 8 academic honors from the College Sports Information Directors of America (CoSIDA).

A 2018 inductee to the Southern California Indoor Volleyball Hall of Fame, Hilliard arrived at SDSU with a wealth of experience after achieving 19 years of unparalleled success as an assistant coach at the University of San Diego, where he served as the Toreros' associate head coach since 2007.

During his fruitful tenure, the Toreros qualified for the NCAA Tournament in all but one of his 19 seasons, advancing to the Sweet 16 in 2004, 2006, 2013 and 2018. In addition, Hilliard helped guide the Toreros to nine West Coast Conference championships while his players earned six All-America awards, 12 All-America honorable mentions, 44 all-WCC accolades and 15 freshman all-conference certificates.

Hilliard twice assumed the reins of the USD program on an interim basis while head coach Jennifer Petrie was absent on maternity leave. In 2006, Hilliard was honored as WCC Coach of the Year after guiding the Toreros to a conference championship and a Sweet 16 appearance in the NCAA Tournament. That season, he coached five all-conference honorees, including WCC Player of the Year Kristen Carlson, as USD finished 14th in the final USA Today/Coaches Poll.

The Toreros also flourished under Hilliard's guidance in 2011, racing to a 13-0 start en route a program-best 28-5 record, highlighted by a spot in the second round of the NCAA Tournament. Throughout his stint, USD was consistently ranked among the nation's top 25, climbing to as high as No. 2 during the 2013 campaign and rising to No. 5 in 2016.

"I would like to thank John David Wicker, Jenny Bramer, Dr. Adela de la Torre and the rest of the SDSU search committee for making me feel so welcome during the interview process," Hilliard said upon his hiring. "To be the head coach of such a remarkable women's volleyball program in my family's hometown is truly a once in a lifetime opportunity.

"We are fully committed to work tirelessly to elevate this program back to an elite status on the college volleyball landscape, one that the student body, faculty, community, alumni and, of course, all future Aztecs will take great pride in."

Hilliard played collegiately at Long Beach State, earning All-America honors in each of his four years from 1990-93, including first-team recognition over his final three seasons. A right-side hitter for the 49ers, Hilliard was named the NCAA Men's Volleyball Player of the Year as a junior in 1992 after leading LBSU to a 31-1 record.

In 1991, Hilliard and the 49ers captured the NCAA Championship with a 3-1 victory over USC in the finals, avenging a loss to the Trojans in the title match the year before. He finished his career as the NCAA all-time leader with 3,034 kills.

Additionally, Hilliard was selected to play for Team USA in the 1992 Summer Olympics in Barcelona, Spain, where he helped the Americans capture the bronze medal. The following year, he won a silver medal at the 1993 Pan American Games in Argentina and also owns a bronze medal from the 1991 World Cup.

After receiving his undergraduate degree in 1993 from Long Beach State in political science, Hilliard continued his volleyball career as a professional in Europe from 1995-98, playing two seasons in Belgium and another in the Netherlands. In 1996, Hilliard and the Masiek Volleyball Club captured the Belgian national championship and competed in the European Champions League.

In addition to his collegiate experience, which included a stint as head coach at nearby Cuyamaca College in 1999 and 2000, Hilliard has also coached for the past 12 years at Wave Volleyball Club in Del Mar, the premier volleyball club in San Diego County.

"Our priority at SDSU will be to engage, attract and secure exceptional student-athletes that strive for both academic and athletic excellence in their everyday lives," Hilliard added. "From day one, we will set expectations high and build from there. I am incredibly excited to get started and I look forward to the bright future ahead."

HILLIARD'S COLLEGIATE COACHING LEDGER (As an Assistant at USD)

| Year | Overall Record | WCC Record (Finish) | Postseason |
|------------------|-----------------------|---------------------|-------------------|
| 2001 | 22-9 | 10-4 (3rd) | NCAA Second Round |
| 2002 | 25-8 | 10-4 (3rd) | NCAA First Round |
| 2003 | 17-13 | 6-8 (T-5th) | NCAA First Round |
| 2004 | 24-5 | 14-0 (1st) | NCAA Sweet 16 |
| 2005 | 23-6 | 10-4 (T-2nd) | NCAA Second Round |
| 2006* | 26-6 | 13-1 (1st) | NCAA Sweet 16 |
| 2007 | 21-8 | 11-3 (1st) | NCAA First Round |
| 2008 | 23-5 | 12-2 (1st) | NCAA First Round |
| 2009 | 18-7 | 10-4 (2nd) | None |
| 2010 | 24-8 | 13-1 (1st) | NCAA Second Round |
| 2011* | 28-5 | 12-4 (2nd) | NCAA Second Round |
| 2012 | 21-7 | 13-3 (T-1st) | NCAA First Round |
| 2013 | 26-4 | 16-2 (1st) | NCAA Sweet 16 |
| 2014 | 19-12 | 12-6 (T-3rd) | NCAA First Round |
| 2015 | 22-10 | 14-4 (2nd) | NCAA Second Round |
| 2016 | 24-6 | 15-3 (2nd) | NCAA First Round |
| 2017 | 25-5 | 17-1 (T-1st) | NCAA Second Round |
| 2018 | 18-13 | 13-5 (3rd) | NCAA Sweet 16 |
| 2019 | 25-6 | 17-1 (1st) | NCAA Second Round |
| USD Total | 431-143 (.751) | | |
| WCC Total | 238-60 (.799) | | |

As Head Coach at SDSU

| Year | Overall Record | MW Record (Finish) | Postseason |
|-----------------------------|-----------------------|--------------------|------------|
| 2020 | 6-9 | 6-9 (8th) | |
| 2021 | 8-22 | 5-13 (9th) | |
| 2022 | 5-16 | 3-7 | |
| SDSU Total | 19-47 | | |
| Career as Head Coach | 73-58 (.557) | | |
| Overall Total | 450-190 (.703) | | |

Notes

* - Served as interim head coach during the 2006 and 2011 seasons at USD. Record reflected in career totals.

- > Qualified for the NCAA Tournament in 18 of his 19 seasons at USD
- > Reached the NCAA Sweet 16 four times in 2004, 2006, 2013 and 2018
- > Won nine West Coast Conference championships

2022 AZTEC PHOTO ROSTER



Heipua TAUTUA'A
OH | 6-2 | Jr.

2



McKenna DOUGLAS
DS/L | 5-7 | Fr.

3



Kennedy FEUERBORN
S | 6-3 | Jr.

4



Jordyn GOLDSMITH
OPP | 6-1 | So.

6



Madison CORF
OH | 5-11 | Fr.

7



Ellie GEOGHEGAN
DS/L | 5-8 | Fr.

8



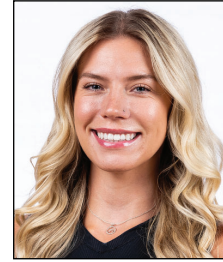
Sara MUKAJ
MB | 6-3 | So.

9



Cara BRAUN
OH | 6-1 | Fr.

10



Kayla RIVERA
OPP | 6-1 | Sr.

11



Julia HAYNIE
MB | 6-1 | Sr.

13



Reagan MERK
OH | 5-11 | So.

14



Mikela LABNO
OH | 6-2 | So.

15



Sarena GONZALEZ
S | 5-8 | Fr.

16



Noa MILLER
S | 5-10 | Sr.

19



Elly SCHRAEDER
MB | 6-2 | So.

20



Kat COOPER
MB | 6-1 | MB

21



Brent HILLIARD
Head Coach



Melanie GREENE
Assistant Coach/
Recruiting Coordinator



STEVE TIMMONS
Assistant Coach



Kara BARKDOLL
Volleyball Operations
Assistant



2022-23 San Diego St. Women's Volleyball Combined Team Statistics All games

Game Records

| Overall | Conference | Home | Away | Neutral |
|---------|------------|-------|-------|---------|
| 5 - 16 | 3 - 7 | 4 - 8 | 1 - 6 | 0 - 2 |

Team Box Score

| # | Player | SP | Attack | | | | | Set | | Serve | | | RE | Dig | | Blocking | | | | | PTS | |
|----------------------|--------------------|-----------|------------|--------------|------------|-------------|-------------|------------|--------------|------------|------------|-------------|------------|------------|--------------|-----------|------------|--------------|-------------|-----------|-----------|----------------|
| | | | K | K/S | E | TA | PCT | A | A/S | SA | SE | SA/S | | DIG | DIG/S | BS | BA | TOT/S | BLK/S | BE | | BHE |
| 2 | Tautua'a, Heipua | 71 | 157 | 2.21 | 81 | 446 | .170 | 15 | 0.21 | 11 | 22 | 0.15 | 30 | 144 | 2.03 | 6 | 19 | 25 | 0.35 | 5 | 1 | 183.5 |
| 3 | Douglas, McKenna | 37 | 2 | 0.05 | 0 | 7 | .286 | 38 | 1.03 | 12 | 10 | 0.32 | 10 | 112 | 3.03 | 0 | 0 | 0 | 0.00 | 0 | 1 | 14.0 |
| 4 | Feuerborn, Kennedy | 12 | 7 | 0.58 | 4 | 20 | .150 | 40 | 3.33 | 0 | 0 | 0.00 | 0 | 1 | 0.08 | 0 | 2 | 2 | 0.17 | 0 | 2 | 8.0 |
| 6 | Goldsmith, Jordyn | 8 | 7 | 0.88 | 8 | 25 | -.040 | 0 | 0.00 | 0 | 0 | 0.00 | 0 | 2 | 0.25 | 0 | 1 | 1 | 0.13 | 0 | 0 | 7.5 |
| 7 | Corf, Madison | 70 | 183 | 2.61 | 124 | 480 | .123 | 7 | 0.10 | 9 | 26 | 0.13 | 35 | 95 | 1.36 | 3 | 14 | 17 | 0.24 | 6 | 2 | 202.0 |
| 8 | Geoghegan, Ellie | 78 | 5 | 0.06 | 1 | 8 | .500 | 44 | 0.56 | 21 | 36 | 0.27 | 33 | 239 | 3.06 | 0 | 0 | 0 | 0.00 | 0 | 0 | 26.0 |
| 9 | Mukaj, Sara | 9 | 2 | 0.22 | 0 | 13 | .154 | 2 | 0.22 | 1 | 0 | 0.11 | 0 | 3 | 0.33 | 0 | 1 | 1 | 0.11 | 2 | 0 | 3.5 |
| 11 | Rivera, Kayla | 78 | 176 | 2.26 | 105 | 490 | .145 | 4 | 0.05 | 3 | 9 | 0.04 | 0 | 22 | 0.28 | 4 | 49 | 53 | 0.68 | 6 | 0 | 207.5 |
| 13 | Haynie, Julia | 48 | 82 | 1.71 | 21 | 166 | .367 | 4 | 0.08 | 5 | 7 | 0.10 | 0 | 11 | 0.23 | 3 | 23 | 26 | 0.54 | 3 | 0 | 101.5 |
| 14 | Merk, Reagan | 29 | 11 | 0.38 | 8 | 30 | .100 | 4 | 0.14 | 5 | 7 | 0.17 | 6 | 34 | 1.17 | 0 | 1 | 1 | 0.03 | 1 | 0 | 16.5 |
| 15 | Labno, Mikela | 78 | 177 | 2.27 | 89 | 486 | .181 | 8 | 0.10 | 0 | 2 | 0.00 | 10 | 41 | 0.53 | 4 | 17 | 21 | 0.27 | 0 | 0 | 189.5 |
| 16 | Gonzalez, Sarena | 68 | 2 | 0.03 | 0 | 10 | .200 | 330 | 4.85 | 10 | 22 | 0.15 | 1 | 64 | 0.94 | 0 | 0 | 0 | 0.00 | 0 | 9 | 12.0 |
| 19 | Miller, Noa | 78 | 13 | 0.17 | 4 | 45 | .200 | 401 | 5.14 | 21 | 16 | 0.27 | 0 | 138 | 1.77 | 0 | 4 | 4 | 0.05 | 2 | 11 | 36.0 |
| 20 | Schraeder, Elly | 69 | 79 | 1.14 | 30 | 200 | .245 | 4 | 0.06 | 0 | 0 | 0.00 | 0 | 5 | 0.07 | 11 | 55 | 66 | 0.96 | 13 | 2 | 117.5 |
| 21 | Cooper, Kat | 57 | 62 | 1.09 | 26 | 163 | .221 | 2 | 0.04 | 2 | 11 | 0.04 | 0 | 19 | 0.33 | 5 | 23 | 28 | 0.49 | 1 | 1 | 80.5 |
| SAN DIEGO ST. | | 78 | 965 | 12.37 | 501 | 2589 | .179 | 903 | 11.58 | 100 | 168 | 1.28 | 136 | 930 | 11.92 | 36 | 209 | 140.5 | 1.80 | 39 | 29 | 1,205.5 |
| Opponents | | 78 | 963 | 12.35 | 346 | 2379 | .259 | 872 | 11.18 | 136 | 161 | 1.74 | 100 | 868 | 11.13 | 28 | 406 | 231 | 2.96 | 38 | 28 | 1,330.0 |

Team statistics

| | SDSU | OPP |
|-------------------------|--------|-------|
| ATTACK | | |
| Kills | 965 | 963 |
| Errors | 501 | 346 |
| Total Attacks | 2589 | 2379 |
| Attack Pct | .179 | .259 |
| Kills/Set | 12.37 | 12.35 |
| SET | | |
| Assists | 903 | 872 |
| Attempts | 2573 | 2300 |
| Assist Pct | .351 | .379 |
| Assists/Set | 11.58 | 11.18 |
| SERVE | | |
| Aces | 100 | 136 |
| Errors | 168 | 161 |
| Attempts | 1634 | 1825 |
| Serve Pct | .897 | .912 |
| Aces/Set | 1.28 | 1.74 |
| SERVE RECEPTIONS | | |
| Errors | 136 | 100 |
| Errors/Set | 1.74 | 1.28 |
| Attempts | 1664 | 1467 |
| Reception Pct | .918 | .999 |
| DEFENSE | | |
| Digs | 930 | 868 |
| Digs/Set | 11.92 | 11.13 |
| BLOCKING | | |
| Block solo | 36 | 28 |
| Block Assist | 209 | 406 |
| Total Blocks | 140.5 | 231 |
| Blocks/Set | 1.80 | 2.96 |
| Block Errors | 39 | 38 |
| Ball handling errors | 29 | 28 |
| ATTENDANCE | | |
| Total | 4081 | 5733 |
| Dates/Avg Per Date | 12/340 | 7/819 |
| Neutral Site #/Avg | 2/104 | - |
| Current win streak | 0 | - |
| Home win streak | 0 | - |

Team Results

| Date | Opponent | Score | Score-by-set | Att. |
|--------------|---------------------|-------|------------------------------|------|
| 08/26/2022 | California | L 0-3 | 20-25,23-25,23-25 | 357 |
| 08/27/2022 | Army West Point | W 3-1 | 25-22,22-25,25-16,25-19 | 287 |
| 08/27/2022 | UC San Diego | W 3-1 | 25-22,25-20,26-28,25-20 | 341 |
| 09/02/2022 | vs Baylor | L 1-3 | 18-25,17-25,29-27,14-25 | 125 |
| 09/03/2022 | at Pepperdine | L 0-3 | 18-25,20-25,32-34 | 302 |
| 09/03/2022 | vs UC Santa Barbara | L 1-3 | 18-25,18-25,22-16,25 | 82 |
| 09/09/2022 | Maryland | L 1-3 | 14-25,25-21,20-25,18-25 | 122 |
| 09/09/2022 | Arizona | L 0-3 | 17-25,15-25,11-25 | 388 |
| 09/10/2022 | Sacramento St. | L 2-3 | 16-25,26-28,25-21,25-22,8-15 | 186 |
| 09/15/2022 | UCLA | L 0-3 | 16-25,23-25,15-25 | 686 |
| 09/17/2022 | at San Diego | L 1-3 | 25-20,13-25,14-25,12-25 | 1000 |
| * 09/22/2022 | San Jose St. | L 1-3 | 18-25,25-18,21-25,10-25 | 322 |
| * 09/24/2022 | Nevada | W 3-1 | 25-16,25-22,20-25,26-24 | 244 |
| * 09/27/2022 | at Fresno St. | W 3-0 | 25-18,25-21,25-21 | 641 |
| * 10/01/2022 | at UNLV | L 1-3 | 15-25,19-25,27-25,22-25 | 698 |
| * 10/06/2022 | at Utah St. | L 0-3 | 19-25,17-25,10-25 | 1084 |
| * 10/08/2022 | at Boise St. | L 1-3 | 21-25,16-25,25-22,23-25 | 1281 |
| * 10/13/2022 | Wyoming | L 1-3 | 14-25,22-25,25-20,17-25 | 441 |
| * 10/15/2022 | Colorado St. | L 0-3 | 21-25,21-25,23-25 | 387 |
| * 10/20/2022 | at New Mexico | L 1-3 | 21-25,23-25,25-18,21-25 | 727 |
| * 10/22/2022 | Air Force | W 3-1 | 25-21,27-29,25-16,25-16 | 320 |



2022-23 San Diego St. Women's Volleyball Combined Team Statistics In Conference games

Game Records

| Overall | Conference | Home | Away | Neutral |
|---------|------------|-------|-------|---------|
| 3 - 7 | 3 - 7 | 2 - 3 | 1 - 4 | 0 - 0 |

Team Box Score

| ## | Player | SP | Attack | | | | Set | | Serve | | | Dig | | | Blocking | | | | PTS | | | |
|----------------------|--------------------|-----------|------------|--------------|------------|-------------|-------------|------------|--------------|-----------|-----------|-------------|-----------|------------|--------------|-----------|------------|------------|-------------|-----------|-----------|--------------|
| | | | K | K/S | E | TA | PCT | A | A/S | SA | SE | SA/S | RE | DIG | DIG/S | BS | BA | TOT/S | | BLK/S | BE | BHE |
| 2 | Tautua'a, Heipua | 31 | 49 | 1.58 | 21 | 151 | .185 | 5 | 0.16 | 4 | 7 | 0.13 | 9 | 56 | 1.81 | 4 | 11 | 15 | 0.48 | 1 | 1 | 62.5 |
| 3 | Douglas, McKenna | 22 | 1 | 0.05 | 0 | 6 | .167 | 24 | 1.09 | 10 | 6 | 0.45 | 6 | 69 | 3.14 | 0 | 0 | 0 | 0.00 | 0 | 0 | 11.0 |
| 4 | Feuerborn, Kennedy | 8 | 6 | 0.75 | 3 | 12 | .250 | 29 | 3.63 | 0 | 0 | 0.00 | 0 | 0 | 0.00 | 0 | 0 | 0 | 0.00 | 0 | 1 | 6.0 |
| 6 | Goldsmith, Jordyn | 5 | 4 | 0.80 | 6 | 15 | .133 | 0 | 0.00 | 0 | 0 | 0.00 | 0 | 2 | 0.40 | 0 | 1 | 1 | 0.20 | 0 | 0 | 4.5 |
| 7 | Corf, Madison | 33 | 98 | 2.97 | 63 | 251 | .139 | 4 | 0.12 | 7 | 13 | 0.21 | 13 | 60 | 1.82 | 2 | 5 | 7 | 0.21 | 1 | 2 | 109.5 |
| 8 | Geoghegan, Ellie | 37 | 3 | 0.08 | 1 | 6 | .333 | 21 | 0.57 | 12 | 15 | 0.32 | 15 | 122 | 3.30 | 0 | 0 | 0 | 0.00 | 0 | 0 | 15.0 |
| 9 | Mukaj, Sara | 2 | 0 | 0.00 | 0 | 1 | .000 | 0 | 0.00 | 0 | 0 | 0.00 | 0 | 0 | 0.00 | 0 | 0 | 0 | 0.00 | 0 | 0 | 0.0 |
| 11 | Rivera, Kayla | 37 | 94 | 2.54 | 54 | 247 | .162 | 4 | 0.11 | 3 | 9 | 0.08 | 0 | 19 | 0.51 | 4 | 23 | 27 | 0.73 | 4 | 0 | 112.5 |
| 13 | Haynie, Julia | 28 | 53 | 1.89 | 11 | 105 | .400 | 3 | 0.11 | 4 | 7 | 0.14 | 0 | 7 | 0.25 | 2 | 16 | 18 | 0.64 | 1 | 0 | 67.0 |
| 14 | Merk, Reagan | 10 | 3 | 0.30 | 3 | 11 | .000 | 2 | 0.20 | 0 | 1 | 0.00 | 1 | 7 | 0.70 | 0 | 1 | 1 | 0.10 | 0 | 0 | 3.5 |
| 15 | Labno, Mikela | 37 | 87 | 2.35 | 45 | 246 | .171 | 6 | 0.16 | 0 | 0 | 0.00 | 7 | 17 | 0.46 | 3 | 6 | 9 | 0.24 | 0 | 0 | 93.0 |
| 16 | Gonzalez, Sarena | 30 | 2 | 0.07 | 0 | 9 | .222 | 129 | 4.30 | 4 | 6 | 0.13 | 0 | 31 | 1.03 | 0 | 0 | 0 | 0.00 | 0 | 5 | 6.0 |
| 19 | Miller, Noa | 37 | 8 | 0.22 | 4 | 29 | .138 | 210 | 5.68 | 5 | 7 | 0.14 | 0 | 68 | 1.84 | 0 | 4 | 4 | 0.11 | 1 | 4 | 15.0 |
| 20 | Schraeder, Elly | 30 | 37 | 1.23 | 10 | 89 | .303 | 0 | 0.00 | 0 | 0 | 0.00 | 0 | 4 | 0.13 | 6 | 23 | 29 | 0.97 | 5 | 1 | 54.5 |
| 21 | Cooper, Kat | 29 | 31 | 1.07 | 14 | 87 | .195 | 2 | 0.07 | 0 | 3 | 0.00 | 0 | 8 | 0.28 | 2 | 8 | 10 | 0.34 | 1 | 1 | 37.0 |
| SAN DIEGO ST. | | 37 | 476 | 12.86 | 235 | 1265 | .191 | 439 | 11.86 | 49 | 74 | 1.32 | 56 | 470 | 12.70 | 23 | 98 | 72 | 1.95 | 14 | 15 | 597.0 |
| Opponents | | 37 | 454 | 12.27 | 170 | 1173 | .242 | 397 | 10.73 | 56 | 77 | 1.51 | 49 | 422 | 11.41 | 13 | 176 | 101 | 2.73 | 24 | 9 | 611.0 |

Team statistics

| | SDSU | OPP |
|-------------------------|-------|-------|
| ATTACK | | |
| Kills | 476 | 454 |
| Errors | 235 | 170 |
| Total Attacks | 1265 | 1173 |
| Attack Pct | .191 | .242 |
| Kills/Set | 12.86 | 12.27 |
| SET | | |
| Assists | 439 | 397 |
| Attempts | 1307 | 1184 |
| Assist Pct | .336 | .335 |
| Assists/Set | 11.86 | 10.73 |
| SERVE | | |
| Aces | 49 | 56 |
| Errors | 74 | 77 |
| Attempts | 798 | 853 |
| Serve Pct | .907 | .910 |
| Aces/Set | 1.32 | 1.51 |
| SERVE RECEPTIONS | | |
| Errors | 56 | 49 |
| Errors/Set | 1.51 | 1.32 |
| Attempts | 776 | 726 |
| Reception Pct | .928 | .998 |
| DEFENSE | | |
| Digs | 470 | 422 |
| Digs/Set | 12.70 | 11.41 |
| BLOCKING | | |
| Block solo | 23 | 13 |
| Block Assist | 98 | 176 |
| Total Blocks | 72 | 101 |
| Blocks/Set | 1.95 | 2.73 |
| Block Errors | 14 | 24 |
| Ball handling errors | 15 | 9 |
| ATTENDANCE | | |
| Total | 1714 | 4431 |
| Dates/Avg Per Date | 5/343 | 5/886 |
| Neutral Site #/Avg | 0/0 | - |
| Current win streak | 0 | - |
| Home win streak | 0 | - |

Team Results

| Date | Opponent | Score | Score-by-set | Att. |
|--------------|---------------|-------|-------------------------|------|
| * 09/22/2022 | San Jose St. | L 1-3 | 18-25,25-18,21-25,10-25 | 322 |
| * 09/24/2022 | Nevada | W 3-1 | 25-16,25-22,20-25,26-24 | 244 |
| * 09/27/2022 | at Fresno St. | W 3-0 | 25-18,25-21,25-21 | 641 |
| * 10/01/2022 | at UNLV | L 1-3 | 15-25,19-25,27-25,22-25 | 698 |
| * 10/06/2022 | at Utah St. | L 0-3 | 19-25,17-25,10-25 | 1084 |
| * 10/08/2022 | at Boise St. | L 1-3 | 21-25,16-25,25-22,23-25 | 1281 |
| * 10/13/2022 | Wyoming | L 1-3 | 14-25,22-25,25-20,17-25 | 441 |
| * 10/15/2022 | Colorado St. | L 0-3 | 21-25,21-25,23-25 | 387 |
| * 10/20/2022 | at New Mexico | L 1-3 | 21-25,23-25,25-18,21-25 | 727 |
| * 10/22/2022 | Air Force | W 3-1 | 25-21,27-29,25-16,25-16 | 320 |

SEASON HIGHS

CAREER HIGHS

#2 HEIPUA TAUTUA'A

Hitting Percentage (*min. 7 kills*) .379 (13-29-29) vs. Army West Point, 8/27/22
 Total Attempts 35, at Pepperdine, 9/3/22
 Kills 14, three times, last: vs. Sacramento State, 9/10/22
 Assists 3, at Pepperdine, 9/3/22
 Aces 4, at Pepperdine, 9/3/22
 Digs 16, vs. No. 9 Baylor, 9/2/22
 Block Solos 2, vs. San José State, 9/22/22
 Block Assists 5, vs. San José State, 9/22/22
 Total Blocks 7, vs. San José State, 9/22/22
 Points 16.0, at Pepperdine, 9/3/22

#3 MCKENNA DOUGLAS

Hitting Percentage (*min. 7 kills*) N/A
 Total Attempts 4, at UNLV, 10/1/22
 Kills 1, twice, last: at Fresno State, 9/27/22
 Assists 7, vs. Nevada, 9/24/22
 Aces 5, at Fresno State, 9/27/22
 Digs 26, vs. Nevada, 9/24/22
 Block Solos N/A
 Block Assists N/A
 Total Blocks N/A
 Points 6.0, at Fresno State, 9/27/22

#4 KENNEDY FEUERBORN

Hitting Percentage (*min. 7 kills*) N/A
 Total Attempts 5, twice, last: vs. Wyoming, 10/13/22
 Kills 2, three times, last: vs. Wyoming, 10/13/22
 Assists 15, vs. Nevada, 9/24/22
 Aces N/A
 Digs 1, vs. Maryland, 9/9/22
 Block Solos N/A
 Block Assists 1, twice, last: vs. Maryland, 9/9/22
 Total Blocks 1, twice, last: vs. Maryland, 9/9/22
 Points 2.0, three times, last: vs. Wyoming, 10/13/22

#6 JORDYN GOLDSMITH

Hitting Percentage (*min. 7 kills*) N/A
 Total Attempts 9, vs. UC Santa Barbara, 9/3/22
 Kills 3, twice, last: vs. Colorado State, 10/15/22
 Assists N/A
 Aces N/A
 Digs 2, vs. Nevada, 9/24/22
 Block Solos N/A
 Block Assists 1, vs. Colorado State, 10/15/22
 Total Blocks 1, vs. Colorado State, 10/15/22
 Points 3.5, vs. Colorado State, 10/15/22

#7 MADISON CORF

Hitting Percentage (*min. 7 kills*) .303, vs. UC San Diego, 8/27/22
 Total Attempts 47, vs. Nevada, 9/24/22
 Kills 22, vs. Nevada, 9/24/22
 Assists 2, vs. Colorado State, 10/15/22
 Aces 3, vs. Air Force, 10/22/22
 Digs 11, twice, last: at New Mexico, 10/20/22
 Block Solos 1, three times, last: at UNLV, 10/1/22
 Block Assists 2, twice, last: vs. Sacramento State, 9/10/22
 Total Blocks 2, three times, last: vs. Sacramento State, 9/10/22
 Points 24.5, vs. Air Force, 10/22/22

#8 ELLIE GEOGHEGAN

Hitting Percentage (*min. 7 kills*) N/A
 Total Attempts 3, at Fresno State, 9/27/22
 Kills 2, at Fresno State, 9/27/22
 Assists 8, at New Mexico, 10/20/22
 Aces 3, twice, last: vs. Wyoming, 10/13/22
 Digs 24, at New Mexico, 10/20/22
 Block Solos N/A
 Block Assists N/A
 Total Blocks N/A
 Points 3.0, three times, last: vs. Wyoming, 10/13/22

.462 (14-2-26), at Boise State, 3/20/21
 38, vs. Nevada, 2/26/21
 15, vs. Nevada, 2/26/21
 5, vs. Fresno State, 10/7/21
 4, at Pepperdine, 9/3/22
 22, vs. New Mexico, 2/20/21
 3, at Wyoming, 3/5/21
 6, at Boise State, 3/20/21
 7, vs. San José State, 9/22/22
 19.0, at Boise State, 3/20/21

N/A
 4, at UNLV, 10/1/22
 1, twice, last: at Fresno State, 9/27/22
 7, vs. Nevada, 9/24/22
 5, at Fresno State, 9/27/22
 26, vs. Nevada, 9/24/22
 N/A
 N/A
 N/A
 6.0, at Fresno State, 9/27/22

N/A
 15, vs. Fresno State, 10/7/21
 6, at UNLV, 2/5/21
 27, at UNLV, 2/5/21
 1, twice, last: vs. Boise State, 10/30/21
 7, vs. Fresno State, 2/12/21
 1, twice, last: vs. Fresno State, 2/12/21
 5, vs. Nevada, 11/18/21
 5, vs. Nevada, 11/18/21
 7.0, twice, last: vs. Utah State, 10/28/21

.636 (7-0-11), vs. Air Force 10/2/21
 27, vs. Colorado State, 10/21/21
 9, three times, last: at Wyoming, 10/23/21
 2, vs. Boise State, 10/30/21
 N/A
 3, four times, last: at Utah State, 10/16/21
 1, four times, last: at Wyoming, 10/23/21
 4, twice, last: vs. Fresno State, 10/7/21
 5, vs. Fresno State, 10/7/21
 10.0, at Wyoming, 10/23/21

.303, vs. UC San Diego, 8/27/22
 47, vs. Nevada, 9/24/22
 22, vs. Nevada, 9/24/22
 2, vs. Colorado State, 10/15/22
 3, vs. Air Force, 10/22/22
 11, twice, last: at New Mexico, 10/20/22
 1, three times, last: at UNLV, 10/1/22
 2, twice, last: vs. Sacramento State, 9/10/22
 2, three times, last: vs. Sacramento State, 9/10/22
 24.5, vs. Air Force, 10/22/22

N/A
 3, at Fresno State, 9/27/22
 2, at Fresno State, 9/27/22
 8, at New Mexico, 10/20/22
 3, twice, last: vs. Wyoming, 10/13/22
 24, at New Mexico, 10/20/22
 N/A
 N/A
 N/A
 3.0, three times, last: vs. Wyoming, 10/13/22

SEASON HIGHS

CAREER HIGHS

#9 SARA MUKAJ

| | |
|--|-------------------------------------|
| Hitting Percentage (<i>min. 7 kills</i>) | N/A |
| Total Attempts | 6, vs. Arizona, 9/9/22 |
| Kills | 1, twice, last: vs. Arizona, 9/9/22 |
| Assists | 2, vs. Sacramento State, 9/10/22 |
| Aces | 1, vs. Sacramento State, 9/10/22 |
| Digs | 3, vs. Sacramento State, 9/10/22 |
| Block Solos | N/A |
| Block Assists | 1, vs. Sacramento State, 9/10/22 |
| Total Blocks | 1, vs. Sacramento State, 9/10/22 |
| Points | 1.5, vs. Sacramento State, 9/10/22 |

#10 CARA BRAUN

| | |
|--|--|
| Hitting Percentage (<i>min. 7 kills</i>) | |
| Total Attempts | |
| Kills | |
| Assists | |
| Aces | |
| Digs | |
| Block Solos | |
| Block Assists | |
| Total Blocks | |
| Points | |

#11 KAYLA RIVERA

| | |
|--|---|
| Hitting Percentage (<i>min. 7 kills</i>) | .647 (12-1-17) at Pepperdine, 9/3/22 |
| Total Attempts | 36, at New Mexico, 10/20/22 |
| Kills | 13, vs. Nevada, 9/24/22 |
| Assists | 2, at Fresno State, 9/27/22 |
| Aces | 1, vs. Nevada, 9/24/22 |
| Digs | 5, twice, last: at New Mexico, 10/20/22 |
| Block Solos | 1, three times, last: at New Mexico, 10/20/22 |
| Block Assists | 7, vs. Army West Point, 8/27/22 |
| Total Blocks | 7, vs. Army West Point, 8/27/22 |
| Points | 14.5, twice: last, vs. Air Force, 10/22/22 |

* - played at Georgia (Fall 2018-Fall 2021)

#13 JULIA HAYNIE

| | |
|--|---|
| Hitting Percentage (<i>min. 7 kills</i>) | .769 (10-0-13), at New Mexico, 10/20/22 |
| Total Attempts | 19, twice, last: vs. Nevada, 9/24/22 |
| Kills | 10, twice, last: at New Mexico, 10/20/22 |
| Assists | 3, at Fresno State, 9/27/22 |
| Aces | 2, twice, last: at UNLV, 10/1/22 |
| Digs | 2, three times, last: at New Mexico, 10/20/22 |
| Block Solos | 1, twice, last: at New Mexico, 10/20/22 |
| Block Assists | 6, at New Mexico, 10/20/22 |
| Total Blocks | 7, at New Mexico, 10/20/22 |
| Points | 14.0, at New Mexico, 10/20/22 |

^ - played at Portland State (Fall 2019 & Spring 2021)

#14 REAGAN MERK

| | |
|--------------------|---|
| Hitting Percentage | .286 (7-3-14), vs. UC Santa Barbara, 9/3/22 |
| Total Attempts | 14, vs. UC Santa Barbara, 9/3/22 |
| Kills | 7, vs. UC Santa Barbara, 9/3/22 |
| Assists | 2, vs. Maryland, 9/9/22 |
| Aces | 2, twice, last: vs. Maryland, 9/9/22 |
| Digs | 7, vs. Maryland, 9/9/22 |
| Block Solos | N/A |
| Block Assists | 1, at Fresno State, 9/27/22 |
| Total Blocks | 1, at Fresno State, 9/27/22 |
| Points | 7.0, vs. UC Santa Barbara, 9/3/22 |

#15 MIKELA LABNO

| | |
|--|---|
| Hitting Percentage (<i>min. 7 kills</i>) | .450 (10-1-20), at No. 8 San Diego, 9/17/22 |
| Total Attempts | 35, at New Mexico, 10/20/22 |
| Kills | 16, at Boise State, 10/8/22 |
| Assists | 2, twice, last: at Fresno State, 9/27/22 |
| Aces | N/A |
| Digs | 6, twice, last: vs. Nevada, 9/24/22 |
| Block Solos | 1, three times, last: vs. Colorado State, 10/15/22 |
| Block Assists | 2, three times, last: vs. Sacramento State, 9/10/22 |
| Total Blocks | 2, six times, last: vs. Colorado State, 10/15/22 |
| Points | 17.0, at Boise State, 10/8/22 |

| |
|--|
| .636 (7-0-11) at Sam Houston, 8/28/21 |
| 11, at Sam Houston, 8/28/21 |
| 7, at Sam Houston, 8/28/21 |
| 4, twice, last: at UC Santa Barbara, 9/3/21 |
| 4, at Sam Houston, 8/27/21 |
| 5, at Sam Houston, 8/28/21 |
| 1, at UC Santa Barbara, 9/3/21 |
| 4, twice, last: vs. Pepperdine, 9/4/21 |
| 4, three times, last: vs. Pepperdine, 9/4/21 |
| 10.0, at Sam Houston, 8/28/21 |

| |
|---|
| .647 (12-1-17) at Pepperdine, 9/3/22 |
| 36, at New Mexico, 10/20/22; at Texas A&M, 10/8/21* |
| 15, at Texas A&M, 10/8/21* |
| 2, at Fresno State, 9/27/22 |
| 2, five times, last: at Texas A&M, 10/8/21* |
| 18, at Texas A&M, 10/8/21* |
| 5, vs. Arkansas, 2/5/21* |
| 7, vs. Army West Point, 8/27/22 |
| 7, vs. Army West Point, 8/27/22 |
| 17.5, at Texas A&M, 10/8/21* |

| |
|--|
| .769 (10-0-13), at New Mexico, 10/20/22 |
| 25, vs. Idaho, 1/25/21^ |
| 11, vs. Idaho, 1/25/21^ |
| 3, at Fresno State, 9/27/22 |
| 3, vs. UC Davis, 9/7/19^ |
| 4, twice, last: at UNLV, 11/1/21 |
| 2, twice, last: at Fresno State, 11/6/21 |
| 9, vs. Eastern Washington, 10/31/19^ |
| 10, vs. Eastern Washington, 10/31/19^ |
| 14.0, at New Mexico, 10/20/22 |

| |
|--|
| .385 (7-2-13), vs. Texas Southern, 9/17/21 |
| 20, vs. UC Riverside, 9/18/21 |
| 7, three times: vs. UC Santa Barbara, 9/3/22 |
| 2, three times, last: vs. Maryland, 9/9/22 |
| 2, three times, last: vs. Maryland, 9/9/22 |
| 7, vs. Maryland, 9/9/22 |
| 1, vs. UC Riverside, 9/18/21 |
| 2, vs. UC Riverside, 9/18/21 |
| 3, vs. UC Riverside, 9/18/21 |
| 9.0, vs. UC Riverside, 9/18/21 |

| |
|--|
| .522 (13-1-23), vs. Pepperdine, 9/4/21 |
| 35, at New Mexico, 10/20/22 |
| 16, at Boise State, 10/8/22 |
| 2, three times, last: at Fresno State, 9/27/22 |
| 2, at Long Beach State, 9/14/21 |
| 13, vs. UC Riverside, 9/18/21 |
| 2, vs. San Diego, 9/11/21 |
| 3, vs. New Mexico, 9/30/21 |
| 4, vs. New Mexico, 9/30/21 |
| 17.0, at Boise State, 10/8/22 |

SEASON HIGHS

CAREER HIGHS

#16 SARENA GONZALEZ

| | |
|--|--|
| Hitting Percentage (<i>min. 7 kills</i>) | N/A |
| Total Attempts | 6, at UNLV, 10/1/22 |
| Kills | 1, twice, last: at Fresno State, 9/27/22 |
| Assists | 30, vs. UC San Diego, 8/27/22 |
| Aces | 3, vs. Maryland, 9/9/22 |
| Digs | 7, at New Mexico, 10/20/22 |
| Block Solos | N/A |
| Block Assists | N/A |
| Total Blocks | N/A |
| Points | 3.0, twice, last: at Fresno State, 9/27/22 |

#19 NOA MILLER

| | |
|--|----------------------------------|
| Hitting Percentage (<i>min. 7 kills</i>) | N/A |
| Total Attempts | 8, at UNLV, 10/1/22 |
| Kills | 3, at Boise State, 10/8/22 |
| Assists | 33, vs. Air Force, 10/22/22 |
| Aces | 6, vs. UC San Diego, 8/27/22 |
| Digs | 12, vs. Army West Point, 8/27/22 |
| Block Solos | N/A |
| Block Assists | 3, at New Mexico, 10/20/22 |
| Total Blocks | 3, at New Mexico, 10/20/22 |
| Points | 6.0, vs. UC San Diego, 8/27/22 |

* - played at Wofford in 2018 and at Arizona State in 2019

#20 ELLY SCHRAEDER

| | |
|--|--|
| Hitting Percentage (<i>min. 7 kills</i>) | .375, (8-2-16), vs. Army West Point, 8/27/22 |
| Total Attempts | 16, vs. Army West Point, 8/27/22 |
| Kills | 8, twice: vs. Air Force, 10/22/22 |
| Assists | 1, four times, last: vs. UCLA, 9/15/22 |
| Aces | N/A |
| Digs | 1, five times, last: vs. Air Force, 10/22/22 |
| Block Solos | 2, twice, last: at UNLV, 10/1/22 |
| Block Assists | 8, vs. Army West Point, 8/27/22 |
| Total Blocks | 9.0, vs. Army West Point, 8/27/22 |
| Points | 13.0, vs. Army West Point, 8/27/22 |

+ - played at San Diego (Spring & Fall 2021)

#21 KAT COOPER

| | |
|--|--|
| Hitting Percentage (<i>min. 7 kills</i>) | .600 (7-1-10), vs. UC San Diego, 8/27/22 |
| Total Attempts | 17, at New Mexico, 10/20/22 |
| Kills | 7, vs. UC San Diego, 8/27/22 |
| Assists | 1, twice, last: vs. Wyoming, 10/15/22 |
| Aces | 1, twice, last: vs. Army West Point, 8/27/22 |
| Digs | 5, vs. UC San Diego, 8/27/22 |
| Block Solos | 1, five times, last: vs. Wyoming, 10/13/22 |
| Block Assists | 4, twice, last: vs. UC San Diego, 8/27/22 |
| Total Blocks | 5, twice, last: vs. UC San Diego, 8/27/22 |
| Points | 10.0, vs. UC San Diego, 8/27/22 |

| |
|--|
| N/A |
| 6, at UNLV, 10/1/22 |
| 1, twice, last: at Fresno State, 9/27/22 |
| 30, vs. UC San Diego, 8/27/22 |
| 3, vs. Maryland, 9/9/22 |
| 7, at New Mexico, 10/20/22 |
| N/A |
| N/A |
| N/A |
| 3.0, twice, last: at Fresno State, 9/27/22 |

| |
|--|
| N/A |
| 8, at UNLV, 10/1/22 |
| 6, vs. Fresno State, 10/7/21 |
| 33, vs. Air Force, 10/22/22 |
| 6, vs. UC San Diego, 8/27/22 |
| 16, vs. Houston, 8/30/19* |
| N/A |
| 3, at New Mexico, 10/20/22 |
| 3, at New Mexico, 10/20/22 |
| 6.0 twice, last: vs. UC San Diego, 8/27/22 |

| |
|--|
| .778 (7-0-9), vs. Portland (2/10/21)+ |
| 16, vs. Army West Point, 8/27/22 |
| 8, vs. Army West Point, 8/27/22 |
| 2, at Loyola Marymount, 3/13/21+ |
| 1, at Loyola Marymount, 3/13/21+ |
| 1, twelve times, last: vs. Air Force, 10/22/22 |
| 2, four times, last: at UNLV, 10/1/22 |
| 8, vs. Army West Point, 8/27/22 |
| 9.0, vs. Army West Point, 8/27/22 |
| 13.0, vs. Army West Point, 8/27/22 |

| |
|--|
| .600 (7-1-10), vs. UC San Diego, 8/27/22 |
| 17, at New Mexico, 10/20/22 |
| 7, vs. UC San Diego, 8/27/22 |
| 1, twice, last: vs. Wyoming, 10/15/22 |
| 1, twice, last: vs. Army West Point, 8/27/22 |
| 5, vs. UC San Diego, 8/27/22 |
| 1, five times, last: vs. Wyoming, 10/13/22 |
| 4, twice, last: vs. UC San Diego, 8/27/22 |
| 5, twice, last: vs. UC San Diego, 8/27/22 |
| 10.0, vs. UC San Diego, 8/27/22 |