



# SAN DIEGO STATE AZTECS

## 2022 Volleyball Weekly Notes

**Jim Solien (Primary Contact)**  
 Assistant Media Relations Director  
**Office Phone Number:** (619) 594-2576  
**E-Mail Address:** jsolien@sdsu.edu  
**News Release Date:** Oct. 19, 2022

**SDSU Official Athletics Website:** goaztecs.com  
**SDSU Official Athletics Twitter:** @GoAztecs  
**SDSU Official Athletics Instagram:** @GoAztecs  
**SDSU Official Athletics Facebook:** facebook.com/goaztecs  
**SDSU Official Athletics YouTube:** youtube.com/goaztecs.com

### 2022 AZTEC VOLLEYBALL SCHEDULE

Day/Date	Opponent	Time
Friday, Aug. 26	California <sup>^</sup> (MWN)	L, 0-3
Saturday, Aug. 27	Army West Point <sup>^</sup>	W, 3-1
Saturday, Aug. 27	UC San Diego <sup>^</sup> (MWN)	W, 3-1
Friday, Sept. 2	vs. No. 9 Baylor <sup>#</sup>	L, 1-3
Saturday, Sept. 3	at Pepperdine <sup>#</sup>	L, 0-3
Saturday, Sept. 3	vs. UC Santa Barbara <sup>#</sup>	L, 1-3
Friday, Sept. 9	Maryland <sup>~</sup>	L, 1-3
Friday, Sept. 9	Arizona <sup>~</sup> (MWN)	L, 0-3
Saturday, Sept. 10	Sacramento State <sup>~</sup>	L, 2-3
Thursday, Sept. 15	UCLA <sup>+</sup> (MWN)	L, 0-3
Saturday, Sept. 17	at San Diego <sup>+</sup>	L, 1-3
Thursday, Sept. 22	San José State* (MWN)	L, 1-3
Saturday, Sept. 24	Nevada*	W, 3-1
Tuesday, Sept. 27	at Fresno State* (MWN)	W, 3-0
Saturday, Oct. 1	at UNLV* (MWN)	L, 1-3
Thursday, Oct. 6	at Utah State* (MWN)	L, 0-3
Saturday, Oct. 8	at Boise State* (MWN)	L, 1-3
Thursday, Oct. 13	Wyoming*	L, 1-3
Saturday, Oct. 15	Colorado State* (MWN)	L, 0-3
Thursday, Oct. 20	at New Mexico* (MWN)	6:30 p.m. MT
Saturday, Oct. 22	Air Force* (MWN)	1 p.m. PT
Thursday, Oct. 27	at Colorado State* (MWN)	7 p.m. MT
Saturday, Oct. 29	at Wyoming* (MWN)	1 p.m. MT
Thursday, Nov. 3	Boise State* (MWN)	7 p.m. PT
Saturday, Nov. 5	Utah State* (MWN)	1 p.m. PT
Monday, Nov. 7	Fresno State* (MWN)	5 p.m. PT
Thursday, Nov. 10	UNLV* (MWN)	7 p.m. PT
Thursday, Nov. 17	at Nevada* (MWN)	7 p.m. PT
Saturday, Nov. 19	at San José State* (MWN)	1 p.m. PT

<sup>^</sup> - San Diego State Invitational (San Diego, Calif.)  
<sup>#</sup> - Pepperdine ASICS Classic (Malibu, Calif.)  
<sup>~</sup> - Aztec Classic (San Diego, Calif.)  
<sup>+</sup> - SDSU/USD Challenge (San Diego, Calif.)

\* - Mountain West match  
 (MWN) - Mountain West Network match

**Socially**  
 Twitter: @AztecVB  
 Instagram: @Aztec\_WVB

#### Match Week Preview

Links to Mountain West Network streaming video and live stats on GoAztecs.com

San Diego State (4-15, 2-6 MW) at New Mexico (11-7, 2-6 MW)  
 Thursday, Oct. 20 | 6:30 p.m. MT (5:30 p.m. PT) | Live Stats | MW Network  
 Series: SDSU leads 41-23

Air Force (8-12, 0-8 MW) at San Diego State (4-15, 2-6 MW)  
 Saturday, Oct. 22 | 1 p.m. PT | Live Stats | MW Network  
 Series: SDSU leads 39-9



#### AZTEC VOLLEYBALL TO FACE NEW MEXICO ON THE ROAD, AIR FORCE AT HOME

- > The San Diego State volleyball team reaches the midway point of its Mountain West schedule when it battles New Mexico and Air Force this week.
- > The Aztecs will venture to Albuquerque to face the Lobos on Thursday, Oct. 20, beginning at 6:30 p.m. MT (5:30 p.m. PT), before returning to "America's Finest City" on Saturday, Oct. 22 to engage the Falcons with a 1 p.m. PT start.
- > In addition to live stats, both contests will be streamed live via the Mountain West Network on GoAztecs.com.
- > The SDSU-Air Force encounter will mark the Aztecs' breast cancer awareness match, featuring a pink rally towel giveaway promotion for fans in attendance.
- > San Diego State will be looking to put the brakes on a five-match losing streak following a 3-1 defeat to Wyoming (Oct. 13) and a hard-fought three-setter against Colorado State two days later (Oct. 15).
- > With the results, the Aztecs (4-15, 2-6 MW) enter the week in tie for eighth in the Mountain West standings along with New Mexico.
- > During SDSU's homestand last weekend, outside hitter Madison Corf led the team with a combined 21 kills (3.00/set) while contributing 20 digs (2.86), three service aces and a block assist. Against CSU, the SDSU freshman recorded her first collegiate double-double with 15 kills and 11 digs. In addition, defensive specialist and fellow classmate Ellie Geoghegan scooped up 32 digs overall (4.57/set) and served up four aces.
- > The Lobos and Falcons are the two Mountain West teams the Aztecs will face just once this season.

#### SERIES RECORD VS. NEW MEXICO

- > Despite dropping both meetings against the Lobos last season, the Aztecs still lead the all-time series 41-23.
- > In its last excursion to the Duke City on Nov. 13, 2021, San Diego State was upended in three sets (23-25, 23-25, 13-25).
- > Among Aztec returners, Jordyn Goldsmith finished with six kills in that match, while Julia Haynie notched three put-aways and contributed a pair of blocks.
- > However, the Lobos out-hit the Aztecs .323 to .123 and maintained the statistical advantage in kills (44-37) and team blocks (9.0 to 3.0) to complete a season sweep against the Scarlet and Black for the first time since 2009.
- > Earlier in the year, SDSU saw its eight-match winning streak against New Mexico snapped in a four-set defeat (20-25, 20-25, 25-16, 21-25) on The Mesa.
- > Despite a stellar defensive effort in which the Aztecs maintained the upper hand in team blocks (10.0 to 7.0) and digs (42-33), the Aztecs were victimized by 10 service aces and hit just .168 in that encounter.
- > Among SDSU returners, Heipua Tautua' a tied for team-high honors with nine kills, while Mikela Labno launched eight non-returnables of her own. In addition, Goldsmith finished with a .556 efficiency, knocking down six kills in nine attempts with just one error, while Noa Miller tied her season best with 28 assists.

#### SERIES RECORD VS. AIR FORCE

- > Although the Falcons have captured seven of the last 12 meetings, San Diego State still holds a sizable 39-9 advantage in the all-time series dating back to 1996.
- > The Aztecs split two matches with Air Force last season, posting a hotly contested three-set sweep (26-24, 27-25, 25-21) on their home court before dropping a 3-2 heartbreaker at the Academy (19-25, 25-22, 25-23, 17-25, 9-15).
- > Among SDSU returners, Mikela Labno blasted 10 kills and hit .474 in that first match, committing just one error in 19 attempts, while Noa Miller just missed a double-double with 25 assists and eight digs.
- > In a slugfest that featured a whopping 35 ties and 12 lead changes, the Aztecs posted their third-highest efficiency of the year with a .337 clip.
- > The two teams witnessed an additional 30 ties and 15 lead changes in the rematch later that season. However, the Falcons maintained a sizable advantage in team blocks (17.0 to 7.0) and service aces (9-1) while holding a slight edge in kills (58-55) to help key their victory.
- > Individually, Tautua' a set a season high in that contest with 18 digs.

#### ON THE HORIZON

- > Following Saturday's clash, San Diego State will hit the road for a pair of rematches against recent opponents Colorado State and Wyoming to open the second half of its Mountain West slate.
- > The Aztecs will head to the Front Range of the Rocky Mountains to face the Rams on Thursday, Oct. 27, starting at 7 p.m. MT (6 p.m. PT) before continuing north to Laramie to battle the Cowgirls on Saturday, Oct. 29, beginning at 1 p.m. MT (noon PT).

**GENERAL INFORMATION**

Location ..... San Diego, Calif.  
 Founded ..... 1897  
 Enrollment ..... 35,782  
 Nickname ..... Aztecs  
 Colors ..... Scarlet and Black (Pantone 187)  
 Conference ..... Mountain West  
 Affiliation ..... Division I  
 President ..... Dr. Adela de la Torre  
 Director of Athletics ..... John David Wicker  
 Faculty Representative ..... Dr. Frank Harris III  
 Home Facility ..... Aztec Court at Peterson Gym (2,000)

**TEAM INFORMATION**

Head Coach ..... Brent Hilliard  
 Alma Mater ..... Long Beach State '93  
 Record at SDSU ..... 19-46 (Third year)  
 Career Record ..... 72-57 (Fifth year)  
 E-Mail ..... bhilliard@sdsu.edu  
 Volleyball Office Phone ..... (619) 594-5064  
 Volleyball Office Fax ..... (619) 594-1674  
 Assistant Coach/Recruiting Coordinator ..... Melanie Greene  
 Assistant Coach ..... Steve Timmons  
 Volleyball Operations Assistant ..... Kara Barkdoll  
 Fall 2021 Record ..... 8-22  
 Fall 2021 Conference Record ..... 5-13 (Ninth)  
 Fall 2021 Home Record ..... 5-4  
 Spring 2021 Road Record ..... 1-5  
 Letterwinners Returning/Lost ..... 9/8  
 Starters Returning/Lost ..... 3/3+Libero

**PROGRAM HISTORY**

First Year of Volleyball ..... 1976  
 Overall Record ..... 898-654 (.578)  
 NCAA Appearances ..... 14  
 Last Postseason Appearance ..... 2012  
 NCAA Postseason Record ..... 15-14

**MEDIA RELATIONS**

Assistant Media Relations Director ..... Jim Solien  
 E-Mail ..... jsolien@sdsu.edu  
 SID Office Phone ..... (619) 594-2576  
 SID Office Fax ..... (619) 582-6541  
 Official Athletic Website ..... www.GoAztecs.com

**2022 AZTEC VOLLEYBALL  
 STATISTICAL LEADERS**  
 (min. 50 percent of team sets played)

Hitting Percentage*	324	Julia Haynie
Kills	161	Mikela Labno
Kills per set	2.53	Madison Corf
Assists	343	Noa Miller
Assists per set	4.90	Noa Miller
Service Aces	19	E. Geoghegan/N. Miller
Service Aces per set	0.32	McKenna Douglas
Digs	192	Ellie Geoghegan
Digs per set	3.03	McKenna Douglas
Blocks	58.0	Elly Schraeder
Blocks per set	0.95	Elly Schraeder

\*. min 3.0 attempts per set

**2022 AZTEC VOLLEYBALL FALL ROSTER**

No.	Player	Pos.	Ht.	Yr.	Hometown (Last School)
2	Heipua Tautua'a	OH	6-2	Jr.	Wai'anae, Hawaii (Wai'anae HS)
3	McKenna Douglas	DS/L	5-7	Fr.	Phoenix, Ariz. (Notre Dame Prep)
4	Kennedy Feuerborn	S	6-3	Jr.	Overland Park, Kan. (Johnson County CC)
6	Jordyn Goldsmith	OPP	6-1	So.	Valleyford, Wash. (Freeman HS)
7	Madison Corf	OH	5-11	Fr.	Kansas City, Mo. (Liberty HS)
8	Ellie Geoghegan	DS/L	5-8	Fr.	Manhattan Beach, Calif. (Mira Costa HS)
9	Sara Mukaj	MB	6-3	So.	Madena, Italy (Istituto Scaruffi-Levi Tricolore)
10	Cara Braun	OH	6-1	Fr.	Tempe, Ariz. (Valley Christian HS)
11	Kayla Rivera	OPP	6-1	Sr.	Ventura, Calif. (Univ. of Georgia)
13	Julia Haynie	MB	6-2	Sr.	Temecula, Calif. (Portland State)
14	Reagan Merk	OH	5-11	So.	Huntington Beach, Calif. (Mater Dei HS)
15	Mikela Labno	OH	6-2	So.	Hilmar, Calif. (Hilmar HS)
16	Sarena Gonzalez	S	5-8	Fr.	Temecula, Calif. (Temecula Valley HS)
19	Noa Miller	S	5-10	Sr.	Douglasville, Ga. (Arizona State)
20	Elly Schraeder	MB	6-2	So.	Athol, Idaho (Univ. of San Diego)
21	Kat Cooper	MB	6-1	Fr.	Springdale, Ark. (Har-Ber HS)

**Head Coach:** Brent Hilliard (Long Beach State, 1993), Third season at SDSU  
**Assistant Coach/Recruiting Coordinator:** Melanie Greene (San Diego State, 2007), 12th season at SDSU  
**Assistant Coach:** Steve Timmons (USC), Third season at SDSU  
**Volleyball Operations Assistant:** Kara Barkdoll (Cal State San Marcos, 2015), Fifth season at SDSU

**Pronunciations**

#2 HEIPIUA TAUTUA'A	HEY-poo-ah TAW-too-AH-AH
#4 Kennedy FEUERBORN	FEWER-born
#8 Ellie GEOGHEGAN	GAY-gun
#9 Sara MUKAJ	MOO-kye
#15 MIKELA Labno	ma-KAY-la
#19 NOA Miller	Noah
#21 Elly SCHRAEDER	SCHRAY-der



**OPPONENT COMPARISON**

2022 Overall Stats	SDSU	MW Rank	OPP	UNM	MW Rank	OPP	AFA	MW Rank	OPP
Hitting Percentage	.175	10	.272	.188	9	.182	.198	8	.207
Kills per set	12.09	7	12.53	12.47	6	12.44	11.80	9	12.08
Assists per set	11.30	7	11.33	11.55	6	11.73	11.03	8	11.11
Service Aces per set	1.29	10	1.79	1.76	2	1.28	1.63	4	1.70
Digs per set	11.44	11	10.79	15.76	2	15.69	12.08	10	12.84
Blocks per set	1.69	11	3.04	2.09	9	2.47	2.34	2	1.98

**SCOUTING THE OPPOSITION**

> Picked to finish fifth in the Mountain West preseason coaches poll, **New Mexico (11-7, 2-6 MW)** has lost three straight and five of its last six after dropping two road matches last week. The Lobos were swept at San José State on Oct. 13 (23-25, 13-25, 18-25) on Oct. 13 before suffering a five-set heartbreaker at Nevada two days later (23-25, 24-26, 25-21, 25-22, 15-17), as a furious rally fell short. With the results, UNM finds themselves in a tie for eighth place in the conference standings at 2-6 with the Aztecs. The Lobos are 4-3 at home this season and a combined 7-6 in road/neutral matches. Offensively, UNM is led by senior outside hitter Kaitlynn Bissoux, who occupies the second spot in the conference with 4.01 kills per set, which ranks 41st nationally, while junior outside hitters Uxue Guereca (2.91) and Kai Wolf (2.49) are also averaging over two put-aways per frame. In addition, senior libero Alena Moldan tops the conference with 4.49 digs per set, which ranks 57th in the country, while Guereca (3.30/set) is slotted eighth in the league in the same category. A pair of fifth-year seniors find themselves among the MW leaders this week, as middle blocker Avital Jaloba (1.09 blocks per set) and setter Anilee Sher rank fifth in their respective statistical categories. As a team, the Lobos lead the conference for all matches with a .182 opponent hitting percentage, which ranks 67th nationally, while their 15.76 digs per set is slotted second in the league and 43rd in the country. However, UNM occupies the sixth spot in the MW in kills (12.47) and the ninth position in blocks (2.09/set). The Lobos are under the direction of fourth-year head coach Jon Newman-Gonchar, who arrived on the Albuquerque campus after spending the previous three seasons at Arkansas as associate head coach. Newman-Gonchar has also had stints as an assistant coach at Iowa State (2013-15), Loyola Marymount (2010-12), as well as UC San Diego with both the men's and women's teams (2007-09).

> Saturday's opponent **Air Force (8-12, 0-8 MW)** is one of two remaining teams without a victory after eight conference matches, joining Fresno State. The Falcons were toppled in four sets at Nevada on Oct. 13 (25-20, 12-25 22-25, 22-25) before suffering a sweep at San José State two days later (20-25, 14-25, 17-25). Prior to its excursion to "America's Finest City" to battle the Aztecs, Air Force will play host to Fresno State on Thursday night. Junior middle blocker Joi Harvey leads the MW this week in blocks (1.25/set), which ranks 47th in the nation, while occupying the fourth spot in the conference with a team-best .363 hitting percentage. Harvey (2.54 kills/set) and senior outside hitter Brookelyn Messenger (2.32 kills/set) have emerged the Falcons' primary offensive threats, while junior setter Caroline Reinkensmeyer is slotted ninth in the league with 5.50 assists per set. Sophomore libero Murphy Riggs lends defensive support along the Air Force back row with 2.85 digs per set, while Messenger (2.38/set) ranks second on the squad in that category. Collectively, the Falcons occupy the second position in the Mountain West with 2.34 blocks per set, which is good for 76th in the nation, but rank just ninth in the league with a .207 opponent hitting percentage. Additionally, Air Force is slotted third in the MW with 130 service aces, which ranks 45th in the country. However, the Falcons enter the week in league's eighth spot with a .198 hitting percentage and rank ninth in kills (11.80/set). Air Force is guided by Keith Barnett, who was elevated to

2022 MOUNTAIN WEST STANDINGS (AS OF OCT. 19)

Team	---Conference---			-----Overall-----			
	W	L	Pct.	W	L	Pct.	Strk
San José State	9	0	1.000	15	4	.789	W9
UNLV	7	1	.875	16	3	.842	W7
Colorado State	7	1	.875	14	5	.737	W2
Utah State	5	3	.625	13	6	.684	L1
Boise State	5	3	.625	13	6	.684	L2
Wyoming	4	4	.500	8	12	.400	W2
Nevada	4	5	.444	10	10	.500	L1
San Diego State	2	6	.250	4	15	.235	L5
New Mexico	2	6	.250	11	7	.611	L3
Air Force	0	8	.000	8	12	.400	L8
Fresno State	0	8	.000	6	14	.300	L8

Upcoming Matches in the MW

Thursday, Oct. 20

San Diego State at New Mexico, 6:30 p.m. MT

- Fresno State at Air Force, 6 p.m. MT
- Utah State at Wyoming, 6:30 p.m. MT
- Boise State at Colorado State, 7 p.m. MT
- San José State at UNLV, 6:30 p.m. PT

Saturday, Oct. 22

Air Force at San Diego State, 1 p.m. PT

- Wyoming at Boise State, noon MT
- New Mexico at Fresno State, noon PT
- UNLV at Nevada, 1 p.m. PT
- Colorado State at Utah State, 7 p.m. MT

Tuesday, Oct. 25

- Utah State at Boise State, 7 p.m. MT

Thursday, Oct. 27

San Diego State at Colorado State, 7 p.m. MT

- San José State at Air Force, 6 p.m. MT
- Fresno State at Wyoming, 6:30 p.m. MT
- Nevada at New Mexico, 6:30 p.m. MT
- UNLV at Boise State, 7 p.m. MT

Saturday, Oct. 29

San Diego State at Wyoming, 1 p.m. MT

- Nevada at Air Force, 11 a.m. MT
- Fresno State at Colorado State, 1 p.m. MT
- San José State at New Mexico, 1 p.m. MT
- UNLV, at Utah State, 1 p.m. MT

Tuesday, Nov. 1

- New Mexico at Air Force, 6 p.m. MT



head coach prior to the 2019 campaign after serving a four-year stint as a Falcons assistant, including the 2018 season as the team's associate head coach. Prior to his arrival at the Academy, Barnett was an assistant coach at West Texas A&M (2013-14) and the head coach at the University of Colorado-Colorado Springs (2009-12). He played collegiately at Pepperdine, where he received second-team All-American honors at setter in 2001.

THIS WEEK'S SAN DIEGO MATCH CONNECTION

- > Air Force freshman outside hitter Savannah Johnson is an alumna of Eastlake High School in nearby Chula Vista.

SDSU IN MW RANKINGS

- > Entering the weekend, Julia Haynie ranks eighth in the conference with a .324 hitting percentage, while Elly Schraeder is slotted 12th with 0.95 blocks per set.
- > Noa Miller's six service aces against UC San Diego on Aug. 27 is tied for the second-highest total in the Mountain West this season and marks the most by an SDSU player since Ashlynn Dunbar served up six of her own vs. Colorado State on Sept. 27, 2018. Dunbar also finished with seven service aces against CSU Bakersfield in the 2018 season opener.
- > Kayla Rivera's .647 hitting percentage (12-1-17) vs. Pepperdine on Sept. 3 is tied for the fourth-best efficiency in the conference this season.
- > McKenna Douglas' 26 digs vs. Nevada on Sept. 24 mark the fifth-best total in a four-set match this season in the league.
- > Schraeder's nine overall blocks vs. Army West Point is tied for the sixth-best figure in the MW this year and represents the most by an SDSU competitor since Lexie Hamrick's 11 rejections against UTEP on Sept. 15, 2018.
- > Madison Corf's 22 kills vs. Nevada represent the fourth-highest total in a four-set match this season and is tied for the 13th-best figure in the conference overall.
- > Collectively, the Aztecs' 71 kills against Nevada is tied for the third-highest figure in the league this season and represents the most in a four-set match.
- > In addition, SDSU's 67 kills against UC San Diego are tied for the fourth-highest figure in the MW for a four-set match this year.
- > The Aztecs' 48 kills at Pepperdine is tied for the fifth-highest figure in the MW a three-set match in the league this year.
- > In addition, SDSU's 14 team blocks vs. Army is tied for the seventh-best total in the conference.

THE LAST TIME OUT

- > Despite Madison Corf's first collegiate double-double, the San Diego State volleyball team was unable to prevent a three-set defeat at the hands of Colorado State (21-25, 21-25, 23-25) on Saturday in a hard-fought Mountain West match last Saturday, Oct. 15, inside Aztec Court at Peterson Gym.
- > The Aztecs blasted as many kills as their guests (43-43) but were plagued by 19 attack errors, seven of which were the result of Ram blocks.
- > SDSU was paced by Corf's performance, which featured 15 kills, 11 digs and one service ace, while Kayla Rivera powered down nine shots, followed by Mikela Labno's eight put-aways.
- > Labno hit .304 for the afternoon, committing one error in 23 attempts and registered a pair of blocks, including a solo stuff, while Ellie Geoghegan provided ample support along the back row with a match-high 14 digs.
- > Elsewhere, Noa Miller (20 assists, 2 aces) and Sarena Gonzalez (16 assists) shared the setting duties, while Julia Haynie contributed five kills in the middle.
- > The Aztecs maintained a 41-36 advantage in team digs but nine errant serves also contributed to their undoing in a fifth consecutive loss.
- > Conversely, CSU totaled just nine attack errors, out-hitting the Scarlet and Black .347 to .224 for the day while maintaining the edge in team blocks (7.0 to 4.0).
- > The teams slugged it out through a high-powered opening set with the teams combining for 30 kills, including 16 by the Rams, who hit .467 for the frame, totaling just two errors in 30 swings.
- > Despite four kills apiece from Corf and Rivera, the Aztecs never led in the set as the visitors benefited from six attack errors and a pair of errant serves.
- > SDSU crept to within 22-20 after Rivera and Haynie floored consecutive shots, but the Rams closed with a 3-1 spurt to escape.
- > The teams combined for six ties and three lead changes in the second stanza, where the Aztecs nursed a slim 15-13 lead following a CSU service error. However, the Rams responded with three consecutive kills to vault in front for good.
- > Moments later, Jordyn Goldsmith powered down a non-returnable shot, but it wasn't enough to stem the tide. Leading 17-16, CSU closed with an 8-5 run to thwart the Aztecs' comeback hopes.
- > Undaunted, SDSU battled through another nip-and-tuck third set, where the sides witnessed 10 ties and four lead changes. Labno and Corf led the Aztecs with four kills apiece, while Miller spun two aces on consecutive serves.
- > With the score deadlocked at 15-15, CSU employed a 5-1 to take a 20-16 lead.
- > Moments later, Labno floored a shot and joined forces with Kat Cooper on a block to trim the margin to 20-19. An errant serve and a kill afforded the Rams a three-point cushion. However, Goldsmith followed with a kill and Miller served up her two aforementioned aces to knot the score at 22-22.
- > CSU subsequently escaped with the sweep thanks to a pair of points on Aztec miscues, an errant serve and a wayward attack, while the visitors squeezed out an ace of their own in the meantime.

SCHEDULE NAVIGATION

- > San Diego State is off to a 2-6 start in Mountain West play this season after logging a 2-9 mark through a difficult non-conference slate.
- > During their non-league schedule, the Aztecs faced four foes that appeared or were receiving votes in the AVCA poll at match time, including No. 8 San Diego, No. 9 Baylor, Pepperdine (rv), UCLA (rv), along with additional Power 5 opponents Maryland and Arizona. Pepperdine has climbed to No. 22 in the latest AVCA rankings, while UCLA opened at No. 12 in the AVCA preseason poll and was ranked in the first two weeks of the regular season prior to its clash at SDSU.
- > Similarly, the Aztecs have played 10 opponents that are currently listed among the top 100 in the third NCAA Women's Volleyball

## Week 9: at New Mexico | vs. Air Force

RPI of the season released on Oct. 17, including San Diego (No. 8), Baylor (No. 24), Pepperdine (No. 28), UNLV (No. 31), Colorado State (No. 41), Utah State (No. 52), UCLA (No. 53), San José State (No. 62), Boise State (No. 86) and Arizona (No. 92).

> Thursday's opponent New Mexico is slotted 85th in the latest RPI.

### NEWCOMERS SHINE

> Seven of eight Aztec newcomers have seen action for the Scarlet and Black this season, with several providing key contributions through 19 matches.

> Freshman Madison Corf has started 13 of 19 matches and leads the team with 2.53 kills per set while ranking second with 155 kills overall. The former AVCA Prep All-American set a career high with 22 put-aways in SDSU's 3-1 triumph over Nevada on Sept. 24, which is tied for the 13th-best performance in the Mountain West this season and marks the fourth-highest total in a four-set match. Corf has recorded double-digit kills in seven matches thus far, tying sophomore Mikela Labno for the team lead. In the Aztecs' 3-1 victory at home over UC San Diego on Aug. 27, she finished with a season-best .303 efficiency, blasting 15 kills, to go with a pair of blocks, including a solo stuff. On Oct. 15, Corf also logged her first collegiate double-double with 15 kills and 11 digs vs. Colorado State.

> A senior transfer from Georgia, Kayla Rivera has started 18 of 19 matches for SDSU and ranks second on the team with 42 total blocks while occupying the second spot in kills (2.21/set). The Aztec opposite hitter was named to the all-tournament team at the Pepperdine ASICS Classic after posting 29 kills and a .313 hitting percentage, including a career-best .647 clip (12-1-17) vs. the host Waves. She also logged a season-high 13 kills against Nevada and a collegiate-best seven block assists vs. Army West Point at the SDSU Invitational.

> Freshman defensive specialist Ellie Geoghegan has taken over the team lead with 192 digs overall and

has surpassed the double-digit plateau on nine occasions, highlighted by a season-high 23 scoops vs. Sacramento State. The Manhattan Beach product made her first collegiate start a memorable one, posting seven digs, two service aces and a pair of setting assists in the Aztecs' 3-1 triumph over Army West Point. She has also recorded 15 of her 19 service aces for the season in her last 10 appearances, tying her career best with three vs. Wyoming on Oct. 13.

> Despite missing nine matches this season, freshman libero McKenna Douglas still leads the Aztecs with 3.03 digs per set. The Phoenix, Arizona, native averaged 3.14 digs per frame in a six-match span from Sept. 22-Oct. 8, highlighted by a career-high 26 scoops vs. Nevada. In SDSU's 3-0 triumph at Fresno State on Sept. 27, Douglas served up a collegiate-best five aces, helping the Scarlet and Black record its first road sweep over the Bulldogs since 1996.

> In her first season on The Mesa after transferring from USD, sophomore middle blocker Elly Schraeder has started all 18 matches she has played, leading the team with 58 total blocks and 0.95 blocks per set, the latter of which ranks 12th in the Mountain West. The Athol, Idaho, native flashed her versatility against Army West Point, posting a career-high nine blocks, including a solo stuff, while hitting .375 on a season-best eight kills in 16 swings with just two errors.

> A starter in 10 of 18 appearances, freshman middle blocker Kat Cooper is slotted third on the team with 28 total blocks and 0.53 blocks per set. A former AVCA Prep All-American, Cooper enjoyed a breakout performance against UC San Diego at the SDSU Invitational when she hit .600 on seven kills in 10 attempts against just one error while adding five blocks (1 solo) and five digs. Earlier that day, the Springdale, Arkansas, native recorded five additional blocks (1 solo) vs. Army West Point. In the Mountain West opener against San José State, Cooper matched her season best with seven kills, posting a .429 efficiency with one error in 14 swings.

## 2022 AZTEC SUPERLATIVES

### Individual

#### HITTING PERCENTAGE (min. 12 kills)

.647 (12-1-17) ..... Kayla Rivera at Pepperdine (Sept. 3)

#### KILLS

22 ..... Madison Corf vs. Nevada (Sept. 24)

5 sets ..... 15 ..... Madison Corf and Mikela Labno vs. Sacramento State (Sept. 10)

4 sets ..... 22 ..... Madison Corf vs. Nevada (Sept. 24)

3 sets ..... 15 ..... Madison Corf vs. Colorado State (Oct. 15)

#### TOTAL ATTEMPTS

47 ..... Madison Corf vs. Nevada (Sept. 24)

5 sets ..... 37 ..... Madison Corf vs. Sacramento State (Sept. 10)

4 sets ..... 47 ..... Madison Corf vs. Nevada (Sept. 24)

3 sets ..... 35 ..... Heipua Tautua'a at Pepperdine (Sept. 3)

#### ASSISTS

31 ..... Noa Miller vs. Nevada (Sept. 24)

5 sets ..... 27 ..... Noa Miller vs. Sacramento State (Sept. 10)

4 sets ..... 31 ..... Noa Miller vs. Nevada (Sept. 24)

3 sets ..... 24 ..... Sarena Gonzalez at Pepperdine (Sept. 3)

#### DIGS

26 ..... McKenna Douglas vs. Nevada (Sept. 24)

5 sets ..... 23 ..... Ellie Geoghegan vs. Sacramento State (Sept. 10)

4 sets ..... 26 ..... McKenna Douglas vs. Nevada (Sept. 24)

3 sets ..... 16 ..... Ellie Geoghegan at Pepperdine (Sept. 3)

#### SERVICE ACES

6 ..... Noa Miller vs. UC San Diego (Aug. 27)

#### BLOCK SOLOS

2 ..... Elly Schraeder at UNLV (Oct. 1) and vs. No. 9 Baylor (Sept. 2)

..... and Heipua Tautua'a vs. San José State (Sept. 22)

#### BLOCK ASSISTS

8 ..... Elly Schraeder vs. Army West Point (Aug. 27)

#### TOTAL BLOCKS

9 ..... Elly Schraeder vs. Army West Point (Aug. 27)

### Team

#### HITTING PERCENTAGE

.349 (42-13-83) ..... vs. Nevada (Sept. 24)

#### KILLS

71 ..... vs. Nevada (Sept. 24)

5 sets ..... 61 ..... vs. Sacramento State (Sept. 10)

4 sets ..... 71 ..... vs. Nevada (Sept. 24)

3 sets ..... 48 ..... at Pepperdine (Sept. 3)

#### TOTAL ATTEMPTS

156 ..... vs. Nevada (Sept. 24)

5 sets ..... 152 ..... vs. Sacramento State (Sept. 10)

4 sets ..... 156 ..... vs. Nevada (Sept. 24)

3 sets ..... 112 ..... at Pepperdine (Sept. 3)

#### ASSISTS

64 ..... vs. Nevada (Sept. 24)

5 sets ..... 58 ..... vs. Sacramento State (Sept. 10)

4 sets ..... 64 ..... vs. Nevada (Sept. 24)

3 sets ..... 48 ..... at Pepperdine (Sept. 3)

#### DIGS

77 ..... vs. Nevada (Sept. 24)

5 sets ..... 55 ..... vs. Sacramento State (Sept. 10)

4 sets ..... 77 ..... vs. Nevada (Sept. 24)

3 sets ..... 42 ..... at Pepperdine (Sept. 3)

#### SERVICE ACES

10 ..... at Fresno State (Sept. 27)

#### TOTAL BLOCKS

14.0 ..... vs. Army West Point (Aug. 27)

## Week 9: at New Mexico | vs. Air Force

> Freshman setter Sarena Gonzalez ranks second on the squad with 4.88 assists per set. A starter in 10 of 19 matches, the Temecula product has dished at least 20 assists in five appearances, including a season-high 30 helpers vs. UCSD on Aug. 27. In addition, Gonzalez has 54 digs (0.90/set) and 10 aces (0.17/set) this season, the latter of which ranks fourth on the team. In the fourth set against Maryland at the Aztec Classic, she spun three aces on consecutive serves.

### ODDS & ENDS

- > With two more victories, San Diego State will reach 900 wins in program history dating back to 1976. The Aztecs own an all-time record of 898-656 in almost 47 seasons of varsity competition.
- > Ellie Geoghegan has served up at least one ace in seven straight matches, including three vs. No. 8 San Diego (Sept. 17) and Wyoming (Oct. 13).
- > Kayla Rivera had at least one block to her credit in the first 18 matches of the season before her streak was snapped vs. Colorado State.
- > All four of SDSU's victories have been recorded with the Aztecs holding the statistical advantage in kills, hitting percentage and digs.
- > San Diego State is also 3-0 this season when leading after two sets.
- > Three of the Aztecs' four wins have been registered on a Saturday.

### REWIND: AZTECS WRAP UP NON-CONFERENCE SLATE

- > San Diego State concluded its challenging non-conference schedule against a pair of perennial heavyweights last month, dropping a three-set decision at home to UCLA (16-25, 23-25, 15-25) on Sept. 15 before falling to No. 8 San Diego on the road two days later (25-20, 13-25, 14-25, 12-25).
- > Kayla Rivera, Mikela Labno and Madison Corf led the Aztecs with 2.14 kills per set for the week (15 overall), while Elly Schraeder averaged one block per frame (7 total).
- > However, the Scarlet and Black was out-hit by a collective .330 to .112 in the two matches, committing 17 more attack errors, while trailing in team blocks 22.0 to 12.0.
- > Competing on its newly unveiled playing surface, UCLA spoiled San Diego State's festivities by maintaining a statistical advantage in hitting percentage (.273 to .078), kills (39-30) and team blocks (14.0 to 6.0) while capitalizing on 23 attack errors.
- > Despite the disparity, the Aztecs and Bruins combined for 23 ties and 13 lead changes in the match. However, UCLA employed timely runs in each of the three sets to keep the Scarlet and Black at bay.
- > Individually, SDSU was led by Rivera's eight kills, while Corf launched six non-returnables of her own, hitting .750 on eight attempts without an error.
- > The Aztec cause also included nine digs by Heipua Tautua'a, while Elly Schraeder totaled three blocks, including a solo cuff.
- > Against the Toreros on Sept. 17, SDSU claimed the opening set against the nation's eighth-ranked team but could not sustain the momentum.
- > The Aztecs came out firing on all cylinders, hitting .433 in the first stanza on 15 kills in 30 attempts with just two errors.
- > However, SDSU was stymied for the remainder of the match, compiling a meager .048 attack percentage on a combined 24 kills against 19 errors in 104 swings over the final three frames.
- > Conversely, USD switched on the afterburners in that span, hitting at a torrid .425 clip thanks to a collective 42 kills in 87 attempts with just five miscues.
- > For the match, the Toreros out-hit the Aztecs .373 to .134, maintaining the upper hand in kills (56-39), digs (51-43) and team blocks (8.0 to 6.0).
- > Individually, SDSU was led by Mikela Labno, who powered down 10 kills and hit .450 for the night after committing just one error in 20 attempts, while Madison Corf just missed her first career double-double following a nine-kill, 10-dig performance.
- > Aztec contributors also included Kayla Rivera, who launched seven kills and finished with a pair of block assists, while Heipua Tautua'a and Kat Cooper (.462) floored six shots apiece and recorded a solo block.

### A LOOK BACK AT THE AZTEC CLASSIC

- > Returning to The Mesa for its second home tournament of the regular season, Sept. 9-10, San Diego State continued its demanding non-conference schedule when it welcomed three teams that combined for 54 victories in 2021.
- > The Aztecs opened the event with a four-set loss to Maryland (14-25, 25-21, 20-25, 18-25) before dropping a three-decision to Arizona (17-25, 15-25, 11-25) later that night.
- > SDSU then closed out the weekend with a tight battle against Sacramento State but ultimately fell in a five-set thriller (16-25, 26-28, 25-21, 25-22, 8-15).
- > Three Aztecs averaged over two kills per set for the tournament, led by Heipua Tautua'a (2.92), Madison Corf (2.50) and Mikela Labno (2.17).
- > In addition, Ellie Geoghegan averaged 3.83 digs per set, followed by Tautua'a (2.17).
- > As a team, however, SDSU was out-hit .304 to .186 for the weekend and trailed in both kills (147-130) and team blocks (30.0 to 15.0).
- > Against Sac State, the Aztecs fought back from a two-set deficit on Saturday but could not pull off the reverse sweep.
- > Labno launched a career-high 15 kills, while Corf tied her collegiate best with 15 put-aways as well.
- > Not to be outdone, Tautua'a finished with her third double-double of the season after posting 14 kills and 14 digs, providing ample back row support for Geoghegan, who set a career high with 23 scoops, while Noa Miller (27 assists) and Sarena Gonzalez (23 assists) split the setting chores.
- > Despite maintaining a 61-55 collective advantage in kills and a 55-49 margin in digs, however, the Aztecs committed more attack errors (28-21) and finished with a 12.0 to 6.0 deficiency in team blocks. Additionally, SDSU was plagued by 12 service errors, while the Hornets held a slight 10-6 edge in aces.
- > Still, the teams battled through an entertaining and competitive match, combining for 30 ties and 16 lead changes on the afternoon.
- > Against Maryland in a rare Friday matinee, the Terrapins maintained the statistical advantage in most categories, including kills (50-41), service aces (12-7) and team blocks (11.0 to 5.0) to help fuel their victory.
- > In addition, Maryland out-hit the Aztecs .289 to .179, posting a .462 clip in the opening set after knocking down 14 kills on 26 attempts with just two errors to help set the tone for the contest.
- > Individually, SDSU was led by Tautua'a (.300), who blasted a team-high 14 kills to go with nine digs. In addition, Labno and Julia Haynie recorded eight put-aways apiece.
- > Later that evening vs. Arizona, the Aztecs were unable to right the ship, as the Wildcats maintained a .438 hitting percentage compared to SDSU's .138 clip.
- > Arizona owned a sizable 42-28 advantage in kills and a 7.0 to 4.0 edge in team blocks while benefiting from 15 Aztec attack errors to complete the sweep.
- > Corf (9) and Tautua'a (7) combined for 16 of SDSU's 28 kills but no other player had more than three for the hosts.

## 2022 SITUATIONAL RECORDS

### GENERAL

Overall.....	4-15
Mountain West.....	2-6
Home.....	3-8
Away.....	1-5
Neutral.....	0-2
vs. Ranked Teams.....	0-2
vs. Unranked Teams.....	4-13
Matches Following a Win.....	2-2
Matches Following a Loss.....	2-12
Longest Winning Streak.....	2
Longest Losing Streak.....	9
Current Streak.....	Lost 5

### BY SETS

3 Sets.....	1-6
4 Sets.....	3-8
5 Sets.....	0-1
Leading After Two.....	3-0
Trailing After Two.....	0-12
Tied After Two.....	1-3
Leading 2-1.....	3-0
Trailing 2-1.....	0-8

### BY MONTH

August.....	2-1
September.....	2-9
October.....	0-5
November.....	0-0

### BY DAY

Tuesday.....	1-0
Thursday.....	0-4
Friday.....	0-4
Saturday.....	3-7

### BY KILLS

Leading in Kills.....	4-2
Trailing in Kills.....	0-12
Tied in Kills.....	0-1

### BY DIGS

Leading in Digs.....	4-7
Trailing in Digs.....	0-7
Tied in Digs.....	0-1

### BY BLOCKS

Leading in Blocks.....	1-0
Trailing in Blocks.....	3-15
Tied in Blocks.....	0-0

### BY ATTACK PERCENTAGE

Greater Attack Percentage.....	4-0
Lower Attack Percentage.....	0-15
Equal Attack Percentage.....	0-0
Hitting above .300.....	1-0
Hitting between .200 and .300.....	2-5
Hitting between .100 and .200.....	1-5
Hitting below .100.....	0-5
Opponent Hitting above .300.....	0-8
Opponent Hitting between .200 and .300.....	2-6
Opponent Hitting between .100 and .200.....	1-1
Opponent Hitting below .100.....	1-0

### BY INDIVIDUAL KILLS

3+ Double-Digit Individual Kill Totals.....	2-1
2 Double-Digit Individual Kill Totals.....	1-3
1 Double-Digit Individual Kill Totals.....	1-6
0 Double-Digit Individual Kill Totals.....	0-5

## 2022 MATCH-BY-MATCH LEADERS

Date	Opponent	Kills	Hitting Pct.*	Assists	Aces	Digs	Blocks
A.26	California	Three players - 7	Labno (.118)	Gonzalez - 16	Geoghegan - 2	Tautua'a - 8	Schraeder - 4
A.27	Army West Point	Tautua'a - 13	Tautua'a (.379)	Miller - 21	Miller - 3	Douglas - 14	Schraeder - 9
A.28	UC San Diego	Corf - 15	Cooper (.600)	Gonzalez - 30	Miller - 6	Douglas - 19	Cooper - 5
S.2	vs. No. 9 Baylor	Tautua'a - 13	Rivera (.048)	Gonzalez - 25	Corf - 1	Tautua'a - 16	Schraeder - 5
S.3	at Pepperdine	Rivera - 12	Rivera (.647)	Gonzalez - 24	Tautua'a - 4	Geoghegan - 16	Cooper - 3
S.3	vs. UC Santa Barbara	Rivera/Haynie - 10	Haynie (.474)	Gonzalez - 21	Corf/Miller - 1	Geoghegan - 17	Four players - 1
S.9	Maryland	Tautua'a - 14	Tautua'a (.300)	Miller - 17	Gonzalez - 3	Geoghegan - 12	Haynie/Rivera - 3
S.9	Arizona	Corf - 9	Corf (.227)	Gonzalez - 17	Haynie/Tautua'a - 1	Geoghegan - 11	Schraeder - 3
S.10	Sacramento State	Corf/Labno - 15	Labno (.407)	Miller - 27	Miller - 2	Geoghegan - 23	Schraeder - 4
S.15	UCLA	Rivera - 8	Rivera (.227)	Gonzalez - 12	Geoghegan - 2	Tautua'a - 9	Schraeder - 3
S.17	at No. 8 San Diego	Labno - 10	Labno (.450)	Gonzalez - 19	Geoghegan - 3	Geoghegan - 14	Schraeder - 4
S.22	San José State	Corf - 10	Cooper (.429)	Miller - 19	Three players - 1	Douglas - 14	Schraeder - 8
S.24	Nevada	Corf - 22	Rivera (.385)	Miller - 31	Douglas - 2	Douglas - 26	Cooper - 2
S.27	at Fresno State	Labno - 12	Haynie (.636)	Miller - 14	Douglas - 5	Douglas/Geoghegan - 5	Three players - 2
O.1	at UNLV	Corf - 15	Rivera (.467)	Gonzalez - 15	Haynie - 2	Douglas - 9	Rivera/Schraeder - 4
O.6	at Utah State	Rivera - 9	Rivera (.211)	Miller - 14	Douglas/Geoghegan - 1	Douglas/Geoghegan - 7	Tautua'a - 5
O.8	at Boise State	Labno - 16	Labno (.355)	Miller - 24	Geoghegan - 2	Geoghegan/Tautua'a - 9	Haynie/Rivera - 3
O.13	Wyoming	Rivera - 9	Tautua'a (.167)	Miller - 17	Geoghegan - 3	Geoghegan - 18	Cooper/Rivera - 4
O.15	Colorado State	Corf - 15	Labno (.304)	Miller - 20	Miller - 2	Geoghegan - 14	Labno/Schraeder - 2
O.20	at New Mexico						
O.22	Air Force						
O.27	at Colorado State						
O.29	at Wyoming						
N.3	Boise State						
N.5	Utah State						
N.7	Fresno State						
N.10	UNLV						
N.17	at Nevada						
N.19	at San José State						

\* - min. 7 kills

### RECAPPING THE PEPPERDINE ASICS CLASSIC

> Despite dropping three matches against teams that combined for 65 victories last season, the Aztecs kept things close in 10 of 11 sets, trailing by a combined seven kills for the tournament (148-141). However, SDSU committed twice as many attack errors (85-42), finishing with a .169 hitting percentage, compared to a .318 clip for the opposition. In addition, the Aztecs were victimized by 22 service aces and experienced a deficiency in team blocks (42.0 to 11.5).

> The Aztecs had their moments against then-No. 9 Baylor in the tournament opener on Sept. 2, but were unable to sustain the momentum after a third-set rally, ultimately falling by a 3-1 count (18-25, 17-25, 29-27, 14-25).

> Individually, SDSU was paced by Heipua Tautua'a, who recorded her second straight double-double and sixth of her career after posting 13 kills and 16 digs, while Madison Corf launched 11 put-aways of her own. The Aztecs' offensive fortunes also received a boost from Kayla Rivera (7 kills) and Mikela Labno (6 kills), while Elly Schraeder anchored the middle with five blocks, including a pair of solo stops.

> Elsewhere, Sarena Gonzalez (25 assists) and Noa Miller (15 assists, 8 digs) shared the setting responsibilities, while Kat Cooper contributed five kills and two block assists at the net.

> Trailing 0-2 in sets, SDSU entertained hopes of a comeback in the third stanza, as the teams combined for 13 ties and a pair of lead changes. The Aztecs enjoyed their most productive set of the match, blasting 16 kills, including four apiece by Corf and Tautua'a. In addition, the Scarlet and Black limited the Bears to their lowest hitting percentage of the day (.121).

> Nevertheless, San Diego State still found itself on the verge of defeat after Baylor took a 24-21 lead following a block by Lauren Harrison and Mallory Talbert. Unfazed, the Aztecs maintained their composure, fighting off five additional match points with an 8-3 closing spurt, clinching the set with three straight points to overcome a 27-26 deficit. Kills by Cooper and Labno, followed by Corf's service ace, afforded SDSU some new life. Unfortunately, the Aztecs' new-found enthusiasm was soon dashed early in the fourth frame, as the Bears grabbed a 9-4 lead and were never threatened.

> SDSU closed out its second tournament of the season the next day (Sept. 3) on a sour note, falling to host Pepperdine in three sets (18-25, 20-25, 32-34) before suffering a 3-1 defeat at the hands of UC Santa Barbara (18-25, 18-25, 25-22, 16-25).

> Against the Waves, the Aztecs were led by Kayla Rivera, who finished with a .647 efficiency on a match-high 12 kills in 17 swings with just one error, while Heipua Tautua'a racked up 11 non-returnables to go with a career-best four service aces. Mikela Labno also hit well on the afternoon, finishing with a .316 clip (7-1-19), while Ellie Geoghegan scooped up a match-high 16 digs.

> However, SDSU was outlit for the match .371 to .259, as Pepperdine benefited from 15 unforced Aztec attack errors. Although the Scarlet and Black maintained a 42-36 advantage in digs and each side served up

six aces, the Waves also finished with more team blocks (9.0 to 4.5) to help fuel their win.

> The third set was the most entertaining, as the teams combined for 11 ties and four lead changes. Still, the Aztecs seemed poised to extend the match to a fourth frame after building a 20-15 lead thanks to a Rivera kill. Pepperdine tightened the score at 23-21 moments later following a kill, a combined block and a Meg Brown ace.

> Labno responded with a kill of her own, which extended the SDSU lead to 24-21. Incredibly, the Waves fought off nine set points down the stretch, including a 32-31 deficit after another Labno put-away. Pepperdine finally closed off the match on a service ace following a kill and an Aztec attack error.

> In the nightcap against the Gauchos, San Diego State was stymied in the middle, as UCSB maintained a decisive advantage in team blocks (13.0 to 2.0) while serving up 12 aces compared to the Aztecs' two. In addition, the Gauchos owned the statistical edge in kills (50-45) and hitting percentage (.310 to .161), capitalizing on 13 SDSU unforced attack errors to help power their victory.

> The Aztecs were paced by Julia Haynie (.474) and Kayla Rivera (.368), who blasted 10 kills apiece, while Reagan Merk tied her career high with seven put-aways. In addition, Ellie Geoghegan anchored the SDSU back row with 17 digs.

### ALL-TOURNAMENT AZTEC

> Senior opposite hitter Kayla Rivera earned a spot on the all-tournament team for her performance in three matches at the Pepperdine ASICS Classic, Sept. 2-3, in Malibu, California.

> A native of Ventura, Rivera led the Aztecs with 29 kills overall and hit .333, including a career-best .647 against host Pepperdine on Sept. 3, when she launched 12 non-returnables on 17 attempts with just one error.

> She also contributed double-digit kills later that day vs. UC Santa Barbara when she tied for team-high honors with 10 put-aways to go with a .368 efficiency.

### SDSU INVITATIONAL REWIND

> After dropping a hard-fought three-set decision to California (20-25, 23-25, 23-25) in their season opener on Aug. 26, the Aztecs rebounded with a pair of 3-1 victories the following day vs. Army West Point (25-22, 22-25, 25-16, 19-25) and UC San Diego (25-22, 25-20, 26-28, 25-20).

> Against Army West Point, the SDSU attack was powered by the combo of Heipua Tautua'a (13 kills) and Mikela Labno (12 kills), while setter Noa Miller recorded her first double-double of the season with 21 assists and 12 digs.

> However, it was the Aztec defense that proved to be the difference against the Black Knights, finishing with a 14.0 to 10.0 advantage in team blocks, to go with a 54-49 spread in digs.

## Week 9: at New Mexico | vs. Air Force

- > In addition to a career-high nine blocks, Elly Schraeder (.375) displayed her dual-threat capabilities with eight kills against only two errors, while Kayla Rivera finished with seven block assists to set her own personal best.
- > The teams combined for 13 ties and three lead changes in the opening set. However, the match witnessed just two more deadlocks in the second stanza, as the Scarlet and Black led throughout the third and fourth frames.
- > In the nightcap vs. UC San Diego, the Aztecs (2-1) owned a decisive 67-42 advantage in kills and served up seven aces to help fuel their win, overcoming a 14.0 to 9.0 deficiency in team blocks.
- > In addition, SDSU outlit the Tritons .270 to .183 and maintained a sizable 51-42 in digs while benefiting from 20 opponent attack errors.
- > Individually, four players posted double-digit kills for the Aztecs, including freshman Madison Corf (.303), who blasted a match-high 14 put-aways, while Tautua'a logged her first double-double of the year with 14 non-returnables to go with 10 digs.
- > Elsewhere, SDSU also received a career-high tying 13 kills from Labno, while Rivera sparked the offense as well with 10 put-aways, followed by Kat Cooper, who hit .600 for the night (7-1-10) and contributed five total blocks, including a solo stop.
- > Not to be outdone, Miller (28 assists) posted a career-high six service aces, sharing the setting duties with Sarena Gonzalez, who dished out 30 helpers of her own. Meanwhile, McKenna Douglas led all players with 19 digs to anchor the Aztec back row.
- > In the opener against Cal, the teams combined for 36 ties and 20 lead changes, as seven of eight SDSU newcomers saw action in the see-saw affair.
- > Despite maintaining a narrow 38-37 edge in kills and a 7-4 spread in service aces, however, the Aztecs were plagued by 25 attack errors, posting a .121 hitting percentage on the night.
- > Conversely, the Golden Bears owned a decisive advantage in team blocks (12.0 to 5.0) and totaled just eight errant attacks, finishing with a .358 efficiency to help key their victory.
- > Offensively, SDSU was led by the trio of Tautua'a, Labno and Madison Corf, who blasted seven kills each, while Kat Cooper (.357) and Kayla Rivera (3 block assists) launched six non-returnables apiece.

### WELCOME BACK

- > Outside hitter Heipua Tautua'a leads the group of eight Aztec letterwinners who return for the 2022 campaign.
- > Tautua'a continued to display her tremendous versatility last season, finishing second on the team in kills (208), digs (239) and digs per set (2.28) while occupying the third spot in kills per set (1.96) and double-doubles (3).
- > The SDSU junior also compiled double-digit digs in 11 matches and surpassed double figures in kills on six occasions last year.
- > Tautua'a enters the 2022 season having started 43 of 44 matches she has appeared in.
- > The Aztecs will also look for senior leadership from Noa Miller and Julia Haynie.
- > A 5-10 setter, Miller led the Scarlet and Black in assists in all but one of her 20 matches played last season. The Arizona State transfer also tied for the top spot on the squad with four double-doubles in her first season at SDSU.
- > Despite missing the final seven matches of the 2021 campaign, Miller averaged a team-leading 6.01 assists per set, which ranked seventh in the Mountain West.
- > Haynie also brought previous Division I experience with her to "America's Finest City" after spending her first two seasons at Portland State. The 6-1 middle blocker led the Aztecs with 61 total blocks, including a team-high eight solo stops across 88 sets. She also ranked fifth on the team with 103 kills (1.17/set), finishing with a .222 hitting percentage.
- > In addition, Haynie topped the squad or tied for the team lead in blocks eight times. She also posted at least one kill in all 25 matches she played while recording at least one block assist in all but four contests, including eight straight to end the year.
- > San Diego State is also expecting continued improvement from a pair of sophomores - Mikela Labno and Jordyn Goldsmith.
- > Last season, Labno ranked fourth on the Aztecs with 132 kills and 1.81 kills per set while contributing 65 digs and 25 total blocks in 73 sets played. She also tied for second on the team with seven block solos and recorded at least one kill in all but two appearances.
- > A native of Hilmar, California, Labno surpassed the double-digit kill plateau on four occasions, logging a breakout performance vs. No. 17 Pepperdine at the Gaucho Invitational, where she launched a season-high 13 kills on 23 attempts with just one error for a stellar .522 hitting percentage, which ranked as the team's second-best clip of the year (min. 12 kills).
- > A 6-1 opposite hitter, Goldsmith also enjoyed a solid debut for the Scarlet and Black in 2021, ranking fifth on the team in kills (119) and kills per set (1.58). She also finished with 35 total blocks and 30 digs across 76 sets, making nine starts in 25 appearances.
- > Goldsmith posted her best hitting percentage of the 2021 season with a .636 clip in a three-set sweep of Air Force, blasting seven kills without an error in 11 attempts.
- > Also back in the mix are a trio of underclassmen in Kennedy Feuerborn, Reagan Merk and Sara Mukaj.
- > A 6-3 setter, Feuerborn appeared in 27 of 30 matches last year, starting six of the Aztecs' final eight contests. As a sophomore, she averaged 3.11 assists (230 overall) while registering 38 kills and 24 block assists. In addition, Feuerborn eclipsed the 20-assist plateau on three occasions, including a season-high 23 helpers at home vs. Boise State.
- > Merk saw action in 18 matches during her freshman campaign on The Mesa, earning two starts. The 5-11 outside hitter posted 29 kills, 40 digs, five service aces and three blocks in 42 sets last year. Against Texas Southern at the Arizona Wildcat Invitational, she came off the bench and played all three sets, recording season-highs of seven kills and six digs to help the Scarlet and Black complete the sweep.
- > A 6-3 middle blocker, Mukaj was off to a tremendous start in 2021 before suffering a season-ending ACL injury vs. San Diego. A standout international player from Italy, Mukaj hit .333 with 16 kills on 36 attempts against four errors across 27 sets while finishing with 22 total blocks, 16 dig and seven aces. She posted a .636 hitting percentage on seven kills in 11 attempts without an error against Sam Houston in the finale of the Bearkat Invitational, adding five digs and four block assists.

### NEW KIDS IN TOWN

- > The prospects for the San Diego State volleyball program continue to brighten after head coach Brent Hilliard reshaped the Aztec roster with a solid newcomer class for the 2022 campaign.
- > SDSU's early signing class last November featured three prep stars in outside hitters Madison Corf (Kansas City, Mo.) and Cara Braun (Tempe, Ariz.), along with middle blocker Kat Cooper (Springdale, Ark.).
- > Over the winter, the Aztecs added a pair of Division I transfers in middle blocker Elly Schraeder (San Diego) and opposite hitter Kayla Rivera (Georgia) before inking three more high school standouts during the spring in defensive specialists McKenna Douglas (Phoenix, Ariz.) and Ellie Geoghegan (Manhattan Beach, Calif.), along with setter Sarena Gonzalez (Temecula, Calif.).
- > As a senior at Liberty High School in suburban Kansas City, Missouri, Corf garnered second-team All-America accolades from the American Volleyball Coaches Association after earning a spot on the AVCA All-Region VI team. Last season, she established single-season career highs in kills (390, 4.1/set), digs (353, 3.7/

## AVCA DIVISION I POLL

(As of Oct. 17, 2022)

Rk		Points	Record	Prev
1	Texas [64]	1,600	14-0	1
2	Louisville	1,530	17-1	2
3	Nebraska	1,469	16-1	3
4	San Diego	1,396	17-1	4
5	Wisconsin	1,299	13-3	5
6	Ohio State	1,281	11-5	6
7	Stanford	1,225	13-4	7
8	Pittsburgh	1,179	18-2	8
9	Minnesota	995	10-6	10
10	Georgia Tech	989	13-4	11
11	Florida	927	15-3	13
12	Purdue	891	15-3	9
13	Penn State	766	15-4	14
14	Baylor	663	15-4	18
15	Washington	645	14-4	15
16	Kentucky	621	11-5	19
17	BYU	614	14-4	12
18	Creighton	576	16-3	21
19	Marquette	462	16-2	16
20	Oregon	443	11-5	17
21	Rice	293	17-2	22
22	Pepperdine	233	14-5	20
23	Western Kentucky	206	19-2	23
24	Houston	117	17-2	NR
25	Michigan	111	13-5	24

First-place votes in parentheses

Others receiving votes and listed on two or more ballots: USC 101; UCF 91; Arkansas 36; Washington State 10; Towson 6; LSU 5

## MW PLAYERS OF THE WEEK

### MW Offensive Player of the Week

- A.29 Kylee Stokes, OPP, Sr., Utah State
- S.5 Kayla Afoa, OH, Sr., Nevada
- S.12 Paige Bartsch, OPP, So., Boise State
- S.19 Blaire Fleming, OH, So., San José State
- S.26 Kennedy Stanford, OH, Jr., Colorado State
- O.3 Gabrielle Arreche-Ramos, OH, Jr., UNLV
- O.10 Tatum Stall, OH, Jr., Utah State
- O.17 Kennedy Stanford, OH, Jr., Colorado State

### MW Defensive Player of the Week

- A.29 Joi Harvey, MB, Jr., Air Force
- S.5 Kia Kaohelaulii, L, Jr., Nevada
- S.12 Allison Casillas, L, Sr., Boise State
- S.19 Maya Sands, L, Fr., UNLV
- S.26 Sarah Smevog, L, Sr., San José State
- O.3 Sarah Smevog, L, Sr., San José State
- O.10 Sarah Smevog, L, Sr., San José State
- O.17 Jordi Holdaway, L, So., Utah State

### MW Freshman of the Week

- A.29 Leah Wilton-LaBoy, S, Utah State
- S.5 Gabby McLaughlin, OH, Nevada
- S.12 Lea Zurlinden, MB, New Mexico
- S.19 Maya Sands, L, UNLV
- S.26 Elle Cotton, S, Boise State
- O.3 Tierney Barlow, MB, Wyoming
- O.10 Bella Wooden, MB, Utah State
- O.17 Maya Sands, L, UNLV

set), blocks (50) and aces (33), helping the Blue Jays to a 26-5 overall record and a second-place district finish.

> Cooper also received national acclaim last year, earning AVCA All-America honorable mention to go with AVCA All-Region IV distinction after leading Har-Ber High School to a 33-2 record and a runner-up finish in the 6A bracket at the 2021 Arkansas state championships. A four-time all-conference selection, Cooper merited all-state recognition and landed on the all-state tournament team in each of her final three seasons.

> Braun brings a winning pedigree with her to SDSU as well after leading her Valley Christian High team to the 2021 Arizona 3A state championship, garnering Conference 3A Player of the Year and 3A Metro Region Offensive Player of the Year accolades. According to MaxPreps, Braun totaled 1,290 kills and hit .344 during her prep career, helping Valley Christian to an additional pair of runner-up state finishes in 2019 and 2020.

> Not to be outdone, Douglas also starred on the Arizona prep volleyball scene, capping a brilliant senior campaign in 2021 with all-state honors from the Arizona Republic after leading Notre Dame Prep to a 37-5 record, highlighted by a Conference 4A state championship. Last season, Douglas was named both the Conference 4A Player of the Year and Defensive Player of the Year while receiving identical acclaim in the 4A West Valley Region after averaging a career-high 4.8 digs per set (307 overall) to go with 61 assists and 47 service aces, according to MaxPreps.

> Geoghegan is also eager to display her defensive prowess this season after she was named the Bay League Division I Libero of the Year and received all-conference recognition at Mira Costa High School in 2021. The Manhattan Beach native led her Mustang squad to a 28-9 overall record and a regional semifinal appearance in the 2021 CIF Open Division state tournament. For her efforts, Geoghegan also collected first-team all-area honors by the Daily Breeze, as Mira Costa finished the year at No. 17 in the AVCA/USA Today Super 25 National High School Rankings.

> Gonzalez, meanwhile, is a local product who attended Temecula Valley High and received all-Southwestern Conference recognition as a senior after helping her Golden Bears squad advance to the second round of the 2021 CIF Southern Section Division II playoffs.

> The first of two transfers to last year's signing class, Schraeder was a part of two teams at USD that advanced to the NCAA Tournament, including a second-round appearance in the fall of 2021. During her freshman campaign that was shortened and delayed due to the COVID-19 pandemic, Schraeder ranked second in the West Coast Conference with a team-high 1.30 blocks per set, establishing a personal best with seven block assists in a road sweep at Gonzaga. A prep star at Coeur d'Alene High in Idaho, Schraeder merited the state's Girls Volleyball 5A/4A Athlete of the Year honors in 2019 and 2020.

> A native of Ventura, Rivera returns to the West Coast after playing three seasons at Georgia, where she started 34 matches in 76 appearances. In 2021, she enjoyed her most productive season as collegian, finishing with 201 kills (2.05/set), 77 total blocks (0.79/set) and 73 digs (0.75/set) in 98 sets played. In addition, Rivera surpassed the double-digit kill plateau eight times during the year and posted three or more blocks in 17 outings.

#### PRESEASON PROGNOSTICATIONS

> San Diego State was pegged for an eighth-place finish in the 2022 Mountain West preseason coaches poll released on Aug. 17.

> In the 23-year history of the Mountain West, SDSU has finished first (2012), second (2002, 2011), fourth (2000, 2001, 2003, 2013, 2017), fifth (2005, 2015, 2019), sixth (1999, 2004, 2006, 2009, 2010, 2014, 2016), seventh (2008), eighth (2007, 2018, 2020), and ninth (2021) in the final league standings.

#### 2022 Mountain West Preseason Poll

Rk.	Team (1st-place votes)	Pts.
1.	Colorado State (6)	93
2.	Utah State (3)	91
3.	San José State (1)	75
	Boise State (1)	75
5.	New Mexico	68
6.	UNLV	57
7.	Wyoming	47
<b>8.</b>	<b>San Diego State</b>	<b>33</b>
9.	Fresno State	29
10.	Air Force	27
11.	Nevada	10

#### MOUNTAIN WEST VOLLEYBALL CHAMPIONSHIP TICKETS ON SALE

> Tickets are now on sale for the 2022 Mountain West Volleyball Championship in Fort Collins, Colorado. The three-day event will run from Nov. 23-25, at Moby Arena on the campus of Colorado State University.

> Single-session tickets range from \$7-15, while all-session passes are \$17-35.

> Tickets can be purchased at CSURams.com, at the Moby Arena box office or by phone at 800-491-RAMS (7267).

> The top six teams in the conference standings will qualify for the Mountain West Volleyball Championship. First-round action starts on Wednesday, Nov. 23, at 1 p.m. MT and 4 p.m. MT. Two semifinal contests will be featured on Thursday, Nov. 24, beginning at 1 p.m. MT and 4 p.m. MT, while the championship match is slated for Friday, Nov. 25, at 6:30 p.m. MT.

> All matches will air live on the Mountain West Network. The MW app is available on your TV through Apple TV, Android TV, Amazon Fire TV or Roku. Mobile applications are available through the iOS App Store and Google Play.





# Brent HILLIARD

## Head Coach - Third Season at San Diego State

San Diego State Director of Athletics John David Wicker ushered in a new era for the Aztec volleyball team with the hiring of Brent Hilliard as the fifth head coach in program history on Jan. 31, 2020.

In his second season at SDSU, Hilliard and the Aztecs were faced with another demanding schedule, squaring off against 10 teams that qualified for postseason play.

However, San Diego State had its moments of glory in the fall of 2021, posting a 3-0 sweep at eventual Mountain West tournament champion Boise State before recording a five-set thriller on the road at UNLV, which ultimately captured the NIVC crown.

Individually, Hilliard oversaw the continued rise to prominence of Victoria O'Sullivan, who received all-Mountain West recognition for the second straight season after ranking second in the conference with 3.71 kills per set, as the SDSU outside hitter concluded her illustrious career with 1,026 kills overall.

Hilliard's charges enjoyed another successful year scholastically, with nine Aztecs landing on the Mountain West all-academic team, including Ashley Vanderpan, Kennedy Feuerborn and Serena Hodson, who took home the department's prestigious Malik Award, presented to SDSU student-athletes who attain a 4.0 GPA.

In his first season with the Scarlet and Black, Hilliard endured a challenging season fraught with COVID-19 protocols, an abbreviated schedule that was postponed until spring, along with injuries to key players.

However, Hilliard and the Aztecs persevered through the 2021 spring campaign, posting a 6-9 record, highlighted by thrilling victories over Boise State on the road and Colorado State at home in the season finale, respectively. Against the Broncos, SDSU defeated a Boise State team that entered the contest with four consecutive 3-0 sweeps. Two weeks later, the Aztecs snapped an 11-match to the Rams dating back to 2014 and logged their first win over CSU in San Diego since 2012.

Under Hilliard's guidance, O'Sullivan garnered all-Mountain West accolades for the first time in her career, as the SDSU junior led the squad with 3.25 kills per set, which ranked seventh in the conference. In addition, seniors Lauren Lee and Erin Gillcrest received MW Defensive Player of the Week recognition following the team's aforementioned wins over Boise State and Colorado State, respectively.

Hilliard's Aztecs also excelled in the classroom, with 12 student-athlete earning a spot on the Mountain West all-academic team, including Lauren Lee, who also merited first-team all-District 8 academic honors from the College Sports Information Directors of America (CoSIDA).

A 2018 inductee to the Southern California Indoor Volleyball Hall of Fame, Hilliard arrived at SDSU with a wealth of experience after achieving 19 years of unparalleled success as an assistant coach at the University of San Diego, where he served as the Toreros' associate head coach since 2007.

During his fruitful tenure, the Toreros qualified for the NCAA Tournament in all but one of his 19 seasons, advancing to the Sweet 16 in 2004, 2006, 2013 and 2018. In addition, Hilliard helped guide the Toreros to nine West Coast Conference championships while his players earned six All-America awards, 12 All-America honorable mentions, 44 all-WCC accolades and 15 freshman all-conference certificates.

Hilliard twice assumed the reins of the USD program on an interim basis while head coach Jennifer Petrie was absent on maternity leave. In 2006, Hilliard was honored as WCC Coach of the Year after guiding the Toreros to a conference championship and a Sweet 16 appearance in the NCAA Tournament. That season, he coached five all-conference honorees, including WCC Player of the Year Kristen Carlson, as USD finished 14th in the final USA Today/Coaches Poll.

The Toreros also flourished under Hilliard's guidance in 2011, racing to a 13-0 start en route a program-best 28-5 record, highlighted by a spot in the second round of the NCAA Tournament. Throughout his stint, USD was consistently ranked among the nation's top 25, climbing to as high as No. 2 during the 2013 campaign and rising to No. 5 in 2016.

"I would like to thank John David Wicker, Jenny Bramer, Dr. Adela de la Torre and the rest of the SDSU search committee for making me feel so welcome during the interview process," Hilliard said upon his hiring. "To be the head coach of such a remarkable women's volleyball program in my family's hometown is truly a once in a lifetime opportunity.

"We are fully committed to work tirelessly to elevate this program back to an elite status on the college volleyball landscape, one that the student body, faculty, community, alumni and, of course, all future Aztecs will take great pride in."

Hilliard played collegiately at Long Beach State, earning All-America honors in each of his four years from 1990-93, including first-team recognition over his final three seasons. A right-side hitter for the 49ers, Hilliard was named the NCAA Men's Volleyball Player of the Year as a junior in 1992 after leading LBSU to a 31-1 record.

In 1991, Hilliard and the 49ers captured the NCAA Championship with a 3-1 victory over USC in the finals, avenging a loss to the Trojans in the title match the year before. He finished his career as the NCAA all-time leader with 3,034 kills.

Additionally, Hilliard was selected to play for Team USA in the 1992 Summer Olympics in Barcelona, Spain, where he helped the Americans capture the bronze medal. The following year, he won a silver medal at the 1993 Pan American Games in Argentina and also owns a bronze medal from the 1991 World Cup.

After receiving his undergraduate degree in 1993 from Long Beach State in political science, Hilliard continued his volleyball career as a professional in Europe from 1995-98, playing two seasons in Belgium and another in the Netherlands. In 1996, Hilliard and the Masiek Volleyball Club captured the Belgian national championship and competed in the European Champions League.

In addition to his collegiate experience, which included a stint as head coach at nearby Cuyamaca College in 1999 and 2000, Hilliard has also coached for the past 12 years at Wave Volleyball Club in Del Mar, the premier volleyball club in San Diego County.

"Our priority at SDSU will be to engage, attract and secure exceptional student-athletes that strive for both academic and athletic excellence in their everyday lives," Hilliard added. "From day one, we will set expectations high and build from there. I am incredibly excited to get started and I look forward to the bright future ahead."

### HILLIARD'S COLLEGIATE COACHING LEDGER (As an Assistant at USD)

Year	Overall Record	WCC Record (Finish)	Postseason
2001	22-9	10-4 (3rd)	NCAA Second Round
2002	25-8	10-4 (3rd)	NCAA First Round
2003	17-13	6-8 (T-5th)	NCAA First Round
2004	24-5	14-0 (1st)	NCAA Sweet 16
2005	23-6	10-4 (T-2nd)	NCAA Second Round
2006*	26-6	13-1 (1st)	NCAA Sweet 16
2007	21-8	11-3 (1st)	NCAA First Round
2008	23-5	12-2 (1st)	NCAA First Round
2009	18-7	10-4 (2nd)	None
2010	24-8	13-1 (1st)	NCAA Second Round
2011*	28-5	12-4 (2nd)	NCAA Second Round
2012	21-7	13-3 (T-1st)	NCAA First Round
2013	26-4	16-2 (1st)	NCAA Sweet 16
2014	19-12	12-6 (T-3rd)	NCAA First Round
2015	22-10	14-4 (2nd)	NCAA Second Round
2016	24-6	15-3 (2nd)	NCAA First Round
2017	25-5	17-1 (T-1st)	NCAA Second Round
2018	18-13	13-5 (3rd)	NCAA Sweet 16
2019	25-6	17-1 (1st)	NCAA Second Round
<b>USD Total</b>	<b>431-143 (.751)</b>		
<b>WCC Total</b>	<b>238-60 (.799)</b>		

### As Head Coach at SDSU

Year	Overall Record	MW Record (Finish)	Postseason
2020	6-9	6-9 (8th)	
2021	8-22	5-13 (9th)	
2022	4-15	2-6	
<b>SDSU Total</b>	<b>18-46</b>		
<b>Career as Head Coach</b>	<b>72-57 (.558)</b>		
<b>Overall Total</b>	<b>449-189 (.704)</b>		

### Notes

\* - Served as interim head coach during the 2006 and 2011 seasons at USD. Record reflected in career totals.

- > Qualified for the NCAA Tournament in 18 of his 19 seasons at USD
- > Reached the NCAA Sweet 16 four times in 2004, 2006, 2013 and 2018
- > Won nine West Coast Conference championships

# 2022 AZTEC PHOTO ROSTER



**Heipua TAUTUA'A**  
OH | 6-2 | Jr.

2



**McKenna DOUGLAS**  
DS/L | 5-7 | Fr.

3



**Kennedy FEUERBORN**  
S | 6-3 | Jr.

4



**Jordyn GOLDSMITH**  
OPP | 6-1 | So.

6



**Madison CORF**  
OH | 5-11 | Fr.

7



**Ellie GEOGHEGAN**  
DS/L | 5-8 | Fr.

8



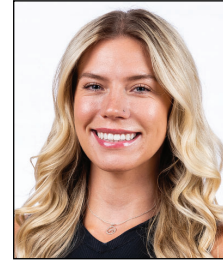
**Sara MUKAJ**  
MB | 6-3 | So.

9



**Cara BRAUN**  
OH | 6-1 | Fr.

10



**Kayla RIVERA**  
OPP | 6-1 | Sr.

11



**Julia HAYNIE**  
MB | 6-1 | Sr.

13



**Reagan MERK**  
OH | 5-11 | So.

14



**Mikela LABNO**  
OH | 6-2 | So.

15



**Sarena GONZALEZ**  
S | 5-8 | Fr.

16



**Noa MILLER**  
S | 5-10 | Sr.

19



**Elly SCHRAEDER**  
MB | 6-2 | So.

20



**Kat COOPER**  
MB | 6-1 | MB

21



**Brent HILLIARD**  
Head Coach



**Melanie GREENE**  
Assistant Coach/  
Recruiting Coordinator



**STEVE TIMMONS**  
Assistant Coach



**Kara BARKDOLL**  
Volleyball Operations  
Assistant



## 2022-23 San Diego St. Women's Volleyball Combined Team Statistics All games

### Game Records

Overall	Conference	Home	Away	Neutral
4 - 15	2 - 6	3 - 8	1 - 5	0 - 2

### Team Box Score

#	Player	SP	Attack					Set		Serve			RE	Dig		Blocking					PTS	
			K	K/S	E	TA	PCT	A	A/S	SA	SE	SA/S		DIG	DIG/S	BS	BA	TOT/S	BLK/S	BE		BHE
2	Tautua'a, Heipua	63	136	2.16	74	390	.159	13	0.21	9	18	0.14	28	125	1.98	5	17	22	0.35	5	1	158.5
3	Douglas, McKenna	37	2	0.05	0	7	.286	38	1.03	12	10	0.32	10	112	3.03	0	0	0	0.00	0	1	14.0
4	Feuerborn, Kennedy	12	7	0.58	4	20	.150	40	3.33	0	0	0.00	0	1	0.08	0	2	2	0.17	0	2	8.0
6	Goldsmith, Jordyn	8	7	0.88	8	25	-.040	0	0.00	0	0	0.00	0	2	0.25	0	1	1	0.13	0	0	7.5
7	Corf, Madison	62	157	2.53	112	413	.109	7	0.11	6	22	0.10	30	79	1.27	3	12	15	0.24	6	1	172.0
8	Geoghegan, Ellie	70	4	0.06	0	5	.800	32	0.46	19	32	0.27	30	192	2.74	0	0	0	0.00	0	0	23.0
9	Mukaj, Sara	9	2	0.22	0	13	.154	2	0.22	1	0	0.11	0	3	0.33	0	1	1	0.11	2	0	3.5
11	Rivera, Kayla	70	155	2.21	92	421	.150	3	0.04	2	6	0.03	0	14	0.20	3	39	42	0.60	5	0	179.5
13	Haynie, Julia	40	64	1.60	19	139	.324	4	0.10	5	5	0.13	0	8	0.20	2	13	15	0.38	2	0	77.5
14	Merk, Reagan	29	11	0.38	8	30	.100	4	0.14	5	7	0.17	6	34	1.17	0	1	1	0.03	1	0	16.5
15	Labno, Mikela	70	161	2.30	78	436	.190	6	0.09	0	2	0.00	10	38	0.54	4	16	20	0.29	0	0	173.0
16	Gonzalez, Sarena	60	2	0.03	0	10	.200	293	4.88	10	22	0.17	1	54	0.90	0	0	0	0.00	0	9	12.0
19	Miller, Noa	70	12	0.17	2	42	.238	343	4.90	19	14	0.27	0	119	1.70	0	0	0	0.00	2	9	31.0
20	Schraeder, Elly	61	67	1.10	29	174	.218	4	0.07	0	0	0.00	0	3	0.05	10	48	58	0.95	12	2	101.0
21	Cooper, Kat	53	59	1.11	22	146	.253	2	0.04	2	11	0.04	0	17	0.32	5	23	28	0.53	1	1	77.5
SAN DIEGO ST.		70	846	12.09	448	2271	.175	791	11.30	90	149	1.29	125	801	11.44	32	173	118.5	1.69	36	26	1,054.5
Opponents		70	877	12.53	304	2103	.272	793	11.33	125	143	1.79	90	755	10.79	24	378	213	3.04	33	26	1,215.0

### Team statistics

	SDSU	OPP
<b>ATTACK</b>		
Kills	846	877
Errors	448	304
Total Attacks	2271	2103
Attack Pct	.175	.272
Kills/Set	12.09	12.53
<b>SET</b>		
Assists	791	793
Attempts	2255	2019
Assist Pct	.351	.393
Assists/Set	11.30	11.33
<b>SERVE</b>		
Aces	90	125
Errors	149	143
Attempts	1442	1650
Serve Pct	.897	.913
Aces/Set	1.29	1.79
<b>SERVE RECEPTIONS</b>		
Errors	125	90
Errors/Set	1.79	1.29
Attempts	1507	1294
Reception Pct	.917	.999
<b>DEFENSE</b>		
Digs	801	755
Digs/Set	11.44	10.79
<b>BLOCKING</b>		
Block solo	32	24
Block Assist	173	378
Total Blocks	118.5	213
Blocks/Set	1.69	3.04
Block Errors	36	33
Ball handling errors	26	26
<b>ATTENDANCE</b>		
Total	3761	5006
Dates/Avg Per Date	11/342	6/834
Neutral Site #/Avg	2/104	-
Current win streak	0	-
Home win streak	0	-

### Team Results

Date	Opponent	Score	Score-by-set	Att.
08/26/2022	California	L 0-3	20-25,23-25,23-25	357
08/27/2022	Army West Point	W 3-1	25-22,22-25,25-16,25-19	287
08/27/2022	UC San Diego	W 3-1	25-22,25-20,26-28,25-20	341
09/02/2022	vs Baylor	L 1-3	18-25,17-25,29-27,14-25	125
09/03/2022	at Pepperdine	L 0-3	18-25,20-25,32-34	302
09/03/2022	vs UC Santa Barbara	L 1-3	18-25,18-25,25-22,16-25	82
09/09/2022	Maryland	L 1-3	14-25,25-21,20-25,18-25	122
09/09/2022	Arizona	L 0-3	17-25,15-25,11-25	388
09/10/2022	Sacramento St.	L 2-3	16-25,26-28,25-21,25-22,8-15	186
09/15/2022	UCLA	L 0-3	16-25,23-25,15-25	686
09/17/2022	at San Diego	L 1-3	25-20,13-25,14-25,12-25	1000
* 09/22/2022	San Jose St.	L 1-3	18-25,25-18,21-25,10-25	322
* 09/24/2022	Nevada	W 3-1	25-16,25-22,20-25,26-24	244
* 09/27/2022	at Fresno St.	W 3-0	25-18,25-21,25-21	641
* 10/01/2022	at UNLV	L 1-3	15-25,19-25,27-25,22-25	698
* 10/06/2022	at Utah St.	L 0-3	19-25,17-25,10-25	1084
* 10/08/2022	at Boise St.	L 1-3	21-25,16-25,25-22,23-25	1281
* 10/13/2022	Wyoming	L 1-3	14-25,22-25,25-20,17-25	441
* 10/15/2022	Colorado St.	L 0-3	21-25,21-25,23-25	387



## 2022-23 San Diego St. Women's Volleyball Combined Team Statistics In Conference games

### Game Records

Overall	Conference	Home	Away	Neutral
2 - 6	2 - 6	1 - 3	1 - 3	0 - 0

### Team Box Score

##	Player	SP	Attack						Set		Serve			Dig			Blocking					PTS
			K	K/S	E	TA	PCT	A	A/S	SA	SE	SA/S	RE	DIG	DIG/S	BS	BA	TOT/S	BLK/S	BE	BHE	
2	Tautua'a, Heipua	23	28	1.22	14	95	.147	3	0.13	2	3	0.09	7	37	1.61	3	9	12	0.52	1	1	37.5
3	Douglas, McKenna	22	1	0.05	0	6	.167	24	1.09	10	6	0.45	6	69	3.14	0	0	0	0.00	0	0	11.0
4	Feuerborn, Kennedy	8	6	0.75	3	12	.250	29	3.63	0	0	0.00	0	0	0.00	0	0	0	0.00	0	1	6.0
6	Goldsmith, Jordyn	5	4	0.80	6	15	-.133	0	0.00	0	0	0.00	0	2	0.40	0	1	1	0.20	0	0	4.5
7	Corf, Madison	25	72	2.88	51	184	.114	4	0.16	4	9	0.16	8	44	1.76	2	3	5	0.20	1	1	79.5
8	Geoghegan, Ellie	29	2	0.07	0	3	.667	9	0.31	10	11	0.34	12	75	2.59	0	0	0	0.00	0	0	12.0
9	Mukaj, Sara	2	0	0.00	0	1	.000	0	0.00	0	0	0.00	0	0	0.00	0	0	0	0.00	0	0	0.0
11	Rivera, Kayla	29	73	2.52	41	178	.180	3	0.10	2	6	0.07	0	11	0.38	3	13	16	0.55	3	0	84.5
13	Haynie, Julia	20	35	1.75	9	78	.333	3	0.15	4	5	0.20	0	4	0.20	1	6	7	0.35	0	0	43.0
14	Merk, Reagan	10	3	0.30	3	11	.000	2	0.20	0	1	0.00	1	7	0.70	0	1	1	0.10	0	0	3.5
15	Labno, Mikela	29	71	2.45	34	196	.189	4	0.14	0	0	0.00	7	14	0.48	3	5	8	0.28	0	0	76.5
16	Gonzalez, Sarena	22	2	0.09	0	9	.222	92	4.18	4	6	0.18	0	21	0.95	0	0	0	0.00	0	5	6.0
19	Miller, Noa	29	7	0.24	2	26	.192	152	5.24	3	5	0.10	0	49	1.69	0	0	0	0.00	1	2	10.0
20	Schraeder, Elly	22	25	1.14	9	63	.254	0	0.00	0	0	0.00	0	2	0.09	5	16	21	0.95	4	1	38.0
21	Cooper, Kat	25	28	1.12	10	70	.257	2	0.08	0	3	0.00	0	6	0.24	2	8	10	0.40	1	1	34.0
<b>SAN DIEGO ST.</b>		<b>29</b>	<b>357</b>	<b>12.31</b>	<b>182</b>	<b>947</b>	<b>.185</b>	<b>327</b>	<b>11.28</b>	<b>39</b>	<b>55</b>	<b>1.34</b>	<b>45</b>	<b>341</b>	<b>11.76</b>	<b>19</b>	<b>62</b>	<b>50</b>	<b>1.72</b>	<b>11</b>	<b>12</b>	<b>446.0</b>
<b>Opponents</b>		<b>29</b>	<b>368</b>	<b>12.69</b>	<b>128</b>	<b>897</b>	<b>.268</b>	<b>318</b>	<b>10.97</b>	<b>45</b>	<b>59</b>	<b>1.55</b>	<b>39</b>	<b>309</b>	<b>10.66</b>	<b>9</b>	<b>148</b>	<b>83</b>	<b>2.86</b>	<b>19</b>	<b>7</b>	<b>496.0</b>

### Team statistics

	SDSU	OPP
<b>ATTACK</b>		
Kills	357	368
Errors	182	128
Total Attacks	947	897
Attack Pct	.185	.268
Kills/Set	12.31	12.69
<b>SET</b>		
Assists	327	318
Attempts	989	903
Assist Pct	.331	.352
Assists/Set	11.28	10.97
<b>SERVE</b>		
Aces	39	45
Errors	55	59
Attempts	606	678
Serve Pct	.909	.913
Aces/Set	1.34	1.55
<b>SERVE RECEPTIONS</b>		
Errors	45	39
Errors/Set	1.55	1.34
Attempts	619	553
Reception Pct	.927	.998
<b>DEFENSE</b>		
Digs	341	309
Digs/Set	11.76	10.66
<b>BLOCKING</b>		
Block solo	19	9
Block Assist	62	148
Total Blocks	50	83
Blocks/Set	1.72	2.86
Block Errors	11	19
Ball handling errors	12	7
<b>ATTENDANCE</b>		
Total	1394	3704
Dates/Avg Per Date	4/349	4/926
Neutral Site #/Avg	0/0	-
Current win streak	0	-
Home win streak	0	-

### Team Results

Date	Opponent	Score	Score-by-set	Att.
* 09/22/2022	San Jose St.	L 1-3	18-25,25-18,21-25,10-25	322
* 09/24/2022	Nevada	W 3-1	25-16,25-22,20-25,26-24	244
* 09/27/2022	at Fresno St.	W 3-0	25-18,25-21,25-21	641
* 10/01/2022	at UNLV	L 1-3	15-25,19-25,27-25,22-25	698
* 10/06/2022	at Utah St.	L 0-3	19-25,17-25,10-25	1084
* 10/08/2022	at Boise St.	L 1-3	21-25,16-25,25-22,23-25	1281
* 10/13/2022	Wyoming	L 1-3	14-25,22-25,25-20,17-25	441
* 10/15/2022	Colorado St.	L 0-3	21-25,21-25,23-25	387

## SEASON HIGHS

## CAREER HIGHS

### #2 HEIPUA TAUTUA'A

Hitting Percentage (*min. 7 kills*) .379 (13-29-29) vs. Army West Point, 8/27/22  
 Total Attempts 35, at Pepperdine, 9/3/22  
 Kills 14, three times, last: vs. Sacramento State, 9/10/22  
 Assists 3, at Pepperdine, 9/3/22  
 Aces 4, at Pepperdine, 9/3/22  
 Digs 16, vs. No. 9 Baylor, 9/2/22  
 Block Solos 2, vs. San José State, 9/22/22  
 Block Assists 5, vs. San José State, 9/22/22  
 Total Blocks 7, vs. San José State, 9/22/22  
 Points 16.0, at Pepperdine, 9/3/22

### #3 MCKENNA DOUGLAS

Hitting Percentage (*min. 7 kills*) N/A  
 Total Attempts 4, at UNLV, 10/1/22  
 Kills 1, twice, last: at Fresno State, 9/27/22  
 Assists 7, vs. Nevada, 9/24/22  
 Aces 5, at Fresno State, 9/27/22  
 Digs 26, vs. Nevada, 9/24/22  
 Block Solos N/A  
 Block Assists N/A  
 Total Blocks N/A  
 Points 6.0, at Fresno State, 9/27/22

### #4 KENNEDY FEUERBORN

Hitting Percentage (*min. 7 kills*) N/A  
 Total Attempts 5, twice, last: vs. Wyoming, 10/13/22  
 Kills 2, three times, last: vs. Wyoming, 10/13/22  
 Assists 15, vs. Nevada, 9/24/22  
 Aces N/A  
 Digs 1, vs. Maryland, 9/9/22  
 Block Solos N/A  
 Block Assists 1, twice, last: vs. Maryland, 9/9/22  
 Total Blocks 1, twice, last: vs. Maryland, 9/9/22  
 Points 2.0, three times, last: vs. Wyoming, 10/13/22

### #6 JORDYN GOLDSMITH

Hitting Percentage (*min. 7 kills*) N/A  
 Total Attempts 9, vs. UC Santa Barbara, 9/3/22  
 Kills 3, twice, last: vs. Colorado State, 10/15/22  
 Assists N/A  
 Aces N/A  
 Digs 2, vs. Nevada, 9/24/22  
 Block Solos N/A  
 Block Assists 1, vs. Colorado State, 10/15/22  
 Total Blocks 1, vs. Colorado State, 10/15/22  
 Points 3.5, vs. Colorado State, 10/15/22

### #7 MADISON CORF

Hitting Percentage (*min. 7 kills*) .303, vs. UC San Diego, 8/27/22  
 Total Attempts 47, vs. Nevada, 9/24/22  
 Kills 22, vs. Nevada, 9/24/22  
 Assists 2, vs. Colorado State, 10/15/22  
 Aces 1, three times, last: at UNLV, 10/1/22  
 Digs 11, vs. Colorado State, 10/15/22  
 Block Solos 1, three times, last: at UNLV, 10/1/22  
 Block Assists 2, twice, last: vs. Sacramento State, 9/10/22  
 Total Blocks 2, three times, last: vs. Sacramento State, 9/10/22  
 Points 22.0, vs. Nevada, 9/24/22

### #8 ELLIE GEOGHEGAN

Hitting Percentage (*min. 7 kills*) N/A  
 Total Attempts 3, at Fresno State, 9/27/22  
 Kills 2, at Fresno State, 9/27/22  
 Assists 6, vs. Wyoming, 10/13/22  
 Aces 3, twice, last: vs. Wyoming, 10/13/22  
 Digs 23, vs. Sacramento State, 9/10/22  
 Block Solos N/A  
 Block Assists N/A  
 Total Blocks N/A  
 Points 3.0, three times, last: vs. Wyoming, 10/13/22

.462 (14-2-26), at Boise State, 3/20/21  
 38, vs. Nevada, 2/26/21  
 15, vs. Nevada, 2/26/21  
 5, vs. Fresno State, 10/7/21  
 4, at Pepperdine, 9/3/22  
 22, vs. New Mexico, 2/20/21  
 3, at Wyoming, 3/5/21  
 6, at Boise State, 3/20/21  
 7, vs. San José State, 9/22/22  
 19.0, at Boise State, 3/20/21

N/A  
 4, at UNLV, 10/1/22  
 1, twice, last: at Fresno State, 9/27/22  
 7, vs. Nevada, 9/24/22  
 5, at Fresno State, 9/27/22  
 26, vs. Nevada, 9/24/22  
 N/A  
 N/A  
 N/A  
 6.0, at Fresno State, 9/27/22

N/A  
 15, vs. Fresno State, 10/7/21  
 6, at UNLV, 2/5/21  
 27, at UNLV, 2/5/21  
 1, twice, last: vs. Boise State, 10/30/21  
 7, vs. Fresno State, 2/12/21  
 1, twice, last: vs. Fresno State, 2/12/21  
 5, vs. Nevada, 11/18/21  
 5, vs. Nevada, 11/18/21  
 7.0, twice, last: vs. Utah State, 10/28/21

.636 (7-0-11), vs. Air Force 10/2/21  
 27, vs. Colorado State, 10/21/21  
 9, three times, last: at Wyoming, 10/23/21  
 2, vs. Boise State, 10/30/21  
 N/A  
 3, four times, last: at Utah State, 10/16/21  
 1, four times, last: at Wyoming, 10/23/21  
 4, twice, last: vs. Fresno State, 10/7/21  
 5, vs. Fresno State, 10/7/21  
 10.0, at Wyoming, 10/23/21

.303, vs. UC San Diego, 8/27/22  
 47, vs. Nevada, 9/24/22  
 22, vs. Nevada, 9/24/22  
 2, vs. Colorado State, 10/15/22  
 1, three times, last: at UNLV, 10/1/22  
 11, vs. Colorado State, 10/15/22  
 1, three times, last: at UNLV, 10/1/22  
 2, twice, last: vs. Sacramento State, 9/10/22  
 2, three times, last: vs. Sacramento State, 9/10/22  
 22.0, vs. Nevada, 9/24/22

N/A  
 3, at Fresno State, 9/27/22  
 2, at Fresno State, 9/27/22  
 6, vs. Wyoming, 10/13/22  
 3, twice, last: vs. Wyoming, 10/13/22  
 23, vs. Sacramento State, 9/10/22  
 N/A  
 N/A  
 N/A  
 3.0, three times, last: vs. Wyoming, 10/13/22

## SEASON HIGHS

## CAREER HIGHS

### #9 SARA MUKAJ

Hitting Percentage ( <i>min. 7 kills</i> )	N/A
Total Attempts	6, vs. Arizona, 9/9/22
Kills	1, twice, last: vs. Arizona, 9/9/22
Assists	2, vs. Sacramento State, 9/10/22
Aces	1, vs. Sacramento State, 9/10/22
Digs	3, vs. Sacramento State, 9/10/22
Block Solos	N/A
Block Assists	1, vs. Sacramento State, 9/10/22
Total Blocks	1, vs. Sacramento State, 9/10/22
Points	1.5, vs. Sacramento State, 9/10/22

### #10 CARA BRAUN

Hitting Percentage ( <i>min. 7 kills</i> )	
Total Attempts	
Kills	
Assists	
Aces	
Digs	
Block Solos	
Block Assists	
Total Blocks	
Points	

### #11 KAYLA RIVERA

Hitting Percentage ( <i>min. 7 kills</i> )	.647 (12-1-17) at Pepperdine, 9/3/22
Total Attempts	34, vs. Sacramento State, 9/10/22
Kills	13, vs. Nevada, 9/24/22
Assists	2, at Fresno State, 9/27/22
Aces	1, vs. Nevada, 9/24/22
Digs	5, vs. Nevada, 9/24/22
Block Solos	N/A
Block Assists	7, vs. Army West Point, 8/27/22
Total Blocks	7, vs. Army West Point, 8/27/22
Points	14.5, vs. Nevada, 9/24/22

\* - played at Georgia (Fall 2018-Fall 2021)

### #13 JULIA HAYNIE

Hitting Percentage ( <i>min. 7 kills</i> )	.636 (7-0-11), at Fresno State, 9/27/22
Total Attempts	19, vs. UC Santa Barbara, 9/3/22
Kills	10, vs. UC Santa Barbara, 9/3/22
Assists	3, at Fresno State, 9/27/22
Aces	2, twice, last: at UNLV, 10/1/22
Digs	2, twice, last: vs. Nevada, 9/24/22
Block Solos	1, vs. Maryland, 9/9/22
Block Assists	3, at Boise State, 10/8/22
Total Blocks	3, twice, last: at Boise State, 10/8/22
Points	11.0, at UNLV, 10/1/22

^ - played at Portland State (Fall 2019 & Spring 2021)

### #14 REAGAN MERK

Hitting Percentage	.286 (7-3-14), vs. UC Santa Barbara, 9/3/22
Total Attempts	14, vs. UC Santa Barbara, 9/3/22
Kills	7, vs. UC Santa Barbara, 9/3/22
Assists	2, vs. Maryland, 9/9/22
Aces	2, twice, last: vs. Maryland, 9/9/22
Digs	7, vs. Maryland, 9/9/22
Block Solos	N/A
Block Assists	1, at Fresno State, 9/27/22
Total Blocks	1, at Fresno State, 9/27/22
Points	7.0, vs. UC Santa Barbara, 9/3/22

### #15 MIKELA LABNO

Hitting Percentage ( <i>min. 7 kills</i> )	.450 (10-1-20), at No. 8 San Diego, 9/17/22
Total Attempts	32, vs. Nevada, 9/24/22
Kills	16, at Boise State, 10/8/22
Assists	2, twice, last: at Fresno State, 9/27/22
Aces	N/A
Digs	6, twice, last: vs. Nevada, 9/24/22
Block Solos	1, three times, last: vs. Colorado State, 10/15/22
Block Assists	2, three times, last: vs. Sacramento State, 9/10/22
Total Blocks	2, six times, last: vs. Colorado State, 10/15/22
Points	17.0, at Boise State, 10/8/22

.636 (7-0-11) at Sam Houston, 8/28/21
11, at Sam Houston, 8/28/21
7, at Sam Houston, 8/28/21
4, twice, last: at UC Santa Barbara, 9/3/21
4, at Sam Houston, 8/27/21
5, at Sam Houston, 8/28/21
1, at UC Santa Barbara, 9/3/21
4, twice, last: vs. Pepperdine, 9/4/21
4, three times, last: vs. Pepperdine, 9/4/21
10.0, at Sam Houston, 8/28/21

.647 (12-1-17) at Pepperdine, 9/3/22
36, at Texas A&M, 10/8/21*
15, at Texas A&M, 10/8/21*
2, at Fresno State, 9/27/22
2, twice, last: at Texas A&M, 10/8/21*
18, at Texas A&M, 10/8/21*
5, vs. Arkansas, 2/5/21*
7, vs. Army West Point, 8/27/22
7, vs. Army West Point, 8/27/22
17.5, at Texas A&M, 10/8/21*

.636 (7-0-11), at Fresno State, 9/27/22
25, vs. Idaho, 1/25/21^
11, vs. Idaho, 1/25/21^
3, at Fresno State, 9/27/22
2, four times, last: at Fresno State, 9/27/22
4, twice, last: at UNLV, 11/1/21
2, twice, last: at Fresno State, 11/6/21
7, vs. Northern Arizona, 1/31/21^
7, vs. Northern Arizona, 1/31/21^
13.5, vs. Idaho, 1/25/21^

.385 (7-2-13), vs. Texas Southern, 9/17/21
20, last: vs. UC Riverside, 9/18/21
7, three times: vs. UC Santa Barbara, 9/3/22
2, three times, last: vs. Maryland, 9/9/22
2, three times, last: vs. Maryland, 9/9/22
7, vs. Maryland, 9/9/22
1, vs. UC Riverside, 9/18/21
2, vs. UC Riverside, 9/18/21
3, vs. UC Riverside, 9/18/21
9.0, vs. UC Riverside, 9/18/21

.522 (13-1-23), vs. Pepperdine, 9/4/21
33, vs. San Diego, 9/11/21
16, at Boise State, 10/8/22
2, three times, last: at Fresno State, 9/27/22
2, at Long Beach State, 9/14/21
13, vs. UC Riverside, 9/18/21
2, vs. San Diego, 9/11/21
3, vs. New Mexico, 9/30/21
4, vs. New Mexico, 9/30/21
17.0, at Boise State, 10/8/22

## SEASON HIGHS

## CAREER HIGHS

### #16 SARENA GONZALEZ

Hitting Percentage ( <i>min. 7 kills</i> )	N/A
Total Attempts	6, at UNLV, 10/1/22
Kills	1, twice, last: at Fresno State, 9/27/22
Assists	30, vs. UC San Diego, 8/27/22
Aces	3, vs. Maryland, 9/9/22
Digs	5, three times, last: vs. UC Santa Barbara, 9/3/22
Block Solos	N/A
Block Assists	N/A
Total Blocks	N/A
Points	3.0, twice, last: at Fresno State, 9/27/22

### #19 NOA MILLER

Hitting Percentage ( <i>min. 7 kills</i> )	N/A
Total Attempts	8, at UNLV, 10/1/22
Kills	3, at Boise State, 10/8/22
Assists	31, vs. Nevada, 9/24/22
Aces	6, vs. UC San Diego, 8/27/22
Digs	12, vs. Army West Point, 8/27/22
Block Solos	N/A
Block Assists	N/A
Total Blocks	N/A
Points	6.0, vs. UC San Diego, 8/27/22

\* - played at Wofford in 2018 and at Arizona State in 2019

### #20 ELLY SCHRAEDER

Hitting Percentage ( <i>min. 7 kills</i> )	.375, (8-2-16), vs. Army West Point, 8/27/22
Total Attempts	16, vs. Army West Point, 8/27/22
Kills	8, vs. Army West Point, 8/27/22
Assists	1, four times, last: vs. UCLA, 9/15/22
Aces	N/A
Digs	1, twice, last: vs. San José State, 9/22/22
Block Solos	2, vs. No. 9 Baylor, 9/3/22
Block Assists	8, vs. Army West Point, 8/27/22
Total Blocks	9.0, vs. Army West Point, 8/27/22
Points	13.0, vs. Army West Point, 8/27/22

+ - played at San Diego (Spring & Fall 2021)

### #21 KAT COOPER

Hitting Percentage ( <i>min. 7 kills</i> )	.600 (7-1-10), vs. UC San Diego, 8/27/22
Total Attempts	15, twice: last, vs. Wyoming, 10/13/22
Kills	7, vs. UC San Diego, 8/27/22
Assists	1, twice, last: vs. Wyoming, 10/15/22
Aces	1, twice, last: vs. Army West Point, 8/27/22
Digs	5, vs. UC San Diego, 8/27/22
Block Solos	1, four times, last: vs. San José State, 9/22/22
Block Assists	4, twice, last: vs. UC San Diego, 8/27/22
Total Blocks	5, twice, last: vs. UC San Diego, 8/27/22
Points	10.0, vs. UC San Diego, 8/27/22

N/A
6, at UNLV, 10/1/22
1, twice, last: at Fresno State, 9/27/22
30, vs. UC San Diego, 8/27/22
3, vs. Maryland, 9/9/22
5, three times, last: vs. UC Santa Barbara, 9/3/22
N/A
N/A
N/A
3.0, twice, last: at Fresno State, 9/27/22

N/A
8, at UNLV, 10/1/22
6, vs. Fresno State, 10/7/21
31, twice, last: vs. Nevada, 9/24/22
6, vs. UC San Diego, 8/27/22
16, vs. Houston, 8/30/19*
N/A
1, four times, last: vs. Kansas State, 9/4/21
1, four times, last: vs. Kansas State, 9/4/21
6.0 twice, last: vs. UC San Diego, 8/27/22

.778 (7-0-9), vs. Portland (2/10/21)+
16, vs. Army West Point, 8/27/22
8, vs. Army West Point, 8/27/22
2, at Loyola Marymount, 3/13/21+
1, at Loyola Marymount, 3/13/21+
1, nine times, last: vs. San José State, 9/22/22
2, three times, last: vs. No. 9 Baylor, 9/3/22
8, vs. Army West Point, 8/27/22
9.0, vs. Army West Point, 8/27/22
13.0, vs. Army West Point, 8/27/22

.600 (7-1-10), vs. UC San Diego, 8/27/22
15, twice: last, vs. Wyoming, 10/13/22
7, vs. UC San Diego, 8/27/22
1, twice, last: vs. Wyoming, 10/15/22
1, twice, last: vs. Army West Point, 8/27/22
5, vs. UC San Diego, 8/27/22
1, four times, last: vs. San José State, 9/22/22
4, twice, last: vs. UC San Diego, 8/27/22
5, twice, last: vs. UC San Diego, 8/27/22
10.0, vs. UC San Diego, 8/27/22