



# SAN DIEGO STATE AZTECS

## 2021 Volleyball Weekly Notes

**Jim Solien (Primary Contact)**  
 Assistant Media Relations Director  
**Office Phone Number:** (619) 594-2576  
**E-Mail Address:** jsolien@sdsu.edu  
**News Release Date:** Sept. 16, 2021

**SDSU Official Athletics Website:** goaztecs.com  
**SDSU Official Athletics Twitter:** @GoAztecs  
**SDSU Official Athletics Instagram:** @GoAztecs  
**SDSU Official Athletics Facebook:** facebook.com/goaztecs  
**SDSU Official Athletics YouTube:** youtube.com/goaztecs.com

### 2021 AZTEC VOLLEYBALL SCHEDULE

Day/Date	Opponent	Time
Friday, Aug. 27	vs. Houston Baptist <sup>^</sup>	L, 0-3
Friday, Aug. 27	at Sam Houston <sup>^</sup>	L, 0-3
Saturday, Aug. 28	at Sam Houston <sup>^</sup>	L, 2-3
Friday, Sept. 3	at UC Santa Barbara <sup>#</sup>	W, 3-0
Saturday, Sept. 4	vs. No. 21 Pepperdine <sup>#</sup>	L, 1-3
Saturday, Sept. 4	vs. Kansas State <sup>#</sup>	L, 1-3
<b>Friday, Sept. 10</b>	<b>No. 16 UCLA+ (MWN)</b>	<b>L, 0-3</b>
<b>Saturday, Sept. 11</b>	<b>No. 25 San Diego+ (MWN)</b>	<b>L, 1-3</b>
Tuesday, Sept. 14	at Long Beach State	L, 0-3
Friday, Sept. 17	vs. Texas Southern~	12:30 p.m. PT
Friday, Sept. 17	at Arizona~	6:30 p.m. PT
Saturday, Sept. 18	vs. UC Riverside~	11 a.m. PT
Thursday, Sept. 23	at Nevada* (MWN)	6 p.m. PT
Saturday, Sept. 25	at San José State* (MWN)	1 p.m. PT
<b>Thursday, Sept. 30</b>	<b>New Mexico* (MWN)</b>	<b>7 p.m. PT</b>
<b>Saturday, Oct. 2</b>	<b>Air Force* (MWN)</b>	<b>1 p.m. PT</b>
<b>Tuesday, Oct. 5</b>	<b>UNLV* (MWN)</b>	<b>7 p.m. PT</b>
<b>Thursday, Oct. 7</b>	<b>Fresno State* (MWN)</b>	<b>7 p.m. PT</b>
Thursday, Oct. 14	at Boise State* (MWN)	7 p.m. MT
Saturday, Oct. 16	at Utah State* (MWN)	1 p.m. MT
<b>Thursday, Oct. 21</b>	<b>Colorado State* (MWN)</b>	<b>7 p.m. PT</b>
Saturday, Oct. 23	at Wyoming* (MWN)	6:30 p.m. MT
<b>Thursday, Oct. 28</b>	<b>Utah State*</b>	<b>7 p.m. PT</b>
<b>Saturday, Oct. 30</b>	<b>Boise State* (MWN)</b>	<b>7 p.m. PT</b>
Tuesday, Nov. 2	at UNLV* (MWN)	6:30 p.m. PT
Saturday, Nov. 6	at Fresno State* (MWN)	11 a.m. PT
Thursday, Nov. 11	at Air Force* (MWN)	6 p.m. MT
Saturday, Nov. 13	at New Mexico* (MWN)	1 p.m. MT
<b>Thursday, Nov. 18</b>	<b>Nevada* (MWN)</b>	<b>7 p.m. PT</b>
<b>Saturday, Nov. 20</b>	<b>San José State* (MWN)</b>	<b>1 p.m. PT</b>

<sup>^</sup> - Bearkat Invitational (Huntsville, Texas)  
<sup>#</sup> - Gaucho Invitational (Santa Barbara, Calif.)  
<sup>+</sup> - SDSU/USD Invitational (San Diego, Calif.)  
<sup>~</sup> - Wildcat Classic (Tucson, Ariz.)  
<sup>\*</sup> - Mountain West match  
 (MWN) - Mountain West Network match

#### Socially

Twitter: @AztecVB  
 Instagram: @Aztec\_WVB

Wildcat Classic (McKale Center | Tucson, Arizona)  
 Links to live stats and streaming video on GoAztecs.com

San Diego State (1-8) vs. Texas Southern (1-8)  
 Friday, Sept. 17 | 12:30 p.m. PT

San Diego State (1-8) at Arizona (5-3)  
 Friday, Sept. 17 | 6:30 p.m. PT

San Diego State (1-8) vs. UC Riverside (3-4)  
 Friday, Sept. 17 | 6:30 p.m. PT



#### AZTEC VOLLEYBALL WRAPS UP NON-CONFERENCE SLATE AT WILDCAT CLASSIC

- > San Diego State closes out the non-conference portion of its 2021 fall schedule this weekend when it travels to Tucson, Arizona, for the Wildcat Classic inside McKale Center on the University of Arizona campus.
- > The Aztecs open the tournament on Friday, Sept. 17, battling Texas Southern at 12:30 p.m. PT before locking horns with host Arizona at 6:30 p.m.
- > On Saturday, Sept. 18, SDSU wraps up its desert excursion with a matinee match against UC Riverside, starting at 11 a.m. The complete event schedule is listed below.

#### Friday, Sept. 17

UC Riverside at Arizona	10 a.m. MST/PDT
San Diego State vs. Texas Southern	12:30 p.m. MST/PDT
UC Riverside vs. Texas Southern	4:30 p.m. MST/PDT
San Diego State at UC Santa Barbara	6:30 p.m. MST/PDT

#### Saturday, Sept. 18

San Diego State vs. UC Riverside	11 a.m. MST/PDT
Texas Southern at Arizona	1:30 p.m. MST/PDT

- > Live stats and streaming video will be available throughout the weekend, with links available on GoAztecs.com.
- > SDSU will be looking to put the brakes on a five-match losing streak after falling to Long Beach State in three sets on Sept. 14 to open its lengthy road swing. The Aztecs were scheduled to play just two home contests between Aug. 27 and Sept. 25, a span of 14 matches.
- > Friday's clash at Arizona will mark Brent Hilliard's 600th match coaching at the Division I collegiate level.

#### SERIES RECORDS

- > Not only does Friday's tournament opener vs. Texas Southern mark the first meeting between the two schools, it also represents San Diego State's first match against a Southwestern Athletic Conference school.
- > The Aztecs have faced two other first-time opponents this season, suffering a 3-0 setback to Houston Baptist in their season opener at the Bearkat Invitational in Huntsville, Texas, on Aug. 27, before falling in four sets to Kansas State at the Gaucho Invitational in Santa Barbara on Sept. 4.
- > Despite dropping three straight matches in the series, SDSU still owns a 20-10 all-time record against Arizona dating back to 1978. The Aztecs are 7-3 against the Wildcats in Tucson, including a three-set defeat (22-25, 19-25, 17-25) at the 2018 Cactus Classic in their last trip to the desert.
- > San Diego State last played Arizona in 2019 at home but experienced another 3-0 blanking (10-25, 22-25, 19-25) in the final match of the SDSU/USD Invitational. After winning a pair of grueling five-set matches in a span of 15 hours to open the tournament, the Aztecs ran out of steam against the Wildcats, as Arizona out-hit the Scarlet and Black .437 to .185 while maintaining the statistical advantage in kills (46-37), digs (30-23) and total blocks (5.0 to 2.0). Individually Victoria O'Sullivan is the lone SDSU returner from that match when she led the team with 10 kills.
- > The Aztecs' last victory over Arizona occurred on the road at the Wildcat Classic in 2003, as the Scarlet and Black registered a 3-1 triumph (31-33, 30-24, 30-23, 30-27) during the 30-point scoring era.
- > SDSU has maintained a 13-2 record vs. UC Riverside, including a 3-1 victory (25-13, 25-20, 19-25, 25-19) in the opener of the 2019 Grand Canyon Invitational in Phoenix. O'Sullivan blasted 13 kills and hit .313 against the Highlanders, while Andrea Walker in the Aztecs' other veteran from that match, finishing with four kills and a pair of block assists. As a team, SDSU out-hit UCR .328 to .192 and maintained the upper hand in most categories, including kills (53-46), assists (51-44), digs (53-44) and total blocks (5.0-3.0).
- > The Aztecs and Highlanders have met at a neutral site on three additional occasions, with SDSU emerging victorious at the UCLA Invitational in 1976 and the Titan Invitational at Cal State Fullerton in 1985, before experiencing a tough five-set defeat the Denver Invitational in 2017.
- > The Aztecs are 165-110 in program history against current members of the Big West after splitting two matches earlier this year with a 3-0 conquest at UC Santa Barbara on Sept. 3, followed by a three-set defeat at Long Beach State on Sept. 14.

**GENERAL INFORMATION**

Location ..... San Diego, Calif.  
 Founded ..... 1897  
 Enrollment ..... 33,870  
 Nickname ..... Aztecs  
 Colors ..... Scarlet and Black (Pantone 187)  
 Conference ..... Mountain West  
 Affiliation ..... Division I  
 President ..... Dr. Adela de la Torre  
 Director of Athletics ..... John David Wicker  
 Faculty Representative ..... Dr. Frank Harris III  
 Home Facility ..... Aztec Court at Peterson Gym (2,000)

**TEAM INFORMATION**

Head Coach ..... Brent Hilliard  
 Alma Mater ..... Long Beach State '93  
 Record at SDSU ..... 7-17 (second year)  
 Career Record ..... 61-28 (Third year)  
 E-Mail ..... bhilliard@sdsu.edu  
 Volleyball Office Phone ..... (619) 594-5064  
 Volleyball Office Fax ..... (619) 594-1674  
 Assistant Coach/Recruiting Coordinator ..... Melanie Greene  
 Assistant Coach ..... Steve Timmons  
 Volleyball Operations Assistant ..... Kara Barkdoll  
 Spring 2021 Record ..... 6-9  
 Spring 2021 Conference Record ..... 6-9 (Eighth)  
 Spring 2021 Home Record ..... 5-4  
 Spring 2021 Road Record ..... 1-5  
 Letterwinners Returning/Lost ..... 8/7  
 Starters Returning/Lost ..... 4/2+Libero

**PROGRAM HISTORY**

First Year of Volleyball ..... 1976  
 Overall Record ..... 887-627 (.586)  
 NCAA Appearances ..... 14  
 Last Postseason Appearance ..... 2012  
 NCAA Postseason Record ..... 15-14

**MEDIA RELATIONS**

Assistant Media Relations Director ..... Jim Solien  
 E-Mail ..... jsolien@sdsu.edu  
 SID Office Phone ..... (619) 594-2576  
 SID Office Fax ..... (619) 582-6541  
 Official Athletic Website ..... www.GoAztecs.com

**2021 AZTEC VOLLEYBALL STATISTICAL LEADERS**  
*(min. 50 percent of team sets played)*

Hitting Percentage*	229	Victoria O'Sullivan
Kills	96	Victoria O'Sullivan
Kills per set	3.31	Victoria O'Sullivan
Assists	125	Ashley Vanderpan
Assists per set	5.76	Noa Miller
Digs	137	Natalie Smith
Digs per set	4.28	Natalie Smith
Blocks	22.0	Sara Mukaj
Blocks per set	0.81	Sara Mukaj
Service Aces	7	Sara Mukaj
Service Aces per set	0.26	Sara Mukaj

\*. min 3.0 attempts per set

**2021 AZTEC VOLLEYBALL FALL ROSTER**

No.	Player	Pos.	Ht.	Yr.	Hometown (Last School)
1	Zoi Faki	OH	6-1	Sr.	Athens, Greece (Pittsburgh)
2	Heipua Tautua'a	OH	6-2	So.	Wai'anae, Hawai'i (Wai'anae HS)
3	Andrea Walker	MB	6-0	Sr.	Fairfield, Calif. (Vanden HS)
4	Kennedy Feuerborn	S	6-3	So.	Overland Park, Kan. (Johnson County CC)
5	Serena Hodson	MB	6-2	Jr.	Mission Viejo, Calif. (Trabuco Hills HS)
6	Jordyn Goldsmith	OPP	6-1	Fr.	Valleyford, Wash. (Freeman HS)
7	Ashley Vanderpan	S	6-1	Jr.	Elk Grove, Calif. (Syracuse)
8	Natalie Smith	DS/L	5-7	Sr.	Weatherford, Texas (Michigan)
9	Sara Mukaj	MB	6-3	Fr.	Modena, Italy (Istituto Scaruffi-Levi Tricolore)
10	Kalani Ruri	S/OPP	6-2	Fr.	Kawerau, New Zealand (Trident HS)
11	Brooklynn Hill	DS/L	5-8	Sr.	Rancho Cucamonga, Calif. (Penn State)
13	Julia Haynie	MB	6-2	Jr.	Temecula, Calif. (Portland State)
14	Reagan Merk	OH	5-11	Fr.	Huntington Beach, Calif. (Mater Dei HS)
15	Mikela Labno	OH	6-2	Fr.	Hilmar, Calif. (Hilmar HS)
16	Carsyn Schuch	DS	5-6	Fr.	Phoenix, Ariz. (Deer Valley HS)
17	Nadia Barcklay	DS	5-2	So.	Foster City, Calif. (Hillsdale HS)
19	Noa Miller	S	5-10	Sr.	Douglasville, Ga. (Arizona State)
21	Victoria O'Sullivan	OH	6-0	Sr.	Albany, Calif. (Saint. Mary's HS)

**Head Coach:** Brent Hilliard (Long Beach State, 1993), Second season at SDSU  
**Assistant Coach/Recruiting Coordinator:** Melanie Greene (San Diego State, 2007), 11th season at SDSU  
**Assistant Coach:** Steve Timmons (USC), Second season at SDSU  
**Volleyball Operations Assistant:** Kara Barkdoll (Cal State San Marcos, 2015), Fourth season at SDSU

**Pronunciations**

#1 ZOI FAKI	Zoey FAH-key
#2 HEIPUA TAUTUA'A	HEY-poo-ah taw-TOO-ah-ah
#9 Sara MUKAJ	MOO-kye
#4 Kennedy FEUERBORN	FEWER-born
#15 MIKELA Labno	ma-KAY-la
#16 CARSYN SCHUCH	Carson Shook



**OPPONENT COMPARISON**

2021 Fall Stats	SDSU	OPP	TSU	OPP	UA	OPP	UCR	OPP
Hitting Percentage	.190	.263	.115	.299	.222	.196	.161	.181
Kills per set	11.91	13.22	9.90	13.37	12.33	11.00	11.33	12.38
Assists per set	11.19	12.25	9.13	12.17	11.15	10.09	10.50	11.29
Digs per set	13.25	12.75	14.53	16.47	13.42	13.06	15.67	14.79
Blocks per set	1.84	2.97	0.83	2.07	1.82	1.70	1.25	2.29
Service Aces per set	0.94	1.59	1.30	2.03	1.58	1.48	1.54	1.25

**SCOUTING THE OPPOSITION**

> **Texas Southern** is off to a 1-8 start this season, notching its lone victory with a 3-1 decision (20-25, 25-19, 25-17, 25-9) over Southern University at the Colonels Invitational in Thibodeaux, Louisiana, on Aug. 27. TSU has faced one other Mountain West opponent this year, falling in three sets to New Mexico at Abilene Christian's Wildcat Classic on Sept. 4 in Abilene, Texas. The Tigers were scheduled to play at Houston Baptist on Sept. 14; however, the match was postponed due to the landfall of Tropical Storm Nicholas. Individually, the TSU attack is led by the duo of outside hitters Thalia Cordero Moreno (2.62 kills/sets) and Danielle Liley (2.32 kills/set), who enter the tournament ranked third and sixth in the SWAC, respectively. In addition, Kaitlyn Scroggins anchors the Tigers' back row with 3.48 digs per set, which ranks eighth in the league, while Amber Johnson occupies the 10th spot with a .204 hitting percentage. Aeris Ramsey (4.63 assists/set) and Dallas Balanay-Flores (4.18 assists/set) split the setting responsibilities for TSU, while Indyah Rideaux tops the squad with 19 blocks. As a team, the Tigers rank third in the league with 39 service aces (1.30/set), including eight by Liley, while occupying the fourth spot in kills (9.90/set). In addition, TSU finds itself in the fifth spot in digs (14.53/set), assists (9.13/set) and hitting percentage (.115). Head coach Gabrielle Floyd is in her second season in charge of the volleyball program at her alma mater, having played collegiately at Texas Southern from 1998-2001. As a senior, Floyd helped the Tigers to a conference divisional championship, earning second-team all-SWAC honors to go with postseason all-tournament recognition. Floyd holds two degrees from TSU and teaches full-time in the University's Department of Health, Kinesiology and Sport Studies.

> **Arizona** slipped to 5-3 on the year after falling short in consecutive matches against Texas and Notre Dame, Sept. 10-11, in Austin, Texas. The Wildcats were upended by the Longhorns, 3-1, before dropping a five-set heart-breaker to the Fighting Irish the following day. With the score knotted at 6-6 in the fifth and deciding frame, Notre Dame closed with a 9-4 spurt to escape with the win. Individually, outside hitter Jaelyn Hodge leads the Arizona offense with an average of 3.82 kills per set, which ranks ninth in the Pac-12 entering the weekend, while her collective total of 126 put-aways is good for third in the conference. In addition, outside hitter Sofia Maldonado Diaz occupies the second spot on the club with 2.63 kills per set, while her team-high 15 service aces (0.47/set) is tops in the league. Elsewhere, libero Kamaile Hiapo (7th - 3.85 digs/set) and setter Emery Herman (8th - 8.70 assists/set) find themselves among the Pac-12 leaders, while middle blocker Merle Weidit tops the squad with a .452 hitting percentage and 26 total blocks. Collectively, Arizona is tied for the conference lead with 52 service aces and ranks third with 13.42 digs per set. However, the Wildcats are second from the bottom in kills (12.33/set) and hitting percentage (.222). Head coach Dave Rubio is entering his 30th season on the Tucson campus, where he has led Arizona to 20 NCAA Tournament berths, including eight trips to the Sweet 16, four Elite Eight appearances, as well as a trip to the Final Four in 2001. His record with the Wildcats stands at 542-352 (.606).

2021 MOUNTAIN WEST STANDINGS (AS OF SEPT. 15)

Team	---Conference---			-----Overall-----			
	W	L	Pct.	W	L	Pct.	Strk
Boise State	0	0	.000	9	1	.900	W7
New Mexico	0	0	.000	8	1	.889	L1
UNLV	0	0	.000	7	2	.778	W5
Wyoming	0	0	.000	6	3	.667	W1
Utah State	0	0	.000	7	4	.636	W1
Colorado State	0	0	.000	4	3	.571	W4
Fresno State	0	0	.000	3	3	.500	L3
San José State	0	0	.000	4	4	.800	L3
Air Force	0	0	.000	1	7	.125	W1
<b>San Diego State</b>	<b>0</b>	<b>0</b>	<b>.000</b>	<b>1</b>	<b>8</b>	<b>.111</b>	<b>L5</b>
Nevada	0	0	.000	1	8	.111	L3

This Weekend in the MW

**Sept 16-17 (Thursday-Friday)**

**Fresno State at Washington Tournament (Seattle, Wash.)**  
(Montana State, Portland, Washington)

**Sept 16-18 (Thursday-Friday-Saturday)**

**Boise State hosting Boise Classic (Boise, Idaho)**  
(Oregon State, Santa Clara)

**Nevada hosting Nevada Classic (Reno, Nev.)**

(Cal State Northridge, Sacramento State)

**Sept 17-18 (Friday-Saturday)**

**San Diego State at Wildcat Classic (Tucson, Ariz.)**  
(Arizona, Texas Southern, UC Riverside)

**Air Force hosting Mile High Invitational (USAF Academy, Colo.)**

(Incarnate Word, Iowa)

**UNLV at Sparky Volleyball Invitational (Tempe, Ariz.)**

(Arizona State, Pacific)

**Wyoming at Shocker Classic (Wichita, Kan.)**

(Creighton, South Dakota, Wichita State)

This Weekend's Non-Tournament Matches

**Thursday, Sept. 16**

Colorado State at Colorado, 7 p.m. MT  
New Mexico at Northern Arizona, 7 p.m. MT

**Saturday, Sept. 18**

Colorado at Colorado State, 1 p.m. MT  
UC San Diego at San José State, 1 p.m. PT  
Northern Arizona at New Mexico, 2 p.m. MT  
Idaho State at Utah State, 4 p.m. MT

> **UC Riverside** co-hosted the UCR/CBU Volleyball Classic last weekend, where it posted a 2-1 mark to raise its season record to 3-4. The Highlanders logged back-to-back 3-1 home victories over Southern Utah and New Orleans before dropping a three-set decision at co-host California Baptist to close out the weekend. UCR has played two other Mountain West schools thus far, suffering a 3-0 sweep against New Mexico at the Cal State Fullerton Titan Classic on Aug. 28, before falling to Fresno State in a grueling 3-2 nail-biter at the Bulldogs' own tournament on Sept. 4. The Highlanders posted a 6-22 record during their last season of play before the Big West Conference shut down competition in 2020 due to the COVID-19 pandemic. Individually, UCR has three players averaging over two kills per set, including outside hitter Amarachi Osuji (2.63), outside hitter Marina Gonzalez (2.46) and opposite hitter Ayanna Kimbrough (2.36), who ranks ninth in the Big West with a .294 hitting percentage. Osuji also landed in the third spot among conference leaders in service aces (0.41/set), while setter Zoey Seput ranks eighth in assists (8.04/set). The Highlanders have five players averaging per set or more, including Osuji (2.70), Seput (2.59), libero Mia Christensen (2.52), outside hitter Mylei Vargas-Deason (2.12) and middle blocker Isabella Scarlett (2.00). As a team, UCR ranks second in the Big West in service aces (1.48/set) and fourth in digs (15.04/set). In addition, the Highlanders have limited their opponents to a .193 hitting percentage, which is second-best in the conference. Not including the canceled 2020 campaign, head coach Michelle Patton-Coleman is in her eighth season at UCR after spending five years at San Francisco State, where she led the Gators to a pair of NCAA Division II regional appearances in 2009 and 2012.

**THE LAST TIME OUT**

- > San Diego State opened its six-match road swing on a sour note with a hard-fought loss in three sets (23-25, 19-25, 23-25) at Long Beach State on Sept. 14.
- > Despite maintaining the statistical edge in team blocks (8.0 to 5.0), the Aztecs (1-8) suffered their fifth straight defeat after mustering just 29 kills for the night. SDSU was unable to capitalize on 13 errant serves by the Beach, committing 14 attack errors on 95 attempts for a .158 hitting percentage.
- > Conversely, LBSU (5-5) knocked down 50 kills with a .309 efficiency while owning a 44-39 advantage in digs to help snap a three-match losing streak to the Aztecs.
- > SDSU was paced by Zoi Faki's eight kills, while Heipua Tautua'a and Reagan Merk launched five put-aways apiece.
- > In addition, Natalie Smith led all players with 14 digs, while Jordyn Goldsmith made her first collegiate start a memorable one with a match-high four blocks, including a solo stop.
- > The Aztec cause was also aided by Noa Miller (10 assists) and Kennedy Feuerborn (3 kills, 7 assists), who split the setting duties, while Mikela Labno served up two aces. Like Goldsmith, Labno also earned her first start in an SDSU uniform vs. the Beach.

**SDSU IN MW RANKINGS**

- > As of Sept. 15, libero Natalie Smith ranks fourth in the Mountain West with an average of 4.28 digs per set (137 overall).
- > In addition, outside hitter Victoria O'Sullivan occupies the sixth position with 3.31 kills per set, while setter Noa Miller finds herself in the eighth spot with 5.76 assists per frame.
- > Smith's 27 digs vs. Houston Baptist on Aug. 27 is tied for the third-best performance in the conference this season.
- > Meanwhile, Victoria O'Sullivan's 19 kills vs. San Diego on Sept. 11 are the tied for the third-best effort in the league this year, while her 15 put-aways at UC Santa Barbara on Sept. 3 are tied for the third-highest in a three-set match.
- > Elsewhere, Sara Mukaj's four service aces at Sam Houston on Aug. 27 is tied for the fifth-best total in the MW thus far.
- > Not to be outdone, the Aztecs own two of the top individual hitting percentages with a minimum of 12 kills in the Mountain West this season. Mikela Labno's .522 clip against (13-1-23) against Pepperdine at the Gaucho Invitational ranks fourth as of Sept. 9, while O'Sullivan's .519 efficiency (15-1-27) at UC Santa Barbara in the same tournament is fifth.
- > Collectively, the Aztecs occupy the fourth spot in the conference with an average of 13.28 digs per set while ranking seventh in team kills (11.91/set) and assists (11.03/set).

**REWIND: SDSU/USD INVITATIONAL**

- > With packed houses providing an electric atmosphere, San Diego State squared off against a pair of ranked opponents at the SDSU/USD Invitational last weekend, falling to No. 16 UCLA in three sets (17-25, 18-25, 13-25) before suffering a 3-1 setback to No. 25 San Diego.
- > Against the Toreros on Sept. 11, the Aztecs had three players record double-digit kills, including Victoria O'Sullivan, who launched a match-high 19 non-returnables and hit .349, while Mikela Labno collected 11, followed by Heipua Tautua'a, who totaled 10 kills and 12 digs for her second career double-double.
- > In addition, senior transfer Noa Miller logged her first double-double as an Aztec with a season-high 28 assists and 11 digs, while fellow classmate Natalie Smith led all competitors with 21 scoops, marking her second-best total of the year.
- > Despite holding the statistical advantage in kills (57-49) and digs (63-51), SDSU was undone by 27 attack errors and was out-blocked (15.0-7.0) en route to its fourth straight loss.
- > The previous night vs. UCLA, the Aztecs kept within striking distance in each of the first two sets; however, the Bruins used an efficient attack, timely runs and a tight defense to keep the host school at bay.
- > SDSU was out-hit .346 to .056 for the match, while UCLA maintained a statistical advantage in kills (39-28), team blocks (13.0-7.0) and digs (29-27) to help key its victory.
- > Once again, O'Sullivan surpassed double figures in kills after posting a team-high 10 put-aways to go with a trio of blocks, including one solo stop, while Sara Mukaj and Julia Haynie totaled three block assists apiece.
- > Additionally, Tautua'a launched seven kills, while Smith tied for match-high honors with 11 digs. Smith also dealt a pair of service aces, while Miller finished with 17 assists.
- > SDSU's clashes with the Bruins and Toreros marked the first time it played ranked opponents since it battled No. 25 Wyoming and No. 20 Colorado State on Oct. 1-3, 2015.

**GAUCHO INVITATIONAL REDUX**

- > San Diego State rolled to its first victory of the season on Sept. 3 with a 3-0 triumph (25-20, 25-19, 25-15) over host UC Santa Barbara on opening night at the Gaucho Invitational.
- > However, the Aztecs were unable to maintain the momentum the following day, dropping a pair of four-set decisions to then-No. 21 Pepperdine (19-25, 16-25, 25-21, 18-25) and Kansas State (19-25, 25-18, 23-25, 16-25).
- > SDSU was victimized by a combined 21 service errors in their two defeats while trailing in kills (115-94), hitting percentage (.280 to .227) and team blocks (21.0 to 14.0).
- > On the flip side, the Aztecs logged their highest efficiency of the season vs. UCSB, hitting at a .384 clip with 49 kills on 99 attempts with just 11 errors. In addition, SDSU's 49 kills marked the team's second-best this year despite a match duration of just three sets.
- > Individually, the Aztecs had three players finish with double-digs kills in a match for the first time this fall, as Victoria O'Sullivan led all players with a season-high 15 put-aways and hit .519, while Zoi Faki (.455) launched 12 non-returnables of her own.
- > Not to be outdone, SDSU received a spark from Heipua Tautua'a (.409), who collected 11 kills, while Mikela Labno floored seven shots off the bench.
- > In her first appearance after transferring from Arizona State, Noa Miller started at setter against the Gauchos, handing out a match-high 22 assists, while Ashley Vanderpan contributed 13 helpers of her own.
- > Natalie Smith once again secured the back row for the Aztecs, finishing with 11 digs, while Faki just missed a double-double after posting nine scoops.

- > The SDSU defense also received four total blocks from Sara Mukaj, including a solo stuff, while O'Sullivan and Julia Haynie came through with a pair of block assists.
- > The Aztecs saved their best for last, powering down 20 kills in the third set on 32 attempts with just three errors for a blazing .531 efficiency.
- > Faki (.714) launched five kills in the final frame without a miscue, matching O'Sullivan (.571), who committed her only error of the night in the set, while Tautua'a (.667) provided four put-aways of her own. Clinging to a slim 10-8 lead, SDSU switched on the afterburners, finishing with a strong 15-7 blitz to secure the sweep.
- > Unfortunately, the Aztecs were unable to duplicate the feat in two encounters the following day vs. Pepperdine and Kansas State.
- > Against the Waves, the SDSU attack was paced by Labno, who hit .522 with a season-best 13 kills on 22 attempts and just one error, while O'Sullivan finished with 10 put-aways of her own. Elsewhere, Smith tied for match-high with 17 digs, while Haynie and Mukaj notched four block assists each..
- > In the finale against the Wildcats, Faki and O'Sullivan led the SDSU offense with 13 kills apiece, while Labno launched nine put-aways of her own. Faki also hit .323 for the match while contributing seven digs and pair of aces.
- > In addition, Miller handed out a season-high 25 assists and racked up seven scoops as well in her third start for the Scarlet and Black, while Tautua'a and Mukaj finished with three block assists each.
- > With the match tied at one set apiece and the teams deadlocked at 22-22 in the third stanza, K-State closed with a 3-1 spurt to escape.

**2021 AZTEC SUPERLATIVES**

**Individual**

**HITTING PERCENTAGE (min. 12 kills)**

.522 (13-1-23) ..... Mikela Labno vs. No. 21 Pepperdine (Sept. 4)

**KILLS**

19 ..... Victoria O'Sullivan vs. No. 25 San Diego (Sept. 11)  
 5 sets ..... 14 ..... Victoria O'Sullivan and Zoi Faki at Sam Houston (Aug. 28)  
 4 sets ..... 19 ..... Victoria O'Sullivan vs. No. 25 San Diego (Sept. 11)  
 3 sets ..... 15 ..... Victoria O'Sullivan at UC Santa Barbara (Sept. 3)

**TOTAL ATTEMPTS**

43 ..... Victoria O'Sullivan vs. No. 25 San Diego (Sept. 11) and Zoi Faki at Sam Houston (Aug. 28)  
 5 sets ..... 43 ..... Zoi Faki at Sam Houston (Aug. 28)  
 4 sets ..... 43 ..... Victoria O'Sullivan vs. No. 25 San Diego (Sept. 11)  
 3 sets ..... 33 ..... Zoi Faki vs. Houston Baptist (Aug. 27)

**ASSISTS**

28 ..... Noa Miller vs. No. 25 San Diego (Sept. 11)  
 5 sets ..... 26 ..... Ashley Vanderpan at Sam Houston (Aug. 28)  
 4 sets ..... 28 ..... Noa Miller vs. No. 25 San Diego (Sept. 11)  
 3 sets ..... 22 ..... Noa Miller at UC Santa Barbara (Sept. 3)

**DIGS**

27 ..... Natalie Smith vs. Houston Baptist (Aug. 27)  
 5 sets ..... 16 ..... Natalie Smith at Sam Houston (Aug. 28)  
 4 sets ..... 21 ..... Natalie Smith vs. No. 25 San Diego (Sept. 11)  
 3 sets ..... 27 ..... Natalie Smith vs. Houston Baptist (Aug. 27)

**SERVICE ACES**

4 ..... Sara Mukaj at Sam Houston (Aug. 27)

**BLOCK SOLOS**

2 ..... Mikela Labno vs. No. 25 San Diego (Sept. 11) and Serena Hodson at Sam Houston (Aug. 28)

**BLOCK ASSISTS**

6 ..... Serena Hodson at Sam Houston (Aug. 28)

**TOTAL BLOCKS**

8 ..... Serena Hodson at Sam Houston (Aug. 28)

**Team**

**HITTING PERCENTAGE**

.384 (49-11-99) ..... at UC Santa Barbara (Sept. 3)

**KILLS**

59 ..... at Sam Houston (Aug. 28)  
 5 sets ..... 59 ..... at Sam Houston (Aug. 28)  
 4 sets ..... 57 ..... vs. No. 25 San Diego (Sept. 11)  
 3 sets ..... 49 ..... at UC Santa Barbara (Sept. 3)

**TOTAL ATTEMPTS**

161 ..... at Sam Houston (Aug. 28)  
 5 sets ..... 161 ..... at Sam Houston (Aug. 28)  
 4 sets ..... 148 ..... vs. No. 25 San Diego (Sept. 11)  
 3 sets ..... 111 ..... vs. Houston Baptist (Aug. 27)

**ASSISTS**

56 ..... vs. No. 25 San Diego (Sept. 11)  
 5 sets ..... 53 ..... at Sam Houston (Aug. 28)  
 4 sets ..... 56 ..... vs. No. 25 San Diego (Sept. 11)  
 3 sets ..... 46 ..... at UC Santa Barbara (Sept. 3)

**DIGS**

70 ..... at Sam Houston (Aug. 28)  
 5 sets ..... 70 ..... at Sam Houston (Aug. 28)  
 4 sets ..... 63 ..... vs. No. 25 San Diego (Sept. 11)  
 3 sets ..... 52 ..... vs. Houston Baptist (Aug. 27)

**SERVICE ACES**

7 ..... at Sam Houston (Aug. 27)

**TOTAL BLOCKS**

12.0 ..... at Sam Houston (Aug. 28)

**ALL-TOURNAMENT AZTECS PART II**

- > For the second consecutive weekend, outside hitter Victoria O’Sullivan earned a spot on an all-tournament team following her performance at the Gaucho Invitational in Santa Barbara, Calif.
- > In three matches, O’Sullivan led the Aztecs with an average of 3.45 kills per set (38 overall) and hit .295 to go with seven digs and five block assists.
- > O’Sullivan has recorded double-digit kills in four straight matches, including season highs of 15 kills and a .519 efficiency in SDSU’s triumph over UCSB.

**BEARKAT INVITATIONAL WRAP**

- > San Diego State came up empty in its season-opening road trip to the Bearkat Invitational, Aug. 27-28, in Huntsville, Texas, falling to Houston Baptist before dropping consecutive matches to tournament host Sam Houston.
- > Against HBU, the Aztecs were out-hit .306 to .153, committing 10 more attack errors (19-9) while nine service attempts went awry. Conversely, the Huskies totaled more kills (42-36) and team blocks (10.0-2.0) to help fuel their 3-0 victory.
- > Individually, SDSU was led by senior transfer Zoi Faki, who knocked down 11 kills in her Aztec debut, while Victoria O’Sullivan collected seven put-aways of her own.
- > Natalie Smith, a senior transfer from Michigan, also impressed in her first match for the Scarlet and Black, anchoring the Aztec back row with a match-high 27 digs, while Ashley Vanderpan dished out 19 assists.
- > In the second match of the weekend, SDSU experienced another whitewash, this time at the hands of Sam Houston, as the visitors were plagued by 26 attack errors, hitting just .029 overall. On the flip side, the Bearkats posted a .299 efficiency, holding a sizable advantage in kills (38-29) and total blocks (15.0-3.0) while owning a slight edge in digs (41-39).
- > The Aztecs were paced by O’Sullivan and Heipua Tautua’a, who blasted eight kills each, while Faki and freshman Jordyn Goldsmith finished with five non-returnables apiece. Vanderpan (15 assists) and Kennedy Feuerborn (11 assists) split the setting duties, while Smith scooped up a team-high 11 digs.
- > The SDSU cause was also advanced by freshmen Sara Mukaj (4) and Reagan Merk (2), who combined for six aces.
- > A late schedule switch provided the Aztecs a rematch against Sam Houston the following day after Central Arkansas withdrew from the tournament for contact tracing. However, SDSU found victory elusive once again, as the Bearkats dealt the Scarlet and Black a five-set heart-breaker.
- > Incredibly, the Aztecs maintained the statistical edge in most categories, including kills (59-52), hitting percentage (.230 to .179), aces (5-4), digs (70-68) and team blocks (12.0-7.0).
- > After hitting at a brisk .351 clip over the first three sets with just eight attack errors, however, SDSU faltered in the final two frames, posting a combined .060 hitting percentage with 14 miscues to finish its venture to the Lone Star State with an 0-3 record.
- > O’Sullivan (.324) and Faki led the Aztecs with 14 kills apiece, while Serena Hodson (.300) posted career-high numbers with nine put-aways of her own and eight total blocks, including two solo stops.
- > In addition, Faki logged her first double-double in a Scarlet and Black uniform after logging 12 digs, while Vanderpan accomplished the feat for the first time this year with 26 assists and 10 digs.
- > Mukaj also boosted the SDSU fortunes with a crisp .636 hitting percentage, recording seven kills on 11 attempts with no errors, while Tautua’a and Goldsmith also floored seven shots.
- > Smith once again anchored the Aztec defense by tying for match-high honors with 16 digs, while Feuerborn came off the bench to hand out 18 assists.

**ALL-TOURNAMENT AZTECS PART I**

- > Outside hitter Victoria O’Sullivan and libero Natalie Smith were each named to the all-tournament team at the Bearkat Invitational, Aug. 27-28, in Huntsville, Texas.
- > In three matches, O’Sullivan knocked down 29 kills (2.64/set) to go with 11 digs and seven block assists while adding one setting assist and one service ace.
- > In SDSU’s tough 3-2 loss to Sam Houston on Aug. 28, O’Sullivan hit .324 and tied for the team lead with 14 kills, including six in the opening set.
- > Meanwhile, Smith played in all 11 sets as well, averaging 4.91 digs (54 overall) to go with six setting assists in her debut event for the Aztecs.
- > In SDSU’s 3-0 setback to Houston Baptist on Aug. 27, Smith posted a whopping 27 digs (9.0/set), falling just two short of tying her career-high of 29 scoops at Notre Dame on Sept. 18, 2019, as a member of the Michigan Wolverines.
- > In addition, Smith tied for match-high honors with 16 digs in the weekend finale at Sam Houston.

**NEWCOMERS SHINE**

- > The Aztecs boast 10 newcomers on their 2021 fall roster, with several providing key contributions during the first three-and-a-half weeks of play.
- > Senior outside hitter Zoi Faki ranks second on the team with an average of 2.50 kills (80 overall) and 2.25 digs per set (72 overall) while tying for the fourth spot with fourth service aces. Against Sam Houston on Aug. 28, the Pitt transfer logged her first double-double in an Aztec uniform with 14 kills and 12 digs.
- > Fellow classmate Natalie Smith, who received all-tournament recognition at the Bearkat Invitational, ranks fourth in the Mountain West with an average of 4.28 digs per set. In the season opener vs. Houston Baptist, the Michigan transfer posted 27 digs, which is tied for the third-best total in the conference so far this year.
- > Freshman Mikela Labno saw her first extended action of the season at the Gaucho Invitational, averaging 2.64 kills in all 11 sets while hitting at a .292 clip. The Aztec outside hitter knocked down a career-high 13 kills against Pepperdine, hitting .522 for the match, which ranks as the fourth-best individual efficiency in the Mountain West thus far. For the season, Labno is tied for third on the squad with 2.09 kills per set. She earned her first career start at Long Beach State on Sept. 14.
- > Arizona State transfer Noa Miller made her San Diego State debut at the Gaucho Invitational and has started the last six matches, averaging 5.76 assists, which ranks eighth in the Mountain West, to go with 1.62 digs per frame. In her first start for the Aztecs vs. UCSB, Miller dished out 22 assists and scooped up seven digs, helping the Scarlet and Black to its first victory of the season. She also added 25 helpers and another seven digs the following day against Kansas State. Against No. 25 USD on Sept. 11, Miller racked up her first double-double as an Aztec and 12th of her career after posting a

**2021 SITUATIONAL RECORDS**

**GENERAL**

Overall.....	1-8
Mountain West.....	0-0
Home.....	0-2
Away.....	1-3
Neutral.....	0-3
vs. Ranked Teams.....	0-3
vs. Unranked Teams.....	1-5
Matches Following a Win.....	0-1
Matches Following a Loss.....	1-6
Longest Winning Streak.....	1
Longest Losing Streak.....	5
Current Streak.....	Lost 5

**BY SETS**

3 Sets.....	1-4
4 Sets.....	0-3
5 Sets.....	0-1
Leading After Two.....	1-0
Trailing After Two.....	0-5
Tied After Two.....	0-3
Leading 2-1.....	0-1
Trailing 2-1.....	0-3

**BY MONTH**

August.....	0-3
September.....	1-5
October.....	0-0
November.....	0-0

**BY DAY**

Tuesday.....	0-1
Thursday.....	0-0
Friday.....	1-3
Saturday.....	0-4

**BY KILLS**

Leading in Kills.....	1-2
Trailing in Kills.....	0-6
Tied in Kills.....	0-0

**BY DIGS**

Leading in Digs.....	1-4
Trailing in Digs.....	0-3
Tied in Digs.....	0-1

**BY BLOCKS**

Leading in Blocks.....	0-2
Trailing in Blocks.....	1-6
Tied in Blocks.....	0-0

**BY ATTACK PERCENTAGE**

Greater Attack Percentage.....	1-1
Lower Attack Percentage.....	0-7
Equal Attack Percentage.....	0-0
Hitting above .300.....	1-0
Hitting between .200 and .300.....	0-4
Hitting between .100 and .200.....	0-2
Hitting below .100.....	0-2
Opponent Hitting above .300.....	0-3
Opponent Hitting between .200 and .300.....	0-2
Opponent Hitting between .100 and .200.....	0-3
Opponent Hitting below .100.....	1-1

**BY INDIVIDUAL KILLS**

3+ Double-Digit Individual Kill Totals.....	1-1
2 Double-Digit Individual Kill Totals.....	0-3
1 Double-Digit Individual Kill Totals.....	0-2
0 Double-Digit Individual Kill Totals.....	0-2

## 2021 MATCH-BY-MATCH LEADERS

Date	Opponent	Kills	Hitting Pct.*	Assists	Aces	Digs	Blocks
A.27	vs. Houston Baptist	Faki - 11	Faki (.242)	Vanderpan - 19	Vanderpan - 1	Smith - 27	Hodson - 2
A.27	at Sam Houston	O'Sullivan/Tautua'a - 8	Tautua'a (.111)	Vanderpan - 15	Mukaj - 4	Smith - 11	Haynie/O'Sullivan - 2
A.28	at Sam Houston	Faki/O'Sullivan - 14	Mukaj (.636)	Vanderpan - 26	Vanderpan - 2	Smith - 16	Hodson - 8
S.3	at UC Santa Barbara	O'Sullivan - 15	O'Sullivan (.519)	Miller - 22	Tautua'a - 1	Smith - 11	Mukaj - 4
S.4	vs. No. 21 Pepperdine	Labno - 13	Labno (.522)	Miller - 19	Vanderpan - 1	Smith - 17	Haynie/Mukaj - 4
S.4	vs. Kansas State	Faki/O'Sullivan - 13	Faki (.323)	Miller - 25	Faki - 2	Smith - 9	Mukaj/Tautua'a - 3
S.10	No. 16 UCLA	O'Sullivan - 10	O'Sullivan (.160)	Miller - 17	Smith - 2	Smith - 11	Mukaj/Haynie/O'Sullivan - 3
S.11	No. 25 San Diego	O'Sullivan - 19	O'Sullivan (.349)	Miller - 28	Miller - 2	Smith - 21	Labno/Mukaj - 3
S.14	at Long Beach State	Faki - 8	Faki (.273)	Miller - 10	Labno - 2	Smith - 14	Goldsmith - 4
S.17	vs. Texas Southern						
S.17	at Arizona						
S.18	vs. UC Riverside						
S.23	at Nevada						
S.25	at San José State						
S.30	New Mexico						
O.2	Air Force						
O.5	UNLV						
O.7	Fresno State						
O.14	at Boise State						
O.16	at Utah State						
O.21	Colorado State						
O.23	at Wyoming						
O.28	Utah State						
O.30	Boise State						
N.2	at UNLV						
N.6	at Fresno State						
N.11	at Air Force						
N.13	at New Mexico						
N.18	Nevada						
N.20	San José State						

\* - min. 7 kills

season-high 28 assists and 11 digs.

> Freshman Sara Mukaj has started seven of eight matches and leads the Scarlet and Black with 22 total blocks. In the first match vs. Sam Houston at the Bearkat Invite on Aug. 27, the Aztec middle blocker served up four aces, which is tied for the fourth-best effort in the MW this year. In the rematch against the Bearkats, Mukaj returned the following day and led the Aztecs with a .636 hitting percentage, launching seven kills on 11 swings without an error to go with five digs and four block assists.

> Another freshman Jordyn Goldsmith received her first starting assignment at Long Beach State after coming off the bench in five previous appearances. She ranks sixth on the squad with 1.44 kills per set (23 overall). Against LBSU the San Diego State opposite hitter led all players with a career-high four blocks, including a solo stop. Against Pepperdine at the Gaucho Invitational on Sept. 4, Goldsmith recorded a season-best .385 hitting percentage, blasting seven kills on 13 swings with just two errors. At the Bearkat Invite the previous week, Goldsmith also launched seven put-aways to go with a season-best three digs in the weekend finale vs. Sam Houston..

> Former Portland State middle blocker Julia Haynie has started all eight matches she has played and ranks third on the squad with 17 total blocks while adding 25 kills. The Aztec junior posted a season-high four block assists against Pepperdine at the Gaucho Invitational. Haynie also knocked down six kills and hit .444 in her Scarlet and Black debut vs. Houston Baptist on Aug. 27. She has multiple block assists in five of eight outings this year.

> Freshman outside hitter Reagan Merk saw her first extended action this season at Long Beach State, finishing with a career-high five kills while committing just one error on seven attempts for a sparkling .714 hitting percentage. She also served up aces on her first two collegiate serves in the second set vs. Sam Houston on Aug. 27.

### WELCOME BACK

> Outside hitter Victoria O'Sullivan leads the group of eight Aztec letterwinners who return for the 2021 fall campaign.

> O'Sullivan earned all-Mountain West honors for the first time in her career last spring after leading the Scarlet and Black with 3.25 kills per set, which ranked seventh in the league. Not to be outdone, the SDSU senior surpassed the double-digit kill plateau in 11 of 15 matches and ranked second on the squad with 32.0 total blocks.

> O'Sullivan led or tied for the team lead in kills 11 times, including six straight to start the year. She has recorded 10 or more kills in 36 of her last 49 appearances dating back to the start of the 2019 campaign.

> The Aztecs will also look for senior leadership from Andrea Walker after the SDSU middle blocker finished third on the team with an average of 2.09 kills per set and 24.0 total blocks. She helped the Aztecs snap a five-match losing streak last March with season highs of 11 kills and a .529 hitting percentage in a come-from-behind 3-2 victory over Utah State.

> In addition, San Diego State is expecting continued improvement from sophomore Heipua Tautua'a, who ranked second on the squad with 99 kills and 140 digs (2.86/set) during her first season on The Mesa last spring. The Aztec outside hitter turned in a superlative performance in SDSU's 3-2 upset at Boise State on March 20, finishing with 14 kills, nine digs and a career-high six block assists while hitting at a .462 clip, which marked the Scarlet and Black's highest individual hitting percentage of the year (min. 12 kills).

> Tautua'a also posted her first collegiate double-double in the Aztecs' 3-2 thriller over Utah State with 11 kills and 11 digs on March 12, after recording a career-high 22 digs in the team's four-set triumph over New Mexico two weeks earlier on Feb. 20.

> Also back in the mix for the Scarlet and Black this fall are tandem setters Ashley Vanderpan and Kennedy Feuerborn, who combined for 601 kills last spring, which marked the first season of intercollegiate competition for both players.

> Vanderpan, who sat out the 2019 campaign after transferring from Syracuse, ranked ninth in the MW with a team-high 6.53 assists per set (334 overall) in nine starts as a sophomore last spring. The Elk Grove, California, native also topped the squad with 11 service aces and three double-doubles (assists-digs) while ranking fourth with 78 digs (1.53/set).

> Vanderpan surpassed the 30-assist plateau in her first four starts, as the Aztecs posted a 3-1 record during that stretch. In a home sweep over New Mexico last February, she combined for 78 assists, dishing out a career-high 40 helpers in the series finale.

> Feuerborn, meanwhile, earned six starting assignments in 13 appearances during her rookie campaign, averaging 4.0 helpers per set (164 overall). She also finished with 31 kills (0.76/set), 19 digs (0.46/set) and 14 blocks (0.34/set) for the year. Feuerborn racked up double-digit assists on six occasions, including a career-high 27 helpers at UNLV in just her second match on Feb. 5.

### NEW KIDS IN TOWN

> San Diego State head coach Brent Hilliard continued to reshape the Aztec roster with the addition of 10 newcomers for the 2021 fall campaign.

> SDSU's early signing class last November consisted of four incoming freshmen in outside hitter Mikela Labno (Hilmar, Calif.), middle blocker Sara Mukaj (Modena, Italy), setter/opposite Kalani Ruri (Kawerau,

New Zealand) and defensive specialist Carsyn Schuch (Phoenix, Ariz.)

- > Over the spring and summer, the Aztecs signed six more players, including four Division I transfers in senior libero Natalie Smith (Michigan), senior outside hitter Zoi Faki (Pittsburgh), senior setter Noa Miller (Arizona State) and junior middle blocker Julia Haynie (Portland State).
- > Also eager to put their stamp on the Scarlet and Black this fall are former prep standouts Jordyn Goldsmith (opposite, Valleyford, Wash.) and Reagan Merk (outside hitter/Huntington Beach, Calif.)
- > Smith was a member of three consecutive NCAA Tournament teams at Michigan from 2017-19. In her last season of competition on the Ann Arbor campus in 2019, the Weatherford, Texas, native set career highs in digs (390), assists (102) and service aces (18). Smith also totaled double-digit digs in 21 matches that year, including 20 or more scoops on three occasions.
- > Faki also brings a winning pedigree with her to "America's Finest City" after playing on three NCAA Tournament teams herself at Pittsburgh from 2016-21. Last spring, she contributed to Pitt's longest postseason run in program history, with the Panthers reaching the Elite Eight as the final unseeded team in the field. Faki served up a career-high three aces in Pitt's upset of No. 3 Minnesota in the NCAA Round of 16 last April.
- > Miller will help bolster the Aztecs setter position after competing for Wofford College and Arizona State in 2018 and 2019, respectively. As a freshman at Wofford, she surpassed the 20-assist plateau on eight occasions before compiling six double-doubles (assist-digs) at ASU. An elite club player, Miller led to her Volley One Academy squad to a national championship in 2016, earning MVP honors for her performance.
- > Haynie is a Southern California product who prepped at Chaparral High School in Temecula before starting 44 of 46 matches in two years at Portland State. As a sophomore last spring, the middle blocker ranked 10th in the Big Sky Conference with a .261 hitting percentage and
- > Among the incoming freshmen, Labno was a multi-sport standout at Hilmar (Calif.) High School, where she garnered a trio of all-conference accolades after leading the Yellowjackets to three straight Trans Valley League championships, along with a pair of CIF Sac-Joaquin Section Division IV titles. Labno, who also competed in basketball and track & field as a prep, recorded a .311 hitting percentage for her career with an average of 3.48 kills and 1.82 digs to go with 163 total blocks and 80 aces, according to MaxPreps.
- > Mukaj starred for elite clubs over the past five years in her native Italy, including Igor Volley Treccate Novara II and Exacer Montale, leading the latter to a second-place finish in the Italian Serie B1 Group C tournament in 2019. She also another one of her club teams to the 2016-17 Serie C championship and a third-place standing at the Italian national U16 championships. In addition, Mukaj was named MVP and voted best middle blocker in the U16 regional finals that year.
- > Likewise, Ruri was a standout performer for numerous prep and national teams at the junior and senior levels in her home country of New Zealand. A versatile player with five years of experience as a setter, opposite and right-side hitter, Ruri most recently collected most valuable player honors and earned a spot on the all-tournament team after leading her squad to a gold medal at the New Zealand U19 Inter Provincial Championships in June 2021.
- > Schuch adds depth to the Aztec back row after starring at Deer Valley High School in Phoenix, Arizona, where she garnered 4A West Valley Region Defensive Player of the Year accolades all four years as a prep, earning first-team all-region honors during that span as well. For her career, Schuch tallied 1,742 digs (4.2/sets) along with 176 service aces and 186 assists, according to MaxPreps.
- > Goldsmith also excelled at the prep level at Freeman High School in Rockford, Washington, where she helped her squad to three top-10 state finishes, including a fourth-place showing as a junior in 2019. This past spring, Goldsmith collected 1A Northeast League MVP honors after leading the Scotties to a conference title with an undefeated 9-0 record during an abbreviated 2021 spring season in which her team did not drop a set (36-0). In addition to volleyball, she also won three letters in both basketball and golf during high school, as well as one in tennis.
- > Rounding out the Aztec rookie class is Merk, who was a three-year letterwinner at prep powerhouse Mater Dei High School in Santa Ana, California. During her high school career, Merk amassed 430 kills, 600 digs, 64 total blocks and 44 service aces, according to MaxPreps. She received all-state recognition as a senior in 2019 from Cal-Hi-Sports and earned Under Armour All-America honors.

**2021 SPRING REWIND**

- > San Diego State ushered in the Brent Hilliard era with a 6-9 record in 15 matches during its abbreviated spring season, all against Mountain West opponents, as the Aztecs finished eighth in the conference standings.
- > SDSU posted a 5-4 record at home and a 1-5 mark on the road. With the results, the Aztecs have fashioned a winning record at home in 10 of the last 12 seasons.
- > The 2021 spring campaign marked the first time in program history that San Diego State did not play at a neutral site. The Aztecs completed two neutral-site matches in 1976, 1987 and 1998.
- > SDSU logged a 3-6 record in three-set matches, a 1-3 mark in four-set affairs, and a 2-0 ledger in five-set affairs.
- > The Aztecs were 6-0 when recording more kills and posting a greater attack percentage than their opponents. SDSU also crafted a 6-0 mark when the opposition was limited to a .200 hitting percentage or lower.
- > In addition, the Aztecs went 4-0 when leading after two sets and were 3-0 when leading in team blocks.
- > SDSU went 4-3 during Saturday matches last spring, marking its lone winning day of the week. The Aztecs were 0-2 in Thursday matches and 2-4 in Friday contests.
- > San Diego State's opponents averaged the third-lowest kills (11.70/set) in the Mountain West last spring. However, the Aztecs yielded the highest team blocks in the conference (140.0, 2.64/set) and the second-most service aces (98, 1.85/set).
- > Despite its modest record, SDSU proved itself a competitive bunch toward the end of last spring, punctuated by a resounding sweep of perennial Mountain West contender Colorado State (25-14, 25-20, 25-19) at home in the season finale on April 3.
- > With the victory, the Aztecs snapped an 11-match losing streak to the Rams dating back to the 2014 campaign. In addition, the win was SDSU's first over CSU in San Diego since 2012.
- > In that contest, Victoria O'Sullivan led all players with 16 kills and posted a season-best .371 hitting percentage, while former Aztec Erin Gillrist tied for match-high honors with six block assists and scooped up a career-best six digs to garner MW Defensive Player of the Week accolades following her final collegiate match.
- > As a team, SDSU recorded its highest hitting percentage of the year (.299) while limiting the Rams to their lowest clip of the season (.076) after CSU entered the match with the second-best mark (.232) in the Mountain West.
- > Two weeks earlier on March 20, the Aztecs recorded a dramatic 3-2 upset at Boise State (25-20, 23-25, 25-21, 24-26, 15-13), defeating a Bronco

**MISCELLANEOUS STATS**

**DOUBLE-DOUBLES**

Zoi Faki (1 season, 3 career (2 at Pittsburgh))

14 kills, 12 digs at Sam Houston, 8/28/21

Ashley Vanderpan (1 season, 4 career)

26 assists, 10 digs at Sam Houston, 8/28/21

Noa Miller (1 season, 12 career (6 at Arizona State, 5 at Wofford))

28 assists, 11 digs vs. No. 25 San Diego

Heipua Tautua'a (1 season, 1 career)

10 kills, 12 digs vs. No. 25 San Diego

**20+ KILLS IN A MATCH**

Player	2021	Career
Victoria O'Sullivan	0	3

**10+ KILLS IN A MATCH**

Player	2021	Career
Victoria O'Sullivan	6	41
Zoi Faki	4	6
Heipua Tautua'a	2	5
Mikela Labno	2	2
Andrea Walker	0	5
Julia Haynie	0	1

**20+ DIGS IN A MATCH**

Natalie Smith	2	5
Zoi Faki	0	1
Heipua Tautua'a	0	1

**10+ DIGS IN A MATCH**

Natalie Smith	8	37
Heipua Tautua'a	2	8
Noa Miller	1	13
Ashley Vanderpan	1	4
Zoi Faki	1	3
Brooklynn Hill	0	1

**10+ BLOCKS IN A MATCH**

Julia Haynie	0	1
--------------	---	---

**5+ BLOCKS IN A MATCH**

Victoria O'Sullivan	1	3
Serena Hodson	1	3
Julia Haynie	0	6
Andrea Walker	0	5
Heipua Tautua'a	0	1

**3+ SERVICE ACES IN A MATCH**

Sara Mukaj	1	1
Natalie Smith	0	4
Brooklynn Hill	0	2
Ashley Vanderpan	0	2
Zoi Faki	0	1
Julia Haynie	0	1
Noa Miller	0	1

squad that entered the match with four straight 3-0 sweeps under their belts.

- > SDSU maintained the upper hand in team blocks, finishing with a 15.0-7.0 advantage while holding the statistical edge in kills (62-59), assists (60-53) and digs (73-62) to help fuel its win.
- > Among the fall returners, O'Sullivan launched 15 kills in that contest, while Heipua Tautua'a blasted 14 put-aways of her own and finished with a season-high .462 hitting percentage. O'Sullivan, who had a pair of solo stops, also matched Tautua'a with six blocks on the day.
- > Not to be outdone, former Aztec libero Lauren Lee finished with a career-high 36 digs, which was tied for the highest total in the Mountain West last spring and ranks fifth in school history. For her efforts, Lee earned MW Defensive Player of the Week honors.
- > With back-to-back victories over New Mexico at home on Feb. 19-20, SDSU extended its winning streak to eight straight over the Lobos.
- > Following the season, O'Sullivan received all-Mountain West recognition for the first time in her career, giving SDSU at least one all-MW honoree for the sixth year in a row.
- > In addition, Lee was named to the College Sports Information Directors of America (CoSIDA) District 8 All-Academic Team.

**PRESEASON PROGNOSTICATIONS**

- > San Diego State was picked to finish sixth this year in the Mountain West preseason coaches poll released on Aug. 18.
- > In the 21-year history of the Mountain West, SDSU has finished first (2012), second (2002, 2011), fourth (2000, 2001, 2003, 2013, 2017), fifth (2005, 2015, 2019), sixth (1999, 2004, 2006, 2009, 2010, 2014, 2016), seventh (2008) and eighth (2007, 2018, 2020) in the final league standings.

**2021 Mountain West Preseason Poll**

Rk.	Team (1st-place votes)	Pts.
1.	UNLV (8)	98
2.	Boise State (2)	90
3.	Colorado State (1)	80
4.	Wyoming	69
5.	Fresno State	61
<b>6.</b>	<b>San Diego State</b>	<b>53</b>
7.	Air Force	46
8.	San José State	41
9.	Utah State	29
10.	New Mexico	26
11.	Nevada	12

**CATCH AZTEC VOLLEYBALL ON THE MOUNTAIN WEST NETWORK**

- > The Mountain West Network is scheduled to stream 19 Aztec volleyball matches during the 2021 fall season. A link to MWN matches will be available on GoAztecs.com.
- > SDSU is slated to live stream eight of its nine remaining home matches, including encounters with defending Mountain West champion UNLV (Oct. 5) along with perennial conference contenders Colorado State (Oct. 21) and Boise State (Oct. 30).
- > In addition, all nine of the Aztecs' conference road matches are scheduled to be streamed live via the MWN.

**ON THE HORIZON**

- > Following the Wildcat Classic, San Diego State opens Mountain West play next week, hitting the road to battle Nevada on Thursday, Sept. 23 before heading over to the Bay Area for a clash with San José State on Saturday, Sept. 25.





# Brent HILLIARD

## Head Coach - Second Season at San Diego State

San Diego State Director of Athletics John David Wicker ushered in a new era for the Aztec volleyball team with the hiring of Brent Hilliard as the fifth head coach in program history on Jan. 31, 2020.

In his first year on The Mesa, Hilliard endured a challenging season fraught with COVID-19 protocols, an abbreviated schedule that was postponed until spring, along with injuries to key players.

However, Hilliard and the Aztecs persevered through the 2021 spring campaign, posting a 6-9 record, highlighted by thrilling victories over Boise State on the road and Colorado State at home in the season finale, respectively. Against the Broncos, SDSU defeated a Boise State team that entered the contest with four consecutive 3-0 sweeps. Two weeks later, the Aztecs snapped an 11-match to the Rams dating back to 2014 and logged their first win over CSU in San Diego since 2012.

Under Hilliard's guidance, Victoria O'Sullivan garnered all-Mountain West accolades for the first time in her career, as the SDSU outside hitter led the squad with 3.25 kills per set, which ranked seventh in the conference. In addition, seniors Lauren Lee and Erin Gillcrist received MW Defensive Player of the Week recognition following the team's aforementioned wins over Boise State and Colorado State, respectively.

Hilliard's Aztecs also excelled in the classroom, with 12 student-athlete earning a spot on the Mountain West all-academic team, including Lauren Lee, who also merited first-team all-District 8 academic honors from the College Sports Information Directors of America (CoSIDA).

A 2018 inductee to the Southern California Indoor Volleyball Hall of Fame, Hilliard arrived at SDSU with a wealth of experience after achieving 19 years of unparalleled success as an assistant coach at the University of San Diego, where he served as the Toreros' associate head coach since 2007.

During his fruitful tenure, the Toreros qualified for the NCAA Tournament in all but one of his 19 seasons, advancing to the Sweet 16 in 2004, 2006, 2013 and 2018. In addition, Hilliard helped guide the Toreros to nine West Coast Conference championships while his players earned six All-America awards, 12 All-America honorable mentions, 44 all-WCC accolades and 15 freshman all-conference certificates.

Hilliard twice assumed the reins of the USD program on an interim basis while head coach Jennifer Petrie was absent on maternity leave. In 2006, Hilliard was honored as WCC Coach of the Year after guiding the Toreros to a conference championship and a Sweet 16 appearance in the NCAA Tournament. That season, he coached five all-conference honorees, including WCC Player of the Year Kristen Carlson, as USD finished 14th in the final USA Today/Coaches Poll.

The Toreros also flourished under Hilliard's guidance in 2011, racing to a 13-0 start en route a program-best 28-5 record, highlighted by a spot in the second round of the NCAA Tournament. Throughout his stint, USD was consistently ranked among the nation's top 25, climbing to as high as No. 2 during the 2013 campaign and rising to No. 5 in 2016.

"I would like to thank John David Wicker, Jenny Bramer, Dr. Adela de la Torre and the rest of the SDSU search committee for making me feel so welcome during the interview process," Hilliard said upon his hiring. "To be the head coach of such a remarkable women's volleyball program in my family's hometown is truly a once in a lifetime opportunity."

"We are fully committed to work tirelessly to elevate this program back to an elite status on the college volleyball landscape, one that the student body, faculty, community, alumni and, of course, all future Aztecs will take great pride in."

Hilliard played collegiately at Long Beach State, earning All-America honors in each of his four years from 1990-93, including first-team recognition over his final three seasons. A right-side hitter for the 49ers, Hilliard was named the NCAA Men's Volleyball Player of the Year as a junior in 1992 after leading LBSU to a 31-1 record.

In 1991, Hilliard and the 49ers captured the NCAA Championship with a 3-1 victory over USC in the finals, avenging a loss to the Trojans in the title match the year before. He finished his career as the NCAA all-time leader with 3,034 kills.

Additionally, Hilliard was selected to play for Team USA in the 1992 Summer Olympics in Barcelona, Spain, where he helped the Americans capture the bronze medal. The following year, he won a silver medal at the 1993 Pan American Games in Argentina and also owns a bronze medal from the 1991 World Cup.

After receiving his undergraduate degree in 1993 from Long Beach State in political science, Hilliard continued his volleyball career as a professional in Europe from 1995-98, playing two seasons in Belgium and another in the Netherlands. In 1996, Hilliard and the Masiek Volleyball Club captured the Belgian national championship and competed in the European Champions League.

In addition to his collegiate experience, which included a stint as head coach at nearby Cuyamaca College in 1999 and 2000, Hilliard has also coached for the past 11 years at Wave Volleyball Club in Del Mar, the premier volleyball club in San Diego County.

"Our priority at SDSU will be to engage, attract and secure exceptional student-athletes that strive for both academic and athletic excellence in their everyday lives," Hilliard added. "From day one, we will set expectations high and build from there. I am incredibly excited to get started and I look forward to the bright future ahead."

### HILLIARD'S COLLEGIATE COACHING LEDGER (As an Assistant at USD)

Year	Overall Record	WCC Record (Finish)	Postseason
2001	22-9	10-4 (3rd)	NCAA Second Round
2002	25-8	10-4 (3rd)	NCAA First Round
2003	17-13	6-8 (T-5th)	NCAA First Round
2004	24-5	14-0 (1st)	NCAA Sweet 16
2005	23-6	10-4 (T-2nd)	NCAA Second Round
2006*	26-6	13-1 (1st)	NCAA Sweet 16
2007	21-8	11-3 (1st)	NCAA First Round
2008	23-5	12-2 (1st)	NCAA First Round
2009	18-7	10-4 (2nd)	None
2010	24-8	13-1 (1st)	NCAA Second Round
2011*	28-5	12-4 (2nd)	NCAA Second Round
2012	21-7	13-3 (T-1st)	NCAA First Round
2013	26-4	16-2 (1st)	NCAA Sweet 16
2014	19-12	12-6 (T-3rd)	NCAA First Round
2015	22-10	14-4 (2nd)	NCAA Second Round
2016	24-6	15-3 (2nd)	NCAA First Round
2017	25-5	17-1 (T-1st)	NCAA Second Round
2018	18-13	13-5 (3rd)	NCAA Sweet 16
2019	25-6	17-1 (1st)	NCAA Second Round
<b>USD Total</b>		<b>431-143 (.751)</b>	
<b>WCC Total</b>		<b>238-60 (.799)</b>	

### As Head Coach at SDSU

Year	Overall Record	MW Record (Finish)	Postseason
2020	6-9	6-9 (8th)	
2021	1-8	0-0	
<b>SDSU Total</b>		<b>7-17 (.292)</b>	
<b>Career as Head Coach</b>		<b>61-28 (.685)</b>	
<b>Overall Total</b>		<b>438-160 (.732)</b>	

#### Notes

- \* - Served as interim head coach during the 2006 and 2011 seasons at USD. Record reflected in career totals.
- > Qualified for the NCAA Tournament in 18 of his 19 seasons at USD
- > Reached the NCAA Sweet 16 four times in 2004, 2006, 2013 and 2018
- > Won nine West Coast Conference championships

# 2021 AZTEC PHOTO ROSTER



**Zoi FAKI**  
OH | 6-1 | Sr. **1**



**Heipua TAUTUA'A**  
OH | 6-2 | So. **2**



**Andrea WALKER**  
MB | 6-0 | Sr. **3**



**Kennedy FEUERBORN**  
S | 6-3 | So. **4**



**Serena HODSON**  
MB | 6-2 | Jr. **5**



**Jordyn GOLDSMITH**  
OPP | 6-1 | Fr. **6**



**Ashley VANDERPAN**  
S | 6-1 | Jr. **7**



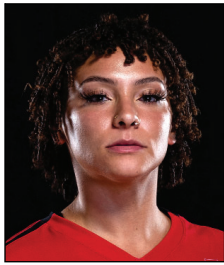
**Natalie SMITH**  
DS/L | 5-7 | Sr. **8**



**Sara MUKAJ**  
MB | 6-3 | Fr. **9**



**Kalani RURI**  
S/OPP | 6-2 | Fr. **10**



**Brooklyn HILL**  
DS/L | 5-8 | Sr. **11**



**Julia HAYNIE**  
MB | 6-1 | Jr. **13**



**Reagan MERK**  
OH | 5-11 | Fr. **14**



**Mikela LABNO**  
OH | 6-2 | Fr. **15**



**Carsyn SCHUCH**  
DS | 5-6 | Fr. **16**



**Nadia BARCKLAY**  
DS/L | 5-2 | So. **17**



**Noa MILLER**  
S | 5-10 | Sr. **19**



**Victoria O'SULLIVAN**  
OH | 6-0 | Sr. **21**



**Brent HILLIARD**  
Head Coach



**Melanie GREENE**  
Assistant Coach/  
Recruiting Coordinator



**STEVE TIMMONS**  
Assistant Coach



**Kara BARKDOLL**  
Volleyball Operations  
Assistant



**2021-22 San Diego St. Women's Volleyball  
Combined Team Statistics  
All games**

**Game Records**

Overall	Conference	Home	Away	Neutral
1 - 8	0 - 0	0 - 2	1 - 3	0 - 3

**Team Box Score**

##	Player	SP	Attack					Set		Serve			Dig		Blocking			BE	BHE	PTS		
			K	K/S	E	TA	PCT	A	A/S	SA	SE	SA/S	RE	DIG	DIG/S	BS	BA				TOT/S	BLK/S
1	Faki, Zoi	32	80	2.50	32	227	.211	3	0.09	3	11	0.09	12	72	2.25	1	6	7	0.22	1	0	87.0
2	Tautua'a, Heipua	32	67	2.09	38	217	.134	12	0.38	2	13	0.06	3	60	1.88	0	15	15	0.47	2	0	76.5
4	Feuerborn, Kennedy	19	6	0.32	2	12	.333	50	2.63	0	0	0.00	0	9	0.47	0	2	2	0.11	0	0	7.0
5	Hodson, Serena	9	12	1.33	6	30	.200	0	0.00	0	0	0.00	0	0	0.00	2	8	10	1.11	1	0	18.0
6	Goldsmith, Jordyn	15	23	1.53	11	57	.211	2	0.13	0	0	0.00	0	6	0.40	1	7	8	0.53	2	0	27.5
7	Vanderpan, Ashley	26	0	0.00	2	5	-.400	125	4.81	5	4	0.19	0	45	1.73	0	1	1	0.04	0	7	5.5
8	Smith, Natalie	32	0	0.00	0	2	.000	25	0.78	4	5	0.13	14	137	4.28	0	0	0	0.00	0	0	4.0
9	Mukaj, Sara	27	16	0.59	4	36	.333	11	0.41	7	7	0.26	0	16	0.59	1	21	22	0.81	2	1	34.5
10	Ruri, Kalani	1	0	0.00	0	0	.000	0	0.00	0	1	0.00	0	1	1.00	0	0	0	0.00	0	0	0.0
11	Hill, Brooklynn	6	0	0.00	0	0	.000	0	0.00	1	2	0.17	0	2	0.33	0	0	0	0.00	0	0	1.0
13	Haynie, Julia	27	25	0.93	18	70	.100	1	0.04	0	2	0.00	0	7	0.26	1	16	17	0.63	3	0	34.0
14	Merk, Reagan	3	6	2.00	0	8	.750	1	0.33	2	1	0.67	0	0	0.00	0	0	0	0.00	0	0	8.0
15	Labno, Mikela	23	48	2.09	27	131	.160	0	0.00	2	0	0.09	2	10	0.43	3	7	10	0.43	0	0	56.5
17	Barcklay, Nadia	2	0	0.00	0	0	.000	0	0.00	0	0	0.00	0	1	0.50	0	0	0	0.00	0	0	0.0
19	Miller, Noa	21	2	0.10	1	10	.100	121	5.76	3	2	0.14	0	34	1.62	0	1	1	0.05	1	1	5.5
21	O'Sullivan, Victoria	29	96	3.31	40	245	.229	2	0.07	1	6	0.03	0	24	0.83	1	14	15	0.52	3	2	105.0
<b>SAN DIEGO ST.</b>		<b>32</b>	<b>381</b>	<b>11.91</b>	<b>181</b>	<b>1050</b>	<b>.190</b>	<b>353</b>	<b>11.03</b>	<b>30</b>	<b>54</b>	<b>0.94</b>	<b>51</b>	<b>424</b>	<b>13.25</b>	<b>10</b>	<b>98</b>	<b>59</b>	<b>1.84</b>	<b>15</b>	<b>11</b>	<b>470.0</b>
<b>Opponents</b>		<b>32</b>	<b>423</b>	<b>13.22</b>	<b>146</b>	<b>1054</b>	<b>.263</b>	<b>388</b>	<b>12.13</b>	<b>51</b>	<b>73</b>	<b>1.59</b>	<b>30</b>	<b>409</b>	<b>12.78</b>	<b>17</b>	<b>156</b>	<b>95</b>	<b>2.97</b>	<b>11</b>	<b>5</b>	<b>569.0</b>

**Team statistics**

	SDSU	OPP
<b>ATTACK</b>		
Kills	381	423
Errors	181	146
Total Attacks	1050	1054
Attack Pct	.190	.263
Kills/Set	11.9	13.2
<b>SET</b>		
Assists	353	388
Attempts	1066	1021
Assist Pct	.331	.380
Assists/Set	11	12.1
<b>SERVE</b>		
Aces	30	51
Errors	54	73
Attempts	649	721
Serve Pct	.917	.899
Aces/Set	0.9	1.6
<b>SERVE RECEPTIONS</b>		
Errors	51	30
Errors/Set	1.6	0.9
Attempts	648	595
Reception Pct	.921	.998
<b>DEFENSE</b>		
Digs	424	409
Digs/Set	13.3	12.8
<b>BLOCKING</b>		
Block solo	10	17
Block Assist	98	156
Total Blocks	59	95
Blocks/Set	1.8	3
Block Errors	15	11
Ball handling errors	11	5
<b>ATTENDANCE</b>		
Total	1542	1357
Dates/Avg Per Date	2/771	4/339
Neutral Site #/Avg	3/97	-
Current win streak	0	-
Home win streak	0	-

**Team Results**

Date	Opponent	Score	Score-by-set	Att.
08/27/2021	vs Houston Baptist	L 0-3	17-25,22-25,16-25	151
08/27/2021	at Sam Houston	L 0-3	18-25,18-25,20-25	228
08/28/2021	at Sam Houston	L 2-3	23-25,25-13,25-14,15-25,9-15	160
09/03/2021	at UC Santa Barbara	W 3-0	25-20,25-19,25-15	200
09/04/2021	vs Pepperdine	L 1-3	19-25,16-25,25-21,18-25	60
09/04/2021	vs Kansas St.	L 1-3	19-25,25-18,23-25,16-25	80
09/10/2021	UCLA	L 0-3	17-25,18-25,13-25	717
09/11/2021	San Diego	L 1-3	25-20,20-25,20-25,18-25	825
09/14/2021	at Long Beach St.	L 0-3	23-25,19-25,23-25	769





**2021-22 San Diego St. Women's Volleyball**  
**Individual Match-by-Match**  
**All games**

**#1 FAKI, Zoi**

Date	Opponent	SP	Attack				Set			Serve				Receipt			Blocking				Team					
			K	E	TA	PCT	A	TA	PCT	SA	SE	TA	PCT	RE	TA	PCT	DIG	BS	BA	BE	TOTAL	BHE	POINTS	HIT%	SCORE	
08/27/2021	vs Houston Baptist	*3	11	3	33	.242	1	3	.333	0	1	10	.900	1	31	.968	6	0	1	1	1.0	0	11.5	.153	0-3	
08/27/2021	at Sam Houston	*3	5	4	20	.050	0	3	.000	0	1	9	.889	0	18	1.000	8	0	0	0	0.0	0	5.0	.029	0-3	
08/28/2021	at Sam Houston	*5	14	8	43	.140	0	9	.000	1	3	18	.833	2	24	.917	12	0	1	0	1.0	0	15.5	.230	2-3	
09/03/2021	at UC Santa Barbara	*3	12	2	22	.455	0	3	.000	0	0	8	1.000	0	22	1.000	9	0	1	0	1.0	0	12.5	.384	3-0	
09/04/2021	vs Pepperdine	*4	5	1	15	.267	1	4	.250	0	1	11	.909	3	21	.857	7	0	2	0	2.0	0	6.0	.242	1-3	
09/04/2021	vs Kansas St.	*4	13	3	31	.323	0	6	.000	2	1	13	.923	1	22	.955	7	0	0	0	0.0	0	15.0	.213	1-3	
09/10/2021	UCLA	*3	3	4	13	-.077	1	4	.250	0	1	6	.833	1	25	.960	7	0	0	0	0.0	0	3.0	.056	0-3	
09/11/2021	San Diego	*4	9	5	28	.143	0	5	.000	0	2	14	.857	4	43	.907	8	1	1	0	2.0	0	10.5	.203	1-3	
09/14/2021	at Long Beach St.	*3	8	2	22	.273	0	1	.000	0	1	7	.857	0	10	1.000	8	0	0	0	0.0	0	8.0	.158	0-3	
<b>Totals</b>			<b>32</b>	<b>80</b>	<b>32</b>	<b>.227</b>	<b>.211</b>	<b>3</b>	<b>.38</b>	<b>.079</b>	<b>3</b>	<b>11</b>	<b>.96</b>	<b>.885</b>	<b>12</b>	<b>.216</b>	<b>.944</b>	<b>72</b>	<b>1</b>	<b>6</b>	<b>1</b>	<b>7.0</b>	<b>0</b>	<b>87.0</b>		

**Player Averages**

Sets Played	Kills per set	Assists per set	Service aces per set	Digs per set	Blocks per set	Points per set
32	2.50	0.09	0.09	2.25	0.22	2.72

**#2 TAUTUA'A, Heipua**

Date	Opponent	SP	Attack				Set			Serve				Receipt			Blocking				Team					
			K	E	TA	PCT	A	TA	PCT	SA	SE	TA	PCT	RE	TA	PCT	DIG	BS	BA	BE	TOTAL	BHE	POINTS	HIT%	SCORE	
08/27/2021	vs Houston Baptist	*3	6	4	23	.087	1	5	.200	0	4	14	.714	0	19	1.000	5	0	0	0	0.0	0	6.0	.153	0-3	
08/27/2021	at Sam Houston	*3	8	5	27	.111	0	3	.000	0	1	8	.875	0	13	1.000	3	0	1	1	1.0	0	8.5	.029	0-3	
08/28/2021	at Sam Houston	*5	7	5	32	.063	2	5	.400	0	1	16	.938	0	34	1.000	15	0	1	1	1.0	0	7.5	.230	2-3	
09/03/2021	at UC Santa Barbara	*3	11	2	22	.409	2	4	.500	1	1	14	.929	0	9	1.000	6	0	1	0	1.0	0	12.5	.384	3-0	
09/04/2021	vs Pepperdine	*4	9	8	32	.031	2	7	.286	0	1	12	.917	1	22	.955	5	0	2	0	2.0	0	10.0	.242	1-3	
09/04/2021	vs Kansas St.	*4	4	2	13	.154	1	6	.167	0	2	13	.846	1	13	.923	5	0	3	0	3.0	0	5.5	.213	1-3	
09/10/2021	UCLA	*3	7	4	23	.130	1	2	.500	0	0	10	1.000	0	10	1.000	3	0	2	0	2.0	0	8.0	.056	0-3	
09/11/2021	San Diego	*4	10	6	27	.148	2	7	.286	1	2	18	.889	0	24	1.000	12	0	2	0	2.0	0	12.0	.203	1-3	
09/14/2021	at Long Beach St.	*3	5	2	18	.167	1	3	.333	0	1	7	.857	1	9	.889	6	0	3	0	3.0	0	6.5	.158	0-3	
<b>Totals</b>			<b>32</b>	<b>67</b>	<b>38</b>	<b>.217</b>	<b>.134</b>	<b>12</b>	<b>.42</b>	<b>.286</b>	<b>2</b>	<b>13</b>	<b>112</b>	<b>.884</b>	<b>3</b>	<b>.153</b>	<b>.980</b>	<b>60</b>	<b>0</b>	<b>15</b>	<b>2</b>	<b>15.0</b>	<b>0</b>	<b>76.5</b>		

**Player Averages**

Sets Played	Kills per set	Assists per set	Service aces per set	Digs per set	Blocks per set	Points per set
32	2.09	0.38	0.06	1.88	0.47	2.39



**2021-22 San Diego St. Women's Volleyball**  
**Individual Match-by-Match**  
**All games**

**#4 FEUERBORN, Kennedy**

Date	Opponent	SP	Attack				Set			Serve				Recept			Blocking				Team				
			K	E	TA	PCT	A	TA	PCT	SA	SE	TA	PCT	RE	TA	PCT	DIG	BS	BA	BE	TOTAL	BHE	POINTS	HIT%	SCORE
08/27/2021	vs Houston Baptist	3	3	1	4	.500	8	23	.348	0	0	0	.000	0	0	.000	1	0	1	0	1.0	0	3.5	.153	0-3
08/27/2021	at Sam Houston	3	0	0	0	.000	11	41	.268	0	0	0	.000	0	1	1.000	2	0	0	0	0.0	0	0.0	.029	0-3
08/28/2021	at Sam Houston	5	0	0	1	.000	18	56	.321	0	0	0	.000	0	0	.000	5	0	0	0	0.0	0	0.0	.230	2-3
09/04/2021	vs Pepperdine	1	0	0	0	.000	1	2	.500	0	0	0	.000	0	0	.000	1	0	0	0	0.0	0	0.0	.242	1-3
09/04/2021	vs Kansas St.	1	0	0	0	.000	2	2	1.000	0	0	0	.000	0	0	.000	0	0	0	0	0.0	0	0.0	.213	1-3
09/10/2021	UCLA	1	0	0	1	.000	1	7	.143	0	0	0	.000	0	0	.000	0	0	0	0	0.0	0	0.0	.056	0-3
09/11/2021	San Diego	2	0	0	0	.000	2	5	.400	0	0	0	.000	0	0	.000	0	0	0	0	0.0	0	0.0	.203	1-3
09/14/2021	at Long Beach St.	3	3	1	6	.333	7	29	.241	0	0	0	.000	0	0	.000	0	0	1	0	1.0	0	3.5	.158	0-3
<b>Totals</b>		<b>19</b>	<b>6</b>	<b>2</b>	<b>12</b>	<b>.333</b>	<b>50</b>	<b>165</b>	<b>.303</b>	<b>0</b>	<b>0</b>	<b>0</b>	<b>.000</b>	<b>0</b>	<b>1</b>	<b>1.000</b>	<b>9</b>	<b>0</b>	<b>2</b>	<b>0</b>	<b>2.0</b>	<b>0</b>	<b>7.0</b>		

**Player Averages**

Sets Played	Kills per set	Assists per set	Service aces per set	Digs per set	Blocks per set	Points per set
19	0.32	2.63	0.00	0.47	0.11	0.37

**#5 HODSON, Serena**

Date	Opponent	SP	Attack				Set			Serve				Recept			Blocking				Team				
			K	E	TA	PCT	A	TA	PCT	SA	SE	TA	PCT	RE	TA	PCT	DIG	BS	BA	BE	TOTAL	BHE	POINTS	HIT%	SCORE
08/27/2021	vs Houston Baptist	*3	3	2	8	.125	0	4	.000	0	0	0	.000	0	1	1.000	0	0	2	0	2.0	0	4.0	.153	0-3
08/27/2021	at Sam Houston	1	0	1	2	-.500	0	0	.000	0	0	0	.000	0	0	.000	0	0	0	0	0.0	0	0.0	.029	0-3
08/28/2021	at Sam Houston	*5	9	3	20	.300	0	2	.000	0	0	0	.000	0	0	.000	0	2	6	1	8.0	0	14.0	.230	2-3
<b>Totals</b>		<b>9</b>	<b>12</b>	<b>6</b>	<b>30</b>	<b>.200</b>	<b>0</b>	<b>6</b>	<b>.000</b>	<b>0</b>	<b>0</b>	<b>0</b>	<b>.000</b>	<b>0</b>	<b>1</b>	<b>1.000</b>	<b>0</b>	<b>2</b>	<b>8</b>	<b>1</b>	<b>10.0</b>	<b>0</b>	<b>18.0</b>		

**Player Averages**

Sets Played	Kills per set	Assists per set	Service aces per set	Digs per set	Blocks per set	Points per set
9	1.33	0.00	0.00	0.00	1.11	2.00

**#6 GOLDSMITH, Jordyn**

Date	Opponent	SP	Attack				Set			Serve				Recept			Blocking				Team				
			K	E	TA	PCT	A	TA	PCT	SA	SE	TA	PCT	RE	TA	PCT	DIG	BS	BA	BE	TOTAL	BHE	POINTS	HIT%	SCORE
08/27/2021	at Sam Houston	3	5	1	12	.333	0	1	.000	0	0	0	.000	0	0	.000	1	0	0	0	0.0	0	5.0	.029	0-3
08/28/2021	at Sam Houston	5	7	3	19	.211	0	1	.000	0	0	0	.000	0	0	.000	3	0	3	1	3.0	0	8.5	.230	2-3
09/04/2021	vs Pepperdine	2	7	2	13	.385	1	2	.500	0	0	0	.000	0	0	.000	1	0	1	1	1.0	0	7.5	.242	1-3
09/04/2021	vs Kansas St.	1	2	3	6	-.167	0	0	.000	0	0	0	.000	0	0	.000	0	0	0	0	0.0	0	2.0	.213	1-3
09/10/2021	UCLA	1	0	0	0	.000	0	0	.000	0	0	0	.000	0	0	.000	0	0	0	0	0.0	0	0.0	.056	0-3
09/14/2021	at Long Beach St.	*3	2	2	7	.000	1	1	1.000	0	0	0	.000	0	0	.000	1	1	3	0	4.0	0	4.5	.158	0-3
<b>Totals</b>		<b>15</b>	<b>23</b>	<b>11</b>	<b>57</b>	<b>.211</b>	<b>2</b>	<b>5</b>	<b>.400</b>	<b>0</b>	<b>0</b>	<b>0</b>	<b>.000</b>	<b>0</b>	<b>0</b>	<b>.000</b>	<b>6</b>	<b>1</b>	<b>7</b>	<b>2</b>	<b>8.0</b>	<b>0</b>	<b>27.5</b>		

**Player Averages**

Sets Played	Kills per set	Assists per set	Service aces per set	Digs per set	Blocks per set	Points per set
15	1.53	0.13	0.00	0.40	0.53	1.83



2021-22 San Diego St. Women's Volleyball  
Individual Match-by-Match  
All games

#7 VANDERPAN, Ashley

Date	Opponent	SP	Attack				Set			Serve				Recept			Blocking					Team			
			K	E	TA	PCT	A	TA	PCT	SA	SE	TA	PCT	RE	TA	PCT	DIG	BS	BA	BE	TOTAL	BHE	POINTS	HIT%	SCORE
08/27/2021	vs Houston Baptist	*3	0	0	1	.000	19	64	.297	1	1	10	.900	0	0	.000	4	0	0	0	0.0	3	1.0	.153	0-3
08/27/2021	at Sam Houston	*3	0	0	0	.000	15	46	.326	1	0	8	1.000	0	0	.000	7	0	0	0	0.0	0	1.0	.029	0-3
08/28/2021	at Sam Houston	*5	0	0	0	.000	26	69	.377	2	1	16	.938	0	0	.000	10	0	0	0	0.0	1	2.0	.230	2-3
09/03/2021	at UC Santa Barbara	3	0	0	1	.000	13	27	.481	0	0	12	1.000	0	0	.000	6	0	0	0	0.0	1	0.0	.384	3-0
09/04/2021	vs Pepperdine	3	0	0	1	.000	14	32	.438	1	0	15	1.000	0	0	.000	6	0	1	0	1.0	1	1.5	.242	1-3
09/04/2021	vs Kansas St.	3	0	2	2	-1.000	14	30	.467	0	2	7	.714	0	1	1.000	6	0	0	0	0.0	0	0.0	.213	1-3
09/10/2021	UCLA	2	0	0	0	.000	6	20	.300	0	0	4	1.000	0	0	.000	1	0	0	0	0.0	0	0.0	.056	0-3
09/11/2021	San Diego	4	0	0	0	.000	18	47	.383	0	0	13	1.000	0	0	.000	5	0	0	0	0.0	1	0.0	.203	1-3
<b>Totals</b>		<b>26</b>	<b>0</b>	<b>2</b>	<b>5</b>	<b>-.400</b>	<b>125</b>	<b>335</b>	<b>.373</b>	<b>5</b>	<b>4</b>	<b>85</b>	<b>.953</b>	<b>0</b>	<b>1</b>	<b>1.000</b>	<b>45</b>	<b>0</b>	<b>1</b>	<b>0</b>	<b>1.0</b>	<b>7</b>	<b>5.5</b>		

Player Averages

Sets Played	Kills per set	Assists per set	Service aces per set	Digs per set	Blocks per set	Points per set
26	0.00	4.81	0.19	1.73	0.04	0.21

#8 SMITH, Natalie

Date	Opponent	SP	Attack				Set			Serve				Recept			Blocking					Team			
			K	E	TA	PCT	A	TA	PCT	SA	SE	TA	PCT	RE	TA	PCT	DIG	BS	BA	BE	TOTAL	BHE	POINTS	HIT%	SCORE
08/27/2021	vs Houston Baptist	3	0	0	1	.000	3	10	.300	0	0	9	1.000	0	12	1.000	27	0	0	0	0.0	0	0.0	.153	0-3
08/27/2021	at Sam Houston	3	0	0	1	.000	1	6	.167	0	0	5	1.000	1	20	.950	11	0	0	0	0.0	0	0.0	.029	0-3
08/28/2021	at Sam Houston	5	0	0	0	.000	2	11	.182	0	1	13	.923	2	26	.923	16	0	0	0	0.0	0	0.0	.230	2-3
09/03/2021	at UC Santa Barbara	3	0	0	0	.000	5	13	.385	0	0	18	1.000	1	18	.944	11	0	0	0	0.0	0	0.0	.384	3-0
09/04/2021	vs Pepperdine	4	0	0	0	.000	4	15	.267	0	0	10	1.000	2	24	.917	17	0	0	0	0.0	0	0.0	.242	1-3
09/04/2021	vs Kansas St.	4	0	0	0	.000	2	13	.154	1	0	16	1.000	3	30	.900	9	0	0	0	0.0	0	1.0	.213	1-3
09/10/2021	UCLA	3	0	0	0	.000	0	6	.000	2	2	9	.778	2	18	.889	11	0	0	0	0.0	0	2.0	.056	0-3
09/11/2021	San Diego	4	0	0	0	.000	4	16	.250	0	2	17	.882	0	17	1.000	21	0	0	0	0.0	0	0.0	.203	1-3
09/14/2021	at Long Beach St.	3	0	0	0	.000	4	6	.667	1	0	12	1.000	3	33	.909	14	0	0	0	0.0	0	1.0	.158	0-3
<b>Totals</b>		<b>32</b>	<b>0</b>	<b>0</b>	<b>2</b>	<b>.000</b>	<b>25</b>	<b>96</b>	<b>.260</b>	<b>4</b>	<b>5</b>	<b>109</b>	<b>.954</b>	<b>14</b>	<b>198</b>	<b>.929</b>	<b>137</b>	<b>0</b>	<b>0</b>	<b>0</b>	<b>0.0</b>	<b>0</b>	<b>4.0</b>		

Player Averages

Sets Played	Kills per set	Assists per set	Service aces per set	Digs per set	Blocks per set	Points per set
32	0.00	0.78	0.13	4.28	0.00	0.13



2021-22 San Diego St. Women's Volleyball  
Individual Match-by-Match  
All games

#9 MUKAJ, Sara

Date	Opponent	SP	Attack				Set			Serve				Recept			Blocking				Team				
			K	E	TA	PCT	A	TA	PCT	SA	SE	TA	PCT	RE	TA	PCT	DIG	BS	BA	BE	TOTAL	BHE	POINTS	HIT%	SCORE
08/27/2021	vs Houston Baptist	1	0	1	2	-.500	0	1	.000	0	0	1	1.000	0	0	.000	0	0	0	0	0.0	0	0.0	.153	0-3
08/27/2021	at Sam Houston	*3	1	2	7	-.143	0	2	.000	4	0	13	1.000	0	0	.000	4	0	1	0	1.0	0	5.5	.029	0-3
08/28/2021	at Sam Houston	*5	7	0	11	.636	3	7	.429	1	2	22	.909	0	0	.000	5	0	4	0	4.0	1	10.0	.230	2-3
09/03/2021	at UC Santa Barbara	*3	1	1	3	.000	4	5	.800	0	1	11	.909	0	0	.000	2	1	3	0	4.0	0	3.5	.384	3-0
09/04/2021	vs Pepperdine	*4	1	0	3	.333	2	4	.500	0	0	12	1.000	0	0	.000	4	0	4	1	4.0	0	3.0	.242	1-3
09/04/2021	vs Kansas St.	*4	2	0	4	.500	0	4	.000	1	1	16	.938	0	0	.000	0	0	3	0	3.0	0	4.5	.213	1-3
09/10/2021	UCLA	*3	0	0	1	.000	1	1	1.000	0	1	6	.833	0	0	.000	0	0	3	1	3.0	0	1.5	.056	0-3
09/11/2021	San Diego	*4	4	0	5	.800	1	5	.200	1	2	10	.800	0	0	.000	1	0	3	0	3.0	0	6.5	.203	1-3
<b>Totals</b>		<b>27</b>	<b>16</b>	<b>4</b>	<b>36</b>	<b>.333</b>	<b>11</b>	<b>29</b>	<b>.379</b>	<b>7</b>	<b>7</b>	<b>91</b>	<b>.923</b>	<b>0</b>	<b>0</b>	<b>.000</b>	<b>16</b>	<b>1</b>	<b>21</b>	<b>2</b>	<b>22.0</b>	<b>1</b>	<b>34.5</b>		

Player Averages

Sets Played	Kills per set	Assists per set	Service aces per set	Digs per set	Blocks per set	Points per set
27	0.59	0.41	0.26	0.59	0.81	1.28

#10 RURI, Kalani

Date	Opponent	SP	Attack				Set			Serve				Recept			Blocking				Team				
			K	E	TA	PCT	A	TA	PCT	SA	SE	TA	PCT	RE	TA	PCT	DIG	BS	BA	BE	TOTAL	BHE	POINTS	HIT%	SCORE
08/27/2021	vs Houston Baptist	1	0	0	0	.000	0	0	.000	0	1	2	.500	0	0	.000	1	0	0	0	0.0	0	0.0	.153	0-3
<b>Totals</b>		<b>1</b>	<b>0</b>	<b>0</b>	<b>0</b>	<b>.000</b>	<b>0</b>	<b>0</b>	<b>.000</b>	<b>0</b>	<b>1</b>	<b>2</b>	<b>.500</b>	<b>0</b>	<b>0</b>	<b>.000</b>	<b>1</b>	<b>0</b>	<b>0</b>	<b>0</b>	<b>0.0</b>	<b>0</b>	<b>0.0</b>		

Player Averages

Sets Played	Kills per set	Assists per set	Service aces per set	Digs per set	Blocks per set	Points per set
1	0.00	0.00	0.00	1.00	0.00	0.00

#11 HILL, Brooklynn

Date	Opponent	SP	Attack				Set			Serve				Recept			Blocking				Team				
			K	E	TA	PCT	A	TA	PCT	SA	SE	TA	PCT	RE	TA	PCT	DIG	BS	BA	BE	TOTAL	BHE	POINTS	HIT%	SCORE
09/04/2021	vs Kansas St.	2	0	0	0	.000	0	1	.000	0	0	0	.000	0	4	1.000	1	0	0	0	0.0	0	0.0	.213	1-3
09/10/2021	UCLA	1	0	0	0	.000	0	0	.000	0	0	1	1.000	0	4	1.000	0	0	0	0	0.0	0	0.0	.056	0-3
09/14/2021	at Long Beach St.	3	0	0	0	.000	0	0	.000	1	2	10	.800	0	0	.000	1	0	0	0	0.0	0	1.0	.158	0-3
<b>Totals</b>		<b>6</b>	<b>0</b>	<b>0</b>	<b>0</b>	<b>.000</b>	<b>0</b>	<b>1</b>	<b>.000</b>	<b>1</b>	<b>2</b>	<b>11</b>	<b>.818</b>	<b>0</b>	<b>8</b>	<b>1.000</b>	<b>2</b>	<b>0</b>	<b>0</b>	<b>0</b>	<b>0.0</b>	<b>0</b>	<b>1.0</b>		

Player Averages

Sets Played	Kills per set	Assists per set	Service aces per set	Digs per set	Blocks per set	Points per set
6	0.00	0.00	0.17	0.33	0.00	0.17



2021-22 San Diego St. Women's Volleyball  
Individual Match-by-Match  
All games

#13 HAYNIE, Julia

Date	Opponent	SP	Attack				Set			Serve				Receipt			Blocking				Team				
			K	E	TA	PCT	A	TA	PCT	SA	SE	TA	PCT	RE	TA	PCT	DIG	BS	BA	BE	TOTAL	BHE	POINTS	HIT%	SCORE
08/27/2021	vs Houston Baptist	*3	6	2	9	.444	0	0	.000	0	2	3	.333	0	0	.000	1	0	0	0	0	0	6.0	.153	0-3
08/27/2021	at Sam Houston	*3	2	3	9	-.111	1	1	1.000	0	0	1	1.000	0	1	1.000	1	0	2	0	2.0	0	3.0	.029	0-3
09/03/2021	at UC Santa Barbara	*3	3	0	4	.750	0	0	.000	0	0	0	.000	0	0	.000	1	0	2	0	2.0	0	4.0	.384	3-0
09/04/2021	vs Pepperdine	*4	2	0	5	.400	0	0	.000	0	0	0	.000	0	0	.000	1	0	4	0	4.0	0	4.0	.242	1-3
09/04/2021	vs Kansas St.	*4	3	2	6	.167	0	1	.000	0	0	0	.000	0	1	1.000	1	1	1	0	2.0	0	4.5	.213	1-3
09/10/2021	UCLA	*3	3	5	13	-.154	0	1	.000	0	0	0	.000	0	1	1.000	0	0	3	1	3.0	0	4.5	.056	0-3
09/11/2021	San Diego	*4	4	4	12	.000	0	2	.000	0	0	0	.000	0	0	.000	1	0	1	1	1.0	0	4.5	.203	1-3
09/14/2021	at Long Beach St.	*3	2	2	12	.000	0	0	.000	0	0	0	.000	0	0	.000	1	0	3	1	3.0	0	3.5	.158	0-3
<b>Totals</b>		<b>27</b>	<b>25</b>	<b>18</b>	<b>70</b>	<b>.100</b>	<b>1</b>	<b>5</b>	<b>.200</b>	<b>0</b>	<b>2</b>	<b>4</b>	<b>.500</b>	<b>0</b>	<b>3</b>	<b>1.000</b>	<b>7</b>	<b>1</b>	<b>16</b>	<b>3</b>	<b>17.0</b>	<b>0</b>	<b>34.0</b>		

Player Averages

Sets Played	Kills per set	Assists per set	Service aces per set	Digs per set	Blocks per set	Points per set
27	0.93	0.04	0.00	0.26	0.63	1.26

#14 MERK, Reagan

Date	Opponent	SP	Attack				Set			Serve				Receipt			Blocking				Team				
			K	E	TA	PCT	A	TA	PCT	SA	SE	TA	PCT	RE	TA	PCT	DIG	BS	BA	BE	TOTAL	BHE	POINTS	HIT%	SCORE
08/27/2021	at Sam Houston	1	0	0	0	.000	0	0	.000	2	0	3	1.000	0	0	.000	0	0	0	0	0.0	0	2.0	.029	0-3
09/10/2021	UCLA	1	1	0	1	1.000	0	0	.000	0	0	2	1.000	0	0	.000	0	0	0	0	0.0	0	1.0	.056	0-3
09/14/2021	at Long Beach St.	1	5	0	7	.714	1	2	.500	0	1	3	.667	0	3	1.000	0	0	0	0	0.0	0	5.0	.158	0-3
<b>Totals</b>		<b>3</b>	<b>6</b>	<b>0</b>	<b>8</b>	<b>.750</b>	<b>1</b>	<b>2</b>	<b>.500</b>	<b>2</b>	<b>1</b>	<b>8</b>	<b>.875</b>	<b>0</b>	<b>3</b>	<b>1.000</b>	<b>0</b>	<b>0</b>	<b>0</b>	<b>0</b>	<b>0.0</b>	<b>0</b>	<b>8.0</b>		

Player Averages

Sets Played	Kills per set	Assists per set	Service aces per set	Digs per set	Blocks per set	Points per set
3	2.00	0.33	0.67	0.00	0.00	2.67

#15 LABNO, Mikela

Date	Opponent	SP	Attack				Set			Serve				Receipt			Blocking				Team				
			K	E	TA	PCT	A	TA	PCT	SA	SE	TA	PCT	RE	TA	PCT	DIG	BS	BA	BE	TOTAL	BHE	POINTS	HIT%	SCORE
08/27/2021	at Sam Houston	1	0	1	1	-1.000	0	0	.000	0	0	1	1.000	0	5	1.000	1	0	0	0	0.0	0	0.0	.029	0-3
08/28/2021	at Sam Houston	1	1	0	1	1.000	0	0	.000	0	0	0	.000	0	0	.000	0	0	0	0	0.0	0	1.0	.230	2-3
09/03/2021	at UC Santa Barbara	3	7	5	18	.111	0	0	.000	0	0	0	.000	0	0	.000	0	0	1	0	1.0	0	7.5	.384	3-0
09/04/2021	vs Pepperdine	4	13	1	23	.522	0	0	.000	0	0	5	1.000	1	11	.909	1	0	1	0	1.0	0	13.5	.242	1-3
09/04/2021	vs Kansas St.	4	9	4	24	.208	0	1	.000	0	0	2	1.000	0	11	1.000	2	0	0	0	0.0	0	9.0	.213	1-3
09/10/2021	UCLA	3	4	4	11	.000	0	1	.000	0	0	1	1.000	0	6	1.000	0	0	2	0	2.0	0	5.0	.056	0-3
09/11/2021	San Diego	4	11	8	33	.091	0	0	.000	0	0	0	.000	0	3	1.000	0	2	1	0	3.0	0	13.5	.203	1-3
09/14/2021	at Long Beach St.	*3	3	4	20	-.050	0	0	.000	2	0	13	1.000	1	6	.833	6	1	2	0	3.0	0	7.0	.158	0-3
<b>Totals</b>		<b>23</b>	<b>48</b>	<b>27</b>	<b>131</b>	<b>.160</b>	<b>0</b>	<b>2</b>	<b>.000</b>	<b>2</b>	<b>0</b>	<b>22</b>	<b>1.000</b>	<b>2</b>	<b>42</b>	<b>.952</b>	<b>10</b>	<b>3</b>	<b>7</b>	<b>0</b>	<b>10.0</b>	<b>0</b>	<b>56.5</b>		

Player Averages

Sets Played	Kills per set	Assists per set	Service aces per set	Digs per set	Blocks per set	Points per set
23	2.09	0.00	0.09	0.43	0.43	2.46





2021-22 San Diego St. Women's Volleyball  
Individual Match-by-Match  
All games

#17 BARCKLAY, Nadia

Date	Opponent	SP	Attack				Set			Serve				Recept			Blocking				Team				
			K	E	TA	PCT	A	TA	PCT	SA	SE	TA	PCT	RE	TA	PCT	DIG	BS	BA	BE	TOTAL	BHE	POINTS	HIT%	SCORE
08/27/2021	vs Houston Baptist	2	0	0	0	.000	0	0	.000	0	0	2	1.000	0	0	.000	1	0	0	0	0.0	0	0.0	.153	0-3
<b>Totals</b>		<b>2</b>	<b>0</b>	<b>0</b>	<b>0</b>	<b>.000</b>	<b>0</b>	<b>0</b>	<b>.000</b>	<b>0</b>	<b>0</b>	<b>2</b>	<b>1.000</b>	<b>0</b>	<b>0</b>	<b>.000</b>	<b>1</b>	<b>0</b>	<b>0</b>	<b>0</b>	<b>0.0</b>	<b>0</b>	<b>0.0</b>		

Player Averages

Sets Played	Kills per set	Assists per set	Service aces per set	Digs per set	Blocks per set	Points per set
2	0.00	0.00	0.00	0.50	0.00	0.00

#19 MILLER, Noa

Date	Opponent	SP	Attack				Set			Serve				Recept			Blocking				Team				
			K	E	TA	PCT	A	TA	PCT	SA	SE	TA	PCT	RE	TA	PCT	DIG	BS	BA	BE	TOTAL	BHE	POINTS	HIT%	SCORE
09/03/2021	at UC Santa Barbara	*3	0	0	2	.000	22	45	.489	0	0	11	1.000	0	0	.000	7	0	0	0	0.0	0	0.0	.384	3-0
09/04/2021	vs Pepperdine	*4	0	0	1	.000	19	53	.358	0	0	11	1.000	0	0	.000	4	0	0	0	0.0	0	0.0	.242	1-3
09/04/2021	vs Kansas St.	*4	1	0	2	.500	25	66	.379	0	0	14	1.000	0	0	.000	7	0	1	0	1.0	0	1.5	.213	1-3
09/10/2021	UCLA	*3	0	0	2	.000	17	50	.340	0	1	10	.900	0	1	1.000	3	0	0	0	0.0	1	0.0	.056	0-3
09/11/2021	San Diego	*4	0	0	0	.000	28	67	.418	2	0	12	1.000	0	0	.000	11	0	0	0	0.0	0	2.0	.203	1-3
09/14/2021	at Long Beach St.	*3	1	1	3	.000	10	43	.233	1	1	14	.929	0	0	.000	2	0	0	1	0.0	0	2.0	.158	0-3
<b>Totals</b>		<b>21</b>	<b>2</b>	<b>1</b>	<b>10</b>	<b>.100</b>	<b>121</b>	<b>324</b>	<b>.373</b>	<b>3</b>	<b>2</b>	<b>72</b>	<b>.972</b>	<b>0</b>	<b>1</b>	<b>1.000</b>	<b>34</b>	<b>0</b>	<b>1</b>	<b>1</b>	<b>1.0</b>	<b>1</b>	<b>5.5</b>		

Player Averages

Sets Played	Kills per set	Assists per set	Service aces per set	Digs per set	Blocks per set	Points per set
21	0.10	5.76	0.14	1.62	0.05	0.26

#21 O'SULLIVAN, Victoria

Date	Opponent	SP	Attack				Set			Serve				Recept			Blocking				Team				
			K	E	TA	PCT	A	TA	PCT	SA	SE	TA	PCT	RE	TA	PCT	DIG	BS	BA	BE	TOTAL	BHE	POINTS	HIT%	SCORE
08/27/2021	vs Houston Baptist	*3	7	6	30	.033	1	1	1.000	0	0	6	1.000	0	0	.000	6	0	0	1	0.0	0	7.0	.153	0-3
08/27/2021	at Sam Houston	*3	8	9	25	-.040	0	2	.000	0	2	9	.778	0	0	.000	1	0	2	1	2.0	0	9.0	.029	0-3
08/28/2021	at Sam Houston	*5	14	3	34	.324	0	3	.000	1	1	13	.923	0	0	.000	4	0	5	0	5.0	2	17.5	.230	2-3
09/03/2021	at UC Santa Barbara	*3	15	1	27	.519	0	0	.000	0	0	0	.000	0	0	.000	3	0	2	0	2.0	0	16.0	.384	3-0
09/04/2021	vs Pepperdine	*4	10	6	27	.148	0	4	.000	0	1	3	.667	0	0	.000	3	0	1	1	1.0	0	10.5	.242	1-3
09/04/2021	vs Kansas St.	*4	13	5	34	.235	0	1	.000	0	1	3	.667	0	0	.000	1	0	2	0	2.0	0	14.0	.213	1-3
09/10/2021	UCLA	*3	10	6	25	.160	0	2	.000	0	1	1	.000	0	1	1.000	2	1	2	0	3.0	0	12.0	.056	0-3
09/11/2021	San Diego	*4	19	4	43	.349	1	3	.333	0	0	0	.000	0	0	.000	4	0	0	0	0.0	0	19.0	.203	1-3
<b>Totals</b>		<b>29</b>	<b>96</b>	<b>40</b>	<b>245</b>	<b>.229</b>	<b>2</b>	<b>16</b>	<b>.125</b>	<b>1</b>	<b>6</b>	<b>35</b>	<b>.829</b>	<b>0</b>	<b>1</b>	<b>1.000</b>	<b>24</b>	<b>1</b>	<b>14</b>	<b>3</b>	<b>15.0</b>	<b>2</b>	<b>105.0</b>		

Player Averages

Sets Played	Kills per set	Assists per set	Service aces per set	Digs per set	Blocks per set	Points per set
29	3.31	0.07	0.03	0.83	0.52	3.62



**San Diego St. Women's Volleyball**  
**Individual Career Summaries**  
**All games**

**BARCKLAY, Nadia**

SEASON	TEAM	SM-MP	K	K/S	E	TA	PCT	A	A/S	SA	SA/S	SE	DIG	D/S	RE	BS	BA	TB	B/S	BE	BHE	PTS	PTS/S
2020-21	SDSU	8-3	0	0.0	0	0	.000	1	0.1	1	0.1	1	1	0.1	0	1	0	1	0.1	0	0	2.0	0.3
2021-22	SDSU	2-1	0	0.0	0	0	.000	0	0.0	0	0.0	0	1	0.5	0	0	0	0	0.0	0	0	0.0	0.0
<b>TOTAL</b>		<b>10 - 4</b>	<b>0</b>	<b>0.0</b>	<b>0</b>	<b>0</b>	<b>.000</b>	<b>1</b>	<b>0.1</b>	<b>1</b>	<b>0.1</b>	<b>1</b>	<b>2</b>	<b>0.2</b>	<b>0</b>	<b>1</b>	<b>0</b>	<b>1</b>	<b>0.1</b>	<b>0</b>	<b>0</b>	<b>2.0</b>	<b>0.2</b>

**Single Game Highs**

Statistic	Value
Assists	1 vs Fresno St. 02/13/21
Serve Aces	1 vs Fresno St. 02/13/21
Digs	1 vs Houston Baptist 08/27/21, vs Fresno St. 02/13/21
Block solos	1 vs New Mexico 02/20/21

**FAKI, Zoi**

SEASON	TEAM	SM-MP	K	K/S	E	TA	PCT	A	A/S	SA	SA/S	SE	DIG	D/S	RE	BS	BA	TB	B/S	BE	BHE	PTS	PTS/S
2016-17	Pitt	14-8	0	0.0	0	0	.000	0	0.0	3	0.2	9	4	0.3	0	0	0	0	0.0	0	0	3.0	0.2
2018-19	Pitt	35-18	30	0.9	14	85	.188	6	0.2	5	0.1	9	46	1.3	3	0	3	3	0.1	2	0	36.5	1.0
2019-20	Pitt	107-32	36	0.3	16	84	.238	6	0.1	14	0.1	30	64	0.6	4	1	9	10	0.1	1	1	55.5	0.5
2020-21	Pitt	72-24	23	0.3	9	63	.222	9	0.1	10	0.1	9	41	0.6	6	1	3	4	0.1	1	1	35.5	0.5
2021-22	SDSU	32-9	80	2.5	32	227	.211	3	0.1	3	0.1	11	72	2.3	12	1	6	7	0.2	1	0	87.0	2.7
<b>TOTAL FOR SDSU</b>		<b>32 - 9</b>	<b>80</b>	<b>2.5</b>	<b>32</b>	<b>227</b>	<b>.211</b>	<b>3</b>	<b>0.1</b>	<b>3</b>	<b>0.1</b>	<b>11</b>	<b>72</b>	<b>2.3</b>	<b>12</b>	<b>1</b>	<b>6</b>	<b>7</b>	<b>0.2</b>	<b>1</b>	<b>0</b>	<b>87.0</b>	<b>2.7</b>
<b>TOTAL</b>		<b>260 - 91</b>	<b>169</b>	<b>0.7</b>	<b>71</b>	<b>459</b>	<b>.214</b>	<b>24</b>	<b>0.1</b>	<b>35</b>	<b>0.1</b>	<b>68</b>	<b>227</b>	<b>0.9</b>	<b>25</b>	<b>3</b>	<b>21</b>	<b>24</b>	<b>0.1</b>	<b>5</b>	<b>2</b>	<b>217.5</b>	<b>0.8</b>

**Single Game Highs**

Statistic	Value
Kills	14 at Sam Houston 08/28/21
Attacks	43 at Sam Houston 08/28/21
Assists	4 vs Boston College 10/09/20
Serve Aces	3 vs Minnesota 04/18/21
Digs	23 vs Michigan 12/01/18
Blocks	2 at Notre Dame 10/16/20, vs Pepperdine 09/04/21
Block solos	1 at Syracuse 10/11/19, at Notre Dame 10/16/20, vs San Diego 09/11/21
Block assists	3 vs Duquesne 09/07/19



San Diego St. Women's Volleyball  
Individual Career Summaries  
All games

**FEUERBORN, Kennedy**

SEASON	TEAM	SM-MP	K	K/S	E	TA	PCT	A	A/S	SA	SA/S	SE	DIG	D/S	RE	BS	BA	TB	B/S	BE	BHE	PTS	PTS/S
2020-21	SDSU	41-13	31	0.8	13	78	.231	162	4.0	1	0.0	5	19	0.5	0	2	12	14	0.3	0	5	40.0	1.0
2021-22	SDSU	19-8	6	0.3	2	12	.333	50	2.6	0	0.0	0	9	0.5	0	0	2	2	0.1	0	0	7.0	0.4
<b>TOTAL</b>		<b>60 - 21</b>	<b>37</b>	<b>0.6</b>	<b>15</b>	<b>90</b>	<b>.244</b>	<b>212</b>	<b>3.5</b>	<b>1</b>	<b>0.0</b>	<b>5</b>	<b>28</b>	<b>0.5</b>	<b>0</b>	<b>2</b>	<b>14</b>	<b>16</b>	<b>0.3</b>	<b>0</b>	<b>5</b>	<b>47.0</b>	<b>0.8</b>

**Single Game Highs**

Statistic	Value	
Kills	6	at UNLV 02/05/21
Attacks	12	at Boise St. 03/20/21
Assists	26	at UNLV 02/05/21, vs Fresno St. 02/12/21
Serve Aces	1	at Wyoming 03/05/21
Digs	7	vs Fresno St. 02/12/21
Blocks	1	6 times
Block solos	1	vs Fresno St. 02/12/21, at UNLV 02/05/21
Block assists	4	vs Colorado St. 04/03/21
PCT	.500	vs Houston Baptist 08/27/21

**GOLDSMITH, Jordyn**

SEASON	TEAM	SM-MP	K	K/S	E	TA	PCT	A	A/S	SA	SA/S	SE	DIG	D/S	RE	BS	BA	TB	B/S	BE	BHE	PTS	PTS/S
2021-22	SDSU	15-6	23	1.5	11	57	.211	2	0.1	0	0.0	0	6	0.4	0	1	7	8	0.5	2	0	27.5	1.8
<b>TOTAL</b>		<b>15 - 6</b>	<b>23</b>	<b>1.5</b>	<b>11</b>	<b>57</b>	<b>.211</b>	<b>2</b>	<b>0.1</b>	<b>0</b>	<b>0.0</b>	<b>0</b>	<b>6</b>	<b>0.4</b>	<b>0</b>	<b>1</b>	<b>7</b>	<b>8</b>	<b>0.5</b>	<b>2</b>	<b>0</b>	<b>27.5</b>	<b>1.8</b>

**Single Game Highs**

Statistic	Value	
Kills	7	at Sam Houston 08/28/21, vs Pepperdine 09/04/21
Attacks	19	at Sam Houston 08/28/21
Assists	1	vs Pepperdine 09/04/21, at Long Beach St. 09/14/21
Digs	3	at Sam Houston 08/28/21
Blocks	4	at Long Beach St. 09/14/21
Block solos	1	at Long Beach St. 09/14/21
Block assists	3	at Long Beach St. 09/14/21, at Sam Houston 08/28/21
PCT	.385	vs Pepperdine 09/04/21



**San Diego St. Women's Volleyball**  
**Individual Career Summaries**  
**All games**

**HAYNIE, Julia**

SEASON	TEAM	SM-MP	K	K/S	E	TA	PCT	A	A/S	SA	SA/S	SE	DIG	D/S	RE	BS	BA	TB	B/S	BE	BHE	PTS	PTS/S
2019-20	PSU	99-28	70	0.7	43	205	.132	4	0.0	6	0.1	7	40	0.4	0	4	70	74	0.7	4	0	115.0	1.2
2020-21	PSU	71-18	95	1.3	36	226	.261	5	0.1	8	0.1	7	24	0.3	1	5	42	47	0.7	2	1	129.0	1.8
2021-22	SDSU	27-8	25	0.9	18	70	.100	1	0.0	0	0.0	2	7	0.3	0	1	16	17	0.6	3	0	34.0	1.3
<b>TOTAL FOR SDSU</b>		<b>27 - 8</b>	<b>25</b>	<b>0.9</b>	<b>18</b>	<b>70</b>	<b>.100</b>	<b>1</b>	<b>0.0</b>	<b>0</b>	<b>0.0</b>	<b>2</b>	<b>7</b>	<b>0.3</b>	<b>0</b>	<b>1</b>	<b>16</b>	<b>17</b>	<b>0.6</b>	<b>3</b>	<b>0</b>	<b>34.0</b>	<b>1.3</b>
<b>TOTAL</b>		<b>197 - 54</b>	<b>190</b>	<b>1.0</b>	<b>97</b>	<b>501</b>	<b>.186</b>	<b>10</b>	<b>0.1</b>	<b>14</b>	<b>0.1</b>	<b>16</b>	<b>71</b>	<b>0.4</b>	<b>1</b>	<b>10</b>	<b>128</b>	<b>138</b>	<b>0.7</b>	<b>9</b>	<b>1</b>	<b>278.0</b>	<b>1.4</b>

**Single Game Highs**

Statistic	Value	
Kills	11	vs Idaho 01/25/21
Attacks	25	vs Idaho 01/25/21
Assists	1	10 times
Serve Aces	3	vs UC Davis 09/07/19
Digs	5	at Utah Valley 09/06/19
Blocks	7	vs Northern Ariz. 01/31/21
Block solos	2	vs Idaho 11/02/19, vs Montana 03/08/21
Block assists	9	vs Eastern Wash. 10/31/19

**HILL, Brooklynn**

SEASON	TEAM	SM-MP	K	K/S	E	TA	PCT	A	A/S	SA	SA/S	SE	DIG	D/S	RE	BS	BA	TB	B/S	BE	BHE	PTS	PTS/S
2018-19	PSU	8-7	0	0.0	0	0	.000	0	0.0	1	0.1	3	2	0.3	1	0	0	0	0.0	0	1	1.0	0.1
2019-20	PSU	11-7	0	0.0	0	0	.000	0	0.0	3	0.3	1	3	0.3	0	0	0	0	0.0	0	0	3.0	0.3
2020-21	SDSU	50-15	1	0.0	1	3	.000	12	0.2	10	0.2	11	77	1.5	18	0	0	0	0.0	0	1	11.0	0.2
2021-22	SDSU	6-3	0	0.0	0	0	.000	0	0.0	1	0.2	2	2	0.3	0	0	0	0	0.0	0	0	1.0	0.2
<b>TOTAL FOR SDSU</b>		<b>56 - 18</b>	<b>1</b>	<b>0.0</b>	<b>1</b>	<b>3</b>	<b>.000</b>	<b>12</b>	<b>0.2</b>	<b>11</b>	<b>0.2</b>	<b>13</b>	<b>79</b>	<b>1.4</b>	<b>18</b>	<b>0</b>	<b>0</b>	<b>0</b>	<b>0.0</b>	<b>0</b>	<b>1</b>	<b>12.0</b>	<b>0.2</b>
<b>TOTAL</b>		<b>75 - 32</b>	<b>1</b>	<b>0.0</b>	<b>1</b>	<b>3</b>	<b>.000</b>	<b>12</b>	<b>0.2</b>	<b>15</b>	<b>0.2</b>	<b>17</b>	<b>84</b>	<b>1.1</b>	<b>19</b>	<b>0</b>	<b>0</b>	<b>0</b>	<b>0.0</b>	<b>0</b>	<b>2</b>	<b>16.0</b>	<b>0.2</b>

**Single Game Highs**

Statistic	Value	
Kills	1	at Boise St. 03/20/21
Attacks	2	at Boise St. 03/20/21
Assists	3	vs Nevada 02/27/21
Serve Aces	3	vs New Mexico 02/19/21, vs Utah St. 03/12/21, vs Towson 12/07/19
Digs	10	at Boise St. 03/20/21



San Diego St. Women's Volleyball  
Individual Career Summaries  
All games

**HODSON, Serena**

SEASON	TEAM	SM-MP	K	K/S	E	TA	PCT	A	A/S	SA	SA/S	SE	DIG	D/S	RE	BS	BA	TB	B/S	BE	BHE	PTS	PTS/S
2018-19	SDSU	18-5	15	0.8	4	36	.306	0	0.0	0	0.0	1	1	0.1	0	1	14	15	0.8	0	0	23.0	1.3
2020-21	SDSU	20-9	17	0.9	8	45	.200	0	0.0	1	0.1	3	4	0.2	0	1	15	16	0.8	2	0	26.5	1.3
2021-22	SDSU	9-3	12	1.3	6	30	.200	0	0.0	0	0.0	0	0	0.0	0	2	8	10	1.1	1	0	18.0	2.0
<b>TOTAL</b>		<b>47 - 17</b>	<b>44</b>	<b>0.9</b>	<b>18</b>	<b>111</b>	<b>.234</b>	<b>0</b>	<b>0.0</b>	<b>1</b>	<b>0.0</b>	<b>4</b>	<b>5</b>	<b>0.1</b>	<b>0</b>	<b>4</b>	<b>37</b>	<b>41</b>	<b>0.9</b>	<b>3</b>	<b>0</b>	<b>67.5</b>	<b>1.4</b>

**Single Game Highs**

Statistic	Value	
Kills	9	at Sam Houston 08/28/21
Attacks	20	at Sam Houston 08/28/21
Serve Aces	1	at UNLV 02/04/21
Digs	2	at Wyoming 03/05/21
Blocks	8	at Sam Houston 08/28/21
Block solos	2	at Sam Houston 08/28/21
Block assists	7	vs Seattle U 08/25/18

**LABNO, Mikela**

SEASON	TEAM	SM-MP	K	K/S	E	TA	PCT	A	A/S	SA	SA/S	SE	DIG	D/S	RE	BS	BA	TB	B/S	BE	BHE	PTS	PTS/S
2021-22	SDSU	23-8	48	2.1	27	131	.160	0	0.0	2	0.1	0	10	0.4	2	3	7	10	0.4	0	0	56.5	2.5
<b>TOTAL</b>		<b>23 - 8</b>	<b>48</b>	<b>2.1</b>	<b>27</b>	<b>131</b>	<b>.160</b>	<b>0</b>	<b>0.0</b>	<b>2</b>	<b>0.1</b>	<b>0</b>	<b>10</b>	<b>0.4</b>	<b>2</b>	<b>3</b>	<b>7</b>	<b>10</b>	<b>0.4</b>	<b>0</b>	<b>0</b>	<b>56.5</b>	<b>2.5</b>

**Single Game Highs**

Statistic	Value	
Kills	13	vs Pepperdine 09/04/21
Attacks	33	vs San Diego 09/11/21
Serve Aces	2	at Long Beach St. 09/14/21
Digs	6	at Long Beach St. 09/14/21
Blocks	3	at Long Beach St. 09/14/21
Block solos	2	vs San Diego 09/11/21
Block assists	2	vs UCLA 09/10/21, at Long Beach St. 09/14/21
PCT	1.000	at Sam Houston 08/28/21



**San Diego St. Women's Volleyball**  
**Individual Career Summaries**  
**All games**

**MERK, Reagan**

SEASON	TEAM	SM-MP	K	K/S	E	TA	PCT	A	A/S	SA	SA/S	SE	DIG	D/S	RE	BS	BA	TB	B/S	BE	BHE	PTS	PTS/S
2021-22	SDSU	3-3	6	2.0	0	8	.750	1	0.3	2	0.7	1	0	0.0	0	0	0	0	0.0	0	0	8.0	2.7
<b>TOTAL</b>		<b>3 - 3</b>	<b>6</b>	<b>2.0</b>	<b>0</b>	<b>8</b>	<b>.750</b>	<b>1</b>	<b>0.3</b>	<b>2</b>	<b>0.7</b>	<b>1</b>	<b>0</b>	<b>0.0</b>	<b>0</b>	<b>0</b>	<b>0</b>	<b>0</b>	<b>0.0</b>	<b>0</b>	<b>0</b>	<b>8.0</b>	<b>2.7</b>

**Single Game Highs**

Statistic	Value	
Kills	5	at Long Beach St. 09/14/21
Attacks	7	at Long Beach St. 09/14/21
Assists	1	at Long Beach St. 09/14/21
Serve Aces	2	at Sam Houston 08/27/21
PCT	1.000	vs UCLA 09/10/21

**MILLER, Noa**

SEASON	TEAM	SM-MP	K	K/S	E	TA	PCT	A	A/S	SA	SA/S	SE	DIG	D/S	RE	BS	BA	TB	B/S	BE	BHE	PTS	PTS/S
2018-19	WOF	108-30	31	0.3	5	95	.274	481	4.5	16	0.1	52	194	1.8	0	0	2	2	0.0	2	15	48.0	0.4
2019-20	ASU	70-26	10	0.1	4	29	.207	283	4.0	4	0.1	13	151	2.2	0	0	1	1	0.0	0	4	14.5	0.2
2021-22	SDSU	21-6	2	0.1	1	10	.100	121	5.8	3	0.1	2	34	1.6	0	0	1	1	0.0	1	1	5.5	0.3
<b>TOTAL FOR SDSU</b>		<b>21 - 6</b>	<b>2</b>	<b>0.1</b>	<b>1</b>	<b>10</b>	<b>.100</b>	<b>121</b>	<b>5.8</b>	<b>3</b>	<b>0.1</b>	<b>2</b>	<b>34</b>	<b>1.6</b>	<b>0</b>	<b>0</b>	<b>1</b>	<b>1</b>	<b>0.0</b>	<b>1</b>	<b>1</b>	<b>5.5</b>	<b>0.3</b>
<b>TOTAL</b>		<b>199 - 62</b>	<b>43</b>	<b>0.2</b>	<b>10</b>	<b>134</b>	<b>.246</b>	<b>885</b>	<b>4.4</b>	<b>23</b>	<b>0.1</b>	<b>67</b>	<b>379</b>	<b>1.9</b>	<b>0</b>	<b>0</b>	<b>4</b>	<b>4</b>	<b>0.0</b>	<b>3</b>	<b>20</b>	<b>68.0</b>	<b>0.3</b>

**Single Game Highs**

Statistic	Value	
Kills	5	at Chattanooga 09/21/18
Attacks	10	at Chattanooga 09/21/18, at Samford 09/22/18
Assists	31	at Chattanooga 09/21/18
Serve Aces	3	vs Western Caro. 11/02/18
Digs	13	at Samford 09/22/18, at Washington 10/18/19
Blocks	1	vs Kansas St. 09/04/21
Block assists	1	at Chattanooga 09/21/18, at Samford 09/22/18, at Oklahoma 09/13/19, vs Kansas St. 09/04/21



**San Diego St. Women's Volleyball  
Individual Career Summaries  
All games**

**MUKAJ, Sara**

SEASON	TEAM	SM-MP	K	K/S	E	TA	PCT	A	A/S	SA	SA/S	SE	DIG	D/S	RE	BS	BA	TB	B/S	BE	BHE	PTS	PTS/S
2021-22	SDSU	27-8	16	0.6	4	36	.333	11	0.4	7	0.3	7	16	0.6	0	1	21	22	0.8	2	1	34.5	1.3
<b>TOTAL</b>		<b>27 - 8</b>	<b>16</b>	<b>0.6</b>	<b>4</b>	<b>36</b>	<b>.333</b>	<b>11</b>	<b>0.4</b>	<b>7</b>	<b>0.3</b>	<b>7</b>	<b>16</b>	<b>0.6</b>	<b>0</b>	<b>1</b>	<b>21</b>	<b>22</b>	<b>0.8</b>	<b>2</b>	<b>1</b>	<b>34.5</b>	<b>1.3</b>

**Single Game Highs**

Statistic	Value	
Kills	7	at Sam Houston 08/28/21
Attacks	11	at Sam Houston 08/28/21
Assists	4	at UC Santa Barbara 09/03/21
Serve Aces	4	at Sam Houston 08/27/21
Digs	5	at Sam Houston 08/28/21
Blocks	4	at Sam Houston 08/28/21, at UC Santa Barbara 09/03/21, vs Pepperdine 09/04/21
Block solos	1	at UC Santa Barbara 09/03/21
Block assists	4	at Sam Houston 08/28/21, vs Pepperdine 09/04/21
PCT	.800	vs San Diego 09/11/21

**O'SULLIVAN, Victoria**

SEASON	TEAM	SM-MP	K	K/S	E	TA	PCT	A	A/S	SA	SA/S	SE	DIG	D/S	RE	BS	BA	TB	B/S	BE	BHE	PTS	PTS/S
2018-19	SDSU	57-24	109	1.9	54	309	.178	0	0.0	0	0.0	0	23	0.4	1	1	14	15	0.3	3	0	117.0	2.1
2019-20	SDSU	110-29	352	3.2	145	872	.237	2	0.0	0	0.0	0	57	0.5	9	14	38	52	0.5	11	0	385.0	3.5
2020-21	SDSU	53-15	172	3.2	84	453	.194	6	0.1	2	0.0	3	23	0.4	3	8	24	32	0.6	3	1	194.0	3.7
2021-22	SDSU	29-8	96	3.3	40	245	.229	2	0.1	1	0.0	6	24	0.8	0	1	14	15	0.5	3	2	105.0	3.6
<b>TOTAL</b>		<b>249 - 76</b>	<b>729</b>	<b>2.9</b>	<b>323</b>	<b>1879</b>	<b>.216</b>	<b>10</b>	<b>0.0</b>	<b>3</b>	<b>0.0</b>	<b>9</b>	<b>127</b>	<b>0.5</b>	<b>13</b>	<b>24</b>	<b>90</b>	<b>114</b>	<b>0.5</b>	<b>20</b>	<b>3</b>	<b>801.0</b>	<b>3.2</b>

**Single Game Highs**

Statistic	Value	
Kills	22	vs West Virginia 09/06/19
Attacks	43	at Boise St. 11/23/19, vs San Diego 09/11/21
Assists	2	at UNLV 02/05/21
Serve Aces	2	vs Colorado St. 04/03/21
Digs	7	at Utah St. 11/21/19
Blocks	6	at Boise St. 03/20/21
Block solos	2	6 times
Block assists	6	vs Colorado St. 04/03/21



**San Diego St. Women's Volleyball**  
**Individual Career Summaries**  
**All games**

**RURI, Kalani**

SEASON	TEAM	SM-MP	K	K/S	E	TA	PCT	A	A/S	SA	SA/S	SE	DIG	D/S	RE	BS	BA	TB	B/S	BE	BHE	PTS	PTS/S
2021-22	SDSU	1-1	0	0.0	0	0	.000	0	0.0	0	0.0	1	1	1.0	0	0	0	0	0.0	0	0	0.0	0.0
<b>TOTAL</b>		<b>1 - 1</b>	<b>0</b>	<b>0.0</b>	<b>0</b>	<b>0</b>	<b>.000</b>	<b>0</b>	<b>0.0</b>	<b>0</b>	<b>0.0</b>	<b>1</b>	<b>1</b>	<b>1.0</b>	<b>0</b>	<b>0</b>	<b>0</b>	<b>0</b>	<b>0.0</b>	<b>0</b>	<b>0</b>	<b>0.0</b>	<b>0.0</b>

**Single Game Highs**

Statistic	Value
Digs	1 vs Houston Baptist 08/27/21

**SMITH, Natalie**

SEASON	TEAM	SM-MP	K	K/S	E	TA	PCT	A	A/S	SA	SA/S	SE	DIG	D/S	RE	BS	BA	TB	B/S	BE	BHE	PTS	PTS/S
2017-18	Mich	88-29	0	0.0	0	1	.000	23	0.3	12	0.1	27	128	1.5	10	0	0	0	0.0	0	2	12.0	0.1
2018-19	Mich	105-34	2	0.0	0	3	.667	32	0.3	11	0.1	25	208	2.0	12	0	0	0	0.0	0	1	13.0	0.1
2019-20	Mich	117-32	2	0.0	1	7	.143	104	0.9	18	0.2	30	401	3.4	57	0	0	0	0.0	1	2	20.0	0.2
2021-22	SDSU	32-9	0	0.0	0	2	.000	25	0.8	4	0.1	5	137	4.3	14	0	0	0	0.0	0	0	4.0	0.1
<b>TOTAL FOR SDSU</b>		<b>32 - 9</b>	<b>0</b>	<b>0.0</b>	<b>0</b>	<b>2</b>	<b>.000</b>	<b>25</b>	<b>0.8</b>	<b>4</b>	<b>0.1</b>	<b>5</b>	<b>137</b>	<b>4.3</b>	<b>14</b>	<b>0</b>	<b>0</b>	<b>0</b>	<b>0.0</b>	<b>0</b>	<b>0</b>	<b>4.0</b>	<b>0.1</b>
<b>TOTAL</b>		<b>342 - 104</b>	<b>4</b>	<b>0.0</b>	<b>1</b>	<b>13</b>	<b>.231</b>	<b>184</b>	<b>0.5</b>	<b>45</b>	<b>0.1</b>	<b>87</b>	<b>874</b>	<b>2.6</b>	<b>93</b>	<b>0</b>	<b>0</b>	<b>0</b>	<b>0.0</b>	<b>1</b>	<b>5</b>	<b>49.0</b>	<b>0.1</b>

**Single Game Highs**

Statistic	Value
Kills	1 at Dayton 09/07/19, at Iowa 09/23/18, at Purdue 11/23/19, vs Oakland 09/07/18
Attacks	2 at Dayton 09/07/19, at Northwestern 11/02/19
Assists	8 vs Illinois 11/09/19
Serve Aces	3 vs Northern Ariz. 08/30/19, vs Ohio St. 09/29/17, vs Iowa 11/13/19, at Pittsburgh 12/01/18
Digs	29 at Notre Dame 09/18/19

**TAUTUA'A, Heipua**

SEASON	TEAM	SM-MP	K	K/S	E	TA	PCT	A	A/S	SA	SA/S	SE	DIG	D/S	RE	BS	BA	TB	B/S	BE	BHE	PTS	PTS/S
2020-21	SDSU	49-14	99	2.0	62	313	.118	25	0.5	6	0.1	26	140	2.9	29	7	15	22	0.4	4	1	119.5	2.4
2021-22	SDSU	32-9	67	2.1	38	217	.134	12	0.4	2	0.1	13	60	1.9	3	0	15	15	0.5	2	0	76.5	2.4
<b>TOTAL</b>		<b>81 - 23</b>	<b>166</b>	<b>2.0</b>	<b>100</b>	<b>530</b>	<b>.125</b>	<b>37</b>	<b>0.5</b>	<b>8</b>	<b>0.1</b>	<b>39</b>	<b>200</b>	<b>2.5</b>	<b>32</b>	<b>7</b>	<b>30</b>	<b>37</b>	<b>0.5</b>	<b>6</b>	<b>1</b>	<b>196.0</b>	<b>2.4</b>

**Single Game Highs**

Statistic	Value
Kills	15 vs Nevada 02/26/21
Attacks	38 vs Nevada 02/26/21
Assists	4 at UNLV 02/04/21, vs Nevada 02/26/21
Serve Aces	2 vs New Mexico 02/20/21, at Boise St. 03/20/21
Digs	22 vs New Mexico 02/20/21
Blocks	6 at Boise St. 03/20/21
Block solos	3 at Wyoming 03/05/21
Block assists	6 at Boise St. 03/20/21





San Diego St. Women's Volleyball  
Individual Career Summaries  
All games

**VANDERPAN, Ashley**

SEASON	TEAM	SM-MP	K	K/S	E	TA	PCT	A	A/S	SA	SA/S	SE	DIG	D/S	RE	BS	BA	TB	B/S	BE	BHE	PTS	PTS/S
2020-21	SDSU	49-14	15	0.3	12	52	.058	325	6.6	11	0.2	11	77	1.6	0	1	9	10	0.2	0	8	31.5	0.6
2021-22	SDSU	26-8	0	0.0	2	5	-.400	125	4.8	5	0.2	4	45	1.7	0	0	1	1	0.0	0	7	5.5	0.2
<b>TOTAL</b>	<b>75 - 22</b>	<b>15</b>	<b>0.2</b>	<b>14</b>	<b>57</b>	<b>.018</b>	<b>450</b>	<b>6.0</b>	<b>16</b>	<b>0.2</b>	<b>15</b>	<b>122</b>	<b>1.6</b>	<b>0</b>	<b>1</b>	<b>10</b>	<b>11</b>	<b>0.1</b>	<b>0</b>	<b>15</b>	<b>37.0</b>	<b>0.5</b>	

**Single Game Highs**

Statistic	Value	
Kills	3	vs New Mexico 02/20/21, vs Nevada 02/26/21
Attacks	9	vs New Mexico 02/20/21, vs Nevada 02/26/21
Assists	40	vs New Mexico 02/20/21
Serve Aces	3	at Boise St. 03/20/21, vs Nevada 02/27/21
Digs	12	vs Nevada 02/26/21
Blocks	1	at Boise St. 03/20/21, at San Jose St. 03/27/21, at UNLV 02/04/21, vs Pepperdine 09/04/21
Block solos	1	at Boise St. 03/20/21
Block assists	2	vs Fresno St. 02/13/21, vs New Mexico 02/19/21

**WALKER, Andrea**

SEASON	TEAM	SM-MP	K	K/S	E	TA	PCT	A	A/S	SA	SA/S	SE	DIG	D/S	RE	BS	BA	TB	B/S	BE	BHE	PTS	PTS/S
2018-19	SDSU	7-4	7	1.0	4	16	.188	0	0.0	0	0.0	0	0	0.0	0	0	5	5	0.7	0	0	9.5	1.4
2019-20	SDSU	70-23	129	1.8	45	273	.308	1	0.0	0	0.0	0	7	0.1	0	6	55	61	0.9	7	0	162.5	2.3
2020-21	SDSU	33-9	69	2.1	28	145	.283	3	0.1	0	0.0	0	4	0.1	0	3	21	24	0.7	1	0	82.5	2.5
<b>TOTAL</b>	<b>110 - 36</b>	<b>205</b>	<b>1.9</b>	<b>77</b>	<b>434</b>	<b>.295</b>	<b>4</b>	<b>0.0</b>	<b>0</b>	<b>0.0</b>	<b>0</b>	<b>11</b>	<b>0.1</b>	<b>0</b>	<b>9</b>	<b>81</b>	<b>90</b>	<b>0.8</b>	<b>8</b>	<b>0</b>	<b>254.5</b>	<b>2.3</b>	

**Single Game Highs**

Statistic	Value	
Kills	13	at Utah St. 11/21/19
Attacks	26	at Utah St. 11/21/19
Assists	2	at Boise St. 03/20/21
Digs	2	at Air Force 10/19/19, vs New Mexico 02/20/21
Blocks	6	at Utah St. 11/21/19
Block solos	2	vs Boise St. 10/24/19
Block assists	7	at Air Force 10/19/19