



SAN DIEGO STATE AZTECS

2021 Spring Volleyball Weekly Notes

Jim Solien (Primary Contact)
 Assistant Media Relations Director
Office Phone Number: (619) 594-2576
E-Mail Address: jsolien@sdsu.edu
News Release Date: March 3, 2021

SDSU Official Athletics Website: goaztecs.com
SDSU Official Athletics Twitter: @GoAztecs
SDSU Official Athletics Instagram: @GoAztecs
SDSU Official Athletics Facebook: facebook.com/goaztecs
SDSU Official Athletics YouTube: youtube.com/goaztecscom

2021 AZTEC SPRING VOLLEYBALL SCHEDULE

Day/Date	Opponent	Time
Thursday, Feb. 4	at UNLV* (MWN)	L, 0-3
Friday, Feb. 5	at UNLV* (MWN)	L, 1-3
Friday, Feb. 12	Fresno State* (MWN)	L, 1-3
Saturday, Feb. 13	Fresno State*	W, 3-0
Friday, Feb. 19	New Mexico*	W, 3-0
Saturday, Feb. 20	New Mexico*	W, 3-1
Friday, Feb. 26	Nevada*	L, 1-3
Saturday, Feb. 27	Nevada* (MWN)	L, 0-3
Friday, March 5	at Wyoming* (MWN)	6 p.m. MT
Saturday, March 6	at Wyoming* (MWN)	Noon MT
Thursday, March 11	Utah State* (MWN)	6 p.m. PT
Friday, March 12	Utah State* (MWN)	6 p.m. PT
Saturday, March 20	at Boise State (MWN)	Noon MT
Saturday, March 27	at San José State*	TBA
Thursday, April 1	Air Force* (MWN)	6 p.m. PT
Saturday, April 3	Colorado State* (MWN)	1 p.m. PT

* - Mountain West match

Socially

Twitter: @SDSUVolleyball

Instagram: @SDSUVolleyball

Match Week Preview

San Diego State (3-5, 3-5 MW) at Wyoming (5-3, 5-3 MW)

Friday, March 5 | 6 p.m. MT

Coverage: Live Stats | MW Network

Saturday, March 6 | Noon MT

Coverage: Live Stats | MW Network

Series Record: SDSU leads 36-20



AZTECS HIT THE ROAD FOR TWO MATCHES AT WYOMING

- > The San Diego State volleyball team hits the road for the first time in four weeks when it travels to the Front Range of the Rocky Mountains for a two-match series against Wyoming, March 5-6, inside the UniWyo Sports Complex.
- > Friday's contest is slated to get underway at 6 p.m. MT/5 p.m. PT, while Saturday's clash is scheduled to start at noon MT/11 a.m. PT. Both matches will feature links to live stats and streaming video via the Mountain West Network on GoAztecs.com.
- > The Aztecs (3-5, 3-5 MW) are coming off a pair of losses at home to Nevada, falling by a 3-1 count in the opener (25-20, 14-25, 20-25, 15-25) before dropping a three-set decision (21-25, 22-25, 13-25).
- > With the results, SDSU finds itself in a three-way tie for seventh in the Mountain West race with New Mexico and Nevada.
- > Against the Wolf Pack, the Aztecs were led by freshman outside hitter Heipua Tautua'a, who stepped into the spotlight with an average of 3.14 kills per set (22 overall) and 2.14 digs per frame, highlighted by a career-high 15-kill performance in the opener.
- > Conversely, Wyoming (3-5, 3-5 MW) will be wrapping up a four-match homestand against the Aztecs after splitting a pair of encounters last weekend vs. Colorado State in Laramie. The Cowgirls were swept in the opener (28-30, 20-25, 12-25) but regrouped in a big way with a four-set victory in the second match (27-25, 25-19, 23-25, 25-22).
- > San Diego State is under the direction of first-year head coach Brent Hilliard, who arrived on The Mesa in January 2020 after a successful 19-year tenure as an assistant at the University of San Diego, where he served as the Toreros' associate head coach from 2007-19.
- > Hilliard hired the legendary Steve Timmons to his staff as an assistant coach. Timmons was the first American male to win three Olympic medals in indoor volleyball, leading the U.S. national team to gold medals at the 1984 and 1988 Summer Games, as well as a bronze in 1992.
- > Saturday's match vs. the Cowgirls will mark the Aztecs' 1,500th match in program history. Since women's volleyball was elevated to varsity status in 1976, SDSU has compiled an 883-615 overall record.

2021 MOUNTAIN WEST SPRING VOLLEYBALL SCHEDULE

- > The Mountain West has adopted a 16-match conference-only schedule for the 2021 spring volleyball season taking place over nine weeks (Feb. 4-April 3).
- > Each institution will play six opponents twice and four opponents once.
- > Using a hybrid scheduling format, the first seven weeks will feature teams facing the same opponent twice in one weekend at one site. Travel partners will play the final two weeks of the season.
- > The regular-season champion will be the Mountain West's NCAA tournament automatic qualifier.

SERIES RECORD VS. WYOMING

- > The Aztecs lead the all-time series with the Cowgirls 36-20.
- > However, SDSU will be looking to snap a nine-match losing streak at Wyoming. The Scarlet and Black is 10-17 in Laramie since 1990, logging its last victory there in 2009.
- > The Aztecs and Cowgirls met just once during the 2019 fall campaign, as the Scarlet and Black experienced a 3-1 setback (19-25, 13-25, 22-25).
- > Among 2021 SDSU returners, Erin Gillcrist blasted a team-high nine kills and hit .368 in that match, while Andrea Walker finished with a .636 clip, launching seven put-aways of her own on 11 attempts with no errors.
- > SDSU maintained the upper hand in team blocks (8.0-5.0), but Wyoming out-hit the Aztecs .389 to .253 and knocked down 14 more kills (49-35) to help fuel its win.
- > San Diego State tried to extend the match but faced a series of three-point deficits in the third set, including a 20-17 spread, before trimming the margin to 21-20 following an errant Cowgirl serve. However, the Aztecs were unable to seize complete control, as two O'Sullivan kills down the stretch proved too little too late.

ON THE HORIZON

- > Following this weekend's matches, San Diego State returns to the friendly confines of Aztec Court for a two-match series against Utah State on consecutive nights, March 11-12. Both encounters are scheduled for a 6 p.m. PT start and will be streamed live via the Mountain West Network with a link available on GoAztecs.com.

2021 MOUNTAIN WEST SPRING STANDINGS (As of March 3)

Team	---Conference---			----Overall----			Strk
	W	L	Pct	W	L	Pct.	
UNLV	6	0	1.000	6	0	1.000	W6
Boise State	6	2	.750	6	2	.750	L2
Fresno State	4	2	.667	4	2	.667	L1
Wyoming	5	3	.625	5	3	.625	W1
Air Force	4	4	.500	4	4	.500	L1
Colorado State	4	4	.500	4	4	.500	L1
San Diego State	3	5	.375	3	5	.375	L2
Nevada	3	5	.375	3	5	.375	W2
New Mexico	3	5	.333	3	5	.333	W1
San José State	1	5	.167	1	5	.167	L2
Utah State	1	5	.167	1	5	.167	W1

Upcoming Matches in the MW

Thursday, March 4

UNLV at Utah State, 6 p.m. MT

Friday, March 5

San Diego State at Wyoming, 6 p.m. MT

Nevada at San José State, 1 p.m. PT

New Mexico at Boise State, 3 p.m. MT

Fresno State at Air Force, 6 p.m. MT

Saturday, March 6

San Diego State at Wyoming, Noon MT

UNLV at Utah State, 1 p.m. MT

Nevada at San José State, 1 p.m. PT

New Mexico at Boise State, 1 p.m. MT

Fresno State at Air Force, 4 p.m. MT

Thursday, March 11

Utah State at San Diego State, 6 p.m. PT

Friday, March 12

Utah State at San Diego State, 6 p.m. PT

Colorado State at San José State, 3 p.m. PT

Wyoming at Fresno State, 5 p.m. PT

Boise State at Nevada, 6 p.m. PT

UNLV at New Mexico, TBA

Saturday, March 13

Boise State at Nevada, 11 a.m. PT

Wyoming at Fresno State, 2 p.m. PT

Colorado State at San José State, 3 p.m. PT

UNLV at New Mexico, TBA



- > Heipua Tautua'a tied for match-high honors with 15 kills, while Victoria O'Sullivan added 13 put-aways of her own, followed by Erin Gillcrist, who hit .500 for the night after launching 10 non-returnables on 18 attempts with just one error.
- > In addition, Lauren Lee led all players with 14 digs, while Ashley Vanderpan notched her second double-double of the year with 34 assists and 12 digs. Gillcrist was also a force at the net, recording a team-high four blocks, including a solo stuff.
- > However, the Aztecs were unable to maintain the momentum after claiming the first set. SDSU hit .286 during the frame, knocking down 18 kills on 42 swings with six miscues. The Aztecs mustered a .155 attack percentage the rest of the way, while the Wolf Pack recorded a .356 clip over the final three sets, including a .500 pace (16-1-30) in the final stanza.
- > In the second match, the SDSU attack was stymied, as Nevada maintained a sizable advantage in hitting percentage (.293 to .080) and team blocks (14.0-5.0).
- > Individually, the Aztecs were led by Gillcrist's eight kills, while Heipua Tautua'a added seven.
- > The Scarlet and Black cause was also aided by Ashley Vanderpan, who handed out 15 assists and served up three aces, while Alexis Durand scooped up a match-high 10 digs in her first collegiate start.

AZTECS AMONG MW LEADERS

- > Victoria O'Sullivan remains among the Mountain West statistical leaders, occupying the fifth spot with an average of 3.46 kills per set (79 overall) while ranking seventh with 3.77 points/set (105.5 overall (K-SA-BS-BA/2)).
- > In addition, Ashley Vanderpan is holding onto to the seventh position this week with an average of 7.27 assists per set.
- > O'Sullivan had her streak of double-digit kills this season snapped at seven matches on Feb. 27 but has still logged 10 or more put-aways in 28 of her last 37 starts dating back to the 2019 fall campaign.
- > Meanwhile, Vanderpan has raised her season average by over two assists after handing out 127 helpers combined (9.07/set) in the last two series vs. New Mexico and Nevada. With her setting, SDSU averaged 14.16 kills in seven sets vs. the Lobos, over 2.5 kills more than its average of 11.64 in the previous four matches.
- > Against Nevada on Feb. 26, Vanderpan recorded her second double-double of the year with 34 assists and 12 digs.
- > Elsewhere, Lauren Lee has posted double-digit digs in six of eight matches this year, including a season-high 16 in the series finale vs. New Mexico on Feb. 20.
- > After a pair of losses last week, the Aztecs dropped to fifth in the MW with an average of 12.29 kills per set for the season and have slid into seventh with 13.82 digs per frame. Conversely, SDSU opponents have posted 12.07 digs per set on Aztec attacks, which ranks next-to-last in the conference, and have managed just 11.54 kills per set against the Scarlet and Black, which is third from the bottom in the league.

NOTABLE

- > Victoria O'Sullivan's consecutive match streak of double-digit kills was snapped at nine dating back to the fall of 2019 after she registered just five put-aways vs. Nevada on Feb. 27. Still, the SDSU outside hitter has logged 10 or more kills in 28 of her last 37 appearances.
- > Setter Ashley Vanderpan owns the Aztecs' two double-doubles this season vs. Fresno State on Feb. 13 (30 assists, 11 digs) and against Nevada on Feb. 26 (34 assists, 12 digs), marking the first two times she's accomplished the feat during her career.
- > Since taking over the starting duties at setter five matches ago, Vanderpan has averaged 9.24 assists and 2.12 digs in 17 sets.
- > The 22 digs posted by Heipua Tautua'a vs. New Mexico on Feb. 20 marked the highest total for an Aztec since Hannah Turnlund scooped up 24 in a narrow five-set loss at Florida Gulf Coast on Aug. 31, 2019.
- > The 15 kills by Tautua'a against Nevada on Feb. 26 marked the first time in seven matches this season that an SDSU player other than O'Sullivan led the team in that statistic.
- > Erin Gillcrist logged her two highest hitting percentages of the season vs. New Mexico (.750) on Feb. 20 and against Nevada (.500) on Feb. 26, combining for 16 kills on 26 swings with just one error in those two matches.
- > The Aztecs had three players collect double-digit kills in the first match vs. Nevada on Feb. 26 — Heipua Tautua'a (15), Victoria O'Sullivan (13), Erin Gillcrist (10) — but still fell short. Last season, SDSU went 8-3 when three players reached double figures in that statistic.
- > In all three of their victories this season, the Aztecs have grabbed a 2-0 lead in sets.
- > In her first collegiate appearance, Gabriella Spaethling came off the bench in the fourth set against Nevada on Feb. 26 and recorded her first career kill and dig.
- > SDSU is one of just four Mountain West teams not to have played a five-set match this season, joining Colorado State, Nevada and UNLV.
- > Through six matches in 2019, the Aztecs completed three five-set nail-biters, falling at Florida Gulf Coast before edging West Virginia and Arkansas at home.

NOTHIN' LIKE HOME COOKIN'

- > Since the beginning of the 2009 campaign, the Aztecs have amassed a 107-54 (.664) record at home, highlighted by a 14-0 mark during the 2012 season when SDSU captured the Mountain West championship.

RECAPPING THE NEW MEXICO SERIES

- > San Diego State posted a pair of victories over New Mexico on Feb. 19-20 at Aztec Court. The two contests were originally slated as a home series for the Lobos when the Mountain West released its 2021 spring schedule. However, the conference officially announced the switch in venues on Feb. 17.
- > SDSU recorded its second straight sweep in the series opener, dispatching the visitors by scores of 25-13, 25-17, 25-21 before claiming a four-set decision in the finale, 25-20, 25-20, 23-25, 25-19.
- > With the two victories, the Aztecs also remain unbeaten vs. New Mexico in the last eight encounters between the two programs.
- > In the opener, Victoria O'Sullivan blasted a match-high 13 kills and hit .346 on the evening, while Nya Blair added a career-high 10 put-aways of her own.
- > The SDSU attack also included seven kills apiece from Erin Gillcrist and Heipua Tautua'a, while Ashley Vanderpan dished out 38

assists and posted seven digs.

- > In addition, Brooklyn Hill served up a personal-best three aces, while Lauren Lee scooped up a team-high 11 scoops in the victory.
- > Despite trailing in team blocks (7.0-6.0), the Aztecs held a sizable advantage in most statistical categories, including kills (45-27), digs (39-25) and service aces (6-1) while outlasting UNM .283 to .136.
- > The third frame was the most competitive, with the two sides witnessing 10 ties and three lead changes. O'Sullivan and Blair took center stage, totaling six kills each in the set, while Andrea Walker added three.
- > In the finale, Victoria O'Sullivan launched a season-high 20 kills and added two solo blocks, while Nya Blair finished with 10 put-aways for the second straight outing.
- > SDSU's fortunes were also buoyed by Andrea Walker, who hit .417 for the match on seven kills with two errors in 12 attempts, while Erin Gillcrist floored seven shots of her own.
- > In addition, the Aztecs received career-high performances from Heipua Tautua'a (22 digs) and Ashley Vanderpan (40 assists), while Lauren Lee posted a season-high 16 digs, marking the fifth straight contest of recording double digits in that category.
- > Despite trailing in team blocks (13.0-5.0) and committing 31 attack errors overall, San Diego State proved that quantity trumped quality on this day, maintaining a sizable 57-43 advantage in kills and a 64-36 edge in digs.

RECAPING THE FRESNO STATE SERIES

- > Brent Hilliard picked up his first victory as head coach of the Aztecs on Feb. 13, after San Diego State dispatched Fresno State in three sets (25-19, 26-24, 25-20) to even the weekend series at one match apiece.
- > SDSU maintained a 41-29 advantage in kills during the series finale, limiting Bulldogs to a .060 hitting percentage, as the visitors committed 22 errors on the day.
- > In addition, the Aztecs held the statistical edge in digs (58-50) and team blocks (9.0-8.0) to break into the win column for the first time this spring.
- > Individually, SDSU was once again led by Victoria O'Sullivan, who launched a team-high 11 kills, breaking the double-digit plateau in that category for the fourth match in a row and 25th time in her last 33 outings dating back to last season.
- > The Aztec offense also received a boost from Andrea Walker (.389) and Nya Blair (.375), who committed just one attack error apiece, blasting eight and seven put-aways, respectively.
- > Not to be outdone, a trio of SDSU players reached double figures in digs, including Lauren Lee (13), Heipua Tautua'a (11) and Ashley Vanderpan (11), with the latter notching her first career double-double after dishing out 30 assists as well.
- > The Aztecs closed with a strong 8-3 surge in the opening set after Fresno State crept to within one point at 17-16.
- > The second stanza evolved into a classic thriller, with the two teams combining for 12 ties and nine lead changes.
- > Things looked bleak for SDSU late in the second stanza after finding itself staring down the barrel of a 24-21 deficit.
- > However, the Scarlet and Black flashed its mettle once again, as O'Sullivan contributed two kills and a solo block to ignite a timely 5-0 blitz. Blair added another key put-away, while the Bulldogs imploded with an attack error on the final serve.
- > The third set was also a nip-and-tuck affair, as the two sides witnessed five ties in the early going. However, the Aztecs took the lead for good after a Blair kill and service ace followed by an O'Sullivan non-returnable, which broke a 12-12 deadlock.
- > In its home opener the previous night, San Diego State dropped a four-set decision (25-22, 16-25, 18-25, 18-25).
- > The Aztecs matched the Bulldogs with 45 kills and held a sizable 51-36 advantage in digs but were undone by 34 attack errors, hitting just .087 for the night, compared to the visitors, who finished with a .246 clip and maintained the upper hand in team blocks (17-10) to with nine service aces.
- > Victoria O'Sullivan was the lone player for the Scarlet and Black to surpass the double-digit kill barrier, launching a team-high 11 non-returnables, while Andrea Walker totaled eight put-aways of her own while contributing four total blocks.
- > Erin Gillcrist and Maddie Lenn also got into the act with seven kills apiece, while Lauren Lee anchored the back row with a match-high 15 digs. In addition, Kennedy Feuerborn dished out a team-best 26 assists.

RECAPING THE UNLV SERIES

- > Playing its first intercollegiate match in over 14 months, San Diego State dropped a three-set decision on the road to UNLV (22-25, 21-25, 10-25) in the 2021 spring opener for both teams on Feb. 4.
- > The Rebels out-hit the Aztecs .310 to .147, maintaining a 44-30 advantage in kills and a 44-34 edge in digs to spoil the debut of first-year SDSU head coach Brent Hilliard.
- > Victoria O'Sullivan paced the Scarlet and Black with 11 kills, hitting .300 for the night on 30 attempts with just two errors, while Heipua Tautua'a launched a six non-returnables of her own to go with a team-high 10 digs.
- > In addition, SDSU received four kills apiece from Erin Gillcrist (3 blocks) and Kennedy Feuerborn (6 assists), while Ashley Vanderpan handed out 11 assists in her first Aztec appearance.
- > The Aztecs were unable to maintain a hot start the next night vs. UNLV, falling in four sets (25-19, 18-25, 19-25, 15-25).
- > The Aztecs outhit the Rebels .452 to .242 in the opening frame, knocking down 15 kills with just one error in 31 attempts. However, SDSU stumbled to a .163 clip the rest of way, while UNLV posted a .296 attack percentage during that span, including a .361 pace in the final set.
- > In all, the Rebels served up 12 aces and maintained the advantage in kills (55-47) and total blocks (7.0-3.0) to help fuel their victory. Conversely, the Aztecs held a slight edge in digs (58-55) but were plagued by eight errant serves.
- > Individually, SDSU was paced by Victoria O'Sullivan, who launched 13 kills and hit .333 for the match, committing just two errors in 33 swings, while Andrea Walker (.316) blasted nine put-aways of her own and contributed two block assists.
- > The Aztec cause was also aided by Erin Gillcrist, who totaled eight kills and a service ace, while Kennedy Feuerborn displayed her versatility with six kills, 27 assists and a solo block.
- > Not to be outdone, Maddie Lenn anchored the back row with a career-high 18 digs, while Lauren Lee reached double digits as well with 13 scoops of her own.

WELCOME BACK

- > The Aztecs return 13 players, including nine letterwinners from last year's squad that finished with a 15-14 record overall and an 8-10 mark in the Mountain West.
- > Leading the returners is outside hitter Victoria O'Sullivan, who ranked sixth in the league with 3.20 kills per set (352 overall) and tied for the team lead with 14 solo blocks while finishing fourth with 52 stops overall. The Aztec junior is the lone veteran to have played all 110 sets in 2019, finishing

2021 SITUATIONAL RECORDS

GENERAL

Overall.....	3-5
Mountain West.....	3-5
Home.....	3-3
Away.....	0-2
vs. Ranked Teams.....	0-0
vs. Unranked Teams.....	3-5
Matches Following a Win.....	2-1
Matches Following a Loss.....	0-4
Longest Winning Streak.....	3
Longest Losing Streak.....	3
Current Streak.....	Last 2

BY SETS

3 Sets.....	2-2
4 Sets.....	1-3
5 Sets.....	0-0
Leading After Two.....	3-0
Trailing After Two.....	0-2
Tied After Two.....	0-3
Leading 2-1.....	1-0
Trailing 2-1.....	0-2

BY MONTH

February.....	3-5
March.....	0-0
April.....	0-0

BY DAY

Thursday.....	0-1
Friday.....	1-3
Saturday.....	2-1

BY KILLS

Leading in Kills.....	3-0
Trailing in Kills.....	0-4
Tied in Kills.....	0-1

BY DIGS

Leading in Digs.....	3-3
Trailing in Digs.....	0-2
Tied in Digs.....	0-0

BY BLOCKS

Leading in Blocks.....	1-0
Trailing in Blocks.....	2-5
Tied in Blocks.....	0-0

BY ATTACK PERCENTAGE

Greater Attack Percentage.....	3-0
Lower Attack Percentage.....	0-5
Equal Attack Percentage.....	0-0
Hitting above .300.....	0-0
Hitting between .200 and .300.....	1-1
Hitting between .100 and .200.....	2-2
Hitting below .100.....	0-2
Opponent Hitting above .300.....	0-2
Opponent Hitting between .200 and .300.....	0-3
Opponent Hitting between .100 and .200.....	2-0
Opponent Hitting below .100.....	1-0

BY INDIVIDUAL KILLS

3+ Double-Digit Individual Kill Totals.....	0-1
2 Double-Digit Individual Kill Totals.....	2-0
1 Double-Digit Individual Kill Totals.....	1-3
0 Double-Digit Individual Kill Totals.....	0-1

with double-digit kill totals in 21 of the Aztecs' 29 matches, including 10 straight to start the season.

- > In SDSU's riveting five-set thriller over West Virginia at the Aztec Challenge in September 2019, O'Sullivan blasted a career-high 22 kills and logged a collegiate-best .487 hitting percentage, committing just three errors in 39 attempts.
- > With the graduation of Hannah Turnlund and Tamia Reeves, setter Camryn Machado is the Aztecs' lone all-Mountain West honoree to return from last year. However, the Cardiff-by-the-Sea native will miss the 2021 spring campaign after suffering a torn ACL in preseason camp.
- > In 2019, Machado ranked second in the MW with 10.62 assists per set (1,158 overall) and occupied the No. 2 spot on the team with 2.54 digs per set (277 overall).
- > Additionally Machado led the Scarlet and Black with 14 double-doubles (assists-digs), including seven vs. MW opponents, and topped the squad with 16 service aces, including a career-high three in a home sweep of Utah State.
- > Senior right-side hitter Erin Gillcrist has been selected team captain for the upcoming season. The Lakewood, Colorado, native has successfully recovered from off-season shoulder surgery and looks to build on a 2019 campaign in which she averaged 1.89 kills (144 overall) and 0.71 blocks per set (54 overall).
- > In the Aztecs' 3-1 victory over Long Beach State on Sept. 19, 2019, Gillcrist matched her career-best with a .500 attack percentage, flooring 10 balls on 16 attempts with two errors.
- > Also back in the fold is middle blocker Andrea Walker, who owns the top returning hitting percentage among Aztec regulars after finishing 10th in the Mountain West last year with a .308 clip. The Fairfield, California, product occupied the second spot on the team with an average of 0.88 blocks per set (61 overall) and ranked fifth behind Gillcrist with an average of 1.87 kills per set (129 overall).
- > Walker compiled double-digit kills on three occasions, including a career-high 13 put-aways in SDSU's 3-1 victory at Utah State on Nov. 21, 2019.

MEET THE NEWCOMERS

- > First-year head coach Brent Hilliard has added four newcomers to the roster, including a trio of freshmen in outside hitter Heipua Tautua'a, setter Kennedy Feuerborn and defensive specialist Nadia Barcklay, along with junior defensive specialist Brooklynn Hill, a transfer from perennial national power Penn State.
- > Hill played 13 matches in two seasons with the Nittany Lions, who advanced to the NCAA regional finals in both of her years on the State College campus. A native of Southern California, Hill starred for three straight conference championship teams at Rancho Cucamonga High School from 2015-17, earning all-Baseline League honors three times to go with a trio of team MVP and Defensive Player of the Year awards.
- > A product of Wai'anae High School in Hawai'i, Tautua'a garnered first-team all-Western Division accolades from the O'ahu Interscholastic Association in 2018 and landed on the AVCA Phenom Watch List. She also excelled at the junior level, collecting Most Valuable Player honors at the 2019 Girls Junior National Championships after leading her Spike and Serve Volleyball Club 16s team to the American Division title. In addition, Tautua'a earned a spot on the USA Volleyball Girls' Youth A1 National Training Team in 2018-19.
- > Feuerborn, meanwhile, arrives on The Mesa by way of Johnson County (Kan.) Community College where she enrolled for the 2019-20 academic year but did not compete in volleyball. Feuerborn earned second-team all-state honors and landed on the state Class 6A all-tournament team as a senior in 2018 at Blue Valley North High School in Overland Park, Kansas. She originally signed with Baylor as a prep but did not attend.
- > Rounding out the rookie class is Barcklay, who graduated from Hillsdale High School in San Mateo, California, where she received first team all-conference recognition and team MVP accolades as a junior in 2018 after averaging 24.6 digs per match (541 total, 7.7 per set).

PRESEASON PROGNOSTICATIONS

- > San Diego State was picked to finish fifth this year in the Mountain West preseason coaches poll released Jan. 28. The Aztecs garnered 70 points and garnered one first-place vote.
- > In the 21-year history of the Mountain West, SDSU has finished first (2012), second (2002, 2011), fourth (2000, 2001, 2003, 2013, 2017), fifth (2005, 2015, 2019), sixth (1999, 2004, 2006, 2009, 2010, 2014, 2016), seventh (2008) and eighth (2007, 2018) in the final league standings.

2021 Mountain West Spring Preseason Poll

Rk.	Team (1st-place votes)	Pts.
1.	Colorado State (5)	92
2.	UNLV (4)	90
3.	Wyoming (1)	80
4.	Boise State	76
5.	San Diego State (1)	70
6.	Fresno State	48
7.	Nevada	41
8.	Air Force	33
9.	San José State	28
10.	New Mexico	25
11.	Utah State	22

VOLLEYBALL LEGEND STEVE TIMMONS ADDED TO COACHING STAFF

- > Aztec head coach Brent Hilliard served up a proverbial ace with his first staff addition after hiring the legendary Steve Timmons as an assistant coach on Feb. 15, 2020.
- > The first American male to win three Olympic medals in indoor volleyball, Timmons has worked as an elite coach since 2013 with Wave Volleyball Club based in nearby Del Mar, one of the most prestigious volleyball clubs in the country.
- > One of the sport's most potent hitters, Timmons first made his impact as a three-year letterman at USC (1980-82), where he helped the Trojans capture the 1980 NCAA Championship, earning all-tournament honors in the process. He also garnered first-team all-conference accolades to go with All-America distinction in 1982.
- > Timmons quickly rose to international stardom, winning gold medals for the U.S. Team at the Summer Olympics 1984 and 1988 to go with a bronze in 1992. He collected MVP honors for the 1984 Games, and in 1988 he was named the U.S. Olympic Committee's Male Volleyball Player of the Year. That same year, he was voted the Federation of International Volleyball's Best Blocker and received MVP recognition at the World Super Four Tournament.
- > Not to be outdone, Timmons led the U.S. Team to gold medals at the 1985 World Cup and 1986 World Championships, helping the Americans complete the first "Triple Crown" in volleyball following their triumph at the 1984 Olympics.
- > Timmons was selected to USA Volleyball's 75th anniversary All-Era team in 2003 and was ranked No. 8 on Volleyball magazine's "35 Best U.S. Players of All Time" list in 2012. In addition, he was named to the inaugural class of the Southern California Indoor Volleyball Hall of Fame in 2017.
- > Previously, Timmons was inducted into the U.S. Volleyball Association and International Volleyball Halls of Fame in 1998 while landing a spot on Volleyball magazine's all-time American Indoors first team. Additionally, he was enshrined in the Orange County Sports Hall of Fame in 1990 and the California Community College Hall of Fame in 1998 for his basketball and volleyball prowess at Orange Coast College.

AZTEC VOLLEYBALL EARNS PUBLIC RECOGNITION AWARD FROM NCAA

- > Last spring, the San Diego State volleyball program was publicly recognized by the NCAA for outstanding academic achievements, along with the Aztec women's golf and women's tennis teams.
- > The recognition came on the heels of the most recent multi-year Academic Progress Rates (APR) in which all three programs were among the top 10 percent of their respective sports nationally.
- > With these squads earning NCAA public recognition last season, San Diego State has now received such distinction a total of 21 times in school history, matching its record of three teams set during the 2011-12 and 2017-18 academic years.
- > The SDSU volleyball program received public recognition for the fourth straight season and fifth time overall, while the Aztec women's tennis team garnered the accolade for the third year in a row and sixth time in the last seven seasons. In addition, the San Diego State women's golf squad merited public recognition for the third time in school history.

2021 MATCH-BY-MATCH LEADERS

Date	Opponent	Kills	Hitting Pct.*	Assists	Aces	Digs	Blocks
F.4	at UNLV	O'Sullivan - 13	O'Sullivan (.300)	Vanderpan - 11	Hodson/Tautua'a - 1	Tautua'a - 10	Gillcris/Walker - 3
F.5	at UNLV	O'Sullivan - 11	O'Sullivan (.333)	Feuerborn - 27	Gillcris - 1	Lenn - 18	Walker - 2
F.12	Fresno State	O'Sullivan - 11	Gillcris (.267)	Feuerborn - 26	none	Lee - 15	Walker - 4
F.13	Fresno State	O'Sullivan - 11	Walker (.389)	Vanderpan - 30	Barcklay/Blair/Lee - 1	Lee - 13	Walker - 4
F.19	New Mexico	O'Sullivan - 13	O'Sullivan (.346)	Vanderpan - 38	Hill - 3	Lee - 11	O'Sullivan - 3
F.20	New Mexico	O'Sullivan - 20	Walker (.417)	Vanderpan - 40	Blair/Tautua'a - 2	Tautua'a - 22	O'Sullivan - 3
F. 26	Nevada	Tautua'a - 15	Gillcris (.500)	Vanderpan - 34	Gillcris/Hill/Lee - 1	Lee - 14	Gillcris - 4
F.27	Nevada	Gillcris - 8	Gillcris (.250)	Vanderpan - 15	Vanderpan - 3	Durand - 10	Hodson - 3
M.5	at Wyoming						
M.6	at Wyoming						
M.12	Utah State						
M.13	Utah State						
M.20	at Boise State						
M.27	at San Jose State						
A.1	Air Force						
A.3	Colorado State						

* - min. 7 kills

SPRING 2021 AZTEC SUPERLATIVES

Individual

HITTING PERCENTAGE (min. 12 kills)

.346 (13-4-39)Victoria O'Sullivan vs. New Mexico (Feb. 19)

KILLS

20Victoria O'Sullivan vs. New Mexico (Feb. 20)

5 sets N/A

4 sets20Victoria O'Sullivan vs. New Mexico (Feb. 20)

3 sets13Victoria O'Sullivan vs. New Mexico (Feb. 19)

TOTAL ATTEMPTS

41Victoria O'Sullivan vs. New Mexico (Feb. 20)

5 sets N/A

4 sets41Victoria O'Sullivan vs. New Mexico (Feb. 20)

3 sets33Victoria O'Sullivan vs. Fresno State (Feb. 13)

ASSISTS

40Ashley Vanderpan vs. New Mexico (Feb. 20)

5 sets N/A

4 sets40Ashley Vanderpan vs. New Mexico (Feb. 20)

3 sets38Ashley Vanderpan vs. New Mexico (Feb. 19)

DIGS

22Heipua Tautua'a vs. New Mexico (Feb. 20)

5 sets N/A

4 sets22Heipua Tautua'a vs. New Mexico (Feb. 20)

3 sets13Lauren Lee vs. Fresno State (Feb. 13)

SERVICE ACES

3Ashley Vanderpan vs. Nevada (Feb. 27)

.....Brooklyn Hill vs. New Mexico (Feb. 19)

BLOCK SOLOS

2Victoria O'Sullivan vs. New Mexico (Feb. 19)

.....Erin Gillcris vs. Fresno State (Feb. 12)

BLOCK ASSISTS

3Four times, last: Erin Gillcris vs. Nevada (Feb. 26)

TOTAL BLOCKS

4Three times, last: Erin Gillcris vs. Nevada (Feb. 26)

Team

HITTING PERCENTAGE

.283 (45-17-99)vs. New Mexico (Feb. 19)

KILLS

57vs. New Mexico (Feb. 20)

5 sets N/A

4 sets57vs. New Mexico (Feb. 20)

3 sets45vs. New Mexico (Feb. 19)

TOTAL ATTEMPTS

140vs. New Mexico (Feb. 20)

5 sets N/A

4 sets140vs. New Mexico (Feb. 20)

3 sets121vs. Fresno State (Feb. 13)

ASSISTS

55vs. New Mexico (Feb. 20)

5 sets N/A

4 sets55vs. New Mexico (Feb. 20)

3 sets44vs. New Mexico (Feb. 19)

DIGS

64vs. New Mexico (Feb. 20)

5 sets N/A

4 sets64vs. New Mexico (Feb. 20)

3 sets58vs. Fresno State (Feb. 13)

SERVICE ACES

7vs. New Mexico (Feb. 20)

TOTAL BLOCKS

10.0vs. Fresno State (Feb. 12)



Brent HILLIARD

Head Coach - First Season at San Diego State

San Diego State Director of Athletics John David Wicker ushered in a new era for the Aztec volleyball team with the hiring of Brent Hilliard as the fifth head coach in program history on Jan. 31, 2020.

A 2018 inductee to the Southern California Indoor Volleyball Hall of Fame, Hilliard arrives at SDSU with a wealth of experience after achieving 19 years of unparalleled success as an assistant coach at the University of San Diego, where he served as the Toreros' associate head coach since 2007.

"Brent Hilliard's presence in San Diego County volleyball is far reaching," Wicker said. "Through the club volleyball teams he coached, his 19 years at USD, the time and relationships with the Olympics, Coach Hilliard will be able to hit the ground running for San Diego State. In addition to his San Diego ties, Brent also has what we need in the next leader to graduate the women in the volleyball program, lead them to compete for championships and prepare them for a successful life after sport. He is known for his coaching tenacity in the gym, and at the same time, people of all ages told us how much they enjoyed him as a person."

During his fruitful tenure, the Toreros qualified for the NCAA Tournament in all but one of his 19 seasons, advancing to the Sweet 16 in 2004, 2006, 2013 and 2018. In addition, Hilliard helped guide the Toreros to nine West Coast Conference championships while his players earned six All-America awards, 12 All-America honorable mentions, 44 all-WCC accolades and 15 freshman all-conference certificates.

Hilliard twice assumed the reins of the USD program on an interim basis while head coach Jennifer Petrie was absent on maternity leave. In 2006, Hilliard was honored as WCC Coach of the Year after guiding the Toreros to a conference championship and a Sweet 16 appearance in the NCAA Tournament. That season, he coached five all-conference honorees, including WCC Player of the Year Kristen Carlson, as USD finished 14th in the final USA Today/Coaches Poll.

The Toreros also flourished under Hilliard's guidance in 2011, racing to a 13-0 start en route a program-best 28-5 record, highlighted by a spot in the second round of the NCAA Tournament. Throughout his stint, USD was consistently ranked among the nation's top 25, climbing to as high as No. 2 during the 2013 campaign and rising to No. 5 in 2016.

"I would like to thank John David Wicker, Jenny Bramer, Dr. Adela de la Torre and the rest of the SDSU search committee for making me feel so welcome during the interview process," Hilliard said. "To be the head coach of such a remarkable women's volleyball program in my family's hometown is truly a once in a lifetime opportunity."

"We are fully committed to work tirelessly to elevate this program back to an elite status on the college volleyball landscape, one that the student body, faculty, community, alumni and, of course, all future Aztecs will take great pride in."

Hilliard played collegiately at Long Beach State, earning All-America honors in each of his four years from 1990-93, including first-team recognition over his final three seasons. A right-side hitter for the 49ers, Hilliard was named the NCAA Men's Volleyball Player of the Year as a junior in 1992 after leading LBSU to a 31-1 record.

In 1991, Hilliard and the 49ers captured the NCAA Championship with a 3-1 victory over USC in the finals, avenging a loss to the Trojans in the title match the year before. He finished his career as the NCAA all-time leader with 3,034 kills.

Additionally, Hilliard was selected to play for Team USA in the 1992 Summer Olympics in Barcelona, Spain, where he helped the Americans capture the bronze medal. The following year, he won a silver medal at the 1993 Pan American Games in Argentina and also owns a bronze medal from the 1991 World Cup.

After receiving his undergraduate degree in 1993 from Long Beach State in political science, Hilliard continued his volleyball career as a professional in Europe from 1995-98, playing two seasons in Belgium and another in the Netherlands. In 1996, Hilliard and the Masiek Volleyball Club captured the Belgian national championship and competed in the European Champions League.

In addition to his collegiate experience, which included a stint as head coach at nearby Cuyamaca College in 1999 and 2000, Hilliard has also coached for the past 10 years at Wave Volleyball Club in Del Mar, the premier volleyball club in San Diego County.

"Our priority at SDSU will be to engage, attract and secure exceptional student-athletes that strive for both academic and athletic excellence in their everyday lives," Hilliard added. "From day one, we will set expectations high and build from there. I am incredibly excited to get started and I look forward to the bright future ahead."

HILLIARD'S COLLEGIATE COACHING LEDGER (As an Assistant at USD)

Year	Overall Record	WCC Record (Finish)	Postseason
2001	22-9	10-4 (3rd)	NCAA Second Round
2002	25-8	10-4 (3rd)	NCAA First Round
2003	17-13	6-8 (T-5th)	NCAA First Round
2004	24-5	14-0 (1st)	NCAA Sweet 16
2005	23-6	10-4 (T-2nd)	NCAA Second Round
2006*	26-6	13-1 (1st)	NCAA Sweet 16
2007	21-8	11-3 (1st)	NCAA First Round
2008	23-5	12-2 (1st)	NCAA First Round
2009	18-7	10-4 (2nd)	None
2010	24-8	13-1 (1st)	NCAA Second Round
2011*	28-5	12-4 (2nd)	NCAA Second Round
2012	21-7	13-3 (T-1st)	NCAA First Round
2013	26-4	16-2 (1st)	NCAA Sweet 16
2014	19-12	12-6 (T-3rd)	NCAA First Round
2015	22-10	14-4 (2nd)	NCAA Second Round
2016	24-6	15-3 (2nd)	NCAA First Round
2017	25-5	17-1 (T-1st)	NCAA Second Round
2018	18-13	13-5 (3rd)	NCAA Sweet 16
2019	25-6	17-1 (1st)	NCAA Second Round

Overall Total 431-143 (.751)

WCC Total 238-60 (.799)

Notes

- * - Served as interim head coach during the 2006 and 2011 seasons
- > Qualified for the NCAA Tournament in 18 of his 19 seasons at USD
- > Reached the NCAA Sweet 16 four times in 2004, 2006, 2013 and 2018
- > Won nine West Coast Conference championships

2021 AZTEC PHOTO ROSTER



Nya BLAIR
OH | 5-11 | So. **1**



Heipua TAUTUA'A
OH | 6-2 | Fr. **2**



Andrea WALKER
MB | 6-0 | RS-Jr. **3**



Kennedy FEUERBORN
S | 6-3 | Fr. **4**



Serena HODSON
MB | 6-2 | So. **5**



Ashley VANDERPAN
S | 6-1 | So. **7**



Lauren LEE
DS/L | 5-0 | Sr. **8**



Camryn MACHADO
S | 6-1 | RS-Jr. **10**



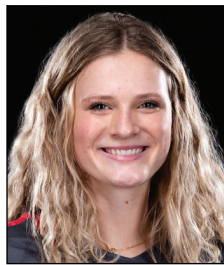
BROOKLYNN HILL
DS/L | 6-1 | RS-Jr. **11**



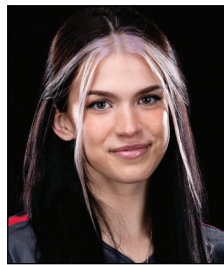
Erin GILLCRIST
RS | 6-1 | Sr. **12**



Elise PARK
DS/L | 5-7 | RS-Fr. **13**



Gabriella SPAETHLING
RS | 6-1 | RS-Fr. **14**



Abby PUGH
MB | 6-3 | RS-Sr. **15**



Alexis DURAND
DS/L | 5-7 | So. **16**



Nadia BARCLAY
DS/L | 5-4 | Fr. **17**



Maddie LENN
OH | 5-10 | Jr. **19**



Victoria O'SULLIVAN
OH | 6-0 | Jr. **21**



Brent HILLIARD
Head Coach



Melanie GREENE
Assistant Coach/
Recruiting Coordinator



STEVE TIMMONS
Assistant Coach



Kara BARKDOLL
Volleyball Operations
Assistant



Yasser AGUILA TODD
Volunteer Assistant Coach

2021 San Diego State Spring Volleyball
 San Diego State Overall Individual Statistics (as of Mar 03, 2021)
 All matches

Overall record: 3-5 Conf: 3-5 Home: 3-3 Away: 0-2 Neutral: 0-0

##	Player	sp	mp-ms	Attack					Set		Serve				
				k	k/s	e	ta	pct	a	a/s	sa	sa/s	se	ta	pct
21	O'SULLIVAN, Victoria	28	8-7	97	3.46	45	251	.207	4	0.14	0	0.00	0	9	1.00
3	WALKER, Andrea	20	6-6	42	2.10	20	96	.229	1	0.05	0	0.00	0	0	.000
1	BLAIR, Nya	19	6-0	39	2.05	20	125	.152	1	0.05	4	0.21	7	60	.883
2	TAUTUA'A, Heipua	28	8-8	55	1.96	38	190	.089	15	0.54	3	0.11	8	89	.910
12	GILLCRIST, Erin	28	8-7	54	1.93	20	119	.286	3	0.11	3	0.11	3	32	.906
14	SPAETHLING, Ella	1	1-0	1	1.00	0	2	.500	0	0.00	0	0.00	0	0	.000
15	PUGH, Abby	16	6-3	15	0.94	6	32	.281	1	0.06	0	0.00	3	15	.800
4	FEUERBORN, Kennedy	17	6-3	15	0.88	8	35	.200	76	4.47	0	0.00	3	18	.833
7	VANDERPAN, Ashley	26	8-5	14	0.54	7	41	.171	189	7.27	3	0.12	5	88	.943
19	LENN, Maddie	24	7-6	10	0.42	10	42	.000	9	0.38	2	0.08	5	28	.821
5	HODSON, Serena	9	4-1	2	0.22	4	12	-.167	0	0.00	1	0.11	1	5	.800
11	HILL, Brooklynn	28	8-1	0	0.00	0	1	.000	11	0.39	4	0.14	8	86	.907
16	DURAND, Alexis	11	5-1	0	0.00	0	0	.000	1	0.09	2	0.18	2	20	.900
17	BARCKLAY, Nadia	7	2-0	0	0.00	0	0	.000	1	0.14	1	0.14	1	25	.960
8	LEE, Lauren	28	8-0	0	0.00	1	4	-.250	20	0.71	4	0.14	5	115	.957
	SAN DIEGO STATE	28	8-8	344	12.2	179	950	.174	332	11.8	27	0.96	51	590	.914
	Opponents	28	8-8	323	11.5	122	907	.222	303	10.8	60	2.14	75	632	.881

##	Player	sp	Recept			Dig		Blocking					Points		
			re	ta	pct	dig	dig/s	bs	ba	total	blk/s	be	bhe	pts	pts/s
21	O'SULLIVAN, Victoria	28	3	28	.893	13	0.46	4	9	13	0.46	2	1	105.5	3.77
3	WALKER, Andrea	20	0	0	.000	3	0.15	3	13	16	0.80	0	0	51.5	2.58
1	BLAIR, Nya	19	1	2	.500	14	0.74	2	2	4	0.21	3	0	46.0	2.42
2	TAUTUA'A, Heipua	28	14	119	.882	87	3.11	2	5	7	0.25	2	1	62.5	2.23
12	GILLCRIST, Erin	28	1	1	.000	10	0.36	5	13	18	0.64	0	0	68.5	2.45
14	SPAETHLING, Ella	1	0	0	.000	1	1.00	0	0	0	0.00	0	0	1.0	1.00
15	PUGH, Abby	16	0	0	.000	1	0.06	0	4	4	0.25	3	0	17.0	1.06
4	FEUERBORN, Kennedy	17	0	0	.000	13	0.76	2	2	4	0.24	0	0	18.0	1.06
7	VANDERPAN, Ashley	26	0	1	1.000	40	1.54	0	7	7	0.27	0	4	20.5	0.79
19	LENN, Maddie	24	10	115	.913	53	2.21	1	0	1	0.04	0	1	13.0	0.54
5	HODSON, Serena	9	0	0	.000	0	0.00	1	3	4	0.44	0	0	5.5	0.61
17	BARCKLAY, Nadia	7	0	0	.000	1	0.14	0	0	0	0.00	0	0	1.0	0.14
8	LEE, Lauren	28	12	130	.908	95	3.39	0	0	0	0.00	0	0	4.0	0.14
11	HILL, Brooklynn	28	13	129	.899	42	1.50	0	0	0	0.00	0	1	4.0	0.14
16	DURAND, Alexis	11	2	18	.889	14	1.27	0	0	0	0.00	0	0	2.0	0.18
-	TEAM	-	3	-	-	-	-	-	-	-	-	-	-	-	-
	SAN DIEGO STATE.....	28	59	546	.892	387	13.82	20	58	49.0	1.75	10	8	420.0	15.00
	Opponents.....	28	27	537	.950	338	12.07	19	136	87.0	3.11	10	9	470.0	16.79

2021 San Diego State Spring Volleyball
 San Diego State Overall Team Statistics (as of Mar 03, 2021)
 All matches

Overall record: 3-5 Conf: 3-5 Home: 3-3 Away: 0-2 Neutral: 0-0

Team Statistics	SDSU	OPP
ATTACK		
Kills	344	323
Errors	179	122
Total Attacks	950	907
Attack Pct	.174	.222
Kills/Set	12.3	11.5
SET		
Assists	332	303
Assists/Set	11.9	10.8
SERVE		
Aces	27	60
Errors	51	75
Attempts	590	632
Serve Pct	.914	.881
Aces/Set	1.0	2.1
SERVE RECEPTIONS		
Errors	59	27
Errors/Set	2.1	1.0
Attempts	546	537
Reception Pct	.892	.950
DEFENSE		
Digs	387	338
Digs/Set	13.8	12.1
BLOCKING		
Block Solo	20	19
Block Assist	58	136
Total Blocks	49.0	87.0
Blocks/Set	1.8	3.1
Block Errors	10	10
Ball handling errors	8	9
ATTENDANCE		
Total	0	0
Dates/Avg Per Date	6/0	2/0
Neutral site #/Avg	0/0	
Current win streak	0	-
Home win streak	0	-

Match wins by #sets	1st	2nd	3rd	4th	5th	Total
San Diego State	0	0	2	1	0	3
Opponents	0	0	2	3	0	5

Sets won by set	1st	2nd	3rd	4th	5th	Total
San Diego State	6	3	2	1	0	12
Opponents	2	5	6	3	0	16

Points by set	1st	2nd	3rd	4th	5th	Total
San Diego State	193	167	153	73	0	586
Opponents	163	186	191	94	0	634

2021 San Diego State Spring Volleyball
San Diego State Category Leaders (as of Mar 03, 2021)
All matches

# ATTACK (by K)							# KILL (by K)			
	S	K	K/S	E	TA	Pct		S	K	K/S
21 O'SULLIVAN, Victoria	28	97	3.46	45	251	.207	21 O'SULLIVAN, Victoria	28	97	3.46
2 TAUTUA'A, Heipua	28	55	1.96	38	190	.089	2 TAUTUA'A, Heipua	28	55	1.96
12 GILLCRIST, Erin	28	54	1.93	20	119	.286	12 GILLCRIST, Erin	28	54	1.93
3 WALKER, Andrea	20	42	2.10	20	96	.229	3 WALKER, Andrea	20	42	2.10
1 BLAIR, Nya	19	39	2.05	20	125	.152	1 BLAIR, Nya	19	39	2.05
15 PUGH, Abby	16	15	0.94	6	32	.281	4 FEUERBORN, Kennedy	17	15	0.88
4 FEUERBORN, Kennedy	17	15	0.88	8	35	.200	15 PUGH, Abby	16	15	0.94
7 VANDERPAN, Ashley	26	14	0.54	7	41	.171	7 VANDERPAN, Ashley	26	14	0.54
19 LENN, Maddie	24	10	0.42	10	42	.000	19 LENN, Maddie	24	10	0.42
5 HODSON, Serena	9	2	0.22	4	12	-.167	5 HODSON, Serena	9	2	0.22
14 SPAETHLING, Ella	1	1	1.00	0	2	.500	14 SPAETHLING, Ella	1	1	1.00
11 HILL, Brooklynn	28	0	0.00	0	1	.000	8 LEE, Lauren	28	0	0.00
8 LEE, Lauren	28	0	0.00	1	4	-.250	11 HILL, Brooklynn	28	0	0.00

# SET (by A)						# SERVE (by SA)						
	S	A	A/S	TA	Pct		S	SA	SE	SA/S	TA	Pct
7 VANDERPAN, Ashley	26	189	7.27	-	-	8 LEE, Lauren	28	4	5	0.14	115	.957
4 FEUERBORN, Kennedy	17	76	4.47	-	-	1 BLAIR, Nya	19	4	7	0.21	60	.883
8 LEE, Lauren	28	20	0.71	-	-	11 HILL, Brooklynn	28	4	8	0.14	86	.907
2 TAUTUA'A, Heipua	28	15	0.54	-	-	2 TAUTUA'A, Heipua	28	3	8	0.11	89	.910
11 HILL, Brooklynn	28	11	0.39	-	-	7 VANDERPAN, Ashley	26	3	5	0.12	88	.943
19 LENN, Maddie	24	9	0.38	-	-	12 GILLCRIST, Erin	28	3	3	0.11	32	.906
21 O'SULLIVAN, Victoria	28	4	0.14	-	-	16 DURAND, Alexis	11	2	2	0.18	20	.900
12 GILLCRIST, Erin	28	3	0.11	-	-	19 LENN, Maddie	24	2	5	0.08	28	.821
1 BLAIR, Nya	19	1	0.05	-	-	5 HODSON, Serena	9	1	1	0.11	5	.800
17 BARCKLAY, Nadia	7	1	0.14	-	-	17 BARCKLAY, Nadia	7	1	1	0.14	25	.960
16 DURAND, Alexis	11	1	0.09	-	-	15 PUGH, Abby	16	0	3	0.00	15	.800
3 WALKER, Andrea	20	1	0.05	-	-	4 FEUERBORN, Kennedy	17	0	3	0.00	18	.833
15 PUGH, Abby	16	1	0.06	-	-	21 O'SULLIVAN, Victoria	28	0	0	0.00	9	1.00
5 HODSON, Serena	9	0	0.00	-	-							

# BLOCK (by Total)						# DEFENSE (by Dig)				
	S	BS	BA	Total	Blk/S		S	Dig	Dig/S	BHE
12 GILLCRIST, Erin	28	5	13	18.0	0.64	8 LEE, Lauren	28	95	3.39	0
3 WALKER, Andrea	20	3	13	16.0	0.80	2 TAUTUA'A, Heipua	28	87	3.11	1
21 O'SULLIVAN, Victoria	28	4	9	13.0	0.46	19 LENN, Maddie	24	53	2.21	1
2 TAUTUA'A, Heipua	28	2	5	7.0	0.25	11 HILL, Brooklynn	28	42	1.50	1
7 VANDERPAN, Ashley	26	0	7	7.0	0.27	7 VANDERPAN, Ashley	26	40	1.54	4
15 PUGH, Abby	16	0	4	4.0	0.25	1 BLAIR, Nya	19	14	0.74	0
5 HODSON, Serena	9	1	3	4.0	0.44	16 DURAND, Alexis	11	14	1.27	0
4 FEUERBORN, Kennedy	17	2	2	4.0	0.24	4 FEUERBORN, Kennedy	17	13	0.76	0
1 BLAIR, Nya	19	2	2	4.0	0.21	21 O'SULLIVAN, Victoria	28	13	0.46	1
19 LENN, Maddie	24	1	0	1.0	0.04	12 GILLCRIST, Erin	28	10	0.36	0
16 DURAND, Alexis	11	0	0	0.0	0.00	3 WALKER, Andrea	20	3	0.15	0
11 HILL, Brooklynn	28	0	0	0.0	0.00	15 PUGH, Abby	16	1	0.06	0
						14 SPAETHLING, Ella	1	1	1.00	0
						17 BARCKLAY, Nadia	7	1	0.14	0
						5 HODSON, Serena	9	0	0.00	0

# POINTS (by Points)				# RECEIPT (by TA)					
	S	Points	Points/S		S	RE	RE/S	TA	Pct
21 O'SULLIVAN, Victoria	28	105	3.77	8 LEE, Lauren	28	12	0.43	130	.908
12 GILLCRIST, Erin	28	68	2.45	11 HILL, Brooklynn	28	13	0.46	129	.899
2 TAUTUA'A, Heipua	28	62	2.23	2 TAUTUA'A, Heipua	28	14	0.50	119	.882
3 WALKER, Andrea	20	51	2.58	19 LENN, Maddie	24	10	0.42	115	.913
1 BLAIR, Nya	19	46	2.42	21 O'SULLIVAN, Victoria	28	3	0.11	28	.893
7 VANDERPAN, Ashley	26	20	0.79	16 DURAND, Alexis	11	2	0.18	18	.889
4 FEUERBORN, Kennedy	17	18	1.06	TM TEAM	-	3	0.11	-	-
15 PUGH, Abby	16	17	1.06	1 BLAIR, Nya	19	1	0.05	2	.500
19 LENN, Maddie	24	13	0.54	7 VANDERPAN, Ashley	26	0	0.00	1	1.000
5 HODSON, Serena	9	5	0.61	12 GILLCRIST, Erin	28	1	0.04	1	.000
11 HILL, Brooklynn	28	4	0.14						
8 LEE, Lauren	28	4	0.14						
14 SPAETHLING, Ella	1	1	1.00						

2021 San Diego State Spring Volleyball
 San Diego State Team Match-by-Match (as of Mar 03, 2021)
 All matches

Date	Opponent	sp			attack			set			serve			recept			dig			blocking			bhe	points	score
		k	e	ta	a	la	pct	sa	se	ta	re	la	pct	bs	ba	be	total	bs	ba	be					
02/04/21	at UNLV	3	30	15	102	.147	29	-	-	2	6	55	.891	6	63	.905	34	2	8	0	6.0	1	38.0	0-3	
02/05/21	at UNLV	4	47	16	135	.230	45	-	-	1	8	78	.897	12	75	.840	58	1	4	2	3.0	2	51.0	1-3	
02-12-21	FRESNO STATE	4	45	34	126	.087	44	-	-	0	7	78	.910	9	84	.893	51	6	8	0	10.0	1	55.0	1-3	
02-13-21	FRESNO STATE	3	41	21	121	.165	38	-	-	3	6	75	.920	5	56	.911	58	3	12	1	9.0	1	53.0	3-0	
02-19-21	NEW MEXICO	3	45	17	99	.283	44	-	-	6	5	74	.932	1	45	.978	39	2	8	3	6.0	0	57.0	3-0	
2-20-21	NEW MEXICO	4	57	31	140	.186	55	-	-	7	7	98	.929	9	72	.875	64	4	2	2	5.0	1	69.0	3-1	
02-26-21	NEVADA	4	51	24	139	.194	50	-	-	3	4	75	.947	9	88	.898	54	1	8	1	5.0	1	59.0	1-3	
02-27-21	NEVADA	3	28	21	88	.080	27	-	-	5	8	57	.860	8	63	.873	29	1	8	1	5.0	1	38.0	0-3	
San Diego State		28	344	179	950	.174	332	-	-	27	51	590	.914	59	546	.892	387	20	58	10	49.0	8	420.0		
		28	323	122	907	.222	303	-	-	60	75	632	.881	27	537	.950	338	19	136	10	87.0	9	470.0		

Sets played: 28
 Kills per set: 12.29
 Assists per set: 11.86

Service aces per set: 0.96
 Digs per set: 13.82
 Blocks per set: 1.75

Points per set: 15.00
 Ball handling errors per set: 0.29
 Reception errors per set: 2.11

Individual Career History

BARCKLAY, Nadia

Season	sp-mp	k	k/s	e	ta	pct	a	a/s	ta	ast%	sa	sa/s	se	ta	srv%
2020	7-2	0	0.00	0	0	.000	1	0.14	-	-	1	0.14	1	25	.960
TOTAL	7-2	0	0.00	0	0	.000	1	0.14	-	-	1	0.14	1	25	.960

Season	dig	d/s	re	ta	rec%	bs	ba	tb	b/s	be	bhe	points	pts/s
2020	1	0.14	0	0	.000	0	0	0	0.00	0	0	1.0	0.14
TOTAL	1	0.14	0	0	.000	0	0	0	0.00	0	0	1.0	0.14

SINGLE-MATCH HIGHS [all-time ranking]:

Assists: 1, Fresno State, 02-13-21

Serve aces: 1, Fresno State, 02-13-21

Digs: 1, Fresno State, 02-13-21

BLAIR, Nya

Season	sp-mp	k	k/s	e	ta	pct	a	a/s	ta	ast%	sa	sa/s	se	ta	srv%
2019	8-5	13	1.62	7	37	.162	1	0.12	-	-	1	0.12	2	17	.882
2020	19-6	39	2.05	20	125	.152	1	0.05	-	-	4	0.21	7	60	.883
TOTAL	27-11	52	1.93	27	162	.154	2	0.07	-	-	5	0.19	9	77	.883

Season	dig	d/s	re	ta	rec%	bs	ba	tb	b/s	be	bhe	points	pts/s
2019	7	0.88	0	4	1.000	1	3	4	0.50	0	0	16.5	2.00
2020	14	0.74	1	2	.500	2	2	4	0.21	3	0	46.0	2.42
TOTAL	21	0.78	1	6	.833	3	5	8	0.30	3	0	62.5	2.30

SINGLE-MATCH HIGHS [all-time ranking]:

Kills: 10, New Mexico, 02-19-21; New Mexico, 2-20-21

Attacks: 35, New Mexico, 2-20-21

Attack pct: .381, New Mexico, 02-19-21 (10-2-21)

Assists: 1, New Mexico, 2-20-21; Fresno State, Nov 12, 2019

Serve aces: 2, New Mexico, 2-20-21

Digs: 4, New Mexico, 02-19-21; at UNLV, 02/05/21; Fresno State, Nov 12, 2019

Blocks: 2, Fresno State, Nov 12, 2019

Block solo: 1, Fresno State, 02-12-21; New Mexico, 02-19-21; Air Force, Nov 14, 2019

Block assist: 2, Fresno State, Nov 12, 2019

DURAND, Alexis

Season	sp-mp	k	k/s	e	ta	pct	a	a/s	ta	ast%	sa	sa/s	se	ta	srv%
2019	3-2	0	0.00	0	0	.000	0	0.00	-	-	0	0.00	0	4	1.000
2020	11-5	0	0.00	0	0	.000	1	0.09	-	-	2	0.18	2	20	.900
TOTAL	14-7	0	0.00	0	0	.000	1	0.07	-	-	2	0.14	2	24	.917

Season	dig	d/s	re	ta	rec%	bs	ba	tb	b/s	be	bhe	points	pts/s
2019	4	1.33	3	19	.842	0	0	0	0.00	0	0	0.0	0.00
2020	14	1.27	2	18	.889	0	0	0	0.00	0	0	2.0	0.18
TOTAL	18	1.29	5	37	.865	0	0	0	0.00	0	0	2.0	0.14

SINGLE-MATCH HIGHS [all-time ranking]:

Assists: 1, Nevada, 02-27-21

Serve aces: 2, Nevada, 02-27-21

Digs: 10, Nevada, 02-27-21

Individual Career History

FEUERBORN, Kennedy

Season	sp-mp	k	k/s	e	ta	pct	a	a/s	ta	ast%	sa	sa/s	se	ta	srv%
2020	17-6	15	0.88	8	35	.200	76	4.47	-	-	0	0.00	3	18	.833
TOTAL	17-6	15	0.88	8	35	.200	76	4.47	-	-	0	0.00	3	18	.833

Season	dig	d/s	re	ta	rec%	bs	ba	tb	b/s	be	bhe	points	pts/s
2020	13	0.76	0	0	.000	2	2	4	0.24	0	0	18.0	1.06
TOTAL	13	0.76	0	0	.000	2	2	4	0.24	0	0	18.0	1.06

SINGLE-MATCH HIGHS [all-time ranking]:

Kills: 6, at UNLV, 02/05/21

Attacks: 11, at UNLV, 02/05/21

Assists: 27, at UNLV, 02/05/21

Digs: 7, Fresno State, 02-12-21

Blocks: 2, Fresno State, 02-12-21

Block solo: 1, Fresno State, 02-12-21; at UNLV, 02/05/21

Block assist: 1, Fresno State, 02-12-21; at UNLV, 02/04/21

GILLCRIST, Erin

Season	sp-mp	k	k/s	e	ta	pct	a	a/s	ta	ast%	sa	sa/s	se	ta	srv%
2017	11-4	8	0.73	8	41	.000	1	0.09	-	-	0	0.00	1	1	.000
2018	104-29	197	1.89	103	523	.180	3	0.03	-	-	1	0.01	3	15	.800
2019	76-22	144	1.89	75	379	.182	3	0.04	-	-	0	0.00	1	7	.857
2020	28-8	54	1.93	20	119	.286	3	0.11	-	-	3	0.11	3	32	.906
TOTAL	219-63	403	1.84	206	1062	.185	10	0.05	-	-	4	0.02	8	55	.855

Season	dig	d/s	re	ta	rec%	bs	ba	tb	b/s	be	bhe	points	pts/s
2017	6	0.55	0	2	1.000	0	15	15	1.36	2	0	15.5	1.36
2018	35	0.34	2	28	.929	0	57	57	0.55	3	2	226.5	2.17
2019	20	0.26	2	18	.889	1	53	54	0.71	9	0	171.5	2.25
2020	10	0.36	1	1	.000	5	13	18	0.64	0	0	68.5	2.43
TOTAL	71	0.32	5	49	.898	6	138	144	0.66	14	2	482.0	2.20

SINGLE-MATCH HIGHS [all-time ranking]:

Kills: 15, 4 times

Attacks: 51, Wyoming, Sep 29, 2018

Attack pct: .429, at Nevada, Oct 20, 2018 (15-3-28)

Assists: 2, at UNLV, 02/05/21

Serve aces: 1, 4 times

Digs: 5, New Mexico, 2-20-21; at San Diego, Sep 20, 2019

Blocks: 8, New Mexico, Oct 11, 2018

Block solo: 2, Fresno State, 02-12-21

Block assist: 8, New Mexico, Oct 11, 2018

Individual Career History

HILL, Brooklynn

Season	sp-mp	k	k/s	e	ta	pct	a	a/s	ta	ast%	sa	sa/s	se	ta	srv%
2020	28-8	0	0.00	0	1	.000	11	0.39	-	-	4	0.14	8	86	.907
TOTAL	28-8	0	0.00	0	1	.000	11	0.39	-	-	4	0.14	8	86	.907

Season	dig	d/s	re	ta	rec%	bs	ba	tb	b/s	be	bhe	points	pts/s
2020	42	1.50	13	129	.899	0	0	0	0.00	0	1	4.0	0.14
TOTAL	42	1.50	13	129	.899	0	0	0	0.00	0	1	4.0	0.14

SINGLE-MATCH HIGHS [all-time ranking]:

Attacks: 1, at UNLV, 02/05/21

Assists: 3, Nevada, 02-27-21; at UNLV, 02/04/21

Serve aces: 3, New Mexico, 02-19-21

Digs: 8, Fresno State, 02-13-21

HODSON, Serena

Season	sp-mp	k	k/s	e	ta	pct	a	a/s	ta	ast%	sa	sa/s	se	ta	srv%
2018	18-5	15	0.83	4	36	.306	0	0.00	-	-	0	0.00	1	1	.000
2019	0-0	0	0.00	0	0	.000	0	0.00	-	-	0	0.00	0	0	.000
2020	9-4	2	0.22	4	12	-.167	0	0.00	-	-	1	0.11	1	5	.800
TOTAL	27-9	17	0.63	8	48	.188	0	0.00	-	-	1	0.04	2	6	.667

Season	dig	d/s	re	ta	rec%	bs	ba	tb	b/s	be	bhe	points	pts/s
2018	1	0.06	0	4	1.000	1	14	15	0.83	0	0	23.0	1.28
2019	0	0.00	0	0	.000	0	0	0	0.00	0	0	0.0	0.00
2020	0	0.00	0	0	.000	1	3	4	0.44	0	0	5.5	0.56
TOTAL	1	0.04	0	4	1.000	2	17	19	0.70	0	0	28.5	1.04

SINGLE-MATCH HIGHS [all-time ranking]:

Kills: 4, Portland, Aug 25, 2018; Seattle U, Aug 25, 2018

Attacks: 13, Portland, Aug 25, 2018

Serve aces: 1, at UNLV, 02/04/21

Digs: 1, vs Pacific, Aug 31, 2018

Blocks: 7, Seattle U, Aug 25, 2018

Block solo: 1, Nevada, 02-27-21; Portland, Aug 25, 2018

Block assist: 7, Seattle U, Aug 25, 2018

Individual Career History

LEE, Lauren

Season	sp-mp	k	k/s	e	ta	pct	a	a/s	ta	ast%	sa	sa/s	se	ta	srv%
2018	98-28	0	0.00	0	3	.000	26	0.27	-	-	18	0.18	14	355	.961
2019	91-28	0	0.00	1	1	-1.000	13	0.14	-	-	11	0.12	13	318	.959
2020	28-8	0	0.00	1	4	-.250	20	0.71	-	-	4	0.14	5	115	.957
TOTAL	217-64	0	0.00	2	8	-.250	59	0.27	-	-	33	0.15	32	788	.959

Season	dig	d/s	re	ta	rec%	bs	ba	tb	b/s	be	bhe	points	pts/s
2018	193	1.97	19	354	.946	0	0	0	0.00	0	1	18.0	0.18
2019	132	1.45	10	306	.967	0	0	0	0.00	0	0	11.0	0.12
2020	95	3.39	12	130	.908	0	0	0	0.00	0	0	4.0	0.14
TOTAL	420	1.94	41	790	.948	0	0	0	0.00	0	1	33.0	0.15

SINGLE-MATCH HIGHS [all-time ranking]:

Attacks: 2, at UNLV, 02/05/21

Assists: 5, at Utah State, Oct 06, 2018

Serve aces: 4, at San Jose State, Oct 18, 2018

Digs: 20, UTEP, Sep 15, 2018

LENN, Maddie

Season	sp-mp	k	k/s	e	ta	pct	a	a/s	ta	ast%	sa	sa/s	se	ta	srv%
2018	26-11	4	0.15	8	33	-.121	3	0.12	-	-	0	0.00	11	73	.849
2019	80-26	49	0.61	26	138	.167	16	0.20	-	-	5	0.06	34	145	.766
2020	24-7	10	0.42	10	42	.000	9	0.38	-	-	2	0.08	5	28	.821
TOTAL	130-44	63	0.48	44	213	.089	28	0.22	-	-	7	0.05	50	246	.797

Season	dig	d/s	re	ta	rec%	bs	ba	tb	b/s	be	bhe	points	pts/s
2018	44	1.69	5	120	.958	0	2	2	0.08	0	0	5.0	0.19
2019	97	1.21	22	355	.938	0	15	15	0.19	1	2	61.5	0.76
2020	53	2.21	10	115	.913	1	0	1	0.04	0	1	13.0	0.54
TOTAL	194	1.49	37	590	.937	1	17	18	0.14	1	3	79.5	0.61

SINGLE-MATCH HIGHS [all-time ranking]:

Kills: 8, Arkansas, Sep 07, 2019

Attacks: 22, Fresno State, 02-12-21

Attack pct: .045, Fresno State, 02-12-21 (7-6-22)

Assists: 3, at UNLV, 02/05/21; Arkansas, Sep 07, 2019

Serve aces: 2, vs Akron, 08/30/19; Long Beach State, Sep 19, 2019

Digs: 18, at UNLV, 02/05/21

Blocks: 3, vs Akron, 08/30/19; San Jose State, Sep 26, 2019

Block solo: 1, Fresno State, 02-12-21

Block assist: 3, vs Akron, 08/30/19; San Jose State, Sep 26, 2019

Individual Career History

MACHADO, Camryn

Season	sp-mp	k	k/s	e	ta	pct	a	a/s	ta	ast%	sa	sa/s	se	ta	srv%
2018	23-8	8	0.35	1	12	.583	89	3.87	-	-	0	0.00	8	41	.805
2019	109-29	48	0.44	19	131	.221	1157	10.61	-	-	16	0.15	14	407	.966
2020	0-0	0	0.00	0	0	.000	0	0.00	-	-	0	0.00	0	0	.000
TOTAL	132-37	56	0.42	20	143	.252	1246	9.44	-	-	16	0.12	22	448	.951

Season	dig	d/s	re	ta	rec%	bs	ba	tb	b/s	be	bhe	points	pts/s
2018	25	1.09	0	0	.000	0	0	0	0.00	1	4	8.0	0.35
2019	277	2.54	1	3	.667	2	35	37	0.34	13	7	83.5	0.76
2020	0	0.00	0	0	.000	0	0	0	0.00	0	0	0.0	0.00
TOTAL	302	2.29	1	3	.667	2	35	37	0.28	14	11	91.5	0.69

SINGLE-MATCH HIGHS [all-time ranking]:

Kills: 5, at Utah State, 11/21/19

Attacks: 8, at FGCU, 08/31/19

Assists: 57, West Virginia, Sep 06, 2019

Serve aces: 5, at FGCU, 08/31/19

Digs: 20, at FGCU, 08/31/19

Blocks: 6, Long Beach State, Sep 19, 2019

Block solo: 1, Long Beach State, Sep 19, 2019

Block assist: 5, Long Beach State, Sep 19, 2019

O'SULLIVAN, Victoria

Season	sp-mp	k	k/s	e	ta	pct	a	a/s	ta	ast%	sa	sa/s	se	ta	srv%
2018	57-24	109	1.91	54	309	.178	0	0.00	-	-	0	0.00	0	3	1.000
2019	110-29	352	3.20	145	872	.237	2	0.02	-	-	0	0.00	0	3	1.000
2020	28-8	97	3.46	45	251	.207	4	0.14	-	-	0	0.00	0	9	1.000
TOTAL	195-61	558	2.86	244	1432	.219	6	0.03	-	-	0	0.00	0	15	1.000

Season	dig	d/s	re	ta	rec%	bs	ba	tb	b/s	be	bhe	points	pts/s
2018	23	0.40	1	16	.938	1	14	15	0.26	3	0	117.0	2.05
2019	57	0.52	9	59	.847	14	38	52	0.47	11	0	385.0	3.50
2020	13	0.46	3	28	.893	4	9	13	0.46	2	1	105.5	3.75
TOTAL	93	0.48	13	103	.874	19	61	80	0.41	16	1	607.5	3.11

SINGLE-MATCH HIGHS [all-time ranking]:

Kills: 22, West Virginia, Sep 06, 2019

Attacks: 42, San Jose State, Sep 26, 2019

Attack pct: .487, West Virginia, Sep 06, 2019 (22-3-39)

Assists: 2, at UNLV, 02/05/21

Digs: 7, at Utah State, 11/21/19

Blocks: 4, at UNLV, 11-02-19

Block solo: 2, 5 times

Block assist: 3, 5 times

Individual Career History

PARK, Elise

SINGLE-MATCH HIGHS [all-time ranking]:

PUGH, Abby

Season	sp-mp	k	k/s	e	ta	pct	a	a/s	ta	ast%	sa	sa/s	se	ta	srv%
2019	4-3	8	2.00	4	19	.211	0	0.00	-	-	1	0.25	0	5	1.000
2020	16-6	15	0.94	6	32	.281	1	0.06	-	-	0	0.00	3	15	.800
TOTAL	20-9	23	1.15	10	51	.255	1	0.05	-	-	1	0.05	3	20	.850

Season	dig	d/s	re	ta	rec%	bs	ba	tb	b/s	be	bhe	points	pts/s
2019	2	0.50	0	0	.000	0	3	3	0.75	0	0	10.5	2.50
2020	1	0.06	0	0	.000	0	4	4	0.25	3	0	17.0	1.06
TOTAL	3	0.15	0	0	.000	0	7	7	0.35	3	0	27.5	1.35

SINGLE-MATCH HIGHS [all-time ranking]:

Kills: 5, Nevada, 02-26-21; New Mexico, 2-20-21

Attacks: 10, Nevada, 02-26-21

Assists: 1, New Mexico, 2-20-21

Digs: 1, New Mexico, 2-20-21

Blocks: 2, Nevada, 02-27-21; at Wyoming, Oct 10, 2019

Block assist: 2, Nevada, 02-27-21; at Wyoming, Oct 10, 2019

SPAETHLING, Ella

Season	sp-mp	k	k/s	e	ta	pct	a	a/s	ta	ast%	sa	sa/s	se	ta	srv%
2020	1-1	1	1.00	0	2	.500	0	0.00	-	-	0	0.00	0	0	.000
TOTAL	1-1	1	1.00	0	2	.500	0	0.00	-	-	0	0.00	0	0	.000

Season	dig	d/s	re	ta	rec%	bs	ba	tb	b/s	be	bhe	points	pts/s
2020	1	1.00	0	0	.000	0	0	0	0.00	0	0	1.0	1.00
TOTAL	1	1.00	0	0	.000	0	0	0	0.00	0	0	1.0	1.00

SINGLE-MATCH HIGHS [all-time ranking]:

Kills: 1, Nevada, 02-26-21

Attacks: 2, Nevada, 02-26-21

Digs: 1, Nevada, 02-26-21

Individual Career History

TAUTUA'A, Heipua

Season	sp-mp	k	k/s	e	ta	pct	a	a/s	ta	ast%	sa	sa/s	se	ta	srv%
2020	28-8	55	1.96	38	190	.089	15	0.54	-	-	3	0.11	8	89	.910
TOTAL	28-8	55	1.96	38	190	.089	15	0.54	-	-	3	0.11	8	89	.910

Season	dig	d/s	re	ta	rec%	bs	ba	tb	b/s	be	bhe	points	pts/s
2020	87	3.11	14	119	.882	2	5	7	0.25	2	1	62.5	2.21
TOTAL	87	3.11	14	119	.882	2	5	7	0.25	2	1	62.5	2.21

SINGLE-MATCH HIGHS [all-time ranking]:

Kills: 15, Nevada, 02-26-21

Attacks: 38, Nevada, 02-26-21

Attack pct: .263, Nevada, 02-26-21 (15-5-38)

Assists: 4, Nevada, 02-26-21; at UNLV, 02/04/21

Serve aces: 2, New Mexico, 2-20-21

Digs: 22, New Mexico, 2-20-21

Blocks: 3, Fresno State, 02-13-21

Block solo: 1, Fresno State, 02-13-21; at UNLV, 02/04/21

Block assist: 2, Fresno State, 02-13-21

VANDERPAN, Ashley

Season	sp-mp	k	k/s	e	ta	pct	a	a/s	ta	ast%	sa	sa/s	se	ta	srv%
2019	0-0	0	0.00	0	0	.000	0	0.00	-	-	0	0.00	0	0	.000
2020	26-8	14	0.54	7	41	.171	189	7.27	-	-	3	0.12	5	88	.943
TOTAL	26-8	14	0.54	7	41	.171	189	7.27	-	-	3	0.12	5	88	.943

Season	dig	d/s	re	ta	rec%	bs	ba	tb	b/s	be	bhe	points	pts/s
2019	0	0.00	0	0	.000	0	0	0	0.00	0	0	0.0	0.00
2020	40	1.54	0	1	1.000	0	7	7	0.27	0	4	20.5	0.77
TOTAL	40	1.54	0	1	1.000	0	7	7	0.27	0	4	20.5	0.77

SINGLE-MATCH HIGHS [all-time ranking]:

Kills: 3, Nevada, 02-26-21; New Mexico, 2-20-21

Attacks: 9, Nevada, 02-26-21; New Mexico, 2-20-21

Assists: 40, New Mexico, 2-20-21

Serve aces: 3, Nevada, 02-27-21

Digs: 12, Nevada, 02-26-21

Blocks: 2, Fresno State, 02-13-21; New Mexico, 02-19-21

Block assist: 2, Fresno State, 02-13-21; New Mexico, 02-19-21

Individual Career History

WALKER, Andrea

Season	sp-mp	k	k/s	e	ta	pct	a	a/s	ta	ast%	sa	sa/s	se	ta	srv%
2017	0-0	0	0.00	0	0	.000	0	0.00	-	-	0	0.00	0	0	.000
2018	7-4	7	1.00	4	16	.188	0	0.00	-	-	0	0.00	0	0	.000
2019	69-23	129	1.87	45	273	.308	1	0.01	-	-	0	0.00	0	0	.000
2020	20-6	42	2.10	20	96	.229	1	0.05	-	-	0	0.00	0	0	.000
TOTAL	96-33	178	1.85	69	385	.283	2	0.02	-	-	0	0.00	0	0	.000

Season	dig	d/s	re	ta	rec%	bs	ba	tb	b/s	be	bhe	points	pts/s
2017	0	0.00	0	0	.000	0	0	0	0.00	0	0	0.0	0.00
2018	0	0.00	0	0	.000	0	5	5	0.71	0	0	9.5	1.29
2019	7	0.10	0	3	1.000	6	55	61	0.88	7	0	162.5	2.35
2020	3	0.15	0	0	.000	3	13	16	0.80	0	0	51.5	2.55
TOTAL	10	0.10	0	3	1.000	9	73	82	0.85	7	0	223.5	2.32

SINGLE-MATCH HIGHS [all-time ranking]:

Kills: 13, at Utah State, 11/21/19

Attacks: 26, at Utah State, 11/21/19

Attack pct: .269, at Utah State, 11/21/19 (13-6-26)

Assists: 1, at UNLV, 02/04/21; Fresno State, Nov 12, 2019

Digs: 2, New Mexico, 2-20-21

Blocks: 6, at Utah State, 11/21/19

Block solo: 2, Boise State, Oct 24, 2019

Block assist: 6, at Utah State, 11/21/19