



SAN DIEGO STATE AZTECS

2021 Spring Volleyball Weekly Notes

Jim Solien (Primary Contact)
 Assistant Media Relations Director
Office Phone Number: (619) 594-2576
E-Mail Address: jsolien@sdsu.edu
News Release Date: March 25, 2021

SDSU Official Athletics Website: goaztecs.com
SDSU Official Athletics Twitter: @GoAztecs
SDSU Official Athletics Instagram: @GoAztecs
SDSU Official Athletics Facebook: facebook.com/goaztecs
SDSU Official Athletics YouTube: youtube.com/goaztecscom

2021 AZTEC SPRING VOLLEYBALL SCHEDULE

Day/Date	Opponent	Time
Thursday, Feb. 4	at UNLV* (MWN)	L, 0-3
Friday, Feb. 5	at UNLV* (MWN)	L, 1-3
Friday, Feb. 12	Fresno State* (MWN)	L, 1-3
Saturday, Feb. 13	Fresno State*	W, 3-0
Friday, Feb. 19	New Mexico*	W, 3-0
Saturday, Feb. 20	New Mexico*	W, 3-1
Friday, Feb. 26	Nevada*	L, 1-3
Saturday, Feb. 27	Nevada* (MWN)	L, 0-3
Friday, March 5	at Wyoming* (MWN)	L, 0-3
Saturday, March 6	at Wyoming* (MWN)	L, 0-3
Thursday, March 11	Utah State* (MWN)	L, 0-3
Friday, March 12	Utah State* (MWN)	W, 3-2
Saturday, March 20	at Boise State (MWN)	W, 3-2
Saturday, March 27	at San José State*	2 p.m. PT
Thursday, April 1	Air Force* (MWN)	6 p.m. PT
Saturday, April 3	Colorado State* (MWN)	1 p.m. PT

* - Mountain West match

Socially

Twitter: @SDSUVolleyball

Instagram: @SDSUVolleyball

Match Week Preview

San Diego State (5-8, 5-8 MW)
 at San Jose State (4-8, 4-8)
 Saturday, March 27, 2021 | 2 p.m. PT
 Spartan Gym at Yosh Uchida Hall
 Coverage: Live Stats | Live Stream
 Series Record: SDSU leads 22-12



AZTECS READY FOR ROAD MATCH SAN JOSÉ STATE

- > The San Diego State volleyball team will make its final road trip of the 2021 spring campaign this weekend when it travels north to the Bay Area on Saturday, March 27 for a single match at San José State.
- > The Aztecs-Spartans clash is scheduled to commence at 2 p.m. PT, with links to streaming video and live stats available on GoAztecs.com.
- > SDSU (5-8, 5-8 MW) is coming off arguably its biggest victory in recent memory after posting a five-set upset at Boise State (25-20, 23-25, 25-21, 24-26, 15-13) on March 20. The Broncos entered the contest with a 10-2 record and a second-place standing in the Mountain West race after posting four consecutive 3-0 sweeps.
- > With the win, the Aztecs snapped a three-match losing streak to Boise State and emerged triumphant at Bronco Gym for just the fourth time since 2011.
- > As a result, San Diego State finds itself in seventh place in the Mountain West race behind Colorado State (6-5, 6-5 MW), Fresno State (6-5, 6-5 MW) and Air Force (6-6, 6-6 MW).
- > On the flip side, San José State (4-8, 4-8 MW) have tumbled into eighth place, one-half match behind the Aztecs, after dropping five of six sets in a pair of losses last weekend at league-leading UNLV.
- > SDSU senior libero Lauren Lee was named Mountain West Defensive Player of the Week on March 22 after posting a career-high 36 digs at Boise State, which is tied for the most in the conference this year and ranks fifth in program history.
- > San Diego State is under the direction of first-year head coach Brent Hilliard, who arrived on The Mesa in January 2020 after a successful 19-year tenure as an assistant at the University of San Diego, where he served as the Toreros' associate head coach from 2007-19.
- > Hilliard hired the legendary Steve Timmons to his staff as an assistant coach. Timmons was the first American male to win three Olympic medals in indoor volleyball, leading the U.S. national team to gold medals at the 1984 and 1988 Summer Games, as well as a bronze in 1992.

2021 MOUNTAIN WEST SPRING VOLLEYBALL SCHEDULE

- > The Mountain West has adopted a 16-match conference-only schedule for the 2021 spring volleyball season taking place over nine weeks (Feb. 4-April 3).
- > Each institution will play six opponents twice and four opponents once.
- > Using a hybrid scheduling format, the first seven weeks will feature teams facing the same opponent twice in one weekend at one site. Travel partners will play the final two weeks of the season.
- > The regular-season champion will be the Mountain West's NCAA tournament automatic qualifier.

SERIES RECORD VS. SAN JOSÉ STATE

- > The Aztecs lead the all-time series 22-12 in 34 varsity meetings vs. the Spartans dating back to 1977.
- > San Diego State sports a 12-4 record at home vs. SJSU, a 7-8 mark in San Jose and a 3-0 ledger on a neutral court.
- > Since San José State joined the Mountain West in 2013, the Aztecs have posted a 7-5 record in 12 meetings versus the Spartans, including a 3-3 mark in San Jose.
- > Four of the last five matches against SJSU have been extended to five sets, including the last encounter when San Diego State jumped out to a 2-0 lead before holding off a furious Spartan comeback for the win (25-14, 25-23, 21-25, 26-28, 16-14) at home on Sept. 26, 2019.
- > In that match, the two sides combined for 35 ties and 17 lead changes over the final three sets in a marathon match that lasted 2 hours and 39 minutes.
- > Collectively, the Aztecs hit just .171, including a .113 clip over the final four sets. After committing two attack errors in the opening frame, San Diego State was plagued by 35 miscues over the remainder of the contest, allowing the SJSU to climb back into contention.
- > Among 2021 Aztec returners, Victoria O'Sullivan led all players with 20 kills in that match and hit .310, while Erin Gillcrist finished with six put-aways. Camryn Machado, who is sidelined this season with an injury, also excelled in that contest with 56 assists and 16 digs.

ON THE HORIZON

- > Following its Bay Area venture, San Diego State closes out its 2021 spring schedule with a pair of home matches vs. Air Force (April 1) and Colorado State (April 3).

GENERAL INFORMATION

Location San Diego, Calif.
 Founded 1897
 Enrollment 33,870
 Nickname Aztecs
 Colors Scarlet and Black (Pantone 187)
 Conference Mountain West
 Affiliation Division I
 President Dr. Adela de la Torre
 Director of Athletics John David Wicker
 Faculty Representative Patrick Papin
 Home Facility Aztec Court at Peterson Gym (2,000)

TEAM INFORMATION

Head Coach Brent Hilliard
 Alma Mater Long Beach State '93
 Record at SDSU 5-8 (First year)
 Career Record 59-19 (Third year)
 E-Mail bhilliard@sdsu.edu
 Volleyball Office Phone (619) 594-5064
 Volleyball Office Fax (619) 594-1674
 Assistant Coach/Recruiting Coordinator Melanie Greene
 Assistant Coach Steve Timmons
 Volleyball Operations Assistant Kara Barkdoll
 2019 Record 15-14
 2019 Conference Record 8-10 (Fifth)
 2019 Home Record 8-5
 2019 Road Record 3-9
 2019 Neutral Record 4-0
 Letterwinners Returning/Lost 9/6
 Starters Returning/Lost 4/2 + libero

PROGRAM HISTORY

First Year of Volleyball 1976
 Overall Record 885-618 (.589)
 NCAA Appearances 14
 Last Postseason Appearance 2012
 NCAA Postseason Record 15-14

MEDIA RELATIONS

Assistant Media Relations Director Jim Solien
 E-Mail jsolien@sdsu.edu
 SID Office Phone (619) 594-2576
 SID Office Fax (619) 582-6541
 Official Athletic Website www.GoAztecs.com

**SPRING 2021 AZTEC VOLLEYBALL
 STATISTICAL LEADERS**

Hitting Percentage	(.283)	Andrea Walker
Kills	148	Victoria O'Sullivan
Kills per set	3.15	Victoria O'Sullivan
Assists	298	Ashley Vanderpan
Assists per set	6.62	Ashley Vanderpan
Digs	196	Lauren Lee
Digs per set	4.17	Lauren Lee
Blocks	31.0	Erin Gillcrist
Blocks per set	0.73	Andrea Walker
Service Aces	9	Brooklynn Hill
Service Aces per set	0.20	Brooklynn Hill

2021 AZTEC SPRING VOLLEYBALL ROSTER

No.	Player	Pos.	Ht.	Yr.	Hometown (Last School)
1	Nya Blair	OH	5-11	So.	Grand Prairie, Texas (Martin HS)
2	Heipua Tautua'a	OH	6-2	Fr.	Wai'anae, Hawai'i (Wai'anae HS)
3	Andrea Walker	MB	6-0	R-Jr.	Fairfield, Calif. (Vanden HS)
4	Kennedy Feuerborn	S	6-3	Fr.	Overland Park, Kan. (Blue Valley North HS)
5	Serena Hodson	MB	6-2	R-So.	Mission Viejo, Calif. (Trabuco Hills HS)
7	Ashley Vanderpan	S	6-1	R-So.	Elk Grove, Calif. (Syracuse)
8	Lauren Lee	DS/L	5-0	Sr.	Coppell, Texas (Rice Univ.)
10	Camryn Machado	S	5-9	R-Jr.	Cardiff-by-the-Sea, Calif. (Utah)
11	Brooklynn Hill	DS/L	5-8	Jr.	Rancho Cucamonga, Calif. (Penn State)
12	Erin Gillcrist	RS	6-1	Sr.	Lakewood, Colo. (Lakewood HS)
13	Elise Park	DS/L	5-7	R-Fr.	Columbia, Md. (Atholton HS)
14	Gabriella Spaethling	RS	6-1	R-Fr.	Larkspur, Calif. (Redwood HS)
15	Abby Pugh	MB	6-3	R-Sr.	Brenham, Texas (Wichita State)
16	Alexis Durand	DS/L	5-7	So.	Long Beach, Calif. (Long Beach Poly HS)
17	Nadia Barclay	DS/L	5-2	Fr.	Foster City, Calif. (Hillsdale HS)
19	Maddie Lenn	OH	5-10	Jr.	San Francisco, Calif. (Sacred Heart Cathedral Prep)
21	Victoria O'Sullivan	OH	6-0	Jr.	Albany, Calif. (St. Mary's HS)

Head Coach: Brent Hilliard (Long Beach State, 1993), First season at SDSU
Assistant Coach/Recruiting Coordinator: Melanie Greene (San Diego State, 2007), 10th season at SDSU
Assistant Coach: Steve Timmons (Southern California), First season at SDSU
Volleyball Operations Assistant: Kara Barkdoll (Cal State San Marcos, 2015), Third season at SDSU
Volunteer Assistant Coach: Yasser Aguila Todd (Trident University, 2009, 2014), Second season at SDSU

Pronunciations

#1 NYA Blair NIGH-ah
 #2 HEIPIUA TAUTUA'A HEY-poo-ah TAW-too-ah-ah
 #4 KENNEDY FEUERBORN FEWER-born



OPPONENT COMPARISON (ALL MATCHES)

2021 Overall Stats	SDSU	MW Rank	OPP	MW Rank	SJSU	MW Rank	OPP	MW Rank
Hitting Percentage	.171	8	.215	7	.215	5	.247	11
Kills per set	11.91	7	11.64	4	12.57	5	12.30	6
Assists per set	11.36	6	10.72	3	11.79	4	11.15	6
Service Aces per set	1.00	11	1.85	10	1.72	5	1.45	4
Digs per set	13.72	7	12.11	1	14.43	5	12.72	3
Blocks per set	1.87	7	2.72	11	1.45	11	2.13	6

SAN JOSÉ STATE AT A GLANCE

> After opening the month with three victories in four matches, San José State (4-8, 4-8 MW) came up empty in its road trip to UNLV last weekend, March 19-20, dropping four of five sets in two losses. The Spartans fell short in the opener, 19-25, 14-25, 25-23, 17-25, before experiencing a sweep in the series finale, 17-25, 22-25, 16-25. Prior to Saturday's clash with the Aztecs, SJSU will play host to New Mexico on Thursday, March 25. Offensively, middle blocker Haylee Nelson (3.57/set) and outside hitter Latavehai Lousi (3.30/set) enter the weekend ranked fourth and fifth in the Mountain West in kills, respectively, while middle blockers Allyson Alden (.318) and Ryann Thomison (.317) occupy the ninth and 10th spots in hitting percentage. In addition, setter Mia Schafer finds herself among the conference leaders, ranking fifth in assists (7.98/set), while libero Sarah Smevog (3.62/set) is seventh in digs. As a team, the Spartans rank among the top half of the MW in assists (4th - 11.79/set), kills (5th - 12.57/set), service aces (5th - 1.72/set) and digs (14.43/set). However, SJSU is last in the conference in blocks (1.45/set) and opponent hitting percentage (.247). The Spartans sport three players from San Diego County on their roster, including Alden (San Marcos HS), Schafer (La Costa Canyon HS) and Yazmin Pitpit (Scripps Ranch HS). Head coach Trent Kersten is in his first year at the helm of the San José State program after spending five years as an assistant coach and recruiting coordinator at TCU from 2015-19. During his tenure with the Horned Frogs staff, Kersten's 2019 recruiting class was ranked fifth in the country by Volleyball Magazine and sixth by Prep Volleyball. Kersten played three seasons at UCLA, where he ranked among the nation's top 15 in hitting percentage (.387) and blocks (1.08/set) as a senior in 2015.

REWIND: AZTECS OUTLAST BOISE STATE IN FIVE-SET THRILLER

> San Diego State recorded perhaps its biggest victory in recent history with a dramatic five-set upset over Boise State (25-20, 23-25, 25-21, 24-26, 15-13) on March 20 at Bronco Gym in Boise, Idaho.
 > The two sides combined for 37 ties and 13 lead changes during the two-and-a-half-hour thriller, as the Aztecs defeated a Boise State squad that entered the weekend with four straight 3-0 sweeps.
 > For just the second time this season, SDSU maintained the upper hand in team blocks, finishing with a 15.0-7.0 advantage while holding the statistical edge in kills (62-59), assists (60-53) and digs (73-62) to help fuel its win.
 > Each team was plagued by 10 errant serves; however, the Aztecs posted a season-high eight aces and committed eight fewer attack errors, as the Scarlet and Black out-hit the Broncos .236 to .157 for the match.
 > Offensively, SDSU was led by the trio of Nya Blair, Victoria O'Sullivan and Heipua Tautua'a, who combined for 47 of the team's 62 kills.

2021 MOUNTAIN WEST SPRING STANDINGS (As of March 25)

Team	---Conference---			----Overall----			Strk
	W	L	Pct	W	L	Pct.	
UNLV	9	0	1.000	9	0	1.000	W9
Boise State	10	3	.769	10	3	.769	L1
Wyoming	8	4	.667	8	4	.667	W1
Colorado State	6	5	.545	6	5	.545	W1
Fresno State	6	5	.545	6	5	.545	W1
Air Force	6	6	.500	6	6	.500	W1
San Diego State	5	8	.385	4	8	.385	W2
San José State	4	8	.333	4	8	.333	L2
New Mexico	3	7	.300	3	5	.300	L2
Utah State	3	8	.278	3	8	.278	L1
Nevada	3	9	.250	3	9	.250	L4

Upcoming Matches in the MW

Thursday, March 25

UNLV at Fresno State, 5 p.m. PT
 Nevada at Utah State, 5:30 p.m. MT
 Wyoming at Air Force, 6 p.m. MT
 New Mexico at San José State, 6 p.m. PT
 Boise State at Colorado State, 7 p.m. MT

Saturday, March 27

San Diego State at San José State, 2 p.m. PT
 New Mexico at Fresno State, 1 p.m. PT
 Utah State at Colorado State, 1 p.m. MT
 Boise State at Air Force, 1 p.m. MT
 UNLV at Nevada, 1 p.m. PT

Thursday, April 1

Air Force at San Diego State, 6 p.m. PT
 Colorado State at New Mexico, TBA
 Fresno State at Nevada, 6 p.m. PT
 San José State at Utah State, 6 p.m. MT
 Wyoming at UNLV, 6:30 p.m. PT

Saturday, April 3

Colorado State at San Diego State, 1 p.m. PT
 Utah State at New Mexico, TBA
 San José State at Wyoming, 1 p.m. MT
 Fresno State at Boise State, 1 p.m. PT
 Air Force at UNLV, 1 p.m. PT

Saturday, April 10

Air Force at Army, TBA

Sunday, April 11

Air Force vs. Navy (at West Point, N.Y.), TBA



Blair led all players with a career-high 18 put-aways, while O'Sullivan floored 15 shots, followed by Tautua'a, who launched 14 non-returnables of her own while committing just two attack errors for a match-best .462 clip.

- > Tautua'a was also one of three Aztecs to post six blocks, joining O'Sullivan, who contributed a pair of solo stuffs, and Erin Gillcrist.
- > In addition, Lauren Lee shattered her career best with 36 digs, which is tied for the most in the Mountain West this season and ranks fifth in school history, while Ashley Vanderpan (11) and Brooklynn Hill (10) surpassed double digits in scoops.
- > Lee's performance marked the highest dig total for an Aztec since Aime Cordeiro collected 39 in a four-set loss to the College of Charleston on Aug. 30, 2006.
- > Not to be outdone, Vanderpan notched her third double-double of the year after handing out 31 assists, while Kennedy Feuerborn (5 kills) dished out 16 helpers.
- > In the deciding fifth set, SDSU broke a 4-4 tie with five straight points, highlighted by two Blair kills, a pair of aces from Tautua'a and another put-away by Feuerborn.
- > However, Boise State stormed back with a 9-4 blitz to tie the score at 13-13. Jessica Donahue and Alyssa Wissinger tallied two kills apiece during that span, while Jordi Holdaway and Allison Casillas each served up aces. In addition, the Broncos benefited from two wayward attacks and an errant serve. Following a timeout, Ohlinger gifted the Aztecs with a service error, while Gillcrist and Tautua'a combined to stymie a Kayly Pau attack at the net, as the Scarlet and Black erupted in jubilation.

LAUREN LEE NAMED MW DEFENSIVE PLAYER OF THE WEEK

- > San Diego State libero Lauren Lee was named Mountain West Volleyball Defensive Player of the Week for her outstanding performance in the Aztecs' thrilling five-set upset at Boise State on March 20.
- > With her award, Lee received the first conference weekly honor of her career and SDSU's first this season.
- > Against the Broncos, Lee posted a career-high 36 digs (7.2/set), which is tied for the most in a conference match this season. In addition, her dig total ranks fifth in program history and is tops in the 25-point scoring era, which began in 2008.
- > Lee was the back-row anchor for an Aztec defense that limited the Broncos to a hitting percentage under .100 for three of the five sets and a .157 clip for the match after Boise State entered the weekend with a .252 pace, which ranked second in the MW.
- > In the fourth set alone, Lee came up with 11 digs against a Bronco squad that was allowing 13.57 team digs per set to the opposition entering the match.
- > A senior from Coppell, Texas, Lee also recorded a clean 1.000 reception percentage, committing no errors in eight chances.
- > For the season, Lee has surpassed the double-digit plateau in digs in 11 of 13 matches, including a current streak of five straight, averaging 5.32 scoops per set during that stretch.

AZTECS AMONG MW LEADERS

- > On the strength of her 36 digs (7.2/set) at Boise State, Lauren Lee has climbed into third place in the Mountain West this week with 4.17 digs per set.
- > With her totals, Lee has surpassed the double-digit dig plateau in 11 of 13 matches, including a current streak of five. Over her last five outings vs. Wyoming, Utah State and Boise State, Lee has scooped up 5.32 digs per set, raising her season average from 3.39 to 4.17 during that stretch.
- > Victoria O'Sullivan remains among the conference leaders as well, occupying the seventh spot with 3.15 kills per set.
- > O'Sullivan had her streak of double-digit kills this season snapped at seven matches on Feb. 27, but has still logged 10 or more put-aways in 31 of her last 42 appearances dating back to the 2019 fall campaign.
- > O'Sullivan is tied for the seventh-highest kill total for a single match in the Mountain West this season and is tied for the third-most in that category for a four-set contest after launching 20 non-returnables in the Aztecs' 3-1 triumph at home over New Mexico on Feb. 20.
- > Meanwhile, Ashley Vanderpan is holding on to the ninth spot with an average of 6.74 assists per set despite splitting time with Kennedy Feuerborn at the setter position.
- > Vanderpan has recorded 30 or more assists in five matches this season, with the Aztecs posting a 4-1 record in those contests. Her 38 helpers in a sweep of New Mexico on Feb. 19 rank as the fourth-highest assist total for a three-set match in the MW so far this year. She also played a key role in the Aztecs' five-set victory at Boise State with 31 assists.
- > Collectively, San Diego State occupies the seventh position in kills (11.91/set), assists (11.30/set) and digs (13.72/set) while ranking eighth in hitting percentage (.171). Conversely, SDSU opponents have posted 12.11 digs per set on Aztec attacks, which ranks last in the conference, and have managed just 11.64 kills per set against the Scarlet and Black, which is fourth from the bottom in the league.

NOTABLE

- > With their 3-2 victories over Utah State and Boise State, the Aztecs have won consecutive five-set matches for the first time since defeating West Virginia and Arkansas on consecutive nights at the SDSU/USD Invitational, Sept. 6-7, 2019. The Scarlet and Black also played consecutive five-setters on Oct. 19 and Oct. 24, 2019, but fell short at Air Force and vs. Boise State at home, respectively.
- > After its five-set comeback victory over Utah State on March 12, San Diego State additionally snapped a 14-match losing streak when trailing 0-2 in sets.
- > In their three previous victories prior to the Boise State and Utah State wins, the Aztecs have grabbed a 2-0 lead in sets.
- > The last time SDSU emerged victorious after falling behind by two sets occurred in the aforementioned match vs. West Virginia in 2019.
- > In their victory Utah State, the Aztecs had four players log double-digit kill totals in the same match for the first time this season: O'Sullivan (12), Blair (12), Tautua'a (11) and Andrea Walker (11).
- > SDSU is 3-1 this season when having three or more players surpass double figures in kills after posting an 8-3 mark in that category last year.
- > The Aztecs are 5-0 this season when leading in kills and logging a greater attack percentage. In addition, SDSU is unbeaten this year at 4-0 when holding the opposition to an attack percentage under .200.

- > Victoria O'Sullivan has been SDSU's leader or co-leader in kills in nine of 13 matches this season. The junior outside hitter has logged 10 or more put-aways in 30 of her last 41 starts dating back to the 2019 fall campaign.
- > The 15 kills by Heipua Tautua'a against Nevada on Feb. 26 marked the first time this season that an Aztec player other than O'Sullivan led the team in that statistic. Erin Gillcrist finished with eight put-aways vs. the Wolf Pack in the series finale, while Tautua'a, Maddie Lenn and Nya Blair all shared the team lead in the series opener at Wyoming on March 5. In addition, Blair set a career-high will 18 kills at Boise State on March 20.
- > Setter Ashley Vanderpan owns three of San Diego State's four double-doubles this season vs. Fresno State on Feb. 13 (30 assists, 11 digs), against Nevada on Feb. 26 (34 assists, 12 digs) and at Boise State on March 20 (31 assists, 11 digs), marking the first three times she's accomplished the feat during her career.
- > SDSU's other double-double belongs to Tautua'a, who notched 11 kills and 11 assists in its five-set triumph over Utah State on March 12, helping the Aztecs snap a five-match losing streak.
- > Erin Gillcrist recorded her two highest hitting percentages of the season vs. New Mexico (.750) on Feb. 20 and against Nevada (.500) on Feb. 26, combining for 16 kills on 26 swings with just one error in those two matches.
- > In her first collegiate appearance, Gabriella Spaethling came off the bench in the fourth set against Nevada on Feb. 26 and recorded her first career kill and dig.

FLASHBACK: 1986 SAN JOSÉ STATE AT SAN DIEGO STATE

- > The Aztecs and Spartans have played some memorable matches over the years, including the 1986 season when San José State and San Diego State squared off as the top two teams in the AVCA/Tachikara poll, respectively, on Sept. 29 of that year. In front of an electric Monday night crowd of 1,764 fans, the Aztecs prevailed in a five-set thriller.
- > After dropping the first two sets, 7-15 and 8-15, the Aztecs stormed back to capture the final three frames, 16-14, 15-11 and 15-4, raising their record to 21-0 on the year. Consequently, SDSU took over the No. 1 spot in the poll for the ensuing four weeks.
- > The Aztecs featured a balanced attack against SJSU, led by sophomore Kris Morton, who posted match-highs of 24 kills and eight blocks, including four solo stops, while three teammates completed double-doubles. Senior setter Liane Sato also topped all players with a 63-assist, 24-dig performance, joining fellow classmate Sally Larsen (15 kills, 17 digs) and junior Jackie Mendez (14 kills, 10 digs).
- > Not to be outdone, senior Renee Pankopf finished with a match-high .577 hitting percentage after knocking down 17 kills on 26 attempts with just two errors, while senior Kim Harsch contributed eight kills and 20 digs on the evening.
- > Collectively, SDSU out-hit the Spartans, .291 to .261, maintaining the statistical advantage in kills (83-78), digs (94-57) and team blocks (11-5) to key the victory.

NOTHIN' LIKE HOME COOKIN'

- > Since the beginning of the 2009 campaign, the Aztecs have amassed a 108-55 (.663) record at home, highlighted by a 14-0 mark during the 2012 season when SDSU captured the Mountain West championship.

THE UTAH STATE SERIES AT A GLANCE

- > San Diego State was forced to move its two-match series vs. Utah State to Jenny Craig Pavilion on the University of San Diego campus, March 11-12, after a roof leak affected the playing floor at SDSU's Peterson Gym.
- > The Aztecs split their two encounters against the Aggies, dropping a 3-0 decision in the opener (23-25, 13-25, 19-25) before overcoming a two-set deficit for a dramatic 3-2 victory in the finale (19-25, 23-25, 25-20, 25-19, 15-7), which snapped a five-match losing streak.
- > In that second match, SDSU shared the offensive wealth, as four players surpassed the double-digit kill plateau, including Victoria O'Sullivan and Nya Blair, who launched 12 put-aways apiece, while Andrea Walker and Heipua Tautua'a finished with 11 each.
- > Tautua'a registered her first collegiate double-double after posting 11 digs as well, while Walker hit at crisp .529 pace, committing just two errors on 17 attempts.
- > Not to be outdone, Lauren Lee anchored an exceptional defensive effort with a career-high 26 digs, while Ashley Vanderpan and Kennedy Feuerborn split the setting duties, handing out 23 assists apiece.
- > Despite trailing in team blocks (8-0-6-0), the Aztecs maintained the statistical advantage in kills (57-50) and digs (65-51) and assists (53-46).
- > The two sides netted seven aces apiece but still combined for a whopping 30 service errors, including 17 by the Aggies. However, the Scarlet and Black offset that inconsistency by hitting .321 over the final three sets to spark its comeback.
- > The teams combined for 10 ties and four lead changes early in the third set, as USU looked to complete its second straight sweep. With the score knotted at 11-11, however, SDSU breathed new life into the match after fashioning a 9-3 run to take the lead for good. Four different Aztecs knocked down kills during that stretch, including two by Tautua'a, while Brooklyn Hill served up a pair of aces to help give SDSU a 20-14 advantage.
- > The Aztecs hit .400 for the set, totaling 13 kills with just one error on 30 swings while benefiting from five USU service errors.
- > SDSU maintained the upper hand for much of the fourth stanza, as another O'Sullivan put-away and a Hill service ace broke a 4-4 deadlock, putting the host school ahead to stay. The Aggies remained within striking distance, narrowing the gap to 15-12 after an Abby Peterson ace. However, the USU libero's next serve went awry, while Tautua'a followed with a pair of kills, sandwiched around a Gillcrist non-returnable, which suddenly extended the Aztec lead to an insurmountable 19-12 margin.
- > Despite posting more kills (13-11) in the fourth set, USU self-destructed once again with five service errors during that stretch.
- > The Aggies untimely serving woes continued in the decisive fifth frame, where they committed four more errors while launching just three kills. Still, the two teams were tied at 4-4 following a put-away by USU's Stall. However, SDSU seized command with an 11-3 closing run, highlighted by two kills each from Tautua'a and Blair, while Lee and Hill contributed service aces. Blair's final kill iced the match for the Scarlet and Black and gave her a new career-best in the process.
- > In the opening match, SDSU was plagued by 24 attack errors and seven wayward serves, as USU posted a greater hitting percentage (.244 to .059) and served up eight aces to help fuel its win. In addition, the Aggies maintained the statistical advantage in kills (34-30), digs (35-34) and team blocks (9-0-5-0).
- > Individually, SDSU received 10 kills apiece from Andrea Walker and Victoria O'Sullivan, while Lauren Lee led the Scarlet and Black with 11 digs. The Aztecs also received three block assists from Serena Hodson, while Ashley Vanderpan handed out a match-high 23 assists.

2021 SITUATIONAL RECORDS

GENERAL

Overall.....	5-8
Mountain West.....	5-8
Home.....	4-4
Away.....	1-4
vs. Ranked Teams.....	0-0
vs. Unranked Teams.....	5-8
Matches Following a Win.....	3-1
Matches Following a Loss.....	1-7
Longest Winning Streak.....	3
Longest Losing Streak.....	5
Current Streak.....	Won 2

BY SETS

3 Sets.....	2-5
4 Sets.....	1-3
5 Sets.....	2-0
Leading After Two.....	3-0
Trailing After Two.....	1-5
Tied After Two.....	1-3
Leading 2-1.....	2-0
Trailing 2-1.....	1-2

BY MONTH

February.....	3-5
March.....	2-3
April.....	0-0

BY DAY

Thursday.....	0-2
Friday.....	2-4
Saturday.....	3-2

BY KILLS

Leading in Kills.....	5-0
Trailing in Kills.....	0-7
Tied in Kills.....	0-1

BY DIGS

Leading in Digs.....	5-4
Trailing in Digs.....	0-3
Tied in Digs.....	0-1

BY BLOCKS

Leading in Blocks.....	2-0
Trailing in Blocks.....	3-7
Tied in Blocks.....	0-1

BY ATTACK PERCENTAGE

Greater Attack Percentage.....	5-0
Lower Attack Percentage.....	0-8
Equal Attack Percentage.....	0-0
Hitting above .300.....	0-0
Hitting between .200 and .300.....	3-2
Hitting between .100 and .200.....	2-2
Hitting below .100.....	0-4
Opponent Hitting above .300.....	0-2
Opponent Hitting between .200 and .300.....	0-6
Opponent Hitting between .100 and .200.....	4-0
Opponent Hitting below .100.....	1-0

BY INDIVIDUAL KILLS

3+ Double-Digit Individual Kill Totals.....	3-1
2 Double-Digit Individual Kill Totals.....	2-1
1 Double-Digit Individual Kill Totals.....	1-3
0 Double-Digit Individual Kill Totals.....	0-3

A LOOK BACK AT THE WYOMING SERIES

- > Making its first road trip in four weeks, San Diego State fell short in pair of matches at Wyoming, March 5-6. The Aztecs gave the host Cowgirls all they could handle in the opener but ultimately dropped a tough three-setter (19-25, 24-26, 22-25) before experiencing a nearly identical fate in the finale (19-25, 14-25, 18-25).
- > In the first match, SDSU and Wyoming were fairly even on the stat sheet, tying in team blocks with six apiece, while SDSU maintained a slight advantage in digs (42-39). However, the Cowgirls outhit the Aztecs .282 to .218 for the evening, including a .429 to .290 spread in the third set, where the Scarlet and Black committed three more attack errors (5-2) in trying to extend the contest.
- > In addition, the Aztecs were plagued by 12 service errors on the night.
- > Individually, SDSU was led by the trio of Nya Blair, Heipua Tautua'a and Maddie Lenn, who knocked down seven kills each while Erin Gillcrist and Victoria O'Sullivan finished with six apiece.
- > Tautua'a also excelled on defense, recording three solo blocks, while Serena Hodson added three block assists. In addition, Lauren Lee anchored the back row with a match-high 15 digs, marking the seventh time in matches she reached double figures in that category.
- > The Aztecs also split the setting duties against Wyoming, with Kennedy Feuerborn dishing out 19 assists, while Ashley Vanderpan handed out 17.
- > The teams combined for 12 ties and three lead changes in the third set, totaling 14 kills apiece, including three each by Lenn and Blair for SDSU. However, Wyoming notched just two errant attacks, compared to five for the Aztecs. The score was knotted at 18-18 before the Cowgirls closed with a 7-4 run.
- > The Aztecs struggled to generate consistency in the second match, as Wyoming benefited from 25 attack errors by the visitors.
- > SDSU trailed in team blocks (11.0-7.0) and were out-hit .221 to .010 for the day, mustering just five kills in the second set as a team.
- > Victoria O'Sullivan led the way with eight kills, followed by Nya Blair (5) and Maddie Lenn (4), while Heipua Tautua'a and Lauren Lee tied for team high honors with 13 digs apiece.

RECAPPING THE NEVADA SERIES

- > After winning three straight, San Diego State dropped consecutive encounters against Nevada Feb. 26-27, to wrap up a season-long six-match homestand.
- > The Aztecs were stymied in the opener by a 3-1 count (25-20, 14-25, 20-25, 15-25) before suffering a three-set defeat the following day (22-25, 21-25, 13-25).
- > Despite receiving double-digit kills from three players in the first match and maintaining a slight edge in digs (54-53), San Diego State was out-hit (.318 to .194) and trailed in team blocks (13.0-5.0).
- > In addition, the Wolf Pack benefited from 24 attack errors and served up eight aces to post their first win on the road in nine meetings vs. the Scarlet and Black.
- > Heipua Tautua'a tied for match-high honors with 15 kills, while Victoria O'Sullivan added 13 put-aways of her own, followed by Erin Gillcrist, who hit .500 for the night after launching 10 non-returnables on 18 attempts with just one error.
- > In addition, Lauren Lee led all players with 14 digs, while Ashley Vanderpan notched her second double-double of the year with 34 assists and 12 digs. Gillcrist was also a force at the net, recording a team-high four blocks, including a solo stuff.
- > However, the Aztecs were unable to maintain the momentum after claiming the first set. SDSU hit .286 during the frame, knocking down 18 kills on 42 swings with six miscues. The Aztecs mustered a .155 attack percentage the rest of the way, while the Wolf Pack recorded a .356 clip over the final three sets, including a .500 pace (16-1-30) in the final stanza.
- > In the second match, the SDSU attack was stymied, as Nevada maintained a sizable advantage in hitting percentage (.293 to .080) and team blocks (14.0-5.0).
- > Individually, the Aztecs were led by Gillcrist's eight kills, while Heipua Tautua'a added seven.
- > The Scarlet and Black cause was also aided by Ashley Vanderpan, who handed out 15 assists and served up three aces, while Alexis Durand scooped up a match-high 10 digs in her first collegiate start.

RECAPPING THE NEW MEXICO SERIES

- > San Diego State posted a pair of victories over New Mexico on Feb. 19-20 at Aztec Court. The two contests were originally slated as a home series for the Lobos when the Mountain West released its 2021 spring schedule. However, the conference officially announced the switch in venues on Feb. 17.
- > SDSU recorded its second straight sweep in the series opener, dispatching the visitors by scores of 25-13, 25-17, 25-21 before claiming a four-set decision in the finale, 25-20, 25-20, 23-25, 25-19.
- > With the two victories, the Aztecs also remain unbeaten vs. New Mexico in the last eight encounters between the two programs.
- > In the opener, Victoria O'Sullivan blasted a match-high 13 kills and hit .346 on the evening, while Nya Blair added a career-high 10 put-aways of her own.
- > The SDSU attack also included seven kills apiece from Erin Gillcrist and Heipua Tautua'a, while Ashley Vanderpan dished out 38 assists and posted seven digs.
- > In addition, Brooklynn Hill served up a personal-best three aces, while Lauren Lee scooped up a team-

high 11 scoops in the victory.

- > Despite trailing in team blocks (7.0-6.0), the Aztecs held a sizable advantage in most statistical categories, including kills (45-27), digs (39-25) and service aces (6-1) while outhitting UNM .283 to .136.
- > The third frame was the most competitive, with the two sides witnessing 10 ties and three lead changes. O'Sullivan and Blair took center stage, totaling six kills each in the set, while Andrea Walker added three.
- > In the finale, Victoria O'Sullivan launched a season-high 20 kills and added two solo blocks, while Nya Blair finished with 10 put-aways for the second straight outing.
- > SDSU's fortunes were also buoyed by Andrea Walker, who hit .417 for the match on seven kills with two errors in 12 attempts, while Erin Gillcrist floored seven shots of her own.
- > In addition, the Aztecs received career-high performances from Heipua Tautua'a (22 digs) and Ashley Vanderpan (40 assists), while Lauren Lee posted a season-high 16 digs, marking the fifth straight contest of recording double digits in that category.
- > Despite trailing in team blocks (13.0-5.0) and committing 31 attack errors overall, San Diego State proved that quantity trumped quality on this day, maintaining a sizable 57-43 advantage in kills and a 64-36 edge in digs.

RECAPPING THE FRESNO STATE SERIES

- > Brent Hilliard picked up his first victory as head coach of the Aztecs on Feb. 13, after San Diego State dispatched Fresno State in three sets (25-19, 26-24, 25-20) to even the weekend series at one match apiece.
- > SDSU maintained a 41-29 advantage in kills during the series finale, limiting Bulldogs to a .060 hitting percentage, as the visitors committed 22 errors on the day.
- > In addition, the Aztecs held the statistical edge in digs (58-50) and team blocks (9.0-8.0) to break into the win column for the first time this spring.
- > Individually, SDSU was once again led by Victoria O'Sullivan, who launched a team-high 11 kills, breaking the double-digit plateau in that category for the fourth match in a row and 25th time in her last 33 outings dating back to last season.
- > The Aztec offense also received a boost from Andrea Walker (.389) and Nya Blair (.375), who committed just one attack error apiece, blasting eight and seven put-aways, respectively.
- > Not to be outdone, a trio of SDSU players reached double figures in digs, including Lauren Lee (13), Heipua Tautua'a (11) and Ashley Vanderpan (11), with the latter notching her first career double-double after dishing out 30 assists as well.
- > The Aztecs closed with a strong 8-3 surge in the opening set after Fresno State crept to within one point at 17-16.
- > The second stanza evolved into a classic thriller, with the two teams combining for 12 ties and nine lead changes.
- > Things looked bleak for SDSU late in the second stanza after finding itself staring down the barrel of a 24-21 deficit.
- > However, the Scarlet and Black flashed its mettle once again, as O'Sullivan contributed two kills and a solo block to ignite a timely 5-0 blitz. Blair added another key put-away, while the Bulldogs imploded with an attack error on the final serve.
- > The third set was also a nip-and-tuck affair, as the two sides witnessed five ties in the early going. However, the Aztecs took the lead for good after a Blair kill and service ace followed by an O'Sullivan non-returnable, which broke a 12-12 deadlock.
- > In its home opener the previous night, San Diego State dropped a four-set decision (25-22, 16-25, 18-25, 18-25).
- > The Aztecs matched the Bulldogs with 45 kills and held a sizable 51-36 advantage in digs but were undone by 34 attack errors, hitting just .087 for the night, compared to the visitors, who finished with a .246 clip and maintained the upper hand in team blocks (17-10) to with nine service aces.
- > Victoria O'Sullivan was the lone player for the Scarlet and Black to surpass the double-digit kill barrier, launching a team-high 11 non-returnables, while Andrea Walker totaled eight put-aways of her own while contributing four total blocks.
- > Erin Gillcrist and Maddie Lenn also got into the act with seven kills apiece, while Lauren Lee anchored the back row with a match-high 15 digs. In addition, Kennedy Feuerborn dished out a team-best 26 assists.

RECAPPING THE UNLV SERIES

- > Playing its first intercollegiate match in over 14 months, San Diego State dropped a three-set decision on the road to UNLV (22-25, 21-25, 10-25) in the 2021 spring opener for both teams on Feb. 4.
- > The Rebels out-hit the Aztecs .310 to .147, maintaining a 44-30 advantage in kills and a 44-34 edge in digs to spoil the debut of first-year SDSU head coach Brent Hilliard.
- > Victoria O'Sullivan paced the Scarlet and Black with 11 kills, hitting .300 for the night on 30 attempts with just two errors, while Heipua Tautua'a launched a six non-returnables of her own to go with a team-high 10 digs.
- > In addition, SDSU received four kills apiece from Erin Gillcrist (3 blocks) and Kennedy Feuerborn (6 assists), while Ashley Vanderpan handed out 11 assists in her first Aztec appearance.
- > The Aztecs were unable to maintain a hot start the next night vs. UNLV, falling in four sets (25-19, 18-25, 19-25, 15-25).

- > The Aztecs outthit the Rebels .452 to .242 in the opening frame, knocking down 15 kills with just one error in 31 attempts. However, SDSU stumbled to a .163 clip the rest of way, while UNLV posted a .296 attack percentage during that span, including a .361 pace in the final set.
- > In all, the Rebels served up 12 aces and maintained the advantage in kills (55-47) and total blocks (7.0-3.0) to help fuel their victory. Conversely, the Aztecs held a slight edge in digs (58-55) but were plagued by eight errant serves.
- > Individually, SDSU was paced by Victoria O'Sullivan, who launched 13 kills and hit .333 for the match, committing just two errors in 33 swings, while Andrea Walker (.316) blasted nine put-aways of her own and contributed two block assists.
- > The Aztec cause was also aided by Erin Gillcrist, who totaled eight kills and a service ace, while Kennedy Feuerborn displayed her versatility with six kills, 27 assists and a solo block.
- > Not to be outdone, Maddie Lenn anchored the back row with a career-high 18 digs, while Lauren Lee reached double digits as well with 13 scoops of her own.

WELCOME BACK

- > The Aztecs return 13 players, including nine letterwinners from last year's squad that finished with a 15-14 record overall and an 8-10 mark in the Mountain West.
- > Leading the returners is outside hitter Victoria O'Sullivan, who ranked sixth in the league with 3.20 kills per set (352 overall) and tied for the team lead with 14 solo blocks while finishing fourth with 52 stops overall. The Aztec junior is the lone veteran to have played all 110 sets in 2019, finishing with double-digit kill totals in 21 of the Aztecs' 29 matches, including 10 straight to start the season.
- > In SDSU's riveting five-set thriller over West Virginia at the Aztec Challenge in September 2019, O'Sullivan blasted a career-high 22 kills and logged a collegiate-best .487 hitting percentage, committing just three errors in 39 attempts.
- > With the graduation of Hannah Turnlund and Tamia Reeves, setter Camryn Machado is the Aztecs' lone all-Mountain West honoree to return from last year. However, the Cardiff-by-the-Sea native will miss the 2021 spring campaign after suffering a torn ACL in preseason camp.
- > In 2019, Machado ranked second in the MW with 10.62 assists per set (1,158 overall) and occupied the No. 2 spot on the team with 2.54 digs per set (277 overall).
- > Additionally Machado led the Scarlet and Black with 14 double-doubles (assists-digs), including seven vs. MW opponents, and topped the squad with 16 service aces, including a career-high three in a home sweep of Utah State.
- > Senior right-side hitter Erin Gillcrist has been selected team captain for the upcoming season. The Lakewood, Colorado, native has successfully recovered from off-season shoulder surgery and looks to build on a 2019 campaign in which she averaged 1.89 kills (144 overall) and 0.71 blocks per set (54 overall).
- > In the Aztecs' 3-1 victory over Long Beach State on Sept. 19, 2019, Gillcrist matched her career-best with a .500 attack percentage, flooring 10 balls on 16 attempts with two errors.
- > Also back in the fold is middle blocker Andrea Walker, who owns the top returning hitting percentage among Aztec regulars after finishing 10th in the Mountain West last year with a .308 clip. The Fairfield, California, product occupied the second spot on the team with an average of 0.88 blocks per set (61 overall) and ranked fifth behind Gillcrist with an average of 1.87 kills per set (129 overall).
- > Walker compiled double-digit kills on three occasions, including a career-high 13 put-aways in SDSU's 3-1 victory at Utah State on Nov. 21, 2019.

MEET THE NEWCOMERS

- > First-year head coach Brent Hilliard has added four newcomers to the roster, including a trio of freshmen in outside hitter Heipua Tautua'a, setter Kennedy Feuerborn and defensive specialist Nadia Barclay, along with junior defensive specialist Brooklynn Hill, a transfer from perennial national power Penn State.
- > Hill played 13 matches in two seasons with the Nittany Lions, who advanced to the NCAA regional finals in both of her years on the State College campus. A native of Southern California, Hill starred for three straight conference championship teams at Rancho Cucamonga High School from 2015-17, earning all-Baseline League honors three times to go with a trio of team MVP and Defensive Player of the Year awards.
- > A product of Wai'anae High School in Hawai'i, Tautua'a garnered first-team all-Western Division accolades from the O'ahu Interscholastic Association in 2018 and landed on the AVCA Phenom Watch List. She also excelled at the junior level, collecting Most Valuable Player honors at the 2019 Girls Junior National Championships after leading her Spike and Serve Volleyball Club 16s team to the American Division title. In addition, Tautua'a earned a spot on the USA Volleyball Girls' Youth A1 National Training Team in 2018-19.
- > Feuerborn, meanwhile, arrives on The Mesa by way of Johnson County (Kan.) Community College where she enrolled for the 2019-20 academic year but did not compete in volleyball. Feuerborn earned second-team all-state honors and landed on the state Class 6A all-tournament team as a senior in 2018 at Blue Valley North High School in Overland Park, Kansas. She originally signed with Baylor as a prep but did not attend.
- > Rounding out the rookie class is Barclay, who graduated from Hillsdale High School in San Mateo, California, where she received first team all-conference recognition and team MVP accolades as a junior in 2018 after averaging 24.6 digs per match (541 total, 7.7 per set).

PRESEASON PROGNOSTICATIONS

- > San Diego State was picked to finish fifth this year in the Mountain West preseason coaches poll released Jan. 28. The Aztecs garnered 70 points and garnered one first-place vote.
- > In the 21-year history of the Mountain West, SDSU has finished first (2012), second (2002, 2011), fourth (2000, 2001, 2003, 2013, 2017), fifth (2005, 2015, 2019), sixth (1999, 2004, 2006, 2009, 2010, 2014, 2016), seventh (2008) and eighth (2007, 2018) in the final league standings.

2021 Mountain West Spring Preseason Poll

Rk.	Team (1st-place votes)	Pts.
1.	Colorado State (5)	92
2.	UNLV (4)	90
3.	Wyoming (1)	80
4.	Boise State	76
5.	San Diego State (1)	70
6.	Fresno State	48
7.	Nevada	41
8.	Air Force	33
9.	San José State	28
10.	New Mexico	25
11.	Utah State	22

VOLLEYBALL LEGEND STEVE TIMMONS ADDED TO COACHING STAFF

- > Aztec head coach Brent Hilliard served up a proverbial ace with his first staff addition after hiring the legendary Steve Timmons as an assistant coach on Feb. 15, 2020.
- > The first American male to win three Olympic medals in indoor volleyball, Timmons has worked as an elite coach since 2013 with Wave Volleyball Club based in nearby Del Mar, one of the most prestigious volleyball clubs in the country.
- > One of the sport's most potent hitters, Timmons first made his impact as a three-year letterman at USC (1980-82), where he helped the Trojans capture the 1980 NCAA Championship, earning all-tournament honors in the process. He also garnered first-team all-conference accolades to go with All-America distinction in 1982.
- > Timmons quickly rose to international stardom, winning gold medals for the U.S. Team at the Summer Olympics 1984 and 1988 to go with a bronze in 1992. He collected MVP honors for the 1984 Games, and in 1988 he was named the U.S. Olympic Committee's Male Volleyball Player of the Year. That same year, he was voted the Federation of International Volleyball's Best Blocker and received MVP recognition at the World Super Four Tournament.
- > Not to be outdone, Timmons led the U.S. Team to gold medals at the 1985 World Cup and 1986 World Championships, helping the Americans complete the first "Triple Crown" in volleyball following their triumph at the 1984 Olympics.
- > Timmons was selected to USA Volleyball's 75th anniversary All-Era team in 2003 and was ranked No. 8 on Volleyball magazine's "35 Best U.S. Players of All Time" list in 2012. In addition, he was named to the inaugural class of the Southern California Indoor Volleyball Hall of Fame in 2017.
- > Previously, Timmons was inducted into the U.S. Volleyball Association and International Volleyball Halls of Fame in 1998 while landing a spot on Volleyball magazine's all-time American Indoors first team. Additionally, he was enshrined in the Orange County Sports Hall of Fame in 1990 and the California Community College Hall of Fame in 1998 for his basketball and volleyball prowess at Orange Coast College.

AZTEC VOLLEYBALL EARNS PUBLIC RECOGNITION AWARD FROM NCAA

- > Last spring, the San Diego State volleyball program was publicly recognized by the NCAA for outstanding academic achievements, along with the Aztec women's golf and women's tennis teams.
- > The recognition came on the heels of the most recent multi-year Academic Progress Rates (APR) in which all three programs were among the top 10 percent of their respective sports nationally.
- > With these squads earning NCAA public recognition last season, San Diego State has now received such distinction a total of 21 times in school history, matching its record of three teams set during the 2011-12 and 2017-18 academic years.
- > The SDSU volleyball program received public recognition for the fourth straight season and fifth time overall, while the Aztec women's tennis team garnered the accolade for the third year in a row and sixth time in the last seven seasons. In addition, the San Diego State women's golf squad merited public recognition for the third time in school history.

2021 MATCH-BY-MATCH LEADERS

Date	Opponent	Kills	Hitting Pct.*	Assists	Aces	Digs	Blocks
F.4	at UNLV	O'Sullivan - 13	O'Sullivan (.300)	Vanderpan - 11	Hodson/Tautua'a - 1	Tautua'a - 10	Gillcris/Walker - 3
F.5	at UNLV	O'Sullivan - 11	O'Sullivan (.333)	Feuerborn - 27	Gillcris - 1	Lenn - 18	Walker - 2
F.12	Fresno State	O'Sullivan - 11	Gillcris (.267)	Feuerborn - 26	none	Lee - 15	Walker - 4
F.13	Fresno State	O'Sullivan - 11	Walker (.389)	Vanderpan - 30	Barcklay/Blair/Lee - 1	Lee - 13	Walker - 4
F.19	New Mexico	O'Sullivan - 13	O'Sullivan (.346)	Vanderpan - 38	Hill - 3	Lee - 11	O'Sullivan - 3
F.20	New Mexico	O'Sullivan - 20	Walker (.417)	Vanderpan - 40	Blair/Tautua'a - 2	Tautua'a - 22	O'Sullivan - 3
F. 26	Nevada	Tautua'a - 15	Gillcris (.500)	Vanderpan - 34	Gillcris/Hill/Lee - 1	Lee - 14	Gillcris - 4
F.27	Nevada	Gillcris - 8	Gillcris (.250)	Vanderpan - 15	Vanderpan - 3	Durand - 10	Hodson - 3
M.5	at Wyoming	Blair/Lenn/Tautua'a - 7	Blair (.333)	Feuerborn - 19	Feuerborn - 1	Lee - 15	Hodson/Tautua'a - 3
M.6	at Wyoming	O'Sullivan - 8	O'Sullivan (.083)	Vanderpan - 15	Gillcris/Vanderpan - 1	Lee/Tautua'a - 13	Gillcris - 4
M.12	Utah State	O'Sullivan/Walker - 10	Walker (.286)	Vanderpan - 23	Durand/Lee - 1	Lee - 11	Hodson - 3
M.13	Utah State	Blair/O'Sullivan - 12	Walker (.529)	Vanderpan/Feuerborn - 23	Hill - 3	Lee - 26	O'Sullivan/Walker - 3
M.20	at Boise State	Blair - 18	Tautua'a (.462)	Vanderpan - 31	Vanderpan - 3	Lee - 36	Gillcris/O'Sullivan/Tautua'a - 6
M.27	at San Jose State						
A.1	Air Force						
A.3	Colorado State						

* - min. 7 kills

SPRING 2021 AZTEC SUPERLATIVES

Individual

HITTING PERCENTAGE (min. 12 kills)

.462 (14-2-26) Heipua Tautua'a at Boise State (March 20)

KILLS

20 Victoria O'Sullivan vs. New Mexico (Feb. 20)

5 sets 18 Nya Blair at Boise State (March 20)

4 sets 20 Victoria O'Sullivan vs. New Mexico (Feb. 20)

3 sets 13 Victoria O'Sullivan vs. New Mexico (Feb. 19)

TOTAL ATTEMPTS

53 Nya Blair at Boise State (March 20)

5 sets 53 Nya Blair at Boise State (March 20)

4 sets 41 Victoria O'Sullivan vs. New Mexico (Feb. 20)

3 sets 33 Victoria O'Sullivan vs. Fresno State (Feb. 13)

ASSISTS

40 Ashley Vanderpan vs. New Mexico (Feb. 20)

5 sets 31 Ashley Vanderpan at Boise State (March 20)

4 sets 40 Ashley Vanderpan vs. New Mexico (Feb. 20)

3 sets 38 Ashley Vanderpan vs. New Mexico (Feb. 19)

DIGS

36 Lauren Lee at Boise State (March 20)

5 sets 36 Lauren Lee at Boise State (March 20)

4 sets 22 Heipua Tautua'a vs. New Mexico (Feb. 20)

3 sets 15 Lauren Lee at Wyoming (March 5)

SERVICE ACES

3 Brooklynn Hill vs. Utah State (March 12) and vs. New Mexico (Feb. 19)

..... Ashley Vanderpan at Boise State (March 20) and vs. Nevada (Feb. 27)

BLOCK SOLOS

3 Heipua Tautua'a at Wyoming (March 5)

BLOCK ASSISTS

6 Heipua Tautua'a at Boise State (March 20)

TOTAL BLOCKS

6 Erin Gillcris, Victoria O'Sullivan and Heipua Tautua'a at Boise State (March 20)

Team

HITTING PERCENTAGE

.283 (45-17-99) vs. New Mexico (Feb. 19)

KILLS

62 at Boise State (March 20)

5 sets 57 at Boise State (March 20)

4 sets 57 vs. New Mexico (Feb. 20)

3 sets 45 vs. New Mexico (Feb. 19)

TOTAL ATTEMPTS

165 at Boise State (March 20)

5 sets 165 at Boise State (March 20)

4 sets 140 vs. New Mexico (Feb. 20)

3 sets 121 vs. Fresno State (Feb. 13)

ASSISTS

59 at Boise State (March 20)

5 sets 59 at Boise State (March 20)

4 sets 55 vs. New Mexico (Feb. 20)

3 sets 44 vs. New Mexico (Feb. 19)

DIGS

73 at Boise State (March 20)

5 sets 73 at Boise State (March 20)

4 sets 64 vs. New Mexico (Feb. 20)

3 sets 58 vs. Fresno State (Feb. 13)

SERVICE ACES

8 at Boise State (March 20)

TOTAL BLOCKS

15.0 at Boise State (March 20)



Brent HILLIARD

Head Coach - First Season at San Diego State

San Diego State Director of Athletics John David Wicker ushered in a new era for the Aztec volleyball team with the hiring of Brent Hilliard as the fifth head coach in program history on Jan. 31, 2020.

A 2018 inductee to the Southern California Indoor Volleyball Hall of Fame, Hilliard arrives at SDSU with a wealth of experience after achieving 19 years of unparalleled success as an assistant coach at the University of San Diego, where he served as the Toreros' associate head coach since 2007.

"Brent Hilliard's presence in San Diego County volleyball is far reaching," Wicker said. "Through the club volleyball teams he coached, his 19 years at USD, the time and relationships with the Olympics, Coach Hilliard will be able to hit the ground running for San Diego State. In addition to his San Diego ties, Brent also has what we need in the next leader to graduate the women in the volleyball program, lead them to compete for championships and prepare them for a successful life after sport. He is known for his coaching tenacity in the gym, and at the same time, people of all ages told us how much they enjoyed him as a person."

During his fruitful tenure, the Toreros qualified for the NCAA Tournament in all but one of his 19 seasons, advancing to the Sweet 16 in 2004, 2006, 2013 and 2018. In addition, Hilliard helped guide the Toreros to nine West Coast Conference championships while his players earned six All-America awards, 12 All-America honorable mentions, 44 all-WCC accolades and 15 freshman all-conference certificates.

Hilliard twice assumed the reins of the USD program on an interim basis while head coach Jennifer Petrie was absent on maternity leave. In 2006, Hilliard was honored as WCC Coach of the Year after guiding the Toreros to a conference championship and a Sweet 16 appearance in the NCAA Tournament. That season, he coached five all-conference honorees, including WCC Player of the Year Kristen Carlson, as USD finished 14th in the final USA Today/Coaches Poll.

The Toreros also flourished under Hilliard's guidance in 2011, racing to a 13-0 start en route a program-best 28-5 record, highlighted by a spot in the second round of the NCAA Tournament. Throughout his stint, USD was consistently ranked among the nation's top 25, climbing to as high as No. 2 during the 2013 campaign and rising to No. 5 in 2016.

"I would like to thank John David Wicker, Jenny Bramer, Dr. Adela de la Torre and the rest of the SDSU search committee for making me feel so welcome during the interview process," Hilliard said. "To be the head coach of such a remarkable women's volleyball program in my family's hometown is truly a once in a lifetime opportunity."

"We are fully committed to work tirelessly to elevate this program back to an elite status on the college volleyball landscape, one that the student body, faculty, community, alumni and, of course, all future Aztecs will take great pride in."

Hilliard played collegiately at Long Beach State, earning All-America honors in each of his four years from 1990-93, including first-team recognition over his final three seasons. A right-side hitter for the 49ers, Hilliard was named the NCAA Men's Volleyball Player of the Year as a junior in 1992 after leading LBSU to a 31-1 record.

In 1991, Hilliard and the 49ers captured the NCAA Championship with a 3-1 victory over USC in the finals, avenging a loss to the Trojans in the title match the year before. He finished his career as the NCAA all-time leader with 3,034 kills.

Additionally, Hilliard was selected to play for Team USA in the 1992 Summer Olympics in Barcelona, Spain, where he helped the Americans capture the bronze medal. The following year, he won a silver medal at the 1993 Pan American Games in Argentina and also owns a bronze medal from the 1991 World Cup.

After receiving his undergraduate degree in 1993 from Long Beach State in political science, Hilliard continued his volleyball career as a professional in Europe from 1995-98, playing two seasons in Belgium and another in the Netherlands. In 1996, Hilliard and the Masiek Volleyball Club captured the Belgian national championship and competed in the European Champions League.

In addition to his collegiate experience, which included a stint as head coach at nearby Cuyamaca College in 1999 and 2000, Hilliard has also coached for the past 10 years at Wave Volleyball Club in Del Mar, the premier volleyball club in San Diego County.

"Our priority at SDSU will be to engage, attract and secure exceptional student-athletes that strive for both academic and athletic excellence in their everyday lives," Hilliard added. "From day one, we will set expectations high and build from there. I am incredibly excited to get started and I look forward to the bright future ahead."

HILLIARD'S COLLEGIATE COACHING LEDGER (As an Assistant at USD)

Year	Overall Record	WCC Record (Finish)	Postseason
2001	22-9	10-4 (3rd)	NCAA Second Round
2002	25-8	10-4 (3rd)	NCAA First Round
2003	17-13	6-8 (T-5th)	NCAA First Round
2004	24-5	14-0 (1st)	NCAA Sweet 16
2005	23-6	10-4 (T-2nd)	NCAA Second Round
2006*	26-6	13-1 (1st)	NCAA Sweet 16
2007	21-8	11-3 (1st)	NCAA First Round
2008	23-5	12-2 (1st)	NCAA First Round
2009	18-7	10-4 (2nd)	None
2010	24-8	13-1 (1st)	NCAA Second Round
2011*	28-5	12-4 (2nd)	NCAA Second Round
2012	21-7	13-3 (T-1st)	NCAA First Round
2013	26-4	16-2 (1st)	NCAA Sweet 16
2014	19-12	12-6 (T-3rd)	NCAA First Round
2015	22-10	14-4 (2nd)	NCAA Second Round
2016	24-6	15-3 (2nd)	NCAA First Round
2017	25-5	17-1 (T-1st)	NCAA Second Round
2018	18-13	13-5 (3rd)	NCAA Sweet 16
2019	25-6	17-1 (1st)	NCAA Second Round

Overall Total 431-143 (.751)

WCC Total 238-60 (.799)

Notes

- * - Served as interim head coach during the 2006 and 2011 seasons
- > Qualified for the NCAA Tournament in 18 of his 19 seasons at USD
- > Reached the NCAA Sweet 16 four times in 2004, 2006, 2013 and 2018
- > Won nine West Coast Conference championships

2021 AZTEC PHOTO ROSTER



Nya BLAIR
OH | 5-11 | So. **1**



Heipua TAUTUA'A
OH | 6-2 | Fr. **2**



Andrea WALKER
MB | 6-0 | RS-Jr. **3**



Kennedy FEUERBORN
S | 6-3 | Fr. **4**



Serena HODSON
MB | 6-2 | So. **5**



Ashley VANDERPAN
S | 6-1 | So. **7**



Lauren LEE
DS/L | 5-0 | Sr. **8**



Camryn MACHADO
S | 6-1 | RS-Jr. **10**



BROOKLYNN HILL
DS/L | 6-1 | RS-Jr. **11**



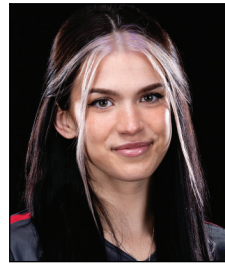
Erin GILLCRIST
RS | 6-1 | Sr. **12**



Elise PARK
DS/L | 5-7 | RS-Fr. **13**



Gabriella SPAETHLING
RS | 6-1 | RS-Fr. **14**



Abby PUGH
MB | 6-3 | RS-Sr. **15**



Alexis DURAND
DS/L | 5-7 | So. **16**



Nadia BARCLAY
DS/L | 5-4 | Fr. **17**



Maddie LENN
OH | 5-10 | Jr. **19**



Victoria O'SULLIVAN
OH | 6-0 | Jr. **21**



Brent HILLIARD
Head Coach



Melanie GREENE
Assistant Coach/
Recruiting Coordinator



STEVE TIMMONS
Assistant Coach



Kara BARKDOLL
Volleyball Operations
Assistant



Yasser AGUILA TODD
Volunteer Assistant Coach

2021 San Diego State Spring Volleyball
 San Diego State Overall Individual Statistics (as of Mar 25, 2021)
 All matches

Overall record: 5-8 Conf: 5-8 Home: 4-4 Away: 1-4 Neutral: 0-0

##	Player	sp	mp-ms	Attack					Set		Serve				
				k	k/s	e	ta	pct	a	a/s	sa	sa/s	se	ta	pct
21	O'SULLIVAN, Victoria	47	13-12	148	3.15	75	388	.188	6	0.13	0	0.00	0	9	1.00
1	BLAIR, Nya	37	11-1	82	2.22	33	243	.202	3	0.08	5	0.14	13	93	.860
3	WALKER, Andrea	33	9-9	69	2.09	28	145	.283	3	0.09	0	0.00	0	0	.000
2	TAUTUA'A, Heipua	46	13-13	92	2.00	61	301	.103	23	0.50	6	0.13	21	152	.862
12	GILLCRIST, Erin	47	13-12	75	1.60	37	201	.189	4	0.09	4	0.09	12	76	.842
14	SPAETHLING, Ella	1	1-0	1	1.00	0	2	.500	0	0.00	0	0.00	0	0	.000
15	PUGH, Abby	19	8-3	17	0.89	7	41	.244	1	0.05	0	0.00	3	15	.800
4	FEUERBORN, Kennedy	35	11-6	26	0.74	12	64	.219	144	4.11	1	0.03	5	32	.844
5	HODSON, Serena	17	7-4	11	0.65	6	31	.161	0	0.00	1	0.06	3	12	.750
19	LENN, Maddie	41	12-9	21	0.51	19	89	.022	10	0.24	3	0.07	6	42	.857
7	VANDERPAN, Ashley	45	13-7	16	0.36	11	55	.091	298	6.62	8	0.18	9	153	.941
11	HILL, Brooklynn	44	13-1	1	0.02	1	3	.000	13	0.30	9	0.20	10	144	.931
8	LEE, Lauren	47	13-0	1	0.02	2	7	-.143	28	0.60	6	0.13	9	184	.951
16	DURAND, Alexis	20	8-1	0	0.00	0	0	.000	1	0.05	3	0.15	8	52	.846
17	BARCKLAY, Nadia	7	2-0	0	0.00	0	0	.000	1	0.14	1	0.14	1	25	.960
	SAN DIEGO STATE	47	13-13	560	11.9	292	1570	.171	535	11.3	47	1.00	100	989	.899
	Opponents	47	13-13	547	11.6	218	1530	.215	507	10.7	87	1.85	125	1053	.881

##	Player	sp	Recept			Dig		Blocking					Points		
			re	ta	pct	dig	dig/s	bs	ba	total	blk/s	be	bhe	pts	pts/s
21	O'SULLIVAN, Victoria	47	3	35	.914	21	0.45	8	18	26	0.55	3	1	165.0	3.51
1	BLAIR, Nya	37	2	8	.750	18	0.49	2	4	6	0.16	5	0	91.0	2.46
3	WALKER, Andrea	33	0	1	1.000	4	0.12	3	21	24	0.73	1	0	82.5	2.50
2	TAUTUA'A, Heipua	46	25	259	.903	132	2.87	6	14	20	0.43	4	1	111.0	2.41
12	GILLCRIST, Erin	47	1	14	.929	20	0.43	7	24	31	0.66	3	1	98.0	2.09
14	SPAETHLING, Ella	1	0	0	.000	1	1.00	0	0	0	0.00	0	0	1.0	1.00
15	PUGH, Abby	19	0	1	1.000	1	0.05	0	5	5	0.26	3	0	19.5	1.03
4	FEUERBORN, Kennedy	35	0	0	.000	19	0.54	2	7	9	0.26	0	4	32.5	0.93
5	HODSON, Serena	17	0	2	1.000	3	0.18	1	10	11	0.65	0	0	18.0	1.06
19	LENN, Maddie	41	13	172	.924	70	1.71	1	3	4	0.10	0	2	26.5	0.65
7	VANDERPAN, Ashley	45	0	1	1.000	71	1.58	1	8	9	0.20	0	9	29.0	0.64
11	HILL, Brooklynn	44	17	172	.901	69	1.57	0	0	0	0.00	0	1	10.0	0.23
8	LEE, Lauren	47	14	187	.925	196	4.17	0	0	0	0.00	0	0	7.0	0.15
17	BARCKLAY, Nadia	7	0	0	.000	1	0.14	0	0	0	0.00	0	0	1.0	0.14
16	DURAND, Alexis	20	5	51	.902	19	0.95	0	0	0	0.00	0	0	3.0	0.15
-	TEAM	-	6	-	-	-	-	-	-	-	-	-	-	-	-
	SAN DIEGO STATE.....	47	86	909	.905	645	13.72	31	114	88.0	1.87	19	19	695.0	14.79
	Opponents.....	47	47	885	.947	569	12.11	31	194	128.0	2.72	22	14	762.0	16.21

2021 San Diego State Spring Volleyball
 San Diego State Overall Team Statistics (as of Mar 25, 2021)
 All matches

Overall record: 5-8 Conf: 5-8 Home: 4-4 Away: 1-4 Neutral: 0-0

Team Statistics	SDSU	OPP
ATTACK		
Kills	560	547
Errors	292	218
Total Attacks	1570	1530
Attack Pct	.171	.215
Kills/Set	11.9	11.6
SET		
Assists	534	504
Assists/Set	11.4	10.7
SERVE		
Aces	47	87
Errors	100	125
Attempts	989	1053
Serve Pct	.899	.881
Aces/Set	1.0	1.9
SERVE RECEPTIONS		
Errors	86	47
Errors/Set	1.8	1.0
Attempts	916	887
Reception Pct	.906	.947
DEFENSE		
Digs	645	569
Digs/Set	13.7	12.1
BLOCKING		
Block Solo	31	31
Block Assist	114	194
Total Blocks	88.0	128.0
Blocks/Set	1.9	2.7
Block Errors	19	22
Ball handling errors	19	14
ATTENDANCE		
Total	0	696
Dates/Avg Per Date	8/0	5/139
Neutral site #/Avg	0/0	
Current win streak	2	-
Home win streak	1	-

Match wins by #sets	1st	2nd	3rd	4th	5th	Total
San Diego State	0	0	2	1	2	5
Opponents	0	0	5	3	0	8

Sets won by set	1st	2nd	3rd	4th	5th	Total
San Diego State	7	3	4	2	2	18
Opponents	6	10	9	4	0	29

Points by set	1st	2nd	3rd	4th	5th	Total
San Diego State	300	264	262	122	30	978
Opponents	283	312	307	139	20	1061

2021 San Diego State Spring Volleyball
 San Diego State Team Match-by-Match (as of Mar 25, 2021)
 All matches

Date	Opponent	sp	attack			set	serve			recept			blocking			bhe	points	score						
			k	e	ta		pct	a	la	pct	sa	se	ta	pct	re				la	pct	bs	ba	be	total
02/04/21	at UNLV	3	30	15	102	.147	29	-	-	2	6	55	.891	6	63	.905	34	2	8	0	6.0	1	38.0	0-3
02/05/21	at UNLV	4	47	16	135	.230	45	-	-	1	8	78	.897	12	75	.840	58	1	4	2	3.0	2	51.0	1-3
02-12-21	FRESNO STATE	4	45	34	126	.087	44	-	-	0	7	78	.910	9	84	.893	51	6	8	0	10.0	1	55.0	1-3
02-13-21	FRESNO STATE	3	41	21	121	.165	38	-	-	3	6	75	.920	5	56	.911	58	3	12	1	9.0	1	53.0	3-0
02-19-21	NEW MEXICO	3	45	17	99	.283	44	-	-	6	5	74	.932	1	45	.978	39	2	8	3	6.0	0	57.0	3-0
2-20-21	NEW MEXICO	4	57	31	140	.186	55	-	-	7	7	98	.929	9	72	.875	64	4	2	2	5.0	1	69.0	3-1
02-26-21	NEVADA	4	51	24	139	.194	50	-	-	3	4	75	.947	9	88	.898	54	1	8	1	5.0	1	59.0	1-3
02-27-21	NEVADA	3	28	21	88	.080	27	-	-	5	8	57	.860	8	63	.873	29	1	8	1	5.0	1	38.0	0-3
03-05-21	at Wyoming	3	41	18	107	.215	40	-	-	1	12	67	.821	2	67	.970	42	3	6	1	6.0	1	48.0	0-3
03-06-21	at Wyoming	3	26	25	103	.010	22	-	-	2	7	53	.868	3	65	.954	44	1	12	2	7.0	2	35.0	0-3
03-11-21	UTAH STATE	3	30	24	102	.059	28	-	-	2	7	57	.877	6	65	.908	34	2	6	1	5.0	4	37.0	0-3
03-12-21	UTAH STATE	5	57	23	143	.238	53	-	-	7	13	110	.882	7	78	.910	65	1	10	2	6.0	3	70.0	3-2
03/20/21	at Boise St.	5	62	23	165	.236	59	-	-	8	10	112	.911	9	95	.905	73	4	22	3	15.0	1	85.0	3-2
	Opponents	47	560	292	1570	.171	534	-	-	47	100	989	.899	86	916	.906	645	31	114	19	88.0	19	695.0	
		47	547	218	1530	.215	504	-	-	87	125	1053	.881	47	887	.947	569	31	194	22	128.0	14	762.0	

Sets played: 47
 Kills per set: 11.91
 Assists per set: 11.36
 Service aces per set: 1.00
 Digs per set: 13.72
 Blocks per set: 1.87
 Points per set: 14.79
 Ball handling errors per set: 0.40
 Reception errors per set: 1.83

2021 San Diego State Spring Volleyball
 San Diego State Individual Match-by-Match (as of Mar 25, 2021)
 All matches

1 BLAIR, Nya

Date	Opponent	sp	attack			set	serve			recept			blocking			bhe	points	team hit%	score					
			k	e	ta		pct	a	ta	pct	sa	se	la	pct	re					ta	pct	bs	ba	be
02/05/21	at UNLV	4	5	3	17	.118	0	-	-	0	12	.917	0	1	1.000	4	0	1	0	1.0	0	5.5	.230	1-3
02-12-21	FRESNO STATE	3	4	2	13	.154	0	-	-	0	0	1.000	0	0	.000	0	1	0	0	1.0	0	5.0	.087	1-3
02-13-21	FRESNO STATE	2	7	1	16	.375	0	-	-	1	0	9	1.000	0	.000	3	0	1	0	1.0	0	8.5	.165	3-0
02-19-21	NEWMEXICO	3	10	2	21	.381	0	-	-	1	1	.909	0	0	.000	4	1	0	3	1.0	0	12.0	.283	3-0
2-20-21	NEWMEXICO	4	10	7	35	.086	1	-	-	2	3	.786	1	1	.000	2	0	0	0	0.0	0	12.0	.186	3-1
02-26-21	NEVADA	3	3	5	23	-.087	0	-	-	0	2	.750	0	0	.000	1	0	0	0	0.0	0	3.0	.194	1-3
03-05-21	at Wyoming	3	7	2	15	.333	0	-	-	0	1	.667	0	0	.000	0	0	0	0	0.0	0	7.0	.215	0-3
03-06-21	at Wyoming	3	5	1	10	.400	0	-	-	0	0	.000	0	3	1.000	2	0	0	1	0.0	0	5.0	.010	0-3
03-11-21	UTAH STATE	2	1	3	6	-.333	0	-	-	0	0	4	1.000	1	2	.500	1	0	0	0.0	0	1.0	.059	0-3
03-12-21	UTAH STATE	5	12	2	34	.294	1	-	-	0	3	.750	0	0	.000	1	0	1	0	1.0	0	12.5	.238	3-2
03/20/21	at Boise St.	*5	18	5	53	.245	1	-	-	1	2	.857	0	1	1.000	0	0	1	1	1.0	0	19.5	.236	3-2
		37	82	33	243	.202	3	-	-	5	13	.860	2	8	.750	18	2	4	5	6.0	0	91.0		

Sets played: 37
 Service aces per set: 0.14
 Points per set: 2.46
 Kills per set: 0.49
 Digs per set: 0.49
 Assists per set: 0.16
 Blocks per set: 0.16

2 TAUTU'AVA, Heipua

Date	Opponent	sp	attack			set	serve			recept			blocking			bhe	points	team hit%	score						
			k	e	ta		pct	a	ta	pct	sa	se	la	pct	re					ta	pct	bs	ba	be	total
02/04/21	at UNLV	*3	6	6	25	.000	4	-	-	1	3	.769	0	7	1.000	10	1	0	0	1.0	0	8.0	.147	0-3	
02/05/21	at UNLV	*4	5	3	28	.071	1	-	-	0	0	12	1.000	5	21	.762	11	0	0	2	0.0	1	5.0	.230	1-3
02-12-21	FRESNO STATE	*4	5	6	17	-.059	1	-	-	0	2	.818	0	20	1.000	11	0	1	0	1.0	0	5.5	.087	1-3	
02-13-21	FRESNO STATE	*3	6	3	21	.143	1	-	-	0	0	12	1.000	1	11	.909	11	1	2	0	3.0	0	8.0	.165	3-0
02-19-21	NEWMEXICO	*3	7	4	18	.167	3	-	-	0	0	6	1.000	0	8	1.000	7	0	0	0	0.0	0	7.0	.283	3-0
2-20-21	NEWMEXICO	*4	4	5	14	-.071	1	-	-	2	1	.947	2	19	.895	22	0	0	0	0.0	0	6.0	.186	3-1	
02-26-21	NEVADA	*4	15	5	38	.263	4	-	-	0	0	9	1.000	3	11	.727	9	0	1	0	1.0	0	15.5	.194	1-3
02-27-21	NEVADA	*3	7	6	29	.034	0	-	-	0	2	.714	3	22	.864	6	0	1	0	1.0	0	7.5	.080	0-3	
03-05-21	at Wyoming	*3	7	4	26	.115	3	-	-	0	1	.909	0	26	1.000	9	3	0	1	3.0	0	10.0	.215	0-3	
03-06-21	at Wyoming	*3	3	8	19	-.263	0	-	-	0	1	.889	1	25	.960	13	0	3	0	3.0	0	4.5	.010	0-3	
03-11-21	UTAH STATE	*2	2	4	17	-.118	0	-	-	0	2	.600	2	17	.882	3	1	0	0	1.0	0	3.0	.059	0-3	
03-12-21	UTAH STATE	*5	11	5	23	.261	2	-	-	1	3	.824	3	29	.897	11	0	0	1	0.0	0	12.0	.238	3-2	
03/20/21	at Boise St.	*5	14	2	26	.462	3	-	-	2	6	.714	5	43	.884	9	0	6	0	6.0	0	19.0	.236	3-2	
		46	92	61	301	.103	23	-	-	6	21	.862	25	259	.903	132	6	14	4	20.0	1	111.0			

Sets played: 46
 Service aces per set: 0.13
 Points per set: 2.41
 Kills per set: 2.87
 Digs per set: 2.87
 Assists per set: 0.43
 Blocks per set: 0.43

2021 San Diego State Spring Volleyball
 San Diego State Individual Match-by-Match (as of Mar 25, 2021)
 All matches

3 WALKER, Andrea

Date	Opponent	sp	k	e	ta	attack	a	ta	set	sa	se	ta	serve	re	ta	recept	dig	bs	ba	be	total	bhe	points	team	hit%	score
02/04/21	at UNLV	*3	3	3	14	.000	1	-	-	0	0	0	.000	0	0	.000	0	0	3	0	3.0	0	4.5	.147	0-3	
02/05/21	at UNLV	*4	9	3	19	.316	0	-	-	0	0	0	.000	0	0	.000	0	0	2	0	2.0	0	10.0	.230	1-3	
02-12-21	FRESNO STATE	*4	8	5	15	.200	0	-	-	0	0	0	.000	0	0	.000	1	1	3	0	4.0	0	10.5	.087	1-3	
02-13-21	FRESNO STATE	*3	8	1	18	.389	0	-	-	0	0	0	.000	0	0	.000	0	1	3	0	4.0	0	10.5	.165	3-0	
02-19-21	NEWMEXICO	*3	7	6	18	.056	0	-	-	0	0	0	.000	0	0	.000	0	0	2	0	2.0	0	8.0	.283	3-0	
2-20-21	NEWMEXICO	*3	7	2	12	.417	0	-	-	0	0	0	.000	0	0	.000	2	1	0	0	1.0	0	8.0	.186	3-1	
03-11-21	UTAH STATE	*3	10	4	21	.286	0	-	-	0	0	0	.000	0	0	.000	0	0	0	0	0.0	0	10.0	.059	0-3	
03-12-21	UTAH STATE	*5	11	2	17	.529	0	-	-	0	0	0	.000	0	0	.000	1	0	3	0	3.0	0	12.5	.238	3-2	
03/20/21	at Boise St.	*5	6	2	11	.364	2	-	-	0	0	0	.000	0	1	1.000	0	0	5	1	5.0	0	8.5	.236	3-2	
		33	69	28	145	.283	3	-	-	0	0	0	.000	0	1	1.000	4	3	21	1	24.0	0	82.5			

Sets played: 33
 Kills per set: 2.09
 Assists per set: 0.09
 Digs per set: 0.12
 Blocks per set: 0.73
 Points per set: 2.50

4 FEUERBORN, Kennedy

Date	Opponent	sp	k	e	ta	attack	a	ta	set	sa	se	ta	serve	re	ta	recept	dig	bs	ba	be	total	bhe	points	team	hit%	score
02/04/21	at UNLV	*3	4	1	10	.300	6	-	-	0	0	0	.000	0	0	.000	1	0	1	0	1.0	0	4.5	.147	0-3	
02/05/21	at UNLV	*4	6	2	11	.364	27	-	-	0	2	8	.750	0	0	.000	3	1	0	0	1.0	0	7.0	.230	1-3	
02-12-21	FRESNO STATE	*4	2	1	5	.200	26	-	-	0	1	9	.889	0	0	.000	7	1	1	0	2.0	0	3.5	.087	1-3	
2-20-21	NEWMEXICO	1	1	1	3	.000	7	-	-	0	0	0	.000	0	0	.000	1	0	0	0	0.0	0	1.0	.186	3-1	
02-26-21	NEVADA	2	0	1	2	.500	4	-	-	0	0	0	.000	0	0	.000	0	0	0	0	0.0	0	2.0	.194	1-3	
02-27-21	NEVADA	3	2	2	4	.000	6	-	-	0	0	1	1.000	0	0	.000	1	0	0	0	0.0	0	2.0	.080	0-3	
03-05-21	at Wyoming	*3	1	1	2	.000	19	-	-	1	1	7	.857	0	0	.000	1	0	1	0	1.0	1	2.5	.215	0-3	
03-06-21	at Wyoming	*3	0	0	3	.000	7	-	-	0	1	5	.800	0	0	.000	3	0	1	0	1.0	1	0.5	.010	0-3	
03-11-21	UTAH STATE	2	1	0	3	.333	2	-	-	0	0	2	1.000	0	0	.000	1	0	0	0	0.0	0	1.0	.059	0-3	
03-12-21	UTAH STATE	*5	4	1	9	.333	23	-	-	0	0	0	.000	0	0	.000	0	0	2	0	2.0	2	5.0	.238	3-2	
03/20/21	at Boise St.	5	5	2	12	.250	17	-	-	0	0	0	.000	0	0	.000	1	0	1	0	1.0	0	5.5	.236	3-2	
		35	26	12	64	.219	144	-	-	1	5	32	.844	0	0	.000	19	2	7	0	9.0	4	32.5			

Sets played: 35
 Kills per set: 0.74
 Assists per set: 4.11
 Service aces per set: 0.03
 Digs per set: 0.54
 Blocks per set: 0.26
 Points per set: 0.93

2021 San Diego State Spring Volleyball
 San Diego State Individual Match-by-Match (as of Mar 25, 2021)
 All matches

5 HODSON, Serena

Date	Opponent	sp	attack			set			serve			recept			blocking			team				
			k	e	ta	a	ta	pct	sa	se	ta	re	ta	pct	bs	ba	be	total	bhe	points	hit%	score
02/04/21	at UNLV	3	0	0	2	0	0	-	1	4	.750	0	0	.000	0	0	0	0.0	0	1.0	0.147	0-3
02-19-21	NEW MEXICO	1	0	0	1	0	0	-	0	0	.000	0	0	.000	0	1	0	1.0	0	0.5	.283	3-0
02-26-21	NEVADA	2	1	0	2	0	0	-	0	0	1.000	0	0	.000	0	0	0	0.0	0	1.0	.194	1-3
02-27-21	NEVADA	*3	1	4	7	0	0	-	0	0	.000	0	0	.000	1	2	0	3.0	0	3.0	.080	0-3
03-05-21	at Wyoming	*3	4	2	11	0	0	-	0	0	.000	0	2	1.000	2	0	3	3.0	0	5.5	.215	0-3
03-06-21	at Wyoming	*2	2	0	4	0	0	-	0	0	.000	0	0	.000	1	0	1	1.0	0	2.5	.010	0-3
03-11-21	UTAH STATE	*3	3	0	4	0	0	-	0	2	.714	0	0	.000	0	3	0	3.0	0	4.5	.059	0-3
		17	11	6	31	0	0	-	1	3	12	0	2	1.000	3	1	10	0	11.0	0	18.0	

Sets played: 17
 Service aces per set: 0.06
 Digs per set: 0.18
 Blocks per set: 0.65
 Points per set: 1.06

7 VANDERPAN, Ashley

Date	Opponent	sp	attack			set			serve			recept			blocking			team				
			k	e	ta	a	ta	pct	sa	se	ta	re	ta	pct	bs	ba	be	total	bhe	points	hit%	score
02/04/21	at UNLV	3	1	0	5	11	-	-	0	12	1.000	0	0	.000	2	0	1	1.0	0	1.5	.147	0-3
02/05/21	at UNLV	2	1	0	4	8	-	-	0	0	1.000	0	0	.000	1	0	0	0.0	1	1.0	.230	1-3
02-12-21	FRESNO STATE	4	0	1	1	13	-	-	0	1	.857	0	0	.000	1	0	0	0.0	0	0.0	.087	1-3
02-13-21	FRESNO STATE	*3	2	2	5	30	-	-	0	1	.938	0	0	.000	11	0	2	2.0	1	3.0	.165	3-0
02-19-21	NEW MEXICO	*3	2	0	5	38	-	-	0	1	.857	0	0	.000	7	0	2	2.0	0	3.0	.283	3-0
2-20-21	NEW MEXICO	*4	3	2	9	40	-	-	0	1	.941	0	1	1.000	4	0	0	0.0	0	3.0	.186	3-1
02-26-21	NEVADA	*4	3	2	9	34	-	-	0	0	1.000	0	0	.000	12	0	1	1.0	1	3.5	.194	1-3
02-27-21	NEVADA	*3	2	0	3	15	-	-	3	1	.929	0	0	.000	2	0	1	1.0	1	5.5	.080	0-3
03-05-21	at Wyoming	3	1	0	1	17	-	-	0	3	.625	0	0	.000	5	0	0	0.0	0	1.0	.215	0-3
03-06-21	at Wyoming	3	1	2	6	15	-	-	1	1	.900	0	0	.000	6	0	0	0.0	0	2.0	.010	0-3
03-11-21	UTAH STATE	*3	0	0	2	23	-	-	0	0	1.000	0	0	.000	3	0	1	1.0	4	0.5	.059	0-3
03-12-21	UTAH STATE	5	0	0	1	23	-	-	1	0	1.000	0	0	.000	6	0	0	0.0	0	1.0	.238	3-2
03/20/21	at Boise St.	*5	0	2	4	31	-	-	3	0	1.000	0	0	.000	11	1	0	1.0	1	4.0	.236	3-2
		45	16	11	55	298	-	-	8	9	153	0	1	1.000	71	1	8	0	9.0	9	29.0	

Sets played: 45
 Service aces per set: 0.18
 Digs per set: 1.58
 Blocks per set: 0.20
 Points per set: 0.64

2021 San Diego State Spring Volleyball
San Diego State Individual Match-by-Match (as of Mar 25, 2021)
All matches

8 LEE, Lauren

Date	Opponent	attack			set			serve			recept			blocking			team					
		sp	k	e	a	ta	pct	sa	se	ta	re	ta	pct	bs	ba	be	bhe	points	hit%	score		
02/04/21	at UNLV	3	0	0	4	-	0	1	9	889	3	20	850	0	0	0	0	0.0	0.0	147	0-3	
02/05/21	at UNLV	4	0	0	1	-	0	1	24	.958	2	28	.929	0	0	0	0	0.0	0.0	.230	1-3	
02-12-21	FRESNO STATE	4	0	1	1	-	0	0	11	1.000	0	21	1.000	0	0	0	0	0.0	0.0	.087	1-3	
02-13-21	FRESNO STATE	3	0	0	3	-	1	1	9	.889	3	22	.864	0	0	0	0	0.0	0.0	1.0	1.65	3-0
02-19-21	NEWMEXICO	3	0	0	1	-	1	1	15	.933	0	8	1.000	0	0	0	0	0.0	0.0	1.0	.283	3-0
2-20-21	NEWMEXICO	4	0	0	3	-	1	0	20	1.000	1	13	.923	0	0	0	0	0.0	0.0	1.0	.186	3-1
02-26-21	NEVADA	4	0	0	4	-	1	0	18	1.000	0	11	1.000	0	0	0	0	0.0	0.0	1.0	.194	1-3
02-27-21	NEVADA	3	0	0	2	-	0	1	9	.889	3	7	.571	0	0	0	0	0.0	0.0	0.0	.080	0-3
03-05-21	at Wyoming	3	1	1	2	-	0	1	10	.900	0	8	1.000	0	0	0	0	0.0	0.0	1.0	.215	0-3
03-06-21	at Wyoming	3	0	0	0	-	0	1	10	.900	0	11	1.000	0	0	0	0	0.0	0.0	0.0	.010	0-3
03-11-21	UTAH STATE	3	0	0	2	-	1	1	9	.889	0	15	1.000	0	0	0	0	0.0	0.0	1.0	.059	0-3
03-12-21	UTAH STATE	5	0	0	2	-	1	1	22	.955	2	15	.867	0	0	0	0	0.0	0.0	1.0	.238	3-2
03/20/21	at Boise St.	5	0	0	4	-	0	0	18	1.000	0	8	1.000	0	0	0	0	0.0	0.0	0.0	.236	3-2
		47	1	2	7	-	6	9	184	.951	14	187	.925	196	0	0	0	0.0	0.0	7.0		

Sets played: 47
Kills per set: 0.02
Assists per set: 0.60
Service aces per set: 0.13
Digs per set: 4.17
Points per set: 0.15

#11 HILL, Brooklynn

Date	Opponent	attack			set			serve			recept			blocking			team					
		sp	k	e	a	ta	pct	sa	se	ta	re	ta	pct	bs	ba	be	bhe	points	hit%	score		
02/04/21	at UNLV	*3	0	0	3	-	0	0	5	1.000	2	17	.882	0	0	0	1	0.0	0.0	.147	0-3	
02/05/21	at UNLV	4	0	0	1	-	0	2	10	.800	2	13	.846	0	0	0	0	0.0	0.0	.230	1-3	
02-12-21	FRESNO STATE	4	0	0	1	-	0	0	11	1.000	2	12	.833	0	0	0	0	0.0	0.0	.087	1-3	
02-13-21	FRESNO STATE	3	0	0	1	-	0	2	9	.778	0	4	1.000	0	0	0	0	0.0	0.0	.165	3-0	
02-19-21	NEWMEXICO	3	0	0	0	-	3	0	23	1.000	0	11	1.000	0	0	0	0	0.0	0.0	3.0	.283	3-0
2-20-21	NEWMEXICO	4	0	0	1	-	0	2	9	.778	3	18	.833	0	0	0	0	0.0	0.0	0.0	.186	3-1
02-26-21	NEVADA	4	0	0	1	-	1	0	11	1.000	2	34	.941	0	0	0	0	0.0	0.0	1.0	.194	1-3
02-27-21	NEVADA	3	0	0	3	-	0	2	8	.750	2	20	.900	0	0	0	0	0.0	0.0	0.0	.080	0-3
03-05-21	at Wyoming	2	0	0	1	-	0	1	2	.500	0	1	1.000	0	0	0	0	0.0	0.0	0.0	.215	0-3
03-06-21	at Wyoming	1	0	0	0	-	0	0	3	1.000	0	2	1.000	0	0	0	0	0.0	0.0	0.0	.010	0-3
03-11-21	UTAH STATE	3	0	0	0	-	0	0	8	1.000	1	9	.889	0	0	0	0	0.0	0.0	0.0	.059	0-3
03-12-21	UTAH STATE	5	0	0	0	-	3	1	22	.955	2	20	.900	0	0	0	0	0.0	0.0	3.0	.238	3-2
03/20/21	at Boise St.	5	1	1	2	-	2	0	23	1.000	1	11	.909	0	0	0	0	0.0	0.0	3.0	.236	3-2
		44	1	1	3	-	9	10	144	.931	17	172	.901	69	0	0	1	10.0	0.0	7.0		

Sets played: 44
Kills per set: 0.02
Assists per set: 0.30
Service aces per set: 0.20
Digs per set: 1.57
Blocks per set: 0.00
Points per set: 0.23

2021 San Diego State Spring Volleyball
 San Diego State Individual Match-by-Match (as of Mar 25, 2021)
 All matches

#12 GILLCRIST, Erin

Date	Opponent	sp	attack			set			serve			recept			blocking			team				
			k	e	ta	a	ta	pct	sa	se	ta	re	ta	pct	bs	ba	be	bhe	points	hit%	score	
02/04/21	at UNLV	3	4	2	11	.182	0	-	0	0	.000	0	0	.000	2	1	2	0	3.0	6.0	.147	0-3
02/05/21	at UNLV	*4	8	3	17	.294	2	-	1	2	.818	0	0	.000	2	0	0	0	0.0	9.0	.230	1-3
02-12-21	FRESNO STATE	*4	7	3	15	.267	0	-	0	0	.000	1	1	.000	0	2	1	0	3.0	9.5	.087	1-3
02-13-21	FRESNO STATE	*3	4	2	12	.167	0	-	0	0	.000	0	0	.000	1	0	3	0	3.0	5.5	.165	3-0
02-19-21	NEWMEXICO	*3	6	0	8	.750	1	-	0	0	.000	0	0	.000	0	0	1	0	1.0	6.5	.283	3-0
2-20-21	NEWMEXICO	*4	7	6	18	.056	0	-	1	0	1.000	0	0	.000	5	1	1	0	2.0	9.5	.186	3-1
02-26-21	NEVADA	*4	10	1	18	.500	0	-	1	1	.889	0	0	.000	0	1	3	0	4.0	13.5	.194	1-3
02-27-21	NEVADA	*3	8	3	20	.250	0	-	0	0	.000	0	0	.000	0	0	2	0	2.0	9.0	.080	0-3
03-05-21	at Wyoming	*3	6	2	14	.286	0	-	0	1	.875	0	3	1.000	4	0	0	0	0.0	6.0	.215	0-3
03-06-21	at Wyoming	*3	2	4	12	.167	0	-	1	2	.778	0	4	1.000	1	0	4	1	4.0	5.0	.010	0-3
03-11-21	UTAH STATE	*3	3	7	20	.200	0	-	0	0	.000	0	0	.000	1	1	0	0	1.0	4.0	.059	0-3
03-12-21	UTAH STATE	*5	7	3	22	.182	0	-	0	4	.636	0	1	1.000	3	0	2	1	2.0	8.0	.238	3-2
03/20/21	at Boise St.	*5	3	1	14	.143	1	-	0	2	.875	0	5	1.000	1	1	5	1	6.0	6.5	.236	3-2
		47	75	37	201	.189	4	-	4	12	.842	1	14	.929	20	7	24	3	31.0	98.0		

Sets played: 47
 Service aces per set: 0.09
 Kills per set: 1.60
 Digs per set: 0.43
 Assists per set: 0.09
 Blocks per set: 0.66
 Points per set: 2.09

#14 SPAETHLING, Ella

Date	Opponent	sp	attack			set			serve			recept			blocking			team				
			k	e	ta	a	ta	pct	sa	se	ta	re	ta	pct	bs	ba	be	bhe	points	hit%	score	
02-26-21	NEVADA	1	1	0	2	.500	0	-	0	0	.000	0	0	.000	1	0	0	0	0.0	1.0	.194	1-3
		1	1	0	2	.500	0	-	0	0	.000	0	0	.000	1	0	0	0	0.0	1.0	.194	1-3

Sets played: 1
 Kills per set: 1.00
 Digs per set: 1.00
 Points per set: 1.00

2021 San Diego State Spring Volleyball
 San Diego State Individual Match-by-Match (as of Mar 25, 2021)
 All matches

#15 PUGH, Abby

Date	Opponent	sp	attack			set			serve			recept			blocking			team						
			k	e	ta	a	ta	pct	sa	se	ta	re	ta	pct	bs	ba	be	total	bhe	points	hit%	score		
02/04/21	at UNLV	*3	1	1	3	0	0	-	0	0	1.000	0	0	0	0	0	1	0	0	1.0	0	1.5	.147	0-3
02-12-21	FRESNO STATE	1	1	1	2	0	0	-	0	1	.500	0	0	0	0	0	0	0	0	0.0	0	1.0	.087	1-3
02-19-21	NEW MEXICO	1	0	1	2	0	0	-	0	0	.000	0	0	0	0	0	0	0	0	0.0	0	0.0	.283	3-0
2-20-21	NEW MEXICO	4	5	0	8	1	0	-	0	0	.625	0	0	0	0	0	0	0	0	0.0	0	5.0	.186	3-1
02-26-21	NEVADA	*4	5	1	10	0	0	-	0	0	.400	0	0	0	0	0	0	0	0	1.0	0	5.5	.194	1-3
02-27-21	NEVADA	*3	3	2	7	0	0	-	0	2	.750	0	0	0	0	2	1	2	0	2.0	0	4.0	.080	0-3
03-05-21	at Wyoming	1	1	0	1	0	0	-	0	0	.000	0	0	0	0	0	0	0	0	0.0	0	1.0	.215	0-3
03-06-21	at Wyoming	2	1	1	8	0	0	-	0	0	.000	0	0	0	0	1	1	0	0	1.0	0	1.5	.010	0-3
Totals		19	17	7	41	1	0	-	0	3	.800	0	1	1	0	5	3	5	0	19.5	0	19.5		

Sets played: 19
 Kills per set: 0.05
 Blocks per set: 0.26
 Points per set: 1.03

#16 DURAND, Alexis

Date	Opponent	sp	attack			set			serve			recept			blocking			team						
			k	e	ta	a	ta	pct	sa	se	ta	re	ta	pct	bs	ba	be	total	bhe	points	hit%	score		
02-12-21	FRESNO STATE	1	0	0	0	0	0	-	0	0	.000	1	4	0	0	0	0	0	0	0.0	0	0.0	.087	1-3
02-19-21	NEW MEXICO	3	0	0	0	0	0	-	0	2	.750	0	0	0	0	0	0	0	0	0.0	0	0.0	.283	3-0
2-20-21	NEW MEXICO	2	0	0	0	0	0	-	0	0	1.000	0	0	0	0	0	0	0	0	0.0	0	0.0	.186	3-1
02-26-21	NEVADA	2	0	0	0	0	0	-	0	0	.000	1	6	0	0	0	0	0	0	0.0	0	0.0	.194	1-3
02-27-21	NEVADA	*3	0	0	0	1	0	-	2	0	1.000	0	8	0	0	0	0	0	0	0.0	0	2.0	.080	0-3
03-05-21	at Wyoming	3	0	0	0	0	0	-	0	3	.750	0	11	0	0	0	0	0	0	0.0	0	0.0	.215	0-3
03-06-21	at Wyoming	3	0	0	0	0	0	-	0	1	.857	1	10	0	0	0	0	0	0	0.0	0	0.0	.010	0-3
03-11-21	UTAH STATE	3	0	0	0	0	0	-	1	2	.846	2	12	0	0	0	0	0	0	0.0	0	1.0	.059	0-3
Totals		20	0	0	0	1	0	-	3	8	.846	5	51	0	0	0	0	0	0	3.0	0	3.0		

Sets played: 20
 Service aces per set: 0.15
 Digs per set: 0.95
 Blocks per set: 0.00
 Points per set: 0.15

2021 San Diego State Spring Volleyball
 San Diego State Individual Match-by-Match (as of Mar 25, 2021)
 All matches

#17 BARCKLAY, Nadia

Date	Opponent	attack			set			serve			recept			blocking			team									
		sp	k	e	a	ta	pct	a	ta	pct	sa	se	ta	re	ta	pct	bs	ba	be	total	bhe	points	hit%	score		
02-12-21	FRESNO STATE	4	0	0	0	0	.000	0	-	-	0	1	12	.917	0	0	.000	0	0	0	0	0	0	0.0	.087	1-3
02-13-21	FRESNO STATE	3	0	0	0	0	.000	1	-	-	1	0	13	1.000	0	0	.000	1	0	0	0	0	0	1.0	.165	3-0
Totals		7	0	0	0	0	.000	1	-	-	1	1	25	.960	0	0	.000	1	0	0	0	0	0	1.0		

Sets played: 7
 Assists per set: 0.14
 Service aces per set: 0.14
 Digs per set: 0.14

#19 LENN, Maddie

Date	Opponent	attack			set			serve			recept			blocking			team									
		sp	k	e	a	ta	pct	a	ta	pct	sa	se	ta	re	ta	pct	bs	ba	be	total	bhe	points	hit%	score		
02/04/21	at UNLV	3	0	0	1	0	.000	0	-	-	0	1	3	.667	1	14	.929	2	0	0	0	0	0	0.0	.147	0-3
02/05/21	at UNLV	*4	0	0	3	0	.000	3	-	-	0	0	0	0.000	2	7	.714	18	0	0	0	0	0	0.0	.230	1-3
02-12-21	FRESNO STATE	*3	7	6	22	0	.045	1	-	-	0	1	7	.857	1	19	.947	9	1	0	0	0	0	8.0	.087	1-3
02-13-21	FRESNO STATE	*3	3	4	16	0	-.062	2	-	-	0	2	7	.714	1	19	.947	8	0	0	0	0	0	3.0	.165	3-0
02-19-21	NEWMEXICO	*3	0	0	0	0	.000	1	-	-	1	0	4	1.000	1	18	.944	4	0	0	0	0	0	1.0	.283	3-0
2-20-21	NEWMEXICO	*4	0	0	0	0	.000	0	-	-	1	0	5	1.000	2	20	.900	3	0	0	0	0	1	1.0	.186	3-1
02-26-21	NEVADA	*4	0	0	0	0	.000	2	-	-	0	1	2	.500	2	18	.889	9	0	0	0	0	0	0.0	.194	1-3
03-05-21	at Wyoming	*3	7	3	21	0	.190	0	-	-	0	0	6	1.000	1	15	.933	2	0	2	0	2.0	0	8.0	.215	0-3
03-06-21	at Wyoming	*2	4	3	17	0	.059	0	-	-	0	0	0	0.000	0	8	1.000	1	0	0	0	0	1	4.0	.010	0-3
03-11-21	UTAH STATE	2	0	2	5	0	-.400	0	-	-	0	0	1	1.000	0	6	1.000	1	0	1	0	1.0	0	0.5	.059	0-3
03-12-21	UTAH STATE	*5	0	0	1	0	.000	1	-	-	1	1	7	.857	0	13	1.000	9	0	0	0	0	0	1.0	.238	3-2
03/20/21	at Boise St.	5	0	1	3	0	-.333	0	-	-	0	0	0	0.000	2	15	.867	4	0	0	0	0	0	0.0	.236	3-2
Totals		41	21	19	89	0	.022	10	-	-	3	6	42	.857	13	172	.924	70	1	3	0	4.0	2	26.5		

Sets played: 41
 Kills per set: 0.51
 Assists per set: 0.24
 Service aces per set: 0.07
 Digs per set: 1.71
 Blocks per set: 0.10

2021 San Diego State Spring Volleyball
 San Diego State Individual Match-by-Match (as of Mar 25, 2021)
 All matches

#21 O'SULLIVAN, Victoria

Date	Opponent	sp	attack			set			serve			recept			dig			blocking			team			
			k	e	ta	pct	a	ta	pct	sa	se	ta	pct	re	ta	pct	bs	ba	be	total	bhe	points	hit%	score
02/04/21	at UNLV	*3	11	2	30	.300	0	-	0	0	4	1.000	0	5	1.000	2	0	0	0	0	0	11.0	.147	0-3
02/05/21	at UNLV	*4	13	2	33	.333	2	-	0	0	0	.000	1	5	.800	2	0	1	0	1.0	0	13.5	.230	1-3
02-12-21	FRESNO STATE	*4	11	8	35	.086	0	-	0	0	2	1.000	1	4	.750	2	0	2	0	2.0	1	12.0	.087	1-3
02-13-21	FRESNO STATE	*3	11	8	33	.091	0	-	0	0	0	.000	0	0	.000	2	1	1	1	2.0	0	12.5	.165	3-0
02-19-21	NEWMEXICO	*3	13	4	26	.346	0	-	0	0	0	.000	0	0	.000	2	1	2	0	3.0	0	15.0	.283	3-0
2-20-21	NEWMEXICO	*4	20	8	41	.293	1	-	0	0	0	.000	0	0	.000	1	2	1	0	3.0	0	22.5	.186	3-1
02-26-21	NEVADA	*4	13	9	35	.114	1	-	0	0	3	1.000	1	8	.875	2	0	2	1	2.0	0	14.0	.194	1-3
02-27-21	NEVADA	3	5	4	18	.056	0	-	0	0	0	.000	0	6	1.000	0	0	0	0.0	0	0	5.0	.080	0-3
03-05-21	at Wyoming	*3	6	3	14	.214	0	-	0	0	0	.000	0	0	.000	1	0	0	0	0.0	0	6.0	.215	0-3
03-06-21	at Wyoming	*3	8	6	24	.083	0	-	0	0	0	.000	0	0	.000	2	1	2	0	3.0	0	10.0	.010	0-3
03-11-21	UTAH STATE	*3	10	4	24	.250	1	-	0	0	0	.000	0	4	1.000	3	0	1	1	1.0	0	10.5	.059	0-3
03-12-21	UTAH STATE	*5	12	10	36	.056	1	-	0	0	0	.000	0	0	.000	1	1	2	0	3.0	0	14.0	.238	3-2
03/20/21	at Boise St.	*5	15	7	39	.205	0	-	0	0	0	.000	0	3	1.000	1	2	4	0	6.0	0	19.0	.236	3-2
Totals		47	148	75	388	.188	6	-	0	0	9	1.000	3	35	.914	21	8	18	3	26.0	1	165.0		

Sets played: 47
 Kills per set: 3.15
 Assists per set: 0.13
 Digs per set: 0.45
 Blocks per set: 0.55
 Points per set: 3.51

#TM TEAM

Date	Opponent	sp	attack			set			serve			recept			dig			blocking			team			
			k	e	ta	pct	a	ta	pct	sa	se	ta	pct	re	ta	pct	bs	ba	be	total	bhe	points	hit%	score
02-12-21	FRESNO STATE	3	0	0	0	.000	0	-	0	0	0	.000	3	3	.000	0	0	0	0	0.0	0	0.0	.087	1-3
03-05-21	at Wyoming	1	0	0	0	.000	0	-	0	0	0	.000	1	1	.000	0	0	0	0	0.0	0	0.0	.215	0-3
03-06-21	at Wyoming	1	0	0	0	.000	0	-	0	0	0	.000	1	1	.000	0	0	0	0	0.0	0	0.0	.010	0-3
03/20/21	at Boise St.	1	0	0	0	.000	0	-	0	0	0	.000	1	1	.000	0	0	0	0	0.0	0	0.0	.236	3-2
Totals		6	0	0	0	.000	0	-	0	0	0	.000	6	6	.000	0	0	0	0	0.0	0	0.0		

Sets played: 6
 Points per set: 0.00

Individual Career History

BARCKLAY, Nadia

Season	sp-mp	k	k/s	e	ta	pct	a	a/s	ta	ast%	sa	sa/s	se	ta	srv%
2020	7-2	0	0.00	0	0	.000	1	0.14	-	-	1	0.14	1	25	.960
TOTAL	7-2	0	0.00	0	0	.000	1	0.14	-	-	1	0.14	1	25	.960

Season	dig	d/s	re	ta	rec%	bs	ba	tb	b/s	be	bhe	points	pts/s
2020	1	0.14	0	0	.000	0	0	0	0.00	0	0	1.0	0.14
TOTAL	1	0.14	0	0	.000	0	0	0	0.00	0	0	1.0	0.14

SINGLE-MATCH HIGHS [all-time ranking]:

Assists: 1, Fresno State, 02-13-21

Serve aces: 1, Fresno State, 02-13-21

Digs: 1, Fresno State, 02-13-21

BLAIR, Nya

Season	sp-mp	k	k/s	e	ta	pct	a	a/s	ta	ast%	sa	sa/s	se	ta	srv%
2019	8-5	13	1.62	7	37	.162	1	0.12	-	-	1	0.12	2	17	.882
2020	37-11	82	2.22	33	243	.202	3	0.08	-	-	5	0.14	13	93	.860
TOTAL	45-16	95	2.11	40	280	.196	4	0.09	-	-	6	0.13	15	110	.864

Season	dig	d/s	re	ta	rec%	bs	ba	tb	b/s	be	bhe	points	pts/s
2019	7	0.88	0	4	1.000	1	3	4	0.50	0	0	16.5	2.00
2020	18	0.49	2	8	.750	2	4	6	0.16	5	0	91.0	2.46
TOTAL	25	0.56	2	12	.833	3	7	10	0.22	5	0	107.5	2.38

SINGLE-MATCH HIGHS [all-time ranking]:

Kills: 18, at Boise State, 03-20-21; at Boise St., 03/20/21

Attacks: 53 [1st], at Boise State, 03-20-21; at Boise St., 03/20/21

Attack pct: .381, New Mexico, 02-19-21 (10-2-21)

Assists: 1, 4 times

Serve aces: 2, New Mexico, 2-20-21

Digs: 4, New Mexico, 02-19-21; at UNLV, 02/05/21; Fresno State, Nov 12, 2019

Blocks: 2, Fresno State, Nov 12, 2019

Block solo: 1, Fresno State, 02-12-21; New Mexico, 02-19-21; Air Force, Nov 14, 2019

Block assist: 2, Fresno State, Nov 12, 2019

DURAND, Alexis

Season	sp-mp	k	k/s	e	ta	pct	a	a/s	ta	ast%	sa	sa/s	se	ta	srv%
2019	3-2	0	0.00	0	0	.000	0	0.00	-	-	0	0.00	0	4	1.000
2020	20-8	0	0.00	0	0	.000	1	0.05	-	-	3	0.15	8	52	.846
TOTAL	23-10	0	0.00	0	0	.000	1	0.04	-	-	3	0.13	8	56	.857

Season	dig	d/s	re	ta	rec%	bs	ba	tb	b/s	be	bhe	points	pts/s
2019	4	1.33	3	19	.842	0	0	0	0.00	0	0	0.0	0.00
2020	19	0.95	5	51	.902	0	0	0	0.00	0	0	3.0	0.15
TOTAL	23	1.00	8	70	.886	0	0	0	0.00	0	0	3.0	0.13

SINGLE-MATCH HIGHS [all-time ranking]:

Assists: 1, Nevada, 02-27-21

Serve aces: 2, Nevada, 02-27-21

Digs: 10, Nevada, 02-27-21

Individual Career History

FEUERBORN, Kennedy

Season	sp-mp	k	k/s	e	ta	pct	a	a/s	ta	ast%	sa	sa/s	se	ta	srv%
2020	35-11	26	0.74	12	64	.219	144	4.11	-	-	1	0.03	5	32	.844
TOTAL	35-11	26	0.74	12	64	.219	144	4.11	-	-	1	0.03	5	32	.844

Season	dig	d/s	re	ta	rec%	bs	ba	tb	b/s	be	bhe	points	pts/s
2020	19	0.54	0	0	.000	2	7	9	0.26	0	4	32.5	0.91
TOTAL	19	0.54	0	0	.000	2	7	9	0.26	0	4	32.5	0.91

SINGLE-MATCH HIGHS [all-time ranking]:

Kills: 6, at UNLV, 02/05/21

Attacks: 12, at Boise St., 03/20/21

Assists: 27, at UNLV, 02/05/21

Serve aces: 1, at Wyoming, 03-05-21

Digs: 7, Fresno State, 02-12-21

Blocks: 2, Fresno State, 02-12-21; Utah State, 03-12-21

Block solo: 1, Fresno State, 02-12-21; at UNLV, 02/05/21

Block assist: 2, Utah State, 03-12-21

GILLCRIST, Erin

Season	sp-mp	k	k/s	e	ta	pct	a	a/s	ta	ast%	sa	sa/s	se	ta	srv%
2017	11-4	8	0.73	8	41	.000	1	0.09	-	-	0	0.00	1	1	.000
2018	104-29	197	1.89	103	523	.180	3	0.03	-	-	1	0.01	3	15	.800
2019	76-22	144	1.89	75	379	.182	3	0.04	-	-	0	0.00	1	7	.857
2020	47-13	75	1.60	37	201	.189	4	0.09	-	-	4	0.09	12	76	.842
TOTAL	238-68	424	1.78	223	1144	.176	11	0.05	-	-	5	0.02	17	99	.828

Season	dig	d/s	re	ta	rec%	bs	ba	tb	b/s	be	bhe	points	pts/s
2017	6	0.55	0	2	1.000	0	15	15	1.36	2	0	15.5	1.36
2018	35	0.34	2	28	.929	0	57	57	0.55	3	2	226.5	2.17
2019	20	0.26	2	18	.889	1	53	54	0.71	9	0	171.5	2.25
2020	20	0.43	1	14	.929	7	24	31	0.66	3	1	98.0	2.09
TOTAL	81	0.34	5	62	.919	8	149	157	0.66	17	3	511.5	2.15

SINGLE-MATCH HIGHS [all-time ranking]:

Kills: 15, 4 times

Attacks: 51, Wyoming, Sep 29, 2018

Attack pct: .429, at Nevada, Oct 20, 2018 (15-3-28)

Assists: 2, at UNLV, 02/05/21

Serve aces: 1, 5 times

Digs: 5, New Mexico, 2-20-21; at San Diego, Sep 20, 2019

Blocks: 8, New Mexico, Oct 11, 2018

Block solo: 2, Fresno State, 02-12-21

Block assist: 8, New Mexico, Oct 11, 2018

Individual Career History

HILL, Brooklynn

Season	sp-mp	k	k/s	e	ta	pct	a	a/s	ta	ast%	sa	sa/s	se	ta	srv%
2020	44-13	1	0.02	1	3	.000	13	0.30	-	-	9	0.20	10	144	.931
TOTAL	44-13	1	0.02	1	3	.000	13	0.30	-	-	9	0.20	10	144	.931

Season	dig	d/s	re	ta	rec%	bs	ba	tb	b/s	be	bhe	points	pts/s
2020	69	1.57	17	172	.901	0	0	0	0.00	0	1	10.0	0.23
TOTAL	69	1.57	17	172	.901	0	0	0	0.00	0	1	10.0	0.23

SINGLE-MATCH HIGHS [all-time ranking]:

Kills: 1, at Boise St., 03/20/21

Attacks: 2, at Boise St., 03/20/21

Assists: 3, Nevada, 02-27-21; at UNLV, 02/04/21

Serve aces: 3, New Mexico, 02-19-21; Utah State, 03-12-21

Digs: 10, at Boise St., 03/20/21

HODSON, Serena

Season	sp-mp	k	k/s	e	ta	pct	a	a/s	ta	ast%	sa	sa/s	se	ta	srv%
2018	18-5	15	0.83	4	36	.306	0	0.00	-	-	0	0.00	1	1	.000
2019	0-0	0	0.00	0	0	.000	0	0.00	-	-	0	0.00	0	0	.000
2020	17-7	11	0.65	6	31	.161	0	0.00	-	-	1	0.06	3	12	.750
TOTAL	35-12	26	0.74	10	67	.239	0	0.00	-	-	1	0.03	4	13	.692

Season	dig	d/s	re	ta	rec%	bs	ba	tb	b/s	be	bhe	points	pts/s
2018	1	0.06	0	4	1.000	1	14	15	0.83	0	0	23.0	1.28
2019	0	0.00	0	0	.000	0	0	0	0.00	0	0	0.0	0.00
2020	3	0.18	0	2	1.000	1	10	11	0.65	0	0	18.0	1.06
TOTAL	4	0.11	0	6	1.000	2	24	26	0.74	0	0	41.0	1.17

SINGLE-MATCH HIGHS [all-time ranking]:

Kills: 4, at Wyoming, 03-05-21; Portland, Aug 25, 2018; Seattle U, Aug 25, 2018

Attacks: 13, Portland, Aug 25, 2018

Serve aces: 1, at UNLV, 02/04/21

Digs: 2, at Wyoming, 03-05-21

Blocks: 7, Seattle U, Aug 25, 2018

Block solo: 1, Nevada, 02-27-21; Portland, Aug 25, 2018

Block assist: 7, Seattle U, Aug 25, 2018

Individual Career History

LEE, Lauren

Season	sp-mp	k	k/s	e	ta	pct	a	a/s	ta	ast%	sa	sa/s	se	ta	srv%
2018	98-28	0	0.00	0	3	.000	26	0.27	-	-	18	0.18	14	355	.961
2019	91-28	0	0.00	1	1	-1.000	13	0.14	-	-	11	0.12	13	318	.959
2020	47-13	1	0.02	2	7	-.143	28	0.60	-	-	6	0.13	9	184	.951
TOTAL	236-69	1	0.00	3	11	-.182	67	0.28	-	-	35	0.15	36	857	.958

Season	dig	d/s	re	ta	rec%	bs	ba	tb	b/s	be	bhe	points	pts/s
2018	193	1.97	19	354	.946	0	0	0	0.00	0	1	18.0	0.18
2019	132	1.45	10	306	.967	0	0	0	0.00	0	0	11.0	0.12
2020	196	4.17	14	187	.925	0	0	0	0.00	0	0	7.0	0.15
TOTAL	521	2.21	43	847	.949	0	0	0	0.00	0	1	36.0	0.15

SINGLE-MATCH HIGHS [all-time ranking]:

Kills: 1, at Wyoming, 03-05-21

Attacks: 2, at UNLV, 02/05/21; at Wyoming, 03-05-21

Assists: 5, at Utah State, Oct 06, 2018

Serve aces: 4, at San Jose State, Oct 18, 2018

Digs: 36 [t-4th], at Boise State, 03-20-21; at Boise St., 03/20/21

LENN, Maddie

Season	sp-mp	k	k/s	e	ta	pct	a	a/s	ta	ast%	sa	sa/s	se	ta	srv%
2018	26-11	4	0.15	8	33	-.121	3	0.12	-	-	0	0.00	11	73	.849
2019	80-26	49	0.61	26	138	.167	16	0.20	-	-	5	0.06	34	145	.766
2020	41-12	21	0.51	19	89	.022	10	0.24	-	-	3	0.07	6	42	.857
TOTAL	147-49	74	0.50	53	260	.081	29	0.20	-	-	8	0.05	51	260	.804

Season	dig	d/s	re	ta	rec%	bs	ba	tb	b/s	be	bhe	points	pts/s
2018	44	1.69	5	120	.958	0	2	2	0.08	0	0	5.0	0.19
2019	97	1.21	22	355	.938	0	15	15	0.19	1	2	61.5	0.76
2020	70	1.71	13	172	.924	1	3	4	0.10	0	2	26.5	0.63
TOTAL	211	1.44	40	647	.938	1	20	21	0.14	1	4	93.0	0.63

SINGLE-MATCH HIGHS [all-time ranking]:

Kills: 8, Arkansas, Sep 07, 2019

Attacks: 22, Fresno State, 02-12-21

Attack pct: .190, at Wyoming, 03-05-21 (7-3-21)

Assists: 3, at UNLV, 02/05/21; Arkansas, Sep 07, 2019

Serve aces: 2, vs Akron, 08/30/19; Long Beach State, Sep 19, 2019

Digs: 18, at UNLV, 02/05/21

Blocks: 3, vs Akron, 08/30/19; San Jose State, Sep 26, 2019

Block solo: 1, Fresno State, 02-12-21

Block assist: 3, vs Akron, 08/30/19; San Jose State, Sep 26, 2019

Individual Career History

MACHADO, Camryn

Season	sp-mp	k	k/s	e	ta	pct	a	a/s	ta	ast%	sa	sa/s	se	ta	srv%
2018	23-8	8	0.35	1	12	.583	89	3.87	-	-	0	0.00	8	41	.805
2019	109-29	48	0.44	19	131	.221	1157	10.61	-	-	16	0.15	14	407	.966
2020	0-0	0	0.00	0	0	.000	0	0.00	-	-	0	0.00	0	0	.000
TOTAL	132-37	56	0.42	20	143	.252	1246	9.44	-	-	16	0.12	22	448	.951

Season	dig	d/s	re	ta	rec%	bs	ba	tb	b/s	be	bhe	points	pts/s
2018	25	1.09	0	0	.000	0	0	0	0.00	1	4	8.0	0.35
2019	277	2.54	1	3	.667	2	35	37	0.34	13	7	83.5	0.76
2020	0	0.00	0	0	.000	0	0	0	0.00	0	0	0.0	0.00
TOTAL	302	2.29	1	3	.667	2	35	37	0.28	14	11	91.5	0.69

SINGLE-MATCH HIGHS [all-time ranking]:

Kills: 5, at Utah State, 11/21/19

Attacks: 8, at FGCU, 08/31/19

Assists: 57, West Virginia, Sep 06, 2019

Serve aces: 5, at FGCU, 08/31/19

Digs: 20, at FGCU, 08/31/19

Blocks: 6, Long Beach State, Sep 19, 2019

Block solo: 1, Long Beach State, Sep 19, 2019

Block assist: 5, Long Beach State, Sep 19, 2019

O'SULLIVAN, Victoria

Season	sp-mp	k	k/s	e	ta	pct	a	a/s	ta	ast%	sa	sa/s	se	ta	srv%
2018	57-24	109	1.91	54	309	.178	0	0.00	-	-	0	0.00	0	3	1.000
2019	110-29	352	3.20	145	872	.237	2	0.02	-	-	0	0.00	0	3	1.000
2020	47-13	148	3.15	75	388	.188	6	0.13	-	-	0	0.00	0	9	1.000
TOTAL	214-66	609	2.85	274	1569	.214	8	0.04	-	-	0	0.00	0	15	1.000

Season	dig	d/s	re	ta	rec%	bs	ba	tb	b/s	be	bhe	points	pts/s
2018	23	0.40	1	16	.938	1	14	15	0.26	3	0	117.0	2.05
2019	57	0.52	9	59	.847	14	38	52	0.47	11	0	385.0	3.50
2020	21	0.45	3	35	.914	8	18	26	0.55	3	1	165.0	3.51
TOTAL	101	0.47	13	110	.882	23	70	93	0.43	17	1	667.0	3.12

SINGLE-MATCH HIGHS [all-time ranking]:

Kills: 22, West Virginia, Sep 06, 2019

Attacks: 42, San Jose State, Sep 26, 2019

Attack pct: .487, West Virginia, Sep 06, 2019 (22-3-39)

Assists: 2, at UNLV, 02/05/21

Digs: 7, at Utah State, 11/21/19

Blocks: 6, at Boise St., 03/20/21

Block solo: 2, 6 times

Block assist: 4, at Boise St., 03/20/21

Individual Career History

PUGH, Abby

Season	sp-mp	k	k/s	e	ta	pct	a	a/s	ta	ast%	sa	sa/s	se	ta	srv%
2019	4-3	8	2.00	4	19	.211	0	0.00	-	-	1	0.25	0	5	1.000
2020	19-8	17	0.89	7	41	.244	1	0.05	-	-	0	0.00	3	15	.800
TOTAL	23-11	25	1.09	11	60	.233	1	0.04	-	-	1	0.04	3	20	.850

Season	dig	d/s	re	ta	rec%	bs	ba	tb	b/s	be	bhe	points	pts/s
2019	2	0.50	0	0	.000	0	3	3	0.75	0	0	10.5	2.50
2020	1	0.05	0	1	1.000	0	5	5	0.26	3	0	19.5	1.00
TOTAL	3	0.13	0	1	1.000	0	8	8	0.35	3	0	30.0	1.30

SINGLE-MATCH HIGHS [all-time ranking]:

Kills: 5, Nevada, 02-26-21; New Mexico, 2-20-21

Attacks: 10, Nevada, 02-26-21

Assists: 1, New Mexico, 2-20-21

Digs: 1, New Mexico, 2-20-21

Blocks: 2, Nevada, 02-27-21; at Wyoming, Oct 10, 2019

Block assist: 2, Nevada, 02-27-21; at Wyoming, Oct 10, 2019

SPAETHLING, Ella

Season	sp-mp	k	k/s	e	ta	pct	a	a/s	ta	ast%	sa	sa/s	se	ta	srv%
2020	1-1	1	1.00	0	2	.500	0	0.00	-	-	0	0.00	0	0	.000
TOTAL	1-1	1	1.00	0	2	.500	0	0.00	-	-	0	0.00	0	0	.000

Season	dig	d/s	re	ta	rec%	bs	ba	tb	b/s	be	bhe	points	pts/s
2020	1	1.00	0	0	.000	0	0	0	0.00	0	0	1.0	1.00
TOTAL	1	1.00	0	0	.000	0	0	0	0.00	0	0	1.0	1.00

SINGLE-MATCH HIGHS [all-time ranking]:

Kills: 1, Nevada, 02-26-21

Attacks: 2, Nevada, 02-26-21

Digs: 1, Nevada, 02-26-21

TAUTUA'A, Heipua

Season	sp-mp	k	k/s	e	ta	pct	a	a/s	ta	ast%	sa	sa/s	se	ta	srv%
2020	46-13	92	2.00	61	301	.103	23	0.50	-	-	6	0.13	21	152	.862
TOTAL	46-13	92	2.00	61	301	.103	23	0.50	-	-	6	0.13	21	152	.862

Season	dig	d/s	re	ta	rec%	bs	ba	tb	b/s	be	bhe	points	pts/s
2020	132	2.87	25	259	.903	6	14	20	0.43	4	1	111.0	2.41
TOTAL	132	2.87	25	259	.903	6	14	20	0.43	4	1	111.0	2.41

SINGLE-MATCH HIGHS [all-time ranking]:

Kills: 15, Nevada, 02-26-21

Attacks: 38 [4th], Nevada, 02-26-21

Attack pct: .462, at Boise St., 03/20/21 (14-2-26)

Assists: 4, Nevada, 02-26-21; at UNLV, 02/04/21

Serve aces: 2, at Boise St., 03/20/21; New Mexico, 2-20-21

Digs: 22, New Mexico, 2-20-21

Blocks: 6, at Boise St., 03/20/21

Block solo: 3 [1-7th], at Wyoming, 03-05-21

Block assist: 6, at Boise St., 03/20/21

Individual Career History

VANDERPAN, Ashley

Season	sp-mp	k	k/s	e	ta	pct	a	a/s	ta	ast%	sa	sa/s	se	ta	srv%
2019	0-0	0	0.00	0	0	.000	0	0.00	-	-	0	0.00	0	0	.000
2020	45-13	16	0.36	11	55	.091	298	6.62	-	-	8	0.18	9	153	.941
TOTAL	45-13	16	0.36	11	55	.091	298	6.62	-	-	8	0.18	9	153	.941

Season	dig	d/s	re	ta	rec%	bs	ba	tb	b/s	be	bhe	points	pts/s
2019	0	0.00	0	0	.000	0	0	0	0.00	0	0	0.0	0.00
2020	71	1.58	0	1	1.000	1	8	9	0.20	0	9	29.0	0.64
TOTAL	71	1.58	0	1	1.000	1	8	9	0.20	0	9	29.0	0.64

SINGLE-MATCH HIGHS [all-time ranking]:

Kills: 3, Nevada, 02-26-21; New Mexico, 2-20-21

Attacks: 9, Nevada, 02-26-21; New Mexico, 2-20-21

Assists: 40, New Mexico, 2-20-21

Serve aces: 3, Nevada, 02-27-21; at Boise St., 03/20/21

Digs: 12, Nevada, 02-26-21

Blocks: 2, Fresno State, 02-13-21; New Mexico, 02-19-21

Block solo: 1, at Boise St., 03/20/21

Block assist: 2, Fresno State, 02-13-21; New Mexico, 02-19-21

WALKER, Andrea

Season	sp-mp	k	k/s	e	ta	pct	a	a/s	ta	ast%	sa	sa/s	se	ta	srv%
2017	0-0	0	0.00	0	0	.000	0	0.00	-	-	0	0.00	0	0	.000
2018	7-4	7	1.00	4	16	.188	0	0.00	-	-	0	0.00	0	0	.000
2019	69-23	129	1.87	45	273	.308	1	0.01	-	-	0	0.00	0	0	.000
2020	33-9	69	2.09	28	145	.283	3	0.09	-	-	0	0.00	0	0	.000
TOTAL	109-36	205	1.88	77	434	.295	4	0.04	-	-	0	0.00	0	0	.000

Season	dig	d/s	re	ta	rec%	bs	ba	tb	b/s	be	bhe	points	pts/s
2017	0	0.00	0	0	.000	0	0	0	0.00	0	0	0.0	0.00
2018	0	0.00	0	0	.000	0	5	5	0.71	0	0	9.5	1.29
2019	7	0.10	0	3	1.000	6	55	61	0.88	7	0	162.5	2.35
2020	4	0.12	0	1	1.000	3	21	24	0.73	1	0	82.5	2.48
TOTAL	11	0.10	0	4	1.000	9	81	90	0.83	8	0	254.5	2.33

SINGLE-MATCH HIGHS [all-time ranking]:

Kills: 13, at Utah State, 11/21/19

Attacks: 26, at Utah State, 11/21/19

Attack pct: .286, Utah State, 03-11-21 (10-4-21)

Assists: 2, at Boise St., 03/20/21

Digs: 2, New Mexico, 2-20-21

Blocks: 6, at Utah State, 11/21/19

Block solo: 2, Boise State, Oct 24, 2019

Block assist: 6, at Utah State, 11/21/19