



SAN DIEGO STATE AZTECS

2021 Spring Volleyball Weekly Notes

Jim Solien (Primary Contact)
 Assistant Media Relations Director
Office Phone Number: (619) 594-2576
E-Mail Address: jsolien@sdsu.edu
News Release Date: March 10, 2021

SDSU Official Athletics Website: goaztecs.com
SDSU Official Athletics Twitter: @GoAztecs
SDSU Official Athletics Instagram: @GoAztecs
SDSU Official Athletics Facebook: facebook.com/goaztecs
SDSU Official Athletics YouTube: youtube.com/goaztecs.com

2021 AZTEC SPRING VOLLEYBALL SCHEDULE

Day/Date	Opponent	Time
Thursday, Feb. 4at UNLV* (MWN)	L, 0-3
Friday, Feb. 5at UNLV* (MWN)	L, 1-3
Friday, Feb. 12 Fresno State* (MWN)	L, 1-3
Saturday, Feb. 13 Fresno State*W, 3-0
Friday, Feb. 19 New Mexico*W, 3-0
Saturday, Feb. 20 New Mexico*W, 3-1
Friday, Feb. 26 Nevada*L, 1-3
Saturday, Feb. 27 Nevada* (MWN)L, 0-3
Friday, March 5at Wyoming* (MWN)	L, 0-3
Saturday, March 6at Wyoming* (MWN)	L, 0-3
Thursday, March 11	.. Utah State* (MWN) 6 p.m. PT
Friday, March 12 Utah State* (MWN) 6 p.m. PT
Saturday, March 20at Boise State (MWN)	Noon MT
Saturday, March 27at San José State*	TBA
Thursday, April 1 Air Force* (MWN) 6 p.m. PT
Saturday, April 3 Colorado State* (MWN) 1 p.m. PT

* - Mountain West match

Socially

Twitter: @SDSUVolleyball

Instagram: @SDSUVolleyball

Match Week Preview

Utah State (1-6, 1-6 MW) at San Diego State (3-7, 3-7 MW)

Thursday, March 11 | 6 p.m. PT

Coverage: Live Stats | MW Network

Friday, March 12 | 6 p.m. PT

Coverage: Live Stats | MW Network

Series Record: SDSU leads 17-6



AZTECS SET TO HOST UTAH STATE FOR A TWO-MATCH SERIES

- > After a brief road trip, the San Diego State volleyball team returns to "America's Finest City" this week when it plays host to Utah State for a two-match series, March 11-12, inside Aztec Court at Peterson Gym.
- > Both matches are slated to begin at 6 p.m. PT and will feature links to live stats and streaming video via the Mountain West Network on GoAztecs.com.
- > The Aztecs (3-7, 3-7 MW) are mired in season-long four-match losing streak after dropping a pair of 3-0 decisions at Wyoming last weekend.
- > SDSU gave the Cowgirls all they could handle in the first match on March 5. However, Wyoming benefited from 12 Aztec service errors on the night, winning by set scores of 25-19, 26-24, 25-22.
- > The following day marked the 1,500th match in San Diego State volleyball history since the program was elevated to varsity status in 1976. However, the Aztecs were unable to muster up enough offense, as Wyoming emerged triumphant by set scores of 25-19, 25-14, 25-18 win. The Cowgirls were once again an eager beneficiaries, this time from 25 SDSU errors.
- > With the results, SDSU remains in a three-way tie for seventh in the Mountain West race with New Mexico and Nevada.
- > Conversely, Utah State (1-6, 1-6 MW) still occupies the basement of the conference standings after falling to MW leader UNLV in a single home match last weekend in three sets (20-25, 19-25, 16-25). The second meeting between the Aggies and Rebels was canceled after a COVID-19 issue within the UNLV program, according to the Mountain West.
- > San Diego State is under the direction of first-year head coach Brent Hilliard, who arrived on The Mesa in January 2020 after a successful 19-year tenure as an assistant at the University of San Diego, where he served as the Toreros' associate head coach from 2007-19.
- > Hilliard hired the legendary Steve Timmons to his staff as an assistant coach. Timmons was the first American male to win three Olympic medals in indoor volleyball, leading the U.S. national team to gold medals at the 1984 and 1988 Summer Games, as well as a bronze in 1992.

2021 MOUNTAIN WEST SPRING VOLLEYBALL SCHEDULE

- > The Mountain West has adopted a 16-match conference-only schedule for the 2021 spring volleyball season taking place over nine weeks (Feb. 4-April 3).
- > Each institution will play six opponents twice and four opponents once.
- > Using a hybrid scheduling format, the first seven weeks will feature teams facing the same opponent twice in one weekend at one site. Travel partners will play the final two weeks of the season.
- > The regular-season champion will be the Mountain West's NCAA tournament automatic qualifier.

SERIES RECORD VS. UTAH STATE

- > The Aztecs lead the all-time series with the Aggies 17-6.
- > San Diego State has won five straight vs. Utah State after winning both encounters during the 2019 fall campaign.
- > Last season, the Aztecs posted a home sweep (25-19, 25-20, 25-22) on Oct. 26, 2019, before posting a 3-1 road victory (25-18, 29-27, 17-25, 25-20) in the penultimate match of the year on Nov. 21, 2019.
- > With the results, the Scarlet and Black remains unbeaten at 11-0 all-time vs. the Aggies in San Diego. In addition, SDSU owns a 4-3 record against USU in Logan and is 2-3 vs. the Aggies on a neutral floor.
- > Among 2021 Aztec returners, Victoria O'Sullivan led all players with 17 kills in the last match between the two programs, while Andrea Walker added a career-high 13 put-aways to go with six block assists.
- > Despite trailing by a substantial margin in team blocks (21.0 to 9.0), SDSU maintained the statistical advantage in kills (62-47) and digs (68-45) to help fuel its victory, as the Aztecs secured their sixth winning season in the last nine years. San Diego State's 62 kills and 60 assists as a team both represented 2019 season highs for a four-set match.
- > In the previous clash a month earlier, the Aztecs established their season-high for a three-set match with 46 kills as a team, while their 42 assists was tied for the top spot in a three-setter.

ON THE HORIZON

- > Following this weekend's matches, San Diego State hits the road for a single match at Boise State on Saturday, March 20, starting at noon MT/11 a.m. PT.

GENERAL INFORMATION

Location San Diego, Calif.
 Founded 1897
 Enrollment 33,870
 Nickname Aztecs
 Colors Scarlet and Black (Pantone 187)
 Conference Mountain West
 Affiliation Division I
 President Dr. Adela de la Torre
 Director of Athletics John David Wicker
 Faculty Representative Patrick Papin
 Home Facility Aztec Court at Peterson Gym (2,000)

TEAM INFORMATION

Head Coach Brent Hilliard
 Alma Mater Long Beach State '93
 Record at SDSU 3-7 (First year)
 Career Record 57-18 (Third year)
 E-Mail bhilliard@sdsu.edu
 Volleyball Office Phone (619) 594-5064
 Volleyball Office Fax (619) 594-1674
 Assistant Coach/Recruiting Coordinator Melanie Greene
 Assistant Coach Steve Timmons
 Volleyball Operations Assistant Kara Barkdoll
 2019 Record 15-14
 2019 Conference Record 8-10 (Fifth)
 2019 Home Record 8-5
 2019 Road Record 3-9
 2019 Neutral Record 4-0
 Letterwinners Returning/Lost 9/6
 Starters Returning/Lost 4/2 + libero

PROGRAM HISTORY

First Year of Volleyball 1976
 Overall Record 883-617 (.589)
 NCAA Appearances 14
 Last Postseason Appearance 2012
 NCAA Postseason Record 15-14

MEDIA RELATIONS

Assistant Media Relations Director Jim Solien
 E-Mail jsolien@sdsu.edu
 SID Office Phone (619) 594-2576
 SID Office Fax (619) 582-6541
 Official Athletic Website www.GoAztecs.com

**SPRING 2021 AZTEC VOLLEYBALL
 STATISTICAL LEADERS**

Hitting Percentage (.248) Erin Gillcrist
 Kills 111 Victoria O'Sullivan
 Kills per set 3.26 Victoria O'Sullivan
 Assists 221 Ashley Vanderpan
 Assists per set 6.91 Ashley Vanderpan
 Digs 123 Lauren Lee
 Digs per set 3.62 Lauren Lee
 Blocks 22.0 Erin Gillcrist
 Blocks per set 0.80 Andrea Walker
 Service Aces 4 Five players
 Service Aces per set 0.16 Nya Blair

2021 AZTEC SPRING VOLLEYBALL ROSTER

No.	Player	Pos.	Ht.	Yr.	Hometown (Last School)
1	Nya Blair	OH	5-11	So.	Grand Prairie, Texas (Martin HS)
2	Heipua Tautua'a	OH	6-2	Fr.	Wai'anae, Hawaii (Wai'anae HS)
3	Andrea Walker	MB	6-0	R-Jr.	Fairfield, Calif. (Vanden HS)
4	Kennedy Feuerborn	S	6-3	Fr.	Overland Park, Kan. (Blue Valley North HS)
5	Serena Hodson	MB	6-2	R-So.	Mission Viejo, Calif. (Trabuco Hills HS)
7	Ashley Vanderpan	S	6-1	R-So.	Elk Grove, Calif. (Syracuse)
8	Lauren Lee	DS/L	5-0	Sr.	Coppell, Texas (Rice Univ.)
10	Camryn Machado	S	5-9	R-Jr.	Cardiff-by-the-Sea, Calif. (Utah)
11	Brooklynn Hill	DS/L	5-8	Jr.	Rancho Cucamonga, Calif. (Penn State)
12	Erin Gillcrist	RS	6-1	Sr.	Lakewood, Colo. (Lakewood HS)
13	Elise Park	DS/L	5-7	R-Fr.	Columbia, Md. (Atholton HS)
14	Gabriella Spaethling	RS	6-1	R-Fr.	Larkspur, Calif. (Redwood HS)
15	Abby Pugh	MB	6-3	R-Sr.	Brenham, Texas (Wichita State)
16	Alexis Durand	DS/L	5-7	So.	Long Beach, Calif. (Long Beach Poly HS)
17	Nadia Barclay	DS/L	5-2	Fr.	Foster City, Calif. (Hillsdale HS)
19	Maddie Lenn	OH	5-10	Jr.	San Francisco, Calif. (Sacred Heart Cathedral Prep)
21	Victoria O'Sullivan	OH	6-0	Jr.	Albany, Calif. (St. Mary's HS)

Head Coach: Brent Hilliard (Long Beach State, 1993), First season at SDSU
Assistant Coach/Recruiting Coordinator: Melanie Greene (San Diego State, 2007), 10th season at SDSU
Assistant Coach: Steve Timmons (Southern California), First season at SDSU
Volleyball Operations Assistant: Kara Barkdoll (Cal State San Marcos, 2015), Third season at SDSU
Volunteer Assistant Coach: Yasser Aguila Todd (Trident University, 2009, 2014), Second season at SDSU

Pronunciations

#1 NYA Blair NIGH-ah
 #2 HEIPIUA TAUTUA'A HEY-poo-ah TAW-too-ah-ah
 #4 Kennedy FEUERBORN FEWER-born



OPPONENT COMPARISON (ALL MATCHES)

2021 Overall Stats	SDSU	MW Rank	OPP	MW Rank	USU	MW Rank	OPP	MW Rank
Hitting Percentage	.163	9	.227	8	.148	3	.196	6
Kills per set	12.09	7	11.88	4	11.88	6	12.20	6
Assists per set	11.50	T-5th	11.09	4	10.92	7	11.28	7
Service Aces per set	0.88	11	1.91	9	1.32	9	1.92	10
Digs per set	13.91	7	12.38	1	15.72	1	15.48	9
Blocks per set	1.82	9	3.06	10	2.08	6	3.08	11

UTAH STATE AT A GLANCE

> Utah State (11-6, 1-6 MW) has played just seven matches this season, posting its lone victory with a four-set thriller (26-28, 25-23, 25-18, 27-25) at Fresno State on Feb. 27. The Aggies fell short in their last match, dropping a three-set decision (20-25, 19-25, 16-25) at home to league-leading UNLV on March 4. However, their second clash against the Rebels, scheduled for the following day, was canceled due to a COVID-19 issue within the UNLV program, according to the conference. Individually, USU is led by outside hitter Kristy Frank, who is averaging 3.53 kills per set (60 overall), which ranks fourth in the Mountain West this week. In her first appearance since Feb. 13, Frank totaled 14 put-aways, five digs and a service ace vs. UNLV. Three additional Aggie players are averaging over two kills per set, including Corinne Larsen (2.68), Bailey Downing (2.28) and Tatum Stall (2.24). A middle blocker, Larsen has anchored USU's efforts at the net with a team-best 1.28 blocks per set (32 overall), which ranks fourth in the league. Elsewhere, setter Kalena Vaivai finds herself among the MW leaders, occupying the third spot with 9.21 assists per set, while Abby Peterson owns a team-best 3.32 digs per frame (83 overall). Collectively, the Aggies are averaging 11.88 kills, which ranks eighth in the conference just behind the Aztecs (12.09), while their .148 hitting percentage is second to last. On the flip side, Utah State has held its own on defense, leading the league with an average of 15.72 digs per set while ranking sixth in blocks with 2.08 per frame. The Aggies are guided by first-year head coach Rob Neilson, who arrived on the Logan campus after serving as the lead assistant coach for the U.S. men's national team from 2017-19. Prior to his stint with Team USA, Neilson spent 10 years on the Brigham Young men's volleyball coaching staff, including the final two as the program's associate head coach in 2014-15. In 2011, he served as the Cougars' interim head coach, leading the squad to a 20-8 record and a No. 2 national ranking. Neilson played collegiately at BYU from 2003-06, starting at setter during the 2005 and 2006 campaigns. He was a member of the Cougars' 2004 national championship team and tallied 2,790 assists in his career, which ranks fifth in the BYU record book in the rally scoring era.

WEEKLY WRAP

> Making its first road trip in four weeks, San Diego State fell short in pair of matches last weekend at Wyoming, March 5-6. The Aztecs gave the host Cowgirls all they could handle in the opener but ultimately dropped a tough three-setter (19-25, 24-26, 22-25) before experiencing a nearly identical fate in the finale (19-25, 14-25, 18-25).
 > In the first match, SDSU and Wyoming were fairly even on the stat sheet, tying in team blocks with six apiece, while SDSU maintained a slight advantage in digs (42-39). However, the Cowgirls outlit the Aztecs .282 to .218 for the evening, including a .429 to .290 spread in the third set, where the Scarlet and Black committed three more attack errors (5-2) in trying to extend the contest.

2021 MOUNTAIN WEST SPRING STANDINGS (As of March 10)

Team	---Conference---			----Overall----			Strk
	W	L	Pct	W	L	Pct.	
UNLV	7	0	1.000	7	0	1.000	W7
Boise State	8	2	.800	8	2	.800	W2
Wyoming	7	3	.700	7	3	.700	W3
Fresno State	5	3	.571	5	3	.571	W1
Air Force	5	5	.500	5	5	.500	L1
Colorado State	4	4	.500	4	4	.500	L1
San José State	3	5	.375	3	5	.375	W2
San Diego State	3	7	.300	3	7	.300	L4
Nevada	3	7	.300	3	7	.300	L2
New Mexico	3	7	.300	3	5	.300	L2
Utah State	1	6	.143	1	6	.143	L1

Upcoming Matches in the MW

Thursday, March 11

Utah State at San Diego State, 6 p.m. PT

Friday, March 12

Utah State at San Diego State, 6 p.m. PT

Colorado State at San José State, 3 p.m. PT

Wyoming at Fresno State, 5 p.m. PT

Boise State at Nevada, 6 p.m. PT

UNLV at New Mexico, canceled

Saturday, March 13

Boise State at Nevada, 11 a.m. PT

Wyoming at Fresno State, 2 p.m. PT

Colorado State at San José State, 3 p.m. PT

UNLV at New Mexico, canceled

Friday, March 19

Air Force at Utah State, 5 p.m. MT

Fresno State at Colorado State, 6 p.m. MT

San José State at UNLV, 6:30 p.m. PT

Saturday, March 20

San Diego State at Boise State, Noon MT

Air Force at Utah State, 1 p.m. MT

Nevada at Wyoming, 1 p.m. MT

Fresno State at Colorado State, 4 p.m. MT

San José State at UNLV, 6:30 p.m. PT



- > In addition, the Aztecs were plagued by 12 service errors on the night.
- > Individually, SDSU was led by the trio of Nya Blair, Heipua Tautua'a and Maddie Lenn, who knocked down seven kills each while Erin Gillcrist and Victoria O'Sullivan finished with six apiece.
- > Tautua'a also excelled on defense, recording three solo blocks, while Serena Hodson added three block assists. In addition, Lauren Lee anchored the back row with a match-high 15 digs, marking the seventh time in matches she reached double figures in that category.
- > The Aztecs also split the setting duties against Wyoming, with Kennedy Feuerborn dishing out 19 assists, while Ashley Vanderpan handed out 17.
- > The teams combined for 12 ties and three lead changes in the third set, totaling 14 kills apiece, including three each by Lenn and Blair for SDSU. However, Wyoming notched just two errant attacks, compared to five for the Aztecs. The score was knotted at 18-18 before the Cowgirls closed with a 7-4 run.
- > The Aztecs struggled to generate consistency in the second match, as Wyoming benefited from 25 attack errors by the visitors.
- > SDSU trailed in team blocks (11.0-7.0) and were out-hit .221 to .010 for the day, mustering just five kills in the second set as a team.
- > Victoria O'Sullivan led the way with eight kills, followed by Nya Blair (5) and Maddie Lenn (4), while Heipua Tautua'a and Lauren Lee tied for team high honors with 13 digs apiece.

AZTECS AMONG MW LEADERS

- > Despite combining for just 14 kills in two matches at Wyoming, Victoria O'Sullivan remains among the Mountain West statistical leaders, occupying the seventh position with an average of 3.26 kills per set (111 overall).
- > In addition, Lauren Lee has climbed into the sixth spot with 3.62 digs per set, while Ashley Vanderpan finds herself in the sixth slot as well with 6.91 assists per frame.
- > O'Sullivan had her streak of double-digit kills this season snapped at seven matches on Feb. 27, but has still logged 10 or more put-aways in 28 of her last 39 appearances dating back to the 2019 fall campaign.
- > O'Sullivan is tied for the fourth-highest kill total for a single match in the Mountain West this season and is tied for the second-most in that category for a four-set contest after launching 20 non-returnables in the Aztecs' 3-1 triumph at home over New Mexico on Feb. 20.
- > Lee has scooped up double-digit digs in eight of 10 matches this year, including a season-high 16 in the Aztecs' four-set victory in their series finale vs. New Mexico.
- > Last weekend at Wyoming, Lee averaged 4.67 digs in six sets played, raising her season average from 3.39 to 3.62 scoops per frame.
- > Meanwhile, Vanderpan recorded 30 or more assists in four straight matches from Feb. 13-26, lifting SDSU to a 3-1 record during that stretch. Her 38 helpers in a sweep of New Mexico on Feb. 19 rank as the second-highest assist total for a three-set match in the MW so far this season.
- > With Vanderpan setting, SDSU averaged 14.16 kills in seven sets during their series vs. the Lobos, over 2.5 kills more than its average of 11.64 in the previous four matches.
- > In the midst of a four-match losing streak, the Aztecs dropped to seventh in the MW with an average of 12.09 kills per set for the season and have slid into seventh with 13.82 digs per frame. Conversely, SDSU opponents have posted 12.39 digs per set on Aztec attacks, which ranks last in the conference, and have managed just 11.88 kills per set against the Scarlet and Black, which is fourth from the bottom in the league.

NOTABLE

- > Victoria O'Sullivan has been the Aztecs' leader in kills in seven of 10 matches this season. The SDSU outside hitter has logged 10 or more put-aways in 28 of her last 39 starts dating back to the 2019 fall campaign.
- > The 15 kills by Heipua Tautua'a against Nevada on Feb. 26 marked the first time this season that an SDSU player other than O'Sullivan led the team in that statistic. Erin Gillcrist finished with eight put-aways vs. the Wolf Pack in the series finale, while Tautua'a, Maddie Lenn and Nya Blair all shared the team lead in the series opener at Wyoming on March 5.
- > In addition, Tautua'a scooped up 22 digs vs. New Mexico on Feb. 20, representing the highest total for an Aztec since Loren Teter notched 24 in a narrow five-set loss at Florida Gulf Coast on Aug. 31, 2019.
- > Setter Ashley Vanderpan owns the Aztecs' two double-doubles this season vs. Fresno State on Feb. 13 (30 assists, 11 digs) and against Nevada on Feb. 26 (34 assists, 12 digs), marking the first two times she's accomplished the feat during her career.
- > As SDSU's starting setter for five matches from Feb. 13-27, Vanderpan averaged 9.24 assists and 2.12 digs in 17 sets.
- > Erin Gillcrist logged her two highest hitting percentages of the season vs. New Mexico (.750) on Feb. 20 and against Nevada (.500) on Feb. 26, combining for 16 kills on 26 swings with just one error in those two matches.
- > The Aztecs had three players collect double-digit kills in the first match vs. Nevada on Feb. 26 — Heipua Tautua'a (15), Victoria O'Sullivan (13), Erin Gillcrist (10) — but still fell short. Last season, SDSU went 8-3 when three players reached double figures in that statistic.
- > In all three of their victories this season, the Aztecs have grabbed a 2-0 lead in sets.
- > San Diego State is 3-0 this season when leading in kills and logging a greater attack percentage.
- > In her first collegiate appearance, Gabriella Spaethling came off the bench in the fourth set against Nevada on Feb. 26 and recorded her first career kill and dig.
- > SDSU is one of just four Mountain West teams not to have played a five-set match this season, joining Colorado State, Nevada and UNLV.
- > Through six matches in 2019, the Aztecs completed three five-set nail-biters, falling at Florida Gulf Coast before edging West Virginia and Arkansas at home.

NOTHIN' LIKE HOME COOKIN'

- > Since the beginning of the 2009 campaign, the Aztecs have amassed a 107-54 (.665) record at home, highlighted by a 14-0 mark during the 2012 season when SDSU captured the Mountain West championship.

RECAPPING THE NEVADA SERIES

- > After winning three straight, San Diego State dropped consecutive encounters against Nevada Feb. 26-27, to wrap up a season-long six-match homestand.
- > The Aztecs were stymied in the opener by a 3-1 count (25-20, 14-25, 20-25, 15-25) before suffering a three-set defeat the following day (22-25, 21-25, 13-25).
- > Despite receiving double-digit kills from three players in the first match and maintaining a slight edge in digs (54-53), San Diego State was out-hit (.318 to .194) and trailed in team blocks (13.0-5.0).
- > In addition, the Wolf Pack benefited from 24 attack errors and served up eight aces to post their first win on the road in nine meetings vs. the Scarlet and Black.
- > Heipua Tautua'a tied for match-high honors with 15 kills, while Victoria O'Sullivan added 13 put-aways of her own, followed by Erin Gillcris, who hit .500 for the night after launching 10 non-returnables on 18 attempts with just one error.
- > In addition, Lauren Lee led all players with 14 digs, while Ashley Vanderpan notched her second double-double of the year with 34 assists and 12 digs. Gillcris was also a force at the net, recording a team-high four blocks, including a solo stuff.
- > However, the Aztecs were unable to maintain the momentum after claiming the first set. SDSU hit .286 during the frame, knocking down 18 kills on 42 swings with six miscues. The Aztecs mustered a .155 attack percentage the rest of the way, while the Wolf Pack recorded a .356 clip over the final three sets, including a .500 pace (16-1-30) in the final stanza.
- > In the second match, the SDSU attack was stymied, as Nevada maintained a sizable advantage in hitting percentage (.293 to .080) and team blocks (14.0-5.0).
- > Individually, the Aztecs were led by Gillcris's eight kills, while Heipua Tautua'a added seven.
- > The Scarlet and Black cause was also aided by Ashley Vanderpan, who handed out 15 assists and served up three aces, while Alexis Durand scooped up a match-high 10 digs in her first collegiate start.

RECAPPING THE NEW MEXICO SERIES

- > San Diego State posted a pair of victories over New Mexico on Feb. 19-20 at Aztec Court. The two contests were originally slated as a home series for the Lobos when the Mountain West released its 2021 spring schedule. However, the conference officially announced the switch in venues on Feb. 17.
- > SDSU recorded its second straight sweep in the series opener, dispatching the visitors by scores of 25-13, 25-17, 25-21 before claiming a four-set decision in the finale, 25-20, 25-20, 23-25, 25-19.
- > With the two victories, the Aztecs also remain unbeaten vs. New Mexico in the last eight encounters between the two programs.
- > In the opener, Victoria O'Sullivan blasted a match-high 13 kills and hit .346 on the evening, while Nya Blair added a career-high 10 put-aways of her own.
- > The SDSU attack also included seven kills apiece from Erin Gillcris and Heipua Tautua'a, while Ashley Vanderpan dished out 38 assists and posted seven digs.
- > In addition, Brooklynn Hill served up a personal-best three aces, while Lauren Lee scooped up a team-high 11 scoops in the victory.
- > Despite trailing in team blocks (7.0-6.0), the Aztecs held a sizable advantage in most statistical categories, including kills (45-27), digs (39-25) and service aces (6-1) while outlasting UNM .283 to .136.
- > The third frame was the most competitive, with the two sides witnessing 10 ties and three lead changes. O'Sullivan and Blair took center stage, totaling six kills each in the set, while Andrea Walker added three.
- > In the finale, Victoria O'Sullivan launched a season-high 20 kills and added two solo blocks, while Nya Blair finished with 10 put-aways for the second straight outing.
- > SDSU's fortunes were also buoyed by Andrea Walker, who hit .417 for the match on seven kills with two errors in 12 attempts, while Erin Gillcris floored seven shots of her own.
- > In addition, the Aztecs received career-high performances from Heipua Tautua'a (22 digs) and Ashley Vanderpan (40 assists), while Lauren Lee posted a season-high 16 digs, marking the fifth straight contest of recording double digits in that category.
- > Despite trailing in team blocks (13.0-5.0) and committing 31 attack errors overall, San Diego State proved that quantity trumped quality on this day, maintaining a sizable 57-43 advantage in kills and a 64-36 edge in digs.

RECAPPING THE FRESNO STATE SERIES

- > Brent Hilliard picked up his first victory as head coach of the Aztecs on Feb. 13, after San Diego State dispatched Fresno State in three sets (25-19, 26-24, 25-20) to even the weekend series at one match apiece.
- > SDSU maintained a 41-29 advantage in kills during the series finale, limiting Bulldogs to a .060 hitting percentage, as the visitors committed 22 errors on the day.
- > In addition, the Aztecs held the statistical edge in digs (58-50) and team blocks (9.0-8.0) to break into the win column for the first time this spring.
- > Individually, SDSU was once again led by Victoria O'Sullivan, who launched a team-high 11 kills, breaking the double-digit plateau in that category for the fourth match in a row and 25th time in her last 33 outings dating back to last season.
- > The Aztec offense also received a boost from Andrea Walker (.389) and Nya Blair (.375), who committed just one attack error apiece, blasting eight and seven put-aways, respectively.
- > Not to be outdone, a trio of SDSU players reached double figures in digs, including Lauren Lee (13), Heipua Tautua'a (11) and Ashley Vanderpan (11), with the latter notching her first career double-double after dishing out 30 assists as well.
- > The Aztecs closed with a strong 8-3 surge in the opening set after Fresno State crept to within one point at 17-16.
- > The second stanza evolved into a classic thriller, with the two teams combining for 12 ties and nine lead changes.
- > Things looked bleak for SDSU late in the second stanza after finding itself staring down the barrel of a 24-21 deficit.
- > However, the Scarlet and Black flashed its mettle once again, as O'Sullivan contributed two kills and a solo block to ignite a timely 5-0 blitz. Blair added another key put-away, while the Bulldogs imploded with an attack error on the final serve.
- > The third set was also a nip-and-tuck affair, as the two sides witnessed five ties in the early going. However, the Aztecs took the lead for good after a Blair kill and service ace followed by an O'Sullivan non-returnable, which broke a 12-12 deadlock.
- > In its home opener the previous night, San Diego State dropped a four-set decision (25-22, 16-25, 18-25, 18-25).
- > The Aztecs matched the Bulldogs with 45 kills and held a sizable 51-36 advantage in digs but were undone by 34 attack errors, hitting just .087 for the night, compared to the visitors, who finished with a .246 clip and maintained the upper hand in team blocks (17-10) to with nine service aces.
- > Victoria O'Sullivan was the lone player for the Scarlet and Black to surpass the double-digit kill barrier, launching a team-high 11 non-returnables, while Andrea Walker totaled eight put-aways of her own while contributing four total blocks.

2021 SITUATIONAL RECORDS

GENERAL

Overall.....	3-7
Mountain West.....	3-7
Home.....	3-3
Away.....	0-4
vs. Ranked Teams.....	0-0
vs. Unranked Teams.....	3-7
Matches Following a Win.....	2-1
Matches Following a Loss.....	0-6
Longest Winning Streak.....	3
Longest Losing Streak.....	4
Current Streak.....	Last 4

BY SETS

3 Sets.....	2-4
4 Sets.....	1-3
5 Sets.....	0-0
Leading After Two.....	3-0
Trailing After Two.....	0-4
Tied After Two.....	0-3
Leading 2-1.....	1-0
Trailing 2-1.....	0-2

BY MONTH

February.....	3-5
March.....	0-2
April.....	0-0

BY DAY

Thursday.....	0-1
Friday.....	1-4
Saturday.....	2-2

BY KILLS

Leading in Kills.....	3-0
Trailing in Kills.....	0-6
Tied in Kills.....	0-1

BY DIGS

Leading in Digs.....	3-4
Trailing in Digs.....	0-2
Tied in Digs.....	0-1

BY BLOCKS

Leading in Blocks.....	1-0
Trailing in Blocks.....	2-6
Tied in Blocks.....	0-1

BY ATTACK PERCENTAGE

Greater Attack Percentage.....	3-0
Lower Attack Percentage.....	0-7
Equal Attack Percentage.....	0-0
Hitting above .300.....	0-0
Hitting between .200 and .300.....	1-2
Hitting between .100 and .200.....	2-2
Hitting below .100.....	0-3
Opponent Hitting above .300.....	0-2
Opponent Hitting between .200 and .300.....	0-5
Opponent Hitting between .100 and .200.....	2-0
Opponent Hitting below .100.....	1-0

BY INDIVIDUAL KILLS

3+ Double-Digit Individual Kill Totals.....	0-1
2 Double-Digit Individual Kill Totals.....	2-0
1 Double-Digit Individual Kill Totals.....	1-3
0 Double-Digit Individual Kill Totals.....	0-3

> Erin Gillcrisp and Maddie Lenn also got into the act with seven kills apiece, while Lauren Lee anchored the back row with a match-high 15 digs. In addition, Kennedy Feuerborn dished out a team-best 26 assists.

RECAPING THE UNLV SERIES

- > Playing its first intercollegiate match in over 14 months, San Diego State dropped a three-set decision on the road to UNLV (22-25, 21-25, 10-25) in the 2021 spring opener for both teams on Feb. 4.
- > The Rebels out-hit the Aztecs .310 to .147, maintaining a 44-30 advantage in kills and a 44-34 edge in digs to spoil the debut of first-year SDSU head coach Brent Hilliard.
- > Victoria O'Sullivan paced the Scarlet and Black with 11 kills, hitting .300 for the night on 30 attempts with just two errors, while Heipua Tautua'a launched a six non-returnables of her own to go with a team-high 10 digs.
- > In addition, SDSU received four kills apiece from Erin Gillcrisp (3 blocks) and Kennedy Feuerborn (6 assists), while Ashley Vanderpan handed out 11 assists in her first Aztec appearance.
- > The Aztecs were unable to maintain a hot start the next night vs. UNLV, falling in four sets (25-19, 18-25, 19-25, 15-25).
- > The Aztecs out-hit the Rebels .452 to .242 in the opening frame, knocking down 15 kills with just one error in 31 attempts. However, SDSU stumbled to a .163 clip the rest of way, while UNLV posted a .296 attack percentage during that span, including a .361 pace in the final set.
- > In all, the Rebels served up 12 aces and maintained the advantage in kills (55-47) and total blocks (7.0-3.0) to help fuel their victory. Conversely, the Aztecs held a slight edge in digs (58-55) but were plagued by eight errant serves.
- > Individually, SDSU was paced by Victoria O'Sullivan, who launched 13 kills and hit .333 for the match, committing just two errors in 33 swings, while Andrea Walker (.316) blasted nine put-aways of her own and contributed two block assists.
- > The Aztec cause was also aided by Erin Gillcrisp, who totaled eight kills and a service ace, while Kennedy Feuerborn displayed her versatility with six kills, 27 assists and a solo block.
- > Not to be outdone, Maddie Lenn anchored the back row with a career-high 18 digs, while Lauren Lee reached double digits as well with 13 scoops of her own.

WELCOME BACK

- > The Aztecs return 13 players, including nine letterwinners from last year's squad that finished with a 15-14 record overall and an 8-10 mark in the Mountain West.
- > Leading the returners is outside hitter Victoria O'Sullivan, who ranked sixth in the league with 3.20 kills per set (352 overall) and tied for the team lead with 14 solo blocks while finishing fourth with 52 stops overall. The Aztec junior is the lone veteran to have played all 110 sets in 2019, finishing with double-digit kill totals in 21 of the Aztecs' 29 matches, including 10 straight to start the season.
- > In SDSU's riveting five-set thriller over West Virginia at the Aztec Challenge in September 2019, O'Sullivan blasted a career-high 22 kills and logged a collegiate-best .487 hitting percentage, committing just three errors in 39 attempts.
- > With the graduation of Hannah Turnlund and Tamia Reeves, setter Camryn Machado is the Aztecs' lone all-Mountain West honoree to return from last year. However, the Cardiff-by-the-Sea native will miss the 2021 spring campaign after suffering a torn ACL in preseason camp.
- > In 2019, Machado ranked second in the MW with 10.62 assists per set (1,158 overall) and occupied the No. 2 spot on the team with 2.54 digs per set (277 overall).
- > Additionally Machado led the Scarlet and Black with 14 double-doubles (assists-digs), including seven vs. MW opponents, and topped the squad with 16 service aces, including a career-high three in a home sweep of Utah State.
- > Senior right-side hitter Erin Gillcrisp has been selected team captain for the upcoming season. The Lakewood, Colorado, native has successfully recovered from off-season shoulder surgery and looks to build on a 2019 campaign in which she averaged 1.89 kills (144 overall) and 0.71 blocks per set (54 overall).
- > In the Aztecs' 3-1 victory over Long Beach State on Sept. 19, 2019, Gillcrisp matched her career-best with a .500 attack percentage, flooring 10 balls on 16 attempts with two errors.
- > Also back in the fold is middle blocker Andrea Walker, who owns the top returning hitting percentage among Aztec regulars after finishing 10th in the Mountain West last year with a .308 clip. The Fairfield, California, product occupied the second spot on the team with an average of 0.88 blocks per set (61 overall) and ranked fifth behind Gillcrisp with an average of 1.87 kills per set (129 overall).
- > Walker compiled double-digit kills on three occasions, including a career-high 13 put-aways in SDSU's 3-1 victory at Utah State on Nov. 21, 2019.

MEET THE NEWCOMERS

- > First-year head coach Brent Hilliard has added four newcomers to the roster, including a trio of freshmen in outside hitter Heipua Tautua'a, setter Kennedy Feuerborn and defensive specialist Nadia Barclay, along with junior defensive specialist Brooklyn Hill, a transfer from perennial national power Penn State.
- > Hill played 13 matches in two seasons with the Nittany Lions, who advanced to the NCAA regional finals in both of her years on the State College campus. A native of Southern California, Hill starred for three straight conference championship teams at Rancho Cucamonga High School from 2015-17, earning all-Baseline League honors three times to go with a trio of team MVP and Defensive Player of the Year awards.
- > A product of Wai'anae High School in Hawai'i, Tautua'a garnered first-team all-Western Division accolades from the O'ahu Interscholastic Association in 2018 and landed on the AVCA Phenom Watch List. She also excelled at the junior level, collecting Most Valuable Player honors at the 2019 Girls Junior National

Championships after leading her Spike and Serve Volleyball Club 16s team to the American Division title. In addition, Tautua'a earned a spot on the USA Volleyball Girls' Youth A1 National Training Team in 2018-19.

- > Feuerborn, meanwhile, arrives on The Mesa by way of Johnson County (Kan.) Community College where she enrolled for the 2019-20 academic year but did not compete in volleyball. Feuerborn earned second-team all-state honors and landed on the state Class 6A all-tournament team as a senior in 2018 at Blue Valley North High School in Overland Park, Kansas. She originally signed with Baylor as a prep but did not attend.
- > Rounding out the rookie class is Barclay, who graduated from Hillsdale High School in San Mateo, California, where she received first team all-conference recognition and team MVP accolades as a junior in 2018 after averaging 24.6 digs per match (541 total, 7.7 per set).

PRESEASON PROGNOSTICATIONS

- > San Diego State was picked to finish fifth this year in the Mountain West preseason coaches poll released Jan. 28. The Aztecs garnered 70 points and garnered one first-place vote.
- > In the 21-year history of the Mountain West, SDSU has finished first (2012), second (2002, 2011), fourth (2000, 2001, 2003, 2013, 2017), fifth (2005, 2015, 2019), sixth (1999, 2004, 2006, 2009, 2010, 2014, 2016), seventh (2008) and eighth (2007, 2018) in the final league standings.

2021 Mountain West Spring Preseason Poll

Rk.	Team (1st-place votes)	Pts.
1.	Colorado State (5)	92
2.	UNLV (4)	90
3.	Wyoming (1)	80
4.	Boise State	76
5.	San Diego State (1)	70
6.	Fresno State	48
7.	Nevada	41
8.	Air Force	33
9.	San José State	28
10.	New Mexico	25
11.	Utah State	22

VOLLEYBALL LEGEND STEVE TIMMONS ADDED TO COACHING STAFF

- > Aztec head coach Brent Hilliard served up a proverbial ace with his first staff addition after hiring the legendary Steve Timmons as an assistant coach on Feb. 15, 2020.
- > The first American male to win three Olympic medals in indoor volleyball, Timmons has worked as an elite coach since 2013 with Wave Volleyball Club based in nearby Del Mar, one of the most prestigious volleyball clubs in the country.
- > One of the sport's most potent hitters, Timmons first made his impact as a three-year letterman at USC (1980-82), where he helped the Trojans capture the 1980 NCAA Championship, earning all-tournament honors in the process. He also garnered first-team all-conference accolades to go with All-America distinction in 1982.
- > Timmons quickly rose to international stardom, winning gold medals for the U.S. Team at the Summer Olympics 1984 and 1988 to go with a bronze in 1992. He collected MVP honors for the 1984 Games, and in 1988 he was named the U.S. Olympic Committee's Male Volleyball Player of the Year. That same year, he was voted the Federation of International Volleyball's Best Blocker and received MVP recognition at the World Super Four Tournament.
- > Not to be outdone, Timmons led the U.S. Team to gold medals at the 1985 World Cup and 1986 World Championships, helping the Americans complete the first "Triple Crown" in volleyball following their triumph at the 1984 Olympics.
- > Timmons was selected to USA Volleyball's 75th anniversary All-Era team in 2003 and was ranked No. 8 on Volleyball magazine's "35 Best U.S. Players of All Time" list in 2012. In addition, he was named to the inaugural class of the Southern California Indoor Volleyball Hall of Fame in 2017.
- > Previously, Timmons was inducted into the U.S. Volleyball Association and International Volleyball Halls of Fame in 1998 while landing a spot on Volleyball magazine's all-time American Indoors first team. Additionally, he was enshrined in the Orange County Sports Hall of Fame in 1990 and the California Community College Hall of Fame in 1998 for his basketball and volleyball prowess at Orange Coast College.

AZTEC VOLLEYBALL EARNS PUBLIC RECOGNITION AWARD FROM NCAA

- > Last spring, the San Diego State volleyball program was publicly recognized by the NCAA for outstanding academic achievements, along with the Aztec women's golf and women's tennis teams.
- > The recognition came on the heels of the most recent multi-year Academic Progress Rates (APR) in which all three programs were among the top 10 percent of their respective sports nationally.
- > With these squads earning NCAA public recognition last season, San Diego State has now received such distinction a total of 21 times in school history, matching its record of three teams set during the 2011-12 and 2017-18 academic years.
- > The SDSU volleyball program received public recognition for the fourth straight season and fifth time overall, while the Aztec women's tennis team garnered the accolade for the third year in a row and sixth time in the last seven seasons. In addition, the San Diego State women's golf squad merited public recognition for the third time in school history.

2021 MATCH-BY-MATCH LEADERS

Date	Opponent	Kills	Hitting Pct.*	Assists	Aces	Digs	Blocks
F.4	at UNLV	O'Sullivan - 13	O'Sullivan (.300)	Vanderpan - 11	Hodson/Tautua'a - 1	Tautua'a - 10	Gillcris/Walker - 3
F.5	at UNLV	O'Sullivan - 11	O'Sullivan (.333)	Feuerborn - 27	Gillcris - 1	Lenn - 18	Walker - 2
F.12	Fresno State	O'Sullivan - 11	Gillcris (.267)	Feuerborn - 26	none	Lee - 15	Walker - 4
F.13	Fresno State	O'Sullivan - 11	Walker (.389)	Vanderpan - 30	Barcklay/Blair/Lee - 1	Lee - 13	Walker - 4
F.19	New Mexico	O'Sullivan - 13	O'Sullivan (.346)	Vanderpan - 38	Hill - 3	Lee - 11	O'Sullivan - 3
F.20	New Mexico	O'Sullivan - 20	Walker (.417)	Vanderpan - 40	Blair/Tautua'a - 2	Tautua'a - 22	O'Sullivan - 3
F. 26	Nevada	Tautua'a - 15	Gillcris (.500)	Vanderpan - 34	Gillcris/Hill/Lee - 1	Lee - 14	Gillcris - 4
F.27	Nevada	Gillcris - 8	Gillcris (.250)	Vanderpan - 15	Vanderpan - 3	Durand - 10	Hodson - 3
M.5	at Wyoming	Blair/Lenn/Tautua'a - 7	Blair (.333)	Feuerborn - 19	Feuerborn - 1	Lee - 15	Hodson/Tautua'a - 3
M.6	at Wyoming	O'Sullivan - 8	O'Sullivan (.083)	Vanderpan - 15	Gillcris/Vanderpan - 1	Lee/Tautua'a - 13	Gillcris - 4
M.12	Utah State						
M.13	Utah State						
M.20	at Boise State						
M.27	at San Jose State						
A.1	Air Force						
A.3	Colorado State						

* - min. 7 kills

SPRING 2021 AZTEC SUPERLATIVES

Individual

HITTING PERCENTAGE (min. 12 kills)

.346 (13-4-39)Victoria O'Sullivan vs. New Mexico (Feb. 19)

KILLS

20Victoria O'Sullivan vs. New Mexico (Feb. 20)

5 sets N/A

4 sets20Victoria O'Sullivan vs. New Mexico (Feb. 20)

3 sets13Victoria O'Sullivan vs. New Mexico (Feb. 19)

TOTAL ATTEMPTS

41Victoria O'Sullivan vs. New Mexico (Feb. 20)

5 sets N/A

4 sets41Victoria O'Sullivan vs. New Mexico (Feb. 20)

3 sets33Victoria O'Sullivan vs. Fresno State (Feb. 13)

ASSISTS

40Ashley Vanderpan vs. New Mexico (Feb. 20)

5 sets N/A

4 sets40Ashley Vanderpan vs. New Mexico (Feb. 20)

3 sets38Ashley Vanderpan vs. New Mexico (Feb. 19)

DIGS

22Heipua Tautua'a vs. New Mexico (Feb. 20)

5 sets N/A

4 sets22Heipua Tautua'a vs. New Mexico (Feb. 20)

3 sets15Lauren Lee at Wyoming (March 5)

SERVICE ACES

3Ashley Vanderpan vs. Nevada (Feb. 27)

.....Brooklyn Hill vs. New Mexico (Feb. 19)

BLOCK SOLOS

3Heipua Tautua'a at Wyoming (March 5)

BLOCK ASSISTS

4Erin Gillcris at Wyoming (March 6)

TOTAL BLOCKS

4 Four times, last: Erin Gillcris at Wyoming (March 6)

Team

HITTING PERCENTAGE

.283 (45-17-99)vs. New Mexico (Feb. 19)

KILLS

57vs. New Mexico (Feb. 20)

5 sets N/A

4 sets57vs. New Mexico (Feb. 20)

3 sets45vs. New Mexico (Feb. 19)

TOTAL ATTEMPTS

140vs. New Mexico (Feb. 20)

5 sets N/A

4 sets140vs. New Mexico (Feb. 20)

3 sets121vs. Fresno State (Feb. 13)

ASSISTS

55vs. New Mexico (Feb. 20)

5 sets N/A

4 sets55vs. New Mexico (Feb. 20)

3 sets44vs. New Mexico (Feb. 19)

DIGS

64vs. New Mexico (Feb. 20)

5 sets N/A

4 sets64vs. New Mexico (Feb. 20)

3 sets58vs. Fresno State (Feb. 13)

SERVICE ACES

7vs. New Mexico (Feb. 20)

TOTAL BLOCKS

10.0vs. Fresno State (Feb. 12)



Brent HILLIARD

Head Coach - First Season at San Diego State

San Diego State Director of Athletics John David Wicker ushered in a new era for the Aztec volleyball team with the hiring of Brent Hilliard as the fifth head coach in program history on Jan. 31, 2020.

A 2018 inductee to the Southern California Indoor Volleyball Hall of Fame, Hilliard arrives at SDSU with a wealth of experience after achieving 19 years of unparalleled success as an assistant coach at the University of San Diego, where he served as the Toreros' associate head coach since 2007.

"Brent Hilliard's presence in San Diego County volleyball is far reaching," Wicker said. "Through the club volleyball teams he coached, his 19 years at USD, the time and relationships with the Olympics, Coach Hilliard will be able to hit the ground running for San Diego State. In addition to his San Diego ties, Brent also has what we need in the next leader to graduate the women in the volleyball program, lead them to compete for championships and prepare them for a successful life after sport. He is known for his coaching tenacity in the gym, and at the same time, people of all ages told us how much they enjoyed him as a person."

During his fruitful tenure, the Toreros qualified for the NCAA Tournament in all but one of his 19 seasons, advancing to the Sweet 16 in 2004, 2006, 2013 and 2018. In addition, Hilliard helped guide the Toreros to nine West Coast Conference championships while his players earned six All-America awards, 12 All-America honorable mentions, 44 all-WCC accolades and 15 freshman all-conference certificates.

Hilliard twice assumed the reins of the USD program on an interim basis while head coach Jennifer Petrie was absent on maternity leave. In 2006, Hilliard was honored as WCC Coach of the Year after guiding the Toreros to a conference championship and a Sweet 16 appearance in the NCAA Tournament. That season, he coached five all-conference honorees, including WCC Player of the Year Kristen Carlson, as USD finished 14th in the final USA Today/Coaches Poll.

The Toreros also flourished under Hilliard's guidance in 2011, racing to a 13-0 start en route a program-best 28-5 record, highlighted by a spot in the second round of the NCAA Tournament. Throughout his stint, USD was consistently ranked among the nation's top 25, climbing to as high as No. 2 during the 2013 campaign and rising to No. 5 in 2016.

"I would like to thank John David Wicker, Jenny Bramer, Dr. Adela de la Torre and the rest of the SDSU search committee for making me feel so welcome during the interview process," Hilliard said. "To be the head coach of such a remarkable women's volleyball program in my family's hometown is truly a once in a lifetime opportunity."

"We are fully committed to work tirelessly to elevate this program back to an elite status on the college volleyball landscape, one that the student body, faculty, community, alumni and, of course, all future Aztecs will take great pride in."

Hilliard played collegiately at Long Beach State, earning All-America honors in each of his four years from 1990-93, including first-team recognition over his final three seasons. A right-side hitter for the 49ers, Hilliard was named the NCAA Men's Volleyball Player of the Year as a junior in 1992 after leading LBSU to a 31-1 record.

In 1991, Hilliard and the 49ers captured the NCAA Championship with a 3-1 victory over USC in the finals, avenging a loss to the Trojans in the title match the year before. He finished his career as the NCAA all-time leader with 3,034 kills.

Additionally, Hilliard was selected to play for Team USA in the 1992 Summer Olympics in Barcelona, Spain, where he helped the Americans capture the bronze medal. The following year, he won a silver medal at the 1993 Pan American Games in Argentina and also owns a bronze medal from the 1991 World Cup.

After receiving his undergraduate degree in 1993 from Long Beach State in political science, Hilliard continued his volleyball career as a professional in Europe from 1995-98, playing two seasons in Belgium and another in the Netherlands. In 1996, Hilliard and the Masiek Volleyball Club captured the Belgian national championship and competed in the European Champions League.

In addition to his collegiate experience, which included a stint as head coach at nearby Cuyamaca College in 1999 and 2000, Hilliard has also coached for the past 10 years at Wave Volleyball Club in Del Mar, the premier volleyball club in San Diego County.

"Our priority at SDSU will be to engage, attract and secure exceptional student-athletes that strive for both academic and athletic excellence in their everyday lives," Hilliard added. "From day one, we will set expectations high and build from there. I am incredibly excited to get started and I look forward to the bright future ahead."

HILLIARD'S COLLEGIATE COACHING LEDGER (As an Assistant at USD)

Year	Overall Record	WCC Record (Finish)	Postseason
2001	22-9	10-4 (3rd)	NCAA Second Round
2002	25-8	10-4 (3rd)	NCAA First Round
2003	17-13	6-8 (T-5th)	NCAA First Round
2004	24-5	14-0 (1st)	NCAA Sweet 16
2005	23-6	10-4 (T-2nd)	NCAA Second Round
2006*	26-6	13-1 (1st)	NCAA Sweet 16
2007	21-8	11-3 (1st)	NCAA First Round
2008	23-5	12-2 (1st)	NCAA First Round
2009	18-7	10-4 (2nd)	None
2010	24-8	13-1 (1st)	NCAA Second Round
2011*	28-5	12-4 (2nd)	NCAA Second Round
2012	21-7	13-3 (T-1st)	NCAA First Round
2013	26-4	16-2 (1st)	NCAA Sweet 16
2014	19-12	12-6 (T-3rd)	NCAA First Round
2015	22-10	14-4 (2nd)	NCAA Second Round
2016	24-6	15-3 (2nd)	NCAA First Round
2017	25-5	17-1 (T-1st)	NCAA Second Round
2018	18-13	13-5 (3rd)	NCAA Sweet 16
2019	25-6	17-1 (1st)	NCAA Second Round

Overall Total 431-143 (.751)

WCC Total 238-60 (.799)

Notes

- * - Served as interim head coach during the 2006 and 2011 seasons
- > Qualified for the NCAA Tournament in 18 of his 19 seasons at USD
- > Reached the NCAA Sweet 16 four times in 2004, 2006, 2013 and 2018
- > Won nine West Coast Conference championships

2021 AZTEC PHOTO ROSTER



Nya BLAIR
OH | 5-11 | So. **1**



Heipua TAUTUA'A
OH | 6-2 | Fr. **2**



Andrea WALKER
MB | 6-0 | RS-Jr. **3**



Kennedy FEUERBORN
S | 6-3 | Fr. **4**



Serena HODSON
MB | 6-2 | So. **5**



Ashley VANDERPAN
S | 6-1 | So. **7**



Lauren LEE
DS/L | 5-0 | Sr. **8**



Camryn MACHADO
S | 6-1 | RS-Jr. **10**



BROOKLYNN HILL
DS/L | 6-1 | RS-Jr. **11**



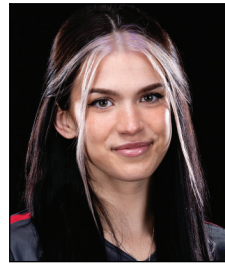
Erin GILLCRIST
RS | 6-1 | Sr. **12**



Elise PARK
DS/L | 5-7 | RS-Fr. **13**



Gabriella SPAETHLING
RS | 6-1 | RS-Fr. **14**



Abby PUGH
MB | 6-3 | RS-Sr. **15**



Alexis DURAND
DS/L | 5-7 | So. **16**



Nadia BARCLAY
DS/L | 5-4 | Fr. **17**



Maddie LENN
OH | 5-10 | Jr. **19**



Victoria O'SULLIVAN
OH | 6-0 | Jr. **21**



Brent HILLIARD
Head Coach



Melanie GREENE
Assistant Coach/
Recruiting Coordinator



STEVE TIMMONS
Assistant Coach



Kara BARKDOLL
Volleyball Operations
Assistant



Yasser AGUILA TODD
Volunteer Assistant Coach

2021 San Diego State Spring Volleyball
San Diego State Overall Individual Statistics (as of Mar 10, 2021)
All matches

Overall record: 3-7 Conf: 3-7 Home: 3-3 Away: 0-4 Neutral: 0-0

##	Player	sp	mp-ms	Attack					Set		Serve				
				k	k/s	e	ta	pct	a	a/s	sa	sa/s	se	ta	pct
21	O'SULLIVAN, Victoria	34	10-9	111	3.26	54	289	.197	4	0.12	0	0.00	0	9	1.00
3	WALKER, Andrea	20	6-6	42	2.10	20	96	.229	1	0.05	0	0.00	0	0	.000
1	BLAIR, Nya	25	8-0	51	2.04	23	150	.187	1	0.04	4	0.16	8	63	.873
2	TAUTUA'A, Heipua	34	10-10	65	1.91	50	235	.064	18	0.53	3	0.09	10	109	.908
12	GILLCRIST, Erin	34	10-9	62	1.82	26	145	.248	3	0.09	4	0.12	6	49	.878
14	SPAETHLING, Ella	1	1-0	1	1.00	0	2	.500	0	0.00	0	0.00	0	0	.000
15	PUGH, Abby	19	8-3	17	0.89	7	41	.244	1	0.05	0	0.00	3	15	.800
19	LENN, Maddie	29	9-8	21	0.72	16	80	.062	9	0.31	2	0.07	5	34	.853
4	FEUERBORN, Kennedy	23	8-5	16	0.70	9	40	.175	102	4.43	1	0.04	5	30	.833
5	HODSON, Serena	14	6-3	8	0.57	6	27	.074	0	0.00	1	0.07	1	5	.800
7	VANDERPAN, Ashley	32	10-5	16	0.50	9	48	.146	221	6.91	4	0.12	9	106	.915
8	LEE, Lauren	34	10-0	1	0.03	2	6	-.167	20	0.59	4	0.12	7	135	.948
17	BARCKLAY, Nadia	7	2-0	0	0.00	0	0	.000	1	0.14	1	0.14	1	25	.960
16	DURAND, Alexis	17	7-1	0	0.00	0	0	.000	1	0.06	2	0.12	6	39	.846
11	HILL, Brooklynn	31	10-1	0	0.00	0	1	.000	12	0.39	4	0.13	9	91	.901
SAN DIEGO STATE		34	10-10	411	12.0	222	1160	.163	394	11.5	30	0.88	70	710	.901
Opponents		34	10-10	404	11.8	151	1114	.227	377	11.0	65	1.91	90	779	.884

##	Player	sp	Recept			Dig		Blocking					Points		
			re	ta	pct	dig	dig/s	bs	ba	total	blk/s	be	bhe	pts	pts/s
21	O'SULLIVAN, Victoria	34	3	28	.893	16	0.47	5	11	16	0.47	2	1	121.5	3.57
3	WALKER, Andrea	20	0	0	.000	3	0.15	3	13	16	0.80	0	0	51.5	2.58
1	BLAIR, Nya	25	1	5	.800	16	0.64	2	2	4	0.16	4	0	58.0	2.32
2	TAUTUA'A, Heipua	34	15	170	.912	109	3.21	5	8	13	0.38	3	1	77.0	2.26
12	GILLCRIST, Erin	34	1	8	.875	15	0.44	5	17	22	0.65	1	0	79.5	2.34
14	SPAETHLING, Ella	1	0	0	.000	1	1.00	0	0	0	0.00	0	0	1.0	1.00
15	PUGH, Abby	19	0	1	1.000	1	0.05	0	5	5	0.26	3	0	19.5	1.03
19	LENN, Maddie	29	11	138	.920	56	1.93	1	2	3	0.10	0	2	25.0	0.86
4	FEUERBORN, Kennedy	23	0	0	.000	17	0.74	2	4	6	0.26	0	2	21.0	0.91
5	HODSON, Serena	14	0	2	1.000	3	0.21	1	7	8	0.57	0	0	13.5	0.96
7	VANDERPAN, Ashley	32	0	1	1.000	51	1.59	0	7	7	0.22	0	4	23.5	0.73
8	LEE, Lauren	34	12	149	.919	123	3.62	0	0	0	0.00	0	0	5.0	0.15
11	HILL, Brooklynn	31	13	132	.902	47	1.52	0	0	0	0.00	0	1	4.0	0.13
16	DURAND, Alexis	17	3	39	.923	14	0.82	0	0	0	0.00	0	0	2.0	0.12
17	BARCKLAY, Nadia	7	0	0	.000	1	0.14	0	0	0	0.00	0	0	1.0	0.14
-	TEAM	-	5	-	-	-	-	-	-	-	-	-	-	-	-
SAN DIEGO STATE.....		34	64	678	.906	473	13.91	24	76	62.0	1.82	13	11	503.0	14.79
Opponents.....		34	30	638	.953	421	12.38	26	156	104.0	3.06	16	10	573.0	16.85

2021 San Diego State Spring Volleyball
 San Diego State Overall Team Statistics (as of Mar 10, 2021)
 All matches

Overall record: 3-7 Conf: 3-7 Home: 3-3 Away: 0-4 Neutral: 0-0

Team Statistics	SDSU	OPP
ATTACK		
Kills	411	404
Errors	222	151
Total Attacks	1160	1114
Attack Pct	.163	.227
Kills/Set	12.1	11.9
SET		
Assists	394	377
Assists/Set	11.6	11.1
SERVE		
Aces	30	65
Errors	70	90
Attempts	710	779
Serve Pct	.901	.884
Aces/Set	0.9	1.9
SERVE RECEPTIONS		
Errors	64	30
Errors/Set	1.9	0.9
Attempts	678	638
Reception Pct	.906	.953
DEFENSE		
Digs	473	421
Digs/Set	13.9	12.4
BLOCKING		
Block Solo	24	26
Block Assist	76	156
Total Blocks	62.0	104.0
Blocks/Set	1.8	3.1
Block Errors	13	16
Ball handling errors	11	10
ATTENDANCE		
Total	0	540
Dates/Avg Per Date	6/0	4/135
Neutral site #/Avg	0/0	
Current win streak	0	-
Home win streak	0	-

Match wins by #sets	1st	2nd	3rd	4th	5th	Total
San Diego State	0	0	2	1	0	3
Opponents	0	0	4	3	0	7

Sets won by set	1st	2nd	3rd	4th	5th	Total
San Diego State	6	3	2	1	0	12
Opponents	4	7	8	3	0	22

Points by set	1st	2nd	3rd	4th	5th	Total
San Diego State	231	205	193	73	0	702
Opponents	213	237	241	94	0	785

2021 San Diego State Spring Volleyball
 San Diego State Team Match-by-Match (as of Mar 10, 2021)
 All matches

Date	Opponent	attack			set			serve			recept			blocking			bhe	points	score					
		sp	k	e	a	la	pct	sa	se	ta	pct	re	la	pct	bs	ba				be	total			
02/04/21	atUNLV	3	30	15	102	.147	29	-	-	2	6	55	.891	6	63	.905	34	2	8	0	6.0	1	38.0	0-3
02/05/21	atUNLV	4	47	16	135	.230	45	-	-	1	8	78	.897	12	75	.840	58	1	4	2	3.0	2	51.0	1-3
02-12-21	FRESNO STATE	4	45	34	126	.087	44	-	-	0	7	78	.910	9	84	.893	51	6	8	0	10.0	1	55.0	1-3
02-13-21	FRESNO STATE	3	41	21	121	.165	38	-	-	3	6	75	.920	5	56	.911	58	3	12	1	9.0	1	53.0	3-0
02-19-21	NEW MEXICO	3	45	17	99	.283	44	-	-	6	5	74	.932	1	45	.978	39	2	8	3	6.0	0	57.0	3-0
2-20-21	NEW MEXICO	4	57	31	140	.186	55	-	-	7	7	98	.929	9	72	.875	64	4	2	2	5.0	1	69.0	3-1
02-26-21	NEVADA	4	51	24	139	.194	50	-	-	3	4	75	.947	9	88	.898	54	1	8	1	5.0	1	59.0	1-3
02-27-21	NEVADA	3	28	21	88	.080	27	-	-	5	8	57	.860	8	63	.873	29	1	8	1	5.0	1	38.0	0-3
03-05-21	atWyoming	3	41	18	107	.215	40	-	-	1	12	67	.821	2	67	.970	42	3	6	1	6.0	1	48.0	0-3
03-06-21	atWyoming	3	26	25	103	.010	22	-	-	2	7	53	.868	3	65	.954	44	1	12	2	7.0	2	35.0	0-3
San Diego State		34	411	222	1160	.163	394	-	-	30	70	710	.901	64	678	.906	473	24	76	13	62.0	11	503.0	
		34	404	151	1114	.227	377	-	-	65	90	779	.884	30	638	.953	421	26	156	16	104.0	10	573.0	

Sets played: 34
 Kills per set: 12.09
 Assists per set: 11.59
 Service aces per set: 0.88
 Digs per set: 13.91
 Blocks per set: 1.82

Points per set: 14.79
 Ball handling errors per set: 0.32
 Reception errors per set: 1.88

2021 San Diego State Spring Volleyball
San Diego State Category Leaders (as of Mar 10, 2021)
All matches

# ATTACK (by K)							# KILL (by K)			
	S	K	K/S	E	TA	Pct		S	K	K/S
21 O'SULLIVAN, Victoria	34	111	3.26	54	289	.197	21 O'SULLIVAN, Victoria	34	111	3.26
2 TAUTUA'A, Heipua	34	65	1.91	50	235	.064	2 TAUTUA'A, Heipua	34	65	1.91
12 GILLCRIST, Erin	34	62	1.82	26	145	.248	12 GILLCRIST, Erin	34	62	1.82
1 BLAIR, Nya	25	51	2.04	23	150	.187	1 BLAIR, Nya	25	51	2.04
3 WALKER, Andrea	20	42	2.10	20	96	.229	3 WALKER, Andrea	20	42	2.10
19 LENN, Maddie	29	21	0.72	16	80	.062	19 LENN, Maddie	29	21	0.72
15 PUGH, Abby	19	17	0.89	7	41	.244	15 PUGH, Abby	19	17	0.89
7 VANDERPAN, Ashley	32	16	0.50	9	48	.146	4 FEUERBORN, Kennedy	23	16	0.70
4 FEUERBORN, Kennedy	23	16	0.70	9	40	.175	7 VANDERPAN, Ashley	32	16	0.50
5 HODSON, Serena	14	8	0.57	6	27	.074	5 HODSON, Serena	14	8	0.57
14 SPAETHLING, Ella	1	1	1.00	0	2	.500	14 SPAETHLING, Ella	1	1	1.00
8 LEE, Lauren	34	1	0.03	2	6	-.167	8 LEE, Lauren	34	1	0.03
11 HILL, Brooklynn	31	0	0.00	0	1	.000	11 HILL, Brooklynn	31	0	0.00

# SET (by A)						# SERVE (by SA)						
	S	A	A/S	TA	Pct		S	SA	SE	SA/S	TA	Pct
7 VANDERPAN, Ashley	32	221	6.91	-	-	1 BLAIR, Nya	25	4	8	0.16	63	.873
4 FEUERBORN, Kennedy	23	102	4.43	-	-	11 HILL, Brooklynn	31	4	9	0.13	91	.901
8 LEE, Lauren	34	20	0.59	-	-	7 VANDERPAN, Ashley	32	4	9	0.12	106	.915
2 TAUTUA'A, Heipua	34	18	0.53	-	-	12 GILLCRIST, Erin	34	4	6	0.12	49	.878
11 HILL, Brooklynn	31	12	0.39	-	-	8 LEE, Lauren	34	4	7	0.12	135	.948
19 LENN, Maddie	29	9	0.31	-	-	2 TAUTUA'A, Heipua	34	3	10	0.09	109	.908
21 O'SULLIVAN, Victoria	34	4	0.12	-	-	19 LENN, Maddie	29	2	5	0.07	34	.853
12 GILLCRIST, Erin	34	3	0.09	-	-	16 DURAND, Alexis	17	2	6	0.12	39	.846
3 WALKER, Andrea	20	1	0.05	-	-	5 HODSON, Serena	14	1	1	0.07	5	.800
17 BARCKLAY, Nadia	7	1	0.14	-	-	4 FEUERBORN, Kennedy	23	1	5	0.04	30	.833
1 BLAIR, Nya	25	1	0.04	-	-	17 BARCKLAY, Nadia	7	1	1	0.14	25	.960
16 DURAND, Alexis	17	1	0.06	-	-	15 PUGH, Abby	19	0	3	0.00	15	.800
15 PUGH, Abby	19	1	0.05	-	-	21 O'SULLIVAN, Victoria	34	0	0	0.00	9	1.00
5 HODSON, Serena	14	0	0.00	-	-							

# BLOCK (by Total)						# DEFENSE (by Dig)				
	S	BS	BA	Total	Blk/S		S	Dig	Dig/S	BHE
12 GILLCRIST, Erin	34	5	17	22.0	0.65	8 LEE, Lauren	34	123	3.62	0
3 WALKER, Andrea	20	3	13	16.0	0.80	2 TAUTUA'A, Heipua	34	109	3.21	1
21 O'SULLIVAN, Victoria	34	5	11	16.0	0.47	19 LENN, Maddie	29	56	1.93	2
2 TAUTUA'A, Heipua	34	5	8	13.0	0.38	7 VANDERPAN, Ashley	32	51	1.59	4
5 HODSON, Serena	14	1	7	8.0	0.57	11 HILL, Brooklynn	31	47	1.52	1
7 VANDERPAN, Ashley	32	0	7	7.0	0.22	4 FEUERBORN, Kennedy	23	17	0.74	2
4 FEUERBORN, Kennedy	23	2	4	6.0	0.26	21 O'SULLIVAN, Victoria	34	16	0.47	1
15 PUGH, Abby	19	0	5	5.0	0.26	1 BLAIR, Nya	25	16	0.64	0
1 BLAIR, Nya	25	2	2	4.0	0.16	12 GILLCRIST, Erin	34	15	0.44	0
19 LENN, Maddie	29	1	2	3.0	0.10	16 DURAND, Alexis	17	14	0.82	0
11 HILL, Brooklynn	31	0	0	0.0	0.00	3 WALKER, Andrea	20	3	0.15	0
16 DURAND, Alexis	17	0	0	0.0	0.00	5 HODSON, Serena	14	3	0.21	0
						14 SPAETHLING, Ella	1	1	1.00	0
						15 PUGH, Abby	19	1	0.05	0
						17 BARCKLAY, Nadia	7	1	0.14	0

# POINTS (by Points)				# RECEIPT (by TA)					
	S	Points	Points/S		S	RE	RE/S	TA	Pct
21 O'SULLIVAN, Victoria	34	121	3.57	2 TAUTUA'A, Heipua	34	15	0.44	170	.912
12 GILLCRIST, Erin	34	79	2.34	8 LEE, Lauren	34	12	0.35	149	.919
2 TAUTUA'A, Heipua	34	77	2.26	19 LENN, Maddie	29	11	0.38	138	.920
1 BLAIR, Nya	25	58	2.32	11 HILL, Brooklynn	31	13	0.42	132	.902
3 WALKER, Andrea	20	51	2.58	16 DURAND, Alexis	17	3	0.18	39	.923
19 LENN, Maddie	29	25	0.86	21 O'SULLIVAN, Victoria	34	3	0.09	28	.893
7 VANDERPAN, Ashley	32	23	0.73	12 GILLCRIST, Erin	34	1	0.03	8	.875
4 FEUERBORN, Kennedy	23	21	0.91	1 BLAIR, Nya	25	1	0.04	5	.800
15 PUGH, Abby	19	19	1.03	TM TEAM	-	5	0.15	-	-
5 HODSON, Serena	14	13	0.96	5 HODSON, Serena	14	0	0.00	2	1.000
8 LEE, Lauren	34	5	0.15	15 PUGH, Abby	19	0	0.00	1	1.000
11 HILL, Brooklynn	31	4	0.13	7 VANDERPAN, Ashley	32	0	0.00	1	1.000
14 SPAETHLING, Ella	1	1	1.00						

Individual Career History

BARCKLAY, Nadia

Season	sp-mp	k	k/s	e	ta	pct	a	a/s	ta	ast%	sa	sa/s	se	ta	srv%
2020	7-2	0	0.00	0	0	.000	1	0.14	-	-	1	0.14	1	25	.960
TOTAL	7-2	0	0.00	0	0	.000	1	0.14	-	-	1	0.14	1	25	.960

Season	dig	d/s	re	ta	rec%	bs	ba	tb	b/s	be	bhe	points	pts/s
2020	1	0.14	0	0	.000	0	0	0	0.00	0	0	1.0	0.14
TOTAL	1	0.14	0	0	.000	0	0	0	0.00	0	0	1.0	0.14

SINGLE-MATCH HIGHS [all-time ranking]:

Assists: 1, Fresno State, 02-13-21

Serve aces: 1, Fresno State, 02-13-21

Digs: 1, Fresno State, 02-13-21

BLAIR, Nya

Season	sp-mp	k	k/s	e	ta	pct	a	a/s	ta	ast%	sa	sa/s	se	ta	srv%
2019	8-5	13	1.62	7	37	.162	1	0.12	-	-	1	0.12	2	17	.882
2020	25-8	51	2.04	23	150	.187	1	0.04	-	-	4	0.16	8	63	.873
TOTAL	33-13	64	1.94	30	187	.182	2	0.06	-	-	5	0.15	10	80	.875

Season	dig	d/s	re	ta	rec%	bs	ba	tb	b/s	be	bhe	points	pts/s
2019	7	0.88	0	4	1.000	1	3	4	0.50	0	0	16.5	2.00
2020	16	0.64	1	5	.800	2	2	4	0.16	4	0	58.0	2.32
TOTAL	23	0.70	1	9	.889	3	5	8	0.24	4	0	74.5	2.24

SINGLE-MATCH HIGHS [all-time ranking]:

Kills: 10, New Mexico, 02-19-21; New Mexico, 2-20-21

Attacks: 35, New Mexico, 2-20-21

Attack pct: .381, New Mexico, 02-19-21 (10-2-21)

Assists: 1, New Mexico, 2-20-21; Fresno State, Nov 12, 2019

Serve aces: 2, New Mexico, 2-20-21

Digs: 4, New Mexico, 02-19-21; at UNLV, 02/05/21; Fresno State, Nov 12, 2019

Blocks: 2, Fresno State, Nov 12, 2019

Block solo: 1, Fresno State, 02-12-21; New Mexico, 02-19-21; Air Force, Nov 14, 2019

Block assist: 2, Fresno State, Nov 12, 2019

DURAND, Alexis

Season	sp-mp	k	k/s	e	ta	pct	a	a/s	ta	ast%	sa	sa/s	se	ta	srv%
2019	3-2	0	0.00	0	0	.000	0	0.00	-	-	0	0.00	0	4	1.000
2020	17-7	0	0.00	0	0	.000	1	0.06	-	-	2	0.12	6	39	.846
TOTAL	20-9	0	0.00	0	0	.000	1	0.05	-	-	2	0.10	6	43	.860

Season	dig	d/s	re	ta	rec%	bs	ba	tb	b/s	be	bhe	points	pts/s
2019	4	1.33	3	19	.842	0	0	0	0.00	0	0	0.0	0.00
2020	14	0.82	3	39	.923	0	0	0	0.00	0	0	2.0	0.12
TOTAL	18	0.90	6	58	.897	0	0	0	0.00	0	0	2.0	0.10

SINGLE-MATCH HIGHS [all-time ranking]:

Assists: 1, Nevada, 02-27-21

Serve aces: 2, Nevada, 02-27-21

Digs: 10, Nevada, 02-27-21

Individual Career History

FEUERBORN, Kennedy

Season	sp-mp	k	k/s	e	ta	pct	a	a/s	ta	ast%	sa	sa/s	se	ta	srv%
2020	23-8	16	0.70	9	40	.175	102	4.43	-	-	1	0.04	5	30	.833
TOTAL	23-8	16	0.70	9	40	.175	102	4.43	-	-	1	0.04	5	30	.833

Season	dig	d/s	re	ta	rec%	bs	ba	tb	b/s	be	bhe	points	pts/s
2020	17	0.74	0	0	.000	2	4	6	0.26	0	2	21.0	0.91
TOTAL	17	0.74	0	0	.000	2	4	6	0.26	0	2	21.0	0.91

SINGLE-MATCH HIGHS [all-time ranking]:

Kills: 6, at UNLV, 02/05/21

Attacks: 11, at UNLV, 02/05/21

Assists: 27, at UNLV, 02/05/21

Serve aces: 1, at Wyoming, 03-05-21

Digs: 7, Fresno State, 02-12-21

Blocks: 2, Fresno State, 02-12-21

Block solo: 1, Fresno State, 02-12-21; at UNLV, 02/05/21

Block assist: 1, 4 times

GILLCRIST, Erin

Season	sp-mp	k	k/s	e	ta	pct	a	a/s	ta	ast%	sa	sa/s	se	ta	srv%
2017	11-4	8	0.73	8	41	.000	1	0.09	-	-	0	0.00	1	1	.000
2018	104-29	197	1.89	103	523	.180	3	0.03	-	-	1	0.01	3	15	.800
2019	76-22	144	1.89	75	379	.182	3	0.04	-	-	0	0.00	1	7	.857
2020	34-10	62	1.82	26	145	.248	3	0.09	-	-	4	0.12	6	49	.878
TOTAL	225-65	411	1.83	212	1088	.183	10	0.04	-	-	5	0.02	11	72	.847

Season	dig	d/s	re	ta	rec%	bs	ba	tb	b/s	be	bhe	points	pts/s
2017	6	0.55	0	2	1.000	0	15	15	1.36	2	0	15.5	1.36
2018	35	0.34	2	28	.929	0	57	57	0.55	3	2	226.5	2.17
2019	20	0.26	2	18	.889	1	53	54	0.71	9	0	171.5	2.25
2020	15	0.44	1	8	.875	5	17	22	0.65	1	0	79.5	2.32
TOTAL	76	0.34	5	56	.911	6	142	148	0.66	15	2	493.0	2.19

SINGLE-MATCH HIGHS [all-time ranking]:

Kills: 15, 4 times

Attacks: 51, Wyoming, Sep 29, 2018

Attack pct: .429, at Nevada, Oct 20, 2018 (15-3-28)

Assists: 2, at UNLV, 02/05/21

Serve aces: 1, 5 times

Digs: 5, New Mexico, 2-20-21; at San Diego, Sep 20, 2019

Blocks: 8, New Mexico, Oct 11, 2018

Block solo: 2, Fresno State, 02-12-21

Block assist: 8, New Mexico, Oct 11, 2018

Individual Career History

HILL, Brooklynn

Season	sp-mp	k	k/s	e	ta	pct	a	a/s	ta	ast%	sa	sa/s	se	ta	srv%
2020	31-10	0	0.00	0	1	.000	12	0.39	-	-	4	0.13	9	91	.901
TOTAL	31-10	0	0.00	0	1	.000	12	0.39	-	-	4	0.13	9	91	.901

Season	dig	d/s	re	ta	rec%	bs	ba	tb	b/s	be	bhe	points	pts/s
2020	47	1.52	13	132	.902	0	0	0	0.00	0	1	4.0	0.13
TOTAL	47	1.52	13	132	.902	0	0	0	0.00	0	1	4.0	0.13

SINGLE-MATCH HIGHS [all-time ranking]:

Attacks: 1, at UNLV, 02/05/21

Assists: 3, Nevada, 02-27-21; at UNLV, 02/04/21

Serve aces: 3, New Mexico, 02-19-21

Digs: 8, Fresno State, 02-13-21

HODSON, Serena

Season	sp-mp	k	k/s	e	ta	pct	a	a/s	ta	ast%	sa	sa/s	se	ta	srv%
2018	18-5	15	0.83	4	36	.306	0	0.00	-	-	0	0.00	1	1	.000
2019	0-0	0	0.00	0	0	.000	0	0.00	-	-	0	0.00	0	0	.000
2020	14-6	8	0.57	6	27	.074	0	0.00	-	-	1	0.07	1	5	.800
TOTAL	32-11	23	0.72	10	63	.206	0	0.00	-	-	1	0.03	2	6	.667

Season	dig	d/s	re	ta	rec%	bs	ba	tb	b/s	be	bhe	points	pts/s
2018	1	0.06	0	4	1.000	1	14	15	0.83	0	0	23.0	1.28
2019	0	0.00	0	0	.000	0	0	0	0.00	0	0	0.0	0.00
2020	3	0.21	0	2	1.000	1	7	8	0.57	0	0	13.5	0.93
TOTAL	4	0.12	0	6	1.000	2	21	23	0.72	0	0	36.5	1.12

SINGLE-MATCH HIGHS [all-time ranking]:

Kills: 4, at Wyoming, 03-05-21; Portland, Aug 25, 2018; Seattle U, Aug 25, 2018

Attacks: 13, Portland, Aug 25, 2018

Serve aces: 1, at UNLV, 02/04/21

Digs: 2, at Wyoming, 03-05-21

Blocks: 7, Seattle U, Aug 25, 2018

Block solo: 1, Nevada, 02-27-21; Portland, Aug 25, 2018

Block assist: 7, Seattle U, Aug 25, 2018

Individual Career History

LEE, Lauren

Season	sp-mp	k	k/s	e	ta	pct	a	a/s	ta	ast%	sa	sa/s	se	ta	srv%
2018	98-28	0	0.00	0	3	.000	26	0.27	-	-	18	0.18	14	355	.961
2019	91-28	0	0.00	1	1	-1.000	13	0.14	-	-	11	0.12	13	318	.959
2020	34-10	1	0.03	2	6	-.167	20	0.59	-	-	4	0.12	7	135	.948
TOTAL	223-66	1	0.00	3	10	-.200	59	0.26	-	-	33	0.15	34	808	.958

Season	dig	d/s	re	ta	rec%	bs	ba	tb	b/s	be	bhe	points	pts/s
2018	193	1.97	19	354	.946	0	0	0	0.00	0	1	18.0	0.18
2019	132	1.45	10	306	.967	0	0	0	0.00	0	0	11.0	0.12
2020	123	3.62	12	149	.919	0	0	0	0.00	0	0	5.0	0.15
TOTAL	448	2.01	41	809	.949	0	0	0	0.00	0	1	34.0	0.15

SINGLE-MATCH HIGHS [all-time ranking]:

Kills: 1, at Wyoming, 03-05-21

Attacks: 2, at UNLV, 02/05/21; at Wyoming, 03-05-21

Assists: 5, at Utah State, Oct 06, 2018

Serve aces: 4, at San Jose State, Oct 18, 2018

Digs: 20, UTEP, Sep 15, 2018

LENN, Maddie

Season	sp-mp	k	k/s	e	ta	pct	a	a/s	ta	ast%	sa	sa/s	se	ta	srv%
2018	26-11	4	0.15	8	33	-.121	3	0.12	-	-	0	0.00	11	73	.849
2019	80-26	49	0.61	26	138	.167	16	0.20	-	-	5	0.06	34	145	.766
2020	29-9	21	0.72	16	80	.062	9	0.31	-	-	2	0.07	5	34	.853
TOTAL	135-46	74	0.55	50	251	.096	28	0.21	-	-	7	0.05	50	252	.802

Season	dig	d/s	re	ta	rec%	bs	ba	tb	b/s	be	bhe	points	pts/s
2018	44	1.69	5	120	.958	0	2	2	0.08	0	0	5.0	0.19
2019	97	1.21	22	355	.938	0	15	15	0.19	1	2	61.5	0.76
2020	56	1.93	11	138	.920	1	2	3	0.10	0	2	25.0	0.86
TOTAL	197	1.46	38	613	.938	1	19	20	0.15	1	4	91.5	0.67

SINGLE-MATCH HIGHS [all-time ranking]:

Kills: 8, Arkansas, Sep 07, 2019

Attacks: 22, Fresno State, 02-12-21

Attack pct: .190, at Wyoming, 03-05-21 (7-3-21)

Assists: 3, at UNLV, 02/05/21; Arkansas, Sep 07, 2019

Serve aces: 2, vs Akron, 08/30/19; Long Beach State, Sep 19, 2019

Digs: 18, at UNLV, 02/05/21

Blocks: 3, vs Akron, 08/30/19; San Jose State, Sep 26, 2019

Block solo: 1, Fresno State, 02-12-21

Block assist: 3, vs Akron, 08/30/19; San Jose State, Sep 26, 2019

Individual Career History

O'SULLIVAN, Victoria

Season	sp-mp	k	k/s	e	ta	pct	a	a/s	ta	ast%	sa	sa/s	se	ta	srv%
2018	57-24	109	1.91	54	309	.178	0	0.00	-	-	0	0.00	0	3	1.000
2019	110-29	352	3.20	145	872	.237	2	0.02	-	-	0	0.00	0	3	1.000
2020	34-10	111	3.26	54	289	.197	4	0.12	-	-	0	0.00	0	9	1.000
TOTAL	201-63	572	2.85	253	1470	.217	6	0.03	-	-	0	0.00	0	15	1.000

Season	dig	d/s	re	ta	rec%	bs	ba	tb	b/s	be	bhe	points	pts/s
2018	23	0.40	1	16	.938	1	14	15	0.26	3	0	117.0	2.05
2019	57	0.52	9	59	.847	14	38	52	0.47	11	0	385.0	3.50
2020	16	0.47	3	28	.893	5	11	16	0.47	2	1	121.5	3.56
TOTAL	96	0.48	13	103	.874	20	63	83	0.41	16	1	623.5	3.10

SINGLE-MATCH HIGHS [all-time ranking]:

Kills: 22, West Virginia, Sep 06, 2019

Attacks: 42, San Jose State, Sep 26, 2019

Attack pct: .487, West Virginia, Sep 06, 2019 (22-3-39)

Assists: 2, at UNLV, 02/05/21

Digs: 7, at Utah State, 11/21/19

Blocks: 4, at UNLV, 11-02-19

Block solo: 2, 5 times

Block assist: 3, 5 times

PUGH, Abby

Season	sp-mp	k	k/s	e	ta	pct	a	a/s	ta	ast%	sa	sa/s	se	ta	srv%
2019	4-3	8	2.00	4	19	.211	0	0.00	-	-	1	0.25	0	5	1.000
2020	19-8	17	0.89	7	41	.244	1	0.05	-	-	0	0.00	3	15	.800
TOTAL	23-11	25	1.09	11	60	.233	1	0.04	-	-	1	0.04	3	20	.850

Season	dig	d/s	re	ta	rec%	bs	ba	tb	b/s	be	bhe	points	pts/s
2019	2	0.50	0	0	.000	0	3	3	0.75	0	0	10.5	2.50
2020	1	0.05	0	1	1.000	0	5	5	0.26	3	0	19.5	1.00
TOTAL	3	0.13	0	1	1.000	0	8	8	0.35	3	0	30.0	1.30

SINGLE-MATCH HIGHS [all-time ranking]:

Kills: 5, Nevada, 02-26-21; New Mexico, 2-20-21

Attacks: 10, Nevada, 02-26-21

Assists: 1, New Mexico, 2-20-21

Digs: 1, New Mexico, 2-20-21

Blocks: 2, Nevada, 02-27-21; at Wyoming, Oct 10, 2019

Block assist: 2, Nevada, 02-27-21; at Wyoming, Oct 10, 2019

Individual Career History

SPAETHLING, Ella

Season	sp-mp	k	k/s	e	ta	pct	a	a/s	ta	ast%	sa	sa/s	se	ta	srv%
2020	1-1	1	1.00	0	2	.500	0	0.00	-	-	0	0.00	0	0	.000
TOTAL	1-1	1	1.00	0	2	.500	0	0.00	-	-	0	0.00	0	0	.000

Season	dig	d/s	re	ta	rec%	bs	ba	tb	b/s	be	bhe	points	pts/s
2020	1	1.00	0	0	.000	0	0	0	0.00	0	0	1.0	1.00
TOTAL	1	1.00	0	0	.000	0	0	0	0.00	0	0	1.0	1.00

SINGLE-MATCH HIGHS [all-time ranking]:

Kills: 1, Nevada, 02-26-21

Attacks: 2, Nevada, 02-26-21

Digs: 1, Nevada, 02-26-21

TAUTUA'A, Heipua

Season	sp-mp	k	k/s	e	ta	pct	a	a/s	ta	ast%	sa	sa/s	se	ta	srv%
2020	34-10	65	1.91	50	235	.064	18	0.53	-	-	3	0.09	10	109	.908
TOTAL	34-10	65	1.91	50	235	.064	18	0.53	-	-	3	0.09	10	109	.908

Season	dig	d/s	re	ta	rec%	bs	ba	tb	b/s	be	bhe	points	pts/s
2020	109	3.21	15	170	.912	5	8	13	0.38	3	1	77.0	2.26
TOTAL	109	3.21	15	170	.912	5	8	13	0.38	3	1	77.0	2.26

SINGLE-MATCH HIGHS [all-time ranking]:

Kills: 15, Nevada, 02-26-21

Attacks: 38, Nevada, 02-26-21

Attack pct: .263, Nevada, 02-26-21 (15-5-38)

Assists: 4, Nevada, 02-26-21; at UNLV, 02/04/21

Serve aces: 2, New Mexico, 2-20-21

Digs: 22, New Mexico, 2-20-21

Blocks: 3, Fresno State, 02-13-21; at Wyoming, 03-05-21; at Wyoming, 03-06-21

Block solo: 3 [1-7th], at Wyoming, 03-05-21

Block assist: 3, at Wyoming, 03-06-21

VANDERPAN, Ashley

Season	sp-mp	k	k/s	e	ta	pct	a	a/s	ta	ast%	sa	sa/s	se	ta	srv%
2019	0-0	0	0.00	0	0	.000	0	0.00	-	-	0	0.00	0	0	.000
2020	32-10	16	0.50	9	48	.146	221	6.91	-	-	4	0.12	9	106	.915
TOTAL	32-10	16	0.50	9	48	.146	221	6.91	-	-	4	0.12	9	106	.915

Season	dig	d/s	re	ta	rec%	bs	ba	tb	b/s	be	bhe	points	pts/s
2019	0	0.00	0	0	.000	0	0	0	0.00	0	0	0.0	0.00
2020	51	1.59	0	1	1.000	0	7	7	0.22	0	4	23.5	0.72
TOTAL	51	1.59	0	1	1.000	0	7	7	0.22	0	4	23.5	0.72

SINGLE-MATCH HIGHS [all-time ranking]:

Kills: 3, Nevada, 02-26-21; New Mexico, 2-20-21

Attacks: 9, Nevada, 02-26-21; New Mexico, 2-20-21

Assists: 40, New Mexico, 2-20-21

Serve aces: 3, Nevada, 02-27-21

Digs: 12, Nevada, 02-26-21

Blocks: 2, Fresno State, 02-13-21; New Mexico, 02-19-21

Block assist: 2, Fresno State, 02-13-21; New Mexico, 02-19-21

Individual Career History

WALKER, Andrea

Season	sp-mp	k	k/s	e	ta	pct	a	a/s	ta	ast%	sa	sa/s	se	ta	srv%
2017	0-0	0	0.00	0	0	.000	0	0.00	-	-	0	0.00	0	0	.000
2018	7-4	7	1.00	4	16	.188	0	0.00	-	-	0	0.00	0	0	.000
2019	69-23	129	1.87	45	273	.308	1	0.01	-	-	0	0.00	0	0	.000
2020	20-6	42	2.10	20	96	.229	1	0.05	-	-	0	0.00	0	0	.000
TOTAL	96-33	178	1.85	69	385	.283	2	0.02	-	-	0	0.00	0	0	.000

Season	dig	d/s	re	ta	rec%	bs	ba	tb	b/s	be	bhe	points	pts/s
2017	0	0.00	0	0	.000	0	0	0	0.00	0	0	0.0	0.00
2018	0	0.00	0	0	.000	0	5	5	0.71	0	0	9.5	1.29
2019	7	0.10	0	3	1.000	6	55	61	0.88	7	0	162.5	2.35
2020	3	0.15	0	0	.000	3	13	16	0.80	0	0	51.5	2.55
TOTAL	10	0.10	0	3	1.000	9	73	82	0.85	7	0	223.5	2.32

SINGLE-MATCH HIGHS [all-time ranking]:

Kills: 13, at Utah State, 11/21/19

Attacks: 26, at Utah State, 11/21/19

Attack pct: .269, at Utah State, 11/21/19 (13-6-26)

Assists: 1, at UNLV, 02/04/21; Fresno State, Nov 12, 2019

Digs: 2, New Mexico, 2-20-21

Blocks: 6, at Utah State, 11/21/19

Block solo: 2, Boise State, Oct 24, 2019

Block assist: 6, at Utah State, 11/21/19