



SAN DIEGO STATE AZTECS

2021 Spring Volleyball Weekly Notes

Jim Solien (Primary Contact)
 Assistant Media Relations Director
Office Phone Number: (619) 594-2576
E-Mail Address: jsolien@sdsu.edu
News Release Date: Feb. 24, 2021

SDSU Official Athletics Website: goaztecs.com
SDSU Official Athletics Twitter: @GoAztecs
SDSU Official Athletics Instagram: @GoAztecs
SDSU Official Athletics Facebook: facebook.com/goaztecs
SDSU Official Athletics YouTube: youtube.com/goaztecscom

2021 AZTEC SPRING VOLLEYBALL SCHEDULE

Day/Date	Opponent	Time
Thursday, Feb. 4	at UNLV* (MWN)	L, 0-3
Friday, Feb. 5	at UNLV* (MWN)	L, 1-3
Friday, Feb. 12	Fresno State* (MWN)	L, 1-3
Saturday, Feb. 13	Fresno State*	W, 3-0
Friday, Feb. 19	New Mexico*	W, 3-0
Saturday, Feb. 20	New Mexico*	W, 3-1
Friday, Feb. 26	Nevada*	6 p.m. PT
Saturday, Feb. 27	Nevada* (MWN)	Noon PT
Friday, March 5	at Wyoming* (MWN)	6 p.m. MT
Saturday, March 6	at Wyoming* (MWN)	Noon MT
Thursday, March 11	Utah State* (MWN)	6 p.m. PT
Friday, March 12	Utah State* (MWN)	6 p.m. PT
Saturday, March 20	at Boise State (MWN)	Noon MT
Saturday, March 27	at San José State*	TBA
Thursday, April 1	Air Force* (MWN)	6 p.m. PT
Saturday, April 3	Colorado State* (MWN)	1 p.m. PT

* - Mountain West match

Socially

Twitter: @SDSUVolleyball

Instagram: @SDSUVolleyball

Match Week Preview

Nevada (1-5, 1-5 MW) at San Diego State (3-3, 3-3 MW)

Friday, Feb. 26 | 6 p.m. PT

Live Stats | Live Stream

Saturday, Feb. 27 | Noon PT

Live Stats | MW Network

Series Record: SDSU leads 11-4



AZTECS WRAP UP HOMESTAND WITH TWO MATCHES VS. NEVADA

- > The San Diego State volleyball team puts the finishing touches on its season-long six-match homestand this weekend when it welcomes Nevada for a pair of Mountain West clashes, Feb. 26-27, inside Aztec Court at Peterson Gym.
- > Friday's encounter is scheduled to get underway at 6 p.m. PT and will be streamed live via the Aztec volleyball team's YouTube channel, with a link available on GoAztecs.com. Meanwhile Saturday's showdown is slated for a noon start and will be streamed live via the Mountain West Network.
- > Spectators will not be allowed to attend matches this spring inside Peterson Gym due to health and safety protocols.
- > The Aztecs (3-3, 3-3 MW) have won three straight after collecting a pair of victories at home over New Mexico on Feb. 19-20.
- > In the opener vs. the Lobos, SDSU notched its second straight sweep, 25-13, 25-17, 25-21, before recording a four-set triumph in the finale, 25-20, 25-20, 23-25, 25-19.
- > Against UNM, the Aztecs were led by junior outside hitter Victoria O'Sullivan, who averaged 4.71 kills in seven sets, hitting .313 with a team-high 33 kills on 67 attempts with just 12 errors.
- > Meanwhile, Nevada (1-5, 1-5 MW), which is coming off a split in its last series vs. Air Force, will be hitting the road for the first time this season when it battles the Scarlet and Black this weekend.
- > San Diego State is under the direction of first-year head coach Brent Hilliard, who arrived on The Mesa in January 2020 after a successful 19-year tenure as an assistant at the University of San Diego, where he served as the Toreros' associate head coach from 2007-19.
- > Hilliard hired the legendary Steve Timmons to his staff as an assistant coach. Timmons was the first American male to win three Olympic medals in indoor volleyball, leading the U.S. national team to gold medals at the 1984 and 1988 Summer Games, as well as a bronze in 1992.

2021 MOUNTAIN WEST SPRING VOLLEYBALL SCHEDULE

- > The Mountain West has adopted a 16-match conference-only schedule for the 2021 spring volleyball season taking place over nine weeks (Feb. 4-April 3).
- > Each institution will play six opponents twice and four opponents once.
- > Using a hybrid scheduling format, the first seven weeks will feature teams facing the same opponent twice in one weekend at one site. Travel partners will play the final two weeks of the season.
- > The regular-season champion will be the Mountain West's NCAA tournament automatic qualifier.

SERIES RECORD VS. NEVADA

- > San Diego State is 11-4 against Nevada in 15 previous encounters dating back to 2011.
- > The Aztecs had their eight-match winning streak vs. the Wolf Pack snapped last season after dropping a four-set decision (25-22, 25-19, 20-25, 25-17) in Reno on Sept. 28, 2019.
- > Despite maintaining a slim edge in total blocks (12.0-11.0) and a slight margin in digs (44-40), SDSU was outthit in that contest .271 to .186, committing nine more attack errors than Nevada (27-18), while finishing with almost as many kills (53-51).
- > Among 2021 Aztec returners, Victoria O'Sullivan finished with 14 kills in that match; Erin Gillcrist recorded six put-aways and six block assists, while Maddie Lenn scooped up eight digs on the day.
- > The third set marked the only time SDSU held an advantage in attack percentage for the contest (.281 to .167), as the Scarlet and Black used a 16-7 surge to erase a 13-9 deficit and stay alive, with O'Sullivan sparking the run with four kills.
- > However, the Aztecs' comeback hopes were dashed in the fourth set after Nevada utilized a timely 11-5 outburst to break a 7-7 deadlock.
- > San Diego State is 8-0 all-time vs. the Wolf Pack in "America's Finest City", including a 3-1 triumph on Nov. 15, 2018, which marked the last time the two teams met on Aztec Court.
- > O'Sullivan and Gillcrist stood out in that match as well, collecting 10 kills apiece.

ON THE HORIZON

- > Following this weekend's matches, San Diego State will hit the road for the second time this season when it travels to elevation to battle Wyoming on consecutive days, March 5-6. Both contest will be streamed live via the Mountain West Network with a link available on GoAztecs.com.

GENERAL INFORMATION

Location San Diego, Calif.
 Founded 1897
 Enrollment 33,870
 Nickname Aztecs
 Colors Scarlet and Black (Pantone 187)
 Conference Mountain West
 Affiliation Division I
 President Dr. Adela de la Torre
 Director of Athletics John David Wicker
 Faculty Representative Patrick Papin
 Home Facility Aztec Court at Peterson Gym (2,000)

TEAM INFORMATION

Head Coach Brent Hilliard
 Alma Mater Long Beach State '93
 Record at SDSU 3-3 (First year)
 Career Record 57-14 (Third year)
 E-Mail bhilliard@sdsu.edu
 Volleyball Office Phone (619) 594-5064
 Volleyball Office Fax (619) 594-1674
 Assistant Coach/Recruiting Coordinator Melanie Greene
 Assistant Coach Steve Timmons
 Volleyball Operations Assistant Kara Barkdoll
 2019 Record 15-14
 2019 Conference Record 8-10 (Fifth)
 2019 Home Record 8-5
 2019 Road Record 3-9
 2019 Neutral Record 4-0
 Letterwinners Returning/Lost 9/6
 Starters Returning/Lost 4/2 + libero

PROGRAM HISTORY

First Year of Volleyball 1976
 Overall Record 883-613 (.590)
 NCAA Appearances 14
 Last Postseason Appearance 2012
 NCAA Postseason Record 15-14

MEDIA RELATIONS

Assistant Media Relations Director Jim Solien
 E-Mail jsolien@sdsu.edu
 SID Office Phone (619) 594-2576
 SID Office Fax (619) 582-6541
 Official Athletic Website www.GoAztecs.com

SPRING 2021 AZTEC VOLLEYBALL STATISTICAL LEADERS

Hitting Percentage (.276) Kennedy Feuerborn
 Kills79 Victoria O'Sullivan
 Kills per set 3.76 Victoria O'Sullivan
 Assists 140 Ashley Vanderpan
 Assists per set 7.37 Ashley Vanderpan
 Digs76 Lauren Lee
 Digs per set 3.62 Lauren Lee
 Blocks 16.0 Andrea Walker
 Blocks per set 0.80 Andrea Walker
 Service Aces 4 Nya Blair
 Service Aces per set 0.25 Nya Blair

2021 AZTEC SPRING VOLLEYBALL ROSTER

No.	Player	Pos.	Ht.	Yr.	Hometown (Last School)
1	Nya Blair	OH	5-11	So.	Grand Prairie, Texas (Martin HS)
2	Heipua Tautua'a	OH	6-2	Fr.	Wai'anae, Hawai'i (Wai'anae HS)
3	Andrea Walker	MB	6-0	R-Jr.	Fairfield, Calif. (Vanden HS)
4	Kennedy Feuerborn	S	6-3	Fr.	Overland Park, Kan. (Blue Valley North HS)
5	Serena Hodson	MB	6-2	R-So.	Mission Viejo, Calif. (Trabuco Hills HS)
7	Ashley Vanderpan	S	6-1	R-So.	Elk Grove, Calif. (Syracuse)
8	Lauren Lee	DS/L	5-0	Sr.	Coppell, Texas (Rice Univ.)
10	Camryn Machado	S	5-9	R-Jr.	Cardiff-by-the-Sea, Calif. (Utah)
11	Brooklynn Hill	DS/L	5-8	Jr.	Rancho Cucamonga, Calif. (Penn State)
12	Erin Gillcrist	RS	6-1	Sr.	Lakewood, Colo. (Lakewood HS)
13	Elise Park	DS/L	5-7	R-Fr.	Columbia, Md. (Atholton HS)
14	Gabriella Spaethling	RS	6-1	R-Fr.	Larkspur, Calif. (Redwood HS)
15	Abby Pugh	MB	6-3	R-Sr.	Brenham, Texas (Wichita State)
16	Alexis Durand	DS/L	5-7	So.	Long Beach, Calif. (Long Beach Poly HS)
17	Nadia Barclay	DS/L	5-2	Fr.	Foster City, Calif. (Hillsdale HS)
19	Maddie Lenn	OH	5-10	Jr.	San Francisco, Calif. (Sacred Heart Cathedral Prep)
21	Victoria O'Sullivan	OH	6-0	Jr.	Albany, Calif. (St. Mary's HS)

Head Coach: Brent Hilliard (Long Beach State, 1993), First season at SDSU
Assistant Coach/Recruiting Coordinator: Melanie Greene (San Diego State, 2007), 10th season at SDSU
Assistant Coach: Steve Timmons (Southern California), First season at SDSU
Volleyball Operations Assistant: Kara Barkdoll (Cal State San Marcos, 2015), Third season at SDSU
Volunteer Assistant Coach: Yasser Aguila Todd (Trident University, 2009, 2014), Second season at SDSU

Pronunciations

#1 NYA Blair NIGH-ah
 #2 HEIPIUA TAUTUA'A HEY-poo-ah TAO-too-ah-ah
 #4 Kennedy FEUERBORN FEWER-born



OPPONENT COMPARISON (ALL MATCHES)

2021 Overall Stats	SDSU	MW Rank	OPP	MW Rank	NEV	MW Rank	OPP	MW Rank
Hitting Percentage	.181	7	.195	6	.168	10	.244	10
Kills per set	12.62	3	11.14	2	11.43	7	13.13	10
Assists per set	12.14	3	10.48	2	10.78	6	12.17	10
Service Aces per set	0.90	11	2.00	11	1.65	9	1.87	9
Digs per set	14.48	4	12.10	1	11.39	10	12.65	4
Blocks per set	1.86	9	2.86	10	2.22	6	2.64	7

NEVADA AT A GLANCE

> Picked seventh in the Mountain West preseason coaches poll, Nevada (1-5, 1-5 MW) has stumbled out of the gate this season, opening with four straight losses before splitting two encounters vs. Air Force, Feb. 19-20, to close out a six-match homestand. The Wolf Pack captured the opening match in four sets (25-20, 25-19, 19-25, 25-23) for their victory of the season last Friday. Briana Souza led Nevada with 14 kills in that contest, committing just one error on 22 attempts for a .591 hitting percentage. In addition, Sydney Peterson was a force at the net with nine blocks, while setter Andrea Alcaraz handed out 34 assists and served up four aces, along with Reka Monteleone. Entering the weekend, Alcaraz ranks fourth in the Mountain West with 9.26 assists per set (176 overall), while Kaila Spevak occupies the sixth spot with 3.79 digs per set (72 overall). In addition Monteleone finds herself among the conference leaders in both service aces (9th - 0.42/set) and kills (10th - 3.21/set, 61 overall). Offensively, the Wolf Pack rank seventh in the MW with 11.43 kills per set as a team and are next-to-last in the league with a .168 hitting percentage. At the net, Nevada is sixth in the conference with 2.22 blocks per set. However, opponents are hitting at .244 clip against the Wolf Pack and are knocking down an average of 13.13 kills per set, both of which rank 10th in the MW. Nevada is coached by Lee Nelson, who is in his sixth season on the Reno campus after spending three years as an assistant at Miami (Fla.) from 2012-14. Prior to his stint with the Hurricanes, Nelson was the associate head coach of the men's program at UC Santa Barbara. His career record is 67-86.

WEEKEND WRAP

> San Diego State extended its winning streak to three matches after posting a pair of victories over New Mexico on Feb. 19-20 at Aztec Court. The two contests were originally slated as a home series for the Lobos when the Mountain West released its 2021 spring schedule. However, the conference officially announced the switch in venues on Feb. 17.
 > SDSU recorded its second straight sweep in the series opener, dispatching the visitors by scores of 25-13, 25-17, 25-21 before claiming a four-set decision in the finale, 25-20, 25-20, 23-25, 25-19.
 > With the two victories, the Aztecs also remain unbeaten vs. New Mexico in the last eight encounters between the two programs.
 > In the opener, Victoria O'Sullivan blasted a match-high 13 kills and hit .346 on the evening, while Nya Blair added a career-high 10 put-aways of her own.
 > The SDSU attack also included seven kills apiece from Erin Gillcrist and Heipua Tautua'a, while Ashley Vanderpan dished out 38 assists and posted seven digs.

2021 MOUNTAIN WEST SPRING STANDINGS (As of Feb. 24)

Team	---Conference---			-----Overall-----			Strk
	W	L	Pct	W	L	Pct.	
Boise State	6	0	1.000	6	0	1.000	W6
UNLV	4	0	1.000	4	0	1.000	W4
Fresno State	3	1	.750	3	1	.750	W2
Wyoming	4	2	1.000	4	2	.667	L2
San Diego State	3	3	.250	3	3	.500	W3
Air Force	3	3	.500	3	3	.500	W1
Colorado State	3	3	.500	3	3	.500	L2
New Mexico	2	4	.333	2	4	.333	L4
San José State	1	5	.167	1	5	.167	L2
Nevada	1	5	.167	1	5	.167	L1
Utah State	0	4	.000	0	4	.000	L4

Upcoming Matches in the MW

Friday, Feb. 26

Nevada at San Diego State, 6 p.m. PT
 New Mexico at Air Force, 6 p.m. MT
 Utah State at Fresno State, 6 p.m. PT
 Colorado State at Wyoming, 6 p.m. MT
 Boise State at UNLV, 6:30 p.m. PT

Saturday, Feb. 27

Nevada at San Diego State, Noon PT
 New Mexico at Air Force, 6 p.m. MT
 Colorado State at Wyoming, 6 p.m. MT
 Boise State at UNLV, 6:30 p.m. PT
 Utah State at Fresno State, 7 p.m. PT

Thursday, March 4

UNLV at Utah State, 6 p.m. MT

Friday, March 5

San Diego State at Wyoming, 6 p.m. MT
 Nevada at San José State, 1 p.m. PT
 New Mexico at Boise State, 3 p.m. MT
 Fresno State at Air Force, 6 p.m. MT

Saturday, March 5

San Diego State at Wyoming, Noon MT
 UNLV at Utah State, 1 p.m. MT
 Nevada at San José State, 1 p.m. PT
 New Mexico at Boise State, 1 p.m. MT
 Fresno State at Air Force, 4 p.m. MT

Thursday, March 11

Utah State at San Diego State, 6 p.m. PT



> In addition, Brooklynn Hill served up a personal-best three aces, while Lauren Lee scooped up a team-high 11 scoops in the victory.
 > Despite trailing in team blocks (7.0-6.0), the Aztecs held a sizable advantage in most statistical categories, including kills (45-27), digs (39-25) and service aces (6-1) while outhitting UNM .283 to .136.
 > The third frame was the most competitive, with the two sides witnessing 10 ties and three lead changes. O'Sullivan and Blair took center stage, totaling six kills each in the set, while Andrea Walker added three.
 > In the finale, Victoria O'Sullivan launched a season-high 20 kills and added two solo blocks, while Nya Blair finished with 10 put-aways for the second straight outing.
 > SDSU's fortunes were also buoyed by Andrea Walker, who hit .417 for the match on seven kills with two errors in 12 attempts, while Erin Gillcrisp floored seven shots of her own.
 > In addition, the Aztecs received career-high performances from Heipua Tautua'a (22 digs) and Ashley Vanderpan (40 assists), while Lauren Lee posted a season-high 16 digs, marking the fifth straight contest of recording double digits in that category.
 > Despite trailing in team blocks (13.0-5.0) and committing 31 attack errors overall, San Diego State proved that quantity trumped quality on this day, maintaining a sizable 57-43 advantage in kills and a 64-36 edge in digs.

AZTECS AMONG MW LEADERS

> Following her performances last week, Victoria O'Sullivan has moved into third among Mountain West statistical leaders with an average of 3.76 kills per set (79 overall) and ranks fifth with 4.12 points/set (86.5 overall (K-SA-BS-BA/2)).
 > In addition, Ashley Vanderpan makes her debut on the charts this week at No. 7 in assists (7.37/set), while Lauren Lee occupies the 10th spot in digs (3.62/set).
 > O'Sullivan is the lone SDSU player to record double-digit kills in all six matches this season and has logged 10 or more put-aways in 27 of her last 35 starts dating back to the 2019 fall campaign.
 > Meanwhile, Vanderpan raised her season average by over two assists after handing out 78 helpers combined (11.14/set) in two victories over New Mexico last weekend. With her setting, SDSU averaged 14.16 kills in seven sets vs. the Lobos, over 2.5 kills more than its average of 11.64 in the previous four matches.
 > Elsewhere, Lee has posted double-digit digs in five straight matches, including a season-high 16 in the series finale vs. New Mexico on Feb. 20.
 > Collectively, the Aztecs rank third in the MW this week with an average of 12.14 kills per set for the season and have climbed to the fourth position with 14.48 digs per frame. Conversely, SDSU opponents have posted a league-low 12.10 digs per set on Aztec attacks and have managed just 11.14 kills per set against the Scarlet and Black, which ranks next-to-last in the conference.

NOTHIN' LIKE HOME COOKIN'

> Since the beginning of the 2009 campaign, the Aztecs have amassed a 107-52 (.673) record at home, highlighted by a 14-0 mark during the 2012 season when SDSU captured the Mountain West championship.

RECAPPING THE FRESNO STATE SERIES

> Brent Hilliard picked up his first victory as head coach of the Aztecs on Feb. 13, after San Diego State dispatched Fresno State in three sets (25-19, 26-24, 25-20) to even the weekend series at one match apiece.
 > SDSU maintained a 41-29 advantage in kills during the series finale, limiting Bulldogs to a .060 hitting percentage, as the visitors committed 22 errors on the day.
 > In addition, the Aztecs held the statistical edge in digs (58-50) and team blocks (9.0-8.0) to break into the win column for the first time this spring.
 > Individually, SDSU was once again led by Victoria O'Sullivan, who launched a team-high 11 kills, breaking the double-digit plateau in that category for the fourth match in a row and 25th time in her last 33 outings dating back to last season.
 > The Aztec offense also received a boost from Andrea Walker (.389) and Nya Blair (.375), who committed just one attack error apiece, blasting eight and seven put-aways, respectively.
 > Not to be outdone, a trio of SDSU players reached double figures in digs, including Lauren Lee (13), Heipua Tautua'a (11) and Ashley Vanderpan (11), with the latter notching her first career double-double after dishing out 30 assists as well.
 > The Aztecs closed with a strong 8-3 surge in the opening set after Fresno State crept to within one point at 17-16.
 > The second stanza evolved into a classic thriller, with the two teams combining for 12 ties and nine lead changes.
 > Things looked bleak for SDSU late in the second stanza after finding itself staring down the barrel of a 24-21 deficit.
 > However, the Scarlet and Black flashed its mettle once again, as O'Sullivan contributed two kills and a solo block to ignite a timely 5-0 blitz. Blair added another key put-away, while the Bulldogs imploded with an attack error on the final serve.
 > The third set was also a nip-and-tuck affair, as the two sides witnessed five ties in the early going. However, the Aztecs took the lead for good after a Blair kill and service ace followed by an O'Sullivan non-returnable, which broke a 12-12 deadlock.
 > In its home opener the previous night, San Diego State dropped a four-set decision (25-22, 16-25, 18-25, 18-25).
 > The Aztecs matched the Bulldogs with 45 kills and held a sizable 51-36 advantage in digs but were undone by 34 attack errors, hitting just .087 for the night, compared to the visitors, who finished with a .246 clip and maintained the upper hand in team blocks (17-10) to with nine service aces.
 > Victoria O'Sullivan was the lone player for the Scarlet and Black to surpass the double-digit kill barrier, launching a team-high 11 non-returnables, while Andrea Walker totaled eight put-aways of her own while contributing four total blocks.
 > Erin Gillcrisp and Maddie Lenn also got into the act with seven kills apiece, while Lauren Lee anchored the back row with a match-high 15 digs. In addition, Kennedy Feuerborn dished out a team-best 26 assists.

RECAPPING THE UNLV SERIES

> Playing its first intercollegiate match in over 14 months, San Diego State dropped a three-set decision on the road to UNLV (22-25, 21-25, 10-25) in the 2021 spring opener for both teams on Feb. 4.
 > The Rebels out-hit the Aztecs .310 to .147, maintaining a 44-30 advantage in kills and a 44-34 edge in digs to spoil the debut of

first-year SDSU head coach Brent Hilliard.

- > Victoria O'Sullivan paced the Scarlet and Black with 11 kills, hitting .300 for the night on 30 attempts with just two errors, while Heipua Tautua'a launched a six non-returnables of her own to go with a team-high 10 digs.
- > In addition, SDSU received four kills apiece from Erin Gillcrist (3 blocks) and Kennedy Feuerborn (6 assists), while Ashley Vanderpan handed out 11 assists in her first Aztec appearance.
- > The Aztecs were unable to maintain a hot start the next night vs. UNLV, falling in four sets (25-19, 18-25, 19-25, 15-25).
- > The Aztecs outhit the Rebels .452 to .242 in the opening frame, knocking down 15 kills with just one error in 31 attempts. However, SDSU stumbled to a .163 clip the rest of way, while UNLV posted a .296 attack percentage during that span, including a .361 pace in the final set.
- > In all, the Rebels served up 12 aces and maintained the advantage in kills (55-47) and total blocks (7-0-3.0) to help fuel their victory. Conversely, the Aztecs held a slight edge in digs (58-55) but were plagued by eight errant serves.
- > Individually, SDSU was paced by Victoria O'Sullivan, who launched 13 kills and hit .333 for the match, committing just two errors in 33 swings, while Andrea Walker (.316) blasted nine put-aways of her own and contributed two block assists.
- > The Aztec cause was also aided by Erin Gillcrist, who totaled eight kills and a service ace, while Kennedy Feuerborn displayed her versatility with six kills, 27 assists and a solo block.
- > Not to be outdone, Maddie Lenn anchored the back row with a career-high 18 digs, while Lauren Lee reached double digits as well with 13 scoops of her own.

NOTABLE

- > Setter Ashley Vanderpan recorded her first career double-double after totaling 30 assists and 11 digs in the Aztecs' 3-0 sweep over Fresno State on Feb. 13.
- > During SDSU's three-match winning streak, Vanderpan has averaged 10.80 assists and 2.2 digs in 10 sets.
- > The 22 digs posted by Heipua Tautua'a vs. New Mexico on Feb. 20 marked the highest total for an Aztec since Hannah Turnlund scooped up 24 in a narrow five-set loss at Florida Gulf Coast on Aug. 31, 2019.
- > Over the past three matches, Tautua'a has averaged a team-high 4.14 digs per set, followed closely by Lauren Lee (3.86), who has notched double-digit scoops in five straight outings.
- > SDSU is one of five Mountain West teams not to have played a five-set match this season, joining Boise State, Colorado State, Nevada, New Mexico and UNLV.
- > Through six matches in 2019, the Aztecs completed three five-set matches, falling at Florida Gulf Coast before edging West Virginia and Arkansas at home.

WELCOME BACK

- > The Aztecs return 13 players, including nine letterwinners from last year's squad that finished with a 15-14 record overall and an 8-10 mark in the Mountain West.
- > Leading the returners is outside hitter Victoria O'Sullivan, who ranked sixth in the league with 3.20 kills per set (352 overall) and tied for the team lead with 14 solo blocks while finishing fourth with 52 stops overall. The Aztec junior is the lone veteran to have played all 110 sets in 2019, finishing with double-digit kill totals in 21 of the Aztecs' 29 matches, including 10 straight to start the season.
- > In SDSU's riveting five-set thriller over West Virginia at the Aztec Challenge in September 2019, O'Sullivan blasted a career-high 22 kills and logged a collegiate-best .487 hitting percentage, committing just three errors in 39 attempts.
- > With the graduation of Hannah Turnlund and Tamia Reeves, setter Camryn Machado is the Aztecs' lone all-Mountain West honoree to return from last year. However, the Cardiff-by-the-Sea native will miss the 2021 spring campaign after suffering a torn ACL in preseason camp.
- > In 2019, Machado ranked second in the MW with 10.62 assists per set (1,158 overall) and occupied the No. 2 spot on the team with 2.54 digs per set (277 overall).
- > Additionally Machado led the Scarlet and Black with 14 double-doubles (assists-digs), including seven vs. MW opponents, and topped the squad with 16 service aces, including a career-high three in a home sweep of Utah State.
- > Senior right-side hitter Erin Gillcrist has been selected team captain for the upcoming season. The Lakewood, Colorado, native has successfully recovered from off-season shoulder surgery and looks to build on a 2019 campaign in which she averaged 1.89 kills (144 overall) and 0.71 blocks per set (54 overall).
- > In the Aztecs' 3-1 victory over Long Beach State on Sept. 19, 2019, Gillcrist matched her career-best with a .500 attack percentage, flooring 10 balls on 16 attempts with two errors.
- > Also back in the fold is middle blocker Andrea Walker, who owns the top returning hitting percentage among Aztec regulars after finishing 10th in the Mountain West last year with a .308 clip. The Fairfield, California, product occupied the second spot on the team with an average of 0.88 blocks per set (61 overall) and ranked fifth behind Gillcrist with an average of 1.87 kills per set (129 overall).
- > Walker compiled double-digit kills on three occasions, including a career-high 13 put-aways in SDSU's 3-1 victory at Utah State on Nov. 21, 2019.

MEET THE NEWCOMERS

- > First-year head coach Brent Hilliard has added four newcomers to the roster, including a trio of freshmen in outside hitter Heipua Tautua'a, setter Kennedy Feuerborn and defensive specialist Nadia Barclay, along with junior defensive specialist Brooklynn Hill, a transfer from perennial national power Penn State.
- > Hill played 13 matches in two seasons with the Nittany Lions, who advanced to the NCAA regional finals in both of her years on the State College campus. A native of Southern California, Hill starred for three straight conference championship teams at Rancho Cucamonga High School from 2015-17, earning all-Baseline League honors three times to go with a trio of team MVP and Defensive Player of the Year awards.
- > A product of Wai'anae High School in Hawai'i, Tautua'a garnered first-team all-Western Division accolades from the O'ahu Interscholastic Association in 2018 and landed on the AVCA Phenom Watch List. She also excelled at the junior level, collecting Most Valuable Player honors at the 2019 Girls Junior National Championships after leading her Spike and Serve Volleyball Club 16s team to the American Division title. In addition, Tautua'a earned a spot on the USA Volleyball Girls' Youth A1 National Training Team in 2018-19.
- > Feuerborn, meanwhile, arrives on The Mesa by way of Johnson County (Kan.) Community College where she enrolled for the 2019-20 academic year but did not compete in volleyball. Feuerborn earned second-team all-state honors and landed on the state Class 6A all-tournament team as a senior in

2021 SITUATIONAL RECORDS

GENERAL

Overall.....	3-3
Mountain West.....	3-3
Home.....	3-1
Away.....	0-2
vs. Ranked Teams.....	0-0
vs. Unranked Teams.....	3-3
Matches Following a Win.....	2-0
Matches Following a Loss.....	0-3
Longest Winning Streak.....	3
Longest Losing Streak.....	3
Current Streak.....	Won 3

BY SETS

3 Sets.....	2-1
4 Sets.....	1-2
5 Sets.....	0-0
Leading After Two.....	3-0
Trailing After Two.....	0-1
Tied After Two.....	0-2
Leading 2-1.....	1-0
Trailing 2-1.....	0-2

BY MONTH

February.....	3-3
March.....	0-0
April.....	0-0

BY DAY

Thursday.....	0-1
Friday.....	1-2
Saturday.....	2-0

BY KILLS

Leading in Kills.....	3-0
Trailing in Kills.....	0-2
Tied in Kills.....	0-1

BY DIGS

Leading in Digs.....	3-2
Trailing in Digs.....	0-1
Tied in Digs.....	0-0

BY BLOCKS

Leading in Blocks.....	1-0
Trailing in Blocks.....	2-3
Tied in Blocks.....	0-0

BY ATTACK PERCENTAGE

Greater Attack Percentage.....	3-0
Lower Attack Percentage.....	0-3
Equal Attack Percentage.....	0-0
Hitting above .300.....	0-0
Hitting between .200 and .300.....	1-1
Hitting between .100 and .200.....	2-1
Hitting below .100.....	0-1
Opponent Hitting above .300.....	0-1
Opponent Hitting between .200 and .300.....	0-2
Opponent Hitting between .100 and .200.....	2-0
Opponent Hitting below .100.....	1-0

BY INDIVIDUAL KILLS

3+ Double-Digit Individual Kill Totals.....	0-0
2 Double-Digit Individual Kill Totals.....	2-0
1 Double-Digit Individual Kill Totals.....	1-3
0 Double-Digit Individual Kill Totals.....	0-0

2018 at Blue Valley North High School in Overland Park, Kansas. She originally signed with Baylor as a prep but did not attend.

> Rounding out the rookie class is Barclay, who graduated from Hillsdale High School in San Mateo, California, where she received first team all-conference recognition and team MVP accolades as a junior in 2018 after averaging 24.6 digs per match (541 total, 7.7 per set).

PRESEASON PROGNOSTICATIONS

> San Diego State was picked to finish fifth this year in the Mountain West preseason coaches poll released Jan. 28. The Aztecs garnered 70 points and garnered one first-place vote.
 > In the 21-year history of the Mountain West, SDSU has finished first (2012), second (2002, 2011), fourth (2000, 2001, 2003, 2013, 2017), fifth (2005, 2015, 2019), sixth (1999, 2004, 2006, 2009, 2010, 2014, 2016), seventh (2008) and eighth (2007, 2018) in the final league standings.

2021 Mountain West Spring Preseason Poll

Rk.	Team (1st-place votes)	Pts.
1.	Colorado State (5)	92
2.	UNLV (4)	90
3.	Wyoming (1)	80
4.	Boise State	76
5.	San Diego State (1)	70
6.	Fresno State	48
7.	Nevada	41
8.	Air Force	33
9.	San José State	28
10.	New Mexico	25
11.	Utah State	22

VOLLEYBALL LEGEND STEVE TIMMONS ADDED TO COACHING STAFF

> Aztec head coach Brent Hilliard served up a proverbial ace with his first staff addition after hiring the legendary Steve Timmons as an assistant coach on Feb. 15, 2020.
 > The first American male to win three Olympic medals in indoor volleyball, Timmons has worked as an elite coach since 2013 with Wave Volleyball Club based in nearby Del Mar, one of the most prestigious volleyball clubs in the country.
 > One of the sport's most potent hitters, Timmons first made his impact as a three-year letterman at USC (1980-82), where he helped the Trojans capture the 1980 NCAA Championship, earning all-tournament honors in the process. He also garnered first-team all-conference accolades to go with All-America distinction in 1982.
 > Timmons quickly rose to international stardom, winning gold medals for the U.S. Team at the Summer Olympics 1984 and 1988 to go with a bronze in 1992. He collected MVP honors for the 1984 Games, and in 1988 he was named the U.S. Olympic Committee's Male Volleyball Player of the Year. That same year, he was voted the Federation of International Volleyball's Best Blocker and received MVP recognition at the World Super Four Tournament.

> Not to be outdone, Timmons led the U.S. Team to gold medals at the 1985 World Cup and 1986 World Championships, helping the Americans complete the first "Triple Crown" in volleyball following their triumph at the 1984 Olympics.

> Timmons was selected to USA Volleyball's 75th anniversary All-Era team in 2003 and was ranked No. 8 on Volleyball magazine's "35 Best U.S. Players of All Time" list in 2012. In addition, he was named to the inaugural class of the Southern California Indoor Volleyball Hall of Fame in 2017.

> Previously, Timmons was inducted into the U.S. Volleyball Association and International Volleyball Halls of Fame in 1998 while landing a spot on Volleyball magazine's all-time American Indoors first team. Additionally, he was enshrined in the Orange County Sports Hall of Fame in 1990 and the California Community College Hall of Fame in 1998 for his basketball and volleyball prowess at Orange Coast College.

AZTEC VOLLEYBALL EARNS PUBLIC RECOGNITION AWARD FROM NCAA

> Last spring, the San Diego State volleyball program was publicly recognized by the NCAA for outstanding academic achievements, along with the Aztec women's golf and women's tennis teams.

> The recognition came on the heels of the most recent multi-year Academic Progress Rates (APR) in which all three programs were among the top 10 percent of their respective sports nationally.

> With these squads earning NCAA public recognition last season, San Diego State has now received such distinction a total of 21 times in school history, matching its record of three teams set during the 2011-12 and 2017-18 academic years.

> The SDSU volleyball program received public recognition for the fourth straight season and fifth time overall, while the Aztec women's tennis team garnered the accolade for the third year in a row and sixth time in the last seven seasons. In addition, the San Diego State women's golf squad merited public recognition for the third time in school history.

2021 MATCH-BY-MATCH LEADERS

Date	Opponent	Kills	Hitting Pct.*	Assists	Aces	Digs	Blocks
F.4	at UNLV	O'Sullivan - 13	O'Sullivan (.300)	Vanderpan - 11	Hodson - 1 Tautua'a	Tautua'a - 10	Gillcrisp - 3 Walker
F.5	at UNLV	O'Sullivan - 11	O'Sullivan (.333)	Feuerborn - 27	Gillcrisp - 1	Lenn - 18	Walker - 2
F.12	Fresno State	O'Sullivan - 11	Gillcrisp (.267)	Feuerborn - 26	none	Lee - 15	Walker - 4
F.13	Fresno State	O'Sullivan - 11	Walker (.389)	Vanderpan - 30	Barcklay - 1 Blair Lee	Lee - 13	Walker - 4
F.19	New Mexico	O'Sullivan - 13	O'Sullivan (.346)	Vanderpan - 38	Hill - 3	Lee - 11	O'Sullivan - 3
F.20	New Mexico	O'Sullivan - 20	Walker (.417)	Vanderpan - 40	Blair - 2 Tautua'a - 1	Tautua'a - 22	O'Sullivan - 3
F.26	Nevada						
F.27	Nevada						
M.5	at Wyoming						
M.6	at Wyoming						
M.12	Utah State						
M.13	Utah State						
M.20	at Boise State						
M.27	at San Jose State						
A.1	Air Force						
A.3	Colorado State						

* - min. 7 kills



Brent HILLIARD

Head Coach - First Season at San Diego State

San Diego State Director of Athletics John David Wicker ushered in a new era for the Aztec volleyball team with the hiring of Brent Hilliard as the fifth head coach in program history on Jan. 31, 2020.

A 2018 inductee to the Southern California Indoor Volleyball Hall of Fame, Hilliard arrives at SDSU with a wealth of experience after achieving 19 years of unparalleled success as an assistant coach at the University of San Diego, where he served as the Toreros' associate head coach since 2007.

"Brent Hilliard's presence in San Diego County volleyball is far reaching," Wicker said. "Through the club volleyball teams he coached, his 19 years at USD, the time and relationships with the Olympics, Coach Hilliard will be able to hit the ground running for San Diego State. In addition to his San Diego ties, Brent also has what we need in the next leader to graduate the women in the volleyball program, lead them to compete for championships and prepare them for a successful life after sport. He is known for his coaching tenacity in the gym, and at the same time, people of all ages told us how much they enjoyed him as a person."

During his fruitful tenure, the Toreros qualified for the NCAA Tournament in all but one of his 19 seasons, advancing to the Sweet 16 in 2004, 2006, 2013 and 2018. In addition, Hilliard helped guide the Toreros to nine West Coast Conference championships while his players earned six All-America awards, 12 All-America honorable mentions, 44 all-WCC accolades and 15 freshman all-conference certificates.

Hilliard twice assumed the reins of the USD program on an interim basis while head coach Jennifer Petrie was absent on maternity leave. In 2006, Hilliard was honored as WCC Coach of the Year after guiding the Toreros to a conference championship and a Sweet 16 appearance in the NCAA Tournament. That season, he coached five all-conference honorees, including WCC Player of the Year Kristen Carlson, as USD finished 14th in the final USA Today/Coaches Poll.

The Toreros also flourished under Hilliard's guidance in 2011, racing to a 13-0 start en route a program-best 28-5 record, highlighted by a spot in the second round of the NCAA Tournament. Throughout his stint, USD was consistently ranked among the nation's top 25, climbing to as high as No. 2 during the 2013 campaign and rising to No. 5 in 2016.

"I would like to thank John David Wicker, Jenny Bramer, Dr. Adela de la Torre and the rest of the SDSU search committee for making me feel so welcome during the interview process," Hilliard said. "To be the head coach of such a remarkable women's volleyball program in my family's hometown is truly a once in a lifetime opportunity."

"We are fully committed to work tirelessly to elevate this program back to an elite status on the college volleyball landscape, one that the student body, faculty, community, alumni and, of course, all future Aztecs will take great pride in."

Hilliard played collegiately at Long Beach State, earning All-America honors in each of his four years from 1990-93, including first-team recognition over his final three seasons. A right-side hitter for the 49ers, Hilliard was named the NCAA Men's Volleyball Player of the Year as a junior in 1992 after leading LBSU to a 31-1 record.

In 1991, Hilliard and the 49ers captured the NCAA Championship with a 3-1 victory over USC in the finals, avenging a loss to the Trojans in the title match the year before. He finished his career as the NCAA all-time leader with 3,034 kills.

Additionally, Hilliard was selected to play for Team USA in the 1992 Summer Olympics in Barcelona, Spain, where he helped the Americans capture the bronze medal. The following year, he won a silver medal at the 1993 Pan American Games in Argentina and also owns a bronze medal from the 1991 World Cup.

After receiving his undergraduate degree in 1993 from Long Beach State in political science, Hilliard continued his volleyball career as a professional in Europe from 1995-98, playing two seasons in Belgium and another in the Netherlands. In 1996, Hilliard and the Masiek Volleyball Club captured the Belgian national championship and competed in the European Champions League.

In addition to his collegiate experience, which included a stint as head coach at nearby Cuyamaca College in 1999 and 2000, Hilliard has also coached for the past 10 years at Wave Volleyball Club in Del Mar, the premier volleyball club in San Diego County.

"Our priority at SDSU will be to engage, attract and secure exceptional student-athletes that strive for both academic and athletic excellence in their everyday lives," Hilliard added. "From day one, we will set expectations high and build from there. I am incredibly excited to get started and I look forward to the bright future ahead."

HILLIARD'S COLLEGIATE COACHING LEDGER (As an Assistant at USD)

Year	Overall Record	WCC Record (Finish)	Postseason
2001	22-9	10-4 (3rd)	NCAA Second Round
2002	25-8	10-4 (3rd)	NCAA First Round
2003	17-13	6-8 (T-5th)	NCAA First Round
2004	24-5	14-0 (1st)	NCAA Sweet 16
2005	23-6	10-4 (T-2nd)	NCAA Second Round
2006*	26-6	13-1 (1st)	NCAA Sweet 16
2007	21-8	11-3 (1st)	NCAA First Round
2008	23-5	12-2 (1st)	NCAA First Round
2009	18-7	10-4 (2nd)	None
2010	24-8	13-1 (1st)	NCAA Second Round
2011*	28-5	12-4 (2nd)	NCAA Second Round
2012	21-7	13-3 (T-1st)	NCAA First Round
2013	26-4	16-2 (1st)	NCAA Sweet 16
2014	19-12	12-6 (T-3rd)	NCAA First Round
2015	22-10	14-4 (2nd)	NCAA Second Round
2016	24-6	15-3 (2nd)	NCAA First Round
2017	25-5	17-1 (T-1st)	NCAA Second Round
2018	18-13	13-5 (3rd)	NCAA Sweet 16
2019	25-6	17-1 (1st)	NCAA Second Round

Overall Total 431-143 (.751)

WCC Total 238-60 (.799)

Notes

- * - Served as interim head coach during the 2006 and 2011 seasons
- > Qualified for the NCAA Tournament in 18 of his 19 seasons at USD
- > Reached the NCAA Sweet 16 four times in 2004, 2006, 2013 and 2018
- > Won nine West Coast Conference championships

2021 AZTEC PHOTO ROSTER



Nya BLAIR
OH | 5-11 | So. **1**



Heipua TAUTUA'A
OH | 6-2 | Fr. **2**



Andrea WALKER
MB | 6-0 | RS-Jr. **3**



Kennedy FEUERBORN
S | 6-3 | Fr. **4**



Serena HODSON
MB | 6-2 | So. **5**



Ashley VANDERPAN
S | 6-1 | So. **7**



Lauren LEE
DS/L | 5-0 | Sr. **8**



Camryn MACHADO
S | 6-1 | RS-Jr. **10**



BROOKLYNN HILL
DS/L | 6-1 | RS-Jr. **11**



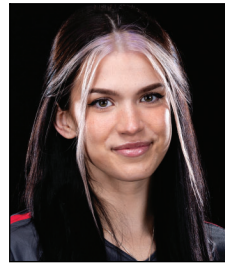
Erin GILLCRIST
RS | 6-1 | Sr. **12**



Elise PARK
DS/L | 5-7 | RS-Fr. **13**



Gabriella SPAETHLING
RS | 6-1 | RS-Fr. **14**



Abby PUGH
MB | 6-3 | RS-Sr. **15**



Alexis DURAND
DS/L | 5-7 | So. **16**



Nadia BARCLAY
DS/L | 5-4 | Fr. **17**



Maddie LENN
OH | 5-10 | Jr. **19**



Victoria O'SULLIVAN
OH | 6-0 | Jr. **21**



Brent HILLIARD
Head Coach



Melanie GREENE
Assistant Coach/
Recruiting Coordinator



STEVE TIMMONS
Assistant Coach



Kara BARKDOLL
Volleyball Operations
Assistant



Yasser AGUILA TODD
Volunteer Assistant Coach

2021 San Diego State Spring Volleyball
San Diego State Overall Individual Statistics (as of Feb 20, 2021)
All matches

Overall record: 3-3 Conf: 3-3 Home: 3-1 Away: 0-2 Neutral: 0-0

##	Player	sp	mp-ms	Attack					Set		Serve				
				k	k/s	e	ta	pct	a	a/s	sa	sa/s	se	ta	pct
21	O'SULLIVAN, Victoria	21	6-6	79	3.76	32	198	.237	3	0.14	0	0.00	0	6	1.00
1	BLAIR, Nya	16	5-0	36	2.25	15	102	.206	1	0.06	4	0.25	5	52	.904
3	WALKER, Andrea	20	6-6	42	2.10	20	96	.229	1	0.05	0	0.00	0	0	.000
12	GILLCRIST, Erin	21	6-5	36	1.71	16	81	.247	3	0.14	2	0.10	2	23	.913
2	TAUTUA'A, Heipua	21	6-6	33	1.57	27	123	.049	11	0.52	3	0.14	6	73	.918
4	FEUERBORN, Kennedy	12	4-3	13	1.08	5	29	.276	66	5.50	0	0.00	3	17	.824
15	PUGH, Abby	9	4-1	7	0.78	3	15	.267	1	0.11	0	0.00	1	7	.857
19	LENN, Maddie	20	6-5	10	0.50	10	42	.000	7	0.35	2	0.10	4	26	.846
7	VANDERPAN, Ashley	19	6-3	9	0.47	5	29	.138	140	7.37	0	0.00	4	60	.933
8	LEE, Lauren	21	6-0	0	0.00	1	4	-.250	14	0.67	3	0.14	4	88	.955
5	HODSON, Serena	4	2-0	0	0.00	0	3	.000	0	0.00	1	0.25	1	4	.750
11	HILL, Brooklynn	21	6-1	0	0.00	0	1	.000	7	0.33	3	0.14	6	67	.910
16	DURAND, Alexis	6	3-0	0	0.00	0	0	.000	0	0.00	0	0.00	2	10	.800
17	BARCKLAY, Nadia	7	2-0	0	0.00	0	0	.000	1	0.14	1	0.14	1	25	.960
SAN DIEGO STATE		21	6-6	265	12.6	134	723	.181	255	12.1	19	0.90	39	458	.915
Opponents		21	6-6	234	11.1	99	693	.195	220	10.4	42	2.00	58	463	.875

##	Player	sp	Recept			Dig		Blocking					Points		
			re	ta	pct	dig	dig/s	bs	ba	total	blk/s	be	bhe	pts	pts/s
21	O'SULLIVAN, Victoria	21	2	14	.857	11	0.52	4	7	11	0.52	1	1	86.5	4.12
1	BLAIR, Nya	16	1	2	.500	13	0.81	2	2	4	0.25	3	0	43.0	2.69
3	WALKER, Andrea	20	0	0	.000	3	0.15	3	13	16	0.80	0	0	51.5	2.58
12	GILLCRIST, Erin	21	1	1	.000	10	0.48	4	8	12	0.57	0	0	46.0	2.19
2	TAUTUA'A, Heipua	21	8	86	.907	72	3.43	2	3	5	0.24	2	1	39.5	1.88
4	FEUERBORN, Kennedy	12	0	0	.000	12	1.00	2	2	4	0.33	0	0	16.0	1.33
15	PUGH, Abby	9	0	0	.000	1	0.11	0	1	1	0.11	2	0	7.5	0.83
19	LENN, Maddie	20	8	97	.918	44	2.20	1	0	1	0.05	0	1	13.0	0.65
7	VANDERPAN, Ashley	19	0	1	1.000	26	1.37	0	5	5	0.26	0	2	11.5	0.61
8	LEE, Lauren	21	9	112	.920	76	3.62	0	0	0	0.00	0	0	3.0	0.14
5	HODSON, Serena	4	0	0	.000	0	0.00	0	1	1	0.25	0	0	1.5	0.38
16	DURAND, Alexis	6	1	4	.750	3	0.50	0	0	0	0.00	0	0	0.0	0.00
17	BARCKLAY, Nadia	7	0	0	.000	1	0.14	0	0	0	0.00	0	0	1.0	0.14
11	HILL, Brooklynn	21	9	75	.880	32	1.52	0	0	0	0.00	0	1	3.0	0.14
-	TEAM	-	3	-	-	-	-	-	-	-	-	-	-	-	-
SAN DIEGO STATE.....		21	42	395	.894	304	14.48	18	42	39.0	1.86	8	6	323.0	15.38
Opponents.....		21	19	417	.954	254	12.10	11	98	60.0	2.86	8	9	336.0	16.00

2021 San Diego State Spring Volleyball
 San Diego State Overall Team Statistics (as of Feb 20, 2021)
 All matches

Overall record: 3-3 Conf: 3-3 Home: 3-1 Away: 0-2 Neutral: 0-0

Team Statistics	SDSU	OPP
ATTACK		
Kills	265	234
Errors	134	99
Total Attacks	723	693
Attack Pct	.181	.195
Kills/Set	12.6	11.1
SET		
Assists	255	220
Assists/Set	12.1	10.5
SERVE		
Aces	19	42
Errors	39	58
Attempts	458	463
Serve Pct	.915	.875
Aces/Set	0.9	2.0
SERVE RECEPTIONS		
Errors	42	19
Errors/Set	2.0	0.9
Attempts	395	417
Reception Pct	.894	.954
DEFENSE		
Digs	304	254
Digs/Set	14.5	12.1
BLOCKING		
Block Solo	18	11
Block Assist	42	98
Total Blocks	39.0	60.0
Blocks/Set	1.9	2.9
Block Errors	8	8
Ball handling errors	6	9
ATTENDANCE		
Total	0	0
Dates/Avg Per Date	4/0	2/0
Neutral site #/Avg	0/0	
Current win streak	3	-
Home win streak	3	-

Match wins by #sets	1st	2nd	3rd	4th	5th	Total
San Diego State	0	0	2	1	0	3
Opponents	0	0	1	2	0	3

Sets won by set	1st	2nd	3rd	4th	5th	Total
San Diego State	5	3	2	1	0	11
Opponents	1	3	4	2	0	10

Points by set	1st	2nd	3rd	4th	5th	Total
San Diego State	147	131	120	58	0	456
Opponents	118	136	141	69	0	464

2021 San Diego State Spring Volleyball
San Diego State Individual Match-by-Match (as of Feb 24, 2021)
All matches

1 BLAIR, Nya

Date	Opponent	sp	attack				set			serve				recept			dig	blocking				team			
			k	e	ta	pct	a	ta	pct	sa	se	ta	pct	re	ta	pct		bs	ba	be	total	bhe	points	hit%	score
02/05/21	at UNLV	4	5	3	17	.118	0	-	-	0	1	12	.917	0	1	1.000	4	0	1	0	1.0	0	5.5	.230	1-3
02-12-21	FRESNO STATE	3	4	2	13	.154	0	-	-	0	0	6	1.000	0	0	.000	0	1	0	0	1.0	0	5.0	.087	1-3
02-13-21	FRESNO STATE	2	7	1	16	.375	0	-	-	1	0	9	1.000	0	0	.000	3	0	1	0	1.0	0	8.5	.165	3-0
02-19-21	NEW MEXICO	3	10	2	21	.381	0	-	-	1	1	11	.909	0	0	.000	4	1	0	3	1.0	0	12.0	.283	3-0
2-20-21	NEW MEXICO	4	10	7	35	.086	1	-	-	2	3	14	.786	1	1	.000	2	0	0	0	0.0	0	12.0	.186	3-1
		16	36	15	102	.206	1	-	-	4	5	52	.904	1	2	.500	13	2	2	3	4.0	0	43.0		

Sets played: 16
Kills per set: 2.25
Assists per set: 0.06

Service aces per set: 0.25
Digs per set: 0.81
Blocks per set: 0.25

Points per set: 2.69

2 TAUTUA'A, Heipua

Date	Opponent	sp	attack				set			serve				recept			dig	blocking				team			
			k	e	ta	pct	a	ta	pct	sa	se	ta	pct	re	ta	pct		bs	ba	be	total	bhe	points	hit%	score
02/04/21	at UNLV	*3	6	6	25	.000	4	-	-	1	3	13	.769	0	7	1.000	10	1	0	0	1.0	0	8.0	.147	0-3
02/05/21	at UNLV	*4	5	3	28	.071	1	-	-	0	0	12	1.000	5	21	.762	11	0	0	2	0.0	1	5.0	.230	1-3
02-12-21	FRESNO STATE	*4	5	6	17	-.059	1	-	-	0	2	11	.818	0	20	1.000	11	0	1	0	1.0	0	5.5	.087	1-3
02-13-21	FRESNO STATE	*3	6	3	21	.143	1	-	-	0	0	12	1.000	1	11	.909	11	1	2	0	3.0	0	8.0	.165	3-0
02-19-21	NEW MEXICO	*3	7	4	18	.167	3	-	-	0	0	6	1.000	0	8	1.000	7	0	0	0	0.0	0	7.0	.283	3-0
2-20-21	NEW MEXICO	*4	4	5	14	-.071	1	-	-	2	1	19	.947	2	19	.895	22	0	0	0	0.0	0	6.0	.186	3-1
Totals		21	33	27	123	.049	11	-	-	3	6	73	.918	8	86	.907	72	2	3	2	5.0	1	39.5		

Sets played: 21
Kills per set: 1.57
Assists per set: 0.52

Service aces per set: 0.14
Digs per set: 3.43
Blocks per set: 0.24

Points per set: 1.88

3 WALKER, Andrea

Date	Opponent	sp	attack				set			serve				recept			dig	blocking				team			
			k	e	ta	pct	a	ta	pct	sa	se	ta	pct	re	ta	pct		bs	ba	be	total	bhe	points	hit%	score
02/04/21	at UNLV	*3	3	3	14	.000	1	-	-	0	0	0	.000	0	0	.000	0	0	3	0	3.0	0	4.5	.147	0-3
02/05/21	at UNLV	*4	9	3	19	.316	0	-	-	0	0	0	.000	0	0	.000	0	0	2	0	2.0	0	10.0	.230	1-3
02-12-21	FRESNO STATE	*4	8	5	15	.200	0	-	-	0	0	0	.000	0	0	.000	1	1	3	0	4.0	0	10.5	.087	1-3
02-13-21	FRESNO STATE	*3	8	1	18	.389	0	-	-	0	0	0	.000	0	0	.000	0	1	3	0	4.0	0	10.5	.165	3-0
02-19-21	NEW MEXICO	*3	7	6	18	.056	0	-	-	0	0	0	.000	0	0	.000	0	0	2	0	2.0	0	8.0	.283	3-0
2-20-21	NEW MEXICO	*3	7	2	12	.417	0	-	-	0	0	0	.000	0	0	.000	2	1	0	0	1.0	0	8.0	.186	3-1
Totals		20	42	20	96	.229	1	-	-	0	0	0	.000	0	0	.000	3	3	13	0	16.0	0	51.5		

Sets played: 20
Kills per set: 2.10
Assists per set: 0.05

Digs per set: 0.15
Blocks per set: 0.80

Points per set: 2.58

2021 San Diego State Spring Volleyball
 San Diego State Individual Match-by-Match (as of Feb 24, 2021)
 All matches

4 FEUERBORN, Kennedy

Date	Opponent	sp	attack				set			serve				recept			dig	blocking				bhe	points	team	
			k	e	ta	pct	a	ta	pct	sa	se	ta	pct	re	ta	pct		bs	ba	be	total			hit%	score
02/04/21	at UNLV	*3	4	1	10	.300	6	-	-	0	0	0	.000	0	0	.000	1	0	1	0	1.0	0	4.5	.147	0-3
02/05/21	at UNLV	*4	6	2	11	.364	27	-	-	0	2	8	.750	0	0	.000	3	1	0	0	1.0	0	7.0	.230	1-3
02-12-21	FRESNO STATE	*4	2	1	5	.200	26	-	-	0	1	9	.889	0	0	.000	7	1	1	0	2.0	0	3.5	.087	1-3
2-20-21	NEW MEXICO	1	1	1	3	.000	7	-	-	0	0	0	.000	0	0	.000	1	0	0	0	0.0	0	1.0	.186	3-1
Totals		12	13	5	29	.276	66	-	-	0	3	17	.824	0	0	.000	12	2	2	0	4.0	0	16.0		

Sets played: 12
 Kills per set: 1.08
 Assists per set: 5.50

Digs per set: 1.00
 Blocks per set: 0.33

Points per set: 1.33

5 HODSON, Serena

Date	Opponent	sp	attack				set			serve				recept			dig	blocking				bhe	points	team	
			k	e	ta	pct	a	ta	pct	sa	se	ta	pct	re	ta	pct		bs	ba	be	total			hit%	score
02/04/21	at UNLV	3	0	0	2	.000	0	-	-	1	1	4	.750	0	0	.000	0	0	0	0	0.0	0	1.0	.147	0-3
02-19-21	NEW MEXICO	1	0	0	1	.000	0	-	-	0	0	0	.000	0	0	.000	0	0	1	0	1.0	0	0.5	.283	3-0
Totals		4	0	0	3	.000	0	-	-	1	1	4	.750	0	0	.000	0	0	1	0	1.0	0	1.5		

Sets played: 4
 Kills per set: 0.00

Service aces per set: 0.25
 Blocks per set: 0.25

Points per set: 0.38

7 VANDERPAN, Ashley

Date	Opponent	sp	attack				set			serve				recept			dig	blocking				bhe	points	team	
			k	e	ta	pct	a	ta	pct	sa	se	ta	pct	re	ta	pct		bs	ba	be	total			hit%	score
02/04/21	at UNLV	3	1	0	5	.200	11	-	-	0	0	12	1.000	0	0	.000	2	0	1	0	1.0	0	1.5	.147	0-3
02/05/21	at UNLV	2	1	0	4	.250	8	-	-	0	0	1	1.000	0	0	.000	1	0	0	0	0.0	1	1.0	.230	1-3
02-12-21	FRESNO STATE	4	0	1	1	-1.000	13	-	-	0	1	7	.857	0	0	.000	1	0	0	0	0.0	0	0.0	.087	1-3
02-13-21	FRESNO STATE	*3	2	2	5	.000	30	-	-	0	1	16	.938	0	0	.000	11	0	2	0	2.0	1	3.0	.165	3-0
02-19-21	NEW MEXICO	*3	2	0	5	.400	38	-	-	0	1	7	.857	0	0	.000	7	0	2	0	2.0	0	3.0	.283	3-0
2-20-21	NEW MEXICO	*4	3	2	9	.111	40	-	-	0	1	17	.941	0	1	1.000	4	0	0	0	0.0	0	3.0	.186	3-1
Totals		19	9	5	29	.138	140	-	-	0	4	60	.933	0	1	1.000	26	0	5	0	5.0	2	11.5		

Sets played: 19
 Kills per set: 0.47
 Assists per set: 7.37

Digs per set: 1.37
 Blocks per set: 0.26

Points per set: 0.61

2021 San Diego State Spring Volleyball
 San Diego State Individual Match-by-Match (as of Feb 24, 2021)
 All matches

8 LEE, Lauren

Date	Opponent	sp	attack				set			serve				recept			dig	blocking				team			
			k	e	ta	pct	a	ta	pct	sa	se	ta	pct	re	ta	pct		bs	ba	be	total	bhe	points	hit%	score
02/04/21	at UNLV	3	0	0	1	.000	4	-	-	0	1	9	.889	3	20	.850	8	0	0	0	0.0	0	0.0	.147	0-3
02/05/21	at UNLV	4	0	0	2	.000	1	-	-	0	1	24	.958	2	28	.929	13	0	0	0	0.0	0	0.0	.230	1-3
02-12-21	FRESNO STATE	4	0	1	1	-1.000	2	-	-	0	0	11	1.000	0	21	1.000	15	0	0	0	0.0	0	0.0	.087	1-3
02-13-21	FRESNO STATE	3	0	0	0	.000	3	-	-	1	1	9	.889	3	22	.864	13	0	0	0	0.0	0	1.0	.165	3-0
02-19-21	NEW MEXICO	3	0	0	0	.000	1	-	-	1	1	15	.933	0	8	1.000	11	0	0	0	0.0	0	1.0	.283	3-0
2-20-21	NEW MEXICO	4	0	0	0	.000	3	-	-	1	0	20	1.000	1	13	.923	16	0	0	0	0.0	0	1.0	.186	3-1
Totals		21	0	1	4	-.250	14	-	-	3	4	88	.955	9	112	.920	76	0	0	0	0.0	0	3.0		

Sets played: 21
 Kills per set: 0.00
 Assists per set: 0.67

Service aces per set: 0.14
 Digs per set: 3.62

Points per set: 0.14

#11 HILL, Brooklynn

Date	Opponent	sp	attack				set			serve				recept			dig	blocking				team			
			k	e	ta	pct	a	ta	pct	sa	se	ta	pct	re	ta	pct		bs	ba	be	total	bhe	points	hit%	score
02/04/21	at UNLV	*3	0	0	0	.000	3	-	-	0	0	5	1.000	2	17	.882	7	0	0	0	0.0	1	0.0	.147	0-3
02/05/21	at UNLV	4	0	0	1	.000	1	-	-	0	2	10	.800	2	13	.846	4	0	0	0	0.0	0	0.0	.230	1-3
02-12-21	FRESNO STATE	4	0	0	0	.000	1	-	-	0	0	11	1.000	2	12	.833	4	0	0	0	0.0	0	0.0	.087	1-3
02-13-21	FRESNO STATE	3	0	0	0	.000	1	-	-	0	2	9	.778	0	4	1.000	8	0	0	0	0.0	0	0.0	.165	3-0
02-19-21	NEW MEXICO	3	0	0	0	.000	0	-	-	3	0	23	1.000	0	11	1.000	4	0	0	0	0.0	0	3.0	.283	3-0
2-20-21	NEW MEXICO	4	0	0	0	.000	1	-	-	0	2	9	.778	3	18	.833	5	0	0	0	0.0	0	0.0	.186	3-1
Totals		21	0	0	1	.000	7	-	-	3	6	67	.910	9	75	.880	32	0	0	0	0.0	1	3.0		

Sets played: 21
 Kills per set: 0.00
 Assists per set: 0.33

Service aces per set: 0.14
 Digs per set: 1.52
 Blocks per set: 0.00

Points per set: 0.14

#12 GILLCRIST, Erin

Date	Opponent	sp	attack				set			serve				recept			dig	blocking				team			
			k	e	ta	pct	a	ta	pct	sa	se	ta	pct	re	ta	pct		bs	ba	be	total	bhe	points	hit%	score
02/04/21	at UNLV	3	4	2	11	.182	0	-	-	0	0	0	.000	0	0	.000	2	1	2	0	3.0	0	6.0	.147	0-3
02/05/21	at UNLV	*4	8	3	17	.294	2	-	-	1	2	11	.818	0	0	.000	2	0	0	0	0.0	0	9.0	.230	1-3
02-12-21	FRESNO STATE	*4	7	3	15	.267	0	-	-	0	0	0	.000	1	1	.000	0	2	1	0	3.0	0	9.5	.087	1-3
02-13-21	FRESNO STATE	*3	4	2	12	.167	0	-	-	0	0	0	.000	0	0	.000	1	0	3	0	3.0	0	5.5	.165	3-0
02-19-21	NEW MEXICO	*3	6	0	8	.750	1	-	-	0	0	0	.000	0	0	.000	0	0	1	0	1.0	0	6.5	.283	3-0
2-20-21	NEW MEXICO	*4	7	6	18	.056	0	-	-	1	0	12	1.000	0	0	.000	5	1	1	0	2.0	0	9.5	.186	3-1
Totals		21	36	16	81	.247	3	-	-	2	2	23	.913	1	1	.000	10	4	8	0	12.0	0	46.0		

Sets played: 21
 Kills per set: 1.71
 Assists per set: 0.14

Service aces per set: 0.10
 Digs per set: 0.48
 Blocks per set: 0.57

Points per set: 2.19

2021 San Diego State Spring Volleyball
San Diego State Individual Match-by-Match (as of Feb 24, 2021)
All matches

#15 PUGH, Abby

Date	Opponent	sp	attack				set			serve				recept			blocking					team			
			k	e	ta	pct	a	ta	pct	sa	se	ta	pct	re	ta	pct	dig	bs	ba	be	total	bhe	points	hit%	score
02/04/21	at UNLV	*3	1	1	3	.000	0	-	-	0	0	5	1.000	0	0	.000	0	0	1	0	1.0	0	1.5	.147	0-3
02-12-21	FRESNO STATE	1	1	1	2	.000	0	-	-	0	1	2	.500	0	0	.000	0	0	0	0	0.0	0	1.0	.087	1-3
02-19-21	NEW MEXICO	1	0	1	2	-.500	0	-	-	0	0	0	.000	0	0	.000	0	0	0	0	0.0	0	0.0	.283	3-0
2-20-21	NEW MEXICO	4	5	0	8	.625	1	-	-	0	0	0	.000	0	0	.000	1	0	0	2	0.0	0	5.0	.186	3-1
Totals		9	7	3	15	.267	1	-	-	0	1	7	.857	0	0	.000	1	0	1	2	1.0	0	7.5		

Sets played: 9
Kills per set: 0.78
Assists per set: 0.11

Digs per set: 0.11
Blocks per set: 0.11

Points per set: 0.83

#16 DURAND, Alexis

Date	Opponent	sp	attack				set			serve				recept			blocking					team			
			k	e	ta	pct	a	ta	pct	sa	se	ta	pct	re	ta	pct	dig	bs	ba	be	total	bhe	points	hit%	score
02-12-21	FRESNO STATE	1	0	0	0	.000	0	-	-	0	0	0	.000	1	4	.750	1	0	0	0	0.0	0	0.0	.087	1-3
02-19-21	NEW MEXICO	3	0	0	0	.000	0	-	-	0	2	8	.750	0	0	.000	0	0	0	0	0.0	0	0.0	.283	3-0
2-20-21	NEW MEXICO	2	0	0	0	.000	0	-	-	0	0	2	1.000	0	0	.000	2	0	0	0	0.0	0	0.0	.186	3-1
		6	0	0	0	.000	0	-	-	0	2	10	.800	1	4	.750	3	0	0	0	0.0	0	0.0		

Sets played: 6

Digs per set: 0.50

Points per set: 0.00

#17 BARCKLAY, Nadia

Date	Opponent	sp	attack				set			serve				recept			blocking					team			
			k	e	ta	pct	a	ta	pct	sa	se	ta	pct	re	ta	pct	dig	bs	ba	be	total	bhe	points	hit%	score
02-12-21	FRESNO STATE	4	0	0	0	.000	0	-	-	0	1	12	.917	0	0	.000	0	0	0	0	0.0	0	0.0	.087	1-3
02-13-21	FRESNO STATE	3	0	0	0	.000	1	-	-	1	0	13	1.000	0	0	.000	1	0	0	0	0.0	0	1.0	.165	3-0
Totals		7	0	0	0	.000	1	-	-	1	1	25	.960	0	0	.000	1	0	0	0	0.0	0	1.0		

Sets played: 7
Assists per set: 0.14

Service aces per set: 0.14
Digs per set: 0.14

Points per set: 0.14

2021 San Diego State Spring Volleyball
 San Diego State Individual Match-by-Match (as of Feb 24, 2021)
 All matches

#19 LENN, Maddie

Date	Opponent	sp	attack				set			serve				recept			dig	blocking				bhe	team		
			k	e	ta	pct	a	ta	pct	sa	se	ta	pct	re	ta	pct		bs	ba	be	total		points	hit%	score
02/04/21	at UNLV	3	0	0	1	.000	0	-	-	0	1	3	.667	1	14	.929	2	0	0	0	0.0	0	0.0	.147	0-3
02/05/21	at UNLV	*4	0	0	3	.000	3	-	-	0	0	0	.000	2	7	.714	18	0	0	0	0.0	0	0.0	.230	1-3
02-12-21	FRESNO STATE	*3	7	6	22	.045	1	-	-	0	1	7	.857	1	19	.947	9	1	0	0	1.0	0	8.0	.087	1-3
02-13-21	FRESNO STATE	*3	3	4	16	-.062	2	-	-	0	2	7	.714	1	19	.947	8	0	0	0	0.0	0	3.0	.165	3-0
02-19-21	NEW MEXICO	*3	0	0	0	.000	1	-	-	1	0	4	1.000	1	18	.944	4	0	0	0	0.0	0	1.0	.283	3-0
2-20-21	NEW MEXICO	*4	0	0	0	.000	0	-	-	1	0	5	1.000	2	20	.900	3	0	0	0	0.0	1	1.0	.186	3-1
Totals		20	10	10	42	.000	7	-	-	2	4	26	.846	8	97	.918	44	1	0	0	1.0	1	13.0		

Sets played: 20
 Kills per set: 0.50
 Assists per set: 0.35

Service aces per set: 0.10
 Digs per set: 2.20
 Blocks per set: 0.05

Points per set: 0.65

#21 O'SULLIVAN, Victoria

Date	Opponent	sp	attack				set			serve				recept			dig	blocking				bhe	team		
			k	e	ta	pct	a	ta	pct	sa	se	ta	pct	re	ta	pct		bs	ba	be	total		points	hit%	score
02/04/21	at UNLV	*3	11	2	30	.300	0	-	-	0	0	4	1.000	0	5	1.000	2	0	0	0	0.0	0	11.0	.147	0-3
02/05/21	at UNLV	*4	13	2	33	.333	2	-	-	0	0	0	.000	1	5	.800	2	0	1	0	1.0	0	13.5	.230	1-3
02-12-21	FRESNO STATE	*4	11	8	35	.086	0	-	-	0	0	2	1.000	1	4	.750	2	0	2	0	2.0	1	12.0	.087	1-3
02-13-21	FRESNO STATE	*3	11	8	33	.091	0	-	-	0	0	0	.000	0	0	.000	2	1	1	1	2.0	0	12.5	.165	3-0
02-19-21	NEW MEXICO	*3	13	4	26	.346	0	-	-	0	0	0	.000	0	0	.000	2	1	2	0	3.0	0	15.0	.283	3-0
2-20-21	NEW MEXICO	*4	20	8	41	.293	1	-	-	0	0	0	.000	0	0	.000	1	2	1	0	3.0	0	22.5	.186	3-1
Totals		21	79	32	198	.237	3	-	-	0	0	6	1.000	2	14	.857	11	4	7	1	11.0	1	86.5		

Sets played: 21
 Kills per set: 3.76
 Assists per set: 0.14

Digs per set: 0.52
 Blocks per set: 0.52

Points per set: 4.12

#TM TEAM

Date	Opponent	sp	attack				set			serve				recept			dig	blocking				bhe	team		
			k	e	ta	pct	a	ta	pct	sa	se	ta	pct	re	ta	pct		bs	ba	be	total		points	hit%	score
02-12-21	FRESNO STATE	3	0	0	0	.000	0	-	-	0	0	0	.000	3	3	.000	0	0	0	0	0.0	0	0.0	.087	1-3
		3	0	0	0	.000	0	-	-	0	0	0	.000	3	3	.000	0	0	0	0	0.0	0	0.0		

Sets played: 3

Points per set: 0.00

2021 San Diego State Spring Volleyball
San Diego State Match Highs (as of Feb 24, 2021)
All matches

INDIVIDUAL MATCH HIGHS

ATTACK PERCENT (K-E-TA) minimum 12 kills

.346 (13- 4-26)	O'SULLIVAN, Victoria vs New Mexico (02-19-21)
.333 (13- 2-33)	O'SULLIVAN, Victoria at UNLV (02/05/21)
.293 (20- 8-41)	O'SULLIVAN, Victoria vs New Mexico (2-20-21)

KILLS (K-E-TA)

20 (20- 8-41) 4s	O'SULLIVAN, Victoria vs New Mexico (2-20-21)
13 (13- 2-33) 4s	O'SULLIVAN, Victoria at UNLV (02/05/21)
13 (13- 4-26) 3s	O'SULLIVAN, Victoria vs New Mexico (02-19-21)
11 (11- 8-35) 4s	O'SULLIVAN, Victoria vs Fresno State (02-12-21)
11 (11- 2-30) 3s	O'SULLIVAN, Victoria at UNLV (02/04/21)
11 (11- 8-33) 3s	O'SULLIVAN, Victoria vs Fresno State (02-13-21)
10 (10- 7-35) 4s	BLAIR, Nya vs New Mexico (2-20-21)
10 (10- 2-21) 3s	BLAIR, Nya vs New Mexico (02-19-21)
9 (9- 3-19) 4s	WALKER, Andrea at UNLV (02/05/21)
8 (8- 3-17) 4s	GILLCRIST, Erin at UNLV (02/05/21)

KILLS 3-SETS (K-E-TA)

13 (13- 4-26)	O'SULLIVAN, Victoria vs New Mexico (02-19-21)
11 (11- 2-30)	O'SULLIVAN, Victoria at UNLV (02/04/21)
11 (11- 8-33)	O'SULLIVAN, Victoria vs Fresno State (02-13-21)
10 (10- 2-21)	BLAIR, Nya vs New Mexico (02-19-21)
8 (8- 1-18)	WALKER, Andrea vs Fresno State (02-13-21)

KILLS 4-SETS (K-E-TA)

20 (20- 8-41)	O'SULLIVAN, Victoria vs New Mexico (2-20-21)
13 (13- 2-33)	O'SULLIVAN, Victoria at UNLV (02/05/21)
11 (11- 8-35)	O'SULLIVAN, Victoria vs Fresno State (02-12-21)
10 (10- 7-35)	BLAIR, Nya vs New Mexico (2-20-21)
9 (9- 3-19)	WALKER, Andrea at UNLV (02/05/21)

KILLS 5-SETS (K-E-TA)

TOTAL ATTEMPTS (K-E-TA)

41 (20- 8-41) 4s	O'SULLIVAN, Victoria vs New Mexico (2-20-21)
35 (10- 7-35) 4s	BLAIR, Nya vs New Mexico (2-20-21)
35 (11- 8-35) 4s	O'SULLIVAN, Victoria vs Fresno State (02-12-21)
33 (11- 8-33) 3s	O'SULLIVAN, Victoria vs Fresno State (02-13-21)
33 (13- 2-33) 4s	O'SULLIVAN, Victoria at UNLV (02/05/21)
30 (11- 2-30) 3s	O'SULLIVAN, Victoria at UNLV (02/04/21)
28 (5- 3-28) 4s	TAUTUA'A, Heipua at UNLV (02/05/21)
26 (13- 4-26) 3s	O'SULLIVAN, Victoria vs New Mexico (02-19-21)
25 (6- 6-25) 3s	TAUTUA'A, Heipua at UNLV (02/04/21)
22 (7- 6-22) 4s	LENN, Maddie vs Fresno State (02-12-21)

TOTAL ATTEMPTS 3-SETS (K-E-TA)

33 (11- 8-33)	O'SULLIVAN, Victoria vs Fresno State (02-13-21)
30 (11- 2-30)	O'SULLIVAN, Victoria at UNLV (02/04/21)
26 (13- 4-26)	O'SULLIVAN, Victoria vs New Mexico (02-19-21)
25 (6- 6-25)	TAUTUA'A, Heipua at UNLV (02/04/21)
21 (6- 3-21)	TAUTUA'A, Heipua vs Fresno State (02-13-21)

TOTAL ATTEMPTS 4-SETS (K-E-TA)

41 (20- 8-41)	O'SULLIVAN, Victoria vs New Mexico (2-20-21)
35 (10- 7-35)	BLAIR, Nya vs New Mexico (2-20-21)
35 (11- 8-35)	O'SULLIVAN, Victoria vs Fresno State (02-12-21)
33 (13- 2-33)	O'SULLIVAN, Victoria at UNLV (02/05/21)
28 (5- 3-28)	TAUTUA'A, Heipua at UNLV (02/05/21)

TOTAL ATTEMPTS 5-SETS (K-E-TA)

2021 San Diego State Spring Volleyball
San Diego State Match Highs (as of Feb 24, 2021)
All matches

POINTS

22.5 (20- 0- 2.5) 4s	O'SULLIVAN, Victoria vs New Mexico (2-20-21)
15.0 (13- 0- 2.0) 3s	O'SULLIVAN, Victoria vs New Mexico (02-19-21)
13.5 (13- 0- 0.5) 4s	O'SULLIVAN, Victoria at UNLV (02/05/21)
12.5 (11- 0- 1.5) 3s	O'SULLIVAN, Victoria vs Fresno State (02-13-21)
12.0 (11- 0- 1.0) 4s	O'SULLIVAN, Victoria vs Fresno State (02-12-21)

POINTS 3-SETS

15.0 (13- 0- 2.0)	O'SULLIVAN, Victoria vs New Mexico (02-19-21)
12.5 (11- 0- 1.5)	O'SULLIVAN, Victoria vs Fresno State (02-13-21)
12.0 (10- 1- 1.0)	BLAIR, Nya vs New Mexico (02-19-21)
11.0 (11- 0- 0.0)	O'SULLIVAN, Victoria at UNLV (02/04/21)
10.5 (8- 0- 2.5)	WALKER, Andrea vs Fresno State (02-13-21)

POINTS 4-SETS

22.5 (20- 0- 2.5)	O'SULLIVAN, Victoria vs New Mexico (2-20-21)
13.5 (13- 0- 0.5)	O'SULLIVAN, Victoria at UNLV (02/05/21)
12.0 (10- 2- 0.0)	BLAIR, Nya vs New Mexico (2-20-21)
12.0 (11- 0- 1.0)	O'SULLIVAN, Victoria vs Fresno State (02-12-21)
10.5 (8- 0- 2.5)	WALKER, Andrea vs Fresno State (02-12-21)

POINTS 5-SETS

2021 San Diego State Spring Volleyball
San Diego State Match Highs (as of Feb 24, 2021)
All matches

ASSISTS

40 (4s) VANDERPAN, Ashley vs New Mexico (2-20-21)
38 (3s) VANDERPAN, Ashley vs New Mexico (02-19-21)
30 (3s) VANDERPAN, Ashley vs Fresno State (02-13-21)
27 (4s) FEUERBORN, Kennedy at UNLV (02/05/21)
26 (4s) FEUERBORN, Kennedy vs Fresno State (02-12-21)

ASSISTS 3-SETS

38 VANDERPAN, Ashley vs New Mexico (02-19-21)
30 VANDERPAN, Ashley vs Fresno State (02-13-21)
11 VANDERPAN, Ashley at UNLV (02/04/21)
6 FEUERBORN, Kennedy at UNLV (02/04/21)
4 LEE, Lauren at UNLV (02/04/21)

ASSISTS 4-SETS

40 VANDERPAN, Ashley vs New Mexico (2-20-21)
27 FEUERBORN, Kennedy at UNLV (02/05/21)
26 FEUERBORN, Kennedy vs Fresno State (02-12-21)
13 VANDERPAN, Ashley vs Fresno State (02-12-21)
8 VANDERPAN, Ashley at UNLV (02/05/21)

ASSISTS 5-SETS

DIGS

22 (4s) TAUTUA'A, Heipua vs New Mexico (2-20-21)
18 (4s) LENN, Maddie at UNLV (02/05/21)
16 (4s) LEE, Lauren vs New Mexico (2-20-21)
15 (4s) LEE, Lauren vs Fresno State (02-12-21)
13 (4s) LEE, Lauren at UNLV (02/05/21)

DIGS 3-SETS

13 LEE, Lauren vs Fresno State (02-13-21)
11 LEE, Lauren vs New Mexico (02-19-21)
11 VANDERPAN, Ashley vs Fresno State (02-13-21)
11 TAUTUA'A, Heipua vs Fresno State (02-13-21)
10 TAUTUA'A, Heipua at UNLV (02/04/21)

DIGS 4-SETS

22 TAUTUA'A, Heipua vs New Mexico (2-20-21)
18 LENN, Maddie at UNLV (02/05/21)
16 LEE, Lauren vs New Mexico (2-20-21)
15 LEE, Lauren vs Fresno State (02-12-21)
13 LEE, Lauren at UNLV (02/05/21)

DIGS 5-SETS

ACES

3 HILL, Brooklynn vs New Mexico (02-19-21)
2 BLAIR, Nya vs New Mexico (2-20-21)
2 TAUTUA'A, Heipua vs New Mexico (2-20-21)
1 LENN, Maddie vs New Mexico (02-19-21)
1 LEE, Lauren vs Fresno State (02-13-21)

BLOCKS (BS-BA)

4 (1- 3) WALKER, Andrea vs Fresno State (02-13-21)
4 (1- 3) WALKER, Andrea vs Fresno State (02-12-21)
3 (2- 1) GILLCRIST, Erin vs Fresno State (02-12-21)
3 (2- 1) O'SULLIVAN, Victoria vs New Mexico (2-20-21)
3 (1- 2) GILLCRIST, Erin at UNLV (02/04/21)
3 (1- 2) O'SULLIVAN, Victoria vs New Mexico (02-19-21)
3 (1- 2) TAUTUA'A, Heipua vs Fresno State (02-13-21)
3 (0- 3) GILLCRIST, Erin vs Fresno State (02-13-21)
3 (0- 3) WALKER, Andrea at UNLV (02/04/21)
2 (1- 1) FEUERBORN, Kennedy vs Fresno State (02-12-21)

2021 San Diego State Spring Volleyball
San Diego State Match Highs (as of Feb 24, 2021)
All matches

TEAM MATCH HIGHS

ATTACK PERCENT (K-E-TA)

.283 (45-17- 99)	vs New Mexico (02-19-21)
.230 (47-16-135)	at UNLV (02/05/21)
.186 (57-31-140)	vs New Mexico (2-20-21)
.165 (41-21-121)	vs Fresno State (02-13-21)
.147 (30-15-102)	at UNLV (02/04/21)
.087 (45-34-126)	vs Fresno State (02-12-21)

KILLS (K-E-TA)

57 (57-31-140) 4s	vs New Mexico (2-20-21)
47 (47-16-135) 4s	at UNLV (02/05/21)
45 (45-34-126) 4s	vs Fresno State (02-12-21)
45 (45-17- 99) 3s	vs New Mexico (02-19-21)
41 (41-21-121) 3s	vs Fresno State (02-13-21)
30 (30-15-102) 3s	at UNLV (02/04/21)

KILLS 3-SETS (K-E-TA)

45 (45-17- 99)	vs New Mexico (02-19-21)
41 (41-21-121)	vs Fresno State (02-13-21)
30 (30-15-102)	at UNLV (02/04/21)

KILLS 4-SETS (K-E-TA)

57 (57-31-140)	vs New Mexico (2-20-21)
47 (47-16-135)	at UNLV (02/05/21)
45 (45-34-126)	vs Fresno State (02-12-21)

KILLS 5-SETS (K-E-TA)

TOTAL ATTEMPTS (K-E-TA)

140 (57-31-140) 4s	vs New Mexico (2-20-21)
135 (47-16-135) 4s	at UNLV (02/05/21)
126 (45-34-126) 4s	vs Fresno State (02-12-21)
121 (41-21-121) 3s	vs Fresno State (02-13-21)
102 (30-15-102) 3s	at UNLV (02/04/21)
99 (45-17- 99) 3s	vs New Mexico (02-19-21)

TOTAL ATTEMPTS 3-SETS (K-E-TA)

121 (41-21-121)	vs Fresno State (02-13-21)
102 (30-15-102)	at UNLV (02/04/21)
99 (45-17- 99)	vs New Mexico (02-19-21)

TOTAL ATTEMPTS 4-SETS (K-E-TA)

140 (57-31-140)	vs New Mexico (2-20-21)
135 (47-16-135)	at UNLV (02/05/21)
126 (45-34-126)	vs Fresno State (02-12-21)

TOTAL ATTEMPTS 5-SETS (K-E-TA)

2021 San Diego State Spring Volleyball
San Diego State Match Highs (as of Feb 24, 2021)
All matches

ASSISTS

55 (4s) vs New Mexico (2-20-21)
45 (4s) at UNLV (02/05/21)
44 (4s) vs Fresno State (02-12-21)
44 (3s) vs New Mexico (02-19-21)
38 (3s) vs Fresno State (02-13-21)

ASSISTS 3-SETS

44 vs New Mexico (02-19-21)
38 vs Fresno State (02-13-21)
29 at UNLV (02/04/21)

ASSISTS 4-SETS

55 vs New Mexico (2-20-21)
45 at UNLV (02/05/21)
44 vs Fresno State (02-12-21)

ASSISTS 5-SETS

DIGS

64 (4s) vs New Mexico (2-20-21)
58 (4s) at UNLV (02/05/21)
58 (3s) vs Fresno State (02-13-21)
51 (4s) vs Fresno State (02-12-21)
39 (3s) vs New Mexico (02-19-21)

DIGS 3-SETS

58 vs Fresno State (02-13-21)
39 vs New Mexico (02-19-21)
34 at UNLV (02/04/21)

DIGS 4-SETS

64 vs New Mexico (2-20-21)
58 at UNLV (02/05/21)
51 vs Fresno State (02-12-21)

DIGS 5-SETS

ACES

7 vs New Mexico (2-20-21)
6 vs New Mexico (02-19-21)
3 vs Fresno State (02-13-21)
2 at UNLV (02/04/21)
1 at UNLV (02/05/21)

BLOCKS

10.0 vs Fresno State (02-12-21)
9.0 vs Fresno State (02-13-21)
6.0 vs New Mexico (02-19-21)
6.0 at UNLV (02/04/21)
5.0 vs New Mexico (2-20-21)
3.0 at UNLV (02/05/21)