



SAN DIEGO STATE AZTECS

2021 Spring Volleyball Weekly Notes

Jim Solien (Primary Contact)
 Assistant Media Relations Director
Office Phone Number: (619) 594-2576
E-Mail Address: jsolien@sdsu.edu
News Release Date: Feb. 17, 2021

SDSU Official Athletics Website: goaztecs.com
SDSU Official Athletics Twitter: @GoAztecs
SDSU Official Athletics Instagram: @GoAztecs
SDSU Official Athletics Facebook: facebook.com/goaztecs
SDSU Official Athletics YouTube: youtube.com/goaztecs.com

2021 AZTEC SPRING VOLLEYBALL SCHEDULE

Day/Date	Opponent	Time
Thursday, Feb. 4	at UNLV* (MWN)	L, 0-3
Friday, Feb. 5	at UNLV* (MWN)	L, 1-3
Friday, Feb. 12	Fresno State* (MWN)	L, 1-3
Saturday, Feb. 13	Fresno State*	W, 3-0
Friday, Feb. 19	New Mexico*	6 p.m. PT
Saturday, Feb. 20	New Mexico*	11 a.m. PT
Friday, Feb. 26	Nevada*	6 p.m. PT
Saturday, Feb. 27	Nevada* (MWN)	Noon PT
Friday, March 5	at Wyoming* (MWN)	6 p.m. MT
Saturday, March 6	at Wyoming* (MWN)	Noon MT
Thursday, March 11	Utah State* (MWN)	6 p.m. PT
Friday, March 12	Utah State* (MWN)	6 p.m. PT
Saturday, March 20	at Boise State (MWN)	Noon MT
Saturday, March 27	at San José State*	TBA
Thursday, April 1	Air Force* (MWN)	6 p.m. PT
Saturday, April 3	Colorado State* (MWN)	1 p.m. PT

* - Mountain West match

Socially

Twitter: @SDSUVolleyball

Instagram: @SDSUVolleyball

Match Week Preview

New Mexico (2-2, 2-2 MW) at San Diego State (1-3, 1-3 MW)

Friday, Feb. 19 | 6 p.m. PT

Live Stats | Live Stream

Saturday, Feb. 20 | 11 a.m. PT

Live Stats | Live Stream

Series Record: SDSU leads 42-21



AZTECS PREPARE TO FACE NEW MEXICO FOR TWO MATCHES

- > The San Diego State volleyball team continues its 2021 spring slate this weekend when it plays host to New Mexico, Feb. 19-20, inside Aztec Court at Peterson Gym.
- > Friday's matchup is set to commence at 6 p.m. PT, while Saturday's clash is slated for an 11 a.m. start. Both contests will be streamed live via the Aztec volleyball team's YouTube channel, with a link available on GoAztecs.com.
- > This weekend's matches were originally slated as a home series for the Lobos when the Mountain West released its 2021 spring schedule. However, the conference officially announced the switch in venues earlier this week.
- > As a result, San Diego State will play 10 of its 16 matches this spring on its home floor.
- > However, spectators will not be allowed to attend matches this spring inside Peterson Gym due to health and safety protocols.
- > The Aztecs (1-3, 1-3 MW) are coming off a home sweep of Fresno State (25-19, 26-24, 25-20) in their last outing on Feb. 13 to even the series at one match apiece after dropping the opener in four sets (25-22, 16-25, 18-25, 18-25).
- > With the victory, the Scarlet and Black gave head coach Brent Hilliard his first win patrolling the San Diego State sidelines.
- > Hilliard arrived on The Mesa in January 2020 after a successful 19-year tenure as an assistant at the University of San Diego, where he served as the Toreros' associate head coach from 2007-19.
- > Hilliard hired the legendary Steve Timmons to his staff as an assistant coach. Timmons was the first American male to win three Olympic medals in indoor volleyball, leading the U.S. national team to gold medals at the 1984 and 1988 Summer Games, as well as a bronze in 1992.
- > New Mexico (2-2, 2-2 MW) is coming off a pair of three-set defeats on the road last weekend at Wyoming.

2021 MOUNTAIN WEST SPRING VOLLEYBALL SCHEDULE

- > The Mountain West has adopted a 16-match conference-only schedule for the 2021 spring volleyball season taking place over nine weeks (Feb. 4-April 3).
- > Each institution will play six opponents twice and four opponents once.
- > Using a hybrid scheduling format, the first seven weeks will feature teams facing the same opponent twice in one weekend at one site. Travel partners will play the final two weeks of the season.
- > The regular-season champion will be the Mountain West's NCAA tournament automatic qualifier.

CATCH AZTEC VOLLEYBALL ON THE MOUNTAIN WEST NETWORK

- > As of Feb. 3, the Mountain West Network is scheduled to stream 11 of the Aztecs' 16 matches during the 2021 spring campaign. A link to MWN matches will be available on GoAztecs.com.
- > SDSU is slated to live stream six home matches on the MWN this spring, including the first Fresno State clash (Feb. 12), followed by Nevada (Feb. 27), Utah State (March 11-12), Air Force (April 1) and Colorado State (April 3).
- > Five of the Aztecs road contests are also scheduled to be streamed on the MWN, including UNLV (Feb. 4-5), Wyoming (March 5-6) and Boise State (March 20).
- > In addition, three of SDSU's remaining non-MWN home matches will be streamed via the team's YouTube channel (New Mexico, Feb. 19-20 and Nevada, Feb. 26).

SERIES RECORD VS. NEW MEXICO

- > The Aztecs have won the last six meetings against the Lobos, raising their record to 42-21 in the all-time series.
- > San Diego State posted four-set victories in both matches last year, capturing the first encounter by scores of 25-18, 18-25, 25-18, 25-21 at Aztec Court, before completing the season sweep in the same sequence by totals of 25-20, 15-25, 25-21, 25-14.
- > In that latter meeting in Albuquerque, SDSU snapped an eight-match slide in true road contests, as four Aztecs produced double-digit kill totals, including Victoria O'Sullivan, who led all players with 16 kills and hit .464 for the night, committed just three errors in 28 attempts. In addition, Erin Gillcrist launched 10 non-returnables of her own and racked up three block assists, while Lauren Lee tied her season-best with 11 digs to go with a match-high three service aces.
- > In the first meeting of the 2019 campaign in San Diego, the Scarlet and Black out-hit the Lobos 308 to . 207 and maintained the statistical advantage in kills (56-54), digs (56-39) and team blocks (11.0-8.0) to help fuel the win.
- > O'Sullivan (12 kills, 2 solo blocks) and Gillcrist (11 kills, 4 block assists) also figured prominently in the Aztec fortunes, while Andrea Walker (.400, 5 kills) contributed five total blocks.
- > Since the Mountain West's inception in 1999, the Aztecs are 26-14 against UNM overall, including a 15-4 mark at home.

GENERAL INFORMATION

Location San Diego, Calif.
 Founded 1897
 Enrollment 33,870
 Nickname Aztecs
 Colors Scarlet and Black (Pantone 187)
 Conference Mountain West
 Affiliation Division I
 President Dr. Adela de la Torre
 Director of Athletics John David Wicker
 Faculty Representative Patrick Papin
 Home Facility Aztec Court at Peterson Gym (2,000)

TEAM INFORMATION

Head Coach Brent Hilliard
 Alma Mater Long Beach State '93
 Record at SDSU 1-3 (First year)
 Career Record 55-14 (Third year)
 E-Mail bhilliard@sdsu.edu
 Volleyball Office Phone (619) 594-5064
 Volleyball Office Fax (619) 594-1674
 Assistant Coach/Recruiting Coordinator Melanie Greene
 Assistant Coach Steve Timmons
 Volleyball Operations Assistant Kara Barkdoll
 2019 Record 15-14
 2019 Conference Record 8-10 (Fifth)
 2019 Home Record 8-5
 2019 Road Record 3-9
 2019 Neutral Record 4-0
 Letterwinners Returning/Lost 9/6
 Starters Returning/Lost 4/2 + libero

PROGRAM HISTORY

First Year of Volleyball 1976
 Overall Record 881-613 (.590)
 NCAA Appearances 14
 Last Postseason Appearance 2012
 NCAA Postseason Record 15-14

MEDIA RELATIONS

Assistant Media Relations Director Jim Solien
 E-Mail jsolien@sdsu.edu
 SID Office Phone (619) 594-2576
 SID Office Fax (619) 582-6541
 Official Athletic Website www.GoAztecs.com

SPRING 2021 AZTEC VOLLEYBALL STATISTICAL LEADERS

Hitting Percentage	(.308)	Kennedy Feuerborn
Kills	.46	Victoria O'Sullivan
Kills per set	3.29	Victoria O'Sullivan
Assists	.62	Ashley Vanderpan
Assists per set	5.36	Kennedy Feuerborn
Digs	.49	Lauren Lee
Digs per set	3.50	Lauren Lee
Blocks	13.0	Andrea Walker
Blocks per set	0.93	Andrea Walker
Service Aces	1	Six players
Service Aces per set	0.33	Serena Hodson

2021 AZTEC SPRING VOLLEYBALL ROSTER

No.	Player	Pos.	Ht.	Yr.	Hometown (Last School)
1	Nya Blair	OH	5-11	So.	Grand Prairie, Texas (Martin HS)
2	Heipua Tautua'a	OH	6-2	Fr.	Wai'anae, Hawaii (Wai'ane HS)
3	Andrea Walker	MB	6-0	R-Jr.	Fairfield, Calif. (Vanden HS)
4	Kennedy Feuerborn	S	6-3	Fr.	Overland Park, Kan. (Blue Valley North HS)
5	Serena Hodson	MB	6-2	R-So.	Mission Viejo, Calif. (Trabuco Hills HS)
7	Ashley Vanderpan	S	6-1	R-So.	Elk Grove, Calif. (Syracuse)
8	Lauren Lee	DS/L	5-0	Sr.	Coppell, Texas (Rice Univ.)
10	Camryn Machado	S	5-9	R-Jr.	Cardiff-by-the-Sea, Calif. (Utah)
11	Brooklynn Hill	DS/L	5-8	Jr.	Rancho Cucamonga, Calif. (Penn State)
12	Erin Gillcrist	RS	6-1	Sr.	Lakewood, Colo. (Lakewood HS)
13	Elise Park	DS/L	5-7	R-Fr.	Columbia, Md. (Atholton HS)
14	Gabriella Spaethling	RS	6-1	R-Fr.	Larkspur, Calif. (Redwood HS)
15	Abby Pugh	MB	6-3	R-Sr.	Brenham, Texas (Wichita State)
16	Alexis Durand	DS/L	5-7	So.	Long Beach, Calif. (Long Beach Poly HS)
17	Nadia Barclay	DS/L	5-2	Fr.	Foster City, Calif. (Hillsdale HS)
19	Maddie Lenn	OH	5-10	Jr.	San Francisco, Calif. (Sacred Heart Cathedral Prep)
21	Victoria O'Sullivan	OH	6-0	Jr.	Albany, Calif. (St. Mary's HS)

Head Coach: Brent Hilliard (Long Beach State, 1993), First season at SDSU
Assistant Coach/Recruiting Coordinator: Melanie Greene (San Diego State, 2007), 10th season at SDSU
Assistant Coach: Steve Timmons (Southern California), First season at SDSU
Volleyball Operations Assistant: Kara Barkdoll (Cal State San Marcos, 2015), Third season at SDSU
Volunteer Assistant Coach: Yasser Aguila Todd (Trident University, 2009, 2014), Second season at SDSU

Pronunciations

#1 NYA Blair HIGH-ah
 #2 HEIPIUA TAUTUA'A HIGH-poo-ah TAO-too-ah-AY
 #4 KENNEDY FEUERBORN FEWER-born



OPPONENT COMPARISON (ALL MATCHES)

2021 Overall Stats	SDSU	MW Rank	OPP	MW Rank	UNM	MW Rank	OPP	MW Rank
Hitting Percentage	.159	8	.225	8	.151	10	.241	10
Kills per set	11.64	9	12.36	8	11.86	7	13.43	11
Assists per set	11.14	6	11.50	7	11.29	5	12.14	10
Digs per set	14.36	4	13.07	4	15.21	1	15.79	11
Blocks per set	2.00	8	2.86	10	1.79	9	2.64	8
Service Aces per set	0.43	11	2.29	11	1.57	7	1.50	6

SCOUTING THE OPPOSITION

> On the road since the beginning of the season, New Mexico (2-2, 2-2 MW) opened with a pair of four-set victories over Nevada before suffering back-to-back sweeps at Wyoming. Following their two wins over the Wolf Pack, the Lobos claimed the year's first pair of Mountain West Player of the Week honors, with freshman Kali Wolf (38 kills, 2 double-doubles) garnering offensive accolades, while fellow classmate Uxue Guereca (33 digs) merited defensive recognition. The Lobos, who were picked 10th in the Mountain West preseason coaches poll, finished the 2019 campaign with an 11-19 overall record and an eighth-place mark of 6-12 in conference play. Individually, UNM has been paced this season by sophomore Kaitlynn Biassou, who shares the team lead with an average of 3.00 kills per set (42 overall), joining Guereca (24 kills), who sat out the Wyoming series. In addition, the Lobos feature setter Kara Erfurth, who ranks second in the MW entering the weekend with 10.50 assists per set, while Guereca (3rd, 4.00) and Alena Molden (4th, 3.79) find themselves among the league leaders in digs. At the net, Biassou and Avital Jaloba have posted a team-high 10 blocks apiece. As a team, UNM leads the Mountain West in digs (15.21/set), but ranks just seventh in both kills (11.86/set) and services (1.57/set). In addition, the Lobos occupy the lower half of the conference in blocks (9th, 1.79/set) and hitting percentage (10th - .151) and opponents hitting percentage (10th - (.241). New Mexico is guided by second-year head coach Jon Newman-Gonchar, who arrived on the Albuquerque campus after serving a three-year stint at Arkansas as associate head coach. Newman-Gonchar has also had stops as an assistant coach at Iowa State (2013-15), Loyola Marymount (2010-12), as well as UC San Diego with both the men's and women's squads (2007-09).

WEEKEND WRAP

> Brent Hilliard picked up his first victory as head coach of the Aztecs on Feb. 13, after San Diego State dispatched Fresno State in three sets (25-19, 26-24, 25-20) to even the weekend series at one match apiece.
 > SDSU maintained a 41-29 advantage in kills during the series finale, limiting Bulldogs to a .060 hitting percentage, as the visitors committed 22 errors on the day.
 > In addition, the Aztecs held the statistical edge in digs (58-50) and team blocks (9.0-8.0) to break into the win column for the first time this spring.
 > Individually, SDSU was once again led by Victoria O'Sullivan, who launched a team-high 11 kills, breaking the double-digit plateau in that category for the fourth match in a row and 25th time in her last 33 outings dating back to last season.

2021 MOUNTAIN WEST SPRING STANDINGS (As of Feb. 17)

Team	---Conference---			-----Overall-----			Strk
	W	L	Pct	W	L	Pct.	
Boise State	4	0	1.000	4	0	1.000	W4
Wyoming	4	0	1.000	4	0	1.000	W4
UNLV	2	0	1.000	2	0	1.000	W2
Colorado State	3	1	.750	3	1	.750	W2
Air Force	2	2	.500	2	2	.500	L1
New Mexico	2	2	.500	2	2	.500	L2
Fresno State	1	1	.500	1	1	.500	L1
San Diego State	1	3	.250	1	2	.250	W1
San José State	1	3	.250	1	3	.250	W1
Nevada	0	4	.000	0	4	.000	L4
Utah State	0	4	.000	0	4	.000	L4

Upcoming Matches in the MW

Thursday, Feb. 18

UNLV at Colorado State, 7 p.m. MT

Friday, Feb. 19

New Mexico at San Diego State, 6 p.m. PT

Wyoming at Boise State, Noon MT

Air Force at Nevada, 1 p.m. PT

Saturday, Feb. 20

New Mexico at San Diego State, 11 a.m. PT

UNLV at Colorado State, Noon. MT

Wyoming at Boise State, 1 p.m. MT

Air Force at Nevada, 1 p.m. PT

Friday, Feb. 26

Nevada at San Diego State, 6 p.m. PT

New Mexico at Air Force, 6 p.m. MT

Utah State at Fresno State, 6 p.m. PT

Colorado State at Wyoming, 6 p.m. MT

Boise State at UNLV, 6:30 p.m. PT

Saturday, Feb. 27

Nevada at San Diego State, Noon PT

New Mexico at Air Force, 6 p.m. MT

Colorado State at Wyoming, 6 p.m. MT

Boise State at UNLV, 6:30 p.m. PT

Utah State at Fresno State, 7 p.m. PT

Thursday, March 4

UNLV at Utah State, 6 p.m. MT



- > The Aztec offense also received a boost from Andrea Walker (.389) and Nya Blair (.375), who committed just one attack error apiece, blasting eight and seven put-aways, respectively.
- > Not to be outdone, a trio of SDSU players reached double figures in digs, including Lauren Lee (13), Heipua Tautua'a (11) and Ashley Vanderpan (11), with the latter notching her first career double-double after dishing out 30 assists as well.
- > The Aztecs closed with a strong 8-3 surge in the opening set after Fresno State crept to within one point at 17-16.
- > The second stanza evolved into a classic thriller, with the two teams combining for 12 ties and nine lead changes.
- > Things looked bleak for SDSU late in the second stanza after finding itself staring down the barrel of a 24-21 deficit.
- > However, the Scarlet and Black flashed its mettle once again, as O'Sullivan contributed two kills and a solo block to ignite a timely 5-0 blitz. Blair added another key put-away, while the Bulldogs imploded with an attack error on the final serve.
- > The third set was also a nip-and-tuck affair, as the two sides witnessed five ties in the early going. However, the Aztecs took the lead for good after a Blair kill and service ace followed by an O'Sullivan non-returnable, which broke a 12-12 deadlock.
- > In its home opener the previous night, San Diego State dropped a four-set decision (25-22, 16-25, 18-25, 18-25).
- > The Aztecs matched the Bulldogs with 45 kills and held a sizable 51-36 advantage in digs but were undone by 34 attack errors, hitting just .087 for the night, compared to the visitors, who finished with a .246 clip and maintained the upper hand in team blocks (17-10) to with nine service aces.
- > Victoria O'Sullivan was the lone player for the Scarlet and Black to surpass the double-digit kill barrier, launching a team-high 11 non-returnables, while Andrea Walker totaled eight put-aways of her own while contributing four total blocks.
- > Erin Gillcrist and Maddie Lenn also got into the act with seven kills apiece, while Lauren Lee anchored the back row with a match-high 15 digs. In addition, Kennedy Feuerborn dished out a team-best 26 assists.

AZTECS AMONG MW LEADERS

- > Entering this weekend, Victoria O'Sullivan ranks seventh in the Mountain West with an average of 3.29 kills per set (46 overall), while Kennedy Feuerborn (5.36/set) and Lauren Lee (3.50/set) occupy the ninth spot in assists and digs, respectively.
- > O'Sullivan is the lone SDSU player to record double-digit kills in all four matches this season and has logged 10 or more put-aways in 25 of her last 33 starts.
- > Last weekend, Lee averaged a team-high 4.00 digs in seven sets, helping the Aztecs to a home split vs. Fresno State. In two matches vs. the Bulldogs, she totaled 28 digs, including a season-high 15 scoops in the series opener.
- > Despite missing the series finale against Fresno State, Feuerborn still leads the team with a .308 hitting percentage (12-4-26). She dished out a season-high 27 assists at UNLV (Feb. 5) before adding 26 helpers in the opener vs. the Bulldogs (Feb. 12).

NOTHIN' LIKE HOME COOKIN'

- > Since the beginning of the 2009 campaign, the Aztecs have amassed a 105-52 (.650) record at home, highlighted by a 14-0 mark during the 2012 season when SDSU captured the Mountain West championship.

RECAPPING THE UNLV SERIES

- > Playing its first intercollegiate match in over 14 months, San Diego State dropped a three-set decision on the road to UNLV (22-25, 21-25, 10-25) in the 2021 spring opener for both teams on Feb. 4.
- > The Rebels out-hit the Aztecs .310 to .147, maintaining a 44-30 advantage in kills and a 44-34 edge in digs to spoil the debut of first-year SDSU head coach Brent Hilliard.
- > Victoria O'Sullivan paced the Scarlet and Black with 11 kills, hitting .300 for the night on 30 attempts with just two errors, while Heipua Tautua'a launched a six non-returnables of her own to go with a team-high 10 digs.
- > In addition, SDSU received four kills apiece from Erin Gillcrist (3 blocks) and Kennedy Feuerborn (6 assists), while Ashley Vanderpan handed out 11 assists in her first Aztec appearance.
- > The Aztecs were unable to maintain a hot start the next night vs. UNLV, falling in four sets (25-19, 18-25, 19-25, 15-25).
- > The Aztecs outhit the Rebels .452 to .242 in the opening frame, knocking down 15 kills with just one error in 31 attempts. However, SDSU stumbled to a .163 clip the rest of way, while UNLV posted a .296 attack percentage during that span, including a .361 pace in the final set.
- > In all, the Rebels served up 12 aces and maintained the advantage in kills (55-47) and total blocks (7.0-3.0) to help fuel their victory. Conversely, the Aztecs held a slight edge in digs (58-55) but were plagued by eight errant serves.
- > Individually, SDSU was paced by Victoria O'Sullivan, who launched 13 kills and hit .333 for the match, committing just two errors in 33 swings, while Andrea Walker (.316) blasted nine put-aways of her own and contributed two block assists.
- > The Aztec cause was also aided by Erin Gillcrist, who totaled eight kills and a service ace, while Kennedy Feuerborn displayed her versatility with six kills, 27 assists and a solo block.
- > Not to be outdone, Maddie Lenn anchored the back row with a career-high 18 digs, while Lauren Lee reached double digits as well with 13 scoops of her own.

DOUBLE TROUBLE

- > Setter Ashley Vanderpan recorded her first career double-double after totaling 30 assists and 11 digs in the Aztecs' 3-0 sweep over Fresno State on Feb. 13.
- > For the weekend against the Bulldogs, the Elk Grove, California, native handed out 43 assists (6.14/set) and scooped up 12 digs (1.71/set) while finishing with two kills and a pair of block assists.
- > Vanderpan, who was inactive the last two years at Syracuse and SDSU, respectively, finally saw her first collegiate action in the opening series at UNLV, totaling 19 assists (3.80/set), three digs, two kills and a block assist in five sets played.

WELCOME BACK

- > The Aztecs return 13 players, including nine letterwinners from last year's squad that finished with a 15-14 record overall and an 8-10 mark in the Mountain West.

- > Leading the returners is outside hitter Victoria O'Sullivan, who ranked sixth in the league with 3.20 kills per set (352 overall) and tied for the team lead with 14 solo blocks while finishing fourth with 52 stops overall. The Aztec junior is the lone veteran to have played all 110 sets in 2019, finishing with double-digit kill totals in 21 of the Aztecs' 29 matches, including 10 straight to start the season.
- > In SDSU's riveting five-set thriller over West Virginia at the Aztec Challenge in September 2019, O'Sullivan blasted a career-high 22 kills and logged a collegiate-best .487 hitting percentage, committing just three errors in 39 attempts.
- > With the graduation of Hannah Turnlund and Tamia Reeves, setter Camryn Machado is the Aztecs' lone all-Mountain West honoree to return from last year. However, the Cardiff-by-the-Sea native will miss the 2021 spring campaign after suffering a torn ACL in preseason camp.
- > In 2019, Machado ranked second in the MW with 10.62 assists per set (1,158 overall) and occupied the No. 2 spot on the team with 2.54 digs per set (277 overall).
- > Additionally Machado led the Scarlet and Black with 14 double-doubles (assists-digs), including seven vs. MW opponents, and topped the squad with 16 service aces, including a career-high three in a home sweep of Utah State.
- > Senior right-side hitter Erin Gillcrist has been selected team captain for the upcoming season. The Lakewood, Colorado, native has successfully recovered from off-season shoulder surgery and looks to build on a 2019 campaign in which she averaged 1.89 kills (144 overall) and 0.71 blocks per set (54 overall).
- > In the Aztecs' 3-1 victory over Long Beach State on Sept. 19, 2019, Gillcrist matched her career-best with a .500 attack percentage, flooring 10 balls on 16 attempts with two errors.
- > Also back in the fold is middle blocker Andrea Walker, who owns the top returning hitting percentage among Aztec regulars after finishing 10th in the Mountain West last year with a .308 clip. The Fairfield, California, product occupied the second spot on the team with an average of 0.88 blocks per set (61 overall) and ranked fifth behind Gillcrist with an average of 1.87 kills per set (129 overall).
- > Walker compiled double-digit kills on three occasions, including a career-high 13 put-aways in SDSU's 3-1 victory at Utah State on Nov. 21, 2019.

MEET THE NEWCOMERS

- > First-year head coach Brent Hilliard has added four newcomers to the roster, including a trio of freshmen in outside hitter Heipua Tautua'a, setter Kennedy Feuerborn and defensive specialist Nadia Barclay, along with junior defensive specialist Brooklynn Hill, a transfer from perennial national power Penn State.
- > Hill played 13 matches in two seasons with the Nittany Lions, who advanced to the NCAA regional finals in both of her years on the State College campus. A native of Southern California, Hill starred for three straight conference championship teams at Rancho Cucamonga High School from 2015-17, earning all-Baseline League honors three times to go with a trio of team MVP and Defensive Player of the Year awards.
- > A product of Wai'anae High School in Hawai'i, Tautua'a garnered first-team all-Western Division accolades from the O'ahu Interscholastic Association in 2018 and landed on the AVCA Phenom Watch List. She also excelled at the junior level, collecting Most Valuable Player honors at the 2019 Girls Junior National Championships after leading her Spike and Serve Volleyball Club 16s team to the American Division title. In addition, Tautua'a earned a spot on the USA Volleyball Girls' Youth A1 National Training Team in 2018-19.
- > Feuerborn, meanwhile, arrives on The Mesa by way of Johnson County (Kan.) Community College where she enrolled for the 2019-20 academic year but did not compete in volleyball. Feuerborn earned second-team all-state honors and landed on the state Class 6A all-tournament team as a senior in 2018 at Blue Valley North High School in Overland Park, Kansas. She originally signed with Baylor as a prep but did not attend.
- > Rounding out the rookie class is Barclay, who graduated from Hillsdale High School in San Mateo, California, where she received first team all-conference recognition and team MVP accolades as a junior in 2018 after averaging 24.6 digs per match (541 total, 7.7 per set).

PRESEASON PROGNOSTICATIONS

- > San Diego State was picked to finish fifth this year in the Mountain West preseason coaches poll released Jan. 28. The Aztecs garnered 70 points and garnered one first-place vote.
- > In the 21-year history of the Mountain West, SDSU has finished first (2012), second (2002, 2011), fourth (2000, 2001, 2003, 2013, 2017), fifth (2005, 2015, 2019), sixth (1999, 2004, 2006, 2009, 2010, 2014, 2016), seventh (2008) and eighth (2007, 2018) in the final league standings.

2021 Mountain West Spring Preseason Poll

Rk.	Team (1st-place votes)	Pts.
1.	Colorado State (5)	92
2.	UNLV (4)	90
3.	Wyoming (1)	80
4.	Boise State	76
5.	San Diego State (1)	70
6.	Fresno State	48
7.	Nevada	41
8.	Air Force	33
9.	San José State	28
10.	New Mexico	25
11.	Utah State	22

VOLLEYBALL LEGEND STEVE TIMMONS ADDED TO COACHING STAFF

- > Aztec head coach Brent Hilliard served up a proverbial ace with his first staff addition after hiring the legendary Steve Timmons as an assistant coach on Feb. 15, 2020.
- > The first American male to win three Olympic medals in indoor volleyball, Timmons has worked as an elite coach since 2013 with Wave Volleyball Club based in nearby Del Mar, one of the most prestigious volleyball clubs in the country.
- > One of the sport's most potent hitters, Timmons first made his impact as a three-year letterman at USC (1980-82), where he helped the Trojans capture the 1980 NCAA Championship, earning all-tournament honors in the process. He also garnered first-team all-conference accolades to go with All-America distinction in 1982.
- > Timmons quickly rose to international stardom, winning gold medals for the U.S. Team at the Summer Olympics 1984 and 1988 to go with a bronze

2021 SITUATIONAL RECORDS

GENERAL

Overall.....	1-3
Mountain West.....	1-3
Home.....	1-1
Away.....	0-2
vs. Ranked Teams.....	0-0
vs. Unranked Teams.....	1-3
Matches Following a Win.....	0-0
Matches Following a Loss.....	0-3
Longest Winning Streak.....	1
Longest Losing Streak.....	3
Current Streak.....	Won 1

BY SETS

3 Sets.....	1-1
4 Sets.....	0-2
5 Sets.....	0-0
Leading After Two.....	1-0
Trailing After Two.....	0-1
Tied After Two.....	0-2
Leading 2-1.....	0-0
Trailing 2-1.....	0-2

BY MONTH

February.....	1-3
March.....	0-0
April.....	0-0

BY DAY

Thursday.....	0-1
Friday.....	0-2
Saturday.....	1-0

BY KILLS

Leading in Kills.....	1-0
Trailing in Kills.....	0-2
Tied in Kills.....	0-1

BY DIGS

Leading in Digs.....	1-2
Trailing in Digs.....	0-1
Tied in Digs.....	0-0

BY BLOCKS

Leading in Blocks.....	1-0
Trailing in Blocks.....	0-3
Tied in Blocks.....	0-0

BY ATTACK PERCENTAGE

Greater Attack Percentage.....	1-0
Lower Attack Percentage.....	0-3
Equal Attack Percentage.....	0-0
Hitting above .300.....	0-0
Hitting between .200 and .300.....	0-1
Hitting between .100 and .200.....	1-1
Hitting below .100.....	0-1
Opponent Hitting above .300.....	0-1
Opponent Hitting between .200 and .300.....	0-2
Opponent Hitting between .100 and .200.....	0-0
Opponent Hitting below .100.....	1-0

BY INDIVIDUAL KILLS

3+ Double-Digit Individual Kill Totals.....	0-0
2 Double-Digit Individual Kill Totals.....	0-0
1 Double-Digit Individual Kill Totals.....	1-3
0 Double-Digit Individual Kill Totals.....	0-0

in 1992. He collected MVP honors for the 1984 Games, and in 1988 he was named the U.S. Olympic Committee's Male Volleyball Player of the Year. That same year, he was voted the Federation of International Volleyball's Best Blocker and received MVP recognition at the World Super Four Tournament.

> Not to be outdone, Timmons led the U.S. Team to gold medals at the 1985 World Cup and 1986 World Championships, helping the Americans complete the first "Triple Crown" in volleyball following their triumph at the 1984 Olympics.

> Timmons was selected to USA Volleyball's 75th anniversary All-Era team in 2003 and was ranked No. 8 on Volleyball magazine's "35 Best U.S. Players of All Time" list in 2012. In addition, he was named to the inaugural class of the Southern California Indoor Volleyball Hall of Fame in 2017.

> Previously, Timmons was inducted into the U.S. Volleyball Association and International Volleyball Halls of Fame in 1998 while landing a spot on Volleyball magazine's all-time American Indoors first team. Additionally, he was enshrined in the Orange County Sports Hall of Fame in 1990 and the California Community College Hall of Fame in 1998 for his basketball and volleyball prowess at Orange Coast College.

AZTEC VOLLEYBALL EARNS PUBLIC RECOGNITION AWARD FROM NCAA

> Last spring, the San Diego State volleyball program was publicly recognized by the NCAA for outstanding academic achievements, along with the Aztec women's golf and women's tennis teams.

> The recognition came on the heels of the most recent multi-year Academic Progress Rates (APR) in which all three programs were among the top 10 percent of their respective sports nationally.

> With these squads earning NCAA public recognition last season, San Diego State has now received such distinction a total of 21 times in school history, matching its record of three teams set during the 2011-12 and 2017-18 academic years.

> The SDSU volleyball program received public recognition for the fourth straight season and fifth time overall, while the Aztec women's tennis team garnered the accolade for the third year in a row and sixth time in the last seven seasons. In addition, the San Diego State women's golf squad merited public recognition for the third time in school history.

2021 MATCH-BY-MATCH LEADERS

Date	Opponent	Kills	Hitting Pct.*	Assists	Aces	Digs	Blocks
F.4	at UNLV	O'Sullivan - 13	O'Sullivan (.300)	Vanderpan - 11	Hodson - 1 Tautua'a	Tautua'a - 10	Gillcrist - 3 Walker
F.5	at UNLV	O'Sullivan - 11	O'Sullivan (.333)	Feuerborn - 27	Gillcrist - 1	Lenn - 18	Walker - 2
F.12	Fresno State	O'Sullivan - 11	Gillcrist (.267)	Feuerborn - 26	none	Lee - 15	Walker - 4
F.13	Fresno State	O'Sullivan - 11	Walker (.389)	Vanderpan - 30	Barcklay - 1 Blair Lee	Lee - 13	Walker - 4
F.19	New Mexico						
F.20	New Mexico						
F. 26	Nevada						
F.27	Nevada						
M.5	at Wyoming						
M.6	at Wyoming						
M.12	Utah State						
M.13	Utah State						
M.20	at Boise State						
M.27	at San Jose State						
A.1	Air Force						
A.3	Colorado State						

* - min. 7 kills



Brent HILLIARD

Head Coach - First Season at San Diego State

San Diego State Director of Athletics John David Wicker ushered in a new era for the Aztec volleyball team with the hiring of Brent Hilliard as the fifth head coach in program history on Jan. 31, 2020.

A 2018 inductee to the Southern California Indoor Volleyball Hall of Fame, Hilliard arrives at SDSU with a wealth of experience after achieving 19 years of unparalleled success as an assistant coach at the University of San Diego, where he served as the Toreros' associate head coach since 2007.

"Brent Hilliard's presence in San Diego County volleyball is far reaching," Wicker said. "Through the club volleyball teams he coached, his 19 years at USD, the time and relationships with the Olympics, Coach Hilliard will be able to hit the ground running for San Diego State. In addition to his San Diego ties, Brent also has what we need in the next leader to graduate the women in the volleyball program, lead them to compete for championships and prepare them for a successful life after sport. He is known for his coaching tenacity in the gym, and at the same time, people of all ages told us how much they enjoyed him as a person."

During his fruitful tenure, the Toreros qualified for the NCAA Tournament in all but one of his 19 seasons, advancing to the Sweet 16 in 2004, 2006, 2013 and 2018. In addition, Hilliard helped guide the Toreros to nine West Coast Conference championships while his players earned six All-America awards, 12 All-America honorable mentions, 44 all-WCC accolades and 15 freshman all-conference certificates.

Hilliard twice assumed the reins of the USD program on an interim basis while head coach Jennifer Petrie was absent on maternity leave. In 2006, Hilliard was honored as WCC Coach of the Year after guiding the Toreros to a conference championship and a Sweet 16 appearance in the NCAA Tournament. That season, he coached five all-conference honorees, including WCC Player of the Year Kristen Carlson, as USD finished 14th in the final USA Today/Coaches Poll.

The Toreros also flourished under Hilliard's guidance in 2011, racing to a 13-0 start en route a program-best 28-5 record, highlighted by a spot in the second round of the NCAA Tournament. Throughout his stint, USD was consistently ranked among the nation's top 25, climbing to as high as No. 2 during the 2013 campaign and rising to No. 5 in 2016.

"I would like to thank John David Wicker, Jenny Bramer, Dr. Adela de la Torre and the rest of the SDSU search committee for making me feel so welcome during the interview process," Hilliard said. "To be the head coach of such a remarkable women's volleyball program in my family's hometown is truly a once in a lifetime opportunity."

"We are fully committed to work tirelessly to elevate this program back to an elite status on the college volleyball landscape, one that the student body, faculty, community, alumni and, of course, all future Aztecs will take great pride in."

Hilliard played collegiately at Long Beach State, earning All-America honors in each of his four years from 1990-93, including first-team recognition over his final three seasons. A right-side hitter for the 49ers, Hilliard was named the NCAA Men's Volleyball Player of the Year as a junior in 1992 after leading LBSU to a 31-1 record.

In 1991, Hilliard and the 49ers captured the NCAA Championship with a 3-1 victory over USC in the finals, avenging a loss to the Trojans in the title match the year before. He finished his career as the NCAA all-time leader with 3,034 kills.

Additionally, Hilliard was selected to play for Team USA in the 1992 Summer Olympics in Barcelona, Spain, where he helped the Americans capture the bronze medal. The following year, he won a silver medal at the 1993 Pan American Games in Argentina and also owns a bronze medal from the 1991 World Cup.

After receiving his undergraduate degree in 1993 from Long Beach State in political science, Hilliard continued his volleyball career as a professional in Europe from 1995-98, playing two seasons in Belgium and another in the Netherlands. In 1996, Hilliard and the Masiek Volleyball Club captured the Belgian national championship and competed in the European Champions League.

In addition to his collegiate experience, which included a stint as head coach at nearby Cuyamaca College in 1999 and 2000, Hilliard has also coached for the past 10 years at Wave Volleyball Club in Del Mar, the premier volleyball club in San Diego County.

"Our priority at SDSU will be to engage, attract and secure exceptional student-athletes that strive for both academic and athletic excellence in their everyday lives," Hilliard added. "From day one, we will set expectations high and build from there. I am incredibly excited to get started and I look forward to the bright future ahead."

HILLIARD'S COLLEGIATE COACHING LEDGER (As an Assistant at USD)

Year	Overall Record	WCC Record (Finish)	Postseason
2001	22-9	10-4 (3rd)	NCAA Second Round
2002	25-8	10-4 (3rd)	NCAA First Round
2003	17-13	6-8 (T-5th)	NCAA First Round
2004	24-5	14-0 (1st)	NCAA Sweet 16
2005	23-6	10-4 (T-2nd)	NCAA Second Round
2006*	26-6	13-1 (1st)	NCAA Sweet 16
2007	21-8	11-3 (1st)	NCAA First Round
2008	23-5	12-2 (1st)	NCAA First Round
2009	18-7	10-4 (2nd)	None
2010	24-8	13-1 (1st)	NCAA Second Round
2011*	28-5	12-4 (2nd)	NCAA Second Round
2012	21-7	13-3 (T-1st)	NCAA First Round
2013	26-4	16-2 (1st)	NCAA Sweet 16
2014	19-12	12-6 (T-3rd)	NCAA First Round
2015	22-10	14-4 (2nd)	NCAA Second Round
2016	24-6	15-3 (2nd)	NCAA First Round
2017	25-5	17-1 (T-1st)	NCAA Second Round
2018	18-13	13-5 (3rd)	NCAA Sweet 16
2019	25-6	17-1 (1st)	NCAA Second Round

Overall Total 431-143 (.751)

WCC Total 238-60 (.799)

Notes

- * - Served as interim head coach during the 2006 and 2011 seasons
- > Qualified for the NCAA Tournament in 18 of his 19 seasons at USD
- > Reached the NCAA Sweet 16 four times in 2004, 2006, 2013 and 2018
- > Won nine West Coast Conference championships

2021 AZTEC PHOTO ROSTER



Nya BLAIR
OH | 5-11 | So. **1**



Heipua TAUTUA'A
OH | 6-2 | Fr. **2**



Andrea WALKER
MB | 6-0 | RS-Jr. **3**



Kennedy FEUERBORN
S | 6-3 | Fr. **4**



Serena HODSON
MB | 6-2 | So. **5**



Ashley VANDERPAN
S | 6-1 | So. **7**



Lauren LEE
DS/L | 5-0 | Sr. **8**



Camryn MACHADO
S | 6-1 | RS-Jr. **10**



BROOKLYNN HILL
DS/L | 6-1 | RS-Jr. **11**



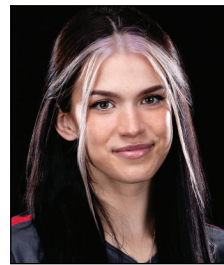
Erin GILLCRIST
RS | 6-1 | Sr. **12**



Elise PARK
DS/L | 5-7 | RS-Fr. **13**



Gabriella SPAETHLING
RS | 6-1 | RS-Fr. **14**



Abby PUGH
MB | 6-3 | RS-Sr. **15**



Alexis DURAND
DS/L | 5-7 | So. **16**



Nadia BARCLAY
DS/L | 5-4 | Fr. **17**



Maddie LENN
OH | 5-10 | Jr. **19**



Victoria O'SULLIVAN
OH | 6-0 | Jr. **21**



Brent HILLIARD
Head Coach



Melanie GREENE
Assistant Coach/
Recruiting Coordinator



STEVE TIMMONS
Assistant Coach



Kara BARKDOLL
Volleyball Operations
Assistant



Yasser AGUILA TODD
Volunteer Assistant Coach

2021 San Diego State Spring Volleyball
San Diego State Overall Individual Statistics (as of Feb 13, 2021)
All matches

Overall record: 1-3 Conf: 1-3 Home: 1-1 Away: 0-2 Neutral: 0-0

##	Player	sp	mp-ms	Attack					Set		Serve				
				k	k/s	e	ta	pct	a	a/s	sa	sa/s	se	ta	pct
21	O'SULLIVAN, Victoria	14	4-4	46	3.29	20	131	.198	2	0.14	0	0.00	0	6	1.00
3	WALKER, Andrea	14	4-4	28	2.00	12	66	.242	1	0.07	0	0.00	0	0	.000
1	BLAIR, Nya	9	3-0	16	1.78	6	46	.217	0	0.00	1	0.11	1	27	.963
12	GILLCRIST, Erin	14	4-3	23	1.64	10	55	.236	2	0.14	1	0.07	2	11	.818
2	TAUTUA'A, Heipua	14	4-4	22	1.57	18	91	.044	7	0.50	1	0.07	5	48	.896
4	FEUERBORN, Kennedy	11	3-3	12	1.09	4	26	.308	59	5.36	0	0.00	3	17	.824
19	LENN, Maddie	13	4-3	10	0.77	10	42	.000	6	0.46	0	0.00	4	17	.765
15	PUGH, Abby	4	2-1	2	0.50	2	5	.000	0	0.00	0	0.00	1	7	.857
7	VANDERPAN, Ashley	12	4-1	4	0.33	3	15	.067	62	5.17	0	0.00	2	36	.944
8	LEE, Lauren	14	4-0	0	0.00	1	4	-.250	10	0.71	1	0.07	3	53	.943
5	HODSON, Serena	3	1-0	0	0.00	0	2	.000	0	0.00	1	0.33	1	4	.750
11	HILL, Brooklynn	14	4-1	0	0.00	0	1	.000	6	0.43	0	0.00	4	35	.886
16	DURAND, Alexis	1	1-0	0	0.00	0	0	.000	0	0.00	0	0.00	0	0	.000
17	BARCKLAY, Nadia	7	2-0	0	0.00	0	0	.000	1	0.14	1	0.14	1	25	.960
SAN DIEGO STATE		14	4-4	163	11.6	86	484	.159	156	11.1	6	0.43	27	286	.906
Opponents		14	4-4	173	12.3	65	480	.225	161	11.5	32	2.29	38	326	.883

##	Player	sp	Recept			Dig		Blocking					Points		
			re	ta	pct	dig	dig/s	bs	ba	total	blk/s	be	bhe	pts	pts/s
21	O'SULLIVAN, Victoria	14	2	14	.857	8	0.57	1	4	5	0.36	1	1	49.0	3.50
3	WALKER, Andrea	14	0	0	.000	1	0.07	2	11	13	0.93	0	0	35.5	2.54
1	BLAIR, Nya	9	0	1	1.000	7	0.78	1	2	3	0.33	0	0	19.0	2.11
12	GILLCRIST, Erin	14	1	1	.000	5	0.36	3	6	9	0.64	0	0	30.0	2.14
2	TAUTUA'A, Heipua	14	6	59	.898	43	3.07	2	3	5	0.36	2	1	26.5	1.89
4	FEUERBORN, Kennedy	11	0	0	.000	11	1.00	2	2	4	0.36	0	0	15.0	1.36
19	LENN, Maddie	13	5	59	.915	37	2.85	1	0	1	0.08	0	0	11.0	0.85
15	PUGH, Abby	4	0	0	.000	0	0.00	0	1	1	0.25	0	0	2.5	0.62
7	VANDERPAN, Ashley	12	0	0	.000	15	1.25	0	3	3	0.25	0	2	5.5	0.46
8	LEE, Lauren	14	8	91	.912	49	3.50	0	0	0	0.00	0	0	1.0	0.07
5	HODSON, Serena	3	0	0	.000	0	0.00	0	0	0	0.00	0	0	1.0	0.33
16	DURAND, Alexis	1	1	4	.750	1	1.00	0	0	0	0.00	0	0	0.0	0.00
17	BARCKLAY, Nadia	7	0	0	.000	1	0.14	0	0	0	0.00	0	0	1.0	0.14
11	HILL, Brooklynn	14	6	46	.870	23	1.64	0	0	0	0.00	0	1	0.0	0.00
-	TEAM	-	3	-	-	-	-	-	-	-	-	-	-	-	-
SAN DIEGO STATE.....		14	32	278	.885	201	14.36	12	32	28.0	2.00	3	5	197.0	14.07
Opponents.....		14	6	257	.977	183	13.07	7	66	40.0	2.86	7	6	245.0	17.50

2021 San Diego State Spring Volleyball
 San Diego State Overall Team Statistics (as of Feb 13, 2021)
 All matches

Overall record: 1-3 Conf: 1-3 Home: 1-1 Away: 0-2 Neutral: 0-0

Team Statistics	SDSU	OPP
ATTACK		
Kills	163	173
Errors	86	65
Total Attacks	484	480
Attack Pct	.159	.225
Kills/Set	11.6	12.4
SET		
Assists	156	161
Assists/Set	11.1	11.5
SERVE		
Aces	6	32
Errors	27	38
Attempts	286	326
Serve Pct	.906	.883
Aces/Set	0.4	2.3
SERVE RECEPTIONS		
Errors	32	6
Errors/Set	2.3	0.4
Attempts	278	257
Reception Pct	.885	.977
DEFENSE		
Digs	201	183
Digs/Set	14.4	13.1
BLOCKING		
Block Solo	12	7
Block Assist	32	66
Total Blocks	28.0	40.0
Blocks/Set	2.0	2.9
Block Errors	3	7
Ball handling errors	5	6
ATTENDANCE		
Total	0	0
Dates/Avg Per Date	2/0	2/0
Neutral site #/Avg	0/0	
Current win streak	1	-
Home win streak	1	-

Match wins by #sets	1st	2nd	3rd	4th	5th	Total
San Diego State	0	0	1	0	0	1
Opponents	0	0	1	2	0	3

Sets won by set	1st	2nd	3rd	4th	5th	Total
San Diego State	3	1	1	0	0	5
Opponents	1	3	3	2	0	9

Points by set	1st	2nd	3rd	4th	5th	Total
San Diego State	97	81	72	33	0	283
Opponents	85	99	95	50	0	329