



# SAN DIEGO STATE AZTECS

## 2021 Volleyball Weekly Notes

**Jim Solien (Primary Contact)**  
 Assistant Media Relations Director  
**Office Phone Number:** (619) 594-2576  
**E-Mail Address:** jsolien@sdsu.edu  
**News Release Date:** Oct. 4, 2021

**SDSU Official Athletics Website:** goaztecs.com  
**SDSU Official Athletics Twitter:** @GoAztecs  
**SDSU Official Athletics Instagram:** @GoAztecs  
**SDSU Official Athletics Facebook:** facebook.com/goaztecs  
**SDSU Official Athletics YouTube:** youtube.com/goaztecs.com

### 2021 AZTEC VOLLEYBALL SCHEDULE

Day/Date	Opponent	Time
Friday, Aug. 27	vs. Houston Baptist <sup>^</sup>	L, 0-3
Friday, Aug. 27	at Sam Houston <sup>^</sup>	L, 0-3
Saturday, Aug. 28	at Sam Houston <sup>^</sup>	L, 2-3
Friday, Sept. 3	at UC Santa Barbara <sup>#</sup>	W, 3-0
Saturday, Sept. 4	vs. No. 21 Pepperdine <sup>#</sup>	L, 1-3
Saturday, Sept. 4	vs. Kansas State <sup>#</sup>	L, 1-3
<b>Friday, Sept. 10</b>	<b>No. 16 UCLA+ (MWN)</b>	<b>L, 0-3</b>
<b>Saturday, Sept. 11</b>	<b>No. 25 San Diego+ (MWN)</b>	<b>L, 1-3</b>
Tuesday, Sept. 14	at Long Beach State	L, 0-3
Friday, Sept. 17	vs. Texas Southern~	W, 3-0
Friday, Sept. 17	at Arizona~	L, 0-3
Saturday, Sept. 18	vs. UC Riverside~	W, 3-0
Thursday, Sept. 23	at Nevada* (MWN)	W, 3-0
Saturday, Sept. 25	at San José State* (MWN)	L, 0-3
<b>Thursday, Sept. 30</b>	<b>New Mexico* (MWN)</b>	<b>L, 1-3</b>
<b>Saturday, Oct. 2</b>	<b>Air Force* (MWN)</b>	<b>W, 3-0</b>
<b>Tuesday, Oct. 5</b>	<b>UNLV* (MWN)</b>	<b>7 p.m. PT</b>
<b>Thursday, Oct. 7</b>	<b>Fresno State* (MWN)</b>	<b>7 p.m. PT</b>
Thursday, Oct. 14	at Boise State* (MWN)	7 p.m. MT
Saturday, Oct. 16	at Utah State* (MWN)	1 p.m. MT
<b>Thursday, Oct. 21</b>	<b>Colorado State* (MWN)</b>	<b>7 p.m. PT</b>
Saturday, Oct. 23	at Wyoming* (MWN)	TBA
<b>Thursday, Oct. 28</b>	<b>Utah State*</b>	<b>7 p.m. PT</b>
<b>Saturday, Oct. 30</b>	<b>Boise State* (MWN)</b>	<b>7 p.m. PT</b>
Monday, Nov. 1	at UNLV* (MWN)	6:30 p.m. PT
Saturday, Nov. 6	at Fresno State* (MWN)	11 a.m. PT
Thursday, Nov. 11	at Air Force* (MWN)	6 p.m. MT
Saturday, Nov. 13	at New Mexico* (MWN)	1 p.m. MT
<b>Thursday, Nov. 18</b>	<b>Nevada* (MWN)</b>	<b>7 p.m. PT</b>
<b>Saturday, Nov. 20</b>	<b>San José State* (MWN)</b>	<b>1 p.m. PT</b>

<sup>^</sup> - Bearkat Invitational (Huntsville, Texas)  
<sup>#</sup> - Gaucho Invitational (Santa Barbara, Calif.)  
<sup>+</sup> - SDSU/USD Invitational (San Diego, Calif.)  
<sup>~</sup> - Wildcat Classic (Tucson, Ariz.)  
<sup>\*</sup> - Mountain West match  
 (MWN) - Mountain West Network match

#### Socially

Twitter: @AztecVB  
 Instagram: @Aztec\_WVB

### Match Week Preview

**UNLV (12-3, 3-1 MW) at San Diego State (5-11, 2-2 MW)**  
 Tuesday, Oct. 5 | 7 p.m. PT | Aztec Court at Peterson Gym  
 Live Stats | MW Network  
 Series: SDSU leads 28-24



**Fresno State (6-6, 2-2 MW) at San Diego State (5-11, 2-2 MW)**  
 Thursday, Oct. 7 | 7 p.m. PT | Aztec Court at Peterson Gym  
 Live Stats | MW Network  
 Series: SDSU leads 33-15



### AZTEC VOLLEYBALL CONTINUES HOMESTAND THIS WEEK VS. UNLV, FRESNO STATE

- > Fresh off a hard-fought 3-0 sweep of Air Force last Saturday, the San Diego State volleyball team resumes its busy stretch with an additional pair of home matches this week against defending Mountain West champion UNLV and Fresno State inside Aztec Court at Peterson Gym.
- > The Aztecs will battle the Rebels on Tuesday, Oct. 5, before tangling with the Bulldogs on Thursday, Oct. 7.
- > First serve for both matches is set for 7 p.m., with links to live stats and streaming video via the Mountain West Network available on GoAztecs.com.
- > SDSU finds itself in a three-way tie for fifth place in the MW standings after splitting two encounters with New Mexico and Air Force. The Aztecs dropped a 3-1 decision to the Lobos (20-25, 20-25, 25-16, 21-25) on Sept. 30, but began the new month on a winning note with a thrilling three-set triumph over the Falcons (26-24, 27-25, 25-21).
- > The SDSU attack is led by senior Victoria O'Sullivan, who ranks sixth in the Mountain West with an average of 3.39 kills per set. The Aztec outside hitter has posted double-digit kills in 11 of her previous 13 starts and has surpassed that plateau in 43 of her last 58 appearances dating back to the start of the 2019 campaign.
- > The first 200 fans attending the SDSU-UNLV clash will receive a free taco as part of the Aztecs' Taco Tuesday gameday promotion.
- > San Diego State's return engagement with the Rebels has been rescheduled for Monday, Nov. 1, at Cox Pavilion in Las Vegas, starting at 6:30 p.m. PT. The contest was originally slated for Tuesday, Nov. 2.

### SERIES RECORD VS. UNLV

- > Since the two programs first met in 1985, the Aztecs lead the all-time series against the Rebels, 28-22.
- > SDSU is 18-5 vs. UNLV at home and has captured 10 of the last 13 meetings on The Mesa.
- > However, the Aztecs have dropped five of their last six encounters with the Rebels, including a pair of defeats in Las Vegas to open the 2021 spring campaign. SDSU was dealt a 3-0 whitewash in the opener (22-25, 21-25, 10-25) before falling four sets in the finale (25-19, 18-25, 19-25, 15-25).
- > In the first match, the Rebels out-hit the Aztecs .310 to .147, owning a 44-30 advantage in kills and a 44-34 edge in digs to spoil the SDSU head coaching debut of Brent Hilliard.
- > Individually in that contest, Victoria O'Sullivan paced the Scarlet and Black with 11 kills, hitting .300 on 30 attempts with just two errors, while Heipua Tautua'a launched six non-returnables of her own to go with a team-high 10 digs.
- > The following night, the Aztecs out-hit the Rebels .452 to .242 in the opening frame, knocking down 15 kills with just one error in 31 attempts. However, SDSU was unable to maintain its hot start, stumbling to a .163 clip the rest of way, while UNLV posted a .296 attack percentage during that span, including a .361 pace in the final set.
- > In all, the Rebels served up 12 aces and maintained the advantage in kills (55-47) and total blocks (7.0-3.0) to help fuel their victory.
- > Individually, SDSU was paced by O'Sullivan, who launched 13 kills and hit .333, while Andrea Walker (.316) blasted nine put-aways of her own and contributed two block assists.

### SERIES RECORD VS. FRESNO STATE

- > Since the first varsity meeting between the two teams back in 1980, the Aztecs lead the all-time series against the Bulldogs 33-15.
- > The Aztecs are 18-5 against Fresno State in San Diego all-time after splitting two matches at Peterson Gym during last spring's shortened campaign. SDSU suffered a 3-1 defeat in the opener (25-22, 16-25, 18-25, 18-25) before rebounding with a 3-0 white-wash in the finale (25-19, 26-24, 25-20), which gave Brent Hilliard his first victory as head coach of the Aztecs.
- > In the victorious encounter, San Diego State maintained a 41-29 advantage in kills, limiting Bulldogs to a .060 hitting percentage, as the visitors committed 22 errors on the day. In addition, the Aztecs held the statistical edge in digs (58-50) and team blocks (9.0-8.0) to secure its first win of the spring.
- > Individually, SDSU was once again led by Victoria O'Sullivan, who launched a team-high 11 kills, while Andrea Walker (.389) floored eight non-returnables of her own.
- > In addition, Heipua Tautua'a and Ashley Vanderpan scooped up 11 digs with the latter notching her first career double-double after dishing out 30 assists.
- > In the opener previous night, the Aztecs matched the Bulldogs with 45 kills and held a sizable 51-36 advantage in digs but were undone by 34 attack errors, hitting just .087 for the night, compared to the visitors, who finished with a .246 clip and maintained the upper hand in team blocks (17-10) to go with nine service aces.

**GENERAL INFORMATION**

Location ..... San Diego, Calif.  
 Founded ..... 1897  
 Enrollment ..... 33,870  
 Nickname ..... Aztecs  
 Colors ..... Scarlet and Black (Pantone 187)  
 Conference ..... Mountain West  
 Affiliation ..... Division I  
 President ..... Dr. Adela de la Torre  
 Director of Athletics ..... John David Wicker  
 Faculty Representative ..... Dr. Frank Harris III  
 Home Facility ..... Aztec Court at Peterson Gym (2,000)

**TEAM INFORMATION**

Head Coach ..... Brent Hilliard  
 Alma Mater ..... Long Beach State '93  
 Record at SDSU ..... 11-20 (second year)  
 Career Record ..... 65-31 (Third year)  
 E-Mail ..... bhilliard@sdsu.edu  
 Volleyball Office Phone ..... (619) 594-5064  
 Volleyball Office Fax ..... (619) 594-1674  
 Assistant Coach/Recruiting Coordinator ..... Melanie Greene  
 Assistant Coach ..... Steve Timmons  
 Volleyball Operations Assistant ..... Kara Barkdoll  
 Spring 2021 Record ..... 6-9  
 Spring 2021 Conference Record ..... 6-9 (Eighth)  
 Spring 2021 Home Record ..... 5-4  
 Spring 2021 Road Record ..... 1-5  
 Letterwinners Returning/Lost ..... 8/7  
 Starters Returning/Lost ..... 4/2+Libero

**PROGRAM HISTORY**

First Year of Volleyball ..... 1976  
 Overall Record ..... 891-630 (.586)  
 NCAA Appearances ..... 14  
 Last Postseason Appearance ..... 2012  
 NCAA Postseason Record ..... 15-14

**MEDIA RELATIONS**

Assistant Media Relations Director ..... Jim Solien  
 E-Mail ..... jsolien@sdsu.edu  
 SID Office Phone ..... (619) 594-2576  
 SID Office Fax ..... (619) 582-6541  
 Official Athletic Website ..... www.GoAztecs.com

**2021 AZTEC VOLLEYBALL  
 STATISTICAL LEADERS**  
*(min. 50 percent of team sets played)*

Hitting Percentage*	.261	Jordyn Goldsmith
Kills	173	Victoria O'Sullivan
Kills per set	3.39	Victoria O'Sullivan
Assists	266	Noa Miller
Assists per set	6.19	Noa Miller
Digs	226	Natalie Smith
Digs per set	4.19	Natalie Smith
Blocks	30.0	Julia Haynie
Blocks per set	0.71	Julia Haynie
Service Aces	9	Noa Miller
Service Aces per set	0.21	Noa Miller

\*. min 3.0 attempts per set

**2021 AZTEC VOLLEYBALL FALL ROSTER**

No.	Player	Pos.	Ht.	Yr.	Hometown (Last School)
1	Zoi Faki	OH	6-1	Sr.	Athens, Greece (Pittsburgh)
2	Heipua Tautua'a	OH	6-2	So.	Wai'anae, Hawaii (Wai'anae HS)
3	Andrea Walker	MB	6-0	Sr.	Fairfield, Calif. (Vanden HS)
4	Kennedy Feuerborn	S	6-3	So.	Overland Park, Kan. (Johnson County CC)
5	Serena Hodson	MB	6-2	Jr.	Mission Viejo, Calif. (Trabuco Hills HS)
6	Jordyn Goldsmith	OPP	6-1	Fr.	Valleyford, Wash. (Freeman HS)
7	Ashley Vanderpan	S	6-1	Jr.	Elk Grove, Calif. (Syracuse)
8	Natalie Smith	DS/L	5-7	Sr.	Weatherford, Texas (Michigan)
9	Sara Mukaj	MB	6-3	Fr.	Modena, Italy (Istituto Scaruffi-Levi Tricolore)
10	Kalani Ruri	S/OPP	6-2	Fr.	Kawerau, New Zealand (Trident HS)
11	Brooklynn Hill	DS/L	5-8	Sr.	Rancho Cucamonga, Calif. (Penn State)
13	Julia Haynie	MB	6-2	Jr.	Temecula, Calif. (Portland State)
14	Reagan Merk	OH	5-11	Fr.	Huntington Beach, Calif. (Mater Dei HS)
15	Mikela Labno	OH	6-2	Fr.	Hilmar, Calif. (Hilmar HS)
16	Carsyn Schuch	DS	5-6	Fr.	Phoenix, Ariz. (Deer Valley HS)
17	Nadia Barkclay	DS	5-2	So.	Foster City, Calif. (Hillsdale HS)
19	Noa Miller	S	5-10	Sr.	Douglasville, Ga. (Arizona State)
21	Victoria O'Sullivan	OH	6-0	Sr.	Albany, Calif. (Saint. Mary's HS)

**Head Coach:** Brent Hilliard (Long Beach State, 1993), Second season at SDSU  
**Assistant Coach/Recruiting Coordinator:** Melanie Greene (San Diego State, 2007), 11th season at SDSU  
**Assistant Coach:** Steve Timmons (USC), Second season at SDSU  
**Volleyball Operations Assistant:** Kara Barkdoll (Cal State San Marcos, 2015), Fourth season at SDSU

**Pronunciations**

#1 ZOI FAKI	Zoey FAH-key
#2 HEIPUA TAUTUA'A	HEY-poo-ah taw-TOO-ah-ah
#9 Sara MUKAJ	MOO-kye
#4 Kennedy FEUERBORN	FEWER-born
#15 MIKELA Labno	ma-KAY-la
#16 CARSYN SCHUCH	Carson Shook



**OPPONENT COMPARISON**

2021 Overall Stats	SDSU	MW Rank	OPP	UNLV	MW Rank	OPP	FS	MW Rank	OPP
Hitting Percentage	.212	7	.229	.242	3	.165	.189	10	.223
Kills per set	12.30	7	12.67	13.29	1	10.83	11.70	9	12.05
Assists per set	11.43	7	11.80	11.83	1	9.67	10.91	9	11.18
Digs per set	13.30	6	12.36	13.37	5	12.83	11.59	10	12.57
Blocks per set	2.02	7	2.44	2.44	2	1.75	1.98	8	2.11
Service Aces per set	1.07	11	1.61	1.79	5	0.96	1.86	3	1.50

**SCOUTING THE OPPOSITION**

> Defending Mountain West champion UNLV (12-3, 3-1 MW) has won three straight to forge a five-way tie for the top spot in the conference, joining New Mexico, San José State, Colorado State and Utah State. The Rebels recorded a pair of 3-1 victories at home last week over Air Force (25-21, 25-27, 25-20, 25-18) and UNM (25-18, 18-25, 25-20, 25-19), with the latter accounting for the Labos' first loss in MW play this season. Reigning conference player of the year Mariena Hayden captured Mountain West Offensive Player of the Week honors for the seventh time in her career after finishing the week with a team-high 31 kills (3.88/set) and nine service aces to go with 18 digs (2.25/set). For the season, the UNLV senior outside hitter leads the nation in service aces (0.77/set) while topping the MW in kills (3.77/set). In addition, senior middle blocker Kate Brennan owns a conference-best .397 hitting percentage and ranks eighth in blocks (1.08/set), just ahead fellow middle Jordyn Freeman (1.02/set). In addition, junior libero Paris Oliveira (3.48/set) and junior outside hitter Shelby Caplonch (3.02/set) occupy the sixth and 10th spots in the conference this week in digs, respectively, while sophomore setter Arien Fafard ranks ninth in assists. Freeman and fellow junior Paola Garcia hail from San Diego County. Freeman prepped at Rancho Bernardo High, while Garcia graduated from Eastlake High. As a team, UNLV leads the Mountain West in kills (13.29/set) and assists (11.83/set) while ranking second in blocks (2.44/set). In addition, the Rebels find themselves among the top half of the conference in hitting percentage (3rd, .242), digs (5th, 13.37/set) and service aces (5th, 1.79/set). Including preseason tournaments, UNLV sports a 9-2 record away from home thus far. Head coach Dawn Sullivan is in her third season with the Rebels after spending 13 years as an assistant at Iowa State, including the final six as associate head coach. Last season, Sullivan earned MW Coach of the Year honors after guiding UNLV to an undefeated 12-0 record in conference play, as the Rebels advanced to the second round of the NCAA Tournament.

> Fresno State (6-6, 2-2 MW) returned home from a seven-match road swing last week to defeat Colorado State in four sets (25-19, 25-14, 19-25, 26-24) before grinding out a three-set triumph over Wyoming (29-27, 25-22, 25-23). The Bulldogs and Aztecs faced two common opponents during their respective non-conference schedules. Fresno State edged UC Riverside, 3-2, in their own tournament last month before suffering the identical fate at Kansas State in the Wildcats' home event. Conversely, SDSU fell to K-State, 3-1, at the UCSB Gaucho Invitational before sweeping UCR, 3-0, at the Wildcat Classic in Tucson. Outside hitter Ella Rud was named Mountain West Freshman of the Week on the heels of a double-double (10 kills, 10 digs) vs. Wyoming, which marked the Bulldogs' first sweep of the Cowgirls since 2013. She also contributed nine kills and five digs in their win over CSU. Entering the week, senior outside hitter Desiree Sukhov ranks second in the conference in service aces (0.52/set) while occupying the ninth spot in kills (3.02/set). In addition, junior setter Mikayla Weiss finds herself in the fifth position with an average of 7.74 assists per set, while junior middle blocker Grace Doyle ranks ninth with a .318 hitting percentage. Elsewhere, sophomore Kasey Purry is tied for 10th with an average of 1.00 blocks per set, while junior Julia Handy tops the squad with 2.49 digs per frame followed

2021 MOUNTAIN WEST STANDINGS (AS OF OCT. 4)

Team	---Conference---			-----Overall-----			
	W	L	Pct.	W	L	Pct.	Strk
New Mexico	3	1	.750	12	3	.800	L1
UNLV	3	1	.750	12	3	.800	W3
Utah State	3	1	.500	11	5	.688	W2
San José State	3	1	.750	9	5	.643	L1
Colorado State	3	1	.750	7	6	.538	L1
<b>San Diego State</b>	<b>2</b>	<b>2</b>	<b>.500</b>	<b>5</b>	<b>11</b>	<b>.313</b>	<b>W1</b>
Boise State	2	2	.500	13	3	.813	W1
Fresno State	2	2	.500	6	6	.500	W2
Air Force	1	3	.250	4	10	.286	L2
Wyoming	0	4	.000	8	8	.500	L4
Nevada	0	4	.000	3	12	.214	L4

Upcoming Matches in the MW

**Tuesday, Oct. 5**

UNLV at San Diego State, 7 p.m. PT

**Thursday, Oct. 7**

Fresno State at San Diego State, 7 p.m. PT

Boise State at Air Force, 6 p.m. MT

Utah State at New Mexico, 6:30 p.m. MT

Colorado State at Nevada, 6 p.m. PT

Wyoming at San José State, 6 p.m. PT

**Saturday, Oct. 9**

Utah State at Air Force, 11 a.m. MT

Wyoming at Nevada, noon PT

Boise State at New Mexico, 1 p.m. MT

Colorado State at San José State, 1 p.m. PT

Fresno State at UNLV, 1 p.m. PT

**Tuesday, Oct. 12**

Nevada at San José State, 6 p.m. PT

**Thursday, Oct. 14**

San Diego State at Boise State, 7 p.m. MT

Air Force at Wyoming, 6:30 p.m. MT

New Mexico at Colorado State, 7 p.m. MT

UNLV at Utah State, 7 p.m. MT

San José State at Fresno State, 6 p.m. PT

**Saturday, Oct. 16**

San Diego State at Utah State, 1 p.m. MT

New Mexico at Wyoming, TBA

UNLV at Boise State, noon MT

Air Force at Colorado State, 1 p.m. MT

**Sunday, Oct. 17**

Nevada at Fresno State, 1 p.m. PT

**Tuesday, Oct. 19**

Utah State at Boise State, 7 p.m. MT

by Sukhov (2.09/set). Also contributing to the Fresno State fortunes are junior outside hitter Amaria Kelley (2.68 kills/set) and senior outside hitter Savannah Smith (2.53 kills/set). Collectively, the Bulldogs rank third in the Mountain West in service aces (1.86/set) but find themselves in the lower half of the conference for all matches in kills (9th, 11.70/set), assists (9th, 10.91/set), digs (10th, 11.59/set) and hitting percentage (10th, .189). Fresno State is under the direction of fourth-year head coach Jonathan Winder, who was a four-time All-American and the 2007 national player of the year for the men's team at Pepperdine, where he led the Waves to the NCAA finals as a senior in 2008.

**NOTHIN' LIKE HOME COOKIN'**

> Since the beginning of the 2009 campaign, the Aztecs have amassed a 110-58 (.655) record at home, highlighted by a 14-0 mark during the 2012 season when SDSU captured the Mountain West championship.

> During the 2021 spring slate, the Aztecs fashioned a winning record at home for the 10th time in the last 12 seasons after posting a 5-4 ledger.

**SDSU IN MW RANKINGS**

> As of Oct. 4, libero Natalie Smith ranks fourth in the Mountain West with an average of 4.19 digs per set (226 overall).

> In addition, outside hitter Victoria O'Sullivan has climbed into the sixth position with 3.39 kills per set, while setter Noa Miller ranks eighth with 6.19 assists per frame.

> Smith's 27 digs vs. Houston Baptist on Aug. 27 is tied for the third-best performance in the conference this season.

> Meanwhile, O'Sullivan's 19 kills vs. San Diego on Sept. 11 are the tied for the fourth-best effort in the league this year, while her 15 put-aways at UC Santa Barbara on Sept. 3 are also tied for the eighth-highest in a three-set match.

> Not to be outdone, the Aztecs own two of the top individual hitting percentages with a minimum of 12 kills in the Mountain West this season. Mikela Labno's .522 clip against (13-1-23) against Pepperdine at the Gaucho Invitational is 11th entering the week, while O'Sullivan's .519 efficiency (15-1-27) at UC Santa Barbara in the same tournament ranks 12th.

> Elsewhere, Serena Hodson's eight total blocks at Sam Houston on Aug. 28 is tied for the eighth-best total in the MW thus far, while Sara Mukaj's four service aces the previous day against the same Bearkat squad is tied for 10th.

> Collectively, the Aztecs occupy the sixth spot in the conference with an average of 13.30 digs per set while ranking seventh in team kills (12.30/set) and hitting percentage (.212).

**O'SULLIVAN REACHES MILESTONE**

> After flooring a match-high 13 shots vs. Air Force, senior Victoria O'Sullivan surpassed the 800-kill plateau for her career (806).

> The Aztec outside hitter saved her best for last against the Falcons, blasting six kills to go with an ace and two blocks (one solo) in the third set alone. She knocked down two kills and combined on a block during a pivotal 6-1 run that broke a 10-10 tie and gave the Scarlet and Black some separation.

> O'Sullivan has led or shared the team lead for kills in seven straight matches she has played and 13 times in her 15 starts this year.

> The Albany, California, native has registered double-digit kills in 11 of her previous 13 starts and has surpassed that barrier in 43 of her last 58 appearances since the start of the 2019 campaign.

**LABNO SHINES**

> Freshman Mikela Labno came through with a pair of solid performances last week vs. New Mexico and Air Force when she averaged 2.57 kills per set and hit .441, which were both higher than her season marks entering the week (2.02 kps, .142)

> In all, the Aztec outside hitter combined for 18 kills on 34 swings with just three errors and tied for the team lead with five total blocks.

> Against Air Force, Labno posted her second-best hitting percentage of the year with a .474 clip, helping the Aztecs snap a two-match slide with the 3-0 sweep. She reached double digits in kills for the third time this year with 10 put-aways in that contest, committing just one error in 19 swings. The Hilmar, California, native, totaled four of her kills in the second set and came up with the clinching point on a solo block, as SDSU prevailed in the frame, 27-25.

> Labno also finished with eight kills, three kills and four total blocks while hitting .400 vs. New Mexico.

**THE LAST TIME OUT**

> After opening its season-long homestand on a sour note vs. New Mexico, San Diego State regrouped two days later on Oct. 2 and emerged triumphant for the first time at Aztec Court this season with a thrilling three-set victory over Air Force (26-24, 27-25, 25-21).

> With the win, SDSU improved to 39-8 in the all-time series vs. the Falcons. In addition, the Aztecs find themselves in a three-way tie for fifth place in the MW with a 2-2 conference record, along with Boise State and Fresno State.

> In a slugfest that featured a whopping 35 ties and 12 lead changes, San Diego State posted its second-best hitting percentage of the season with a .337 clip.

> Victoria O'Sullivan led all players with 13 kills and three service aces to go with a trio of blocks, including a solo stop, while Mikela Labno reached the double-digit plateau with 10 put-aways while hitting at a .474 pace with just one error on 19 attempts.

> The Aztec cause was also advanced by Heipua Tautua'a, who displayed her versatility with eight kills, six digs, two blocks and an ace, while Jordyn Goldsmith launched seven non-returnables without an error, finishing with a .636 efficiency on an economical 11 swings.

> In addition, Noa Miller (25 assists) and Kennedy Feuerborn (11 assists), split the setting duties, while Natalie Smith tied Miller for team-high honors with eight digs.

> The tightness of the match was reflected on the stat sheet, where the Aztecs maintained a slight advantage in kills (46-43) and digs (33-32), while the two sides each recorded seven team blocks. However, SDSU served up more aces (6-2) and committed three fewer attack errors (16-13) to help squeeze out the victory.

> The Aztecs saved their best for last with a stellar .455 hitting percentage in the third set, blasting 17 kills on 33 attempts with just two errors. O'Sullivan came through in the clutch as well, notching six of her kills in the frame, while Labno and Goldsmith tallied three apiece. In addition to her setting, Miller supplied some stout defense with six digs in the final stanza to help vanquish Air Force.

> On Sept. 30, SDSU saw its eight-match winning streak vs. New Mexico snapped, despite a stellar defensive effort in which the Aztecs maintained the upper hand in team blocks (10.0 to 7.0) and digs (42-33).

> SDSU was victimized by 10 service aces and hit just .168 for the night, while UNM did not fare much better, posting a .171

efficiency. However, the Lobos held a slight edge in kills (45-43) to help maintain their share of first place in the MW standings.

- > Individually, SDSU was paced by O'Sullivan and Tautua'a, who collected eight kills apiece, while Labno launched eight non-returnables of her own and hit .400 for the match. In addition, Andrea Walker finished with a .455 clip, knocking down seven kills with two miscues in 11 attempts while tying for match-high honors with a season-best six block assists.
- > Not to be outdone, Goldsmith posted a .556 efficiency, blasting six kills with just one error on nine swings, while Noa Miller tied her season-high with 28 assists to lead all players. Natalie Smith got into the act as well with a match-high 13 digs, while O'Sullivan tied her personal-best with seven scoops.

**FEAST OR FAMINE**

- > Eleven of San Diego State's 16 matches have been completed in three sets this season, with the Aztecs posting a 5-6 record in those contests.
- > SDSU has played just one five-set match this year, falling to Sam Houston in their final encounter of the Bearkat Invite on Aug. 28, after building a 2-1 lead.
- > The Aztecs have come out on the wrong side of the scoreboard in each of their four-set matches this year, falling to No. 21 Pepperdine (Sept. 4), Kansas State (Sept. 4), No. 25 San Diego (Sept. 11) and New Mexico (Sept. 30).

**OTHER TRENDS**

- > All five of San Diego State's victories this season have been recorded when the Aztecs have finished with more kills and digs, as well as a greater hitting percentage.
- > SDSU's lone loss when posting a better efficiency occurred vs. Sam Houston in its final match of the

Bearkat Invitational on Aug. 28, when the Aztecs outhit the host Bearkats, .230 to .179 but fell short in five sets. In addition, the Scarlet and Black registered more kills in that contest (59-52).

- > San Diego State also recorded more kills (57-49) in a four-set home defeat to No. 25 San Diego on Sept. 11.
- > The Aztecs are 3-0 when hitting above .300 this season, notching a season-high .384 clip in a sweep at UC Santa Barbara on Sept. 3, followed by a .337 efficiency in a hard-fought whitewash of Air Force on Oct. 2. SDSU has finished with a .303 hitting percentage in a blanking of UC Riverside at the Wildcat Classic.
- > The Aztecs have dropped three matches when maintaining the upper hand in blocks, including losses to New Mexico (10.0 to 7.0), Long Beach State (8.0 to 5.0) and the second defeat at Sam Houston (12.0 to 7.0).
- > San Diego State's sweep of Air Force on Oct. 2 marked the first time this season the Aztecs prevailed when an opponent hit over .200 for the match, as the Falcons finished with a .272 clip.
- > When Victoria O'Sullivan posted a team-leading nine kills in SDSU's sweep at Nevada on Sept. 23, it marked the first time in three matches this year the Aztecs emerged victorious without having a player reaching the double-digit plateau in that statistic.

**NEWCOMERS MAKING THEIR MARK**

- > San Diego State boasts 10 newcomers on its 2021 fall roster, with several providing key contributions during the first five weeks of play.
- > Senior outside hitter Zoi Faki ranks second on the team with an average of 2.16 kills per set (80 overall) while ranking third with 1.97 digs per set (73 overall). She also has three service aces to her credit. Against Sam Houston on Aug. 28, the Pitt transfer logged her first double-double in an Aztec uniform with 14 kills and 12 digs.

**2021 AZTEC SUPERLATIVES**

**Individual**

**HITTING PERCENTAGE (min. 12 kills)**

.522 (13-1-23) ..... Mikela Labno vs. No. 21 Pepperdine (Sept. 4)

**KILLS**

19 ..... Victoria O'Sullivan vs. No. 25 San Diego (Sept. 11)  
 5 sets ..... 14 ..... Victoria O'Sullivan and Zoi Faki at Sam Houston (Aug. 28)  
 4 sets ..... 19 ..... Victoria O'Sullivan vs. No. 25 San Diego (Sept. 11)  
 3 sets ..... 15 ..... Victoria O'Sullivan at UC Santa Barbara (Sept. 3)

**TOTAL ATTEMPTS**

43 ..... Victoria O'Sullivan vs. No. 25 San Diego (Sept. 11) and Zoi Faki at Sam Houston (Aug. 28)  
 5 sets ..... 43 ..... Zoi Faki at Sam Houston (Aug. 28)  
 4 sets ..... 43 ..... Victoria O'Sullivan vs. No. 25 San Diego (Sept. 11)  
 3 sets ..... 33 ..... Zoi Faki vs. Houston Baptist (Aug. 27)

**ASSISTS**

28 ..... Noa Miller vs. New Mexico (Sept. 30) and vs. No. 25 San Diego (Sept. 11)  
 5 sets ..... 26 ..... Ashley Vanderpan at Sam Houston (Aug. 28)  
 4 sets ..... 28 ..... Noa Miller vs. New Mexico (Sept. 30) and vs. No. 25 San Diego (Sept. 11)  
 3 sets ..... 26 ..... Noa Miller at UC Riverside (Sept. 18)

**DIGS**

27 ..... Natalie Smith vs. Houston Baptist (Aug. 27)  
 5 sets ..... 16 ..... Natalie Smith at Sam Houston (Aug. 28)  
 4 sets ..... 21 ..... Natalie Smith vs. No. 25 San Diego (Sept. 11)  
 3 sets ..... 27 ..... Natalie Smith vs. Houston Baptist (Aug. 27)

**SERVICE ACES**

4 ..... Sara Mukaj at Sam Houston (Aug. 27)

**BLOCK SOLOS**

2 ..... Mikela Labno vs. No. 25 San Diego (Sept. 11) and Serena Hodson at Sam Houston (Aug. 28)

**BLOCK ASSISTS**

6 ..... Andrea Walker vs. New Mexico (Sept. 30)  
 ..... Serena Hodson at Sam Houston (Aug. 28)

**TOTAL BLOCKS**

8 ..... Serena Hodson at Sam Houston (Aug. 28)

**Team**

**HITTING PERCENTAGE**

.384 (49-11-99) ..... at UC Santa Barbara (Sept. 3)

**KILLS**

59 ..... at Sam Houston (Aug. 28)  
 5 sets ..... 59 ..... at Sam Houston (Aug. 28)  
 4 sets ..... 57 ..... vs. No. 25 San Diego (Sept. 11)  
 3 sets ..... 49 ..... at UC Santa Barbara (Sept. 3)

**TOTAL ATTEMPTS**

161 ..... at Sam Houston (Aug. 28)  
 5 sets ..... 161 ..... at Sam Houston (Aug. 28)  
 4 sets ..... 148 ..... vs. No. 25 San Diego (Sept. 11)  
 3 sets ..... 111 ..... vs. Houston Baptist (Aug. 27)

**ASSISTS**

56 ..... vs. No. 25 San Diego (Sept. 11)  
 5 sets ..... 53 ..... at Sam Houston (Aug. 28)  
 4 sets ..... 56 ..... vs. No. 25 San Diego (Sept. 11)  
 3 sets ..... 46 ..... at UC Santa Barbara (Sept. 3)

**DIGS**

70 ..... at Sam Houston (Aug. 28)  
 5 sets ..... 70 ..... at Sam Houston (Aug. 28)  
 4 sets ..... 63 ..... vs. No. 25 San Diego (Sept. 11)  
 3 sets ..... 57 ..... vs. UC Riverside (Sept. 18)

**SERVICE ACES**

10 ..... at Nevada (Sept. 23) and at Sam Houston (Aug. 27)

**TOTAL BLOCKS**

12.0 ..... at Sam Houston (Aug. 28)



- > Fellow classmate Natalie Smith, who received all-tournament recognition at the Bearkat Invitational, ranks fourth in the Mountain West with an average of 4.19 digs per set. In the season opener vs. Houston Baptist, the Michigan transfer posted 27 digs, which is tied for the third-best total in the conference so far this year.
- > Freshman Mikela Labno has started the last eight matches and ranks third on the squad with 2.13 kills per set while leading the squad with seven solo blocks. The Aztec outside hitter earned her first career start at Long Beach State on Sept. 14 and scooped up a collegiate-best 13 digs in SDSU's 3-0 sweep of UC Riverside at the Wildcat Classic on Sept. 18. Labno saw her first extended action of the season at the Gaucho Invitational, averaging 2.64 kills in all 11 sets while hitting at a .292 clip. The Hilmar, California, native knocked down a career-high 13 kills against Pepperdine, hitting .522 for the match, which ranks as the 12th-best individual efficiency in the Mountain West thus far.
- > Arizona State transfer Noa Miller made her San Diego State debut at the Gaucho Invitational and has started the last 13 matches, averaging 6.19 assists, which ranks eighth in the Mountain West, to go with 1.72 digs per frame. In her first start for the Aztecs vs. UCSB, Miller dished out 22 assists and scooped up seven digs, helping the Scarlet and Black to its first victory of the season. She also added 25 helpers and another seven digs the following day against Kansas State. Against No. 25 USD on Sept. 11, Miller racked up her first double-double as an Aztec and 12th of her career after posting a season-high 28 assists and 11 digs. Last week, she tied her SDSU-best with 28 helpers vs. New Mexico.
- > Freshman Jordyn Goldsmith has hit .500 over the last three matches, knocking down 22 kills on 38 attempts with just three errors. In the Aztecs' sweep of New Mexico, the rookie opposite hitter led the Scarlet and Black with a .636 efficiency, collecting seven kills on 11 swings without a miscue. Goldsmith currently ranks sixth on the squad with 1.58 kills per set (60 overall), recording a career-high nine put-aways while hitting .389 at San José State on Sept. 25. At the Wildcat Classic vs. UC Riverside on Sept. 18, the Valleyford, Washington, native also set a personal-best with four block assists, helping the Scarlet and Black to a three-set whitewash. She also totaled four blocks at Long Beach on Sept. 14, including a solo stop.
- > Despite missing the last two matches, former Portland State middle blocker Julia Haynie still leads the squad with 30 total blocks while adding 49 kills, which ranks sixth on the squad. The SDSU junior finished with season bests of eight kills and five block assists, helping the Aztecs sweep past Nevada in their Mountain West opener on Sept. 23. She also enjoyed a pair of breakout performances at the Wildcat Classic with matching totals of six kills, a .455 hitting percentage and four total blocks, propelling SDSU to victories over Texas Southern and UC Riverside. The Temecula native also knocked down six kills and hit .444 in her Scarlet and Black debut vs. Houston Baptist on Aug. 27. She has multiple block assists in eight of her 13 starts this year.
- > Freshman outside hitter Reagan Merk saw extended action in four straight matches from Sept. 14-18, totaling 21 kills, 17 digs and three blocks for that week. The Huntington Beach native earned her first career start in SDSU's sweep of UC Riverside at the Wildcat Classic, where she tied her career-highs with seven kills and six digs while recording her first three blocks in an Aztec uniform, including a solo stop. Merk also launched seven put-aways and posted six digs the previous day in SDSU's blanking of Texas Southern. Earlier in the week at Long Beach State, she knocked down five kills while committing just one error on seven attempts for a sparkling .714 hitting percentage. Merk also served up aces on her first two collegiate serves in the second set vs. Sam Houston on Aug. 27.
- > Likewise, freshman opposite hitter Kalani Ruri made the most of her two appearances at the Wildcat Classic. The native New Zealander opened the tournament with five kills against Texas Southern, hitting a season-best .556 efficiency with no errors on nine swings while adding a pair of block assists, as the Aztecs snapped a five-match losing streak. The following day, Ruri helped SDSU roll to another sweep after posting a season-best seven kills and hit at a .385 clip to go with another pair of block assists vs. UCR.
- > Freshman Sara Mukaj started seven of eight matches before suffering an ACL injury but still leads the Scarlet and Black with 0.81 blocks per set (22 overall). In the first match vs. Sam Houston at the Bearkat Invite on Aug. 27, the Aztec middle blocker served up four aces, which is tied for the eighth-best effort in the MW this year. In the rematch against the Bearkats, Mukaj returned the following day and led the Aztecs with a .636 hitting percentage, launching seven kills on 11 swings without an error to go with five digs and four block assists.

**ROAD DIARIES: NEVADA AND SAN JOSÉ STATE**

- > San Diego State improved to 12-11 all-time in MW openers after a three-set whitewash (29-27, 25-17, 25-20) of Nevada on Sept. 23
- > The Aztecs survived a grueling opening set, where the two teams combined for 16 ties and seven lead changes, before the Scarlet and Black pulled away in the final two frames.
- > SDSU limited the Wolf Pack to a minus-.029 hitting percentage over those final two sets to help snap a three-match losing streak in the head-to-head series.
- > Victoria O'Sullivan tied for match-high honors with nine kills, snapping her streak of 11 straight starts with double-digit put-aways. However, the Aztecs shared the wealth offensively, as Julia Haynie recorded season-bests of eight kills and five block assists, while Heipua Tautua'a and Mikela Labno launched seven non-returnables apiece.
- > Tautua'a also displayed her versatility with 11 digs, three block assists and a pair of service aces, while Andrea Walker knocked down four kills and came up with four block assists in just her second start of the year.
- > In addition Jordyn Goldsmith also got into the act with four kills and three block assists, while Noa Miller (19 assists) and Ashley Vanderpan (15 assists) shared the bulk of the setting duties. Once again, Natalie Smith was solid along the back row, where she logged a match-high 13 digs.
- > As a team the Aztecs maintained the statistical advantage in kills (39-31), digs (46-38), team blocks (11.0 to 8.0) and aces (7-4) to help key the victory.
- > SDSU found itself in another back-and-forth affair two days later at San José State, where the teams combined for 26 ties and 11 lead changes. However, the Aztecs were unable to keep pace with the hot-hitting Spartans and dropped a hard-fought decision in three sets (20-25, 21-25, 16-25).
- > San Diego State was out-hit .412 to .257, as SJSU committed just eight attack errors for the day, knocking down 43 kills on 85 attempts to go with seven service aces to help spark its win.
- > O'Sullivan led the Scarlet and Black with 11 kills and hit at a .360 clip, while Goldsmith notched season highs of nine put-aways and a .389 efficiency.
- > In addition, the Aztec cause was advanced by Andrea Walker, who tied for match-high honors with three blocks assists, while Noa Miller (17 assists) and Ashley Vanderpan (10 assists) split the setting responsibilities.
- > However, SDSU could not contain the tandem of Haylee Nelson and Latahevai Lousi, who combined for 29 of the Spartans' 43 kills. Nelson led all players with 18 put-aways and hit .630, committing just one error on 27 attempts, while Lousi launched 11 non-returnables of her own and recorded two miscues on 22 swings for a .409 efficiency.

**WILDCAT CLASSIC REWIND**

- > San Diego State concluded its non-conference schedule in Tucson, Arizona, winning two of three matches at the Wildcat Classic, Sept. 17-18.
- > The Aztecs put the brakes on a five-match slide with a 3-0 sweep of Texas Southern (25-17, 25-22, 25-17) in the tournament opener on Sept. 17 before having the tables turned against them vs. host Arizona (20-25, 22-25, 15-25).
- > However, the Scarlet and Black rebounded in style the following day with another whitewash against UC Riverside (25-15, 25-21, 25-19) in its weekend finale.
- > Victoria O'Sullivan posted double-digit kills in all three matches, averaging a team-high 3.89 kills per set while hitting .389 for the weekend to go with eight digs and five total blocks.

**2021 SITUATIONAL RECORDS**

**GENERAL**

Overall.....	5-11
Mountain West.....	2-2
Home.....	1-3
Away.....	2-5
Neutral.....	2-3
vs. Ranked Teams.....	0-3
vs. Unranked Teams.....	5-8
Matches Following a Win.....	1-3
Matches Following a Loss.....	4-7
Longest Winning Streak.....	2
Longest Losing Streak.....	5
Current Streak.....	Won 1

**BY SETS**

3 Sets.....	5-6
4 Sets.....	0-4
5 Sets.....	0-1
Leading After Two.....	5-0
Trailing After Two.....	0-8
Tied After Two.....	0-3
Leading 2-1.....	0-1
Trailing 2-1.....	0-4

**BY MONTH**

August.....	0-3
September.....	4-8
October.....	1-0
November.....	0-0

**BY DAY**

Tuesday.....	0-1
Thursday.....	1-1
Friday.....	2-4
Saturday.....	2-5

**BY KILLS**

Leading in Kills.....	5-2
Trailing in Kills.....	0-9
Tied in Kills.....	0-0

**BY DIGS**

Leading in Digs.....	5-6
Trailing in Digs.....	0-4
Tied in Digs.....	0-1

**BY BLOCKS**

Leading in Blocks.....	3-3
Trailing in Blocks.....	1-7
Tied in Blocks.....	1-1

**BY ATTACK PERCENTAGE**

Greater Attack Percentage.....	5-1
Lower Attack Percentage.....	0-10
Equal Attack Percentage.....	0-0
Hitting above .300.....	3-0
Hitting between .200 and .300.....	2-5
Hitting between .100 and .200.....	0-4
Hitting below .100.....	0-2
Opponent Hitting above .300.....	0-4
Opponent Hitting between .200 and .300.....	1-5
Opponent Hitting between .100 and .200.....	1-2
Opponent Hitting below .100.....	3-0

**BY INDIVIDUAL KILLS**

3+ Double-Digit Individual Kill Totals.....	1-1
2 Double-Digit Individual Kill Totals.....	1-3
1 Double-Digit Individual Kill Totals.....	2-4
0 Double-Digit Individual Kill Totals.....	1-3

## 2021 MATCH-BY-MATCH LEADERS

Date	Opponent	Kills	Hitting Pct.*	Assists	Aces	Digs	Blocks
A.27	vs. Houston Baptist	Faki - 11	Faki (.242)	Vanderpan - 19	Vanderpan - 1	Smith - 27	Hodson - 2
A.27	at Sam Houston	O'Sullivan/Tautua'a - 8	Tautua'a (.111)	Vanderpan - 15	Mukaj - 4	Smith - 11	Haynie/O'Sullivan - 2
A.28	at Sam Houston	Faki/O'Sullivan - 14	Mukaj (.636)	Vanderpan - 26	Vanderpan - 2	Smith - 16	Hodson - 8
S.3	at UC Santa Barbara	O'Sullivan - 15	O'Sullivan (.519)	Miller - 22	Tautua'a - 1	Smith - 11	Mukaj - 4
S.4	vs. No. 21 Pepperdine	Labno - 13	Labno (.522)	Miller - 19	Vanderpan - 1	Smith - 17	Haynie/Mukaj - 4
S.4	vs. Kansas State	Faki/O'Sullivan - 13	Faki (.323)	Miller - 25	Faki - 2	Smith - 9	Mukaj/Tautua'a - 3
S.10	No. 16 UCLA	O'Sullivan - 10	O'Sullivan (.160)	Miller - 17	Smith - 2	Smith - 11	Mukaj/Haynie/O'Sullivan - 3
S.11	No. 25 San Diego	O'Sullivan - 19	O'Sullivan (.349)	Miller - 28	Miller - 2	Smith - 21	Labno/Mukaj - 3
S.14	at Long Beach State	Faki - 8	Faki (.273)	Miller - 10	Labno - 2	Smith - 14	Goldsmith - 4
S.17	vs. Texas Southern	O'Sullivan - 12	Merk (.385)	Miller - 21	Hill/Miller - 1	Smith - 14	Haynie - 4
S.17	at Arizona	O'Sullivan - 10	O'Sullivan (.381)	Vanderpan - 14	Miller/Smith - 1	Smith - 13	Labno/Walker - 2
S.18	vs. UC Riverside	O'Sullivan - 14	O'Sullivan (.500)	Miller - 26	Vanderpan - 2	Smith - 22	Goldsmith/Haynie - 4
S.23	at Nevada	O'Sullivan - 9	Haynie (.429)	Miller - 19	Smith/Tautua'a - 2	Smith - 13	Haynie - 5
S.25	at San José State	O'Sullivan - 11	Goldsmith (.389)	Miller - 17	none	Smith - 6	Walker - 3
S.30	New Mexico	O'Sullivan/Tautua'a - 9	Walker (.455)	Miller - 28	O'Sullivan - 3	Smith - 13	Walker - 6
O.2	Air Force	O'Sullivan - 13	Goldsmith (.636)	Miller - 25	O'Sullivan - 3	Smith/Miller - 8	O'Sullivan/Walker - 3
O.5	UNLV						
O.7	Fresno State						
O.14	at Boise State						
O.16	at Utah State						
O.21	Colorado State						
O.23	at Wyoming						
O.28	Utah State						
O.30	Boise State						
N.2	at UNLV						
N.6	at Fresno State						
N.11	at Air Force						
N.13	at New Mexico						
N.18	Nevada						
N.20	San José State						

\* - min. 7 kills

> In the opener vs. TSU, the Aztecs out-hit the Tigers .255 to .049, blasting more kills (42-26) while owning the edge in digs (50-48) and team blocks (6.0 to 2.0).

> O'Sullivan led a balanced SDSU attack with a match-high 11 kills, while freshman Reagan Merk came off the bench to record a season-best seven put-aways of her own. In addition, junior Julia Haynie (4 block assists) collected six kills and hit .455, while freshmen Kalani Ruri (2 block assists) and Mikela Labno launched five non-returnables apiece.

> The Aztec fortunes were also buoyed by senior Natalie Smith, who tied for match-high honors with 14 digs, while classmate Noa Miller led all players with 20 assists and registered seven digs. Not to be outdone, sophomore Heipua Tautua'a contributed to the SDSU defensive efforts with eight scoops of her own, as the Scarlet and Black limited the Tigers to a .000 hitting percentage over the first two sets.

> San Diego State was unable to duplicate the same success in the nightcap vs. Arizona, as the Wildcats served up seven aces while recording more kills (41-30) and team blocks (8.0 to 4.0) to help fuel their win.

> Once again, O'Sullivan paced the Aztec offense with 10 kills, while Labno racked up six put-aways, followed by Jordyn Goldsmith's five. In addition, Smith anchored SDSU's back row with a match-high 13 digs, while Ashley Vanderpan (14 assists) handled the bulk of the setting responsibilities, along with Miller (10 assists).

> The teams combined for 14 ties and three lead changes in the first two sets; however, the Aztecs were unable to respond to timely Wildcat runs.

> The following day vs. UCR, San Diego State posted its second-highest team hitting percentage of the season with a .303 clip, maintaining a sizable 43-31 advantage in kills while committing just 13 attack errors on 99 attempts. In addition, the Scarlet and Black held the statistical edge in team blocks (9.0 to 2.0), digs (57-35) and service aces (5-2) to help secure the victory.

> Conversely, the Highlanders were limited to a .086 pace, marking the second-lowest efficiency by an SDSU opponent this year.

> O'Sullivan led all players with 14 kills and did not commit an attack error until her penultimate attempt of the match, finishing with a .500 hitting percentage. In addition, the Aztecs received seven kills apiece from Ruri (.385) and Merk, while Miller fell two assists shy of her season high after dishing out 26 helpers.

> Not to be outdone, Haynie (.455) knocked down six kills and totaled four blocks, including a solo stuff, while Goldsmith assisted on four stops at the net as well. SDSU's defensive efforts were also buoyed by Smith's match-high 22 digs, while Labno (5 kills) contributed a season-best 13 scoops of her own.

> The teams combined for 18 ties and nine lead changes in the first two sets, but this time it was the Aztecs who fashioned timely runs to seize the momentum.

### LONG BEACH STATE MATCH RECAP

> San Diego State traveled up the freeway to Long Beach State on Sept. 14, but fell short in hard-fought three-set defeat (23-25, 19-25, 23-25).

> Despite maintaining the statistical edge in team blocks (8.0 to 5.0), the Aztecs (1-8) suffered their fifth straight defeat after mustering just 29 kills for the night. SDSU was unable to capitalize on 13 errant serves by the Beach, committing 14 attack errors on 95 attempts for a .158 hitting percentage.

> Conversely, LBSU (5-5) knocked down 50 kills with a .309 efficiency while owning a 44-39 advantage in digs to help snap a three-match losing streak to the Aztecs.

> SDSU was paced by Zoi Faki's eight kills, while Heipua Tautua'a and Reagan Merk launched five put-aways apiece.

> In addition, Natalie Smith led all players with 14 digs, while Jordyn Goldsmith made her first collegiate start a memorable one with a match-high four blocks, including a solo stop.

> The Aztec cause was also aided by Noa Miller (10 assists) and Kennedy Feuerborn (3 kills, 7 assists), who split the setting duties, while Mikela Labno served up two aces. Like Goldsmith, Labno also earned her first start in an SDSU uniform vs. the Beach.

### REWIND: SDSU/USD INVITATIONAL

> With packed houses providing an electric atmosphere, San Diego State squared off against a pair of ranked opponents at the SDSU/USD Invitational last weekend, falling to No. 16 UCLA in three sets (17-25, 18-25, 13-25) before suffering a 3-1 setback to No. 25 San Diego.

> Against the Toreros on Sept. 11, the Aztecs had three players record double-digit kills, including Victoria O'Sullivan, who launched a match-high 19 non-returnables and hit .349, while Mikela Labno collected 11, followed by Heipua Tautua'a, who totaled 10 kills and 12 digs for her second career double-double.

> In addition, senior transfer Noa Miller logged her first double-double as an Aztec with a season-high 28 assists and 11 digs, while fellow classmate Natalie Smith led all competitors with 21 scoops, marking her second-best total of the year.

> Despite holding the statistical advantage in kills (57-49) and digs (63-51), SDSU was undone by 27 attack errors and was out-blocked (15.0-7.0) en route to its fourth straight loss.

> The previous night vs. UCLA, the Aztecs kept within striking distance in each of the first two sets; however, the Bruins used an efficient attack, timely runs and a tight defense to keep the host school at bay.

> SDSU was out-hit .346 to .056 for the match, while UCLA maintained a statistical advantage in kills (39-28), team blocks (13.0-7.0) and digs (29-27) to help key its victory.

> Once again, O'Sullivan surpassed double figures in kills after posting a team-high 10 put-aways to go with a trio of blocks, including one solo stop, while Sara Mukaj and Julia Haynie totaled three block assists apiece.

> Additionally, Tautua'a launched seven kills, while Smith tied for match-high honors with 11 digs. Smith also dealt a pair of service aces, while Miller finished with 17 assists.

> SDSU's clashes with the Bruins and Toreros marked the first time it played ranked opponents since it battled No. 25 Wyoming and No. 20 Colorado State on Oct. 1-3, 2015.

**GAUCHO INVITATIONAL REDUX**

- > San Diego State rolled to its first victory of the season on Sept. 3 with a 3-0 triumph (25-20, 25-19, 25-15) over host UC Santa Barbara on opening night at the Gaucho Invitational.
- > However, the Aztecs were unable to maintain the momentum the following day, dropping a pair of four-set decisions to then-No. 21 Pepperdine (19-25, 16-25, 25-21, 18-25) and Kansas State (19-25, 25-18, 23-25, 16-25).
- > SDSU was victimized by a combined 21 service errors in their two defeats while trailing in kills (115-94), hitting percentage (.280 to .227) and team blocks (21.0 to 14.0).
- > On the flip side, the Aztecs logged their highest efficiency of the season vs. UCSB, hitting at a .384 clip with 49 kills on 99 attempts with just 11 errors. In addition, SDSU's 49 kills marked the team's second-best this year despite a match duration of just three sets.
- > Individually, the Aztecs had three players finish with double-digs kills in a match for the first time this fall, as Victoria O'Sullivan led all players with a season-high 15 put-aways and hit .519, while Zoi Faki (.455) launched 12 non-returnables of her own.
- > Not to be outdone, SDSU received a spark from Heipua Tautua'a (.409), who collected 11 kills, while Mikela Labno floored seven shots off the bench.
- > In her first appearance after transferring from Arizona State, Noa Miller started at setter against the Gauchos, handing out a match-high 22 assists, while Ashley Vanderpan contributed 13 helpers of her own.
- > Natalie Smith once again secured the back row for the Aztecs, finishing with 11 digs, while Faki just missed a double-double after posting nine scoops.
- > The SDSU defense also received four total blocks from Sara Mukaj, including a solo stuff, while O'Sullivan and Julia Haynie came through with a pair of block assists.
- > The Aztecs saved their best for last, powering down 20 kills in the third set on 32 attempts with just three errors for a blazing .531 efficiency.
- > Faki (.714) launched five kills in the final frame without a miscue, matching O'Sullivan (.571), who committed her only error of the night in the set, while Tautua'a (.667) provided four put-aways of her own. Clinging to a slim 10-8 lead, SDSU switched on the afterburners, finishing with a strong 15-7 blitz to secure the sweep.
- > Unfortunately, the Aztecs were unable to duplicate the feat in two encounters the following day vs. Pepperdine and Kansas State.
- > Against the Waves, the SDSU attack was paced by Labno, who hit .522 with a season-best 13 kills on 22 attempts and just one error, while O'Sullivan finished with 10 put-aways of her own. Elsewhere, Smith tied for match-high with 17 digs, while Haynie and Mukaj notched four block assists each..
- > In the finale against the Wildcats, Faki and O'Sullivan led the SDSU offense with 13 kills apiece, while Labno launched nine put-aways of her own. Faki also hit .323 for the match while contributing seven digs and pair of aces.
- > In addition, Miller handed out a season-high 25 assists and racked up seven scoops as well in her third start for the Scarlet and Black, while Tautua'a and Mukaj finished with three block assists each.
- > With the match tied at one set apiece and the teams deadlocked at 22-22 in the third stanza, K-State closed with a 3-1 spurt to escape.

**ALL-TOURNAMENT AZTECS PART II**

- > For the second consecutive weekend, outside hitter Victoria O'Sullivan earned a spot on an all-tournament team following her performance at the Gaucho Invitational in Santa Barbara, Calif.
- > In three matches, O'Sullivan led the Aztecs with an average of 3.45 kills per set (38 overall) and hit .295 to go with seven digs and five block assists.
- > For the season, O'Sullivan has recorded double-digit kills in nine straight matches, including season highs of 19 kills vs. No. 25 San Diego along with a .519 efficiency in SDSU's triumph over UCSB.

**BEARKAT INVITATIONAL WRAP**

- > San Diego State came up empty in its season-opening road trip to the Bearkat Invitational, Aug. 27-28, in Huntsville, Texas, falling to Houston Baptist before dropping consecutive matches to tournament host Sam Houston.
- > Against HBU, the Aztecs were out-hit .306 to .153, committing 10 more attack errors (19-9) while nine service attempts went awry. Conversely, the Huskies totaled more kills (42-36) and team blocks (10.0-2.0) to help fuel their 3-0 victory.
- > Individually, SDSU was led by senior transfer Zoi Faki, who knocked down 11 kills in her Aztec debut, while Victoria O'Sullivan collected seven put-aways of her own.
- > Natalie Smith, a senior transfer from Michigan, also impressed in her first match for the Scarlet and Black, anchoring the Aztec back row with a match-high 27 digs, while Ashley Vanderpan dished out 19 assists.
- > In the second match of the weekend, SDSU experienced another whitewash, this time at the hands of Sam Houston, as the visitors were plagued by 26 attack errors, hitting just .029 overall. On the flip side, the Bearkats posted a .299 efficiency, holding a sizable advantage in kills (38-29) and total blocks (15.0-3.0) while owning a slight edge in digs (41-39).
- > The Aztecs were paced by O'Sullivan and Heipua Tautua'a, who blasted eight kills each, while Faki and freshman Jordyn Goldsmith finished with five non-returnables apiece. Vanderpan (15 assists) and Kennedy Feuerborn (11 assists) split the setting duties, while Smith scooped up a team-high 11 digs.
- > The SDSU cause was also advanced by freshmen Sara Mukaj (4) and Reagan Merk (2), who combined for six aces.
- > A late schedule switch provided the Aztecs a rematch against Sam Houston the following day after Central Arkansas withdrew from the tournament for contact tracing. However, SDSU found victory elusive once again, as the Bearkats dealt the Scarlet and Black a five-set heart-breaker.
- > Incredibly, the Aztecs maintained the statistical edge in most categories, including kills (59-52), hitting percentage (.230 to .179), aces (5-4), digs (70-68) and team blocks (12.0-7.0).
- > After hitting at a brisk .351 clip over the first three sets with just eight attack errors, however, SDSU faltered in the final two frames, posting a combined .060 hitting percentage with 14 miscues to finish its venture to the Lone Star State with an 0-3 record.
- > O'Sullivan (.324) and Faki led the Aztecs with 14 kills apiece, while Serena Hodson (.300) posted career-high numbers with nine put-aways of her own and eight total blocks, including two solo stops.
- > In addition, Faki logged her first double-double in a Scarlet and Black uniform after logging 12 digs, while Vanderpan accomplished the feat for the first time this year with 26 assists and 10 digs.
- > Mukaj also boosted the SDSU fortunes with a crisp .636 hitting percentage, recording seven kills on 11 attempts with no errors, while Tautua'a and Goldsmith also floored seven shots.
- > Smith once again anchored the Aztec defense by tying for match-high honors with 16 digs, while Feuerborn came off the bench to hand out 18 assists.

**ALL-TOURNAMENT AZTECS PART I**

- > Outside hitter Victoria O'Sullivan and libero Natalie Smith were each named to the all-tournament team at the Bearkat Invitational, Aug. 27-28, in Huntsville, Texas.
- > In three matches, O'Sullivan knocked down 29 kills (2.64/set) to go with 11 digs and seven block assists while adding one setting assist and one service ace.
- > In SDSU's tough 3-2 loss to Sam Houston on Aug. 28, O'Sullivan hit .324 and tied for the team lead with 14 kills, including six in the opening set.

**MISCELLANEOUS STATS**

**DOUBLE-DOUBLES**

**Zoi Faki** (1 season, 3 career (2 at Pittsburgh))

14 kills, 12 digs at Sam Houston, 8/28/21

**Ashley Vanderpan** (1 season, 4 career)

26 assists, 10 digs at Sam Houston, 8/28/21

**Noa Miller** (1 season, 12 career (6 at Arizona State, 5 at Wofford))

28 assists, 11 digs vs. No. 25 San Diego

**Heipua Tautua'a** (1 season, 1 career)

10 kills, 12 digs vs. No. 25 San Diego

**20+ KILLS IN A MATCH**

Player	2021	Career
Victoria O'Sullivan	0	3

**10+ KILLS IN A MATCH**

Player	2021	Career
Victoria O'Sullivan	11	46
Mikela Labno	3	3
Zoi Faki	4	6
Heipua Tautua'a	2	5
Andrea Walker	0	5
Julia Haynie	0	1

**20+ DIGS IN A MATCH**

Player	2021	Career
Natalie Smith	3	6
Zoi Faki	0	1
Heipua Tautua'a	0	1

**10+ DIGS IN A MATCH**

Player	2021	Career
Natalie Smith	13	42
Heipua Tautua'a	2	8
Noa Miller	1	13
Ashley Vanderpan	1	4
Zoi Faki	1	3
Mikela Labno	1	1
Brooklynn Hill	0	1

**10+ BLOCKS IN A MATCH**

Player	2021	Career
Julia Haynie	0	1

**5+ BLOCKS IN A MATCH**

Player	2021	Career
Julia Haynie	1	7
Andrea Walker	1	6
Victoria O'Sullivan	1	3
Serena Hodson	1	3
Heipua Tautua'a	0	1

**3+ SERVICE ACES IN A MATCH**

Player	2021	Career
Victoria O'Sullivan	2	2
Sara Mukaj	1	1
Natalie Smith	0	4
Brooklynn Hill	0	2
Ashley Vanderpan	0	2
Zoi Faki	0	1
Julia Haynie	0	1
Noa Miller	0	1

- > Meanwhile, Smith played in all 11 sets as well, averaging 4.91 digs (54 overall) to go with six setting assists in her debut event for the Aztecs.
- > In SDSU's 3-0 setback to Houston Baptist on Aug. 27, Smith posted a whopping 27 digs (9.0/set), falling just two short of tying her career-high of 29 scoops at Notre Dame on Sept. 18, 2019, as a member of the Michigan Wolverines.
- > In addition, Smith tied for match-high honors with 16 digs in the weekend finale at Sam Houston.

**WELCOME BACK**

- > Outside hitter Victoria O'Sullivan leads the group of eight Aztec letterwinners who return for the 2021 fall campaign.
- > O'Sullivan earned all-Mountain West honors for the first time in her career last spring after leading the Scarlet and Black with 3.25 kills per set, which ranked seventh in the league. Not to be outdone, the SDSU senior surpassed the double-digit kill plateau in 11 of 15 matches and ranked second on the squad with 32.0 total blocks.
- > O'Sullivan led or tied for the team lead in kills 11 times, including six straight to start the spring. Entering MW play this fall, she has recorded 10 or more kills in 41 of her last 54 appearances dating back to the start of the 2019 campaign.
- > The Aztecs will also look for senior leadership from Andrea Walker after the SDSU middle blocker finished third on the team with an average of 2.09 kills per set and 24.0 total blocks. She helped the Aztecs snap a five-match losing streak last March with season highs of 11 kills and a .529 hitting percentage in a come-from-behind 3-2 victory over Utah State.
- > In addition, San Diego State is expecting continued improvement from sophomore Heipua Tautua'a, who ranked second on the squad with 99 kills and 140 digs (2.86/set) during her first season on The Mesa last spring. The Aztec outside hitter turned in a superlative performance in SDSU's 3-2 upset at Boise State on March 20, finishing with 14 kills, nine digs and a career-high six block assists while hitting at a .462 clip, which marked the Scarlet and Black's highest individual hitting percentage of the year (min. 12 kills).
- > Tautua'a also posted her first collegiate double-double in the Aztecs' 3-2 thriller over Utah State with 11 kills and 11 digs on March 12, after recording a career-high 22 digs in the team's four-set triumph over New Mexico two weeks earlier on Feb. 20.
- > Also back in the mix for the Scarlet and Black this fall are tandem setters Ashley Vanderpan and Kennedy Feuerborn, who combined for 601 kills last spring, which marked the first season of intercollegiate competition for both players.
- > Vanderpan, who sat out the 2019 campaign after transferring from Syracuse, ranked ninth in the MW with a team-high 6.53 assists per set (334 overall) in nine starts as a sophomore last spring. The Elk Grove, California, native also topped the squad with 11 service aces and three double-doubles (assists-digs) while ranking fourth with 78 digs (1.53/set).
- > Vanderpan surpassed the 30-assist plateau in her first four starts, as the Aztecs posted a 3-1 record during that stretch. In a home sweep over New Mexico last February, she combined for 78 assists, dishing out a career-high 40 helpers in the series finale.
- > Feuerborn, meanwhile, earned six starting assignments in 13 appearances during her rookie campaign, averaging 4.0 helpers per set (164 overall). She also finished with 31 kills (0.76/set), 19 digs (0.46/set) and 14 blocks (0.34/set) for the year. Feuerborn racked up double-digit assists on six occasions, including a career-high 27 helpers at UNLV in just her second match on Feb. 5.

**NEW KIDS IN TOWN**

- > San Diego State head coach Brent Hilliard continued to reshape the Aztec roster with the addition of 10 newcomers for the 2021 fall campaign.
- > SDSU's early signing class last November consisted of four incoming freshmen in outside hitter Mikela Labno (Hilmar, Calif.), middle blocker Sara Mukaj (Modena, Italy), setter/opposite Kalani Ruri (Kawerau, New Zealand) and defensive specialist Carsyn Schuch (Phoenix, Ariz.)
- > Over the spring and summer, the Aztecs signed six more players, including four Division I transfers in senior libero Natalie Smith (Michigan), senior outside hitter Zai Faki (Pittsburgh), senior setter Noa Miller (Arizona State) and junior middle blocker Julia Haynie (Portland State).
- > Also eager to put their stamp on the Scarlet and Black this fall are former prep standouts Jordyn Goldsmith (opposite/Valleyford, Wash.) and Reagan Merk (outside hitter/Huntington Beach, Calif.)
- > Smith was a member of three consecutive NCAA Tournament teams at Michigan from 2017-19. In her last season of competition on the Ann Arbor campus in 2019, the Weatherford, Texas, native set career highs in digs (390), assists (102) and service aces (18). Smith also totaled double-digit digs in 21 matches that year, including 20 or more scoops on three occasions.
- > Faki also brings a winning pedigree with her to "America's Finest City" after playing on three NCAA Tournament teams herself at Pittsburgh from 2016-21. Last spring, she contributed to Pitt's longest postseason run in program history, with the Panthers reaching the Elite Eight as the final unseeded team in the field. Faki served up a career-high three aces in Pitt's upset of No. 3 Minnesota in the NCAA Round of 16 last April.
- > Miller will help bolster the Aztecs setter position after competing for Wofford College and Arizona State in 2018 and 2019, respectively. As a freshman at Wofford, she surpassed the 20-assist plateau on eight occasions before compiling six double-doubles (assist-digs) at ASU. An elite club player, Miller led to her Volley One Academy squad to a national championship in 2016, earning MVP honors for her performance.
- > Haynie is a Southern California product who prepped at Chaparral High School in Temecula before starting 44 of 46 matches in two years at Portland State. As a sophomore last spring, the middle blocker ranked 10th in the Big Sky Conference with a .261 hitting percentage and
- > Among the incoming freshmen, Labno was a multi-sport standout at Hilmar (Calif.) High School, where she garnered a trio of all-conference accolades after leading the Yellowjackets to three straight Trans Valley

- League championships, along with a pair of CIF Sac-Joaquin Section Division IV titles. Labno, who also competed in basketball and track & field as a prep, recorded a .311 hitting percentage for her career with an average of 3.48 kills and 1.82 digs to go with 163 total blocks and 80 aces, according to MaxPreps.
- > Mukaj starred for elite clubs over the past five years in her native Italy, including Igor Volley Trecate Novara II and Exacer Montale, leading the latter to a second-place finish in the Italian Serie B1 Group C tournament in 2019. She also another one of her club teams to the 2016-17 Serie C championship and a third-place standing at the Italian national U16 championships. In addition, Mukaj was named MVP and voted best middle blocker in the U16 regional finals that year.
- > Likewise, Ruri was a standout performer for numerous prep and national teams at the junior and senior levels in her home country of New Zealand.

A versatile player with five years of experience as a setter, opposite and right-side hitter, Ruri most recently collected most valuable player honors and earned a spot on the all-tournament team after leading her squad to a gold medal at the New Zealand U19 Inter Provincial Championships in June 2021.

- > Schuch adds depth to the Aztec back row after starring at Deer Valley High School in Phoenix, Arizona, where she garnered 4A West Valley Region Defensive Player of the Year accolades all four years as a prep, earning first-team all-region honors during that span as well. For her career, Schuch tallied 1,742 digs (4.2/sets) along with 176 service aces and 186 assists, according to MaxPreps.
- > Goldsmith also excelled at the prep level at Freeman High School in Rockford, Washington, where she helped her squad to three top-10 state finishes, including a fourth-place showing as a junior in 2019. This past spring, Goldsmith collected 1A Northeast League MVP honors after leading the Scotties to a conference title with an undefeated 9-0 record during an abbreviated 2021 spring season in which her team did not drop a set (36-0). In addition to volleyball, she also won three letters in both basketball and golf during high school, as well as one in tennis.
- > Rounding out the Aztec rookie class is Merk, who was a three-year letterwinner at prep powerhouse Mater Dei High School in Santa Ana, California. During her high school career, Merk amassed 430 kills, 600 digs, 64 total blocks and 44 service aces, according to MaxPreps. She received all-state recognition as a senior in 2019 from Cal-Hi-Sports and earned Under Armour All-America honors.

**PRESEASON PROGNOSTICATIONS**

- > San Diego State was picked to finish sixth this year in the Mountain West preseason coaches poll released on Aug. 18.
- > In the 21-year history of the Mountain West, SDSU has finished first (2012), second (2002, 2011), fourth (2000, 2001, 2003, 2013, 2017), fifth (2005, 2015, 2019), sixth (1999, 2004, 2006, 2009, 2010, 2014, 2016), seventh (2008) and eighth (2007, 2018, 2020) in the final league standings.

**2021 Mountain West Preseason Poll**

Rk.	Team (1st-place votes)	Pts.
1.	UNLV (8)	98
2.	Boise State (2)	90
3.	Colorado State (1)	80
4.	Wyoming	69
5.	Fresno State	61
6.	<b>San Diego State</b>	<b>53</b>
7.	Air Force	46
8.	San José State	41
9.	Utah State	29
10.	New Mexico	26
11.	Nevada	12

**CATCH AZTEC VOLLEYBALL ON THE MOUNTAIN WEST NETWORK**

- > The Mountain West Network is scheduled to stream 19 Aztec volleyball matches during the 2021 fall season. A link to MWN matches will be available on GoAztecs.com.
- > SDSU is slated to live stream eight of its nine remaining home matches, including encounters with defending Mountain West champion UNLV (Oct. 5) along with perennial conference contenders Colorado State (Oct. 21) and Boise State (Oct. 30).
- > In addition, all nine of the Aztecs' conference road matches are scheduled to be streamed live via the MWN.

**ON THE HORIZON**

- > Following Thursday's match vs. Fresno State, San Diego State continues its Mountain West slate next week when it travels to the Gem State for a clash with Boise State on Thursday, Oct. 14, before making a trip over to Utah State on Saturday, Oct. 16. The Aztecs-Broncos match is set for a 7 p.m. MT/6 p.m. PT start, while the SDSU-USU encounter is scheduled to get underway at 1 p.m. MT/noon PT.





# Brent HILLIARD

## Head Coach - Second Season at San Diego State

San Diego State Director of Athletics John David Wicker ushered in a new era for the Aztec volleyball team with the hiring of Brent Hilliard as the fifth head coach in program history on Jan. 31, 2020.

In his first year on The Mesa, Hilliard endured a challenging season fraught with COVID-19 protocols, an abbreviated schedule that was postponed until spring, along with injuries to key players.

However, Hilliard and the Aztecs persevered through the 2021 spring campaign, posting a 6-9 record, highlighted by thrilling victories over Boise State on the road and Colorado State at home in the season finale, respectively. Against the Broncos, SDSU defeated a Boise State team that entered the contest with four consecutive 3-0 sweeps. Two weeks later, the Aztecs snapped an 11-match to the Rams dating back to 2014 and logged their first win over CSU in San Diego since 2012.

Under Hilliard's guidance, Victoria O'Sullivan garnered all-Mountain West accolades for the first time in her career, as the SDSU outside hitter led the squad with 3.25 kills per set, which ranked seventh in the conference. In addition, seniors Lauren Lee and Erin Gillcrst received MW Defensive Player of the Week recognition following the team's aforementioned wins over Boise State and Colorado State, respectively.

Hilliard's Aztecs also excelled in the classroom, with 12 student-athlete earning a spot on the Mountain West all-academic team, including Lauren Lee, who also merited first-team all-District 8 academic honors from the College Sports Information Directors of America (CoSIDA).

A 2018 inductee to the Southern California Indoor Volleyball Hall of Fame, Hilliard arrived at SDSU with a wealth of experience after achieving 19 years of unparalleled success as an assistant coach at the University of San Diego, where he served as the Toreros' associate head coach since 2007.

During his fruitful tenure, the Toreros qualified for the NCAA Tournament in all but one of his 19 seasons, advancing to the Sweet 16 in 2004, 2006, 2013 and 2018. In addition, Hilliard helped guide the Toreros to nine West Coast Conference championships while his players earned six All-America awards, 12 All-America honorable mentions, 44 all-WCC accolades and 15 freshman all-conference certificates.

Hilliard twice assumed the reins of the USD program on an interim basis while head coach Jennifer Petrie was absent on maternity leave. In 2006, Hilliard was honored as WCC Coach of the Year after guiding the Toreros to a conference championship and a Sweet 16 appearance in the NCAA Tournament. That season, he coached five all-conference honorees, including WCC Player of the Year Kristen Carlson, as USD finished 14th in the final USA Today/Coaches Poll.

The Toreros also flourished under Hilliard's guidance in 2011, racing to a 13-0 start en route a program-best 28-5 record, highlighted by a spot in the second round of the NCAA Tournament. Throughout his stint, USD was consistently ranked among the nation's top 25, climbing to as high as No. 2 during the 2013 campaign and rising to No. 5 in 2016.

"I would like to thank John David Wicker, Jenny Bramer, Dr. Adela de la Torre and the rest of the SDSU search committee for making me feel so welcome during the interview process," Hilliard said upon his hiring. "To be the head coach of such a remarkable women's volleyball program in my family's hometown is truly a once in a lifetime opportunity."

"We are fully committed to work tirelessly to elevate this program back to an elite status on the college volleyball landscape, one that the student body, faculty, community, alumni and, of course, all future Aztecs will take great pride in."

Hilliard played collegiately at Long Beach State, earning All-America honors in each of his four years from 1990-93, including first-team recognition over his final three seasons. A right-side hitter for the 49ers, Hilliard was named the NCAA Men's Volleyball Player of the Year as a junior in 1992 after leading LBSU to a 31-1 record.

In 1991, Hilliard and the 49ers captured the NCAA Championship with a 3-1 victory over USC in the finals, avenging a loss to the Trojans in the title match the year before. He finished his career as the NCAA all-time leader with 3,034 kills.

Additionally, Hilliard was selected to play for Team USA in the 1992 Summer Olympics in Barcelona, Spain, where he helped the Americans capture the bronze medal. The following year, he won a silver medal at the 1993 Pan American Games in Argentina and also owns a bronze medal from the 1991 World Cup.

After receiving his undergraduate degree in 1993 from Long Beach State in political science, Hilliard continued his volleyball career as a professional in Europe from 1995-98, playing two seasons in Belgium and another in the Netherlands. In 1996, Hilliard and the Masiek Volleyball Club captured the Belgian national championship and competed in the European Champions League.

In addition to his collegiate experience, which included a stint as head coach at nearby Cuyamaca College in 1999 and 2000, Hilliard has also coached for the past 11 years at Wave Volleyball Club in Del Mar, the premier volleyball club in San Diego County.

"Our priority at SDSU will be to engage, attract and secure exceptional student-athletes that strive for both academic and athletic excellence in their everyday lives," Hilliard added. "From day one, we will set expectations high and build from there. I am incredibly excited to get started and I look forward to the bright future ahead."

### HILLIARD'S COLLEGIATE COACHING LEDGER (As an Assistant at USD)

Year	Overall Record	WCC Record (Finish)	Postseason
2001	22-9	10-4 (3rd)	NCAA Second Round
2002	25-8	10-4 (3rd)	NCAA First Round
2003	17-13	6-8 (T-5th)	NCAA First Round
2004	24-5	14-0 (1st)	NCAA Sweet 16
2005	23-6	10-4 (T-2nd)	NCAA Second Round
2006*	26-6	13-1 (1st)	NCAA Sweet 16
2007	21-8	11-3 (1st)	NCAA First Round
2008	23-5	12-2 (1st)	NCAA First Round
2009	18-7	10-4 (2nd)	None
2010	24-8	13-1 (1st)	NCAA Second Round
2011*	28-5	12-4 (2nd)	NCAA Second Round
2012	21-7	13-3 (T-1st)	NCAA First Round
2013	26-4	16-2 (1st)	NCAA Sweet 16
2014	19-12	12-6 (T-3rd)	NCAA First Round
2015	22-10	14-4 (2nd)	NCAA Second Round
2016	24-6	15-3 (2nd)	NCAA First Round
2017	25-5	17-1 (T-1st)	NCAA Second Round
2018	18-13	13-5 (3rd)	NCAA Sweet 16
2019	25-6	17-1 (1st)	NCAA Second Round
<b>USD Total</b>		<b>431-143 (.751)</b>	
<b>WCC Total</b>		<b>238-60 (.799)</b>	

### As Head Coach at SDSU

Year	Overall Record	MW Record (Finish)	Postseason
2020	6-9	6-9 (8th)	
2021	5-11	2-2	
<b>SDSU Total</b>		<b>11-20 (.355)</b>	
<b>Career as Head Coach</b>		<b>65-31 (.677)</b>	
<b>Overall Total</b>		<b>442-163 (.731)</b>	

#### Notes

- \* - Served as interim head coach during the 2006 and 2011 seasons at USD. Record reflected in career totals.
- > Qualified for the NCAA Tournament in 18 of his 19 seasons at USD
- > Reached the NCAA Sweet 16 four times in 2004, 2006, 2013 and 2018
- > Won nine West Coast Conference championships

# 2021 AZTEC PHOTO ROSTER



**Zoi FAKI**  
OH | 6-1 | Sr. **1**



**Heipua TAUTUA'A**  
OH | 6-2 | So. **2**



**Andrea WALKER**  
MB | 6-0 | Sr. **3**



**Kennedy FEUERBORN**  
S | 6-3 | So. **4**



**Serena HODSON**  
MB | 6-2 | Jr. **5**



**Jordyn GOLDSMITH**  
OPP | 6-1 | Fr. **6**



**Ashley VANDERPAN**  
S | 6-1 | Jr. **7**



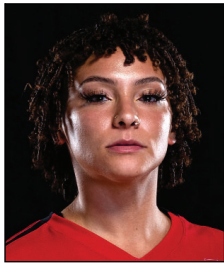
**Natalie SMITH**  
DS/L | 5-7 | Sr. **8**



**Sara MUKAJ**  
MB | 6-3 | Fr. **9**



**Kalani RURI**  
S/OPP | 6-2 | Fr. **10**



**Brooklyn HILL**  
DS/L | 5-8 | Sr. **11**



**Julia HAYNIE**  
MB | 6-1 | Jr. **13**



**Reagan MERK**  
OH | 5-11 | Fr. **14**



**Mikela LABNO**  
OH | 6-2 | Fr. **15**



**Carsyn SCHUCH**  
DS | 5-6 | Fr. **16**



**Nadia BARCKLAY**  
DS/L | 5-2 | So. **17**



**Noa MILLER**  
S | 5-10 | Sr. **19**



**Victoria O'SULLIVAN**  
OH | 6-0 | Sr. **21**



**Brent HILLIARD**  
Head Coach



**Melanie GREENE**  
Assistant Coach/  
Recruiting Coordinator



**STEVE TIMMONS**  
Assistant Coach



**Kara BARKDOLL**  
Volleyball Operations  
Assistant



**2021-22 San Diego St. Women's Volleyball  
Combined Team Statistics  
All games**

as of Oct 04, 2021

**Game Records**

Overall	Conference	Home	Away	Neutral
5 - 11	2 - 2	1 - 3	2 - 5	2 - 3

**Team Box Score**

##	Player	SP	Attack				Set		Serve			Dig		Blocking				PTS				
			K	K/S	E	TA	PCT	A	A/S	SA	SE	SA/S	RE	DIG	DIG/S	BS	BA		TOT/S	BLK/S	BE	BHE
1	Faki, Zoi	37	80	2.16	32	227	.211	4	0.11	3	12	0.08	16	73	1.97	1	6	7	0.19	1	0	87.0
2	Tautua'a, Heipua	50	103	2.06	63	346	.116	19	0.38	5	19	0.10	8	99	1.98	2	21	23	0.46	3	1	120.5
3	Walker, Andrea	16	22	1.38	5	41	.415	2	0.13	0	0	0.00	0	4	0.25	1	17	18	1.13	2	0	31.5
4	Feuerborn, Kennedy	31	9	0.29	5	20	.200	73	2.35	0	1	0.00	0	10	0.32	0	4	4	0.13	1	2	11.0
5	Hodson, Serena	9	12	1.33	6	30	.200	0	0.00	0	0	0.00	0	0	0.00	2	8	10	1.11	1	0	18.0
6	Goldsmith, Jordyn	37	60	1.62	23	142	.261	3	0.08	0	0	0.00	0	19	0.51	1	20	21	0.57	3	1	71.0
7	Vanderpan, Ashley	42	0	0.00	2	6	-.333	186	4.43	8	6	0.19	0	68	1.62	0	1	1	0.02	0	10	8.5
8	Smith, Natalie	54	0	0.00	0	4	.000	40	0.74	8	10	0.15	17	226	4.19	0	0	0	0.00	0	2	8.0
9	Mukaj, Sara	27	16	0.59	4	36	.333	11	0.41	7	7	0.26	0	16	0.59	1	21	22	0.81	2	1	34.5
10	Ruri, Kalani	9	14	1.56	5	31	.290	0	0.00	0	1	0.00	1	3	0.33	0	5	5	0.56	0	0	16.5
11	Hill, Brooklynn	25	0	0.00	0	0	.000	0	0.00	5	10	0.20	0	7	0.28	0	0	0	0.00	0	0	5.0
13	Haynie, Julia	42	49	1.17	25	118	.203	2	0.05	0	3	0.00	1	11	0.26	2	28	30	0.71	3	0	65.0
14	Merk, Reagan	14	23	1.64	9	48	.292	1	0.07	2	8	0.14	0	18	1.29	1	2	3	0.21	0	0	27.0
15	Labno, Mikela	45	96	2.13	49	259	.181	4	0.09	3	11	0.07	11	44	0.98	7	15	22	0.49	0	1	113.5
17	Barcklay, Nadia	3	0	0.00	0	0	.000	0	0.00	1	0	0.33	0	1	0.33	0	0	0	0.00	0	0	1.0
19	Miller, Noa	43	7	0.16	1	17	.353	266	6.19	9	10	0.21	0	74	1.72	0	1	1	0.02	1	3	16.5
21	O'Sullivan, Victoria	51	173	3.39	63	428	.257	6	0.12	7	11	0.14	1	45	0.88	4	25	29	0.57	5	2	196.5
<b>SAN DIEGO ST.</b>		<b>54</b>	<b>664</b>	<b>12.30</b>	<b>292</b>	<b>1753</b>	<b>.212</b>	<b>617</b>	<b>11.43</b>	<b>58</b>	<b>109</b>	<b>1.07</b>	<b>87</b>	<b>718</b>	<b>13.30</b>	<b>22</b>	<b>174</b>	<b>109</b>	<b>2.02</b>	<b>22</b>	<b>23</b>	<b>831.0</b>
<b>Opponents</b>		<b>54</b>	<b>684</b>	<b>12.67</b>	<b>275</b>	<b>1785</b>	<b>.229</b>	<b>633</b>	<b>11.72</b>	<b>87</b>	<b>124</b>	<b>1.61</b>	<b>58</b>	<b>668</b>	<b>12.37</b>	<b>21</b>	<b>222</b>	<b>132</b>	<b>2.44</b>	<b>13</b>	<b>12</b>	<b>903.0</b>

**Team statistics**

	SDSU	OPP
<b>ATTACK</b>		
Kills	664	684
Errors	292	275
Total Attacks	1753	1785
Attack Pct	.212	.229
Kills/Set	12.3	12.7
<b>SET</b>		
Assists	617	633
Attempts	1791	1754
Assist Pct	.345	.361
Assists/Set	11.4	11.7
<b>SERVE</b>		
Aces	58	87
Errors	109	124
Attempts	1155	1210
Serve Pct	.906	.898
Aces/Set	1.1	1.6
<b>SERVE RECEPTIONS</b>		
Errors	87	58
Errors/Set	1.6	1.1
Attempts	1086	1046
Reception Pct	.920	.999
<b>DEFENSE</b>		
Digs	718	668
Digs/Set	13.3	12.4
<b>BLOCKING</b>		
Block solo	22	21
Block Assist	174	222
Total Blocks	109	132
Blocks/Set	2	2.4
Block Errors	22	13
Ball handling errors	23	12
<b>ATTENDANCE</b>		
Total	2026	2997
Dates/Avg Per Date	4/507	7/428
Neutral Site #/Avg	5/58	-
Current win streak	0	-
Home win streak	0	-

**Team Results**

Date	Opponent	Score	Score-by-set	Att.
08/27/2021	vs Houston Baptist	L 0-3	17-25,22-25,16-25	151
08/27/2021	at Sam Houston	L 0-3	18-25,18-25,20-25	228
08/28/2021	at Sam Houston	L 2-3	23-25,25-13,25-14,15-25,9-15	160
09/03/2021	at UC Santa Barbara	W 3-0	25-20,25-19,25-15	200
09/04/2021	vs Pepperdine	L 1-3	19-25,16-25,25-21,18-25	60
09/04/2021	vs Kansas St.	L 1-3	19-25,25-18,23-25,16-25	80
09/10/2021	UCLA	L 0-3	17-25,18-25,13-25	717
09/11/2021	San Diego	L 1-3	25-20,20-25,20-25,18-25	825
09/14/2021	at Long Beach St.	L 0-3	23-25,19-25,23-25	769
09/17/2021	vs Texas Southern	W 3-0	25-17,25-22,25-17	0
09/17/2021	at Arizona	L 0-3	20-25,22-25,15-25	1061
09/18/2021	vs UC Riverside	W 3-0	25-15,25-21,25-19	0
* 09/23/2021	at Nevada	W 3-0	29-27,25-17,25-20	254
* 09/25/2021	at San Jose St.	L 0-3	20-25,21-25,16-25	325
* 09/30/2021	New Mexico	L 1-3	20-25,20-25,25-16,21-25	206
* 10/02/2021	Air Force	W 3-0	26-24,27-25,25-21	278





**2021-22 San Diego St. Women's Volleyball**  
**Individual Match-by-Match**  
**All games**

as of Oct 04, 2021

**#1 FAKI, Zoi**

Date	Opponent	SP	Attack				Set			Serve				Receipt			Blocking				Team				
			K	E	TA	PCT	A	TA	PCT	SA	SE	TA	PCT	RE	TA	PCT	DIG	BS	BA	BE	TOTAL	BHE	POINTS	HIT%	SCORE
08/27/2021	vs Houston Baptist	*3	11	3	33	.242	1	3	.333	0	1	10	.900	1	31	.968	6	0	1	1	1.0	0	11.5	.153	0-3
08/27/2021	at Sam Houston	*3	5	4	20	.050	0	3	.000	0	1	9	.889	0	18	1.000	8	0	0	0	0.0	0	5.0	.029	0-3
08/28/2021	at Sam Houston	*5	14	8	43	.140	0	9	.000	1	3	18	.833	2	24	.917	12	0	1	0	1.0	0	15.5	.230	2-3
09/03/2021	at UC Santa Barbara	*3	12	2	22	.455	0	3	.000	0	0	8	1.000	0	22	1.000	9	0	1	0	1.0	0	12.5	.384	3-0
09/04/2021	vs Pepperdine	*4	5	1	15	.267	1	4	.250	0	1	11	.909	3	21	.857	7	0	2	0	2.0	0	6.0	.242	1-3
09/04/2021	vs Kansas St.	*4	13	3	31	.323	0	6	.000	2	1	13	.923	1	22	.955	7	0	0	0	0.0	0	15.0	.213	1-3
09/10/2021	UCLA	*3	3	4	13	-.077	1	4	.250	0	1	6	.833	1	25	.960	7	0	0	0	0.0	0	3.0	.056	0-3
09/11/2021	San Diego	*4	9	5	28	.143	0	5	.000	0	2	14	.857	4	43	.907	8	1	1	0	2.0	0	10.5	.203	1-3
09/14/2021	at Long Beach St.	*3	8	2	22	.273	0	1	.000	0	1	7	.857	0	10	1.000	8	0	0	0	0.0	0	8.0	.158	0-3
09/25/2021	at San Jose St.	*3	0	0	0	.000	0	0	.000	0	1	10	.900	0	0	.000	1	0	0	0	0.0	0	0.0	.257	0-3
09/30/2021	New Mexico	*2	0	0	0	.000	1	5	.200	0	0	8	1.000	4	12	.667	0	0	0	0	0.0	0	0.0	.168	1-3
<b>Totals</b>		<b>37</b>	<b>80</b>	<b>32</b>	<b>227</b>	<b>.211</b>	<b>4</b>	<b>43</b>	<b>.093</b>	<b>3</b>	<b>12</b>	<b>114</b>	<b>.895</b>	<b>16</b>	<b>228</b>	<b>.930</b>	<b>73</b>	<b>1</b>	<b>6</b>	<b>1</b>	<b>7.0</b>	<b>0</b>	<b>87.0</b>		

**Player Averages**

Sets Played	Kills per set	Assists per set	Service aces per set	Digs per set	Blocks per set	Points per set
37	2.16	0.11	0.08	1.97	0.19	2.35

**#2 TAUTUA'A, Heipua**

Date	Opponent	SP	Attack				Set			Serve				Receipt			Blocking				Team				
			K	E	TA	PCT	A	TA	PCT	SA	SE	TA	PCT	RE	TA	PCT	DIG	BS	BA	BE	TOTAL	BHE	POINTS	HIT%	SCORE
08/27/2021	vs Houston Baptist	*3	6	4	23	.087	1	5	.200	0	4	14	.714	0	19	1.000	5	0	0	0	0.0	0	6.0	.153	0-3
08/27/2021	at Sam Houston	*3	8	5	27	.111	0	3	.000	0	1	8	.875	0	13	1.000	3	0	1	1	1.0	0	8.5	.029	0-3
08/28/2021	at Sam Houston	*5	7	5	32	.063	2	5	.400	0	1	16	.938	0	34	1.000	15	0	1	1	1.0	0	7.5	.230	2-3
09/03/2021	at UC Santa Barbara	*3	11	2	22	.409	2	4	.500	1	1	14	.929	0	9	1.000	6	0	1	0	1.0	0	12.5	.384	3-0
09/04/2021	vs Pepperdine	*4	9	8	32	.031	2	7	.286	0	1	12	.917	1	22	.955	5	0	2	0	2.0	0	10.0	.242	1-3
09/04/2021	vs Kansas St.	*4	4	2	13	.154	1	6	.167	0	2	13	.846	1	13	.923	5	0	3	0	3.0	0	5.5	.213	1-3
09/10/2021	UCLA	*3	7	4	23	.130	1	2	.500	0	0	10	1.000	0	10	1.000	3	0	2	0	2.0	0	8.0	.056	0-3
09/11/2021	San Diego	*4	10	6	27	.148	2	7	.286	1	2	18	.889	0	24	1.000	12	0	2	0	2.0	0	12.0	.203	1-3
09/14/2021	at Long Beach St.	*3	5	2	18	.167	1	3	.333	0	1	7	.857	1	9	.889	6	0	3	0	3.0	0	6.5	.158	0-3
09/17/2021	vs Texas Southern	*2	3	0	19	.158	1	4	.250	0	2	8	.750	1	11	.909	8	0	1	0	1.0	0	3.5	.255	3-0
09/17/2021	at Arizona	*3	3	3	15	.000	0	4	.000	0	0	9	1.000	2	16	.875	4	0	0	0	0.0	0	3.0	.144	0-3
09/23/2021	at Nevada	*3	7	6	18	.056	3	9	.333	2	1	17	.941	0	10	1.000	11	0	3	0	3.0	1	10.5	.245	3-0
09/25/2021	at San Jose St.	*3	6	2	20	.200	0	4	.000	0	1	12	.917	1	8	.875	4	0	0	0	0.0	0	6.0	.257	0-3
09/30/2021	New Mexico	*4	9	10	31	-.032	0	2	.000	0	2	10	.800	0	12	1.000	6	1	1	1	2.0	0	10.5	.168	1-3
10/02/2021	Air Force	*3	8	4	26	.154	3	12	.250	1	0	11	1.000	1	24	.958	6	1	1	0	2.0	0	10.5	.337	3-0
<b>Totals</b>		<b>50</b>	<b>103</b>	<b>63</b>	<b>346</b>	<b>.116</b>	<b>19</b>	<b>77</b>	<b>.247</b>	<b>5</b>	<b>19</b>	<b>179</b>	<b>.894</b>	<b>8</b>	<b>234</b>	<b>.966</b>	<b>99</b>	<b>2</b>	<b>21</b>	<b>3</b>	<b>23.0</b>	<b>1</b>	<b>120.5</b>		

**Player Averages**

Sets Played	Kills per set	Assists per set	Service aces per set	Digs per set	Blocks per set	Points per set
50	2.06	0.38	0.10	1.98	0.46	2.41





2021-22 San Diego St. Women's Volleyball  
Individual Match-by-Match  
All games

as of Oct 04, 2021

#3 WALKER, Andrea

Date	Opponent	SP	Attack				Set			Serve				Recept		Blocking					Team				
			K	E	TA	PCT	A	TA	PCT	SA	SE	TA	PCT	RE	TA	PCT	DIG	BS	BA	BE	TOTAL	BHE	POINTS	HIT%	SCORE
09/17/2021	at Arizona	*3	3	0	8	.375	0	1	.000	0	0	0	.000	0	1	1.000	2	1	1	1	2.0	0	4.5	.144	0-3
09/23/2021	at Nevada	*3	4	1	6	.500	0	0	.000	0	0	0	.000	0	0	.000	0	0	4	0	4.0	0	6.0	.245	3-0
09/25/2021	at San Jose St.	*3	3	0	4	.750	0	0	.000	0	0	0	.000	0	0	.000	0	0	3	0	3.0	0	4.5	.257	0-3
09/30/2021	New Mexico	*4	7	2	11	.455	0	0	.000	0	0	0	.000	0	2	1.000	0	0	6	0	6.0	0	10.0	.168	1-3
10/02/2021	Air Force	*3	5	2	12	.250	2	3	.667	0	0	0	.000	0	1	1.000	2	0	3	1	3.0	0	6.5	.337	3-0
<b>Totals</b>			<b>16</b>	<b>22</b>	<b>5</b>	<b>41</b>	<b>.415</b>	<b>2</b>	<b>4</b>	<b>.500</b>	<b>0</b>	<b>0</b>	<b>0</b>	<b>.000</b>	<b>0</b>	<b>4</b>	<b>1.000</b>	<b>4</b>	<b>1</b>	<b>17</b>	<b>2</b>	<b>18.0</b>	<b>0</b>	<b>31.5</b>	

Player Averages

Sets Played	Kills per set	Assists per set	Service aces per set	Digs per set	Blocks per set	Points per set
16	1.38	0.13	0.00	0.25	1.13	1.97

#4 FEUERBORN, Kennedy

Date	Opponent	SP	Attack				Set			Serve				Recept		Blocking					Team				
			K	E	TA	PCT	A	TA	PCT	SA	SE	TA	PCT	RE	TA	PCT	DIG	BS	BA	BE	TOTAL	BHE	POINTS	HIT%	SCORE
08/27/2021	vs Houston Baptist	3	3	1	4	.500	8	23	.348	0	0	0	.000	0	0	.000	1	0	1	0	1.0	0	3.5	.153	0-3
08/27/2021	at Sam Houston	3	0	0	0	.000	11	41	.268	0	0	0	.000	0	1	1.000	2	0	0	0	0.0	0	0.0	.029	0-3
08/28/2021	at Sam Houston	5	0	0	1	.000	18	56	.321	0	0	0	.000	0	0	.000	5	0	0	0	0.0	0	0.0	.230	2-3
09/04/2021	vs Pepperdine	1	0	0	0	.000	1	2	.500	0	0	0	.000	0	0	.000	1	0	0	0	0.0	0	0.0	.242	1-3
09/04/2021	vs Kansas St.	1	0	0	0	.000	2	2	1.000	0	0	0	.000	0	0	.000	0	0	0	0	0.0	0	0.0	.213	1-3
09/10/2021	UCLA	1	0	0	1	.000	1	7	.143	0	0	0	.000	0	0	.000	0	0	0	0	0.0	0	0.0	.056	0-3
09/11/2021	San Diego	2	0	0	0	.000	2	5	.400	0	0	0	.000	0	0	.000	0	0	0	0	0.0	0	0.0	.203	1-3
09/14/2021	at Long Beach St.	3	3	1	6	.333	7	29	.241	0	0	0	.000	0	0	.000	0	0	1	0	1.0	0	3.5	.158	0-3
09/17/2021	vs Texas Southern	1	0	2	2	-1.000	2	4	.500	0	0	0	.000	0	0	.000	0	0	0	0	0.0	0	0.0	.255	3-0
09/17/2021	at Arizona	3	0	0	0	.000	1	7	.143	0	0	0	.000	0	0	.000	0	0	0	0	0.0	1	0.0	.144	0-3
09/18/2021	vs UC Riverside	1	0	0	0	.000	3	13	.231	0	0	0	.000	0	0	.000	0	0	0	0	0.0	0	0.0	.303	3-0
09/23/2021	at Nevada	1	0	0	0	.000	0	4	.000	0	0	0	.000	0	0	.000	0	0	0	0	0.0	0	0.0	.245	3-0
09/25/2021	at San Jose St.	2	0	0	0	.000	3	9	.333	0	1	2	.500	0	0	.000	0	0	0	0	0.0	1	0.0	.257	0-3
09/30/2021	New Mexico	1	1	1	2	.000	3	6	.500	0	0	0	.000	0	0	.000	0	0	1	0	1.0	0	1.5	.168	1-3
10/02/2021	Air Force	3	2	0	4	.500	11	12	.917	0	0	0	.000	0	0	.000	1	0	1	1	1.0	0	2.5	.337	3-0
<b>Totals</b>			<b>31</b>	<b>9</b>	<b>5</b>	<b>20</b>	<b>.200</b>	<b>73</b>	<b>220</b>	<b>.332</b>	<b>0</b>	<b>1</b>	<b>2</b>	<b>.500</b>	<b>0</b>	<b>1</b>	<b>1.000</b>	<b>10</b>	<b>0</b>	<b>4</b>	<b>1</b>	<b>4.0</b>	<b>2</b>	<b>11.0</b>	

Player Averages

Sets Played	Kills per set	Assists per set	Service aces per set	Digs per set	Blocks per set	Points per set
31	0.29	2.35	0.00	0.32	0.13	0.35

#5 HODSON, Serena

Date	Opponent	SP	Attack				Set			Serve				Recept		Blocking					Team				
			K	E	TA	PCT	A	TA	PCT	SA	SE	TA	PCT	RE	TA	PCT	DIG	BS	BA	BE	TOTAL	BHE	POINTS	HIT%	SCORE
08/27/2021	vs Houston Baptist	*3	3	2	8	.125	0	4	.000	0	0	0	.000	0	1	1.000	0	0	2	0	2.0	0	4.0	.153	0-3
08/27/2021	at Sam Houston	1	0	1	2	-.500	0	0	.000	0	0	0	.000	0	0	.000	0	0	0	0	0.0	0	0.0	.029	0-3
08/28/2021	at Sam Houston	*5	9	3	20	.300	0	2	.000	0	0	0	.000	0	0	.000	0	2	6	1	8.0	0	14.0	.230	2-3
<b>Totals</b>			<b>9</b>	<b>12</b>	<b>6</b>	<b>30</b>	<b>.200</b>	<b>0</b>	<b>6</b>	<b>.000</b>	<b>0</b>	<b>0</b>	<b>0</b>	<b>.000</b>	<b>0</b>	<b>1</b>	<b>1.000</b>	<b>0</b>	<b>2</b>	<b>8</b>	<b>1</b>	<b>10.0</b>	<b>0</b>	<b>18.0</b>	

Player Averages

Sets Played	Kills per set	Assists per set	Service aces per set	Digs per set	Blocks per set	Points per set
9	1.33	0.00	0.00	0.00	1.11	2.00



2021-22 San Diego St. Women's Volleyball  
Individual Match-by-Match  
All games

as of Oct 04, 2021

#6 GOLDSMITH, Jordyn

Date	Opponent	SP	Attack				Set			Serve				Recept			Blocking				Team				
			K	E	TA	PCT	A	TA	PCT	SA	SE	TA	PCT	RE	TA	PCT	DIG	BS	BA	BE	TOTAL	BHE	POINTS	HIT%	SCORE
08/27/2021	at Sam Houston	3	5	1	12	.333	0	1	.000	0	0	0	.000	0	0	.000	1	0	0	0	0.0	0	5.0	.029	0-3
08/28/2021	at Sam Houston	5	7	3	19	.211	0	1	.000	0	0	0	.000	0	0	.000	3	0	3	1	3.0	0	8.5	.230	2-3
09/04/2021	vs Pepperdine	2	7	2	13	.385	1	2	.500	0	0	0	.000	0	0	.000	1	0	1	1	1.0	0	7.5	.242	1-3
09/04/2021	vs Kansas St.	1	2	3	6	-.167	0	0	.000	0	0	0	.000	0	0	.000	0	0	0	0	0.0	0	2.0	.213	1-3
09/10/2021	UCLA	1	0	0	0	.000	0	0	.000	0	0	0	.000	0	0	.000	0	0	0	0	0.0	0	0.0	.056	0-3
09/14/2021	at Long Beach St.	*3	2	2	7	.000	1	1	1.000	0	0	0	.000	0	0	.000	1	1	3	0	4.0	0	4.5	.158	0-3
09/17/2021	vs Texas Southern	*3	3	3	6	.000	0	1	.000	0	0	1	1.000	0	0	.000	1	0	1	0	1.0	0	3.5	.255	3-0
09/17/2021	at Arizona	3	5	4	21	.048	1	1	1.000	0	0	0	.000	0	0	.000	3	0	1	0	1.0	0	5.5	.144	0-3
09/18/2021	vs UC Riverside	*3	3	1	7	.286	0	1	.000	0	0	0	.000	0	0	.000	0	0	4	0	4.0	1	5.0	.303	3-0
09/23/2021	at Nevada	3	4	1	13	.231	0	0	.000	0	0	0	.000	0	0	.000	2	0	3	0	3.0	0	5.5	.245	3-0
09/25/2021	at San Jose St.	3	9	2	18	.389	0	0	.000	0	0	0	.000	0	0	.000	2	0	1	0	1.0	0	9.5	.257	0-3
09/30/2021	New Mexico	*4	6	1	9	.556	0	0	.000	0	0	0	.000	0	0	.000	3	0	2	0	2.0	0	7.0	.168	1-3
10/02/2021	Air Force	*3	7	0	11	.636	0	2	.000	0	0	1	1.000	0	0	.000	2	0	1	1	1.0	0	7.5	.337	3-0
<b>Totals</b>		<b>37</b>	<b>60</b>	<b>23</b>	<b>142</b>	<b>.261</b>	<b>3</b>	<b>10</b>	<b>.300</b>	<b>0</b>	<b>0</b>	<b>2</b>	<b>1.000</b>	<b>0</b>	<b>0</b>	<b>.000</b>	<b>19</b>	<b>1</b>	<b>20</b>	<b>3</b>	<b>21.0</b>	<b>1</b>	<b>71.0</b>		

Player Averages

Sets Played	Kills per set	Assists per set	Service aces per set	Digs per set	Blocks per set	Points per set
37	1.62	0.08	0.00	0.51	0.57	1.92

#7 VANDERPAN, Ashley

Date	Opponent	SP	Attack				Set			Serve				Recept			Blocking				Team				
			K	E	TA	PCT	A	TA	PCT	SA	SE	TA	PCT	RE	TA	PCT	DIG	BS	BA	BE	TOTAL	BHE	POINTS	HIT%	SCORE
08/27/2021	vs Houston Baptist	*3	0	0	1	.000	19	64	.297	1	1	10	.900	0	0	.000	4	0	0	0	0.0	3	1.0	.153	0-3
08/27/2021	at Sam Houston	*3	0	0	0	.000	15	46	.326	1	0	8	1.000	0	0	.000	7	0	0	0	0.0	0	1.0	.029	0-3
08/28/2021	at Sam Houston	*5	0	0	0	.000	26	69	.377	2	1	16	.938	0	0	.000	10	0	0	0	0.0	1	2.0	.230	2-3
09/03/2021	at UC Santa Barbara	3	0	0	1	.000	13	27	.481	0	0	12	1.000	0	0	.000	6	0	0	0	0.0	1	0.0	.384	3-0
09/04/2021	vs Pepperdine	3	0	0	1	.000	14	32	.438	1	0	15	1.000	0	0	.000	6	0	1	0	1.0	1	1.5	.242	1-3
09/04/2021	vs Kansas St.	3	0	2	2	-1.000	14	30	.467	0	2	7	.714	0	1	1.000	6	0	0	0	0.0	0	0.0	.213	1-3
09/10/2021	UCLA	2	0	0	0	.000	6	20	.300	0	0	4	1.000	0	0	.000	1	0	0	0	0.0	0	0.0	.056	0-3
09/11/2021	San Diego	4	0	0	0	.000	18	47	.383	0	0	13	1.000	0	0	.000	5	0	0	0	0.0	1	0.0	.203	1-3
09/17/2021	vs Texas Southern	2	0	0	0	.000	8	17	.471	0	0	13	1.000	0	0	.000	4	0	0	0	0.0	0	0.0	.255	3-0
09/17/2021	at Arizona	3	0	0	0	.000	14	34	.412	0	0	9	1.000	0	0	.000	2	0	0	0	0.0	0	0.0	.144	0-3
09/18/2021	vs UC Riverside	3	0	0	1	.000	7	22	.318	2	0	16	1.000	0	0	.000	3	0	0	0	0.0	0	2.0	.303	3-0
09/23/2021	at Nevada	3	0	0	0	.000	15	36	.417	1	1	12	.917	0	0	.000	6	0	0	0	0.0	2	1.0	.245	3-0
09/25/2021	at San Jose St.	3	0	0	0	.000	10	31	.323	0	1	6	.833	0	0	.000	5	0	0	0	0.0	1	0.0	.257	0-3
09/30/2021	New Mexico	2	0	0	0	.000	7	16	.438	0	0	8	1.000	0	0	.000	3	0	0	0	0.0	0	0.0	.168	1-3
<b>Totals</b>		<b>42</b>	<b>0</b>	<b>2</b>	<b>6</b>	<b>-.333</b>	<b>186</b>	<b>491</b>	<b>.379</b>	<b>8</b>	<b>6</b>	<b>149</b>	<b>.960</b>	<b>0</b>	<b>1</b>	<b>1.000</b>	<b>68</b>	<b>0</b>	<b>1</b>	<b>0</b>	<b>1.0</b>	<b>10</b>	<b>8.5</b>		

Player Averages

Sets Played	Kills per set	Assists per set	Service aces per set	Digs per set	Blocks per set	Points per set
42	0.00	4.43	0.19	1.62	0.02	0.20



**2021-22 San Diego St. Women's Volleyball  
Individual Match-by-Match  
All games**

as of Oct 04, 2021

**#8 SMITH, Natalie**

Date	Opponent	SP	Attack				Set			Serve				Receipt			Blocking					Team			
			K	E	TA	PCT	A	TA	PCT	SA	SE	TA	PCT	RE	TA	PCT	DIG	BS	BA	BE	TOTAL	BHE	POINTS	HIT%	SCORE
08/27/2021	vs Houston Baptist	3	0	0	1	.000	3	10	.300	0	0	9	1.000	0	12	1.000	27	0	0	0	0.0	0	0.0	.153	0-3
08/27/2021	at Sam Houston	3	0	0	1	.000	1	6	.167	0	0	5	1.000	1	20	.950	11	0	0	0	0.0	0	0.0	.029	0-3
08/28/2021	at Sam Houston	5	0	0	0	.000	2	11	.182	0	1	13	.923	2	26	.923	16	0	0	0	0.0	0	0.0	.230	2-3
09/03/2021	at UC Santa Barbara	3	0	0	0	.000	5	13	.385	0	0	18	1.000	1	18	.944	11	0	0	0	0.0	0	0.0	.384	3-0
09/04/2021	vs Pepperdine	4	0	0	0	.000	4	15	.267	0	0	10	1.000	2	24	.917	17	0	0	0	0.0	0	0.0	.242	1-3
09/04/2021	vs Kansas St.	4	0	0	0	.000	2	13	.154	1	0	16	1.000	3	30	.900	9	0	0	0	0.0	0	1.0	.213	1-3
09/10/2021	UCLA	3	0	0	0	.000	0	6	.000	2	2	9	.778	2	18	.889	11	0	0	0	0.0	0	2.0	.056	0-3
09/11/2021	San Diego	4	0	0	0	.000	4	16	.250	0	2	17	.882	0	17	1.000	21	0	0	0	0.0	0	0.0	.203	1-3
09/14/2021	at Long Beach St.	3	0	0	0	.000	4	6	.667	1	0	12	1.000	3	33	.909	14	0	0	0	0.0	0	1.0	.158	0-3
09/17/2021	vs Texas Southern	3	0	0	1	.000	3	17	.176	0	2	13	.846	0	10	1.000	14	0	0	0	0.0	0	0.0	.255	3-0
09/17/2021	at Arizona	3	0	0	0	.000	3	9	.333	1	1	10	.900	0	13	1.000	13	0	0	0	0.0	0	1.0	.144	0-3
09/18/2021	vs UC Riverside	3	0	0	0	.000	4	8	.500	0	0	7	1.000	0	14	1.000	22	0	0	0	0.0	1	0.0	.303	3-0
09/23/2021	at Nevada	3	0	0	1	.000	1	7	.143	2	0	16	1.000	0	15	1.000	13	0	0	0	0.0	1	2.0	.245	3-0
09/25/2021	at San Jose St.	3	0	0	0	.000	2	7	.286	0	1	13	.923	1	19	.947	6	0	0	0	0.0	0	0.0	.257	0-3
09/30/2021	New Mexico	4	0	0	0	.000	0	5	.000	1	1	14	.929	2	20	.900	13	0	0	0	0.0	0	1.0	.168	1-3
10/02/2021	Air Force	3	0	0	0	.000	2	14	.143	0	0	10	1.000	0	11	1.000	8	0	0	0	0.0	0	0.0	.337	3-0
<b>Totals</b>		<b>54</b>	<b>0</b>	<b>0</b>	<b>4</b>	<b>.000</b>	<b>40</b>	<b>163</b>	<b>.245</b>	<b>8</b>	<b>10</b>	<b>192</b>	<b>.948</b>	<b>17</b>	<b>300</b>	<b>.943</b>	<b>226</b>	<b>0</b>	<b>0</b>	<b>0</b>	<b>0.0</b>	<b>2</b>	<b>8.0</b>		

**Player Averages**

Sets Played	Kills per set	Assists per set	Service aces per set	Digs per set	Blocks per set	Points per set
54	0.00	0.74	0.15	4.19	0.00	0.15

**#9 MUKAJ, Sara**

Date	Opponent	SP	Attack				Set			Serve				Receipt			Blocking					Team			
			K	E	TA	PCT	A	TA	PCT	SA	SE	TA	PCT	RE	TA	PCT	DIG	BS	BA	BE	TOTAL	BHE	POINTS	HIT%	SCORE
08/27/2021	vs Houston Baptist	1	0	1	2	-.500	0	1	.000	0	0	1	1.000	0	0	.000	0	0	0	0	0.0	0	0.0	.153	0-3
08/27/2021	at Sam Houston	*3	1	2	7	-.143	0	2	.000	4	0	13	1.000	0	0	.000	4	0	1	0	1.0	0	5.5	.029	0-3
08/28/2021	at Sam Houston	*5	7	0	11	.636	3	7	.429	1	2	22	.909	0	0	.000	5	0	4	0	4.0	1	10.0	.230	2-3
09/03/2021	at UC Santa Barbara	*3	1	1	3	.000	4	5	.800	0	1	11	.909	0	0	.000	2	1	3	0	4.0	0	3.5	.384	3-0
09/04/2021	vs Pepperdine	*4	1	0	3	.333	2	4	.500	0	0	12	1.000	0	0	.000	4	0	4	1	4.0	0	3.0	.242	1-3
09/04/2021	vs Kansas St.	*4	2	0	4	.500	0	4	.000	1	1	16	.938	0	0	.000	0	0	3	0	3.0	0	4.5	.213	1-3
09/10/2021	UCLA	*3	0	0	1	.000	1	1	1.000	0	1	6	.833	0	0	.000	0	0	3	1	3.0	0	1.5	.056	0-3
09/11/2021	San Diego	*4	4	0	5	.800	1	5	.200	1	2	10	.800	0	0	.000	1	0	3	0	3.0	0	6.5	.203	1-3
<b>Totals</b>		<b>27</b>	<b>16</b>	<b>4</b>	<b>36</b>	<b>.333</b>	<b>11</b>	<b>29</b>	<b>.379</b>	<b>7</b>	<b>7</b>	<b>91</b>	<b>.923</b>	<b>0</b>	<b>0</b>	<b>.000</b>	<b>16</b>	<b>1</b>	<b>21</b>	<b>2</b>	<b>22.0</b>	<b>1</b>	<b>34.5</b>		

**Player Averages**

Sets Played	Kills per set	Assists per set	Service aces per set	Digs per set	Blocks per set	Points per set
27	0.59	0.41	0.26	0.59	0.81	1.28



2021-22 San Diego St. Women's Volleyball  
Individual Match-by-Match  
All games

#10 RURI, Kalani

Date	Opponent	SP	Attack				Set			Serve				Receipt			Blocking				Team				
			K	E	TA	PCT	A	TA	PCT	SA	SE	TA	PCT	RE	TA	PCT	DIG	BS	BA	BE	TOTAL	BHE	POINTS	HIT%	SCORE
08/27/2021	vs Houston Baptist	1	0	0	0	.000	0	0	.000	0	1	2	.500	0	0	.000	1	0	0	0	0.0	0	0.0	.153	0-3
09/17/2021	vs Texas Southern	2	5	0	9	.556	0	2	.000	0	0	0	.000	0	0	.000	0	0	2	0	2.0	0	6.0	.255	3-0
09/18/2021	vs UC Riverside	3	7	2	13	.385	0	0	.000	0	0	0	.000	0	0	.000	2	0	2	0	2.0	0	8.0	.303	3-0
09/25/2021	at San Jose St.	1	1	1	3	.000	0	0	.000	0	0	0	.000	1	1	.000	0	0	0	0	0.0	0	1.0	.257	0-3
09/30/2021	New Mexico	2	1	2	6	.167	0	0	.000	0	0	0	.000	0	0	.000	0	0	1	0	1.0	0	1.5	.168	1-3
<b>Totals</b>		<b>9</b>	<b>14</b>	<b>5</b>	<b>31</b>	<b>.290</b>	<b>0</b>	<b>2</b>	<b>.000</b>	<b>0</b>	<b>1</b>	<b>2</b>	<b>.500</b>	<b>1</b>	<b>1</b>	<b>.000</b>	<b>3</b>	<b>0</b>	<b>5</b>	<b>0</b>	<b>5.0</b>	<b>0</b>	<b>16.5</b>		

Player Averages

Sets Played	Kills per set	Assists per set	Service aces per set	Digs per set	Blocks per set	Points per set
9	1.56	0.00	0.00	0.33	0.56	1.83

#11 HILL, Brooklynn

Date	Opponent	SP	Attack				Set			Serve				Receipt			Blocking				Team				
			K	E	TA	PCT	A	TA	PCT	SA	SE	TA	PCT	RE	TA	PCT	DIG	BS	BA	BE	TOTAL	BHE	POINTS	HIT%	SCORE
09/04/2021	vs Kansas St.	2	0	0	0	.000	0	1	.000	0	0	0	.000	0	4	1.000	1	0	0	0	0.0	0	0.0	.213	1-3
09/10/2021	UCLA	1	0	0	0	.000	0	0	.000	0	0	1	1.000	0	4	1.000	0	0	0	0	0.0	0	0.0	.056	0-3
09/14/2021	at Long Beach St.	3	0	0	0	.000	0	0	.000	1	2	10	.800	0	0	.000	1	0	0	0	0.0	0	1.0	.158	0-3
09/17/2021	vs Texas Southern	3	0	0	0	.000	0	1	.000	1	1	6	.833	0	0	.000	0	0	0	0	0.0	0	1.0	.255	3-0
09/17/2021	at Arizona	3	0	0	0	.000	0	0	.000	1	2	8	.750	0	0	.000	0	0	0	0	0.0	0	1.0	.144	0-3
09/18/2021	vs UC Riverside	3	0	0	0	.000	0	1	.000	0	1	13	.923	0	0	.000	3	0	0	0	0.0	0	0.0	.303	3-0
09/23/2021	at Nevada	3	0	0	0	.000	0	0	.000	1	1	10	.900	0	0	.000	0	0	0	0	0.0	0	1.0	.245	3-0
09/30/2021	New Mexico	4	0	0	0	.000	0	0	.000	0	2	17	.882	0	0	.000	1	0	0	0	0.0	0	0.0	.168	1-3
10/02/2021	Air Force	3	0	0	0	.000	0	2	.000	1	1	13	.923	0	0	.000	1	0	0	0	0.0	0	1.0	.337	3-0
<b>Totals</b>		<b>25</b>	<b>0</b>	<b>0</b>	<b>0</b>	<b>.000</b>	<b>0</b>	<b>5</b>	<b>.000</b>	<b>5</b>	<b>10</b>	<b>78</b>	<b>.872</b>	<b>0</b>	<b>8</b>	<b>1.000</b>	<b>7</b>	<b>0</b>	<b>0</b>	<b>0</b>	<b>0.0</b>	<b>0</b>	<b>5.0</b>		

Player Averages

Sets Played	Kills per set	Assists per set	Service aces per set	Digs per set	Blocks per set	Points per set
25	0.00	0.00	0.20	0.28	0.00	0.20





2021-22 San Diego St. Women's Volleyball  
Individual Match-by-Match  
All games

as of Oct 04, 2021

#13 HAYNIE, Julia

Date	Opponent	SP	Attack				Set			Serve				Receipt			Blocking					Team			
			K	E	TA	PCT	A	TA	PCT	SA	SE	TA	PCT	RE	TA	PCT	DIG	BS	BA	BE	TOTAL	BHE	POINTS	HIT%	SCORE
08/27/2021	vs Houston Baptist	*3	6	2	9	.444	0	0	.000	0	2	3	.333	0	0	.000	1	0	0	0	0.0	0	6.0	.153	0-3
08/27/2021	at Sam Houston	*3	2	3	9	-.111	1	1	1.000	0	0	1	1.000	0	1	1.000	1	0	2	0	2.0	0	3.0	.029	0-3
09/03/2021	at UC Santa Barbara	*3	3	0	4	.750	0	0	.000	0	0	0	.000	0	0	.000	1	0	2	0	2.0	0	4.0	.384	3-0
09/04/2021	vs Pepperdine	*4	2	0	5	.400	0	0	.000	0	0	0	.000	0	0	.000	1	0	4	0	4.0	0	4.0	.242	1-3
09/04/2021	vs Kansas St.	*4	3	2	6	.167	0	1	.000	0	0	0	.000	0	1	1.000	1	1	1	0	2.0	0	4.5	.213	1-3
09/10/2021	UCLA	*3	3	5	13	-.154	0	1	.000	0	0	0	.000	0	1	1.000	0	0	3	1	3.0	0	4.5	.056	0-3
09/11/2021	San Diego	*4	4	4	12	.000	0	2	.000	0	0	0	.000	0	0	.000	1	0	1	1	1.0	0	4.5	.203	1-3
09/14/2021	at Long Beach St.	*3	2	2	12	.000	0	0	.000	0	0	0	.000	0	0	.000	1	0	3	1	3.0	0	3.5	.158	0-3
09/17/2021	vs Texas Southern	*3	6	1	11	.455	1	3	.333	0	0	1	1.000	0	2	1.000	2	0	4	0	4.0	0	8.0	.255	3-0
09/17/2021	at Arizona	*3	1	1	2	.000	0	1	.000	0	1	1	.000	0	0	.000	0	0	0	0	0.0	0	1.0	.144	0-3
09/18/2021	vs UC Riverside	*3	6	1	11	.455	0	1	.000	0	0	1	1.000	0	0	.000	0	1	3	0	4.0	0	8.5	.303	3-0
09/23/2021	at Nevada	*3	8	2	14	.429	0	2	.000	0	0	0	.000	0	1	1.000	1	0	5	0	5.0	0	10.5	.245	3-0
09/25/2021	at San Jose St.	*3	3	2	10	.100	0	1	.000	0	0	0	.000	1	3	.667	1	0	0	0	0.0	0	3.0	.257	0-3
<b>Totals</b>			<b>42</b>	<b>49</b>	<b>25</b>	<b>118</b>	<b>.203</b>	<b>2</b>	<b>13</b>	<b>.154</b>	<b>0</b>	<b>3</b>	<b>7</b>	<b>.571</b>	<b>1</b>	<b>9</b>	<b>.889</b>	<b>11</b>	<b>2</b>	<b>28</b>	<b>3</b>	<b>30.0</b>	<b>0</b>	<b>65.0</b>	

Player Averages

Sets Played	Kills per set	Assists per set	Service aces per set	Digs per set	Blocks per set	Points per set
42	1.17	0.05	0.00	0.26	0.71	1.55

#14 MERK, Reagan

Date	Opponent	SP	Attack				Set			Serve				Receipt			Blocking					Team			
			K	E	TA	PCT	A	TA	PCT	SA	SE	TA	PCT	RE	TA	PCT	DIG	BS	BA	BE	TOTAL	BHE	POINTS	HIT%	SCORE
08/27/2021	at Sam Houston	1	0	0	0	.000	0	0	.000	2	0	3	1.000	0	0	.000	0	0	0	0	0.0	0	2.0	.029	0-3
09/10/2021	UCLA	1	1	0	1	1.000	0	0	.000	0	0	2	1.000	0	0	.000	0	0	0	0	0.0	0	1.0	.056	0-3
09/14/2021	at Long Beach St.	1	5	0	7	.714	1	2	.500	0	1	3	.667	0	3	1.000	0	0	0	0	0.0	0	5.0	.158	0-3
09/17/2021	vs Texas Southern	3	7	2	13	.385	0	0	.000	0	3	6	.500	0	8	1.000	6	0	0	0	0.0	0	7.0	.255	3-0
09/17/2021	at Arizona	2	2	0	6	.333	0	1	.000	0	1	5	.800	0	16	1.000	5	0	0	0	0.0	0	2.0	.144	0-3
09/18/2021	vs UC Riverside	*3	7	7	20	.000	0	6	.000	0	3	8	.625	0	17	1.000	6	1	2	0	3.0	0	9.0	.303	3-0
09/23/2021	at Nevada	1	0	0	0	.000	0	0	.000	0	0	2	1.000	0	1	1.000	0	0	0	0	0.0	0	0.0	.245	3-0
10/02/2021	Air Force	2	1	0	1	1.000	0	1	.000	0	0	0	.000	0	0	.000	1	0	0	0	0.0	0	1.0	.337	3-0
<b>Totals</b>			<b>14</b>	<b>23</b>	<b>9</b>	<b>48</b>	<b>.292</b>	<b>1</b>	<b>10</b>	<b>.100</b>	<b>2</b>	<b>8</b>	<b>29</b>	<b>.724</b>	<b>0</b>	<b>45</b>	<b>1.000</b>	<b>18</b>	<b>1</b>	<b>2</b>	<b>0</b>	<b>3.0</b>	<b>0</b>	<b>27.0</b>	

Player Averages

Sets Played	Kills per set	Assists per set	Service aces per set	Digs per set	Blocks per set	Points per set
14	1.64	0.07	0.14	1.29	0.21	1.93



**2021-22 San Diego St. Women's Volleyball  
Individual Match-by-Match  
All games**

as of Oct 04, 2021

**#15 LABNO, Mikela**

Date	Opponent	SP	Attack				Set			Serve				Receipt			Blocking				Team				
			K	E	TA	PCT	A	TA	PCT	SA	SE	TA	PCT	RE	TA	PCT	DIG	BS	BA	BE	TOTAL	BHE	POINTS	HIT%	SCORE
08/27/2021	at Sam Houston	1	0	1	1	-1.000	0	0	.000	0	0	1	1.000	0	5	1.000	1	0	0	0	0.0	0	0.0	.029	0-3
08/28/2021	at Sam Houston	1	1	0	1	1.000	0	0	.000	0	0	0	.000	0	0	.000	0	0	0	0	0.0	0	1.0	.230	2-3
09/03/2021	at UC Santa Barbara	3	7	5	18	.111	0	0	.000	0	0	0	.000	0	0	.000	0	0	1	0	1.0	0	7.5	.384	3-0
09/04/2021	vs Pepperdine	4	13	1	23	.522	0	0	.000	0	0	5	1.000	1	11	.909	1	0	1	0	1.0	0	13.5	.242	1-3
09/04/2021	vs Kansas St.	4	9	4	24	.208	0	1	.000	0	0	2	1.000	0	11	1.000	2	0	0	0	0.0	0	9.0	.213	1-3
09/10/2021	UCLA	3	4	4	11	.000	0	1	.000	0	0	1	1.000	0	6	1.000	0	0	2	0	2.0	0	5.0	.056	0-3
09/11/2021	San Diego	4	11	8	33	.091	0	0	.000	0	0	0	.000	0	3	1.000	0	2	1	0	3.0	0	13.5	.203	1-3
09/14/2021	at Long Beach St.	*3	3	4	20	-.050	0	0	.000	2	0	13	1.000	1	6	.833	6	1	2	0	3.0	0	7.0	.158	0-3
09/17/2021	vs Texas Southern	*3	5	3	16	.125	2	2	1.000	0	2	6	.667	2	16	.875	3	1	1	0	2.0	0	6.5	.255	3-0
09/17/2021	at Arizona	*3	6	7	17	-.059	0	3	.000	0	1	5	.800	1	18	.944	3	0	2	0	2.0	0	7.0	.144	0-3
09/18/2021	vs UC Riverside	*3	5	1	19	.211	1	4	.250	1	0	16	1.000	0	18	1.000	13	0	0	0	0.0	1	6.0	.303	3-0
09/23/2021	at Nevada	*3	7	3	21	.190	0	1	.000	0	1	9	.889	3	31	.903	6	1	2	0	3.0	0	9.0	.245	3-0
09/25/2021	at San Jose St.	*3	7	5	21	.095	0	2	.000	0	3	9	.667	0	31	1.000	3	0	0	0	0.0	0	7.0	.257	0-3
09/30/2021	New Mexico	*4	8	2	15	.400	1	1	1.000	0	2	7	.714	2	32	.938	3	1	3	0	4.0	0	10.5	.168	1-3
10/02/2021	Air Force	*3	10	1	19	.474	0	13	.000	0	2	15	.867	1	28	.964	3	1	0	0	1.0	0	11.0	.337	3-0
<b>Totals</b>		<b>45</b>	<b>96</b>	<b>49</b>	<b>259</b>	<b>.181</b>	<b>4</b>	<b>28</b>	<b>.143</b>	<b>3</b>	<b>11</b>	<b>89</b>	<b>.876</b>	<b>11</b>	<b>216</b>	<b>.949</b>	<b>44</b>	<b>7</b>	<b>15</b>	<b>0</b>	<b>22.0</b>	<b>1</b>	<b>113.5</b>		

**Player Averages**

Sets Played	Kills per set	Assists per set	Service aces per set	Digs per set	Blocks per set	Points per set
45	2.13	0.09	0.07	0.98	0.49	2.52

**#17 BARCKLAY, Nadia**

Date	Opponent	SP	Attack				Set			Serve				Receipt			Blocking				Team				
			K	E	TA	PCT	A	TA	PCT	SA	SE	TA	PCT	RE	TA	PCT	DIG	BS	BA	BE	TOTAL	BHE	POINTS	HIT%	SCORE
08/27/2021	vs Houston Baptist	2	0	0	0	.000	0	0	.000	0	0	2	1.000	0	0	.000	1	0	0	0	0.0	0	0.0	.153	0-3
09/18/2021	vs UC Riverside	1	0	0	0	.000	0	0	.000	1	0	2	1.000	0	1	1.000	0	0	0	0	0.0	0	1.0	.303	3-0
<b>Totals</b>		<b>3</b>	<b>0</b>	<b>0</b>	<b>0</b>	<b>.000</b>	<b>0</b>	<b>0</b>	<b>.000</b>	<b>1</b>	<b>0</b>	<b>4</b>	<b>1.000</b>	<b>0</b>	<b>1</b>	<b>1.000</b>	<b>1</b>	<b>0</b>	<b>0</b>	<b>0</b>	<b>0.0</b>	<b>0</b>	<b>1.0</b>		

**Player Averages**

Sets Played	Kills per set	Assists per set	Service aces per set	Digs per set	Blocks per set	Points per set
3	0.00	0.00	0.33	0.33	0.00	0.33



**2021-22 San Diego St. Women's Volleyball  
Individual Match-by-Match  
All games**

as of Oct 04, 2021

**#19 MILLER, Noa**

Date	Opponent	SP	Attack				Set			Serve				Recept			Blocking				Team				
			K	E	TA	PCT	A	TA	PCT	SA	SE	TA	PCT	RE	TA	PCT	DIG	BS	BA	BE	TOTAL	BHE	POINTS	HIT%	SCORE
09/03/2021	at UC Santa Barbara	*3	0	0	2	.000	22	45	.489	0	0	11	1.000	0	0	.000	7	0	0	0	0.0	0	0.0	.384	3-0
09/04/2021	vs Pepperdine	*4	0	0	1	.000	19	53	.358	0	0	11	1.000	0	0	.000	4	0	0	0	0.0	0	0.0	.242	1-3
09/04/2021	vs Kansas St.	*4	1	0	2	.500	25	66	.379	0	0	14	1.000	0	0	.000	7	0	1	0	1.0	0	1.5	.213	1-3
09/10/2021	UCLA	*3	0	0	2	.000	17	50	.340	0	1	10	.900	0	1	1.000	3	0	0	0	0.0	1	0.0	.056	0-3
09/11/2021	San Diego	*4	0	0	0	.000	28	67	.418	2	0	12	1.000	0	0	.000	11	0	0	0	0.0	0	2.0	.203	1-3
09/14/2021	at Long Beach St.	*3	1	1	3	.000	10	43	.233	1	1	14	.929	0	0	.000	2	0	0	1	0.0	0	2.0	.158	0-3
09/17/2021	vs Texas Southern	*3	2	0	3	.667	20	51	.392	1	1	16	.938	0	0	.000	7	0	0	0	0.0	0	3.0	.255	3-0
09/17/2021	at Arizona	*3	0	0	0	.000	10	40	.250	1	1	11	.909	0	0	.000	6	0	0	0	0.0	1	1.0	.144	0-3
09/18/2021	vs UC Riverside	*3	1	0	2	.500	26	56	.464	1	1	10	.900	0	0	.000	5	0	0	0	0.0	1	2.0	.303	3-0
09/23/2021	at Nevada	*3	0	0	0	.000	19	49	.388	1	2	12	.833	0	0	.000	3	0	0	0	0.0	0	1.0	.245	3-0
09/25/2021	at San Jose St.	*3	0	0	0	.000	17	39	.436	0	0	7	1.000	0	1	1.000	5	0	0	0	0.0	0	0.0	.257	0-3
09/30/2021	New Mexico	*4	2	0	2	1.000	28	74	.378	1	0	12	1.000	0	0	.000	6	0	0	0	0.0	0	3.0	.168	1-3
10/02/2021	Air Force	*3	0	0	0	.000	25	29	.862	1	3	12	.750	0	0	.000	8	0	0	0	0.0	0	1.0	.337	3-0
<b>Totals</b>			<b>43</b>	<b>7</b>	<b>1</b>	<b>17</b>	<b>.353</b>	<b>266</b>	<b>662</b>	<b>.402</b>	<b>9</b>	<b>10</b>	<b>152</b>	<b>.934</b>	<b>0</b>	<b>2</b>	<b>1.000</b>	<b>74</b>	<b>0</b>	<b>1</b>	<b>1</b>	<b>1.0</b>	<b>3</b>	<b>16.5</b>	

**Player Averages**

Sets Played	Kills per set	Assists per set	Service aces per set	Digs per set	Blocks per set	Points per set
43	0.16	6.19	0.21	1.72	0.02	0.38

**#21 O'SULLIVAN, Victoria**

Date	Opponent	SP	Attack				Set			Serve				Recept			Blocking				Team				
			K	E	TA	PCT	A	TA	PCT	SA	SE	TA	PCT	RE	TA	PCT	DIG	BS	BA	BE	TOTAL	BHE	POINTS	HIT%	SCORE
08/27/2021	vs Houston Baptist	*3	7	6	30	.033	1	1	1.000	0	0	6	1.000	0	0	.000	6	0	0	1	0.0	0	7.0	.153	0-3
08/27/2021	at Sam Houston	*3	8	9	25	-.040	0	2	.000	0	2	9	.778	0	0	.000	1	0	2	1	2.0	0	9.0	.029	0-3
08/28/2021	at Sam Houston	*5	14	3	34	.324	0	3	.000	1	1	13	.923	0	0	.000	4	0	5	0	5.0	2	17.5	.230	2-3
09/03/2021	at UC Santa Barbara	*3	15	1	27	.519	0	0	.000	0	0	0	.000	0	0	.000	3	0	2	0	2.0	0	16.0	.384	3-0
09/04/2021	vs Pepperdine	*4	10	6	27	.148	0	4	.000	0	1	3	.667	0	0	.000	3	0	1	1	1.0	0	10.5	.242	1-3
09/04/2021	vs Kansas St.	*4	13	5	34	.235	0	1	.000	0	1	3	.667	0	0	.000	1	0	2	0	2.0	0	14.0	.213	1-3
09/10/2021	UCLA	*3	10	6	25	.160	0	2	.000	0	1	1	.000	0	1	1.000	2	1	2	0	3.0	0	12.0	.056	0-3
09/11/2021	San Diego	*4	19	4	43	.349	1	3	.333	0	0	0	.000	0	0	.000	4	0	0	0	0.0	0	19.0	.203	1-3
09/17/2021	vs Texas Southern	*3	11	3	30	.267	3	5	.600	0	0	4	1.000	0	1	1.000	5	0	1	0	1.0	0	11.5	.255	3-0
09/17/2021	at Arizona	*3	10	2	21	.381	0	2	.000	0	0	0	.000	0	0	.000	0	1	0	0	1.0	0	11.0	.144	0-3
09/18/2021	vs UC Riverside	*3	14	1	26	.500	0	1	.000	0	0	0	.000	0	0	.000	3	0	3	0	3.0	0	15.5	.303	3-0
09/23/2021	at Nevada	*3	9	2	25	.280	0	0	.000	0	0	0	.000	1	1	.000	4	1	1	0	2.0	0	10.5	.245	3-0
09/25/2021	at San Jose St.	*3	11	2	25	.360	1	2	.500	0	0	0	.000	0	0	.000	1	0	2	0	2.0	0	12.0	.257	0-3
09/30/2021	New Mexico	*4	9	7	31	.065	0	1	.000	3	1	11	.909	0	0	.000	7	0	2	2	2.0	0	13.0	.168	1-3
10/02/2021	Air Force	*3	13	6	25	.280	0	1	.000	3	4	15	.733	0	0	.000	1	1	2	0	3.0	0	18.0	.337	3-0
<b>Totals</b>			<b>51</b>	<b>173</b>	<b>63</b>	<b>428</b>	<b>.257</b>	<b>6</b>	<b>28</b>	<b>.214</b>	<b>7</b>	<b>11</b>	<b>65</b>	<b>.831</b>	<b>1</b>	<b>3</b>	<b>.667</b>	<b>45</b>	<b>4</b>	<b>25</b>	<b>5</b>	<b>29.0</b>	<b>2</b>	<b>196.5</b>	

**Player Averages**

Sets Played	Kills per set	Assists per set	Service aces per set	Digs per set	Blocks per set	Points per set
51	3.39	0.12	0.14	0.88	0.57	3.85



**San Diego St. Women's Volleyball**  
**Individual Career Summaries**  
**All games**

Page 1/9  
as of Oct 04, 2021

**BARCKLAY, Nadia**

SEASON	TEAM	SM-MP	K	K/S	E	TA	PCT	A	A/S	SA	SA/S	SE	DIG	D/S	RE	BS	BA	TB	B/S	BE	BHE	PTS	PTS/S
2020-21	SDSU	8-3	0	0.0	0	0	.000	1	0.1	1	0.1	1	1	0.1	0	1	0	1	0.1	0	0	2.0	0.3
2021-22	SDSU	3-2	0	0.0	0	0	.000	0	0.0	1	0.3	0	1	0.3	0	0	0	0	0.0	0	0	1.0	0.3
<b>TOTAL</b>	<b>11 - 5</b>	<b>0</b>	<b>0.0</b>	<b>0</b>	<b>0</b>	<b>.000</b>	<b>1</b>	<b>0.1</b>	<b>2</b>	<b>0.2</b>	<b>1</b>	<b>2</b>	<b>0.2</b>	<b>0</b>	<b>1</b>	<b>0</b>	<b>1</b>	<b>0.1</b>	<b>0</b>	<b>0</b>	<b>3.0</b>	<b>0.3</b>	

**Single Game Highs**

Statistic	Value	
Assists	1	vs Fresno St. 02/13/21
Serve Aces	1	vs UC Riverside 09/18/21, vs Fresno St. 02/13/21
Digs	1	vs Houston Baptist 08/27/21, vs Fresno St. 02/13/21
Block solos	1	vs New Mexico 02/20/21

**FAKI, Zoi**

SEASON	TEAM	SM-MP	K	K/S	E	TA	PCT	A	A/S	SA	SA/S	SE	DIG	D/S	RE	BS	BA	TB	B/S	BE	BHE	PTS	PTS/S
2016-17	Pitt	14-8	0	0.0	0	0	.000	0	0.0	3	0.2	9	4	0.3	0	0	0	0	0.0	0	0	3.0	0.2
2018-19	Pitt	35-18	30	0.9	14	85	.188	6	0.2	5	0.1	9	46	1.3	3	0	3	3	0.1	2	0	36.5	1.0
2019-20	Pitt	107-32	36	0.3	16	84	.238	6	0.1	14	0.1	30	64	0.6	4	1	9	10	0.1	1	1	55.5	0.5
2020-21	Pitt	72-24	23	0.3	9	63	.222	9	0.1	10	0.1	9	41	0.6	6	1	3	4	0.1	1	1	35.5	0.5
2021-22	SDSU	37-11	80	2.2	32	227	.211	4	0.1	3	0.1	12	73	2.0	16	1	6	7	0.2	1	0	87.0	2.4
<b>TOTAL FOR SDSU</b>	<b>37 - 11</b>	<b>80</b>	<b>2.2</b>	<b>32</b>	<b>227</b>	<b>.211</b>	<b>4</b>	<b>0.1</b>	<b>3</b>	<b>0.1</b>	<b>12</b>	<b>73</b>	<b>2.0</b>	<b>16</b>	<b>1</b>	<b>6</b>	<b>7</b>	<b>0.2</b>	<b>1</b>	<b>0</b>	<b>87.0</b>	<b>2.4</b>	
<b>TOTAL</b>	<b>265 - 93</b>	<b>169</b>	<b>0.6</b>	<b>71</b>	<b>459</b>	<b>.214</b>	<b>25</b>	<b>0.1</b>	<b>35</b>	<b>0.1</b>	<b>69</b>	<b>228</b>	<b>0.9</b>	<b>29</b>	<b>3</b>	<b>21</b>	<b>24</b>	<b>0.1</b>	<b>5</b>	<b>2</b>	<b>217.5</b>	<b>0.8</b>	

**Single Game Highs**

Statistic	Value	
Kills	14	at Sam Houston 08/28/21
Attacks	43	at Sam Houston 08/28/21
Assists	4	vs Boston College 10/09/20
Serve Aces	3	vs Minnesota 04/18/21
Digs	23	vs Michigan 12/01/18
Blocks	2	at Notre Dame 10/16/20, vs Pepperdine 09/04/21
Block solos	1	at Syracuse 10/11/19, at Notre Dame 10/16/20, vs San Diego 09/11/21
Block assists	3	vs Duquesne 09/07/19





**San Diego St. Women's Volleyball**  
**Individual Career Summaries**  
**All games**

Page 2/9  
as of Oct 04, 2021

**FEUERBORN, Kennedy**

SEASON	TEAM	SM-MP	K	K/S	E	TA	PCT	A	A/S	SA	SA/S	SE	DIG	D/S	RE	BS	BA	TB	B/S	BE	BHE	PTS	PTS/S
2020-21	SDSU	41-13	31	0.8	13	78	.231	162	4.0	1	0.0	5	19	0.5	0	2	12	14	0.3	0	5	40.0	1.0
2021-22	SDSU	31-15	9	0.3	5	20	.200	73	2.4	0	0.0	1	10	0.3	0	0	4	4	0.1	1	2	11.0	0.4
<b>TOTAL</b>		<b>72 - 28</b>	<b>40</b>	<b>0.6</b>	<b>18</b>	<b>98</b>	<b>.224</b>	<b>235</b>	<b>3.3</b>	<b>1</b>	<b>0.0</b>	<b>6</b>	<b>29</b>	<b>0.4</b>	<b>0</b>	<b>2</b>	<b>16</b>	<b>18</b>	<b>0.3</b>	<b>1</b>	<b>7</b>	<b>51.0</b>	<b>0.7</b>

**Single Game Highs**

Statistic	Value	
Kills	6	at UNLV 02/05/21
Attacks	12	at Boise St. 03/20/21
Assists	26	vs Fresno St. 02/12/21, at UNLV 02/05/21
Serve Aces	1	at Wyoming 03/05/21
Digs	7	vs Fresno St. 02/12/21
Blocks	1	6 times
Block solos	1	vs Fresno St. 02/12/21, at UNLV 02/05/21
Block assists	4	vs Colorado St. 04/03/21
PCT	.500	vs Houston Baptist 08/27/21, vs Air Force 10/02/21

**GOLDSMITH, Jordyn**

SEASON	TEAM	SM-MP	K	K/S	E	TA	PCT	A	A/S	SA	SA/S	SE	DIG	D/S	RE	BS	BA	TB	B/S	BE	BHE	PTS	PTS/S
2021-22	SDSU	37-13	60	1.6	23	142	.261	3	0.1	0	0.0	0	19	0.5	0	1	20	21	0.6	3	1	71.0	1.9
<b>TOTAL</b>		<b>37 - 13</b>	<b>60</b>	<b>1.6</b>	<b>23</b>	<b>142</b>	<b>.261</b>	<b>3</b>	<b>0.1</b>	<b>0</b>	<b>0.0</b>	<b>0</b>	<b>19</b>	<b>0.5</b>	<b>0</b>	<b>1</b>	<b>20</b>	<b>21</b>	<b>0.6</b>	<b>3</b>	<b>1</b>	<b>71.0</b>	<b>1.9</b>

**Single Game Highs**

Statistic	Value	
Kills	9	at San Jose St. 09/25/21
Attacks	21	at Arizona 09/17/21
Assists	1	vs Pepperdine 09/04/21, at Long Beach St. 09/14/21, at Arizona 09/17/21
Digs	3	vs New Mexico 09/30/21, at Sam Houston 08/28/21, at Arizona 09/17/21
Blocks	4	vs UC Riverside 09/18/21, at Long Beach St. 09/14/21
Block solos	1	at Long Beach St. 09/14/21
Block assists	4	vs UC Riverside 09/18/21
PCT	.636	vs Air Force 10/02/21



**San Diego St. Women's Volleyball**  
**Individual Career Summaries**  
**All games**

Page 3/9  
as of Oct 04, 2021

**HAYNIE, Julia**

SEASON	TEAM	SM-MP	K	K/S	E	TA	PCT	A	A/S	SA	SA/S	SE	DIG	D/S	RE	BS	BA	TB	B/S	BE	BHE	PTS	PTS/S
2019-20	PSU	99-28	70	0.7	43	205	.132	4	0.0	6	0.1	7	40	0.4	0	4	70	74	0.7	4	0	115.0	1.2
2020-21	PSU	71-18	95	1.3	36	226	.261	5	0.1	8	0.1	7	24	0.3	1	5	42	47	0.7	2	1	129.0	1.8
2021-22	SDSU	42-13	49	1.2	25	118	.203	2	0.0	0	0.0	3	11	0.3	1	2	28	30	0.7	3	0	65.0	1.5
<b>TOTAL FOR SDSU</b>		<b>42 - 13</b>	<b>49</b>	<b>1.2</b>	<b>25</b>	<b>118</b>	<b>.203</b>	<b>2</b>	<b>0.0</b>	<b>0</b>	<b>0.0</b>	<b>3</b>	<b>11</b>	<b>0.3</b>	<b>1</b>	<b>2</b>	<b>28</b>	<b>30</b>	<b>0.7</b>	<b>3</b>	<b>0</b>	<b>65.0</b>	<b>1.5</b>
<b>TOTAL</b>		<b>212 - 59</b>	<b>214</b>	<b>1.0</b>	<b>104</b>	<b>549</b>	<b>.200</b>	<b>11</b>	<b>0.1</b>	<b>14</b>	<b>0.1</b>	<b>17</b>	<b>75</b>	<b>0.4</b>	<b>2</b>	<b>11</b>	<b>140</b>	<b>151</b>	<b>0.7</b>	<b>9</b>	<b>1</b>	<b>309.0</b>	<b>1.5</b>

**Single Game Highs**

Statistic	Value	
Kills	11	vs Idaho 01/25/21
Attacks	25	vs Idaho 01/25/21
Assists	1	11 times
Serve Aces	3	vs UC Davis 09/07/19
Digs	5	at Utah Valley 09/06/19
Blocks	7	vs Northern Ariz. 01/31/21
Block solos	2	vs Idaho 11/02/19, vs Montana 03/08/21
Block assists	9	vs Eastern Wash. 10/31/19

**HILL, Brooklynn**

SEASON	TEAM	SM-MP	K	K/S	E	TA	PCT	A	A/S	SA	SA/S	SE	DIG	D/S	RE	BS	BA	TB	B/S	BE	BHE	PTS	PTS/S
2018-19	PSU	8-7	0	0.0	0	0	.000	0	0.0	1	0.1	3	2	0.3	1	0	0	0	0.0	0	1	1.0	0.1
2019-20	PSU	11-7	0	0.0	0	0	.000	0	0.0	3	0.3	1	3	0.3	0	0	0	0	0.0	0	0	3.0	0.3
2020-21	SDSU	50-15	1	0.0	1	3	.000	12	0.2	10	0.2	11	77	1.5	18	0	0	0	0.0	0	1	11.0	0.2
2021-22	SDSU	25-9	0	0.0	0	0	.000	0	0.0	5	0.2	10	7	0.3	0	0	0	0	0.0	0	0	5.0	0.2
<b>TOTAL FOR SDSU</b>		<b>75 - 24</b>	<b>1</b>	<b>0.0</b>	<b>1</b>	<b>3</b>	<b>.000</b>	<b>12</b>	<b>0.2</b>	<b>15</b>	<b>0.2</b>	<b>21</b>	<b>84</b>	<b>1.1</b>	<b>18</b>	<b>0</b>	<b>0</b>	<b>0</b>	<b>0.0</b>	<b>0</b>	<b>1</b>	<b>16.0</b>	<b>0.2</b>
<b>TOTAL</b>		<b>94 - 38</b>	<b>1</b>	<b>0.0</b>	<b>1</b>	<b>3</b>	<b>.000</b>	<b>12</b>	<b>0.1</b>	<b>19</b>	<b>0.2</b>	<b>25</b>	<b>89</b>	<b>0.9</b>	<b>19</b>	<b>0</b>	<b>0</b>	<b>0</b>	<b>0.0</b>	<b>0</b>	<b>2</b>	<b>20.0</b>	<b>0.2</b>

**Single Game Highs**

Statistic	Value	
Kills	1	at Boise St. 03/20/21
Attacks	2	at Boise St. 03/20/21
Assists	3	vs Nevada 02/27/21
Serve Aces	3	vs New Mexico 02/19/21, vs Utah St. 03/12/21, vs Towson 12/07/19
Digs	10	at Boise St. 03/20/21



**San Diego St. Women's Volleyball**  
**Individual Career Summaries**  
**All games**

Page 4/9  
as of Oct 04, 2021

**HODSON, Serena**

SEASON	TEAM	SM-MP	K	K/S	E	TA	PCT	A	A/S	SA	SA/S	SE	DIG	D/S	RE	BS	BA	TB	B/S	BE	BHE	PTS	PTS/S
2018-19	SDSU	18-5	15	0.8	4	36	.306	0	0.0	0	0.0	1	1	0.1	0	1	14	15	0.8	0	0	23.0	1.3
2020-21	SDSU	20-9	17	0.9	8	45	.200	0	0.0	1	0.1	3	4	0.2	0	1	15	16	0.8	2	0	26.5	1.3
2021-22	SDSU	9-3	12	1.3	6	30	.200	0	0.0	0	0.0	0	0	0.0	0	2	8	10	1.1	1	0	18.0	2.0
<b>TOTAL</b>	<b>47 - 17</b>	<b>44</b>	<b>0.9</b>	<b>18</b>	<b>111</b>	<b>.234</b>	<b>0</b>	<b>0.0</b>	<b>1</b>	<b>0.0</b>	<b>4</b>	<b>5</b>	<b>0.1</b>	<b>0</b>	<b>4</b>	<b>37</b>	<b>41</b>	<b>0.9</b>	<b>3</b>	<b>0</b>	<b>67.5</b>	<b>1.4</b>	

**Single Game Highs**

Statistic	Value	
Kills	9	at Sam Houston 08/28/21
Attacks	20	at Sam Houston 08/28/21
Serve Aces	1	at UNLV 02/04/21
Digs	2	at Wyoming 03/05/21
Blocks	8	at Sam Houston 08/28/21
Block solos	2	at Sam Houston 08/28/21
Block assists	7	vs Seattle U 08/25/18

**LABNO, Mikela**

SEASON	TEAM	SM-MP	K	K/S	E	TA	PCT	A	A/S	SA	SA/S	SE	DIG	D/S	RE	BS	BA	TB	B/S	BE	BHE	PTS	PTS/S
2021-22	SDSU	45-15	96	2.1	49	259	.181	4	0.1	3	0.1	11	44	1.0	11	7	15	22	0.5	0	1	113.5	2.5
<b>TOTAL</b>	<b>45 - 15</b>	<b>96</b>	<b>2.1</b>	<b>49</b>	<b>259</b>	<b>.181</b>	<b>4</b>	<b>0.1</b>	<b>3</b>	<b>0.1</b>	<b>11</b>	<b>44</b>	<b>1.0</b>	<b>11</b>	<b>7</b>	<b>15</b>	<b>22</b>	<b>0.5</b>	<b>0</b>	<b>1</b>	<b>113.5</b>	<b>2.5</b>	

**Single Game Highs**

Statistic	Value	
Kills	13	vs Pepperdine 09/04/21
Attacks	33	vs San Diego 09/11/21
Assists	2	vs Texas Southern 09/17/21
Serve Aces	2	at Long Beach St. 09/14/21
Digs	13	vs UC Riverside 09/18/21
Blocks	3	at Nevada 09/23/21, at Long Beach St. 09/14/21
Block solos	2	vs San Diego 09/11/21
Block assists	3	vs New Mexico 09/30/21
PCT	1.000	at Sam Houston 08/28/21



San Diego St. Women's Volleyball  
Individual Career Summaries  
All games

**MERK, Reagan**

SEASON	TEAM	SM-MP	K	K/S	E	TA	PCT	A	A/S	SA	SA/S	SE	DIG	D/S	RE	BS	BA	TB	B/S	BE	BHE	PTS	PTS/S
2021-22	SDSU	14-8	23	1.6	9	48	.292	1	0.1	2	0.1	8	18	1.3	0	1	2	3	0.2	0	0	27.0	1.9
<b>TOTAL</b>		<b>14 - 8</b>	<b>23</b>	<b>1.6</b>	<b>9</b>	<b>48</b>	<b>.292</b>	<b>1</b>	<b>0.1</b>	<b>2</b>	<b>0.1</b>	<b>8</b>	<b>18</b>	<b>1.3</b>	<b>0</b>	<b>1</b>	<b>2</b>	<b>3</b>	<b>0.2</b>	<b>0</b>	<b>0</b>	<b>27.0</b>	<b>1.9</b>

**Single Game Highs**

Statistic	Value	
Kills	7	vs UC Riverside 09/18/21, vs Texas Southern 09/17/21
Attacks	20	vs UC Riverside 09/18/21
Assists	1	at Long Beach St. 09/14/21
Serve Aces	2	at Sam Houston 08/27/21
Digs	6	vs UC Riverside 09/18/21, vs Texas Southern 09/17/21
Blocks	3	vs UC Riverside 09/18/21
Block solos	1	vs UC Riverside 09/18/21
Block assists	2	vs UC Riverside 09/18/21
PCT	1.000	vs UCLA 09/10/21, vs Air Force 10/02/21

**MILLER, Noa**

SEASON	TEAM	SM-MP	K	K/S	E	TA	PCT	A	A/S	SA	SA/S	SE	DIG	D/S	RE	BS	BA	TB	B/S	BE	BHE	PTS	PTS/S
2018-19	WOF	108-30	31	0.3	5	95	.274	481	4.5	16	0.1	52	194	1.8	0	0	2	2	0.0	2	15	48.0	0.4
2019-20	ASU	70-26	10	0.1	4	29	.207	283	4.0	4	0.1	13	151	2.2	0	0	1	1	0.0	0	4	14.5	0.2
2021-22	SDSU	43-13	7	0.2	1	17	.353	266	6.2	9	0.2	10	74	1.7	0	0	1	1	0.0	1	3	16.5	0.4
<b>TOTAL FOR SDSU</b>		<b>43 - 13</b>	<b>7</b>	<b>0.2</b>	<b>1</b>	<b>17</b>	<b>.353</b>	<b>266</b>	<b>6.2</b>	<b>9</b>	<b>0.2</b>	<b>10</b>	<b>74</b>	<b>1.7</b>	<b>0</b>	<b>0</b>	<b>1</b>	<b>1</b>	<b>0.0</b>	<b>1</b>	<b>3</b>	<b>16.5</b>	<b>0.4</b>
<b>TOTAL</b>		<b>221 - 69</b>	<b>48</b>	<b>0.2</b>	<b>10</b>	<b>141</b>	<b>.270</b>	<b>1030</b>	<b>4.7</b>	<b>29</b>	<b>0.1</b>	<b>75</b>	<b>419</b>	<b>1.9</b>	<b>0</b>	<b>0</b>	<b>4</b>	<b>4</b>	<b>0.0</b>	<b>3</b>	<b>22</b>	<b>79.0</b>	<b>0.4</b>

**Single Game Highs**

Statistic	Value	
Kills	5	at Chattanooga 09/21/18
Attacks	10	at Chattanooga 09/21/18, at Samford 09/22/18
Assists	31	at Chattanooga 09/21/18
Serve Aces	3	vs Western Caro. 11/02/18
Digs	13	at Samford 09/22/18, at Washington 10/18/19
Blocks	1	vs Kansas St. 09/04/21
Block assists	1	at Chattanooga 09/21/18, at Samford 09/22/18, at Oklahoma 09/13/19, vs Kansas St. 09/04/21
PCT	1.000	vs New Mexico 09/30/21



**San Diego St. Women's Volleyball**  
**Individual Career Summaries**  
**All games**

**MUKAJ, Sara**

SEASON	TEAM	SM-MP	K	K/S	E	TA	PCT	A	A/S	SA	SA/S	SE	DIG	D/S	RE	BS	BA	TB	B/S	BE	BHE	PTS	PTS/S
2021-22	SDSU	27-8	16	0.6	4	36	.333	11	0.4	7	0.3	7	16	0.6	0	1	21	22	0.8	2	1	34.5	1.3
<b>TOTAL</b>		<b>27 - 8</b>	<b>16</b>	<b>0.6</b>	<b>4</b>	<b>36</b>	<b>.333</b>	<b>11</b>	<b>0.4</b>	<b>7</b>	<b>0.3</b>	<b>7</b>	<b>16</b>	<b>0.6</b>	<b>0</b>	<b>1</b>	<b>21</b>	<b>22</b>	<b>0.8</b>	<b>2</b>	<b>1</b>	<b>34.5</b>	<b>1.3</b>

**Single Game Highs**

Statistic	Value	
Kills	7	at Sam Houston 08/28/21
Attacks	11	at Sam Houston 08/28/21
Assists	4	at UC Santa Barbara 09/03/21
Serve Aces	4	at Sam Houston 08/27/21
Digs	5	at Sam Houston 08/28/21
Blocks	4	vs Pepperdine 09/04/21, at Sam Houston 08/28/21, at UC Santa Barbara 09/03/21
Block solos	1	at UC Santa Barbara 09/03/21
Block assists	4	vs Pepperdine 09/04/21, at Sam Houston 08/28/21
PCT	.800	vs San Diego 09/11/21

**O'SULLIVAN, Victoria**

SEASON	TEAM	SM-MP	K	K/S	E	TA	PCT	A	A/S	SA	SA/S	SE	DIG	D/S	RE	BS	BA	TB	B/S	BE	BHE	PTS	PTS/S
2018-19	SDSU	57-24	109	1.9	54	309	.178	0	0.0	0	0.0	0	23	0.4	1	1	14	15	0.3	3	0	117.0	2.1
2019-20	SDSU	110-29	352	3.2	145	872	.237	2	0.0	0	0.0	0	57	0.5	9	14	38	52	0.5	11	0	385.0	3.5
2020-21	SDSU	53-15	172	3.2	84	453	.194	6	0.1	2	0.0	3	23	0.4	3	8	24	32	0.6	3	1	194.0	3.7
2021-22	SDSU	51-15	173	3.4	63	428	.257	6	0.1	7	0.1	11	45	0.9	1	4	25	29	0.6	5	2	196.5	3.9
<b>TOTAL</b>		<b>271 - 83</b>	<b>806</b>	<b>3.0</b>	<b>346</b>	<b>2062</b>	<b>.223</b>	<b>14</b>	<b>0.1</b>	<b>9</b>	<b>0.0</b>	<b>14</b>	<b>148</b>	<b>0.5</b>	<b>14</b>	<b>27</b>	<b>101</b>	<b>128</b>	<b>0.5</b>	<b>22</b>	<b>3</b>	<b>892.5</b>	<b>3.3</b>

**Single Game Highs**

Statistic	Value	
Kills	22	vs West Virginia 09/06/19
Attacks	43	at Boise St. 11/23/19, vs San Diego 09/11/21
Assists	3	vs Texas Southern 09/17/21
Serve Aces	3	vs New Mexico 09/30/21, vs Air Force 10/02/21
Digs	7	at Utah St. 11/21/19, vs New Mexico 09/30/21
Blocks	6	at Boise St. 03/20/21
Block solos	2	6 times
Block assists	6	vs Colorado St. 04/03/21





San Diego St. Women's Volleyball  
Individual Career Summaries  
All games

**RURI, Kalani**

SEASON	TEAM	SM-MP	K	K/S	E	TA	PCT	A	A/S	SA	SA/S	SE	DIG	D/S	RE	BS	BA	TB	B/S	BE	BHE	PTS	PTS/S
2021-22	SDSU	9-5	14	1.6	5	31	.290	0	0.0	0	0.0	1	3	0.3	1	0	5	5	0.6	0	0	16.5	1.8
<b>TOTAL</b>		<b>9 - 5</b>	<b>14</b>	<b>1.6</b>	<b>5</b>	<b>31</b>	<b>.290</b>	<b>0</b>	<b>0.0</b>	<b>0</b>	<b>0.0</b>	<b>1</b>	<b>3</b>	<b>0.3</b>	<b>1</b>	<b>0</b>	<b>5</b>	<b>5</b>	<b>0.6</b>	<b>0</b>	<b>0</b>	<b>16.5</b>	<b>1.8</b>

**Single Game Highs**

Statistic	Value	
Kills	7	vs UC Riverside 09/18/21
Attacks	13	vs UC Riverside 09/18/21
Digs	2	vs UC Riverside 09/18/21
Blocks	2	vs UC Riverside 09/18/21, vs Texas Southern 09/17/21
Block assists	2	vs Texas Southern 09/17/21, vs UC Riverside 09/18/21
PCT	.556	vs Texas Southern 09/17/21

**SMITH, Natalie**

SEASON	TEAM	SM-MP	K	K/S	E	TA	PCT	A	A/S	SA	SA/S	SE	DIG	D/S	RE	BS	BA	TB	B/S	BE	BHE	PTS	PTS/S
2017-18	Mich	88-29	0	0.0	0	1	.000	23	0.3	12	0.1	27	128	1.5	10	0	0	0	0.0	0	2	12.0	0.1
2018-19	Mich	105-34	2	0.0	0	3	.667	32	0.3	11	0.1	25	208	2.0	12	0	0	0	0.0	0	1	13.0	0.1
2019-20	Mich	117-32	2	0.0	1	7	.143	104	0.9	18	0.2	30	401	3.4	57	0	0	0	0.0	1	2	20.0	0.2
2021-22	SDSU	54-16	0	0.0	0	4	.000	40	0.7	8	0.1	10	226	4.2	17	0	0	0	0.0	0	2	8.0	0.1
<b>TOTAL FOR SDSU</b>		<b>54 - 16</b>	<b>0</b>	<b>0.0</b>	<b>0</b>	<b>4</b>	<b>.000</b>	<b>40</b>	<b>0.7</b>	<b>8</b>	<b>0.1</b>	<b>10</b>	<b>226</b>	<b>4.2</b>	<b>17</b>	<b>0</b>	<b>0</b>	<b>0</b>	<b>0.0</b>	<b>0</b>	<b>2</b>	<b>8.0</b>	<b>0.1</b>
<b>TOTAL</b>		<b>364 - 111</b>	<b>4</b>	<b>0.0</b>	<b>1</b>	<b>15</b>	<b>.200</b>	<b>199</b>	<b>0.5</b>	<b>49</b>	<b>0.1</b>	<b>92</b>	<b>963</b>	<b>2.6</b>	<b>96</b>	<b>0</b>	<b>0</b>	<b>0</b>	<b>0.0</b>	<b>1</b>	<b>7</b>	<b>53.0</b>	<b>0.1</b>

**Single Game Highs**

Statistic	Value	
Kills	1	at Dayton 09/07/19, at Iowa 09/23/18, at Purdue 11/23/19, vs Oakland 09/07/18
Attacks	2	at Dayton 09/07/19, at Northwestern 11/02/19
Assists	8	vs Illinois 11/09/19
Serve Aces	3	vs Northern Ariz. 08/30/19, vs Ohio St. 09/29/17, vs Iowa 11/13/19, at Pittsburgh 12/01/18
Digs	29	at Notre Dame 09/18/19



**San Diego St. Women's Volleyball**  
**Individual Career Summaries**  
**All games**

Page 8/9  
as of Oct 04, 2021

**TAUTUA'A, Heipua**

SEASON	TEAM	SM-MP	K	K/S	E	TA	PCT	A	A/S	SA	SA/S	SE	DIG	D/S	RE	BS	BA	TB	B/S	BE	BHE	PTS	PTS/S
2020-21	SDSU	49-14	99	2.0	62	313	.118	25	0.5	6	0.1	26	140	2.9	29	7	15	22	0.4	4	1	119.5	2.4
2021-22	SDSU	50-15	103	2.1	63	346	.116	19	0.4	5	0.1	19	99	2.0	8	2	21	23	0.5	3	1	120.5	2.4
<b>TOTAL</b>		<b>99 - 29</b>	<b>202</b>	<b>2.0</b>	<b>125</b>	<b>659</b>	<b>.117</b>	<b>44</b>	<b>0.4</b>	<b>11</b>	<b>0.1</b>	<b>45</b>	<b>239</b>	<b>2.4</b>	<b>37</b>	<b>9</b>	<b>36</b>	<b>45</b>	<b>0.5</b>	<b>7</b>	<b>2</b>	<b>240.0</b>	<b>2.4</b>

**Single Game Highs**

Statistic	Value	
Kills	15	vs Nevada 02/26/21
Attacks	38	vs Nevada 02/26/21
Assists	4	at UNLV 02/04/21, vs Nevada 02/26/21
Serve Aces	2	at Boise St. 03/20/21, at Nevada 09/23/21, vs New Mexico 02/20/21
Digs	22	vs New Mexico 02/20/21
Blocks	6	at Boise St. 03/20/21
Block solos	3	at Wyoming 03/05/21
Block assists	6	at Boise St. 03/20/21

**VANDERPAN, Ashley**

SEASON	TEAM	SM-MP	K	K/S	E	TA	PCT	A	A/S	SA	SA/S	SE	DIG	D/S	RE	BS	BA	TB	B/S	BE	BHE	PTS	PTS/S
2020-21	SDSU	49-14	15	0.3	12	52	.058	325	6.6	11	0.2	11	77	1.6	0	1	9	10	0.2	0	8	31.5	0.6
2021-22	SDSU	42-14	0	0.0	2	6	-.333	186	4.4	8	0.2	6	68	1.6	0	0	1	1	0.0	0	10	8.5	0.2
<b>TOTAL</b>		<b>91 - 28</b>	<b>15</b>	<b>0.2</b>	<b>14</b>	<b>58</b>	<b>.017</b>	<b>511</b>	<b>5.6</b>	<b>19</b>	<b>0.2</b>	<b>17</b>	<b>145</b>	<b>1.6</b>	<b>0</b>	<b>1</b>	<b>10</b>	<b>11</b>	<b>0.1</b>	<b>0</b>	<b>18</b>	<b>40.0</b>	<b>0.4</b>

**Single Game Highs**

Statistic	Value	
Kills	3	vs New Mexico 02/20/21, vs Nevada 02/26/21
Attacks	9	vs New Mexico 02/20/21, vs Nevada 02/26/21
Assists	40	vs New Mexico 02/20/21
Serve Aces	3	vs Nevada 02/27/21, at Boise St. 03/20/21
Digs	12	vs Nevada 02/26/21
Blocks	1	at Boise St. 03/20/21, at San Jose St. 03/27/21, at UNLV 02/04/21, vs Pepperdine 09/04/21
Block solos	1	at Boise St. 03/20/21
Block assists	2	vs Fresno St. 02/13/21, vs New Mexico 02/19/21



San Diego St. Women's Volleyball  
Individual Career Summaries  
All games

**WALKER, Andrea**

SEASON	TEAM	SM-MP	K	K/S	E	TA	PCT	A	A/S	SA	SA/S	SE	DIG	D/S	RE	BS	BA	TB	B/S	BE	BHE	PTS	PTS/S
2018-19	SDSU	7-4	7	1.0	4	16	.188	0	0.0	0	0.0	0	0	0.0	0	0	5	5	0.7	0	0	9.5	1.4
2019-20	SDSU	70-23	129	1.8	45	273	.308	1	0.0	0	0.0	0	7	0.1	0	6	55	61	0.9	7	0	162.5	2.3
2020-21	SDSU	33-9	69	2.1	28	145	.283	3	0.1	0	0.0	0	4	0.1	0	3	21	24	0.7	1	0	82.5	2.5
2021-22	SDSU	16-5	22	1.4	5	41	.415	2	0.1	0	0.0	0	4	0.3	0	1	17	18	1.1	2	0	31.5	2.0
<b>TOTAL</b>		<b>126 - 41</b>	<b>227</b>	<b>1.8</b>	<b>82</b>	<b>475</b>	<b>.305</b>	<b>6</b>	<b>0.0</b>	<b>0</b>	<b>0.0</b>	<b>0</b>	<b>15</b>	<b>0.1</b>	<b>0</b>	<b>10</b>	<b>98</b>	<b>108</b>	<b>0.9</b>	<b>10</b>	<b>0</b>	<b>286.0</b>	<b>2.3</b>

**Single Game Highs**

Statistic	Value	
Kills	13	at Utah St. 11/21/19
Attacks	26	at Utah St. 11/21/19
Assists	2	at Boise St. 03/20/21, vs Air Force 10/02/21
Digs	2	at Arizona 09/17/21, at Air Force 10/19/19, vs Air Force 10/02/21, vs New Mexico 02/20/21
Blocks	6	at Utah St. 11/21/19
Block solos	2	vs Boise St. 10/24/19
Block assists	7	at Air Force 10/19/19