



SAN DIEGO STATE AZTECS

2021 Volleyball Weekly Notes

Jim Solien (Primary Contact)
 Assistant Media Relations Director
Office Phone Number: (619) 594-2576
E-Mail Address: jsolien@sdsu.edu
News Release Date: Oct. 27, 2021

SDSU Official Athletics Website: goaztecs.com
SDSU Official Athletics Twitter: @GoAztecs
SDSU Official Athletics Instagram: @GoAztecs
SDSU Official Athletics Facebook: facebook.com/goaztecs
SDSU Official Athletics YouTube: youtube.com/goaztecs.com

2021 AZTEC VOLLEYBALL SCHEDULE

Day/Date	Opponent	Time
Friday, Aug. 27	vs. Houston Baptist [^]	L, 0-3
Friday, Aug. 27	at Sam Houston [^]	L, 0-3
Saturday, Aug. 28	at Sam Houston [^]	L, 2-3
Friday, Sept. 3	at UC Santa Barbara [#]	W, 3-0
Saturday, Sept. 4	vs. No. 21 Pepperdine [#]	L, 1-3
Saturday, Sept. 4	vs. Kansas State [#]	L, 1-3
Friday, Sept. 10	No. 16 UCLA+ (MWN)	L, 0-3
Saturday, Sept. 11	No. 25 San Diego+ (MWN)	L, 1-3
Tuesday, Sept. 14	at Long Beach State	L, 0-3
Friday, Sept. 17	vs. Texas Southern~	W, 3-0
Friday, Sept. 17	at Arizona~	L, 0-3
Saturday, Sept. 18	vs. UC Riverside~	W, 3-0
Thursday, Sept. 23	at Nevada* (MWN)	W, 3-0
Saturday, Sept. 25	at San José State* (MWN)	L, 0-3
Thursday, Sept. 30	New Mexico* (MWN)	L, 1-3
Saturday, Oct. 2	Air Force* (MWN)	W, 3-0
Tuesday, Oct. 5	UNLV* (MWN)	L, 0-3
Thursday, Oct. 7	Fresno State* (MWN)	L, 2-3
Thursday, Oct. 14	at Boise State* (MWN)	W, 3-0
Saturday, Oct. 16	at Utah State* (MWN)	L, 0-3
Thursday, Oct. 21	Colorado State* (MWN)	L, 2-3
Saturday, Oct. 23	at Wyoming* (MWN)	L, 0-3
Thursday, Oct. 28	Utah State*	7 p.m. PT
Saturday, Oct. 30	Boise State* (MWN)	1 p.m. PT
Monday, Nov. 1	at UNLV* (MWN)	6:30 p.m. PT
Saturday, Nov. 6	at Fresno State* (MWN)	11 a.m. PT
Thursday, Nov. 11	at Air Force* (MWN)	6 p.m. MT
Saturday, Nov. 13	at New Mexico* (MWN)	1 p.m. MT
Thursday, Nov. 18	Nevada* (MWN)	7 p.m. PT
Saturday, Nov. 20	San José State* (MWN)	1 p.m. PT

[^] - Bearkat Invitational (Huntsville, Texas)
[#] - Gaucho Invitational (Santa Barbara, Calif.)
⁺ - SDSU/USD Invitational (San Diego, Calif.)
[~] - Wildcat Classic (Tucson, Ariz.)
^{*} - Mountain West match
 (MWN) - Mountain West Network match

Socially

Twitter: @AztecVB
 Instagram: @Aztec_WVB

Match Week Preview

Utah State (16-6, 8-2 MW) at San Diego State (6-16, 3-7 MW)
 Thursday, Oct. 28 | 7 p.m. PT | Aztec Court at Peterson Gym
 Coverage: Live Stats | Series: SDSU leads 18-8



Boise State (15-8, 4-6 MW) at San Diego State (6-16, 3-7 MW)
 Saturday, Oct. 30 | 1 p.m. PT | Aztec Court at Peterson Gym
 Coverage: Live Stats/MW Network | Series: Tied 10-10



San Diego State (6-16, 3-7 MW) at UNLV (15-6, 6-4 MW)
 Monday, Nov. 1 | 6:30 p.m. PT | Cox Pavilion, Las Vegas, Nev.
 Coverage: Live Stats/MW Network | Series: SDSU leads 28-23



AZTEC VOLLEYBALL TO PLAY THREE MATCHES IN FIVE DAYS

- > The San Diego State volleyball team enters a busy stretch this week with three matches in a five-day span, playing host to Utah State and Boise State, respectively, before heading to the Silver State to face UNLV.
- > The Scarlet and Black welcomes the Aggies to Aztec Court at Peterson Gym on Thursday, Oct. 28 at 7 p.m., before the Broncos invade The Mesa on Saturday, Oct. 30 at 1 p.m. SDSU will then open the new month with a road dash against the Rebels in Las Vegas on Monday, Nov. 1, starting at 6:30 p.m. PT.
- > Live stats will be available for all three matches, while the Aztecs' encounters with Boise State and UNLV will be streamed live via the Mountain West Network, with a link available on GoAztecs.com.
- > In addition, Saturday's clash vs. the Broncos has been designated as SDSU's Halloween match, and the first 200 fans in attendance will receive a free bucket with Halloween candy.
- > The Aztecs occupy the ninth spot in the Mountain West standings through 10 matches of conference play. SDSU is coming off a pair of losses last week, dropping a 3-2 heartbreaker to Colorado State at home (28-26, 25-21, 22-25, 14-25, 13-15), before falling in three sets at Wyoming two days later (26-28, 19-25, 14-25).
- > As of Oct. 27, senior Victoria O'Sullivan ranks fifth in the league for all matches with an average of 3.53 kills per set. The Aztec outside hitter has posted double-digit kills in 17 of her previous 19 starts and has surpassed that plateau in 49 of her last 64 appearances dating back to the start of the 2019 campaign. She needs just nine kills to reach 900 for her career.
- > Entering the week, San Diego State leads the MW in conference matches with an average of 13.37 kills and 12.29 assists per set. In addition, Aztec opponents have the recorded the fewest digs in league play (10.71/set).

SERIES RECORD VS. UTAH STATE

- > Despite a three-set loss to the Aggies earlier this month, the Aztecs still lead the all-time series 18-8.
- > Overall, SDSU owns a 12-1 record against Utah State in San Diego, a 4-4 mark in Logan and a 2-3 ledger vs. the Aggies on a neutral floor.
- > In the last meeting between the two squads on Oct. 16, the Aztecs found themselves on the wrong side of a 3-0 score in Logan, (16-25, 26-28, 19-26).
- > SDSU was led by Victoria O'Sullivan and Heipua Tautua'a, who launched 10 kills apiece, while Mikela Labno floored eight shots of her own. In addition Zoi Faki scooped up a team-high 11 digs while contributing four kills, two aces and a pair of blocks, including a solo stuff.
- > However, Utah State posted a greater hitting percentage (.323 to .152) and maintained the statistical advantage in kills (43-39) as well as team blocks (11.0 to 4.0) to help key its victory.
- > The Aztecs have lost to the Aggies twice in a single season just once in program history, dropping a pair of matches at the 1978 AIAW National Championships in Tuscaloosa, Alabama, where SDSU finished the tournament in fifth place.

SERIES RECORD VS. BOISE STATE

- > With their dramatic victory in Boise on Oct. 14, the all-time series between the Aztecs and Broncos is tied 10-10.
- > SDSU is 5-4 at home against Boise State and 5-6 on the road.
- > The Aztecs have defeated the Broncos on the road in consecutive seasons for the first time in program history after a thrilling 3-0 whitewash in Boise two weeks ago (25-23, 25-20, 25-18).
- > The Broncos entered that match ranked fifth in the nation with 188 team blocks, but SDSU was not fazed, as the Scarlet and Black hit at a .400 clip, marking its highest efficiency since a .410 performance in a home sweep of San Diego on Oct. 2, 2018.
- > Victoria O'Sullivan tied her career-high with 22 kills and posted a season-best .545 hitting percentage, committing just four errors in 33 attempts.
- > Heipua Tautua'a also surpassed the double-digit kill plateau with 11 non-returnables, while Jordyn Goldsmith tied her season-high with nine put-aways and hit .467 for the night.

SERIES RECORD VS. UNLV

- > The Aztecs lead the all-time series vs. the Rebels 28-23 since the two programs first met in 1985.
- > However, SDSU has dropped six of the last seven vs. UNLV, including a 3-0 setback at home on Oct. 5 (25-21, 25-21, 25-20).
- > The Aztecs held their own against the Rebels in a hard-fought battle, maintaining the statistical advantage in kills (42-32) and digs (49-35), as the two teams combined for 30 ties and 16 lead changes.
- > Conversely, SDSU trailed in team blocks (14.0 to 4.0) and was plagued by 17 more attack errors (26-9), while the Rebels served up nine aces.
- > Offensively, the Aztecs were paced by Victoria O'Sullivan's 11 kills, while Heipua Tautua'a hit .353 for the night, launching nine put-aways in 17 attempts with just two errors.
- > In addition, Noa Miller recorded a double-double with a match-high 21 assists to go with 12 digs, while Natalie Smith finished with 15 scoops of her own.
- > SDSU was last victorious in Las Vegas almost two years ago to the date on Nov. 2, 2019, when it prevailed in four nail-biting sets (28-26, 27-25, 20-25, 27-25), with the match featuring 42 ties and 16 lead changes.

GENERAL INFORMATION

Location San Diego, Calif.
 Founded 1897
 Enrollment 33,870
 Nickname Aztecs
 Colors Scarlet and Black (Pantone 187)
 Conference Mountain West
 Affiliation Division I
 President Dr. Adela de la Torre
 Director of Athletics John David Wicker
 Faculty Representative Dr. Frank Harris III
 Home Facility Aztec Court at Peterson Gym (2,000)

TEAM INFORMATION

Head Coach Brent Hilliard
 Alma Mater Long Beach State '93
 Record at SDSU 12-25 (second year)
 Career Record 66-36 (Third year)
 E-Mail bhilliard@sdsu.edu
 Volleyball Office Phone (619) 594-5064
 Volleyball Office Fax (619) 594-1674
 Assistant Coach/Recruiting Coordinator Melanie Greene
 Assistant Coach Steve Timmons
 Volleyball Operations Assistant Kara Barkdoll
 Spring 2021 Record 6-9
 Spring 2021 Conference Record 6-9 (Eighth)
 Spring 2021 Home Record 5-4
 Spring 2021 Road Record 1-5
 Letterwinners Returning/Lost 8/7
 Starters Returning/Lost 4/2+Libero

PROGRAM HISTORY

First Year of Volleyball 1976
 Overall Record 892-635 (.584)
 NCAA Appearances 14
 Last Postseason Appearance 2012
 NCAA Postseason Record 15-14

MEDIA RELATIONS

Assistant Media Relations Director Jim Solien
 E-Mail jsolien@sdsu.edu
 SID Office Phone (619) 594-2576
 SID Office Fax (619) 582-6541
 Official Athletic Website www.GoAztecs.com

**2021 AZTEC VOLLEYBALL
 STATISTICAL LEADERS**
(min. 50 percent of team sets played)

Hitting Percentage*	.261	Victoria O'Sullivan
Kills	258	Victoria O'Sullivan
Kills per set	3.53	Victoria O'Sullivan
Assists	396	Noa Miller
Assists per set	6.09	Noa Miller
Digs	295	Natalie Smith
Digs per set	3.88	Natalie Smith
Blocks	40.0	Victoria O'Sullivan
Blocks per set	0.70	Julia Haynie
Service Aces	13	Noa Miller
Service Aces per set	0.20	Noa Miller

*. min 3.0 attempts per set

2021 AZTEC VOLLEYBALL FALL ROSTER

No.	Player	Pos.	Ht.	Yr.	Hometown (Last School)
1	Zoi Faki	OH	6-1	Sr.	Athens, Greece (Pittsburgh)
2	Heipua Tautua'a	OH	6-2	So.	Wai'anae, Hawaii (Wai'anae HS)
3	Andrea Walker	MB	6-0	Sr.	Fairfield, Calif. (Vanden HS)
4	Kennedy Feuerborn	S	6-3	So.	Overland Park, Kan. (Johnson County CC)
5	Serena Hodson	MB	6-2	Jr.	Mission Viejo, Calif. (Trabuco Hills HS)
6	Jordyn Goldsmith	OPP	6-1	Fr.	Valleyford, Wash. (Freeman HS)
7	Ashley Vanderpan	S	6-1	Jr.	Elk Grove, Calif. (Syracuse)
8	Natalie Smith	DS/L	5-7	Sr.	Weatherford, Texas (Michigan)
9	Sara Mukaj	MB	6-3	Fr.	Modena, Italy (Istituto Scaruffi-Levi Tricolore)
10	Kalani Ruri	S/OPP	6-2	Fr.	Kawerau, New Zealand (Trident HS)
11	Brooklynn Hill	DS/L	5-8	Sr.	Rancho Cucamonga, Calif. (Penn State)
13	Julia Haynie	MB	6-2	Jr.	Temecula, Calif. (Portland State)
14	Reagan Merk	OH	5-11	Fr.	Huntington Beach, Calif. (Mater Dei HS)
15	Mikela Labno	OH	6-2	Fr.	Hilmar, Calif. (Hilmar HS)
16	Carsyn Schuch	DS	5-6	Fr.	Phoenix, Ariz. (Deer Valley HS)
17	Nadia Barcklay	DS	5-2	So.	Foster City, Calif. (Hillsdale HS)
19	Noa Miller	S	5-10	Sr.	Douglasville, Ga. (Arizona State)
21	Victoria O'Sullivan	OH	6-0	Sr.	Albany, Calif. (Saint. Mary's HS)

Head Coach: Brent Hilliard (Long Beach State, 1993), Second season at SDSU
Assistant Coach/Recruiting Coordinator: Melanie Greene (San Diego State, 2007), 11th season at SDSU
Assistant Coach: Steve Timmons (USC), Second season at SDSU
Volleyball Operations Assistant: Kara Barkdoll (Cal State San Marcos, 2015), Fourth season at SDSU

Pronunciations

#1 ZOI FAKI	Zoey FAH-key
#2 HEIPUA TAUTUA'A	HEY-poo-ah taw-TOO-ah-ah
#9 Sara MUKAJ	MOO-kye
#4 Kennedy FEUERBORN	FEWER-born
#15 MIKELA Labno	ma-KAY-la
#16 CARSYN SCHUCH	Carson Shook



OPPONENT COMPARISON

2021 Overall Stats	SDSU	OPP	USU	OPP	BSU	OPP	UNLV	OPP
Hitting Percentage	.219	.244	.247	.192	.258	.201	.259	.190
Kills per set	12.68	12.58	13.02	11.55	12.63	12.44	13.11	11.32
Assists per set	11.82	12.25	11.91	10.47	11.56	11.71	11.62	10.62
Digs per set	13.32	11.86	12.53	11.73	12.76	13.07	12.45	12.32
Blocks per set	1.83	2.57	2.25	2.25	2.63	1.87	2.41	1.71
Service Aces per set	0.99	1.74	1.53	1.28	1.93	1.49	1.72	1.03

SCOUTING THE OPPOSITION

> **Utah State (12-6, 7-1 MW)** has won five straight to take over sole possession of second place in the conference standings. In their last two outings, the Aggies held on for a five-set triumph at Boise State on Oct. 19 (23-25, 25-21, 25-22, 22-25, 15-11) before returning home for a 3-1 victory over Fresno State on Oct. 23 (25-20, 18-25, 25-14, 25-18). Outside hitter Adna Mehmedovic captured Mountain West Freshman of the Week honors thanks in part to her performance vs. Fresno State when she hit .379 and finished with 17 kills, five block assists and two service aces. For the season, junior middle blocker Kennedy Boyd (2.10 kills/set) leads the MW with a .423 hitting percentage, which ranks 13th nationally entering the week. Along with Boyd, USU boasts three other players who are averaging over two kills per set, including sophomore outside hitter Tatum Stall (2.84), senior outside hitter Kristy Frank (2.56) and junior middle blocker Kylee Stokes (2.06). In addition, senior middle blocker Corinne Larsen occupies the sixth spot in the conference with 1.09 blocks per set, while sophomore libero Abby Peterson (3.35 digs/set) and junior setter Kalena Vaivai (5.31 assists/set) find themselves among the MW leaders, ranking sixth and 10th in their respective statistical categories. Collectively, the Aggies occupy the second spot in the Mountain West for all matches in assists (11.91/set) while ranking third in hitting percentage (.247), kills (13.02/set) and opponent hitting percentage (.192). In addition, USU is slotted fourth in blocks (2.25/set) and eighth in digs (12.53/set). The Aggies are under the direction of second-year head coach Rob Neilson, who arrived on the Logan campus after serving as the lead assistant coach for the U.S. men's national team from 2017-19. Prior to his stint with Team USA, Neilson spent 10 years on the Brigham Young men's volleyball coaching staff, including the final two as the program's associate head coach in 2014-15. In 2011, he served as the Cougars' interim head coach, leading the squad to a 20-8 record and a No. 2 national ranking. Neilson played collegiately at BYU from 2003-06, starting at setter during the 2005 and 2006 campaigns. He was a member of the Cougars' 2004 national championship team and tallied 2,790 assists in his career, which ranks fifth in the BYU record book in the rally scoring era.

> **Boise State (15-8, 4-6 MW)** has dropped five of its last six matches to drop into seventh place in the conference standings, one match ahead of the Aztecs who defeated the Broncos on their home floor during that stretch on Oct. 14. Last week, Boise State dropped a pair of matches on the road, falling to Fresno State in four sets on Oct. 21 (22-25, 25-20, 13-25, 17-25) before suffering a 3-0 whitewash at the hands of Sacramento State in a non-conference clash (16-25, 22-25, 19-25). Prior to Saturday's rematch at SDSU, the Broncos will battle UNLV in Las Vegas on Thursday night. Despite its recent stumbles, Boise State still ranks third nationally in service aces (1.66) and fourth in team blocks (2.26.0). Individually, the Broncos are paced by junior outside hitter Lauren Ohlinger, who occupies the third spot in the MW in points (4.34/set) and service aces (0.47/set) while ranking fourth in kills (3.60/set). Not to be outdone, Ohlinger is slotted ninth in the country with 40 aces overall, while her 373.5 points entering the weekend is good for 32nd. In addition, junior middle blocker Alyssa Wissinger finds herself atop the conference perch with 1.19 blocks per set and is tied for fifth with a team-best .355 hitting percentage, while senior setter Danielle Boss ranks second with an average

2021 MOUNTAIN WEST STANDINGS (AS OF OCT. 27)

Team	---Conference---			-----Overall-----			
	W	L	Pct.	W	L	Pct.	Strk
Colorado State	9	1	.900	13	6	.684	W6
Utah State	8	2	.800	16	6	.727	W5
San José State	8	3	.727	14	7	.667	W5
New Mexico	6	4	.600	15	6	.714	W1
UNLV	6	4	.600	15	6	.714	L1
Wyoming	5	5	.500	13	9	.591	W1
Fresno State	5	5	.500	9	9	.500	L1
Boise State	4	6	.400	15	8	.652	L3
San Diego State	3	7	.300	6	16	.273	L3
Air Force	2	8	.200	5	15	.250	L1
Nevada	0	11	.000	3	19	.136	L11

Upcoming Matches in the MW

Thursday, Oct. 28

Utah State at San Diego State, 7 p.m. PT

Colorado State at Air Force, 6 p.m. MT

Wyoming at New Mexico, 6:30 p.m. MT

Boise State at UNLV, 6:30 p.m. PT

Fresno State at Nevada, 6 p.m. PT

Friday, Oct. 30

Boise State at San Diego State, 1 p.m. PT

Colorado State at New Mexico, noon MT

Wyoming at Air Force, 1 p.m. MT

Utah State at UNLV, 1 p.m. PT

Fresno State at San José State, 7 p.m. PT

Monday, Nov. 1

San Diego State at UNLV, 6:30 p.m. PT

Thursday, Nov. 4

UNLV at Fresno State, 6 p.m. PT

San José State at Wyoming, 6:30 p.m. MT

Air Force at Utah State, 7 p.m. MT

Nevada at Colorado State, 7 p.m. MT

New Mexico at Boise State, 7 p.m. MT

Saturday, Nov. 6

San Diego State at Fresno State, 11 a.m. PT

San José State at Colorado State, 1 p.m. MT

New Mexico at Utah State, 1 p.m. MT

Nevada at Wyoming, 6:30 p.m. MT

Air Force at Boise State, 7 p.m. MT

Tuesday, Nov. 9

Colorado State at Wyoming, 6:30 p.m. MT

Thursday, Nov. 11

San Diego State at Air Force, 6 p.m. MT

Utah State at San José State, 4 p.m. PT

Boise State at Nevada, 6 p.m. PT

UNLV at New Mexico, 6:30 p.m. MT

Fresno State at Wyoming, 6:30 p.m. MT

of 10.34 assists per set. Elsewhere, senior middle blocker Alli O'Hara (1.13/set) and sophomore opposite Makayla Hansen (1.12/set) rank third and fourth in blocks, respectively, while sophomore libero Jolei Akima landed in the 10th spot this week with 2.88 digs per frame. As a team, Boise State leads the Mountain West with 2.63 blocks per set, which ranks 20th nationally. Boise State also ranks second in the conference for all matches in service aces (1.93/set) and hitting percentage but is slotted only seventh in kills (12.63) while holding its opponents to a .201 hitting percentage, which ranks sixth. The Broncos are 7-4 at home this season and 4-4 on the road while posting a 4-0 mark in neutral-site matches. Redshirt freshman libero Sam Beschell is a native of nearby Solana Beach, California, where she prepped at Santa Fe Christian High. Head coach Shawn Garus is in his 13th season in charge of the Boise State program, sporting a 329-276 career record and a 221-156 mark at the school. Garus captured back-to-back Mountain West Coach of the Year honors (2015-16) to go with 2016 AVCA Region Coach of the Year accolades.

> UNLV (15-6, 6-4 MW) has posted a 2-3 record since defeating the Aztecs in San Diego on Oct. 5, slipping into a tie for fifth place with New Mexico in the conference standings. Prior to Monday's encounter with SDSU, the Rebels will square off against Boise State (Oct. 28) and Utah State (Oct. 30). UNLV split two matches last week, surviving a five-set battle with the Wyoming Cowgirls at home on Oct. 21 (20-25, 25-16, 23-25, 25-21, 15-5) before dropping a tough three-set decision at Colorado State two days later (25-27, 21-25, 27-29). Despite the split, senior outside hitter Mariena Hayden collected her second Mountain West Offensive Player of the Week award on Oct. 25. Against Wyoming, she launched a career-high 30 kills with just four errors to hit .491 for the match while serving up a season-best seven aces. Hayden ranks third nationally in service aces (0.69/set, 46 overall) as of Oct. 26 while topping the MW in kills (4.09/set). In addition, senior middle blocker Kate Brennan occupies the second spot in the league with a .396 hitting percentage and ranks 10th in blocks (0.97/set), trailing fellow middle Jordyn Freeman, who is slotted seventh (1.07/set). In addition, junior libero Paris Oliveira (3.23/set) and junior outside hitter Shelby Caplnoch (2.89/set) find themselves in the seventh and ninth spots this week in digs, respectively, while sophomore setter Arien Fafard leads the team in assists (5.20/set, 395 overall). Freeman and fellow junior Paola Garcia hail from San Diego County. Freeman prepped at Rancho Bernardo High, while Garcia graduated from Eastlake High. As a team, UNLV leads the Mountain West for all matches with a .259 hitting percentage while ranking second in kills (13.11/set) and blocks (2.41/set). In addition, the Rebels are limiting opponents to the second-worst hitting percentage for the season with a .190 clip. Including preseason tournaments, UNLV is 5-1 at home this season and 5-5 on the road while posting a 5-0 ledger in neutral-site matches. Head coach Dawn Sullivan is in her third season with the Rebels after spending 13 years as an assistant at Iowa State, including the final six as associate head coach. Last season, Sullivan earned MW Coach of the Year honors after guiding UNLV to an undefeated 12-0 record in conference play, as the Rebels advanced to the second round of the NCAA Tournament.

SDSU IN MW RANKINGS

- > As of Oct. 27, libero Natalie Smith ranks fourth in the Mountain West with an average of 3.88 digs per set (295 overall).
- > In addition, outside hitter Victoria O'Sullivan is holding steady in the fifth position with 3.53 kills per set for overall matches and ranks fourth in that statistic (3.63/set) during conference play.
- > Elsewhere, setter Noa Miller occupies the eighth spot with 6.09 assists per frame.
- > Smith's 27 digs vs. Houston Baptist on Aug. 27 is tied for the third-best performance in the conference this season and is tops for a three-set match. In addition, the SDSU senior posted 22 scoops vs. UC Riverside on Sept. 18, which is tied for the third-best total in a three-set contest.
- > Meanwhile, O'Sullivan's 22 kills at Boise State on Oct. 14 represent the most for a three-set match in the MW this year and are tied for the fourth-best effort in the league overall. Not to be outdone, the Aztec senior knocked down 19 kills vs. San Diego on Sept. 11, which is tied for the three-best output in a four-set match this year in the MW.
- > In addition, Serena Hodson's eight total blocks at Sam Houston on Aug. 28 is tied for the ninth-best total in the MW thus far.
- > Collectively, San Diego State leads the conference in Mountain West matches with 13.37 kills and 12.29 assists per set while ranking fourth with 12.46 digs per frame and sixth with a .240 hitting percentage.
- > For all matches, the Aztecs occupy the third spot in the league in assists (11.78/set) and are slotted fourth in digs (13.49/set) while ranking sixth in kills (12.68/set) and seventh in hitting percentage (.217).

NOTING THE COLORADO STATE & WYOMING MATCHES

- > San Diego State lost a match for the first time this season when leading 2-0 in sets after suffering a 3-2 heartbreaker to visiting Colorado State on Oct. 21 (28-26, 25-22, 22-25, 14-25, 13-15).
- > The Aztecs finished with more kills (64-62) and digs (60-55) but the Rams maintained the upper hand in hitting percentage (.309 to .257) and team blocks (10.0 to 7.0). In addition, CSU overcame 16 service errors with nine aces to help complete its comeback.
- > After hitting a combined .368 over the first two sets, the SDSU attack ran out of steam, as the hosts recorded a .167 efficiency the rest of the way, including a .000 pace in the fourth stanza (6-6-28).
- > Individually, Zoi Faki blasted a career-high 20 kills and hit .400 for the night, committing just four errors in 40 attempts, while Victoria O'Sullivan added 14 put-aways of her own.
- > In addition, the Aztec cause was spurred by Heipua Tautua'a and Jordyn Goldsmith, who launched eight non-returnables apiece, while Julia Haynie (.500) collected six kills and tied for match-high honors with five block assists.
- > Along the back row, Natalie Smith led the Scarlet and Black with 17 digs, just ahead of Tautua'a (16), while Faki (9) fell one dig short of a double-double.
- > The teams combined for 10 ties in the decisive fifth set where SDSU twice inched in front by two, including a 12-10 spread following a Haynie kill. However, the Rams responded with a timely 5-1 run to hand the Aztecs the disappointing defeat. CSU totaled just one attack error in the frame, knocking down 11 kills on 20 swings for a .500 efficiency.
- > San Diego State tried to rebound against a hot-hitting Wyoming squad on the road two days later but ultimately fell short in three sets (26-28, 19-25, 14-25).
- > The Aztecs were out-hit .411 to .194 and trailed in team blocks 8.0 to 3.0, while Cowgirls owned a 47-38 advantage in kills and a 5-1 edge in service aces.
- > SDSU was led by Victoria O'Sullivan, who tied for match-high honors with 11 kills, while Jordyn Goldsmith tied her career-best with nine put-aways of her own.
- > In addition, Heipua Tautua'a and Andrea Walker (2 blocks) floored five shots apiece, while Noa Miller (16 assists) and Ashley Vanderpan (12 assists) shared the setting chores. The Aztecs also received a boost from Zoi Faki, who topped the squad with 11 digs.
- > The opening set was the closest of the three, as the teams combined for 12 ties and three lead changes.
- > O'Sullivan launched five non-returnables in the frame, while Goldsmith added three. SDSU nursed a trio of three-point leads,

including a 12-10 advantage following a Walker kill. However, the Cowgirls responded with an 8-2 surge to vault in front 18-14.

> The Aztecs flashed their resiliency down the stretch with an 11-6 spurt, ultimately reaching set point at 25-24 following a Cowgirl attack error. O'Sullivan blasted two clutch kills and combined with Walker on a block in that span, while Goldsmith came through with an earlier solo stop. After a timeout, Wyoming seized control with a 4-1 run, clinching the final points on three kills and an ace.

O'SULLIVAN TABBED MW OFFENSIVE PLAYER OF THE WEEK ON OCT. 18

> Victoria O'Sullivan was named Mountain West Offensive Player of the Week for her performances in a pair of recent conference road matches at Boise State and Utah State.

> With her award, the SDSU senior received the first conference weekly honor of her career and the Aztecs' first this season.

> In two matches, O'Sullivan blasted 32 kills (5.33/set) and recorded a .350 hitting percentage to go with five block assists, helping the Scarlet and Black to a 1-1 week.

> Against Boise State on Oct. 14, O'Sullivan tied her career high with 22 kills (7.33/set), leading the Aztecs to a 3-0 sweep of the Broncos, which marked the first time in program history San Diego State recorded victories over Boise State on the road in consecutive seasons.

> The SDSU outside hitter compiled a personal-best .545 efficiency, committing just four attack errors on 33 attempts while contributing three block assists.

> O'Sullivan blasted 10 kills in the first set alone vs. the Broncos, including two on the final three serves, as SDSU erased a 21-19 deficit with a key 6-2 closing run. Her 22-kill effort represents the most for a three-set contest in the Mountain West this year and is tied for third in overall matches.

> Two days later vs. Utah State on Oct. 16, O'Sullivan came back with 10 kills (3.33/set) to tie for match-

high honors while adding a pair of block assists.

> Earlier this month, O'Sullivan surpassed the 800-kill plateau for her career and now has 891 in a Scarlet and Black uniform.

> The Aztec outside hitter saved her best for last against the Falcons, blasting six kills to go with an ace and two blocks (one solo) in the third set alone. She knocked down two kills and combined on a block during a pivotal 6-1 run that broke a 10-10 tie and gave the Scarlet and Black some separation.

> A native of Albany, California, O'Sullivan has led or shared the team lead for kills in 18 matches this year and 13 of her last 14 starts. She has also surpassed the double-digit kill barrier in 49 of her last 64 appearances since the start of the 2019 campaign.

HOME SWEET HOME

> Since the beginning of the 2009 campaign, the Aztecs have amassed a 110-61 (.643) record at home, highlighted by a 14-0 mark during the 2012 season when SDSU captured the Mountain West championship.

> During the 2021 spring slate, the Aztecs fashioned a winning record at home for the 10th time in the last 12 seasons after posting a 5-4 ledger.

IT'S MILLER TIME

> Senior Noa Miller ramped up her production over the last eight matches when she averaged 6.31 assists per set, which was higher than her season pace of 5.92 helpers per set prior to that stretch.

> Miller totaled 20 or more assists in a recent four-match homestand from Sept. 30-Oct. 7, including 28 vs. New Mexico to tie her season best.

> The SDSU setter also recorded double-doubles in a pair of starts vs. UNLV and Fresno State, posting 21 assists and 12 digs against the Rebels on Oct. 5, before finishing with 27 assists and 13 digs two days later vs.

2021 AZTEC SUPERLATIVES

Individual

HITTING PERCENTAGE (min. 12 kills)

.545 (22-4-33)Victoria O'Sullivan at Boise State (Oct. 14)

KILLS

22.....Victoria O'Sullivan at Boise State (Oct. 14)

5 sets.....20Zoi Faki vs. Colorado State (Oct. 21)

4 sets.....19Victoria O'Sullivan vs. No. 25 San Diego (Sept. 11)

3 sets.....22Victoria O'Sullivan at Boise State (Oct. 14)

TOTAL ATTEMPTS

43.....Victoria O'Sullivan vs. No. 25 San Diego (Sept. 11) and Zoi Faki at Sam Houston (Aug. 28)

5 sets.....43Zoi Faki at Sam Houston (Aug. 28)

4 sets.....43Victoria O'Sullivan vs. No. 25 San Diego (Sept. 11)

3 sets.....33Victoria O'Sullivan at Boise State (Oct. 14) and Zoi Faki vs. Houston Baptist (Aug. 27)

ASSISTS

28.....Noa Miller vs. Colorado State (Oct. 28), vs. New Mexico (Sept. 30)

.....and vs. No. 25 San Diego (Sept. 11)

5 sets.....28Noa Miller vs. Colorado State (Oct. 28)

4 sets.....28Noa Miller vs. New Mexico (Sept. 30) and vs. No. 25 San Diego (Sept. 11)

3 sets.....26Noa Miller at UC Riverside (Sept. 18)

DIGS

27.....Natalie Smith vs. Houston Baptist (Aug. 27)

5 sets.....17Natalie Smith vs. Colorado State (Oct. 21) and Heipua Tautua'a vs. Fresno State (Oct. 7)

4 sets.....21Natalie Smith vs. No. 25 San Diego (Sept. 11)

3 sets.....27Natalie Smith vs. Houston Baptist (Aug. 27)

SERVICE ACES

4.....Sara Mukoj at Sam Houston (Aug. 27)

BLOCK SOLOS

2.....Mikela Labno vs. No. 25 San Diego (Sept. 11) and Serena Hodson at Sam Houston (Aug. 28)

BLOCK ASSISTS

6.....Andrea Walker vs. New Mexico (Sept. 30)

.....Serena Hodson at Sam Houston (Aug. 28)

TOTAL BLOCKS

8.....Serena Hodson at Sam Houston (Aug. 28)

Team

HITTING PERCENTAGE

.400 (55-13-105)at Boise State (Oct. 14)

KILLS

64.....vs. Colorado State (Oct. 21)

5 sets.....64vs. Colorado State (Oct. 21)

4 sets.....57vs. No. 25 San Diego (Sept. 11)

3 sets.....55at Boise State (Oct. 14)

TOTAL ATTEMPTS

161.....at Sam Houston (Aug. 28)

5 sets.....161at Sam Houston (Aug. 28)

4 sets.....148vs. No. 25 San Diego (Sept. 11)

3 sets.....112at Utah State (Oct. 16)

ASSISTS

59.....vs. Colorado State (Oct. 21)

5 sets.....59vs. Colorado State (Oct. 21)

4 sets.....56vs. No. 25 San Diego (Sept. 11)

3 sets.....51at Boise State (Oct. 14)

DIGS

74.....vs. Fresno State (Oct. 7)

5 sets.....74vs. Fresno State (Oct. 7)

4 sets.....63vs. No. 25 San Diego (Sept. 11)

3 sets.....57vs. UC Riverside (Sept. 18)

SERVICE ACES

7.....at Nevada (Sept. 23) and at Sam Houston (Aug. 27)

TOTAL BLOCKS

12.0.....at Sam Houston (Aug. 28)

the Bulldogs, the latter of which tied her collegiate high for scoops. She now has 14 double-doubles for her career, including three this year after recording six at Arizona State (2019) and five at Wofford (2018).

- > Against Fresno State, Miller added to her versatility by collecting a career-high six kills on six attempts (1.000).
- > For the third time this season, Miller equaled her SDSU best with 28 assists vs. Colorado State.
- > Entering the week, the Douglasville, Georgia, native leads the Aztecs with 13 service aces and recently surpassed 100 digs in an SDSU uniform (115) after posting seven scoops at Boise State.

GOLDSMITH SHINES

- > Freshman Jordyn Goldsmith has started the last five of the last eight matches, posting 52 kills, 14 total blocks and 14 digs during that stretch.
- > In SDSU's 3-0 sweep over Air Force on Oct. 2, the Valleyford, Washington, native knocked down seven kills on 11 attempts without an error for a sparkling .636 hitting percentage.
- > The following week vs. Fresno State on Oct. 7, Goldsmith set a collegiate-best with five total blocks, including a solo stop. She also had four block assists in the Aztecs' 3-0 blanking of UC Riverside on Sept. 18.
- > Goldsmith contributed to SDSU's 3-0 whitewash at Boise State on Oct. 14, when she tied her career-high with nine kills and hit .467 to go with a block assist.
- > While listed as an opposite hitter, Goldsmith holds a rare distinction of playing at middle blocker as a left-hander recently due to injuries to Sara Mukaj and Julia Haynie.

LABNO LIGHTS IT UP

- > Freshman Mikela Labno came through with a pair of solid performances three weeks ago vs. New Mexico and Air Force when she averaged 2.57 kills per set and hit .441, which were both higher than her season marks entering that week (2.02 kps, .142).
- > In all, the Aztec outside hitter combined for 18 kills on 34 swings with just three errors and tied for the team lead with five total blocks.
- > Against Air Force, Labno posted her second-best hitting percentage of the year with a .474 clip,, helping the Aztecs snap a two-match slide with the 3-0 sweep. She reached double digits in kills for the third time this year with 10 put-aways in that contest, committing just one error in 19 swings. The Hilmar, California, native, totaled four of her kills in the second set and came up with the clinching point on a solo block, as SDSU prevailed in the frame, 27-25.
- > Labno also finished with eight kills, three kills and four total blocks while hitting .400 vs. New Mexico.

ROAD DIARIES PART II: BOISE STATE AND UTAH STATE

- > Victoria O'Sullivan tied her career best with 22 kills last Thursday, propelling the Aztecs to an inspiring 3-0 sweep over Boise State (25-23, 25-20, 25-18) at Bronco Gym.
- > In addition to her match-high kills, O'Sullivan led all players with a season-best .545 hitting percentage, while Heipua Tautua'a launched 11 put-aways of her own, helping San Diego State snap a two-match losing streak and defeat Boise State on the road in consecutive seasons for the first time ever.
- > SDSU also received considerable contributions from Jordyn Goldsmith, who tied her season-high with nine kills and hit .467 for the night, as well as Zoi Faki, who totaled seven kills and eight digs.
- > Elsewhere, Noa Miller (22 assists) and Ashley Vanderpan (19 assists) split the setting responsibilities, with the latter serving up two aces, while Natalie Smith scooped up a match-high nine digs to anchor the Aztec back row. O'Sullivan and Andrea Walker also excelled at the net, finishing with three block assists each.
- > The Broncos entered the match ranked fifth nationally with 188 total blocks, but SDSU was not intimidated, as the Scarlet and Black hit at a .400 clip, marking its highest efficiency since a .410 performance in a home sweep of San Diego on Oct. 2, 2018.
- > In addition, the Aztecs maintained the statistical advantage in kills (55-32) and digs (34-23) to help fuel their win.
- > Still, San Diego State found itself trailing by five on two occasions in the opening set, including a 13-8 spread following an unsuccessful challenge on an attack error. However, the visitors regrouped with a vengeance, reeling off seven straight points to vault in front 15-13. O'Sullivan capped the run with three straight kills after teaming with Walker on an earlier block.
- > The two teams slugged it out for the remainder of the set, combining for nine ties and two additional lead changes. Facing a 23-22 deficit after a service error, SDSU escaped with the set, thanks to O'Sullivan's two late kills sandwiched around a Boise State attack error. In all, the Aztecs totaled 20 kills in the frame, with O'Sullivan flooring 10 shots alone, while Goldsmith blasted five non-returnables of her own.
- > The scoreboard was knotted at 5-5 early in the second stanza until another O'Sullivan kill and a Vanderpan service ace sparked a 6-1 run that catapulted SDSU into the lead for good. The Aztecs maintained series of five-point advantages, including a 20-15 margin following Vanderpan's second ace of the night.
- > The Broncos narrowed the gap three times down to two points, closing to within 22-20 after a Jessica Donahue kill. However, SDSU withstood the challenge, benefiting from a Boise State attack error, while Goldsmith and O'Sullivan each knocked down a kill to give the Scarlet and Black a decisive 2-0 lead in sets.
- > After hitting .378 and .385 in the first two frames, respectively, SDSU saved its best for last, finishing strong with a .448 efficiency in the third set by blasting 17 kills on 29 swings with just four errors. O'Sullivan and Faki totaled five put-aways apiece in what proved to be the final stanza, while Tautua'a and Brooklynn Hill each served up an ace.
- > The Aztecs never trailed in the set, storming to an 8-0 lead, punctuated by three consecutive O'Sullivan kills. The Broncos would not go quietly, however, as the host school cut the margin to three on three occasions, including a 19-16 spread following an SDSU attack error. The Scarlet and Black once again vanquished the threat, thanks in part to Tautua'a, who powered down three kills in a decisive 6-2 closing run, while the Broncos imploded with a late ball-handling error and a wayward attack to seal their fate.
- > Two days later, San Diego State suffered the opposite fate, dropping a three-set decision at Utah State (16-25, 26-28, 19-26).
- > The Aggies posted a greater hitting percentage (.323 to .152) and maintained the statistical advantage in kills (43-39) as well as team blocks (11.0 to 4.0), while the Aztecs committed 11 more attack errors and were foiled by seven service aces to fall to 4-4 in Logan all-time.
- > SDSU was led by Victoria O'Sullivan and Heipua Tautua'a, who launched 10 kills apiece, while Mikela Labno floored eight shots of her own. In addition, the Aztec charge was aided by Zoi Faki, who scooped up a team-high 11 digs while contributing four kills, two aces and a pair of blocks, including a solo stuff.
- > Elsewhere, Noa Miller (16 assists) and Ashley Vanderpan (15 assists, 8 digs) shared the setting duties, while Julia Haynie topped the squad with three block assists.
- > The second stanza was the most competitive of the day, as the teams combined for nine ties and four lead changes. SDSU logged its best hitting percentage of the match in that set, hitting at a .244 clip on 17 kills in 41 attempts with seven miscues. The Aztecs faced a series of five-point deficits, including a 15-10 spread after a kill by USU's Tatun Stall.

2021 SITUATIONAL RECORDS

GENERAL

Overall.....	6-16
Mountain West.....	3-7
Home.....	1-6
Away.....	3-7
Neutral.....	2-3
vs. Ranked Teams.....	0-3
vs. Unranked Teams.....	6-11
Matches Following a Win.....	1-5
Matches Following a Loss.....	5-10
Longest Winning Streak.....	2
Longest Losing Streak.....	5
Current Streak.....	Lost 2

BY SETS

3 Sets.....	6-9
4 Sets.....	0-4
5 Sets.....	0-3
Leading After Two.....	6-1
Trailing After Two.....	0-11
Tied After Two.....	0-4
Leading 2-1.....	0-3
Trailing 2-1.....	0-4

BY MONTH

August.....	0-3
September.....	4-8
October.....	2-5
November.....	0-0

BY DAY

Tuesday.....	0-2
Thursday.....	2-3
Friday.....	2-4
Saturday.....	2-7

BY KILLS

Leading in Kills.....	6-5
Trailing in Kills.....	0-11
Tied in Kills.....	0-0

BY DIGS

Leading in Digs.....	6-11
Trailing in Digs.....	0-4
Tied in Digs.....	0-1

BY BLOCKS

Leading in Blocks.....	3-3
Trailing in Blocks.....	2-12
Tied in Blocks.....	1-1

BY ATTACK PERCENTAGE

Greater Attack Percentage.....	6-2
Lower Attack Percentage.....	0-14
Equal Attack Percentage.....	0-0
Hitting above .300.....	4-0
Hitting between .200 and .300.....	2-7
Hitting between .100 and .200.....	0-7
Hitting below .100.....	0-2
Opponent Hitting above .300.....	0-7
Opponent Hitting between .200 and .300.....	2-7
Opponent Hitting between .100 and .200.....	1-2
Opponent Hitting below .100.....	3-0

BY INDIVIDUAL KILLS

3+ Double-Digit Individual Kill Totals.....	1-1
2 Double-Digit Individual Kill Totals.....	2-6
1 Double-Digit Individual Kill Totals.....	2-6
0 Double-Digit Individual Kill Totals.....	1-3

2021 MATCH-BY-MATCH LEADERS

Date	Opponent	Kills	Hitting Pct.*	Assists	Aces	Digs	Blocks
A.27	vs. Houston Baptist	Faki - 11	Faki (.242)	Vanderpan - 19	Vanderpan - 1	Smith - 27	Hodson - 2
A.27	at Sam Houston	O'Sullivan/Tautua'a - 8	Tautua'a (.111)	Vanderpan - 15	Mukaj - 4	Smith - 11	Haynie/O'Sullivan - 2
A.28	at Sam Houston	Faki/O'Sullivan - 14	Mukaj (.636)	Vanderpan - 26	Vanderpan - 2	Smith - 16	Hodson - 8
S.3	at UC Santa Barbara	O'Sullivan - 15	O'Sullivan (.519)	Miller - 22	Tautua'a - 1	Smith - 11	Mukaj - 4
S.4	vs. No. 21 Pepperdine	Labno - 13	Labno (.522)	Miller - 19	Vanderpan - 1	Smith - 17	Haynie/Mukaj - 4
S.4	vs. Kansas State	Faki/O'Sullivan - 13	Faki (.323)	Miller - 25	Faki - 2	Smith - 9	Mukaj/Tautua'a - 3
S.10	No. 16 UCLA	O'Sullivan - 10	O'Sullivan (.160)	Miller - 17	Smith - 2	Smith - 11	Mukaj/Haynie/O'Sullivan - 3
S.11	No. 25 San Diego	O'Sullivan - 19	O'Sullivan (.349)	Miller - 28	Miller - 2	Smith - 21	Labno/Mukaj - 3
S.14	at Long Beach State	Faki - 8	Faki (.273)	Miller - 10	Labno - 2	Smith - 14	Goldsmith - 4
S.17	vs. Texas Southern	O'Sullivan - 12	Merk (.385)	Miller - 21	Hill/Miller - 1	Smith - 14	Haynie - 4
S.17	at Arizona	O'Sullivan - 10	O'Sullivan (.381)	Vanderpan - 14	Miller/Smith - 1	Smith - 13	Labno/Walker - 2
S.18	vs. UC Riverside	O'Sullivan - 14	O'Sullivan (.500)	Miller - 26	Vanderpan - 2	Smith - 22	Goldsmith/Haynie - 4
S.23	at Nevada	O'Sullivan - 9	Haynie (.429)	Miller - 19	Smith/Tautua'a - 2	Smith - 13	Haynie - 5
S.25	at San José State	O'Sullivan - 11	Goldsmith (.389)	Miller - 17	none	Smith - 6	Walker - 3
S.30	New Mexico	O'Sullivan/Tautua'a - 9	Walker (.455)	Miller - 28	O'Sullivan - 3	Smith - 13	Walker - 6
O.2	Air Force	O'Sullivan - 13	Goldsmith (.636)	Miller - 25	O'Sullivan - 3	Smith/Miller - 8	O'Sullivan/Walker - 3
O.5	UNLV	O'Sullivan - 11	Tautua'a (.353)	Miller - 21	Miller/Smith - 1	Smith - 15	Goldsmith/Walker - 2
O.7	Fresno State	O'Sullivan - 17	Walker (.467)	Miller - 27	Faki/O'Sullivan - 2	Tautua'a - 17	Goldsmith - 5
O.14	at Boise State	O'Sullivan - 22	O'Sullivan (.545)	Miller - 22	Vanderpan - 2	Smith - 9	O'Sullivan/Walker - 3
O.16	at Utah State	O'Sullivan/Tautua'a - 10	Labno (.227)	Miller - 16	Faki - 2	Faki - 11	Haynie - 3
O.21	Colorado State	Faki - 20	Faki (.400)	Miller - 28	Miller/Smith - 1	Smith - 17	Haynie - 5
O.23	at Wyoming	O'Sullivan - 11	O'Sullivan (.364)	Miller - 16	Tautua'a - 1	Faki - 11	Walker - 2
O.28	Utah State						
O.30	Boise State						
N.1	at UNLV						
N.6	at Fresno State						
N.11	at Air Force						
N.13	at New Mexico						
N.18	Nevada						
N.20	San José State						

* - min. 7 kills

> SDSU caught proverbial lightning in a bottle at this juncture with a 13-4 blitz, sparked by Faki, who registered two kills, a solo block and a service ace, while Labno also figured prominently in the run with three put-aways of her own. In addition, Tautua'a exploded for a pair of kills, and after an Aggie attack error, the Aztecs were seemingly in the driver's seat with a 23-19 lead. However, Utah State fought itself off the ropes with a timely 9-3 outburst to escape with the set.

> Perhaps a bit stung by their misfortune, the Aztecs went cold in the third set, hitting at a .077 clip on 12 kills in 39 attempts with nine errors, six of which were the result of Aggie blocks.

FEAST OR FAMINE

> Fifteen of San Diego State's 20 matches have been completed in three sets this season, with the Aztecs posting a 6-9 record in those contests.

> SDSU has played a trio of five-set matches this year, falling to Sam Houston in their final encounter of the Bearkat Invite on Aug. 28, before experiencing an identical fate vs. Fresno State on Oct. 7. The Aztecs held a 2-1 lead in both contests.

> In addition, the Aztecs were victimized by a furious rally against Colorado State at home on Oct. 21, as the Rams overcame an 0-2 deficit to hand the Scarlet and Black a heartbreaking five-set defeat.

> SDSU has come out on the wrong side of the scoreboard in each of their four-set matches this year, falling to No. 21 Pepperdine (Sept. 4), Kansas State (Sept. 4), No. 25 San Diego (Sept. 11) and New Mexico (Sept. 30).

OTHER TRENDS

> All six of San Diego State's victories this season have been recorded when the Aztecs have finished with more kills and digs, as well as a greater hitting percentage.

> SDSU has lost two matches this season when posting a better efficiency — both five-set defeats. The Aztecs out-hit Sam Houston in their final match of the Bearkat Invitational on Aug. 28 (.230 to .179) before experiencing the same fate at home vs. Fresno State on Oct. 7 (.247 to .201).

> San Diego State has dropped five matches this year when posting more kills than the opposition, including a narrow home loss to Colorado on Oct. 21, when the Aztecs held a 64-62 edge in that statistical category. SDSU also suffered that distinction in two additional home contests earlier this month, including a 3-0 defeat to UNLV (42-32) on Oct. 5 and the aforementioned heartbreaker to Fresno State (62-56). The Aztecs also recorded more kills in that five-setter at Sam Houston on Aug. 28 (59-52) and a four-set home defeat to No. 25 San Diego on Sept. 11 (57-49).

> The Aztecs are 4-0 when hitting above .300 this season, including a season-high .400 clip in their 3-0 upset at Boise State on Oct. 14. The Scarlet and Black also notched a .384 efficiency in a sweep at UC Santa Barbara on Sept. 3, followed by a .337 pace in a hard-fought whitewash of Air Force on Oct. 2. In addition, SDSU finished with a .303 hitting percentage in a blanking of UC Riverside at the Wildcat Classic.

> The Aztecs have fallen in three matches when maintaining the upper hand in blocks, including losses to New Mexico (10.0 to 7.0), Long Beach State (8.0 to 5.0) and the second defeat at Sam Houston (12.0 to 7.0).

> San Diego State's sweep of Air Force marked the first time this season the Aztecs prevailed when an opponent hit over .200 for the match, as the Falcons finished with a .272 clip.

> When Victoria O'Sullivan posted a team-leading nine kills in SDSU's sweep at Nevada on Sept. 23, it marked the first time in four matches this year the Aztecs emerged victorious without having a player reaching the double-digit plateau in that statistic.

NEWCOMERS MAKING THEIR MARK

> San Diego State boasts 10 newcomers on its 2021 fall roster, with several providing key contributions during the first nine weeks of the season.

> Senior libero Natalie Smith, who received all-tournament recognition at the Bearkat Invitational in August, ranks fourth in the Mountain West with an average of 3.88 digs per set. In the season opener vs. Houston Baptist, the Michigan transfer posted 27 digs, which is tied for the third-best total in the conference so far this year. Smith has started all 22 matches and has recorded double-digit digs on 16 occasions.

> Fellow classmate Zoi Faki ranks second on the team with an average of 2.18 digs per set (122 overall) while occupying the fourth spot with 2.05 kills per frame (115 overall). She also has seven service aces to her credit. Against Sam Houston on Aug. 28, the Pitt transfer logged her first double-double in an Aztec uniform with 14 kills and 12 digs. Faki has started the last four matches, including last week's encounter vs. Colorado State on Oct. 21, when she set a career high with 20 kills and hit .400 for the night. She also posted 11 digs in a pair of recent matches at Utah State (Oct. 16) and Wyoming (Oct. 23).

> Arizona State transfer Noa Miller made her San Diego State debut at the Gaucho Invitational and has started the last 19 matches, averaging 6.09 assists, which ranks eighth in the Mountain West, to go with 1.77 digs per frame. The Aztec setter has increased her production over the last eight matches (6.31/set), surpassing the 20-assist plateau in four consecutive starts during that stretch from Sept. 30-Oct. 7, highlighted by double-doubles vs. UNLV (21 assists, 12 digs) and Fresno State (27 assists, 13 digs), which gave her 14 for her career. In her first start for the Aztecs vs. UCSB, Miller dished out 22 assists and scooped up seven digs, helping the Scarlet and Black to its first victory of the season. Against No. 25 USD on Sept. 11, she racked up her first double-double as an Aztec after posting a season-high 28 assists and 11 digs. Two weeks ago, Miller tied her SDSU-best with 28 helpers vs. Colorado State on Oct. 21.

> Freshman Mikela Labno has started 10 matches this season and ranks third on the team in overall kills (122) and fourth in kills per set (2.03) while leading the squad with seven solo blocks. The Aztec outside hitter earned her first career start at Long Beach State on Sept. 14 and scooped up a collegiate-best 13 digs in SDSU's 3-0 sweep of UC Riverside at the Wildcat Classic on Sept. 18. Labno saw her first extended action of the season at the Gaucho Invitational, averaging 2.64 kills in all 11 sets while hitting at a .292 clip. The Hilmar, California, native knocked down a career-high 13 kills against Pepperdine, hitting a season-high .519

for the match.

- > Freshman Jordyn Goldsmith has started eight matches this season, including five of the last eight when she totaled 52 kills, 14 blocks (3 solo) and 14 digs. In the Aztecs' sweep of Air Force, the rookie opposite hitter led the Scarlet and Black with a .636 efficiency, collecting seven kills on 11 swings without a miscue. She also established a collegiate-best with five total blocks vs. Fresno State, including a solo stop. Goldsmith currently ranks fifth among Aztec regulars with 1.65 kills per set (99 overall), matching her career-high with nine put-aways while hitting .467 at Boise State on Oct. 14. She also recorded nine kills at Wyoming on Oct. 23 and duplicated the total while hitting .389 at San José State on Sept. 25. At the Wildcat Classic vs. UC Riverside on Sept. 18, the Valleyford, Washington, native came through with four block assists, helping the Scarlet and Black to a three-set whitewash.
- > Despite missing the Aztecs' four-match homestand earlier this month, former Portland State middle blocker Julia Haynie remains in second on the squad with 39 total blocks while adding 63 kills, which ranks sixth. The SDSU junior finished with season bests of eight kills and five block assists, helping the Aztecs sweep past Nevada in their Mountain West opener on Sept. 23. She also enjoyed a pair of breakout performances at the Wildcat Classic with matching totals of six kills, a .455 hitting percentage and four total blocks, propelling SDSU to victories over Texas Southern and UC Riverside. The Temecula native also knocked down six kills and hit .444 in her Scarlet and Black debut vs. Houston Baptist on Aug. 27. She has multiple block assists in 10 of her 17 starts this year, tying her season high with five vs. Colorado State.
- > Freshman outside hitter Reagan Merk saw extended action in four straight matches from Sept. 14-18, totaling 21 kills, 17 digs and three blocks for that week. The Huntington Beach native earned her first collegiate start in SDSU's sweep of UC Riverside at the Wildcat Classic, where she tied her career highs with seven kills and six digs while recording her first three blocks in an Aztec uniform, including a solo stop. Merk also launched seven put-aways and posted six digs the previous day in SDSU's blanking of Texas Southern. Earlier in the week at Long Beach State, she knocked down five kills while committing just one error on seven attempts for a sparkling .714 hitting percentage. Merk also served up aces on her first two collegiate serves in the second set vs. Sam Houston on Aug. 27.
- > Likewise, freshman opposite hitter Kalani Ruri made the most of her two appearances at the Wildcat Classic. The native New Zealander opened the tournament with five kills against Texas Southern, hitting a season-best .556 efficiency with no errors on nine swings while adding a pair of block assists, as the Aztecs snapped a five-match losing streak. The following day, Ruri helped SDSU roll to another sweep after posting a season-best seven kills and hit at a .385 clip to go with another pair of block assists vs. UCR.
- > Freshman Sara Mukaj started seven of eight matches before suffering an ACL injury but still leads the Scarlet and Black with 0.81 blocks per set (22 overall). In the first match vs. Sam Houston at the Bearkat Invite on Aug. 27, the Aztec middle blocker served up four aces, which is tied for the eighth-best effort in the MW this year. In the rematch against the Bearcats, Mukaj returned the following day and led the Aztecs with a .636 hitting percentage, launching seven kills on 11 swings without an error to go with five digs and four block assists.

A LOOK BACK AT THE UNLV, FRESNO STATE HOME MATCHES

- > San Diego State built a 2-1 lead in sets against visiting Fresno State on Oct. 7 but was unable to close out the Bulldogs, falling in a 3-2 heartbreaker (25-22, 22-25, 25-17, 23-25, 12-15) inside Aztec Court at Peterson Gym.
- > For the second straight match, SDSU maintained the statistical advantage in kills (62-56) and digs (74-56) but came out on the wrong side of the scoreboard.
- > The Aztecs also out-hit Fresno State .247 to .201 but trailed in blocks (15.0 to 8.0) and service aces (9-4).
- > SDSU combined for a .289 efficiency over the first three sets, including a .520 clip in the third frame when they knocked down 16 kills on 25 attempts with just three errors. However, the Aztecs could not pull away in the fourth stanza despite posting more kills (15-9).
- > Conversely, the Bulldogs benefited from eight Aztec attack errors and three wayward serves in the set while out-blocking the Scarlet and Black 5.0 to 2.0 to steal the momentum.
- > Individually, SDSU's Victoria O'Sullivan led all players 17 kills, while Mikela Labno finished with 12 put-aways of her own.
- > Defensively, four Aztecs surpassed double figures in digs, including Heipua Tautua'a, who tied for match-high honors with a season-best 17 scoops, followed by Natalie Smith (15), Noa Miller (13) and Kennedy Feuerborn (10).
- > Miller recorded her second straight double-double after handing out a match-high 27 assists to go with a personal-best six kills, while Jordyn Goldsmith logged a team-high five blocks, including a solo stop.
- > The teams combined for 12 ties and six lead changes in the pivotal fourth set, where Tautua'a led the Aztec offense with four kills, while Miller and Andrea Walker collected three apiece.
- > SDSU seemed poised to close out the match after forging a 21-18 lead following consecutive kills by Walker and Feuerborn. However, the Bulldogs would not go quietly, crafting a timely 5-1 surge to vault in front 23-22.
- > Fresno State was gifted three points on two wayward SDSU attacks and a ball-handling error, while Ella Rud knocked down a kill and combined with Kasey Purry on a block. The Aztecs knotted the score shortly thereafter at 23-23 on a Walker blast but could not regain the upper hand, as the Bulldogs recorded back-to-back kills to escape with the set.
- > Stung, SDSU found itself in pursuit mode for the fifth and final set after falling behind 7-2. The Aztecs could not avoid the defensive exploits of Purry, who combined with Amaria Kelley and Savannah Smith on a pair of block assists during that span while adding a solo stop. In addition, Smith, Kelley and Sukhov each contributed a kill while the Scarlet and Black shot itself in the proverbial foot with a service error.
- > SDSU flashed its resiliency with a 10-7 run that trimmed the deficit to 14-12, aided by three O'Sullivan kills, two by Labno and one each by Tautua'a and Walker, who also teamed with Feuerborn on a block during that stretch. However, the rally proved too little too late, as a Smith kill ended the match shortly thereafter.
- > Two days earlier, San Diego State dropped a three-set decision to UNLV (21-25, 21-25, 20-25) despite maintaining the statistical advantage in kills (42-32) and digs (49-35).
- > However, the Aztecs trailed in team blocks (14.0 to 4.0) and service aces (9-2).
- > Offensively, SDSU was once again paced by Victoria O'Sullivan, who blasted 11 kills, while Heipua Tautua'a hit .353 for the night, launching nine put-aways on 17 attempts with just two errors.
- > In addition, Noa Miller notched a double-double after posting a match-high 21 assists to go with 12 digs.
- > Not to be outdone, Natalie Smith led all players with 15 scoops of her own, while O'Sullivan and Tautua'a finished with five apiece.
- > The Aztecs found themselves in the thick of the fight throughout the match, as the teams combined for 30 ties and 16 lead changes. However, the Rebels unleashed timely runs to keep the host school at bay.

NEW MEXICO & AIR FORCE MATCH REWIND

- > After opening its season-long homestand on a sour note vs. New Mexico, San Diego State regrouped two days later on Oct. 2 and emerged triumphant for the first time at Aztec Court this season with a thrilling three-set victory over Air Force (26-24, 27-25, 25-21).
- > With the win, SDSU improved to 39-8 in the all-time series vs. the Falcons. In addition, the Aztecs find themselves in a three-way tie for fifth place in the MW with a 2-2 conference record, along with Boise State and Fresno State.

MISCELLANEOUS STATS

DOUBLE-DOUBLES

Zoi Faki (1 season, 3 career (2 at Pittsburgh))

14 kills, 12 digs at Sam Houston, 8/28/21

Ashley Vanderpan (1 season, 4 career)

26 assists, 10 digs at Sam Houston, 8/28/21

Noa Miller (3 season, 14 career (6 at Arizona State, 5 at Wofford))

28 assists, 11 digs vs. No. 25 San Diego, 9/11/21

21 assists, 12 digs vs. UNLV, 10/5/21

27 assists, 13 digs vs. Fresno State, 10/7/21

Heipua Tautua'a (1 season, 1 career)

10 kills, 12 digs vs. No. 25 San Diego

20+ KILLS IN A MATCH

Player	2021	Career
Victoria O'Sullivan	1	4
Zoi Faki	1	1

10+ KILLS IN A MATCH

Player	2021	Career
Victoria O'Sullivan	15	50
Mikela Labno	4	4
Zoi Faki	4	6
Heipua Tautua'a	3	6
Andrea Walker	0	5
Julia Haynie	0	1

20+ DIGS IN A MATCH

Player	2021	Career
Natalie Smith	3	6
Zoi Faki	0	1
Heipua Tautua'a	0	1

10+ DIGS IN A MATCH

Player	2021	Career
Natalie Smith	15	44
Noa Miller	3	15
Heipua Tautua'a	3	9
Zoi Faki	3	5
Ashley Vanderpan	1	4
Mikela Labno	1	1
Brooklynn Hill	0	1

10+ BLOCKS IN A MATCH

Player	2021	Career
Julia Haynie	0	1

5+ BLOCKS IN A MATCH

Player	2021	Career
Julia Haynie	1	7
Andrea Walker	1	6
Victoria O'Sullivan	1	3
Serena Hodson	1	3
Jordyn Goldsmith	1	1
Heipua Tautua'a	0	1

3+ SERVICE ACES IN A MATCH

Player	2021	Career
Victoria O'Sullivan	2	2
Sara Mukaj	1	1
Natalie Smith	0	4
Brooklynn Hill	0	2
Ashley Vanderpan	0	2
Zoi Faki	0	1
Julia Haynie	0	1
Noa Miller	0	1

- > In a slug-fest that featured a whopping 35 ties and 12 lead changes, San Diego State posted its second-best hitting percentage of the season with a .337 clip.
- > Victoria O'Sullivan led all players with 13 kills and three service aces to go with a trio of blocks, including a solo stop, while Mikela Labno reached the double-digit plateau with 10 put-aways while hitting at a .474 pace with just one error on 19 attempts.
- > The Aztec cause was also advanced by Heipua Tautua'a, who displayed her versatility with eight kills, six digs, two blocks and an ace, while Jordyn Goldsmith launched seven non-returnables without an error, finishing with a .636 efficiency on an economical 11 swings.
- > In addition, Noa Miller (25 assists) and Kennedy Feuerborn (11 assists), split the setting duties, while Natalie Smith tied Miller for team-high honors with eight digs.
- > The tightness of the match was reflected on the stat sheet, where the Aztecs maintained a slight advantage in kills (46-43) and digs (33-32), while the two sides each recorded seven team blocks. However, SDSU served up more aces (6-2) and committed three fewer attack errors (16-13) to help squeeze out the victory.
- > The Aztecs saved their best for last with a stellar .455 hitting percentage in the third set, blasting 17 kills on 33 attempts with just two errors. O'Sullivan came through in the clutch as well, notching six of her kills in the frame, while Labno and Goldsmith tallied three apiece. In addition to her setting, Miller supplied some stout defense with six digs in the final stanza to help vanquish Air Force.
- > On Sept. 30, SDSU saw its eight-match winning streak vs. New Mexico snapped, despite a stellar defensive effort in which the Aztecs maintained the upper hand in team blocks (10.0 to 7.0) and digs (42-33).
- > SDSU was victimized by 10 service aces and hit just .168 for the night, while UNM did not fare much better, posting a .171 efficiency. However, the Lobos held a slight edge in kills (45-43) to help maintain their share of first place in the MW standings.
- > Individually, SDSU was paced by O'Sullivan and Tautua'a, who collected eight kills apiece, while Labno launched eight non-returnables of her own and hit .400 for the match. In addition, Andrea Walker finished with a .455 clip, knocking down seven kills with two miscues in 11 attempts while tying for match-high honors with a season-best six block assists.
- > Not to be outdone, Goldsmith posted a .556 efficiency, blasting six kills with just one error on nine swings, while Noa Miller tied her season-high with 28 assists to lead all players. Natalie Smith got into the act as well with a match-high 13 digs, while O'Sullivan tied her personal-best with seven scoops.

ROAD DIARIES PART I: NEVADA AND SAN JOSÉ STATE

- > San Diego State improved to 12-11 all-time in MW openers after a three-set whitewash (29-27, 25-17, 25-20) of Nevada on Sept. 23.
- > The Aztecs survived a grueling opening set, where the two teams combined for 16 ties and seven lead changes, before the Scarlet and Black pulled away in the final two frames.
- > SDSU limited the Wolf Pack to a minus-.029 hitting percentage over those final two sets to help snap a three-match losing streak in the head-to-head series.
- > Victoria O'Sullivan tied for match-high honors with nine kills, snapping her streak of 11 straight starts with double-digit put-aways. However, the Aztecs shared the wealth offensively, as Julia Haynie recorded season-bests of eight kills and five block assists, while Heipua Tautua'a and Mikela Labno launched seven non-returnables apiece.
- > Tautua'a also displayed her versatility with 11 digs, three block assists and a pair of service aces, while Andrea Walker knocked down four kills and came up with four block assists in just her second start of the year.
- > In addition Jordyn Goldsmith also got into the act with four kills and three block assists, while Noa Miller (19 assists) and Ashley Vanderpan (15 assists) shared the bulk of the setting duties. Once again, Natalie Smith was solid along the back row, where she logged a match-high 13 digs.
- > As a team the Aztecs maintained the statistical advantage in kills (39-31), digs (46-38), team blocks (11.0 to 8.0) and aces (7-4) to help key the victory.
- > SDSU found itself in another back-and-forth affair two days later at San José State, where the teams combined for 26 ties and 11 lead changes. However, the Aztecs were unable to keep pace with the hot-hitting Spartans and dropped a hard-fought decision in three sets (20-25, 21-25, 16-25).
- > San Diego State was out-hit .412 to .257, as SJSU committed just eight attack errors for the day, knocking down 43 kills on 85 attempts to go with seven service aces to help spark its win.
- > O'Sullivan led the Scarlet and Black with 11 kills and hit at a .360 clip, while Goldsmith notched season highs of nine put-aways and a .389 efficiency.
- > In addition, the Aztec cause was advanced by Andrea Walker, who tied for match-high honors with three blocks assists, while Noa Miller (17 assists) and Ashley Vanderpan (10 assists) split the setting responsibilities.
- > However, SDSU could not contain the tandem of Haylee Nelson and Latahevai Lousi, who combined for 29 of the Spartans' 43 kills. Nelson led all players with 18 put-aways and hit .630, committing just one error on 27 attempts, while Lousi launched 11 non-returnables of her own and recorded two miscues on 22 swings for a .409 efficiency.

WILDCAT CLASSIC REVISITED

- > San Diego State concluded its non-conference schedule in Tucson, Arizona, winning two of three matches at the Wildcat Classic, Sept. 17-18.
- > The Aztecs put the brakes on a five-match slide with a 3-0 sweep of Texas Southern (25-17, 25-22, 25-17) in the tournament opener on Sept. 17 before having the tables turned against them vs. host Arizona (20-25, 22-25, 15-25).
- > However, the Scarlet and Black rebounded in style the following day with another whitewash against UC Riverside (25-15, 25-21, 25-19) in its weekend finale.

- > Victoria O'Sullivan posted double-digit kills in all three matches, averaging a team-high 3.89 kills per set while hitting .389 for the weekend to go with eight digs and five total blocks.
- > In the opener vs. TSU, the Aztecs out-hit the Tigers .255 to .049, blasting more kills (42-26) while owning the edge in digs (50-48) and team blocks (6.0 to 2.0).
- > O'Sullivan led a balanced SDSU attack with a match-high 11 kills, while freshman Reagan Merk came off the bench to record a season-best seven put-aways of her own. In addition, junior Julia Haynie (4 block assists) collected six kills and hit .455, while freshmen Kalani Ruri (2 block assists) and Mikela Labno launched five non-returnables apiece.
- > The Aztec fortunes were also buoyed by senior Natalie Smith, who tied for match-high honors with 14 digs, while classmate Noa Miller led all players with 20 assists and registered seven digs. Not to be outdone, sophomore Heipua Tautua'a contributed to the SDSU defensive efforts with eight scoops of her own, as the Scarlet and Black limited the Tigers to a .000 hitting percentage over the first two sets.
- > San Diego State was unable to duplicate the same success in the nightcap vs. Arizona, as the Wildcats served up seven aces while recording more kills (41-30) and team blocks (8.0 to 4.0) to help fuel their win.
- > Once again, O'Sullivan paced the Aztec offense with 10 kills, while Labno racked up six put-aways, followed by Jordyn Goldsmith's five. In addition, Smith anchored SDSU's back row with a match-high 13 digs, while Ashley Vanderpan (14 assists) handled the bulk of the setting responsibilities, along with Miller (10 assists).
- > The teams combined for 14 ties and three lead changes in the first two sets; however, the Aztecs were unable to respond to timely Wildcat runs.
- > The following day vs. UCR, San Diego State posted its second-highest team hitting percentage of the season with a .303 clip, maintaining a sizable 43-31 advantage in kills while committing just 13 attack errors on 99 attempts. In addition, the Scarlet and Black held the statistical edge in team blocks (9.0 to 2.0), digs (57-35) and service aces (5-2) to help secure the victory.
- > Conversely, the Highlanders were limited to a .086 pace, marking the second-lowest efficiency by an SDSU opponent this year.
- > O'Sullivan led all players with 14 kills and did not commit an attack error until her penultimate attempt of the match, finishing with a .500 hitting percentage. In addition, the Aztecs received seven kills apiece from Ruri (.385) and Merk, while Miller fell two assists shy of her season high after dishing out 26 helpers.
- > Not to be outdone, Haynie (.455) knocked down six kills and totaled four blocks, including a solo stuff, while Goldsmith assisted on four stops at the net as well. SDSU's defensive efforts were also buoyed by Smith's match-high 22 digs, while Labno (5 kills) contributed a season-best 13 scoops of her own.
- > The teams combined for 18 ties and nine lead changes in the first two sets, but this time it was the Aztecs who fashioned timely runs to seize the momentum.

LONG BEACH STATE MATCH RECAP

- > San Diego State traveled up the freeway to Long Beach State on Sept. 14, but fell short in hard-fought three-set defeat (23-25, 19-25, 23-25).
- > Despite maintaining the statistical edge in team blocks (8.0 to 5.0), the Aztecs (1-8) suffered their fifth straight defeat after mustering just 29 kills for the night. SDSU was unable to capitalize on 13 errant serves by the Beach, committing 14 attack errors on 95 attempts for a .158 hitting percentage.
- > Conversely, LBSU (5-5) knocked down 50 kills with a .309 efficiency while owning a 44-39 advantage in digs to help snap a three-match losing streak to the Aztecs.
- > SDSU was paced by Zoi Faki's eight kills, while Heipua Tautua'a and Reagan Merk launched five put-aways apiece.
- > In addition, Natalie Smith led all players with 14 digs, while Jordyn Goldsmith made her first collegiate start a memorable one with a match-high four blocks, including a solo stop.
- > The Aztec cause was also aided by Noa Miller (10 assists) and Kennedy Feuerborn (3 kills, 7 assists), who split the setting duties, while Mikela Labno served up two aces. Like Goldsmith, Labno also earned her first start in an SDSU uniform vs. the Beach.

REWIND: SDSU/USD INVITATIONAL

- > With packed houses providing an electric atmosphere, San Diego State squared off against a pair of ranked opponents at the SDSU/USD Invitational last weekend, falling to No. 16 UCLA in three sets (17-25, 18-25, 13-25) before suffering a 3-1 setback to No. 25 San Diego.
- > Against the Toreros on Sept. 11, the Aztecs had three players record double-digit kills, including Victoria O'Sullivan, who launched a match-high 19 non-returnables and hit .349, while Mikela Labno collected 11, followed by Heipua Tautua'a, who totaled 10 kills and 12 digs for her second career double-double.
- > In addition, senior transfer Noa Miller logged her first double-double as an Aztec with a season-high 28 assists and 11 digs, while fellow classmate Natalie Smith led all competitors with 21 scoops, marking her second-best total of the year.
- > Despite holding the statistical advantage in kills (57-49) and digs (63-51), SDSU was undone by 27 attack errors and was out-blocked (15.0-7.0) en route to its fourth straight loss.
- > The previous night vs. UCLA, the Aztecs kept within striking distance in each of the first two sets; however, the Bruins used an efficient attack, timely runs and a tight defense to keep the host school at bay.
- > SDSU was out-hit .346 to .056 for the match, while UCLA maintained a statistical advantage in kills (39-28), team blocks (13.0-7.0) and digs (29-27) to help key its victory.
- > Once again, O'Sullivan surpassed double figures in kills after posting a team-high 10 put-aways to go with a trio of blocks, including one solo stop, while Sara Mukaj and Julia Haynie totaled three block assists apiece.
- > Additionally, Tautua'a launched seven kills, while Smith tied for match-high honors with 11 digs. Smith

also dealt a pair of service aces, while Miller finished with 17 assists.

> SDSU's clashes with the Bruins and Toreros marked the first time it played ranked opponents since it battled No. 25 Wyoming and No. 20 Colorado State on Oct. 1-3, 2015.

GAUCHO INVITATIONAL REDUX

> San Diego State rolled to its first victory of the season on Sept. 3 with a 3-0 triumph (25-20, 25-19, 25-15) over host UC Santa Barbara on opening night at the Gaucho Invitational.

> However, the Aztecs were unable to maintain the momentum the following day, dropping a pair of four-set decisions to then-No. 21 Pepperdine (19-25, 16-25, 25-21, 18-25) and Kansas State (19-25, 25-18, 23-25, 16-25).

> SDSU was victimized by a combined 21 service errors in their two defeats while trailing in kills (115-94), hitting percentage (.280 to .227) and team blocks (21.0 to 14.0).

> On the flip side, the Aztecs logged their highest efficiency of the season vs. UCSB, hitting at a .384 clip with 49 kills on 99 attempts with just 11 errors. In addition, SDSU's 49 kills marked the team's second-best this year despite a match duration of just three sets.

> Individually, the Aztecs had three players finish with double-digs kills in a match for the first time this fall, as Victoria O'Sullivan led all players with a season-high 15 put-aways and hit .519, while Zoi Faki (.455) launched 12 non-returnables of her own.

> Not to be outdone, SDSU received a spark from Heipua Tautua'a (.409), who collected 11 kills, while Mikela Labno floored seven shots off the bench.

> In her first appearance after transferring from Arizona State, Noa Miller started at setter against the Gauchos, handing out a match-high 22 assists, while Ashley Vanderpan contributed 13 helpers of her own.

> Natalie Smith once again secured the back row for the Aztecs, finishing with 11 digs, while Faki just missed a double-double after posting nine scoops.

> The SDSU defense also received four total blocks from Sara Mukaj, including a solo stuff, while O'Sullivan and Julia Haynie came through with a pair of block assists.

> The Aztecs saved their best for last, powering down 20 kills in the third set on 32 attempts with just three errors for a blazing .531 efficiency.

> Faki (.714) launched five kills in the final frame without a miscue, matching O'Sullivan (.571), who committed her only error of the night in the set, while Tautua'a (.667) provided four put-aways of her own. Clinging to a slim 10-8 lead, SDSU switched on the afterburners, finishing with a strong 15-7 blitz to secure the sweep.

> Unfortunately, the Aztecs were unable to duplicate the feat in two encounters the following day vs. Pepperdine and Kansas State.

> Against the Waves, the SDSU attack was paced by Labno, who hit .522 with a season-best 13 kills on 22 attempts and just one error, while O'Sullivan finished with 10 put-aways of her own. Elsewhere, Smith tied for match-high with 17 digs, while Haynie and Mukaj notched four block assists each.

> In the finale against the Wildcats, Faki and O'Sullivan led the SDSU offense with 13 kills apiece, while Labno launched nine put-aways of her own. Faki also hit .323 for the match while contributing seven digs and pair of aces.

> In addition, Miller handed out a season-high 25 assists and racked up seven scoops as well in her third start for the Scarlet and Black, while Tautua'a and Mukaj finished with three block assists each.

> With the match tied at one set apiece and the teams deadlocked at 22-22 in the third stanza, K-State closed with a 3-1 spurt to escape.

ALL-TOURNAMENT AZTECS PART II

> For the second consecutive weekend, outside hitter Victoria O'Sullivan earned a spot on an all-tournament team following her performance at the Gaucho Invitational in Santa Barbara, California.

> In three matches, O'Sullivan led the Aztecs with an average of 3.45 kills per set (38 overall) and hit .295 to go with seven digs and five block assists.

> For the season, O'Sullivan has recorded double-digit kills in nine straight matches, including season highs of 19 kills vs. No. 25 San Diego along with a .519 efficiency in SDSU's triumph over UCSB.

BEARKAT INVITATIONAL WRAP

> San Diego State came up empty in its season-opening road trip to the Bearkat Invitational, Aug. 27-28, in Huntsville, Texas, falling to Houston Baptist before dropping consecutive matches to tournament host Sam Houston.

> Against HBU, the Aztecs were out-hit .306 to .153, committing 10 more attack errors (19-9) while nine service attempts went awry. Conversely, the Huskies totaled more kills (42-36) and team blocks (10.0-2.0) to help fuel their 3-0 victory.

> Individually, SDSU was led by senior transfer Zoi Faki, who knocked down 11 kills in her Aztec debut, while Victoria O'Sullivan collected seven put-aways of her own.

> Natalie Smith, a senior transfer from Michigan, also impressed in her first match for the Scarlet and Black, anchoring the Aztec back row with a match-high 27 digs, while Ashley Vanderpan dished out 19 assists.

> In the second match of the weekend, SDSU experienced another whitewash, this time at the hands of Sam Houston, as the visitors were plagued by 26 attack errors, hitting just .029 overall. On the flip side, the Bearkats posted a .299 efficiency, holding a sizable advantage in kills (38-29) and total blocks (15.0-3.0) while owning a slight edge in digs (41-39).

> The Aztecs were paced by O'Sullivan and Heipua Tautua'a, who blasted eight kills each, while Faki and freshman Jordyn Goldsmith finished with five non-returnables apiece. Vanderpan (15 assists) and Kennedy Feuerborn (11 assists) split the setting duties, while Smith scooped up a team-high 11 digs.

> The SDSU cause was also advanced by freshmen Sara Mukaj (4) and Reagan Merk (2), who combined for six aces.

> A late schedule switch provided the Aztecs a rematch against Sam Houston the following day after Central Arkansas withdrew from the tournament for contact tracing. However, SDSU found victory elusive once again, as the Bearkats dealt the Scarlet and Black a five-set heart-breaker.

> Incredibly, the Aztecs maintained the statistical edge in most categories, including kills (59-52), hitting percentage (.230 to .179), aces (5-4), digs (70-68) and team blocks (12.0-7.0).

> After hitting at a brisk .351 clip over the first three sets with just eight attack errors, however, SDSU faltered in the final two frames, posting a combined .060 hitting percentage with 14 miscues to finish its venture to the Lone Star State with an 0-3 record.

> O'Sullivan (.324) and Faki led the Aztecs with 14 kills apiece, while Serena Hodson (.300) posted career-high numbers with nine put-aways of her own and eight total blocks, including two solo stops.

> In addition, Faki logged her first double-double in a Scarlet and Black uniform after logging 12 digs, while Vanderpan accomplished the feat for the first time this year with 26 assists and 10 digs.

> Mukaj also boosted the SDSU fortunes with a crisp .636 hitting percentage, recording seven kills on 11 attempts with no errors, while Tautua'a and Goldsmith also floored seven shots.

> Smith once again anchored the Aztec defense by tying for match-high honors with 16 digs, while Feuerborn came off the bench to hand out 18 assists.

ALL-TOURNAMENT AZTECS PART I

> Outside hitter Victoria O'Sullivan and libero Natalie Smith were each named to the all-tournament team at the Bearkat Invitational, Aug. 27-28, in Huntsville, Texas.

> In three matches, O'Sullivan knocked down 29 kills (2.64/set) to go with 11 digs and seven block assists while adding one setting assist and one service ace.

> In SDSU's tough 3-2 loss to Sam Houston on Aug. 28, O'Sullivan hit .324 and tied for the team lead with 14 kills, including six in the opening set.

> Meanwhile, Smith played in all 11 sets as well, averaging 4.91 digs (54 overall) to go with six setting assists in her debut event for the Aztecs.

> In SDSU's 3-0 setback to Houston Baptist on Aug. 27, Smith posted a whopping 27 digs (9.0/set), falling just two short of tying her career-high of 29 scoops at Notre Dame on Sept. 18, 2019, as a member of the Michigan Wolverines.

> In addition, Smith tied for match-high honors with 16 digs in the weekend finale at Sam Houston.

WELCOME BACK

> Outside hitter Victoria O'Sullivan leads the group of eight Aztec letterwinners who return for the 2021 fall campaign.

> O'Sullivan earned all-Mountain West honors for the first time in her career last spring after leading the Scarlet and Black with 3.25 kills per set, which ranked seventh in the league. Not to be outdone, the SDSU senior surpassed the double-digit kill plateau in 11 of 15 matches and ranked second on the squad with 32.0 total blocks.

> O'Sullivan led or tied for the team lead in kills 11 times, including six straight to start the spring. Entering MW play this fall, she has recorded 10 or more kills in 41 of her last 54 appearances dating back to the start of the 2019 campaign.

> The Aztecs will also look for senior leadership from Andrea Walker after the SDSU middle blocker finished third on the team with an average of 2.09 kills per set and 24.0 total blocks. She helped the Aztecs snap a five-match losing streak last March with season highs of 11 kills and a .529 hitting percentage in a come-from-behind 3-2 victory over Utah State.

> In addition, San Diego State is expecting continued improvement from sophomore Heipua Tautua'a, who ranked second on the squad with 99 kills and 140 digs (2.86/set) during her first season on The Mesa last spring. The Aztec outside hitter turned in a superlative performance in SDSU's 3-2 upset at Boise State on March 20, finishing with 14 kills, nine digs and a career-high six block assists while hitting at a .462 clip, which marked the Scarlet and Black's highest individual hitting percentage of the year (min. 12 kills).

> Tautua'a also posted her first collegiate double-double in the Aztecs' 3-2 thriller over Utah State with 11 kills and 11 digs on March 12, after recording a career-high 22 digs in the team's four-set triumph over New Mexico two weeks earlier on Feb. 20.

> Also back in the mix for the Scarlet and Black this fall are tandem setters Ashley Vanderpan and Kennedy Feuerborn, who combined for 601 kills last spring, which marked the first season of intercollegiate competition for both players.

> Vanderpan, who sat out the 2019 campaign after transferring from Syracuse, ranked ninth in the MW with a team-high 6.53 assists per set (334 overall) in nine starts as a sophomore last spring. The Elk Grove, California, native also topped the squad with 11 service aces and three double-doubles (assists-digs) while ranking fourth with 78 digs (1.53/set).

> Vanderpan surpassed the 30-assist plateau in her first four starts, as the Aztecs posted a 3-1 record during that stretch. In a home sweep over New Mexico last February, she combined for 78 assists, dishing out a career-high 40 helpers in the series finale.

> Feuerborn, meanwhile, earned six starting assignments in 13 appearances during her rookie campaign, averaging 4.0 helpers per set (164 overall). She also finished with 31 kills (0.76/set), 19 digs (0.46/set) and 14 blocks (0.34/set) for the year. Feuerborn racked up double-digit assists on six occasions, including a career-high 27 helpers at UNLV in just her second match on Feb. 5.

AVCA DIVISION I POLL

(As of Oct. 25, 2021)

Rk	Points	Record	Prev	
1	Texas (61)	1,597	17-0	1
2	Louisville (3)	1,539	20-0	2
3	Wisconsin	1,471	17-1	3
4	Pittsburgh	1,364	18-2	4
5	Kentucky	1,321	15-3	5
6	Nebraska	1,239	16-3	9
7	BYU	1,214	19-1	8
8	Washington	1,115	15-3	10
9	Ohio State	1,071	16-4	6
10	Baylor	1,010	13-4	11
11	Minnesota	947	12-6	12
12	Purdue	909	14-5	7
13	Penn State	852	14-6	14
14	Georgia Tech	770	17-3	13
15	Stanford	706	12-6	15
16	UCLA	688	15-3	17
17	Oregon	589	15-5	16
18	Western Kentucky	483	20-1	19
19	Utah	426	13-6	18
20	San Diego	323	14-4	21
21	Tennessee	292	16-4	20
22	Washington State	261	12-7	22
23	Florida	207	13-6	23
24	Creighton	186	20-3	24
25	Pepperdine	60	15-4	25

First-place votes in parentheses

Others receiving votes and listed on two or more ballots: Illinois 44; Miami (FL) 29; Marquette 26; Arizona State 14; Michigan 14; Florida State 12; Rice 11; LSU 2.

MW PLAYERS OF THE WEEK

MW Offensive Player of the Week

- A.30 Kaitlyn Biassou, OH, Jr., New Mexico
- S.6 Lauren Ohlinger, OH, Jr., Boise State
- S.13 Lauren Ohlinger, OH, Jr., Boise State
- S.20 Makayla Hansen, OH, So., Boise State
- S.27 Kennedy Stanford, OH, So., Colorado State
- O.4 Mariena Hayden, OH, Sr., UNLV
- O.11 Kaitlynn Biassou, OH, Jr., New Mexico
- O.18 Victoria O'Sullivan, OH, Sr., San Diego St.**
- O.25 Mariena Hayden, OH, Sr., UNLV

MW Defensive Player of the Week

- A.30 Alena Moldan, L, Jr., New Mexico
- S.6 Sarah Smevog, L, Sr., San José State
- S.13 Alexa Roumeliotis, L, Sr., Colorado State
- S.20 Paris Oliveira, L, Jr., UNLV
- S.27 Sarah Smevog, L, Sr., San José State
- O.4 Makayla Hansen, OH, So., Boise State
- O.11 Alena Moldan, L, Jr. New Mexico
- O.18 Abby Peterson, L, So., Utah State
- O.25 Alexa Roumeliotis, L, Sr., Colorado State

MW Freshman of the Week

- A.30 Chloe Thomasm, MB, UNLV
- S.6 Elizabeth Woods, MB, New Mexico
- S.13 Chloe Thomas, MB, UNLV
- S.20 Mac Russ, MB, Air Force
- S.27 Jordan Miller, OH, Boise State
- O.4 Ella Rud, OH, Fresno State
- O.11 Chloe Thomas, MB, UNLV
- O.18 Madeline Boerstra, OH, San José State
- O.25 Adna Mehmedovic, OH, Utah State

NEW KIDS IN TOWN

> San Diego State head coach Brent Hilliard continued to reshape the Aztec roster with the addition of 10 newcomers for the 2021 fall campaign.

> SDSU's early signing class last November consisted of four incoming freshmen in outside hitter Mikela Labno (Hilmar, Calif.), middle blocker Sara Mukaj (Modena, Italy), setter/opposite Kalani Ruri (Kawerau, New Zealand) and defensive specialist Carsyn Schuch (Phoenix, Ariz.)

> Over the spring and summer, the Aztecs signed six more players, including four Division I transfers in senior libero Natalie Smith (Michigan), senior outside hitter Zoi Faki (Pittsburgh), senior setter Noa Miller (Arizona State) and junior middle blocker Julia Haynie (Portland State).

> Also eager to put their stamp on the Scarlet and Black this fall are former prep standouts Jordyn Goldsmith (opposite/Valleyford, Wash.) and Reagan Merk (outside hitter/Huntington Beach, Calif.)

> Smith was a member of three consecutive NCAA Tournament teams at Michigan from 2017-19. In her last season of competition on the Ann Arbor campus in 2019, the Weatherford, Texas, native set career highs in digs (390), assists (102) and service aces (18). Smith also totaled double-digit digs in 21 matches that year, including 20 or more scoops on three occasions.

> Faki also brings a winning pedigree with her to "America's Finest City" after playing on three NCAA Tournament teams herself at Pittsburgh from 2016-21. Last spring, she contributed to Pitt's longest postseason run in program history, with the Panthers reaching the Elite Eight as the final unseeded team in the field. Faki served up a career-high three aces in Pitt's upset of No. 3 Minnesota in the NCAA Round of 16 last April.

> Miller will help bolster the Aztecs setter position after competing for Wofford College and Arizona State in 2018 and 2019, respectively. As a freshman at Wofford, she surpassed the 20-assist plateau on eight occasions before compiling six double-doubles (assist-digs) at ASU. An elite club player, Miller led to her Volley One Academy squad to a national championship in 2016, earning MVP honors for her performance.

> Haynie is a Southern California product who prepped at Chaparral High School in Temecula before starting 44 of 46 matches in two years at Portland State. As a sophomore last spring, the middle blocker ranked 10th in the Big Sky Conference with a .261 hitting percentage and

> Among the incoming freshmen, Labno was a multi-sport standout at Hilmar (Calif.) High School, where she garnered a trio of all-conference accolades after leading the Yellowjackets to three straight Trans Valley League championships, along with a pair of CIF Sac-Joaquin Section Division IV titles. Labno, who also competed in basketball and track & field as a prep, recorded a .311 hitting percentage for her career with an average of 3.48 kills and 1.82 digs to go with 163 total blocks and 80 aces, according to MaxPreps.

> Mukaj starred for elite clubs over the past five years in her native Italy, including Igor Volley Trecate Novara II and Exacer Montale, leading the latter to a second-place finish in the Italian Serie B1 Group C tournament in 2019. She also another one of her club teams to the 2016-17 Serie C championship and a third-place standing at the Italian national U16 championships. In addition, Mukaj was named MVP and voted best middle blocker in the U16 regional finals that year.

> Likewise, Ruri was a standout performer for numerous prep and national teams at the junior and senior levels in her home country of New Zealand. A versatile player with five years of experience as a setter, opposite and right-side hitter, Ruri most recently collected most valuable player honors and earned a spot on the all-tournament team after leading her squad to a gold medal at the New Zealand U19 Inter Provincial Championships in June 2021.

> Schuch adds depth to the Aztec back row after starring at Deer Valley High School in Phoenix, Arizona, where she garnered 4A West Valley Region Defensive Player of the Year accolades all four years as a prep, earning first-team all-region honors during that span as well. For her career, Schuch tallied 1,742 digs (4.2/sets) along with 176 service aces and 186 assists, according to MaxPreps.

> Goldsmith also excelled at the prep level at Freeman High School in Rockford, Washington, where she helped her squad to three top-10 state finishes, including a fourth-place showing as a junior in 2019. This past spring, Goldsmith collected 1A Northeast League MVP honors after leading the Scotties to a conference title with an undefeated 9-0 record during an abbreviated 2021 spring season in which her team did not drop a set (36-0). In addition to volleyball, she also won three letters in both basketball and golf during high school, as well as one in tennis.

> Rounding out the Aztec rookie class is Merk, who was a three-year letter-winner at prep powerhouse Mater Dei High School in Santa Ana, California.

During her high school career, Merk amassed 430 kills, 600 digs, 64 total blocks and 44 service aces, according to MaxPreps. She received all-state recognition as a senior in 2019 from Cal-Hi-Sports and earned Under Armour All-America honors.

PRESEASON PROGNOSTICATIONS

> San Diego State was picked to finish sixth this year in the Mountain West preseason coaches poll released on Aug. 18.

> In the 21-year history of the Mountain West, SDSU has finished first (2012), second (2002, 2011), fourth (2000, 2001, 2003, 2013, 2017), fifth (2005, 2015, 2019), sixth (1999, 2004, 2006, 2009, 2010, 2014, 2016), seventh (2008) and eighth (2007, 2018, 2020) in the final league standings.

2021 Mountain West Preseason Poll

Rk.	Team (1st-place votes)	Pts.
1.	UNLV (8)	98
2.	Boise State (2)	90
3.	Colorado State (1)	80
4.	Wyoming	69
5.	Fresno State	61
6.	San Diego State	53
7.	Air Force	46
8.	San José State	41
9.	Utah State	29
10.	New Mexico	26
11.	Nevada	12

CATCH AZTEC VOLLEYBALL ON THE MOUNTAIN WEST NETWORK

> The Mountain West Network is scheduled to stream 19 Aztec volleyball matches during the 2021 fall season. A link to MWN matches will be available on GoAztecs.com.

> SDSU is slated to live stream eight of its nine remaining home matches, including encounters with defending Mountain West champion UNLV (Oct. 5) along with perennial conference contenders Colorado State (Oct. 21) and Boise State (Oct. 30).

> In addition, all nine of the Aztecs' conference road matches are scheduled to be streamed live via the MWN.

ON THE HORIZON

> Following Monday's match at UNLV, San Diego State continues its road swing on Saturday, Nov. 6, when it travels to the Central Valley for a clash with Fresno State, starting at 11 a.m. PT.



Brent HILLIARD

Head Coach - Second Season at San Diego State

San Diego State Director of Athletics John David Wicker ushered in a new era for the Aztec volleyball team with the hiring of Brent Hilliard as the fifth head coach in program history on Jan. 31, 2020.

In his first year on The Mesa, Hilliard endured a challenging season fraught with COVID-19 protocols, an abbreviated schedule that was postponed until spring, along with injuries to key players.

However, Hilliard and the Aztecs persevered through the 2021 spring campaign, posting a 6-9 record, highlighted by thrilling victories over Boise State on the road and Colorado State at home in the season finale, respectively. Against the Broncos, SDSU defeated a Boise State team that entered the contest with four consecutive 3-0 sweeps. Two weeks later, the Aztecs snapped an 11-match to the Rams dating back to 2014 and logged their first win over CSU in San Diego since 2012.

Under Hilliard's guidance, Victoria O'Sullivan garnered all-Mountain West accolades for the first time in her career, as the SDSU outside hitter led the squad with 3.25 kills per set, which ranked seventh in the conference. In addition, seniors Lauren Lee and Erin Gillcrst received MW Defensive Player of the Week recognition following the team's aforementioned wins over Boise State and Colorado State, respectively.

Hilliard's Aztecs also excelled in the classroom, with 12 student-athlete earning a spot on the Mountain West all-academic team, including Lauren Lee, who also merited first-team all-District 8 academic honors from the College Sports Information Directors of America (CoSIDA).

A 2018 inductee to the Southern California Indoor Volleyball Hall of Fame, Hilliard arrived at SDSU with a wealth of experience after achieving 19 years of unparalleled success as an assistant coach at the University of San Diego, where he served as the Toreros' associate head coach since 2007.

During his fruitful tenure, the Toreros qualified for the NCAA Tournament in all but one of his 19 seasons, advancing to the Sweet 16 in 2004, 2006, 2013 and 2018. In addition, Hilliard helped guide the Toreros to nine West Coast Conference championships while his players earned six All-America awards, 12 All-America honorable mentions, 44 all-WCC accolades and 15 freshman all-conference certificates.

Hilliard twice assumed the reins of the USD program on an interim basis while head coach Jennifer Petrie was absent on maternity leave. In 2006, Hilliard was honored as WCC Coach of the Year after guiding the Toreros to a conference championship and a Sweet 16 appearance in the NCAA Tournament. That season, he coached five all-conference honorees, including WCC Player of the Year Kristen Carlson, as USD finished 14th in the final USA Today/Coaches Poll.

The Toreros also flourished under Hilliard's guidance in 2011, racing to a 13-0 start en route a program-best 28-5 record, highlighted by a spot in the second round of the NCAA Tournament. Throughout his stint, USD was consistently ranked among the nation's top 25, climbing to as high as No. 2 during the 2013 campaign and rising to No. 5 in 2016.

"I would like to thank John David Wicker, Jenny Bramer, Dr. Adela de la Torre and the rest of the SDSU search committee for making me feel so welcome during the interview process," Hilliard said upon his hiring. "To be the head coach of such a remarkable women's volleyball program in my family's hometown is truly a once in a lifetime opportunity."

"We are fully committed to work tirelessly to elevate this program back to an elite status on the college volleyball landscape, one that the student body, faculty, community, alumni and, of course, all future Aztecs will take great pride in."

Hilliard played collegiately at Long Beach State, earning All-America honors in each of his four years from 1990-93, including first-team recognition over his final three seasons. A right-side hitter for the 49ers, Hilliard was named the NCAA Men's Volleyball Player of the Year as a junior in 1992 after leading LBSU to a 31-1 record.

In 1991, Hilliard and the 49ers captured the NCAA Championship with a 3-1 victory over USC in the finals, avenging a loss to the Trojans in the title match the year before. He finished his career as the NCAA all-time leader with 3,034 kills.

Additionally, Hilliard was selected to play for Team USA in the 1992 Summer Olympics in Barcelona, Spain, where he helped the Americans capture the bronze medal. The following year, he won a silver medal at the 1993 Pan American Games in Argentina and also owns a bronze medal from the 1991 World Cup.

After receiving his undergraduate degree in 1993 from Long Beach State in political science, Hilliard continued his volleyball career as a professional in Europe from 1995-98, playing two seasons in Belgium and another in the Netherlands. In 1996, Hilliard and the Masiek Volleyball Club captured the Belgian national championship and competed in the European Champions League.

In addition to his collegiate experience, which included a stint as head coach at nearby Cuyamaca College in 1999 and 2000, Hilliard has also coached for the past 11 years at Wave Volleyball Club in Del Mar, the premier volleyball club in San Diego County.

"Our priority at SDSU will be to engage, attract and secure exceptional student-athletes that strive for both academic and athletic excellence in their everyday lives," Hilliard added. "From day one, we will set expectations high and build from there. I am incredibly excited to get started and I look forward to the bright future ahead."

HILLIARD'S COLLEGIATE COACHING LEDGER (As an Assistant at USD)

Year	Overall Record	WCC Record (Finish)	Postseason
2001	22-9	10-4 (3rd)	NCAA Second Round
2002	25-8	10-4 (3rd)	NCAA First Round
2003	17-13	6-8 (T-5th)	NCAA First Round
2004	24-5	14-0 (1st)	NCAA Sweet 16
2005	23-6	10-4 (T-2nd)	NCAA Second Round
2006*	26-6	13-1 (1st)	NCAA Sweet 16
2007	21-8	11-3 (1st)	NCAA First Round
2008	23-5	12-2 (1st)	NCAA First Round
2009	18-7	10-4 (2nd)	None
2010	24-8	13-1 (1st)	NCAA Second Round
2011*	28-5	12-4 (2nd)	NCAA Second Round
2012	21-7	13-3 (T-1st)	NCAA First Round
2013	26-4	16-2 (1st)	NCAA Sweet 16
2014	19-12	12-6 (T-3rd)	NCAA First Round
2015	22-10	14-4 (2nd)	NCAA Second Round
2016	24-6	15-3 (2nd)	NCAA First Round
2017	25-5	17-1 (T-1st)	NCAA Second Round
2018	18-13	13-5 (3rd)	NCAA Sweet 16
2019	25-6	17-1 (1st)	NCAA Second Round
USD Total		431-143 (.751)	
WCC Total		238-60 (.799)	

As Head Coach at SDSU

Year	Overall Record	MW Record (Finish)	Postseason
2020	6-9	6-9 (8th)	
2021	6-16	3-7	
SDSU Total		12-25 (.324)	
Career as Head Coach		66-36 (.647)	
Overall Total		443-168 (.725)	

Notes

- * - Served as interim head coach during the 2006 and 2011 seasons at USD. Record reflected in career totals.
- > Qualified for the NCAA Tournament in 18 of his 19 seasons at USD
- > Reached the NCAA Sweet 16 four times in 2004, 2006, 2013 and 2018
- > Won nine West Coast Conference championships

2021 AZTEC PHOTO ROSTER



Zoi FAKI
OH | 6-1 | Sr. **1**



Heipua TAUTUA'A
OH | 6-2 | So. **2**



Andrea WALKER
MB | 6-0 | Sr. **3**



Kennedy FEUERBORN
S | 6-3 | So. **4**



Serena HODSON
MB | 6-2 | Jr. **5**



Jordyn GOLDSMITH
OPP | 6-1 | Fr. **6**



Ashley VANDERPAN
S | 6-1 | Jr. **7**



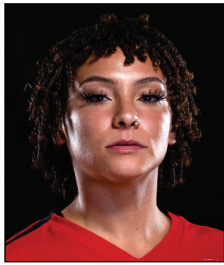
Natalie SMITH
DS/L | 5-7 | Sr. **8**



Sara MUKAJ
MB | 6-3 | Fr. **9**



Kalani RURI
S/OPP | 6-2 | Fr. **10**



Brooklyn HILL
DS/L | 5-8 | Sr. **11**



Julia HAYNIE
MB | 6-1 | Jr. **13**



Reagan MERK
OH | 5-11 | Fr. **14**



Mikela LABNO
OH | 6-2 | Fr. **15**



Carsyn SCHUCH
DS | 5-6 | Fr. **16**



Nadia BARCKLAY
DS/L | 5-2 | So. **17**



Noa MILLER
S | 5-10 | Sr. **19**



Victoria O'SULLIVAN
OH | 6-0 | Sr. **21**



Brent HILLIARD
Head Coach



Melanie GREENE
Assistant Coach/
Recruiting Coordinator



STEVE TIMMONS
Assistant Coach



Kara BARKDOLL
Volleyball Operations
Assistant



**2021-22 San Diego St. Women's Volleyball
Combined Team Statistics
All games**

as of Oct 27, 2021

Game Records

Overall	Conference	Home	Away	Neutral
6 - 16	3 - 7	1 - 6	3 - 7	2 - 3

Team Box Score

##	Player	SP	Attack					Set		Serve			Dig		Blocking					PTS			
			K	K/S	E	TA	PCT	A	A/S	SA	SE	SA/S	RE	DIG	DIG/S	BS	BA	TOT/S	BLK/S		BE	BHE	
1	Faki, Zoi	56	115	2.05	45	318	.220	13	0.23	7	20	0.13	27	122	2.18	2	8	10	0.18	2	0	128.0	
2	Tautua'a, Heipua	72	154	2.14	85	478	.144	31	0.43	7	23	0.10	16	151	2.10	2	23	25	0.35	5	2	174.5	
3	Walker, Andrea	35	48	1.37	9	86	.453	4	0.11	0	0	0.00	1	8	0.23	2	27	29	0.83	4	1	63.5	
4	Feuerborn, Kennedy	41	18	0.44	10	44	.182	102	2.49	0	1	0.00	0	11	0.27	0	9	9	0.22	1	2	22.5	
5	Hodson, Serena	9	12	1.33	6	30	.200	0	0.00	0	0	0.00	0	0	0.00	2	8	10	1.11	1	0	18.0	
6	Goldsmith, Jordyn	59	99	1.68	50	239	.205	3	0.05	0	1	0.00	0	28	0.47	4	28	32	0.54	4	1	117.0	
7	Vanderpan, Ashley	56	1	0.02	2	9	-.111	254	4.54	10	13	0.18	0	83	1.48	0	1	1	0.02	0	12	11.5	
8	Smith, Natalie	76	0	0.00	0	5	.000	57	0.75	10	15	0.13	31	295	3.88	0	0	0	0.00	0	4	10.0	
9	Mukaj, Sara	27	16	0.59	4	36	.333	11	0.41	7	7	0.26	0	16	0.59	1	21	22	0.81	2	1	34.5	
10	Ruri, Kalani	10	16	1.60	5	33	.333	0	0.00	0	1	0.00	1	4	0.40	0	5	5	0.50	0	0	18.5	
11	Hill, Brooklynn	44	0	0.00	0	0	.000	0	0.00	6	13	0.14	0	12	0.27	0	0	0	0.00	0	0	6.0	
13	Haynie, Julia	56	63	1.13	29	152	.224	5	0.09	0	4	0.00	1	14	0.25	2	37	39	0.70	3	0	83.5	
14	Merk, Reagan	25	26	1.04	11	59	.254	4	0.16	2	9	0.08	1	28	1.12	1	2	3	0.12	0	0	30.0	
15	Labno, Mikela	60	122	2.03	67	341	.161	4	0.07	3	15	0.05	16	59	0.98	7	17	24	0.40	0	1	140.5	
17	Barcklay, Nadia	3	0	0.00	0	0	.000	0	0.00	1	0	0.33	0	1	0.33	0	0	0	0.00	0	0	1.0	
19	Miller, Noa	65	16	0.25	1	34	.441	396	6.09	13	16	0.20	0	115	1.77	0	1	1	0.02	2	8	29.5	
21	O'Sullivan, Victoria	73	258	3.53	98	613	.261	9	0.12	9	12	0.12	1	58	0.79	5	35	40	0.55	6	2	289.5	
SAN DIEGO ST.			76	964	12.68	422	2477	.219	893	11.75	75	150	0.99	132	1005	13.22	28	222	139	1.83	30	34	1,178.0
Opponents			76	956	12.58	356	2463	.244	879	11.57	132	177	1.74	75	902	11.87	33	324	195	2.57	20	20	1,283.0

Team statistics

	SDSU	OPP
ATTACK		
Kills	964	956
Errors	422	356
Total Attacks	2477	2463
Attack Pct	.219	.244
Kills/Set	12.7	12.6
SET		
Assists	893	879
Attempts	2532	2427
Assist Pct	.353	.362
Assists/Set	11.8	11.6
SERVE		
Aces	75	132
Errors	150	177
Attempts	1625	1714
Serve Pct	.908	.897
Aces/Set	1	1.7
SERVE RECEPTIONS		
Errors	132	75
Errors/Set	1.7	1
Attempts	1537	1475
Reception Pct	.914	.999
DEFENSE		
Digs	1005	902
Digs/Set	13.2	11.9
BLOCKING		
Block solo	28	33
Block Assist	222	324
Total Blocks	139	195
Blocks/Set	1.8	2.6
Block Errors	30	20
Ball handling errors	34	20
ATTENDANCE		
Total	2849	5031
Dates/Avg Per Date	7/407	10/503
Neutral Site #/Avg	5/58	-
Current win streak	0	-
Home win streak	0	-

Team Results

Date	Opponent	Score	Score-by-set	Att.
08/27/2021	vs Houston Baptist	L 0-3	17-25,22-25,16-25	151
08/27/2021	at Sam Houston	L 0-3	18-25,18-25,20-25	228
08/28/2021	at Sam Houston	L 2-3	23-25,25-13,25-14,15-25,9-15	160
09/03/2021	at UC Santa Barbara	W 3-0	25-20,25-19,25-15	200
09/04/2021	vs Pepperdine	L 1-3	19-25,16-25,25-21,18-25	60
09/04/2021	vs Kansas St.	L 1-3	19-25,25-18,23-25,16-25	80
09/10/2021	UCLA	L 0-3	17-25,18-25,13-25	717
09/11/2021	San Diego	L 1-3	25-20,20-25,20-25,18-25	825
09/14/2021	at Long Beach St.	L 0-3	23-25,19-25,23-25	769
09/17/2021	vs Texas Southern	W 3-0	25-17,25-22,25-17	0
09/17/2021	at Arizona	L 0-3	20-25,22-25,15-25	1061
09/18/2021	vs UC Riverside	W 3-0	25-15,25-21,25-19	0
* 09/23/2021	at Nevada	W 3-0	29-27,25-17,25-20	254
* 09/25/2021	at San Jose St.	L 0-3	20-25,21-25,16-25	325
* 09/30/2021	New Mexico	L 1-3	20-25,20-25,25-16,21-25	206
* 10/02/2021	Air Force	W 3-0	26-24,27-25,25-21	278
* 10/05/2021	UNLV	L 0-3	21-25,21-25,20-25	163
* 10/07/2021	Fresno St.	L 2-3	25-22,22-25,25-17,23-25,12-15	221
* 10/14/2021	at Boise St.	W 3-0	25-23,25-20,25-18	576
* 10/16/2021	at Utah St.	L 0-3	16-25,26-28,19-25	456
* 10/21/2021	Colorado St.	L 2-3	28-26,25-21,22-25,14-25,13-15	439
* 10/23/2021	at Wyoming	L 0-3	26-28,19-25,14-25	1002



**2021-22 San Diego St. Women's Volleyball
Combined Team Statistics
In Conference games**

as of Oct 27, 2021

Game Records

Overall	Conference	Home	Away	Neutral
3 - 7	3 - 7	1 - 4	2 - 3	0 - 0

Team Box Score

#	Player	SP	Attack				Set		Serve			Dig		Blocking				PTS				
			K	K/S	E	TA	PCT	A	A/S	SA	SE	SA/S	RE	DIG	DIG/S	BS	BA		TOT/S	BLK/S	BE	BHE
1	Faki, Zoi	24	35	1.46	13	91	.242	10	0.42	4	9	0.17	15	50	2.08	1	2	3	0.13	1	0	41.0
2	Tautua'a, Heipua	35	81	2.31	44	227	.163	18	0.51	5	8	0.14	10	79	2.26	2	7	9	0.26	3	2	91.5
3	Walker, Andrea	32	45	1.41	9	78	.462	4	0.13	0	0	0.00	1	6	0.19	1	26	27	0.84	3	1	59.0
4	Feuerborn, Kennedy	17	12	0.71	6	30	.200	46	2.71	0	1	0.00	0	2	0.12	0	7	7	0.41	1	1	15.5
6	Goldsmith, Jordyn	35	65	1.86	31	148	.230	0	0.00	0	1	0.00	0	18	0.51	3	15	18	0.51	2	0	75.5
7	Vanderpan, Ashley	22	1	0.05	0	3	.333	100	4.55	3	9	0.14	0	29	1.32	0	0	0	0.00	0	5	4.0
8	Smith, Natalie	35	0	0.00	0	2	.000	22	0.63	5	7	0.14	17	109	3.11	0	0	0	0.00	0	3	5.0
10	Ruri, Kalani	4	4	1.00	3	11	.091	0	0.00	0	0	0.00	1	1	0.25	0	1	1	0.25	0	0	4.5
11	Hill, Brooklynn	29	0	0.00	0	0	.000	0	0.00	3	7	0.10	0	7	0.24	0	0	0	0.00	0	0	3.0
13	Haynie, Julia	20	25	1.25	8	58	.293	3	0.15	0	1	0.00	1	5	0.25	0	14	14	0.70	0	0	32.0
14	Merk, Reagan	14	4	0.29	2	12	.167	3	0.21	0	1	0.00	1	11	0.79	0	0	0	0.00	0	0	4.0
15	Labno, Mikela	28	58	2.07	29	158	.184	1	0.04	0	12	0.00	11	30	1.07	3	7	10	0.36	0	0	64.5
19	Miller, Noa	35	11	0.31	0	19	.579	219	6.26	7	11	0.20	0	63	1.80	0	0	0	0.00	1	5	18.0
21	O'Sullivan, Victoria	35	127	3.63	52	291	.258	4	0.11	8	6	0.23	1	26	0.74	3	17	20	0.57	3	0	146.5
SAN DIEGO ST.		35	468	13.37	197	1128	.240	430	12.29	35	73	1.00	68	436	12.46	13	96	61	1.74	14	17	564.0
Opponents		35	435	12.43	152	1091	.259	402	11.49	68	85	1.94	35	375	10.71	13	150	88	2.51	8	12	591.0

Team statistics

	SDSU	OPP
ATTACK		
Kills	468	435
Errors	197	152
Total Attacks	1128	1091
Attack Pct	.240	.259
Kills/Set	13.4	12.4
SET		
Assists	430	402
Attempts	1143	1082
Assist Pct	.376	.372
Assists/Set	12.3	11.5
SERVE		
Aces	35	68
Errors	73	85
Attempts	771	805
Serve Pct	.905	.894
Aces/Set	1	1.9
SERVE RECEPTIONS		
Errors	68	35
Errors/Set	1.9	1
Attempts	720	698
Reception Pct	.906	.999
DEFENSE		
Digs	436	375
Digs/Set	12.5	10.7
BLOCKING		
Block solo	13	13
Block Assist	96	150
Total Blocks	61	88
Blocks/Set	1.7	2.5
Block Errors	14	8
Ball handling errors	17	12
ATTENDANCE		
Total	1307	2613
Dates/Avg Per Date	5/261	5/523
Neutral Site #/Avg	0/0	-
Current win streak	0	-
Home win streak	0	-

Team Results

Date	Opponent	Score	Score-by-set	Att.
* 09/23/2021	at Nevada	W 3-0	29-27,25-17,25-20	254
* 09/25/2021	at San Jose St.	L 0-3	20-25,21-25,16-25	325
* 09/30/2021	New Mexico	L 1-3	20-25,20-25,16,21-25	206
* 10/02/2021	Air Force	W 3-0	26-24,27-25,25-21	278
* 10/05/2021	UNLV	L 0-3	21-25,21-25,20-25	163
* 10/07/2021	Fresno St.	L 2-3	25-22,22-25,25-17,23-25,12-15	221
* 10/14/2021	at Boise St.	W 3-0	25-23,25-20,25-18	576
* 10/16/2021	at Utah St.	L 0-3	16-25,26-28,19-25	456
* 10/21/2021	Colorado St.	L 2-3	28-26,25-21,22-25,14-25,13-15	439
* 10/23/2021	at Wyoming	L 0-3	26-28,19-25,14-25	1002



2021-22 San Diego St. Women's Volleyball
Individual Match-by-Match
All games

as of Oct 27, 2021

#1 FAKI, Zoi

Date	Opponent	SP	Attack				Set			Serve				Recept			DIG	Blocking				Team			
			K	E	TA	PCT	A	TA	PCT	SA	SE	TA	PCT	RE	TA	PCT		BS	BA	BE	TOTAL	BHE	POINTS	HIT%	SCORE
08/27/2021	vs Houston Baptist	*3	11	3	33	.242	1	3	.333	0	1	10	.900	1	31	.968	6	0	1	1	1.0	0	11.5	.153	0-3
08/27/2021	at Sam Houston	*3	5	4	20	.050	0	3	.000	0	1	9	.889	0	18	1.000	8	0	0	0	0.0	0	5.0	.029	0-3
08/28/2021	at Sam Houston	*5	14	8	43	.140	0	9	.000	1	3	18	.833	2	24	.917	12	0	1	0	1.0	0	15.5	.230	2-3
09/03/2021	at UC Santa Barbara	*3	12	2	22	.455	0	3	.000	0	0	8	1.000	0	22	1.000	9	0	1	0	1.0	0	12.5	.384	3-0
09/04/2021	vs Pepperdine	*4	5	1	15	.267	1	4	.250	0	1	11	.909	3	21	.857	7	0	2	0	2.0	0	6.0	.242	1-3
09/04/2021	vs Kansas St.	*4	13	3	31	.323	0	6	.000	2	1	13	.923	1	22	.955	7	0	0	0	0.0	0	15.0	.213	1-3
09/10/2021	UCLA	*3	3	4	13	-.077	1	4	.250	0	1	6	.833	1	25	.960	7	0	0	0	0.0	0	3.0	.056	0-3
09/11/2021	San Diego	*4	9	5	28	.143	0	5	.000	0	2	14	.857	4	43	.907	8	1	1	0	2.0	0	10.5	.203	1-3
09/14/2021	at Long Beach St.	*3	8	2	22	.273	0	1	.000	0	1	7	.857	0	10	1.000	8	0	0	0	0.0	0	8.0	.158	0-3
09/25/2021	at San Jose St.	3	0	0	0	.000	0	0	.000	0	1	10	.900	0	0	.000	1	0	0	0	0.0	0	0.0	.257	0-3
09/30/2021	New Mexico	2	0	0	0	.000	1	5	.200	0	0	8	1.000	4	12	.667	0	0	0	0	0.0	0	0.0	.168	1-3
10/05/2021	UNLV	1	1	0	3	.333	0	0	.000	0	0	0	.000	1	2	.500	0	0	0	0	0.0	0	1.0	.148	0-3
10/07/2021	Fresno St.	4	0	0	1	.000	0	5	.000	2	2	14	.857	0	10	1.000	10	0	0	0	0.0	0	2.0	.247	2-3
10/14/2021	at Boise St.	*3	7	2	18	.278	4	4	1.000	0	1	10	.900	4	35	.886	8	0	0	1	0.0	0	7.0	.400	3-0
10/16/2021	at Utah St.	*3	4	1	15	.200	3	7	.429	2	1	11	.909	2	21	.905	11	1	1	0	2.0	0	7.5	.152	0-3
10/21/2021	Colorado St.	*5	20	4	40	.400	1	8	.125	0	3	11	.727	4	36	.889	9	0	1	0	1.0	0	20.5	.257	2-3
10/23/2021	at Wyoming	*3	3	6	14	-.214	1	4	.250	0	1	10	.900	0	16	1.000	11	0	0	0	0.0	0	3.0	.194	0-3
Totals		56	115	45	318	.220	13	71	.183	7	20	170	.882	27	348	.922	122	2	8	2	10.0	0	128.0		

Player Averages

Sets Played	Kills per set	Assists per set	Service aces per set	Digs per set	Blocks per set	Points per set
56	2.05	0.23	0.13	2.18	0.18	2.29

#2 TAUTUA'A, Heipua

Date	Opponent	SP	Attack				Set			Serve				Recept			DIG	Blocking				Team			
			K	E	TA	PCT	A	TA	PCT	SA	SE	TA	PCT	RE	TA	PCT		BS	BA	BE	TOTAL	BHE	POINTS	HIT%	SCORE
08/27/2021	vs Houston Baptist	*3	6	4	23	.087	1	5	.200	0	4	14	.714	0	19	1.000	5	0	0	0	0.0	0	6.0	.153	0-3
08/27/2021	at Sam Houston	*3	8	5	27	.111	0	3	.000	0	1	8	.875	0	13	1.000	3	0	1	1	1.0	0	8.5	.029	0-3
08/28/2021	at Sam Houston	*5	7	5	32	.063	2	5	.400	0	1	16	.938	0	34	1.000	15	0	1	1	1.0	0	7.5	.230	2-3
09/03/2021	at UC Santa Barbara	*3	11	2	22	.409	2	4	.500	1	1	14	.929	0	9	1.000	6	0	1	0	1.0	0	12.5	.384	3-0
09/04/2021	vs Pepperdine	*4	9	8	32	.031	2	7	.286	0	1	12	.917	1	22	.955	5	0	2	0	2.0	0	10.0	.242	1-3
09/04/2021	vs Kansas St.	*4	4	2	13	.154	1	6	.167	0	2	13	.846	1	13	.923	5	0	3	0	3.0	0	5.5	.213	1-3
09/10/2021	UCLA	*3	7	4	23	.130	1	2	.500	0	0	10	1.000	0	10	1.000	3	0	2	0	2.0	0	8.0	.056	0-3
09/11/2021	San Diego	*4	10	6	27	.148	2	7	.286	1	2	18	.889	0	24	1.000	12	0	2	0	2.0	0	12.0	.203	1-3
09/14/2021	at Long Beach St.	*3	5	2	18	.167	1	3	.333	0	1	7	.857	1	9	.889	6	0	3	0	3.0	0	6.5	.158	0-3
09/17/2021	vs Texas Southern	*2	3	0	19	.158	1	4	.250	0	2	8	.750	1	11	.909	8	0	1	0	1.0	0	3.5	.255	3-0
09/17/2021	at Arizona	*3	3	3	15	.000	0	4	.000	0	0	9	1.000	2	16	.875	4	0	0	0	0.0	0	3.0	.144	0-3
09/23/2021	at Nevada	*3	7	6	18	.056	3	9	.333	2	1	17	.941	0	10	1.000	11	0	3	0	3.0	1	10.5	.245	3-0
09/25/2021	at San Jose St.	*3	6	2	20	.200	0	4	.000	0	1	12	.917	1	8	.875	4	0	0	0	0.0	0	6.0	.257	0-3
09/30/2021	New Mexico	*4	9	10	31	-.032	0	2	.000	0	2	10	.800	0	12	1.000	6	1	1	1	2.0	0	10.5	.168	1-3
10/02/2021	Air Force	*3	8	4	26	.154	3	12	.250	1	0	11	1.000	1	24	.958	6	1	1	0	2.0	0	10.5	.337	3-0
10/05/2021	UNLV	*3	9	3	17	.353	2	5	.400	0	1	9	.889	1	15	.933	5	0	0	0	0.0	0	9.0	.148	0-3
10/07/2021	Fresno St.	*5	8	4	29	.138	5	13	.385	0	1	15	.933	2	20	.900	17	0	1	0	1.0	0	8.5	.247	2-3
10/14/2021	at Boise St.	*3	11	4	25	.280	1	6	.167	1	1	19	.947	0	13	1.000	3	0	0	1	0.0	0	12.0	.400	3-0
10/16/2021	at Utah St.	*3	10	7	24	.125	1	8	.125	0	1	10	.900	1	25	.960	7	0	0	0	0.0	0	10.0	.152	0-3
10/21/2021	Colorado St.	*5	8	2	21	.286	2	10	.200	0	0	19	1.000	2	25	.920	16	0	1	0	1.0	0	8.5	.257	2-3
10/23/2021	at Wyoming	*3	5	2	16	.188	1	3	.333	1	0	11	1.000	2	23	.913	4	0	0	1	0.0	1	6.0	.194	0-3
Totals		72	154	85	478	.144	31	122	.254	7	23	262	.912	16	355	.955	151	2	23	5	25.0	2	174.5		

Player Averages

Sets Played	Kills per set	Assists per set	Service aces per set	Digs per set	Blocks per set	Points per set
72	2.14	0.43	0.10	2.10	0.35	2.42



**2021-22 San Diego St. Women's Volleyball
Individual Match-by-Match
All games**

as of Oct 27, 2021

#3 WALKER, Andrea

Date	Opponent	SP	Attack				Set			Serve				Recept			Blocking					Team			
			K	E	TA	PCT	A	TA	PCT	SA	SE	TA	PCT	RE	TA	PCT	DIG	BS	BA	BE	TOTAL	BHE	POINTS	HIT%	SCORE
09/17/2021	at Arizona	*3	3	0	8	.375	0	1	.000	0	0	0	.000	0	1	1.000	2	1	1	1	2.0	0	4.5	.144	0-3
09/23/2021	at Nevada	*3	4	1	6	.500	0	0	.000	0	0	0	.000	0	0	.000	0	0	4	0	4.0	0	6.0	.245	3-0
09/25/2021	at San Jose St.	*3	3	0	4	.750	0	0	.000	0	0	0	.000	0	0	.000	0	0	3	0	3.0	0	4.5	.257	0-3
09/30/2021	New Mexico	*4	7	2	11	.455	0	0	.000	0	0	0	.000	0	2	1.000	0	0	6	0	6.0	0	10.0	.168	1-3
10/02/2021	Air Force	*3	5	2	12	.250	2	3	.667	0	0	0	.000	0	1	1.000	2	0	3	1	3.0	0	6.5	.337	3-0
10/05/2021	UNLV	*3	5	2	11	.273	0	2	.000	0	0	0	.000	0	1	1.000	1	0	2	0	2.0	0	6.0	.148	0-3
10/07/2021	Fresno St.	*5	8	1	15	.467	1	2	.500	0	0	0	.000	1	3	.667	1	0	2	1	2.0	0	9.0	.247	2-3
10/14/2021	at Boise St.	*3	3	0	5	.600	1	2	.500	0	0	0	.000	0	0	.000	1	0	3	0	3.0	0	4.5	.400	3-0
10/21/2021	Colorado St.	*5	5	1	8	.500	0	1	.000	0	0	0	.000	0	0	.000	0	1	1	1	2.0	1	6.5	.257	2-3
10/23/2021	at Wyoming	*3	5	0	6	.833	0	3	.000	0	0	0	.000	0	0	.000	1	0	2	0	2.0	0	6.0	.194	0-3
Totals			35	48	9	86	.453	4	14	.286	0	0	0	.000	1	8	.875	8	2	27	4	29.0	1	63.5	

Player Averages

Sets Played	Kills per set	Assists per set	Service aces per set	Digs per set	Blocks per set	Points per set
35	1.37	0.11	0.00	0.23	0.83	1.81

#4 FEUERBORN, Kennedy

Date	Opponent	SP	Attack				Set			Serve				Recept			Blocking					Team			
			K	E	TA	PCT	A	TA	PCT	SA	SE	TA	PCT	RE	TA	PCT	DIG	BS	BA	BE	TOTAL	BHE	POINTS	HIT%	SCORE
08/27/2021	vs Houston Baptist	3	3	1	4	.500	8	23	.348	0	0	0	.000	0	0	.000	1	0	1	0	1.0	0	3.5	.153	0-3
08/27/2021	at Sam Houston	3	0	0	0	.000	11	41	.268	0	0	0	.000	0	1	1.000	2	0	0	0	0.0	0	0.0	.029	0-3
08/28/2021	at Sam Houston	5	0	0	1	.000	18	56	.321	0	0	0	.000	0	0	.000	5	0	0	0	0.0	0	0.0	.230	2-3
09/04/2021	vs Pepperdine	1	0	0	0	.000	1	2	.500	0	0	0	.000	0	0	.000	1	0	0	0	0.0	0	0.0	.242	1-3
09/04/2021	vs Kansas St.	1	0	0	0	.000	2	2	1.000	0	0	0	.000	0	0	.000	0	0	0	0	0.0	0	0.0	.213	1-3
09/10/2021	UCLA	1	0	0	1	.000	1	7	.143	0	0	0	.000	0	0	.000	0	0	0	0	0.0	0	0.0	.056	0-3
09/11/2021	San Diego	2	0	0	0	.000	2	5	.400	0	0	0	.000	0	0	.000	0	0	0	0	0.0	0	0.0	.203	1-3
09/14/2021	at Long Beach St.	3	3	1	6	.333	7	29	.241	0	0	0	.000	0	0	.000	0	0	1	0	1.0	0	3.5	.158	0-3
09/17/2021	vs Texas Southern	1	0	2	2	-1.000	2	4	.500	0	0	0	.000	0	0	.000	0	0	0	0	0.0	0	0.0	.255	3-0
09/17/2021	at Arizona	3	0	0	0	.000	1	7	.143	0	0	0	.000	0	0	.000	0	0	0	0	0.0	1	0.0	.144	0-3
09/18/2021	vs UC Riverside	1	0	0	0	.000	3	13	.231	0	0	0	.000	0	0	.000	0	0	0	0	0.0	0	0.0	.303	3-0
09/23/2021	at Nevada	1	0	0	0	.000	0	4	.000	0	0	0	.000	0	0	.000	0	0	0	0	0.0	0	0.0	.245	3-0
09/25/2021	at San Jose St.	2	0	0	0	.000	3	9	.333	0	1	2	.500	0	0	.000	0	0	0	0	0.0	1	0.0	.257	0-3
09/30/2021	New Mexico	1	1	1	2	.000	3	6	.500	0	0	0	.000	0	0	.000	0	0	1	0	1.0	0	1.5	.168	1-3
10/02/2021	Air Force	3	2	0	4	.500	11	12	.917	0	0	0	.000	0	0	.000	1	0	1	1	1.0	0	2.5	.337	3-0
10/05/2021	UNLV	3	4	2	9	.222	9	28	.321	0	0	0	.000	0	0	.000	0	0	1	0	1.0	0	4.5	.148	0-3
10/07/2021	Fresno St.	5	5	3	15	.133	15	44	.341	0	0	0	.000	0	0	.000	1	0	3	0	3.0	0	6.5	.247	2-3
10/21/2021	Colorado St.	1	0	0	0	.000	2	4	.500	0	0	1	1.000	0	0	.000	0	0	0	0	0.0	0	0.0	.257	2-3
10/23/2021	at Wyoming	1	0	0	0	.000	3	9	.333	0	0	0	.000	0	0	.000	0	0	1	0	1.0	0	0.5	.194	0-3
Totals			41	18	10	44	.182	102	305	.334	0	1	3	.667	0	1	1.000	11	0	9	1	9.0	2	22.5	

Player Averages

Sets Played	Kills per set	Assists per set	Service aces per set	Digs per set	Blocks per set	Points per set
41	0.44	2.49	0.00	0.27	0.22	0.55



2021-22 San Diego St. Women's Volleyball
Individual Match-by-Match
All games

as of Oct 27, 2021

#5 HODSON, Serena

Date	Opponent	SP	Attack				Set			Serve				Receipt			Blocking				Team				
			K	E	TA	PCT	A	TA	PCT	SA	SE	TA	PCT	RE	TA	PCT	DIG	BS	BA	BE	TOTAL	BHE	POINTS	HIT%	SCORE
08/27/2021	vs Houston Baptist	*3	3	2	8	.125	0	4	.000	0	0	0	.000	0	1	1.000	0	0	2	0	2.0	0	4.0	.153	0-3
08/27/2021	at Sam Houston	1	0	1	2	-.500	0	0	.000	0	0	0	.000	0	0	.000	0	0	0	0	0.0	0	0.0	.029	0-3
08/28/2021	at Sam Houston	*5	9	3	20	.300	0	2	.000	0	0	0	.000	0	0	.000	0	2	6	1	8.0	0	14.0	.230	2-3
Totals		9	12	6	30	.200	0	6	.000	0	0	0	.000	0	1	1.000	0	2	8	1	10.0	0	18.0		

Player Averages

Sets Played	Kills per set	Assists per set	Service aces per set	Digs per set	Blocks per set	Points per set
9	1.33	0.00	0.00	0.00	1.11	2.00

#6 GOLDSMITH, Jordyn

Date	Opponent	SP	Attack				Set			Serve				Receipt			Blocking				Team				
			K	E	TA	PCT	A	TA	PCT	SA	SE	TA	PCT	RE	TA	PCT	DIG	BS	BA	BE	TOTAL	BHE	POINTS	HIT%	SCORE
08/27/2021	at Sam Houston	3	5	1	12	.333	0	1	.000	0	0	0	.000	0	0	.000	1	0	0	0	0.0	0	5.0	.029	0-3
08/28/2021	at Sam Houston	5	7	3	19	.211	0	1	.000	0	0	0	.000	0	0	.000	3	0	3	1	3.0	0	8.5	.230	2-3
09/04/2021	vs Pepperdine	2	7	2	13	.385	1	2	.500	0	0	0	.000	0	0	.000	1	0	1	1	1.0	0	7.5	.242	1-3
09/04/2021	vs Kansas St.	1	2	3	6	-.167	0	0	.000	0	0	0	.000	0	0	.000	0	0	0	0	0.0	0	2.0	.213	1-3
09/10/2021	UCLA	1	0	0	0	.000	0	0	.000	0	0	0	.000	0	0	.000	0	0	0	0	0.0	0	0.0	.056	0-3
09/14/2021	at Long Beach St.	*3	2	2	7	.000	1	1	1.000	0	0	0	.000	0	0	.000	1	1	3	0	4.0	0	4.5	.158	0-3
09/17/2021	vs Texas Southern	*3	3	3	6	.000	0	1	.000	0	0	1	1.000	0	0	.000	1	0	1	0	1.0	0	3.5	.255	3-0
09/17/2021	at Arizona	3	5	4	21	.048	1	1	1.000	0	0	0	.000	0	0	.000	3	0	1	0	1.0	0	5.5	.144	0-3
09/18/2021	vs UC Riverside	*3	3	1	7	.286	0	1	.000	0	0	0	.000	0	0	.000	0	0	4	0	4.0	1	5.0	.303	3-0
09/23/2021	at Nevada	3	4	1	13	.231	0	0	.000	0	0	0	.000	0	0	.000	2	0	3	0	3.0	0	5.5	.245	3-0
09/25/2021	at San Jose St.	3	9	2	18	.389	0	0	.000	0	0	0	.000	0	0	.000	2	0	1	0	1.0	0	9.5	.257	0-3
09/30/2021	New Mexico	*4	6	1	9	.556	0	0	.000	0	0	0	.000	0	0	.000	3	0	2	0	2.0	0	7.0	.168	1-3
10/02/2021	Air Force	*3	7	0	11	.636	0	2	.000	0	0	1	1.000	0	0	.000	2	0	1	1	1.0	0	7.5	.337	3-0
10/05/2021	UNLV	*3	6	2	14	.286	0	0	.000	0	0	0	.000	0	0	.000	2	1	1	0	2.0	0	7.5	.148	0-3
10/07/2021	Fresno St.	*5	5	4	12	.083	0	2	.000	0	1	4	.750	0	0	.000	1	1	4	0	5.0	0	8.0	.247	2-3
10/14/2021	at Boise St.	3	9	2	15	.467	0	0	.000	0	0	0	.000	0	0	.000	0	0	1	1	1.0	0	9.5	.400	3-0
10/16/2021	at Utah St.	*3	2	2	9	.000	0	1	.000	0	0	2	1.000	0	0	.000	3	0	0	0	0.0	0	2.0	.152	0-3
10/21/2021	Colorado St.	5	8	9	27	-.037	0	0	.000	0	0	0	.000	0	0	.000	1	0	2	0	2.0	0	9.0	.257	2-3
10/23/2021	at Wyoming	3	9	8	20	.050	0	1	.000	0	0	3	1.000	0	0	.000	2	1	0	0	1.0	0	10.0	.194	0-3
Totals		59	99	50	239	.205	3	14	.214	0	1	11	.909	0	0	.000	28	4	28	4	32.0	1	117.0		

Player Averages

Sets Played	Kills per set	Assists per set	Service aces per set	Digs per set	Blocks per set	Points per set
59	1.68	0.05	0.00	0.47	0.54	1.98



**2021-22 San Diego St. Women's Volleyball
Individual Match-by-Match
All games**

as of Oct 27, 2021

#7 VANDERPAN, Ashley

Date	Opponent	SP	Attack				Set			Serve				Recept			Blocking					Team			
			K	E	TA	PCT	A	TA	PCT	SA	SE	TA	PCT	RE	TA	PCT	DIG	BS	BA	BE	TOTAL	BHE	POINTS	HIT%	SCORE
08/27/2021	vs Houston Baptist	*3	0	0	1	.000	19	64	.297	1	1	10	.900	0	0	.000	4	0	0	0	0.0	3	1.0	.153	0-3
08/27/2021	at Sam Houston	*3	0	0	0	.000	15	46	.326	1	0	8	1.000	0	0	.000	7	0	0	0	0.0	0	1.0	.029	0-3
08/28/2021	at Sam Houston	*5	0	0	0	.000	26	69	.377	2	1	16	.938	0	0	.000	10	0	0	0	0.0	1	2.0	.230	2-3
09/03/2021	at UC Santa Barbara	3	0	0	1	.000	13	27	.481	0	0	12	1.000	0	0	.000	6	0	0	0	0.0	1	0.0	.384	3-0
09/04/2021	vs Pepperdine	3	0	0	1	.000	14	32	.438	1	0	15	1.000	0	0	.000	6	0	1	0	1.0	1	1.5	.242	1-3
09/04/2021	vs Kansas St.	3	0	2	2	-1.000	14	30	.467	0	2	7	.714	0	1	1.000	6	0	0	0	0.0	0	0.0	.213	1-3
09/10/2021	UCLA	2	0	0	0	.000	6	20	.300	0	0	4	1.000	0	0	.000	1	0	0	0	0.0	0	0.0	.056	0-3
09/11/2021	San Diego	4	0	0	0	.000	18	47	.383	0	0	13	1.000	0	0	.000	5	0	0	0	0.0	1	0.0	.203	1-3
09/17/2021	vs Texas Southern	2	0	0	0	.000	8	17	.471	0	0	13	1.000	0	0	.000	4	0	0	0	0.0	0	0.0	.255	3-0
09/17/2021	at Arizona	3	0	0	0	.000	14	34	.412	0	0	9	1.000	0	0	.000	2	0	0	0	0.0	0	0.0	.144	0-3
09/18/2021	vs UC Riverside	3	0	0	1	.000	7	22	.318	2	0	16	1.000	0	0	.000	3	0	0	0	0.0	0	2.0	.303	3-0
09/23/2021	at Nevada	3	0	0	0	.000	15	36	.417	1	1	12	.917	0	0	.000	6	0	0	0	0.0	2	1.0	.245	3-0
09/25/2021	at San Jose St.	3	0	0	0	.000	10	31	.323	0	1	6	.833	0	0	.000	5	0	0	0	0.0	1	0.0	.257	0-3
09/30/2021	New Mexico	2	0	0	0	.000	7	16	.438	0	0	8	1.000	0	0	.000	3	0	0	0	0.0	0	0.0	.168	1-3
10/14/2021	at Boise St.	3	0	0	0	.000	19	40	.475	2	3	9	.667	0	0	.000	2	0	0	0	0.0	0	2.0	.400	3-0
10/16/2021	at Utah St.	3	0	0	1	.000	15	43	.349	0	1	11	.909	0	0	.000	8	0	0	0	0.0	1	0.0	.152	0-3
10/21/2021	Colorado St.	5	1	0	2	.500	22	59	.373	0	3	22	.864	0	0	.000	4	0	0	0	0.0	1	1.0	.257	2-3
10/23/2021	at Wyoming	3	0	0	0	.000	12	31	.387	0	0	7	1.000	0	0	.000	1	0	0	0	0.0	0	0.0	.194	0-3
Totals		56	1	2	9	-.111	254	664	.383	10	13	198	.934	0	1	1.000	83	0	1	0	1.0	12	11.5		

Player Averages

Sets Played	Kills per set	Assists per set	Service aces per set	Digs per set	Blocks per set	Points per set
56	0.02	4.54	0.18	1.48	0.02	0.21

#8 SMITH, Natalie

Date	Opponent	SP	Attack				Set			Serve				Recept			Blocking					Team			
			K	E	TA	PCT	A	TA	PCT	SA	SE	TA	PCT	RE	TA	PCT	DIG	BS	BA	BE	TOTAL	BHE	POINTS	HIT%	SCORE
08/27/2021	vs Houston Baptist	3	0	0	1	.000	3	10	.300	0	0	9	1.000	0	12	1.000	27	0	0	0	0.0	0	0.0	.153	0-3
08/27/2021	at Sam Houston	3	0	0	1	.000	1	6	.167	0	0	5	1.000	1	20	.950	11	0	0	0	0.0	0	0.0	.029	0-3
08/28/2021	at Sam Houston	5	0	0	0	.000	2	11	.182	0	1	13	.923	2	26	.923	16	0	0	0	0.0	0	0.0	.230	2-3
09/03/2021	at UC Santa Barbara	3	0	0	0	.000	5	13	.385	0	0	18	1.000	1	18	.944	11	0	0	0	0.0	0	0.0	.384	3-0
09/04/2021	vs Pepperdine	4	0	0	0	.000	4	15	.267	0	0	10	1.000	2	24	.917	17	0	0	0	0.0	0	0.0	.242	1-3
09/04/2021	vs Kansas St.	4	0	0	0	.000	2	13	.154	1	0	16	1.000	3	30	.900	9	0	0	0	0.0	0	1.0	.213	1-3
09/10/2021	UCLA	3	0	0	0	.000	0	6	.000	2	2	9	.778	2	18	.889	11	0	0	0	0.0	0	2.0	.056	0-3
09/11/2021	San Diego	4	0	0	0	.000	4	16	.250	0	2	17	.882	0	17	1.000	21	0	0	0	0.0	0	0.0	.203	1-3
09/14/2021	at Long Beach St.	3	0	0	0	.000	4	6	.667	1	0	12	1.000	3	33	.909	14	0	0	0	0.0	0	1.0	.158	0-3
09/17/2021	vs Texas Southern	3	0	0	1	.000	3	17	.176	0	2	13	.846	0	10	1.000	14	0	0	0	0.0	0	0.0	.255	3-0
09/17/2021	at Arizona	3	0	0	0	.000	3	9	.333	1	1	10	.900	0	13	1.000	13	0	0	0	0.0	0	1.0	.144	0-3
09/18/2021	vs UC Riverside	3	0	0	0	.000	4	8	.500	0	0	7	1.000	0	14	1.000	22	0	0	0	0.0	1	0.0	.303	3-0
09/23/2021	at Nevada	3	0	0	1	.000	1	7	.143	2	0	16	1.000	0	15	1.000	13	0	0	0	0.0	1	2.0	.245	3-0
09/25/2021	at San Jose St.	3	0	0	0	.000	2	7	.286	0	1	13	.923	1	19	.947	6	0	0	0	0.0	0	0.0	.257	0-3
09/30/2021	New Mexico	4	0	0	0	.000	0	5	.000	1	1	14	.929	2	20	.900	13	0	0	0	0.0	0	1.0	.168	1-3
10/02/2021	Air Force	3	0	0	0	.000	2	14	.143	0	0	10	1.000	0	11	1.000	8	0	0	0	0.0	0	0.0	.337	3-0
10/05/2021	UNLV	3	0	0	0	.000	5	18	.278	1	0	9	1.000	3	28	.893	15	0	0	0	0.0	0	1.0	.148	0-3
10/07/2021	Fresno St.	5	0	0	0	.000	5	16	.313	0	0	16	1.000	4	26	.846	15	0	0	0	0.0	0	0.0	.247	2-3
10/14/2021	at Boise St.	3	0	0	1	.000	2	4	.500	0	0	9	1.000	1	11	.909	9	0	0	0	0.0	1	0.0	.400	3-0
10/16/2021	at Utah St.	3	0	0	0	.000	1	9	.111	0	1	9	.889	2	21	.905	8	0	0	0	0.0	0	0.0	.152	0-3
10/21/2021	Colorado St.	5	0	0	0	.000	4	9	.444	1	3	22	.864	2	28	.929	17	0	0	0	0.0	0	1.0	.257	2-3
10/23/2021	at Wyoming	3	0	0	0	.000	0	3	.000	0	1	10	.900	2	26	.923	5	0	0	0	0.0	1	0.0	.194	0-3
Totals		76	0	0	5	.000	57	222	.257	10	15	267	.944	31	440	.930	295	0	0	0	0.0	4	10.0		

Player Averages

Sets Played	Kills per set	Assists per set	Service aces per set	Digs per set	Blocks per set	Points per set
76	0.00	0.75	0.13	3.88	0.00	0.13



2021-22 San Diego St. Women's Volleyball
Individual Match-by-Match
All games

as of Oct 27, 2021

#9 MUKAJ, Sara

Date	Opponent	SP	Attack				Set			Serve				Recept			Blocking					Team			
			K	E	TA	PCT	A	TA	PCT	SA	SE	TA	PCT	RE	TA	PCT	DIG	BS	BA	BE	TOTAL	BHE	POINTS	HIT%	SCORE
08/27/2021	vs Houston Baptist	1	0	1	2	.500	0	1	.000	0	0	1	1.000	0	0	.000	0	0	0	0	0.0	0	0.0	.153	0-3
08/27/2021	at Sam Houston	*3	1	2	7	-.143	0	2	.000	4	0	13	1.000	0	0	.000	4	0	1	0	1.0	0	5.5	.029	0-3
08/28/2021	at Sam Houston	*5	7	0	11	.636	3	7	.429	1	2	22	.909	0	0	.000	5	0	4	0	4.0	1	10.0	.230	2-3
09/03/2021	at UC Santa Barbara	*3	1	1	3	.000	4	5	.800	0	1	11	.909	0	0	.000	2	1	3	0	4.0	0	3.5	.384	3-0
09/04/2021	vs Pepperdine	*4	1	0	3	.333	2	4	.500	0	0	12	1.000	0	0	.000	4	0	4	1	4.0	0	3.0	.242	1-3
09/04/2021	vs Kansas St.	*4	2	0	4	.500	0	4	.000	1	1	16	.938	0	0	.000	0	0	3	0	3.0	0	4.5	.213	1-3
09/10/2021	UCLA	*3	0	0	1	.000	1	1	1.000	0	1	6	.833	0	0	.000	0	0	3	1	3.0	0	1.5	.056	0-3
09/11/2021	San Diego	*4	4	0	5	.800	1	5	.200	1	2	10	.800	0	0	.000	1	0	3	0	3.0	0	6.5	.203	1-3
Totals		27	16	4	36	.333	11	29	.379	7	7	91	.923	0	0	.000	16	1	21	2	22.0	1	34.5		

Player Averages

Sets Played	Kills per set	Assists per set	Service aces per set	Digs per set	Blocks per set	Points per set
27	0.59	0.41	0.26	0.59	0.81	1.28

#10 RURI, Kalani

Date	Opponent	SP	Attack				Set			Serve				Recept			Blocking					Team			
			K	E	TA	PCT	A	TA	PCT	SA	SE	TA	PCT	RE	TA	PCT	DIG	BS	BA	BE	TOTAL	BHE	POINTS	HIT%	SCORE
08/27/2021	vs Houston Baptist	1	0	0	0	.000	0	0	.000	0	1	2	.500	0	0	.000	1	0	0	0	0.0	0	0.0	.153	0-3
09/17/2021	vs Texas Southern	2	5	0	9	.556	0	2	.000	0	0	0	.000	0	0	.000	0	0	2	0	2.0	0	6.0	.255	3-0
09/18/2021	vs UC Riverside	3	7	2	13	.385	0	0	.000	0	0	0	.000	0	0	.000	2	0	2	0	2.0	0	8.0	.303	3-0
09/25/2021	at San Jose St.	1	1	1	3	.000	0	0	.000	0	0	0	.000	1	1	.000	0	0	0	0	0.0	0	1.0	.257	0-3
09/30/2021	New Mexico	2	1	2	6	-.167	0	0	.000	0	0	0	.000	0	0	.000	0	0	1	0	1.0	0	1.5	.168	1-3
10/16/2021	at Utah St.	1	2	0	2	1.000	0	0	.000	0	0	0	.000	0	0	.000	1	0	0	0	0.0	0	2.0	.152	0-3
Totals		10	16	5	33	.333	0	2	.000	0	1	2	.500	1	1	.000	4	0	5	0	5.0	0	18.5		

Player Averages

Sets Played	Kills per set	Assists per set	Service aces per set	Digs per set	Blocks per set	Points per set
10	1.60	0.00	0.00	0.40	0.50	1.85



2021-22 San Diego St. Women's Volleyball
Individual Match-by-Match
All games

as of Oct 27, 2021

#11 HILL, Brooklynn

Date	Opponent	SP	Attack				Set			Serve				Receipt			Blocking				Team				
			K	E	TA	PCT	A	TA	PCT	SA	SE	TA	PCT	RE	TA	PCT	DIG	BS	BA	BE	TOTAL	BHE	POINTS	HIT%	SCORE
09/04/2021	vs Kansas St.	2	0	0	0	.000	0	1	.000	0	0	0	.000	0	4	1.000	1	0	0	0	0.0	0	0.0	.213	1-3
09/10/2021	UCLA	1	0	0	0	.000	0	0	.000	0	0	1	1.000	0	4	1.000	0	0	0	0	0.0	0	0.0	.056	0-3
09/14/2021	at Long Beach St.	3	0	0	0	.000	0	0	.000	1	2	10	.800	0	0	.000	1	0	0	0	0.0	0	1.0	.158	0-3
09/17/2021	vs Texas Southern	3	0	0	0	.000	0	1	.000	1	1	6	.833	0	0	.000	0	0	0	0	0.0	0	1.0	.255	3-0
09/17/2021	at Arizona	3	0	0	0	.000	0	0	.000	1	2	8	.750	0	0	.000	0	0	0	0	0.0	0	1.0	.144	0-3
09/18/2021	vs UC Riverside	3	0	0	0	.000	0	1	.000	0	1	13	.923	0	0	.000	3	0	0	0	0.0	0	0.0	.303	3-0
09/23/2021	at Nevada	3	0	0	0	.000	0	0	.000	1	1	10	.900	0	0	.000	0	0	0	0	0.0	0	1.0	.245	3-0
09/30/2021	New Mexico	4	0	0	0	.000	0	0	.000	0	2	17	.882	0	0	.000	1	0	0	0	0.0	0	0.0	.168	1-3
10/02/2021	Air Force	3	0	0	0	.000	0	2	.000	1	1	13	.923	0	0	.000	1	0	0	0	0.0	0	1.0	.337	3-0
10/05/2021	UNLV	3	0	0	0	.000	0	1	.000	0	1	8	.875	0	0	.000	0	0	0	0	0.0	0	0.0	.148	0-3
10/07/2021	Fresno St.	4	0	0	0	.000	0	1	.000	0	0	11	1.000	0	0	.000	0	0	0	0	0.0	0	0.0	.247	2-3
10/14/2021	at Boise St.	3	0	0	0	.000	0	0	.000	1	0	7	1.000	0	0	.000	2	0	0	0	0.0	0	1.0	.400	3-0
10/16/2021	at Utah St.	2	0	0	0	.000	0	0	.000	0	1	6	.833	0	0	.000	0	0	0	0	0.0	0	0.0	.152	0-3
10/21/2021	Colorado St.	4	0	0	0	.000	0	0	.000	0	0	10	1.000	0	0	.000	3	0	0	0	0.0	0	0.0	.257	2-3
10/23/2021	at Wyoming	3	0	0	0	.000	0	0	.000	0	1	11	.909	0	0	.000	0	0	0	0	0.0	0	0.0	.194	0-3
Totals		44	0	0	0	.000	0	7	.000	6	13	131	.901	0	8	1.000	12	0	0	0	0.0	0	6.0		

Player Averages

Sets Played	Kills per set	Assists per set	Service aces per set	Digs per set	Blocks per set	Points per set
44	0.00	0.00	0.14	0.27	0.00	0.14

#13 HAYNIE, Julia

Date	Opponent	SP	Attack				Set			Serve				Receipt			Blocking				Team				
			K	E	TA	PCT	A	TA	PCT	SA	SE	TA	PCT	RE	TA	PCT	DIG	BS	BA	BE	TOTAL	BHE	POINTS	HIT%	SCORE
08/27/2021	vs Houston Baptist	*3	6	2	9	.444	0	0	.000	0	2	3	.333	0	0	.000	1	0	0	0	0.0	0	6.0	.153	0-3
08/27/2021	at Sam Houston	*3	2	3	9	.111	1	1	1.000	0	0	1	1.000	0	1	1.000	1	0	2	0	2.0	0	3.0	.029	0-3
09/03/2021	at UC Santa Barbara	*3	3	0	4	.750	0	0	.000	0	0	0	.000	0	0	.000	1	0	2	0	2.0	0	4.0	.384	3-0
09/04/2021	vs Pepperdine	*4	2	0	5	.400	0	0	.000	0	0	0	.000	0	0	.000	1	0	4	0	4.0	0	4.0	.242	1-3
09/04/2021	vs Kansas St.	*4	3	2	6	.167	0	1	.000	0	0	0	.000	0	1	1.000	1	1	1	0	2.0	0	4.5	.213	1-3
09/10/2021	UCLA	*3	3	5	13	.154	0	1	.000	0	0	0	.000	0	1	1.000	0	0	3	1	3.0	0	4.5	.056	0-3
09/11/2021	San Diego	*4	4	4	12	.000	0	2	.000	0	0	0	.000	0	0	.000	1	0	1	1	1.0	0	4.5	.203	1-3
09/14/2021	at Long Beach St.	*3	2	2	12	.000	0	0	.000	0	0	0	.000	0	0	.000	1	0	3	1	3.0	0	3.5	.158	0-3
09/17/2021	vs Texas Southern	*3	6	1	11	.455	1	3	.333	0	0	1	1.000	0	2	1.000	2	0	4	0	4.0	0	8.0	.255	3-0
09/17/2021	at Arizona	*3	1	1	2	.000	0	1	.000	0	1	1	.000	0	0	.000	0	0	0	0	0.0	0	1.0	.144	0-3
09/18/2021	vs UC Riverside	*3	6	1	11	.455	0	1	.000	0	0	1	1.000	0	0	.000	0	1	3	0	4.0	0	8.5	.303	3-0
09/23/2021	at Nevada	*3	8	2	14	.429	0	2	.000	0	0	0	.000	0	1	1.000	1	0	5	0	5.0	0	10.5	.245	3-0
09/25/2021	at San Jose St.	*3	3	2	10	.100	0	1	.000	0	0	0	.000	1	3	.667	1	0	0	0	0.0	0	3.0	.257	0-3
10/14/2021	at Boise St.	*3	3	1	6	.333	2	3	.667	0	0	3	1.000	0	2	1.000	0	0	1	0	1.0	0	3.5	.400	3-0
10/16/2021	at Utah St.	*3	3	2	11	.091	1	2	.500	0	0	0	.000	0	0	.000	0	0	3	0	3.0	0	4.5	.152	0-3
10/21/2021	Colorado St.	*5	6	1	10	.500	0	1	.000	0	1	2	.500	0	0	.000	3	0	5	0	5.0	0	8.5	.257	2-3
10/23/2021	at Wyoming	*3	2	0	7	.286	0	1	.000	0	0	0	.000	0	0	.000	0	0	0	0	0.0	0	2.0	.194	0-3
Totals		56	63	29	152	.224	5	20	.250	0	4	12	.667	1	11	.909	14	2	37	3	39.0	0	83.5		

Player Averages

Sets Played	Kills per set	Assists per set	Service aces per set	Digs per set	Blocks per set	Points per set
56	1.13	0.09	0.00	0.25	0.70	1.49



2021-22 San Diego St. Women's Volleyball
Individual Match-by-Match
All games

as of Oct 27, 2021

#14 MERK, Reagan

Date	Opponent	SP	Attack				Set			Serve				Receipt			Blocking				Team							
			K	E	TA	PCT	A	TA	PCT	SA	SE	TA	PCT	RE	TA	PCT	DIG	BS	BA	BE	TOTAL	BHE	POINTS	HIT%	SCORE			
08/27/2021	at Sam Houston	1	0	0	0	.000	0	0	.000	2	0	3	1.000	0	0	.000	0	0	0	0	0	0	0	0	0	2.0	.029	0-3
09/10/2021	UCLA	1	1	0	1	1.000	0	0	.000	0	0	2	1.000	0	0	.000	0	0	0	0	0	0	0	0	0	1.0	.056	0-3
09/14/2021	at Long Beach St.	1	5	0	7	.714	1	2	.500	0	1	3	.667	0	3	1.000	0	0	0	0	0	0	0	0	0	5.0	.158	0-3
09/17/2021	vs Texas Southern	3	7	2	13	.385	0	0	.000	0	3	6	.500	0	8	1.000	6	0	0	0	0	0	0	0	0	7.0	.255	3-0
09/17/2021	at Arizona	2	2	0	6	.333	0	1	.000	0	1	5	.800	0	16	1.000	5	0	0	0	0	0	0	0	0	2.0	.144	0-3
09/18/2021	vs UC Riverside	*3	7	7	20	.000	0	6	.000	0	3	8	.625	0	17	1.000	6	1	2	0	3	0	0	0	0	9.0	.303	3-0
09/23/2021	at Nevada	1	0	0	0	.000	0	0	.000	0	0	2	1.000	0	1	1.000	0	0	0	0	0	0	0	0	0	0.0	.245	3-0
10/02/2021	Air Force	2	1	0	1	1.000	0	1	.000	0	0	0	.000	0	0	.000	1	0	0	0	0	0	0	0	1.0	.337	3-0	
10/05/2021	UNLV	3	0	0	0	.000	2	2	1.000	0	0	0	.000	0	0	.000	4	0	0	0	0	0	0	0	0	0.0	.148	0-3
10/07/2021	Fresno St.	5	1	1	6	.000	1	1	1.000	0	0	0	.000	0	0	.000	5	0	0	0	0	0	0	0	1.0	.247	2-3	
10/21/2021	Colorado St.	2	1	1	3	.000	0	1	.000	0	1	2	.500	1	3	.667	1	0	0	0	0	0	0	0	0	1.0	.257	2-3
10/23/2021	at Wyoming	1	1	0	2	.500	0	0	.000	0	0	1	1.000	0	0	.000	0	0	0	0	0	0	0	0	0	1.0	.194	0-3
Totals		25	26	11	59	.254	4	14	.286	2	9	32	.719	1	48	.979	28	1	2	0	3.0	0	30.0					

Player Averages

Sets Played	Kills per set	Assists per set	Service aces per set	Digs per set	Blocks per set	Points per set
25	1.04	0.16	0.08	1.12	0.12	1.20

#15 LABNO, Mikela

Date	Opponent	SP	Attack				Set			Serve				Receipt			Blocking				Team							
			K	E	TA	PCT	A	TA	PCT	SA	SE	TA	PCT	RE	TA	PCT	DIG	BS	BA	BE	TOTAL	BHE	POINTS	HIT%	SCORE			
08/27/2021	at Sam Houston	1	0	1	1	-1.000	0	0	.000	0	0	1	1.000	0	5	1.000	1	0	0	0	0	0	0	0	0	0.0	.029	0-3
08/28/2021	at Sam Houston	1	1	0	1	1.000	0	0	.000	0	0	0	.000	0	0	.000	0	0	0	0	0	0	0	0	1.0	.230	2-3	
09/03/2021	at UC Santa Barbara	3	7	5	18	.111	0	0	.000	0	0	0	.000	0	0	.000	0	0	1	0	1.0	0	0	0	7.5	.384	3-0	
09/04/2021	vs Pepperdine	4	13	1	23	.522	0	0	.000	0	0	5	1.000	1	11	.909	1	0	1	0	1.0	0	0	0	13.5	.242	1-3	
09/04/2021	vs Kansas St.	4	9	4	24	.208	0	1	.000	0	0	2	1.000	0	11	1.000	2	0	0	0	0	0	0	0	9.0	.213	1-3	
09/10/2021	UCLA	3	4	4	11	.000	0	1	.000	0	0	1	1.000	0	6	1.000	0	0	2	0	2.0	0	0	0	5.0	.056	0-3	
09/11/2021	San Diego	4	11	8	33	.091	0	0	.000	0	0	0	.000	0	3	1.000	0	2	1	0	3.0	0	0	0	13.5	.203	1-3	
09/14/2021	at Long Beach St.	*3	3	4	20	-.050	0	0	.000	2	0	13	1.000	1	6	.833	6	1	2	0	3.0	0	0	0	7.0	.158	0-3	
09/17/2021	vs Texas Southern	*3	5	3	16	.125	2	2	1.000	0	2	6	.667	2	16	.875	3	1	1	0	2.0	0	0	0	6.5	.255	3-0	
09/17/2021	at Arizona	*3	6	7	17	-.059	0	3	.000	0	1	5	.800	1	18	.944	3	0	2	0	2.0	0	0	0	7.0	.144	0-3	
09/18/2021	vs UC Riverside	*3	5	1	19	.211	1	4	.250	1	0	16	1.000	0	18	1.000	13	0	0	0	0	0	0	1	6.0	.303	3-0	
09/23/2021	at Nevada	*3	7	3	21	.190	0	1	.000	0	1	9	.889	3	31	.903	6	1	2	0	3.0	0	0	0	9.0	.245	3-0	
09/25/2021	at San Jose St.	*3	7	5	21	.095	0	2	.000	0	3	9	.667	0	31	1.000	3	0	0	0	0	0	0	0	7.0	.257	0-3	
09/30/2021	New Mexico	*4	8	2	15	.400	1	1	1.000	0	2	7	.714	2	32	.938	3	1	3	0	4.0	0	0	0	10.5	.168	1-3	
10/02/2021	Air Force	*3	10	1	19	.474	0	13	.000	0	2	15	.867	1	28	.964	3	1	0	0	1.0	0	0	0	11.0	.337	3-0	
10/05/2021	UNLV	*3	5	10	24	-.208	0	3	.000	0	1	15	.933	4	19	.789	5	0	1	0	1.0	0	0	0	5.5	.148	0-3	
10/07/2021	Fresno St.	*5	12	4	31	.258	0	4	.000	0	3	9	.667	1	29	.966	8	0	0	0	0	0	0	0	12.0	.247	2-3	
10/16/2021	at Utah St.	3	8	3	22	.227	0	0	.000	0	0	0	.000	0	2	1.000	1	0	0	0	0	0	0	0	8.0	.152	0-3	
10/21/2021	Colorado St.	2	0	0	2	.000	0	0	.000	0	0	0	.000	0	3	1.000	1	0	1	0	1.0	0	0	0	0.5	.257	2-3	
10/23/2021	at Wyoming	2	1	1	3	.000	0	1	.000	0	0	0	.000	0	3	1.000	0	0	0	0	0	0	0	0	1.0	.194	0-3	
Totals		60	122	67	341	.161	4	36	.111	3	15	113	.867	16	272	.941	59	7	17	0	24.0	1	140.5					

Player Averages

Sets Played	Kills per set	Assists per set	Service aces per set	Digs per set	Blocks per set	Points per set
60	2.03	0.07	0.05	0.98	0.40	2.34



2021-22 San Diego St. Women's Volleyball
Individual Match-by-Match
All games

as of Oct 27, 2021

#17 BARCKLAY, Nadia

Date	Opponent	SP	Attack				Set			Serve				Receipt			Blocking				Team				
			K	E	TA	PCT	A	TA	PCT	SA	SE	TA	PCT	RE	TA	PCT	DIG	BS	BA	BE	TOTAL	BHE	POINTS	HIT%	SCORE
08/27/2021	vs Houston Baptist	2	0	0	0	.000	0	0	.000	0	0	2	1.000	0	0	.000	1	0	0	0	0.0	0	0.0	.153	0-3
09/18/2021	vs UC Riverside	1	0	0	0	.000	0	0	.000	1	0	2	1.000	0	1	1.000	0	0	0	0	0.0	0	1.0	.303	3-0
Totals		3	0	0	0	.000	0	0	.000	1	0	4	1.000	0	1	1.000	1	0	0	0	0.0	0	1.0		

Player Averages

Sets Played	Kills per set	Assists per set	Service aces per set	Digs per set	Blocks per set	Points per set
3	0.00	0.00	0.33	0.33	0.00	0.33

#19 MILLER, Noa

Date	Opponent	SP	Attack				Set			Serve				Receipt			Blocking				Team				
			K	E	TA	PCT	A	TA	PCT	SA	SE	TA	PCT	RE	TA	PCT	DIG	BS	BA	BE	TOTAL	BHE	POINTS	HIT%	SCORE
09/03/2021	at UC Santa Barbara	*3	0	0	2	.000	22	45	.489	0	0	11	1.000	0	0	.000	7	0	0	0	0.0	0	0.0	.384	3-0
09/04/2021	vs Pepperdine	*4	0	0	1	.000	19	53	.358	0	0	11	1.000	0	0	.000	4	0	0	0	0.0	0	0.0	.242	1-3
09/04/2021	vs Kansas St.	*4	1	0	2	.500	25	66	.379	0	0	14	1.000	0	0	.000	7	0	1	0	1.0	0	1.5	.213	1-3
09/10/2021	UCLA	*3	0	0	2	.000	17	50	.340	0	1	10	.900	0	1	1.000	3	0	0	0	0.0	1	0.0	.056	0-3
09/11/2021	San Diego	*4	0	0	0	.000	28	67	.418	2	0	12	1.000	0	0	.000	11	0	0	0	0.0	0	2.0	.203	1-3
09/14/2021	at Long Beach St.	*3	1	1	3	.000	10	43	.233	1	1	14	.929	0	0	.000	2	0	0	1	0.0	0	2.0	.158	0-3
09/17/2021	vs Texas Southern	*3	2	0	3	.667	20	51	.392	1	1	16	.938	0	0	.000	7	0	0	0	0.0	0	3.0	.255	3-0
09/17/2021	at Arizona	*3	0	0	0	.000	10	40	.250	1	1	11	.909	0	0	.000	6	0	0	0	0.0	1	1.0	.144	0-3
09/18/2021	vs UC Riverside	*3	1	0	2	.500	26	56	.464	1	1	10	.900	0	0	.000	5	0	0	0	0.0	1	2.0	.303	3-0
09/23/2021	at Nevada	*3	0	0	0	.000	19	49	.388	1	2	12	.833	0	0	.000	3	0	0	0	0.0	0	1.0	.245	3-0
09/25/2021	at San Jose St.	*3	0	0	0	.000	17	39	.436	0	0	7	1.000	0	1	1.000	5	0	0	0	0.0	0	0.0	.257	0-3
09/30/2021	New Mexico	*4	2	0	2	1.000	28	74	.378	1	0	12	1.000	0	0	.000	6	0	0	0	0.0	0	3.0	.168	1-3
10/02/2021	Air Force	*3	0	0	0	.000	25	29	.862	1	3	12	.750	0	0	.000	8	0	0	0	0.0	0	1.0	.337	3-0
10/05/2021	UNLV	*3	1	0	3	.333	21	52	.404	1	1	13	.923	0	0	.000	12	0	0	0	0.0	1	2.0	.148	0-3
10/07/2021	Fresno St.	*5	6	0	6	1.000	27	69	.391	0	2	23	.913	0	0	.000	13	0	0	0	0.0	3	6.0	.247	2-3
10/14/2021	at Boise St.	*3	0	0	2	.000	22	41	.537	1	2	16	.875	0	0	.000	7	0	0	0	0.0	0	1.0	.400	3-0
10/16/2021	at Utah St.	*3	0	0	1	.000	16	42	.381	1	0	13	1.000	0	0	.000	3	0	0	0	0.0	0	1.0	.152	0-3
10/21/2021	Colorado St.	*5	1	0	2	.500	28	63	.444	1	0	14	1.000	0	0	.000	3	0	0	0	0.0	1	2.0	.257	2-3
10/23/2021	at Wyoming	*3	1	0	3	.333	16	35	.457	0	1	7	.857	0	0	.000	3	0	0	1	0.0	0	1.0	.194	0-3
Totals		65	16	1	34	.441	396	964	.411	13	16	238	.933	0	2	1.000	115	0	1	2	1.0	8	29.5		

Player Averages

Sets Played	Kills per set	Assists per set	Service aces per set	Digs per set	Blocks per set	Points per set
65	0.25	6.09	0.20	1.77	0.02	0.45



**2021-22 San Diego St. Women's Volleyball
Individual Match-by-Match
All games**

as of Oct 27, 2021

#21 O'SULLIVAN, Victoria

Date	Opponent	SP	Attack				Set			Serve				Recept			DIG	Blocking				Team				
			K	E	TA	PCT	A	TA	PCT	SA	SE	TA	PCT	RE	TA	PCT		BS	BA	BE	TOTAL	BHE	POINTS	HIT%	SCORE	
08/27/2021	vs Houston Baptist	*3	7	6	30	.033	1	1	1.000	0	0	6	1.000	0	0	.000	6	0	0	1	0.0	0	7.0	.153	0-3	
08/27/2021	at Sam Houston	*3	8	9	25	-.040	0	2	.000	0	2	9	.778	0	0	.000	1	0	2	1	2.0	0	9.0	.029	0-3	
08/28/2021	at Sam Houston	*5	14	3	34	.324	0	3	.000	1	1	13	.923	0	0	.000	4	0	5	0	5.0	2	17.5	.230	2-3	
09/03/2021	at UC Santa Barbara	*3	15	1	27	.519	0	0	.000	0	0	0	.000	0	0	.000	3	0	2	0	2.0	0	16.0	.384	3-0	
09/04/2021	vs Pepperdine	*4	10	6	27	.148	0	4	.000	0	1	3	.667	0	0	.000	3	0	1	1	1.0	0	10.5	.242	1-3	
09/04/2021	vs Kansas St.	*4	13	5	34	.235	0	1	.000	0	1	3	.667	0	0	.000	1	0	2	0	2.0	0	14.0	.213	1-3	
09/10/2021	UCLA	*3	10	6	25	.160	0	2	.000	0	1	1	.000	0	1	1.000	2	1	2	0	3.0	0	12.0	.056	0-3	
09/11/2021	San Diego	*4	19	4	43	.349	1	3	.333	0	0	0	.000	0	0	.000	4	0	0	0	0.0	0	19.0	.203	1-3	
09/17/2021	vs Texas Southern	*3	11	3	30	.267	3	5	.600	0	0	4	1.000	0	1	1.000	5	0	1	0	1.0	0	11.5	.255	3-0	
09/17/2021	at Arizona	*3	10	2	21	.381	0	2	.000	0	0	0	.000	0	0	.000	0	1	0	0	1.0	0	11.0	.144	0-3	
09/18/2021	vs UC Riverside	*3	14	1	26	.500	0	1	.000	0	0	0	.000	0	0	.000	3	0	3	0	3.0	0	15.5	.303	3-0	
09/23/2021	at Nevada	*3	9	2	25	.280	0	0	.000	0	0	0	.000	1	1	.000	4	1	1	0	2.0	0	10.5	.245	3-0	
09/25/2021	at San Jose St.	*3	11	2	25	.360	1	2	.500	0	0	0	.000	0	0	.000	1	0	2	0	2.0	0	12.0	.257	0-3	
09/30/2021	New Mexico	*4	9	7	31	.065	0	1	.000	3	1	11	.909	0	0	.000	7	0	2	2	2.0	0	13.0	.168	1-3	
10/02/2021	Air Force	*3	13	6	25	.280	0	1	.000	3	4	15	.733	0	0	.000	1	1	2	0	3.0	0	18.0	.337	3-0	
10/05/2021	UNLV	*3	11	7	27	.148	0	1	.000	0	0	10	1.000	0	0	.000	5	0	1	0	1.0	0	11.5	.148	0-3	
10/07/2021	Fresno St.	*5	17	7	39	.256	2	5	.400	2	1	16	.938	0	0	.000	3	1	2	0	3.0	0	21.0	.247	2-3	
10/14/2021	at Boise St.	*3	22	4	33	.545	0	3	.000	0	0	0	.000	0	0	.000	2	0	3	0	3.0	0	23.5	.400	3-0	
10/16/2021	at Utah St.	*3	10	7	27	.111	1	3	.333	0	0	0	.000	0	0	.000	0	0	2	0	2.0	0	11.0	.152	0-3	
10/21/2021	Colorado St.	*5	14	7	37	.189	0	2	.000	0	0	0	.000	0	0	.000	2	0	1	0	1.0	0	14.5	.257	2-3	
10/23/2021	at Wyoming	*3	11	3	22	.364	0	0	.000	0	0	0	.000	0	0	.000	1	0	1	1	1.0	0	11.5	.194	0-3	
Totals			73	258	98	613	.261	9	42	.214	9	12	91	.868	1	3	.667	58	5	35	6	40.0	2	289.5		

Player Averages

Sets Played	Kills per set	Assists per set	Service aces per set	Digs per set	Blocks per set	Points per set
73	3.53	0.12	0.12	0.79	0.55	3.97



San Diego St. Women's Volleyball
Individual Career Summaries
All games

Page 1/9
as of Oct 27, 2021

BARCKLAY, Nadia

SEASON	TEAM	SM-MP	K	K/S	E	TA	PCT	A	A/S	SA	SA/S	SE	DIG	D/S	RE	BS	BA	TB	B/S	BE	BHE	PTS	PTS/S
2020-21	SDSU	8-3	0	0.0	0	0	.000	1	0.1	1	0.1	1	1	0.1	0	1	0	1	0.1	0	0	2.0	0.3
2021-22	SDSU	3-2	0	0.0	0	0	.000	0	0.0	1	0.3	0	1	0.3	0	0	0	0	0.0	0	0	1.0	0.3
TOTAL		11 - 5	0	0.0	0	0	.000	1	0.1	2	0.2	1	2	0.2	0	1	0	1	0.1	0	0	3.0	0.3

Single Game Highs

Statistic	Value	
Assists	1	vs Fresno St. 02/13/21
Serve Aces	1	vs UC Riverside 09/18/21, vs Fresno St. 02/13/21
Digs	1	vs Fresno St. 02/13/21, vs Houston Baptist 08/27/21
Block solos	1	vs New Mexico 02/20/21

FAKI, Zoi

SEASON	TEAM	SM-MP	K	K/S	E	TA	PCT	A	A/S	SA	SA/S	SE	DIG	D/S	RE	BS	BA	TB	B/S	BE	BHE	PTS	PTS/S
2016-17	Pitt	14-8	0	0.0	0	0	.000	0	0.0	3	0.2	9	4	0.3	0	0	0	0	0.0	0	0	3.0	0.2
2018-19	Pitt	35-18	30	0.9	14	85	.188	6	0.2	5	0.1	9	46	1.3	3	0	3	3	0.1	2	0	36.5	1.0
2019-20	Pitt	107-32	36	0.3	16	84	.238	6	0.1	14	0.1	30	64	0.6	4	1	9	10	0.1	1	1	55.5	0.5
2020-21	Pitt	72-24	23	0.3	9	63	.222	9	0.1	10	0.1	9	41	0.6	6	1	3	4	0.1	1	1	35.5	0.5
2021-22	SDSU	56-17	115	2.1	45	318	.220	13	0.2	7	0.1	20	122	2.2	27	2	8	10	0.2	2	0	128.0	2.3
TOTAL FOR SDSU		56 - 17	115	2.1	45	318	.220	13	0.2	7	0.1	20	122	2.2	27	2	8	10	0.2	2	0	128.0	2.3
TOTAL		284 - 99	204	0.7	84	550	.218	34	0.1	39	0.1	77	277	1.0	40	4	23	27	0.1	6	2	258.5	0.9

Single Game Highs

Statistic	Value	
Kills	20	vs Colorado St. 10/21/21
Attacks	43	at Sam Houston 08/28/21
Assists	4	at Boise St. 10/14/21, vs Boston College 10/09/20
Serve Aces	3	vs Minnesota 04/18/21
Digs	23	vs Michigan 12/01/18
Blocks	2	at Notre Dame 10/16/20, vs Pepperdine 09/04/21, at Utah St. 10/16/21
Block solos	1	at Syracuse 10/11/19, at Utah St. 10/16/21, at Notre Dame 10/16/20, vs San Diego 09/11/21
Block assists	3	vs Duquesne 09/07/19



San Diego St. Women's Volleyball
Individual Career Summaries
All games

Page 2/9
as of Oct 27, 2021

FEUERBORN, Kennedy

SEASON	TEAM	SM-MP	K	K/S	E	TA	PCT	A	A/S	SA	SA/S	SE	DIG	D/S	RE	BS	BA	TB	B/S	BE	BHE	PTS	PTS/S
2020-21	SDSU	41-13	31	0.8	13	78	.231	162	4.0	1	0.0	5	19	0.5	0	2	12	14	0.3	0	5	40.0	1.0
2021-22	SDSU	41-19	18	0.4	10	44	.182	102	2.5	0	0.0	1	11	0.3	0	0	9	9	0.2	1	2	22.5	0.5
TOTAL		82 - 32	49	0.6	23	122	.213	264	3.2	1	0.0	6	30	0.4	0	2	21	23	0.3	1	7	62.5	0.8

Single Game Highs

Statistic	Value	
Kills	6	at UNLV 02/05/21
Attacks	15	vs Fresno St. 10/07/21
Assists	26	at UNLV 02/05/21, vs Fresno St. 02/12/21
Serve Aces	1	at Wyoming 03/05/21
Digs	7	vs Fresno St. 02/12/21
Blocks	1	7 times
Block solos	1	vs Fresno St. 02/12/21, at UNLV 02/05/21
Block assists	4	vs Colorado St. 04/03/21
PCT	.500	vs Air Force 10/02/21, vs Houston Baptist 08/27/21

GOLDSMITH, Jordyn

SEASON	TEAM	SM-MP	K	K/S	E	TA	PCT	A	A/S	SA	SA/S	SE	DIG	D/S	RE	BS	BA	TB	B/S	BE	BHE	PTS	PTS/S
2021-22	SDSU	59-19	99	1.7	50	239	.205	3	0.1	0	0.0	1	28	0.5	0	4	28	32	0.5	4	1	117.0	2.0
TOTAL		59 - 19	99	1.7	50	239	.205	3	0.1	0	0.0	1	28	0.5	0	4	28	32	0.5	4	1	117.0	2.0

Single Game Highs

Statistic	Value	
Kills	9	at San Jose St. 09/25/21, at Boise St. 10/14/21, at Wyoming 10/23/21
Attacks	27	vs Colorado St. 10/21/21
Assists	1	at Arizona 09/17/21, vs Pepperdine 09/04/21, at Long Beach St. 09/14/21
Digs	3	at Utah St. 10/16/21, at Arizona 09/17/21, at Sam Houston 08/28/21, vs New Mexico 09/30/21
Blocks	4	vs UC Riverside 09/18/21, at Long Beach St. 09/14/21
Block solos	1	vs Fresno St. 10/07/21, at Long Beach St. 09/14/21, at Wyoming 10/23/21, vs UNLV 10/05/21
Block assists	4	vs UC Riverside 09/18/21, vs Fresno St. 10/07/21
PCT	.636	vs Air Force 10/02/21



San Diego St. Women's Volleyball
Individual Career Summaries
All games

Page 3/9
as of Oct 27, 2021

HAYNIE, Julia

SEASON	TEAM	SM-MP	K	K/S	E	TA	PCT	A	A/S	SA	SA/S	SE	DIG	D/S	RE	BS	BA	TB	B/S	BE	BHE	PTS	PTS/S
2019-20	PSU	99-28	70	0.7	43	205	.132	4	0.0	6	0.1	7	40	0.4	0	4	70	74	0.7	4	0	115.0	1.2
2020-21	PSU	71-18	95	1.3	36	226	.261	5	0.1	8	0.1	7	24	0.3	1	5	42	47	0.7	2	1	129.0	1.8
2021-22	SDSU	56-17	63	1.1	29	152	.224	5	0.1	0	0.0	4	14	0.3	1	2	37	39	0.7	3	0	83.5	1.5
TOTAL FOR SDSU		56 - 17	63	1.1	29	152	.224	5	0.1	0	0.0	4	14	0.3	1	2	37	39	0.7	3	0	83.5	1.5
TOTAL		226 - 63	228	1.0	108	583	.206	14	0.1	14	0.1	18	78	0.3	2	11	149	160	0.7	9	1	327.5	1.4

Single Game Highs

Statistic	Value	
Kills	11	vs Idaho 01/25/21
Attacks	25	vs Idaho 01/25/21
Assists	2	at Boise St. 10/14/21
Serve Aces	3	vs UC Davis 09/07/19
Digs	5	at Utah Valley 09/06/19
Blocks	7	vs Northern Ariz. 01/31/21
Block solos	2	vs Montana 03/08/21, vs Idaho 11/02/19
Block assists	9	vs Eastern Wash. 10/31/19

HILL, Brooklynn

SEASON	TEAM	SM-MP	K	K/S	E	TA	PCT	A	A/S	SA	SA/S	SE	DIG	D/S	RE	BS	BA	TB	B/S	BE	BHE	PTS	PTS/S
2018-19	PSU	8-7	0	0.0	0	0	.000	0	0.0	1	0.1	3	2	0.3	1	0	0	0	0.0	0	1	1.0	0.1
2019-20	PSU	11-7	0	0.0	0	0	.000	0	0.0	3	0.3	1	3	0.3	0	0	0	0	0.0	0	0	3.0	0.3
2020-21	SDSU	50-15	1	0.0	1	3	.000	12	0.2	10	0.2	11	77	1.5	18	0	0	0	0.0	0	1	11.0	0.2
2021-22	SDSU	44-15	0	0.0	0	0	.000	0	0.0	6	0.1	13	12	0.3	0	0	0	0	0.0	0	0	6.0	0.1
TOTAL FOR SDSU		94 - 30	1	0.0	1	3	.000	12	0.1	16	0.2	24	89	0.9	18	0	0	0	0.0	0	1	17.0	0.2
TOTAL		113 - 44	1	0.0	1	3	.000	12	0.1	20	0.2	28	94	0.8	19	0	0	0	0.0	0	2	21.0	0.2

Single Game Highs

Statistic	Value	
Kills	1	at Boise St. 03/20/21
Attacks	2	at Boise St. 03/20/21
Assists	3	vs Nevada 02/27/21
Serve Aces	3	vs New Mexico 02/19/21, vs Utah St. 03/12/21, vs Towson 12/07/19
Digs	10	at Boise St. 03/20/21



San Diego St. Women's Volleyball
Individual Career Summaries
All games

Page 4/9
as of Oct 27, 2021

HODSON, Serena

SEASON	TEAM	SM-MP	K	K/S	E	TA	PCT	A	A/S	SA	SA/S	SE	DIG	D/S	RE	BS	BA	TB	B/S	BE	BHE	PTS	PTS/S
2018-19	SDSU	18-5	15	0.8	4	36	.306	0	0.0	0	0.0	1	1	0.1	0	1	14	15	0.8	0	0	23.0	1.3
2020-21	SDSU	20-9	17	0.9	8	45	.200	0	0.0	1	0.1	3	4	0.2	0	1	15	16	0.8	2	0	26.5	1.3
2021-22	SDSU	9-3	12	1.3	6	30	.200	0	0.0	0	0.0	0	0	0.0	0	2	8	10	1.1	1	0	18.0	2.0
TOTAL	47 - 17	44	0.9	18	111	.234	0	0.0	1	0.0	4	5	0.1	0	4	37	41	0.9	3	0	67.5	1.4	

Single Game Highs

Statistic	Value	
Kills	9	at Sam Houston 08/28/21
Attacks	20	at Sam Houston 08/28/21
Serve Aces	1	at UNLV 02/04/21
Digs	2	at Wyoming 03/05/21
Blocks	8	at Sam Houston 08/28/21
Block solos	2	at Sam Houston 08/28/21
Block assists	7	vs Seattle U 08/25/18

LABNO, Mikela

SEASON	TEAM	SM-MP	K	K/S	E	TA	PCT	A	A/S	SA	SA/S	SE	DIG	D/S	RE	BS	BA	TB	B/S	BE	BHE	PTS	PTS/S
2021-22	SDSU	60-20	122	2.0	67	341	.161	4	0.1	3	0.1	15	59	1.0	16	7	17	24	0.4	0	1	140.5	2.3
TOTAL	60 - 20	122	2.0	67	341	.161	4	0.1	3	0.1	15	59	1.0	16	7	17	24	0.4	0	1	140.5	2.3	

Single Game Highs

Statistic	Value	
Kills	13	vs Pepperdine 09/04/21
Attacks	33	vs San Diego 09/11/21
Assists	2	vs Texas Southern 09/17/21
Serve Aces	2	at Long Beach St. 09/14/21
Digs	13	vs UC Riverside 09/18/21
Blocks	3	at Nevada 09/23/21, at Long Beach St. 09/14/21
Block solos	2	vs San Diego 09/11/21
Block assists	3	vs New Mexico 09/30/21
PCT	1.000	at Sam Houston 08/28/21



San Diego St. Women's Volleyball
Individual Career Summaries
All games

MERK, Reagan

SEASON	TEAM	SM-MP	K	K/S	E	TA	PCT	A	A/S	SA	SA/S	SE	DIG	D/S	RE	BS	BA	TB	B/S	BE	BHE	PTS	PTS/S
2021-22	SDSU	25-12	26	1.0	11	59	.254	4	0.2	2	0.1	9	28	1.1	1	1	2	3	0.1	0	0	30.0	1.2
TOTAL		25 - 12	26	1.0	11	59	.254	4	0.2	2	0.1	9	28	1.1	1	1	2	3	0.1	0	0	30.0	1.2

Single Game Highs

Statistic	Value	
Kills	7	vs Texas Southern 09/17/21, vs UC Riverside 09/18/21
Attacks	20	vs UC Riverside 09/18/21
Assists	2	vs UNLV 10/05/21
Serve Aces	2	at Sam Houston 08/27/21
Digs	6	vs Texas Southern 09/17/21, vs UC Riverside 09/18/21
Blocks	3	vs UC Riverside 09/18/21
Block solos	1	vs UC Riverside 09/18/21
Block assists	2	vs UC Riverside 09/18/21
PCT	1.000	vs Air Force 10/02/21, vs UCLA 09/10/21

MILLER, Noa

SEASON	TEAM	SM-MP	K	K/S	E	TA	PCT	A	A/S	SA	SA/S	SE	DIG	D/S	RE	BS	BA	TB	B/S	BE	BHE	PTS	PTS/S
2018-19	WOF	108-30	31	0.3	5	95	.274	481	4.5	16	0.1	52	194	1.8	0	0	2	2	0.0	2	15	48.0	0.4
2019-20	ASU	70-26	10	0.1	4	29	.207	283	4.0	4	0.1	13	151	2.2	0	0	1	1	0.0	0	4	14.5	0.2
2021-22	SDSU	65-19	16	0.2	1	34	.441	396	6.1	13	0.2	16	115	1.8	0	0	1	1	0.0	2	8	29.5	0.5
TOTAL FOR SDSU		65 - 19	16	0.2	1	34	.441	396	6.1	13	0.2	16	115	1.8	0	0	1	1	0.0	2	8	29.5	0.5
TOTAL		243 - 75	57	0.2	10	158	.297	1160	4.8	33	0.1	81	460	1.9	0	0	4	4	0.0	4	27	92.0	0.4

Single Game Highs

Statistic	Value	
Kills	6	vs Fresno St. 10/07/21
Attacks	10	at Chattanooga 09/21/18, at Samford 09/22/18
Assists	31	at Chattanooga 09/21/18
Serve Aces	3	vs Western Caro. 11/02/18
Digs	13	at Samford 09/22/18, vs Fresno St. 10/07/21, at Washington 10/18/19
Blocks	1	vs Kansas St. 09/04/21
Block assists	1	at Chattanooga 09/21/18, at Samford 09/22/18, at Oklahoma 09/13/19, vs Kansas St. 09/04/21
PCT	1.000	vs New Mexico 09/30/21, vs Fresno St. 10/07/21



San Diego St. Women's Volleyball
Individual Career Summaries
All games

Page 6/9
as of Oct 27, 2021

MUKAJ, Sara

SEASON	TEAM	SM-MP	K	K/S	E	TA	PCT	A	A/S	SA	SA/S	SE	DIG	D/S	RE	BS	BA	TB	B/S	BE	BHE	PTS	PTS/S
2021-22	SDSU	27-8	16	0.6	4	36	.333	11	0.4	7	0.3	7	16	0.6	0	1	21	22	0.8	2	1	34.5	1.3
TOTAL		27 - 8	16	0.6	4	36	.333	11	0.4	7	0.3	7	16	0.6	0	1	21	22	0.8	2	1	34.5	1.3

Single Game Highs

Statistic	Value	
Kills	7	at Sam Houston 08/28/21
Attacks	11	at Sam Houston 08/28/21
Assists	4	at UC Santa Barbara 09/03/21
Serve Aces	4	at Sam Houston 08/27/21
Digs	5	at Sam Houston 08/28/21
Blocks	4	at Sam Houston 08/28/21, at UC Santa Barbara 09/03/21, vs Pepperdine 09/04/21
Block solos	1	at UC Santa Barbara 09/03/21
Block assists	4	at Sam Houston 08/28/21, vs Pepperdine 09/04/21
PCT	.800	vs San Diego 09/11/21

O'SULLIVAN, Victoria

SEASON	TEAM	SM-MP	K	K/S	E	TA	PCT	A	A/S	SA	SA/S	SE	DIG	D/S	RE	BS	BA	TB	B/S	BE	BHE	PTS	PTS/S
2018-19	SDSU	57-24	109	1.9	54	309	.178	0	0.0	0	0.0	0	23	0.4	1	1	14	15	0.3	3	0	117.0	2.1
2019-20	SDSU	110-29	352	3.2	145	872	.237	2	0.0	0	0.0	0	57	0.5	9	14	38	52	0.5	11	0	385.0	3.5
2020-21	SDSU	53-15	172	3.2	84	453	.194	6	0.1	2	0.0	3	23	0.4	3	8	24	32	0.6	3	1	194.0	3.7
2021-22	SDSU	73-21	258	3.5	98	613	.261	9	0.1	9	0.1	12	58	0.8	1	5	35	40	0.5	6	2	289.5	4.0
TOTAL		293 - 89	891	3.0	381	2247	.227	17	0.1	11	0.0	15	161	0.5	14	28	111	139	0.5	23	3	985.5	3.4

Single Game Highs

Statistic	Value	
Kills	22	vs West Virginia 09/06/19, at Boise St. 10/14/21
Attacks	43	at Boise St. 11/23/19, vs San Diego 09/11/21
Assists	3	vs Texas Southern 09/17/21
Serve Aces	3	vs New Mexico 09/30/21, vs Air Force 10/02/21
Digs	7	at Utah St. 11/21/19, vs New Mexico 09/30/21
Blocks	6	at Boise St. 03/20/21
Block solos	2	6 times
Block assists	6	vs Colorado St. 04/03/21



San Diego St. Women's Volleyball
Individual Career Summaries
All games

Page 7/9
as of Oct 27, 2021

RURI, Kalani

SEASON	TEAM	SM-MP	K	K/S	E	TA	PCT	A	A/S	SA	SA/S	SE	DIG	D/S	RE	BS	BA	TB	B/S	BE	BHE	PTS	PTS/S
2021-22	SDSU	10-6	16	1.6	5	33	.333	0	0.0	0	0.0	1	4	0.4	1	0	5	5	0.5	0	0	18.5	1.9
TOTAL		10 - 6	16	1.6	5	33	.333	0	0.0	0	0.0	1	4	0.4	1	0	5	5	0.5	0	0	18.5	1.9

Single Game Highs

Statistic	Value	
Kills	7	vs UC Riverside 09/18/21
Attacks	13	vs UC Riverside 09/18/21
Digs	2	vs UC Riverside 09/18/21
Blocks	2	vs Texas Southern 09/17/21, vs UC Riverside 09/18/21
Block assists	2	vs Texas Southern 09/17/21, vs UC Riverside 09/18/21
PCT	1.000	at Utah St. 10/16/21

SMITH, Natalie

SEASON	TEAM	SM-MP	K	K/S	E	TA	PCT	A	A/S	SA	SA/S	SE	DIG	D/S	RE	BS	BA	TB	B/S	BE	BHE	PTS	PTS/S
2017-18	Mich	88-29	0	0.0	0	1	.000	23	0.3	12	0.1	27	128	1.5	10	0	0	0	0.0	0	2	12.0	0.1
2018-19	Mich	105-34	2	0.0	0	3	.667	32	0.3	11	0.1	25	208	2.0	12	0	0	0	0.0	0	1	13.0	0.1
2019-20	Mich	117-32	2	0.0	1	7	.143	104	0.9	18	0.2	30	401	3.4	57	0	0	0	0.0	1	2	20.0	0.2
2021-22	SDSU	76-22	0	0.0	0	5	.000	57	0.8	10	0.1	15	295	3.9	31	0	0	0	0.0	0	4	10.0	0.1
TOTAL FOR SDSU		76 - 22	0	0.0	0	5	.000	57	0.8	10	0.1	15	295	3.9	31	0	0	0	0.0	0	4	10.0	0.1
TOTAL		386 - 117	4	0.0	1	16	.188	216	0.6	51	0.1	97	1032	2.7	110	0	0	0	0.0	1	9	55.0	0.1

Single Game Highs

Statistic	Value	
Kills	1	at Dayton 09/07/19, at Iowa 09/23/18, at Purdue 11/23/19, vs Oakland 09/07/18
Attacks	2	at Dayton 09/07/19, at Northwestern 11/02/19
Assists	8	vs Illinois 11/09/19
Serve Aces	3	vs Northern Ariz. 08/30/19, vs Ohio St. 09/29/17, vs Iowa 11/13/19, at Pittsburgh 12/01/18
Digs	29	at Notre Dame 09/18/19



San Diego St. Women's Volleyball
Individual Career Summaries
All games

Page 8/9
as of Oct 27, 2021

TAUTUA'A, Heipua

SEASON	TEAM	SM-MP	K	K/S	E	TA	PCT	A	A/S	SA	SA/S	SE	DIG	D/S	RE	BS	BA	TB	B/S	BE	BHE	PTS	PTS/S
2020-21	SDSU	49-14	99	2.0	62	313	.118	25	0.5	6	0.1	26	140	2.9	29	7	15	22	0.4	4	1	119.5	2.4
2021-22	SDSU	72-21	154	2.1	85	478	.144	31	0.4	7	0.1	23	151	2.1	16	2	23	25	0.3	5	2	174.5	2.4
TOTAL		121 - 35	253	2.1	147	791	.134	56	0.5	13	0.1	49	291	2.4	45	9	38	47	0.4	9	3	294.0	2.4

Single Game Highs

Statistic	Value	
Kills	15	vs Nevada 02/26/21
Attacks	38	vs Nevada 02/26/21
Assists	5	vs Fresno St. 10/07/21
Serve Aces	2	at Boise St. 03/20/21, at Nevada 09/23/21, vs New Mexico 02/20/21
Digs	22	vs New Mexico 02/20/21
Blocks	6	at Boise St. 03/20/21
Block solos	3	at Wyoming 03/05/21
Block assists	6	at Boise St. 03/20/21

VANDERPAN, Ashley

SEASON	TEAM	SM-MP	K	K/S	E	TA	PCT	A	A/S	SA	SA/S	SE	DIG	D/S	RE	BS	BA	TB	B/S	BE	BHE	PTS	PTS/S
2020-21	SDSU	49-14	15	0.3	12	52	.058	325	6.6	11	0.2	11	77	1.6	0	1	9	10	0.2	0	8	31.5	0.6
2021-22	SDSU	56-18	1	0.0	2	9	-.111	254	4.5	10	0.2	13	83	1.5	0	0	1	1	0.0	0	12	11.5	0.2
TOTAL		105 - 32	16	0.2	14	61	.033	579	5.5	21	0.2	24	160	1.5	0	1	10	11	0.1	0	20	43.0	0.4

Single Game Highs

Statistic	Value	
Kills	3	vs Nevada 02/26/21, vs New Mexico 02/20/21
Attacks	9	vs New Mexico 02/20/21, vs Nevada 02/26/21
Assists	40	vs New Mexico 02/20/21
Serve Aces	3	vs Nevada 02/27/21, at Boise St. 03/20/21
Digs	12	vs Nevada 02/26/21
Blocks	1	at UNLV 02/04/21, vs Pepperdine 09/04/21, at Boise St. 03/20/21, at San Jose St. 03/27/21
Block solos	1	at Boise St. 03/20/21
Block assists	2	vs Fresno St. 02/13/21, vs New Mexico 02/19/21



San Diego St. Women's Volleyball
Individual Career Summaries
All games

Page 9/9
as of Oct 27, 2021

WALKER, Andrea

SEASON	TEAM	SM-MP	K	K/S	E	TA	PCT	A	A/S	SA	SA/S	SE	DIG	D/S	RE	BS	BA	TB	B/S	BE	BHE	PTS	PTS/S
2018-19	SDSU	7-4	7	1.0	4	16	.188	0	0.0	0	0.0	0	0	0.0	0	0	5	5	0.7	0	0	9.5	1.4
2019-20	SDSU	70-23	129	1.8	45	273	.308	1	0.0	0	0.0	0	7	0.1	0	6	55	61	0.9	7	0	162.5	2.3
2020-21	SDSU	33-9	69	2.1	28	145	.283	3	0.1	0	0.0	0	4	0.1	0	3	21	24	0.7	1	0	82.5	2.5
2021-22	SDSU	35-10	48	1.4	9	86	.453	4	0.1	0	0.0	0	8	0.2	1	2	27	29	0.8	4	1	63.5	1.8
TOTAL		145 - 46	253	1.7	86	520	.321	8	0.1	0	0.0	0	19	0.1	1	11	108	119	0.8	12	1	318.0	2.2

Single Game Highs

Statistic	Value	
Kills	13	at Utah St. 11/21/19
Attacks	26	at Utah St. 11/21/19
Assists	2	vs Air Force 10/02/21, at Boise St. 03/20/21
Digs	2	at Arizona 09/17/21, at Air Force 10/19/19, vs Air Force 10/02/21, vs New Mexico 02/20/21
Blocks	6	at Utah St. 11/21/19
Block solos	2	vs Boise St. 10/24/19
Block assists	7	at Air Force 10/19/19