



SAN DIEGO STATE AZTECS

2021 Volleyball Weekly Notes

Jim Solien (Primary Contact)
 Assistant Media Relations Director
Office Phone Number: (619) 594-2576
E-Mail Address: jsolien@sdsu.edu
News Release Date: Oct. 13, 2021

SDSU Official Athletics Website: goaztecs.com
SDSU Official Athletics Twitter: @GoAztecs
SDSU Official Athletics Instagram: @GoAztecs
SDSU Official Athletics Facebook: facebook.com/goaztecs
SDSU Official Athletics YouTube: youtube.com/goaztecs.com

2021 AZTEC VOLLEYBALL SCHEDULE

Day/Date	Opponent	Time
Friday, Aug. 27	vs. Houston Baptist [^]	L, 0-3
Friday, Aug. 27	at Sam Houston [^]	L, 0-3
Saturday, Aug. 28	at Sam Houston [^]	L, 2-3
Friday, Sept. 3	at UC Santa Barbara [#]	W, 3-0
Saturday, Sept. 4	vs. No. 21 Pepperdine [#]	L, 1-3
Saturday, Sept. 4	vs. Kansas State [#]	L, 1-3
Friday, Sept. 10	No. 16 UCLA+ (MWN)	L, 0-3
Saturday, Sept. 11	No. 25 San Diego+ (MWN)	L, 1-3
Tuesday, Sept. 14	at Long Beach State	L, 0-3
Friday, Sept. 17	vs. Texas Southern [~]	W, 3-0
Friday, Sept. 17	at Arizona [~]	L, 0-3
Saturday, Sept. 18	vs. UC Riverside [~]	W, 3-0
Thursday, Sept. 23	at Nevada* (MWN)	W, 3-0
Saturday, Sept. 25	at San José State* (MWN)	L, 0-3
Thursday, Sept. 30	New Mexico* (MWN)	L, 1-3
Saturday, Oct. 2	Air Force* (MWN)	W, 3-0
Tuesday, Oct. 5	UNLV* (MWN)	L, 0-3
Thursday, Oct. 7	Fresno State* (MWN)	L, 2-3
Thursday, Oct. 14	at Boise State* (MWN)	7 p.m. MT
Saturday, Oct. 16	at Utah State* (MWN)	1 p.m. MT
Thursday, Oct. 21	Colorado State* (MWN)	7 p.m. PT
Saturday, Oct. 23	at Wyoming* (MWN)	6:30 p.m. MT
Thursday, Oct. 28	Utah State*	7 p.m. PT
Saturday, Oct. 30	Boise State* (MWN)	7 p.m. PT
Monday, Nov. 1	at UNLV* (MWN)	6:30 p.m. PT
Saturday, Nov. 6	at Fresno State* (MWN)	11 a.m. PT
Thursday, Nov. 11	at Air Force* (MWN)	6 p.m. MT
Saturday, Nov. 13	at New Mexico* (MWN)	1 p.m. MT
Thursday, Nov. 18	Nevada* (MWN)	7 p.m. PT
Saturday, Nov. 20	San José State* (MWN)	1 p.m. PT

[^] - Bearkat Invitational (Huntsville, Texas)
[#] - Gaucho Invitational (Santa Barbara, Calif.)
⁺ - SDSU/USD Invitational (San Diego, Calif.)
[~] - Wildcat Classic (Tucson, Ariz.)
^{*} - Mountain West match
 (MWN) - Mountain West Network match

Socially

Twitter: @AztecVB
 Instagram: @Aztec_WVB

Match Week Preview

San Diego State (5-13, 2-4 MW) at Boise State (14-4, 3-3 MW)
 Thursday, Oct. 14 | 6 p.m. PT | Bronco Gym | Boise, Idaho
 Live Stats | MW Network
 Series: Boise State leads 10-9



San Diego State (5-13, 2-4 MW) at Utah State (12-6, 4-2 MW)
 Saturday, Oct. 16 | Noon PT | Dee Glen Smith Spectrum | Logan, Utah
 Live Stats | MW Network
 Series: SDSU leads 18-7



AZTEC VOLLEYBALL PREPARES FOR ROAD MATCHES AT BOISE STATE, UTAH STATE

- > The San Diego State volleyball team hits the road this week for a pair of matches against Mountain West adversaries Boise State and Utah State.
- > The Aztecs will engage the Broncos on Thursday, Oct. 14 at 7 p.m. MT/6 p.m. PT before locking horns with the Aggies on Saturday, Oct. 16 at 1 p.m. MT/noon PT. In addition to live stats, a link to streaming video via the Mountain West Network will be available on GoAztecs.com.
- > SDSU finds itself in a tie for eighth place in the MW standings after dropping two encounters last week vs. UNLV and Fresno State to wrap up a four-match homestand. The Aztecs fell to the Rebels in three closely contested sets (21-25, 21-25, 20-25) before suffering a 3-2 heartbreaker against the Bulldogs (25-22, 22-25, 25-17, 23-25, 12-15).
- > The SDSU attack is led by senior Victoria O'Sullivan, who ranks sixth in the Mountain West with an average of 3.41 kills per set. The Aztec outside hitter has posted double-digit kills in 13 of her previous 15 starts and has surpassed that plateau in 45 of her last 60 appearances dating back to the start of the 2019 campaign.

SERIES RECORD VS. BOISE STATE

- > Since the teams first met in 2005, the Broncos hold a 10-9 edge in the all-time series.
- > The Aztecs are 4-6 in 10 previous trips to Boise, highlighted by a 3-2 upset (25-20, 23-25, 25-21, 24-26, 15-13) during the shortened 2021 spring campaign. SDSU also emerged triumphant at Bronco Gym in 2011, 2013 and 2018.
- > In that contest last March, the Aztecs recorded perhaps their biggest victory in recent memory after Boise State entered the match with four straight 3-0 sweeps.
- > The two sides combined for 37 ties and 13 lead changes during the two-and-a-half-hour thriller, but SDSU maintained the upper hand in team blocks, finishing with a 15.0-7.0 advantage while holding the statistical edge in kills (62-59), assists (60-53) and digs (73-62) to help fuel its win.
- > Each team was plagued by 10 errant serves; however, the Aztecs posted a season-high eight aces and committed eight fewer attack errors, as the Scarlet and Black out-hit the Broncos .236 to .157 for the match.
- > Among this season's returners, Victoria O'Sullivan (15) and Heipua Tautua'a (14) combined for 29 of SDSU's 62 kills.
- > Tautua'a finished with a season-best .462 hitting percentage and came up with six block assists, while O'Sullivan totaled six stops as well, including a pair of solo stuffs.
- > In addition, Ashley Vanderpan notched her third double-double of the year with 31 assists and 11 digs, while Kennedy Feuerborn (5 kills) dished out 16 helpers.
- > Boise State will travel to "America's Finest City" for the rematch between the two squads on Saturday, Oct. 30.

SERIES RECORD VS. UTAH STATE

- > The Aztecs lead the all-time series with the Aggies 18-7 after splitting a weekend series with the Aggies in San Diego last spring.
- > The teams played both matches at Jenny Craig Pavilion on the University of San Diego campus after a roof leak affected the playing surface inside Peterson Gym.
- > The Aztecs dropped a 3-0 decision in the opener (23-25, 13-25, 19-25) before overcoming a two-set deficit for a dramatic 3-2 victory in the finale (19-25, 23-25, 25-20, 25-19, 15-7), which snapped a five-match losing streak.
- > In the triumphant encounter, SDSU shared the offensive wealth, as four players surpassed the double-digit kill plateau, including Victoria O'Sullivan, who launched 12 non-returnables, while Andrea Walker and Heipua Tautua'a finished with 11 each.
- > Tautua'a registered her first collegiate double-double after posting 11 digs as well, while Walker hit at crisp .529 pace, committing just two errors on 17 attempts.
- > Overall, SDSU owns a 12-1 record against Utah State in San Diego, a 4-3 mark in Logan and a 2-3 ledger vs. the Aggies on a neutral floor.
- > In their last visit to USU in the penultimate match of the 2019 campaign, the Aztecs came away with a four-set victory (25-18, 29-27, 17-25, 25-20), as O'Sullivan led all players with 17 kills, while Walker added a career-high 13 put-aways to go with six block assists.
- > Despite trailing by a substantial margin in team blocks (21.0 to 9.0), SDSU maintained the statistical advantage in kills (62-47) and digs (68-45) to help fuel that win.
- > The Aztecs-Aggies rematch in San Diego is set for Thursday, Oct. 28.

SCHEDULE CHANGE

- > San Diego State's road match at UNLV has been rescheduled for Monday, Nov. 1, at Cox Pavilion in Las Vegas, starting at 6:30 p.m. PT. The contest was originally slated for Tuesday, Nov. 2.

GENERAL INFORMATION

Location San Diego, Calif.
 Founded 1897
 Enrollment 33,870
 Nickname Aztecs
 Colors Scarlet and Black (Pantone 187)
 Conference Mountain West
 Affiliation Division I
 President Dr. Adela de la Torre
 Director of Athletics John David Wicker
 Faculty Representative Dr. Frank Harris III
 Home Facility Aztec Court at Peterson Gym (2,000)

TEAM INFORMATION

Head Coach Brent Hilliard
 Alma Mater Long Beach State '93
 Record at SDSU 11-22 (second year)
 Career Record 65-33 (Third year)
 E-Mail bhilliard@sdsu.edu
 Volleyball Office Phone (619) 594-5064
 Volleyball Office Fax (619) 594-1674
 Assistant Coach/Recruiting Coordinator Melanie Greene
 Assistant Coach Steve Timmons
 Volleyball Operations Assistant Kara Barkdoll
 Spring 2021 Record 6-9
 Spring 2021 Conference Record 6-9 (Eighth)
 Spring 2021 Home Record 5-4
 Spring 2021 Road Record 1-5
 Letterwinners Returning/Lost 8/7
 Starters Returning/Lost 4/2+Libero

PROGRAM HISTORY

First Year of Volleyball 1976
 Overall Record 891-632 (.585)
 NCAA Appearances 14
 Last Postseason Appearance 2012
 NCAA Postseason Record 15-14

MEDIA RELATIONS

Assistant Media Relations Director Jim Solien
 E-Mail jsolien@sdsu.edu
 SID Office Phone (619) 594-2576
 SID Office Fax (619) 582-6541
 Official Athletic Website www.GoAztecs.com

**2021 AZTEC VOLLEYBALL
 STATISTICAL LEADERS**
(min. 50 percent of team sets played)

Hitting Percentage*	.251	Victoria O'Sullivan
Kills	201	Victoria O'Sullivan
Kills per set	3.41	Victoria O'Sullivan
Assists	314	Noa Miller
Assists per set	6.16	Noa Miller
Digs	256	Natalie Smith
Digs per set	4.13	Natalie Smith
Blocks	33.0	Victoria O'Sullivan
Blocks per set	0.71	Julia Haynie
Service Aces	10	Noa Miller
Service Aces per set	0.20	Noa Miller

*. min 3.0 attempts per set

2021 AZTEC VOLLEYBALL FALL ROSTER

No.	Player	Pos.	Ht.	Yr.	Hometown (Last School)
1	Zoi Faki	OH	6-1	Sr.	Athens, Greece (Pittsburgh)
2	Heipua Tautua'a	OH	6-2	So.	Wai'anae, Hawai'i (Wai'anae HS)
3	Andrea Walker	MB	6-0	Sr.	Fairfield, Calif. (Vanden HS)
4	Kennedy Feuerborn	S	6-3	So.	Overland Park, Kan. (Johnson County CC)
5	Serena Hodson	MB	6-2	Jr.	Mission Viejo, Calif. (Trabuco Hills HS)
6	Jordyn Goldsmith	OPP	6-1	Fr.	Valleyford, Wash. (Freeman HS)
7	Ashley Vanderpan	S	6-1	Jr.	Elk Grove, Calif. (Syracuse)
8	Natalie Smith	DS/L	5-7	Sr.	Weatherford, Texas (Michigan)
9	Sara Mukaj	MB	6-3	Fr.	Modena, Italy (Istituto Scaruffi-Levi Tricolore)
10	Kalani Ruri	S/OPP	6-2	Fr.	Kawerau, New Zealand (Trident HS)
11	Brooklynn Hill	DS/L	5-8	Sr.	Rancho Cucamonga, Calif. (Penn State)
13	Julia Haynie	MB	6-2	Jr.	Temecula, Calif. (Portland State)
14	Reagan Merk	OH	5-11	Fr.	Huntington Beach, Calif. (Mater Dei HS)
15	Mikela Labno	OH	6-2	Fr.	Hilmar, Calif. (Hilmar HS)
16	Carsyn Schuch	DS	5-6	Fr.	Phoenix, Ariz. (Deer Valley HS)
17	Nadia Barkclay	DS	5-2	So.	Foster City, Calif. (Hillsdale HS)
19	Noa Miller	S	5-10	Sr.	Douglasville, Ga. (Arizona State)
21	Victoria O'Sullivan	OH	6-0	Sr.	Albany, Calif. (Saint. Mary's HS)

Head Coach: Brent Hilliard (Long Beach State, 1993), Second season at SDSU
Assistant Coach/Recruiting Coordinator: Melanie Greene (San Diego State, 2007), 11th season at SDSU
Assistant Coach: Steve Timmons (USC), Second season at SDSU
Volleyball Operations Assistant: Kara Barkdoll (Cal State San Marcos, 2015), Fourth season at SDSU

Pronunciations

#1 ZOI FAKI	Zoey FAH-key
#2 HEIPUA TAUTUA'A	HEY-poo-ah taw-TOO-ah-ah
#9 Sara MUKAJ	MOO-kye
#4 Kennedy FEUERBORN	FEWER-born
#15 MIKELA Labno	ma-KAY-la
#16 CARSYN SCHUCH	Carson Shook



OPPONENT COMPARISON

2021 Overall Stats	SDSU	MW Rank	OPP	BSU	MW Rank	OPP	USU	MW Rank	OPP
Hitting Percentage	.211	8	.229	.266	1	.170	.239	4	.188
Kills per set	12.39	7	12.45	13.03	4	11.86	12.81	5	11.63
Assists per set	11.58	6	11.55	11.92	2	11.11	11.65	5	10.51
Digs per set	13.56	4	12.16	13.39	6	13.62	12.79	8	12.18
Blocks per set	1.95	8	2.60	2.85	1	1.75	2.24	4	2.26
Service Aces per set	1.03	11	1.61	2.00	2	1.39	1.46	7	1.21

SCOUTING THE OPPOSITION

> Picked to finish second in the Mountain West preseason coaches poll, Boise State (14-4, 3-3 MW) lost a four-set decision at New Mexico in its last outing on Oct. 9 (25-22, 22-25, 21-25, 20-25) to slip into a fifth-place tie in the league standings. The Broncos posted an 11-1 mark in non-conference play, winning three straight tournament titles outright (UC/Adidas Invite, Sacramento State Invite, Boise State Classic) after sharing the event crown at their season-opening Boise State Invitational. Offensively, the Broncos are paced by junior outside hitter Lauren Ohlinger, who leads the MW with 3.83 kills per set and occupies the second position with 35 service aces (0.53/set), which ranks ninth nationally entering the week. In addition, junior middle blocker Alyssa Wissinger finds herself atop the conference perch with 1.74 blocks per set and ranks fifth with a team-best .365 hitting percentage, while senior setter Danielle Boss owns a MW-leading average of 10.77 assists per set. Not to be outdone, senior middle blocker Alli O'Hara (1.23/set) and sophomore opposite Makayla Hansen (1.14/set) rank second and fourth in blocks, respectively, while sophomore libero Jolei Akima is slotted seventh in the conference with 3.23 digs per frame. As a team, Boise State leads the Mountain West with a .266 hitting percentage and 2.85 blocks per set, the latter of which ranks ninth nationally. In addition, the Broncos' 188.0 total blocks and 132 service aces are currently fourth and 10th in the country, respectively. Boise State is also holding its opponents to a .170 hitting percentage, which ranks third in the conference. The Broncos are 6-2 at home this season and 4-2 on the road while posting a 4-0 mark in neutral-site matches. Redshirt freshman libero Sam Beschell hails from nearby Solana Beach, California, where she prepped at Santa Fe Christian High. Head coach Shawn Garus is in his 13th season at the helm of the Bronco program, sporting a 327-272 career record and a 220-152 mark at the school. Garus captured back-to-back Mountain West Coach of the Year honors (2015-16) to go with 2016 AVCA Region Coach of the Year accolades.

> Utah State (12-6, 4-2 MW), which was pegged for a ninth-place finish in the Mountain West preseason coaches poll, enters the week alone in fourth in the conference standings. The Aggies split a pair of road matches last week, falling in a 3-2 nail-biter at New Mexico (25-22, 14-25, 21-25, 25-22, 10-15) before rebounding with a four-set triumph over Air Force (25-11, 25-19, 17-25, 25-14). Individually, junior middle blocker Kennedy Boyd (2.04 kills/set) leads the Mountain West with a .408 hitting percentage, which ranks 19th nationally entering the week. Along with Boyd, USU sports three other players who are averaging over two kills per set, including sophomore outside hitter Tatum Stall (2.80), senior outside hitter Kristy Frank (2.26) and junior middle blocker Kylee Stokes (2.06). In addition, senior middle blocker Corinne Larsen occupies the fifth spot in the conference with 1.13 blocks per set, while sophomore libero Abby Peterson (3.35 digs/set) and junior setter Kalena Vaivai (5.21 assists/set) find themselves among the MW leaders, ranking sixth and 10th in their respective statistical categories. Collectively, the Aggies are slotted fourth in the Mountain West in hitting percentage (.239), blocks (2.24/set) and opponent hitting percentage (.188) while ranking fifth in kills (12.81/set) and seventh in service aces (1.46/set). Utah State is guided by second-year head coach Rob Neilson, who arrived on the Logan campus after serving as the lead assistant coach for the U.S. men's national team from 2017-19. Prior to his stint with Team USA, Neilson

2021 MOUNTAIN WEST STANDINGS (AS OF OCT. 13)

Team	---Conference---			-----Overall-----			
	W	L	Pct.	W	L	Pct.	Strk
New Mexico	5	1	.833	14	3	.824	W2
UNLV	5	1	.833	14	3	.824	W5
Colorado State	5	1	.833	9	6	.600	W2
Utah State	4	2	.667	12	6	.667	W1
San José State	4	3	.571	10	7	.588	W1
Boise State	3	3	.500	14	4	.778	L1
Fresno State	3	3	.500	7	7	.500	L1
San Diego State	2	4	.333	5	13	.278	L2
Wyoming	2	4	.333	10	8	.556	W2
Air Force	1	5	.167	4	12	.250	L4
Nevada	0	7	.000	3	15	.167	L7

Upcoming Matches in the MW

Thursday, Oct. 14

San Diego State at Boise State, 7 p.m. MT

Air Force at Wyoming, 6:30 p.m. MT

New Mexico at Colorado State, 7 p.m. MT

UNLV at Utah State, 7 p.m. MT

San José State at Fresno State, 6 p.m. PT

Saturday, Oct. 16

San Diego State at Utah State, 1 p.m. MT

New Mexico at Wyoming, TBA

UNLV at Boise State, noon MT

Air Force at Colorado State, 1 p.m. MT

Sunday, Oct. 17

Nevada at Fresno State, 1 p.m. PT

Tuesday, Oct. 19

Utah State at Boise State, 7 p.m. MT

Thursday, Oct. 21

Colorado State at San Diego State, 7 p.m. PT

Nevada at Air Force, 6 p.m. MT

San José State at New Mexico, 6:30 p.m. MT

Boise State at Fresno State, 6 p.m. PT

Wyoming at UNLV, 6:30 p.m. PT

Saturday, Oct. 23

San Diego State at Wyoming, TBA

Boise State at Sacramento State, noon PT

UNLV at Colorado State, 1 p.m. MT

Fresno State at Utah State, 1 p.m. MT

Air Force at San José State, 1 p.m. PT

New Mexico at Nevada at 1 p.m. PT

Tuesday, Oct. 26

San José State at Nevada, 6 p.m. PT

spent 10 years on the Brigham Young men's volleyball coaching staff, including the final two as the program's associate head coach in 2014-15. In 2011, he served as the Cougars' interim head coach, leading the squad to a 20-8 record and a No. 2 national ranking. Neilson played collegiately at BYU from 2003-06, starting at setter during the 2005 and 2006 campaigns. He was a member of the Cougars' 2004 national championship team and tallied 2,790 assists in his career, which ranks fifth in the BYU record book in the rally scoring era.

SDSU IN MW RANKINGS

- > As of Oct. 13, libero Natalie Smith ranks fourth in the Mountain West with an average of 4.13 digs per set (256 overall).
- > In addition, outside hitter Victoria O'Sullivan is slotted in the sixth position with 3.41 kills per set, while setter Noa Miller ranks eighth with 6.16 assists per frame.
- > Smith's 27 digs vs. Houston Baptist on Aug. 27 is tied for the third-best performance in the conference this season.
- > Meanwhile, O'Sullivan's 19 kills vs. San Diego on Sept. 11 are the tied for the seventh-best effort in the league this year, while her 15 put-aways at UC Santa Barbara on Sept. 3 are also tied for the ninth-highest in a three-set match.
- > Not to be outdone, the Aztecs own two of the top individual hitting percentages with a minimum of 12 kills in the Mountain West this season. Mikela Labno's .522 clip against (13-1-23) against Pepperdine at the Gaucho Invitational is 11th entering the week, while O'Sullivan's .519 efficiency (15-1-27) at UC Santa Barbara in the same tournament ranks 12th.
- > Elsewhere, Serena Hodson's eight total blocks at Sam Houston on Aug. 28 is tied for the ninth-best total in the MW thus far, while Sara Mukaj's four service aces the previous day against the same Bearkat squad is tied for 10th.
- > Collectively, the Aztecs occupy the sixth spot in the conference with an average of 13.30 digs per set while ranking seventh in team kills (12.30/set) and hitting percentage (.212).

O'SULLIVAN REACHES MILESTONE

- > After flooring a match-high 13 shots vs. Air Force on Oct. 2, senior Victoria O'Sullivan surpassed the 800-kill plateau for her career and now has 834 in a Scarlet and Black uniform.
- > The Aztec outside hitter saved her best for last against the Falcons, blasting six kills to go with an ace and two blocks (one solo) in the third set alone. She knocked down two kills and combined on a block during a pivotal 6-1 run that broke a 10-10 tie and gave the Scarlet and Black some separation.
- > O'Sullivan has led or shared the team lead for kills in nine straight matches she has played and 15 times in her 17 starts this year.
- > The Albany, California, native has also registered double-digit kills in 13 of her previous 15 starts and has surpassed that barrier in 45 of her last 60 appearances since the start of the 2019 campaign.

IT'S MILLER TIME

- > Senior Noa Miller ramped up her production during the Aztecs' recent homestand when she averaged 6.73 assists per set in four matches, which was higher than her season pace of 5.92 helpers per set prior to that stretch.
- > Miller totaled 20 or more assists in each of the last four matches, including 28 vs. New Mexico on Sept. 30 to tie her season best.
- > The SDSU setter has also recorded double-doubles in her last two starts, posting 21 assists and 12 digs against UNLV on Oct. 5, before finishing with 27 assists and 13 digs two days later vs. Fresno State, the latter of which tied her collegiate high. She now has 14 double-doubles for her career, including three this year after recording six at Arizona State (2019) and five at Wofford (2018).
- > Against the Bulldogs, Miller added to her versatility by collecting a career-high six kills on six attempts (1,000).
- > Entering the week, the Douglasville, Georgia, native leads the Aztecs with 10 service aces and needs just one dig to reach 100 for her career.

GOLDSMITH SHINES

- > Freshman Jordyn Goldsmith has started the last four matches, posting 24 kills, 10 total blocks and eight digs while hitting at a .370 efficiency.
- > In SDSU's 3-0 sweep over Air Force on Oct. 2, the Valleyford, Washington, native knocked down seven kills on 11 attempts without an error for a sparkling .636 hitting percentage.
- > Last week vs. Fresno State on Oct. 7, Goldsmith set a collegiate-bet with five total blocks, including a solo stop. She also had four block assists in the Aztecs' 3-0 blanking of UC Riverside on Sept. 18.
- > While listed as an opposite hitter, Goldsmith holds a rare distinction of playing at middle blocker as a left-hander recently due to injuries to Sara Mukaj and Julia Haynie.

LABNO LIGHTS IT UP

- > Freshman Mikela Labno came through with a pair of solid performances two weeks ago vs. New Mexico and Air Force when she averaged 2.57 kills per set and hit .441, which were both higher than her season marks entering that week (2.02 kps, .142)
- > In all, the Aztec outside hitter combined for 18 kills on 34 swings with just three errors and tied for the team lead with five total blocks.
- > Against Air Force, Labno posted her second-best hitting percentage of the year with a .474 clip,, helping the Aztecs snap a two-match slide with the 3-0 sweep. She reached double digits in kills for the third time this year with 10 put-aways in that contest, committing just one error in 19 swings. The Hilmar, California, native, totaled four of her kills in the second set and came up with the clinching point on a solo block, as SDSU prevailed in the frame, 27-25.
- > Labno also finished with eight kills, three kills and four total blocks while hitting .400 vs. New Mexico.

THE LAST TIME OUT

- > San Diego State built a 2-1 lead in sets against visiting Fresno State in its last outing on Oct. 7 but was unable to close out the Bulldogs, falling in a 3-2 heartbreaker (25-22, 22-25, 25-17, 23-25, 12-15) inside Aztec Court at Peterson Gym.
- > For the second straight match, SDSU maintained the statistical advantage in kills (62-56) and digs (74-56) but came out on the wrong side of the scoreboard.
- > The Aztecs also out-hit Fresno State .247 to .201 but trailed in blocks (15.0 to 8.0) and service aces (9-4).
- > SDSU combined for a .289 efficiency over the first three sets, including a .520 clip in the third frame when they knocked down 16 kills on 25 attempts with just three errors. However, the Aztecs could not pull away in the fourth stanza despite posting more kills (15-9).
- > Conversely, the Bulldogs benefited from eight Aztec attack errors and three wayward serves in the set while out-blocking the Scarlet and Black 5-0 to 2-0 to steal the momentum.
- > Individually, SDSU's Victoria O'Sullivan led all players 17 kills, while Mikela Labno finished with 12 put-aways of her own.
- > Defensively, four Aztecs surpassed double figures in digs, including Heipua Tautua'a, who tied for match-high honors with a

season-best 17 scoops, followed by Natalie Smith (15), Noa Miller (13) and Kennedy Feuerborn (10).
 > Miller recorded her second straight double-double after handing out a match-high 27 assists to go with a personal-best six kills, while Jordyn Goldsmith logged a team-high five blocks, including a solo stop.
 > The teams combined for 12 ties and six lead changes in the pivotal fourth set, where Tautua'a led the Aztec offense with four kills, while Miller and Andrea Walker collected three apiece.
 > SDSU seemed poised to close out the match after forging a 21-18 lead following consecutive kills by Walker and Feuerborn. However, the Bulldogs would not go quietly, crafting a timely 5-1 surge to vault in front 23-22.
 > Fresno State was gifted three points on two wayward SDSU attacks and a ball-handling error, while Ella Rud knocked down a kill and combined with Kasey Purry on a block. The Aztecs knotted the score shortly thereafter at 23-23 on a Walker blast but could not regain the upper hand, as the Bulldogs recorded back-to-back kills to escape with the set.
 > Stung, SDSU found itself in pursuit mode for the fifth and final set after falling behind 7-2. The Aztecs could not avoid the defensive exploits of Purry, who combined with Amaria Kelley and Savanah Smith on a pair of block assists during that span while adding a solo stop. In addition, Smith, Kelley and Sukhov each contributed a kill while the Scarlet and Black shot itself in the proverbial foot with a service error.
 > SDSU flashed its resiliency with a 10-7 run that trimmed the deficit to 14-12, aided by three O'Sullivan kills, two by Labno and one each by Tautua'a and Walker, who also teamed with Feuerborn on a block during that stretch. However, the rally proved too little too late, as a Smith kill ended the match shortly thereafter.
 > Two days earlier, San Diego State dropped a three-set decision to UNLV (21-25, 21-25, 20-25) despite maintaining the statistical advantage in kills (42-32) and digs (49-35).
 > However, the Aztecs trailed in team blocks (14.0 to 4.0) and service aces (9-2).
 > Offensively, SDSU was once again paced by Victoria O'Sullivan, who blasted 11 kills, while Heipua Tautua'a hit .353 for the night, launching nine put-aways on 17 attempts with just two errors.

> In addition, Noa Miller notched a double-double after posting a match-high 21 assists to go with 12 digs.
 > Not to be outdone, Natalie Smith led all players with 15 scoops of her own, while O'Sullivan and Tautua'a finished with five apiece.
 > The Aztecs found themselves in the thick of the fight throughout the match, as the teams combined for 30 ties and 16 lead changes. However, the Rebels unleashed timely runs to keep the host school at bay.

FEAST OR FAMINE

> Twelve of San Diego State's 18 matches have been completed in three sets this season, with the Aztecs posting a 5-7 record in those contests.
 > SDSU has played a pair of five-set matches this year, falling to Sam Houston in their final encounter of the Bearkat Invite on Aug. 28, before experiencing an identical fate vs. Fresno State on Oct. 7. The Aztecs held a 2-1 lead in both contests.
 > The Aztecs have come out on the wrong side of the scoreboard in each of their four-set matches this year, falling to No. 21 Pepperdine (Sept. 4), Kansas State (Sept. 4), No. 25 San Diego (Sept. 11) and New Mexico (Sept. 30).

OTHER TRENDS

> All five of San Diego State's victories this season have been recorded when the Aztecs have finished with more kills and digs, as well as a greater hitting percentage.
 > SDSU has lost two matches this season when posting a better efficiency – both five-set defeats. The Aztecs out-hit Sam Houston in their final match of the Bearkat Invitational on Aug. 28 (.230 to .179) before experiencing the same fate at home vs. Fresno State on Oct. 7 (.247 to .201).
 > San Diego State has dropped four matches this year when posting more kills than the opposition, including two straight last week in a 3-0 setback to UNLV (42-32) and the aforementioned heartbreaker to Fresno

2021 AZTEC SUPERLATIVES

Individual

HITTING PERCENTAGE (min. 12 kills)

.522 (13-1-23) Mikela Labno vs. No. 21 Pepperdine (Sept. 4)

KILLS

19 Victoria O'Sullivan vs. No. 25 San Diego (Sept. 11)
 5 sets 17 Victoria O'Sullivan vs. Fresno State (Oct. 7)
 4 sets 19 Victoria O'Sullivan vs. No. 25 San Diego (Sept. 11)
 3 sets 15 Victoria O'Sullivan at UC Santa Barbara (Sept. 3)

TOTAL ATTEMPTS

43 Victoria O'Sullivan vs. No. 25 San Diego (Sept. 11) and Zoi Faki at Sam Houston (Aug. 28)
 5 sets 43 Zoi Faki at Sam Houston (Aug. 28)
 4 sets 43 Victoria O'Sullivan vs. No. 25 San Diego (Sept. 11)
 3 sets 33 Zoi Faki vs. Houston Baptist (Aug. 27)

ASSISTS

28 Noa Miller vs. New Mexico (Sept. 30) and vs. No. 25 San Diego (Sept. 11)
 5 sets 26 Ashley Vanderpan at Sam Houston (Aug. 28)
 4 sets 28 Noa Miller vs. New Mexico (Sept. 30) and vs. No. 25 San Diego (Sept. 11)
 3 sets 26 Noa Miller at UC Riverside (Sept. 18)

DIGS

27 Natalie Smith vs. Houston Baptist (Aug. 27)
 5 sets 17 Heipua Tautua'a vs. Fresno State (Oct. 7)
 4 sets 21 Natalie Smith vs. No. 25 San Diego (Sept. 11)
 3 sets 27 Natalie Smith vs. Houston Baptist (Aug. 27)

SERVICE ACES

4 Sara Mukaj at Sam Houston (Aug. 27)

BLOCK SOLOS

2 Mikela Labno vs. No. 25 San Diego (Sept. 11) and Serena Hodson at Sam Houston (Aug. 28)

BLOCK ASSISTS

6 Andrea Walker vs. New Mexico (Sept. 30)
 Serena Hodson at Sam Houston (Aug. 28)

TOTAL BLOCKS

8 Serena Hodson at Sam Houston (Aug. 28)

Team

HITTING PERCENTAGE

.384 (49-11-99) at UC Santa Barbara (Sept. 3)

KILLS

62 vs. Fresno State (Oct. 7)
 5 sets 62 vs. Fresno State (Oct. 7)
 4 sets 57 vs. No. 25 San Diego (Sept. 11)
 3 sets 49 at UC Santa Barbara (Sept. 3)

TOTAL ATTEMPTS

161 at Sam Houston (Aug. 28)
 5 sets 161 at Sam Houston (Aug. 28)
 4 sets 148 vs. No. 25 San Diego (Sept. 11)
 3 sets 111 vs. Houston Baptist (Aug. 27)

ASSISTS

56 vs. Fresno State (Oct. 7) and vs. No. 25 San Diego (Sept. 11)
 5 sets 56 vs. Fresno State (Oct. 7)
 4 sets 56 vs. No. 25 San Diego (Sept. 11)
 3 sets 46 at UC Santa Barbara (Sept. 3)

DIGS

74 vs. Fresno State (Oct. 7)
 5 sets 74 vs. Fresno State (Oct. 7)
 4 sets 63 vs. No. 25 San Diego (Sept. 11)
 3 sets 57 vs. UC Riverside (Sept. 18)

SERVICE ACES

7 at Nevada (Sept. 23) and at Sam Houston (Aug. 27)

TOTAL BLOCKS

12.0 at Sam Houston (Aug. 28)

State (62-56). The Aztecs also recorded more kills in that five-setter at Sam Houston on Aug. 28 (59-52) and a four-set home defeat to No. 25 San Diego on Sept. 11 (57-49).

- > The Aztecs are 3-0 when hitting above .300 this season, notching a season-high .384 clip in a sweep at UC Santa Barbara on Sept. 3, followed by a .337 efficiency in a hard-fought whitewash of Air Force on Oct. 2. SDSU has finished with a .303 hitting percentage in a blanking of UC Riverside at the Wildcat Classic.
- > The Aztecs have fallen in three matches when maintaining the upper hand in blocks, including losses to New Mexico (10.0 to 7.0), Long Beach State (8.0 to 5.0) and the second defeat at Sam Houston (12.0 to 7.0).
- > San Diego State's sweep of Air Force on Oct. 2 marked the first time this season the Aztecs prevailed when an opponent hit over .200 for the match, as the Falcons finished with a .272 clip.
- > When Victoria O'Sullivan posted a team-leading nine kills in SDSU's sweep at Nevada on Sept. 23, it marked the first time in four matches this year the Aztecs emerged victorious without having a player reaching the double-digit plateau in that statistic.

NEWCOMERS MAKING THEIR MARK

- > San Diego State boasts 10 newcomers on its 2021 fall roster, with several providing key contributions during the first seven weeks of play.
- > Freshman Mikela Labno has started the last 10 matches and has climbed into second on the team with 2.13 kills per set while leading the squad with seven solo blocks. The Aztec outside hitter earned her first career start at Long Beach State on Sept. 14 and scooped up a collegiate-best 13 digs in SDSU's 3-0 sweep of UC Riverside at the Wildcat Classic on Sept. 18. Labno saw her first extended action of the season at the Gaucho Invitational, averaging 2.64 kills in all 11 sets while hitting at a .292 clip. The Hilmar, California, native knocked down a career-high 13 kills against Pepperdine, hitting .522 for the match, which ranks as the 11th-best individual efficiency in the Mountain West thus far.
- > Arizona State transfer Noa Miller made her San Diego State debut at the Gaucho Invitational and has started the last 15 matches, averaging 6.16 assists, which ranks eighth in the Mountain West, to go with 1.94 digs per frame. The Aztec setter has increased her production over the last four matches, surpassing the 20-assist plateau (6.73/set), highlighted by double-doubles vs. UNLV (21 assists, 12 digs) and Fresno State (27 assists, 13 digs), giving her 14 for her career. In her first start for the Aztecs vs. UCSB, Miller dished out 22 assists and scooped up seven digs, helping the Scarlet and Black to its first victory of the season. Against No. 25 USD on Sept. 11, she racked up her first double-double as an Aztec after posting a season-high 28 assists and 11 digs. Two weeks ago, Miller tied her SDSU-best with 28 helpers vs. New Mexico on Sept. 30.
- > Senior libero Natalie Smith, who received all-tournament recognition at the Bearkat Invitational, ranks fourth in the Mountain West with an average of 4.19 digs per set. In the season opener vs. Houston Baptist, the Michigan transfer posted 27 digs, which is tied for the third-best total in the conference so far this year.
- > Fellow classmate Zoi Faki ranks third on the team with an average of 1.98 digs per set while occupying the fourth spot with 1.93 kills per frame (81 overall). She also has five service aces to her credit. Against Sam Houston on Aug. 28, the Pitt transfer logged her first double-double in an Aztec uniform with 14 kills and 12 digs. Last week vs. Fresno State, Faki came off the bench and recorded her second-highest dig total of the year with 10 scoops while serving up a pair of aces.
- > Freshman Jordyn Goldsmith has started seven matches this season, including four straight during SDSU's most recent homestand when she totaled 24 kills, 10 blocks (2 solo) and eight digs while hitting at a .370 clip. In the Aztecs' sweep of Air Force, the rookie opposite hitter led the Scarlet and Black with a .636 efficiency, collecting seven kills on 11 swings without a miscue. She also established a collegiate-best with five total blocks vs. Fresno State, including a solo stop. Goldsmith currently ranks fifth among Aztec regulars with 1.54 kills per set (71 overall), recording a career-high nine put-aways while hitting .389 at San José State on Sept. 25. At the Wildcat Classic vs. UC Riverside on Sept. 18, the Valleyford, Washington, native also came through with four block assists, helping the Scarlet and Black to a three-set whitewash.
- > Despite missing the last four matches, former Portland State middle blocker Julia Haynie remains in second on the squad with 30 total blocks while adding 49 kills, which ranks sixth. The SDSU junior finished with season bests of eight kills and five block assists, helping the Aztecs sweep past Nevada in their Mountain West opener on Sept. 23. She also enjoyed a pair of breakout performances at the Wildcat Classic with matching totals of six kills, a .455 hitting percentage and four total blocks, propelling SDSU to victories over Texas Southern and UC Riverside. The Temecula native also knocked down six kills and hit .444 in her Scarlet and Black debut vs. Houston Baptist on Aug. 27. She has multiple block assists in eight of her 13 starts this year.
- > Freshman outside hitter Reagan Merk saw extended action in four straight matches from Sept. 14-18, totaling 21 kills, 17 digs and three blocks for that week. The Huntington Beach native earned her first collegiate start in SDSU's sweep of UC Riverside at the Wildcat Classic, where she tied her career highs with seven kills and six digs while recording her first three blocks in an Aztec uniform, including a solo stop. Merk also launched seven put-aways and posted six digs the previous day in SDSU's blanking of Texas Southern. Earlier in the week at Long Beach State, she knocked down five kills while committing just one error on seven attempts for a sparkling .714 hitting percentage. Merk also served up aces on her first two collegiate serves in the second set vs. Sam Houston on Aug. 27.
- > Likewise, freshman opposite hitter Kalani Ruri made the most of her two appearances at the Wildcat Classic. The native New Zealander opened the tournament with five kills against Texas Southern, hitting a season-best .556 efficiency with no errors on nine swings while adding a pair of block assists, as the Aztecs snapped a five-match losing streak. The following day, Ruri helped SDSU roll to another sweep after posting a season-best seven kills and hit at a .385 clip to go with another pair of block assists vs. UCR.
- > Freshman Sara Mukaj started seven of eight matches before suffering an ACL injury but still leads the Scarlet and Black with 0.81 blocks per set (22 overall). In the first match vs. Sam Houston at the Bearkat Invite on Aug. 27, the Aztec middle blocker served up four aces, which is tied for the eighth-best effort in the MW this year. In the rematch against the Bearkats, Mukaj returned the following day and led the Aztecs with a .636 hitting percentage, launching seven kills on 11 swings without an error to go with five digs and four block assists.

ROAD DIARIES: NEVADA AND SAN JOSÉ STATE

- > San Diego State improved to 12-11 all-time in MW openers after a three-set whitewash (29-27, 25-17, 25-20) of Nevada on Sept. 23
- > The Aztecs survived a grueling opening set, where the two teams combined for 16 ties and seven lead changes, before the Scarlet and Black pulled away in the final two frames.
- > SDSU limited the Wolf Pack to a minus-.029 hitting percentage over those final two sets to help snap a three-match losing streak in the head-to-head series.
- > Victoria O'Sullivan tied for match-high honors with nine kills, snapping her streak of 11 straight starts with double-digit put-aways. However, the Aztecs shared the wealth offensively, as Julia Haynie recorded season-bests of eight kills and five block assists, while Heipua Tautua'a and Mikela Labno launched seven non-returnable apiece.
- > Tautua'a also displayed her versatility with 11 digs, three block assists and a pair of service aces, while Andrea Walker knocked down four kills and came up with four block assists in just her second start of the year.
- > In addition Jordyn Goldsmith also got into the act with four kills and three block assists, while Noa Miller (19 assists) and Ashley Vanderpan (15 assists) shared the bulk of the setting duties. Once again, Natalie Smith was solid along the back row, where she logged a match-high 13 digs.
- > As a team the Aztecs maintained the statistical advantage in kills (39-31), digs (46-38), team blocks (11.0 to 8.0) and aces (7-4) to help key the victory.
- > SDSU found itself in another back-and-forth affair two days later at San José State, where the teams combined for 26 ties and 11 lead changes. However, the Aztecs were unable to keep pace with the hot-hitting Spartans and dropped a hard-fought decision in three sets (20-25, 21-25, 16-25).
- > San Diego State was out-hit .412 to .257, as SJSU committed just eight attack errors for the day, knocking down 43 kills on 85 attempts to go with

2021 SITUATIONAL RECORDS

GENERAL	
Overall.....	5-13
Mountain West.....	2-4
Home.....	1-5
Away.....	2-5
Neutral.....	2-3
vs. Ranked Teams.....	0-3
vs. Unranked Teams.....	5-10
Matches Following a Win.....	1-4
Matches Following a Loss.....	4-8
Longest Winning Streak.....	2
Longest Losing Streak.....	5
Current Streak.....	Lost 2
BY SETS	
3 Sets.....	5-7
4 Sets.....	0-4
5 Sets.....	0-2
Leading After Two.....	5-0
Trailing After Two.....	0-9
Tied After Two.....	0-4
Leading 2-1.....	0-2
Trailing 2-1.....	0-4
BY MONTH	
August.....	0-3
September.....	4-8
October.....	1-2
November.....	0-0
BY DAY	
Tuesday.....	0-2
Thursday.....	1-2
Friday.....	2-4
Saturday.....	2-5
BY KILLS	
Leading in Kills.....	5-4
Trailing in Kills.....	0-9
Tied in Kills.....	0-0
BY DIGS	
Leading in Digs.....	5-7
Trailing in Digs.....	0-4
Tied in Digs.....	0-1
BY BLOCKS	
Leading in Blocks.....	3-3
Trailing in Blocks.....	1-9
Tied in Blocks.....	1-1
BY ATTACK PERCENTAGE	
Greater Attack Percentage.....	5-2
Lower Attack Percentage.....	0-11
Equal Attack Percentage.....	0-0
Hitting above .300.....	3-0
Hitting between .200 and .300.....	2-6
Hitting between .100 and .200.....	0-5
Hitting below .100.....	0-2
Opponent Hitting above .300.....	0-4
Opponent Hitting between .200 and .300.....	1-7
Opponent Hitting between .100 and .200.....	1-2
Opponent Hitting below .100.....	3-0
BY INDIVIDUAL KILLS	
3+ Double-Digit Individual Kill Totals.....	1-1
2 Double-Digit Individual Kill Totals.....	1-4
1 Double-Digit Individual Kill Totals.....	2-5
0 Double-Digit Individual Kill Totals.....	1-3

2021 MATCH-BY-MATCH LEADERS

Date	Opponent	Kills	Hitting Pct.*	Assists	Aces	Digs	Blocks
A.27	vs. Houston Baptist	Faki - 11	Faki (.242)	Vanderpan - 19	Vanderpan - 1	Smith - 27	Hodson - 2
A.27	at Sam Houston	O'Sullivan/Tautua'a - 8	Tautua'a (.111)	Vanderpan - 15	Mukaj - 4	Smith - 11	Haynie/O'Sullivan - 2
A.28	at Sam Houston	Faki/O'Sullivan - 14	Mukaj (.636)	Vanderpan - 26	Vanderpan - 2	Smith - 16	Hodson - 8
S.3	at UC Santa Barbara	O'Sullivan - 15	O'Sullivan (.519)	Miller - 22	Tautua'a - 1	Smith - 11	Mukaj - 4
S.4	vs. No. 21 Pepperdine	Labno - 13	Labno (.522)	Miller - 19	Vanderpan - 1	Smith - 17	Haynie/Mukaj - 4
S.4	vs. Kansas State	Faki/O'Sullivan - 13	Faki (.323)	Miller - 25	Faki - 2	Smith - 9	Mukaj/Tautua'a - 3
S.10	No. 16 UCLA	O'Sullivan - 10	O'Sullivan (.160)	Miller - 17	Smith - 2	Smith - 11	Mukaj/Haynie/O'Sullivan - 3
S.11	No. 25 San Diego	O'Sullivan - 19	O'Sullivan (.349)	Miller - 28	Miller - 2	Smith - 21	Labno/Mukaj - 3
S.14	at Long Beach State	Faki - 8	Faki (.273)	Miller - 10	Labno - 2	Smith - 14	Goldsmith - 4
S.17	vs. Texas Southern	O'Sullivan - 12	Merk (.385)	Miller - 21	Hill/Miller - 1	Smith - 14	Haynie - 4
S.17	at Arizona	O'Sullivan - 10	O'Sullivan (.381)	Vanderpan - 14	Miller/Smith - 1	Smith - 13	Labno/Walker - 2
S.18	vs. UC Riverside	O'Sullivan - 14	O'Sullivan (.500)	Miller - 26	Vanderpan - 2	Smith - 22	Goldsmith/Haynie - 4
S.23	at Nevada	O'Sullivan - 9	Haynie (.429)	Miller - 19	Smith/Tautua'a - 2	Smith - 13	Haynie - 5
S.25	at San José State	O'Sullivan - 11	Goldsmith (.389)	Miller - 17	none	Smith - 6	Walker - 3
S.30	New Mexico	O'Sullivan/Tautua'a - 9	Walker (.455)	Miller - 28	O'Sullivan - 3	Smith - 13	Walker - 6
O.2	Air Force	O'Sullivan - 13	Goldsmith (.636)	Miller - 25	O'Sullivan - 3	Smith/Miller - 8	O'Sullivan/Walker - 3
O.5	UNLV	O'Sullivan - 11	Tautua'a (.353)	Miller - 21	Miller/Smith - 1	Smith - 15	Goldsmith/Walker - 2
O.7	Fresno State	O'Sullivan - 17	Walker (.467)	Miller - 27	Faki/O'Sullivan - 2	Tautua'a - 17	Goldsmith - 5
O.14	at Boise State						
O.16	at Utah State						
O.21	Colorado State						
O.23	at Wyoming						
O.28	Utah State						
O.30	Boise State						
N.2	at UNLV						
N.6	at Fresno State						
N.11	at Air Force						
N.13	at New Mexico						
N.18	Nevada						
N.20	San José State						

* - min. 7 kills

seven service aces to help spark its win.

- > O'Sullivan led the Scarlet and Black with 11 kills and hit at a .360 clip, while Goldsmith notched season highs of nine put-aways and a .389 efficiency.
- > In addition, the Aztec cause was advanced by Andrea Walker, who tied for match-high honors with three blocks assists, while Noa Miller (17 assists) and Ashley Vanderpan (10 assists) split the setting responsibilities.
- > However, SDSU could not contain the tandem of Haylee Nelson and Latahevai Lousi, who combined for 29 of the Spartans' 43 kills. Nelson led all players with 18 put-aways and hit .630, committing just one error on 27 attempts, while Lousi launched 11 non-returnables of her own and recorded two miscues on 22 swings for a .409 efficiency.

WILDCAT CLASSIC REWIND

- > San Diego State concluded its non-conference schedule in Tucson, Arizona, winning two of three matches at the Wildcat Classic, Sept. 17-18.
- > The Aztecs put the brakes on a five-match slide with a 3-0 sweep of Texas Southern (25-17, 25-22, 25-17) in the tournament opener on Sept. 17 before having the tables turned against them vs. host Arizona (20-25, 22-25, 15-25).
- > However, the Scarlet and Black rebounded in style the following day with another whitewash against UC Riverside (25-15, 25-21, 25-19) in its weekend finale.
- > Victoria O'Sullivan posted double-digit kills in all three matches, averaging a team-high 3.89 kills per set while hitting .389 for the weekend to go with eight digs and five total blocks.
- > In the opener vs. TSU, the Aztecs out-hit the Tigers .255 to .049, blasting more kills (42-26) while owning the edge in digs (50-48) and team blocks (6.0 to 2.0).
- > O'Sullivan led a balanced SDSU attack with a match-high 11 kills, while freshman Reagan Merk came off the bench to record a season-best seven put-aways of her own. In addition, junior Julia Haynie (4 block assists) collected six kills and hit .455, while freshmen Kalani Ruri (2 block assists) and Mikela Labno launched five non-returnables apiece.
- > The Aztec fortunes were also buoyed by senior Natalie Smith, who tied for match-high honors with 14 digs, while classmate Noa Miller led all players with 20 assists and registered seven digs. Not to be outdone, sophomore Heipua Tautua'a contributed to the SDSU defensive efforts with eight scoops of her own, as the Scarlet and Black limited the Tigers to a .000 hitting percentage over the first two sets.
- > San Diego State was unable to duplicate the same success in the nightcap vs. Arizona, as the Wildcats served up seven aces while recording more kills (41-30) and team blocks (8.0 to 4.0) to help fuel their win.
- > Once again, O'Sullivan paced the Aztec offense with 10 kills, while Labno racked up six put-aways, followed by Jordyn Goldsmith's five. In addition, Smith anchored SDSU's back row with a match-high 13 digs, while Ashley Vanderpan (14 assists) handled the bulk of the setting responsibilities, along with Miller (10 assists).
- > The teams combined for 14 ties and three lead changes in the first two sets; however, the Aztecs were unable to respond to timely Wildcat runs.

> The following day vs. UCR, San Diego State posted its second-highest team hitting percentage of the season with a .303 clip, maintaining a sizable 43-31 advantage in kills while committing just 13 attack errors on 99 attempts. In addition, the Scarlet and Black held the statistical edge in team blocks (9.0 to 2.0), digs (57-35) and service aces (5-2) to help secure the victory.

- > Conversely, the Highlanders were limited to a .086 pace, marking the second-lowest efficiency by an SDSU opponent this year.
- > O'Sullivan led all players with 14 kills and did not commit an attack error until her penultimate attempt of the match, finishing with a .500 hitting percentage. In addition, the Aztecs received seven kills apiece from Ruri (.385) and Merk, while Miller fell two assists shy of her season high after dishing out 26 helpers.
- > Not to be outdone, Haynie (.455) knocked down six kills and totaled four blocks, including a solo stuff, while Goldsmith assisted on four stops at the net as well. SDSU's defensive efforts were also buoyed by Smith's match-high 22 digs, while Labno (5 kills) contributed a season-best 13 scoops of her own.
- > The teams combined for 18 ties and nine lead changes in the first two sets, but this time it was the Aztecs who fashioned timely runs to seize the momentum.

LONG BEACH STATE MATCH RECAP

- > San Diego State traveled up the freeway to Long Beach State on Sept. 14, but fell short in hard-fought three-set defeat (23-25, 19-25, 23-25).
- > Despite maintaining the statistical edge in team blocks (8.0 to 5.0), the Aztecs (1-8) suffered their fifth straight defeat after mustering just 29 kills for the night. SDSU was unable to capitalize on 13 errant serves by the Beach, committing 14 attack errors on 95 attempts for a .158 hitting percentage.
- > Conversely, LBSU (5-5) knocked down 50 kills with a .309 efficiency while owning a 44-39 advantage in digs to help snap a three-match losing streak to the Aztecs.
- > SDSU was paced by Zoi Faki's eight kills, while Heipua Tautua'a and Reagan Merk launched five put-aways apiece.
- > In addition, Natalie Smith led all players with 14 digs, while Jordyn Goldsmith made her first collegiate start a memorable one with a match-high four blocks, including a solo stop.
- > The Aztec cause was also aided by Noa Miller (10 assists) and Kennedy Feuerborn (3 kills, 7 assists), who split the setting duties, while Mikela Labno served up two aces. Like Goldsmith, Labno also earned her first start in an SDSU uniform vs. the Beach.

REWIND: SDSU/USD INVITATIONAL

- > With packed houses providing an electric atmosphere, San Diego State squared off against a pair of ranked opponents at the SDSU/USD Invitational last weekend, falling to No. 16 UCLA in three sets (17-25, 18-25, 13-25) before suffering a 3-1 setback to No. 25 San Diego.
- > Against the Toreros on Sept. 11, the Aztecs had three players record double-digit kills, including Victoria O'Sullivan, who launched a match-high 19 non-returnables and hit .349, while Mikela Labno collected 11, followed by Heipua Tautua'a, who totaled 10 kills and 12 digs for her second career double-double.

- > In addition, senior transfer Noa Miller logged her first double-double as an Aztec with a season-high 28 assists and 11 digs, while fellow classmate Natalie Smith led all competitors with 21 scoops, marking her second-best total of the year.
- > Despite holding the statistical advantage in kills (57-49) and digs (63-51), SDSU was undone by 27 attack errors and was out-blocked (15.0-7.0) en route to its fourth straight loss.
- > The previous night vs. UCLA, the Aztecs kept within striking distance in each of the first two sets; however, the Bruins used an efficient attack, timely runs and a tight defense to keep the host school at bay.
- > SDSU was out-hit .346 to .056 for the match, while UCLA maintained a statistical advantage in kills (39-28), team blocks (13.0-7.0) and digs (29-27) to help key its victory.
- > Once again, O'Sullivan surpassed double figures in kills after posting a team-high 10 put-aways to go with a trio of blocks, including one solo stop, while Sara Mukaj and Julia Haynie totaled three block assists apiece.
- > Additionally, Tautua'a launched seven kills, while Smith tied for match-high honors with 11 digs. Smith also dealt a pair of service aces, while Miller finished with 17 assists.
- > SDSU's clashes with the Bruins and Toreros marked the first time it played ranked opponents since it battled No. 25 Wyoming and No. 20 Colorado State on Oct. 1-3, 2015.

GAUCHO INVITATIONAL REDUX

- > San Diego State rolled to its first victory of the season on Sept. 3 with a 3-0 triumph (25-20, 25-19, 25-15) over host UC Santa Barbara on opening night at the Gaucho Invitational.
- > However, the Aztecs were unable to maintain the momentum the following day, dropping a pair of four-set decisions to then-No. 21 Pepperdine (19-25, 16-25, 25-21, 18-25) and Kansas State (19-25, 25-18, 23-25, 16-25).
- > SDSU was victimized by a combined 21 service errors in their two defeats while trailing in kills (115-94), hitting percentage (.280 to .227) and team blocks (21.0 to 14.0).
- > On the flip side, the Aztecs logged their highest efficiency of the season vs. UCSB, hitting at a .384 clip with 49 kills on 99 attempts with just 11 errors. In addition, SDSU's 49 kills marked the team's second-best this year despite a match duration of just three sets.
- > Individually, the Aztecs had three players finish with double-digs kills in a match for the first time this fall, as Victoria O'Sullivan led all players with a season-high 15 put-aways and hit .519, while Zoi Faki (.455) launched 12 non-returnables of her own.
- > Not to be outdone, SDSU received a spark from Heipua Tautua'a (.409), who collected 11 kills, while Mikela Labno floored seven shots off the bench.
- > In her first appearance after transferring from Arizona State, Noa Miller started at setter against the Gauchos, handing out a match-high 22 assists, while Ashley Vanderpan contributed 13 helpers of her own.
- > Natalie Smith once again secured the back row for the Aztecs, finishing with 11 digs, while Faki just missed a double-double after posting nine scoops.
- > The SDSU defense also received four total blocks from Sara Mukaj, including a solo stuff, while O'Sullivan and Julia Haynie came through with a pair of block assists.
- > The Aztecs saved their best for last, powering down 20 kills in the third set on 32 attempts with just three errors for a blazing .531 efficiency.
- > Faki (.714) launched five kills in the final frame without a miscue, matching O'Sullivan (.571), who committed her only error of the night in the set, while Tautua'a (.667) provided four put-aways of her own. Clinging to a slim 10-8 lead, SDSU switched on the afterburners, finishing with a strong 15-7 blitz to secure the sweep.
- > Unfortunately, the Aztecs were unable to duplicate the feat in two encounters the following day vs. Pepperdine and Kansas State.
- > Against the Waves, the SDSU attack was paced by Labno, who hit .522 with a season-best 13 kills on 22 attempts and just one error, while O'Sullivan finished with 10 put-aways of her own. Elsewhere, Smith tied for match-high with 17 digs, while Haynie and Mukaj notched four block assists each.
- > In the finale against the Wildcats, Faki and O'Sullivan led the SDSU offense with 13 kills apiece, while Labno launched nine put-aways of her own. Faki also hit .323 for the match while contributing seven digs and pair of aces.
- > In addition, Miller handed out a season-high 25 assists and racked up seven scoops as well in her third start for the Scarlet and Black, while Tautua'a and Mukaj finished with three block assists each.
- > With the match tied at one set apiece and the teams deadlocked at 22-22 in the third stanza, K-State closed with a 3-1 spurt to escape.

ALL-TOURNAMENT AZTECS PART II

- > For the second consecutive weekend, outside hitter Victoria O'Sullivan earned a spot on an all-tournament team following her performance at the Gaucho Invitational in Santa Barbara, Calif.
- > In three matches, O'Sullivan led the Aztecs with an average of 3.45 kills per set (38 overall) and hit .295 to go with seven digs and five block assists.
- > For the season, O'Sullivan has recorded double-digit kills in nine straight matches, including season highs of 19 kills vs. No. 25 San Diego along with a .519 efficiency in SDSU's triumph over UCSB.

BEARKAT INVITATIONAL WRAP

- > San Diego State came up empty in its season-opening road trip to the Bearkat Invitational, Aug. 27-28, in Huntsville, Texas, falling to Houston Baptist before dropping consecutive matches to tournament host Sam Houston.
- > Against HBU, the Aztecs were out-hit .306 to .153, committing 10 more attack errors (19-9) while nine service attempts went awry. Conversely, the Huskies totaled more kills (42-36) and team blocks (10.0-2.0) to help fuel their 3-0 victory.
- > Individually, SDSU was led by senior transfer Zoi Faki, who knocked down 11 kills in her Aztec debut, while Victoria O'Sullivan collected seven put-aways of her own.
- > Natalie Smith, a senior transfer from Michigan, also impressed in her first match for the Scarlet and Black, anchoring the Aztec back row with a match-high 27 digs, while Ashley Vanderpan dished out 19 assists.
- > In the second match of the weekend, SDSU experienced another whitewash, this time at the hands of Sam Houston, as the visitors were plagued by 26 attack errors, hitting just .029 overall. On the flip side, the Bearkats posted a .299 efficiency, holding a sizable advantage in kills (38-29) and total blocks (15.0-3.0) while owning a slight edge in digs (41-39).
- > The Aztecs were paced by O'Sullivan and Heipua Tautua'a, who blasted eight kills each, while Faki and freshman Jordyn Goldsmith finished with five non-returnables apiece. Vanderpan (15 assists) and Kennedy Feuerborn (11 assists) split the setting duties, while Smith scooped up a team-high 11 digs.
- > The SDSU cause was also advanced by freshmen Sara Mukaj (4) and Reagan Merk (2), who combined for six aces.
- > A late schedule switch provided the Aztecs a rematch against Sam Houston the following day after Central Arkansas withdrew from the tournament for contact tracing. However, SDSU found victory elusive once again, as the Bearkats dealt the Scarlet and Black a five-set heart-breaker.
- > Incredibly, the Aztecs maintained the statistical edge in most categories, including kills (59-52), hitting percentage (.230 to .179), aces (5-4), digs (70-68) and team blocks (12.0-7.0).
- > After hitting at a brisk .351 clip over the first three sets with just eight attack errors, however, SDSU faltered in the final two frames, posting a combined .060 hitting percentage with 14 miscues to finish its venture to the Lone Star State with an 0-3 record.
- > O'Sullivan (.324) and Faki led the Aztecs with 14 kills apiece, while Serena Hodson (.300) posted career-high numbers with nine put-aways of her own and eight total blocks, including two solo stops.
- > In addition, Faki logged her first double-double in a Scarlet and Black uniform after logging 12 digs, while Vanderpan accomplished the feat for the

MISCELLANEOUS STATS

DOUBLE-DOUBLES

Zoi Faki (1 season, 3 career (2 at Pittsburgh))

14 kills, 12 digs at Sam Houston, 8/28/21

Ashley Vanderpan (1 season, 4 career)

26 assists, 10 digs at Sam Houston, 8/28/21

Noa Miller (3 season, 14 career (6 at Arizona State, 5 at Wofford))

28 assists, 11 digs vs. No. 25 San Diego, 9/11/21

21 assists, 12 digs vs. UNLV, 10/5/21

27 assists, 13 digs vs. Fresno State, 10/7/21

Heipua Tautua'a (1 season, 1 career)

10 kills, 12 digs vs. No. 25 San Diego

20+ KILLS IN A MATCH

Player	2021	Career
Victoria O'Sullivan	0	3

10+ KILLS IN A MATCH

Player	2021	Career
Victoria O'Sullivan	13	48
Mikela Labno	4	4
Zoi Faki	4	6
Heipua Tautua'a	2	5
Andrea Walker	0	5
Julia Haynie	0	1

20+ DIGS IN A MATCH

Natalie Smith	3	6
Zoi Faki	0	1
Heipua Tautua'a	0	1

10+ DIGS IN A MATCH

Natalie Smith	15	44
Noa Miller	3	15
Heipua Tautua'a	3	9
Zoi Faki	2	4
Ashley Vanderpan	1	4
Mikela Labno	1	1
Brooklynn Hill	0	1

10+ BLOCKS IN A MATCH

Julia Haynie	0	1
--------------	---	---

5+ BLOCKS IN A MATCH

Julia Haynie	1	7
Andrea Walker	1	6
Victoria O'Sullivan	1	3
Serena Hodson	1	3
Jordyn Goldsmith	1	1
Heipua Tautua'a	0	1

3+ SERVICE ACES IN A MATCH

Victoria O'Sullivan	2	2
Sara Mukaj	1	1
Natalie Smith	0	4
Brooklynn Hill	0	2
Ashley Vanderpan	0	2
Zoi Faki	0	1
Julia Haynie	0	1
Noa Miller	0	1

first time this year with 26 assists and 10 digs.

- > Mukaj also boosted the SDSU fortunes with a crisp .636 hitting percentage, recording seven kills on 11 attempts with no errors, while Tautua and Goldsmith also floored seven shots.
- > Smith once again anchored the Aztec defense by tying for match-high honors with 16 digs, while Feuerborn came off the bench to hand out 18 assists.

ALL-TOURNAMENT AZTECS PART I

- > Outside hitter Victoria O'Sullivan and libero Natalie Smith were each named to the all-tournament team at the Bearkat Invitational, Aug. 27-28, in Huntsville, Texas.
- > In three matches, O'Sullivan knocked down 29 kills (2.64/set) to go with 11 digs and seven block assists while adding one setting assist and one service ace.
- > In SDSU's tough 3-2 loss to Sam Houston on Aug. 28, O'Sullivan hit .324 and tied for the team lead with 14 kills, including six in the opening set.
- > Meanwhile, Smith played in all 11 sets as well, averaging 4.91 digs (54 overall) to go with six setting assists in her debut event for the Aztecs.
- > In SDSU's 3-0 setback to Houston Baptist on Aug. 27, Smith posted a whopping 27 digs (9.0/set), falling just two short of tying her career-high of 29 scoops at Notre Dame on Sept. 18, 2019, as a member of the Michigan Wolverines.
- > In addition, Smith tied for match-high honors with 16 digs in the weekend finale at Sam Houston.

WELCOME BACK

- > Outside hitter Victoria O'Sullivan leads the group of eight Aztec letterwinners who return for the 2021 fall campaign.
- > O'Sullivan earned all-Mountain West honors for the first time in her career last spring after leading the Scarlet and Black with 3.25 kills per set, which ranked seventh in the league. Not to be outdone, the SDSU senior surpassed the double-digit kill plateau in 11 of 15 matches and ranked second on the squad with 32.0 total blocks.
- > O'Sullivan led or tied for the team lead in kills 11 times, including six straight to start the spring. Entering MW play this fall, she has recorded 10 or more kills in 41 of her last 54 appearances dating back to the start of the 2019 campaign.
- > The Aztecs will also look for senior leadership from Andrea Walker after the SDSU middle blocker finished third on the team with an average of 2.09 kills per set and 24.0 total blocks. She helped the Aztecs snap a five-match losing streak last March with season highs of 11 kills and a .529 hitting percentage in a come-from-behind 3-2 victory over Utah State.
- > In addition, San Diego State is expecting continued improvement from sophomore Heipua Tautua'a, who ranked second on the squad with 99 kills and 140 digs (2.86/set) during her first season on The Mesa last spring. The Aztec outside hitter turned in a superlative performance in SDSU's 3-2 upset at Boise State on March 20, finishing with 14 kills, nine digs and a career-high six block assists while hitting at a .462 clip, which marked the Scarlet and Black's highest individual hitting percentage of the year (min. 12 kills).
- > Tautua'a also posted her first collegiate double-double in the Aztecs' 3-2 thriller over Utah State with 11 kills and 11 digs on March 12, after recording a career-high 22 digs in the team's four-set triumph over New Mexico two weeks earlier on Feb. 20.
- > Also back in the mix for the Scarlet and Black this fall are tandem setters Ashley Vanderpan and Kennedy Feuerborn, who combined for 601 kills last spring, which marked the first season of intercollegiate competition for both players.
- > Vanderpan, who sat out the 2019 campaign after transferring from Syracuse, ranked ninth in the MW with a team-high 6.53 assists per set (334 overall) in nine starts as a sophomore last spring. The Elk Grove, California, native also topped the squad with 11 service aces and three double-doubles (assists-digs) while ranking fourth with 78 digs (1.53/set).
- > Vanderpan surpassed the 30-assist plateau in her first four starts, as the Aztecs posted a 3-1 record during that stretch. In a home sweep over New Mexico last February, she combined for 78 assists, dishing out a career-high 40 helpers in the series finale.
- > Feuerborn, meanwhile, earned six starting assignments in 13 appearances during her rookie campaign, averaging 4.0 helpers per set (164 overall). She also finished with 31 kills (0.76/set), 19 digs (0.46/set) and 14 blocks (0.34/set) for the year. Feuerborn racked up double-digit assists on six occasions, including a career-high 27 helpers at UNLV in just her second match on Feb. 5.

NEW KIDS IN TOWN

- > San Diego State head coach Brent Hilliard continued to reshape the Aztec roster with the addition of 10 newcomers for the 2021 fall campaign.
- > SDSU's early signing class last November consisted of four incoming freshmen in outside hitter Mikela Labno (Hilmar, Calif.), middle blocker Sara Mukaj (Modena, Italy), setter/opposite Kalani Ruri (Kawerau, New Zealand) and defensive specialist Carsyn Schuch (Phoenix, Ariz.)
- > Over the spring and summer, the Aztecs signed six more players, including four Division I transfers in senior libero Natalie Smith (Michigan), senior outside hitter Zai Faki (Pittsburgh), senior setter Noa Miller (Arizona State) and junior middle blocker Julia Haynie (Portland State).
- > Also eager to put their stamp on the Scarlet and Black this fall are former prep standouts Jordyn Goldsmith (opposite/Valleyford, Wash.) and Reagan Merk (outside hitter/Huntington Beach, Calif.)
- > Smith was a member of three consecutive NCAA Tournament teams at Michigan from 2017-19. In her last season of competition on the Ann Arbor campus in 2019, the Weatherford, Texas, native set career highs in digs (390), assists (102) and service aces (18). Smith also totaled double-digit digs in 21 matches that year, including 20 or more scoops on three occasions.
- > Faki also brings a winning pedigree with her to "America's Finest City" after playing on three NCAA Tournament teams herself at Pittsburgh from 2016-21. Last spring, she contributed to Pitt's longest postseason run in program history, with the Panthers reaching the Elite Eight as the final unseeded team in the field. Faki served up a career-high three aces in Pitt's upset of No. 3 Minnesota in the NCAA Round of 16 last April.

- > Miller will help bolster the Aztecs setter position after competing for Wofford College and Arizona State in 2018 and 2019, respectively. As a freshman at Wofford, she surpassed the 20-assist plateau on eight occasions before compiling six double-doubles (assist-digs) at ASU. An elite club player, Miller led to her Volley One Academy squad to a national championship in 2016, earning MVP honors for her performance.
- > Haynie is a Southern California product who prepped at Chaparral High School in Temecula before starting 44 of 46 matches in two years at Portland State. As a sophomore last spring, the middle blocker ranked 10th in the Big Sky Conference with a .261 hitting percentage and
- > Among the incoming freshmen, Labno was a multi-sport standout at Hilmar (Calif.) High School, where she garnered a trio of all-conference accolades after leading the Yellowjackets to three straight Trans Valley League championships, along with a pair of CIF Sac-Joaquin Section Division IV titles. Labno, who also competed in basketball and track & field as a prep, recorded a .311 hitting percentage for her career with an average of 3.48 kills and 1.82 digs to go with 163 total blocks and 80 aces, according to MaxPreps.
- > Mukaj starred for elite clubs over the past five years in her native Italy, including Igor Volley Trecate Novara II and Exacer Montale, leading the latter to a second-place finish in the Italian Serie B1 Group C tournament in 2019. She also another one of her club teams to the 2016-17 Serie C championship and a third-place standing at the Italian national U16 championships. In addition, Mukaj was named MVP and voted best middle blocker in the U16 regional finals that year.
- > Likewise, Ruri was a standout performer for numerous prep and national teams at the junior and senior levels in her home country of New Zealand.
- A versatile player with five years of experience as a setter, opposite and right-side hitter, Ruri most recently collected most valuable player honors and earned a spot on the all-tournament team after leading her squad to a gold medal at the New Zealand U19 Inter Provincial Championships in June 2021.
- > Schuch adds depth to the Aztec back row after starring at Deer Valley High School in Phoenix, Arizona, where she garnered 4A West Valley Region Defensive Player of the Year accolades all four years as a prep, earning first-team all-region honors during that span as well. For her career, Schuch tallied 1,742 digs (4.2/sets) along with 176 service aces and 186 assists, according to MaxPreps.
- > Goldsmith also excelled at the prep level at Freeman High School in Rockford, Washington, where she helped her squad to three top-10 state finishes, including a fourth-place showing as a junior in 2019. This past spring, Goldsmith collected 1A Northeast League MVP honors after leading the Scotties to a conference title with an undefeated 9-0 record during an abbreviated 2021 spring season in which her team did not drop a set (36-0). In addition to volleyball, she also won three letters in both basketball and golf during high school, as well as one in tennis.
- > Rounding out the Aztec rookie class is Merk, who was a three-year letterwinner at prep powerhouse Mater Dei High School in Santa Ana, California. During her high school career, Merk amassed 430 kills, 600 digs, 64 total blocks and 44 service aces, according to MaxPreps. She received all-state recognition as a senior in 2019 from Cal-Hi-Sports and earned Under Armour All-America honors.

PRESEASON PROGNOSTICATIONS

- > San Diego State was picked to finish sixth this year in the Mountain West preseason coaches poll released on Aug. 18.
- > In the 21-year history of the Mountain West, SDSU has finished first (2012), second (2002, 2011), fourth (2000, 2001, 2003, 2013, 2017), fifth (2005, 2015, 2019), sixth (1999, 2004, 2006, 2009, 2010, 2014, 2016), seventh (2008) and eighth (2007, 2018, 2020) in the final league standings.

2021 Mountain West Preseason Poll

Rk.	Team (1st-place votes)	Pts.
1.	UNLV (8)	98
2.	Boise State (2)	90
3.	Colorado State (1)	80
4.	Wyoming	69
5.	Fresno State	61
6.	San Diego State	53
7.	Air Force	46
8.	San José State	41
9.	Utah State	29
10.	New Mexico	26
11.	Nevada	12

CATCH AZTEC VOLLEYBALL ON THE MOUNTAIN WEST NETWORK

- > The Mountain West Network is scheduled to stream 19 Aztec volleyball matches during the 2021 fall season. A link to MWN matches will be available on GoAztecs.com.
- > SDSU is slated to live stream eight of its nine remaining home matches, including encounters with defending Mountain West champion UNLV (Oct. 5) along with perennial conference contenders Colorado State (Oct. 21) and Boise State (Oct. 30).
- > In addition, all nine of the Aztecs' conference road matches are scheduled to be streamed live via the MWN.

ON THE HORIZON

- > Following Saturday's match at Utah State, San Diego State wraps up the first half of its Mountain West slate next week when it plays host to Colorado State on Thursday, Oct. 21, before making a trip to the Front Range of the Rocky Mountains for a clash with Wyoming on Saturday, Oct. 23. The Aztecs-Rams match is set to begin at 7 p.m. PT, while the starting time for the SDSU-Wyoming encounter is set for 6:30 p.m. MT/5:30 p.m. PT.



Brent HILLIARD

Head Coach - Second Season at San Diego State

San Diego State Director of Athletics John David Wicker ushered in a new era for the Aztec volleyball team with the hiring of Brent Hilliard as the fifth head coach in program history on Jan. 31, 2020.

In his first year on The Mesa, Hilliard endured a challenging season fraught with COVID-19 protocols, an abbreviated schedule that was postponed until spring, along with injuries to key players.

However, Hilliard and the Aztecs persevered through the 2021 spring campaign, posting a 6-9 record, highlighted by thrilling victories over Boise State on the road and Colorado State at home in the season finale, respectively. Against the Broncos, SDSU defeated a Boise State team that entered the contest with four consecutive 3-0 sweeps. Two weeks later, the Aztecs snapped an 11-match to the Rams dating back to 2014 and logged their first win over CSU in San Diego since 2012.

Under Hilliard's guidance, Victoria O'Sullivan garnered all-Mountain West accolades for the first time in her career, as the SDSU outside hitter led the squad with 3.25 kills per set, which ranked seventh in the conference. In addition, seniors Lauren Lee and Erin Gillcrst received MW Defensive Player of the Week recognition following the team's aforementioned wins over Boise State and Colorado State, respectively.

Hilliard's Aztecs also excelled in the classroom, with 12 student-athlete earning a spot on the Mountain West all-academic team, including Lauren Lee, who also merited first-team all-District 8 academic honors from the College Sports Information Directors of America (CoSIDA).

A 2018 inductee to the Southern California Indoor Volleyball Hall of Fame, Hilliard arrived at SDSU with a wealth of experience after achieving 19 years of unparalleled success as an assistant coach at the University of San Diego, where he served as the Toreros' associate head coach since 2007.

During his fruitful tenure, the Toreros qualified for the NCAA Tournament in all but one of his 19 seasons, advancing to the Sweet 16 in 2004, 2006, 2013 and 2018. In addition, Hilliard helped guide the Toreros to nine West Coast Conference championships while his players earned six All-America awards, 12 All-America honorable mentions, 44 all-WCC accolades and 15 freshman all-conference certificates.

Hilliard twice assumed the reins of the USD program on an interim basis while head coach Jennifer Petrie was absent on maternity leave. In 2006, Hilliard was honored as WCC Coach of the Year after guiding the Toreros to a conference championship and a Sweet 16 appearance in the NCAA Tournament. That season, he coached five all-conference honorees, including WCC Player of the Year Kristen Carlson, as USD finished 14th in the final USA Today/Coaches Poll.

The Toreros also flourished under Hilliard's guidance in 2011, racing to a 13-0 start en route a program-best 28-5 record, highlighted by a spot in the second round of the NCAA Tournament. Throughout his stint, USD was consistently ranked among the nation's top 25, climbing to as high as No. 2 during the 2013 campaign and rising to No. 5 in 2016.

"I would like to thank John David Wicker, Jenny Bramer, Dr. Adela de la Torre and the rest of the SDSU search committee for making me feel so welcome during the interview process," Hilliard said upon his hiring. "To be the head coach of such a remarkable women's volleyball program in my family's hometown is truly a once in a lifetime opportunity."

"We are fully committed to work tirelessly to elevate this program back to an elite status on the college volleyball landscape, one that the student body, faculty, community, alumni and, of course, all future Aztecs will take great pride in."

Hilliard played collegiately at Long Beach State, earning All-America honors in each of his four years from 1990-93, including first-team recognition over his final three seasons. A right-side hitter for the 49ers, Hilliard was named the NCAA Men's Volleyball Player of the Year as a junior in 1992 after leading LBSU to a 31-1 record.

In 1991, Hilliard and the 49ers captured the NCAA Championship with a 3-1 victory over USC in the finals, avenging a loss to the Trojans in the title match the year before. He finished his career as the NCAA all-time leader with 3,034 kills.

Additionally, Hilliard was selected to play for Team USA in the 1992 Summer Olympics in Barcelona, Spain, where he helped the Americans capture the bronze medal. The following year, he won a silver medal at the 1993 Pan American Games in Argentina and also owns a bronze medal from the 1991 World Cup.

After receiving his undergraduate degree in 1993 from Long Beach State in political science, Hilliard continued his volleyball career as a professional in Europe from 1995-98, playing two seasons in Belgium and another in the Netherlands. In 1996, Hilliard and the Masiek Volleyball Club captured the Belgian national championship and competed in the European Champions League.

In addition to his collegiate experience, which included a stint as head coach at nearby Cuyamaca College in 1999 and 2000, Hilliard has also coached for the past 11 years at Wave Volleyball Club in Del Mar, the premier volleyball club in San Diego County.

"Our priority at SDSU will be to engage, attract and secure exceptional student-athletes that strive for both academic and athletic excellence in their everyday lives," Hilliard added. "From day one, we will set expectations high and build from there. I am incredibly excited to get started and I look forward to the bright future ahead."

HILLIARD'S COLLEGIATE COACHING LEDGER (As an Assistant at USD)

Year	Overall Record	WCC Record (Finish)	Postseason
2001	22-9	10-4 (3rd)	NCAA Second Round
2002	25-8	10-4 (3rd)	NCAA First Round
2003	17-13	6-8 (T-5th)	NCAA First Round
2004	24-5	14-0 (1st)	NCAA Sweet 16
2005	23-6	10-4 (T-2nd)	NCAA Second Round
2006*	26-6	13-1 (1st)	NCAA Sweet 16
2007	21-8	11-3 (1st)	NCAA First Round
2008	23-5	12-2 (1st)	NCAA First Round
2009	18-7	10-4 (2nd)	None
2010	24-8	13-1 (1st)	NCAA Second Round
2011*	28-5	12-4 (2nd)	NCAA Second Round
2012	21-7	13-3 (T-1st)	NCAA First Round
2013	26-4	16-2 (1st)	NCAA Sweet 16
2014	19-12	12-6 (T-3rd)	NCAA First Round
2015	22-10	14-4 (2nd)	NCAA Second Round
2016	24-6	15-3 (2nd)	NCAA First Round
2017	25-5	17-1 (T-1st)	NCAA Second Round
2018	18-13	13-5 (3rd)	NCAA Sweet 16
2019	25-6	17-1 (1st)	NCAA Second Round
USD Total		431-143 (.751)	
WCC Total		238-60 (.799)	

As Head Coach at SDSU

Year	Overall Record	MW Record (Finish)	Postseason
2020	6-9	6-9 (8th)	
2021	5-13	2-4	
SDSU Total		11-22 (.333)	
Career as Head Coach		65-33 (.663)	
Overall Total		442-163 (.731)	

Notes

- * - Served as interim head coach during the 2006 and 2011 seasons at USD. Record reflected in career totals.
- > Qualified for the NCAA Tournament in 18 of his 19 seasons at USD
- > Reached the NCAA Sweet 16 four times in 2004, 2006, 2013 and 2018
- > Won nine West Coast Conference championships

2021 AZTEC PHOTO ROSTER



Zoi FAKI
OH | 6-1 | Sr. **1**



Heipua TAUTUA'A
OH | 6-2 | So. **2**



Andrea WALKER
MB | 6-0 | Sr. **3**



Kennedy FEUERBORN
S | 6-3 | So. **4**



Serena HODSON
MB | 6-2 | Jr. **5**



Jordyn GOLDSMITH
OPP | 6-1 | Fr. **6**



Ashley VANDERPAN
S | 6-1 | Jr. **7**



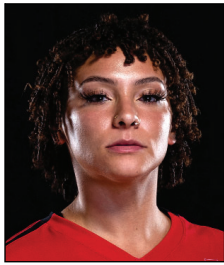
Natalie SMITH
DS/L | 5-7 | Sr. **8**



Sara MUKAJ
MB | 6-3 | Fr. **9**



Kalani RURI
S/OPP | 6-2 | Fr. **10**



Brooklyn HILL
DS/L | 5-8 | Sr. **11**



Julia HAYNIE
MB | 6-1 | Jr. **13**



Reagan MERK
OH | 5-11 | Fr. **14**



Mikela LABNO
OH | 6-2 | Fr. **15**



Carsyn SCHUCH
DS | 5-6 | Fr. **16**



Nadia BARCKLAY
DS/L | 5-2 | So. **17**



Noa MILLER
S | 5-10 | Sr. **19**



Victoria O'SULLIVAN
OH | 6-0 | Sr. **21**



Brent HILLIARD
Head Coach



Melanie GREENE
Assistant Coach/
Recruiting Coordinator



STEVE TIMMONS
Assistant Coach



Kara BARKDOLL
Volleyball Operations
Assistant



**2021-22 San Diego St. Women's Volleyball
Combined Team Statistics
All games**

as of Oct 12, 2021

Game Records

Overall	Conference	Home	Away	Neutral
5 - 13	2 - 4	1 - 5	2 - 5	2 - 3

Team Box Score

##	Player	SP	Attack					Set		Serve			Dig			Blocking					PTS	
			K	K/S	E	TA	PCT	A	A/S	SA	SE	SA/S	RE	DIG	DIG/S	BS	BA	TOT/S	BLK/S	BE		BHE
1	Faki, Zoi	42	81	1.93	32	231	.212	4	0.10	5	14	0.12	17	83	1.98	1	6	7	0.17	1	0	90.0
2	Tautua'a, Heipua	58	120	2.07	70	392	.128	26	0.45	5	21	0.09	11	121	2.09	2	22	24	0.41	3	1	138.0
3	Walker, Andrea	24	35	1.46	8	67	.403	3	0.13	0	0	0.00	1	6	0.25	1	21	22	0.92	3	0	46.5
4	Feuerborn, Kennedy	39	18	0.46	10	44	.182	97	2.49	0	1	0.00	0	11	0.28	0	8	8	0.21	1	2	22.0
5	Hodson, Serena	9	12	1.33	6	30	.200	0	0.00	0	0	0.00	0	0	0.00	2	8	10	1.11	1	0	18.0
6	Goldsmith, Jordyn	45	71	1.58	29	168	.250	3	0.07	0	1	0.00	0	22	0.49	3	25	28	0.62	3	1	86.5
7	Vanderpan, Ashley	42	0	0.00	2	6	.333	186	4.43	8	6	0.19	0	68	1.62	0	1	1	0.02	0	10	8.5
8	Smith, Natalie	62	0	0.00	0	4	.000	50	0.81	9	10	0.15	24	256	4.13	0	0	0	0.00	0	2	9.0
9	Mukaj, Sara	27	16	0.59	4	36	.333	11	0.41	7	7	0.26	0	16	0.59	1	21	22	0.81	2	1	34.5
10	Ruri, Kalani	9	14	1.56	5	31	.290	0	0.00	0	1	0.00	1	3	0.33	0	5	5	0.56	0	0	16.5
11	Hill, Brooklynn	32	0	0.00	0	0	.000	0	0.00	5	11	0.16	0	7	0.22	0	0	0	0.00	0	0	5.0
13	Haynie, Julia	42	49	1.17	25	118	.203	2	0.05	0	3	0.00	1	11	0.26	2	28	30	0.71	3	0	65.0
14	Merk, Reagan	22	24	1.09	10	54	.259	4	0.18	2	8	0.09	0	27	1.23	1	2	3	0.14	0	0	28.0
15	Labno, Mikela	53	113	2.13	63	314	.159	4	0.08	3	15	0.06	16	57	1.08	7	16	23	0.43	0	1	131.0
17	Barcklay, Nadia	3	0	0.00	0	0	.000	0	0.00	1	0	0.33	0	1	0.33	0	0	0	0.00	0	0	1.0
19	Miller, Noa	51	14	0.27	1	26	.500	314	6.16	10	13	0.20	0	99	1.94	0	1	1	0.02	1	7	24.5
21	O'Sullivan, Victoria	59	201	3.41	77	494	.251	8	0.14	9	12	0.15	1	53	0.90	5	28	33	0.56	5	2	229.0
SAN DIEGO ST.		62	768	12.39	342	2015	.211	712	11.48	64	123	1.03	105	841	13.56	25	192	121	1.95	23	27	953.0
Opponents		62	772	12.45	307	2042	.228	712	11.48	105	146	1.69	64	755	12.18	27	268	161	2.60	14	15	1,038.0

Team statistics

	SDSU	OPP
ATTACK		
Kills	768	772
Errors	342	307
Total Attacks	2015	2042
Attack Pct	.211	.228
Kills/Set	12.4	12.5
SET		
Assists	712	712
Attempts	2065	2014
Assist Pct	.345	.354
Assists/Set	11.5	11.5
SERVE		
Aces	64	105
Errors	123	146
Attempts	1327	1386
Serve Pct	.907	.895
Aces/Set	1	1.7
SERVE RECEPTIONS		
Errors	105	64
Errors/Set	1.7	1
Attempts	1240	1204
Reception Pct	.915	.999
DEFENSE		
Digs	841	755
Digs/Set	13.6	12.2
BLOCKING		
Block solo	25	27
Block Assist	192	268
Total Blocks	121	161
Blocks/Set	2	2.6
Block Errors	23	14
Ball handling errors	27	15
ATTENDANCE		
Total	2410	2997
Dates/Avg Per Date	6/402	7/428
Neutral Site #/Avg	5/58	-
Current win streak	0	-
Home win streak	0	-

Team Results

Date	Opponent	Score	Score-by-set	Att.
08/27/2021	vs Houston Baptist	L 0-3	17-25,22-25,16-25	151
08/27/2021	at Sam Houston	L 0-3	18-25,18-25,20-25	228
08/28/2021	at Sam Houston	L 2-3	23-25,25-13,25-14,15-25,9-15	160
09/03/2021	at UC Santa Barbara	W 3-0	25-20,25-19,25-15	200
09/04/2021	vs Pepperdine	L 1-3	19-25,16-25,25-21,18-25	60
09/04/2021	vs Kansas St.	L 1-3	19-25,25-18,23-25,16-25	80
09/10/2021	UCLA	L 0-3	17-25,18-25,13-25	717
09/11/2021	San Diego	L 1-3	25-20,20-25,20-25,18-25	825
09/14/2021	at Long Beach St.	L 0-3	23-25,19-25,23-25	769
09/17/2021	vs Texas Southern	W 3-0	25-17,25-22,25-17	0
09/17/2021	at Arizona	L 0-3	20-25,22-25,15-25	1061
09/18/2021	vs UC Riverside	W 3-0	25-15,25-21,25-19	0
* 09/23/2021	at Nevada	W 3-0	29-27,25-17,25-20	254
* 09/25/2021	at San Jose St.	L 0-3	20-25,21-25,16-25	325
* 09/30/2021	New Mexico	L 1-3	20-25,20-25,25-16,21-25	206
* 10/02/2021	Air Force	W 3-0	26-24,27-25,25-21	278
* 10/05/2021	UNLV	L 0-3	21-25,21-25,20-25	163
* 10/07/2021	Fresno St.	L 2-3	25-22,22-25,25-17,23-25,12-15	221



**2021-22 San Diego St. Women's Volleyball
Combined Team Statistics
In Conference games**

Game Records

Overall	Conference	Home	Away	Neutral
2 - 4	2 - 4	1 - 3	1 - 1	0 - 0

Team Box Score

##	Player	SP	Attack				Set		Serve			Dig			Blocking				PTS			
			K	K/S	E	TA	PCT	A	A/S	SA	SE	SA/S	RE	DIG	DIG/S	BS	BA	TOT/S		BLK/S	BE	BHE
1	Faki, Zoi	10	1	0.10	0	4	.250	1	0.10	2	3	0.20	5	11	1.10	0	0	0	0.00	0	0	3.0
2	Tautua'a, Heipua	21	47	2.24	29	141	.128	13	0.62	3	6	0.14	5	49	2.33	2	6	8	0.38	1	1	55.0
3	Walker, Andrea	21	32	1.52	8	59	.407	3	0.14	0	0	0.00	1	4	0.19	0	20	20	0.95	2	0	42.0
4	Feuerborn, Kennedy	15	12	0.80	6	30	.200	41	2.73	0	1	0.00	0	2	0.13	0	6	6	0.40	1	1	15.0
6	Goldsmith, Jordyn	21	37	1.76	10	77	.351	0	0.00	0	1	0.00	0	12	0.57	2	12	14	0.67	1	0	45.0
7	Vanderpan, Ashley	8	0	0.00	0	0	.000	32	4.00	1	2	0.13	0	14	1.75	0	0	0	0.00	0	3	1.0
8	Smith, Natalie	21	0	0.00	0	1	.000	15	0.71	4	2	0.19	10	70	3.33	0	0	0	0.00	0	1	4.0
10	Ruri, Kalani	3	2	0.67	3	9	-.111	0	0.00	0	0	0.00	1	0	0.00	0	1	1	0.33	0	0	2.5
11	Hill, Brooklynn	17	0	0.00	0	0	.000	0	0.00	2	5	0.12	0	2	0.12	0	0	0	0.00	0	0	2.0
13	Haynie, Julia	6	11	1.83	4	24	.292	0	0.00	0	0	0.00	1	2	0.33	0	5	5	0.83	0	0	13.5
14	Merk, Reagan	11	2	0.18	1	7	.143	3	0.27	0	0	0.00	0	10	0.91	0	0	0	0.00	0	0	2.0
15	Labno, Mikela	21	49	2.33	25	131	.183	1	0.05	0	12	0.00	11	28	1.33	3	6	9	0.43	0	0	55.0
19	Miller, Noa	21	9	0.43	0	11	.818	137	6.52	4	8	0.19	0	47	2.24	0	0	0	0.00	0	4	13.0
21	O'Sullivan, Victoria	21	70	3.33	31	172	.227	3	0.14	8	6	0.38	1	21	1.00	3	10	13	0.62	2	0	86.0
SAN DIEGO ST.		21	272	12.95	117	666	.233	249	11.86	24	46	1.14	41	272	12.95	10	66	43	2.05	7	10	339.0
Opponents		21	251	11.95	103	670	.221	235	11.19	41	54	1.95	24	228	10.86	7	94	54	2.57	2	7	346.0

Team statistics

	SDSU	OPP
ATTACK		
Kills	272	251
Errors	117	103
Total Attacks	666	670
Attack Pct	.233	.221
Kills/Set	13	12
SET		
Assists	249	235
Attempts	676	669
Assist Pct	.368	.351
Assists/Set	11.9	11.2
SERVE		
Aces	24	41
Errors	46	54
Attempts	473	477
Serve Pct	.903	.887
Aces/Set	1.1	2
SERVE RECEPTIONS		
Errors	41	24
Errors/Set	2	1.1
Attempts	423	427
Reception Pct	.903	.997
DEFENSE		
Digs	272	228
Digs/Set	13	10.9
BLOCKING		
Block solo	10	7
Block Assist	66	94
Total Blocks	43	54
Blocks/Set	2	2.6
Block Errors	7	2
Ball handling errors	10	7
ATTENDANCE		
Total	868	579
Dates/Avg Per Date	4/217	2/290
Neutral Site #/Avg	0/0	-
Current win streak	0	-
Home win streak	0	-

Team Results

Date	Opponent	Score	Score-by-set	Att.
* 09/23/2021	at Nevada	W 3-0	29-27,25-17,25-20	254
* 09/25/2021	at San Jose St.	L 0-3	20-25,21-25,16-25	325
* 09/30/2021	New Mexico	L 1-3	20-25,20-25,25-16,21-25	206
* 10/02/2021	Air Force	W 3-0	26-24,27-25,25-21	278
* 10/05/2021	UNLV	L 0-3	21-25,21-25,20-25	163
* 10/07/2021	Fresno St.	L 2-3	25-22,22-25,25-17,23-25,12-15	221



2021-22 San Diego St. Women's Volleyball
Individual Match-by-Match
All games

as of Oct 12, 2021

#1 FAKI, Zoi

Date	Opponent	SP	Attack				Set			Serve				Receipt			Blocking				Team				
			K	E	TA	PCT	A	TA	PCT	SA	SE	TA	PCT	RE	TA	PCT	DIG	BS	BA	BE	TOTAL	BHE	POINTS	HIT%	SCORE
08/27/2021	vs Houston Baptist	*3	11	3	33	.242	1	3	.333	0	1	10	.900	1	31	.968	6	0	1	1	1.0	0	11.5	.153	0-3
08/27/2021	at Sam Houston	*3	5	4	20	.050	0	3	.000	0	1	9	.889	0	18	1.000	8	0	0	0	0.0	0	5.0	.029	0-3
08/28/2021	at Sam Houston	*5	14	8	43	.140	0	9	.000	1	3	18	.833	2	24	.917	12	0	1	0	1.0	0	15.5	.230	2-3
09/03/2021	at UC Santa Barbara	*3	12	2	22	.455	0	3	.000	0	0	8	1.000	0	22	1.000	9	0	1	0	1.0	0	12.5	.384	3-0
09/04/2021	vs Pepperdine	*4	5	1	15	.267	1	4	.250	0	1	11	.909	3	21	.857	7	0	2	0	2.0	0	6.0	.242	1-3
09/04/2021	vs Kansas St.	*4	13	3	31	.323	0	6	.000	2	1	13	.923	1	22	.955	7	0	0	0	0.0	0	15.0	.213	1-3
09/10/2021	UCLA	*3	3	4	13	-.077	1	4	.250	0	1	6	.833	1	25	.960	7	0	0	0	0.0	0	3.0	.056	0-3
09/11/2021	San Diego	*4	9	5	28	.143	0	5	.000	0	2	14	.857	4	43	.907	8	1	1	0	2.0	0	10.5	.203	1-3
09/14/2021	at Long Beach St.	*3	8	2	22	.273	0	1	.000	0	1	7	.857	0	10	1.000	8	0	0	0	0.0	0	8.0	.158	0-3
09/25/2021	at San Jose St.	3	0	0	0	.000	0	0	.000	0	1	10	.900	0	0	.000	1	0	0	0	0.0	0	0.0	.257	0-3
09/30/2021	New Mexico	2	0	0	0	.000	1	5	.200	0	0	8	1.000	4	12	.667	0	0	0	0	0.0	0	0.0	.168	1-3
10/05/2021	UNLV	1	1	0	3	.333	0	0	.000	0	0	0	.000	1	2	.500	0	0	0	0	0.0	0	1.0	.148	0-3
10/07/2021	Fresno St.	4	0	0	1	.000	0	5	.000	2	2	14	.857	0	10	1.000	10	0	0	0	0.0	0	2.0	.247	2-3
Totals		42	81	32	231	.212	4	48	.083	5	14	128	.891	17	240	.929	83	1	6	1	7.0	0	90.0		

Player Averages

Sets Played	Kills per set	Assists per set	Service aces per set	Digs per set	Blocks per set	Points per set
42	1.93	0.10	0.12	1.98	0.17	2.14

#2 TAUTUA'A, Heipua

Date	Opponent	SP	Attack				Set			Serve				Receipt			Blocking				Team				
			K	E	TA	PCT	A	TA	PCT	SA	SE	TA	PCT	RE	TA	PCT	DIG	BS	BA	BE	TOTAL	BHE	POINTS	HIT%	SCORE
08/27/2021	vs Houston Baptist	*3	6	4	23	.087	1	5	.200	0	4	14	.714	0	19	1.000	5	0	0	0	0.0	0	6.0	.153	0-3
08/27/2021	at Sam Houston	*3	8	5	27	.111	0	3	.000	0	1	8	.875	0	13	1.000	3	0	1	1	1.0	0	8.5	.029	0-3
08/28/2021	at Sam Houston	*5	7	5	32	.063	2	5	.400	0	1	16	.938	0	34	1.000	15	0	1	1	1.0	0	7.5	.230	2-3
09/03/2021	at UC Santa Barbara	*3	11	2	22	.409	2	4	.500	1	1	14	.929	0	9	1.000	6	0	1	0	1.0	0	12.5	.384	3-0
09/04/2021	vs Pepperdine	*4	9	8	32	.031	2	7	.286	0	1	12	.917	1	22	.955	5	0	2	0	2.0	0	10.0	.242	1-3
09/04/2021	vs Kansas St.	*4	4	2	13	.154	1	6	.167	0	2	13	.846	1	13	.923	5	0	3	0	3.0	0	5.5	.213	1-3
09/10/2021	UCLA	*3	7	4	23	.130	1	2	.500	0	0	10	1.000	0	10	1.000	3	0	2	0	2.0	0	8.0	.056	0-3
09/11/2021	San Diego	*4	10	6	27	.148	2	7	.286	1	2	18	.889	0	24	1.000	12	0	2	0	2.0	0	12.0	.203	1-3
09/14/2021	at Long Beach St.	*3	5	2	18	.167	1	3	.333	0	1	7	.857	1	9	.889	6	0	3	0	3.0	0	6.5	.158	0-3
09/17/2021	vs Texas Southern	*2	3	0	19	.158	1	4	.250	0	2	8	.750	1	11	.909	8	0	1	0	1.0	0	3.5	.255	3-0
09/17/2021	at Arizona	*3	3	3	15	.000	0	4	.000	0	0	9	1.000	2	16	.875	4	0	0	0	0.0	0	3.0	.144	0-3
09/23/2021	at Nevada	*3	7	6	18	.056	3	9	.333	2	1	17	.941	0	10	1.000	11	0	3	0	3.0	1	10.5	.245	3-0
09/25/2021	at San Jose St.	*3	6	2	20	.200	0	4	.000	0	1	12	.917	1	8	.875	4	0	0	0	0.0	0	6.0	.257	0-3
09/30/2021	New Mexico	*4	9	10	31	-.032	0	2	.000	0	2	10	.800	0	12	1.000	6	1	1	1	2.0	0	10.5	.168	1-3
10/02/2021	Air Force	*3	8	4	26	.154	3	12	.250	1	0	11	1.000	1	24	.958	6	1	1	0	2.0	0	10.5	.337	3-0
10/05/2021	UNLV	*3	9	3	17	.353	2	5	.400	0	1	9	.889	1	15	.933	5	0	0	0	0.0	0	9.0	.148	0-3
10/07/2021	Fresno St.	*5	8	4	29	.138	5	13	.385	0	1	15	.933	2	20	.900	17	0	1	0	1.0	0	8.5	.247	2-3
Totals		58	120	70	392	.128	26	95	.274	5	21	203	.897	11	269	.959	121	2	22	3	24.0	1	138.0		

Player Averages

Sets Played	Kills per set	Assists per set	Service aces per set	Digs per set	Blocks per set	Points per set
58	2.07	0.45	0.09	2.09	0.41	2.38



**2021-22 San Diego St. Women's Volleyball
Individual Match-by-Match
All games**

as of Oct 12, 2021

#3 WALKER, Andrea

Date	Opponent	SP	Attack				Set			Serve				Receipt			Blocking					Team			
			K	E	TA	PCT	A	TA	PCT	SA	SE	TA	PCT	RE	TA	PCT	DIG	BS	BA	BE	TOTAL	BHE	POINTS	HIT%	SCORE
09/17/2021	at Arizona	*3	3	0	8	.375	0	1	.000	0	0	0	.000	0	1	1.000	2	1	1	1	2.0	0	4.5	.144	0-3
09/23/2021	at Nevada	*3	4	1	6	.500	0	0	.000	0	0	0	.000	0	0	.000	0	0	4	0	4.0	0	6.0	.245	3-0
09/25/2021	at San Jose St.	*3	3	0	4	.750	0	0	.000	0	0	0	.000	0	0	.000	0	0	3	0	3.0	0	4.5	.257	0-3
09/30/2021	New Mexico	*4	7	2	11	.455	0	0	.000	0	0	0	.000	0	2	1.000	0	0	6	0	6.0	0	10.0	.168	1-3
10/02/2021	Air Force	*3	5	2	12	.250	2	3	.667	0	0	0	.000	0	1	1.000	2	0	3	1	3.0	0	6.5	.337	3-0
10/05/2021	UNLV	*3	5	2	11	.273	0	2	.000	0	0	0	.000	0	1	1.000	1	0	2	0	2.0	0	6.0	.148	0-3
10/07/2021	Fresno St.	*5	8	1	15	.467	1	2	.500	0	0	0	.000	1	3	.667	1	0	2	1	2.0	0	9.0	.247	2-3
Totals		24	35	8	67	.403	3	8	.375	0	0	0	.000	1	8	.875	6	1	21	3	22.0	0	46.5		

Player Averages

Sets Played	Kills per set	Assists per set	Service aces per set	Digs per set	Blocks per set	Points per set
24	1.46	0.13	0.00	0.25	0.92	1.94

#4 FEUERBORN, Kennedy

Date	Opponent	SP	Attack				Set			Serve				Receipt			Blocking					Team			
			K	E	TA	PCT	A	TA	PCT	SA	SE	TA	PCT	RE	TA	PCT	DIG	BS	BA	BE	TOTAL	BHE	POINTS	HIT%	SCORE
08/27/2021	vs Houston Baptist	3	3	1	4	.500	8	23	.348	0	0	0	.000	0	0	.000	1	0	1	0	1.0	0	3.5	.153	0-3
08/27/2021	at Sam Houston	3	0	0	0	.000	11	41	.268	0	0	0	.000	0	1	1.000	2	0	0	0	0.0	0	0.0	.029	0-3
08/28/2021	at Sam Houston	5	0	0	1	.000	18	56	.321	0	0	0	.000	0	0	.000	5	0	0	0	0.0	0	0.0	.230	2-3
09/04/2021	vs Pepperdine	1	0	0	0	.000	1	2	.500	0	0	0	.000	0	0	.000	1	0	0	0	0.0	0	0.0	.242	1-3
09/04/2021	vs Kansas St.	1	0	0	0	.000	2	2	1.000	0	0	0	.000	0	0	.000	0	0	0	0	0.0	0	0.0	.213	1-3
09/10/2021	UCLA	1	0	0	1	.000	1	7	.143	0	0	0	.000	0	0	.000	0	0	0	0	0.0	0	0.0	.056	0-3
09/11/2021	San Diego	2	0	0	0	.000	2	5	.400	0	0	0	.000	0	0	.000	0	0	0	0	0.0	0	0.0	.203	1-3
09/14/2021	at Long Beach St.	3	3	1	6	.333	7	29	.241	0	0	0	.000	0	0	.000	0	0	1	0	1.0	0	3.5	.158	0-3
09/17/2021	vs Texas Southern	1	0	2	2	-1.000	2	4	.500	0	0	0	.000	0	0	.000	0	0	0	0	0.0	0	0.0	.255	3-0
09/17/2021	at Arizona	3	0	0	0	.000	1	7	.143	0	0	0	.000	0	0	.000	0	0	0	0	0.0	1	0.0	.144	0-3
09/18/2021	vs UC Riverside	1	0	0	0	.000	3	13	.231	0	0	0	.000	0	0	.000	0	0	0	0	0.0	0	0.0	.303	3-0
09/23/2021	at Nevada	1	0	0	0	.000	0	4	.000	0	0	0	.000	0	0	.000	0	0	0	0	0.0	0	0.0	.245	3-0
09/25/2021	at San Jose St.	2	0	0	0	.000	3	9	.333	0	1	2	.500	0	0	.000	0	0	0	0	0.0	1	0.0	.257	0-3
09/30/2021	New Mexico	1	1	1	2	.000	3	6	.500	0	0	0	.000	0	0	.000	0	0	1	0	1.0	0	1.5	.168	1-3
10/02/2021	Air Force	3	2	0	4	.500	11	12	.917	0	0	0	.000	0	0	.000	1	0	1	1	1.0	0	2.5	.337	3-0
10/05/2021	UNLV	3	4	2	9	.222	9	28	.321	0	0	0	.000	0	0	.000	0	0	1	0	1.0	0	4.5	.148	0-3
10/07/2021	Fresno St.	5	5	3	15	.133	15	44	.341	0	0	0	.000	0	0	.000	1	0	3	0	3.0	0	6.5	.247	2-3
Totals		39	18	10	44	.182	97	292	.332	0	1	2	.500	0	1	1.000	11	0	8	1	8.0	2	22.0		

Player Averages

Sets Played	Kills per set	Assists per set	Service aces per set	Digs per set	Blocks per set	Points per set
39	0.46	2.49	0.00	0.28	0.21	0.56



2021-22 San Diego St. Women's Volleyball
Individual Match-by-Match
All games

as of Oct 12, 2021

#5 HODSON, Serena

Date	Opponent	SP	Attack				Set			Serve				Recept			Blocking				Team				
			K	E	TA	PCT	A	TA	PCT	SA	SE	TA	PCT	RE	TA	PCT	DIG	BS	BA	BE	TOTAL	BHE	POINTS	HIT%	SCORE
08/27/2021	vs Houston Baptist	*3	3	2	8	.125	0	4	.000	0	0	0	.000	0	1	1.000	0	0	2	0	2.0	0	4.0	.153	0-3
08/27/2021	at Sam Houston	1	0	1	2	-.500	0	0	.000	0	0	0	.000	0	0	.000	0	0	0	0	0.0	0	0.0	.029	0-3
08/28/2021	at Sam Houston	*5	9	3	20	.300	0	2	.000	0	0	0	.000	0	0	.000	0	2	6	1	8.0	0	14.0	.230	2-3
Totals		9	12	6	30	.200	0	6	.000	0	0	0	.000	0	1	1.000	0	2	8	1	10.0	0	18.0		

Player Averages

Sets Played	Kills per set	Assists per set	Service aces per set	Digs per set	Blocks per set	Points per set
9	1.33	0.00	0.00	0.00	1.11	2.00

#6 GOLDSMITH, Jordyn

Date	Opponent	SP	Attack				Set			Serve				Recept			Blocking				Team				
			K	E	TA	PCT	A	TA	PCT	SA	SE	TA	PCT	RE	TA	PCT	DIG	BS	BA	BE	TOTAL	BHE	POINTS	HIT%	SCORE
08/27/2021	at Sam Houston	3	5	1	12	.333	0	1	.000	0	0	0	.000	0	0	.000	1	0	0	0	0.0	0	5.0	.029	0-3
08/28/2021	at Sam Houston	5	7	3	19	.211	0	1	.000	0	0	0	.000	0	0	.000	3	0	3	1	3.0	0	8.5	.230	2-3
09/04/2021	vs Pepperdine	2	7	2	13	.385	1	2	.500	0	0	0	.000	0	0	.000	1	0	1	1	1.0	0	7.5	.242	1-3
09/04/2021	vs Kansas St.	1	2	3	6	-.167	0	0	.000	0	0	0	.000	0	0	.000	0	0	0	0	0.0	0	2.0	.213	1-3
09/10/2021	UCLA	1	0	0	0	.000	0	0	.000	0	0	0	.000	0	0	.000	0	0	0	0	0.0	0	0.0	.056	0-3
09/14/2021	at Long Beach St.	*3	2	2	7	.000	1	1	1.000	0	0	0	.000	0	0	.000	1	1	3	0	4.0	0	4.5	.158	0-3
09/17/2021	vs Texas Southern	*3	3	3	6	.000	0	1	.000	0	0	1	1.000	0	0	.000	1	0	1	0	1.0	0	3.5	.255	3-0
09/17/2021	at Arizona	3	5	4	21	.048	1	1	1.000	0	0	0	.000	0	0	.000	3	0	1	0	1.0	0	5.5	.144	0-3
09/18/2021	vs UC Riverside	*3	3	1	7	.286	0	1	.000	0	0	0	.000	0	0	.000	0	4	0	4.0	1	5.0	.303	3-0	
09/23/2021	at Nevada	3	4	1	13	.231	0	0	.000	0	0	0	.000	0	0	.000	2	0	3	0	3.0	0	5.5	.245	3-0
09/25/2021	at San Jose St.	3	9	2	18	.389	0	0	.000	0	0	0	.000	0	0	.000	2	0	1	0	1.0	0	9.5	.257	0-3
09/30/2021	New Mexico	*4	6	1	9	.556	0	0	.000	0	0	0	.000	0	0	.000	3	0	2	0	2.0	0	7.0	.168	1-3
10/02/2021	Air Force	*3	7	0	11	.636	0	2	.000	0	0	1	1.000	0	0	.000	2	0	1	1	1.0	0	7.5	.337	3-0
10/05/2021	UNLV	*3	6	2	14	.286	0	0	.000	0	0	0	.000	0	0	.000	2	1	1	0	2.0	0	7.5	.148	0-3
10/07/2021	Fresno St.	*5	5	4	12	.083	0	2	.000	0	1	4	.750	0	0	.000	1	1	4	0	5.0	0	8.0	.247	2-3
Totals		45	71	29	168	.250	3	12	.250	0	1	6	.833	0	0	.000	22	3	25	3	28.0	1	86.5		

Player Averages

Sets Played	Kills per set	Assists per set	Service aces per set	Digs per set	Blocks per set	Points per set
45	1.58	0.07	0.00	0.49	0.62	1.92



2021-22 San Diego St. Women's Volleyball
Individual Match-by-Match
All games

as of Oct 12, 2021

#7 VANDERPAN, Ashley

Date	Opponent	SP	Attack				Set			Serve				Recept			Blocking				Team				
			K	E	TA	PCT	A	TA	PCT	SA	SE	TA	PCT	RE	TA	PCT	DIG	BS	BA	BE	TOTAL	BHE	POINTS	HIT%	SCORE
08/27/2021	vs Houston Baptist	*3	0	0	1	.000	19	64	.297	1	1	10	.900	0	0	.000	4	0	0	0	0.0	3	1.0	.153	0-3
08/27/2021	at Sam Houston	*3	0	0	0	.000	15	46	.326	1	0	8	1.000	0	0	.000	7	0	0	0	0.0	0	1.0	.029	0-3
08/28/2021	at Sam Houston	*5	0	0	0	.000	26	69	.377	2	1	16	.938	0	0	.000	10	0	0	0	0.0	1	2.0	.230	2-3
09/03/2021	at UC Santa Barbara	3	0	0	1	.000	13	27	.481	0	0	12	1.000	0	0	.000	6	0	0	0	0.0	1	0.0	.384	3-0
09/04/2021	vs Pepperdine	3	0	0	1	.000	14	32	.438	1	0	15	1.000	0	0	.000	6	0	1	0	1.0	1	1.5	.242	1-3
09/04/2021	vs Kansas St.	3	0	2	2	-1.000	14	30	.467	0	2	7	.714	0	1	1.000	6	0	0	0	0.0	0	0.0	.213	1-3
09/10/2021	UCLA	2	0	0	0	.000	6	20	.300	0	0	4	1.000	0	0	.000	1	0	0	0	0.0	0	0.0	.056	0-3
09/11/2021	San Diego	4	0	0	0	.000	18	47	.383	0	0	13	1.000	0	0	.000	5	0	0	0	0.0	1	0.0	.203	1-3
09/17/2021	vs Texas Southern	2	0	0	0	.000	8	17	.471	0	0	13	1.000	0	0	.000	4	0	0	0	0.0	0	0.0	.255	3-0
09/17/2021	at Arizona	3	0	0	0	.000	14	34	.412	0	0	9	1.000	0	0	.000	2	0	0	0	0.0	0	0.0	.144	0-3
09/18/2021	vs UC Riverside	3	0	0	1	.000	7	22	.318	2	0	16	1.000	0	0	.000	3	0	0	0	0.0	0	2.0	.303	3-0
09/23/2021	at Nevada	3	0	0	0	.000	15	36	.417	1	1	12	.917	0	0	.000	6	0	0	0	0.0	2	1.0	.245	3-0
09/25/2021	at San Jose St.	3	0	0	0	.000	10	31	.323	0	1	6	.833	0	0	.000	5	0	0	0	0.0	1	0.0	.257	0-3
09/30/2021	New Mexico	2	0	0	0	.000	7	16	.438	0	0	8	1.000	0	0	.000	3	0	0	0	0.0	0	0.0	.168	1-3
Totals		42	0	2	6	-.333	186	491	.379	8	6	149	.960	0	1	1.000	68	0	1	0	1.0	10	8.5		

Player Averages

Sets Played	Kills per set	Assists per set	Service aces per set	Digs per set	Blocks per set	Points per set
42	0.00	4.43	0.19	1.62	0.02	0.20

#8 SMITH, Natalie

Date	Opponent	SP	Attack				Set			Serve				Recept			Blocking				Team				
			K	E	TA	PCT	A	TA	PCT	SA	SE	TA	PCT	RE	TA	PCT	DIG	BS	BA	BE	TOTAL	BHE	POINTS	HIT%	SCORE
08/27/2021	vs Houston Baptist	3	0	0	1	.000	3	10	.300	0	0	9	1.000	0	12	1.000	27	0	0	0	0.0	0	0.0	.153	0-3
08/27/2021	at Sam Houston	3	0	0	1	.000	1	6	.167	0	0	5	1.000	1	20	.950	11	0	0	0	0.0	0	0.0	.029	0-3
08/28/2021	at Sam Houston	5	0	0	0	.000	2	11	.182	0	1	13	.923	2	26	.923	16	0	0	0	0.0	0	0.0	.230	2-3
09/03/2021	at UC Santa Barbara	3	0	0	0	.000	5	13	.385	0	0	18	1.000	1	18	.944	11	0	0	0	0.0	0	0.0	.384	3-0
09/04/2021	vs Pepperdine	4	0	0	0	.000	4	15	.267	0	0	10	1.000	2	24	.917	17	0	0	0	0.0	0	0.0	.242	1-3
09/04/2021	vs Kansas St.	4	0	0	0	.000	2	13	.154	1	0	16	1.000	3	30	.900	9	0	0	0	0.0	0	1.0	.213	1-3
09/10/2021	UCLA	3	0	0	0	.000	0	6	.000	2	2	9	.778	2	18	.889	11	0	0	0	0.0	0	2.0	.056	0-3
09/11/2021	San Diego	4	0	0	0	.000	4	16	.250	0	2	17	.882	0	17	1.000	21	0	0	0	0.0	0	0.0	.203	1-3
09/14/2021	at Long Beach St.	3	0	0	0	.000	4	6	.667	1	0	12	1.000	3	33	.909	14	0	0	0	0.0	0	1.0	.158	0-3
09/17/2021	vs Texas Southern	3	0	0	1	.000	3	17	.176	0	2	13	.846	0	10	1.000	14	0	0	0	0.0	0	0.0	.255	3-0
09/17/2021	at Arizona	3	0	0	0	.000	3	9	.333	1	1	10	.900	0	13	1.000	13	0	0	0	0.0	0	1.0	.144	0-3
09/18/2021	vs UC Riverside	3	0	0	0	.000	4	8	.500	0	0	7	1.000	0	14	1.000	22	0	0	0	0.0	1	0.0	.303	3-0
09/23/2021	at Nevada	3	0	0	1	.000	1	7	.143	2	0	16	1.000	0	15	1.000	13	0	0	0	0.0	1	2.0	.245	3-0
09/25/2021	at San Jose St.	3	0	0	0	.000	2	7	.286	0	1	13	.923	1	19	.947	6	0	0	0	0.0	0	0.0	.257	0-3
09/30/2021	New Mexico	4	0	0	0	.000	0	5	.000	1	1	14	.929	2	20	.900	13	0	0	0	0.0	0	1.0	.168	1-3
10/02/2021	Air Force	3	0	0	0	.000	2	14	.143	0	0	10	1.000	0	11	1.000	8	0	0	0	0.0	0	0.0	.337	3-0
10/05/2021	UNLV	3	0	0	0	.000	5	18	.278	1	0	9	1.000	3	28	.893	15	0	0	0	0.0	0	1.0	.148	0-3
10/07/2021	Fresno St.	5	0	0	0	.000	5	16	.313	0	0	16	1.000	4	26	.846	15	0	0	0	0.0	0	0.0	.247	2-3
Totals		62	0	0	4	.000	50	197	.254	9	10	217	.954	24	354	.932	256	0	0	0	0.0	2	9.0		

Player Averages

Sets Played	Kills per set	Assists per set	Service aces per set	Digs per set	Blocks per set	Points per set
62	0.00	0.81	0.15	4.13	0.00	0.15



**2021-22 San Diego St. Women's Volleyball
Individual Match-by-Match
All games**

as of Oct 12, 2021

#9 MUKAJ, Sara

Date	Opponent	SP	Attack				Set			Serve				Receipt			Blocking					Team			
			K	E	TA	PCT	A	TA	PCT	SA	SE	TA	PCT	RE	TA	PCT	DIG	BS	BA	BE	TOTAL	BHE	POINTS	HIT%	SCORE
08/27/2021	vs Houston Baptist	1	0	1	2	.500	0	1	.000	0	0	1	1.000	0	0	.000	0	0	0	0	0.0	0	0.0	.153	0-3
08/27/2021	at Sam Houston	*3	1	2	7	.143	0	2	.000	4	0	13	1.000	0	0	.000	4	0	1	0	1.0	0	5.5	.029	0-3
08/28/2021	at Sam Houston	*5	7	0	11	.636	3	7	.429	1	2	22	.909	0	0	.000	5	0	4	0	4.0	1	10.0	.230	2-3
09/03/2021	at UC Santa Barbara	*3	1	1	3	.000	4	5	.800	0	1	11	.909	0	0	.000	2	1	3	0	4.0	0	3.5	.384	3-0
09/04/2021	vs Pepperdine	*4	1	0	3	.333	2	4	.500	0	0	12	1.000	0	0	.000	4	0	4	1	4.0	0	3.0	.242	1-3
09/04/2021	vs Kansas St.	*4	2	0	4	.500	0	4	.000	1	1	16	.938	0	0	.000	0	0	3	0	3.0	0	4.5	.213	1-3
09/10/2021	UCLA	*3	0	0	1	.000	1	1	1.000	0	1	6	.833	0	0	.000	0	0	3	1	3.0	0	1.5	.056	0-3
09/11/2021	San Diego	*4	4	0	5	.800	1	5	.200	1	2	10	.800	0	0	.000	1	0	3	0	3.0	0	6.5	.203	1-3
Totals		27	16	4	36	.333	11	29	.379	7	7	91	.923	0	0	.000	16	1	21	2	22.0	1	34.5		

Player Averages

Sets Played	Kills per set	Assists per set	Service aces per set	Digs per set	Blocks per set	Points per set
27	0.59	0.41	0.26	0.59	0.81	1.28

#10 RURI, Kalani

Date	Opponent	SP	Attack				Set			Serve				Receipt			Blocking					Team			
			K	E	TA	PCT	A	TA	PCT	SA	SE	TA	PCT	RE	TA	PCT	DIG	BS	BA	BE	TOTAL	BHE	POINTS	HIT%	SCORE
08/27/2021	vs Houston Baptist	1	0	0	0	.000	0	0	.000	0	1	2	.500	0	0	.000	1	0	0	0	0.0	0	0.0	.153	0-3
09/17/2021	vs Texas Southern	2	5	0	9	.556	0	2	.000	0	0	0	.000	0	0	.000	0	0	2	0	2.0	0	6.0	.255	3-0
09/18/2021	vs UC Riverside	3	7	2	13	.385	0	0	.000	0	0	0	.000	0	0	.000	2	0	2	0	2.0	0	8.0	.303	3-0
09/25/2021	at San Jose St.	1	1	1	3	.000	0	0	.000	0	0	0	.000	1	1	.000	0	0	0	0	0.0	0	1.0	.257	0-3
09/30/2021	New Mexico	2	1	2	6	.167	0	0	.000	0	0	0	.000	0	0	.000	0	0	1	0	1.0	0	1.5	.168	1-3
Totals		9	14	5	31	.290	0	2	.000	0	1	2	.500	1	1	.000	3	0	5	0	5.0	0	16.5		

Player Averages

Sets Played	Kills per set	Assists per set	Service aces per set	Digs per set	Blocks per set	Points per set
9	1.56	0.00	0.00	0.33	0.56	1.83

#11 HILL, Brooklynn

Date	Opponent	SP	Attack				Set			Serve				Receipt			Blocking					Team			
			K	E	TA	PCT	A	TA	PCT	SA	SE	TA	PCT	RE	TA	PCT	DIG	BS	BA	BE	TOTAL	BHE	POINTS	HIT%	SCORE
09/04/2021	vs Kansas St.	2	0	0	0	.000	0	1	.000	0	0	0	.000	0	4	1.000	1	0	0	0	0.0	0	0.0	.213	1-3
09/10/2021	UCLA	1	0	0	0	.000	0	0	.000	0	0	1	1.000	0	4	1.000	0	0	0	0	0.0	0	0.0	.056	0-3
09/14/2021	at Long Beach St.	3	0	0	0	.000	0	0	.000	1	2	10	.800	0	0	.000	1	0	0	0	0.0	0	1.0	.158	0-3
09/17/2021	vs Texas Southern	3	0	0	0	.000	0	1	.000	1	1	6	.833	0	0	.000	0	0	0	0	0.0	0	1.0	.255	3-0
09/17/2021	at Arizona	3	0	0	0	.000	0	0	.000	1	2	8	.750	0	0	.000	0	0	0	0	0.0	0	1.0	.144	0-3
09/18/2021	vs UC Riverside	3	0	0	0	.000	0	1	.000	0	1	13	.923	0	0	.000	3	0	0	0	0.0	0	0.0	.303	3-0
09/23/2021	at Nevada	3	0	0	0	.000	0	0	.000	1	1	10	.900	0	0	.000	0	0	0	0	0.0	0	1.0	.245	3-0
09/30/2021	New Mexico	4	0	0	0	.000	0	0	.000	0	2	17	.882	0	0	.000	1	0	0	0	0.0	0	0.0	.168	1-3
10/02/2021	Air Force	3	0	0	0	.000	0	2	.000	1	1	13	.923	0	0	.000	1	0	0	0	0.0	0	1.0	.337	3-0
10/05/2021	UNLV	3	0	0	0	.000	0	1	.000	0	1	8	.875	0	0	.000	0	0	0	0	0.0	0	0.0	.148	0-3
10/07/2021	Fresno St.	4	0	0	0	.000	0	1	.000	0	0	11	1.000	0	0	.000	0	0	0	0	0.0	0	0.0	.247	2-3
Totals		32	0	0	0	.000	0	7	.000	5	11	97	.887	0	8	1.000	7	0	0	0	0.0	0	5.0		

Player Averages

Sets Played	Kills per set	Assists per set	Service aces per set	Digs per set	Blocks per set	Points per set
32	0.00	0.00	0.16	0.22	0.00	0.16



2021-22 San Diego St. Women's Volleyball
Individual Match-by-Match
All games

as of Oct 12, 2021

#13 HAYNIE, Julia

Date	Opponent	SP	Attack				Set			Serve				Receipt			Blocking					Team			
			K	E	TA	PCT	A	TA	PCT	SA	SE	TA	PCT	RE	TA	PCT	DIG	BS	BA	BE	TOTAL	BHE	POINTS	HIT%	SCORE
08/27/2021	vs Houston Baptist	*3	6	2	9	.444	0	0	.000	0	2	3	.333	0	0	.000	1	0	0	0	0.0	0	6.0	.153	0-3
08/27/2021	at Sam Houston	*3	2	3	9	-.111	1	1	1.000	0	0	1	1.000	0	1	1.000	1	0	2	0	2.0	0	3.0	.029	0-3
09/03/2021	at UC Santa Barbara	*3	3	0	4	.750	0	0	.000	0	0	0	.000	0	0	.000	1	0	2	0	2.0	0	4.0	.384	3-0
09/04/2021	vs Pepperdine	*4	2	0	5	.400	0	0	.000	0	0	0	.000	0	0	.000	1	0	4	0	4.0	0	4.0	.242	1-3
09/04/2021	vs Kansas St.	*4	3	2	6	.167	0	1	.000	0	0	0	.000	0	1	1.000	1	1	1	0	2.0	0	4.5	.213	1-3
09/10/2021	UCLA	*3	3	5	13	-.154	0	1	.000	0	0	0	.000	0	1	1.000	0	0	3	1	3.0	0	4.5	.056	0-3
09/11/2021	San Diego	*4	4	4	12	.000	0	2	.000	0	0	0	.000	0	0	.000	1	0	1	1	1.0	0	4.5	.203	1-3
09/14/2021	at Long Beach St.	*3	2	2	12	.000	0	0	.000	0	0	0	.000	0	0	.000	1	0	3	1	3.0	0	3.5	.158	0-3
09/17/2021	vs Texas Southern	*3	6	1	11	.455	1	3	.333	0	0	1	1.000	0	2	1.000	2	0	4	0	4.0	0	8.0	.255	3-0
09/17/2021	at Arizona	*3	1	1	2	.000	0	1	.000	0	1	1	.000	0	0	.000	0	0	0	0	0.0	0	1.0	.144	0-3
09/18/2021	vs UC Riverside	*3	6	1	11	.455	0	1	.000	0	0	1	1.000	0	0	.000	0	1	3	0	4.0	0	8.5	.303	3-0
09/23/2021	at Nevada	*3	8	2	14	.429	0	2	.000	0	0	0	.000	0	1	1.000	1	0	5	0	5.0	0	10.5	.245	3-0
09/25/2021	at San Jose St.	*3	3	2	10	.100	0	1	.000	0	0	0	.000	1	3	.667	1	0	0	0	0.0	0	3.0	.257	0-3
Totals			42	49	25	118	.203	2	13	.154	0	3	.571	1	9	.889	11	2	28	3	30.0	0	65.0		

Player Averages

Sets Played	Kills per set	Assists per set	Service aces per set	Digs per set	Blocks per set	Points per set
42	1.17	0.05	0.00	0.26	0.71	1.55

#14 MERK, Reagan

Date	Opponent	SP	Attack				Set			Serve				Receipt			Blocking					Team			
			K	E	TA	PCT	A	TA	PCT	SA	SE	TA	PCT	RE	TA	PCT	DIG	BS	BA	BE	TOTAL	BHE	POINTS	HIT%	SCORE
08/27/2021	at Sam Houston	1	0	0	0	.000	0	0	.000	2	0	3	1.000	0	0	.000	0	0	0	0	0.0	0	2.0	.029	0-3
09/10/2021	UCLA	1	1	0	1	1.000	0	0	.000	0	0	2	1.000	0	0	.000	0	0	0	0	0.0	0	1.0	.056	0-3
09/14/2021	at Long Beach St.	1	5	0	7	.714	1	2	.500	0	1	3	.667	0	3	1.000	0	0	0	0	0.0	0	5.0	.158	0-3
09/17/2021	vs Texas Southern	3	7	2	13	.385	0	0	.000	0	3	6	.500	0	8	1.000	6	0	0	0	0.0	0	7.0	.255	3-0
09/17/2021	at Arizona	2	2	0	6	.333	0	1	.000	0	1	5	.800	0	16	1.000	5	0	0	0	0.0	0	2.0	.144	0-3
09/18/2021	vs UC Riverside	*3	7	7	20	.000	0	6	.000	0	3	8	.625	0	17	1.000	6	1	2	0	3.0	0	9.0	.303	3-0
09/23/2021	at Nevada	1	0	0	0	.000	0	0	.000	0	0	2	1.000	0	1	1.000	0	0	0	0	0.0	0	0.0	.245	3-0
10/02/2021	Air Force	2	1	0	1	1.000	0	1	.000	0	0	0	.000	0	0	.000	1	0	0	0	0.0	0	1.0	.337	3-0
10/05/2021	UNLV	3	0	0	0	.000	2	2	1.000	0	0	0	.000	0	0	.000	4	0	0	0	0.0	0	0.0	.148	0-3
10/07/2021	Fresno St.	5	1	1	6	.000	1	1	1.000	0	0	0	.000	0	0	.000	5	0	0	0	0.0	0	1.0	.247	2-3
Totals			22	24	10	54	.259	4	13	.308	2	8	.29	.724	0	45	1.000	27	1	2	0	3.0	0	28.0	

Player Averages

Sets Played	Kills per set	Assists per set	Service aces per set	Digs per set	Blocks per set	Points per set
22	1.09	0.18	0.09	1.23	0.14	1.27



2021-22 San Diego St. Women's Volleyball
Individual Match-by-Match
All games

as of Oct 12, 2021

#15 LABNO, Mikela

Date	Opponent	SP	Attack				Set			Serve			Recept			DIG	Blocking				Team				
			K	E	TA	PCT	A	TA	PCT	SA	SE	TA	PCT	RE	TA		PCT	BS	BA	BE	TOTAL	BHE	POINTS	HIT%	SCORE
08/27/2021	at Sam Houston	1	0	1	1	-1.000	0	0	.000	0	0	1	1.000	0	5	1.000	1	0	0	0	0.0	0	0.0	.029	0-3
08/28/2021	at Sam Houston	1	1	0	1	1.000	0	0	.000	0	0	0	.000	0	0	.000	0	0	0	0	0.0	0	1.0	.230	2-3
09/03/2021	at UC Santa Barbara	3	7	5	18	.111	0	0	.000	0	0	0	.000	0	0	.000	0	0	1	0	1.0	0	7.5	.384	3-0
09/04/2021	vs Pepperdine	4	13	1	23	.522	0	0	.000	0	0	5	1.000	1	11	.909	1	0	1	0	1.0	0	13.5	.242	1-3
09/04/2021	vs Kansas St.	4	9	4	24	.208	0	1	.000	0	0	2	1.000	0	11	1.000	2	0	0	0	0.0	0	9.0	.213	1-3
09/10/2021	UCLA	3	4	4	11	.000	0	1	.000	0	0	1	1.000	0	6	1.000	0	2	0	2.0	0	5.0	.056	0-3	
09/11/2021	San Diego	4	11	8	33	.091	0	0	.000	0	0	0	.000	0	3	1.000	0	2	1	0	3.0	0	13.5	.203	1-3
09/14/2021	at Long Beach St.	*3	3	4	20	-.050	0	0	.000	2	0	13	1.000	1	6	.833	6	1	2	0	3.0	0	7.0	.158	0-3
09/17/2021	vs Texas Southern	*3	5	3	16	.125	2	2	1.000	0	2	6	.667	2	16	.875	3	1	1	0	2.0	0	6.5	.255	3-0
09/17/2021	at Arizona	*3	6	7	17	-.059	0	3	.000	0	1	5	.800	1	18	.944	3	0	2	0	2.0	0	7.0	.144	0-3
09/18/2021	vs UC Riverside	*3	5	1	19	.211	1	4	.250	1	0	16	1.000	0	18	1.000	13	0	0	0	0.0	1	6.0	.303	3-0
09/23/2021	at Nevada	*3	7	3	21	.190	0	1	.000	0	1	9	.889	3	31	.903	6	1	2	0	3.0	0	9.0	.245	3-0
09/25/2021	at San Jose St.	*3	7	5	21	.095	0	2	.000	0	3	9	.667	0	31	1.000	3	0	0	0	0.0	0	7.0	.257	0-3
09/30/2021	New Mexico	*4	8	2	15	.400	1	1	1.000	0	2	7	.714	2	32	.938	3	1	3	0	4.0	0	10.5	.168	1-3
10/02/2021	Air Force	*3	10	1	19	.474	0	13	.000	0	2	15	.867	1	28	.964	3	1	0	0	1.0	0	11.0	.337	3-0
10/05/2021	UNLV	*3	5	10	24	-.208	0	3	.000	0	1	15	.933	4	19	.789	5	0	1	0	1.0	0	5.5	.148	0-3
10/07/2021	Fresno St.	*5	12	4	31	.258	0	4	.000	0	3	9	.667	1	29	.966	8	0	0	0	0.0	0	12.0	.247	2-3
Totals		53	113	63	314	.159	4	35	.114	3	15	113	.867	16	264	.939	57	7	16	0	23.0	1	131.0		

Player Averages

Sets Played	Kills per set	Assists per set	Service aces per set	Digs per set	Blocks per set	Points per set
53	2.13	0.08	0.06	1.08	0.43	2.47

#17 BARCKLAY, Nadia

Date	Opponent	SP	Attack				Set			Serve			Recept			DIG	Blocking				Team				
			K	E	TA	PCT	A	TA	PCT	SA	SE	TA	PCT	RE	TA		PCT	BS	BA	BE	TOTAL	BHE	POINTS	HIT%	SCORE
08/27/2021	vs Houston Baptist	2	0	0	0	.000	0	0	.000	0	0	2	1.000	0	0	.000	1	0	0	0	0.0	0	0.0	.153	0-3
09/18/2021	vs UC Riverside	1	0	0	0	.000	0	0	.000	1	0	2	1.000	0	1	1.000	0	0	0	0	0.0	0	1.0	.303	3-0
Totals		3	0	0	0	.000	0	0	.000	1	0	4	1.000	0	1	1.000	1	0	0	0	0.0	0	1.0		

Player Averages

Sets Played	Kills per set	Assists per set	Service aces per set	Digs per set	Blocks per set	Points per set
3	0.00	0.00	0.33	0.33	0.00	0.33



**2021-22 San Diego St. Women's Volleyball
Individual Match-by-Match
All games**

as of Oct 12, 2021

#19 MILLER, Noa

Date	Opponent	SP	Attack				Set			Serve				Receipt			Blocking				Team				
			K	E	TA	PCT	A	TA	PCT	SA	SE	TA	PCT	RE	TA	PCT	DIG	BS	BA	BE	TOTAL	BHE	POINTS	HIT%	SCORE
09/03/2021	at UC Santa Barbara	*3	0	0	2	.000	22	45	.489	0	0	11	1.000	0	0	.000	7	0	0	0	0.0	0	0.0	.384	3-0
09/04/2021	vs Pepperdine	*4	0	0	1	.000	19	53	.358	0	0	11	1.000	0	0	.000	4	0	0	0	0.0	0	0.0	.242	1-3
09/04/2021	vs Kansas St.	*4	1	0	2	.500	25	66	.379	0	0	14	1.000	0	0	.000	7	0	1	0	1.0	0	1.5	.213	1-3
09/10/2021	UCLA	*3	0	0	2	.000	17	50	.340	0	1	10	.900	0	1	1.000	3	0	0	0	0.0	1	0.0	.056	0-3
09/11/2021	San Diego	*4	0	0	0	.000	28	67	.418	2	0	12	1.000	0	0	.000	11	0	0	0	0.0	0	2.0	.203	1-3
09/14/2021	at Long Beach St.	*3	1	1	3	.000	10	43	.233	1	1	14	.929	0	0	.000	2	0	0	1	0.0	0	2.0	.158	0-3
09/17/2021	vs Texas Southern	*3	2	0	3	.667	20	51	.392	1	1	16	.938	0	0	.000	7	0	0	0	0.0	0	3.0	.255	3-0
09/17/2021	at Arizona	*3	0	0	0	.000	10	40	.250	1	1	11	.909	0	0	.000	6	0	0	0	0.0	1	1.0	.144	0-3
09/18/2021	vs UC Riverside	*3	1	0	2	.500	26	56	.464	1	1	10	.900	0	0	.000	5	0	0	0	0.0	1	2.0	.303	3-0
09/23/2021	at Nevada	*3	0	0	0	.000	19	49	.388	1	2	12	.833	0	0	.000	3	0	0	0	0.0	0	1.0	.245	3-0
09/25/2021	at San Jose St.	*3	0	0	0	.000	17	39	.436	0	0	7	1.000	0	1	1.000	5	0	0	0	0.0	0	0.0	.257	0-3
09/30/2021	New Mexico	*4	2	0	2	1.000	28	74	.378	1	0	12	1.000	0	0	.000	6	0	0	0	0.0	0	3.0	.168	1-3
10/02/2021	Air Force	*3	0	0	0	.000	25	29	.862	1	3	12	.750	0	0	.000	8	0	0	0	0.0	0	1.0	.337	3-0
10/05/2021	UNLV	*3	1	0	3	.333	21	52	.404	1	1	13	.923	0	0	.000	12	0	0	0	0.0	1	2.0	.148	0-3
10/07/2021	Fresno St.	*5	6	0	6	1.000	27	69	.391	0	2	23	.913	0	0	.000	13	0	0	0	0.0	3	6.0	.247	2-3
Totals			51	14	1	26	.500	314	783	.401	10	13	188	.931	0	2	1.000	99	0	1	1	1.0	7	24.5	

Player Averages

Sets Played	Kills per set	Assists per set	Service aces per set	Digs per set	Blocks per set	Points per set
51	0.27	6.16	0.20	1.94	0.02	0.48

#21 O'SULLIVAN, Victoria

Date	Opponent	SP	Attack				Set			Serve				Receipt			Blocking				Team				
			K	E	TA	PCT	A	TA	PCT	SA	SE	TA	PCT	RE	TA	PCT	DIG	BS	BA	BE	TOTAL	BHE	POINTS	HIT%	SCORE
08/27/2021	vs Houston Baptist	*3	7	6	30	.033	1	1	1.000	0	0	6	1.000	0	0	.000	6	0	0	1	0.0	0	7.0	.153	0-3
08/27/2021	at Sam Houston	*3	8	9	25	-.040	0	2	.000	0	2	9	.778	0	0	.000	1	0	2	1	2.0	0	9.0	.029	0-3
08/28/2021	at Sam Houston	*5	14	3	34	.324	0	3	.000	1	1	13	.923	0	0	.000	4	0	5	0	5.0	2	17.5	.230	2-3
09/03/2021	at UC Santa Barbara	*3	15	1	27	.519	0	0	.000	0	0	0	.000	0	0	.000	3	0	2	0	2.0	0	16.0	.384	3-0
09/04/2021	vs Pepperdine	*4	10	6	27	.148	0	4	.000	0	1	3	.667	0	0	.000	3	0	1	1	1.0	0	10.5	.242	1-3
09/04/2021	vs Kansas St.	*4	13	5	34	.235	0	1	.000	0	1	3	.667	0	0	.000	1	0	2	0	2.0	0	14.0	.213	1-3
09/10/2021	UCLA	*3	10	6	25	.160	0	2	.000	0	1	1	.000	0	1	1.000	2	1	2	0	3.0	0	12.0	.056	0-3
09/11/2021	San Diego	*4	19	4	43	.349	1	3	.333	0	0	0	.000	0	0	.000	4	0	0	0	0.0	0	19.0	.203	1-3
09/17/2021	vs Texas Southern	*3	11	3	30	.267	3	5	.600	0	0	4	1.000	0	1	1.000	5	0	1	0	1.0	0	11.5	.255	3-0
09/17/2021	at Arizona	*3	10	2	21	.381	0	2	.000	0	0	0	.000	0	0	.000	0	1	0	0	1.0	0	11.0	.144	0-3
09/18/2021	vs UC Riverside	*3	14	1	26	.500	0	1	.000	0	0	0	.000	0	0	.000	3	0	3	0	3.0	0	15.5	.303	3-0
09/23/2021	at Nevada	*3	9	2	25	.280	0	0	.000	0	0	0	.000	1	1	.000	4	1	1	0	2.0	0	10.5	.245	3-0
09/25/2021	at San Jose St.	*3	11	2	25	.360	1	2	.500	0	0	0	.000	0	0	.000	1	0	2	0	2.0	0	12.0	.257	0-3
09/30/2021	New Mexico	*4	9	7	31	.065	0	1	.000	3	1	11	.909	0	0	.000	7	0	2	2	2.0	0	13.0	.168	1-3
10/02/2021	Air Force	*3	13	6	25	.280	0	1	.000	3	4	15	.733	0	0	.000	1	1	2	0	3.0	0	18.0	.337	3-0
10/05/2021	UNLV	*3	11	7	27	.148	0	1	.000	0	0	10	1.000	0	0	.000	5	0	1	0	1.0	0	11.5	.148	0-3
10/07/2021	Fresno St.	*5	17	7	39	.256	2	5	.400	2	1	16	.938	0	0	.000	3	1	2	0	3.0	0	21.0	.247	2-3
Totals			59	201	77	494	.251	8	34	.235	9	12	91	.868	1	3	.667	53	5	28	5	33.0	2	229.0	

Player Averages

Sets Played	Kills per set	Assists per set	Service aces per set	Digs per set	Blocks per set	Points per set
59	3.41	0.14	0.15	0.90	0.56	3.88



San Diego St. Women's Volleyball
Individual Career Summaries
All games

Page 1/9
as of Oct 12, 2021

BARCKLAY, Nadia

SEASON	TEAM	SM-MP	K	K/S	E	TA	PCT	A	A/S	SA	SA/S	SE	DIG	D/S	RE	BS	BA	TB	B/S	BE	BHE	PTS	PTS/S
2020-21	SDSU	8-3	0	0.0	0	0	.000	1	0.1	1	0.1	1	1	0.1	0	1	0	1	0.1	0	0	2.0	0.3
2021-22	SDSU	3-2	0	0.0	0	0	.000	0	0.0	1	0.3	0	1	0.3	0	0	0	0	0.0	0	0	1.0	0.3
TOTAL		11 - 5	0	0.0	0	0	.000	1	0.1	2	0.2	1	2	0.2	0	1	0	1	0.1	0	0	3.0	0.3

Single Game Highs

Statistic	Value	
Assists	1	vs Fresno St. 02/13/21
Serve Aces	1	vs UC Riverside 09/18/21, vs Fresno St. 02/13/21
Digs	1	vs Fresno St. 02/13/21, vs Houston Baptist 08/27/21
Block solos	1	vs New Mexico 02/20/21

FAKI, Zoi

SEASON	TEAM	SM-MP	K	K/S	E	TA	PCT	A	A/S	SA	SA/S	SE	DIG	D/S	RE	BS	BA	TB	B/S	BE	BHE	PTS	PTS/S
2016-17	Pitt	14-8	0	0.0	0	0	.000	0	0.0	3	0.2	9	4	0.3	0	0	0	0	0.0	0	0	3.0	0.2
2018-19	Pitt	35-18	30	0.9	14	85	.188	6	0.2	5	0.1	9	46	1.3	3	0	3	3	0.1	2	0	36.5	1.0
2019-20	Pitt	107-32	36	0.3	16	84	.238	6	0.1	14	0.1	30	64	0.6	4	1	9	10	0.1	1	1	55.5	0.5
2020-21	Pitt	72-24	23	0.3	9	63	.222	9	0.1	10	0.1	9	41	0.6	6	1	3	4	0.1	1	1	35.5	0.5
2021-22	SDSU	42-13	81	1.9	32	231	.212	4	0.1	5	0.1	14	83	2.0	17	1	6	7	0.2	1	0	90.0	2.1
TOTAL FOR SDSU		42 - 13	81	1.9	32	231	.212	4	0.1	5	0.1	14	83	2.0	17	1	6	7	0.2	1	0	90.0	2.1
TOTAL		270 - 95	170	0.6	71	463	.214	25	0.1	37	0.1	71	238	0.9	30	3	21	24	0.1	5	2	220.5	0.8

Single Game Highs

Statistic	Value	
Kills	14	at Sam Houston 08/28/21
Attacks	43	at Sam Houston 08/28/21
Assists	4	vs Boston College 10/09/20
Serve Aces	3	vs Minnesota 04/18/21
Digs	23	vs Michigan 12/01/18
Blocks	2	at Notre Dame 10/16/20, vs Pepperdine 09/04/21
Block solos	1	at Syracuse 10/11/19, at Notre Dame 10/16/20, vs San Diego 09/11/21
Block assists	3	vs Duquesne 09/07/19



San Diego St. Women's Volleyball
Individual Career Summaries
All games

FEUERBORN, Kennedy

SEASON	TEAM	SM-MP	K	K/S	E	TA	PCT	A	A/S	SA	SA/S	SE	DIG	D/S	RE	BS	BA	TB	B/S	BE	BHE	PTS	PTS/S
2020-21	SDSU	41-13	31	0.8	13	78	.231	162	4.0	1	0.0	5	19	0.5	0	2	12	14	0.3	0	5	40.0	1.0
2021-22	SDSU	39-17	18	0.5	10	44	.182	97	2.5	0	0.0	1	11	0.3	0	0	8	8	0.2	1	2	22.0	0.6
TOTAL		80 - 30	49	0.6	23	122	.213	259	3.2	1	0.0	6	30	0.4	0	2	20	22	0.3	1	7	62.0	0.8

Single Game Highs

Statistic	Value	
Kills	6	at UNLV 02/05/21
Attacks	15	vs Fresno St. 10/07/21
Assists	26	vs Fresno St. 02/12/21, at UNLV 02/05/21
Serve Aces	1	at Wyoming 03/05/21
Digs	7	vs Fresno St. 02/12/21
Blocks	1	6 times
Block solos	1	vs Fresno St. 02/12/21, at UNLV 02/05/21
Block assists	4	vs Colorado St. 04/03/21
PCT	.500	vs Air Force 10/02/21, vs Houston Baptist 08/27/21

GOLDSMITH, Jordyn

SEASON	TEAM	SM-MP	K	K/S	E	TA	PCT	A	A/S	SA	SA/S	SE	DIG	D/S	RE	BS	BA	TB	B/S	BE	BHE	PTS	PTS/S
2021-22	SDSU	45-15	71	1.6	29	168	.250	3	0.1	0	0.0	1	22	0.5	0	3	25	28	0.6	3	1	86.5	1.9
TOTAL		45 - 15	71	1.6	29	168	.250	3	0.1	0	0.0	1	22	0.5	0	3	25	28	0.6	3	1	86.5	1.9

Single Game Highs

Statistic	Value	
Kills	9	at San Jose St. 09/25/21
Attacks	21	at Arizona 09/17/21
Assists	1	at Long Beach St. 09/14/21, at Arizona 09/17/21, vs Pepperdine 09/04/21
Digs	3	at Sam Houston 08/28/21, at Arizona 09/17/21, vs New Mexico 09/30/21
Blocks	4	vs UC Riverside 09/18/21, at Long Beach St. 09/14/21
Block solos	1	vs UNLV 10/05/21, vs Fresno St. 10/07/21, at Long Beach St. 09/14/21
Block assists	4	vs UC Riverside 09/18/21, vs Fresno St. 10/07/21
PCT	.636	vs Air Force 10/02/21



San Diego St. Women's Volleyball
Individual Career Summaries
All games

Page 3/9
as of Oct 12, 2021

HAYNIE, Julia

SEASON	TEAM	SM-MP	K	K/S	E	TA	PCT	A	A/S	SA	SA/S	SE	DIG	D/S	RE	BS	BA	TB	B/S	BE	BHE	PTS	PTS/S
2019-20	PSU	99-28	70	0.7	43	205	.132	4	0.0	6	0.1	7	40	0.4	0	4	70	74	0.7	4	0	115.0	1.2
2020-21	PSU	71-18	95	1.3	36	226	.261	5	0.1	8	0.1	7	24	0.3	1	5	42	47	0.7	2	1	129.0	1.8
2021-22	SDSU	42-13	49	1.2	25	118	.203	2	0.0	0	0.0	3	11	0.3	1	2	28	30	0.7	3	0	65.0	1.5
TOTAL FOR SDSU		42 - 13	49	1.2	25	118	.203	2	0.0	0	0.0	3	11	0.3	1	2	28	30	0.7	3	0	65.0	1.5
TOTAL		212 - 59	214	1.0	104	549	.200	11	0.1	14	0.1	17	75	0.4	2	11	140	151	0.7	9	1	309.0	1.5

Single Game Highs

Statistic	Value	
Kills	11	vs Idaho 01/25/21
Attacks	25	vs Idaho 01/25/21
Assists	1	11 times
Serve Aces	3	vs UC Davis 09/07/19
Digs	5	at Utah Valley 09/06/19
Blocks	7	vs Northern Ariz. 01/31/21
Block solos	2	vs Idaho 11/02/19, vs Montana 03/08/21
Block assists	9	vs Eastern Wash. 10/31/19

HILL, Brooklynn

SEASON	TEAM	SM-MP	K	K/S	E	TA	PCT	A	A/S	SA	SA/S	SE	DIG	D/S	RE	BS	BA	TB	B/S	BE	BHE	PTS	PTS/S
2018-19	PSU	8-7	0	0.0	0	0	.000	0	0.0	1	0.1	3	2	0.3	1	0	0	0	0.0	0	1	1.0	0.1
2019-20	PSU	11-7	0	0.0	0	0	.000	0	0.0	3	0.3	1	3	0.3	0	0	0	0	0.0	0	0	3.0	0.3
2020-21	SDSU	50-15	1	0.0	1	3	.000	12	0.2	10	0.2	11	77	1.5	18	0	0	0	0.0	0	1	11.0	0.2
2021-22	SDSU	32-11	0	0.0	0	0	.000	0	0.0	5	0.2	11	7	0.2	0	0	0	0	0.0	0	0	5.0	0.2
TOTAL FOR SDSU		82 - 26	1	0.0	1	3	.000	12	0.1	15	0.2	22	84	1.0	18	0	0	0	0.0	0	1	16.0	0.2
TOTAL		101 - 40	1	0.0	1	3	.000	12	0.1	19	0.2	26	89	0.9	19	0	0	0	0.0	0	2	20.0	0.2

Single Game Highs

Statistic	Value	
Kills	1	at Boise St. 03/20/21
Attacks	2	at Boise St. 03/20/21
Assists	3	vs Nevada 02/27/21
Serve Aces	3	vs New Mexico 02/19/21, vs Utah St. 03/12/21, vs Towson 12/07/19
Digs	10	at Boise St. 03/20/21



San Diego St. Women's Volleyball
Individual Career Summaries
All games

Page 4/9
as of Oct 12, 2021

HODSON, Serena

SEASON	TEAM	SM-MP	K	K/S	E	TA	PCT	A	A/S	SA	SA/S	SE	DIG	D/S	RE	BS	BA	TB	B/S	BE	BHE	PTS	PTS/S
2018-19	SDSU	18-5	15	0.8	4	36	.306	0	0.0	0	0.0	1	1	0.1	0	1	14	15	0.8	0	0	23.0	1.3
2020-21	SDSU	20-9	17	0.9	8	45	.200	0	0.0	1	0.1	3	4	0.2	0	1	15	16	0.8	2	0	26.5	1.3
2021-22	SDSU	9-3	12	1.3	6	30	.200	0	0.0	0	0.0	0	0	0.0	0	2	8	10	1.1	1	0	18.0	2.0
TOTAL	47 - 17	44	0.9	18	111	.234	0	0.0	1	0.0	4	5	0.1	0	4	37	41	0.9	3	0	67.5	1.4	

Single Game Highs

Statistic	Value	
Kills	9	at Sam Houston 08/28/21
Attacks	20	at Sam Houston 08/28/21
Serve Aces	1	at UNLV 02/04/21
Digs	2	at Wyoming 03/05/21
Blocks	8	at Sam Houston 08/28/21
Block solos	2	at Sam Houston 08/28/21
Block assists	7	vs Seattle U 08/25/18

LABNO, Mikela

SEASON	TEAM	SM-MP	K	K/S	E	TA	PCT	A	A/S	SA	SA/S	SE	DIG	D/S	RE	BS	BA	TB	B/S	BE	BHE	PTS	PTS/S
2021-22	SDSU	53-17	113	2.1	63	314	.159	4	0.1	3	0.1	15	57	1.1	16	7	16	23	0.4	0	1	131.0	2.5
TOTAL	53 - 17	113	2.1	63	314	.159	4	0.1	3	0.1	15	57	1.1	16	7	16	23	0.4	0	1	131.0	2.5	

Single Game Highs

Statistic	Value	
Kills	13	vs Pepperdine 09/04/21
Attacks	33	vs San Diego 09/11/21
Assists	2	vs Texas Southern 09/17/21
Serve Aces	2	at Long Beach St. 09/14/21
Digs	13	vs UC Riverside 09/18/21
Blocks	3	at Nevada 09/23/21, at Long Beach St. 09/14/21
Block solos	2	vs San Diego 09/11/21
Block assists	3	vs New Mexico 09/30/21
PCT	1.000	at Sam Houston 08/28/21



San Diego St. Women's Volleyball
Individual Career Summaries
All games

Page 5/9
as of Oct 12, 2021

MERK, Reagan

SEASON	TEAM	SM-MP	K	K/S	E	TA	PCT	A	A/S	SA	SA/S	SE	DIG	D/S	RE	BS	BA	TB	B/S	BE	BHE	PTS	PTS/S
2021-22	SDSU	22-10	24	1.1	10	54	.259	4	0.2	2	0.1	8	27	1.2	0	1	2	3	0.1	0	0	28.0	1.3
TOTAL		22 - 10	24	1.1	10	54	.259	4	0.2	2	0.1	8	27	1.2	0	1	2	3	0.1	0	0	28.0	1.3

Single Game Highs

Statistic	Value	
Kills	7	vs UC Riverside 09/18/21, vs Texas Southern 09/17/21
Attacks	20	vs UC Riverside 09/18/21
Assists	2	vs UNLV 10/05/21
Serve Aces	2	at Sam Houston 08/27/21
Digs	6	vs Texas Southern 09/17/21, vs UC Riverside 09/18/21
Blocks	3	vs UC Riverside 09/18/21
Block solos	1	vs UC Riverside 09/18/21
Block assists	2	vs UC Riverside 09/18/21
PCT	1.000	vs Air Force 10/02/21, vs UCLA 09/10/21

MILLER, Noa

SEASON	TEAM	SM-MP	K	K/S	E	TA	PCT	A	A/S	SA	SA/S	SE	DIG	D/S	RE	BS	BA	TB	B/S	BE	BHE	PTS	PTS/S
2018-19	WOF	108-30	31	0.3	5	95	.274	481	4.5	16	0.1	52	194	1.8	0	0	2	2	0.0	2	15	48.0	0.4
2019-20	ASU	70-26	10	0.1	4	29	.207	283	4.0	4	0.1	13	151	2.2	0	0	1	1	0.0	0	4	14.5	0.2
2021-22	SDSU	51-15	14	0.3	1	26	.500	314	6.2	10	0.2	13	99	1.9	0	0	1	1	0.0	1	7	24.5	0.5
TOTAL FOR SDSU		51 - 15	14	0.3	1	26	.500	314	6.2	10	0.2	13	99	1.9	0	0	1	1	0.0	1	7	24.5	0.5
TOTAL		229 - 71	55	0.2	10	150	.300	1078	4.7	30	0.1	78	444	1.9	0	0	4	4	0.0	3	26	87.0	0.4

Single Game Highs

Statistic	Value	
Kills	6	vs Fresno St. 10/07/21
Attacks	10	at Chattanooga 09/21/18, at Samford 09/22/18
Assists	31	at Chattanooga 09/21/18
Serve Aces	3	vs Western Caro. 11/02/18
Digs	13	at Samford 09/22/18, vs Fresno St. 10/07/21, at Washington 10/18/19
Blocks	1	vs Kansas St. 09/04/21
Block assists	1	at Chattanooga 09/21/18, at Samford 09/22/18, at Oklahoma 09/13/19, vs Kansas St. 09/04/21
PCT	1.000	vs New Mexico 09/30/21, vs Fresno St. 10/07/21



San Diego St. Women's Volleyball
Individual Career Summaries
All games

MUKAJ, Sara

SEASON	TEAM	SM-MP	K	K/S	E	TA	PCT	A	A/S	SA	SA/S	SE	DIG	D/S	RE	BS	BA	TB	B/S	BE	BHE	PTS	PTS/S
2021-22	SDSU	27-8	16	0.6	4	36	.333	11	0.4	7	0.3	7	16	0.6	0	1	21	22	0.8	2	1	34.5	1.3
TOTAL		27 - 8	16	0.6	4	36	.333	11	0.4	7	0.3	7	16	0.6	0	1	21	22	0.8	2	1	34.5	1.3

Single Game Highs

Statistic	Value	
Kills	7	at Sam Houston 08/28/21
Attacks	11	at Sam Houston 08/28/21
Assists	4	at UC Santa Barbara 09/03/21
Serve Aces	4	at Sam Houston 08/27/21
Digs	5	at Sam Houston 08/28/21
Blocks	4	vs Pepperdine 09/04/21, at Sam Houston 08/28/21, at UC Santa Barbara 09/03/21
Block solos	1	at UC Santa Barbara 09/03/21
Block assists	4	at Sam Houston 08/28/21, vs Pepperdine 09/04/21
PCT	.800	vs San Diego 09/11/21

O'SULLIVAN, Victoria

SEASON	TEAM	SM-MP	K	K/S	E	TA	PCT	A	A/S	SA	SA/S	SE	DIG	D/S	RE	BS	BA	TB	B/S	BE	BHE	PTS	PTS/S
2018-19	SDSU	57-24	109	1.9	54	309	.178	0	0.0	0	0.0	0	23	0.4	1	1	14	15	0.3	3	0	117.0	2.1
2019-20	SDSU	110-29	352	3.2	145	872	.237	2	0.0	0	0.0	0	57	0.5	9	14	38	52	0.5	11	0	385.0	3.5
2020-21	SDSU	53-15	172	3.2	84	453	.194	6	0.1	2	0.0	3	23	0.4	3	8	24	32	0.6	3	1	194.0	3.7
2021-22	SDSU	59-17	201	3.4	77	494	.251	8	0.1	9	0.2	12	53	0.9	1	5	28	33	0.6	5	2	229.0	3.9
TOTAL		279 - 85	834	3.0	360	2128	.223	16	0.1	11	0.0	15	156	0.6	14	28	104	132	0.5	22	3	925.0	3.3

Single Game Highs

Statistic	Value	
Kills	22	vs West Virginia 09/06/19
Attacks	43	at Boise St. 11/23/19, vs San Diego 09/11/21
Assists	3	vs Texas Southern 09/17/21
Serve Aces	3	vs New Mexico 09/30/21, vs Air Force 10/02/21
Digs	7	at Utah St. 11/21/19, vs New Mexico 09/30/21
Blocks	6	at Boise St. 03/20/21
Block solos	2	6 times
Block assists	6	vs Colorado St. 04/03/21



San Diego St. Women's Volleyball
Individual Career Summaries
All games

RURI, Kalani

SEASON	TEAM	SM-MP	K	K/S	E	TA	PCT	A	A/S	SA	SA/S	SE	DIG	D/S	RE	BS	BA	TB	B/S	BE	BHE	PTS	PTS/S
2021-22	SDSU	9-5	14	1.6	5	31	.290	0	0.0	0	0.0	1	3	0.3	1	0	5	5	0.6	0	0	16.5	1.8
TOTAL		9 - 5	14	1.6	5	31	.290	0	0.0	0	0.0	1	3	0.3	1	0	5	5	0.6	0	0	16.5	1.8

Single Game Highs

Statistic	Value	
Kills	7	vs UC Riverside 09/18/21
Attacks	13	vs UC Riverside 09/18/21
Digs	2	vs UC Riverside 09/18/21
Blocks	2	vs UC Riverside 09/18/21, vs Texas Southern 09/17/21
Block assists	2	vs Texas Southern 09/17/21, vs UC Riverside 09/18/21
PCT	.556	vs Texas Southern 09/17/21

SMITH, Natalie

SEASON	TEAM	SM-MP	K	K/S	E	TA	PCT	A	A/S	SA	SA/S	SE	DIG	D/S	RE	BS	BA	TB	B/S	BE	BHE	PTS	PTS/S
2017-18	Mich	88-29	0	0.0	0	1	.000	23	0.3	12	0.1	27	128	1.5	10	0	0	0	0.0	0	2	12.0	0.1
2018-19	Mich	105-34	2	0.0	0	3	.667	32	0.3	11	0.1	25	208	2.0	12	0	0	0	0.0	0	1	13.0	0.1
2019-20	Mich	117-32	2	0.0	1	7	.143	104	0.9	18	0.2	30	401	3.4	57	0	0	0	0.0	1	2	20.0	0.2
2021-22	SDSU	62-18	0	0.0	0	4	.000	50	0.8	9	0.1	10	256	4.1	24	0	0	0	0.0	0	2	9.0	0.1
TOTAL FOR SDSU		62 - 18	0	0.0	0	4	.000	50	0.8	9	0.1	10	256	4.1	24	0	0	0	0.0	0	2	9.0	0.1
TOTAL		372 - 113	4	0.0	1	15	.200	209	0.6	50	0.1	92	993	2.7	103	0	0	0	0.0	1	7	54.0	0.1

Single Game Highs

Statistic	Value	
Kills	1	at Dayton 09/07/19, at Iowa 09/23/18, at Purdue 11/23/19, vs Oakland 09/07/18
Attacks	2	at Dayton 09/07/19, at Northwestern 11/02/19
Assists	8	vs Illinois 11/09/19
Serve Aces	3	vs Northern Ariz. 08/30/19, vs Ohio St. 09/29/17, vs Iowa 11/13/19, at Pittsburgh 12/01/18
Digs	29	at Notre Dame 09/18/19



San Diego St. Women's Volleyball
Individual Career Summaries
All games

TAUTUA'A, Heipua

SEASON	TEAM	SM-MP	K	K/S	E	TA	PCT	A	A/S	SA	SA/S	SE	DIG	D/S	RE	BS	BA	TB	B/S	BE	BHE	PTS	PTS/S
2020-21	SDSU	49-14	99	2.0	62	313	.118	25	0.5	6	0.1	26	140	2.9	29	7	15	22	0.4	4	1	119.5	2.4
2021-22	SDSU	58-17	120	2.1	70	392	.128	26	0.4	5	0.1	21	121	2.1	11	2	22	24	0.4	3	1	138.0	2.4
TOTAL		107 - 31	219	2.0	132	705	.123	51	0.5	11	0.1	47	261	2.4	40	9	37	46	0.4	7	2	257.5	2.4

Single Game Highs

Statistic	Value	
Kills	15	vs Nevada 02/26/21
Attacks	38	vs Nevada 02/26/21
Assists	5	vs Fresno St. 10/07/21
Serve Aces	2	at Boise St. 03/20/21, at Nevada 09/23/21, vs New Mexico 02/20/21
Digs	22	vs New Mexico 02/20/21
Blocks	6	at Boise St. 03/20/21
Block solos	3	at Wyoming 03/05/21
Block assists	6	at Boise St. 03/20/21

VANDERPAN, Ashley

SEASON	TEAM	SM-MP	K	K/S	E	TA	PCT	A	A/S	SA	SA/S	SE	DIG	D/S	RE	BS	BA	TB	B/S	BE	BHE	PTS	PTS/S
2020-21	SDSU	49-14	15	0.3	12	52	.058	325	6.6	11	0.2	11	77	1.6	0	1	9	10	0.2	0	8	31.5	0.6
2021-22	SDSU	42-14	0	0.0	2	6	-.333	186	4.4	8	0.2	6	68	1.6	0	0	1	1	0.0	0	10	8.5	0.2
TOTAL		91 - 28	15	0.2	14	58	.017	511	5.6	19	0.2	17	145	1.6	0	1	10	11	0.1	0	18	40.0	0.4

Single Game Highs

Statistic	Value	
Kills	3	vs New Mexico 02/20/21, vs Nevada 02/26/21
Attacks	9	vs New Mexico 02/20/21, vs Nevada 02/26/21
Assists	40	vs New Mexico 02/20/21
Serve Aces	3	vs Nevada 02/27/21, at Boise St. 03/20/21
Digs	12	vs Nevada 02/26/21
Blocks	1	at Boise St. 03/20/21, at San Jose St. 03/27/21, at UNLV 02/04/21, vs Pepperdine 09/04/21
Block solos	1	at Boise St. 03/20/21
Block assists	2	vs Fresno St. 02/13/21, vs New Mexico 02/19/21



San Diego St. Women's Volleyball
Individual Career Summaries
All games

Page 9/9
as of Oct 12, 2021

WALKER, Andrea

SEASON	TEAM	SM-MP	K	K/S	E	TA	PCT	A	A/S	SA	SA/S	SE	DIG	D/S	RE	BS	BA	TB	B/S	BE	BHE	PTS	PTS/S
2018-19	SDSU	7-4	7	1.0	4	16	.188	0	0.0	0	0.0	0	0	0.0	0	0	5	5	0.7	0	0	9.5	1.4
2019-20	SDSU	70-23	129	1.8	45	273	.308	1	0.0	0	0.0	0	7	0.1	0	6	55	61	0.9	7	0	162.5	2.3
2020-21	SDSU	33-9	69	2.1	28	145	.283	3	0.1	0	0.0	0	4	0.1	0	3	21	24	0.7	1	0	82.5	2.5
2021-22	SDSU	24-7	35	1.5	8	67	.403	3	0.1	0	0.0	0	6	0.3	1	1	21	22	0.9	3	0	46.5	1.9
TOTAL		134 - 43	240	1.8	85	501	.309	7	0.1	0	0.0	0	17	0.1	1	10	102	112	0.8	11	0	301.0	2.2

Single Game Highs

Statistic	Value	
Kills	13	at Utah St. 11/21/19
Attacks	26	at Utah St. 11/21/19
Assists	2	at Boise St. 03/20/21, vs Air Force 10/02/21
Digs	2	at Arizona 09/17/21, at Air Force 10/19/19, vs Air Force 10/02/21, vs New Mexico 02/20/21
Blocks	6	at Utah St. 11/21/19
Block solos	2	vs Boise St. 10/24/19
Block assists	7	at Air Force 10/19/19