



SAN DIEGO STATE WOMEN'S BASKETBALL

2019-20 GAME NOTES

Ben Pearson, Assistant Media Relations Director • E-mail: ben.pearson@sdsu.edu • Office: 619-594-5547

2019-20 SCHEDULE

Date	Opponent	Time/Result
Oct. 27	Regina (Exhibition)	W, 84-52
Nov. 5	at Hawai'i	L, 58-61
Nov. 9	Towson	W, 80-72
Nov. 12	Westcliff (at Grossmont Coll.)	W, 77-56
Nov. 14	Alabama A&M	L, 53-61
Nov. 17	Cal State Fullerton	W, 55-45
Nov. 21	California	L, 48-74
Nov. 26	at UC Santa Barbara	L, 52-64
Nov. 30	Arkansas State	L, 62-71
Dec. 4	Colorado State*	W, 59-49
Dec. 7	at San Jose State*	L, 67-84
Dec. 11	San Diego	L, 47-70
Dec. 19	at California Baptist	W, 80-68
Dec. 21	at Incarnate Word	W, 57-48
Dec. 28	CSUN	L, 69-74 (OT)
Jan. 1	at Fresno State*	L, 54-79
Jan. 4	Utah State*	W, 66-62
Jan. 8	Wyoming*	W, 67-60 (OT)
Jan. 11	at Boise State*	L, 72-86
Jan. 15	Fresno State*	L, 60-65
Jan. 18	at Nevada*	L, 69-70
Jan. 22	at Wyoming*	L, 67-81
Jan. 25	UNLV*	W, 48-39
Jan. 29	New Mexico*	W, 75-74
Feb. 1	at Utah State*	W, 59-51
Feb. 8	Air Force*	L, 49-51
Feb. 12	at New Mexico*	W, 67-58
Feb. 15	Boise State*	1 p.m.
Feb. 22	at UNLV*	3 p.m.
Feb. 24	at Colorado State*	7 p.m.
Feb. 27	Nevada*	5:30 p.m.
March 1-4	MW Championships	TBA

* Mountain West game

Home games in **Bold**

All home games at Steve Fisher Court at Viejas Arena
All times local to site.

GAME NO. 27 | vs. Boise State (Saturday, February 15, 1 P.M. PT), Viejas Arena

LIVE MEDIA: Mountain West Network | Live Stats



SAN DIEGO STATE

2019-20 Record: 12-14, 7-7
Head Coach: Stacie Terry-Hutson
Seventh Year at San Diego State

TEAM LEADERS

Scoring	Taylor Kalmer - 15.2
Rebounding	Sophia Ramos - 6.0
Assists	Sophia Ramos - 3.8



BOISE STATE

2019-20 Record: 17-9, 9-5
Head Coach: Gordy Presnell
15th Year at Boise State

TEAM LEADERS

Scoring	Riley Lupfer - 12.3
Rebounding	Mallory McGwire - 8.3
Assists	Jayde Christopher - 7.7

- San Diego State (12-14, 7-7) hosts Boise State (17-9, 9-5) Saturday afternoon at 1 p.m. PT for their annual pink game. The game will be streamed on the Mountain West Network with Chris Eilo on the call.
- With a 7-7 record in Mountain West play, the Aztecs are in sixth place, a half game out of fifth. The top five teams receive a first-round bye at the MW Tournament.
- SDSU's seven wins in conference, matches their win total from a year ago when they went 7-11 and tied for seventh place.
- The Aztecs beat New Mexico 68-59 on the road Wednesday evening for their fourth win in the last five games.
- SDSU was red hot to start the game and built a 19-point lead in the first quarter and never relinquished the lead.
- The Aztecs scored 44 points in the first half against New Mexico, a season-high and led by 14 points at the half, their largest halftime lead of the year.
- Taylor Kalmer is averaging 16.4 points per game in conference play, second in the conference. She has scored in double-digits in 20 straight games, the longest streak by an Aztec in the MW era (1999-present).
- The Aztecs are shooting 43.8 percent from the field and 36.1 percent from three in conference, both are second in the MW.
- The Aztecs' overall shooting percentage of 41.9 percent would be the program's best since the 2013-14 season.
- Taylor Kalmer is top three in the conference in minutes per game (1st, 37.27), field goal attempts (2nd, 346) and field goals made (3rd, 153).
- Sophia Ramos had her streak of 26 straight made free throws snapped Wednesday. On the year, she is shooting 84.0 percent from the line, second best in the conference.
- As of Thursday, Taylor Kalmer and Sophia Ramos are second and third in the nation in total minutes played.
- Freshman Isabela Hernandez is shooting 43.5 percent (20-46) from three on the season. If she maintains that pace and reaches 50 attempts, that would be the second-best in a single season in school history.
- In conference play, Hernandez is shooting 48.1 percent from three and Monique Terry is shooting 46.3 percent.
- SDSU is top three in the MW in three-point percentage, field goal percentage defense, blocked shots, fouls per game and free throws made and attempted.
- SDSU set an all-time attendance record for a women's basketball game vs. New Mexico on Jan. 29 with 5,320 fans, topping the 5,271 that witnessed the Aztecs play No. 2 UConn in 2007.

SAN DIEGO STATE AZTECS (12-14, 7-7)

No.	Name	Pos.	Ht.	Yr.	PPG	RPG	APG	Individual Player Notes
0	Kennedi Villa	G	6-0	RS-Sr.	1.3	1.5	0.8	Shooting 50 percent from the floor... Averages just one turnover per 30 minutes.
2	Sophia Ramos	G	5-9	So.	13.8	6.0	3.8	Two-time MW Player of the Week... Had career-high 32 points and 11 rebounds vs UNM (1-29-20).
3	Mallory Adams	G/F	6-0	So.	12.8	6.0	0.8	Out for the year with injury... Most rebounds for a SDSU freshman since 1984 last year.
4	Monique Terry	F	6-2	Sr.	4.3	3.2	0.7	Shooting 41.2% from three... Moved into starting lineup after M. Adams injury.
5	Tëa Adams	G	5-9	Jr.	8.3	2.9	2.5	Second on team in steals and third in assists... Had career-high eight rebounds at CBU (12-19-19).
10	Isabela Hernandez	G/F	6-2	Fr.	3.3	1.3	0.2	Leads team in 3-point percentage (.435)... 1A Player of the Year in Washington last year... Four-star recruit.
15	Jayden Perez	G	5-8	So.	0.4	0.6	0.4	Appeared in 12 games... Appeared in 15 games last year before suffering season-ending injury.
21	Talia Sireni	G	5-9	Fr.	0.2	0.1	0.0	Scored first collegiate points at Fresno St. (1-1-20)... Averaged 29 ppg, 8 rpg & 8 apg as a HS Sr.
22	Zayn Dornstauder	C	6-3	RS-Sr.	8.1	4.8	0.1	Had 11 rebounds vs. UNM (1-29-20)... Leads team in blocks and FG percentage (.580).
24	Kiara Edwards	F	6-1	Jr.	0.5	0.8	0.1	Played career-high 16 minutes and scored five points vs. CSUN (12-28-19)... Sat out last season.
25	Taylor Kalmer	G	5-8	RS-Sr.	15.2	3.8	2.9	Second in the MW in scoring in conference play... Scored in double-digits in all but two games.
34	Baylee Vanderdoes	F	6-1	Sr.	3.7	5.4	0.5	Had double-doubles at SJSU (12-7-19) and at CBU (12-19-19)... Started every game for SDSU this season.
45	Naomi Ekwedike	F	6-6	RS-Jr.	0.8	0.6	0.0	Missed 2018-19 with injury... Shot 52.3 percent from the field in 2017-18.

Head Coach: Stacie Terry-Hutson (UT Arlington, 1998) | (Seventh Season at SDSU)

Assistant Coaches: Kevin Morrison (Cal Poly Pomona, 1994); Ciara Carl (Point Loma Nazarene, 2005); Nick Grant (Baylor, 2010)

Director of Basketball Operations: Jon Silver (UCLA, 2009) | Director of Player Personnel: Mercedes Riggs (Duke, 2016) | Graduate Assistant: Sheila Boykin (LSU, 2015)

PERSONNEL SUMMARY

Returning Starters (4):

Mallory Adams, So., G/F (12.2 ppg, 8.9 rpg, 109 made FTs)
 Téa Adams, Jr., G (10.0 ppg, 3.4 rpg, 2.0 apg)
 Zayn Dornstauder, RS-Sr., C (6.4 ppg, 4.3 rpg, 1.1 bpg)
 Sophia Ramos, So., G, (13.9 ppg, 4.5 apg, 4.4 rpg)

Starters Lost (1):

Najé Murray, G (13.7 ppg, 81 made 3-pt FGs)

Other Players Lost (3):

Arantxa Gómez Ferrer, F, (32 games, 9.2 mpg, .561 FG%)
 Loli Gomez, G, (31 games, 9.8 mpg, .400 3-pt %)
 Monica Merkovsky, F, (2 games)

Other Letterwinners Returning (4):

Jayden Perez, So., G, (15 games, 5.9 mpg)
 Monique Terry, Sr., F, (32 games, 9.8 mpg, 1.7 ppg, 1.3 rpg)
 Baylee Vanderdoes, Sr., F (3.2 ppg, 3.1 rpg, 0.6 bpg)
 Kennedy Villa, RS-So., G (32 games, 11.2 mpg, 0.5 spg)

Other Players Returning (2):

Kiara Edwards, Jr., F, Missed 2018-19 season
 Naomi Ekwedike RS-Jr., C, Missed 2018-19 season

Newcomers (3):

Isabela Hernandez, Fr., G/F, 6-2, Bellingham, Wash. (Lynden Christian)
 Taylor Kalmer*, RS- Sr., G, 5-8, Chandler, Ariz. (Oregon State)
 Talia Sireni, Fr., G, 5-9, Surrey, British Columbia, Canada (Earl Marriott Secondary School)

*Redshirted at SDSU in 2018-19

ROSTER BREAKDOWN

By Class

Seniors (4): Dornstauder, Kalmer, Terry, Vanderdoes;
Juniors (3): T. Adams, Edwards, Ekwedike; **Sophomores (4):** M. Adams, Perez, Ramos, Villa; **Freshmen (2):** Hernandez, Sireni

By State (5)/Country (2)

Arizona (2): Edwards, Kalmer; **California (2):** Vanderdoes, Villa; **New Mexico (1):** Perez;
Texas (3): M. Adams, Ramos, Terry; **Washington (2):** T. Adams, Hernandez; **Canada (2):** Dornstauder, Sireni;
Nigeria (1): Ekwedike

By Position

Centers (2): Dornstauder, Ekwedike; **Forwards (4):** M. Adams, Edwards, Terry, Vanderdoes; **Guards (7):** T. Adams, Hernandez, Kalmer, Perez, Sireni, Ramos, Villa

By Height

6-6 (1): Ekwedike; **6-3 (1):** Dornstauder; **6-2 (2):** Hernandez, Terry; **6-1 (2):** Edwards, Vanderdoes; **6-0 (2):** M. Adams, Villa; **5-9 (3):** T. Adams, Ramos, Sireni; **5-8 (2):** Kalmer, Perez

2019-20 NUMERICAL ROSTER

No.	Name	Pos.	Ht.	Yr.	Hometown (Previous School/High School)
0	Kennedi Villa	G	6-0	RS-So.	Albany, Calif. (Saint Mary's HS)
2	Sophia Ramos	G	5-9	So.	San Antonio, Texas (Incarnate Word HS)
3	Mallory Adams	G/F	6-0	So.	Frisco, Texas (Lone Star HS)
4	Monique Terry	F	6-2	Sr.	San Antonio, Texas (Brennan HS)
5	Téa Adams	G	5-9	Jr.	Kirkland, Wash. (Juanita HS)
10	Isabela Hernandez	G/F	6-2	Fr.	Bellingham, Wash. (Lynden Christian HS)
15	Jayden Perez	G	5-8	So.	Las Cruces, N.M. (Onate HS)
21	Talia Sireni	G	5-9	Fr.	Surrey, British Columbia, Canada (Earl Marriott Secondary School)
22	Zayn Dornstauder	C	6-3	RS-Sr.	Regina, Saskatchewan, Canada (Ball State/Hamilton HS (Ariz.))
24	Kiara Edwards	F	6-1	Jr.	Surprise, Ariz. (Valley Vista HS)
25	Taylor Kalmer	G	5-8	RS-Sr.	Chandler, Ariz. (Oregon State/Corona del Sol HS)
34	Baylee Vanderdoes	F	6-1	Sr.	Auburn, Calif. (Placer HS)
45	Naomi Ekwedike	C	6-6	RS-Jr.	Lagos, Nigeria (Potter's House Christian Academy (Fla.))

2019-20 ALPHABETICAL ROSTER

No.	Name	Pos.	Ht.	Yr.	Hometown (Previous School/High School)
3	Mallory Adams	G/F	6-0	So.	Frisco, Texas (Lone Star HS)
5	Téa Adams	G	5-9	Jr.	Kirkland, Wash. (Juanita HS)
22	Zayn Dornstauder	C	6-3	RS-Sr.	Regina, Saskatchewan, Canada (Ball State/Hamilton HS (Ariz.))
24	Kiara Edwards	F	6-1	Jr.	Surprise, Ariz. (Valley Vista HS)
45	Naomi Ekwedike	C	6-6	RS-Jr.	Lagos, Nigeria (Potter's House Christian Academy (Fla.))
10	Isabela Hernandez	G/F	6-2	Fr.	Bellingham, Wash. (Lynden Christian HS)
25	Taylor Kalmer	G	5-8	RS-Sr.	Chandler, Ariz. (Oregon State/Corona del Sol HS)
15	Jayden Perez	G	5-8	So.	Las Cruces, N.M. (Onate HS)
2	Sophia Ramos	G	5-9	So.	San Antonio, Texas (Incarnate Word HS)
21	Talia Sireni	G	5-9	Fr.	Surrey, British Columbia, Canada (Earl Marriott Secondary School)
4	Monique Terry	F	6-2	Sr.	San Antonio, Texas (Brennan HS)
34	Baylee Vanderdoes	F	6-1	Sr.	Auburn, Calif. (Placer HS)
0	Kennedi Villa	G	6-0	RS-So.	Albany, Calif. (Saint Mary's HS)

Head Coach: Stacie Terry-Hutson (UT Arlington, 1998), Seventh season at SDSU

Assistant Coach: Kevin Morrison (Cal Poly Pomona, 1994), Second season at SDSU

Assistant Coach: Ciara Carl (Point Loma Nazarene, 2005), Seventh season at SDSU

Assistant Coach: Nick Grant (Baylor, 2010), Sixth season at SDSU

Director of Operations: Jon Silver (UCLA, 2009; LSU 2017), Fourth season at SDSU

Director of Player Development: Mercedes Riggs (Duke, 2016), Second season at SDSU

Graduate Assistant: Sheila Boykin (LSU, 2015), Second season at SDSU

Administrative Assistant: Jordan Mottershaw (Western Oregon, 2017; Cal St. San Bernardino, 2019), First season at SDSU

2019-20 PRONUNCIATION GUIDE

<u>Téa Adams</u>	TAY-uh	<u>Talia Sireni</u>	Ta-LEE-uh Si-REN-ee
<u>Naomi Ekwedike</u>	nay-O-mee ECK-weh-DEE-kay	<u>Baylee Vanderdoes</u>	VAN-der-doze
<u>Zayn Dornstauder</u>	Zane dorn-STOU-der	<u>Kennedi Villa</u>	VILL-uh
<u>Taylor Kalmer</u>	KELL-mer	<u>Ciara Carl</u>	see-ARR-uh

SAN DIEGO STATE QUICK FACTS

GENERAL INFORMATION

Location: San Diego, Calif., 92182
 Founded: 1897
 Enrollment: 34,828
 Nickname: Aztecs
 School Colors: Scarlet and Black
 Affiliation: NCAA Division I
 Conference: Mountain West
 Home Arena (Capacity):
 Steve Fisher Court at Viejas Arena (12,414)
 President: Dr. Adela de la Torre
 Director of Athletics: John David Wicker

AZTEC BASKETBALL FACTS

First Year of Basketball: 1976-77
 All-Time Record: 665-610 (.522) / 43 seasons
 Postseason Appearances/NCAA Appearances: 12/9
 Last Postseason Appearance: 2013
 Lost to BYU (69-58) in WNIT Second Round

SDSU TEAM INFORMATION

2018-19 Record: 14-18 (.438)
 2018-19 MW Record/Finish: 7-11/t-7th
 2019 MW Tournament Record: 2-1
 2019 Final NCAA RPI: 207
 Letterwinners Returning/Lost: 8/3
 Starters Returning/Lost: 4/1
 Newcomers: 3

AZTEC BASKETBALL STAFF

Head Coach: Stacie Terry-Hutson
 Alma Mater: UT Arlington, 1998
 Career Record/Years: 73-111/Seventh Year
 Basketball Office Phone: 619-594-4095
 Assistant Coaches:
 Kevin Morrison
 Second season at SDSU
 Alma Mater: Cal Poly Pomona, 1994
 Ciara Carl
 Seventh season at SDSU
 Alma Mater: Point Loma Nazarene, 2005
 Nick Grant
 Sixth season at SDSU
 Alma Mater: Baylor, 2010
 Director of Basketball Operations: Jon Silver
 Fourth season at SDSU
 Alma Mater: UCLA, 2009
 Player Development Coordinator: Mercedes Riggs
 Second season at SDSU
 Alma Mater: Duke, 2016
 Graduate Assistant: Sheila Boykin
 Second season at SDSU
 Alma Mater: LSU, 2015
 Administrative Assistant: Jordan Mottershaw
 Athletic Trainer: Queenie Soriano
 Academic Advisor: Dr. Bre White
 Strength and Conditioning: Andrew Mitchell

SDSU MEDIA RELATIONS

Women's Basketball SID: Ben Pearson
 E-mail: ben.pearson@sdsu.edu
 Office Phone: 619-594-5547

Last Time Out (W, 68-59 at New Mexico, 2-12-20)

The Aztec women's basketball team (12-14, 7-7) built a 19-point first quarter lead at New Mexico (13-13, 4-9) and then held on to win 67-58 in front of 4,753 fans inside Dreamstyle Arena Wednesday evening.

Four Aztecs scored in double-digits, led by Taylor Kalmer's 17 points. The fifth-year senior also tied a career-high with six assists. Sophia Ramos had 16 points and six rebounds. Zayn Dornstauder and Tea Adams each had 10 points.

The Aztecs began the game on an 8-0 and 13-2 run. They would shoot 69 percent from the floor in the opening quarter and led by as much as 19 points and had three players score at least five points.

The Lobos made a 7-1 run to start the second quarter and a 6-0 run later in the quarter, but the Aztecs maintained their offensive efficiency. SDSU scored 44 first half points, a season-best, on 65 percent shooting and held a 14-point lead at the halftime break, their largest of the year.

The Aztecs' hot shooting cooled in the third quarter and the Lobos began the second half on a 12-3 run as their crowd started to get loud. New Mexico pulled within five points, but the Aztecs seemed to always have an answer to push their lead back to double-digits.

The Lobos made one final run closed the deficit to three points with 4:49 remaining, but they wouldn't score the rest of the game as SDSU forced the Lobos to miss their final seven shots. The Aztecs closed the game on a 6-0 run to secure the season sweep of New Mexico.

SDSU allowed just one made three-pointer on 17 attempts after giving up 13 made threes against the Lobos two weeks ago. Meanwhile, the Aztecs shot a season-high 53 percent (8-15) from three.

The Aztecs had seven players with at least five rebounds and held a 46-33 advantage on the glass.

New Mexico had three players score at least 10 points and were led by Ahlise Hurt's 13.

Noting the New Mexico Game

Team Notes

- SDSU has won four straight against the Lobos and six of the last seven.
- SDSU is now 7-7 in the Mountain West and just a half game out of fifth place. The top five seeds receive a first round bye in the Mountain West Tournament.
- The Aztecs scored 44 points in the first half, a season-high and led by 14 points, their largest halftime lead.
- SDSU has seven players with at least five rebounds.
- The Aztecs outrebounded the Lobos 46-33 after being -26 on the glass in their meetings two weeks ago.
- SDSU allowed just one made three-pointer on 17 attempts after giving up 13 made threes against the Lobos two weeks ago. Meanwhile, the Aztecs shot a season-high 53 percent (8-15) from three.
- The Aztecs held New Mexico to seven assists.
- SDSU held New Mexico to 10 fourth quarter points and none in the final 4:49. This tied the lowest scoring output the Aztecs have allowed in the fourth quarter.
- The Aztecs had 22 turnovers, a season-high. They had 21 against New Mexico two weeks ago.
- SDSU committed 20 fouls, tying their season-high.
- This was just the Aztecs' second win when making less free throws than their opponent (2-7).
- SDSU is 7-1 when holding their opponent under 60 points.

SAN DIEGO STATE STREAKS

Most Consecutive Starts*

	Consecutive	Total
Sophia Ramos	56	56
Tea Adams	47	55
Baylee Vanderdoes	26	55
Taylor Kalmer	26	26
Monique Terry	18	30
Mallory Adams	0	38
Zayn Dornstauder	0	17
Kennedi Villa	0	3
Naomi Ekwedike	0	1
Isabela Hernandez	0	0
Talia Sireni	0	0

Most Consecutive Games*

	Consecutive	Total
Baylee Vanderdoes	99	111
Monique Terry	58	96
Kennedi Villa	58	61
Sophia Ramos	58	58
Zayn Dornstauder	58	58
Tea Adams	46	84
Taylor Kalmer	26	26
Isabela Hernandez	26	26
Kiara Edwards	1	29
Jayden Perez	1	27
Talia Sireni	1	9
Naomi Ekwedike	0	46
Mallory Adams	0	38

Most Consecutive Games With A Point^

	Consecutive	Total
Sophia Ramos	58	58
Tea Adams	41	79
Mallory Adams	38	38
Taylor Kalmer	26	26
Monique Terry	20	58
Zayn Dornstauder	11	53
Kennedi Villa	1	23
Isabela Hernandez	1	16
Baylee Vanderdoes	0	86
Naomi Ekwedike	0	22
Kiara Edwards	0	10
Jayden Perez	0	8
Talia Sireni	0	1

*SDSU totals only

^must have played in the game

BOISE STATE SERIES

Boise State leads 9-8

Record at SDSU.....	6-3
Record at Boise State.....	2-6
Record at Neutral.....	0-0
Most Points SDSU.....	86, 2013
Most Points BSU.....	91, 2019
Largest Margin SDSU.....	41, 2013
Largest Margin BSU.....	30, 2016
Longest SDSU Win Streak.....	5
Longest BSU Win Streak.....	5
Current Streak.....	BSU 5
12-20-05.....	H.....W.....54-51
2-1-12.....	A.....W.....69-59
2-29-12.....	H.....W.....58-41
2-6-13.....	A.....W.....64-40
3-9-13.....	H.....W.....86-45
1-8-14.....	A.....L.....64-73
2-5-14.....	H.....W.....75-65
2-7-15.....	H.....W.....57-40
2-28-15.....	A.....L.....58-64
1-16-16.....	H.....L.....45-75
2-27-16.....	A.....L.....63-68
1-7-17.....	H.....W.....84-77
1-13-18.....	H.....L.....70-86
2-27-18.....	A.....L.....53-64
1-5-19.....	H.....L.....66-69
2-16-19.....	A.....L.....67-91
1-11-20.....	A.....L.....72-86

- This was the 14th time SDSU has held their opponent under 40 percent shooting (9-5).
- The Aztecs have had a better field goal percentage than their opponent in all 12 of their wins.
- SDSU is 9-2 when leading or being tied at the half, 10-2 when leading or being tied at the end of the third quarter and 12-1 when leading or being tied with five minutes left.

Player Notes

- Taylor Kalmer scored 17 points and has now scored in double-digits in 20 straight games, the longest streak for an Aztec in the Mountain West era (1999-present).
- Kalmer tied a career-high with six assists and has now had at least three assists in eight of her last nine games.
- Tea Adams had 10 points, snapping a streak of eight straight games with less than 10 points. She scored in double-digits in nine of SDSU's first 17 games.
- Zayn Dornstauder has a plus/minus of +17 in just 18 minutes, a team-high.
- Sophia Ramos has scored in double-digits in 10 of her last 11 games.
- Ramos had her streak of 26 consecutive made free throws snapped. She is second in the conference with 84 percent shooting from the line.
- Baylee Vanderdoes has had at least five rebounds in seven of the last eight games.
- Kennedy Villa tied a career-high with five rebounds.

Opponent Notebook (Boise State)

- The Broncos are 17-9 on the year and 9-5 in conference (third place).
- They went 28-5 last year and 16-2 in conference and won the Mountain West regular season and tournament championship.
- They are just 6-5 on the road.
- They shoot 44.8 percent from the field, first in the conference.
- They average 16.4 assists per game, which is tops in the conference and ninth in the nation. They are led by Jayde Christopher's 7.7 dimes per game, which is second in the nation.
- The Broncos have four players averaging between 10.3 and 12.3 points per game.
- Riley Lupfer has made 80 three-pointers, the fourth most in the nation.
- Oregon transfer Mallory McGwire leads the team rebounding (8.3).
- Head coach Gordy Presnell (15th year) has led BSU to the postseason seven times. He has 684 career wins and his teams have had a winning record in 28 of his 32 years coaching.

Series Notes

- Boise State leads the all-time series 9-8.
- The Broncos have won the last five meetings and eight of the last nine.
- During the Broncos' five game win streak against SDSU, four of those wins were by double-digits.
- Boise State is averaging 88.5 points against SDSU over their last two games.
- SDSU is 6-3 all time against Boise State at home.
- Their first (and only) meeting before BSU joined the Mountain West was Dec. 20, 2005, a 54-51 SDSU win.
- The Aztecs won the first five meetings, but are 3-9 since.

Aztecs Bringing in Five New Players Next Season

The Aztecs will have five newcomers next season, four incoming freshmen and Mercedes Staples, a mid-year transfer from Minnesota.

Asia Avinger | 5'7" | Point Guard | Rosary HS | Cerritos, Calif.

Coach Terry-Hutson's take: "She is a dynamic pass-first point guard who is quick off the dribble and tenacious on defense."

Why Avinger chose SDSU: "I knew in my heart that this is the place I wanted to be. I want to be part of creating something special and I see great success for the program in the future. I knew I would have a great education by choosing San Diego State, but I also have never met a coaching staff so genuine and hardworking as the ones at SDSU."

SDSU RECORD WHEN...

Playing at home.....	8-7
Playing on the road.....	4-7
Playing a night game (5 p.m. or later).....	5-7
Playing a day game.....	7-7
Leading or tied at the end of the 1st quarter.....	7-3
Trailing at the end of the 1st quarter.....	5-11
Leading or tied at halftime.....	9-2
Trailing at halftime.....	3-12
Leading or tied at the end of the 3rd quarter.....	10-2
Trailing at the end of the 3rd quarter.....	2-12
Leading or tied with 5:00 minutes remaining.....	12-1
Trailing with 5:00 minutes remaining.....	0-13
In overtime.....	1-1
Scoring less than 50 points.....	1-3
Scoring 50-59 points.....	4-4
Scoring 60-69 points.....	3-6
Scoring 70-79 points.....	2-1
Scoring 80 or more points.....	2-0
Opponent scores less than 50 points.....	4-0
Opponent scores 50-59 points.....	3-1
Opponent scores 60-69 points.....	3-4
Opponent scores 70-79 points.....	2-6
Opponent scores 80 or more points.....	0-3
FG% .500 or above.....	1-3
FG% .400-.499.....	8-4
FG% under .400.....	3-7
Opponent FG% .500 or above.....	0-1
Opponent FG% .400-.499.....	3-8
Opponent FG% under .400.....	9-5
Better shooting %.....	12-5
Worse shooting %.....	0-9
More FT attempts.....	9-6
Fewer FT attempts.....	3-6
Same FT attempts.....	0-2
More FTs made.....	10-5
Fewer FTs made.....	2-7
Same FTs made.....	0-2
More rebounds.....	7-4
Fewer rebounds.....	5-10
Same rebounds.....	0-0
More turnovers.....	7-10
Fewer turnovers.....	4-3
Same turnovers.....	1-1
More assists.....	7-3
Fewer assists.....	4-11
Same assists.....	1-0
More steals.....	3-3
Fewer steals.....	7-10
Same steals.....	2-1
Have 20+ point scorer.....	5-5
Don't have 20+ point scorer.....	7-9
Have 0-1 players with 10+ points.....	0-0
Have 2 players with 10+ points.....	5-3
Have 3 players with 10+ points.....	3-8
Have 4 or more players with 10+ points.....	4-3

SDSU STREAKS

Last 5 games.....	4-1
Last 10 games.....	5-5
Longest winning streak.....	3
Longest losing streak.....	4
Current streak.....	Won 1

Avinger is a four-star recruit and received a scout's grade of 95 by ESPN. She is ranked No. 68 in the country and No. 19 for her position according to ESPN. She had over 20 DI offers.

Last season she led Rosary High School to a 27-8 record while capturing the CIF State Division One championship. She scored 24 points in the championship game and averaged 12.1 points, 7.7 rebounds and 6.3 assists on the year.

An athletic lead guard who can score inside and out, Avinger has made the All-CIF Southern Section team each of the last two years. Last season, she was named to the Max Preps All-California Third team, the Los Angeles Times All-Area Team, the Orange County Register All-County First Team.

As a sophomore, she helped Los Alamitos High School win the Sunset League and advance to the CIF Division I semifinals. After the season, she was named her league's MVP and to the All-CIF Southern Section team.

Kamaria Gipson | 6'3" | Center | A.C. Jones HS | Beeville, Texas

Coach Terry-Hutson's take: "Kamaria will bring tremendous athleticism to the team. She can really rebound, has great timing as a shot blocker and has untapped potential on the offensive end. She comes from a winning program and will be a great fit for our program over the next four years."

Why Gipson chose SDSU: "I picked SDSU because of the program's vision going forward and the plan they have for my development. The coaching staff made San Diego feel like a home away from home and I meshed well with my future teammates. I hope for great things in the future as an Aztec."

Kamaria (Cuh-MARE-uh) Gipson has scored over 2,500 points in her high school career. This season she is averaging 21.2 points, 15.2 rebounds and 5.7 blocks per game and has helped A.C. Jones High School (Beeville, Texas) to a 28-2 record so far this year after leading them to a program record 30 wins and a Bi-District championship a season ago.

Mercedes Staples | 5'10" | Guard | Viewmont HS | University of Minnesota | Centerville, Utah

Coach Terry-Hutson's take: "She is an incredible shooter and a dynamic offensive threat that brings power five experience to our team. She has a vivacious personality that will fit in great with our program and culture."

Why Staples chose SDSU: "I had a great connection between the players and coaches which made my decision even easier. I am excited to be a part of SDSU and its community and look forward to making those around me successful."

Staples appeared in 25 games and made two starts for the Golden Gophers as a freshman (2018-19) averaging 3.4 points in 14.8 minutes. This season started the season opener for Minnesota and played in eight games before deciding to transfer.

A four-star 2018 recruit out of Viewmont High School in Bountiful, Utah, Staples was ranked as the No. 64 player in the country by ESPN.com. As a senior, she averaged 22.4 points, 4.3 assists, 3.8 rebounds and 2.8 steals and helped her school reach the Class 5A quarterfinals. After the season she was named a First Team All-State selection by the Salt Lake Tribune.

Kimberly Villalobos | 6'0" | Guard/Forward | Chaminade HS | Van Nuys, Calif.

Coach Terry-Hutson's take: "She is a versatile guard who can do a little of everything. She can pass, lock down on defense and will bring athleticism to the team."

Why Villalobos chose SDSU: "The first time I visited SDSU, I knew I was heading home but it never felt like I was leaving home."

Villalobos, who received over 10 DI offers, averaged 19 points per game last season at Bishop Alemany High School.

She has played with the El Salvador national team and was recently named the top Salvadoran basketball player in the US.

Villalobos plays for Team Taurasi for the California Storm AAU Team on the prestigious Nike circuit with Asia Avinger.

Flera "Flo" Vinerte | 6'2" | Forward | New Hope Academy | Riga, Latvia

Coach Terry-Hutson's take: "Flo can score inside & out, is a great passer and has a great feel for the game."

Why Vinerte chose SDSU: "I used to write "California Dreamin'" on my shoes so when an opportunity arose to join San Diego State, I didn't have to think twice about it, because I had the chance to go somewhere I've always wanted to go to."

Vinerte, a native of Riga, Latvia, is a skilled post with great passing skills. She helped the New York Military Academy win a Class E State Championship last season before transferring to the New Hope Academy (Landover Hills, Md.), who won last year's national championship, for her senior year.

Vinerte, who has a nice shooting touch from outside, played for Latvia in the U-17 FIBA World Championships. among true freshmen.

2019-20 Media Information

All media requests for interviews with the coaching staff or student-athletes should be directed to Ben Pearson at ben.pearson@sdsu.edu. Please submit your requests with a minimum of 24 hours notice. During the season, head coach Stacie Terry-Hutson and the players are generally available to meet with the media following each workout, as requested.

There will be no interviews on game days until postgame. All workouts will take place at the Jeff Jacobs JAM Center with a few exceptions. Media wishing to attend practice should contact the Aztec media relations department at least one day in advance. Media desiring to cover Aztec practices on campus can park in PS7 and obtain a special parking permit from the SDSU athletic media relations office. Media parking via permit only will be provided for all home games in PS12, adjacent to Viejas Arena.

2019-20 MOUNTAIN WEST STANDINGS

As of Feb. 12

	MW	Overall
Fresno State	14-0	21-4
San José State	9-4	15-9
Boise State	9-5	17-9
UNLV	8-5	12-12
Wyoming	7-6	11-11
San Diego State	7-7	12-14
Nevada	6-8	13-12
Colorado State	5-8	11-13
New Mexico	4-9	13-13
Air Force	3-10	5-19
Utah State	2-12	7-18

AZTECS VS. THE MOUNTAIN WEST

Air Force	36	11
Boise State	8	9
Colorado State	29	29
Fresno State	27	23
Nevada	11	12
New Mexico	32	34
San José State	23	10
UNLV	29	31
Utah State	9	6
Wyoming	29	31
Total	233	196

AZTECS TOP 100 IN THE NATION

As of Feb. 12

Category	Team Value	Rank
Personal Fouls/Game	14.0	20
Three-Pt FG Percentage	.351	41
Turnovers/Game	14.2	63
Rebounds	931	81
Free Throws Made	293	89
Field Goal Percentage	.419	91
Fewest Fouls	363	92
FG Percentage	.418	94

Individual

Category	Player	Value	Rank
Minutes	Taylor Kalmer	968:55	2
Minutes	Sophia Ramos	937:33	3
Minutes/Game	Taylor Kalmer	37.27	17
FGs Made	Taylor Kalmer	153	40
FG Attempts	Taylor Kalmer	346	44
FT Percentage	Sophia Ramos	.840	44
Minutes/Game	Sophia Ramos	36.06	47
FTs Made	Sophia Ramos	89	62
Points	Taylor Kalmer	394	69
Assists	Sophia Ramos	98	91

CAREER HIGHS

Points
8, at California Baptist (12-19-19)

Rebounds
5, Twice
Last: at New Mexico (2-12-20)

Assists
3, Four times
Last: at Incarnate Word (12-21-19)

Steals
3, at Utah State (2-1-20)

Blocks
3, vs. Fresno State (1-23-19)

Field Goals
4, at California Baptist (12-19-19)

Field Goal Attempts
4, Four times
Last: vs. Utah State (1-4-20)

3-Point Field Goals
1, vs. Colorado State (12-4-19)

3-Point Field Goal Attempts
1, Three times
Last: vs. Fresno State (1-15-20)

Free Throws
2, Two times
Last: vs. Westcliff (11-12-19)

Free Throw Attempts
2, Multiple times
Last: at Nevada (1-18-20)

MISC. CAREER STATS

Double-figure scoring games: 0

Double-figure rebounding games: 0



#0 KENNEDI VILLA

RS Sophomore
6-0
Guard
Albany, Calif.
Saint Mary's HS

2018-19 Mountain West All-Academic Team

As a RS Freshman (2018-19 Season)

Appeared in all 32 games, making two starts... Averaged 0.9 points, 1.3 rebounds, and 0.5 assists in 11.2 minutes per game... Was 12-for-33 from the field (.364)... Scored career-high five points vs. UC Santa Barbara (12-21-18)... Grabbed a career-high four rebounds on three occasions, including in back-to-back games (at SJSU and at Fresno St.)... Had three blocks vs. Fresno State (1-23-19)... Played 10 or more minutes in 20 games and 20 or more minutes three times.

As a Freshman (2017-18 Season)

Appeared in three games before suffering an injury... Received medical redshirt... Scored one point and dished out one assist in her collegiate debut vs. Presbyterian (11-10-17)... Had two rebounds vs. Tulane (11-25-17)... Played season-high six minutes vs. Hope International (12-10-17).

At Saint Mary's High School

A three-star recruit according to ESPN, earning a scouts grade of 88 at Saint Mary's High in Albany, Calif. ... Named to the *NorCal Sports TV* Girls West All-Star team her senior season alongside former Aztec Najé Murray ... Also named an *All-Bay Area News Group* honorable mention that year after pacing Saint Mary's with 1.9 assists per game while ranking second with 10.6 points and 2.7 steals per game ... Saint Mary's advanced to the 2017 CIF Division III Northern regional championship game, finishing the year 22-11 ... As a junior, averaged a team-best 11.3 points per game alongside 5.1 rebounds per game ... Averaged 8.4 points per game to rank second on the team as a sophomore, tacking on 5.3 rebounds per game with 70 total steals and 68 assists.

Personal

Kennedi Villa was born in Oakland, Calif. to Carrie and Joe Villa ... Has one brother, Joe Jr. ... Majoring in communications.

CAREER STATISTICS

Season	gp-gs		Total		3-Point		F-Throws		Rebounds				Scoring							
	gp	gs	fg-fga	pct	fg-fga	pct	ft-fta	pct	off	def	tot	avg	pf	fo	ast	to	blk	stl	pts	avg
2017-18	3	0	0	.000	0	.000	1	.500	0	3	3	1.0	1	0	1	0	0	0	1	0.3
2018-19	32	2	12	.364	0	.000	5	.385	15	28	43	1.3	39	0	16	21	5	16	29	0.9
2019-20	26	1	15	.500	1	.333	4	.400	10	29	39	1.5	43	1	22	14	6	9	35	1.3
TOTAL	61	3	27	.429	1	.333	10	.400	25	60	85	1.4	83	1	39	35	11	25	65	1.1

CAREER HIGHS

Points
32, vs. New Mexico (1-29-20)

Rebounds
11, vs. New Mexico (1-29-20)

Assists
9, Twice
Last: vs. UNLV (1-25-20)

Steals
5, Twice
Last: vs. UNLV (1-25-20)

Blocks
2, Four times
Last: vs. CSUN (12-28-19)

Field Goals
10, Twice
Last: at CSUN (12-9-18)

Field Goal Attempts
24, at CSUN (12-9-18)

3-Point Field Goals
7, at CSUN (12-9-18)

3-Point Field Goal Attempts
13, at CSUN (12-9-18)

Free Throws
16, vs. New Mexico (1-29-20)

Free Throw Attempts
16, vs. New Mexico (1-29-20)

MISC. CAREER STATS

Double-figure scoring games: 46

Double-figure rebounding games: 3

Double-Doubles: 3



#2 SOPHIA RAMOS

Sophomore
5-9
Guard
San Antonio, Texas
Incarnate Word HS

Mountain West All-Tournament Team (2019)
Mountain West All-Freshman Team (2018-19)

As a Freshman (2018-19 Season)

Hit the ground running as a true freshman, leading the team in scoring (13.9 ppg), assists (4.5 apg) and three-point percentage (.362)... Started 31 of 32 games and averaged 34.0 minutes, second on the team and fifth in the MW... Was second on the team with 4.4 rebounds and 1.3 steals per game... Was named to the Mountain West all-freshman team after leading all MW freshmen in scoring and assists... Averaged the most points and assists by a SDSU freshman since 1992... Became the first Aztec (of any class) to lead the team in points and assists since 1997... Was the only true freshman in the nation to average 13.0 points, 4.0 rebounds and 4.5 assists per game... Shot 44.3 percent from the field, best on the team (min. 100 made FG)... Was 80 percent (68-85) from the FT line, seventh-best in the MW... Led the team with a 1.3 assist-to-turnover ratio, which was the second-best among freshmen in the MW... Named to the Mountain West all-tournament team after averaging 16.7 points and committing just two turnovers across three games and 112 minutes... Scored 10 or more points in 27 of SDSU's 32 games... Led the team in assists 25 times... Scored 28 points at CSUN (12-9-18), including seven three-pointers (six in the fourth quarter), with seven rebounds and six assists. Her six threes in the fourth quarter set a school record... Scored 24 points on 10-for-17 shooting at San Diego (11-28-18)... Had a career-high nine assists along with nine points and seven rebounds against California Baptist (11-23-18)... Had 20 points, including 15 in the fourth quarter, and zero turnovers and hit the game-tying shot with 2.6 seconds left in regulation to force OT against No. 2 seed New Mexico in the MW Tournament quarterfinals (3-11-19).

At Incarnate Word High School

A four-star recruit according to Prospects Nation ... She scored over 2,000 career points at Incarnate Word High School in San Antonio, where she was a four-time Texas Association of Private and Parochial Schools (TAPPS) All-State and All-District first-team pick ... Two-time *Express News* Super Team member ... Four-time *Express News* All-Area Private Schools MVP ... As a senior averaged 22.4 points, 6.2 rebounds, 4.1 assists and 3.7 steals and was named to the TAPPS 6A state all-tournament team ... As a junior, averaged 16.6 points, 8.2 rebounds, 4.2 assists and 2.9 steals per game, leading Incarnate Word to a 27-6 record ... Ramos played AAU for SA Finest and coach Ray Caldwell. The team won the Super 64 National Championship with a buzzer-beater in 2017.

Personal

Born in San Antonio to Nicola and Gavino Ramos ... Enjoys swimming, traveling and playing tennis ... Plans to major in kinesiology with hopes of having a career in physical therapy or coaching.

CAREER STATISTICS

Season	gp-gs		Total		3-Point		F-Throws		Rebounds				Scoring								
	min/avg	fg-fga	pct	fg-fga	pct	ft-fa	pct	off	def	tot	avg	pf	fo	ast	to	blk	stl	pts	avg		
2018-19	32-31	1089/34.0	.443	168-379	.443	42-116	.362	68-85	.800	20	122	142	4.4	56	0	144	111	14	43	446	13.9
2019-20	26-26	939/36.1	.406	121-298	.406	29-94	.309	89-106	.840	14	142	156	6.0	44	0	98	84	10	35	360	13.8
TOTAL	58-57	2028/35.0	.427	289-677	.427	71-210	.338	157-191	.822	34	264	298	5.1	100	0	242	195	24	78	806	13.9

CAREER HIGHS

Points
20, Twice
Last: vs. [10] Air Force (3-10-19)

Rebounds
16, vs. [2] New Mexico (3-11-19)

Assists
3, vs. New Mexico (2-6-19)

Steals
3, vs Incarnate Word (11-18-18)

Blocks
2, at San Diego (11-28-18)

Field Goals
8, Twice
Last: vs. [10] Air Force (3-10-19)

Field Goal Attempts
18, vs. Alabama A&M (11-14-19)

3-Point Field Goals
3, vs. San José State (2-2-19)

3-Point Field Goal Attempts
7, at UC Santa Barbara (11-26-19)

Free Throws
11, vs. California Baptist (11-23-18)

Free Throw Attempts
15, vs. California Baptist (11-23-18)

MISC. CAREER STATS

Double-figure scoring games: 25

Double-figure rebounding games: 16

Double-Doubles: 9



#3 MALLORY ADAMS

Sophomore
6-0
Guard/Forward
Frisco, Texas
Lone Star HS

All-Mountain West Honorable Mention (2018-19)
Mountain West All-Freshman Team (2018-19)

As A Freshman (2018-19)

Made an immediate impact in her first year on the Mesa... Started all 32 games and averaged a team-high 8.9 rebounds and 12.2 points... Was an all-Mountain West honorable mention selection and was named to the Mountain West All-Freshman Team... Her 8.9 rebounds per game were the most by an Aztec freshman since 1984 and the most for any Aztec since 2000... She was third in the MW in rebounding and led all freshmen... Was 109-for-156 from the free throw line... Her 109 made free throws were the most by an Aztec freshman since 1984 and the 10th most in a single-season in school history... Reached double-figures in points 19 times and had 10 or more rebounds on 15 occasions... Led the Aztecs in scoring 10 times and in rebounds in 22 of SDSU's 32 games... Scored 20 points twice; vs. Boise State (1-5-19) and against Air Force in the first round of the MW Tournament (3-5-19)... Had 16 rebounds against New Mexico in the quarterfinals of the MW Tournament, the most ever by an Aztec in the MW Tournament... Averaged 13.3 points and 9.3 rebounds per game in SDSU's three MW Tournament games... Scored 10 or more points in 13 of SDSU's final 17 games... Was third on the team with 22 made three-pointers (22-69, .319)... Averaged 32.0 minutes per game, third on the team... Was 11-for-15 from the FT line against California Baptist (11-23-18), tying her for the fifth most made free throws in a game in program history.

High School

A four-star recruit according to Prospects Nation, she earned an ESPN scout's grade of 90 as the 14th-ranked wing in her class... Scored over 2,000 points in high school and was named the Dallas-Fort Worth High School Player of the Year... Averaged 22.8 points and 10.3 rebounds per game in her senior year, leading Lone Star High School to a 34-5 overall record and a perfect 14-0 in the district... As a junior, she garnered Texas Association of Basketball Coaches (TABC) and Texas Girls Coaches Association (TGCA) all-state and all-region honors and was the District 13-5A Offensive MVP after averaging 18.9 points and 9.0 rebounds en route to Lone Star's district championship... She attended Centennial High School her first two years where she was the District 9-5A MVP and a TGCA all-state and TABC all-region honoree... As a freshman, she was named the 2015 District 9-5A Newcomer of the Year after averaging 18 points and 10 boards per game... Adams played AAU for Cy-Fair EYB L... She piqued interest from a number of schools, including SMU, Kansas, Alabama, Tulsa, Houston, New Mexico, Rutgers and New Mexico State among others... Was a member of the National Honor Society.

Personal

Born in Bryant, Ark.... Parents are Michelle and Gary Adams... Adams' older sister, McKenzie, was a guard on SMU's women's basketball team... Her father, Gary, played four years of football at Arkansas and her mother, Michelle, played volleyball at Missouri Southern State... Her favorite athletes are Kobe Bryant and Skylar Diggins... Enjoys watching movies, swimming and going to the beach.

CAREER STATISTICS

Season	gp-gs		Total		3-Point		F-Throws		Rebounds				Scoring							
	min	avg	fg-fga	pct	fg-fga	pct	ft-fta	pct	off	def	tot	avg	pf	fo	ast	to	blk	stl	pts	avg
2018-19	32-32	1024/32.0	129-331	.390	22-69	.319	109-156	.699	101	184	285	8.9	61	1	30	45	13	18	389	12.2
2019-20	6-6	191/31.8	24-76	.316	6-22	.273	23-33	.697	13	23	36	6.0	8	0	6	8	1	4	77	12.8
TOTAL	38-38	1215/32.0	153-407	.376	28-91	.308	132-189	.698	114	207	321	8.4	69	1	36	53	14	22	466	12.3

CAREER HIGHS

Points
14, vs. Wyoming (1-8-20)

Rebounds
10, vs. Fresno State (1-15-20)

Assists
4, vs. Wyoming (1-8-20)

Steals
2, vs. Biola (12-28-16)

Blocks
3, vs. Air Force (2-8-20)

Field Goals
5, Twice
Last: Wyoming (1-8-20)

Field Goal Attempts
12, vs. Wyoming (1-8-20)

3-Point Field Goals
4, vs. Wyoming (1-8-20)

3-Point Field Goal Attempts
11, vs. Wyoming (1-8-20)

Free Throws
3, vs. Air Force (1-12-19)

Free Throw Attempts
4, Twice
Last: vs. Air Force (1-12-19)

MISC. CAREER STATS

Double-figure scoring games: 4

Double-figure rebounding games: 1



#4 MONIQUE TERRY

Senior
6-2
Forward
San Antonio, Texas
Brennan HS

2017-18 Mountain West All-Academic Team

As a Junior (2018-19 Season)

Appeared in all 32 games and made one start... Averaged 0.9 points and 1.2 rebounds in 8.8 minutes per game... Shot .389 from the field (21-54) and .462 from three (6-13)... 19 of her 41 rebounds were offensive... Had career-high 12 points on a 5-for-5 shooting vs. Incarnate Word (11-18-18)... Scored eight points on 3-for-3 shooting and grabbed four rebounds at UC Irvine (12-7-18)... Had career-high three assists against Fresno State (Jan. 23)... Scored in 13 games... Played 10 or more minutes in 17 games, including a span of six consecutive games (Dec. 7-Jan. 12).

As a Sophomore (2017-18)

Limited to 10 games due to injury... Scored in four games, totaling 10 points on 4-for-5 shooting ... Had season-highs in points (4) and rebounds (3) at Arizona (12-3-17) ... Had career-high two blocks vs. Hope International (12-10-17).

As a Freshman (2016-17)

Appeared in 28 of the Aztecs' 30 games, making 10 starts ... Started 10 of 11 games between Nov. 27 and Jan. 14, including four of five to open conference play ... Second among freshmen in scoring (2.7/gm), rebounding (2.0/gm), assists (0.1/gm) and steals (0.25/gm) ... Best offensive output came in a win against Biola (12-28-16), shooting 4-for-6 for eight points and grabbing three offensive boards in a season-high 23 minutes ... Pulled down a season-best five rebounds in the game prior at Cal State Fullerton (12-22-16) ... Dished out two of three assists on the year in the final game of the Seton Hall Thanksgiving Classic, a win over Central Connecticut (11-27-16) ... Logged double-digit minutes in 19 games, playing 20-or-more minutes in four straight games from Dec. 28 to Jan. 7 ... Named to the MW all-academic team and earned SDSU scholar-athlete distinction.

At Brennan High School

Graduated from Brennan High School in her hometown of San Antonio, Texas ... A McDonald's All-American nominee who helped her squad to a pair of appearances in the University Interscholastic League (UIL) 4A state tournament ... Was the lone player in District 27-6A to average a double-double during her junior campaign, posting 10.3 points and 10.4 rebounds per game while leading the district with a .540 field-goal percentage ... Was named the District 27-6A defensive player of the year and garnered all-region accolades ... Also served as team captain and landed on the Northside Independent School District's (NISD) all-tournament team ... Earned a scouts grade of 89 and was rated a three-star recruit by *espnW* ... Drew interest on the recruiting trail from Utah State, Houston, Tulsa, Western Kentucky, Arkansas State and Denver ... Received District 6A all-academic distinction and was a three-year National Honor Society member.

Personal

Born in Odessa, Texas ... Parents are Steven and Elizabeth Terry ... Enjoys reading, shopping and traveling in her spare time ... Lists center Joakim Noah, linebacker Clay Matthews and three-time Naismith Women's College Player of the Year Breanna Stewart as her favorite athletes ... Majoring in geological sciences at SDSU.

CAREER STATISTICS

Season	gp-gs	min/avg	Total		3-Point		F-Throws		Rebounds				Scoring							
			fg-fga	pct	fg-fga	pct	ft-fita	pct	off	def	tot	avg	pf	fo	ast	to	blk	stl	pts	avg
2016-17	28-10	344/12.3	33-62	.532	0-3	.000	10-19	.526	19	38	57	2.0	38	0	3	16	3	7	76	2.7
2017-18	10-0	62/6.2	4-5	.800	0-0	.000	2-2	1.000	6	7	13	1.3	9	0	0	3	2	1	10	1.0
2018-19	32-1	313/9.8	21-54	.389	6-13	.462	7-10	.700	19	22	41	1.3	24	0	13	16	2	9	55	1.7
2019-20	26-19	511/19.7	41-97	.423	21-51	.412	8-14	.571	13	70	83	3.2	40	0	20	27	9	7	111	4.3
TOTAL	96-30	1230/12.8	99-218	.454	27-67	.403	27-45	.600	57	137	194	2.0	111	0	36	62	16	24	252	2.6

CAREER HIGHS

Points
21, at Cal State Fullerton (11-15-18)

Rebounds
8, Twice
Last: at California Baptist (12-19-19)

Assists
8, vs. Arkansas State (11-30-19)

Steals
5, vs. New Mexico (2-6-19)

Blocks
2, at San José State (1-10-18)

Field Goals
9, vs. Hope International (12-10-17)

Field Goal Attempts
18, vs. [2] New Mexico (3-11-19)

3-Point Field Goals
3, vs. Arkansas State (11-30-19)

3-Point Field Goal Attempts
7, vs. Arkansas State (11-30-19)

Free Throws
8 vs. Colorado State (12-4-19)

Free Throw Attempts
11, vs. [2] New Mexico (3-11-19)

MISC. CAREER STATS

Double-figure
scoring games: 28

Double-figure
rebounding games: 0



#5 TÉA ADAMS

Junior
5-9
Guard
Kirkland, Wash.
Juanita HS

2017-18 Mountain West All-Academic Team

As a Sophomore (2018-19 Season)

Made huge strides in her second season on the Mesa... Started all 29 games she appeared in, averaging 10.0 points, 3.4 rebounds and 2.0 assists in 27.8 minutes per game... Scored 10 or more points 17 times and was SDSU's leading scorer on six occasions... Began the year by scoring in double-digits in five straight games... Had a stretch of six consecutive games with 10 or more points in conference play... Hit a game-winning bucket in the final seconds twice; vs. Hawai'i (11-9-18) and vs. San Jose State (2-2-19)... Had a career-high 21 points and was a perfect 7-for-7 from the FT line at Cal State Fullerton (11-5-18)... Scored 18 points vs. New Mexico in the MW Tournament quarterfinals (3-11-19)... Had a career-high five steals vs. New Mexico (2-6-19)... Was third on the team in assists (58) and steals (42).

As a Freshman (2017-18)

Appeared in 29 games off the bench during her freshman campaign, averaging 16.6 minutes per game... Averaged 4.6 points, 1.8 rebounds and 1.6 assists per game... Had her best game of the season against Hope International (12-10-17) with season-highs in points (20 on 9-for-13 shooting), rebounds (8), assists (7) and steals (4) in just 22 minutes... Had 10 points against Fresno State (2-7-18) on 4-for-8 shooting... Had seven points and five assists against New Mexico (1-20-18)... Was third on team in assists (47) and fourth in steals (22)... Played at least 13 minutes in all but three games... Named SDSU scholar-athlete and to the Mountain West All-Academic Team.

At Juanita High School

A three-star recruit ranked No. 22 among point guards in her class according to ESPN with a 90 scouts grade... Finished her four-year career at Juanita High as the program's all-time leading scorer with 1,835 career points, leading the team in scoring each season... As a senior, was a first-team All-3A/2A KingCo Conference honoree, her fourth consecutive all-conference honor, and was a *Seattle Times* Class 3A first team pick following career-high tallies in points (22.5), assists (3.3), rebounds (4.1) and steals (4.7)... A 2016 All-USA Western Washington Preseason Girls Basketball Team honorable mention and KingCo 3A/2A First Team pick after recording 20.0 points per game... Named to the 2015 All-USA Western Washington Preseason Girls Basketball first team and captured KingCo 2A/3A Co-MVP and Defensive Player of the Year accolades as a sophomore... Collected All-KingCo 2A/3A first-team honors her freshman year.

Personal

Téa Adams was born in Kirkland, Wash., to Erika and Sam Adams... Sam was a three-year starter on Texas A&M's football team and a member of the Aggies' track team, getting inducted into the school's Hall of Fame in 2001... Sam, a three-time Pro Bowl defensive tackle, was a first-round pick of the Seattle Seahawks in 1994, for whom he played six seasons, and also played for Baltimore, Oakland, Buffalo, Cincinnati and Denver, winning two AFC

CAREER STATISTICS

Season	gp-gs min/avg		Total		3-Point		F-Throws		Rebounds				Scoring							
	gp-gs	min/avg	fg-fga	pct	fg-fga	pct	ft-fta	pct	off	def	tot	avg	pf	fo	ast	to	blk	stl	pts	avg
2017-18	29-0	482/16.6	51-182	.280	6-45	.133	26-39	.667	7	46	53	1.8	48	1	47	41	4	22	134	4.6
2018-19	29-29	805/27.8	112-293	.382	4-12	.333	63-106	.594	21	79	100	3.4	61	1	58	63	6	42	291	10.0
2019-20	26-26	705/27.1	78-202	.386	20-64	.313	40-56	.714	8	68	76	2.9	56	2	66	52	5	27	216	8.3
TOTAL	84-55	1992/23.7	241-677	.356	30-121	.248	129-201	.642	36	193	229	2.7	165	4	171	156	15	91	641	7.6

CAREER HIGHS

Points
16, vs. Westcliff (11-12-19)

Rebounds
5, vs. Cal (11-21-19)

Assists
1, Many times
Last: vs. New Mexico (1-29-20)

Steals
1, Three times
Last: vs. UNLV (1-25-20)

Blocks
2, vs. Arkansas State (11-30-19)

Field Goals
5, vs. Westcliff (11-12-19)

Field Goal Attempts
12, vs. Westcliff (11-12-19)

3-Point Field Goals
4, vs. Westcliff (11-12-19)

3-Point Field Goal Attempts
7, UNLV (1-25-20)

Free Throws
2, Twice
Last: at UC Santa Barbara (11-26-19)

Free Throw Attempts
2, Many times
Last: at Boise State (1-11-20)

MISC. CAREER STATS

Double-figure scoring games: 3

Double-figure rebounding games: 0



#10 ISABELA HERNANDEZ

Freshman

6-2

Guard/Forward

Bellingham, Wash.

Lynden Christian HS

At Lynden Christian High School

A four-star recruit according to Prospects Nation, Hernandez was named the 1A State Player of the Year in Washington after her senior year... As a senior, averaged 13.9 points, 7.4 rebounds, 2.3 assists, 1.3 steals and 1.0 blocks per game... As a junior, posted averages of 13.0 points and 5.3 rebounds while shooting 50 percent from the field and 88 percent from the charity stripe... She helped Lynden Christian (Bellingham, Wash.) win the state championship in 2016 and 2018 (29-0)... Helped the Lyncs qualify for the state championship game three times in her four years... Had a game where she knocked down seven three-pointers in her senior year... Was an all-state selection her junior and season seasons, as well as being chosen for the Washington State All-Tournament Team... Was an all-league and all-county pick her last three years... Was heavily-recruited and received offers from Gonzaga, Colorado, Washington State and Colorado State among others... An honor roll student and a member of the National Honor Society... Lettered in soccer as a freshman.

Personal

Isabela Hernandez was born in Bellingham, Wash. to Tanna and Juan Hernandez... Her father played baseball at Long Beach State and Azusa Pacific and her mother played basketball at Azusa Pacific... In eighth grade, wrote a letter to herself stating her dream was to play at San Diego State... Lists Kevin Durant as her favorite player... Plans to major in business with hopes of launching a career in marketing.

CAREER STATISTICS

Season	gp-gs	min/avg	Total		3-Point		F-Throws		Rebounds					Scoring						
			fg-fga	pct	fg-fga	pct	ft-fta	pct	off	def	tot	avg	pf	fo	ast	to	blk	stl	pts	avg
2019-20	26-0	347/13.3	30-90	.333	20-46	.435	6-10	.600	6	27	33	1.3	12	0	6	22	4	5	86	3.3
TOTAL	26-0	347/13.3	30-90	.333	20-46	.435	6-10	.600	6	27	33	1.3	12	0	6	22	4	5	86	3.3

CAREER HIGHS

Points
11, vs. Incarnate Word (11-18-18)

Rebounds
4, Twice
Last: vs. Westcliff (11-12-19)

Assists
2, Twice
Last: vs. Westcliff (11-12-19)

Steals
1, vs. Cal (11-21-19)

Blocks
N/A

Field Goals
2, Twice
Last: at Wyoming (1-9-19)

Field Goal Attempts
5, vs. Incarnate Word (11-18-18)

3-Point Field Goals
1, Twice
Last: at Hawai'i (11-5-19)

3-Point Field Goal Attempts
2, vs. Incarnate Word (11-18-18)

Free Throws
6, vs. Incarnate Word (11-18-18)

Free Throw Attempts
8, vs. Incarnate Word (11-18-18)

MISC. CAREER STATS

Double-figure scoring games: 1

Double-figure rebounding games: 0



#15 JAYDEN PEREZ

Sophomore
5-8
Guard
Las Cruces, N.M.
Ostate HS

Mountain West Scholar-Athlete (2018-19)
Mountain West All-Academic Team (2018-19)

As a Freshman (2018-19 Season)

Appeared in 15 games off the bench before suffering a season-ending injury... Averaged 1.7 points, 0.8 rebounds and 0.4 assists in 5.9 minutes... Was 12-for-14 (.857) from the FT line on the year... Scored 11 points, grabbed two rebounds and dished out two assists against Incarnate Word (11-18-18)... Played a season-high 21 minutes and scored six points and hauled in four rebounds at Wyoming (1-9-19).

At Ostate High School

A three-star recruit according to ESPN, earning a scout's grade of 89 as the 73rd-ranked point guard in her class... Missed her senior year due to injury, but still amassed 1,586 career points... As a junior, averaged nearly 20 points with 5.8 rebounds, 2.7 assists and 1.7 steals... Selected to the 2017 All-U.S.A. New Mexico Girls Basketball Team, she led Ostate HS to the Class 6A state tournament, earning Class 6A all-state second-team honors along the way... A three-time New Mexico All-State honoree, she played her freshman and sophomore seasons at Las Cruces High, capturing District 3-6A Player of the Year and Class 6A all-state second-team honors each year... Plays AAU for Team Fusion in El Paso, Texas, under head coach Lee Williams... A 4.0 student, ranked ninth in her class... Also competed for Ostate's volleyball team as a junior... She was also recruited by numerous D-I schools including San Diego, New Mexico, Nebraska, Saint Mary's, UTEP and Long Beach State.

Personal

Parents are Vanessa and Saul Perez... Plans to major in kinesiology as a fitness specialist... Enjoys spending time with family, cooking and lifting weights... Favorite athlete is Kelly Oubre Jr. of the Washington Wizards.

CAREER STATISTICS

Season	gp-gs	min/avg	Total		3-Point		F-Throws		Rebounds				Scoring							
			fg-fga	pct	fg-fga	pct	ft-fta	pct	off	def	tot	avg	pf	fo	ast	to	blk	stl	pts	avg
2018-19	15-0	88/5.9	6-22	.273	1-9	.111	12-14	.857	1	11	12	0.8	2	0	6	13	0	0	25	1.7
2019-20	12-0	57/4.8	2-9	.222	1-2	.500	0-0	.000	1	6	7	0.6	3	0	4	3	0	1	5	0.4
TOTAL	27-0	145/5.4	8-31	.258	2-11	.182	12-14	.857	2	17	19	0.7	5	0	10	16	0	1	30	1.1

CAREER HIGHS

Points
2, at Fresno State (1-1-20)

Rebounds
1, vs. Westcliff (11-12-19)

Assists
N/A

Steals
N/A

Blocks
N/A

Field Goals
1, at Fresno State (1-1-20)

Field Goal Attempts
2, Twice
Last: at Fresno State (1-1-20)

3-Point Field Goals
N/A

3-Point Field Goal Attempts
1, Three times
Last: vs. Fresno State (1-15-20)

Free Throws
N/A

Free Throw Attempts
N/A

MISC. CAREER STATS

Double-figure scoring games: 0

Double-figure rebounding games: 0



#21 TALIA SIRENI

Freshman
5-9
Guard
Surrey, British Columbia, Canada
Earl Marriott Secondary School

Prep/International Career

A three-star recruit according to Prospects Nation, Sireni averaged 29 points, eight assists and eight rebounds per game her senior season at Earl Marriott Secondary School while shooting 81 percent from the free-throw line... Helped her team advance to the British Columbia Provincial Championships in 2017... Was named her high school team's MVP four times, including as an eighth grader... Received the Surrey Firefighter Tournament Dream Team Award her junior and senior seasons... Has represented British Columbia on the Provincial Team, helping them earn a silver medal in 2016... Also played for the VK Basketball Club (Vancouver), who she helped win the Bball National championship in the summer of 2018... Was an honor roll student... Ran track where she competed in the 100 and 400 meter dashes.

Personal

Talia Sireni (Ta-LEE-uh Si-REN-ee) was born in White Rock, British Columbia, Canada to Tiffany and Doron Sireni... Enjoys biking, surfing, hiking, camping, playing the piano and traveling... Was the assistant coach for her school's eighth and ninth grade team during her junior and senior seasons... Lists her favorite athlete as Kelsey Plum of the Las Vegas Aces... Plans to major in kinesiology.

CAREER STATISTICS

Season	gp-gs	min/avg	Total		3-Point		F-Throws		Rebounds				Scoring								
			fg-fga	pct	fg-fga	pct	ft-fta	pct	off	def	tot	avg	pf	fo	ast	to	blk	stl	pts	avg	
2019-20	9-0	21/2.3	1-6	.167	0-3	.000	0-0	.000	0	1	1	0.1	1	0	0	0	0	0	0	2	0.2
TOTAL	9-0	21/2.3	1-6	.167	0-3	.000	0-0	.000	0	1	1	0.1	1	0	0	0	0	0	0	2	0.2

CAREER HIGHS

Points
18, vs. Wyoming (1-8-20)

Rebounds
11, Three times
Last: vs. New Mexico (1-29-20)

Assists
2, Twice
Last: at San Diego (11-28-18)

Steals
3, at Air Force (1-30-19)

Blocks
5, at New Mexico (1-16-19)

Field Goals
9, vs. Wyoming (1-8-20)

Field Goal Attempts
14, vs. Wyoming (1-8-20)

3-Point Field Goals
1, vs. Hawai'i (11-9-18)

3-Point Field Goal Attempts
1, Four times
Last: at Wyoming (1-22-10)

Free Throws
8, at Boise State (1-11-20)

Free Throw Attempts
10, vs. New Mexico (2-6-19)

MISC. CAREER STATS

Double-figure scoring games: 18

Double-figure rebounding games: 5

Double-doubles: 2



#22 ZAYN DORNSTAUDER

RS Senior
6-3
Center
Regina, Saskatchewan, Canada
Ball State/San Francisco/Hamilton HS (Ariz.)

As a RS Junior (2018-19)

In her first season at SDSU appeared in all 32 games, made 17 starts and averaged 6.4 points, 4.3 rebounds and a team-best 1.1 blocks per game... Tied for fourth in the MW in blocks per game... Led the team with a 44.6 field goal percentage (min. 100 attempts)... Averaged 18.3 minutes per game... Scored 10 or more points on six occasions... Had a career-high 14 points at Boise State (2-16-19) on 6-for-10 shooting... Notched her first career double-double vs. New Mexico (2-6-19) when she had 11 rebounds and 11 points (7-for-10 shooting)... Scored 12 points on 5-for-7 shooting in the MW Tournament semifinals vs. Wyoming (3-12-19)... Her .714 field goal percentage vs. the Cowgirls tied her for the third-best FG percentage in SDSU's MW Tournament history. (min. 5 made FG)... Had a stretch in conference play with four double-digit scoring outings in six games... Set career-highs for blocks (5) and minutes (29) at New Mexico (1-16-19)... Logged double-digit minutes in all but two games... Started 16 of SDSU's final 20 games.

Prior to SDSU

Spent the 2017-18 season as a redshirt at Ball State... Played her first two years at the University of San Francisco ... In her freshman year (2015-16) at San Francisco, Dornstauder appeared in 17 games, averaging 6.8 minutes per game and 2.1 points. She had two games with a career-high eight points and helped the Dons win the WCC Tournament and advance to the NCAA Tournament ... Dornstauder appeared in five games the following season (2016-17), totaling five points.

Prep/International Career

Completed her prep career at Hamilton High in Chandler, Ariz., playing one season for the Huskies ... Helped Hamilton HS finish with a 22-9 overall record and placed fifth in the 2015 Division 1 state championships in 2015 ... Played in the Arizona Senior All-star game to end her high school career ... Played three years at Dr. Martin Leboldus High, in Regina, Saskatchewan, helping them go 77-8 overall and win the 2013 provincial 5A championship ... Played four years for Team Saskatchewan, on the U15 and U17 squads ... In 2014, helped the U17 team finish fourth at the Canadian Women's National Championships while leading the tournament in rebounds and finishing second in blocks ... Led the 2012 Women's U15 Canadian Tournament in rebounds and blocked shots as well... Also competed at the 2013 Jeux Canada Summer Games and the 2011 West Canada Summer Games ... Played club basketball with the Regina Jr. Cougars and the Regina Hornets, traveling through Western Canada and the Northern United States... Lived in Southwest France for one year (2009-10) and played with the Port St. Marie U14 team.

Personal

Born in Prince Albert, Saskatchewan, Canada to Gord Dornstauder and Patty Urbaniak ... Her sister, Quinn, played basketball at Arizona State and left in third place on the school's all-time career block list (138) ... Also has two brothers: Declan and Kaz... Lists her favorite athlete as Allen Iverson ... Enjoys drawing, photography and longboarding ... Is majoring in social work.

CAREER STATISTICS

Season	gp-gs		Total		3-Point		F-Throws		Rebounds				Scoring							
	gp-gs	min/avg	fg-fga	pct	fg-fga	pct	ft-fga	pct	off	def	tot	avg	pf	fo	ast	to	blk	stl	pts	avg
2015-16*	17-0	115/6.8	12-37	.324	0-0	.000	12-16	.750	4	13	17	1.0	24	0	2	14	5	1	36	2.1
2016-17*	5-0	37/7.4	3-17	.176	0-0	.000	4-7	.571	1	5	6	1.2	11	1	1	4	3	4	10	2.0
2018-19	32-17	585/18.3	78-175	.446	1-3	.333	49-70	.700	52	87	139	4.3	78	1	11	56	35	14	206	6.4
2019-20	26-0	448/17.2	83-143	.580	0-1	.000	45-66	.682	39	85	124	4.8	57	1	3	52	30	8	211	8.1
TOTAL	58-17	1033/17.8	161-318	.506	1-4	.250	94-136	.691	91	172	263	4.5	135	2	14	108	65	22	417	7.2
All*	80-17	1185/14.8	176-372	.473	1-4	.250	110-159	.692	96	190	286	3.6	170	3	17	126	73	27	463	5.8

*at San Francisco

CAREER HIGHS

Points
6, vs. Hope International (12-10-17)

Rebounds
5, vs. Hope International (12-10-17)

Assists
1, Three times
Last: vs. CSUN (12-28-19)

Steals
1, Twice
Last: at Fresno State (1-1-2)

Blocks
1, vs. Fresno State (1-15-20)

Field Goals
3, vs. Hope International (12-10-17)

Field Goal Attempts
5, Twice
Last: vs. Hope Int'l (12-10-17)

3-Point Field Goals
1, at Wyoming (2-14-18)

3-Point Field Goal Attempts
1, Three times
Last: at Wyoming (1-22-20)

Free Throws
1, Three times
Last: vs. CSUN (12-28-19)

Free Throw Attempts
2, Four times
Last: vs. CSUN (12-28-19)

MISC. CAREER STATS

Double-figure scoring games: 0

Double-figure rebounding games: 0



#24 KIARA EDWARDS

Junior
6-1
Forward
Surprise, Ariz.
Valley Vista HS

As a Sophomore (2018-19 Season)

Did not see any action.

As a Freshman (2017-18)

Appeared in nine games off the bench, totaling 46 minutes ... Averaged 1.8 points and 1.6 rebounds per game ... Was 7-for-16 (.438) from the field ... Totaled season-highs in points (6), rebounds (5) and minutes (15) against Hope International (12-10-17) ... Hit first career three-pointer at Wyoming (2-14-18).

At Valley Vista High School

A four-star recruit ranked No. 119 by Prospects Nation at Valley Vista High (Surprise, Ariz.) ... Invited to the 2016 Women's U17 World Championships team trials ... Averaged nearly a double-double over her four-year varsity career (12.9 PPG, 9.8 RPG) ... Her senior season, helped Valley Vista to a state title, the school's first, after averaging 12.1 points and 8.8 rebounds per game, both team highs ... Competed in the 2017 Arizona Girls High School Basketball All-Star game ... Was a 2016-17 All-West Valley Preps first team pick for the third-straight year after earning Girls Basketball Player of the Year runner-up nods each of the previous two seasons ... Also a two-time (2013-14, 2015-16) Sports360AZ All-Academic Girls Basketball Team honorable mention.

Personal

Kiara Edwards was born in Fresno, Calif., to Stephanie and Demetrius Edwards ... Demetrius was a three-year letterwinner at defensive tackle for Fresno State ... Also has a brother, Demetrius Jr. ... Uncle Johnny McWilliams played five seasons in the NFL after playing for USC ... Majoring in journalism at SDSU with plans of working in broadcasting.

CAREER STATISTICS

Season	gp-gs	min/avg	Total		3-Point		F-Throws		Rebounds				Scoring							
			fg-fga	pct	fg-fga	pct	ft-fta	pct	off	def	tot	avg	pf	fo	ast	to	blk	stl	pts	avg
2017-18	9-0	46/5.1	7-16	.438	1-3	.333	1-2	.500	2	12	14	1.6	2	0	0	7	0	1	16	1.8
2019-20	20-0	108/5.4	4-19	.211	0-2	.000	2-6	.333	2	13	15	0.8	11	0	2	9	1	1	10	0.5
TOTAL	29-0	154/5.3	11-35	.314	1-5	.200	3-8	.375	4	25	29	1.0	13	0	2	16	1	2	26	0.9

CAREER HIGHS

Points
22, Twice
Last: vs. CSUN (12-28-19)

Rebounds
8, vs. Alabama A&M (11-14-19)

Assists
6, Three times
Last: at New Mexico (2-12-20)

Steals
2, Five times
Last: vs. UNLV (1-25-20)

Blocks
1, Multiple times
Last: at Fresno State (1-1-20)

Field Goals
9, Twice
Last: vs. CSUN (12-28-19)

Field Goal Attempts
21, at San Jose State (12-7-19)

3-Point Field Goals
3, Multiple times
Last: at New Mexico (2-12-20)

3-Point Field Goal Attempts
8, at San Jose State (12-7-19)

Free Throws
5, Twice
Last: at Utah State (2-1-20)

Free Throw Attempts
6, Four times
Last: at Utah State (2-1-20)

MISC. CAREER STATS

Career double-figure scoring games: 35

Double-figure scoring games at SDSU: 24

Career double-figure rebounding games (all at SDSU): 0



#25 TAYLOR KALMER

RS Senior
5-8
Guard
Chandler, Ariz.
Oregon State/Corona del Sol HS

2018-19 Season

Utilized redshirt season due to NCAA transfer rules.

At Oregon State (2015-18)

Appeared in 80 games as a reserve in her three years at Oregon State... Improved her scoring each season: 2.7 ppg as a freshman, 3.3 ppg as a sophomore and 6.0 ppg as a junior ... As a junior, averaged 17.7 minutes per game and shot 38.4 percent from the floor and 37.2 percent from three-point territory ... Had career-high 19 points on 8-for-10 shooting against San José State (12/10/17)... Helped the Beavers advance to the second weekend of the NCAA Tournament all three years, including a run to the Final Four in 2016 ... Named Oregon State's Most Improved Player after the 2015-16 season ... Three-time Pac-12 Academic Honorable Mention selection.

At Corona del Sol High School

A four-year starter at Corona del Sol High School, Kalmer tallied 1,648 points, 303 assists and 197 steals in her prep career ... A four-time all-city and all-state selection, Kalmer averaged 20 points as a junior and 18.7 as a senior and helped her team make the playoffs all four years ... McDonald's All-American nominee ... Kalmer was rated the No. 31 point guard nationally by ESPN before signing with Oregon State.

Personal

Born in Plano, Texas to Christi and John Kalmer ... Lists Russell Westbrook as her favorite athlete ... Enjoys hiking, working out, being outdoors, creative designing, crafts and reading ... Majored in merchandising management at Oregon State and hopes to work for Nike when her playing career is over.

CAREER STATISTICS

Season	Total			3-Point		F-Throws		Rebounds				Scoring								
	gp-gs	min/avg	fg-fga	pct	fg-fga	pct	ft-fta	pct	off	def	tot	avg	pf	fo	ast	to	blk	stl	pts	avg
2015-16*	24-0	163/6.8	24-70	.343	11-32	.344	6-8	.750	2	12	14	0.6	12	0	16	12	0	6	65	2.7
2016-17*	24-0	215/9.0	29-69	.420	7-29	.241	14-17	.824	3	17	20	0.8	9	0	21	21	0	5	79	3.3
2017-18*	32-0	566/17.7	76-198	.384	32-86	.372	7-10	.700	12	62	74	2.3	22	0	60	36	1	10	191	6.0
2019-20	26-26	970/37.3	154-347	.444	35-94	.372	53-66	.803	12	87	99	3.8	36	0	76	50	5	16	396	15.2
TOTAL	26-26	970/37.3	154-347	.444	35-94	.372	53-66	.803	12	87	99	3.8	36	0	76	50	5	16	396	15.2
All*	106-26	1914/18.1	283-684	.414	85-241	.353	80-101	.792	29	178	207	2.0	79	0	173	119	6	37	731	6.9

*at Oregon State

CAREER HIGHS

Points
12, Twice
Last: at California Baptist (12-19-19)

Rebounds
14, vs. [2] New Mexico (3-11-19)

Assists
3, Twice
Last: vs. Fresno State (1-15-20)

Steals
2, Multiple times
Last: vs. Wyoming (1-8-20)

Blocks
4, vs. Alabama A&M (11-14-19)

Field Goals
5, Three times
Last: at California Baptist (12-19-19)

Field Goal Attempts
11, at California Baptist (12-19-19)

3-Point Field Goals
1, Three times
Last: vs. CSUN (12-28-19)

3-Point Field Goal Attempts
1, Multiple times
Last: at Wyoming (1-22-20)

Free Throws
7, vs. Towson (11-9-19)

Free Throw Attempts
8, vs. Towson (11-9-19)

MISC. CAREER STATS

Double-figure scoring games: 8

Double-figure rebounding games: 5

Double-Doubles: 3



#34 BAYLEE VANDERDOES

Senior
6-1
Forward
Auburn, Calif.
Placer HS

As a Junior (2018-19 Season)

Appeared in all 32 games, making eight starts... Averaged 3.2 points and 3.1 rebounds in 15.3 minutes per game... Shot 48.8 percent from the floor (40-88) and 75 percent from the FT line (21-28)... Was second on the team with 18 blocks... Had a career-high 14 rebounds (8 offensive) in SDSU's upset over No. 2 seed New Mexico in the MW Tournament quarterfinals (3-11-19), tying her for the third most rebounds by an Aztec in MW Tournament history... Scored in double-digits twice; vs. California Baptist (10 points; 11-23-18) and vs. Arizona (11 points; 12-2-18)... Started 11 of SDSU's first 12 games... Played 10 or more minutes in all but three games... Scored in 24 of SDSU's 32 games.

As a Sophomore (2017-18)

Appeared in all 30 games and made eight starts... Averaged 3.3 points and 3.8 rebounds per game... Led the team with 20 blocks... Second on the team with 55 offensive rebounds... Led the Aztecs in blocks 10 times... Had career-high 13 rebounds, including 11 offensive boards, vs. Central Michigan (11-24-17)... Had career-high 13 points on 5-5 shooting at Nevada (3-2-18)... Had career-high three blocks twice... Scored 11 points vs. Boise State (1-13-18).

As a Freshman (2016-17)

Appeared in 23 contests with nine starts... Began collegiate career by starting the season's first eight games... Led all SDSU freshmen in scoring (3.9/gm), rebounding (2.7/gm), minutes per game (13.6/gm), assists (0.4/gm) and blocks (0.1/gm)... Became the first Aztec freshman since 2013 to notch a double-double since 2013 with a 10-point, 10-rebound performance against San Diego Christian (11-14-16) in her second collegiate game... Best offensive performance of the year came in the MW Tournament game against No. 8-seed San José State (3-6-17), a 12-point effort on 5-for-6 shooting in 16 minutes... Played 20-or-more minutes five times, with 25 minutes logged against Loyola Marymount (11-20-16), during which she grabbed six boards, serving as a season high... Pulled down five rebounds at Fresno State (2-22-17)... Dished out a pair of assists in the final game of the Seton Hall Thanksgiving Classic, a win over Central Connecticut (11-27-16).

At Placer High School

A standout player at Placer High School in Auburn, Calif., who won four varsity letters under head coach Tony Camillucci... Averaged 21.1 points, 11.0 rebounds and 3.6 blocks per game during her senior campaign, earning a spot on the *MaxPreps* Division IV all-California state second team... Captured the Pioneer Valley League most valuable player award on two occasions and garnered second-team All-Metro accolades from the *Sacramento Bee*... Holds Placer High's single-game record for points scored (41) and blocked shots (11)... Was rated a three-star recruit by *ESPN* and received a scouts grade of 89... Chose the Aztecs over the likes of Oregon State, Fresno State, UNLV, Utah State, East Carolina and Florida Atlantic among others... Also competed in volleyball as a prep.

Personal

Parents are Eddie and Behia Vanderdoes... Has one older brother, Eddie, who was a defensive lineman at UCLA and was drafted by the Oakland Raiders... Grandfather played professional basketball in Germany... Lists guard Derrick Rose as her favorite athlete... Majoring in history.

CAREER STATISTICS

Season	gp-gs	min/avg	Total		3-Point		F-Throws		Rebounds				Scoring							
			fg-fga	pct	fg-fga	pct	ft-fa	pct	off	def	tot	avg	pf	fo	ast	to	blk	stl	pts	avg
2016-17	23-9	312/13.6	33-67	.493	0-0	.000	23-37	.622	17	44	61	2.7	43	1	8	20	3	6	89	3.9
2017-18	30-8	500/16.7	33-88	.375	0-1	.000	34-56	.607	55	60	115	3.8	53	1	7	30	20	11	100	3.3
2018-19	32-11	488/15.3	40-88	.455	1-10	.100	21-28	.750	35	65	100	3.1	66	1	20	43	18	13	102	3.2
2019-20	26-26	461/17.7	35-83	.422	3-5	.600	23-42	.548	42	98	140	5.4	41	0	12	20	12	9	96	3.7
TOTAL	111-54	1761/15.9	141-326	.433	4-16	.250	101-163	.620	149	267	416	3.7	203	3	47	113	53	39	387	3.5

CAREER HIGHS

Points
8, vs. Nevada (3-5-18)

Rebounds
7, at UNLV (2-17-18)

Assists
2, vs. Hope International (12-10-17)

Steals
2, vs. UC Irvine (12-8-17)

Blocks
2, vs. UC Irvine (12-8-17)

Field Goals
4, vs. Nevada (3-5-18)

Field Goal Attempts
5, Three times
Last: vs. Nevada (3-5-18)

3-Point Field Goals
N/A

3-Point Field Goal Attempts
N/A

Free Throws
1, Twice
Last: at Colorado State (1-24-18)

Free Throw Attempts
2, Five times
Last: vs. Westcliff (1-12-19)

MISC. CAREER STATS

Double-figure scoring games: 0

Double-figure rebounding games: 0



#45 NAOMI EKWEDIKE

RS Junior
6-6
Center
Lagos, Nigeria
Potter's House Christian Academy

As a RS Sophomore (2018-19 Season)

Missed the season with an injury.

As a Redshirt Freshman (2017-18)

Appeared in 22 games, while making one start ... In 7.2 minutes per game, averaged 2.2 points and 2.5 rebounds ... Was 23-for-44 from the field (.523) ... Had career-high eight points on 4-for-5 shooting against Nevada in Mountain West Tournament (3-5-18) ... Earned start against Santa Clara and scored four points and grabbed four rebounds in season-high 15 minutes ... Had six points and career-high seven rebounds (four offensive) at UNLV (2-17-18) ... Had five points, two blocks and two steals against UC Irvine (12-8-17) ... Named SDSU scholar-athlete.

As a Freshman (2016-17)

Played in the first nine games of the year before suffering a season-ending knee injury on Dec. 11 against UC Santa Barbara ... Averaged 1.9 points and 1.2 rebounds in 7.0 minutes per game ... Logged double-digit minutes three times, spending a season-high 12 minutes on the floor in the Seton Hall Thanksgiving Classic finale, a win over Central Connecticut (11-27-16) ... Knocked down a pair of field goals three times, going 2-for-4 for five points in a win against San Diego Christian (11-14-16) ... Pulled down a trio of rebounds twice: at San Diego (11-17-16) and UC Davis (12-2-16) ... SDSU Scholar-Athlete honoree.

At Potter's House Christian Academy (Fla.)

A native of Lagos, Nigeria, who competed for three years as a prep at Potter's House Christian Academy in Jacksonville, Fla. ... Was a member of two state championship teams and helped the Lions secure a national title in the National Christian School Athletic Association tournament as junior ... Averaged 3.8 points, 7.3 rebounds and 2.5 blocks during the 2014-15 campaign, posting four or more rejections in eight different games, according to *MaxPreps* ... Was named her squad's most improved player ... Received a scouts grade of 89 and was rated a three-star recruit by *espnW* ... Also drew interest from Virginia Tech, East Carolina, Prairie View A&M and Maryland-Eastern Shore during the recruiting process ... National Honor Society member and Good Citizenships award recipient.

Personal

Naomi Kelechi Ekwedike was born in Lagos, Nigeria ... Parents are Raymond and Bukola Ekwedike ... Has an aunt who played for the Nigerian national soccer team ... Majoring in business administration with a concentration in human resources at SDSU.

CAREER STATISTICS

Season	gp-gs	min/avg	Total		3-Point		F-Throws		Rebounds						Scoring					
			fg-fga	pct	fg-fga	pct	ft-fta	pct	off	def	tot	avg	pf	fo	ast	to	blk	stl	pts	avg
2016-17	9-0	63/7.0	8-19	.421	0-0	.000	1-3	.333	5	6	11	1.2	10	0	0	13	0	0	17	1.9
2017-18	22-1	158/7.2	23-44	.523	0-0	.000	3-11	.273	22	32	54	2.5	28	1	6	16	5	3	49	2.2
2019-20	15-0	68/4.5	6-17	.353	0-0	.000	0-2	.000	5	4	9	0.6	11	0	0	5	0	2	12	0.8
TOTAL	46-1	289/6.3	37-80	.463	0-0	.000	4-16	.250	32	42	74	1.6	49	1	6	34	5	5	78	1.7

All games

RECORD:	OVERALL	HOME	AWAY	NEUTRAL
ALL GAMES	12-14	8-7	4-7	0-0
CONFERENCE	7-7	5-2	2-5	0-0
NON-CONFERENCE	5-7	3-5	2-2	0-0

#	Player	Total		3-Point		F-Throw		Rebounds																	
		gp-gs	min	avg	fg-fga	fg%	3fg-fga	3fg%	ft-fa	ft%	off	def	tot	avg	pf	dq	a	to	blk	stl	pts	avg			
25	Taylor Kalmer	26-26	970	37.3	154-347	.444	35-94	.372	53-66	.803	12	87	99	3.8	36	0	76	50	5	16	396	15.2			
02	Sophia Ramos	26-26	939	36.1	121-298	.406	29-94	.309	89-106	.840	14	142	156	6.0	44	0	98	84	10	35	360	13.8			
03	Mallory Adams	6-6	191	31.8	24-76	.316	6-22	.273	23-33	.697	13	23	36	6.0	8	0	6	8	1	4	77	12.8			
05	Tea Adams	26-26	705	27.1	78-202	.386	20-64	.313	40-56	.714	8	68	76	2.9	56	2	66	52	5	27	216	8.3			
22	Zayn Dornstauder	26-0	448	17.2	83-143	.580	0-1	.000	45-66	.682	39	85	124	4.8	57	1	3	52	30	8	211	8.1			
04	Monique Terry	26-19	511	19.7	41-97	.423	21-51	.412	8-14	.571	13	70	83	3.2	40	0	20	27	9	7	111	4.3			
34	Baylee Vanderdoes	26-26	461	17.7	35-83	.422	3-5	.600	23-42	.548	42	98	140	5.4	41	0	12	20	12	9	96	3.7			
10	Isabela Hernandez	26-0	347	13.3	30-90	.333	20-46	.435	6-10	.600	6	27	33	1.3	12	0	6	22	4	5	86	3.3			
00	Kennedi Villa	26-1	425	16.3	15-30	.500	1-3	.333	4-10	.400	10	29	39	1.5	43	1	22	14	6	9	35	1.3			
45	Naomi Ekwedike	15-0	68	4.5	6-17	.353	0-0	.000	0-2	.000	5	4	9	0.6	11	0	0	5	0	2	12	0.8			
24	Kiara Edwards	20-0	108	5.4	4-19	.211	0-2	.000	2-6	.333	2	13	15	0.8	11	0	2	9	1	1	10	0.5			
15	Jayden Perez	12-0	57	4.8	2-9	.222	1-2	.500	0-0	.000	1	6	7	0.6	3	0	4	3	0	1	5	0.4			
21	Talia Sireni	9-0	21	2.3	1-6	.167	0-3	.000	0-0	.000	0	1	1	0.1	1	0	0	0	0	0	2	0.2			
Team												42	71	113											22
Total.....		26	5251	594-1417		.419	136-387	.351	293-411	.713	207	724	931	35.8	363	4	315	368	83	124	1617	62.2			
Opponents.....		26	5250	640-1649		.388	151-497	.304	242-346	.699	318	659	977	37.6	388	-	368	291	80	178	1673	64.3			

TEAM STATISTICS	SDSU	OPP	Date	Opponent	Score	Att.
SCORING	1617	1673	11/05/19	at HAWAII	L 58-61	1213
Points per game	62.2	64.3	11/09/19	TOWSON	w 80-72	1462
Scoring margin	-2.2	-	11/12/19	WESTCLIFF	w 77-56	247
FIELD GOALS-ATT	594-1417	640-1649	11/14/19	ALABAMA A&M	L 53-61	4020
Field goal pct	.419	.388	11/17/19	CAL ST. FULLERTON	w 55-45	1737
3 POINT FG-ATT	136-387	151-497	11/21/19	CAL	L 48-74	557
3-point FG pct	.351	.304	11/26/19	at UC Santa Barbara	L 52-64	431
3-pt FG made per game	5.2	5.8	11/30/19	ARKANSAS ST.	L 62-71	1788
FREE THROWS-ATT	293-411	242-346	* 12/04/19	COLORADO ST.	w 59-49	534
Free throw pct	.713	.699	* 12/07/19	at San Jose St.	L 67-84	322
F-Throws made per game	11.3	9.3	12/11/19	SAN DIEGO	L 47-70	524
REBOUNDS	931	977	12/19/19	at California Baptist	w 80-68	302
Rebounds per game	35.8	37.6	12/21/19	at Incarnate Word	w 57-48	255
Rebounding margin	-1.8	-	12/28/19	CSUN	Lot 69-74	710
ASSISTS	315	368	* 1/1/20	at Fresno State	L 54-79	2128
Assists per game	12.1	14.2	* 1/4/20	UTAH STATE	w 66-62	678
TURNOVERS	368	291	* 1/8/20	WYOMING	Wot 67-60	347
Turnovers per game	14.2	11.2	* 01/11/20	at Boise St.	L 72-86	1394
Turnover margin	-3.0	-	* 1/15/20	FRESNO STATE	L 60-65	504
Assist/turnover ratio	0.9	1.3	* 01/18/20	at Nevada	L 69-70	1258
STEALS	124	178	* 01/22/20	at Wyoming	L 67-81	2404
Steals per game	4.8	6.8	* 01/25/20	UNLV	w 48-39	716
BLOCKS	83	80	* 1/29/20	NEW MEXICO	w 75-74	5320
Blocks per game	3.2	3.1	* 2/1/20	at Utah State	w 59-51	409
ATTENDANCE	21572	14869	* 02/08/20	AIR FORCE	L 49-51	2428
Home games-Avg/Game	15-1438	11-1352	* 02/12/20	at New Mexico	w 67-58	4753
Neutral site-Avg/Game	-	0-0				

* = Conference game

Score by Periods	1st	2nd	3rd	4th	OT	Totals
San Diego St.	399	330	429	440	19	1617
Opponents	403	372	427	454	17	1673

Conference games only

RECORD:	OVERALL	HOME	AWAY	NEUTRAL
ALL GAMES	7-7	5-2	2-5	0-0
CONFERENCE	7-7	5-2	2-5	0-0
NON-CONFERENCE	0-0	0-0	0-0	0-0

#	Player	gp-gs	min	avg	Total		3-Point		F-Throw		Rebounds				a	to	blk	stl	pts	avg			
					fg-fga	fg%	3fg-fga	3fg%	ft-fa	ft%	off	def	tot	avg							pf	dq	
25	Taylor Kalmer	14-14	542	38.7	88-205	.429	17-49	.347	38-47	.809	7	45	52	3.7	16	0	39	28	2	8	231	16.5	
02	Sophia Ramos	14-14	517	36.9	70-157	.446	15-44	.341	59-69	.855	10	83	93	6.6	24	0	52	52	2	17	214	15.3	
22	Zayn Dornstauder	14-0	237	16.9	40-73	.548	0-1	.000	28-40	.700	23	48	71	5.1	36	0	1	35	13	6	108	7.7	
05	Tea Adams	14-14	388	27.7	37-103	.359	6-31	.194	22-29	.759	3	32	35	2.5	32	2	33	24	2	15	102	7.3	
04	Monique Terry	14-14	331	23.6	31-65	.477	19-41	.463	7-12	.583	2	45	47	3.4	23	0	12	15	6	5	88	6.3	
10	Isabela Hernandez	14-0	209	14.9	19-50	.380	13-27	.481	2-4	.500	0	15	15	1.1	6	0	3	11	1	4	53	3.8	
34	Baylee Vanderdoes	14-14	276	19.7	20-39	.513	2-3	.667	9-18	.500	26	59	85	6.1	25	0	8	12	2	8	51	3.6	
00	Kennedi Villa	14-0	221	15.8	8-17	.471	1-2	.500	1-6	.167	3	17	20	1.4	28	1	6	11	4	6	18	1.3	
45	Naomi Ekwedike	6-0	21	3.5	3-4	.750	0-0	.000	0-0	.000	1	1	2	0.3	4	0	0	0	0	0	6	1.0	
21	Talia Sireni	5-0	8	1.6	1-3	.333	0-2	.000	0-0	.000	0	0	0	0.0	1	0	0	0	0	0	2	0.4	
15	Jayden Perez	5-0	16	3.2	1-4	.250	0-0	.000	0-0	.000	1	1	2	0.4	1	0	1	2	0	0	2	0.4	
24	Kiara Edwards	12-0	59	4.9	2-10	.200	0-2	.000	0-0	.000	1	8	9	0.8	6	0	1	4	1	1	4	0.3	
Team											20	32	52					12					
Total.....		14	2825		320-730	.438	73-202	.361	166-225	.738	97	386	483	34.5	202	3	156	206	33	70	879	62.8	
Opponents.....		14	2825		340-872	.390	85-255	.333	144-197	.731	163	334	497	35.5	214	-	190	154	41	98	909	64.9	

TEAM STATISTICS	SDSU	OPP	Date	Opponent	Score	Att.
SCORING	879	909	* 12/04/19	COLORADO ST.	w 59-49	534
Points per game	62.8	64.9	* 12/07/19	at San Jose St.	L 67-84	322
Scoring margin	-2.1	-	* 1/1/20	at Fresno State	L 54-79	2128
FIELD GOALS-ATT	320-730	340-872	* 1/4/20	UTAH STATE	w 66-62	678
Field goal pct	.438	.390	* 1/8/20	WYOMING	wot 67-60	347
3 POINT FG-ATT	73-202	85-255	* 01/11/20	at Boise St.	L 72-86	1394
3-point FG pct	.361	.333	* 1/15/20	FRESNO STATE	L 60-65	504
3-pt FG made per game	5.2	6.1	* 01/18/20	at Nevada	L 69-70	1258
FREE THROWS-ATT	166-225	144-197	* 01/22/20	at Wyoming	L 67-81	2404
Free throw pct	.738	.731	* 01/25/20	UNLV	w 48-39	716
F-Throws made per game	11.9	10.3	* 1/29/20	NEW MEXICO	w 75-74	5320
REBOUNDS	483	497	* 2/1/20	at Utah State	w 59-51	409
Rebounds per game	34.5	35.5	* 02/08/20	AIR FORCE	L 49-51	2428
Rebounding margin	-1.0	-	* 02/12/20	at New Mexico	w 67-58	4753
ASSISTS	156	190	* = Conference game			
Assists per game	11.1	13.6				
TURNOVERS	206	154				
Turnovers per game	14.7	11.0				
Turnover margin	-3.7	-				
Assist/turnover ratio	0.8	1.2				
STEALS	70	98				
Steals per game	5.0	7.0				
BLOCKS	33	41				
Blocks per game	2.4	2.9				
ATTENDANCE	10527	12668				
Home games-Avg/Game	7-1504	7-1810				
Neutral site-Avg/Game	-	0-0				

Score by Periods	1st	2nd	3rd	4th	OT	Totals
San Diego St.	226	178	226	236	13	879
Opponents	214	204	229	256	6	909

TEAM STATISTICS

Opponent	Date	Score		Total		3-Pointers		Free throws		Rebounds				pf	a	t/o	blk	stl	pts	avg
				fg-fga	pct	3fg-fga	pct	ft-fta	pct	off	def	tot	avg							
at HAWAII	11/05/19	58-61	L	22-60	.367	4-13	.308	10-18	.556	9	30	39	39.0	12	6	6	1	2	58	58.0
TOWSON	11/09/19	80-72	W	27-60	.450	5-16	.313	21-28	.750	12	31	43	41.0	11	17	14	3	6	80	69.0
WESTCLIFF	11/12/19	77-56	W	30-67	.448	8-18	.444	9-13	.692	14	39	53	45.0	8	23	15	6	1	77	71.7
ALABAMA A&M	11/14/19	53-61	L	17-54	.315	3-17	.176	16-23	.696	13	24	37	43.0	20	10	18	7	5	53	67.0
CAL ST. FULLERTON	11/17/19	55-45	W	18-59	.305	6-14	.429	13-18	.722	12	39	51	44.6	7	11	9	4	3	55	64.6
CAL	11/21/19	48-74	L	18-54	.333	2-9	.222	10-14	.714	11	19	30	42.2	12	5	16	6	7	48	61.8
at UC Santa Barbara	11/26/19	52-64	L	21-58	.362	7-22	.318	3-8	.375	6	26	32	40.7	17	10	13	2	4	52	60.4
ARKANSAS ST.	11/30/19	62-71	L	23-56	.411	9-25	.360	7-10	.700	9	18	27	39.0	18	20	14	5	6	62	60.6
COLORADO ST.	12/04/19	59-49	W	18-51	.353	5-16	.313	18-21	.857	10	30	40	39.1	20	8	14	3	6	59	60.4
at San Jose St.	12/07/19	67-84	L	24-58	.414	5-16	.313	14-19	.737	12	29	41	39.3	15	14	21	2	6	67	61.1
SAN DIEGO	12/11/19	47-70	L	19-45	.422	3-9	.333	6-9	.667	4	18	22	37.7	17	13	20	5	5	47	59.8
at California Baptist	12/19/19	80-68	W	31-67	.463	5-14	.357	13-16	.813	11	30	41	38.0	9	14	8	0	5	80	61.5
at Incarnate Word	12/21/19	57-48	W	20-46	.435	6-15	.400	11-14	.786	3	29	32	37.5	12	11	10	3	5	57	61.2
CSUN	12/28/19	69-74	Lot	28-61	.459	5-13	.385	8-15	.533	6	35	41	37.8	18	19	19	8	5	69	61.7
at Fresno State	1/1/20	54-79	L	21-55	.382	2-10	.200	10-13	.769	8	29	37	37.7	14	3	21	2	4	54	61.2
UTAH STATE	1/4/20	66-62	W	27-51	.529	1-4	.250	11-16	.688	3	25	28	37.1	14	11	8	0	4	66	61.5
WYOMING	1/8/20	67-60	Wot	25-55	.455	7-20	.350	10-13	.769	7	24	31	36.8	9	15	11	2	4	67	61.8
at Boise St.	01/11/20	72-86	L	23-46	.500	6-14	.429	20-23	.870	6	20	26	36.2	19	5	17	1	4	72	62.4
FRESNO STATE	1/15/20	60-65	L	24-61	.393	6-17	.353	6-14	.429	11	32	43	36.5	13	20	11	3	4	60	62.3
at Nevada	01/18/20	69-70	L	28-56	.500	6-12	.500	7-15	.467	7	28	35	36.5	9	11	10	0	2	69	62.6
at Wyoming	01/22/20	67-81	L	26-51	.510	7-15	.467	8-14	.571	3	23	26	36.0	18	10	12	1	3	67	62.8
UNLV	01/25/20	48-39	W	19-50	.380	6-20	.300	4-6	.667	3	23	26	35.5	12	13	13	6	11	48	62.1
NEW MEXICO	1/29/20	75-74	W	22-45	.489	7-18	.389	24-27	.889	4	37	41	35.7	17	15	21	0	6	75	62.7
at Utah State	2/1/20	59-51	W	20-43	.465	6-15	.400	13-15	.867	6	24	30	35.5	14	9	14	1	6	59	62.5
AIR FORCE	02/08/20	49-51	L	17-49	.347	1-10	.100	14-21	.667	7	26	33	35.4	8	9	11	7	7	49	62.0
at New Mexico	02/12/20	67-58	W	26-59	.441	8-15	.533	7-8	.875	10	36	46	35.8	20	13	22	5	3	67	62.2
San Diego St.		1617		594-1417	.419	136-387	.351	293-411	.713	207	724	931	35.8	363	315	368	83	124	1617	62.2
Opponents		1673		640-1649	.388	151-497	.304	242-346	.699	318	659	977	37.6	388	368	291	80	178	1673	64.3

Games played: 26
Points/game: 62.2
FG Pct: 41.9
3FG Pct: 35.1
FT Pct: 71.3

Rebounds/game: 35.8
Assists/game: 12.1
Turnovers/game: 14.2
Assist/turnover ratio: 0.9
Steals/game: 4.8
Blocks/game: 3.2

Home games

RECORD:	OVERALL	HOME	AWAY	NEUTRAL
ALL GAMES	8-7	8-7	0-0	0-0
CONFERENCE	5-2	5-2	0-0	0-0
NON-CONFERENCE	3-5	3-5	0-0	0-0

#	Player	gp-gs	min	avg	Total		3-Point		F-Throw		Rebounds				pf	dq	a	to	blk	stl	pts	avg
					fg-fga	fg%	3fg-fga	3fg%	ft-fa	ft%	off	def	tot	avg								
25	Taylor Kalmer	15-15	557	37.1	80-187	.428	17-49	.347	33-40	.825	6	55	61	4.1	23	0	48	30	4	12	210	14.0
03	Mallory Adams	4-4	131	32.8	15-51	.294	4-15	.267	20-28	.714	11	19	30	7.5	6	0	4	3	1	2	54	13.5
02	Sophia Ramos	15-15	542	36.1	64-160	.400	14-50	.280	49-59	.831	8	81	89	5.9	21	0	71	48	7	26	191	12.7
05	Tea Adams	15-15	415	27.7	48-118	.407	13-40	.325	29-40	.725	2	38	40	2.7	31	1	45	31	4	15	138	9.2
22	Zayn Dornstauder	15-0	262	17.5	54-91	.593	0-0	.000	23-35	.657	26	50	76	5.1	33	1	2	29	22	3	131	8.7
04	Monique Terry	15-10	312	20.8	25-65	.385	12-34	.353	4-9	.444	7	40	47	3.1	28	0	15	15	9	6	66	4.4
34	Baylee Vanderdoes	15-15	243	16.2	15-42	.357	2-2	1.000	13-23	.565	25	53	78	5.2	20	0	6	10	10	4	45	3.0
10	Isabela Hernandez	15-0	180	12.0	15-49	.306	11-29	.379	2-4	.500	6	13	19	1.3	6	0	4	16	4	4	43	2.9
00	Kennedi Villa	15-1	238	15.9	9-22	.409	1-3	.333	2-4	.500	7	18	25	1.7	21	0	11	7	3	5	21	1.4
45	Naomi Ekwedike	9-0	47	5.2	4-12	.333	0-0	.000	0-2	.000	3	4	7	0.8	7	0	0	4	0	2	8	0.9
24	Kiara Edwards	12-0	82	6.8	3-13	.231	0-1	.000	2-4	.500	2	5	7	0.6	6	0	1	6	1	0	8	0.7
21	Talia Sireni	5-0	16	3.2	0-4	.000	0-2	.000	0-0	.000	0	1	1	0.2	1	0	0	0	0	0	0	0.0
15	Jayden Perez	4-0	26	6.5	0-4	.000	0-1	.000	0-0	.000	0	4	4	1.0	1	0	2	1	0	1	0	0.0
Team											23	39	62				14					
Total.....		15	3051		332-818	.406	74-226	.327	177-248	.714	126	420	546	36.4	204	2	209	214	65	80	915	61.0
Opponents.....		15	3050		356-962	.370	80-279	.287	131-196	.668	207	385	592	39.5	235	-	216	183	49	108	923	61.5

Score by Periods	1st	2nd	3rd	4th	OT	Totals
San Diego St.	219	176	239	262	19	915
Opponents	228	189	237	252	17	923

Away games

RECORD:	OVERALL	HOME	AWAY	NEUTRAL
ALL GAMES	4-7	0-0	4-7	0-0
CONFERENCE	2-5	0-0	2-5	0-0
NON-CONFERENCE	2-2	0-0	2-2	0-0

#	Player	gp-gs	min	avg	Total		3-Point		F-Throw		Rebounds				pf	dq	a	to	blk	stl	pts	avg
					fg-fga	fg%	3fg-fga	3fg%	ft-fa	ft%	off	def	tot	avg								
25	Taylor Kalmer	11-11	413	37.5	74-160	.463	18-45	.400	20-26	.769	6	32	38	3.5	13	0	28	20	1	4	186	16.9
02	Sophia Ramos	11-11	397	36.1	57-138	.413	15-44	.341	40-47	.851	6	61	67	6.1	23	0	27	36	3	9	169	15.4
03	Mallory Adams	2-2	60	30.0	9-25	.360	2-7	.286	3-5	.600	2	4	6	3.0	2	0	2	5	0	2	23	11.5
22	Zayn Dornstauder	11-0	186	16.9	29-52	.558	0-1	.000	22-31	.710	13	35	48	4.4	24	0	1	23	8	5	80	7.3
05	Tea Adams	11-11	290	26.4	30-84	.357	7-24	.292	11-16	.688	6	30	36	3.3	25	1	21	21	1	12	78	7.1
34	Baylee Vanderdoes	11-11	218	19.8	20-41	.488	1-3	.333	10-19	.526	17	45	62	5.6	21	0	6	10	2	5	51	4.6
04	Monique Terry	11-9	199	18.1	16-32	.500	9-17	.529	4-5	.800	6	30	36	3.3	12	0	5	12	0	1	45	4.1
10	Isabela Hernandez	11-0	167	15.2	15-41	.366	9-17	.529	4-6	.667	0	14	14	1.3	6	0	2	6	0	1	43	3.9
00	Kennedi Villa	11-0	187	17.0	6-8	.750	0-0	.000	2-6	.333	3	11	14	1.3	22	1	11	7	3	4	14	1.3
45	Naomi Ekwedike	6-0	21	3.5	2-5	.400	0-0	.000	0-0	.000	2	0	2	0.3	4	0	0	1	0	0	4	0.7
15	Jayden Perez	8-0	31	3.9	2-5	.400	1-1	1.000	0-0	.000	1	2	3	0.4	2	0	2	2	0	0	5	0.6
21	Talia Sireni	4-0	5	1.3	1-2	.500	0-1	.000	0-0	.000	0	0	0	0.0	0	0	0	0	0	0	2	0.5
24	Kiara Edwards	8-0	26	3.3	1-6	.167	0-1	.000	0-2	.000	0	8	8	1.0	5	0	1	3	0	1	2	0.3
Team											19	32	51				8					
Total.....		11	2200		262-599	.437	62-161	.385	116-163	.712	81	304	385	35.0	159	2	106	154	18	44	702	63.8
Opponents.....		11	2200		284-687	.413	71-218	.326	111-150	.740	111	274	385	35.0	153	-	152	108	31	70	750	68.2

Score by Periods	1st	2nd	3rd	4th	Totals
San Diego St.	180	154	190	178	702
Opponents	175	183	190	202	750

Games won

RECORD:	OVERALL	HOME	AWAY	NEUTRAL
ALL GAMES	12-0	8-0	4-0	0-0
CONFERENCE	7-0	5-0	2-0	0-0
NON-CONFERENCE	5-0	3-0	2-0	0-0

#	Player	gp-gs	min	avg	Total		3-Point		F-Throw		Rebounds				pf	dq	a	to	blk	stl	pts	avg
					fg-fga	fg%	3fg-fga	3fg%	ft-fa	ft%	off	def	tot	avg								
02	Sophia Ramos	12-12	440	36.7	56-121	.463	13-39	.333	60-69	.870	4	74	78	6.5	13	0	46	46	4	20	185	15.4
25	Taylor Kalmer	12-12	446	37.2	70-150	.467	17-38	.447	26-33	.788	4	44	48	4.0	13	0	43	16	2	10	183	15.3
03	Mallory Adams	2-2	67	33.5	7-20	.350	3-6	.500	12-16	.750	4	14	18	9.0	1	0	3	1	1	1	29	14.5
22	Zayn Dornstauder	12-0	221	18.4	45-78	.577	0-0	.000	14-17	.824	23	44	67	5.6	22	0	1	23	14	2	104	8.7
05	Tea Adams	12-12	336	28.0	37-103	.359	8-31	.258	18-22	.818	6	33	39	3.3	32	1	32	22	2	7	100	8.3
04	Monique Terry	12-10	268	22.3	26-60	.433	16-40	.400	4-6	.667	2	43	45	3.8	23	0	15	8	2	6	72	6.0
34	Baylee Vanderdoes	12-12	212	17.7	14-39	.359	1-2	.500	15-20	.750	25	47	72	6.0	16	0	5	10	6	5	44	3.7
10	Isabela Hernandez	12-0	144	12.0	13-42	.310	11-25	.440	2-4	.500	2	14	16	1.3	6	0	2	11	0	4	39	3.3
00	Kennedi Villa	12-0	190	15.8	11-22	.500	1-1	1.000	3-6	.500	6	19	25	2.1	17	0	10	6	2	5	26	2.2
45	Naomi Ekwedike	4-0	22	5.5	3-6	.500	0-0	.000	0-2	.000	1	0	1	0.3	3	0	0	0	0	0	6	1.5
24	Kiara Edwards	8-0	48	6.0	1-8	.125	0-1	.000	0-0	.000	1	4	5	0.6	5	0	0	4	0	0	2	0.3
21	Talia Sireni	3-0	8	2.7	0-2	.000	0-1	.000	0-0	.000	0	1	1	0.3	0	0	0	0	0	0	0	0.0
15	Jayden Perez	4-0	24	6.0	0-2	.000	0-1	.000	0-0	.000	0	4	4	1.0	2	0	3	0	0	0	0	0.0
Team											17	26	43				12					
Total.....		12	2426		283-653	.433	70-185	.378	154-195	.790	95	367	462	38.5	153	1	160	159	33	60	790	65.8
Opponents.....		12	2425		266-756	.352	64-236	.271	86-133	.647	140	290	430	35.8	186	-	137	136	35	72	682	56.8

Score by Periods	1st	2nd	3rd	4th	OT	Totals
San Diego St.	212	153	196	216	13	790
Opponents	165	155	180	176	6	682

Games lost

RECORD:	OVERALL	HOME	AWAY	NEUTRAL
ALL GAMES	0-14	0-7	0-7	0-0
CONFERENCE	0-7	0-2	0-5	0-0
NON-CONFERENCE	0-7	0-5	0-2	0-0

#	Player	gp-gs	min	avg	Total		3-Point		F-Throw		Rebounds				pf	dq	a	to	blk	stl	pts	avg
					fg-fga	fg%	3fg-fga	3fg%	ft-fa	ft%	off	def	tot	avg								
25	Taylor Kalmer	14-14	524	37.4	84-197	.426	18-56	.321	27-33	.818	8	43	51	3.6	23	0	33	34	3	6	213	15.2
02	Sophia Ramos	14-14	499	35.6	65-177	.367	16-55	.291	29-37	.784	10	68	78	5.6	31	0	52	38	6	15	175	12.5
03	Mallory Adams	4-4	124	31.0	17-56	.304	3-16	.188	11-17	.647	9	9	18	4.5	7	0	3	7	0	3	48	12.0
05	Tea Adams	14-14	369	26.4	41-99	.414	12-33	.364	22-34	.647	2	35	37	2.6	24	1	34	30	3	20	116	8.3
22	Zayn Dornstauder	14-0	227	16.2	38-65	.585	0-1	.000	31-49	.633	16	41	57	4.1	35	1	2	29	16	6	107	7.6
34	Baylee Vanderdoes	14-14	249	17.8	21-44	.477	2-3	.667	8-22	.364	17	51	68	4.9	25	0	7	10	6	4	52	3.7
10	Isabela Hernandez	14-0	203	14.5	17-48	.354	9-21	.429	4-6	.667	4	13	17	1.2	6	0	4	11	4	1	47	3.4
04	Monique Terry	14-9	243	17.4	15-37	.405	5-11	.455	4-8	.500	11	27	38	2.7	17	0	5	19	7	1	39	2.8
24	EDWARDS, Kiara	12-0	60	5.0	3-11	.273	0-1	.000	2-6	.333	1	9	10	0.8	6	0	2	5	1	1	8	0.7
00	Kennedi Villa	14-1	235	16.8	4-8	.500	0-2	.000	1-4	.250	4	10	14	1.0	26	1	12	8	4	4	9	0.6
15	Jayden Perez	8-0	33	4.1	2-7	.286	1-1	1.000	0-0	.000	1	2	3	0.4	1	0	1	3	0	1	5	0.6
45	Naomi Ekwedike	11-0	46	4.2	3-11	.273	0-0	.000	0-0	.000	4	4	8	0.7	8	0	0	5	0	2	6	0.5
21	Talia Sireni	6-0	13	2.2	1-4	.250	0-2	.000	0-0	.000	0	0	0	0.0	1	0	0	0	0	0	2	0.3
Team											25	45	70				10					
Total.....		14	2825		311-764	.407	66-202	.327	139-216	.644	112	357	469	33.5	210	3	155	209	50	64	827	59.1
Opponents.....		14	2825		374-893	.419	87-261	.333	156-213	.732	178	369	547	39.1	202	-	231	155	45	106	991	70.8

Score by Periods	1st	2nd	3rd	4th	OT	Totals
San Diego St.	187	177	233	224	6	827
Opponents	238	217	247	278	11	991

Aztec Individual Highs**Points**

32, Sophia Ramos vs. New Mexico (1-29-20)

Field Goals Made

9, Zayn Dornstauder vs. Wyoming (1-8-20)
 9, Taylor Kalmer vs. CSUN (12-28-19)
 9, Sophia Ramos at California Baptist (12-19-19)
 9, Taylor Kalmer at San Jose State (12-7-19)

Field Goals Attempted

21, Taylor Kalmer at San Jose State (12-7-19)

Field Goal Percentage (min. 5 made)

1.000 (5-5), Zayn Dornstauder vs. Fresno State (1-15-20)

3-Point Field Goals Made

4, Monique Terry vs. Wyoming (1-8-20)
 4, Sophia Ramos at California Baptist (12-19-19)
 4, Isabela Hernandez vs. Westcliff (11-12-19)

3-Point Field Goals Attempted

11, Monique Terry vs. Wyoming (1-8-20)

3-Pt Field Goal Percentage (min. 3 made)

.800 (4-5), Isabela Hernandez vs. Westcliff (11-12-19)

Free Throws Made

16, Sophia Ramos vs. New Mexico (1-29-20)

Free Throws Attempted

16, Sophia Ramos vs. New Mexico (1-29-20)

Free Throw Percentage (min 5 made)

1.000 (16-16), Sophia Ramos vs. New Mexico (1-29-20)
 1.000 (8-8), Zayn Dornstauder at Boise State (1-11-20)
 1.000 (8-8), Sophia Ramos at California Baptist (12-19-19)
 1.000 (7-7), Sophia Ramos at Utah State (2-1-20)
 1.000 (6-6), Mallory Adams vs. Cal State Fullerton (11-17-19)
 1.000 (5-5), Taylor Kalmer vs. Colorado State (12-4-19)

Rebounds

12, Mallory Adams vs. Cal State Fullerton (11-17-19)

Assists

9, Sophia Ramos vs. UNLV (1-25-20)

Steals

5, Sophia Ramos vs. UNLV (1-25-20)

Blocked Shots

4, Zayn Dornstauder vs. Cal (11-21-19)
 4, Baylee Vanderdoes vs. Alabama A&M (11-15-19)

Turnovers

7, Sophia Ramos vs. New Mexico (1-29-20)
 7, Sophia Ramos vs. UNLV (1-25-20)
 7, Sophia Ramos vs. Alabama A&M (11-15-19)

Minutes

44, Taylor Kalmer vs. Wyoming (1-8-20)
 44, Sophia Ramos vs. CSUN (12-28-19)

Opponent Individual Highs**Points**

31, Dariauna Lewis (Alabama A&M, 11-14-19)

Field Goals Made

13, Tereza Vitulova (Wyoming, 1-8-20)

Field Goals Attempted

23, Tereza Vitulova (Wyoming, 1-8-20)

Field Goal Percentage (min 5 made)

1.000 (5-5), Payton Tennison (Arkansas State, 11-30-19)

3-Point Field Goals Made

5, Haley Cavinder (Fresno State, 1-15-20)
 5, Megan Anderson (San Jose State, 12-7-19)

3-Point Field Goals Attempted

11, Steph Gorman (Utah State, 1-4-20)

3-Pt Field Goal Percentage (min 3 made)

1.000 (4-4), Payton Tennison (Arkansas State, 11-30-19)

Free Throws Made

11, Dariauna Lewis (Alabama A&M, 11-14-19)

Free Throws Attempted

12, Dariauna Lewis (Alabama A&M, 11-14-19)

Free Throw Percentage (min 5 made)

1.000 (7-7), De'Jionae Calloway (CSUN, 12-28-19)
 1.000 (6-6), Antonia Anderson (New Mexico, 2-12-20)
 1.000 (6-6), Jamie Bonnarens (Colorado State, 12-4-19)
 1.000 (5-5), Hanna Cavinder (Fresno State, 1-15-20)

Rebounds

17, Maddi Utti (Fresno State, 1-15-20)
 17, Dariauna Lewis (Alabama A&M, 11-14-19)

Assists

11, Briana Autry (Air Force, 2-8-20)

Steals

5, Myah Pace (San Diego, 12-11-19)

Blocked Shots

4, Tiana Afu (California Baptist, 12-19-19)
 4, Joy Krupa (Cal State Fullerton, 11-17-19)
 4, Dariauna Lewis (Alabama A&M, 11-14-19)

Turnovers

5, Madison Pollock (San Diego, 12-11-19)
 5, Fieme'a Hafoka (San Jose State, 12-7-19)
 5, Mammusu Secka (Westcliff, 11-12-19)

Aztec Team Highs

Points	80	at California Baptist (12-19-19) vs. Towson (11-9-19)
Field Goals Made	31	at California Baptist (12-19-19)
Field Goal Attempts	67	at California Baptist (12-19-19) vs. Westcliff (11-12-19)
Field Goal Percentage	.529 (27-51)	vs. Utah State (1-4-20)
3-pt Field Goals Made	9	vs. Arkansas State, 11-30-19
3-pt Field Goals Attempted	25	vs. Arkansas State, 11-30-19
3-pt Field Goal Percentage	.533 (8-15)	at New Mexico (2-12-20)
Free Throws Made	24	vs. New Mexico (1-29-20)
Free Throw Attempts	28	vs. Towson (11-9-19)
FT Percentage (Min 10 att.)	.889 (24-27)	vs. New Mexico (1-29-20)
Rebounds	53	vs. Westcliff (11-12-19)
Assists	23	vs. Westcliff (11-12-19)
Steals	11	vs. UNLV (1-25-20)
Blocked Shots	8	vs. CSUN (12-28-19)
Turnovers	22	at New Mexico (2-12-20)
Fouls	20	at New Mexico (2-12-20)
	20	vs. Colorado State (12-4-19)
	20	vs. Alabama A&M (11-14-19)

Aztec Team Lows

Points	47	vs. San Diego (12-11-19)
Field Goals Made	17	vs. Alabama A&M (11-14-19)
Field Goal Attempts	45	vs. New Mexico (1-29-20) vs. San Diego (12-11-19)
Field Goal Percentage	.305 (18-59)	vs. Cal State Fullerton (11-17-19)
3-pt Field Goals Made	1	vs. Air Force (2-8-20) vs. Utah State (1-4-20)
3-pt Field Goals Attempted	4	vs. Utah State (1-4-20)
3-pt Field Goal Percentage	.100 (1-10)	vs. Air Force (2-8-20)
Free Throws Made	3	at UC Santa Barbara (11-26-19)
Free Throws Attempted	6	vs. UNLV (1-25-20)
FT Percentage (Min 10 att.)	.429 (6-14)	Fresno State (1-15-20)
Rebounds	22	vs. San Diego (12-11-19)
Assists	3	at Fresno State (1-1-20)
Steals	1	vs. Westcliff (11-12-19)
Blocked Shots	0	vs. New Mexico (1-29-20) at Nevada (1-18-20) vs. Utah State (1-4-20) at California Baptist (12-19-19)
Turnovers	6	at Hawai'i (11-5-19)
Fouls	7	vs. Cal State Fullerton (11-17-19)

Aztec Scoring

First Half High	44	at New Mexico (2-12-20)
First Quarter High	28	vs. Colorado State (12-4-19)
Second Quarter High	23	vs. New Mexico (1-29-20)
Second Half High	49	vs. Towson (11-9-19)
Third Quarter High	28	vs. Towson (11-9-19)
Fourth Quarter High	27	vs. Westcliff (11-12-19)
First Half Low	15	vs. Alabama A&M (11-14-19)
First Quarter Low	7	at Fresno State (1-1-20)
Second Quarter Low	4	vs. Colorado State (12-4-19)
Second Half Low	20	vs. San Diego (12-11-19)
Third Quarter Low	9	vs. San Diego (12-11-19)
Fourth Quarter Low	10	vs. Cal (11-21-19)
Largest Halftime Lead	14 (44-30)	at New Mexico (2-12-20)
Largest Halftime Deficit	22 (15-37)	vs. Alabama A&M (11-14-19)
Largest Margin of Victory	21 (77-56)	vs. Westcliff (11-12-19)
Largest Loss	26 (48-74)	vs. Cal (11-21-19)
Largest Deficit in a Win	12 (14-26)	vs. New Mexico (1-29-20)
	12 (33-45)	vs. Towson (11-9-19)
Largest Lead in a Loss	8 (30-22)	vs. Fresno State (1-15-20)

Opponent Team Highs

Points	86	Boise State (1-11-20)
Field Goals Made	31	Fresno State (1-1-20) Cal (11-21-19) Towson (11-9-19)
Field Goal Attempts	77	CSUN (12-28-19)
Field Goal Percentage	.500 (28-56)	Wyoming (1-22-20)
3-pt Field Goals Made	13	New Mexico (1-29-20)
3-pt Field Goals Attempted	33	Westcliff (11-12-19)
3-pt Field Goal Percentage	.500 (10-20)	San Jose State (12-7-19)
	.500 (8-16)	Arkansas State 11-30-19
Free Throws Made	19	Boise State (1-11-20)
Free Throws Attempts	27	Alabama A&M (11-14-19)
FT Percentage (Min 10 att.)	1.000 (9-9)	Fresno State (1-15-20)
Rebounds	52	UNLV (1-25-20)
Assists	20	Boise State (1-11-20) San Jose State (12-7-19)
Steals	15	Fresno State (1-1-20)
Blocked Shots	7	Cal State Fullerton (11-17-19)
Turnovers	17	UNLV (1-25-20)
Fouls	22	New Mexico (1-29-20)

Opponent Team Lows

Points	39	UNLV (1-25-20)
Field Goals Made	15	UNLV (1-25-20) Colorado State (12-4-19)
Field Goal Attempts	49	Colorado State (12-4-19)
Field Goal Percentage	.242 (15-62)	UNLV (1-25-20)
3-pt Field Goals Made	0	UNLV (1-25-20)
3-pt Field Goal Attempts	5	Utah State (2-1-20)
3-pt Field Goal Percentage	.000 (0-11)	UNLV (1-25-20)
Free Throws Made	4	Cal State Fullerton (11-17-19)
Free Throw Attempts	5	Cal State Fullerton (11-17-19)
FT Percentage (Min 10 att.)	.455 (5-11)	Towson (11-9-19)
Rebounds	29	New Mexico (1-29-20) Boise State (1-11-20)
Assists	5	UNLV (1-25-20)
Steals	2	Hawai'i (11-5-19)
Blocked Shots	0	Nevada (1-18-20) Wyoming (1-8-20)
Turnovers	6	Wyoming (1-22-20) Nevada (1-18-20) Cal State Fullerton (11-17-19)
Fouls	8	Fresno State (1-15-20)

Opponent Scoring

First Half High	43	Boise State (1-11-20)
First Quarter High	26	New Mexico (1-29-20)
Second Quarter High	29	Boise State (1-11-20)
Second Half High	47	Wyoming (1-22-20)
Third Quarter High	26	Westcliff (11-12-19)
Fourth Quarter High	25	Wyoming (1-22-20)
First Half Low	12	UNLV (1-25-20)
First Quarter Low	6	UNLV (1-25-20) Incarnate Word (12-21-19)
Second Quarter Low	5	Fresno State (1-15-20)
Second Half Low	25	Colorado State (12-4-19)
Third Quarter Low	4	Wyoming (1-8-20)
Fourth Quarter Low	10	New Mexico (2-12-20) Westcliff (11-12-19)
Largest Halftime Lead	22 (37-15)	Alabama A&M (11-14-19)
Largest Halftime Deficit	14 (30-44)	New Mexico (2-12-20)
Largest Margin of Victory	26 (74-48)	Cal (11-21-19)
Largest Loss	21 (56-77)	Westcliff (11-12-19)
Largest Deficit in a Win	8 (22-30)	Fresno State (1-15-20)
Largest Lead in a Loss	12 (26-14)	New Mexico (1-29-20)
	12 (45-33)	Towson (11-9-19)

► **THE LAST TIME AN AZTEC...**

Scored 20-24 points

24, Sophia Ramos, 2-1-20 at Utah State

Scored 25-29 points

32, Sophia Ramos, 1-29-20 vs. New Mexico

Scored 30-39 points

32, Sophia Ramos, 1-29-20 vs. New Mexico

Scored 40+ points

41, Chana Perry, 1-2-88 vs. Northern Illinois

Had 20+ rebounds

27, Chana Perry, 11-25-88 vs. Alabama State

Had 15-19 rebounds

16, Mallory Adams, 3-11-19 vs. [2] New Mexico

Had 10-14 rebounds

11, Sophia Ramos, 1-29-20 vs. New Mexico

11, Zayn Dornstauder, 1-29-20 vs. New Mexico

Had 10+ assists

11, Geena Gomez, 1-20-18 vs. New Mexico

Had A Double-Double

Sophia Ramos, 32 points, 11 rebounds, 1-29-20 vs. New Mexico

Had A Triple-Double

Chelsea Hopkins, 13 points, 11 rebounds, 12 assists, 3-9-13 vs. Boise State

► **The Last Time San Diego State...**

Had two players score 20 points in the same game

Taylor Kalmer (22) and Sophia Ramos (20), 12-7-19 at San Jose State

Had two players with a double-double in the same game

Sophia Ramos (20 points, 10 rebounds) and Baylee Vanderdoes (10 points, 10 rebounds), 12-7-19 at San Jose State

Scored 100+ points

101, vs. Colorado State (101-62), 1-25-92

Allowed 100+ points

104, vs. UCLA (56-104), 12-11-98

Won by 20+ points

21, vs. Westcliff (77-56), 11-12-19

Won by 30+ points

43, vs. Incarnate Word (81-38), 11-18-18

Won by 40+ points

43, vs. Incarnate Word (81-38), 11-18-18

Won in Overtime

vs. Wyoming (67-60), 1-8-20

Lost in Overtime

vs. CSUN (69-74), 12-28-19

► **2019-20 AZTEC LEADERS**

Double-Figure Scoring Games

Taylor Kalmer (24), Sophia Ramos (19), Zayn Dornstauder (12), Téa Adams (10), Mallory Adams (5), Isabela Hernandez (3), Baylee Vanderdoes (3), Monique Terry (3)

SDSU High Scorer

Taylor Kalmer (12), Sophia Ramos (7), Téa Adams (5), Zayn Dornstauder (1), Monique Terry (1), Mallory Adams (1)

Double-Figure Rebounding Games

Baylee Vanderdoes (2), Sophia Ramos (2), Zayn Dornstauder (2), Monique Terry (1), Mallory Adams (1)

Games Led SDSU In Rebounds*

Sophia Ramos (9), Baylee Vanderdoes (8), Zayn Dornstauder (5), Monique Terry (4), Mallory Adams (2), Taylor Kalmer (2), Isabela Hernandez (1), Téa Adams (1)

Games Led SDSU In Assists*

Sophia Ramos (14), Taylor Kalmer (12), Téa Adams (5), Monique Terry (1)

Games Led SDSU In Steals*

Sophia Ramos (14), Téa Adams (10), Zayn Dornstauder (3), Taylor Kalmer (2), Kennedi Villa (2), Isabela Hernandez (2), Mallory Adams (2), Monique Terry (1), Baylee Vanderdoes (1)

Games Led SDSU In Blocks*

Zayn Dornstauder (15), Baylee Vanderdoes (8), Monique Terry (3), Sophia Ramos (3), Kennedi Villa (3), Taylor Kalmer (2), Isabela Hernandez (2), Téa Adams (1), Kiara Edwards (1), Mallory Adams (1)

*Includes ties

► **2019-20 SPECIALTY STATS**

	San Diego State/Opponent				
	Points in Paint	Points off TOs	2nd Chance Points	Fast Break Points	Bench Points
at Hawai'i (L)	32/30	7/5	10/15	7/2	17/15
vs. Towson (W)	28/32	22/10	8/13	20/15	17/18
vs. Westcliff (W)	32/24	11/13	15/10	12/2	34/18
vs. Alabama A&M (L)	22/38	15/20	9/18	5/6	15/18
vs. CS Fullerton (W)	18/18	6/6	6/6	8/11	10/16
vs. Cal (L)	18/40	4/15	4/23	2/12	8/23
at UC Santa Barbara (L)	12/26	6/11	2/8	1/4	8/13
vs. Arkansas State (L)	22/34	21/23	7/9	6/11	16/29
vs. Colorado State (W)	18/18	16/13	3/1	18/5	8/11
at San Jose State (L)	26/34	15/26	10/12	10/23	11/19
vs. San Diego (L)	18/30	12/17	2/16	4/16	5/14
at California Baptist (W)	36/34	8/8	4/6	3/15	15/9
at Incarnate Word (W)	20/20	10/5	6/8	8/6	18/3
vs. CSUN (L)	42/32	8/17	4/11	6/11	15/18
at Fresno State (L)	30/44	4/22	13/12	4/10	9/11
vs. Utah State (W)	32/22	10/2	2/5	8/2	12/11
vs. Wyoming (W)	28/32	11/6	0/6	4/4	18/0
at Boise State (L)	16/40	10/7	8/12	6/6	21/40
vs. Fresno State (L)	20/20	4/7	4/11	2/4	19/14
at Nevada (L)	42/30	9/9	6/15	12/5	16/31
at Wyoming (L)	26/42	15/16	1/8	0/4	23/10
vs. UNLV (W)	16/28	20/12	0/17	6/4	17/16
vs. New Mexico (W)	26/28	5/23	6/11	6/5	9/0
at Utah State (W)	18/20	10/9	6/9	4/4	4/17
Air Force (L)	24/32	13/9	8/9	8/14	11/4
at New Mexico (W)	24/38	15/12	8/8	7/11	15/21

► 2019-20 AZTEC GAME-BY-GAME POINTS-REBOUNDS-ASSISTS

	0	2	3	4	5	10	15	21	22	24	25	34	45
	Kennedi	Sophia	Mallory	Monique	Téa	Isabela	Jayden	Talia	Zayn	Kiara	Taylor	Baylee	Naomi
Opponent	Villa	Ramos	Adams	Terry	Adams	Hernandez	Perez	Sireni	Dornstauder	Edwards	Kalmer	Vanderdoes	Ekwedike
at Hawai'i	1-4-0	14-5-2	13-3-0	1-4-0	4-4-2	0-1-0	3-1-0	DNP	13-6-0	DNP	10-5-1	0-1-0	0-1-0
TOWSON	0-1-2	10-6-6	15-6-1	0-2-1	16-4-1	3-2-0	DNP	DNP	12-7-0	DNP	13-4-5	9-3-1	2-0-0
WESTCLIFF	4-5-1	8-5-6	DNP	0-5-1	10-3-5	16-4-1	0-4-2	0-1-0	12-4-0	0-2-0	19-5-6	6-9-1	2-0-0
ALABAMA A&M	4-1-0	12-3-2	8-8-1	0-1-0	11-0-5	0-0-0	DNP	DNP	9-6-0	0-0-0	5-8-2	2-3-0	0-1-0
CS FULLERTON	0-3-0	5-7-5	14-12-2	0-1-0	7-3-2	2-2-0	DNP	DNP	8-6-0	0-1-0	15-6-2	4-7-0	DNP
CAL	0-1-1	14-1-2	17-4-0	0-2-0	1-1-0	2-5-0	0-0-0	0-0-0	6-1-0	0-1-0	8-5-2	0-1-0	0-4-0
at UCSB	0-1-1	6-5-1	10-3-2	6-5-0	14-1-1	2-1-0	DNP	0-0-0	0-2-0	0-0-0	11-3-4	3-4-1	0-0-0
ARKANSAS ST.	0-1-3	15-4-5	DNP	6-3-1	16-5-8	5-0-1	0-0-0	DNP	4-3-0	1-0-0	13-3-2	2-4-0	0-0-0
COLORADO ST.	5-2-0	15-4-2	DNP	3-5-3	15-5-1	0-3-0	DNP	DNP	0-1-0	DNP	15-7-2	3-9-0	DNP
at San Jose St.	2-1-1	20-10-6	DNP	2-2-0	2-2-3	6-1-1	0-0-0	DNP	3-4-0	0-2-1	22-4-0	10-10-2	DNP
SAN DIEGO	0-1-1	9-5-6	DNP	2-0-1	16-4-2	0-1-1	0-0-0	0-0-0	5-3-1	0-0-0	15-2-2	0-2-0	0-0-0
at Cal Baptist	8-2-0	30-8-2	DNP	2-2-1	6-8-5	0-0-0	0-0-0	DNP	7-3-0	DNP	15-2-2	12-11-1	DNP
at Incarnate Word	1-2-3	9-5-1	DNP	4-7-2	5-4-0	3-1-0	0-0-1	DNP	14-6-0	DNP	19-3-4	2-2-0	DNP
CSUN	0-1-1	14-9-8	DNP	2-4-1	8-4-2	0-1-0	DNP	DNP	13-6-1	5-2-1	22-1-5	5-8-0	0-1-0
at Fresno State	1-1-0	7-3-0	DNP	2-1-0	11-4-1	2-1-0	2-2-0	2-0-0	0-2-0	0-3-0	14-5-2	11-7-0	2-0-0
UTAH STATE	6-1-1	20-5-2	DNP	13-1-0	6-2-3	0-1-0	DNP	0-0-0	4-5-0	2-1-0	14-2-5	1-8-0	DNP
WYOMING	0-2-0	11-7-4	DNP	14-7-4	10-3-7	0-0-0	DNP	DNP	18-6-0	0-0-0	11-1-0	3-3-0	DNP
at Boise State	0-0-0	14-5-2	DNP	2-1-0	7-0-0	11-2-0	0-0-0	0-0-0	10-10-0	0-0-0	21-3-2	7-3-1	DNP
FRESNO STATE	2-1-2	10-8-5	DNP	4-10-1	5-3-6	3-1-0	DNP	0-0-0	12-2-0	0-0-0	20-5-3	2-8-3	2-1-0
at Nevada	0-2-2	16-8-3	DNP	6-3-1	6-5-2	5-1-1	DNP	DNP	11-4-0	0-1-0	19-1-2	6-7-0	DNP
at Wyoming	0-0-0	13-4-6	DNP	3-1-0	8-2-1	11-2-0	0-0-1	DNP	10-3-0	2-1-0	20-3-2	0-5-0	0-0-0
UNLV	0-0-0	5-6-9	DNP	10-1-1	4-0-0	9-1-0	DNP	DNP	8-7-0	0-0-0	10-4-3	2-3-0	0-0-0
NEW MEXICO	0-2-0	32-11-5	DNP	9-4-1	6-1-2	3-0-1	DNP	DNP	6-11-0	0-0-0	17-5-5	2-5-1	DNP
at Utah State	0-0-0	24-8-1	DNP	8-3-1	5-1-2	0-3-0	DNP	DNP	2-2-1	0-1-0	18-4-3	0-5-1	2-1-0
AIR FORCE	0-3-0	11-8-4	DNP	3-1-0	7-2-1	0-0-0	DNP	DNP	11-5-0	DNP	13-3-4	4-5-0	DNP
New Mexico	2-5-0	16-6-3	DNP	9-7-0	10-5-4	3-1-0	0-0-0	0-0-0	10-6-0	0-0-0	17-6-5	0-7-0	DNP

DNP - Did Not Play

Starting Lineups

Game	F/C	F	G	G	G
at Hawai'i (L)	Vanderdoes	M. Adams	Kalmer	T. Adams	Ramos
TOWSON (W)	Vanderdoes	M. Adams	Kalmer	T. Adams	Ramos
WESTCLIFF (W)	Vanderdoes	Terry	Kalmer	T. Adams	Ramos
ALABAMA A&M (L)	Vanderdoes	M. Adams	Kalmer	T. Adams	Ramos
CS FULLERTON (W)	Vanderdoes	M. Adams	Kalmer	T. Adams	Ramos
CAL (L)	Vanderdoes	M. Adams	Kalmer	T. Adams	Ramos
at UC Santa Barbara (L)	Vanderdoes	M. Adams	Kalmer	T. Adams	Ramos
ARKANSAS STATE (L)	Vanderdoes	Villa	Kalmer	T. Adams	Ramos
COLORADO STATE (W)	Vanderdoes	Terry	Kalmer	T. Adams	Ramos
at San Jose State (L)	Vanderdoes	Terry	Kalmer	T. Adams	Ramos
SAN DIEGO (L)	Vanderdoes	Terry	Kalmer	T. Adams	Ramos
at California Baptist (W)	Vanderdoes	Terry	Kalmer	T. Adams	Ramos
at Incarnate Word (W)	Vanderdoes	Terry	Kalmer	T. Adams	Ramos
CSUN (L)	Vanderdoes	Terry	Kalmer	T. Adams	Ramos

Fresno State (L)	Vanderdoes	Terry	Kalmer	T. Adams	Ramos
UTAH STATE (W)	Vanderdoes	Terry	Kalmer	T. Adams	Ramos
WYOMING (W)	Vanderdoes	Terry	Kalmer	T. Adams	Ramos
at Boise State (L)	Vanderdoes	Terry	Kalmer	T. Adams	Ramos
FRESNO STATE (L)	Vanderdoes	Terry	Kalmer	T. Adams	Ramos
at Nevada (L)	Vanderdoes	Terry	Kalmer	T. Adams	Ramos
at Wyoming (L)	Vanderdoes	Terry	Kalmer	T. Adams	Ramos
UNLV (W)	Vanderdoes	Terry	Kalmer	T. Adams	Ramos
NEW MEXICO (W)	Vanderdoes	Terry	Kalmer	T. Adams	Ramos
at Utah State (W)	Vanderdoes	Terry	Kalmer	T. Adams	Ramos
AIR FORCE (L)	Vanderdoes	Terry	Kalmer	T. Adams	Ramos
at New Mexico (W)	Vanderdoes	Terry	Kalmer	T. Adams	Ramos

Lineup Records

Vanderdoes, Terry, Kalmer, T. Adams, Ramos 10-9

Vanderdoes, M. Adams, Kalmer, T. Adams, Ramos 2-4

Vanderdoes, Villa, Kalmer, T. Adams, Ramos 0-1



KENNEDI VILLA
RS-So. | 6-0 | G
Albany, Calif.
Saint Mary's HS

0



SOPHIA RAMOS
So. | 5-9 | G
San Antonio, Texas
Incarnate Word HS

2



MALLORY ADAMS
So. | 6-0 | G/F
Frisco, Texas
Lone Star HS

3



MONIQUE TERRY
Sr. | 6-2 | F
San Antonio, Texas
Brennan HS

4



TÉA ADAMS
Jr. | 5-9 | G
Kirkland, Wash.
Juanita HS

5



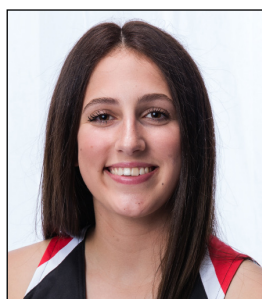
ISABELA HERNANDEZ
Fr. | 6-2 | G/F
Bellingham, Wash.
Lynden Christian HS

10



JAYDEN PEREZ
So. | 5-8 | G
Las Cruces, N.M.
Onate HS

15



TALIA SIRENI
Fr. | 5-9 | G
Surrey, British Columbia, Canada
Earl Marriott Secondary School

21



ZAYN DORNSTAUDER
RS-Sr. | 6-3 | C
Regina, Saskatchewan, Canada
Ball State /Hamilton HS (Ariz.)

22



KIARA EDWARDS
Jr. | 6-1 | F
Surprise, Ariz.
Valley Vista HS

24



TAYLOR KALMER
RS-Sr. | 5-8 | G
Chandler, Ariz.
Oregon State/Corona del Sol HS

25



BAYLEE VANDERDOES
Sr. | 6-1 | F
Auburn, Calif.
Placer HS

34



NAOMI EKWEIKE
RS-Jr. | 6-6 | C
Lagos, Nigeria
Potters House Christian Academy (Fla.)

45



STACIE TERRY-HUTSON
Head Coach
Seventh Season
UT Arlington (1998)

HC



KEVIN MORRISON
Assistant Coach
Second Season
Cal Poly Pomona (1994)

AC



CIARA CARL
Assistant Coach
Seventh Season
Point Loma Nazarene (2005)

AC



NICK GRANT
Assistant Coach
Sixth Season
Baylor (2010)

AC