

# No. 4/4 San Diego State

2019-20 Record: 24-0 (H: 12-0; A: 9-0; N: 3-0) 13-0 MW  
11-Time MW Champions, 12 Postseason Berths in Last 14 Years

- ▶ SDSU has won at least 19 games in 15 straight seasons.
- ▶ SDSU has advanced to postseason play in 12 of the last 14 seasons (2006 NCAA, 2007-09 NIT, 2010-15 NCAA, 2016 NIT, 2018 NCAA).
- ▶ SDSU has won 28 straight games when leading at the half.
- ▶ SDSU has won 30 straight when having a higher FG pct.
- ▶ SDSU is 12th nationally in winning percentage since the beginning of the 2010-11 season.
- ▶ Since its founding in 1999, no men's basketball program has won more Mountain West championships (regular-season and tournament) than San Diego State's 11.

		PPG	RPG	APG	FG	3FG	FT	
<b>0</b>	<b>Keshad Johnson</b> (KEY-shawd) Forward, 6-7, 208, Fr.-HS Oakland, Calif. (San Leandro HS)	19-20 2.0 MW 1.4	1.8 0.8	0.2 0.0	35.3 4/9	4/18 1/5	6/16 2/6	Athletic, talented freshman... Only scholarship member of the 2019 class... Played in 17 games... Has 20 pts. in his last 60 mins. on the court (10 games)... 34 points and 30 rebounds in 104 minutes of action... Played in 6 of last 7 games... Rated as a four-star prospect by ESPN, he averaged 14.4 pts., 8.0 rebs., 3.0 assists, 2.3 blocks and 1.9 steals as a senior in HS.
<b>2</b>	<b>Adam Seiko</b> (SAY-co) Guard, 6-3, 195, So.-1L Boston, Mass. (Sierra Canyon HS (Calif.))	19-20 3.3 MW 2.5	1.1 1.5	0.6 0.6	46.3 39.3	40.9 33.3	5/7 3/5	Had a strk. of 117 TO free minutes earlier this season... Played in 22 of 24 games this season... Avg. 12.3 minutes per game... Has a career 41.6 3FG pct. (32-of-77)... Only 23 turnovers in 660 career minutes (1 TO every 28.7 minutes)... This season 4 TOs in 271 minutes... Made 5 of last 12 3FGs, 41.7 pct. (last 5 games)... Scored 14 pts. in last 38 mins.
<b>3</b>	<b>Aguek Arop</b> (uh-GWUK uh-ROPE) Forward, 6-6, 220, So.-1L Omaha, Neb. (South Omaha HS)	19-20 3.1 MW 1.7	2.4 1.5	0.5 0.2	44.2 40.0	0/4 0/0	5/7 2/2	Missed 10 games this season due to an injury to his right shoulder... Made his return on Sat. at AFA (5 mins.)... Provides SDSU with needed post depth due to N. Meshah injury... Scored in 22 of last 29 games (94 pts.)... 17-of-33 rebounds this year are on off. glass... A 6-6 forward with a near 7-foot wingspan... Good mid-range game and is deadly from 15-feet.
<b>4</b>	<b>Trey Pulliam</b> (pull-EE-um) Guard, 6-3, 180, Jr.-TR Bryan, Texas (Consolidated HS /Navarro College)	19-20 3.7 MW 4.2	1.8 1.5	2.0 1.8	44.3 51.2	6/16 5/11	12/18 8/11	1 of 5 players to see action in all 24 games this season... Has an assist in 4 of last 5 games... Last 4 games: 28 points, 8 rebounds, 4 assists, 10-15 FGs (66.7 pct.)... Has 68 points in his last 14 games (4.9 ppg)... Last 12 games: 4.8 ppg, 1.9 rpg, 1.8 apg, 1.75 A/TO ratio... Played 11-1 minutes in all 24 games this season... His 49 assists are third on the team (2.0 apg).
<b>5</b>	<b>Yanni Wetzell</b> Forward, 6-10, 240, Sr.-TR Auckland, New Zealand (Westlake HS (NZ)/Vanderbilt)	19-20 11.7 MW 11.4	6.4 6.3	1.5 1.7	59.9 60.0	6/18 3/6	61.9 61.3	MW Player of the Week (11-25 & 1-13)... Las Vegas Inv. All-Tournament Team... 3rd on team in pts. (11.7), 1st in rebs. (6.4) and FG pct. (59.9)... 16 of 25 career double-figure scoring games have come this season... Last 21 games: 12.5 ppg, 6.3 rpg, 62.1 FG pct. (64.2 2FG pct.)... Last season: 190 pts., This season: 281 pts... Grad. transfer from Vanderbilt.
<b>10</b>	<b>KJ Feagin</b> (FAY-gun) Guard, 6-1, 190, Sr.-TR Carson, Calif. (Long Beach Poly/Santa Clara)	19-20 8.8 MW 9.7	3.2 3.6	3.3 2.7	38.6 40.4	39.4 43.9	81.8 76.5	Last 3 games: 54 pts., 11 asts, 9 rebs. 14-24 3FGs (58.3 pct.)... Had a trey in 11 of last 12 games (26 total)... Has 15 or more pts. in 3 str. games. (1st time in SDSU career)... Career numbers: 1,394 points, 298 rebounds, 406 assists and 79 steals... One of only 18 active players to produce those career numbers... Season A/TO ratio is 1.77... Started 105 of his 107 games.
<b>11</b>	<b>Matt Mitchell</b> Forward, 6-6, 240, Jr.-2L Riverside, Calif. (Roosevelt HS)	19-20 12.1 MW 13.8	4.5 5.1	1.5 1.4	47.7 50.9	42.0 45.1	85.4 89.1	Started the last 11 games in place of N. Mensah... Last 11 games: 13.5 ppg., 4.8 rpg., 1.5 apg... Last 2 games: 44 pts., 8 rebs., 4 asts., 11-20 FGs, 7-9 3FGs... Setting single-season highs for pts. (12.1) and rebs. (4.5)... 32-5 in last 2 seasons when he scores 9+ points and 19-1 in his career when he scores 15+ points... 985 career pts... Last 12 games: 40-of-45 FTs (88.9 pct.).
<b>12</b>	<b>Nolan Narain</b> (NUH-rain) Forward, 6-10, 230, Sr.-3L Hamilton, Ontario, Canada (La Lumiere School (Ind.))	19-20 2.2 MW 2.1	1.7 1.4	0.3 0.1	58.8 60.0	0/2 0/2	4/8 3/7	Injuries have limited his practice time and allowed him to play in 11 games to date... Played in 10 of last 11 games... Logged 27 mins. in last 4 games (10 pts., 6 rebs.)... In 5th year w/ program (redshirt in 2015-16)... 74 career games, including 31 last season... Shooting numbers from '18-19: 49.3 pct. from the field and 54.8 pct. inside the three-point arc.
<b>13</b>	<b>Caleb Giordano</b> (GEE-or-dan-oh) Guard, 6-3, 190, Fr.-RS La Mesa, Calif. (Great Oak HS/San Diego Miramar College)	19-20 0.6 MW 0.0	0.1 0.0	0.2 0.0	2/9 0/3	2/9 0/3	0/2 0/0	Walk-on guard, who has appeared in 10 games this season... A red-shirt in 2018-19; played at Miramar College in 2017-18... At Miramar, started 14-of-28 games w/ 9.1 pts, 2.8 rebs and 1.3 ast. averages... Recorded his first major college points w/ a three vs. SD Christian (12-18) & hit a three vs. Utah (12-21)... His father and uncle played FB at BYU.
<b>20</b>	<b>Jordan Schakel</b> (SHACK-ull) Guard, 6-6, 200, Jr.-2L Torrance, Calif. (Bishop Montgomery HS)	19-20 10.0 MW 9.4	3.5 3.1	0.6 0.7	45.9 41.9	43.2 36.9	91.7 20/20	Las Vegas Inv. All-Tournament Team... Last 6 games: 11.5 ppg, 15-of-36 3FGs (41.7 pct.)... Career 40.4 3FG shooter... Has 25 double-digit scoring games (15 this year)... SDSU is 23-2 in his career when he scores 10+ points... 5th among active DI players in fewest TO/40 mins (0.9 per 40 min., 1,700 mins.)... Avg 2.8 3-pt FGs/40 mins for career... Made multiple 3s in 35 games.
<b>21</b>	<b>Jared Barnett</b> Guard, 6-1, 170, Fr.-HS Los Angeles, Calif. (Westchester HS)	19-20 0.3 MW 0.0	0.0 0.0	0.1 0.0	1/5 0/0	0/1 0/0	1/2 0/0	True freshman walk-on from Playa Vista, Calif. ... Has appeared in 9 games with his lone bucket coming in the season opener vs. Texas Southern (11-5)... Was named second-team all-conference as a senior after averaging 13 points six assists and three rebounds per game... Received academic honor roll recognition all four of years at Westchester High.
<b>22</b>	<b>Malachi Flynn</b> (MAL-uh-k-eye) Guard, 6-1, 185, Jr.-TR Tacoma, Wash. (Bellarmine Prep/Washington State)	19-20 16.5 MW 17.5	3.9 4.8	5.2 4.7	44.5 45.3	38.2 35.1	83.5 90.2	Wooden & Lute Olson National Player of the Year Watch Lists... Only player in the nation this season to average 16.5 points, 5 assists with an ATO ratio of 3 or better... Basketball Hall of Fame Classic MVP... MW Player of the Week (12/2)... Las Vegas Inv. MVP... Double figures in 23 of 24 games... 45 treys in last 20 games (2.3 per gm.)... Made 53 of last 57 FTA (93.0 pct.).
<b>31</b>	<b>Nathan Mensah</b> (MEN-suh) Forward, 6-10, 220, So.-1L Labadi, Accra, Ghana (Findlay Prep (Nev.))	19-20 6.9 MW 9.0	6.8 9.5	0.3 1.0	61.7 60.0	0/0 0/0	64.0 6/7	Has 3 career double-doubles... Avg. 13.7 pts. and 13.6 rebs. per 40 mins this season... SDSU is 9-1 when he scores 10+ & 7-0 when he has 10+ rebs... 26 rebounds in last 4 games (6.5 rpg)... Last 3 games: 11-13 FGs (84.6 pct)... 11 str. games with a blocked shot... In last 23 seasons, only Kawhi Leonard produced a 10-10-3 blk-2 stl. game as an SDSU frosh.
<b>35</b>	<b>Joel Mensah</b> (MEN-suh) Forward, 6-10, 210, So.-1L Korle Gonno, Accra, Ghana (JSerra Catholic HS (Calif.))	19-20 2.0 MW 0.8	1.1 0.7	0.1 0.1	61.3 4/6	0/0 0/0	1/3 1/2	Played 132 minutes, action in 20-30 games this year... Has eclipsed pts. & blocks from last year... FG pct. is up 43.4 pct. from 2018-19... Last 10 games: 14 pts., 7-10 FGs, 9 rebs., 65 mins... Attended JSerra Catholic High in Capistrano, Calif... Averaged 15.9 pts, 8.8 rebs, 1.2 stls and 1.4 blks in his senior season... Not related to Nathan Mensah.

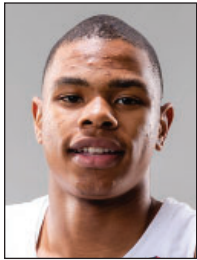
## Brian Dutcher

3rd year Head Coach / 67-24  
21st season at SDSU / 31st seasons overall

- ▶ Only first year coach in the country to guide his team to the NCAA Tournament in 2017-18 season.
- ▶ Posted at least 21 victories in each of his first three seasons as head coach.
- ▶ Been on the sidelines for all of San Diego State's record 11 Mountain West Conference championships.
- ▶ Helped guide Michigan to three NCAA national championship game appearances including the program's first national title in 1989.
- ▶ His teams are 58-4 with 30 straight wins when owning a higher FG pct.
- ▶ His teams are 45-3 when the opponent shoots 40 pct. or less from the floor.
- ▶ His teams are 39-5 at home and are 21-1 in its last 22 home games.

# SDSU BROADCAST ROSTER

No. 4 San Diego State vs. New Mexico | Steve Fisher Court at Viejas Arena | San Diego, Calif. | February 11, 2020



**# 0**

**Keshad Johnson**

Forward  
6-7, 208, Freshman-HS  
Oakland, Calif.  
San Leandro High

PPG: 2.0 RPG: 1.8 APG: 0.2  
FG%: 35.3 3FG: 22.2 FT%: 37.5



**# 2**

**Adam Seiko**

Guard  
6-3, 195, Sophomore-1L  
Boston, Mass.  
Sierra Canyon High (Calif.)

PPG: 3.3 RPG: 1.1 APG: 0.5  
FG%: 46.3 3FG: 40.9 FT%: 71.4



**# 3**

**Aguek Arop**

Forward  
6-6, 220, Sophomore-1L  
Omaha, Neb.  
Omaha South High

PPG: 3.1 RPG: 2.4 APG: 0.5  
FG%: 44.2 3FG: 00.0 FT%: 71.4

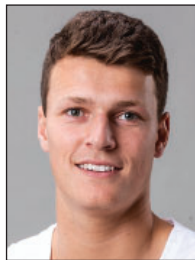


**# 4**

**Trey Pulliam**

Guard  
6-3, 180, Junior-TR  
Bryan, Texas  
Consolidated High/Navarro College

PPG: 3.7 RPG: 1.8 APG: 2.0  
FG%: 44.3 3FG: 37.5 FT%: 66.7



**# 5**

**Yanni Wetzell**

Forward  
6-10, 240, Senior-TR  
Auckland, New Zealand  
Westlake High (NZ)/Vanderbilt

PPG: 11.7 RPG: 6.4 APG: 1.5  
FG%: 59.9 3FG: 33.3 FT%: 61.9

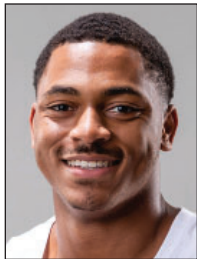


**# 10**

**KJ Feagin**

Guard  
6-1, 190, Senior-TR  
Carson, Calif.  
Long Beach Poly

PPG: 8.8 RPG: 3.2 APG: 3.3  
FG%: 38.6 3FG: 39.4 FT%: 81.8



**# 11**

**Matt Mitchell**

Forward  
6-6, 240, Junior-2L  
Riverside, Calif.  
Roosevelt High

PPG: 12.1 RPG: 4.5 APG: 1.5  
FG%: 47.7 3FG: 42.0 FT%: 85.4



**# 12**

**Nolan Narain**

Forward  
6-10, 230, Senior-3L  
Hamilton, Ontario, Canada  
La Lumiere School (Ind.)

PPG: 2.2 RPG: 1.7 APG: 0.3  
FG%: 58.8 3FG: 0.0 FT%: 50.0

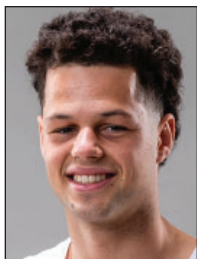


**# 13**

**Caleb Giordano**

Guard  
6-3, 190, Freshman-RS  
La Mesa, Calif.  
Great Oak High/SD Miramar College

PPG: 0.6 RPG: 0.1 APG: 0.2  
FG%: 22.2 3FG: 22.2 FT%: 00.0



**# 20**

**Jordan Schakel**

Forward  
6-7, 200, Junior-2L  
Torrance, Calif.  
Bishop Montgomery High

PPG: 10.0 RPG: 3.5 APG: 0.6  
FG%: 45.9 3FG: 43.2 FT%: 91.7

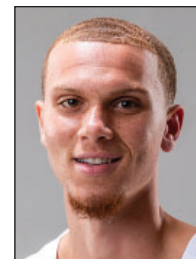


**# 21**

**Jared Barnett**

Guard  
6-1, 170, Freshman-HS  
Los Angeles, Calif.  
Westchester High

PPG: 0.3 RPG: 0.0 APG: 0.1  
FG%: 20.0 3FG: 00.0 FT%: 50.0



**# 22**

**Malachi Flynn**

Guard  
6-1, 185, Junior-TR  
Tacoma, Wash.  
Bellarmine Prep/Washington State

PPG: 16.5 RPG: 3.9 APG: 5.2  
FG%: 44.5 3FG: 38.2 FT%: 83.5



**# 31**

**Nathan Mensah**

Forward  
6-10, 220, Sophomore-1L  
Labadi, Accra, Ghana  
Findley Prep (Nev.)

PPG: 6.9 RPG: 6.8 APG: 0.3  
FG%: 61.7 3FG: - FT%: 64.0



**# 35**

**Joel Mensah**

Forward  
6-10, 210, Sophomore-1L  
Korle Gonno, Accra, Ghana  
JSerra Catholic High (Calif.)

PPG: 2.0 RPG: 1.1 APG: 0.1  
FG%: 61.3 3FG: - FT%: 33.3



**Brian Dutcher**

Head Coach