



# SAN DIEGO STATE WOMEN'S BASKETBALL

## 2020-21 GAME NOTES

Ben Pearson, Assistant Media Relations Director • E-mail: ben.pearson@sdsu.edu • Office: 619-594-5547

### 2020-21 SCHEDULE

Date	Opponent	Time/Result
Nov. 25	Washington (Las Vegas)	L, 59-61
Nov. 27	Lamar (Las Vegas)	W, 60-54
<b>Dec. 2</b>	<b>California Baptist</b>	<b>L, 71-75</b>
Dec. 5	at San Diego	W, 64-56
Dec. 8	at Colorado State*	L, 77-86
Dec. 10	at Colorado State*	L, 77-84 (2OT)
<b>Dec. 13</b>	<b>Saint Katherine</b>	<b>Canceled</b>
<b>Dec. 19</b>	<b>UC Irvine</b>	<b>4 p.m.</b>
<b>Dec. 21</b>	<b>Cal Poly</b>	<b>2 p.m.</b>
<b>Dec. 31</b>	<b>UNLV*</b>	<b>2 p.m.</b>
<b>Jan. 2</b>	<b>UNLV*</b>	<b>1 p.m.</b>
Jan. 7	at Nevada*	6 p.m.
Jan. 9	at Nevada*	1 p.m.
<b>Jan. 14</b>	<b>Utah State*</b>	<b>6 p.m.</b>
<b>Jan. 16</b>	<b>Utah State*</b>	<b>12 p.m.</b>
<b>Jan. 22</b>	<b>Air Force*</b>	<b>6 p.m.</b>
<b>Jan. 24</b>	<b>Air Force*</b>	<b>1 p.m.</b>
Jan. 28	at Wyoming*	6:30 p.m.
Jan. 30	at Wyoming*	1 p.m.
<b>Feb. 3</b>	<b>New Mexico*</b>	<b>6 p.m.</b>
<b>Feb. 5</b>	<b>New Mexico*</b>	<b>1 p.m.</b>
Feb. 8	at San Jose State*	6 p.m.
Feb. 10	at San Jose State*	1 p.m.
<b>Feb. 18</b>	<b>Fresno State*</b>	<b>6 p.m.</b>
<b>Feb. 20</b>	<b>Fresno State*</b>	<b>12 p.m.</b>
Feb. 24	at Boise State*	TBA
Feb. 26	at Boise State*	TBA
March 7-10	MW Championships (Las Vegas)	TBA

\* Mountain West game

Home games in **Bold**

All home games at Steve Fisher Court at Viejas Arena

All times local to site.

Games No. 7 & 8 | vs. UC Irvine, Dec. 19 (4 p.m. PT) & vs. Cal Poly Dec. 21 (2 p.m. PT), Viejas Arena

LIVE MEDIA: Mountain West Network | Live Stats



### SAN DIEGO STATE

2020-21 Record: 2-4 (0-2)

Head Coach: Stacie Terry-Hutson

Eighth Year at San Diego State



### UC IRVINE

2020-21 Record: 1-3

Head Coach: Tamara Inoue

Fifth Year at UC Irvine



### CAL POLY

2020-21 Record: 3-1

Head Coach: Faith Mimnaugh

24th Year at Cal Poly

### TEAM LEADERS

Scoring Sophia Ramos - 16.8

Rebounding Sophia Ramos - 6.8

Assists Sophia Ramos - 3.0

### TEAM LEADERS

Scoring Kayla Williams - 16.0

Rebounding Chloe Webb - 8.7

Assists Kayla Williams - 4.0

### TEAM LEADERS

Scoring Sierra Campisano - 19.8

Rebounding Sierra Campisano - 15.3

Assists Abbey Ellis - 3.0

- San Diego State (2-4, 0-2) will wrap up the non-conference portion of their season with games against UC Irvine (Dec. 19 at 4 p.m.) and Cal Poly (Dec. 21 at 2 p.m.). Both games will be streamed on the Mountain West Network.
- The Aztecs began Mountain West play with a two-game series at Colorado State last week. SDSU lost both games, the first one 86-77 and the second one in double overtime 84-77.
- Tea Adams scored a career-high 24 points in the double overtime game and made a couple key plays. She had a block at the end of regulation to force the first overtime and then hit a three to tie the game up in the final seconds of the first overtime period.
- Adams has scored in double-digits in five straight games and she is leading the team in field goal percentage (.600) and three-point percentage (.692).
- Mercedes Staples had double-doubles in both games, the first of her career, and is now averaging 8.8 rebounds per game, second-best in the Mountain West. Her 8.0 defensive rebounds per game is 16th in the country.
- Freshman Kamaria Gipson notched her first career double-double in the second game at CSU, recording 10 points and 10 rebounds. Through four games, she is averaging 5.3 points and 7.0 rebounds in 19 minutes a game.
- Three Aztecs rank in the top 100 in the nation in total minutes played: Mercedes Staples (26th), Sophia Ramos (75th) and Alex Crain (97th).
- SDSU is averaging just 14.2 personal fouls a game, the lowest in the conference and 26th-best in the nation.
- The Aztecs lead the Mountain West in three-point field goal percentage defense, allowing opponents to shoot just 27.2 percent from deep.
- Head coach Stacie Terry-Hutson enters the weekend with 99 career wins.
- Following Christmas, the Aztecs will resume Mountain West play when they host UNLV Dec. 31 and Jan 2.

### SAN DIEGO STATE AZTECS 2020-21 ROSTER

No.	Name	Pos.	Ht.	Yr.	PPG	RPG	APG	Individual Player Notes
1	Asia Avinger	G	5-7	Fr.	--	--	--	Out for the year... MW Preseason Freshman of the Year... Highest ranked recruit under Terry-Hutson.
2	Sophia Ramos	G	5-9	Jr.	16.8	6.8	3.0	Leads team in scoring and rebounding... Has 989 career points... Preseason All-Mountain West Selection.
3	Mallory Adams	G/F	6-0	So.	--	--	--	Currently out with injury... Missed all but six games last season... 2018-19 All-MW HM & All-Freshman Team.
4	Bailee Chynoweth	G	5-11	Fr.	0.0	0.0	0.0	Walk-on from Austin, Texas (Westlake HS)... All-State & All-Region selection in 2020.
5	Tea Adams	G	5-9	Sr.	13.7	2.8	2.8	Scored career-high 24 points at CSU (12-10)... Leads team in FG% (.600) and 3-pt FG% (.692).
10	Isabela Hernandez	G/F	6-2	So.	4.0	2.3	0.2	Shot 43.1% from three last year, 2nd best in SDSU history... Averaged 13.1 minutes last season.
11	Kamaria Gipson	C	6-3	Fr.	5.3	7.0	0.3	Had double-double at CSU (12-10)... Averaged 22.5 points, 15.2 rebs & 5.7 blocks per game as a HS senior.
12	Mercedes Staples	G	5-10	Jr.	10.7	8.8	0.4	Had two double-doubles in CSU series... Transfer from Minnesota where she appeared in 25 games.
13	Talia Sireni	G	5-9	So.	1.8	0.7	0.3	Appeared in 10 games off the bench in 2019-20... Averaged 2.1 minutes, 0.2 points and 0.1 rebounds.
15	Jayden Perez	G	5-8	Jr.	--	--	--	Out for the year with injury.. Appeared in 12 games off the bench in 2019-20.
21	Alex Crain	G	5-9	Jr.	7.5	3.0	1.0	Transferred from TCU (48 games)... Graduated from TCU in two years political science degree.
22	Flo Vinerte	F	6-2	Fr.	0.0	1.0	0.0	Played for the Latvian youth national team... Attended New Hope Academy (Landover Hills, Md.)
23	Kim Villalobos	G/F	6-0	Fr.	4.0	5.5	0.5	Averaged 15 points & 12 rebounds as a senior at Chaminade HS... Played with the El Salvador national team.
24	Kiara Edwards	F	6-1	Sr.	4.7	1.8	0.0	Had career-high 7 points at USD (12-2)... First year starting... Appeared in 23 games last season.
30	Ivana Murillo	F	6-1	Jr.	0.0	0.0	0.0	Colombia native & transfer from Northeastern Oklahoma A&M Coll... Averaged 13.1 points & 9.4 rebounds.

Head Coach: Stacie Terry-Hutson (UT Arlington, 1998) | Eighth Season at SDSU

Assistant Coaches: Ciara Carl (Point Loma Nazarene, 2005); Nick Grant (Baylor, 2010), Marsha Frese (Rice, 1995)

Director of Basketball Operations: Jon Silver (UCLA, 2009) | Director of Player Personnel: Mercedes Riggs (Duke, 2016) | Graduate Assistant: Naomi Ekwedike (SDSU, 2020)

**PERSONNEL SUMMARY**

**Returning Starters (3):**

Mallory Adams\*, So., G/F (12.8 ppg, 6.0 rpg)  
 Téa Adams, Sr., G (9.1 ppg, 3.2 rpg, 2.3 apg)  
 Sophia Ramos, Jr., G, (14.3 ppg, 6.5 rpg, 3.8 apg)  
*\*Limited to six games in 2019-20*

**Starters Lost (3):**

Taylor Kalmer, G (15.7 ppg, 4.0 rpg, 3.1 apg)  
 Monique Terry, F (4.6 ppg, 3.4 rpg, 40.3 3-pt FG%)  
 Baylee Vanderdoes, F (3.7 ppg, 5.4 rpg)

**Other Players Lost (3):**

Zayn Dornstauder, C (17.6 mpg, 8.0 ppg, 4.5 rpg)  
 Naomi Ekwedike, C (17 games)  
 Kennedy Villa (16.5 mpg, 1.9 rpg, 48.9 FG%)

**Other Letterwinners Returning (2):**

Kiara Edwards, F (23 games, 4.9 mpg)  
 Isabela Hernandez, G/F (3.1 ppg, 43.1 3-pt FG%)

**Other Players Returning (2):**

Jayden Perez, Jr., G (12 games)  
 Talia Sireni, So., G (10 games)

**Newcomers (8):**

Asia Avinger, Fr., G, 5-7, Cerritos, Calif. (Rosary HS)  
 Bailee Chynoweth, Fr., G, Austin, Texas (Westlake HS)  
 Alex Crain, Jr., G, McKinney Texas (TCU/Dallas Thunder)  
 Kamaria Gipson, Fr., C, Beeville, Texas (A.C. Jones HS)  
 Ivvana Murillo, Jr., F, Medellin, Colombia (Northeastern Oklahoma A&M, Santa Catalina de Sena HS)  
 Mercedes Staples, Jr., G, Centerville, Utah (Minnesota, Viewmont HS)  
 Kim Villalobos, Fr., G/F, Van Nuys, Calif. (Chaminade HS)  
 Flo Vinerte, Fr., F, Riga Latvia (New Hope Academy (Md.))

**ROSTER BREAKDOWN**

**By Class**

**Seniors (2):** T. Adams, Edwards; **Juniors (5):** Crain, Murillo, Perez, Ramos, Staples; **Sophomores (3):** M. Adams, Hernandez, Sireni; **Freshmen (5):** Avinger, Chynoweth, Gipson, Villalobos, Vinerte

**By State (5)/Country (3)**

**Arizona (1):** Edwards; **California (2):** Avinger, Villalobos; **New Mexico (1):** Perez; **Texas (5):** M. Adams, Chynoweth, Crain, Gipson, Ramos; **Washington (2):** T. Adams, Hernandez; **Canada (1):** Sireni; **Colombia (1):** Murillo; **Latvia (1):** Vinerte

**By Position**

**Centers (1):** Gipson; **Forwards (5):** M. Adams, Edwards, Murillo, Villalobos, Vinerte; **Guards (9):** T. Adams, Avinger, Chynoweth, Crain, Hernandez, Perez, Ramos, Sireni, Staples

**By Height**

**6-3 (1):** Gipson; **6-2 (2):** Hernandez, Vinerte; **6-1 (2):** Edwards, Murillo; **6-0 (2):** M. Adams, Villalobos; **5-11 (1):** Chynoweth; **5-10 (1):** Staples; **5-9 (4):** T. Adams, Crain Ramos, Sireni; **5-8 (1):** Perez; **5-7 (1):** Avinger

**2020-21 NUMERICAL ROSTER**

No.	Name	Pos.	Ht.	Yr.	Hometown (Previous School/High School)
1	Asia Avinger	G	5-7	Fr.	Cerritos, Calif. (Rosary HS)
2	Sophia Ramos	G	5-9	Jr.	San Antonio, Texas (Incarnate Word HS)
3	Mallory Adams	G/F	6-0	So.	Frisco, Texas (Lone Star HS)
4	Bailee Chynoweth	G	5-11	Fr.	Austin, Texas (Westlake HS)
5	Téa Adams	G	5-9	Sr.	Kirkland, Wash. (Juanita HS)
10	Isabela Hernandez	G/F	6-2	So.	Bellingham, Wash. (Lynden Christian HS)
11	Kamaria Gipson	C	6-3	Fr.	Beeville, Texas (A.C. Jones HS)
12	Mercedes Staples	G	5-10	Jr.	Centerville, Utah (Minnesota/Viewmont HS)
13	Talia Sireni	G	5-9	So.	Surrey, British Columbia, Canada (Earl Marriott Secondary School)
15	Jayden Perez	G	5-8	Jr.	Las Cruces, N.M. (Onate HS)
21	Alex Crain	G	5-9	Jr.	McKinney, Texas (TCU/Dallas Thunder)
22	Flo Vinerte	F	6-2	Fr.	Riga, Latvia (New Hope Academy (Md.))
23	Kim Villalobos	G/F	6-0	Fr.	Van Nuys, Calif. (Chaminade HS)
24	Kiara Edwards	F	6-1	Sr.	Surprise, Ariz. (Valley Vista HS)
30	Ivvana Murillo	F	6-1	Jr.	Medellin, Colombia (Northeastern Oklahoma A&M/Santa Catalina de Sena HS)

**2020-21 ALPHABETICAL ROSTER**

No.	Name	Pos.	Ht.	Yr.	Hometown (Previous School/High School)
3	Mallory Adams	G/F	6-0	So.	Frisco, Texas (Lone Star HS)
5	Téa Adams	G	5-9	Sr.	Kirkland, Wash. (Juanita HS)
1	Asia Avinger	G	5-7	Fr.	Cerritos, Calif. (Rosary HS)
4	Bailee Chynoweth	G	5-11	Fr.	Austin, Texas (Westlake HS)
21	Alex Crain	G	5-9	Jr.	McKinney, Texas (TCU/Dallas Thunder)
24	Kiara Edwards	F	6-1	Sr.	Surprise, Ariz. (Valley Vista HS)
11	Kamaria Gipson	C	6-3	Fr.	Beeville, Texas (A.C. Jones HS)
10	Isabela Hernandez	G/F	6-2	So.	Bellingham, Wash. (Lynden Christian HS)
30	Ivvana Murillo	F	6-1	Jr.	Medellin, Colombia (Northeastern Oklahoma A&M/Santa Catalina de Sena HS)
15	Jayden Perez	G	5-8	Jr.	Las Cruces, N.M. (Onate HS)
2	Sophia Ramos	G	5-9	So.	San Antonio, Texas (Incarnate Word HS)
13	Talia Sireni	G	5-9	So.	Surrey, British Columbia, Canada (Earl Marriott Secondary School)
12	Mercedes Staples	G	5-10	Jr.	Centerville, Utah (Minnesota/Viewmont HS)
23	Kim Villalobos	G/F	6-0	Fr.	Van Nuys, Calif. (Chaminade HS)
22	Flo Vinerte	F	6-2	Fr.	Riga, Latvia (New Hope Academy (Md.))

**Head Coach:** Stacie Terry-Hutson (UT Arlington, 1998), Eighth season at SDSU

**Assistant Coach:** Ciara Carl (Point Loma Nazarene, 2005), Eighth season at SDSU

**Assistant Coach:** Nick Grant (Baylor, 2010), Seventh season at SDSU

**Assistant Coach:** Marsha Frese (Rice 1995), First season at SDSU

**Director of Operations:** Jon Silver (UCLA, 2009; LSU 2017), Fifth season at SDSU

**Director of Player Development:** Mercedes Riggs (Duke, 2016), Third season at SDSU

**Graduate Assistant:** Naomi Ekwedike (San Diego State, 2020), First season at SDSU

**Administrative Assistant:** Jordan Mottershaw (W. Oregon, 2017; Cal St. San Bernardino, 2019), Second season at SDSU

**2020-21 PRONUNCIATION GUIDE**

Téa Adams	TAY-uh	Talia Sireni	Ta-LEE-uh Si-REN-ee
Asia Avinger	AV-in-JER	Kim Villalobos	VILL-uh-lobos
Bailee Chynoweth	CHIN-uh-WITH	Flo Vinerte	vin-AIR-tay
Kiara Edwards	key-ARR-uh	Ciara Carl	see-ARR-uh
Kamaria Gipson	cuh-MARE-uh	Marsha Frese	FREEZE
Ivvana Murillo	ee-VON-uh mur-EE-oh	Naomi Ekwedike	nay-O-mee ECK-weh-DEE-kay

## SAN DIEGO STATE QUICK FACTS

### GENERAL INFORMATION

Location: San Diego, Calif., 92182  
 Founded: 1897  
 Enrollment: 33,870  
 Nickname: Aztecs  
 School Colors: Scarlet and Black  
 Affiliation: NCAA Division I  
 Conference: Mountain West  
 Home Arena (Capacity):  
 Steve Fisher Court at Viejas Arena (12,414)  
 President: Dr. Adela de la Torre  
 Director of Athletics: John David Wicker

### AZTEC BASKETBALL FACTS

First Year of Basketball: 1976-77  
 All-Time Record: 665-610 (.522) / 43 seasons  
 Postseason Appearances/NCAA Appearances: 12/9  
 Last Postseason Appearance: 2013  
 Lost to BYU (69-58) in WNIT Second Round

### SDSU TEAM INFORMATION

2019-20 Record: 14-17 (.452)  
 2019-20 MW Record/Finish: 9-9/t-5th  
 2020 MW Tournament Record: 0-1  
 2020 Final NCAA RPI: 244  
 Letterwinners Returning/Lost: 5/6  
 Starters Returning/Lost: 2/3  
 Newcomers: 8 (5 freshmen & 3 transfers)

### AZTEC BASKETBALL STAFF

Head Coach: Stacie Terry  
 Alma Mater: UT Arlington, 1998  
 Career Record/Years: 97-128/Eighth Year  
 Basketball Office Phone: 619-594-4095  
 Assistant Coaches:  
 Ciara Carl  
 Eighth season at SDSU  
 Alma Mater: Point Loma Nazarene, 2005  
 Nick Grant  
 Seventh season at SDSU  
 Alma Mater: Baylor, 2010  
 Marsha Frese  
 First season at SDSU  
 Alma Mater: Rice, 1995  
 Director of Basketball Operations: Jon Silver  
 Fifth season at SDSU  
 Alma Mater: UCLA, 2009  
 Player Development Coordinator: Mercedes Riggs  
 Third season at SDSU  
 Alma Mater: Duke, 2016  
 Graduate Assistant: Naomi Ekwedike  
 First season at SDSU  
 Alma Mater: San Diego State, 2020  
 Administrative Assistant: Jordan Mottershaw  
 Athletic Trainer: Queenie Soriano  
 Academic Advisor: Dr. Bre White  
 Strength and Conditioning: Justin Landry

### SDSU MEDIA RELATIONS

Women's Basketball SID: Ben Pearson  
 E-mail: ben.pearson@sdsu.edu  
 Office Phone: 619-594-5547

### Last Time Out (L, 77-84 (2OT) at Colorado State, 12-10-20)

The Aztec women's basketball team (2-4, 0-2) lost in double overtime at Colorado State (5-1, 3-1) 84-77 last December 10.

The Aztecs, who played the majority of the game without leading scorer Sophia Ramos, saw three players record career-highs for points. Téa Adams played phenomenal and finished with 24 points, Mercedes Staples notched her second straight double-double with 16 points and 13 rebounds and freshman Kamaria Gipson came off the bench to collect a career-high 10 points and 10 rebounds.

Adams had a block in the final seconds of regulation to force overtime and then hit a three in the closing moments to force the second overtime.

The first half was a game of runs. SDSU started off on an 8-0 run, making six of their first eight shots. The Rams responded with a 19-2 run to go up by as much as nine points (23-14).

The Aztecs then held CSU scoreless for an eight-minute stretch in the second quarter as they went on an 11-0 run to retake the lead.

SDSU led by as much as five points in the third quarter but then missed their first six field goals in the fourth quarter and CSU retook the lead.

Adams showed her senior leadership, scoring six straight points down the stretch in the fourth quarter to give SDSU a 60-58 lead with two minutes left. The Rams would tie it with 1:35 left and then neither team would score the rest of the way. Adams had a huge block on McKenna Hofschild with three seconds left to force overtime.

With SDSU trailing by three, Adams hit a three from the wing to force the second overtime. The Rams led for the entire second overtime. SDSU trailed by just two with 1:17 left but were outscored 8-3 down the stretch.

The Rams were led by Lore Devos' 23 points and 12 rebounds. McKenna Hofschild added 18 points while Tori Williams notched a double-double with 10 points and 10 rebounds.

The Aztecs outrebounded the Rams 60-42 and 23-6 on the offensive glass.

Mercedes Staples (16 points & 13 rebounds) and Kamaria Gipson (10 points & 10 rebounds) both finished with a double-double, the first time two Aztecs have had a double-double in the same game since last December 7 when Sophia Ramos and Baylee Vanderdoes accomplished it at San Jose State.

### Asia Avinger & Jayden Perez Out for the Year

Guards Asia Avinger and Jayden Perez will miss the entire 2020-21 season due to leg injuries head coach Stacie Terry-Hutson announced Tuesday.

"It's a big blow to lose two key pieces in your backcourt, but we have to adapt," Terry-Hutson said. "They are already rehabbing, and we look forward to having both of them back at full strength next season."

Avinger (Cerritos, Calif.), the preseason Mountain West Freshman of the Year, was expected to play a large role in the Aztecs' backcourt this season. One of the nation's best 2020 combo guards according to espnW, Avinger was ranked No. 56 in the nation according to ESPN, the highest ranked recruit under Terry-Hutson.

Perez, a junior from Las Cruces, N.M., has appeared in 27 games off the bench the last two seasons and was set to assume a larger role in the 2020-21 season.

## SAN DIEGO STATE STREAKS

### Most Consecutive Starts\*

	Consecutive	Total
Sophia Ramos	67	68
Téa Adams	7	65
Alex Crain	6	6
Kiara Edwards	6	6
Mercedes Staples	6	6
Mallory Adams	0	38

### Most Consecutive Games\*

	Consecutive	Total
Sophia Ramos	69	69
Téa Adams	57	95
Isabela Hernandez	37	37
Kiara Edwards	8	38
Talia Sireni	6	16
Alex Crain	6	6
Mercedes Staples	6	6
Kamaria Gipson	4	4
Kim Villalobos	4	4
Flo Vinerte	4	4
Ivvana Murillo	2	2
Mallory Adams	0	38
Jayden Perez	0	27
Bailee Chynoweth	0	1

### Most Consecutive Games With A Point^

	Consecutive	Total
Téa Adams	52	90
Mallory Adams	38	38
Kiara Edwards	6	16
Alex Crain	6	6
Mercedes Staples	6	6
Kamaria Gipson	4	4
Kim Villalobos	4	4
Isabela Hernandez	3	24
Talia Sireni	3	5
Sophia Ramos	0	68
Jayden Perez	0	8

\*SDSU totals only

^must have played in the game

## SDSU 1,000 POINT SCORERS

Player	Years	Points
1. Judy Porter	(1980-83)	2,318
2. Falisha Wright	(1992-95)	1,733
3. McKynzie Fort	(2015-18)	1,708
4. Paris Johnson	(2008-11)	1,598
5. Jené Morris	(2008-10)	1,499
6. Courtney Clements	(2011-13)	1,495
7. Chana Perry	(1988-89)	1,445
8. Jessica Haynes	(1986-88)	1,395
9. Quenese Davis	(2007-10)	1,370
10. Michelle Suman	(1992-95)	1,341
11. Brooke Meadows	(1986-89)	1,310
12. Jamey Cox	(2000-03)	1,275
13. Marsha Overton	(1980-83)	1,273
14. Tina Hutchinson	(1984-85)	1,256
15. Christina Murguia	(1992-95)	1,237
16. Kieishsha Garnes	(1991-92)	1,235
17. Shelda Arceneaux	(1984-87)	1,232
18. Dee Dee Duncan	(1983-86)	1,108
19. Julie Evans	(1989-90)	1,106
20. Jodi Nowlin-Tres	(1994-97)	1,089
21. Heidi Bauer	(1981-83, 85)	1,024
22. Sophia Ramos	(2018-present)	989

## ALL-TIME SERIES

### San Diego State leads UC Irvine 20-7

Record at SDSU.....	9-5
Record at UCI.....	10-2
Record at Neutral.....	1-0
Most Points SDSU.....	93, 1977
Most Points UCI.....	82, 1986
Largest Margin SDSU.....	46, 1987
Largest Margin UCI.....	13, 1986
Longest SDSU Win Streak.....	7
Longest UCI Win Streak.....	2
Current Streak.....	SDSU 1
12-16-77.....	H.....W..... 93-55
12-19-78.....	H.....W..... 69-54
2-24-79.....	A.....W..... 54-53
12-8-79.....	H.....W..... 67-66
12-17-79.....	A.....W..... 47-42
1-18-82.....	A.....L..... 56-58
2-15-82.....	H.....W..... 64-60
1-30-86.....	A.....W..... 57-52
2-15-86.....	H.....L..... 69-82
3-6-86.....	N.....W..... 73-56
1-3-87.....	H.....L..... 48-50
1-26-87.....	A.....L..... 53-55
1-9-88.....	H.....W..... 91-45
2-4-88.....	A.....W..... 59-55
1-5-89.....	A.....W..... 78-47
2-13-89.....	H.....W..... 85-62
1-27-90.....	H.....W..... 67-39
2-22-90.....	A.....W..... 67-54
12-17-91.....	H.....W..... 70-49
12-4-02 (ot).....	H.....L..... 58-61
12-2-03.....	A.....W..... 51-40
11-13-09.....	A.....W..... 64-42
11-23-10.....	H.....L..... 66-68
12-16-11.....	A.....W..... 76-57
11-14-12.....	H.....W..... 63-53
12-8-17.....	H.....L..... 65-67
12-7-18.....	A.....W..... 78-70

### San Diego State leads Cal Poly 9-2

Record at SDSU.....	5-0
Record at CP.....	4-1
Record at Neutral.....	0-1
Most Points SDSU.....	80, 2007
Most Points CP.....	80, 1977
Largest Margin SDSU.....	33, 1996
Largest Margin CP.....	9, 1976
Longest SDSU Win Streak.....	9
Longest CP Win Streak.....	2
Current Streak.....	SDSU 9
12-18-76.....	N.....L..... 46-55
12-2-77.....	A.....L..... 79-80
2-1-78.....	A.....W..... 62-50
12-1-78.....	H.....W..... 50-37
1-7-96.....	H.....W..... 64-31
1-2-01.....	A.....W..... 73-63
11-16-01.....	H.....W..... 63-54
12-7-06 (ot).....	H.....W..... 70-68
11-29-07.....	A.....W..... 80-70
12-21-11.....	H.....W..... 79-78
12-16-12.....	A.....W..... 73-56

## Opponent Notebook (UC Irvine)

- The Anteaters are 1-3 on the year.
- They went 13-18 last season and tied for second place in the Big West with a 9-7 record.
- They lost to Saint Mary's 67-64 at home on Wednesday.
- Both SDSU and UC Irvine have lost to California Baptist this season.
- Kayla Williams leads UCI in scoring (16.0 ppg) and assists (4.0 apg).
- Chloe Webb is averaging 8.0 rebounds per game.
- Head coach Tamara Inoue (5th season) is 58-72 at UC Irvine.

## Series Notes

- San Diego State leads the series 20-7.
- The Aztecs are 9-5 all-time against UCI at home.
- The Aztecs have won three of the last four meetings.
- SDSU won seven straight games against the Anteaters from 1988-91.

## Opponent Notebook (Cal Poly)

- The Mustangs are 3-1 on the year.
- They went 11-18 last season and 6-10 in the Big West.
- They lost their season opener to Stanford and then won their next three games, beating New Mexico State (70-60) and then sweeping a two game series against Santa Clara at home (57-56 & 70-59).
- They play at California Baptist on Saturday.
- Sierra Campisano leads Cal Poly in scoring (19.8 ppg) and rebounding (8.8 rpg).
- Head coach Faith Mimnaugh is in her 24th season at Cal Poly. She has led the Mustangs to the NCAA Tournament or WNIT four times since 2011.

## Series Notes

- San Diego State leads the series 9-2.
- The Aztecs are 5-0 all-time at home against Cal Poly.
- The Aztecs lost the first two meetings with CP (1976 & 77) but have since won the last nine.
- They last placed in December of 2012, a 73-56 Aztec win at Cal Poly.

## 2019-20 Season By The Numbers

- 2** - SDSU had two players (Sophia Ramos & Taylor Kalmer) earn All-Mountain West honors, the first time that has happened since the 2012-2013 season.
- 2** - The Aztecs earned their first sweeps of New Mexico and Colorado State since the 2012-13 season.
- 4** - Following the 2019-20 season, head coach Stacie Terry-Hutson received a four-year extension. She set or tied personal bests for total wins, Mountain West wins, and road wins along with a handful of statistical highs in the 2019-20 season.
- 5** - The Aztecs won five road games, their most since the 2012-13 season.
- 6** - Sophomore forward Mallory Adams was limited to six games due to injury. She averaged 12.2 points and 8.9 rebounds per game as a freshman, the highest rebounding average for a freshman since 1983-1984.
- 6.5** - Sophia Ramos averaged a team-high 6.5 rebounds per game, the most by an Aztec guard since Chelsea Hopkins in the 2012-13 season.
- 8** - The Aztecs' GPA in the fall semester was their best over the past eight semesters.
- 9** - The Aztecs went 9-9 in the Mountain West to tie for fifth place, their highest finish since 2012-13.
- 12** - SDSU played in 12 games that went to overtime or were decided by five points or less, including 11 of the final 18 games.
- 16** - Sophia Ramos was 16-for-16 from the free throw line vs. New Mexico on Jan. 29, tying the school record for free throws made in a game (Tina Hutchinson, 1984). Ramos was one of three players in the nation to make at least 16 free throws in a game without

## MW PRESEASON POLL

Rk.	Team	Pts.
1.	Fresno State (22)	266
2.	San José State (2)	239
3.	Boise State (1)	221
4.	<b>SAN DIEGO STATE (1)</b>	<b>185</b>
5.	Wyoming	173
6.	New Mexico	145
7.	Air Force	120
8.	Colorado State	117
9.	UNLV	111
10.	Nevada	95
11.	Air Force	44

First-place votes in parentheses

## MW PRESEASON HONORS

### Preseason All-Mountain West Team

Mallory McGwire, Sr., C, Boise State  
 Haley Cavinder, So., G, Fresno State  
 Maddi Utti, Sr., G, Fresno State  
**Sophia Ramos, Jr., Guard, San Diego State**  
 Ayzhiana Basallo, Jr., Guard, San Jose State

### Preseason Player of the Year

Maddi Utti, Sr., G, Fresno State

### Preseason Newcomer of the Year:

LaTascya Duff, Jr., Guard, New Mexico

### Preseason Freshman of the Year

Asia Avinger, G, San Diego State

## SDSU IN THE MW POLL

Year	Pre.	Final
1999-2000	6th	6th
2000-01	7th	6th
2001-02	7th	7th
2002-03	7th	7th
2003-04	6th	7th
2004-05	7th	t-7th
2005-06	8th	9th
2006-07	7th	7th
2007-08	7th	t-5th
2008-09	2nd	2nd
2009-10	1st	t-3rd
2010-11	2nd	6th
2011-12	2nd	1st
2012-13	1st	1st
2013-14	3rd	t-6th
2014-15	7th	7th
2015-16	6th	t-8th
2016-17	7th	8th
2017-18	8th	t-8th
2018-19	9th	t-7th
2019-20	5th	t-5th
2021-21	4th	---



**SDSU RECORD WHEN...**

Playing at home .....	0-1
Playing on the road .....	1-2
Playing at a neutral site .....	1-1
Playing a night game (5 p.m. or later) .....	0-2
Playing a day game .....	2-2
Leading or tied at the end of the 1st quarter .....	1-1
Trailing at the end of the 1st quarter .....	1-3
Leading or tied at halftime .....	1-2
Trailing at halftime .....	1-2
Leading or tied at the end of the 3rd quarter .....	2-2
Trailing at the end of the 3rd quarter .....	0-2
Leading or tied with 5:00 minutes remaining .....	2-1
Trailing with 5:00 minutes remaining .....	0-3
In overtime .....	0-1
Scoring less than 50 points .....	0-0
Scoring 50-59 points .....	0-1
Scoring 60-69 points .....	2-0
Scoring 70-79 points .....	0-3
Scoring 80 or more points .....	0-0
Opponent scores less than 50 points .....	0-0
Opponent scores 50-59 points .....	2-0
Opponent scores 60-69 points .....	0-1
Opponent scores 70-79 points .....	0-1
Opponent scores 80 or more points .....	0-2
FG% .500 or above .....	0-0
FG% .400-.499 .....	1-3
FG% under .400 .....	1-1
Opponent FG% .500 or above .....	0-0
Opponent FG% .400-.499 .....	0-3
Opponent FG% under .400 .....	2-1
Better shooting % .....	2-2
Worse shooting % .....	0-2
More FT attempts .....	2-3
Fewer FT attempts .....	0-1
Same FT attempts .....	0-0
More FTs made .....	2-3
Fewer FTs made .....	0-1
Same FTs made .....	0-0
More rebounds .....	0-3
Fewer rebounds .....	2-1
Same rebounds .....	0-0
More turnovers .....	2-3
Fewer turnovers .....	0-1
Same turnovers .....	0-0
More assists .....	1-0
Fewer assists .....	0-3
Same assists .....	1-1
More steals .....	1-2
Fewer steals .....	1-1
Same steals .....	0-0
Have 20+ point scorer .....	1-3
Don't have 20+ point scorer .....	1-1
Have 0-1 players with 10+ points .....	0-0
Have 2 players with 10+ points .....	1-1
Have 3 players with 10+ points .....	1-1
Have 4 or more players with 10+ points .....	0-2

**SDSU STREAKS**

Last 5 games .....	2-3
Last 10 games .....	2-4
Longest winning streak .....	1
Longest losing streak .....	2
Current streak .....	Last 2

a miss.

**25** - Senior Taylor Kalmer finished the year scoring in double-digits in 25 straight games, the longest streak for an Aztec in the Mountain West era (1999-present).

**35.8** - The Aztecs shot 35.8 percent from three on the year. This was the second-highest percentage in the conference and 28th in the nation. It was the Aztecs' best rate from deep since the 1991-92 season and the second-best in school history.

**38.6** - SDSU held opponents to 38.6 shooting from the field, the second-lowest in the conference and the best percentage under head coach Stacie Terry-Hutson.

**41.7** - SDSU shot 41.7 percent from the field this season, their best since the 2013-14 season.

**43.1** - Freshman Isabela Hernandez shot 43.1 percent from three, the second-best in a single season in school history (minimum 50 attempts).

**83.1** - Sophia Ramos had a free throw percentage of 83.1, the second-best in the Mountain West and eighth-best in school history. Ramos finished the year with 113 made free throws, the 10th most in a single season in program history.

**1,380** - SDSU's average attendance in 2019-20, a new program record. The Aztecs also set a school record for total attendance in last year (23,458).

**Aztecs Sign Two Talented Wings to NLLs**

Aztec women's basketball head coach Stacie Terry-Hutson announced the signings of four-star guards Cailee Crawford (Albuquerque, N.M.) and Khylee Pepe (Long Beach, Calif.) to National Letters of Intent.

"We are thrilled to add Cailee and Khylee to our program," Terry-Hutson explained. "They are both talented perimeter players who are great passers and can play multiple positions. They will fit in well with our team of versatile players."

Pepe (5'11") is a consensus four-star recruit and is ranked No. 83 in the espnW HoopGurlz top 100 rankings. She is a three-time all-state selection in California and was recruited by numerous power five programs. After playing her freshman season at Mater Dei (Santa Ana, Calif.), she transferred to Bishop Montgomery High School (Torrance, Calif.) where she has helped them win two league championships.

At Bishop Montgomery, she was named to the All-CIF and CalHiSports All-state team the last two seasons and took home league MVP honors last season. This past season, she averaged 17 points, eight rebounds, four assists and three steals and had 10 games with 20 or more points. She averaged 25.4 points over her final five games and set a new school record with 41 points in a game.

As a freshman at Mater Dei High School, she averaged 11.7 points, 6.5 rebounds and 3.6 assists and was a Second Team All-County selection. She helped the Monarchs win the Trinity League and finish fourth in the CIF-SS Open Division.

A 6'0" wing, Crawford is a four-star recruit according to Prospects Nation and has appeared in espnW's HoopGurlz top 100 rankings for 2021 recruits. Last season, she averaged 19.7 points, 6.2 rebounds and 3.5 assists while also contributing a steal and a block per game. She shot an efficient 58 percent from the field inside the arc. She averaged 22.2 points and 6.2 rebounds as a sophomore, helping Highland High School advance to the 4A quarterfinals.

Crawford is a two-time 4A All-State selection in New Mexico and was the 4A State Co-Player of the year last season. She has also been named to the All-Metro First Team three times while helping Highland High School win over 20 games each season and claiming two district titles.

**2020-21 MOUNTAIN WEST STANDINGS**

*As of Dec. 17*

	<b>MW</b>	<b>Overall</b>
Colorado State	3-1	6-1
Fresno State	1-1	3-3
Wyoming	1-1	2-2
UNLV	1-1	2-3
Boise State	0-0	3-0
Nevada	0-0	3-0
New Mexico	0-0	2-0
San José State	0-0	1-0
Utah State	0-0	2-3
Air Force	0-0	0-3
<b>San Diego State</b>	<b>0-2</b>	<b>2-4</b>

**AZTECS VS. THE MOUNTAIN WEST**

Air Force	36	11
Boise State	8	10
Colorado State	30	31
Fresno State	27	23
Nevada	12	12
New Mexico	32	34
San José State	23	10
UNLV	29	32
Utah State	9	7
Wyoming	29	31
<b>Total</b>	<b>235</b>	<b>201</b>

**AZTECS TOP 100 IN THE NATION**

*As of Dec. 17*

	<b>Team</b>	
<b>Category</b>	<b>Value</b>	<b>Rank</b>
Personal Fouls/Game	14.2	26
Rebounds	244	35
Steals	40	53
FT Attempts	105	62
FTs Made	74	66
3-Pt FG Defense	.272	95
3-Pt FG Percentage	.337	98

	<b>Individual</b>		
<b>Category</b>	<b>Player</b>	<b>Value</b>	<b>Rank</b>
Def. Rebs/Game	Mercedes Staples	8.0	16
FG Attempts	Sophia Ramos	92	22
Minutes	Mercedes Staples	208:54	26
Double-Doubles	Sophia Ramos	2	T-31
Double-Doubles	Mercedes Staples	2	T-31
Rebounds	Mercedes Staples	53	33
FTs Made	Sophia Ramos	25	36
FG Percentage	Téa Adams	.600	46
Steals	Sophia Ramos	13	47
Points	Sophia Ramos	101	52
FTs Attempted	Sophia Ramos	29	63
FGs Made	Sophia Ramos	34	71
Minutes	Sophia Ramos	191:30	75
FGs Made	Téa Adams	33	82
Minutes	Alex Crain	184:57	97



## #1 ASIA AVINGER

Freshman

5-7

Guard

Cerritos, Calif.

Rosary HS

*Out for the season with injury*

*Preseason Mountain West Freshman of the Year (2020-21)*

### High School

One of the nation's best combo guards according to espnW, Avinger comes to SDSU as a four-star recruit ranked No. 56 in the nation according to ESPN, the highest ranked recruit under Stacie Terry-Hutson... A three-time All-CIF Southern Section pick, she was ranked as the No. 16 point guard in the nation by espnW... Following her senior year, she was named the Orange County Register's Female Athlete of the Year and to the MaxPreps All-California First Team. She was also named the Trinity League MVP and the Orange County Player of the Year... Averaged 13.8 points, 6.3 rebounds and 4.0 assists as a senior... Helped lead Rosary HS to the 2020 CIF Southern California DI Regional championship before the tournament was suspended by COVID-19... As a junior averaged 12.1 points, 7.7 rebounds and 6.3 assists and helped guide Rosary HS to a 27-8 record and the 2019 CIF State Division One championship... Avinger scored 24 points in the championship game and took home MVP honors... Following her junior year, she was named to the MaxPreps All-California Third team, the CIF Orange County First Team, the Los Angeles Times All-Area Team and the Orange County Register All-County First Team... As a sophomore she attended Los Alamitos HS who won the Sunset League and was named the league's MVP... Helped Los Alamitos reach the CIF DI semi-finals... Was named to the Sunset League First Team as a freshman... Received recruiting interested from over 20 DI schools... Also competed in track and field... Received the Rosary HS Scholar Athlete Award for the 2018-19 school year.

### Personal

Born in Long Beach, Calif. to Nicole and Skinner Avinger... Her father played football at Portland State... Enjoys playing and watching football, going to the beach, swimming, trampoline parks and watching movies... Worked at the Mamba Academy as a coaching assistant... Lists Steve Nash as her favorite athlete... Undecided on her major.

CAREER HIGHS

Points  
32, vs. New Mexico (1-29-20)

Rebounds  
14, vs. Boise State (2-15-20)

Assists  
9, Twice  
Last: vs. UNLV (1-25-20)

Steals  
5, Three times  
Last: at San Diego (12-5-20)

Blocks  
3, vs. Lamar (11-27-20)

Field Goals  
10, Twice  
Last: at CSUN (12-9-18)

Field Goal Attempts  
27, at Colorado State (12-8-20)

3-Point Field Goals  
7, at CSUN (12-9-18)

3-Point Field Goal Attempts  
13, at CSUN (12-9-18)

Free Throws  
16, vs. New Mexico (1-29-20)

Free Throw Attempts  
16, vs. New Mexico (1-29-20)

MISC. CAREER STATS

Double-figure scoring games: 55

20 point scoring games: 13

Double-figure rebounding games: 7

Double-Doubles: 6



# #2 SOPHIA RAMOS

Junior  
5-9  
Guard  
San Antonio, Texas  
Incarnate Word HS

**Preseason All-Mountain West Team (2020-21) | All-Mountain West Team (2019-20) | Mountain West All-Freshman Team (2018-19) | Mountain West All-Tournament Team (2019) | Mountain West All-Academic Team (2019-20) | Three-time Mountain West Player of the Week**

### As A Sophomore (2019-20)

Named to the All-Mountain West Team after averaging 14.3 points, 6.5 rebounds and 3.8 assists... Started all 31 games, averaging 36.7 minutes per game, second in the conference and 18th in the nation... Had 23 games with 10 or more points and led the Aztecs in scoring eight times... Became the first SDSU guard to lead the Aztecs in rebounding since 2013 (Chelsea Hopkins)... Led the team in rebounds 12 times, had four games with 10 or more rebounds and three double-doubles... Led the team in assists 18 times and in steals 17 times... Was 113-for-136 from the line (.831), the second-best FT percentage in the conference and eighth-best in school history... Her 113 free throws were the 10th-most in a single-season in program history... Was second on the team in made three-pointers (37)... Had three games with at least 20 points, 10 rebounds and five assists, tied for the third-most in the nation... Scored 20 or more points six times and topped 30 points twice... Had 32 points and 11 rebounds vs. New Mexico (1-29-20) while shooting a perfect 16-for-16 from the line (including the game-winner). Her 16 made free throws tied a school record and made her one of three players in the nation to make at least 16 free throws in a game without a miss... Ramos earned Mountain West Player of the Week honors twice and was the College Sports Madness National High-Major Player of the Week following the New Mexico game... Had 25 points, 14 rebounds and five assists against Boise State (2-15-20) to become the first Aztec (male or female) to reach those totals in a game in the Mountain West era (1999-present)... Had 30 points on 9-for-14 shooting with eight rebounds at California Baptist (12-19-19)... Led the team with 41 steals and had four games with three or more steals and had a career-high five takeaways vs. UNLV (1-25-20)... Played at least 30 minutes in all but one game and topped 35 minutes 24 times including in each of the last nine games.

### As a Freshman (2018-19 Season)

Hit the ground running as a true freshman, leading the team in scoring (13.9 ppg), assists (4.5 apg) and three-point percentage (.362)... Started 31 of 32 games and averaged 34.0 minutes, second on the team and fifth in the MW... Was second on the team with 4.4 rebounds and 1.3 steals per game... Was named to the Mountain West all-freshman team after leading all MW freshmen in scoring and assists... Averaged the most points and assists by a SDSU freshman since 1992... Became the first Aztec (of any class) to lead the team in points and assists since 1997... Was the only true freshman in the nation to average 13.0 points, 4.0 rebounds and 4.5 assists per game... Shot 44.3 percent from the field, best on the team (min. 100 made FG)... Was 80 percent (68-85) from the FT line, seventh-best in the MW... Led the team with a 1.3 assist-to-turnover ratio, which was the second-best among freshmen in the MW... Named to the Mountain West all-tournament team after averaging 16.7 points and committing just two turnovers across three games and 112 minutes... Scored 10 or more points in 27 of SDSU's 32 games... Led the team in assists 25 times... Scored 28 points at CSUN (12-9-18), including seven three-pointers (six in the fourth quarter), with seven rebounds and six assists. Her six threes in the fourth quarter set a school record.

### At Incarnate Word High School

A four-star recruit according to Prospects Nation... She scored over 2,000 career points at Incarnate Word High School in San Antonio, where she was a four-time (TAPPS) All-State and All-District first-team pick... Two-time *Express News* Super Team member... Four-time *Express News* All-Area Private Schools MVP... As a senior averaged 22.4 points, 6.2 rebounds, 4.1 assists and 3.7 steals and was named to the TAPPS 6A state all-tournament team... As a junior, averaged 16.6 points, 8.2 rebounds, 4.2 assists and 2.9 steals per game, leading Incarnate Word to a 27-6 record.

### Personal

Born in San Antonio to Nicola and Gavino Ramos... Enjoys swimming, traveling and playing tennis... Plans to major in kinesiology with hopes of having a career in physical therapy or coaching.

CAREER STATISTICS

Season	gp-gs		Total		3-Point		F-Throws		Rebounds				Scoring												
	gp	gs	fg-fga	pct	fg-fga	pct	ft-fta	pct	off	def	tot	avg	pf	fo	ast	to	blk	stl	pts	avg					
2018-19	32	31	1089	34.0	168	379	.443	42	116	.362	68	85	.800	20	122	142	4.4	56	0	144	111	14	43	446	13.9
2019-20	31	31	1139	36.7	146	368	.397	37	115	.322	113	136	.831	16	185	201	6.5	58	0	119	100	11	41	442	14.3
2020-21	6	6	191	31.8	34	92	.370	8	28	.286	25	29	.862	2	39	41	6.8	7	0	18	15	4	13	101	16.8
TOTAL	69	68	2419	35.1	348	839	.415	87	259	.336	206	250	.824	38	346	384	5.6	121	0	281	226	29	97	989	14.3

CAREER HIGHS

Points  
20, Twice  
Last: vs. [10] Air Force (3-10-19)

Rebounds  
16, vs. [2] New Mexico (3-11-19)

Assists  
3, vs. New Mexico (2-6-19)

Steals  
3, vs Incarnate Word (11-18-18)

Blocks  
2, at San Diego (11-28-18)

Field Goals  
8, Twice  
Last: vs. [10] Air Force (3-10-19)

Field Goal Attempts  
18, vs. Alabama A&M (11-14-19)

3-Point Field Goals  
3, vs. San José State (2-2-19)

3-Point Field Goal Attempts  
7, at UC Santa Barbara (11-26-19)

Free Throws  
11, vs. California Baptist (11-23-18)

Free Throw Attempts  
15, vs. California Baptist (11-23-18)

MISC. CAREER STATS

Double-figure scoring games: 25

Double-figure rebounding games: 16

Double-Doubles: 10



# #3 MALLORY ADAMS

Sophomore  
6-0  
Guard/Forward  
Frisco, Texas  
Lone Star HS

**All-Mountain West Honorable Mention (2018-19)**  
**Mountain West All-Freshman Team (2018-19)**

**As a Sophomore (2019-20)**

Limited to six games due to injury and received medical hardship waiver from the NCAA after the season... Averaged 12.8 points and 6.0 rebounds in 31.8 minutes before suffering injury... Scored in double-digits in five of her six games... Scored a season-high 17 points on 6-for-13 shooting against Cal (11-21-19)... Had a double-double with 14 points and 12 rebounds against Cal State Fullerton (11-17-19)... Started all six games she played in while playing at least 30 minutes in every game.

**As A Freshman (2018-19)**

Made an immediate impact in her first year on the Mesa... Started all 32 games and averaged a team-high 8.9 rebounds and 12.2 points... Was an all-Mountain West honorable mention selection and was named to the Mountain West All-Freshman Team... Her 8.9 rebounds per game were the most by an Aztec freshman since 1984 and the most for any Aztec since 2000... She was third in the MW in rebounding and led all freshmen... Was 109-for-156 from the free throw line... Her 109 made free throws were the most by an Aztec freshman since 1984 and the 10th most in a single-season in school history... Reached double-figures in points 19 times and had 10 or more rebounds on 15 occasions... Led the Aztecs in scoring 10 times and in rebounds in 22 of SDSU's 32 games... Scored 20 points twice; vs. Boise State (1-5-19) and against Air Force in the first round of the MW Tournament (3-5-19)... Had 16 rebounds against New Mexico in the quarterfinals of the MW Tournament, the most ever by an Aztec in the MW Tournament... Averaged 13.3 points and 9.3 rebounds per game in SDSU's three MW Tournament games... Scored 10 or more points in 13 of SDSU's final 17 games... Was third on the team with 22 made three-pointers (22-69, .319)... Averaged 32.0 minutes per game, third on the team... Was 11-for-15 from the FT line against California Baptist (11-23-18), tying her for the fifth most made free throws in a game in program history.

**High School**

A four-star recruit according to Prospects Nation, she earned an ESPN scout's grade of 90 as the 14th-ranked wing in her class... Scored over 2,000 points in high school and was named the Dallas-Fort Worth High School Player of the Year... Averaged 22.8 points and 10.3 rebounds per game in her senior year, leading Lone Star High School to a 34-5 overall record and a perfect 14-0 in the district... As a junior, she garnered Texas Association of Basketball Coaches (TABC) and Texas Girls Coaches Association (TGCA) all-state and all-region honors and was the District 13-5A Offensive MVP after averaging 18.9 points and 9.0 rebounds en route to Lone Star's district championship... She attended Centennial High School her first two years where she was the District 9-5A MVP and a TGCA all-state and TABC all-region honoree... As a freshman, she was named the 2015 District 9-5A Newcomer of the Year after averaging 18 points and 10 boards per game... Adams played AAU for Cy-Fair EYB L... She piqued interest from a number of schools, including SMU, Kansas, Alabama, Tulsa, Houston, New Mexico, Rutgers and New Mexico State among others... Was a member of the National Honor Society.

**Personal**

Born in Bryant, Ark.... Parents are Michelle and Gary Adams... Adams' older sister, McKenzie, was a guard on SMU's women's basketball team... Her father, Gary, played four years of football at Arkansas and her mother, Michelle, played volleyball at Missouri Southern State... Her favorite athletes are Kobe Bryant and Skylar Diggins... Enjoys watching movies, swimming and going to the beach.

CAREER STATISTICS

Season	gp-gs		Total	3-Point		F-Throws		Rebounds				Scoring								
	min	avg		fg-fga	pct	ft-fga	pct	off	def	tot	avg	pf	fo	ast	to	blk	stl	pts	avg	
2018-19	32-32	1024/32.0	129-331	.390	22-69	.319	109-156	.699	101	184	285	8.9	61	1	30	45	13	18	389	12.2
2019-20	6-6	191/31.8	24-76	.316	6-22	.273	23-33	.697	13	23	36	6.0	8	0	6	8	1	4	77	12.8
TOTAL	38-38	1215/32.0	153-407	.376	28-91	.308	132-189	.698	114	207	321	8.4	69	1	36	53	14	22	466	12.3





# #4 BAILEE CHYNOWETH

Freshman  
 5-11  
 Guard  
 Austin, Texas  
 Westlake HS

### High School

Attended Westlake HS in Austin, Texas for her final three years of high school, earning All-District First Team honors all three years.... As a senior, was named to the TGCA All-State team and to the All-Region team and also earned her district's Defensive MVP award... As a junior, earned her team's defensive MVP award... As a sophomore, was named her team's offensive MVP... Helped her school win the district championship three years in a row, only losing one game in district over than span... A three-time academic award winner... Attended Edmonds Woodway HS in Edmonds, Wash. her freshmen season.

### Personal

Born in Seattle, Wash. to Erika and Vic Chynoweth... Grew up in Edmonds, Wash. before moving to Austin, Texas prior to her sophomore year in high school... Lists Diana Taurasi as her favorite athlete... Plans to major in industrial and organizational psychology.

## CAREER STATISTICS

Season	gp-gs	min/avg	Total		3-Point		F-Throws		Rebounds				Scoring							
			fg-fga	pct	fg-fga	pct	ft-fa	pct	off	def	tot	avg	pf	fo	ast	to	blk	stl	pts	avg
2020-21	1-0	2/2.0	0-0	.000	0-0	.000	0-0	.000	0	0	0	0.0	0	0	0	0	0	0	0	0.0
TOTAL	1-0	2/2.0	0-0	.000	0-0	.000	0-0	.000	0	0	0	0.0	0	0	0	0	0	0	0	0.0

**CAREER HIGHS**

**Points**  
24 at Colorado State (12-10-20)

**Rebounds**  
8, Twice  
Last: at California Baptist (12-19-19)

**Assists**  
8, vs. Arkansas State (11-30-19)

**Steals**  
5, vs. New Mexico (2-6-19)

**Blocks**  
2, at San José State (1-10-18)

**Field Goals**  
9, Three times  
Last: at Colorado State (12-10-20)

**Field Goal Attempts**  
19, at Colorado State (12-10-20)

**3-Point Field Goals**  
3, Twice  
Last: at Colorado State (12-10-20)

**3-Point Field Goal Attempts**  
7, vs. Arkansas State (11-30-19)

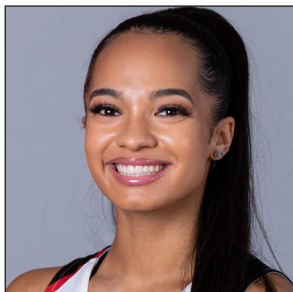
**Free Throws**  
8 vs. Colorado State (12-4-19)

**Free Throw Attempts**  
11, vs. [2] New Mexico (3-11-19)

**MISC. CAREER STATS**

Double-figure scoring games: 38

Double-figure rebounding games: 0



# #5 TÉA ADAMS

Senior  
5-9  
Guard  
Kirkland, Wash.  
Juanita HS

**2017-18 & 2019-20 Mountain West All-Academic Team**

**As A Junior (2019-20)**

Appeared in all 31 games and made 30 starts... Averaged 9.1 points, 3.2 rebounds and 2.3 assists... Was second on the team in steals (31) and third in assists (72)... Made a career-high 25 three-pointers... Scored in double-digits 15 times, including the final six games and led the team in scoring six times... Led the team in steals 11 times and had four games with at least three steals... Had a season-high 18 points at UNLV (2-22-20) on 6-for-12 shooting... Scored 16 points with a career-highs in assists (8) and made three-pointers (3) vs. Arkansas State (11-30-19)... Tied a career-high with eight rebounds at California Baptist (12-19-19)... Averaged 12.8 points on 45.3 percent shooting over the final six games... Averaged 28.0 minutes per game and played at least 30 minutes 13 times.

**As a Sophomore (2018-19 Season)**

Made huge strides in her second season on the Mesa... Started all 29 games she appeared in, averaging 10.0 points, 3.4 rebounds and 2.0 assists in 27.8 minutes per game... Scored 10 or more points 17 times and was SDSU's leading scorer on six occasions... Began the year by scoring in double-digits in five straight games... Had a stretch of six consecutive games with 10 or more points in conference play... Hit a game-winning bucket in the final seconds twice; vs. Hawai'i (11-9-18) and vs. San Jose State (2-2-19)... Had a career-high 21 points and was a perfect 7-for-7 from the FT line at Cal State Fullerton (11-5-18)... Scored 18 points vs. New Mexico in the MW Tournament quarterfinals (3-11-19)... Had a career-high five steals vs. New Mexico (2-6-19)... Was third on the team in assists (58) and steals (42).

**As a Freshman (2017-18)**

Appeared in 29 games off the bench during her freshman campaign, averaging 16.6 minutes per game... Averaged 4.6 points, 1.8 rebounds and 1.6 assists per game... Had her best game of the season against Hope International (12-10-17) with season-highs in points (20 on 9-for-13 shooting), rebounds (8), assists (7) and steals (4) in just 22 minutes... Had 10 points against Fresno State (2-7-18) on 4-for-8 shooting... Had seven points and five assists against New Mexico (1-20-18)... Was third on team in assists (47) and fourth in steals (22)... Played at least 13 minutes in all but three games... Named SDSU scholar-athlete and to the Mountain West All-Academic Team.

**At Juanita High School**

A three-star recruit ranked No. 22 among point guards in her class according to ESPN with a 90 scouts grade... Finished her four-year career at Juanita High as the program's all-time leading scorer with 1,835 career points, leading the team in scoring each season... As a senior, was a first-team All-3A/2A KingCo Conference honoree, her fourth consecutive all-conference honor, and was a *Seattle Times* Class 3A first team pick following career-high tallies in points (22.5), assists (3.3), rebounds (4.1) and steals (4.7)... A 2016 All-USA Western Washington Preseason Girls Basketball Team honorable mention and KingCo 3A/2A First Team pick after recording 20.0 points per game... Named to the 2015 All-USA Western Washington Preseason Girls Basketball first team and captured KingCo 2A/3A Co-MVP and Defensive Player of the Year accolades as a sophomore... Collected All-KingCo 2A/3A first-team honors her freshman year.

**Personal**

Téa Adams was born in Kirkland, Wash., to Erika and Sam Adams... Sam was a three-year starter on Texas A&M's football team and a member of the Aggies' track team, getting inducted into the school's Hall of Fame in 2001... Sam, a three-time Pro Bowl defensive tackle, was a first-round pick of the Seattle Seahawks in 1994, for whom he played six seasons, and also played for Baltimore, Oakland, Buffalo, Cincinnati and Denver, winning two AFC Championships and Super Bowl XXXV with the Ravens... Adams has two brothers, Terin and Sam... Majoring in business.

**CAREER STATISTICS**

Season	gp-gs	min/avg	Total		3-Point		F-Throws		Rebounds				Scoring							
			fg-fga	pct	fg-fga	pct	ft-fga	pct	off	def	tot	avg	pf	fo	ast	to	blk	stl	pts	avg
2017-18	29-0	482/16.6	51-182	.280	6-45	.133	26-39	.667	7	46	53	1.8	48	1	47	41	4	22	134	4.6
2018-19	29-29	805/27.8	112-293	.382	4-12	.333	63-106	.594	21	79	100	3.4	61	1	58	63	6	42	291	10.0
2019-20	31-30	869/28.0	103-256	.402	25-75	.333	52-70	.743	11	89	100	3.2	74	4	72	62	5	31	283	9.1
2020-21	6-6	178/29.7	33-55	.600	9-13	.692	7-13	.538	0	17	17	2.8	10	0	17	22	4	5	82	13.7
<b>TOTAL</b>	<b>95-65</b>	<b>2334/24.6</b>	<b>299-786</b>	<b>.380</b>	<b>44-145</b>	<b>.303</b>	<b>148-228</b>	<b>.649</b>	<b>39</b>	<b>231</b>	<b>270</b>	<b>2.8</b>	<b>193</b>	<b>6</b>	<b>194</b>	<b>188</b>	<b>19</b>	<b>100</b>	<b>790</b>	<b>8.3</b>

CAREER HIGHS

Points  
16, vs. Westcliff (11-12-19)

Rebounds  
5, Twice  
Last: at Colorado State (12-10-20)

Assists  
1, Many times  
Last: at San Diego (12-5-20)

Steals  
2, vs. New Mexico (1-29-20)

Blocks  
2, vs. Arkansas State (11-30-19)

Field Goals  
5, vs. Westcliff (11-12-19)

Field Goal Attempts  
12, vs. Westcliff (11-12-19)

3-Point Field Goals  
4, vs. Westcliff (11-12-19)

3-Point Field Goal Attempts  
7, UNLV (1-25-20)

Free Throws  
2, Twice  
Last: at UC Santa Barbara (11-26-19)

Free Throw Attempts  
2, Many times  
Last: at Boise State (11-11-20)

MISC. CAREER STATS

Double-figure scoring games: 4

Double-figure rebounding games: 0



# #10 ISABELA HERNANDEZ

Sophomore  
6-2  
Guard/Forward  
Bellingham, Wash.  
Lynden Christian HS

**Mountain West All-Academic Team (2019-20)**

**As a Freshman (2019-20)**

Appeared in all 31 games, coming off the bench to play 13.1 minutes per game... Averaged 3.1 points and 1.2 rebounds per game while shooting 43.1 percent from three, the second best in a season in school history (minimum 50 attempts)... Had career-high 16 points and was 4-for-5 from three vs. Westcliff (11-12-19)... Had two games with 11 points (at Boise State & at Wyoming)... Had season-high five rebounds vs. Cal (11-21-19)... Played 10 or more minutes 21 times and played a season-high of 26 minutes at Wyoming (1-22-20).

**At Lynden Christian High School**

A four-star recruit according to Prospects Nation, Hernandez was named the 1A State Player of the Year in Washington after her senior year... As a senior, averaged 13.9 points, 7.4 rebounds, 2.3 assists, 1.3 steals and 1.0 blocks per game... As a junior, posted averages of 13.0 points and 5.3 rebounds while shooting 50 percent from the field and 88 percent from the charity stripe... She helped Lynden Christian (Bellingham, Wash.) win the state championship in 2016 and 2018 (29-0)... Helped the Lyncs qualify for the state championship game three times in her four years... Had a game where she knocked down seven three-pointers in her senior year... Was an all-state selection her junior and season seasons, as well as being chosen for the Washington State All-Tournament Team... Was an all-league and all-county pick her last three years... Was heavily-recruited and received offers from Gonzaga, Colorado, Washington State and Colorado State among others... An honor roll student and a member of the National Honor Society... Lettered in soccer as a freshman.

**Personal**

Isabela Hernandez was born in Bellingham, Wash. to Tanna and Juan Hernandez... Her father played baseball at Long Beach State and Azusa Pacific and her mother played basketball at Azusa Pacific... In eighth grade, wrote a letter to herself stating her dream was to play at San Diego State... Lists Kevin Durant as her favorite player... Plans to major in business with hopes of launching a career in marketing.

CAREER STATISTICS

Season	gp-gs		Total		3-Point		F-Throws		Rebounds				Scoring							
	min	avg	fg-fga	pct	fg-fga	pct	ft-fga	pct	off	def	tot	avg	pf	fo	ast	to	blk	stl	pts	avg
2019-20	31-0	406/13.1	34-99	.343	22-51	.431	6-10	.600	6	30	36	1.2	13	0	7	24	5	7	96	3.1
2020-21	6-0	138/23.0	10-32	.313	4-12	.333	0-0	.000	4	10	14	2.3	6	0	1	5	1	1	24	4.0
TOTAL	37-0	544/14.7	44-131	.336	26-63	.413	6-10	.600	10	40	50	1.4	19	0	8	29	6	8	120	3.2

CAREER HIGHS

Points  
10, at Colorado State (12-10-20)

Rebounds  
10, at Colorado State (12-10-20)

Assists  
1, at San Diego (12-5-20)

Steals  
3, vs California Baptist (12-2-20)

Blocks  
N/A

Field Goals  
4, at Colorado State (12-10-20)

Field Goal Attempts  
7, at Colorado State (12-10-20)

3-Point Field Goals  
N/A

3-Point Field Goal Attempts  
N/A

Free Throws  
2, at Colorado State (12-10-20)

Free Throw Attempts  
2, Twice  
Last: at Colorado State (12-10-20)

MISC. CAREER STATS

Double-figure  
scoring games: 1

Double-figure  
rebounding games: 1

Double-Doubles: 1



# #11 KAMARIA GIPSON

Freshman

6-3

Center

Beeville, Texas

A.C. Jones HS

**At A.C. Jones High School**

Gipson finished her storied high school career with 2,655 points, the 32nd most ever in Texas... Averaged 22.5 points, 15.2 rebounds and 5.7 blocks per game as a senior and helped A.C. Jones High School go 33-3 and 14-0 in district and advance to the 4A State Regional Quarterfinals... Following the season, Gipson was named the District 30-4A MVP for the third straight year... As a junior, averaged 22.6 points and 14.2 rebounds per game and helped her school go 30-8 and win the Bi-District championship... Was named the All-South Texas MVP, the District 30-4A MVP while also being a TGCA 4A All-State selection and TBAC 4A All-Region pick following her junior season... In her sophomore year, A.C. Jones HS won the district and area championships and she won her first District 30-4A MVP Award while also being named to the All South Texas First Team and to the TBA All Region 4A Team... As a freshman, averaged 14.5 points, 12.3 rebounds and 6.7 blocks and earned the All-South Texas and District 30-4A Newcomer of the Year awards... Also played volleyball and ran the 400m for her school's track team... Earned all-academic recognition.

**Personal**

Kamaria (Cuh-MARE-uh) Gipson was born in Corpus Christi, Texas to Demetria Jefferson... Enjoys drawing and working out... Lists LeBron James as her favorite athlete... Plans to major in athletic training with plans to become a nurse or physical therapist.

CAREER STATISTICS

Season	gp-gs	min/avg	Total		3-Point		F-Throws		Rebounds							Scoring				
			fg-fga	pct	fg-fga	pct	ft-fla	pct	off	def	tot	avg	pf	fo	ast	to	blk	stl	pts	avg
2020-21	4-0	75/18.8	9-19	.474	0-0	.000	3-4	.750	13	15	28	7.0	10	0	1	5	0	5	21	5.3
TOTAL	4-0	75/18.8	9-19	.474	0-0	.000	3-4	.750	13	15	28	7.0	10	0	1	5	0	5	21	5.3

CAREER HIGHS

Points  
16, at Colorado State (12-10-20)

Rebounds  
13, at Colorado State (12-10-20)

Assists  
6, vs. Northern Iowa (3-22-19)\*

Steals  
3, vs. Washington (11-25-20)

Blocks  
1, Twice  
Last: vs. California Baptist (12-3-20)

Field Goals  
6, at Colorado State (12-10-20)

Field Goal Attempts  
15, at Colorado State (12-10-20)

3-Point Field Goals  
4, vs. Northern Iowa (3-22-19)\*

3-Point Field Goal Attempts  
7, at San Diego (12-5-20)

Free Throws  
4, at San Diego (12-5-20)

Free Throw Attempts  
4, at San Diego (12-5-20)

MISC. CAREER STATS

Career double-figure scoring games: 5

Double-figure scoring games at SDSU: 3

Career double-figure rebounding games (all at SDSU): 3

Career double-doubles (all at SDSU): 2

\*While at Minnesota



# #12 MERCEDES STAPLES

Junior  
5-10  
Guard  
Centerville, Utah  
Minnesota/Viewmont HS

**At Minnesota (2018-19)**

Staples appeared in 25 games and made two starts for the Golden Gophers as a freshman (2018-19) while averaging 3.4 points in 14.8 minutes... Had the best game of her career against Northern Iowa in the 2019 WNIT when she made four three-pointers, scored 14 points and dished out six assists... She appeared in eight games (one start) as a sophomore (2019-20) before deciding to transfer... Averaged 14.2 minutes, 2.6 points and 1.1 rebounds.

**At Viewmont High School**

A four-star 2018 recruit out of Viewmont High School in Bountiful, Utah, Staples was ranked as the No. 64 player in the country by ESPN.com... As a senior, averaged 22.4 points, 4.3 assists, 3.8 rebounds and 2.8 steals and helped her school reach the Class 5A quarterfinals... After the season was named a First Team All-State selection by the Salt Lake Tribune... Staples was a starter on varsity all four years and increased her scoring average from 11.8 points per game as a freshman to 16.6 as a sophomore and 18.1 as a junior... Was a three-time Class 5A All-State selection... Helped Viewmont High School reach the state championship game as a junior... Was recruited by LSU, Kansas State, Missouri, Clemson, Utah and Texas Tech before deciding to attend Minnesota... Also played soccer for two seasons as a center midfielder.

**Personal**

Born in Salt Lake City to Janet and Darin Staples... Majoring in social science... Hopes to be a coach when her playing career is over... Lists Diana Taurasi as her favorite player.

CAREER STATISTICS

Season	gp-gs	min/avg	Total		3-Point		F-Throws		Rebounds				Scoring							
			fg-fga	pct	fg-fga	pct	ft-fta	pct	off	def	tot	avg	pf	fo	ast	to	blk	stl	pts	avg
2018-19*	25-2	369/14.8	32-94	.340	18-56	.321	4-7	.571	1	31	32	1.3	23	0	27	23	2	20	86	3.4
2019-20*	8-1	114/14.3	8-29	.276	3-14	.214	2-3	.667	2	7	9	1.1	7	0	7	5	1	8	21	2.6
2020-21	6-6	208/34.7	25-66	.379	5-20	.250	9-11	.818	5	48	53	8.8	11	0	10	13	2	7	64	10.7
TOTAL	6-6	208/34.7	25-66	.379	5-20	.250	9-11	.818	5	48	53	8.8	11	0	10	13	2	7	64	10.7

\*at Minnesota

## CAREER HIGHS

Points  
5, at Colorado State (12-10-20)

Rebounds  
1, vs. Westcliff (11-12-19)

Assists  
1, vs. Washington (11-25-20)

Steals  
N/A

Blocks  
N/A

Field Goals  
2, at Colorado State (12-10-20)

Field Goal Attempts  
2, Many times  
Last: at Colorado State (12-10-20)

3-Point Field Goals  
1, vs. Washington (11-25-20)

3-Point Field Goal Attempts  
1, Many times  
Last: vs. Lamar (11-27-20)

Free Throws  
2, at Colorado State (12-8-20)

Free Throw Attempts  
2, Twice  
Last: at Colorado State (12-8-20)

## MISC. CAREER STATS

Double-figure  
scoring games: 0

Double-figure  
rebounding games: 0



## #13 TALIA SIRENI

Sophomore

5-9

Guard

Surrey, British Columbia, Canada  
Earl Marriott Secondary School

**As a Freshman (2019-20)**

Appeared in 10 games off the bench... Averaged 2.1 minutes, 0.2 points and 0.1 rebounds... Scored lone points at Fresno State (1-1-20)... Finished season 1-for-6 from the field.

**Prep/International Career**

A three-star recruit according to Prospects Nation, Sireni averaged 29 points, eight assists and eight rebounds per game her senior season at Earl Marriott Secondary School while shooting 81 percent from the free-throw line... Helped her team advance to the British Columbia Provincial Championships in 2017... Was named her high school team's MVP four times, including as an eighth grader... Received the Surrey Firefighter Tournament Dream Team Award her junior and senior seasons... Has represented British Columbia on the Provincial Team, helping them earn a silver medal in 2016... Also played for the VK Basketball Club (Vancouver), who she helped win the Bball National championship in the summer of 2018... Was an honor roll student... Ran track where she competed in the 100 and 400 meter dashes.

**Personal**

Talia Sireni (Tahl-EE-uh Si-REN-ee) was born in White Rock, British Columbia, Canada to Tiffany and Doron Sireni... Enjoys biking, surfing, hiking, camping, playing the piano and traveling... Was the assistant coach for her school's eighth and ninth grade team during her junior and senior seasons... Lists her favorite athlete as Kelsey Plum of the Las Vegas Aces... Majoring in kinesiology.

## CAREER STATISTICS

Season	gp-gs	min/avg	Total		3-Point		F-Throws		Rebounds				Scoring							
			fg-fga	pct	fg-fga	pct	ft-fta	pct	off	def	tot	avg	pf	fo	ast	to	blk	stl	pts	avg
2019-20	10-0	21/2.1	1-6	.167	0-3	.000	0-0	.000	0	1	1	0.1	1	0	0	0	0	0	2	0.2
2020-21	6-0	45/7.5	3-7	.429	1-2	.500	4-5	.800	1	3	4	0.7	3	0	1	2	0	0	11	1.8
TOTAL	16-0	66/4.1	4-13	.308	1-5	.200	4-5	.800	1	4	5	0.3	4	0	1	2	0	0	13	0.8

CAREER HIGHS

Points  
11, vs. Incarnate Word (11-18-18)

Rebounds  
4, Twice  
Last: vs. Westcliff (11-12-19)

Assists  
2, Twice  
Last: vs. Westcliff (11-12-19)

Steals  
1, vs. Cal (11-21-19)

Blocks  
N/A

Field Goals  
2, Twice  
Last: at Wyoming (1-9-19)

Field Goal Attempts  
5, vs. Incarnate Word (11-18-18)

3-Point Field Goals  
1, Twice  
Last: at Hawai'i (11-5-19)

3-Point Field Goal Attempts  
2, vs. Incarnate Word (11-18-18)

Free Throws  
6, vs. Incarnate Word (11-18-18)

Free Throw Attempts  
8, vs. Incarnate Word (11-18-18)

MISC. CAREER STATS

Double-figure scoring games: 1

Double-figure rebounding games: 0



# #15 JAYDEN PEREZ

Junior  
5-8  
Guard  
Las Cruces, N.M.  
Ostate HS

**Out for the season with injury**  
*Mountain West Scholar-Athlete (2018-19)*  
*Mountain West All-Academic Team (2018-19)*

**As a Sophomore (2019-20 Season)**

Appeared in 12 games off the bench... Averaged 4.8 minutes, 0.4 points, 0.6 rebounds and 0.3 assists... Had season-high three points in season opener at Hawai'i... Tied career-highs with four rebounds and two assists in 12 minutes of action vs. Westcliff (11-12-19).

**As a Freshman (2018-19 Season)**

Appeared in 15 games off the bench before suffering a season-ending injury... Averaged 1.7 points, 0.8 rebounds and 0.4 assists in 5.9 minutes... Was 12-for-14 (.857) from the FT line on the year... Scored 11 points, grabbed two rebounds and dished out two assists against Incarnate Word (11-18-18)... Played a season-high 21 minutes and scored six points and hauled in four rebounds at Wyoming (1-9-19).

**At Ostate High School**

A three-star recruit according to ESPN, earning a scout's grade of 89 as the 73rd-ranked point guard in her class... Missed her senior year due to injury, but still amassed 1,586 career points... As a junior, averaged nearly 20 points with 5.8 rebounds, 2.7 assists and 1.7 steals... Selected to the 2017 All-U.S.A. New Mexico Girls Basketball Team, she led Ostate HS to the Class 6A state tournament, earning Class 6A all-state second-team honors along the way... A three-time New Mexico All-State honoree, she played her freshman and sophomore seasons at Las Cruces High, capturing District 3-6A Player of the Year and Class 6A all-state second-team honors each year... Plays AAU for Team Fusion in El Paso, Texas, under head coach Lee Williams... A 4.0 student, ranked ninth in her class... Also competed for Ostate's volleyball team as a junior... She was also recruited by numerous D-1 schools including San Diego, New Mexico, Nebraska, Saint Mary's, UTEP and Long Beach State.

**Personal**

Parents are Vanessa and Saul Perez... Plans to major in kinesiology as a fitness specialist... Enjoys spending time with family, cooking and lifting weights... Favorite athlete is Kelly Oubre Jr.

CAREER STATISTICS

Season	gp-gs	min/avg	Total		3-Point		F-Throws		Rebounds				Scoring							
			fg-fga	pct	fg-fga	pct	ft-fta	pct	off	def	tot	avg	pf	fo	ast	to	blk	stl	pts	avg
2018-19	15-0	88/5.9	6-22	.273	1-9	.111	12-14	.857	1	11	12	0.8	2	0	6	13	0	0	25	1.7
2019-20	12-0	57/4.8	2-9	.222	1-2	.500	0-0	.000	1	6	7	0.6	3	0	4	3	0	1	5	0.4
TOTAL	27-0	145/5.4	8-31	.258	2-11	.182	12-14	.857	2	17	19	0.7	5	0	10	16	0	1	30	1.1

CAREER HIGHS

**Points**  
12, vs. Washington (11-25-20)

**Rebounds**  
6, at Colorado State (12-10-20)

**Assists**  
5, vs. Oklahoma (3-4-20)\*

**Steals**  
1, Many times  
Last: at Colorado State (12-10-20)

**Blocks**  
4, vs. Alabama A&M (11-14-19)\*

**Field Goals**  
5, vs. Washington (11-25-20)

**Field Goal Attempts**  
16, at Colorado State (12-10-20)

**3-Point Field Goals**  
3, vs. Texas Tech (1-16-19)\*

**3-Point Field Goal Attempts**  
4, at Colorado State (12-10-20)

**Free Throws**  
4, at Colorado State (12-10-20)

**Free Throw Attempts**  
6, at Colorado State (12-10-20)

MISC. CAREER STATS

Double-figure scoring games: 5

Double-figure scoring games at SDSU: 3

Double-figure rebounding games: 0

Double-Doubles: 0

\*While at TCU



# #21 ALEX CRAIN

Junior  
5-9  
Guard  
McKinney, Texas  
TCU/Dallas Thunder

**At TCU (2018-20)**

Appeared in 48 games while averaging six minutes per game in her two years at TCU... Averaged 1.2 points, 0.5 rebounds and 0.3 assists per game... Helped TCU average 23 wins in her two seasons... Had career-high 11 points on 4-for-4 shooting (3-for-3 from three) along with four assists against Texas Tech her freshman season... In her final home game in 2020, scored a season-high seven points and dished out a career-high five assists against Oklahoma... Was named to the 2019-20 Academic All-Big 12 First Team.

**High School**

Was rated a three-star prospect by espnW and Prospects Nation... Was home schooled and played for the Dallas Thunder, a basketball organization for home-schooled students that competes as part of the National Christian HomeSchool Championships (NCHC)... Earned NCHC All-American and Big South All-Region honors three times... As a senior, averaged 19.5 points, seven rebounds, five assists and 2.5 steals per game and was named the Big South Region Player of the Year after helping lead the Thunder to the 18U Class 5A championship game... As a junior, averaged 15 points, eight rebounds, three assists and two steals per game, while helping the Thunder to a 18U class 8A title... Was named the Co-National Junior Offensive Player of the Year.

**Personal**

Graduated from TCU in two years with a degree in political science while majoring in philosophy.

CAREER STATISTICS

Season	gp-gs	min/avg	Total		3-Point		F-Throws		Rebounds							Scoring				
			fg-fga	pct	fg-fga	pct	ft-fa	pct	off	def	tot	avg	pf	fo	ast	to	blk	stl	pts	avg
2018-19*	23-0	148/6.4	13-37	.351	7-15	.467	4-4	1.000	5	12	17	0.7	13	0	6	6	1	2	37	1.6
2019-20*	25-0	141/5.6	7-37	.189	2-15	.133	5-10	.500	1	8	9	0.4	19	0	8	9	0	3	21	0.8
2020-21	6-6	186/31.0	16-47	.340	1-10	.100	12-20	.600	5	13	18	3.0	20	2	6	12	1	6	45	7.5
TOTAL	6-6	186/31.0	16-47	.340	1-10	.100	12-20	.600	5	13	18	3.0	20	2	6	12	1	6	45	7.5

\*at TCU





# #22 FLO VINERTE

Freshman

6-2

Forward

Riga, Latvia

New Hope Academy (Md.)

### High School/International

As a senior, Vinerte helped New Hope Academy (Landover Hills, Md.) go 23-8 and earn a season-ending national ranking of No. 45 according to MaxPreps... Was named a McDonald's All-American nominee... Helped New Hope Academy take third place at the NACA National Championships... Was scheduled to play in the 2020 Buffalo Wild Wings Roundball Classic All-Star Showcase before it was canceled due to COVID-19... As a junior, helped the New York Military Academy win a Class E State Championship... Played for the Latvian youth national team on multiple occasions, including in the U-17 FIBA World Championships... Helped the U16 Latvian team take fourth place at the European Championships... Played volleyball and tennis for one season... Took JROTC and is a cadet private first class... Won two awards for Spanish: Most improved and best Spanish student... Was in many scholastic clubs, including poetry and writing, Latin, cinema and culture and land navigation.

### Personal

Flera "Flo" Vinerte was born in Riga, Latvia to Diana Jakobsons and Donalds Vinerte... Enjoys learning new languages, cinema and theater and playing the piano... Plans to major in psychology... After college wants to get a medical degree in psychiatry... Lists Serena Williams as her favorite athlete.

### CAREER STATISTICS

Season	gp-gs	min/avg	Total		3-Point		F-Throws		Rebounds				Scoring							
			fg-fga	pct	fg-fga	pct	ft-fta	pct	off	def	tot	avg	pf	fo	ast	to	blk	stl	pts	avg
2020-21	4-0	18/4.5	0-0	.000	0-0	.000	0-0	.000	2	2	4	1.0	2	0	0	3	0	0	0	0.0
TOTAL	4-0	18/4.5	0-0	.000	0-0	.000	0-0	.000	2	2	4	1.0	2	0	0	3	0	0	0	0.0

CAREER HIGHS

Points  
16, at Colorado State (12-8-20)

Rebounds  
7, at Colorado State (12-8-20)

Assists  
1, at San Diego (12-5-20)

Steals  
1, at San Diego (12-5-20)

Blocks  
1, at Colorado State (12-10-20)

Field Goals  
6, at Colorado State (12-8-20)

Field Goal Attempts  
13, at Colorado State (12-10-20)

3-Point Field Goals  
1, at Colorado State (12-8-20)

3-Point Field Goal Attempts  
2, at Colorado State (12-10-20)

Free Throws  
4, at Colorado State (12-10-20)

Free Throw Attempts  
8, at Colorado State (12-10-20)

MISC. CAREER STATS

Double-figure  
scoring games: 1

Double-figure  
rebounding games: 0



# #23 KIM VILLALOBOS

Freshman

6-0

Guard/Forward

Van Nuys, Calif.

Chaminade HS

**High School/International**

Averaged 15 points and 12 rebounds per game as a senior at Chaminade HS... Was named to the All-Mission League First-Team as a senior... Helped her school reach the quarterfinals of the CIF Southern Section Division I championships... Previously attended Bishop Alemany HS where she averaged 19 points per game as a junior... Played with the El Salvador national team and was named the top Salvadoran basketball player in the US... Played for Team Taurasi for the California Storm AAU program on the prestigious Nike circuit with teammate Asia Avinger.

**Personal**

Kimberly Villalobos was born in Panorama City, Calif. to Silvia Estrada and Enock Villalobos... Lists Kobe Bryant as her favorite athlete and had the opportunity to work at the Mamba Sports Academy... Undecided on major... Plans to become a psychologist or a physical therapist.

CAREER STATISTICS

Season	gp-gs	min/avg	Total		3-Point		F-Throws		Rebounds				Scoring							
			fg-fga	pct	fg-fga	pct	ft-fa	pct	off	def	tot	avg	pf	fo	ast	to	blk	stl	pts	avg
2020-21	4-0	96/24.0	10-30	.333	1-3	.333	11-19	.579	10	14	24	6.0	9	0	1	2	1	1	32	8.0
TOTAL	4-0	96/24.0	10-30	.333	1-3	.333	11-19	.579	10	14	24	6.0	9	0	1	2	1	1	32	8.0

CAREER HIGHS

**Points**  
8, at Colorado State (12-8-20)

**Rebounds**  
5, vs. Hope International (12-10-17)

**Assists**  
1, Three times  
Last: vs. CSUN (12-28-19)

**Steals**  
1, Many times  
Last: vs. California Baptist (12-3-20)

**Blocks**  
1, vs. Fresno State (1-15-20)

**Field Goals**  
4, at Colorado State (12-8-20)

**Field Goal Attempts**  
5, Three times  
Last: at Colorado State (12-8-20)

**3-Point Field Goals**  
1, Twice  
Last: vs. California Baptist (12-3-20)

**3-Point Field Goal Attempts**  
1, Many times  
Last: vs. California Baptist (12-3-20)

**Free Throws**  
3, at San Diego (12-5-20)

**Free Throw Attempts**  
4, at San Diego (12-5-20)

MISC. CAREER STATS

Double-figure scoring games: 0

Double-figure rebounding games: 0



# #24 KIARA EDWARDS

Senior  
6-1  
Forward  
Surprise, Ariz.  
Valley Vista HS

**As a Junior (2019-20)**

Appeared in 23 games off the bench, averaging 4.9 minutes, 0.4 points and 0.7 rebounds... Logged season-highs in minutes (16) and points (5) vs. CSUN (12-28-19)... Had season-high three rebounds at Fresno State (1-1-20)... Played 10 minutes four times.

**As a Sophomore (2018-19 Season)**

Did not see any action.

**As a Freshman (2017-18)**

Appeared in nine games off the bench, totaling 46 minutes ... Averaged 1.8 points and 1.6 rebounds per game ... Was 7-for-16 (.438) from the field ... Totaled season-highs in points (6), rebounds (5) and minutes (15) against Hope International (12-10-17) ... Hit first career three-pointer at Wyoming (2-14-18).

**At Valley Vista High School**

A four-star recruit ranked No. 119 by Prospects Nation at Valley Vista High (Surprise, Ariz.) ... Invited to the 2016 Women's U17 World Championships team trials ... Averaged nearly a double-double over her four-year varsity career (12.9 PPG, 9.8 RPG) ... Her senior season, helped Valley Vista to a state title, the school's first, after averaging 12.1 points and 8.8 rebounds per game, both team highs ... Competed in the 2017 Arizona Girls High School Basketball All-Star game ... Was a 2016-17 All-West Valley Preps first team pick for the third-straight year after earning Girls Basketball Player of the Year runner-up nods each of the previous two seasons ... Also a two-time (2013-14, 2015-16) Sports360AZ All-Academic Girls Basketball Team honorable mention.

**Personal**

Kiara Edwards was born in Fresno, Calif., to Stephanie and Demetrius Edwards ... Demetrius was a three-year letterwinner at defensive tackle for Fresno State ... Also has a brother, Demetrius Jr. ... Uncle Johnny McWilliams played five seasons in the NFL after playing for USC ... Majoring in journalism at SDSU with plans of working in broadcasting.

CAREER STATISTICS

Season	gp-gs		Total		3-Point		F-Throws		Rebounds				Scoring							
	gp	gs	fg-fga	pct	fg-fga	pct	ft-fa	pct	off	def	tot	avg	pf	fo	ast	to	blk	stl	pts	avg
2017-18	9	0	7-16	.438	1-3	.333	1-2	.500	2	12	14	1.6	2	0	0	7	0	1	16	1.8
2019-20	23	0	4-19	.211	0-2	.000	2-6	.333	2	13	15	0.7	11	0	2	10	1	1	10	0.4
2020-21	6	6	12-18	.667	1-1	1.000	3-4	.750	3	8	11	1.8	6	0	0	5	1	2	28	4.7
TOTAL	38	6	23-53	.434	2-6	.333	6-12	.500	7	33	40	1.1	19	0	2	22	2	4	54	1.4

CAREER HIGHS

Points  
20, W. Oklahoma St. Coll. (2-24-20)\*

Rebounds  
15, at Seminole St. College (1-30-20)\*

Assists  
5, at N. Oklahoma College-Enid (2-10-20)\*

Steals  
4, at Redlands Comm. Coll. (2-17-20)\*

Blocks  
3, W. Oklahoma St. Coll. (2-24-20)\*

Field Goals  
9, W. Oklahoma St. Coll. (2-24-20)\*

Field Goal Attempts  
14, W. Oklahoma St. Coll. (2-24-20)\*

3-Point Field Goals  
1, Many Times  
Last: vs. E. Oklahoma St. College (1-27-20)\*

3-Point Field Goal Attempts  
1, Many Times  
Last: vs. E. Oklahoma St. College (1-27-20)\*

Free Throws  
8, at Redlands Comm. Coll. (2-17-20)\*

Free Throw Attempts  
9, at Redlands Comm. Coll. (2-17-20)\*

MISC. CAREER STATS

Double-figure scoring games: 17

Double-figure rebounding games: 11



# #30 IVVANA MURILLO

Junior

6-1

Forward

Medellín, Colombia

Northeastern Oklahoma A&M College/Santa Catalina de Sena HS

**Before SDSU**

Played at Northeastern Oklahoma A&M College for two years... As a sophomore, averaged 13.1 points and 9.4 rebounds and shot 50 percent from the field... Named to the 2020 NJCAA Division I All-Region first team after finishing second in her region in rebounding and fourth in field goal percentage... At NEO in the 2019-20 season, scored in double-digits in 20 of their 29, had 11 games with double-digit rebounds and recorded nine double-doubles... As a freshman, she averaged 5.4 points and 4.2 rebounds while shooting 50 percent from the field... Had six games scoring 10 or more points in 2018-19... Attended Santa Catalina de Sena High School in Medellín, Colombia.

**Personal**

Born in in Medellín, Colombia to Maria Teresa Arango and Fausto Murillo... Lists Jaylen Brown as her favorite athlete... Plans to major in business.

CAREER STATISTICS

2018-19*	30-29	582/19.4	61-122	.500	0-1	.000	39-64	.609	46	81	127	4.2	58	0	29	56	8	15	161	5.4
2019-20*	26-26	783/30.1	127-251	.506	2-6	.333	68-106	.642	63	181	244	9.4	87	4	47	98	16	35	324	12.5
2020-21	2-0	6/3.0	0-1	.000	0-0	.000	0-0	.000	0	0	0	0.0	1	0	0	1	0	0	0	0.0
TOTAL	2-0	6/3.0	0-1	.000	0-0	.000	0-0	.000	0	0	0	0.0	1	0	0	1	0	0	0	0.0
All*	58-55	1371/23.6	188-374	.503	2-7	.286	107-170	.629	109	262	371	6.4	146	4	76	155	24	50	485	8.4

\*at Northeastern Oklahoma A&M College

All games

RECORD:	OVERALL	HOME	AWAY	NEUTRAL
ALL GAMES	2-4	0-1	1-2	1-1
CONFERENCE	0-2	0-0	0-2	0-0
NON-CONFERENCE	2-2	0-1	1-0	1-1

#	Player	gp-gs	min	avg	Total		3-Point		F-Throw		Rebounds			pf	dq	a	to	blk	stl	pts	avg				
					fg-fga	fg%	3fg-fga	3fg%	ft-fga	ft%	off	def	tot									avg			
02	Sophia Ramos	6-6	191	31.8	34-92	.370	8-28	.286	25-29	.862	2	39	41	6.8	7	0	18	15	4	13	101	16.8			
05	Tea Adams	6-6	178	29.7	33-55	.600	9-13	.692	7-13	.538	0	17	17	2.8	10	0	17	22	4	5	82	13.7			
12	Mercedes Staples	6-6	208	34.7	25-66	.379	5-20	.250	9-11	.818	5	48	53	8.8	11	0	10	13	2	7	64	10.7			
23	Kim Villalobos	4-0	96	24.0	10-30	.333	1-3	.333	11-19	.579	10	14	24	6.0	9	0	1	2	1	1	32	8.0			
21	Alex Crain	6-6	186	31.0	16-47	.340	1-10	.100	12-20	.600	5	13	18	3.0	20	2	6	12	1	6	45	7.5			
11	Kamaria Gipson	4-0	75	18.8	9-19	.474	0-0	.000	3-4	.750	13	15	28	7.0	10	0	1	5	0	5	21	5.3			
24	Kiara Edwards	6-6	107	17.8	12-18	.667	1-1	1.000	3-4	.750	3	8	11	1.8	6	0	0	5	1	2	28	4.7			
10	Isabela Hernandez	6-0	138	23.0	10-32	.313	4-12	.333	0-0	.000	4	10	14	2.3	6	0	1	5	1	1	24	4.0			
13	Talia Sireni	6-0	45	7.5	3-7	.429	1-2	.500	4-5	.800	1	3	4	0.7	3	0	1	2	0	0	11	1.8			
22	Flo Vinerte	4-0	18	4.5	0-0	.000	0-0	.000	0-0	.000	2	2	4	1.0	2	0	0	3	0	0	0	0.0			
04	Bailee Chynoweth	1-0	2	2.0	0-0	.000	0-0	.000	0-0	.000	0	0	0	0.0	0	0	0	0	0	0	0	0.0			
30	Ivvana Murillo	2-0	6	3.0	0-1	.000	0-0	.000	0-0	.000	0	0	0	0.0	1	0	0	1	0	0	0	0.0			
Team											12	18	30												10
Total.....		6	1250		152-367	.414	30-89	.337	74-105	.705	57	187	244	40.7	85	2	55	95	14	40	408	68.0			
Opponents.....		6	1250		162-411	.394	40-147	.272	52-72	.722	64	171	235	39.2	92	-	76	76	20	42	416	69.3			

TEAM STATISTICS	SDSU	OPP	Date	Opponent	Score	Att.
SCORING	408	416	11/25/20	vs Washington	L 59-61	0
Points per game	68.0	69.3	11/27/20	vs Lamar University	W 60-54	0
Scoring margin	-1.3	-	12/02/20	CALIFORNIA BAPTIST	L 71-75	0
FIELD GOALS-ATT	152-367	162-411	12/05/20	at San Diego	W 64-56	0
Field goal pct	.414	.394	* 12/08/20	at Colorado St.	L 77-86	0
3 POINT FG-ATT	30-89	40-147	* 12/10/20	at Colorado St.	L 77-84	0
3-point FG pct	.337	.272	* - Conference game			
3-pt FG made per game	5.0	6.7				
FREE THROWS-ATT	74-105	52-72				
Free throw pct	.705	.722				
F-Throws made per game	12.3	8.7				
REBOUNDS	244	235				
Rebounds per game	40.7	39.2				
Rebounding margin	+1.5	-				
ASSISTS	55	76				
Assists per game	9.2	12.7				
TURNOVERS	95	76				
Turnovers per game	15.8	12.7				
Turnover margin	-3.2	-				
Assist/turnover ratio	0.6	1.0				
STEALS	40	42				
Steals per game	6.7	7.0				
BLOCKS	14	20				
Blocks per game	2.3	3.3				
ATTENDANCE	0	0				
Home games-Avg/Game	1-0	3-0				
Neutral site-Avg/Game	-	2-0				

Score by Periods	1st	2nd	3rd	4th	OT	OT2	Totals
San Diego St.	94	100	103	94	7	10	408
Opponents	94	88	102	108	7	17	416

Conference games only

RECORD:	OVERALL	HOME	AWAY	NEUTRAL
ALL GAMES	0-2	0-0	0-2	0-0
CONFERENCE	0-2	0-0	0-2	0-0
NON-CONFERENCE	0-0	0-0	0-0	0-0

#	Player	gp-gs	min	avg	Total		3-Point		F-Throw		Rebounds				pf	dq	a	to	blk	stl	pts	avg
					fg-fga	fg%	3fg-fga	3fg%	ft-fa	ft%	off	def	tot	avg								
05	Tea Adams	2-2	63	31.5	14-27	.519	3-4	.750	4-5	.800	0	6	6	3.0	7	0	6	10	2	0	35	17.5
12	Mercedes Staples	2-2	81	40.5	11-24	.458	2-4	.500	3-3	1.000	4	19	23	11.5	3	0	6	5	1	3	27	13.5
23	Kim Villalobos	2-0	60	30.0	8-22	.364	1-3	.333	7-12	.583	6	7	13	6.5	6	0	0	1	1	0	24	12.0
02	Sophia Ramos	2-2	39	19.5	8-27	.296	2-6	.333	3-3	1.000	0	8	8	4.0	1	0	4	1	0	3	21	10.5
21	Alex Crain	2-2	64	32.0	5-20	.250	0-4	.000	4-8	.500	3	5	8	4.0	8	1	0	5	1	1	14	7.0
11	Kamaria Gipson	2-0	34	17.0	5-9	.556	0-0	.000	2-2	1.000	8	6	14	7.0	4	0	0	1	0	2	12	6.0
24	Kiara Edwards	2-2	23	11.5	5-6	.833	0-0	.000	0-0	.000	1	3	4	2.0	1	0	0	1	0	0	10	5.0
13	Talia Sireni	2-0	14	7.0	2-4	.500	0-0	.000	3-3	1.000	0	0	0	0.0	1	0	0	1	0	0	7	3.5
10	Isabela Hernandez	2-0	51	25.5	2-10	.200	0-3	.000	0-0	.000	4	3	7	3.5	1	0	0	2	1	0	4	2.0
30	Ivana Murillo	2-0	6	3.0	0-1	.000	0-0	.000	0-0	.000	0	0	0	0.0	1	0	0	1	0	0	0	0.0
22	Flo Vinerte	2-0	15	7.5	0-0	.000	0-0	.000	0-0	.000	2	2	4	2.0	0	0	0	1	0	0	0	0.0
Team											6	8	14					1				
Total.....		2	450		60-150	.400	8-24	.333	26-36	.722	34	67	101	50.5	33	1	16	30	6	9	154	77.0
Opponents.....		2	450		63-140	.450	20-52	.385	24-32	.750	11	63	74	37.0	24	-	34	20	17	10	170	85.0

Score by Periods	1st	2nd	3rd	4th	OT	OT2	Totals
San Diego St.	25	39	42	31	7	10	154
Opponents	39	27	32	48	7	17	170

TEAM STATISTICS

Opponent	Date	Score		Total		3-Pointers		Free throws		Rebounds				pf	a	t/o	blk	stl	pts	avg
				fg-fga	pct	3fg-fga	pct	ft-fta	pct	off	def	tot	avg							
vs Washington	11/25/20	59-61	L	23-49	.469	6-13	.462	7-10	.700	2	28	30	30.0	8	11	14	1	9	59	59.0
vs Lamar University	11/27/20	60-54	W	21-48	.438	7-19	.368	11-17	.647	3	30	33	31.5	16	8	19	4	4	60	59.5
CALIFORNIA BAPTIST	12/02/20	71-75	L	25-62	.403	6-16	.375	15-22	.682	10	31	41	34.7	14	10	12	1	8	71	63.3
at San Diego	12/05/20	64-56	W	23-58	.397	3-17	.176	15-20	.750	8	31	39	35.8	14	10	20	2	10	64	63.5
at Colorado St.	12/08/20	77-86	L	32-67	.478	4-9	.444	9-13	.692	11	30	41	36.8	18	9	16	2	4	77	66.2
at Colorado St.	12/10/20	77-84	Lot	28-83	.337	4-15	.267	17-23	.739	23	37	60	40.7	15	7	14	4	5	77	68.0
San Diego St.		408		152-367	.414	30-89	.337	74-105	.705	57	187	244	40.7	85	55	95	14	40	408	68.0
Opponents		416		162-411	.394	40-147	.272	52-72	.722	64	171	235	39.2	92	76	76	20	42	416	69.3

Games played: 6  
 Points/game: 68.0  
 FG Pct: 41.4  
 3FG Pct: 33.7  
 FT Pct: 70.5

Rebounds/game: 40.7  
 Assists/game: 9.2  
 Turnovers/game: 15.8  
 Assist/turnover ratio: 0.6  
 Steals/game: 6.7  
 Blocks/game: 2.3

Home games

RECORD:	OVERALL	HOME	AWAY	NEUTRAL
ALL GAMES	0-1	0-1	0-0	0-0
CONFERENCE	0-0	0-0	0-0	0-0
NON-CONFERENCE	0-1	0-1	0-0	0-0

#	Player	gp-gs	min	avg	Total		3-Point		F-Throw		Rebounds												
					fg-fga	fg%	3fg-fga	3fg%	ft-fa	ft%	off	def	tot	avg	pf	dq	a	to	blk	stl	pts	avg	
02	Sophia Ramos	1-1	36	36.0	9-23	.391	3-9	.333	5-6	.833	1	3	4	4.0	1	0	3	3	0	3	26	26.0	
05	Tea Adams	1-1	29	29.0	3-4	.750	2-2	1.000	3-6	.500	0	2	2	2.0	2	0	2	1	0	0	11	11.0	
21	Alex Crain	1-1	37	37.0	3-8	.375	0-1	.000	3-4	.750	0	3	3	3.0	5	1	3	0	0	0	9	9.0	
12	Mercedes Staples	1-1	32	32.0	4-13	.308	0-3	.000	0-0	.000	1	9	10	10.0	0	0	2	4	1	1	8	8.0	
11	Kamaria Gipson	1-0	23	23.0	3-6	.500	0-0	.000	1-2	.500	2	5	7	7.0	3	0	0	1	0	3	7	7.0	
23	Kim Villalobos	1-0	18	18.0	1-3	.333	0-0	.000	3-4	.750	2	5	7	7.0	2	0	0	1	0	0	5	5.0	
24	Kiara Edwards	1-1	16	16.0	2-3	.667	1-1	1.000	0-0	.000	1	2	3	3.0	0	0	0	1	0	1	5	5.0	
22	Flo Vinerte	1-0	1	1.0	0-0	.000	0-0	.000	0-0	.000	0	0	0	0.0	1	0	0	1	0	0	0	0.0	
10	Isabela Hernandez	1-0	8	8.0	0-2	.000	0-0	.000	0-0	.000	0	0	0	0.0	0	0	0	0	0	0	0	0.0	
13	Talia Sireni	1-0	0	0.0	0-0	.000	0-0	.000	0-0	.000	0	0	0	0.0	0	0	0	0	0	0	0	0.0	
Team											3	2	5										
Total.....		1	200		25-62	.403	6-16	.375	15-22	.682	10	31	41	41.0	14	1	10	12	1	8	71	71.0	
Opponents.....		1	200		30-65	.462	5-25	.200	10-13	.769	7	31	38	38.0	17	-	17	14	2	7	75	75.0	

Score by Periods	1st	2nd	3rd	4th	Totals
San Diego St.	15	14	22	20	71
Opponents	20	12	22	21	75

Away games

RECORD:	OVERALL	HOME	AWAY	NEUTRAL
ALL GAMES	1-2	0-0	1-2	0-0
CONFERENCE	0-2	0-0	0-2	0-0
NON-CONFERENCE	1-0	0-0	1-0	0-0

#	Player	gp-gs	min	avg	Total		3-Point		F-Throw		Rebounds												
					fg-fga	fg%	3fg-fga	3fg%	ft-fa	ft%	off	def	tot	avg	pf	dq	a	to	blk	stl	pts	avg	
05	Tea Adams	3-3	88	29.3	23-37	.622	4-6	.667	4-5	.800	0	8	8	2.7	7	0	8	15	2	2	54	18.0	
12	Mercedes Staples	3-3	111	37.0	14-33	.424	4-11	.364	7-7	1.000	4	26	30	10.0	5	0	6	6	1	3	39	13.0	
02	Sophia Ramos	3-3	77	25.7	13-43	.302	2-9	.222	8-8	1.000	0	18	18	6.0	3	0	8	3	1	8	36	12.0	
23	Kim Villalobos	3-0	78	26.0	9-27	.333	1-3	.333	8-15	.533	8	9	17	5.7	7	0	1	1	1	1	27	9.0	
24	Kiara Edwards	3-3	40	13.3	7-10	.700	0-0	.000	3-4	.750	1	3	4	1.3	1	0	0	1	1	0	17	5.7	
21	Alex Crain	3-3	83	27.7	6-25	.240	0-6	.000	5-10	.500	4	6	10	3.3	11	1	1	6	1	3	17	5.7	
11	Kamaria Gipson	3-0	52	17.3	6-13	.462	0-0	.000	2-2	1.000	11	10	21	7.0	7	0	1	4	0	2	14	4.7	
13	Talia Sireni	3-0	17	5.7	2-4	.500	0-0	.000	4-5	.800	0	0	0	0.0	1	0	0	1	0	0	8	2.7	
10	Isabela Hernandez	3-0	81	27.0	3-15	.200	0-6	.000	0-0	.000	4	4	8	2.7	3	0	1	4	1	0	6	2.0	
30	Ivvana Murillo	2-0	6	3.0	0-1	.000	0-0	.000	0-0	.000	0	0	0	0.0	1	0	0	1	0	0	0	0.0	
22	Flo Vinerte	3-0	17	5.7	0-0	.000	0-0	.000	0-0	.000	2	2	4	1.3	1	0	0	2	0	0	0	0.0	
Team											8	12	20										
Total.....		3	650		83-208	.399	11-41	.268	41-56	.732	42	98	140	46.7	47	1	26	50	8	19	218	72.7	
Opponents.....		3	650		86-209	.411	25-74	.338	29-41	.707	26	92	118	39.3	46	-	40	37	18	18	226	75.3	

Score by Periods	1st	2nd	3rd	4th	OT	OT2	Totals
San Diego St.	45	57	56	43	7	10	218
Opponents	45	47	49	61	7	17	226



**Games won**

<b>RECORD:</b>	<b>OVERALL</b>	<b>HOME</b>	<b>AWAY</b>	<b>NEUTRAL</b>
ALL GAMES	2-0	0-0	1-0	1-0
CONFERENCE	0-0	0-0	0-0	0-0
NON-CONFERENCE	2-0	0-0	1-0	1-0

#	Player	gp-gs	min	avg	Total		3-Point		F-Throw		Rebounds					pts	avg					
					fg-fga	fg%	3fg-fga	3fg%	ft-fa	ft%	off	def	tot	avg	pf			dq	a	to	blk	stl
02	Sophia Ramos	2-2	78	39.0	11-30	.367	2-9	.222	13-16	.813	1	21	22	11.0	3	0	8	6	4	6	37	18.5
05	Tea Adams	2-2	54	27.0	13-16	.813	3-5	.600	0-0	.000	0	6	6	3.0	1	0	5	9	1	3	29	14.5
12	Mercedes Staples	2-2	61	30.5	7-19	.368	3-12	.250	4-6	.667	0	12	12	6.0	6	0	0	2	0	0	21	10.5
24	Kiara Edwards	2-2	44	22.0	4-8	.500	0-0	.000	3-4	.750	0	2	2	1.0	2	0	0	1	1	1	11	5.5
10	Isabela Hernandez	2-0	54	27.0	4-11	.364	2-6	.333	0-0	.000	0	5	5	2.5	4	0	1	3	0	0	10	5.0
21	Alex Crain	2-2	53	26.5	3-12	.250	0-3	.000	4-6	.667	2	2	4	2.0	7	0	2	5	0	3	10	5.0
23	Kim Villalobos	1-0	18	18.0	1-5	.200	0-0	.000	1-3	.333	2	2	4	4.0	1	0	1	0	0	1	3	3.0
11	Kamaria Gipson	1-0	18	18.0	1-4	.250	0-0	.000	0-0	.000	3	4	7	7.0	3	0	1	3	0	0	2	2.0
13	Talia Sireni	2-0	16	8.0	0-1	.000	0-1	.000	1-2	.500	1	3	4	2.0	2	0	0	1	0	0	1	0.5
04	Bailee Chynoweth	1-0	2	2.0	0-0	.000	0-0	.000	0-0	.000	0	0	0	0.0	0	0	0	0	0	0	0	0.0
22	Flo Vinerte	1-0	2	2.0	0-0	.000	0-0	.000	0-0	.000	0	0	0	0.0	1	0	0	1	0	0	0	0.0
<b>Team</b>											2	4	6				8					
Total.....		2	400		44-106	.415	10-36	.278	26-37	.703	11	61	72	36.0	30	0	18	39	6	14	124	62.0
Opponents.....		2	400		42-135	.311	12-47	.255	14-21	.667	28	53	81	40.5	42	-	14	29	1	17	110	55.0

Score by Periods	1st	2nd	3rd	4th	Totals
San Diego St.	35	34	25	30	124
Opponents	20	34	31	25	110

**Games lost**

<b>RECORD:</b>	<b>OVERALL</b>	<b>HOME</b>	<b>AWAY</b>	<b>NEUTRAL</b>
ALL GAMES	0-4	0-1	0-2	0-1
CONFERENCE	0-2	0-0	0-2	0-0
NON-CONFERENCE	0-2	0-1	0-0	0-1

#	Player	gp-gs	min	avg	Total		3-Point		F-Throw		Rebounds					pts	avg					
					fg-fga	fg%	3fg-fga	3fg%	ft-fa	ft%	off	def	tot	avg	pf			dq	a	to	blk	stl
02	Sophia Ramos	4-4	113	28.3	23-62	.371	6-19	.316	12-13	.923	1	18	19	4.8	4	0	10	9	0	7	64	16.0
05	Tea Adams	4-4	124	31.0	20-39	.513	6-8	.750	7-13	.538	0	11	11	2.8	9	0	12	13	3	2	53	13.3
12	Mercedes Staples	4-4	147	36.8	18-47	.383	2-8	.250	5-5	1.000	5	36	41	10.3	5	0	10	11	2	7	43	10.8
23	Kim Villalobos	3-0	78	26.0	9-25	.360	1-3	.333	10-16	.625	8	12	20	6.7	8	0	0	2	1	0	29	9.7
21	Alex Crain	4-4	133	33.2	13-35	.371	1-7	.143	8-14	.571	3	11	14	3.5	13	2	4	7	1	3	35	8.8
11	Kamaria Gipson	3-0	57	19.0	8-15	.533	0-0	.000	3-4	.750	10	11	21	7.0	7	0	0	2	0	5	19	6.3
24	Kiara Edwards	4-4	63	15.8	8-10	.800	1-1	1.000	0-0	.000	3	6	9	2.3	4	0	0	4	0	1	17	4.3
10	Isabela Hernandez	4-0	84	21.0	6-21	.286	2-6	.333	0-0	.000	4	5	9	2.3	2	0	0	2	1	1	14	3.5
13	Talia Sireni	4-0	29	7.3	3-6	.500	1-1	1.000	3-3	1.000	0	0	0	0.0	1	0	1	1	0	0	10	2.5
22	Flo Vinerte	3-0	16	5.3	0-0	.000	0-0	.000	0-0	.000	2	2	4	1.3	1	0	0	2	0	0	0	0.0
30	Ivvana Murillo	2-0	6	3.0	0-1	.000	0-0	.000	0-0	.000	0	0	0	0.0	1	0	0	1	0	0	0	0.0
<b>Team</b>											10	14	24				2					
Total.....		4	850		108-261	.414	20-53	.377	48-68	.706	46	126	172	43.0	55	2	37	56	8	26	284	71.0
Opponents.....		4	850		120-276	.435	28-100	.280	38-51	.745	36	118	154	38.5	50	-	62	47	19	25	306	76.5

Score by Periods	1st	2nd	3rd	4th	OT	OT2	Totals
San Diego St.	59	66	78	64	7	10	284
Opponents	74	54	71	83	7	17	306

**Aztec Individual Highs****Points**

26, Sophia Ramos vs. California Baptist (12-2-20)

**Field Goals Made**

9, Téa Adams at Colorado State (12-10-20)

9, Téa Adams at San Diego (12-5-20)

9, Sophia Ramos vs. California Baptist (12-2-20)

**Field Goals Attempted**

27, Sophia Ramos at Colorado State (12-8-20)

**Field Goal Percentage (min. 5 made)**

.900 (9-10), Téa Adams at San Diego (12-5-20)

**3-Point Field Goals Made**

3, Téa Adams at Colorado State (12-10-20)

3, Sophia Ramos vs. California Baptist (12-2-20)

**3-Point Field Goals Attempted**

9, Sophia Ramos vs. California Baptist (12-2-20)

**3-Pt Field Goal Percentage (min. 3 made)**

.750 (3-4), Téa Adams at Colorado State (12-10-20)

**Free Throws Made**

8, Sophia Ramos vs. Lamar (11-27-20)

**Free Throws Attempted**

11, Sophia Ramos vs. Lamar (11-27-20)

**Free Throw Percentage (min 5 made)**

1.000 (5-5), Sophia Ramos at San Diego (12-5-20)

**Rebounds**

13, Mercedes Staples at Colorado State (12-10-20)

**Assists**

4, Sophia Ramos at San Diego (12-5-20)

4, Sophia Ramos vs. Lamar (11-27-20)

**Steals**

5, Sophia Ramos at San Diego (12-5-20)

**Blocked Shots**

3, Sophia Ramos vs. Lamar (11-27-20)

**Turnovers**

7, Téa Adams at Colorado State (12-10-20)

**Minutes**

49, Mercedes Staples at Colorado State (12-10-20)

**Opponent Individual Highs****Points**

26, Britney Thomas (California Baptist, 12-2-2)

**Field Goals Made**

12, Britney Thomas vs. (California Baptist, 12-2-2)

**Field Goals Attempted**

23, Quay Miller (Washington, 11-25-20)

**Field Goal Percentage (min 5 made)**

.857 (12-14), Britney Thomas (California Baptist, 12-2-2)

**3-Point Field Goals Made**

4, Lore Devos (Colorado State, 12-8-20)

4, Tori Williams (Colorado State, 12-8-20)

**3-Point Field Goals Attempted**

11, Angel Hastings (Lamar, 11-27-20)

**3-Pt Field Goal Percentage (min 3 made)**

1.000 (3-3), Jamie Bonnarens (Colorado State, 12-10-20)

**Free Throws Made**

5, Ane Olaeta (California Baptist, 12-2-20)

**Free Throws Attempted**

6, McKenna Hofschild (Colorado State, 12-8-20)

6, Ane Olaeta (California Baptist, 12-2-20)

**Free Throw Percentage (min 5 made)**

.833 (5-6), Ane Olaeta (California Baptist, 12-2-20)

**Rebounds**

12, Lore Devos (Colorado State, 12-8-20)

12, Britney Thomas (California Baptist, 12-2-2)

12, Anyssia Gibbs (Lamar, 11-27-20)

**Assists**

7, McKenna Hofschild (Colorado State, 12-10-20)

7, McKenna Hofschild (Colorado State, 12-8-20)

7, Sydney Palma (California Baptist, 12-2-2)

**Steals**

3, Jordyn Edwards (San Diego, 12-5-20)

3, Anyssia Gibbs (Lamar, 11-27-20)

**Blocked Shots**

7, Sydney Mech (Colorado State, 12-10-20)

**Turnovers**

5, Ane Olaeta (California Baptist, 12-2-20)

## Aztec Team Highs

Points	77	at Colorado State (12-10-20)
	77	at Colorado State (12-8-20)
Field Goals Made	32	at Colorado State (12-8-20)
Field Goal Attempts	83	at Colorado State (12-10-20)
Field Goal Percentage	.478 (32-67)	at Colorado State (12-8-20)
3-pt Field Goals Made	7	vs. Lamar (11-27-20)
3-pt Field Goals Attempted	19	vs. Lamar (11-27-20)
3-pt Field Goal Percentage	.462 (6-13)	vs. Washington (11-25-20)
Free Throws Made	17	at Colorado State (12-10-20)
Free Throw Attempts	23	at Colorado State (12-10-20)
FT Percentage (Min 10 att.)	.750 (15-20)	at San Diego (12-5-20)
Rebounds	60	at Colorado State (12-10-20)
Assists	11	vs. Washington (11-25-20)
Steals	10	at San Diego (12-5-20)
Blocked Shots	4	at Colorado State (12-10-20)
		vs. Lamar (11-27-20)
Turnovers	20	at San Diego (12-5-20)
Fouls	18	at Colorado State (12-8-20)

## Aztec Team Lows

Points	59	vs. Washington (11-25-20)
Field Goals Made	21	vs. Lamar (11-27-20)
Field Goal Attempts	48	vs. Lamar (11-27-20)
Field Goal Percentage	.337 (28-83)	at Colorado State (12-8-20)
3-pt Field Goals Made	3	at San Diego (12-5-20)
3-pt Field Goals Attempted	8	at Colorado State (12-8-20)
3-pt Field Goal Percentage	.176 (3-17)	at San Diego (12-5-20)
Free Throws Made	7	vs. Washington (11-25-20)
Free Throws Attempted	10	vs. Washington (11-25-20)
FT Percentage (Min 10 att.)	.647 (11-17)	vs. Lamar (11-27-20)
Rebounds	30	vs. Washington (11-25-20)
Assists	7	at Colorado State (12-10-20)
Steals	4	at Colorado State (12-8-20)
		vs. Lamar (11-27-20)
Blocked Shots	1	vs. California Baptist (12-2-20)
		vs. Washington (11-25-20)
Turnovers	12	vs. California Baptist (12-2-20)
Fouls	8	vs. Washington (11-25-20)

## Aztec Scoring

First Half High	38	at San Diego (12-5-20)
First Quarter High	20	at San Diego (12-5-20)
Second Quarter High	24	at Colorado State (12-8-20)
Second Half High	42	at Colorado State (12-8-20)
		vs. California Baptist (12-2-20)
Third Quarter High	22	vs. California Baptist (12-2-20)
Fourth Quarter High	21	at Colorado State (12-8-20)
First Half Low	29	at Colorado State (12-10-20)
		vs. California Baptist (12-2-20)
First Quarter Low	11	at Colorado State (12-8-20)
Second Quarter Low	14	vs. California Baptist (12-2-20)
Second Half Low	26	at San Diego (12-5-20)
Third Quarter Low	11	vs. Lamar (11-27-20)
Fourth Quarter Low	10	at Colorado State (12-10-20)
Largest Halftime Lead	12 (38-26)	at San Diego (12-5-20)
Largest Halftime Deficit	3 (35-38)	at Colorado State (12-8-20)
	3 (29-32)	vs. California Baptist (12-2-20)
Largest Margin of Victory	8 (64-56)	at San Diego (12-5-20)
Largest Loss	9 (77-86)	at Colorado State (12-8-20)
Largest Deficit in a Win	3 (42-45)	vs. Lamar (11-27-20)
Largest Lead in a Loss	8 (8-0)	at Colorado State (12-10-20)
	8 (52-44)	at Colorado State (12-8-20)

## Opponent Team Highs

Points	86	at Colorado State (12-8-20)
Field Goals Made	32	at Colorado State (12-10-20)
Field Goal Attempts	75	at Colorado State (12-10-20)
Field Goal Percentage	.477 (31-65)	at Colorado State (12-8-20)
3-pt Field Goals Made	12	at Colorado State (12-8-20)
3-pt Field Goals Attempted	26	at Colorado State (12-10-20)
		at Colorado State (12-8-20)
3-pt Field Goal Percentage	.462 (12-26)	at Colorado State (12-8-20)
Free Throws Made	12	at Colorado State (12-10-20)
		at Colorado State (12-8-20)
Free Throws Attempted	18	at Colorado State (12-8-20)
FT Percentage (Min 10 att.)	.857 (12-14)	at Colorado State (12-10-20)
Rebounds	44	at San Diego (12-5-20)
Assists	19	at Colorado State (12-10-20)
Steals	9	vs. Lamar (11-27-20)
Blocked Shots	12	at Colorado State (12-10-20)
Turnovers	17	at San Diego (12-5-20)
Fouls	22	at San Diego (12-5-20)

## Opponent Team Lows

Points	54	vs. Lamar (11-27-20)
Field Goals Made	19	vs. Lamar (11-27-20)
Field Goal Attempts	65	vs. California Baptist (12-2-20)
Field Goal Percentage	.288 (19-66)	vs. Lamar (11-27-20)
3-pt Field Goals Made	3	vs. Washington (11-25-20)
3-pt Field Goal Attempts	22	at San Diego (12-5-20)
3-pt Field Goal Percentage	.130 (3-23)	vs. Washington (11-25-20)
Free Throws Made	4	vs. Washington (11-25-20)
Free Throw Attempts	6	vs. Washington (11-25-20)
FT Percentage (Min 10 att.)	.556 (5-9)	at San Diego (12-5-20)
Rebounds	32	at Colorado State (12-8-20)
Assists	6	at San Diego (12-5-20)
Steals	4	at Colorado State (12-10-20)
Blocked Shots	0	vs. Washington (11-25-20)
		vs. Lamar (11-27-20)
Turnovers	9	at Colorado State (12-8-20)
Fouls	9	vs. Washington (11-25-20)

## Opponent Scoring

First Half High	38	at Colorado State (12-8-20)
First Quarter High	23	at Colorado State (12-10-20)
Second Quarter High	22	at Colorado State (12-10-20)
Second Half High	48	at Colorado State (12-8-20)
Third Quarter High	22	vs. California Baptist (12-2-20)
Fourth Quarter High	35	at Colorado State (12-8-20)
First Half Low	26	at San Diego (12-5-20)
First Quarter Low	6	at San Diego (12-5-20)
Second Quarter Low	5	at Colorado State (12-10-20)
Second Half Low	26	vs. Lamar (11-27-20)
Third Quarter Low	13	at Colorado State (12-8-20)
Fourth Quarter Low	12	vs. Lamar (11-27-20)
Largest Halftime Lead	3 (38-35)	at Colorado State (12-8-20)
	3 (32-29)	vs. California Baptist (12-2-20)
Largest Halftime Deficit	12 (26-38)	at San Diego (12-5-20)
Largest Margin of Victory	9 (86-77)	at Colorado State (12-8-20)
Largest Loss	8 (56-64)	at San Diego (12-5-20)
Largest Lead in a Loss	8 (0-8)	at Colorado State (12-10-20)
	8 (44-52)	at Colorado State (12-8-20)
Largest Lead in a Loss	3 (45-42)	vs. Lamar (11-27-20)

► **THE LAST TIME AN AZTEC...**

**Scored 20-24 points**

24, Téa Adams, 12-10-20 at Colorado State

**Scored 25-29 points**

26, Sophia Ramos, 12-2-20 vs. California Baptist

**Scored 30-39 points**

32, Sophia Ramos, 1-29-20 vs. New Mexico

**Scored 40+ points**

41, Chana Perry, 1-2-88 vs. Northern Illinois

**Had 20+ rebounds**

27, Chana Perry, 11-25-88 vs. Alabama State

**Had 15-19 rebounds**

16, Mallory Adams, 3-11-19 vs. [2] New Mexico

**Had 10-14 rebounds**

13, Mercedes Staples, 12-10-20 at Colorado State

**Had 10+ assists**

11, Geena Gomez, 1-20-18 vs. New Mexico

**Had A Double-Double**

Mercedes Staples, 16 points, 13 rebounds 12-10-20 at Colorado State

**Had A Triple-Double**

Chelsea Hopkins, 13 points, 11 rebounds, 12 assists, 3-9-13 vs. Boise State

► **The Last Time San Diego State...**

**Had two players score 20 points in the same game**

Taylor Kalmer (22) and Sophia Ramos (20), 12-7-19 at San Jose State

**Had two players with a double-double in the same game**

Mercedes Staples (16 points & 13 rebounds) & Kamaria Gipson (10 points & 10 rebounds), 12-10-20 at Colorado State

**Scored 100+ points**

101, vs. Colorado State (101-62), 1-25-92

**Allowed 100+ points**

104, vs. UCLA (56-104), 12-11-98

**Won by 20+ points**

21, vs. Westcliff (77-56), 11-12-19

**Won by 30+ points**

43, vs. Incarnate Word (81-38), 11-18-18

**Won by 40+ points**

43, vs. Incarnate Word (81-38), 11-18-18

**Won in Overtime**

at Colorado State (64-61), 2-24-20

**Lost in Overtime**

at Colorado State (77-84), 12-10-20 at Colorado State (2 OT)

► **2020-21 AZTEC LEADERS**

**Double-Figure Scoring Games**

Sophia Ramos (5), Téa Adams (5), Mercedes Staples (3), Alex Crain (2), Kim Villalobos (1), Isabela Hernandez (1), Kamaria Gipson (1)

**SDSU High Scorer\***

Sophia Ramos (4), Téa Adams (2)

**Double-Figure Rebounding Games**

Mercedes Staples (3), Sophia Ramos (2), Kamaria Gipson (1)

**Double-Doubles**

Sophia Ramos (2), Mercedes Staples (1), Kamaria Gipson (1)

**Games Led SDSU In Rebounds\***

Mercedes Staples (4), Sophia Ramos (2)

**Games Led SDSU In Assists\***

Sophia Ramos (4), Téa Adams (3), Mercedes Staples (2), Alex Crain (1)

**Games Led SDSU In Steals\***

Sophia Ramos (4), Mercedes Staples (2), Kamaria Gipson (2), Kiara Edwards (1), Téa Adams (1), Alex Crain (1),

**Games Led SDSU In Blocks\***

Téa Adams (3), Sophia Ramos (2), Mercedes Staples (2), Kiara Edwards (1), Alex Crain (1), Isabela Hernandez (1), Kim Villalobos (1)

\*Includes ties

► **2020-21 SPECIALTY STATS**

	San Diego State/Opponent				
	Points in Paint	Points off TOs	2nd Chance Points	Fast Break Points	Bench Points
vs. Washington (L)	24/46	22/16	2/16	19/6	13/4
vs. Lamar (W)	16/20	10/15	4/10	9/11	8/9
vs. California Baptist (L)	28/50	11/12	10/7	7/15	12/15
at San Diego (W)	24/28	15/24	4/7	13/6	8/19
at Colorado State (L)	46/32	5/16	13/2	6/16	22/26
at Colorado State (L)	38/36	6/11	16/5	8/25	25/20

► 2020-21 AZTEC GAME-BY-GAME POINTS-REBOUNDS-ASSISTS

Opponent	2 Sophia Ramos	3 Mallory Adams	4 Bailee Chynoweth	5 Téa Adams	10 Isabela Hernandez	11 Kamaria Gipson	12 Mercedes Staples	13 Talia Sireni	21 Alex Crain	22 Flo Vinerte	23 Kim Villalobos	24 Kiara Edwards	30 Ivvana Murillo
Washington (L)	17-7-3	DNP	DNP	7-3-4	10-2-0	DNP	8-8-2	3-0-1	12-3-1	DNP	DNP	2-2-0	DNP
Lamar (W)	22-12-4	DNP	0-0-0	10-4-3	8-4-0	DNP	9-5-0	0-4-0	7-2-1	DNP	DNP	4-2-0	DNP
CBU (L)	26-4-3	DNP	DNP	11-2-2	0-0-0	7-7-0	8-10-2	0-0-0	9-3-3	0-0-0	5-7-0	5-3-0	DNP
at San Diego (W)	15-10-4	DNP	DNP	19-2-2	2-1-1	2-7-1	12-7-0	1-0-0	3-2-1	0-0-0	3-4-1	7-0-0	DNP
at Colorado St. (L)	21-7-3	DNP	DNP	11-2-3	2-2-0	2-4-0	11-10-3	2-0-0	4-2-0	0-1-0	16-7-0	8-4-0	0-0-0
at Colorado St. (L)	0-1-1	DNP	DNP	24-4-3	2-5-0	10-10-0	16-13-3	5-0-0	10-6-0	0-3-0	8-6-0	2-0-0	0-0-0
DNP - Did Not Play													

**Starting Lineups**

Game	F/C	F/G	G	G	G
Washington (L)	Edwards	Staples	Crain	T. Adams	Ramos
Lamar (W)	Edwards	Staples	Crain	T. Adams	Ramos
CALIFORNIA BAPTIST (L)	Edwards	Staples	Crain	T. Adams	Ramos
at San Diego (W)	Edwards	Staples	Crain	T. Adams	Ramos
at Colorado State (L)	Edwards	Staples	Crain	T. Adams	Ramos
at Colorado State (L)	Edwards	Staples	Crain	T. Adams	Ramos

**Lineup Records**

Edwards, Staples, Crain, T. Adams, Ramos, 2-4

All games

RECORD:	OVERALL	HOME	AWAY	NEUTRAL
ALL GAMES	14-17	9-8	5-8	0-1
CONFERENCE	9-9	6-3	3-6	0-0
NON-CONFERENCE	5-8	3-5	2-2	0-1

#	Player	gp-gs	min	avg	Total		3-Point		F-Throw		Rebounds				pf	dq	a	to	blk	stl	pts	avg			
					fg-fga	fg%	3fg-fga	3fg%	ft-fta	ft%	off	def	tot	avg											
25	Taylor Kalmer	31-31	1178	38.0	188-423	.444	45-118	.381	65-81	.802	14	111	125	4.0	48	0	95	66	5	19	486	15.7			
02	Sophia Ramos	31-31	1139	36.7	146-368	.397	37-115	.322	113-136	.831	16	185	201	6.5	58	0	119	100	11	41	442	14.3			
03	Mallory Adams	6-6	191	31.8	24-76	.316	6-22	.273	23-33	.697	13	23	36	6.0	8	0	6	8	1	4	77	12.8			
05	Tea Adams	31-30	869	28.0	103-256	.402	25-75	.333	52-70	.743	11	89	100	3.2	74	4	72	62	5	31	283	9.1			
22	Zayn Dornstauder	31-2	547	17.6	95-173	.549	0-2	.000	59-85	.694	46	94	140	4.5	67	1	6	57	32	9	249	8.0			
04	Monique Terry	31-24	657	21.2	53-129	.411	27-67	.403	11-19	.579	15	90	105	3.4	48	0	26	29	9	10	144	4.6			
34	Baylee Vanderdoes	31-30	567	18.3	43-108	.398	3-6	.500	27-49	.551	55	111	166	5.4	52	0	14	24	15	13	116	3.7			
10	Isabela Hernandez	31-0	406	13.1	34-99	.343	22-51	.431	6-10	.600	6	30	36	1.2	13	0	7	24	5	7	96	3.1			
00	Kennedi Villa	31-1	513	16.5	23-47	.489	1-3	.333	6-13	.462	17	42	59	1.9	51	1	24	18	6	14	53	1.7			
45	Naomi Ekwedike	17-0	69	4.1	6-17	.353	0-0	.000	0-2	.000	5	4	9	0.5	12	0	0	6	0	2	12	0.7			
24	Kiara Edwards	23-0	113	4.9	4-19	.211	0-2	.000	2-6	.333	2	13	15	0.7	11	0	2	10	1	1	10	0.4			
15	Jayden Perez	12-0	57	4.8	2-9	.222	1-2	.500	0-0	.000	1	6	7	0.6	3	0	4	3	0	1	5	0.4			
21	Talia Sireni	10-0	21	2.1	1-6	.167	0-3	.000	0-0	.000	0	1	1	0.1	1	0	0	0	0	0	2	0.2			
Team											61	85	146												24
Total.....		31	6327		722-1730	.417	167-466	.358	364-504	.722	262	884	1146	37.0	446	6	375	431	90	152	1975	63.7			
Opponents.....		31	6325		767-1985	.386	182-615	.296	308-432	.713	377	803	1180	38.1	469	-	441	342	96	206	2024	65.3			

TEAM STATISTICS	SDSU	OPP	Date	Opponent	Score	Att.					
SCORING	1975	2024	11/05/19	at HAWAII	L	58-61	1213				
Points per game	63.7	65.3	11/09/19	TOWSON	W	80-72	1462				
Scoring margin	-1.6	-	11/12/19	WESTCLIFF	W	77-56	247				
FIELD GOALS-ATT	722-1730	767-1985	11/14/19	ALABAMA A&M	L	53-61	4020				
Field goal pct	.417	.386	11/17/19	CAL ST. FULLERTON	W	55-45	1737				
3 POINT FG-ATT	167-466	182-615	11/21/19	CAL	L	48-74	557				
3-point FG pct	.358	.296	11/26/19	at UC Santa Barbara	L	52-64	431				
3-pt FG made per game	5.4	5.9	11/30/19	ARKANSAS ST.	L	62-71	1788				
FREE THROWS-ATT	364-504	308-432	* 12/04/19	COLORADO ST.	W	59-49	534				
Free throw pct	.722	.713	* 12/07/19	at San Jose St.	L	67-84	322				
F-Throws made per game	11.7	9.9	12/11/19	SAN DIEGO	L	47-70	524				
REBOUNDS	1146	1180	12/19/19	at California Baptist	W	80-68	302				
Rebounds per game	37.0	38.1	12/21/19	at Incarnate Word	W	57-48	255				
Rebounding margin	-1.1	-	12/28/19	CSUN	Lot	69-74	710				
ASSISTS	375	441	* 1/1/20	at Fresno State	L	54-79	2128				
Assists per game	12.1	14.2	* 1/4/20	UTAH STATE	W	66-62	678				
TURNOVERS	431	342	* 1/8/20	WYOMING	Wot	67-60	347				
Turnovers per game	13.9	11.0	* 01/11/20	at Boise St.	L	72-86	1394				
Turnover margin	-2.9	-	* 1/15/20	FRESNO STATE	L	60-65	504				
Assist/turnover ratio	0.9	1.3	* 01/18/20	at Nevada	L	69-70	1258				
STEALS	152	206	* 01/22/20	at Wyoming	L	67-81	2404				
Steals per game	4.9	6.6	* 01/25/20	UNLV	W	48-39	716				
BLOCKS	90	96	* 1/29/20	NEW MEXICO	W	75-74	5320				
Blocks per game	2.9	3.1	* 2/1/20	at Utah State	W	59-51	409				
ATTENDANCE	23458	18522	* 02/08/20	AIR FORCE	L	49-51	2428				
Home games-Avg/Game	17-1380	13-1323	* 02/12/20	at New Mexico	W	67-58	4753				
Neutral site-Avg/Game	-	1-1320	* 02/15/20	BOISE ST.	Lot	67-69	880				
Score by Periods	1st	2nd	3rd	4th	OT	Totals	* 02/22/20	at UNLV	L	67-72	1253
San Diego St.	474	407	532	514	48	1975	* 02/24/20	at Colorado St.	Wot	64-61	1080
Opponents	478	451	517	531	47	2024	* 02/27/20	NEVADA	W	81-68	1006
							03/01/20	vs Utah State	Lot	79-81	1320

2020-21 BROADCAST ROSTER



**ASIA AVINGER**  
Fr. | 5-7 | G  
Cerritos, Calif.  
Rosary HS

0



**SOPHIA RAMOS**  
Jr. | 5-9 | G  
San Antonio, Texas  
Incarnate Word HS

2



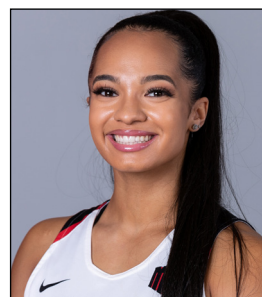
**MALLORY ADAMS**  
So. | 6-0 | G/F  
Frisco, Texas  
Lone Star HS

3



**BAILEE CHYNOWETH**  
Fr. | 5-11 | G  
Austin, Texas  
Westlake HS

4



**TÉA ADAMS**  
Sr. | 5-9 | G  
Kirkland, Wash.  
Juanita HS

5



**ISABELA HERNANDEZ**  
So. | 6-2 | G/F  
Bellingham, Wash.  
Lynden Christian HS

10



**KAMARIA GIPSON**  
Fr. | 6-3 | C  
Beeville, Texas  
A.C. Jones HS

11



**MERCEDES STAPLES**  
So. | Jr. | G  
Centerville, Utah  
Minnesota/Viewmont HS

12



**TALIA SIRENI**  
So. | 5-9 | G  
Surrey, British Columbia, Canada  
Earl Marriott Secondary School

13



**JAYDEN PEREZ**  
So. | 5-8 | G  
Las Cruces, N.M.  
Onate HS

15



**ALEX CRAIN**  
Jr. | 5-9 | G  
McKinney, Texas  
TCU/Dallas Thunder

21



**FLO VINERTE**  
Fr. | 6-2 | F  
Riga, Latvia  
New Hope Academy (Md.)

22



**KIM VILLALOBOS**  
Fr. | 6-0 | G/F  
Van Nuys, Calif.  
Chaminade HS

23



**KIARA EDWARDS**  
Sr. | 6-1 | F  
Surprise, Ariz.  
Valley Vista HS

24



**IVVANA MURILLO**  
Jr. | 6-1 | F  
Medellin, Colombia  
NE Oklahoma A&M/ Santa Catalina de Sena HS

30



**STACIE TERRY-HUTSON**  
Head Coach  
Eighth Season  
UT Arlington (1998)

HC



**MARSHA FRESE**  
Assistant Coach  
First Season  
Rice (1995)

AC



**CIARA CARL**  
Assistant Coach  
Eighth Season  
Point Loma Nazarene (2005)

AC



**NICK GRANT**  
Assistant Coach  
Seventh Season  
Baylor (2010)

AC