



SAN DIEGO STATE AZTECS

2019 Volleyball Weekly Notes

Jim Solien (Primary Contact)
 Assistant Media Relations Director
Office Phone Number: (619) 594-2576
E-Mail Address: jsolien@sdsu.edu
News Release Date: Sept. 25, 2019

SDSU Official Athletics Website: goaztecs.com
SDSU Official Athletics Twitter: @GoAztecs
SDSU Official Athletics Instagram: @GoAztecs
SDSU Official Athletics Facebook: facebook.com/goaztecs
SDSU Official Athletics YouTube: youtube.com/goaztecs.com

2019 AZTEC VOLLEYBALL SCHEDULE

Day/Date	Opponent	Time/Result
Friday, Aug. 30	vs. Akron^	W, 3-0
Friday, Aug. 30	vs. Bryant^	W, 3-0
Saturday, Aug. 31	at Florida Gulf Coast^	L, 2-3
Friday, Sept. 6	West Virginia+	W, 3-2
Saturday, Sept. 7	Arkansas+	W, 3-2
Saturday, Sept. 7	Arizona+	L, 0-3
Friday, Sept. 13	vs. UC Riverside~	W, 3-1
Saturday, Sept. 14	vs. Eastern Washington~	W, 3-1
Saturday, Sept. 14	at Grand Canyon~	L, 0-3
Thursday, Sept. 19	Long Beach State	W, 3-1
Friday, Sept. 20	at San Diego	L, 0-3
Thursday, Sept. 26	San José State*	6 p.m. PT
Saturday, Sept. 28	at Nevada*	1 p.m. PT
Thursday, Oct. 3	UNLV*	6 p.m. PT
Saturday, Oct. 5	New Mexico*	2 p.m. PT
Thursday, Oct. 10	at Wyoming*	6:30 p.m. MT
Saturday, Oct. 12	at Colorado State*	1 p.m. MT
Monday, Oct. 14	at Fresno State*	7 p.m. PT
Saturday, Oct. 19	at Air Force*	1 p.m. MT
Thursday, Oct. 24	Boise State*	6 p.m. PT
Saturday, Oct. 26	Utah State*	2 p.m. PT
Thursday, Oct. 31	at New Mexico*	7 p.m. MT
Saturday, Nov. 2	at UNLV*	2 p.m. PT
Thursday, Nov. 7	Wyoming*	6 p.m. PT
Saturday Nov. 9	Colorado State*	2 p.m. PT
Tuesday, Nov. 12	Fresno State*	6 p.m. PT
Thursday, Nov. 14	Air Force*	6 p.m. PT
Thursday, Nov. 21	at Utah State*	7 p.m. MT
Saturday, Nov. 23	at Boise State*	2 p.m. MT

^ - FGCU Homewood Suites Fort Myers Classic (Fort Myers, Fla.)
 + - SDSU/USD Invitational (San Diego, Calif.)
 # - GCU Invitational (Phoenix, Ariz.)
 * - Mountain West match

Socially

Twitter: @SDSUVolleyball
 Instagram: @SDSUVolleyball

Match Week Preview

San José State (5-6, 0-0 MW) at San Diego State (7-4, 0-0 MW)
 Thursday, Sept. 26 | 6 p.m. PT | Aztec Court | San Diego, Calif.
 Live Stats | MW Network
 Series: SDSU leads 21-12



San Diego State (7-4, 0-0 MW) at Nevada (10-2, 0-0 MW)
 Saturday, Sept. 28 | 7 p.m. PT | Virginia Street Gym | Reno, Nev.
 Live Stats | MW Network
 Series: SDSU leads 11-3



AZTECS WELCOME SAN JOSE STATE, TRAVEL TO NEVADA TO OPEN MOUNTAIN WEST SCHEDULE

- > San Diego State opens its 21st season of Mountain West competition this weekend when it battles San José State and Nevada.
- > The Aztecs will play host to the Spartans on Thursday, Sept. 26, beginning at 6 p.m. PT, before traveling to the Silver State to face the Wolf Pack on Saturday, Sept. 28, starting at 1 p.m. PT.
- > In addition to live stats, both contests will be streamed live via the Mountain West Network on GoAztecs.com.
- > Through 11 matches, San Diego State has equaled its best start since 2011 and 2012 when it posted identical 7-4 records to begin those seasons.
- > The Aztecs have compiled a 161-159 record in MW competition since the league's inception in 1999. However, SDSU is 230-148 in program history against teams in the current conference alignment thanks in part to renewed rivalries with Fresno State and San José State.
- > The Aztecs are 10-10 all-time in MW openers and will be looking to snap a two-match losing skid in conference lid-lifters after falling to Fresno State in three sets at home last season.

SERIES RECORDS

- > Despite dropping a pair of narrow five-set decisions to the Spartans a year ago, San Diego State still owns a 21-12 record against San José State in the all-time series.
- > The Scarlet and Black is 12-4 versus the Spartans at home, but has lost two in a row at Aztec Court after winning four straight on The Mesa against their northern California rivals between 2009 and 2016.
- > Since San José State joined the Mountain West in 2013, SDSU has posted a 6-5 record in 11 meetings versus the Spartans.
- > Hannah Turnlund and Tamia Reeves are the Aztecs' top returners from the last meeting vs. San José State. Turnlund blasted 15 kills and added three block assists, while Reeves hit .667 for the match with 12 kills and no errors in 15 attempts to go with six block assists. In addition, Loren Teter scooped up 15 digs, while Gabi Peoples finished with a double-double on 33 assists and 14 digs.
- > The SDSU-SJSU clash was the Aztecs' 11th match that went five sets during the 2018 campaign, the highest single-season total in program history.
- > San Diego State is 11-3 against Nevada in 14 previous encounters and has won eight straight, including a pair of four-set victories last season.
- > SDSU is 3-3 all-time vs. the Wolf Pack in Reno. The Aztecs' last loss in the series occurred at Virginia Street Gym in a 3-1 setback on Oct. 17, 2014.
- > Erin Gillcrist (.429) tied for match-high honors with 15 kills in last season's road victory over Nevada, while Reeves hit .533 with eight put-aways of her own and no errors. Not to be outdone, Teter finished with 15 digs to tie for match-high distinction as well.

HEAD COACH DEITRE COLLINS-PARKER

- > San Diego State head coach Deitre Collins-Parker is in her 12th season with the Aztecs after becoming the fourth head coach in program history prior to the 2009 campaign. Her record at San Diego State stands at 160-150 (.516).
- > Collins-Parker previously served as head coach at UNLV for eight seasons (1996-2003) and at Cornell for five years (2004-2008). Her career record stands at 324-342 (.486).
- > A three-time All-American as a collegiate player at the University of Hawai'i, Collins-Parker led the Rainbow Wahine to consecutive national titles (1983-84) and was twice named the national player of the year.
- > In addition, Collins-Parker was selected to the NCAA all-tournament team and still shares the record for solo blocks in one NCAA tournament with 15 in 1982.
- > Collins-Parker was a member of the U.S. Olympic Team and competed at the Goodwill Games and Pan Am Games prior to playing professionally in Europe for four years.
- > Collins-Parker is one of six players named to the NCAA Division I Women's Volleyball 25th Anniversary Team in October 2005 and was inducted into the AVCA Hall of Fame in the fall of 2008.
- > In the summer of 2017, Collins-Parker was head coach of the Mountain West All-Star volleyball team that competed in the European Global Challenge.

GENERAL INFORMATION

Location San Diego, Calif.
 Founded 1897
 Enrollment 32,005
 Nickname Aztecs
 Colors Scarlet and Black (Pantone 187)
 Conference Mountain West
 Affiliation Division I
 President Dr. Adela de la Torre
 Director of Athletics John David Wicker
 Faculty Representative Patrick Papin
 Home Facility Aztec Court at Peterson Gym (2,000)

TEAM INFORMATION

Head Coach Deitre Collins-Parker
 Alma Mater Hawai'i '95
 Record at SDSU 163-152 (11th year)
 Career Record 325-345 (24th year)
 E-Mail dcollins33@mail.sdsu.edu
 Volleyball Office Phone (619) 594-5064
 Volleyball Office Fax (619) 594-1674
 Assistant Coach/Recruiting Coordinator Melanie Greene
 Assistant Coach Dr. Ken Murczek
 Volleyball Operations Assistant Kara Barkdoll
 2018 Record 10-21
 2018 Conference Record 8-10 (Eighth)
 2018 Home Record 6-10
 2018 Road Record 4-7
 2018 Neutral Record 0-4
 Letterwinners Returning/Lost 12/4
 Starters Returning/Lost 3 + Libero/3

PROGRAM HISTORY

First Year of Volleyball 1976
 Overall Record 875-604 (.592)
 NCAA Appearances 14
 Last Postseason Appearance 2012
 NCAA Postseason Record 15-14

MEDIA RELATIONS

Assistant Media Relations Director Jim Solien
 E-Mail jsolien@sdsu.edu
 SID Office Phone (619) 594-2576
 SID Office Fax (619) 582-6541
 Official Athletic Website www.GoAztecs.com

**2019 AZTEC VOLLEYBALL
 STATISTICAL LEADERS**

Hitting Percentage	.394	Tamia Reeves
Kills	147	Victoria O'Sullivan
Kills per set	3.50	Victoria O'Sullivan
Assists	446	Camryn Machado
Assists per set	10.62	Camryn Machado
Digs	152	Loren Teter
Digs per set	3.62	Loren Teter
Blocks	37	Lexie Hamrick
Blocks per set	0.97	Lexie Hamrick
Service Aces	8	Camryn Machado
Service Aces per set	0.19	Camryn Machado

2019 AZTEC VOLLEYBALL ROSTER

No.	Player	Pos.	Ht.	Yr.	Hometown (Last School)
1	Nya Blair	OH	5-11	Fr.	Grand Prairie, Texas (Martin HS)
3	Andrea Walker	MB	6-0	So.	Fairfield, Calif. (Vanden HS)
4	Lauren Lee	DS/L	5-0	Jr.	Coppell, Texas (Rice Univ.)
5	Serena Hodson	MB	6-2	So.	Mission Viejo, Calif. (Trabuco Hills HS)
6	Alexis Durand	DS/L	5-7	Fr.	Long Beach, Calif. (Long Beach Poly HS)
7	Hannah Turnlund	OH	5-11	Sr.	Morgan Hill, Calif. (Presentation HS)
8	Loren Teter	DS	5-7	RS-Jr.	Redondo Beach, Calif. (Notre Dame Academy)
9	Gabi Peoples	S	5-10	Jr.	Beaverton, Ore. (Beaverton HS)
10	Camryn Machado	S	5-9	RS-Sa.	Cardiff-by-the-Sea, Calif. (Utah)
11	Alexis Ratliff	MB	6-6	RS-Fr.	Atlanta, Ga. (Saint Francis HS)
12	Erin Gillkrist	MB	6-1	Jr.	Lakewood, Colo. (Lakewood HS)
13	Elise Park	DS/L	5-7	Fr.	Columbia, Md. (Atholton HS)
14	Gabriella Spaethling	RS	6-1	Fr.	Larkspur, Calif. (Redwood HS)
15	Abby Pugh	MB	6-3	RS-Jr.	Brenham, Texas (Wichita State)
16	Ashley Vanderpan	S	6-1	RS-Fr.	Elk Grove, Calif. (Syracuse)
17	Sam McGrath	DS/L	5-4	RS-Jr.	Oakland, Calif. (Bishop O'Dowd HS)
18	Tamia Reeves	MB	6-1	Sr.	Carrilton, Texas (Hebron HS)
19	Maddie Lenn	OH	5-10	So.	San Francisco, Calif. (Sacred Heart Cathedral Prep)
20	Lexie Hamrick	OH	6-3	RS-Jr.	Louisville, Ky. (Lindsey Wilson College)
21	Victoria O'Sullivan	OH	6-0	So.	Albany, Calif. (St. Mary's HS)

Head Coach: Deitre Collins-Parker (Hawai'i, 1995), 12th season at SDSU
Assistant Coach: Melanie Greene (San Diego State, 2007), 10th season at SDSU
Assistant Coach: Dr. Ken Murczek (San Diego State, 1998), Third season at SDSU
Volleyball Operations Assistant: Kara Barkdoll (Cal State San Marcos, 2015), Second season at SDSU
Volunteer Assistant Coach: Isabel Miller (Arizona State, 2018), First season at SDSU
Technical Coordinator: Yasser Aguila Todd (Trident University, 2009, 2014), First season at SDSU

Pronunciations

#8 Loren TETER TEE-ter
 #9 GABI Peoples gabby
 #18 TAMIA Reeves tah-MEE-ah



OPPONENT COMPARISON

2019 Overall Stats	SDSU	MW Rank	OPP	SJSU	MW Rank	OPP	NEV	MW Rank	OPP
Hitting Percentage	.251	2	.224	.206	7	.190	.220	5	.150
Kills per set	13.0	3	12.3	12.7	6	10.5	13.2	2	11.5
Assists per set	12.2	4	11.6	11.7	6	9.5	12.4	1	10.6
Digs per set	12.8	10	11.7	14.1	5	12.8	17.2	1	16.4
Blocks per set	1.8	9	1.7	1.6	11	2.0	2.5	3	1.6
Service Aces per set	0.6	11	1.1	1.4	2	1.5	1.4	5	1.5

SCOUTING THE OPPOSITION

> San José State (5-6) is coming off a split last weekend at the Big Apple Tournament in New York, defeating Long Island in four sets before dropping a narrow 3-2 decision to Columbia. After posting a 17-12 record in 2017 followed by a 16-11 mark in 2016, the Spartans have posted back-to-back winning seasons from the first time since the 2000 and 2001 campaigns. Individually, SJSU has been paced this season by sophomore middle blocker Haylee Nelson, who has knocked down 3.30 kills per set (132 overall), which ranks eighth in the Mountain West. The Spartans have three outside hitters averaging over two kills per set, including junior Lataheva Lousi (2.37), freshman Makayla Lewis (2.36) and senior Caitlin Bettey (2.17). In addition, senior middle blocker Thalana Grajeda finds herself among the MW leaders, occupying the second spot in hitting percentage (.391) as well as the fifth position in service aces (0.35/set). Sophomore libero Sarah Smevog anchors SJSU's defense with an average of 4.03 digs per set (161 overall), which ranks fifth in the league, while fellow classmate Mamie Garard (6.32 assists/set) and senior Kaitlynn Zdroik (5.12 assists/set) have split time at the setter position. As a team, the Spartans are hitting .206 on the season, but have limited the opposition to a .190, which ranks fifth in the MW. SJSU is also among the conference leaders in services aces (2nd, 1.6/set) and digs (5th, 14.1/set). The Spartans are guided by head coach Jolene Shephardson, who is in her sixth season in Silicon Valley after a three-year stint at CSU Bakersfield. The former Jolene Patton played collegiately at South Florida, helping the Bulls to a pair Conference USA regular-season co-championships in 2000 and 2002. Her career record stands at 110-139.

> Nevada (10-2) is off to its best start since 2001 when it opened with an 11-1 mark. The Wolf Pack captured three victories in its home tournament last weekend, defeating Southern Utah (3-2), Gonzaga (3-0) and California Baptist (3-2) to extend its winning streak to seven straight. Junior Kayla Afoa was named MVP of the Nevada Invitational and collected Mountain West Defensive Player of the Week honors after posting 44 digs (3.38/set) and 13 blocks (1.0/set) in the three wins. Entering the weekend, the versatile Wolf Pack outside hitter finds herself among the league leaders in kills (3rd, 3.67/set), points (3rd, 4.35/set), service aces (6th, 0.35/set) and digs (8th, 3.72/set). In addition, Nevada has received a boost from freshman middle blocker Sydney Petersen, who leads the MW with 1.43 blocks per set (66 overall) and ranks seventh with a .340 hitting percentage, while senior setter Dalyn Burns occupies the third spot in the league with an average of 10.26 assists per set. Along with Afoa, senior Ryan Blackwood has supported the Wolf Pack's defensive efforts with a team-leading 3.89 digs per set, which ranks sixth in the MW. Burns was a teammate of Aztec outside hitter Hannah Turnlund at Presentation High School in San Jose, California. As a team, Nevada leads the conference in digs (17.24/set) and assists (12.35/sets) while ranking second in kills (13.17/set), third in blocks (2.50/set) and fifth in hitting percentage (.220). The Wolf Pack are coached by Lee Nelson, who is in his fifth season on the Reno campus after spending three years as an assistant at Miami (Fla.) from 2012-14. Prior to his stint with the Hurricanes, Nelson was the associate head coach of the men's program at UC Santa Barbara. His career record is 59-72.

2019 MOUNTAIN WEST STANDINGS (As of Sept. 25)

Team	-----Conference-----				-----Overall-----		
	W	L	Pct	GB	W	L	Pct.
Boise State	1	0	1.000	--	9	3	.750
#17 Colorado State	0	0	.000	--	10	1	.909
Nevada	0	0	.000	--	10	2	.833
San Diego State	0	0	.000	--	7	4	.636
Fresno State	0	0	.000	--	7	5	.583
San José State	0	0	.000	--	5	6	.455
Wyoming	0	0	.000	--	5	6	.455
New Mexico	0	0	.000	--	5	7	.417
UNLV	0	0	.000	--	4	7	.364
Air Force	0	0	.000	--	3	9	.250
Utah State	0	1	.000	1	0	13	.000

This Weekin the MW

Tuesday, Sept. 24

Boise State 3, Utah State 0

Thursday, Sept. 26

San José State at San Diego State, 6 p.m. PT

Nevada at Fresno State., 6 p.m. PT
 Utah State at Air Force, 6:30 p.m. MT
 UNLV at Wyoming, 6:30 p.m. MT
 New Mexico at No. 17 Colorado State, 7 p.m. MT

Saturday, Sept. 28

San Diego State at Nevada, 1 p.m. PT

Wyoming at New Mexico, 1 p.m. MT
 Air Force at Boise State, 2 p.m. MT
 No. 17 Colorado State at UNLV, 2 p.m. PT
 Fresno State at San José State, 2 p.m. MT

Tuesday, Oct. 1

No. 17 Colorado State at Wyoming, 6:30 p.m. MT

WRAPPING UP THE NON-CONFERENCE SLATE

- > San Diego State put the finishing touches on its 2019 non-conference schedule last week, posting a four-set victory at home over Long Beach State on Sept. 19, before falling in three sets at San Diego the next evening.
- > Against the Beach, the Aztecs received double-digit kills from three players, including Hannah Turnlund, who blasted a team-high 17-putaways, followed by Victoria O'Sullivan (14) and Erin Gillcrist (10).
- > Gillcrist and Tamia Reeves (7 kills) each hit .500 for the match, combining for just three errors, while Lexie Hamrick finished with a .400 dip, launching eight kills with just two miscues in eight swings.
- > Camryn Machado also got into the act with her seventh double-double of the year, thanks to a 50-assist, 10-dig effort. She also registered six total blocks, tying Reeves for match-high honors.
- > Loren Teter turned in another solid performance along the back row, leading all players with 16 digs.
- > Despite trailing in team blocks (9.0-8.0), however, SDSU owned the statistical advantage in most categories, including hitting percentage (.328 to .192), kills (57-49), assists (54-45), and service aces (5-4).
- > The Aztecs were unable to sustain the momentum the following night at San Diego, as the Toreros outthit the Scarlet and Black .323 to .124 while capitalizing on eight SDSU service errors.
- > Turnlund and O'Sullivan paced the Aztecs with eight kills apiece. However, O'Sullivan had her streak of consecutive matches with double-digit kills halted at 10.

AZTECS AMONG MOUNTAIN WEST LEADERS

- > Entering the first weekend of conference play, San Diego State boasts six players among the Mountain West leaders in various categories.
- > Tamia Reeves leads the league with a .394 hitting percentage, while Camryn Machado occupies the top spot with an average of 10.62 assists per set.
- > In addition, Victoria O'Sullivan (3.62/set) and Hannah Turnlund rank fifth and sixth in kills, respectively, while Lexie Hamrick is ninth with a .297 hitting percentage.
- > Not to be outdone, Loren Teter also landed in the ninth position this week with 3.62 digs per set.
- > As a team, SDSU ranks among the top half of the conference in hitting percentage (2nd, .251), kills (3rd, 13.00/set) and assists (4th, 12.17/set).

NOTHIN' LIKE HOME COOKIN'

- > In head coach Deitre Collins-Parker's tenure, the Aztecs have amassed an 86-45 (.656) record at home, highlighted by a 14-0 mark during the 2012 season when SDSU captured the Mountain West championship.
- > San Diego State is 3-1 this season at Aztec Court, including victories over West Virginia and Arkansas as part of the SDSU/USD Invitational.

GCU INVITATIONAL REDUX

- > San Diego State went 2-1 at the GCU Invitational, Sept. 13-14, in Phoenix, Arizona.
- > The Aztecs played their first four-set match of the season in the opener, earning a 3-1 victory over UC Riverside.
- > SDSU posted its second-best hitting percentage of the season at .328 while limiting the Highlanders to a .192 clip.
- > The Aztecs also maintained the upper hand over UCR in kills (53-46), assists (51-44), digs (53-44) and total blocks (5.0-3.0).
- > Individually, Hannah Turnlund led all players with 17 kills to go with a .310 hitting percentage, while Victoria O'Sullivan (.312) topped the double-digit plateau after launching 13 non-returnables of her own. Not to be outdone, Lexie Hamrick blasted nine put-aways, hitting .615 for the match.
- > In addition, Camryn Machado logged another double-double with 43 assists and 13 digs, tying Loren Teter in the latter statistic for match-high honors.
- > San Diego State followed with another four-set decision over Eastern Washington, surviving a pivotal third set that featured 21 ties and nine lead changes before the Aztecs prevailed by a 28-26 count. SDSU then used a timely 10-4 run late in the fourth frame to secure the victory.
- > The Aztecs received double-digit kill totals from three players, including Turnlund, who launched a match-high 16 put-aways while adding 11 digs for her fourth double-double of the year. Additionally, O'Sullivan powered down 12 kills, while Hamrick hit .333, recording 10 non-returnables while tying for match-high honors with five total blocks.
- > Machado also got into the act with her sixth double-double of the year (48 assists, 15 digs), while Teter scooped up a team-high 18 digs.
- > San Diego State could not sustain the momentum in the tournament finale, however, falling to host Grand Canyon in three sets.
- > Despite knocking down just two fewer kills than the Lopes (40-38), the Aztecs were undone by 19 attack errors, as GCU owned a decisive advantage in hitting percentage, .360 to .183, while maintaining the edge in total blocks (6.0-2.0) and digs (35-31).
- > O'Sullivan surpassed the double-digit plateau in kills for the ninth straight match, posting 11 put-aways to go with a .280 attack percentage, while Teter registered another steady performance with 15 digs.

MACHADO NAMED TO GCU INVITE ALL-TOURNAMENT TEAM

- > San Diego State setter Camryn Machado landed a spot on the all-tournament team at the GCU Invitational after another series of outstanding all-round performances.
- > In three matches, Machado averaged 10.27 assists (113 overall) and 2.73 digs (30 overall) per set to go with 11 kills, six block assists and one service ace.
- > In addition to her aforementioned assist totals, the Aztec redshirt sophomore contributed three kills and three block assists each in SDSU's victories over UC Riverside and Eastern Washington.

IN TETER WE TRUST

- > Libero Loren Teter also enjoyed a tremendous weekend at the GCU Invite, averaging 0.68 digs more per set than her season rate entering the tournament (4.18 to 3.50).
- > The Redondo Beach, California, native logged double-digit dig totals in all three matches, including 18 scoops vs. Eastern Wash-

ington, which marked her second-highest figure of the year after a 24-dig effort at Florida Gulf Coast on Aug. 31.

> Teter has finished with double-digit digs in nine of 11 matches this season and has broken that barrier in 20 out of her last 25 appearances dating back to Oct. 4, 2018.

SDSU/USD INVITATIONAL REWIND

- > San Diego State posted a 2-1 record in its home games at the SDSU/USD Invitational, Sept. 6-7.
- > The Aztecs opened with a dramatic victory over West Virginia after rallying from two sets down.
- > Against the Mountaineers, SDSU recorded a .117 attack percentage over the first two sets before turning the tables with a .352 clip over the final three frames.
- > Individually, outside hitter Victoria O'Sullivan hit .487 for the match, blasting a career-high 22 kills to go with three block assists.
- > The Aztecs also received double-digit put-aways from outside hitter Hannah Turnlund (19) and middle blocker Tamia Reeves (10), while libero Loren Teter tied for match-high honors with 15 digs.
- > Not to be outdone, setter Camryn Machado logged her fourth straight double-double after dishing out a personal-best 57 assists to go with 13 digs.
- > Fueled by its good fortune, San Diego State outlasted a pesky Arkansas squad in another fierce five-set battle the next day.
- > The Aztecs and Razorbacks traded punches with alternating set scores until the final frame, where Turnlund and O'Sullivan launched two kills apiece during a decisive 4-1 run that closed off the set after Arkansas overcame a 7-1 deficit to forge an 11-11 tie.
- > O'Sullivan hit .371 vs. the Razorbacks and collected a team-high 19 kills, while Turnlund surpassed the

double-digit plateau once again with 15 non-returnables.

- > The two sides were nearly identical in team statistics, with San Diego State maintaining the upper hand in hitting percentage (.270 to .260), kills (61-59) and total blocks (8.0-7.0), while Arkansas held a slight edge in assists (58-55) and digs (43-42).
- > After playing consecutive five-setters less than 24 hours apart, the Aztecs were unable to sustain the momentum in their weekend finale last Saturday night, dropping a 3-0 decision to visiting Arizona.
- > SDSU was out-hit .437 to .185 for the match while trailing in kills (46-37), digs (30-23) and total blocks (5.0-2.0).
- > O'Sullivan once again led the Aztec charge against the Wildcats with 10 kills, while Reeves posted a sparkling .462 hitting percentage (8-2-13).
- > San Diego State captured the first-ever meetings vs. West Virginia and Arkansas, but slipped to 20-10 all-time vs. Arizona.

O'SULLIVAN SHINES

- > Celebrating her 19th birthday on Sept. 6, Victoria O'Sullivan rose to the occasion at the SDSU/USD Invitational, averaging a team-high 3.92 kills per set while leading the Aztecs with a .381 hitting percentage.
- > O'Sullivan registered double-digit kills in all three matches, including a career-high 22 put-aways vs. West Virginia. She also hit .487 against the Mountaineers, including a .750 clip in the decisive fifth frame when she blasted six kills with no errors on eight swings to help the Aztecs rally from an 0-2 deficit in sets.
- > O'Sullivan returned with a team-high 19 kills and a .371 attack percentage vs. Arkansas, coming through in the clutch once again with six kills in the fifth set, including two on SDSU's final four points after the Razorbacks rallied from 7-1 down to tie the score at 11-11.

2019 AZTEC SUPERLATIVES

Individual

HITTING PERCENTAGE (min. 12 kills)

.487 (22-3-39) Victoria O'Sullivan vs. West Virginia (Sept. 6)

KILLS

24 Hannah Turnlund at Florida Gulf Coast (Aug. 31)
 5 sets 24 Hannah Turnlund at Florida Gulf Coast (Aug. 31)
 4 sets 17 Hannah Turnlund, twice, last vs. Long Beach State (Sept. 19)
 3 sets 11 Victoria O'Sullivan at Grand Canyon (Sept. 14)

TOTAL ATTEMPTS

69 Hannah Turnlund at Florida Gulf Coast (Aug. 31)
 5 sets 69 Hannah Turnlund at Florida Gulf Coast (Aug. 31)
 4 sets 50 Hannah Turnlund vs. Eastern Washington (Sept. 14)
 3 sets 32 Hannah Turnlund at Grand Canyon (Sept. 14)

ASSISTS

57 Camryn Machado vs. West Virginia (Sept. 6)
 5 sets 57 Camryn Machado vs. West Virginia (Sept. 6)
 4 sets 50 Camryn Machado vs. Long Beach State (Sept. 19)
 3 sets 37 Camryn Machado vs. Bryant (Aug. 30)

DIGS

24 Loren Teter at Florida Gulf Coast (Aug. 31)
 5 sets 24 Loren Teter at Florida Gulf Coast (Aug. 31)
 4 sets 18 Loren Teter vs. Eastern Washington (Sept. 14)
 3 sets 15 Loren Teter vs. Akron (Aug. 30)

SERVICE ACES

5 Camryn Machado at Florida Gulf Coast (Aug. 31)

BLOCK SOLOS

2 Lexie Hamrick, twice, last: vs. Eastern Washington (Sept. 14)

BLOCK ASSISTS

6 Tamia Reeves at Florida Gulf Coast (Aug. 31)

TOTAL BLOCKS

7 Tamia Reeves at Florida Gulf Coast (Aug. 31)

Team

HITTING PERCENTAGE

.337 (42-9-98) vs. Akron (Aug. 30)

KILLS

64 at Florida Gulf Coast (Aug. 31)
 5 sets 64 at Florida Gulf Coast (Aug. 31)
 4 sets 60 vs. Eastern Washington (Sept. 14)
 3 sets 43 vs. Bryant (Aug. 30)

TOTAL ATTEMPTS

179 at Florida Gulf Coast (Aug. 31)
 5 sets 179 at Florida Gulf Coast (Aug. 31)
 4 sets 161 vs. Eastern Washington (Sept. 14)
 3 sets 104 at Grand Canyon (Sept. 14)

ASSISTS

61 vs. West Virginia (Sept. 6)
 5 sets 61 vs. West Virginia (Sept. 6)
 4 sets 54 vs. Long Beach State (Sept. 19)
 3 sets 40 vs. Akron (Aug. 30), vs. Bryant (Aug. 30)

DIGS

87 at Florida Gulf Coast (Aug. 31)
 5 sets 87 at Florida Gulf Coast (Aug. 31)
 4 sets 71 vs. Eastern Washington (Sept. 14)
 3 sets 51 vs. Bryant (Aug. 30)

SERVICE ACES

7 at Florida Gulf Coast (Aug. 31)

TOTAL BLOCKS

11.0 vs. Eastern Washington (Sept. 14)
 at Florida Gulf Coast (Aug. 31)

- > The Aztec sophomore also finished with five block assists in the tournament, including three vs. WVU.
- > Coupled with her efforts at the GCU Invitational, O'Sullivan has logged double-digit kills in all nine matches this year after posting just three last season.

FORT MYERS CLASSIC RECAP

- > San Diego State finished with a 2-1 record at the FGCU Homewood Suites Fort Myers Classic, August 30-31, in Fort Myers, Florida.
- > The Aztecs opened with a pair of sweeps over Akron and Bryant, before falling short against host Florida Gulf Coast in a tough five-set battle.
- > SDSU was led by Hannah Turnlund (3.73 kills/set) and Camryn Machado (11.55 assists/set, 3.82 digs/set), who each earned a spot on the all-tournament team.
- > Machado logged three straight double-doubles, while Tamia Reeves hit .431 to go with 2.55 kills and 1.27 blocks per set.
- > Additionally, the Scarlet and Black was bolstered by the play of Victoria O'Sullivan (3.45 kills/set, 0.73 blocks/set) and Loren Teter (4.64 digs/set).
- > Collectively, the Aztecs out-hit the opposition .272 to .148 at the tournament while maintaining the upper hand in kills (149-123), digs (188-158) and total blocks (27-0-19-0). T
- > The Scarlet and Black also registered 16 fewer errant attacks than their foes (47-63) and did not commit a ball-handling error in three matches.
- > In the finale vs. Florida Gulf Coast, Turnlund posted a career-high 24 kills and scooped up 16 digs in the finale for her second straight double-double. She also tallied 10 put-aways and 11 digs vs. Bryant. In addition, the Morgan Hill, California, native hit .412 against Akron, launching seven kills with no errors in 17 attempts while adding three total blocks.
- > With their victories over Akron and Bryant, SDSU started a season 2-0 for the first time since the 2013 campaign.
- > All three matches at the FGCU Classic marked the Aztecs' first-ever meetings against those respective opponents.

MACHADO COLLECTS MW HONORS

- > Thanks to her all-round performance at the FGCU Homewood Suites Fort Myers Classic, Camryn Machado was named Mountain West Defensive Player of the Week on Sept. 2.
- > Against Florida Gulf Coast, the SDSU redshirt sophomore established career highs with 55 assists and 20 digs to go with a personal-best five service aces.
- > Earlier, the Cardiff-by-the-Sea, California, native opened the year with 35 assists and 12 digs vs. Akron, before notching 37 helpers and 10 digs against Bryant.

WELCOME BACK

- > With the graduation of four-time all-Mountain West honoree Deja Harris, senior Hannah Turnlund is the lone San Diego State veteran to have started all 31 matches during the 2018 campaign.
- > The Aztec outside hitter finished second on the squad last year with 2.78 kills per set (339 overall), blasting double-digit put-aways in 19 matches.
- > In the penultimate contest of the regular season vs. Nevada, Turnlund became the second SDSU player in the Mountain West era to post a 20-20 performance with a career-high 23 kills and 23 digs, fueling a 3-1 win for the Scarlet and Black.
- > In addition, the Aztecs welcome back senior Tamia Reeves and junior Erin Gillcrist, who ranked second and third on the squad last year with 72 and 57 total blocks in the middle, respectively.
- > Reeves owns SDSU's top returning hitting percentage from last year after posting a .273 clip, while Gillcrist (197) and sophomore outside hitter Victoria O'Sullivan (109) each surpassed the 100-kill plateau.
- > Redshirt juniors Loren Teter (2.65 digs/set) and Sam McGrath (2.43 digs/set) provided much of the support in the back row during the 2018 campaign.
- > Teter ranked eighth in Mountain West play last year with 3.23 digs per set, logging double-digit scoops in 14 matches, including five straight to end the season.
- > In a five-set victory at Utah State, Teter came through with a career-high 22 digs, matching McGrath's personal-best total accomplished on two occasions during the season vs. Idaho and at Air Force.
- > Redshirt sophomore Camryn Machado is expected to garner increased playing time at setter this season after appearing in only eight matches last year due to injury.
- > A local product from La Costa Canyon High School, Machado originally signed with Utah following her prep career, where she averaged 3.05 assists per set off the bench as a freshman in 2017, as the Utes advanced to the second round of the NCAA Tournament.

ADDING DEPTH

- > San Diego State landed a pair of transfers during spring practice last year in setter Ashley Vanderpan and middle blocker Abby Pugh, who join true freshmen Nya Blair, Alexis Durand, Elise Park and Gabriella Spaethling.
- > A native of Elk Grove, California, Vanderpan sat out the 2018 campaign as a redshirt at Syracuse and will retain freshman status this fall. She twice captured her squad's Most Valuable Player award at Elk Grove High School, garnering first-team all-conference accolades on two occasions.
- > Pugh, meanwhile, will have junior eligibility this fall after spending two years at Wichita State. A native of Brenham, Texas, Pugh averaged 1.46 kills and hit .289 in over 120 career sets for the Shockers. In 2018, she started 22 of 30 matches, averaging 1.53 kills per set (150 overall) while hitting at a .282 clip and totaling 58 blocks..

STAFF ADDITIONS

- > The Aztecs have added volunteer assistant coach Isabel Miller and technical coordinator Yasser Aguila Todd to their 2019 staff.
- > A native of Phoenix, Arizona, Miller played at Boise State (2013-14) and San Diego Mesa College (2015-16) before completing her collegiate career at Arizona State in 2017.
- > Miller was a member of the inaugural sand volleyball team at Boise State in 2014 and recorded the first pairs match victory in program history, along with teammate Maddy O'Donnell.
- > Miller graduated from Arcadia High School in Phoenix, where she was a three-time all-state selection in volleyball. As a prep, Miller also garnered first-team all-conference honors all four years and was named league MVP during her sophomore season.
- > Aguila Todd, meanwhile, is the co-founder of Spartan Volleyball Academy in Wildomar, California, and has served as a volunteer assistant coach at Palomar College and the University of Saint Katherine in San Marcos, California.
- > Aguila Todd also spent time as a volunteer assistant at Santa Rosa Academy in Menifee, California, and coached seven teams within the Viper Volleyball Club in Temecula.

2019 SITUATIONAL RECORDS

GENERAL

Overall.....	7-4
Mountain West.....	0-0
Home.....	3-1
Away.....	0-3
Neutral.....	4-0
vs. Ranked Teams.....	0-0
vs. Unranked Teams.....	7-4
Matches Following a Win.....	4-3
Matches Following a Loss.....	3-0
Longest Winning Streak.....	2
Longest Losing Streak.....	1, four times
Current Streak.....	Last 1

BY SETS

3 Sets.....	2-3
4 Sets.....	3-0
5 Sets.....	2-1
Leading After Two.....	4-0
Trailing After Two.....	1-3
Tied After Two.....	2-1
Leading 2-1.....	4-0
Trailing 2-1.....	1-0

BY MONTH

August.....	2-1
September.....	5-3
October.....	0-0
November.....	0-0

BY DAY

Thursday.....	1-0
Friday.....	3-2
Saturday.....	3-2

BY KILLS

Leading in Kills.....	6-1
Trailing in Kills.....	1-3
Tied in Kills.....	0-0

BY DIGS

Leading in Digs.....	6-1
Trailing in Digs.....	1-3
Tied in Digs.....	0-0

BY BLOCKS

Leading in Blocks.....	5-0
Trailing in Blocks.....	1-3
Tied in Blocks.....	1-1

BY ATTACK PERCENTAGE

Greater Attack Percentage.....	7-1
Lower Attack Percentage.....	0-3
Equal Attack Percentage.....	0-0
Hitting above .300.....	3-0
Hitting between .200 and .300.....	4-1
Hitting between .100 and .200.....	0-3
Hitting below .100.....	0-0
Opponent Hitting above .300.....	0-3
Opponent Hitting between .200 and .300.....	2-1
Opponent Hitting between .100 and .200.....	4-0
Opponent Hitting below .100.....	1-0

BY INDIVIDUAL KILLS

3+ Double-Digit Individual Kill Totals.....	3-1
2 Double-Digit Individual Kill Totals.....	3-0
1 Double-Digit Individual Kill Totals.....	1-2

PRESEASON PROGNOSTICATIONS

> San Diego State was picked to finish eighth this year in the Mountain West preseason coaches poll released Aug. 14.

> In the 20-year history of the Mountain West, SDSU has finished first (2012), second (2002, 2011), fourth (2000, 2001, 2003, 2013, 2017), fifth (2005, 2015), sixth (1999, 2004, 2006, 2009, 2010, 2014, 2016), seventh (2008) and eighth (2007, 2018) in the final league standings.

2019 Mountain West Preseason Poll

Rk.	Team (1st-place votes)	Pts.
1.	Colorado State (10)	100
2.	Wyoming	79
3.	UNLV	78
4.	Boise State	73
5.	San José State	66
6.	Fresno State	56
7.	New Mexico	50
8.	San Diego State	41
9.	Air Force	28
10.	Utah State	19
11.	Nevada	15

AZTEC VOLLEYBALL EARNS PUBLIC RECOGNITION AWARD FROM NCAA

> Last spring, the San Diego State volleyball program was publicly recognized by the NCAA for outstanding academic achievements, along with the Aztec women's tennis and cross country teams.

> The recognition came on the heels of the most recent multiyear Academic Progress Rates (APR) in which all three programs were among the top 10 percent of their respective sports nationally.

> With these squads earning NCAA public recognition last season, San Diego State has now received such distinction a total of 18 times in school history, matching its record of three teams set during the 2011-12 academic year.

> The SDSU volleyball program received public recognition for the third straight season and fourth time overall, while the Aztec women's tennis team garnered the accolade for the second year in a row and fifth time in the last six seasons. In addition, the San Diego State cross country squad merited public recognition for the sixth time in school history.

ON THE HORIZON

Following Saturday's clash, the Aztecs will continue their Mountain West schedule with two home matches next week, locking horns with UNLV on Thursday, Oct. 3, before squaring off against New Mexico on Saturday, Oct. 5. The Aztecs' match with the Rebels is slated for a 6 p.m. PT start, while their engagement vs. the Lobos is set to get underway at 2 p.m. PT.

2019 MATCH-BY-MATCH LEADERS

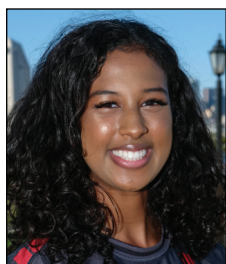
Date	Opponent	Kills	Hitting Pct.*	Assists	Aces	Digs	Blocks
A.30	vs. Akron	O'Sullivan - 10	Turnlund (.412)	Machado - 35	Lenn - 2	Teter - 15	Reeves/Hamrick - 4
A.30	vs. Bryant	O'Sullivan - 10 Turnlund	Hamrick (.545)	Machado - 37	McGrath - 1	Teter - 12	Reeves - 3 Hamrick O'Sullivan
A.31	at FGCU	Turnlund - 24	Reeves (.421)	Machado - 55	Machado - 5	Teter - 24	Reeves - 7
S.6	West Virginia	O'Sullivan - 22	O'Sullivan (.487)	Machado - 57	Machado - 1 Reeves	Teter - 15	Reeves - 5 Hamrick
S.7	Arkansas	O'Sullivan - 19	Reeves (.636)	Machado - 46	None	Teter - 11	Hamrick - 4
S.7	Arizona	O'Sullivan - 10	Reeves (.462)	Machado - 32	Machado - 1 Reeves	Teter - 7	Hamrick - 2
S.13	vs. UC Riverside	Turnlund - 17	Hamrick (.615)	Machado - 43	Hamrick - 1 Machado McGrath	Teter - 13 Machado	Hamrick - 3 Machado
S.14	vs. Eastern Wash.	Turnlund - 16	Lenn (.385)	Machado - 48	Five with 1	Teter - 18	Hamrick - 5
S.14	at Grand Canyon	O'Sullivan - 11	O'Sullivan (.280)	Machado - 22	None	Teter - 15	Walker - 2
S.19	Long Beach State	Turnlund - 17	Gillcrist (.500) Reeves	Machado - 50	Lenn - 2	Teter - 16	Hamrick - 6 Machado
S.20	at San Diego	Turnlund - 8 O'Sullivan	Turnlund (.150)	Machado - 21	None	Machado - 9	O'Sullivan - 3

* - min. 7 kills

2019 AZTEC PHOTO ROSTER



Nya BLAIR
OH | 5-11 | Fr. **1**



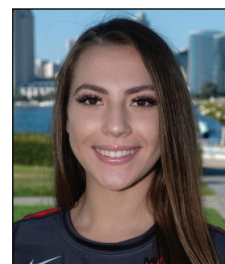
Andrea WALKER
MB | 6-0 | RS-So. **3**



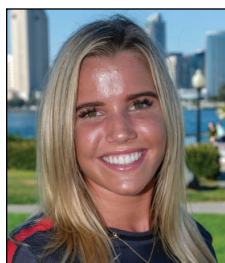
Lauren LEE
DS/L | 5-0 | Jr. **4**



Serena HODSON
MB | 6-2 | So. **5**



Alexis DURAND
DS/L | 5-7 | Fr. **6**



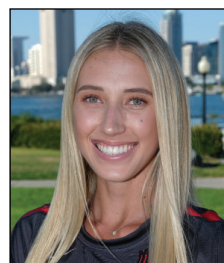
Hannah TURNLUND
OH | 5-11 | Sr. **7**



Loren TETER
DS | 5-7 | RS-Jr. **8**



Gabi PEOPLES
S | 5-10 | Jr. **9**



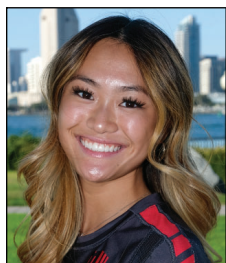
Camryn MACHADO
S | 6-1 | RS-So. **10**



Alexis RATLIFF
MB | 6-6 | RS-Fr. **11**



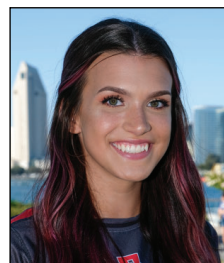
Erin GILLCRIST
MB | 6-1 | Jr. **12**



Elise PARK
DS/L | 5-7 | Fr. **13**



Gabriella SPAETHLING
RS | 6-1 | Fr. **14**



Abby PUGH
MB | 6-3 | RS-Jr. **15**



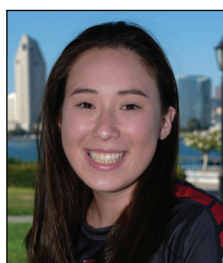
Ashley VANDERPAN
S | 6-1 | RS-Fr. **16**



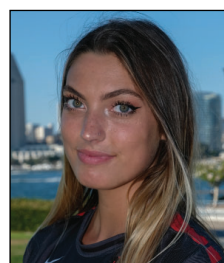
Sam McGRATH
DS/L | 5-4 | RS-Jr. **17**



Tamia REEVES
MB | 6-1 | Sr. **18**



Maddie LENN
OH | 5-10 | So. **19**



Lexie HAMRICK
OH | 6-3 | RS-Jr. **20**



Victoria O'SULLIVAN
OH | 6-0 | So. **21**



Dentre COLLINS-PARKER
Head Coach



Melanie GREENE
Assistant Coach/
Recruiting Coordinator



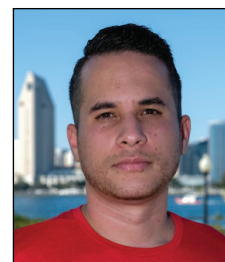
Dr. Ken MURCZEK
Assistant Coach



Kara BARKDOLL
Volleyball Operations
Assistant



Isabel MILLER
Volunteer Assistant
Coach



Yasser AGUILA TODD
Technical Coordinator

2019 San Diego State Volleyball
San Diego State Combined Team Statistics (as of Sep 20, 2019)
All matches

Overall record: 7-4 Conf: 0-0 Home: 3-1 Away: 0-3 Neutral: 4-0

#	Player	sp	Attack					Set		Serve			Dig			Blocking					points	
			k	k/s	e	ta	pct	a	a/s	sa	se	sa/s	re	dig	dig/s	bs	ba	total	blk/s	be		bhe
21	O'SULLIVAN, Victoria	42	147	3.50	50	338	.287	0	0.00	0	0	0.00	2	13	0.31	3	18	21	0.50	4	0	159.0
7	TURNLUND, Hannah	42	144	3.43	66	415	.188	5	0.12	1	13	0.02	6	93	2.21	1	7	8	0.19	3	0	149.5
18	REEVES, Tamia	39	76	1.95	15	155	.394	1	0.03	5	7	0.13	0	23	0.59	4	24	28	0.72	1	0	97.0
20	HAMRICK, Lexie	38	76	2.00	29	158	.297	1	0.03	2	3	0.05	0	6	0.16	8	29	37	0.97	13	1	100.5
19	LENN, Maddie	40	45	1.12	21	115	.209	10	0.25	5	21	0.12	14	48	1.20	0	12	12	0.30	0	0	56.0
10	MACHADO, Camryn	42	21	0.50	6	54	.278	446	10.62	8	9	0.19	0	115	2.74	1	17	18	0.43	6	3	38.5
12	GILLCRIST, Erin	10	15	1.50	7	38	.211	0	0.00	0	0	0.00	0	7	0.70	0	1	1	0.10	1	0	15.5
3	WALKER, Andrea	9	9	1.00	5	25	.160	0	0.00	0	0	0.00	0	1	0.11	0	5	5	0.56	1	0	11.5
11	RATLIFF, Alexis	13	9	0.69	5	27	.148	0	0.00	0	3	0.00	0	2	0.15	1	2	3	0.23	0	0	11.0
15	Pugh, Abby	1	3	3.00	1	8	.250	0	0.00	1	0	1.00	0	2	2.00	0	0	0	0.00	0	0	4.0
1	Blair, Nya	2	1	0.50	3	8	-.250	0	0.00	0	0	0.00	0	0	0.00	0	1	1	0.50	0	0	1.5
9	Peoples, Gabi	2	0	0.00	0	0	.000	10	5.00	0	0	0.00	0	1	0.50	0	0	0	0.00	0	0	0.0
6	DURAND, Alexis	1	0	0.00	0	0	.000	0	0.00	0	0	0.00	0	0	0.00	0	0	0	0.00	0	0	0.0
17	McGRATH, Sam	38	0	0.00	0	2	.000	11	0.29	4	17	0.11	15	56	1.47	0	0	0	0.00	0	0	4.0
8	TETER, Loren	42	0	0.00	0	1	.000	27	0.64	1	14	0.02	6	152	3.62	0	0	0	0.00	0	0	1.0
4	LEE, Lauren	30	0	0.00	0	0	.000	0	0.00	0	2	0.00	0	17	0.57	0	0	0	0.00	0	0	0.0
SAN DIEGO STATE		42	546	13.00	208	1344	.251	511	12.17	27	89	0.64	51	536	12.76	18	116	76.0	1.81	29	4	649.0
Opponents		42	518	12.33	212	1366	.224	488	11.62	51	98	1.21	27	492	11.71	16	114	73.0	1.74	13	6	642.0

Team Statistics	SDSU	OPP
ATTACK		
Kills	546	518
Errors	208	212
Total Attacks	1344	1366
Attack Pct	.251	.224
Kills/Set	13.0	12.3
SET		
Assists	511	488
Assists/Set	12.2	11.6
SERVE		
Aces	27	51
Errors	89	98
Aces/Set	0.6	1.2
SERVE RECEPTIONS		
Errors	51	27
Errors/Set	1.2	0.6
DEFENSE		
Digs	536	492
Digs/Set	12.8	11.7
BLOCKING		
Block Solo	18	16
Block Assist	116	114
Total Blocks	76.0	73.0
Blocks/Set	1.8	1.7
Block Errors	29	13
Ball handling errors	4	6
ATTENDANCE		
Total	1125	1409
Dates/Avg Per Date	4/281	3/470
Neutral site #/Avg	4/59	
Current win streak	0	-
Home win streak	1	-

Date	Opponent	Score	Score by set	Att.
08/30/19	vs Akron	w 3-0	25-20,25-19,25-18	0
08/30/19	vs Bryant	w 3-0	26-22,25-16,25-13	0
08/31/19	at FGCU	L 2-3	25-22,23-25,23-25,25-22,11-15	702
Sep 06	WEST VIRGINIA	w 3-2	21-25,16-25,25-22,25-16,15-13	386
Sep 07	ARKANSAS	w 3-2	26-24,16-25,25-19,17-25,15-12	111
Sep 07	ARIZONA	L 0-3	10-25,22-25,19-25	396
09/13/19	vs UC Riverside	w 3-1	25-13,25-20,19-25,25-19	128
09/14/19	vs Eastern Wash.	w 3-1	25-16,22-25,28-26,25-21	107
09/14/19	at Grand Canyon	L 0-3	19-25,19-25,19-25	84
Sep 19	LONG BEACH STATE	w 3-1	25-12,25-20,21-25,25-21	232
Sep 20	at San Diego	L 0-3	13-25,15-25,20-25	623

Record in 3-set matches:2-3 • Record in 4-set matches:3-0 • Record in 5-set matches:2-1