

San Diego State Aztecs

2018-19 Record: 19-10 (H: 14-2; A: 4-6; N: 1-2); 11-4 MW
12 Postseason Berths in Last 13 Years, 11-Time MW Champions

- The Aztecs have won at least 19 games in 14 straight seasons (counts this season). Entering the year that was tied for the 7th-longest active streak in the nation.
- San Diego State has advanced to postseason play in 12 of the last 13 seasons (2006 NCAA, 2007-09 NIT, 2010-15 NCAA, 2016 NIT, 2018 NCAA).

- Trends:**
- SDSU is 17-2 this season and 36-5 under Brian Dutcher when holding the opposition to 45.0 percent or less FG shooting.
 - SDSU 37-4 last 41x when owing a higher FG pct.
 - The Aztecs are 29-2 in the Dutcher era when holding opponents to 45 percent FG shooting and 35 percent 3FG shooting.

	PPG	RPG	APG	FG	3FG	FT	
0	Devin Watson						1 of 6 players in the nation avg. 15.7 pts., 4.3 asts., 2.5 3FG per game... Last 7 gms.: 15.4 ppg, 4.0 rpg, 3.0 apg, 17-43 3FG (39.5 pct.)... 1 of 7 active players w/1,700 pts. & 450 asts... 90 career 10+ scoring games, including 25 of 29 TY... 33 career 20+pt. games... 8 gms. this season w/7+ assists... SDSU is 18-3 when he shoots 40 pct or better and has two TO or less.
	Guard, 6-1, 183, Sr.-1L MW Player of the Week Oceanside, Calif. (San Francisco)						
<p>‘18-19 15.7 3.1 4.3 41.1 38.6 74.8</p> <p>MWC 16.1 3.4 3.5 40.2 37.3 76.1</p> <p>Career Highs: Points: 33 - two times Rebounds: 8 vs. Coppin State (12-18-15) Assists: 9 at Arizona State (11-14-17)</p>							
2	Adam Seiko / SAY-ko /						Played in 27 of 29 games this season (13.3 mpg)... Scored in 12 of last 19 gms... Only 16 TOs in 359 mins... Is 14-31 from 3-pt. range (.424)... Has at least as many assists as TOs in 19 of last 22 games... Set CH for pts. (13) and rebs. (5) against CSUDH... Coming off of a RS season... Three-star signee by Rivals... Sierra Canyon went 27-3, and was ranked No. 5 in California and No. 15 nationally his senior year.
	Guard, 6-3, 195, Fr.-RS Boston, Mass. (Sierra Canyon HS (Calif.))						
<p>‘18-19 2.5 1.1 0.7 41.0 42.4 75.0</p> <p>MWC 1.8 1.1 0.8 35.0 36.8 60.0</p> <p>Career Highs: Points: 13 vs. CSUDH (12-12-18) Rebounds: 5 vs. CSUDH (12-12-18) Assists: 2 - five times</p>							
3	Aguek Arop / uh-GWUK uh-ROPE /						Played 10+ mins. in 16 of last 18 games... Scored in CH 5 str. gms. (21 pts.)... Made 20 of last 34 FGA (12 gms.)... 29 of 90 rebounds are on offensive glass... Last 7 gms.: 26 pts., 22 rebs., 10 asts., 9 stls. (142 min.)... A 6-6 forward with a near 7-foot wingspan that is expected to see significant time this season... Good mid-range game and is deadly from 15-foot and in... Has been hindered a bit during camp due to a hip injury.
	Forward, 6-6, 220, Fr.-HS Omaha, Neb. (Omaha South HS)						
<p>‘18-19 3.3 2.7 0.9 48.5 23.1 58.6</p> <p>MWC 3.7 2.5 1.1 55.0 28.6 47.6</p> <p>Career Highs: Points: 11 vs. Brown (12-29-18) Rebounds: 5 - two times Assists: 3 - two times</p>							
4	Michael Sohikish / so-HE-kish /						Walk-on who has seen action in 21 career games, including 10 games this season... Scored first points of the season on a pair of free throws against CSUDH (12-12-18)... Fifth-year in the program... A civil engineer major who served as a student-manager before earning playing time... Career totals: 17 points, 3 rebounds, 7 assists, 4 steals, 60 minutes and just 3 turnover.
	Guard, 5-9, 160, Sr.-SQ San Diego, Calif. (University City HS)						
<p>‘18-19 0.9 0.1 0.5 3/8 1/4 2/2</p> <p>MWC 1.8 0.0 0.5 3/6 1/3 0/0</p> <p>Career Highs: Points: 45 vs. San Jose State (3-2-19) Rebounds: 1 - three times Assists: 2 vs. CSUDH (12-12-18)</p>							
5	Jalen McDaniels						Named MWC POW twice TY... Last 18 gms.: 17.9 points, 8.9 rebounds, 1.8 asts., 49.6 FG pct... Career FG pct. 51.6... Double-doubles in 7 of last 15 gms... Has 30 offensive rebounds in the last 13 games... CH 30 pts., 13 rebs., 4 asts., 5 stls. vs. UNLV (1st DI player to do that since Ben Simmons)... One of 4 Fr. in the country LS to post 10.5 pts., 7.5 rebs. & shoot 58+ pct. from the field.
	Forward, 6-10, 195, So.-1L 2-time MW PoW Federal Way, Wash. (Federal Way HS)						
<p>‘18-19 16.4 8.2 2.2 47.8 30.9 72.4</p> <p>MWC 17.7 8.8 1.8 48.5 29.7 76.0</p> <p>Career Highs: Points: 30 vs. UNLV (1-26-19) Rebounds: 15 at Illinois St. (12-1-18) Assists: 5 - two times</p>							
11	Matt Mitchell						62 career starts (61 straight)... 6 20-point games (4 this season, 3 of last 20 gms.)... Trey in 9 of last 10 gms... Made 15 straight FTA at one point this season... 13-4 this season when he scores 9+ points and 11-1 in his career when he scores 15+ points... SDSU is 25-6 when he has multiple assists... 652 career points... Home averages: 12.6 points, 4.6 rebs., 45.0 FG pct., 37.3 3FG pct.
	Forward, 6-6, 240, So.-1L Riverside, Calif. (Roosevelt HS)						
<p>‘18-19 10.6 4.0 1.9 41.9 32.4 79.1</p> <p>MWC 8.8 4.2 1.9 37.6 31.7 90.3</p> <p>Career Highs: Points: 31 vs. Eastern Illinois (11-20-17) Rebounds: 9 - two times Assists: 9 vs. New Mexico (1-15-19)</p>							
20	Jordan Schakel / SHACK-ull /						Among active DI players, he ranks 7th in fewest TO/40 minutes (0.83, min. 1,000 mins.)... Has 10 double-digit scoring games in 56-game career (has 9 in last 22 games)... 2nd Aztec in last 22 seasons to produce 3 3FGM, 7 rebs. and 100 pct. FG game (Jamaal Franklin)... Made first 16 FTA of the season... Last season: 106 pts., this season: 194 pts... Made 12 of last 20 3FGA... Missed 6 of last 11 games.
	Guard, 6-6, 200, So.-1L Torrance, Calif. (Bishop Montgomery HS)						
<p>‘18-19 8.4 3.9 1.1 47.6 45.7 84.6</p> <p>MWC 8.0 3.0 0.7 49.1 43.9 71.4</p> <p>Career Highs: Points: 16 vs. Tx. Southern (11-14-18) Rebounds: 8 vs. BYU (12-22-18) Assists: 3 vs. CSUN (1-1-19)</p>							
23	Ed Chang						Played 51 minutes total in 12 gms... All 6 FGM are from three-point range... Tremendous shooter (once made nine 3FG in one half of a HS game)... Did not play in high school last season... Attended Papillion-La Vista High in Papillion, Neb. for three years as a prep before finishing at Garfield High in Seattle... Was a two-time all-state selection in Nebraska... Tabbed a four-star recruit by ESPN.
	Forward, 6-8, 215, Fr.-HS Papillion, Neb. (Garfield HS (Wash.))						
<p>‘18-19 1.8 0.8 0.3 37.5 40.0 3/4</p> <p>MWC 2.0 0.7 0.3 3/8 3/8 3/4</p> <p>Career Highs: Points: 4 vs. San Jose State (3-2-19) Rebounds: 3 vs. CSUDH (12-12-18) Assists: 1 - three times</p>							
24	Nolan Narain						Played in 58 career games, including 26 this season... Shooting 48.5 percent from the field and 53.7 percent inside the three-point arc... In fourth year with the program (redshirt in 2015-16 campaign)... Scored the best basketball of his career near the end of last season... Played a CH 18 points in 18 minutes of action against UW (2-14-18)... In a five-game stretch late last season, he had 43 pts. and 14 rebs.
	Forward, 6-10, 230, Jr.-2L Hamilton, Ontario, Canada (La Lumiere School (Ind.))						
<p>‘18-19 3.0 2.3 0.7 48.5 28.6 47.4</p> <p>MWC 2.5 2.0 0.8 37.2 18.2 1/3</p> <p>Career Highs: Points: 18 vs. Wyoming (2-14-18) Rebounds: 7 - three times Assists: 3 vs. San Jose State (3-2-19)</p>							
31	Nathan Mensah / MEN-sah /						Had 2 double-doubles... In last 23 seasons, only Leonard produced a 10-10-3 (blk-2 stl. game as an SDSU Fr... Avg. 11.8 pts. and 11.9 rebs. per 40 mins... Started last 15 gms... Played 21+ mins. 8 of last 11 gms... 33 off. rebs. last 11 gms... An injury on the middle finger of his left (shooting) hand forced him to miss about four weeks... He was cleared on Oct. 31... He is playing with a hard brace on that finger.
	Forward, 6-10, 225, Fr.-HS Labadi, Accra, Ghana (Findlay Prep (Nev.))						
<p>‘18-19 5.6 5.6 0.6 58.7 0/0 71.4</p> <p>MWC 6.1 6.1 0.8 59.1 0/0 80.0</p> <p>Career Highs: Points: 16 vs. New Mexico (1-15-18) Rebounds: - two times Assists: 4 vs. San Jose State (3-2-19)</p>							
35	Joel Mensah / MEN-sah /						Played 7 minutes, action in 14 of 29 gms... A hard working center expected to see the floor this season... Is a good shooter with range out to 15 feet... Has a very good motor... Attended JSerra Catholic High in Capistrano, Calif... Averaged 15.9 points, 8.8 rebounds, 1.2 steals and 1.4 blocked shots in his senior season... Nathan and Joel Mensah are not related.
	Forward, 6-10, 215, Fr.-HS Korle Gonno, Accra, Ghana (JSerra Catholic HS (Calif.))						
<p>‘18-19 1.1 1.0 0.0 19.2 0/0 6/9</p> <p>MWC 0.9 1.0 0.0 2/9 0/0 2/2</p> <p>Career Highs: Points: 4 - two times Rebounds: 3 vs. Iowa State (11-21-18) Assists: -</p>							
42	Jeremy Hemsley						9th in school history w/1,341 career points (10.4 ppg)... 10+ pts. in 7 of last 12 gms... 146 career treys (7th in SDSU history)... Started 90 of 129 games in his career... SDSU is 23-3 when he has at least four assists and 43-15 when he has one TO or less (10-2-17)... Has 9 career 20-pt. games... Double figures in scoring 72x... Career numbers: 1,341 points, 271 assists, 303 rebounds, 100 stls., 146 3FGs.
	Guard, 6-3, 195, Sr.-3L Rancho Cucamonga, Calif. (Damien HS)						
<p>‘18-19 9.1 2.9 2.5 42.8 35.1 63.6</p> <p>MWC 8.2 2.9 2.8 42.7 29.3 59.0</p> <p>Career Highs: Points: 30 at Nevada (1-4-17) Rebounds: 7 vs. San José State (1-10-17) Assists: 9 - two times</p>							

red indicates probable starter, black indicates reserve, gold indicates player is injured and not expected to play.

SDSU BROADCAST ROSTER

Fresno State at San Diego State | Steve Fisher Court at Viejas Arena | San Diego, Calif. | Mar. 6, 2019



0
DEVIN WATSON

Guard
6-1, 183, Senior-1L
Oceanside, Calif.
Univ. of San Francisco

PPG: 15.7 RPG: 3.1 APG: 4.3
FG%: 41.1 3FG: 38.6 FT%: 74.8



2
ADAM SEIKO

Guard
6-3, 195, Freshman-RS
Boston, Mass.
Sierra Canyon High (Calif.)

PPG: 2.5 RPG: 1.1 APG: 0.7
FG%: 41.0 3FG: 42.4 FT%: 75.0



3
AGUEK AROP

Forward
6-6, 220, Freshman-HS
Omaha, Neb.
Omaha South High

PPG: 3.3 RPG: 2.7 APG: 0.9
FG%: 48.5 3FG: 23.1 FT%: 58.6



4
MICHAEL SOHIKISH

Guard
5-9, 160, Senior-SQ
San Diego, Calif.
University City High

PPG: 0.9 RPG: 0.1 APG: 0.5
FG%: 3/8 3FG: 1/4 FT%: 2/2



5
JALEN MCDANIELS

Forward
6-10, 195, Sophomore-1L
Federal Way, Wash.
Federal Way High

PPG: 16.4 RPG: 8.2 APG: 2.2
FG%: 47.8 3FG: 30.9 FT%: 72.4



11
MATT MITCHELL

Forward
6-6, 230, Sophomore-1L
Riverside, Calif.
Roosevelt High

PPG: 10.6 RPG: 4.0 APG: 1.9
FG%: 41.9 3FG: 32.4 FT%: 79.1



20
JORDAN SCHAKEL

Guard
6-6, 200, Sophomore-1L
Torrance, Calif.
Bishop Montgomery High

PPG: 8.4 RPG: 3.9 APG: 1.1
FG%: 47.6 3FG: 45.7 FT%: 84.6



23
ED CHANG

Forward
6-8, 215, Freshman-HS
Papillion, Neb.
Garfield High (Wash.)

PPG: 1.8 RPG: 0.8 APG: 0.3
FG%: 37.5 3FG: 40.0 FT%: 3/4



24
NOLAN NARAIN

Forward
6-10, 230, Junior-2L
Hamilton, Ontario, Canada
La Lumiere School (Ind.)

PPG: 3.0 RPG: 2.3 APG: 0.7
FG%: 48.5 3FG: 28.6 FT%: 47.4



31
NATHAN MENSAH

Forward
6-10, 225, Freshman-HS
Labadi, Accra, Ghana
Findlay Prep (Nev.)

PPG: 5.6 RPG: 5.6 APG: 0.6
FG%: 58.7 3FG: 0/0 FT%: 71.4



35
JOEL MENSAH

Forward
6-10, 215, Freshman-HS
Korle Gonno, Accra, Ghana
JSerra Catholic High (Calif.)

PPG: 1.1 RPG: 1.0 APG: 0.0
FG%: 19.2 3FG: 0/0 FT%: 6/9



42
JEREMY HEMSLEY

Guard
6-3, 195, Senior-3L
Rancho Cucamonga, Calif.
Damien High

PPG: 9.1 RPG: 2.9 APG: 2.5
FG%: 42.8 3FG: 35.1 FT%: 63.6

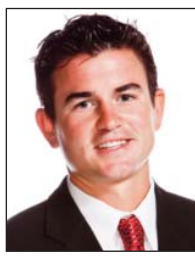


HEAD COACH
BRIAN DUTCHER

- 2nd season as head coach
- 20th year at SDSU
- 1989 NCAA champion
- 3 NCAA title game appearances
- 17 NCAA tournament appearances
- 11-time Mountain West champion



ASSISTANT COACH
ROD PALMER



ASSISTANT COACH
DAVE VELASQUEZ



ASSISTANT COACH
JAY MORRIS



ASST. TO HEAD COACH
MARK FISHER