

San Diego State Aztecs

2018-19 Record: 16-9 (H: 12-2; A: 3-5; N: 1-2); 8-4 MW
12 Postseason Berths in Last 13 Years, 11-Time MW Champions

- The Aztecs have won at least 19 games in 13 straight seasons, which is tied for the 7th-longest active streak in the nation.
- San Diego State has advanced to postseason play in 12 of the last 13 seasons (2006 NCAA, 2007-09 NIT, 2010-15 NCAA, 2016 NIT, 2018 NCAA).

Trends:

- SDSU is 14-2 this season and 33-5 under Brian Dutcher when holding the opposition to 45.0 percent or less FG shooting.
- SDSU 34-4 last 38x when owing a higher FG pct.
- The Aztecs are 26-1 in the Dutcher era when holding opponents to 45 percent FG shooting and 35 percent 3FG shooting.

	PPG	RPG	APG	FG	3FG	FT	
0 Devin Watson <i>Guard, 6-1, 183, Sr.-1L</i> <i>Oceanside, Calif. (San Francisco)</i>	'18-19 16.4 MWC 17.7	3.0 3.2	4.4 3.4	42.8 43.3	40.0 39.7	76.1 78.9	1 of 4 players in the nation avg. 16.0 pts., 4.0 asts., 2.5 3FGM per game and shooting 40+ pct. from 3FG... Last 3 gms.: 21.0 ppg, 4.0 rpg, 2.0 apg, 10-19 3FG (52.6 pct.)... 1 of 8 active players w/1,650 pts. & 450 asts... 87 career 10+ scoring games, including 22 of 25 TY... 33 career 20+ pt. games... 7 gms. this season w/7+ assists... SDSU is 18-3 when he shoots 40 pct. or better and has two TO or less.
2 Adam Seiko / SAY-ko / <i>Guard, 6-3, 195, Fr.-RS</i> <i>Boston, Mass. (Sierra Canyon HS (Calif.))</i>	'18-19 2.8 MWC 2.2	1.2 1.3	0.8 1.0	42.1 36.8	43.8 38.9	76.9 62.5	Played in 24 of 25 games this season (14.0 mpg)... Scored in 11 of last 16 gms... Only 13 TOs in 337 mins... Is 14-of-32 from 3-pt. range (.438)... Has at least as many assists as TOs in 18 of last 19 gms... Set CH for pts. (13) and rebs. (5) against CSUDH... Coming off of a RS season... Three-star signee by Rivals... Sierra Canyon went 27-3, and was ranked No. 5 in California and No. 15 nationally his senior year.
3 Aguek Arop / uh-GWUK uh-ROPE / <i>Forward, 6-6, 220, Fr.-HS</i> <i>Omaha, Neb. (Omaha South HS)</i>	'18-19 3.2 MWC 3.6	2.7 2.5	0.8 1.0	45.6 53.3	25.0 2/6	72.7 64.3	Played 10+ mins. in 13 of last 15 games... 69 pts. in last 18 gms. (3.8 ppg)... Made 14 of last 24 FGA (9 gms.)... 26 of 61 rebounds are on off-ensive glass... Last 4 gms.: 13 pts., 14 rebs., 5 asts., 5 stls. (66 min.)... A 6-6 forward with a near 7-foot wingspan that is expected to see significant time this season... Good mid-range game and is deadly from 15-foot and in... Has been hindered a bit during camp due to a hip injury.
4 Michael Sohikish / so-HE-kish / <i>Guard, 5-9, 160, Sr.-SQ</i> <i>San Diego, Calif. (University City HS)</i>	'18-19 0.4 MWC 0.7	0.1 0.0	0.4 0.3	1/6 1/4	0/3 0/2	2/2 0/0	Walk-on who has seen action in 20 career games, including nine games this season... Scored first points of the season on a pair of free throws against CSUDH (12-12-18)... Fifth-year in the program... A civil engineer major who served as a student-manager before earning playing time... Career totals: 12 points, 3 rebounds, 6 assists, 4 steals, 56 minutes and just 3 turnover.
5 Jalen McDaniels <i>Forward, 6-10, 195, So.-1L</i> <i>Federal Way, Wash. (Federal Way HS)</i>	'18-19 17.2 MWC 19.8	8.6 9.8	2.3 1.9	49.6 51.9	33.3 34.5	74.7 82.5	Named MWC POW twice TY... Last 14 gms.: 19.7 points, 9.7 rebounds, 1.9 asts., 52.8 FG pct... Scored 10+ pts. in CH 14 strt. gms... Career FG pct. 53.1... Double-doubles in 7 of last 11 gms... Has 28 offensive rebounds in the last 9 games... CH 30 pts., 13 rebs., 4 asts., 5 stls. vs. UNLV (1st DI player to do that since Ben Simmons)... One of 4 Fr. in the country LS to post 10.5 pts., 7.5 rebs. & shoot 58+ pct. from the field.
11 Matt Mitchell <i>Forward, 6-6, 240, So.-1L</i> <i>Riverside, Calif. (Roosevelt HS)</i>	'18-19 10.5 MWC 8.2	3.8 3.9	2.1 2.3	42.6 37.6	31.2 28.6	76.7 83.9	58 career starts (57 straight)... 6 20-point games (4 this season, 3 of last 16 gms.)... 23 assists in last 7 gms. (3.3 apg)... Trey in 5 of last 6 gms... Made 15 straight FTA on one point this season... 12-3 this season when he scores 9+ points and 10-1 in his career when he scores 15+ points... SDSU is 24-6 when he has multiple assists... 609 career points.
20 Jordan Schakel / SHACK-ull / <i>Guard, 6-6, 200, So.-1L</i> <i>Torrance, Calif. (Bishop Montgomery HS)</i>	'18-19 8.0 MWC 6.3	3.7 2.0	1.2 0.8	44.6 40.0	41.9 28.6	83.8 66.7	Among active Division I players, he ranks 9th in fewest TO/40 minutes (0.87, min. 92.1 mins.)... Has 8 double-digit scoring games in 52-game career (has 7 in last 18 games)... 2nd Aztec in last 22 seasons to produce 3 3FGM, 7 rebs. and 100 pct. FT game (Jamal Franklin)... Made first 16 FTA of the season... Last season: 106 pts., this season: 152 pts... Missed 6 of last 7 games.
23 Ed Chang <i>Forward, 6-8, 215, Fr.-HS</i> <i>Papillion, Neb. (Garfield HS (Wash.))</i>	'18-19 1.5 MWC 1.6	0.8 0.8	0.4 0.4	35.7 2/6	38.5 2/6	2/2 2/2	Played 45 minutes total in 11 gms... All 5 FGM are from three-point range... Tremendous shooter (once made nine 3FG in one half of a HS game)... Did not play in high school last season... Attended Papillion-La Vista High in Papillion, Neb. for three years as a prep before finishing at Garfield High in Seattle... Was a two-time all-state selection in Nebraska... Tabbed a four-star recruit by ESPN.
24 Nolan Narain <i>Forward, 6-10, 230, Jr.-2L</i> <i>Hamilton, Ontario, Canada (La Lumiere School (Ind.))</i>	'18-19 3.2 MWC 2.7	2.5 2.1	0.6 0.7	54.5 43.3	3/10 1/7	47.1 0/1	Played in 54 career games, including 22 this season... Shooting 54.5 percent from the field and 60.0 percent inside the three-point arc... Starting fourth year in the program (redshirt in 2015-16 campaign)... Played the best basketball of his career near the end of last season... Scored a CH 18 points in 18 minutes of action against UW (2-14-18)... In a five-game stretch late last season, he had 43 pts. and 14 rebs.
31 Nathan Mensah / MEN-sah / <i>Forward, 6-10, 225, Fr.-HS</i> <i>Labadi, Accra, Ghana (Findlay Prep (Nev.))</i>	'18-19 5.5 MWC 6.2	5.4 5.7	0.5 0.5	58.0 58.0	0/0 0/0	72.0 84.2	Recorded 1st career double-double vs. Utah St. (10 pts & 10 rebs.)... In last 23 seasons, only Kawhi Leonard produced a 10-10-3 (blk-2 stl. game as an SDSU Fr... Avg. 11.5 pts. and 11.1 rebs. per 40 mins... Started last 11 gms... Played 21+ mins. last 7 gms... 22 off. rebs. last 7 gms... An injury on the middle finger of his left (shooting) hand forced him to miss about four weeks... He was cleared on Oct. 31... He is playing with a hard brace on that finger.
35 Joel Mensah / MEN-sah / <i>Forward, 6-10, 215, Fr.-HS</i> <i>Korle Gonno, Accra, Ghana (JSerra Catholic HS (Calif.))</i>	'18-19 1.1 MWC 0.7	0.9 0.8	0.0 0.0	19.0 1/4	0/0 0/0	6/9 2/2	Played 63 minutes, action in 13 of 25 gms... A hard working center expected to see the floor this season... Is a good shooter with range out to 15 feet... Has a very good motor... Attended JSerra Catholic High in Capistrano, Calif... Averaged 15.9 points, 8.8 rebounds, 1.2 steals and 1.4 blocked shots in his senior season... Nathan and Joel Mensah are not related.
42 Jeremy Hemsley <i>Guard, 6-3, 195, Sr.-3L</i> <i>Rancho Cucamonga, Calif. (Damien HS)</i>	'18-19 9.3 MWC 8.5	2.9 2.9	2.5 2.9	43.0 43.2	33.8 25.0	67.1 65.6	9th in school history w/1,311 career points (10.5 ppg)... 10+ pts. in 5 of last 8 gms... 142 career treys (7th in SDSU history)... Started 86 of 125 games in his career... SDSU is 22-3 when he has at least four assists and 41-15 when he is one TO or less... Has 9 career 20-pt. games... Double figures in scoring 70x... Career numbers: 1,311 points, 261 assists, 292 rebounds, 97 stls., 142 3FGs.

red indicates probable starter, black indicates reserve, gold indicates player is injured and not expected to play.

SDSU BROADCAST ROSTER

Nevada at San Diego State | Steve Fisher Court at Viejas Arena | San Diego, Calif. | Feb. 20, 2019



0
DEVIN WATSON

Guard
6-1, 183, Senior-1L
Oceanside, Calif.
Univ. of San Francisco

PPG: 16.4 RPG: 3.0 APG: 4.4
FG%: 42.8 3FG: 40.0 FT%: 76.1



2
ADAM SEIKO

Guard
6-3, 195, Freshman-RS
Boston, Mass.
Sierra Canyon High (Calif.)

PPG: 2.8 RPG: 1.2 APG: 0.8
FG%: 42.1 3FG: 43.8 FT%: 76.9



3
AGUEK AROP

Forward
6-6, 220, Freshman-HS
Omaha, Neb.
Omaha South High

PPG: 3.2 RPG: 2.7 APG: 0.8
FG%: 46.6 3FG: 25.0 FT%: 72.7



4
MICHAEL SOHIKISH

Guard
5-9, 160, Senior-SQ
San Diego, Calif.
University City High

PPG: 0.4 RPG: 0.1 APG: 0.4
FG%: 1/6 3FG: 0/3 FT%: 2/2



5
JALEN MCDANIELS

Forward
6-10, 195, Sophomore-1L
Federal Way, Wash.
Federal Way High

PPG: 17.2 RPG: 8.6 APG: 2.3
FG%: 49.6 3FG: 33.3 FT%: 74.7



11
MATT MITCHELL

Forward
6-6, 230, Sophomore-1L
Riverside, Calif.
Roosevelt High

PPG: 10.5 RPG: 3.8 APG: 2.1
FG%: 42.6 3FG: 31.2 FT%: 76.7



20
JORDAN SCHAKEL

Guard
6-6, 200, Sophomore-1L
Torrance, Calif.
Bishop Montgomery High

PPG: 8.0 RPG: 3.7 APG: 1.2
FG%: 44.6 3FG: 41.9 FT%: 83.8



23
ED CHANG

Forward
6-8, 215, Freshman-HS
Papillion, Neb.
Garfield High (Wash.)

PPG: 1.5 RPG: 0.8 APG: 0.4
FG%: 35.7 3FG: 38.5 FT%: 2/2



24
NOLAN NARAIN

Forward
6-10, 230, Junior-2L
Hamilton, Ontario, Canada
La Lumiere School (Ind.)

PPG: 3.2 RPG: 2.5 APG: 0.6
FG%: 54.5 3FG: 30.0 FT%: 47.1



31
NATHAN MENSAH

Forward
6-10, 225, Freshman-HS
Labadi, Accra, Ghana
Findlay Prep (Nev.)

PPG: 5.5 RPG: 5.4 APG: 0.5
FG%: 58.0 3FG: 0/0 FT%: 72.0



35
JOEL MENSAH

Forward
6-10, 215, Freshman-HS
Korle Gonno, Accra, Ghana
JSerra Catholic High (Calif.)

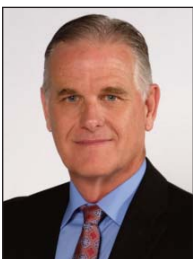
PPG: 1.1 RPG: 0.9 APG: 0.0
FG%: 19.0 3FG: 0/0 FT%: 6/9



42
JEREMY HEMSLEY

Guard
6-3, 195, Senior-3L
Rancho Cucamonga, Calif.
Damien High

PPG: 9.3 RPG: 2.9 APG: 2.5
FG%: 43.0 3FG: 33.8 FT%: 67.1

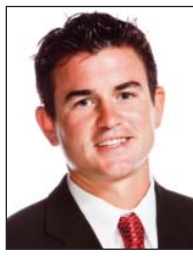


HEAD COACH
BRIAN DUTCHER

- 2nd season as head coach
- 20th year at SDSU
- 1989 NCAA champion
- 3 NCAA title game appearances
- 17 NCAA tournament appearances
- 11-time Mountain West champion



ASSISTANT COACH
ROD PALMER



ASSISTANT COACH
DAVE VELASQUEZ



ASSISTANT COACH
JAY MORRIS



ASST. TO HEAD COACH
MARK FISHER