

San Diego State Aztecs

2018-19 Record: 15-9 (H: 11-2; A: 3-5; N: 1-2); 7-4 MW
12 Postseason Berths in Last 13 Years, 11-Time MW Champions

- The Aztecs have won at least 19 games in 13 straight seasons, which is tied for the 7th-longest active streak in the nation.
- San Diego State has advanced to postseason play in 12 of the last 13 seasons (2006 NCAA, 2007-09 NIT, 2010-15 NCAA, 2016 NIT, 2018 NCAA).

Trends:

- SDSU is 13-2 this season and 32-5 under Brian Dutcher when holding the opposition to 45.0 percent or less FG shooting.
- SDSU 33-4 last 37x when owing a higher FG pct.
- The Aztecs are 26-1 in the Dutcher era when holding opponents to 45 percent FG shooting and 35 percent 3FG shooting.

Number	Name	Position	Height	Year	HS	PPG	RPG	APG	FG	3FG	FT	Notes
0	Devin Watson	Guard	6-1	Sr.	Oceanside, Calif. (San Francisco)	18-19: 16.3 MWC: 17.5	2.8 2.9	4.5 3.6	42.6 43.0	39.6 38.9	75.8 78.7	Career Highs: Points: 33 - two times Rebounds: 8 vs. Coppin State (12-18-15) Assists: 9 at Arizona State (11-14-17)
2	Adam Seiko / SAY-ko /	Guard	6-3	Fr.-RS	Boston, Mass. (Sierra Canyon HS (Calif.))	18-19: 2.9 MWC: 2.4	1.2 1.4	0.8 1.1	42.1 36.8	43.8 38.9	76.9 62.5	Career Highs: Points: 13 vs. CSUDH (12-12-18) Rebounds: 5 vs. CSUDH (12-12-18) Assists: 2 - five times
3	Aguek Arop / uh-GWUK uh-ROPE /	Forward	6-6	Fr.-HS	Omaha, Neb. (Omaha South HS)	18-19: 3.1 MWC: 3.5	2.6 2.4	0.8 1.1	45.6 51.9	25.0 2/6	72.7 64.3	Career Highs: Points: 11 vs. Brown (12-29-18) Rebounds: 5 - two times Assists: 3 at Colorado State (2-12-19)
4	Michael Sohikish / so-HE-kish /	Guard	5-9	Sr.-SQ	San Diego, Calif. (University City HS)	18-19: 0.4 MWC: 0.7	0.1 0.0	0.4 0.3	1/6 1/4	0/3 0/2	2/2 0/0	Career Highs: Points: 4 vs. SD Christian (11-10-17) Rebounds: 1 - three times Assists: 2 vs. CSUDH (12-12-18)
5	Jalen McDaniels	Forward	6-10	So.-1L	Federal Way, Wash. (Federal Way HS)	18-19: 17.1 MWC: 19.9	8.6 10.0	2.4 2.0	49.8 52.7	35.7 40.0	74.7 82.5	Career Highs: Points: 30 vs. UNLV (1-26-19) Rebounds: 15 at Illinois St. (12-1-18) Assists: 5 - two times
11	Matt Mitchell	Forward	6-6	So.-1L	Riverside, Calif. (Roosevelt HS)	18-19: 10.4 MWC: 7.7	3.7 3.6	2.1 2.3	43.4 39.0	31.8 29.7	74.6 83.3	Career Highs: Points: 31 vs. Eastern Illinois (11-20-17) Rebounds: 9 vs. Wash. St. (11-26-17) Assists: 9 vs. New Mexico (1-15-19)
20	Jordan Schakel / SHACK-ull /	Guard	6-6	So.-1L	Torrance, Calif. (Bishop Montgomery HS)	18-19: 8.0 MWC: 6.3	3.7 2.0	1.2 0.8	44.6 40.0	41.9 28.6	83.8 66.7	Career Highs: Points: 16 vs. Tx. Southern (11-14-18) Rebounds: 8 vs. BYU (12-22-18) Assists: 3 vs. CSUN (1-1-19)
23	Ed Chang	Forward	6-8	Fr.-HS	Papillion, Neb. (Garfield HS (Wash.))	18-19: 1.5 MWC: 1.6	0.8 0.8	0.4 0.4	35.7 2/6	38.5 2/6	2/2 2/2	Career Highs: Points: 3 - five times Rebounds: 3 vs. CSUDH (12-12-18) Assists: 1 - three times
24	Nolan Narain	Forward	6-10	Jr.-2L	Hamilton, Ontario, Canada (La Lumiere School (Ind.))	18-19: 3.4 MWC: 3.0	2.5 2.2	0.7 0.8	56.6 46.4	3/9 1/6	47.1 0/1	Career Highs: Points: 18 vs. Wyoming (2-14-18) Rebounds: 7 - three times Assists: 2 - four times
31	Nathan Mensah / MEN-sah /	Forward	6-10	Fr.-HS	Labadi, Accra, Ghana (Findlay Prep (Nev.))	18-19: 5.3 MWC: 5.8	5.3 5.5	0.5 0.6	57.3 56.8	0/0 0/0	73.9 93.3	Career Highs: Points: 16 vs. New Mexico (1-15-18) Rebounds: 11 vs. Jackson St. (11-27-18) Assists: 2 - three times
35	Joel Mensah / MEN-sah /	Forward	6-10	Fr.-HS	Korle Gonno, Accra, Ghana (JSerra Catholic HS (Calif.))	18-19: 1.1 MWC: 0.7	0.9 0.8	0.0 0.0	19.0 1/4	0/0 0/0	6/9 2/2	Career Highs: Points: 4 - two times Rebounds: 3 vs. Iowa State (11-21-18) Assists: -
42	Jeremy Hemsley	Guard	6-3	Sr.-3L	Rancho Cucamonga, Calif. (Damien HS)	18-19: 9.4 MWC: 8.6	2.8 2.7	2.4 2.6	42.5 42.0	33.8 25.0	69.7 71.4	Career Highs: Points: 30 at Nevada (1-4-17) Rebounds: 7 vs. San José State (1-10-17) Assists: 9 - two times

1 of 7 players in the nation avg. 16.0 pts., 4.5 asts., 2.5 3FGM per game... Scored or assisted on 38.1% of SDSU FGs... Career numbers: 1,665 pts., 280 rebs., 457 asts... 1 of 8 active players w/1,650 pts. & 450 asts... 86 career double-figure scoring games, including 21 of 24 TY... 33 career 20+pt. games... 7 gms. this season w/7+ assists... SDSU is 18-3 when he shoots 40 pct. or better and has two TO or less.

Played in 23 of 24 games this season (14.1 mpg)... Scored in 11 of last 15 gms... Only 12 TOs in 324 mins... Is 14-of-32 from 3-pt. range (43.8)... 18 straight gms. w/ at least as many assists as TOs... Set CH for pts. (13) and rebs. (5) against CSUDH... Coming off of a RS season... Three-star signee by Rivals... Sierra Canyon went 27-3, and was ranked No. 5 in California and No. 15 nationally his senior year.

Played 10+ mins. in 12 of last 14 games... 65 pts. in last 17 gms. (3.8 ppg)... Made 12 of last 21 FGA (8 gms)... 24 of 57 rebounds are on off-ensive glass... Last 3 gms: 9 pts., 10 rebs., 5 asts. (49 min)... A 6-6 forward with a near 7-foot wingspan that is expected to see significant time this season... Good mid-range game and is deadly from 15-feet and in... Has been hindered a bit during camp due to a hip injury.

Walk-on who has seen action in 20 career games, including nine games this season... Scored first points of the season on a pair of free throws against CSUDH (12-12-18)... Fifth-year in the program... A civil engineer major who served as a student-manager before earning playing time... Career totals: 12 points, 3 rebounds, 6 assists, 4 steals, 56 minutes and just 3 turnover.

Named MWC POW twice TY... Last 13 gms: 19.8 points, 9.9 rebounds, 2.0 asts., 53.6 FG pct... Scored 10+ pts. in CH 13 strt. gms... Career FG pct. 53.4... Double-doubles in 7 of last 10 gms... Has 24 offensive rebounds in the last 8 games... CH 30 pts., 13 rebs., 4 asts., 5 stls. vs. UNLV (1st DI player to do that since Ben Simmons)... One of 4 Fr. in the country LS to post 10.5 pts., 7.5 rebs. & shoot 58+ pct. from the field.

57 career starts (56 straight)... 6 20-point games (4 this season, 3 of last 15 gms)... 20 assists in last 6 gms. (3.3 apg)... Trey in 4 of last 5 gms... Made 15 straight FTA at one point this season... 11-3 this season when he scores 9+ points and 10-1 in his career when he scores 15+ points... SDSU is 23-6 when he has multiple assists... 596 career points.

Among active Division I players, he ranks 10th in fewest TO/40 minutes (0.87, min. 921 mins)... Has 8 double-digit scoring games in 52-game career (has 7 in last 18 games)... 2nd Aztec in last 22 seasons to produce 3 3FGM, 7 rebs. and 100 pct. FT game (Jamal Franklin)... Made first 16 FTA of the season... Last season: 106 pts., this season: 152 pts... Missed 5 of last 6 games.

Played 45 minutes total in 11 gms... All 5 FGM are from three-point range... Tremendous shooter (once made nine 3FG in one half of a HS game)... Did not play in high school last season... Attended Papillion-La Vista High in Papillion, Neb. for three years as a prep before finishing at Garfield High in Seattle... Was a two-time all-state selection in Nebraska... Tabbed a four-star recruit by ESPN.

Ranks 10th in MWC in FG pct. (min. 45 FGA)... Played in 53 career games, including 21 this season... Starting fourth year in the program (redshirt in 2015-16 campaign)... Played the best basketball of his career near the end of last season... Scored a career-high 18 points in 18 minutes of action against UW (2-14-18)... In a five-game stretch late last season, he had 43 pts. and 14 rebs.

Recorded 1st career double-double on Sat. (10 pts & 10 rebs)... In last 23 seasons, only Kawhi Leonard produced a 10-10-3 (blk-2 stl. game as an SDSU Fr... Avg. 11.1 pts. and 11.0 rebs. per 40 mins... Started last 10 gms... Played 21+ mins. last 6 gms... 18 off. rebs. last 6 gms... An injury on the middle finger of his left (shooting) hand forced him to miss about four weeks... He was cleared on Oct. 31... He is playing with a hard brace on that finger.

Played 63 minutes, action in 13 of 24 gms... A hard working center expected to see the floor this season... Is a good shooter with range out to 15 feet... Has a very good motor... Attended JSerra Catholic High in Capistrano, Calif... Averaged 15.9 points, 8.8 rebounds, 1.2 steals and 1.4 blocked shots in his senior season... Nathan and Joel Mensah are not related.

10th in school history w/ 1,304 career points (10.5 ppg)... 10+ pts. in 5 of last 7 gms... 142 career treys (7th in SDSU history)... Started 85 of 124 games in his career... SDSU is 21-3 when he has at least four assists and 40-15 when he has one TO or less... Has 9 career 20+ pt. games... Double figures in scoring 69x... Career numbers: 1,304 points, 255 assists, 287 rebounds, 96 stls., 142 3FGs.

red indicates probable starter, black indicates reserve, gold indicates player is injured and not expected to play.

SDSU BROADCAST ROSTER

Boise State at San Diego State | Steve Fisher Court at Viejas Arena | San Diego, Calif. | Feb. 16, 2019



0
DEVIN WATSON

Guard
6-1, 183, Senior-1L
Oceanside, Calif.
Univ. of San Francisco

PPG: 16.3 RPG: 2.8 APG: 4.5
FG%: 42.6 3FG: 39.6 FT%: 75.8



2
ADAM SEIKO

Guard
6-3, 195, Freshman-RS
Boston, Mass.
Sierra Canyon High (Calif.)

PPG: 2.9 RPG: 1.2 APG: 0.8
FG%: 42.1 3FG: 43.8 FT%: 76.9



3
AGUEK AROP

Forward
6-6, 220, Freshman-HS
Omaha, Neb.
Omaha South High

PPG: 3.1 RPG: 2.6 APG: 0.8
FG%: 45.5 3FG: 25.0 FT%: 72.7



4
MICHAEL SOHIKISH

Guard
5-9, 160, Senior-SQ
San Diego, Calif.
University City High

PPG: 0.4 RPG: 0.1 APG: 0.4
FG%: 1/6 3FG: 0/3 FT%: 2/2



5
JALEN MCDANIELS

Forward
6-10, 195, Sophomore-1L
Federal Way, Wash.
Federal Way High

PPG: 17.1 RPG: 8.6 APG: 2.4
FG%: 49.8 3FG: 35.7 FT%: 74.7



11
MATT MITCHELL

Forward
6-6, 230, Sophomore-1L
Riverside, Calif.
Roosevelt High

PPG: 10.4 RPG: 3.7 APG: 2.1
FG%: 43.4 3FG: 31.8 FT%: 74.6



20
JORDAN SCHAKEL

Guard
6-6, 200, Sophomore-1L
Torrance, Calif.
Bishop Montgomery High

PPG: 8.0 RPG: 3.7 APG: 1.2
FG%: 44.6 3FG: 41.9 FT%: 83.8



23
ED CHANG

Forward
6-8, 215, Freshman-HS
Papillion, Neb.
Garfield High (Wash.)

PPG: 1.5 RPG: 0.8 APG: 0.4
FG%: 35.7 3FG: 38.5 FT%: 2/2



24
NOLAN NARAIN

Forward
6-10, 230, Junior-2L
Hamilton, Ontario, Canada
La Lumiere School (Ind.)

PPG: 3.4 RPG: 2.5 APG: 0.7
FG%: 56.6 3FG: 3/9 FT%: 47.1



31
NATHAN MENSAH

Forward
6-10, 225, Freshman-HS
Labadi, Accra, Ghana
Findlay Prep (Nev.)

PPG: 5.3 RPG: 5.3 APG: 0.5
FG%: 57.3 3FG: 0/0 FT%: 73.9



35
JOEL MENSAH

Forward
6-10, 215, Freshman-HS
Korle Gonno, Accra, Ghana
JSerra Catholic High (Calif.)

PPG: 1.1 RPG: 0.9 APG: 0.0
FG%: 19.0 3FG: 0/0 FT%: 6/9



42
JEREMY HEMSLEY

Guard
6-3, 195, Senior-3L
Rancho Cucamonga, Calif.
Damien High

PPG: 9.4 RPG: 2.8 APG: 2.4
FG%: 42.5 3FG: 33.8 FT%: 69.7

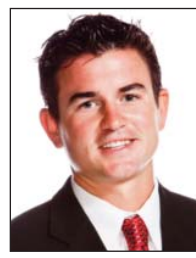


HEAD COACH
BRIAN DUTCHER

- 2nd season as head coach
- 20th year at SDSU
- 1989 NCAA champion
- 3 NCAA title game appearances
- 17 NCAA tournament appearances
- 11-time Mountain West champion



ASSISTANT COACH
ROD PALMER



ASSISTANT COACH
DAVE VELASQUEZ



ASSISTANT COACH
JAY MORRIS



ASST. TO HEAD COACH
MARK FISHER