



SAN DIEGO STATE AZTECS

2019 Volleyball Weekly Notes

Jim Solien (Primary Contact)
 Assistant Media Relations Director
Office Phone Number: (619) 594-2576
E-Mail Address: jsolien@sdsu.edu
News Release Date: Nov. 6, 2019

SDSU Official Athletics Website: goaztecs.com
SDSU Official Athletics Twitter: @GoAztecs
SDSU Official Athletics Instagram: @GoAztecs
SDSU Official Athletics Facebook: facebook.com/goaztecs
SDSU Official Athletics YouTube: youtube.com/goaztecscom

2019 AZTEC VOLLEYBALL SCHEDULE

| Day/Date | Opponent | Time/Result |
|---------------------------|-------------------------------|------------------|
| Friday, Aug. 30 | vs. Akron^ | W, 3-0 |
| Friday, Aug. 30 | vs. Bryant^ | W, 3-0 |
| Saturday, Aug. 31 | at Florida Gulf Coast^ | L, 2-3 |
| Friday, Sept. 6 | West Virginia+ | W, 3-2 |
| Saturday, Sept. 7 | Arkansas+ | W, 3-2 |
| Saturday, Sept. 7 | Arizona+ | L, 0-3 |
| Friday, Sept. 13 | vs. UC Riverside~ | W, 3-1 |
| Saturday, Sept. 14 | vs. Eastern Washington~ | W, 3-1 |
| Saturday, Sept. 14 | at Grand Canyon~ | L, 0-3 |
| Thursday, Sept. 19 | Long Beach State | W, 3-1 |
| Friday, Sept. 20 | at San Diego | L, 0-3 |
| Thursday, Sept. 26 | San José State* | W, 3-2 |
| Saturday, Sept. 28 | at Nevada* | L, 1-3 |
| Thursday, Oct. 3 | UNLV* | L, 1-3 |
| Saturday, Oct. 5 | New Mexico* | W, 3-1 |
| Thursday, Oct. 10 | at Wyoming* | L, 0-3 |
| Saturday, Oct. 12 | at No. 15 Colorado State* | L, 0-3 |
| Monday, Oct. 14 | at Fresno State* | L, 0-3 |
| Saturday, Oct. 19 | at Air Force* | L, 2-3 |
| Thursday, Oct. 24 | Boise State* | L, 2-3 |
| Saturday, Oct. 26 | Utah State* | W, 3-0 |
| Thursday, Oct. 31 | at New Mexico* | W, 3-1 |
| Saturday, Nov. 2 | at UNLV* | W, 3-1 |
| Thursday, Nov. 7 | Wyoming* | 6 p.m. PT |
| Saturday Nov. 9 | No. 13 Colorado State* | 2 p.m. PT |
| Tuesday, Nov. 12 | Fresno State* | 6 p.m. PT |
| Thursday, Nov. 14 | Air Force* | 6 p.m. PT |
| Thursday, Nov. 21 | at Utah State* | 7 p.m. MT |
| Saturday, Nov. 23 | at Boise State* | 2 p.m. MT |

^ - FGCU Homewood Suites Fort Myers Classic (Fort Myers, Fla.)
 + - SDSU/USD Invitational (San Diego, Calif.)
 # - GCU Invitational (Phoenix, Ariz.)
 * - Mountain West match

Socially

Twitter: @SDSUVolleyball
 Instagram: @SDSUVolleyball

Match Week Preview

Wyoming (15-8, 10-2 MW) at San Diego State (12-11, 5-7 MW)
 Thursday, Nov. 7 | 6 p.m. PT | Aztec Court | San Diego, Calif.
 Live Stats | MW Network
 Series Record: SDSU leads 36-20

No. 13 Colorado State (22-1, 12-0 MW) at San Diego State (12-11, 5-7 MW)
 Saturday, Nov. 9 | 2 p.m. PT | Aztec Court | San Diego, Calif.
 Live Stats
 Series: Colorado State leads 44-16



AZTECS RETURN HOME TO FACE WYOMING, NO. 13 COLORADO STATE

- > San Diego State opens a four-match homestand starting this week when it plays host to Wyoming and 13th-ranked Colorado State.
- > The Aztecs will battle the Cowgirls on Thursday, Nov. 7, beginning at 6 p.m. PT, before locking horns with the Rams on Saturday, Nov. 9, starting at 2 p.m. PT.
- > Both matches will feature live stats, while a link to streaming video will be available for the Aztecs-Cowgirls clash on GoAztecs.com via the Mountain West Network.
- > The first 300 fans in attendance for Saturday's SDSU-CSU showdown will receive a free Aztec Volleyball T-shirt. In addition, free admission will be available for those patrons presenting a ticket from the SDSU football or women's basketball games scheduled for that same day.
- > The Aztecs recorded their first two victories in true road matches this season after defeating New Mexico and UNLV in four sets last weekend.
- > With the results, SDSU climbed into a tie for sixth place in the Mountain West standings with a 5-7 conference mark, joining Fresno State and Air Force.
- > In addition, the Aztecs have posted an 21-18 overall record since Sept. 29, 2018, after starting last season with a 1-14 ledger.
- > SDSU is 11-2 this year when blasting more kills than the opposition and are 11-4 when recording a greater hitting percentage. The Scarlet and Black is also 7-0 this season when capturing the first two sets.
- > Senior middle blocker Tamia Reeves ranks second in the Mountain West with a .403 hitting percentage, which is good for 19th in the nation.

SERIES RECORD VS. WYOMING

- > Despite a three-set loss in Laramie on Oct. 10, the Aztecs still lead the all-time series against the Cowgirls 36-20.
- > In that previous encounter, Erin Gillcrist led SDSU with nine kills and hit .368, while Andrea Walker (.636) and Hannah Turnlund totaled seven put-aways each.
- > The Aztecs emerged victorious in Wyoming's last visit to "America's Finest City" on Sept. 29, 2018, when the Scarlet and Black prevailed in five sets to ignite a five-match winning streak.
- > Gillcrist is SDSU's top returning performer from that contest, launching 15 kills, while Hannah Turnlund completed a double-double with 12 non-returnables and 11 digs. In addition, Sam McGrath (16 digs) and Lauren Lee (10 digs) provided plenty of defensive support.

SERIES RECORD VS. COLORADO STATE

- > The Rams swept SDSU in Fort Collins on Oct. 12 to extend their winning streak to 10 straight in the series and raise their record to 44-16 against the Aztecs all-time.
- > In that match, San Diego State received nine kills from Hannah Turnlund, while Andrea Walker finished with seven put-aways and hit .556 for the match.
- > Despite posting more digs (39-37) and team blocks (4.0-3.0), the Aztecs trailed in kills (46-30) were out-hit (.406 to .132).
- > SDSU posted its last victory against the Rams in 2013, upsetting the No. 9 CSU squad on the road, which marked the last time the Scarlet and Black knocked off a ranked opponent.

TURNLUND'S TURN

- > With her 11 put-aways at Air Force on Oct. 19, senior Hannah Turnlund broke the 1,000-kill plateau for her career and has launched 1,069 non-returnables in an Aztec uniform.
- > In addition, Turnlund has accumulated 2,983 attacks for her career, vaulting into 10th place on the school's all-time list in that statistic. Last weekend, she combined for 88 attempts to move past Angelica Jackson, who compiled 2,955 attacks from 1984-87.
- > Turnlund has posted double-digit kill totals in 16 of 23 matches this season and 57 times in her career.
- > Against Florida Gulf Coast on Aug. 31, Turnlund completed a double-double with a personal-best 24 kills to go with a season-high 16 digs, as the Aztecs dropped a narrow five-set decision.
- > With that performance, the Morgan Hill, California, native secured a spot on the all-tournament team at the Homewood Suites FGCU Fort Myers Classic.
- > Not to be outdone, Turnlund has racked up 10 double-doubles over the last two seasons after logging none in her first two years on The Mesa. Among her standout matches was a 23-kill, 21-dig effort vs. Nevada in the next-to-last outing of the 2018 campaign.

GENERAL INFORMATION

Location San Diego, Calif.
 Founded 1897
 Enrollment 32,005
 Nickname Aztecs
 Colors Scarlet and Black (Pantone 187)
 Conference Mountain West
 Affiliation Division I
 President Dr. Adela de la Torre
 Director of Athletics John David Wicker
 Faculty Representative Patrick Papin
 Home Facility Aztec Court at Peterson Gym (2,000)

TEAM INFORMATION

Head Coach Deitre Collins-Parker
 Alma Mater Hawai'i '95
 Record at SDSU 168-159 (11th year)
 Career Record 330-350 (24th year)
 E-Mail dcollins33@mail.sdsu.edu
 Volleyball Office Phone (619) 594-5064
 Volleyball Office Fax (619) 594-1674
 Assistant Coach/Recruiting Coordinator Melanie Greene
 Assistant Coach Dr. Ken Murczek
 Volleyball Operations Assistant Kara Barkdoll
 2018 Record 10-21
 2018 Conference Record 8-10 (Eighth)
 2018 Home Record 6-10
 2018 Road Record 4-7
 2018 Neutral Record 0-4
 Letterwinners Returning/Lost 12/4
 Starters Returning/Lost 3 + Libero/3

PROGRAM HISTORY

First Year of Volleyball 1976
 Overall Record 880-611 (.590)
 NCAA Appearances 14
 Last Postseason Appearance 2012
 NCAA Postseason Record 15-14

MEDIA RELATIONS

Assistant Media Relations Director Jim Solien
 E-Mail jsolien@sdsu.edu
 SID Office Phone (619) 594-2576
 SID Office Fax (619) 582-6541
 Official Athletic Website www.GoAztecs.com

**2019 AZTEC VOLLEYBALL
 STATISTICAL LEADERS**

| | | |
|----------------------|--------|-----------------|
| Hitting Percentage | (.403) | Tamia Reeves |
| Kills | 315 | Hannah Turnlund |
| Kills per set | 3.54 | Hannah Turnlund |
| Assists | 914 | Camryn Machado |
| Assists per set | 10.39 | Camryn Machado |
| Digs | 327 | Loren Teter |
| Digs per set | 3.67 | Loren Teter |
| Blocks | 80 | Tamia Reeves |
| Blocks per set | 1.00 | Lexie Hamrick |
| Service Aces | 14 | Camryn Machado |
| Service Aces per set | 0.16 | Camryn Machado |

2019 AZTEC VOLLEYBALL ROSTER

| No. | Player | Pos. | Ht. | Yr. | Hometown (Last School) |
|-----|----------------------|------|------|--------|---|
| 1 | Nya Blair | OH | 5-11 | Fr. | Grand Prairie, Texas (Martin HS) |
| 3 | Andrea Walker | MB | 6-0 | So. | Fairfield, Calif. (Vanden HS) |
| 4 | Lauren Lee | DS/L | 5-0 | Jr. | Coppell, Texas (Rice Univ.) |
| 5 | Serena Hodson | MB | 6-2 | So. | Mission Viejo, Calif. (Trabuco Hills HS) |
| 6 | Alexis Durand | DS/L | 5-7 | Fr. | Long Beach, Calif. (Long Beach Poly HS) |
| 7 | Hannah Turnlund | OH | 5-11 | Sr. | Morgan Hill, Calif. (Presentation HS) |
| 8 | Loren Teter | DS | 5-7 | RS-Jr. | Redondo Beach, Calif. (Notre Dame Academy) |
| 9 | Gabi Peoples | S | 5-10 | Jr. | Beaverton, Ore. (Beaverton HS) |
| 10 | Camryn Machado | S | 5-9 | RS-Sa. | Cardiff-by-the-Sea, Calif. (Utah) |
| 11 | Alexis Ratliff | MB | 6-6 | RS-Fr. | Atlanta, Ga. (Saint Francis HS) |
| 12 | Erin Gillkrist | MB | 6-1 | Jr. | Lakewood, Colo. (Lakewood HS) |
| 13 | Elise Park | DS/L | 5-7 | Fr. | Columbia, Md. (Atholton HS) |
| 14 | Gabriella Spaethling | RS | 6-1 | Fr. | Larkspur, Calif. (Redwood HS) |
| 15 | Abby Pugh | MB | 6-3 | RS-Jr. | Brenham, Texas (Wichita State) |
| 16 | Ashley Vanderpan | S | 6-1 | RS-Fr. | Elk Grove, Calif. (Syracuse) |
| 17 | Sam McGrath | DS/L | 5-4 | RS-Jr. | Oakland, Calif. (Bishop O'Dowd HS) |
| 18 | Tamia Reeves | MB | 6-1 | Sr. | Carrallton, Texas (Hebron HS) |
| 19 | Maddie Lenn | OH | 5-10 | So. | San Francisco, Calif. (Sacred Heart Cathedral Prep) |
| 20 | Lexie Hamrick | OH | 6-3 | RS-Jr. | Louisville, Ky. (Lindsey Wilson College) |
| 21 | Victoria O'Sullivan | OH | 6-0 | So. | Albany, Calif. (St. Mary's HS) |

Head Coach: Deitre Collins-Parker (Hawai'i, 1995), 11th season at SDSU
Assistant Coach: Melanie Greene (San Diego State, 2007), Ninth season at SDSU
Assistant Coach: Dr. Ken Murczek (San Diego State, 1998), Third season at SDSU
Volleyball Operations Assistant: Kara Barkdoll (Cal State San Marcos, 2015), Second season at SDSU
Volunteer Assistant Coach: Isabel Miller (Arizona State, 2018), First season at SDSU
Technical Coordinator: Yasser Aguila Todd (Trident University, 2009, 2014), First season at SDSU

Pronunciations

#8 Loren TETER TEE-ter
 #9 GABI Peoples gabby
 #18 TAMIA Reeves tah-MEE-ah



OPPONENT COMPARISON (OVERALL MATCHES)

| 2019 Overall Stats | SDSU | MW Rank | OPP | WYO | MW Rank | OPP | CSU | MW Rank | OPP |
|----------------------|-------|---------|-------|-------|---------|-------|-------|---------|-------|
| Hitting Percentage | .237 | 2 | .230 | .230 | 3 | .185 | .285 | 1 | .103 |
| Kills per set | 12.92 | 4 | 12.82 | 12.50 | 8 | 12.74 | 13.59 | 1 | 9.56 |
| Assists per set | 12.25 | 3 | 11.83 | 11.46 | 8 | 11.92 | 12.71 | 1 | 8.85 |
| Digs per set | 13.25 | 10 | 11.47 | 14.18 | 5 | 14.69 | 13.26 | 9 | 11.48 |
| Blocks per set | 2.07 | 8 | 1.96 | 2.46 | 3 | 2.11 | 2.97 | 2 | 1.88 |
| Service Aces per set | 0.72 | 11 | 1.51 | 1.13 | 10 | 1.23 | 1.73 | 2 | 0.98 |

SCOUTING THE OPPOSITION

> Wyoming (15-8, 10-2 MW) has lost just two matches in conference play so far this year, falling to Colorado State on both occasions. The Cowgirls have recorded sweeps in their last three victories, defeating Nevada, San Jose State and Air Force at home. In its last outing, Wyoming limited the Falcons to a paltry .009 hitting percentage (30-29-117) while totaling 15.0 team blocks. Individually, the Cowgirls are led by the quartet of sophomore KC McMahon (2.91), junior Jackie McBride (2.56), senior Tara Traphagan (2.40) and fellow classmate Halie McArdle (2.03), who are averaging over two kills per set. McBride, a middle blocker, ranks fourth in the league with a .363 hitting percentage and occupies the fifth spot with 1.23 blocks per set (92 overall). In addition, Wyoming has received a boost from senior libero Madi Fields, who prepped at Mission Vista High School in nearby Oceanside, California, and ranks second in the MW with an average of 4.36 digs per frame. The Cowgirls' setter duties have been shared by junior Mackenzie Coates, who is sixth in the league in assists (9.26/set), along with freshman Kyra Slavik (7.19). Collectively, Wyoming enters the weekend among the conference leaders in hitting percentage (3rd, .230), blocks (3rd, 2.46/set), opponent hitting percentage (3rd, .185) and digs (5th, 14.18/set). However, the Cowgirls are just eighth in kills (12.50/set) and rank seventh in opponent kills (12.74/set). Wyoming is coached by Chad Callihan, who is in his seventh season on the Laramie campus after spending five years as head coach at Georgia Southern. He has also served as head coach at Appalachian State and Radford. Callihan's career record stands at 364-209, including a 137-74 mark at Wyoming.

> Colorado State (22-1, 12-0 MW) climbed to No. 13 in the latest AVCA Division I Coaches Poll after beating Wyoming and Air Force at home last week. The Rams have won 21 straight, including 14 by 3-0 sweeps after dropping a four-set decision to California in their own home tournament on Aug. 31. Prior to its clash with the Aztecs, CSU will travel to Fresno State on Thursday. Individually, the Rams are led by junior Breanna Runnels, a two-time all-MW selection who occupies the second spot in the conference with 3.65 kills per set, while senior Kirstie Hillyer (.412) and fellow classmate Paulina Hougaard-Jensen (.355) are first and fifth, respectively, in hitting percentage. Additionally, Hougaard-Jensen (3rd, 1.37/set) and Hillyer (4th, 1.29/set) find themselves among the league leaders in blocks, while senior setter Katie Oleksak, the two-time reigning MW Player of the Year, tops the conference with 10.87 assists per frame. Not to be outdone, junior libero Alexa Roumeliotis ranks fifth in the MW this week with 3.96 digs per set, while freshman Alyssa Bert has served up a team-high 31 aces. Collectively, CSU leads the conference in hitting percentage (.285), kills (13.59/set) and assists (12.71/set). The Rams also rank second in the MW with 2.97 blocks per set and top the conference in opponent hitting percentage (.103), as well as opponent kills (9.56/set) and opponent blocks (1.88). Colorado State is coached by Tom Hilbert, who has guided the Rams to the NCAA tournament in all 23 seasons on the Fort Collins campus. Previously, Hilbert was the head coach at Idaho from 1989-96. His career record is 757-207, including a 582-135 mark at CSU.

2019 MOUNTAIN WEST STANDINGS (As of Nov. 6)

| Team | ---Conference--- | | | ----Overall---- | | | Strk |
|------------------------|------------------|----------|-------------|-----------------|-----------|-------------|-----------|
| | W | L | Pct | W | L | Pct. | |
| #13 Colorado State | 12 | 0 | 1.000 | 22 | 1 | .957 | W21 |
| Wyoming | 10 | 2 | .833 | 15 | 8 | .652 | W1 |
| UNLV | 9 | 3 | .750 | 13 | 10 | .565 | L1 |
| Boise State | 7 | 5 | .583 | 15 | 8 | .652 | L1 |
| Nevada | 6 | 7 | .462 | 16 | 9 | .640 | L1 |
| San Diego State | 5 | 7 | .417 | 12 | 11 | .522 | W3 |
| Fresno State | 5 | 7 | .417 | 12 | 12 | .500 | L3 |
| Air Force | 5 | 7 | .417 | 8 | 16 | .322 | L2 |
| San José State | 4 | 9 | .308 | 9 | 15 | .375 | W2 |
| New Mexico | 2 | 10 | .167 | 7 | 17 | .292 | W1 |
| Utah State | 2 | 10 | .167 | 2 | 22 | .083 | L6 |

Upcoming Matches in the MW

Thursday, Nov. 7

- Wyoming at San Diego State, 6 p.m. PT
- No. 14 Colorado State at Fresno State, 6 p.m. PT
- San José State at Air Force, 6:30 p.m. MT
- UNLV at Boise State, 7 p.m. MT
- New Mexico at Utah State, 7 p.m. MT

Saturday, Nov. 9

- No. 13 Colorado State at San Diego State, 2 p.m. PT
- Wyoming at Fresno State, 11 a.m. PT
- New Mexico at Boise State, Noon MT
- UNLV at Utah State, 1 p.m. MT
- Nevada at Air Force, 2 p.m. PT

Tuesday, Nov. 12

- Fresno State at San Diego State, 6 p.m. PT



WEEKLY WRAP

- > San Diego State collected its first two victories of the year in true road matches last weekend after defeating New Mexico and UNLV in four sets. With the results, the Aztecs extended their winning streak to three matches, moving into a tie for sixth place in the MW with Fresno State and Air Force.
- > Against the Lobos, SDSU received double-digit kills from four players to record its sixth straight victory over UNM and surpass its win-total from the entire 2018 campaign.
- > Victoria O'Sullivan led the Aztecs' balanced attack with a match-high 16 kills and hit .464 for the night, committing just three errors in 28 attempts, while Hannah Turnlund completed her fifth double-double of the year with 13 put-aways and 11 digs.
- > Not to be outdone, Tamia Reeves maintained her torrid pace, finishing with a .524 attack percentage on 11 kills and no miscues to go with five total blocks, while Erin Gilchrist crushed 10 non-returnables of her own.
- > In addition, Camryn Machado provided a huge spark with her 12th double-double of the year on 49 assists and 11 digs, while Loren Teter led all players with 21 digs to anchor SDSU's back row. Lauren Lee also tied her season-best with 11 digs while serving up a match-high three aces.
- > Collectively, the Aztecs owned the statistical advantage in most categories, including kills (59-51), hitting percentage (.295 to .229) and digs (68-45), while the two sides recorded 7.0 team blocks apiece. SDSU also benefited from eight Lobo service errors.
- > Two days later, the Aztecs snapped the Rebels' nine-match winning streak, posting their first victory in Las Vegas in six matches dating back to 2012.
- > Three SDSU players compiled double-digit kills in the closely fought battle, including 16 put-aways from Turnlund, who also equaled her career-high with 21 digs to complete her sixth double-double of the season.
- > The Aztec cause was also advanced by O'Sullivan, who finished with 13 kills on the afternoon, while Andrea Walker launched a personal-best 12 non-returnables of her own to go with five block assists. In addition, Machado dished out 50 assists in a four-set match for the second time this year, while Teter provided another consistent effort along the back row with 19 digs.
- > As a team, the SDSU maintained the advantage in kills (58-56), digs (74-64) and team blocks (12.0-9.0), with O'Sullivan and Reeves providing two solo stuffs apiece. Despite committing 34 attack errors, the Scarlet and Black also benefited from 11 errant Rebel serves, which offset eight aces by the hosts.

ON THE HORIZON

- > Following Saturday's clash, San Diego State will close out its home schedule next week when it welcomes Fresno State to The Mesa on Tuesday, Nov. 12, before entertaining Air Force on Thursday, Nov. 14 as part of Senior Night festivities.

AZTECS AMONG MOUNTAIN WEST LEADERS

- > Entering the eighth weekend of conference play, San Diego State boasts seven players among the Mountain West leaders in various categories.
- > Tamia Reeves ranks second with a .403 hitting percentage, while Lexie Hamrick (.303) occupies the ninth spot despite missing the last six matches, followed closely by Andrea Walker (.300).
- > In addition, Camryn Machado is holding down the No. 3 position with an average of 10.40 assists per set, while Hannah Turnlund remains in the fourth position with an average of 3.54 kills per frame.
- > Elsewhere, Victoria O'Sullivan (3.17/set) climbed two places into sixth with 3.17 kills per set, while Loren Teter moved up two spots into seventh in digs (3.67/set).
- > As a team, SDSU ranks among the top half of the conference for all matches in hitting percentage (2nd, .237), assists (3rd, 12.24/set) and kills (4th, 12.92/set).

WALKER WATCH

- > Redshirt sophomore Andrea Walker has given the Aztecs a tremendous boost over the past month, posting a .317 hitting percentage in 10 matches since cracking the starting lineup vs. UNLV on Oct. 3.
- > During that stretch, the Aztec middle blocker has knocked down 70 kills with just 15 errors on 144 attempts to go with 33 total blocks. On Nov. 2 at UNLV, she blasted a career-high 12 kills to go with five block assists, helping the Scarlet and Black snap the Rebels' nine-match losing streak.
- > Last month at Air Force, Walker set a personal-best with seven block assists.

NOTHIN' LIKE HOME COOKIN'

- > In head coach Deitre Collins-Parker's tenure, the Aztecs have amassed an 89-47 (.654) record at home, highlighted by a 14-0 mark during the 2012 season when SDSU captured the Mountain West championship.
- > San Diego State is 6-3 this season at Aztec Court, including victories over West Virginia and Arkansas as part of the SDSU/USD Invitational.

REEVES TABBED MW OFFENSIVE PLAYER OF THE WEEK

- > Tamia Reeves was named MW Offensive Player of the Week on Oct. 7, after a pair of outstanding performances in the Aztecs' two home matches vs. UNLV and New Mexico.
- > With her award, Reeves garnered her first career conference weekly accolade and SDSU's second this season.
- > For the week, Reeves posted a sparkling .667 attack percentage, knocking down 19 kills with just one error in 27 attempts.
- > The SDSU middle blocker averaged 3.19 points and 2.38 kills in eight sets played, helping the Aztecs earn a split with the Rebels and Lobos. She also displayed her versatility with nine total blocks, two digs and a service ace.
- > Against UNLV on Oct. 3, Reeves launched 9 kills in 13 swings without an error, finishing with a season-best .692 clip, which also marks the SDSU's team-high for the year. She also added a season-high five blocks, including a solo stop, although the Aztecs dropped a four-set decision.
- > On Oct. 5, Reeves came back with a 10-kill effort against the Lobos, hitting at a .643 pace to help the Scarlet and Black capture a 3-1 victory. She totaled just one error on a season-high 14 attempts and also contributed four blocks and one ace.

MORE REEVES

- > Tamia Reeves enters the weekend ranked second in the Mountain West with a team-high .403 hitting percentage, which is good for 21st in the country and tops the squad with 80 blocks (0.91/set), including 13 solo stuffs.
- > In addition, the Carrollton, Texas, native ranks third on the team with 166 kills for the season (1.95/set) and has committed one error or less in 15 matches this year.
- > The Aztecs are also 5-1 on the season when Reeves totals at least 10 kills.

DOUBLE TROUBLE

- > Setter Camryn Machado has posted a team-high 12 double-doubles this season, including a 57-assist, 13-dig effort in the Aztecs' comeback win over West Virginia on Sept. 6.
- > San Diego State is 8-4 on the year when Machado records a double-double.
- > Ironically, four of those matches featured an additional double-double by Hannah Turnlund, who also had big hand in the Aztecs' aforementioned thriller over WVU when she finished with 19 kills and 10 digs.
- > Overall, Turnlund has compiled six double-doubles this year, including 16 digs and 21 digs in SDSU's thriller over UNLV on Nov. 2, the latter of which equaled a career-high.

GCU INVITATIONAL REDUX

- > San Diego State went 2-1 at the GCU Invitational, Sept. 13-14, in Phoenix, Arizona.
- > The Aztecs played their first four-set match of the season in the opener, earning a 3-1 victory over UC Riverside.
- > SDSU posted its second-best hitting percentage of the season at .328 while limiting the Highlanders to a .192 dip.
- > The Aztecs also maintained the upper hand over UCR in kills (53-46), assists (51-44), digs (53-44) and total blocks (5.0-3.0).
- > Individually, Hannah Turnlund led all players with 17 kills to go with a .310 hitting percentage, while Victoria O'Sullivan (.312) topped the double-digit plateau after launching 13 non-returnables of her own. Not to be outdone, Lexie Hamrick blasted nine put-aways, hitting .615 for the match.
- > In addition, Camryn Machado logged another double-double with 43 assists and 13 digs, tying Loren Teter in the latter statistic for match-high honors.
- > San Diego State followed with another four-set decision over Eastern Washington, surviving a pivotal third

set that featured 21 ties and nine lead changes before the Aztecs prevailed by a 28-26 count. SDSU then used a timely 10-4 run late in the fourth frame to secure the victory.

- > The Aztecs received double-digit kill totals from three players, including Turnlund, who launched a match-high 16 put-aways while adding 11 digs for her fourth double-double of the year. Additionally, O'Sullivan powered down 12 kills, while Hamrick hit .333, recording 10 non-returnables while tying for match-high honors with five total blocks.
- > Machado also got into the act with her sixth double-double of the year (48 assists, 15 digs), while Teter scooped up a team-high 18 digs.
- > San Diego State could not sustain the momentum in the tournament finale, however, falling to host Grand Canyon in three sets.
- > Despite knocking down just two fewer kills than the Lopes (40-38), the Aztecs were undone by 19 attack errors, as GCU owned a decisive advantage in hitting percentage, .360 to .183, while maintaining the edge in total blocks (6.0-2.0) and digs (35-31).
- > O'Sullivan surpassed the double-digit plateau in kills for the ninth straight match, posting 11 put-aways to go with a .280 attack percentage, while Teter registered another steady performance with 15 digs.

MACHADO NAMED TO GCU INVITE ALL-TOURNAMENT TEAM

- > Setter Camryn Machado landed a spot on the all-tournament team at the GCU Invitational after another series of outstanding all-round performances.
- > In three matches, Machado averaged 10.27 assists (113 overall) and 2.73 digs (30 overall) per set to go with 11 kills, six block assists and one service ace.
- > In addition to her aforementioned assist totals, the Aztec redshirt sophomore contributed three kills and three block assists each in SDSU's victories over UC Riverside and Eastern Washington.

2019 AZTEC SUPERLATIVES

Individual

HITTING PERCENTAGE (min. 12 kills)

.487 (22-3-39) Victoria O'Sullivan vs. West Virginia (Sept. 6)

KILLS

24 Hannah Turnlund at Florida Gulf Coast (Aug. 31)
 5 sets 24 Hannah Turnlund at Florida Gulf Coast (Aug. 31)
 4 sets 17 Hannah Turnlund, twice, last vs. Long Beach State (Sept. 19)
 3 sets 19 Hannah Turnlund at Fresno State (Oct. 14)

TOTAL ATTEMPTS

69 Hannah Turnlund at Florida Gulf Coast (Aug. 31)
 5 sets 69 Hannah Turnlund at Florida Gulf Coast (Aug. 31)
 4 sets 52 Hannah Turnlund at UNLV (Nov. 2)
 3 sets 36 Hannah Turnlund at Fresno State (Oct. 14)

ASSISTS

57 Camryn Machado vs. West Virginia (Sept. 6)
 5 sets 57 Camryn Machado vs. West Virginia (Sept. 6)
 4 sets 50 Camryn Machado at UNLV (Nov. 2)
 Camryn Machado vs. Long Beach State (Sept. 19)
 3 sets 41 Camryn Machado vs. Utah State (Oct. 26)

DIGS

24 Loren Teter at Florida Gulf Coast (Aug. 31)
 5 sets 24 Loren Teter at Florida Gulf Coast (Aug. 31)
 4 sets 21 Loren Teter at New Mexico (Oct. 31)
 Hannah Turnlund at UNLV (Nov. 2)
 3 sets 19 Loren Teter vs. Utah State (Oct. 26)

SERVICE ACES

5 Camryn Machado at Florida Gulf Coast (Aug. 31)

BLOCK SOLOS

2 Tamia Reeves, twice, last at UNLV (Nov. 2)
 Lexie Hamrick, three times, last: vs. San José State (Sept. 26)

BLOCK ASSISTS

7 Andrea Walker at Air Force (Oct. 19)

TOTAL BLOCKS

8 Tamia Reeves vs. Boise State (Oct. 24)

Team

HITTING PERCENTAGE

.337 (42-9-98) vs. Akron (Aug. 30)

KILLS

68 vs. San José State (Sept. 26)
 5 sets 68 vs. San José State (Sept. 26)
 4 sets 60 vs. Eastern Washington (Sept. 14)
 3 sets 46 vs. Utah State (Oct. 24)

TOTAL ATTEMPTS

181 vs. San José State (Sept. 26)
 5 sets 181 vs. San José State (Sept. 26)
 4 sets 161 at UNLV (Nov. 2)
 vs. Eastern Washington (Sept. 14)
 3 sets 104 vs. Utah State (Oct. 26)
 at Grand Canyon (Sept. 14)

ASSISTS

61 vs. San José State (Sept. 26)
 vs. West Virginia (Sept. 6)
 5 sets 61 vs. San José State (Sept. 26)
 vs. West Virginia (Sept. 6)
 4 sets 58 at New Mexico (Oct. 31)
 3 sets 48 vs. Utah State (Oct. 26)

DIGS

87 at Florida Gulf Coast (Aug. 31)
 5 sets 87 at Florida Gulf Coast (Aug. 31)
 4 sets 74 at UNLV (Nov. 2)
 3 sets 51 vs. Bryant (Aug. 30)

SERVICE ACES

10 vs. Utah State (Oct. 26)

TOTAL BLOCKS

14.0 vs. Boise State (Oct. 24)

IN TETER WE TRUST

- > Libero Loren Teter also enjoyed a tremendous weekend at the GCU Invite, averaging 0.68 digs more per set than her season rate entering the tournament (4.18 to 3.50).
- > The Redondo Beach, California, native logged double-digit dig totals in all three matches, including 18 scoops vs. Eastern Washington, which marked her second-highest figure up to that point after a 24-dig effort at Florida Gulf Coast on Aug. 31.
- > Teter has finished with double-digit digs in 19 of 23 matches this season and has broken that barrier in 30 out of her last 36 appearances dating back to Oct. 4, 2018.

SDSU/USD INVITATIONAL REWIND

- > San Diego State posted a 2-1 record in its home games at the SDSU/USD Invitational, Sept. 6-7.
- > The Aztecs opened with a dramatic victory over West Virginia after rallying from two sets down.
- > Against the Mountaineers, SDSU recorded a .117 attack percentage over the first two sets before turning the tables with a .352 clip over the final three frames.
- > Individually, outside hitter Victoria O'Sullivan hit .487 for the match, blasting a career-high 22 kills to go with three block assists.
- > The Aztecs also received double-digit put-aways from outside hitter Hannah Turnlund (19) and middle blocker Tamia Reeves (10), while libero Loren Teter tied for match-high honors with 15 digs.
- > Not to be outdone, setter Camryn Machado logged her fourth straight double-double after dishing out a personal-best 57 assists to go with 13 digs.
- > Fueled by its good fortune, San Diego State outlasted a pesky Arkansas squad in another fierce five-set battle the next day.
- > The Aztecs and Razorbacks traded punches with alternating set scores until the final frame, where Turnlund and O'Sullivan launched two kills apiece during a decisive 4-1 run that closed off the set after Arkansas overcame a 7-1 deficit to forge an 11-11 tie.
- > O'Sullivan hit .371 vs. the Razorbacks and collected a team-high 19 kills, while Turnlund surpassed the double-digit plateau once again with 15 non-returnables.
- > The two sides were nearly identical in team statistics, with San Diego State maintaining the upper hand in hitting percentage (.270 to .260), kills (61-59) and total blocks (8.0-7.0), while Arkansas held a slight edge in assists (58-55) and digs (43-42).
- > After playing consecutive five-setters less than 24 hours apart, the Aztecs were unable to sustain the momentum in their weekend finale last Saturday night, dropping a 3-0 decision to visiting Arizona.
- > SDSU was out-hit .437 to .185 for the match while trailing in kills (46-37), digs (30-23) and total blocks (5.0-2.0).
- > O'Sullivan once again led the Aztec charge against the Wildcats with 10 kills, while Reeves posted a sparkling .462 hitting percentage (8-2-13).
- > San Diego State captured the first-ever meetings vs. West Virginia and Arkansas, but slipped to 20-10 all-time vs. Arizona.

O'SULLIVAN SHINES

- > Celebrating her 19th birthday on Sept. 6, Victoria O'Sullivan rose to the occasion at the SDSU/USD Invitational, averaging a team-high 3.92 kills per set while leading the Aztecs with a .381 hitting percentage.
- > O'Sullivan registered double-digit kills in all three matches, including a career-high 22 put-aways vs. West Virginia. She also hit .487 against the Mountaineers, including a .750 clip in the decisive fifth frame when she blasted six kills with no errors on eight swings to help the Aztecs rally from an 0-2 deficit in sets.
- > O'Sullivan returned with a team-high 19 kills and a .371 attack percentage vs. Arkansas, coming through in the clutch once again with six kills in the fifth set, including two on SDSU's final four points after the Razorbacks rallied from 7-1 down to tie the score at 11-11.
- > The Aztec sophomore also finished with five block assists in the tournament, including three vs. WVU.
- > Coupled with her efforts at the GCU Invitational, O'Sullivan has logged double-digit kills in all nine matches this year after posting just three last season.

FORT MYERS CLASSIC RECAP

- > San Diego State finished with a 2-1 record at the FGCU Homewood Suites Fort Myers Classic, August 30-31, in Fort Myers, Florida.
- > The Aztecs opened with a pair of sweeps over Akron and Bryant, before falling short against host Florida Gulf Coast in a tough five-set battle.
- > SDSU was led by Hannah Turnlund (3.73 kills/set) and Camryn Machado (11.55 assists/set, 3.82 digs/set), who each earned a spot on the all-tournament team.
- > Machado logged three straight double-doubles, while Tamia Reeves hit .431 to go with 2.55 kills and 1.27 blocks per set.
- > Additionally, the Scarlet and Black was bolstered by the play of Victoria O'Sullivan (3.45 kills/set, 0.73 blocks/set) and Loren Teter (4.64 digs/set).
- > Collectively, the Aztecs out-hit the opposition .272 to .148 at the tournament while maintaining the upper hand in kills (149-123), digs (188-158) and total blocks (27.0-19.0).
- > The Scarlet and Black also registered 16 fewer errant attacks than their foes (47-63) and did not commit a ball-handling error in three matches.
- > In the finale vs. Florida Gulf Coast, Turnlund posted a career-high 24 kills and scooped up 16 digs in the finale for her second straight double-double. She also tallied 10 put-aways and 11 digs vs. Bryant. In addition, the Morgan Hill, California, native hit .412 against Akron, launching seven kills with no errors in 17 attempts while adding three total blocks.
- > With their victories over Akron and Bryant, SDSU started a season 2-0 for the first time since the 2013 campaign.
- > All three matches at the FGCU Classic marked the Aztecs' first-ever meetings against those respective opponents.

MACHADO COLLECTS MW HONORS

- > Thanks to her all-round performance at the FGCU Homewood Suites Fort Myers Classic, Camryn Machado was named Mountain West Defensive Player of the Week on Sept. 2.
- > Against Florida Gulf Coast, the SDSU redshirt sophomore established career highs with 55 assists and 20 digs to go with a personal-best five service aces.
- > Earlier, the Cardiff-by-the-Sea, California, native opened the year with 35 assists and 12 digs vs. Akron, before notching 37 helpers and 10 digs against Bryant.

WELCOME BACK

- > With the graduation of four-time all-Mountain West honoree Deja Harris, senior Hannah Turnlund is the lone San Diego State veteran to have started all 31 matches during the 2018 campaign.
- > The Aztec outside hitter finished second on the squad last year with 2.78 kills per set (339 overall), blasting double-digit put-aways in 19 matches.
- > In the penultimate contest of the regular season vs. Nevada, Turnlund became the second SDSU player in the Mountain West era to post a 20-20 performance with a career-high 23 kills and 23 digs, fueling a 3-1 win for the Scarlet and Black.
- > In addition, the Aztecs welcome back senior Tamia Reeves and junior Erin Gillcrist, who ranked second and third on the squad last year with 72 and 57 total blocks in the middle, respectively.
- > Reeves owns SDSU's top returning hitting percentage from last year after posting a .273 clip, while Gillcrist (197) and sophomore outside hitter Victoria O'Sullivan (109) each surpassed the 100-kill plateau.

2019 SITUATIONAL RECORDS

GENERAL

| | |
|-------------------------------|-------|
| Overall..... | 12-11 |
| Mountain West..... | 5-7 |
| Home..... | 6-3 |
| Away..... | 2-8 |
| Neutral..... | 4-0 |
| vs. Ranked Teams..... | 0-1 |
| vs. Unranked Teams..... | 12-10 |
| Matches Following a Win..... | 6-5 |
| Matches Following a Loss..... | 6-5 |
| Longest Winning Streak..... | 3 |
| Longest Losing Streak..... | 5 |
| Current Streak..... | Won 3 |

BY SETS

| | |
|-------------------------|-----|
| 3 Sets..... | 3-6 |
| 4 Sets..... | 6-2 |
| 5 Sets..... | 3-3 |
| Leading After Two..... | 7-0 |
| Trailing After Two..... | 1-8 |
| Tied After Two..... | 4-3 |
| Leading 2-1..... | 8-1 |
| Trailing 2-1..... | 1-3 |

BY MONTH

| | |
|----------------|-----|
| August..... | 2-1 |
| September..... | 6-4 |
| October..... | 2-6 |
| November..... | 2-0 |

BY DAY

| | |
|---------------|-----|
| Monday..... | 0-1 |
| Thursday..... | 3-3 |
| Friday..... | 3-2 |
| Saturday..... | 6-5 |

BY KILLS

| | |
|------------------------|------|
| Leading in Kills..... | 11-2 |
| Trailing in Kills..... | 1-9 |
| Tied in Kills..... | 0-0 |

BY DIGS

| | |
|-----------------------|------|
| Leading in Digs..... | 11-6 |
| Trailing in Digs..... | 1-5 |
| Tied in Digs..... | 0-0 |

BY BLOCKS

| | |
|-------------------------|-----|
| Leading in Blocks..... | 7-5 |
| Trailing in Blocks..... | 3-4 |
| Tied in Blocks..... | 2-2 |

BY ATTACK PERCENTAGE

| | |
|---|------|
| Greater Attack Percentage..... | 11-4 |
| Lower Attack Percentage..... | 1-7 |
| Equal Attack Percentage..... | 0-0 |
| Hitting above .300..... | 4-0 |
| Hitting between .200 and .300..... | 6-6 |
| Hitting between .100 and .200..... | 2-5 |
| Hitting below .100..... | 0-0 |
| Opponent Hitting above .300..... | 0-6 |
| Opponent Hitting between .200 and .300..... | 5-3 |
| Opponent Hitting between .100 and .200..... | 6-2 |
| Opponent Hitting below .100..... | 1-0 |

BY INDIVIDUAL KILLS

| | |
|---|-----|
| 3+ Double-Digit Individual Kill Totals..... | 7-3 |
| 2 Double-Digit Individual Kill Totals..... | 4-2 |
| 1 Double-Digit Individual Kill Totals..... | 1-3 |

- > Redshirt juniors Loren Teter (2.65 digs/set) and Sam McGrath (2.43 digs/set) provided much of the support in the back row during the 2018 campaign.
- > Teter ranked eighth in Mountain West play last year with 3.23 digs per set, logging double-digit scoops in 14 matches, including five straight to end the season.
- > In a five-set victory at Utah State, Teter came through with a career-high 22 digs, matching McGrath's personal-best total accomplished on two occasions during the season vs. Idaho and at Air Force.
- > Redshirt sophomore Camryn Machado is expected to garner increased playing time at setter this season after appearing in only eight matches last year due to injury.
- > A local product from La Costa Canyon High School, Machado originally signed with Utah following her prep career, where she averaged 3.05 assists per set off the bench as a freshman in 2017, as the Utes advanced to the second round of the NCAA Tournament.

ADDING DEPTH

- > San Diego State landed a pair of transfers during spring practice last year in setter Ashley Vanderpan and middle blocker Abby Pugh, who join true freshmen Nya Blair, Alexis Durand, Elise Park and Gabriella Spaethling.
- > A native of Elk Grove, California, Vanderpan sat out the 2018 campaign as a redshirt at Syracuse and will retain freshman status this fall. She twice captured her squad's Most Valuable Player award at Elk Grove High School, garnering first-team all-conference accolades on two occasions.
- > Pugh, meanwhile, will have junior eligibility this fall after spending two years at Wichita State. A native of Brenham, Texas, Pugh averaged 1.46 kills and hit .289 in over 120 career sets for the Shockers. In 2018, she started 22 of 30 matches, averaging 1.53 kills per set (150 overall) while hitting at a .282 clip and totaling 58 blocks.

STAFF ADDITIONS

- > The Aztecs have added volunteer assistant coach Isabel Miller and technical coordinator Yasser Aguila Todd to their 2019 staff.
- > A native of Phoenix, Arizona, Miller played at Boise State (2013-14) and San Diego Mesa College (2015-16) before completing her collegiate career at Arizona State in 2017.
- > Miller was a member of the inaugural sand volleyball team at Boise State in 2014 and recorded the first pairs match victory in program history, along with teammate Maddy O'Donnell.
- > Miller graduated from Arcadia High School in Phoenix, where she was a three-time all-state selection in volleyball. As a prep, Miller also garnered first-team all-conference honors all four years and was named league MVP during her sophomore season.
- > Aguila Todd, meanwhile, is the co-founder of Spartan Volleyball Academy in Wildomar, California, and has served as a volunteer assistant coach at Palomar College and the University of Saint Katherine in San Marcos, California.

- > Aguila Todd also spent time as a volunteer assistant at Santa Rosa Academy in Menifee, California, and coached seven teams within the Viper Volleyball Club in Temecula.

PRESEASON PROGNOSTICATIONS

- > San Diego State was picked to finish eighth this year in the Mountain West preseason coaches poll released Aug. 14.
- > In the 20-year history of the Mountain West, SDSU has finished first (2012), second (2002, 2011), fourth (2000, 2001, 2003, 2013, 2017), fifth (2005, 2015), sixth (1999, 2004, 2006, 2009, 2010, 2014, 2016), seventh (2008) and eighth (2007, 2018) in the final league standings.

2019 Mountain West Preseason Poll

| Rk. | Team (1st-place votes) | Pts. |
|-----|------------------------|------|
| 1. | Colorado State (10) | 100 |
| 2. | Wyoming | 79 |
| 3. | UNLV | 78 |
| 4. | Boise State | 73 |
| 5. | San José State | 66 |
| 6. | Fresno State | 56 |
| 7. | New Mexico | 50 |
| 8. | San Diego State | 41 |
| 9. | Air Force | 28 |
| 10. | Utah State | 19 |
| 11. | Nevada | 15 |

AZTEC VOLLEYBALL EARNS PUBLIC RECOGNITION AWARD FROM NCAA

- > Last spring, the San Diego State volleyball program was publicly recognized by the NCAA for outstanding academic achievements, along with the Aztec women's tennis and cross country teams.
- > The recognition came on the heels of the most recent multiyear Academic Progress Rates (APR) in which all three programs were among the top 10 percent of their respective sports nationally.
- > With these squads earning NCAA public recognition last season, San Diego State has now received such distinction a total of 18 times in school history, matching its record of three teams set during the 2011-12 academic year.
- > The SDSU volleyball program received public recognition for the third straight season and fourth time overall, while the Aztec women's tennis team garnered the accolade for the second year in a row and fifth time in the last six seasons. In addition, the San Diego State cross country squad merited public recognition for the sixth time in school history.

2019 MATCH-BY-MATCH LEADERS

| Date | Opponent | Kills | Hitting Pct.* | Assists | Aces | Digs | Blocks |
|------|--------------------------|-----------------------------|----------------------------|--------------|-----------------------------------|-----------------------|-------------------------------------|
| A.30 | vs. Akron | O'Sullivan - 10 | Turnlund (.412) | Machado - 35 | Lenn - 2 | Teter - 15 | Reeves/Hamrick - 4 |
| A.30 | vs. Bryant | O'Sullivan - 10 Turnlund | Hamrick (.545) | Machado - 37 | McGrath - 1 | Teter - 12 | Reeves - 3 Hamrick O'Sullivan |
| A.31 | at FGCU | Turnlund - 24 | Reeves (.421) | Machado - 55 | Machado - 5 | Teter - 24 | Reeves - 7 |
| S.6 | West Virginia | O'Sullivan - 22 | O'Sullivan (.487) | Machado - 57 | Machado - 1 Reeves | Teter - 15 | Reeves - 5 Hamrick |
| S.7 | Arkansas | O'Sullivan - 19 | Reeves (.636) | Machado - 46 | None | Teter - 11 | Hamrick - 4 |
| S.7 | Arizona | O'Sullivan - 10 | Reeves (.462) | Machado - 32 | Machado - 1 Reeves | Teter - 7 | Hamrick - 2 |
| S.13 | vs. UC Riverside | Turnlund - 17 | Hamrick (.615) | Machado - 43 | Hamrick - 1 Machado McGrath | Teter - 13 Machado | Hamrick - 3 Machado |
| S.14 | vs. Eastern Wash. | Turnlund - 16 | Lenn (.385) | Machado - 48 | Five with 1 | Teter - 18 | Hamrick - 5 |
| S.14 | at Grand Canyon | O'Sullivan - 11 | O'Sullivan (.280) | Machado - 22 | None | Teter - 15 | Walker - 2 |
| S.19 | Long Beach State | Turnlund - 17 | Gillcrist (.500) Reeves | Machado - 50 | Lenn - 2 | Teter - 16 | Hamrick - 6 Machado |
| S.20 | at San Diego | Turnlund - 8 O'Sullivan | Turnlund (.150) | Machado - 21 | None | Machado - 9 | O'Sullivan - 3 |
| S.26 | San José State | O'Sullivan - 20 | Hamrick (.348) | Machado - 56 | None | Teter - 22 | Hamrick - 6 |
| S.28 | at Nevada | O'Sullivan - 14 Turnlund | Hamrick (.286) | Machado - 44 | Lee - 2 | Machado - 11 | Reeves - 7 |
| O.3 | UNLV | Turnlund - 15 | Reeves (.692) | Machado - 31 | McGrath - 2 | Teter - 16 | Reeves - 5 |
| O.5 | New Mexico | Turnlund - 13 | Reeves (.643) | Machado - 35 | Turnlund - 2 | Teter - 13 | Walker - 5 |
| O.10 | at Wyoming | Gillcrist - 9 | Walker (.636) | Machado - 25 | None | Machado - 9 | Reeves - 5 |
| O.12 | at No. 15 Colorado State | Turnlund - 9 | Walker (.556) | Machado - 23 | Lee - 2 | Teter - 11 | Turnlund - 2 |
| O.14 | at Fresno State | Turnlund - 19 | Turnlund (.361) | Machado - 22 | Machado - 1 McGrath | Teter - 12 | Reeves - 2 |
| O.19 | at Air Force | Turnlund - 11 | Gillcrist (.476) | Machado - 41 | Machado - 1 | Teter - 20 | Walker - 7 |
| O.24 | Boise State | Turnlund - 21 | Reeves (.357) | Machado - 51 | Reeves - 1 Teter | Machado - 14 | Reeves - 8 |
| O.26 | Utah State | Turnlund - 14 | Reeves (.714) | Machado - 41 | Machado - 3 Teter | Teter - 19 | Reeves - 2 Walker |
| O.31 | at New Mexico | O'Sullivan - 16 | Reeves (.524) | Machado - 49 | Lee - 3 | Teter - 21 | Reeves - 5 |
| N.2 | at UNLV | Turnlund - 16 | Walker (.227) | Machado - 50 | Turnlund - 1 | Teter - 19 | Reeves - 5 Walker |

* - min. 7 kills



Deitre COLLINS-PARKER

Head Coach - 11th season

Deitre Collins-Parker, a two-time national collegiate player of the year and AVCA Hall of Fame member, was named the head volleyball coach at San Diego State on Jan. 30, 2009. She became just the fourth head coach since the Aztecs began collegiate play in 1976, replacing Mark Warner, who retired at the end of the 2008 season after 13 years at the helm of the women's program.

Following an injury-plagued start to the 2018 campaign, Collins-Parker's squad regrouped, posting a 9-7 record over the final 16 matches of the season, highlighted by its first victory over crosstown foe San Diego since 2012 and its first road win at Boise State since 2013. Individually, Deja Harris garnered all-Mountain West accolades for the fourth year in a row and completed her illustrious Aztec career ranked eighth on the school's all-time charts with a .322 hitting percentage.

In 2017, Collins-Parker directed SDSU to its second consecutive winning season and a fourth-place Mountain West finish. A quartet of Aztecs were named all-MW (Deja Harris, Devyn Pritchard, Baylee Little, Alexis Cage) -- tied for the program's largest number of honorees since the team joined the league in 2000.

During the summer of 2014 she led a Mountain West all-star team on a tour of Europe that concluded with a bronze medal third-place finish at the 2014 European Global Challenge in Pula, Croatia.

In 2012 she led her Aztec squad to a 23-8 mark and a 13-3 ledger in the Mountain West as the Aztecs claimed their first-ever Mountain West title. It was SDSU's best conference record and league finish since the 1996 season and top overall record since 1995. In addition, she produced a pair of All-America honorees (Andrea Hannasch and Johnna Fouch) along with a total of three all-conference selections (Raegan Shelton) and the conference Newcomer of the Year (Michelle Waber).

Collins-Parker arrived at San Diego State after five seasons as the head coach at Cornell, where she led the Big Red to three Ivy League titles and two NCAA tournament appearances. Under her tutelage, the Big Red had seven players named first-team All-Ivy, including two-time Ivy League Player of the Year and honorable mention All-American, Elizabeth Bishop (2007).

Prior to taking over at Cornell in 2004, Collins-Parker spent the previous eight seasons as head coach at UNLV, earning Western Athletic Conference Coach of the Year in 1998 after taking a dormant volleyball program and leading the Lady Rebels to a 23-8 record and a WAC tournament semifinal appearance. Before her stint at UNLV, Collins-Parker served as an assistant coach at South Alabama, Northern Arizona and Houston for one year each. She also has plenty of international coaching experience as well. She served as head coach of the 1998 U.S. junior national team, directing her squad to a gold medal in the national qualifier. She served in the same capacity during the summer of 2000 (silver medal) and 2001 (bronze medal).

A former member of the U.S. national team and a three-time AVCA All-American at the University of Hawai'i, Collins-Parker was the starting middle blocker for the 1988 Olympic Team in Seoul, South Korea, and was an alternate for the 1992 team in Barcelona, Spain. She played in over 130 international matches and earned bronze medals at the 1986 Goodwill Games and the 1987 Pan-Am Games.

As a collegian, Collins-Parker was a two-time Broderick Award honoree as the national player of the year (1983, 1984) after leading the Rainbow Wahine to consecutive national titles and a 110-5 record in her final three seasons. Collins capped off her career by becoming the first volleyball player to be awarded the Broderick Cup recipient, given to the nation's best collegiate athlete in all sports. She was twice named to the NCAA all-tournament team and still holds the record for solo blocks in one NCAA tournament (15 in 1982). She was one of six players named to the NCAA Division I Women's Volleyball 25th Anniversary Team in October 2005. Collins-Parker went on to compete at the national level and played in the 1988 Seoul Olympic Games and was also an alternate for the 1992 games in Barcelona, Spain. She played in over 130 international matches and earned bronze medals at the 1986 Goodwill Games and 1987

Pan-Am Games. She played professionally in the Italian League (1988-89) and the French League (1989-91), capturing the French League Championship twice and the European Cup of Champions in 1990.

Collins-Parker received the NCAA Silver Anniversary Award during the 2009 NCAA Convention in Washington, D.C. The award honors former student-athletes who successfully completed collegiate careers in various sports and have excelled in their chosen professions on their 25th anniversary of completing their athletic eligibility. Collins-Parker was inducted into the AVCA Hall of Fame in the fall of 2008. She currently serves as a member of the AVCA Board of Directors and the chairperson on the AVCA Minority Coaches Committee. She currently has membership with the AVCA, Coaches Accreditation Program, Kaepa Gold Medal Clinics, Black Coaches Association, and Fellowship of Christian Athletes. A 1995 graduate of Hawai'i with a bachelor of arts in broadcast communications, Collins-Parker is a member of the USA Volleyball Coaching Accreditation Program and is a CAP level III accredited coach.

Collins-Parker is married to Dale Parker, a former assistant coach with the Cornell women's basketball program for three seasons who served as an assistant at nearby San Diego Christian College during the 2012-13 season.

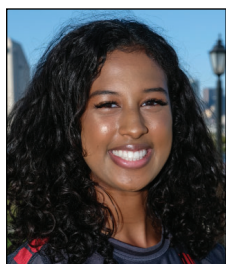
| Year | School | W | L | Pct. |
|-----------------------------|---------|------------|------------|-------------|
| 1996 | UNLV | 5 | 22 | .185 |
| 1997 | UNLV | 9 | 18 | .333 |
| 1998 | UNLV | 23 | 8 | .742 |
| 1999 | UNLV | 12 | 14 | .462 |
| 2000 | UNLV | 6 | 21 | .222 |
| 2001 | UNLV | 10 | 16 | .385 |
| 2002 | UNLV | 11 | 20 | .355 |
| 2003 | UNLV | 13 | 17 | .433 |
| 2004 | Cornell | 17 | 9 | .654 |
| 2005 | Cornell | 19 | 6 | .760 |
| 2006 | Cornell | 18 | 9 | .667 |
| 2007 | Cornell | 9 | 16 | .360 |
| 2008 | Cornell | 10 | 15 | .400 |
| 2009 | SDSU | 14 | 15 | .483 |
| 2010 | SDSU | 16 | 16 | .500 |
| 2011 | SDSU | 18 | 10 | .642 |
| 2012 | SDSU | 23 | 8 | .742 |
| 2013 | SDSU | 16 | 14 | .533 |
| 2014 | SDSU | 14 | 15 | .483 |
| 2015 | SDSU | 12 | 19 | .387 |
| 2016 | SDSU | 17 | 15 | .531 |
| 2017 | SDSU | 16 | 15 | .516 |
| 2018 | SDSU | 10 | 21 | .323 |
| 2019 | SDSU | 12 | 11 | .522 |
| UNLV - Eight Years | | 89 | 136 | .396 |
| Cornell - Five Years | | 73 | 55 | .570 |
| SDSU - 11th Year | | 168 | 159 | .514 |
| Overall - 24th Year | | 330 | 350 | .485 |



2019 AZTEC PHOTO ROSTER



Nya BLAIR 1
OH | 5-11 | Fr.



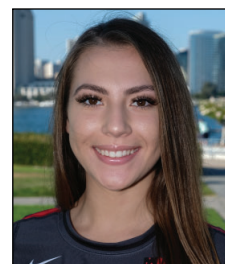
Andrea WALKER 3
MB | 6-0 | RS-So.



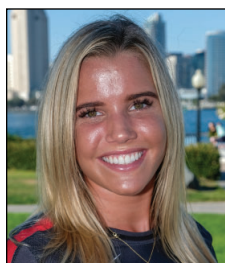
Lauren LEE 4
DS/L | 5-0 | Jr.



Serena HODSON 5
MB | 6-2 | So.



Alexis DURAND 6
DS/L | 5-7 | Fr.



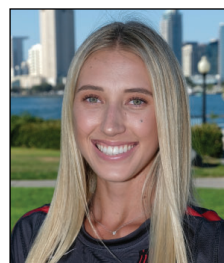
Hannah TURNLUND 7
OH | 5-11 | Sr.



Loren TETER 8
DS | 5-7 | RS-Jr.



Gabi PEOPLES 9
S | 5-10 | Jr.



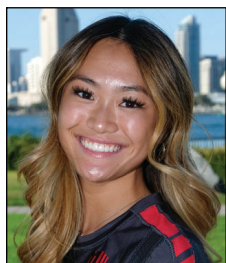
Camryn MACHADO 10
S | 6-1 | RS-So.



Alexis RATLIFF 11
MB | 6-6 | RS-Fr.



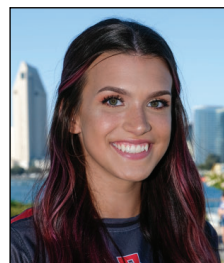
Erin GILLCRIST 12
MB | 6-1 | Jr.



Elise PARK 13
DS/L | 5-7 | Fr.



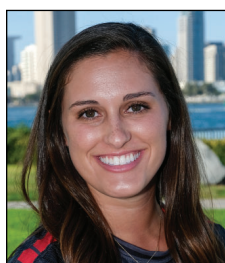
Gabriella SPAETHLING 14
RS | 6-1 | Fr.



Abby PUGH 15
MB | 6-3 | RS-Jr.



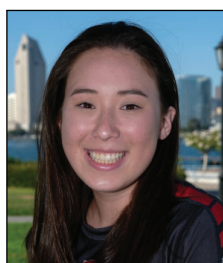
Ashley VANDERPAN 16
S | 6-1 | RS-Fr.



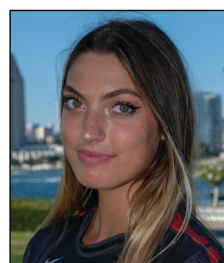
Sam McGRATH 17
DS/L | 5-4 | RS-Jr.



Tamia REEVES 18
MB | 6-1 | Sr.



Maddie LENN 19
OH | 5-10 | So.



Lexie HAMRICK 20
OH | 6-3 | RS-Jr.



Victoria O'SULLIVAN 21
OH | 6-0 | So.



Dentre COLLINS-PARKER
Head Coach



Melanie GREENE
Assistant Coach/
Recruiting Coordinator



Dr. Ken MURCZEK
Assistant Coach



Kara BARKDOLL
Volleyball Operations
Assistant



Isabel MILLER
Volunteer Assistant
Coach



Yasser AGUILA TODD
Technical Coordinator

2019 San Diego State Volleyball
San Diego State Combined Team Statistics (as of Nov 02, 2019)
All matches

Overall record: 12-11 Conf: 5-7 Home: 6-3 Away: 2-8 Neutral: 4-0

| # | Player | sp | Attack | | | | pct | Set | | Serve | | | Dig | | | Blocking | | | | | points | |
|-----------------|----------------------|----|--------|-------|-----|------|--------|------|-------|-------|-----|------|-----|------|-------|----------|-----|-------|-------|----|--------|--------|
| | | | k | k/s | e | ta | | a | a/s | sa | se | sa/s | re | dig | dig/s | bs | ba | total | blk/s | be | | bhe |
| 7 | TURNLUND, Hannah | 89 | 315 | 3.54 | 152 | 875 | .186 | 10 | 0.11 | 6 | 20 | 0.07 | 23 | 181 | 2.03 | 3 | 22 | 25 | 0.28 | 5 | 0 | 335.0 |
| 21 | O'SULLIVAN, Victoria | 89 | 282 | 3.17 | 113 | 688 | .246 | 2 | 0.02 | 0 | 0 | 0.00 | 6 | 35 | 0.39 | 12 | 30 | 42 | 0.47 | 8 | 0 | 309.0 |
| 18 | REEVES, Tamia | 85 | 166 | 1.95 | 33 | 330 | .403 | 2 | 0.02 | 9 | 12 | 0.11 | 1 | 51 | 0.60 | 13 | 67 | 80 | 0.94 | 3 | 1 | 221.5 |
| 20 | HAMRICK, Lexie | 52 | 105 | 2.02 | 39 | 218 | .303 | 1 | 0.02 | 2 | 5 | 0.04 | 0 | 10 | 0.19 | 10 | 42 | 52 | 1.00 | 15 | 1 | 138.0 |
| 12 | GILLCRIST, Erin | 55 | 97 | 1.76 | 53 | 262 | .168 | 3 | 0.05 | 0 | 0 | 0.00 | 2 | 15 | 0.27 | 0 | 35 | 35 | 0.64 | 7 | 0 | 114.5 |
| 3 | WALKER, Andrea | 48 | 80 | 1.67 | 29 | 170 | .300 | 0 | 0.00 | 0 | 0 | 0.00 | 0 | 4 | 0.08 | 4 | 34 | 38 | 0.79 | 3 | 0 | 101.0 |
| 19 | LENN, Maddie | 70 | 48 | 0.69 | 26 | 133 | .165 | 15 | 0.21 | 5 | 32 | 0.07 | 19 | 87 | 1.24 | 0 | 15 | 15 | 0.21 | 1 | 1 | 60.5 |
| 10 | MACHADO, Camryn | 88 | 37 | 0.42 | 17 | 108 | .185 | 914 | 10.39 | 14 | 12 | 0.16 | 1 | 231 | 2.62 | 2 | 27 | 29 | 0.33 | 12 | 4 | 66.5 |
| 11 | RATLIFF, Alexis | 13 | 9 | 0.69 | 5 | 27 | .148 | 0 | 0.00 | 0 | 3 | 0.00 | 0 | 2 | 0.15 | 1 | 2 | 3 | 0.23 | 0 | 0 | 11.0 |
| 15 | Pugh, Abby | 4 | 8 | 2.00 | 4 | 19 | .211 | 0 | 0.00 | 1 | 0 | 0.25 | 0 | 2 | 0.50 | 0 | 3 | 3 | 0.75 | 0 | 0 | 10.5 |
| 8 | TETER, Loren | 89 | 2 | 0.02 | 0 | 3 | .667 | 63 | 0.71 | 8 | 24 | 0.09 | 24 | 327 | 3.67 | 0 | 0 | 0 | 0.00 | 0 | 0 | 10.0 |
| 1 | Blair, Nya | 2 | 1 | 0.50 | 3 | 8 | -.250 | 0 | 0.00 | 0 | 0 | 0.00 | 0 | 0 | 0.00 | 0 | 1 | 1 | 0.50 | 0 | 0 | 1.5 |
| 9 | Peoples, Gabi | 11 | 0 | 0.00 | 0 | 0 | .000 | 51 | 4.64 | 1 | 1 | 0.09 | 0 | 14 | 1.27 | 0 | 0 | 0 | 0.00 | 0 | 0 | 1.0 |
| 6 | DURAND, Alexis | 3 | 0 | 0.00 | 0 | 0 | .000 | 0 | 0.00 | 0 | 0 | 0.00 | 3 | 4 | 1.33 | 0 | 0 | 0 | 0.00 | 0 | 0 | 0.0 |
| 17 | McGRATH, Sam | 79 | 0 | 0.00 | 1 | 4 | -.250 | 18 | 0.23 | 11 | 27 | 0.14 | 30 | 123 | 1.56 | 0 | 0 | 0 | 0.00 | 0 | 0 | 11.0 |
| 4 | LEE, Lauren | 70 | 0 | 0.00 | 1 | 1 | -1.000 | 11 | 0.16 | 7 | 9 | 0.10 | 8 | 93 | 1.33 | 0 | 0 | 0 | 0.00 | 0 | 0 | 7.0 |
| SAN DIEGO STATE | | 89 | 1150 | 12.92 | 476 | 2846 | .237 | 1090 | 12.25 | 64 | 145 | 0.72 | 134 | 1179 | 13.25 | 45 | 278 | 184.0 | 2.07 | 54 | 7 | 1398.0 |
| Opponents | | 89 | 1141 | 12.82 | 459 | 2964 | .230 | 1053 | 11.83 | 134 | 211 | 1.51 | 64 | 1021 | 11.47 | 39 | 271 | 174.5 | 1.96 | 26 | 12 | 1449.5 |

| Team Statistics | SDSU | OPP | Date | Opponent | Score | Score by set | Att. | |
|-------------------------|-------|--------|---|---------------------|-------|-------------------------------|------|--|
| ATTACK | | | | | | | | |
| Kills | 1150 | 1141 | 08/30/19 | vs Akron | w 3-0 | 25-20,25-19,25-18 | 0 | |
| Errors | 476 | 459 | 08/30/19 | vs Bryant | w 3-0 | 26-22,25-16,25-13 | 0 | |
| Total Attacks | 2846 | 2964 | 08/31/19 | at FGCU | L 2-3 | 25-22,23-25,23-25,25-22,11-15 | 702 | |
| Attack Pct | .237 | .230 | Sep 06 | WEST VIRGINIA | w 3-2 | 21-25,16-25,25-22,25-16,15-13 | 386 | |
| Kills/Set | 12.9 | 12.8 | Sep 07 | ARKANSAS | w 3-2 | 26-24,16-25,25-19,17-25,15-12 | 111 | |
| | | | Sep 07 | ARIZONA | L 0-3 | 10-25,22-25,19-25 | 396 | |
| SET | | | | | | | | |
| Assists | 1090 | 1053 | 09/13/19 | vs UC Riverside | w 3-1 | 25-13,25-20,19-25,25-19 | 128 | |
| Assists/Set | 12.2 | 11.8 | 09/14/19 | vs Eastern Wash. | w 3-1 | 25-16,22-25,28-26,25-21 | 107 | |
| | | | 09/14/19 | at Grand Canyon | L 0-3 | 19-25,19-25,19-25 | 84 | |
| SERVE | | | | | | | | |
| Aces | 64 | 134 | Sep 19 | LONG BEACH STATE | w 3-1 | 25-12,25-20,21-25,25-21 | 232 | |
| Errors | 145 | 211 | Sep 20 | at San Diego | L 0-3 | 13-25,15-25,20-25 | 623 | |
| Attempts | 1928 | 1928 | *Sep 26 | SAN JOSE STATE | w 3-2 | 25-14,25-23,21-25,26-28,16-14 | 264 | |
| Serve Pct | .925 | .891 | *09/28/19 | at Nevada | L 1-3 | 22-25,19-25,25-20,17-25 | 281 | |
| Aces/Set | 0.7 | 1.5 | *Oct 03 | UNLV | L 1-3 | 21-25,24-26,25-20,23-25 | 192 | |
| SERVE RECEPTIONS | | | | | | | | |
| Errors | 134 | 64 | *Oct 05 | NEW MEXICO | w 3-1 | 25-18,18-25,25-18,25-21 | 356 | |
| Errors/Set | 1.5 | 0.7 | *Oct 10 | at Wyoming | L 0-3 | 19-25,13-25,22-25 | 810 | |
| Attempts | 1703 | 1770 | *Oct 12 | at #15 Colorado St. | L 0-3 | 19-25,15-25,16-25 | 2677 | |
| Reception Pct | .921 | .964 | *Oct 14 | at Fresno State | L 0-3 | 24-26,22-25,19-25 | 1327 | |
| | | | *10/19/19 | at Air Force | L 2-3 | 13-25,25-15,25-16,22-25,11-15 | 322 | |
| DEFENSE | | | | | | | | |
| Digs | 1179 | 1021 | *Oct 24 | BOISE STATE | L 2-3 | 18-25,25-16,22-25,25-21,13-15 | 242 | |
| Digs/Set | 13.2 | 11.5 | *Oct 26 | UTAH STATE | w 3-0 | 25-19,25-20,25-22 | 254 | |
| | | | *10/31/19 | at New Mexico | w 3-1 | 25-20,15-25,25-21,25-14 | 276 | |
| | | | *11-02-19 | at UNLV | w 3-1 | 28-26,27-25,20-25,27-25 | 636 | |
| BLOCKING | | | | | | | | |
| Block Solo | 45 | 39 | Record in 3-set matches:3-6 • Record in 4-set matches:6-2 • Record in 5-set matches:3-3 | | | | | |
| Block Assist | 278 | 271 | | | | | | |
| Total Blocks | 184.0 | 174.5 | | | | | | |
| Blocks/Set | 2.1 | 2.0 | | | | | | |
| Block Errors | 54 | 26 | | | | | | |
| Ball handling errors | 7 | 12 | | | | | | |
| ATTENDANCE | | | | | | | | |
| Total | 2433 | 7738 | | | | | | |
| Dates/Avg Per Date | 9/270 | 10/774 | | | | | | |
| Neutral site #/Avg | 4/59 | | | | | | | |
| Current win streak | 3 | - | | | | | | |
| Home win streak | 1 | - | | | | | | |

2019 San Diego State Volleyball
San Diego State Combined Team Statistics (as of Nov 02, 2019)
Conference matches

| RECORD: | OVERALL | HOME | AWAY | NEUTRAL |
|----------------|---------|------|------|---------|
| ALL GAMES | 5-7 | 3-2 | 2-5 | 0-0 |
| CONFERENCE | 5-7 | 3-2 | 2-5 | 0-0 |
| NON-CONFERENCE | 0-0 | 0-0 | 0-0 | 0-0 |

| # | Player | sp | Attack | | | | | Set | | Serve | | | Dig | | | Blocking | | | | | points | |
|----|----------------------|----|--------|-------|-----|------|--------|-----|-------|-------|-----|------|-----|-----|-------|----------|-----|-------|-------|----|--------|-------|
| | | | k | k/s | e | ta | pct | a | a/s | sa | se | sa/s | re | dig | dig/s | bs | ba | total | blk/s | be | | bhe |
| 7 | TURNLUND, Hannah | 47 | 171 | 3.64 | 86 | 460 | .185 | 5 | 0.11 | 5 | 7 | 0.11 | 17 | 88 | 1.87 | 2 | 15 | 17 | 0.36 | 2 | 0 | 185.5 |
| 21 | O'SULLIVAN, Victoria | 47 | 135 | 2.87 | 63 | 350 | .206 | 2 | 0.04 | 0 | 0 | 0.00 | 4 | 22 | 0.47 | 9 | 12 | 21 | 0.45 | 4 | 0 | 150.0 |
| 18 | REEVES, Tamia | 46 | 90 | 1.96 | 18 | 175 | .411 | 1 | 0.02 | 4 | 5 | 0.09 | 1 | 28 | 0.61 | 9 | 43 | 52 | 1.13 | 2 | 1 | 124.5 |
| 12 | GILLCRIST, Erin | 45 | 82 | 1.82 | 46 | 224 | .161 | 3 | 0.07 | 0 | 0 | 0.00 | 2 | 8 | 0.18 | 0 | 34 | 34 | 0.76 | 6 | 0 | 99.0 |
| 3 | Walker, Andrea | 39 | 71 | 1.82 | 24 | 145 | .324 | 0 | 0.00 | 0 | 0 | 0.00 | 0 | 3 | 0.08 | 4 | 29 | 33 | 0.85 | 2 | 0 | 89.5 |
| 20 | HAMRICK, Lexie | 14 | 29 | 2.07 | 10 | 60 | .317 | 0 | 0.00 | 0 | 2 | 0.00 | 0 | 4 | 0.29 | 2 | 13 | 15 | 1.07 | 2 | 0 | 37.5 |
| 10 | MACHADO, Camryn | 46 | 16 | 0.35 | 11 | 54 | .093 | 468 | 10.17 | 6 | 3 | 0.13 | 1 | 116 | 2.52 | 1 | 10 | 11 | 0.24 | 6 | 1 | 28.0 |
| 15 | PUGH, Abby | 3 | 5 | 1.67 | 3 | 11 | .182 | 0 | 0.00 | 0 | 0 | 0.00 | 0 | 0 | 0.00 | 0 | 3 | 3 | 1.00 | 0 | 0 | 6.5 |
| 19 | LENN, Maddie | 30 | 3 | 0.10 | 5 | 18 | -.111 | 5 | 0.17 | 0 | 11 | 0.00 | 5 | 39 | 1.30 | 0 | 3 | 3 | 0.10 | 1 | 1 | 4.5 |
| 8 | TETER, Loren | 47 | 2 | 0.04 | 0 | 2 | 1.000 | 36 | 0.77 | 7 | 10 | 0.15 | 18 | 175 | 3.72 | 0 | 0 | 0 | 0.00 | 0 | 0 | 9.0 |
| 9 | PEOPLES, Gabi | 9 | 0 | 0.00 | 0 | 0 | .000 | 41 | 4.56 | 1 | 1 | 0.11 | 0 | 13 | 1.44 | 0 | 0 | 0 | 0.00 | 0 | 0 | 1.0 |
| 6 | Durand, Alexis | 2 | 0 | 0.00 | 0 | 0 | .000 | 0 | 0.00 | 0 | 0 | 0.00 | 3 | 4 | 2.00 | 0 | 0 | 0 | 0.00 | 0 | 0 | 0.0 |
| 17 | McGRATH, Sam | 41 | 0 | 0.00 | 1 | 2 | -.500 | 7 | 0.17 | 7 | 10 | 0.17 | 15 | 67 | 1.63 | 0 | 0 | 0 | 0.00 | 0 | 0 | 7.0 |
| 4 | LEE, Lauren | 40 | 0 | 0.00 | 1 | 1 | -1.000 | 11 | 0.28 | 7 | 7 | 0.17 | 8 | 76 | 1.90 | 0 | 0 | 0 | 0.00 | 0 | 0 | 7.0 |
| | TEAM | - | - | - | - | - | - | - | - | - | - | - | 9 | - | - | - | - | - | - | - | - | - |
| | SAN DIEGO STATE | 47 | 604 | 12.85 | 268 | 1502 | .224 | 579 | 12.32 | 37 | 56 | 0.79 | 83 | 643 | 13.68 | 27 | 162 | 108.0 | 2.30 | 25 | 3 | 749.0 |
| | Opponents | 47 | 623 | 13.26 | 247 | 1598 | .235 | 565 | 12.02 | 83 | 113 | 1.77 | 37 | 529 | 11.26 | 23 | 157 | 101.5 | 2.16 | 13 | 6 | 807.5 |

| Team Statistics | SDSU | OPP |
|-------------------------|-------|-------|
| ATTACK | | |
| Kills | 604 | 623 |
| Errors | 268 | 247 |
| Total Attacks | 1502 | 1598 |
| Attack Pct | .224 | .235 |
| Kills/Set | 12.9 | 13.3 |
| SET | | |
| Assists | 579 | 565 |
| Assists/Set | 12.3 | 12.0 |
| SERVE | | |
| Aces | 37 | 83 |
| Errors | 56 | 113 |
| Attempts | 1024 | 1037 |
| Serve Pct | .945 | .891 |
| Aces/Set | 0.8 | 1.8 |
| SERVE RECEPTIONS | | |
| Errors | 83 | 37 |
| Errors/Set | 1.8 | 0.8 |
| Attempts | 919 | 966 |
| Reception Pct | .910 | .962 |
| DEFENSE | | |
| Digs | 643 | 529 |
| Digs/Set | 13.7 | 11.3 |
| BLOCKING | | |
| Block Solo | 27 | 23 |
| Block Assist | 162 | 157 |
| Total Blocks | 108.0 | 101.5 |
| Blocks/Set | 2.3 | 2.2 |
| Block Errors | 25 | 13 |
| Ball handling errors | 3 | 6 |
| ATTENDANCE | | |
| Total | 1308 | 6329 |
| Dates/Avg Per Date | 5/262 | 7/904 |
| Neutral site #/Avg | 0/0 | - |
| Current win streak | 3 | - |
| Home win streak | 1 | - |

| Date | Opponent | Score | Score by set | Att. |
|-----------|---------------------|-------|-------------------------------|------|
| *Sep 26 | SAN JOSE STATE | w 3-2 | 25-14,25-23,21-25,26-28,16-14 | 264 |
| *09/28/19 | at Nevada | L 1-3 | 22-25,19-25,25-20,17-25 | 281 |
| *Oct 03 | UNLV | L 1-3 | 21-25,24-26,25-20,23-25 | 192 |
| *Oct 05 | NEW MEXICO | w 3-1 | 25-18,18-25,25-18,25-21 | 356 |
| *Oct 10 | at Wyoming | L 0-3 | 19-25,13-25,22-25 | 810 |
| *Oct 12 | at #15 Colorado St. | L 0-3 | 19-25,15-25,16-25 | 2677 |
| *Oct 14 | at Fresno State | L 0-3 | 24-26,22-25,19-25 | 1327 |
| *10/19/19 | at Air Force | L 2-3 | 13-25,25-15,25-16,22-25,11-15 | 322 |
| *Oct 24 | BOISE STATE | L 2-3 | 18-25,25-16,22-25,25-21,13-15 | 242 |
| *Oct 26 | UTAH STATE | w 3-0 | 25-19,25-20,25-22 | 254 |
| *10/31/19 | at New Mexico | w 3-1 | 25-20,15-25,25-21,25-14 | 276 |
| *11-02-19 | at UNLV | w 3-1 | 28-26,27-25,20-25,27-25 | 636 |

Record in 3-set matches: 1-3
Record in 4-set matches: 3-2
Record in 5-set matches: 1-2