



SAN DIEGO STATE AZTECS

2019 Volleyball Weekly Notes

Jim Solien (Primary Contact)
 Assistant Media Relations Director
Office Phone Number: (619) 594-2576
E-Mail Address: jsolien@sdsu.edu
News Release Date: Nov. 20, 2019

SDSU Official Athletics Website: goaztecs.com
SDSU Official Athletics Twitter: @GoAztecs
SDSU Official Athletics Instagram: @GoAztecs
SDSU Official Athletics Facebook: facebook.com/goaztecs
SDSU Official Athletics YouTube: youtube.com/goaztecs.com

2019 AZTEC VOLLEYBALL SCHEDULE

Day/Date	Opponent	Time/Result
Friday, Aug. 30	vs. Akron^	W, 3-0
Friday, Aug. 30	vs. Bryant^	W, 3-0
Saturday, Aug. 31	at Florida Gulf Coast^	L, 2-3
Friday, Sept. 6	West Virginia+	W, 3-2
Saturday, Sept. 7	Arkansas+	W, 3-2
Saturday, Sept. 7	Arizona+	L, 0-3
Friday, Sept. 13	vs. UC Riverside~	W, 3-1
Saturday, Sept. 14	vs. Eastern Washington~	W, 3-1
Saturday, Sept. 14	at Grand Canyon~	L, 0-3
Thursday, Sept. 19	Long Beach State	W, 3-1
Friday, Sept. 20	at San Diego	L, 0-3
Thursday, Sept. 26	San José State*	W, 3-2
Saturday, Sept. 28	at Nevada*	L, 1-3
Thursday, Oct. 3	UNLV*	L, 1-3
Saturday, Oct. 5	New Mexico*	W, 3-1
Thursday, Oct. 10	at Wyoming*	L, 0-3
Saturday, Oct. 12	at No. 15 Colorado State*	L, 0-3
Monday, Oct. 14	at Fresno State*	L, 0-3
Saturday, Oct. 19	at Air Force*	L, 2-3
Thursday, Oct. 24	Boise State*	L, 2-3
Saturday, Oct. 26	Utah State*	W, 3-0
Thursday, Oct. 31	at New Mexico*	W, 3-1
Saturday, Nov. 2	at UNLV*	W, 3-1
Thursday, Nov. 7	Wyoming*	L, 0-3
Saturday Nov. 9	No. 13 Colorado State*	L, 0-3
Tuesday, Nov. 12	Fresno State*	W, 3-0
Thursday, Nov. 14	Air Force*	W, 3-1
Thursday, Nov. 21	at Utah State*	7 p.m. MT
Saturday, Nov. 23	at Boise State*	2 p.m. MT

^ - FGCU Homewood Suites Fort Myers Classic (Fort Myers, Fla.)
 + - SDSU/USD Invitational (San Diego, Calif.)
 # - GCU Invitational (Phoenix, Ariz.)
 * - Mountain West match

Socially

Twitter: @SDSUVolleyball
 Instagram: @SDSUVolleyball

Match Week Preview

San Diego State (14-13, 7-9 MW) at Utah State (2-26, 2-14 MW)
 Thursday, Nov. 21 | 7 p.m. MT | Wayne Estes Center | Logan, Utah
 Live Stats | MW Network
 Series Record: SDSU leads 16-6



San Diego State (14-13, 7-9 MW) at Boise State (16-11, 8-8 MW)
 Saturday, Nov. 23 | 2 p.m. MT | Bronco Gym | Boise, Idaho
 Live Stats | MW Network
 Series: Boise State leads 9-8



AZTECS TO CLOSE OUT REGULAR SEASON WITH ROAD MATCHES AT UTAH STATE, BOISE STATE

- > San Diego State wraps up its 2019 campaign this week with a pair of Mountain West road matches at Utah State and Boise State.
- > The Aztecs will battle the Aggies on Thursday, Nov. 21 at 7 p.m. MT/6 p.m. PT, before facing the Broncos on Saturday, Nov. 23, starting at 2 p.m. MT/1 p.m. PT. Both encounters will feature live stats as well as streaming video via the Mountain West Network.
- > SDSU completed its final homestand of the year with wins over Fresno State and Air Force. The Aztecs swept the Bulldogs (25-15, 27-25, 25-13) in a match that was played at San Diego City College due to a power outage affecting the San Diego State campus on Nov. 12. Two days later, the Scarlet and Black grounded the Falcons in four sets (25-18, 23-25, 25-23, 25-22) to highlight the team's Senior Night festivities.
- > With the victories, SDSU is tied with Nevada for fifth-place in the Mountain West standings at 7-9, one match behind fourth-place Boise State.
- > If the Aztecs split their final two contests, they will assure themselves of their sixth winning campaign in the last nine years.
- > SDSU has posted a 23-20 overall record since Sept. 29, 2018, after starting last season with a 1-14 ledger.
- > The Aztecs are 13-2 this year when blasting more kills than the opposition and are 13-4 when recording a greater hitting percentage. SDSU is also 8-0 this season when capturing the first two sets.
- > Senior middle blocker Tamia Reeves ranks second in the Mountain West with a .396 hitting percentage, which is good for 24th in the country entering the week, while redshirt sophomore Camryn Machado occupies the No. 2 spot in the conference with 10.49 assists at the setter position, which ranks 48th nationally.

SERIES RECORD VS. UTAH STATE

- > The Aztecs lead the all-time series against the Aggies 16-6, including a 3-3 mark in six previous trips to Logan.
- > SDSU has won four straight vs. Utah State, including a three-set triumph at Aztec Court on Oct. 26 (25-19, 25-20, 25-22).
- > In that encounter, the Aztecs maintained a distinct edge in kills (46-31) and digs (48-27) while serving up a season-high 10 aces.
- > Individually, SDSU was paced by Hannah Turnlund's 14 kills, while Tamia Reeves floored 10 shots of her own, finishing with a season-high .714 hitting percentage with no errors on 14 attempts.
- > The Aztec cause was also buoyed by Camryn Machado, who dished out 41 assists, while Loren Teter scooped up 19 digs, both of which marked team season-highs for a three-set match.
- > San Diego State's collective 46 kills and 48 digs also represented season-highs for a three-set match.

SERIES RECORD VS. BOISE STATE

- > The Broncos have won seven of the last 10 meetings vs. the Aztecs to take a 9-8 lead in the all-time series.
- > SDSU will be looking to avenge a tough five-set defeat to Boise State at home on Oct. 24 (18-25, 25-16, 22-25, 25-21, 13-15).
- > In that contest, the Aztecs maintained the statistical advantage in hitting percentage (.225 to .163), kills (59-57) and digs (57-41) while matching the Broncos with a season-high 14 team blocks.
- > However, the Aztecs were undone by eight Boise State service aces while committing seven errant serves of their own in the close loss.
- > In the fifth and deciding set, SDSU led 5-2 but could not sustain the momentum, as the Broncos reeled off a timely 9-3 run to vault in front for good.
- > Individually, the Aztecs were led by Hannah Turnlund, who launched 21 kills, which marked her second-best total of the season and third-highest of her career.
- > SDSU also received double-digit kills from Victoria O'Sullivan (13) and Erin Gillcrist (11), while Tamia Reeves (7 kills) matched her career-high with eight total blocks, including two solo stops.

DIGGIN' THE 'D'

- > The Aztecs are 5-2 in their last seven matches thanks in part to an improved defense.
- > SDSU is averaging 15.29 digs per set during that stretch, exactly two scoops higher than its season clip of 13.29.
- > The Aztecs have also posted more team blocks than the opposition (59.0-54.0), with Tamia Reeves averaging a team-high 1.33 blocks per set in that span (32 overall), followed by Andrea Walker (0.96, 23 overall) and Erin Gillcrist (0.83, 20 overall).

GENERAL INFORMATION

Location San Diego, Calif.
 Founded 1897
 Enrollment 32,005
 Nickname Aztecs
 Colors Scarlet and Black (Pantone 187)
 Conference Mountain West
 Affiliation Division I
 President Dr. Adela de la Torre
 Director of Athletics John David Wicker
 Faculty Representative Patrick Papin
 Home Facility Aztec Court at Peterson Gym (2,000)

TEAM INFORMATION

Head Coach Deitre Collins-Parker
 Alma Mater Hawai'i '95
 Record at SDSU 170-161 (11th year)
 Career Record 332-352 (24th year)
 E-Mail dcollins33@mail.sdsu.edu
 Volleyball Office Phone (619) 594-5064
 Volleyball Office Fax (619) 594-1674
 Assistant Coach/Recruiting Coordinator Melanie Greene
 Assistant Coach Dr. Ken Murczek
 Volleyball Operations Assistant Kara Barkdoll
 2018 Record 10-21
 2018 Conference Record 8-10 (Eighth)
 2018 Home Record 6-10
 2018 Road Record 4-7
 2018 Neutral Record 0-4
 Letterwinners Returning/Lost 12/4
 Starters Returning/Lost 3 + Libero/3

PROGRAM HISTORY

First Year of Volleyball 1976
 Overall Record 882-613 (.590)
 NCAA Appearances 14
 Last Postseason Appearance 2012
 NCAA Postseason Record 15-14

MEDIA RELATIONS

Assistant Media Relations Director Jim Solien
 E-Mail jsolien@sdsu.edu
 SID Office Phone (619) 594-2576
 SID Office Fax (619) 582-6541
 Official Athletic Website www.GoAztecs.com

**2019 AZTEC VOLLEYBALL
 STATISTICAL LEADERS**

Hitting Percentage	(.396)	Tamia Reeves
Kills	345	Hannah Turnlund
Kills per set	3.48	Hannah Turnlund
Assists	1,058	Camryn Machado
Assists per set	10.48	Camryn Machado
Digs	464	Loren Teter
Digs per set	3.57	Loren Teter
Blocks	100	Tamia Reeves
Blocks per set	1.02	Tamia Reeves
Service Aces	16	Camryn Machado
Service Aces per set	0.16	Camryn Machado

2019 AZTEC VOLLEYBALL ROSTER

No.	Player	Pos.	Ht.	Yr.	Hometown (Last School)
1	Nya Blair	OH	5-11	Fr.	Grand Prairie, Texas (Martin HS)
3	Andrea Walker	MB	6-0	So.	Fairfield, Calif. (Vanden HS)
4	Lauren Lee	DS/L	5-0	Jr.	Coppell, Texas (Rice Univ.)
5	Serena Hodson	MB	6-2	So.	Mission Viejo, Calif. (Trabuco Hills HS)
6	Alexis Durand	DS/L	5-7	Fr.	Long Beach, Calif. (Long Beach Poly HS)
7	Hannah Turnlund	OH	5-11	Sr.	Morgan Hill, Calif. (Presentation HS)
8	Loren Teter	DS	5-7	RS-Jr.	Redondo Beach, Calif. (Notre Dame Academy)
9	Gabi Peoples	S	5-10	Jr.	Beaverton, Ore. (Beaverton HS)
10	Camryn Machado	S	5-9	RS-Sa.	Cardiff-by-the-Sea, Calif. (Utah)
11	Alexis Ratliff	MB	6-6	RS-Fr.	Atlanta, Ga. (Saint Francis HS)
12	Erin Gillkrist	MB	6-1	Jr.	Lakewood, Colo. (Lakewood HS)
13	Elise Park	DS/L	5-7	Fr.	Columbia, Md. (Atholton HS)
14	Gabriella Spaethling	RS	6-1	Fr.	Larkspur, Calif. (Redwood HS)
15	Abby Pugh	MB	6-3	RS-Jr.	Brenham, Texas (Wichita State)
16	Ashley Vanderpan	S	6-1	RS-Fr.	Elk Grove, Calif. (Syracuse)
17	Sam McGrath	DS/L	5-4	RS-Jr.	Oakland, Calif. (Bishop O'Dowd HS)
18	Tamia Reeves	MB	6-1	Sr.	Carrilton, Texas (Hebron HS)
19	Maddie Lenn	OH	5-10	So.	San Francisco, Calif. (Sacred Heart Cathedral Prep)
20	Lexie Hamrick	OH	6-3	RS-Jr.	Louisville, Ky. (Lindsey Wilson College)
21	Victoria O'Sullivan	OH	6-0	So.	Albany, Calif. (St. Mary's HS)

Head Coach: Deitre Collins-Parker (Hawai'i, 1995), 11th season at SDSU
Assistant Coach: Melanie Greene (San Diego State, 2007), Ninth season at SDSU
Assistant Coach: Dr. Ken Murczek (San Diego State, 1998), Third season at SDSU
Volleyball Operations Assistant: Kara Barkdoll (Cal State San Marcos, 2015), Second season at SDSU
Volunteer Assistant Coach: Isabel Miller (Arizona State, 2018), First season at SDSU
Technical Coordinator: Yasser Aguila Todd (Trident University, 2009, 2014), First season at SDSU

Pronunciations
 #1 NYA Blair NIGH-ah
 #8 Loren TETER TEE-ter
 #18 TAMIA Reeves tah-MEE-ah



OPPONENT COMPARISON (OVERALL MATCHES)

2019 Overall Stats	SDSU	MW Rank	OPP	USU	MW Rank	OPP	BSU	MW Rank	OPP
Hitting Percentage	.236	3	.230	.132	11	.245	.211	5	.194
Kills per set	12.93	3	13.00	8.91	11	14.41	12.52	7	13.05
Assists per set	12.25	2	12.04	8.36	11	13.65	11.65	8	12.32
Digs per set	13.29	9	11.61	11.65	11	14.83	14.23	4	13.65
Blocks per set	2.16	7	2.00	2.48	4	2.22	2.94	2	2.37
Service Aces per set	0.75	11	1.45	1.08	10	1.98	1.40	4	1.39

SCOUTING THE OPPOSITION

> **Utah State (12-26, 2-14 MW)** has recorded just two wins this season, both in five-set fashion, knocking off San José State at home on Oct. 3, followed by road victory at New Mexico on Oct. 12. In two road matches on consecutive evenings last week, the Aggies were swept at then-No. 12 Colorado State (15-25, 22-25, 13-25) before suffering a similar fate at Wyoming (19-25, 19-25, 8-25). Collectively, USU is among the league's best blocking teams, occupying the fourth spot with an average of 2.48 per set, which is good for 41st in the nation entering the week, while junior Bailey Downing (1.11/set) and sophomore Corinne Larsen (1.10/set) and rank seven and ninth in the conference individually. However, the Aggies are last in kills (8.91/set), hitting percentage (.132) and digs (11.56/set). Offensively, Downing has racked up 151 kills for the season, while Larsen and senior Izzie Belnap have recorded 129 put-aways apiece, followed closely by sophomore Whitney Solosabal (125). Belnap (Utah Valley) is one of two NCAA Division I transfers on the Aggie squad, joining fellow classmate Heidi Carpenter (Nicholls State), who tops the squad with an average of 5.21 assists at the setter position. Anchoring the USU back row is freshman Grace DuBay, who tops the squad with 3.14 digs per frame (254 overall). Earlier this season, DuBay set a school record for a three-set match with 27 digs vs. Weber State. USU is guided by head coach Grayson DuBose, who owns a career record of 189-230 in nearly 14 seasons on the Logan campus. He is the second-longest tenured coach in the Mountain West behind Colorado State's Tom Hilbert, who is in 23rd year at the helm of the Rams program.

> **Boise State (16-11, 8-8 MW)** is still fourth in the conference race despite dropping four of its last five, including a pair of 3-0 setbacks on the road last weekend against Wyoming (26-28, 20-25, 16-25) and then-No. 12 Colorado State (21-25, 19-25, 15-25). Prior to Saturday's clash with the Aztecs, the Broncos will play host to Fresno State on Thursday evening. Offensively, Boise State sports three outside hitters averaging over two kills per set, including freshman Lauren Ohlinger (2.89), who ranks 10th in the league entering the week, followed by senior Janell Walley (2.64), who also occupies the fourth spot in the MW with a .362 hitting percentage, and sophomore Shae Duffy (2.27). Not to be outdone, sophomore middle blocker Jessica Donahue leads the conference in blocks (1.54/set) and ranks seventh in hitting percentage (.32), while sophomore setter Danielle Boss is third in assists (9.93) and ninth in service aces (0.30/set). Additionally, freshman middle blocker Alyssa Wissinger landed in the eighth position this week with a clip of 1.11 blocks per set, while freshman libero Allison Casillas ranks ninth in digs (3.20/set). As a team, Boise State finds itself among the top half of the conference in several categories, including blocks (2nd, 2.94/set), digs (4th, 14.23/set), service aces (4th, 1.40/set) and hitting percentage (5th, .211). The Broncos are just seventh in the league with 12.52 kills per set, but have limited the opposition to the fourth-worst hitting percentage in the MW (.194). Head coach Shawn Garus is in his 11th season at the helm of the Boise State program, sporting a 302-262 career record and a 194-143 mark at the school. Garus captured back-to-back Mountain West Coach of the Year honors (2015-16) to go with 2016 AVCA Region Coach of the Year accolades.

2019 MOUNTAIN WEST STANDINGS (As of Nov. 20)

Team	---Conference---			----Overall----			Strk
	W	L	Pct	W	L	Pct.	
#11 Colorado State	16	0	1.000	24	1	.963	W25
Wyoming	14	2	.875	19	8	.704	W5
UNLV	14	3	.824	18	10	.643	W5
Boise State	8	8	.500	16	11	.593	L2
San Diego State	7	9	.438	14	13	.519	W2
Nevada	7	9	.438	17	11	.607	L2
Fresno State	6	10	.375	13	15	.464	W1
San José State	5	11	.313	10	17	.370	L2
Air Force	5	11	.313	8	20	.286	L6
New Mexico	5	12	.313	10	19	.345	L1
Utah State	2	14	.125	2	26	.071	L10

Upcoming Matches in the MW

Tuesday, Nov. 19

UNLV 3, at New Mexico 1

Thursday, Nov. 21

San Diego State at Utah State, 7 p.m. MT

Wyoming at Nevada, 6 p.m. PT

#11 Colorado State at San José State, 6 p.m. PT

New Mexico at Air Force, 6:30 p.m. MT

Fresno State at Boise State, 7 p.m. MT

Saturday, Nov. 23

San Diego State at Boise State, 2 p.m. MT

#11 Colorado State at Nevada, Noon PT

Fresno State at Utah State, 1 p.m. MT

UNLV at Air Force, 1 p.m. MT

Wyoming at San José State, 2 p.m. PT

Saturday, Nov. 30

#11 Colorado State at Denver, 1 p.m. MT

End of Regular Season



WEEKLY WRAP

- > San Diego State registered two impressive victories last week to conclude its final homestand of the 2019 campaign, defeating Fresno State in three sets (25-15, 27-25, 25-13), followed by a four-set conquest of Air Force (25-18, 23-25, 25-23, 25-22) on Senior Night.
- > The Aztecs were forced to move their Nov. 12 match vs. the Bulldogs to San Diego City College due to a power outage affecting the SDSU campus and surrounding areas, while star outside hitter Hannah Turnlund sat out with an injury.
- > Despite the adversity, the Aztecs rose to the occasion, as Victoria O'Sullivan blasted 15 kills and hit .423 to help fuel the sweep.
- > Seeing her first extended action of the year, true freshman Nya Blair came off the bench and launched seven non-returnables of her own, while Andrea Walker finished with five kills and four block assists.
- > As a team, SDSU equaled their highest collective hitting percentage of the year at .337 and benefited from 22 attack errors, as Fresno State finished with just a .109 clip.
- > The Aztecs also played solid defense for the most part, maintaining a hefty 40-25 advantage in digs, as well as a 9-6 edge in team blocks.
- > On Senior Night vs. the Falcons, Turnlund returned to the lineup and made her final appearance on Aztec Court a memorable one, posting team-high 13 kills, while Walker and Erin Gillcrist (.318, 6 block assists) logged 10 put-aways each to help the Scarlet and Black snap a three-match losing streak vs. Air Force.
- > Tamia Reeves also got into the act with nine kills to go with a match-high seven block assists, while Camryn Machado logged her 13th double-double of the year with 47 assists and 10 digs.
- > Neither side hit particularly well, as SDSU finished with a .193 attack percentage compared to the Falcons' .183 clip.
- > However, the Aztecs owned a slight advantage in kills (54-48) and team blocks (11.0-10.0) to help secure their victory. In addition, SDSU was the beneficiary of 11 Air Force service errors and maintained the upper hand in digs (52-46).
- > The two sides combined for 32 ties and 11 lead changes over the final three sets.

AZTECS AMONG MOUNTAIN WEST LEADERS

- > Entering the final week of conference play, San Diego State boasts six players among the Mountain West leaders in various categories.
- > Tamia Reeves ranks second in the league with a .396 hitting percentage, which ranks 24th in the nation, and has climbed into 10th place this week with an average of 1.02 blocks per set.
- > In addition, Camryn Machado jumped into the No. 2 position with an average of 10.49 assists per set, while Hannah Turnlund held down the fourth spot with an average of 3.48 kills per frame.
- > Elsewhere, Loren Teter (3.57 digs/set) and Victoria O'Sullivan (3.12 kills/set) rank seventh in their respective statistics, while Andrea Walker is 10th in the league with a .305 hitting percentage.
- > As a team, SDSU ranks among the top half of the conference for all matches in assists (2nd, 12.25/set), kills (3rd, 12.93/set) and hitting percentage (3rd, .236).
- > The Aztecs have also yielded the second-fewest blocks as a team (2.00/set), while opponents have logged the second-worst dig average in the MW (11.60/set).

TURNLUND'S TURN

- > With her 11 put-aways in road match at Air Force on Oct. 19, senior Hannah Turnlund broke the 1,000-kill plateau for her career and has now blasted 1,099 non-returnables in an Aztec uniform.
- > In addition, Turnlund has accumulated 3,080 attacks for her career, vaulting into ninth place on the school's all-time list in that statistic. In SDSU's home finale vs. Air Force, she launched 36 attempts to move past Mary Holland, who compiled 2,955 attacks from 1984-87.
- > Turnlund has posted double-digit kill totals in 18 of 26 matches this season and 59 times in her career.
- > Against Florida Gulf Coast on Aug. 31, Turnlund completed a double-double with a personal-best 24 kills to go with 16 digs, as the Aztecs dropped a narrow five-set decision.
- > With that performance, the Morgan Hill, California, native secured a spot on the all-tournament team at the Homewood Suites FGCU Fort Myers Classic.
- > Not to be outdone, Turnlund has racked up 11 double-doubles over the last two seasons after logging none in her first two years on The Mesa. Among her standout matches was a 23-kill, 21-dig effort vs. Nevada in the next-to-last outing of the 2018 campaign.

RIVETING REEVES

- > Tamia Reeves ranks second in the Mountain West this week with a .396 hitting percentage, which is good for 24th in the country, and tops the squad with 102 blocks (1.02/set), including 14 solo stuffs.
- > In addition, the Carrollton, Texas, native ranks third on the team with 190 kills for the season (1.94/set) and has committed one error or less in 19 matches this year.
- > The Aztecs are also 5-1 on the season when Reeves totals at least 10 kills.
- > Reeves will almost assuredly rank among SDSU's single-season top 10 in hitting percentage following the 2019 campaign. Her current clip of .396 is second only to Jennifer Hamilton's pace of .412 set in 1995.
- > Reeves has recorded five or more block assists in three straight matches, including a season-high seven vs. Air Force. For the season, she has totaled at least five blocks on 12 occasions.

WALKER WATCH

- > Redshirt sophomore Andrea Walker has given the Aztecs a tremendous boost over the past month, posting a .319 hitting percentage in 14 matches since cracking the starting lineup vs. UNLV on Oct. 3.
- > During that stretch, the Aztec middle blocker has knocked down 101 kills on 210 attempts to go with 42 total blocks. On the return trip to UNLV on Nov. 2, she blasted a career-high 12 kills to go with five block assists, helping the Scarlet and Black snap the Rebels' nine-match losing streak.
- > Last month at Air Force, Walker set a personal-best with seven block assists.

A LOOK AT THE FUTURE

- > Filling in for an injured Hannah Turnlund against Fresno State last Tuesday, true freshman Nya Blair made the most of her opportunity, finishing with seven kills, two block assists and on service ace, helping the Aztecs sweep the Bulldogs.
- > She also came off the bench late in the final set against Air Force two night later, adding three kills and a solo block to help SDSU clinch the victory.

DOUBLE TROUBLE

- > Setter Camryn Machado has posted a team-high 13 double-doubles this season, including a 57-assist, 13-dig effort in the Aztecs' comeback win over West Virginia on Sept. 6.
- > San Diego State is 9-4 on the year when Machado records a double-double.
- > Ironically, four of those matches featured an additional double-double by Hannah Turnlund, who also had big hand in the Aztecs' aforementioned thriller over WVU when she finished with 19 kills and 10 digs.
- > Overall, Turnlund has compiled seven double-doubles this year, including 16 digs and 21 digs in SDSU's thriller over UNLV on Nov. 2, the latter of which equaled a career-high.

AZTECS SIGN AZIAH BUCKNER TO NLI

- > San Diego State opened the early signing period with a splash, announcing the addition of prep star Aziah Buckner for the 2020 season.
- > A dynamic 5-11 outside hitter, Buckner is a senior at Briarcrest Christian High School in Eads, Tennessee, where she helped her squad capture the Division 2-AA state championship for the second year in a row last month, as the Saints compiled a 79-6 record during that stretch.
- > During the 2019 campaign, Buckner totaled 366 kills (3.2/set), 232 digs (2.0/set) and 50 blocks (0.43/set) to go with a .261 hitting percentage, earning prep volleyball player of the year honors by the *Daily Memphian*.
- > She also garnered all-state, all-region and all-metro accolades during her prep career while receiving Under Armour All-America honorable mention in 2019.

REEVES TABBED MW OFFENSIVE PLAYER OF THE WEEK

- > Tamia Reeves was named MW Offensive Player of the Week on Oct. 7, after a pair of outstanding performances in the Aztecs' two home matches vs. UNLV and New Mexico.

- > With her award, Reeves garnered her first career conference weekly accolade and SDSU's second this season.
- > For the week, Reeves posted a sparkling .667 attack percentage, knocking down 19 kills with just one error in 27 attempts.
- > The SDSU middle blocker averaged 3.19 points and 2.38 kills in eight sets played, helping the Aztecs earn a split with the Rebels and Lobos. She also displayed her versatility with nine total blocks, two digs and a service ace.
- > Against UNLV on Oct. 3, Reeves launched 9 kills in 13 swings without an error, finishing with a season-best .692 clip, which also marks the SDSU's team-high for the year. She also added a season-high five blocks, including a solo stop, although the Aztecs dropped a four-set decision.
- > On Oct. 5, Reeves came back with a 10-kill effort against the Lobos, hitting at a .643 pace to help the Scarlet and Black capture a 3-1 victory. She totaled just one error on a season-high 14 attempts and also contributed four blocks and one ace.

GCU INVITATIONAL REDUX

- > San Diego State went 2-1 at the GCU Invitational, Sept. 13-14, in Phoenix, Arizona.
- > The Aztecs played their first four-set match of the season in the opener, earning a 3-1 victory over UC Riverside.
- > SDSU posted its second-best hitting percentage of the season at .328 while limiting the Highlanders to a .192 clip.
- > The Aztecs also maintained the upper hand over UCR in kills (53-46), assists (51-44), digs (53-44) and total blocks (5-0-3-0).
- > Individually, Hannah Turnlund led all players with 17 kills to go with a .310 hitting percentage, while Victoria O'Sullivan (.312) topped the double-digit plateau after launching 13 non-returnables of her own. Not

2019 AZTEC SUPERLATIVES

Individual

HITTING PERCENTAGE (min. 12 kills)

.487 (22-3-39) Victoria O'Sullivan vs. West Virginia (Sept. 6)

KILLS

24 Hannah Turnlund at Florida Gulf Coast (Aug. 31)
 5 sets 24 Hannah Turnlund at Florida Gulf Coast (Aug. 31)
 4 sets 17 Hannah Turnlund, twice, last: vs. Long Beach State (Sept. 19)
 3 sets 19 Hannah Turnlund at Fresno State (Oct. 14)

TOTAL ATTEMPTS

69 Hannah Turnlund at Florida Gulf Coast (Aug. 31)
 5 sets 69 Hannah Turnlund at Florida Gulf Coast (Aug. 31)
 4 sets 52 Hannah Turnlund at UNLV (Nov. 2)
 3 sets 36 Hannah Turnlund, twice, last: vs. Wyoming (Nov. 7)

ASSISTS

57 Camryn Machado vs. West Virginia (Sept. 6)
 5 sets 57 Camryn Machado vs. West Virginia (Sept. 6)
 4 sets 50 Camryn Machado, twice, last: at UNLV (Nov. 2)
 3 sets 41 Camryn Machado vs. Utah State (Oct. 26)

DIGS

24 Loren Teter at Florida Gulf Coast (Aug. 31)
 5 sets 24 Loren Teter at Florida Gulf Coast (Aug. 31)
 4 sets 21 Loren Teter at New Mexico (Oct. 31)
 Hannah Turnlund at UNLV (Nov. 2)
 3 sets 19 Loren Teter vs. Utah State (Oct. 26)

SERVICE ACES

5 Camryn Machado at Florida Gulf Coast (Aug. 31)

BLOCK SOLOS

2 Tamia Reeves, twice, last at UNLV (Nov. 2)
 Lexie Hamrick, three times, last: vs. San José State (Sept. 26)

BLOCK ASSISTS

7 Andrea Walker at Air Force (Oct. 19)
 Tamia Reeves vs. Air Force (Nov. 14)

TOTAL BLOCKS

8 Tamia Reeves vs. Boise State (Oct. 24)

Team

HITTING PERCENTAGE

.337 (42-9-98) vs. Akron (Aug. 30)

KILLS

68 vs. San José State (Sept. 26)
 5 sets 68 vs. San José State (Sept. 26)
 4 sets 60 vs. Eastern Washington (Sept. 14)
 3 sets 46 vs. Utah State (Oct. 24)

TOTAL ATTEMPTS

181 vs. San José State (Sept. 26)
 5 sets 181 vs. San José State (Sept. 26)
 4 sets 161 at UNLV (Nov. 2)
 vs. Eastern Washington (Sept. 14)
 3 sets 114 vs. Wyoming (Nov. 7)

ASSISTS

61 vs. San José State (Sept. 26)
 vs. West Virginia (Sept. 6)
 5 sets 61 vs. San José State (Sept. 26)
 vs. West Virginia (Sept. 6)
 4 sets 58 at New Mexico (Oct. 31)
 3 sets 42 vs. Wyoming (Nov. 7)
 vs. Utah State (Oct. 26)

DIGS

87 at Florida Gulf Coast (Aug. 31)
 5 sets 87 at Florida Gulf Coast (Aug. 31)
 4 sets 74 at UNLV (Nov. 2)
 3 sets 51 vs. Bryant (Aug. 30)

SERVICE ACES

10 vs. Utah State (Oct. 26)

TOTAL BLOCKS

14.0 vs. Boise State (Oct. 24)

to be outdone, Lexie Hamrick blasted nine put-aways, hitting .615 for the match.

- > In addition, Camryn Machado logged another double-double with 43 assists and 13 digs, tying Loren Teter in the latter statistic for match-high honors.
- > San Diego State followed with another four-set decision over Eastern Washington, surviving a pivotal third set that featured 21 ties and nine lead changes before the Aztecs prevailed by a 28-26 count. SDSU then used a timely 10-4 run late in the fourth frame to secure the victory.
- > The Aztecs received double-digit kill totals from three players, including Turnlund, who launched a match-high 16 put-aways while adding 11 digs for her fourth double-double of the year. Additionally, O'Sullivan powered down 12 kills, while Hamrick hit .333, recording 10 non-returnables while tying for match-high honors with five total blocks.
- > Machado also got into the act with her sixth double-double of the year (48 assists, 15 digs), while Teter scooped up a team-high 18 digs.
- > San Diego State could not sustain the momentum in the tournament finale, however, falling to host Grand Canyon in three sets.
- > Despite knocking down just two fewer kills than the Lopes (40-38), the Aztecs were undone by 19 attack errors, as GCU owned a decisive advantage in hitting percentage, .360 to .183, while maintaining the edge in total blocks (6.0-2.0) and digs (35-31).
- > O'Sullivan surpassed the double-digit plateau in kills for the ninth straight match, posting 11 put-aways to go with a .280 attack percentage, while Teter registered another steady performance with 15 digs.

MACHADO NAMED TO GCU INVITE ALL-TOURNAMENT TEAM

- > Setter Camryn Machado landed a spot on the all-tournament team at the GCU Invitational after another series of outstanding all-round performances.
- > In three matches, Machado averaged 10.27 assists (113 overall) and 2.73 digs (30 overall) per set to go with 11 kills, six block assists and one service ace.
- > In addition to her aforementioned assist totals, the Aztec redshirt sophomore contributed three kills and three block assists each in SDSU's victories over UC Riverside and Eastern Washington.

IN TETER WE TRUST

- > Libero Loren Teter has finished with double-digit digs in 21 of 27 matches this season and has broken that barrier in 32 out of her last 40 appearances dating back to Oct. 4, 2018.
- > The Redondo Beach, California, native enjoyed a tremendous weekend at the GCU Invite, averaging 0.68 digs more per set than her season rate entering the tournament (4.18 to 3.50).
- > She logged double-digit dig totals in all three matches in Phoenix, including 18 scoops vs. Eastern Washington, which marked her second-highest figure up to that point after a 24-dig effort at Florida Gulf Coast on Aug. 31.

SDSU/USD INVITATIONAL REWIND

- > San Diego State posted a 2-1 record in its home games at the SDSU/USD Invitational, Sept. 6-7.
- > The Aztecs opened with a dramatic victory over West Virginia after rallying from two sets down.
- > Against the Mountaineers, SDSU recorded a .117 attack percentage over the first two sets before turning the tables with a .352 clip over the final three frames.
- > Individually, outside hitter Victoria O'Sullivan hit .487 for the match, blasting a career-high 22 kills to go with three block assists.
- > The Aztecs also received double-digit put-aways from outside hitter Hannah Turnlund (19) and middle blocker Tamia Reeves (10), while libero Loren Teter tied for match-high honors with 15 digs.
- > Not to be outdone, setter Camryn Machado logged her fourth straight double-double after dishing out a personal-best 57 assists to go with 13 digs.
- > Fueled by its good fortune, San Diego State outlasted a pesky Arkansas squad in another fierce five-set battle the next day.
- > The Aztecs and Razorbacks traded punches with alternating set scores until the final frame, where Turnlund and O'Sullivan launched two kills apiece during a decisive 4-1 run that closed off the set after Arkansas overcame a 7-1 deficit to forge an 11-11 tie.
- > O'Sullivan hit .371 vs. the Razorbacks and collected a team-high 19 kills, while Turnlund surpassed the double-digit plateau once again with 15 non-returnables.
- > The two sides were nearly identical in team statistics, with San Diego State maintaining the upper hand in hitting percentage (.270 to .260), kills (61-59) and total blocks (8.0-7.0), while Arkansas held a slight edge in assists (58-55) and digs (43-42).
- > After playing consecutive five-setters less than 24 hours apart, the Aztecs were unable to sustain the momentum in their weekend finale last Saturday night, dropping a 3-0 decision to visiting Arizona.
- > SDSU was out-hit .437 to .185 for the match while trailing in kills (46-37), digs (30-23) and total blocks (5.0-2.0).
- > O'Sullivan once again led the Aztec charge against the Wildcats with 10 kills, while Reeves posted a sparkling .462 hitting percentage (8-2-13).
- > San Diego State captured the first-ever meetings vs. West Virginia and Arkansas, but slipped to 20-10 all-time vs. Arizona.

O'SULLIVAN SHINES

- > Celebrating her 19th birthday on Sept. 6, Victoria O'Sullivan rose to the occasion at the SDSU/USD Invitational, averaging a team-high 3.92 kills per set while leading the Aztecs with a .381 hitting percentage.
- > O'Sullivan registered double-digit kills in all three matches, including a career-high 22 put-aways vs. West Virginia. She also hit .487 against the Mountaineers, including a .750 clip in the decisive fifth frame when she blasted six kills with no errors on eight swings to help the Aztecs rally from an 0-2 deficit in sets.
- > O'Sullivan returned with a team-high 19 kills and a .371 attack percentage vs. Arkansas, coming through in the clutch once again with six kills in the fifth set, including two on SDSU's final four points after the Razorbacks rallied from 7-1 down to tie the score at 11-11.
- > The Aztec sophomore also finished with five block assists in the tournament, including three vs. WVU.
- > Coupled with her efforts at the GCU Invitational, O'Sullivan has logged double-digit kills in 18 of 25 matches this year after posting just three last season.

FORT MYERS CLASSIC RECAP

- > San Diego State finished with a 2-1 record at the FGCU Homewood Suites Fort Myers Classic, August 30-31, in Fort Myers, Florida.
- > The Aztecs opened with a pair of sweeps over Akron and Bryant, before falling short against host Florida Gulf Coast in a tough five-set battle.
- > SDSU was led by Hannah Turnlund (3.73 kills/set) and Camryn Machado (11.55 assists/set, 3.82 digs/set), who each earned a spot on the all-tournament team.
- > Machado logged three straight double-doubles, while Tamia Reeves hit .431 to go with 2.55 kills and 1.27 blocks per set.
- > Additionally, the Scarlet and Black was bolstered by the play of Victoria O'Sullivan (3.45 kills/set, 0.73 blocks/set) and Loren Teter (4.64 digs/set).
- > Collectively, the Aztecs out-hit the opposition .272 to .148 at the tournament while maintaining the upper hand in kills (149-123), digs (188-158) and total blocks (27.0-19.0).
- > The Scarlet and Black also registered 16 fewer errant attacks than their foes (47-63) and did not commit a ball-handling error in three matches.
- > In the finale vs. Florida Gulf Coast, Turnlund posted a career-high 24 kills and scooped up 16 digs in the finale for her second straight double-double.

2019 SITUATIONAL RECORDS

GENERAL

Overall.....	14-13
Mountain West.....	7-9
Home.....	8-5
Away.....	2-8
Neutral.....	4-0
vs. Ranked Teams.....	0-2
vs. Unranked Teams.....	14-11
Matches Following a Win.....	7-6
Matches Following a Loss.....	7-6
Longest Winning Streak.....	3
Longest Losing Streak.....	5
Current Streak.....	Won 2

BY SETS

3 Sets.....	4-8
4 Sets.....	7-2
5 Sets.....	3-3
Leading After Two.....	8-0
Trailing After Two.....	1-10
Tied After Two.....	5-3
Leading 2-1.....	9-1
Trailing 2-1.....	1-3

BY MONTH

August.....	2-1
September.....	6-4
October.....	2-6
November.....	4-2

BY DAY

Monday.....	0-1
Tuesday.....	1-0
Thursday.....	4-4
Friday.....	3-2
Saturday.....	6-6

BY KILLS

Leading in Kills.....	13-2
Trailing in Kills.....	1-11
Tied in Kills.....	0-0

BY DIGS

Leading in Digs.....	13-7
Trailing in Digs.....	1-6
Tied in Digs.....	0-0

BY BLOCKS

Leading in Blocks.....	9-5
Trailing in Blocks.....	3-5
Tied in Blocks.....	2-3

BY ATTACK PERCENTAGE

Greater Attack Percentage.....	13-4
Lower Attack Percentage.....	1-9
Equal Attack Percentage.....	0-0
Hitting above .300.....	5-0
Hitting between .200 and .300.....	6-8
Hitting between .100 and .200.....	3-5
Hitting below .100.....	0-0
Opponent Hitting above .300.....	0-8
Opponent Hitting between .200 and .300.....	5-3
Opponent Hitting between .100 and .200.....	8-2
Opponent Hitting below .100.....	1-0

BY INDIVIDUAL KILLS

3+ Double-Digit Individual Kill Totals.....	8-3
2 Double-Digit Individual Kill Totals.....	4-3
1 Double-Digit Individual Kill Totals.....	2-3

She also tallied 10 put-aways and 11 digs vs. Bryant. In addition, the Morgan Hill, California, native hit .412 against Akron, launching seven kills with no errors in 17 attempts while adding three total blocks.

- > With their victories over Akron and Bryant, SDSU started a season 2-0 for the first time since the 2013 campaign.
- > All three matches at the FGCU Classic marked the Aztecs' first-ever meetings against those respective opponents.

MACHADO COLLECTS MW HONORS

- > Thanks to her all-round performance at the FGCU Homewood Suites Fort Myers Classic, Camryn Machado was named Mountain West Defensive Player of the Week on Sept. 2.
- > Against Florida Gulf Coast, the SDSU redshirt sophomore established career highs with 55 assists and 20 digs to go with a personal-best five service aces.
- > Earlier, the Cardiff-by-the-Sea, California, native opened the year with 35 assists and 12 digs vs. Akron, before notching 37 helpers and 10 digs against Bryant.

WELCOME BACK

- > With the graduation of four-time all-Mountain West honoree Deja Harris, senior Hannah Turnlund is the lone San Diego State veteran to have started all 31 matches during the 2018 campaign.
- > The Aztec outside hitter finished second on the squad last year with 2.78 kills per set (339 overall), blasting double-digit put-aways in 19 matches.
- > In the penultimate contest of the regular season vs. Nevada, Turnlund became the second SDSU player in the Mountain West era to post a 20-20 performance with a career-high 23 kills and 23 digs, fueling a 3-1 win for the Scarlet and Black.
- > In addition, the Aztecs welcome back senior Tamia Reeves and junior Erin Gillcrist, who ranked second and third on the squad last year with 72 and 57 total blocks in the middle, respectively.
- > Reeves owns SDSU's top returning hitting percentage from last year after posting a .273 clip, while Gillcrist (197) and sophomore outside hitter Victoria O'Sullivan (109) each surpassed the 100-kill plateau.
- > Redshirt juniors Loren Teter (2.65 digs/set) and Sam McGrath (2.43 digs/set) provided much of the support in the back row during the 2018 campaign.
- > Teter ranked eighth in Mountain West play last year with 3.23 digs per set, logging double-digit scoops in 14 matches, including five straight to end the season.
- > In a five-set victory at Utah State, Teter came through with a career-high 22 digs, matching McGrath's personal-best total accomplished on two occasions during the season vs. Idaho and at Air Force.
- > Redshirt sophomore Camryn Machado is expected to garner increased playing time at setter this season after appearing in only eight matches last year due to injury.
- > A local product from La Costa Canyon High School, Machado originally signed with Utah following her prep career, where she averaged 3.05 assists per set off the bench as a freshman in 2017, as the Utes advanced to the second round of the NCAA Tournament.

ADDING DEPTH

- > San Diego State landed a pair of transfers during spring practice last year in setter Ashley Vanderpan and middle blocker Abby Pugh, who join true freshmen Nya Blair, Alexis Durand, Elise Park and Gabriella Spaethling.
- > A native of Elk Grove, California, Vanderpan sat out the 2018 campaign as a redshirt at Syracuse and will retain freshman status this fall. She twice captured her squad's Most Valuable Player award at Elk Grove High School, garnering first-team all-conference accolades on two occasions.
- > Pugh, meanwhile, will have junior eligibility this fall after spending two years at Wichita State. A native of Brenham, Texas, Pugh averaged 1.46 kills and hit .289 in over 120 career sets for the Shockers. In 2018, she started 22 of 30 matches, averaging 1.53 kills per set (150 overall) while hitting at a .282 clip and totaling 58 blocks.

STAFF ADDITIONS

- > The Aztecs have added volunteer assistant coach Isabel Miller and technical coordinator Yasser Aguila Todd to their 2019 staff.
- > A native of Phoenix, Arizona, Miller played at Boise State (2013-14) and San Diego Mesa College (2015-16) before completing her collegiate career at Arizona State in 2017.
- > Miller was a member of the inaugural sand volleyball team at Boise State in 2014 and recorded the first pairs match victory in program history, along with teammate Maddy O'Donnell.
- > Miller graduated from Arcadia High School in Phoenix, where she was a three-time all-state selection in volleyball. As a prep, Miller also garnered first-team all-conference honors all four years and was named league MVP during her sophomore season.
- > Aguila Todd, meanwhile, is the co-founder of Spartan Volleyball Academy in Wildomar, California, and has served as a volunteer assistant coach at Palomar College and the University of Saint Katherine in San Marcos, California.
- > Aguila Todd also spent time as a volunteer assistant at Santa Rosa Academy in Menifee, California, and coached seven teams within the Viper Volleyball Club in Temecula.

PRESEASON PROGNOSTICATIONS

- > San Diego State was picked to finish eighth this year in the Mountain West preseason coaches poll released Aug. 14.
- > In the 20-year history of the Mountain West, SDSU has finished first (2012), second (2002, 2011), fourth (2000, 2001, 2003, 2013, 2017), fifth (2005, 2015), sixth (1999, 2004, 2006, 2009, 2010, 2014, 2016), seventh (2008) and eighth (2007, 2018) in the final league standings.

2019 Mountain West Preseason Poll

Rk.	Team (1st-place votes)	Pts.
1.	Colorado State (10)	100
2.	Wyoming	79
3.	UNLV	78
4.	Boise State	73
5.	San José State	66
6.	Fresno State	56
7.	New Mexico	50
8.	San Diego State	41
9.	Air Force	28
10.	Utah State	19
11.	Nevada	15

AZTEC VOLLEYBALL EARNS PUBLIC RECOGNITION AWARD FROM NCAA

- > Last spring, the San Diego State volleyball program was publicly recognized by the NCAA for outstanding academic achievements, along with the Aztec women's tennis and cross country teams.
- > The recognition came on the heels of the most recent multiyear Academic Progress Rates (APR) in which all three programs were among the top 10 percent of their respective sports nationally.
- > With these squads earning NCAA public recognition last season, San Diego State has now received such distinction a total of 18 times in school history, matching its record of three teams set during the 2011-12 academic year.
- > The SDSU volleyball program received public recognition for the third straight season and fourth time overall, while the Aztec women's tennis team garnered the accolade for the second year in a row and fifth time in the last six seasons. In addition, the San Diego State cross country squad merited public recognition for the sixth time in school history.

2019 AZTEC DOUBLE-DOUBLES

CAMRYN MACHADO (13)

Aug. 30	vs. Akron	35 assists, 12 digs
Aug. 30	vs. Bryant	37 assists, 10 digs
Aug. 31	at Florida Gulf Coast	55 assists, 20 digs
Sept. 6	West Virginia	57 assists, 13 digs
Sept. 13	vs. UC Riverside	43 assists, 13 digs
Sept. 14	vs. Eastern Washington	48 assists, 15 digs
Sept. 19	Long Beach State	50 assists, 10 digs
Sept. 26	San José State	56 assists, 16 digs
Sept. 28	Nevada	44 assists, 11 digs
Sept. 28	at Air Force	41 assists, 10 digs
Oct. 24	Boise State	51 assists, 14 digs
Oct. 31	at New Mexico	49 assists, 14 digs
Nov. 14	Air Force	47 assists, 10 digs

HANNAH TURNLUND (7)

Aug. 30	vs. Bryant	10 kills, 11 digs
Aug. 31	at Florida Gulf Coast	24 kills, 16 digs
Sept. 6	West Virginia	19 kills, 10 digs
Sept. 14	vs. Eastern Washington	16 kills, 11 digs
Oct. 31	at New Mexico	13 kills, 11 digs
Nov. 2	at UNLV	16 kills, 21 digs
Nov. 7	Wyoming	10 kills, 12 digs

2019 MATCH-BY-MATCH LEADERS

Date	Opponent	Kills	Hitting Pct.*	Assists	Aces	Digs	Blocks
A.30	vs. Akron	O'Sullivan - 10	Turnlund (.412)	Machado - 35	Lenn - 2	Teter - 15	Reeves/Hamrick - 4
A.30	vs. Bryant	O'Sullivan - 10 Turnlund	Hamrick (.545)	Machado - 37	McGrath - 1	Teter - 12	Reeves - 3 Hamrick O'Sullivan
A.31	at FGCU	Turnlund - 24	Reeves (.421)	Machado - 55	Machado - 5	Teter - 24	Reeves - 7
S.6	West Virginia	O'Sullivan - 22	O'Sullivan (.487)	Machado - 57	Machado - 1 Reeves	Teter - 15	Reeves - 5 Hamrick
S.7	Arkansas	O'Sullivan - 19	Reeves (.636)	Machado - 46	None	Teter - 11	Hamrick - 4
S.7	Arizona	O'Sullivan - 10	Reeves (.462)	Machado - 32	Machado - 1 Reeves	Teter - 7	Hamrick - 2
S.13	vs. UC Riverside	Turnlund - 17	Hamrick (.615)	Machado - 43	Hamrick - 1 Machado McGrath	Teter - 13 Machado	Hamrick - 3 Machado
S.14	vs. Eastern Wash.	Turnlund - 16	Lenn (.385)	Machado - 48	Five with 1	Teter - 18	Hamrick - 5
S.14	at Grand Canyon	O'Sullivan - 11	O'Sullivan (.280)	Machado - 22	None	Teter - 15	Walker - 2
S.19	Long Beach State	Turnlund - 17	Gillcrist (.500) Reeves	Machado - 50	Lenn - 2	Teter - 16	Hamrick - 6 Machado
S.20	at San Diego	Turnlund - 8 O'Sullivan	Turnlund (.150)	Machado - 21	None	Machado - 9	O'Sullivan - 3
S.26	San José State	O'Sullivan - 20	Hamrick (.348)	Machado - 56	None	Teter - 22	Hamrick - 6
S.28	at Nevada	O'Sullivan - 14 Turnlund	Hamrick (.286)	Machado - 44	Lee - 2	Machado - 11	Reeves - 7
0.3	UNLV	Turnlund - 15	Reeves (.692)	Machado - 31	McGrath - 2	Teter - 16	Reeves - 5
0.5	New Mexico	Turnlund - 13	Reeves (.643)	Machado - 35	Turnlund - 2	Teter - 13	Walker - 5
0.10	at Wyoming	Gillcrist - 9	Walker (.636)	Machado - 25	None	Machado - 9	Reeves - 5
0.12	at No. 15 Colorado State	Turnlund - 9	Walker (.556)	Machado - 23	Lee - 2	Teter - 11	Turnlund - 2
0.14	at Fresno State	Turnlund - 19	Turnlund (.361)	Machado - 22	Machado - 1 McGrath	Teter - 12	Reeves - 2
0.19	at Air Force	Turnlund - 11	Gillcrist (.476)	Machado - 41	Machado - 1	Teter - 20	Walker - 7
0.24	Boise State	Turnlund - 21	Reeves (.357)	Machado - 51	Reeves - 1 Teter	Machado - 14	Reeves - 8
0.26	Utah State	Turnlund - 14	Reeves (.714)	Machado - 41	Machado - 3 Teter	Teter - 19	Reeves - 2 Walker
0.31	at New Mexico	O'Sullivan - 16	Reeves (.524)	Machado - 49	Lee - 3	Teter - 21	Reeves - 5
N.2	at UNLV	Turnlund - 16	Walker (.227)	Machado - 50	Turnlund - 1	Teter - 19	Reeves - 5 Walker
N.7	Wyoming	Gillcrist - 11	Walker (.357)	Machado - 36	Machado - 1 Reeves	Turnlund - 12	Walker - 4
N.9	No. 13 Colorado State	Walker - 8	Walker (.368)	Machado - 30	Turnlund - 1 Lee	Lee - 7	Reeves - 5
N.12	Fresno State	O'Sullivan - 15	O'Sullivan (.423)	Machado - 31	Lee - 2	Lee - 7 Machado McGrath Teter	Reeves - 5
N.14	Air Force	Turnlund - 13	Gillcrist (.318)	Machado - 47	Lee - 1 Machado Reeves	Teter - 13	Reeves - 7

* - min. 7 kills



Deitre COLLINS-PARKER

Head Coach - 11th season

Deitre Collins-Parker, a two-time national collegiate player of the year and AVCA Hall of Fame member, was named the head volleyball coach at San Diego State on Jan. 30, 2009. She became just the fourth head coach since the Aztecs began collegiate play in 1976, replacing Mark Warner, who retired at the end of the 2008 season after 13 years at the helm of the women's program.

Following an injury-plagued start to the 2018 campaign, Collins-Parker's squad regrouped, posting a 9-7 record over the final 16 matches of the season, highlighted by its first victory over crosstown foe San Diego since 2012 and its first road win at Boise State since 2013. Individually, Deja Harris garnered all-Mountain West accolades for the fourth year in a row and completed her illustrious Aztec career ranked eighth on the school's all-time charts with a .322 hitting percentage.

In 2017, Collins-Parker directed SDSU to its second consecutive winning season and a fourth-place Mountain West finish. A quartet of Aztecs were named all-MW (Deja Harris, Devyn Pritchard, Baylee Little, Alexis Cage) -- tied for the program's largest number of honorees since the team joined the league in 2000.

During the summer of 2014 she led a Mountain West all-star team on a tour of Europe that concluded with a bronze medal third-place finish at the 2014 European Global Challenge in Pula, Croatia.

In 2012 she led her Aztec squad to a 23-8 mark and a 13-3 ledger in the Mountain West as the Aztecs claimed their first-ever Mountain West title. It was SDSU's best conference record and league finish since the 1996 season and top overall record since 1995. In addition, she produced a pair of All-America honorees (Andrea Hannasch and Johnna Fouch) along with a total of three all-conference selections (Raegan Shelton) and the conference Newcomer of the Year (Michelle Waber).

Collins-Parker arrived at San Diego State after five seasons as the head coach at Cornell, where she led the Big Red to three Ivy League titles and two NCAA tournament appearances. Under her tutelage, the Big Red had seven players named first-team All-Ivy, including two-time Ivy League Player of the Year and honorable mention All-American, Elizabeth Bishop (2007).

Prior to taking over at Cornell in 2004, Collins-Parker spent the previous eight seasons as head coach at UNLV, earning Western Athletic Conference Coach of the Year in 1998 after taking a dormant volleyball program and leading the Lady Rebels to a 23-8 record and a WAC tournament semifinal appearance. Before her stint at UNLV, Collins-Parker served as an assistant coach at South Alabama, Northern Arizona and Houston for one year each. She also has plenty of international coaching experience as well. She served as head coach of the 1998 U.S. junior national team, directing her squad to a gold medal in the national qualifier. She served in the same capacity during the summer of 2000 (silver medal) and 2001 (bronze medal).

A former member of the U.S. national team and a three-time AVCA All-American at the University of Hawai'i, Collins-Parker was the starting middle blocker for the 1988 Olympic Team in Seoul, South Korea, and was an alternate for the 1992 team in Barcelona, Spain. She played in over 130 international matches and earned bronze medals at the 1986 Goodwill Games and the 1987 Pan-Am Games.

As a collegian, Collins-Parker was a two-time Broderick Award honoree as the national player of the year (1983, 1984) after leading the Rainbow Wahine to consecutive national titles and a 110-5 record in her final three seasons. Collins capped off her career by becoming the first volleyball player to be awarded the Broderick Cup recipient, given to the nation's best collegiate athlete in all sports. She was twice named to the NCAA all-tournament team and still holds the record for solo blocks in one NCAA tournament (15 in 1982). She was one of six players named to the NCAA Division I Women's Volleyball 25th Anniversary Team in October 2005. Collins-Parker went on to compete at the national level and played in the 1988 Seoul Olympic Games and was also an alternate for the 1992 games in Barcelona, Spain. She played in over 130 international matches and earned bronze medals at the 1986 Goodwill Games and 1987

Pan-Am Games. She played professionally in the Italian League (1988-89) and the French League (1989-91), capturing the French League Championship twice and the European Cup of Champions in 1990.

Year	School	W	L	Pct.
1996	UNLV	5	22	.185
1997	UNLV	9	18	.333
1998	UNLV	23	8	.742
1999	UNLV	12	14	.462
2000	UNLV	6	21	.222
2001	UNLV	10	16	.385
2002	UNLV	11	20	.355
2003	UNLV	13	17	.433
2004	Cornell	17	9	.654
2005	Cornell	19	6	.760
2006	Cornell	18	9	.667
2007	Cornell	9	16	.360
2008	Cornell	10	15	.400
2009	SDSU	14	15	.483
2010	SDSU	16	16	.500
2011	SDSU	18	10	.642
2012	SDSU	23	8	.742
2013	SDSU	16	14	.533
2014	SDSU	14	15	.483
2015	SDSU	12	19	.387
2016	SDSU	17	15	.531
2017	SDSU	16	15	.516
2018	SDSU	10	21	.323
2019	SDSU	14	13	.519
UNLV - Eight Years		89	136	.396
Cornell - Five Years		73	55	.570
SDSU - 11th Year		170	161	.514
Overall - 24th Year		332	352	.485

Collins-Parker received the NCAA Silver Anniversary Award during the 2009 NCAA Convention in Washington, D.C. The award honors former student-athletes who successfully completed collegiate careers in various sports and have excelled in their chosen professions on their 25th anniversary of completing their athletic eligibility. Collins-Parker was inducted into the AVCA Hall of Fame in the fall of 2008. She currently serves as a member of the AVCA Board of Directors and the chairperson on the AVCA Minority Coaches Committee. She currently has membership with the AVCA, Coaches Accreditation Program, Kaepa Gold Medal Clinics, Black Coaches Association, and Fellowship of Christian Athletes. A 1995 graduate of Hawai'i with a bachelor of arts in broadcast communications, Collins-Parker is a member of the USA Volleyball Coaching Accreditation Program and is a CAP level III accredited coach.

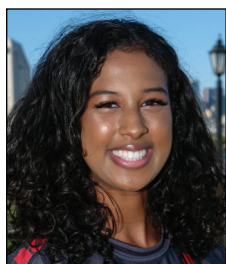
Collins-Parker is married to Dale Parker, a former assistant coach with the Cornell women's basketball program for three seasons who served as an assistant at nearby San Diego Christian College during the 2012-13 season.



2019 AZTEC PHOTO ROSTER



Nya BLAIR
OH | 5-11 | Fr. **1**



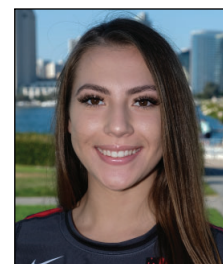
Andrea WALKER
MB | 6-0 | RS-So. **3**



Lauren LEE
DS/L | 5-0 | Jr. **4**



Serena HODSON
MB | 6-2 | So. **5**



Alexis DURAND
DS/L | 5-7 | Fr. **6**



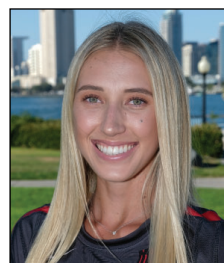
Hannah TURNLUND
OH | 5-11 | Sr. **7**



Loren TETER
DS | 5-7 | RS-Jr. **8**



Gabi PEOPLES
S | 5-10 | Jr. **9**



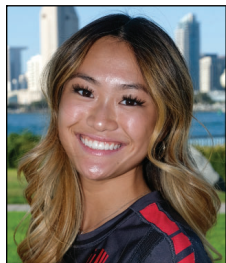
Camryn MACHADO
S | 6-1 | RS-So. **10**



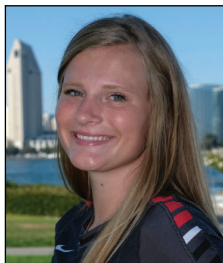
Alexis RATLIFF
MB | 6-6 | RS-Fr. **11**



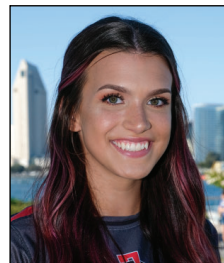
Erin GILLCRIST
MB | 6-1 | Jr. **12**



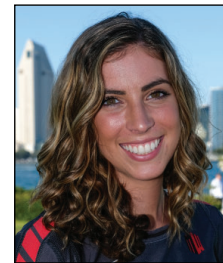
Elise PARK
DS/L | 5-7 | Fr. **13**



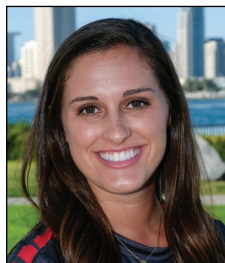
Gabriella SPAETHLING
RS | 6-1 | Fr. **14**



Abby PUGH
MB | 6-3 | RS-Jr. **15**



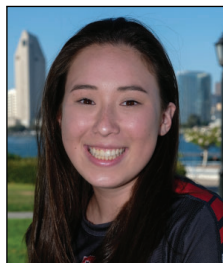
Ashley VANDERPAN
S | 6-1 | RS-Fr. **16**



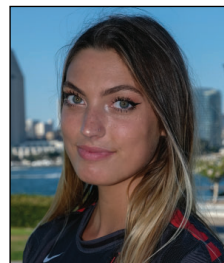
Sam McGRATH
DS/L | 5-4 | RS-Jr. **17**



Tamia REEVES
MB | 6-1 | Sr. **18**



Maddie LENN
OH | 5-10 | So. **19**



Lexie HAMRICK
OH | 6-3 | RS-Jr. **20**



Victoria O'SULLIVAN
OH | 6-0 | So. **21**



Dentre COLLINS-PARKER
Head Coach



Melanie GREENE
Assistant Coach/
Recruiting Coordinator



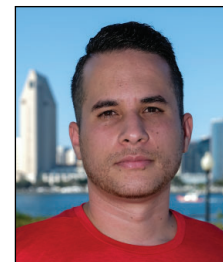
Dr. Ken MURCZEK
Assistant Coach



Kara BARKDOLL
Volleyball Operations
Assistant



Isabel MILLER
Volunteer Assistant
Coach



Yasser AGUILA TODD
Technical Coordinator

2019 San Diego State Volleyball
San Diego State Combined Team Statistics (as of Nov 14, 2019)
All matches

Overall record: 14-13 Conf: 7-9 Home: 8-5 Away: 2-8 Neutral: 4-0

#	Player	sp	Attack				pct	Set		Serve			Dig			Blocking					points	
			k	k/s	e	ta		a	a/s	sa	se	sa/s	re	dig	dig/s	bs	ba	total	blk/s	be		bhe
7	TURNLUND, Hannah	99	345	3.48	172	972	.178	11	0.11	7	23	0.07	25	203	2.05	3	24	27	0.27	5	0	367.0
21	O'SULLIVAN, Victoria	102	318	3.12	132	792	.235	2	0.02	0	0	0.00	6	48	0.47	13	38	51	0.50	11	0	350.0
18	REEVES, Tamia	98	190	1.94	38	384	.396	2	0.02	11	15	0.11	1	54	0.55	14	86	100	1.02	3	1	258.0
12	GILLCRIST, Erin	68	127	1.87	62	331	.196	3	0.04	0	1	0.00	2	19	0.28	0	49	49	0.72	9	0	151.5
3	WALKER, Andrea	61	111	1.82	39	236	.305	1	0.02	0	0	0.00	0	6	0.10	5	47	52	0.85	6	0	139.5
20	HAMRICK, Lexie	52	105	2.02	39	218	.303	1	0.02	2	5	0.04	0	10	0.19	10	42	52	1.00	15	1	138.0
19	LENN, Maddie	76	49	0.64	26	138	.167	15	0.20	5	33	0.07	19	93	1.22	0	15	15	0.20	1	2	61.5
10	MACHADO, Camryn	101	43	0.43	19	120	.200	1058	10.48	16	14	0.16	1	261	2.58	2	33	35	0.35	13	5	77.5
1	Blair, Nya	6	11	1.83	5	31	.194	1	0.17	1	2	0.17	0	5	0.83	1	3	4	0.67	0	0	14.5
11	RATLIFF, Alexis	13	9	0.69	5	27	.148	0	0.00	0	3	0.00	0	2	0.15	1	2	3	0.23	0	0	11.0
15	Pugh, Abby	4	8	2.00	4	19	.211	0	0.00	1	0	0.25	0	2	0.50	0	3	3	0.75	0	0	10.5
8	TETER, Loren	102	2	0.02	0	3	.667	71	0.70	9	26	0.09	27	364	3.57	0	0	0	0.00	0	0	11.0
17	McGRATH, Sam	92	1	0.01	1	5	.000	23	0.25	12	33	0.13	34	149	1.62	0	0	0	0.00	0	0	13.0
9	Peoples, Gabi	11	0	0.00	0	0	.000	51	4.64	1	1	0.09	0	14	1.27	0	0	0	0.00	0	0	1.0
6	DURAND, Alexis	3	0	0.00	0	0	.000	0	0.00	0	0	0.00	3	4	1.33	0	0	0	0.00	0	0	0.0
4	LEE, Lauren	83	0	0.00	1	1	-1.000	12	0.14	11	12	0.13	10	122	1.47	0	0	0	0.00	0	0	11.0
SAN DIEGO STATE		102	1319	12.93	543	3277	.237	1251	12.26	76	168	0.75	148	1356	13.29	49	342	220.0	2.16	63	9	1615.0
Opponents		102	1326	13.00	537	3427	.230	1228	12.04	148	253	1.45	76	1183	11.60	41	327	204.5	2.00	31	15	1678.5

Team Statistics	SDSU	OPP	Date	Opponent	Score	Score by set	Att.	
ATTACK								
Kills	1319	1326	08/30/19	vs Akron	w 3-0	25-20,25-19,25-18	0	
Errors	543	537	08/30/19	vs Bryant	w 3-0	26-22,25-16,25-13	0	
Total Attacks	3277	3427	08/31/19	at FGCU	L 2-3	25-22,23-25,23-25,25-22,11-15	702	
Attack Pct	.237	.230	Sep 06	WEST VIRGINIA	w 3-2	21-25,16-25,25-22,25-16,15-13	386	
Kills/Set	12.9	13.0	Sep 07	ARKANSAS	w 3-2	26-24,16-25,25-19,17-25,15-12	111	
SET								
Assists	1251	1228	Sep 07	ARIZONA	L 0-3	10-25,22-25,19-25	396	
Assists/Set	12.3	12.0	09/13/19	vs UC Riverside	w 3-1	25-13,25-20,19-25,25-19	128	
SERVE								
Aces	76	148	09/14/19	vs Eastern Wash.	w 3-1	25-16,22-25,28-26,25-21	107	
Errors	168	253	09/14/19	at Grand Canyon	L 0-3	19-25,19-25,19-25	84	
Attempts	2238	2222	Sep 19	LONG BEACH STATE	w 3-1	25-12,25-20,21-25,25-21	232	
Serve Pct	.925	.886	Sep 20	at San Diego	L 0-3	13-25,15-25,20-25	623	
Aces/Set	0.7	1.5	*Sep 26	SAN JOSE STATE	w 3-2	25-14,25-23,21-25,26-28,16-14	264	
SERVE RECEPTIONS								
Errors	148	76	*09/28/19	at Nevada	L 1-3	22-25,19-25,25-20,17-25	281	
Errors/Set	1.5	0.7	*Oct 03	UNLV	L 1-3	21-25,24-26,25-20,23-25	192	
Attempts	1955	2056	*Oct 05	NEW MEXICO	w 3-1	25-18,18-25,25-18,25-21	356	
Reception Pct	.924	.963	*Oct 10	at Wyoming	L 0-3	19-25,13-25,22-25	810	
DEFENSE								
Digs	1356	1183	*Oct 12	at #15 Colorado St.	L 0-3	19-25,15-25,16-25	2677	
Digs/Set	13.3	11.6	*Oct 14	at Fresno State	L 0-3	24-26,22-25,19-25	1327	
BLOCKING								
Block Solo	49	41	*10/19/19	at Air Force	L 2-3	13-25,25-15,25-16,22-25,11-15	322	
Block Assist	342	327	*Oct 24	BOISE STATE	L 2-3	18-25,25-16,22-25,25-21,13-15	242	
Total Blocks	220.0	204.5	*Oct 26	UTAH STATE	w 3-0	25-19,25-20,25-22	254	
Blocks/Set	2.2	2.0	*10/31/19	at New Mexico	w 3-1	25-20,15-25,25-21,25-14	276	
Block Errors	63	31	*11-02-19	at UNLV	w 3-1	28-26,27-25,20-25,27-25	636	
Ball handling errors	9	15	*11-07-19	WYOMING	L 0-3	22-25,23-25,24-26	326	
ATTENDANCE								
Total	3821	7738	*11-09-19	#13 COLORADO ST.	L 0-3	21-25,23-25,23-25	618	
Dates/Avg Per Date	13/294	10/774	*Nov 12	FRESNO STATE	w 3-0	25-15,27-25,25-13	142	
Neutral site #/Avg	4/59	-	*Nov 14	AIR FORCE	w 3-1	25-18,23-25,25-23,25-22	302	
Current win streak	2	-	Record in 3-set matches:4-8 • Record in 4-set matches:7-2 • Record in 5-set matches:3-3					
Home win streak	2	-						

2019 San Diego State Volleyball
San Diego State Combined Team Statistics (as of Nov 14, 2019)
Conference matches

Overall record: 7-9 Conf: 7-9 Home: 5-4 Away: 2-5 Neutral: 0-0

#	Player	sp	Attack				Set		Serve			Dig			Blocking					points		
			k	k/s	e	ta	pct	a	a/s	sa	se	sa/s	re	dig	dig/s	bs	ba	total	blk/s		be	bhe
7	TURNLUND, Hannah	57	201	3.53	106	557	.171	6	0.11	6	10	0.11	19	110	1.93	2	17	19	0.33	2	0	217.5
21	O'SULLIVAN, Victoria	60	171	2.85	82	454	.196	2	0.03	0	0	0.00	4	35	0.58	10	20	30	0.50	7	0	191.0
18	REEVES, Tamia	59	114	1.93	23	229	.397	1	0.02	6	8	0.10	1	31	0.53	10	62	72	1.22	2	1	161.0
12	GILLCRIST, Erin	58	112	1.93	55	293	.195	3	0.05	0	1	0.00	2	12	0.21	0	48	48	0.83	8	0	136.0
3	Walker, Andrea	52	102	1.96	34	211	.322	1	0.02	0	0	0.00	0	5	0.10	5	42	47	0.90	5	0	128.0
20	HAMRICK, Lexie	14	29	2.07	10	60	.317	0	0.00	0	2	0.00	0	4	0.29	2	13	15	1.07	2	0	37.5
10	MACHADO, Camryn	59	22	0.37	13	66	.136	612	10.37	8	5	0.14	1	146	2.47	1	16	17	0.29	7	2	39.0
1	BLAIR, Nya	4	10	2.50	2	23	.348	1	0.25	1	2	0.25	0	5	1.25	1	2	3	0.75	0	0	13.0
15	PUGH, Abby	3	5	1.67	3	11	.182	0	0.00	0	0	0.00	0	0	0.00	0	3	3	1.00	0	0	6.5
19	LENN, Maddie	36	4	0.11	5	23	-.043	5	0.14	0	12	0.00	5	45	1.25	0	3	3	0.08	1	2	5.5
8	TETER, Loren	60	2	0.03	0	2	1.000	44	0.73	8	12	0.13	21	212	3.53	0	0	0	0.00	0	0	10.0
17	McGRATH, Sam	54	1	0.02	1	3	.000	12	0.22	8	16	0.15	19	93	1.72	0	0	0	0.00	0	0	9.0
6	Durand, Alexis	2	0	0.00	0	0	.000	0	0.00	0	0	0.00	3	4	2.00	0	0	0	0.00	0	0	0.0
4	LEE, Lauren	53	0	0.00	1	1	-1.000	12	0.23	11	10	0.21	10	105	1.98	0	0	0	0.00	0	0	11.0
9	PEOPLES, Gabi	9	0	0.00	0	0	.000	41	4.56	1	1	0.11	0	13	1.44	0	0	0	0.00	0	0	1.0
SAN DIEGO STATE		60	773	12.88	335	1933	.227	740	12.33	49	79	0.82	97	820	13.67	31	226	144.0	2.40	34	5	966.0
Opponents		60	808	13.47	325	2061	.234	740	12.33	97	155	1.62	49	691	11.52	25	213	131.5	2.19	18	9	1036.5

Team Statistics	SDSU	OPP
ATTACK		
Kills	773	808
Errors	335	325
Total Attacks	1933	2061
Attack Pct	.227	.234
Kills/Set	12.9	13.5
SET		
Assists	740	740
Assists/Set	12.3	12.3
SERVE		
Aces	49	97
Errors	79	155
Attempts	1334	1331
Serve Pct	.941	.884
Aces/Set	0.8	1.6
SERVE RECEPTIONS		
Errors	97	49
Errors/Set	1.6	0.8
Attempts	1171	1252
Reception Pct	.917	.961
DEFENSE		
Digs	820	691
Digs/Set	13.7	11.5
BLOCKING		
Block Solo	31	25
Block Assist	226	213
Total Blocks	144.0	131.5
Blocks/Set	2.4	2.2
Block Errors	34	18
Ball handling errors	5	9
ATTENDANCE		
Total	2696	6329
Dates/Avg Per Date	9/300	7/904
Neutral site #/Avg	0/0	
Current win streak	2	-
Home win streak	2	-

Date	Opponent	Score	Score by set	Att.
*Sep 26	SAN JOSE STATE	w 3-2	25-14,25-23,21-25,26-28,16-14	264
*09/28/19	at Nevada	L 1-3	22-25,19-25,25-20,17-25	281
*Oct 03	UNLV	L 1-3	21-25,24-26,25-20,23-25	192
*Oct 05	NEW MEXICO	w 3-1	25-18,18-25,25-18,25-21	356
*Oct 10	at Wyoming	L 0-3	19-25,13-25,22-25	810
*Oct 12	at #15 Colorado St.	L 0-3	19-25,15-25,16-25	2677
*Oct 14	at Fresno State	L 0-3	24-26,22-25,19-25	1327
*10/19/19	at Air Force	L 2-3	13-25,25-15,25-16,22-25,11-15	322
*Oct 24	BOISE STATE	L 2-3	18-25,25-16,22-25,25-21,13-15	242
*Oct 26	UTAH STATE	w 3-0	25-19,25-20,25-22	254
*10/31/19	at New Mexico	w 3-1	25-20,15-25,25-21,25-14	276
*11-02-19	at UNLV	w 3-1	28-26,27-25,20-25,27-25	636
*11-07-19	WYOMING	L 0-3	22-25,23-25,24-26	326
*11-09-19	#13 COLORADO ST.	L 0-3	21-25,23-25,23-25	618
*Nov 12	FRESNO STATE	w 3-0	25-15,27-25,25-13	142
*Nov 14	AIR FORCE	w 3-1	25-18,23-25,25-23,25-22	302

Record in 3-set matches:2-5 • Record in 4-set matches:4-2 • Record in 5-set matches:1-2