



SAN DIEGO STATE AZTECS

2019 Volleyball Weekly Notes

Jim Solien (Primary Contact)
 Assistant Media Relations Director
Office Phone Number: (619) 594-2576
E-Mail Address: jsolien@sdsu.edu
News Release Date: Nov. 11, 2019

SDSU Official Athletics Website: goaztecs.com
SDSU Official Athletics Twitter: @GoAztecs
SDSU Official Athletics Instagram: @GoAztecs
SDSU Official Athletics Facebook: facebook.com/goaztecs
SDSU Official Athletics YouTube: youtube.com/goaztecs.com

2019 AZTEC VOLLEYBALL SCHEDULE

Day/Date	Opponent	Time/Result
Friday, Aug. 30	vs. Akron^	W, 3-0
Friday, Aug. 30	vs. Bryant^	W, 3-0
Saturday, Aug. 31	at Florida Gulf Coast^	L, 2-3
Friday, Sept. 6	West Virginia+	W, 3-2
Saturday, Sept. 7	Arkansas+	W, 3-2
Saturday, Sept. 7	Arizona+	L, 0-3
Friday, Sept. 13	vs. UC Riverside~	W, 3-1
Saturday, Sept. 14	vs. Eastern Washington~	W, 3-1
Saturday, Sept. 14	at Grand Canyon~	L, 0-3
Thursday, Sept. 19	Long Beach State	W, 3-1
Friday, Sept. 20	at San Diego	L, 0-3
Thursday, Sept. 26	San José State*	W, 3-2
Saturday, Sept. 28	at Nevada*	L, 1-3
Thursday, Oct. 3	UNLV*	L, 1-3
Saturday, Oct. 5	New Mexico*	W, 3-1
Thursday, Oct. 10	at Wyoming*	L, 0-3
Saturday, Oct. 12	at No. 15 Colorado State*	L, 0-3
Monday, Oct. 14	at Fresno State*	L, 0-3
Saturday, Oct. 19	at Air Force*	L, 2-3
Thursday, Oct. 24	Boise State*	L, 2-3
Saturday, Oct. 26	Utah State*	W, 3-0
Thursday, Oct. 31	at New Mexico*	W, 3-1
Saturday, Nov. 2	at UNLV*	W, 3-1
Thursday, Nov. 7	Wyoming*	L, 0-3
Saturday Nov. 9	No. 13 Colorado State*	L, 0-3
Tuesday, Nov. 12	Fresno State*	6 p.m. PT
Thursday, Nov. 14	Air Force*	6 p.m. PT
Thursday, Nov. 21	at Utah State*	7 p.m. MT
Saturday, Nov. 23	at Boise State*	2 p.m. MT

^ - FGCU Homewood Suites Fort Myers Classic (Fort Myers, Fla.)
 + - SDSU/USD Invitational (San Diego, Calif.)
 # - GCU Invitational (Phoenix, Ariz.)
 * - Mountain West match

Socially

Twitter: @SDSUVolleyball
 Instagram: @SDSUVolleyball

Match Week Preview

Fresno State (12-14, 5-9 MW) at San Diego State (12-13, 5-9 MW)
 Tuesday, Nov. 12 | 6 p.m. PT | Aztec Court | San Diego, Calif.
 Live Stats | MW Network
 Series Record: SDSU leads 31-14



Air Force (8-18, 5-9 MW) at San Diego State (12-13, 5-9 MW)
 Thursday, Nov. 14 | 6 p.m. PT | Aztec Court | San Diego, Calif.
 Live Stats | MW Network
 Series: SDSU leads 37-8



AZTECS TO WRAP UP 2019 HOME SLATE VS. FRESNO STATE, AIR FORCE

- > San Diego State closes out the home portion of its 2019 schedule this week when it battles Fresno State and Air Force inside Aztec Court at Peterson Gym.
- > SDSU will face the Bulldogs on Tuesday, Nov. 12, before squaring off against the Falcons two nights later on Thursday, Nov. 14. Both contests are slated for a 6 p.m. PT start and will feature streaming video via the Mountain West Network.
- > The Aztecs will hold a Taco Tuesday promotion in conjunction with their match vs. Fresno State, with the first 150 fans in attendance receiving a free taco.
- > In addition, SDSU will conduct its Senior Night festivities prior to the Air Force clash, celebrating the accomplishments of Hannah Turnlund, Tamia Reeves, Loren Teter and Sam McGrath.
- > The Aztecs opened their homestand last week against the top two teams in the Mountain West, falling in three close sets to both second-place Wyoming (22-25, 23-25, 24-26) and 13th-ranked Colorado State (21-25, 23-25, 23-25).
- > Fresno State and Air Force will be traveling to "America's Finest City" determined to halt their own prolonged losing streaks. The Bulldogs have dropped five straight matches, while the Falcons are winless in their last four outings.
- > As a result, SDSU, Fresno State and Air Force join San José State in a four-way tie for sixth place in the conference standings with a 5-9 record.
- > The Aztecs are 11-2 this year when blasting more kills than the opposition and are 11-4 when recording a greater hitting percentage. The Scarlet and Black is also 7-0 this season when capturing the first two sets.
- > Senior middle blocker Tamia Reeves leads the Mountain West with a .407 hitting percentage, which is good for 14th in the nation entering the week.

SERIES RECORD VS. FRESNO STATE

- > Despite a three-set loss (24-26, 22-25, 19-25) in Fresno on Oct. 14, the Aztecs still lead the all-time varsity series against the Bulldogs 31-14.
- > In that previous encounter, Hannah Turnlund led SDSU with 19 kills and registered her third-highest hitting percentage of the year at .361, while Victoria O'Sullivan launched nine put-aways of her own.
- > Collectively, the Aztecs totaled almost as many kills as Fresno State (46-44) and maintained a sizeable advantage in digs (43-29), but were plagued by eight more attack errors and finished with far fewer team blocks (9.5-2.0).
- > SDSU built a trio of seven-point leads in the opening set and led 24-21 before the Bulldogs stole the frame with five straight points, including three via service ace.
- > The Aztecs are 16-4 against Fresno State in San Diego all-time, but had their five-match home winning streak against the Bulldogs snapped last year in the Mountain West opener on Sept. 21, 2018.

SERIES RECORD VS. AIR FORCE

- > The Aztecs lead the all-time series, 37-8; however, the Falcons have captured six of the last nine meetings.
- > In addition, SDSU has lost three straight to Air Force, all on the road, including a narrow 3-2 setback (13-25, 25-15, 25-16, 22-25, 11-15) earlier this season on Oct. 19.
- > Despite posting a greater hitting percentage (.214 to .183) and maintaining the edge in team blocks (12.0-8.0), the Aztecs finished with fewer kills (65-48) and digs (66-62).
- > SDSU captured the second and third sets, hitting at a .442 clip during that span with only four attack errors (27-4-52). However, the Scarlet and Black posted a mere .080 hitting percentage in the other three frames, combining for just 21 kills (21-14-88).
- > Consequently, the Aztecs lost for the first time this year when holding a 2-1 lead in sets and when limiting the opposition to a .200 attack percentage or lower.
- > SDSU was paced by Hannah Turnlund, who floored 11 shots against the Falcons to surpass the 1,000-kill plateau for her career, while Erin Gillcrist and Victoria O'Sullivan recorded 10 put-aways each.
- > In addition, Gillcrist hit .476 on the afternoon, committing no errors on 21 attempts, while Andrea Walker logged nine kills to go with a career-high seven block assists.
- > Not to be outdone, Camryn Machado completed a double-double with 41 assists and 10 digs.

GENERAL INFORMATION

Location San Diego, Calif.
 Founded 1897
 Enrollment 32,005
 Nickname Aztecs
 Colors Scarlet and Black (Pantone 187)
 Conference Mountain West
 Affiliation Division I
 President Dr. Adela de la Torre
 Director of Athletics John David Wicker
 Faculty Representative Patrick Papin
 Home Facility Aztec Court at Peterson Gym (2,000)

TEAM INFORMATION

Head Coach Deitre Collins-Parker
 Alma Mater Hawai'i '95
 Record at SDSU 168-161 (11th year)
 Career Record 330-352 (24th year)
 E-Mail dcollins33@mail.sdsu.edu
 Volleyball Office Phone (619) 594-5064
 Volleyball Office Fax (619) 594-1674
 Assistant Coach/Recruiting Coordinator Melanie Greene
 Assistant Coach Dr. Ken Murczek
 Volleyball Operations Assistant Kara Barkdoll
 2018 Record 10-21
 2018 Conference Record 8-10 (Eighth)
 2018 Home Record 6-10
 2018 Road Record 4-7
 2018 Neutral Record 0-4
 Letterwinners Returning/Lost 12/4
 Starters Returning/Lost 3 + Libero/3

PROGRAM HISTORY

First Year of Volleyball 1976
 Overall Record 880-613 (.589)
 NCAA Appearances 14
 Last Postseason Appearance 2012
 NCAA Postseason Record 15-14

MEDIA RELATIONS

Assistant Media Relations Director Jim Solien
 E-Mail jsolien@sdsu.edu
 SID Office Phone (619) 594-2576
 SID Office Fax (619) 582-6541
 Official Athletic Website www.GoAztecs.com

2019 AZTEC VOLLEYBALL ROSTER

No.	Player	Pos.	Ht.	Yr.	Hometown (Last School)
1	Nya Blair	OH	5-11	Fr.	Grand Prairie, Texas (Martin HS)
3	Andrea Walker	MB	6-0	So.	Fairfield, Calif. (Vanden HS)
4	Lauren Lee	DS/L	5-0	Jr.	Coppell, Texas (Rice Univ.)
5	Serena Hodson	MB	6-2	So.	Mission Viejo, Calif. (Trabuco Hills HS)
6	Alexis Durand	DS/L	5-7	Fr.	Long Beach, Calif. (Long Beach Poly HS)
7	Hannah Turnlund	OH	5-11	Sr.	Morgan Hill, Calif. (Presentation HS)
8	Loren Teter	DS	5-7	RS-Jr.	Redondo Beach, Calif. (Notre Dame Academy)
9	Gabi Peoples	S	5-10	Jr.	Beaverton, Ore. (Beaverton HS)
10	Camryn Machado	S	5-9	RS-Sa.	Cardiff-by-the-Sea, Calif. (Utah)
11	Alexis Ratliff	MB	6-6	RS-Fr.	Atlanta, Ga. (Saint Francis HS)
12	Erin Gillcrist	MB	6-1	Jr.	Lakewood, Colo. (Lakewood HS)
13	Elise Park	DS/L	5-7	Fr.	Columbia, Md. (Atholton HS)
14	Gabriella Spaethling	RS	6-1	Fr.	Larkspur, Calif. (Redwood HS)
15	Abby Pugh	MB	6-3	RS-Jr.	Brenham, Texas (Wichita State)
16	Ashley Vanderpan	S	6-1	RS-Fr.	Elk Grove, Calif. (Syracuse)
17	Sam McGrath	DS/L	5-4	RS-Jr.	Oakland, Calif. (Bishop O'Dowd HS)
18	Tamia Reeves	MB	6-1	Sr.	Carrallton, Texas (Hebron HS)
19	Maddie Lenn	OH	5-10	So.	San Francisco, Calif. (Sacred Heart Cathedral Prep)
20	Lexie Hamrick	OH	6-3	RS-Jr.	Louisville, Ky. (Lindsey Wilson College)
21	Victoria O'Sullivan	OH	6-0	So.	Albany, Calif. (St. Mary's HS)

Head Coach: Deitre Collins-Parker (Hawai'i, 1995), 11th season at SDSU
Assistant Coach: Melanie Greene (San Diego State, 2007), Ninth season at SDSU
Assistant Coach: Dr. Ken Murczek (San Diego State, 1998), Third season at SDSU
Volleyball Operations Assistant: Kara Barkdoll (Cal State San Marcos, 2015), Second season at SDSU
Volunteer Assistant Coach: Isabel Miller (Arizona State, 2018), First season at SDSU
Technical Coordinator: Yasser Aguila Todd (Trident University, 2009, 2014), First season at SDSU

Pronunciations

#8 Loren TETER TEE-ter
 #9 GABI Peoples gabby
 #18 TAMIA Reeves tah-MEE-ah



OPPONENT COMPARISON (OVERALL MATCHES)

2019 Overall Stats	SDSU	MW Rank	OPP	FS	MW Rank	OPP	AF	MW Rank	OPP
Hitting Percentage	.236	3	.236	.174	9	.195	.156	10	.220
Kills per set	12.92	3	13.11	12.49	8	11.79	11.92	9	11.79
Assists per set	12.25	3	12.13	11.86	6	10.97	11.28	9	10.36
Digs per set	13.31	10	11.71	14.22	4	14.22	13.65	6	13.49
Blocks per set	2.11	7	1.98	2.02	8	2.68	1.55	11	2.43
Service Aces per set	0.72	11	1.48	1.82	1	1.18	1.38	7	1.33

SCOUTING THE OPPOSITION

> **Fresno State (12-14, 5-9 MW)** has been in a tailspin of late, suffering its fifth consecutive defeat after falling to Wyoming at home in four sets (22-25, 21-25, 25-16, 19-25) last Saturday. Against the Cowgirls, junior outside hitter Jessica Sukhov blasted 15 kills, while freshman Amaria Kelley chipped in 11. However, the Bulldogs were out-hit .364 to .237, as Wyoming committed just eight attack errors on the afternoon, compared to 23 miscues for the hosts. Sukhov continues to lead the MW with 4.00 kills per set, while junior libero Reagan Leonard owns a conference-best average of 4.56 digs per frame. In addition, senior setter Madelyn Halteman occupies the second spot in service aces (0.43/set, 40 overall) and ranks fifth in the league in assists (9.79/set) while freshman middle blocker Grace Doyle tops the squad with 79.0 total blocks. As a team, Fresno State is hitting .174 for the season, which ranks ninth in the MW entering the week, while their average of 12.49 kills per set is eighth. Likewise, the Bulldogs occupy the eighth spot in blocks (2.02/set), but lead the conference in service aces (1.82/set) and rank fourth in digs (14.22/set). Fresno State is 2-7 in true road matches this year, including a 1-5 mark in MW play. The Bulldogs are under the direction of second-year head coach Jonathan Winder, who was a four-time All-American and the 2007 national player of the year for the men's team at Pepperdine, where he led the Waves to the NCAA finals as a senior in 2008.

> **Air Force (8-18, 5-9 MW)** has dropped four straight and has not won a set since posting a 3-0 victory (25-21, 25-19, 25-18) at New Mexico on Oct. 26. The Falcons came up empty in a pair of home matches last week against San José State (24-26, 13-25, 33-35) and Nevada (20-25, 20-25, 23-25). Against the Wolf Pack, the Falcons received double-digit kills from Brooklyn Messenger (11) and Cambria Galloway (10), but it wasn't enough as Nevada committed 11 fewer attack errors (25-14) to keep the hosts at bay. For the season, Air Force senior Denise Soazi (2.96/set) and sophomore Bailey Keith (2.93/set) rank ninth and 10th among the Mountain West leaders in kills, respectively, while junior libero Alex King (4.20/set) occupies the fourth spot in digs. In addition, fellow classmate Andi Ahlers ranks seventh in the league in assists (8.93/set), while freshman Taleah Cooper and (54.0) and Keith (50.0) lead the team in total blocks. Collectively, the Falcons are averaging 11.92 kills per set and hitting at a .156 pace, which ranks ninth and 10th in the conference, respectively. However, Air Force is allowing the fourth-fewest kills in the MW (11.78/set) and fourth-least service aces (1.03/set). The Falcons are 3-5 in true road matches this season, including a 2-5 mark in the MW. Air Force is guided by Keith Barnett, who was elevated to head coach in the off-season after serving a four-year stint as a Falcons assistant, including the 2018 campaign as the team's associate head coach. Last season, he helped lead Air Force to a 17-15 overall record, their first winning ledger since 1999, highlighted by a program-best seven conference victories. Prior to his arrival at the Academy, Barnett was an assistant coach at West Texas A&M (2013-14) and the head coach at the University of Colorado-Colorado Springs (2009-12). He played collegiately at Pepperdine, where he received second-team All-American honors at setter in 2001.

2019 AZTEC VOLLEYBALL STATISTICAL LEADERS

Hitting Percentage	(.407)	Tamia Reeves
Kills	332	Hannah Turnlund
Kills per set	3.49	Hannah Turnlund
Assists	980	Camryn Machado
Assists per set	10.43	Camryn Machado
Digs	344	Loren Teter
Digs per set	3.62	Loren Teter
Blocks	88	Tamia Reeves
Blocks per set	1.00	Lexie Hamrick
Service Aces	15	Camryn Machado
Service Aces per set	0.16	Camryn Machado

2019 MOUNTAIN WEST STANDINGS (As of Nov. 11)

Team	---Conference---			-----Overall-----			Strk
	W	L	Pct	W	L	Pct.	
#12 Colorado State	14	0	1.000	24	1	.960	W23
Wyoming	12	2	.857	17	8	.680	W3
UNLV	11	3	.786	15	10	.600	W2
Boise State	8	6	.571	16	9	.640	W1
Nevada	7	7	.500	17	9	.654	W1
San Diego State	5	9	.357	12	13	.480	L2
Fresno State	5	9	.357	12	14	.462	L5
San José State	5	9	.357	10	15	.400	W3
Air Force	5	9	.357	8	18	.308	L4
New Mexico	3	11	.214	8	18	.308	L1
Utah State	2	12	.143	2	24	.077	L8

Upcoming Matches in the MW

Tuesday, Nov. 12

Fresno State at San Diego State, 6 p.m. PT

Thursday, Nov. 14

Air Force at San Diego State, 6 p.m. PT

Boise State at Wyoming, 6:30 p.m. MT

Utah State at No. 12 Colorado State, 7 p.m. MT

San José State at New Mexico, 7 p.m. MT

Nevada at UNLV, 7 p.m. PT

Friday, Nov. 15

Utah State at Wyoming, 6:30 p.m. MT

Saturday, Nov. 16

Boise State at No. 12 Colorado State, Noon MT

Nevada at New Mexico, 1 p.m. MT

Air Force at Fresno State, 1 p.m. PT

San José State at UNLV, 5 p.m. PT



WEEKLY WRAP

> San Diego State opened its homestand on a sour note last week, falling in three close sets to both Wyoming (22-25, 23-25, 24-26) and 13th-ranked Colorado State (21-25, 23-25, 23-25).

> Against the Cowgirls on Nov. 7, the Aztecs saw their three-match winning streak halted after dropping three sets by a combined seven points.

> Collectively, SDSU maintained a 50-43 advantage in digs and tied one of the league's toughest squads at the net with seven team blocks, but it wasn't enough as Wyoming pounded more kills (52-43) and committed five fewer attack errors (19-14) to complete the sweep.

> The Aztecs were led by Erin Gillcrist's 11 kills, while Hannah Turnlund completed her third consecutive double-double and seventh of the year with 10 put-aways and 12 digs.

> In addition, Andrea Walker floored eight shots to go with four block assists, while Victoria O'Sullivan finished with seven kills and three block assists of her own.

> SDSU also fought valiantly against the Rams last Saturday, owning a slight advantage in team blocks (9.0-7.0) and committing eight fewer attack errors (18-10). However, the Aztecs trailed by a wide margin in kills (52-34) and digs (48-35), while getting outfit .301 to .242.

> The Aztecs were paced by Walker's eight kills, while Turnlund got into the act with seven shots, followed by O'Sullivan, Gillcrist and Tamia Reeves (.545), who finished with six put-aways each. Additionally, Reeves led all players with five block assists, while Lauren Lee posted seven digs.

AZTECS AMONG MOUNTAIN WEST LEADERS

> Entering the ninth week of conference play, San Diego State boasts seven players among the Mountain West leaders in various categories.

> Tamia Reeves has reclaimed the top spot with a .407 hitting percentage, which ranks 14th in the nation, while Andrea Walker is ninth in the league with a .310 clip.

> In addition, Camryn Machado is holding down the No. 3 position with an average of 10.44 assists per set, while Hannah Turnlund occupies the fifth spot with an average of 3.49 kills per frame.

> Elsewhere, Loren Teter (3.62 digs/set) and Victoria O'Sullivan (3.11 kills/set) find themselves in the seventh position in their respective statistics, while Lexie Hamrick still ranks 10th in blocks (1.00/set) despite missing the last 10 contests.

> As a team, SDSU ranks third in the conference for all matches in hitting percentage (.236), kills (12.92/set) and assists (12.24/set).

ON THE HORIZON

> Following Thursday's showdown, San Diego State will wrap up its regular-season schedule next week when it hits the road to face Utah State on Thursday, Nov. 21, before traveling to Boise State on Saturday, Nov. 23.

TURNLUND'S TURN

> With her 11 put-aways at Air Force on Oct. 19, senior Hannah Turnlund broke the 1,000-kill plateau for her career and has hammered 1,086 non-returnables in an Aztec uniform.

> In addition, Turnlund has accumulated 3,044 attacks for her career, vaulting into 10th place on the school's all-time list in that statistic. In road matches at New Mexico and UNLV earlier this month, she combined for 88 attempts to move past Angelica Jackson, who compiled 2,955 attacks from 1984-87.

> The Aztec senior needs just 12 more attempts to move past Mary Holland (1979-82) for ninth place in that category.

> Turnlund has posted double-digit kill totals in 17 of 25 matches this season and 58 times in her career.

> Against Florida Gulf Coast on Aug. 31, Turnlund completed a double-double with a personal-best 24 kills to go with 16 digs, as the Aztecs dropped a narrow five-set decision.

> With that performance, the Morgan Hill, California, native secured a spot on the all-tournament team at the Homewood Suites FGCU Fort Myers Classic.

> Not to be outdone, Turnlund has racked up 10 double-doubles over the last two seasons after logging none in her first two years on The Mesa. Among her standout matches was a 23-kill, 21-dig effort vs. Nevada in the next-to-last outing of the 2018 campaign.

WALKER WATCH

> Redshirt sophomore Andrea Walker has given the Aztecs a tremendous boost over the past month, posting a .328 hitting percentage in 12 matches since cracking the starting lineup vs. UNLV on Oct. 3.

> During that stretch, the Aztec middle blocker has knocked down 86 kills on 177 attempts to go with 35 total blocks. In the return trip to UNLV on Nov. 2, she blasted a career-high 12 kills to go with five block assists, helping the Scarlet and Black snap the Rebels' nine-match losing streak.

> Last month at Air Force, Walker set a personal-best with seven block assists.

NOTHIN' LIKE HOME COOKIN'

> In head coach Deitre Collins-Parker's tenure, the Aztecs have amassed an 89-49 (.654) record at home, highlighted by a 14-0 mark during the 2012 season when SDSU captured the Mountain West championship.

> San Diego State is 6-5 this season at Aztec Court, including victories over West Virginia and Arkansas as part of the SDSU/USD Invitational.

REEVES TABBED MW OFFENSIVE PLAYER OF THE WEEK

> Tamia Reeves was named MW Offensive Player of the Week on Oct. 7, after a pair of outstanding performances in the Aztecs' two home matches vs. UNLV and New Mexico.

> With her award, Reeves garnered her first career conference weekly accolade and SDSU's second this season.

> For the week, Reeves posted a sparkling .667 attack percentage, knocking down 19 kills with just one error in 27 attempts.

> The SDSU middle blocker averaged 3.19 points and 2.38 kills in eight sets played, helping the Aztecs earn a split with the Rebels and Lobos. She also displayed her versatility with nine total blocks, two digs and a service ace.

> Against UNLV on Oct. 3, Reeves launched 9 kills in 13 swings without an error, finishing with a season-best .692 clip, which also marks the SDSU's team-high for the year. She also added a season-high five blocks, including a solo stop, although the Aztecs dropped a four-set decision.

> On Oct. 5, Reeves came back with a 10-kill effort against the Lobos, hitting at a .643 pace to help the Scarlet and Black capture a 3-1 victory. She totaled just one error on a season-high 14 attempts and also contributed four blocks and one ace.

MORE REEVES

- > Tamia Reeves enters the week with a Mountain West-leading .407 hitting percentage, which is good for 14th in the country, and tops the squad with 88 blocks (0.97/set), including 14 solo stuffs.
- > In addition, the Carrollton, Texas, native ranks third on the team with 178 kills for the season (1.96/set) and has committed one error or less in 17 matches this year.
- > The Aztecs are also 5-1 on the season when Reeves totals at least 10 kills.
- > Reeves will almost assuredly rank among SDSU's single-season top 10 in hitting percentage following the 2019 campaign. Her current clip of .407 is second only to Jennifer Hamilton's pace of .412 set in 1995.

DOUBLE TROUBLE

- > Setter Camryn Machado has posted a team-high 12 double-doubles this season, including a 57-assist, 13-dig effort in the Aztecs' comeback win over West Virginia on Sept. 6.
- > San Diego State is 8-4 on the year when Machado records a double-double.
- > Ironically, four of those matches featured an additional double-double by Hannah Turnlund, who also had big hand in the Aztecs' aforementioned thriller over WVU when she finished with 19 kills and 10 digs.
- > Overall, Turnlund has compiled seven double-doubles this year, including 16 digs and 21 digs in SDSU's thriller over UNLV on Nov. 2, the latter of which equaled a career-high.

GCU INVITATIONAL REDUX

- > San Diego State went 2-1 at the GCU Invitational, Sept. 13-14, in Phoenix, Arizona.
- > The Aztecs played their first four-set match of the season in the opener, earning a 3-1 victory over UC Riverside.
- > SDSU posted its second-best hitting percentage of the season at .328 while limiting the Highlanders to a .192 clip.

- > The Aztecs also maintained the upper hand over UCR in kills (53-46), assists (51-44), digs (53-44) and total blocks (5.0-3.0).
- > Individually, Hannah Turnlund led all players with 17 kills to go with a .310 hitting percentage, while Victoria O'Sullivan (.312) topped the double-digit plateau after launching 13 non-returnables of her own. Not to be outdone, Lexie Hamrick blasted nine put-aways, hitting .615 for the match.
- > In addition, Camryn Machado logged another double-double with 43 assists and 13 digs, tying Loren Teter in the latter statistic for match-high honors.
- > San Diego State followed with another four-set decision over Eastern Washington, surviving a pivotal third set that featured 21 ties and nine lead changes before the Aztecs prevailed by a 28-26 count. SDSU then used a timely 10-4 run late in the fourth frame to secure the victory.
- > The Aztecs received double-digit kill totals from three players, including Turnlund, who launched a match-high 16 put-aways while adding 11 digs for her fourth double-double of the year. Additionally, O'Sullivan powered down 12 kills, while Hamrick hit .333, recording 10 non-returnables while tying for match-high honors with five total blocks.
- > Machado also got into the act with her sixth double-double of the year (48 assists, 15 digs), while Teter scooped up a team-high 18 digs.
- > San Diego State could not sustain the momentum in the tournament finale, however, falling to host Grand Canyon in three sets.
- > Despite knocking down just two fewer kills than the Lopes (40-38), the Aztecs were undone by 19 attack errors, as GCU owned a decisive advantage in hitting percentage, .360 to .183, while maintaining the edge in total blocks (6.0-2.0) and digs (35-31).
- > O'Sullivan surpassed the double-digit plateau in kills for the ninth straight match, posting 11 put-aways to go with a .280 attack percentage, while Teter registered another steady performance with 15 digs.

2019 AZTEC SUPERLATIVES

Individual

HITTING PERCENTAGE (min. 12 kills)

.487 (22-3-39) Victoria O'Sullivan vs. West Virginia (Sept. 6)

KILLS

24 Hannah Turnlund at Florida Gulf Coast (Aug. 31)
 5 sets 24 Hannah Turnlund at Florida Gulf Coast (Aug. 31)
 4 sets 17 Hannah Turnlund, twice, last: vs. Long Beach State (Sept. 19)
 3 sets 19 Hannah Turnlund at Fresno State (Oct. 14)

TOTAL ATTEMPTS

69 Hannah Turnlund at Florida Gulf Coast (Aug. 31)
 5 sets 69 Hannah Turnlund at Florida Gulf Coast (Aug. 31)
 4 sets 52 Hannah Turnlund at UNLV (Nov. 2)
 3 sets 36 Hannah Turnlund, twice, last: vs. Wyoming (Nov. 7)

ASSISTS

57 Camryn Machado vs. West Virginia (Sept. 6)
 5 sets 57 Camryn Machado vs. West Virginia (Sept. 6)
 4 sets 50 Camryn Machado, twice, last: at UNLV (Nov. 2)
 3 sets 41 Camryn Machado vs. Utah State (Oct. 26)

DIGS

24 Loren Teter at Florida Gulf Coast (Aug. 31)
 5 sets 24 Loren Teter at Florida Gulf Coast (Aug. 31)
 4 sets 21 Loren Teter at New Mexico (Oct. 31)
 Hannah Turnlund at UNLV (Nov. 2)
 3 sets 19 Loren Teter vs. Utah State (Oct. 26)

SERVICE ACES

5 Camryn Machado at Florida Gulf Coast (Aug. 31)

BLOCK SOLOS

2 Tamia Reeves, twice, last at UNLV (Nov. 2)
 Lexie Hamrick, three times, last: vs. San José State (Sept. 26)

BLOCK ASSISTS

7 Andrea Walker at Air Force (Oct. 19)

TOTAL BLOCKS

8 Tamia Reeves vs. Boise State (Oct. 24)

Team

HITTING PERCENTAGE

.337 (42-9-98) vs. Akron (Aug. 30)

KILLS

68 vs. San José State (Sept. 26)
 5 sets 68 vs. San José State (Sept. 26)
 4 sets 60 vs. Eastern Washington (Sept. 14)
 3 sets 46 vs. Utah State (Oct. 24)

TOTAL ATTEMPTS

181 vs. San José State (Sept. 26)
 5 sets 181 vs. San José State (Sept. 26)
 4 sets 161 at UNLV (Nov. 2)
 vs. Eastern Washington (Sept. 14)
 3 sets 114 vs. Wyoming (Nov. 7)

ASSISTS

61 vs. San José State (Sept. 26)
 vs. West Virginia (Sept. 6)
 5 sets 61 vs. San José State (Sept. 26)
 vs. West Virginia (Sept. 6)
 4 sets 58 at New Mexico (Oct. 31)
 3 sets 42 vs. Wyoming (Nov. 7)
 vs. Utah State (Oct. 26)

DIGS

87 at Florida Gulf Coast (Aug. 31)
 5 sets 87 at Florida Gulf Coast (Aug. 31)
 4 sets 74 at UNLV (Nov. 2)
 3 sets 51 vs. Bryant (Aug. 30)

SERVICE ACES

10 vs. Utah State (Oct. 26)

TOTAL BLOCKS

14.0 vs. Boise State (Oct. 24)

MACHADO NAMED TO GCU INVITE ALL-TOURNAMENT TEAM

- > Setter Camryn Machado landed a spot on the all-tournament team at the GCU Invitational after another series of outstanding all-round performances.
- > In three matches, Machado averaged 10.27 assists (113 overall) and 2.73 digs (30 overall) per set to go with 11 kills, six block assists and one service ace.
- > In addition to her aforementioned assist totals, the Aztec redshirt sophomore contributed three kills and three block assists each in SDSU's victories over UC Riverside and Eastern Washington.

IN TETER WE TRUST

- > Libero Loren Teter has finished with double-digit digs in 20 of 25 matches this season and has broken that barrier in 31 out of her last 38 appearances dating back to Oct. 4, 2018.
- > The Redondo Beach, California, native enjoyed a tremendous weekend at the GCU Invite, averaging 0.68 digs more per set than her season rate entering the tournament (4.18 to 3.50).
- > She logged double-digit dig totals in all three matches in Phoenix, including 18 scoops vs. Eastern Washington, which marked her second-highest figure up to that point after a 24-dig effort at Florida Gulf Coast on Aug. 31.

SDSU/USD INVITATIONAL REWIND

- > San Diego State posted a 2-1 record in its home games at the SDSU/USD Invitational, Sept. 6-7.
- > The Aztecs opened with a dramatic victory over West Virginia after rallying from two sets down.
- > Against the Mountaineers, SDSU recorded a .117 attack percentage over the first two sets before turning the tables with a .352 clip over the final three frames.
- > Individually, outside hitter Victoria O'Sullivan hit .487 for the match, blasting a career-high 22 kills to go with three block assists.
- > The Aztecs also received double-digit put-aways from outside hitter Hannah Turnlund (19) and middle blocker Tamia Reeves (10), while libero Loren Teter tied for match-high honors with 15 digs.
- > Not to be outdone, setter Camryn Machado logged her fourth straight double-double after dishing out a personal-best 57 assists to go with 13 digs.
- > Fueled by its good fortune, San Diego State outlasted a pesky Arkansas squad in another fierce five-set battle the next day.
- > The Aztecs and Razorbacks traded punches with alternating set scores until the final frame, where Turnlund and O'Sullivan launched two kills apiece during a decisive 4-1 run that closed off the set after Arkansas overcame a 7-1 deficit to forge an 11-11 tie.
- > O'Sullivan hit .371 vs. the Razorbacks and collected a team-high 19 kills, while Turnlund surpassed the double-digit plateau once again with 15 non-returnables.
- > The two sides were nearly identical in team statistics, with San Diego State maintaining the upper hand in hitting percentage (.270 to .260), kills (61-59) and total blocks (8.0-7.0), while Arkansas held a slight edge in assists (58-55) and digs (43-42).
- > After playing consecutive five-setters less than 24 hours apart, the Aztecs were unable to sustain the momentum in their weekend finale last Saturday night, dropping a 3-0 decision to visiting Arizona.
- > SDSU was out-hit .437 to .185 for the match while trailing in kills (46-37), digs (30-23) and total blocks (5.0-2.0).
- > O'Sullivan once again led the Aztec charge against the Wildcats with 10 kills, while Reeves posted a sparkling .462 hitting percentage (8-2-13).
- > San Diego State captured the first-ever meetings vs. West Virginia and Arkansas, but slipped to 20-10 all-time vs. Arizona.

O'SULLIVAN SHINES

- > Celebrating her 19th birthday on Sept. 6, Victoria O'Sullivan rose to the occasion at the SDSU/USD Invitational, averaging a team-high 3.92 kills per set while leading the Aztecs with a .381 hitting percentage.
- > O'Sullivan registered double-digit kills in all three matches, including a career-high 22 put-aways vs. West Virginia. She also hit .487 against the Mountaineers, including a .750 clip in the decisive fifth frame when she blasted six kills with no errors on eight swings to help the Aztecs rally from an 0-2 deficit in sets.
- > O'Sullivan returned with a team-high 19 kills and a .371 attack percentage vs. Arkansas, coming through in the clutch once again with six kills in the fifth set, including two on SDSU's final four points after the Razorbacks rallied from 7-1 down to tie the score at 11-11.
- > The Aztec sophomore also finished with five block assists in the tournament, including three vs. WVU.
- > Coupled with her efforts at the GCU Invitational, O'Sullivan has logged double-digit kills in 18 of 25 matches this year after posting just three last season.

FORT MYERS CLASSIC RECAP

- > San Diego State finished with a 2-1 record at the FGCU Homewood Suites Fort Myers Classic, August 30-31, in Fort Myers, Florida.
- > The Aztecs opened with a pair of sweeps over Akron and Bryant, before falling short against host Florida Gulf Coast in a tough five-set battle.
- > SDSU was led by Hannah Turnlund (3.73 kills/set) and Camryn Machado (11.55 assists/set, 3.82 digs/set), who each earned a spot on the all-tournament team.
- > Machado logged three straight double-doubles, while Tamia Reeves hit .431 to go with 2.55 kills and 1.27 blocks per set.
- > Additionally, the Scarlet and Black was bolstered by the play of Victoria O'Sullivan (3.45 kills/set, 0.73 blocks/set) and Loren Teter (4.64 digs/set).
- > Collectively, the Aztecs out-hit the opposition .272 to .148 at the tournament while maintaining the upper hand in kills (149-123), digs (188-158) and total blocks (27.0-19.0).
- > The Scarlet and Black also registered 16 fewer errant attacks than their foes (47-63) and did not commit a ball-handling error in three matches.
- > In the finale vs. Florida Gulf Coast, Turnlund posted a career-high 24 kills and scooped up 16 digs in the finale for her second straight double-double. She also tallied 10 put-aways and 11 digs vs. Bryant. In addition, the Morgan Hill, California, native hit .412 against Akron, launching seven kills with no errors in 17 attempts while adding three total blocks.
- > With their victories over Akron and Bryant, SDSU started a season 2-0 for the first time since the 2013 campaign.
- > All three matches at the FGCU Classic marked the Aztecs' first-ever meetings against those respective opponents.

MACHADO COLLECTS MW HONORS

- > Thanks to her all-round performance at the FGCU Homewood Suites Fort Myers Classic, Camryn Machado was named Mountain West Defensive Player of the Week on Sept. 2.
- > Against Florida Gulf Coast, the SDSU redshirt sophomore established career highs with 55 assists and 20 digs to go with a personal-best five service aces.
- > Earlier, the Cardiff-by-the-Sea, California, native opened the year with 35 assists and 12 digs vs. Akron, before notching 37 helpers and 10 digs against Bryant.

WELCOME BACK

- > With the graduation of four-time all-Mountain West honoree Deja Harris, senior Hannah Turnlund is the lone San Diego State veteran to have started all 31 matches during the 2018 campaign.

2019 SITUATIONAL RECORDS

GENERAL

Overall.....	12-13
Mountain West.....	5-9
Home.....	6-5
Away.....	2-8
Neutral.....	4-0
vs. Ranked Teams.....	0-2
vs. Unranked Teams.....	12-11
Matches Following a Win.....	6-6
Matches Following a Loss.....	6-6
Longest Winning Streak.....	3
Longest Losing Streak.....	5
Current Streak.....	Last 2

BY SETS

3 Sets.....	3-8
4 Sets.....	6-2
5 Sets.....	3-3
Leading After Two.....	7-0
Trailing After Two.....	1-10
Tied After Two.....	4-3
Leading 2-1.....	8-1
Trailing 2-1.....	1-3

BY MONTH

August.....	2-1
September.....	6-4
October.....	2-6
November.....	2-2

BY DAY

Monday.....	0-1
Thursday.....	3-4
Friday.....	3-2
Saturday.....	6-6

BY KILLS

Leading in Kills.....	11-2
Trailing in Kills.....	1-11
Tied in Kills.....	0-0

BY DIGS

Leading in Digs.....	11-7
Trailing in Digs.....	1-6
Tied in Digs.....	0-0

BY BLOCKS

Leading in Blocks.....	7-5
Trailing in Blocks.....	3-5
Tied in Blocks.....	2-3

BY ATTACK PERCENTAGE

Greater Attack Percentage.....	11-4
Lower Attack Percentage.....	1-9
Equal Attack Percentage.....	0-0
Hitting above .300.....	4-0
Hitting between .200 and .300.....	6-8
Hitting between .100 and .200.....	2-5
Hitting below .100.....	0-0
Opponent Hitting above .300.....	0-8
Opponent Hitting between .200 and .300.....	5-3
Opponent Hitting between .100 and .200.....	6-2
Opponent Hitting below .100.....	1-0

BY INDIVIDUAL KILLS

3+ Double-Digit Individual Kill Totals.....	7-3
2 Double-Digit Individual Kill Totals.....	4-3
1 Double-Digit Individual Kill Totals.....	1-3

- > The Aztec outside hitter finished second on the squad last year with 2.78 kills per set (339 overall), blasting double-digit put-aways in 19 matches.
- > In the penultimate contest of the regular season vs. Nevada, Turnlund became the second SDSU player in the Mountain West era to post a 20-20 performance with a career-high 23 kills and 23 digs, fueling a 3-1 win for the Scarlet and Black.
- > In addition, the Aztecs welcome back senior Tamia Reeves and junior Erin Gillcrist, who ranked second and third on the squad last year with 72 and 57 total blocks in the middle, respectively.
- > Reeves owns SDSU's top returning hitting percentage from last year after posting a .273 clip, while Gillcrist (197) and sophomore outside hitter Victoria O'Sullivan (109) each surpassed the 100-kill plateau.
- > Redshirt juniors Loren Teter (2.65 digs/set) and Sam McGrath (2.43 digs/set) provided much of the support in the back row during the 2018 campaign.
- > Teter ranked eighth in Mountain West play last year with 3.23 digs per set, logging double-digit scoops in 14 matches, including five straight to end the season.
- > In a five-set victory at Utah State, Teter came through with a career-high 22 digs, matching McGrath's personal-best total accomplished on two occasions during the season vs. Idaho and at Air Force.
- > Redshirt sophomore Camryn Machado is expected to garner increased playing time at setter this season after appearing in only eight matches last year due to injury.
- > A local product from La Costa Canyon High School, Machado originally signed with Utah following her prep career, where she averaged 3.05 assists per set off the bench as a freshman in 2017, as the Utes advanced to the second round of the NCAA Tournament.

ADDING DEPTH

- > San Diego State landed a pair of transfers during spring practice last year in setter Ashley Vanderpan and middle blocker Abby Pugh, who join true freshmen Nya Blair, Alexis Durand, Elise Park and Gabriella Spaethling.
- > A native of Elk Grove, California, Vanderpan sat out the 2018 campaign as a redshirt at Syracuse and will retain freshman status this fall. She twice captured her squad's Most Valuable Player award at Elk Grove High School, garnering first-team all-conference accolades on two occasions.
- > Pugh, meanwhile, will have junior eligibility this fall after spending two years at Wichita State. A native of Brenham, Texas, Pugh averaged 1.46 kills and hit .289 in over 120 career sets for the Shockers. In 2018, she started 22 of 30 matches, averaging 1.53 kills per set (150 overall) while hitting at a .282 clip and totaling 58 blocks.

STAFF ADDITIONS

- > The Aztecs have added volunteer assistant coach Isabel Miller and technical coordinator Yasser Aguila Todd to their 2019 staff.
- > A native of Phoenix, Arizona, Miller played at Boise State (2013-14) and San Diego Mesa College (2015-16) before completing her collegiate career at Arizona State in 2017.
- > Miller was a member of the inaugural sand volleyball team at Boise State in 2014 and recorded the first pairs match victory in program history, along with teammate Maddy O'Donnell.
- > Miller graduated from Arcadia High School in Phoenix, where she was a three-time all-state selection in

- volleyball. As a prep, Miller also garnered first-team all-conference honors all four years and was named league MVP during her sophomore season.
- > Aguila Todd, meanwhile, is the co-founder of Spartan Volleyball Academy in Wildomar, California, and has served as a volunteer assistant coach at Palomar College and the University of Saint Katherine in San Marcos, California.
- > Aguila Todd also spent time as a volunteer assistant at Santa Rosa Academy in Menifee, California, and coached seven teams within the Viper Volleyball Club in Temecula.

PRESEASON PROGNOSTICATIONS

- > San Diego State was picked to finish eighth this year in the Mountain West preseason coaches poll released Aug. 14.
- > In the 20-year history of the Mountain West, SDSU has finished first (2012), second (2002, 2011), fourth (2000, 2001, 2003, 2013, 2017), fifth (2005, 2015), sixth (1999, 2004, 2006, 2009, 2010, 2014, 2016), seventh (2008) and eighth (2007, 2018) in the final league standings.

2019 Mountain West Preseason Poll

Rk.	Team (1st-place votes)	Pts.
1.	Colorado State (10)	100
2.	Wyoming	79
3.	UNLV	78
4.	Boise State	73
5.	San José State	66
6.	Fresno State	56
7.	New Mexico	50
8.	San Diego State	41
9.	Air Force	28
10.	Utah State	19
11.	Nevada	15

AZTEC VOLLEYBALL EARNS PUBLIC RECOGNITION AWARD FROM NCAA

- > Last spring, the San Diego State volleyball program was publicly recognized by the NCAA for outstanding academic achievements, along with the Aztec women's tennis and cross country teams.
- > The recognition came on the heels of the most recent multiyear Academic Progress Rates (APR) in which all three programs were among the top 10 percent of their respective sports nationally.
- > With these squads earning NCAA public recognition last season, San Diego State has now received such distinction a total of 18 times in school history, matching its record of three teams set during the 2011-12 academic year.
- > The SDSU volleyball program received public recognition for the third straight season and fourth time overall, while the Aztec women's tennis team garnered the accolade for the second year in a row and fifth time in the last six seasons. In addition, the San Diego State cross country squad merited public recognition for the sixth time in school history.

2019 AZTEC DOUBLE-DOUBLES

CAMRYN MACHADO (12)

Aug. 30vs. Akron.....	35 assists, 12 digs
Aug. 30vs. Bryant	37 assists, 10 digs
Aug. 31at Florida Gulf Coast	55 assists, 20 digs
Sept. 6West Virginia	57 assists, 13 digs
Sept. 13vs. UC Riverside.....	43 assists, 13 digs
Sept. 14vs. Eastern Washington	48 assists, 15 digs
Sept. 19Long Beach State	50 assists, 10 digs
Sept. 26San José State	56 assists, 16 digs
Sept. 28Nevada	44 assists, 11 digs
Sept. 28at Air Force.....	41 assists, 10 digs
Oct. 24Boise State	51 assists, 14 digs
Oct. 31at New Mexico.....	49 assists, 14 digs

HANNAH TURNLUND (7)

Aug. 30vs. Bryant	10 kills, 11 digs
Aug. 31at Florida Gulf Coast	24 kills, 16 digs
Sept. 6West Virginia	19 kills, 10 digs
Sept. 14vs. Eastern Washington	16 kills, 11 digs
Oct. 31at New Mexico.....	13 kills, 11 digs
Nov. 2at UNLV	16 kills, 21 digs
Nov. 7Wyoming.....	10 kills, 12 digs

2019 MATCH-BY-MATCH LEADERS

Date	Opponent	Kills	Hitting Pct.*	Assists	Aces	Digs	Blocks
A.30	vs. Akron	O'Sullivan - 10	Turnlund (.412)	Machado - 35	Lenn - 2	Teter - 15	Reeves/Hamrick - 4
A.30	vs. Bryant	O'Sullivan - 10 Turnlund	Hamrick (.545)	Machado - 37	McGrath - 1	Teter - 12	Reeves - 3 Hamrick O'Sullivan
A.31	at FGCU	Turnlund - 24	Reeves (.421)	Machado - 55	Machado - 5	Teter - 24	Reeves - 7
S.6	West Virginia	O'Sullivan - 22	O'Sullivan (.487)	Machado - 57	Machado - 1 Reeves	Teter - 15	Reeves - 5 Hamrick
S.7	Arkansas	O'Sullivan - 19	Reeves (.636)	Machado - 46	None	Teter - 11	Hamrick - 4
S.7	Arizona	O'Sullivan - 10	Reeves (.462)	Machado - 32	Machado - 1 Reeves	Teter - 7	Hamrick - 2
S.13	vs. UC Riverside	Turnlund - 17	Hamrick (.615)	Machado - 43	Hamrick - 1 Machado McGrath	Teter - 13 Machado	Hamrick - 3 Machado
S.14	vs. Eastern Wash.	Turnlund - 16	Lenn (.385)	Machado - 48	Five with 1	Teter - 18	Hamrick - 5
S.14	at Grand Canyon	O'Sullivan - 11	O'Sullivan (.280)	Machado - 22	None	Teter - 15	Walker - 2
S.19	Long Beach State	Turnlund - 17	Gillcrist (.500) Reeves	Machado - 50	Lenn - 2	Teter - 16	Hamrick - 6 Machado
S.20	at San Diego	Turnlund - 8 O'Sullivan	Turnlund (.150)	Machado - 21	None	Machado - 9	O'Sullivan - 3
S.26	San José State	O'Sullivan - 20	Hamrick (.348)	Machado - 56	None	Teter - 22	Hamrick - 6
S.28	at Nevada	O'Sullivan - 14 Turnlund	Hamrick (.286)	Machado - 44	Lee - 2	Machado - 11	Reeves - 7
0.3	UNLV	Turnlund - 15	Reeves (.692)	Machado - 31	McGrath - 2	Teter - 16	Reeves - 5
0.5	New Mexico	Turnlund - 13	Reeves (.643)	Machado - 35	Turnlund - 2	Teter - 13	Walker - 5
0.10	at Wyoming	Gillcrist - 9	Walker (.636)	Machado - 25	None	Machado - 9	Reeves - 5
0.12	at No. 15 Colorado State	Turnlund - 9	Walker (.556)	Machado - 23	Lee - 2	Teter - 11	Turnlund - 2
0.14	at Fresno State	Turnlund - 19	Turnlund (.361)	Machado - 22	Machado - 1 McGrath	Teter - 12	Reeves - 2
0.19	at Air Force	Turnlund - 11	Gillcrist (.476)	Machado - 41	Machado - 1	Teter - 20	Walker - 7
0.24	Boise State	Turnlund - 21	Reeves (.357)	Machado - 51	Reeves - 1 Teter	Machado - 14	Reeves - 8
0.26	Utah State	Turnlund - 14	Reeves (.714)	Machado - 41	Machado - 3 Teter	Teter - 19	Reeves - 2 Walker
0.31	at New Mexico	O'Sullivan - 16	Reeves (.524)	Machado - 49	Lee - 3	Teter - 21	Reeves - 5
N.2	at UNLV	Turnlund - 16	Walker (.227)	Machado - 50	Turnlund - 1	Teter - 19	Reeves - 5 Walker
N.7	Wyoming	Gillcrist - 11	Walker (.357)	Machado - 36	Machado - 1 Reeves	Turnlund - 12	Walker - 4
N.9	No. 13 Colorado State	Walker - 8	Walker (.368)	Machado - 30	Turnlund - 1 Lee	Lee - 7	Reeves - 5

* - min. 7 kills



Deitre COLLINS-PARKER

Head Coach - 11th season

Deitre Collins-Parker, a two-time national collegiate player of the year and AVCA Hall of Fame member, was named the head volleyball coach at San Diego State on Jan. 30, 2009. She became just the fourth head coach since the Aztecs began collegiate play in 1976, replacing Mark Warner, who retired at the end of the 2008 season after 13 years at the helm of the women's program.

Following an injury-plagued start to the 2018 campaign, Collins-Parker's squad regrouped, posting a 9-7 record over the final 16 matches of the season, highlighted by its first victory over crosstown foe San Diego since 2012 and its first road win at Boise State since 2013. Individually, Deja Harris garnered all-Mountain West accolades for the fourth year in a row and completed her illustrious Aztec career ranked eighth on the school's all-time charts with a .322 hitting percentage.

In 2017, Collins-Parker directed SDSU to its second consecutive winning season and a fourth-place Mountain West finish. A quartet of Aztecs were named all-MW (Deja Harris, Devyn Pritchard, Baylee Little, Alexis Cage) -- tied for the program's largest number of honorees since the team joined the league in 2000.

During the summer of 2014 she led a Mountain West all-star team on a tour of Europe that concluded with a bronze medal third-place finish at the 2014 European Global Challenge in Pula, Croatia.

In 2012 she led her Aztec squad to a 23-8 mark and a 13-3 ledger in the Mountain West as the Aztecs claimed their first-ever Mountain West title. It was SDSU's best conference record and league finish since the 1996 season and top overall record since 1995. In addition, she produced a pair of All-America honorees (Andrea Hannasch and Johnna Fouch) along with a total of three all-conference selections (Raegan Shelton) and the conference Newcomer of the Year (Michelle Waber).

Collins-Parker arrived at San Diego State after five seasons as the head coach at Cornell, where she led the Big Red to three Ivy League titles and two NCAA tournament appearances. Under her tutelage, the Big Red had seven players named first-team All-Ivy, including two-time Ivy League Player of the Year and honorable mention All-American, Elizabeth Bishop (2007).

Prior to taking over at Cornell in 2004, Collins-Parker spent the previous eight seasons as head coach at UNLV, earning Western Athletic Conference Coach of the Year in 1998 after taking a dormant volleyball program and leading the Lady Rebels to a 23-8 record and a WAC tournament semifinal appearance. Before her stint at UNLV, Collins-Parker served as an assistant coach at South Alabama, Northern Arizona and Houston for one year each. She also has plenty of international coaching experience as well. She served as head coach of the 1998 U.S. junior national team, directing her squad to a gold medal in the national qualifier. She served in the same capacity during the summer of 2000 (silver medal) and 2001 (bronze medal).

A former member of the U.S. national team and a three-time AVCA All-American at the University of Hawai'i, Collins-Parker was the starting middle blocker for the 1988 Olympic Team in Seoul, South Korea, and was an alternate for the 1992 team in Barcelona, Spain. She played in over 130 international matches and earned bronze medals at the 1986 Goodwill Games and the 1987 Pan-Am Games.

As a collegian, Collins-Parker was a two-time Broderick Award honoree as the national player of the year (1983, 1984) after leading the Rainbow Wahine to consecutive national titles and a 110-5 record in her final three seasons. Collins capped off her career by becoming the first volleyball player to be awarded the Broderick Cup recipient, given to the nation's best collegiate athlete in all sports. She was twice named to the NCAA all-tournament team and still holds the record for solo blocks in one NCAA tournament (15 in 1982). She was one of six players named to the NCAA Division I Women's Volleyball 25th Anniversary Team in October 2005. Collins-Parker went on to compete at the national level and played in the 1988 Seoul Olympic Games and was also an alternate for the 1992 games in Barcelona, Spain. She played in over 130 international matches and earned bronze medals at the 1986 Goodwill Games and 1987

Pan-Am Games. She played professionally in the Italian League (1988-89) and the French League (1989-91), capturing the French League Championship twice and the European Cup of Champions in 1990.

Collins-Parker received the NCAA Silver Anniversary Award during the 2009 NCAA Convention in Washington, D.C. The award honors former student-athletes who successfully completed collegiate careers in various sports and have excelled in their chosen professions on their 25th anniversary of completing their athletic eligibility. Collins-Parker was inducted into the AVCA Hall of Fame in the fall of 2008. She currently serves as a member of the AVCA Board of Directors and the chairperson on the AVCA Minority Coaches Committee. She currently has membership with the AVCA, Coaches Accreditation Program, Kaepa Gold Medal Clinics, Black Coaches Association, and Fellowship of Christian Athletes. A 1995 graduate of Hawai'i with a bachelor of arts in broadcast communications, Collins-Parker is a member of the USA Volleyball Coaching Accreditation Program and is a CAP level III accredited coach.

Collins-Parker is married to Dale Parker, a former assistant coach with the Cornell women's basketball program for three seasons who served as an assistant at nearby San Diego Christian College during the 2012-13 season.

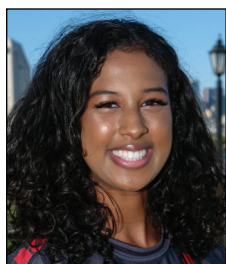
Year	School	W	L	Pct.
1996	UNLV	5	22	.185
1997	UNLV	9	18	.333
1998	UNLV	23	8	.742
1999	UNLV	12	14	.462
2000	UNLV	6	21	.222
2001	UNLV	10	16	.385
2002	UNLV	11	20	.355
2003	UNLV	13	17	.433
2004	Cornell	17	9	.654
2005	Cornell	19	6	.760
2006	Cornell	18	9	.667
2007	Cornell	9	16	.360
2008	Cornell	10	15	.400
2009	SDSU	14	15	.483
2010	SDSU	16	16	.500
2011	SDSU	18	10	.642
2012	SDSU	23	8	.742
2013	SDSU	16	14	.533
2014	SDSU	14	15	.483
2015	SDSU	12	19	.387
2016	SDSU	17	15	.531
2017	SDSU	16	15	.516
2018	SDSU	10	21	.323
2019	SDSU	12	13	.480
UNLV - Eight Years		89	136	.396
Cornell - Five Years		73	55	.570
SDSU - 11th Year		168	161	.511
Overall - 24th Year		330	352	.484



2019 AZTEC PHOTO ROSTER



Nya BLAIR
OH | 5-11 | Fr. **1**



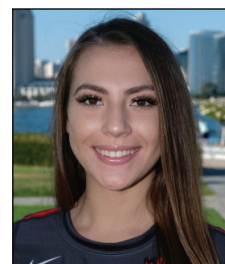
Andrea WALKER
MB | 6-0 | RS-So. **3**



Lauren LEE
DS/L | 5-0 | Jr. **4**



Serena HODSON
MB | 6-2 | So. **5**



Alexis DURAND
DS/L | 5-7 | Fr. **6**



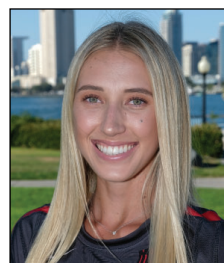
Hannah TURNLUND
OH | 5-11 | Sr. **7**



Loren TETER
DS | 5-7 | RS-Jr. **8**



Gabi PEOPLES
S | 5-10 | Jr. **9**



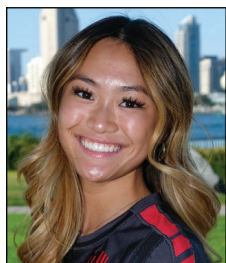
Camryn MACHADO
S | 6-1 | RS-So. **10**



Alexis RATLIFF
MB | 6-6 | RS-Fr. **11**



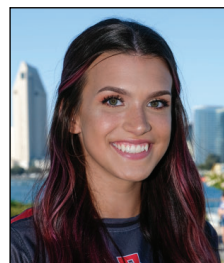
Erin GILLCRIST
MB | 6-1 | Jr. **12**



Elise PARK
DS/L | 5-7 | Fr. **13**



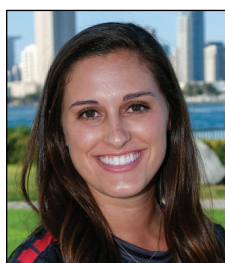
Gabriella SPAETHLING
RS | 6-1 | Fr. **14**



Abby PUGH
MB | 6-3 | RS-Jr. **15**



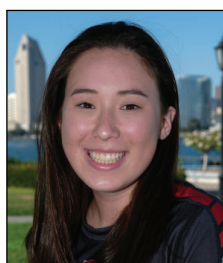
Ashley VANDERPAN
S | 6-1 | RS-Fr. **16**



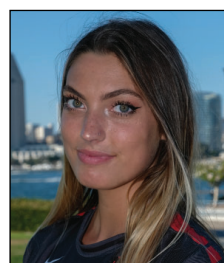
Sam McGRATH
DS/L | 5-4 | RS-Jr. **17**



Tamia REEVES
MB | 6-1 | Sr. **18**



Maddie LENN
OH | 5-10 | So. **19**



Lexie HAMRICK
OH | 6-3 | RS-Jr. **20**



Victoria O'SULLIVAN
OH | 6-0 | So. **21**



Dentre COLLINS-PARKER
Head Coach



Melanie GREENE
Assistant Coach/
Recruiting Coordinator



Dr. Ken MURCZEK
Assistant Coach



Kara BARKDOLL
Volleyball Operations
Assistant



Isabel MILLER
Volunteer Assistant
Coach



Yasser AGUILA TODD
Technical Coordinator

2019 San Diego State Volleyball
San Diego State Combined Team Statistics (as of Nov 09, 2019)
All matches

Overall record: 12-13 Conf: 5-9 Home: 6-5 Away: 2-8 Neutral: 4-0

#	Player	sp	Attack				Set		Serve			Dig			Blocking					points		
			k	k/s	e	ta	pct	a	a/s	sa	se	sa/s	re	dig	dig/s	bs	ba	total	blk/s		be	bhe
7	TURNLUND, Hannah	95	332	3.49	166	936	.177	11	0.12	7	21	0.07	25	196	2.06	3	24	27	0.28	5	0	354.0
21	O'SULLIVAN, Victoria	95	295	3.11	119	736	.239	2	0.02	0	0	0.00	6	42	0.44	13	35	48	0.51	9	0	325.5
18	REEVES, Tamia	91	178	1.96	34	354	.407	2	0.02	10	13	0.11	1	52	0.57	14	74	88	0.97	3	1	239.0
12	GILLCRIST, Erin	61	114	1.87	57	302	.189	3	0.05	0	1	0.00	2	16	0.26	0	39	39	0.64	7	0	133.5
20	HAMRICK, Lexie	52	105	2.02	39	218	.303	1	0.02	2	5	0.04	0	10	0.19	10	42	52	1.00	15	1	138.0
3	WALKER, Andrea	54	96	1.78	33	203	.310	0	0.00	0	0	0.00	0	5	0.09	5	40	45	0.83	5	0	121.0
19	LENN, Maddie	73	48	0.66	26	135	.163	15	0.21	5	33	0.07	19	92	1.26	0	15	15	0.21	1	1	60.5
10	MACHADO, Camryn	94	39	0.41	17	113	.195	980	10.43	15	14	0.16	1	244	2.60	2	29	31	0.33	13	5	70.5
11	RATLIFF, Alexis	13	9	0.69	5	27	.148	0	0.00	0	3	0.00	0	2	0.15	1	2	3	0.23	0	0	11.0
15	Pugh, Abby	4	8	2.00	4	19	.211	0	0.00	1	0	0.25	0	2	0.50	0	3	3	0.75	0	0	10.5
8	TETER, Loren	95	2	0.02	0	3	.667	68	0.72	8	24	0.08	26	344	3.62	0	0	0	0.00	0	0	10.0
1	Blair, Nya	2	1	0.50	3	8	-.250	0	0.00	0	0	0.00	0	0	0.00	0	1	1	0.50	0	0	1.5
17	McGRATH, Sam	85	0	0.00	1	4	-.250	19	0.22	11	29	0.13	32	135	1.59	0	0	0	0.00	0	0	11.0
9	Peoples, Gabi	11	0	0.00	0	0	.000	51	4.64	1	1	0.09	0	14	1.27	0	0	0	0.00	0	0	1.0
6	DURAND, Alexis	3	0	0.00	0	0	.000	0	0.00	0	0	0.00	3	4	1.33	0	0	0	0.00	0	0	0.0
4	LEE, Lauren	76	0	0.00	1	1	-1.000	12	0.16	8	10	0.11	8	106	1.39	0	0	0	0.00	0	0	8.0
SAN DIEGO STATE		95	1227	12.92	505	3059	.236	1164	12.25	68	154	0.72	141	1264	13.31	48	304	200.0	2.11	58	8	1495.0
Opponents		95	1245	13.11	491	3195	.236	1152	12.13	141	232	1.48	68	1112	11.71	39	299	188.5	1.98	29	13	1574.5

Team Statistics	SDSU	OPP	Date	Opponent	Score	Score by set	Att.	
ATTACK								
Kills	1227	1245	08/30/19	vs Akron	w 3-0	25-20,25-19,25-18	0	
Errors	505	491	08/30/19	vs Bryant	w 3-0	26-22,25-16,25-13	0	
Total Attacks	3059	3195	08/31/19	at FGCU	L 2-3	25-22,23-25,23-25,25-22,11-15	702	
Attack Pct	.236	.236	Sep 06	WEST VIRGINIA	w 3-2	21-25,16-25,25-22,25-16,15-13	386	
Kills/Set	12.9	13.1	Sep 07	ARKANSAS	w 3-2	26-24,16-25,25-19,17-25,15-12	111	
			Sep 07	ARIZONA	L 0-3	10-25,22-25,19-25	396	
SET								
Assists	1164	1152	09/13/19	vs UC Riverside	w 3-1	25-13,25-20,19-25,25-19	128	
Assists/Set	12.3	12.1	09/14/19	vs Eastern Wash.	w 3-1	25-16,22-25,28-26,25-21	107	
			09/14/19	at Grand Canyon	L 0-3	19-25,19-25,19-25	84	
SERVE								
Aces	68	141	Sep 19	LONG BEACH STATE	w 3-1	25-12,25-20,21-25,25-21	232	
Errors	154	232	Sep 20	at San Diego	L 0-3	13-25,15-25,20-25	623	
Attempts	2066	2077	*Sep 26	SAN JOSE STATE	w 3-2	25-14,25-23,21-25,26-28,16-14	264	
Serve Pct	.925	.888	*09/28/19	at Nevada	L 1-3	22-25,19-25,25-20,17-25	281	
Aces/Set	0.7	1.5	*Oct 03	UNLV	L 1-3	21-25,24-26,25-20,23-25	192	
SERVE RECEPTIONS								
Errors	141	68	*Oct 05	NEW MEXICO	w 3-1	25-18,18-25,25-18,25-21	356	
Errors/Set	1.5	0.7	*Oct 10	at Wyoming	L 0-3	19-25,13-25,22-25	810	
Attempts	1831	1899	*Oct 12	at #15 Colorado St.	L 0-3	19-25,15-25,16-25	2677	
Reception Pct	.923	.964	*Oct 14	at Fresno State	L 0-3	24-26,22-25,19-25	1327	
			*10/19/19	at Air Force	L 2-3	13-25,25-15,25-16,22-25,11-15	322	
			*Oct 24	BOISE STATE	L 2-3	18-25,25-16,22-25,25-21,13-15	242	
DEFENSE								
Digs	1264	1112	*Oct 26	UTAH STATE	w 3-0	25-19,25-20,25-22	254	
Digs/Set	13.3	11.7	*10/31/19	at New Mexico	w 3-1	25-20,15-25,25-21,25-14	276	
			*11-02-19	at UNLV	w 3-1	28-26,27-25,20-25,27-25	636	
BLOCKING								
Block Solo	48	39	*11-07-19	WYOMING	L 0-3	22-25,23-25,24-26	326	
Block Assist	304	299	*11-09-19	#13 COLORADO ST.	L 0-3	21-25,23-25,23-25	618	
Total Blocks	200.0	188.5	Record in 3-set matches:3-8 • Record in 4-set matches:6-2 • Record in 5-set matches:3-3					
Blocks/Set	2.1	2.0						
Block Errors	58	29						
Ball handling errors	8	13						
ATTENDANCE								
Total	3377	7738						
Dates/Avg Per Date	11/307	10/774						
Neutral site #/Avg	4/59							
Current win streak	0	-						
Home win streak	0	-						

2019 San Diego State Volleyball
San Diego State Combined Team Statistics (as of Nov 09, 2019)
Conference matches

RECORD:	OVERALL	HOME	AWAY	NEUTRAL
ALL GAMES	5-9	3-4	2-5	0-0
CONFERENCE	5-9	3-4	2-5	0-0
NON-CONFERENCE	0-0	0-0	0-0	0-0

#	Player	sp	Attack				Set		Serve			Dig			Blocking					points		
			k	k/s	e	ta	pct	a	a/s	sa	se	sa/s	re	dig	dig/s	bs	ba	total	blk/s		be	bhe
7	TURNLUND, Hannah	53	188	3.55	100	521	.169	6	0.11	6	8	0.11	19	103	1.94	2	17	19	0.36	2	0	204.5
21	O'SULLIVAN, Victoria	53	148	2.79	69	398	.198	2	0.04	0	0	0.00	4	29	0.55	10	17	27	0.51	5	0	166.5
18	REEVES, Tamia	52	102	1.96	19	199	.417	1	0.02	5	6	0.10	1	29	0.56	10	50	60	1.15	2	1	142.0
12	GILLCRIST, Erin	51	99	1.94	50	264	.186	3	0.06	0	1	0.00	2	9	0.18	0	38	38	0.75	6	0	118.0
3	Walker, Andrea	45	87	1.93	28	178	.331	0	0.00	0	0	0.00	0	4	0.09	5	35	40	0.89	4	0	109.5
20	HAMRICK, Lexie	14	29	2.07	10	60	.317	0	0.00	0	2	0.00	0	4	0.29	2	13	15	1.07	2	0	37.5
10	MACHADO, Camryn	52	18	0.35	11	59	.119	534	10.27	7	5	0.13	1	129	2.48	1	12	13	0.25	7	2	32.0
15	PUGH, Abby	3	5	1.67	3	11	.182	0	0.00	0	0	0.00	0	0	0.00	0	3	3	1.00	0	0	6.5
19	LENN, Maddie	33	3	0.09	5	20	-.100	5	0.15	0	12	0.00	5	44	1.33	0	3	3	0.09	1	1	4.5
8	TETER, Loren	53	2	0.04	0	2	1.000	41	0.77	7	10	0.13	20	192	3.62	0	0	0	0.00	0	0	9.0
9	PEOPLES, Gabi	9	0	0.00	0	0	.000	41	4.56	1	1	0.11	0	13	1.44	0	0	0	0.00	0	0	1.0
6	Durand, Alexis	2	0	0.00	0	0	.000	0	0.00	0	0	0.00	3	4	2.00	0	0	0	0.00	0	0	0.0
17	McGRATH, Sam	47	0	0.00	1	2	-.500	8	0.17	7	12	0.15	17	79	1.68	0	0	0	0.00	0	0	7.0
4	LEE, Lauren	46	0	0.00	1	1	-1.000	12	0.26	8	8	0.17	8	89	1.93	0	0	0	0.00	0	0	8.0
	TEAM	-	-	-	-	-	-	-	-	-	-	-	10	-	-	-	-	-	-	-	-	-
	SAN DIEGO STATE	53	681	12.85	297	1715	.224	653	12.32	41	65	0.77	90	728	13.74	30	188	124.0	2.34	29	4	846.0
	Opponents	53	727	13.72	279	1829	.245	664	12.53	90	134	1.70	41	620	11.70	23	185	115.5	2.18	16	7	932.5

Team Statistics	SDSU	OPP
ATTACK		
Kills	681	727
Errors	297	279
Total Attacks	1715	1829
Attack Pct	.224	.245
Kills/Set	12.8	13.7
SET		
Assists	653	664
Assists/Set	12.3	12.5
SERVE		
Aces	41	90
Errors	65	134
Attempts	1162	1186
Serve Pct	.944	.887
Aces/Set	0.8	1.7
SERVE RECEPTIONS		
Errors	90	41
Errors/Set	1.7	0.8
Attempts	1047	1095
Reception Pct	.914	.963
DEFENSE		
Digs	728	620
Digs/Set	13.7	11.7
BLOCKING		
Block Solo	30	23
Block Assist	188	185
Total Blocks	124.0	115.5
Blocks/Set	2.3	2.2
Block Errors	29	16
Ball handling errors	4	7
ATTENDANCE		
Total	2252	6329
Dates/Avg Per Date	7/322	7/904
Neutral site #/Avg	0/0	-
Current win streak	0	-
Home win streak	0	-

Date	Opponent	Score	Score by set	Att.
*Sep 26	SAN JOSE STATE	w 3-2	25-14,25-23,21-25,26-28,16-14	264
*09/28/19	at Nevada	L 1-3	22-25,19-25,25-20,17-25	281
*Oct 03	UNLV	L 1-3	21-25,24-26,25-20,23-25	192
*Oct 05	NEW MEXICO	w 3-1	25-18,18-25,25-18,25-21	356
*Oct 10	at Wyoming	L 0-3	19-25,13-25,22-25	810
*Oct 12	at #15 Colorado St.	L 0-3	19-25,15-25,16-25	2677
*Oct 14	at Fresno State	L 0-3	24-26,22-25,19-25	1327
*10/19/19	at Air Force	L 2-3	13-25,25-15,25-16,22-25,11-15	322
*Oct 24	BOISE STATE	L 2-3	18-25,25-16,22-25,25-21,13-15	242
*Oct 26	UTAH STATE	w 3-0	25-19,25-20,25-22	254
*10/31/19	at New Mexico	w 3-1	25-20,15-25,25-21,25-14	276
*11-02-19	at UNLV	w 3-1	28-26,27-25,20-25,27-25	636
*11-07-19	WYOMING	L 0-3	22-25,23-25,24-26	326
*11-09-19	#13 COLORADO ST.	L 0-3	21-25,23-25,23-25	618

Record in 3-set matches: 1-5
Record in 4-set matches: 3-2
Record in 5-set matches: 1-2