



SAN DIEGO STATE AZTECS

2019 Volleyball Weekly Notes

Jim Solien (Primary Contact)
 Assistant Media Relations Director
Office Phone Number: (619) 594-2576
E-Mail Address: jsolien@sdsu.edu
News Release Date: Oct. 30, 2019

SDSU Official Athletics Website: goaztecs.com
SDSU Official Athletics Twitter: @GoAztecs
SDSU Official Athletics Instagram: @GoAztecs
SDSU Official Athletics Facebook: facebook.com/goaztecs
SDSU Official Athletics YouTube: youtube.com/goaztecs.com

2019 AZTEC VOLLEYBALL SCHEDULE

Day/Date	Opponent	Time/Result
Friday, Aug. 30	vs. Akron^	W, 3-0
Friday, Aug. 30	vs. Bryant^	W, 3-0
Saturday, Aug. 31	at Florida Gulf Coast^	L, 2-3
Friday, Sept. 6	West Virginia+	W, 3-2
Saturday, Sept. 7	Arkansas+	W, 3-2
Saturday, Sept. 7	Arizona+	L, 0-3
Friday, Sept. 13	vs. UC Riverside~	W, 3-1
Saturday, Sept. 14	vs. Eastern Washington~	W, 3-1
Saturday, Sept. 14	at Grand Canyon~	L, 0-3
Thursday, Sept. 19	Long Beach State	W, 3-1
Friday, Sept. 20	at San Diego	L, 0-3
Thursday, Sept. 26	San José State*	W, 3-2
Saturday, Sept. 28	at Nevada*	L, 1-3
Thursday, Oct. 3	UNLV*	L, 1-3
Saturday, Oct. 5	New Mexico*	W, 3-1
Thursday, Oct. 10	at Wyoming*	L, 0-3
Saturday, Oct. 12	at No. 15 Colorado State*	L, 0-3
Monday, Oct. 14	at Fresno State*	L, 0-3
Saturday, Oct. 19	at Air Force*	L, 2-3
Thursday, Oct. 24	Boise State*	L, 2-3
Saturday, Oct. 26	Utah State*	W, 3-0
Thursday, Oct. 31	at New Mexico*	7 p.m. MT
Saturday, Nov. 2	at UNLV*	2 p.m. PT
Thursday, Nov. 7	Wyoming*	6 p.m. PT
Saturday Nov. 9	Colorado State*	2 p.m. PT
Tuesday, Nov. 12	Fresno State*	6 p.m. PT
Thursday, Nov. 14	Air Force*	6 p.m. PT
Thursday, Nov. 21	at Utah State*	7 p.m. MT
Saturday, Nov. 23	at Boise State*	2 p.m. MT

^ - FGCU Homewood Suites Fort Myers Classic (Fort Myers, Fla.)
 + - SDSU/USD Invitational (San Diego, Calif.)
 # - GCU Invitational (Phoenix, Ariz.)
 * - Mountain West match

Socially

Twitter: @SDSUVolleyball
 Instagram: @SDSUVolleyball

Match Week Preview

San Diego State (10-11, 3-7 MW) at New Mexico (6-16, 1-9 MW)
 Thursday, Oct. 31 | 7 p.m. MT | Johnson Center | Albuquerque, N.M.
 Series Record: SDSU leads 41-21



San Diego State (10-11, 3-7 MW) at UNLV (12-9, 8-2 MW)
 Saturday, Nov. 2 | 2 p.m. PT | Cox Pavilion | Las Vegas, Nev.
 Series: SDSU leads 27-22



AZTECS HIT THE ROAD TO FACE NEW MEXICO, UNLV

- > San Diego State embarks on its penultimate road trip of the regular season this weekend when it travels to New Mexico and UNLV.
- > The Aztecs will face the Lobos on Thursday, Oct. 31, starting at 7 p.m. MT/6 p.m. PT, before heading to Sin City to battle the Rebels on Saturday, Nov. 2, beginning at 2 p.m. PT.
- > In addition to live stats, a link to streaming video will be available for both matches on GoAztecs.com via the Mountain West Network.
- > SDSU split two encounters at home last week, dropping a tough five-set decision to Boise State (18-25, 25-16, 22-25, 25-21, 13-15) before rebounding with a sweep of Utah State (25-19, 25-20, 25-22), which snapped a five-match losing streak.
- > With the results, the Aztecs still occupy the eighth position in the Mountain West standings with a 3-7 conference mark.
- > SDSU has posted an 19-18 overall record since Sept. 29, 2018, after starting last season with a 1-14 ledger.
- > The Aztecs are 9-2 this year when blasting more kills than the opposition and are 10-4 when recording a greater hitting percentage. The Scarlet and Black is also 6-0 this season when capturing the first two sets.
- > Senior middle blocker Tamia Reeves hit .536 last week, including a .714 clip vs. Utah State (10-0-14) to raise her attack percentage to .410 for the year, which ranks second in the Mountain West and 20th in the nation.

SERIES RECORD VS. NEW MEXICO

- > The Aztecs defeated the Lobos for the fifth straight match after posting a 3-1 triumph (25-18, 18-25, 25-18, 25-21) on Oct. 5.
- > With the victory, SDSU moved to 41-21 in the all-time series vs. UNM.
- > In that match, the Aztecs featured a balanced attack, with four players posting double figures in kills - Hannah Turnlund (13), Victoria O'Sullivan (12), Erin Gillcrist (11) and Tamia Reeves (10). Reeves committed just one error on 14 attempts (.643) en route to earning MW Offensive Player of the Week honors.
- > SDSU has won two straight vs. the Lobos in Albuquerque and is 5-5 in its last 10 trips to the Duke City.
- > Since the Mountain West's inception in 1999, the Aztecs are 25-14 against UNM overall, including a 10-10 mark on the road.

SERIES RECORD VS. UNLV

- > Despite dropping a 3-1 decision (21-25, 24-26, 25-20, 23-25) at home on Oct. 3, SDSU still sports a 27-22 overall record against the Rebels.
- > In that match, the Aztecs received double-digit kills from Hannah Turnlund (15) and Victoria O'Sullivan (11), while Tamia Reeves hit .692 for the evening (9-0-13).
- > SDSU posted a greater hitting percentage (.283 to .250) and maintained the statistical advantage in digs (52-46) and total blocks (11.0-5.0); however, the Aztecs could not contain the Rebels' attack, logging 13 fewer kills (63-50) in the loss.
- > SDSU is 3-7 in its last 10 visits to Las Vegas. The Aztecs' last victory in Sin City occurred in 2012, when they emerged with a four-set triumph.

TURNLUND'S TURN

- > With her 11 put-aways at Air Force on Oct. 19, senior Hannah Turnlund surpassed the 1,000-kill plateau for her career and has launched 1,040 non-returnables in a Scarlet and Black uniform.
- > In addition, Turnlund has accumulated 2,895 attacks for her career, needing just 61 more to move into 10th place on the school's all-time list in that statistic. Angelica Jackson (1984-87) currently ranks 10th in that category with 2,955 attempts for her career.
- > Turnlund has posted double-digit kill totals in 14 of 21 matches this season and 55 times in her career.
- > Against Florida Gulf Coast on Aug. 31, Turnlund completed a double-double with a personal-best 24 kills to go with a season-high 16 digs, as the Aztecs dropped a narrow five-set decision.
- > With that performance, the Morgan Hill, California, native secured a spot on the all-tournament team at the Homewood Suites FGCU Fort Myers Classic.
- > Not to be outdone, Turnlund has racked up eight double-doubles over the last two seasons after logging none in her first two years on The Mesa. Among her standout matches was a 23-kill, 21-dig effort vs. Nevada in the next-to-last outing of the 2018 campaign.

ON THE HORIZON

- > Following Saturday's matchup at UNLV, San Diego State will open a four-match homestand, starting next week when it plays host to Wyoming on Thursday, Nov. 7 before locking horns with No. 14 Colorado State two days later on Nov. 9.

GENERAL INFORMATION

Location San Diego, Calif.
 Founded 1897
 Enrollment 32,005
 Nickname Aztecs
 Colors Scarlet and Black (Pantone 187)
 Conference Mountain West
 Affiliation Division I
 President Dr. Adela de la Torre
 Director of Athletics John David Wicker
 Faculty Representative Patrick Papin
 Home Facility Aztec Court at Peterson Gym (2,000)

TEAM INFORMATION

Head Coach Deitre Collins-Parker
 Alma Mater Hawai'i '95
 Record at SDSU 166-159 (11th year)
 Career Record 328-350 (24th year)
 E-Mail dcollins33@mail.sdsu.edu
 Volleyball Office Phone (619) 594-5064
 Volleyball Office Fax (619) 594-1674
 Assistant Coach/Recruiting Coordinator Melanie Greene
 Assistant Coach Dr. Ken Murczek
 Volleyball Operations Assistant Kara Barkdoll
 2018 Record 10-21
 2018 Conference Record 8-10 (Eighth)
 2018 Home Record 6-10
 2018 Road Record 4-7
 2018 Neutral Record 0-4
 Letterwinners Returning/Lost 12/4
 Starters Returning/Lost 3 + Libero/3

PROGRAM HISTORY

First Year of Volleyball 1976
 Overall Record 878-611 (.590)
 NCAA Appearances 14
 Last Postseason Appearance 2012
 NCAA Postseason Record 15-14

MEDIA RELATIONS

Assistant Media Relations Director Jim Solien
 E-Mail jsolien@sdsu.edu
 SID Office Phone (619) 594-2576
 SID Office Fax (619) 582-6541
 Official Athletic Website www.GoAztecs.com

**2019 AZTEC VOLLEYBALL
 STATISTICAL LEADERS**

Hitting Percentage	(.410)	Tamia Reeves
Kills	286	Hannah Turnlund
Kills per set	3.53	Hannah Turnlund
Assists	815	Camryn Machado
Assists per set	10.19	Camryn Machado
Digs	287	Loren Teter
Digs per set	3.54	Loren Teter
Blocks	70	Tamia Reeves
Blocks per set	1.00	Lexie Hamrick
Service Aces	14	Camryn Machado
Service Aces per set	0.17	Camryn Machado

2019 AZTEC VOLLEYBALL ROSTER

No.	Player	Pos.	Ht.	Yr.	Hometown (Last School)
1	Nya Blair	OH	5-11	Fr.	Grand Prairie, Texas (Martin HS)
3	Andrea Walker	MB	6-0	So.	Fairfield, Calif. (Vanden HS)
4	Lauren Lee	DS/L	5-0	Jr.	Coppell, Texas (Rice Univ.)
5	Serena Hodson	MB	6-2	So.	Mission Viejo, Calif. (Trabuco Hills HS)
6	Alexis Durand	DS/L	5-7	Fr.	Long Beach, Calif. (Long Beach Poly HS)
7	Hannah Turnlund	OH	5-11	Sr.	Morgan Hill, Calif. (Presentation HS)
8	Loren Teter	DS	5-7	RS-Jr.	Redondo Beach, Calif. (Notre Dame Academy)
9	Gabi Peoples	S	5-10	Jr.	Beaverton, Ore. (Beaverton HS)
10	Camryn Machado	S	5-9	RS-Sa.	Cardiff-by-the-Sea, Calif. (Utah)
11	Alexis Ratliff	MB	6-6	RS-Fr.	Atlanta, Ga. (Saint Francis HS)
12	Erin Gillkrist	MB	6-1	Jr.	Lakewood, Colo. (Lakewood HS)
13	Elise Park	DS/L	5-7	Fr.	Columbia, Md. (Atholton HS)
14	Gabriella Spaethling	RS	6-1	Fr.	Larkspur, Calif. (Redwood HS)
15	Abby Pugh	MB	6-3	RS-Jr.	Brenham, Texas (Wichita State)
16	Ashley Vanderpan	S	6-1	RS-Fr.	Elk Grove, Calif. (Syracuse)
17	Sam McGrath	DS/L	5-4	RS-Jr.	Oakland, Calif. (Bishop O'Dowd HS)
18	Tamia Reeves	MB	6-1	Sr.	Carrallton, Texas (Hebron HS)
19	Maddie Lenn	OH	5-10	So.	San Francisco, Calif. (Sacred Heart Cathedral Prep)
20	Lexie Hamrick	OH	6-3	RS-Jr.	Louisville, Ky. (Lindsey Wilson College)
21	Victoria O'Sullivan	OH	6-0	So.	Albany, Calif. (St. Mary's HS)

Head Coach: Deitre Collins-Parker (Hawai'i, 1995), 11th season at SDSU
Assistant Coach: Melanie Greene (San Diego State, 2007), Ninth season at SDSU
Assistant Coach: Dr. Ken Murczek (San Diego State, 1998), Third season at SDSU
Volleyball Operations Assistant: Kara Barkdoll (Cal State San Marcos, 2015), Second season at SDSU
Volunteer Assistant Coach: Isabel Miller (Arizona State, 2018), First season at SDSU
Technical Coordinator: Yasser Aguila Todd (Trident University, 2009, 2014), First season at SDSU

Pronunciations

#8 Loren TETER TEE-ter
 #9 GABI Peoples gabby
 #18 TAMIA Reeves tah-MEE-ah



OPPONENT COMPARISON (OVERALL MATCHES)

2019 Overall Stats	SDSU	MW Rank	OPP	UNM	MW Rank	OPP	UNLV	MW Rank	OPP
Hitting Percentage	.239	2	.235	.178	9	.225	.234	3	.237
Kills per set	12.75	5	12.77	11.33	10	12.98	12.98	2	11.76
Assists per set	12.04	4	11.79	10.52	10	12.05	12.00	5	11.13
Digs per set	12.80	10	11.26	13.68	6	14.60	13.49	8	13.72
Blocks per set	2.04	8	1.96	2.08	7	2.39	1.76	10	2.14
Service Aces per set	0.72	11	1.48	1.21	8	1.51	1.78	2	1.18

SCOUTING THE OPPOSITION

> **New Mexico (6-16, 1-9 MW)** has struggled in conference play this season, dropping nine of its first 10 Mountain West matches, including a 3-0 sweep at home to Air Force in its last outing on Oct. 26 (21-25, 19-25, 18-25). The Lobos' lone victory against a league opponent was recorded in a 3-2 nail-biter at Nevada on Oct. 17. Thursday's clash will be UNM's first inside the Johnson Center this year after falling in their four previous matches at Dreamstyle Arena. Individually, the Lobos are led by senior Lauren Twitty, who ranks seventh in the conference with 3.14 kills per set, while fellow classmate Tai Bierria (2.54) and freshman Kaitlynn Biassou (2.53) are averaging over two put-aways per frame as well. In addition, freshman Alena Moldan occupies the sixth spot in the league with 3.79 digs per set, while sophomore Rachel Murphy ranks ninth in blocks (1.01/set). Sophomore Jaclyn Inclan (5.77 assists, 2.48 digs) and senior Maddie Freiwald (4.48 assists) share the team's setting duties. Collectively, UNM enters the weekend ranked sixth and seventh, respectively, in digs (13.68/set) and blocks (2.01/set). However, the Lobos find themselves near the bottom of the MW in hitting percentage (9th, .178), kills (10th, 11.33/set) and assists (10th, 10.52/set). New Mexico is led by first-year head coach Jon Newman-Gonchar, who arrived on the Albuquerque campus after serving a three-year stint at Arkansas as associate head coach. Newman-Gonchar has also had stops as an assistant coach at Iowa State (2013-15), Loyola Marymount (2010-12), as well as UC San Diego with both the men's and women's squads (2007-09).

> **UNLV (12-9, 8-2 MW)** has been one of the hottest teams in the Mountain West lately, winning eight straight to take over third place in the league standings. The Rebels defeated Air Force at home in their last match by a 3-1 count (25-23, 22-25, 25-16, 25-19), as junior Mariena Hayden led all players with 18 kills, while freshman Shelby Capllonch contributed her 13th double-double of the year with 10 kills and 12 digs. Prior to Saturday's clash with the Aztecs, UNLV will square off against Fresno State on Thursday. For the season, Hayden ranks sixth in the conference with 3.28 kills per set, while Capllonch (2.87/set) and junior Thea Sweder (2.18/set) are also averaging over two put-aways per frame. Additionally, UNLV has received a boost from sophomore Kate Brennan, who ranks eighth in the MW with a .315 hitting percentage and tops the squad with 77 total blocks (0.86/set), while senior Antonette Rolda occupies the 10th spot in the conference in assists (5.86/set). Capllonch (3.13/set) holds a slight edge over Hayden (3.11/set) for the team lead in digs. Overall, the Rebels find themselves among the MW leaders in kills (2nd, 12.98/set), service aces (2nd, 1.78/set), hitting percentage (3rd, .234) and assists (12.00/set). However, UNLV is allowing a league-worst .237 hitting percentage by the opposition and ranks just 10th in blocks (1.76/set). Head coach Dawn Sullivan is in her second season with the Rebels after leading her squad to a 22-12 record last year, highlighted by a semifinal appearance in the National Invitational Volleyball Championship. Prior to her arrival at UNLV, Sullivan spent 13 years as an assistant at Iowa State, including the final six as associate head coach.

2019 MOUNTAIN WEST STANDINGS (As of Oct. 30)

Team	---Conference---			-----Overall-----			Strk
	W	L	Pct	W	L	Pct.	
#14 Colorado State	11	0	1.000	21	1	.952	W20
Wyoming	9	2	.818	14	8	.636	L1
UNLV	8	2	.800	12	9	.571	W8
Boise State	6	4	.600	14	7	.667	W2
Fresno State	5	5	.500	12	10	.545	L1
Air Force	5	5	.500	8	14	.364	W1
Nevada	4	6	.400	14	8	.636	L5
San Diego State	3	7	.300	10	11	.476	W1
San José State	2	8	.200	7	14	.333	L2
Utah State	2	8	.200	2	20	.091	L4
New Mexico	1	9	.100	6	16	.273	L3

Upcoming Matches in the MW

Thursday, Oct. 31

San Diego State at New Mexico, 7 p.m. MT

Boise State at San José State, 6 p.m. PT

Utah State at Nevada, 6 p.m. PT

Fresno State at UNLV, 6:30 p.m. PT

Air Force at No. 14 Colorado State, 7 p.m. MT

Saturday, Nov. 2

San Diego State at UNLV, 2 p.m. PT

Boise State at Nevada, 11 a.m. PT

Fresno State at New Mexico, 1 p.m. MT

Air Force at Wyoming, 1 p.m. MT

Utah State at San José State, 2 p.m. PT

Tuesday, Nov. 5

Nevada at San José State, 6 p.m. PT



WEEKLY WRAP

> San Diego State split two contests at home last weekend, dropping a tough five-set decision to Boise State (18-25, 25-16, 22-25, 25-21, 13-15) before sweeping Utah State (25-19, 25-20, 25-22), which snapped a five-match losing skid.

> Against the Broncos, the Aztecs finished with a greater hitting percentage (.225 to .163) and maintained a slight edge in kills (59-57).

> In addition, SDSU owned a sizable advantage in digs (57-41) and matched Boise State with a season-high 14 team blocks; however, the Aztecs were undone by eight Bronco service aces while committing seven errant serves of their own.

> Consequently, the Scarlet and Black lost for the second straight match when limiting an opponent to a .200 attack percentage or below and fell for only the second time this year when leading in kills.

> Individually, SDSU was led by Hannah Turnlund, who launched 21 kills, which marked her second-best total of the season and third-highest of her career.

> The Aztecs also received double-digit kills from Victoria O'Sullivan (13) and Erin Gillcrist (11), while Tamia Reeves (7 kills) matched her career-high with eight total blocks, including two solo stops.

> Not to be outdone, Camryn Machado recorded her 11th double-double of the year with 51 assists and 14 digs, while Loren Teter finished with 13 scoops of her own.

> In the fifth and deciding set, SDSU led 5-2 but could not sustain the momentum, as the Broncos reeled off a timely 9-3 run to vault in front for good.

> Against the Aggies, the Aztecs maintained a distinct edge in kills (46-31) and digs (48-27) while serving up a season-high 10 aces to defeat Utah State for the fourth straight meeting.

> SDSU was paced by Turnlund's 14 kills, while Reeves floored 10 shots of her own, finishing with a season-high .714 hitting percentage with no errors on 14 attempts.

> The Aztec cause was also buoyed by Machado, who handed out 41 assists, while Teter scooped up 19 digs, both of which marked team season-highs for a three-set match.

> San Diego State's collective 46 kills, 48 digs and 42 assists also represented season-highs for a three-set match.

AZTECS AMONG MOUNTAIN WEST LEADERS

> Entering the sixth weekend of conference play, San Diego State boasts seven players among the Mountain West leaders in various categories.

> Tamia Reeves ranks second with a .410 hitting percentage, while Andrea Walker occupies the ninth spot with a .306 clip, followed closely by Lexie Hamrick (.303), who remains in the top 10 despite missing the last six matches.

> In addition, Camryn Machado is holding down the No. 3 position with an average of 10.19 assists per set, while Hannah Turnlund climbed one notch into fourth with an average of 3.53 kills per frame.

> Elsewhere, Victoria O'Sullivan (3.12/set) ranks eighth in kills, while Loren Teter is ninth in digs (3.54/set).

> As a team, SDSU ranks among the top half of the conference for all matches in hitting percentage (2nd, .239), assists (4th, 12.04/set) and kills (5th, 12.75/set).

WALKER WATCH

> Redshirt sophomore Andrea Walker has given the Aztecs a tremendous boost over the past month, posting a .333 hitting percentage in eight matches since cracking the starting lineup vs. UNLV on Oct. 3.

> During that stretch, the Aztec middle blocker has knocked down 51 kills with just 15 errors on 74 attempts to go with 22 total blocks. Against Air Force on Oct. 19, she blasted a career-high nine kills to go with a personal-best seven block assists.

REEVES TABBED MW OFFENSIVE PLAYER OF THE WEEK

> Tamia Reeves was named MW Offensive Player of the Week on Oct. 7, after a pair of outstanding performances in the Aztecs' two home matches vs. UNLV and New Mexico.

> With her award, Reeves garnered her first career conference weekly accolade and SDSU's second this season.

> For the week, Reeves posted a sparkling .667 attack percentage, knocking down 19 kills with just one error in 27 attempts.

> The SDSU middle blocker averaged 3.19 points and 2.38 kills in eight sets played, helping the Aztecs earn a split with the Rebels and Lobos. She also displayed her versatility with nine total blocks, two digs and a service ace.

> Against UNLV on Oct. 3, Reeves launched 9 kills in 13 swings without an error, finishing with a season-best .692 clip, which also marks the SDSU's team-high for the year. She also added a season-high five blocks, including a solo stop, although the Aztecs dropped a four-set decision.

> On Oct. 5, Reeves came back with a 10-kill effort against the Lobos, hitting at a .643 pace to help the Scarlet and Black capture a 3-1 victory. She totaled just one error on a season-high 14 attempts and also contributed four blocks and one ace.

MORE REEVES

> Tamia Reeves enters the weekend ranked second in the Mountain West with a team-high .410 hitting percentage, which is good for 20th in the country and tops the squad with 70 blocks (0.91/set), including 10 solo stufes. 146 kills for the season (1.90/set).

> In addition, the Carrollton, Texas, native ranks third on the team with 146 kills for the season (1.90/set) and has committed one error or less in 14 matches this year.

> The Aztecs are also 4-1 on the season when Reeves totals at least 10 kills.

DOUBLE TROUBLE

> Setter Camryn Machado has posted a team-high 11 double-doubles this season, including a 57-assist, 13-dig effort in the Aztecs' comeback win over West Virginia on Sept. 6.

> San Diego State is 7-4 on the year when Machado records a double-double.

> Ironically, four of those matches featured an additional double-double by Hannah Turnlund, who also had big hand in the Aztecs' aforementioned thriller over WVU when she finished with 19 kills and 10 digs.

GCU INVITATIONAL REDUX

- > San Diego State went 2-1 at the GCU Invitational, Sept. 13-14, in Phoenix, Arizona.
- > The Aztecs played their first four-set match of the season in the opener, earning a 3-1 victory over UC Riverside.
- > SDSU posted its second-best hitting percentage of the season at .328 while limiting the Highlanders to a .192 clip.
- > The Aztecs also maintained the upper hand over UCR in kills (53-46), assists (51-44), digs (53-44) and total blocks (5.0-3.0).
- > Individually, Hannah Turnlund led all players with 17 kills to go with a .310 hitting percentage, while Victoria O'Sullivan (.312) topped the double-digit plateau after launching 13 non-returnables of her own. Not to be outdone, Lexie Hamrick blasted nine put-aways, hitting .615 for the match.
- > In addition, Camryn Machado logged another double-double with 43 assists and 13 digs, tying Loren Teter in the latter statistic for match-high honors.
- > San Diego State followed with another four-set decision over Eastern Washington, surviving a pivotal third set that featured 21 ties and nine lead changes before the Aztecs prevailed by a 28-26 count. SDSU then used a timely 10-4 run late in the fourth frame to secure the victory.
- > The Aztecs received double-digit kill totals from three players, including Turnlund, who launched a match-high 16 put-aways while adding 11 digs for her fourth double-double of the year. Additionally, O'Sullivan powered down 12 kills, while Hamrick hit .333, recording 10 non-returnables while tying for match-high honors with five total blocks.
- > Machado also got into the act with her sixth double-double of the year (48 assists, 15 digs), while Teter scooped up a team-high 18 digs.
- > San Diego State could not sustain the momentum in the tournament finale, however, falling to host Grand

- Canyon in three sets.
- > Despite knocking down just two fewer kills than the Lopes (40-38), the Aztecs were undone by 19 attack errors, as GCU owned a decisive advantage in hitting percentage, .360 to .183, while maintaining the edge in total blocks (6.0-2.0) and digs (35-31).
- > O'Sullivan surpassed the double-digit plateau in kills for the ninth straight match, posting 11 put-aways to go with a .280 attack percentage, while Teter registered another steady performance with 15 digs.

MACHADO NAMED TO GCU INVITE ALL-TOURNAMENT TEAM

- > Setter Camryn Machado landed a spot on the all-tournament team at the GCU Invitational after another series of outstanding all-round performances.
- > In three matches, Machado averaged 10.27 assists (113 overall) and 2.73 digs (30 overall) per set to go with 11 kills, six block assists and one service ace.
- > In addition to her aforementioned assist totals, the Aztec redshirt sophomore contributed three kills and three block assists each in SDSU's victories over UC Riverside and Eastern Washington.

IN TETER WE TRUST

- > Libero Loren Teter also enjoyed a tremendous weekend at the GCU Invite, averaging 0.68 digs more per set than her season rate entering the tournament (4.18 to 3.50).
- > The Redondo Beach, California, native logged double-digit dig totals in all three matches, including 18 scoops vs. Eastern Washington, which marked her second-highest figure up to that point after a 24-dig effort at Florida Gulf Coast on Aug. 31.
- > Teter has finished with double-digit digs in 17 of 21 matches this season and has broken that barrier in 28 out of her last 34 appearances dating back to Oct. 4, 2018.

2019 AZTEC SUPERLATIVES

Individual

HITTING PERCENTAGE (min. 12 kills)

.487 (22-3-39) Victoria O'Sullivan vs. West Virginia (Sept. 6)

KILLS

24 Hannah Turnlund at Florida Gulf Coast (Aug. 31)
 5 sets 24 Hannah Turnlund at Florida Gulf Coast (Aug. 31)
 4 sets 17 Hannah Turnlund, twice, last vs. Long Beach State (Sept. 19)
 3 sets 19 Hannah Turnlund at Fresno State (Oct. 14)

TOTAL ATTEMPTS

69 Hannah Turnlund at Florida Gulf Coast (Aug. 31)
 5 sets 69 Hannah Turnlund at Florida Gulf Coast (Aug. 31)
 4 sets 50 Hannah Turnlund vs. Eastern Washington (Sept. 14)
 3 sets 36 Hannah Turnlund at Fresno State (Oct. 14)

ASSISTS

57 Camryn Machado vs. West Virginia (Sept. 6)
 5 sets 57 Camryn Machado vs. West Virginia (Sept. 6)
 4 sets 50 Camryn Machado vs. Long Beach State (Sept. 19)
 3 sets 41 Camryn Machado vs. Utah State (Oct. 26)

DIGS

24 Loren Teter at Florida Gulf Coast (Aug. 31)
 5 sets 24 Loren Teter at Florida Gulf Coast (Aug. 31)
 4 sets 18 Loren Teter vs. Eastern Washington (Sept. 14)
 3 sets 19 Loren Teter vs. Utah State (Oct. 26)

SERVICE ACES

5 Camryn Machado at Florida Gulf Coast (Aug. 31)

BLOCK SOLOS

2 Tamia Reeves vs. Boise State (Oct. 24)
 Lexie Hamrick, three times, last: vs. San José State (Sept. 26)

BLOCK ASSISTS

7 Andrea Walker at Air Force (Oct. 19)

TOTAL BLOCKS

8 Tamia Reeves vs. Boise State (Oct. 24)

Team

HITTING PERCENTAGE

.337 (42-9-98) vs. Akron (Aug. 30)

KILLS

68 vs. San José State (Sept. 26)
 5 sets 68 vs. San José State (Sept. 26)
 4 sets 60 vs. Eastern Washington (Sept. 14)
 3 sets 46 vs. Utah State (Oct. 24)

TOTAL ATTEMPTS

181 vs. San José State (Sept. 26)
 5 sets 181 vs. San José State (Sept. 26)
 4 sets 161 vs. Eastern Washington (Sept. 14)
 3 sets 104 vs. Utah State (Oct. 26)
 at Grand Canyon (Sept. 14)

ASSISTS

61 vs. San José State (Sept. 26)
 vs. West Virginia (Sept. 6)
 5 sets 61 vs. San José State (Sept. 26)
 vs. West Virginia (Sept. 6)
 4 sets 54 vs. Long Beach State (Sept. 19)
 3 sets 48 vs. Utah State (Oct. 26)

DIGS

87 at Florida Gulf Coast (Aug. 31)
 5 sets 87 at Florida Gulf Coast (Aug. 31)
 4 sets 71 vs. Eastern Washington (Sept. 14)
 3 sets 51 vs. Bryant (Aug. 30)

SERVICE ACES

10 vs. Utah State (Oct. 26)

TOTAL BLOCKS

14.0 vs. Boise State (Oct. 24)

SDSU/USD INVITATIONAL REWIND

- > San Diego State posted a 2-1 record in its home games at the SDSU/USD Invitational, Sept. 6-7.
- > The Aztecs opened with a dramatic victory over West Virginia after rallying from two sets down.
- > Against the Mountaineers, SDSU recorded a .117 attack percentage over the first two sets before turning the tables with a .352 clip over the final three frames.
- > Individually, outside hitter Victoria O'Sullivan hit .487 for the match, blasting a career-high 22 kills to go with three block assists.
- > The Aztecs also received double-digit put-aways from outside hitter Hannah Turnlund (19) and middle blocker Tamia Reeves (10), while libero Loren Teter tied for match-high honors with 15 digs.
- > Not to be outdone, setter Camryn Machado logged her fourth straight double-double after dishing out a personal-best 57 assists to go with 13 digs.
- > Fueled by its good fortune, San Diego State outlasted a pesky Arkansas squad in another fierce five-set battle the next day.
- > The Aztecs and Razorbacks traded punches with alternating set scores until the final frame, where Turnlund and O'Sullivan launched two kills apiece during a decisive 4-1 run that closed off the set after Arkansas overcame a 7-1 deficit to forge an 11-11 tie.
- > O'Sullivan hit .371 vs. the Razorbacks and collected a team-high 19 kills, while Turnlund surpassed the double-digit plateau once again with 15 non-returnables.
- > The two sides were nearly identical in team statistics, with San Diego State maintaining the upper hand in hitting percentage (.270 to .260), kills (61-59) and total blocks (8.0-7.0), while Arkansas held a slight edge in assists (58-55) and digs (43-42).
- > After playing consecutive five-setters less than 24 hours apart, the Aztecs were unable to sustain the momentum in their weekend finale last Saturday night, dropping a 3-0 decision to visiting Arizona.
- > SDSU was out-hit .437 to .185 for the match while trailing in kills (46-37), digs (30-23) and total blocks (5.0-2.0).
- > O'Sullivan once again led the Aztec charge against the Wildcats with 10 kills, while Reeves posted a sparkling .462 hitting percentage (8-2-13).
- > San Diego State captured the first-ever meetings vs. West Virginia and Arkansas, but slipped to 20-10 all-time vs. Arizona.

O'SULLIVAN SHINES

- > Celebrating her 19th birthday on Sept. 6, Victoria O'Sullivan rose to the occasion at the SDSU/USD Invitational, averaging a team-high 3.92 kills per set while leading the Aztecs with a .381 hitting percentage.
- > O'Sullivan registered double-digit kills in all three matches, including a career-high 22 put-aways vs. West Virginia. She also hit .487 against the Mountaineers, including a .750 clip in the decisive fifth frame when she blasted six kills with no errors on eight swings to help the Aztecs rally from an 0-2 deficit in sets.
- > O'Sullivan returned with a team-high 19 kills and a .371 attack percentage vs. Arkansas, coming through in the clutch once again with six kills in the fifth set, including two on SDSU's final four points after the Razorbacks rallied from 7-1 down to tie the score at 11-11.
- > The Aztec sophomore also finished with five block assists in the tournament, including three vs. WVU.
- > Coupled with her efforts at the GCU Invitational, O'Sullivan has logged double-digit kills in all nine matches this year after posting just three last season.

FORT MYERS CLASSIC RECAP

- > San Diego State finished with a 2-1 record at the FGCU Homewood Suites Fort Myers Classic, August 30-31, in Fort Myers, Florida.
- > The Aztecs opened with a pair of sweeps over Akron and Bryant, before falling short against host Florida Gulf Coast in a tough five-set battle.
- > SDSU was led by Hannah Turnlund (3.73 kills/set) and Camryn Machado (11.55 assists/set, 3.82 digs/set), who each earned a spot on the all-tournament team.
- > Machado logged three straight double-doubles, while Tamia Reeves hit .431 to go with 2.55 kills and 1.27 blocks per set.
- > Additionally, the Scarlet and Black was bolstered by the play of Victoria O'Sullivan (3.45 kills/set, 0.73 blocks/set) and Loren Teter (4.64 digs/set).
- > Collectively, the Aztecs out-hit the opposition .272 to .148 at the tournament while maintaining the upper hand in kills (149-123), digs (188-158) and total blocks (27.0-19.0).
- > The Scarlet and Black also registered 16 fewer errant attacks than their foes (47-63) and did not commit a ball-handling error in three matches.
- > In the finale vs. Florida Gulf Coast, Turnlund posted a career-high 24 kills and scooped up 16 digs in the finale for her second straight double-double. She also tallied 10 put-aways and 11 digs vs. Bryant. In addition, the Morgan Hill, California, native hit .412 against Akron, launching seven kills with no errors in 17 attempts while adding three total blocks.
- > With their victories over Akron and Bryant, SDSU started a season 2-0 for the first time since the 2013 campaign.
- > All three matches at the FGCU Classic marked the Aztecs' first-ever meetings against those respective opponents.

MACHADO COLLECTS MW HONORS

- > Thanks to her all-round performance at the FGCU Homewood Suites Fort Myers Classic, Camryn Machado was named Mountain West Defensive Player of the Week on Sept. 2.
- > Against Florida Gulf Coast, the SDSU redshirt sophomore established career highs with 55 assists and 20 digs to go with a personal-best five service aces.
- > Earlier, the Cardiff-by-the-Sea, California, native opened the year with 35 assists and 12 digs vs. Akron, before notching 37 helpers and 10 digs against Bryant.

WELCOME BACK

- > With the graduation of four-time all-Mountain West honoree Deja Harris, senior Hannah Turnlund is the lone San Diego State veteran to have started all 31 matches during the 2018 campaign.
- > The Aztec outside hitter finished second on the squad last year with 2.78 kills per set (339 overall), blasting double-digit put-aways in 19 matches.
- > In the penultimate contest of the regular season vs. Nevada, Turnlund became the second SDSU player in the Mountain West era to post a 20-20 performance with a career-high 23 kills and 23 digs, fueling a 3-1 win for the Scarlet and Black.
- > In addition, the Aztecs welcome back senior Tamia Reeves and junior Erin Gillcrist, who ranked second and third on the squad last year with 72 and 57 total blocks in the middle, respectively.
- > Reeves owns SDSU's top returning hitting percentage from last year after posting a .273 clip, while Gillcrist (197) and sophomore outside hitter Victoria O'Sullivan (109) each surpassed the 100-kill plateau.
- > Redshirt juniors Loren Teter (2.65 digs/set) and Sam McGrath (2.43 digs/set) provided much of the support in the back row during the 2018 campaign.
- > Teter ranked eighth in Mountain West play last year with 3.23 digs per set, logging double-digit scoops in 14 matches, including five straight to end the season.

2019 SITUATIONAL RECORDS

GENERAL

Overall.....	10-11
Mountain West.....	3-7
Home.....	6-3
Away.....	0-8
Neutral.....	4-0
vs. Ranked Teams.....	0-1
vs. Unranked Teams.....	10-10
Matches Following a Win.....	4-5
Matches Following a Loss.....	6-5
Longest Winning Streak.....	2
Longest Losing Streak.....	5
Current Streak.....	Won 1

BY SETS

3 Sets.....	3-6
4 Sets.....	4-2
5 Sets.....	3-3
Leading After Two.....	6-0
Trailing After Two.....	1-8
Tied After Two.....	3-3
Leading 2-1.....	6-1
Trailing 2-1.....	1-3

BY MONTH

August.....	2-1
September.....	6-4
October.....	2-6
November.....	0-0

BY DAY

Monday.....	0-1
Thursday.....	2-3
Friday.....	3-2
Saturday.....	5-5

BY KILLS

Leading in Kills.....	9-2
Trailing in Kills.....	1-9
Tied in Kills.....	0-0

BY DIGS

Leading in Digs.....	9-6
Trailing in Digs.....	1-5
Tied in Digs.....	0-0

BY BLOCKS

Leading in Blocks.....	6-5
Trailing in Blocks.....	3-4
Tied in Blocks.....	1-2

BY ATTACK PERCENTAGE

Greater Attack Percentage.....	10-4
Lower Attack Percentage.....	0-7
Equal Attack Percentage.....	0-0
Hitting above .300.....	4-0
Hitting between .200 and .300.....	5-6
Hitting between .100 and .200.....	1-5
Hitting below .100.....	0-0
Opponent Hitting above .300.....	0-6
Opponent Hitting between .200 and .300.....	4-3
Opponent Hitting between .100 and .200.....	5-2
Opponent Hitting below .100.....	1-0

BY INDIVIDUAL KILLS

3+ Double-Digit Individual Kill Totals.....	5-3
2 Double-Digit Individual Kill Totals.....	4-2
1 Double-Digit Individual Kill Totals.....	1-3

- > In a five-set victory at Utah State, Teter came through with a career-high 22 digs, matching McGrath's personal-best total accomplished on two occasions during the season vs. Idaho and at Air Force.
- > Redshirt sophomore Camryn Machado is expected to garner increased playing time at setter this season after appearing in only eight matches last year due to injury.
- > A local product from La Costa Canyon High School, Machado originally signed with Utah following her prep career, where she averaged 3.05 assists per set off the bench as a freshman in 2017, as the Utes advanced to the second round of the NCAA Tournament.

ADDING DEPTH

- > San Diego State landed a pair of transfers during spring practice last year in setter Ashley Vanderpan and middle blocker Abby Pugh, who join true freshmen Nya Blair, Alexis Durand, Elise Park and Gabriella Spaethling.
- > A native of Elk Grove, California, Vanderpan sat out the 2018 campaign as a redshirt at Syracuse and will retain freshman status this fall. She twice captured her squad's Most Valuable Player award at Elk Grove High School, garnering first-team all-conference accolades on two occasions.
- > Pugh, meanwhile, will have junior eligibility this fall after spending two years at Wichita State. A native of Brenham, Texas, Pugh averaged 1.46 kills and hit .289 in over 120 career sets for the Shockers. In 2018, she started 22 of 30 matches, averaging 1.53 kills per set (150 overall) while hitting at a .282 clip and totaling 58 blocks.

STAFF ADDITIONS

- > The Aztecs have added volunteer assistant coach Isabel Miller and technical coordinator Yasser Aguila Todd to their 2019 staff.
- > A native of Phoenix, Arizona, Miller played at Boise State (2013-14) and San Diego Mesa College (2015-16) before completing her collegiate career at Arizona State in 2017.
- > Miller was a member of the inaugural sand volleyball team at Boise State in 2014 and recorded the first pairs match victory in program history, along with teammate Maddy O'Donnell.
- > Miller graduated from Arcadia High School in Phoenix, where she was a three-time all-state selection in volleyball. As a prep, Miller also garnered first-team all-conference honors all four years and was named league MVP during her sophomore season.
- > Aguila Todd, meanwhile, is the co-founder of Spartan Volleyball Academy in Wildomar, California, and has served as a volunteer assistant coach at Palomar College and the University of Saint Katherine in San Marcos, California.
- > Aguila Todd also spent time as a volunteer assistant at Santa Rosa Academy in Menifee, California, and coached seven teams within the Viper Volleyball Club in Temecula.

PRESEASON PROGNOSTICATIONS

- > San Diego State was picked to finish eighth this year in the Mountain West preseason coaches poll released Aug. 14.
- > In the 20-year history of the Mountain West, SDSU has finished first (2012), second (2002, 2011), fourth (2000, 2001, 2003, 2013, 2017), fifth (2005, 2015), sixth (1999, 2004, 2006, 2009, 2010, 2014, 2016), seventh (2008) and eighth (2007, 2018) in the final league standings.

2019 Mountain West Preseason Poll

Rk.	Team (1st-place votes)	Pts.
1.	Colorado State (10)	100
2.	Wyoming	79
3.	UNLV	78
4.	Boise State	73
5.	San José State	66
6.	Fresno State	56
7.	New Mexico	50
8.	San Diego State	41
9.	Air Force	28
10.	Utah State	19
11.	Nevada	15

AZTEC VOLLEYBALL EARNS PUBLIC RECOGNITION AWARD FROM NCAA

- > Last spring, the San Diego State volleyball program was publicly recognized by the NCAA for outstanding academic achievements, along with the Aztec women's tennis and cross country teams.
- > The recognition came on the heels of the most recent multiyear Academic Progress Rates (APR) in which all three programs were among the top 10 percent of their respective sports nationally.
- > With these squads earning NCAA public recognition last season, San Diego State has now received such distinction a total of 18 times in school history, matching its record of three teams set during the 2011-12 academic year.
- > The SDSU volleyball program received public recognition for the third straight season and fourth time overall, while the Aztec women's tennis team garnered the accolade for the second year in a row and fifth time in the last six seasons. In addition, the San Diego State cross country squad merited public recognition for the sixth time in school history.

2019 MATCH-BY-MATCH LEADERS

Date	Opponent	Kills	Hitting Pct.*	Assists	Aces	Digs	Blocks
A.30	vs. Akron	O'Sullivan - 10	Turnlund (.412)	Machado - 35	Lenn - 2	Teter - 15	Reeves/Hamrick - 4
A.30	vs. Bryant	O'Sullivan - 10 Turnlund	Hamrick (.545)	Machado - 37	McGrath - 1	Teter - 12	Reeves - 3 Hamrick O'Sullivan
A.31	at FGCU	Turnlund - 24	Reeves (.421)	Machado - 55	Machado - 5	Teter - 24	Reeves - 7
S.6	West Virginia	O'Sullivan - 22	O'Sullivan (.487)	Machado - 57	Machado - 1 Reeves	Teter - 15	Reeves - 5 Hamrick
S.7	Arkansas	O'Sullivan - 19	Reeves (.636)	Machado - 46	None	Teter - 11	Hamrick - 4
S.7	Arizona	O'Sullivan - 10	Reeves (.462)	Machado - 32	Machado - 1 Reeves	Teter - 7	Hamrick - 2
S.13	vs. UC Riverside	Turnlund - 17	Hamrick (.615)	Machado - 43	Hamrick - 1 Machado McGrath	Teter - 13 Machado	Hamrick - 3 Machado
S.14	vs. Eastern Wash.	Turnlund - 16	Lenn (.385)	Machado - 48	Five with 1	Teter - 18	Hamrick - 5
S.14	at Grand Canyon	O'Sullivan - 11	O'Sullivan (.280)	Machado - 22	None	Teter - 15	Walker - 2
S.19	Long Beach State	Turnlund - 17	Gillcrist (.500) Reeves	Machado - 50	Lenn - 2	Teter - 16	Hamrick - 6 Machado
S.20	at San Diego	Turnlund - 8 O'Sullivan	Turnlund (.150)	Machado - 21	None	Machado - 9	O'Sullivan - 3
S.26	San José State	O'Sullivan - 20	Hamrick (.348)	Machado - 56	None	Teter - 22	Hamrick - 6
S.28	at Nevada	O'Sullivan - 14 Turnlund	Hamrick (.286)	Machado - 44	Lee - 2	Machado - 11	Reeves - 7
O.3	UNLV	Turnlund - 15	Reeves (.692)	Machado - 31	McGrath - 2	Teter - 16	Reeves - 5
O.5	New Mexico	Turnlund - 13	Reeves (.643)	Machado - 35	Turnlund - 2	Teter - 13	Walker - 5
O.10	at Wyoming	Gillcrist - 9	Walker (.636)	Machado - 25	None	Machado - 9	Reeves - 5
O.12	at No. 15 Colorado State	Turnlund - 9	Walker (.556)	Machado - 23	Lee - 2	Teter - 11	Turnlund - 2
O.14	at Fresno State	Turnlund - 19	Turnlund (.361)	Machado - 22	Machado - 1 McGrath	Teter - 12	Reeves - 2
O.19	at Air Force	Turnlund - 11	Gillcrist (.476)	Machado - 41	Machado - 1	Teter - 20	Walker - 7
O.24	Boise State	Turnlund - 21	Reeves (.357)	Machado - 51	Reeves - 1 Teter	Machado - 14	Reeves - 8
O.26	Utah State	Turnlund - 14	Reeves (.714)	Machado - 41	Machado - 3 Teter	Teter - 19	Reeves - 2 Walker

* - min. 7 kills



Deitre COLLINS-PARKER

Head Coach - 11th season

Deitre Collins-Parker, a two-time national collegiate player of the year and AVCA Hall of Fame member, was named the head volleyball coach at San Diego State on Jan. 30, 2009. She became just the fourth head coach since the Aztecs began collegiate play in 1976, replacing Mark Warner, who retired at the end of the 2008 season after 13 years at the helm of the women's program.

Following an injury-plagued start to the 2018 campaign, Collins-Parker's squad regrouped, posting a 9-7 record over the final 16 matches of the season, highlighted by its first victory over crosstown foe San Diego since 2012 and its first road win at Boise State since 2013. Individually, Deja Harris garnered all-Mountain West accolades for the fourth year in a row and completed her illustrious Aztec career ranked eighth on the school's all-time charts with a .322 hitting percentage.

In 2017, Collins-Parker directed SDSU to its second consecutive winning season and a fourth-place Mountain West finish. A quartet of Aztecs were named all-MW (Deja Harris, Devyn Pritchard, Baylee Little, Alexis Cage) -- tied for the program's largest number of honorees since the team joined the league in 2000.

During the summer of 2014 she led a Mountain West all-star team on a tour of Europe that concluded with a bronze medal third-place finish at the 2014 European Global Challenge in Pula, Croatia.

In 2012 she led her Aztec squad to a 23-8 mark and a 13-3 ledger in the Mountain West as the Aztecs claimed their first-ever Mountain West title. It was SDSU's best conference record and league finish since the 1996 season and top overall record since 1995. In addition, she produced a pair of All-America honorees (Andrea Hannasch and Johnna Fouch) along with a total of three all-conference selections (Raegan Shelton) and the conference Newcomer of the Year (Michelle Waber).

Collins-Parker arrived at San Diego State after five seasons as the head coach at Cornell, where she led the Big Red to three Ivy League titles and two NCAA tournament appearances. Under her tutelage, the Big Red had seven players named first-team All-Ivy, including two-time Ivy League Player of the Year and honorable mention All-American, Elizabeth Bishop (2007).

Prior to taking over at Cornell in 2004, Collins-Parker spent the previous eight seasons as head coach at UNLV, earning Western Athletic Conference Coach of the Year in 1998 after taking a dormant volleyball program and leading the Lady Rebels to a 23-8 record and a WAC tournament semifinal appearance. Before her stint at UNLV, Collins-Parker served as an assistant coach at South Alabama, Northern Arizona and Houston for one year each. She also has plenty of international coaching experience as well. She served as head coach of the 1998 U.S. junior national team, directing her squad to a gold medal in the national qualifier. She served in the same capacity during the summer of 2000 (silver medal) and 2001 (bronze medal).

A former member of the U.S. national team and a three-time AVCA All-American at the University of Hawai'i, Collins-Parker was the starting middle blocker for the 1988 Olympic Team in Seoul, South Korea, and was an alternate for the 1992 team in Barcelona, Spain. She played in over 130 international matches and earned bronze medals at the 1986 Goodwill Games and the 1987 Pan-Am Games.

As a collegian, Collins-Parker was a two-time Broderick Award honoree as the national player of the year (1983, 1984) after leading the Rainbow Wahine to consecutive national titles and a 110-5 record in her final three seasons. Collins capped off her career by becoming the first volleyball player to be awarded the Broderick Cup recipient, given to the nation's best collegiate athlete in all sports. She was twice named to the NCAA all-tournament team and still holds the record for solo blocks in one NCAA tournament (15 in 1982). She was one of six players named to the NCAA Division I Women's Volleyball 25th Anniversary Team in October 2005. Collins-Parker went on to compete at the national level and played in the 1988 Seoul Olympic Games and was also an alternate for the 1992 games in Barcelona, Spain. She played in over 130 international matches and earned bronze medals at the 1986 Goodwill Games and 1987

Pan-Am Games. She played professionally in the Italian League (1988-89) and the French League (1989-91), capturing the French League Championship twice and the European Cup of Champions in 1990.

Collins-Parker received the NCAA Silver Anniversary Award during the 2009 NCAA Convention in Washington, D.C. The award honors former student-athletes who successfully completed collegiate careers in various sports and have excelled in their chosen professions on their 25th anniversary of completing their athletic eligibility. Collins-Parker was inducted into the AVCA Hall of Fame in the fall of 2008. She currently serves as a member of the AVCA Board of Directors and the chairperson on the AVCA Minority Coaches Committee. She currently has membership with the AVCA, Coaches Accreditation Program, Kaepa Gold Medal Clinics, Black Coaches Association, and Fellowship of Christian Athletes. A 1995 graduate of Hawai'i with a bachelor of arts in broadcast communications, Collins-Parker is a member of the USA Volleyball Coaching Accreditation Program and is a CAP level III accredited coach.

Collins-Parker is married to Dale Parker, a former assistant coach with the Cornell women's basketball program for three seasons who served as an assistant at nearby San Diego Christian College during the 2012-13 season.

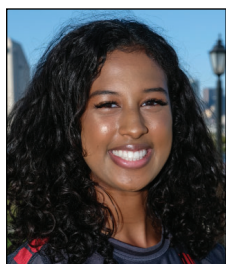
Year	School	W	L	Pct.
1996	UNLV	5	22	.185
1997	UNLV	9	18	.333
1998	UNLV	23	8	.742
1999	UNLV	12	14	.462
2000	UNLV	6	21	.222
2001	UNLV	10	16	.385
2002	UNLV	11	20	.355
2003	UNLV	13	17	.433
2004	Cornell	17	9	.654
2005	Cornell	19	6	.760
2006	Cornell	18	9	.667
2007	Cornell	9	16	.360
2008	Cornell	10	15	.400
2009	SDSU	14	15	.483
2010	SDSU	16	16	.500
2011	SDSU	18	10	.642
2012	SDSU	23	8	.742
2013	SDSU	16	14	.533
2014	SDSU	14	15	.483
2015	SDSU	12	19	.387
2016	SDSU	17	15	.531
2017	SDSU	16	15	.516
2018	SDSU	10	21	.323
2019	SDSU	10	11	.476
UNLV - Eight Years		89	136	.396
Cornell - Five Years		73	55	.570
SDSU - 11th Year		166	159	.511
Overall - 24th Year		328	350	.484



2019 AZTEC PHOTO ROSTER



Nya BLAIR
OH | 5-11 | Fr. **1**



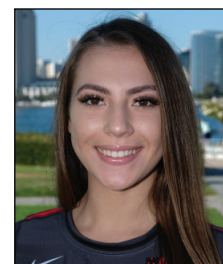
Andrea WALKER
MB | 6-0 | RS-So. **3**



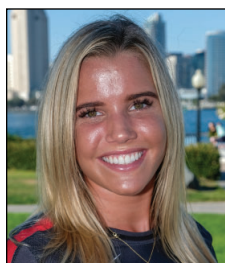
Lauren LEE
DS/L | 5-0 | Jr. **4**



Serena HODSON
MB | 6-2 | So. **5**



Alexis DURAND
DS/L | 5-7 | Fr. **6**



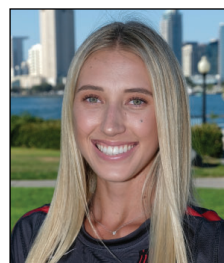
Hannah TURNLUND
OH | 5-11 | Sr. **7**



Loren TETER
DS | 5-7 | RS-Jr. **8**



Gabi PEOPLES
S | 5-10 | Jr. **9**



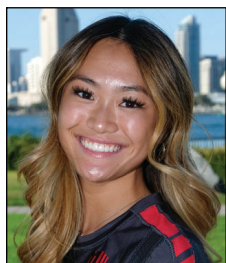
Camryn MACHADO
S | 6-1 | RS-So. **10**



Alexis RATLIFF
MB | 6-6 | RS-Fr. **11**



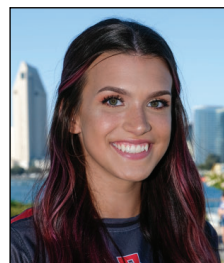
Erin GILLCRIST
MB | 6-1 | Jr. **12**



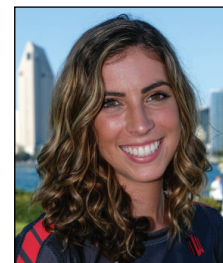
Elise PARK
DS/L | 5-7 | Fr. **13**



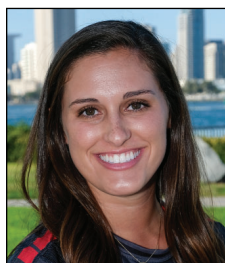
Gabriella SPAETHLING
RS | 6-1 | Fr. **14**



Abby PUGH
MB | 6-3 | RS-Jr. **15**



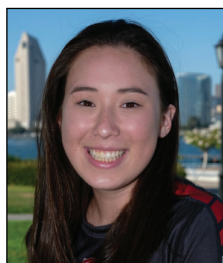
Ashley VANDERPAN
S | 6-1 | RS-Fr. **16**



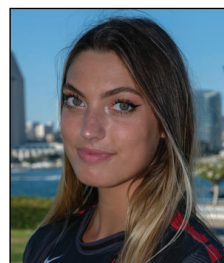
Sam McGRATH
DS/L | 5-4 | RS-Jr. **17**



Tamia REEVES
MB | 6-1 | Sr. **18**



Maddie LENN
OH | 5-10 | So. **19**



Lexie HAMRICK
OH | 6-3 | RS-Jr. **20**



Victoria O'SULLIVAN
OH | 6-0 | So. **21**



Dentre COLLINS-PARKER
Head Coach



Melanie GREENE
Assistant Coach/
Recruiting Coordinator



Dr. Ken MURCZEK
Assistant Coach



Kara BARKDOLL
Volleyball Operations
Assistant



Isabel MILLER
Volunteer Assistant
Coach



Yasser AGUILA TODD
Technical Coordinator

2019 San Diego State Volleyball
San Diego State Combined Team Statistics (as of Oct 26, 2019)
All matches

Overall record: 10-11 Conf: 3-7 Home: 6-3 Away: 0-8 Neutral: 4-0

#	Player	sp	Attack				pct	Set		Serve			Dig			Blocking				points		
			k	k/s	e	ta		a	a/s	sa	se	sa/s	re	dig	dig/s	bs	ba	total	blk/s		be	bhe
7	TURNLUND, Hannah	81	286	3.53	134	787	.193	8	0.10	5	19	0.06	18	149	1.84	3	19	22	0.27	5	0	303.5
21	O'SULLIVAN, Victoria	81	253	3.12	105	619	.239	2	0.02	0	0	0.00	5	30	0.37	10	26	36	0.44	8	0	276.0
18	REEVES, Tamia	77	146	1.90	28	288	.410	2	0.03	8	12	0.10	1	44	0.57	10	60	70	0.91	3	1	194.0
20	HAMRICK, Lexie	52	105	2.02	39	218	.303	1	0.02	2	5	0.04	0	10	0.19	10	42	52	1.00	15	1	138.0
12	GILLCRIST, Erin	47	82	1.74	43	216	.181	2	0.04	0	0	0.00	2	11	0.23	0	30	30	0.64	6	0	97.0
3	WALKER, Andrea	40	61	1.52	20	134	.306	0	0.00	0	0	0.00	0	4	0.10	4	27	31	0.77	2	0	78.5
19	LENN, Maddie	67	48	0.72	26	133	.165	14	0.21	5	32	0.07	19	87	1.30	0	15	15	0.22	1	1	60.5
10	MACHADO, Camryn	80	33	0.41	13	97	.206	815	10.19	14	11	0.17	1	209	2.61	2	25	27	0.34	9	4	61.5
11	RATLIFF, Alexis	13	9	0.69	5	27	.148	0	0.00	0	3	0.00	0	2	0.15	1	2	3	0.23	0	0	11.0
15	Pugh, Abby	4	8	2.00	4	19	.211	0	0.00	1	0	0.25	0	2	0.50	0	3	3	0.75	0	0	10.5
1	Blair, Nya	2	1	0.50	3	8	-.250	0	0.00	0	0	0.00	0	0	0.00	0	1	1	0.50	0	0	1.5
8	TETER, Loren	81	1	0.01	0	2	.500	55	0.68	8	24	0.10	21	287	3.54	0	0	0	0.00	0	0	9.0
9	Peoples, Gabi	11	0	0.00	0	0	.000	51	4.64	1	1	0.09	0	14	1.27	0	0	0	0.00	0	0	1.0
6	DURAND, Alexis	3	0	0.00	0	0	.000	0	0.00	0	0	0.00	3	4	1.33	0	0	0	0.00	0	0	0.0
17	McGRATH, Sam	71	0	0.00	1	4	-.250	16	0.23	10	26	0.14	26	108	1.52	0	0	0	0.00	0	0	10.0
4	LEE, Lauren	62	0	0.00	1	1	-1.000	10	0.16	4	6	0.06	7	76	1.23	0	0	0	0.00	0	0	4.0
SAN DIEGO STATE		81	1033	12.75	422	2553	.239	976	12.05	58	139	0.72	120	1037	12.80	40	250	165.0	2.04	49	7	1256.0
Opponents		81	1034	12.77	412	2651	.235	955	11.79	120	192	1.48	58	912	11.26	32	253	158.5	1.96	21	12	1312.5

Team Statistics	SDSU	OPP
ATTACK		
Kills	1033	1034
Errors	422	412
Total Attacks	2553	2651
Attack Pct	.239	.235
Kills/Set	12.8	12.8
SET		
Assists	976	955
Assists/Set	12.0	11.8
SERVE		
Aces	58	120
Errors	139	192
Attempts	1738	1745
Serve Pct	.920	.890
Aces/Set	0.7	1.5
SERVE RECEPTIONS		
Errors	120	58
Errors/Set	1.5	0.7
Attempts	1541	1586
Reception Pct	.922	.963
DEFENSE		
Digs	1037	912
Digs/Set	12.8	11.3
BLOCKING		
Block Solo	40	32
Block Assist	250	253
Total Blocks	165.0	158.5
Blocks/Set	2.0	2.0
Block Errors	49	21
Ball handling errors	7	12
ATTENDANCE		
Total	2433	6826
Dates/Avg Per Date	9/270	8/853
Neutral site #/Avg	4/59	
Current win streak	1	-
Home win streak	1	-

Date	Opponent	Score	Score by set	Att.
08/30/19	vs Akron	w 3-0	25-20,25-19,25-18	0
08/30/19	vs Bryant	w 3-0	26-22,25-16,25-13	0
08/31/19	at FGCU	L 2-3	25-22,23-25,23-25,25-22,11-15	702
Sep 06	WEST VIRGINIA	w 3-2	21-25,16-25,25-22,25-16,15-13	386
Sep 07	ARKANSAS	w 3-2	26-24,16-25,25-19,17-25,15-12	111
Sep 07	ARIZONA	L 0-3	10-25,22-25,19-25	396
09/13/19	vs UC Riverside	w 3-1	25-13,25-20,19-25,25-19	128
09/14/19	vs Eastern Wash.	w 3-1	25-16,22-25,28-26,25-21	107
09/14/19	at Grand Canyon	L 0-3	19-25,19-25,19-25	84
Sep 19	LONG BEACH STATE	w 3-1	25-12,25-20,21-25,25-21	232
Sep 20	at San Diego	L 0-3	13-25,15-25,20-25	623
*Sep 26	SAN JOSE STATE	w 3-2	25-14,25-23,21-25,26-28,16-14	264
*09/28/19	at Nevada	L 1-3	22-25,19-25,25-20,17-25	281
*Oct 03	UNLV	L 1-3	21-25,24-26,25-20,23-25	192
*Oct 05	NEW MEXICO	w 3-1	25-18,18-25,25-18,25-21	356
*Oct 10	at Wyoming	L 0-3	19-25,13-25,22-25	810
*Oct 12	at #15 Colorado St.	L 0-3	19-25,15-25,16-25	2677
*Oct 14	at Fresno State	L 0-3	24-26,22-25,19-25	1327
*10/19/19	at Air Force	L 2-3	13-25,25-15,25-16,22-25,11-15	322
*Oct 24	BOISE STATE	L 2-3	18-25,25-16,22-25,25-21,13-15	242
*Oct 26	UTAH STATE	w 3-0	25-19,25-20,25-22	254

Record in 3-set matches:3-6 • Record in 4-set matches:4-2 • Record in 5-set matches:3-3

2019 San Diego State Volleyball
San Diego State Combined Team Statistics (as of Oct 26, 2019)
Conference matches

RECORD:	OVERALL	HOME	AWAY	NEUTRAL
ALL GAMES	3-7	3-2	0-5	0-0
CONFERENCE	3-7	3-2	0-5	0-0
NON-CONFERENCE	0-0	0-0	0-0	0-0

#	Player	sp	Attack					Set		Serve			Dig			Blocking					points	
			k	k/s	e	ta	pct	a	a/s	sa	se	sa/s	re	dig	dig/s	bs	ba	total	blk/s	be		bhe
7	TURNLUND, Hannah	39	142	3.64	68	372	.199	3	0.08	4	6	0.10	12	56	1.44	2	12	14	0.36	2	0	154.0
21	O'SULLIVAN, Victoria	39	106	2.72	55	281	.181	2	0.05	0	0	0.00	3	17	0.44	7	8	15	0.38	4	0	117.0
18	REEVES, Tamia	38	70	1.84	13	133	.429	1	0.03	3	5	0.08	1	21	0.55	6	36	42	1.11	2	1	97.0
12	GILLCRIST, Erin	37	67	1.81	36	178	.174	2	0.05	0	0	0.00	2	4	0.11	0	29	29	0.78	5	0	81.5
3	Walker, Andrea	31	52	1.68	15	109	.339	0	0.00	0	0	0.00	0	3	0.10	4	22	26	0.84	1	0	67.0
20	HAMRICK, Lexie	14	29	2.07	10	60	.317	0	0.00	0	2	0.00	0	4	0.29	2	13	15	1.07	2	0	37.5
10	MACHADO, Camryn	38	12	0.32	7	43	.116	369	9.71	6	2	0.16	1	94	2.47	1	8	9	0.24	3	1	23.0
15	PUGH, Abby	3	5	1.67	3	11	.182	0	0.00	0	0	0.00	0	0	0.00	0	3	3	1.00	0	0	6.5
19	LENN, Maddie	27	3	0.11	5	18	-.111	4	0.15	0	11	0.00	5	39	1.44	0	3	3	0.11	1	1	4.5
8	TETER, Loren	39	1	0.03	0	1	1.000	28	0.72	7	10	0.18	15	135	3.46	0	0	0	0.00	0	0	8.0
9	PEOPLES, Gabi	9	0	0.00	0	0	.000	41	4.56	1	1	0.11	0	13	1.44	0	0	0	0.00	0	0	1.0
6	Durand, Alexis	2	0	0.00	0	0	.000	0	0.00	0	0	0.00	3	4	2.00	0	0	0	0.00	0	0	0.0
17	McGRATH, Sam	33	0	0.00	1	2	-.500	5	0.15	6	9	0.18	11	52	1.58	0	0	0	0.00	0	0	6.0
4	LEE, Lauren	32	0	0.00	1	1	-1.000	10	0.31	4	4	0.12	7	59	1.84	0	0	0	0.00	0	0	4.0
	TEAM	-	-	-	-	-	-	-	-	-	-	-	9	-	-	-	-	-	-	-	-	-
	SAN DIEGO STATE	39	487	12.49	214	1209	.226	465	11.92	31	50	0.79	69	501	12.85	22	134	89.0	2.28	20	3	607.0
	Opponents	39	516	13.23	200	1285	.246	467	11.97	69	94	1.77	31	420	10.77	16	139	85.5	2.19	8	6	670.5

Team Statistics	SDSU	OPP
ATTACK		
Kills	487	516
Errors	214	200
Total Attacks	1209	1285
Attack Pct	.226	.246
Kills/Set	12.5	13.2
SET		
Assists	465	467
Assists/Set	11.9	12.0
SERVE		
Aces	31	69
Errors	50	94
Attempts	834	854
Serve Pct	.940	.890
Aces/Set	0.8	1.8
SERVE RECEPTIONS		
Errors	69	31
Errors/Set	1.8	0.8
Attempts	757	782
Reception Pct	.909	.960
DEFENSE		
Digs	501	420
Digs/Set	12.8	10.8
BLOCKING		
Block Solo	22	16
Block Assist	134	139
Total Blocks	89.0	85.5
Blocks/Set	2.3	2.2
Block Errors	20	8
Ball handling errors	3	6
ATTENDANCE		
Total	1308	5417
Dates/Avg Per Date	5/262	5/1083
Neutral site #/Avg	0/0	
Current win streak	1	-
Home win streak	1	-

Date	Opponent	Score	Score by set	Att.
*Sep 26	SAN JOSE STATE	w 3-2	25-14,25-23,21-25,26-28,16-14	264
*09/28/19	at Nevada	L 1-3	22-25,19-25,25-20,17-25	281
*Oct 03	UNLV	L 1-3	21-25,24-26,25-20,23-25	192
*Oct 05	NEW MEXICO	w 3-1	25-18,18-25,25-18,25-21	356
*Oct 10	at Wyoming	L 0-3	19-25,13-25,22-25	810
*Oct 12	at #15 Colorado St.	L 0-3	19-25,15-25,16-25	2677
*Oct 14	at Fresno State	L 0-3	24-26,22-25,19-25	1327
*10/19/19	at Air Force	L 2-3	13-25,25-15,25-16,22-25,11-15	322
*Oct 24	BOISE STATE	L 2-3	18-25,25-16,22-25,25-21,13-15	242
*Oct 26	UTAH STATE	w 3-0	25-19,25-20,25-22	254

Record in 3-set matches: 1-3
Record in 4-set matches: 1-2
Record in 5-set matches: 1-2