



SAN DIEGO STATE AZTECS

2019 Volleyball Weekly Notes

Jim Solien (Primary Contact)
 Assistant Media Relations Director
Office Phone Number: (619) 594-2576
E-Mail Address: jsolien@sdsu.edu
News Release Date: Oct. 2, 2019

SDSU Official Athletics Website: goaztecs.com
SDSU Official Athletics Twitter: @GoAztecs
SDSU Official Athletics Instagram: @GoAztecs
SDSU Official Athletics Facebook: facebook.com/goaztecs
SDSU Official Athletics YouTube: youtube.com/goaztecs.com

2019 AZTEC VOLLEYBALL SCHEDULE

Day/Date	Opponent	Time/Result
Friday, Aug. 30	vs. Akron [^]	W, 3-0
Friday, Aug. 30	vs. Bryant [^]	W, 3-0
Saturday, Aug. 31	at Florida Gulf Coast [^]	L, 2-3
Friday, Sept. 6	West Virginia+	W, 3-2
Saturday, Sept. 7	Arkansas+	W, 3-2
Saturday, Sept. 7	Arizona+	L, 0-3
Friday, Sept. 13	vs. UC Riverside~	W, 3-1
Saturday, Sept. 14	vs. Eastern Washington~	W, 3-1
Saturday, Sept. 14	at Grand Canyon~	L, 0-3
Thursday, Sept. 19	Long Beach State	W, 3-1
Friday, Sept. 20	at San Diego	L, 0-3
Thursday, Sept. 26	San José State*	W, 3-2
Saturday, Sept. 28	at Nevada*	L, 1-3
Thursday, Oct. 3	UNLV*	6 p.m. PT
Saturday, Oct. 5	New Mexico*	2 p.m. PT
Thursday, Oct. 10	at Wyoming*	6:30 p.m. MT
Saturday, Oct. 12	at Colorado State*	1 p.m. MT
Monday, Oct. 14	at Fresno State*	7 p.m. PT
Saturday, Oct. 19	at Air Force*	1 p.m. MT
Thursday, Oct. 24	Boise State*	6 p.m. PT
Saturday, Oct. 26	Utah State*	2 p.m. PT
Thursday, Oct. 31	at New Mexico*	7 p.m. MT
Saturday, Nov. 2	at UNLV*	2 p.m. PT
Thursday, Nov. 7	Wyoming*	6 p.m. PT
Saturday Nov. 9	Colorado State*	2 p.m. PT
Tuesday, Nov. 12	Fresno State*	6 p.m. PT
Thursday, Nov. 14	Air Force*	6 p.m. PT
Thursday, Nov. 21	at Utah State*	7 p.m. MT
Saturday, Nov. 23	at Boise State*	2 p.m. MT

[^] - FGCU Homewood Suites Fort Myers Classic (Fort Myers, Fla.)
⁺ - SDSU/USD Invitational (San Diego, Calif.)
[#] - GCU Invitational (Phoenix, Ariz.)
^{*} - Mountain West match

Socially

Twitter: @SDSUVolleyball
 Instagram: @SDSUVolleyball

Match Week Preview

UNLV (4-9, 0-2 MW) at San Diego State (8-5, 1-1 MW)
 Thursday, Oct. 3 | 6 p.m. PT | Aztec Court | San Diego, Calif.
 Live Stats | MW Network
 Series: SDSU leads 27-21



New Mexico (5-9, 0-2 MW) at San Diego State (8-5, 1-1 MW)
 Saturday, Sept. 28 | 2 p.m. PT | Aztec Court | San Diego, Calif.
 Live Stats | MW Network
 Series: SDSU leads 40-21



AZTECS CONTINUE MOUNTAIN WEST SLATE VS. UNLV AND NEW MEXICO

- > San Diego State opens a two-match homestand this week when it entertains UNLV and New Mexico at Aztec Court.
- > SDSU will battle the Rebels on Thursday, Oct. 3, beginning at 6 p.m. PT, before locking horns with the Lobos on Saturday, Oct. 5, starting at 2 p.m. PT.
- > In addition to live stats, both contests will feature streaming video via the Mountain West Network on GoAztecs.com.
- > The first 250 fans in attendance for Saturday's tilt vs. UNLV will receive a free pink t-shirt in recognition of Breast Cancer Awareness Month.
- > SDSU split its first two conference matches of the season last weekend, outlasting San José State in a five-set thriller at home (25-14, 25-23, 21-25, 26-28, 16-14) before falling to Nevada by a 3-1 count in Reno (22-25, 19-25, 25-20, 17-25).
- > Despite last Saturday's loss to the Wolf Pack, the Aztecs have still matched their best start since 2011 and 2012 when the Scarlet and Black began those respective seasons with an 8-5 mark.
- > In addition, SDSU has posted a 17-12 record since Sept. 29, 2018, after starting last season with a 1-14 ledger.

SERIES RECORDS

- > Despite suffering a pair of losses to the Rebels a year ago, San Diego State still owns a 27-21 lead vs. UNLV in the all-time series.
- > The Aztecs are 18-4 against the Rebels in San Diego and have won 10 of the last 12 encounters on The Mesa.
- > However, UNLV claimed a 3-1 decision (25-17, 25-21, 17-25, 30-28) over the Scarlet and Black in their last visit to "America's Finest City" on Oct. 13, 2018, snapping SDSU's five-match winning streak at the time.
- > Hannah Turnlund and Loren Teter are the Aztecs' top returners from that meeting vs. the Rebels inside Peterson Gym. Turnlund knocked down a match-high 16 kills, hit .364 and added seven digs, while Teter led all players with 21 scoops of her own. In addition, Erin Gillcrist contributed eight kills, while Tamia Reeves finished with four block assists.
- > San Diego State is 40-21 vs. New Mexico since 1976, having won four straight and six of the last seven in the all-time series.
- > The Aztecs are 23-7 against the Lobos in San Diego and have captured seven consecutive meetings on The Mesa, including a 3-1 triumph (25-21, 25-22, 21-25, 25-15) last year on Oct. 11, 2018.
- > In that contest, Victoria O'Sullivan posted season highs with 15 kills and a .400 hitting percentage, while Erin Gillcrist matched that clip, launching seven put-aways of her own with one error in 15 swings to go with a season-best eight block assists.

ON THE HORIZON

Following Saturday's clash, the Aztecs will open a four-match road swing, starting next week when it travels to Wyoming on Thursday, Oct. 10, before tangling with No. 16 Colorado State two days later on Oct. 12.

HEAD COACH DEITRE COLLINS-PARKER

- > San Diego State head coach Deitre Collins-Parker is in her 11th season with the Aztecs after becoming the fourth head coach in program history prior to the 2009 campaign. Her record at San Diego State stands at 164-153 (.516).
- > Collins-Parker previously served as head coach at UNLV for eight seasons (1996-2003) and at Cornell for five years (2004-2008). Her career record stands at 326-346 (.486).
- > A three-time All-American as a collegiate player at the University of Hawai'i, Collins-Parker led the Rainbow Wahine to consecutive national titles (1983-84) and was twice named the national player of the year.
- > In addition, Collins-Parker was selected to the NCAA all-tournament team and still shares the record for solo blocks in one NCAA tournament with 15 in 1982.
- > Collins-Parker was a member of the U.S. Olympic Team and competed at the Goodwill Games and Pan Am Games prior to playing professionally in Europe for four years.
- > Collins-Parker is one of six players named to the NCAA Division I Women's Volleyball 25th Anniversary Team in October 2005 and was inducted into the AVCA Hall of Fame in the fall of 2008.
- > In the summer of 2017, Collins-Parker was head coach of the Mountain West All-Star volleyball team that competed in the European Global Challenge.

GENERAL INFORMATION

Location San Diego, Calif.
 Founded 1897
 Enrollment 32,005
 Nickname Aztecs
 Colors Scarlet and Black (Pantone 187)
 Conference Mountain West
 Affiliation Division I
 President Dr. Adela de la Torre
 Director of Athletics John David Wicker
 Faculty Representative Patrick Papin
 Home Facility Aztec Court at Peterson Gym (2,000)

TEAM INFORMATION

Head Coach Deitre Collins-Parker
 Alma Mater Hawai'i '95
 Record at SDSU 164-153 (11th year)
 Career Record 326-346 (24th year)
 E-Mail dcollins33@mail.sdsu.edu
 Volleyball Office Phone (619) 594-5064
 Volleyball Office Fax (619) 594-1674
 Assistant Coach/Recruiting Coordinator Melanie Greene
 Assistant Coach Dr. Ken Murczek
 Volleyball Operations Assistant Kara Barkdoll
 2018 Record 10-21
 2018 Conference Record 8-10 (Eighth)
 2018 Home Record 6-10
 2018 Road Record 4-7
 2018 Neutral Record 0-4
 Letterwinners Returning/Lost 12/4
 Starters Returning/Lost 3 + Libero/3

PROGRAM HISTORY

First Year of Volleyball 1976
 Overall Record 876-605 (.591)
 NCAA Appearances 14
 Last Postseason Appearance 2012
 NCAA Postseason Record 15-14

MEDIA RELATIONS

Assistant Media Relations Director Jim Solien
 E-Mail jsolien@sdsu.edu
 SID Office Phone (619) 594-2576
 SID Office Fax (619) 582-6541
 Official Athletic Website www.GoAztecs.com

**2019 AZTEC VOLLEYBALL
 STATISTICAL LEADERS**

Hitting Percentage	.361	Tamia Reeves
Kills	181	Victoria O'Sullivan
Kills per set	3.55	Victoria O'Sullivan
Assists	546	Camryn Machado
Assists per set	10.71	Camryn Machado
Digs	179	Loren Teter
Digs per set	3.51	Loren Teter
Blocks	47	Lexie Hamrick
Blocks per set	1.02	Lexie Hamrick
Service Aces	8	Camryn Machado
Service Aces per set	0.16	Camryn Machado

2019 AZTEC VOLLEYBALL ROSTER

No.	Player	Pos.	Ht.	Yr.	Hometown (Last School)
1	Nya Blair	OH	5-11	Fr.	Grand Prairie, Texas (Martin HS)
3	Andrea Walker	MB	6-0	So.	Fairfield, Calif. (Vanden HS)
4	Lauren Lee	DS/L	5-0	Jr.	Coppell, Texas (Rice Univ.)
5	Serena Hodson	MB	6-2	So.	Mission Viejo, Calif. (Trabuco Hills HS)
6	Alexis Durand	DS/L	5-7	Fr.	Long Beach, Calif. (Long Beach Poly HS)
7	Hannah Turnlund	OH	5-11	Sr.	Morgan Hill, Calif. (Presentation HS)
8	Loren Teter	DS	5-7	RS-Jr.	Redondo Beach, Calif. (Notre Dame Academy)
9	Gabi Peoples	S	5-10	Jr.	Beaverton, Ore. (Beaverton HS)
10	Camryn Machado	S	5-9	RS-Sa.	Cardiff-by-the-Sea, Calif. (Utah)
11	Alexis Ratliff	MB	6-6	RS-Fr.	Atlanta, Ga. (Saint Francis HS)
12	Erin Gillcrist	MB	6-1	Jr.	Lakewood, Colo. (Lakewood HS)
13	Elise Park	DS/L	5-7	Fr.	Columbia, Md. (Atholton HS)
14	Gabriella Spaethling	RS	6-1	Fr.	Larkspur, Calif. (Redwood HS)
15	Abby Pugh	MB	6-3	RS-Jr.	Brenham, Texas (Wichita State)
16	Ashley Vanderpan	S	6-1	RS-Fr.	Elk Grove, Calif. (Syracuse)
17	Sam McGrath	DS/L	5-4	RS-Jr.	Oakland, Calif. (Bishop O'Dowd HS)
18	Tamia Reeves	MB	6-1	Sr.	Carrilton, Texas (Hebron HS)
19	Maddie Lenn	OH	5-10	So.	San Francisco, Calif. (Sacred Heart Cathedral Prep)
20	Lexie Hamrick	OH	6-3	RS-Jr.	Louisville, Ky. (Lindsey Wilson College)
21	Victoria O'Sullivan	OH	6-0	So.	Albany, Calif. (St. Mary's HS)

Head Coach: Deitre Collins-Parker (Hawai'i, 1995), 12th season at SDSU
Assistant Coach: Melanie Greene (San Diego State, 2007), 10th season at SDSU
Assistant Coach: Dr. Ken Murczek (San Diego State, 1998), Third season at SDSU
Volleyball Operations Assistant: Kara Barkdoll (Cal State San Marcos, 2015), Second season at SDSU
Volunteer Assistant Coach: Isabel Miller (Arizona State, 2018), First season at SDSU
Technical Coordinator: Yasser Aguila Todd (Trident University, 2009, 2014), First season at SDSU

Pronunciations

#8 Loren TETER TEE-ter
 #9 GABI Peoples gabby
 #18 TAMIA Reeves tah-MEE-ah



OPPONENT COMPARISON (OVERALL MATCHES)

2019 Overall Stats	SDSU	MW Rank	OPP	UNLV	MW Rank	OPP	UNM	MW Rank	OPP
Hitting Percentage	.238	3	.222	.224	7	.254	.165	9	.208
Kills per set	13.04	4	12.22	12.47	6	12.29	10.91	10	12.79
Assists per set	12.22	4	11.53	11.60	6	11.52	10.08	10	11.77
Digs per set	12.73	11	11.63	12.83	10	13.45	14.11	5	15.00
Blocks per set	1.94	8	1.92	1.78	9	2.24	2.09	6	2.43
Service Aces per set	0.61	11	1.29	1.48	3	1.34	1.40	7	1.38

SCOUTING THE OPPOSITION

> **UNLV (4-9, 0-2 MW)** dropped its first two Mountain West matches last week, suffering a tough 3-2 loss at Wyoming after winning the first two sets, followed by a 3-1 setback at home to then-No. 17 Colorado State. Overall, the Rebels have lost five of their last six, with a 3-1 home triumph over Kansas marking their lone victory during that stretch. Individually, UNLV is led by the outside hitter tandem of freshman Shelby Caplonch, who ranks ninth in the MW with 3.12 kills per set (181 overall), while junior Thea Sweder averages 2.62 kills per frame (118 overall). In addition, junior Macy Smith occupies the eighth spot in the league with a .327 hitting percentage and tops the squad with 49 total blocks (0.84/set), while sophomore Kate Brennan has contributed 47 total blocks (0.81/set) in the middle as well. The Rebels' setting responsibilities have been shared by senior Antonette Rolda (5.52 assists/set, 320 overall) and sophomore Lauryn Burt (4.83 assists/set, 280 overall), while Caplonch and junior Mariena Hayden are tied for the team lead in digs so far this year with an average of 2.91 per set. As a team, UNLV ranks third in the MW in service aces (1.48/set), with Burt (16), Caplonch (15), Sweder (12), Paris Oliveira (12) and Hayden (10) each posting double digits in this category. In addition, the Rebels occupy the fourth position in the conference with an average of 12.47 kills and 11.60 assists per set. However, UNLV is allowing a league-worst .254 hitting percentage by the opposition. Head coach Dawn Sullivan is in her second season with the Rebels after leading her squad to a 22-12 record last year, highlighted by a semifinal appearance in the National Invitational Volleyball Championship. Prior to her arrival at UNLV, Sullivan spent 13 years as an assistant at Iowa State, including the final six as associate head coach. > **New Mexico (5-9, 0-2 MW)** came up empty its two conference openers last week as well, dropping a 3-0 decision at then-No. 17 Colorado State before falling short to Wyoming in a 3-2 nail-biter at home. Trailing 14-11 in the fifth set vs. the Cowgirls, the Lobos fought off three match points to tie the score at 14-14, but Wyoming used a 3-1 run to escape with the match. Prior its clash with the Aztecs, New Mexico will battle Fresno State in a road match on Thursday. Individually, the Lobos are led by senior Lauren Twitty, who ranks 10th in the conference with 3.09 kills per set (164 overall), while the fellow classmate Tai Bierria (2.47/set, 131 overall) and freshman Kaitlynn Biassou (2.17/set, 104 overall) are averaging over two put-aways per frame. Additionally, freshman Alena Malden ranks fifth in digs (4.08/set), while sophomore Rachel Murphy (7th, 1.08 blocks/set) and sophomore Jaclyn Inlan (10th, 5.73 assists per set) also find themselves among the league leaders. Collectively, UNM occupies the fifth spot in digs with 14.11 per set and ranks sixth in blocks with 2.09 per frame. However, the Lobos find themselves near the bottom of the MW in hitting percentage (9th, .165), kills (10th, 10.91/set) and assists (10th, 10.08/set). SDSU and UNM have faced one common opponent during their respective non-conference schedules, with both sides coming out on the wrong side of the scoreboard against Grand Canyon. The Lobos are guided by first-year head coach Jon Newman-Gonchar, who arrived on the Albuquerque campus after serving a three-year stint at Arkansas as associate head coach. Newman-Gonchar has also had stops as an assistant coach at Iowa State (2013-15), Loyola Marymount (2010-12), as well as UC San Diego with both the men's and women's teams (2007-09).

2019 MOUNTAIN WEST STANDINGS (As of Oct. 2)

Team	-----Conference-----				-----Overall-----		
	W	L	Pct	GB	W	L	Pct.
#16 Colorado State	3	0	1.000	--	13	1	.939
Boise State	2	0	1.000	0.5	10	3	.769
Fresno State	2	0	1.000	0.5	9	5	.643
Wyoming	2	1	.667	1.0	7	7	.500
Nevada	1	1	.000	1.5	11	3	.786
San Diego State	1	1	.500	1.5	8	5	.615
Air Force	1	1	.500	1.5	4	10	.286
San José State	0	2	.000	2.5	5	8	.385
New Mexico	0	2	.000	2.5	5	9	.417
UNLV	0	2	.000	2.5	4	9	.308
Utah State	0	2	.000	2.5	0	14	.000

This Week in the MW

Tuesday, Oct. 1

No. 16 Colorado State 3, Wyoming 2

Thursday, Oct. 3

UNLV at San Diego State, 6 p.m. PT

New Mexico at Fresno State., 6 p.m. PT

Wyoming at Air Force, 6:30 p.m. MT

San José State at Utah State, 7 p.m. MT

Nevada at Boise State, 7 p.m. MT

Saturday, Oct. 5

New Mexico at San Diego State, 2 p.m. PT

Nevada at Utah State, Noon MT

No. 16 Colorado State at Air Force, 1 p.m. MT

UNLV at Fresno State, 1 p.m. PT

San José State at Boise State, 2 p.m. MT

Tuesday, Oct. 8

San José State at Nevada, 6 p.m. PT



WEEKLY WRAP

- > San Diego State finds itself in a three-way tie for fifth place in the Mountain West standings with Nevada and Air Force after splitting a pair of matches to San José State and the aforementioned Wolf Pack squad.
- > Against SJSU at home on Sept. 26, the Aztecs prevailed in a 3-2 nail-biter (25-14, 25-23, 21-25, 26-28, 16-14).
- > Despite owning a sizable 68-52 advantage in kills and a 68-61 edge in digs, SDSU was out-blocked by a 14.0-11.0 margin and was victimized by four service aces.
- > In addition, the Aztecs hit just .171 as a team, including a .113 clip over the final four sets. After committing two attack errors in the opening frame, SDSU was plagued by 35 miscues over the remainder of the contest, allowing the Spartans to climb back into contention.
- > Still, the Aztecs withstood the challenge, thanks to double-digit kill totals from Victoria O'Sullivan (20), Hannah Turnlund (19), Lexie Hamrick (11) and Tamia Reeves (10).
- > Hamrick hit .348 on the night, while O'Sullivan finished with a .310 clip, as the two players combined for just 10 errors in 65 attempts.
- > Not to be outdone, Camryn Machado also bolstered SDSU's fortunes with her eighth double-double of the year on 56 assists and 16 digs, while Loren Teter led all players with 22 scoops of her own.
- > The Aztecs had their eight-match winning streak against Nevada snapped on Sept. 28 in a four-set defeat (22-25, 19-25, 25-20, 17-25).
- > Despite maintaining a slim edge in total blocks (12.0-11.0) and a slight margin in digs (44-40), SDSU was out-hit .271 to .186, committing nine more attack errors than the Wolf Pack (27-18), while finishing with almost as many kills (53-51).
- > O'Sullivan and Turnlund led the Aztecs with 14 kills each, while Reeves matched her season high with seven total blocks.

AZTECS AMONG MOUNTAIN WEST LEADERS

- > Entering the second weekend of conference play, San Diego State boasts six players among the Mountain West leaders in various categories.
- > Camryn Machado is holding down the No. 2 spot with an average of 10.71, assists per set, while Tamia Reeves is fourth with a .361 hitting percentage.
- > In addition, Victoria O'Sullivan (3.55/set) and Hannah Turnlund (3.47/set) rank fifth and sixth in kills, respectively, while Lexie Hamrick is 10th with a .303 hitting percentage.
- > Not to be outdone, Loren Teter also landed in the ninth position this week with 3.51 digs per set.
- > As a team, SDSU ranks among the top half of the conference for all matches in hitting percentage (3rd, .238), kills (4th, 13.0/4/set) and assists (4th, 12.20/set).

NOTHIN' LIKE HOME COOKIN'

- > In head coach Deitre Collins-Parker's tenure, the Aztecs have amassed an 87-45 (.659) record at home, highlighted by a 14-0 mark during the 2012 season when SDSU captured the Mountain West championship.
- > San Diego State is 4-1 this season at Aztec Court, including victories over West Virginia and Arkansas as part of the SDSU/USD Invitational.

GCU INVITATIONAL REDUX

- > San Diego State went 2-1 at the GCU Invitational, Sept. 13-14, in Phoenix, Arizona.
- > The Aztecs played their first four-set match of the season in the opener, earning a 3-1 victory over UC Riverside.
- > SDSU posted its second-best hitting percentage of the season at .328 while limiting the Highlanders to a .192 clip.
- > The Aztecs also maintained the upper hand over UCR in kills (53-46), assists (51-44), digs (53-44) and total blocks (5.0-3.0).
- > Individually, Hannah Turnlund led all players with 17 kills to go with a .310 hitting percentage, while Victoria O'Sullivan (.312) topped the double-digit plateau after launching 13 non-returnables of her own. Not to be outdone, Lexie Hamrick blasted nine put-aways, hitting .615 for the match.
- > In addition, Camryn Machado logged another double-double with 43 assists and 13 digs, tying Loren Teter in the latter statistic for match-high honors.
- > San Diego State followed with another four-set decision over Eastern Washington, surviving a pivotal third set that featured 21 ties and nine lead changes before the Aztecs prevailed by a 28-26 count. SDSU then used a timely 10-4 run late in the fourth frame to secure the victory.
- > The Aztecs received double-digit kill totals from three players, including Turnlund, who launched a match-high 16 put-aways while adding 11 digs for her fourth double-double of the year. Additionally, O'Sullivan powered down 12 kills, while Hamrick hit .333, recording 10 non-returnables while tying for match-high honors with five total blocks.
- > Machado also got into the act with her sixth double-double of the year (48 assists, 15 digs), while Teter scooped up a team-high 18 digs.
- > San Diego State could not sustain the momentum in the tournament finale, however, falling to host Grand Canyon in three sets.
- > Despite knocking down just two fewer kills than the Lopes (40-38), the Aztecs were undone by 19 attack errors, as GCU owned a decisive advantage in hitting percentage, .360 to .183, while maintaining the edge in total blocks (6.0-2.0) and digs (35-31).
- > O'Sullivan surpassed the double-digit plateau in kills for the ninth straight match, posting 11 put-aways to go with a .280 attack percentage, while Teter registered another steady performance with 15 digs.

MACHADO NAMED TO GCU INVITE ALL-TOURNAMENT TEAM

- > San Diego State setter Camryn Machado landed a spot on the all-tournament team at the GCU Invitational after another series of outstanding all-round performances.
- > In three matches, Machado averaged 10.27 assists (113 overall) and 2.73 digs (30 overall) per set to go with 11 kills, six block assists and one service ace.
- > In addition to her aforementioned assist totals, the Aztec redshirt sophomore contributed three kills and three block assists each in SDSU's victories over UC Riverside and Eastern Washington.

IN TETER WE TRUST

- > Libero Loren Teter also enjoyed a tremendous weekend at the GCU Invite, averaging 0.68 digs more per set than her season rate entering the tournament (4.18 to 3.50).
- > The Redondo Beach, California, native logged double-digit dig totals in all three matches, including 18 scoops vs. Eastern Washington, which marked her second-highest figure of the year after a 24-dig effort at Florida Gulf Coast on Aug. 31.
- > Teter has finished with double-digit digs in 10 of 13 matches this season and has broken that barrier in 21 out of her last 27 appearances dating back to Oct. 4, 2018.

SDSU/USD INVITATIONAL REWIND

- > San Diego State posted a 2-1 record in its home games at the SDSU/USD Invitational, Sept. 6-7.
- > The Aztecs opened with a dramatic victory over West Virginia after rallying from two sets down.
- > Against the Mountaineers, SDSU recorded a .117 attack percentage over the first two sets before turning the tables with a .352 clip over the final three frames.
- > Individually, outside hitter Victoria O'Sullivan hit .487 for the match, blasting a career-high 22 kills to go with three block assists.
- > The Aztecs also received double-digit put-aways from outside hitter Hannah Turnlund (19) and middle blocker Tamia Reeves (10), while libero Loren Teter tied for match-high honors with 15 digs.
- > Not to be outdone, setter Camryn Machado logged her fourth straight double-double after dishing out a personal-best 57 assists to go with 13 digs.
- > Fueled by its good fortune, San Diego State outlasted a pesky Arkansas squad in another fierce five-set battle the next day.

- > The Aztecs and Razorbacks traded punches with alternating set scores until the final frame, where Turnlund and O'Sullivan launched two kills apiece during a decisive 4-1 run that closed off the set after Arkansas overcame a 7-1 deficit to forge an 11-11 tie.
- > O'Sullivan hit .371 vs. the Razorbacks and collected a team-high 19 kills, while Turnlund surpassed the double-digit plateau once again with 15 non-returnables.
- > The two sides were nearly identical in team statistics, with San Diego State maintaining the upper hand in hitting percentage (.270 to .260), kills (61-59) and total blocks (8.0-7.0), while Arkansas held a slight edge in assists (58-55) and digs (43-42).
- > After playing consecutive five-setters less than 24 hours apart, the Aztecs were unable to sustain the momentum in their weekend finale last Saturday night, dropping a 3-0 decision to visiting Arizona.
- > SDSU was outlit .437 to .185 for the match while trailing in kills (46-37), digs (30-23) and total blocks (5.0-2.0).
- > O'Sullivan once again led the Aztec charge against the Wildcats with 10 kills, while Reeves posted a sparkling .462 hitting percentage (8-2-13).
- > San Diego State captured the first-ever meetings vs. West Virginia and Arkansas, but slipped to 20-10 all-time vs. Arizona.

O'SULLIVAN SHINES

- > Celebrating her 19th birthday on Sept. 6, Victoria O'Sullivan rose to the occasion at the SDSU/USD Invitational, averaging a team-high 3.92 kills per set while leading the Aztecs with a .381 hitting percentage.
- > O'Sullivan registered double-digit kills in all three matches, including a career-high 22 put-aways vs. West Virginia. She also hit .487 against the Mountaineers, including a .750 clip in the decisive fifth frame when

2019 AZTEC SUPERLATIVES

Individual

HITTING PERCENTAGE (min. 12 kills)

.487 (22-3-39) Victoria O'Sullivan vs. West Virginia (Sept. 6)

KILLS

24 Hannah Turnlund at Florida Gulf Coast (Aug. 31)
 5 sets 24 Hannah Turnlund at Florida Gulf Coast (Aug. 31)
 4 sets 17 Hannah Turnlund, twice, last vs. Long Beach State (Sept. 19)
 3 sets 11 Victoria O'Sullivan at Grand Canyon (Sept. 14)

TOTAL ATTEMPTS

69 Hannah Turnlund at Florida Gulf Coast (Aug. 31)
 5 sets 69 Hannah Turnlund at Florida Gulf Coast (Aug. 31)
 4 sets 50 Hannah Turnlund vs. Eastern Washington (Sept. 14)
 3 sets 32 Hannah Turnlund at Grand Canyon (Sept. 14)

ASSISTS

57 Camryn Machado vs. West Virginia (Sept. 6)
 5 sets 57 Camryn Machado vs. West Virginia (Sept. 6)
 4 sets 50 Camryn Machado vs. Long Beach State (Sept. 19)
 3 sets 37 Camryn Machado vs. Bryant (Aug. 30)

DIGS

24 Loren Teter at Florida Gulf Coast (Aug. 31)
 5 sets 24 Loren Teter at Florida Gulf Coast (Aug. 31)
 4 sets 18 Loren Teter vs. Eastern Washington (Sept. 14)
 3 sets 15 Loren Teter vs. Akron (Aug. 30)

SERVICE ACES

5 Camryn Machado at Florida Gulf Coast (Aug. 31)

BLOCK SOLOS

2 Lexie Hamrick, twice, last: vs. Eastern Washington (Sept. 14)

BLOCK ASSISTS

6 Tamia Reeves, twice, last at Nevada (Sept. 28)
 Erin Gillcrist at Nevada (Sept. 26)
 Lexie Hamrick vs. San José State (Sept. 26)

TOTAL BLOCKS

7 Tamia Reeves, twice, last at Nevada (Sept. 28)

Team

HITTING PERCENTAGE

.337 (42-9-98) vs. Akron (Aug. 30)

KILLS

68 vs. San José State (Sept. 26)
 5 sets 68 vs. San José State (Sept. 26)
 4 sets 60 vs. Eastern Washington (Sept. 14)
 3 sets 43 vs. Bryant (Aug. 30)

TOTAL ATTEMPTS

181 vs. San José State (Sept. 26)
 5 sets 181 vs. San José State (Sept. 26)
 4 sets 161 vs. Eastern Washington (Sept. 14)
 3 sets 104 at Grand Canyon (Sept. 14)

ASSISTS

61 vs. San José State (Sept. 26)
 vs. West Virginia (Sept. 6)
 5 sets 61 vs. San José State (Sept. 26)
 vs. West Virginia (Sept. 6)
 4 sets 54 vs. Long Beach State (Sept. 19)
 3 sets 40 vs. Akron (Aug. 30), vs. Bryant (Aug. 30)

DIGS

87 at Florida Gulf Coast (Aug. 31)
 5 sets 87 at Florida Gulf Coast (Aug. 31)
 4 sets 71 vs. Eastern Washington (Sept. 14)
 3 sets 51 vs. Bryant (Aug. 30)

SERVICE ACES

7 at Florida Gulf Coast (Aug. 31)

TOTAL BLOCKS

12.0 at Nevada (Sept. 28)

she blasted six kills with no errors on eight swings to help the Aztecs rally from an 0-2 deficit in sets.

- > O'Sullivan returned with a team-high 19 kills and a .371 attack percentage vs. Arkansas, coming through in the clutch once again with six kills in the fifth set, including two on SDSU's final four points after the Razorbacks rallied from 7-1 down to tie the score at 11-11.
- > The Aztec sophomore also finished with five block assists in the tournament, including three vs. WVU.
- > Coupled with her efforts at the GCU Invitational, O'Sullivan has logged double-digit kills in all nine matches this year after posting just three last season.

FORT MYERS CLASSIC RECAP

- > San Diego State finished with a 2-1 record at the FGCU Homewood Suites Fort Myers Classic, August 30-31, in Fort Myers, Florida.
- > The Aztecs opened with a pair of sweeps over Akron and Bryant, before falling short against host Florida Gulf Coast in a tough five-set battle.
- > SDSU was led by Hannah Turnlund (3.73 kills/set) and Camryn Machado (11.55 assists/set, 3.82 digs/set), who each earned a spot on the all-tournament team.
- > Machado logged three straight double-doubles, while Tamia Reeves hit .431 to go with 2.55 kills and 1.27 blocks per set.
- > Additionally, the Scarlet and Black was bolstered by the play of Victoria O'Sullivan (3.45 kills/set, 0.73 blocks/set) and Loren Teter (4.64 digs/set).
- > Collectively, the Aztecs outhit the opposition .272 to .148 at the tournament while maintaining the upper hand in kills (149-123), digs (188-158) and total blocks (27.0-19.0). T
- > The Scarlet and Black also registered 16 fewer errant attacks than their foes (47-63) and did not commit a ball-handling error in three matches.
- > In the finale vs. Florida Gulf Coast, Turnlund posted a career-high 24 kills and scooped up 16 digs in the finale for her second straight double-double. She also tallied 10 put-aways and 11 digs vs. Bryant. In addition, the Morgan Hill, California, native hit .412 against Akron, launching seven kills with no errors in 17 attempts while adding three total blocks.
- > With their victories over Akron and Bryant, SDSU started a season 2-0 for the first time since the 2013 campaign.
- > All three matches at the FGCU Classic marked the Aztecs' first-ever meetings against those respective opponents.

MACHADO COLLECTS MW HONORS

- > Thanks to her all-round performance at the FGCU Homewood Suites Fort Myers Classic, Camryn Machado was named Mountain West Defensive Player of the Week on Sept. 2.
- > Against Florida Gulf Coast, the SDSU redshirt sophomore established career highs with 55 assists and 20 digs to go with a personal-best five service aces.
- > Earlier, the Cardiff-by-the-Sea, California, native opened the year with 35 assists and 12 digs vs. Akron, before notching 37 helpers and 10 digs against Bryant.

WELCOME BACK

- > With the graduation of four-time all-Mountain West honoree Deja Harris, senior Hannah Turnlund is the lone San Diego State veteran to have started all 31 matches during the 2018 campaign.
- > The Aztec outside hitter finished second on the squad last year with 2.78 kills per set (339 overall), blasting double-digit put-aways in 19 matches.
- > In the penultimate contest of the regular season vs. Nevada, Turnlund became the second SDSU player in the Mountain West era to post a 20-20 performance with a career-high 23 kills and 23 digs, fueling a 3-1 win for the Scarlet and Black.
- > In addition, the Aztecs welcome back senior Tamia Reeves and junior Erin Gillcrist, who ranked second and third on the squad last year with 72 and 57 total blocks in the middle, respectively.
- > Reeves owns SDSU's top returning hitting percentage from last year after posting a .273 clip, while Gillcrist (197) and sophomore outside hitter Victoria O'Sullivan (109) each surpassed the 100-kill plateau.
- > Redshirt juniors Loren Teter (2.65 digs/set) and Sam McGrath (2.43 digs/set) provided much of the support in the back row during the 2018 campaign.
- > Teter ranked eighth in Mountain West play last year with 3.23 digs per set, logging double-digit scoops in 14 matches, including five straight to end the season.
- > In a five-set victory at Utah State, Teter came through with a career-high 22 digs, matching McGrath's personal-best total accomplished on two occasions during the season vs. Idaho and at Air Force.
- > Redshirt sophomore Camryn Machado is expected to garner increased playing time at setter this season after appearing in only eight matches last year due to injury.
- > A local product from La Costa Canyon High School, Machado originally signed with Utah following her prep career, where she averaged 3.05 assists per set off the bench as a freshman in 2017, as the Utes advanced to the second round of the NCAA Tournament.

ADDING DEPTH

- > San Diego State landed a pair of transfers during spring practice last year in setter Ashley Vanderpan and middle blocker Abby Pugh, who join true freshmen Nya Blair, Alexis Durand, Elise Park and Gabriella Spaethling.
- > A native of Elk Grove, California, Vanderpan sat out the 2018 campaign as a redshirt at Syracuse and will retain freshman status this fall. She twice captured her squad's Most Valuable Player award at Elk Grove High School, garnering first-team all-conference accolades on two occasions.
- > Pugh, meanwhile, will have junior eligibility this fall after spending two years at Wichita State. A native of Brenham, Texas, Pugh averaged 1.46 kills and hit .289 in over 120 career sets for the Shockers. In 2018, she started 22 of 30 matches, averaging 1.53 kills per set (150 overall) while hitting at a .282 clip and totaling 58 blocks..

STAFF ADDITIONS

- > The Aztecs have added volunteer assistant coach Isabel Miller and technical coordinator Yasser Aguila Todd to their 2019 staff.
- > A native of Phoenix, Arizona, Miller played at Boise State (2013-14) and San Diego Mesa College (2015-16) before completing her collegiate career at Arizona State in 2017.
- > Miller was a member of the inaugural sand volleyball team at Boise State in 2014 and recorded the first pairs match victory in program history, along with teammate Maddy O'Donnell.
- > Miller graduated from Arcadia High School in Phoenix, where she was a three-time all-state selection in volleyball. As a prep, Miller also garnered first-team all-conference honors all four years and was named league MVP during her sophomore season.
- > Aguila Todd, meanwhile, is the co-founder of Spartan Volleyball Academy in Wildomar, California, and has served as a volunteer assistant coach at

2019 SITUATIONAL RECORDS

GENERAL

Overall.....	8-5
Mountain West.....	1-1
Home.....	4-1
Away.....	0-4
Neutral.....	4-0
vs. Ranked Teams.....	0-0
vs. Unranked Teams.....	7-4
Matches Following a Win.....	4-4
Matches Following a Loss.....	4-0
Longest Winning Streak.....	2
Longest Losing Streak.....	1, five times
Current Streak.....	Last 1

BY SETS

3 Sets.....	2-3
4 Sets.....	3-1
5 Sets.....	3-1
Leading After Two.....	5-0
Trailing After Two.....	1-4
Tied After Two.....	2-1
Leading 2-1.....	5-0
Trailing 2-1.....	1-1

BY MONTH

August.....	2-1
September.....	6-4
October.....	0-0
November.....	0-0

BY DAY

Thursday.....	2-0
Friday.....	3-2
Saturday.....	3-3

BY KILLS

Leading in Kills.....	7-1
Trailing in Kills.....	1-4
Tied in Kills.....	0-0

BY DIGS

Leading in Digs.....	7-2
Trailing in Digs.....	1-3
Tied in Digs.....	0-0

BY BLOCKS

Leading in Blocks.....	5-1
Trailing in Blocks.....	2-3
Tied in Blocks.....	1-1

BY ATTACK PERCENTAGE

Greater Attack Percentage.....	8-1
Lower Attack Percentage.....	0-4
Equal Attack Percentage.....	0-0
Hitting above .300.....	3-0
Hitting between .200 and .300.....	4-1
Hitting between .100 and .200.....	1-4
Hitting below .100.....	0-0
Opponent Hitting above .300.....	0-3
Opponent Hitting between .200 and .300.....	2-2
Opponent Hitting between .100 and .200.....	5-0
Opponent Hitting below .100.....	1-0

BY INDIVIDUAL KILLS

3+ Double-Digit Individual Kill Totals.....	4-1
2 Double-Digit Individual Kill Totals.....	3-1
1 Double-Digit Individual Kill Totals.....	1-2

Palomar College and the University of Saint Katherine in San Marcos, California.
 > Aguila Todd also spent time as a volunteer assistant at Santa Rosa Academy in Menifee, California, and coached seven teams within the Viper Volleyball Club in Temecula.

PRESEASON PROGNOSTICATIONS

> San Diego State was picked to finish eighth this year in the Mountain West preseason coaches poll released Aug. 14.
 > In the 20-year history of the Mountain West, SDSU has finished first (2012), second (2002, 2011), fourth (2000, 2001, 2003, 2013, 2017), fifth (2005, 2015), sixth (1999, 2004, 2006, 2009, 2010, 2014, 2016), seventh (2008) and eighth (2007, 2018) in the final league standings.

2019 Mountain West Preseason Poll

Rk.	Team (1st-place votes)	Pts.
1.	Colorado State (10)	100
2.	Wyoming	79
3.	UNLV	78
4.	Boise State	73
5.	San José State	66
6.	Fresno State	56
7.	New Mexico	50
8.	San Diego State	41
9.	Air Force	28
10.	Utah State	19
11.	Nevada	15

AZTEC VOLLEYBALL EARNS PUBLIC RECOGNITION AWARD FROM NCAA

> Last spring, the San Diego State volleyball program was publicly recognized by the NCAA for outstanding academic achievements, along with the Aztec women's tennis and cross country teams.
 > The recognition came on the heels of the most recent multiyear Academic Progress Rates (APR) in which all three programs were among the top 10 percent of their respective sports nationally.
 > With these squads earning NCAA public recognition last season, San Diego State has now received such distinction a total of 18 times in school history, matching its record of three teams set during the 2011-12 academic year.
 > The SDSU volleyball program received public recognition for the third straight season and fourth time overall, while the Aztec women's tennis team garnered the accolade for the second year in a row and fifth time in the last six seasons. In addition, the San Diego State cross country squad merited public recognition for the sixth time in school history.

2019 MATCH-BY-MATCH LEADERS

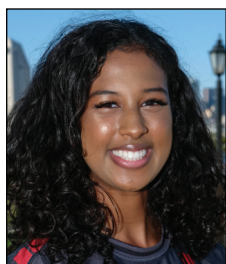
Date	Opponent	Kills	Hitting Pct.*	Assists	Aces	Digs	Blocks
A.30	vs. Akron	O'Sullivan - 10	Turnlund (.412)	Machado - 35	Lenn - 2	Teter - 15	Reeves/Hamrick - 4
A.30	vs. Bryant	O'Sullivan - 10 Turnlund	Hamrick (.545)	Machado - 37	McGrath - 1	Teter - 12	Reeves - 3 Hamrick O'Sullivan
A.31	at FGCU	Turnlund - 24	Reeves (.421)	Machado - 55	Machado - 5	Teter - 24	Reeves - 7
S.6	West Virginia	O'Sullivan - 22	O'Sullivan (.487)	Machado - 57	Machado - 1 Reeves	Teter - 15	Reeves - 5 Hamrick
S.7	Arkansas	O'Sullivan - 19	Reeves (.636)	Machado - 46	None	Teter - 11	Hamrick - 4
S.7	Arizona	O'Sullivan - 10	Reeves (.462)	Machado - 32	Machado - 1 Reeves	Teter - 7	Hamrick - 2
S.13	vs. UC Riverside	Turnlund - 17	Hamrick (.615)	Machado - 43	Hamrick - 1 Machado McGrath	Teter - 13 Machado	Hamrick - 3 Machado
S.14	vs. Eastern Wash.	Turnlund - 16	Lenn (.385)	Machado - 48	Five with 1	Teter - 18	Hamrick - 5
S.14	at Grand Canyon	O'Sullivan - 11	O'Sullivan (.280)	Machado - 22	None	Teter - 15	Walker - 2
S.19	Long Beach State	Turnlund - 17	Gillcrist (.500) Reeves	Machado - 50	Lenn - 2	Teter - 16	Hamrick - 6 Machado
S.20	at San Diego	Turnlund - 8 O'Sullivan	Turnlund (.150)	Machado - 21	None	Machado - 9	O'Sullivan - 3
S.26	San José State	O'Sullivan - 20	Hamrick (.348)	Machado - 56	None	Teter - 22	Hamrick - 6
S.28	at Nevada	O'Sullivan - 14 Turnlund	Hamrick (.286)	Machado - 44	Lee - 2	Machado - 11	Reeves - 7

* - min. 7 kills

2019 AZTEC PHOTO ROSTER



Nya BLAIR
OH | 5-11 | Fr. **1**



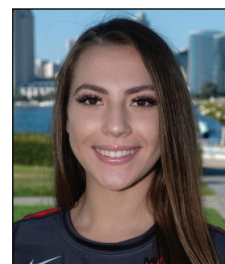
Andrea WALKER
MB | 6-0 | RS-So. **3**



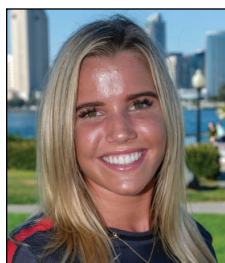
Lauren LEE
DS/L | 5-0 | Jr. **4**



Serena HODSON
MB | 6-2 | So. **5**



Alexis DURAND
DS/L | 5-7 | Fr. **6**



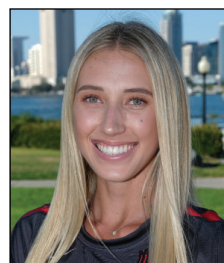
Hannah TURNLUND
OH | 5-11 | Sr. **7**



Loren TETER
DS | 5-7 | RS-Jr. **8**



Gabi PEOPLES
S | 5-10 | Jr. **9**



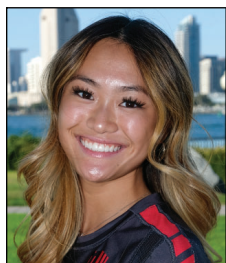
Camryn MACHADO
S | 6-1 | RS-So. **10**



Alexis RATLIFF
MB | 6-6 | RS-Fr. **11**



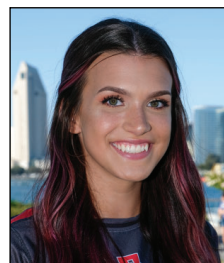
Erin GILLCRIST
MB | 6-1 | Jr. **12**



Elise PARK
DS/L | 5-7 | Fr. **13**



Gabriella SPAETHLING
RS | 6-1 | Fr. **14**



Abby PUGH
MB | 6-3 | RS-Jr. **15**



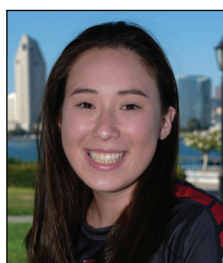
Ashley VANDERPAN
S | 6-1 | RS-Fr. **16**



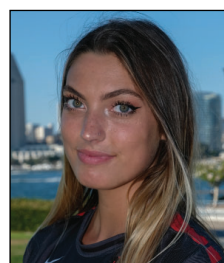
Sam McGRATH
DS/L | 5-4 | RS-Jr. **17**



Tamia REEVES
MB | 6-1 | Sr. **18**



Maddie LENN
OH | 5-10 | So. **19**



Lexie HAMRICK
OH | 6-3 | RS-Jr. **20**



Victoria O'SULLIVAN
OH | 6-0 | So. **21**



Dentre COLLINS-PARKER
Head Coach



Melanie GREENE
Assistant Coach/
Recruiting Coordinator



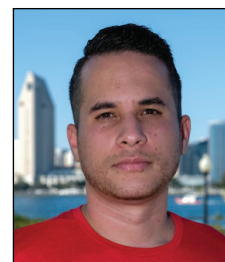
Dr. Ken MURCZEK
Assistant Coach



Kara BARKDOLL
Volleyball Operations
Assistant



Isabel MILLER
Volunteer Assistant
Coach



Yasser AGUILA TODD
Technical Coordinator

2019 San Diego State Volleyball
San Diego State Combined Team Statistics (as of Sep 28, 2019)
All matches

Overall record: 8-5 Conf: 1-1 Home: 4-1 Away: 0-4 Neutral: 4-0

#	Player	sp	Attack				Set		Serve			re	Dig		Blocking					points		
			k	k/s	e	ta	pct	a	a/s	sa	se		sa/s	dig	dig/s	bs	ba	total	blk/s		be	bhe
21	O'SULLIVAN, Victoria	51	181	3.55	65	416	.279	0	0.00	0	0	0.00	2	18	0.35	4	21	25	0.49	6	0	195.5
7	TURLUND, Hannah	51	177	3.47	88	506	.176	5	0.10	1	14	0.02	8	103	2.02	1	10	11	0.22	4	0	184.0
20	HAMRICK, Lexie	46	94	2.04	35	195	.303	1	0.02	2	3	0.04	0	9	0.20	10	37	47	1.02	14	1	124.5
18	REEVES, Tamia	48	92	1.92	22	194	.361	1	0.02	5	8	0.10	0	27	0.56	5	35	40	0.83	1	0	119.5
19	LENN, Maddie	49	46	0.94	22	122	.197	13	0.27	5	28	0.10	16	65	1.33	0	15	15	0.31	1	0	58.5
12	GILLCRIST, Erin	18	27	1.50	17	78	.128	0	0.00	0	0	0.00	0	7	0.39	0	8	8	0.44	4	0	31.0
10	MACHADO, Camryn	51	25	0.49	8	70	.243	546	10.71	8	10	0.16	0	142	2.78	1	20	21	0.41	7	3	44.0
3	WALKER, Andrea	10	10	1.00	5	26	.192	0	0.00	0	0	0.00	0	1	0.10	0	5	5	0.50	2	0	12.5
11	RATLIFF, Alexis	13	9	0.69	5	27	.148	0	0.00	0	3	0.00	0	2	0.15	1	2	3	0.23	0	0	11.0
15	Pugh, Abby	1	3	3.00	1	8	.250	0	0.00	1	0	1.00	0	2	2.00	0	0	0	0.00	0	0	4.0
1	Blair, Nya	2	1	0.50	3	8	-.250	0	0.00	0	0	0.00	0	0	0.00	0	1	1	0.50	0	0	1.5
9	Peoples, Gabi	2	0	0.00	0	0	.000	10	5.00	0	0	0.00	0	1	0.50	0	0	0	0.00	0	0	0.0
6	DURAND, Alexis	1	0	0.00	0	0	.000	0	0.00	0	0	0.00	0	0	0.00	0	0	0	0.00	0	0	0.0
17	McGRATH, Sam	45	0	0.00	0	2	.000	11	0.24	5	17	0.11	17	62	1.38	0	0	0	0.00	0	0	5.0
8	TETER, Loren	51	0	0.00	0	1	.000	34	0.67	2	17	0.04	7	179	3.51	0	0	0	0.00	0	0	2.0
4	LEE, Lauren	39	0	0.00	1	1	-1.000	2	0.05	2	2	0.05	4	31	0.79	0	0	0	0.00	0	0	2.0
SAN DIEGO STATE		51	665	13.04	272	1654	.238	623	12.22	31	102	0.61	66	649	12.73	22	154	99.0	1.94	39	4	795.0
Opponents		51	623	12.22	257	1650	.222	588	11.53	66	124	1.29	31	593	11.63	20	156	98.0	1.92	18	8	787.0

Team Statistics	SDSU	OPP	Date	Opponent	Score	Score by set	Att.	
ATTACK								
Kills	665	623	08/30/19	vs Akron	w 3-0	25-20,25-19,25-18	0	
Errors	272	257	08/30/19	vs Bryant	w 3-0	26-22,25-16,25-13	0	
Total Attacks	1654	1650	08/31/19	at FGCU	L 2-3	25-22,23-25,23-25,25-22,11-15	702	
Attack Pct	.238	.222	Sep 06	WEST VIRGINIA	w 3-2	21-25,16-25,25-22,25-16,15-13	386	
Kills/Set	13.0	12.2	Sep 07	ARKANSAS	w 3-2	26-24,16-25,25-19,17-25,15-12	111	
			Sep 07	ARIZONA	L 0-3	10-25,22-25,19-25	396	
SET								
Assists	623	588	09/13/19	vs UC Riverside	w 3-1	25-13,25-20,19-25,25-19	128	
Assists/Set	12.2	11.5	09/14/19	vs Eastern Wash.	w 3-1	25-16,22-25,28-26,25-21	107	
			09/14/19	at Grand Canyon	L 0-3	19-25,19-25,19-25	84	
SERVE								
Aces	31	66	Sep 19	LONG BEACH STATE	w 3-1	25-12,25-20,21-25,25-21	232	
Errors	102	124	Sep 20	at San Diego	L 0-3	13-25,15-25,20-25	623	
Aces/Set	0.6	1.3	*Sep 26	SAN JOSE STATE	w 3-2	25-14,25-23,21-25,26-28,16-14	264	
			*09/28/19	at Nevada	L 1-3	22-25,19-25,25-20,17-25	281	
SERVE RECEPTIONS								
Errors	66	31						
Errors/Set	1.3	0.6						
DEFENSE								
Digs	649	593						
Digs/Set	12.7	11.6						
BLOCKING								
Block Solo	22	20						
Block Assist	154	156						
Total Blocks	99.0	98.0						
Blocks/Set	1.9	1.9						
Block Errors	39	18						
Ball handling errors	4	8						
ATTENDANCE								
Total	1389	1690						
Dates/Avg Per Date	5/278	4/422						
Neutral site #/Avg	4/59							
Current win streak	0	-						
Home win streak	2	-						

Record in 3-set matches:2-3 • Record in 4-set matches:3-1 • Record in 5-set matches:3-1